

図 1

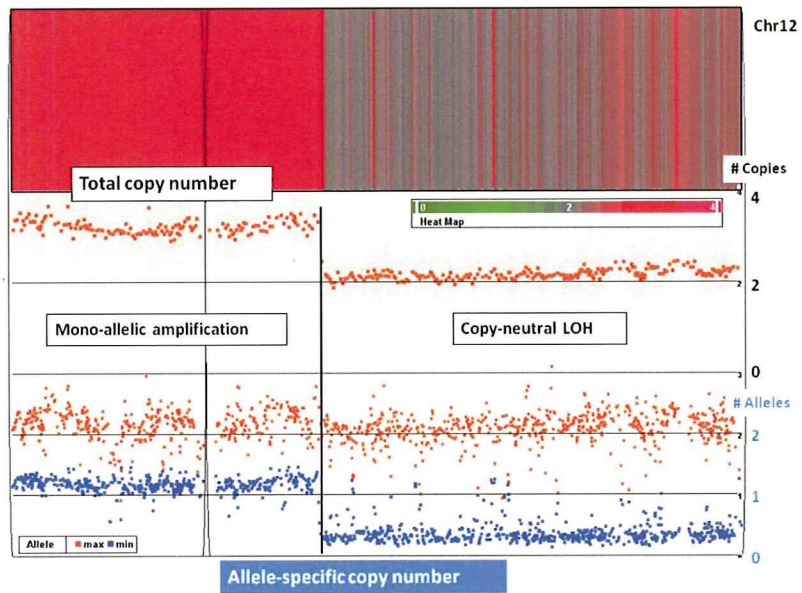


图2 Genome-wide copy number alterations in N-T pairs(Ovarian Cancer)

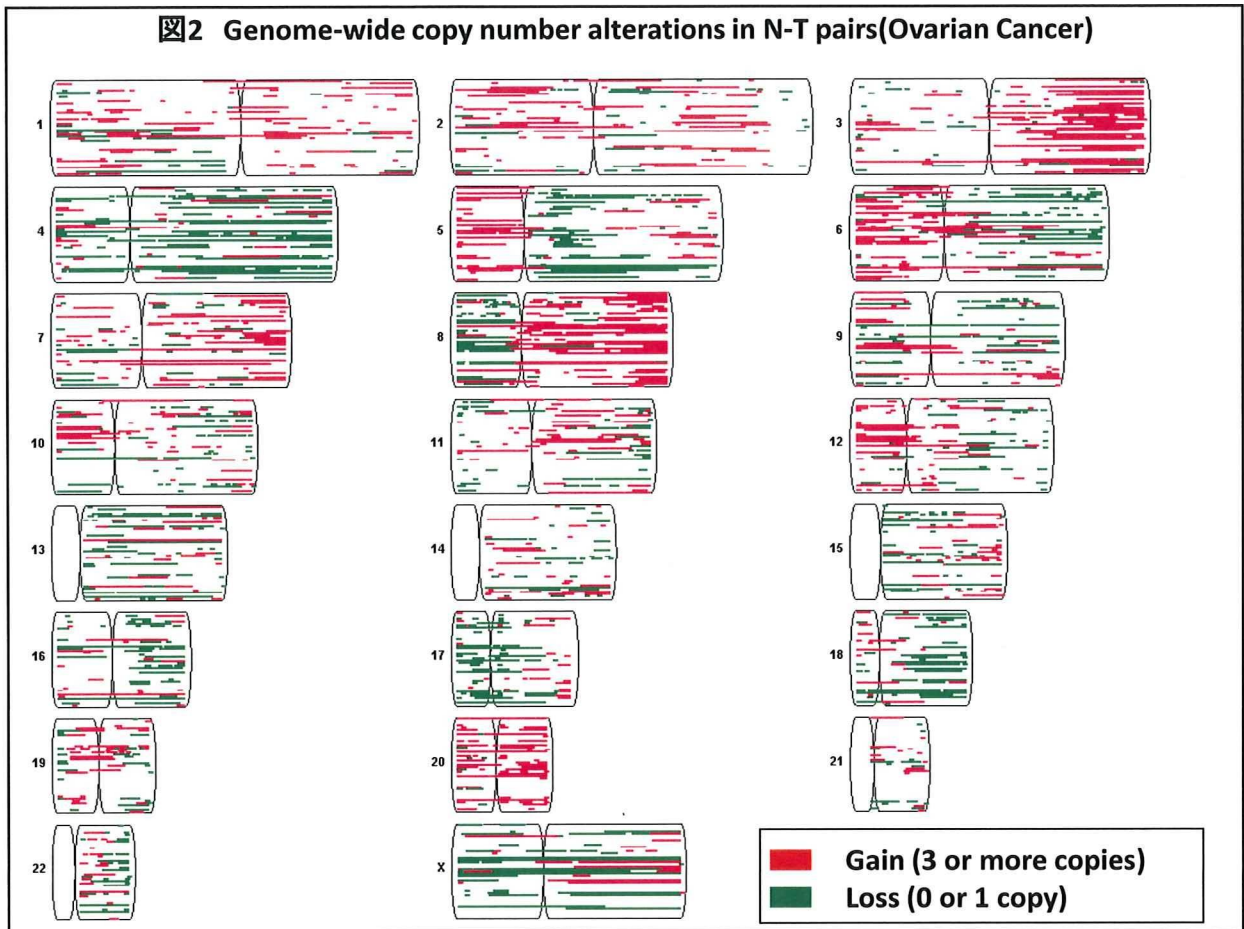
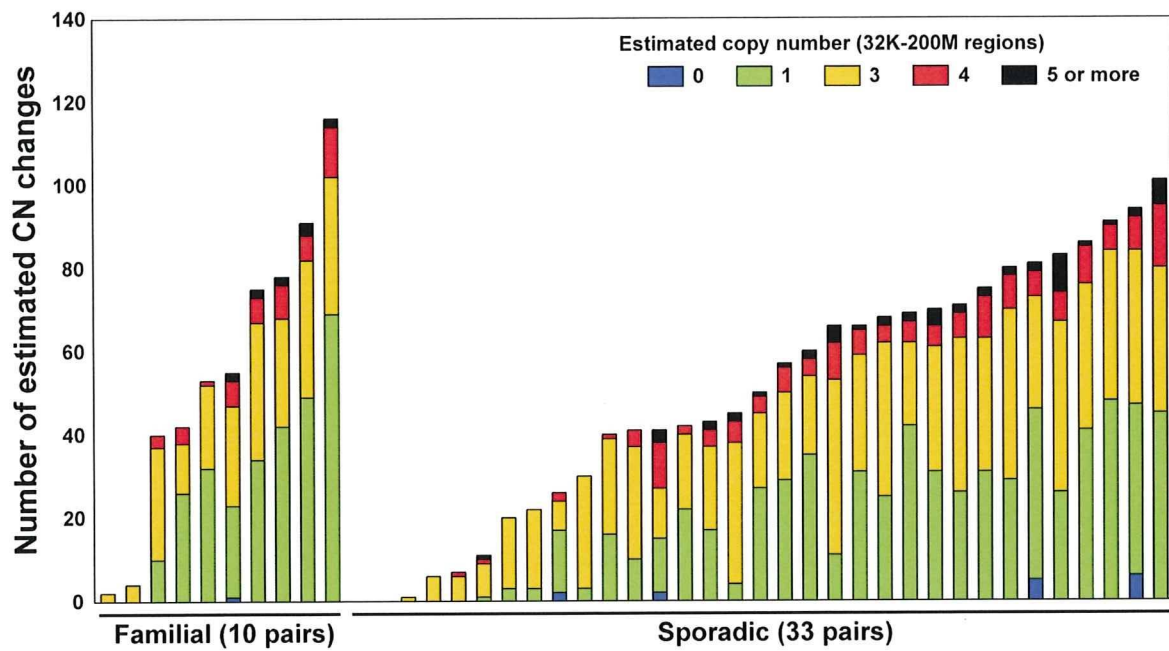
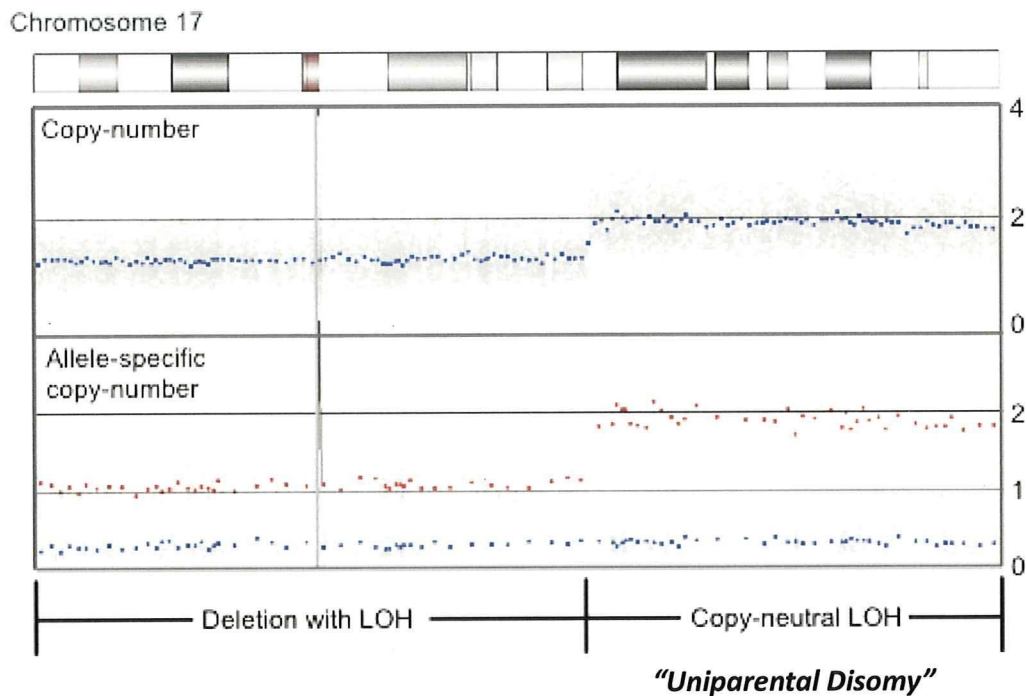


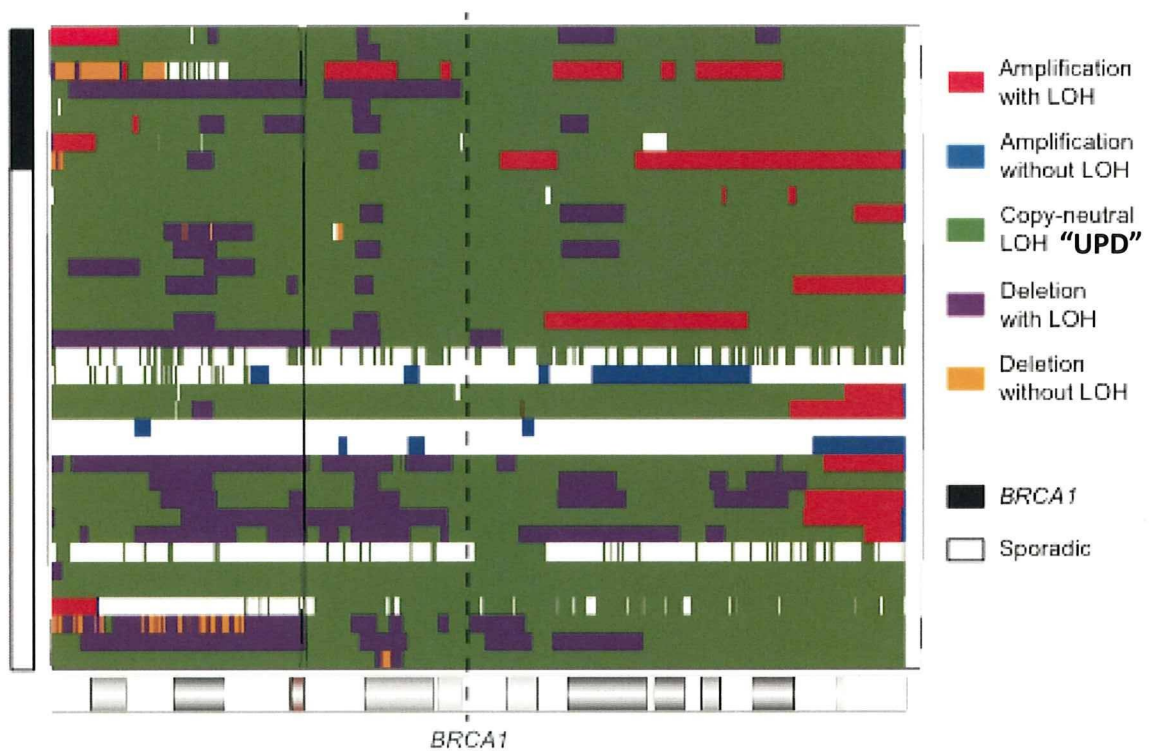
Figure 3 Inter-individual variation in the number of copy number alterations (Ovarian Cancer)



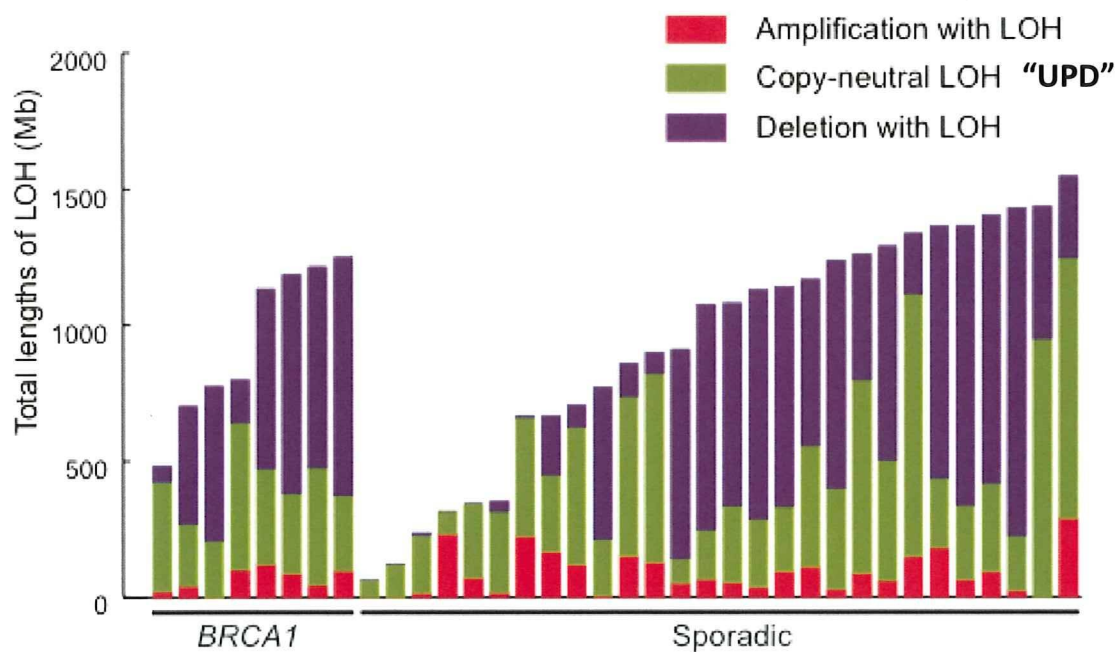
片親性ダイソミー(図4) (Uniparental Disomy: UPD, copy-neutral LOH)



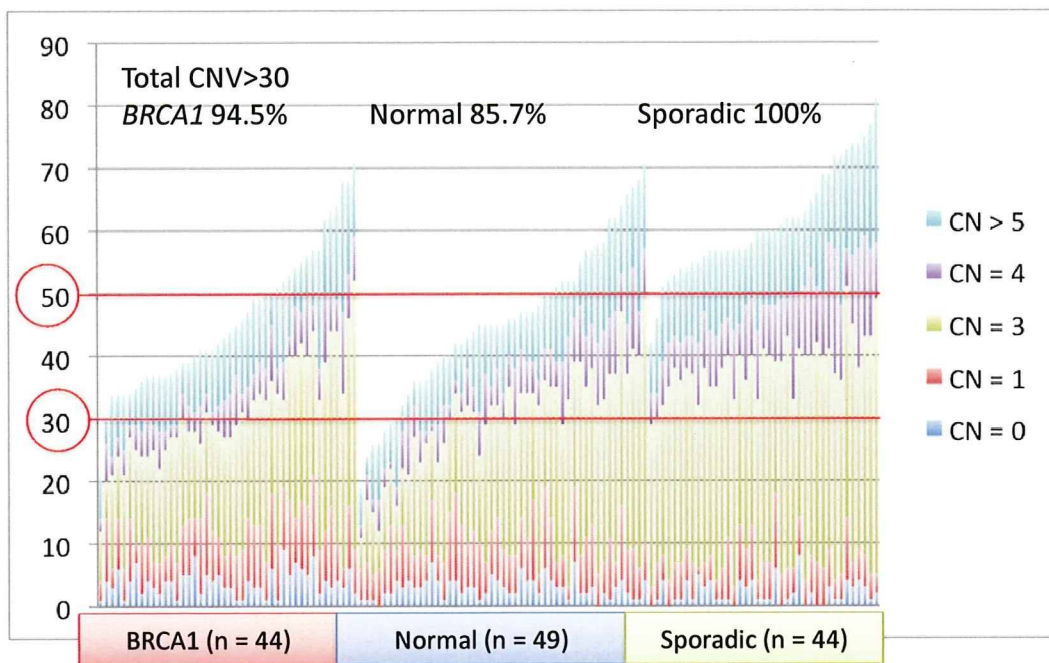
Chromosome 17 (图5)



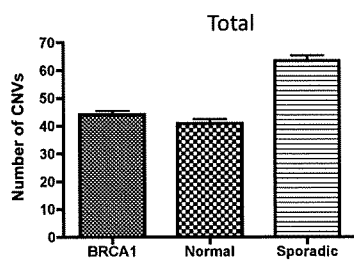
片親性ダイソミーの頻度 (図6)



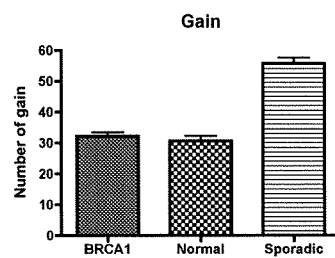
Total number of CNV(图7)



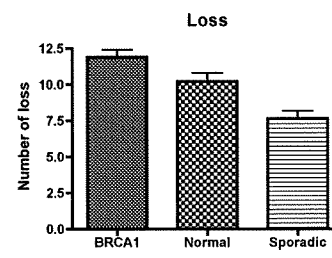
CNV frequency (表8)



Kruskal-Wallis test: $p < 0.0001$
 Dunn's Multiple Comparison Test
 BRCA1 vs Normal: $p > 0.05$
 BRCA1 vs Sporadic: $p < 0.001$
 Sporadic vs Normal: $p < 0.001$

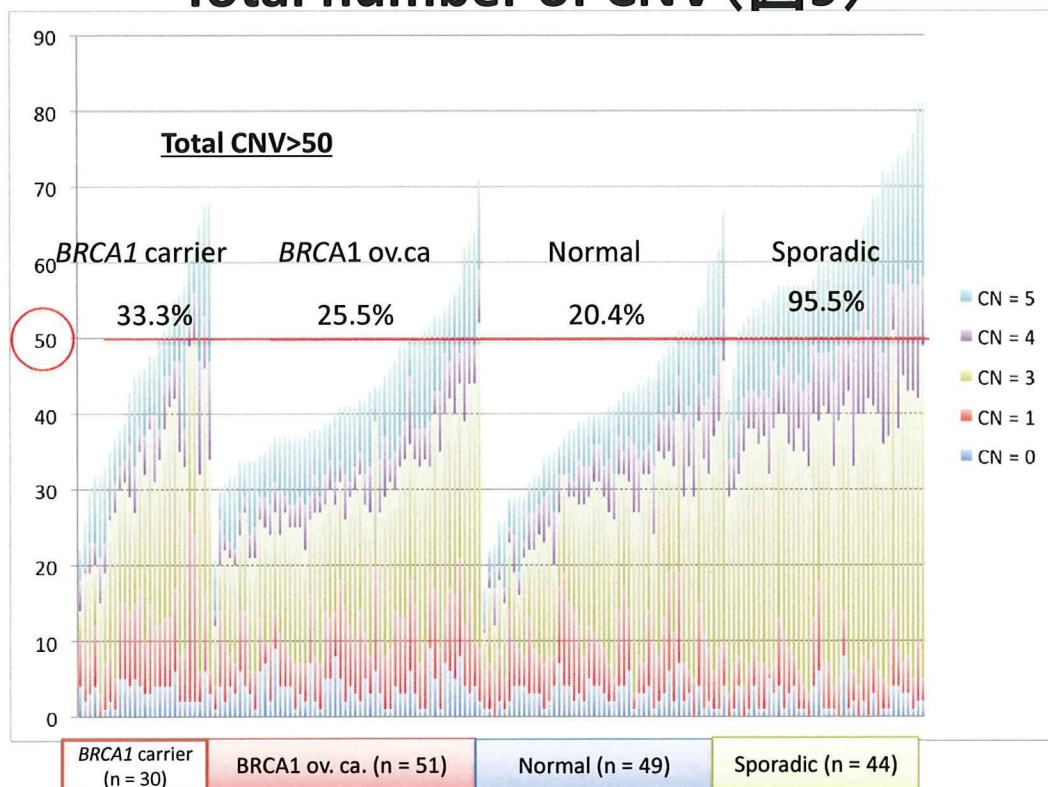


Kruskal-Wallis test: $p < 0.0001$
 Dunn's Multiple Comparison Test
 BRCA1 vs Normal: $p > 0.05$
 BRCA1 vs Sporadic: $p < 0.001$
 Sporadic vs Normal: $p < 0.01$



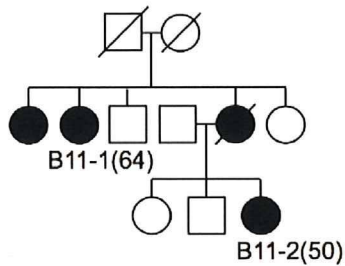
Kruskal-Wallis test: $p < 0.0001$
 Dunn's Multiple Comparison Test
 BRCA1 vs Normal: $p > 0.05$
 BRCA1 vs Sporadic: $p < 0.001$
 Sporadic vs Normal: $p < 0.01$

Total number of CNV (图9)



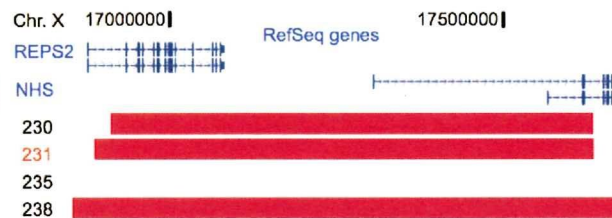
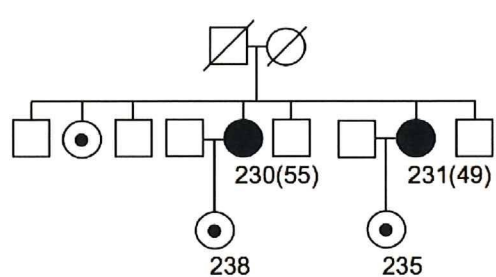
Genetic anticipation (図10)

Family B11



約4kbの延長

Family 14



最大24kbの延長

图11 Genome-wide copy number alterations in N-T pairs(Breast Cancer)

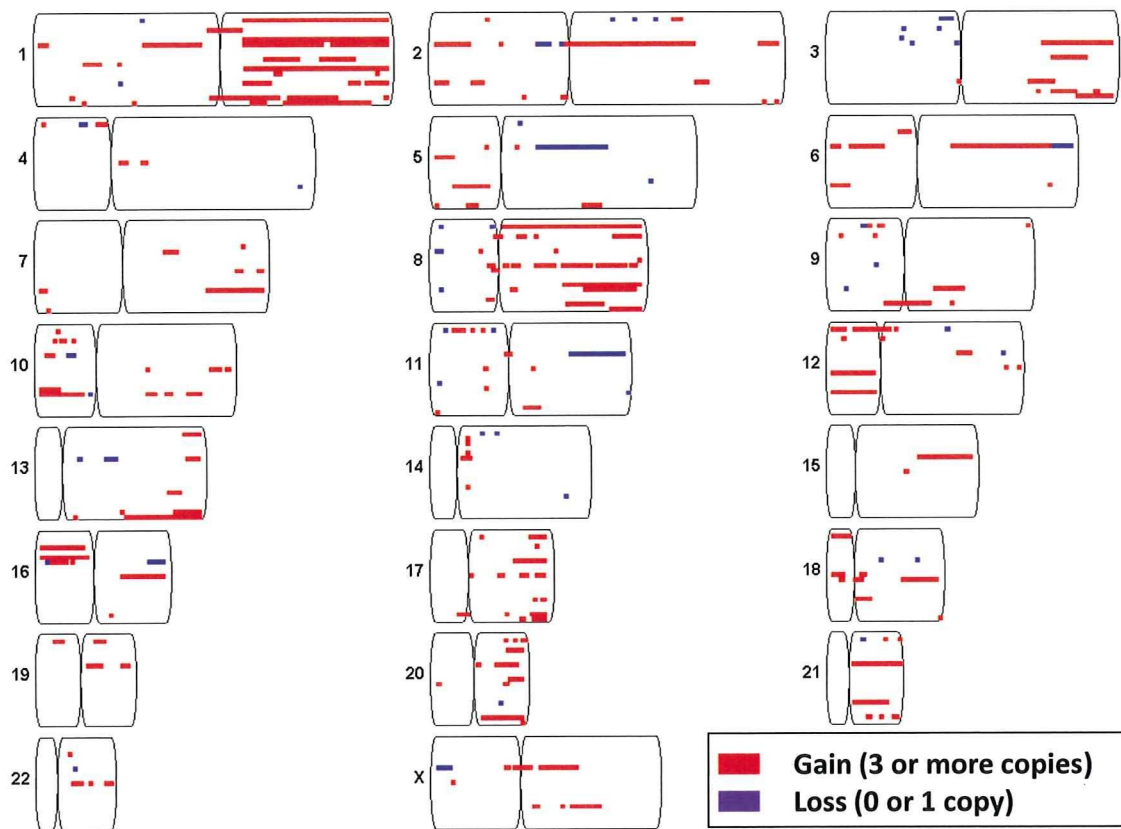
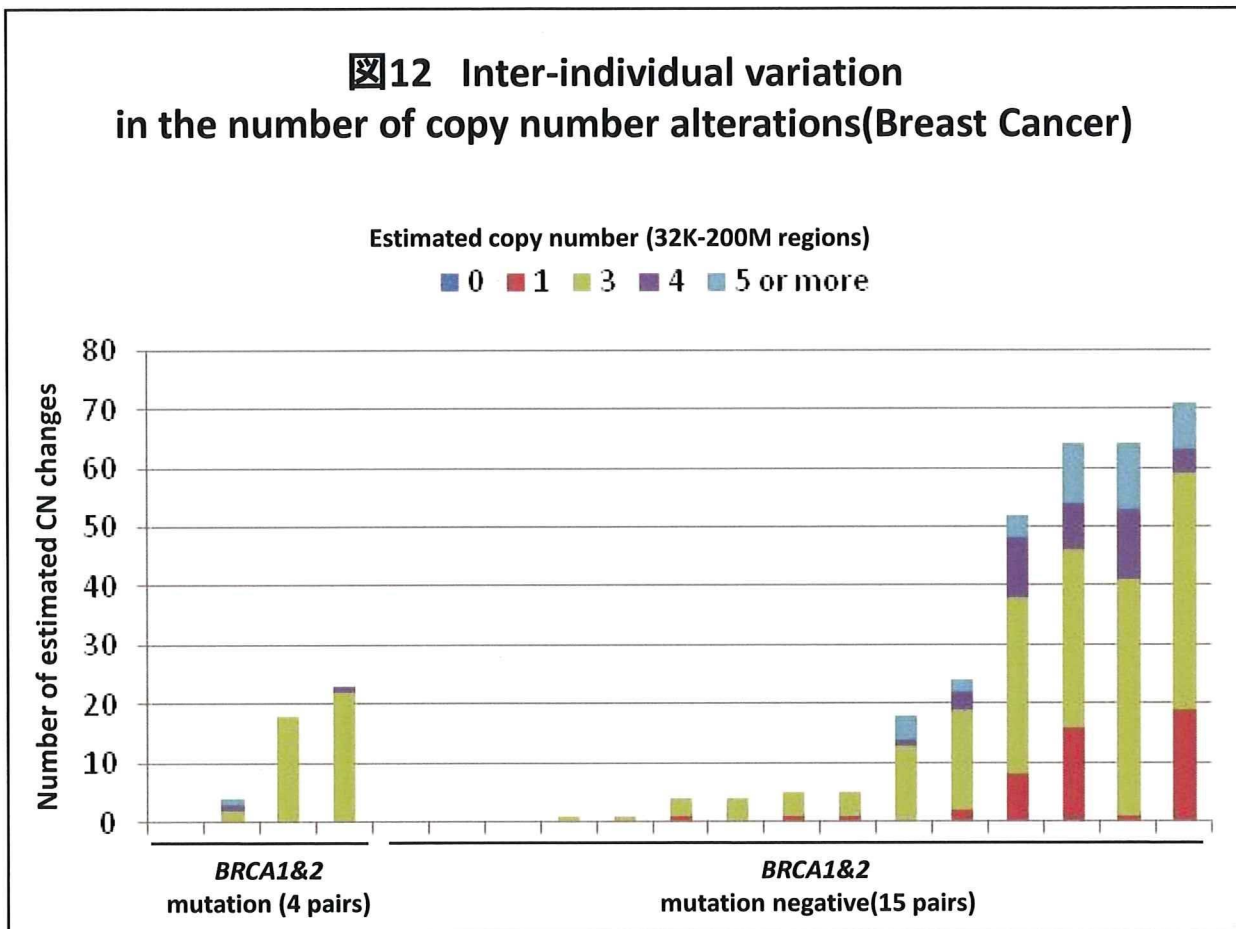
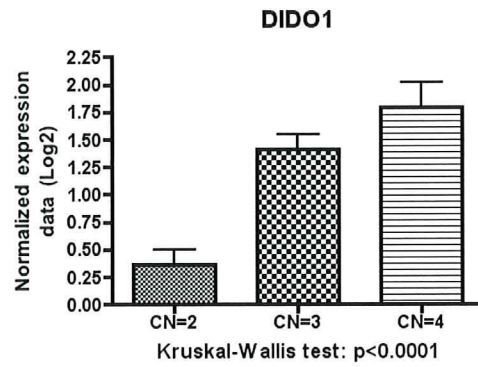
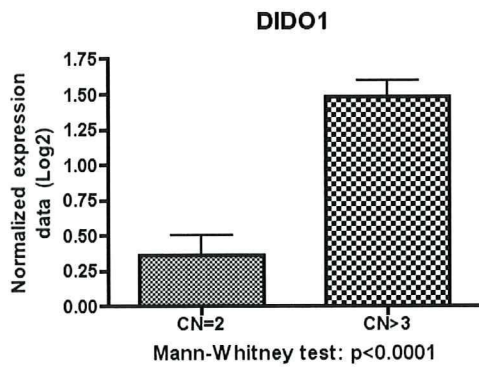
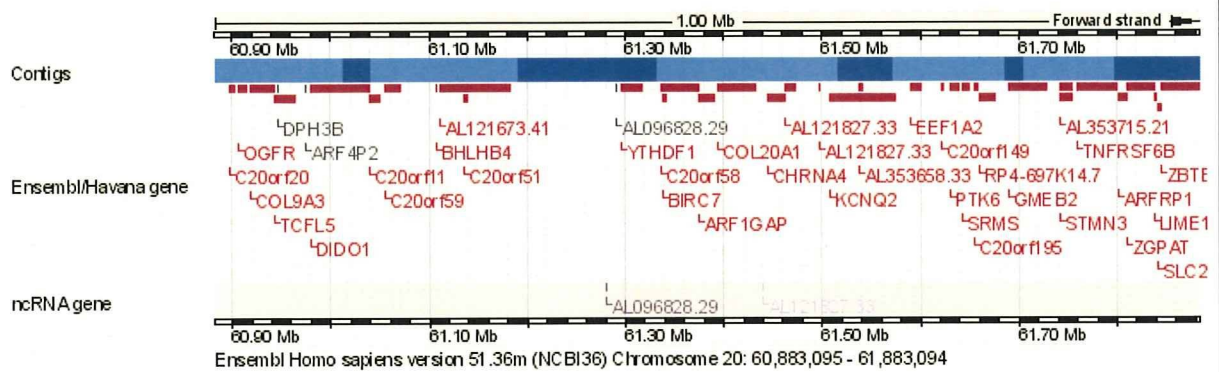


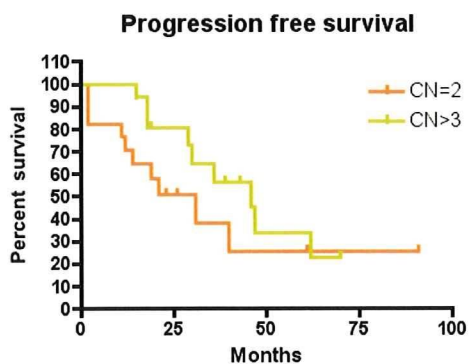
Figure 12 Inter-individual variation in the number of copy number alterations(Breast Cancer)



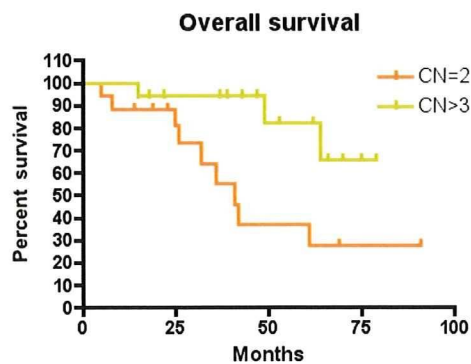
13 20q13.33



14
Prognosis (Copy number 2 vs >3)

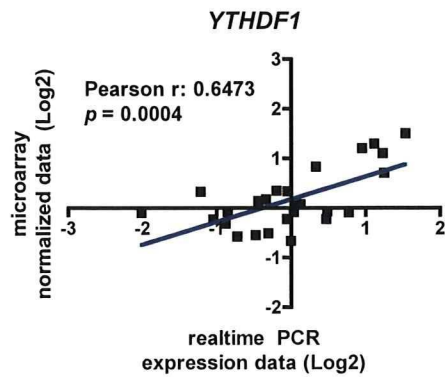
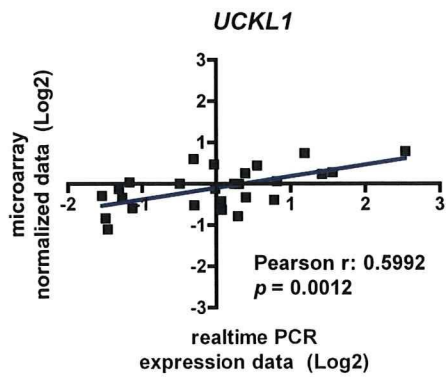


Logrank test	P=0.1975
Median survival	
CN=2	31.00
CN>3	46.00
Hazard ratio	1.771
95%CI of ratio	0.7237-4.783



Logrank test	P=0.0122
Median survival	
CN=2	41.00
CN>3	Undefined
Hazard ratio	4.515
95%CI of ratio	1.386-14.32

Figure 15 Validation of microarray data



研究成果の刊行に関する一覧表

雑誌

発表者氏名	論文タイトル名	発表誌名	巻名	ページ	出版年
Tae-Hee Lee, Seyha Seng, Masayuki Sekine, Cimona Hinton, Yigong Fu, Hava Karsenty Avraham, Shalom Avraham	Vascular Endothelial Growth Factor Mediates Intracrine Survival in Human Breast Carcinoma Cells through Internally Expressed VEGFR1/FLT1	PLoS med	4(6) e186	1101- 1116	2007
Yahata T, Aoki Y. Tanaka K	Prediction of myometrial invasion in patients with endometrial carcinoma: comparison of magnetic resonance imaging, transvaginal ultrasonography, and gross visual inspection.	Eur J Gynaecol Oncol	28(3)	193-5	2007
TakehiroSerikawa, AkiraKikuchi, Susumu Sugaya, Norio Suzuki, Hiroshi Kikuchi. Kenichi Tanaka.	In vitro and in vivo evaluation of novel cationic liposomes utilized for cancer gene therapy	Journal of controlled release	113	255-260	2007
Banzai C., Yahata T., Sasahara J., Kashima K., Fujita K., Nishikura K., Ajioka Y., Motoyama T Kenichi Tanaka.	Advanced Malignant Rhabdoid Tumor of the Ovary Effectively Responding to Chemotherapy: A Case Report and Review of the Literature.	Gynecologic Oncology	105	261-5	2007
Takehiro Serikawa, Hiroshi Kikuchi, Takeshi Oite Kenichi Tanaka	Enhancement of Gene Expression Efficiency Using Cationic Liposomes on Ovarian Cancer Cells	Drug Delivery	15	523-9	2008

Okada H, Tajima A, Shichiri K, Tanaka A, Inoue I. Tanaka K.	Genome-wide expression of Azoospermia testes demonstrates a specific profile and implicates ART3 in genetic susceptibility.	PLoS Genet.	4(2)	1-14	2008
Yahata, T., Numata, M., Kashima, K., Sekine, M., Fujita, K., Yamamoto, T Tanaka, K.	Conservative treatment of stage IA1 adenocarcinoma of the cervix during pregnancy.	Gynecol Oncol	109	49-52	2008
Yahata T, Kawasaki T, Serikawa T, Suzuki M Tanaka K.	Adenocarcinoma arising from respiratory ciliated epithelium in benign cystic teratoma of the ovary: a case report with analyzes of the CT, MRI, and pathological findings.	J Obstet Gynaecol Res.	34(3)	408-12	2008
Kashima K, Yahata T, Fujita K Tanaka K .	Primary retroperitoneal mucinous cystadenocarcinoma associated with pregnancy.	Int J Gynecol Cancer.	18(5)	908-12	2008
Masayuki Yamaguchi, Tetsuro Yahata, Kazuyuki Fujita, Junko Sakurada, Hajime Umezumi Kenichi Tanaka	Extranodal Rosai-Dorfman Disease Involving Bilateral Ovaries in a Patient with a Ventriculoperitoneal Shunt	J Obstet Gynaecol Res	35(5)	1000-1003	2009
Yoshihara K, Tajima A, Komata D, Yamamoto T, Kodama S, Fujiwara H, Suzuki M, Onishi Y. Hatae M, Sueyoshi K, Fujiwara H, Kudo Y, Inoue I. Tanaka K	Gene expression profiling of advanced-stage serous ovarian cancers distinguishes novel subclasses and implicates ZEB2 in tumor progression and prognosis.	Cancer Sci	100(8)	1421-8	2009

Quan J, Yahata T, Tamura N, Nagata H Tanaka K .	Relationship between single nucleotide polymorphisms in CYP1A1 and CYP1B1 genes and the bone mineral density and serum lipid profiles in postmenopausal Japanese women taking hormone therapy.	Menopause.	16(1)	171-6	2009
Kyoko Yamada, Kazuyuki Fujita. Jinhua Quan, Masayuki Sekine Katsunori Kashima, Tetsuro Yahata, Kenichi Tanaka	Increased apoptosis of germ Cells in patients with AZFc deletions	J Assist Reprod Genet		In press	2010
C. Banzai, T. Yahata, K. Fujita, Y. Ajioka, M. Kawahara, H. Okamura K. Tanaka	Recurrent borderline ovarian tumor presenting as a pedunculated polyp at colonoscopy	Endoscopy	42	69-70	2010
Dai komata, Tetsuro Yahata, Shoji Kodama, Yu koyama, Nobuo Takeda, Kenzo Tajima Haruhiko Makino Nobuaki Sato, Ichiro Muto, Katsuyoshi Hatakeyama, And Kenichi Tanaka	The prevalence of hereditary breast/ovarian cancer risk in patients with a history of breast or ovarian Cancer in Japanese subjects	J Obstet Gynecol Res	35(5)	912-917	2010
Saeki T., et al.,	Pharmacokinetic analysis of a combined chemoendocrine treatment with paclitaxel and toremifene for metastatic breast cancer.	Breast Cancer	16	113-120	2009
Saeki T., et al.,	Evaluation of the safety and tolerability of oral TAS-108 in postmenopausal patients with metastatic breast cancer.	Annals of Oncology	20(5)	868-873	2009

Saeki T., et al.,	Physiological and oncogenic aurora-pathway.	International Journal of Biological Sciences	5(7)	722-726	2009
Okita A., Saeki T., et al.	Efficacy and tolerability of weekly paclitaxel combination with high-dose toremifene citrate in patients with metastatic breast cancer.	Acta Medica Okayama	63(4)	187-194	2009
Omokawa Y., Saeki T., et al.,	In vitro and in vivo anti-tumor effects of novel Span 80 vesicles containing immobilized Eucheuma serra agglutinin.	International Journal of Pharmaceutics,		in press,	2010
Sekigawa T, Tajima A, Hasegawa T, Hasegawa Y, Inoue H, Sano Y, Matsune S, Kuroho Y, Inoue I.	Gene-expression profiles in human nasal polyp tissues and identification of genetic susceptibility in aspirin intolerant asthma.	Clin Exp Allergy	39	972-981	2009
Kang E-H, Yamaguchi T, Tajima A, Nakajima T, Tomoyasu Y, Watanabe M, Yamaguchi M, Park S-B, Maki K, Inoue I.	Association of the growth hormone receptor gene polymorphisms with mandibular height in a Korean population.	<i>Arch Oral Biol</i>	54	556-562	2009
Tomoyasu Y, Yamaguchi T, Tajima A, Nakajima T, Inoue I, Maki K.	Further evidence for an association between mandibular height and the growth hormone receptor genes in a Japanese population.	Am J Orthod Dentofacial Orthop	136	536-541	2009
Koike A, Nishida N, Inoue I, Tsuji S, Tokunaga K.	Genome-wide association database developed in the Japanese Integrated Database Project.	J Hum Genet	54	543-546	2009

Brookes AJ, Lehvaslaiho H, Muilu J, Shigemoto Y, Oroguchi T, Tomiki T, Mukaiyama A, Konagaya A, Kojima T, Inoue I, Kuroda M, Mizushima H, Thorisson GA, Dash D, Rajeevan H, Darlison MW, Woon M, Fredman D, Smith AV, Senger M, Naito K, Sugawara H.	The phenotype and genotype experiment object model (PaGE-OM): a robust data structure for information related to DNA variation.	Hum Mutat	30	968-977	2009
Nakaoka H, Inoue I.	Meta-analysis of genetic association studies: methodologies, between-study heterogeneity and winner's curse.	J Hum Genet	54	615-623	2009
Yoshihara K, Tajima A, Yahata T, Kodama S, Fujiwara H, Suzuki M, Onishi Y, Hatae M. Sueyoshi K, Fujiwara H, Kudo Y, Kotera K, Masuzaki H, Tashiro H, Katabuchi H, Inoue I, Tanaka K.	Gene expression profile for predicting survival in advanced-stage serous ovarian cancer across two independent databases.	PLoS ONE	5	e9615	2010