

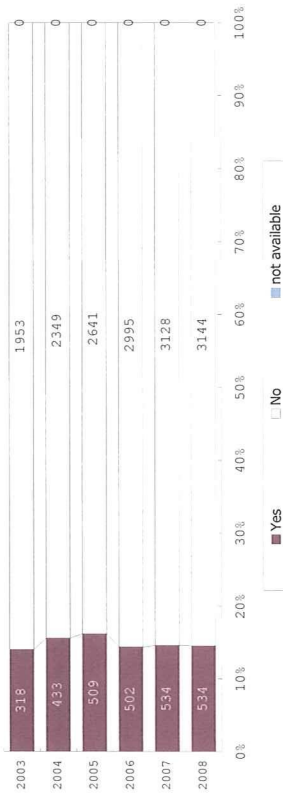
404 Diabetes



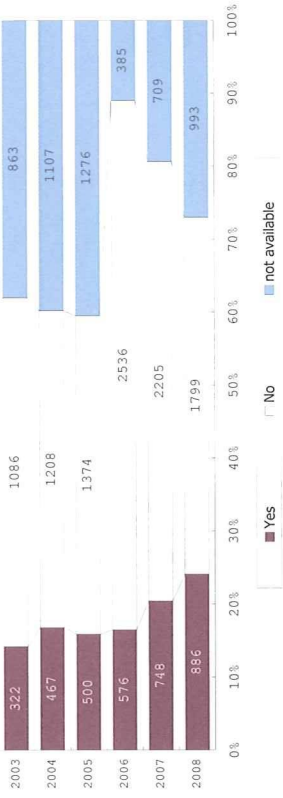
405 Pregnancy induced hypertension



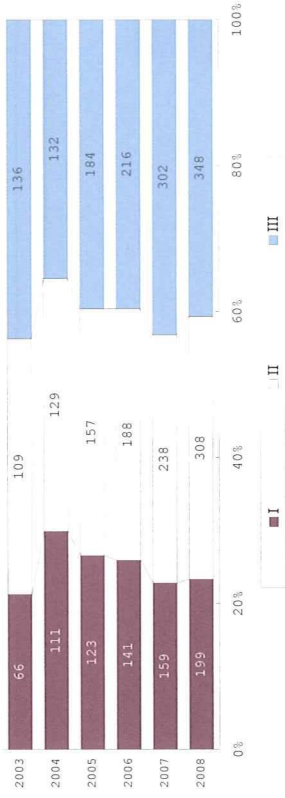
406 Clinical CAM



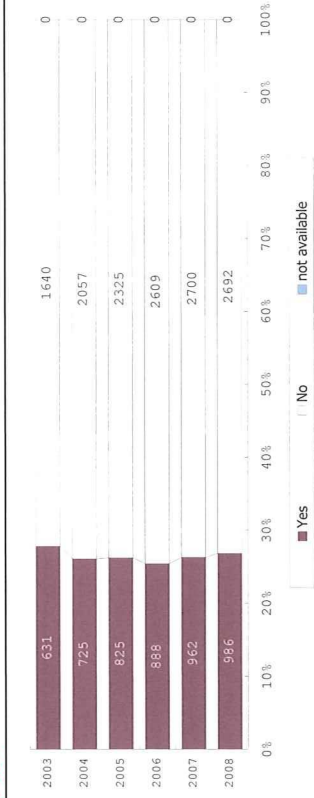
407 Histologic CAM



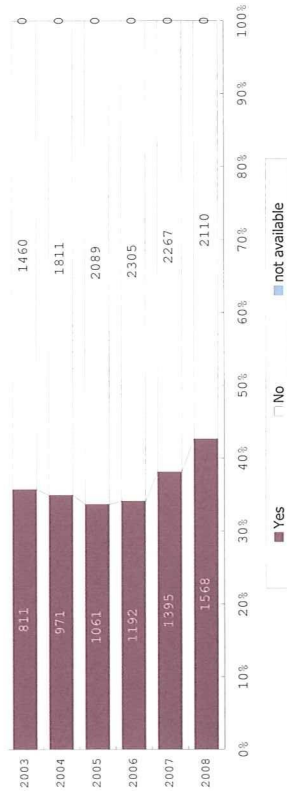
408 Grade of histologic CAM (among infants with positive histologic CAM)



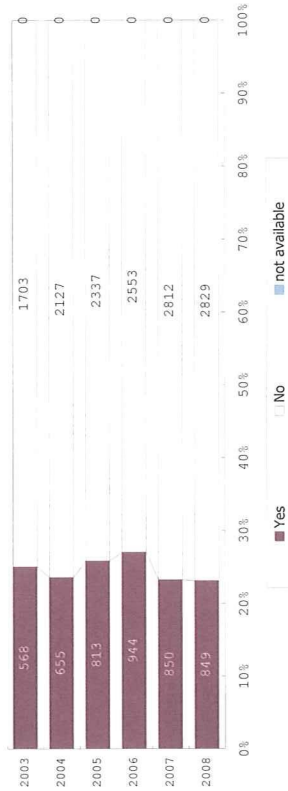
501 PROM



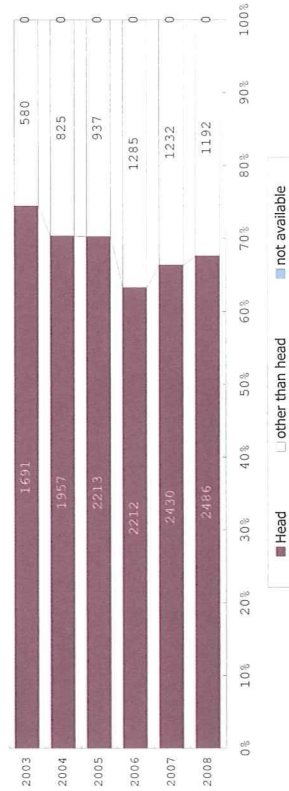
502 Maternal steroid



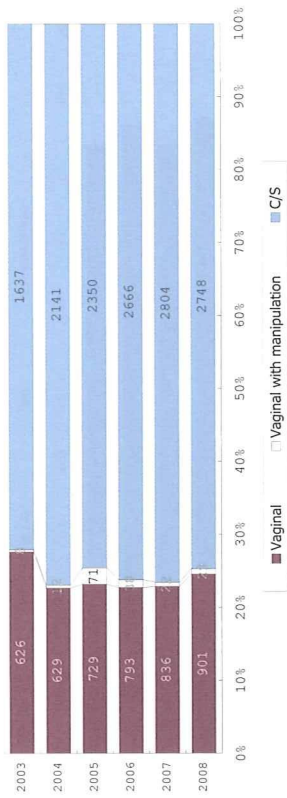
503 NRFS



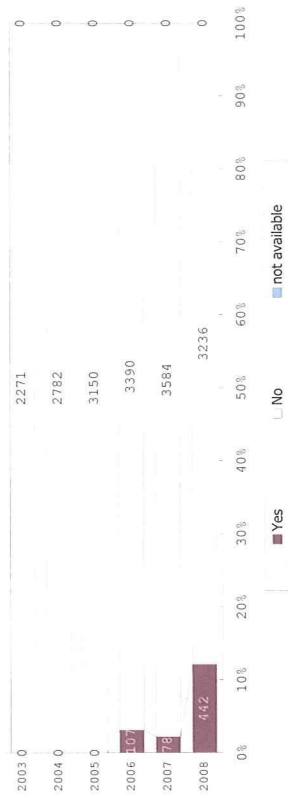
504 Presentation



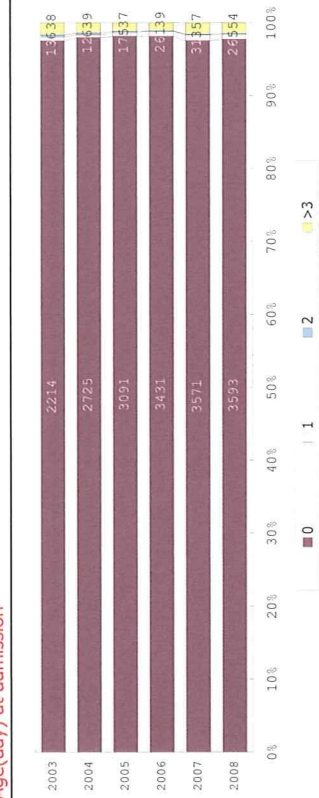
505 Mode of delivery

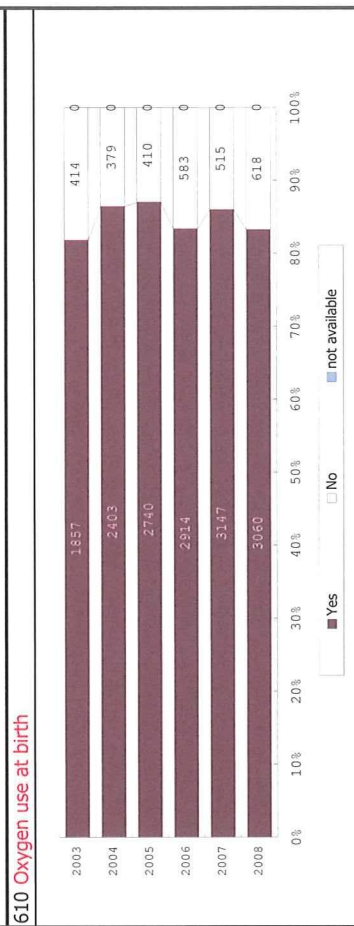
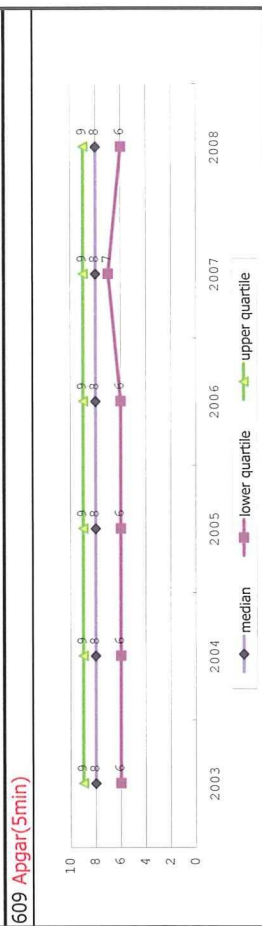
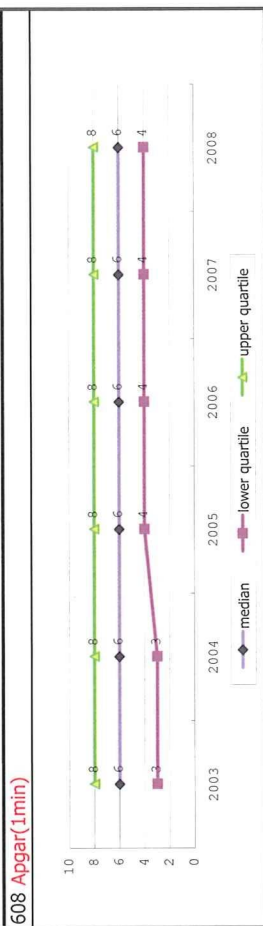
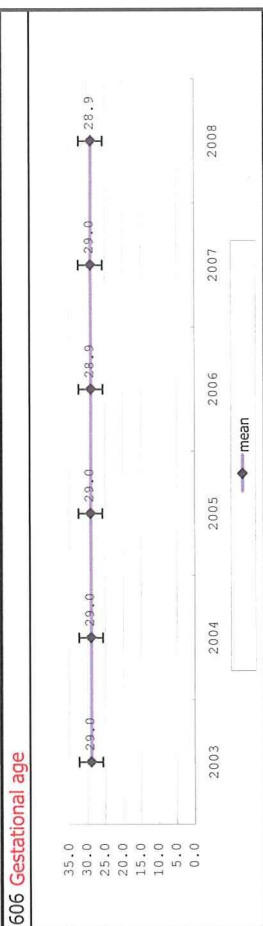
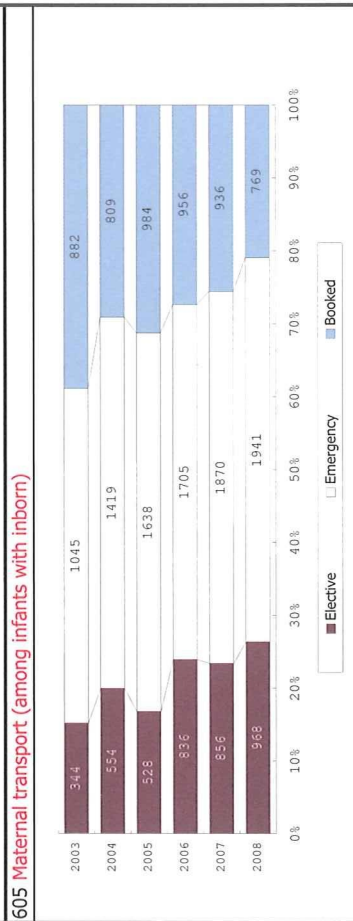
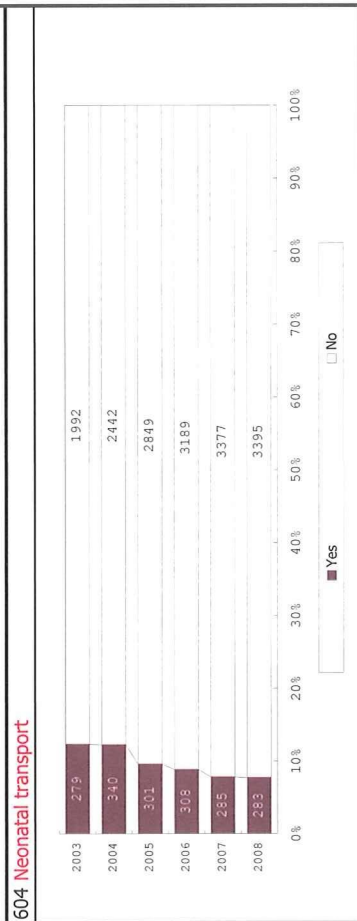
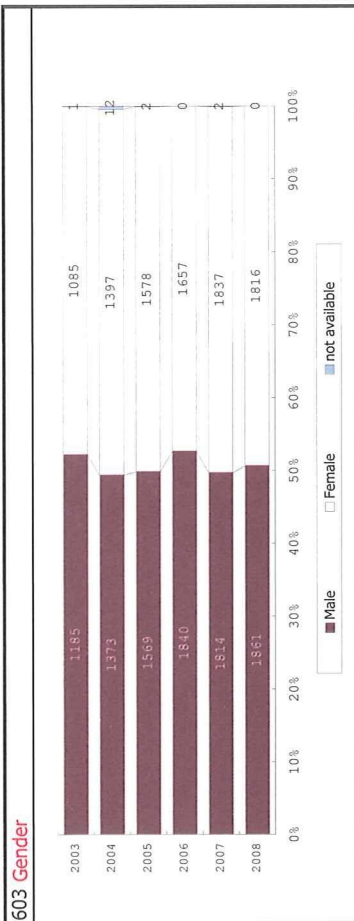


510 Cord blood transfusion

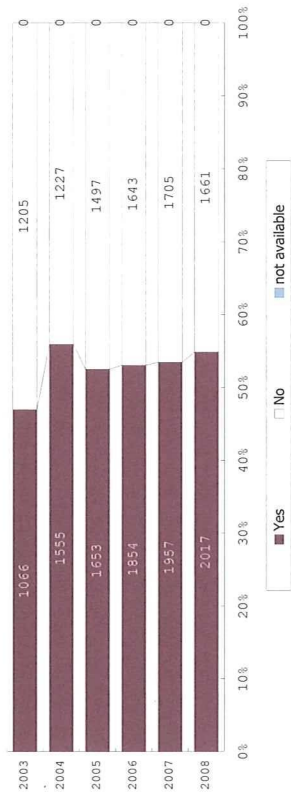


602 Age(day) at admission

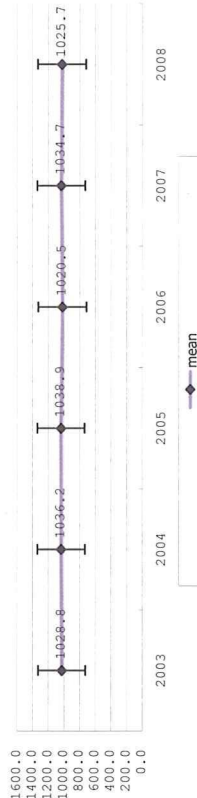




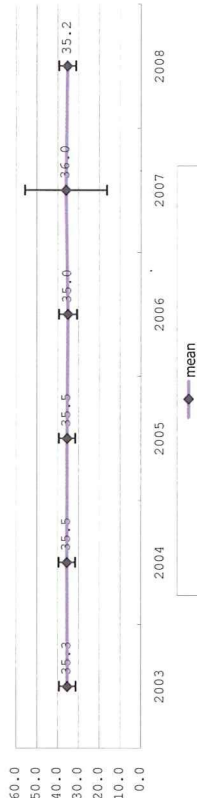
611 Intubation at birth



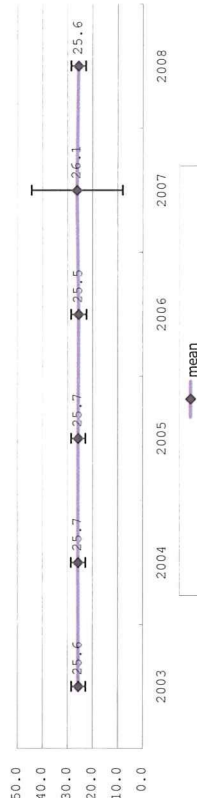
612 Birth weight



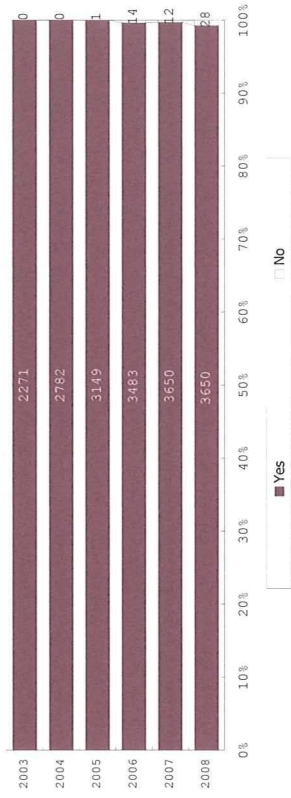
613 Body length at birth



614 Head circumference at birth

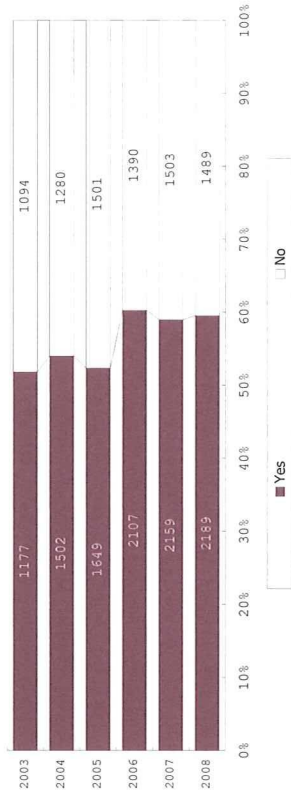


615 Live birth

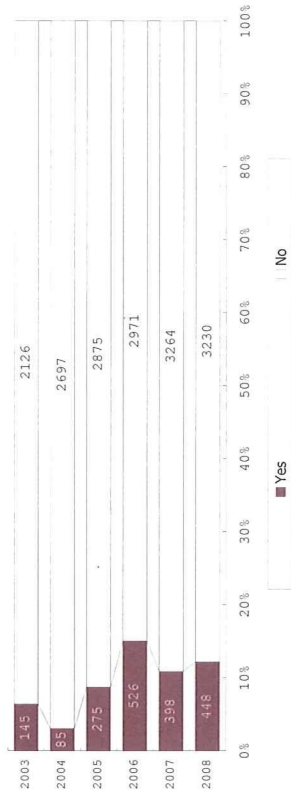


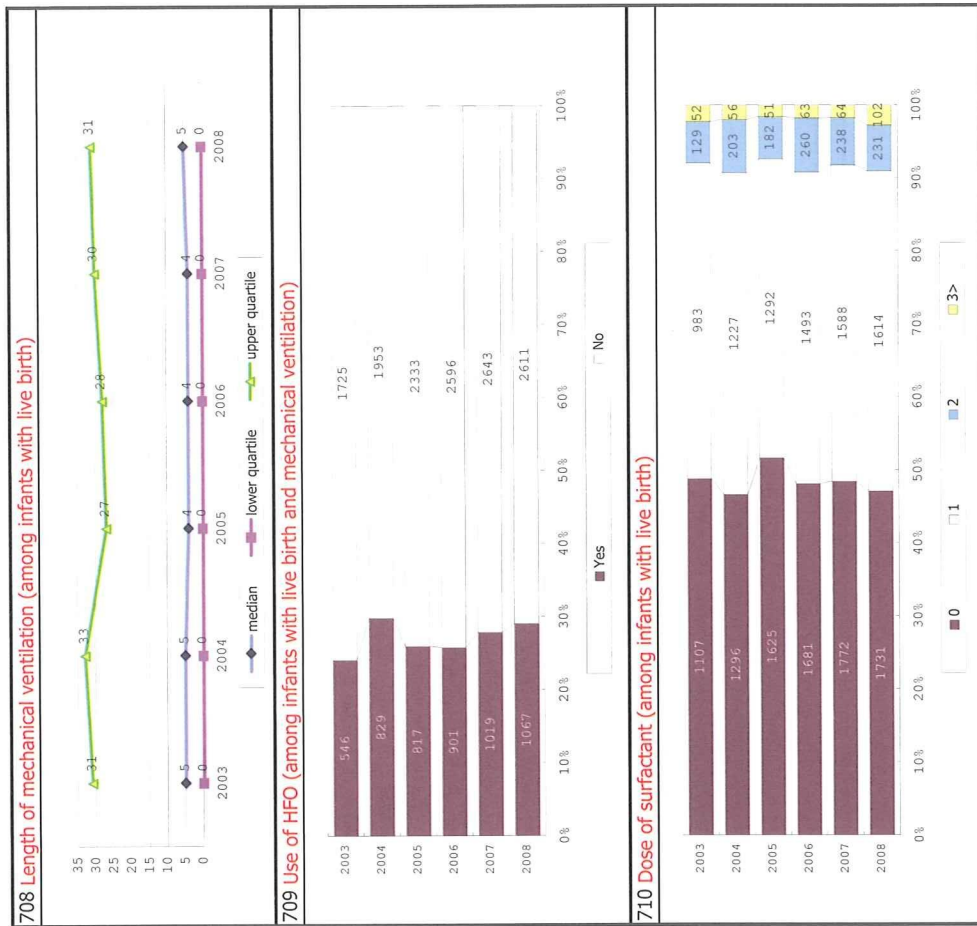
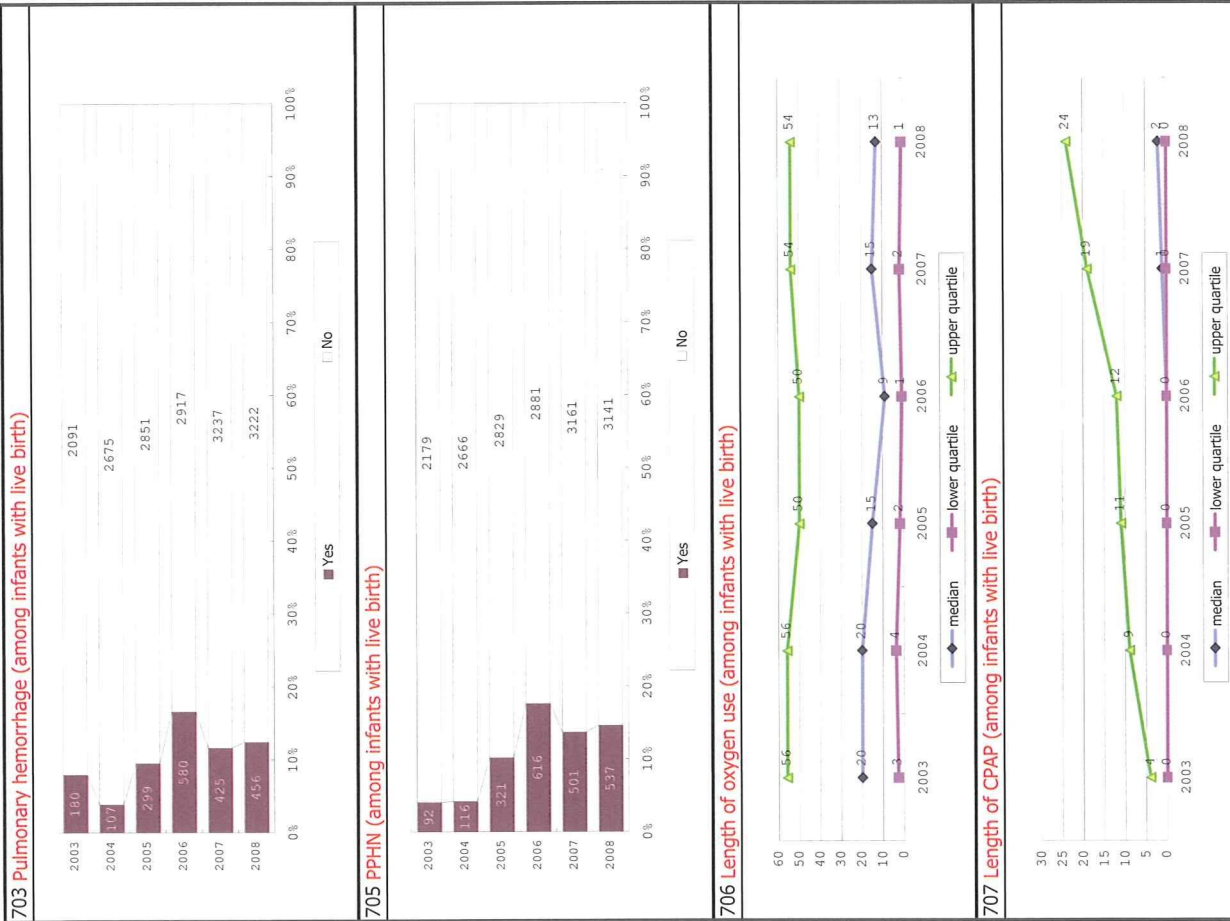
Respiratory disease

701 RDS (among infants with live birth)

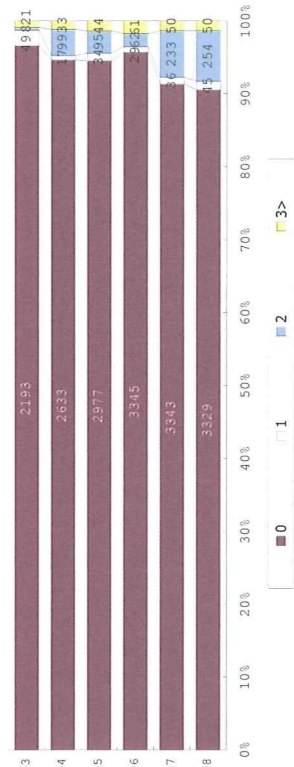


702 Air leak syndrome (among infants with live birth)

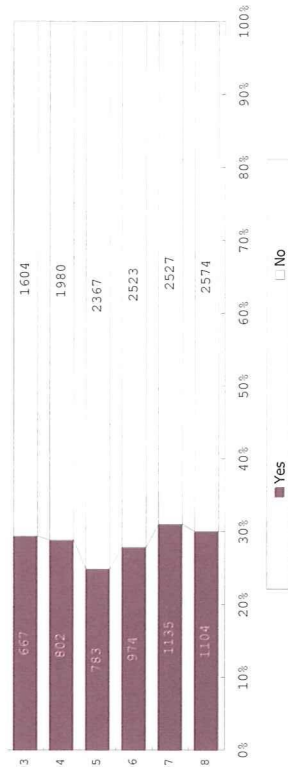




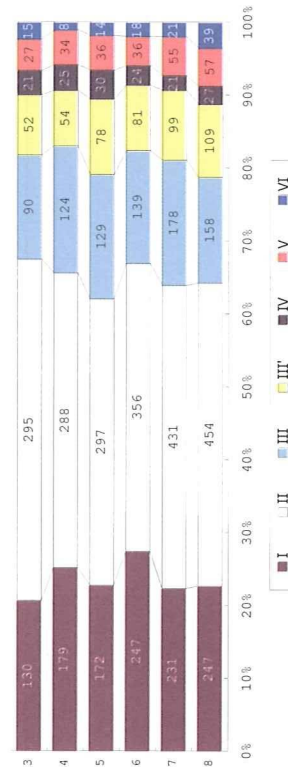
711 Length of inhaled nitric oxide (among infants with live birth)



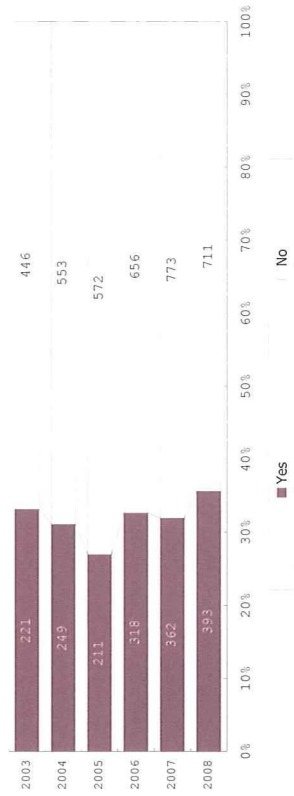
712 CLD at 28 d (among infants with live birth and alive at 28 days of age)



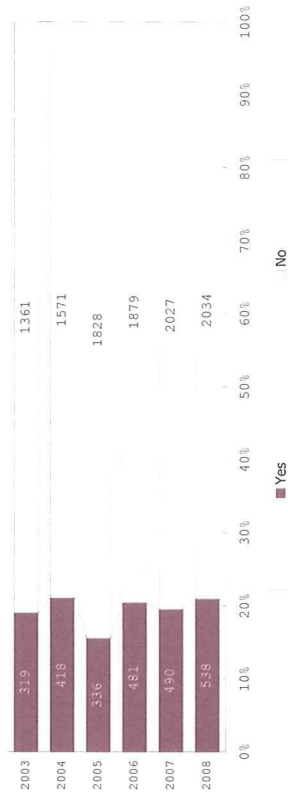
713 Type of CLD (among infants with CLD)



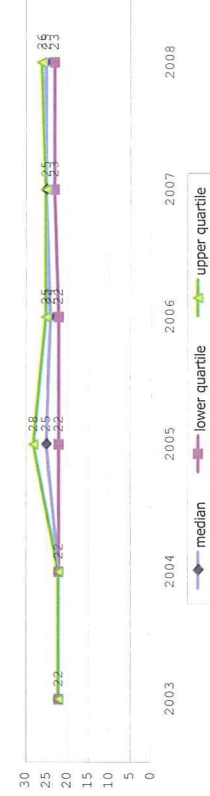
714 Glucocorticoid for CLD (among infants with CLD)

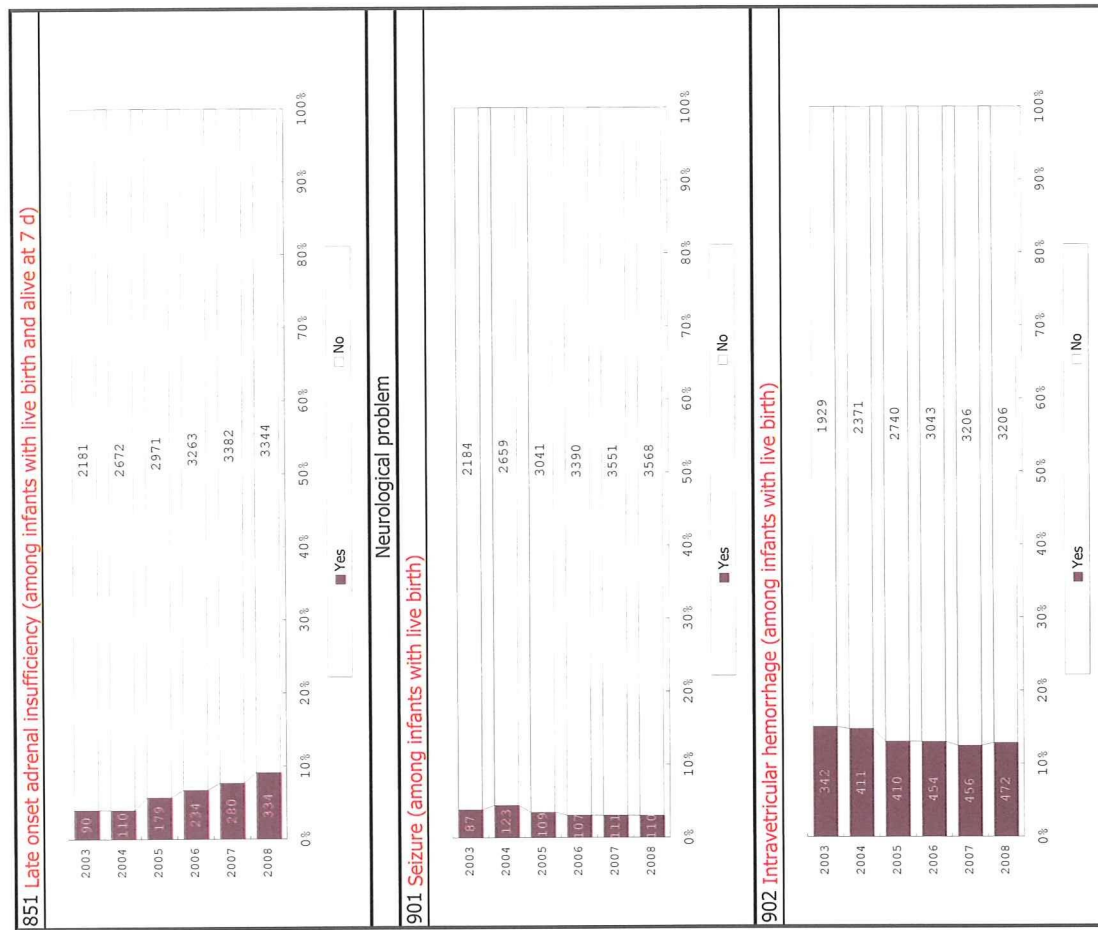
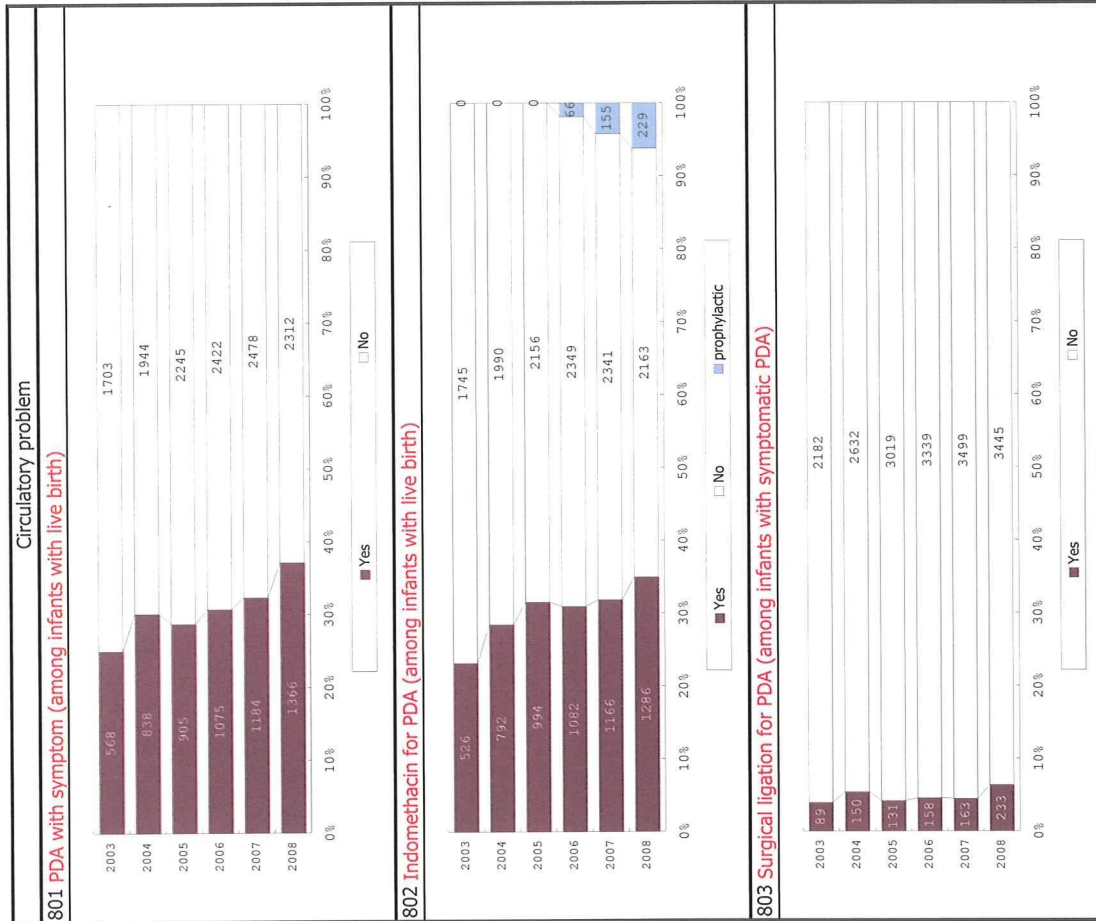


715 CLD at 36 wk (among infants with live birth, alive at 36 wk(corrected age), and CLD)

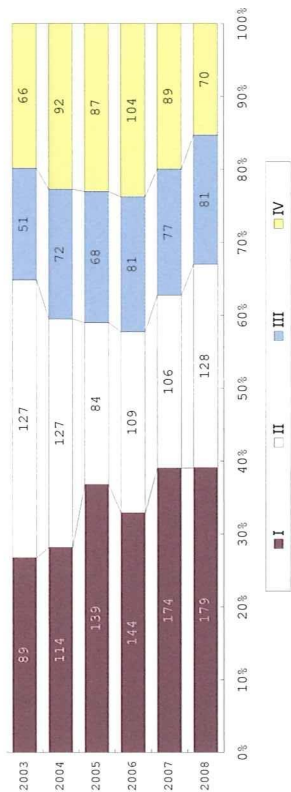


716 Oxygen concentration at 36 wk (among infants with CLD at 36 wk)

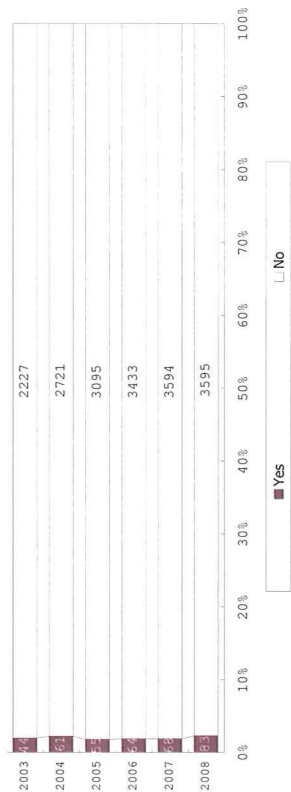




903 Grade of IVH (among infants with live birth and IVH)



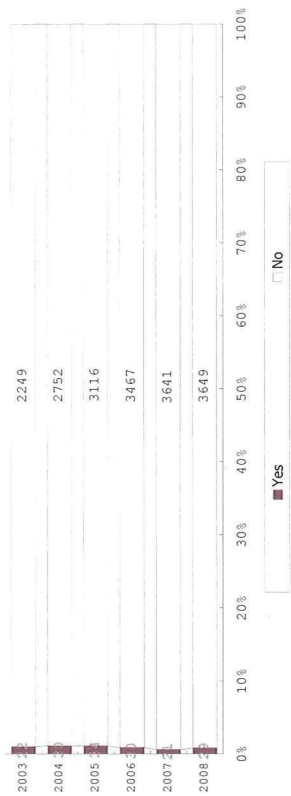
904 Post IVH hydrocephalus (among infants with live birth and IVH)



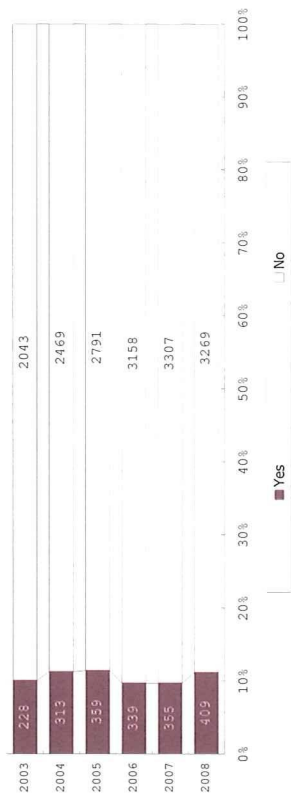
905 PVL (among infants with live birth)



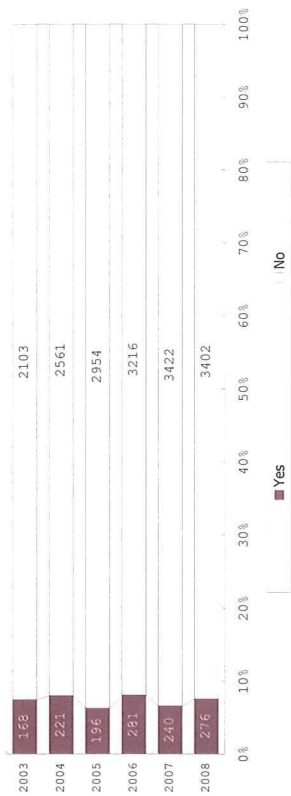
906 HIE (among infants with live birth)



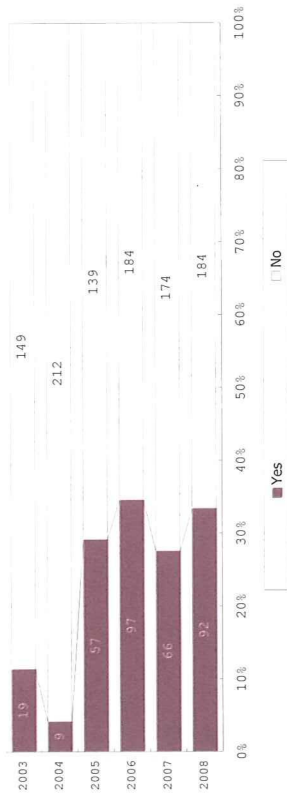
907 Infection (among infants with live birth)



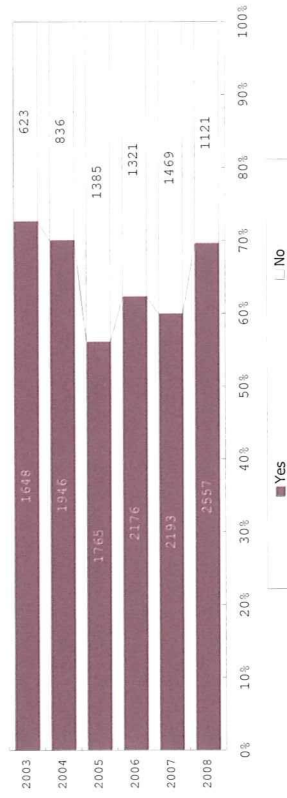
908 Sepsis (among infants with live birth)



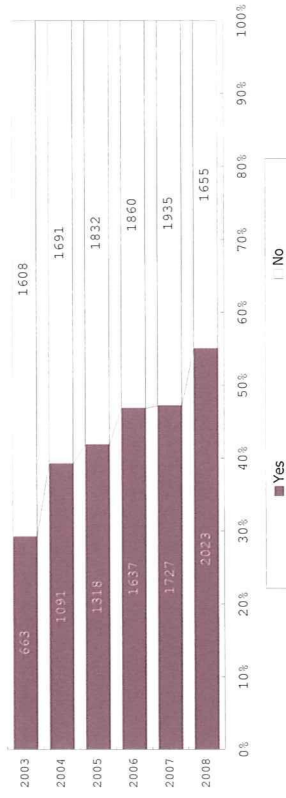
1004 Early onset sepsis (among infants with live birth and sepsis)



1010 Use of antibiotics (among infants with live birth)

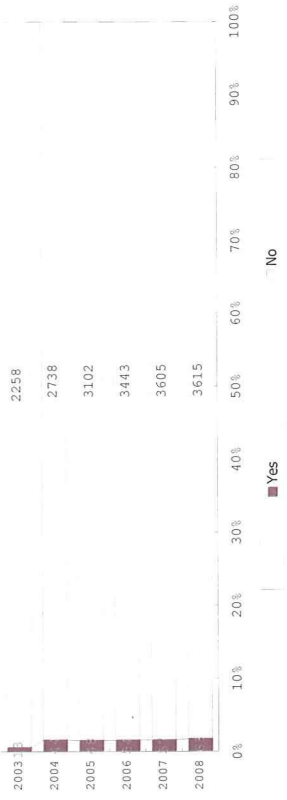


1101 Intravenous hyperalimentation (among infants with live birth)



Gastrointestinal problem

1102 NEC (among infants with live birth)

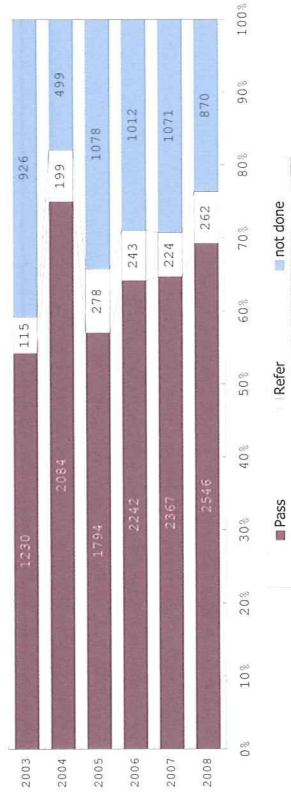


1103 Idiopathic intestinal perforation (among infants with live birth)



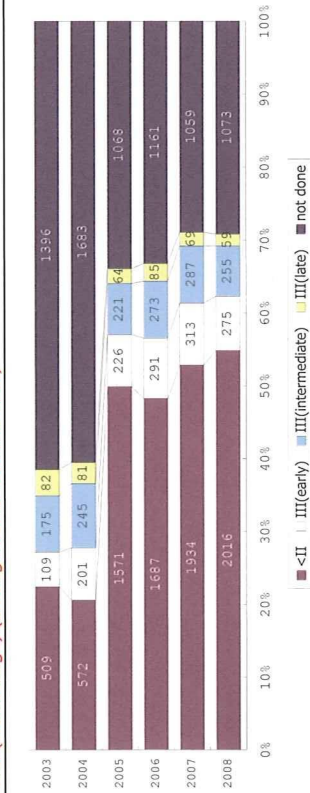
Hearing screening

1201 Hearing loss screening (among infants with live birth)

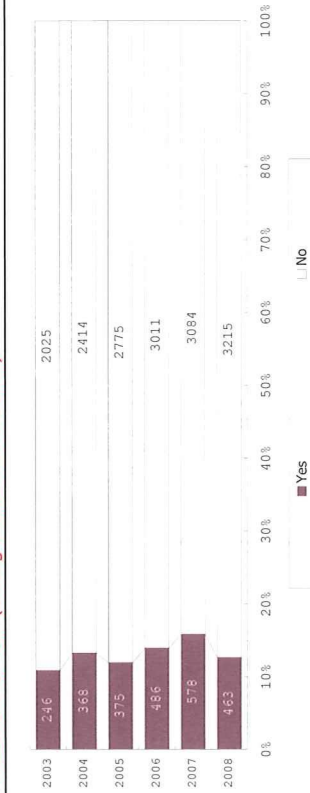


Retinopathy of prematurity

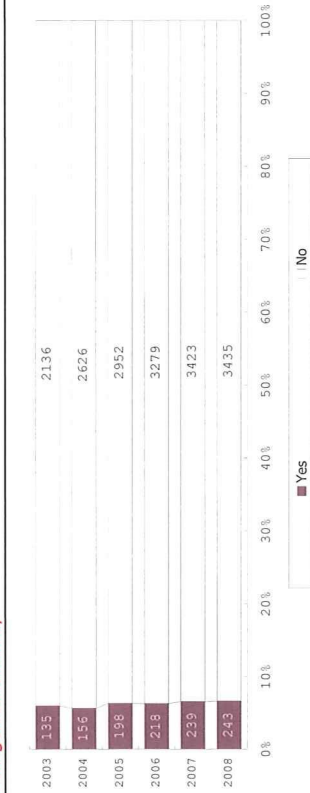
1301 ROP(worst stage) (among infants with live birth)



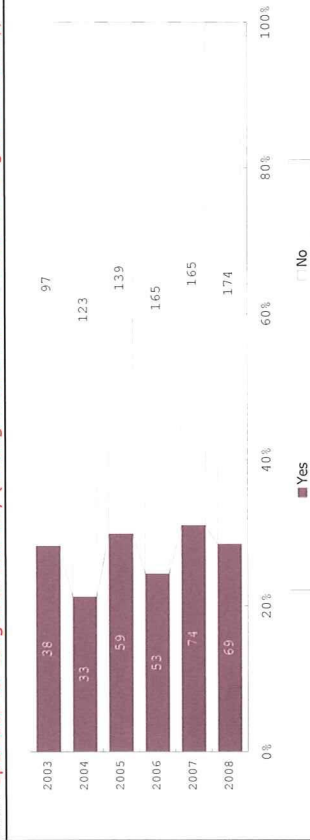
1302 Treatment for ROP (among infants with live birth)



1411 Congenital anomaly

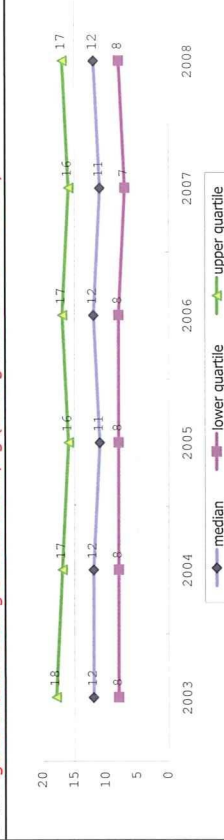


1413 Operation for congenital anomaly (among infants with live birth and congenital anomaly)

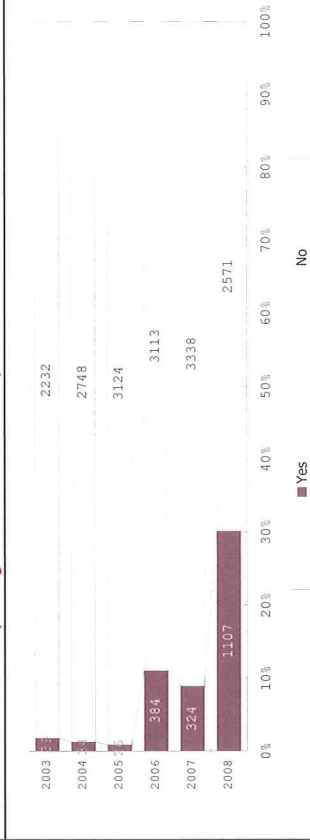


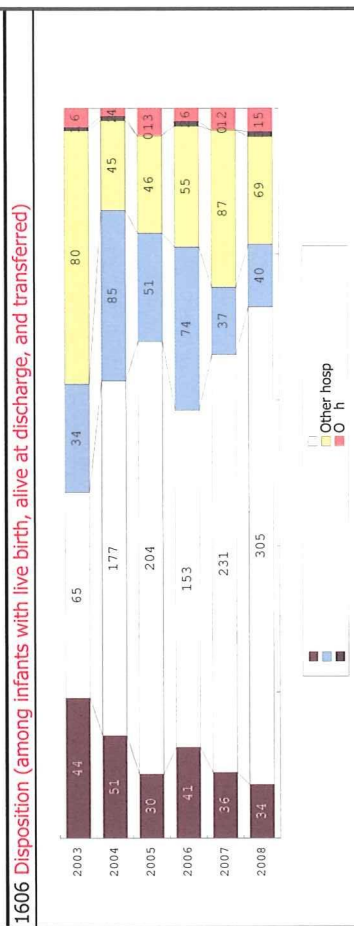
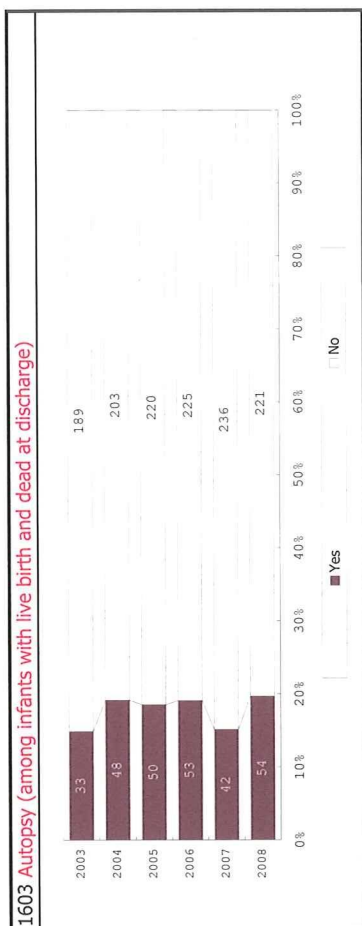
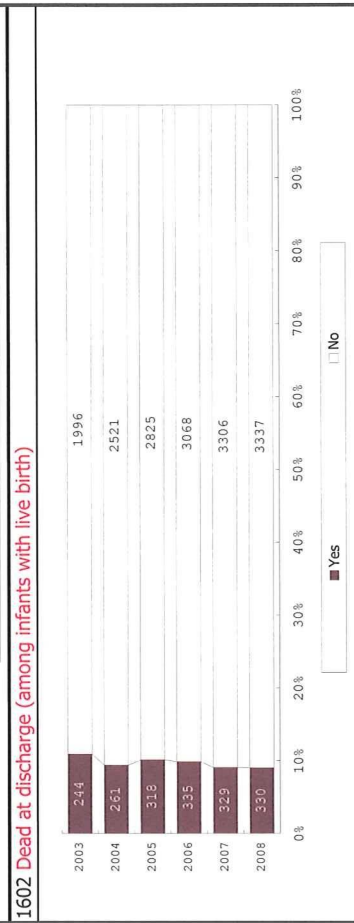
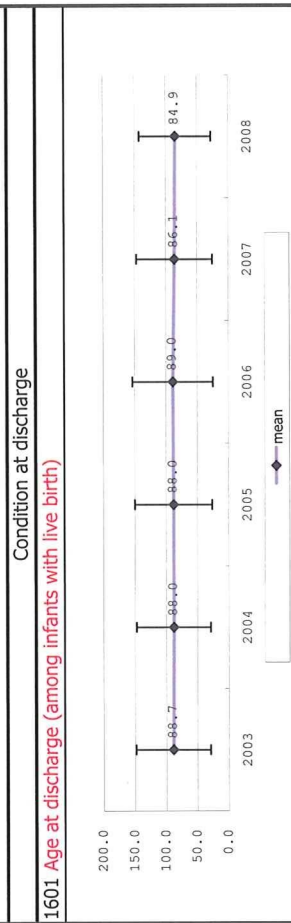
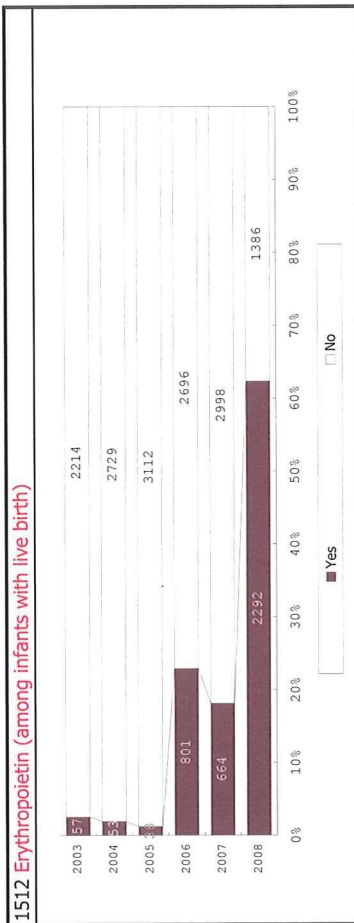
Summary

1501 Age at enteral feeding exceed 100ml/kg (among infants with live birth)

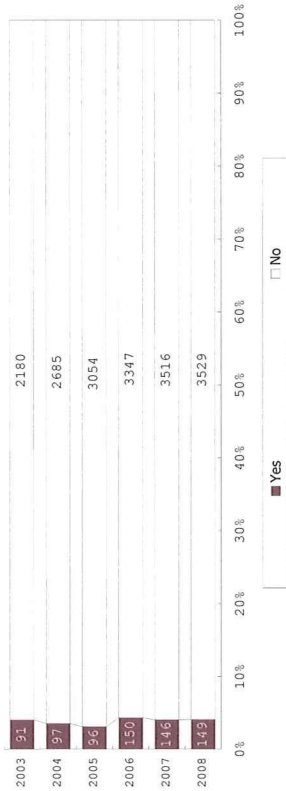


1511 Blood transfusion (among infants with live birth)





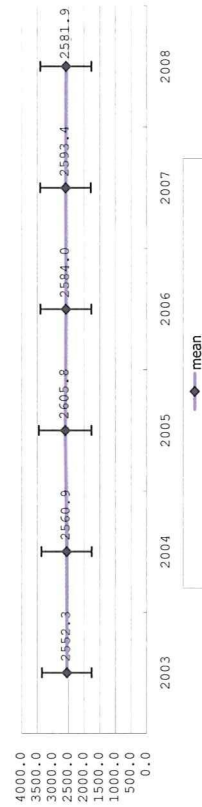
1607 HOT (among infants with live birth and alive at discharge)



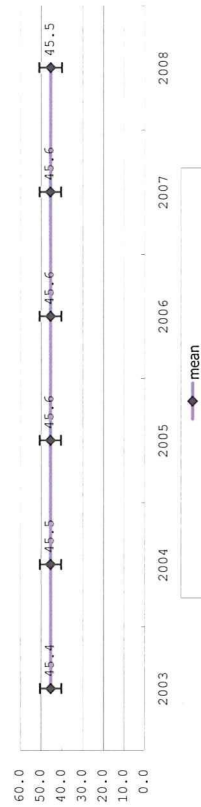
1608 Tracheostomy (among infants with live birth and alive at discharge)



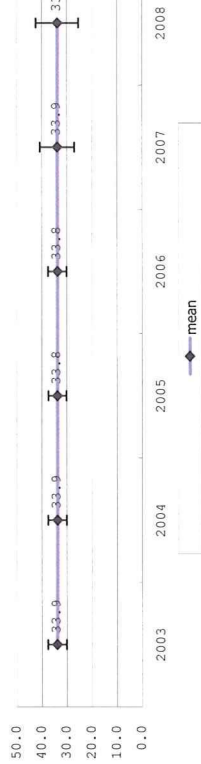
1609 Body weight at discharge (among infants with alive at discharge)

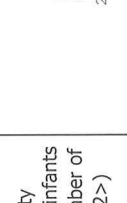
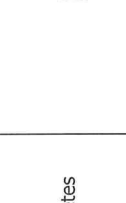
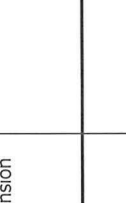








1610 Body length at discharge (among infants with alive at discharge)



1611 Head circumference at discharge (among infants with alive at discharge)

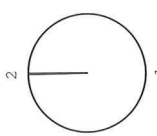
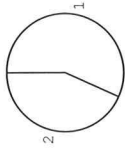
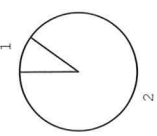


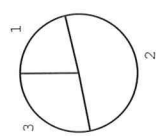
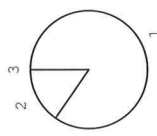
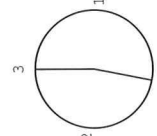
Analysis results (cumulative data)		I-1/16	
No.	Resources of participating hospitals	All hospitals	n
A			
Maternal information			
301	Maternal age (median)	31.0	18080
	lower quartile	28.0	
	upper quartile	35.0	
302	Gravida	 1:0 41% 2:1 30% 3:2 16% 4:3> 13%	19113
303	Parity	 1:0 57% 2:1 30% 3:2 10% 4:3> 3%	19113
304	Maternal Comorbidity	O410 750Number O459 395Number O430 340Number O470 336Number O441 279Number	4376
B			
Pregnancy complication			
401	Number of fetus	 1:1 73% 2:2 23% 3:3 4% 4:4> 0%	19113

Analysis results (cumulative data)		I-2/16	
No.	Resources of participating hospitals	All hospitals	n
402	Birth order (among infants with number of fetus 2>)	 1:1 44% 2:2 49% 3:3 6% 4:4> 0%	5131
403	Plurality (among infants with number of fetus 2>)	 1:monochorionic 37% 2:multiple chorionic 60% 3:not available 2%	4803
404	Diabetes	 1:Yes 1% 2:No 99% 3:not available 0%	19113
405	Pregnancy induced hypertension	 1:Yes 17% 2:No 83% 3:not available 0%	19113
406	Clinical CAM	 1:Yes 15% 2:No 85% 3:not available 0%	19113
407	Histologic CAM	 1:Yes 18% 2:No 54% 3:not available 28%	19113

Analysis results (cumulative data)		I-3/16	
No.	Resources of participating hospitals	All hospitals	n
408	Grade of histologic CAM (among infants with positive histologic CAM)	<p>1: I 24% 2: II 35% 3: III 41%</p>	3269
Delivery status			
501	PROM	<p>1: Yes 26% 2: No 74% 3: not available 0%</p>	19113
502	Maternal steroid	<p>1: Yes 37% 2: No 63% 3: not available 0%</p>	19113
503	NRFS	<p>1: Yes 25% 2: No 75% 3: not available 0%</p>	19113
504	Presentation	<p>1: Head 68% 2: other than head 32% 3: not available 0%</p>	19113

Analysis results (cumulative data)		I-4/16	
No.	Resources of participating hospitals	All hospitals	n
505	Mode of delivery	<p>1: Vaginal 24% 2: Vaginal with manipulation 1% 3: C/S 75%</p>	19113
510	Cord blood transfusion	<p>1: Yes 3% 2: No 97% 3: not available 0%</p>	19113
Neonatal information			
602	Age(day) at admission	<p>1: 0 98% 2: 1 1% 3: 2 0% 4: >3 1%</p>	19113
603	Gender	<p>1: Male 51% 2: Female 49% 3: not available 0%</p>	19102
604	Neonatal transport	<p>1: Yes 9% 2: No 91%</p>	19113

Analysis results (cumulative data)		I-6/16	
No.	Resources of participating hospitals	All hospitals	n
612	Birth weight (mean)	1030.5	19109
	SD	305.1	
	95% confidence interval	1026.2-1034.9	
613	Body length at birth (mean)	35.4	17102
	SD	9.2	
	95% confidence interval	35.3-35.6	
614	Head circumference at birth (mean)	25.7	16846
	SD	8.2	
	95% confidence interval	25.6-25.8	
615	Live birth	 1:Yes 100% 2:No 0%	19113
Respiratory disease			
701	RDS (among infants with live birth)	 1:Yes 57% 2:No 43%	19113
702	Air leak syndrome (among infants with live birth)	 1:Yes 10% 2:No 90%	19113

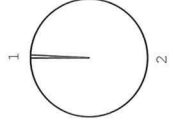
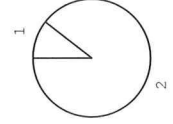
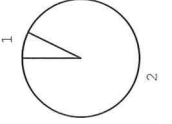
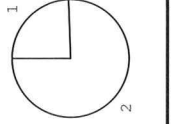
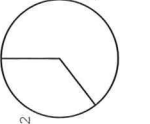
Analysis results (cumulative data)		I-5/16		
No.	Resources of participating hospitals	All hospitals	n	
605	Maternal transport (among infants with inborn)	 1:Elective 21% 2:Emergency 51% 3:Booked 28%	19113	
		Gestational age (mean)	29.0	19084
		SD	3.3	
606	95% confidence interval	28.9-29.0		
		6.0	18809	
		3.0		
608	upper quartile	8.0		
		6.0		
		9.0		
609	upper quartile	8.0	18512	
		6.0		
		9.0		
610	Oxygen use at birth	 1:Yes 85% 2:No 15% 3:not available 0%	19113	
		Intubation at birth	 1:Yes 53% 2:No 47% 3:not available 0%	19113

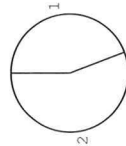
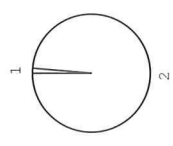
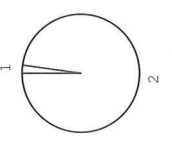
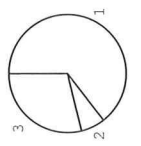
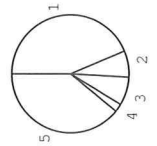
Analysis results (cumulative data)		I-7/16	
No.	Resources of participating hospitals	All hospitals	n
703	Pulmonary hemorrhage (among infants with live birth)		19113
		1:Yes 2:No	11% 89%
705	PPHN (among infants with live birth)		19113
		1:Yes 2:No	11% 89%
706	Length of oxygen use (median) (among infants with live birth)	15.0	19113
		lower quartile	2.0
		upper quartile	53.0
707	Length of CPAP (median) (among infants with live birth)	0.0	19113
		lower quartile	0.0
		upper quartile	14.0
708	Length of mechanical ventilation (median) (among infants with live birth)	4.0	19113
		lower quartile	0.0
		upper quartile	30.0
709	Use of HFO (among infants with live birth and mechanical ventilation)		19113
		1:Yes 2:No	27% 73%

Analysis results (cumulative data)		I-8/16	
No.	Resources of participating hospitals	All hospitals	n
710	Dose of surfactant (among infants with live birth)		19113
		1:0 2:1 3:2 4:3>	48% 43% 7% 2%
711	Length of inhaled nitric oxide (among infants with live birth)		19113
		1:0 2:1 3:2 4:3>	94% 1% 4% 1%
712	CLD at 28 d (among infants with live birth and alive at 28 days of age)		19113
		1:Yes 2:No	29% 71%
713	Type of CLD (among infants with CLD)		5147
		1:I 2:II 3:III 4:III' 5:IV 6:V 7:VI	24% 41% 16% 9% 3% 5% 2%
714	Glucocorticoid for CLD (among infants with CLD)		5487
		1:Yes 2:No	32% 68%
715	CLD at 36 wk (among infants with live birth, alive at 36 wk (corrected age), and CLD)		13355
		1:Yes 2:No	19% 81%

Analysis results (cumulative data)		I-10/16	
No.	Resources of participating hospitals	All hospitals	n
G		Neurological problem	
901	Seizure (among infants with live birth)	<p>1: Yes 3% 2: No 97%</p>	19113
902	Intraventricular hemorrhage (among infants with live birth)	<p>1: Yes 13% 2: No 87%</p>	19113
903	Grade of IVH (among infants with live birth and IVH)	<p>1: I 34% 2: II 28% 3: III 18% 4: IV 21%</p>	2472
904	Post IVH hydrocephalus (among infants with live birth and IVH)	<p>1: Yes 2% 2: No 98%</p>	19113
905	PVL (among infants with live birth)	<p>1: Yes 3% 2: No 97%</p>	19113

Analysis results (cumulative data)		I-9/16	
No.	Resources of participating hospitals	All hospitals	n
716	Oxygen concentration at 36 wk (median) (among infants with CLD at 36 wk)	23.0	2596
	lower quartile	22.0	
	upper quartile	25.0	
F		Circulatory problem	
801	PDA with symptom (among infants with live birth)	<p>1: Yes 31% 2: No 69%</p>	19113
802	Indomethacin for PDA (among infants with live birth)	<p>1: Yes 31% 2: No 67% 3: prophylactic 2%</p>	19113
803	Surgical ligation for PDA (among infants with symptomatic PDA)	<p>1: Yes 5% 2: No 95%</p>	19113
851	Late onset adrenal insufficiency (among infants with live birth and alive at 7 d)	<p>1: Yes 6% 2: No 94%</p>	19113

Analysis results (cumulative data)		I-11/16	
No.	Resources of participating hospitals	All hospitals	n
906	HIE (among infants with live birth)	 <p>1: Yes 1% 2: No 99%</p>	19113
H Infection			
1001	Intrauterine infection (among infants with live birth)	 <p>1: Yes 11% 2: No 89%</p>	19113
1002	Sepsis (among infants with live birth)	 <p>1: Yes 7% 2: No 93%</p>	19113
1004	Early onset sepsis (among infants with live birth and sepsis)	 <p>1: Yes 24% 2: No 76%</p>	1391
1010	Use of antibiotics (among infants with live birth)	 <p>1: Yes 65% 2: No 35%</p>	19113

Analysis results (cumulative data)		I-12/16	
No.	Resources of participating hospitals	All hospitals	n
I Gastrointestinal problem			
1101	Intravenous hyperalimentation (among infants with live birth)	 <p>1: Yes 44% 2: No 56%</p>	19113
1102	NEC (among infants with live birth)	 <p>1: Yes 1% 2: No 99%</p>	19113
1103	Idiopathic intestinal perforation (among infants with live birth)	 <p>1: Yes 2% 2: No 98%</p>	19113
J Hearing screening			
1201	Hearing loss screening (among infants with live birth)	 <p>1: Pass 64% 2: Refer 7% 3: not done 29%</p>	19113
K Retinopathy of prematurity			
1301	ROP(worst stage) (among infants with live birth)	 <p>1: <III 44% 2: III (early) 7% 3: III (intermediate) 8% 4: III (late) 2% 5: not done 39%</p>	19113