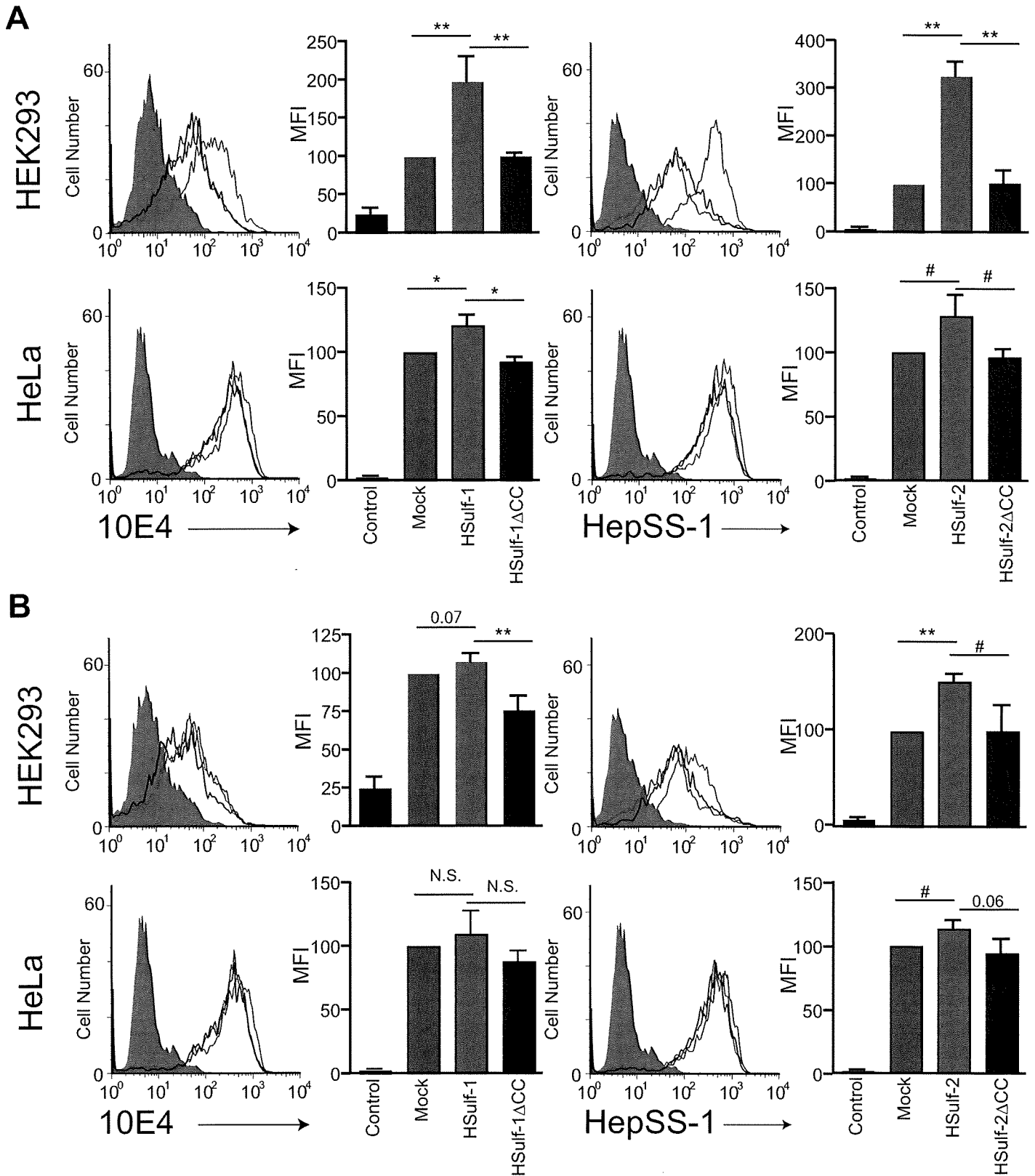


- Morimoto-Tomita M, Uchimura K, Werb Z, Hemmerich S, Rosen SD. 2002. Cloning and characterization of two extracellular heparin-degrading endosulfatases in mice and humans. *J Biol Chem.* 277:49175–49185.
- Narita K, Chien J, Mullany SA, Staub J, Qian X, Lingle WL, Shridhar V. 2007. Loss of HSulf-1 expression enhances autocrine signaling mediated by amphiregulin in breast cancer. *J Biol Chem.* 282:14413–14420.
- Nawroth R, van Zante A, Cervantes S, McManus M, Hebrok M, Rosen SD. 2007. Extracellular sulfatases, elements of the Wnt signaling pathway, positively regulate growth and tumorigenicity of human pancreatic cancer cells. *PLoS ONE.* 2:e392.
- Parish CR. 2006. The role of heparan sulphate in inflammation. *Nat Rev Immunol.* 6:633–643.
- Parish CR, Freeman C, Brown KJ, Francis DJ, Cowden WB. 1999. Identification of sulfated oligosaccharide-based inhibitors of tumor growth and metastasis using novel in vitro assays for angiogenesis and heparanase activity. *Cancer Res.* 59:3433–3441.
- Powell AK, Yates EA, Fernig DG, Turnbull JE. 2004. Interactions of heparin/heparan sulfate with proteins: Appraisal of structural factors and experimental approaches. *Glycobiology.* 14:17R–30R.
- Saad OM, Ebel H, Uchimura K, Rosen SD, Bertozzi CR, Leary JA. 2005. Compositional profiling of heparin/heparan sulfate using mass spectrometry: Assay for specificity of a novel extracellular human endosulfatase. *Glycobiology.* 15:818–826.
- Tang R, Rosen SD. 2009. Functional consequences of the subdomain organization of the sulfs. *J Biol Chem.* 284:21505–21514.
- Thery C, Zitvogel L, Amigorena S. 2002. Exosomes: Composition, biogenesis and function. *Nat Rev Immunol.* 2:569–579.
- Uchimura K, Morimoto-Tomita M, Bistrup A, Li J, Lyon M, Gallagher J, Werb Z, Rosen SD. 2006a. HSulf-2, an extracellular endoglucosaminase-6-sulfatase, selectively mobilizes heparin-bound growth factors and chemokines: Effects on VEGF, FGF-1, and SDF-1. *BMC Biochem.* 7:2.
- Uchimura K, Morimoto-Tomita M, Rosen SD. 2006b. Measuring the activities of the SulfS: Two novel heparin/heparan sulfate endosulfatases. *Methods Enzymol.* 416:243–253.
- Van Den Born J, Salmivirta K, Henttinen T, Ostman N, Ishimaru T, Miyaura S, Yoshida K, Salmivirta M. 2005. Novel heparan sulfate structures revealed by monoclonal antibodies. *J Biol Chem.* 280:20516–20523.
- van Kuppevelt TH, Dennissen MA, van Venrooij WJ, Hoet RM, Veerkamp JH. 1998. Generation and application of type-specific anti-heparan sulfate antibodies using phage display technology. Further evidence for heparan sulfate heterogeneity in the kidney. *J Biol Chem.* 273:12960–12966.
- Viviano BL, Paine-Saunders S, Gasiunas N, Gallagher J, Saunders S. 2004. Domain-specific modification of heparan sulfate by Qsulf1 modulates the binding of the bone morphogenetic protein antagonist Noggin. *J Biol Chem.* 279:5604–5611.
- Vlodavsky I, Ilan N, Naggi A, Casu B. 2007. Heparanase: Structure, biological functions, and inhibition by heparin-derived mimetics of heparan sulfate. *Curr Pharm Des.* 13:2057–2073.
- Zito E, Fraldi A, Pepe S, Annunziata I, Kobinger G, Di Natale P, Ballabio A, Cosma MP. 2005. Sulphatase activities are regulated by the interaction of sulphatase-modifying factor 1 with SUMF2. *EMBO Rep.* 6:655–660.

Supplementary Fig. 1



Supplementary Figure 1. Cell surface expression of 10E4 and HepSS-1 heparan sulfate epitopes in HSulf-transfected HEK293 and HeLa cells

Flow cytometry of HEK293 and HeLa cells transiently transfected with pcDNA3.1 empty vector alone (Mock) (A,B), cDNA of HSulf-1 (HSulf-1) (A), HSulf-1ΔCC (HSulf-1ΔCC) (A), HSulf-2 (HSulf-2) (B), or HSulf-2ΔCC (HSulf-2ΔCC) (B) analyzed with 10E4 and HepSS-1 (A,B). These data are representative of three independent experiments.

Mean fluorescence intensity (MFI) relative to "Mock" of three independent experiments were shown.

Mouse IgM was used as "control". **, $P < 0.001$; *, $P < 0.01$; #, $P < 0.05$.

