

1. JBCRG01~03の術前化学療法の歴史的背景

1) 世界の術前化学療法の歴史

術前化学療法の歴史においてNational Surgical Adjuvant Breast and Bowel Project (NSABP) の2つのtrialの結果は今日の治療のmilestoneとして世界に大きなインパクトを与えた。1つはNSABP-B18であり、切除可能乳癌(T_{1-3} , N_{0-1} , M_0)1,523例に対し、AC療法(doxorubicin 60mg/m²+cyclophosphamide 600mg/m²) 4サイクルを手術前後に実施した試験である。この試験は1)手術前後での化学療法実施のタイミングの違いは無再発生存、全生存に差を生じない、2)術前AC群でpCR(病理学的寛解=癌の完全消失+DCISのみの遺残)が得られた患者では非pCRの患者に比較し無再発生存が有意に良好であるという重要な結果をもたらした³⁾。もう1つはNSABP-B27であり、切除可能乳癌(T_{1c-3} , N_{0-1} , M_0)2,400例に対し、AC療法4サイクル後にdocetaxel 100mg/m²4サイクルを術前に投与した場合、pCR(no tumor+DCIS)rateが13.7%から26.1%まで飛躍的に改善することを示し、術前化学療法におけるtaxaneの重要性を位置付けた⁴⁾。

2) 当時のわが国における術前化学療法の現状とJBCRG01の成り立ち

NSABP B-27の結果が発表された2001年当時、多くの乳腺治療医にとって、術前化学療法は手探り的な状態にあったことが同年の癌治療学会のアンケートから伺える。これによるとanthracyclineに関してはAC, EC(epirubicin+cyclophosphamide), FEC(fluorouracil+epirubicin+cyclophosphamide)と種々のレジメンが用いられていたが、心毒性への懸念から効果よりも安全性が重要視され、ACよりもFECが選択される傾向がみられた。しかしepirubicinの汎用doseは20~90mg/m²と様々でglobal trialの結果へ照合し使用する姿勢には乏しかった様である。Taxaneに関してはsequentialではFEC→Taxane(T), AC→T, EC→Tが、concurrentではTAC(docetaxel+doxorubicin+cyclophosphamide)に関心が向けられていた。sequentialとconcurrentの投与方法による毒性の違いやNSABP-B27とTACの結果からsequentialレジメンの浸透がみられようになってきた。これらのtrialの結果や社会事情を受けて、JBCRGではJBCRG01 studyとして切除可能乳癌(T_{1c-3} , N_{0-1} , M_0)に対してFEC100mg/m²×4 followed by docetaxel 75mg/m²×4の安全性と有効性を検討する臨床試験をデザインした(図1)。

3) JBCRG02への発展

世界的に鑑みてdocetaxelのstandard doseは100mg/m²であり、JBCRG 01での75mg/m²の設定は国外のtrialへの整合性が問われていた。また、JBCRG 01での中間解析の病理学的検討において浸潤癌の癥痕組織の中に高度の変化を有する癌細胞がごく少量残存した所見、つまり僅かにpCRに至らない症例が確認されたことから1) anthracyclineとdocetaxelによるsequential chemotherapyでのglobal dose100mg/m²の検証、2) docetaxelの高用量投与によるpCR rateの向上の検討の為にJBCRG02試験としてFEC100mg/m²×4 followed by docetaxel 100mg/m²×4が実施された。この試験にはJBCRG01参加施設の内コンセプトに合意した数施設によって実施された(図1)。

3) JBCRG03のrationaleとstudy design

さらに、JBCRG01の中間解析による結果は、種々の疑問と考察を生み出した。1)FEC先行の治療ではその毒性により引き続きdocetaxelの減量が認められ、忍容性および効果を低下させている可能性があること、2) FEC responderがdocetaxel変更後に増悪した症例が認められたこと、また3) docetaxel先行regimenが海外の試験で発表されており⁵⁾、わが国でのdocetaxel先行の術前化学療法を検討する余地があること、等からJBCRG01のreverse regimenであるdocetaxel 75mg/m²×4 followed by FEC 100mg/m²×4がJBCRG03試験として実施されるに至った(図1)。Primary endpointは病理組織学的効果(pCR rate), secondary endpointは安全性、臨床効果、乳房温存率、3年無再発生存率であり、予定症例数は130名、予定登録期間は2005年8月から2006年7月までの12カ月であった。

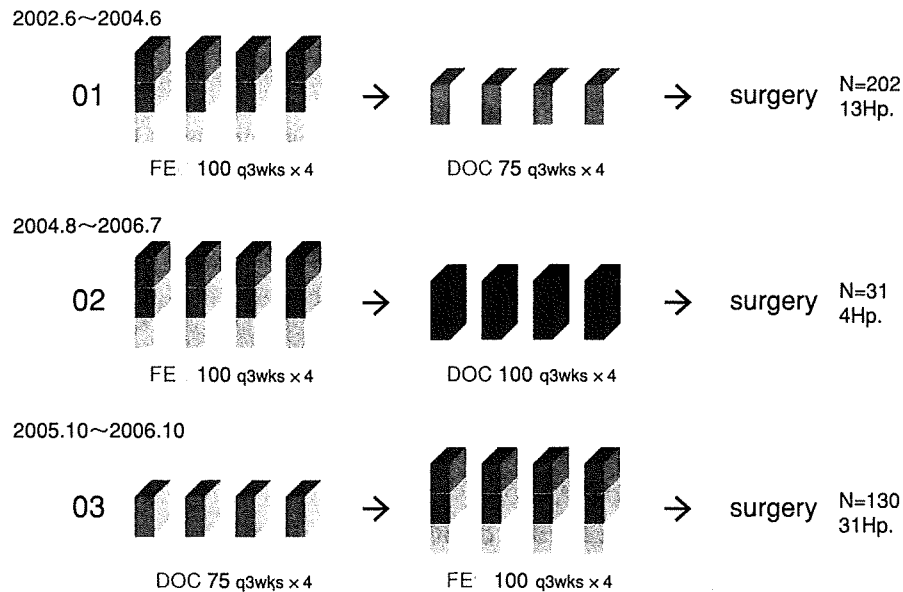


図1 JBCRG neoadjuvant 01-03 study design

2. 結果

JBCRG01およびJBCRG02の結果については、既に報告されているが^{6,7)}、JBCRG03については予定症例数130例に対し、実際の登録期間は2005年10月から2006年10月までの13カ月で137例の登録を得た。今回の検討は137例中111例での解析のため、最終的な効果・認容性に関しては言及しないが、患者背景では閉経前、T2、ERかつ/あるいはPgR陽性が多く登録されていた。血液毒性では白血球・好中球減少はgrade3-4もみられたが、発熱性好中球減少はdocetaxel投与中、FEC投与中いずれも10%前後であった。一方、非血液毒性ではFECにて疲労、悪心・嘔吐および食欲不振においてgrade3が認められたが、他はgrade1-2であり忍容性が高かった。全体的に評価するとFECでは血液毒性と消化器症状の発生頻度とgradeが高く、docetaxelでは皮膚症状や浮腫、末梢神経障害などの症状が特徴的であったが、いずれもgradeは低く忍容性は高いと考えられた。

3. 考察

1) 01-03から得られた知見

3つの臨床試験から得られた知見をまとめてみる。JBCRG01では当時はわが国においてmanageableか解らなかつた世界的標準治療であるFEC100を組み入れ、anthracycline→taxaneでの臨床効果の有用性を検証、JBCRG02ではglobal doseであったdocetaxel 100mg/m²へのdose upによる病理学的効果の向上を検証、JBCRG03ではdocetaxel先行による忍容性の向上が臨床的、病理学的効果の向上に寄与するか、reverse regimenとした場合に増悪症例がみられるかが検証されたと言える。

JBCRG01が開始された2002年当時では画期的であったFEC100の実施、pCRを目標とした術前化学療法による臨床試験、中間解析での予想を上回る臨床・病理学的効果等が魅力的であったためか、JBCRG01開始時13施設であったJBCRG参加施設もJBCRG03では31施設まで拡がりをみせた。また、JBCRG01、JBCRG02、JBCRG03の登録期間と症例数を見直すと、JBCRG01では2002年6月から2004年6月までの25カ月で202症例がenrollされたが、JBCRG02試験では24カ月で50症例、JBCRG03では13カ月で130例と症例登録がスムーズとなり、global trialの趨勢を意識した臨床試験参加へのinvestigatorの意欲と術前

化学療法自体の浸透が伺えた。

2) 今後の課題と展望

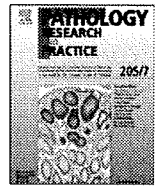
JBCRG01からJBCRG03までの試験の結果は非常に示唆に富むものであった。1) 強力であるFEC100 mg/m²やDocetaxel 75mg/m²を用いても、明らかなchemo resistanceは存在し、この症例における予後の改善が求められる。術前化学療法後に残存病変が有った症例に対する術後治療を検証する試験が存在しないため、われわれはJBCRG04として残存病変がある症例に対するcapecitabine追加投与の有無という試験を計画、始動している。2) JBCRG01試験において治療前に得られた腫瘍の免疫染色の結果から、ER陽性群はpCR rateが低い点が明らかとなった。この結果を受け、特に化学療法の恩恵が乏しいと考えられる閉経患者を対象にaromatase inhibitorの逐次投与の臨床試験が準備されている。3) 同様にJBCRG01試験において諸家が指摘している様にHER2陽性群に高いpCR rateが得られたが、最近特に着目されるtrastuzumabやlapatinib等のHER2 inhibitor, 分子標的療法の追加による更なるpCR rateの向上が期待されている。4) JBCRG01, JBCRG03いずれにおいてdocetaxelのnon-responderが観察されたことから01-03の臨床データとTranslational Research (TR) での種々の情報を組み合わせて、術前化学療法のbest selectionが必須と理解された。

結 語

今回われわれはJBCRGを基盤とした3つの臨床試験から得られた知見を総合的に検証した。種々のコンセプトのもと、3種類のregimenが術前化学療法の試験として遂行され、予定症例数も完了可能であった。慎重な観察のもと、多くが高い忍容性を維持し諸家が報告したpCR rateと同等以上の結果が得られた。これらの試験を通じて、JBCRGは日本での医師主導型臨床試験の普及に寄与したとともに、付随した科学的検証の為にTRを併行するglobal typeの試験の骨子を確立したと言える。

文 献

- 1) Fisher B, Montague E, Redmond C, et al : Comparison of radical mastectomy with alternative treatments for primary breast cancer. A first report of results from a prospective randomized clinical trial. *Cancer* 39 : 2827-2839, 1977
- 2) Early Breast Cancer Trialists' Collaborative Group (EBCTCG) : Effects of chemotherapy and hormonal therapy for early breast cancer on recurrence and 15-year survival : an overview of the randomised trials. *Lancet* 365 (9472) : 14-20, 1687-1717, 2005
- 3) Wolmark N, Wang J, Mamounas E, et al : Preoperative chemotherapy in patients with operable breast cancer : nine-year results from National Surgical Adjuvant Breast and Bowel Project B-18. *J Natl Cancer Inst Monogr* 30 : 96-102, 2001
- 4) Bear HD, Anderson S, Smith RE, et al : The effect on tumor response of adding sequential preoperative docetaxel to preoperative doxorubicin and cyclophosphamide : preliminary results from National Surgical Adjuvant Breast and Bowel Project Protocol B-27. *J Clin Oncol* 15 ; 21 (22) : 4165-4174, 2003
- ⑤ Gradishar WJ, Wedam SB, Jahanzeb M, et al : Neoadjuvant docetaxel followed by adjuvant doxorubicin and cyclophosphamide in patients with stage III breast cancer. *Ann Oncol* 16 (8) : 1297-1304, 2005
- 6) Nakamura S, Toi M, Takatsuka K, et al : The effect of pathological response of multicenter phase II trial of fluorouracil, epirubicin, cyclophosphamide (FEC100) followed by docetaxel (DOC75) in primary operable breast cancer 5th European Breast Cancer Conference, Nice, 21-25 March 2006
- 7) 濱岡 剛, 中村清吾, 増田慎三, 他 : JBCRG02 : 原発乳がんに対するFEC 100 followed by Docetaxel 100による術前化学療法 2007日本乳癌学会総会プログラム抄録集15回 p247
- 8) Roche H, Fumoleau P, Spielmann, et al : Sequential adjuvant epirubicin-based and docetaxel chemotherapy for node-positive breast cancer patients : the FNCLCC PACS 01 Trial. *J Clin Oncol* 20 ; 24 (36) : 5664-71, 2006



Original Article

Presence of immunoglobulin heavy chain rearrangement in so-called “plasma cell granuloma of the lung”

Masaru Kojima^{a,*}, Naoya Nakamura^b, Hideaki Itoh^c, Mitsuhiro Kamiyoshihara^d, Morio Matsumoto^e, Nobumasa Nakazato^f, Tomomi Fujisawa^g, Tadashi Motoori^h, Nobuhide Masawa^a, Hiroshi Inagakiⁱ^a Department of Anatomic and Diagnostic Pathology, Dokkyo University School of Medicine, Mibu, Japan^b Department Pathology, Tokai University School of Medicine, Isehara, Japan^c Department Pathology and Clinical Laboratories, Maebashi Red Cross Hospital, Maebashi, Japan^d Department Thoracic Surgery, Maebashi Red Cross Hospital, Maebashi, Japan^e Department of Hematology, National Nishigunma Hospital, Shibukawa, Japan^f Department of Pathology and Clinical Laboratories, Gunma Prefectural Cancer Center Hospital, Ohta, Japan^g Department of Breast Oncology, Gunma Prefectural Cancer Center Hospital, Ohta, Japan^h Department of Pathology, Kitasato University, Kitasato Institute Medical Center Hospital, Kitamoto, Japanⁱ Department of Pathology, Nagoya City University Graduate School of Medical Science, Nagoya, Japan

ARTICLE INFO

Article history:

Received 20 April 2009

Received in revised form

3 August 2009

Accepted 3 September 2009

Keywords:

Plasma cell granuloma

Lung

Immunoglobulin heavy chain

Polymerase chain reaction

SUMMARY

Inflammatory pseudotumor of the lung appears to be a set of heterogeneous disorders. Histologically, three subtypes of pulmonary IPTs have been delineated. Among these, plasma cell granuloma (PCG) is characterized by prominent lymphoplasmacytic infiltration, and PCG has been added to the list of differential diagnostic problems of mucosa-associated lymphoid tissue (MALT) type lymphoma. To investigate the presence or absence of monoclonal B-cell proliferation, we analyzed the immunohistological and genotypic findings in three cases of pulmonary PCGs. Histologically, the three lesions were characterized by severe infiltration of mature plasma cells, plasmacytoid cells, and small lymphocytes intermixed. Scattered Russell bodies (intracytoplasmic inclusions) were present in all three cases, but there were no Dutcher bodies (intranuclear inclusions) or centrocyte-like cells. Immunohistochemical studies of light chain determinants demonstrated the polyclonal nature of B-cells. There was no CD5⁺, CD43⁺ or cyclin D1⁺ B-lymphocytes in any of the three lesions. There were no lymphoepithelial lesions detected within any of the three lesions even by immunostaining for cytokeratin. However, polymerase chain assay for immunoglobulin heavy chain gene demonstrated a clonal band in one of the three cases. It currently remains unclear whether this one case, demonstrating IgH gene rearrangement in our series, could be a sign of the prelymphomatous stage (e.g. incipient MALT type lymphoma) or merely represents an exaggeration of normal B-cell clonal response.

© 2009 Elsevier GmbH. All rights reserved.

Introduction

So-called “Inflammatory pseudotumors (IPTs)” affect almost all major organs including the lungs [3,20]. Histologically, IPTs are characterized as an irregular proliferation of myofibroblasts intermixed with inflammatory cells, mainly lymphocytes and plasma cells [3,20]. Histologically, IPT of the lung has been classified into three histological types: (i) fibrohistiocytic type, (ii) plasma cell granuloma (PCGs), and (iii) largely sclerosed or fibrosed type [20]. True neoplastic proliferations of mesenchymal or dendritic cells have been reported in some IPTs [2,3,13,21]. Pulmonary IPTs have also been associated with previous viral infections such as human herpes virus type-8 (HHV-8) [8].

Recently, Zen et al. [22] demonstrated that some pulmonary PCGs represent an IgG4-related sclerosing disease. Rarely, pulmonary IPTs have also been associated with B-cell lymphoma [13]. Moreover, PCG has been added to the list of differential diagnostic problems of extramedullary plasmacytoma (EMP) [12]. To examine the presence or absence of monoclonal B-cell proliferation, we analyzed the immunohistological and genotypic findings in three cases of pulmonary PCGs.

Materials and methods

The tissue specimens were fixed in formalin solution, routinely processed and embedded in paraffin. For light microscopic examination, the sections were stained with hematoxylin–eosin (HE) and elastica van Gieson (EVG) stain.

* Corresponding author. Tel.: +81 282 86 1111x2178; fax: +81 282 86 5171.
E-mail address: m-kojima@dokkyomed.ac.jp (M. Kojima).

Immunohistochemical studies were performed using the antigen retrieval method on the avidin–biotin–peroxidase method or Ventana automated (BenchMark™) stainer according to the manufacturer's instructions.

The panel of antibodies included human immunoglobulin light chains (kappa and lambda) (Dako A/S, Glostrup, Denmark), IgG (Novocastra, Newcastle, UK), IgA (Novocastra), IgM (Novocastra), MCO011 (IgG4; Binding Site, Birmingham, UK), PS-1 (CD3; Immunotech, Marseille, France), 4C7 (CD5; Novocastra), L26 (CD20; Dako), a cocktail of 2G9 (CD21; Novocastra) and RB L25 (CD35; Novocastra), 1B12 (CD 23; Novocastra), DFT-1 (CD43; Dako), 1B16 (CD56; Novocastra), PGM-1 (CD68; Dako), 5A4 (CD246 [anaplastic lymphoma kinase, ALK]; Novocastra), SP4 (Cyclin D1; Nichirei Co., Tokyo, Japan), AE1/3 (Dako), V9 (vimentin; Dako), D33 (desmin; Dako), HHF35 (muscle-specific actin; Nichirei Co.), S-100 (Dako), and 137B1 (human herpes virus type-8, Novocastra). Sections with known reactivity for antibodies assayed served as positive controls, and sections treated with normal rabbit- and mouse serum served as negative controls.

In situ hybridization (ISH) with Epstein-Barr virus (EBV)-encoded small RNA (EBER) oligonucleotides was performed to test for the presence of EBV small RNA in formalin-fixed, paraffin-embedded sections using a Ventana automated (BenchMark™) stainer.

DNA was extracted from the paraffin-embedded section. The variable region (CDR2 and FW3) and VDJ region (CDR3) of the immunoglobulin heavy chain (IgH) gene were amplified by semi-nested PCR, using primers of FR2B, LJH, and VLJH, according to a previously described method [14]. Primers were as follows: 5'-CCGG(A/G)AA(A/G)(A/G) GTCTGGAGTGG-3', as up-stream consensus V region primer (FR2B); 5'-TGAGGAGACGGTGACC-3', as a consensus J region primer (LJH); 5'-GTGACCAGGGT [A/C/G/T] CCTTGGCCCCAG-3', as a consensus J region primer (VLJH). PCR products were estimated to be about 200–300 bps in length.

The API2-MALT1 fusion transcript was examined using formalin-fixed and paraffin-embedded tissue according to the method recently described by us [11].

Results

Clinical findings

The clinical histories of PCG are summarized in Table 1. Only one (no.1) of three cases showed bloody sputum. The remaining two cases (nos. 2 and 3) were asymptomatic but had shown abnormal shadows on chest radiograph during a medical check-up. Chest radiographs and computed tomography demonstrated a solitary nodule in the peripheral pulmonary field in two cases (nos. 1 and 3) and four nodules on the peripheral pulmonary field of the bilateral lobes in the remaining one case (no. 2). One patient (no. 3) had a history of rectal cancer before the episode of PCG.

Table 1
Summary of clinical findings.

Age/ gender	Symptom	Location (number)	Size (cm)	Hilar LA	Autoantibody	IgG4 (mg/ dl)	Treatment	Outcome
1 58/M	Bloody sputum	Right lower lobe, peripheral (1)	4	–	NE	18.1	Video-associated thorascopic surgery	4 m alive (–)
2 68/M	–	Bilateral lobe, peripheral (4)	7	+	ANA	NE	Video-associated thorascopic surgery	56m alive (+)
3 72/M	–	Left lower lobe (1)	2.5	+	NE	52	Partial lobectomy	4 m alive (–)

Abbreviations: LA, lymphadenopathy; NE, not examined; ANA, antinuclear antibody; m, months; (–), without disease; (+), with disease. Normal range of IgG4 < 135 mg/dl (Ref [16]).

Two cases (nos. 2 and 3) showed mediastinal lymphadenopathy. There was no other evidence of disease in any of the three cases.

Elevated serum IgG level had been recorded in one (no. 2) of the three cases. Antinuclear antibody was detected in Case 2. Serum IgG4 level was within the normal range in of two cases (nos. 1 and 3) examined.

Clinically, two cases (nos. 1 and 2) were suspected of having primary lung cancer and Case 3 was suspected of having metastatic rectal cancer. Two cases (nos. 2 and 3) showed hilar lymphadenopathy. However, lymph node biopsies were not performed.

Pathological findings

Macroscopically, two lesions (nos. 1 and 3) were solitary tan and firm and were relatively well circumscribed without fibrosis (Fig. 1a). The remaining case comprised four nodules in the bilateral lungs.

Histologically, the lesions were characterized by a relatively well-demarcated mass composed of a few lymphoid follicles and chronic inflammatory process intermixed with irregular fibrosis (Fig. 1b). The lesions demonstrated severe infiltration of mature plasma cells, plasmacytoid cells, and small lymphocytes (Fig. 1c). Scattered Russell bodies (intracytoplasmic inclusions) and a few immature plasma cells, large transformed lymphocytes, including immunoblasts and histiocytes, were present in all three cases (Fig. 1c), but there were no Dutcher bodies (intranuclear inclusions), centrocyte-like (CCL) cells, or amyloid deposition. There was no remarkable eosinophilic infiltration in any of the three lesions. Three lesions contained scattered multinucleated giant cells. At the boundaries of the nodules, the inflammatory process extended into the adjacent parenchyma, showing fibrous endings of the alveolar septa with lymphoplasmacytic infiltration (interstitial pneumonia pattern) in all three cases (Fig. 1b). EVG staining demonstrated prominent obliterative phlebitis and arteritis in one case (no. 3) (Fig. 1d). However, there was no necrotic area in Case 3.

Staining for CD20, CD3, and CD5 showed the mixed nature of the small lymphocytes. The majority of large transformed lymphocytes, including immunoblasts, expressed B-cell antigen. Immunohistochemical studies of light chain determinants for plasma cells, plasmacytoid cells, and B-immunoblasts have demonstrated a polyclonal pattern (Figs. 1e and f). There were numerous IgG-positive plasma cells with scattered IgA- or IgM-positive plasma cells. However, IgG4-positive cells comprised only 5–10% of the IgG-positive plasma cells. There were no CD20⁺, CD5⁺, CD43⁺, or cyclin D1⁺ medium-sized lymphocytes in any of the three lesions. Staining with monoclonal antibody, a cocktail of CD21 and CD35 and CD23 highlighted the meshwork of follicular dendritic cells (FDCs). The FDC networks usually showed a normal/reactive pattern. There were no lymphoepithelial lesions

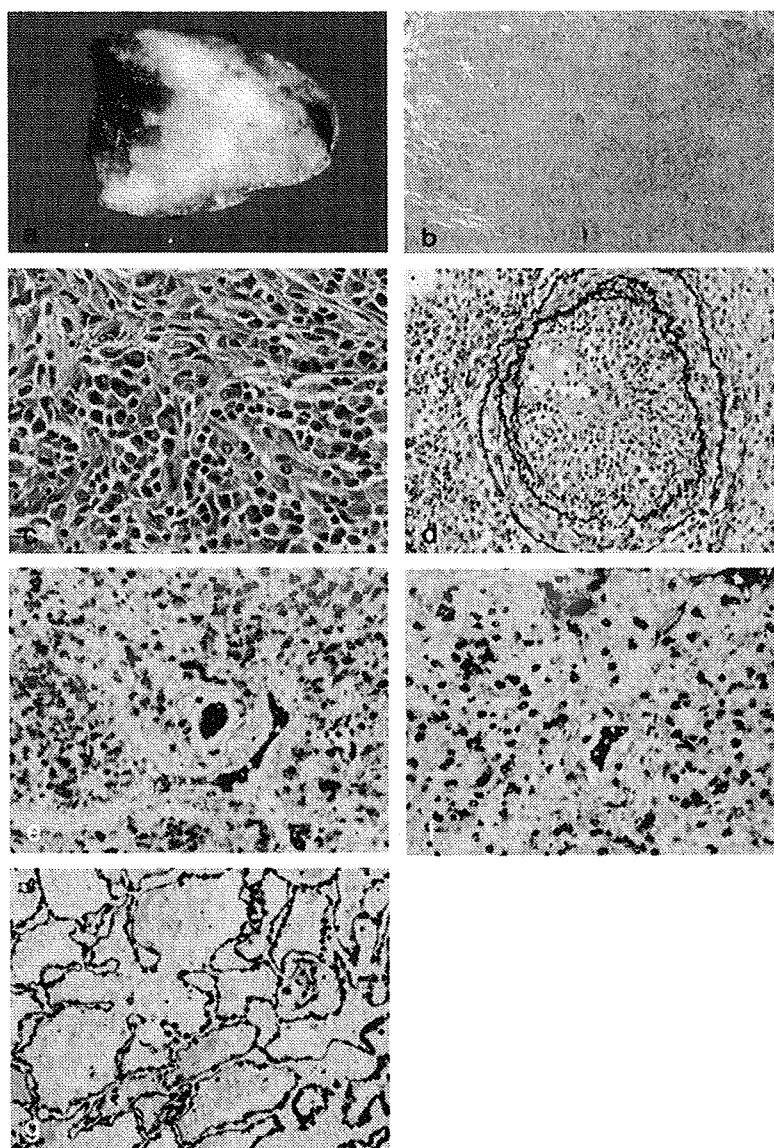


Fig. 1. (a) Cut surface of the resected specimen demonstrated a solitary tan and firm mass that was relatively well circumscribed without fibrosis. Case 3. (b) Low-power field of the lesion. The lesion was a relatively well-demarcated mass composed of a few reactive germinal centers with well-preserved mantle zones and a chronic inflammatory process intermixed with irregular fibrosis. At the boundaries of the nodules, the lesion showed an interstitial pneumonia pattern. Case 3. HE $\times 10$. (c) High-power field of Fig. 1b. The lesion demonstrated severe infiltration of mature plasma cells, plasmacytoid cells, and small lymphocytes. Scattered Russell bodies (intracytoplasmic inclusions) and a few immature plasma cells, large transformed lymphocytes, and histiocytes were present in all three cases. Case 3. HE $\times 100$. (d) EVG staining demonstrated obliterative arteritis. Case 3. $\times 50$. Immunostaining for light chain determinant of the immunoglobulin demonstrated the polytypic nature of mature plasma cells. (e) Kappa and (f) Lambda Case 3. $\times 50$. (g) There were no lymphoepithelial lesions on immunostaining of cytokeratin. Case 1. $\times 50$

(LELs) detected even by immunostaining for cytokeratin in any of the three lesions (Fig. 1g).

There were no CD68+, vimentin+, desmin+, muscle-specific actin+, ALK+, S-100+ spindle cell proliferation cells in any of the three lesions. Moreover, there were no cocktails of CD21 and CD35+, CD23+, EBER+ FDCs in any of the three lesions.

There were no HHV-8 or EBER-positive cells in any of the three cases.

Genotypic findings

A discrete band of amplified IgH gene was found in one case (no. 3) (Fig. 2), respectively. In the remaining two cases (nos. 1 and 2), only germ line bands were detected.

Discussion

IPTs of the lung appear to comprise a set of heterogeneous disease entities [20] that include true neoplastic proliferation of mesenchymal cells, post viral infection state, and autoimmune disease (IgG4-related sclerosing disease) [8,16,21,22]. Histologically, in the present three cases, plasmacytic infiltration was the most conspicuous histological finding compared to myofibroblastic proliferation or collagenous stroma, and all of the present three lesions were diagnosed as PCG [21].

A portion of pulmonary IPTs demonstrated anaplastic lymphoma kinase (ALK) and ALK expression on immunohistochemistry [1,4–6]. At present, these cases are recognized as neoplasms with intermediate biologic potential, namely “inflammatory myofibroblastic tumor” [21]. Immunohistochemical cytoplasmic positivity

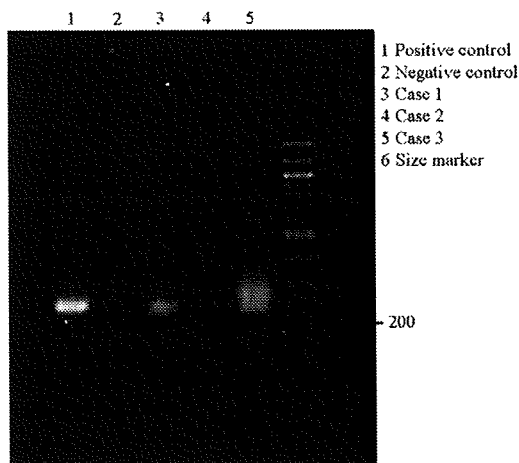


Fig. 2. PCR analysis of three cases for clonal Ig heavy chain rearrangement.

for ALK correlates well with the presence of ALK rearrangements detectable by fluorescent in situ hybridization [4]. However, there were no ALK+ cells in any of the three lesions [21]. Expression of ALK was noted in 40% of the pulmonary inflammatory myofibroblastic tumor [21]. However, there were no CD68+, vimentin+, desmin+, muscle-specific actin+, ALK+, S-100+ spindle cells in any of the three lesions [21]. EBV+ FDC sarcoma appears to be another differential diagnostic problem [3]. However, there were no EBV+ atypical FDCs among the cocktail of CD21 and CD35+ and CD23+FDCs in any of the three lesions [3].

The present three lesions contained numerous IgG+ plasma cells. However, IgG4-positive cells comprised only 5–10% of the IgG-positive plasma cells [16]. Moreover, the serum IgG4-level was within the normal range in two cases examined [16].

Approximately, 70–90% of the primary pulmonary lymphomas are marginal zone B-cell lymphoma of the mucosa-associated lymphoid tissue (MALT) type [18]. Various degrees of plasma cell differentiation have been noted in MALT type lymphoma, and plasma cells may occasionally obscure the CCL cells, which are the tumor cells of MALT type lymphoma [18]. Hussong et al. [10] reported five cases of extramedullary plasmacytoma that showed characteristic histological findings of MZBL, including the presence of a marginal zone distribution pattern, CCL cells, reactive lymphoid follicles with or without follicular colonization, and LEL at sites where epithelium was present. Based on these observations, they suggested that a portion of extramedullary plasmacytoma can be regarded as an extreme plasmacytic differentiation of MZBL [10].

The present three cases should be differentiated from MZBL extreme plasmacytic differentiation. Immunohistochemical studies of light chain determinants demonstrated the polytypic nature of the plasma cells and plasmacytoid cells. There were no CD43+ B-lymphocytes in any of the three lesions [15]. Moreover, there were no LELs detected in any of the three lesions even by immunostaining for cytokeratin. However, PCR assay for IgH gene demonstrated a clonal band in one of the three cases, whereas there was no API2-MALT1 fusion transcript detected in any of the three lesions, although it is detected in approximately 40% of pulmonary MALT type lymphoma [7].

Histologically, vasculitis was observed in numerous arteries and veins in one case (no. 3). Moreover, PCR assay for IgH gene demonstrated a clonal band in Case 3 only. Histological findings of Case 3 were somewhat similar to those of lymphomatoid granulomatosis grade 1 [9,18]. Case 3 should also be differentiated

from lymphomatoid granulomatosis grade 1. However, there was no necrotic area in Case 3. Moreover, there were no EBV+ large lymphoid cells in this lesion [9,19].

Recently, Nam-Cha et al. [17] analyzed six florid RFH specimens using immunohistochemistry, IgH-PCR, and microdissected PCR. They found that some germinal centers contained a population of plasma cells and plasmacytoid germinal center cells showing immunoglobulin light chain restriction [17]. In three cases, the monotypic germinal center cells also showed distinct bcl-2 expression [17]. Two cases demonstrated a predominant IgH rearrangement on a florid polyclonal background, and one showed an IgH monoclonal rearrangement on PCR [17]. Nam-Cha et al. [17] reported that only one of the six cases developed follicular lymphoma. As suggested by Nam-Cha et al. in the previous series, it remains unclear whether Case 3, demonstrating IgH gene rearrangement in the present series, could be a sign of prelymphomatous stage (incipient MALT lymphoma) or merely represents an exaggeration of normal B-cell clonal response. However, Case 3 has only undergone a short follow up to date. To clarify this issue, further study is needed.

Acknowledgments

This work was supported by the Intractable Diseases, the Health and Labour Sciences Research Grants from Ministry of Health, Labor and Welfare (H21-112).

References

- [1] J.K. Chan, W. Cheuk, M. Shimizu, Anaplastic lymphoma kinase expression in inflammatory pseudotumors, *Am. J. Surg. Pathol.* 25 (2001) 761–768.
- [2] W. Cheuk, J.K. Chan, T.W. Shek, J.H. Chang, M.H. Tsou, N.W. Yuen, W.F. Ng, A.C. Chan, J. Plat, Inflammatory pseudotumor-like follicular dendritic cell tumor: a distinct intraabdominal neoplasm with consistent Epstein-Barr virus association, *Am. J. Surg. Pathol.* 25 (2001) 721–731.
- [3] C.M. Coffin, P.A. Humphery, L.P. Dehner, Extrapulmonary inflammatory myofibroblastic tumor. A clinical and pathological survey, *Sem. Diagn. Pathol.* 15 (1998) 85–101.
- [4] C.M. Coffin, A. Patel, S. Perkins, K.S. Elenitoba-Johnson, E. Perlman, C.A. Griffin, ALK-1 and p80 expression and chromosomal rearrangements involving 2p23 in inflammatory myofibroblastic tumor, *Mod. Pathol.* 14 (2001) 569–574.
- [5] C.M. Coffin, J.L. Hornick, C.D.M. Fletcher, Inflammatory myofibroblastic tumor, comparison of clinicopathologic, histologic, immunohistochemical features including ALK expression in atypical and aggressive cases, *Am. J. Surg. Pathol.* 31 (2007) 509–520.
- [6] J.R. Cook, L.P. Dehner, M.H. Collins, Z. Ma, S.W. Morris, C.M. Coffin, D.A. Hill, Anaplastic lymphoma kinase (ALK) expression in the inflammatory myofibroblastic tumor: a comparative immunohistochemical study, *Am. J. Surg. Pathol.* 25 (2001) 1364–1371.
- [7] M.-Q. Du, MALT lymphoma: recent advances in aetiology and molecular genetics, *J. Clin. Exp. Hematopathol.* 47 (2007) 31–42.
- [8] J.J. Gomez-Roman, P. Sanchez-Velasco, G. Ocejio-Vinyals, E. Hernandez-Nieto, F. Leyva-Cobian, J.F. Val-Bernal, Human herpesvirus-8 genes are expressed in pulmonary inflammatory myofibroblastic tumor (inflammatory pseudotumor), *Am. J. Surg. Pathol.* 25 (2001) 624–629.
- [9] D.G. Guinee Jr., S.L. Perkins, W.D. Travis, J.A. Holden, S.R. Trip, M.N. Koss, Proliferation and cellular phenotype in lymphomatoid granulomatosis, indications of a higher proliferation index of B-cells, *Am. J. Surg. Pathol.* 22 (1998) 1093–1100.
- [10] J.W. Hussong, S.L. Perkins, B. Schnitzer, H. Hargreaves, G. Frizzera, Extramedullary plasmacytoma. A form of marginal zone cell lymphoma?, *Am. J. Clin. Pathol.* 111 (1999) 111–116.
- [11] H. Inagaki, J.K.C. Chan, J.W.M. Ng, M. Okabe, T. Yoshino, M. Okamoto, H. Ogawa, H. Matsushita, T. Yokose, Y. Matsuno, N. Nakamura, T. Nagasaka, R. Ueda, T. Eimoto, S. Nakamura, S. Nakamura, Primary thymic extranodal marginal zone B-cell lymphoma of mucosa-associated lymphoid tissue type exhibits distinctive clinicopathological and molecular features, *Am. J. Pathol.* 160 (2002) 1435–1443.
- [12] M.N. Koss, L. Hochholzer, C.A. Moran, G. Frizzera, Pulmonary plasmacytomas: a clinicopathologic and immunohistochemical study of five cases, *Ann. Diagn. Pathol.* 2 (1998) 1–11.
- [13] S.J. Kovach, A.V. Fischer, P.J. Katzman, R.M. Salloum, S.E. Ettinghausen, R. Madeb, L.G. Koniaris, Inflammatory myofibroblastic tumors, *J. Surg. Oncol.* 94 (2006) 385–391.

- [14] T. Kuze, N. Nakamura, Y. Hashimoto, M. Abe M, Most of CD30+ anaplastic large cell lymphoma of B cell type show a somatic mutation in the IgH V region genes, *Leukemia* 12 (1998) 753–757.
- [15] R. Lai, L.M. Weiss, K.L. Chang, D.A. Arber, Frequency of CD43 expression in non-Hodgkin lymphoma. A survey of 742 cases and further characterization of rare CD43+ follicular lymphomas., *Am. J. Clin. Pathol.* 111 (1999) 488–494.
- [16] Y. Masaki, L. Dong, N. Kurose, K. Kitagawa, Y. Morikawa, M. Yamamoto, H. Takahashi, Y. Shinomura, K. Imai, T. Saeki, A. Azumi, S. Nakada, E. Sugiyama, S. Matsui, T. Origuchi, S. Nishiyama, I. Nishimori, T. Nojima, K. Yamada, M. Kawano, Y. Zen, M. Kaneko, K. Miyazaki, K. Tsubota, K. Eguchi, K. Tomoda, T. Sawaki, T. Kawanami, M. Tanaka, T. Fukushima, S. Sugai, H. Umemura, et al., Proposal for a new clinical entity. IgG4-positive multi-organ lymphoproliferative syndrome: analysis of 64 cases of IgG4-related disorders, *Ann. Rheum. Dis.* doi:10.1136/ard.2008.089169.
- [17] S.H. Nam-Cha, B. San-Millán, M. Mollejo, M. García-Cosío, G. Garijo, M. Gomez, R.A. Warnke, E.S. Jaffe, M.A. Piris MA, Light-chain restricted germinal centers in reactive lymphadenitis: report of eight cases, *Histopathology* 52 (2008) 436–444.
- [18] A.G. Nicholson, N.L. Harris, Marginal zone B-cell lymphoma of the mucosa-associated lymphoid tissue (MALT) type, in: W.D. Travis, E. Brambilla, H.K. Müller-Hermelink, C.C. Harris (Eds.), *Tumours of the Lung, Pleura, Thymus and Heart*, IARC Press, Lyon, 2004, pp. 88–90.
- [19] S. Pittaluga, W.H. Wilson, E.S. Jaffe, Lymphomatoid granulomatosis, in: S.H. Swerdlow, E. Campo, N.L. Harris, E.S. Jaffe, S.A. Pileri, H. Stein, J. Thiele, J.W. Vardiman JW (Eds.), *WHO Classification of Tumours of Haematopoietic and Lymphoid Tissues*, IARC Press, Lyon, 2008, pp. 247–249.
- [20] W.D. Travis, T.V. Colby, M.N. Koss, M.L. Rosado-de-Christenson, N.L. Muller, T.E. King Jr., Miscellaneous disease of uncertain etiology, in: D.W. King (Ed.), *Atlas of Nontumor Pathology: Non-neoplastic Disorders of the Lower Respiratory Tract*, 1st ed. American Registry of Pathology and Armed Forces Institute of Pathology, Washington DC, 2002, pp. 857–900.
- [21] S.A. Yousen, H.D. Tazelaar, T. Manabe, L.P. Dehner, Inflammatory myofibroblastic tumor, in: W.D. Travis, E. Brambilla, H.K. Müller-Hermelink, C.C. Harris (Eds.), *Tumours of the Lung, Pleura, Thymus and Heart*, IARC Press, Lyon, 2004, pp. 105–106.
- [22] Y. Zen, S. Kitagawa, H. Minato, H. Kurumaya, K. Katayanagi, S. Masuda, H. Niwa, M. Fujimura, Y. Nakanuma, IgG4-positive plasma cells in inflammatory pseudotumor (plasma cell granuloma) of the lung, *Hum. Pathol.* 36 (2005) 710–717.



● 原 著 ●

腋窩リンパ節転移陰性乳がんに対する 術後補助化学療法としての Docetaxel と Cyclophosphamide の忍容性および安全性 —JECBC04 試験—

山本 尚人^{*1,2} 田部井敏夫^{*2} 井上 賢一^{*2} 武井 寛幸^{*2} 佐藤 信昭^{*2}
柳田 康弘^{*2} 藤澤 知巳^{*2} 藤井 博文^{*2} 佐伯 俊昭^{*2} 黒住 昌史^{*2}

[*Jpn J Cancer Chemother* 37(1): 57-63, January, 2010]

Tolerability and Safety of Docetaxel Plus Cyclophosphamide as Adjuvant Chemotherapy for Axillary Lymph Node-Negative Breast Cancer—JECBC04 Trial: Naohito Yamamoto^{*1,2}, Toshio Tabei^{*2}, Kenichi Inoue^{*2}, Hiroyuki Takei^{*2}, Nobuaki Sato^{*2}, Yasuhiro Yanagita^{*2}, Tomomi Fujisawa^{*2}, Hirofumi Fujii^{*2}, Toshiaki Saeki^{*2} and Masafumi Kurosumi^{*2} (^{*1}Chiba Cancer Center, Division of Breast Surgery, ^{*2}Japan East Cancer Center Breast Cancer Consortium)

Summary

A recent foreign clinical trial showed that the combination of docetaxel plus cyclophosphamide (TC) is associated with a superior disease-free survival compared with doxorubicin plus cyclophosphamide as adjuvant chemotherapy for breast cancer. To assess the tolerability and safety of TC in a Japanese patient population, we conducted a multicenter, open-labeled clinical trial. Eligible patients were women who had axillary lymph node-negative breast cancer with surgical excision of the primary tumor. Patients were treated with 4 courses of TC (75 and 600 mg/m², respectively), administered intravenously every 3 weeks. The primary endpoint was feasibility, which was defined as the proportion of patients who completed 4 courses of the chemotherapy. From October 2006 to November 2007, 39 patients were enrolled and 32 were evaluable. Seven patients were excluded because of the inadequate treatment schedule. Feasibility was 96.9% (31/32). One patient did not complete treatment because of the hypersensitivity. The mean administered dose was 73.2 mg/m² for docetaxel and 588.3 mg/m² for cyclophosphamide, respectively. The mean relative dose intensity was 96.1% and 95.7%, respectively. The grade 3/4 toxicity including leukopenia, neutropenia, and febrile neutropenia was manageable. From these results, we consider that TC might become a standard non-anthracycline adjuvant regimen for operable breast cancer. Key words: Breast cancer, Docetaxel, Cyclophosphamide, Adjuvant therapy (Received Apr. 6, 2009/Accepted Jun. 8, 2009)

要旨 海外の臨床試験成績から、docetaxel+cyclophosphamide (TC) の4コース投与は乳がんの術後補助化学療法として有効と考えられるが、国内での使用経験は十分ではない。このため TC の忍容性および安全性を評価する目的で多施設共同臨床試験を実施した。対象は原発乳がんの根治術が施行され、腋窩リンパ節転移陰性の女性とした。docetaxel および cyclophosphamide の用量はそれぞれ 75 および 600 mg/m² (いずれも点滴静注) とし、3週間隔で4コース投与した。主要評価項目は試験治療を4コース完遂した患者の割合とした。2006年10月～2007年11月にかけて本試験には39名の患者が組み入れられ32名を評価した。7名は試験治療が手順どおりに投与されなかったため除外した。試験治療の完遂割合は96.9% (31/32) で、1名は過敏性反応のために試験治療を中止した。実投与量の平均値は docetaxel が 73.2 mg/m², cyclophosphamide が 588.3 mg/m² で、計画した投与量のそれぞれ 96.1%, 95.7% であった。grade 3/4 の有害事象は白血球、好中球/顆粒球、発熱性好中球減少などで、投与中止を必要としたものはなかった。以上から、non-anthracycline レジメンの TC は乳がんの術後標準治療の一つになり得ると考えられた。

^{*1} 千葉県がんセンター・乳腺外科

^{*2} 東日本がんセンター連合 (JECBC)

はじめに

原発乳がんの手術後薬物療法は、腋窩リンパ節転移個数、腫瘍径、ホルモン感受性の有無、HER2発現の有無、年齢といった因子に基づいて選択される¹⁾。これまで手術後の補助化学療法としては、cyclophosphamide+methotrexate+fluorouracil (CMF)、doxorubicin+cyclophosphamide (AC)などが標準的に使用されてきた²⁻⁴⁾が、その後、taxane系薬剤がレジメンに取り入れられるようになった⁵⁻⁷⁾。最近では長期生存者の増加に伴いanthracycline系薬剤による心毒性が懸念されるようになり、non-anthracyclineレジメンの開発が期待されている。

このような観点からUS Oncology 9735試験では、I・II期および手術可能なIII期の原発乳がんを対象として、ACの4コース投与とdocetaxel+cyclophosphamide (TC)の4コース投与を比較した結果、TC群の無病生存期間はAC群よりも有意に長いことが確認された⁸⁾。年齢、ホルモン感受性の有無、腋窩リンパ節転移の有無といった因子によるサブグループ解析でもこの傾向は一貫していたことから、TCは早期乳がんの術後補助化学療法の標準治療になり得ると結論された。しかし、この試験は海外の患者を対象としたもので、国内の患者集団でのTCの忍容性および安全性は十分に評価されていない。

こうしたことから、US Oncology 9735試験と同一の用法・用量で国内の乳がん患者にTCを投与した時の忍容性および安全性を評価する目的で、多施設共同オープン試験を実施した。

I. 対象および試験方法

本臨床試験は2006年10月～2007年11月にかけて国内の6施設（新潟県立がんセンター、群馬県立がんセンター、埼玉県立がんセンター、神奈川県立がんセンター、栃木県立がんセンター、千葉県がんセンター）で実施された。試験の実施に際してはヘルシンキ宣言⁹⁾および臨床研究に関する倫理指針¹⁰⁾を遵守し、各施設の倫理審査委員会で事前に試験実施の承認を得るとともに、試験に参加した全患者から文書による同意を取得した。

1. 対象集団

本試験の対象は、組織学的に診断された原発乳がん女性で、根治術が施行され、腋窩リンパ節郭清またはセンチネルリンパ節生検によって腋窩リンパ節転移が陰性であることが確認された患者とした。またSt. Gallen分類の中等度リスクに相当するよう年齢は20歳以上34歳以下であるか、あるいは35歳以上70歳以下で、「原発巣

の腫瘍最大径>2cm」「分化度がgrade2または3」「腫瘍組織周囲への脈管侵襲」「human epidermal growth factor receptor-2 (HER2)の過剰発現 (immunohistochemistryが3+, またはfluorescence *in situ* hybridization (FISH)が陽性)」のいずれかを満たすこととした。

その他、① Eastern Cooperative Oncology Groupのperformance status (PS):0または1、② 臓器機能が良好（ヘモグロビン:9 g/dL以上、白血球数:4,000/mm³以上12,000/mm³以下、好中球数:2,000/mm³以上、血小板数:10×10⁴/mm³以上、血清総ビリルビン値:施設基準値の上限以下、ASTおよびALT:100 IU/L未満、血清クレアチニン値:施設基準値上限の1.5倍以下）などを選択基準とした。

また、① 術前、術後補助療法として放射線療法、内分泌療法、化学療法の施行歴がある、② 感染症など試験治療に支障を来す可能性がある患者は本試験の対象から除外した。

2. 試験治療

試験治療はdocetaxel（タキソテール、サノフィ・アベンティス株式会社、東京）+cyclophosphamide（注射用エンドキサン、塩野義製薬株式会社、大阪）の併用療法とし、これを3週間隔で合計4コース投与することとした。docetaxelの用量は75 mg/m²、cyclophosphamideの用量は600 mg/m²とし、両薬剤とも各コースの第1日目に投与した。docetaxelの副作用であるアレルギーおよび浮腫を予防する目的でのステロイドを使用するかどうかは各施設の判断に任せた。各コース第1日目の標準的な投与手順を以下に示す。

手順1:生理食塩液100 mL+dexamethasoneまたはbetamethasone 8 mgを急速点滴静注

手順2:生理食塩液250 mL+docetaxelを1時間かけて点滴静注

手順3:生理食塩液250 mL+cyclophosphamideを30分かけて点滴静注

手順4:生理食塩液100 mLを急速点滴静注

ただし、以下の条件に1項目でも抵触する場合は、すべての項目が回復するまで投与を延期することとした。投与の延期は投与予定日から最大3週までとした。

- ① 白血球数<3,000/mm³、かつ好中球数<1,500/mm³、
- ② grade2以上の神経障害、
- ③ grade2以上の浮腫、
- ④ grade2以上の肝・腎機能障害、
- ⑤ その他、担当医師が必要と判断した場合。

また、以下に示す有害事象が認められた場合には以降の投与量を1段階減量し（docetaxelは75 mg/m²から60 mg/m²、cyclophosphamideは600 mg/m²から500

Table 1 Baseline characteristics of 32 evaluable patients with operable breast cancer

Characteristic		Category	n	%
Age		30-34	1	3.1
		35-70	31	96.9
Performance status		0	32	100.0
		1	0	0.0
Post menopause		Yes	11	34.4
		No	21	65.6
Hormone receptor	ER	+	8	25.0
		-	24	75.0
	PgR	+	6	18.8
		-	26	81.3
HER2	IHC	3+	5	15.6
		2+	7	21.9
		1+	14	43.8
		-	6	18.8
	FISH	+*	2	6.3
		-	2	6.3
	Not tested	13	40.6	
	Unknown	15	46.9	
Primary lesion		Right breast	15	46.9
		Left breast	17	53.1
TNM	T	Tis, T0, T1	16	50.0
		T2, T3, T4	16	50.0
	N	N0	32	100.0
	M	M0	32	100.0
Stage		I	16	50.0
		II a, II b, III b	16	50.0
Histological type	Invasive	Papillo tubular Ca.	6	18.8
		Solid tubular Ca.	11	34.4
		Scirrhus Ca.	11	34.4
		Other	3	9.4
		Unknown	1	3.1
Surgery		Lumpectomy	24	75.0
		Mastectomy	8	25.0
Allergy predisposition		Yes	30	93.8
		No	2	6.3
Anamnesis of hypersensitive drug reaction		No	32	100.0
		Yes	0	0.0
Complications		No	26	81.3
		Yes	6	18.8

*: IHC=2+

mg/m²), 有害事象が回復しても投与量をもとに戻さないこととした。① grade 3 以上の非血液学的毒性 (悪心・嘔吐, 全身倦怠感を除く), ② grade 4 以上の血液学的毒性 (白血球減少, 好中球減少を除く), ③ grade 3 以上の発熱性好中球減少, ④ grade 4 の好中球減少, 白血球減少が 7 日間以上継続。なお, 1 段階を超える減量が必要な場合は試験を中止することとし, さらなる減量は認めなかった。

3. 併用療法に関する規定

試験治療の評価に影響を及ぼすと考えられる化学療法, ホルモン療法, biologic response modifier, 放射線療法, 手術療法の併用は禁止した。granulocyte colony-stimulating factor (G-CSF) 製剤は grade 4 または 38°C 以上の発熱があり, かつ grade 3 以上の好中球減少または白血球減少が認められた場合に投与してよいこととし, 予防目的での投与は禁止した。G-CSF 製剤を投与

Table 2 Reasons of dose reduction and dose delay

Reasons of dose reduction	Course			Total
	2	3	4	
Non-hematological toxicity greater than grade 3*	0	0	0	0
Hematological toxicity greater than grade 4†	0	0	0	0
Febrile neutropenia greater than grade 3	2	1	0	3
Grade 4 leukocytes and neutrophils for 7 days or more	0	0	0	0
Judgement of investigator	2‡	0	1§	3

*: Except nausea, vomiting and fatigue

†: Except leukocytes and neutrophils

‡: Two were due to grade 4 leukocytes and neutrophils for 6 days or less.

§: One was due to rash grade 2 and the patient's wish.

Reasons of dose delay	Course			Total
	2	3	4	
Leukocytes <3,000/mm ³ and neutrophils <1,500/mm ³	0	1	0	1
Neuropathy greater than grade 2	0	0	0	0
Edema greater than grade 2	0	0	0	0
Liver or renal disorders greater than grade 2	0	0	0	0
Judgement of investigator	1 [¶]	0	1 [¶]	2
Social factor	2	1	2	5

¶: One was due to the dental treatment.

¶: One was due to rash grade 2 and the patient's wish.

した場合は、白血球数が 10,000/mm³以上または好中球数が 5,000/mm³以上に回復した時点で投与を中止することとした。

4. 評価項目

主要評価項目は試験治療を 4 コース完遂した患者の割合とした。副次評価項目は安全性、dose intensity (1 コース当たりの実際の投与量)、relative dose intensity (1 コース当たりの実際の投与量/計画した投与量)とした。有害事象は National Cancer Institute Common Terminology Criteria for Adverse Events version 3.0 の日本語訳¹¹⁾に基づいて評価した。

5. 目標とする患者数

目標とする患者数は 4 コースの完遂割合の推定値に基づいて設定した。具体的には完遂割合の期待値を 80%、閾値を 60%とし、有意水準片側 5%、検出力 90%で、十分な完遂割合が達成されたかどうかを検証できる患者数を正規分布近似によって計算すると必要な患者数は 44 名となり、これに脱落などの影響を考慮し 50 名とした。

II. 結 果

本試験には 2006 年 10 月～2007 年 11 月の間に 39 名の患者が組み入れられた。予定症例集積期間 1 年間に対し予定された 50 名に満たなかったが、効果安全性評価委員および運営委員にて協議した結果、32 名を評価に採用し忍容性の評価は可能と考え、症例集積を終了した。

残る 7 名は試験治療が手順どおりに投与されなかったため評価から除外した。

評価可能であった 32 名の患者背景を Table 1 に示す。35 歳未満の患者は 1 名のみで、残る患者の年齢はすべて 35～70 歳であった。PS は良好で全患者が 0 に分類された。閉経後の患者は 11 名 (34.4%) で、エストロゲンおよびプロゲステロン受容体に感受性のある患者はそれぞれ 8 名 (25.0%)、6 名 (18.8%) であった。

4 コースの試験治療を完了したのは 32 名中 31 名で完遂割合は 96.9%であった。1 名は grade 2 の過敏性反応が出現し、処置後に試験治療を再開したが再度同様の症状が出現したため試験治療を中止した。1 コース当たりの実際の投与量 (dose intensity) の平均値は docetaxel が 73.2 (SD 3.9) mg/m²、cyclophosphamide が 588.3 (SD 26.2) mg/m²で、relative dose intensity は docetaxel が 96.1%、cyclophosphamide が 95.7%であった。コースごとの減量および投与延期の内訳を Table 2 に示す。減量理由で多かったものは、「発熱性好中球減少」および「担当医師の判断」であった。

非血液毒性の有害事象を Table 3 に示す。発現の多かった有害事象は悪心、食欲不振、脱毛、粘膜炎 (咽頭)、味覚変化、便秘、爪の変化、疲労、浮腫、皮疹/落屑、色素沈着、神経障害、筋肉痛および関節痛であった。ほとんどの有害事象は grade 1 または 2 で、grade 3 に該当したのは疲労、筋肉痛、関節痛、腹部痛が各 1 名 (3.1%)、

Table 3 Non-hematological toxicity

Adverse event	grade					
	1		2		3	
	n	%	n	%	n	%
Fatigue	19	59.4	8	25.0	1	3.1
Pain-muscle	8	25.0	5	15.6	1	3.1
Pain-joint	9	28.1	7	21.9	1	3.1
Pain-abdomen	0	0.0	0	0.0	1	3.1
Alopecia	6	18.8	26	81.3	0	0.0
Rash/desquamation	4	12.5	17	53.1	0	0.0
Nail changes	20	62.5	3	9.4	0	0.0
Hyperpigmentation	15	46.9	1	3.1	0	0.0
Mucositis-pharynx	18	56.3	4	12.5	0	0.0
Taste alteration	21	65.6	1	3.1	0	0.0
Nausea	18	56.3	1	3.1	0	0.0
Anorexia	16	50.0	2	6.3	0	0.0
Constipation	15	46.9	2	6.3	0	0.0
Diarrhea	8	25.0	3	9.4	0	0.0
Vomiting	4	12.5	0	0.0	0	0.0
Edema: limb	10	31.3	5	15.6	0	0.0
Edema: head and neck	1	3.1	1	3.1	0	0.0
Watery eye	7	21.9	1	3.1	0	0.0
Neuropathy-sensory	15	46.9	3	9.4	0	0.0
Neuropathy-motor	2	6.3	0	0.0	0	0.0
Allergic reaction/hypersensitivity	2	6.3	2	6.3	0	0.0
Cystitis	1	3.1	2	6.3	0	0.0
Phlebitis	0	0.0	1	3.1	0	0.0
Albumin, serum-low	9	28.1	0	0.0	0	0.0
AST, SGOT	9	28.1	0	0.0	0	0.0
ALT, SGPT	9	28.1	0	0.0	0	0.0
Alkaline phosphatase	3	9.4	0	0.0	0	0.0
Bilirubin	1	3.1	0	0.0	0	0.0
Creatinine	4	12.5	0	0.0	0	0.0
Calcium, serum-low	15	46.9	1	3.1	0	0.0
Sodium, serum-high	3	9.4	0	0.0	0	0.0
Potassium, serum-high	1	3.1	0	0.0	0	0.0
Potassium, serum-low	1	3.1	0	0.0	0	0.0
Others	9	28.1	4	12.5	0	0.0

grade 4/5 adverse events were not observed.

Table 4 Hematological toxicity

Laboratory event	grade							
	1		2		3		4	
	n	%	n	%	n	%	n	%
Leukocytes	1	3.1	1	3.1	15	46.9	7	21.9
Neutrophils/granulocytes	1	3.1	1	3.1	1	3.1	19	59.4
Febrile neutropenia	0	0.0	0	0.0	5	15.6	0	0.0
Fever	1	3.1	1	3.1	0	0.0	0	0.0
Hemoglobin	17	53.1	6	18.8	0	0.0	0	0.0
Platelets	5	15.6	0	0.0	0	0.0	0	0.0

grade 5 adverse events were not observed.

発熱性好中球減少が5名(15.6%)であった。grade 4以上に該当する有害事象はなかった。試験治療の中止を必要としたのは先に記載した過敏性反応の1名のみで、

1段階の減量を必要としたのは発熱性好中球減少の3名であった。

血液毒性に関する有害事象を Table 4 に示す。発現が

多かったのはヘモグロビン、白血球、好中球/顆粒球で、このうち白血球減少は grade 3~4 が 22 名 (68.8%)、好中球減少は grade 3~4 が 20 名 (62.5%) であった。投与延期を必要としたのは白血球および好中球が減少した 1 名であった。なお、grade 4 の好中球減少症 19 例中 7 例と grade 3 の発熱性好中球減少症 5 例中 2 例に G-CSF が使用された。

Ⅲ. 考 察

腋窩リンパ節転移陰性の乳がん術後補助化学療法としては、これまで CMF や AC が使用されてきた^{3,4)}。その後、報告されるようになった taxane 系薬剤⁵⁻⁷⁾のうち、docetaxel は cyclophosphamide との併用ではヒト腫瘍移植マウスでの研究で相乗的な効果を示すことが報告されていた¹²⁾。この組み合わせを用いた TC は近年、AC よりも再発抑制効果が優れることが示された⁸⁾。TC の再発抑制効果は部分集団でも検討され、年齢、ホルモン受容体あるいはリンパ節転移の有無の状況にかかわらず、TC が AC より優れる傾向が示された。

一方、国内での TC の報告は、US Oncology 9735 試験における投与量とは異なり、その使用経験は十分とはいえない¹³⁻¹⁵⁾。このためわれわれは、特に腋窩リンパ節転移陰性の中間リスク例に対する有用性に着目し、国内の患者に TC が投与可能かどうかを評価する目的で本試験を実施した。docetaxel と cyclophosphamide の投与順序に関しては US Oncology 9735 試験⁸⁾において特別の記載がなかったため、本試験実施開始時には docetaxel と cyclophosphamide の投与手順は厳密に規定しなかった。しかし、初期登録例のうち 7 例で docetaxel の前に cyclophosphamide が投与され、その 7 例中 5 例に grade 2 以上のアレルギー反応が起こったため効果安全評価委員会の判断で投与手順を docetaxel, cyclophosphamide の順と規定し、それ以外の投与手順で投与された 7 例は評価から除外した。その後、規定どおり投与された 32 例を評価可能症例とした。評価可能であった 32 名中 31 名 (96.9%) が 4 コースの投与を完了することができ、TC の忍容性は良好であった。また、relative dose intensity は両薬剤とも約 96% で、減量を必要とした患者は少なかった。US Oncology 9735 試験での TC 群の完遂割合は 93% で、2 剤の relative dose intensity は 99.8% であり⁸⁾、欧米と日本ではほぼ同等の忍容性であると考えられた。

本試験でみられた有害事象のうち grade 3~4 に該当したのは白血球、好中球減少、発熱性好中球減少などであった。US Oncology 9735 試験では grade 3~4 として 61% の好中球減少、8% 未満の感染症および 5% の発熱を

報告されている⁸⁾。今回の試験では grade 3~4 の好中球減少は同程度 (62.5%) であり、感染症は認めなかった。これらの多くでは試験治療の継続が可能であり、投与延期を必要としたのは白血球および好中球減少の 1 名のみであった。しかし 5 名 (15.6%) の発熱性好中球減少が出現しており、うち 3 名が 1 段階の減量を必要とした。9 名では試験中に G-CSF が投与された。白血球数や好中球数の変化を監視しながら必要に応じて減量、投与延期または G-CSF 投与で対処することによって TC の安全性は確保できるものと考えられた。また grade 1~2 ではあるものの、US Oncology 9735 試験では言及されていない皮疹/落屑 (65.6%) や過敏反応 (12.5%) も認めたこと、中止の 1 例は過敏反応によるものであったことを念頭に置き治療を行うことも重要である。

以上から、TC は海外と同一の用法・用量で国内の患者に投与可能で、白血球や好中球が減少した場合でも減量、投与延期または G-CSF 投与によって対処可能と考えられた。現在、AC は乳がんの術後補助化学療法として広く使用されているが、doxorubicin を含む anthracycline 系薬剤には心毒性があり、心筋障害、心不全などの重大な副作用が報告されている¹⁶⁻¹⁸⁾。このため、特に長期生存が期待される早期乳がんの術後補助化学療法では、anthracycline 系薬剤を含まないレジメンを確立することは重要な課題である。

これらを考慮すると、TC は術後補助化学療法の標準治療になり得るものと期待することができる。US Oncology では、さらに TC と docetaxel+doxorubicin+cyclophosphamide (TAC) を比較する臨床試験が進行中である (NCT00493870: Clinical Trial. gov)。今後はさらに使用経験を積んで TC の安全性プロファイルを確認するとともに、有効性についても評価することが望ましい。

文 献

- 1) Goldhirsch A, Glick JH, Gelber RD, *et al*: Progress and promise: highlights of the international expert consensus on the primary therapy of early breast cancer 2007M. *Ann Oncol* 18(7): 1133-1144, 2007.
- 2) Early Breast Cancer Trialists' Collaborative Group: Effects of adjuvant tamoxifen and of cytotoxic therapy on mortality in early breast cancer: an overview of 61 randomized trials among 28,896 women. *N Engl J Med* 319(26): 1681-1692, 1988.
- 3) Fisher B, Jeong JH, Anderson S, *et al*: Treatment of axillary lymph node-negative, estrogen receptor-negative breast cancer: updated findings from National Surgical Adjuvant Breast and Bowel Project clinical trials. *J Natl Cancer Inst* 96(24): 1823-1831, 2004.
- 4) Bonadonna G, Moliterni A, Zambetti M, *et al*: 30 years' follow up of randomised studies of adjuvant CMF in operable breast cancer: cohort study. *BMJ* 330(7485): 217, 2005.
- 5) Citron ML, Berry DA, Cirincione C, *et al*: Randomized trial of dose dense versus conventionally scheduled and

- sequential versus concurrent combination chemotherapy as postoperative adjuvant treatment of node-positive primary breast cancer: first report of Intergroup Trial C9741/Cancer and Leukemia Group B Trial 9741. *J Clin Oncol* 21(8): 1431-1439, 2003.
- 6) Roché H, Fumoleau P, Spielmann M, *et al*: Sequential adjuvant epirubicin-based and docetaxel chemotherapy for node-positive breast cancer patients: the FNCLCC PACS 01 Trial. *J Clin Oncol* 24(36): 5564-5571, 2006.
 - 7) Martin M, Pienkoswki T, Mackey J, *et al*: Adjuvant docetaxel for nodepositive breast cancer. *N Engl J Med* 352(22): 2302-2313, 2005.
 - 8) Jones SE, Savin MA, Holmes FA, *et al*: Phase III trial comparing doxorubicin plus cyclophosphamide with docetaxel plus cyclophosphamide as adjuvant therapy for operable breast cancer. *J Clin Oncol* 24(34): 5381-5387, 2006.
 - 9) World Medical Association Declaration of Helsinki: ethical principles for medical research involving human subjects. (日本医師会ホームページ: http://www.med.or.jp/wma/helsinki02_j.html).
 - 10) 厚生労働省: 臨床研究に関する倫理指針. 平成 16 年 12 月全部改正.
 - 11) 日本臨床腫瘍研究グループ, 日本癌治療学会: 有害事象共通用語規準 v3.0 日本語訳 JCOG/JSCO 版. *Int J Clin Oncol* 9(Suppl III): 1-82, 2004.
 - 12) Bissery MC, Vrignaud P and Lavelle F: Preclinical profile of docetaxel (taxotere): efficacy as a single agent and in combination. *Semin Oncol* 22(6 Suppl 13): 3-16, 1995.
 - 13) Shimizu T, Enomoto K, Haga S, *et al*: Phase I study of docetaxel and cyclophosphamide in patients with advanced or recurrent breast cancer. *Breast Cancer* 10(2): 140-148, 2003.
 - 14) 田代英哉, 佐川 庸, 岡田憲三・他: 乳癌術後補助化学療法における Docetaxel+Cyclophosphamide (TC) 療法の安全性. *癌と化学療法* 34(3): 393-396, 2007.
 - 15) 増野浩二郎, 野上眞子, 田代英哉・他: 乳癌術後補助療法としての TC (Docetaxel/Cyclophosphamide) 療法の忍容性の検討. *日臨外会誌* 69(11): 2747-2751, 2008.
 - 16) Lefrak EA, Pitha J, Rosenheim S, *et al*: A clinicopathologic analysis of adriamycin cardiotoxicity. *Cancer* 32(2): 302-314, 1973.
 - 17) Minow RA, Benjamin RA and Gottlieb JA: Adriamycin (NSC-123127) cardiomyopathy—An overview with determination of risk factors. *Cancer Chemother Rep Part 3* 6: 195-201, 1975.
 - 18) Von Hoff DD, Layard MW, Basa P, *et al*: Risk factors for doxorubicin-induced congestive heart failure. *Ann Intern Med* 91(5): 710-717, 1979.

Study of time-course changes in annual recurrence rates for breast cancer: data analysis of 2,209 patients for 10 years post-surgery

Morihiko Kimura · Yasuhiro Yanagita ·
Tomomi Fujisawa · Tokihiro Koida

Received: 24 December 2006 / Accepted: 1 January 2007
© Springer Science+Business Media B.V. 2007

Abstract Annual recurrence rates (ARR) are used to assess changes in the risk of breast cancer recurrence following surgery. In this retrospective study, ARR were calculated from the clinical records of 2,209 breast cancer patients who had undergone surgery. The time-course changes of ARR associated with prognostic/predictive factors were calculated. Overall, ARR decreased for 5 years following surgery and then remained almost constant. In hormone receptor (HR)-negative patients, ARR peaked after 2 years and peaked again at 6–7 years. In HR-positive patients, ARR peaked at 2 years. ARR increased in relation to the number of lymph-node metastases for 5 years, and peaked after 2 years in the absence and presence of venous invasion. The log-rank test demonstrated significant differences in recurrence between HR-negative and HR-positive cancer up to 5 years post-surgery. The presence of venous invasion had a significant effect on recurrence in the first 5 years, and the presence of lymph-node metastasis had a significant effect on recurrence up to and after 5 years. In conclusion,

prognostic/predictive factors affected breast cancer recurrence in the first 5 years but had a lesser effect on recurrence more than 5 years post-surgery.

Keywords Aromatase inhibitor · Breast cancer · Chemotherapy · Hormone receptor · Hormone therapy · Lymph node · Risk · Recurrence · Surgery · Venous invasion

Introduction

A number of comparative studies of post-operative adjuvant therapy for breast cancer have been reported. Meta-analyses of these studies have served as the basis for therapeutic guidelines for patients with breast cancer [1], so that all patients are treated under the principle of evidence-based medicine.

The purpose of post-operative adjuvant therapy is to reduce the risk of breast cancer recurrence. Annual recurrence rates (ARR) are used to assess changes in the risk of recurrence. ARR are defined as the 'percentage of patients developing recurrent cancer in 1 year among those without recurrence, at a certain time after surgery'. This definition is based on the hypothesis that ARR are constant, regardless of the time elapsed after surgery. ARR are widely used as an index for simulation of recurrence-free survival curves and to calculate the risk reduction: the odds of non-recurrence X years after surgery in patients with ARR of 15% are calculated as $(1-0.15)^X$. For evaluation of the therapeutic effect, reduction of ARR is also used to assess decreases in risk of recurrence after post-operative adjuvant therapy.

M. Kimura (✉)
Department of Surgery, General Ota Hospital (previously
Gunma Cancer Centre), 29-5, Hachiman-cho, Ota-shi,
Gunma 373-8585, Japan
e-mail: mkimura@qk9.so-net.ne.jp

Y. Yanagita · T. Fujisawa
Department of Breast Surgery, Gunma Cancer Centre,
Gunma, Japan

T. Koida
Department of Breast Surgery, Kounan Hospital
(previously Gunma Cancer Centre), Tochigi, Japan

However, it is questionable whether the above hypothesis is realistic. A total of 70% of recurrences occur within 3 years post-surgery [2], and based on an integral analysis of data from the Eastern Cooperative Oncology Group (ECOG), it has been reported that the risk for breast cancer recurrence reaches a peak 1–2 years after surgery and then decreases [3]. According to the results of a meta-analysis carried out by the Early Breast Cancer Trialists' Collaborative Group (EBCTCG), the optimal administration period for tamoxifen is 5 years [4, 5]; however, there is insufficient evidence available to determine the optimal treatment period of other hormone therapies. Moreover, chemotherapy is generally recommended for short periods in patients with hormone receptor (HR)-negative breast cancer. In the present study, we investigate time-course changes of ARR associated with HR-expression status, number of lymph-node metastases and the presence or absence of venous invasion. These prognostic/predictive factors are considered to be key determinants affecting recurrence after surgery. We also discuss therapeutic strategies, including post-operative adjuvant therapy, taking ARR into consideration.

Methods

This was an exploratory retrospective study. The study was approved by the ethics committee of Gumma Cancer Centre, and performed in accordance with the Declaration of Helsinki. ARR were calculated from the clinical records of breast cancer patients who had undergone surgery between April 1972 and March 2003 at the Gunma Cancer Centre. Time-course changes of ARR and differences in time-course changes in ARR between patients with different prognostic/predictive factors were investigated.

ARR were defined as 'the percentage of patients with recurrence between X years after surgery and $X + 1$ years after surgery among patients without recurrence X years after surgery'. ARR were calculated for the whole study population and were assessed according to HR-expression status, number of lymph-node metastases and the presence or absence of venous invasion. The specific time when ARR tended to change was also determined. Recurrence rates before and after that time were compared using 95% confidence intervals and log-rank tests. Since the study was exploratory, no adjustment was made for multiplicity, and the level of statistical significance was set at 5%.

Results

Patient characteristics

The ARR of 2,209 patients were calculated. The clinical characteristics of the study population, including prognostic/predictive factors, are summarised in Table 1.

Changes in ARR

The overall ARR peaked at 2 years post-surgery, gradually decreased up to 5 years post-surgery and then remained relatively constant (Fig. 1).

Time-course changes in ARR differed according to HR-expression status. In HR-negative patients, ARR peaked within 2 years post-surgery and then reached another peak 6–7 years post-surgery. In HR-positive patients, ARR peaked 2 years post-surgery and then remained almost constant (Fig. 2). ARR increased in relation to the number of lymph-node metastases up to 5 years post-surgery, peaking at 2 years, but remained relatively constant between 5 and 10 years (Fig. 3). ARR varied greatly depending on the presence or absence of venous invasion up to 5 years post-surgery with a peak at 2 years, and thereafter remained almost constant (Fig. 4).

Comparison of recurrence up to 5 years post-surgery with more than 5 years post-surgery

There were differences in time-course changes of recurrence rates between up to 5 years post-surgery and after more than 5 years post-surgery. Table 2 shows recurrence rates and confidence intervals in the first 5 years post-surgery and after more than 5 years post-surgery, according to prognostic/predictive factors. Confidence intervals for recurrence rates up to 5 years post-surgery in patients distributed by HR-expression status, number of lymph-node metastases and the presence or absence of venous invasion, did not overlap, whereas confidence intervals for recurrence rates 5–10 years post-surgery did overlap.

When evaluated using the log-rank test, there were significant differences in recurrence between patients with HR-negative cancer and those with HR-positive cancer for up to 5 years post-surgery (Table 3). There were also significant differences in recurrence depending on the presence or absence of venous invasion in the first 5 years. When assessed by HR-expression status and the presence or absence of venous invasion, there were no significant differences in recurrence 5–10 years post-surgery. The presence of

Table 1 Clinical characteristics of the study population

Total number of patients (N)	2,209
Age, years	
Median	51
Range	20–92
Menopause status, n	
Premenopause	961
Postmenopause	1,084
Unknown	164
Hormone receptor-expression status, n	
Positive	1,211 (54.8%)
Negative	526 (23.8%)
Unknown	472 (21.4%)
Lymph-node metastasis, n	
0	1,237 (56.0%)
1–3	505 (22.9%)
4–6	403 (13.2%)
≥7	63 (2.9%)
Unknown	1 (0.0%)
Venous invasion status, n	
Presence	1,105 (50.0%)
Absence	1,009 (45.7%)
Unknown	95 (4.3%)
Histological classification, n	
Infiltrating mammary duct carcinoma	1,923 (87.1%)
Infiltrating lobular carcinoma	76 (3.4%)
Other/unknown	210 (9.5%)

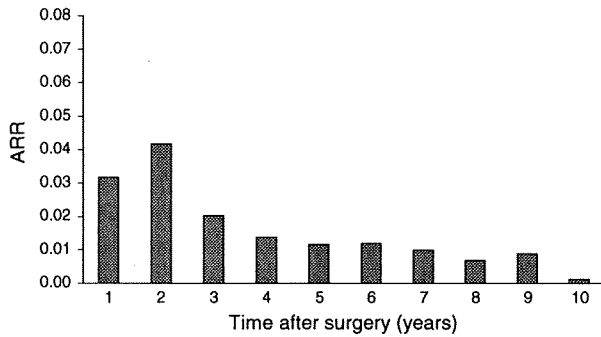


Fig. 1 Time-course changes of the overall annual recurrence rates (ARR)

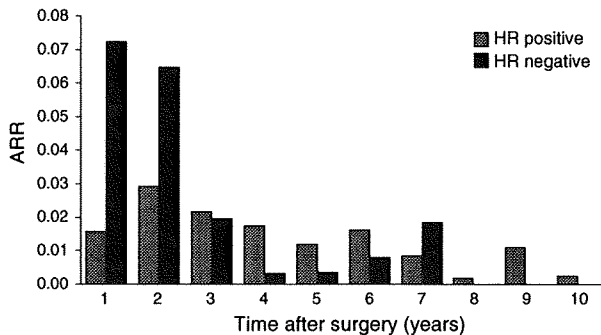


Fig. 2 Time-course changes of annual recurrence rates (ARR) in hormone receptor-positive and -negative patients

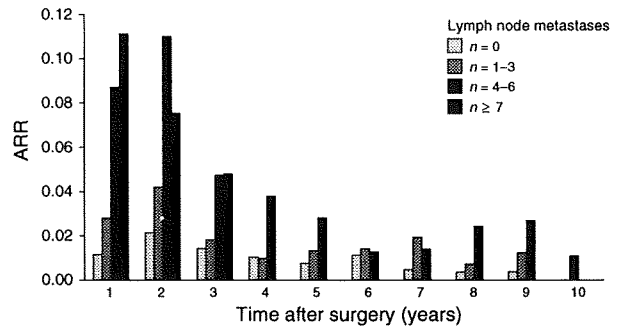


Fig. 3 Time-course changes of annual recurrence rates (ARR) according to number of lymph-node metastases

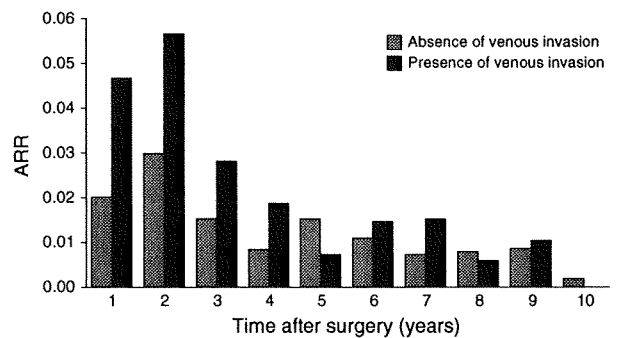


Fig. 4 Time-course changes of annual recurrence rates (ARR) in patients according to the absence or presence of venous invasion

lymph-node metastasis had a significant effect on recurrence up to 5 years post-surgery and 5–10 years post-surgery.

Discussion

In the present study, the ARR up to 5 years post-surgery reached a peak at 2 years and then gradually decreased, while the ARR more than 5 years post-surgery remained almost constant. Time-course changes in ARR in the first 5 years post-surgery were different from those more than 5 years post-surgery. Annual hazard rates of recurrence (AHRR) have been calculated previously based on the results of seven clinical studies carried out by the ECOG [3]. The time-course changes of AHRR in all patients and for patients distributed according to HR-expression status and the presence or absence of lymph-node metastasis tended to be similar to the results of the present study. The results of the meta-analysis done by the EBCTCG also showed that the AHRR more than 5 years post-surgery was lower than in the first 5 years post-surgery

Table 2 Recurrence rates up to 5 years and 5–10 years post-surgery according to prognostic/predictive factors

	Up to 5 years post-surgery		5–10 years post-surgery	
	Recurrence rates	95% CI	Recurrence rates	95% CI
All patients	224/2,209 (10.1%)	8.9–11.5	42/1,247 (3.4%)	2.4–4.5
HR+	96/1,211 (7.9%)	6.5–9.6	23/677 (3.4%)	2.2–5.1
HR-	75/526 (14.3%)	11.4–17.5	6/251 (2.4%)	0.9–5.1
Absence of lymph-node metastasis	67/1,237 (5.4%)	4.2–6.8	15/723 (2.1%)	1.2–3.4
Presence of lymph-node metastasis	157/971 (16.2%)	13.9–18.6	27/523 (5.2%)	3.4–7.4
No. of lymph-node metastases (1–3)	51/505 (10.1%)	7.6–13.1	16/357 (4.5%)	2.6–7.2
No. of lymph-node metastases (4–6)	95/403 (23.6%)	19.5–28.0	11/158 (7.0%)	3.5–12.1
No. of lymph-node metastases (≥ 7)	11/63 (17.5%)	9.1–29.1	0/8 (0.0%)	0.0–31.2
Presence of venous invasion	134/1,009 (13.3%)	11.2–15.5	18/482 (3.7%)	2.2–5.8
Absence of venous invasion	85/1,105 (7.7%)	6.2–9.4	24/731 (3.3%)	2.1–4.8

CI, confidence intervals; HR+/-, hormone receptor-positive/-negative

Table 3 Log-rank test for recurrence up to 5 years post-surgery and 5–10 years post-surgery according to prognostic/predictive factors

Prognostic/ predictive factor	Recurrence up to 5 years post-surgery		Log-rank test	Recurrence 5–10 years post-surgery		Log-rank test
	Presence <i>n</i>	Absence <i>n</i>		Presence <i>n</i>	Absence <i>n</i>	
HR	HR+	96 (7.9%)	$P < 0.0001$	23 (3.4%)	654 (96.6%)	$P = 0.4454$
	HR-	75 (14.3%)		6 (2.4%)	245 (97.6%)	
Lymph-node metastasis	n+	157 (16.2%)	$P < 0.0001$	27 (5.2%)	496 (94.8%)	$P = 0.0025$
	n-	67 (5.4%)		15 (2.1%)	708 (97.9%)	
Venous invasion	v+	134 (13.3%)	$P < 0.0001$	18 (3.7%)	464 (96.3%)	$P = 0.3343$
	v-	85 (7.7%)		24 (3.3%)	707 (96.7%)	

HR+/-, hormone receptor-positive/-negative; n+/-, presence/absence of lymph-node metastasis; v+/-, presence/absence of venous invasion

[4, 5], suggesting that time-course changes in ARR up to 5 years post-surgery were different from those more than 5 years post-surgery.

We found that all the prognostic/predictive factors (HR-expression, lymph-node metastasis and venous invasion) affected the ARR up to 5 years post-surgery, as previously reported. In particular, venous invasion was included in the risk category at the International Consensus Conference on Primary Treatment of Breast Cancer in 2005 [1]. The results of the present study also suggested that venous invasion affected ARR, with a higher ARR in the first 5 years post-surgery than that more than 5 years post-surgery, and the recurrence risk was increased by the occurrence of venous invasion. It is important to discuss therapeutic strategies, including use of post-operative adjuvant therapy, for the prevention of recurrence within 5 years and particularly within 3 years of surgery.

In HR-negative patients, recurrence was observed mainly within 2 years, so it appears reasonable to initiate potent chemotherapy immediately after surgery. Interestingly, ARR again increased 6–7 years after surgery. This suggests that closer observation of HR-negative patients is required, and there should be fur-

ther discussion about therapeutic strategies, including the possibility of administering extra courses of chemotherapy if necessary.

The pattern of ARR in HR-positive patients was quite different from HR-negative patients. In HR-positive patients, the ARR were almost constant and barely decreased beyond 5 years post-surgery, with a small peak at 2 years. In addition, there was no difference in ARR between premenopausal and postmenopausal patients (data not shown). This correlates with previously published results [3]. The meta-analysis done by the EBCTCG concluded that the optimal treatment period with tamoxifen should be 5 years. Recently, the use of aromatase inhibitors after 2–3 years of tamoxifen has also resulted in improvement in disease-free survival [6, 7]. However, it was reported that aromatase inhibitors, which are becoming first-choice drugs for postmenopausal HR-positive patients with breast cancer, were effective when administered beyond the 5-year treatment period of tamoxifen [8, 9]. This suggests that hormone therapy for more than 5 years post-surgery may be effective. The present study also confirmed that the recurrence rates more than 5 years post-surgery were higher in

HR-positive patients than in HR-negative patients. Further investigation of the usefulness of hormone therapy beyond 5 years post-surgery is required, with a focus on the use of aromatase inhibitors.

As long-term data on ARR accumulate and more clinical studies are conducted, the optimal therapeutic methods for use in breast cancer beyond 5 years post-surgery should become clearer.

Conclusion

In the present study, ARR were not constant and differed between up to 5 years post-surgery and more than 5 years post-surgery. Prognostic/predictive factors affected recurrence up to 5 years post-surgery but had a lesser effect on recurrence more than 5 years post-surgery. The results of this study suggest that recurrence-free survival rates can be improved by preventing recurrence up to 5 years, especially 3 years, after surgery. The use of post-operative adjuvant therapy for more than 5 years after surgery should be considered, depending on the HR-expression status of the patient.

Acknowledgement This study was independently funded. We thank Mr Shinichiro Kato for offering valuable scientific advice during the preparation of this manuscript and Sian-Marie Lucas PhD who provided Medical Editing advice.

References

1. Goldhirsch A, Glick JH, Gelber RD et al (2005) Meeting highlights: international expert consensus on the primary therapy of early breast cancer 2005. *Ann Oncol* 16:1569–1583
2. Miura S (1989) Recurrence and follow-up after surgery. *Jpn J Breast Cancer* 4:181–190
3. Saphner T, Tormey DC, Gray R (1996) Annual hazard rates of recurrence for breast cancer after primary therapy. *J Clin Oncol* 14:2738–2746
4. Early Breast Cancer Trialists' Collaborative Group (1998) Polychemotherapy for early breast cancer: an overview of the randomised trials. *Lancet* 352:930–942
5. Early Breast Cancer Trialists' Collaborative Group (2005) Effects of chemotherapy and hormonal therapy for early breast cancer on recurrence and 15-year survival: an overview of the randomised trials. *Lancet* 365:1687–1717
6. Coombes RC, Hall E, Gibson LJ et al (2004) A randomized trial of exemestane after two to three years of tamoxifen therapy in postmenopausal women with primary breast cancer. *N Engl J Med* 350:1081–1092
7. Jakesz R, Jonat W, Gnani M et al (2005) Switching of postmenopausal women with endocrine-responsive early breast cancer to anastrozole after 2 years' adjuvant tamoxifen: combined results of ABCSG trial 8 and ARNO 95 trial. *Lancet* 366:455–462
8. Goss PE, Ingle JN, Martino S et al (2005) Randomized trial of letrozole following tamoxifen as extended adjuvant therapy in receptor-positive breast cancer: updated findings from NCIC CTG MA.17. *J Natl Cancer Inst* 97:1262–1271
9. Jakesz R, Samonigg H, Greil R et al (2005) Extended adjuvant treatment with anastrozole: results from the Austrian Breast and Colorectal Cancer Study Group Trial 6a (ABCSG-6a). *J Clin Oncol (Meeting Abstracts)* 23:10s