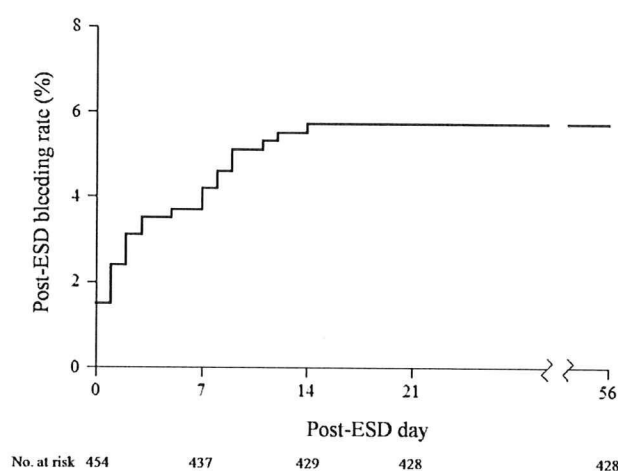
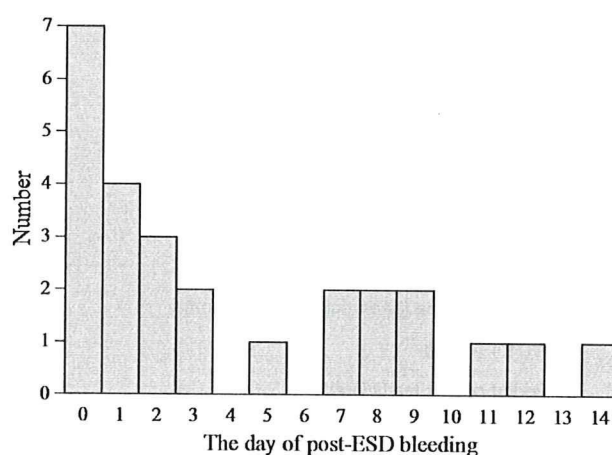


TABLE 2. Comparison of the early and late bleeding cases

	Post-ESD bleeding	
	Early (0-3 days) (16 cases)	Late (4-14 days) (10 cases)
Location (U/M/L)	2/4/10	4/4/2
Circumference (AW/GC/LC/PW)	2/2/7/5	3/1/4/2
Gross type (I/IIa/IIb/IIc/combined)	3/12/1	1/9/0
Ulcerative findings (presence/absence)	4/12	1/9
Resection style (en bloc/piecemeal)	15/1	9/1
Tumor size, mm (mean \pm SD)	24.5 \pm 19.2	19.7 \pm 14.0
Tumor depth (mucosa/submucosa)	14/2	7/3
Histologic type (intestinal/diffuse/adenoma)	16/0/0	9/0/1

ESD, Endoscopic submucosal dissection; U, upper third; M, middle third; L, lower third; AW, anterior wall; GC, greater curve; LC, lesser curve; PW, posterior wall; SD, standard deviation.

**Figure 2.** A post-ESD bleeding curve of all cases.**Figure 3.** The post-ESD bleeding cases.

delayed bleeding occurred with similar probability between the conditions before and after a second-look endoscopy. It suggests that the second-look endoscopy may contribute less to the prevention of delayed bleeding. One of the major differences between post-ESD ulcers and peptic ulcers lies in the circumstance of ulcer formation. Peptic ulcers are usually created under low pH. Because peptic ulcers may still have the potential to bleed even after the initial hemostasis, second-look endoscopy within 24 hours may be effective.¹⁸⁻²⁰ Conversely, post-ESD ulcers are created under relatively high pH because of premedication of PPI, and are relatively similar in property so they are more easily managed without second-look endoscopy, as suggested in this study.

There is plenty of room for discussion about the use of PPIs. Intravenous administration was limited in the initial period of management, and the 3 PPIs (10 mg rabeprazole, 20 mg omeprazole, 30 mg lansoprazole twice daily)

administered orally were not differentiated in our study.¹⁶ Because there may be some differences in a variety of uses in the effect on the prevention of post-ESD bleeding,^{21,22} further studies are needed to determine the optimum use of PPI, especially high-dose PPI infusion to obtain the maximum hemostatic effect.

A previous study concluded that the treatments for nonbleeding visible vessels at the final step of ESD reduced post-ESD bleeding significantly, but could not prevent it completely.¹⁰ Furthermore, newly developing visible vessels on the ulcer bed may contribute to the bleeding in some cases. Even after treatment of visible vessels by second-look endoscopy, some cases of bleeding occurred in other locations where no vessels were seen on the second-look endoscopy, which may also suggest that a second-look endoscopy after ESD may not be useful.

In the analysis of risk factors inducing post-ESD bleeding, the flat or depressed type tumor was thought to be

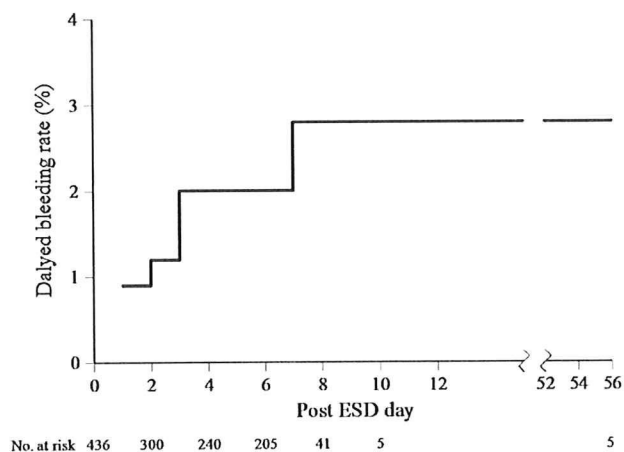


Figure 4. A curve of delayed bleeding before the second-look endoscopy. The observation period is from the day of ESD and to the second-look endoscopy. Five lesions for which the second-look endoscopy was omitted were observed for 2 months.

the predictor. The reason is not clear, but it may be because such tumors tend to be rich in vascularity. In fact, flat or depressed type tumors are mostly reddish, which indicates the existence of more vessels in the submucosal layer than in elevated type. More vessels may increase the risk of post-ESD bleeding; however, the speculation should be confirmed by further histologic study. Conversely, only 1 large case series revealed that tumor location is thought to be relevant in post-ESD bleeding and found that a tumor located in the middle or lower third of the stomach was an independent risk factor.⁷ The authors speculated that the reason was that intraoperative thermocoagulation of vessels was insufficient because intraoperative bleeding was less frequent in those areas. Because careful observation of visible vessels on the mucosal defect may overcome the technical drawback, we speculate that there was no significant difference in post-ESD bleeding among the locations in this study. Further studies are needed to elucidate the risk factors of post-ESD bleeding.

This study found that post-ESD bleeding from the lower stomach lesions tends to occur earlier than that from the upper stomach. Based on the findings of this study, we may be able to change the duration of follow-up depending on the location. For example, it may be acceptable to shorten the duration of hospitalization for the patient undergoing ESD for the lesion in the lower third of the stomach.

The limitation of this study is that these analyses used retrospective data from a single center. Moreover, we could not make a pure comparison between the groups with or without the second-look endoscopy because almost all patients had been checked by the second-look endoscopy in our hospital.

In conclusion, we suggest that, although there are some differences in the possibility of delayed bleeding ac-

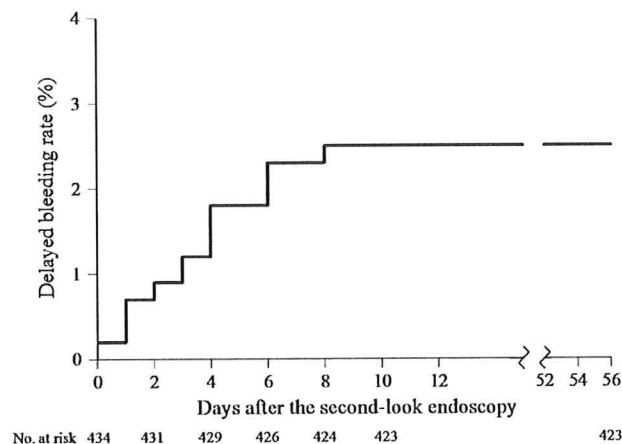


Figure 5. A curve of delayed bleeding after the second-look endoscopy. The observation period is from the second-look endoscopy to 2 months after ESD.

ording to the location or gross type of the lesion, a second-look endoscopy to prevent it after ESD may be omitted to avoid an excessive or unnecessary examination. Based on these retrospective data, a prospective, randomized, controlled trial to validate second-look endoscopy should be warranted in the future.

REFERENCES

1. Gotoda T, Kondo H, Ono H, et al. A new endoscopic mucosal resection procedure using an insulation-tipped electro-surgical knife for rectal flat lesions: report of two cases. *Gastrointest Endosc* 1999;50:560-3.
2. Ono H, Kondo H, Gotoda T, et al. Endoscopic mucosal resection for treatment of early gastric cancer. *Gut* 2001;48:225-9.
3. Yahagi N, Fujishiro M, Kakushima N, et al. Merits and demerits of endoscopic submucosal dissection using a flex-knife [in Japanese with English abstract]. *Stomach Intestine* 2004;39:39-43.
4. Oyama T, Tomori A, Hotta K, et al. Endoscopic submucosal dissection of early esophageal cancer. *Clin Gastroenterol Hepatol* 2005;3:567-70.
5. Fujishiro M, Kodashima S, Goto O, et al. Technical feasibility of endoscopic submucosal dissection of gastrointestinal epithelial neoplasms with a splash-needle. *Surg Laparosc Endosc Percutan Tech* 2008;18:592-7.
6. Gotoda T, Yanagisawa A, Sasako M, et al. Incidence of lymph node metastasis from early gastric cancer: estimation with a large number of cases at two large centers. *Gastric Cancer* 2000;3:219-25.
7. Oda I, Gotoda T, Hamanaka H, et al. Endoscopic submucosal dissection for early gastric cancer: technical feasibility, operation time and complications from a large consecutive series. *Dig Endosc* 2005;17:54-8.
8. Watanabe K, Ogata S, Kawazoe S, et al. Clinical outcomes of EMR for gastric tumors: historical pilot evaluation between endoscopic submucosal dissection and conventional mucosal resection. *Gastrointest Endosc* 2006;63:776-82.
9. Oka S, Tanaka S, Kaneko I, et al. Advantage of endoscopic submucosal dissection compared with EMR for early gastric cancer. *Gastrointest Endosc* 2006;64:877-83.

10. Takizawa K, Oda I, Gotoda T, et al. Routine coagulation of visible vessels may prevent delayed bleeding after endoscopic submucosal dissection—an analysis of risk factors. *Endoscopy* 2008;40:179-83.
11. Fujishiro M, Yahagi N, Kashimura K, et al. Comparison of various submucosal injection solutions for maintaining mucosal elevation during endoscopic mucosal resection. *Endoscopy* 2004;36:579-83.
12. Fujishiro M, Yahagi N, Nakamura M, et al. Successful outcomes of a novel endoscopic treatment for GI tumors: endoscopic submucosal dissection with a mixture of high-molecular-weight hyaluronic acid, glycerin, and sugar. *Gastrointest Endosc* 2006;63:243-9.
13. Yamamoto H, Yahagi N, Oyama T, et al. Usefulness and safety of 0.4% sodium hyaluronate solution as a submucosal fluid “cushion” in endoscopic resection for gastric neoplasms: a prospective multicenter trial. *Gastrointest Endosc* 2008;67:830-9.
14. Kodashima S, Fujishiro M, Yahagi N, et al. Endoscopic submucosal dissection using flexknife. *J Clin Gastroenterol* 2006;40:378-84.
15. Enomoto S, Yahagi N, Fujishiro M, et al. Novel endoscopic hemostasis technique for use during endoscopic submucosal dissection. *Endoscopy* 2007;39: E156.
16. Shimatani T, Inoue M, Kuroiwa T, et al. Acid-suppressive efficacy of a reduces dosage of rabeprazole: comparison of 10 mg twice daily rabeprazole with 20 mg twice daily rabeprazole, 30 mg twice daily lansoprazole, and 20 mg twice daily omeprazole by 24-hr intragastric pH-metry. *Dig Dis Sci* 2005;50:1202-6.
17. Kakushima N, Yahagi N, Fujishiro M, et al. The healing process of gastric artificial ulcers after endoscopic submucosal dissection. *Dig Endosc* 2004;16:327-31.
18. Villanueva C, Balanzo J, Torras X, et al. Value of a second-look endoscopy after injection therapy for bleeding peptic ulcer: a prospective and randomized trial. *Gastrointest Endosc* 1994;40:34-9.
19. Saeed ZA, Cole RA, Ramirez FC, et al. Endoscopic retreatment after successful initial hemostasis prevents ulcer rebleeding: a prospective randomized trial. *Endoscopy* 1996;28:288-94.
20. Chiu PW, Lam CY, Lee SW, et al. Effect of scheduled second therapeutic endoscopy on peptic ulcer rebleeding: a prospective randomised trial. *Gut* 2003;52:1403-7.
21. Lau JY, Sung JJ, Lee KK, et al. Effect of intravenous omeprazole on recurrent bleeding after endoscopic treatment of bleeding peptic ulcers. *N Engl J Med* 2000;343:310-6.
22. Chan FK, Wong VW, Suen BY, et al. Combination of a cyclo-oxygenase-2 inhibitor and a proton-pump inhibitor for prevention of recurrent ulcer bleeding in patients at very high risk: a double-blind, randomized trial. *Lancet* 2007;369:1621-6.

Received April 22, 2009. Accepted August 27, 2009.

Current affiliations: Department of Gastroenterology, Graduate School of Medicine, The University of Tokyo, Tokyo, Japan.

Reprint requests: Mitsuhiro Fujishiro, MD, PhD, Department of Gastroenterology, Graduate School of Medicine, The University of Tokyo, 7-3-1, Hongo, Bunkyo-ku, Tokyo, Japan.

If you would like to chat with an author of this article, you may contact Dr. Fujishiro at mtfujish-kk@umin.ac.jp.

Image of the Month

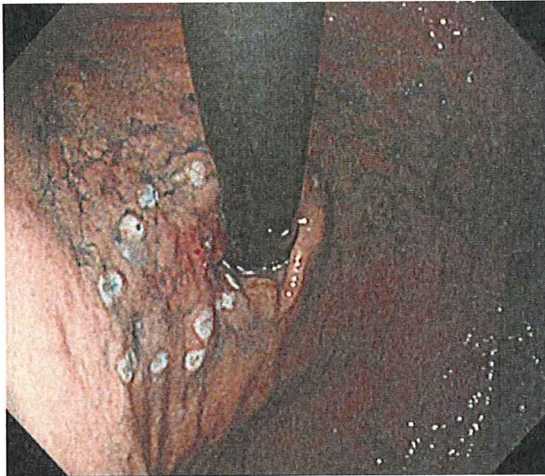
En bloc resection of cardia cancer and lipoma with endoscopic submucosal dissection

S. Ono, M. Fujishiro*, O. Goto, S. Kodashima, M. Omata

Department of Gastroenterology, Graduate School of Medicine, University of Tokyo, 7-3-1 Hongo, Bunkyo, Tokyo, Japan

Received 14 April 2008; accepted 9 June 2008

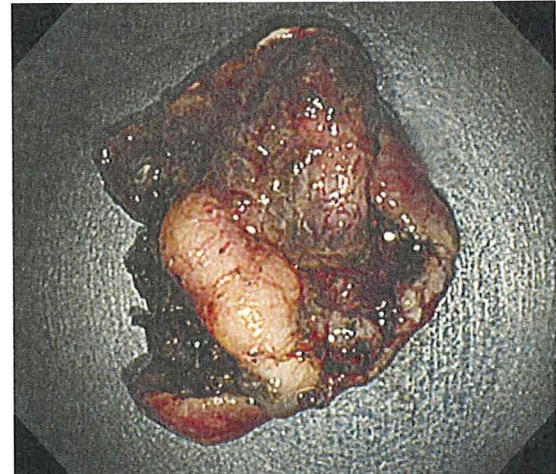
Available online 25 July 2008



A 64-year-old gentleman was referred to our department for endoscopic submucosal dissection (ESD) of an early gastric cancer [1]. An upper-gastrointestinal endoscopy showed a superficial, shallow depression, 4 cm in diameter, from the lesser curvature to the anterior wall in the cardia. ESD was performed for this intramucosal adenocarcinoma (Fig. 1). Doing the submucosal dissection, we encountered with a yellowish-colored adipose tissue, 2 cm in diameter, beneath the cancerous mucosa unexpectedly. The capsulated adipose tissue was easily differentiated from extraluminal fat, because it was located over the muscularis propria in the submucosal layer and identified as a lipoma. So we carefully cut at the level of the deepest edge of the lipoma, and treated the feeding vessels. Injection agent with indigocarmine added was useful to discriminate the yellowish lipoma from blue-colored submucosa to dissect. Thus, the cancer with the lipoma was

successfully resected in an en bloc fashion (Fig. 2). Histological assessment revealed a differentiated type intramucosal adenocarcinoma, 0-IIc, with curative resection and a well-differentiated adipose tumor covered by a fibrous capsule. The most recent endoscopy performed 8 weeks after ESD revealed no recurrence.

The stomach is a rare location for lipomas, and the lipomas represent about 3% of all benign gastric masses [2]. There are few reports of gastric lipoma with early gastric cancer, and no reports of cases treated with ESD procedures [3].



References

- [1] Fujishiro M, Goto O, Kakushima N, Kodashima S, Muraki Y, Omata M. Endoscopic submucosal dissection of stomach neoplasms after unsuccessful endoscopic resection. *Dig Liver Dis* 2007;6:566–71.
- [2] Ferrozzi F, Tognini G, Bova D, Pavone P. Lipomatous tumors of the stomach: CT findings and differential diagnosis. *J Comput Assist Tomogr* 2000;6:854–8.
- [3] Yamamoto T, Imakiire K, Hashiguchi S, Matsumoto J, Kadono J, Hamada N, et al. A rare case of gastric lipoma with early gastric cancer. *Intern Med* 2004;11:1039–41.

* Corresponding author. Tel.: +81 3 3815 5411x33019; fax: +81 3 5800 8806.

E-mail address: mtfujish-kk@umin.ac.jp (M. Fujishiro).

GASTROENTEROLOGY

Is it possible to predict the procedural time of endoscopic submucosal dissection for early gastric cancer?

Osamu Goto, Mitsuhiro Fujishiro, Shinya Kodashima, Satoshi Ono and Masao Omata

Department of Gastroenterology, The University of Tokyo, Tokyo, Japan

Key words

early gastric cancer, endoscopic submucosal dissection, operation schedule, predictive formula of procedural time, procedural time.

Accepted for publication 14 August 2008.

Correspondence

Dr Mitsuhiro Fujishiro, Department of Gastroenterology, Graduate school of Medicine, The University of Tokyo, 7-3-1 Hongo, Bunkyo-ku, Tokyo, Japan. Email: mtfujish-kkr@umin.ac.jp

Abstract**Background and Aim:** Endoscopic submucosal dissection (ESD) has been expected to be a possible curative treatment, especially for node-negative early gastric cancer (EGC). We investigated the influential factors on the procedural time of gastric ESD with a Flex knife for the estimation.**Methods:** In 222 intestinal-type EGC resected by ESD experts with established techniques, age, sex, location, circumference, gross type, tumor size, tumor depth, ulcerative findings, the period of ESD, the operator, and the experience of the operator were retrospectively analyzed. Predictors with a significant difference, as determined by multivariate analysis, were used to compose a predictive formula of procedural time.**Results:** Location, gross type, tumor depth, ulcerative findings, and tumor size were considered influential factors on the procedural time by univariate analysis. Location in the upper-third of the stomach, presence of ulcerative findings, and > 20 mm in size were independent factors, as determined by multivariate analysis. Procedural time (min) was nearly equal to the maximal tumor size (mm) multiplied by 2.5, and an additional 40 min was required if the tumor was located in the upper-third of the stomach or had ulcerative findings (in both situations, an additional 80 min was needed).**Conclusion:** The procedural time of ESD with a Flex knife for EGC can be predicted by tumor size, location, and existence of ulcerative findings. The estimation of procedural time may be very useful to determine the operation schedule.**Introduction**

Endoscopic submucosal dissection (ESD) is a recently-developed endoluminal surgical technique for intramucosal neoplasms of the gastrointestinal tract, characterized by a circumferential mucosal incision and submucosal dissection beneath the lesion.¹⁻³ It is expected to be a possible curative method, especially for node-negative early gastric cancer (EGC),^{4,5} with the advantage of preserving the whole stomach.

One of the shortcomings of ESD is, however, that it takes longer to resect the lesion, compared to other endoscopic treatments.^{5,6} In Japan, ESD is usually performed in the left lateral decubital position under only intravenous administration of some sedatives or analgetics without an anesthesiologist. When the operation is prolonged, this can lead to accompanying complications, for example, postoperative aspiration pneumonia, deep vein thrombosis, or cardiorespiratory instability due to an overdose of anesthetic drugs. If the procedural time can be predicted, it would be very useful for arranging the operation schedule to prevent possible complications. Although some reports refer to the factors that prolong ESD,⁷⁻¹⁰ to our knowledge, there has been no investigation about the prediction of the procedural time so far. Therefore, we retro-

spectively assessed the influential factors on the procedural time of ESD for EGC from our consecutive data and validated the possibility of whether the procedural time of ESD can be predicted before it takes place.

Methods

From August 2003, when the technical methodology of ESD was established in our hospital (The University of Tokyo, Tokyo, Japan) to January 2008, 347 consecutive EGC were resected by ESD. In this study, 222 lesions with a histological diagnosis of intestinal-type EGC were retrospectively investigated. Those excluded included 47 lesions resected by beginners who performed gastric ESD for 30 cases or less; 42 lesions resected in the initial phase of experts, where the total number of resection reached up to 30; eight lesions with a histological diagnosis of diffuse-type EGC, because these lesions were principally resected by gastrectomy in our hospital due to the possibility of the rapid growth of residual cancer cells, or the difficulty in the demarcation of the tumor, or the difficulty to distinguish ulcerative findings caused by biopsy from those by the tumor in some cases; six

Table 1 Univariate analysis of predictors for procedural time

	<i>n</i>	Mean procedural time (min)	<i>P</i> -value
Sex (male : female)	183 : 39	77.7 : 69.2	0.3898
Location (U : M : L)	65 : 79 : 78	99.9 : 73.6 : 59.1	< 0.0001*
Circumference (AW : GC : LC : PW)	42 : 29 : 91 : 60	80.2 : 58.3 : 75.1 : 83.8	0.2256
Gross type (0-I/IIa : 0-IIb/IIc : combined)	68 : 136 : 18	82.7 : 68.9 : 107.2	0.0116**
Tumor depth (mucosa : submucosa)	169 : 53	70.7 : 94.0	0.0077
Ulcerative findings (presence : absence)	42 : 180	98.3 : 71.1	0.0041
Period of ESD (early : late) [†]	136 : 86	78.1 : 73.3	0.5377
Operator (A : B : C : D)	54 : 121 : 36 : 11	86.4 : 72.9 : 77.9 : 57.3	0.3174
Experience of ESD (51 or more : 31–50)	191 : 31	76.9 : 71.8	0.6332
	Mean ± SD	<i>r</i>	
Age (years)	68.1 ± 9.3	0.083	0.2203
Tumor size (mm)	21.7 ± 15.2	0.506	< 0.0001

*Significantly different between upper-third (U) and middle-third (M), and between U and lower-third (L) by Fisher's Fisher's protected least significance difference (PLSD). **Significantly different between flat/depressed and combined by Fisher's PLSD. AW, anterior wall; GC, greater curve; LC, lesser curve; PW, posterior wall. †Early, 2003–2005; Late, 2006–2008.

lesions in a remnant stomach after gastrectomy or in a gastric tube after esophagectomy, because the number was small and the specific conditions might affect subsequent analyses; and 22 lesions from patients whose medical records were insufficient for retrospective analyses.

All patients provided written, informed consent before undergoing treatment. All lesions were resected by four very experienced ESD experts, each of whom had performed ESD with a Flex knife for more than 30 cases of EGC or gastric adenoma.^{11–13} The technical outcomes and major complication rates of ESD for these cases were as follows: en bloc resection rate, 97.3%; complete resection rate (the rate of en bloc resection with tumor-free lateral and basal margins), 88.3%; delayed bleeding rate, 6.3%; and perforation rate, 2.7%.

ESD was indicated according to the criteria of node-negative EGC by Gotoda *et al.*¹⁴ The ESD techniques have been described elsewhere.^{1–3} In brief, a Flex knife (KD-630L; Olympus, Tokyo, Japan)^{3,15} was used as the main electrosurgical knife, and other knives, such as an insulation-tipped (IT) knife,^{1,2} a hook knife,¹⁶ or a needle knife, were used when required. An endoscope with a water-jet system (GIF-Q260J; Olympus, Japan) was mainly used in the study. A mixture of 10% glycerin mixed with a 5% fructose and 0.9% saline preparation (Glyceol; Chugai Pharmaceutical, Tokyo, Japan) containing 0.005% indigo carmine and 0.0005% epinephrine was used to make a submucosal fluid cushion.¹⁷ Hyaluronic acid was added to the injection solution for resection of a difficult lesion.¹⁸ Hemostatic forceps (HDB2422W; Pentax, Tokyo, Japan) were used for hemostasis.¹⁹

Procedural time was defined as the duration from circumferential marking around the lesion to the completion of hemostasis on the mucosal defect after resection. To determine the influential factors on procedural time, the following variables were analyzed: age, sex, location (upper-third, middle-third, or lower-third), circumference (anterior wall, posterior wall, lesser curve, or greater curve), gross type (0-I/IIa, 0-IIb/IIc, or combined type), tumor size (maximal diameter of the resected tumor actually measured), tumor depth (mucosal tumor or submucosal invasive tumor), ulcerative findings in the submucosal layer (endoscopic presence or absence), the period of ESD (early [2003–2005], late [2006–

Table 2 Multivariate analysis of predictors for procedural time over 120 min

		Odds ratio (95% confidence interval)	<i>P</i> -value
Location	Lower	1	
	Middle	1.006 (0.288–3.513)	0.9920
	Upper	4.649 (1.393–15.513)	0.0124
Gross type	0-I/IIa	1	
	0-IIb/IIc	0.345 (0.109–1.089)	0.0695
	Combined	2.600 (0.691–9.784)	0.1575
Tumor depth	Mucosa	1	
	Submucosa	0.665 (0.229–1.929)	0.4527
Ulcerative findings	Absence	1	
	Presence	4.914 (1.480–16.318)	0.0093
Tumor size	≤ 20 mm	1	
	> 20 mm	8.261 (2.786–24.493)	0.0001

2008]), the operator (A, B, C, and D), and the experience of ESD (more than 50 cases or 31–50 cases).

A preliminary univariate analysis was performed using Pearson's correlation coefficient for age and tumor size; Student's *t*-test for sex, tumor depth, ulcerative findings, the period of ESD, and the experience of ESD; and one-way ANOVA for location, circumference, gross type, and the operator. Predictors with a significant difference or correlation, as determined by univariate analysis, were included in the multivariate analysis using a logistic regression model. Predictors with a significant difference, as determined by multivariate analysis, were included in a step forward linear regression model to compose a predictive formula of procedural time. A *P*-value of < 0.05 in each analysis was considered statistically significant.

Results

The univariate analysis of variables for the procedural time is shown in Table 1. Location, gross type, tumor depth, ulcerative findings, and tumor size were considered influential factors on

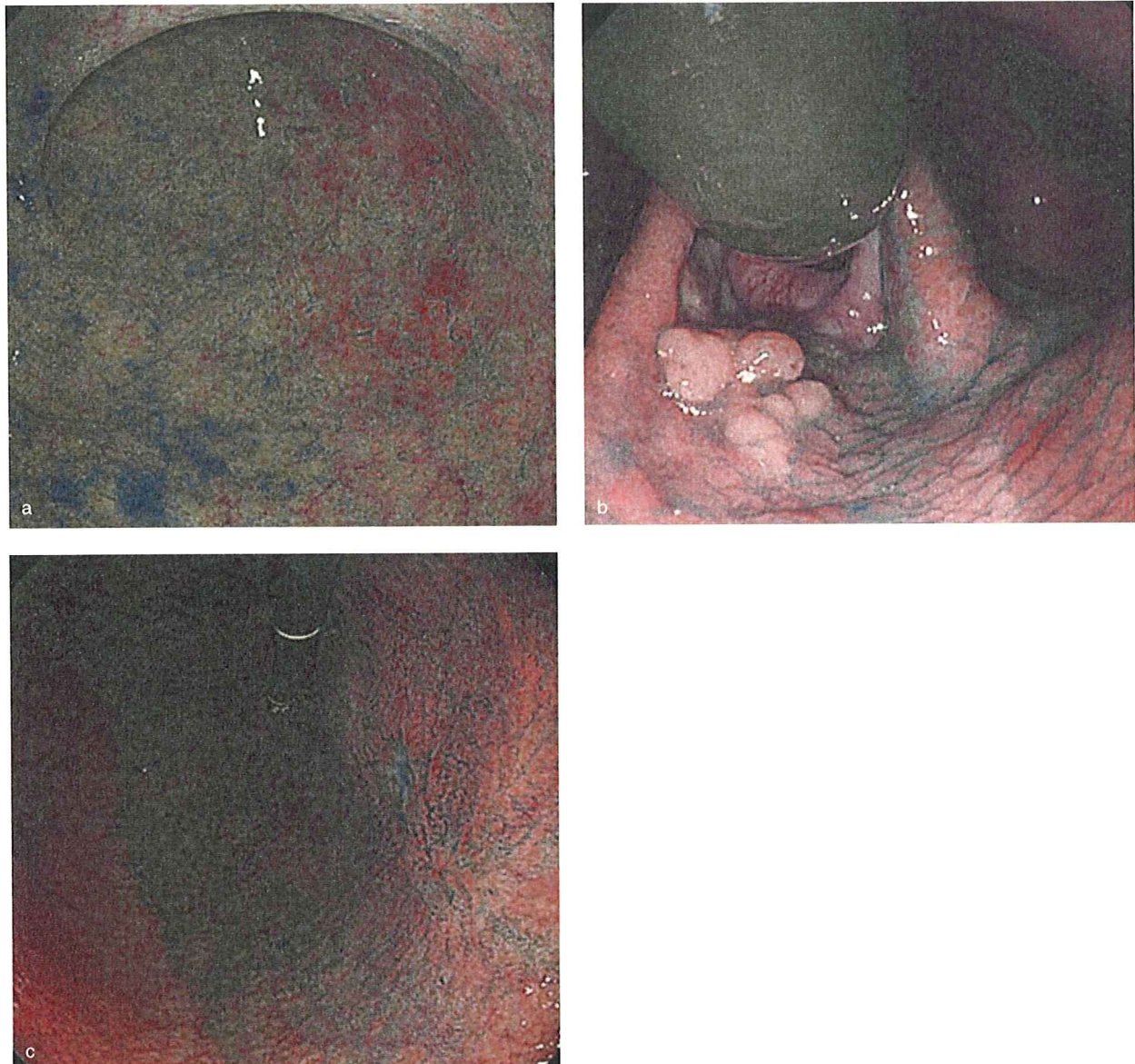


Figure 1 Representative cases for a comparison between predictive and actual procedural time. (a) 50 mm in maximal diameter located in the lower-third of the stomach without ulcerative findings. Predictive time is 125 min and the actual time is 130 min. (b) 15 mm in maximal diameter located in the upper-third of the stomach without ulcerative findings. Predictive time is 77.5 min and the actual time is 80 min. (c) 15 mm in maximal diameter located in the middle-third of the stomach with ulcerative findings. Predictive time is 77.5 min and the actual time is 90 min.

procedural time with a significant difference or correlation. The multivariate analysis using these variables revealed that the location in the upper-third of the stomach, presence of ulcerative findings, and > 20 mm in size were independent factors with a significant difference (Table 2), with a procedural time exceeding 120 min considered a long time.¹⁰

To compose a predictive formula of procedural time, categorical data were changed as follows: location in the upper-third of the

stomach, 1; the middle or the lower third of the stomach, 0; presence of ulcerative findings, 1; and the absence of ulcerative findings, 0. After these variables were included in a linear regression model, the following formula was obtained: predictive procedural time (min) = $2.384 \times (\text{tumor size, mm}) + 38.568 \times (\text{location}) + 40.333 \times (\text{ulcerative findings})$ ($R^2 = 0.767$, $P < 0.0001$). The simplified predictive formula is shown in Table 3 with some examples of clinical cases (Fig. 1).

Table 3 Predictive formula of procedural time and some examples for a comparison between predictive and actual procedural time

Case	Tumor size (mm)	Location	Predictive procedural time (min) = 2.5 × (tumor size, mm)		Actual time(min)
			+ 40 × (Location) [†] Ulcerative findings	+ 40 × (Ulcerative findings) [†] Predictive time (min)	
a	50	Lower	Absence	125	130
b	15	Upper	Absence	77.5	80
c	15	Middle	Presence	77.5	90

[†]Upper-third = 1, middle- or the lower-third = 0; *Presence = 1, absence = 0.

Discussion

In the present study, we elucidated that the prediction of procedural time was possible by determining tumor size, location, and ulcerative findings. The findings that these parameters affected the procedural time of gastric ESD were consistent with previous reports⁷⁻¹⁰ and our own experiences. Oda *et al.* reported that these factors were equal to characteristics technically difficult to resect, by investigating the en bloc resection rate, and that ESD was prolonged depending on the presence of these factors, with no statistical analysis.⁷ Although Onozato *et al.*⁸ and Imagawa *et al.*⁹ also demonstrated that procedural time was significantly prolonged, influenced by tumor size, location, and ulcerative findings, these data were only from univariate analyses. The present study is considered to be valuable with regard to the disclosure of the determinant factors, as determined by multivariate analysis.

In the predictive formula of procedural time, each coefficient of predictors indicates a degree of influence on procedural time. The formula implies that procedural time (min) is nearly equal to maximal tumor size (mm) multiplied by 2.5, and an additional 40 min is required when the tumor is located in the upper-third of the stomach or has ulcerative findings (in both situations, an additional 80 min is needed). By quantifying the influence of these parameters, we can easily calculate the predictive procedural time.

The prediction of procedural time is useful for the patient. We can arrange some safer conditions for the patient when ESD is expected to take a long time. First, treatment by an ESD expert can contribute to a faster operation. Second, the use of intermittent compression of the calf with an external pressure cuff may prevent deep vein thrombosis. Third, the attendance of an anesthesiologist can make the operator concentrate on the treatment. Fourth, airway management by the insertion of an endotracheal tube assists secure ventilation and may prevent intraoperative aspiration or postoperative pneumonia.

Because the primary objective of this study is to elucidate predictors of procedural time before ESD, we used factors that could be known before ESD. In practice, intraoperative conditions, such as unexpected massive bleeding, perforation, piecemeal resection, patient's compliance to venous anesthesia, and the application of an electrocautery snare in the final step of dissection, are expected to be influential on the actual procedural time to some extent. However, this study revealed a strong correlation with actual time ($R^2 = 0.767$) by using only three preoperative parameters.

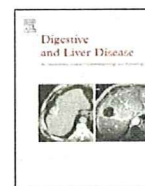
Some shortcomings may be raised in the generalization our findings. First, these outcomes were obtained from ESD experts; second, a Flex knife was used as a main electrosurgical knife (resection with an IT knife is supposed to be quicker); and third, there are some technical differences, including equipment, among hospitals. The most important thing in this study, however, lies in the predictability of the procedural time before ESD. Accumulation of the predictive formula with various conditions in various hospitals is expected to confirm the possibility to predict procedural time.

In summary, we found a formula to predict the procedural time of gastric ESD, based on tumor size, location, and ulcerative findings. This may be useful in determining an appropriate operation schedule for the patient when the operation is expected to take a long time.

References

- 1 Gotoda T, Kondo H, Ono H *et al.* A new endoscopic mucosal resection procedure using an insulation-tipped electrosurgical knife for rectal flat lesions: report of two cases. *Gastrointest. Endosc.* 1999; **50**: 560-3.
- 2 Ono H, Kondo H, Gotoda T *et al.* Endoscopic mucosal resection for treatment of early gastric cancer. *Gut* 2001; **48**: 225-9.
- 3 Yahagi N, Fujishiro M, Kakushima N *et al.* Merits and demerits of endoscopic submucosal dissection using a flex-knife. *Stomach Intestine* 2004; **39**: 39-43. (In Japanese with English abstract.)
- 4 Oda I, Saito D, Tada M *et al.* A multicenter retrospective study of endoscopic resection for early gastric cancer. *Gastric Cancer* 2006; **9**: 262-70.
- 5 Oka S, Tanaka S, Kaneko I *et al.* Advantage of endoscopic submucosal dissection compared with EMR for early gastric cancer. *Gastrointest. Endosc.* 2006; **64**: 877-83.
- 6 Watanabe K, Ogata S, Kawazoe S *et al.* Clinical outcomes of EMR for gastric tumors: historical pilot evaluation between endoscopic submucosal dissection and conventional mucosal resection. *Gastrointest. Endosc.* 2006; **63**: 776-82.
- 7 Oda I, Gotoda T, Hamanaka H *et al.* Endoscopic submucosal dissection for early gastric cancer: technical feasibility, operation time and complications from a large consecutive series. *Dig. Endosc.* 2005; **17**: 54-8.
- 8 Onozato Y, Ishihara H, Iizuka H *et al.* Endoscopic submucosal dissection for early gastric cancers and large flat adenomas. *Endoscopy* 2006; **38**: 980-6.
- 9 Imagawa A, Okada H, Kawahara Y *et al.* Endoscopic submucosal dissection for early gastric cancer: results and degrees of technical difficulty as well as success. *Endoscopy* 2006; **38**: 987-90.

- 10 Ono H, Inui T, Hasuike N, Yamaguchi Y, Matsubayashi H, Otake Y. Treatment outcome of endoscopic submucosal dissection. *Stomach Intestine* 2006; **41**: 37–44. (In Japanese with English abstract.)
- 11 Kakushima N, Fujishiro M, Kodashima S, Muraki Y, Tateishi A, Omata M. A learning curve for endoscopic submucosal dissection of gastric epithelial neoplasms. *Endoscopy* 2006; **38**: 991–5.
- 12 Choi IJ, Kim CG, Chang HJ, Kim SG, Kook MC, Bae JM. The learning curve for EMR with circumferential mucosal incision in treating intramucosal gastric neoplasm. *Gastrointest. Endosc.* 2005; **62**: 860–5.
- 13 Gotoda T, Friedland S, Hamanaka H, Soetikno R. A learning curve for advanced endoscopic resection. *Gastrointest. Endosc.* 2005; **62**: 866–7.
- 14 Gotoda T, Yanagisawa A, Sasako M *et al.* Incidence of lymph node metastasis from early gastric cancer: estimation with a large number of cases at two large centers. *Gastric Cancer* 2000; **3**: 219–25.
- 15 Kodashima S, Fujishiro M, Yahagi N, Kakushima N, Omata M. Endoscopic submucosal dissection using flexknife. *J. Clin. Gastroenterol.* 2006; **40**: 378–84.
- 16 Oyama T, Tomori A, Hotta K *et al.* Endoscopic submucosal dissection of early esophageal cancer. *Clin. Gastroenterol. Hepatol.* 2005; **3**: S67–70.
- 17 Fujishiro M, Yahagi N, Kashimura K *et al.* Comparison of various submucosal injection solutions for maintaining mucosal elevation during endoscopic mucosal resection. *Endoscopy* 2004; **36**: 579–83.
- 18 Fujishiro M, Yahagi N, Nakamura M *et al.* Successful outcomes of a novel endoscopic treatment for GI tumors: endoscopic submucosal dissection with a mixture of high-molecular-weight hyaluronic acid, glycerin, and sugar. *Gastrointest. Endosc.* 2006; **63**: 243–9.
- 19 Enomoto S, Yahagi N, Fujishiro M *et al.* Novel endoscopic hemostasis technique for use during endoscopic submucosal dissection. *Endoscopy* 2007; **39**: E156.



Digestive Endoscopy

Technical feasibility of endoscopic submucosal dissection for early gastric cancer in patients taking anti-coagulants or anti-platelet agents

S. Ono, M. Fujishiro*, K. Niimi, O. Goto, S. Kodashima, N. Yamamichi, M. Omata

Department of Gastroenterology, Graduate School of Medicine, University of Tokyo, 7-3-1, Hongo, Bunkyo, Tokyo 113-8655, Japan

ARTICLE INFO

Article history:

Received 7 August 2008
Accepted 13 January 2009
Available online 18 February 2009

Keywords:

Anti-coagulant
Anti-platelet agent
Early gastric cancer
Endoscopic submucosal dissection

ABSTRACT

Background: Endoscopic submucosal dissection is a novel technique that is expected to be a curative treatment for early gastric cancers. Anti-coagulants and anti-platelet agents are widely used, especially in elderly patients, to prevent thromboembolic disease. However, the feasibility of endoscopic submucosal dissection for such patients has not been investigated.

Aims: To determine the feasibility of endoscopic submucosal dissection for patients using anti-coagulant and anti-platelet agents via retrospective investigation of clinical outcomes.

Methods: Of 408 patients with 444 early gastric cancers consecutively treated by endoscopic submucosal dissection from January 2000 to December 2007 in our hospital, 47 patients with 56 early gastric cancers were receiving anti-coagulants or anti-platelet agents. All patients were classified into groups for high and low risk of thromboembolism. In 44 low-risk patients, these agents were stopped for 1 week before and after treatment. Only three high-risk patients underwent intravenous heparin replacement during the cessation period.

Results: Comparison with other patients showed no significant differences in complete en-bloc resection (96.4%) or perforation (1.8%). Postoperative bleeding requiring endoscopic treatment occurred for six early gastric cancers (10.7%) in the anti-coagulant and anti-platelet group; this frequency was slightly higher than that observed for other patients (5.2%). The healing of endoscopic submucosal dissection ulcers was not delayed by anti-coagulant and anti-platelet treatment (91% in the scarring stage) when checked at the 8th week after endoscopic submucosal dissection.

Conclusion: The clinical outcomes of endoscopic submucosal dissection for early gastric cancers in patients receiving anti-coagulants or anti-platelet agents indicated that endoscopic submucosal dissection for low-risk patients could be a reliable technique with equivalent efficacy and risk in comparison with that for other early gastric cancer patients.

© 2009 Editrice Gastroenterologica Italiana S.r.l. Published by Elsevier Ltd. All rights reserved.

1. Introduction

Successful outcomes for endoscopic mucosal resection (EMR) have resulted in its implementation as the standard treatment for small and non-ulcerative early gastric cancers (EGCs), as it is less invasive than surgical gastrectomy [1,2]. Recently, owing to establishment of criteria for node-negative tumours [3] and development of endoscopic submucosal dissection (ESD) [4–10], endoluminal treatments have also been recommended for large-sized or ulcerative EGCs.

ESD has become a more acceptable option than gastrectomy, especially for elderly patients who often have several comorbidities [11], such as medication with anti-coagulants or anti-platelet agents for primary and secondary prevention of cerebro- and car-

diovascular disease. These agents are considered to enhance the tendency to bleed, which may result in increased intra- and post-ESD bleeding. Additionally, ESD-induced ulcers may delay the healing process due to their inhibition of the regeneration of epithelial cells. Thus, the cessation during the perioperative period has been principally recommended without solid evidence; this practice may cause life threatening cerebro- and cardiovascular events.

Because the feasibility of ESD for patients receiving anti-coagulant and anti-platelet therapy has not been investigated in detail, we here investigated the clinical outcomes of ESD in EGC patients receiving these drugs.

2. Methods

Amongst 408 patients with 444 EGCs consecutively treated by ESD from January 2000 to December 2007 in the University of Tokyo hospital, 47 patients (males: 37; females: 10) with 56 EGCs were receiving anti-coagulants or anti-platelet agents. All patients were

* Corresponding author. Tel.: +81 3 3815 5411x33019; fax: +81 3 5800 8806.
E-mail address: mtfujish-kkr@umin.ac.jp (M. Fujishiro).

Table 1
Summary of anti-platelet agents and anti-coagulants in 47 patients^a.

	N
Anti-coagulants	
Warfarin	5
Anti-platelet agents	
Aspirin	35
Ticlopidine	11
Icosapentate ethyl	9
Cilostazol	6
Dipyridamole	2
Prostaglandin	2
Others	4

^a Some patients were receiving more than one agent.

classified into groups for high and low risk of thromboembolism as classified by the American Society for Gastrointestinal Endoscopy. High-risk criteria included conditions of atrial fibrillation associated with valvular heart disease, mechanical valve in the mitral position, and mechanical valve with prior thromboembolic event. In this study, patients with coronary stents, including drug-eluting stents that require double anti-platelet therapy, were also included in the high-risk group. Other patients were assigned to the low-risk group [12].

We defined the following as anti-platelet agents: cyclooxygenase inhibitors (e.g., aspirin), phosphodiesterase inhibitors (e.g., cilostazol), purinergic receptor antagonists (e.g., ticlopidine), serotonin receptor antagonists (e.g., sarpogrelate), and eicosapentaenoic acid preparations (e.g., icosapentate) [13]. These agents were principally stopped for 1 week before and after treatment if the patients were considered to be at low risk for thromboembolism. For patients at high risk for thromboembolism, intravenous heparin was administered until 6 h before treatment and restarted once haemostasis was confirmed by stable vital signs and laboratory data, and after consultation with the prescribing doctors.

All indicated lesions were preoperatively confirmed to be adenocarcinomas or lesions suspected to be adenocarcinomas by endoscopic biopsy. In our study, no lymphovascular invasion in addition to the following were criteria for node-negative EGCs [3]: intramucosal intestinal-type cancer without ulcerative findings, regardless of size (M-UI[-]); intramucosal intestinal-type cancer with ulcerative findings, 3 cm or less in size (M-UI[+]); SM1 (slight invasion into submucosa less than 500 μ m from muscularis mucosa) intestinal-type cancer, 3 cm or less in size (SM1).

The above preoperative diagnosis was principally predicted by white-light conventional and chromoendoscopy with indigo carmine. Endoscopic ultrasonography was additionally performed for lesions suspected to present submucosal invasion and/or ulcers. Some lesions that did not meet the above criteria preoperatively were also resected by ESD if they were technically resectable upon consideration of patient comorbidities and/or requests [14]. The ESD procedure was performed as previously reported elsewhere [5,6,8]. All patients provided written informed consent before receiving treatment.

Table 2

Summary of comorbidities of patients receiving anti-coagulants or anti-platelet agents.

Comorbidity	N
Ischaemic heart disease	21
Cerebral vascular disturbance	12
Arteriosclerosis obliterans	5
Atrial fibrillation	3
Abdominal aortic aneurysm	1
Unknown	12

Table 3

Clinicopathological findings of early gastric cancers resected by endoscopic submucosal dissection in patients receiving anti-coagulants or anti-platelet agents.

Findings	N=56
Mean size of resected mucosa (mm, mean \pm S.D.)	21.3 \pm 16.2
Location	
Upper	11 (19.6%)
Middle	20 (35.7%)
Lower	22 (39.3%)
Remnant	3 (5.4%)
Macroscopic type	
Protruded	19 (33.9%)
Flat or depressed	31 (55.4%)
Mixed	6 (10.7%)
Depth of invasion	
M	42 (75%)
SM1	6 (10.7%)
SM2	8 (14.3%)
Histological type	
Diffuse	5 (8.9%)
Intestinal	51 (91.1%)
Angiolymphatic invasion	
Yes	7 (12.5%)
No	49 (87.5%)

Endoscopic characteristics of the lesions were classified according to the Paris endoscopic classification [15]. Histological assessment was performed according to the revised Vienna classification of gastrointestinal epithelial neoplasia [16].

The parameters assessed in this study were en-bloc resection, en-bloc resection with tumour-free lateral and basal margins (R0 resection), and frequency of complications; these included postoperative bleeding and perforation as well as ulcer healing after ESD. These parameters were compared amongst patients who were using or not using anti-coagulants or anti-platelet agents and who were treated during the same period in our hospital. Statistical analyses were conducted using the χ^2 -test with Yates' modification and Student's *t*-tests. $P \leq 0.05$ was considered significant.

3. Results

The mean age of the 47 patients was 72.4 \pm 7.7 years (range, 57–90 years), which was significantly higher than that of the other 361 patients in the same period (mean age, 66.3 \pm 9.9 years). All of these 47 patients were receiving anti-platelet agents, and warfarin was additionally prescribed to five patients. In three patients, intravenous heparin replacement was performed during the cessation period due to high risk for thromboembolism. Intravenous heparin was restarted in these three high-risk patients at 18, 14 and 11 h after ESD, respectively. The most common anti-platelet agent was aspirin (74%), followed by ticlopidine (23%) (Table 1). Thirty-five patients had apparent comorbidities requiring these agents. The most common comorbidity was ischaemic heart disease (45%), followed by cerebral vascular disturbance (26%). Twelve patients

Table 4

Clinical outcomes according to use of anti-coagulants or anti-platelets.

	With anti-coagulants or anti-platelet agents	Without anti-coagulants or anti-platelet agents	P-value
En-bloc resection (%)	96.4 (54/56)	94.3 (366/388)	NS
Plus R0 resection	82.1 (46/56)	93.0 (361/388)	NS
Postoperative bleeding (%)	10.7 (6/56)	5.2 (20/388)	NS
Perforation (%)	1.8 (1/56)	4.4 (17/388)	NS

NS, not significant.

Table 5
Characteristics of tumours and patients experiencing postoperative bleeding.

Case no.	Age (years)	Sex	Location	Diameter of lesions (mm)	Diameter of specimen (mm)	Depth of invasion	Scar	Pathological feature	Timing of bleeding	Anti-coagulants	Anti-platelet drugs	Restart of drugs	Comorbidity
1	64	F	Middle	47	113	M	+	Intestinal	Within 24 h	–	Aspirin, ticlopidine, Icosapentate	19th day	Cerebral vascular disturbance
2	76	M	Lower	17	36	M	–	Intestinal	Within 24 h	–	Icosapentate	Not restarted	Hypertension
3	65	M	Lower	5	20	M	–	Intestinal	7th day	–	Aspirin	28th day	Ischaemic heart disease
4	81	M	Lower	16	24	M	–	Intestinal	2nd day	–	Clostrazol	21st day	Hypertension
5	70	M	Middle	20	26	SM1	–	Intestinal	3rd day	–	Aspirin	Not restarted	Ischaemic heart disease
6	67	M	Upper	35	50	SM1	–	Intestinal	14th day	–	Aspirin, ticlopidine ^a	3rd day	Ischaemic heart disease

^a A patient with a coronary stent in the high-risk group. Intravenous heparin was alternatively administered.

receiving anti-platelet agents had no certain comorbidities such agents (Table 2). One patient was receiving aspirin in spite of liver cirrhosis with thrombocytopenia.

Histopathological findings of the 56 resected lesions are summarised in Table 3. There were no significant differences in mean size, location, macroscopic type, depth, histological type, and lymphovascular invasion of the lesions in the two groups (P =not significant).

The frequency of en-bloc and en-bloc plus R0 resections as well as complications are summarised in Table 4. The frequency of en-bloc resection was 96.4%, and that of en-bloc resection plus R0 resection was 82.1%. A mean change in haemoglobin levels -0.44 ± 0.77 g/dL (range, -1.9 to $+1.2$ g/dL) was observed between pre- and post-ESD, and the haemoglobin level dropped by more than 1 g/dL in 9 (19%) of 47 patients. Postoperative bleeding requiring endoscopic treatment occurred in six EGCs (10.7%) in five low-risk patients and one high-risk patient. Postoperative bleeding was observed within 24 h in two patients, within 24–72 h in two patients, and at more than 72 h in two patients. Only one high-risk patient had postoperative bleeding after restarting anti-platelet agent treatment, and in five low-risk patients, bleeding occurred during the cessation period of these agents (Table 5). Perforation during ESD occurred in one low-risk patient (1.8%). There were no significant differences in the frequency of complications in the two types of patients evaluated in the same period.

Twenty-two low-risk patients underwent follow-up endoscopy at the 8th week after ESD in our hospital following our usual follow-up schedule. Examination of the 22 low-risk patients revealed 20 reddish scars without ulcers and 2 reduced ulcers surrounded by regenerative mucosa. There seemed to be no delay of healing for gastric ulcers created by ESD in low-risk patients when compared to the other patients without anti-coagulants or anti-platelet agents, as previously described elsewhere [17].

4. Discussion

As the populations of developed countries age, older high-risk patients with EGCs are being treated with ESD. Our previous study demonstrated the technical feasibility of ESD treatment for these patients, with outcomes comparable to those in younger patients [11]. However, elderly patients have higher incidences of comorbidities including cerebro- and cardiovascular diseases that require anti-coagulants or anti-platelet agents, as shown in the present study. Increased treatment of EGCs in elderly patients with ESD techniques will therefore result in increased likelihood of gastroenterologists encountering patients receiving those agents.

From this study, a reliable outcome can be expected for ESD in patients receiving such agents, assuming that a sufficient cessation period is secured. However, a longer cessation period could increase the risk of thromboembolism, although we did not observe any cases of cerebro- or cardiovascular events during cessation. Some cases of adverse events during cessation have been reported in Japan [18]; therefore, shorter cessation periods are preferable even for patients at low risk for thromboembolism. However, shorter cessation periods may also cause significant increases in postoperative bleeding and delayed healing of artificial ulcers. To balance the risk of thromboembolism in the perioperative period with complications related to the agents, it is necessary to definitely identify the optimal cessation time.

Although this study revealed similar clinical outcomes of ESD for EGCs in patients taking and not taking anti-coagulants or anti-platelet agents, several limitations must be considered when interpreting the data. These include the retrospective design and the insufficient number of patients to analyse risk factors for complications. In particular, there was a very limited number of patients

at high risk for thromboembolism who required intravenous heparin; this implies that our study may actually only represent the feasibility of ESD for EGCs in patients at low risk for thromboembolism.

A non-concurrent, long-term follow-up study of EGC revealed that median duration of the early stage was estimated as 44 months and the cumulative 5-year corrected survival was estimated as 62.8% in unresected patients [19]. Because the treatment strategy should be determined by weighing risks against obtainable benefits, it might be one of options for high-risk patients to be followed without any treatment for EGC. The limited number of such patients in the present study may indicate that primary physicians managing the high-risk patients made the treatment decision before consulting endoscopic surgeons, as we did not intentionally exclude high-risk patients from ESD treatment in this study.

In summary, ESD for EGC can be performed with satisfactory outcomes with permissible risk even in patients receiving anti-coagulants or anti-platelet agents when a sufficient cessation period of these agents is obtained. The indication criteria for ESD may therefore be expanded to such patients, at least to those with a low risk of thromboembolism. However, further studies with a larger number of high-risk cases are needed to conclusively assess the feasibility of ESD for EGCs in this subgroup.

Conflict of interest statement

None declared.

References

- [1] Rembacken BJ, Gotoda T, Fujii T, Axon AT. Endoscopic mucosal resection. *Endoscopy* 2001;33:709–18.
- [2] Soetikno RM, Gotoda T, Nakanishi Y, Soehendra N. Endoscopic mucosal resection. *Gastrointest Endosc* 2003;57:567–79.
- [3] Gotoda T, Yanagisawa A, Sasako M, Ono H, Nakanishi Y, Shimoda T, et al. Incidence of lymph node metastasis from early gastric cancer: estimation with a large number of cases at two large centers. *Gastric Cancer* 2000;3:219–25.
- [4] Yamamoto H, Kawata H, Sunada K, Satoh K, Kaneko Y, Ido K, et al. Success rate of curative endoscopic mucosal resection with circumferential mucosal incision assisted by submucosal injection of sodium hyaluronate. *Gastrointest Endosc* 2002;56:507–12.
- [5] Yahagi N, Fujishiro M, Kakushima N, Kobayashi K, Hashimoto T, Oka M, et al. Endoscopic submucosal dissection for early gastric cancer using the tip of an electrosurgical snare (thin type). *Dig Endosc* 2004;16:34–8.
- [6] Oda I, Gotoda T, Hamanaka H, Eguchi T, Saito Y, Matsuda T, et al. Endoscopic submucosal dissection for early gastric cancer: technical feasibility, operation time and complications from a large consecutive series. *Dig Endosc* 2005;17:54–8.
- [7] Oyama T, Tomori A, Hotta K, Morita S, Kominato K, Tanaka M, et al. Endoscopic submucosal dissection of early esophageal cancer. *Clin Gastroenterol Hepatol* 2005;3:S67–70.
- [8] Fujishiro M. Endoscopic submucosal dissection for stomach neoplasms. *World J Gastroenterol* 2006;12:5108–12.
- [9] Fujishiro M, Yahagi N, Nakamura M, Kakushima N, Kodashima S, Ono S, et al. Successful outcomes of a novel endoscopic treatment for GI tumors: endoscopic submucosal dissection with a mixture of high-molecular-weight hyaluronic acid, glycerin, and sugar. *Gastrointest Endosc* 2006;63:243–9.
- [10] Fujishiro M, Goto O, Kakushima N, Kodashima S, Muraki Y, Omata M. Endoscopic submucosal dissection of stomach neoplasms after unsuccessful endoscopic resection. *Dig Liver Dis* 2007;39:566–71.
- [11] Kakushima N, Fujishiro M, Kodashima S, Muraki Y, Tateishi A, Yahagi N, et al. Technical feasibility of endoscopic submucosal dissection for gastric neoplasms in the elderly Japanese population. *J Gastroenterol Hepatol* 2007;22:311–4.
- [12] Eisen GM, Baron TH, Dominitz JA, Faigel DO, Goldstein JL, Johanson JF, et al. Guideline on the management of anticoagulation and antiplatelet therapy for endoscopic procedures. *Gastrointest Endosc* 2002;55:775–9.
- [13] Ogoshi K, Kaneko E, Tada M, Mine T, Yoshino J, Yahagi N, et al. The management of anticoagulation and antiplatelet therapy for endoscopic procedures. *Gastroenterol Endosc* 2005;47:2691–5.
- [14] Goto O, Fujishiro M, Kakushima N, Kodashima S, Ono S, Yamaguchi H, et al. Endoscopic submucosal dissection as a staging measure may not lead to worse prognosis in early gastric cancer patients with additional gastrectomy. *Dig Liver Dis* 2008;40:293–7.
- [15] The Paris endoscopic classification of superficial neoplastic lesions: esophagus, stomach, and colon: November 30 to December 1, 2002. *Gastrointest Endosc* 2003;58:S3–43.
- [16] Schlemper RJ, Riddell RH, Kato Y, Borchard F, Cooper HS, Dawsey SM, et al. The Vienna classification of gastrointestinal epithelial neoplasia. *Gut* 2000;47:251–5.
- [17] Kakushima N, Fujishiro M, Kodashima S, Kobayashi K, Tateishi A, Iguchi M, et al. Histopathologic characteristics of gastric ulcers created by endoscopic submucosal dissection. *Endoscopy* 2006;38:412–5.
- [18] Fujishiro M, Oda I, Yamamoto Y, Akiyama J, Ishii N, Kakushima N, et al. Multi-center survey regarding the management of anticoagulation and antiplatelet therapy for endoscopic procedures in Japan. *J Gastroenterol Hepatol*; September 24, 2008 [Epub ahead of print].
- [19] Tsukuma H, Oshima A, Narahara H, Morii T. Natural history of early gastric cancer: a non-concurrent, long term, follow up study. *Gut* 2000;47:618–21.

Outcomes of endoscopic submucosal dissection for early gastric cancer with special reference to validation for curability criteria

Authors

O. Goto, M. Fujishiro, S. Kodashima, S. Ono, M. Omata

Institution

Department of Gastroenterology, Graduate School of Medicine, University of Tokyo, Tokyo, Japan

submitted 2 February 2008
accepted after revision
5 November 2008

Bibliography

DOI 10.1055/s-0028-1119452
Endoscopy 2009; 41:
118–122 © Georg Thieme
Verlag KG Stuttgart · New York
ISSN 0013-726X

Corresponding author

M. Fujishiro, MD, PhD
Department of
Gastroenterology
Graduate school of Medicine
University of Tokyo
7-3-1, Hongo
Bunkyo-ku
Tokyo
Japan
Fax: +81-3-58008806
mtfujish-kkrr@umin.ac.jp

Background and study aims: Endoscopic submucosal dissection (ESD) is a novel, promising endoscopic technique for gastrointestinal neoplasms. We aimed to elucidate the feasibility of ESD as curative treatment for intestinal-type early gastric cancer (EGC) potentially without lymph-node metastases.

Patients and methods: For the short-term analysis, 276 consecutive, intestinal-type EGCs, which fulfilled the criteria for node-negative EGC in 231 patients who had undergone ESD from January 2000 to March 2007, were retrospectively investigated. For the long-term analysis, 212 lesions checked by endoscopy later than 1 year or recurrence within 1 year after ESD were assessed for local recurrence, and 208 patients followed for over 1 year or to death within 1 year after ESD were assessed for metastases and survival. All lesions/patients were divided into three groups: intramucosal cancer without ulcerative findings (M-UI[-]); intramucosal cancer with ulcerative findings, ≤ 3 cm (M-UI[+]); and slight invasive

cancer into submucosa ($< 500 \mu\text{m}$), ≤ 3 cm (SM1). **Results:** En bloc and complete resection rates were 96.7% and 91.7%, respectively. During a median follow-up of 36 months (range 2–93 months), two local recurrences occurred (0.9%), which were detected at 2 and 6 months after ESD, respectively. During a median follow-up of 38 months (range 6–97 months), the 5-year overall and disease-specific survival rates were 96.2% and 100%, respectively, with neither lymph node nor other-organ metastasis; one patient died due to other disease 6 months after ESD. No disease-related death occurred. No significant differences were found between the groups in short- and long-term analyses.

Conclusions: The prognostic analyses demonstrated the validity of the criteria of node-negative intestinal-type EGC as curability criteria for ESD. ESD can be proposed as an alternative method to gastrectomy for the treatment of these EGCs.

Introduction

Endoscopic submucosal dissection (ESD), which is characterized by circumferential mucosal incision and submucosal dissection beneath the lesion, is a recently developed endoscopic method used mainly for intramucosal neoplasms of the gastrointestinal tract [1–3]. This technique enables en bloc resection even for large or ulcerative lesions.

However, “resectability of the primary site” is quite different from “curability of the entire lesion,” because an endoluminal approach can only completely resect a primary site. Although the “tentative” curability criteria for ESD in the treatment of early gastric cancer (EGC) has been established by the condition of absence of nodal metastasis in the surgically resected stomach and regional lymph nodes [4], there are, at least,

three considerable drawbacks to curability criteria. First, investigation of metastatic lymph nodes in the operative cases in the study [4] may be insufficient, because the nodal metastases were only investigated at one central section of each lymph node stained by hematoxylin and eosin. Second, cancer cells may remain in the gastric wall between the primary site and the lymph nodes, which may result in an intraluminal recurrent tumor, such as a submucosal tumor, after ESD. Finally, the tumor may have metastasized to organs other than lymph nodes, because nodal metastasis is not the only way to metastasize. Accordingly, the prognostic analyses in patients with EGC who have undergone ESD are warranted, to evaluate whether the condition of node-negative EGC can be regarded as a curability criterion for ESD. In prognosis studies of patients with gastrectomy, the 5-year disease-specific

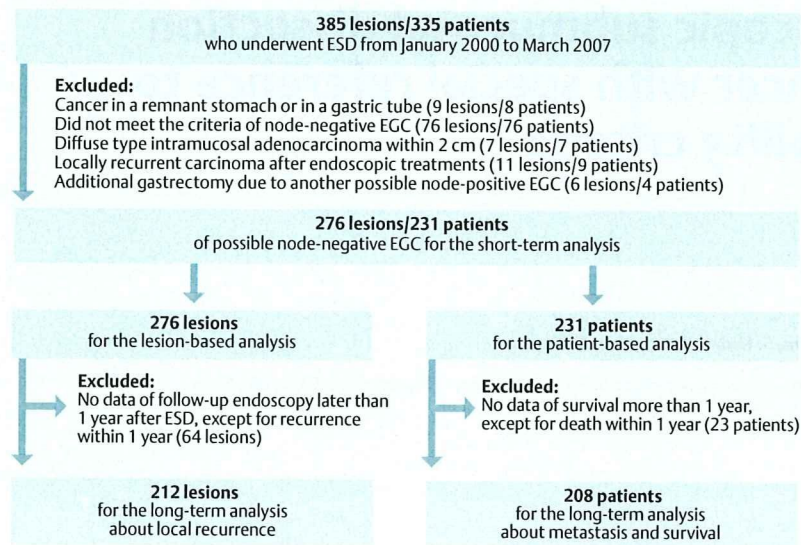


Fig. 1 Flowchart showing the patient inclusion in this study: 276 lesions from 231 patients were eligible for the short-term analysis, and 212 lesions from 208 patients were eligible for the long-term analysis.

survival rate was 99% in mucosal cancer groups and 96% in submucosal cancer groups [5–7]. However, little is known about the prognosis of endoscopic resection, particularly ESD [8–10]. Therefore, we performed this retrospective, long-term analysis to investigate the feasibility of ESD as curative treatment for possible node-negative EGC.

Patients and methods

From January 2000 to March 2007, 335 patients with 385 EGCs underwent ESD in our hospital after giving informed consent. All the indicated lesions were preoperatively either proven or suspected as adenocarcinoma by endoscopic biopsy. The following criteria, which are without angiolymphatic invasion, were the curability criteria for ESD used in our hospital, and reported by Gotoda et al. as node-negative EGCs [4]:

- ▶ intramucosal intestinal-type cancer without ulcerative findings, regardless of size (M-UI[-])
- ▶ intramucosal intestinal-type cancer with ulcerative findings, 3 cm or less in size (M-UI[+])
- ▶ SM1 (slight invasion into submucosa less than 500 μ m from muscularis mucosa) intestinal-type cancer, 3 cm or less in size (SM1).

The original criteria by Gotoda et al. also included small intramucosal diffuse-type cancers without ulcer findings. In our hospital, however, these cancers are principally resected by gastrectomy for reasons such as difficulty in demarcation of the tumor margin, possibility of rapid growth of residual cancer cells, or difficulty in deciding on ulcerative status in some cases.

The above histological diagnosis was principally predicted by white-light conventional endoscopy and chromoendoscopy with indigo carmine. Endoscopic ultrasonography was also performed for lesions with suspicion of submucosal invasion and/or ulcerative lesions. After ESD, some of the lesions were excluded from further assessment; a total of 276 lesions in 231 patients, which met the above curability criteria, were eligible to be assessed for this study (Fig. 1). Excluded were: nine lesions in eight patients in a remnant stomach after gastrectomy or in a gastric tube after esophagectomy because a previous operation

might have changed the angiolymphatic flow and the previous carcinoma might have influenced the patient's survival; 76 lesions in 76 patients that did not meet the criteria of node-negative EGC; seven diffuse-type adenocarcinomas within 2 cm in seven patients; 11 locally recurrent carcinomas in nine patients; and six lesions in four patients, in whom post-ESD lesions were resected by additional gastrectomy due to another possible node-positive EGC because the outcome of current ESD could not reflect the survival of these patients accurately. Clinicopathological features of the eligible lesions are shown in Table 1. For the short-term analysis, all the EGCs (246 M-UI[-]s, 17 M-UI[+]s, 13 SM1s) were analyzed in terms of en bloc resection (resection in a one-piece fashion with endoscopically no residual tumor), complete resection (resection in a one-piece fashion with histologically no tumor on the lateral and vertical margins), and two major complications (delayed bleeding and perforation). Additionally, the subanalysis targeting the M-UI(-) group (179 small tumors [≤ 2 cm in size] and 67 large tumors [> 2 cm in size]) was performed to verify the technical feasibility of ESD for large tumors.

For the long-term analysis, 212 lesions (76.8% of the 276 lesions), which were checked by esophagogastroduodenoscopy at least once later than 1 year post-ESD or had recurred within 1 year, were analyzed for local recurrence. In the subanalysis, the frequency of local recurrence was compared between the lesions with and without en bloc/complete resection. In terms of metastases and survival, data from 208 patients (90.0% of the 231 patients) whose survival information was obtained later than 1 year or whose death occurred within 1 year, were analyzed. For the 117 patients who had no medical records for the most recent year up to the end of March 2008, the following questionnaire was sent in order to obtain the necessary information.

- ▶ When did you have your last endoscopy?
- ▶ Was the local recurrence identified by endoscopy?
- ▶ When did you have your last abdominal computed tomography (CT) scan?
- ▶ Was any metastasis identified by CT?

At total of 78 patients (66.7%) had responded to our questionnaire by the end of April 2008, and the obtained data were included in the analyses.

	Total	Cancer type		
		M-UI(-)	M-UI(+)	SM1†
Number of patients	231	203	15	13
Age, mean ± SD, years	66.8 ± 9.6	66.7 ± 9.4	67.0 ± 13.7	68.8 ± 8.3
Sex, male/female	192/39	168/35	13/2	11/2
Number of lesions	276	246	17	13
Location				
Upper	43	36	2	5
Middle	89	79	4	6
Lower	144	131	11	2
Circumference				
Anterior wall	51	48	1	2
Posterior wall	71	61	3	7
Lesser curve	112	98	11	3
Greater curve	42	39	2	1
Macroscopic type				
Protruded or elevated	81	75	2	4
Flat or depressed	171	151	15	5
Combined	24	20	0	4

† Slight invasion into submucosa < 500 μm from muscularis mucosa.

Table 1 Clinicopathological features of possible node-negative cancers resected by endoscopic submucosal dissection.

	Total	Cancer type			P-value
		M-UI(-)	M-UI(+)	SM1‡	
Number of lesions	276	246	17	13	
En bloc resection rate, %	96.7	97.6	88.2	92.3	0.0731
Complete resection rate, %*	91.7	92.3	82.4	92.3	0.3575
Delayed bleeding rate, %†	5.1	4.5	11.8	7.7	0.3770
Perforation rate, %	4.0	3.7	5.9	7.7	0.7063

* En bloc with histologically tumor-free on the edge of lateral/vertical surgical margins.

† The rate of cases needing emergency endoscopy due to hematemesis or melena.

‡ Slight invasion into submucosa < 500 μm from muscularis mucosa.

Table 2 Short-term outcomes of endoscopic submucosal dissection for possible node-negative early gastric cancers.

ESD techniques have been described precisely elsewhere [2, 3, 11–13]. In brief, a flex-knife (KD-630L; Olympus, Tokyo, Japan) was used as the main electrosurgical knife [3, 11]. An insulation-tipped diathermic knife (IT knife) [12] or a hook-knife [13] was used as the lesion required. These knives were used for cutting the surrounding non-neoplastic mucosa and for submucosal dissection beneath the lesion. A mixture of 10% glycerin plus 5% fructose and 0.9% saline preparation (Glyceol, Chugai Pharmaceutical Co., Tokyo, Japan) or 20% glucose, which contained 0.005% indigo carmine and 0.0005% epinephrine, was injected into the submucosa under the lesion to make a submucosal fluid cushion [14]. Hyaluronic acid was added to the injection solution for lesions with ulcerative findings or those located in a difficult area [15]. Hemostatic forceps (HDB2422W; Pentax, Tokyo, Japan) were used for bleeding during the procedure or for ablation of visible vessels on the mucosal defect after resection [16]. An electrocautery snare 15 mm (SD-210L-15, Olympus) or 25 mm (SD-210L-25, Olympus) in diameter was used at the final step of ESD when appropriate, following consideration of several factors (e.g. procedure time, technical difficulty, complications, patient's comorbidity).

If the patient's symptoms, laboratory findings, and chest and abdominal radiographs were unremarkable the day after ESD, a light meal was permitted, and the patient was then discharged within 1 week. If complications occurred, the schedules were changed according to the individual patient's condition. Follow-up endoscopy for surveillance of recurrence was carried out at 2

months after ESD in the first year, and annually thereafter. If tumor-free margins of the resected specimens had not been obtained at ESD, an additional endoscopy at 6 months post-ESD was scheduled. Abdominal CT was also performed annually, or more frequently, according to the judgment of doctors in charge. For the statistical analyses, the chi-squared test was used for the analysis of short-term outcomes, and Fisher's exact probability test was used for the subanalyses. The Kaplan-Meier method was used for the analysis of long-term outcomes. If we could not calculate the difference between the groups due to no event in either group, the chi-squared test or Fisher's exact probability test was used to assess those differences in proportions. Statistical significance was set at a *P*-value of less than 0.05.

Results



The short-term outcomes of ESD are summarized in **Table 2**. In total, favorable outcomes could be shown in the en bloc resection rate (96.7%) and the complete resection rate (91.7%). Delayed bleeding rate (5.1%) and perforation rate (4.0%) were also acceptable and all complications were managed without surgical intervention. In the analyses according to EGC group, there were no significant differences between the groups. Even in the subanalysis of tumor size in the M-UI(-) group, there were no significant differences in the resectability and complication rates (**Table 3**).

	≤ 2 cm	> 2 cm	P-value
Number of lesions	179	67	
En bloc resection rate, %	97.8	97.0	0.6650
Complete resection rate, %*	93.3	89.6	0.4200
Delayed bleeding rate, %†	5.0	3.0	0.7320
Perforation rate, %	3.4	4.5	0.7075

* En bloc with histologically tumor-free on the edge of lateral/vertical surgical margins.
† The rate of cases needing emergency endoscopy due to hematemesis or melena.

Table 3 Short-term outcomes of endoscopic submucosal dissection for intramucosal cancers without ulcerative findings.

For the lesion-based long-term analysis during a median endoscopic follow-up of 36 months (range 2–93 months), locally recurrent carcinoma occurred in two of 212 lesions (0.9%). Both cases had been resected in an en bloc fashion without tumor-free lateral margins. In one case, local recurrence was diagnosed at 2 months after ESD for M-UI(-). Additional ESD was performed in an en bloc fashion without tumor-free lateral margins; local recurrence was indicated again after a further 7 months, but no further treatment was performed because of coexisting uncontrollable hepatocellular carcinoma, which caused death at 25 months after the initial ESD. In the other case, local recurrence was diagnosed at 6 months after ESD for M-UI(+). Additional ESD was performed with complete resection and no further recurrence was seen after a further 10 months. No recurrence was seen in lesions that underwent complete resection. Between the lesions with and without en bloc resection, there was no significant difference in local recurrence rate (1.0% [2/203] vs. 0% [0/9]; $P > 0.9999$), whereas in the lesions with incomplete resection local recurrence was significantly more frequent than in the lesions with complete resection (8.7% [2/23] vs. 0% [0/189]; $P = 0.011$).

For the patient-based long-term analysis during a median follow-up of 38 months (range 6–97 months), no metastasis to lymph nodes or other organs was seen and nine patients died due to diseases other than gastric cancer. Of those, one patient died 6 months after ESD. The 3- and 5-year overall/disease-specific survival was 96.2%/100% and 96.2%/100%, respectively, with no significant differences between the three groups (○ Fig. 2).

Discussion

In the present study, the overall rates of en bloc resection and complete resection, which were major parameters for the evaluation of the short-term outcomes of ESD, were high (96.7% and 91.7%). In addition, technical feasibility to expand the indication criteria for ESD to include large intramucosal intestinal-type EGCs without ulcerative findings and small intramucosal intestinal-type EGCs with ulcerative findings may be acceptable in terms of short-term outcomes. Furthermore, the favorable short-term outcomes have led to excellent long-term prognoses in this study. In particular, the 3- and 5-year disease-specific survival rates (100%, 100%) are as high as those in reported data for gastrectomy [5–7]. When considering the preservation of stomach physiology in cases of ESD, it is quite obvious that ESD will win an advantage over gastrectomy.

In small EGCs, some reports have demonstrated the long-term efficacy of endoscopic resection, showing satisfactory data of 3- or 5-year disease-specific survival rates (> 99%) [8,9]. The comparative studies between endoscopic mucosal resection (EMR) and ESD have revealed some advantages and disadvantages of

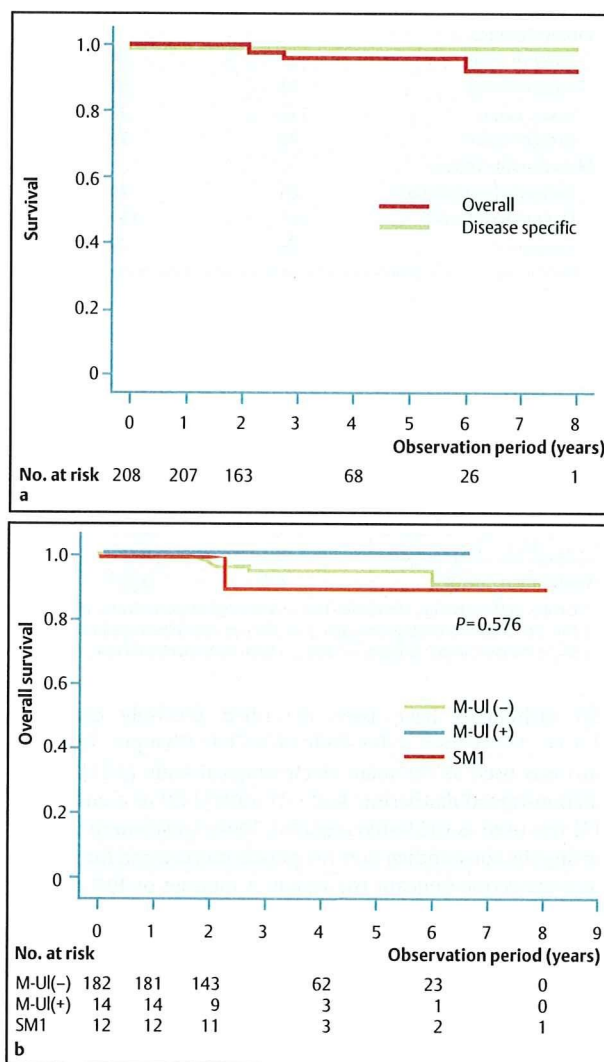


Fig. 2 Kaplan-Meier estimation of survival for early gastric cancer patients: **a** in total; **b** in the three groups. There was no significant difference between the groups.

ESD and EMR [9,10]. Further studies will be needed to elucidate the best endoscopic treatments for small EGCs in each case. Additionally, another advantage of ESD, to minimize local recurrence even when piecemeal resection is performed, was noticed in this study. From this study, only two cases with en bloc resection resulted in local recurrence, whereas none of nine lesions that underwent piecemeal resection recurred. On the contrary, previous studies of EMR have revealed that piecemeal resection could be a major causal factor for local recurrence [1,17,18]. Procedural differences between EMR and ESD may influence the re-

sults, which means that circumferential mucosal incision around the tumor with an appropriate margin during ESD may prevent the occurrence of residual cancer cells even when ESD is completed in a piecemeal fashion. Further studies are warranted to determine whether en bloc resection by ESD is essential for a favorable prognosis. However, from the aspect of precise histological investigation, piecemeal resection should be avoided even when ESD is applied [19], and the number of pieces should be kept to a minimum.

In contrast to intestinal-type EGC, ESD for diffuse-type EGC should be discussed cautiously [20,21]. Even though Gotoda et al. [4] reported that there was no lymph node metastasis in diffuse-type EGCs of less than 2 cm in size without ulcerative findings, the results were based on relatively small numbers (141 cases), and there remain a number of identified difficulties in using ESD for this indication (e.g. difficulty in demarcation of tumor margin, possibility of rapid growth of residual cancer cells, and uncertainty over ulcerative findings). More evidence is needed to clarify the use of ESD in this indication.

The limitations of this study are its retrospective design and single-center analysis, with recall bias to some extent, although the results were obtained from consecutive data. To increase the follow-up rate, questionnaires were sent to those patients lost during follow-up. However, there are approximately 20% of local recurrence and 10% of survival data still missing. A prospective, multicenter study will be necessary to confirm our results.

In conclusion, the present study with favorable long-term prognoses corroborated the feasibility of ESD for possible node-negative intestinal-type EGC and the validity of the criteria of node-negative intestinal-type EGC as curability criteria for ESD. We would propose that ESD can become an alternative method to gastrectomy in cases of possible node-negative intestinal-type EGC, with an invaluable advantage over gastrectomy of preservation of the stomach.

Competing interests: None

References

- 1 Ono H, Kondo H, Gotoda T et al. Endoscopic mucosal resection for treatment of early gastric cancer. *Gut* 2001; 48: 225–229
- 2 Yamamoto H, Kawata H, Sunada K et al. Success rate of curative endoscopic mucosal resection with circumferential mucosal incision assisted by submucosal injection of sodium hyaluronate. *Gastrointest Endosc* 2002; 56: 507–512
- 3 Yahagi N, Fujishiro M, Kakushima N et al. Endoscopic submucosal dissection for early gastric cancer using the tip of an electrosurgical snare (thin type). *Dig Endosc* 2004; 16: 34–38
- 4 Gotoda K, Yanagisawa A, Sasako M et al. Incidence of lymph node metastasis from early gastric cancer: estimation with a large number of cases at two large centers. *Gastric Cancer* 2000; 3: 219–225
- 5 Sakako M, Kinoshita T, Maruyama K. Prognosis of early gastric cancer (in Japanese with English abstract). *Stomach and Intestine* 1993; 28: 139–146
- 6 Abe S, Ogawa Y, Nagasue N et al. Early gastric cancer: results in a general hospital in Japan. *World J Surg* 1984; 8: 308–314
- 7 Itoh H, Oohata Y, Nakamura K et al. Complete ten-year postgastrectomy follow-up of early gastric cancer. *Am J Surg* 1989; 158: 14–16
- 8 Uedo N, Iishi H, Tatsuta M et al. Longterm outcomes after endoscopic mucosal resection for early gastric cancer. *Gastric Cancer* 2006; 9: 88–92
- 9 Oda I, Saito D, Tada M et al. A multicenter retrospective study of endoscopic resection for early gastric cancer. *Gastric Cancer* 2006; 9: 262–270
- 10 Oka S, Tanaka S, Kaneko I et al. Advantage of endoscopic submucosal dissection compared with EMR for early gastric cancer. *Gastrointest Endosc* 2006; 64: 877–883
- 11 Kodashima S, Fujishiro M, Yahagi N et al. Endoscopic submucosal dissection using flexknife. *J Clin Gastroenterol* 2006; 40: 378–384
- 12 Gotoda T, Kondo H, Ono H et al. A new endoscopic mucosal resection procedure using an insulation-tipped electrosurgical knife for rectal flat lesions: report of two cases. *Gastrointest Endosc* 1999; 50: 560–563
- 13 Oyama T, Tomori A, Hotta K et al. Endoscopic submucosal dissection of early esophageal cancer. *Clin Gastroenterol Hepatol* 2005; 3: S67–70
- 14 Fujishiro M, Yahagi N, Kashimura K et al. Comparison of various submucosal injection solutions for maintaining mucosal elevation during endoscopic mucosal resection. *Endoscopy* 2004; 36: 579–583
- 15 Fujishiro M, Yahagi N, Nakamura M et al. Successful outcomes of a novel endoscopic treatment for GI tumors: endoscopic submucosal dissection with a mixture of high-molecular-weight hyaluronic acid, glycerin, and sugar. *Gastrointest Endosc* 2006; 63: 243–249
- 16 Enomoto S, Yahagi N, Fujishiro M et al. Novel endoscopic hemostasis technique for use during endoscopic submucosal dissection. *Endoscopy* 2007; 39: E156
- 17 Tanabe S, Koizumi W, Mitomi H et al. Clinical outcome of endoscopic aspiration mucosectomy for early stage gastric cancer. *Gastrointest Endosc* 2002; 56: 708–713
- 18 Gotoda T. Endoscopic resection of early gastric cancer. *Gastric Cancer* 2007; 10: 1–11
- 19 Eguchi T, Gotoda T, Oda I et al. Is endoscopic one-piece mucosal resection essential for early gastric cancer? *Dig Endosc* 2003; 15: 113–116
- 20 Abe N, Watanabe T, Sugiyama M et al. Endoscopic treatment or surgery for undifferentiated early gastric cancer? *Am J Surg* 2004; 188: 181–184
- 21 Li C, Kim S, Lai JF et al. Risk factors for lymph node metastasis in undifferentiated early gastric cancer. *Ann Surg Oncol* 2008; 15: 764–769

ORIGINAL ARTICLE

LONG-TERM RESULTS OF GASTRIC CANCER SCREENING USING THE SERUM PEPSINOGEN TEST METHOD AMONG AN ASYMPTOMATIC MIDDLE-AGED JAPANESE POPULATION

KAZUMASA MIKI,^{1,2} MITSUHIRO FUJISHIRO,^{2,3} SHINYA KODASHIMA^{2,3} AND NAOHISA YAHAGI^{2,4}¹Japan Research Foundation of Prediction, Diagnosis and Therapy for Gastric Cancer (JRF PDT GC), ²Endoscopy Unit, Mitsubishi Clinic, ³Department of Gastroenterology, The University of Tokyo and ⁴Department of Gastroenterology, Toranomon Hospital, Tokyo, Japan

Background and Aim: In order to reduce gastric cancer death, mass screening for gastric cancer has been established in Japan for several decades. Only photofluorography is considered to be an acceptable screening method so far, but recent evidence may show the usefulness of serum pepsinogen (PG) measurement for gastric cancer screening. The aim of the present study was to elucidate the feasibility of measuring serum PG levels for detection of gastric cancers.

Methods: Serum PG levels (PGI/PGII) were measured in asymptomatic middle-aged Japanese between 1991 and 2005. Those with a PGI \leq 70 ng/mL and PGI/PGII \leq 3 were defined as having a positive PG test. According to the obtained results of serum PG levels and previous individual records, those with a positive PG test and those with a negative PG test took gastroendoscopy every 2 and 5 years, respectively.

Results: The total number of participating individuals was 101 892 (mean age of 48.7 years). In a total of 21 178 planned gastroscopies (20.8%), 13 789 (65.1%) underwent gastroendoscopy and 125 gastric cancers were detected, which corresponded to 0.12% of all participants and to 0.91% of those with gastroendoscopy. Early-stage cancers and intestinal-type intramucosal cancers accounted for 80% and 39% of all the detected cancers, respectively.

Conclusions: Serum PG measurement for mass screening of gastric cancer enabled us to achieve high recruitment for gastroendoscopy in intended individuals, a favorable detection rate of gastric cancer and, in particular, an extremely high proportion of early-stage gastric cancer in all the detected cancers.

Key words: endoscopy, gastric cancer, mass screening, serum pepsinogen.

INTRODUCTION

Gastric cancer is a major public health burden. Globally, it is the fourth most common cancer and the second leading cause of cancer-related death, with 700 000 deaths annually worldwide. The risk of gastric cancer varies among the countries and populations and it is well known that Japan is one of the highest-risk areas, where the age-standardized incidence rate (ASR) is greater than 20 per 100 000.¹ Early gastric cancer is typically small and asymptomatic, and the high mortality from gastric cancer is mainly due to late presentation. Therefore, early detection is an important way to reduce deaths from gastric cancer.

Screening for gastric cancer using photofluorography began in the 1960s and is now an established nationwide program in Japan. Asymptomatic individuals older than 40 years are eligible for this government-sponsored (nowadays municipality sponsored) mass screening. However, actual participation among eligible individuals is only approximately 20%.² Thus, a new wave to encourage the individuals to participate in screening has been warranted.

Measurement of serum pepsinogen (PG) has been gradually accepted as a non-invasive serological screening test for gastric cancer, particularly in Japan. Serum PG has recently gained attention as a candidate for a new screening test for gastric cancer in several Asian-Pacific countries,^{3–5} as well as in Japan.^{6–14} Serum PG consists of two types: PGI and PGII. PGI levels decrease with loss of fundic gland mucosa, whereas PGII remains constant. Therefore, a low PGI level or a low PGI/II ratio, or both, are good indicators of atrophic gastritis – a preneoplastic gastric lesion and a PGI level \leq 70 ng/mL and a PGI/PGII ratio \leq 3 are common cut-offs used for the identification of patients with atrophic gastritis.^{6–14} In Japanese patients, a PGI/II ratio $>$ 3 has a sensitivity of 93% and a specificity of 88% for the diagnosis of a normal fundic gland.¹¹ In a pooled analysis of Japanese studies that assessed approximately 300 000 people, the sensitivity of serum PG testing for gastric cancer screening was 77% and the specificity was 73%.¹²

Early detection using the serum test in an asymptomatic stage may result in minimal invasive surgery of the detected gastric cancer, including endoscopic resection, which can save complete stomach physiology.¹³ In the present study, we investigated the feasibility of measuring serum PG levels in asymptomatic middle-aged individuals for the detection of gastric cancers and the possibility of the application of endoscopic resection for the detected cancers by PG measurement.

Correspondence: Kazumasa Miki, 2-13-33-202, Kamiohsaki, Shinagawa-ku, Tokyo 141-0021, Japan. Email: mikik@med.toho-u.ac.jp

Received 29 August 2008; accepted 6 October 2008.

© 2009 The Authors

© 2009 Japan Gastroenterological Endoscopy Society

METHODS

Serum PG levels for mass screening of gastric cancer were measured as part of the annual medical check-up for employees of several companies which commissioned the Mitsubishi Clinic, Tokyo, Japan between 1991 and 2005. Blood samples were taken after fasting, and serum PG levels were assayed by a modified radioimmunoassay method using PGI and PGII RIA BEAD Kits (Dainabot Co., Tokyo, Japan) or the latex enhanced immunoturbidimetric assay using PGI and the PGII LZ-test EIKEN (Eiken Chemical Co., Tokyo, Japan). Those with a PGI \leq 70 ng/mL and PGI/PGII \leq 3 were defined as having a positive PG test.⁶⁻¹⁴ Individuals with renal failure were precluded from this screening due to interference of the results. Individuals who had been prescribed medication that might affect gastrointestinal function, such as proton pump inhibitors or non-steroidal anti-inflammatory drugs before examination and who had eradication therapy for *Helicobacter pylori* were also precluded.

According to the results of serum PG levels and previous individual records, those with a positive PG test and without gastroendoscopy during the previous year, and those with a negative PG test and without gastroendoscopy during the previous 4 years were recommended to undergo gastroendoscopy. In brief, those with a positive PG test and those with a negative PG test underwent gastroendoscopy every 2 and 5 years, respectively. The decision to undertake gastroendoscopy or not was finally judged by the individuals who were informed of the necessity.

Gastroendoscopy was carried out at an endoscopy unit of Mitsubishi Clinic with topical pharyngeal lidocaine anesthesia by skilled endoscopists (over 5 years experience), using standard gastroscopes (GIF-P30, GIF-XQ260; Olympus, Tokyo, Japan). If mucosal appearances were suspected of cancers during gastroendoscopy, endoscopic biopsies were taken from the areas. This mass-screening method for gastric cancer was approved by board members of the clinic and all the commissioning companies also agreed to carry out this mass-screening method for gastric cancer screening. Statistical analyses between groups were carried out using the chi-squared test and a P value <0.05 was considered a significant difference.

RESULTS

During the study period of 15 years, the total number of individuals who participated in this screening program was 101 892 (85 578 men and 16 314 women; mean age, 48.7 years). Among those, 22 987 (22.6%) (19 988 men and 2999 women) individuals were allocated into positive PG tests and, furthermore, 12 874 and 8304 individuals planned to undergo gastroendoscopy due to a positive PG test without gastroendoscopy for 2 years and a negative PG test without gastroendoscopy for 5 years, respectively. For the total of the planned gastroendoscopies, 13 789 individuals (65.1%) (9136 with a positive PG test and 4653 with a negative PG test) underwent gastroendoscopy. There was a significant difference ($P < 0.05$) between those with a positive PG test and those with a negative PG test (71.0% vs 56.0%).

Gastric cancer was detected in 125 patients (121 men and four women), which corresponded to 0.12% of all partici-

Table 1. Characteristics of detected gastric cancers using the serum pepsinogen test method among an asymptomatic middle-aged Japanese population

	Differentiated -type	Undifferentiated -type	Total
Early-stage (intramucosal)	72 (49)	28 (23)	100 (72)
Advanced-stage	6	19	25
Total	78	47	125

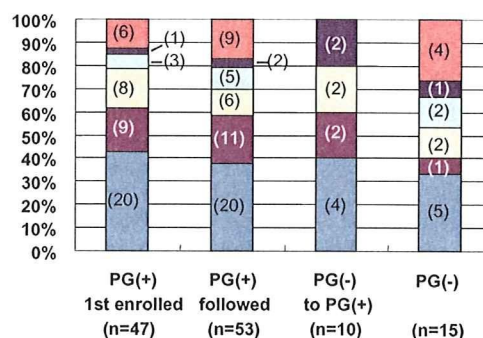


Fig. 1. Distribution of the detected cancers according to inducements for gastroendoscopy. Numbers in parentheses are those of the corresponding cases.

pants and to 0.91% of those who had a gastroendoscopy. When the cancer patients were divided into 110 patients with a positive PG test and 15 patients with a negative PG test, the numbers corresponded to 0.48% and 0.019% of the total participants of each group, respectively, and to 1.2% and 0.32% of the participants of each group who had gastroendoscopy, respectively. The detection rates between participants with positive and negative PG tests were significantly different ($P < 0.05$). The inducements for gastroendoscopy were: a positive PG test as the first enrollment of this mass screening (47 patients: 38%); continuous positive PG tests during follow up (53 patients: 42%); change to a positive PG test during follow up (10 patients: 8%); and continuous negative PG tests during follow up (15 patients: 12%). The characteristics of the detected gastric cancers are shown in Table 1 and Fig. 1. Early-stage (intramucosal or submucosally invasive) cancers and differentiated-type cancers accounted for 80% and 62% of all detected cancers, respectively. Among 72 early-stage differentiated-type cancers, 49 (68%) were intramucosal cancers, which were potentially curable by endoscopic resection such as endoscopic mucosal resection and endoscopic submucosal dissection.¹⁵ Subanalyses of the detected cancers according to inducements for gastroendoscopy revealed that there was no significant difference among the groups in terms of histology and depth of cancer invasion.

DISCUSSION

This long-term, large-scale study revealed the usefulness of serum PG measurement for gastroendoscopy in terms of