

Figure 1. (a) Histograms of annual income normalized by minimum wage income Okinawa, 2002. (b) histograms of annual income normalized by mw income Tokyo, 2002. Minimum-wage income is defined as annual income that is earned if an individual works at the minimum wage all year, by multiplying the minimum wage by minimum value of weekly hours and annual work-days. Workers earning more than three times as much as minimum wage annual earnings are not included in the sample

minimum wage earnings)/the minimum value of minimum wage earnings. We clearly confirm that the minimum wage is much more relevant to the wage distribution in a low-wage prefecture (Okinawa) than in a high-wage prefecture (Tokyo).

Table 3 reports FMW by industry and indicates that FMW in the wholesale-and-retail-trade and accommodation-eating-drinking industries increased from 1982 to 2002. Table 3 also indicates that part-time workers are more likely to be minimum-wage workers than regular workers. Workers in smaller firms are more likely to be minimum-wage workers than workers in larger firms.

Table 4 examines whether minimum-wage workers belong to low-income families. We classify minimum-wage workers by the status of their head-of-household and six annual household income categories (in thousands of yen): less than 1000, 1000–1990, 2000–2990, 3000–3990, 4000–4990, and 5000 and above. Table 4 tabulates the distribution of household income among minimum-wage workers and non-minimum-wage workers. As far as heads-of-households are concerned, minimum-wage workers are more likely to belong to low-income households than non-minimum-wage workers. However, approximately 70% of minimum-wage workers are not household heads. As shown in column (4), the household heads of low-income families whose annual income is less than 3 million yen comprised only approximately 15% of minimum-wage workers in 2002. The major segment of minimum-wage workers (approximately 50% in 2002) is comprised of non-head-of-households in middle-income and high-income families (who earn over 5 million yen).

Table 5 reports the composition of minimum-wage workers with respect to sex, age and level of education. We can see that junior-high and high-school graduates and middle-aged women (30–59 years old) are more likely to be minimum-wage workers. In particular, more than half of minimum-wage workers are middle-aged women, many of whom may be part-time workers.

The nationwide data in Figure 2 show that the Kaiz index and FMW variables moved together in 1982–2002. Figure 3 includes the results of two typical prefectures: Okinawa (low-wage prefectures) and Tokyo (high-wage prefecture). Both the FMW and Kaiz index are high in Okinawa but low in Tokyo, as mentioned before. The time trends in the three prefectures are similar to the nationwide trend, but the magnitude of the variation differs across prefectures.

Figure 4 illustrates the FMW among junior-high and high-school graduates using four different age categories and sex. Figure 4(a) indicates that younger male workers, especially teenagers, tend to be minimum-wage workers, but few male workers in the 25–59 year age group are minimum-wage workers. The FMW is high among women regardless of age, as reported in Figure 4(b). Both Figure 4(a) and (b) report that the FMW among young workers increased from 1992 to 2002.

5. MINIMUM WAGE'S EFFECT ON EMPLOYMENT

We empirically investigate the effect of the minimum wage on the employment of workers who are more likely to be affected by a minimum-wage hike. The

Table 3. Percent of workers earning less than minimum wage

Year	1982			2002		
	FMW minimum	FMW maximum	FMW	FMW minimum	FMW maximum	FMW
Industry (%)						
Agriculture	22.30	34.63	Agriculture	28.92	44.77	
Forestry	3.55	7.59	Forestry	5.61	12.89	
Fishery	6.45	11.57	Fishery	12.50	24.88	
Mining	2.79	6.09	Mining	4.71	7.17	
Construction	5.11	11.85	Construction	5.92	13.13	
Manufacturing	11.54	18.89	Manufacturing	10.87	21.41	
Electricity, gas, heat supply and water	2.28	3.31	Electricity, gas, heat supply and water	1.43	3.43	
Communications and transport	2.17	5.04	Information, communication and transport	5.75	15.13	
Wholesale and retail trade	14.98	26.67	Wholesale and retail trade	19.28	35.26	
Finance, insurance and real estate	5.10	10.27	Finance, insurance, and real estate	6.71	16.42	
Service	10.26	17.50	Accommodation, eating and drinking	29.61	52.37	
			Compound service	5.28	12.83	
			Miscellaneous service	11.18	22.00	
Government	3.22	5.31	Government	1.90	5.57	
Employment category (%)						
Regular	6.03	11.67	Regular	4.73	10.99	
Part-timer and Arubaito	45.43	71.25	Part-timer	36.99	68.37	
			Arubaito	36.78	62.00	
			Temporary staff	10.58	29.04	
Contract worker	12.43	21.48	Contract worker	9.85	24.84	
Miscellaneous	21.48	33.54	Miscellaneous	22.31	37.23	
Employer size (%)						
1-4	24.84	36.93	1-4	25.19	38.55	
5-9	16.11	26.99	5-9	17.53	31.24	
10-19	13.43	23.66	10-19	15.67	29.41	
20-29	12.68	22.57	20-29	14.26	28.31	
30-49	12.06	21.63	30-49	13.64	27.57	
50-99	10.98	19.94	50-99	12.05	25.55	
100-299	8.28	16.26	100-299	9.81	21.71	
300-499	6.03	12.56	300-499	8.32	18.67	
500-999	4.69	10.26	500-999	7.80	17.17	
1000-	3.16	6.45	1000-	7.55	16.24	
Government	3.29	5.52	Government	3.41	8.48	

The fraction of minimum-wage workers (FMW) is defined as the number of minimum-wage workers among all employed workers. Minimum-wage worker is defined if imputed minimum-wage annual earnings are above reported annual earnings. Imputed minimum-wage annual earnings are calculated in two ways: one based on the minimum values of workdays and work hours, and the other based on the maximum values of workdays and work hours. The minimum-wage worker defined by the former method is the minimum number of minimum-wage workers and the latter method is the maximum number of minimum-wage workers. Therefore, the resulting fraction of minimum-wage workers has its bound ranging from FMW minimum to FMW maximum.

Table 4. Household background of minimum wage and non minimum wage workers

	(1)	(2)	(3)	(4)
Year	1982		2002	
Minimum wage worker?	No	Yes	No	Yes
Household head				
-99 (10 000 yen)	0.08	5.28	0.14	2.27
-199	5.28	9.32	1.23	7.26
-299	12.15	3.53	4.35	5.38
-399	12.98	1.87	6.55	3.03
-499	10.69	1.01	7.34	1.92
500-	20.5	1.09	37.64	3.88
Non-household head				
-99	0.01	0.77	0.02	0.43
-199	0.59	5.73	0.19	1.98
-299	2.67	14.69	0.83	5.09
-399	5.09	17.77	1.96	8.5
-499	7.00	15.35	3.1	9.72
500-	22.97	23.56	36.66	50.54

Minimum-wage workers are the workers whose annual earnings (= minimum value of labour earnings bracket) is below minimum-wage annual earnings (= maximum annual hours of work × hourly minimum wage).

Table 5. Who are minimum wage workers?

Year	1982	2002
Education (%)		
Junior high school	41.95	20.39
High school	48.54	57.13
Junior college	6.18	15.9
College	3.18	6.52
Sex by age groups (%)		
Male	24.54	26.54
15-19	3.87	2.38
20-24	6.75	5.99
25-29	3.31	4.14
30-39	2.94	3.51
40-49	1.84	2.26
50-59	2.35	2.87
60-	3.49	5.4
Female	75.46	73.46
15-19	4.02	2.57
20-24	9.29	7.62
25-29	6.16	6.43
30-39	19.69	13.28
40-49	20.27	18.44
50-59	11.28	17.35
60-	4.75	7.77

The same note applies as in Table 4. Composition of minimum wage workers by education level, sex and age.

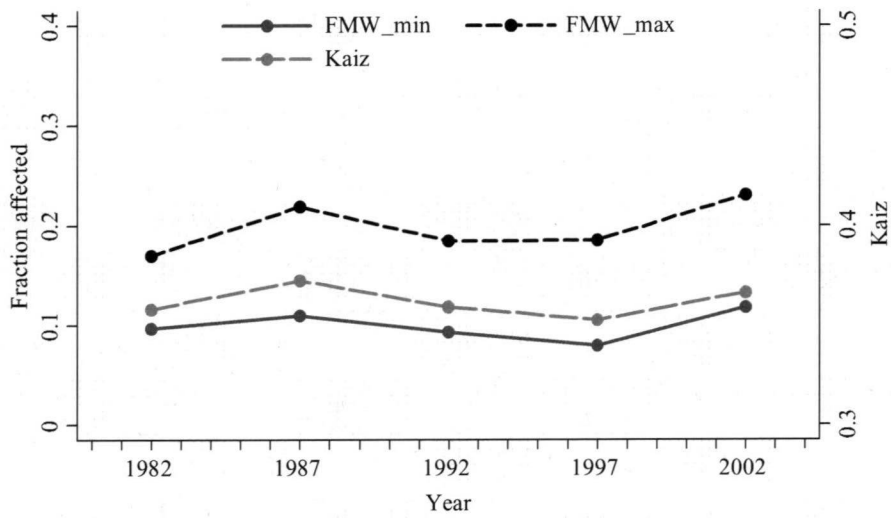


Figure 2. Time series of the fraction of minimum-wage workers and Kaiz index

analysis in the previous section reveals that a large percentage of young, elderly and married women receive wages near the minimum wage. To restrict our analysis to the demographic groups that are presumably heavily affected by the minimum wage, we focus on the following seven categories of workers: male teenagers (15–19 years old), male young adults (20–24 years old), male elderly (over 60 years old), female teenagers, female young adults, female elderly and middle-aged (25–59 years old) married women.

To establish the causal effect of a minimum-wage hike on employment, we examine the relation between the fraction of workers who are affected by the minimum-wage hike and the change in employment using prefecture-level variation. More specifically, we calculate the fraction of workers who are affected by a minimum-wage hike (fraction affected (*FA*)), in other words, workers whose wage is above the current minimum wage but below the revised minimum wage. This *FA* takes different values across prefectures, even if the amounts of the minimum-wage hike are homogeneous across prefectures, because the minimum-wage hike is more prevalent in the low wage prefectures, such as Okinawa, than in high wage prefectures like Tokyo. Card (1992) originally proposed using *FA* to examine the effect of the federal minimum-wage increase on employment, because the uniform increase of the minimum wage across states has different impacts across states depending on each state's wage distribution.

The following model is estimated to examine the effect of *FA* on the change in the employment rate of worker group *k* in prefecture *i* between years *t* and *t* – 5:

$$\Delta E_{i,t}^k = \beta_0^k + \beta_1^k FA_{i,t-5} + \beta_2^k \Delta AW_{i,t} + \beta^k \Delta X_{i,t}^k + Y_t \gamma^k + e_{i,t}^k, \quad (1)$$

where $\Delta E_{i,t}^k$ is the change in the employment rate of category *k* in prefecture *i* between years *t* and *t* – 5; $FA_{i,t-5}$ is the fraction of workers who are affected

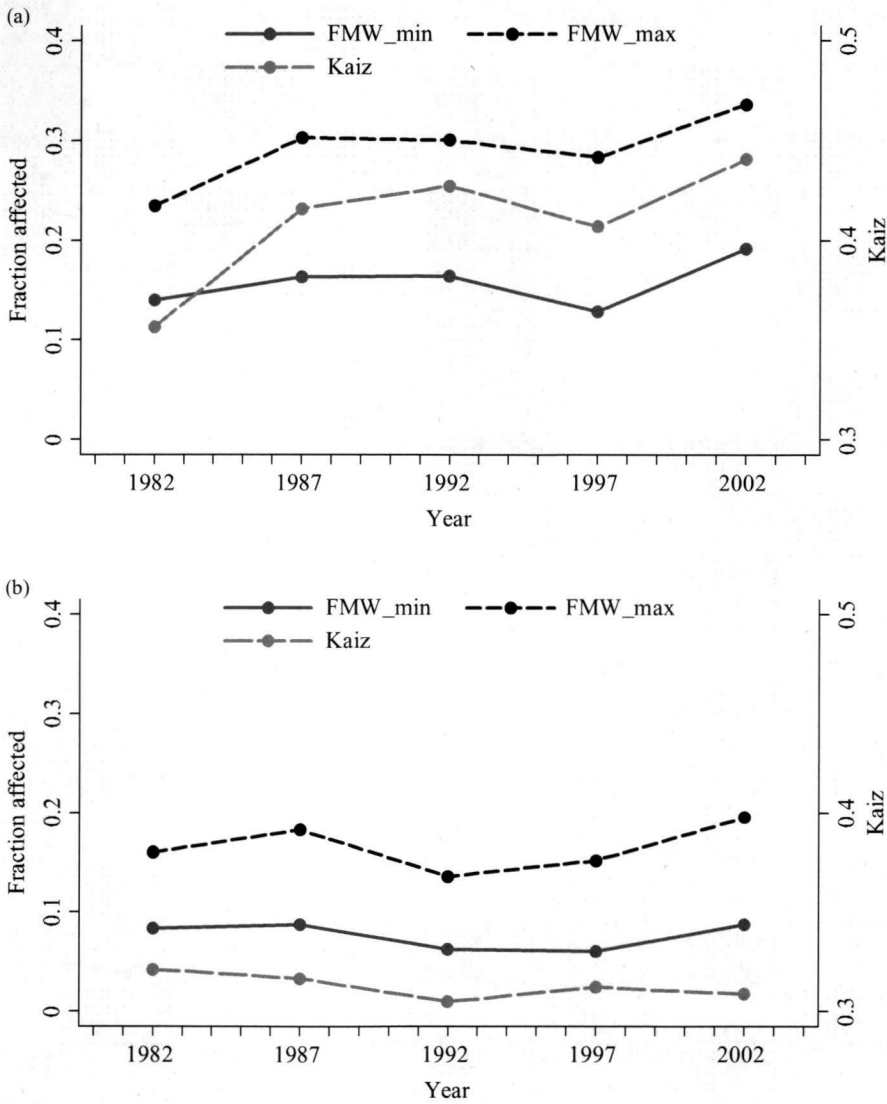


Figure 3. (a) Time series of fraction of minimum-wage workers and Kaiz index: Okinawa. (b) Time series of fraction of minimum-wage workers and Kaiz index: Tokyo

by the minimum-wage hike between t and $t - 5$; $\Delta AW_{i,t}$ is the change in the average wage of middle-aged (25–59 years old) male workers; $X_{i,t}^k$ is a set of explanatory variables (the proportion of the population in the relevant categories and the unemployment rate of middle-aged males); and Y_t is a set of dummy variables for year t . We adopt two definitions of FA : FA_{min} and FA_{max} . FA_{min} is the fraction of workers who satisfy the condition,

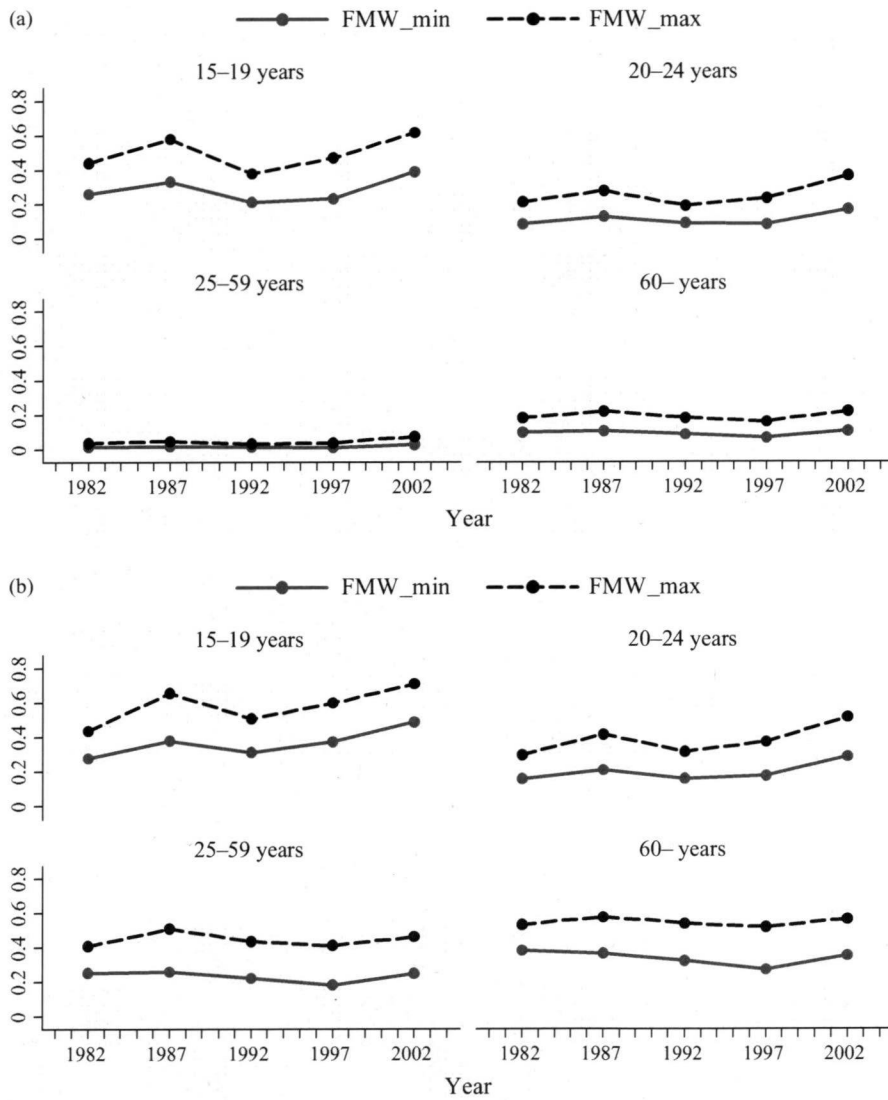


Figure 4. (a) Minimum-wage fraction maximum among junior-high school and high-school graduates: men. (b) Minimum-wage fraction maximum among junior-high school and high-school graduates: women

$MWIncome_{it-5}^{\min} \leq Income_{it-5} < MWincome_{it}^{\min}$. The minimum of the minimum-wage annual income, $MWIncome_{it}^{\min}$, is calculated using the hourly minimum wage and the minimum value of annual work hours. FA_{max} is similarly defined based on the maximum of the minimum-wage annual income. Card and Krueger (1995) claim that an increase in the average wage relative to output price causes firms to cut employment through a reduction in output production.

Table 6. Summary statistics for the employment analysis sample

	Observations	Mean	Standard deviation	Minimum	Maximum
Fraction affected minimum (<i>FA_min</i>)	188	0.039	0.027	0.003	0.113
Fraction affected maximum (<i>FA_max</i>)	188	0.055	0.036	0.003	0.138
Employment rate					
Male, 15–19	235	0.162	0.028	0.097	0.240
Male, 20–24	235	0.751	0.072	0.552	0.895
Male, 60–	235	0.490	0.052	0.341	0.635
Female, 15–19	235	0.155	0.030	0.092	0.239
Female, 20–24	235	0.721	0.054	0.561	0.863
Female, 60–	235	0.239	0.043	0.144	0.351
Female, 25–29, married	235	0.659	0.104	0.415	0.858
Change in employment rate					
Male, 15–19	188	-0.005	0.028	-0.083	0.063
Male, 20–24	188	-0.021	0.044	-0.134	0.095
Male, 60–	188	-0.019	0.036	-0.113	0.077
Female, 15–19	188	-0.005	0.028	-0.079	0.065
Female, 20–24	188	-0.007	0.039	-0.108	0.131
Female, 60–	188	-0.007	0.021	-0.054	0.040
Female, 25–29, married	188	0.051	0.071	-0.032	0.298
Share of population					
Male, 15–19	235	0.040	0.006	0.028	0.061
Male, 20–24	235	0.034	0.008	0.020	0.059
Male, 60–	235	0.112	0.026	0.053	0.165
Female, 15–19	235	0.039	0.006	0.026	0.057
Female, 20–24	235	0.037	0.007	0.023	0.053
Female, 60–	235	0.150	0.035	0.071	0.231
Female, 25–29, married	235	0.216	0.079	0.047	0.308
Change in share of population					
Male, 15–19	188	-0.002	0.005	-0.017	0.012
Male, 20–24	188	-0.001	0.006	-0.018	0.011
Male, 60–	188	0.016	0.006	0.003	0.032
Female, 15–19	188	-0.002	0.005	-0.017	0.012
Female, 20–24	188	-0.002	0.005	-0.017	0.010
Female, 60–	188	0.019	0.007	0.004	0.037
Female, 25–29, married	188	-0.054	0.061	-0.180	-0.006
Change in average wage	188	0.318	0.443	-0.575	1.137
Unemployment rate					
Change in unemployment rate	188	0.006	0.011	-0.016	0.030

We control this scale effect by including the change in the average adult male's wage ($\Delta AW_{i,t}$) and the year dummy variables as explanatory variables. The estimation method is weighted least squares, with the weight being the inverse of the standard error of the dependent variable.

Table 6 reports the descriptive statistics for the regression analysis sample. The *FA* has a mean of approximately 4–6%, with sufficient variation across years and prefectures. Table 7 displays the fraction of workers affected by a minimum-wage hike for a 5-year period, and we can confirm that *FA* tends to be higher in rural, low-wage areas, such as Aomori and Okinawa, than in high-wage areas such as Tokyo. It also displays a variation over time within a prefecture.

Table 7. Fraction of workers affected by minimum-wage hike (%)

Year	1982–1987	1997–2002	Year	1982–1987	1997–2002
Hokkaido	3.18	0.81	Shiga	2.48	0.27
Aomori	6.22	4.15	Kyoto	6.19	1.34
Iwate	6.55	4.47	Osaka	5.32	0.98
Miyagi	4.63	0.52	Hyogo	5.76	1.11
Akita	6.27	3.46	Nara	2.20	0.26
Yamagata	6.72	3.07	Wakayama	2.93	0.53
Fukushima	5.54	1.37	Tottori	5.25	1.50
Ibaraki	2.27	0.36	Shimane	5.21	1.95
Tochigi	3.11	0.37	Okayama	2.60	0.53
Gunma	3.00	0.38	Hiroshima	2.72	0.52
Saitama	4.59	0.77	Yamaguchi	3.28	0.62
Chiba	4.74	0.75	Tokushima	5.19	0.65
Tokyo	2.98	0.71	Kagawa	4.36	0.80
Kanagawa	3.65	0.70	Ehime	5.15	0.60
Niigata	4.50	0.50	Kochi	5.56	0.51
Toyama	3.18	0.38	Fukuoka	2.95	0.68
Ishikawa	3.76	0.63	Saga	5.80	3.66
Fukui	3.98	0.50	Nagasaki	5.27	4.04
Yamanashi	2.92	0.60	Kumamoto	6.92	3.55
Nagano	2.74	0.51	Oita	5.02	3.72
Gifu	3.90	1.40	Miyazaki	6.87	4.34
Shizuoka	2.66	1.12	Kagoshima	5.88	4.03
Aichi	6.27	0.94	Okinawa	6.09	4.54
Mie	3.17	1.18			

The fraction of workers affected by the minimum-wage hike (FA) is defined as the number of workers affected by the minimum-wage hike (i.e. $MWIncome_i^{\min} \leq Income_i < MWIncome_{i+5}^{\min}$) divided by the number of employed workers.

To illustrate the regression results for subsamples, Figure 5(a) and (b) visually reports the regression results for male and female teenagers between 1997 and 2002. The fraction of workers affected by the minimum-wage hike (FA) on the horizontal axis is the residual from the regression of FA on other explanatory variables. Both figures confirm a weakly negative relation between regression-adjusted FA and the change in the employment rate over the 5-year period.

Tables 8–10 report the comprehensive results of regressions by demographic groups. Columns (1) and (2) of Table 8 indicate that a higher FA results in a reduction of the employment rate among male teenagers. A 1% increase in FA reduces the employment rate by approximately 0.2 percentage points. Considering that the average employment rate of male teenagers is approximately 16% (Table 6) and the average FA is approximately 5%, the magnitude is small. Columns (3) and (4) indicate the negative impact of a higher FA on the employment rate of young adults, but the coefficients are not statistically significant. A higher FA does not affect the employment rate of elderly people.

Table 9 reports the results for women. The estimated coefficients are consistently negative and some of the coefficients are statistically significant. However, all results depend on the choice of FA variable, and it is rather

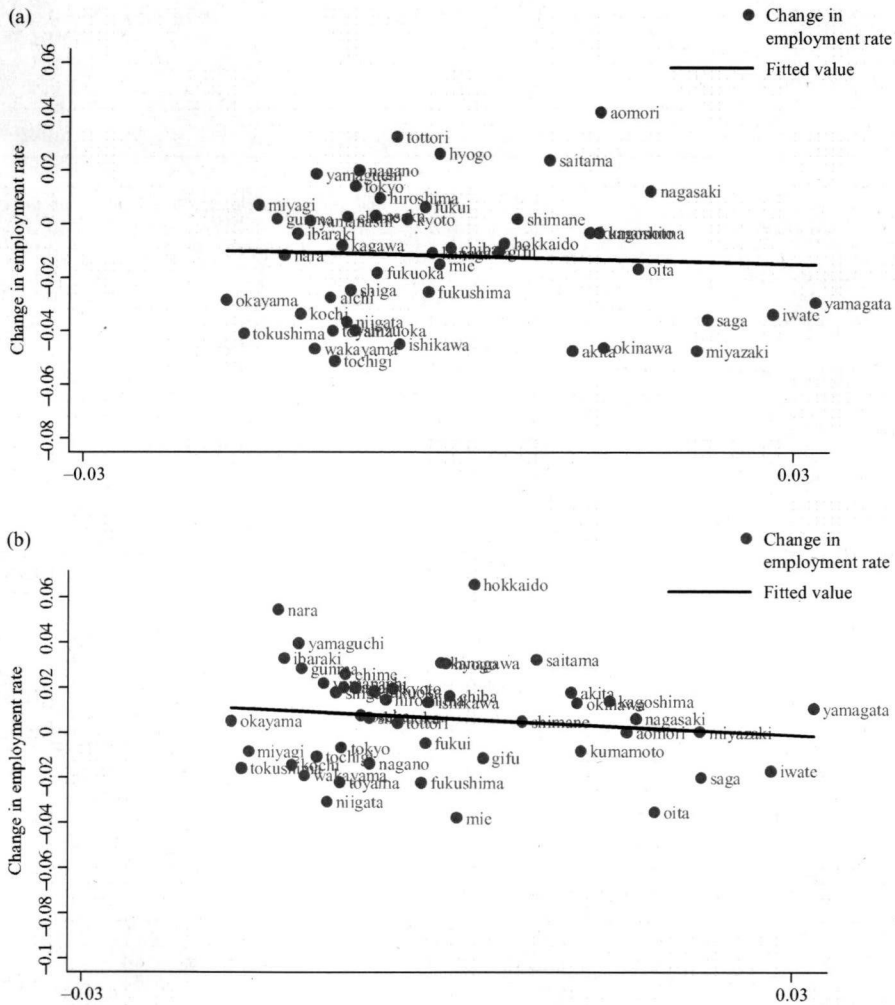


Figure 5. (a) Fraction of workers affected by the minimum-wage hike and change of employment rate, 1997–2002: male 15–19 year olds. (b) Fraction of workers affected by the minimum-wage hike and change of employment rate, 1997–2002: female 15–19 year olds

difficult to see a clear relation between FA and the employment rate from this table. Table 10 reports the results for married women in the 25–59 year age group who are likely to be employed as part-time workers. The estimated coefficients clearly indicate that the minimum-wage hike reduces employment among members of this group. A 1% increase in FA decreases the employment rate by 0.4–0.8 percentage points. Considering that the average of FA is approximately 5% and the employment rate of this group is roughly 66%, the magnitude is rather moderate.

Table 8. Fraction of workers affected by the minimum-wage hike and the change of employment rate, male dependent variable: change in employment rate

	(1)	(2)	(3)	(4)	(5)	(6)
Age group	15–19		20–25		60–	
Fraction affected (<i>FA</i>)	<i>FA_min</i>	<i>FA_max</i>	<i>FA_min</i>	<i>FA_max</i>	<i>FA_min</i>	<i>FA_max</i>
Fraction affected	-0.23 (0.11)	-0.20 (0.12)	-0.26 (0.15)	-0.26 (0.14)	-0.02 (0.11)	-0.00 (0.11)
Change in population share	0.43 (0.60)	0.08 (0.58)	-1.31 (0.84)	-1.34 (0.82)	0.14 (0.36)	0.15 (0.36)
Change in average wage	0.02 (0.02)	0.02 (0.02)	0.02 (0.03)	0.02 (0.02)	0.02 (0.01)	0.02 (0.01)
Change in unemployment rate	-0.72 (0.45)	-0.70 (0.47)	-0.33 (0.71)	-0.27 (0.70)	-0.89 (0.39)	-0.88 (0.38)
Constant	0.02 (0.02)	0.02 (0.02)	0.01 (0.03)	0.02 (0.03)	-0.04 (0.01)	-0.04 (0.01)
Dummy for year	Y	Y	Y	Y	Y	Y
Observations	188	188	188	188	188	188
<i>R</i> ²	0.35	0.35	0.34	0.35	0.69	0.69

Standard errors are reported in parentheses. The inverse of the estimated variance of the dependent variable is used as a weight for the weighted least squares estimation.

Table 9. Female dependent variable: change in employment rate

	(1)	(2)	(3)	(4)	(5)	(6)
Age group	15–19		20–25		60–	
Fraction affected (<i>FA</i>)	<i>FA_min</i>	<i>FA_max</i>	<i>FA_min</i>	<i>FA_max</i>	<i>FA_min</i>	<i>FA_max</i>
Fraction affected	-0.37 (0.10)	-0.13 (0.11)	-0.09 (0.12)	-0.23 (0.12)	-0.10 (0.10)	-0.11 (0.08)
Change in population share	0.49 (0.64)	0.16 (0.64)	-1.43 (0.79)	-1.62 (0.80)	0.01 (0.22)	-0.01 (0.22)
Change in average wage	-0.02 (0.01)	-0.01 (0.02)	-0.00 (0.02)	-0.01 (0.02)	-0.01 (0.01)	-0.01 (0.01)
Change in unemployment rate	-0.25 (0.59)	-0.18 (0.61)	0.04 (0.54)	0.05 (0.54)	-0.10 (0.29)	-0.07 (0.29)
Constant	0.01 (0.01)	0.01 (0.01)	0.03 (0.02)	0.05 (0.02)	-0.03 (0.01)	-0.03 (0.01)
Dummy for year	Y	Y	Y	Y	Y	Y
Observations	188	188	188	188	188	188
<i>R</i> ²	0.22	0.18	0.50	0.51	0.44	0.45

6. MINIMUM WAGE'S EFFECT ON THE CHOICES OF YOUTH AGED 16–17 YEARS

The effects of the minimum wage on the outcomes of youths are not limited to employment but also include schooling decisions. Cunningham (1981) and Ehrenberg and Marcus (1982) examine this subject by arguing that the minimum wage's effect on schooling decisions is complex because it affects both the opportunity cost of schooling and the return to schooling. The opportunity cost of attending high school is the wage that high-school-age youth expect to receive in the labour market. If the employment-reduction effect is limited, then

Table 10. Female, 25–59 years, married dependent variable: change in employment rate

	(1)	(2)
Fraction affected (<i>FA</i>)	<i>FA_min</i>	<i>FA_max</i>
Fraction affected	-0.43 (0.13)	-0.82 (0.13)
Change in population share	0.49 (0.60)	0.81 (0.58)
Change in average wage	-0.03 (0.02)	-0.07 (0.02)
Change in unemployment rate	-1.32 (0.78)	-1.38 (0.75)
Constant	0.11 (0.02)	0.18 (0.03)
Dummy for year	Y	Y
Observations	188	188
R ²	0.76	0.78

a minimum-wage hike might increase the expected wage; in contrast, with a significant employment-reduction effect, the expected wage might decrease. The minimum wage also affects the return to schooling through a modification of the wage structure. If the minimum wage reduces the labour demand for low-skilled workers, the demand for skilled workers might be increased through a substitution effect, which may lead to a higher return to education. In our context, an increased minimum wage may reduce the demand for part-time jobs among high-school students or high-school dropouts, and increase the demand for high-school graduates. If a minimum-wage increase does not reduce employment, however, even high-school dropouts can earn a higher wage and are, therefore, less likely to return to education because of the minimum-wage increase. Overall, the minimum wage has a complex effect on high-school age youths' schooling decisions through the opportunity cost of attending high school and the relative value of returning to high school to receive a diploma.

In addition, Ehrenberg and Marcus (1982) emphasize the importance of household liquidity constraints. If a youth belongs to a household that is liquidity-constrained, he or she might finance their studies by working part time. In this scenario, increasing the minimum wage might increase employment as well as school attendance. These theoretical complexities suggest the importance of treating youths' decisions about schooling and employment jointly.

This section investigates the minimum wage's effect on young people's choice between employment and school enrolment. We focus on high-school age individuals, 16 and 17 years old, and classify them into the following exclusive categories to capture the possible joint decision of schooling and employment: (i) not in school and not employed; (ii) in school and not employed; (iii) in school and employed; and (iv) not in school and employed. The empirical model used in this section is the aggregate data version of Neumark and Wascher (1995), which is the same model that was used in the previous section except for the dependent variables. As in the employment analysis, we exploit the prefectural

variation of the fraction of workers affected by the minimum-wage hike. The estimation model is described as follows:

$$\Delta p_{i,t}^k = \beta_0^k + \beta_1^k FA_{i,t-1} + \beta_2^k \Delta AW_{j,t} + \Delta X_{j,t}^k \beta^k + Y_t \gamma^k + \varepsilon_{j,t}^k, \quad (2)$$

where $p_{i,t}^k$ is the population of each category k divided by the relevant-aged population in prefecture i and year t ; FA is the fraction of workers affected by the minimum-wage hike in the 5-year period; and AW , X and the other variables are the same as in the previous section. The estimation method is weighted least squares, in which the inverses of the standard errors of the dependent variables are used as weights. The above model is estimated based on a sample that includes only young people 16 and 17 years old. Some 15 and 18 year olds are also high-school age depending on the quarter of their birth, but the birth quarter is not recorded before the 1997 survey; therefore, we do not include 15 and 18 year olds in the sample.

Table 11 reports the summary statistics of the analysis sample for the choice of youths. Approximately 93% of 16–17 year-old youths are in school without employment, while 2.5% are in school and have part-time jobs. Of the remaining 5%, 2.5% are out of school and employed, whereas 1.7% are idle.

Table 12 presents the estimation results. For all estimations, the changes in proportions of youth who are in school but not employed are treated as the base category. Panel A reports the regression results using the fraction of workers who are affected by the minimum-wage changes as an independent variable. The change in the fraction of workers who are affected by a minimum-wage hike is defined by a range as in the previous analysis, because the definition of minimum-wage workers depends on whether we use the minimum hours of work or the maximum hours of work to define minimum-wage annual income. Columns (1) and (2) report the effect of the fraction affected on the change in the fraction of

Table 11. Summary statistics of analysis sample for high school age choice

	Observations	Mean	Standard deviation	Minimum	Maximum
In school, not employed	235	0.933	0.022	0.851	0.983
Δ In school, not employed	188	-0.919	0.024	-0.970	-0.847
Out school, not employed	235	0.017	0.008	0.002	0.058
Δ Out school, not employed	188	0.001	0.008	-0.024	0.028
In school, employed	235	0.025	0.018	0.002	0.100
Δ In school, employed	188	-0.004	0.014	-0.054	0.045
Out school, employed	235	0.025	0.011	0.006	0.071
Δ Out school, employed	188	-0.011	0.013	-0.062	0.023
Unemployment rate	235	0.023	0.012	0.006	0.070
Δ Unemployment rate	188	0.006	0.011	-0.016	0.030
Population share of age 16–17 years	235	0.047	0.010	0.028	0.075
Δ Population share of age 16–17 years	188	-0.002	0.005	-0.011	0.011
Average wage	235	2.950	0.718	1.637	4.613
Change in average wage	188	0.318	0.443	-0.575	1.137

Table 12. *Effect of minimum wage on choices among high-school-age teenagers*

	(1)	(2)	(3)	(4)	(5)	(6)
	Out of school not employed		In school employed		Out of school employed	
5 year change in state						
Fraction affected (<i>FA</i>) variable	<i>FA_min</i>	<i>FA_max</i>	<i>FA_min</i>	<i>FA_max</i>	<i>FA_min</i>	<i>FA_max</i>
Fraction affected	-0.00 (0.03)	0.04 (0.03)	0.27 (0.07)	0.30 (0.06)	0.11 (0.05)	0.13 (0.04)
Change in population share	-0.17 (0.26)	-0.15 (0.25)	-0.08 (0.35)	0.38 (0.32)	0.04 (0.34)	0.24 (0.33)
Change in average wage	0.00 (0.00)	0.01 (0.00)	0.01 (0.01)	0.01 (0.01)	-0.02 (0.01)	-0.01 (0.01)
Change in unemployment rate	0.07 (0.14)	0.07 (0.14)	0.20 (0.21)	0.17 (0.22)	0.01 (0.20)	0.00 (0.20)
Constant	0.00 (0.00)	-0.01 (0.00)	-0.01 (0.01)	-0.03 (0.01)	-0.01 (0.00)	-0.02 (0.01)
Year dummy	<i>Y</i>	<i>Y</i>	<i>Y</i>	<i>Y</i>	<i>Y</i>	<i>Y</i>
Observations	188	188	188	188	188	188
R ²	0.11	0.11	0.18	0.22	0.17	0.18

Standard errors are in parentheses.

workers who are out of school and not employed. Regardless of the measurement of the fraction of workers affected by the minimum-wage hike, the minimum-wage hike did not significantly change the fraction of youths in this category. Columns (3) and (4) show that the fraction of youths who were employed while attending school increased when the minimum-wage hike affected more workers. To quantify its impact, let us think about the counterfactual situation of Okinawa not increasing its minimum wage between 1997 and 2002. The fraction affected was zero instead of the actual 4.54% reported in Table 7. The coefficient estimate is 0.30 (column (4)); therefore, the estimated effect on the increase in the probability of the choice to stay in school and be employed decreases by 1.359%. This is a large effect, given that only 2.5% of youths work while attending school (Table 11). Columns (5) and (6) report that the increase in the fraction of workers affected by a minimum-wage hike increases the probability of youths being out of school and employed. The estimated magnitude is approximately one-third of the effect on the choice of being in school and employed.

Overall, the higher the fraction of workers who are affected by the minimum-wage hike, the higher the fraction of youths in employment, either while attending high school or dropping out of high school. In particular, estimates indicate that a higher minimum wage relative to the regional wage distribution encourages high-school students to work as part-time workers. An examination of the long-term consequence of the minimum wage on skill formation and labour-market outcomes, as conducted by Neumark and Nizalova (2007) for the USA, is left for future research.

7. CONCLUSION

The present paper aimed to answer the following three questions based on Japanese data. First, do minimum-wage workers belong to low-income house-

holds? Second, what are the minimum wage's effects on employment among populations that are marginally attached to the labour market? Third, what are the minimum wage's effects on the employment and schooling choices of 16 and 17-year-olds?

Five waves of the ESS, from 1982, 1987, 1992, 1997 and 2002, were used to calculate the percentage of workers earning the minimum wage. The annual earnings and work-hours reported in range brackets enabled us to calculate the minimum and maximum number of minimum-wage workers. The minimum fraction of minimum-wage workers was approximately 3–4% between 1982 and 2002, while the maximum fraction was 6–10% during the same period for men. The corresponding figures for women were approximately 22 and 36–40%, respectively.

Female workers, workers with low educational backgrounds, workers in rural areas, and workers in retail or food industries were more likely than others to be employed at the minimum-wage level. Although workers with weaker labour-market characteristics were more likely to work at the minimum wage, those minimum-wage workers did not necessarily belong to disadvantaged households. In 2002, only around 20% of minimum-wage workers were heads-of-households and approximately half of them belonged to households with annual incomes of 5 million yen or more as a non-household head. This result confirms the finding of Tachibanaki and Urakawa (2007) that was based on a much smaller dataset.

The analysis results exploiting the cross-prefecture heterogeneity of the fraction of workers affected by a minimum-wage hike indicates that a minimum-wage hike reduces the employment of male teenagers and middle-aged married women. Its magnitude for male teenagers is estimated to be small, but that for middle-aged married women is moderate.

The analysis of the minimum wage's effect on the choices of high-school age youths shows us that an increase in the minimum wage encourages employment for young people whether or not they are attending high school. Although a higher minimum wage relative to regional wage decreases teenage male employment, it positively affects the employment of high-school age youths. The combination of these two pieces of evidence implies that a minimum-wage increase relative to the regional wage distribution will have a strong negative impact on male high-school graduates. The minimum wage's long-term effect on the skill formation and long-term labour-market outcomes of young people has yet to be examined. Overall, a policy supporting a rising minimum wage would not be helpful in alleviating poverty in Japan because such policy is not well targeted toward poor households and would reduce the employment of less-skilled workers. Adopting a more direct antipoverty policy, such as an earned-income tax credit, would be one viable policy alternative.¹¹

¹¹ Recent studies by Leigh (2009) and Rothstein (2008), however, report that the expansion of earned-income tax credits suppresses the wages of low-skilled workers because it encourages their labor supply.

REFERENCES

- Abe, Y. and A. Tanaka (2007) 'Seiki Part Chingin Kakusa to Saitei Chingin no Yakuwari 1990 nen–2001 nen (The Part-Time/Full-Time Wage Gap and the Role of the Regional Minimum Wage in Japan: 1990–2001)', *Nihon Rodo Kenkyu Zasshi* 568, 77–92 (in Japanese).
- Abe, Y. and K. Tamada (2008) 'Regional Patterns of Employment Changes in Japan: Evidence from the 1990s', Available from URL: <http://www.econ.fukuoka-u.ac.jp/~ktamada/regionalpattern.pdf> (in Japanese).
- Ariga, K. (2007) 'Shinki Kosotsusha no Rodo Shijo (Labor Market of New High School Graduates)', in F. Hayashi (ed.), *Keizai Teitai no Genin to Seido (Causes and Institutions of Economic Stagnation)*, Tokyo: Keiso Shoboin (in Japanese).
- Brown, C. (1999) *Minimum Wages, Employment, and the Distribution of Income*, Chapter 32, pp. 2101–163. Amsterdam: Elsevier.
- Brown, C., C. Gilroy and A. Kohen (1983) 'The Effect of the Minimum Wage on Employment and Unemployment', *Journal of Economic Literature* 20, 487–528.
- Burkhauser, R. V., K. A. Couch and D. Wittenberg (1996) 'Who Gets What from Minimum Wage Hikes: A Re-estimation of Card and Krueger's Distributional Analysis in Myth and Measurement: The New Economics of the Minimum Wage', *Industrial and Labor Relations Review* 49, 547–52.
- Card, D. (1992) 'Using Regional Variation in Wages to Measure the Effects of the Federal Minimum Wage', *Industrial and Labor Relations Review* 46, 22–37.
- Card, D. and A. Krueger (1995) *Myth And Measurement*. Princeton, NJ: Princeton University Press.
- Cunningham, J. (1981) 'The Impact of Minimum Wages on Youth Employment, Hours of Work, and School Attendance: Cross-Sectional Evidence from the 1960 and 1970 Censuses,' in S. Rottenberg (ed.), *The Economics of Legal Minimum Wages*. Washington, DC: American Enterprise Institute.
- Ehrenberg, R. G. and A. J. Marcus (1982) 'Minimum Wages and Teenagers' Enrollment-Employment Outcomes: A Multinomial Logit Model', *Journal of Human Resources* 17, 39–58.
- Kambayashi, R., D. Kawaguchi and K. Yamada (2009) 'The Minimum Wage in a Deflationary Economy: Experience of Japan, 1994–2003,' Global-COE Hi-Stat Discussion Paper Series, gd09-074.
- Kawaguchi, D. (2009) 'Saitei Chingin to Koyo (Minimum Wage and Employment)', in I. Ohashi (ed.), *Rodo Juyo no Keizaigaku (Economics of Labour Demand)*. Kyoto: Minerva Publishing (in Japanese).
- Kawaguchi, D. and K. Yamada (2007) 'The Impact of Minimum Wage on Female Employment in Japan', *Contemporary Economic Policy* 25, 107–18.
- Kennan, J. (1995) 'The Elusive Effects of Minimum Wages', *Journal of Economic Literature* 33, 1949–65.
- Komamura, K. (2003) 'Teishotoku setai no suikei to seikatsu hogo (Estimation of Poor Households and Livelihood Assistance)', *Mita Shogaku Kenkyu* 46, 107–26 (in Japanese).
- Leigh, A. (2009) 'Who Benefits from the Earned Income Tax Credit? Incidence among Recipients, Coworkers and Firms', *B.E. Journal of Economic Analysis & Policy* (forthcoming).
- Manning, A. (2003) *Monopsony in Motion*. Princeton, NJ: Princeton University Press.
- Ministry of Health, Labor and Welfare (2005) 'Report by Saitei Chingin no Arikata Kenkyukai (Minimum Wage Study Group)' (online; cited 9 September 2009). Available from: <http://www.mhlw.go.jp/shingi/2005/03/s0331-7.html> (in Japanese).
- Neumark, D. and O. Nizalova (2007) 'Minimum Wage Effects in the Longer Run', *Journal of Human Resources* 42, 435–52.
- Neumark, D. and W. Wascher (1995) 'Minimum Wage Effects on Employment and School Enrollment', *Journal of Business and Economics Statistics* 13, 199–206.
- Neumark, D. and W. Wascher (2008) *Minimum Wages*. Cambridge, MA: MIT Press.
- Rothstein, J. (2008) 'The Unintended Consequences of Encouraging Work: Tax Incidence and the EITC', Mimeo-graph.
- Stigler, G. (1946) 'The Economics of Minimum Wage Legislation', *American Economic Review* 36, 358–65.
- Tachibanaki, T. and K. Urakawa (2007) *Study on Japanese Poverty (Nihon no Hinkon Kenkyu)*. Tokyo: University of Tokyo Press (in Japanese).
- Yugami, K. (2005) 'Todou fuken deta wo tsukatta tiiki roudou sijou no bunseki (Analysis of Regional Labor Market Based on Prefectural Data)', *Nihon Rodo Kenkyu Zasshi* 539, 4–16 (in Japanese).

Gender Salary Differences in Economics Departments in Japan

Ana Maria Takahashi¹

Department of Economics

University of Utah

JOB MARKET PAPER

Abstract: By using unique data about academic economists in Japanese universities, we conduct the first detailed study of gender salary differences within Japanese academia. Despite the common belief among Japanese academics that there cannot be a gender salary gap within the Japanese academia, our empirical results show that female academic economists earn 7% less than comparable males, after controlling for rank and detailed personal, job, institutional and human capital characteristics. The coefficient for the female dummy has almost the same value, regardless of whether rank is included or excluded from the salary equation, suggesting that there is a significant gender salary gap *within* each rank, but there are no gender differences in rank attainment. Our results contrast with findings from previous studies in the US and in the UK where most of the gender salary differences stem from rank attainment differences. We provide possible explanations for why our results are different. Refereed articles, the most commonly accepted measures of productivity, have no statistically significant effect on salary. The fixed-term employment is associated with 24% lower annual salary and private university has a salary premium of 16%.

1 Introduction

There is now a large body of literature on labor market discrimination. Labor market discrimination is a situation in which an otherwise identical person is treated differently by virtue of that person's gender or race (Heckman 1998). A large part of the literature on labor market discrimination focuses on the problem of gender salary differences. This paper seeks to explore the problem of gender salary differences among Japanese academic economists by using an original data set collected via a mail survey.

A great number of studies have already examined gender salary differences within the academic profession in the US and the UK (Broder 1993; McNabb and Wass 1997; Ward

¹Address: 949-7302, Niigata, Minamiuonuma, Urasa 1014-1, Flat 2007 A, Cell: 080-3397-3934; Tel/Fax: 025-777-5127, Japan; picioarea@economics.utah.edu

2001; Ginther and Hayes 2003; Blackaby et al. 2005). Most of these studies found that much of the gender salary differences in academia stems from the differences in rank attainment between males and females. By using data from Scottish universities, Ward (2001) finds that female academics receive 7% lower salary than males, after controlling for various productive and institutional characteristics, but without controlling for rank. When rank is controlled for, the estimated salary gap is reduced to 3.2% and becomes statistically insignificant. By using data from the Surveys of Doctorate Recipients in the US, Ginther and Hayes (2003) find negligible gender salary differences within rank, but substantial gender differences in rank attainment. Blackaby et al. (2005) use data from British universities, and find that the gender salary gap nearly halves when rank is controlled for.

In contrast to the abundance of literature in the US and the UK, there have been few studies about the gender salary gap within Japanese academia, despite a growing public interest in gender equality in Japan. In 1999, Japanese government enacted *the Basic Law for Gender Equal Society*. Consequently, in 2000, the Association of National Universities set out an *Action Plan* stipulating that each national university should increase the proportion of female academics to 20% by 2010. In 2008, the Ministry of Education, Sports, Science and Technology (MEXT) announced that it would provide 6 million yen in support, to selected universities, for each female academic hired². Despite such an interest in achieving gender equality in academia, little is known about gender differences within Japanese academia. A study conducted by the EPMEWSE³ (2008:18) shows that average salaries differ between male and female Japanese academics, after controlling for age. However, the study does not control for any other differences in characteristics between male and female academics. Therefore, a detailed study of gender salary differences is called for.

We conduct the first detailed study of gender salary differences within Japanese academia

²Asahi News, October 5, 2008.

³Japan Inter-Society Liaison Association Committee for Promoting Equal Participation of Men and Women in Science and Engineering (annex.jsap.or.jp/renrakukai/2007enquete/h19enquete_report.v2.pdf).

by using a data set that we collected via a mail survey administered in 2008. Our study focuses on academic economists. For each academic in our sample, our data contain detailed productivity characteristics, such as publication record and the amount of research grants, detailed information about career history, and detailed institutional characteristics.

There are at least two reasons why the study of gender salary gap within the Japanese academic labor market is of interest to researchers. First, there is a common belief among Japanese academics that there cannot be a gender salary gap within Japanese academia. In Japan, academics' salaries are determined by a rigid payment scheme, called the 'salary table', with distinct pay scales for each rank. It is commonly believed that age, experience, and education levels are the only criteria that determine the payment level. It is also believed that promotion is automatic, based on age and experience. If these beliefs were true, then salary would be a deterministic function of age, experience, and education, leaving little room for a gender salary gap. However, there have been no empirical investigations into whether such beliefs are in fact true. Therefore, whether or not there are gender salary differences within Japanese academia is still an open empirical question.

Second, there are important institutional differences between the US and Japanese academia; differences that may cause a very different pattern of gender salary gap in Japan compared to that in the US. In US academia, both salary determination and promotion decisions are departmental matters. Departments manage the budget for salaries and decide remuneration. Promotion decisions are also made at the department level, typically by a faculty committee. In contrast, in Japanese academia, only promotions decisions are made at the department level, typically by a faculty committee. The salary for each academic is typically determined by the university's personnel division (*jinji-bu*), and not by the department⁴. Thus, in Japanese academia, salary and promotion are determined by two different

⁴According to interviews conducted by the author. We interviewed several academics, including representatives of the Association of Private Universities of Japan (*Nihon Shiritsu Daigaku Kyoukai*), and of the Faculty and Staff Union of Japanese Universities (*Zenkouku Daigaku Kosen Kyoshokuin Kumiai*).

entities. This indicates that salary determination and promotion decisions are based on information with different levels of accuracy. Since salary is not decided at the department level, salary may be determined based on less accurate information about academic productivity. For example, the personnel division may not receive the full set of information about academic performance. Moreover, as the personnel divisions consist of non-academics, they may not be capable of assessing some aspects of productivity such as the quality of publications. On the contrary, promotion may be determined based on more accurate information, since it is determined at the department level by fellow academics. Information about academic productivity would be readily available to faculty, and research quality can be more accurately evaluated by academics than non-academics.

Since the accuracy of information is a central issue in theories of statistical discrimination, it is possible that statistical discrimination or prejudicial beliefs about female academics' productivity, if these exist, would manifest in terms of gender salary differences rather than in terms of promotion differences. Therefore, unlike in the US and the UK where promotion gaps are the main source of gender salary gap in academia, we may see a very different pattern of gender salary gap within Japanese academia.

We organize our paper as follows. Section 2 presents main theories of discrimination. Section 3 discusses relevant empirical literature. Section 4 briefly outlines the background information. Section 5 describes the empirical methodology. Section 6 presents the data and Section 7 presents the variables used for estimation. Section 8 contains the estimation results and Section 9 discusses the sample selection bias problem. Section 10 includes a discussion of the results and Section 11 concludes.