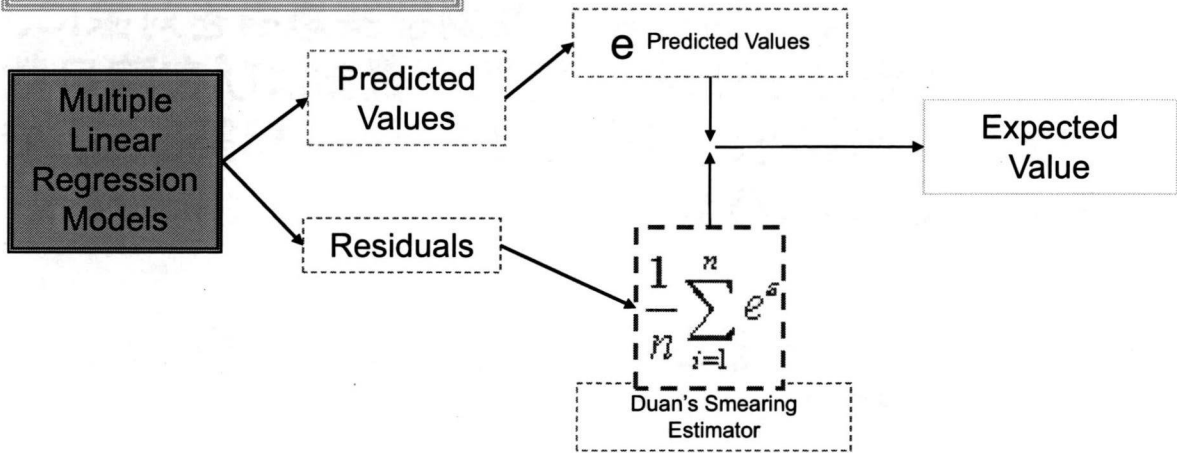




# Risk-adjustment: obtaining expected values

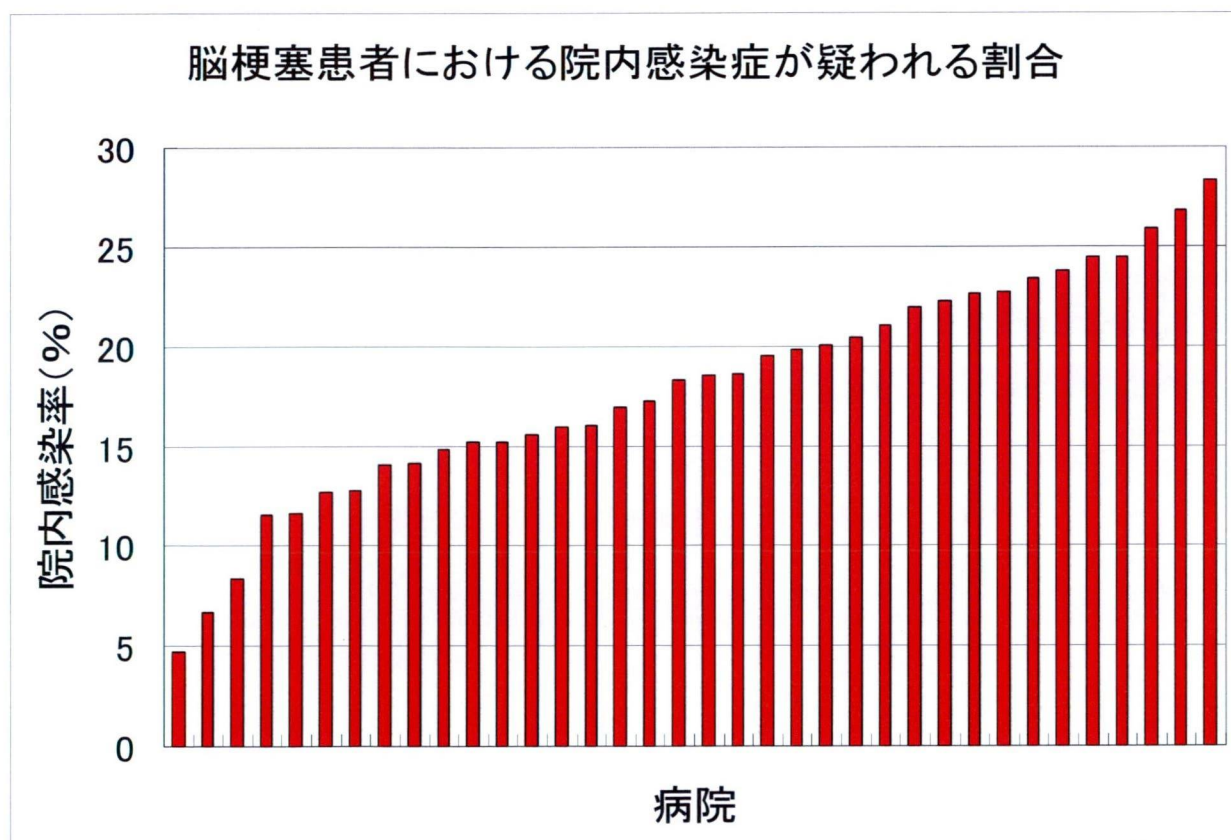
- 1. Ln[Total Hospital Charges (¥)]
- 2. Ln[Antibiotic Charges (¥)]
- 3. Ln[Post-surgical length of stay (Days)]



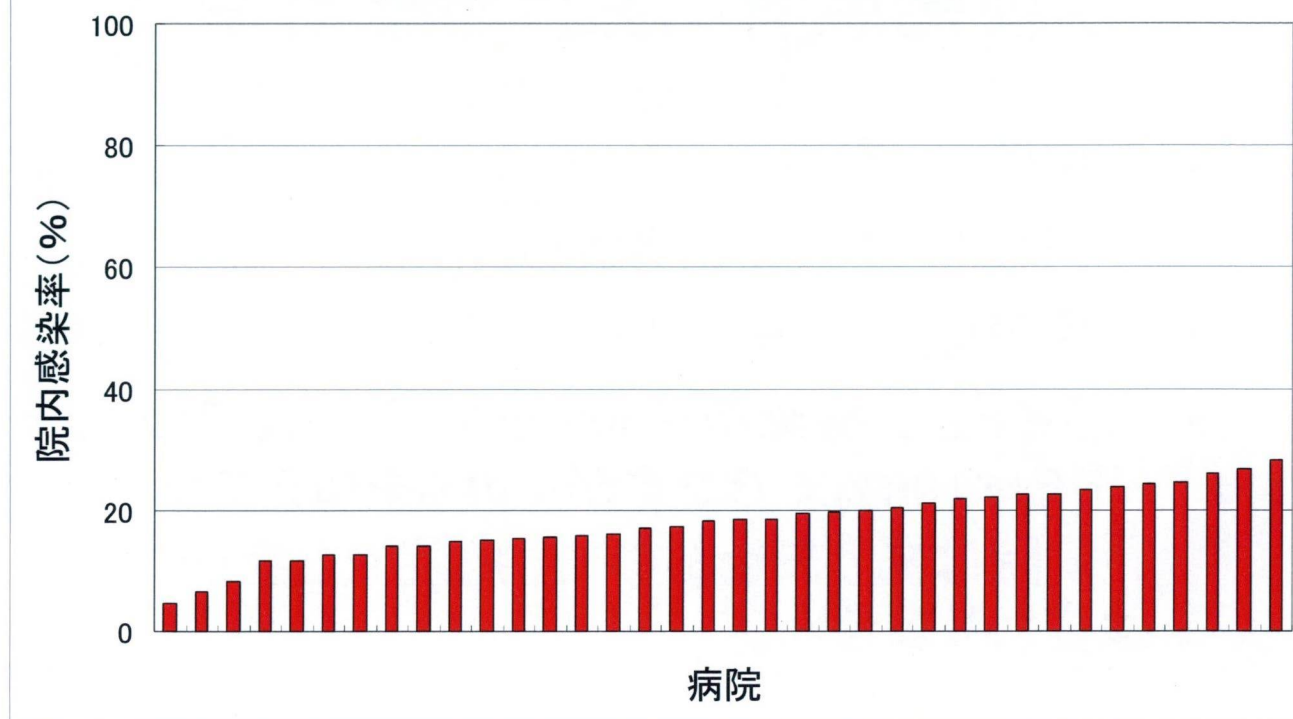
\*Evans et al., 2007

# 脳梗塞患者における感染率

- 病院数: 36病院
- 症例数8,861人の患者さん
- 感染率は4.7%~28.3%
- スライド2は感染率を30%まで切って、スライド3は100%までですが、30%を超えてない病院はありませんので、病院数と症例数は変わりません。



## 脳梗塞患者における院内感染症が疑われる割合



## 感染率について

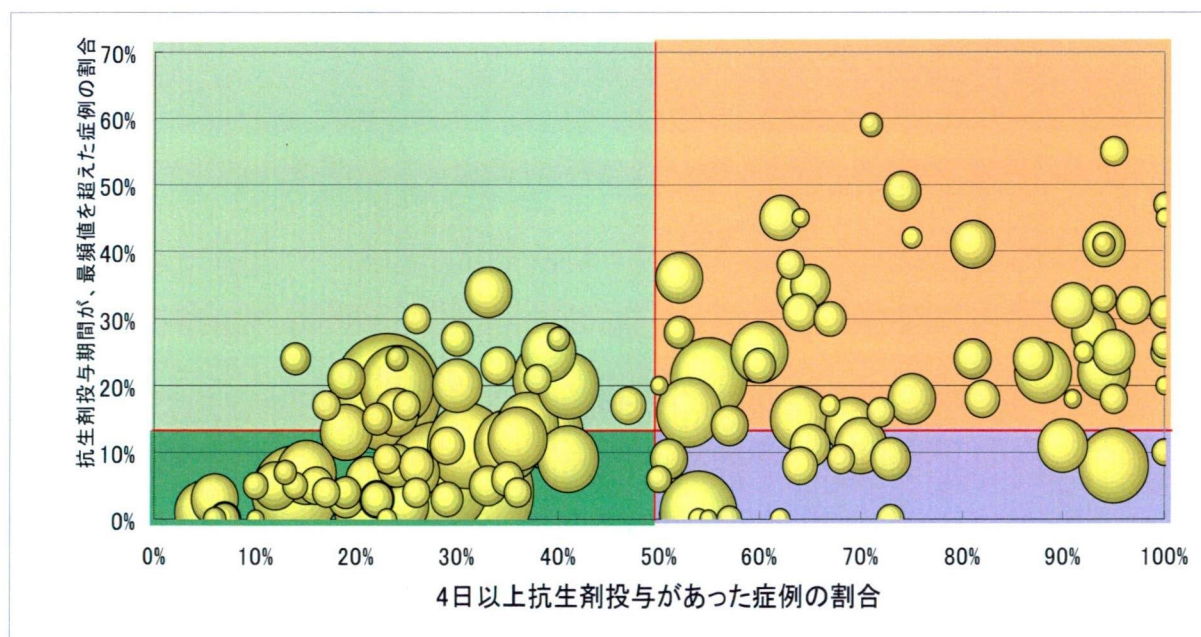
- 感染率についてですが、下記の先行研究により、脳梗塞患者では10%~41.5%までの院内感染率があるそうです。したがって今回の研究はこの中に入っています。
- Chevret S, Hemmer M, Carlet J, Langer M. Incidence and risk factors of pneumonia acquired in intensive care units: results from a multicenter prospective study on 996 patients: European Cooperative Group on Nosocomial Pneumonia. *Intensive Care Med* 1993; 19:256-264
- Barsic B, Beus I, Marton E, Himbele J, Klinar I. Nosocomial infections in critically ill infectious disease patients: results of a 7-year focal surveillance. *Infection* 1999; 27:16-22
- Yilmaz G, Cevik M, Erdinc FS, Ucler S, Tulek N. The risk factors for infections acquired by cerebral hemorrhage and cerebral infarct patients in a neurology intensive care unit in Turkey. *Jpn J Inf Dis* 2007; 60(23):87-91
- Hilker R, Poetter C, Findeisen N, et al. Nosocomial pneumonia after acute stroke – implications for neurological intensive care medicine. *Stroke* 2003;34:975-981
- Upadya A, Thorevska N, Sena K, Manthous C, Amoateng-Adjepong Y. Predictors and Consequences of pneumonia in critically ill patients with stroke. *J Crit Care* 2004;19(1):16-22
- Hassan A, Khealani B, Shafqat S, et al. Stroke-associated pneumonia: microbiological data and outcome. *Singapore Med J* 2006;47(3):204-207
- Ersoz M, Ulusoy H, Oktar M, Akyuz M. Urinary tract infection and bacteriuria in stroke patients: frequencies, pathogen, microorganisms, and risk factors. *Am J Phys Med Rehabil* 2007;86:734-41



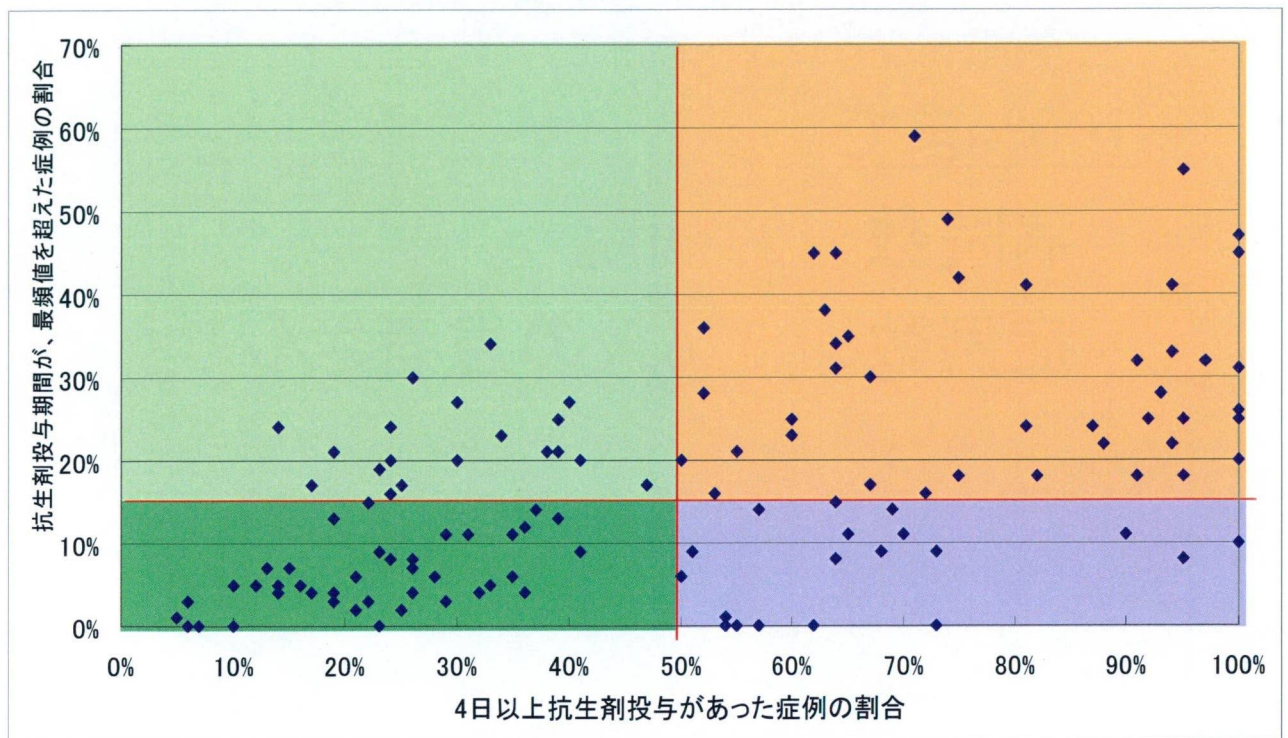
# 胃切除術患者

- 100%まで
  - 病院数: 123病院
  - 症例数: 7,326人の患者さん

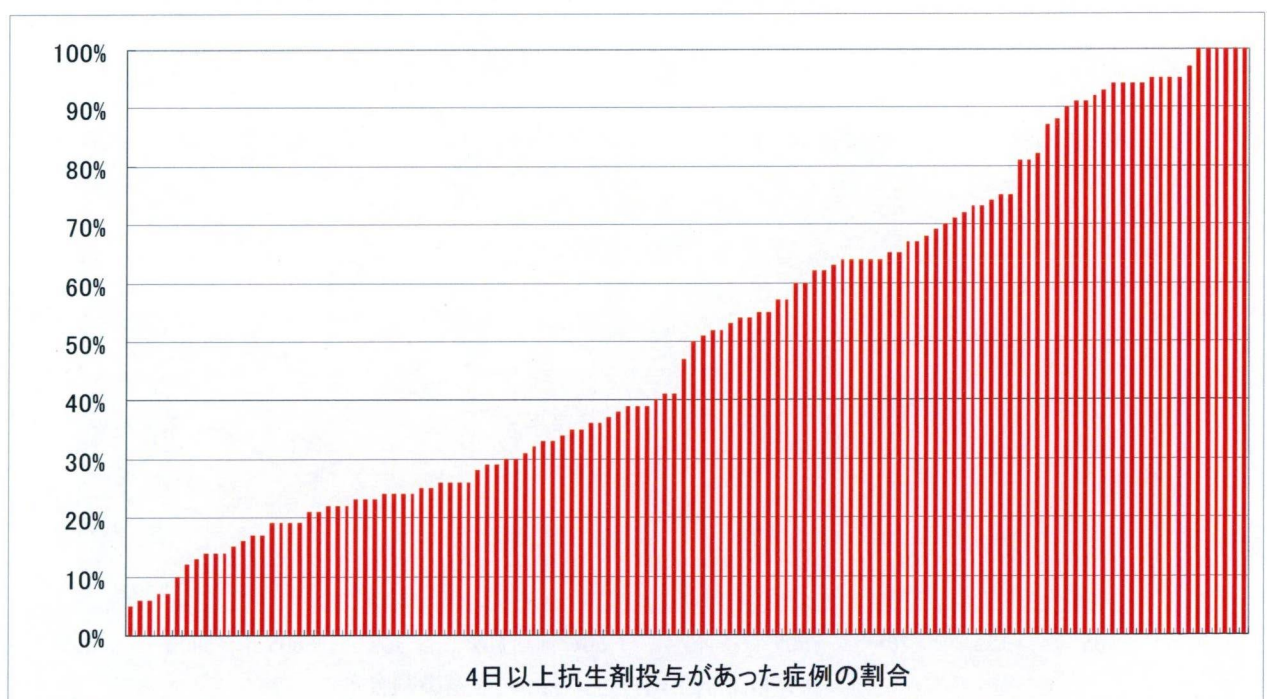
抗生剤投与期間が、最頻値を超えた症例の割合と  
4日以上抗生剤投与があった症例の割合(100%まで)



抗生剤投与期間が、最頻値を超えた症例の割合と  
4日以上抗生剤投与があった症例の割合(100%まで)

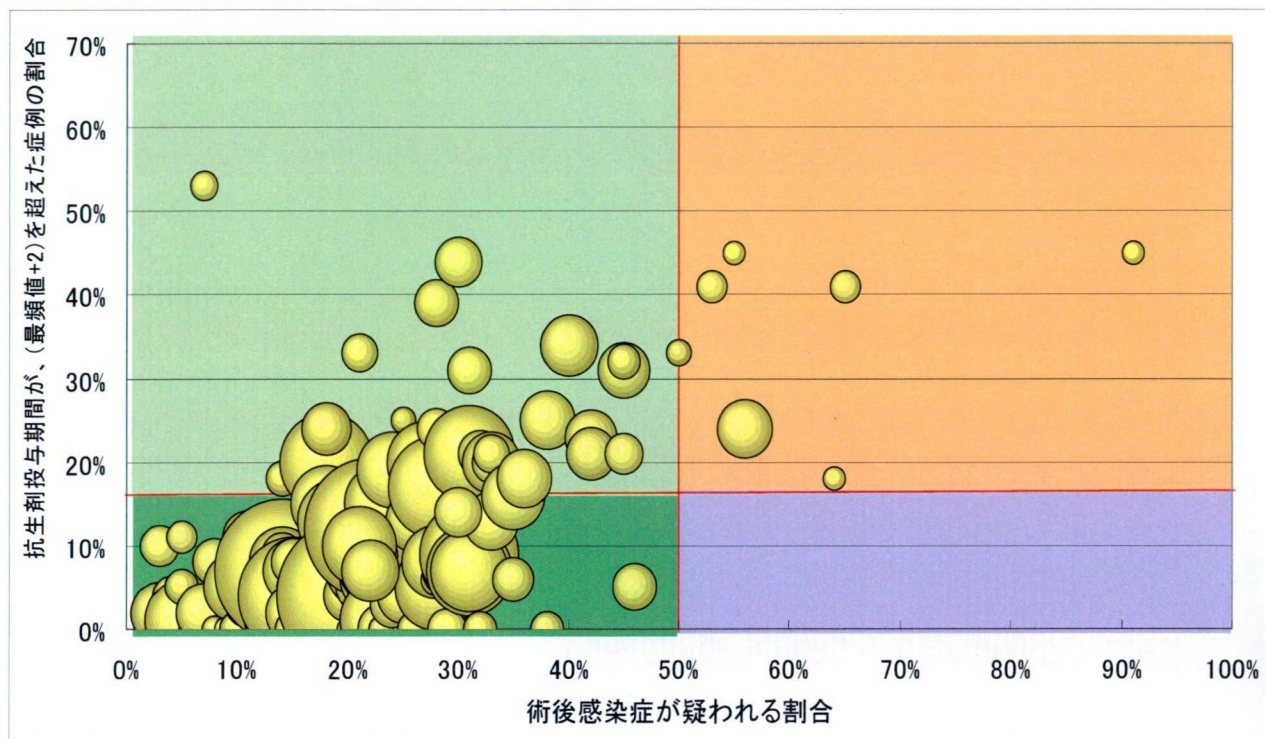


4日以上抗生剤投与があった症例の割合(100%まで)

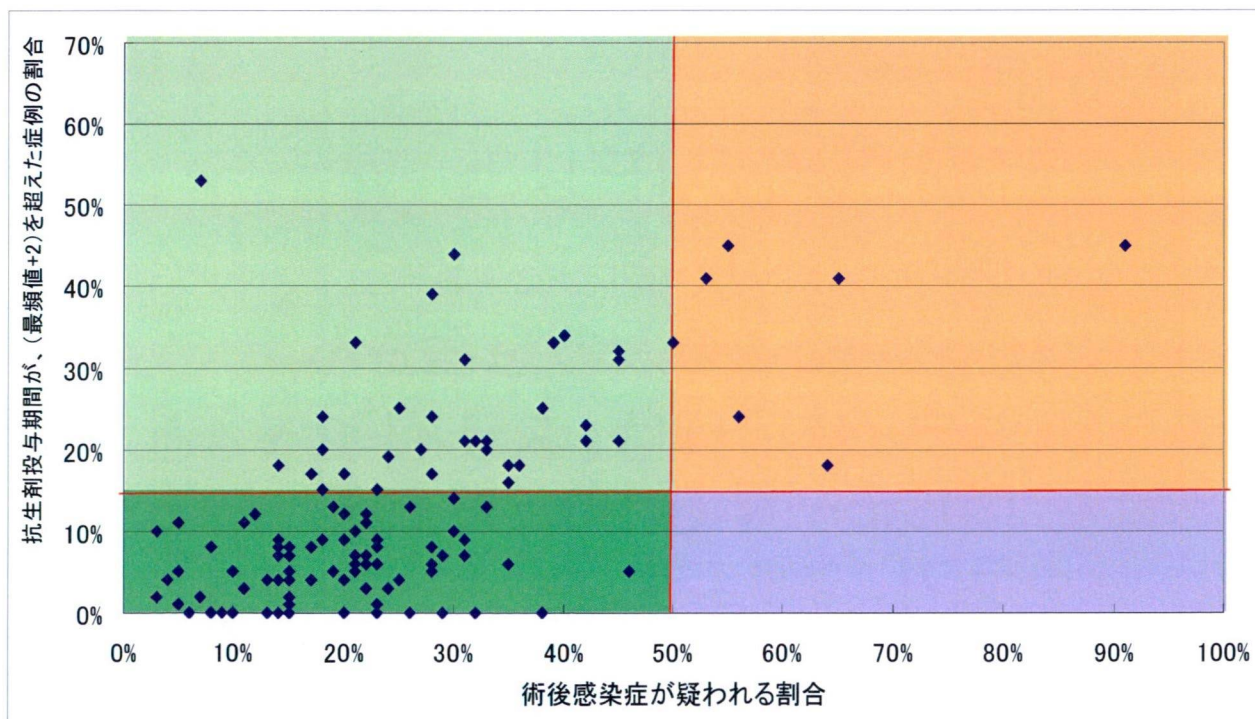




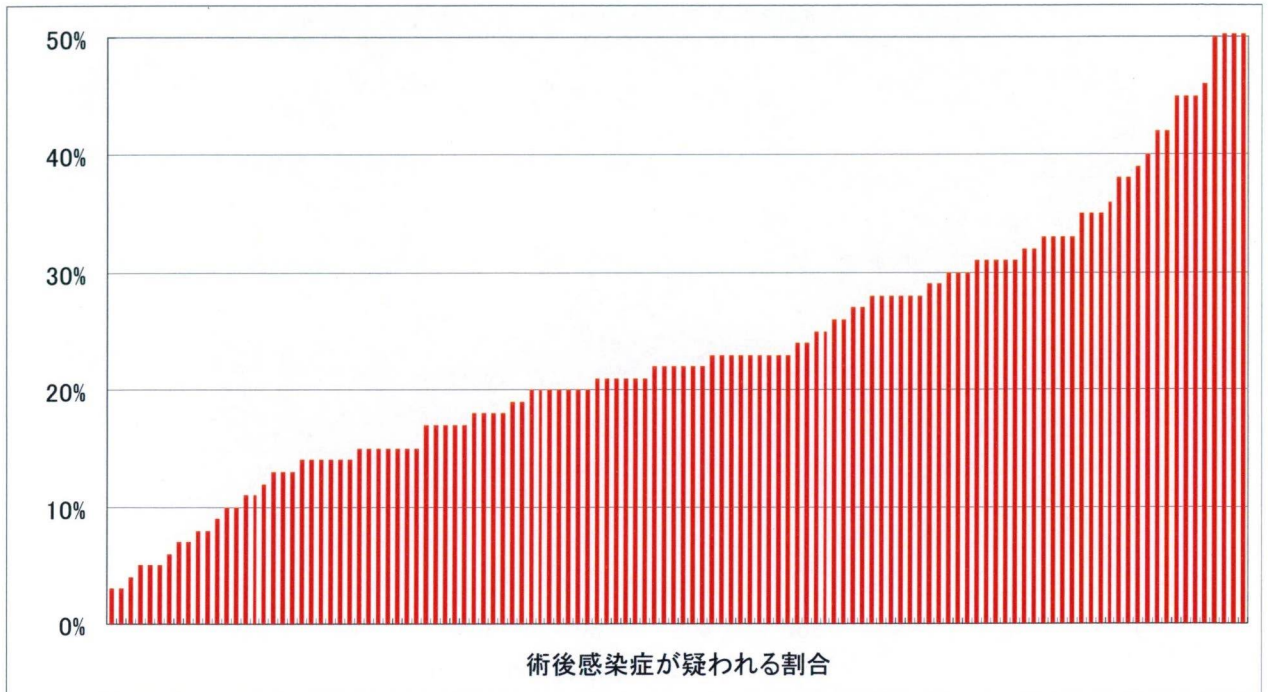
抗生剤投与期間が、(最頻値+2日間)を超えた症例の割合  
と術後感染症が疑われる割合(100%まで)



抗生剤投与期間が、(最頻値+2日間)を超えた症例の割合  
と術後感染症が疑われる割合(100%まで)



## 術後感染症が疑われる割合(100%まで)

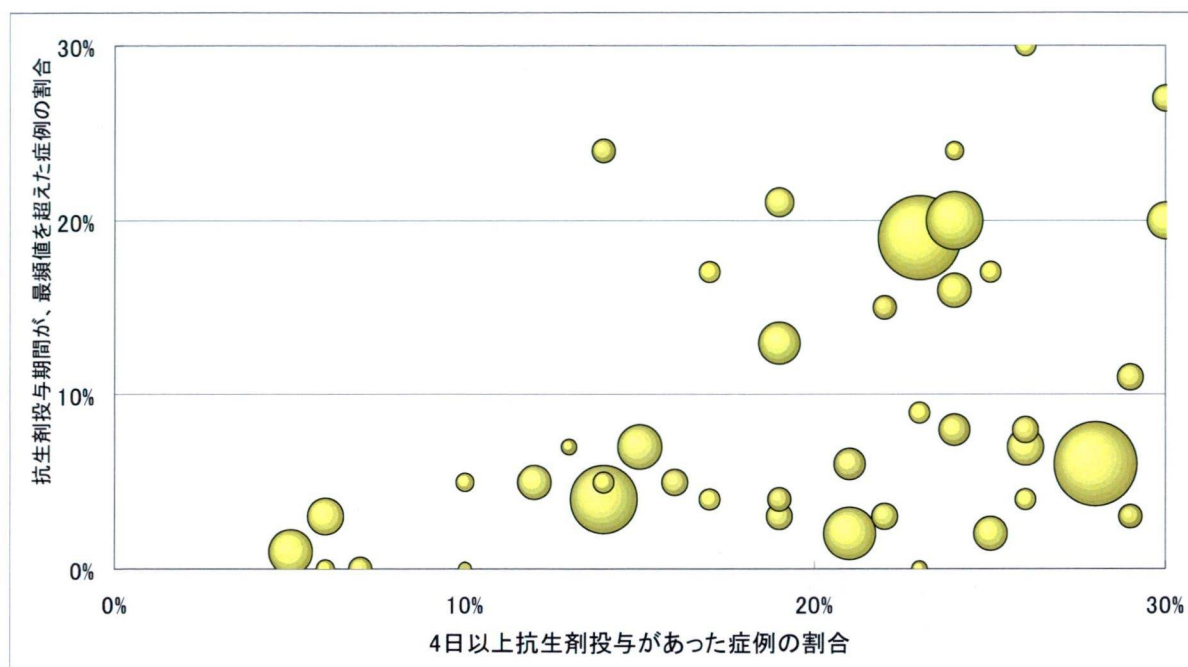


## 胃切除術患者

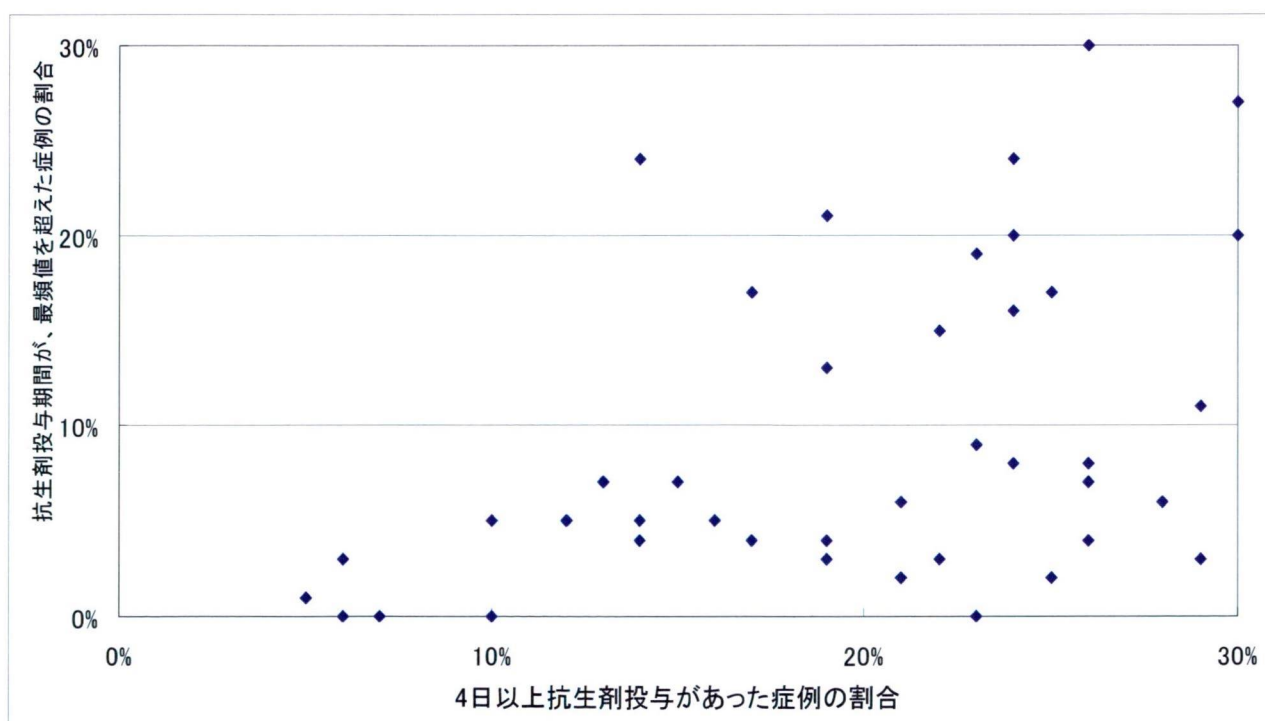
- 30%まで
  - 予防的投与が4日以上
    - 病院数: **40病院**
    - 症例数 **2,250人** の患者さん
    - スライド9~11は、スライド2~4と同じデータで、30%まで切ったグラフになります。



抗生剤投与期間が、最頻値を超えた症例の割合と  
4日以上抗生剤投与があった症例の割合(30%まで)

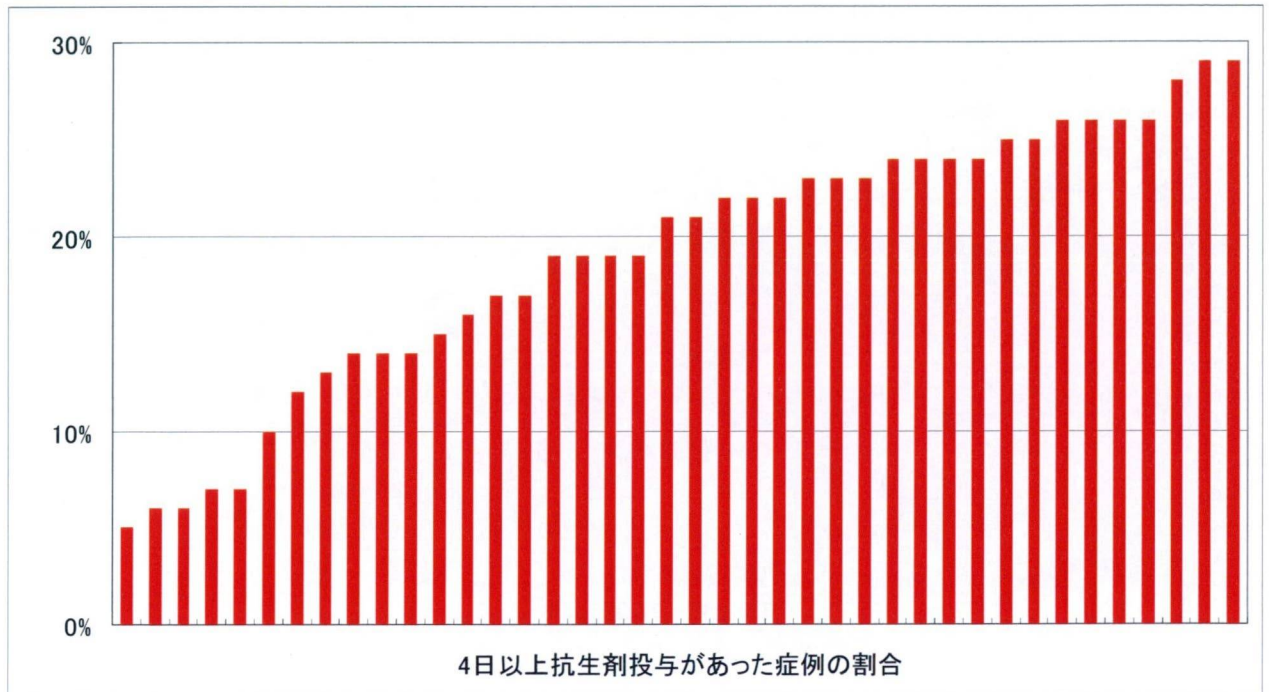


抗生剤投与期間が、最頻値を超えた症例の割合と  
4日以上抗生剤投与があった症例の割合(30%まで)





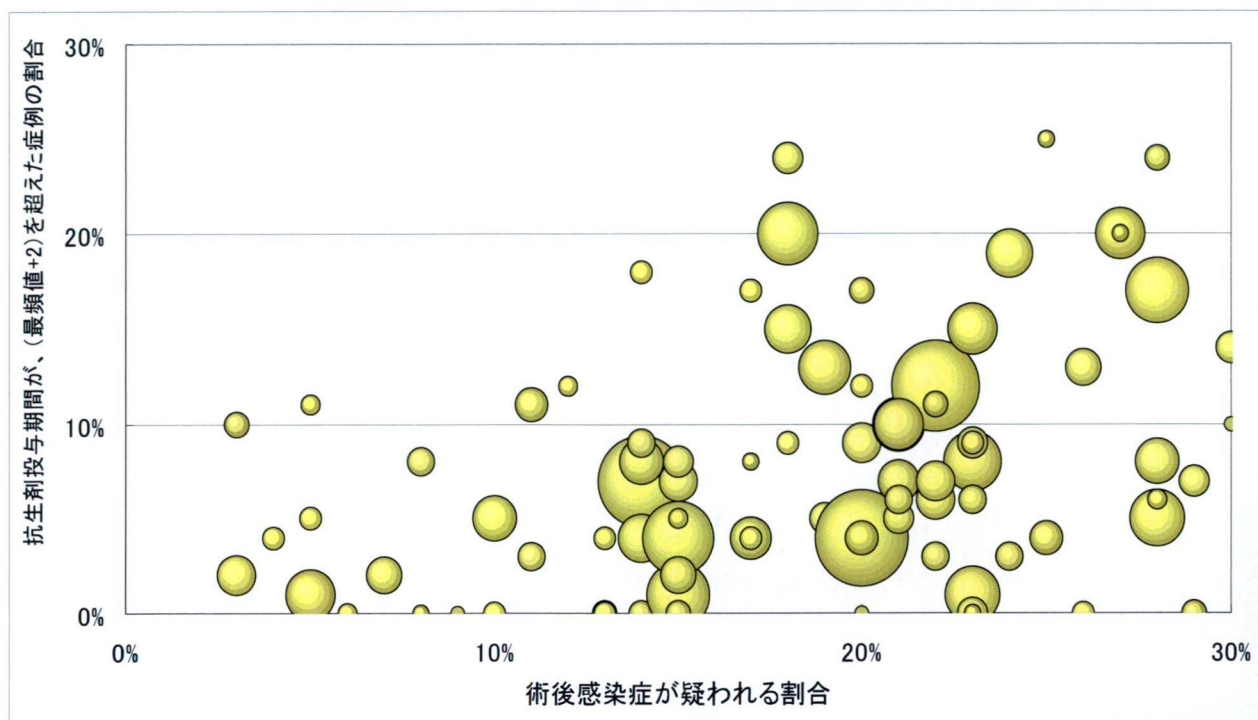
## 4日以上抗生剤投与があった症例の割合(30%まで)



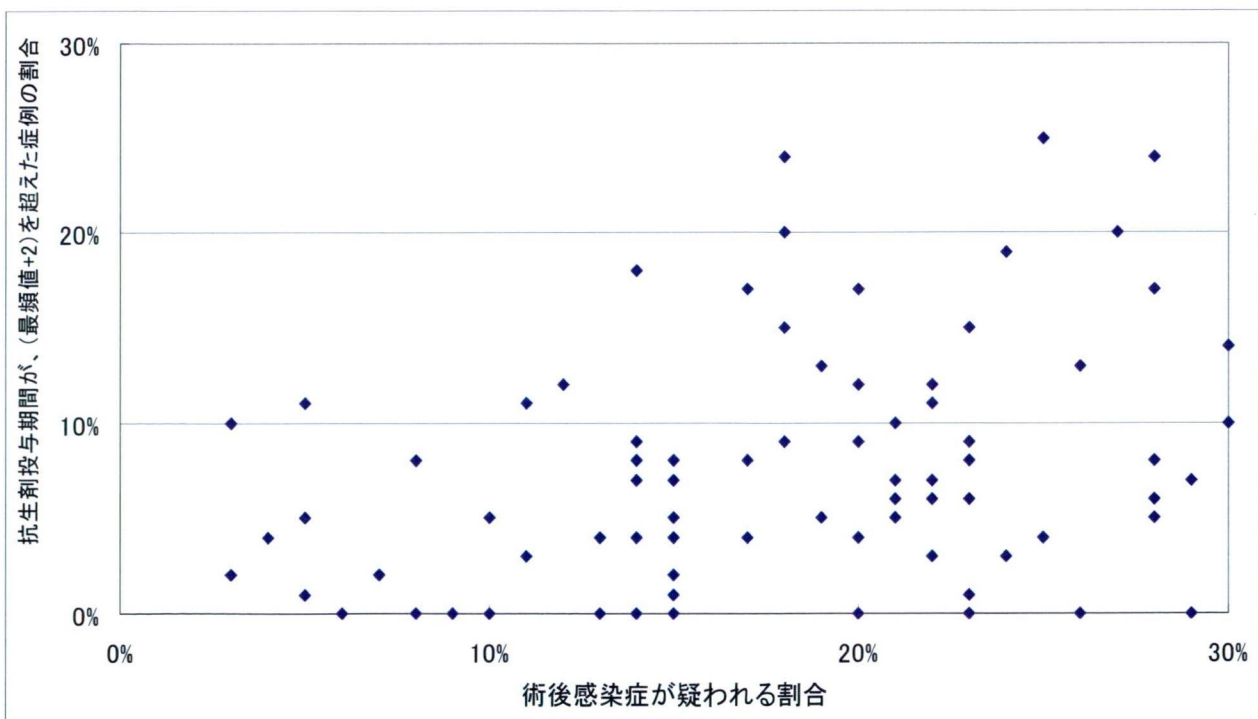
## 胃切除術患者

- 30%まで
  - 術後感染症が疑われた症例
    - 病院数: 85病院
    - 症例数 5,549人の患者さん
    - スライド13~15は、スライド5~7と同じデータで、30%まで切ったグラフになります。

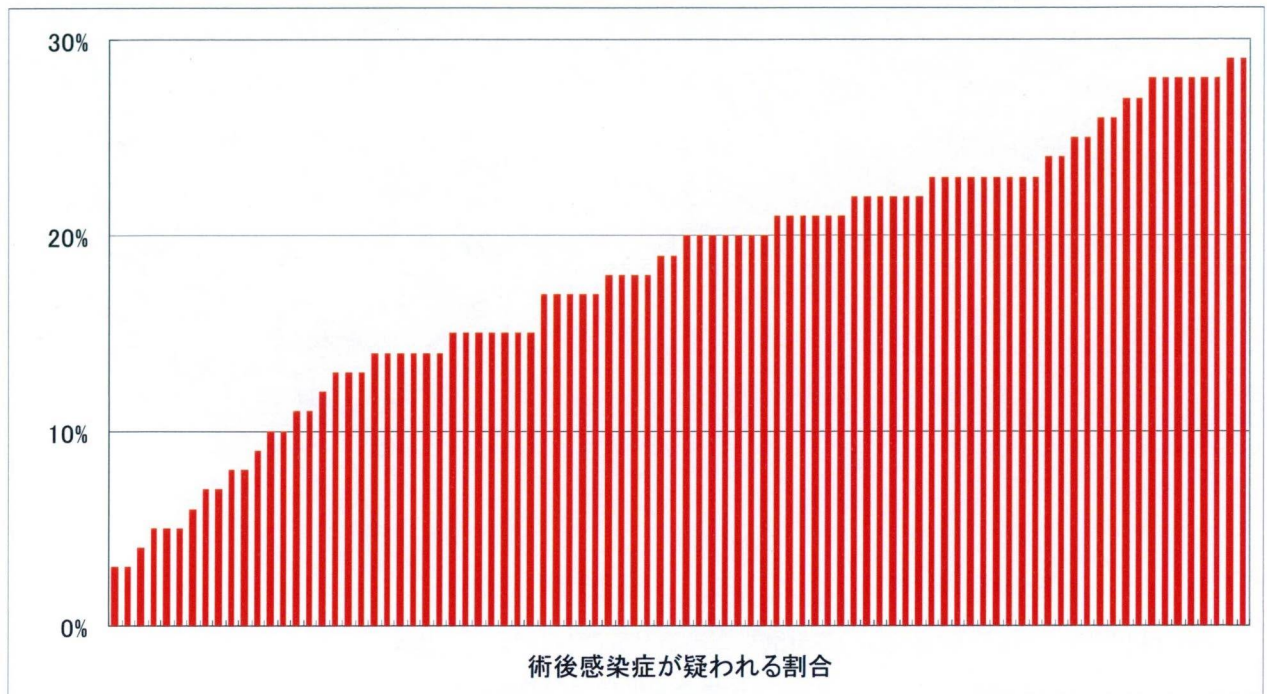
## 抗生剤投与期間が、(最頻値+2日間)を超えた症例の割合 と術後感染症が疑われる割合(30%まで)



## 抗生剤投与期間が、(最頻値+2日間)を超えた症例の割合 と術後感染症が疑われる割合(30%まで)



## 術後感染症が疑われる割合(30%まで)





# Risk-adjusted increases in medical resource utilization associated with health care-associated infections in gastrectomy patients

Jason Lee MSc,<sup>1</sup> Yuichi Imanaka MD PhD MPH,<sup>2</sup> Miho Sekimoto MD PhD MPH,<sup>3</sup> Tatsuro Ishizaki MD PhD MPH,<sup>3</sup> Kenshi Hayashida MSc PhD,<sup>3</sup> Hiroshi Ikai MD<sup>4</sup> and Tetsuya Otsubo MSc<sup>1</sup>

<sup>1</sup>PhD Candidate, <sup>2</sup>Professor, <sup>3</sup>Lecturer, <sup>4</sup>Instructor, Department of Healthcare Economics and Quality Management, Kyoto University Graduate School of Medicine, Kyoto, Japan

## Keywords

cross infections, medical resources, risk adjustment

## Correspondence

Professor Yuichi Imanaka  
Department of Healthcare Economics and Quality Management  
Kyoto University Graduate School of Medicine  
Yoshida Konoe-cho  
Sakyo-ku  
Kyoto 606-8501  
Japan  
E-mail: imanaka@pbh.med.kyoto-u.ac.jp

Accepted for publication: 5 August 2008

doi:10.1111/j.1365-2753.2009.01121.x

## Abstract

**Rationale, aims and objectives** Quantifying the impact of health care-associated infections (HAIs) on medical resource utilization is necessary for payers and providers to appropriately allocate limited resources for interventions. However, previous studies tend to involve single institutions and do not take into account patient and practice variations between several hospitals. The objective of this study was to conduct a multi-institutional risk-adjusted comparison of HAI-associated impact on medical resources in gastrectomy patients in Japan.

**Methods** Health care-associated infections were identified using a combination of International Classification of Diseases-10 codes and antibiotic utilization patterns in 1058 gastrectomy patients from 10 Japanese hospitals. Multiple linear regression models and risk adjustment were used to analyse the impact of HAIs on: (1) total hospital costs; (2) antibiotic costs; and (3) post-surgical length of stay (LOS).

**Results** Overall HAI incidence for the database was 20.3%, with a range of 8.8–29.6% among the 10 hospitals. Regression models showed that HAIs were significantly associated with increases in all three indicators. Risk-adjusted comparisons revealed that HAIs were associated with an increase of US\$2767 (range: US\$1035–6513) in overall hospital cost, US\$202 (US\$98.8–764.6) antibiotic costs and 10.6 (4.7–24 days) post-surgical LOS days. **Conclusions** Even after adjusting for patient characteristics and other variables, there was still a high degree of variation observed in the impact of HAIs on total hospital costs and antibiotic costs from a third-party payer's perspective and post-surgical LOS among the 10 hospitals. This information can increase the efficiency of allocation of resources for interventions to reduce HAIs.

## Introduction

The control of health care-associated infections (HAIs) is a particularly important yet elusive goal for increasing the quality of health care. In addition to decreased quality of life [1,2] and increased morbidity and mortality [3], HAIs represent potentially preventable increases in medical resource utilization [4–7]. These increases in resource utilization must first be quantified in order for providers and payers to decide how to appropriately allocate limited resources for preventive measures.

While studies that estimate the impact of HAIs on resource utilization generally involve data from one or two hospitals [8–12], a multi-institutional comparison would provide a wider contextual

backdrop in which to interpret the results of each hospital. However, risk adjustments must first be conducted in order to account for practice variations and patient characteristics before meaningful comparisons can be made. To the best of our knowledge, there is no current risk-adjusted multi-institutional comparison of the impact of HAIs on medical resource utilization in a Japanese setting.

The aforementioned studies generally involved chart reviews [8,9] or prospective studies [10–12]. However, these methods are extremely labour-intensive and tend to be self-limiting in terms of population sample size and study period duration. An alternative approach is the use of reimbursement data or administrative data, which provides a standardized and detailed database that can be

used for multi-institution comparative studies. The hospital payment system in Japan uses an identical reimbursement schedule for all acute-care hospitals, and it is required for hospitals to produce data in similar formats. Therefore, these data are easily obtained, analysed and used to compare multiple institutions in a Japanese setting.

Infection identification using administrative data can be conducted by the use of International Classification of Diseases (ICD) codes. However, the use of these codes alone to identify HAIs has been found to have poor identification capability [13,14]. In order to improve identification capability, we chose to complement ICD code-based identification with the use of antibiotic utilization patterns as a clinically relevant indicator of infection incidence.

The objective of this study was to quantify increases in medical resource utilization associated with infections in gastrectomy patients from several Japanese hospitals, and to conduct a risk-adjusted comparison of performance between the hospitals.

## Methods

### Patient selection

Patient information was obtained from hospitals enrolled in the Quality Indicator/Improvement Project (QIP), a database of 16 Japanese hospitals (at the time of study) that consists of clinical and claims data on discharged patients. We selected patients with gastric cancer who were hospitalized for the purpose of gastrectomy as our target population as gastric cancer occurs with very high incidence in Japan [15]. By focusing on patients who had only undergone gastrectomies, we reduced the intrinsic variation associated with procedural differences.

Data were obtained on patients who were admitted from April 2004 to January 2007. Total and subtotal gastrectomies for gastric cancer performed were identified using the Diagnostic Procedure Combination coding system for reimbursement, a national fee schedule introduced into Japan in 2003. The sampled hospitals had a bed size ranging from 280 to 1106 beds, with a mean of 561 beds.

Patients were excluded if they fulfilled any of the following criteria: (1) patients who had died during admission; (2) patients who were given antibiotics before the day when gastrectomy was performed; (3) patients who had other surgeries before gastrectomy; (4) patients admitted directly from the emergency ward; and (5) patients with missing data with regards to antibiotic payments and anaesthesia time. Finally, hospitals with fewer than 30 cases were excluded from analysis.

Clinical diagnoses were conducted using ICD-10 (10th revision of ICD codes). Pre-existing co-morbidity conditions were analysed using the Charlson co-morbidity index (Dartmouth-Manitoba version) [16,17].

### Identification of post-surgical HAI

Antibiotic utilization patterns were discerned using daily drug claims data, which allowed us to identify antibiotic administration, type of antibiotic and dosage on a day-to-day basis. We used antibiotic utilization patterns that would not occur in the simple pre-surgical prophylaxis observed in uninfected patients. Patients were deemed to have HAIs if they fell into any of the following categories: (1) post-admission complications with ICD-10 codes

indicating HAI, adapted from the Pennsylvania Health Care Cost Containment Council (PHC4) [13]; (2) the use of three or more different types of antibiotics during their hospital stay; (3) the use of two types of antibiotics in which a second antibiotic type was added or changed midway through the course; (4) more than 1 day of antibiotics given in a separate time frame in which no surgery was conducted; and (5) the use of more than 3 days of antibiotics starting from the day of surgery. The final sample size ( $N$ ) used for analysis was 1058 patients from 10 hospitals.

### Resource utilization indicators

Total hospital costs and antibiotic costs from a third-party payer's perspective, as well as post-surgical length of stay (LOS), were used as indicators of medical resource utilization.

### Statistical analysis

Analyses were performed using Dr. SPSS VER. II 11.0.1J (SPSS Inc., Chicago, IL, USA);  $P$ -values reported were two-tailed and the level of significance was set at  $P < 0.05$ .

Multiple linear regression models were developed to estimate the impact of HAIs on medical resource utilization. Total hospital costs, antibiotic costs and post-surgical LOS were natural logarithm transformed before being used as dependent variables in the regression models. The independent variables used were age (equal to and above 70 years), gender, post-surgical infection, co-morbidities, pre-surgical LOS, type of gastrectomy (total or partial), number of surgeries, surgery duration and hospital stratification. The age of 70 years was selected as preliminary analysis showed that the proportions of patients above and below this age were approximately equal, and univariate analysis showed highly significant association with HAI presence/absence (data not shown). Anaesthesia time (minutes) was used as a proxy indicator for surgery duration.

Hierarchical regression models were developed, with covariates grouped into patient characteristics, co-morbidities and surgery-associated factors. The first model for each dependent variable excluded the use of hospitals as dummy variables, while the second model included hospital stratification.

Risk-adjusted values were obtained using the first regression models as described previously, but with hospital stratification and post-surgical infection status excluded as variables. These regression models were then used to produce predicted values for each of the three medical resource utilization indicators. As the dependent variables were logarithmic transformed before analysis, the exponentials of the predicted values were calculated in order to obtain expected values with units of Japanese Yen and days. Duan's smearing coefficient was applied to correct for retransformation bias [18,19]. Risk adjustment was conducted by dividing each hospital's mean observed value ( $O$ ) by the mean expected value ( $E$ ), and multiplying the result by the mean value of the entire data set.

Final estimates were adjusted for inflation using the Japanese consumer price index (to adjust all values to the 2007 Yen value) and then converted to US dollars using Purchasing Power Parities (Japanese 100 Yen = US\$0.85; April 2007) [20].

**Results**

The distribution of patient characteristics and gastrectomy type are presented in Table 1. The population was skewed towards an older patient population, with 47.9% of the subjects equal to or more than 70 years of age. In all, 9.7% of the study population suffered from diabetes, and 9.5% exhibited metastatic cancer. There were more patients (64.2%) who underwent subtotal gastrectomies than those who underwent total gastrectomies.

Figure 1 shows HAI incidence in total and at the hospital level. In general, there was an infection incidence of 20.3% (215 cases) in our sample population, and a range from 8.8% (Hospital A) to 29.6% (Hospital E). A breakdown of infection cases by identification method shows that the use of ICD-10 codes resulted in 85 cases (8.03%) identified. In all, 72 of these cases were also identified by antibiotic utilization. Of the cases identified by ICD codes, 70% were 'unspecified infections following a procedure', 20% were specified as 'surgical site infections' (SSIs), and the remaining 10% consisted of unspecified pneumonia, septicemia

and urinary tract infections. There were an additional 130 patients identified by antibiotic utilization alone.

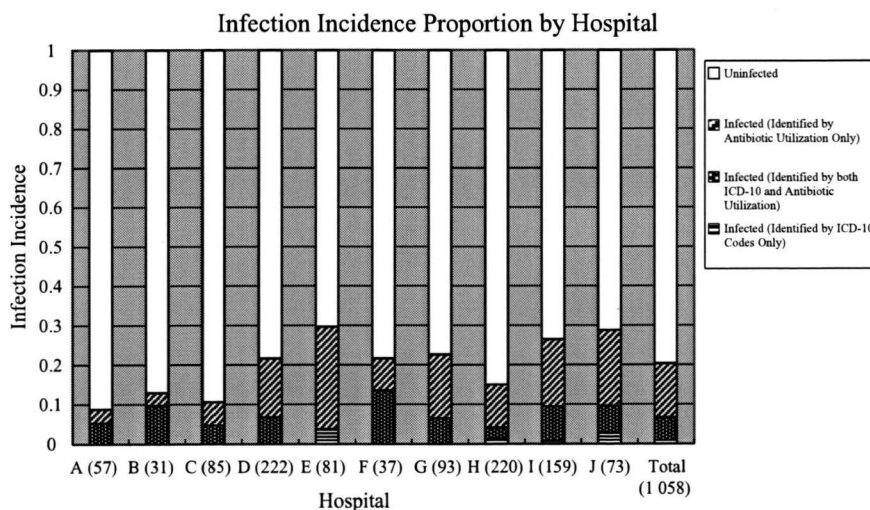
Furthermore, while 'the use of >3 days of antibiotics starting from the day of surgery' was included as a criterion for infection identification, all of the cases that were identified as infected patients by this particular criterion were also identified by at least one of the other four criteria.

The regression models used are shown in Table 2. Cases with post-surgical HAIs showed highly significant association in all three indicators of increased medical resource utilization ( $P < 0.001$ ) in all of the six models constructed.

The first regression model constructed was able to account for 60.7% of variation observed in total hospital costs. With hospital stratification, the model accounted for 64.3% of variation. Age and all surgery-associated factors were significantly associated with total hospital costs, while gender was not. Congestive heart failure was the only co-morbid condition that was consistently significant in both models for total hospital costs, and diabetes showed significance when hospital stratification was included in analysis.

Hospital	A	B	C	D	E	F	G	H	I	J	Total	%
N	57	31	85	222	81	37	93	220	159	73	1058	100
Patient characteristics												
Female	16	8	30	61	28	12	31	74	59	24	343	32.4
Age (≥70 years)	24	16	52	102	41	15	30	102	92	33	507	47.9
Acute myocardial infarction	2	0	1	0	4	0	1	2	5	0	15	1.4
Congestive heart failure	0	1	0	0	1	1	0	0	4	0	7	0.7
Peripheral vascular disease	1	0	0	1	0	0	0	1	0	1	4	0.4
Cerebral vascular disease	3	1	3	7	7	0	3	3	6	2	35	3.3
Pulmonary disease	2	1	4	13	3	1	1	6	8	1	40	3.8
Peptic ulcer	3	2	8	7	2	1	0	9	13	9	54	5.1
Liver disease	0	0	0	3	1	0	0	1	1	0	6	0.6
Diabetes	10	4	10	30	3	2	4	16	21	3	103	9.7
Diabetes w/complications	0	1	0	1	7	0	0	1	2	0	12	1.1
Renal disease	2	0	0	2	1	0	2	1	7	1	16	1.5
Metastatic cancer	8	3	5	15	1	13	1	38	12	4	100	9.5
Gastrectomy type												
Subtotal	37	19	42	153	54	23	69	148	99	35	679	64.2

**Table 1** Distribution of patients, patient characteristics and type of gastrectomy by hospital and in total



**Figure 1** Infection incidence proportion by hospital and in total. White sections represent patients uninfected with HAIs; sections with diagonal lines represent infected patients identified by antibiotic utilization only; sections with dots represent infected patients identified by both International Classification of Diseases (ICD)-10 codes and antibiotic utilization; sections with horizontal lines represent infected patients identified by ICD-10 codes only (only in Hospitals E, H, I and J).



**Table 2** Regression models showing association between patient characteristics, co-morbid conditions, surgery associated factors and hospital stratification on total hospital costs, antibiotic costs, and post-surgical length of stay

Models	Total hospital costs 1			Total hospital costs 2			Antibiotic costs 1			Antibiotic costs 2			Post-surgical length of stay 1			Post-surgical length of stay 2		
	Beta	B	P-value	Beta	B	P-value	Beta	B	P-value	Beta	B	P-value	Beta	B	P-value	Beta	B	P-value
<i>R</i> <sup>2</sup>	0.607			0.643			0.349			0.661			0.282			0.322		
Patient characteristics																		
Age (≥70 years)	0.061	0.032	0.002	0.064	0.034	0.001	0.009	0.023	0.713	0.008	0.020	0.662	0.083	0.078	0.002	0.072	0.068	0.007
Gender	0.006	0.003	0.779	-0.002	-0.001	0.929	-0.015	-0.039	0.546	-0.004	-0.010	0.835	0.053	0.053	0.049	0.045	0.046	0.084
Post-surgical infection	0.325	0.216	<0.001	0.315	0.209	<0.001	0.580	1.716	<0.001	0.593	1.755	<0.001	0.404	0.473	<0.001	0.401	0.469	<0.001
Co-morbid conditions																		
Acute myocardial infarction	0.022	0.050	0.252	0.010	0.022	0.597	-0.050	-0.502	0.047	-0.023	-0.232	0.208	0.025	0.099	0.343	0.013	0.051	0.619
Congestive heart failure	0.057	0.189	0.004	0.055	0.182	0.004	-0.027	-0.397	0.286	0.021	0.311	0.253	0.047	0.276	0.075	0.043	0.247	0.103
Peripheral vascular disease	-0.008	-0.035	0.679	-0.007	-0.029	0.720	0.013	0.256	0.596	0.014	0.280	0.425	0.009	0.072	0.719	0.013	0.099	0.614
Cerebral vascular accident	0.014	0.022	0.462	0.008	0.011	0.682	0.000	0.003	0.984	0.016	0.105	0.389	-0.004	-0.010	0.882	-0.009	-0.025	0.716
Pulmonary disease	-0.023	-0.032	0.246	-0.014	-0.020	0.447	0.013	0.081	0.606	0.000	-0.002	0.986	0.005	0.013	0.842	0.009	0.022	0.724
Peptic ulcer	-0.002	-0.003	0.905	0.000	0.000	0.988	-0.034	-0.181	0.184	-0.024	-0.127	0.202	-0.004	-0.009	0.881	-0.006	-0.014	0.808
Liver disease	0.016	0.056	0.420	0.021	0.075	0.254	0.002	0.033	0.933	-0.002	-0.024	0.933	0.021	0.132	0.423	0.023	0.141	0.378
Diabetes	0.024	0.021	0.228	0.037	0.034	0.046	0.020	0.079	0.436	0.000	-0.001	0.989	0.026	0.042	0.318	0.034	0.054	0.187
Diabetes w/complications	0.035	0.089	0.073	0.024	0.061	0.206	-0.021	-0.234	0.410	0.034	0.387	0.064	0.060	0.265	0.024	0.038	0.168	0.151
Renal disease	0.032	0.071	0.097	0.025	0.054	0.191	-0.046	-0.453	0.065	-0.043	-0.418	0.019	0.012	0.045	0.658	0.007	0.025	0.799
Metastatic cancer	0.007	0.006	0.723	0.036	0.033	0.064	0.036	0.145	0.164	0.051	0.209	0.007	0.010	0.016	0.718	0.031	0.050	0.243
Surgery associated factors																		
Pre-surgical LOS	0.333	0.019	<0.001	0.325	0.019	<0.001	0.069	0.018	0.006	-0.026	-0.007	0.175	0.090	0.009	0.001	0.065	0.006	0.018
Gastroectomy type	0.359	0.200	<0.001	0.352	0.196	<0.001	0.061	0.152	0.020	0.058	0.145	0.003	0.144	0.142	<0.001	0.132	0.129	<0.001
No. of surgeries	0.194	0.071	<0.001	0.221	0.081	<0.001	-0.039	-0.064	0.144	0.031	0.051	0.154	0.070	0.046	0.012	0.121	0.079	<0.001
Surgery duration	0.148	0.000	<0.001	0.136	0.000	<0.001	0.010	0.000	0.707	0.043	0.001	0.040	0.091	0.000	0.001	0.070	0.000	0.018
Hospitals																		
B				0.023	0.036	0.316				-0.255	-1.801	<0.001				0.118	0.329	<0.001
C				0.030	0.029	0.309				0.218	0.954	<0.001				0.058	0.100	0.153
D				-0.075	-0.049	0.043				0.256	0.749	<0.001				-0.016	-0.018	0.758
E				0.067	0.067	0.019				-0.161	-0.719	<0.001				0.119	0.211	0.002
F				-0.068	-0.099	0.006				-0.212	-1.372	<0.001				-0.103	-0.265	0.003
G				0.137	0.129	<0.001				0.126	0.529	<0.001				0.069	0.115	0.082
H				-0.014	-0.009	0.700				0.238	0.698	<0.001				0.096	0.111	0.057
I				0.050	0.038	0.139				0.065	0.215	0.051				0.123	0.162	0.009
J				0.036	0.038	0.195				-0.105	-0.493	<0.001				0.030	0.055	0.434

Beta refers to standardized coefficients and B refers to unstandardized coefficients.

**Table 3** Observed and risk-adjusted means of total hospital costs, antibiotic costs, post-surgical length of stay in total and by hospital

	Total hospital costs (US\$)				Antibiotic costs (US\$)				Post-surgical length of stay (days)			
	Uninfected		Infected		Uninfected		Infected		Uninfected		Infected	
	Observed	Adjusted	Observed	Adjusted	Observed	Adjusted	Observed	Adjusted	Observed	Adjusted	Observed	Adjusted
Total	11 252.9	11 543.6	15 676.3	14 310.6	42.9	45.9	277.9	248.3	16.1	17.5	29.2	28.1
A	11 041.2	11 334.7	19 919.8	17 848.0	28.9	31.0	838.9	795.6	15.1	16.6	38.4	40.6
B	11 597.7	12 205.9	16 785.4	13 897.1	7.9	8.9	161.2	114.4	21.1	23.0	31.3	27.7
C	13 270.0	11 740.7	14 981.6	12 776.0	69.6	67.7	208.8	196.7	17.7	17.4	24.8	23.1
D	10 314.6	10 783.7	14 271.6	13 696.7	56.8	59.7	335.4	313.2	14.6	16.0	24.6	24.9
E	12 407.0	12 205.4	15 937.8	14 001.7	14.8	15.5	124.4	114.2	18.8	19.5	28.5	25.7
F	10 736.8	10 644.5	12 601.3	11 811.6	8.3	9.3	218.9	207.2	12.5	13.2	18.0	18.1
G	11 541.3	12 759.4	16 375.3	17 681.3	42.5	50.7	250.7	275.0	14.9	17.6	33.3	38.2
H	10 771.2	11 421.2	14 687.9	13 602.8	51.2	56.9	289.2	247.4	15.7	18.1	27.2	27.0
I	11 476.4	11 745.3	16 937.2	14 230.7	37.1	38.3	302.9	254.9	17.4	18.3	33.6	29.5
J	11 329.9	11 750.8	17 167.6	15 266.5	23.0	24.8	222.1	175.7	16.2	17.5	34.0	31.1

In the case of antibiotic costs, the regression model was able to account for 34.9% of variation observed, and 66.3% with hospital stratification included. Age and gender were not significant with antibiotic costs in both models. When hospitals were not included in analysis, pre-surgical LOS and gastrectomy type were significantly associated with antibiotic costs. When hospitals were included, only gastrectomy type remained significant, and surgery duration gained significance.

The regression models developed were able to account for 28.2% of variations in post-surgical LOS, and 32.2% after taking into account hospital stratification. Age showed significant association in both models, while gender showed association only when hospitals were not included in analysis. The only co-morbid condition significantly associated with post-surgical LOS was diabetes with complications in the first model. Furthermore, pre-surgical LOS, gastrectomy type and number of surgeries were significant factors associated with post-surgical LOS.

The risk-adjusted differences for all three medical resource utilization indicators between infected and uninfected patients at hospital level were shown in Table 3. Risk adjustment resulted in reducing the variation between infected and uninfected patients. Infected patients showed a risk-adjusted increase in US\$2767, or approximately 24% for total hospital costs (and a pre-adjusted increase of US\$4423.4). At the hospital level, there was a range of adjusted infection-based increases in total hospital costs from US\$1035 (Hospital C) to US\$6513 (Hospital A).

In general, infections were associated with an increase in US\$202.4 in mean antibiotic costs. Prior to adjustment, the difference in antibiotic costs between infected and uninfected patients was US\$235. Hospital E showed the least amount of increase at a risk-adjusted mean of US\$98.8. The highest increase in antibiotic costs as a result of infections was seen in Hospital A, at US\$764.6. In addition, Hospitals B, E and F presented very low antibiotic costs for their respective uninfected populations, at less than US\$15.

Hospital stay was extended by an adjusted average of 10.6 days post surgery, as a result of infection. While most hospitals managed to control the extended LOS to approximately 10 days or less, Hospitals A and G had large increases of 24 days and 20.7

days, respectively. Hospital B showed the lowest increase in mean post-surgical LOS in infected patients at only 4.7 days.

## Discussion

In this study, we used a combination of ICD codes and antibiotic utilization patterns in order to identify HAIs in gastrectomy surgery patients admitted into 10 hospitals in Japan. Regression analysis was conducted to estimate the impact of medical resource utilization increases involved with infections, with resource utilization measured in three indicators – total hospital costs, antibiotic costs and post-surgical LOS. Finally, we conducted risk-adjusted performance comparisons within the 10 hospitals.

Previous studies have shown that the use of ICD codes to identify HAIs has poor sensitivity and positive predictive value [13,14]. Furthermore, using claims data alone to derive secondary diagnoses has been found to lack distinguishing ability between pre-existing conditions and conditions that occur post admission [21]. In response to these issues, we complemented ICD code identification with antibiotic utilization data and adjusted selection criteria to reduce misidentification of pre-existing conditions. The use of ICD codes alone would have resulted in an infection incidence of approximately 8%. ICD codes alone may have been limited to the more serious infections, while antibiotic utilization allowed us to include less severe infections in our calculations that were not reflected in ICD codes.

Evidence-based medicine supports that even with gastrectomy surgeries, a single dose of cefazolin before surgery is sufficient prophylaxis [22,23]. However, the Japanese Society for Chemotherapy produced guidelines that recommended 3–4 days of prophylaxis for clean-contaminated surgeries such as gastrectomy. Furthermore, a previous study [24] showed that the mean prophylaxis given to gastrectomy patients was approximately 3–4 days. Taking this into account, we adjusted for this over-utilization of antibiotics by allowing for a 3-day prophylactic period post surgery, and identifying cases with 4 or more days of antibiotic utilization as infections. The failure to do so may have resulted in mistakenly identifying antibiotic over-utilization as infections. However, there would be an uncertainty as to the validity of cases

identified as infected by this criterion alone, as cases with 4 or more days of antibiotic utilization may simply represent antibiotic administration practice variation. Despite this, all cases that were identified by this criterion were further confirmed by at least one other identification criterion.

A previous study of a single hospital in Japan showed a 13.8% incidence of SSIs associated with gastrectomy [25], while the sample population here presented a 20.3% incidence proportion of infections that included other infections in addition to SSIs, such as bloodstream infections and pneumonia.

In all six regression models that we used, post-surgical HAIs were significantly associated with increases in total hospital costs, antibiotic costs and post-surgical LOS. Among the independent variables, comparisons of standardized coefficients (Table 2) showed that HAIs had the third highest magnitude of impact on total hospital costs (after type of gastrectomy and pre-surgical LOS), and the highest magnitude of impact on antibiotic costs and post-surgical LOS. Total hospital costs and post-surgical LOS were sensitive to all surgery-associated factors, but antibiotic costs were unsurprisingly less sensitive to this group of variables.

Post-surgical LOS showed significant associations with both age and gender, with elderly ( $\geq 70$  years) male patients associated with longer hospital stays. This was consistent with previous studies that showed longer LOS periods associated with elderly [26] and male patients [27]. The problems of increases in post-surgical LOS associated with HAIs are further exacerbated by the already-lengthy hospital stay durations in Japan [28].

Pre-existing co-morbid conditions did not seem to show consistent or strong influences on increases in medical resource utilization based on our models, which may be due to the low volume of cases with co-morbidity scores. The two most common co-morbidities (that occurred in approximately 10% of the dataset population) were diabetes and metastatic cancer, which showed significant association with total hospital costs and antibiotic costs, respectively.

Even after risk adjustment, we observed large degrees of variation in HAI-associated increases in all three indicators. The difference between mean total hospital costs uninfected and infected patients ranged as much as from US\$1035 in Hospital C to US\$6513 in Hospital A. Hospital A had approximately 2.4 times the overall mean of increased total hospital costs associated with HAI, and had the largest observed difference between infected and uninfected patients with regards to post-surgical LOS. A more detailed inspection of the cases in Hospital A revealed that two of the five had methicillin-resistant *Staphylococcus aureus* (MRSA) infections, which may have accounted for the increased medical resource utilization reflected.

The overall risk-adjusted mean of increased antibiotic costs associated with HAIs was US\$202. Table 2 showed that the  $R^2$  value for the regression model using antibiotic costs as the dependent variable that had included hospital stratification was much higher than that of the model that did not. Furthermore, when hospital stratification was included in analysis, most of the hospitals showed significant association, implying high variation in antibiotic use at the hospital level. Hospital B showed the lowest adjusted antibiotic costs for uninfected patients at US\$8.9, while Hospitals E and F also had very low values in this category. An analysis of the cases in these hospitals revealed that all uninfected cases were given the appropriate 1-day-only prophylaxis method

as prescribed by evidence-based medicine. In addition to these laudable achievements, Hospitals B and E managed to control the increase in antibiotic costs in infected patients to US\$99 and US\$105, respectively. Increases in antibiotic costs in Hospital F were closer to the overall average at US\$198. This could imply that there may be stringent antibiotic utilization guidelines in place at Hospitals B and E, and that they are strictly adhered to even in infected cases. The other seven hospitals had higher adjusted antibiotic costs in their uninfected cases, and an analysis of these hospitals showed that the majority of cases were given approximately 2–3 days of prophylaxis. This unfavourable utilization rates for uninfected cases reflected the results reported previously [25], and resulted in unnecessary cost as well as increase the risk of developing resistant bacteria.

With regards to limitations of this study, the sampled hospitals were part of a database known as the QIP. These hospitals had voluntarily entered this project in order to improve health care quality and management, and as such, may not represent the general situation of hospitals in Japan. Therefore, there may be a degree of selection bias and resulting generalizability issues.

We believe the method presented here can be similarly applied to analysing patients with other diseases and procedures. We have used this technique to quantify the increases in medical resource utilization associated with post-surgical HAIs, and also shown that even after adjusting for variations in patient characteristics and other variables, a large degree of variation still exists between hospitals in terms of resource utilization. In this study, we observed both good performers in terms of controlling infection incidence and the resulting resource utilization, as well as hospitals that did not perform as well. The results of this study were reported back to the participating hospitals in order to commend and encourage further good practice in good performers, as well as to bring attention to problem areas in the other hospitals. This information is highly useful for the hospitals involved as they represent not only information about their own hospitals, but provide a context of other hospitals in which to compare their own performance.

## Acknowledgements

This study was supported in part by the Grant-in-aid for Scientific Research from the Ministry of Education, Culture, Sports, Science and Technology of Japan, and the Health Sciences Research Grants for the Research on Policy Planning and Evaluation from the Ministry of Health, Labor and Welfare of Japan. The authors are grateful to the staff at the 16 hospitals that participated in the QIP: Aizawa Hospital, Iizuka Hospital, Kameda Medical Center, Kawakita General Hospital, Keijinkai Hospital, Keiju Medical Center, Kurashiki Central Hospital, Nakagami Hospital, Nakano General Hospital, Nikko Memorial Hospital, Omura Municipal Hospital, Saitama Cooperative Hospital, Seirei Hamamatsu General Hospital, Takeda General Hospital, Teishinkai Hospital and Urasoe Sogo Hospital.

## References

1. Whitehouse, J. D., Friedman, N. D., Kirkland, K. B., Richardson, W. J. & Sexton, D. J. (2002) The impact of surgical-site infections following orthopedic surgery at a community hospital and a university hospital: adverse quality of life, excess length of stay, and extra cost. *Infection Control and Hospital Epidemiology*, 23, 183–189.



2. Davey, P., Hernanz, C., Lynch, W., Malek, M. & Byrne, D. (1991) Human and non-financial costs of hospital-acquired infection. *The Journal of Hospital Infection*, 18 (Suppl A), 79–84.
3. Klevens, R. M., Edwards, J. R., Richards, C. L. Jr, Horan, T. C., Gaynes, R. P., Pollock, D. A. & Cardo, D. M. (2007) Estimating health care-associated infections and deaths in U.S. hospitals, 2002. *Public Health Reports*, 122, 160–166.
4. Mahieu, L. M., Buitengeweg, N., Beutels, P. & De Dooy, J. J. (2001) Additional hospital stay and charges due to hospital-acquired infections in a neonatal intensive care unit. *The Journal of Hospital Infection*, 47, 223–229.
5. Song, X., Srinivasan, A., Plaut, D. & Perl, T. M. (2003) Effect of nosocomial vancomycin-resistant enterococcal bacteremia on mortality, length of stay, and costs. *Infection Control and Hospital Epidemiology*, 24, 251–256.
6. Thompson, D. A., Makary, M. A., Dorman, T. & Pronovost, P. J. (2006) Clinical and economic outcomes of hospital acquired pneumonia in intra-abdominal surgery patients. *Annals of Surgery*, 243, 547–552.
7. Shorr, A. F., Tabak, Y. P., Killian, A. D., Gupta, V., Liu, L. Z. & Kollef, M. H. (2006) Healthcare-associated bloodstream infection: a distinct entity? Insights from a large U.S. database. *Critical Care Medicine*, 34, 2588–2595.
8. Halasa, N. B., Williams, J. V., Wilson, G. J., Walsh, W. F., Schaffner, W. & Wright, P. F. (2005) Medical and economic impact of a respiratory syncytial virus outbreak in a neonatal intensive care unit. *The Pediatric Infectious Disease Journal*, 24, 1040–1044.
9. Yamashita, S., Yamaguchi, H., Sakaguchi, M., Satsumae, T., Yamamoto, S. & Shinya, F. (2000) Longer-term diabetic patients have a more frequent incidence of nosocomial infections after elective gastrectomy. *Anesthesia and Analgesia*, 91, 1176–1181.
10. Herwaldt, L. A., Cullen, J. J., Scholz, D., French, P., Zimmerman, M. B., Pfaller, M. A., Wenzel, R. P. & Perl, T. M. (2006) A prospective study of outcomes, healthcare resource utilization, and costs associated with postoperative nosocomial infections. *Infection Control and Hospital Epidemiology*, 27, 1291–1298.
11. Dominguez, T. E., Chalom, R. & Costarino, A. T. Jr. (2001) The impact of adverse patient occurrences on hospital costs in the pediatric intensive care unit. *Critical Care Medicine*, 29, 169–174.
12. Coskun, D., Aytac, J., Aydinli, A. & Bayer, A. (2005) Mortality rate, length of stay and extra cost of sternal surgical site infections following coronary artery bypass grafting in a private medical centre in Turkey. *The Journal of Hospital Infection*, 60, 176–179.
13. Stevenson, K. B., Khan, Y., Dickman, J., *et al.* (2008) Administrative coding data, compared with CDC/NHSN criteria, are poor indicators of health care-associated infections. *American Journal of Infection Control*, 36, 155–164.
14. Sherman, E. R., Heydon, K. H., St John, K. H., Teszner, E., Rettig, S. L., Alexander, S. K., Zaoutis, T. Z. & Coffin, S. E. (2006) Administrative data fail to accurately identify cases of healthcare-associated infection. *Infection Control and Hospital Epidemiology*, 27, 332–337.
15. Center for Cancer Control and Information Services, National Cancer Center, Japan. (2008) *Cancer Statistics in Japan '07*. Available at: <http://ganjoho.ncc.go.jp/public/statistics/backnumber/odjrh3000000o8is-att/FIG04.PDF> (last accessed 16 February 2009).
16. Sundararajan, V., Henderson, T., Perry, C., Muggivan, A., Quan, H. & Ghali, W. A. (2004) New ICD-10 version of the Charlson comorbidity index predicted in-hospital mortality. *Journal of Clinical Epidemiology*, 57, 1288–1294.
17. Luthi, J. C., Troillet, N., Eisenring, M. C., Sax, H., Burnand, B., Quan, H. & Ghali, W. (2007) Administrative data outperformed single-day chart review for comorbidity measure. *International Journal for Quality in Health Care*, 19, 225–231.
18. Duan, N. (1983) Smearing estimate: a nonparametric retransformation method. *Journal of the American Statistical Association*, 78, 605–610.
19. Evans, E., Imanaka, Y., Sekimoto, M., Ishizaki, T., Hayashida, K., Fukuda, H. & Oh, E. H. (2007) Risk adjusted resource utilization for AMI patients treated in Japanese hospitals. *Health Economics*, 16, 347–359.
20. Organisation for Economic Co-operation and Development (OECD). (2008) *OECD Statistics on Purchasing Power Parities (PPP): Comparative Price Levels*. Available at: <http://www.oecd.org/dataoecd/48/18/18598721.pdf> (last accessed 7 March 2008).
21. Naessens, J. M., Campbell, C. R., Berg, B., Williams, A. R. & Culbertson, R. (2007) Impact of diagnosis-timing indicators on measures of safety, comorbidity and case mix groupings from administrative data sources. *Medical Care*, 45, 781–788.
22. Page, C. P., Bohnen, J. M., Fletcher, J. R., McManus, A. T., Solomkin, J. S. & Wittmann, D. H. (1993) Antimicrobial prophylaxis for surgical wounds. Guidelines for clinical care. *Archives of Surgery*, 128, 79–88.
23. The Medical Letter Consultants. (1992) Antimicrobial prophylaxis in surgery. *The Medical Letter on Drugs and Therapeutics*, 34, 5–8.
24. Sekimoto, M., Imanaka, Y., Evans, E., Ishizaki, T., Hirose, M., Hayashida, K. & Fukui, T. (2004) Practice variation in perioperative antibiotic use in Japan. *International Journal for Quality in Health Care*, 16, 367–373.
25. Imai, E., Ueda, M., Kanao, K., Miyaki, K., Kubota, T. & Kitajima, M. (2005) Surgical site infection surveillance after open gastrectomy and risk factors for surgical site infection. *Journal of Infection and Chemotherapy*, 11, 141–145.
26. Takahashi, R., Okugawa, S. & Matsushita, S. (1993) Long-term hospitalization of elderly patients in a regional hospital. *Nippon Ronen Igakkai Zasshi*, 30, 301–307. In Japanese.
27. Yang, X. & Imai, H. (2003) Transition of the average length of stay in a university hospital – II. Comparison between the genders and age groups. *Hospital Administration*, 40 (4), 345–355.
28. Ministry of Health, Labor and Welfare. (2002) Medical Institution Survey. Available at: <http://www.mhlw.go.jp/toukei/saikin/hw/iryosd/02/index.html> (last accessed 16 February 2009)

1 **Title Page**

2  
3 Title:

4 Healthcare-associated infections in acute ischemic stroke patients from 36 Japanese hospitals:  
5 risk-adjusted economic and clinical outcomes

6  
7 Authors:

8 Jason Lee MSc

9  
10 Yuichi Imanaka MD, PhD\*

11  
12 Miho Sekimoto MD, PhD

13  
14 Hiroshi Ikai MD

15  
16 Tetsuya Otsubo MSc

17  
18 *\*Corresponding Author*

19  
20  
21 Affiliation:

22 Kyoto University, Graduate School of Medicine  
23 Department of Healthcare Economics and Quality Management

24  
25  
26 Corresponding Address:

27 Yoshida Konoe-cho, Sakyo-ku  
28 Kyoto, 606-8501  
29 Japan

30  
31  
32 Fax Number: +81 75 753 4455

33 Telephone: +81 75 753 4453

34 Email Address: [imanaka-y@umin.net](mailto:imanaka-y@umin.net)

1 **Abstract**

2 Background

3 Healthcare-associated infections (HAIs) are a major cause for worsening in ischemic stroke patients.  
4 In addition to increased morbidity and mortality, HAIs also result in a potentially preventable  
5 increase in economic costs.

6 Aims

7 The aim of this study was to identify HAI incidence in ischemic stroke patients in Japanese hospitals,  
8 and to conduct a risk-adjusted analysis of the associated economic and clinical outcomes.

9 Methods

10 HAIs were identified in 36 Japanese hospitals using an administrative database. Identification was  
11 carried out using a combination of International Classification of Diseases (ICD-10) codes and  
12 antibiotic utilization patterns that indicated the presence of an infection. Risk-adjusted hospital  
13 charges and length of stay were calculated using multiple linear regression analyses correcting for  
14 patient and hospital factors. A logistic regression model was used to analyze the association between  
15 HAI infection and mortality.

16 Results

17 There was an overall HAI incidence of 16.4 %, with an inter-hospital range of 4.7% to 28.3%. After  
18 risk-adjustment, infected cases paid an additional US\$3,067 per admission (inter-hospital range  
19 US\$434 – US\$7,151) and were hospitalized for an additional 16.3 days (Inter-hospital range: 5.1  
20 days – 25.1 days) when compared to uninfected patients. HAIs also had a strongly significant  
21 association with increased mortality (OR=23.2, 95%; CI: 12.5 – 43.2).

22 Conclusions

23 We observed a wide range of HAI incidence between the hospitals. HAIs were found to be  
24 significantly associated with increased hospital charges, LOS and mortality. Furthermore, the use of  
25 risk-adjusted multi-institutional comparisons allowed us to analyze individual performance levels in  
26 both infection and cost control.

27 (247 words)