

## 3) 感作性試験

OECD ガイドライン 429 として認証されている Local Lymph Node Assay (LLNA) が基本的には代替法として利用される<sup>10)</sup>。LLNA に関しては一濃度のみで評価する reduced-LLNA が ESAC の認証を得るとともに<sup>8)</sup>、放射線同位元素を用いない試験法の確立基準が ICCVAM や ECVAM で検討されるなど現在、もっとも議論が盛んな分野である。

## 4) 遺伝毒性試験

*In vitro* 小核試験が OECD ガイドラインとなる目処が付き<sup>10)</sup>、現行の *in vitro* 遺伝毒性試験のセットが揃った。まずはエイムス試験、次に *in vitro* の染色体異常試験や遺伝子突然変異試験などを利用した評価が進むと予想されている。

## 5) その他

EU を中心として、大きな代替法に関するプロジェクトが進行している。生殖毒性試験として ReProTex、急性毒性試験として A-cute-Tox、感作性試験として SENS-IT-IV、遺伝毒性および癌原性を評価するためのハイスループットゲノミクスとして Carcinogenic など進行中である<sup>11)</sup>。この他にも多くのプロジェクトが計画・進行中であり、EU においては多額の資金が試験法開発に投入されている。

3) 財団法人 化学物質評価研究機構編 (2007) EU 新化学品規則 REACH が分かる本、工業調査会、東京

4) 戸田栄作 (2007) [http://www.nies.go.jp/risk/seminar/h191207\\_17/H191217text01.pdf](http://www.nies.go.jp/risk/seminar/h191207_17/H191217text01.pdf).

5) Hartung, T (2006) <http://www.soc.nil.ac.jp/jsaae/20kai.html>

6) Inke Gubbels-Van Hal (2007) Non-testing in REACH?, Chemistry Today, 25(4), 14-16

7) JRC (2008) [http://www.vet.uu.nl/nca/userfiles/other/REACH\\_and\\_the\\_need\\_for\\_intelligent\\_testing\\_strategies.pdf#search=Integrated%20Testing%20Strategies%20REACH](http://www.vet.uu.nl/nca/userfiles/other/REACH_and_the_need_for_intelligent_testing_strategies.pdf#search=Integrated%20Testing%20Strategies%20REACH)

8) ECVAM statement (2008) <http://ecvam.jrc.cec.eu.int/index.htm>

9) ICCVAM (2008) [http://iccvam.niehs.nih.gov/docs/ocutox\\_docs/EPr\\_eport/ocu\\_report.htm](http://iccvam.niehs.nih.gov/docs/ocutox_docs/EPr_eport/ocu_report.htm)

10) Chemicals Testing: OECD Guidelines for the Testing of Chemicals - Sections 4: (2008) [http://www.oecd.org/document/55/0,3343,en\\_2649\\_34377\\_2349687\\_1\\_1\\_1\\_1,00.html](http://www.oecd.org/document/55/0,3343,en_2649_34377_2349687_1_1_1_1,00.html)

11) EC (2008) Alternative Testing Strategies, EUR22846

12) EPAA (2008) [http://ec.europa.eu/enterprise/epaa/index\\_en.htm](http://ec.europa.eu/enterprise/epaa/index_en.htm)

13) OSIRIS (2008) <http://www.osiris-reach.eu/>

## 5 おわりに

REACH の目的は化学物質の安全性の確保であるが、その中心は代替法である。すでに確立された代替法が少ないこともあり、代替法を用いた安全性評価の動向は大きく変動する状況にあると考えている。このような状況下、欧州の動向から目を離さず、各社においても REACH の登録、安全性試験の対策を急いで頂きたいと考えている。

## 参考文献

1) ECH (2008) [http://ec.europa.eu/echa/home\\_en.html](http://ec.europa.eu/echa/home_en.html)

2) 風間良英編 (2007) REACH と欧州新化学品規則体制、化学工業日報社、東京



## Original article

## Interlaboratory validation of the modified murine local lymph node assay based on adenosine triphosphate measurement

Takashi Omori <sup>a,\*</sup>, Kenji Idehara <sup>b,\*</sup>, Hajime Kojima <sup>c</sup>, Takashi Sozu <sup>d</sup>, Kazunori Arima <sup>e</sup>, Hirohiko Goto <sup>f</sup>, Tomohiko Hanada <sup>g</sup>, Yoshiaki Ikarashi <sup>h</sup>, Taketo Inoda <sup>h</sup>, Yukiko Kanazawa <sup>i</sup>, Tadashi Kosaka <sup>j</sup>, Eiji Maki <sup>k</sup>, Takashi Morimoto <sup>l</sup>, Shinsuke Shinoda <sup>m</sup>, Naoki Shinoda <sup>n</sup>, Masahiro Takeyoshi <sup>o</sup>, Masashi Tanaka <sup>p</sup>, Mamoru Uratani <sup>q</sup>, Masahito Usami <sup>r</sup>, Atsushi Yamanaka <sup>s</sup>, Tomofumi Yoneda <sup>t</sup>, Isao Yoshimura <sup>u</sup>, Atsuko Yuasa <sup>v</sup>

<sup>a</sup> Kyoto University School of Public Health, Japan

<sup>b</sup> Daicel Chemical Industries Ltd., Japan

<sup>c</sup> National Institute of Health Sciences, Japan

<sup>d</sup> Osaka University, Japan

<sup>e</sup> Taisha Pharmaceutical Co. Ltd., Japan

<sup>f</sup> Otsuka Pharmaceutical Co. Ltd., Japan

<sup>g</sup> Nippon Shinyaku Co. Ltd., Japan

<sup>h</sup> Nakano Seiyaku Co. Ltd., Japan

<sup>i</sup> Food and Drug Safety Center, Japan

<sup>j</sup> Institute of Environmental Toxicology, Japan

<sup>k</sup> Biosafety Research Center, Foods and Pesticides, Japan

<sup>l</sup> Sumitomo Chemical Co. Ltd., Japan

<sup>m</sup> Drug Safety Testing Center Co. Ltd., Japan

<sup>n</sup> Santen Pharmaceutical Co. Ltd., Japan

<sup>o</sup> Chemicals Evaluation and Research Institute, Japan

<sup>p</sup> Meiji Seika Kaisha Ltd., Japan

<sup>q</sup> Ishihara Sangyo Kaisha Ltd., Japan

<sup>r</sup> Hoyu Co. Ltd., Japan

<sup>s</sup> Plas Corporation, Japan

<sup>t</sup> Toa Eiyo Ltd., Japan

<sup>u</sup> Tokyo University of Science, Japan

<sup>v</sup> Fuji Film Co. Ltd., Japan

## ARTICLE INFO

## Article history:

Received 27 March 2008

Accepted 7 May 2008

## Keywords:

Adenosine triphosphate  
Interlaboratory validation  
Local lymph node assay based on adenosine triphosphate content  
Local lymph node assay  
Skin sensitization  
Methods

## ABSTRACT

**Introduction:** The murine local lymph node assay (LLNA) is a well-established alternative to the guinea pig maximization test (GPMT) or Buehler test (BT) for the assessment of the skin sensitizing ability of drugs and chemicals. Daicel Chemical Industries Ltd. has developed a modified LLNA based on the adenosine triphosphate (ATP) content (LLNA-DA). We conducted 2 interlaboratory validation studies to evaluate the reliability and relevance of LLNA-DA. **Methods:** The experiment involved 17 laboratories, wherein 14 chemicals were examined under blinded conditions. In the first study, 3 chemicals were examined in 10 laboratories and the remaining 9 were examined in 3 laboratories. In the second study, 1 chemical was examined in 7 laboratories and the remaining 4 chemicals were examined in 4 laboratories. The data were expressed as the ATP content for each chemical-treated group, and the stimulation index (SI) for each chemical-treated group was determined as the increase in the ATP content relative to the concurrent vehicle control group. An SI of 3 was set as the cut-off value for exhibiting skin sensitization activity. **Results:** The results of the first study obtained in the experiments conducted for the 3 chemicals that were examined in all the 10 laboratories and for 5 of the remaining 9 chemicals were sufficiently consistent with small variations in their SI values. The sensitivity, specificity, and accuracy of LLNA-DA against those of GPMT/BT were 7/8 (87.5%), 3/3 (100%), and 10/11 (90.9%), respectively. In the second study, all the 5 chemicals studied demonstrated acceptably small interlaboratory variations. **Discussion:** In the first study, a large variation was observed for 2 chemicals; in the second study, this variation was small. It was attributed to the

\* Corresponding authors. Omori is to be contacted at Department of Biostatistics, Kyoto University School of Public Health, Yoshida Konoe-cho, Sakyo-ku, Kyoto 606-8501, Japan. Tel.: +81 75 753 4482; fax: +81 75 753 4487. Idehara, Daicel Chemical Industries, Ltd., 1239 Shinzaike, Aboshi-ku, Himeji, Hyogo 671-1283, Japan. Tel.: +81 79 274 4096; fax: +81 79 274 5831.  
E-mail addresses: [omori@pbh.med.kyoto-u.ac.jp](mailto:omori@pbh.med.kyoto-u.ac.jp) (T. Omori), [kn\\_idehara@daicel.co.jp](mailto:kn_idehara@daicel.co.jp) (K. Idehara).

application of dimethylsulfoxide as the solvent for the metallic salts. In conclusion, these 2 studies provide good evidence for the reliability of the LLNA-DA.

© 2008 Elsevier Inc. All rights reserved.

## 1. Introduction

Skin sensitization (allergic contact dermatitis (ACD)) is an immunologically mediated cutaneous reaction to a drug or chemical. It is known that detecting and evaluating the immune-based adverse effects that are collectively referred to as hypersensitivity reactions is a very difficult task, particularly during the drug approval process, because of the lack of adequate non-clinical models and the low incidence rate of reactions (Hastings, 2001). However, there are several adequate and predictive methods for modeling ACD. For several decades, tests involving guinea pigs, such as the guinea pig maximization test (GPMT) or the Buehler test (BT), have been used for assessing the skin sensitization potential of chemicals (OECD, 1992).

The local lymph node assay (LLNA) employs a mouse model for assessing the relative sensitization potential; it is a well-established alternative method for determining whether a chemical causes ACD. Although GPMT and BT can be viewed as phenomenological methods in which the clinical signs are modeled, LLNA was developed on the basis of a mechanistic understanding of immune-based contact dermatitis (Hastings, 2001). In addition, this method also offers important animal welfare benefits. The use of LLNA has been successfully validated by several studies (Basketter et al., 2002; Basketter, Gerberick, Kimber, & Loveless, 1996; Basketter & Scholes, 1992; Gerberick, Ryan, Kimber, Dearman, & Basketter, 2000; Haneke, Tice, Carson, Margolin, & Stokes, 2001). Recently, it has been recommended that this method be formally adopted by the Organization for Economic Co-operation and Development (OECD), according to the guidelines for testing chemicals 406 and 429 (OECD, 1992, 2002), and that it be accepted by the EU and US as a suitable method for classifying the skin sensitizing ability of chemicals (Basketter, Casati, Gerberick, Griem, Philips, & Worth, 2005; Dean, Twerdok, Tice, Sailstad, Hattan, & Stokes, 2001; Sailstad, Hattan, Hill, & Stokes, 2001). The LLNA was specifically designed to identify contact allergens. The assay was not intended to facilitate the detection of low molecular weight chemicals associated with systemic sensitization or drug allergies (Kimber, 2001). However, an investigation, which was designed to explore the ability of LLNA to identify pharmaceutical process intermediates known to cause contact allergy in humans, provided evidence that the assay is a useful method for hazard identification (Durand, De Buret, Virat, & Nauman, 2003). Furthermore, presently, the use of the method, along with the use of GPMT and BT, is recommended for the determination of the skin sensitization potential of new drugs (FDA, 2002).

The original LLNA uses [<sup>3</sup>H]-methyl thymidine to measure lymphocyte proliferation; this hinders its use, particularly in Japan, because being a radioisotope (RI)-based method, it requires special facilities. Several authors have been conducting investigations for the development of an alternative non-RI method for performing LLNA (Dearman, Hilton, Basketter, & Kimber, 1999; Ehling et al., 2005a, 2005b; Hatao, Hariya, Katsumura, & Kato, 1995; Lee, Park, Park, Kim, & Oh, 2002; Takeyoshi, Yamasaki, Yakabe, Takatsuki, & Kimber, 2001).

Daicel Chemical Industries Ltd. proposed a modification of LLNA, which involves the measurement of the adenosine triphosphate (ATP) content instead of [<sup>3</sup>H]-methyl thymidine incorporation for assessing lymphocyte proliferation (Idehara, Yamagishi, Yamashita, & Ito, in press; Yamashita, Idehara, Fukuda, Yamagishi, & Kawada, 2005). This modified assay method is designated as the LLNA modified by Daicel, based on the ATP content (LLNA-DA).

Although LLNA-DA essentially involves the same procedure as LLNA, the evidence available is insufficient for validating the assay method through interlaboratory evaluation. Therefore, we conducted 2 interlaboratory validation studies for LLNA-DA.

In the first study, 2 metallic salts—cobalt chloride and nickel sulfate—dissolved in dimethylsulfoxide (DMSO) produced inconsistent results across the laboratories. We assumed that the inconsistency factor would be due to one of the following 2 reasons: (1) DMSO was used as the vehicle in the control group for the 2 metallic salts, and DMSO application in mice is difficult as compared with acetone-olive oil (AOO) or acetone (ACE) application or (2) LLNA-DA is unsuitable for use with metallic salts, and both the chemicals used were metallic salts. Therefore, a second study employing additional metallic salt with DMSO was planned in order to ascertain the hypothesis.

The primary objectives of the first study were (1) to evaluate the extent of interlaboratory variation with regard to LLNA-DA and (2) to ascertain whether the results of LLNA-DA are comparable with those of LLNA. The primary objective of the second study was to examine the reliability of the LLNA-DA method when metallic salts were tested with DMSO.

## 2. Methods

### 2.1. Organization

This study was organized by researchers belonging to the committee for the validation of the assay. The research team comprised

**Table 1(a)**  
Selected chemicals with their corresponding vehicles, the referenced results of LLNA and GPMT/BT, and the allocation of chemicals for the LLNA-DA experiments in the first study

Chemical	CASRN <sup>a</sup>	Vehicle <sup>b</sup>	LLNA	GPMT/BT <sup>c</sup>	Laboratory <sup>d</sup>									
					1	2	3	4	5	6	7	8	9	10
A: 2,4-Dinitrochlorobenzene	97-00-7	AOO	+	+	□	□	□	□	○	△	□	□	△	○
B: Hexyl cinnamic aldehyde	101-86-0	AOO	+	+	○	○	△	△	△	□	△	○	○	△
C: 3-Aminophenol	591-27-5	AOO	+	+nonstd	□		○					□		
D: Glutaraldehyde	111-30-8	ACE	+	+	△	△			□					
E: Cobalt chloride	7646-79-9	DMSO	+	+				○		○		△		
F: Isoeugenol	97-54-1	AOO	+	+				□	○					△
G: Formaldehyde	50-00-0	ACE	+	+	△	△			□					
H: Dimethyl isophthalate	1469-93-4	AOO	-	-	□		□				□			
I: Isopropanol	67-63-0	AOO	-	-	○	○	△	△	△	□	△	○		△
J: Nickel sulfate	10101-97-0	DMSO	-	+				○		○		△		
K: Abietic acid	514-10-3	AOO	+	+		□				△	○			
L: Methyl salicylate	119-36-8	AOO	-	-				○			○			○

<sup>a</sup> The Chemical Abstract Services Registry Number.

<sup>b</sup> ACE, acetone; AOO, acetone-olive oil; DMSO, dimethylsulfoxide.

<sup>c</sup> Judgment based on the guinea pig maximization test or the Buehler test; "nonstd" indicates a nonstandard animal that was not tested for chemical G.

<sup>d</sup> Allocated pairs for the LLNA-DA experiments in a laboratory; ○, experiment 1; △, experiment 2; □, experiment 3.

Table 1(b)

Selected chemicals with their corresponding vehicles, the referenced results of LLNA and GPMT/BT, and the allocation of chemicals in the second study

Chemical	CASRN <sup>a</sup>	Vehicle <sup>b</sup>	LLNA	GPMT/BT <sup>c</sup>	Laboratory <sup>d</sup>						
					11	12	13	14	15	16	17
B: Hexyl cinnamic aldehyde	101-86-0	AOO	+	+	○	○	○	○	○	○	○
E: Cobalt chloride	7657-79-9	DMSO	+	+	□		△	△			△
J: Nickel sulfate	10101-97-0	DMSO	-	+	□	△		△			
M: Lactic acid	598-82-3	DMSO	-	-	△		△		△	△	
N: Potassium dichromate	7778-50-9	DMSO	+	+	△	△			△		△

<sup>a</sup> The Chemical Abstract Services Registry Number.<sup>b</sup> ACE, acetone; AOO, acetone-olive oil; DMSO, dimethylsulfoxide.<sup>c</sup> Judgment based on guinea pig maximization test or Buehler test.<sup>d</sup> Allocated pairs for an experiment in a laboratory; ○, experiment 1; △, experiment 2; □, experiment 3.

representatives from each experimental laboratory, toxicologists as the chemical selectors and as distributors of the chemicals and materials, biostatisticians, and the study manager. All the experimentations were performed by the toxicologists of the experimental laboratories. In the first study, participation was limited to 10 experimental laboratories with sufficient experience in the use of the LLNA and/or its modifications; however, this was not a limiting factor in the second study, in which 7 additional experimental laboratories were included. A total of 17 different experimental laboratories participated in these 2 studies.

Research teams of all the experimental laboratories obtained ethical approval for each standard operational procedure conducted in their laboratories.

## 2.2. Technology transfer

A 1-day technology-transfer seminar was held by the LLNA-DA developer for each study, which was attended by at least 1 toxicologist from each experimental laboratory. Participants learned the method of conducting the assay according to the standard protocol. In addition, in the second study, the operation of LLNA-DA with DMSO was also included in the seminar (Omori et al., 2008).

## 2.3. Preliminary tests

Prior to each study, a preliminary test was conducted by researchers from all the experimental laboratories, who used only the positive control chemical, namely, 25% hexyl cinnamic aldehyde. The purpose of these preliminary tests was to ascertain whether the standard protocol was being documented sufficiently and to confirm the sensitivity of LLNA-DA (Omori et al., 2008).

The results of both preliminary tests revealed that the standard protocol was essentially valid and required few modifications.

## 2.4. Chemical selection and allocation

The chemical selectors chose 20 candidate chemicals that were previously used in LLNA and whose test results had been documented (Basketter & Scholes, 1992; Basketter, Gerberick, & Kimber, 1998; Basketter, Lea, Cooper, et al., 1999; Basketter, Lea, Dickens, 1999; Basketter, Blaikie, Dearman, Kimber, Ryan, Gerberick, et al., 2000; Gerberick et al., 2004; Hanke et al., 2001; Kimber et al., 1998; Loveless et al., 1996). On the basis of these literature data and solubility of the chemicals, the chemical selectors selected vehicles and prepared 3 fixed doses (low, medium, and high) for each chemical; subsequently, the chemicals were transported from the chemical and material distributors to the experimental laboratories.

In the first study, 12 of the 20 candidate chemicals were selected and classified as strong, mild, or weak sensitizers or non-sensitizers on the basis of LLNA. In order to reduce the number of animals used, pairs comprising groups treated with 2 or 3 chemicals and the same vehicle control group were employed; in other words, in each laboratory, 2 or 3 chemicals were simultaneously tested with 1 negative

control and 1 positive control for every experiment. Of the 12 chemicals, 3 were dispatched to all the 10 participating experimental laboratories, and the remaining 9 were randomly allocated to the laboratories by a biostatistician and dispatched to each of the 3 experimental laboratories.

In the second study, 5 of the 20 candidate chemicals were selected. To determine whether the results from the 7 new laboratories would be similar to those obtained in the first study, the chemical selectors chose a single chemical that had been tested by all the 10 laboratories in the first study. The remaining 4 chemicals selected by the chemical selectors comprised 3 metallic salts—cobalt chloride, nickel sulfate, and potassium dichromate—and lactic acid with DMSO as the vehicle control. Pairs comprising groups treated with 2 of the 4 chemicals and

Table 2(a)

Body weight (g) [day 1]

Laboratory	n	Mean	SD	Min	Med	Max
1	120	22.0	1.5	19.3	21.8	27.1
2	108	22.5	1.3	19.4	22.6	25.0
3	108	22.0	1.2	18.2	22.0	24.8
4	108	22.7	1.4	20.0	22.5	26.7
5	108	21.6	1.1	19.1	21.6	24.4
6	108	21.7	1.4	19.3	21.7	24.9
7	108	22.8	1.4	18.5	22.8	25.9
8	108	23.4	1.5	20.5	23.3	28.6
9	72	23.0	1.2	20.1	22.9	26.5
10	72	22.6	1.4	19.8	22.5	25.8
11	96	22.9	1.3	19.9	22.9	26.5
12	60	21.6	1.0	18.8	21.7	24.1
13	60	22.2	1.1	19.5	22.1	24.8
14	60	21.8	1.5	18.7	21.8	24.3
15	60	22.5	1.1	20.0	22.5	25.2
16	60	22.3	1.5	18.8	22.6	25.5
17	60	22.1	1.4	19.5	22.3	26.4

Table 2(b)

Body weight (g) [day 8]

Laboratory	n	Mean	SD	Min	Med	Max
1	120	22.1	1.5	19.0	22.0	26.1
2	108	23.4	1.4	20.6	23.3	26.7
3	108	23.2	1.4	19.8	23.2	26.6
4	104	23.4	1.4	20.4	23.3	27.1
5	108	23.0	1.3	20.1	23.0	25.8
6	108	22.2	1.4	19.2	22.2	25.6
7	108	23.0	1.5	17.1	23.0	26.0
8	108	23.9	1.8	20.1	24.0	29.2
9	72	23.9	1.3	20.9	23.9	27.0
10	72	23.3	1.3	20.7	23.3	26.8
11	96	23.4	1.3	21.1	23.3	27.1
12	60	23.1	1.2	20.4	23.2	26.5
13	60	22.9	1.3	20.2	22.7	26.2
14	59	22.3	1.9	16.3	22.4	25.9
15	60	23.8	1.3	21.3	23.6	26.6
16	60	23.3	1.6	19.1	23.4	27.0
17	60	23.1	1.4	19.7	23.3	26.7

**Table 3(a)**  
Mean and SD for the ATP content and SI values obtained in all the laboratories in the first study

Vehicle/ concentration	1		2		3		4		5		6		7		8		9		10		
	Mean±SD	SI	Mean±SD	SI	Mean±SD	SI	Mean±SD	SI	Mean±SD	SI	Mean±SD	SI	Mean±SD	SI	Mean±SD	SI	Mean±SD	SI	Mean±SD	SI	
<b>A: 2,4-Dinitrochlorobenzene</b>																					
AOO	27,188±10,027	-	26,159±2157	-	35,610±7212	-	42,866±9956	-	11,899±7366	-	13,910±3921	-	20,576±5446	-	26,842±9515	-	53,350±14,893	-	26,842±9515	-	53,350±14,893
0.03%	77,305±25,181	2.8	60,843±19,746	2.3	80,548±34,265	2.3	127,990±23,651	3.0	18,107±3203	1.5	38,247±10,833	2.7	86,083±21,219	3.8	47,730±22,738	2.4	75,290±20,086	2.8	62,000±23,941	1.2	112,163±22,420
0.10%	147,161±32,102	5.4	70,451±26,337	2.7	150,579±23,446	4.2	210,206±57,119	4.9	45,691±21,305	3.8	59,302±19,598	4.3	121,021±23,461	5.4	62,571±30,199	3.0	112,282±36,388	4.2	112,163±22,420	2.1	112,163±22,420
0.30%	325,485±46,981	12.0	241,466±73,709	9.2	354,678±27,371	10.0	365,768±51,573	8.5	166,224±43,333	14.0	210,636±46,213	15.1	296,024±33,270	13.2	259,203±105,308	12.6	292,230±5423	10.9	251,172±40,569	4.7	251,172±40,569
<b>B: Heptyl cinnamaldehyde</b>																					
AOO	24,583±5761	-	41,189±17,452	-	35,652±12,253	-	43,007±8931	-	19,146±6582	-	16,375±3953	-	29,925±6142	-	29,602±8049	-	29,077±2876	-	29,602±8049	-	29,077±2876
5%	33,196±6535	1.4	56,291±4484	1.4	48,383±14,959	1.4	64,212±6260	1.2	27,369±8594	1.7	27,369±8594	1.7	46,148±14,005	1.5	16,616±4630	1.4	25,602±11,242	0.9	40,685±14,674	1.4	40,685±14,674
10%	73,884±14,255	3.0	109,204±15,298	2.7	82,040±12,032	2.3	138,873±51,932	3.2	35,432±14,357	1.9	38,327±9530	2.3	126,759±35,639	4.2	50,829±8197	4.2	65,640±27,871	2.2	79,321±10,548	2.7	79,321±10,548
25%	142,130±29,633	5.8	198,520±40,800	4.8	158,304±26,958	4.4	219,687±29,834	5.1	76,029±5733	4.0	90,067±27,828	5.5	212,289±50,835	7.1	124,803±34,287	10.2	114,791±13,669	3.9	101,984±21,546	3.5	101,984±21,546
<b>C: 3-Aminophenol</b>																					
Vehicle/concentration																					
AOO	27,188±10,027	-	27,188±10,027	-	24,047±3932	-	34,047±3932	-	34,047±3932	-	33,875±4945	-	33,875±4945	-	33,875±4945	-	20,576±5446	-	20,576±5446	-	20,576±5446
1%	47,591±2668	1.8	47,591±2668	1.8	33,875±4945	1.4	33,875±4945	1.4	33,875±4945	1.4	33,875±4945	1.4	33,875±4945	1.4	33,875±4945	1.4	25,167±4299	-	25,167±4299	-	25,167±4299
3%	63,021±9400	2.3	63,021±9400	2.3	42,352±11,487	1.8	42,352±11,487	1.8	42,352±11,487	1.8	42,352±11,487	1.8	42,352±11,487	1.8	42,352±11,487	1.8	40,921±10,896	-	40,921±10,896	-	40,921±10,896
10%	76,927±15,323	2.8	76,927±15,323	2.8	41,759±8243	1.7	41,759±8243	1.7	41,759±8243	1.7	41,759±8243	1.7	41,759±8243	1.7	41,759±8243	1.7	49,037±8244	-	49,037±8244	-	49,037±8244
<b>D: Glutaraldehyde</b>																					
Vehicle/concentration																					
AOO	17,947±4929	-	17,947±4929	-	38,044±13,217	-	38,044±13,217	-	38,044±13,217	-	38,044±13,217	-	38,044±13,217	-	38,044±13,217	-	16,439±6488	-	16,439±6488	-	16,439±6488
0.05%	25,594±9403	1.4	25,594±9403	1.4	28,096±9168	1.4	28,096±9168	1.4	28,096±9168	1.4	28,096±9168	1.4	28,096±9168	1.4	28,096±9168	1.4	17,024±5163	-	17,024±5163	-	17,024±5163
0.15%	72,748±20,584	4.1	72,748±20,584	4.1	48,980±8745	3.4	48,980±8745	3.4	48,980±8745	3.4	48,980±8745	3.4	48,980±8745	3.4	48,980±8745	3.4	40,319±17,078	-	40,319±17,078	-	40,319±17,078
0.50%	89,767±21,798	5.0	89,767±21,798	5.0	129,110±31,985	5.0	129,110±31,985	5.0	129,110±31,985	5.0	129,110±31,985	5.0	129,110±31,985	5.0	129,110±31,985	5.0	42,237±6048	-	42,237±6048	-	42,237±6048
<b>E: Cobalt chloride</b>																					
Vehicle/concentration																					
AOO	100,396±24,632	-	100,396±24,632	-	4184±2395	-	4184±2395	-	4184±2395	-	4184±2395	-	4184±2395	-	4184±2395	-	19,803±4451	-	19,803±4451	-	19,803±4451
0.30%	203,895±24,479	2.0	203,895±24,479	2.0	44,002±30,922	10.5	44,002±30,922	10.5	44,002±30,922	10.5	44,002±30,922	10.5	44,002±30,922	10.5	44,002±30,922	10.5	87,562±13,336	-	87,562±13,336	-	87,562±13,336
1.00%	267,172±52,088	2.7	267,172±52,088	2.7	85,978±24,533	20.6	85,978±24,533	20.6	85,978±24,533	20.6	85,978±24,533	20.6	85,978±24,533	20.6	85,978±24,533	20.6	131,004±34,534	-	131,004±34,534	-	131,004±34,534
3.00%																	159,808±13,473	-	159,808±13,473	-	159,808±13,473
<b>F: Isoniazid</b>																					
Vehicle/concentration																					
AOO	42,866±9956	-	42,866±9956	-	11,899±7366	-	11,899±7366	-	11,899±7366	-	11,899±7366	-	11,899±7366	-	11,899±7366	-	26,842±9515	-	26,842±9515	-	26,842±9515
1%	125,838±22,236	2.9	125,838±22,236	2.9	22,896±7449	1.9	22,896±7449	1.9	22,896±7449	1.9	22,896±7449	1.9	22,896±7449	1.9	22,896±7449	1.9	69,236±20,292	-	69,236±20,292	-	69,236±20,292
3%	175,277±10,289	4.1	175,277±10,289	4.1	23,619±8830	2.0	23,619±8830	2.0	23,619±8830	2.0	23,619±8830	2.0	23,619±8830	2.0	23,619±8830	2.0	86,598±20,489	-	86,598±20,489	-	86,598±20,489
10%	262,118±34,406	6.1	262,118±34,406	6.1	117,098±5209	9.8	117,098±5209	9.8	117,098±5209	9.8	117,098±5209	9.8	117,098±5209	9.8	117,098±5209	9.8	190,392±38,486	-	190,392±38,486	-	190,392±38,486

G: Formaldehyde			2			5							
Vehicle/concentration	Mean±SD	SI	Mean±SD	SI	Mean±SD	SI	Mean±SD	SI					
ACE	17,947±4929	–	38,044±13,217	–	16,439±6488	–	19,510±5239	–					
0.5%	52,214±10,965	2.9	64,467±11,056	1.7	30,959±12,804	1.9	44,219±7822	2.7					
1.5%	51,405±13,007	2.9	115,143±20,638	3.0									
5.0%	86,334±33,682	4.8	120,966±21,688	3.2									
H: Dimethyl isophthalate			3			7							
Vehicle/concentration	Mean±SD	SI	Mean±SD	SI	Mean±SD	SI	Mean±SD	SI					
A00	27,188±10,027	–	35,610±7212	–	22,466±3515	–	28,306±4047	–					
5%	36,534±10,199	1.3	35,710±8126	1.0	25,555±3074	1.1	23,583±3751	1.0					
10%	31,200±10,875	1.1	34,357±8364	1.0									
25%	30,030±10,456	1.1	23,900±3733	0.7									
I: Isopramol			5			8			10				
Vehicle/concentration	Mean±SD	SI	Mean±SD	SI	Mean±SD	SI	Mean±SD	SI	Mean±SD	SI	Mean±SD	SI	
A00	24,583±5761	–	41,189±17,452	–	19,146±6582	–	29,925±6142	–	12,207±4127	–	29,602±8049	–	
10%	37,756±12,448	1.5	37,286±9163	0.9	10,106±3170	0.5	43,446±17,986	1.5	14,797±2984	1.2	18,791±7645	0.6	
25%	27,101±2623	1.1	35,024±4878	0.9	14,531±1549	0.8	14,752±5342	0.9	27,285±3421	1.0	20,627±6175	0.7	
50%	28,723±3313	1.2	33,259±7651	0.8	30,822±4485	0.9	34,382±6421	0.8	13,551±1001	1.1	15,039±3697	0.5	
												36,216±4960	1.2
J: Nickel sulfate			6			8							
Vehicle/concentration	Mean±SD	SI	Mean±SD	SI	Mean±SD	SI	Mean±SD	SI					
DMSO	100,396±24,632	–	4184±2395	–	19,803±4451	–	19,803±4451	–					
1%	116,266±22,468	1.2	21,990±7141	5.3	69,077±14,602	3.5	69,077±14,602	3.5					
3%	153,074±35,051	1.5	27,966±6162	6.7	60,881±7880	3.1	60,881±7880	3.1					
10%	103,595±20,343	1.0	49,303±14,901	11.8	50,568±9846	2.6	50,568±9846	2.6					
K: Abietic acid			6			7							
Vehicle/concentration	Mean±SD	SI	Mean±SD	SI	Mean±SD	SI	Mean±SD	SI					
A00	26,159±2157	–	13,910±3921	–	21,546±13,493	–	21,546±13,493	–					
5%	55,039±8805	2.1	25,277±9139	1.8	40,328±8389	1.9	40,328±8389	1.9					
10%	91,706±17,069	3.5	57,615±12,621	4.1	85,821±24,030	4.0	85,821±24,030	4.0					
25%	121,351±36,474	4.6	110,687±29,265	8.0	81,818±24,819	3.8	81,818±24,819	3.8					
L: Methyl salicylate			7			10							
Vehicle/concentration	Mean±SD	SI	Mean±SD	SI	Mean±SD	SI	Mean±SD	SI					
A00	24,047±3932	–	21,546±13,493	–	53,350±14,893	–	53,350±14,893	–					
5%	25,764±7330	1.1	23,459±7751	1.1	33,663±5192	0.6	33,663±5192	0.6					
10%	26,361±6381	1.1	38,158±6803	1.8	41,698±7559	0.8	41,698±7559	0.8					
25%	37,359±10,622	1.6	29,881±11,569	1.4	44,426±13,600	0.8	44,426±13,600	0.8					

(continued on next page)

Table 3(a) (continued)

Vehicle/ concentration	1		2		3		4		5		6		7		8		9		10	
	Mean±SD	SI	Mean±SD	SI	Mean±SD	SI	Mean±SD	SI	Mean±SD	SI	Mean±SD	SI	Mean±SD	SI	Mean±SD	SI	Mean±SD	SI	Mean±SD	SI
AOO	23,639±5906	-	30,284±11,576	-	25,429±5884	-	44,371±9224	-	15,183±5554	-	10,447±4413	-	25,112±8035	-	18,428±4503	-	26,327±5484	-	22,309±6393	-
25%	147,032±30,059	6.2	153,995±35,670	5.1	144,091±18,550	5.7	243,877±42,495	5.5	72,877±19,820	4.8	84,748±16,459	8.1	136,327±26,932	5.4	101,382±22,894	5.5	140,388±23,895	5.3	113,209±18,835	5.1

ACE, acetone; AOO, acetone-olive oil; DMSO, dimethylsulfoxide.  
Number of animals: 4 for all the tested chemicals, 8 for the positive controls of laboratories 1–8,

the same vehicle control group were employed. These 4 chemicals were randomly allocated by a biostatistician.

In order to avoid predicting the severity of the effects of each chemical, all the chemical names were coded into alphabetic characters, and they were labeled as low, medium, and high in terms of the concentration that enabled blinded distribution for both the studies. However, prior to the study, the researchers and toxicologists of the respective laboratories were informed of the identity of the 20 candidate chemicals and the corresponding control vehicles. This was done in order to ensure the safety of the chemists performing the experiments (e.g., with regard to proper disposal of the chemicals) and to prevent any anxiety that they would experience while handling unknown chemicals.

### 2.5. Development of LLNA-DA

The original LLNA measures the proliferation of draining lymph node cells (LNCs) via the incorporation of [<sup>3</sup>H]-methyl thymidine into DNA and β scintillation counting. Although this approach to measure the activity of LNC is well established through many studies on the original LLNA, alternative approaches that do not require the use of radioisotopes are expected to be beneficial.

ATP is the main energy source for a majority of cellular functions, and it is an essential molecule for living cells. ATP activity is known to indicate the number of living cells. Therefore, measurement of the ATP content in the lymph node by a luciferin–luciferase assay is considered to be one of the surrogates of altered lymph node cellularity. The measurement of the ATP content of the lymph node involves determination of the cell number at the end of cell proliferation, while the measurement of [<sup>3</sup>H]-methyl thymidine incorporation involves determination of the endpoint of cell proliferation. One of the benefits of measuring the ATP content is that it allows the use of commercially available reagent kits; in this method, the ATP content is expressed in terms of the chemiluminescence (relative light units, RLU) induced by the luciferin–luciferase reaction.

Yamashita, Idehara, Fukuda, Yamagishi, and Kawada (2005) used 3 chemicals to study the approach involving the measurement of the ATP content. They found that when the dosing schedule of the original LLNA was followed, the ATP measurement approach as well as the flow cytometric analysis of LNCs (Hatao, Hariya, Katsumura, & Kato, 1995) or the assessment of 5-bromo-2'-deoxyuridine (BrdU) incorporation into LNCs (Takeyoshi, Yamasaki, Yakabe, Takatsuki, & Kimber, 2001) tended to show lower stimulation indices (SIs) than the original LLNA. Hence, in order to increase lymph node proliferation, Yamashita et al. proposed pretreatment with 1% sodium lauryl sulfate (SLS) prior to the application of the test chemicals and an additional treatment with the tested chemical. Through their studies, these authors successfully increased the sensitivity of the ATP measurement approach, and the SI value of 3 obtained with this approach was considered to be comparable to that of the original LLNA. Additionally, these authors conducted 6 independent experiments using eugenol to determine the intralaboratory variation in the SI values of the ATP measurement approach. The mean and coefficient of variance of the SI values were 4.0% and 17.3%, respectively.

Daicel Chemical Industries Ltd. refined the ATP measurement approach, which was designated LLNA-DA. In addition to the original LLNA procedure, this ATP content measurement assay includes pretreatment with 1% SLS solution along with its application of the test chemicals on the seventh day; this strategy was expected to yield similar SI values, i.e., approximately 3, to those of the original LLNA. Therefore, this additional step enabled the use of the same cut-off point as that of the original LLNA. By the time the first validation study was conducted, Daicel Chemical Industries Ltd. had obtained some results for LLNA-DA by using the abovementioned cut-off point, in which the correlation coefficient of the EC3 value for LLNA and LLNA-DA for 10 chemicals was 0.90,

Table 3(b)

Mean and SD for the ATP content and SI values obtained in all the laboratories in the second study

B: Hexyl cinnamic aldehyde														
Vehicle/ concentration	11		12		13		14		15		16		17	
	Mean±SD	SI	Mean±SD	SI	Mean±SD	SI	Mean±SD	SI	Mean±SD	SI	Mean±SD	SI	Mean±SD	SI
AOO	21,328±8537	–	27,436±7629	–	24,739±6350	–	24,348±8236	–	31,189±10,511	–	28,421±8943	–	23,888±10,275	–
5%	32,306±7470	1.5	45,178±8970	1.6	35,059±13,111	1.4	50,408±15,075	2.1	46,853±7275	1.5	65,209±12,332	2.3	31,668±6045	1.3
10%	70,689±7059	3.3	94,494±20,913	3.4	110,638±34,223	4.5	88,935±49,202	3.7	78,471±11,510	2.5	146,720±30,935	5.2	110,331±13,800	4.6
25%	95,348±32,502	4.5	156,615±19,035	5.7	133,833±22,340	5.4	185,142±43,204	7.6	122,146±25,678	3.9	239,220±35,785	8.4	154,106±28,583	6.5
E: Cobalt chloride														
Vehicle/concentration	11		13		14		17							
	Mean±SD	SI	Mean±SD	SI	Mean±SD	SI	Mean±SD	SI						
DMSO	82,093±26,296	–	81,326±13,350	–	41,770±12,971	–	50,815±5671	–						
1%	122,193±21,742	1.5	133,890±34,318	1.6	97,101±15,349	2.3	148,776±68,574	2.9						
3%	141,919±33,024	1.7	199,335±5756	2.5	171,272±19,452	4.1	216,116±18,966	4.3						
5%	165,350±10,204	2.0	206,394±16,349	2.5	177,705±46,577	4.3	256,978±54,531	5.1						
J: Nickel sulfate														
Vehicle/concentration	11		12		14		16							
	Mean±SD	SI	Mean±SD	SI	Mean±SD	SI	Mean±SD	SI						
DMSO	82,093±26,296	–	83,046±6308	–	41,770±12,971	–	76,153±28,228	–						
1%	53,652±8085	0.7	82,896±14,003	1.0	77,804±25,666	1.9	90,029±11,264	1.2						
3%	65,034±25,414	0.8	103,345±24,614	1.2	65,200±11,620	1.6	118,932±13,811	1.6						
10%	60,451±17,784	0.7	80,596±21,515	1.0	88,990±14,982	2.1	88,482±19,237	1.2						
M: Lactic acid														
Vehicle/concentration	11		13		15		16							
	Mean±SD	SI	Mean±SD	SI	Mean±SD	SI	Mean±SD	SI						
DMSO	65,060±9211	–	81,326±13,350	–	49,353±21,291	–	76,153±28,228	–						
5%	60,576±20,296	0.9	80,639±18,883	1.0	45,730±8622	0.9	69,247±15,579	0.9						
10%	49,033±11,761	0.8	55,369±7627	0.7	47,928±15,171	1.0	60,621±11,273	0.8						
25%	52,131±16,088	0.8	60,124±13,945	0.7	35,259±2939	0.7	69,108±14,746	0.9						
N: Potassium dichromate														
Vehicle/concentration	11		12		15		16							
	Mean±SD	SI	Mean±SD	SI	Mean±SD	SI	Mean±SD	SI						
DMSO	65,060±9211	–	83,046±6308	–	49,353±21,291	–	50,815±5671	–						
0.1%	123,936±17,967	1.9	157,464±29,682	1.9	131,244±35,222	2.7	165,248±46,056	3.3						
0.3%	145,833±41,893	2.2	217,061±37,807	2.6	191,819±51,627	3.9	257,138±29,816	5.1						
1.0%	311,009±24,188	4.8	338,610±33,485	4.1	296,431±75,377	6.0	323,834±60,878	6.4						
Positive control (hexyl cinnamic aldehyde)														
Vehicle/ concentration	11		12		13		14		15		16		17	
	Mean±SD	SI	Mean±SD	SI	Mean±SD	SI	Mean±SD	SI	Mean±SD	SI	Mean±SD	SI	Mean±SD	SI
AOO	25,807±8795	–	30,147±6951	–	24,943±6509	–	27,245±7022	–	33,713±7937	–	37,383±5294	–	17,417.3±7195	–
25%	102,118±22,127	4.0	142,679±50,388	4.7	136,950±22,057	5.5	184,010±31,146	6.8	143,322±31,990	4.3	268,199±47,663	7.2	138,799±25,305	8.0

ACE, acetone; AOO, acetone-olive oil; DMSO, dimethylsulfoxide.

Number of animals: 4 for all the tested chemicals, 8 for the positive controls of laboratories 12–17, and 12 for the positive control of laboratory 11.

and the accuracy of LLNA-DA against LLNA for 18 chemicals was 89% (16/18) (in-house data).

The ATP content value is influenced by time, that is, it decreases over time. This is not emerge in the original LLNA since it involves the measurement of [<sup>3</sup>H]-methyl thymidine incorporation. Daicel Chemical Industry Ltd. investigated it and found that the ATP content value is not influenced by a 10- to 20-min delay, while this value would be reduced to approximately 50% of its original value with a 2-h delay. Therefore, Daicel Chemical Industry Ltd. recommends that when LLNA-DA is conducted, all the procedural steps from lymph node excision to the determination of the ATP content be performed rapidly and without delay.

Very recently, Idehara et al. (in press) reported the details of the intralaboratory study on LLNA-DA.

## 2.6. Standard protocol of LLNA-DA for the studies

The standard protocol for the assay was prepared prior to the preliminary test and determined according to the time of commencement of the study. Three doses were prepared for each of the test chemicals.

The groups of female CBA/JNCrJ mice ( $n=4$ ; Charles River Japan Inc., Kanagawa) were treated with the topical application of 25  $\mu$ L of 1 of the 3 doses of the test chemicals or the vehicle control exclusively on the dorsum of both ears. Following pretreatment with 1% SLS for 1 h, daily treatments with the chemicals were performed for the first 3 days and, subsequently, on day 7. On day 8, the treated mice were sacrificed, and the draining auricular lymph nodes were excised. After recording the lymph node weight (LNW), the LNCs were ground



between 2 slide glasses and subsequently suspended in 1 mL of phosphate-buffered saline (PBS) with a cell scraper. The LNC suspension was mixed and diluted to 1% with PBS. The ATP content was determined using a commercially available kit (Kikkoman Co., Tokyo). ATP was extracted from 0.1 mL of the diluted LNC suspension for 20 s, following which 0.1 mL of a reagent containing luciferase was added and the bioluminescence (RLU) in 10 s was measured with a luminometer (Lumitester C-100; Kikkoman Co., Tokyo). A point to note is that after the death of the animal, the ATP content of the lymph node decreases over time. It is therefore desirable that the series of procedures from lymph node excision to the determination of the ATP content must be performed rapidly and without delay.

### 2.7. Database

A biostatistician created a database containing the LNW and ATP content data obtained for each mouse in all the experimental laboratories. For comparison, data from studies on the original LLNA were collected and included in the database.

### 2.8. Statistical methods

For each experimental group, the SI was defined as the increase in the ATP content in the chemical-treated group relative to that in the vehicle control group. An SI of 3 was defined as the cut-off value for

the skin sensitization potential. In order to demonstrate the variability within the SI values, the confidence interval of the SI values was calculated (Omori & Sozu, 2007). A variance component,  $\tau^2$ , estimated by a random effect model for the log-transformed SI, was used as a measure of the interlaboratory variations; this is similar to the meta-analysis technique used in clinical studies (Normand, 1999). Using the abovementioned random effect model, we estimated the weighted average as an overall estimate of the SI value recorded for each chemical dose. The EC3 is defined as the estimated concentration that yields an SI value of 3. The EC3 of the weighted average was estimated and classified into the appropriate chemical category (Gerberick et al., 2004). Finally, the sensitivity, specificity, accuracy, positive predictivity, and negative predictivity were calculated as measures of relevance on the basis of the weighted averages in order to assess the concordance of the LLNA-DA results with the LLNA or GPMT/BT results (OECD, 2005). These measures were not calculated in the second study because of a shortage of chemicals.

## 3. Results

### 3.1. Chemical selection

Tables 1(a) and 1(b) show the selected chemicals, the results of LLNA and GPMT/BT as references, and the results obtained for the chemicals allocated for the LLNA-DA experiments of both the studies.

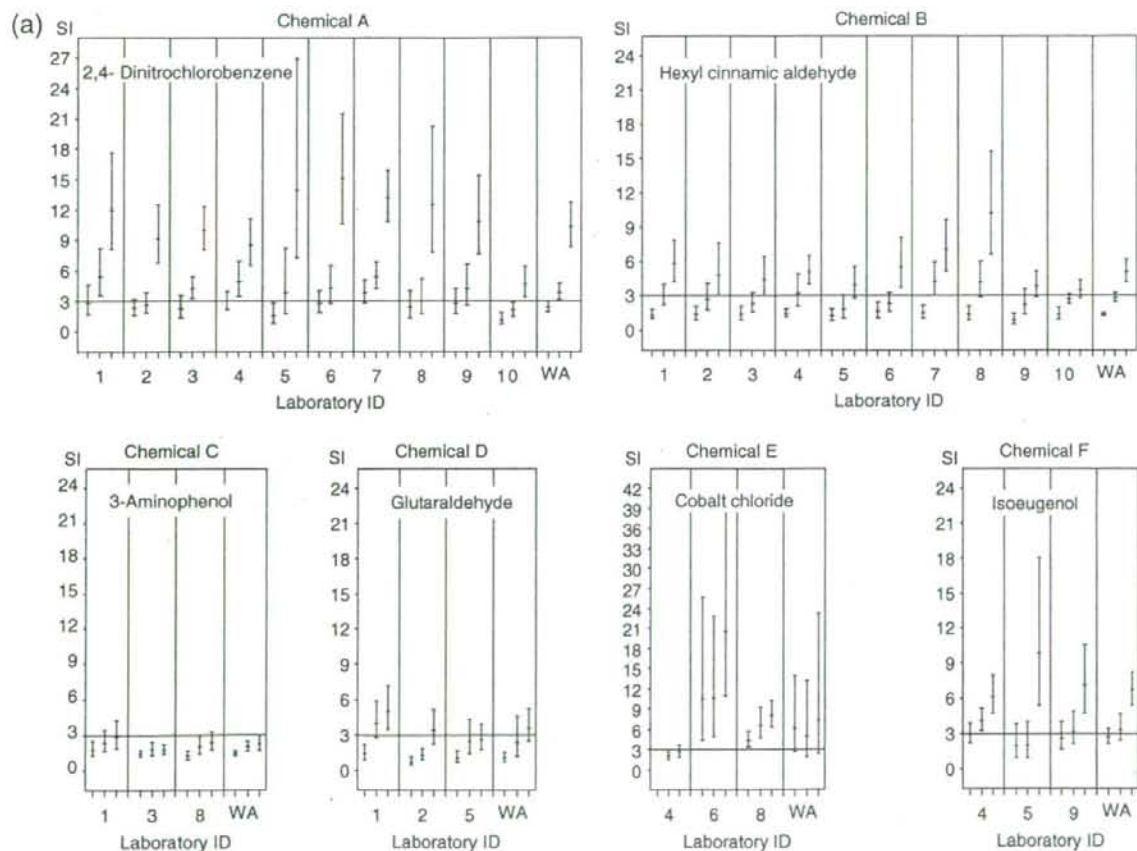


Fig. 1. (a). Dose-response relationships of the SI values with 95% confidence intervals for each chemical analyzed in all the laboratories. "WA" indicates the weighted average of the SI values obtained by meta-analysis using the random effect model in the first study. (b). Dose-response relationships of the SI values with 95% confidence intervals for each chemical analyzed in all the laboratories. "WA" indicates the weighted average of the SI values obtained by meta-analysis using the random effect model in the second study.

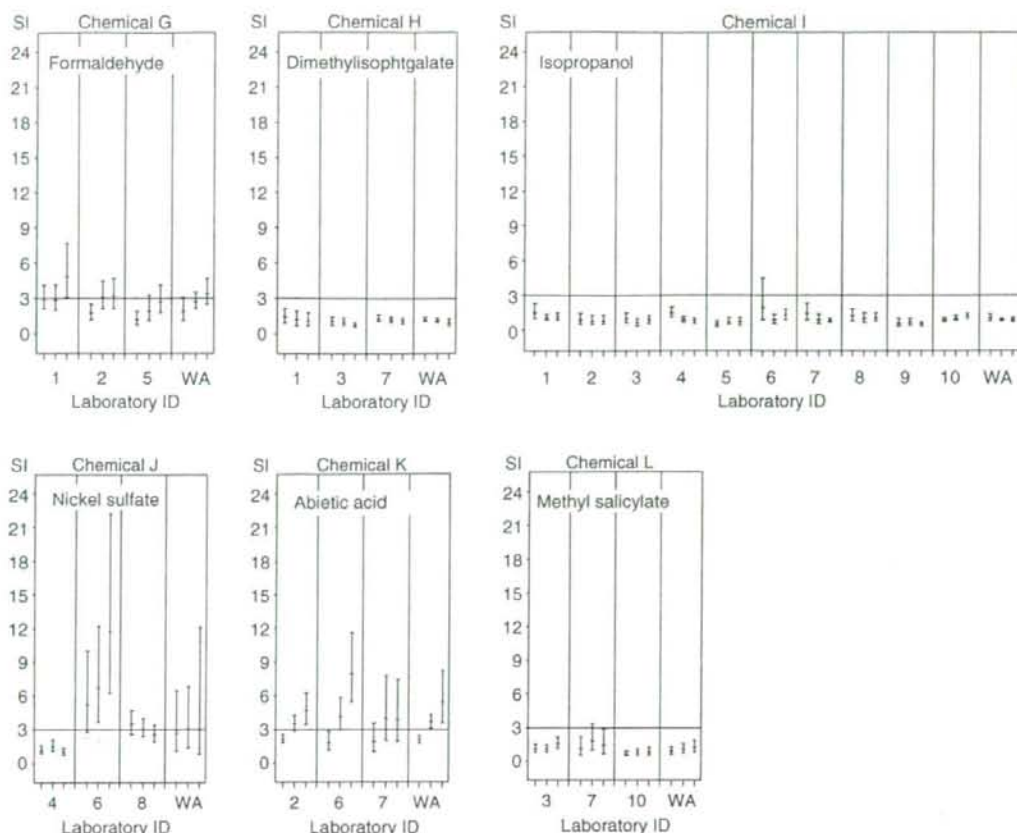


Fig. 1 (continued).

The GPMT/BT results for chemical D (glutaraldehyde) are not listed in Table 1(a) because the data were not available at the time the list was prepared.

The chemical selectors initially set the dose concentrations of chemical E (cobalt chloride) at 1%, 3%, and 10%. However, during the first round of the experiments in a laboratory in the first study, 2 of the 4 mice treated with the 10% dose concentration died, while the other 2 exhibited signs of hypokinesia. Since only the laboratory had conducted the experiment using this chemical concentration at the time, the chemical selectors decided to alter the dose concentrations. Then, the dose concentrations of chemical E were subsequently set at 0.3%, 1%, and 3% in a blinded manner for the remaining 2 laboratories in the first study. However, after several considerations, the chemical selectors adopted different doses in the second study, i.e., 1%, 3%, and 5%.

### 3.2. Body weights

Tables 2(a) and 2(b) summarize the body weight statistics observed on days 1 and 8 in each laboratory, respectively. No substantial interlaboratory variations were observed with regard to the body weights.

### 3.3. ATP content and SI values

The ATP content and SI values recorded by the experimental laboratories for each of the test chemicals are summarized in Tables 3(a)

and 3(b), and the dose–response relationships for the SI values are indicated in Fig. 1(a) and (b).

The results of the first study are shown in Table 3(a) and Fig. 1(a). For chemicals A (2,4-dinitrochlorobenzene), B (hexyl cinnamic aldehyde), F (iso Eugenol), and K (abietic acid), dose–response relationships of the SI values were clearly evident in each laboratory, and the SI values for all the high-dose groups were greater than 3. The dose–response relationships for chemicals H (dimethyl isophthalate), I (isopropanol), and L (methyl salicylate) were unclear, and the laboratories that assessed these chemicals reported negative findings. The SI values obtained for chemical C (3-aminophenol) in all 3 laboratories were lower than 3, and the values obtained in laboratories 1 and 3 were approximately 3 for the high-dose group. Further, dose–response relationships of the SI values were observed for chemicals D (glutaraldehyde) and G (formaldehyde), whose SI values were also approximately 3 for the high-dose groups. The SI values were greater than 3 for the high-dose groups in laboratories 1 and 2 but not in laboratory 5. The SI values for chemicals E (cobalt chloride) and J (nickel sulfate) were inconsistent across laboratories; further, an inconsistency was observed in the ATP content values in the vehicle control group for these chemicals. In the case of chemical E, the dose–response relationship of the weighted average of the SI values yielded a v-shaped curve; therefore, it may be considered that the observed dose–response relationships based on the weighted average values for chemical E were inappropriate.

Table 3(b) and Fig. 1(b) describe the results of the second study. For chemicals B (hexyl cinnamic aldehyde) and N (potassium dichromate),

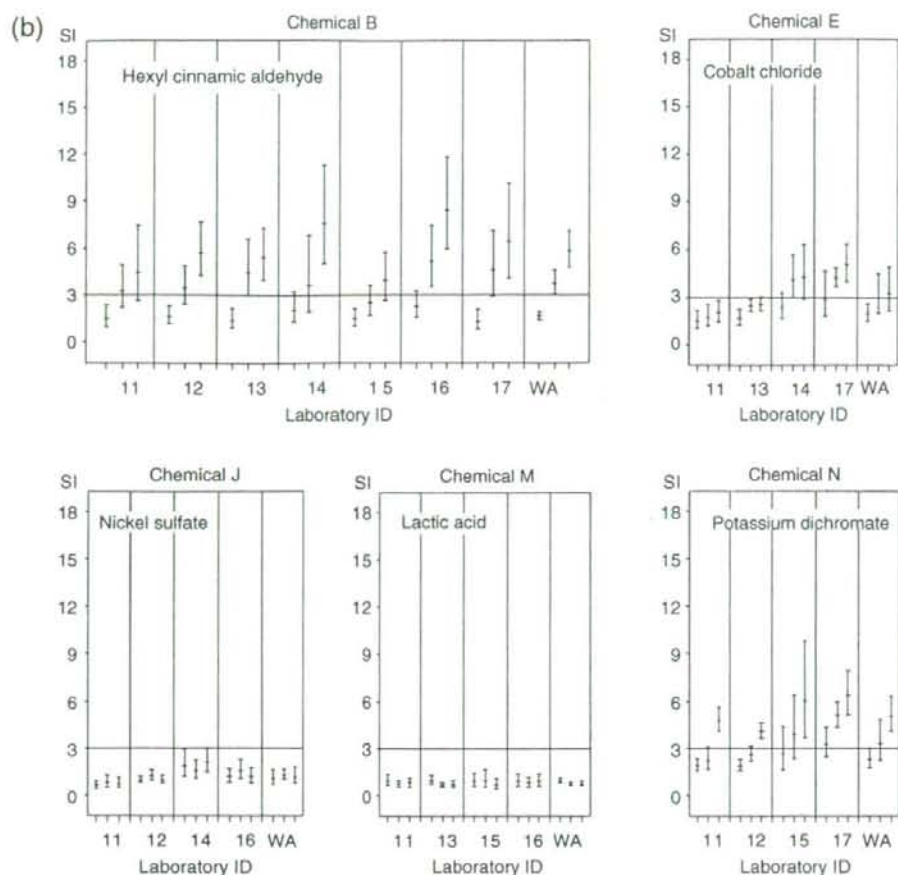


Fig. 1 (continued).

the dose–response relationships of the SI values were evident in each laboratory, and all the SI values of the high-dose groups were greater than 3. The SI values for chemicals J (nickel sulfate) and M (lactic acid) were lower than 3, and these chemicals tested negative in all the laboratories. The SI value for chemical E (cobalt chloride), which was inconsistent in the first study, was also inconsistent between different laboratories in the study. However, as opposed to the results of the first study, the dose–response relationships and ATP contents were considerably similar between laboratories.

#### 3.4. ATP content and LNW

Fig. 2(a) and (b) shows the scatter plots of ATP content according to LNW for all the chemicals. Since the ATP content decreases with time, it is important for the scatter plot to demonstrate a linear relationship between the ATP content and LNW. This linear relationship can be used as a rough indicator of whether the experiments conformed to the protocol for measuring the ATP content. Since all the scatter plots demonstrated linearity, it can be concluded that all the experiments adhered to the protocol.

#### 3.5. Assay sensitivity

We defined assay sensitivity as the ability to accurately detect the positive control chemical. Since a positive control was included in

each experiment, we investigated whether the SI value assigned to the positive control group was greater than 3 in the experiments. Fig. 3(a) and (b) shows the SI values obtained for all the positive control groups with 95% confidence intervals. All the experiments in these studies were assay sensitive because all the SI values were greater than 3.

#### 3.6. Intralaboratory variability

Although limited, the results obtained for the positive control groups allowed us to evaluate the intralaboratory variability of the assay. Fig. 3(a) and (b) also shows the variability of the SI values obtained for the positive control groups in each laboratory in both the studies. No large intralaboratory variation was observed in any of the laboratories.

#### 3.7. Interlaboratory variability

The data shown in Fig. 1(a) and (b) were used to measure the interlaboratory variability in the SI values for all the chemical doses. Tables 4(a) and 4(b) show the weighted average of the SI values with 95% confidence intervals and a summary index of the interlaboratory variability, i.e.,  $\tau^2$ .

In the first study, all the doses of chemicals E (cobalt chloride) and J (nickel sulfate) and the intermediate dose of chemical D (glutaraldehyde) exhibited relatively large interlaboratory variations. On the

other hand, in the second study, no large interlaboratory variation was observed in any of the laboratories.

Tables 5(a) and 5(b) show the results of the judgments based on the cut-off value of 3 for the SI values obtained for all the chemicals in all the laboratories. In the first study, 4 chemicals, namely, D (glutaraldehyde), E (cobalt chloride), G (formaldehyde), and J (nickel sulfate), showed inconsistent results among the laboratories. For

chemicals D (glutaraldehyde) and G (formaldehyde), the SI values for the high doses were approximately 3 among all 3 laboratories; thus, the variation was small. On the other hand, the values for chemicals E (cobalt chloride) and J (nickel sulfate) were inconsistent among the laboratories (Fig. 1(a)). In the second study, consistent results were observed for the 4 chemicals. Although an inconsistency was observed for chemical E (cobalt chloride), the dose–

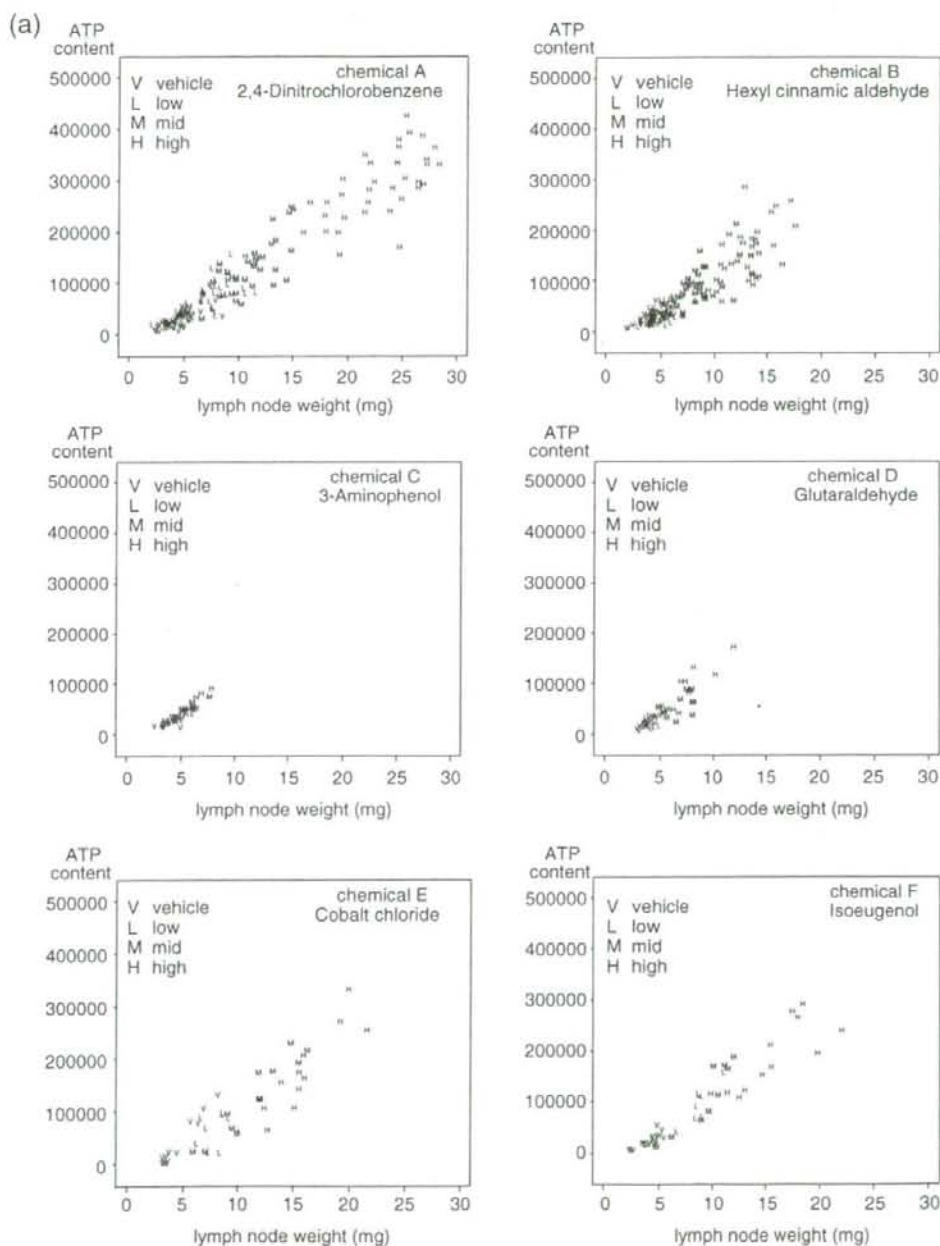


Fig. 2. (a). Scatter plots indicating the ATP content with the LNW (mg) recorded for the vehicle (V), low-dose (L), middle-dose (M), and high-dose groups (H) for each chemical in the first study. (b). Scatter plots indicating the ATP content with the LNW (mg) recorded for the vehicle (V), low-dose (L), middle-dose (M), and high-dose groups (H) for each chemical in the second study.

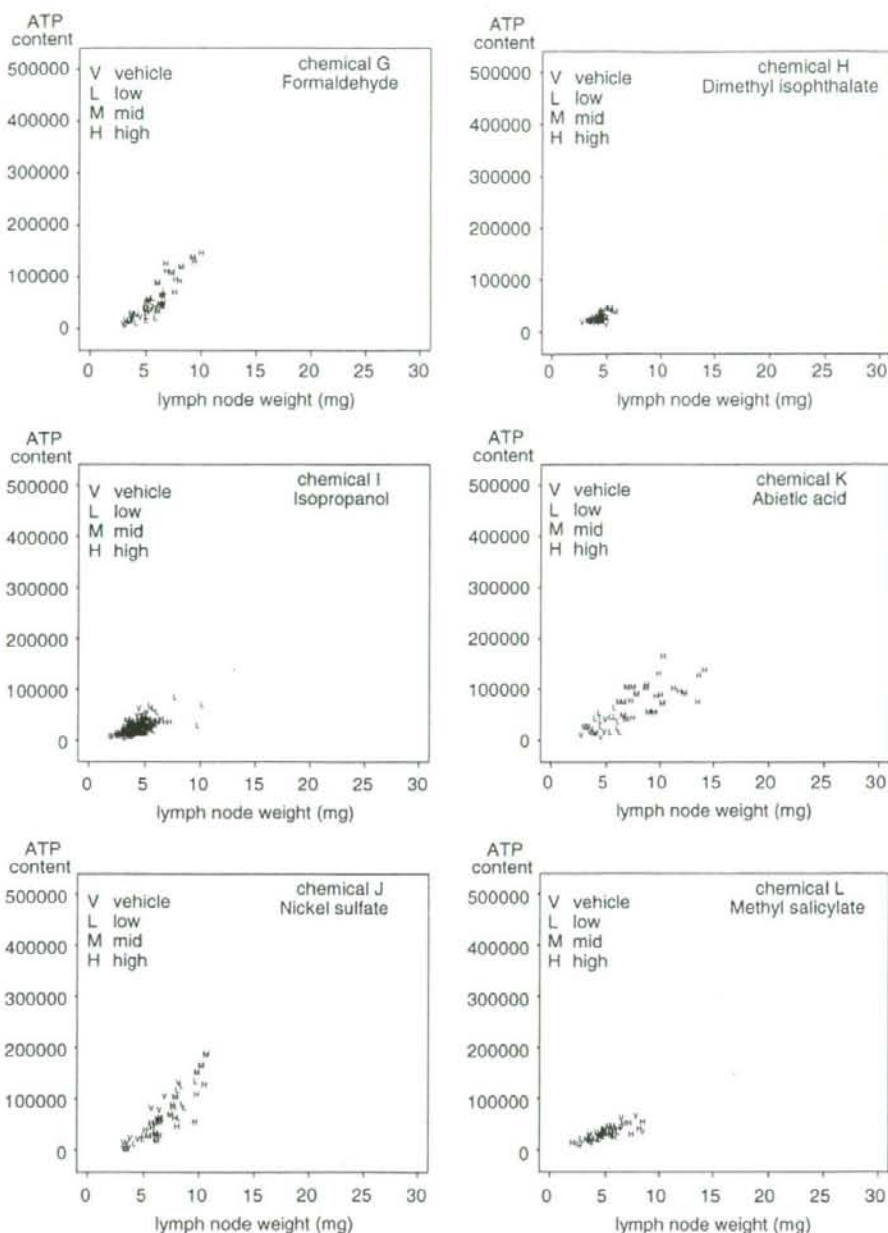


Fig. 2 (continued).

response relationships of the chemical were very similar between laboratories and the variation in the SI value for each dose was small, as mentioned above.

### 3.8. EC3 and measures of relevance

To avoid the problem of multiple counts of the same chemicals from different laboratories, the calculations of EC3 and sensitivity, specificity, accuracy, positive predictivity, and negative predictiv-

ity of LLNA-DA were based on the weighted averages of the SI values.

Tables 6(a) and 6(b) show the EC3 results and its classification for LLNA-DA based on the weighted averages for both the studies and the reported EC3 and its classification based on the reported values for LLNA.

The sensitivity, specificity, accuracy, positive predictivity, and negative predictivity of LLNA-DA with regard to the chemicals in the first study, as against those of GPMT/BT and LLNA are shown in Table 7.

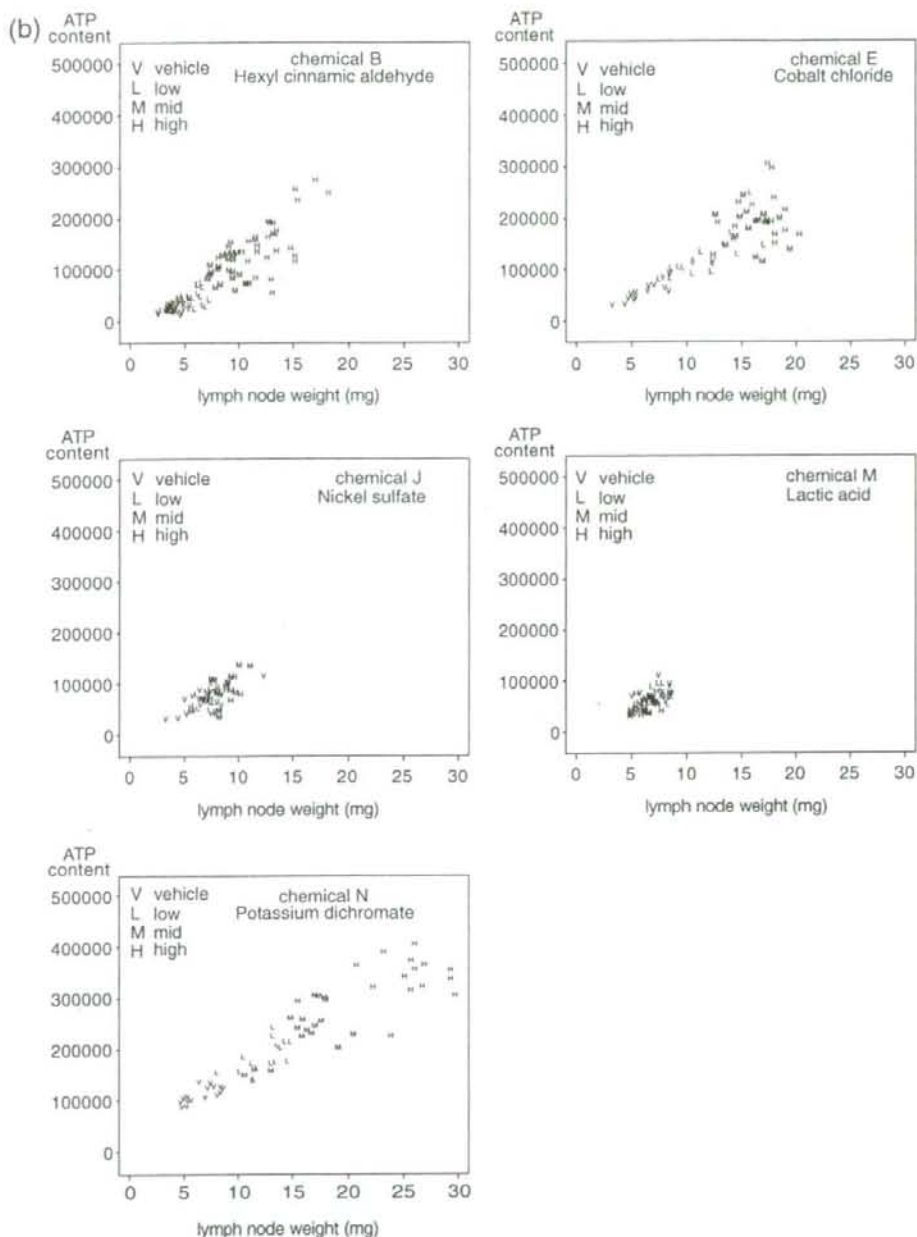


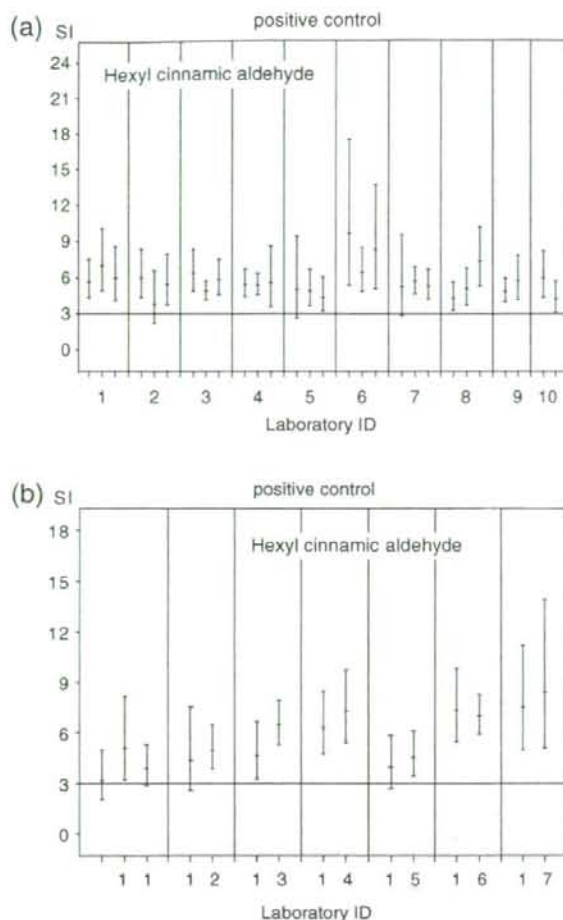
Fig. 2 (continued).

To enable comparison of the measurements of LLNA against those of GPMT/BT when the same chemicals were selected, these values calculated only on the basis of the referenced data are shown in Table 7.

The sensitivity, specificity, accuracy, positive predictivity, and negative predictivity values of LLNA-DA against those of GPMT/BT were similar to those of LLNA against those of GPMT/BT. Chemical C (3-aminophenol) was negative for LLNA-DA and positive for LLNA, and chemical J (nickel sulfate) was positive for LLNA-DA and negative for LLNA.

#### 4. Discussion

Researchers have provided considerable evidence for the reliability of LLNA; however, limited evidence is available for the reliability of LLNA-DA. Since the methods involved in LLNA-DA and LLNA are essentially identical, the results of our study provide adequate evidence in support of LLNA-DA as an alternative assay method to LLNA.



**Fig. 3.** (a) SI values with 95% confidence intervals obtained for the positive control (25% hexyl cinnamic aldehyde) groups in all the laboratories in the first study. (b) SI values with 95% confidence intervals obtained for the positive control (25% hexyl cinnamic aldehyde) groups in all the laboratories in the second study.

Although several interlaboratory studies on LLNA have been reported, they did not necessarily employ the same protocol; additionally, these studies were conducted by approximately 5 experi-

mental laboratories (Basketter et al., 1991; Kimber et al., 1991, 1998, 1995; Loveless et al., 1996; Scholes et al., 1992). In contrast, one of the distinguishing features of the series of the present 2 studies is that 17 independent experimental laboratories used the same protocol to test chemicals. The fact that the interlaboratory variations were small for most of the chemicals is considered as a significant finding of this study. In particular, chemical B (hexyl cinnamic aldehyde) was tested by all the 17 laboratories; it was observed that the SI value of the interlaboratory variation was small and that the dose–response relationship was considerably similar. These results indicate that LLNA-DA is a robust technique.

In the first study, 2 of the 12 chemicals—chemicals E (cobalt chloride) and J (nickel sulfate)—demonstrated large interlaboratory variations. We considered that this might be attributed to the use of DMSO as the exclusive vehicle for these 2 chemicals. The fact that these 2 chemicals were the only metallic salts could be another reason for the large variations observed. Therefore, in the second study, it was necessary to examine interlaboratory variations with regard to other metallic salts with DMSO as the vehicle. The results of the second study, which used 5 chemicals including these 2 metallic salts, demonstrated small interlaboratory variations for all the chemicals. The small variation observed for the metallic salts could be due to the following reasons. (1) Prior to the study, the developer advised the toxicologists to carefully apply the DMSO solution onto the ears since it is highly hydrophilic, and the presence of moisture in the ears could lead to considerable variation in the results. (2) During the technical-transfer seminar, the participating toxicologists were well trained in all aspects of the experiment, including the application of DMSO solution onto the ears of the mice. Thus, our present finding is that the large variation for the 2 metallic salts in the first study was caused by inappropriate DMSO application, which in comparison with AOO or ACE has unique physical properties in terms of the difficulty involved in its application to the dorsum of the ears. Therefore, this factor was considered when the metallic salts were assessed with LLNA-DA.

Furthermore, these 2 studies provided substantial historical data with regard to the ATP content for the vehicle control group that used AOO, ACE, or DMSO with LLNA-DA. These data could be referred to by new laboratories that are considering the use of this assay. As in the case of LLNA studies, data from these studies regarding DMSO appear to demonstrate the toxicity of the chemical (Wright et al., 2001). We observed a higher ATP content when DMSO was used as a solvent than when AOO or ACE was used. This tendency may cause the SI values to change depending on the vehicle used in the experiment because a high ATP content in the vehicle control group would lead to relatively low SI values.

These studies also present certain limitations. First, the results are representative of only 14 chemicals. Although it may be recommended that the assay be tested using several chemicals, the

**Table 4(a)**

The weighted average of the SI values and the variance component,  $\tau^2$ , in the first study

Chemical	Low-dose group			Middle-dose group			High-dose group		
	SI	95%CI	$\tau^2$	SI	95%CI	$\tau^2$	SI	95% CI	$\tau^2$
A: 2,4-Dinitrochlorobenzene	2.5	(2.0, 3.0)	0.03	3.9	(3.1, 4.8)	0.03	10.3	(8.4, 12.8)	0.04
B: Hexyl cinnamic aldehyde	1.4	(1.2, 1.6)	0.00	2.8	(2.5, 3.3)	0.01	5.1	(4.2, 6.2)	0.03
C: 3-Aminophenol	1.4	(1.2, 1.7)	0.00	2.0	(1.6, 2.4)	0.00	2.2	(1.7, 2.9)	0.02
D: Glutaraldehyde	1.0	(0.7, 1.5)	0.02	2.3	(1.2, 4.6)	0.13	3.6	(2.4, 5.2)	0.03
E: Cobalt chloride	6.1	(2.7, 13.9)	0.11	5.0	(1.9, 13.2)	0.29	7.4	(2.4, 23.3)	0.42
F: Isoeugenol	2.7	(2.2, 3.4)	0.00	3.4	(2.4, 4.7)	0.02	6.7	(5.5, 8.3)	0.00
G: Formaldehyde	1.8	(1.1, 3.1)	0.07	2.7	(2.1, 3.4)	0.00	3.4	(2.5, 4.7)	0.01
H: Dimethyl isophthalate	1.2	(1.0, 1.4)	0.00	1.1	(0.9, 1.3)	0.00	0.9	(0.7, 1.2)	0.02
I: Isopropanol	1.1	(0.8, 1.4)	0.04	0.9	(0.8, 1.0)	0.00	0.9	(0.8, 1.1)	0.03
J: Nickel sulfate	2.7	(1.1, 6.5)	0.24	3.1	(1.4, 6.9)	0.20	3.1	(0.8, 12.1)	0.62
K: Abietic acid	2.1	(1.8, 2.4)	0.00	3.7	(3.1, 4.3)	0.00	5.4	(3.5, 8.3)	0.04
L: Methyl salicylate	0.9	(0.6, 1.3)	0.03	1.1	(0.7, 1.6)	0.04	1.2	(0.8, 1.9)	0.04

The variance component  $\tau^2$  represents the interlaboratory variance for the log-transformed SI, which is obtained by decomposing the total variance into the between variance and within variance by performing meta-analysis with a random effect model. Since  $\tau^2$  indicates variance, its value is greater than 0, and a higher value indicates greater interlaboratory variation.

Table 4(b)

The weighted averages of the SI values and the variance component ( $\tau^2$ , in the second study

Chemical	Low-dose group			Middle-dose group			High-dose group		
	SI	95%CI	$\tau^2$	SI	95%CI	$\tau^2$	SI	95% CI	$\tau^2$
B: Hexyl cinnamic aldehyde	1.7	(1.4, 2.0)	0.00	3.8	(3.1, 4.6)	0.01	5.9	(4.8, 7.2)	0.01
E: Cobalt chloride	2.0	(1.5, 2.6)	0.02	3.0	(2.0, 4.5)	0.07	3.2	(2.1, 4.9)	0.07
J: Nickel sulfate	1.1	(0.7, 1.6)	0.06	1.3	(1.0, 1.6)	0.01	1.2	(0.8, 1.8)	0.07
M: Lactic acid	1.0	(0.8, 1.1)	0.00	0.7	(0.6, 0.9)	0.00	0.8	(0.7, 0.9)	0.00
N: Potassium dichromate	2.3	(1.8, 3.0)	0.02	3.3	(2.2, 4.8)	0.06	5.1	(4.1, 6.3)	0.02

The variance component  $\tau^2$  represents the interlaboratory variance for the log-transformed SI, which is obtained by decomposing the total variance into the between variance and within variance by using meta-analysis with a random effect model. Since  $\tau^2$  indicates variance, it takes on a value greater than 0, and a larger value indicates greater interlaboratory variation.

chemicals used in the present studies were selected from a wide range of chemicals, and their skin sensitization potentials were determined by the application of the LLNA method.

Further, the precision of the measurements of relevance was low because only 12 chemicals were tested by this assay method; therefore, even a difference in only a single chemical would affect the sensitivity. Since the study demonstrated the strong reliability of the assay, further assessments using other known chemicals should be conducted in other studies. Idehara et al. (in press) report the results of the intralaboratory study.

Another limitation is with regard to the quality of the data. It was extremely difficult to ensure complete compliance with good laboratory practice (GLP) in these studies. However, although the experiments involved in the studies were not conducted in complete accordance with GLP, the format file for data recording of individual experiments was devised at the planning stage of the study, and the data files collected for all the experiments complied with this format. Furthermore, since all the data used for the analyses were based on the database, if required, we can provide the database regarding the ATP content values obtained for the individual animals with the standard protocol that was used here.

Unlike LLNA, LLNA-DA measures the ATP content. It is an extremely simple method for measuring the ATP content during an experiment, and it yields quick results. However, since the ATP content of the LNCs

decreases with time, while performing LLNA-DA, it is necessary to comply with the time of operation from lymph node excision to the determination of ATP content. Measuring the LNW as an internal control is recommended. The plot of ATP content against LNW, as in Fig. 2, might aid in roughly checking the compliance.

In conclusion, these 2 studies provide valuable evidence for the reliability of LLNA-DA.

Table 6(a)

EC3 and chemical classification in the first study

Chemical	LLNA-DA		LLNA	
	EC3	Classification	EC3	Classification
A: 2,4-Dinitrochlorobenzene	0.06	Extreme	0.04	Extreme
B: Hexyl cinnamic aldehyde	11.1	Weak	8.4	Moderate
C: 3-Aminophenol	–	Negative	3.2	Moderate
D: Glutaraldehyde	0.3	Strong	0.1	Extreme
E: Cobalt chloride	–	(Positive) <sup>a</sup>	<0.5	Strong
F: Isoeugenol	1.9	Moderate	1.8	Moderate
G: Formaldehyde	3.0	Moderate	0.7	Strong
H: Dimethyl isophthalate	–	Negative	–	Negative
I: Isopropanol	–	Negative	–	Negative
J: Nickel sulfate	2.7	Moderate	–	Negative
K: Abietic acid	7.9	Moderate	14.7	Weak
L: Methyl salicylate	–	Negative	–	Negative

The EC3 for LLNA-DA is based on the weighted average. The SI values obtained for chemical E (cobalt chloride) with LLNA-DA was greater than 3 for all the doses; however, since the dose–response relationship yielded a v-shaped curve, the EC3 could not be determined.

<sup>a</sup> Although the weighted averages of the SI values were greater than 3 for all the doses, the EC3 and classification were determined because the dose–response relationship exhibited a v-shaped curve.

Table 5(a)

Judgment based on SI values greater than 3 for LLNA and the referenced values for LLNA and GPMT/BT in the first study

Chemical	LLNA	GPMT/BT	Laboratory																	
			1	2	3	4	5	6	7	8	9	10								
A: 2,4-Dinitrochlorobenzene	+	+	+	+	+	+	+	+	+	+	+	+	+	+	+	+	+	+	+	+
B: Hexyl cinnamic aldehyde	+	+	+	+	+	+	+	+	+	+	+	+	+	+	+	+	+	+	+	+
C: 3-Aminophenol	+	nonstd	–	–	–	–	–	–	–	–	–	–	–	–	–	–	–	–	–	–
D: Glutaraldehyde	+	+	–	–	–	–	–	–	–	–	–	–	–	–	–	–	–	–	–	–
E: Cobalt chloride	+	+	–	–	–	–	–	–	–	–	–	–	–	–	–	–	–	–	–	–
F: Isoeugenol	+	+	–	–	–	–	–	–	–	–	–	–	–	–	–	–	–	–	–	–
G: Formaldehyde	+	+	+	+	–	–	–	–	–	–	–	–	–	–	–	–	–	–	–	–
H: Dimethyl isophthalate	–	–	–	–	–	–	–	–	–	–	–	–	–	–	–	–	–	–	–	–
I: Isopropanol	–	–	–	–	–	–	–	–	–	–	–	–	–	–	–	–	–	–	–	–
J: Nickel sulfate	–	+	–	–	–	–	–	–	–	–	–	–	–	–	–	–	–	–	–	–
K: Abietic acid	+	+	–	–	–	–	–	–	–	–	–	–	–	–	–	–	–	–	–	–
L: Methyl salicylate	–	–	–	–	–	–	–	–	–	–	–	–	–	–	–	–	–	–	–	–

\*nonstd\* indicates a nonstandard animal.

Table 5(b)

Judgment based on SI values greater than 3 for LLNA and the referenced values for LLNA and GPMT/BT in the second study

Chemical	LLNA	GPMT/BT	Laboratory																	
			11	12	13	14	15	16	17											
B: Hexyl cinnamic aldehyde	+	+	+	+	+	+	+	+	+	+	+	+	+	+	+	+	+	+	+	+
E: Cobalt chloride	+	+	–	–	–	–	–	–	–	–	–	–	–	–	–	–	–	–	–	–
J: Nickel sulfate	–	+	–	–	–	–	–	–	–	–	–	–	–	–	–	–	–	–	–	–
M: Lactic acid	–	–	–	–	–	–	–	–	–	–	–	–	–	–	–	–	–	–	–	–
N: Potassium dichromate	+	+	+	+	–	–	–	–	–	–	–	–	–	–	–	–	–	–	–	–

Table 6(b)

EC3 and chemical classification in the second study

Chemical	LLNA-DA		LLNA	
	EC3	Classification	EC3	Classification
B: Hexyl cinnamic aldehyde	8.1	Moderate	8.4	Moderate
E: Cobalt chloride	3.0	Moderate	<0.5	Strong
J: Nickel sulfate	–	Negative	–	Negative
M: Lactic acid	–	Negative	>25	Negative
N: Potassium dichromate	0.2	Strong	0.1	Strong

Table 7

Sensitivity, specificity, accuracy, positive predictivity, and negative predictivity in the study

	n	Sensitivity	Specificity	Accuracy	Positive predictivity	Negative predictivity
LLNA-DA vs. GPMT/BT	11	87.5% (7/8)	100% (3/3)	90.9% (10/11)	100% (7/7)	75.0% (3/4)
LLNA-DA vs. LLNA	12	87.5% (7/8)	75.0% (3/4)	83.3% (10/12)	88% (7/8)	75.0% (3/4)
LLNA vs. GPMT/BT	11	87.5% (7/8)	100% (3/3)	90.9% (10/11)	100% (7/7)	75.0% (3/4)

For LLNA-DA, the judgment was based on the weighted average of the SI values. For LLNA and GPMT/BT, judgments were based on the referenced data.



## Acknowledgment

This study was partially supported by a grant from the Ministry of Health, Labour and Welfare (principal investigator: Yasuo Ohno) and Japanese Society for Alternatives to Animal Experiments.

We would like to express our appreciation to the editors and the reviewers of the original manuscript, who made insightful suggestions that improved the clarity of the presentation.

## References

- Basketter, D. A., Blaikie, L., Dearman, R. J., Kimber, I., Ryan, C. A., Gerberick, G. F., et al. (2000). Use of the local lymph node assay for the estimation of relative contact allergenic potency. *Contact Dermatitis*, 42, 344–348.
- Basketter, D. A., Casati, S., Gerberick, G. F., Griem, P., Philips, B., & Worth, A. (2005). Skin sensitisation. *Alternatives To Laboratory Animals*, 33(Supplement 1), 83–103.
- Basketter, D. A., Evans, P., Fielder, R. J., Gerberick, G. F., Dearman, R. J., & Kimber, I. (2002). Local lymph node assay: Validation, conduct and use in practice. *Food and Chemical Toxicology*, 40, 593–598.
- Basketter, D. A., Gerberick, G. F., & Kimber, I. (1998). Strategies for identifying false positive responses in predictive skin sensitization tests. *Food and Chemical Toxicology*, 36, 327–333.
- Basketter, D. A., Gerberick, G. F., Kimber, I., & Loveless, S. E. (1996). The local lymph node assay: A viable alternative to currently accepted skin sensitization tests. *Food and Chemical Toxicology*, 34, 985–997.
- Basketter, D. A., Lea, L. J., Cooper, K. J., Ryan, C. A., Gerberick, G. F., Dearman, R. J., et al. (1999). Identification of metal allergens in the local lymph node assay. *American Journal of Contact Dermatitis*, 10, 207–212.
- Basketter, D. A., Lea, L. J., Dickens, A., Briggs, D., Pate, I., Dearman, R. J., et al. (1999). A comparison of statistical approaches to the derivation of EC<sub>3</sub> values from local lymph node assay dose responses. *Journal of Applied Toxicology*, 19, 261–266.
- Basketter, D. A., & Scholes, E. W. (1992). Comparison of the local lymph node assay with the guinea-pig maximization test for the detection of a range of contact allergens. *Food and Chemical Toxicology*, 30, 65–69.
- Basketter, D. A., Scholes, E. W., Kimber, I., Botham, P. A., Hilton, J., Miller, K., et al. (1991). Interlaboratory evaluation of the local lymph node assay with 25 chemicals and comparison with guinea pig test data. *Toxicology Methods*, 1, 30–43.
- Dean, J. H., Twerdok, L. E., Tice, R. R., Sailstad, D. M., Hattan, D. G., & Stokes, W. S. (2001). ICCVAM evaluation of the murine local lymph node assay. II. Conclusions and recommendations of an independent scientific peer review panel. *Regulatory Toxicology and Pharmacology*, 34, 258–273.
- Dearman, R. J., Hilton, J., Basketter, D. A., & Kimber, I. (1999). Cytokine endpoints for the local lymph node assay: Consideration of interferon- $\gamma$  and interleukin 12. *Journal of Applied Toxicology*, 19, 149–155.
- Durand, G., De Burlet, G., Virat, M., & Nauman, B. D. (2003). Use of the local lymph node assay in the evaluation of the sensitizing potential of pharmaceutical process intermediates. *Contact Dermatitis*, 49, 148–154.
- Ehling, G., Hecht, M., Heusener, A., Huesler, J., Gamer, A. O., van Loveren, H., et al. (2005). An European inter-laboratory validation of alternative endpoints of the murine local lymph node assay: First round. *Toxicology*, 212, 60–68.
- Ehling, G., Hecht, M., Heusener, A., Huesler, J., Gamer, A. O., van Loveren, H., et al. (2005). An European inter-laboratory validation of alternative endpoints of the murine local lymph node assay: 2nd round. *Toxicology*, 212, 69–79.
- FDA (2002). *Guidance for industry—immunotoxicology evaluation of investigational new drugs*.
- Gerberick, G. F., Ryan, C. A., Kern, P. S., Dearman, R. J., Kimber, I., Patlewicz, G. Y., et al. (2004). A chemical dataset for evaluation of alternative approaches to skin-sensitization testing. *Contact Dermatitis*, 50, 274–288.
- Gerberick, G. F., Ryan, C. A., Kimber, I., Dearman, R. J., & Basketter, D. A. (2000). Local lymph node assay: Validation assessment for regulatory purposes. *Toxicology*, 11, 3–18.
- Haneke, K. E., Tice, R. R., Carson, B. L., Margolin, B. H., & Stokes, W. S. (2001). ICCVAM evaluation of the murine local lymph node assay. III. Data analyses completed by the national toxicology program interagency center for the evaluation of alternative toxicological methods. *Regulatory Toxicology and Pharmacology*, 34, 274–286.
- Hastings, K. L. (2001). Pre-clinical methods for detecting the hypersensitivity potential of pharmaceuticals: Regulatory considerations. *Toxicology*, 158, 85–89.
- Hatao, M., Hariya, T., Katsumura, Y., & Kato, S. (1995). A modification of the local lymph node assay for contact allergenic screening: Measurement of interleukin-2 as an alternative to radioisotope-dependent proliferation assay. *Toxicology*, 98, 15–22.
- Idehara, K., Yamagishi, G., Yamashita, K., & Ito, M. (2008). Characterization and evaluation of a modified local lymph node assay using ATP content as a non-radio isotopic endpoint. *Journal of Pharmacological and Toxicological Methods*, 58, 1–10 (this issue).
- Kimber, I. (2001). The local lymph node assay and potential application to the identification of drug allergens. *Toxicology*, 158, 59–64.
- Kimber, I., Hilton, J., Botham, P. A., Basketter, D. A., Scholes, E. W., Miller, K., et al. (1991). The murine local lymph node assay: Results of an inter-laboratory trial. *Toxicology Letters*, 55, 203–213.
- Kimber, I., Hilton, J., Dearman, R. J., Gerberick, G. F., Ryan, C. A., Basketter, D. A., et al. (1998). Assessment of the skin sensitization potential of topical medicaments using the local lymph node assay: An interlaboratory evaluation. *Journal of Toxicology and Environmental Health, Part A*, 53, 563–579.
- Kimber, I., Hilton, J., Dearman, R. J., Gerberick, G. F., Ryan, C. A., Basketter, D. A., et al. (1995). An international evaluation of the murine local lymph node assay and comparison of modified procedures. *Toxicology*, 103, 63–73.
- Lee, J. K., Park, J. H., Park, S. H., Kim, H. S., & Oh, H. Y. (2002). A nonradioisotopic endpoint for measurement of lymph node cell proliferation in a murine allergic contact dermatitis model, using bromodeoxyuridine immunohistochemistry. *Journal of Pharmacological and Toxicological Methods*, 48, 53–61.
- Loveless, S. E., Ladics, G. S., Gerberick, G. F., Ryan, C. A., Basketter, D. A., Scholes, E. W., et al. (1996). Further evaluation of the local lymph node assay in the final phase of an international collaborative trial. *Toxicology*, 108, 141–152.
- Normand, S. L. T. (1999). Meta-analysis: Formulating, evaluating, combining, and reporting. *Statistics in Medicine*, 18, 321–359.
- OECD (1992). Organization for Economic Co-operation and Development—OECD guidelines for testing of chemicals. No. 406: *Skin sensitization*.
- OECD (2002). Organization for Economic Co-operation and Development—OECD guidelines for testing of chemicals. No. 429: *Skin sensitization: Local lymph node assay*.
- OECD (2005). Organization for Economic Co-operation and Development—OECD series on testing and assessment. No. 34: *Guidance document on the validation and international acceptance of new or updated test methods for hazard assessment*.
- Omori, T., Ikarashi, Y., Kanazawa, Y., Idehara, K., Kojima, H., Sozu, T., et al. (2008). Validation studies on an alternative endpoint for the local lymph node assay (LLNA-DA): Importance of study management. *Alternatives to Animal Testing and Experimentation*, 14, Special Issue, 429–432.
- Omori, T., & Sozu, T. (2007). Variance of the stimulation index for the local lymph node assay. *Alternatives to Animal Testing and Experimentation*, 12, 321–359.
- Sailstad, D. M., Hattan, D., Hill, R. N., & Stokes, W. S. (2001). ICCVAM evaluation of the murine local lymph node assay. I. The ICCVAM review process. *Regulatory Toxicology and Pharmacology*, 34, 249–257.
- Scholes, E. W., Basketter, D. A., Saril, A. E., Kimber, I., Evans, C. D., Miller, K., et al. (1992). The local lymph node assay: Results of a final inter-laboratory validation under field conditions. *Journal of Applied Toxicology*, 12, 217–222.
- Takeyoshi, M., Yamasaki, K., Yakabe, Y., Takatsuki, M., & Kimber, I. (2001). Development of non-radio isotopic endpoint of murine local lymph node assay based on 5-bromo-2'-deoxyuridine (BrdU) incorporation. *Toxicology Letters*, 119, 203–208.
- Wright, Z. M., Basketter, D. A., Blaikie, L., Cooper, K. J., Warbrick, E. V., Dearman, R. J., et al. (2001). Vehicle effects on skin sensitizing potency of four chemicals: Assessment using the local lymph node assay. *International Journal of Cosmetic Science*, 23, 75–83.
- Yamashita, K., Idehara, K., Fukuda, N., Yamagishi, G., & Kawada, N. (2005). Development of a modified local lymph node assay using ATP measurement as an endpoint. *Alternatives to Animal Testing and Experimentation*, 11, 136–144.

ORIGINAL ARTICLE

## An *in Vitro* Evaluation Method to Test Ocular Irritation using a Human Corneal Epithelium Model

Shoko Arai<sup>1</sup>, Naoki Yamamoto<sup>2</sup>, Masakazu Katoh<sup>3</sup>  
and Hajime Kojima<sup>1</sup>

<sup>1</sup>Japanese Center for the Validation of Alternative Methods (JaCVAM),  
National Institute of Health Sciences, Tokyo, Japan;

<sup>2</sup>Fujita Health University, Aichi, Japan; <sup>3</sup>Japan Tissue Engineering Co., Ltd., Aichi, Japan

### Abstract

Recently, safety evaluation tests that do not involve animal experiments have been prosperously developing. However, the optimal evaluation materials and methods for assessing ocular irritancy have not been well investigated. In this study, we determined the optimal evaluation method for testing ocular irritation using a human cultured corneal epithelium model (corneal model). In order to assess adequate treatment conditions for the corneal model, we used cetylpyridinium chloride (CPC), which has been recognized as an irritant chemical by the Draize eye test. The irritancy elicited by multiple concentrations of CPC was evaluated by a cytotoxicity assay under nine treatment conditions and compared to the Draize score. The treatment conditions that included a 5-second exposure period followed by a 24-hour post-incubation period (hereafter called protocol "5-sec+24-h") showed a significant correlation between cytotoxicity and the Draize score. Furthermore, the dose-dependent cytotoxicity of six test chemicals was assessed by protocol "5-sec+24-h" and found to correlate with the Draize eye test results.

**Key words:** ocular irritation, corneal model, Draize eye test, cytotoxicity assay, dose-dependency

### Introduction

A classical and reliable method to evaluate ocular irritation is an eye mucosal irritation assay (Draize eye test) devised by J. H. Draize (Draize *et al.*, 1944). According to guideline 405 of the OECD (Organization for Economic Cooperation and Development), the Draize eye test should be performed by observing the cornea, conjunctiva, and iris for three days after applying 100  $\mu$ L of liquid test chemicals with an eye dropper or 100 mg of powder test chemicals into one eye of a rabbit (OECD, 2002). The damage level of each eye section is used to assign a Draize score (110 total points). Since the development of the Draize eye test, five irritancy groups (none, mild, moderate, severe or very severe) were classified in accor-

dance with the Draize score and used to assess the irritancy levels of various chemicals (Kay *et al.*, 1962). However, these animal experiments often involve the suffering of laboratory animals and are against with 3R's concept (Reduction, Refinement and Replacement). Therefore, an *in vitro* evaluation method for assessing ocular irritancy is greatly needed.

To date, a number of *in vitro* assays have been developed as alternative methods to the Draize eye test. Above all, it was shown that the bovine corneal opacity and permeability (BCOP) test and isolated chicken eye (ICE) test lead the correlative results with the Draize score when severe irritants or corrosive test chemicals were adopted by the NICEATM (The NTP Interagency Center for the

Evaluation of Alternative Toxicological Methods) and the ICCVAM (Interagency Coordinating Committee on the Validation of Alternative Methods (ICCVAM, 2006a, 2006b, Merrill *et al.*, 2006)). Furthermore, the international validation studies were performed successfully and these two tests were accepted by the ESAC, scientific advisory committee of ECVAM (European Centre for the Validation of Alternative Methods) (ECVAM, 2007). However, these tests are not considered complete *in vitro* assays because animal-derived tissues are still used. Recently, a rabbit corneal epithelial cell line was reported as a useful alternative when evaluated by a cytotoxicity assay (Ohno *et al.*, 1999). Although this assay is easy to perform and moderate in price, there are some disadvantages; insoluble and powder chemicals and stock solutions are often not testable because they must be dissolved in culture medium.

To correct these problems, we focused on a human cultured corneal epithelium model. In this study, we determined the optimal treatment conditions to assess cytotoxicity using a human cultured corneal epithelium model (corneal model) and demonstrated that dose-dependent ocular irritancy could be detected by our evaluation method.

## Materials and Methods

### 1. Human cultured corneal epithelium model (the corneal model)

The corneal model was supplied as a kit by Japan Tissue Engineering Co., Ltd. Corneal epidermal cells were prepared from the normal human corneal epidermis which was provided by the Human & Animal Bridging Research Organization (Tokyo, Japan). The corneal epidermal cells were proliferated by co-culturing them with mouse 3T3-J2 cells as a feeder. The corneal model consisting of the proliferated corneal epidermal cells was cultivated on a cell culture inert (surface 0.3cm<sup>2</sup>, BD Biosciences, CA, USA) in an optimized medium containing 5% fetal bovine serum, and kept at the air-liquid interface for 4 days. The corneal model was embedded in an agar gel containing nutrient solution and shipped at around 18°C. In order to eliminate the stress that follows shipment, the corneal models were incubated in sterile 24-well culture plates containing pre-warmed assay medium for 2 hours before starting the assay. During the experiments, the corneal models were maintained under the standard incubation conditions at 37°C with 5% CO<sub>2</sub> in humidified atmosphere. It is recommended that the corneal models be preserved at

4°C and used within 24 hours of arrival.

### 2. Test chemicals

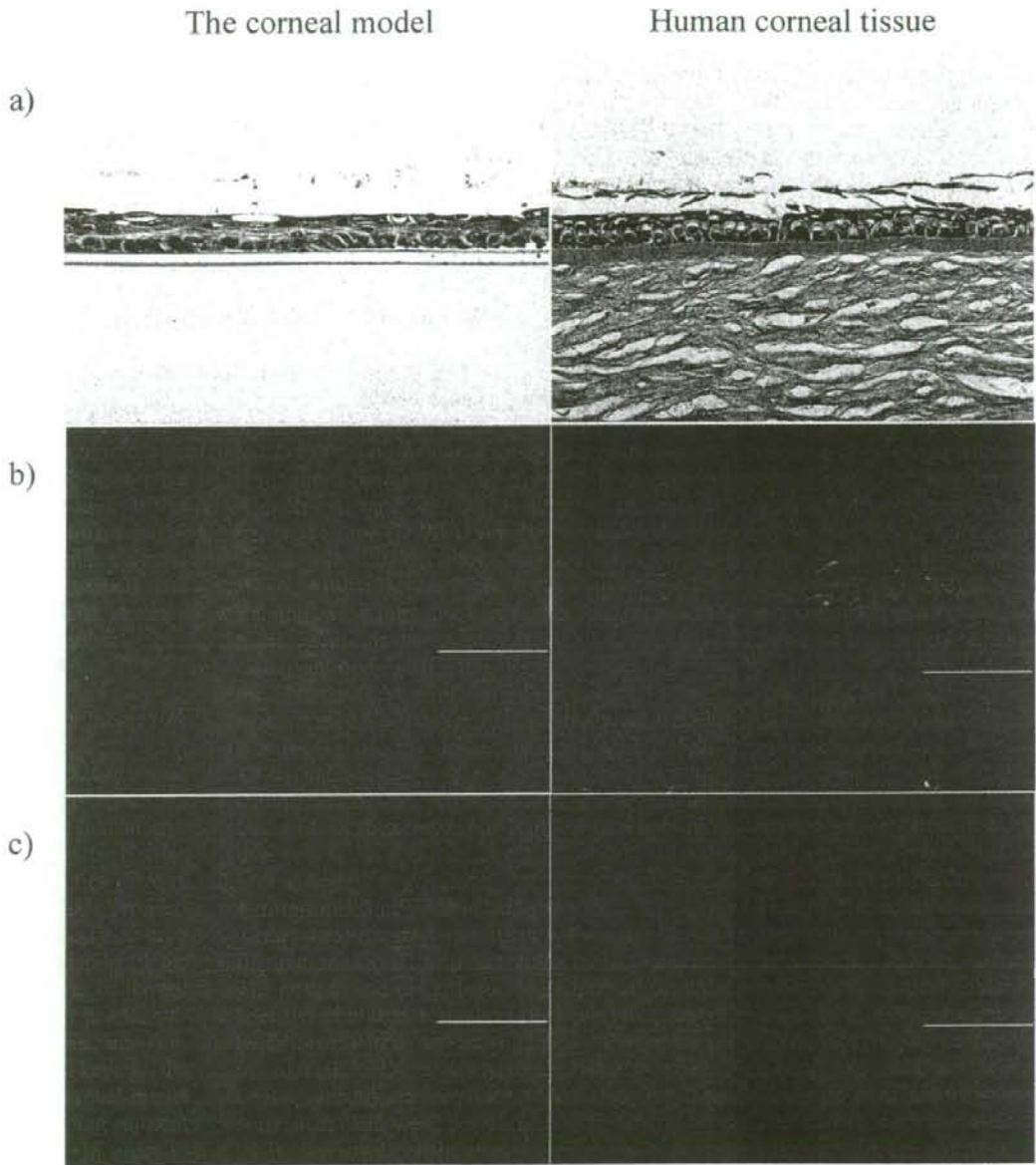
The chemicals used in this study were previously evaluated by the Draize eye test (Ohno *et al.*, 1999). The irritancy level of each test chemical was identified using at least two or more concentrations. The test chemicals were purchased from the following suppliers: cetylpyridinium chloride (Wako Pure Chemical Industries, Ltd., Osaka, Japan; Wako), benzyl alcohol (Acros Organics, Morris Plains, NJ, USA), calcium thioglycolate (Wako), m-phenylenediamine (Wako), sodium salicylate (Wako), lactic acid (Wako), and ethanol (Wako). Distilled water was used as a solvent or negative control.

### 3. Reagents and antibodies

MTT (3-(4,5-dimethylthiazol-2-yl)-2, 5-diphenyl-tetrazolium bromide) was purchased from Sigma-Aldrich, Milwaukee, USA, Dulbecco's phosphate-buffered saline (D-PBS) from Gibco Laboratories, Grand Island, NY, USA and isopropanol from Wako. Antibodies used for immunohistochemical staining were purchased from the following suppliers: anti-human cytokeratin-3 mouse monoclonal antibody (BIOMOL Research Laboratories Inc., Plymouth Meeting, PA, USA) and anti-human mucin mouse monoclonal antibody (MUC-1, Novus Biologicals Inc., Littleton, Co., USA). These antibodies were diluted with D-PBS containing 1% bovine serum albumin (Takara Shuzo Co., Ltd., Kyoto, Japan) at 1:100 or 1:50, respectively.

### 4. Immunohistochemical staining

The corneal models were fixed with two different fixative solutions overnight at room temperature. The bottom and upper layers were treated simultaneously with 10% formalin neutral buffer solution (Mildform, Wako) and an original fixative solution of SUPER FIX (KURABO Industries, LTD., Osaka, Japan), respectively. After fixation, the corneal models were paraffin-embedded as previously described (Nishi *et al.*, 2007; Yamamoto *et al.*, 2008). The human corneal tissue was provided by an unbiased volunteer, and 3-micron paraffin sections of corneal tissue were prepared using a sliding microtome (REM-700, Yamato Kohki Industrial Co., Ltd., Saitama, Japan) and mounted on silanized glass slides (DAKO Japan Co., Ltd., Kyoto, Japan). After the dewaxing process, the sections were blocked with a non-specific staining



**Fig. 1** Comparison between the corneal model and human corneal tissue  
a) H&E staining. b, c) Immunohistochemical staining by human cytokeratin-3 or MUC-1 antibodies.  
The scale bars represent 100  $\mu\text{m}$ .