

数字は事例数(%)

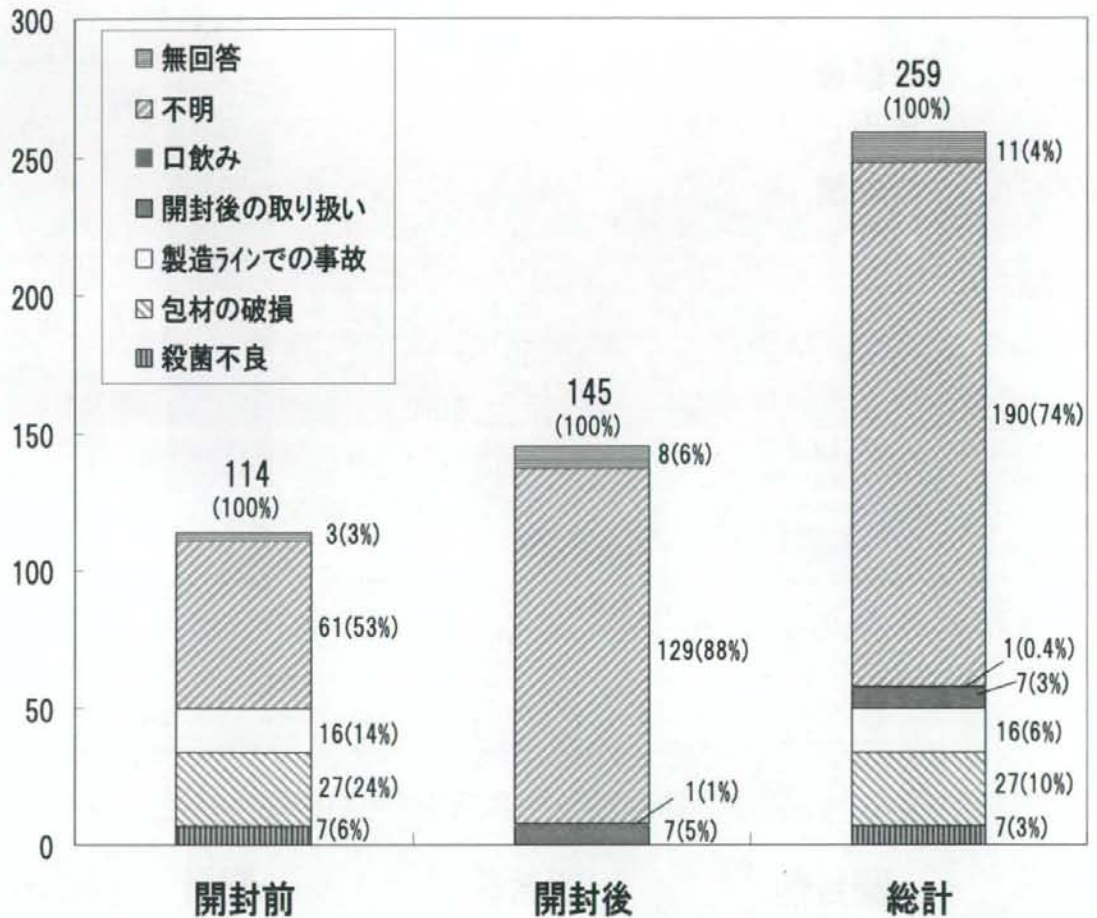


図17 苦情事例集計での微生物汚染の原因(自治体)

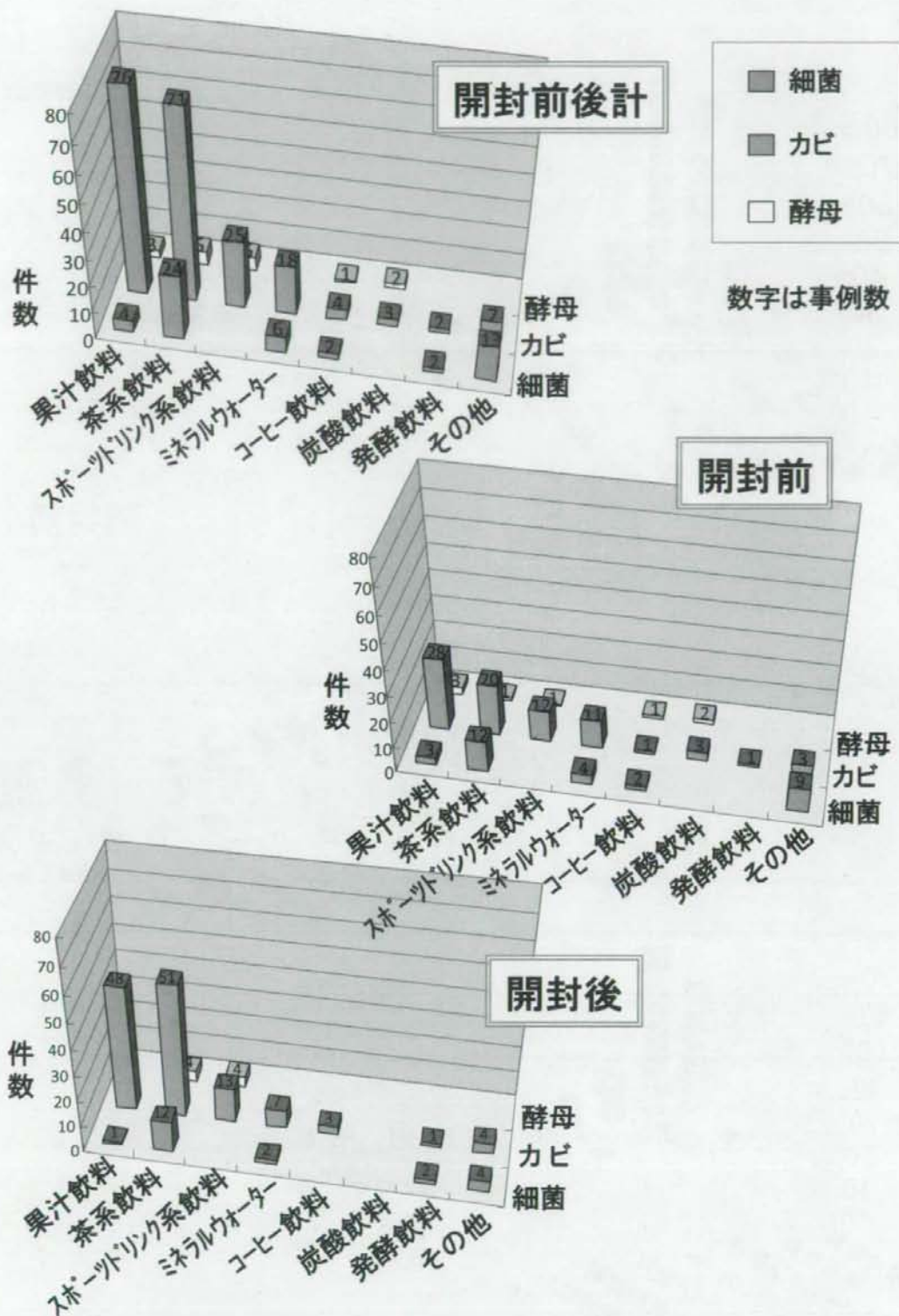


図18 苦情事例集計での清涼飲料水の種類と微生物の種類  
の組合せ(自治体)

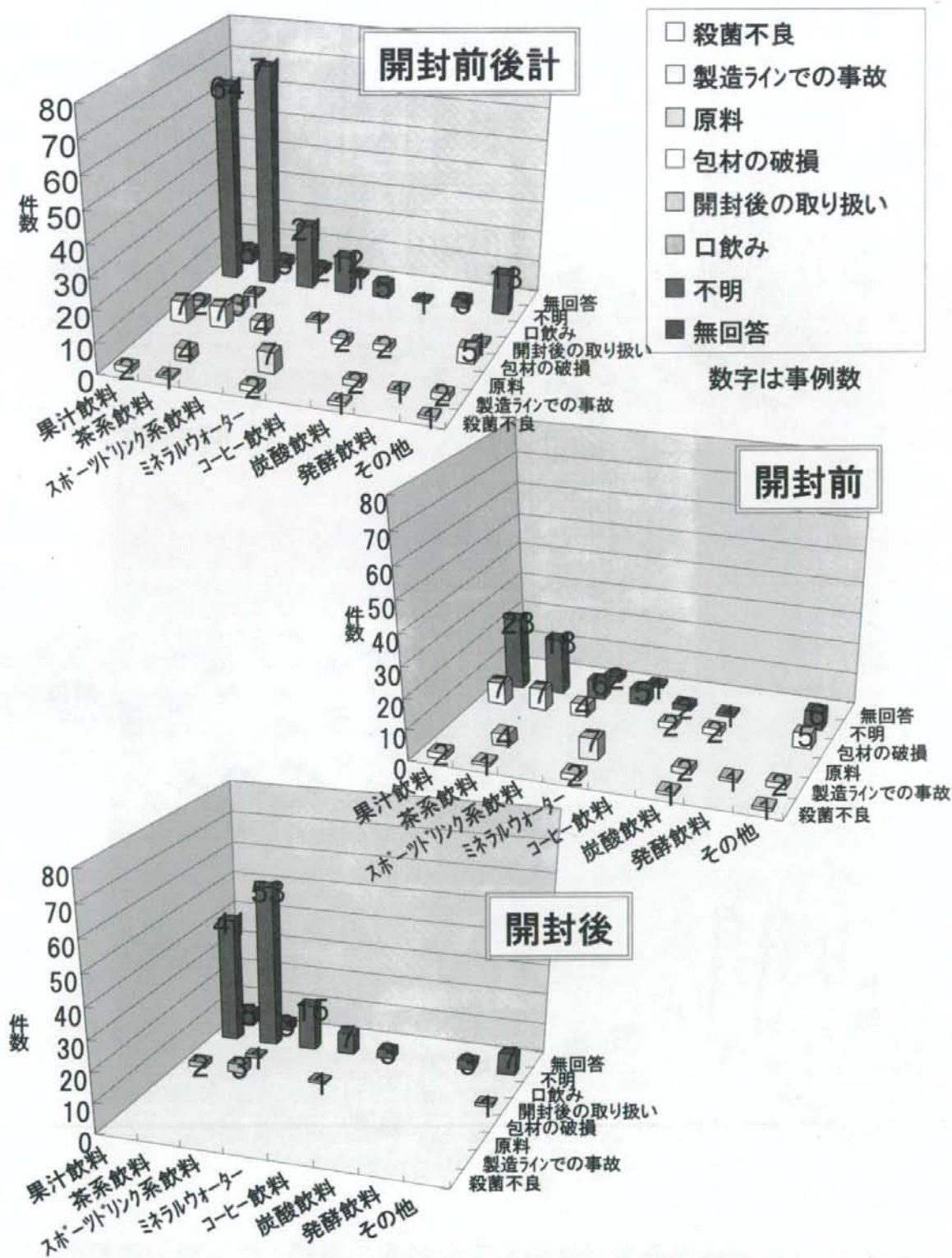


図19 苦情事例集計での清涼飲料水の種類と原因の組合せ(自治体)

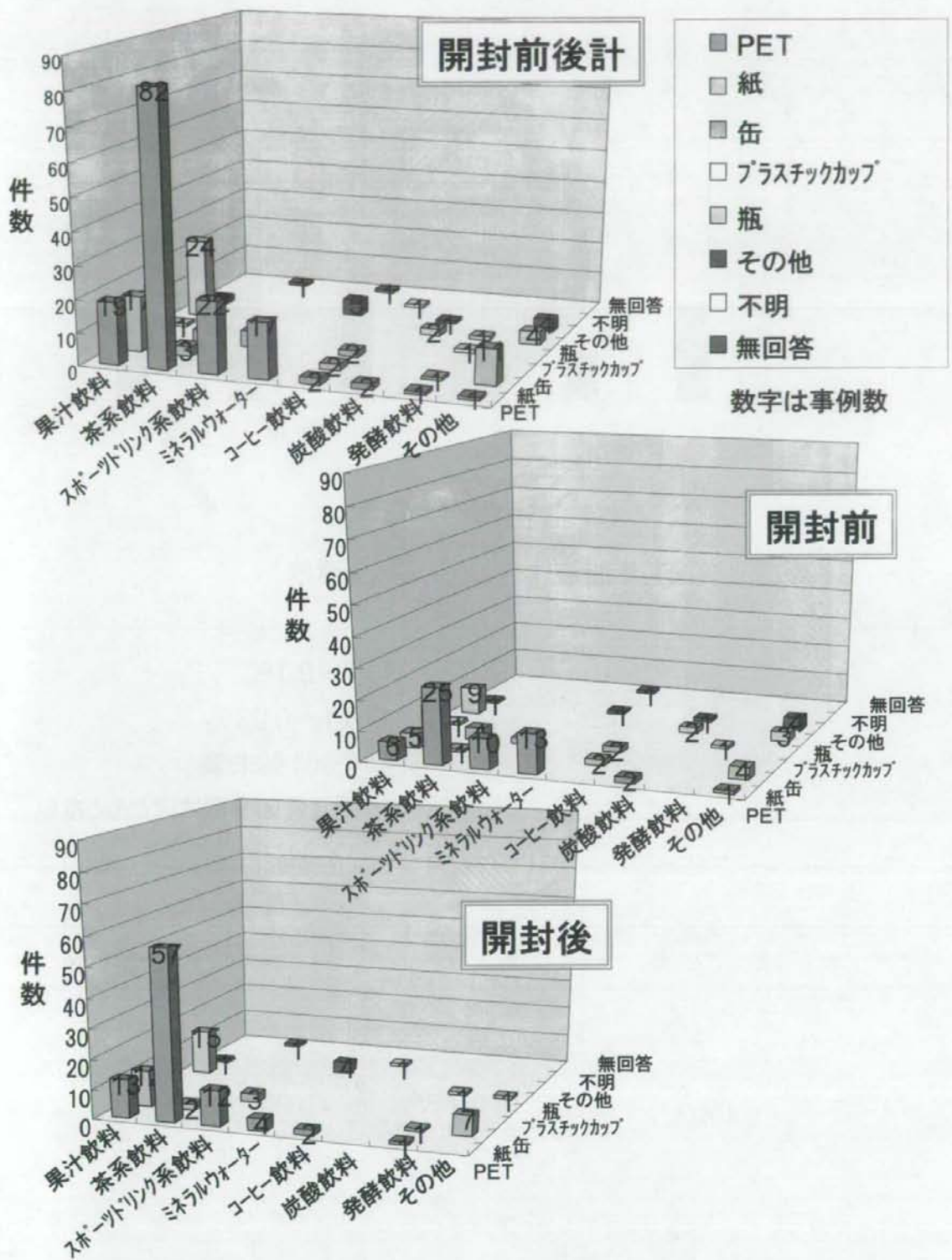


図20 苦情事例集計での清涼飲料水の種類と容器の組合せ(自治体)

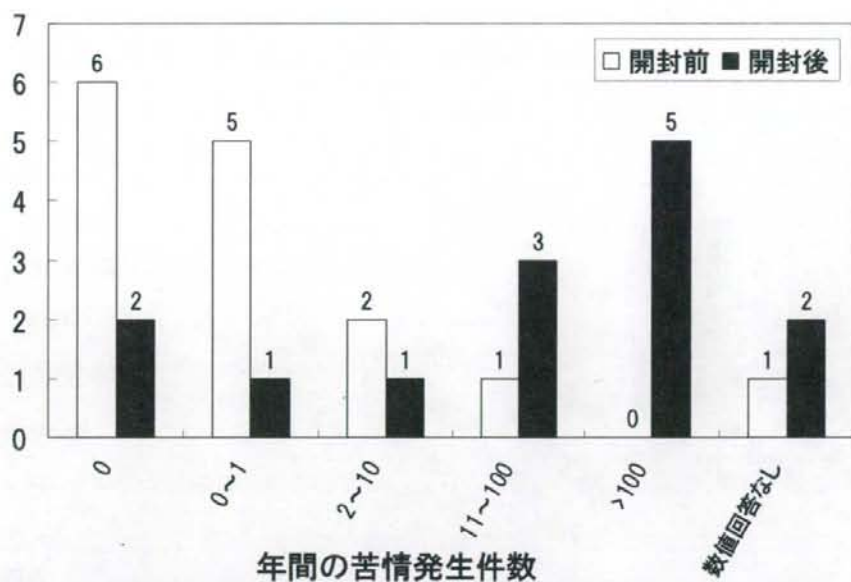


図21 年間苦情件数(ILSI・全清飲)

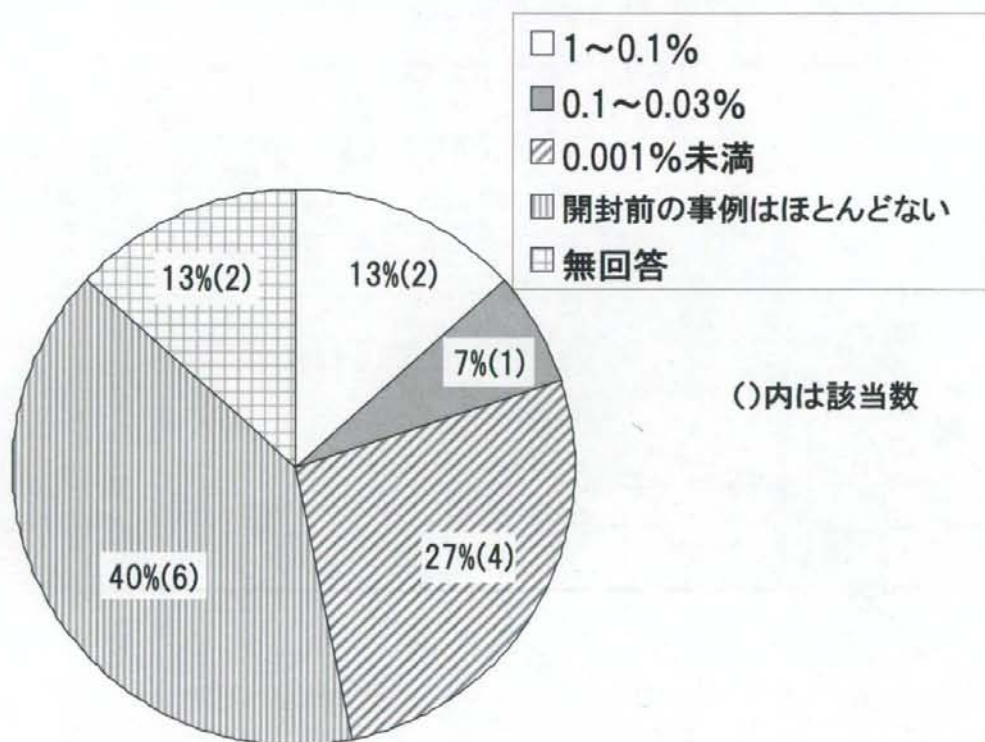


図22 開封前苦情の発生率(ILSI・全清飲)

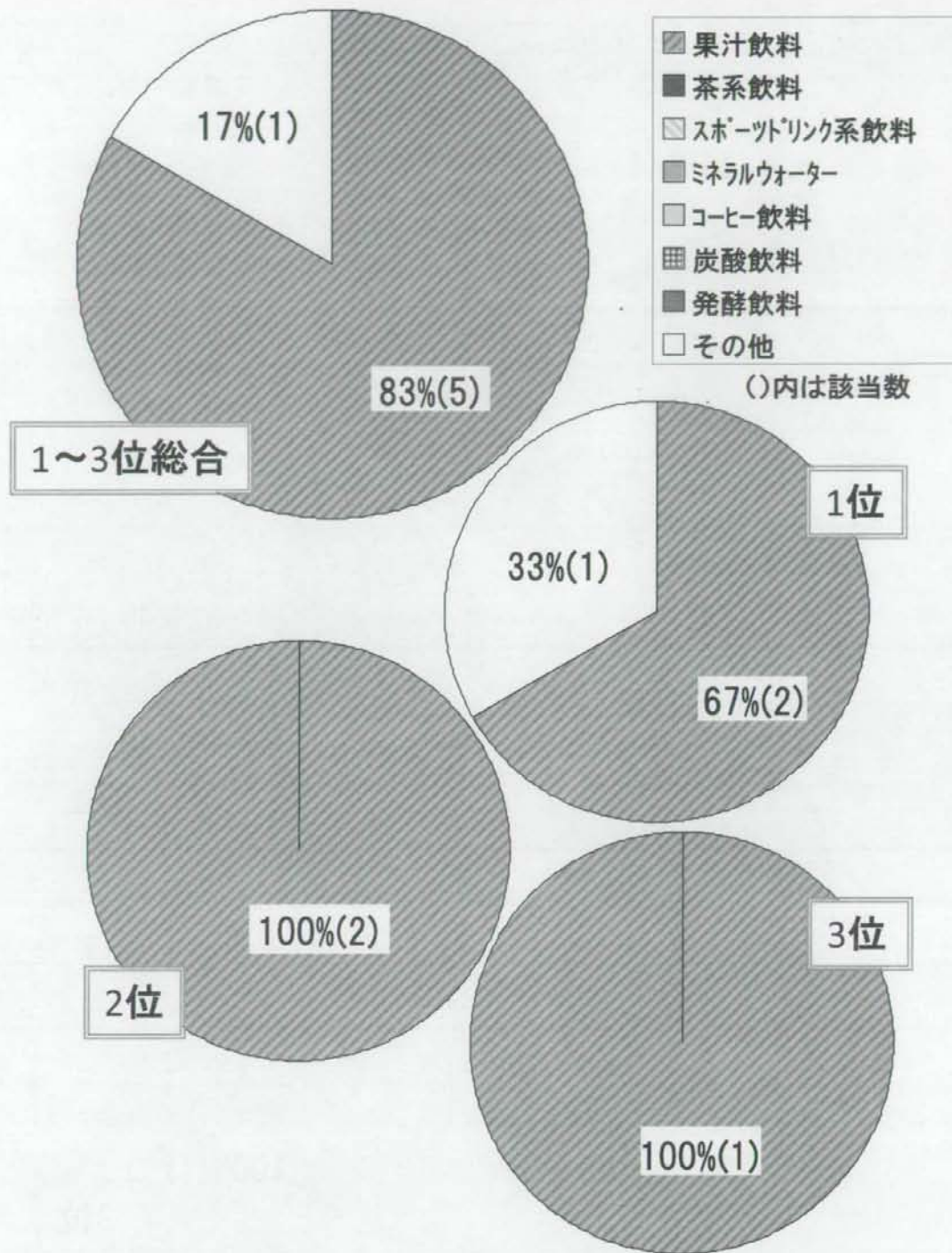


図23 開封前苦情の清涼飲料水の種類の傾向(ILSI)

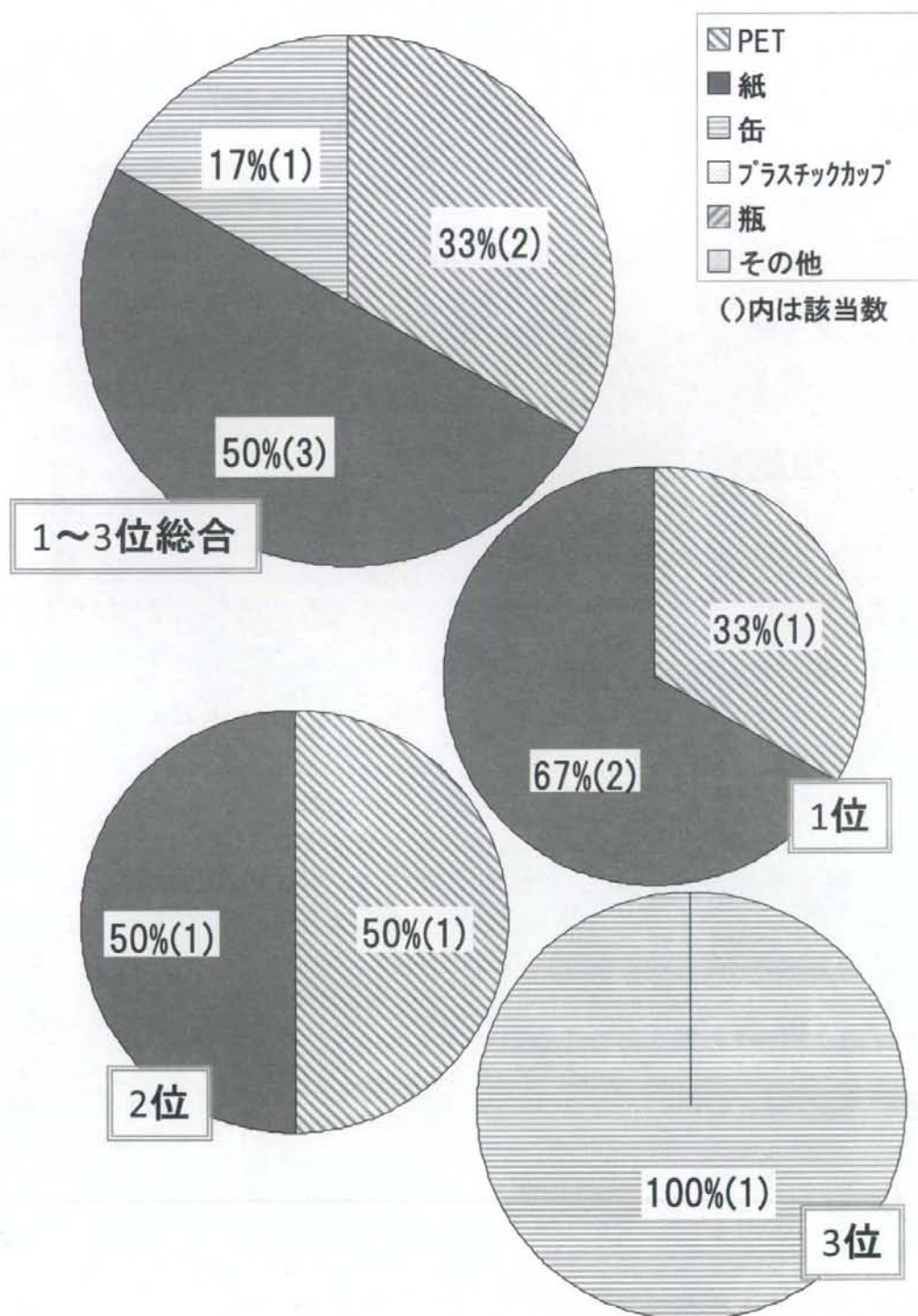


図24 開封前苦情の容器の種類傾向(ILSI)

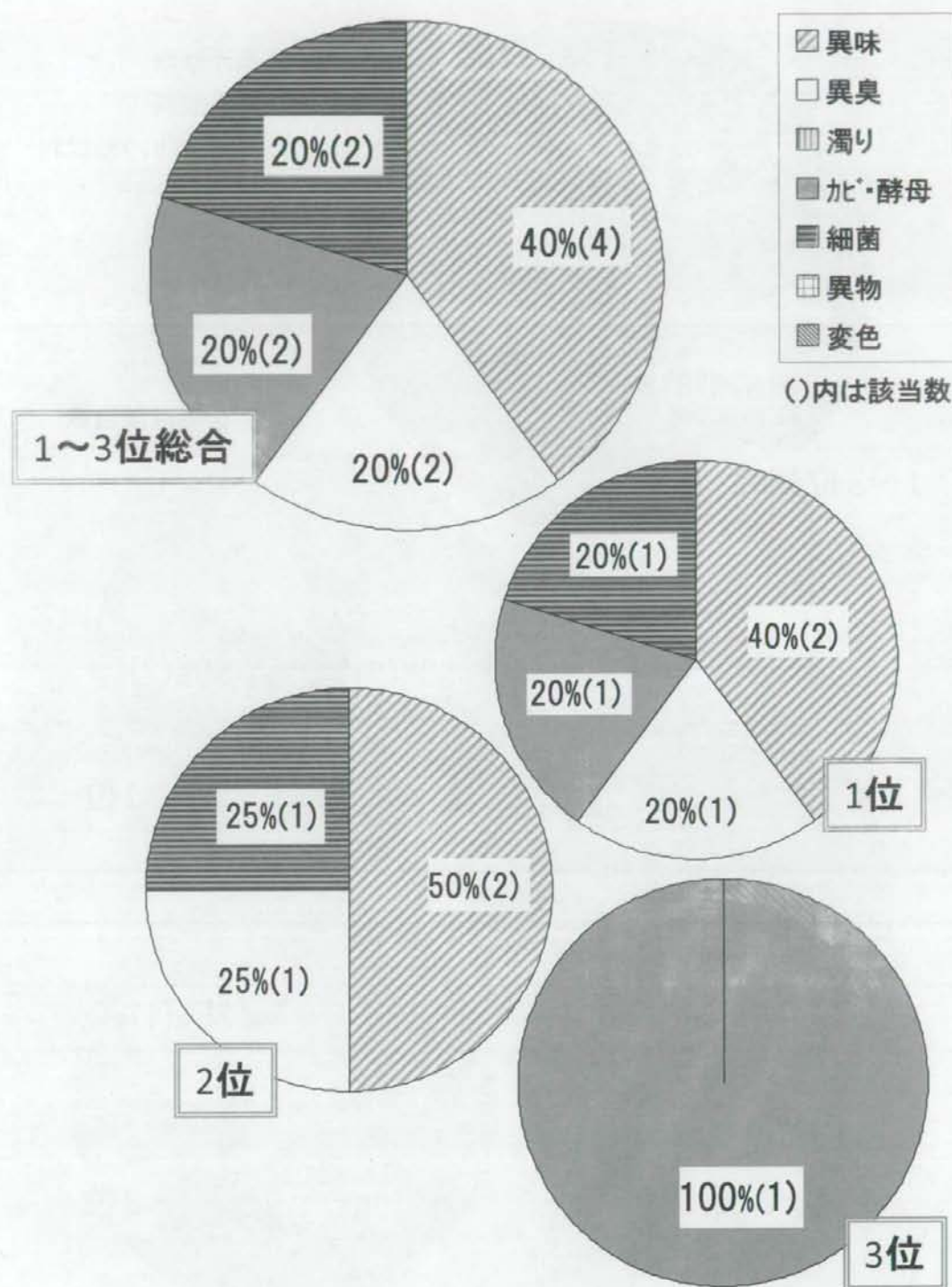


図25 開封前苦情の苦情内容の傾向(ILSI)



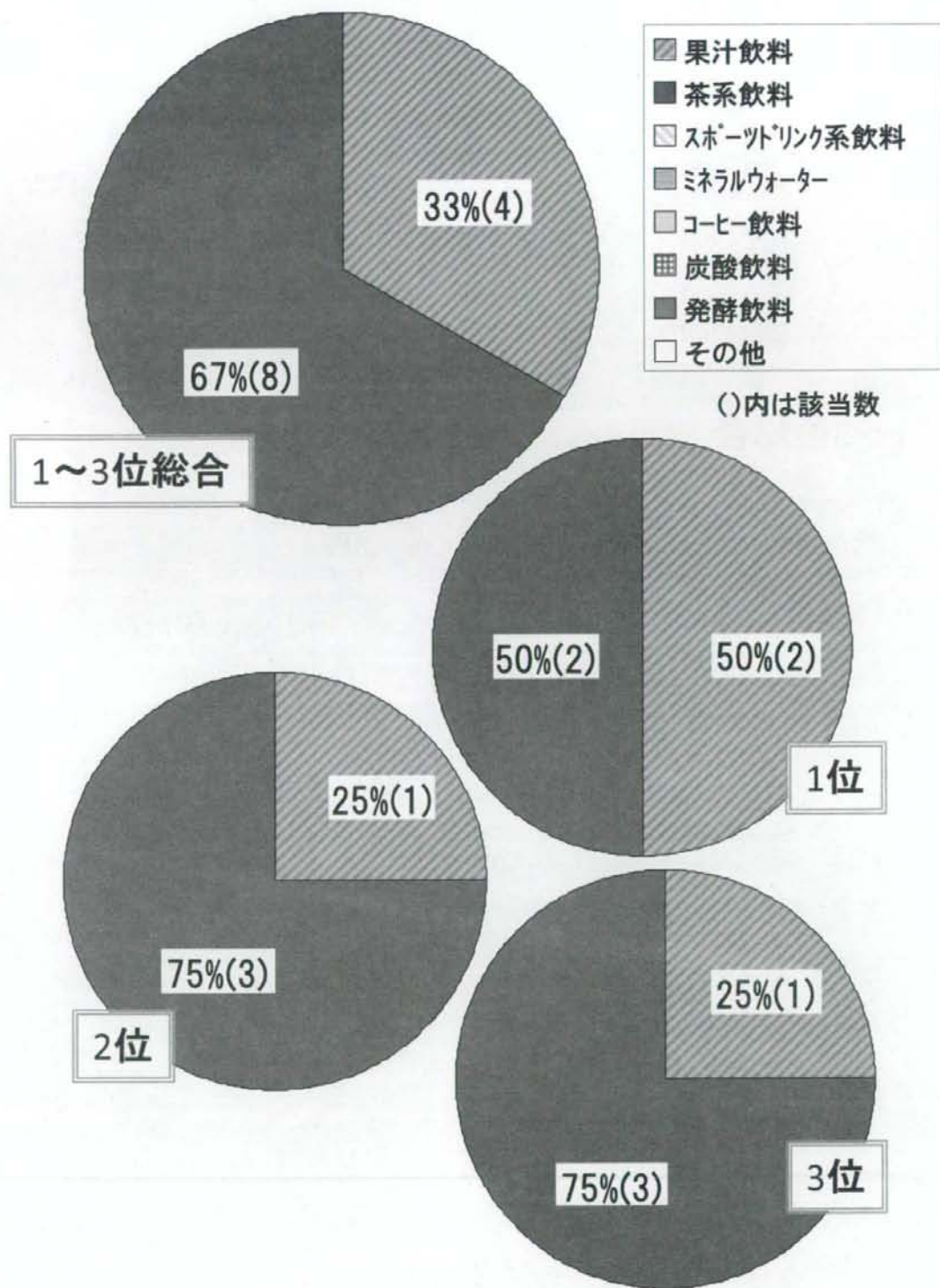


図26 開封後苦情の清涼飲料水の種類の傾向(ILSI)

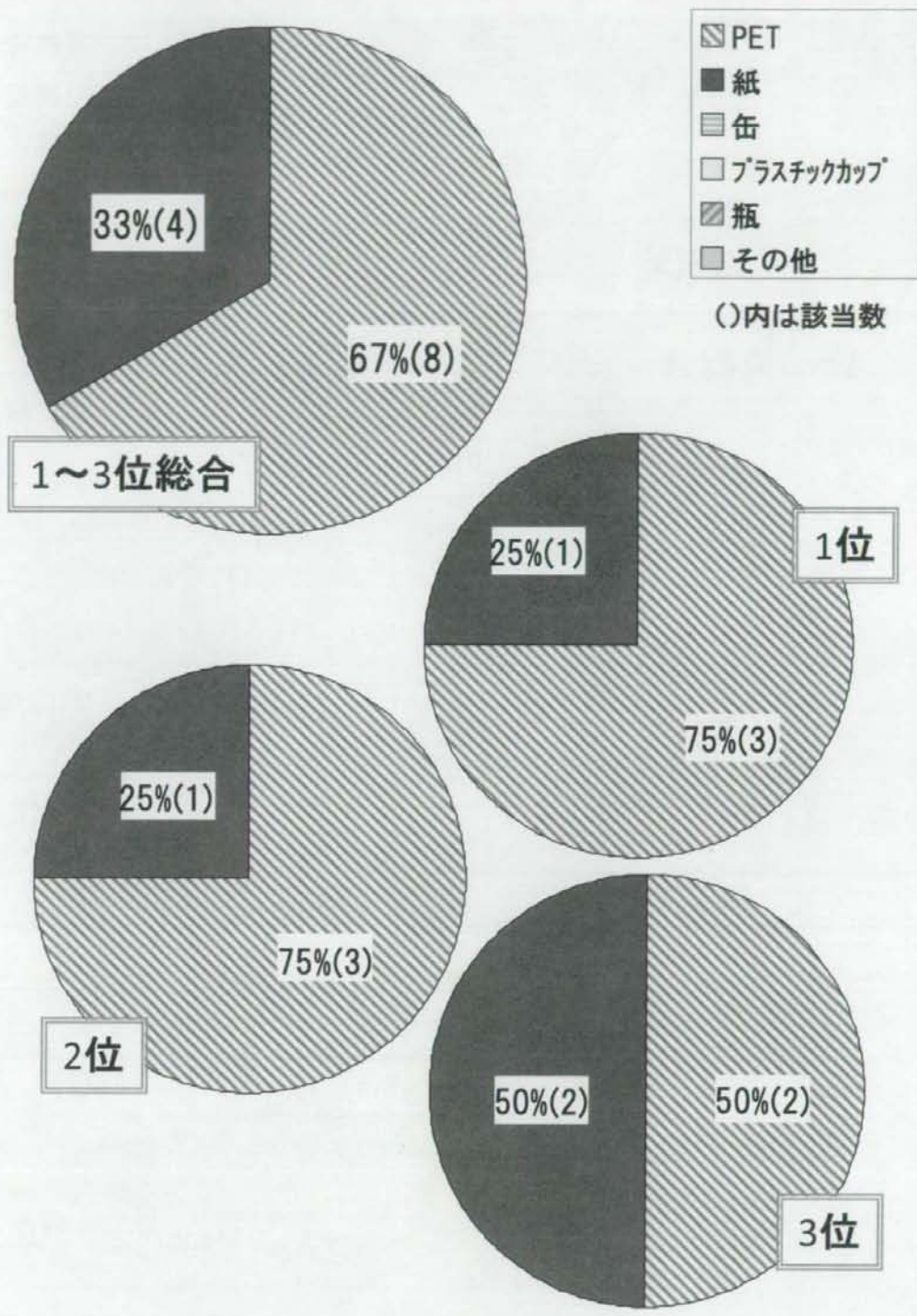


図27 開封後苦情の容器の種類傾向(ILSI)

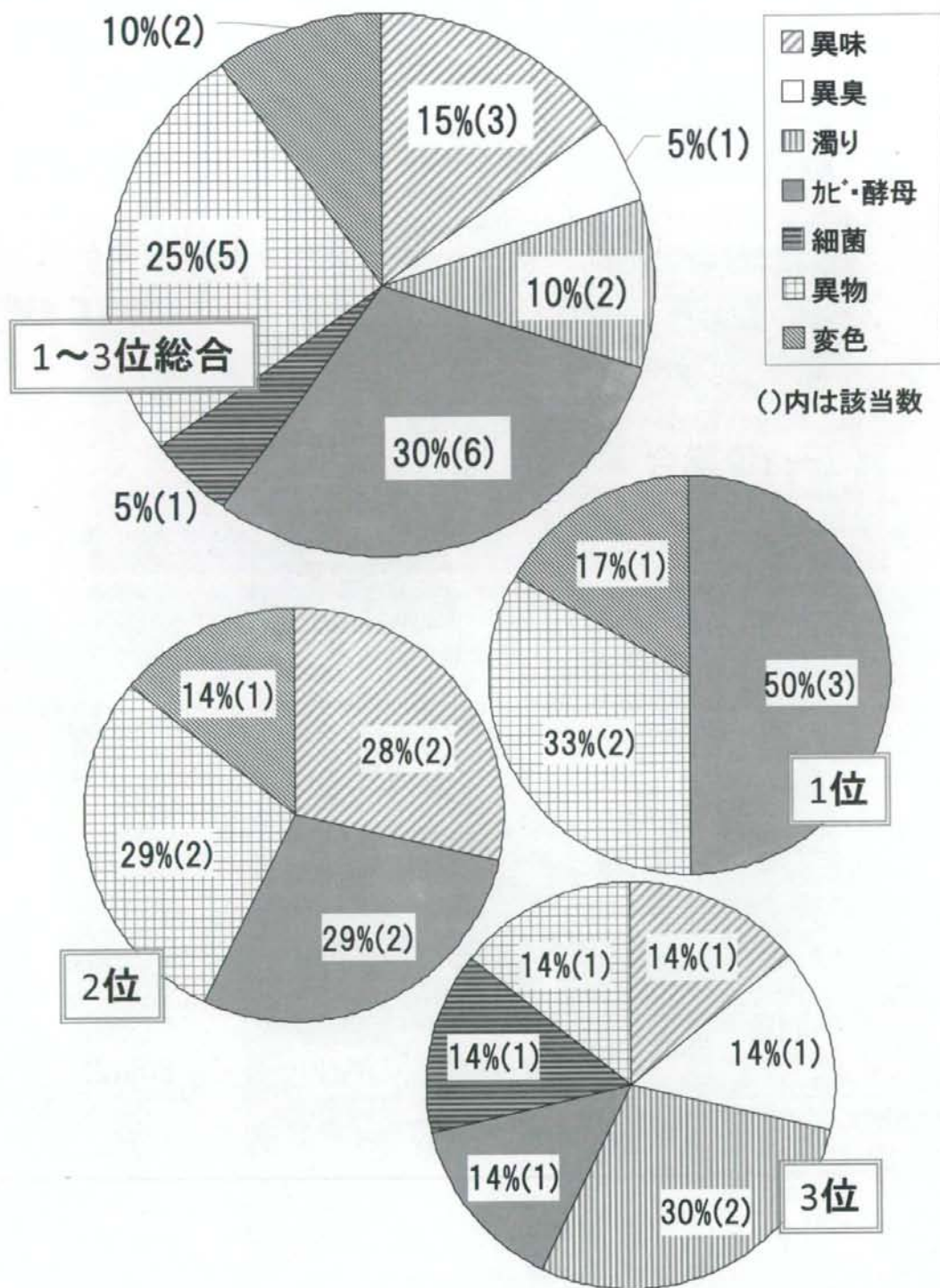


図28 開封後苦情の異常内容の傾向(ILSI)

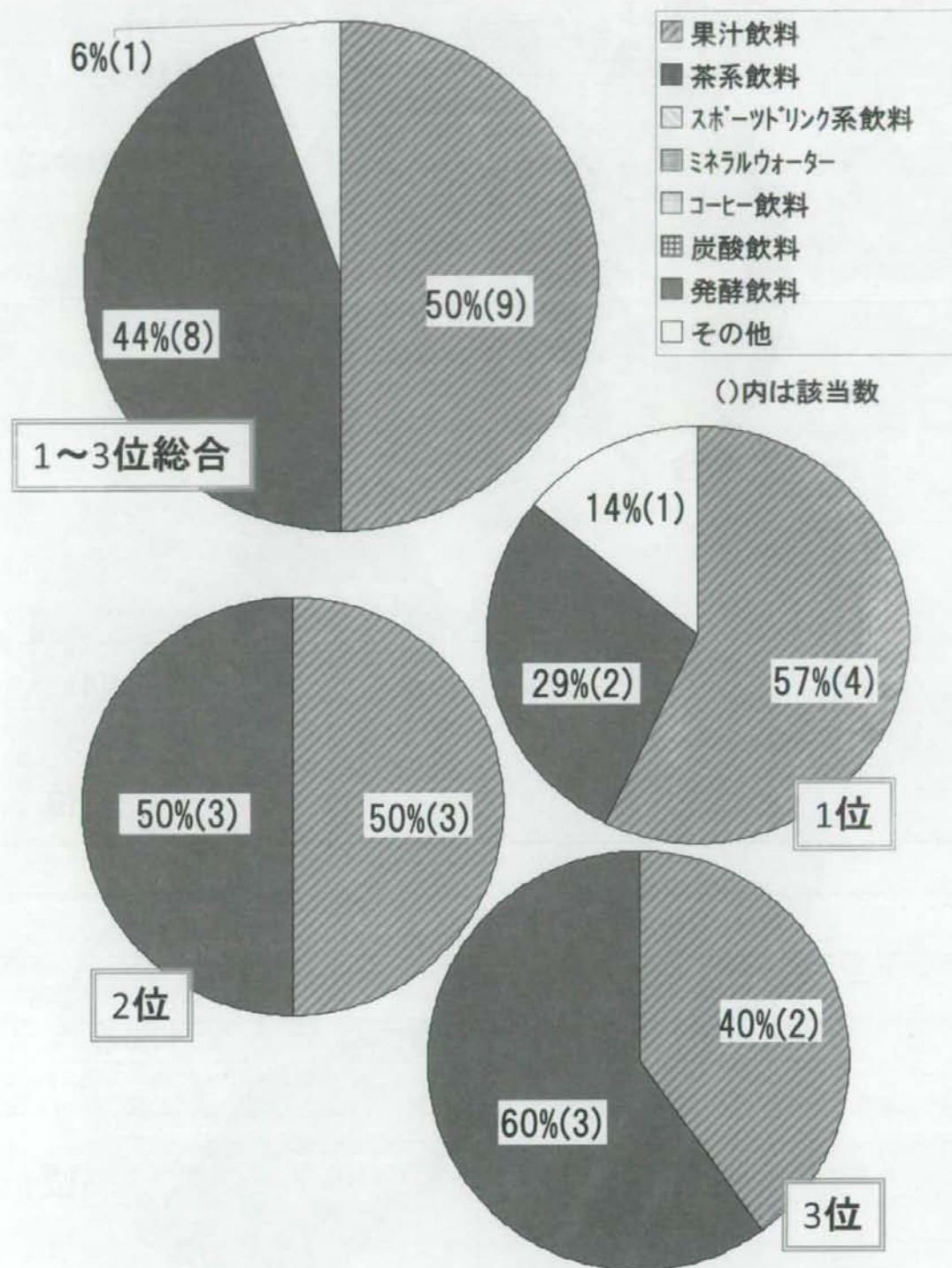


図29 開封前後苦情総計の清涼飲料水の種類の傾向(ILSI)

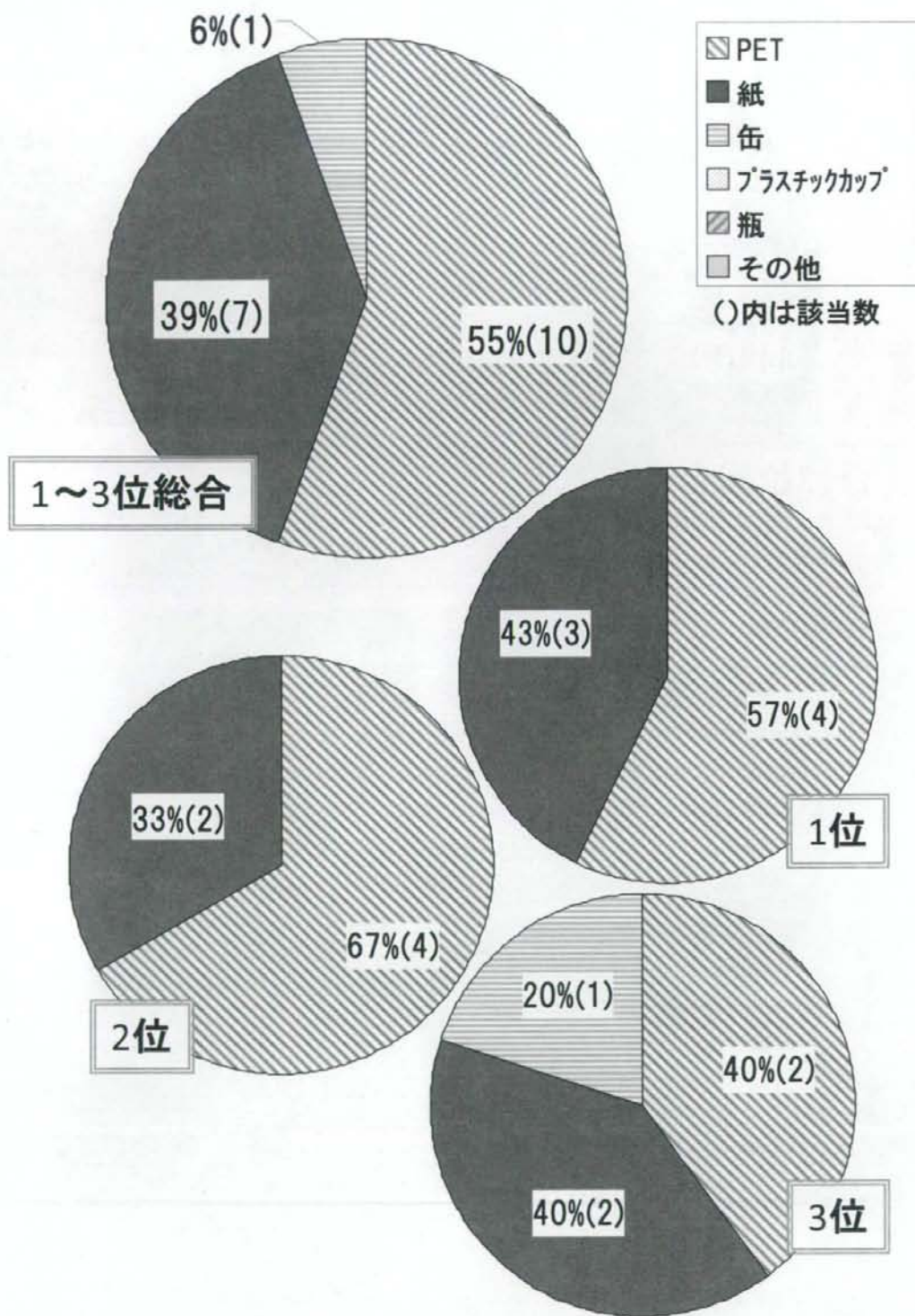


図30 開封前後苦情総計の容器の種類傾向(ILSI)

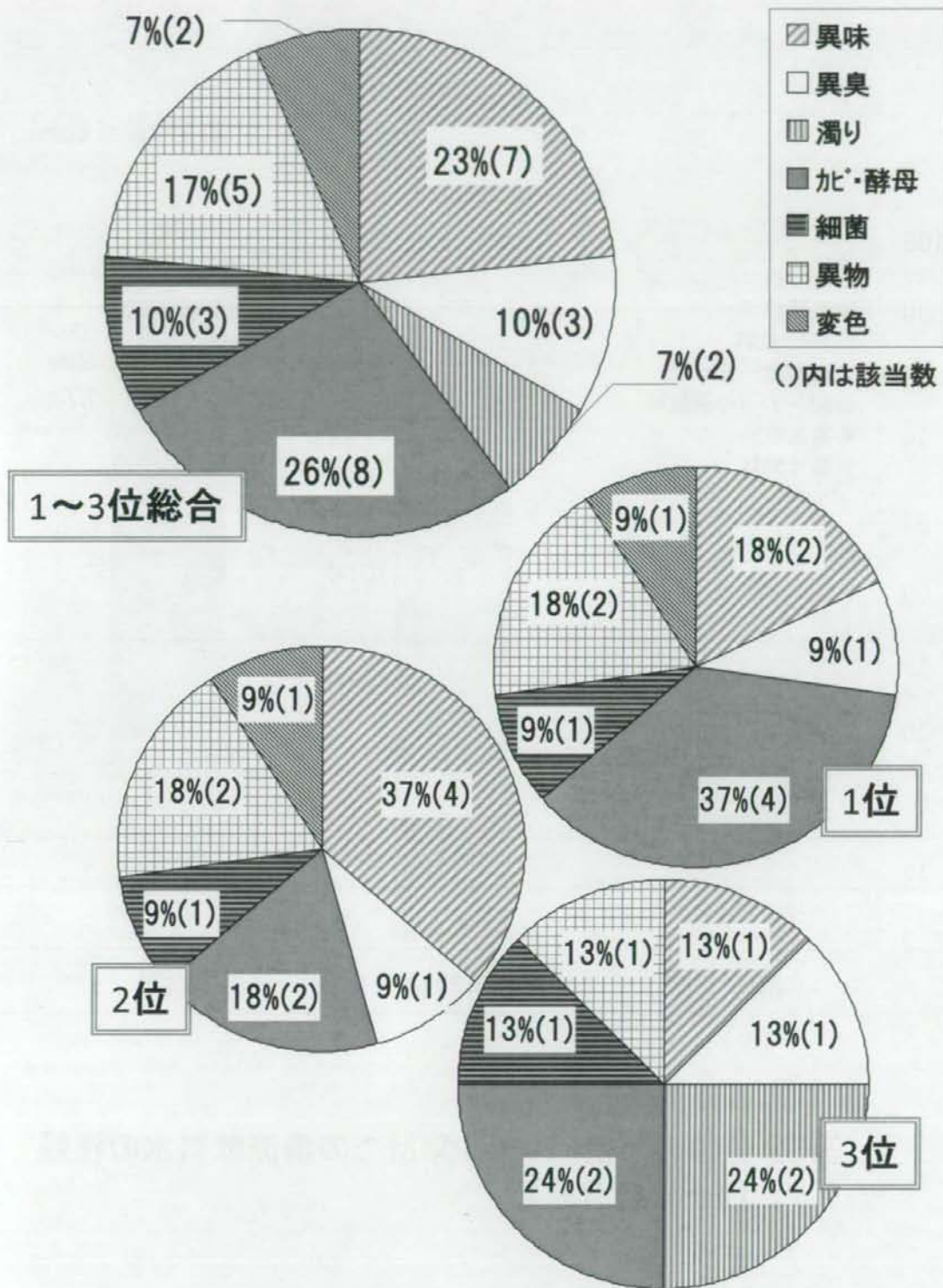


図31 開封前後苦情総計の苦情内容の傾向(ILSI)

数字は該当数(%)

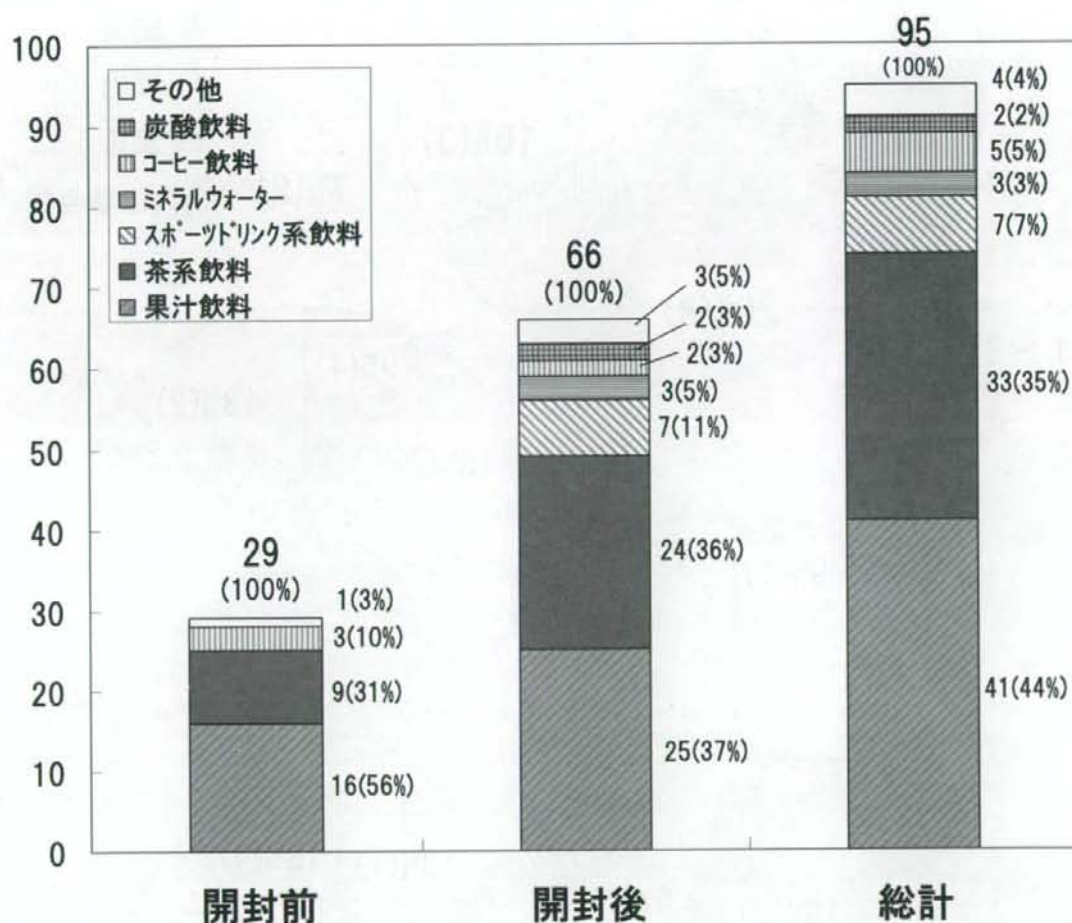


図32 苦情の事例パターン集計での清涼飲料水の種類 (ILSI・全清飲)

数字は該当数(%)

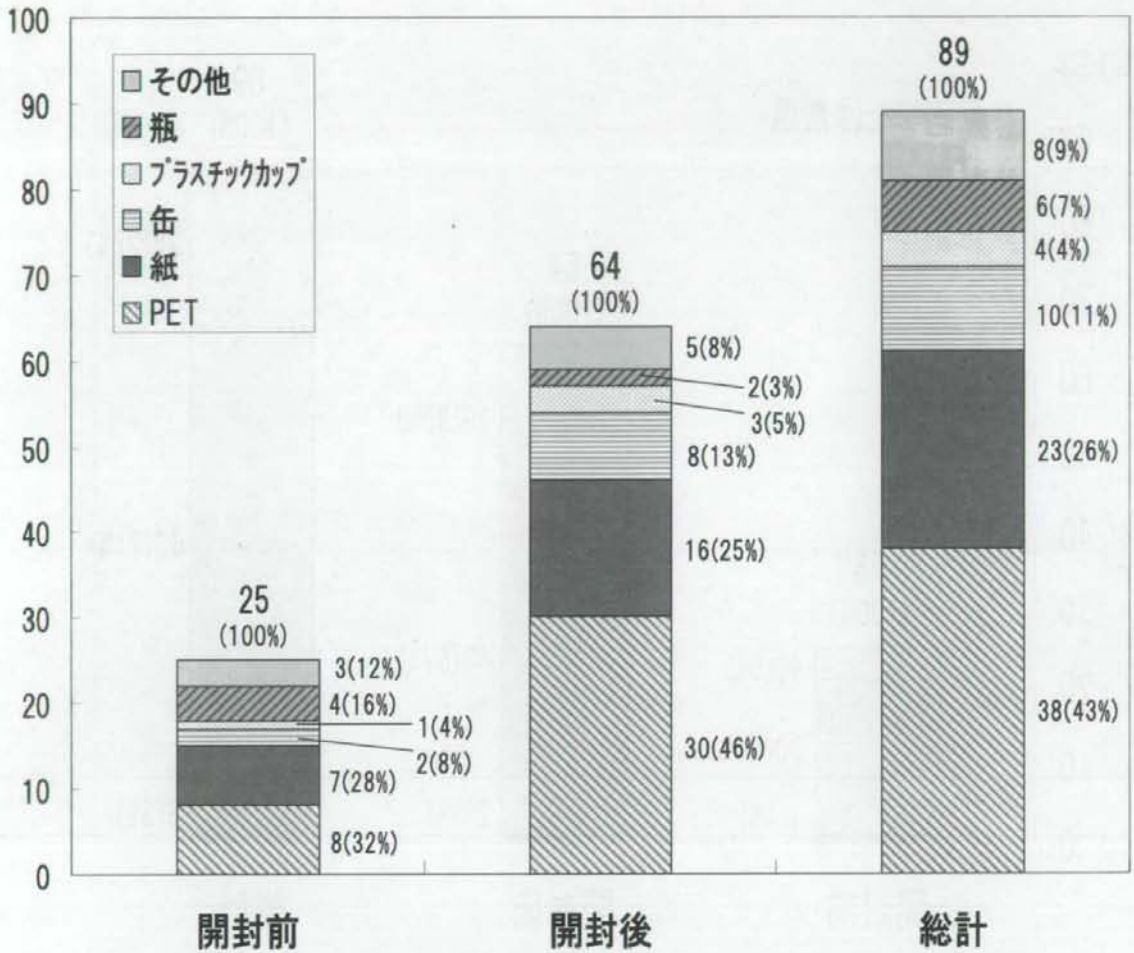


図33 苦情の事例パターン集計での容器の種類 (ILSI・全清飲)



数字は該当数(%)

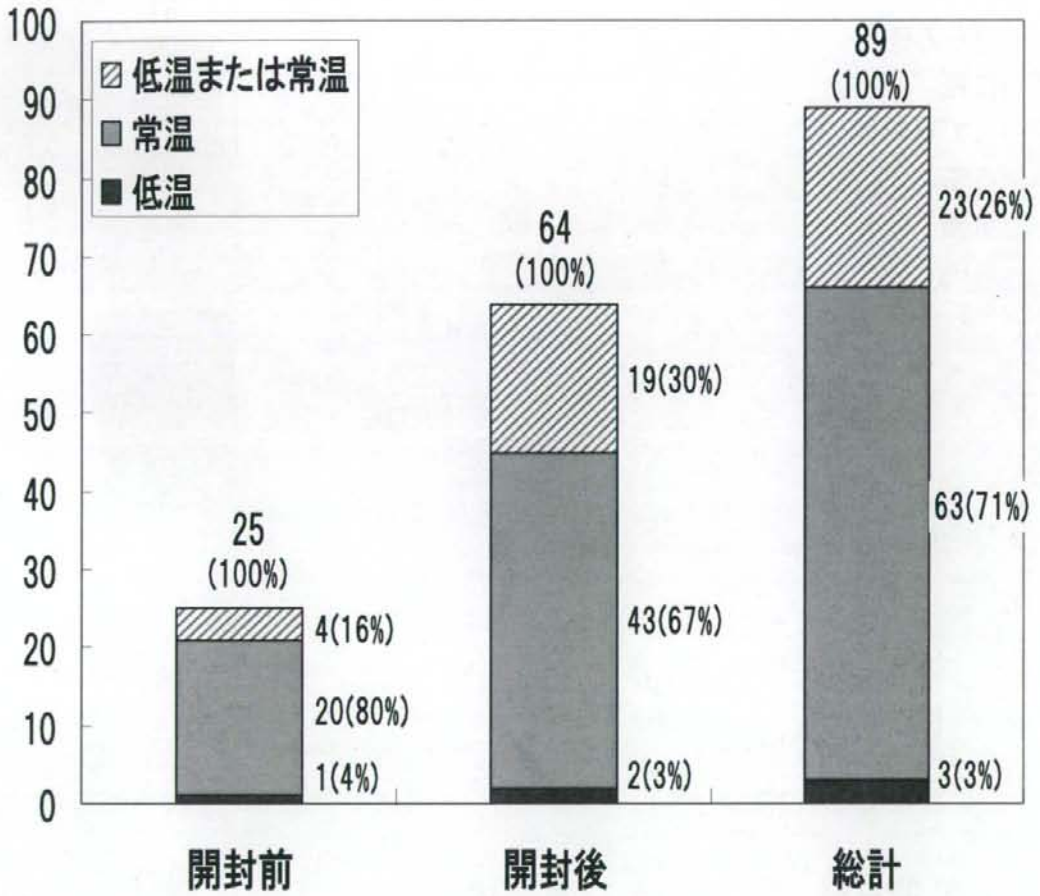


図34 苦情の事例パターン集計での流通販売条件 (ILSI・全清飲)

数字は該当数(%)

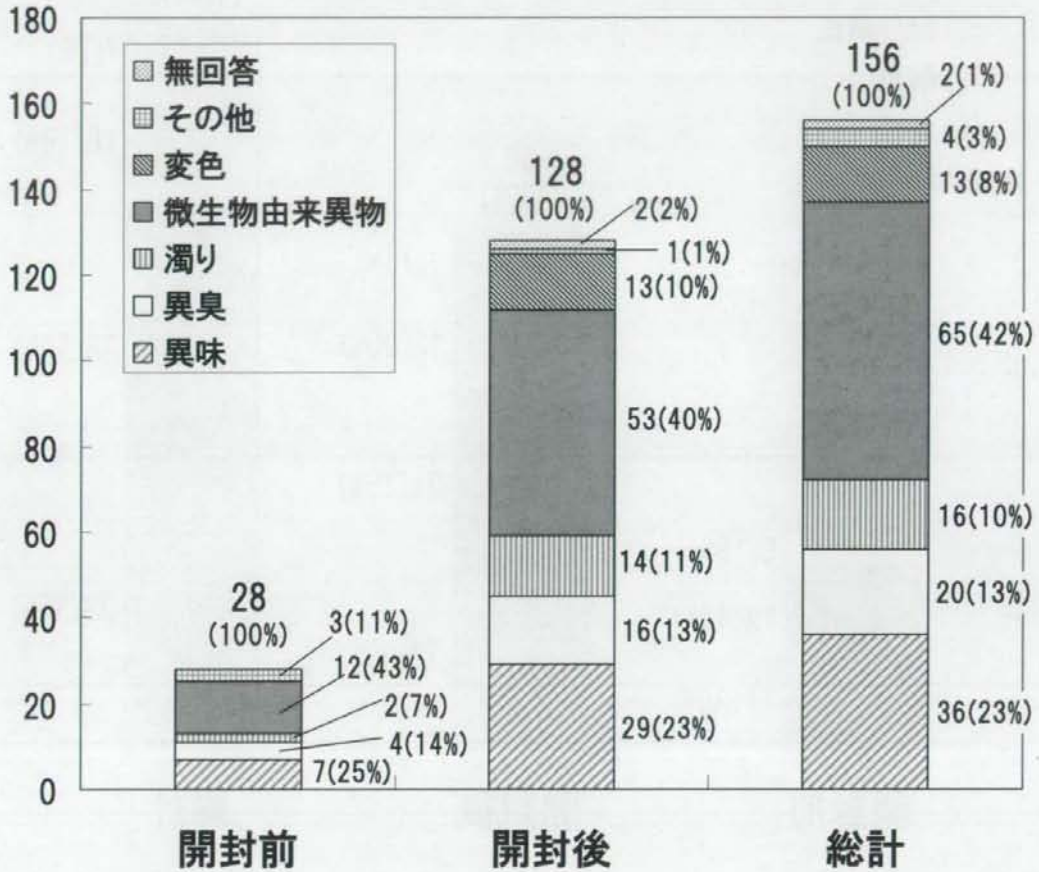


図35 苦情の事例パターン集計での異常の内容(ILSI・全清飲)

数字は該当数(%)

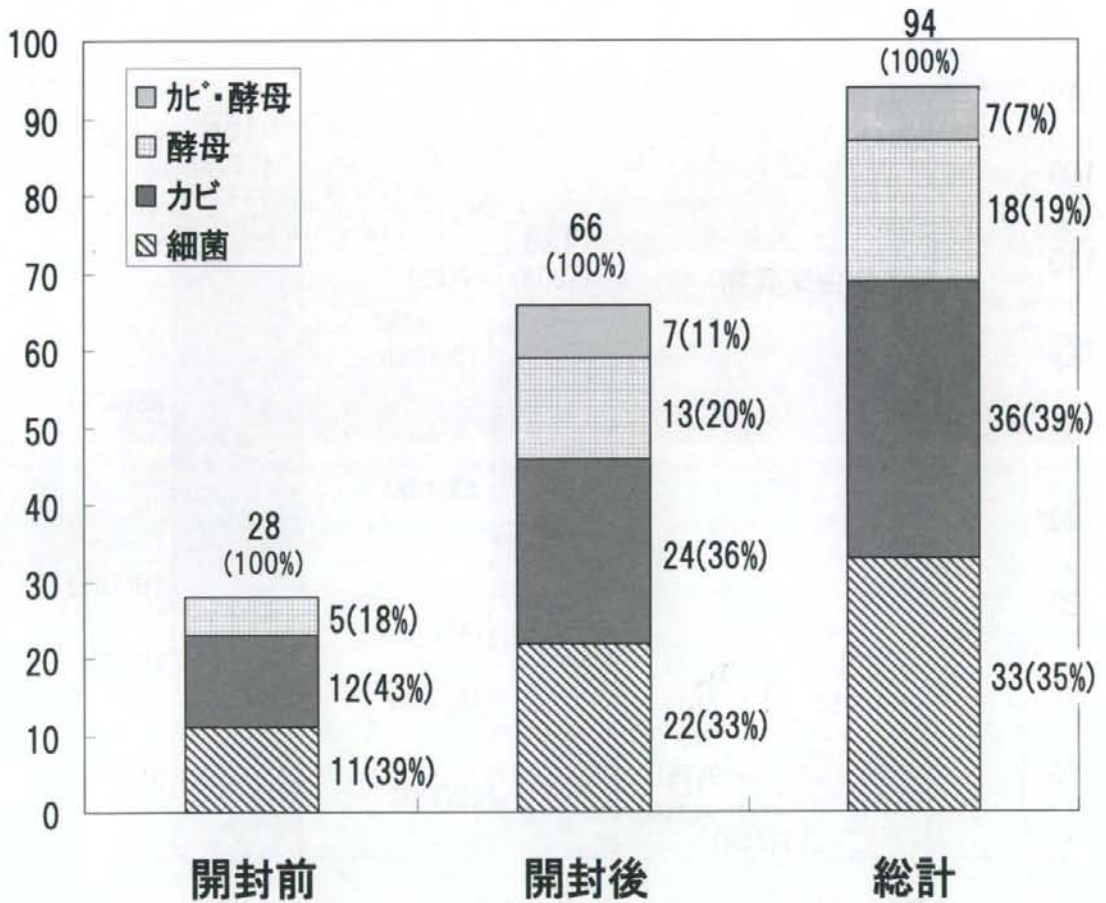


図36 苦情の事例パターン集計での微生物の種類 (ILSI・全清飲)

数字は該当数(%)

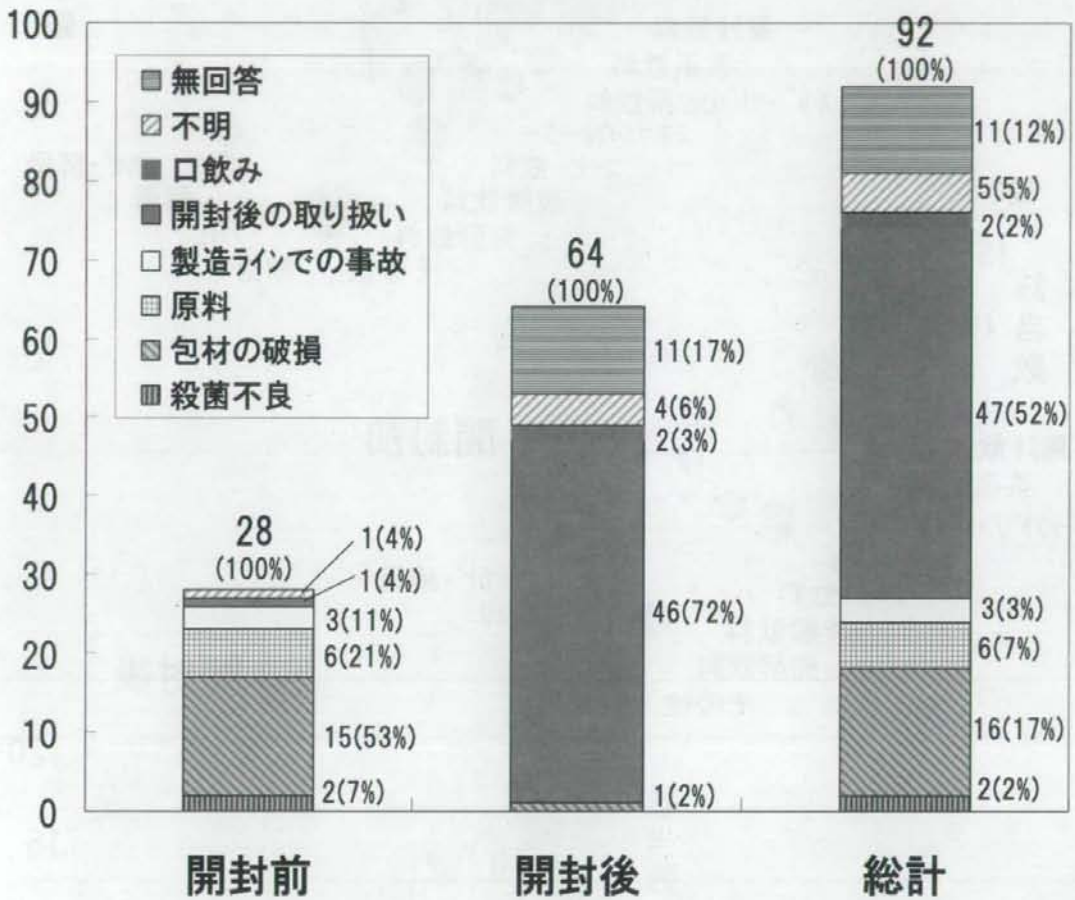


図37 苦情の事例パターン集計での微生物汚染の原因 (ILSI・全清飲)