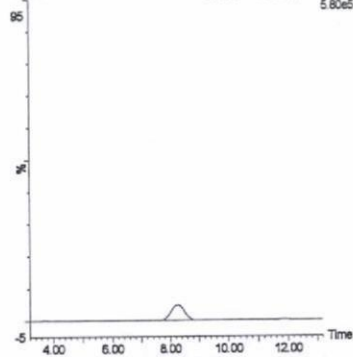


標準品 (0.05 ng)

X090219\_06 Sm (Mn, 3x3)

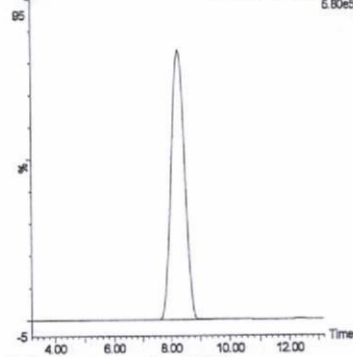
1: MRM of 23 Channels ES+  
360.06 > 128.51 (Florasulam)  
5.80e5



標準品 (1 ng)

X090219\_03 Sm (Mn, 3x3)

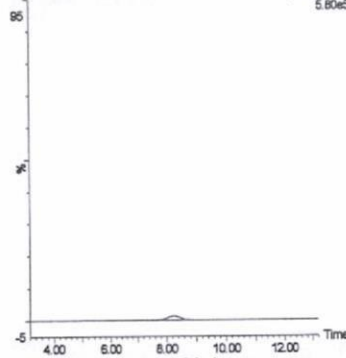
1: MRM of 23 Channels ES+  
360.06 > 128.51 (Florasulam)  
5.80e5



筋肉 (0.01 mg/kg 添加)

X090219\_18 Sm (Mn, 3x3)

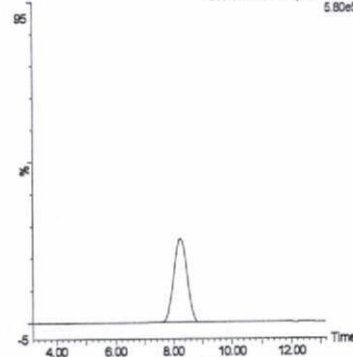
1: MRM of 23 Channels ES+  
360.06 > 128.51 (Florasulam)  
5.80e5



筋肉 (0.5 mg/kg 添加)

X090219\_13 Sm (Mn, 3x3)

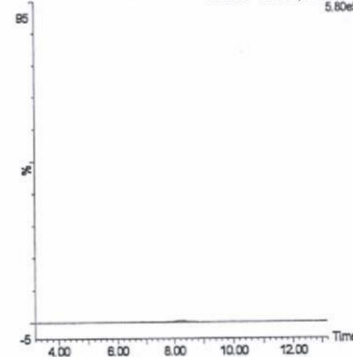
1: MRM of 23 Channels ES+  
360.06 > 128.51 (Florasulam)  
5.80e5



脂肪 (0.01 mg/kg 添加)

X090217\_26 Sm (Mn, 3x3)

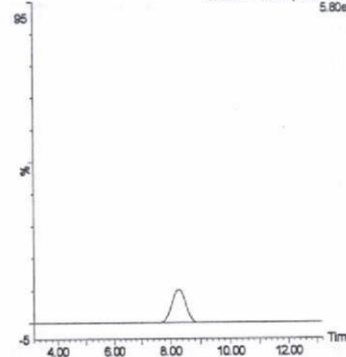
1: MRM of 23 Channels ES+  
360.06 > 128.51 (Florasulam)  
5.80e5



脂肪 (0.5 mg/kg 添加)

X090217\_21 Sm (Mn, 3x3)

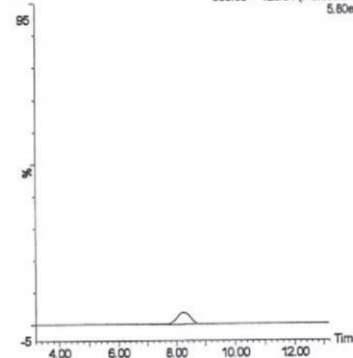
1: MRM of 23 Channels ES+  
360.06 > 128.51 (Florasulam)  
5.80e5



肝臓 (0.01 mg/kg 添加)

X090219\_41 Sm (Mn, 3x3)

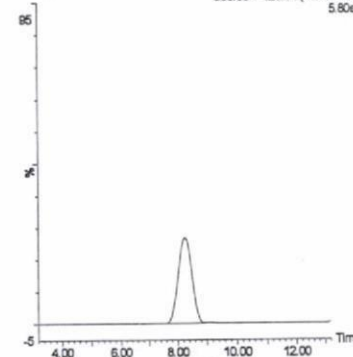
1: MRM of 23 Channels ES+  
360.06 > 128.51 (Florasulam)  
5.80e5



肝臓 (0.5 mg/kg 添加)

X090219\_36 Sm (Mn, 3x3)

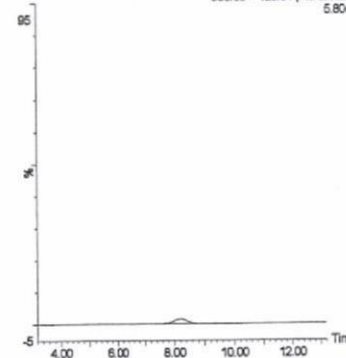
1: MRM of 23 Channels ES+  
360.06 > 128.51 (Florasulam)  
5.80e5



腎臓 (0.01 mg/kg 添加)

X090224\_63 Sm (Mn, 3x3)

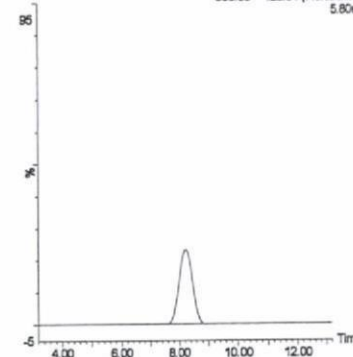
1: MRM of 23 Channels ES+  
360.06 > 128.51 (Florasulam)  
5.80e5



腎臓 (0.5 mg/kg 添加)

X090224\_78 Sm (Mn, 3x3)

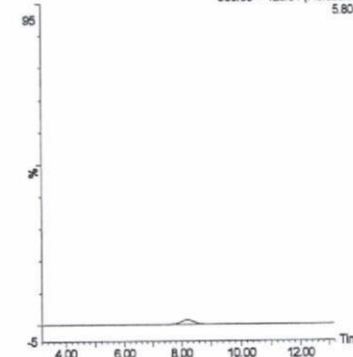
1: MRM of 23 Channels ES+  
360.06 > 128.51 (Florasulam)  
5.80e5



えび (0.01 mg/kg 添加)

X090224\_49 Sm (Mn, 3x3)

1: MRM of 23 Channels ES+  
360.06 > 128.51 (Florasulam)  
5.80e5



えび (0.5 mg/kg 添加)

X090224\_44 Sm (Mn, 3x3)

1: MRM of 23 Channels ES+  
360.06 > 128.51 (Florasulam)  
5.80e5

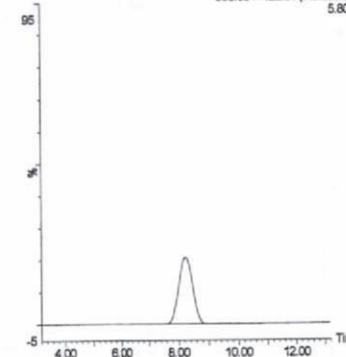
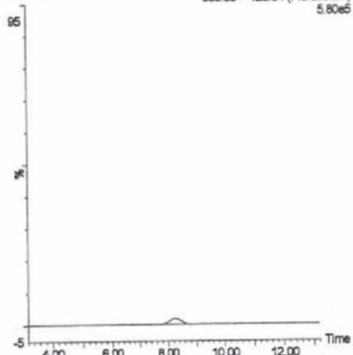


図 2-26. 標準品, 回収試料のMRMクロマトグラム (フロラスラム①)

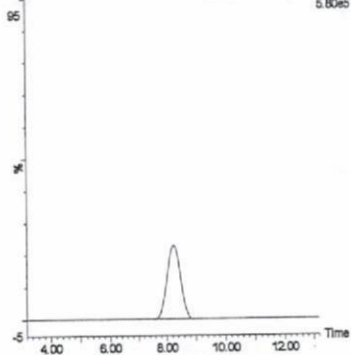
うなぎ (0.01 mg/kg 添加)

X090224\_32 Sm (Mn, 3x3) 1: MRM of 23 Channels ES+  
360.06 > 128.51 (Florasulam)  
5.80e5



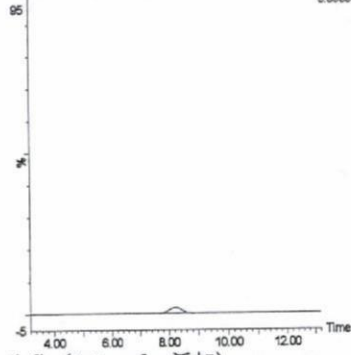
うなぎ (0.5 mg/kg 添加)

X090224\_27 Sm (Mn, 3x3) 1: MRM of 23 Channels ES+  
360.06 > 128.51 (Florasulam)  
5.80e5



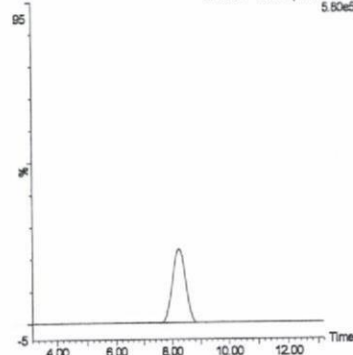
鮭 (0.01 mg/kg 添加)

X090219\_56 Sm (Mn, 3x3) 1: MRM of 23 Channels ES+  
360.06 > 128.51 (Florasulam)  
5.80e5



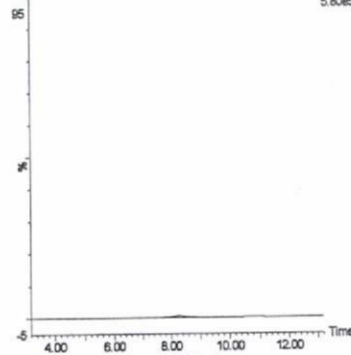
鮭 (0.5 mg/kg 添加)

X090219\_53 Sm (Mn, 3x3) 1: MRM of 23 Channels ES+  
360.06 > 128.51 (Florasulam)  
5.80e5



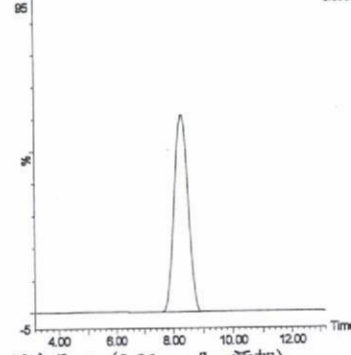
牛乳 (0.01 mg/kg 添加)

X090217\_10 Sm (Mn, 3x3) 1: MRM of 23 Channels ES+  
360.06 > 128.51 (Florasulam)  
5.80e5



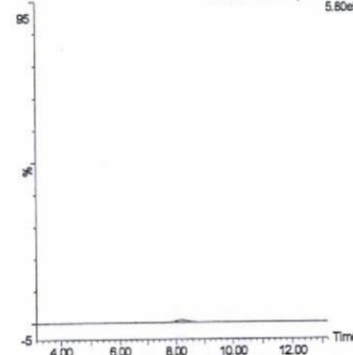
牛乳 (0.5 mg/kg 添加)

X090215\_10 Sm (Mn, 3x3) 1: MRM of 23 Channels ES+  
360.06 > 128.51 (Florasulam)  
5.80e5



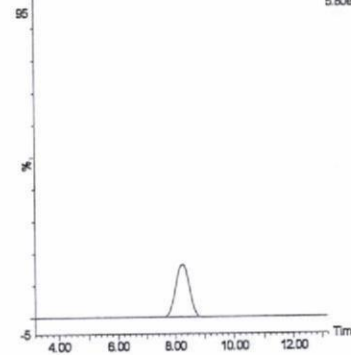
鶏卵 (0.01 mg/kg 添加)

X090224\_15 Sm (Mn, 3x3) 1: MRM of 23 Channels ES+  
360.06 > 128.51 (Florasulam)  
5.80e5



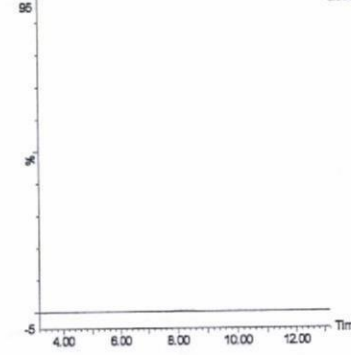
鶏卵 (0.5 mg/kg 添加)

X090224\_10 Sm (Mn, 3x3) 1: MRM of 23 Channels ES+  
360.06 > 128.51 (Florasulam)  
5.80e5



はちみつ (0.01 mg/kg 添加)

X090224\_66 Sm (Mn, 3x3) 1: MRM of 23 Channels ES+  
360.06 > 128.51 (Florasulam)  
5.80e5



はちみつ (0.5 mg/kg 添加)

X090224\_61 Sm (Mn, 3x3) 1: MRM of 23 Channels ES+  
360.06 > 128.51 (Florasulam)  
5.80e5

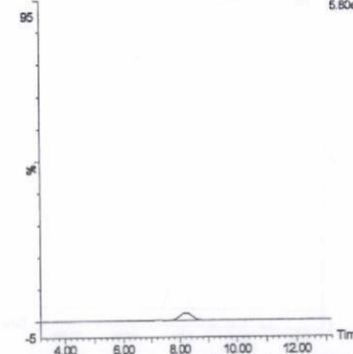


図 2-26. 標準品, 回収試料のMRMクロマトグラム (フロラスラム®)

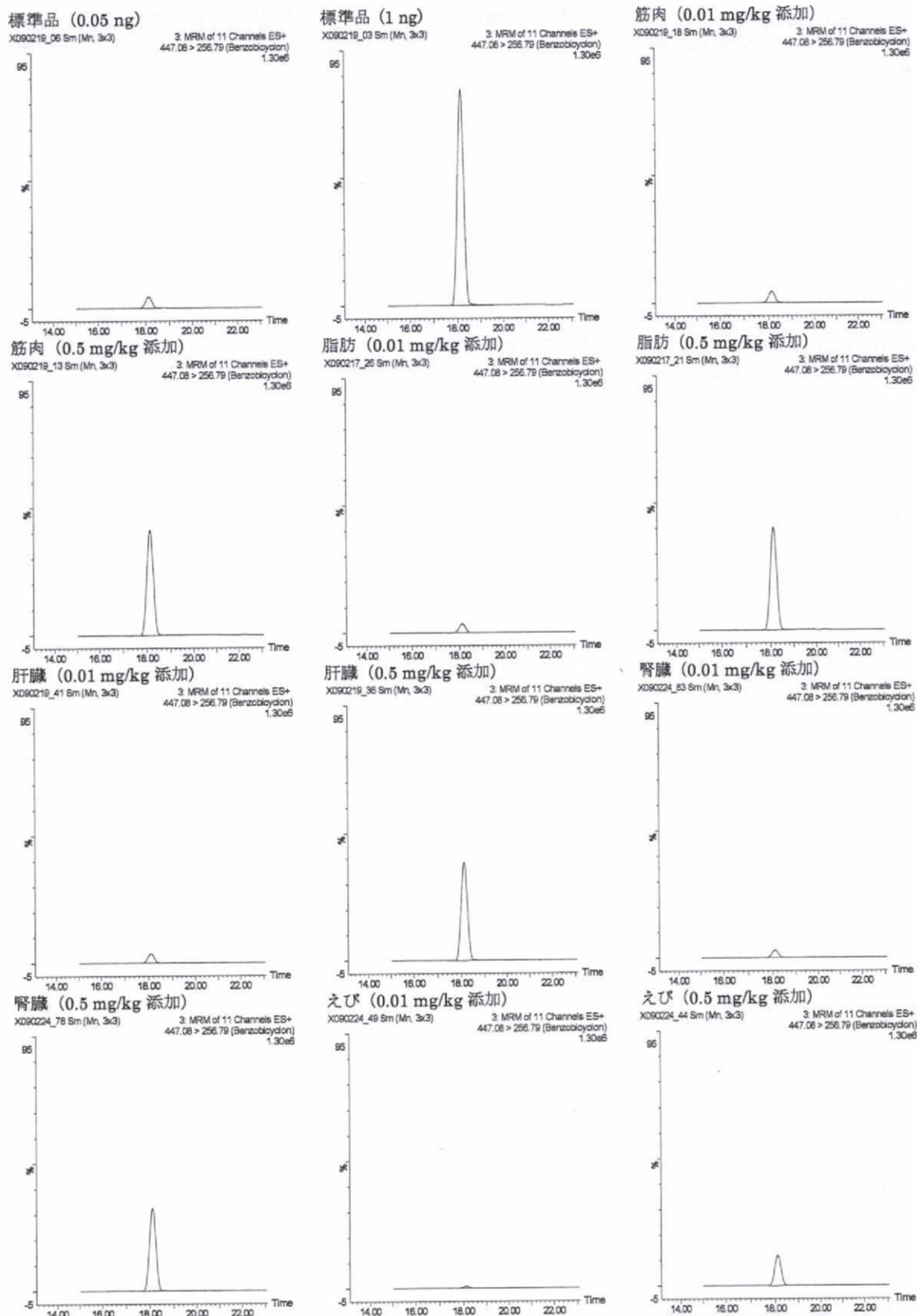
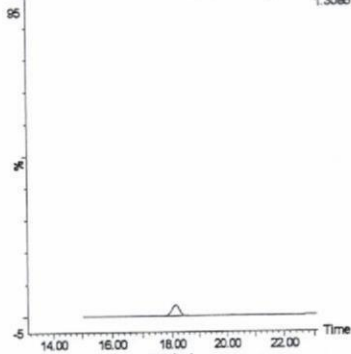


図 2-27. 標準品, 回収試料の MRM クロマトグラム (ベンゾビシクロン①)

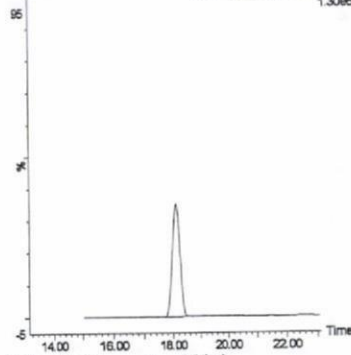
うなぎ (0.01 mg/kg 添加)

X090224\_32 Sm (Mn, 3x3) 3 MRM of 11 Channels ES+  
447.06 > 256.79 (Benzobicyclon) 1.30e6



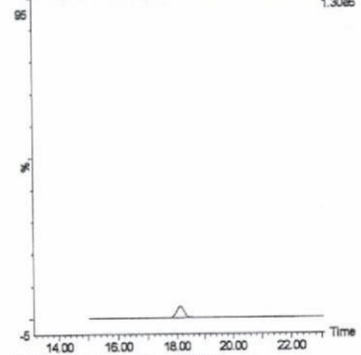
うなぎ (0.5 mg/kg 添加)

X090224\_27 Sm (Mn, 3x3) 3 MRM of 11 Channels ES+  
447.06 > 256.79 (Benzobicyclon) 1.30e6



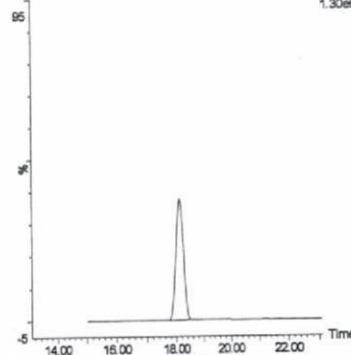
鮭 (0.01 mg/kg 添加)

X090219\_88 Sm (Mn, 3x3) 3 MRM of 11 Channels ES+  
447.06 > 256.79 (Benzobicyclon) 1.30e6



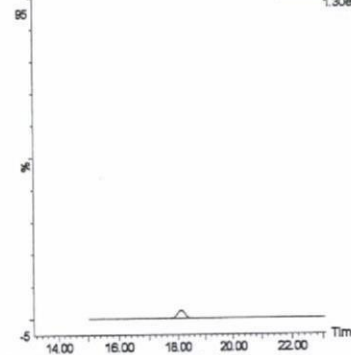
鮭 (0.5 mg/kg 添加)

X090219\_53 Sm (Mn, 3x3) 3 MRM of 11 Channels ES+  
447.06 > 256.79 (Benzobicyclon) 1.30e6



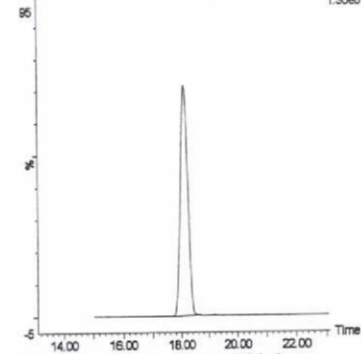
牛乳 (0.01 mg/kg 添加)

X090217\_10 Sm (Mn, 3x3) 3 MRM of 11 Channels ES+  
447.06 > 256.79 (Benzobicyclon) 1.30e6



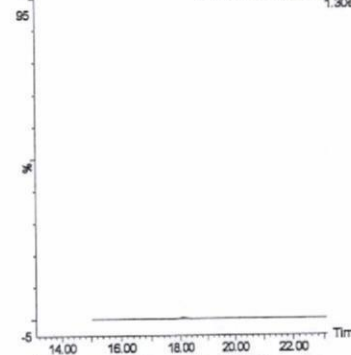
牛乳 (0.5 mg/kg 添加)

X090215\_10 Sm (Mn, 3x3) 3 MRM of 11 Channels ES+  
447.06 > 256.79 (Benzobicyclon) 1.30e6



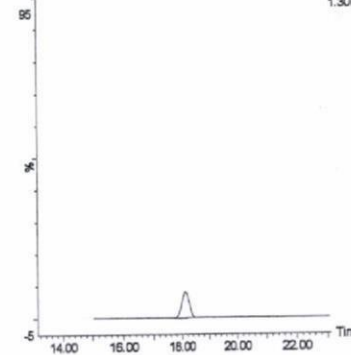
鶏卵 (0.01 mg/kg 添加)

X090224\_15 Sm (Mn, 3x3) 3 MRM of 11 Channels ES+  
447.06 > 256.79 (Benzobicyclon) 1.30e6



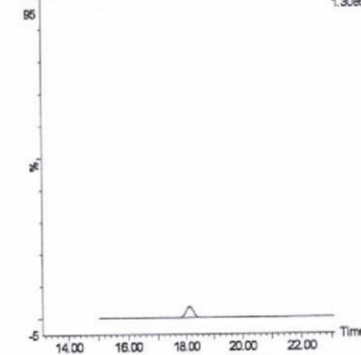
鶏卵 (0.5 mg/kg 添加)

X090224\_10 Sm (Mn, 3x3) 3 MRM of 11 Channels ES+  
447.06 > 256.79 (Benzobicyclon) 1.30e6



はちみつ (0.01 mg/kg 添加)

X090224\_96 Sm (Mn, 3x3) 3 MRM of 11 Channels ES+  
447.06 > 256.79 (Benzobicyclon) 1.30e6



はちみつ (0.5 mg/kg 添加)

X090224\_81 Sm (Mn, 3x3) 3 MRM of 11 Channels ES+  
447.06 > 256.79 (Benzobicyclon) 1.30e6

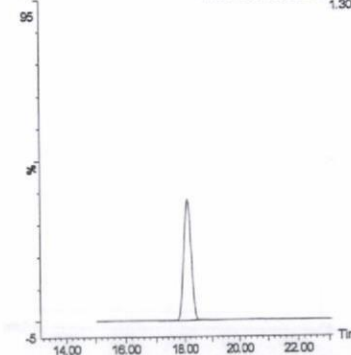
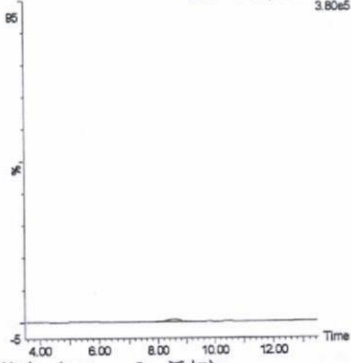


図 2-27. 標準品, 回収試料の MRM クロマトグラム (ベンゾピシクロン②)

標準品 (0.05 ng)

X090219\_06 Sm (Mn, 3x3)

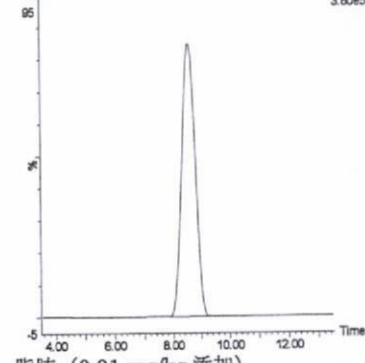
1: MRM of 23 Channels ES+  
453.14 > 181.52 (Foramsulfuron)  
3.80e5



標準品 (1 ng)

X090219\_03 Sm (Mn, 3x3)

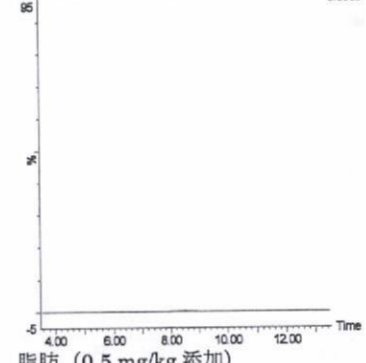
1: MRM of 23 Channels ES+  
453.14 > 181.52 (Foramsulfuron)  
3.80e5



筋肉 (0.01 mg/kg 添加)

X090219\_18 Sm (Mn, 3x3)

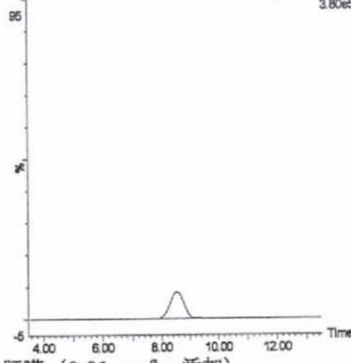
1: MRM of 23 Channels ES+  
453.14 > 181.52 (Foramsulfuron)  
3.80e5



筋肉 (0.5 mg/kg 添加)

X090219\_13 Sm (Mn, 3x3)

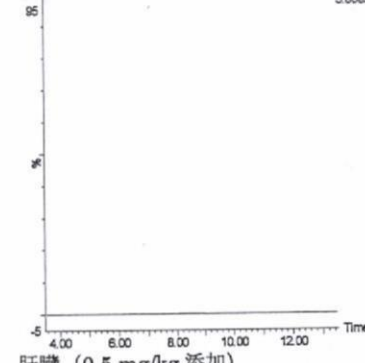
1: MRM of 23 Channels ES+  
453.14 > 181.52 (Foramsulfuron)  
3.80e5



脂肪 (0.01 mg/kg 添加)

X090217\_26 Sm (Mn, 3x3)

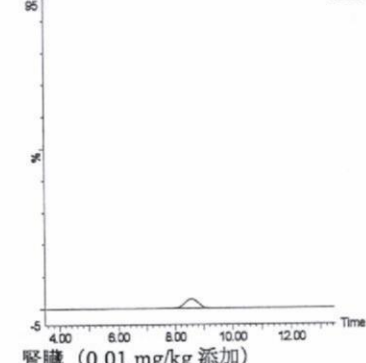
1: MRM of 23 Channels ES+  
453.14 > 181.52 (Foramsulfuron)  
3.80e5



脂肪 (0.5 mg/kg 添加)

X090217\_21 Sm (Mn, 3x3)

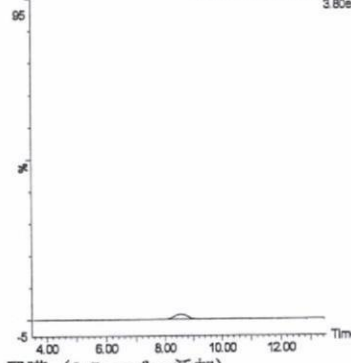
1: MRM of 23 Channels ES+  
453.14 > 181.52 (Foramsulfuron)  
3.80e5



肝臓 (0.01 mg/kg 添加)

X090219\_41 Sm (Mn, 3x3)

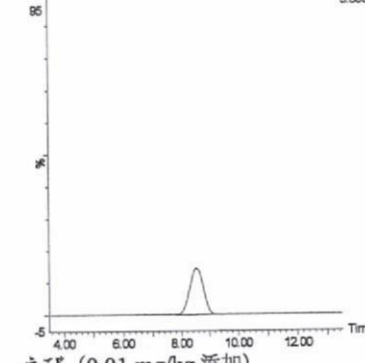
1: MRM of 23 Channels ES+  
453.14 > 181.52 (Foramsulfuron)  
3.80e5



肝臓 (0.5 mg/kg 添加)

X090219\_36 Sm (Mn, 3x3)

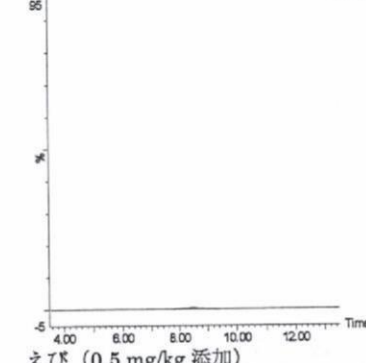
1: MRM of 23 Channels ES+  
453.14 > 181.52 (Foramsulfuron)  
3.80e5



腎臓 (0.01 mg/kg 添加)

X090224\_83 Sm (Mn, 3x3)

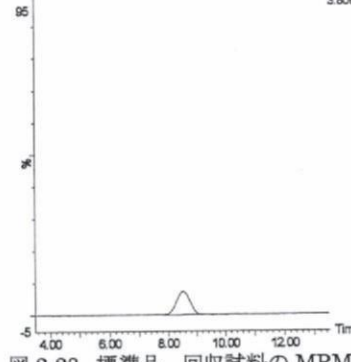
1: MRM of 23 Channels ES+  
453.14 > 181.52 (Foramsulfuron)  
3.80e5



腎臓 (0.5 mg/kg 添加)

X090224\_78 Sm (Mn, 3x3)

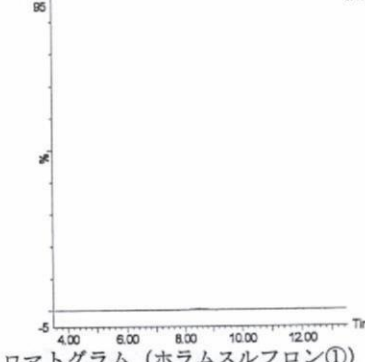
1: MRM of 23 Channels ES+  
453.14 > 181.52 (Foramsulfuron)  
3.80e5



えび (0.01 mg/kg 添加)

X090224\_49 Sm (Mn, 3x3)

1: MRM of 23 Channels ES+  
453.14 > 181.52 (Foramsulfuron)  
3.80e5



えび (0.5 mg/kg 添加)

X090224\_44 Sm (Mn, 3x3)

1: MRM of 23 Channels ES+  
453.14 > 181.52 (Foramsulfuron)  
3.80e5

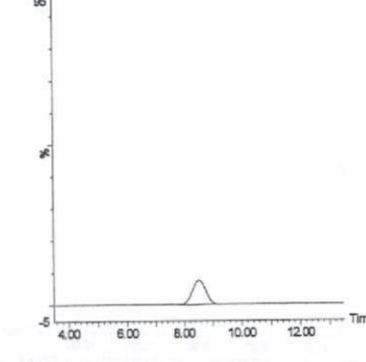
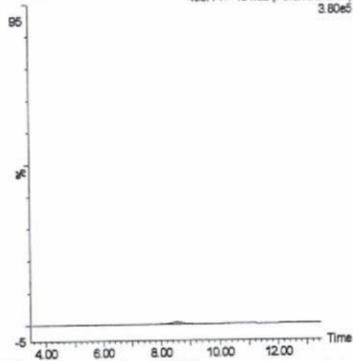


図 2-28. 標準品, 回収試料の MRM クロマトグラム (ホラムスルフロンの①)

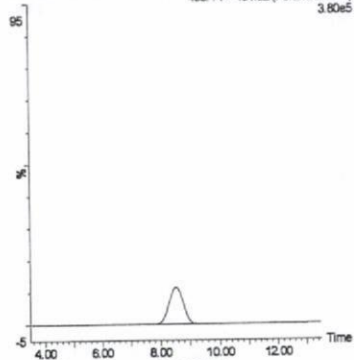
うなぎ (0.01 mg/kg 添加)

X090224\_32 Sm (Mn, 3x3) 1: MRM of 23 Channels ES+  
453.14 > 181.52 (Foramsulfuron) 3.80e5



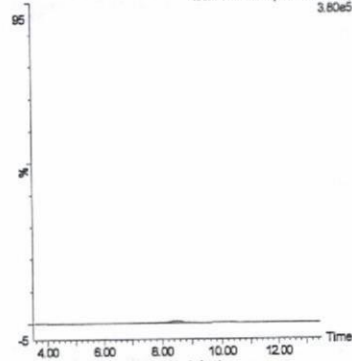
うなぎ (0.5 mg/kg 添加)

X090224\_27 Sm (Mn, 3x3) 1: MRM of 23 Channels ES+  
453.14 > 181.52 (Foramsulfuron) 3.80e5



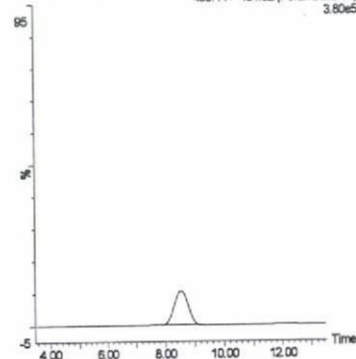
鮭 (0.01 mg/kg 添加)

X090219\_58 Sm (Mn, 3x3) 1: MRM of 23 Channels ES+  
453.14 > 181.52 (Foramsulfuron) 3.80e5



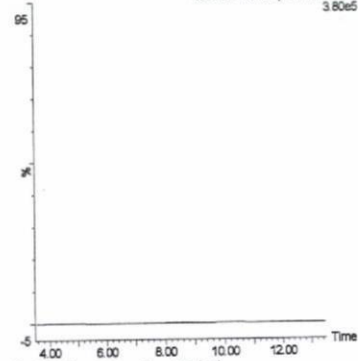
鮭 (0.5 mg/kg 添加)

X090219\_53 Sm (Mn, 3x3) 1: MRM of 23 Channels ES+  
453.14 > 181.52 (Foramsulfuron) 3.80e5



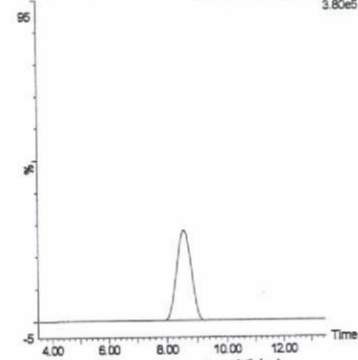
牛乳 (0.01 mg/kg 添加)

X090217\_10 Sm (Mn, 3x3) 1: MRM of 23 Channels ES+  
453.14 > 181.52 (Foramsulfuron) 3.80e5



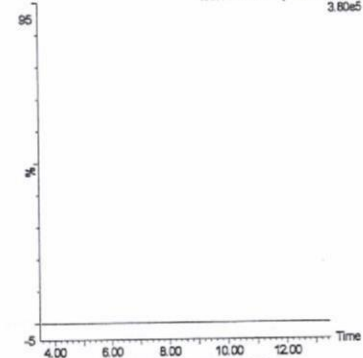
牛乳 (0.5 mg/kg 添加)

X090215\_10 Sm (Mn, 3x3) 1: MRM of 23 Channels ES+  
453.14 > 181.52 (Foramsulfuron) 3.80e5



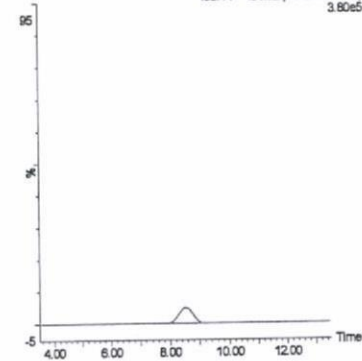
鶏卵 (0.01 mg/kg 添加)

X090224\_15 Sm (Mn, 3x3) 1: MRM of 23 Channels ES+  
453.14 > 181.52 (Foramsulfuron) 3.80e5



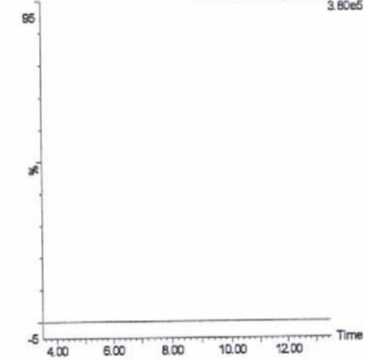
鶏卵 (0.5 mg/kg 添加)

X090224\_10 Sm (Mn, 3x3) 1: MRM of 23 Channels ES+  
453.14 > 181.52 (Foramsulfuron) 3.80e5



はちみつ (0.01 mg/kg 添加)

X090224\_66 Sm (Mn, 3x3) 1: MRM of 23 Channels ES+  
453.14 > 181.52 (Foramsulfuron) 3.80e5



はちみつ (0.5 mg/kg 添加)

X090224\_61 Sm (Mn, 3x3) 1: MRM of 23 Channels ES+  
453.14 > 181.52 (Foramsulfuron) 3.80e5

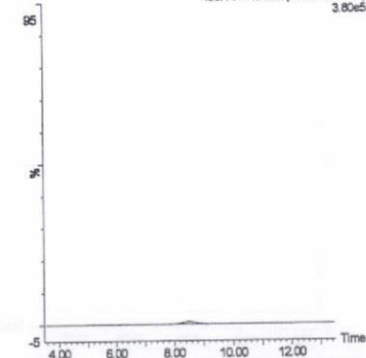
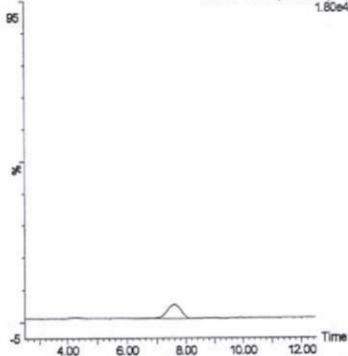


図 2-28. 標準品, 回収試料の MRM クロマトグラム (ホラムスルロン<sup>®</sup>)

標準品 (0.05 ng)

X090219\_06 Sm (Mn, 3x3)

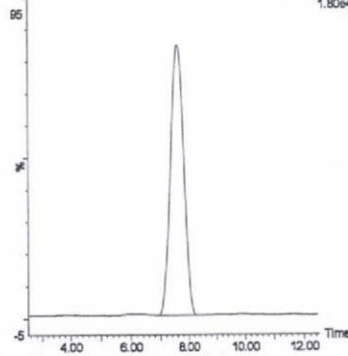
1: MRM of 23 Channels ES+  
193.98 > 61.66 (Metaldehyde)  
1.80e4



標準品 (1 ng)

X090219\_03 Sm (Mn, 3x3)

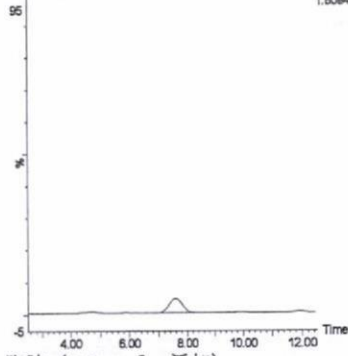
1: MRM of 23 Channels ES+  
193.98 > 61.66 (Metaldehyde)  
1.80e4



筋肉 (0.01 mg/kg 添加)

X090219\_18 Sm (Mn, 3x3)

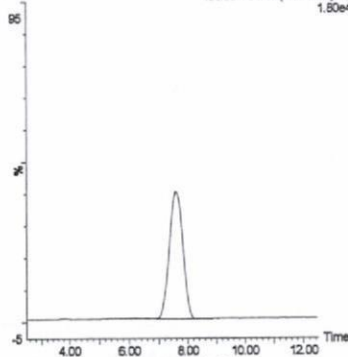
1: MRM of 23 Channels ES+  
193.98 > 61.66 (Metaldehyde)  
1.80e4



筋肉 (0.5 mg/kg 添加)

X090219\_13 Sm (Mn, 3x3)

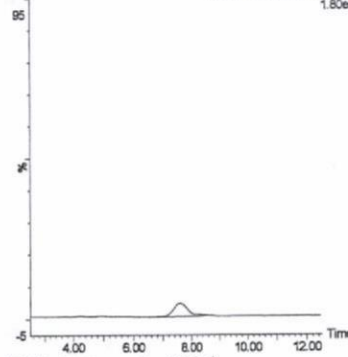
1: MRM of 23 Channels ES+  
193.98 > 61.66 (Metaldehyde)  
1.80e4



脂肪 (0.01 mg/kg 添加)

X090217\_26 Sm (Mn, 3x3)

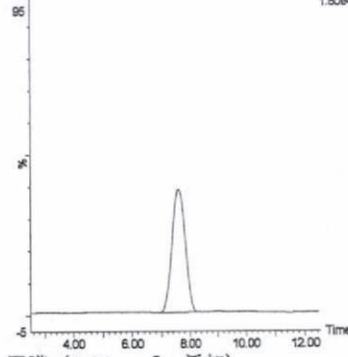
1: MRM of 23 Channels ES+  
193.98 > 61.66 (Metaldehyde)  
1.80e4



脂肪 (0.5 mg/kg 添加)

X090217\_21 Sm (Mn, 3x3)

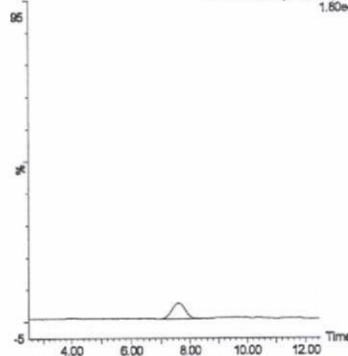
1: MRM of 23 Channels ES+  
193.98 > 61.66 (Metaldehyde)  
1.80e4



肝臓 (0.01 mg/kg 添加)

X090219\_41 Sm (Mn, 3x3)

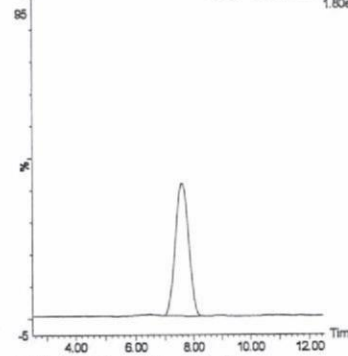
1: MRM of 23 Channels ES+  
193.98 > 61.66 (Metaldehyde)  
1.80e4



肝臓 (0.5 mg/kg 添加)

X090219\_36 Sm (Mn, 3x3)

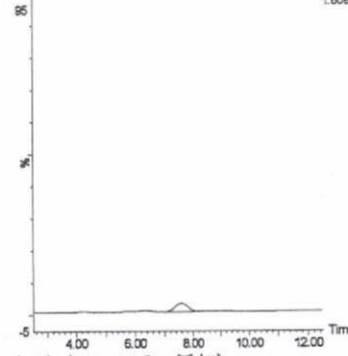
1: MRM of 23 Channels ES+  
193.98 > 61.66 (Metaldehyde)  
1.80e4



腎臓 (0.01 mg/kg 添加)

X090224\_63 Sm (Mn, 3x3)

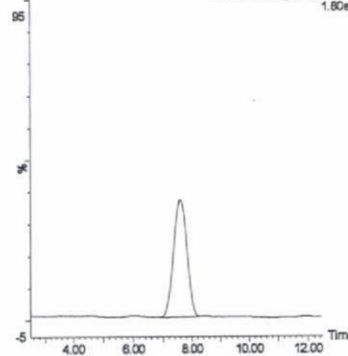
1: MRM of 23 Channels ES+  
193.98 > 61.66 (Metaldehyde)  
1.80e4



腎臓 (0.5 mg/kg 添加)

X090224\_78 Sm (Mn, 3x3)

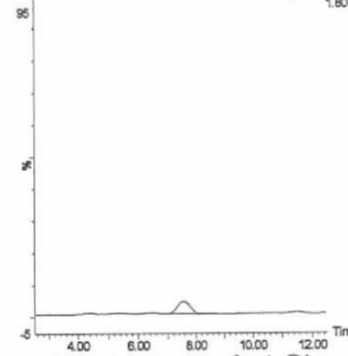
1: MRM of 23 Channels ES+  
193.98 > 61.66 (Metaldehyde)  
1.80e4



えび (0.01 mg/kg 添加)

X090224\_49 Sm (Mn, 3x3)

1: MRM of 23 Channels ES+  
193.98 > 61.66 (Metaldehyde)  
1.80e4



えび (0.5 mg/kg 添加)

X090224\_44 Sm (Mn, 3x3)

1: MRM of 23 Channels ES+  
193.98 > 61.66 (Metaldehyde)  
1.80e4

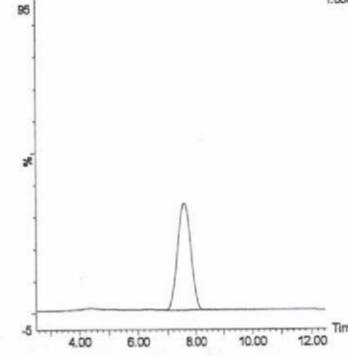
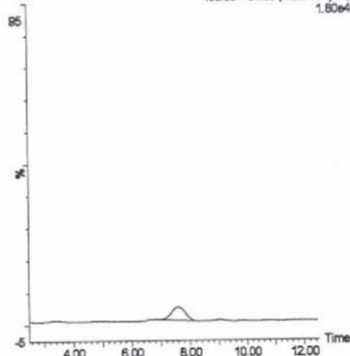


図 2-29. 標準品, 回収試料の MRM クロマトグラム (メタルデヒド①)

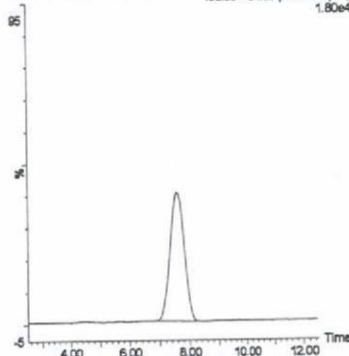
うなぎ (0.01 mg/kg 添加)

X090224\_32 Sm (Mn, 3x3)  
1: MRM of 23 Channels ES+  
193.98 > 61.66 (Metaldehyde)  
1.80e4



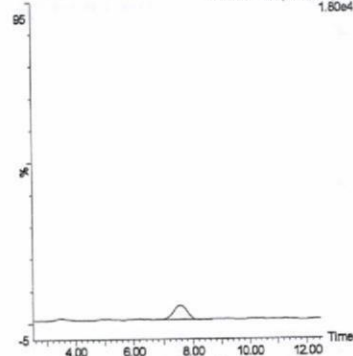
うなぎ (0.5 mg/kg 添加)

X090224\_27 Sm (Mn, 3x3)  
1: MRM of 23 Channels ES+  
193.98 > 61.66 (Metaldehyde)  
1.80e4



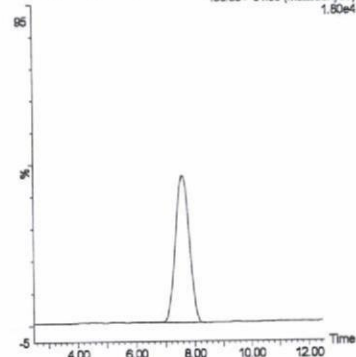
鮭 (0.01 mg/kg 添加)

X090219\_58 Sm (Mn, 3x3)  
1: MRM of 23 Channels ES+  
193.98 > 61.66 (Metaldehyde)  
1.80e4



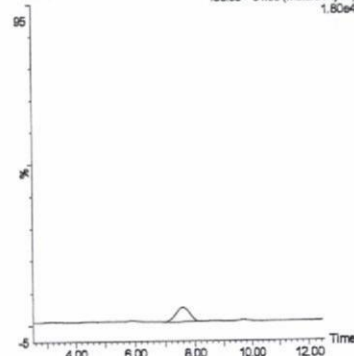
鮭 (0.5 mg/kg 添加)

X090219\_53 Sm (Mn, 3x3)  
1: MRM of 23 Channels ES+  
193.98 > 61.66 (Metaldehyde)  
1.80e4



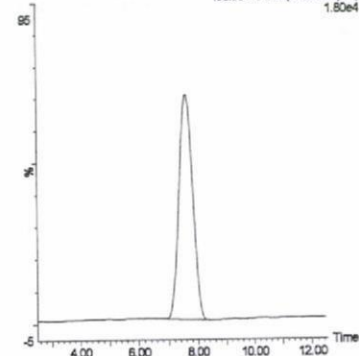
牛乳 (0.01 mg/kg 添加)

X090217\_10 Sm (Mn, 3x3)  
1: MRM of 23 Channels ES+  
193.98 > 61.66 (Metaldehyde)  
1.80e4



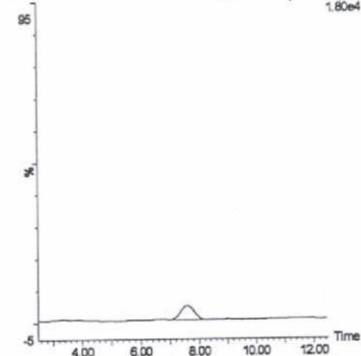
牛乳 (0.5 mg/kg 添加)

X090215\_10 Sm (Mn, 3x3)  
1: MRM of 23 Channels ES+  
193.98 > 61.66 (Metaldehyde)  
1.80e4



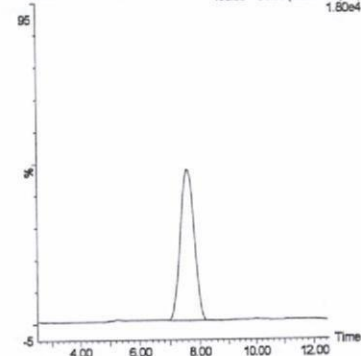
鶏卵 (0.01 mg/kg 添加)

X090224\_15 Sm (Mn, 3x3)  
1: MRM of 23 Channels ES+  
193.98 > 61.66 (Metaldehyde)  
1.80e4



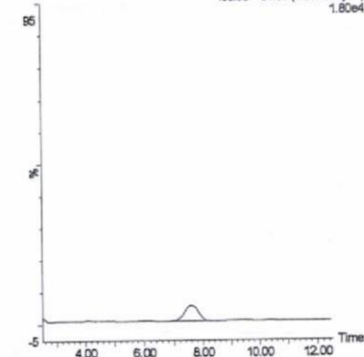
鶏卵 (0.5 mg/kg 添加)

X090224\_10 Sm (Mn, 3x3)  
1: MRM of 23 Channels ES+  
193.98 > 61.66 (Metaldehyde)  
1.80e4



はちみつ (0.01 mg/kg 添加)

X090224\_66 Sm (Mn, 3x3)  
1: MRM of 23 Channels ES+  
193.98 > 61.66 (Metaldehyde)  
1.80e4



はちみつ (0.5 mg/kg 添加)

X090224\_61 Sm (Mn, 3x3)  
1: MRM of 23 Channels ES+  
193.98 > 61.66 (Metaldehyde)  
1.80e4

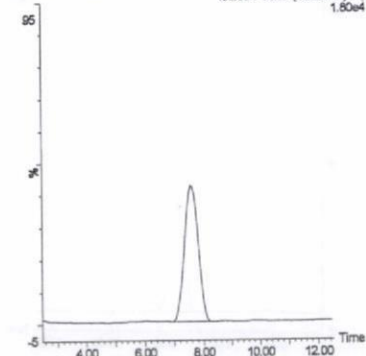
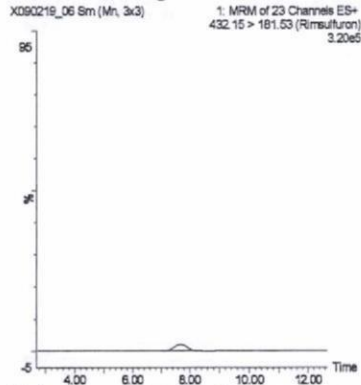


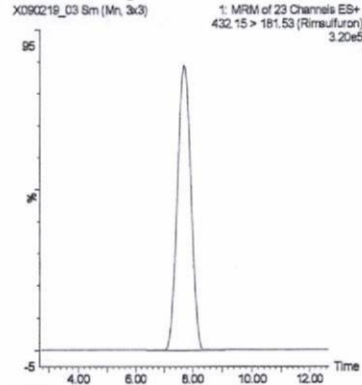
図 2-29. 標準品, 回収試料の MRM クロマトグラム (メタアルデヒド②)



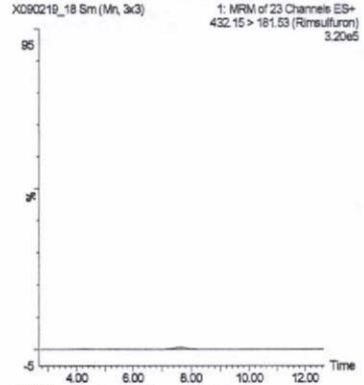
標準品 (0.05 ng)



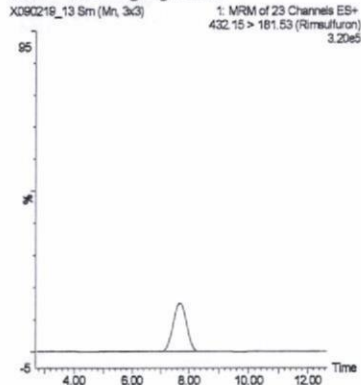
標準品 (1 ng)



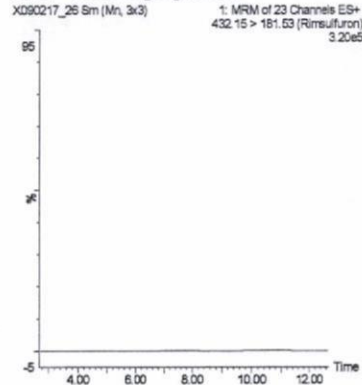
筋肉 (0.01 mg/kg 添加)



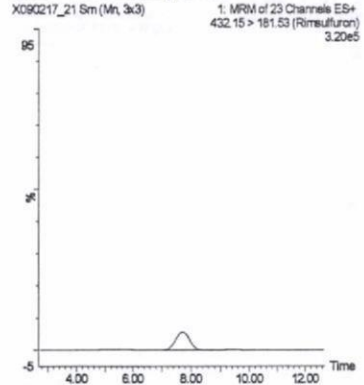
筋肉 (0.5 mg/kg 添加)



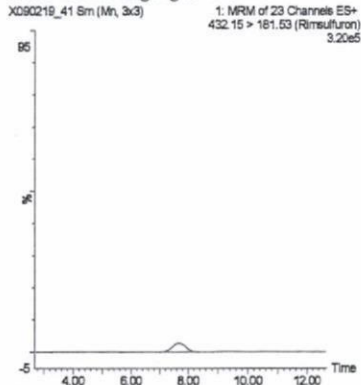
脂肪 (0.01 mg/kg 添加)



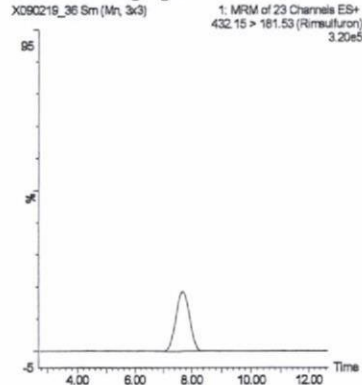
脂肪 (0.5 mg/kg 添加)



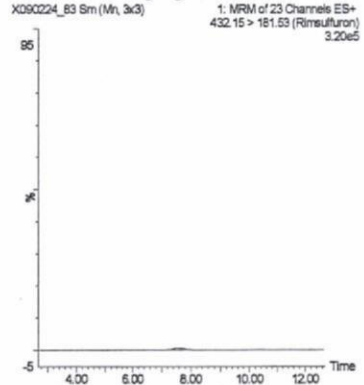
肝臓 (0.01 mg/kg 添加)



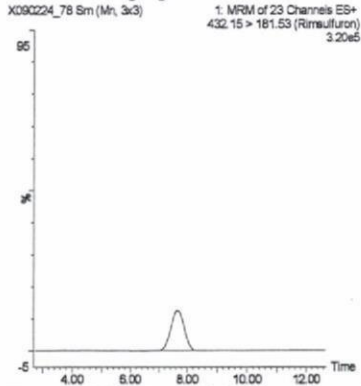
肝臓 (0.5 mg/kg 添加)



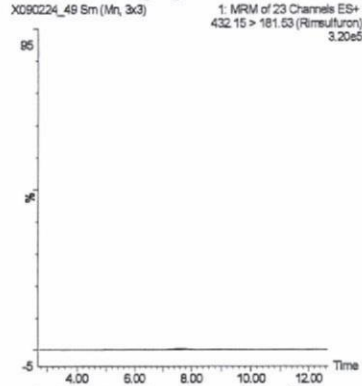
腎臓 (0.01 mg/kg 添加)



腎臓 (0.5 mg/kg 添加)



えび (0.01 mg/kg 添加)



えび (0.5 mg/kg 添加)

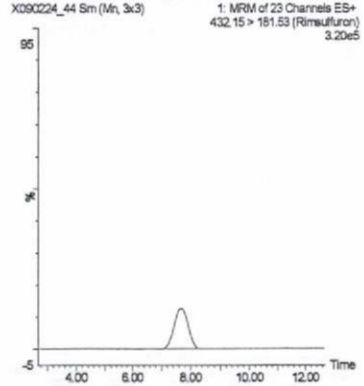
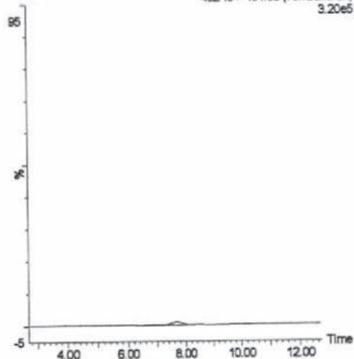


図 2-30. 標準品, 回収試料の MRM クロマトグラム (リムスルフロン①)

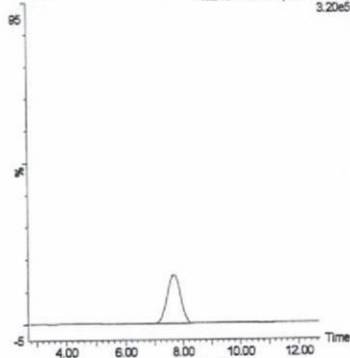
うなぎ (0.01 mg/kg 添加)

X090224\_32 Sm (Mn, 3x3) 1: MRM of 23 Channels ES+  
432.15 > 181.53 (Rimsulfuron)  
3.20e5



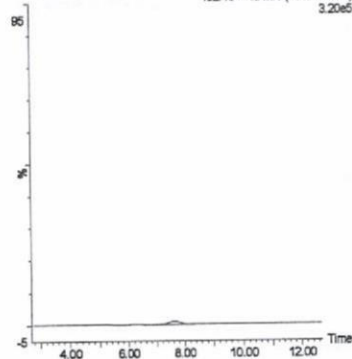
うなぎ (0.5 mg/kg 添加)

X090224\_27 Sm (Mn, 3x3) 1: MRM of 23 Channels ES+  
432.15 > 181.53 (Rimsulfuron)  
3.20e5



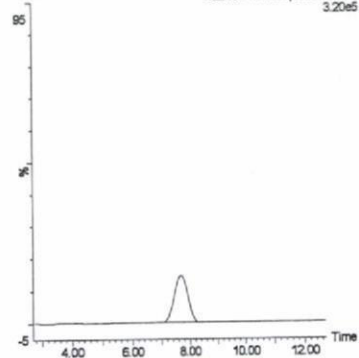
鮭 (0.01 mg/kg 添加)

X090219\_58 Sm (Mn, 3x3) 1: MRM of 23 Channels ES+  
432.15 > 181.53 (Rimsulfuron)  
3.20e5



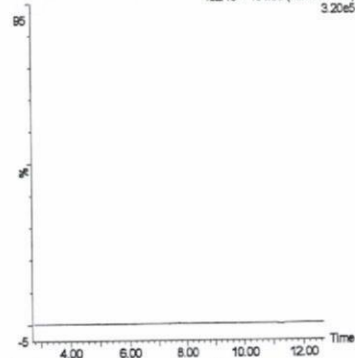
鮭 (0.5 mg/kg 添加)

X090219\_53 Sm (Mn, 3x3) 1: MRM of 23 Channels ES+  
432.15 > 181.53 (Rimsulfuron)  
3.20e5



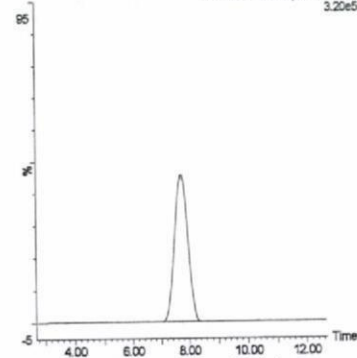
牛乳 (0.01 mg/kg 添加)

X090217\_10 Sm (Mn, 3x3) 1: MRM of 23 Channels ES+  
432.15 > 181.53 (Rimsulfuron)  
3.20e5



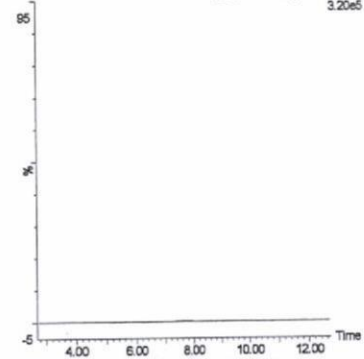
牛乳 (0.5 mg/kg 添加)

X090215\_10 Sm (Mn, 3x3) 1: MRM of 23 Channels ES+  
432.15 > 181.53 (Rimsulfuron)  
3.20e5



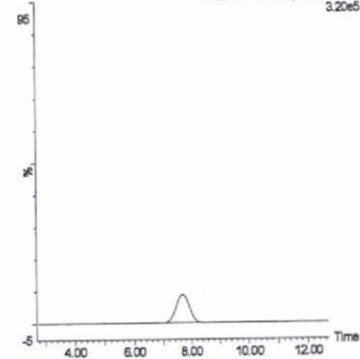
鶏卵 (0.01 mg/kg 添加)

X090224\_15 Sm (Mn, 3x3) 1: MRM of 23 Channels ES+  
432.15 > 181.53 (Rimsulfuron)  
3.20e5



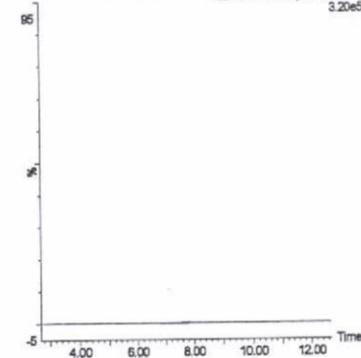
鶏卵 (0.5 mg/kg 添加)

X090224\_10 Sm (Mn, 3x3) 1: MRM of 23 Channels ES+  
432.15 > 181.53 (Rimsulfuron)  
3.20e5



はちみつ (0.01 mg/kg 添加)

X090224\_86 Sm (Mn, 3x3) 1: MRM of 23 Channels ES+  
432.15 > 181.53 (Rimsulfuron)  
3.20e5



はちみつ (0.5 mg/kg 添加)

X090224\_61 Sm (Mn, 3x3) 1: MRM of 23 Channels ES+  
432.15 > 181.53 (Rimsulfuron)  
3.20e5

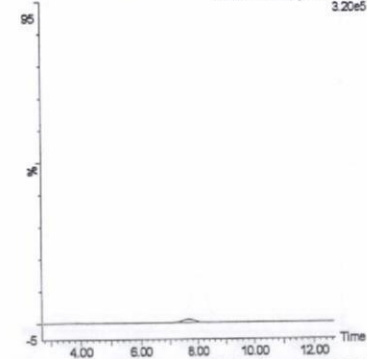
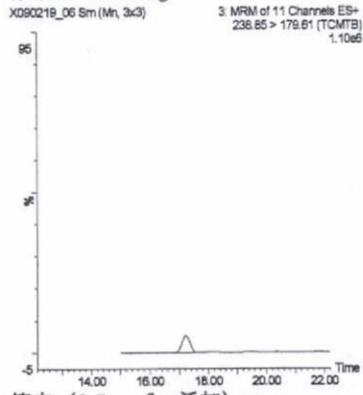
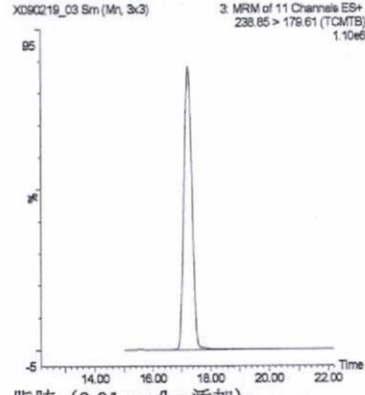


図 2-30. 標準品, 回収試料の MRM クロマトグラム (リムスルフロン®)

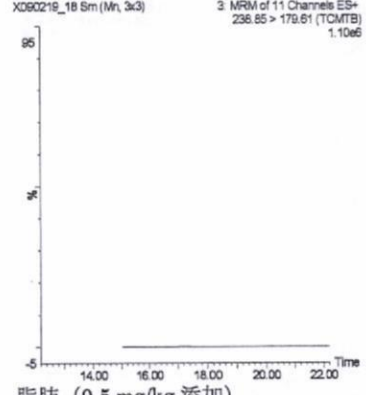
標準品 (0.05 ng)



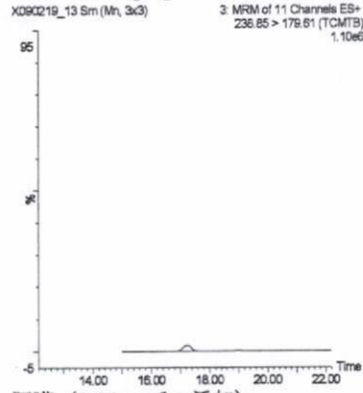
標準品 (1 ng)



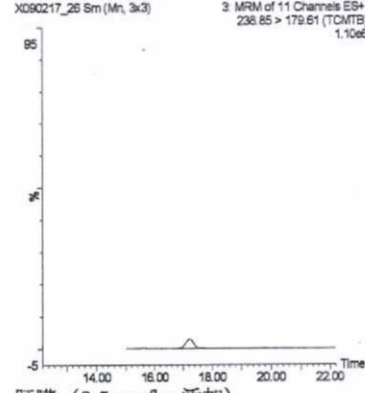
筋肉 (0.01 mg/kg 添加)



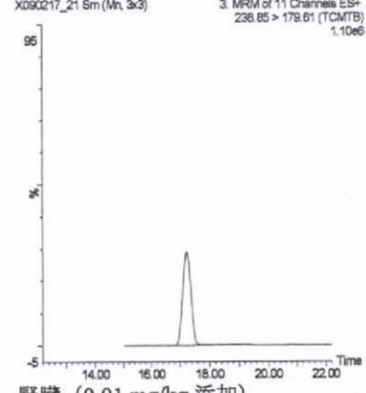
筋肉 (0.5 mg/kg 添加)



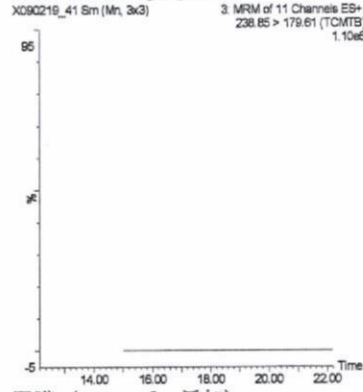
脂肪 (0.01 mg/kg 添加)



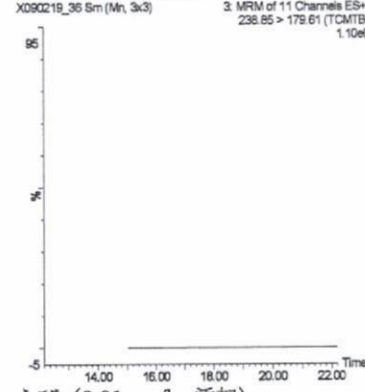
脂肪 (0.5 mg/kg 添加)



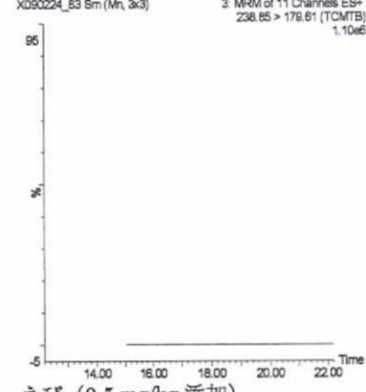
肝臓 (0.01 mg/kg 添加)



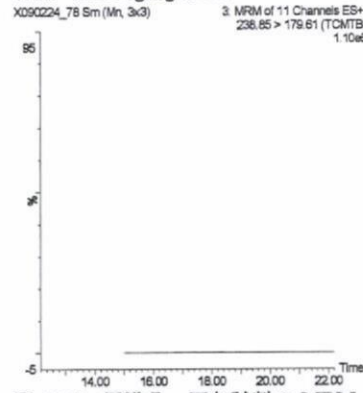
肝臓 (0.5 mg/kg 添加)



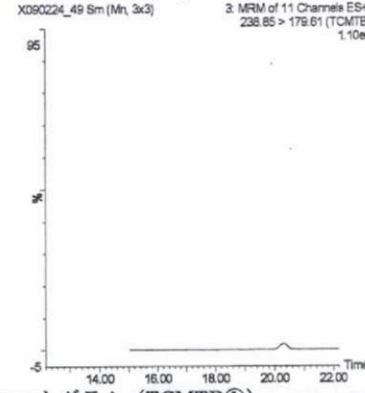
腎臓 (0.01 mg/kg 添加)



腎臓 (0.5 mg/kg 添加)



えび (0.01 mg/kg 添加)



えび (0.5 mg/kg 添加)

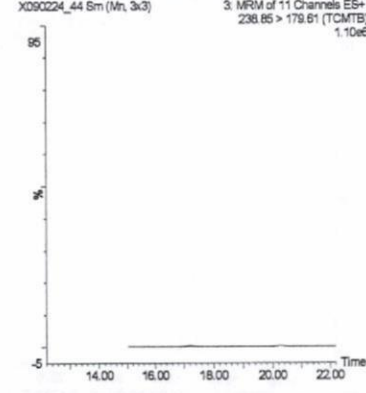
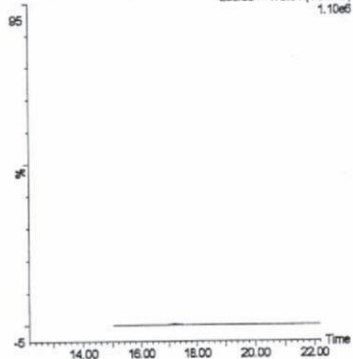


図 2-31. 標準品, 回収試料の MRM クロマトグラム (TCMTB①)

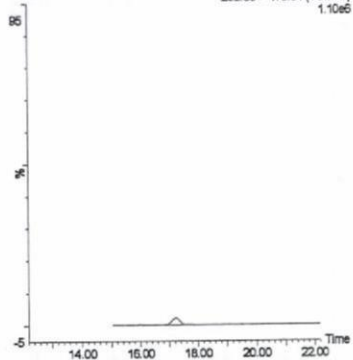
うなぎ (0.01 mg/kg 添加)

X090224\_32 Sm (Mn, 3x3) 3 MRM of 11 Channels ES+  
238.85 > 179.61 (TCMTB) 1.10e6



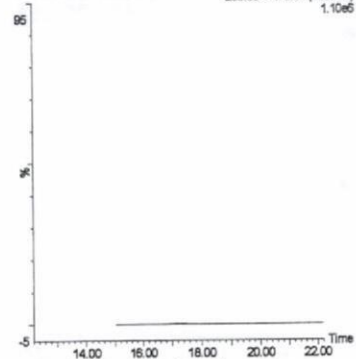
うなぎ (0.5 mg/kg 添加)

X090224\_27 Sm (Mn, 3x3) 3 MRM of 11 Channels ES+  
238.85 > 179.61 (TCMTB) 1.10e6



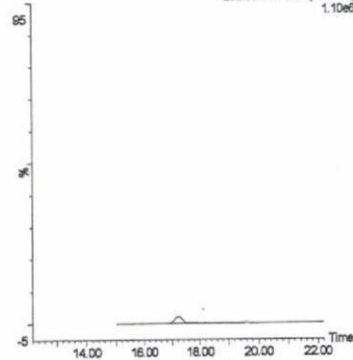
蛙 (0.01 mg/kg 添加)

X090219\_58 Sm (Mn, 3x3) 3 MRM of 11 Channels ES+  
238.85 > 179.61 (TCMTB) 1.10e6



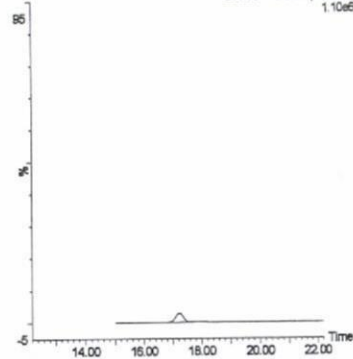
蛙 (0.5 mg/kg 添加)

X090219\_53 Sm (Mn, 3x3) 3 MRM of 11 Channels ES+  
238.85 > 179.61 (TCMTB) 1.10e6



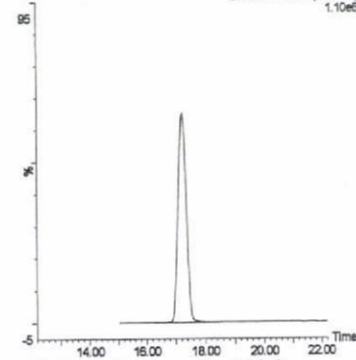
牛乳 (0.01 mg/kg 添加)

X090217\_10 Sm (Mn, 3x3) 3 MRM of 11 Channels ES+  
238.85 > 179.61 (TCMTB) 1.10e6



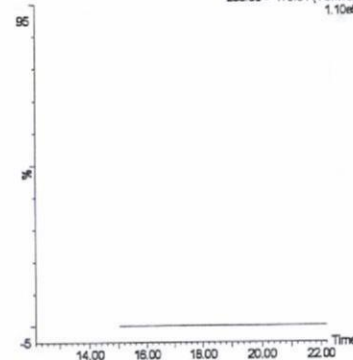
牛乳 (0.5 mg/kg 添加)

X090215\_10 Sm (Mn, 3x3) 3 MRM of 11 Channels ES+  
238.85 > 179.61 (TCMTB) 1.10e6



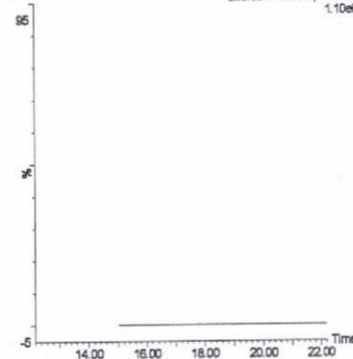
鶏卵 (0.01 mg/kg 添加)

X090224\_15 Sm (Mn, 3x3) 3 MRM of 11 Channels ES+  
238.85 > 179.61 (TCMTB) 1.10e6



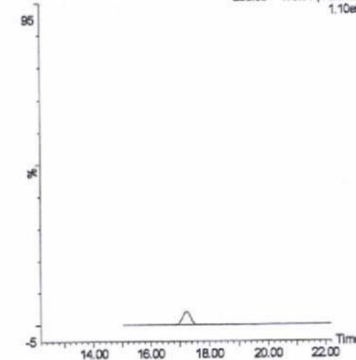
鶏卵 (0.5 mg/kg 添加)

X090224\_10 Sm (Mn, 3x3) 3 MRM of 11 Channels ES+  
238.85 > 179.61 (TCMTB) 1.10e6



はちみつ (0.01 mg/kg 添加)

X090224\_66 Sm (Mn, 3x3) 3 MRM of 11 Channels ES+  
238.85 > 179.61 (TCMTB) 1.10e6



はちみつ (0.5 mg/kg 添加)

X090224\_61 Sm (Mn, 3x3) 3 MRM of 11 Channels ES+  
238.85 > 179.61 (TCMTB) 1.10e6

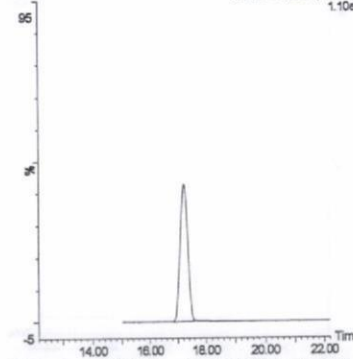


図 2-31. 標準品, 回収試料のMRMクロマトグラム (TCMTB®)

標準品 1 ng

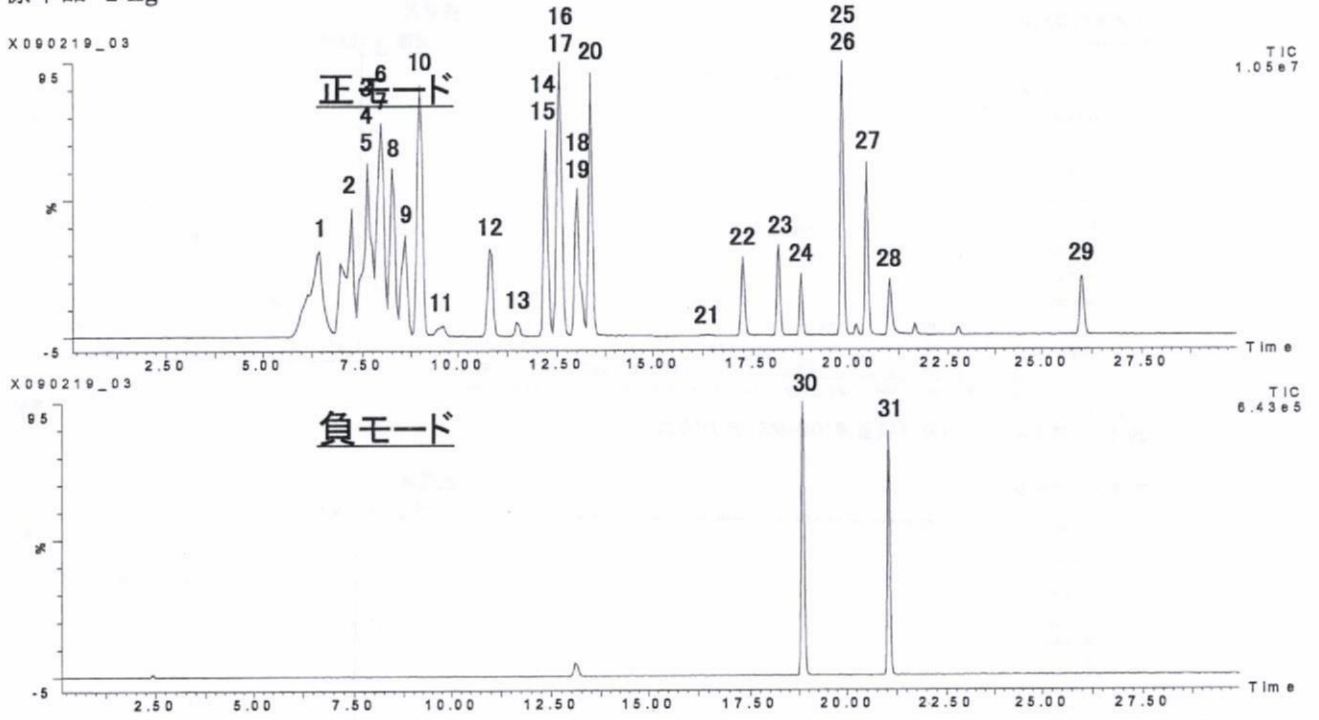


図 3. 混合標準溶液のトータルイオンクロマトグラム (LC-MS/MS)

- 1:プロパモカルブ, 2:ニコスルフロソ, 3:チフェンスルフロソメチル, 4:メタアルデヒド, 5:リムスルフロソ, 6:  
 アジムスルフロソ, 7:トリネキサパックエチル,  
 8:フロラスラム, 9:ホラムスルフロソ, 10:フラザスルフロソ, 11:ジフルフェンソピル, 12:ナブタラム, 13:アリ  
 ドクロール, 14:シアナジン, 15:プロベナゾール,  
 16:クロランスラムメチル, 17:ピロキロン, 18:ジクロスラム, 19:スルフェントラゾン, 20:デメトン-S-メチル,  
 21:フルオリミド, 22:TCMTB, 23:ペンゾピシクロソ,  
 24:ジクロフルアニド, 25:アラニカルブ, 26:トリルフルアニド, 27:イソキサチオン, 28:ドジン, 29:シラフルオ  
 フェン, 30:フルスルファミド, 31:フルアジナム

マススペクトル  
Abundance

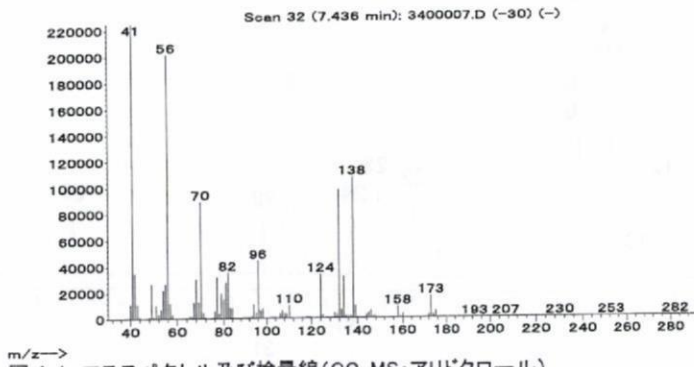
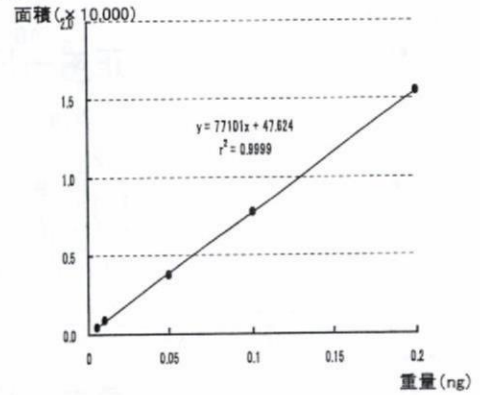


図 4-1. マススペクトル及び検量線 (GC-MS; アリドクロロール)

検量線



マススペクトル  
Abundance

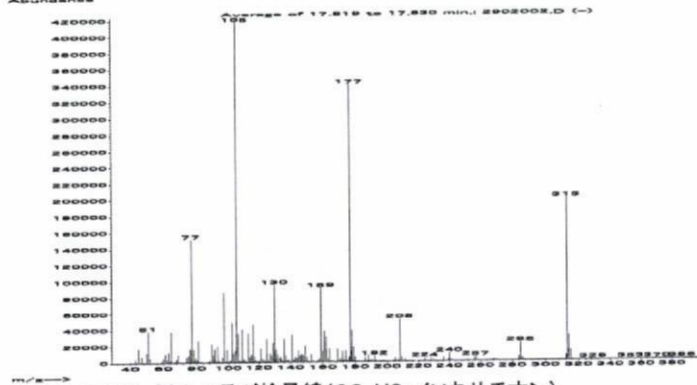
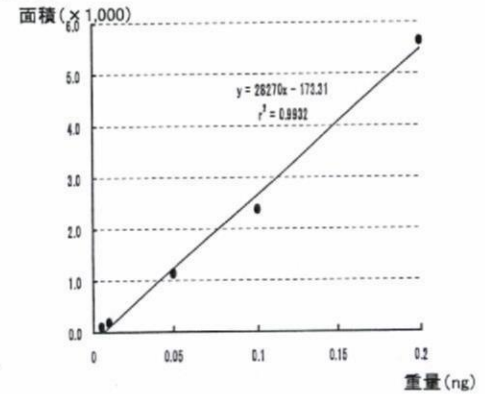


図 4-2. マススペクトル及び検量線 (GC-MS; イソキサチオン)

検量線



マススペクトル  
Abundance

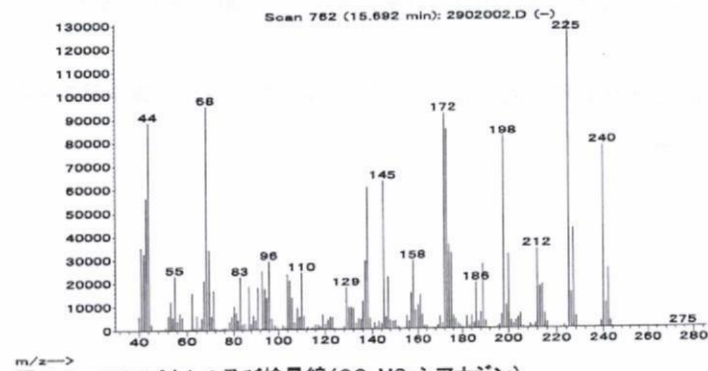
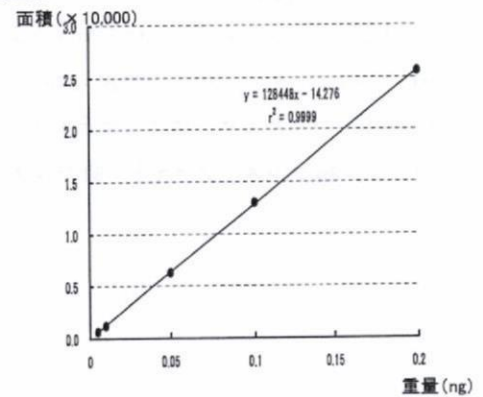


図 4-3. マススペクトル及び検量線 (GC-MS; シアナジン)

検量線



マススペクトル

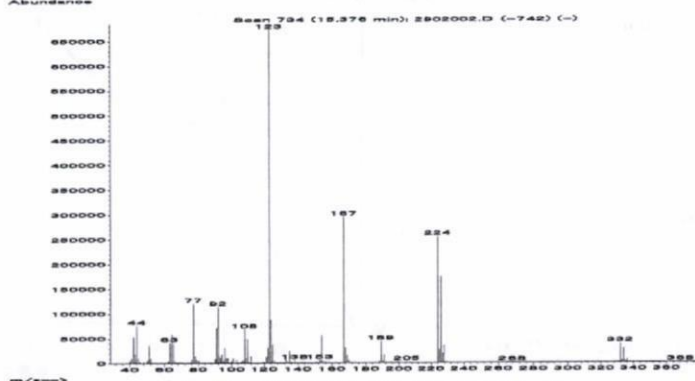
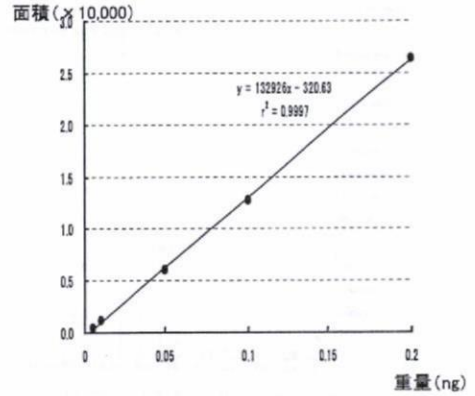


図 4-4. マススペクトル及び検量線 (GC-MS; ジクロフルアミド)

検量線



マススペクトル

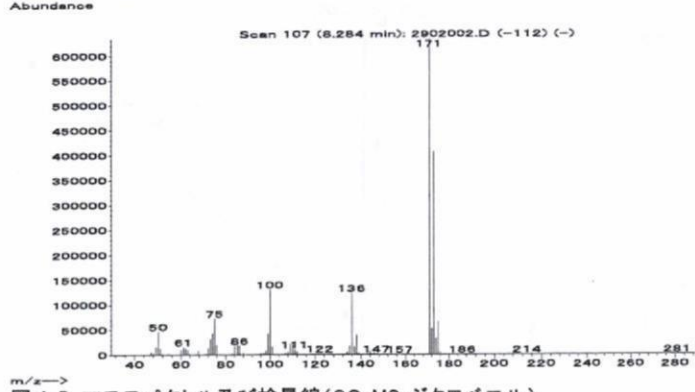
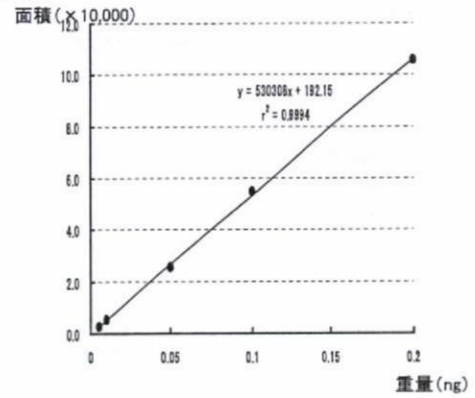


図 4-5. マススペクトル及び検量線 (GC-MS; ジクロペンシル)

検量線



マススペクトル

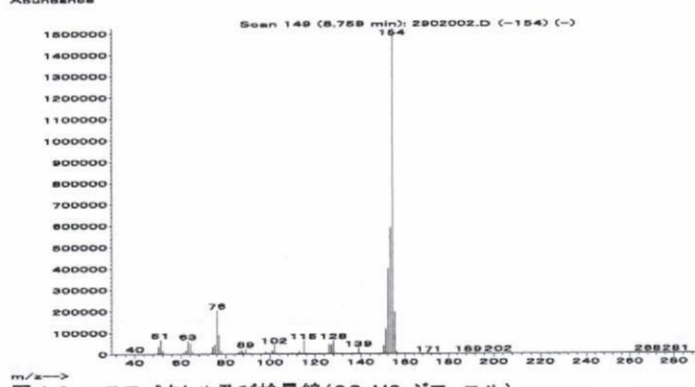
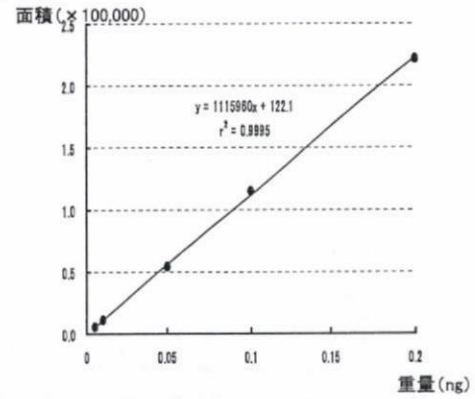
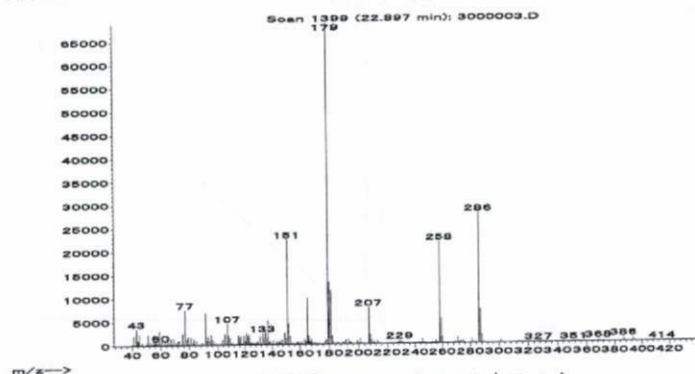


図 4-6. マススペクトル及び検量線 (GC-MS; ジフェニル)

検量線



マススペクトル



検量線

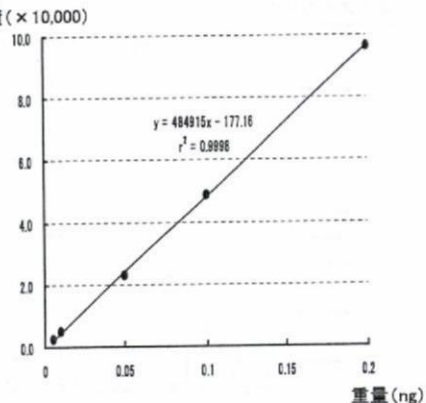
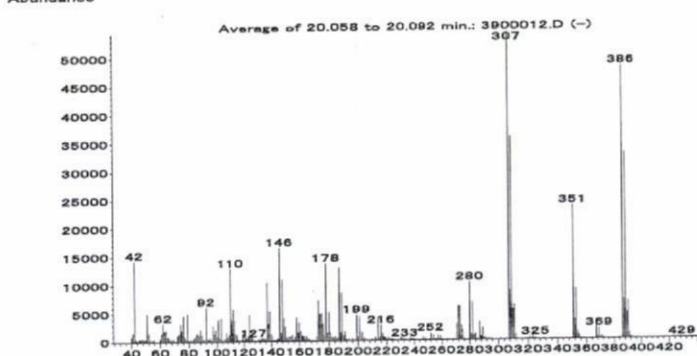


図 4-7. マススペクトル及び検量線 (GC-MS; シラフルオフェン)

マススペクトル



検量線

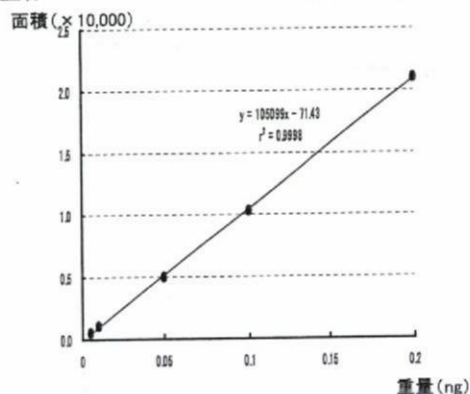
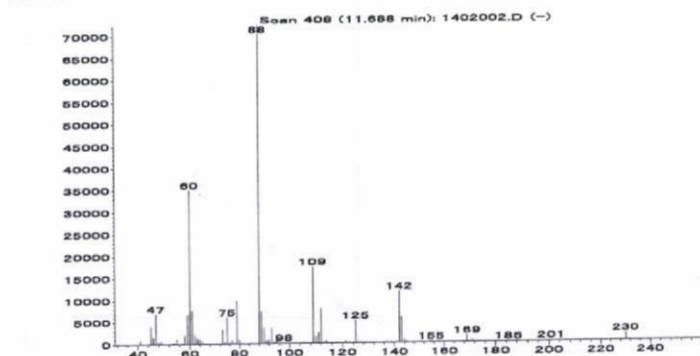


図 4-8. マススペクトル及び検量線 (GC-MS; スルフエントラゾン)

マススペクトル



検量線

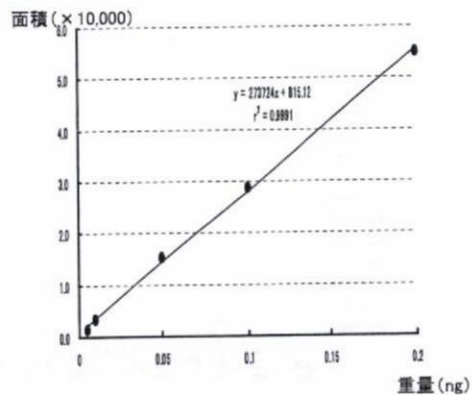
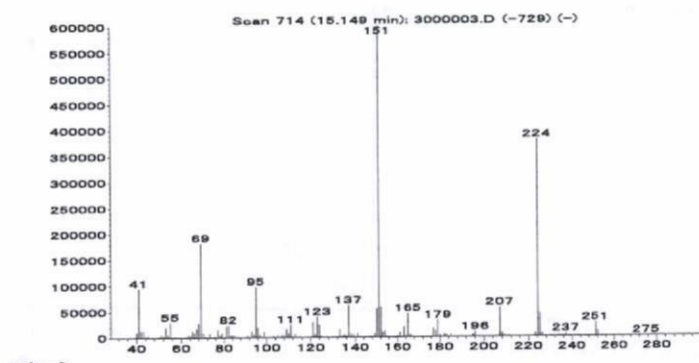


図 4-9. マススペクトル及び検量線 (GC-MS; デメトン-S-メチル)



マススペクトル



検量線  
面積 (×10,000)

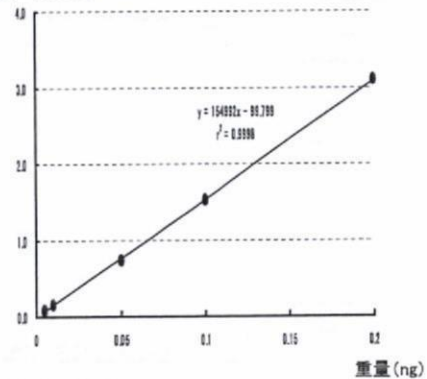
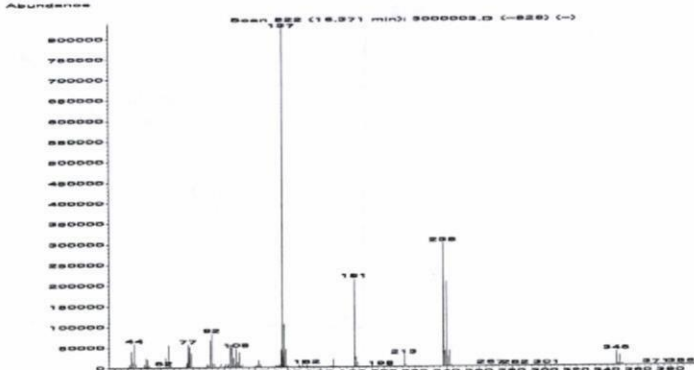


図 4-10. マススペクトル及び検量線 (GC-MS; トリネキサパックエチル)

マススペクトル



検量線

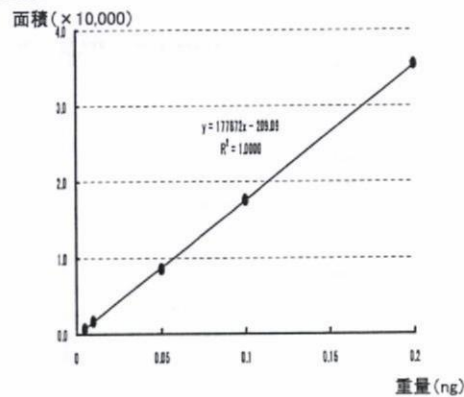
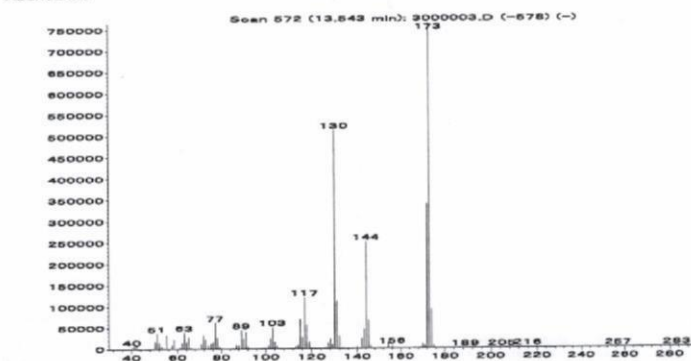


図 4-11. マススペクトル及び検量線 (GC-MS; トリルフルアニド)

マススペクトル



検量線

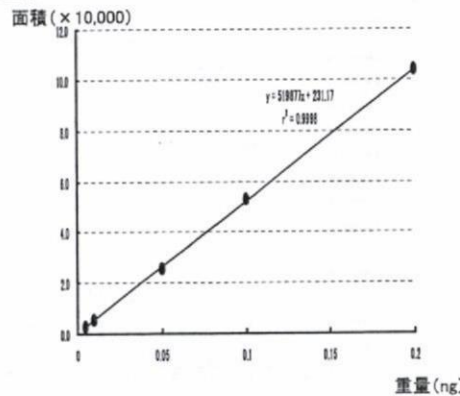
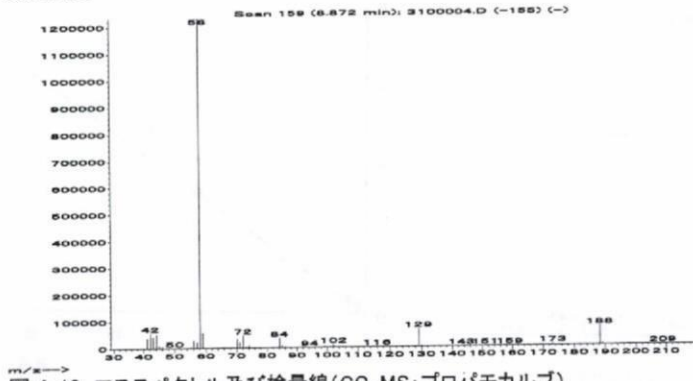


図 4-12. マススペクトル及び検量線 (GC-MS; ピロキロン)

マススペクトル



検量線  
面積 (× 100,000)

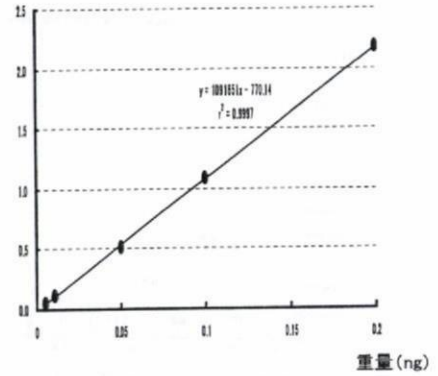
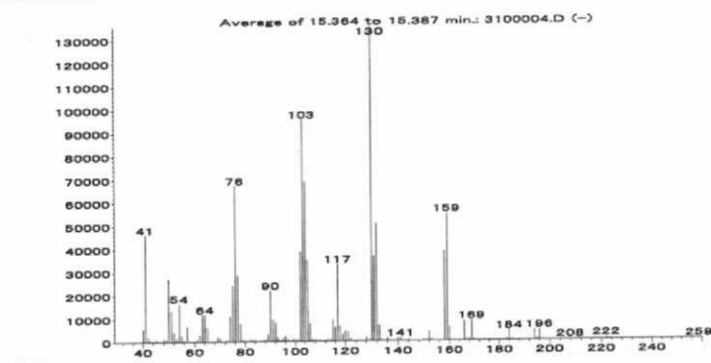


図 4-13. マススペクトル及び検量線(GC-MS; プロパモナルブ)

マススペクトル



検量線

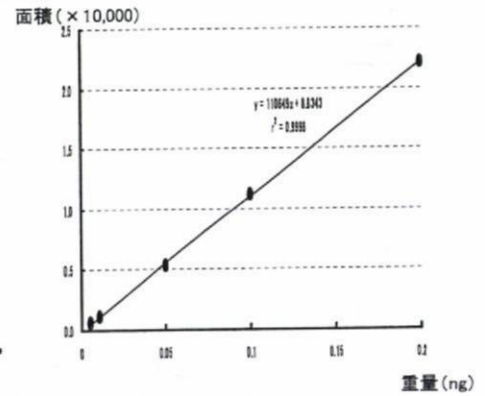
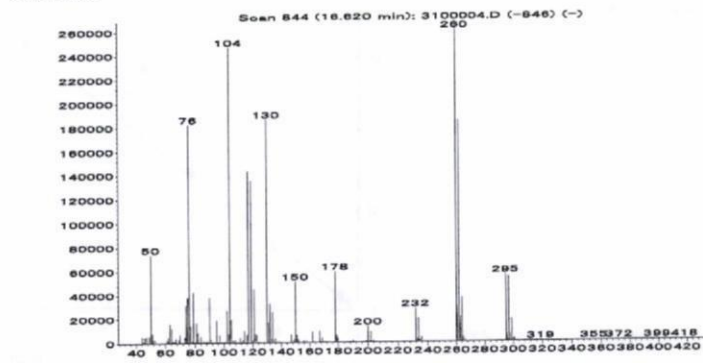


図 4-14. マススペクトル及び検量線(GC-MS; プロベナゾール)

マススペクトル



検量線

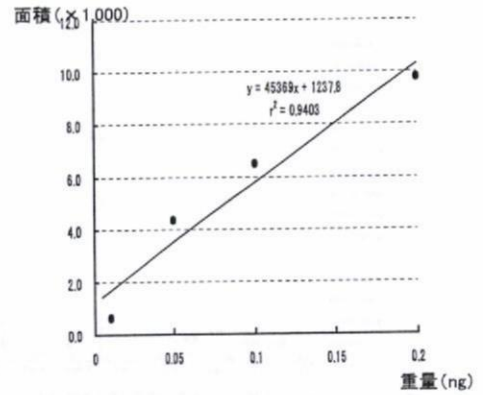
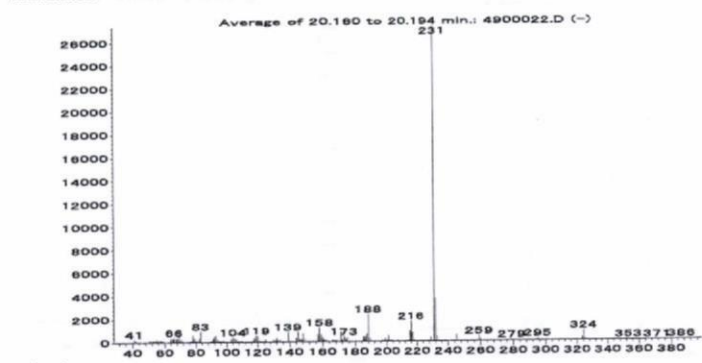


図 4-15. マススペクトル及び検量線(GC-MS; ホルペット)

マススペクトル



検量線  
面積 (× 10,000)

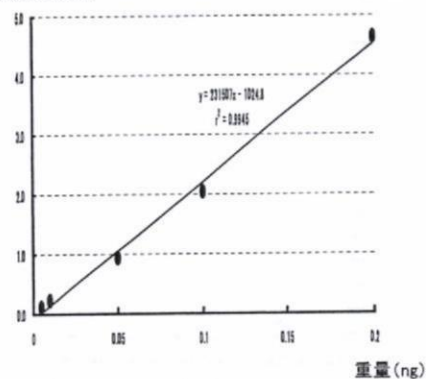
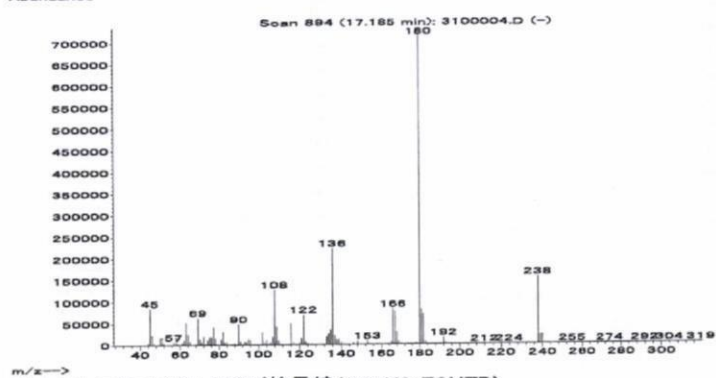


図 4-16. マススペクトル及び検量線 (GC-MS; リムスフロロン)

マススペクトル



検量線  
面積 (× 10,000)

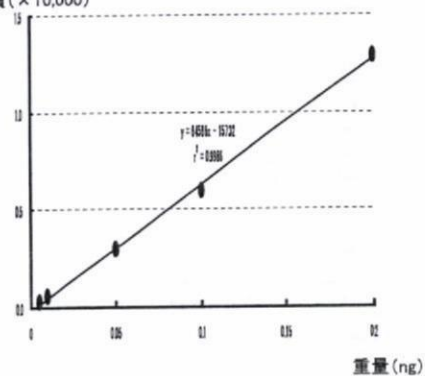
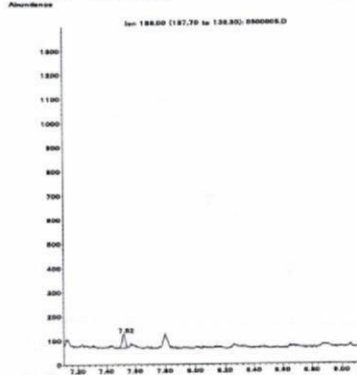
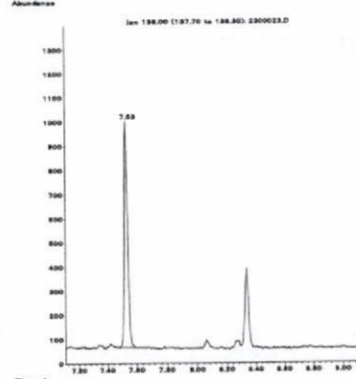


図 4-17. マススペクトル及び検量線 (GC-MS; TCMTB)

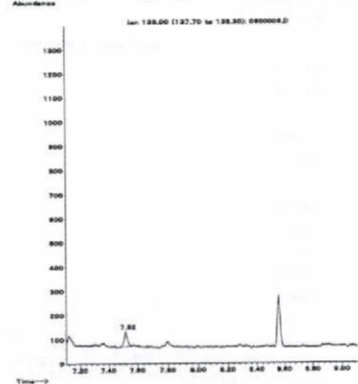
標準品 (0.01 ng)



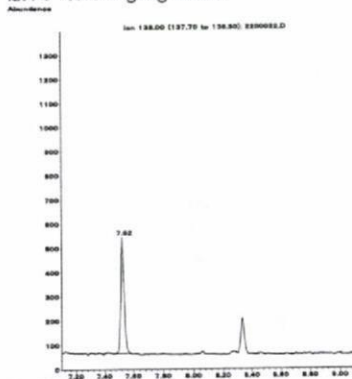
標準品 (0.2 ng)



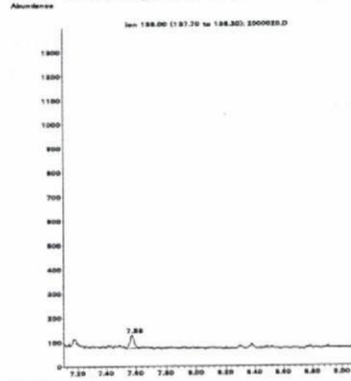
筋肉 (0.01 mg/kg 添加)



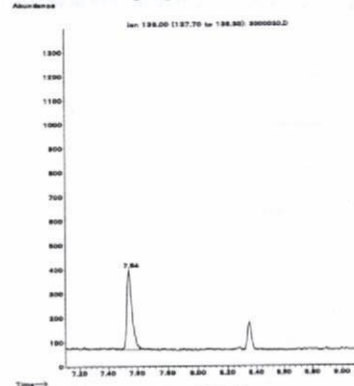
筋肉 (0.5 mg/kg 添加)



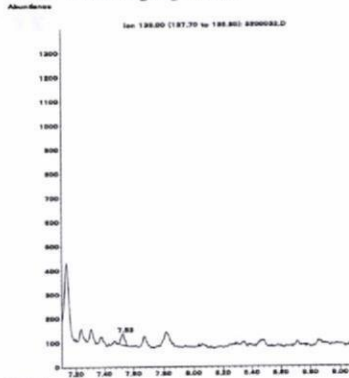
脂肪 (0.01 mg/kg 添加)



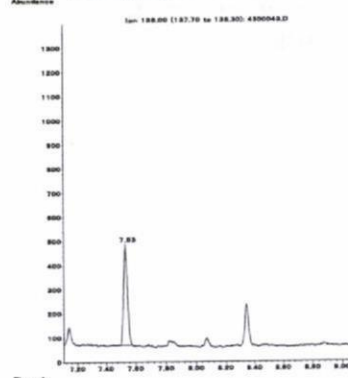
脂肪 (0.5 mg/kg 添加)



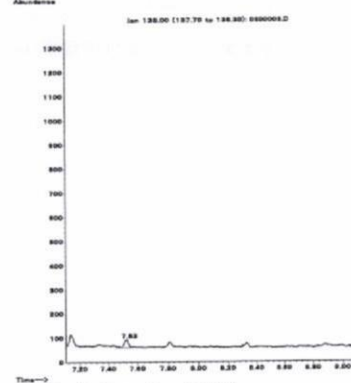
肝臓 (0.01 mg/kg 添加)



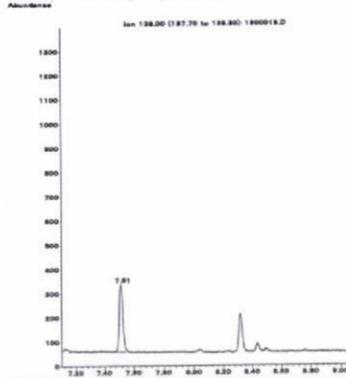
肝臓 (0.5 mg/kg 添加)



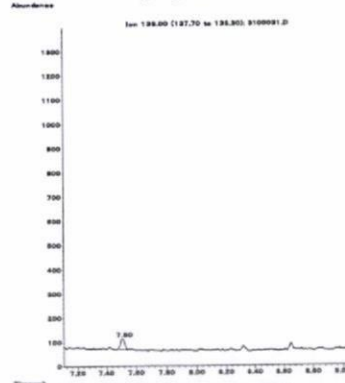
腎臓 (0.01 mg/kg 添加)



腎臓 (0.5 mg/kg 添加)



えび (0.01 mg/kg 添加)



えび (0.5 mg/kg 添加)

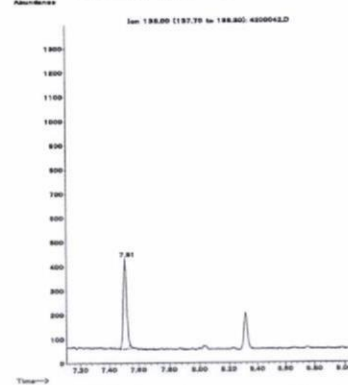


図 5-1. 標準品, 回収試料の SIM クロマトグラム (アリドクロール①)