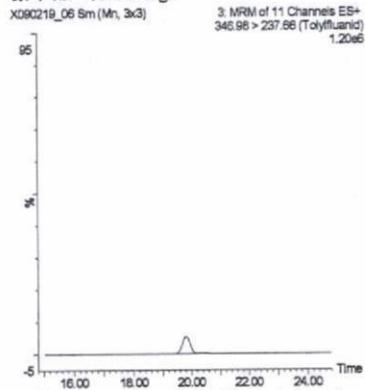
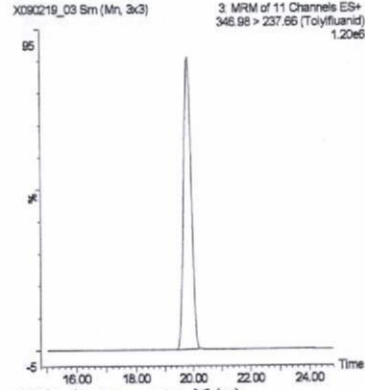


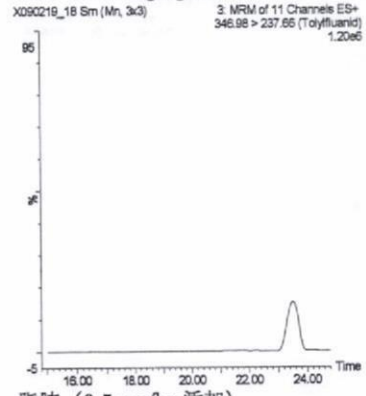
標準品 (0.05 ng)



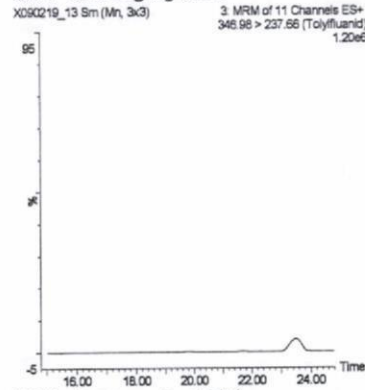
標準品 (1 ng)



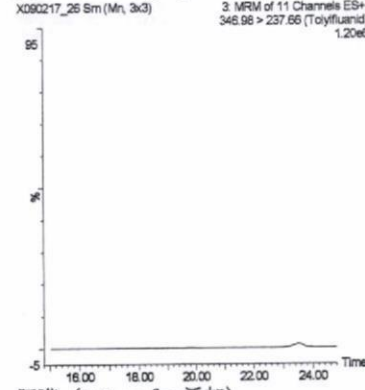
筋肉 (0.01 mg/kg 添加)



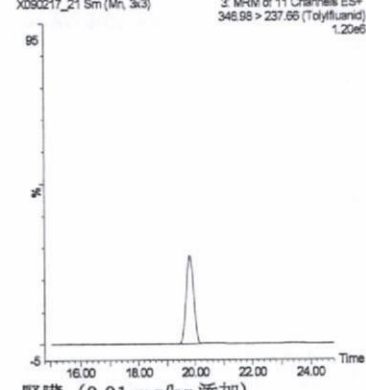
筋肉 (0.5 mg/kg 添加)



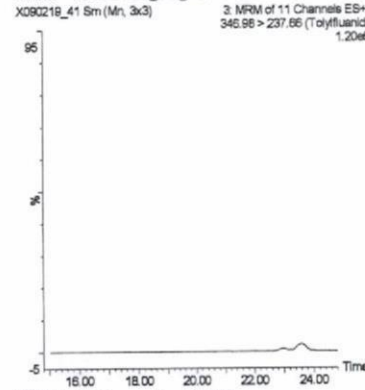
脂肪 (0.01 mg/kg 添加)



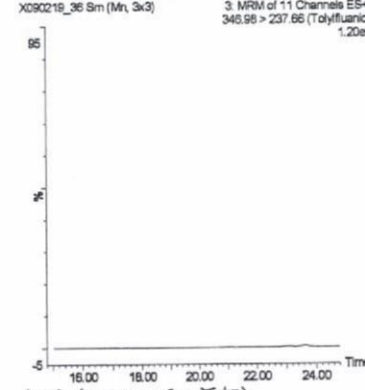
脂肪 (0.5 mg/kg 添加)



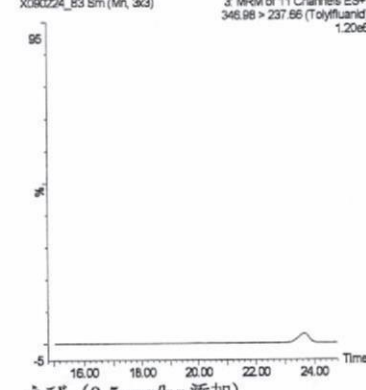
肝臓 (0.01 mg/kg 添加)



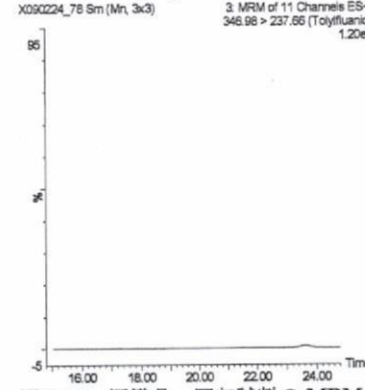
肝臓 (0.5 mg/kg 添加)



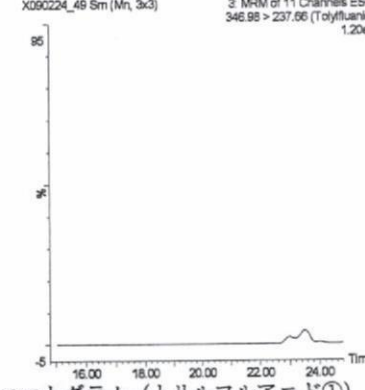
腎臓 (0.01 mg/kg 添加)



腎臓 (0.5 mg/kg 添加)



えび (0.01 mg/kg 添加)



えび (0.5 mg/kg 添加)

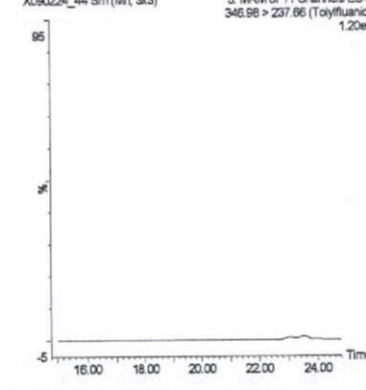
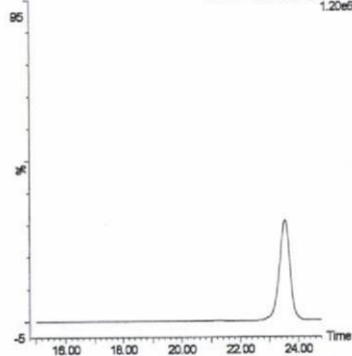


図 2-16. 標準品, 回収試料のMRMクロマトグラム (トリルフルアノド①)

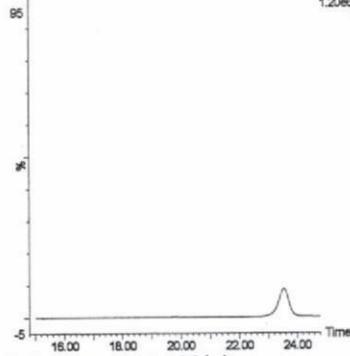
うなぎ (0.01 mg/kg 添加)

X090224\_32 Sm (Mn, 3x3) 3 MRM of 11 Channels ES+  
346.98 > 237.66 (Tolylfluorid) 1.20e6



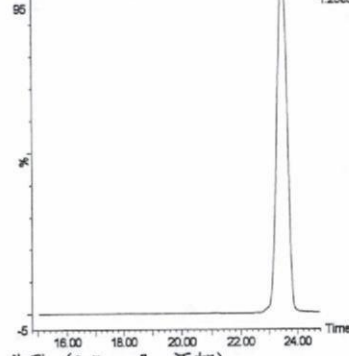
うなぎ (0.5 mg/kg 添加)

X090224\_27 Sm (Mn, 3x3) 3 MRM of 11 Channels ES+  
346.98 > 237.66 (Tolylfluorid) 1.20e6



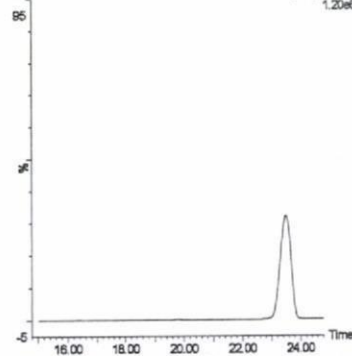
鮭 (0.01 mg/kg 添加)

X090219\_58 Sm (Mn, 3x3) 3 MRM of 11 Channels ES+  
346.98 > 237.66 (Tolylfluorid) 1.20e6



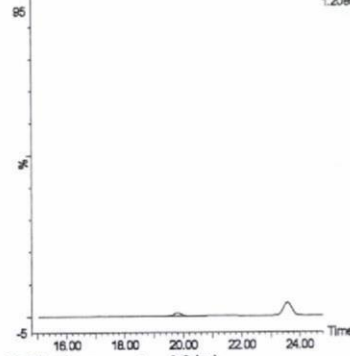
鮭 (0.5 mg/kg 添加)

X090219\_53 Sm (Mn, 3x3) 3 MRM of 11 Channels ES+  
346.98 > 237.66 (Tolylfluorid) 1.20e6



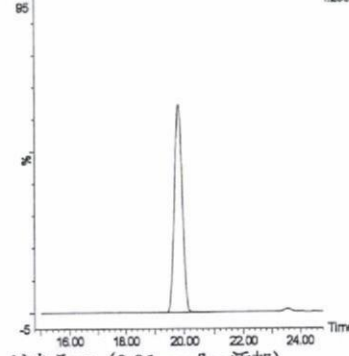
牛乳 (0.01 mg/kg 添加)

X090217\_10 Sm (Mn, 3x3) 3 MRM of 11 Channels ES+  
346.98 > 237.66 (Tolylfluorid) 1.20e6



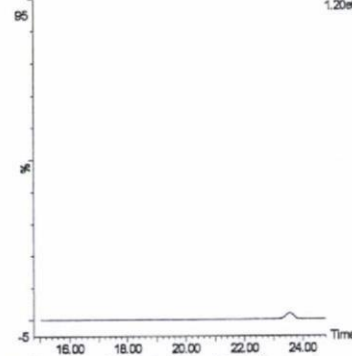
牛乳 (0.5 mg/kg 添加)

X090215\_10 Sm (Mn, 3x3) 3 MRM of 11 Channels ES+  
346.98 > 237.66 (Tolylfluorid) 1.20e6



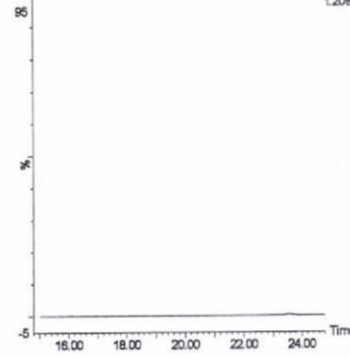
鶏卵 (0.01 mg/kg 添加)

X090224\_15 Sm (Mn, 3x3) 3 MRM of 11 Channels ES+  
346.98 > 237.66 (Tolylfluorid) 1.20e6



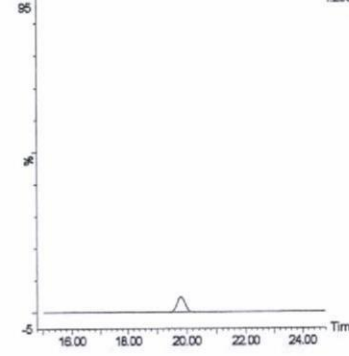
鶏卵 (0.5 mg/kg 添加)

X090224\_10 Sm (Mn, 3x3) 3 MRM of 11 Channels ES+  
346.98 > 237.66 (Tolylfluorid) 1.20e6



はちみつ (0.01 mg/kg 添加)

X090224\_66 Sm (Mn, 3x3) 3 MRM of 11 Channels ES+  
346.98 > 237.66 (Tolylfluorid) 1.20e6



はちみつ (0.5 mg/kg 添加)

X090224\_61 Sm (Mn, 3x3) 3 MRM of 11 Channels ES+  
346.98 > 237.66 (Tolylfluorid) 1.20e6

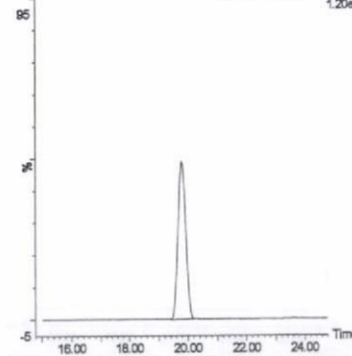
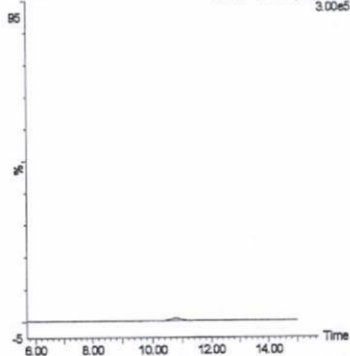


図 2-16. 標準品, 回収試料の MRM クロマトグラム (トリルフルアノド②)

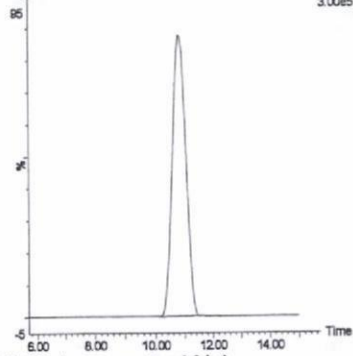
標準品 (0.05 ng)

X090219\_06 Sm (Mn, 3x3)  
1: MRM of 23 Channels ES+  
292.09 > 143.56 (Naphtalam)  
3.00e5



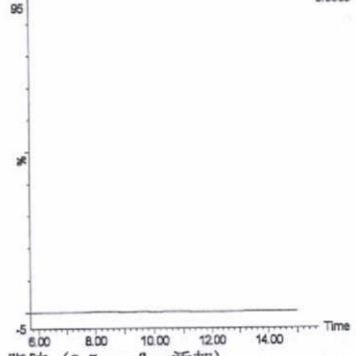
標準品 (1 ng)

X090219\_03 Sm (Mn, 3x3)  
1: MRM of 23 Channels ES+  
292.09 > 143.56 (Naphtalam)  
3.00e5



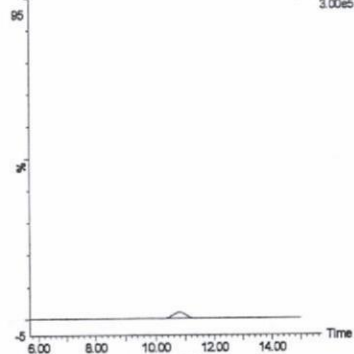
筋肉 (0.01 mg/kg 添加)

X090219\_18 Sm (Mn, 3x3)  
1: MRM of 23 Channels ES+  
292.09 > 143.56 (Naphtalam)  
3.00e5



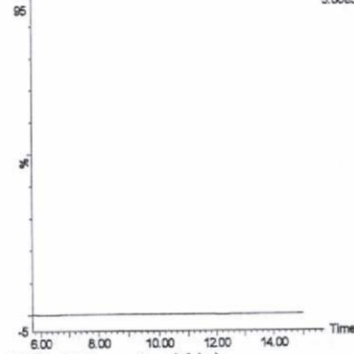
筋肉 (0.5 mg/kg 添加)

X090219\_13 Sm (Mn, 3x3)  
1: MRM of 23 Channels ES+  
292.09 > 143.56 (Naphtalam)  
3.00e5



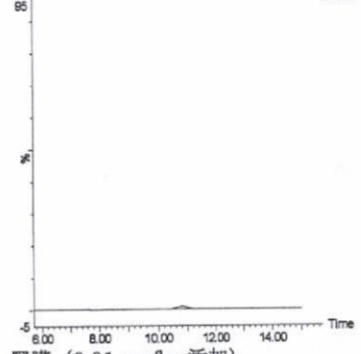
脂肪 (0.01 mg/kg 添加)

X090217\_26 Sm (Mn, 3x3)  
1: MRM of 23 Channels ES+  
292.09 > 143.56 (Naphtalam)  
3.00e5



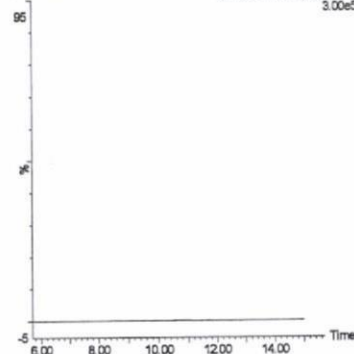
脂肪 (0.5 mg/kg 添加)

X090217\_21 Sm (Mn, 3x3)  
1: MRM of 23 Channels ES+  
292.09 > 143.56 (Naphtalam)  
3.00e5



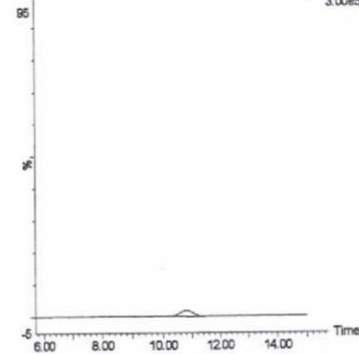
肝臓 (0.01 mg/kg 添加)

X090219\_41 Sm (Mn, 3x3)  
1: MRM of 23 Channels ES+  
292.09 > 143.56 (Naphtalam)  
3.00e5



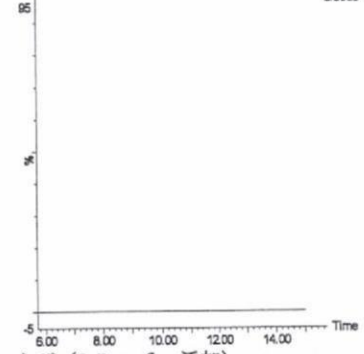
肝臓 (0.5 mg/kg 添加)

X090219\_36 Sm (Mn, 3x3)  
1: MRM of 23 Channels ES+  
292.09 > 143.56 (Naphtalam)  
3.00e5



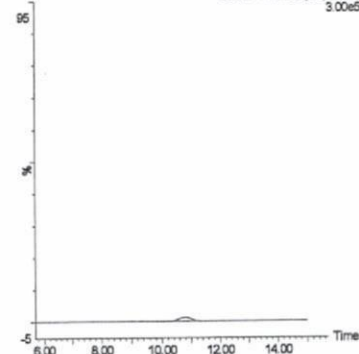
腎臓 (0.01 mg/kg 添加)

X090224\_83 Sm (Mn, 3x3)  
1: MRM of 23 Channels ES+  
292.09 > 143.56 (Naphtalam)  
3.00e5



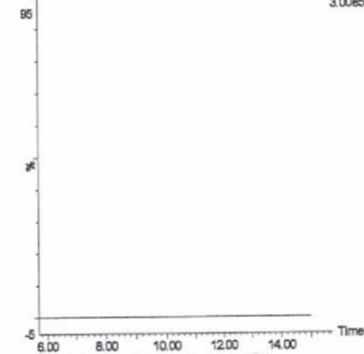
腎臓 (0.5 mg/kg 添加)

X090224\_78 Sm (Mn, 3x3)  
1: MRM of 23 Channels ES+  
292.09 > 143.56 (Naphtalam)  
3.00e5



えび (0.01 mg/kg 添加)

X090224\_49 Sm (Mn, 3x3)  
1: MRM of 23 Channels ES+  
292.09 > 143.56 (Naphtalam)  
3.00e5



えび (0.5 mg/kg 添加)

X090224\_44 Sm (Mn, 3x3)  
1: MRM of 23 Channels ES+  
292.09 > 143.56 (Naphtalam)  
3.00e5

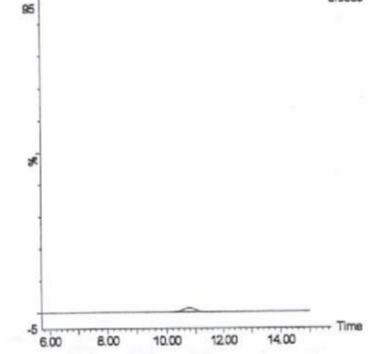
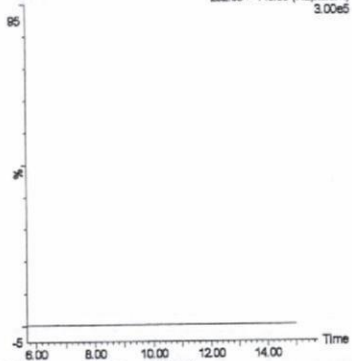


図 2-17. 標準品, 回収試料のMRMクロマトグラム (ナプタラム①)

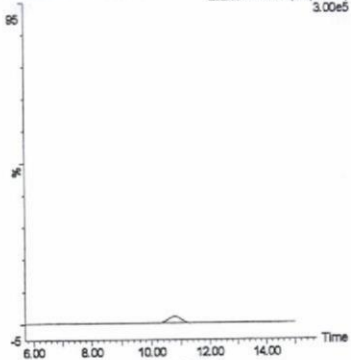
うなぎ (0.01 mg/kg 添加)

X090224\_32 Sm (Mn, 3x3) 1: MRM of 23 Channels ES+ 292.09 > 143.56 (Naphtalam) 3.00e5



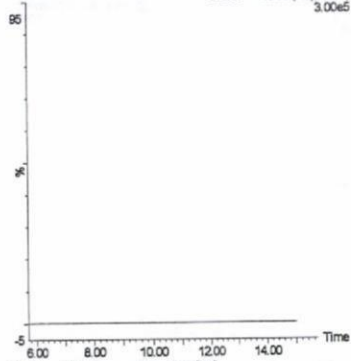
うなぎ (0.5 mg/kg 添加)

X090224\_27 Sm (Mn, 3x3) 1: MRM of 23 Channels ES+ 292.09 > 143.56 (Naphtalam) 3.00e5



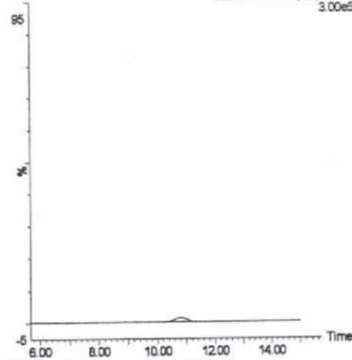
鮭 (0.01 mg/kg 添加)

X090219\_58 Sm (Mn, 3x3) 1: MRM of 23 Channels ES+ 292.09 > 143.56 (Naphtalam) 3.00e5



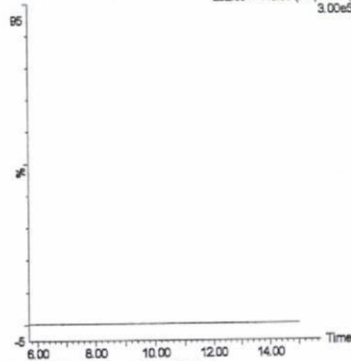
鮭 (0.5 mg/kg 添加)

X090219\_53 Sm (Mn, 3x3) 1: MRM of 23 Channels ES+ 292.09 > 143.56 (Naphtalam) 3.00e5



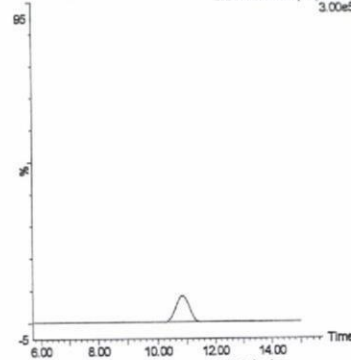
牛乳 (0.01 mg/kg 添加)

X090217\_10 Sm (Mn, 3x3) 1: MRM of 23 Channels ES+ 292.09 > 143.56 (Naphtalam) 3.00e5



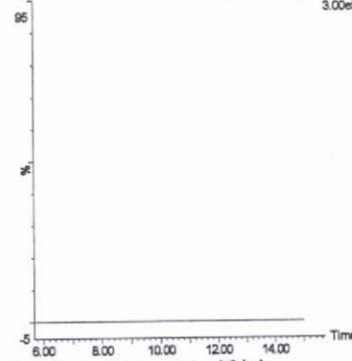
牛乳 (0.5 mg/kg 添加)

X090215\_10 Sm (Mn, 3x3) 1: MRM of 23 Channels ES+ 292.09 > 143.56 (Naphtalam) 3.00e5



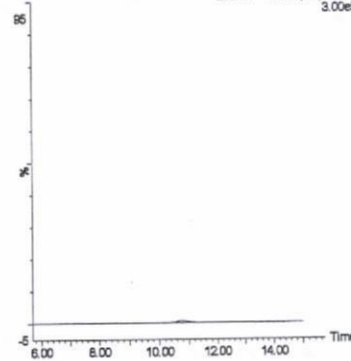
鶏卵 (0.01 mg/kg 添加)

X090224\_15 Sm (Mn, 3x3) 1: MRM of 23 Channels ES+ 292.09 > 143.56 (Naphtalam) 3.00e5



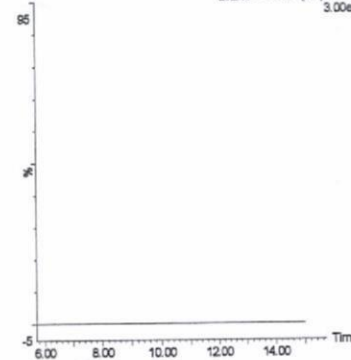
鶏卵 (0.5 mg/kg 添加)

X090224\_10 Sm (Mn, 3x3) 1: MRM of 23 Channels ES+ 292.09 > 143.56 (Naphtalam) 3.00e5



はちみつ (0.01 mg/kg 添加)

X090224\_66 Sm (Mn, 3x3) 1: MRM of 23 Channels ES+ 292.09 > 143.56 (Naphtalam) 3.00e5



はちみつ (0.5 mg/kg 添加)

X090224\_61 Sm (Mn, 3x3) 1: MRM of 23 Channels ES+ 292.09 > 143.56 (Naphtalam) 3.00e5

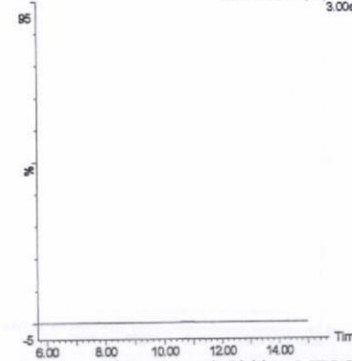
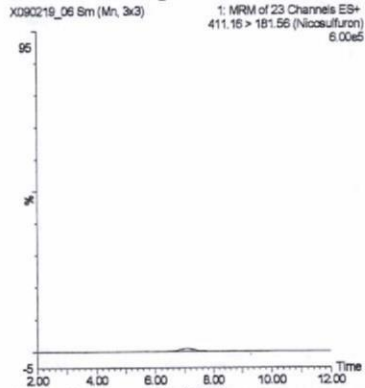
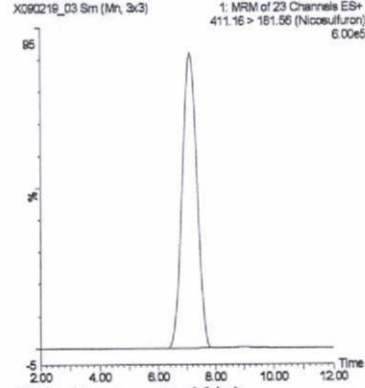


図 2-17. 標準品, 回収試料の MRM クロマトグラム (ナプタラム②)

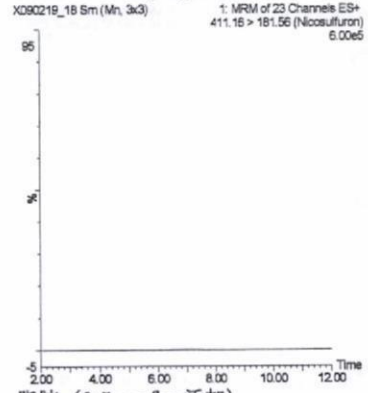
標準品 (0.05 ng)



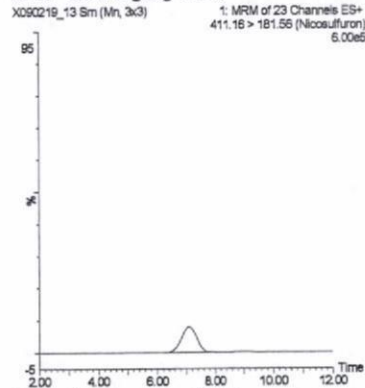
標準品 (1 ng)



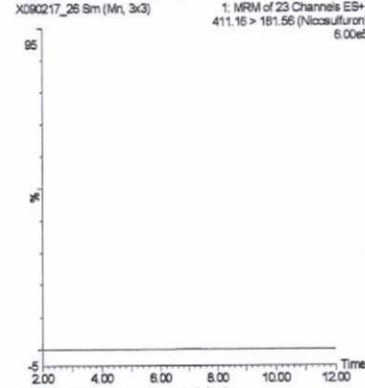
筋肉 (0.01 mg/kg 添加)



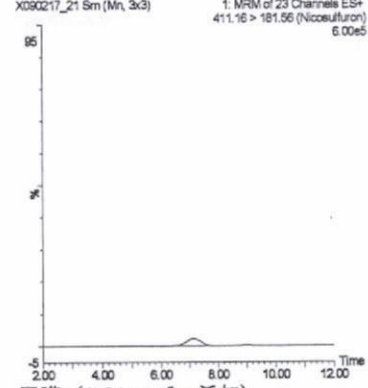
筋肉 (0.5 mg/kg 添加)



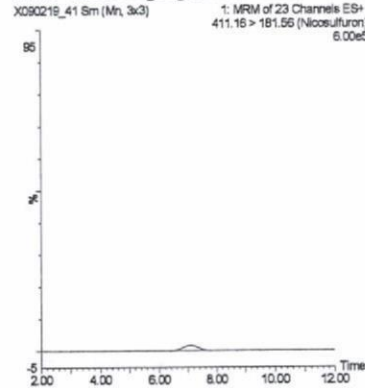
脂肪 (0.01 mg/kg 添加)



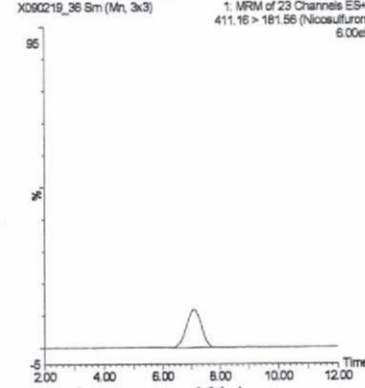
脂肪 (0.5 mg/kg 添加)



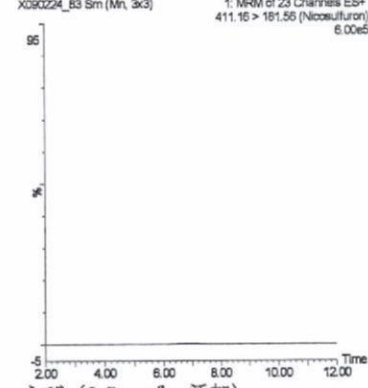
肝臓 (0.01 mg/kg 添加)



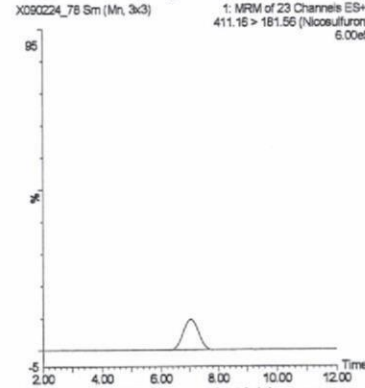
肝臓 (0.5 mg/kg 添加)



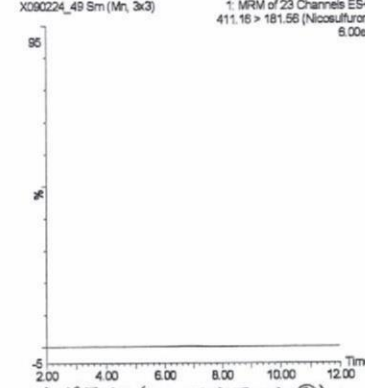
腎臓 (0.01 mg/kg 添加)



腎臓 (0.5 mg/kg 添加)



えび (0.01 mg/kg 添加)



えび (0.5 mg/kg 添加)

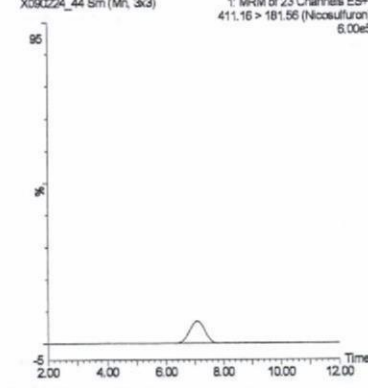
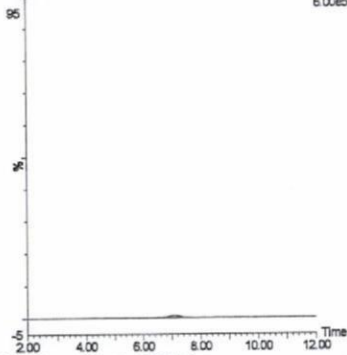


図 2-18. 標準品, 回収試料の MRM クロマトグラム (ニコスルフロンの①)

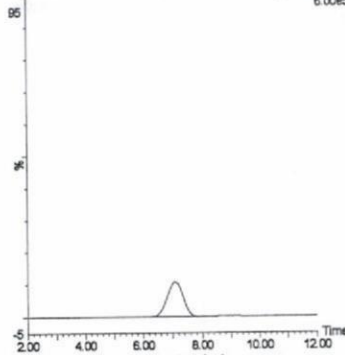
うなぎ (0.01 mg/kg 添加)

X090224\_32 Sm (Mn, 3x3)  
1: MRM of 23 Channels ES+  
411.16 > 181.56 (Nicotifluron)  
6.00e5



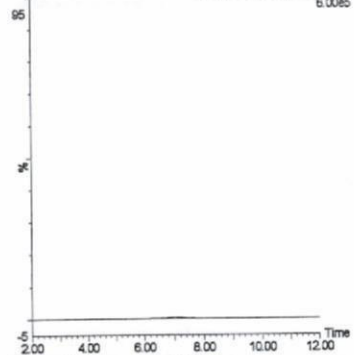
うなぎ (0.5 mg/kg 添加)

X090224\_27 Sm (Mn, 3x3)  
1: MRM of 23 Channels ES+  
411.16 > 181.56 (Nicotifluron)  
6.00e5



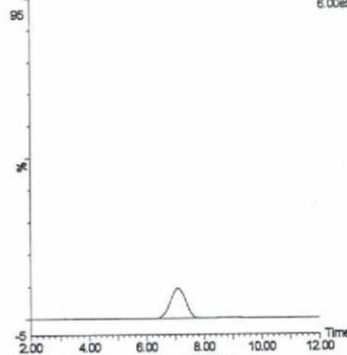
鮭 (0.01 mg/kg 添加)

X090219\_58 Sm (Mn, 3x3)  
1: MRM of 23 Channels ES+  
411.16 > 181.56 (Nicotifluron)  
6.00e5



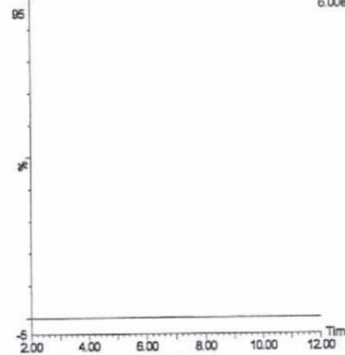
鮭 (0.5 mg/kg 添加)

X090219\_53 Sm (Mn, 3x3)  
1: MRM of 23 Channels ES+  
411.16 > 181.56 (Nicotifluron)  
6.00e5



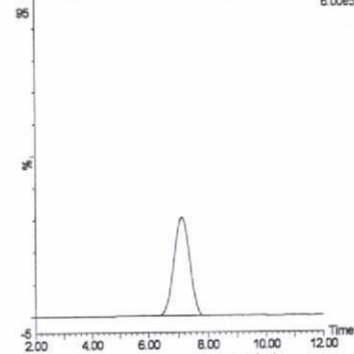
牛乳 (0.01 mg/kg 添加)

X090217\_10 Sm (Mn, 3x3)  
1: MRM of 23 Channels ES+  
411.16 > 181.56 (Nicotifluron)  
6.00e5



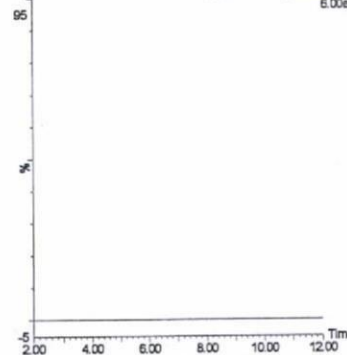
牛乳 (0.5 mg/kg 添加)

X090215\_10 Sm (Mn, 3x3)  
1: MRM of 23 Channels ES+  
411.16 > 181.56 (Nicotifluron)  
6.00e5



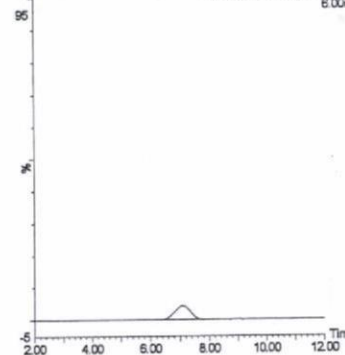
鶏卵 (0.01 mg/kg 添加)

X090224\_15 Sm (Mn, 3x3)  
1: MRM of 23 Channels ES+  
411.16 > 181.56 (Nicotifluron)  
6.00e5



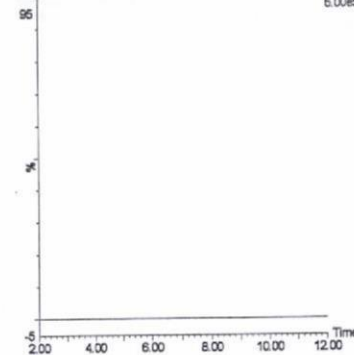
鶏卵 (0.5 mg/kg 添加)

X090224\_10 Sm (Mn, 3x3)  
1: MRM of 23 Channels ES+  
411.16 > 181.56 (Nicotifluron)  
6.00e5



はちみつ (0.01 mg/kg 添加)

X090224\_66 Sm (Mn, 3x3)  
1: MRM of 23 Channels ES+  
411.16 > 181.56 (Nicotifluron)  
6.00e5



はちみつ (0.5 mg/kg 添加)

X090224\_61 Sm (Mn, 3x3)  
1: MRM of 23 Channels ES+  
411.16 > 181.56 (Nicotifluron)  
6.00e5

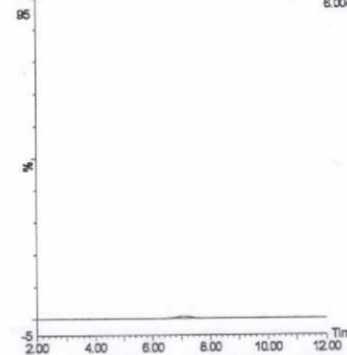
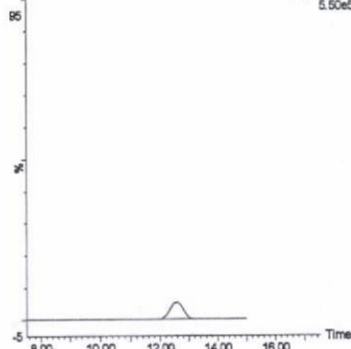


図 2-18. 標準品, 回収試料の MRM クロマトグラム (ニコスルフロンの②)

標準品 (0.05 ng)

X090219\_05 Sm (Mn, 3x3)

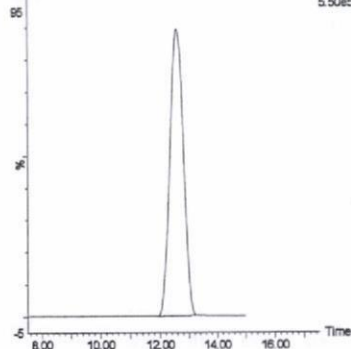
1: MRM of 23 Channels ES+  
173.86 > 116.57 (Pyroquolon)  
5.50e5



標準品 (1 ng)

X090219\_03 Sm (Mn, 3x3)

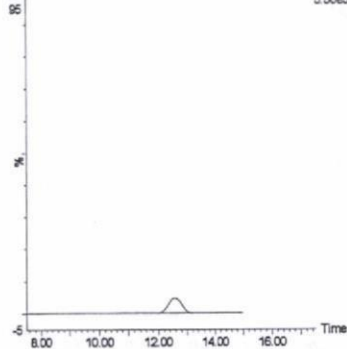
1: MRM of 23 Channels ES+  
173.86 > 116.57 (Pyroquolon)  
5.50e5



筋肉 (0.01 mg/kg 添加)

X090219\_18 Sm (Mn, 3x3)

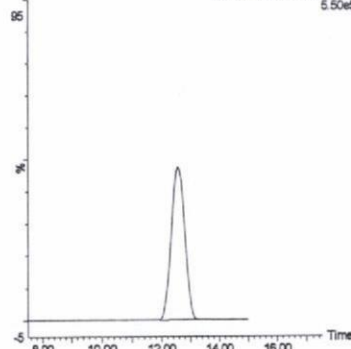
1: MRM of 23 Channels ES+  
173.86 > 116.57 (Pyroquolon)  
5.50e5



筋肉 (0.5 mg/kg 添加)

X090219\_13 Sm (Mn, 3x3)

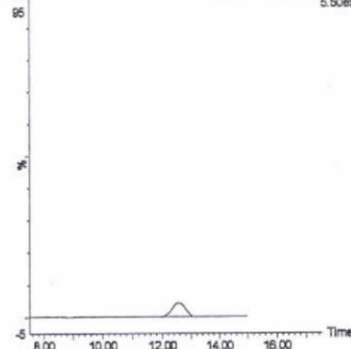
1: MRM of 23 Channels ES+  
173.86 > 116.57 (Pyroquolon)  
5.50e5



脂肪 (0.01 mg/kg 添加)

X090217\_26 Sm (Mn, 3x3)

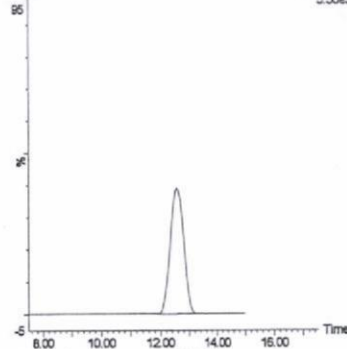
1: MRM of 23 Channels ES+  
173.86 > 116.57 (Pyroquolon)  
5.50e5



脂肪 (0.5 mg/kg 添加)

X090217\_21 Sm (Mn, 3x3)

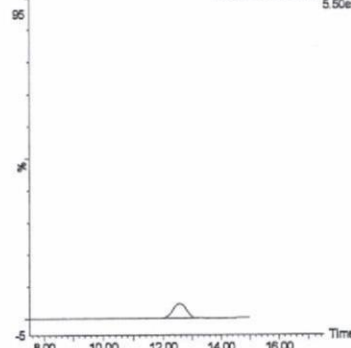
1: MRM of 23 Channels ES+  
173.86 > 116.57 (Pyroquolon)  
5.50e5



肝臓 (0.01 mg/kg 添加)

X090219\_41 Sm (Mn, 3x3)

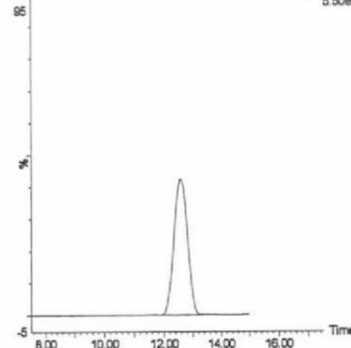
1: MRM of 23 Channels ES+  
173.86 > 116.57 (Pyroquolon)  
5.50e5



肝臓 (0.5 mg/kg 添加)

X090219\_36 Sm (Mn, 3x3)

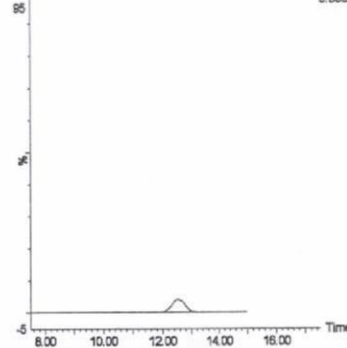
1: MRM of 23 Channels ES+  
173.86 > 116.57 (Pyroquolon)  
5.50e5



腎臓 (0.01 mg/kg 添加)

X090224\_63 Sm (Mn, 3x3)

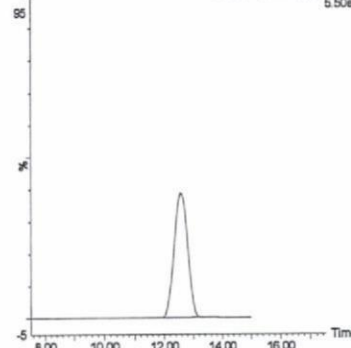
1: MRM of 23 Channels ES+  
173.86 > 116.57 (Pyroquolon)  
5.50e5



腎臓 (0.5 mg/kg 添加)

X090224\_78 Sm (Mn, 3x3)

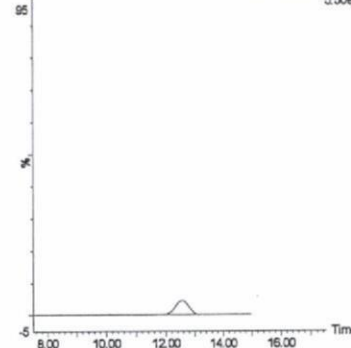
1: MRM of 23 Channels ES+  
173.86 > 116.57 (Pyroquolon)  
5.50e5



えび (0.01 mg/kg 添加)

X090224\_49 Sm (Mn, 3x3)

1: MRM of 23 Channels ES+  
173.86 > 116.57 (Pyroquolon)  
5.50e5



えび (0.5 mg/kg 添加)

X090224\_44 Sm (Mn, 3x3)

1: MRM of 23 Channels ES+  
173.86 > 116.57 (Pyroquolon)  
5.50e5

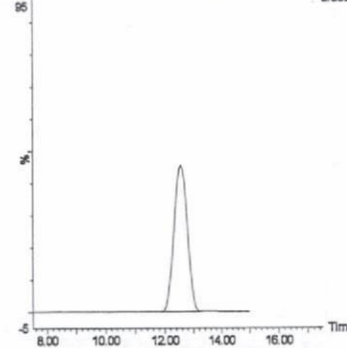


図 2-19. 標準品, 回収試料のMRMクロマトグラム (ピロキロン①)

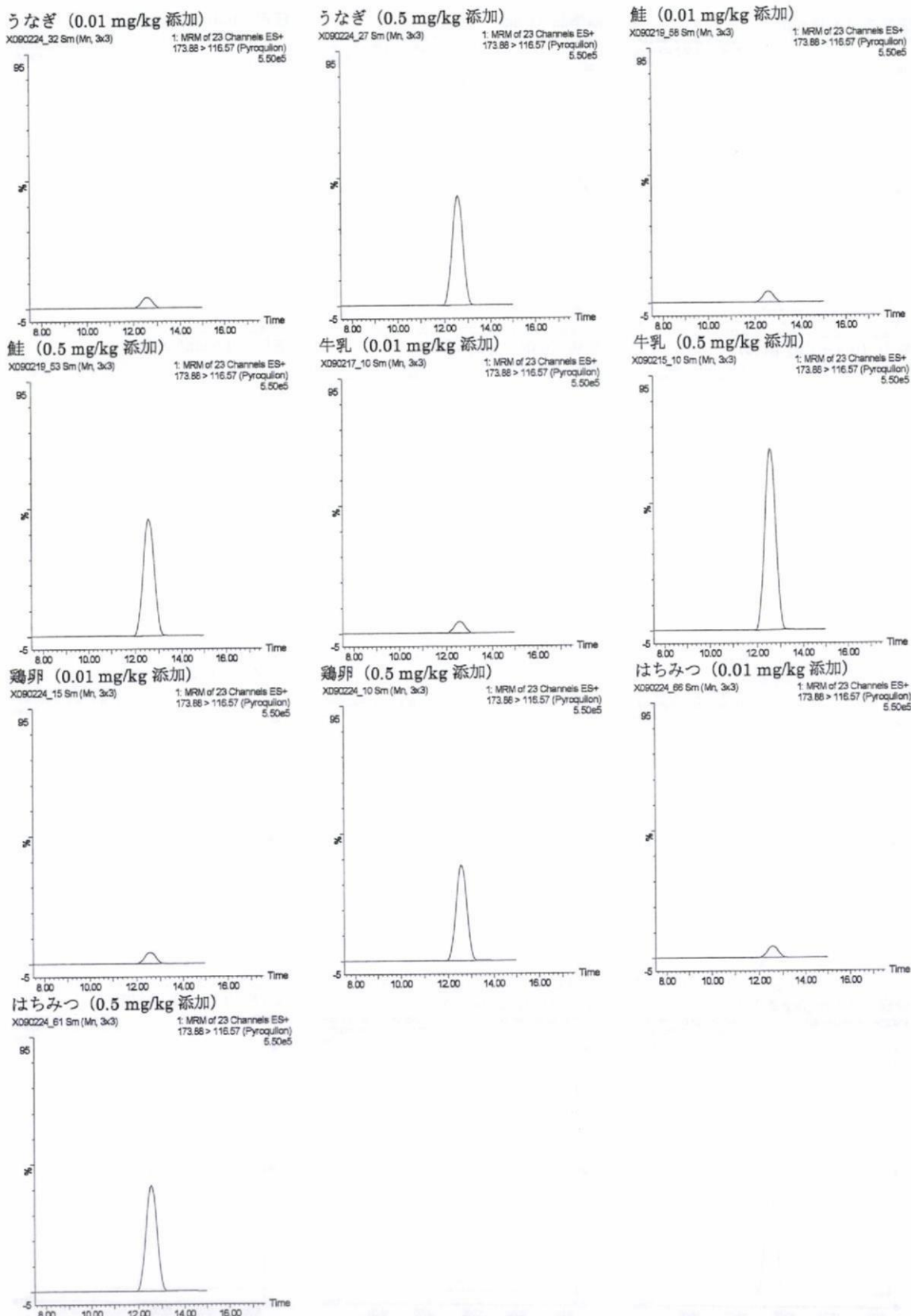


図 2-19. 標準品, 回収試料の MRM クロマトグラム (ピロキロン<sup>®</sup>)



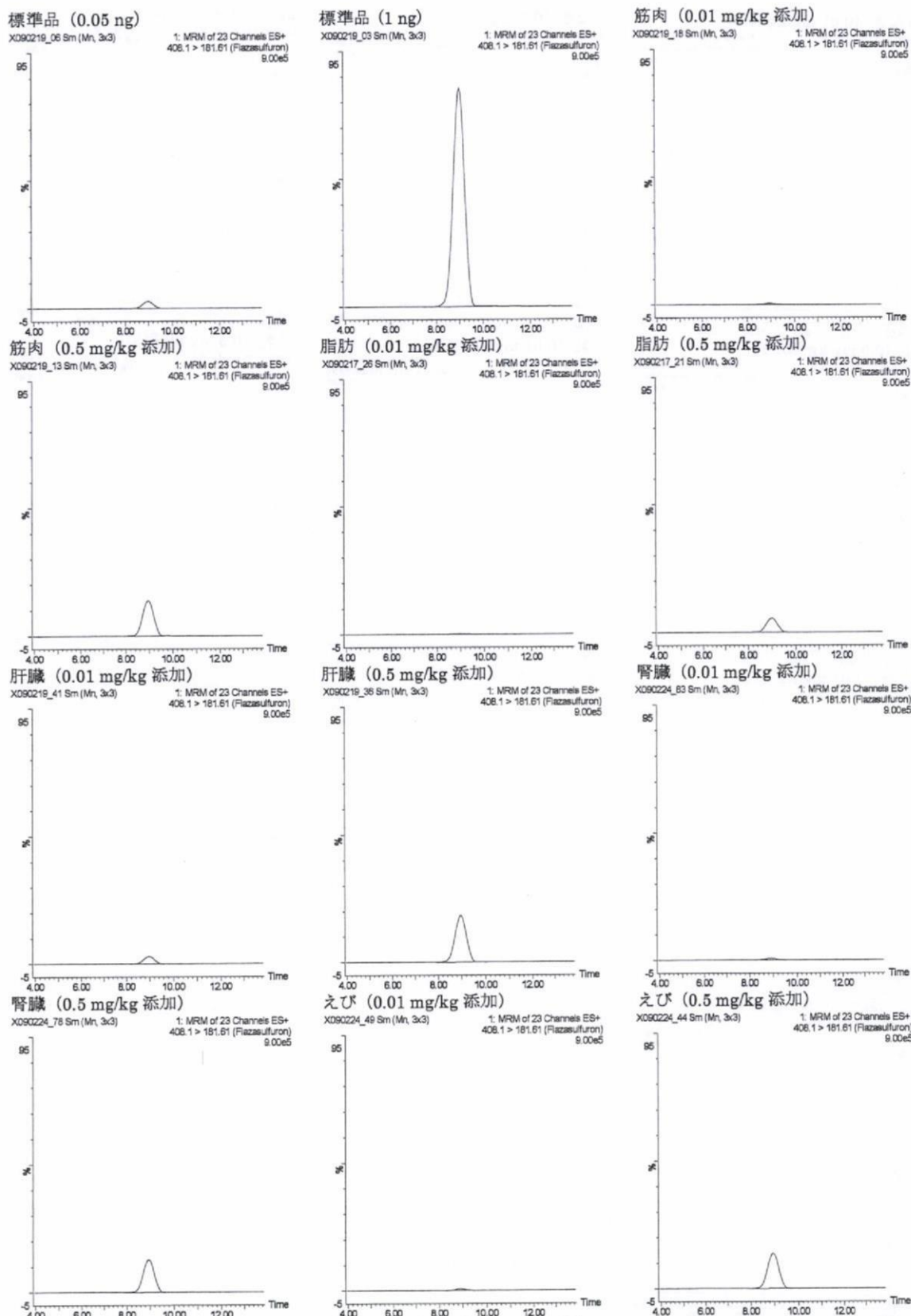
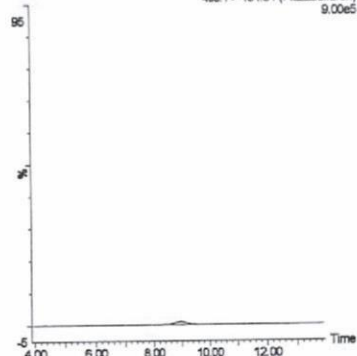


図 2-20. 標準品, 回収試料の MRM クロマトグラム (フラザルスフロンの①)

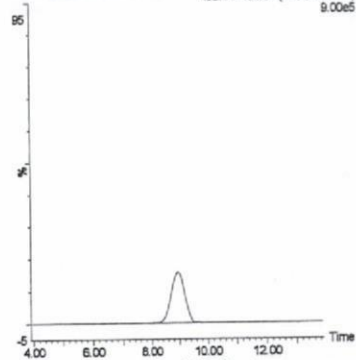
うなぎ (0.01 mg/kg 添加)

X090224\_32 Sm (Mn, 3x3) 1: MRM of 23 Channels ES+  
408.1 > 181.61 (Flazasulfuron) 9.00e5



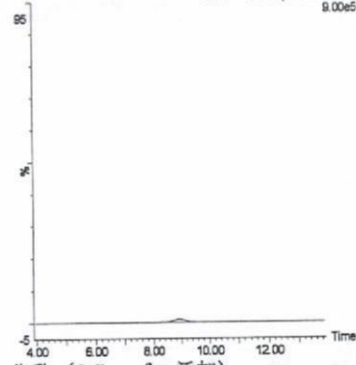
うなぎ (0.5 mg/kg 添加)

X090224\_27 Sm (Mn, 3x3) 1: MRM of 23 Channels ES+  
408.1 > 181.61 (Flazasulfuron) 9.00e5



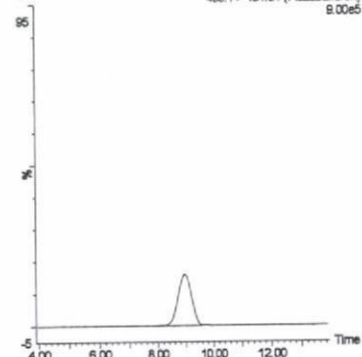
鮭 (0.01 mg/kg 添加)

X090219\_66 Sm (Mn, 3x3) 1: MRM of 23 Channels ES+  
408.1 > 181.61 (Flazasulfuron) 9.00e5



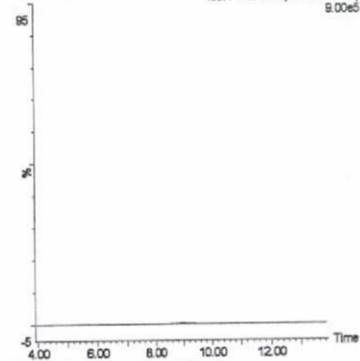
鮭 (0.5 mg/kg 添加)

X090219\_53 Sm (Mn, 3x3) 1: MRM of 23 Channels ES+  
408.1 > 181.61 (Flazasulfuron) 9.00e5



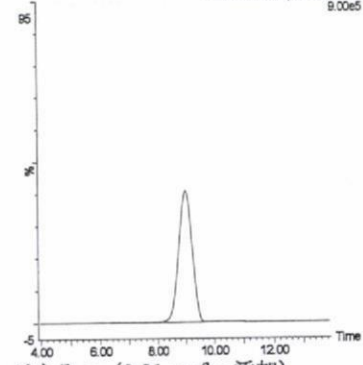
牛乳 (0.01 mg/kg 添加)

X090217\_10 Sm (Mn, 3x3) 1: MRM of 23 Channels ES+  
408.1 > 181.61 (Flazasulfuron) 9.00e5



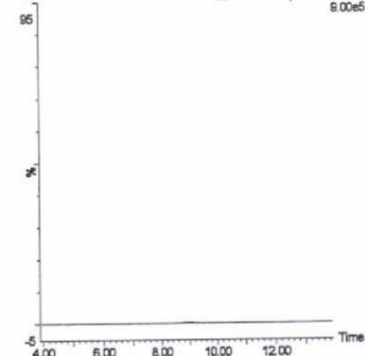
牛乳 (0.5 mg/kg 添加)

X090215\_10 Sm (Mn, 3x3) 1: MRM of 23 Channels ES+  
408.1 > 181.61 (Flazasulfuron) 9.00e5



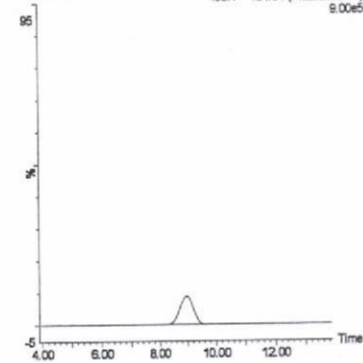
鶏卵 (0.01 mg/kg 添加)

X090224\_15 Sm (Mn, 3x3) 1: MRM of 23 Channels ES+  
408.1 > 181.61 (Flazasulfuron) 9.00e5



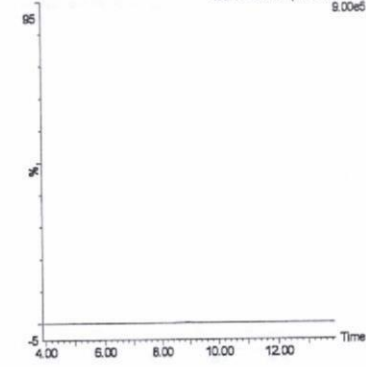
鶏卵 (0.5 mg/kg 添加)

X090224\_10 Sm (Mn, 3x3) 1: MRM of 23 Channels ES+  
408.1 > 181.61 (Flazasulfuron) 9.00e5



はちみつ (0.01 mg/kg 添加)

X090224\_66 Sm (Mn, 3x3) 1: MRM of 23 Channels ES+  
408.1 > 181.61 (Flazasulfuron) 9.00e5



はちみつ (0.5 mg/kg 添加)

X090224\_61 Sm (Mn, 3x3) 1: MRM of 23 Channels ES+  
408.1 > 181.61 (Flazasulfuron) 9.00e5

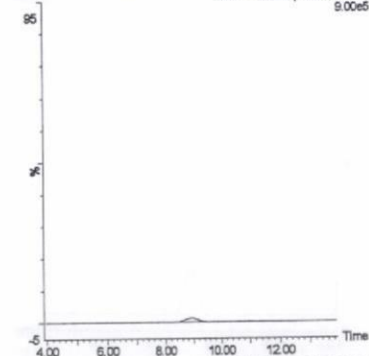


図 2-20. 標準品, 回収試料の MRM クロマトグラム (フラザルスフロン<sup>®</sup>)

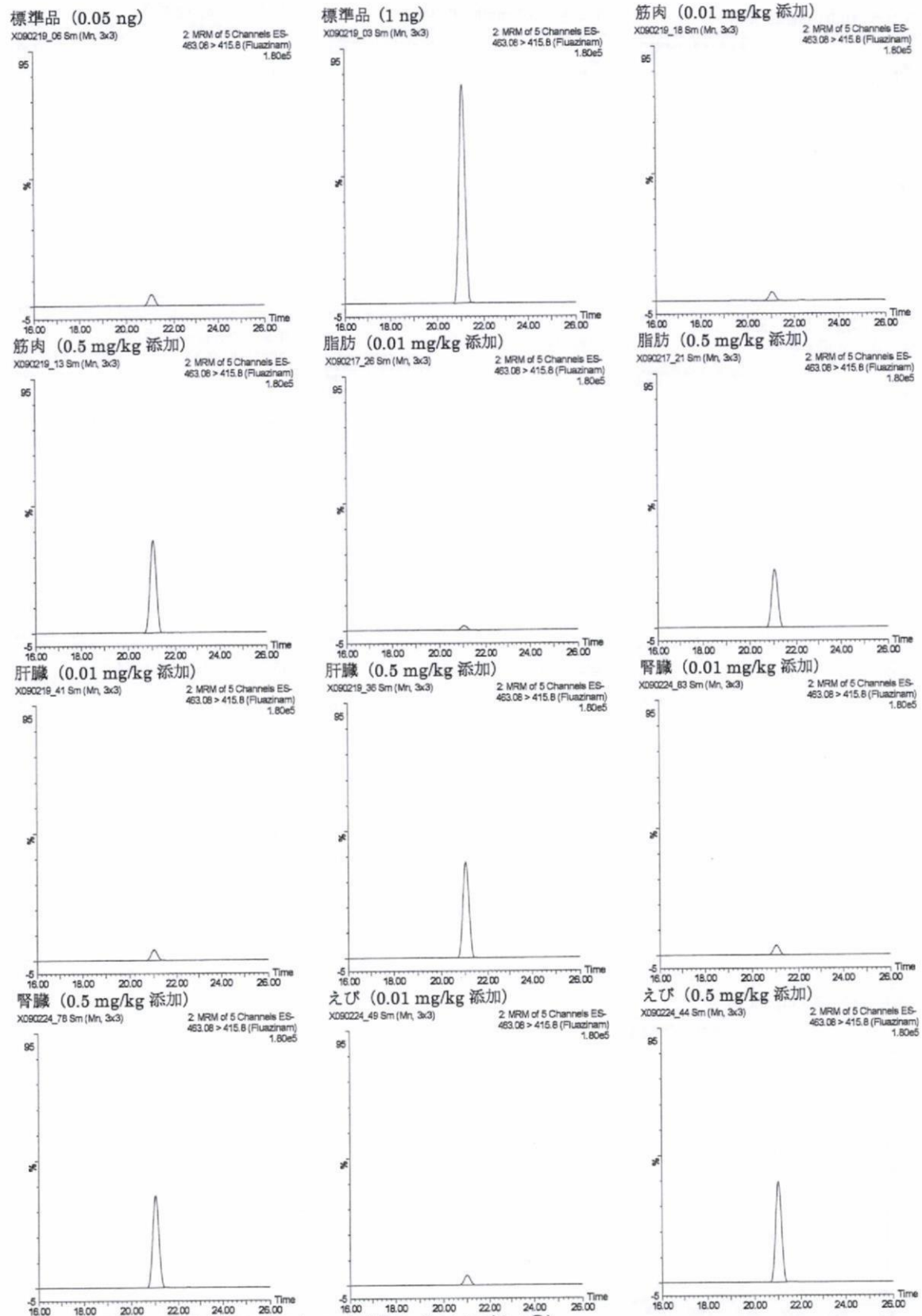
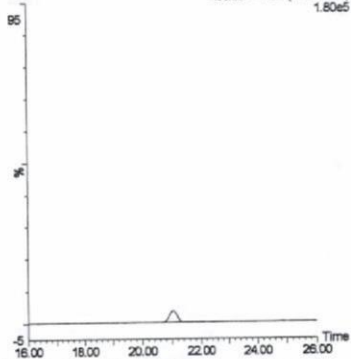
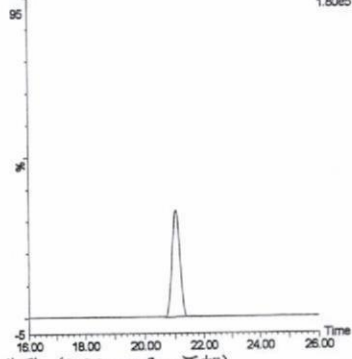


図 2-21. 標準品, 回収試料のMRM クロマトグラム (フルアジナム①)

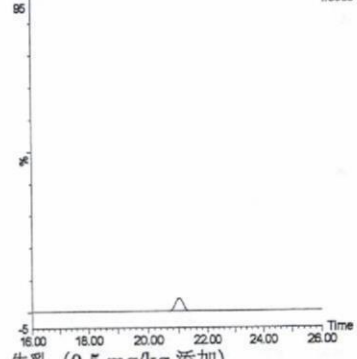
うなぎ (0.01 mg/kg 添加)  
X090224\_32 Sm (Mn, 3x3) 2. MRM of 5 Channels ES-463.06 > 415.8 (Fluazinam) 1.80e5



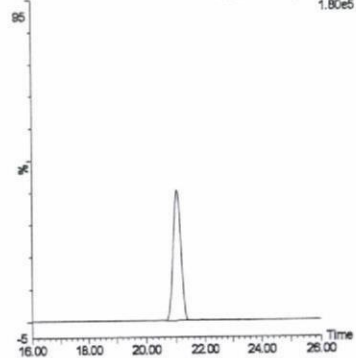
うなぎ (0.5 mg/kg 添加)  
X090224\_27 Sm (Mn, 3x3) 2. MRM of 5 Channels ES-463.06 > 415.8 (Fluazinam) 1.80e5



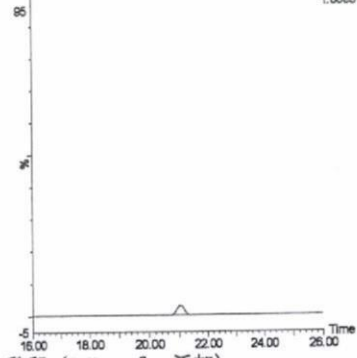
鮭 (0.01 mg/kg 添加)  
X090219\_58 Sm (Mn, 3x3) 2. MRM of 5 Channels ES-463.06 > 415.8 (Fluazinam) 1.80e5



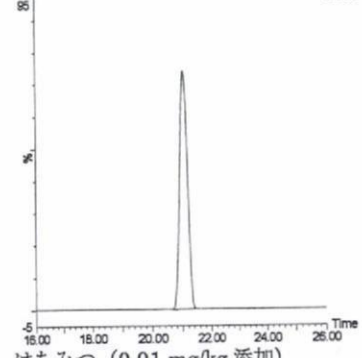
鮭 (0.5 mg/kg 添加)  
X090219\_53 Sm (Mn, 3x3) 2. MRM of 5 Channels ES-463.06 > 415.8 (Fluazinam) 1.80e5



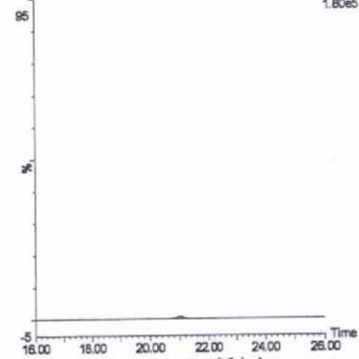
牛乳 (0.01 mg/kg 添加)  
X090217\_10 Sm (Mn, 3x3) 2. MRM of 5 Channels ES-463.06 > 415.8 (Fluazinam) 1.80e5



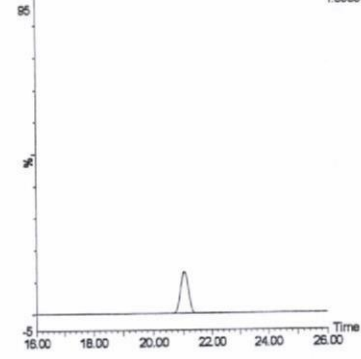
牛乳 (0.5 mg/kg 添加)  
X090215\_10 Sm (Mn, 3x3) 2. MRM of 5 Channels ES-463.06 > 415.8 (Fluazinam) 1.80e5



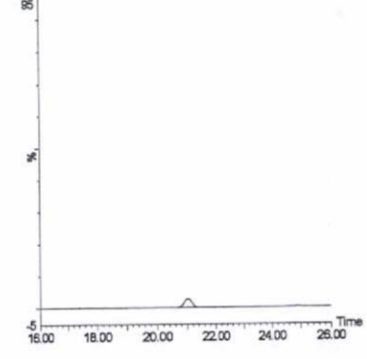
鶏卵 (0.01 mg/kg 添加)  
X090224\_15 Sm (Mn, 3x3) 2. MRM of 5 Channels ES-463.06 > 415.8 (Fluazinam) 1.80e5



鶏卵 (0.5 mg/kg 添加)  
X090224\_10 Sm (Mn, 3x3) 2. MRM of 5 Channels ES-463.06 > 415.8 (Fluazinam) 1.80e5



はちみつ (0.01 mg/kg 添加)  
X090224\_66 Sm (Mn, 3x3) 2. MRM of 5 Channels ES-463.06 > 415.8 (Fluazinam) 1.80e5



はちみつ (0.5 mg/kg 添加)  
X090224\_61 Sm (Mn, 3x3) 2. MRM of 5 Channels ES-463.06 > 415.8 (Fluazinam) 1.80e5

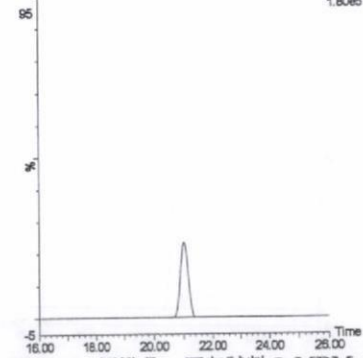
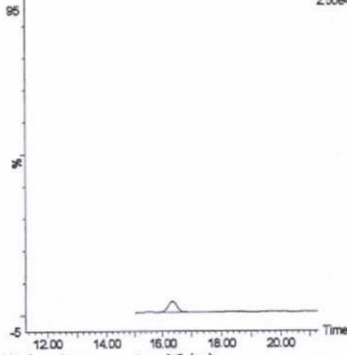


図 2-21. 標準品, 回収試料の MRM クロマトグラム (フルアジナム②)

標準品 (0.05 ng)

X090219\_06 Sm (Mn, 3x3)

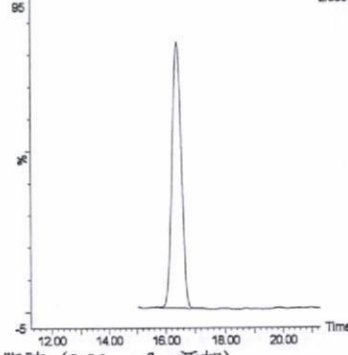
3 MRM of 11 Channels ES+  
260.02 > 167.59 (Fluorimide)  
2.50e4



標準品 (1 ng)

X090219\_03 Sm (Mn, 3x3)

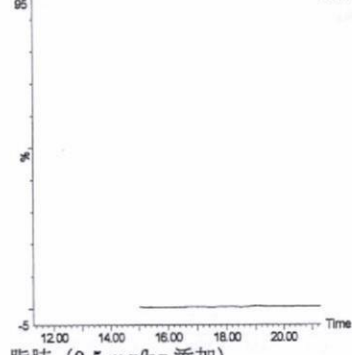
3 MRM of 11 Channels ES+  
260.02 > 167.59 (Fluorimide)  
2.50e4



筋肉 (0.01 mg/kg 添加)

X090219\_18 Sm (Mn, 3x3)

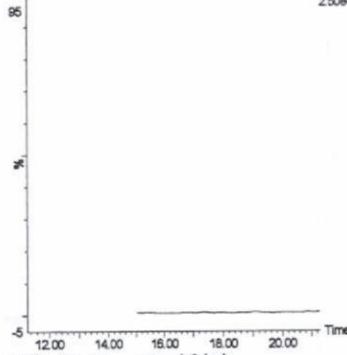
3 MRM of 11 Channels ES+  
260.02 > 167.59 (Fluorimide)  
2.50e4



筋肉 (0.5 mg/kg 添加)

X090219\_13 Sm (Mn, 3x3)

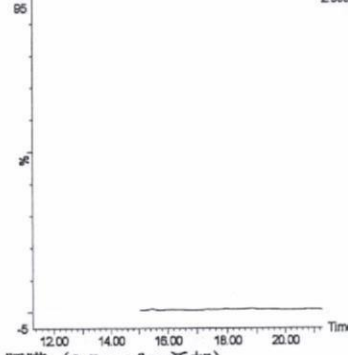
3 MRM of 11 Channels ES+  
260.02 > 167.59 (Fluorimide)  
2.50e4



脂肪 (0.01 mg/kg 添加)

X090217\_26 Sm (Mn, 3x3)

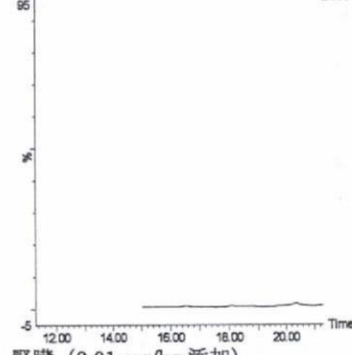
3 MRM of 11 Channels ES+  
260.02 > 167.59 (Fluorimide)  
2.50e4



脂肪 (0.5 mg/kg 添加)

X090217\_21 Sm (Mn, 3x3)

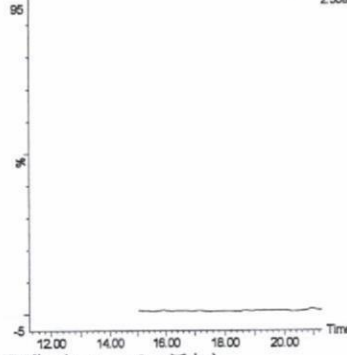
3 MRM of 11 Channels ES+  
260.02 > 167.59 (Fluorimide)  
2.50e4



肝臓 (0.01 mg/kg 添加)

X090219\_41 Sm (Mn, 3x3)

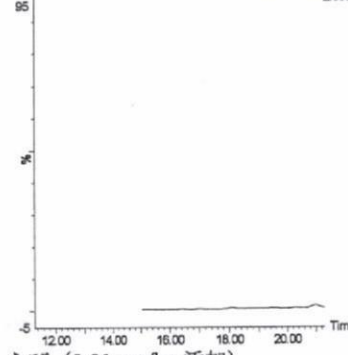
3 MRM of 11 Channels ES+  
260.02 > 167.59 (Fluorimide)  
2.50e4



肝臓 (0.5 mg/kg 添加)

X090219\_36 Sm (Mn, 3x3)

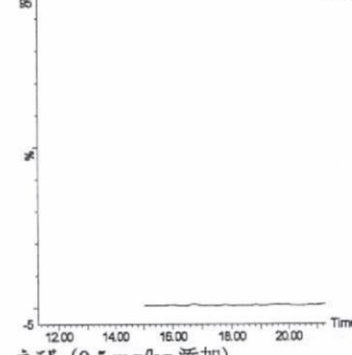
3 MRM of 11 Channels ES+  
260.02 > 167.59 (Fluorimide)  
2.50e4



腎臓 (0.01 mg/kg 添加)

X090224\_83 Sm (Mn, 3x3)

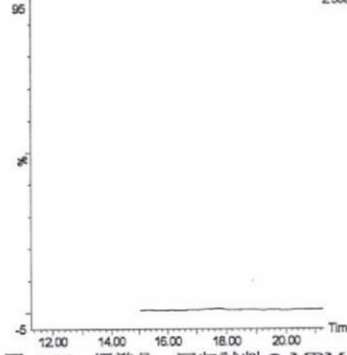
3 MRM of 11 Channels ES+  
260.02 > 167.59 (Fluorimide)  
2.50e4



腎臓 (0.5 mg/kg 添加)

X090224\_78 Sm (Mn, 3x3)

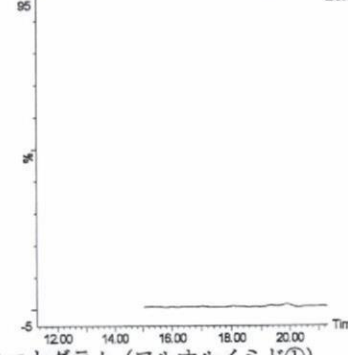
3 MRM of 11 Channels ES+  
260.02 > 167.59 (Fluorimide)  
2.50e4



えび (0.01 mg/kg 添加)

X090224\_49 Sm (Mn, 3x3)

3 MRM of 11 Channels ES+  
260.02 > 167.59 (Fluorimide)  
2.50e4



えび (0.5 mg/kg 添加)

X090224\_44 Sm (Mn, 3x3)

3 MRM of 11 Channels ES+  
260.02 > 167.59 (Fluorimide)  
2.50e4

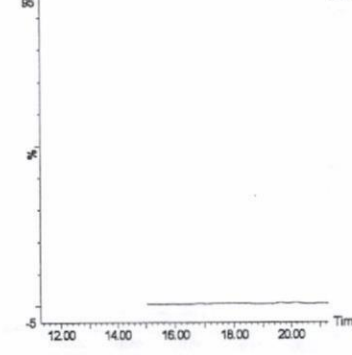
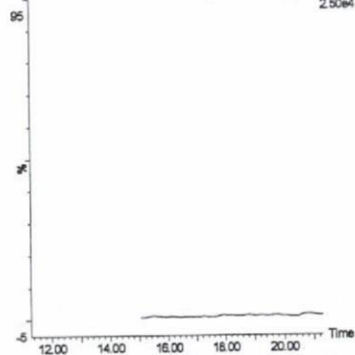


図 2-22. 標準品, 回収試料の MRM クロマトグラム (フルオルイミド①)

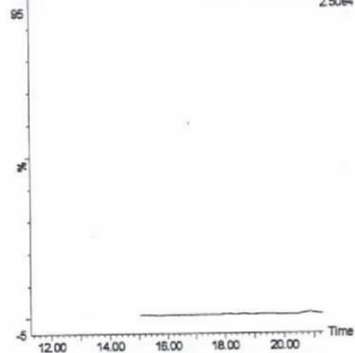
うなぎ (0.01 mg/kg 添加)

X090224\_32 Sm (Mn, 3x3) 3 MRM of 11 Channels ES+  
260.02 > 167.59 (Fluoroimide) 2.50e4



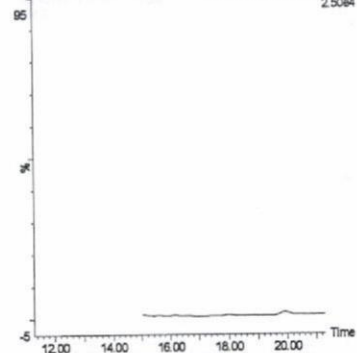
うなぎ (0.5 mg/kg 添加)

X090224\_27 Sm (Mn, 3x3) 3 MRM of 11 Channels ES+  
260.02 > 167.59 (Fluoroimide) 2.50e4



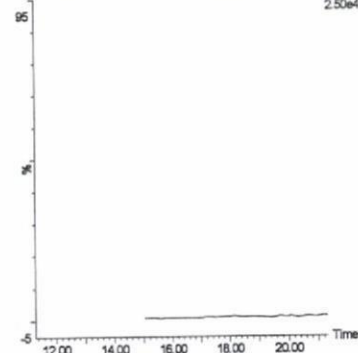
鮭 (0.01 mg/kg 添加)

X090219\_56 Sm (Mn, 3x3) 3 MRM of 11 Channels ES+  
260.02 > 167.59 (Fluoroimide) 2.50e4



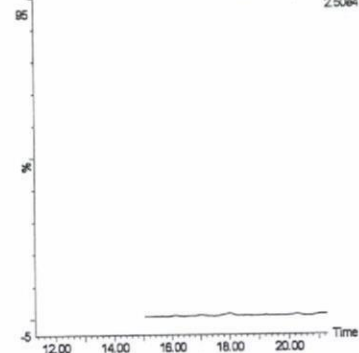
鮭 (0.5 mg/kg 添加)

X090219\_53 Sm (Mn, 3x3) 3 MRM of 11 Channels ES+  
260.02 > 167.59 (Fluoroimide) 2.50e4



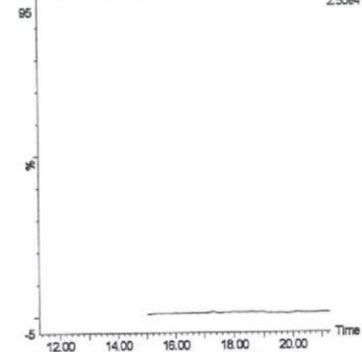
牛乳 (0.01 mg/kg 添加)

X090217\_10 Sm (Mn, 3x3) 3 MRM of 11 Channels ES+  
260.02 > 167.59 (Fluoroimide) 2.50e4



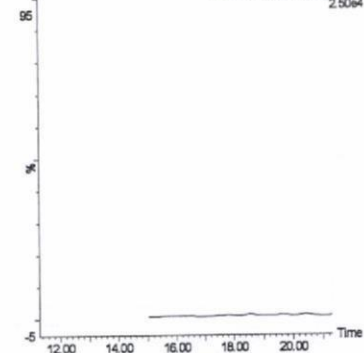
牛乳 (0.5 mg/kg 添加)

X090215\_10 Sm (Mn, 3x3) 3 MRM of 11 Channels ES+  
260.02 > 167.59 (Fluoroimide) 2.50e4



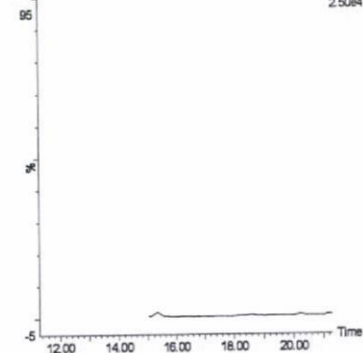
鶏卵 (0.01 mg/kg 添加)

X090224\_15 Sm (Mn, 3x3) 3 MRM of 11 Channels ES+  
260.02 > 167.59 (Fluoroimide) 2.50e4



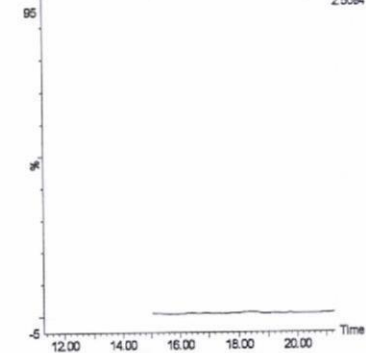
鶏卵 (0.5 mg/kg 添加)

X090224\_10 Sm (Mn, 3x3) 3 MRM of 11 Channels ES+  
260.02 > 167.59 (Fluoroimide) 2.50e4



はちみつ (0.01 mg/kg 添加)

X090224\_66 Sm (Mn, 3x3) 3 MRM of 11 Channels ES+  
260.02 > 167.59 (Fluoroimide) 2.50e4



はちみつ (0.5 mg/kg 添加)

X090224\_61 Sm (Mn, 3x3) 3 MRM of 11 Channels ES+  
260.02 > 167.59 (Fluoroimide) 2.50e4

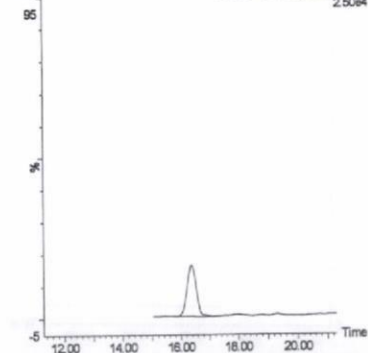
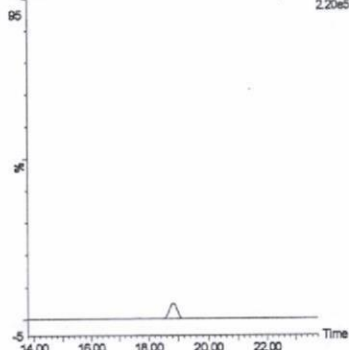


図 2-22. 標準品, 回収試料のMRMクロマトグラム (フルオルイミド②)

標準品 (0.05 ng)

X090218\_06 Sm (Mn, 3x3)

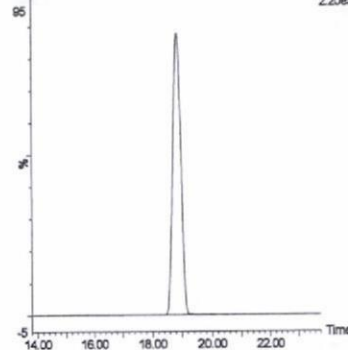
2. MRM of 5 Channels ES-  
413.07 > 170.66 (Flusulfamide)  
2.20e5



標準品 (1 ng)

X090218\_03 Sm (Mn, 3x3)

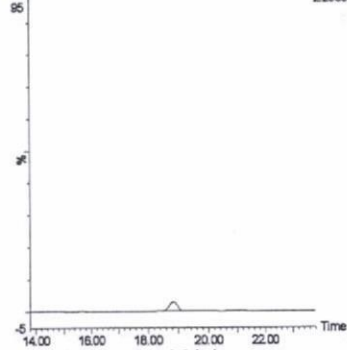
2. MRM of 5 Channels ES-  
413.07 > 170.66 (Flusulfamide)  
2.20e5



筋肉 (0.01 mg/kg 添加)

X090218\_18 Sm (Mn, 3x3)

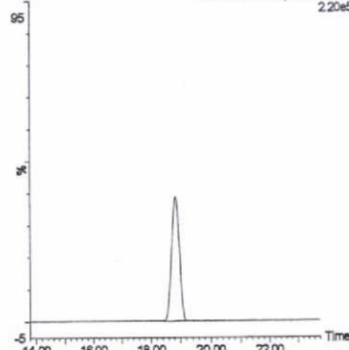
2. MRM of 5 Channels ES-  
413.07 > 170.66 (Flusulfamide)  
2.20e5



筋肉 (0.5 mg/kg 添加)

X090218\_13 Sm (Mn, 3x3)

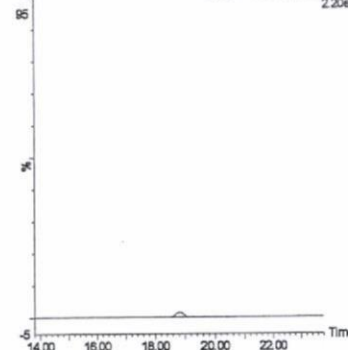
2. MRM of 5 Channels ES-  
413.07 > 170.66 (Flusulfamide)  
2.20e5



脂肪 (0.01 mg/kg 添加)

X090217\_26 Sm (Mn, 3x3)

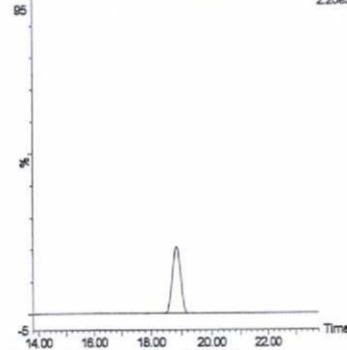
2. MRM of 5 Channels ES-  
413.07 > 170.66 (Flusulfamide)  
2.20e5



脂肪 (0.5 mg/kg 添加)

X090217\_21 Sm (Mn, 3x3)

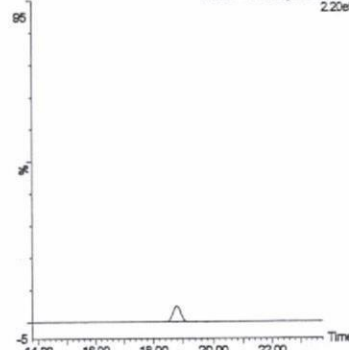
2. MRM of 5 Channels ES-  
413.07 > 170.66 (Flusulfamide)  
2.20e5



肝臓 (0.01 mg/kg 添加)

X090219\_41 Sm (Mn, 3x3)

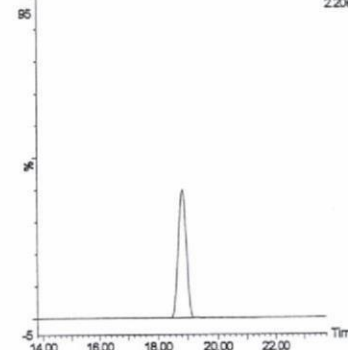
2. MRM of 5 Channels ES-  
413.07 > 170.66 (Flusulfamide)  
2.20e5



肝臓 (0.5 mg/kg 添加)

X090219\_36 Sm (Mn, 3x3)

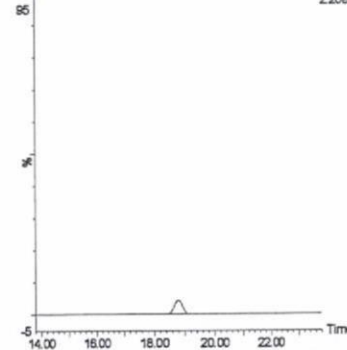
2. MRM of 5 Channels ES-  
413.07 > 170.66 (Flusulfamide)  
2.20e5



腎臓 (0.01 mg/kg 添加)

X090224\_63 Sm (Mn, 3x3)

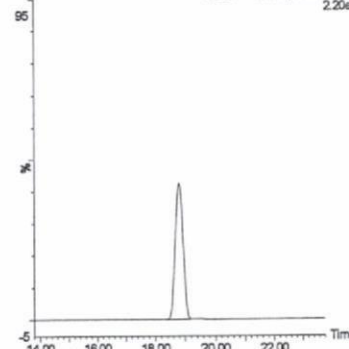
2. MRM of 5 Channels ES-  
413.07 > 170.66 (Flusulfamide)  
2.20e5



腎臓 (0.5 mg/kg 添加)

X090224\_78 Sm (Mn, 3x3)

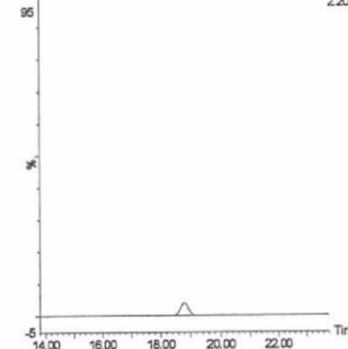
2. MRM of 5 Channels ES-  
413.07 > 170.66 (Flusulfamide)  
2.20e5



えび (0.01 mg/kg 添加)

X090224\_49 Sm (Mn, 3x3)

2. MRM of 5 Channels ES-  
413.07 > 170.66 (Flusulfamide)  
2.20e5



えび (0.5 mg/kg 添加)

X090224\_44 Sm (Mn, 3x3)

2. MRM of 5 Channels ES-  
413.07 > 170.66 (Flusulfamide)  
2.20e5

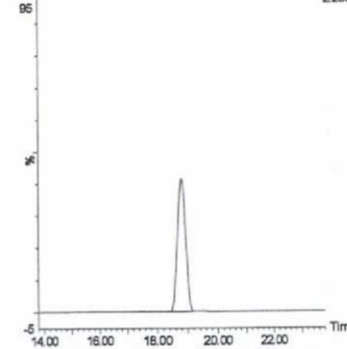
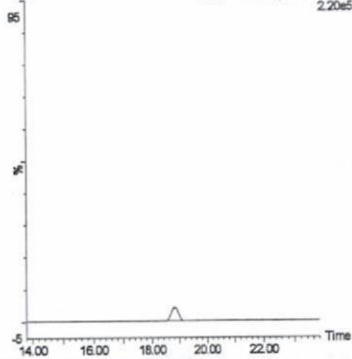
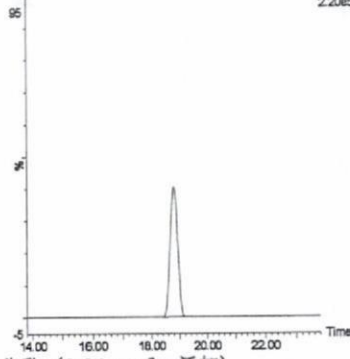


図 2-23. 標準品, 回収試料の MRM クロマトグラム (フルスルファミド①)

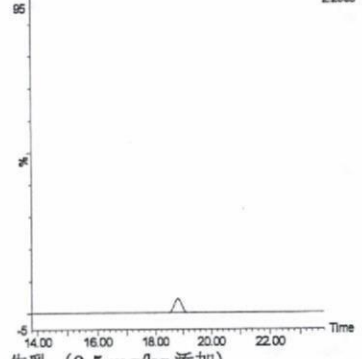
うなぎ (0.01 mg/kg 添加)  
X090224\_32 Sm (Mn, 3x3) 2 MRM of 5 Channels ES-413.07 > 170.66 (Flusulfamide) 2.20e5



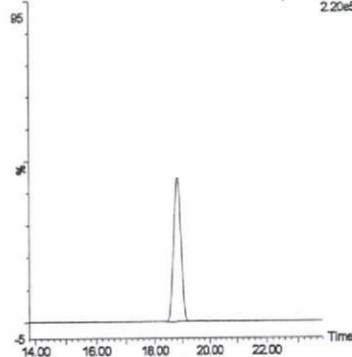
うなぎ (0.5 mg/kg 添加)  
X090224\_27 Sm (Mn, 3x3) 2 MRM of 5 Channels ES-413.07 > 170.66 (Flusulfamide) 2.20e5



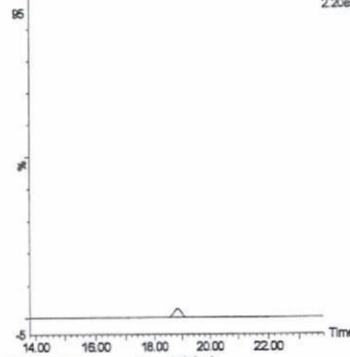
鮭 (0.01 mg/kg 添加)  
X090219\_58 Sm (Mn, 3x3) 2 MRM of 5 Channels ES-413.07 > 170.66 (Flusulfamide) 2.20e5



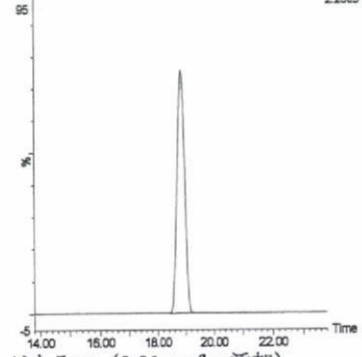
鮭 (0.5 mg/kg 添加)  
X090219\_53 Sm (Mn, 3x3) 2 MRM of 5 Channels ES-413.07 > 170.66 (Flusulfamide) 2.20e5



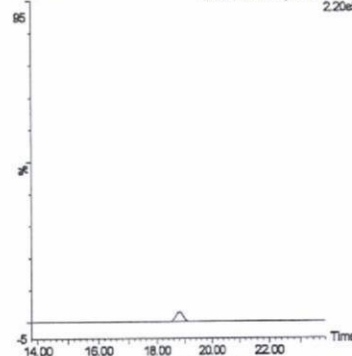
牛乳 (0.01 mg/kg 添加)  
X090217\_10 Sm (Mn, 3x3) 2 MRM of 5 Channels ES-413.07 > 170.66 (Flusulfamide) 2.20e5



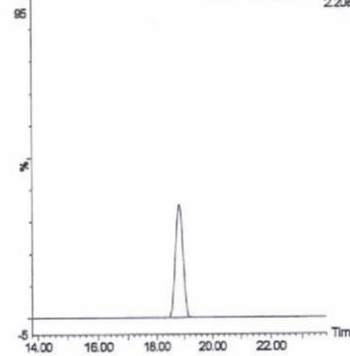
牛乳 (0.5 mg/kg 添加)  
X090215\_10 Sm (Mn, 3x3) 2 MRM of 5 Channels ES-413.07 > 170.66 (Flusulfamide) 2.20e5



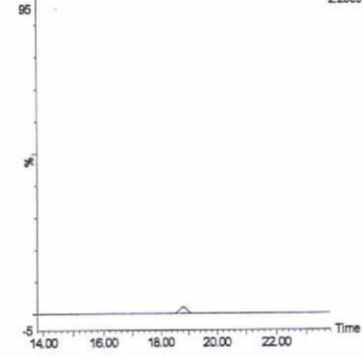
鶏卵 (0.01 mg/kg 添加)  
X090224\_15 Sm (Mn, 3x3) 2 MRM of 5 Channels ES-413.07 > 170.66 (Flusulfamide) 2.20e5



鶏卵 (0.5 mg/kg 添加)  
X090224\_10 Sm (Mn, 3x3) 2 MRM of 5 Channels ES-413.07 > 170.66 (Flusulfamide) 2.20e5



はちみつ (0.01 mg/kg 添加)  
X090224\_66 Sm (Mn, 3x3) 2 MRM of 5 Channels ES-413.07 > 170.66 (Flusulfamide) 2.20e5



はちみつ (0.5 mg/kg 添加)  
X090224\_61 Sm (Mn, 3x3) 2 MRM of 5 Channels ES-413.07 > 170.66 (Flusulfamide) 2.20e5

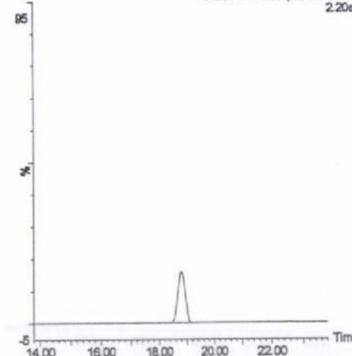


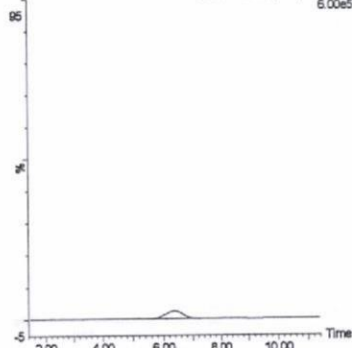
図 2-23. 標準品, 回収試料の MRM クロマトグラム (フルスルファミド②)



標準品 (0.05 ng)

X090219\_06 Sm (Mn, 3x3)

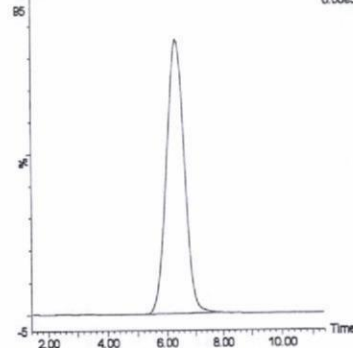
1: MRM of 23 Channels ES+  
188.91 > 101.52 (Propamocarb)  
6.00e5



標準品 (1 ng)

X090219\_03 Sm (Mn, 3x3)

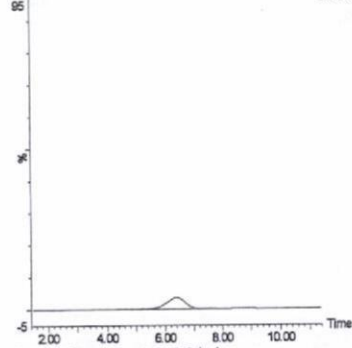
1: MRM of 23 Channels ES+  
188.91 > 101.52 (Propamocarb)  
6.00e5



筋肉 (0.01 mg/kg 添加)

X090219\_18 Sm (Mn, 3x3)

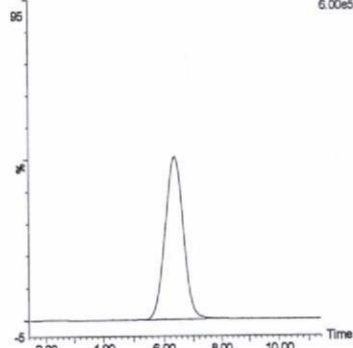
1: MRM of 23 Channels ES+  
188.91 > 101.52 (Propamocarb)  
6.00e5



筋肉 (0.5 mg/kg 添加)

X090219\_13 Sm (Mn, 3x3)

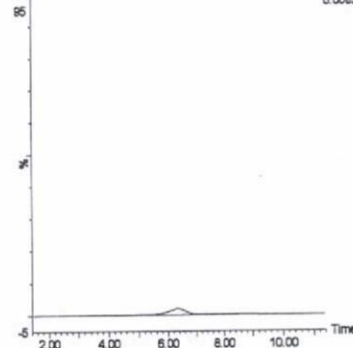
1: MRM of 23 Channels ES+  
188.91 > 101.52 (Propamocarb)  
6.00e5



脂肪 (0.01 mg/kg 添加)

X090217\_26 Sm (Mn, 3x3)

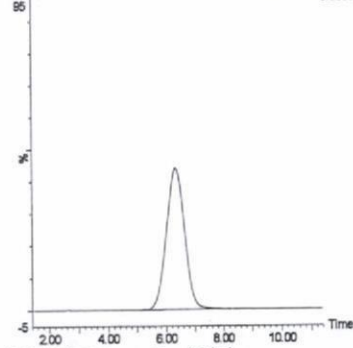
1: MRM of 23 Channels ES+  
188.91 > 101.52 (Propamocarb)  
6.00e5



脂肪 (0.5 mg/kg 添加)

X090217\_21 Sm (Mn, 3x3)

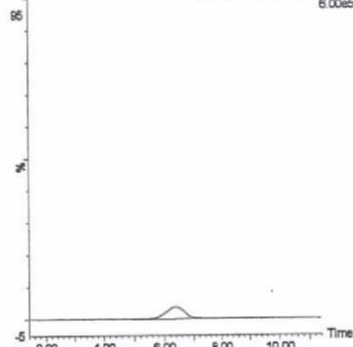
1: MRM of 23 Channels ES+  
188.91 > 101.52 (Propamocarb)  
6.00e5



肝臓 (0.01 mg/kg 添加)

X090219\_41 Sm (Mn, 3x3)

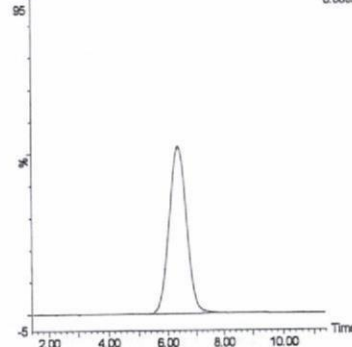
1: MRM of 23 Channels ES+  
188.91 > 101.52 (Propamocarb)  
6.00e5



肝臓 (0.5 mg/kg 添加)

X090219\_36 Sm (Mn, 3x3)

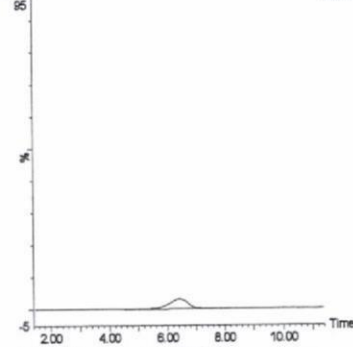
1: MRM of 23 Channels ES+  
188.91 > 101.52 (Propamocarb)  
6.00e5



腎臓 (0.01 mg/kg 添加)

X090224\_83 Sm (Mn, 3x3)

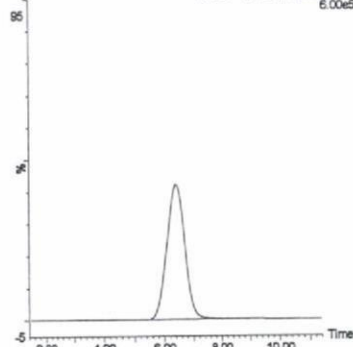
1: MRM of 23 Channels ES+  
188.91 > 101.52 (Propamocarb)  
6.00e5



腎臓 (0.5 mg/kg 添加)

X090224\_76 Sm (Mn, 3x3)

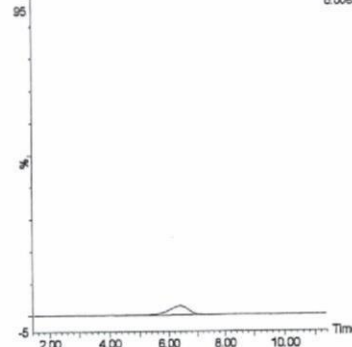
1: MRM of 23 Channels ES+  
188.91 > 101.52 (Propamocarb)  
6.00e5



えび (0.01 mg/kg 添加)

X090224\_49 Sm (Mn, 3x3)

1: MRM of 23 Channels ES+  
188.91 > 101.52 (Propamocarb)  
6.00e5



えび (0.5 mg/kg 添加)

X090224\_44 Sm (Mn, 3x3)

1: MRM of 23 Channels ES+  
188.91 > 101.52 (Propamocarb)  
6.00e5

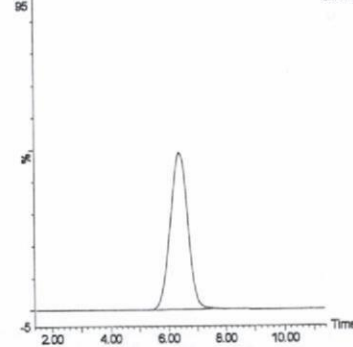
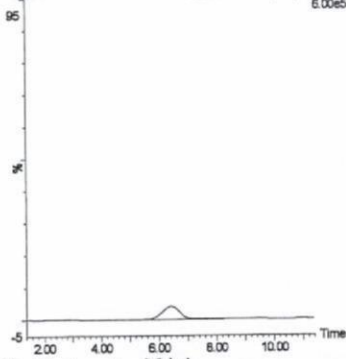
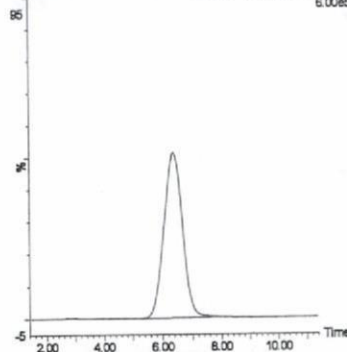


図 2-24. 標準品, 回収試料の MRM クロマトグラム (プロパモカルブ①)

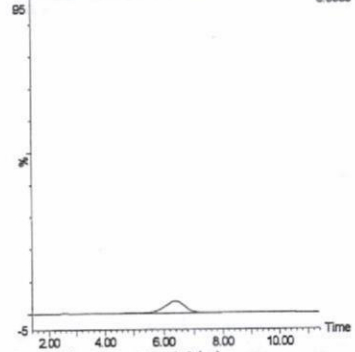
うなぎ (0.01 mg/kg 添加)  
X090224\_32 Sm (Mn, 3x3)  
1: MRM of 23 Channels ES+  
188.91 > 101.52 (Propamocarb)  
6.00e5



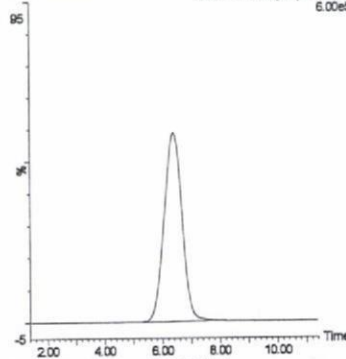
うなぎ (0.5 mg/kg 添加)  
X090224\_27 Sm (Mn, 3x3)  
1: MRM of 23 Channels ES+  
188.91 > 101.52 (Propamocarb)  
6.00e5



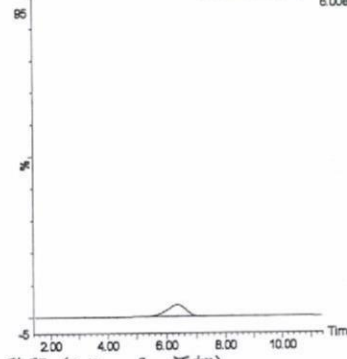
鮭 (0.01 mg/kg 添加)  
X090218\_58 Sm (Mn, 3x3)  
1: MRM of 23 Channels ES+  
188.91 > 101.52 (Propamocarb)  
6.00e5



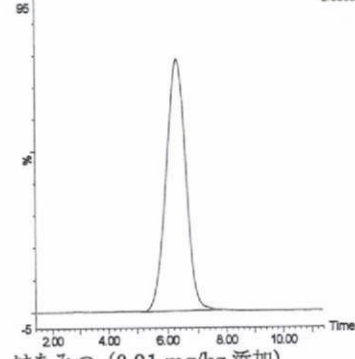
鮭 (0.5 mg/kg 添加)  
X090218\_53 Sm (Mn, 3x3)  
1: MRM of 23 Channels ES+  
188.91 > 101.52 (Propamocarb)  
6.00e5



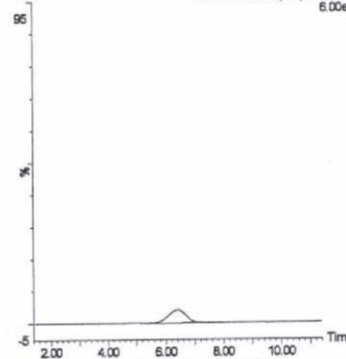
牛乳 (0.01 mg/kg 添加)  
X090217\_10 Sm (Mn, 3x3)  
1: MRM of 23 Channels ES+  
188.91 > 101.52 (Propamocarb)  
6.00e5



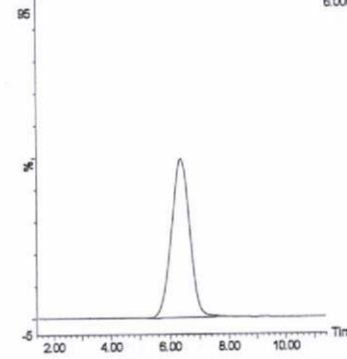
牛乳 (0.5 mg/kg 添加)  
X090215\_10 Sm (Mn, 3x3)  
1: MRM of 23 Channels ES+  
188.91 > 101.52 (Propamocarb)  
6.00e5



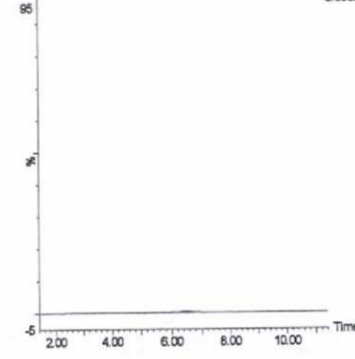
鶏卵 (0.01 mg/kg 添加)  
X090224\_15 Sm (Mn, 3x3)  
1: MRM of 23 Channels ES+  
188.91 > 101.52 (Propamocarb)  
6.00e5



鶏卵 (0.5 mg/kg 添加)  
X090224\_10 Sm (Mn, 3x3)  
1: MRM of 23 Channels ES+  
188.91 > 101.52 (Propamocarb)  
6.00e5



はちみつ (0.01 mg/kg 添加)  
X090224\_66 Sm (Mn, 3x3)  
1: MRM of 23 Channels ES+  
188.91 > 101.52 (Propamocarb)  
6.00e5



はちみつ (0.5 mg/kg 添加)  
X090224\_61 Sm (Mn, 3x3)  
1: MRM of 23 Channels ES+  
188.91 > 101.52 (Propamocarb)  
6.00e5

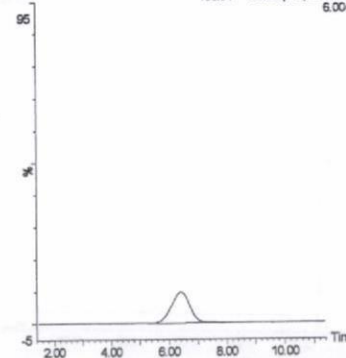
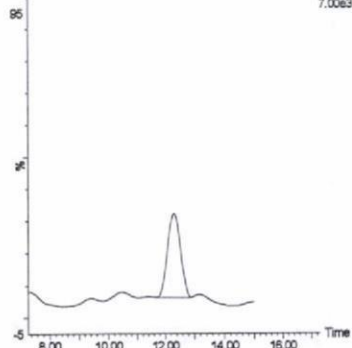


図 2-24. 標準品, 回収試料の MRM クロマトグラム (プロパモカルブ®)

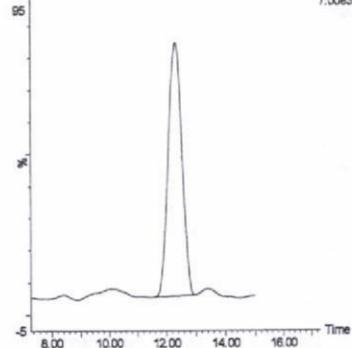
標準品 (0.25 ng)

X090219\_05 Sm (Mn, 3x3) 1: MRM of 23 Channels ES+ 223.96 > 101.53 (Probenazole) 7.00e3



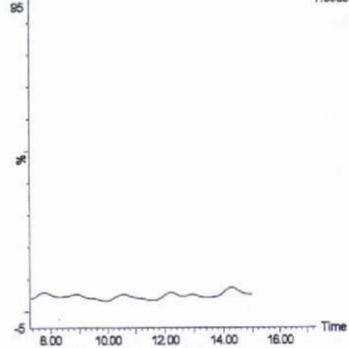
標準品 (1 ng)

X090219\_03 Sm (Mn, 3x3) 1: MRM of 23 Channels ES+ 223.96 > 101.53 (Probenazole) 7.00e3



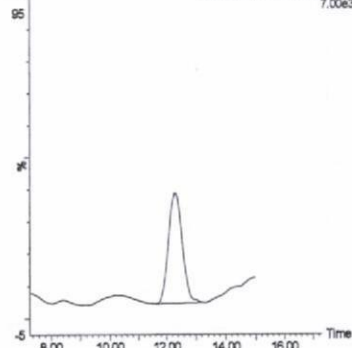
筋肉 (0.01 mg/kg 添加)

X090219\_18 Sm (Mn, 3x3) 1: MRM of 23 Channels ES+ 223.96 > 101.53 (Probenazole) 7.00e3



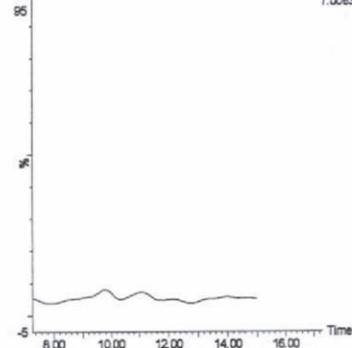
筋肉 (0.5 mg/kg 添加)

X090219\_13 Sm (Mn, 3x3) 1: MRM of 23 Channels ES+ 223.96 > 101.53 (Probenazole) 7.00e3



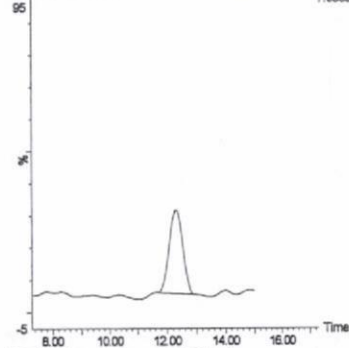
脂肪 (0.01 mg/kg 添加)

X090217\_26 Sm (Mn, 3x3) 1: MRM of 23 Channels ES+ 223.96 > 101.53 (Probenazole) 7.00e3



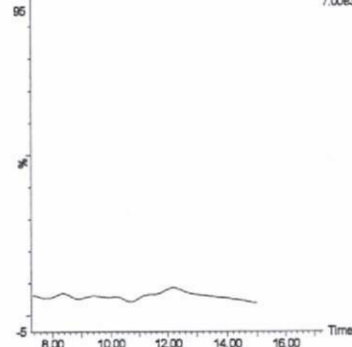
脂肪 (0.5 mg/kg 添加)

X090217\_21 Sm (Mn, 3x3) 1: MRM of 23 Channels ES+ 223.96 > 101.53 (Probenazole) 7.00e3



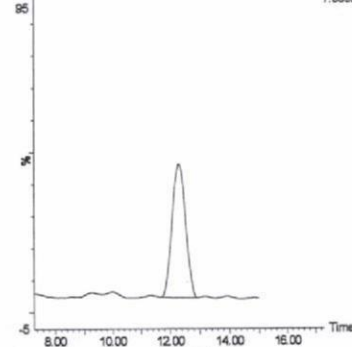
肝臓 (0.01 mg/kg 添加)

X090219\_41 Sm (Mn, 3x3) 1: MRM of 23 Channels ES+ 223.96 > 101.53 (Probenazole) 7.00e3



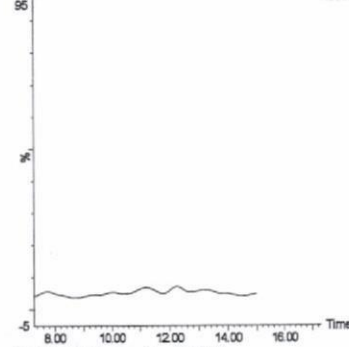
肝臓 (0.5 mg/kg 添加)

X090219\_36 Sm (Mn, 3x3) 1: MRM of 23 Channels ES+ 223.96 > 101.53 (Probenazole) 7.00e3



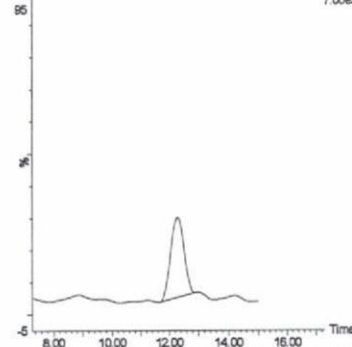
腎臓 (0.01 mg/kg 添加)

X090224\_63 Sm (Mn, 3x3) 1: MRM of 23 Channels ES+ 223.96 > 101.53 (Probenazole) 7.00e3



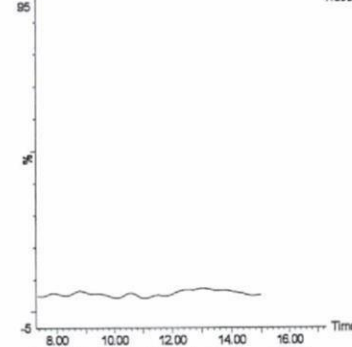
腎臓 (0.5 mg/kg 添加)

X090224\_78 Sm (Mn, 3x3) 1: MRM of 23 Channels ES+ 223.96 > 101.53 (Probenazole) 7.00e3



えび (0.01 mg/kg 添加)

X090224\_49 Sm (Mn, 3x3) 1: MRM of 23 Channels ES+ 223.96 > 101.53 (Probenazole) 7.00e3



えび (0.5 mg/kg 添加)

X090224\_44 Sm (Mn, 3x3) 1: MRM of 23 Channels ES+ 223.96 > 101.53 (Probenazole) 7.00e3

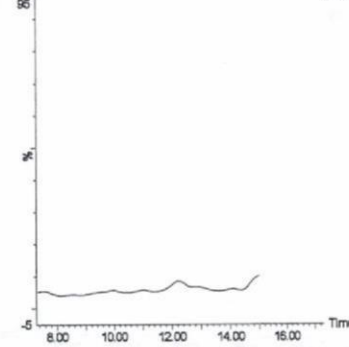
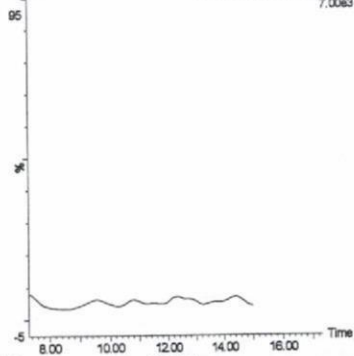


図 2-25. 標準品, 回収試料の MRM クロマトグラム (プロベナゾール①)

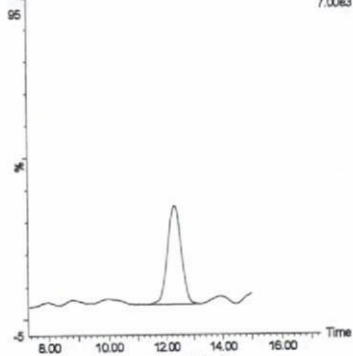
うなぎ (0.01 mg/kg 添加)

X090224\_32 Sm (Mn, 3x3) 1. MRM of 23 Channels ES+  
223.96 > 101.53 (Probenazole) 7.00e3



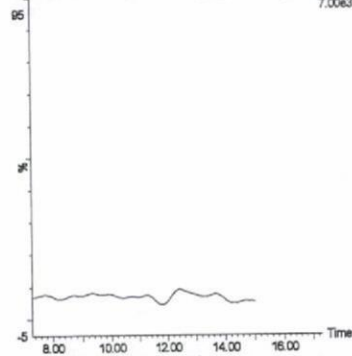
うなぎ (0.5 mg/kg 添加)

X090224\_27 Sm (Mn, 3x3) 1. MRM of 23 Channels ES+  
223.96 > 101.53 (Probenazole) 7.00e3



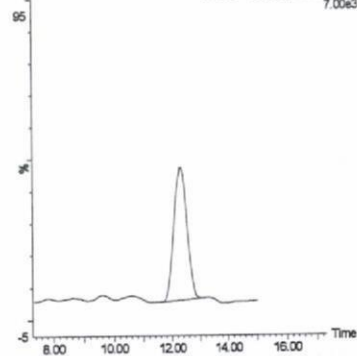
鮭 (0.01 mg/kg 添加)

X090219\_58 Sm (Mn, 3x3) 1. MRM of 23 Channels ES+  
223.96 > 101.53 (Probenazole) 7.00e3



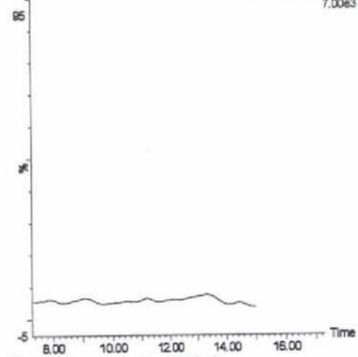
鮭 (0.5 mg/kg 添加)

X090219\_53 Sm (Mn, 3x3) 1. MRM of 23 Channels ES+  
223.96 > 101.53 (Probenazole) 7.00e3



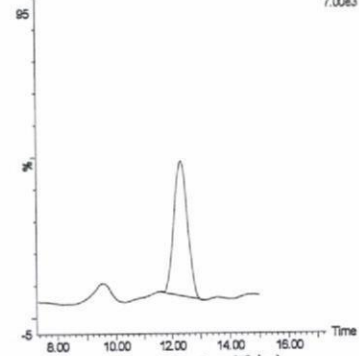
牛乳 (0.01 mg/kg 添加)

X090217\_10 Sm (Mn, 3x3) 1. MRM of 23 Channels ES+  
223.96 > 101.53 (Probenazole) 7.00e3



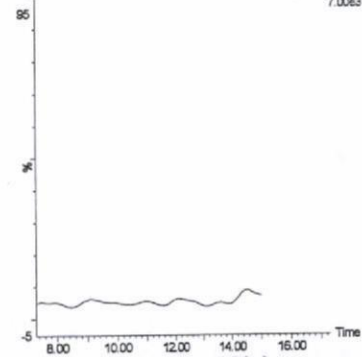
牛乳 (0.5 mg/kg 添加)

X090215\_10 Sm (Mn, 3x3) 1. MRM of 23 Channels ES+  
223.96 > 101.53 (Probenazole) 7.00e3



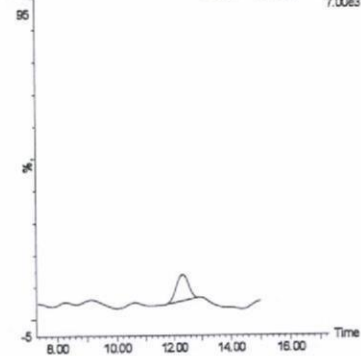
鶏卵 (0.01 mg/kg 添加)

X090224\_16 Sm (Mn, 3x3) 1. MRM of 23 Channels ES+  
223.96 > 101.53 (Probenazole) 7.00e3



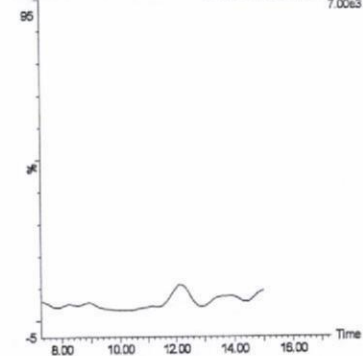
鶏卵 (0.5 mg/kg 添加)

X090224\_10 Sm (Mn, 3x3) 1. MRM of 23 Channels ES+  
223.96 > 101.53 (Probenazole) 7.00e3



はちみつ (0.01 mg/kg 添加)

X090224\_66 Sm (Mn, 3x3) 1. MRM of 23 Channels ES+  
223.96 > 101.53 (Probenazole) 7.00e3



はちみつ (0.5 mg/kg 添加)

X090224\_61 Sm (Mn, 3x3) 1. MRM of 23 Channels ES+  
223.96 > 101.53 (Probenazole) 7.00e3

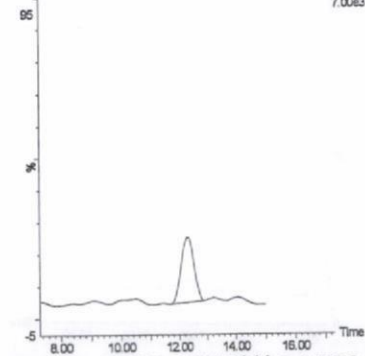


図 2-25. 標準品, 回収試料のMRMクロマトグラム (プロベナゾール②)