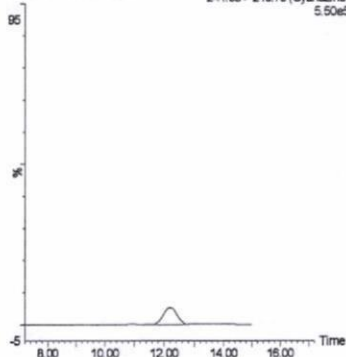


標準品 (0.05 ng)

X090219_06 Sm (Mn, 3x3)

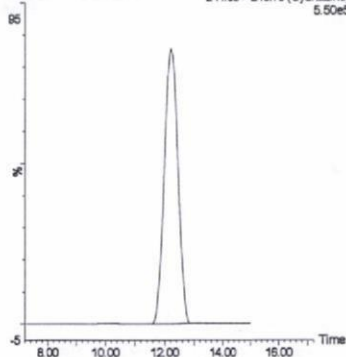
1: MRM of 23 Channels ES+
241.06 > 213.76 (Cyanazine)
5.50e5



標準品 (1 ng)

X090219_03 Sm (Mn, 3x3)

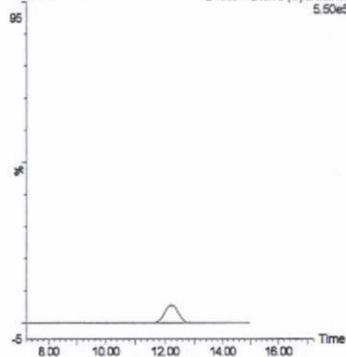
1: MRM of 23 Channels ES+
241.06 > 213.76 (Cyanazine)
5.50e5



筋肉 (0.01 mg/kg 添加)

X090219_18 Sm (Mn, 3x3)

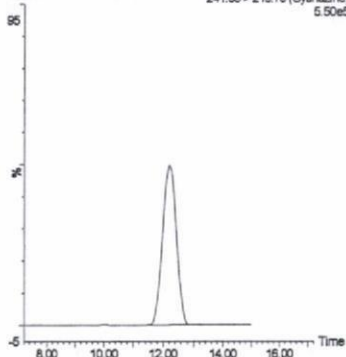
1: MRM of 23 Channels ES+
241.06 > 213.76 (Cyanazine)
5.50e5



筋肉 (0.5 mg/kg 添加)

X090219_13 Sm (Mn, 3x3)

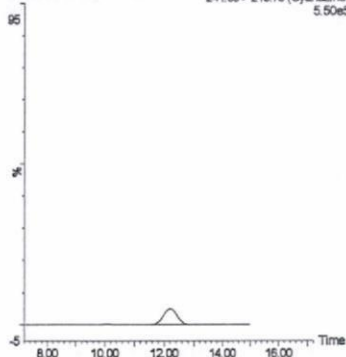
1: MRM of 23 Channels ES+
241.06 > 213.76 (Cyanazine)
5.50e5



脂肪 (0.01 mg/kg 添加)

X090217_26 Sm (Mn, 3x3)

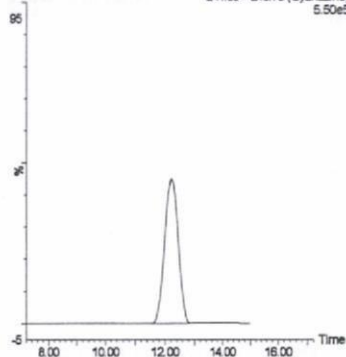
1: MRM of 23 Channels ES+
241.06 > 213.76 (Cyanazine)
5.50e5



脂肪 (0.5 mg/kg 添加)

X090217_21 Sm (Mn, 3x3)

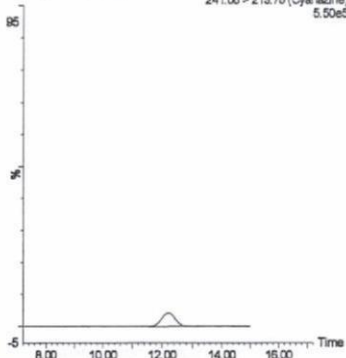
1: MRM of 23 Channels ES+
241.06 > 213.76 (Cyanazine)
5.50e5



肝臓 (0.01 mg/kg 添加)

X090219_41 Sm (Mn, 3x3)

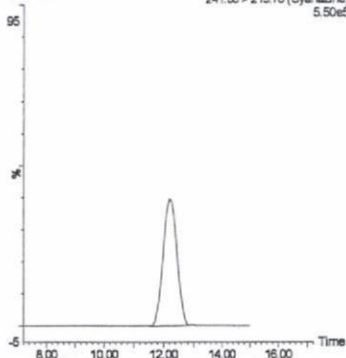
1: MRM of 23 Channels ES+
241.06 > 213.76 (Cyanazine)
5.50e5



肝臓 (0.5 mg/kg 添加)

X090219_36 Sm (Mn, 3x3)

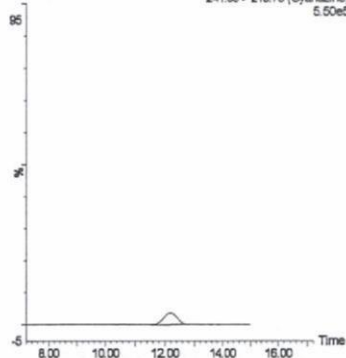
1: MRM of 23 Channels ES+
241.06 > 213.76 (Cyanazine)
5.50e5



腎臓 (0.01 mg/kg 添加)

X090224_83 Sm (Mn, 3x3)

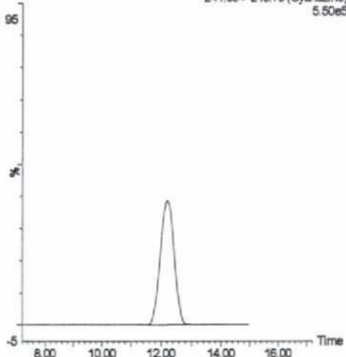
1: MRM of 23 Channels ES+
241.06 > 213.76 (Cyanazine)
5.50e5



腎臓 (0.5 mg/kg 添加)

X090224_76 Sm (Mn, 3x3)

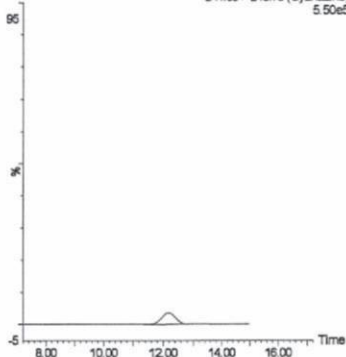
1: MRM of 23 Channels ES+
241.06 > 213.76 (Cyanazine)
5.50e5



えび (0.01 mg/kg 添加)

X090224_49 Sm (Mn, 3x3)

1: MRM of 23 Channels ES+
241.06 > 213.76 (Cyanazine)
5.50e5



えび (0.5 mg/kg 添加)

X090224_44 Sm (Mn, 3x3)

1: MRM of 23 Channels ES+
241.06 > 213.76 (Cyanazine)
5.50e5

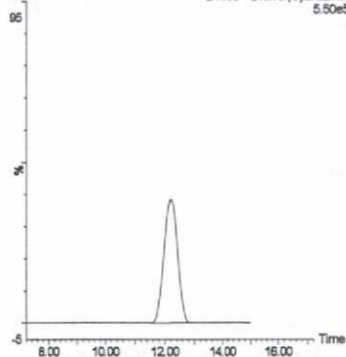
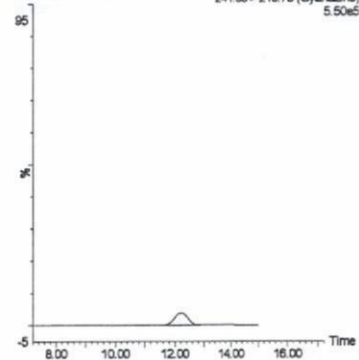


図 2-6. 標準品, 回収試料のMRMクロマトグラム (シアナジン①)

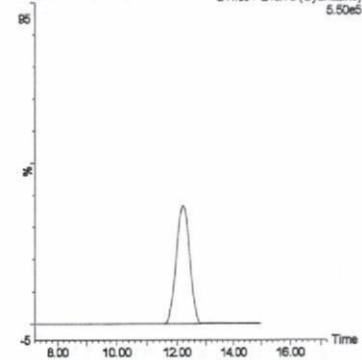
うなぎ (0.01 mg/kg 添加)

X090224_32 Sm (Mn, 3x3) 1: MRM of 23 Channels ES+
241.06 > 213.76 (Cyanazine) 5.50e5



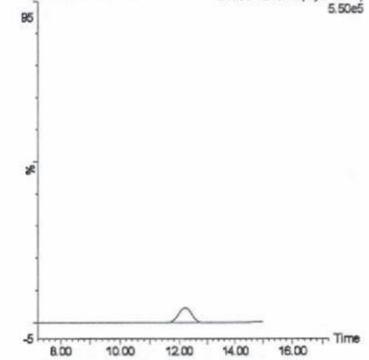
うなぎ (0.5 mg/kg 添加)

X090224_27 Sm (Mn, 3x3) 1: MRM of 23 Channels ES+
241.06 > 213.76 (Cyanazine) 5.50e5



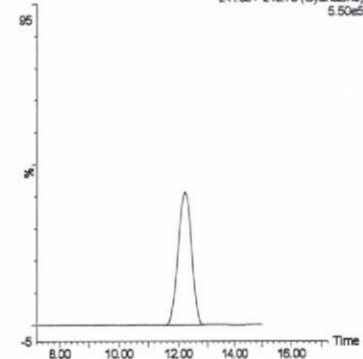
鮭 (0.01 mg/kg 添加)

X090219_58 Sm (Mn, 3x3) 1: MRM of 23 Channels ES+
241.06 > 213.76 (Cyanazine) 5.50e5



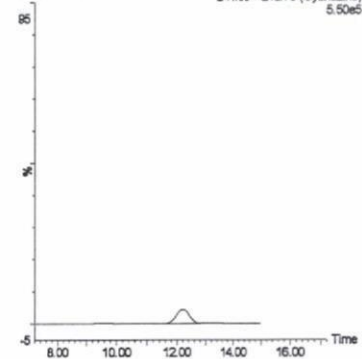
鮭 (0.5 mg/kg 添加)

X090219_53 Sm (Mn, 3x3) 1: MRM of 23 Channels ES+
241.06 > 213.76 (Cyanazine) 5.50e5



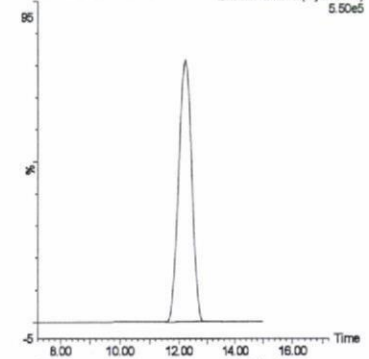
牛乳 (0.01 mg/kg 添加)

X090217_10 Sm (Mn, 3x3) 1: MRM of 23 Channels ES+
241.06 > 213.76 (Cyanazine) 5.50e5



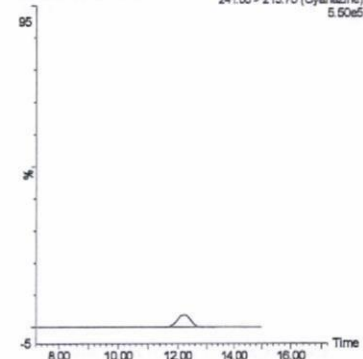
牛乳 (0.5 mg/kg 添加)

X090215_10 Sm (Mn, 3x3) 1: MRM of 23 Channels ES+
241.06 > 213.76 (Cyanazine) 5.50e5



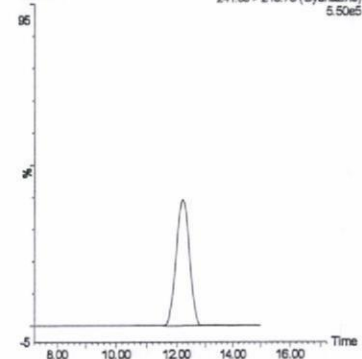
鶏卵 (0.01 mg/kg 添加)

X090224_15 Sm (Mn, 3x3) 1: MRM of 23 Channels ES+
241.06 > 213.76 (Cyanazine) 5.50e5



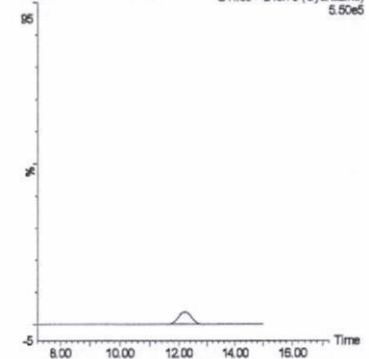
鶏卵 (0.5 mg/kg 添加)

X090224_10 Sm (Mn, 3x3) 1: MRM of 23 Channels ES+
241.06 > 213.76 (Cyanazine) 5.50e5



はちみつ (0.01 mg/kg 添加)

X090224_66 Sm (Mn, 3x3) 1: MRM of 23 Channels ES+
241.06 > 213.76 (Cyanazine) 5.50e5



はちみつ (0.5 mg/kg 添加)

X090224_81 Sm (Mn, 3x3) 1: MRM of 23 Channels ES+
241.06 > 213.76 (Cyanazine) 5.50e5

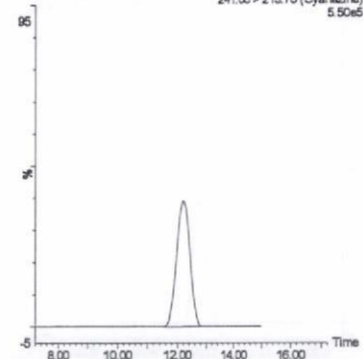
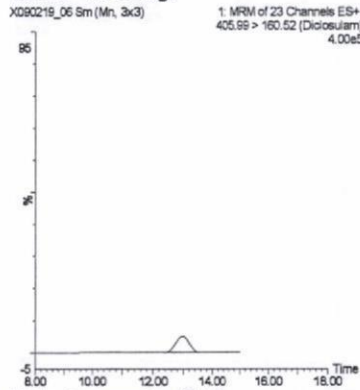
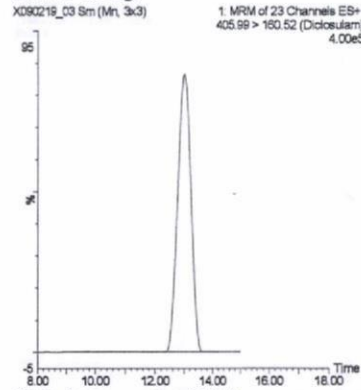


図 2-6. 標準品, 回収試料の MRM クロマトグラム (シアナジン®)

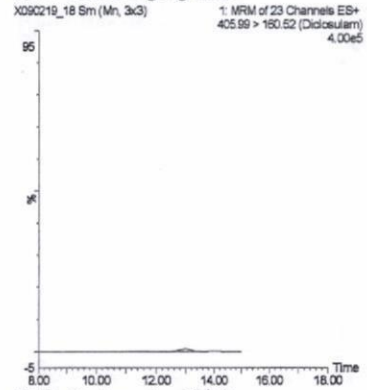
標準品 (0.05 ng)



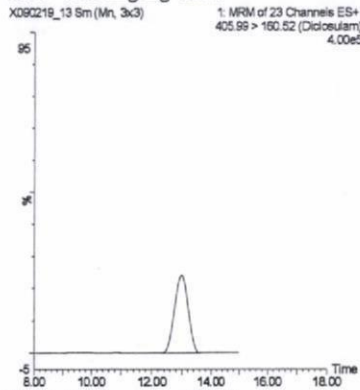
標準品 (1 ng)



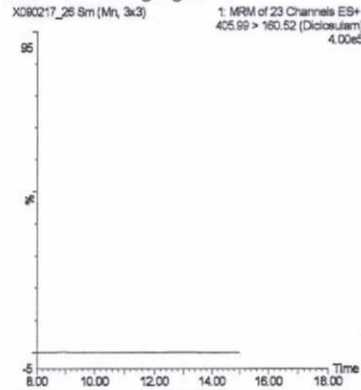
筋肉 (0.01 mg/kg 添加)



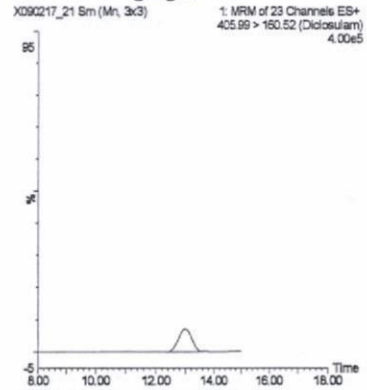
筋肉 (0.5 mg/kg 添加)



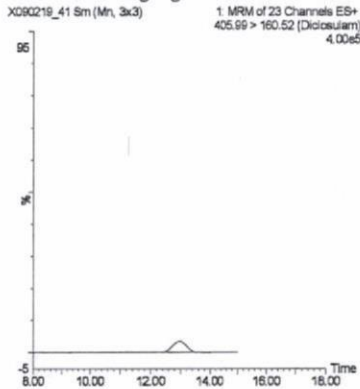
脂肪 (0.01 mg/kg 添加)



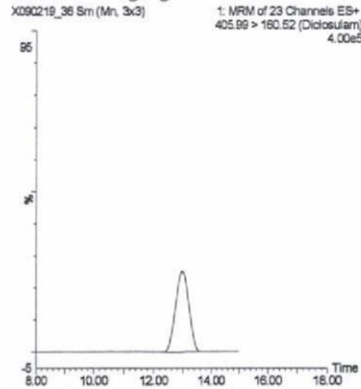
脂肪 (0.5 mg/kg 添加)



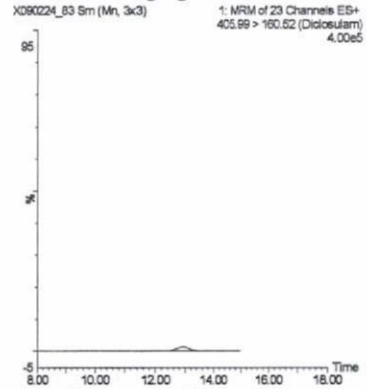
肝臓 (0.01 mg/kg 添加)



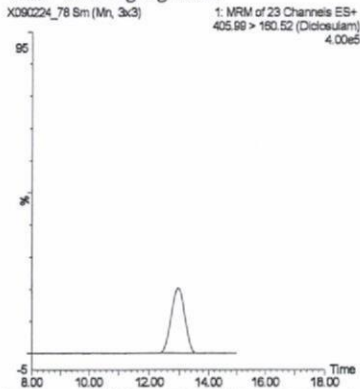
肝臓 (0.5 mg/kg 添加)



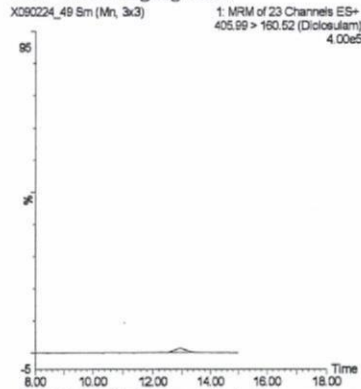
腎臓 (0.01 mg/kg 添加)



腎臓 (0.5 mg/kg 添加)



えび (0.01 mg/kg 添加)



えび (0.5 mg/kg 添加)

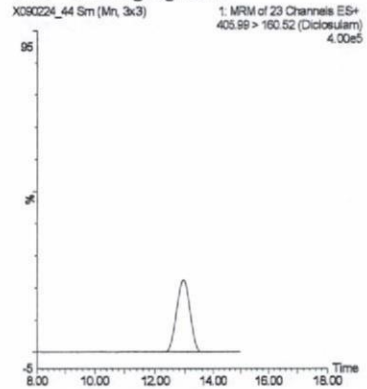
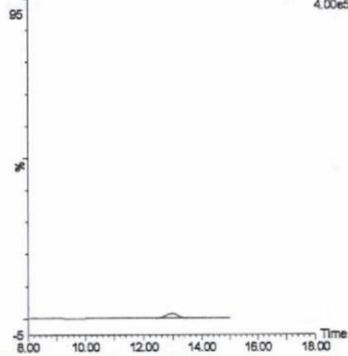


図 2-7. 標準品, 回収試料のMRM クロマトグラム (ジクロフェナム①)

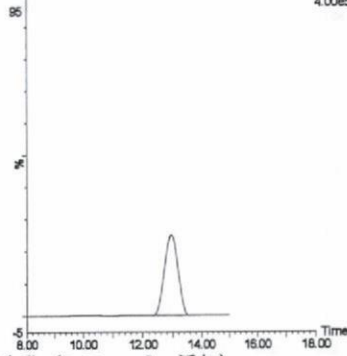
うなぎ (0.01 mg/kg 添加)

X090224_32 Sm (Mn, 3x3) 1: MRM of 23 Channels ES+
405.99 > 160.52 (Diclosulam)
4.00e5



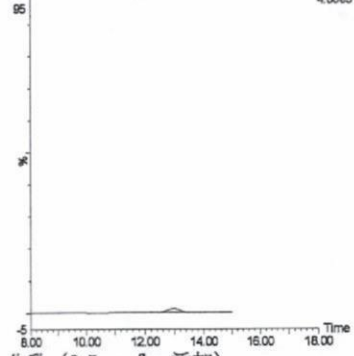
うなぎ (0.5 mg/kg 添加)

X090224_27 Sm (Mn, 3x3) 1: MRM of 23 Channels ES+
405.99 > 160.52 (Diclosulam)
4.00e5



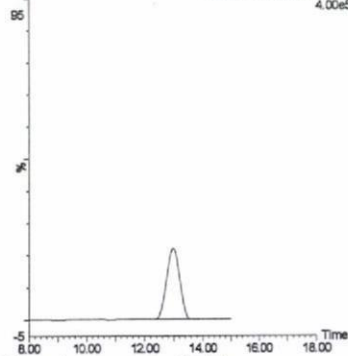
鮭 (0.01 mg/kg 添加)

X090219_59 Sm (Mn, 3x3) 1: MRM of 23 Channels ES+
405.99 > 160.52 (Diclosulam)
4.00e5



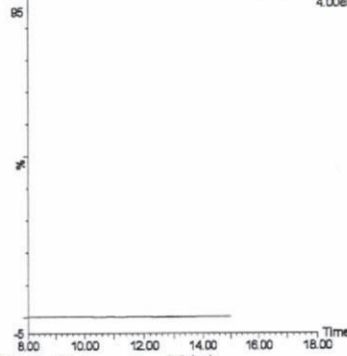
鮭 (0.5 mg/kg 添加)

X090219_53 Sm (Mn, 3x3) 1: MRM of 23 Channels ES+
405.99 > 160.52 (Diclosulam)
4.00e5



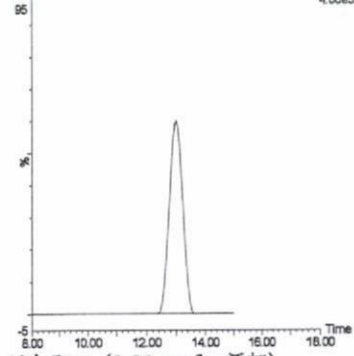
牛乳 (0.01 mg/kg 添加)

X090217_10 Sm (Mn, 3x3) 1: MRM of 23 Channels ES+
405.99 > 160.52 (Diclosulam)
4.00e5



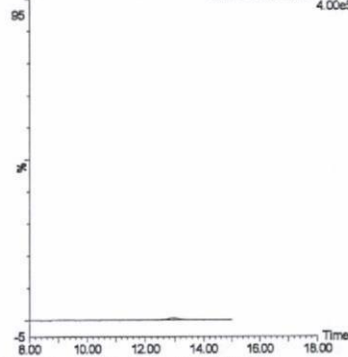
牛乳 (0.5 mg/kg 添加)

X090215_10 Sm (Mn, 3x3) 1: MRM of 23 Channels ES+
405.99 > 160.52 (Diclosulam)
4.00e5



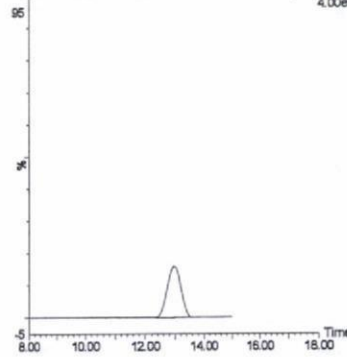
鶏卵 (0.01 mg/kg 添加)

X090224_15 Sm (Mn, 3x3) 1: MRM of 23 Channels ES+
405.99 > 160.52 (Diclosulam)
4.00e5



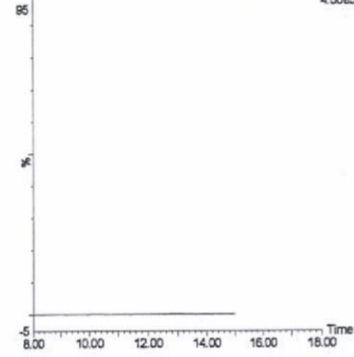
鶏卵 (0.5 mg/kg 添加)

X090224_10 Sm (Mn, 3x3) 1: MRM of 23 Channels ES+
405.99 > 160.52 (Diclosulam)
4.00e5



はちみつ (0.01 mg/kg 添加)

X090224_66 Sm (Mn, 3x3) 1: MRM of 23 Channels ES+
405.99 > 160.52 (Diclosulam)
4.00e5



はちみつ (0.5 mg/kg 添加)

X090224_61 Sm (Mn, 3x3) 1: MRM of 23 Channels ES+
405.99 > 160.52 (Diclosulam)
4.00e5

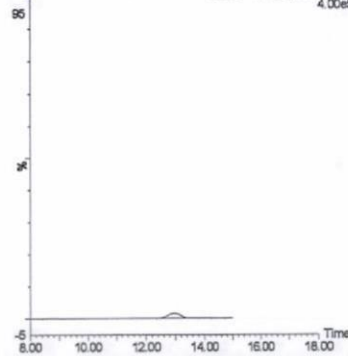


図 2-7. 標準品, 回収試料の MRM クロマトグラム (ジクロスラム®)

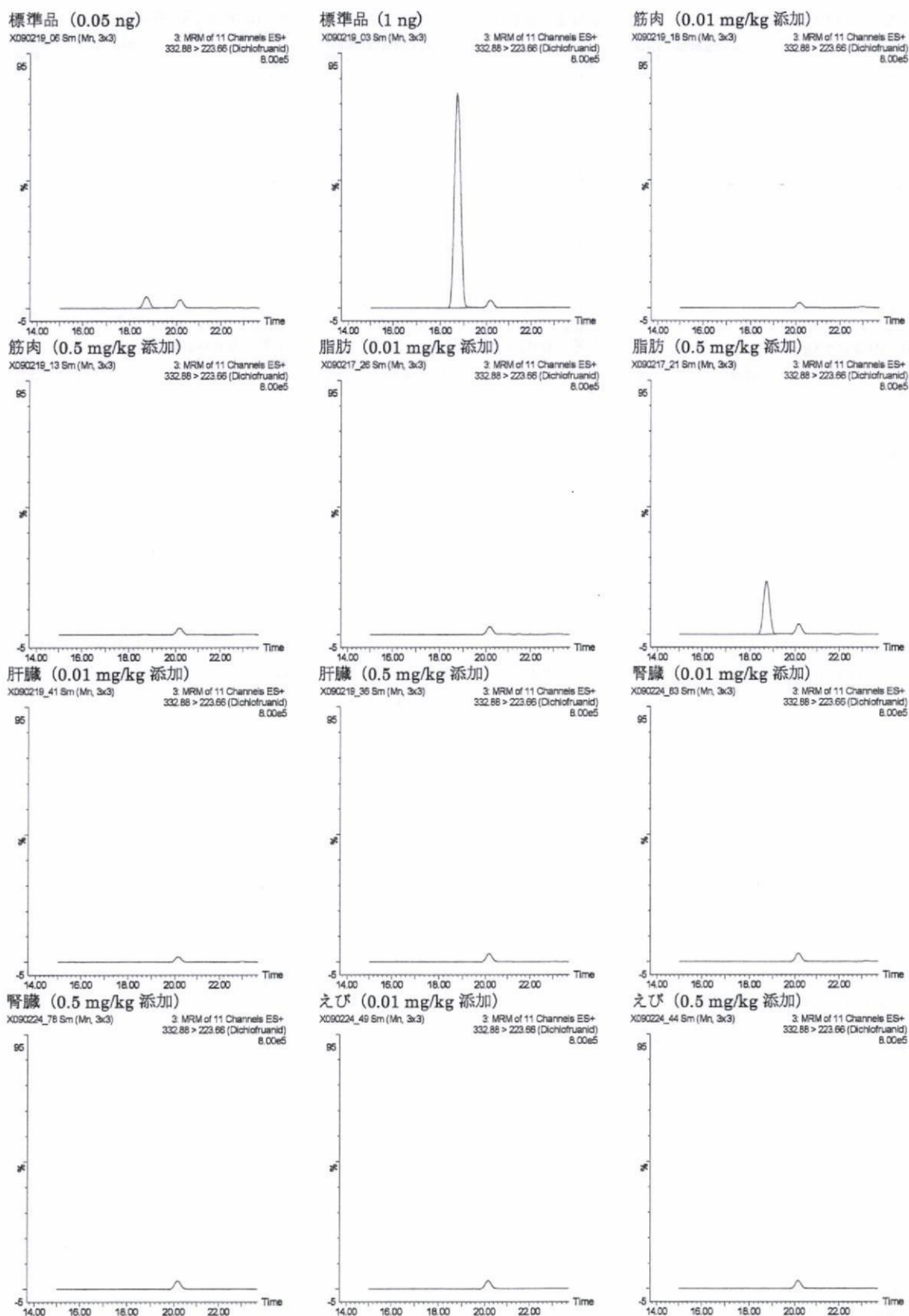
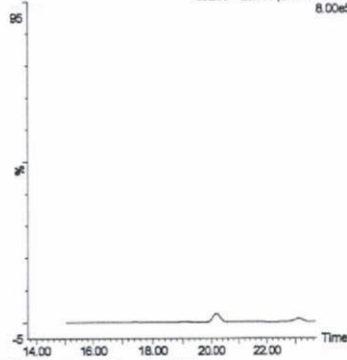


図 2-8. 標準品, 回収試料のMRMクロマトグラム (ジクロフルアノール①)

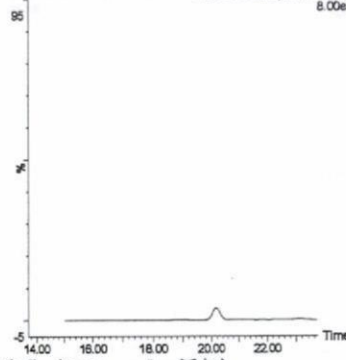
うなぎ (0.01 mg/kg 添加)

X090224_32 Sm (Mn, 3x3) 3 MRM of 11 Channels ES+ 332.88 > 223.66 (Dichlorofluorid) 8.00e5



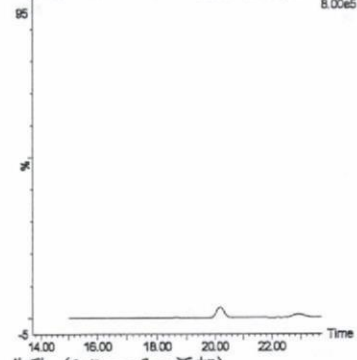
うなぎ (0.5 mg/kg 添加)

X090224_27 Sm (Mn, 3x3) 3 MRM of 11 Channels ES+ 332.88 > 223.66 (Dichlorofluorid) 8.00e5



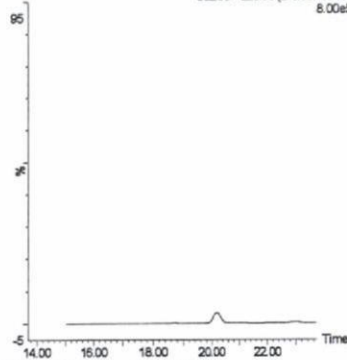
鮭 (0.01 mg/kg 添加)

X090219_56 Sm (Mn, 3x3) 3 MRM of 11 Channels ES+ 332.88 > 223.66 (Dichlorofluorid) 8.00e5



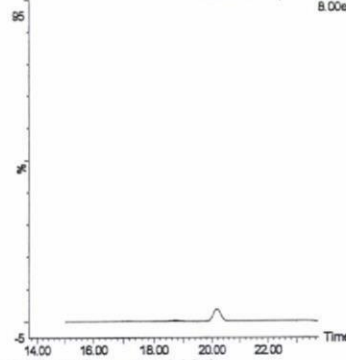
鮭 (0.5 mg/kg 添加)

X090219_53 Sm (Mn, 3x3) 3 MRM of 11 Channels ES+ 332.88 > 223.66 (Dichlorofluorid) 8.00e5



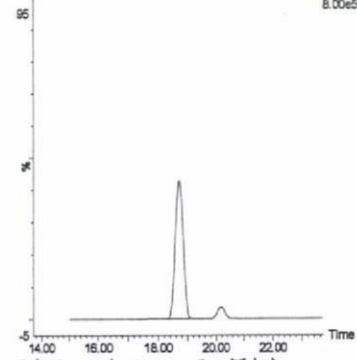
牛乳 (0.01 mg/kg 添加)

X090217_10 Sm (Mn, 3x3) 3 MRM of 11 Channels ES+ 332.88 > 223.66 (Dichlorofluorid) 8.00e5



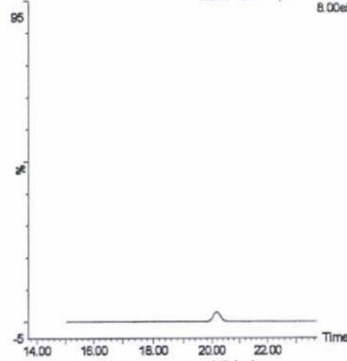
牛乳 (0.5 mg/kg 添加)

X090215_10 Sm (Mn, 3x3) 3 MRM of 11 Channels ES+ 332.88 > 223.66 (Dichlorofluorid) 8.00e5



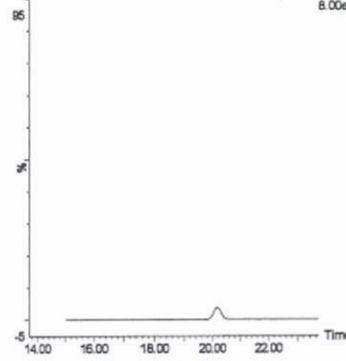
鶏卵 (0.01 mg/kg 添加)

X090224_15 Sm (Mn, 3x3) 3 MRM of 11 Channels ES+ 332.88 > 223.66 (Dichlorofluorid) 8.00e5



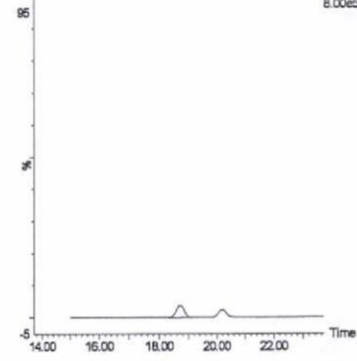
鶏卵 (0.5 mg/kg 添加)

X090224_10 Sm (Mn, 3x3) 3 MRM of 11 Channels ES+ 332.88 > 223.66 (Dichlorofluorid) 8.00e5



はちみつ (0.01 mg/kg 添加)

X090224_66 Sm (Mn, 3x3) 3 MRM of 11 Channels ES+ 332.88 > 223.66 (Dichlorofluorid) 8.00e5



はちみつ (0.5 mg/kg 添加)

X090224_61 Sm (Mn, 3x3) 3 MRM of 11 Channels ES+ 332.88 > 223.66 (Dichlorofluorid) 8.00e5

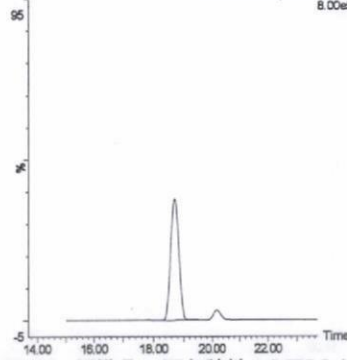
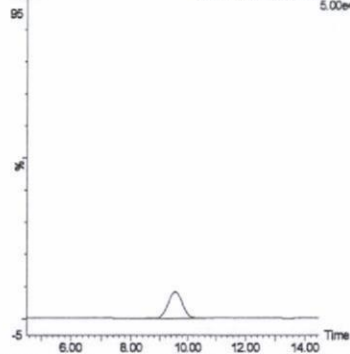


図 2-8. 標準品, 回収試料のMRM クロマトグラム (ジクロフルアニド②)

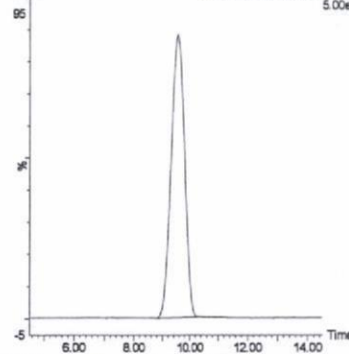
標準品 (0.25 ng)

X090219_05 Sm (Mn, 3x3)
1: MRM of 23 Channels ES+
335.14 > 205.67 (Diflufenzopyr)
5.00e4



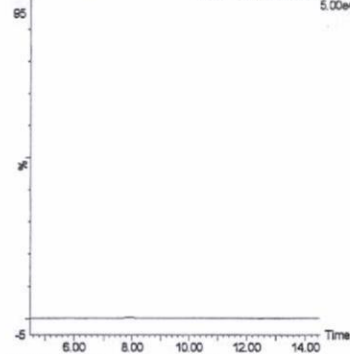
標準品 (1 ng)

X090219_03 Sm (Mn, 3x3)
1: MRM of 23 Channels ES+
335.14 > 205.67 (Diflufenzopyr)
5.00e4



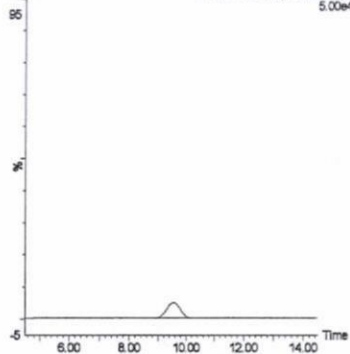
筋肉 (0.01 mg/kg 添加)

X090219_18 Sm (Mn, 3x3)
1: MRM of 23 Channels ES+
335.14 > 205.67 (Diflufenzopyr)
5.00e4



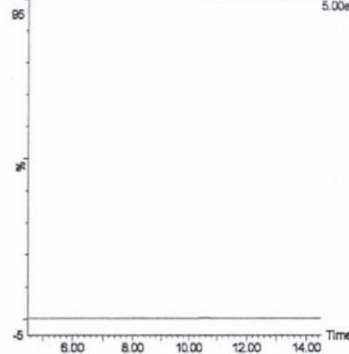
筋肉 (0.5 mg/kg 添加)

X090219_13 Sm (Mn, 3x3)
1: MRM of 23 Channels ES+
335.14 > 205.67 (Diflufenzopyr)
5.00e4



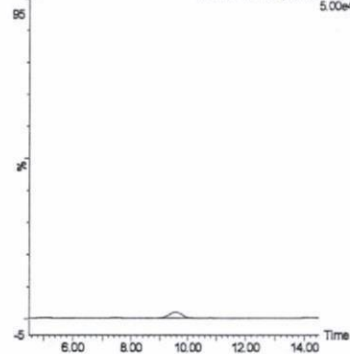
脂肪 (0.01 mg/kg 添加)

X090217_26 Sm (Mn, 3x3)
1: MRM of 23 Channels ES+
335.14 > 205.67 (Diflufenzopyr)
5.00e4



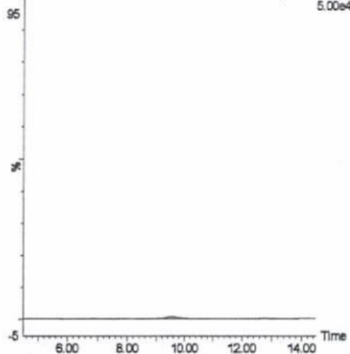
脂肪 (0.5 mg/kg 添加)

X090217_21 Sm (Mn, 3x3)
1: MRM of 23 Channels ES+
335.14 > 205.67 (Diflufenzopyr)
5.00e4



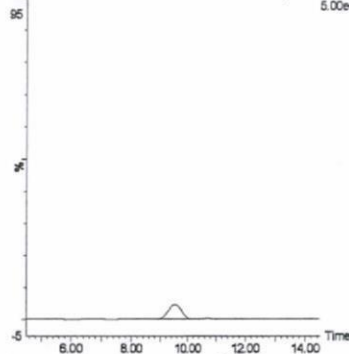
肝臓 (0.01 mg/kg 添加)

X090219_41 Sm (Mn, 3x3)
1: MRM of 23 Channels ES+
335.14 > 205.67 (Diflufenzopyr)
5.00e4



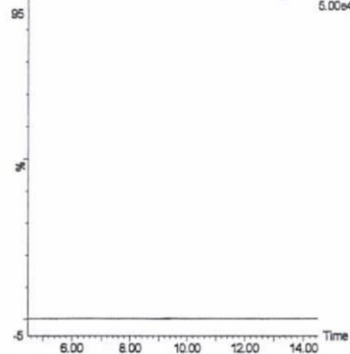
肝臓 (0.5 mg/kg 添加)

X090219_36 Sm (Mn, 3x3)
1: MRM of 23 Channels ES+
335.14 > 205.67 (Diflufenzopyr)
5.00e4



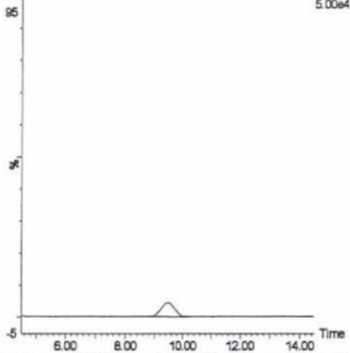
腎臓 (0.01 mg/kg 添加)

X090224_63 Sm (Mn, 3x3)
1: MRM of 23 Channels ES+
335.14 > 205.67 (Diflufenzopyr)
5.00e4



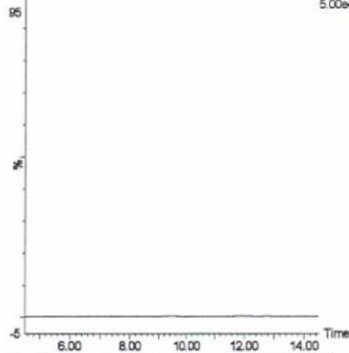
腎臓 (0.5 mg/kg 添加)

X090224_78 Sm (Mn, 3x3)
1: MRM of 23 Channels ES+
335.14 > 205.67 (Diflufenzopyr)
5.00e4



えび (0.01 mg/kg 添加)

X090224_49 Sm (Mn, 3x3)
1: MRM of 23 Channels ES+
335.14 > 205.67 (Diflufenzopyr)
5.00e4



えび (0.5 mg/kg 添加)

X090224_44 Sm (Mn, 3x3)
1: MRM of 23 Channels ES+
335.14 > 205.67 (Diflufenzopyr)
5.00e4

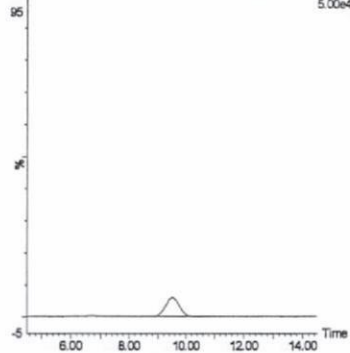
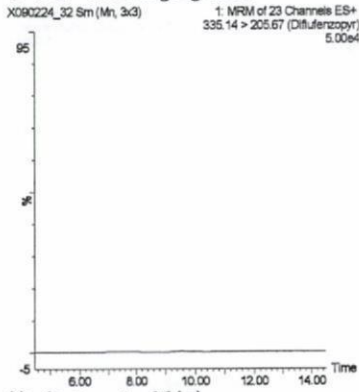
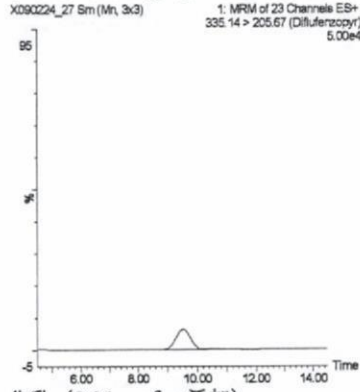


図 2-9. 標準品, 回収試料のMRMクロマトグラム (ジフルフェンゾピル①)

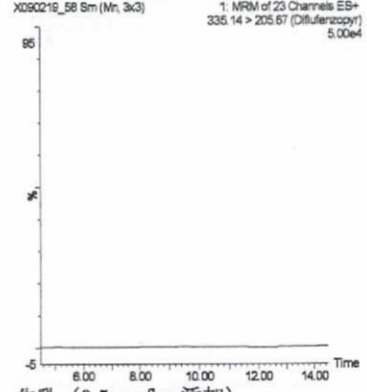
うなぎ (0.01 mg/kg 添加)



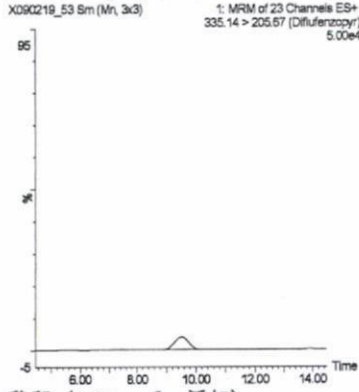
うなぎ (0.5 mg/kg 添加)



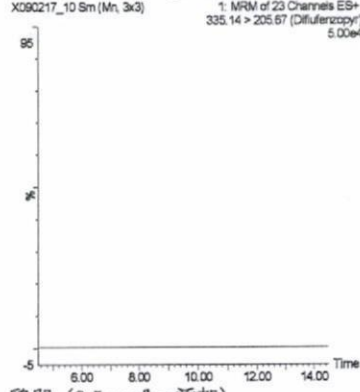
鮭 (0.01 mg/kg 添加)



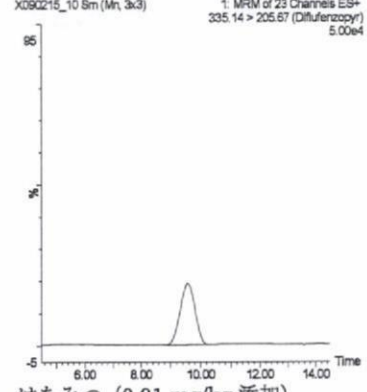
鮭 (0.5 mg/kg 添加)



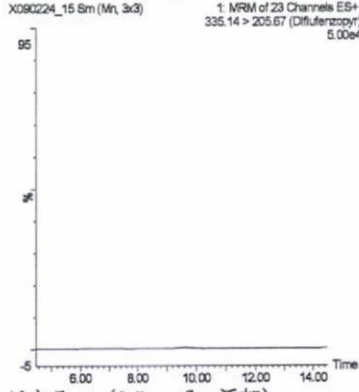
牛乳 (0.01 mg/kg 添加)



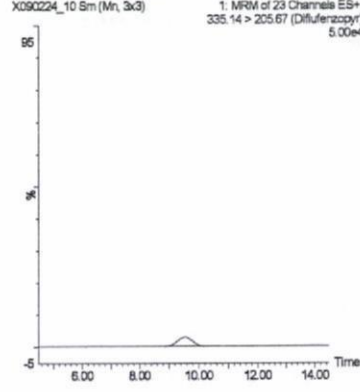
牛乳 (0.5 mg/kg 添加)



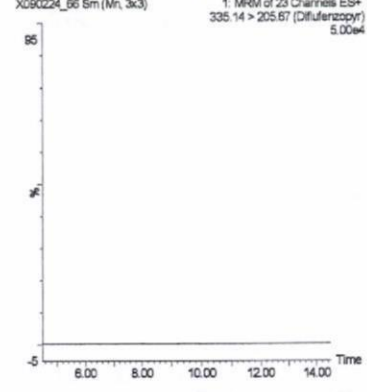
鶏卵 (0.01 mg/kg 添加)



鶏卵 (0.5 mg/kg 添加)



はちみつ (0.01 mg/kg 添加)



はちみつ (0.5 mg/kg 添加)

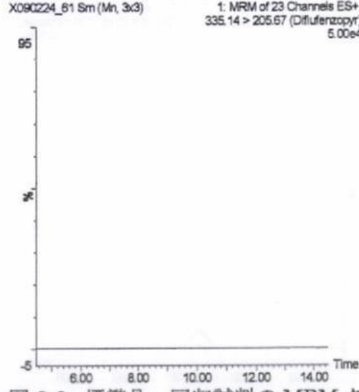


図 2-9. 標準品, 回収試料の MRM クロマトグラム (ジフルフェンゾピル[®])

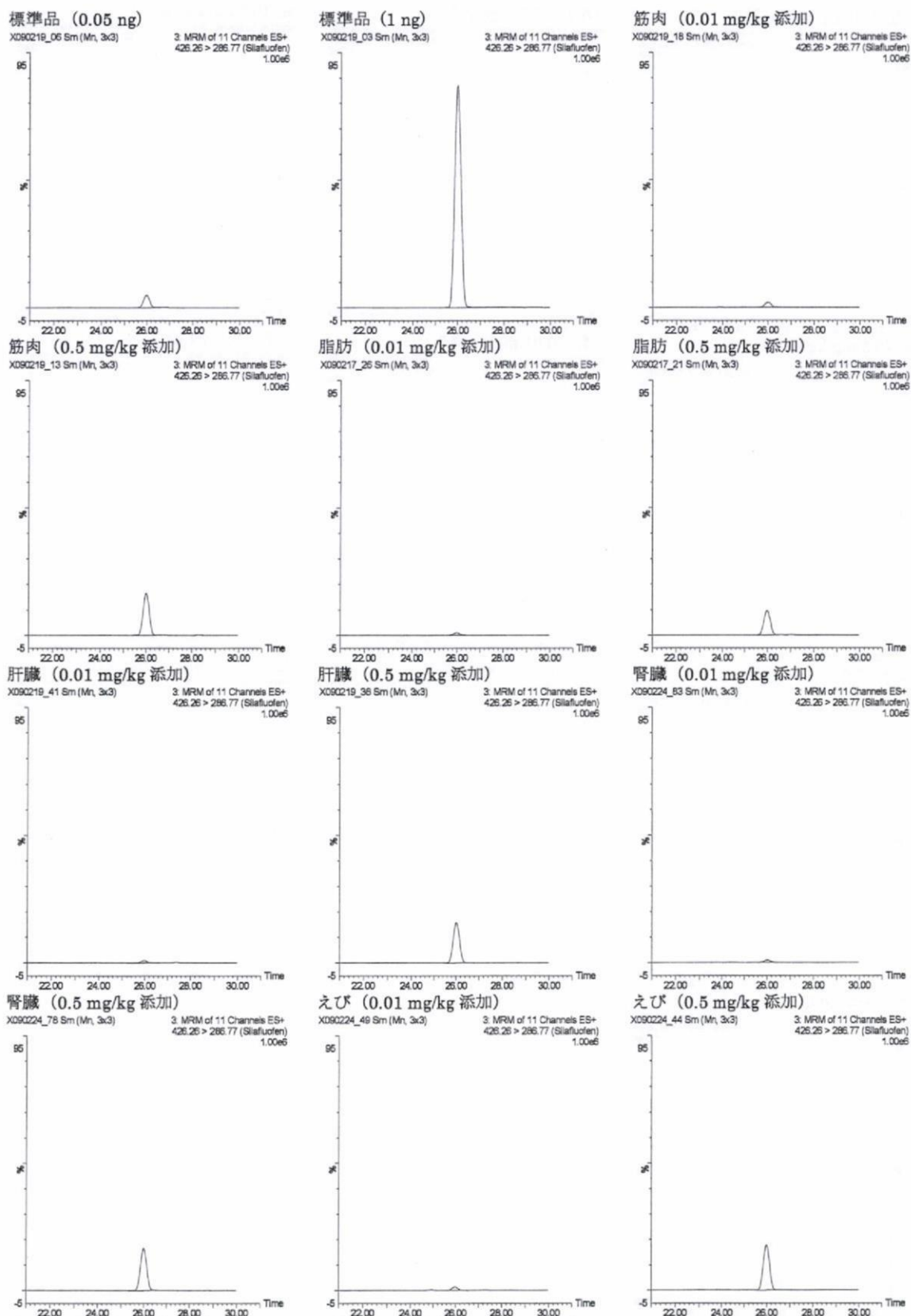
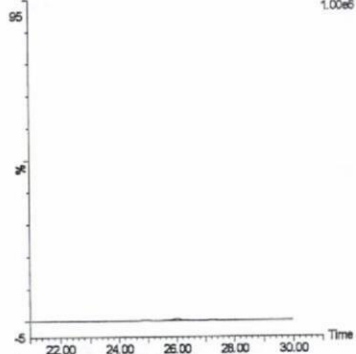


図 2-10. 標準品, 回収試料の MRM クロマトグラム (シラフルオフェン①)

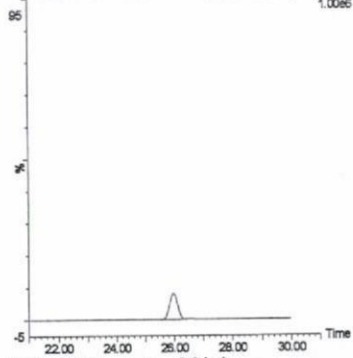
うなぎ (0.01 mg/kg 添加)

X090224_32 Sm (Mn, 3x3)
3: MRM of 11 Channels ES+
426.26 > 286.77 (Sialfluofen)
1.00e6



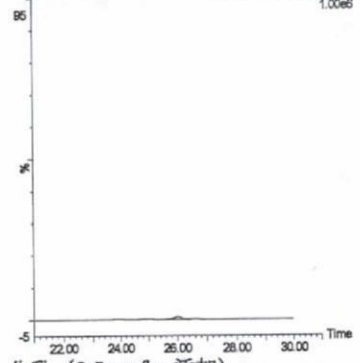
うなぎ (0.5 mg/kg 添加)

X090224_27 Sm (Mn, 3x3)
3: MRM of 11 Channels ES+
426.26 > 286.77 (Sialfluofen)
1.00e6



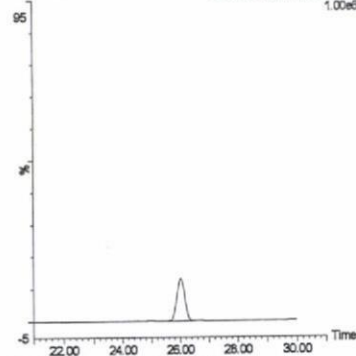
鮭 (0.01 mg/kg 添加)

X090219_58 Sm (Mn, 3x3)
3: MRM of 11 Channels ES+
426.26 > 286.77 (Sialfluofen)
1.00e6



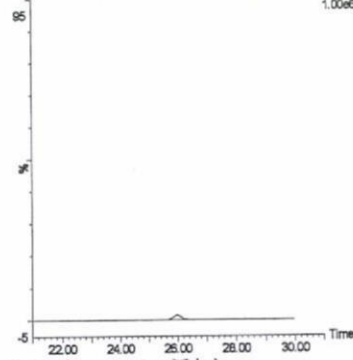
鮭 (0.5 mg/kg 添加)

X090219_53 Sm (Mn, 3x3)
3: MRM of 11 Channels ES+
426.26 > 286.77 (Sialfluofen)
1.00e6



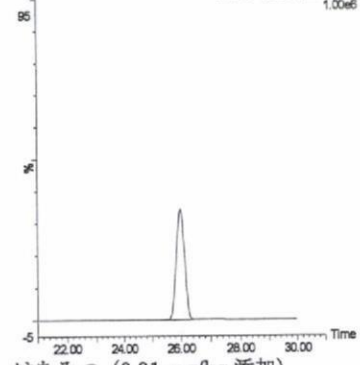
牛乳 (0.01 mg/kg 添加)

X090217_10 Sm (Mn, 3x3)
3: MRM of 11 Channels ES+
426.26 > 286.77 (Sialfluofen)
1.00e6



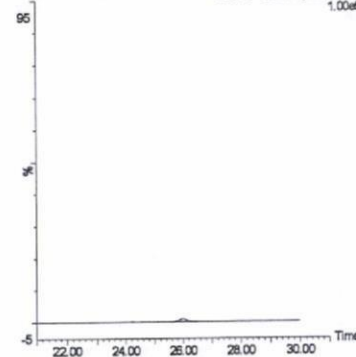
牛乳 (0.5 mg/kg 添加)

X090215_10 Sm (Mn, 3x3)
3: MRM of 11 Channels ES+
426.26 > 286.77 (Sialfluofen)
1.00e6



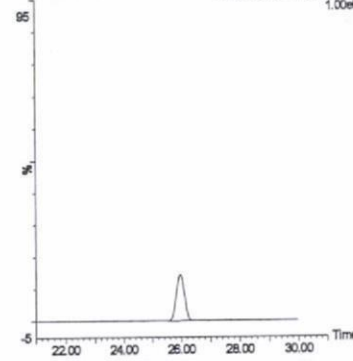
鶏卵 (0.01 mg/kg 添加)

X090224_15 Sm (Mn, 3x3)
3: MRM of 11 Channels ES+
426.26 > 286.77 (Sialfluofen)
1.00e6



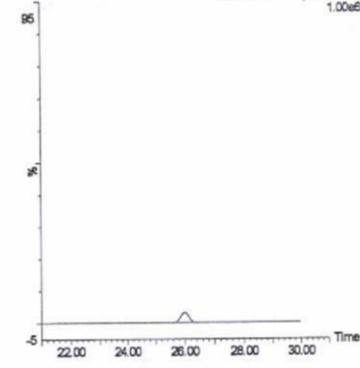
鶏卵 (0.5 mg/kg 添加)

X090224_10 Sm (Mn, 3x3)
3: MRM of 11 Channels ES+
426.26 > 286.77 (Sialfluofen)
1.00e6



はちみつ (0.01 mg/kg 添加)

X090224_96 Sm (Mn, 3x3)
3: MRM of 11 Channels ES+
426.26 > 286.77 (Sialfluofen)
1.00e6



はちみつ (0.5 mg/kg 添加)

X090224_61 Sm (Mn, 3x3)
3: MRM of 11 Channels ES+
426.26 > 286.77 (Sialfluofen)
1.00e6

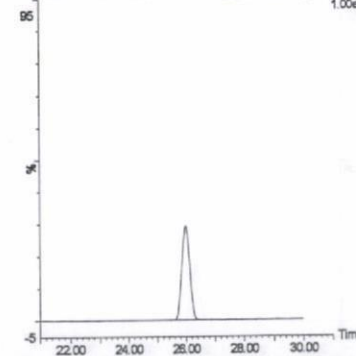
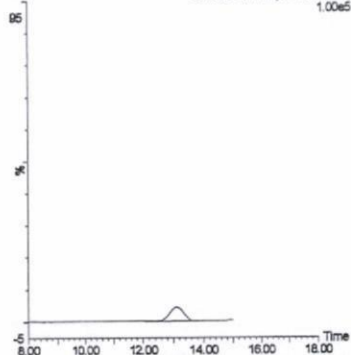


図 2-10. 標準品, 回収試料の MRM クロマトグラム (シラフルオフен®)

標準品 (0.05 ng)

X090219_06 Sm (Mn, 3x3)

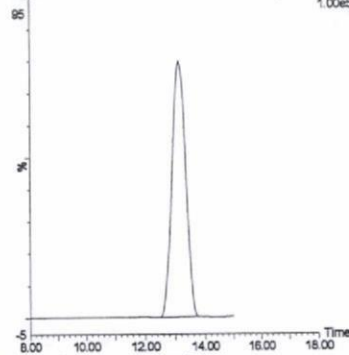
1: MRM of 23 Channels ES+
367.05 > 307.02 (Sulfentrazone)
1.00e5



標準品 (1 ng)

X090219_03 Sm (Mn, 3x3)

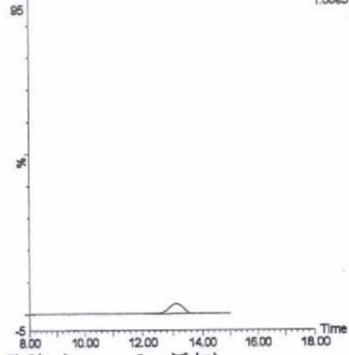
1: MRM of 23 Channels ES+
367.05 > 307.02 (Sulfentrazone)
1.00e5



筋肉 (0.01 mg/kg 添加)

X090219_18 Sm (Mn, 3x3)

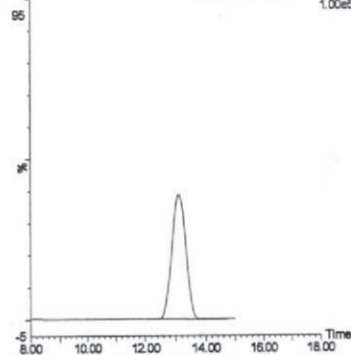
1: MRM of 23 Channels ES+
367.05 > 307.02 (Sulfentrazone)
1.00e5



筋肉 (0.5 mg/kg 添加)

X090219_13 Sm (Mn, 3x3)

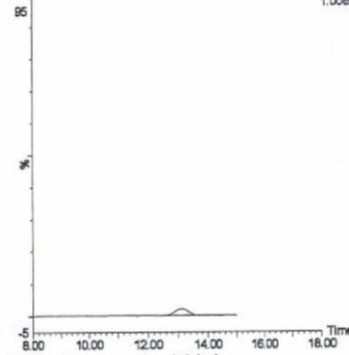
1: MRM of 23 Channels ES+
367.05 > 307.02 (Sulfentrazone)
1.00e5



脂肪 (0.01 mg/kg 添加)

X090217_26 Sm (Mn, 3x3)

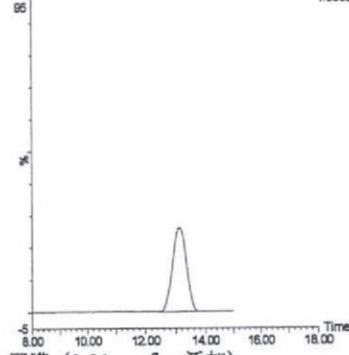
1: MRM of 23 Channels ES+
367.05 > 307.02 (Sulfentrazone)
1.00e5



脂肪 (0.5 mg/kg 添加)

X090217_21 Sm (Mn, 3x3)

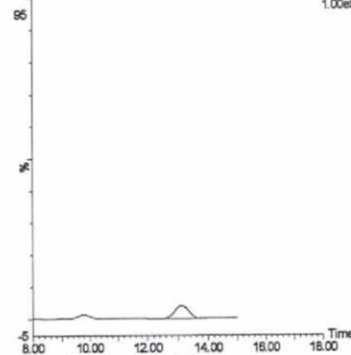
1: MRM of 23 Channels ES+
367.05 > 307.02 (Sulfentrazone)
1.00e5



肝臓 (0.01 mg/kg 添加)

X090219_41 Sm (Mn, 3x3)

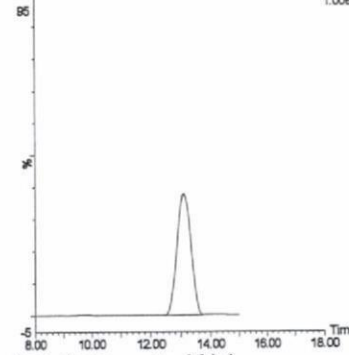
1: MRM of 23 Channels ES+
367.05 > 307.02 (Sulfentrazone)
1.00e5



肝臓 (0.5 mg/kg 添加)

X090219_36 Sm (Mn, 3x3)

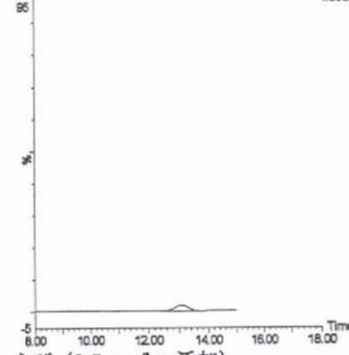
1: MRM of 23 Channels ES+
367.05 > 307.02 (Sulfentrazone)
1.00e5



腎臓 (0.01 mg/kg 添加)

X090224_83 Sm (Mn, 3x3)

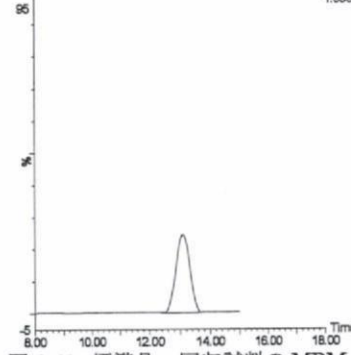
1: MRM of 23 Channels ES+
367.05 > 307.02 (Sulfentrazone)
1.00e5



腎臓 (0.5 mg/kg 添加)

X090224_78 Sm (Mn, 3x3)

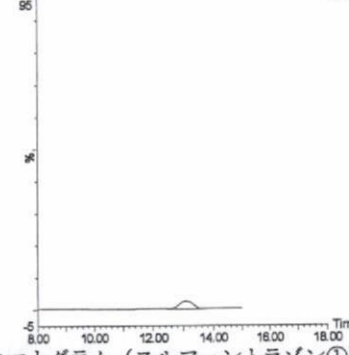
1: MRM of 23 Channels ES+
367.05 > 307.02 (Sulfentrazone)
1.00e5



えび (0.01 mg/kg 添加)

X090224_49 Sm (Mn, 3x3)

1: MRM of 23 Channels ES+
367.05 > 307.02 (Sulfentrazone)
1.00e5



えび (0.5 mg/kg 添加)

X090224_44 Sm (Mn, 3x3)

1: MRM of 23 Channels ES+
367.05 > 307.02 (Sulfentrazone)
1.00e5

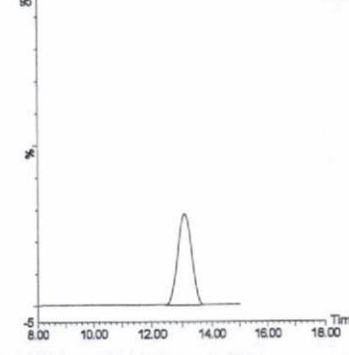
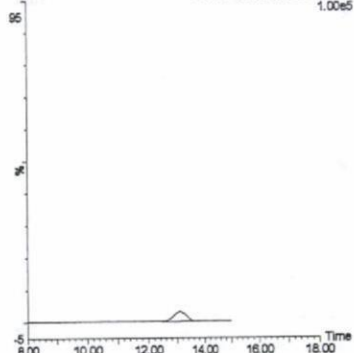


図 2-11. 標準品, 回収試料の MRM クロマトグラム (スルフェントラゾン①)

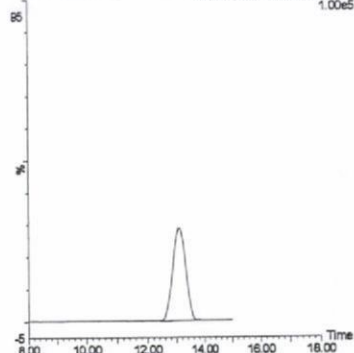
うなぎ (0.01 mg/kg 添加)

X090224_32 Sm (Mn, 3x3) 1: MRM of 23 Channels ES+
367.05 > 307.02 (Sulfentrazone) 1.00e5



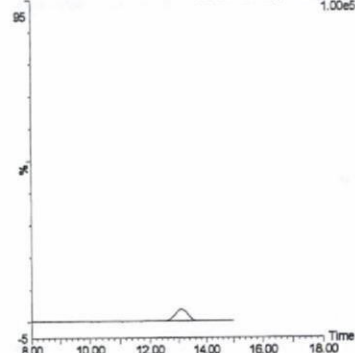
うなぎ (0.5 mg/kg 添加)

X090224_27 Sm (Mn, 3x3) 1: MRM of 23 Channels ES+
367.05 > 307.02 (Sulfentrazone) 1.00e5



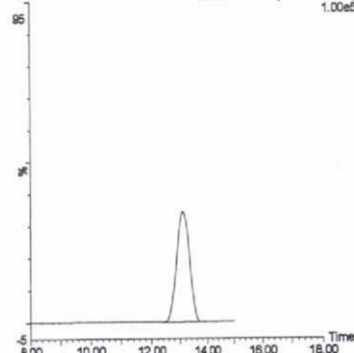
蛙 (0.01 mg/kg 添加)

X090216_56 Sm (Mn, 3x3) 1: MRM of 23 Channels ES+
367.05 > 307.02 (Sulfentrazone) 1.00e5



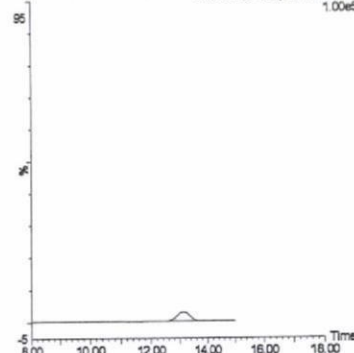
蛙 (0.5 mg/kg 添加)

X090219_53 Sm (Mn, 3x3) 1: MRM of 23 Channels ES+
367.05 > 307.02 (Sulfentrazone) 1.00e5



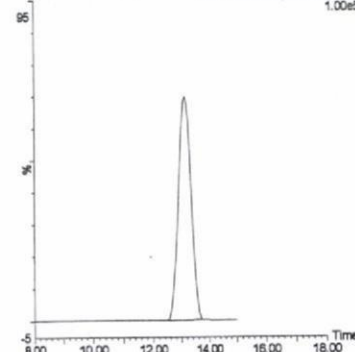
牛乳 (0.01 mg/kg 添加)

X090217_10 Sm (Mn, 3x3) 1: MRM of 23 Channels ES+
367.05 > 307.02 (Sulfentrazone) 1.00e5



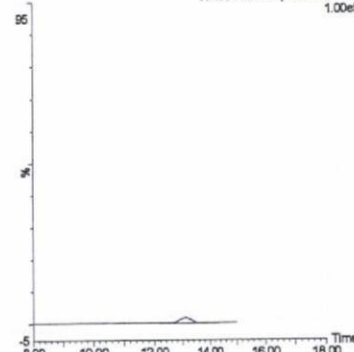
牛乳 (0.5 mg/kg 添加)

X090215_10 Sm (Mn, 3x3) 1: MRM of 23 Channels ES+
367.05 > 307.02 (Sulfentrazone) 1.00e5



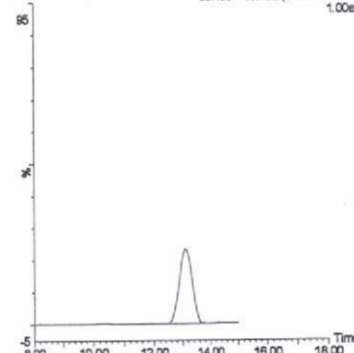
鶏卵 (0.01 mg/kg 添加)

X090224_15 Sm (Mn, 3x3) 1: MRM of 23 Channels ES+
367.05 > 307.02 (Sulfentrazone) 1.00e5



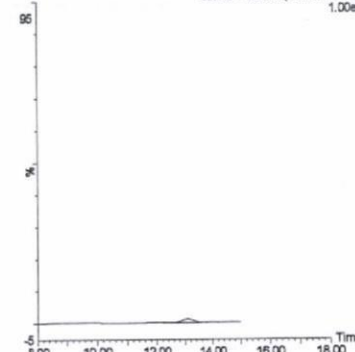
鶏卵 (0.5 mg/kg 添加)

X090224_10 Sm (Mn, 3x3) 1: MRM of 23 Channels ES+
367.05 > 307.02 (Sulfentrazone) 1.00e5



はちみつ (0.01 mg/kg 添加)

X090224_66 Sm (Mn, 3x3) 1: MRM of 23 Channels ES+
367.05 > 307.02 (Sulfentrazone) 1.00e5



はちみつ (0.5 mg/kg 添加)

X090224_61 Sm (Mn, 3x3) 1: MRM of 23 Channels ES+
367.05 > 307.02 (Sulfentrazone) 1.00e5

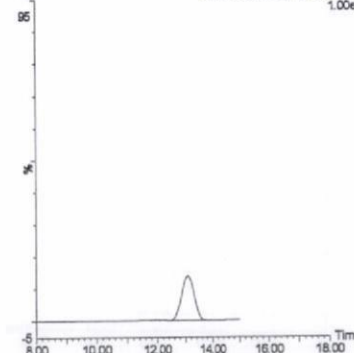
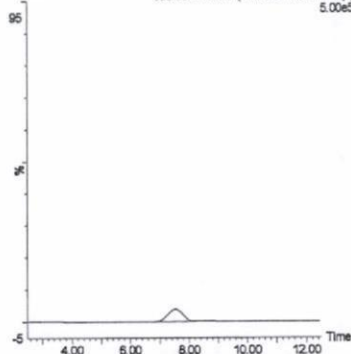


図 2-11. 標準品, 回収試料の MRM クロマトグラム (スルフェントラゾン[®])

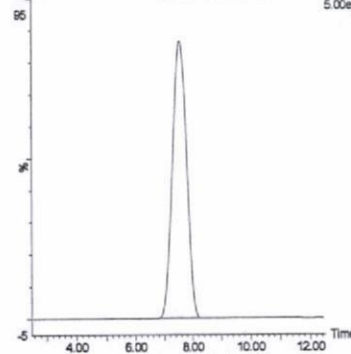
標準品 (0.05 ng)

X090219_06 Sm (Mn, 3x3) 1: MRM of 23 Channels ES+
388.06 > 166.57 (Thienuisulfuron-methyl)
5.00e5



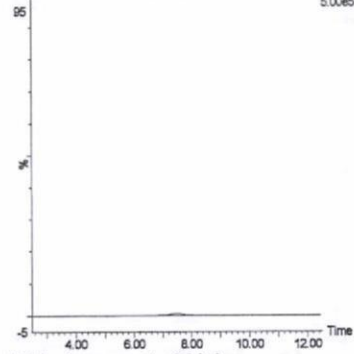
標準品 (1 ng)

X090219_03 Sm (Mn, 3x3) 1: MRM of 23 Channels ES+
388.06 > 166.57 (Thienuisulfuron-methyl)
5.00e5



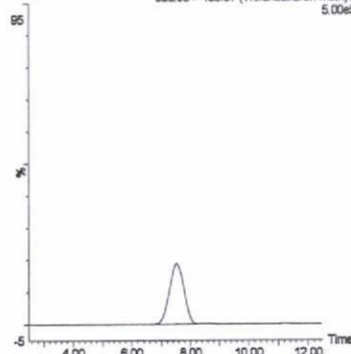
筋肉 (0.01 mg/kg 添加)

X090219_18 Sm (Mn, 3x3) 1: MRM of 23 Channels ES+
388.06 > 166.57 (Thienuisulfuron-methyl)
5.00e5



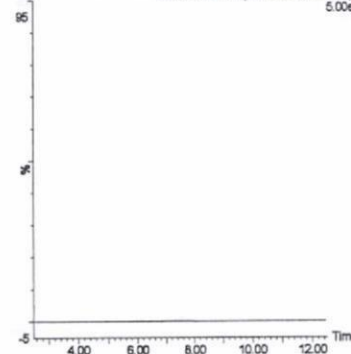
筋肉 (0.5 mg/kg 添加)

X090219_13 Sm (Mn, 3x3) 1: MRM of 23 Channels ES+
388.06 > 166.57 (Thienuisulfuron-methyl)
5.00e5



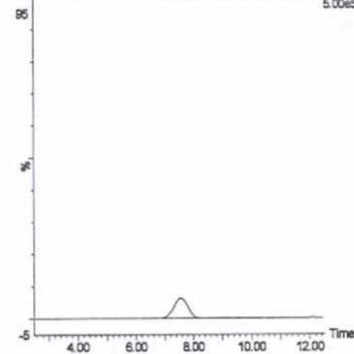
脂肪 (0.01 mg/kg 添加)

X090217_26 Sm (Mn, 3x3) 1: MRM of 23 Channels ES+
388.06 > 166.57 (Thienuisulfuron-methyl)
5.00e5



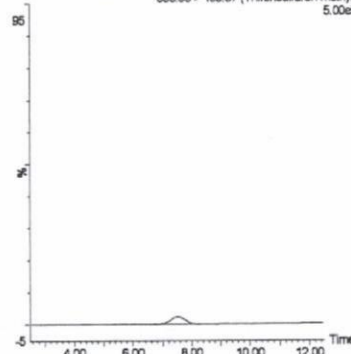
脂肪 (0.5 mg/kg 添加)

X090217_21 Sm (Mn, 3x3) 1: MRM of 23 Channels ES+
388.06 > 166.57 (Thienuisulfuron-methyl)
5.00e5



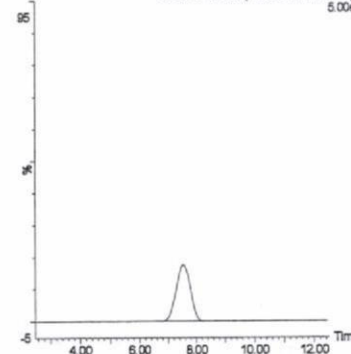
肝臓 (0.01 mg/kg 添加)

X090219_41 Sm (Mn, 3x3) 1: MRM of 23 Channels ES+
388.06 > 166.57 (Thienuisulfuron-methyl)
5.00e5



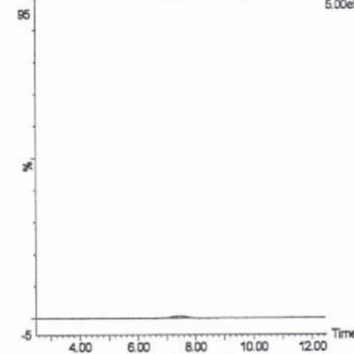
肝臓 (0.5 mg/kg 添加)

X090219_36 Sm (Mn, 3x3) 1: MRM of 23 Channels ES+
388.06 > 166.57 (Thienuisulfuron-methyl)
5.00e5



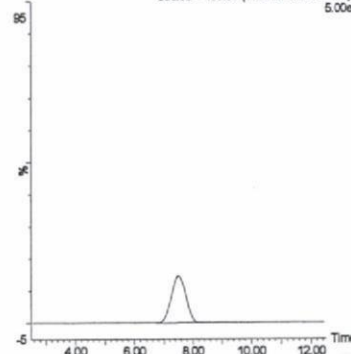
腎臓 (0.01 mg/kg 添加)

X090224_63 Sm (Mn, 3x3) 1: MRM of 23 Channels ES+
388.06 > 166.57 (Thienuisulfuron-methyl)
5.00e5



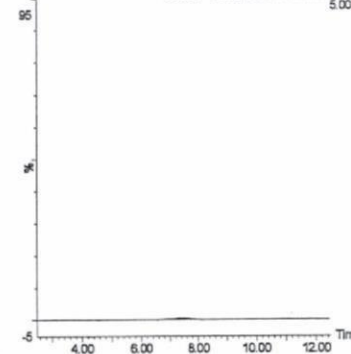
腎臓 (0.5 mg/kg 添加)

X090224_78 Sm (Mn, 3x3) 1: MRM of 23 Channels ES+
388.06 > 166.57 (Thienuisulfuron-methyl)
5.00e5



えび (0.01 mg/kg 添加)

X090224_49 Sm (Mn, 3x3) 1: MRM of 23 Channels ES+
388.06 > 166.57 (Thienuisulfuron-methyl)
5.00e5



えび (0.5 mg/kg 添加)

X090224_44 Sm (Mn, 3x3) 1: MRM of 23 Channels ES+
388.06 > 166.57 (Thienuisulfuron-methyl)
5.00e5

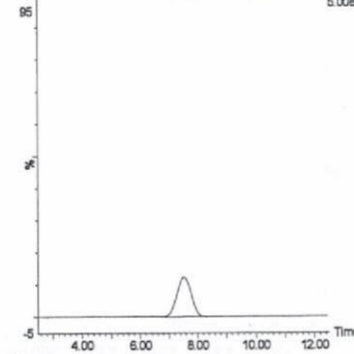
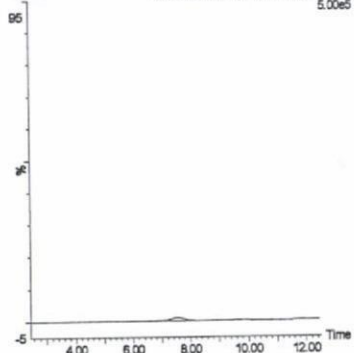


図 2-12. 標準品, 回収試料の MRM クロマトグラム (チフェンスルフロンメチル①)

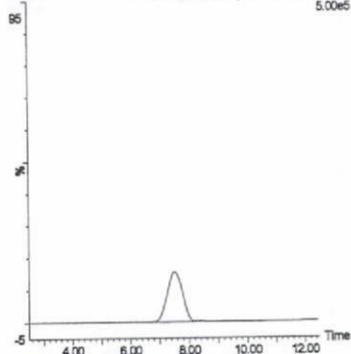
うなぎ (0.01 mg/kg 添加)

X090224_32 Sm (Mn, 3x3) 1: MRM of 23 Channels ES+
388.06 > 166.57 (Thifensulfuron-methyl) 5.00e5



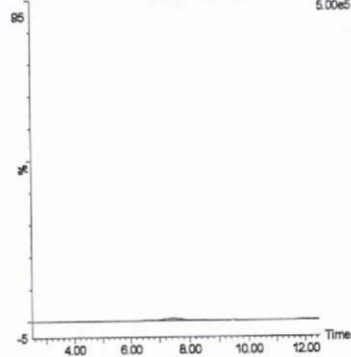
うなぎ (0.5 mg/kg 添加)

X090224_27 Sm (Mn, 3x3) 1: MRM of 23 Channels ES+
388.06 > 166.57 (Thifensulfuron-methyl) 5.00e5



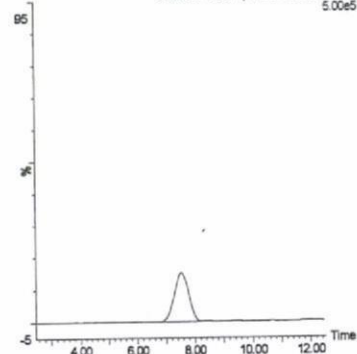
鮭 (0.01 mg/kg 添加)

X090219_58 Sm (Mn, 3x3) 1: MRM of 23 Channels ES+
388.06 > 166.57 (Thifensulfuron-methyl) 5.00e5



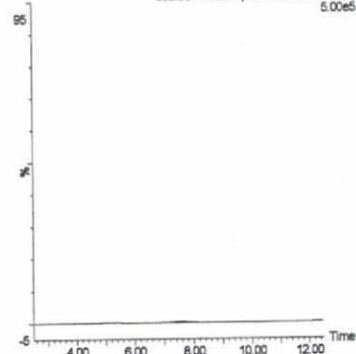
鮭 (0.5 mg/kg 添加)

X090219_53 Sm (Mn, 3x3) 1: MRM of 23 Channels ES+
388.06 > 166.57 (Thifensulfuron-methyl) 5.00e5



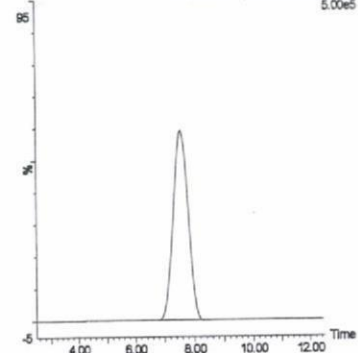
牛乳 (0.01 mg/kg 添加)

X090217_10 Sm (Mn, 3x3) 1: MRM of 23 Channels ES+
388.06 > 166.57 (Thifensulfuron-methyl) 5.00e5



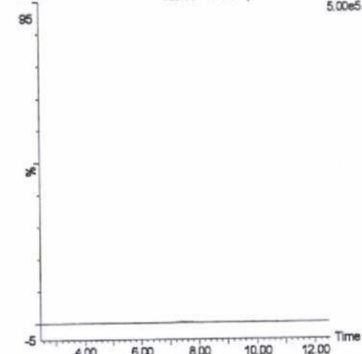
牛乳 (0.5 mg/kg 添加)

X090215_10 Sm (Mn, 3x3) 1: MRM of 23 Channels ES+
388.06 > 166.57 (Thifensulfuron-methyl) 5.00e5



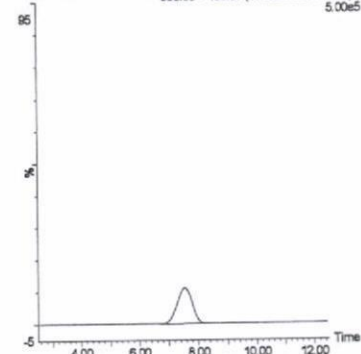
鶏卵 (0.01 mg/kg 添加)

X090224_15 Sm (Mn, 3x3) 1: MRM of 23 Channels ES+
388.06 > 166.57 (Thifensulfuron-methyl) 5.00e5



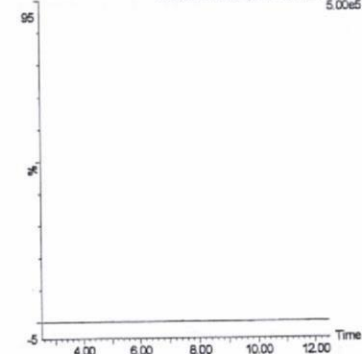
鶏卵 (0.5 mg/kg 添加)

X090224_10 Sm (Mn, 3x3) 1: MRM of 23 Channels ES+
388.06 > 166.57 (Thifensulfuron-methyl) 5.00e5



はちみつ (0.01 mg/kg 添加)

X090224_66 Sm (Mn, 3x3) 1: MRM of 23 Channels ES+
388.06 > 166.57 (Thifensulfuron-methyl) 5.00e5



はちみつ (0.5 mg/kg 添加)

X090224_61 Sm (Mn, 3x3) 1: MRM of 23 Channels ES+
388.06 > 166.57 (Thifensulfuron-methyl) 5.00e5

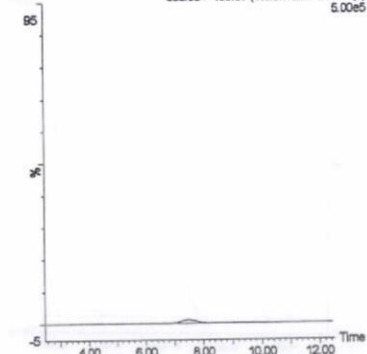
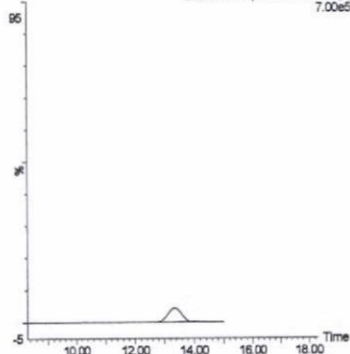


図 2-12. 標準品, 回収試料の MRM クロマトグラム (チフェンスルフロメチル[®])

標準品 (0.05 ng)

X090219_06 Sm (Mn, 3x3)

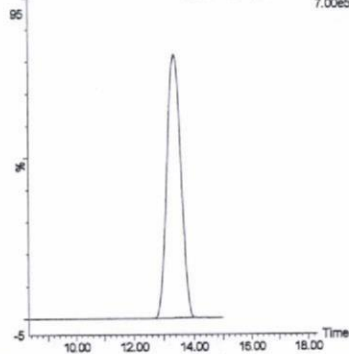
1: MRM of 23 Channels ES+
230.9 > 88.4 (Demeton-S-methyl)
7.00e5



標準品 (1 ng)

X090219_03 Sm (Mn, 3x3)

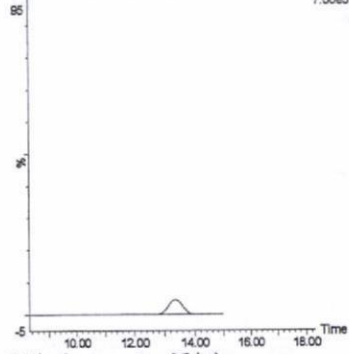
1: MRM of 23 Channels ES+
230.9 > 88.4 (Demeton-S-methyl)
7.00e5



筋肉 (0.01 mg/kg 添加)

X090219_18 Sm (Mn, 3x3)

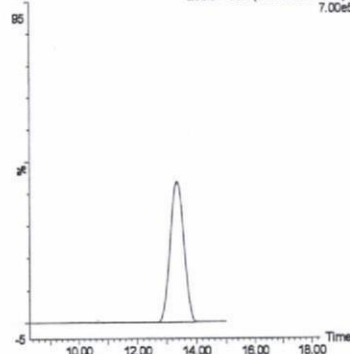
1: MRM of 23 Channels ES+
230.9 > 88.4 (Demeton-S-methyl)
7.00e5



筋肉 (0.5 mg/kg 添加)

X090219_13 Sm (Mn, 3x3)

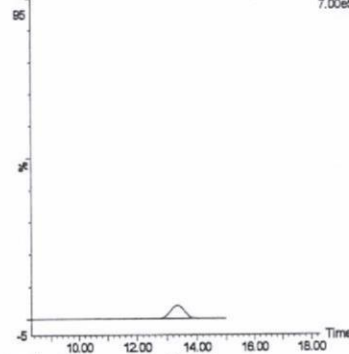
1: MRM of 23 Channels ES+
230.9 > 88.4 (Demeton-S-methyl)
7.00e5



脂肪 (0.01 mg/kg 添加)

X090217_26 Sm (Mn, 3x3)

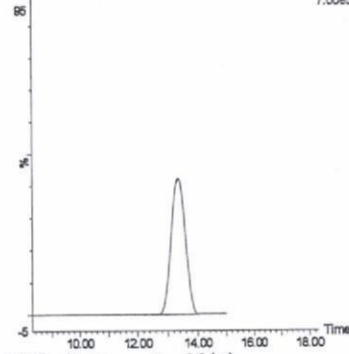
1: MRM of 23 Channels ES+
230.9 > 88.4 (Demeton-S-methyl)
7.00e5



脂肪 (0.5 mg/kg 添加)

X090217_21 Sm (Mn, 3x3)

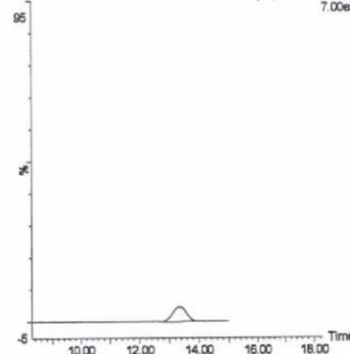
1: MRM of 23 Channels ES+
230.9 > 88.4 (Demeton-S-methyl)
7.00e5



肝臓 (0.01 mg/kg 添加)

X090219_41 Sm (Mn, 3x3)

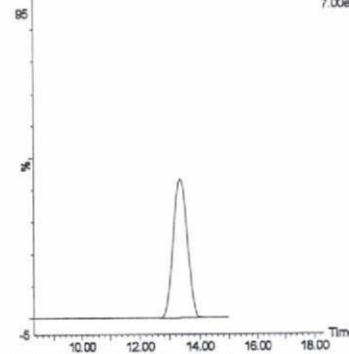
1: MRM of 23 Channels ES+
230.9 > 88.4 (Demeton-S-methyl)
7.00e5



肝臓 (0.5 mg/kg 添加)

X090219_36 Sm (Mn, 3x3)

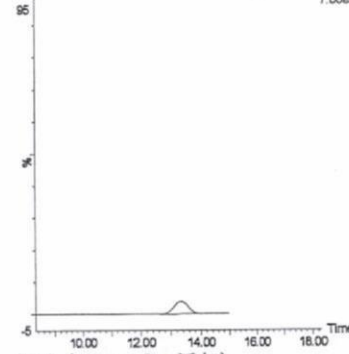
1: MRM of 23 Channels ES+
230.9 > 88.4 (Demeton-S-methyl)
7.00e5



腎臓 (0.01 mg/kg 添加)

X090224_63 Sm (Mn, 3x3)

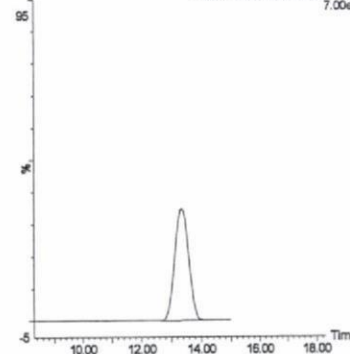
1: MRM of 23 Channels ES+
230.9 > 88.4 (Demeton-S-methyl)
7.00e5



腎臓 (0.5 mg/kg 添加)

X090224_76 Sm (Mn, 3x3)

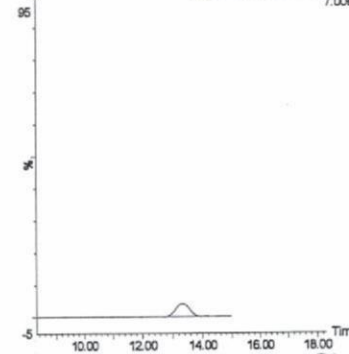
1: MRM of 23 Channels ES+
230.9 > 88.4 (Demeton-S-methyl)
7.00e5



えび (0.01 mg/kg 添加)

X090224_49 Sm (Mn, 3x3)

1: MRM of 23 Channels ES+
230.9 > 88.4 (Demeton-S-methyl)
7.00e5



えび (0.5 mg/kg 添加)

X090224_44 Sm (Mn, 3x3)

1: MRM of 23 Channels ES+
230.9 > 88.4 (Demeton-S-methyl)
7.00e5

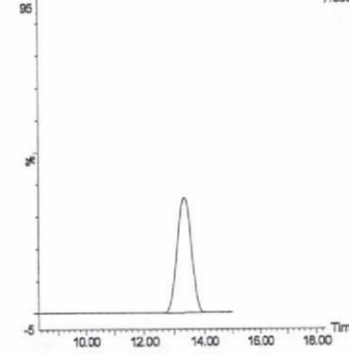
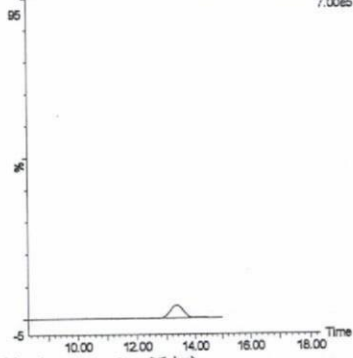


図 2-13. 標準品, 回収試料の MRM クロマトグラム (デメトン-S-メチル①)

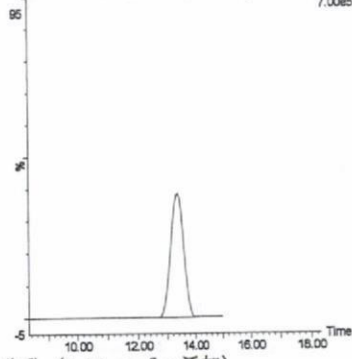
うなぎ (0.01 mg/kg 添加)

X090224_32 Sm (Mn, 3x3) 1: MRM of 23 Channels ES+
230.9 > 88.4 (Demeton-S-methyl)
7.00e5



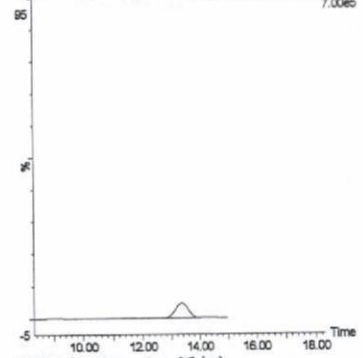
うなぎ (0.5 mg/kg 添加)

X090224_27 Sm (Mn, 3x3) 1: MRM of 23 Channels ES+
230.9 > 88.4 (Demeton-S-methyl)
7.00e5



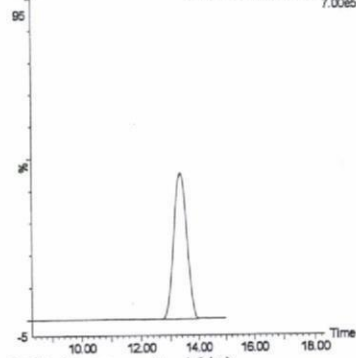
鮭 (0.01 mg/kg 添加)

X090219_58 Sm (Mn, 3x3) 1: MRM of 23 Channels ES+
230.9 > 88.4 (Demeton-S-methyl)
7.00e5



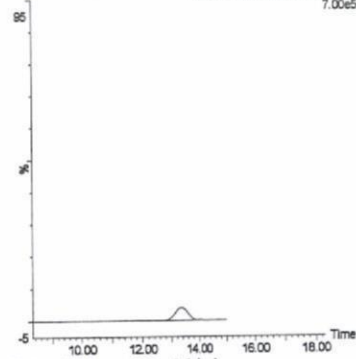
鮭 (0.5 mg/kg 添加)

X090219_53 Sm (Mn, 3x3) 1: MRM of 23 Channels ES+
230.9 > 88.4 (Demeton-S-methyl)
7.00e5



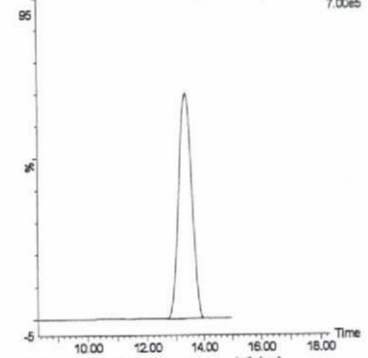
牛乳 (0.01 mg/kg 添加)

X090217_10 Sm (Mn, 3x3) 1: MRM of 23 Channels ES+
230.9 > 88.4 (Demeton-S-methyl)
7.00e5



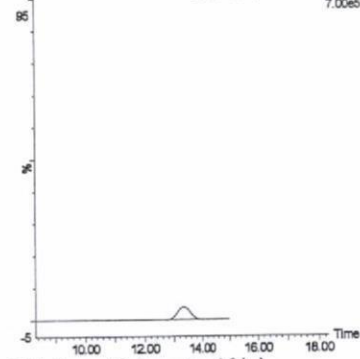
牛乳 (0.5 mg/kg 添加)

X090215_10 Sm (Mn, 3x3) 1: MRM of 23 Channels ES+
230.9 > 88.4 (Demeton-S-methyl)
7.00e5



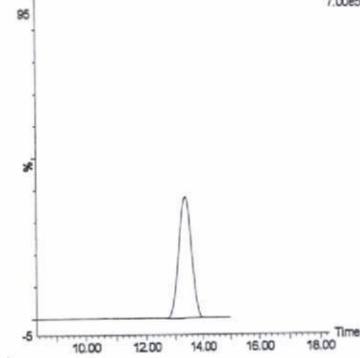
鶏卵 (0.01 mg/kg 添加)

X090224_15 Sm (Mn, 3x3) 1: MRM of 23 Channels ES+
230.9 > 88.4 (Demeton-S-methyl)
7.00e5



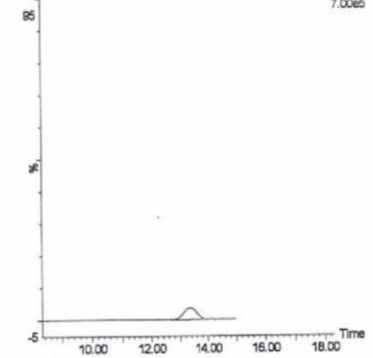
鶏卵 (0.5 mg/kg 添加)

X090224_10 Sm (Mn, 3x3) 1: MRM of 23 Channels ES+
230.9 > 88.4 (Demeton-S-methyl)
7.00e5



はちみつ (0.01 mg/kg 添加)

X090224_66 Sm (Mn, 3x3) 1: MRM of 23 Channels ES+
230.9 > 88.4 (Demeton-S-methyl)
7.00e5



はちみつ (0.5 mg/kg 添加)

X090224_61 Sm (Mn, 3x3) 1: MRM of 23 Channels ES+
230.9 > 88.4 (Demeton-S-methyl)
7.00e5

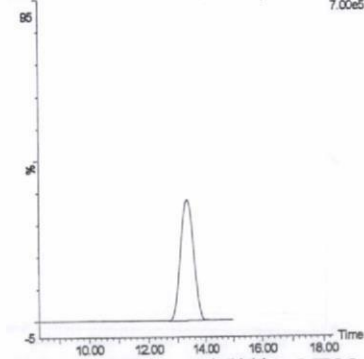


図 2-13. 標準品, 回収試料の MRM クロマトグラム (デメトン-S-メチル②)

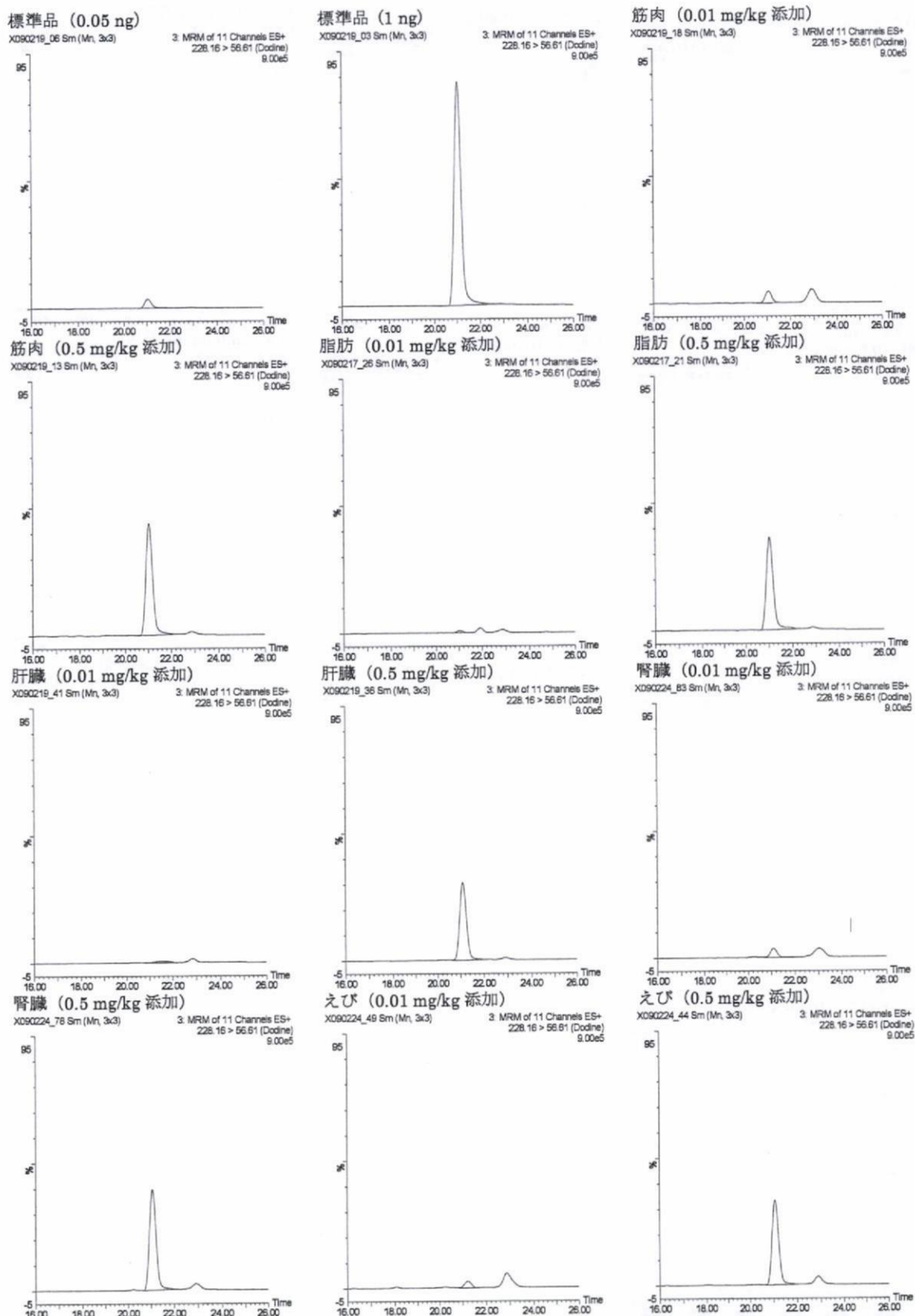
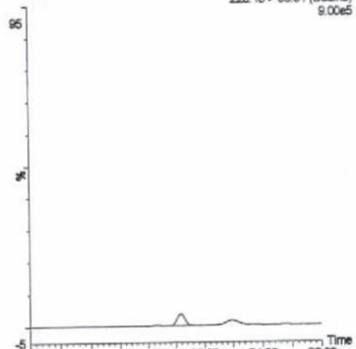


図 2-14. 標準品, 回収試料のMRMクロマトグラム (ドジン①)

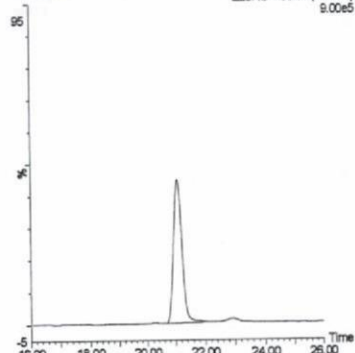
うなぎ (0.01 mg/kg 添加)

X090224_32 Sm (Mn, 3x3) 3 MRM of 11 Channels ES+
228.16 > 56.61 (Dodine) 9.00e5



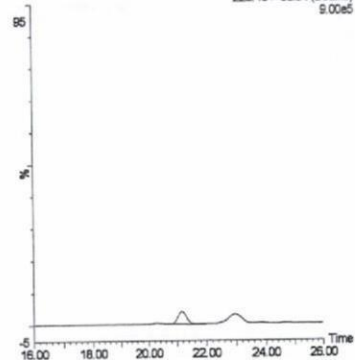
うなぎ (0.5 mg/kg 添加)

X090224_27 Sm (Mn, 3x3) 3 MRM of 11 Channels ES+
228.16 > 56.61 (Dodine) 9.00e5



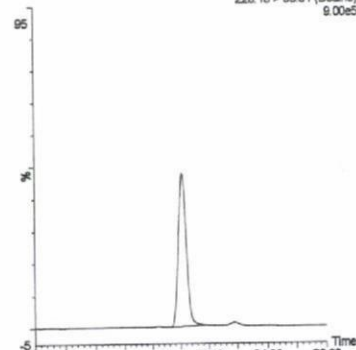
鮭 (0.01 mg/kg 添加)

X090219_58 Sm (Mn, 3x3) 3 MRM of 11 Channels ES+
228.16 > 56.61 (Dodine) 9.00e5



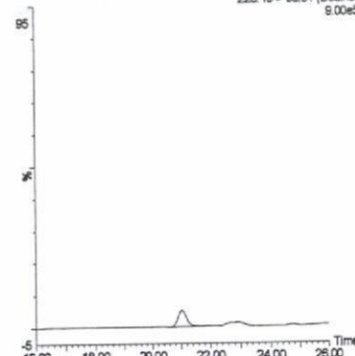
鮭 (0.5 mg/kg 添加)

X090219_53 Sm (Mn, 3x3) 3 MRM of 11 Channels ES+
228.16 > 56.61 (Dodine) 9.00e5



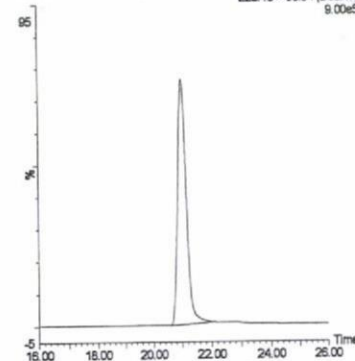
牛乳 (0.01 mg/kg 添加)

X090217_10 Sm (Mn, 3x3) 3 MRM of 11 Channels ES+
228.16 > 56.61 (Dodine) 9.00e5



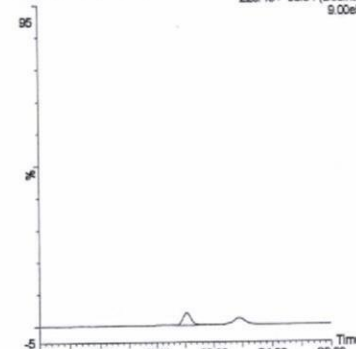
牛乳 (0.5 mg/kg 添加)

X090215_10 Sm (Mn, 3x3) 3 MRM of 11 Channels ES+
228.16 > 56.61 (Dodine) 9.00e5



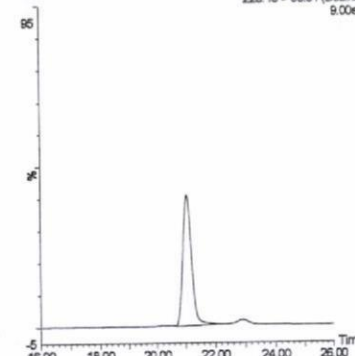
鶏卵 (0.01 mg/kg 添加)

X090224_15 Sm (Mn, 3x3) 3 MRM of 11 Channels ES+
228.16 > 56.61 (Dodine) 9.00e5



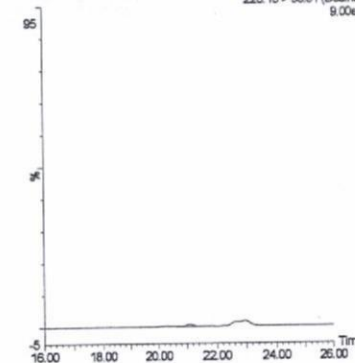
鶏卵 (0.5 mg/kg 添加)

X090224_10 Sm (Mn, 3x3) 3 MRM of 11 Channels ES+
228.16 > 56.61 (Dodine) 9.00e5



はちみつ (0.01 mg/kg 添加)

X090224_66 Sm (Mn, 3x3) 3 MRM of 11 Channels ES+
228.16 > 56.61 (Dodine) 9.00e5



はちみつ (0.5 mg/kg 添加)

X090224_61 Sm (Mn, 3x3) 3 MRM of 11 Channels ES+
228.16 > 56.61 (Dodine) 9.00e5

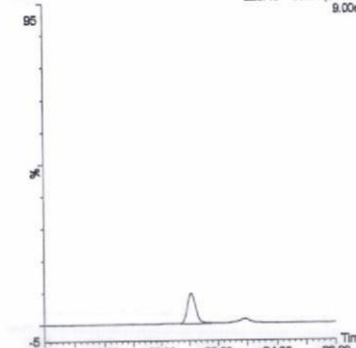


図 2-14. 標準品, 回収試料のMRMクロマトグラム (ドジン②)

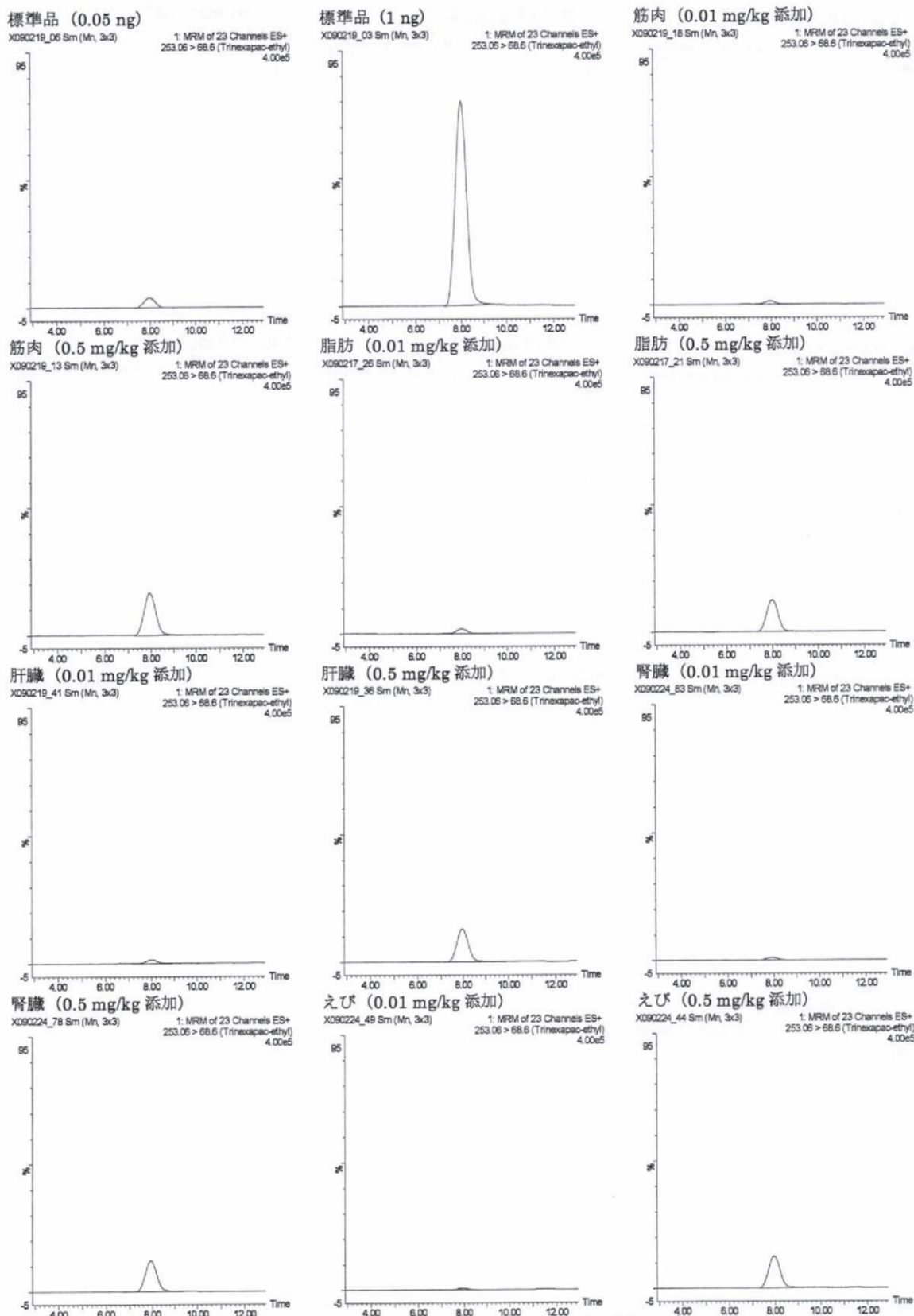
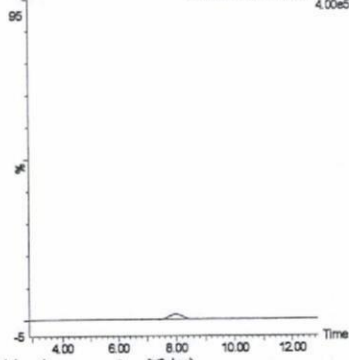


図 2-15. 標準品, 回収試料の MRM クロマトグラム (トリネキサバックエチル①)

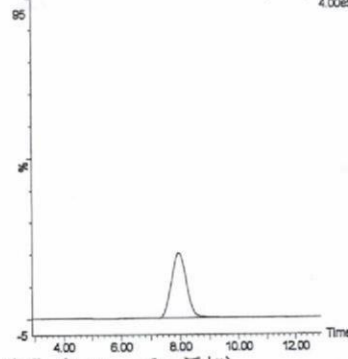
うなぎ (0.01 mg/kg 添加)

X090224_32 Sm (Mn, 3x3) 1: MRM of 23 Channels ES+
253.06 > 68.6 (Trinecapo-ethyl) 4.00e5



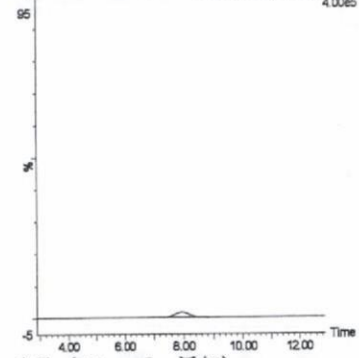
うなぎ (0.5 mg/kg 添加)

X090224_27 Sm (Mn, 3x3) 1: MRM of 23 Channels ES+
253.06 > 68.6 (Trinecapo-ethyl) 4.00e5



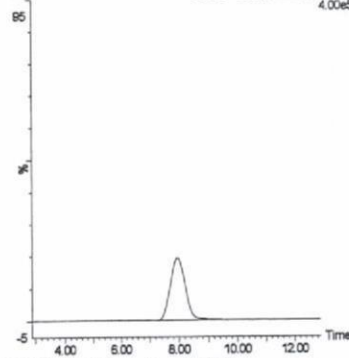
鮭 (0.01 mg/kg 添加)

X090219_58 Sm (Mn, 3x3) 1: MRM of 23 Channels ES+
253.06 > 68.6 (Trinecapo-ethyl) 4.00e5



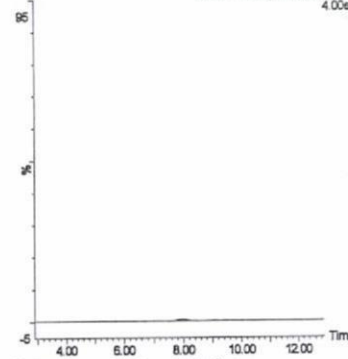
鮭 (0.5 mg/kg 添加)

X090219_53 Sm (Mn, 3x3) 1: MRM of 23 Channels ES+
253.06 > 68.6 (Trinecapo-ethyl) 4.00e5



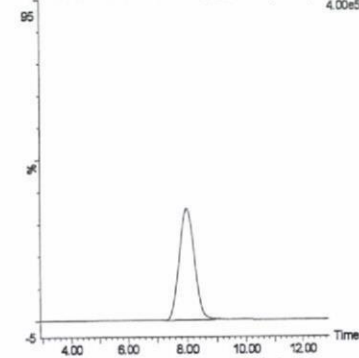
牛乳 (0.01 mg/kg 添加)

X090217_10 Sm (Mn, 3x3) 1: MRM of 23 Channels ES+
253.06 > 68.6 (Trinecapo-ethyl) 4.00e5



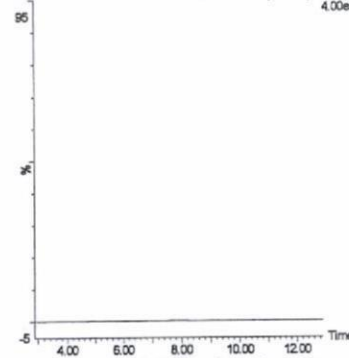
牛乳 (0.5 mg/kg 添加)

X090215_10 Sm (Mn, 3x3) 1: MRM of 23 Channels ES+
253.06 > 68.6 (Trinecapo-ethyl) 4.00e5



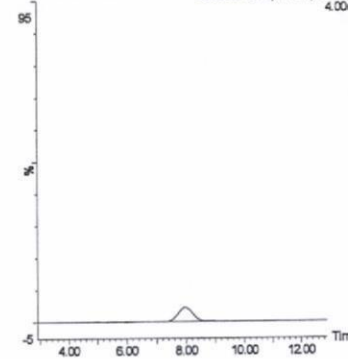
鶏卵 (0.01 mg/kg 添加)

X090224_15 Sm (Mn, 3x3) 1: MRM of 23 Channels ES+
253.06 > 68.6 (Trinecapo-ethyl) 4.00e5



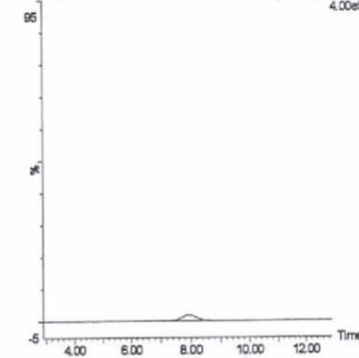
鶏卵 (0.5 mg/kg 添加)

X090224_10 Sm (Mn, 3x3) 1: MRM of 23 Channels ES+
253.06 > 68.6 (Trinecapo-ethyl) 4.00e5



はちみつ (0.01 mg/kg 添加)

X090224_66 Sm (Mn, 3x3) 1: MRM of 23 Channels ES+
253.06 > 68.6 (Trinecapo-ethyl) 4.00e5



はちみつ (0.5 mg/kg 添加)

X090224_61 Sm (Mn, 3x3) 1: MRM of 23 Channels ES+
253.06 > 68.6 (Trinecapo-ethyl) 4.00e5

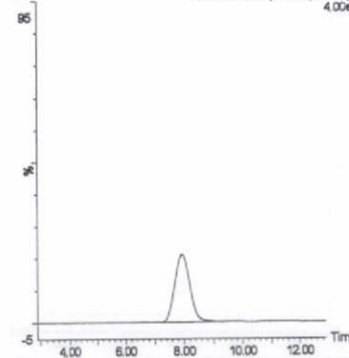


図 2-15. 標準品, 回収試料のMRM クロマトグラム (トリネキサパックエチル②)