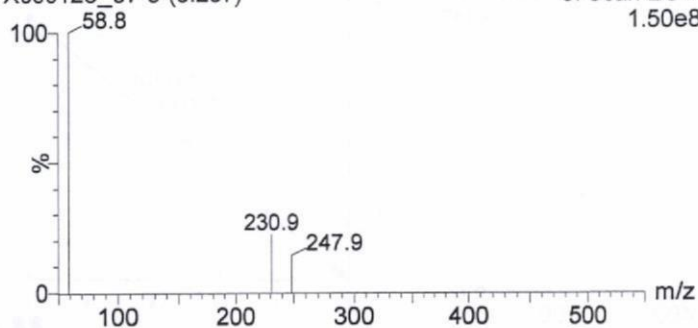
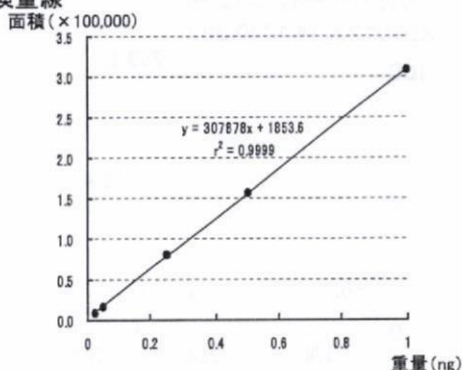


プリカーサーイオン (正モード)
X090128_07 9 (0.267)



検量線

5: Scan ES+
1.50e8



プロダクトイオン (プリカーサーイオン; m/z=230.9, 正モード)

X090128_10 10 (0.286)

5: Daughters of 231ES+
3.56e7

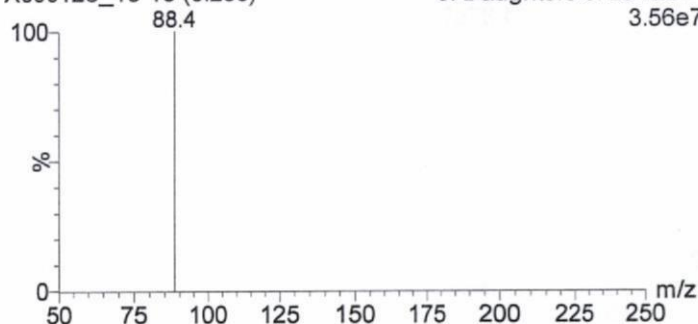
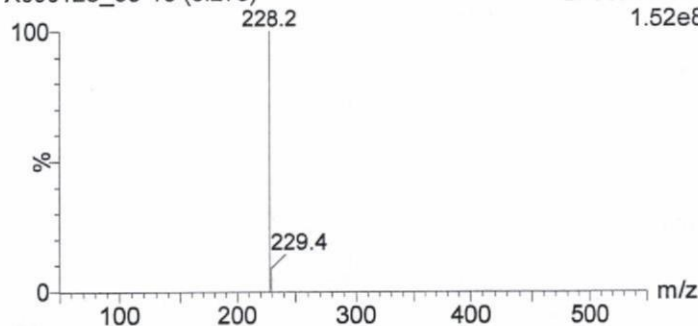


図 1-13. マススペクトル及び検量線 (LC-MS/MS; デメトン-S-メチル)

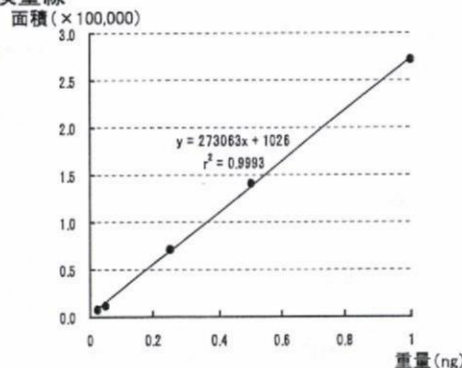
プリカーサーイオン (正モード)

X090128_09 10 (0.275)

2: Scan ES+
1.52e8



検量線



プロダクトイオン (プリカーサーイオン; m/z=228.2, 正モード)

X090128_12 10 (0.279)

3: Daughters of 228ES+
8.57e6

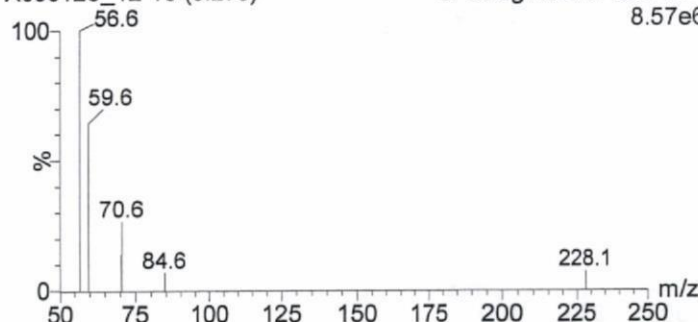
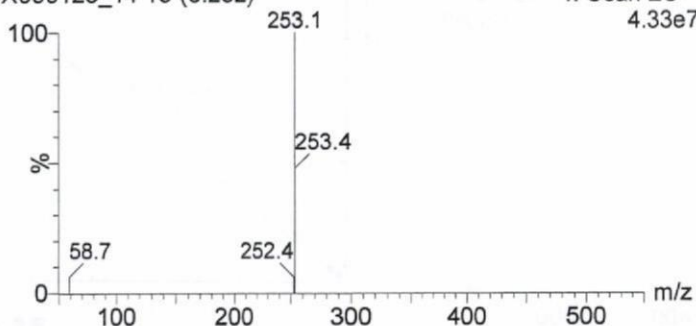
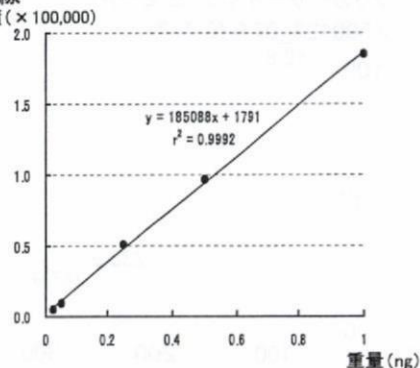


図 1-14. マススペクトル及び検量線 (LC-MS/MS; ドジ)

プリカーサーイオン (正モード)
X090123_14 10 (0.282)



検量線
面積 (× 100,000)
4: Scan ES+
4.33e7



プロダクトイオン (プリカーサーイオン; m/z=253.1, 正モード)

X090123_39 8 (0.245)

4: Daughters of 253ES+
1.87e7

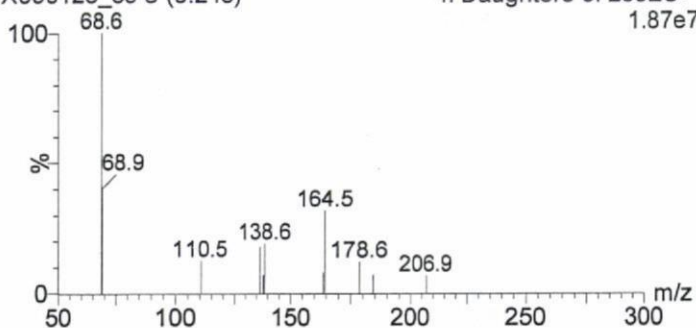
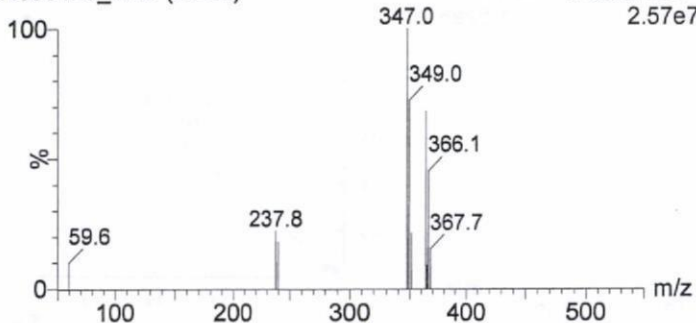
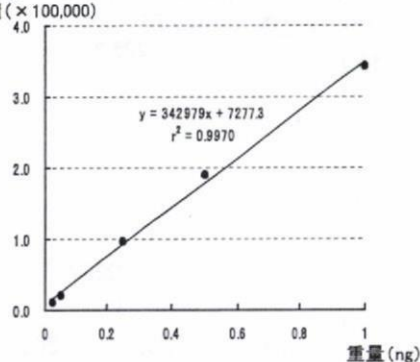


図 1-15. マスペクトル及び検量線 (LC-MS/MS; トリネキサパックエチル)

プリカーサーイオン (正モード)
X090123_15 8 (0.245)



検量線
面積 (× 100,000)
4: Scan ES+
2.57e7



プロダクトイオン (プリカーサーイオン; m/z=347.0, 正モード)

X090123_40 9 (0.267)

5: Daughters of 347ES+
2.13e7

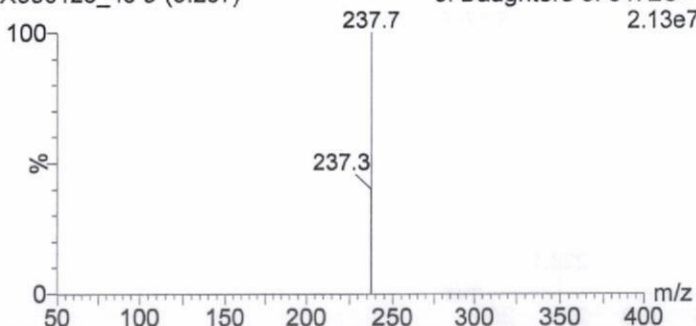
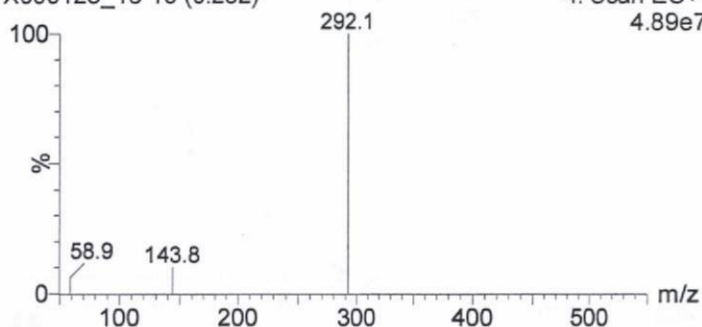
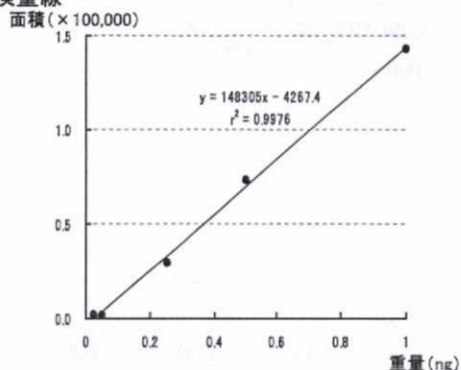


図 1-16. マスペクトル及び検量線 (LC-MS/MS; トリルフルアニド)

プリカーサーイオン(正モード)
X090123_16 10 (0.282)



検量線



プロダクトイオン(プリカーサーイオン; m/z=292.1, 正モード)
X090123_41 11 (0.305) Cm (11:12) 5: Daughters of 292ES+
3.36e7

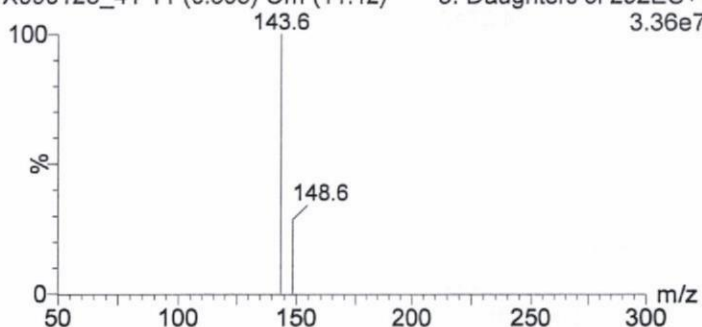
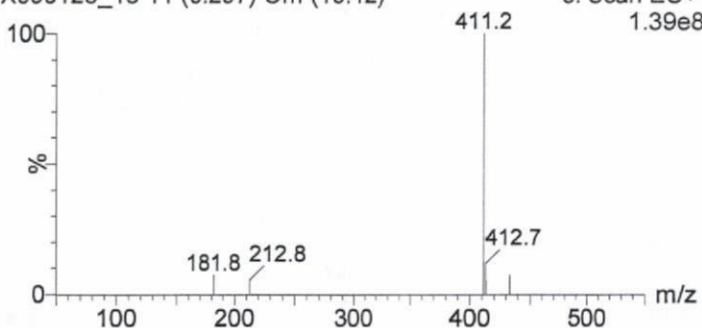
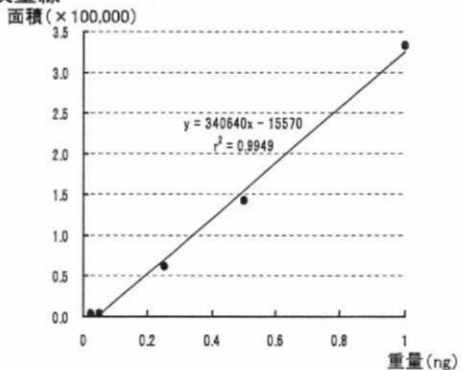


図 1-17. マススペクトル及び検量線(LC-MS/MS; ナブタラム)

プリカーサーイオン(正モード)
X090123_18 11 (0.297) Cm (10:12)



検量線



プロダクトイオン(プリカーサーイオン; m/z=411.2, 正モード)
X090123_42 10 (0.282) Cm (9:12) 4: Daughters of 411ES+
8.07e7

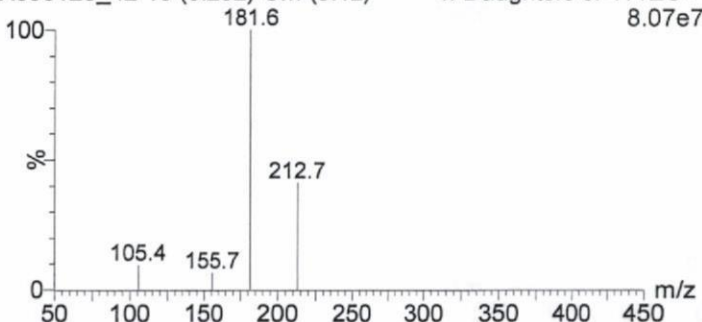
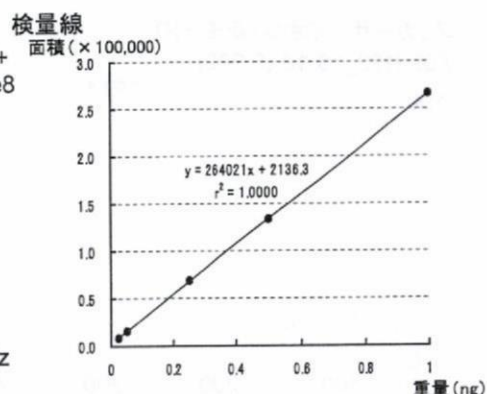
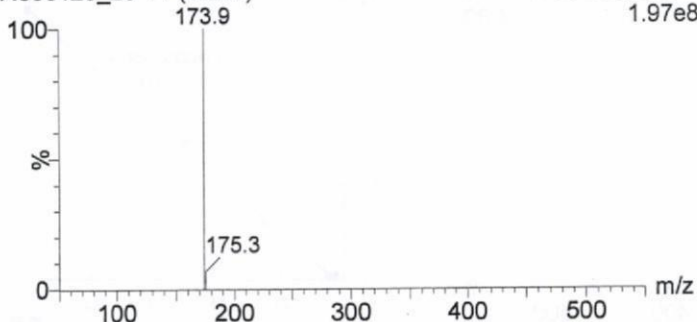


図 1-18. マススペクトル及び検量線(LC-MS/MS; ニコスルフロソ)

プリカーサーイオン (正モード)
X090123_20 11 (0.294)



プロダクトイオン (プリカーサーイオン; m/z=173.9, 正モード)

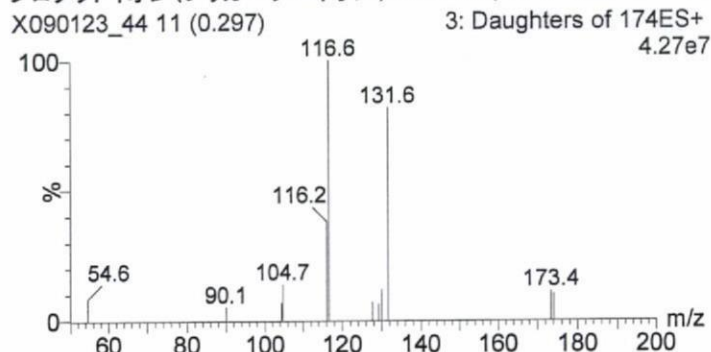
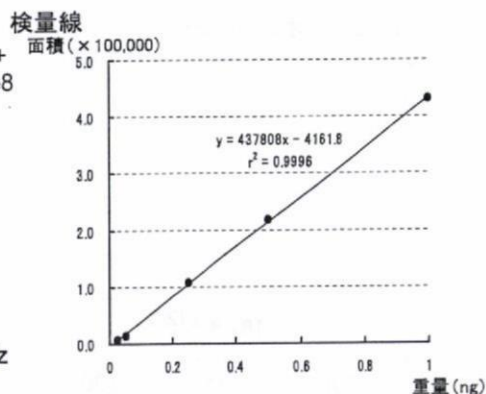
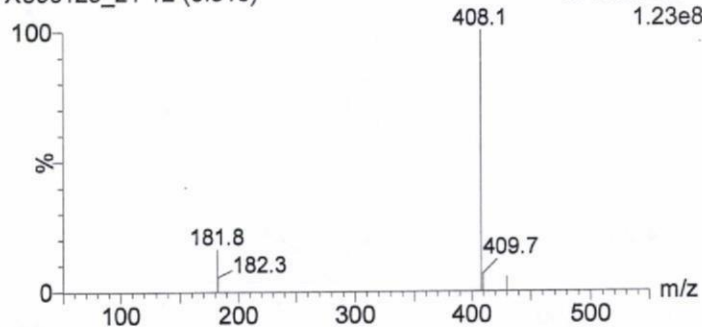


図 1-19. マスペクトル及び検量線 (LC-MS/MS; ピロキロン)

プリカーサーイオン (正モード)
X090123_21 12 (0.316)



プロダクトイオン (プリカーサーイオン; m/z=408.1, 正モード)

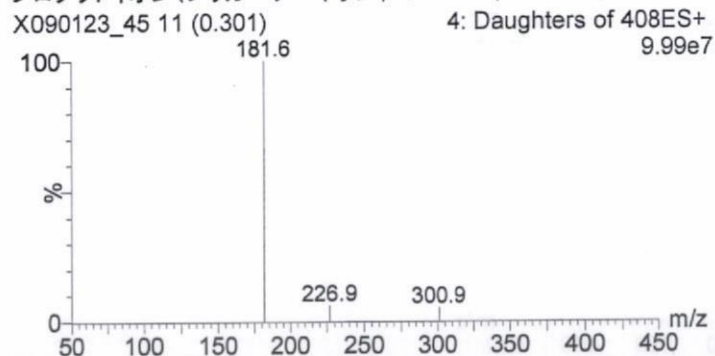
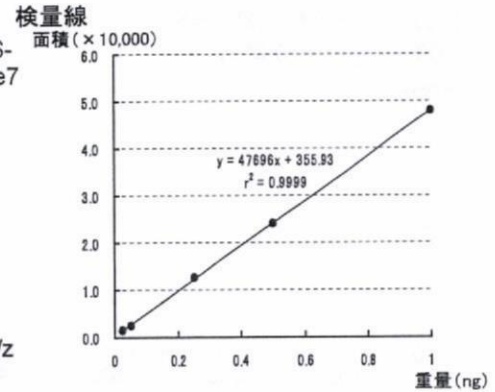
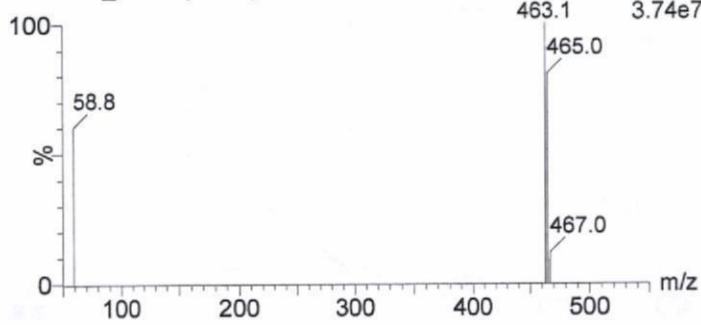


図 1-20. マスペクトル及び検量線 (LC-MS/MS; フラザスルフロン)

プリカーサーイオン(負モード)
X090123_59 10 (0.279)



プロダクトイオン(プリカーサーイオン; m/z=463.1, 負モード)
X090126_18 10 (0.282)

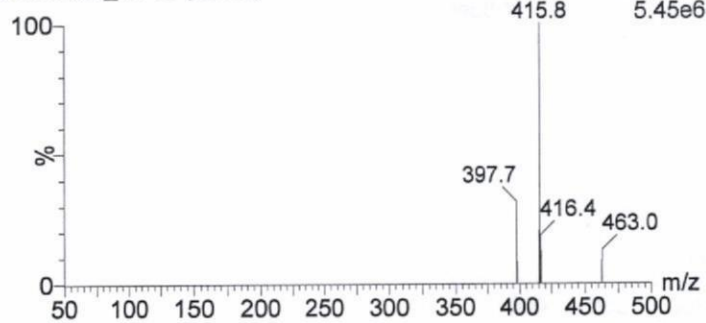
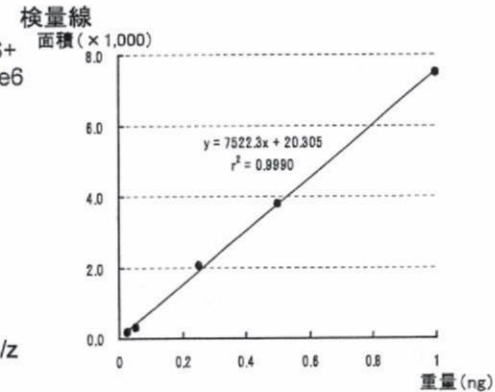
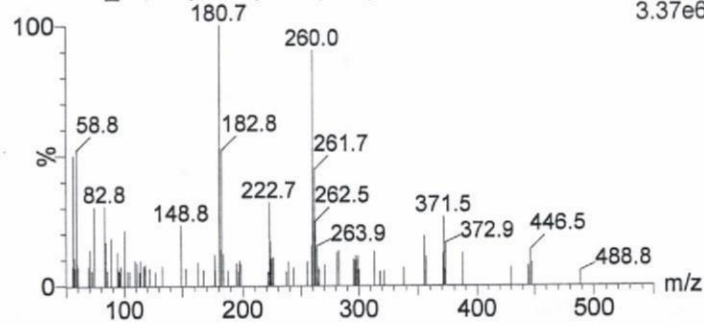


図 1-21. マスペクトル及び検量線(LC-MS/MS;フルアジナム)

プリカーサーイオン(正モード)
X090123_23 11 (0.290) Cm (9:11)



プロダクトイオン(プリカーサーイオン; m/z=260.0, 正モード)
X090126_40 7 (0.227) Cm (6:8)

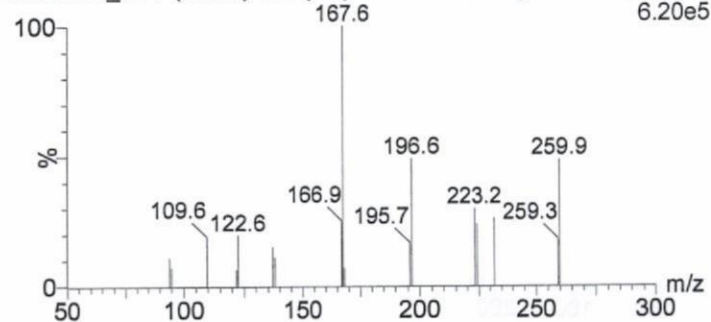
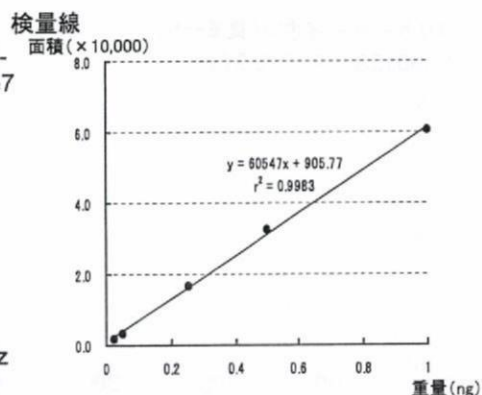
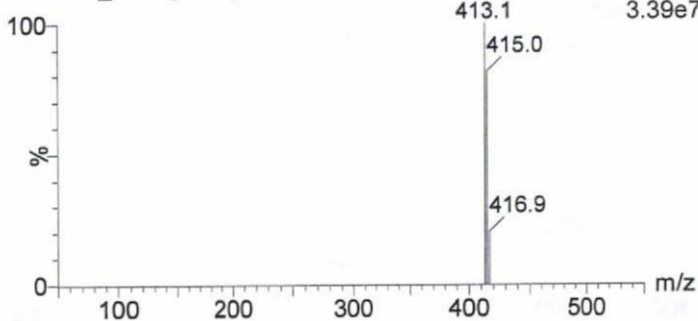


図 1-22. マスペクトル及び検量線(LC-MS/MS;フルオルイミド)

プリカーサーイオン(負モード)
X090123_61 9 (0.252)



プロダクトイオン(プリカーサーイオン; m/z=413.1, 負モード)
X090126_19 11 (0.294)

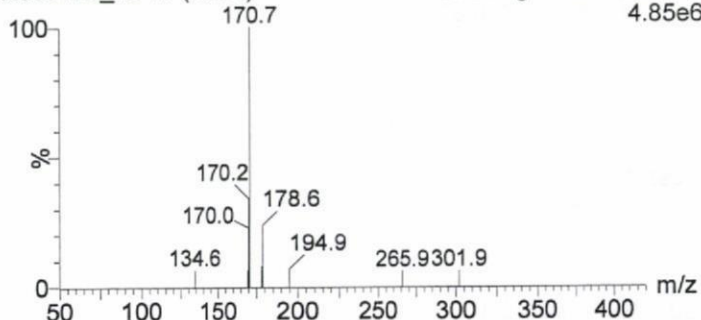
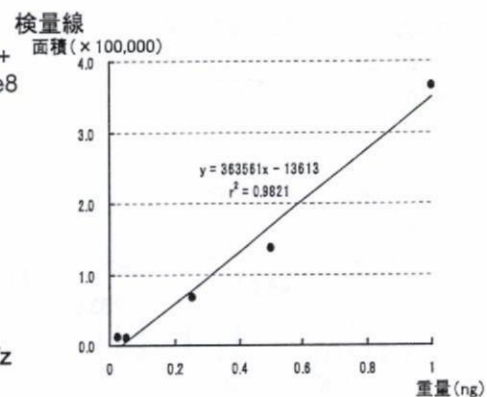
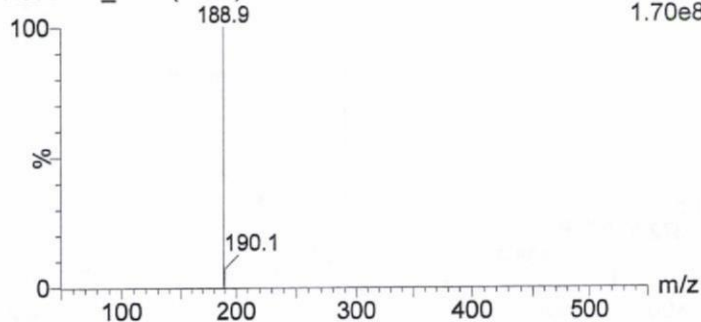


図 1-23. マスペクトル及び検量線(LC-MS/MS;フルスルファミド)

プリカーサーイオン(正モード)
X090126_06 9 (0.264)



プロダクトイオン(プリカーサーイオン; m/z=188.9, 正モード)
X090126_14 11 (0.301)

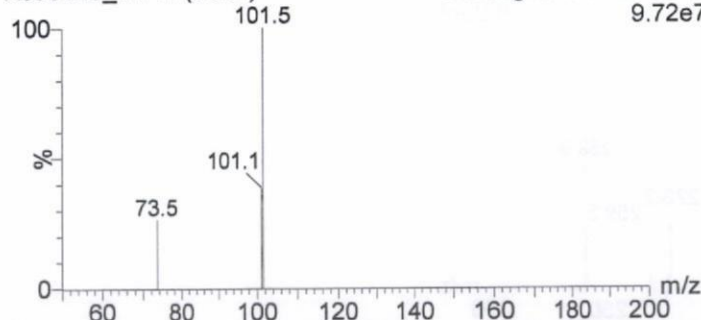
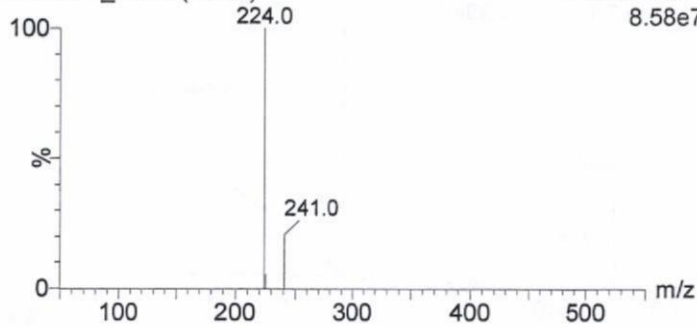
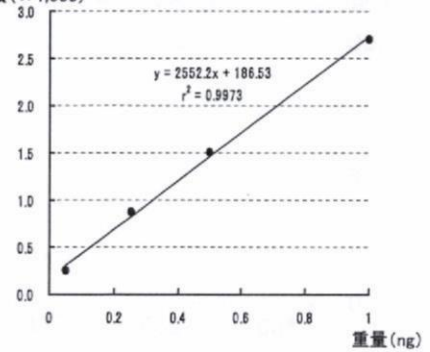


図 1-24. マスペクトル及び検量線(LC-MS/MS;プロバモカルブ)

プリカーサーイオン(正モード)
X090123_25 10 (0.282)



検量線
面積 (× 1,000)
4: Scan ES+
8.58e7



プロダクトイオン(プリカーサーイオン; m/z=224.0, 正モード)
X090123_46 12 (0.316) Cm (8:16) 3: Daughters of 224ES+
4.04e5

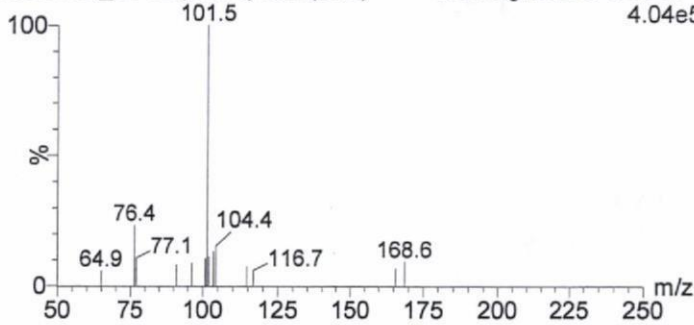
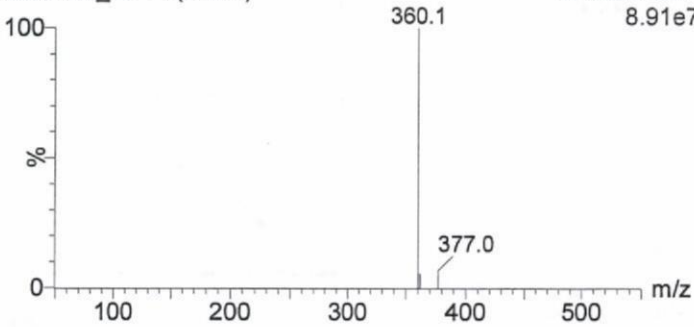
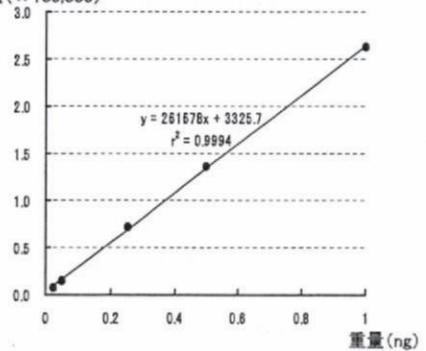


図 1-25. マスペクトル及び検量線(LC-MS/MS;プロベナゾール)

プリカーサーイオン(正モード)
X090123_26 11 (0.297)



検量線
面積 (× 100,000)
3: Scan ES+
8.91e7



プロダクトイオン(プリカーサーイオン; m/z=360.1, 正モード)
X090123_47 11 (0.301) Cm (8:14) 4: Daughters of 360ES+
5.36e7

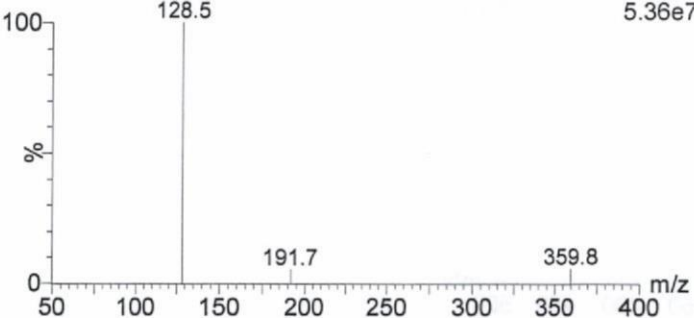
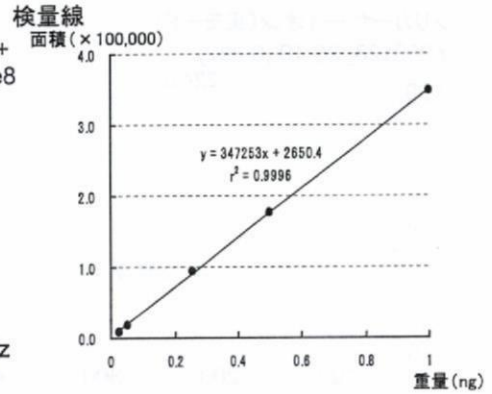
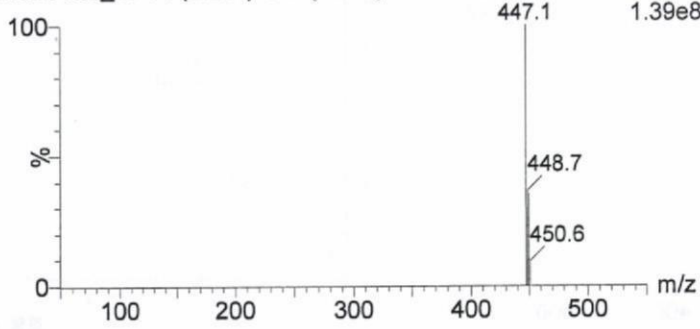


図 1-26. マスペクトル及び検量線(LC-MS/MS;フロラスラム)

プリカーサーイオン(正モード)
X090123_27 11 (0.294) Cm (10:12)



プロダクトイオン(プリカーサーイオン; m/z=447.1, 正モード)
X090123_48 10 (0.279) 3: Daughters of 447ES+
4.17e7

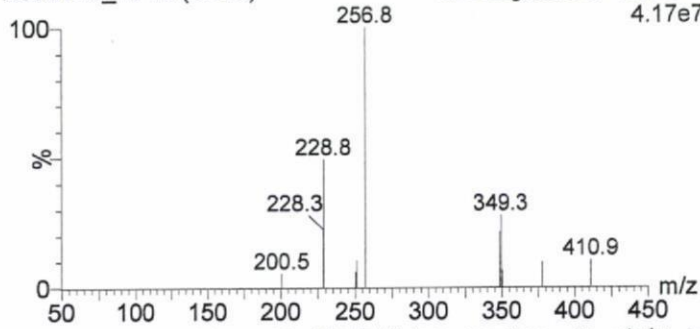
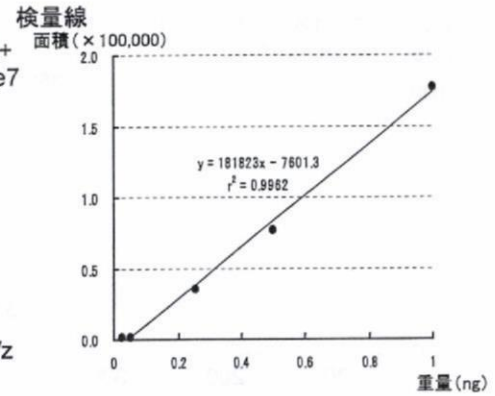
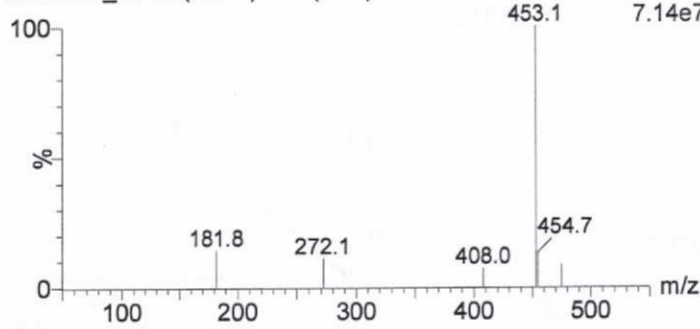


図 1-27. マスペクトル及び検量線(LC-MS/MS;ベンゾビスシクロン)

プリカーサーイオン(正モード)
X090123_28 10 (0.279) Cm (8:14)



プロダクトイオン(プリカーサーイオン; m/z=453.1, 正モード)
X090123_49 12 (0.320) Cm (9:14) 4: Daughters of 453ES+
6.19e7

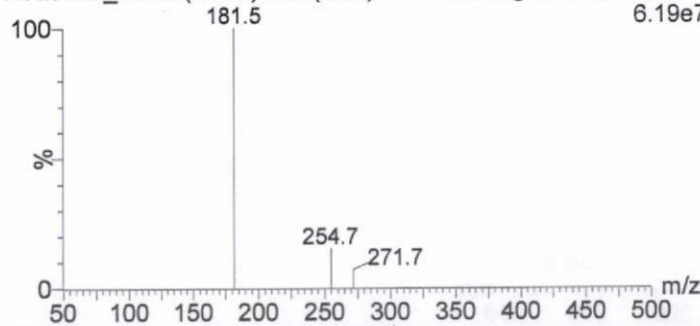
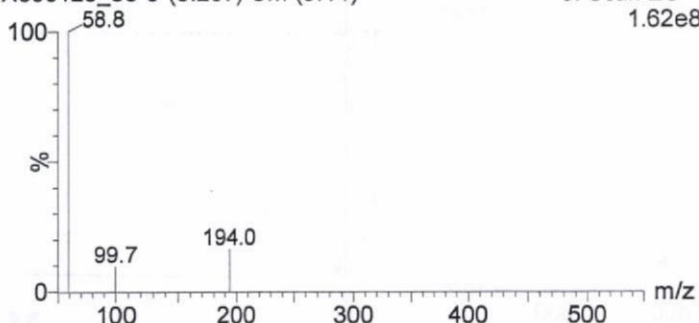
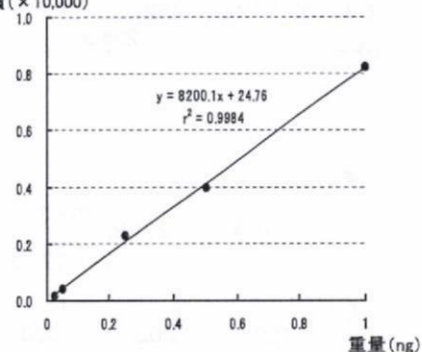


図 1-28. マスペクトル及び検量線(LC-MS/MS;ホラムスルフロン)

プリカーサーイオン(正モード)
X090123_30 9 (0.267) Cm (9:11)



検量線
面積 (×10,000)
5: Scan ES+
1.62e8



プロダクトイオン(プリカーサーイオン; m/z=194.0, 正モード)

X090126_39 10 (0.286) 5: Daughters of 194ES+
3.41e6

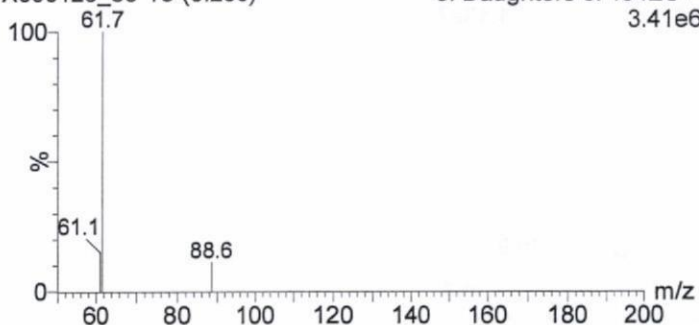
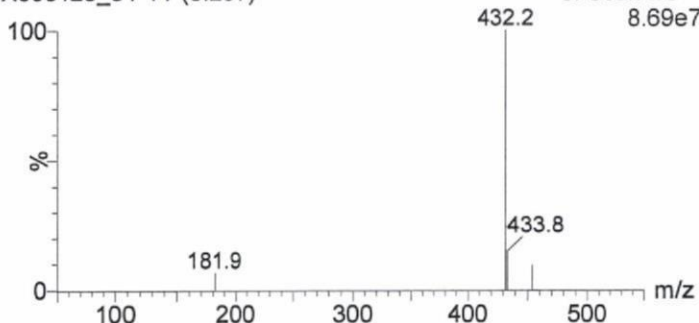


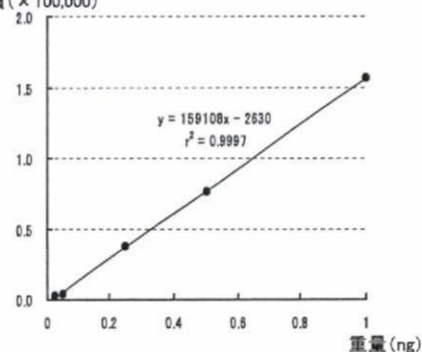
図 1-29. マスペクトル及び検量線(LC-MS/MS;メタアルデヒド)

プリカーサーイオン(正モード)

X090123_31 11 (0.297)



検量線
面積 (×100,000)
3: Scan ES+
8.69e7



プロダクトイオン(プリカーサーイオン; m/z=453.1, 正モード)

X090123_50 12 (0.320) Cm (12:15) 4: Daughters of 432ES+
4.29e7

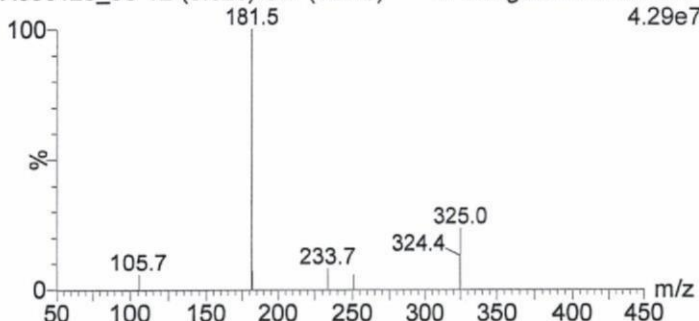
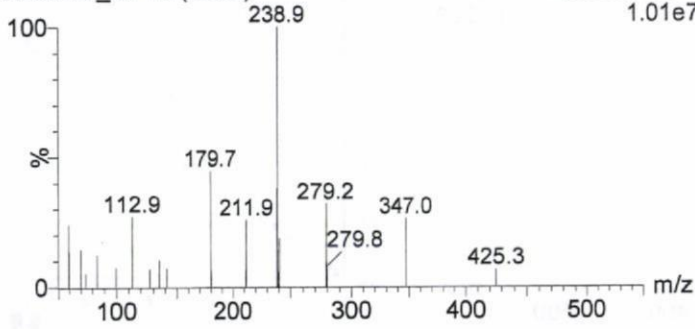


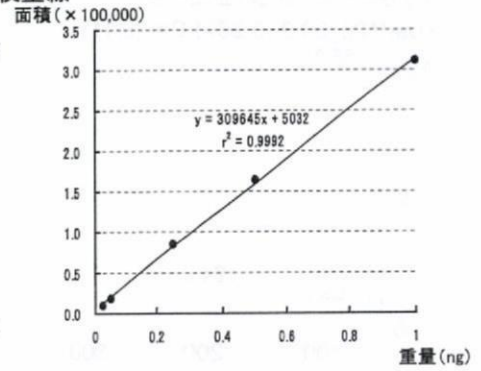
図 1-30. マスペクトル及び検量線(LC-MS/MS;リムスルフロン)

プリカーサーイオン(正モード)
X090126_07 10 (0.282)



検量線

4: Scan ES+
1.01e7



プロダクトイオン(プリカーサーイオン; m/z=238.9, 正モード)

X090126_15 7 (0.230)

5: Daughters of 239ES+
1.13e7

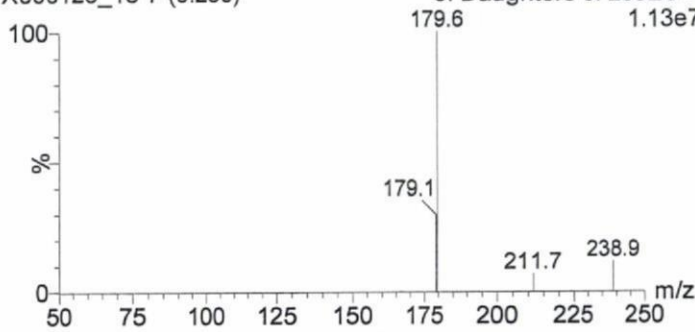
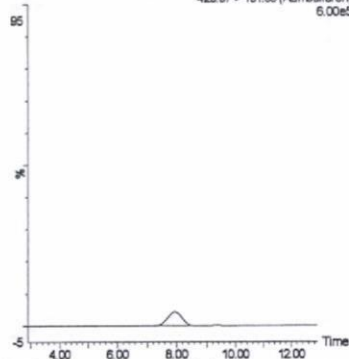


図 1-31. マススペクトル及び検量線(LC-MS/MS; TCMTB)

標準品 (0.05 ng)

X090219_06 Sm (Mn, 3x3)

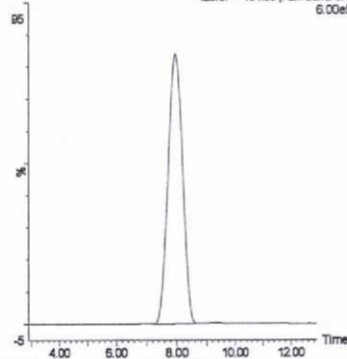
1: MRM of 23 Channels ES+
425.07 > 181.66 (Azimsulfuron)
6.00e5



標準品 (1 ng)

X090219_03 Sm (Mn, 3x3)

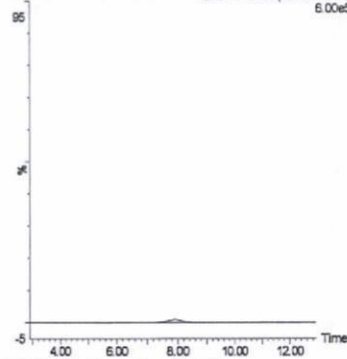
1: MRM of 23 Channels ES+
425.07 > 181.66 (Azimsulfuron)
6.00e5



筋肉 (0.01 mg/kg 添加)

X090219_16 Sm (Mn, 3x3)

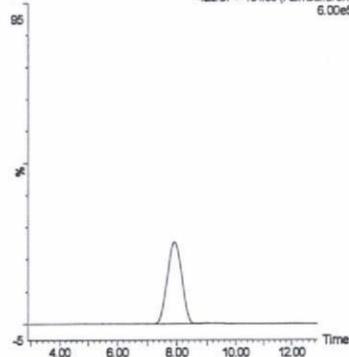
1: MRM of 23 Channels ES+
425.07 > 181.66 (Azimsulfuron)
6.00e5



筋肉 (0.5 mg/kg 添加)

X090219_13 Sm (Mn, 3x3)

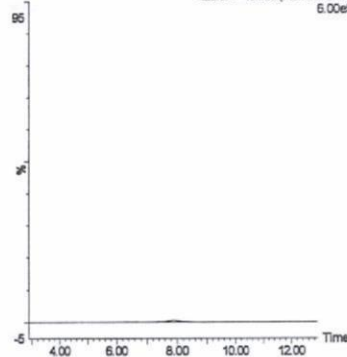
1: MRM of 23 Channels ES+
425.07 > 181.66 (Azimsulfuron)
6.00e5



脂肪 (0.01 mg/kg 添加)

X090217_26 Sm (Mn, 3x3)

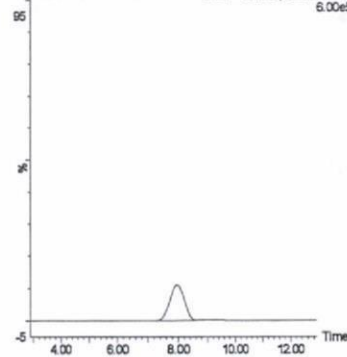
1: MRM of 23 Channels ES+
425.07 > 181.66 (Azimsulfuron)
6.00e5



脂肪 (0.5 mg/kg 添加)

X090217_21 Sm (Mn, 3x3)

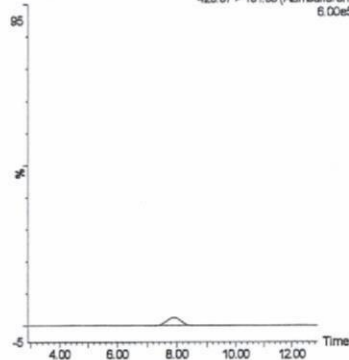
1: MRM of 23 Channels ES+
425.07 > 181.66 (Azimsulfuron)
6.00e5



肝臓 (0.01 mg/kg 添加)

X090219_41 Sm (Mn, 3x3)

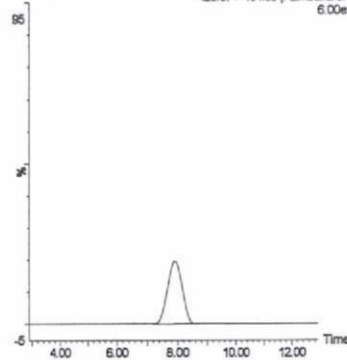
1: MRM of 23 Channels ES+
425.07 > 181.66 (Azimsulfuron)
6.00e5



肝臓 (0.5 mg/kg 添加)

X090219_36 Sm (Mn, 3x3)

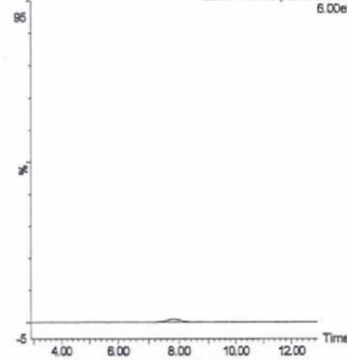
1: MRM of 23 Channels ES+
425.07 > 181.66 (Azimsulfuron)
6.00e5



腎臓 (0.01 mg/kg 添加)

X090224_63 Sm (Mn, 3x3)

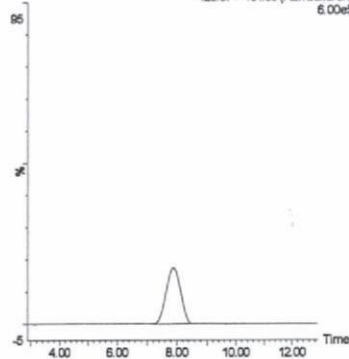
1: MRM of 23 Channels ES+
425.07 > 181.66 (Azimsulfuron)
6.00e5



腎臓 (0.5 mg/kg 添加)

X090224_76 Sm (Mn, 3x3)

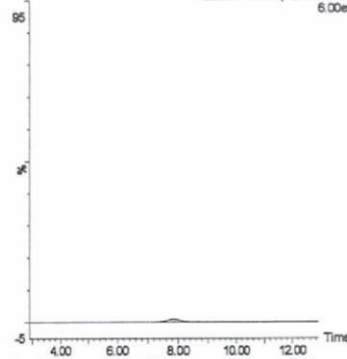
1: MRM of 23 Channels ES+
425.07 > 181.66 (Azimsulfuron)
6.00e5



えび (0.01 mg/kg 添加)

X090224_49 Sm (Mn, 3x3)

1: MRM of 23 Channels ES+
425.07 > 181.66 (Azimsulfuron)
6.00e5



えび (0.5 mg/kg 添加)

X090224_44 Sm (Mn, 3x3)

1: MRM of 23 Channels ES+
425.07 > 181.66 (Azimsulfuron)
6.00e5

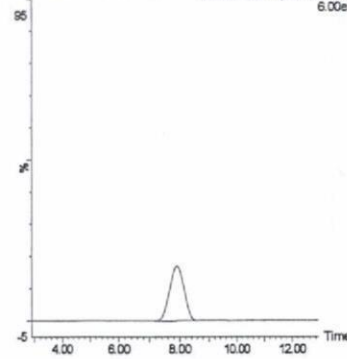
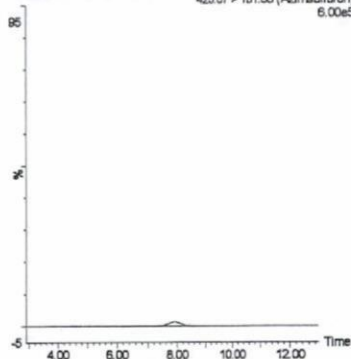


図 2-1. 標準品, 回収試料のMRM クロマトグラム (アジメスルフロンのMRM)

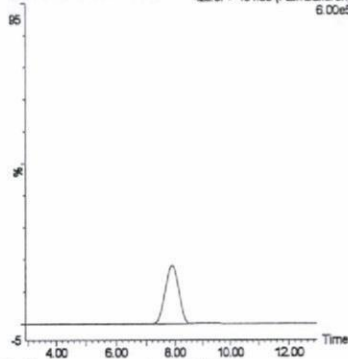
うなぎ (0.01 mg/kg 添加)

X090224_32 Sm (Mn, 3x3)
1: MRM of 23 Channels ES+
425.07 > 181.66 (Azimsulfuron)
6.00e5



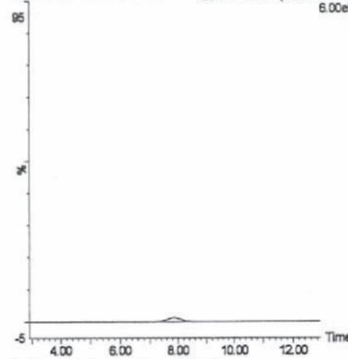
うなぎ (0.5 mg/kg 添加)

X090224_27 Sm (Mn, 3x3)
1: MRM of 23 Channels ES+
425.07 > 181.66 (Azimsulfuron)
6.00e5



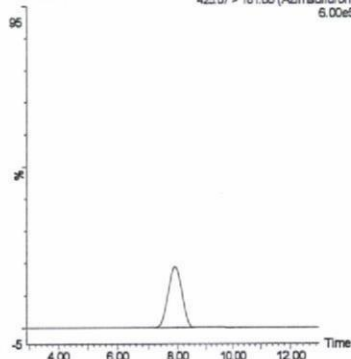
鮭 (0.01 mg/kg 添加)

X090219_58 Sm (Mn, 3x3)
1: MRM of 23 Channels ES+
425.07 > 181.66 (Azimsulfuron)
6.00e5



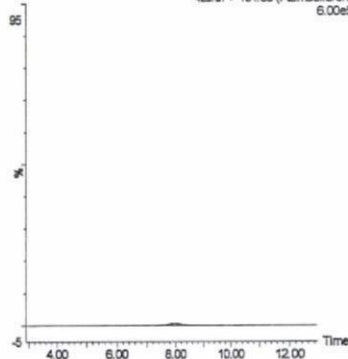
鮭 (0.5 mg/kg 添加)

X090218_53 Sm (Mn, 3x3)
1: MRM of 23 Channels ES+
425.07 > 181.66 (Azimsulfuron)
6.00e5



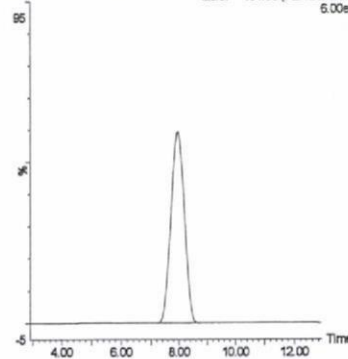
牛乳 (0.01 mg/kg 添加)

X090217_10 Sm (Mn, 3x3)
1: MRM of 23 Channels ES+
425.07 > 181.66 (Azimsulfuron)
6.00e5



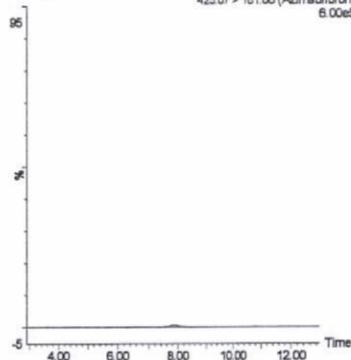
牛乳 (0.5 mg/kg 添加)

X090215_10 Sm (Mn, 3x3)
1: MRM of 23 Channels ES+
425.07 > 181.66 (Azimsulfuron)
6.00e5



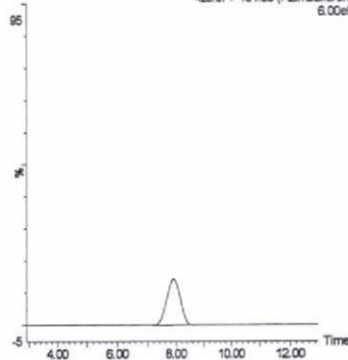
鶏卵 (0.01 mg/kg 添加)

X090224_16 Sm (Mn, 3x3)
1: MRM of 23 Channels ES+
425.07 > 181.66 (Azimsulfuron)
6.00e5



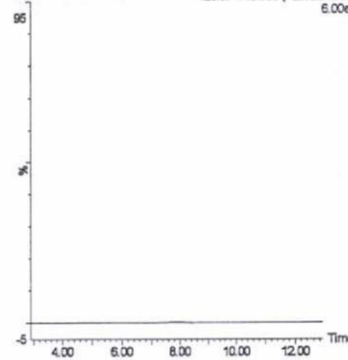
鶏卵 (0.5 mg/kg 添加)

X090224_10 Sm (Mn, 3x3)
1: MRM of 23 Channels ES+
425.07 > 181.66 (Azimsulfuron)
6.00e5



はちみつ (0.01 mg/kg 添加)

X090224_66 Sm (Mn, 3x3)
1: MRM of 23 Channels ES+
425.07 > 181.66 (Azimsulfuron)
6.00e5



はちみつ (0.5 mg/kg 添加)

X090224_61 Sm (Mn, 3x3)
1: MRM of 23 Channels ES+
425.07 > 181.66 (Azimsulfuron)
6.00e5

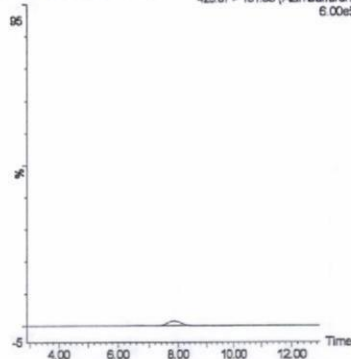
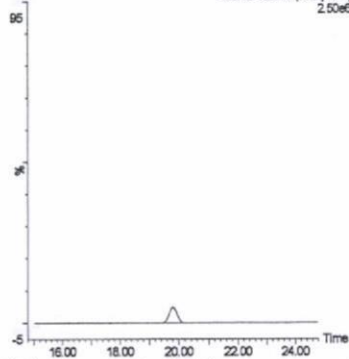


図 2-1. 標準品, 回収試料のMRM クロマトグラム (アジメスルロン[®])

標準品 (0.05 ng)

X090219_06 Sm (Mn, 3x3)

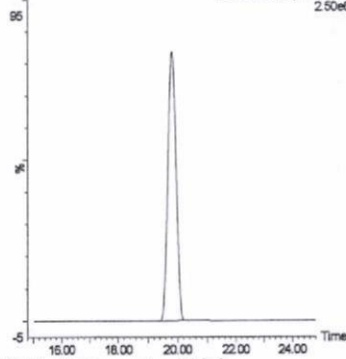
3 MRM of 11 Channels ES+
400.15 > 237.8 (Alanycarb)
2.50e6



標準品 (1 ng)

X090219_03 Sm (Mn, 3x3)

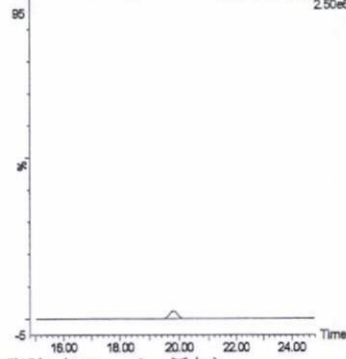
3 MRM of 11 Channels ES+
400.15 > 237.8 (Alanycarb)
2.50e6



筋肉 (0.01 mg/kg 添加)

X090219_18 Sm (Mn, 3x3)

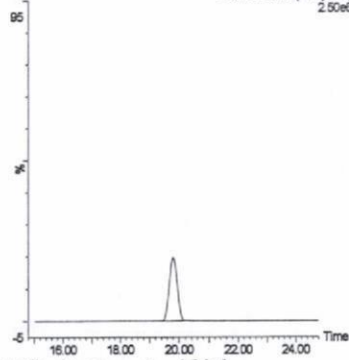
3 MRM of 11 Channels ES+
400.15 > 237.8 (Alanycarb)
2.50e6



筋肉 (0.5 mg/kg 添加)

X090219_13 Sm (Mn, 3x3)

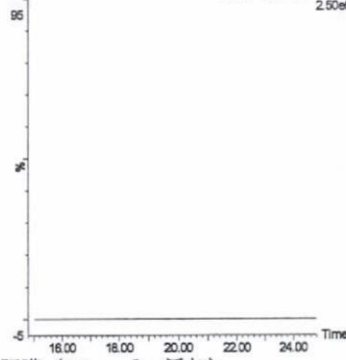
3 MRM of 11 Channels ES+
400.15 > 237.8 (Alanycarb)
2.50e6



脂肪 (0.01 mg/kg 添加)

X090217_26 Sm (Mn, 3x3)

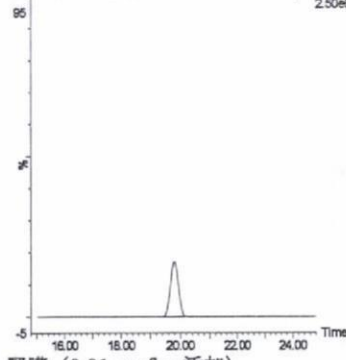
3 MRM of 11 Channels ES+
400.15 > 237.8 (Alanycarb)
2.50e6



脂肪 (0.5 mg/kg 添加)

X090217_21 Sm (Mn, 3x3)

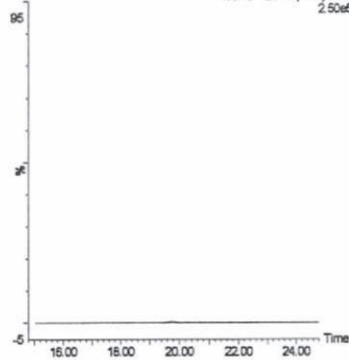
3 MRM of 11 Channels ES+
400.15 > 237.8 (Alanycarb)
2.50e6



肝臓 (0.01 mg/kg 添加)

X090219_41 Sm (Mn, 3x3)

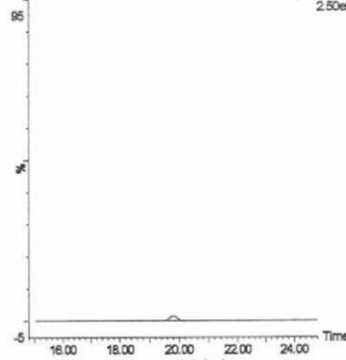
3 MRM of 11 Channels ES+
400.15 > 237.8 (Alanycarb)
2.50e6



肝臓 (0.5 mg/kg 添加)

X090219_36 Sm (Mn, 3x3)

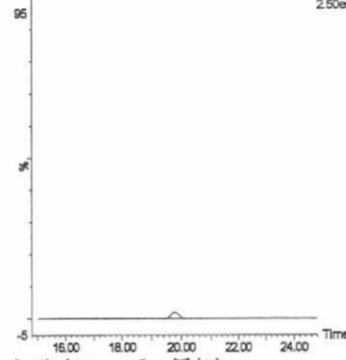
3 MRM of 11 Channels ES+
400.15 > 237.8 (Alanycarb)
2.50e6



腎臓 (0.01 mg/kg 添加)

X090224_83 Sm (Mn, 3x3)

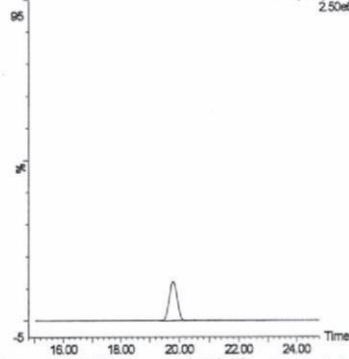
3 MRM of 11 Channels ES+
400.15 > 237.8 (Alanycarb)
2.50e6



腎臓 (0.5 mg/kg 添加)

X090224_76 Sm (Mn, 3x3)

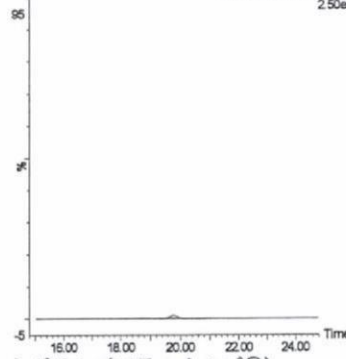
3 MRM of 11 Channels ES+
400.15 > 237.8 (Alanycarb)
2.50e6



えび (0.01 mg/kg 添加)

X090224_46 Sm (Mn, 3x3)

3 MRM of 11 Channels ES+
400.15 > 237.8 (Alanycarb)
2.50e6



えび (0.5 mg/kg 添加)

X090224_44 Sm (Mn, 3x3)

3 MRM of 11 Channels ES+
400.15 > 237.8 (Alanycarb)
2.50e6

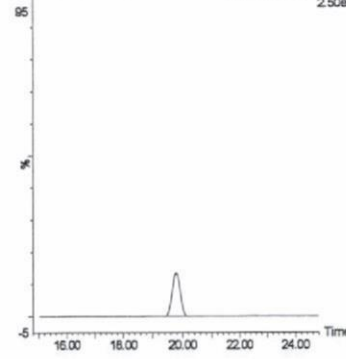
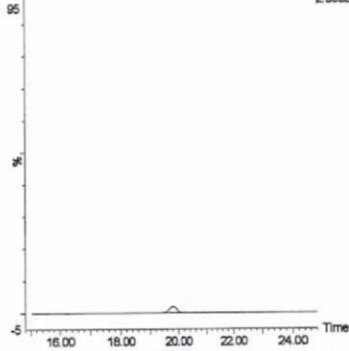
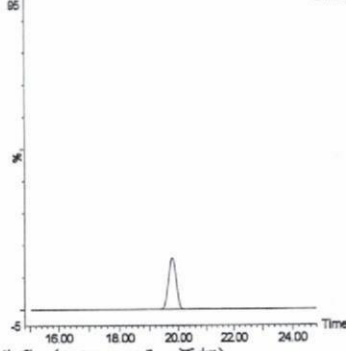


図 2-2. 標準品, 回収試料のMRM クロマトグラム (アラニカルブ①)

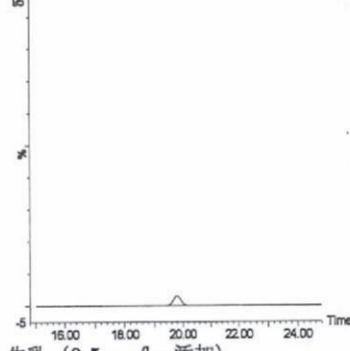
うなぎ (0.01 mg/kg 添加)
X090224_32 Sm (Mn, 3x3) 3 MRM of 11 Channels ES+
400.15 > 237.8 (Alanycarb) 2.50e6



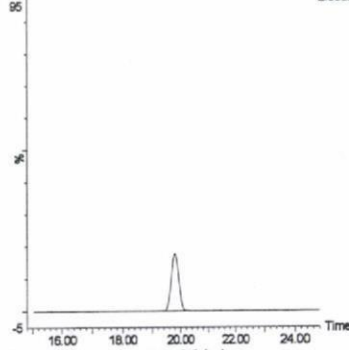
うなぎ (0.5 mg/kg 添加)
X090224_27 Sm (Mn, 3x3) 3 MRM of 11 Channels ES+
400.15 > 237.8 (Alanycarb) 2.50e6



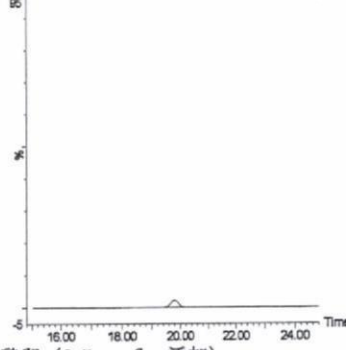
鮭 (0.01 mg/kg 添加)
X090219_56 Sm (Mn, 3x3) 3 MRM of 11 Channels ES+
400.15 > 237.8 (Alanycarb) 2.50e6



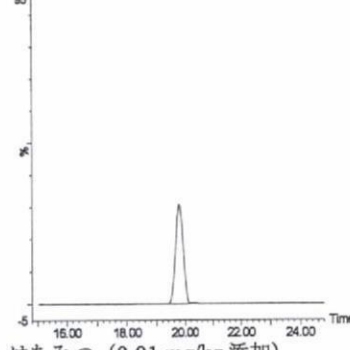
鮭 (0.5 mg/kg 添加)
X090219_53 Sm (Mn, 3x3) 3 MRM of 11 Channels ES+
400.15 > 237.8 (Alanycarb) 2.50e6



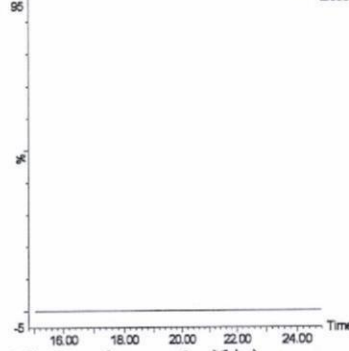
牛乳 (0.01 mg/kg 添加)
X090217_10 Sm (Mn, 3x3) 3 MRM of 11 Channels ES+
400.15 > 237.8 (Alanycarb) 2.50e6



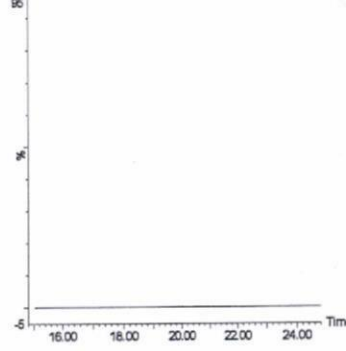
牛乳 (0.5 mg/kg 添加)
X090215_10 Sm (Mn, 3x3) 3 MRM of 11 Channels ES+
400.15 > 237.8 (Alanycarb) 2.50e6



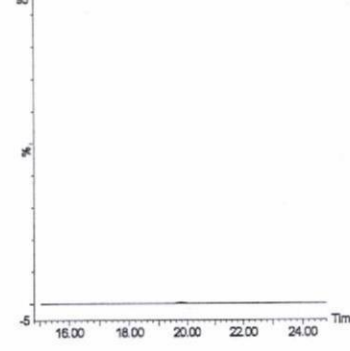
鶏卵 (0.01 mg/kg 添加)
X090224_15 Sm (Mn, 3x3) 3 MRM of 11 Channels ES+
400.15 > 237.8 (Alanycarb) 2.50e6



鶏卵 (0.5 mg/kg 添加)
X090224_10 Sm (Mn, 3x3) 3 MRM of 11 Channels ES+
400.15 > 237.8 (Alanycarb) 2.50e6



はちみつ (0.01 mg/kg 添加)
X090224_66 Sm (Mn, 3x3) 3 MRM of 11 Channels ES+
400.15 > 237.8 (Alanycarb) 2.50e6



はちみつ (0.5 mg/kg 添加)
X090224_61 Sm (Mn, 3x3) 3 MRM of 11 Channels ES+
400.15 > 237.8 (Alanycarb) 2.50e6

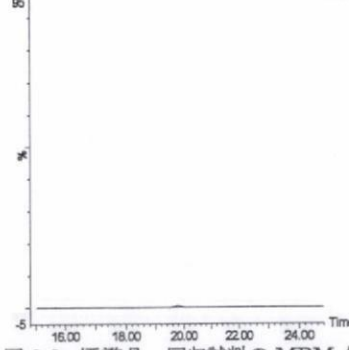
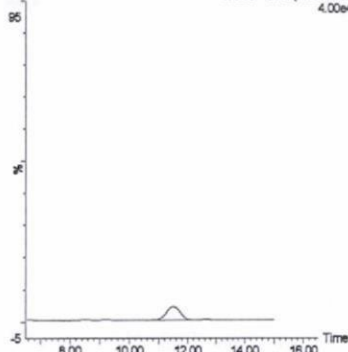


図 2-2. 標準品, 回収試料の MRM クロマトグラム (アラニカルブ②)

標準品 (0.05 ng)

X090219_06 Sm (Mn, 3x3)

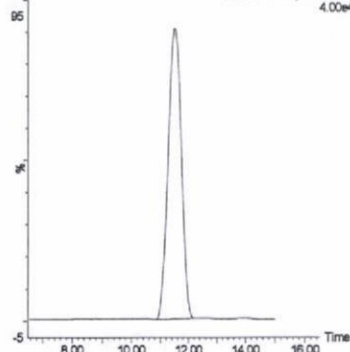
1: MRM of 23 Channels ES+
173.59 > 97.6 (Alidochlor)
4.00e4



標準品 (1 ng)

X090219_03 Sm (Mn, 3x3)

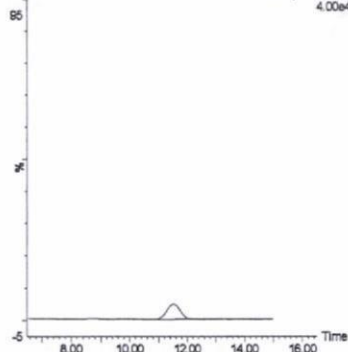
1: MRM of 23 Channels ES+
173.59 > 97.6 (Alidochlor)
4.00e4



筋肉 (0.01 mg/kg 添加)

X090219_18 Sm (Mn, 3x3)

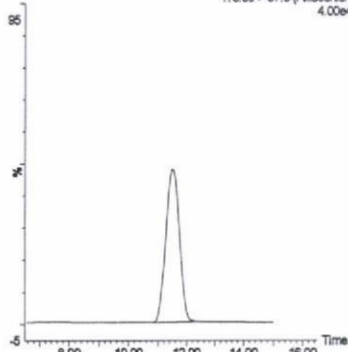
1: MRM of 23 Channels ES+
173.59 > 97.6 (Alidochlor)
4.00e4



筋肉 (0.5 mg/kg 添加)

X090219_13 Sm (Mn, 3x3)

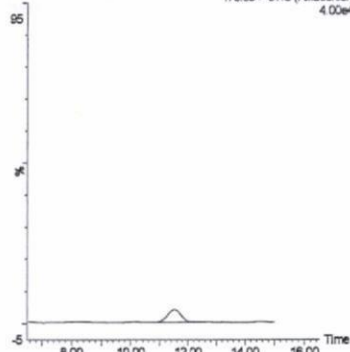
1: MRM of 23 Channels ES+
173.59 > 97.6 (Alidochlor)
4.00e4



脂肪 (0.01 mg/kg 添加)

X090217_26 Sm (Mn, 3x3)

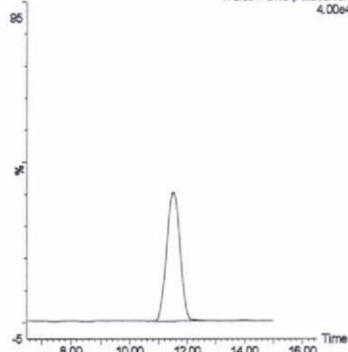
1: MRM of 23 Channels ES+
173.59 > 97.6 (Alidochlor)
4.00e4



脂肪 (0.5 mg/kg 添加)

X090217_21 Sm (Mn, 3x3)

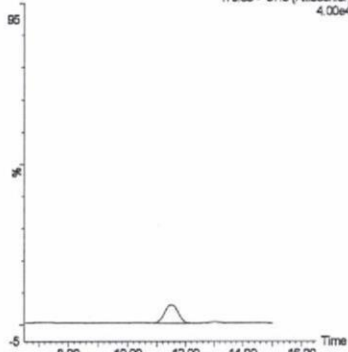
1: MRM of 23 Channels ES+
173.59 > 97.6 (Alidochlor)
4.00e4



肝臓 (0.01 mg/kg 添加)

X090219_41 Sm (Mn, 3x3)

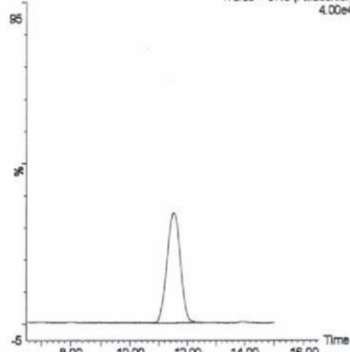
1: MRM of 23 Channels ES+
173.59 > 97.6 (Alidochlor)
4.00e4



肝臓 (0.5 mg/kg 添加)

X090219_36 Sm (Mn, 3x3)

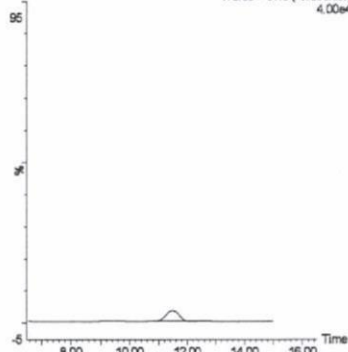
1: MRM of 23 Channels ES+
173.59 > 97.6 (Alidochlor)
4.00e4



腎臓 (0.01 mg/kg 添加)

X090224_83 Sm (Mn, 3x3)

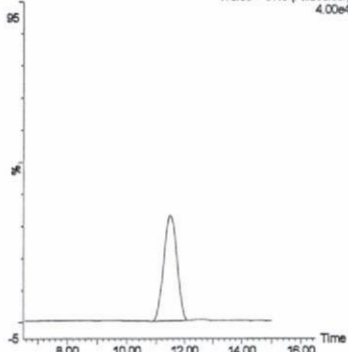
1: MRM of 23 Channels ES+
173.59 > 97.6 (Alidochlor)
4.00e4



腎臓 (0.5 mg/kg 添加)

X090224_78 Sm (Mn, 3x3)

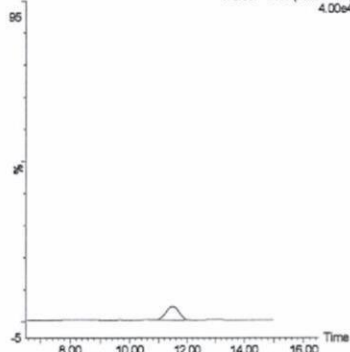
1: MRM of 23 Channels ES+
173.59 > 97.6 (Alidochlor)
4.00e4



えび (0.01 mg/kg 添加)

X090224_49 Sm (Mn, 3x3)

1: MRM of 23 Channels ES+
173.59 > 97.6 (Alidochlor)
4.00e4



えび (0.5 mg/kg 添加)

X090224_44 Sm (Mn, 3x3)

1: MRM of 23 Channels ES+
173.59 > 97.6 (Alidochlor)
4.00e4

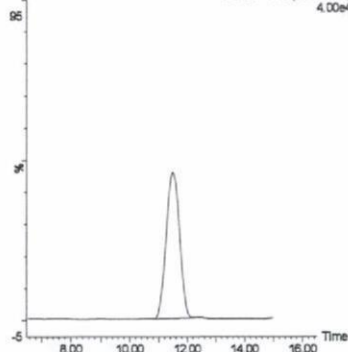
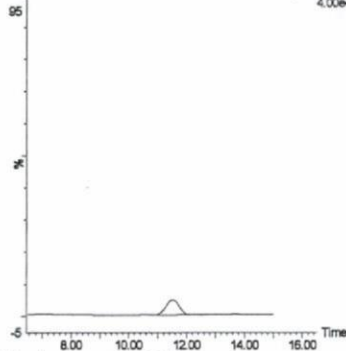


図 2-3. 標準品, 回収試料のMRMクロマトグラム (アリドクロール①)

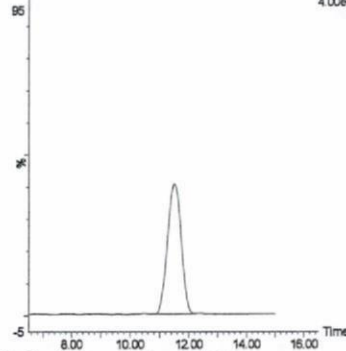
うなぎ (0.01 mg/kg 添加)

X090224_32 Sm (Mn, 3x3) 1: MRM of 23 Channels ES+
173.59 > 97.6 (Alidochlor) 4.00e4



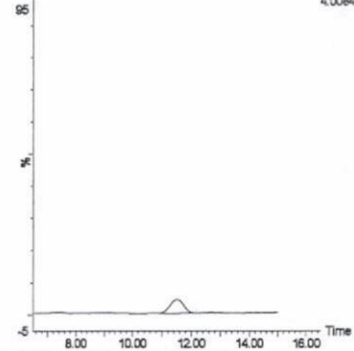
うなぎ (0.5 mg/kg 添加)

X090224_27 Sm (Mn, 3x3) 1: MRM of 23 Channels ES+
173.59 > 97.6 (Alidochlor) 4.00e4



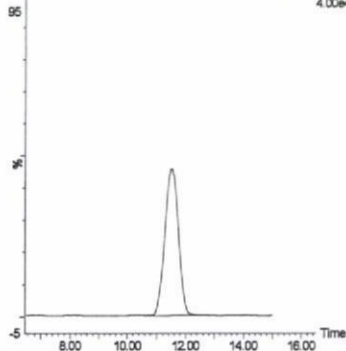
鮭 (0.01 mg/kg 添加)

X090219_58 Sm (Mn, 3x3) 1: MRM of 23 Channels ES+
173.59 > 97.6 (Alidochlor) 4.00e4



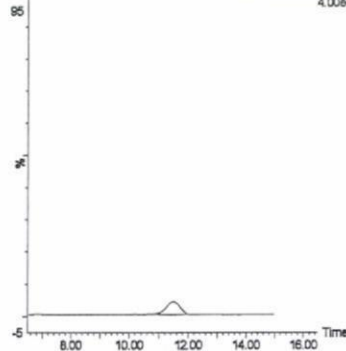
鮭 (0.5 mg/kg 添加)

X090219_53 Sm (Mn, 3x3) 1: MRM of 23 Channels ES+
173.59 > 97.6 (Alidochlor) 4.00e4



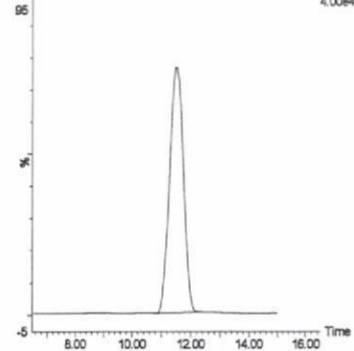
牛乳 (0.01 mg/kg 添加)

X090217_10 Sm (Mn, 3x3) 1: MRM of 23 Channels ES+
173.59 > 97.6 (Alidochlor) 4.00e4



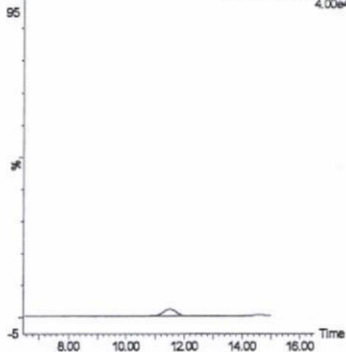
牛乳 (0.5 mg/kg 添加)

X090215_10 Sm (Mn, 3x3) 1: MRM of 23 Channels ES+
173.59 > 97.6 (Alidochlor) 4.00e4



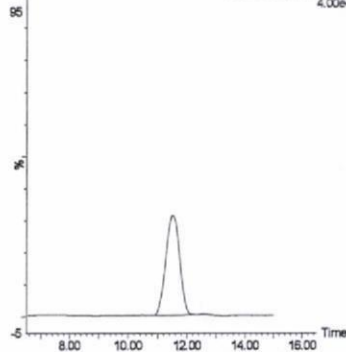
鶏卵 (0.01 mg/kg 添加)

X090224_15 Sm (Mn, 3x3) 1: MRM of 23 Channels ES+
173.59 > 97.6 (Alidochlor) 4.00e4



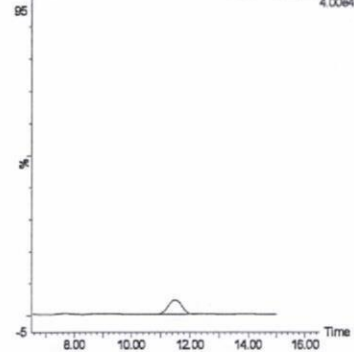
鶏卵 (0.5 mg/kg 添加)

X090224_10 Sm (Mn, 3x3) 1: MRM of 23 Channels ES+
173.59 > 97.6 (Alidochlor) 4.00e4



はちみつ (0.01 mg/kg 添加)

X090224_66 Sm (Mn, 3x3) 1: MRM of 23 Channels ES+
173.59 > 97.6 (Alidochlor) 4.00e4



はちみつ (0.5 mg/kg 添加)

X090224_61 Sm (Mn, 3x3) 1: MRM of 23 Channels ES+
173.59 > 97.6 (Alidochlor) 4.00e4

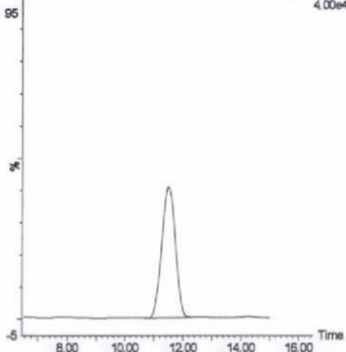
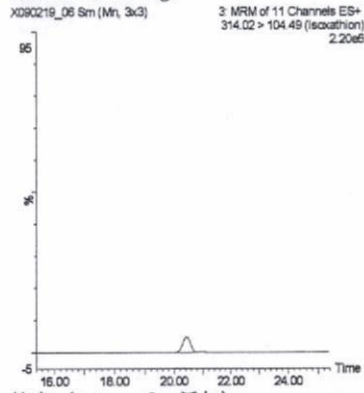
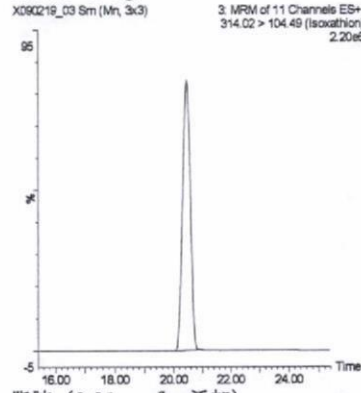


図 2-3. 標準品, 回収試料のMRM クロマトグラム (アリドクロール[®])

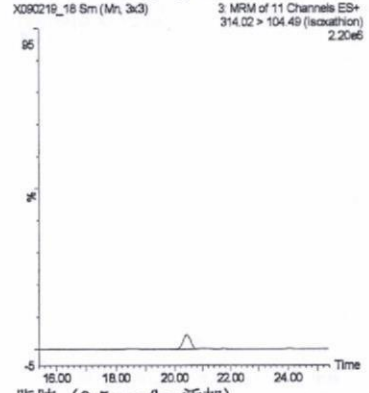
標準品 (0.05 ng)



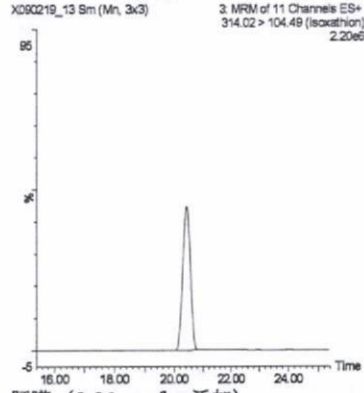
標準品 (1 ng)



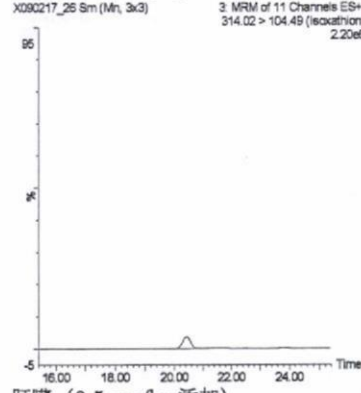
筋肉 (0.01 mg/kg 添加)



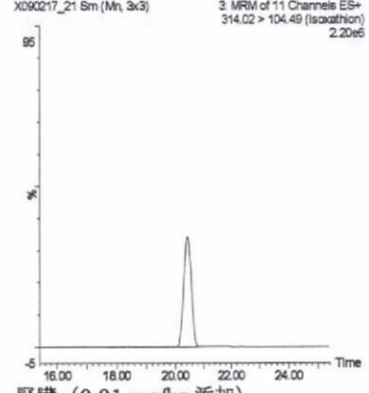
筋肉 (0.5 mg/kg 添加)



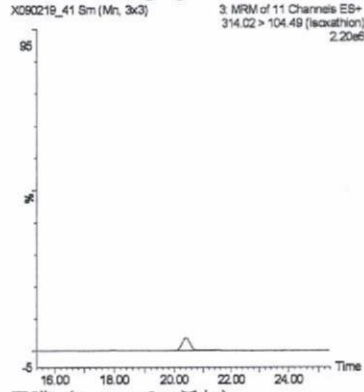
脂肪 (0.01 mg/kg 添加)



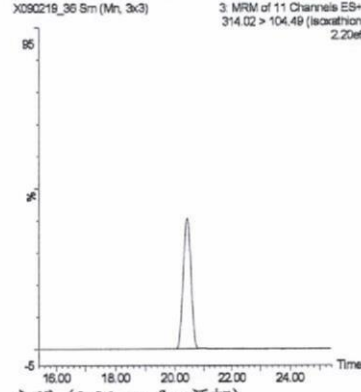
脂肪 (0.5 mg/kg 添加)



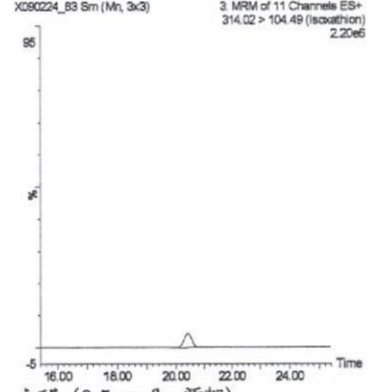
肝臓 (0.01 mg/kg 添加)



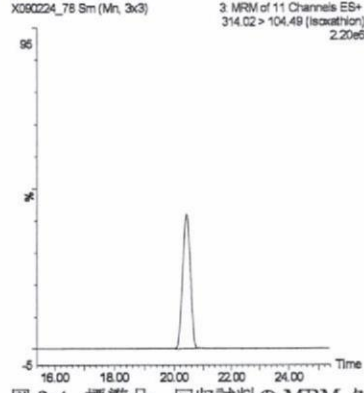
肝臓 (0.5 mg/kg 添加)



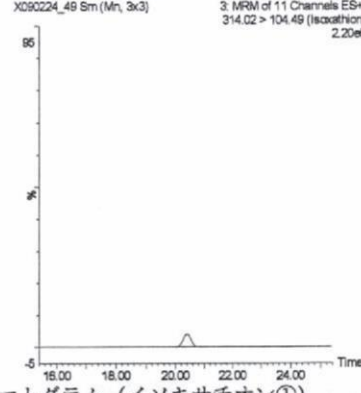
腎臓 (0.01 mg/kg 添加)



腎臓 (0.5 mg/kg 添加)



えび (0.01 mg/kg 添加)



えび (0.5 mg/kg 添加)

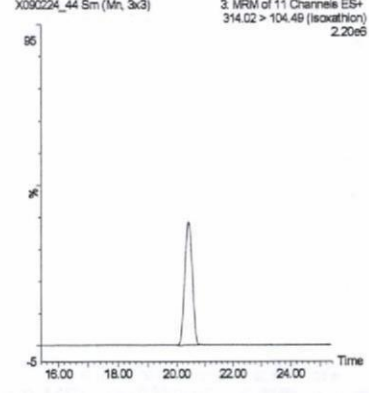
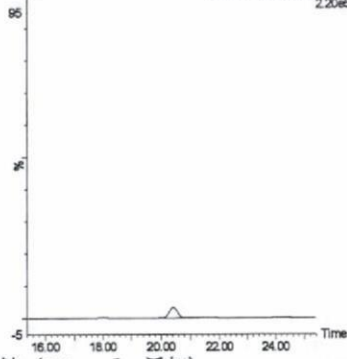


図 2-4. 標準品, 回収試料のMRMクロマトグラム (イソキサチオン①)

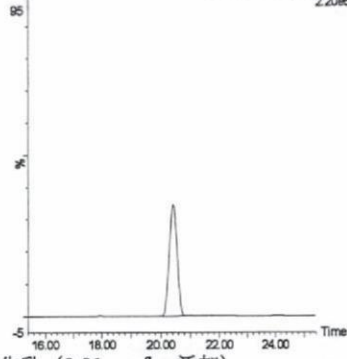
うなぎ (0.01 mg/kg 添加)

X090224_32 Sm (Mn, 3x3) 3. MRM of 11 Channels ES+
314.02 > 104.49 (Isocathion)
2.20e6



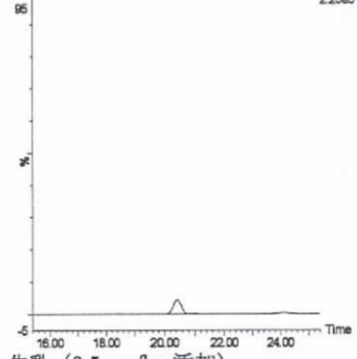
うなぎ (0.5 mg/kg 添加)

X090224_27 Sm (Mn, 3x3) 3. MRM of 11 Channels ES+
314.02 > 104.49 (Isocathion)
2.20e6



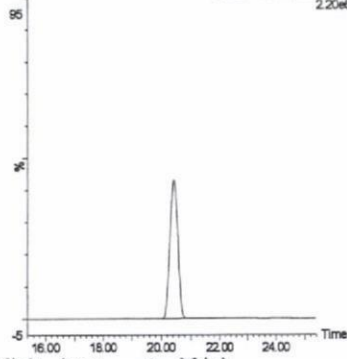
鮭 (0.01 mg/kg 添加)

X090219_58 Sm (Mn, 3x3) 3. MRM of 11 Channels ES+
314.02 > 104.49 (Isocathion)
2.20e6



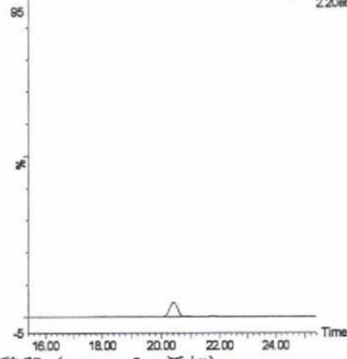
鮭 (0.5 mg/kg 添加)

X090219_53 Sm (Mn, 3x3) 3. MRM of 11 Channels ES+
314.02 > 104.49 (Isocathion)
2.20e6



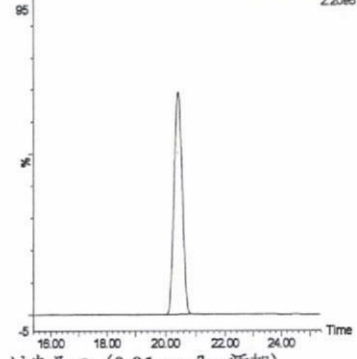
牛乳 (0.01 mg/kg 添加)

X090217_10 Sm (Mn, 3x3) 3. MRM of 11 Channels ES+
314.02 > 104.49 (Isocathion)
2.20e6



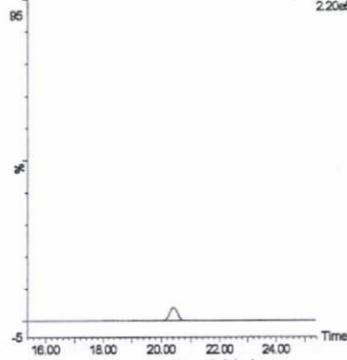
牛乳 (0.5 mg/kg 添加)

X090215_10 Sm (Mn, 3x3) 3. MRM of 11 Channels ES+
314.02 > 104.49 (Isocathion)
2.20e6



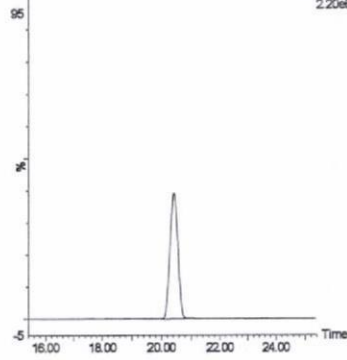
鶏卵 (0.01 mg/kg 添加)

X090224_15 Sm (Mn, 3x3) 3. MRM of 11 Channels ES+
314.02 > 104.49 (Isocathion)
2.20e6



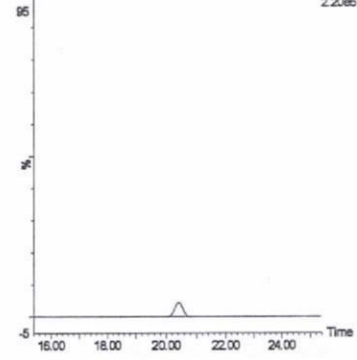
鶏卵 (0.5 mg/kg 添加)

X090224_10 Sm (Mn, 3x3) 3. MRM of 11 Channels ES+
314.02 > 104.49 (Isocathion)
2.20e6



はちみつ (0.01 mg/kg 添加)

X090224_66 Sm (Mn, 3x3) 3. MRM of 11 Channels ES+
314.02 > 104.49 (Isocathion)
2.20e6



はちみつ (0.5 mg/kg 添加)

X090224_61 Sm (Mn, 3x3) 3. MRM of 11 Channels ES+
314.02 > 104.49 (Isocathion)
2.20e6

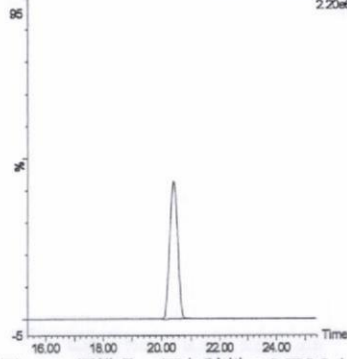
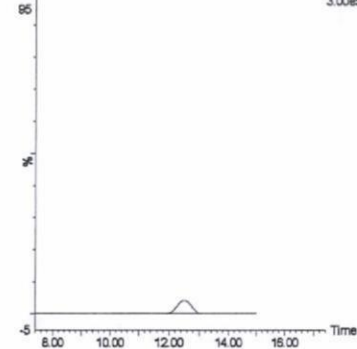


図 2-4. 標準品, 回収試料の MRM クロマトグラム (イソキサチオン[®])

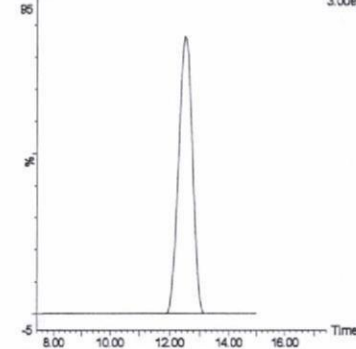
標準品 (0.05 ng)

X090219_06 Sm (Mn, 3x3) 1: MRM of 23 Channels ES+
429.94 > 369.77 (Cioransulam-methyl)
3.00e5



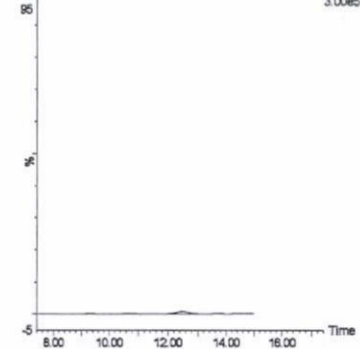
標準品 (1 ng)

X090219_03 Sm (Mn, 3x3) 1: MRM of 23 Channels ES+
429.94 > 369.77 (Cioransulam-methyl)
3.00e5



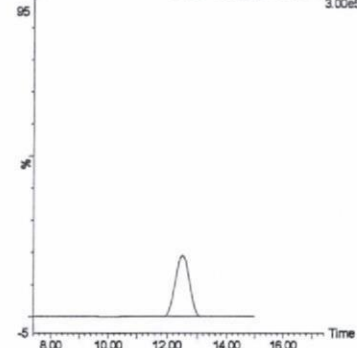
筋肉 (0.01 mg/kg 添加)

X090219_18 Sm (Mn, 3x3) 1: MRM of 23 Channels ES+
429.94 > 369.77 (Cioransulam-methyl)
3.00e5



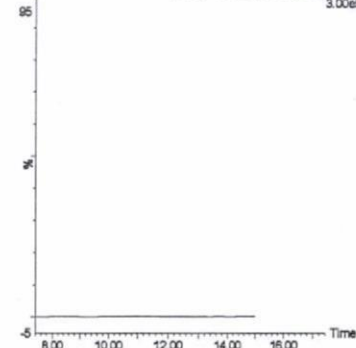
筋肉 (0.5 mg/kg 添加)

X090219_13 Sm (Mn, 3x3) 1: MRM of 23 Channels ES+
429.94 > 369.77 (Cioransulam-methyl)
3.00e5



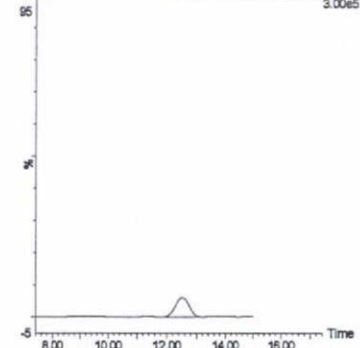
脂肪 (0.01 mg/kg 添加)

X090217_26 Sm (Mn, 3x3) 1: MRM of 23 Channels ES+
429.94 > 369.77 (Cioransulam-methyl)
3.00e5



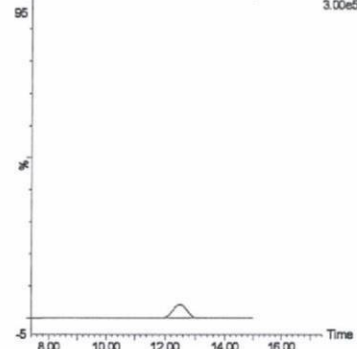
脂肪 (0.5 mg/kg 添加)

X090217_21 Sm (Mn, 3x3) 1: MRM of 23 Channels ES+
429.94 > 369.77 (Cioransulam-methyl)
3.00e5



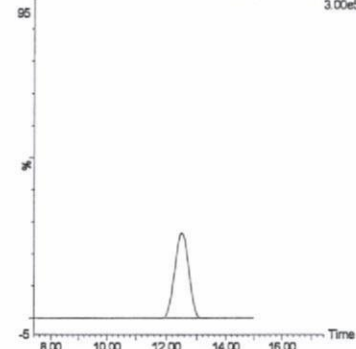
肝臓 (0.01 mg/kg 添加)

X090219_41 Sm (Mn, 3x3) 1: MRM of 23 Channels ES+
429.94 > 369.77 (Cioransulam-methyl)
3.00e5



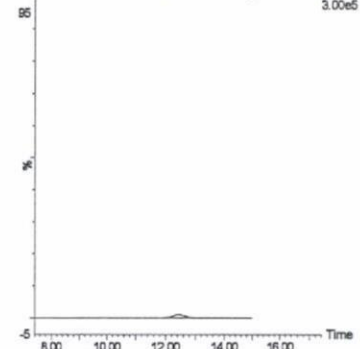
肝臓 (0.5 mg/kg 添加)

X090219_38 Sm (Mn, 3x3) 1: MRM of 23 Channels ES+
429.94 > 369.77 (Cioransulam-methyl)
3.00e5



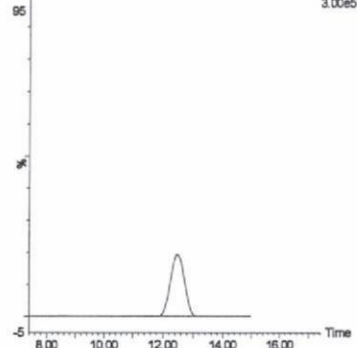
腎臓 (0.01 mg/kg 添加)

X090224_83 Sm (Mn, 3x3) 1: MRM of 23 Channels ES+
429.94 > 369.77 (Cioransulam-methyl)
3.00e5



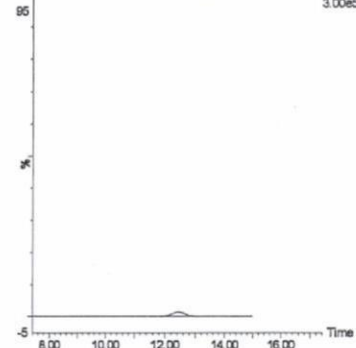
腎臓 (0.5 mg/kg 添加)

X090224_78 Sm (Mn, 3x3) 1: MRM of 23 Channels ES+
429.94 > 369.77 (Cioransulam-methyl)
3.00e5



えび (0.01 mg/kg 添加)

X090224_49 Sm (Mn, 3x3) 1: MRM of 23 Channels ES+
429.94 > 369.77 (Cioransulam-methyl)
3.00e5



えび (0.5 mg/kg 添加)

X090224_44 Sm (Mn, 3x3) 1: MRM of 23 Channels ES+
429.94 > 369.77 (Cioransulam-methyl)
3.00e5

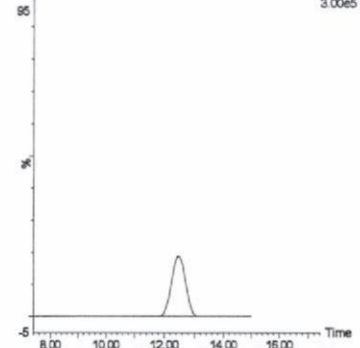
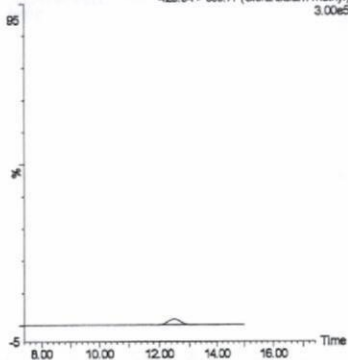


図 2-5. 標準品, 回収試料のMRMクロマトグラム (クロランスラムメチル①)

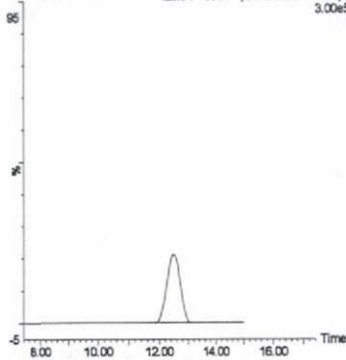
うなぎ (0.01 mg/kg 添加)

X090224_32 Sm (Mn, 3x3) 1: MRM of 23 Channels ES+
429.94 > 369.77 (Cloransulam-methyl) 3.00e5



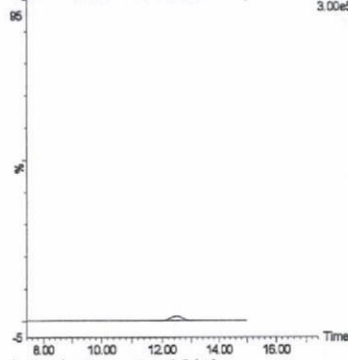
うなぎ (0.5 mg/kg 添加)

X090224_27 Sm (Mn, 3x3) 1: MRM of 23 Channels ES+
429.94 > 369.77 (Cloransulam-methyl) 3.00e5



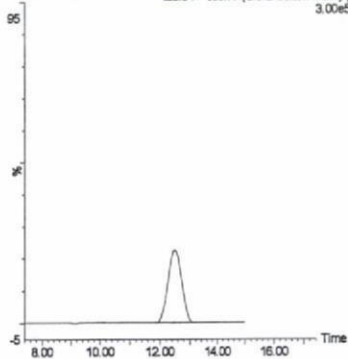
鮭 (0.01 mg/kg 添加)

X090218_58 Sm (Mn, 3x3) 1: MRM of 23 Channels ES+
429.94 > 369.77 (Cloransulam-methyl) 3.00e5



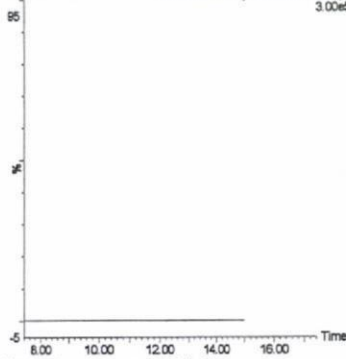
鮭 (0.5 mg/kg 添加)

X090219_53 Sm (Mn, 3x3) 1: MRM of 23 Channels ES+
429.94 > 369.77 (Cloransulam-methyl) 3.00e5



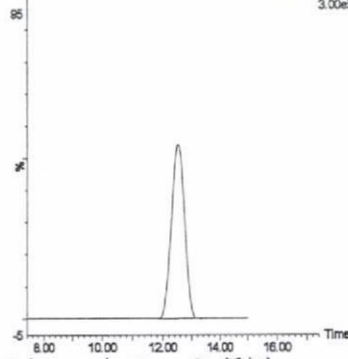
牛乳 (0.01 mg/kg 添加)

X090217_10 Sm (Mn, 3x3) 1: MRM of 23 Channels ES+
429.94 > 369.77 (Cloransulam-methyl) 3.00e5



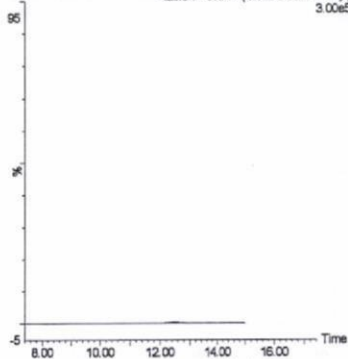
牛乳 (0.5 mg/kg 添加)

X090215_10 Sm (Mn, 3x3) 1: MRM of 23 Channels ES+
429.94 > 369.77 (Cloransulam-methyl) 3.00e5



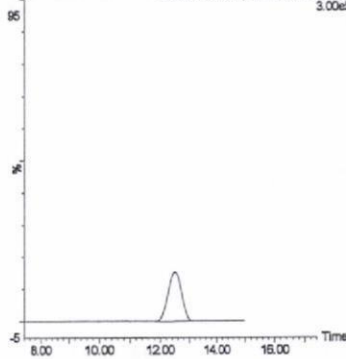
鶏卵 (0.01 mg/kg 添加)

X090224_16 Sm (Mn, 3x3) 1: MRM of 23 Channels ES+
429.94 > 369.77 (Cloransulam-methyl) 3.00e5



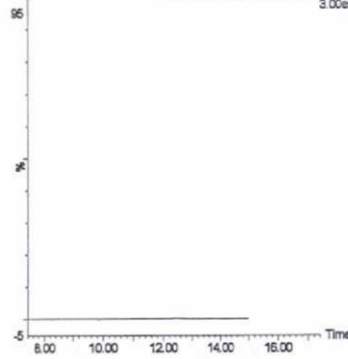
鶏卵 (0.5 mg/kg 添加)

X090224_10 Sm (Mn, 3x3) 1: MRM of 23 Channels ES+
429.94 > 369.77 (Cloransulam-methyl) 3.00e5



はちみつ (0.01 mg/kg 添加)

X090224_66 Sm (Mn, 3x3) 1: MRM of 23 Channels ES+
429.94 > 369.77 (Cloransulam-methyl) 3.00e5



はちみつ (0.5 mg/kg 添加)

X090224_61 Sm (Mn, 3x3) 1: MRM of 23 Channels ES+
429.94 > 369.77 (Cloransulam-methyl) 3.00e5

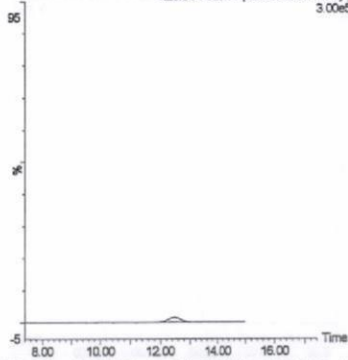


図 2-5. 標準品, 回収試料のMRM クロマトグラム (クラランスラムメチル②)