

Chatsworth, CA). The total RNA yield was determined by OD260. One microgram of total RNA was used for cDNA synthesis by random hexamer and Omniscript reverse transcriptase (Qiagen). The cDNA was stored at -80°C until further use.

2.4. Real-time quantitative PCR

Real-time quantitative polymerase chain reaction (PCR) was performed as described previously (Matsubara et al., 2006). Used primers sets were 5-TCTTGG AAACAATGGCAACA-3 and 5-CTCGGGGATCTT CAAATTCA-3 for SRp20, 5-ATATGCCCTGCGT AAAGTGG-3 and 5-AGACCGAGACCGTGAGT AGC-3 for SRp30c, 5-CCCGGACTCACACCACAG-3 and 5-AGATCGGCTGCGAGACCT-3 for SC35, 5-GAGGCTTTGGTTTTGTGGAA-3 and 5-CGAGCCC TAGCATGTTCAAT-3 for SRp40, 5-GCTACGGCG GATCTACTAC-3 and 5-TTGATGCAGAGCGAG AGCTA-3 for SRp46, 5-TCCAGACTCAGCAG TTGTGG-3 and 5-TGGTGCCAACAGAGACAAAG-3 for SRp54, 5-AAATACGGACCACCTGTTCG-3 and 5-CTTACCTGCTTGTCGCATA-3 for SRp55, 5-GAT CCTGGAGGTGGATCTGA-3 and 5-CCACA AAGGTCTTTGCCATT-3 for SRp75, 5-TGCCTACA TCCGGGTAAAG-3 and 5-CTGCTGTTGC TTCTGCTACG-3 for ASF/SF2, 5-CGCTGGCAAAG-GAGAGTTAG-3 and 5-CGAATCCACAAAGG CAAAT-3 for 9G8, and 5-CAGCCTCAAGATCATC AGCA-3 and 5-TGTGGTTCATGAGTCTTCCA-3 for GAPDH. All measurements were performed at least in duplicate. GAPDH mRNA levels were used for normal-

ization. Expression values for mood disorder subjects were normalized by the mean of the value for control subjects. Methods and results of the quantitative analysis of GR α and GR β mRNA levels were described in detail in our previous report (Matsubara et al., 2006).

2.5. Serum cortisol determination

Serum cortisol concentration was measured via radioimmunoassay by the SRL Corporation (Tokyo, Japan).

2.6. Data analysis

Data are presented as mean \pm standard error of the mean (SEM) unless otherwise specified. For statistical analyses, we used one-way analysis of variance (ANOVA) followed by the Dunnett test. Spearman's correlations were calculated to assess the correlation between data. Two group comparisons, such as the effects of mood stabilizer usage or gender on SR protein mRNA expression, were performed using the Student's *t*-test. For all statistical analyses, $p < 0.05$ was considered significant.

3. Results

3.1. Increased SRp20 mRNA expression in BPD patients during depressive and remissive states

We first examined the expression of SR protein splicing factors, SRp20, SRp30c, SC35, SRp40, SRp46,

Table 1
Demographic and clinical characteristics of subjects

	Controls <i>n</i> = 28	Patients				Relatives	
		MDD		BPD		MDD	BPD
		Depressed	Remission	Depressed	Remission		
	<i>n</i> = 20	<i>n</i> = 41	<i>n</i> = 13	<i>n</i> = 37	<i>n</i> = 17	<i>n</i> = 15	
Age (years)	50.0 \pm 1.8	52.3 \pm 3.5	57.3 \pm 2.2	55.5 \pm 3.5	53.2 \pm 2.3	48.8 \pm 3.5	44.7 \pm 4.7
Gender (male/female)	15/13	10/10	15/26	2/11	7/30	4/13	5/10
HDRS		25.9 \pm 1.9	3.2 \pm 0.2	24.6 \pm 1.1	2.9 \pm 0.2		
Serum cortisol ($\mu\text{g/dl}$)	8.6 \pm 0.8	10.3 \pm 1.3	11.6 \pm 1.1	10.9 \pm 4.5	10.5 \pm 0.8		
Medication							
No medication	28	3	4	1	0	17	15
SSRI	0	5	13	4	3	0	0
TCA	0	8	8	1	6	0	0
Li	0	0	0	4	21	0	0
VPA	0	0	0	7	16	0	0
CBZ	0	0	0	2	8	0	0

MDD, major depressive disorder; BPD, bipolar disorder; Relatives, first-degree relatives of MDD and BPD patients; HDRS, Hamilton Depression Rating Scale; SSRI, selective serotonin reuptake inhibitor; TCA, tricyclic antidepressant; Li, lithium; VPA, valproic acid; CBZ, carbamazepine.

SRp54, SRp55, SRp75, ASF/SF2 and 9G8 in mood disorder patients in the depressive state (Fig. 1A). SRp30c mRNA expression was not altered in either BPD or MDD patients, compared to healthy control subjects ($F=0.122$, $df=2$, 58 , $p=0.885$). Unexpectedly, the expression of SRp20 mRNA was significantly increased in BPD patients, compared to healthy control subjects ($F=5.437$, $df=2$, 58 , $p=0.007$, post-hoc $p=0.003$), whereas in MDD patients there was only a slight, non-significant increase in SRp20 mRNA expression (post-hoc $p=0.262$). There were no significant effects of gender on SRp20 mRNA expression in healthy control subjects ($t=0.839$, $df=26$, $p=0.409$), MDD patients ($t=0.281$, $df=18$, $p=0.782$), or BPD patients ($t=-0.276$, $df=11$, $p=0.787$) in the depressive state. There were also no significant correlations between SRp20 mRNA expression and age in healthy control subjects ($r=0.096$, $p=0.634$), MDD patients ($r=0.110$, $p=0.644$), or BPD patients ($r=-0.396$, $p=0.180$) in this state.

Next, we examined the expression of SRp20 mRNA in mood disorder patients in a remissive state (Fig. 1B). We also examined SC35 mRNA expression in these patients, because it has been reported that stress increased SC35 expression (Meshorer et al., 2005). BPD patients showed a significant increase in SRp20 mRNA expression, similar in extent to that in a depressive state ($F=3.999$, $df=2$, 103 , $p=0.021$, post-hoc $p=0.012$), whereas MDD patients did not show any alteration in SRp20 mRNA expression (post-hoc $p=0.341$). SC35 mRNA expression was not altered in

either BPD or MDD patients, compared to healthy control subjects ($F=0.210$, $df=2$, 103 , $p=0.811$).

As the expression of SRp20 mRNA was increased in BPD patients in both the depressive and remissive states, we also examined the expression of SRp20 and SC35 mRNA in the first-degree relatives of mood disorder patients. However, the expression of both of these factors were similar to those of healthy control subjects (SRp20: $F=0.136$, $df=2$, 57 , $p=0.873$; SC35: $F=0.461$, $df=2$, 57 , $p=0.633$).

3.2. SR proteins and the HPA axis

We examined the relationships between the SRp30c mRNA expression, which is reported to be associated with alternative splicing of the GR transcript (Xu et al., 2003), and the expression of GR α mRNA, GR β mRNA, the GR β /GR α ratio, and serum cortisol concentration. There was a significant correlation between the expression of SRp30c mRNA and GR β /GR α in healthy control subjects, but not in either group of mood disorder patients in the depressive state (Fig. 2). SRp30c mRNA expression did not show any significant correlation with serum cortisol concentrations in healthy control subjects ($r=0.236$, $p=0.345$), MDD patients ($r=-0.092$, $p=0.813$), or BPD patients ($r=-0.051$, $p=0.935$) in the depressive state.

Unexpectedly, there was also a significant correlation between SRp20 mRNA expression and GR β mRNA expression in MDD patients in a depressive state (Fig. 3)

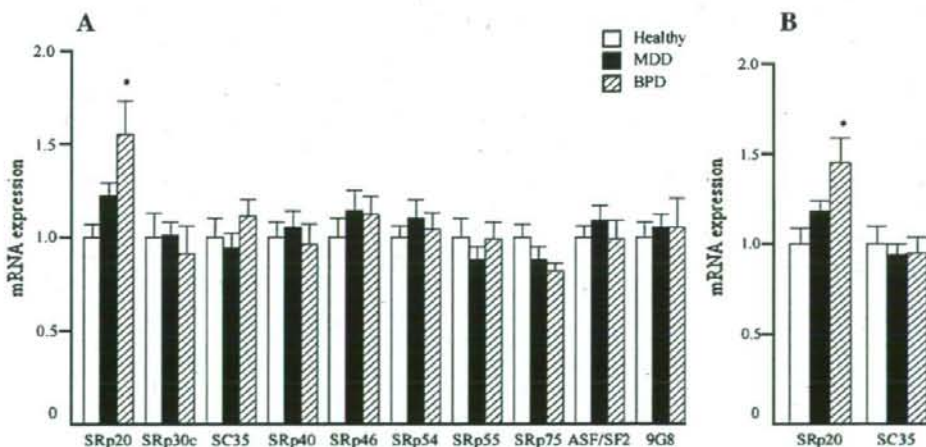


Fig. 1. The mRNA expression of SR protein splicing factors in mood disorder patients. A. Quantitative real-time PCR revealed an increased SRp20 mRNA expression only in BPD patients in a depressive state ($n=13$) compared to healthy control subjects ($n=28$). B. The expression of SRp20 mRNA was increased in BPD patients ($n=37$) in a remissive state compared to healthy control subjects ($n=28$). MDD, major depressive disorder; BPD, bipolar disorder. Values are mean \pm standard error. * $p<0.05$.

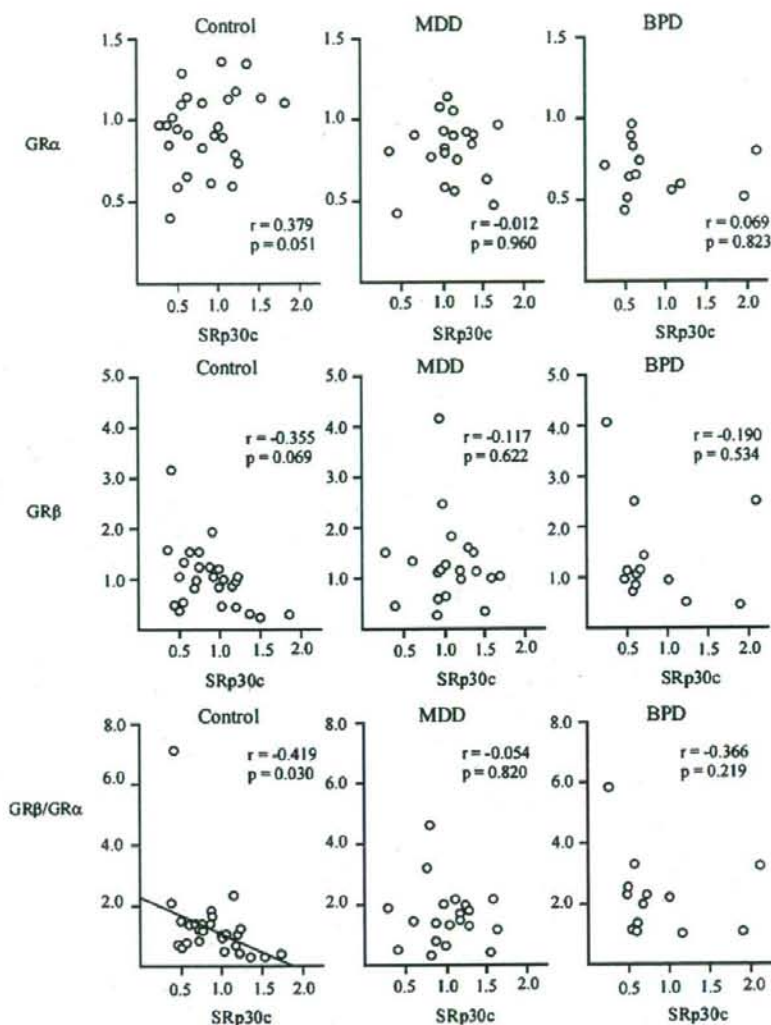


Fig. 2. The correlations of SRp30c mRNA expression with GR α mRNA, GR β mRNA and the GR β /GR α ratio. There was a significant correlation between SRp30c mRNA expression and the GR β /GR α ratio only in healthy control subjects. Only data for patients in the depressive state are shown. MDD, major depressive disorder; BPD, bipolar disorder.

No such correlations were found in either BPD patients in a depressive state or healthy control subjects (Fig. 3). There were no significant correlations of SRp20 mRNA expression with serum cortisol concentration in healthy control subjects ($r=-0.030$, $p=0.906$), MDD patients ($r=0.285$, $p=0.458$), or BPD patients ($r=-0.066$, $p=0.916$) in the depressive state.

In the remissive state, SRp20 mRNA expression was not significantly correlated with GR α mRNA in MDD

patients ($r=-0.009$, $p=0.954$) or BPD patients ($r=-0.107$, $p=0.529$). Also, there were no significant correlations between SRp20 mRNA expression and serum cortisol concentration in MDD patients ($r=0.254$, $p=0.382$) or BPD patients ($r=0.225$, $p=0.420$) in the remissive state. GR β mRNA expression in mood disorder patients in the remissive state was not analyzed in our previous report, because it was not altered in such patients in the depressive state (Matsubara et al., 2006).

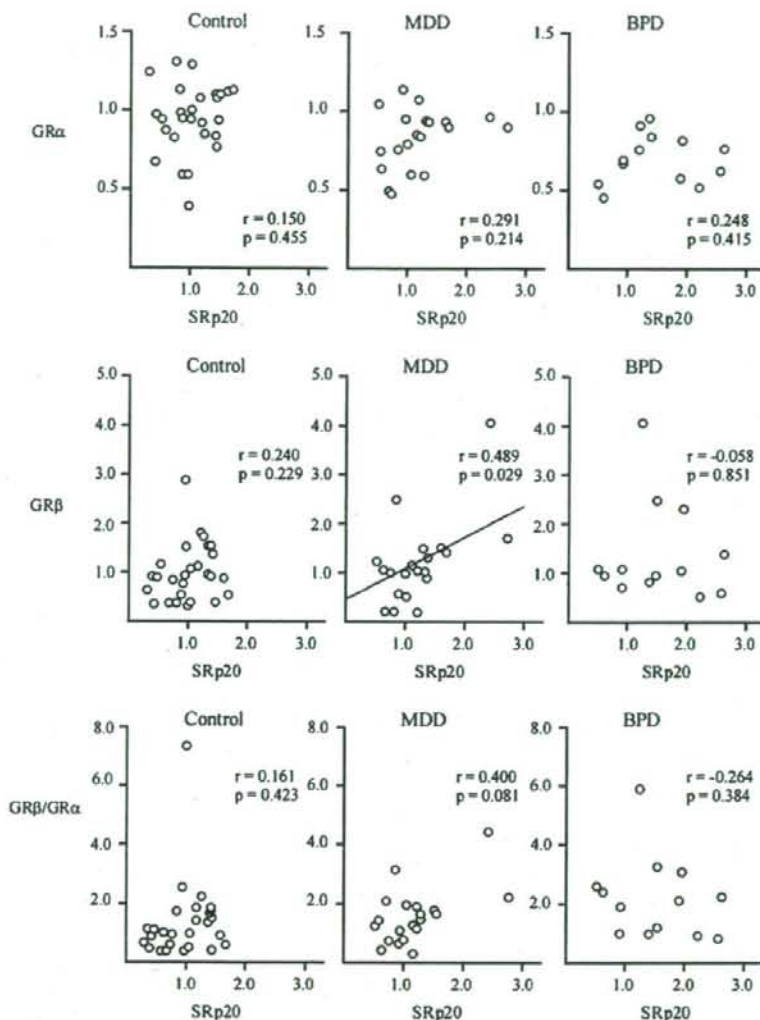


Fig. 3. The correlations of SRp20 mRNA expression with GR α mRNA, GR β mRNA and GR β /GR α ratio. A significant correlation of SRp20 mRNA expression with GR β mRNA level was seen in depressive MDD patients, but not in healthy control subjects or in depressive BPD patients. Only data for patients in the depressive state are shown. MDD, major depressive disorder; BPD, bipolar disorder.

3.3. No significant relationship between SRp20 mRNA expression and medication

Recently, it was reported that valproic acid (VPA) increased SRp20 and ASF/SF2 protein levels (Brichta et al., 2003). To examine the effect of VPA on SRp20 mRNA expression in BPD patients, we divided them into two groups, those with or without VPA medication. The two groups showed similar increased SRp20 mRNA

expression in both the depressive ($t=1.058$, $df=11$, $p=0.313$) and remissive ($t=-0.532$, $df=35$, $p=0.598$) states. To examine the effect of antidepressant medication on SRp20 mRNA expression in BPD patients, we studied the correlation between SRp20 mRNA expression and the dose of antidepressant medications; however, there were no significant correlations in patients in either the depressive ($r=-0.095$, $p=0.757$) or remissive ($r=0.025$, $p=0.884$) states.

4. Discussion

In the present study, we found the inverse correlation between SRp30c mRNA expression and the GR β /GR α mRNA ratio in healthy control subjects, but not in mood disorder patients. This is the first evidence, *in vivo*, of the possibility that SRp30c might regulate the alternative splicing of GR, a finding that was reported previously only *in vitro* (Xu et al., 2003). Also, this finding supports our hypothesis that proper alternative splicing of the GR transcript may be disturbed in mood disorder patients, which is derived from our previous finding that a significant correlation between GR α and GR β mRNA expression was found only in healthy control subjects, but not in mood disorder patients (Matsubara et al., 2006). Interestingly, there was also a significant correlation between SRp20 mRNA expression and GR β mRNA expression in MDD patients, but not in BPD patients. This may be another finding suggesting that the alternative splicing status in mood disorder patients is different from that in the healthy controls. Although the present study revealed that there are altered correlative relationships between the expression of SR proteins and GR-related parameters in mood disorder patients, it remains unknown whether there are any causal relationships between them.

Another major finding of our study is that the expression of SRp20 mRNA was significantly increased in BPD patients, but not in MDD patients. The increased expression of SRp20 mRNA was revealed in these patients in both the depressive and remissive states. These findings suggest that increased expression of SRp20 mRNA in BPD patients may not be state-dependent. However, we did not identify significant alterations in SRp20 mRNA expression in the first-degree relatives of mood disorder patients. The increased SRp20 mRNA expression may be closely related to the onset of disease and last after recovery from the depressive state.

It has been reported that VPA increased SRp20 and ASF/SF2 protein levels in fibroblast cultures derived from spinal muscular atrophy patients (Brichta et al., 2003). However, we did not find such effects of VPA on SRp20 mRNA in the peripheral white blood cells of mood disorder patients, or ASF/SF2 mRNA expressions (data not shown). Thus, our findings did not suggest that the increased expression of SRp20 mRNA in BPD patients was caused by VPA medication. The discrepancy between the previous report and this study may be due to differences in the tissues examined.

The biological significance of increased SRp20 expression in BPD patients is the next question to be clarified. There are several target genes regulated by

SRp20-mediated alternative splicing, such as calcitonin (CT)/calcitonin gene-related peptide (CGRP) and CD44 (Lou et al., 1998; Galiana-Arnoux et al., 2003). These molecules have been reported to be involved in the regulation of proinflammatory cytokines and the HPA axis (Noble et al., 1993; Dhillon et al., 2003), which are related to the pathophysiology of mood disorders.

Although it is unknown whether SRp20 expression is also changed in the brain of BPD patients, it should be noted that there have been an increasing number of molecules that showed altered expression in both brain and peripheral blood cells of mood disorder patients, including GR α mRNA, heat shock protein 40, and LIM protein (Webster et al., 2002; Iwamoto et al., 2004; Knable et al., 2004; Matsubara et al., 2006). To confirm the relevance of an altered SRp20 expression to the pathophysiology of mood disorders, it is necessary to establish an animal model for mood disorders, in which the SRp20 gene and/or its target genes are genetically modified.

This is the first report demonstrating the possibility of an aberrant alternative splicing occurring via increased SRp20 in BPD patients. The increased expression of SRp20 mRNA in BPD patients was consistent in both the depressive and remissive states. Our results suggest that SRp20 might also be a biological marker of BPD, by distinguishing it from MDD even at the first depression episode, and leading to appropriate psychopharmacological strategies for prevention of manic episodes.

Conflict of interest

There are no conflicts of interest including any financial, personal, or other relationships with people for any of the coauthors related to the work described in the article.

Role of the funding source

This study was supported in part by a Grant-in-Aid for Research on Psychiatric and Neurological Diseases and Mental Health from the Ministry of Health, Labour and Welfare of Japan, and a Research grant on Pharmacotherapeutics in Neuropsychiatry from Mitsubishi Pharma Research Foundation.

Acknowledgement

The authors thank Masatomo Suetsugi and Michiko Fujimoto for helpful discussions.

References

- Black, D.L., 2003. Mechanisms of alternative pre-messenger RNA splicing. *Annu. Rev. Biochem.* 72, 291–336.
- Brichta, L., Hofmann, Y., Hahnen, E., Siebzehnrubl, F.A., Raschke, H., Blumcke, I., Eyupoglu, I.Y., Wirth, B., 2003. Valproic acid increases the SMN2 protein level: a well-known drug as a potential therapy for spinal muscular atrophy. *Hum. Mol. Genet.* 12, 2481–2489.

- de Kloet, E.R., Joels, M., Holsboer, F., 2005. Stress and the brain: from adaptation to disease. *Nat. Rev. Neurosci.* 6, 463–475.
- Dhillon, W.S., Small, C.J., Jethwa, P.H., Russell, S.H., Gardiner, J.V., Bewick, G.A., Seth, A., Murphy, K.G., Ghatei, M.A., Bloom, S.R., 2003. Paraventricular nucleus administration of calcitonin gene-related peptide inhibits food intake and stimulates the hypothalamo-pituitary-adrenal axis. *Endocrinology* 144, 1420–1425.
- Galiana-Amoux, D., Lejeune, F., Gesnel, M.C., Stevenin, J., Breathnach, R., Del Gatto-Konczak, F., 2003. The CD44 alternative v9 contains a splicing enhancer responsive to the SR protein 9G8, ASF/SF2, and SRp20. *J. Biol. Chem.* 278, 32943–32953.
- Garcia-Blanco, M.A., Baraniak, A.P., Lasda, E.L., 2004. Alternative splicing in disease and therapy. *Nat. Biotechnol.* 22, 535–546.
- Grabowski, P.J., Black, D.L., 2001. Alternative RNA splicing in the nervous system. *Prog. Neurobiol.* 65, 289–308.
- Graveley, B.R., 2000. Sorting out the complexity of SR protein functions. *RNA* 6, 1197–1211.
- Holsboer, F., 2000. The corticosteroid hypothesis of depression. *Neuropsychopharmacology* 23, 477–501.
- Iwamoto, K., Kakiuchi, C., Bundo, M., Ikeda, K., Kato, T., 2004. Molecular characterization of bipolar disorder by comparing gene expression profiles of postmortem brains of major mental disorders. *Mol. Psychiatry* 9, 406–416.
- Kakiuchi, C., Iwamoto, K., Ishiwata, M., Bundo, M., Kasahara, T., Kusumi, I., Tsujita, T., Okazaki, Y., Nanko, S., Kunugi, H., Sasaki, T., Kato, T., 2003. Impaired feedback regulation of XBP1 as a genetic risk factor for bipolar disorder. *Nat. Genet.* 35, 171–175.
- Knable, M.B., Barci, B.M., Webster, M.J., Meador-Woodruff, J., Torrey, E.F., 2004. Molecular abnormalities of the hippocampus in severe psychiatric illness: postmortem findings from the Stanley Neuropathology Consortium. *Mol. Psychiatry* 9, 609–620.
- Lareu, L.F., Inada, M., Green, R.E., Wengrod, J.C., Brenner, S.E., 2007. Unproductive splicing of SR genes associated with highly conserved and ultraconserved DNA elements. *Nature* 446, 926–929.
- Lee, C.J., Irizarry, K., 2003. Alternative splicing in the nervous system: an emerging source of diversity and regulation. *Biol. Psychiatry* 54, 771–776.
- Lou, H., Neugebauer, K.M., Gagel, R.F., Berget, S.M., 1998. Regulation of alternative polyadenylation by U1 snRNPs and SRp20. *Mol. Cell Biol.* 18, 4977–4985.
- Lu, N.Z., Cidlowski, J.A., 2006. Glucocorticoid isoforms generate transcriptional specificity. *Trends Cell Biol.* 16, 301–307.
- Matsubara, T., Funato, H., Kobayashi, A., Nobumoto, M., Watanabe, Y., 2006. Reduced glucocorticoid receptor α expression in mood disorder patients and first-degree relatives. *Biol. Psychiatry* 59, 689–695.
- Meshorer, E., Bryk, B., Toiber, D., Cohen, J., Podoly, E., Dori, A., Soreq, H., 2005. SC35 promotes sustainable stress-induced alternative splicing of neuronal acetylcholinesterase mRNA. *Mol. Psychiatry* 10, 985–997.
- Noble, P.W., Lake, F.R., Henson, P.M., Riches, D.W.H., 1993. Hyaluronate activation of CD44 induces insulin-like growth factor-1 expression by a tumor necrosis factor- α -dependent mechanism in murine macrophages. *J. Clin. Invest.* 91, 2368–2378.
- Pariante, C.M., Miller, A.H., 2001. Glucocorticoid receptors in major depression: relevance to pathophysiology and treatment. *Biol. Psychiatry* 49, 391–404.
- Pariante, C.M., 2004. Glucocorticoid receptor function in vitro in patients with major depression. *Stress* 7, 209–219.
- Periman, W.R., Webster, M.J., Kleinman, J.E., Weickert, C.S., 2004. Reduced glucocorticoid and estrogen receptor alpha messenger ribonucleic acid levels in the amygdala of patients with major mental illness. *Biol. Psychiatry* 56, 844–852.
- Webster, M.J., Knable, M.B., O'Grady, J., Orthmann, J., Weickert, C.S., 2002. Regional specificity of brain glucocorticoid receptor mRNA alterations in subjects with schizophrenia and mood disorders. *Mol. Psychiatry* 7, 985–994.
- Xu, Q., Leung, D.Y.M., Kisich, K.O., 2003. Serine-arginine-rich protein p30 directs alternative splicing of glucocorticoid receptor pre-mRNA to glucocorticoid receptor β in neutrophils. *J. Biol. Chem.* 278, 27112–27118.
- Yamada, K., Nakamura, K., Minabe, Y., Iwayama-Shigeno, Y., Takao, H., Toyota, T., Hattori, E., Takei, N., Sekine, Y., Suzuki, K., Iwata, Y., Miyoshi, K., Honda, A., Baba, K., Katayama, T., Tohyama, M., Mori, N., Yoshikawa, T., 2004. Association analysis of FEZ1 variants with schizophrenia in Japanese cohorts. *Biol. Psychiatry* 56, 683–690.
- Zheng, Z.M., 2004. Regulation of alternative RNA splicing by exon definition and exon sequences in viral and mammalian gene expression. *J. Biomed. Sci.* 11, 278–294.



Altered expression of neurotrophic factors in patients with major depression

Koji Otsuki, Shusaku Uchida, Toshio Watanuki, Yusuke Wakabayashi, Michiko Fujimoto, Toshio Matsubara, Hiromasa Funato, Yoshifumi Watanabe*

Division of Neuropsychiatry, Department of Neuroscience, Yamaguchi University Graduate School of Medicine, 1-1-1 Minamikogushi, Ube, Yamaguchi 755-8505, Japan

Received 1 September 2007; received in revised form 16 January 2008; accepted 17 January 2008

Abstract

There is an abundance of evidence suggesting the involvement of altered levels of expression of neurotrophic factors in the pathophysiology of neuropsychiatric disorders. Although postmortem brain studies have indicated the alterations in the expression levels of neurotrophic factors in mood disorder patients, it is unclear whether these changes are state- or trait-dependent. In this study, we examined the expression levels of the members of the glial cell line-derived neurotrophic factor (GDNF) family (GDNF, artemin (ARTN), neurturin, and persephin), brain-derived neurotrophic factor, nerve growth factor, neurotrophin-3 (NT-3), and neurotrophin-4 mRNAs by using quantitative real-time PCR method in peripheral blood cells of patients with major depressive and bipolar disorders in both a current depressive and a remissive states. Reduced expression levels of GDNF, ARTN, and NT-3 mRNAs were found in patients with major depressive disorder in a current depressive state, but not in a remissive state. Altered expressions of these mRNAs were not found in patients with bipolar disorder. Our results suggest that the changes in the expression levels of GDNF, ARTN, and NT-3 mRNAs might be state-dependent and associated with the pathophysiology of major depression.

© 2008 Elsevier Ltd. All rights reserved.

Keywords: Major depression; Bipolar disorder; Neurotrophic factor; GDNF; State marker

1. Introduction

Brain imaging studies have indicated the altered volumes of the hippocampus, prefrontal cortex, cingulate cortex, or amygdala in patients with major depression or bipolar disorder (Drevets et al., 1997; Sheline et al., 1999; Bremner et al., 2000; Caetano et al., 2006). Postmortem brain studies have also reported anatomical alterations such as neuronal/glial cell atrophy or reduction in cortical brain regions in depressed patients (Ongur et al., 1998; Rajkowska et al., 1999; Cotter et al., 2001). These studies suggest the alteration of structural and neuronal plasticity in mood disorders.

Neurotrophic factors have many effects on the nervous system such as neurogenesis, neuronal growth, differentiation, and plasticity. There is a growing body of evidence demonstrating that neurotrophic factors have crucial roles in stress response, the action of antidepressants, and pathophysiology of mood disorders (Smith et al., 1995; Nibuya et al., 1999; Karege et al., 2002; Nestler et al., 2002; Duman and Monteggia, 2006; Govindarajan et al., 2006). For example, the expression level of brain-derived neurotrophic factor (BDNF) was significantly decreased in animals subjected to social defeat, immobilization, and maternal deprivation stresses (Smith et al., 1995; Nibuya et al., 1999; Roceri et al., 2002; Tsankova et al., 2006). In addition, chronic antidepressant treatment increases the expression levels of BDNF and neurogenesis in rodents (Malberg et al., 2000; Duman and Monteggia, 2006; Tsankova et al., 2006). Furthermore, low levels of serum BDNF is

* Corresponding author. Tel.: +81 836 22 2255; fax: +81 836 22 2253.
E-mail address: yoshiwat@yamaguchi-u.ac.jp (Y. Watanabe).

suggested to be associated with major depression (Duman et al., 1997; Karege et al., 2002; Nestler et al., 2002). In addition to BDNF, the expression levels of other neurotrophic factors, including: nerve growth factor (NGF); glial cell line-derived neurotrophic factor (GDNF); neurotrophin-3 (NT-3); and neurotrophin-4 (NT-4) were also reported to be associated with stress response and neurogenesis in rodents and depression in humans (Smith et al., 1995; Ueyama et al., 1997; Aloe et al., 2002; Dwivedi et al., 2005; Shimazu et al., 2006). However, little is known about whether the changes in the expression levels of these molecules are state- or trait-dependent in mood disorders.

Another well known characteristic of the pathophysiology of mood disorders is the dysregulation of hypothalamic-pituitary-adrenal (HPA) axis (Arborelius et al., 1999; Holsboer, 2001; Nestler et al., 2002; de Kloet, 2003). Although the molecular mechanisms of the aberrant regulation of the HPA axis in mood disorders remains unclear, one candidate is the dysfunction of the glucocorticoid receptor (GR), which plays an important role in the negative feedback of the HPA axis and the adaptation to stress (Holsboer, 2000; Pariante and Miller, 2001). In response to stress, glucocorticoid hormone and GR are associated with stress-induced effects on the brain, including shrinkage of neural dendrites, suppressed neurogenesis, and reduced serotonin metabolism (Lopez et al., 1998; McEwen, 2000; Sapolsky et al., 2000; de Kloet, 2003). In addition, previous studies have indicated the reduced expression of GR α mRNA in the brain and peripheral white blood cells of patients with mood disorders (Webster et al., 2002; Knable et al., 2004; Perlman et al., 2004; Matsubara et al., 2006). Several lines of evidence have suggested that glucocorticoid hormone or GR affect the expression levels of neurotrophic factors (Barbany and Persson, 1992; Chao and McEwen, 1994; Smith et al., 1995; Mocchetti et al., 1996; Ridder et al., 2005; Schulte-Herbruggen et al., 2006). For example, adrenalectomy significantly decreased the mRNA levels of BDNF, NT-3, and NGF in the rat cerebral cortex and hippocampus (Barbany and Persson, 1992). In addition, GR knock-out heterozygous mice exhibited decreased levels of BDNF protein in the hippocampus, whereas GR overexpressing mice exhibited increased levels of BDNF protein in the amygdala and hippocampus (Ridder et al., 2005; Schulte-Herbruggen et al., 2006). These observations suggest that the reduced levels of GR may affect the expression levels of neurotrophic factors in patients with mood disorders.

In this study, we aimed to determine whether there are alterations in the expression levels of multiple neurotrophic factors, including GDNF family members (GDNF, artemin (ARTN), neurturin (NRTN), and persephin (PSPN)), BDNF, NGF, NT-3, and NT-4 mRNAs in peripheral white blood cells of mood disorder patients. Furthermore, to examine whether the altered expression of neurotrophic factor mRNAs are state- or trait-dependent, the mRNA levels of these factors were examined in both current depressive and remissive states.

2. Materials and methods

2.1. Subjects

Major depressive and bipolar disorder patients were diagnosed according to the criteria in the Diagnostic and Statistical Manual of Mental Disorders, fourth edition (DSM-IV; American Psychiatric Association, 1994). These included both outpatients and inpatients of the Division of Neuropsychiatry of the Yamaguchi University Hospital. The extent of the depressive state was assessed by a 21-item "Hamilton Depression Rating Scale" (HDRS). Subjects were classified as under a current depressive state when they showed a score of more than 18 on HDRS and met the DSM-IV criteria for major depressive episode. Subjects were classified as being in remission when they showed a score of less than 6 on HDRS and did not show any symptoms of the major depressive episode in the DSM-IV criteria for more than 2 months. Individuals were excluded from the present study if they had abnormal physical examinations or abnormal results for routine medical laboratory tests such as a complete blood count, renal, liver or thyroid function. Female subjects who were pregnant or took oral contraceptives were also excluded. All healthy control subjects were screened to exclude significant current or past medical or neurological illnesses, significant alcohol or drug abuse and past or current Axis I psychiatric illnesses. This protocol was approved by the Institutional Review Board of Yamaguchi University Hospital. Informed written consent was obtained for all subjects.

2.2. Blood sample preparation, RNA isolation, and cDNA synthesis

Blood sample preparation, total RNA isolation and cDNA synthesis were performed as previously described (Matsubara et al., 2006). In brief, blood was obtained by venipuncture between 10:00 a.m. and 11:00 a.m. and processed for total RNA purification from peripheral blood cells by using QIAamp RNA Blood Mini Kit (Qiagen, Chatsworth, CA, USA) according to the manufacturer's manual. The quality of RNA was determined based on A_{260}/A_{280} ratio, which was found as 1.7–2.0 for all RNA preparations. One microgram of total RNA was used for cDNA synthesis using random hexamer primers and Omniscript Reverse Transcriptase (Qiagen). The cDNA was stored at -80°C until further use.

2.3. Serum cortisol determination

Serum cortisol concentration was measured via radioimmunoassay by the SRL Corporation (Tokyo, Japan).

2.4. Quantitative real-time polymerase chain reaction

Quantitative real-time polymerase chain reaction (qRT-PCR) was performed in an Applied Biosystems 7300 Fast

Real-Time PCR System with SYBR green PCR master mix (Applied Biosystems, CA, USA) according to the manufacturer's manual. PCR conditions were 15 min at 95 °C, 45 cycles of 15 s at 95 °C and 30 s at 60 °C. The primer sequences are described in Table 1. The amplification of a single PCR product was confirmed by monitoring the dissociation curve and electrophoresis on 1.5% agarose gels stained with ethidium bromide. Amplification curves were visually inspected to set a suitable baseline range and threshold level. To generate standard curves, various concentrations of cDNA, made from total RNA isolated from human lymphoma-derived Jurkat cells, were used in each PCR reaction. The number of cycles required to reach the threshold fluorescence level was scored and used for generating standard curves and interpolating mRNA concentration levels. The relative quantification method, in which the ratio between the amount of target molecule and a reference molecule within the same sample was calculated, was employed for quantifying target molecules according to the manufacturer's protocol. All measurements were performed at least in duplicate. Levels of GAPDH mRNA was used to normalize the relative expression levels of target mRNA. Expression values for mood disorder subjects were normalized by the mean of the value for control subjects.

2.5. Dex/CRH test

A few days after blood sampling for the RNA isolation and basal cortisol determination, Dexamethasone (Dex)/corticotropin-releasing hormone (CRH) test was performed as previously reported (Matsubara et al., 2006). Mood disorder patients were pretreated with an oral dose of 1 mg of Dex (Asahikasei Pharmaceutical Corporation, Tokyo, Japan) at 11:00 p.m. The next day intravenous cannulation was carried out at 12:30 p.m. and 100 µg of human CRH (hCRH, Mitsubishi Pharma Corporation, Tokyo, Japan) was administered intravenously at 1:00 p.m., immediately after the first blood collection. Blood specimens were drawn through the intravenous catheter 15 min, 30 min, 60 min and 120 min later. Blood samples were immediately centrifuged and stored at -20 °C. Serum level of cortisol and plasma level of ACTH were measured with radioimmunoassay (SRL). We defined non-suppress-

sors as those individuals whose post-CRH plasma cortisol levels were more than 5 µg/dl.

2.6. Statistical analysis

Commercial software (SPSS version 11.5; Chicago, Illinois) was used to perform data analysis. All data are expressed as the mean ± standard error of the mean (SEM). Two group comparisons were performed using the Student's *t*-test. The other data were subjected to one-way analysis of variance (ANOVA) followed by post hoc analysis (Tukey test). In all cases, comparisons were considered statistically significant for $p < 0.05$.

3. Results

Table 2 shows the demographic and clinical characteristics of the subjects. The majority of the patients were on medications. The mean ages were not significantly different among major depressive disorder patients, bipolar depressive patients or healthy control subjects ($F = 1.228$, $df = 4.125$, $p = 0.303$).

We first examined the expression levels of the GDNF family members (GDNF, ARTN, NRTN, and PSPN) in patients with mood disorder in a current depressive state (Fig. 1). The qRT-PCR revealed that the expression of GDNF mRNA was significantly decreased in major depressive disorder patients compared with healthy control subjects ($F = 5.472$, $df = 2.58$, $p = 0.005$) (Fig. 1A). In addition, ARTN mRNA was significantly decreased in major depressive disorder patients compared with healthy control subjects and bipolar disorder patients ($F = 4.147$, $df = 2.58$, $p = 0.037$; $p = 0.049$) (Fig. 1B). There was no significant difference in the expression levels of GDNF and ARTN mRNA between patients with bipolar disorder in a current depressive state and healthy control subjects (GDNF: $F = 5.472$, $df = 2.58$, $p = 0.214$, ARTN: $F = 4.147$, $df = 2.58$, $p = 0.932$) (Fig. 1A and B). There was no significant difference in the expression levels of NRTN and PSPN mRNAs among major depressive, bipolar disorder patients and healthy control subjects (NRTN: $p = 0.67$; PSPN: $p = 0.282$) (Fig. 1C and D).

Next, we examined the expression levels of BDNF, NGF, NT-3 and NT-4 mRNAs in patients with mood

Table 1
Primer sequences used for quantitative real-time PCR

	Forward primer (5'-3')	Reverse primer (5'-3')	Size (bp)
BDNF	TGGCTGACACTTTCGAACAC	AGAAGAGGAGGCTCCAAGG	145
NGF	CAACAGGACTCACAGGAGCA	GCTGTGGCGGTGGTCTTAT	115
NT-3	GAAACGCGATGTAAGGAAGC	CCAGCCCACGAGTTTATTGT	138
NT-4	CCTCCGCCAGTACTTCTTTG	TCAGATACCCAGTGCCTCCT	114
GDNF	CAAACCCAGAGAATCCAGA	AGCCGCTGCAGTACCTAAA	150
ARTN	CTCTCCACACGACCTCAGC	ATGAAGGAGACCGCTTGGA	123
NRTN	ACGAGACGGTGTCTGTCC	GCAGCCCGAGGTCGTAGA	72
PSPN	CCGTAGGGAAAGTCTCTGCT	CCTTTGCACCTGTTACAGC	126
GAPDH	CAGCTCAAGATCATCAGCA	TGTGGTCATGAGTCTCTCCA	106

Table 2
Demographic and clinical characteristics of subjects

	Control <i>n</i> = 28	Patients			
		MDD Depressive <i>n</i> = 20	Remissive <i>n</i> = 40	BPD	
		Depressive <i>n</i> = 13	Remissive <i>n</i> = 29		
Age (years)	50.0 ± 1.8	52.3 ± 3.5	57.1 ± 2.2	55.5 ± 3.5	53.6 ± 2.6
Gender (Male/Female)	15/13	10/10	15/25	2/11	5/24
HDRS		25.9 ± 1.9	3.3 ± 0.2	24.6 ± 1.1	2.9 ± 0.2
Serum cortisol (µg/dl)	8.6 ± 0.8	10.3 ± 1.3	11.6 ± 1.1	10.9 ± 4.5	10.5 ± 1.0
<i>Dex-CRH test</i>					
Suppressor		8	7	3	2
Non-suppressor		8	3	7	5
<i>Medication</i>					
No medication	28	3	4	1	0
Antidepressants	0	17	36	9	14
Mood stabilizers	0	0	0	10	27

MDD, major depressive disorder; BPD, bipolar disorder; HDRS, Hamilton Depression Rating Scale.

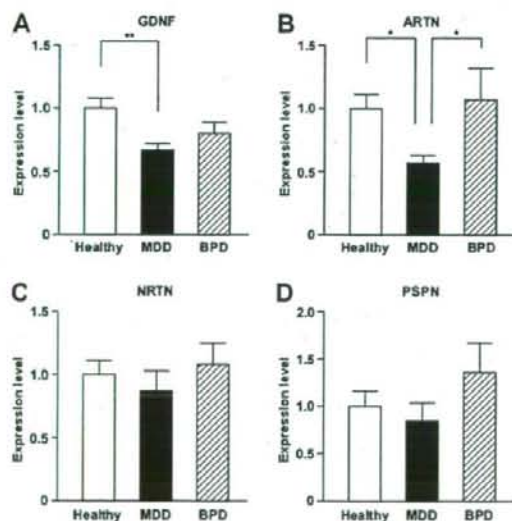


Fig. 1. The mRNA expression of GDNF family members in mood disorder patients in a depressive state. Quantitative real-time PCR revealed decreased GDNF and ARTN mRNA expression only in MDD patients (*n* = 20) compared with healthy control subjects (*n* = 28). MDD, major depressive disorder; BPD, bipolar disorder. Values are mean ± standard error. * *p* < 0.05; ** *p* < 0.01.

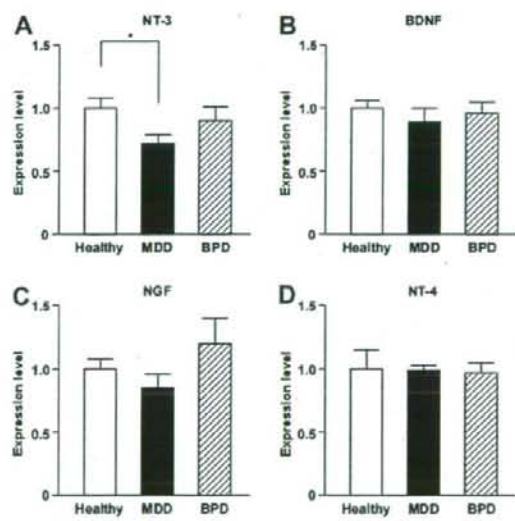


Fig. 2. The mRNA expression of NT-3, BDNF, NGF, and NT-4 in mood disorder patients in a depressive state. Quantitative real-time PCR revealed decreased NT-3 mRNA expression only in MDD patients (*n* = 20) compared with healthy control subjects (*n* = 28). There was no significant difference in the levels of BDNF, NGF, and NT-4 mRNAs among the three groups studied. MDD, major depressive disorder; BPD, bipolar disorder. Values are mean ± standard error. * *p* < 0.05.

disorder in a current depressive state (Fig. 2). The expression levels of NT-3 mRNA was significantly decreased in major depressive patients compared with healthy control subjects ($F = 3.310$, $df = 2.58$, $p = 0.034$) (Fig. 2A). There was no significant difference in the expression level of NT-3 mRNA between patients with bipolar disorder in a current depressive state and healthy control subjects ($F = 3.31$, $df = 2.58$, $p = 0.675$) (Fig. 2A). There was no significant difference in the expression levels of BDNF, NGF and NT-4 mRNAs among the three groups (BDNF: $p = 0.615$; NGF: $p = 0.162$, NT-4: $p = 0.245$) (Fig. 2B–D).

We analyzed the effect of gender on the mRNA levels of GDNF, ARTN, and NT-3 in patients with major depressive disorder in a current depressive state and healthy controls. Gender difference did not produce a significant effect on GDNF, ARTN, and NT-3 mRNA expression of healthy control subjects (GDNF: $t = -0.970$, $df = 26$, $p = 0.341$, ARTN: $t = -1.187$, $df = 26$, $p = 0.246$, NT-3: $t = -0.386$, $df = 26$, $p = 0.703$) and those of major depressive disorder patients in a current depressive state (GDNF: $t = -0.919$, $df = 18$, $p = 0.370$, ARTN: $t = -0.984$, $df = 18$, $p = 0.338$, NT-3: $t = -0.659$, $df = 18$, $p = 0.519$).

To examine whether the altered expression levels of GDNF, ARTN, and NT-3 mRNAs observed in a current depressive state are state- or trait-dependent, the mRNA levels of these factors were also examined in a remissive state. The expression levels of GDNF, ARTN, and NT-3 mRNAs in major depressive disorder patients in a remissive state showed no significant differences compared with healthy control subjects or bipolar disorder patients (GDNF: $F = 2.296$, $df = 2.94$, $p = 0.106$; ARTN: $F = 2.619$, $df = 2.94$, $p = 0.078$; NT-3: $F = 0.980$, $df = 2.94$, $p = 0.379$) (Fig. 3A-C). In addition, the expression levels of GDNF, ARTN, and NT-3 mRNAs in bipolar disorder patients in a remissive state showed no significant differences compared with healthy control subjects or major depressive disorder patients (GDNF: $F = 2.296$, $df = 2.94$, $p = 0.997$; ARTN: $F = 2.619$, $df = 2.94$, $p = 0.063$; NT-3: $F = 0.980$, $df = 2.94$, $p = 0.522$) (Fig. 3A-C). We also examined the expression levels of GDNF, ARTN, and NT-3 mRNA in same patients with major depressive ($n = 15$) or bipolar disorder ($n = 9$) before and after remission. qRT-PCR revealed that the expressions of these three mRNA were significantly decreased in patients with major depressive disorder in a current depressive state compared with those in a current remissive state (GDNF: $t = -2.704$, $df = 28$, $p = 0.012$, ARTN: $t = -3.241$, $df = 28$, $p = 0.030$, NT-3: $t = -2.151$, $df = 28$, $p = 0.040$). There was no significant difference in the expression levels GDNF, ARTN, and NT-3 mRNA between patients with bipolar disorder in a current depressive and depressive state (GDNF: $t = -0.095$, $df = 16$, $p = 0.925$, ARTN: $t = -0.655$, $df = 16$, $p = 0.522$, NT-3: $t = 0.778$, $df = 16$, $p = 0.448$). Importantly, there was no significant difference in the treatment periods before remission between major depressive disorder (2.93 ± 0.36 months) and bipolar disorder patients (2.78 ± 0.41 months) ($t = 0.274$, $df = 22$, $p = 0.787$). In addition, there was no difference in the medication (imipramine equivalent) between patients with major depressive disorder in a current depressive and remissive state ($t = 0.120$, $df = 28$, $p = 0.906$). Furthermore, there was no correlation between expression levels of GDNF, ARTN, or NT-3 mRNA and medication (imipramine equivalent) in same patients with major depressive disorder

(GDNF: $r = 0.186$, $p = 0.326$, ARTN: $r = -0.130$, $p = 0.493$, NT-3: $r = 0.048$, $p = 0.801$). These data suggest that the observed effects are likely to be due to the disease states.

There was no significant correlation between GDNF, ARTN, or NT-3 mRNA levels and the serum cortisol concentration for healthy control subjects, major depressive disorder patients or bipolar disorder patients (data not shown).

To examine the association between GDNF, ARTN or NT-3 mRNA levels and HPA axis activity; the mRNAs levels for these three genes of mood disorder patients in a current depressive state were compared between suppressors and non-suppressors of the Dex/CRH test. There was no significant difference in the expression level of the mRNAs for these three genes between suppressors and non-suppressors (data not shown).

4. Discussion

In the present study, we found the reduced expression of GDNF, ARTN, and NT-3 mRNAs in peripheral white blood cells of major depressive disorder patients in a current depressive state. In contrast, these reductions of GDNF, ARTN, and NT-3 mRNA expression were not observed in major depressive disorder patients in a remissive state. These results suggest that reduced expression of GDNF, ARTN, and NT-3 mRNAs are state-dependent.

Importantly, this represents the first study showing a reduced expression of ARTN mRNA in a depressive state, but not in a remissive state of major depressive disorder. ARTN is expressed in structures of the basal ganglia (subthalamic nucleus, putamen and the substantia nigra), thalamus and many peripheral adult human tissues (Baloh et al., 1998), and is a potent neurotrophic factor that may play an important role in the structural development and plasticity of ventral mesencephalic dopaminergic neurons (Zihlmann et al., 2005). It is known that the GDNF family ligands exert their effects through GDNF family receptor α (GFR α) and Ret (Airaksinen et al., 1999). Four distinct GFR α s (GFR α 1-4) have been reported (Airaksinen et al., 1999). These molecules form a complex, containing the GDNF family ligand and GFR α homodimers, that

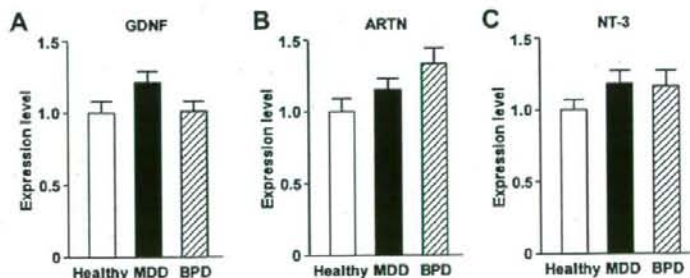


Fig. 3. The mRNA expression of GDNF, ARTN, and NT-3 in mood disorder patients in a remissive state. There was no significant difference in the levels of GDNF, ARTN, and NT-3 mRNAs among the three groups studied. MDD, major depressive disorder; BPD, bipolar disorder. Values are mean \pm standard error.

brings two molecules of Ret together (Coulpier and Ibanez, 2004). Ret can then activate a variety of intracellular signaling pathways, including Ras/mitogen-activated protein kinase (MAPK); PI3K/AKT; RAC1/Jun NH2-terminal kinase (JNK); p38MAPK and phospholipase C γ pathways (Ichihara et al., 2004; Kodama et al., 2005), resulting in cell survival, inflammation, differentiation and apoptosis. Concerning the relationship between ARTN and disease, the upregulation of ARTN mRNA expression is observed in smooth muscle cells of arteries, Schwann cells, and neural ganglia in chronic pancreatitis (Ceyhan et al., 2007), and in the auditory nerve of deafened rats (Wissel et al., 2006). To our knowledge, however, there is no report indicating the involvement of ARTN in the pathophysiology of neuropsychiatric disorders. It is important to note that both GDNF and ARTN bind to GFR α 1 (Airaksinen et al., 1999). Our present data showed both GDNF and ARTN expression levels were reduced in patients with major depressive disorder, suggesting that dysfunctions of GFR α 1-mediated pathways may be involved in the pathophysiology of major depression.

Our major finding is the reduced expression of two GDNF family gene (GDNF and ARTN) mRNAs in major depressive disorder. Recent postmortem brain studies have shown a reduction of glia in different brain structures of patients with mood disorders (Ongur et al., 1998; Rajkowska et al., 1999; Hamidi et al., 2004). Although there are no reports showing an altered expression of GDNF in the brains of patients with mood disorders, a report showed the decreased levels of whole blood GDNF in a remissive state of major depressive and bipolar disorder patients (Takebayashi et al., 2006). In contrast, increased serum GDNF immunoreactivity in bipolar disorders was observed (Rosa et al., 2006). The reason for this discrepancy is unclear, but one possible speculation is racial differences between the Japanese and Brazilian populations. Differences in the methodology used for sample preparation and determination of GDNF levels, such as ELISA (Takebayashi et al., 2006) and Western blotting (Rosa et al., 2006) may also account for this discrepancy.

A growing body of evidence has implicated a role for chronic or moderate oxidative stress in the pathogenesis of mood disorders. Previous studies showed that increased levels of malondialdehyde (a marker of lipid peroxidation) (Kuloglu et al., 2002; Khanzode et al., 2003; Ozcan et al., 2004), and decreased catalase levels (Ranjekar et al., 2003; Ozcan et al., 2004) were observed in the peripheral blood of mood disorder patients. Moreover, increased levels of oxidative DNA damage was reported in the peripheral blood of major depressive disorder patients (Forlenza and Miller, 2006). These results suggest an increased oxidative stress status in mood disorders. Importantly, GDNF blocked the DNA cleavage induced by bleomycin sulphate and L-buthionine-[S,R]-sulfoximine exposure in cultured mesencephalic neurons (Sawada et al., 2000), and reduced oxidative stress-induced cell death (Gong et al., 1999; Toth

et al., 2002; Ugarte et al., 2003). Interestingly, increased levels of apoptosis have been observed in peripheral blood lymphocytes of depressive patients (Eilat et al., 1999; Ivanova et al., 2007). In addition, in a postnatal primary culture of mesencephalic dopaminergic neurons, GDNF supports their viability by suppressing apoptosis (Burke et al., 1998). Taken together, these data indicate that the reduced expression of GDNF mRNA may contribute to oxidative stress-induced cell death and apoptosis in peripheral blood cells of mood disorders, and this might be one of the mechanisms of immune inadequacy in mood disorders (Riccardi et al., 2002).

NT-3 mRNA and protein levels have been observed to be decreased in the hippocampus in a postmortem study (Dwivedi et al., 2005). In addition, increased levels of NT-3 in the cerebrospinal fluid of major depressive patients were reported (Hock et al., 2000). In peripheral blood, serum NT-3 levels were increased in bipolar disorder patients during a depressive state (Walz et al., 2007), and this data could not be replicated by our present study. Walz et al. (2007) speculated that the increased levels of NT-3 was due to a compensation to the decreased BDNF level. Our data showed decreased levels of NT-3 in a depressive state in major depressive disorder, but not for BDNF. The reason for this discrepancy is unclear.

A limitation of our study is that the majority of the patients were on medication, thus we can not exclude the influence of medication on the expression levels of the neurotrophic factors studied. A previous report indicated no alteration of the level of GDNF in the hippocampus of mice upon chronic treatment with antidepressants (Chen et al., 2001), whereas the increased expression of GDNF has been reported in cultured cells upon treatment with both antidepressants and mood stabilizers (Hisaoka et al., 2001; Castro et al., 2005). In addition, NT-3 levels have been reported to be decreased by chronic treatment with antidepressants which blocked norepinephrine uptake in the locus coeruleus of rats (Smith et al., 1995). In our study, however, expression levels of GDNF, ARTN, and NT-3 mRNA are only affected in the depressive state, but not in the remissive state. In addition, we found that there was significant difference in the expression levels of the GDNF, ARTN, and NT-3 mRNA in same patients with major depressive disorder before and after remission, although these two patient groups received similar medications. It is important to note that there was no correlation between expression levels of GDNF, ARTN, or NT-3 mRNA and medications in same patients with major depressive disorder before and after remission. These results suggest that there is no effect of medications on the expression of these three mRNAs, and the observed effects are likely to be due to the disease states.

Several lines of evidence have suggested that glucocorticoid hormone or GR affect the expression levels of GDNF and NT-3 mRNA (Barbany and Persson, 1992; Verity et al., 1998; Baecker et al., 1999; Hansson et al., 2000). It

is important to note that reduced expression of GR α has also been observed in the cerebral cortex, hippocampus, and amygdala in mood disorder patients (Webster et al., 2002; Knable et al., 2004; Perlman et al., 2004). Furthermore, we previously reported that the expression of GR α mRNA is also reduced in peripheral white blood cells of mood disorder patients (Matsubara et al., 2006). These observations raise the possibility that dysfunction of GR in peripheral blood plays a causal role in the aberrant GDNF and NT-3 expression in mood disorder patients. However, present our study indicated that there was no difference in the expression levels of GDNF and NT-3 mRNA between suppressors and non-suppressors of the Dex/CRH test or even in cortisol levels between mood disorders and healthy controls. Furthermore, it is important to mention that some antidepressants alter the expression of GR (Pariante and Miller, 2001). Thus, the involvement of GR in the aberrant transcriptional regulation of certain neurotrophic factors in patients with major depressive disorder remains unclear. Further studies are needed to clarify the aberrant transcriptional mechanisms of both GDNF and NT-3 expression in patients with major depressive disorder.

In conclusion, our results suggest that the changes in the expression levels of GDNF, ARTN, and NT-3 mRNAs in peripheral white blood cells might be state-dependent and associated with the pathophysiology of major depression.

5. Role of the funding source

This study was supported in part by a Grant-in-Aid for Research on Psychiatric and Neurological Diseases and Mental Health from the Ministry of Health, Labour and Welfare of Japan, and a Research grant on Pharmacotherapeutics in Neuropsychiatry from Mitsubishi Pharma Research Foundation.

6. Conflict of interest

There are no conflicts of interest including any financial, personal, or other relationships with people for any of the authors related to the work described in the article.

7. Contributors

K. Otsuki, S. Uchida, and Y. Watanabe designated the research. K. Otsuki, T. Watanuki, Y. Wakabayashi, M. Fujimoto, H. Funato, and T. Matsubara performed the experiments. The manuscript was written by K. Otsuki, S. Uchida and Y. Watanabe. All authors discussed results and commented on the manuscript.

Acknowledgements

The authors thank Dr. Masatomo Suetsugu for helpful discussion, and Ms. Ayumi Kobayashi and Ms. Kumiko Hara for their excellent technical assistance.

References

- Airaksinen MS, Titievsky A, Saarna M. GDNF family neurotrophic factor signaling: four masters, one servant? *Molecular and Cellular Neurosciences* 1999;13:313-25.
- Aloe L, Alleva E, Fiore M. Stress and nerve growth factor: findings in animal models and humans. *Pharmacology, Biochemistry, and Behavior* 2002;73:159-66.
- American Psychiatric Association. *Diagnostic and statistical manual of mental disorders*. 4th ed. Washington, DC: American Psychiatric Press; 1994.
- Arborelius L, Owens MJ, Plotsky PM, Nemeroff CB. The role of corticotropin-releasing factor in depression and anxiety disorders. *The Journal of Endocrinology* 1999;160:1-12.
- Baecker PA, Lee WH, Verity AN, Eglen RM, Johnson RM. Characterization of a promoter for the human glial cell line-derived neurotrophic factor gene. *Brain Research* 1999;69:209-22.
- Baloh RH, Tansey MG, Lampe PA, Fahrner TJ, Enomoto H, Simburger KS, et al. Artemin, a novel member of the GDNF ligand family, supports peripheral and central neurons and signals through the GFRalpha3-RET receptor complex. *Neuron* 1998;21:1291-302.
- Barbany G, Persson H. Regulation of neurotrophin mRNA expression in the rat brain by glucocorticoids. *The European Journal of Neuroscience* 1992;4:396-403.
- Bremner JD, Narayan M, Anderson ER, Staib LH, Miller HL, Charney DS. Hippocampal volume reduction in major depression. *The American Journal of Psychiatry* 2000;157:115-8.
- Burke RE, Antonelli M, Sulzer D. Glial cell line-derived neurotrophic growth factor inhibits apoptotic death of postnatal substantia nigra dopamine neurons in primary culture. *Journal of Neurochemistry* 1998;71:517-25.
- Caetano SC, Kaur S, Brambilla P, Nicoletti M, Hatch JP, Sassi RB, et al. Smaller cingulate volumes in unipolar depressed patients. *Biological Psychiatry* 2006;59:702-6.
- Castro LM, Gallant M, Niles LP. Novel targets for valproic acid: up-regulation of melatonin receptors and neurotrophic factors in C6 glioma cells. *Journal of Neurochemistry* 2005;95:1227-36.
- Ceyhan GO, Bergmann F, Kadihasanoglu M, Erkan M, Park W, Hinz U, et al. The neurotrophic factor artemin influences the extent of neural damage and growth in chronic pancreatitis. *Gut* 2007;56:534-44.
- Chao HM, McEwen BS. Glucocorticoids and the expression of mRNAs for neurotrophins, their receptors and GAP-43 in the rat hippocampus. *Brain Research* 1994;26:271-6.
- Chen AC, Eisch AJ, Sakai N, Takahashi M, Nestler EJ, Duman RS. Regulation of GFRalpha-1 and GFRalpha-2 mRNAs in rat brain by electroconvulsive seizure. *Synapse* 2001;39:42-50.
- Cotter D, Mackay D, Landau S, Kerwin R, Everall I. Reduced glial cell density and neuronal size in the anterior cingulate cortex in major depressive disorder. *Archives of General Psychiatry* 2001;58:545-53.
- Coulpier M, Ibanez CF. Retrograde propagation of GDNF-mediated signals in sympathetic neurons. *Molecular and Cellular Neurosciences* 2004;27:132-9.
- de Kloet ER. Hormones, brain and stress. *Endocrine Regulations* 2003;37:51-68.
- Drevets WC, Price JL, Simpson Jr JR, Todd RD, Reich T, Vannier M, et al. Subgenual prefrontal cortex abnormalities in mood disorders. *Nature* 1997;386:824-7.
- Duman RS, Monteggia LM. A neurotrophic model for stress-related mood disorders. *Biological Psychiatry* 2006;59:1116-27.
- Duman RS, Heninger GR, Nestler EJ. A molecular and cellular theory of depression. *Archives of General Psychiatry* 1997;54:597-606.
- Dwivedi Y, Mondal AC, Rizavi HS, Conley RR. Suicide brain is associated with decreased expression of neurotrophins. *Biological Psychiatry* 2005;58:315-24.
- Eilat E, Mendlovic S, Doron A, Zakuth V, Spirer Z. Increased apoptosis in patients with major depression: a preliminary study. *Journal of Immunology* 1999;163:533-4.

- Forlenza MJ, Miller GE. Increased serum levels of 8-hydroxy-2'-deoxyguanosine in clinical depression. *Psychosomatic Medicine* 2006;68:1-7.
- Gong L, Wyatt RJ, Baker I, Masserano JM. Brain-derived and glial cell line-derived neurotrophic factors protect a catecholaminergic cell line from dopamine-induced cell death. *Neuroscience Letters* 1999;263:153-6.
- Govindarajan A, Rao BS, Nair D, Trinh M, Mawjee N, Tonegawa S, et al. Transgenic brain-derived neurotrophic factor expression causes both anxiogenic and antidepressant effects. Proceedings of the National Academy of Sciences of the United States of America 2006;103:13208-13.
- Hamidi M, Drevets WC, Price JL. Glial reduction in amygdala in major depressive disorder is due to oligodendrocytes. *Biological Psychiatry* 2004;55:563-9.
- Hansson AC, Cintra A, Belluardo N, Sommer W, Bhatnagar M, Bader M, et al. Gluco- and mineralocorticoid receptor-mediated regulation of neurotrophic factor gene expression in the dorsal hippocampus and the neocortex of the rat. *The European Journal of Neuroscience* 2000;12:2918-34.
- Hisaoka K, Nishida A, Koda T, Miyata M, Zensho H, Morinobu S, et al. Antidepressant drug treatments induce glial cell line-derived neurotrophic factor (GDNF) synthesis and release in rat C6 glioblastoma cells. *Journal of Neurochemistry* 2001;79:25-34.
- Hock C, Heese K, Muller-Spahn F, Huber P, Riesen W, Nitsch RM, et al. Increased cerebrospinal fluid levels of neurotrophin 3 (NT-3) in elderly patients with major depression. *Molecular Psychiatry* 2000;5:510-3.
- Holsboer F. The corticosteroid receptor hypothesis of depression. *Neuropsychopharmacology* 2000;23:477-501.
- Holsboer F. Stress, hypercortisolism and corticosteroid receptors in depression: implications for therapy. *Journal of Affective Disorders* 2001;62:77-91.
- Ichihara M, Murakumo Y, Takahashi M. RET and neuroendocrine tumors. *Cancer Letters* 2004;204:197-211.
- Ivanova SA, Semke VY, Vetlugina TP, Rikitina NM, Kudiyakova TA, Simutkin GG. Signs of apoptosis of immunocompetent cells in patients with depression. *Neuroscience and Behavioral Physiology* 2007;37:527-30.
- Karege F, Perret G, Bondolfi G, Schwald M, Bertschy G, Aubry JM. Decreased serum brain-derived neurotrophic factor levels in major depressed patients. *Psychiatry Research* 2002;109:143-8.
- Khanzode SD, Dakhale GN, Khanzode SS, Saoji A, Palasodkar R. Oxidative damage and major depression: the potential antioxidant action of selective serotonin re-uptake inhibitors. *Redox Report* 2003;8:365-70.
- Knable MB, Barci BM, Webster MJ, Meador-Woodruff J, Torrey EF. Molecular abnormalities of the hippocampus in severe psychiatric illness: postmortem findings from the Stanley Neuropathology Consortium. *Molecular Psychiatry* 2004;9:609-20,544.
- Kodama Y, Asai N, Kawai K, Jijwa M, Murakumo Y, Ichihara M, et al. The RET proto-oncogene: a molecular therapeutic target in thyroid cancer. *Cancer Science* 2005;96:143-8.
- Kuloglu M, Atmaca M, Tezcan E, Gecici O, Tunckol H, Ustundag B. Antioxidant enzyme activities and malondialdehyde levels in patients with obsessive-compulsive disorder. *Neuropsychobiology* 2002;46:27-32.
- Lopez JF, Chalmers DT, Little KY, Watson SJ. A.E. Bennett Research Award. Regulation of serotonin1A, glucocorticoid, and mineralocorticoid receptor in rat and human hippocampus: implications for the neurobiology of depression. *Biological Psychiatry* 1998;43:547-73.
- Malberg JE, Eisch AJ, Nestler EJ, Duman RS. Chronic antidepressant treatment increases neurogenesis in adult rat hippocampus. *Journal of Neuroscience* 2000;20:9104-10.
- Matsubara T, Funato H, Kobayashi A, Nobumoto M, Watanabe Y. Reduced glucocorticoid receptor alpha expression in mood disorder patients and first-degree relatives. *Biological Psychiatry* 2006;59:689-95.
- McEwen BS. Effects of adverse experiences for brain structure and function. *Biological Psychiatry* 2000;48:721-31.
- Mocchetti I, Spiga G, Hayes VY, Isackson PJ, Colangelo A. Glucocorticoids differentially increase nerve growth factor and basic fibroblast growth factor expression in the rat brain. *Journal of Neuroscience* 1996;16:2141-8.
- Nestler EJ, Barrot M, DiLeone RJ, Eisch AJ, Gold SJ, Monteggia LM. Neurobiology of depression. *Neuron* 2002;34:13-25.
- Nibuya M, Takahashi M, Russell DS, Duman RS. Repeated stress increases catalytic TrkB mRNA in rat hippocampus. *Neuroscience Letters* 1999;267:81-4.
- Ongur D, Drevets WC, Price JL. Glial reduction in the subgenual prefrontal cortex in mood disorders. Proceedings of the National Academy of Sciences of the United States of America 1998;95:13290-5.
- Ozcan ME, Gulec M, Ozerol E, Polat R, Akyol O. Antioxidant enzyme activities and oxidative stress in affective disorders. *International Clinical Psychopharmacology* 2004;19:89-95.
- Pariante CM, Miller AH. Glucocorticoid receptors in major depression: relevance to pathophysiology and treatment. *Biological Psychiatry* 2001;49:391-404.
- Perlman WR, Webster MJ, Kleinman JE, Weickert CS. Reduced glucocorticoid and estrogen receptor alpha messenger ribonucleic acid levels in the amygdala of patients with major mental illness. *Biological Psychiatry* 2004;56:844-52.
- Rajkowska G, Miguel-Hidalgo JJ, Wei J, Dille G, Pittman SD, Meltzer HY, et al. Morphometric evidence for neuronal and glial prefrontal cell pathology in major depression. *Biological Psychiatry* 1999;45:1085-98.
- Ranjekar PK, Hinge A, Hegde MV, Ghatge M, Kale A, Sitasawad S, et al. Decreased antioxidant enzymes and membrane essential polyunsaturated fatty acids in schizophrenic and bipolar mood disorder patients. *Psychiatry Research* 2003;121:109-22.
- Riccardi C, Bruscoli S, Migliorati G. Molecular mechanisms of immunomodulatory activity of glucocorticoids. *Pharmacological Research* 2002;45:361-8.
- Ridder S, Chourbaji S, Hellweg R, Urani A, Zacher C, Schmid W, et al. Mice with genetically altered glucocorticoid receptor expression show altered sensitivity for stress-induced depressive reactions. *Journal of Neuroscience* 2005;25:6243-50.
- Roceri M, Hendriks W, Racagni G, Ellenbroek BA, Riva MA. Early maternal deprivation reduces the expression of BDNF and NMDA receptor subunits in rat hippocampus. *Molecular Psychiatry* 2002;7:609-16.
- Rosa AR, Frey BN, Andreaza AC, Cereser KM, Cunha AB, Quevedo J, et al. Increased serum glial cell line-derived neurotrophic factor immunoreactivity during manic and depressive episodes in individuals with bipolar disorder. *Neuroscience Letters* 2006;407:146-50.
- Sapolsky RM, Romero LM, Munck AU. How do glucocorticoids influence stress responses? Integrating permissive, suppressive, stimulatory, and preparative actions. *Endocrine Reviews* 2000;21:55-89.
- Sawada H, Ibi M, Kihara T, Urushitani M, Nakanishi M, Akaike A, et al. Neuroprotective mechanism of glial cell line-derived neurotrophic factor in mesencephalic neurons. *Journal of Neurochemistry* 2000;74:1175-84.
- Schulte-Herbruggen O, Chourbaji S, Ridder S, Brandwein C, Gass P, Hortnagl H, et al. Stress-resistant mice overexpressing glucocorticoid receptors display enhanced BDNF in the amygdala and hippocampus with unchanged NGF and serotonergic function. *Psychoneuroendocrinology* 2006;31:1266-77.
- Sheline YI, Sanghavi M, Mintun MA, Gado MH. Depression duration but not age predicts hippocampal volume loss in medically healthy women with recurrent major depression. *Journal of Neuroscience* 1999;19:5034-43.
- Shimazu K, Zhao M, Sakata K, Akbarian S, Bates B, Jaenisch R, et al. NT-3 facilitates hippocampal plasticity and learning and memory by regulating neurogenesis. *Learning and Memory (Cold Spring Harbor, NY)* 2006;13:307-15.
- Smith MA, Makino S, Kvetnansky R, Post RM. Stress and glucocorticoids affect the expression of brain-derived neurotrophic factor and

- neurotrophin-3 mRNAs in the hippocampus. *Journal of Neuroscience* 2005;15:1768-77.
- Takebayashi M, Hisaoka K, Nishida A, Tsuchioka M, Miyoshi I, Kozuru T, et al. Decreased levels of whole blood glial cell line-derived neurotrophic factor (GDNF) in remitted patients with mood disorders. *The International Journal of Neuropsychopharmacology/Official Scientific Journal of the Collegium Internationale Neuropsychopharmacologicum (CINP)* 2006;9:607-12.
- Toth G, Yang H, Anguelov RA, Vettrano J, Wang Y, Acsadi G. Gene transfer of glial cell-derived neurotrophic factor and cardiotrophin-1 protects PC12 cells from injury: involvement of the phosphatidylinositol 3-kinase and mitogen-activated protein kinase pathways. *Journal of Neuroscience Research* 2002;69:622-32.
- Tsankova NM, Berton O, Renthal W, Kumar A, Neve RL, Nestler EJ. Sustained hippocampal chromatin regulation in a mouse model of depression and antidepressant action. *Nature Neuroscience* 2006;9:519-25.
- Ueyama T, Kawai Y, Nemoto K, Sekimoto M, Tone S, Senba E. Immobilization stress reduced the expression of neurotrophins and their receptors in the rat brain. *Neuroscience Research* 1997;28:103-10.
- Ugarte SD, Lin E, Klann E, Zigmond MJ, Perez RG. Effects of GDNF on 6-OHDA-induced death in a dopaminergic cell line: modulation by inhibitors of PI3 kinase and MEK. *Journal of Neuroscience Research* 2003;73:105-12.
- Verity AN, Wyatt TL, Hajos B, Eglén RM, Baecker PA, Johnson RM. Regulation of glial cell line-derived neurotrophic factor release from rat C6 glioblastoma cells. *Journal of Neurochemistry* 1998;70:531-9.
- Walz JC, Andreazza AC, Frey BN, Cacilhas AA, Cereser KM, Cunha AB, et al. Serum neurotrophin-3 is increased during manic and depressive episodes in bipolar disorder. *Neuroscience Letters* 2007;415:87-9.
- Webster MJ, Knable MB, O'Grady J, Orthmann J, Weickert CS. Regional specificity of brain glucocorticoid receptor mRNA alterations in subjects with schizophrenia and mood disorders. *Molecular Psychiatry* 2002;7:985-94,24.
- Wissel K, Wefstaedt P, Rieger H, Miller JM, Lenarz T, Stover T. Upregulation of glial cell line-derived neurotrophic factor and artemin mRNA in the auditory nerve of deafened rats. *Neuroreport* 2006;17:875-8.
- Zihlmann KB, Ducray AD, Schaller B, Huber AW, Krebs SH, Andres RH, et al. The GDNF family members neurturin, artemin and persephin promote the morphological differentiation of cultured ventral mesencephalic dopaminergic neurons. *Brain Research Bulletin* 2005;68:42-53.



State-dependent changes in the expression levels of NCAM-140 and L1 in the peripheral blood cells of bipolar disorders, but not in the major depressive disorders

Yusuke Wakabayashi, Shusaku Uchida, Hiromasa Funato, Toshio Matsubara, Toshio Watanuki, Koji Otsuki, Michiko Fujimoto, Akira Nishida, Yoshifumi Watanabe*

Division of Neuropsychiatry, Department of Neuroscience, Yamaguchi University Graduate School of Medicine, 1-1-1 Minamikogushi, Ube, Yamaguchi 755-8505, Japan

ARTICLE INFO

Article history:

Received 22 January 2008
Received in revised form 19 February 2008
Accepted 10 March 2008
Available online 15 March 2008

Keywords:

Bipolar disorder
Cell adhesion molecule
Major depressive disorder
State marker

ABSTRACT

Recent postmortem brain and imaging studies provide evidence for disturbances of structural and synaptic plasticity in patients with mood disorders. Several lines of evidence suggest that the cell adhesion molecules (CAMs), neural cell adhesion molecules (NCAM) and L1, play important roles in both structural and synaptic plasticity. Although postmortem brain studies have indicated altered expression levels of NCAM and L1, it is still unclear whether these changes are state- or trait-dependent. In this study, the mRNA levels for various CAMs, including NCAM and L1, were measured using quantitative real-time PCR in peripheral blood cells of major depressive disorder patients, bipolar disorder patients and normal healthy subjects. Reduced expression levels of NCAM-140 mRNA were observed in bipolar disorder patients in a current depressive state. In contrast, L1 mRNA levels were increased in bipolar disorder patients in a current depressive state. NCAM-140 and L1 mRNA levels were not changed in bipolar disorder patients in a remissive state, or in major depressive disorder patients. In addition, there were no significant changes in the expression levels of intercellular adhesion molecule -1, vascular cell adhesion molecule -1, E-cadherin, or integrin α D among healthy controls, major depressive or bipolar disorder patients. Our results suggest that the reciprocal alteration in the expression of NCAM-140 and L1 mRNAs could be state-dependent and associated with the pathophysiology of bipolar disorder.

© 2008 Elsevier Inc. All rights reserved.

1. Introduction

Brain imaging studies have indicated altered volumes of the hippocampus, prefrontal cortex or amygdala in patients with major depression, bipolar disorder or schizophrenia (Drevets et al., 1997; Nelson et al., 1998; Sheline et al., 1999; Wright et al., 2000). Furthermore, postmortem brain studies have reported anatomical alterations such as neuronal/glia atrophy and a reduction in the central nervous system of patients with mood disorders (Ongur et al., 1998; Cotter et al., 2001; Drevets, 2003). These data suggest the aberrant alteration of structural and synaptic plasticity in mood disorders. However, the exact pathways and mechanisms for the pathophysiology of mood disorders have not been fully characterized.

Cell adhesion molecules (CAMs) play crucial roles in cell–cell interactions, which form the basis for the organization of cells and

tissues. Neural cell adhesion molecule (NCAM) and L1 are members of the immunoglobulin superfamily and play important roles in structural and synaptic plasticity in the brain (Martin and Kandel, 1996; Schachner, 1997; Benson et al., 2000; Sandi, 2004).

NCAM is composed of three major isoforms: NCAM-180, -140 and -120 (Hemperly et al., 1990; Ricard et al., 1999). These molecules are involved in multiple neurobiological functions (Kiss and Muller, 2001; Sandi, 2004). The NCAM-180 and -140 isoforms are transmembrane proteins, whereas the NCAM-120 isoform is an extracellular polypeptide attached to the cell surface via a glycosyl phosphatidylinositol lipid anchor. The NCAM-180 and -120 isoforms are mainly expressed in the brain, whereas the NCAM-140 isoform is widely expressed in a number of organs (Gennarini et al., 1986; He et al., 1986; Hemperly et al., 1986; Murray et al., 1986; Sadoul et al., 1986). NCAM and L1 have important roles in cell–cell adhesion, intracellular signaling and interactions with growth factor receptors through homophilic (NCAM–NCAM or L1–L1) and heterophilic (NCAM–L1) binding (Sandi, 2004).

Several lines of evidence have indicated that altered expression of NCAM and L1 was observed in patients with mood disorders. Variable alternative spliced exon (VASE)-NCAM, which leads to a down-regulation of synaptic plasticity, was increased in the prefrontal cortex and hippocampus of patients with bipolar disorder (Vawter et al.,

Abbreviations: BPD, bipolar disorder; CAM, cell adhesion molecule; GAPDH, glyceraldehyde-3-phosphate dehydrogenase; HDRS, Hamilton depression rating scale; HPA, hypothalamic-pituitary-adrenal; MDD, major depressive disorder; NCAM, neural cell adhesion molecule; PBMCs, peripheral blood monocyte cells.

* Corresponding author. Tel.: +81 836 22 2255; fax: +81 836 22 2253.

E-mail address: yoshiwat@yamaguchi-u.ac.jp (Y. Watanabe).

1998). In addition, levels of secreted exon (SEC)–NCAM were increased in the hippocampus of patients with bipolar disorder (Vawter et al., 1999). Furthermore, NCAM protein levels were increased in the cerebrospinal fluid (CSF) of patients with major depressive disorder and bipolar disorder (Poltorak et al., 1996). Alterations in the protein levels of L1 in the brains of patients with mood disorders are controversial. The expression of L1 mRNA and protein was reported to be increased in the prefrontal cortex, but decreased in the ventral parieto-occipital cortex, in patients with major depression (Laifenfeld et al., 2005b). However, another study reported a lack of any significant change of L1 protein in the prefrontal cortex of patients with major depressive disorder and bipolar disorder (Webster et al., 1999). Also, it is still unclear whether alterations in the levels of NCAM and L1 in mood disorders are state- or trait-dependent.

Previously, we and others have reported that the reduced expression of glucocorticoid receptor (GR), which plays important roles in the negative feedback of the HPA axis and adaptation to stress (Holsboer, 2000; Pariante and Miller, 2001), was observed in peripheral blood cells and postmortem brains of patients with mood disorders (Webster et al., 2002; Knable et al., 2004; Perlman et al., 2004; Torrey et al., 2005; Matsubara et al., 2006). Aberrant regulation and function of GR are thought to be involved in the pathophysiology of stress-related disorders including mood disorders, anxiety disorder and post-traumatic stress disorder in human, and are also associated with stress-induced alterations of neural plasticity such as shrinkage of neural dendrites and suppressed neurogenesis in rodents (de Kloet et al., 1998; McEwen, 1999; Sapolsky, 2000; Gass et al., 2001). Importantly, the expression levels of NCAM and L1 are considered to be regulated through glucocorticoid-mediated pathways, although the detailed molecular mechanisms of this regulation are still unclear (Grant et al., 1996; Simpson and Morris, 2000; Sandi, 2004). These observations prompt us to speculate the possibility that the mRNA levels of NCAM and L1 would be altered by the reduced expression of GR observed in patients with mood disorder.

In the present study, we assessed the mRNA levels of NCAM, L1 and other CAMs in peripheral white blood cells of depressive patients with mood disorders. Furthermore, to examine whether the altered mRNA levels of CAMs are state- or trait-dependent, we also assessed them in patients in a remissive state.

2. Materials and methods

2.1. Subjects

Major depressive and bipolar disorder patients were diagnosed according to the criteria in the Diagnostic and Statistical Manual of Mental Disorders, fourth edition (DSM-IV; American Psychiatric Association, 1994). These included both outpatients and inpatients of the Division of Neuropsychiatry of the Yamaguchi University Hospital. The extent of the depressive state was assessed by a 21-item "Hamilton Depression Rating Scale" (HDRS). Subjects were classified as under a current depressive state when they showed a score of more than 18 on HDRS and met the DSM-IV criteria for a major depressive episode. Subjects were classified as being in remission when they showed a score of less than 6 on HDRS and did not show any symptoms of a major depressive episode in the DSM-IV criteria for more than 2 months. A group of individuals with mood disorder in a current depressive state was assessed every two months for 6 months to investigate alterations in gene expression during recovery from depressive states. Individuals were excluded from the present study if they had abnormal physical examinations or abnormal results for routine medical laboratory tests such as a complete blood count, renal, liver and thyroid function. Female subjects who were pregnant or took oral contraceptives were also excluded. All healthy control subjects were screened to exclude significant current or past medical or neurological illness, significant alcohol or drug abuse and past or current Axis I psychiatric illness. This protocol was approved by the Institutional Review Board of Yamaguchi University Hospital. Informed written consent was obtained for all subjects.

2.2. Blood sample preparation, RNA isolation and cDNA synthesis

Blood sample preparation, total RNA isolation and cDNA synthesis were performed as previously described (Matsubara et al., 2006). In brief, blood was obtained by venipuncture between 10:00 a.m. and 11:00 a.m. and processed for total RNA purification from peripheral blood cells using the QIAamp RNA Blood Mini Kit (Qiagen, Chatsworth, CA, USA) according to the manufacturer's manual. One microgram of total RNA was used for cDNA synthesis by random hexamer primers and Omniscript Reverse Transcriptase (Qiagen). Human brain cDNA was commercially obtained

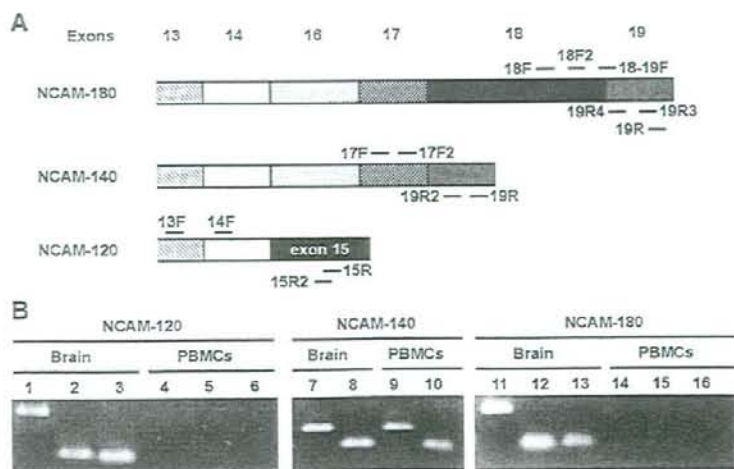


Fig. 1. Schematic diagram of the 3' region of the three NCAM isoforms mRNA (A). The commonly used exons for each isoform are filled with the same patterns. The positions of PCR primers used in RT-PCR are indicated with a black line with the primer name. RT-PCR revealed that the expression of mRNA for the three NCAM isoforms was detected in human brain. In contrast, the expression of NCAM-120 and -180 mRNA was not observed in human PBMCs, although NCAM-140 mRNA expression was detected (B). PBMCs, peripheral blood monocyte cells.

(FirstChoice™ PCR-Ready Human Brain cDNA; Ambion, Foster City, CA, USA). The cDNA was stored at -80°C until further use.

2.3. Quantitative real-time polymerase chain reaction

Quantitative real-time polymerase chain reaction (qRT-PCR) was performed in an Applied Biosystems 7300 Fast Real-Time PCR System with SYBR green PCR master mix (Applied Biosystems, Foster City, CA, USA) according to the manufacturer's manual. PCR conditions were 15 min at 95°C , 40 to 50 cycles of 15 s at 95°C and 30 s at 60°C . The position and sequences of the PCR primers on the NCAM gene to detect each specific-NCAM isoform are described in Fig. 1A and Table 1, respectively. Primer sequences for other CAMs were: L1 forward, GCCAAAGGAGACAGTGAAG; L1 reverse, GTCCTGCTTGATGTGCAAGA; ICAM-1 forward, CAAGGCCTCAGTCAGTGTGA; ICAM-1 reverse, CCTCTGGCTTCGTGAGAATC; VCAM-1 forward, AAGATGGCTGTGATCCTGG; VCAM-1 reverse, GGTGCTGCAAGTCAATGAGA; E-cadherin forward, GAACGATTGCCACATACAC; E-cadherin reverse, ATTCCGGCTTGTGTGATTC; ITGAD forward, ATTTGGGGATACAGGAAGG; ITGAD reverse, AGAAGCAGCTGCAGGAGAAG. The amplification of the single PCR product was confirmed by monitoring the dissociation curve and electrophoresis on 1.5% agarose gels stained with ethidium bromide. Amplification curves were visually inspected to set a suitable baseline range and threshold level. To generate standard curves, various concentrations of cDNA, made from total RNA isolated from human lymphoma-derived Jurkat cells, were used in each PCR reaction. The number of cycles required to reach the threshold fluorescence level was scored and used for generating standard curves and interpolating mRNA concentration levels. The relative quantification method, in which the ratio between the amount of target molecule and a reference molecule within the same sample was calculated, was employed for quantifying target molecules according to the manufacturer's protocol. All measurements were performed, at least, in duplicate. GAPDH mRNA levels were used for normalization. The PCR primers of GAPDH were: forward, CAGCCTCAAGATCATCAGCA; reverse, TGTGGTCATGAGTCTTCCA. Expression values for mood disorder subjects were normalized by the mean of the value for control subjects.

2.4. Serum cortisol determination

Serum cortisol concentrations were measured via radioimmunoassay by the SRL Corporation (Tokyo, Japan).

Table 1
NCAM PCR primers

Lane	Primer name	Exon	Direction	Sequence (5'–3')
NCAM-120				
1, 4	13F	13	Forward	GCGAACCAGTGCACCTAAG
	15R	15	Reverse	GAGCAAAAGAGAGTAC
2, 5	14F	14	Forward	GAACCAAGCAAGGAAATCCA
	15R	15	Reverse	GAGCAAAAGAGAGTAC
3, 6	14F	14	Forward	GAACCAAGCAAGGAAATCCA
	15R2	15	Reverse	CAAGAGTCACTGCAGAGAAAAGC
NCAM-140				
7, 9	17F	17	Forward	GAGTCCAAGGAGCCCATC
	19R	19	Reverse	TCTGTGTGGCGTCATTG
8, 10	17F2	17	Forward	AACATGATGGAGGAAACA
	19R2	19	Reverse	GGCTCTGTTCTGTCTCTCTG
NCAM-180				
11, 14	18F	18	Forward	AGATATTGACCTTGCAAAAGGATG
	19R	19	Reverse	TCTGTGTGGCGTCATTG
12, 15	18–19F	18–19	Forward	CCAGCAAAGACCGAGAAG
	19R3	19	Reverse	ATTGGGACCGCTTCTGACT
13, 16	18F2	18	Forward	CTGAGCTTCTCTTCTGACT
	19R4	19	Reverse	TCTGTCTCTGGCACTCTG

The positions of the primers are shown in Fig. 1.

Table 2
Demographic and clinical characteristics of subjects

Control	Patients				
	MDD		BPD		
		Depressed	Remissive	Depressed	Remissive
	n=28	n=20	n=40	n=13	n=29
Age (years)	50.0±1.8	52.3±3.6	57.1±2.2	55.5±3.7	53.8±2.7
Gender (male/female)	15/13	10/10	15/25	2/11	6/23
HDRS		25.9±1.9	3.3±0.2	24.6±1.1	2.8±0.2
Serum cortisol (µg/dl)	8.5±0.9	10.3±1.4	11.1±1.0	10.9±5.5	10.1±1.1
Dex-CRH test					
Suppressor		8	7	3	2
Nonsuppressor		8	3	7	5
Medication					
No medication	28	3	4	1	0
Antidepressants	0	17	36	9	14
Mood stabilizers	0	0	0	10	27

MDD, major depressive disorder; BPD, bipolar disorder; HDRS, Hamilton Depression Rating Scale.

2.5. Dex/CRH test

A subgroup of subjects in a current depressive state underwent the Dex/CRH test as previously reported, with minor modifications (Matsubara et al., 2006; Heuser et al., 1996). Mood disorder patients were pretreated with an oral dose of 1 mg of Dex (Dexamethasone, Asahikasei Pharmaceutical Corporation, Tokyo, Japan) at 11:00 p.m. The next day intravenous cannulation was carried out at 12:30 p.m. and 100 µg of human CRH (hCRH, Mitsubishi Pharma Corporation, Tokyo, Japan) was administered intravenously at 1:00 P.M., immediately after the first blood collection. Blood specimens were drawn through the intravenous catheter 15 min, 30 min, 60 min and 120 min later. Blood samples were immediately centrifuged and stored at -20°C . Serum levels of cortisol and ACTH were measured with radioimmunoassay (SRL). We defined non-suppressors as those individuals whose post-CRH serum cortisol levels were more than 5 µg/dl.

2.6. Statistical analysis

Commercial software (SPSS version 11.5; Chicago, Illinois) was used to perform data analysis. All data are expressed as the mean± standard error of mean (SEM). For analysis of two groups, data were subjected to the Student's *t* test. For analysis of three or more groups, data were subjected to one-way analysis of variance (ANOVA) followed by *post hoc* analysis (Dunn test). The Spearman correlation was calculated to assess the correlation between data. In all cases, comparisons were considered statistically significant for $p < 0.05$.

3. Results

3.1. The mRNA expression pattern of three NCAM isoforms in peripheral blood cells

The three major isoforms of NCAM, generated by alternative splicing from a single NCAM pre-mRNA, are expressed in the brain (Hemperly et al., 1990; Ricard et al., 1999). However, the mRNA expression pattern of these NCAM isoforms in peripheral white blood cells is not known. Therefore, we examined the expression of the mRNA for these NCAM isoforms in peripheral white blood cells using reverse transcription-PCR (RT-PCR). The locations and sequences of the PCR primer sets are described in Fig. 1A and Table 1, respectively. To detect the expression of specific-NCAM isoform mRNA, multiple PCR primers were constructed in the positions of isoform-specific exons or splice junctions (Fig. 1A). In addition, human brain cDNA was used as a positive control. RT-PCR showed that the expression of NCAM-180, -140 and -120 isoform mRNAs were detected in human

brain, while only NCAM-140 isoform mRNA was detected in human peripheral white blood cells (Fig. 1B).

3.2. Demographic and clinical characteristics of subjects

Table 2 shows the demographic and clinical characteristics of the subjects used in this study. The mean ages were not significantly different among major depressive disorder patients, bipolar depressive patients and healthy control subjects ($F=1.228$, $df=4,125$, $p=0.303$). Levels of serum cortisol were not significantly different among the three groups ($F=0.833$, $df=4,55$, $p=0.510$). Table 3 shows the summarized profile of medication for longitudinally followed subjects with bipolar disorder.

3.3. The expression levels of NCAM-140 and L1 mRNA in mood disorder patients

The expression levels of NCAM-140 mRNA were examined in patients with mood disorder in a current depressive state. qRT-PCR revealed that the expression levels of NCAM-140 mRNA were significantly decreased in bipolar disorder patients compared with healthy control subjects and major depressive disorder patients ($F=5.22$, $df=2,58$, $p=0.008$, post hoc $p=0.008$) (Fig. 2A). There were no significant differences in the expression levels of NCAM-140 mRNA between major depressive disorder patients and healthy control subjects ($p=1.00$) (Fig. 2A). In contrast, in a remissive state, bipolar disorder patients did not show any differences in the expression levels of NCAM-140 mRNA compared with healthy control subjects and major depressive disorder patients ($F=0.724$, $df=2,94$, $p=0.590$) (Fig. 2A). There was no significant correlation between NCAM-140 mRNA levels and serum cortisol concentrations in healthy control subjects, major depressive disorder patients and bipolar disorder patients in a current depressive state (data not shown).

In contrast to NCAM-140, the expression levels of L1 mRNA were significantly increased in bipolar disorder patients in a current depressive state compared with healthy control subjects and major depressive disorder patients in a current depressive state ($F=8.307$, $df=2,58$, $p=0.001$, post hoc $p=0.001$) (Fig. 2B). There were no significant differences in the expression levels of L1 mRNA between major depressive disorder patients in a current depressive state and healthy control subjects ($p=0.923$) (Fig. 2B). The expression levels of L1 mRNA in bipolar disorder patients in a remissive state showed no significant difference compared with healthy control subjects and major depressive disorder patients in a remissive state ($F=0.783$, $df=2,94$, $p=0.460$) (Fig. 2B). There was no significant correlation between L1 mRNA levels and serum cortisol concentrations of healthy control subjects, major depressive disorder patients and bipolar disorder patients in a current depressive state (data not shown).

Table 3

Summarized profile of medication for longitudinally followed subjects with bipolar disorder

Mood stabilizers	Treatment period (Months)				
		0	2	4	6
Antidepressants alone	–	2	4	3	2
Antidepressants + mood stabilizers	Li	2	2	2	2
	VPA	3		1	
	Li+VPA	2	1		
	VPA+CBZ		1		
Mood stabilizers alone	VPA	1	2	1	1
	CBZ	1			
	Li+VPA				1
	Li+CBZ			1	1
	VPA+CBZ	1		1	1
No medication	–	1			
Total number		13	10	9	8

Li, lithium carbonate; VPA, sodium valproate; CBZ, carbamazepine.

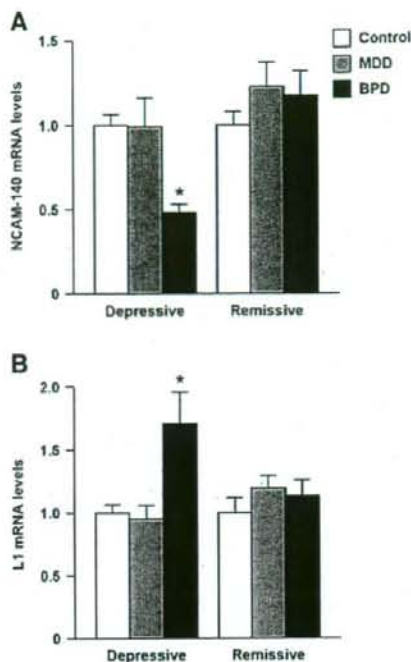


Fig. 2. The expression levels of NCAM-140 and L1 mRNA in mood disorder patients. Reduced expression levels of NCAM-140 mRNA were shown in bipolar disorder patients in a current depressive state, but not in bipolar disorder patients in a remissive state, major depressive patients in current depressive state and major depressive patients in a remissive state compared with healthy control subjects (A). Increased expression levels of L1 mRNA were shown in bipolar disorder patients in a current depressive state, but not in bipolar disorder patients in a remissive state, major depressive patients in a current depressive state and major depressive patients in a remissive state compared with healthy control subjects (B). MDD, major depressive disorder; BPD, bipolar disorder. Values are mean \pm standard error. * $p < 0.01$.

To further investigate whether NCAM-140 and L1 mRNA levels vary during recovery from a depressive state, bipolar disorder patients in a current depressive state were assessed for NCAM-140 and L1 mRNA expression every 2 months for 6 months (0 M, 2 M, 4 M and 6 M indicate 0, 2, 4 and 6 months recovery period, respectively). The decreased expression levels of NCAM-140 mRNA were observed in 0 M compared with healthy controls ($F=4.518$, $df=4,63$, $p=0.003$, post hoc $p=0.001$), but not in 2 M, 4 M and 6 M (2 M, $p=0.385$; 4 M, $p=0.070$; 6 M, $p=0.553$) (Fig. 3A). Similar to NCAM-140, the increased expression levels of L1 mRNA compared with healthy controls were observed in only 0 M ($F=3.387$, $df=4,63$, $p=0.014$, post hoc $p=0.008$), but not in 2 M, 4 M and 6 M (2 M, $p=1.00$; 4 M, $p=0.944$; 6 M, $p=0.146$) (Fig. 3B). The Hamilton Depression Rating Scale (HDRS) score was significantly reduced at 2 months in bipolar disorder patients ($F=19.6$, $df=3,35$, $p < 0.01$) (Fig. 3C). Thus, the reduced expression of NCAM-140 and the increased expression of L1 mRNAs would be state-dependent in bipolar disorder patients.

3.4. Relationship between CAMs (NCAM-140, L1) and the HPA axis

Next, we examined whether the altered expression levels of NCAM-140 and L1 mRNAs are correlated with GR α mRNA levels or the HDRS score. There was no significant correlation between GR α mRNA levels and NCAM-140 or L1 mRNA levels in bipolar disorder patients in a current depressive state ($r=-0.198$, $p=0.517$, $r=-0.052$, $p=0.865$, respectively) (data not shown). There was a significant correlation

between HDRS scores and NCAM-140 mRNA levels in patients with bipolar disorders ($r = -0.411$, $p = 0.008$), whereas no significant correlation was observed between HDRS scores and L1 mRNA levels ($r = -0.042$, $p = 0.797$) (data not shown).

To examine the association between NCAM-140 or L1 mRNA levels and HPA axis regulation, NCAM-140 and L1 mRNA levels of patients with major depressive disorder and bipolar disorder in a current depressive state were compared between suppressors and non-suppressors of the Dex/CRH test. Non-suppressors showed a significant decrease of NCAM-140 mRNA expression, but not L1 mRNA, compared with suppressors ($t = 2.346$, $df = 24$, $p = 0.028$, $t = -0.531$, $df = 24$, $p = 0.600$, respectively) (Fig. 4).

3.5. The expression levels of other CAMs mRNA in mood disorder patients

Previous reports have indicated the increased expression of intercellular adhesion molecule-1 (ICAM-1) and vascular adhesion molecule-1 (VCAM-1) in post mortem brains of bipolar disorder patients or major depression in the elderly patients (Thomas et al., 2002, 2004). In addition, cadherin and integrin are also well known to be associated with structural plasticity in the brain. Therefore, we also examined the expression levels of the mRNA for these CAMs in mood disorder patients. There were no significant differences in the

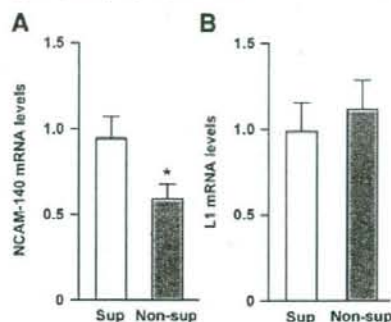


Fig. 4. Comparison of the expression levels of NCAM-140 and L1 mRNA between suppressors and non-suppressors of Dex/CRH test. There was a significant difference in NCAM-140 mRNA expression of mood disorder patients, but not for L1. Sup, suppressors; Non-Sup, non-suppressors. Values are mean \pm standard error. * $p < 0.05$.

expression levels of ICAM-1 ($F = 0.338$, $df = 2,58$, $p = 0.715$), VCAM-1 ($F = 0.760$, $df = 2,58$, $p = 0.472$), E-cadherin ($F = 1.005$, $df = 2,58$, $p = 0.372$) or integrin α D ($F = 0.751$, $df = 2,58$, $p = 0.477$) between the mood disorder patients in a current depressive state and healthy controls (data not shown).

4. Discussion

In the present study, we examined the mRNA expression levels of structural and synaptic plasticity-associated CAMs in mood disorder patients. Our main finding is the significant alterations in the expression levels of NCAM-140 and L1 mRNAs in bipolar disorder patients. Even in this group of subjects, the decreased expression levels of NCAM-140 mRNA and increased expression levels of L1 mRNA were specifically observed in a depressive state. These results suggest that the reciprocal alteration of NCAM-140 and L1 mRNA expression in peripheral white blood cells is state-dependent in bipolar disorders. Moreover, a significant correlation between HDRS scores and NCAM-140 mRNA levels in bipolar disorders supports this idea.

In contrast, any significant difference was not observed in the expression levels of NCAM-140 or L1 mRNA of major depressive disorder patients compared with healthy control subjects. Recent studies have demonstrated the pathophysiological distinctions between bipolar and major depression (Soares and Mann, 1997; Vawter et al., 2000; Beyer and Krishnan, 2002). For instance, increased expression of VASE-NCAM and SEC-NCAM isoforms were shown in postmortem brains of bipolar disorder patients (Vawter et al., 1998, 1999; Vawter, 2000). Furthermore, a genetic study has indicated that a single nucleotide polymorphism of the NCAM gene displays a significant association with bipolar disorder but not with major depressive disorder in Japanese individuals (Arai et al., 2004). Thus, these results support the idea that NCAM is more relevant to the pathophysiology of bipolar disorder than that of major depressive disorder.

We have previously shown a reduced expression of GR α mRNA in mood disorder patients in both a depressive and a remissive state (Matsubara et al., 2006). In this study, the expression levels of NCAM and L1 mRNA were not changed in a remissive state. In addition, we did not find any significant correlation in the expression levels between GR α mRNA and NCAM or L1 mRNA in mood disorder patients in a current depressive state. These data suggest that the alteration of NCAM-140 and L1 mRNA expression in bipolar disorder patients is not likely to be due to aberrant regulation of GR, although previous reports have suggested that NCAM expression is regulated by a GR-mediated pathway (Sandi, 2004). It has been reported that transforming growth factor- β (TGF- β) (Roubin et al., 1990) and neural restrictive silencer factor (NRSF; also known as REST) (Schoenherr and Anderson,

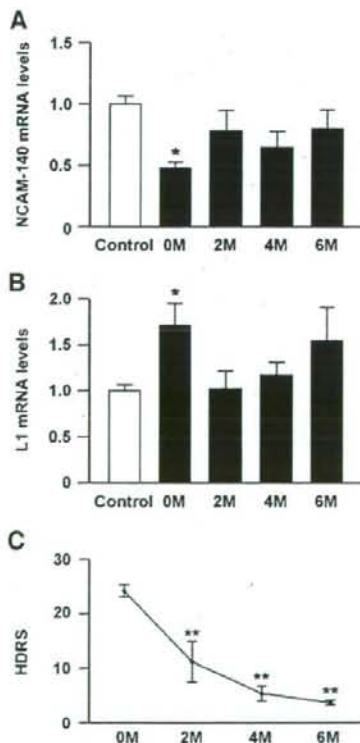


Fig. 3. The expression levels of NCAM-140 and L1 mRNA in bipolar disorder patients during recovery from a depressive state. Reduced expression levels of NCAM-140 mRNA were not observed at 2, 4 and 6 months in bipolar disorder patients (A). Similarly, increased expression levels of L1 mRNA were not observed at 2, 4 and 6 months in bipolar disorder patients (B). HDRS value of bipolar disorder patients was significantly reduced at 2, 4 and 6 months compared with 0 month (C). HDRS, Hamilton Depressive Rating Scale; 0 M, 2 M, 4 M and 6 M, 0, 2, 4 and 6 months recovery period, respectively. Values mean \pm standard error. * $p < 0.05$; ** $p < 0.01$.