

assessed through recording of adverse events, physical examinations, and standard laboratory tests.

### Statistical analysis

We determined that a sample size of 57 patients per treatment group was required to provide 90% power for detecting a significant ( $P < 0.05$ ) difference in ACR20 response between the control group and the tocilizumab group by use of the two-sided chi-square test, where ACR20 response rates in the population were assumed to be 35 and 65% in the control group and the tocilizumab group, respectively. We decided to recruit 60 patients per treatment group to allow for anticipated withdrawals. The primary end point was the ACR20 response at week 24 with the last observation carried forward (LOCF) method, using an intent-to-treat (ITT) analysis. The incidences of clinical improvements were analyzed by the chi-square test.

All statistical analyses were two-sided and  $P$  values less than 0.05 were considered significant. All patients receiving at least one dose of tocilizumab or tocilizumab placebo, and at least 4 weeks of MTX or MTX placebo administration were included in the clinical efficacy analysis.

## Results

### Characteristics of the patients

One-hundred and twenty-seven patients were enrolled in the study (Fig. 1). Two patients randomized to the control group withdrew before dosing (gall stone and patient's request). A total of 125 patients (64 in the control group and 61 in the tocilizumab group) received study drugs. Thirty-three patients in the control group and 54 patients in the tocilizumab group completed 24-week treatment. Withdrawal occurred in 31 patients in the control group and seven patients in the tocilizumab group. The reported reasons for withdrawal are shown in Fig. 1.

Demographics and baseline disease characteristics did not differ between the two groups (Table 1). Mean disease duration was 8.6 years. Patients had active RA, indicated by DAS28 score of 6.1 and CRP of 31 mg/l at baseline after using of MTX 8 mg/week for at least 8 weeks.

### Clinical efficacy

The primary end point of the study, an ACR20 response at week 24 was 25.0% in the control group compared with 80.3% in the tocilizumab group, indicating the superiority of tocilizumab treatment ( $P < 0.001$ ). The ACR50 and ACR70 response rates in the tocilizumab group were higher than those in the control group at all time points

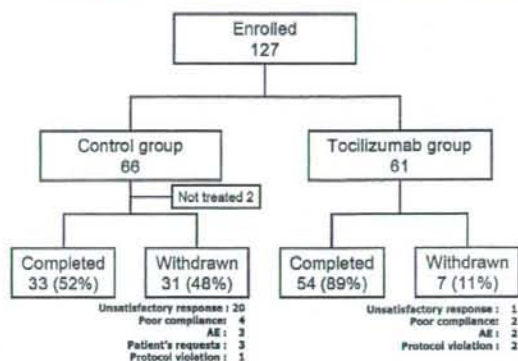


Fig. 1 Randomization, reasons for withdrawal, and numbers of patients who completed the trial. *Tocilizumab* humanized anti-interleukin-6 receptor antibody

Table 1 Patient demographics and clinical characteristics at baseline

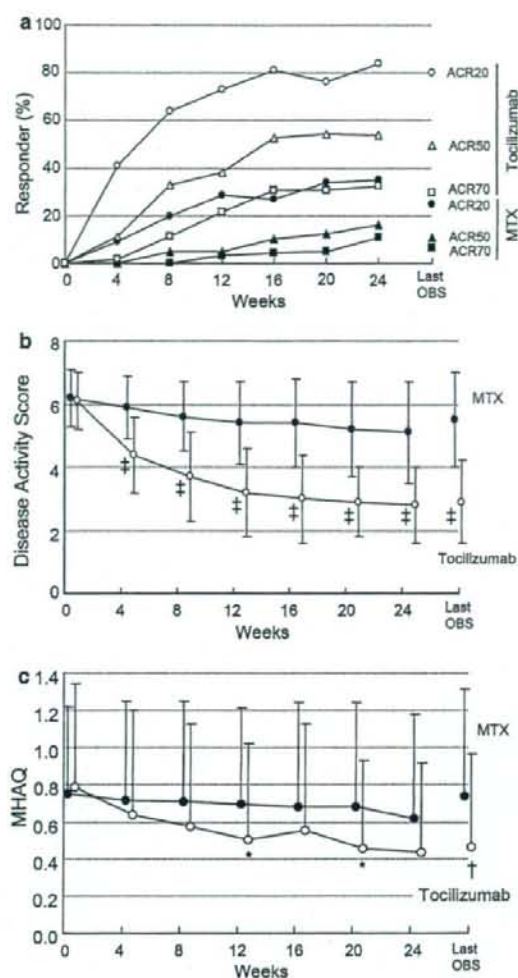
	Control group (n = 64)	Tocilizumab group (n = 61)
Demographics		
Age (years)	50.8 ± 12.2	52.6 ± 10.6
Male:female ratio	16:48	6:55
Clinical characteristics		
RA duration (years)	8.7 ± 7.1	8.5 ± 8.4
No. of failed DMARDs, mean (range)	3.6 (1–8)	3.3 (1–8)
Functional class <sup>a</sup> , I/II/III/IV	7:50:7:0	2:49:10:0
RA Stage <sup>a</sup> , I/II/III/IV	3:18:17:26	1:20:22:18
Tender joint count, 0–49 scale	14.2 ± 8.6	13.8 ± 7.5
Swollen joint count, 0–46 scale	12.7 ± 7.5	12.4 ± 5.9
ESR (mm/h)	51.9 ± 24.0	51.9 ± 27.7
CRP (mg/l)	32 ± 26	30 ± 20
DAS28	6.2 ± 0.9	6.1 ± 0.9
VEGF (pg/ml)	730.8 ± 445.6	711.3 ± 417.4

Except where indicated otherwise values are mean ± SD

*Tocilizumab* humanized anti-interleukin-6 receptor antibody; RA rheumatoid arthritis; ESR erythrocyte sedimentation rate; CRP C-reactive protein; DAS28 Disease Activity Score in 28 joints; VEGF vascular endothelial growth factor

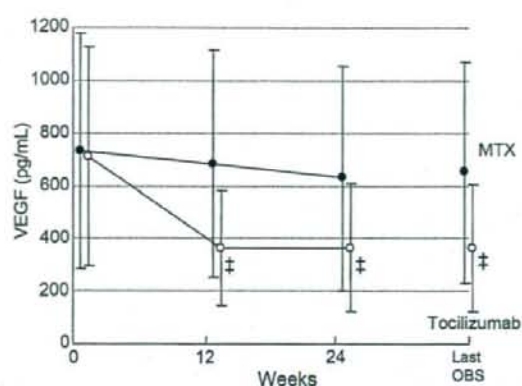
<sup>a</sup> RA functional status determined by the American College of Rheumatology criteria. RA stage determined by Steinbrocker's criteria

from week 4 onward (Fig. 2a). At the last observation, the ACR50 response rate was 10.9 and 49.2%, and the ACR70 response rate was 6.3 and 29.5% in the control group and the tocilizumab group, respectively. Additionally, the tocilizumab group showed a greater reduction in



**Fig. 2** Percentage of responders according to the American College of Rheumatology (ACR) improvement criteria and the Disease Activity Score in 28 joints (DAS28) as well as mean change in Modified Health Assessment Questionnaire (MHAQ) scores. Percentage of responders according to the ACR improvement criteria (a) and the DAS28 (b) according to the ITT analysis over 24 weeks. Mean change in MHAQ scores from baseline to week 24 (c). Last OBS = last observation. \* $P < 0.05$ ; † $P < 0.01$ ; ‡ $P < 0.001$  versus MTX by paired *t*-test

DAS28 than the control group did (Fig. 2b). At the last observation, the incidence of "Good" was 3.2 and 65.5%, and that of "Good or moderate" was 39.7 and 96.6% in the control group and the tocilizumab group, respectively. Similarly, remission was observed in 1.6% of the control group and 43.1% of the tocilizumab group at the last observation, and tocilizumab treatment achieved



**Fig. 3** Change from baseline in serum levels of VEGF. Values are the mean for each group at each time point. VEGF was measured at three points (0, 12 and 24 weeks) over the study period. Last OBS = last observation. † $P < 0.001$  versus MTX by paired *t*-test

significantly higher remission rates than MTX treatment ( $P < 0.001$ ).

Tocilizumab treatment also significantly improved MHAQ scores compared to MTX treatment (Fig. 2c). A decrease of  $\geq 0.22$  units in MHAQ scores represents significant clinical improvement and the minimum clinical important difference [12]. Such improvement was seen in 34% in the control group and 67% in the tocilizumab group at the last observation, demonstrating significant improvement in the tocilizumab group compared to the control group ( $P < 0.001$ ).

The mean serum VEGF levels showed a marked decrease in the tocilizumab group (Fig. 3). Mean changes from baseline were  $-74.0$  pg/ml in the control group and  $-346.9$  pg/ml in the tocilizumab group at week 24 ( $P < 0.001$ ).

## Safety

A total of 104 adverse events occurred in 46 of 64 patients (71.9%) in the control group and 211 adverse events occurred in 56 of 61 patients (91.8%) in the tocilizumab group. Most of the adverse events were mild or moderate. Table 2 shows frequent adverse events observed in at least 5% of the patients. Nasopharyngitis was the most common adverse event in the both groups (the control group 10.9%, the tocilizumab group 18.0%).

Serious adverse events were reported in 4.7% (3 of 64 patients) and 6.6% (4 of 61 patients) in the control group and tocilizumab group, respectively. In the control group, these consisted of one event each of pneumonia, spinal compression fracture and femoral neck fracture, among which a causal relationship with the study drug could not

**Table 2** Adverse events observed in at least 5% of patients

	Control group (n = 64)	Tocilizumab group (n = 61)
Nasopharyngitis	7 (10.9)	11 (18.0)
Stomatitis	0	7 (11.5)
Hyperlipidemia	1 (1.6)	4 (6.6)
Headache	2 (3.1)	4 (6.6)
Rash	2 (3.1)	4 (6.6)
Diarrhea	1 (1.6)	4 (6.6)
Upper respiratory tract inflammation	4 (6.3)	3 (4.9)

Values are the number (%) of patients

*Tocilizumab* humanized anti-interleukin-6 receptor antibody

be ruled out for pneumonia. In the tocilizumab group, the serious adverse events consisted of one event each of pneumonia, infectious arthritis, colonic polyp and headache, among which a causal relationship with the investigational product could not be ruled out for pneumonia and infectious arthritis. All serious adverse events improved with appropriate treatments.

Tuberculosis was not observed in this study. No tuberculosis screening or prophylactic use of any anti-tuberculosis drugs was done for this study.

Drug-related infusion reactions were reported for eight events in seven patients (11.5%) of the tocilizumab group: two with pruritus, and one each with headache, flushing, rash, arthralgia, abnormal feeling and increased blood pressure. The severity of arthralgia was moderate while all other infusion reactions were mild, and all patients continued the study.

#### Laboratory findings

Laboratory test abnormalities were reported in 23 and 56% of patients in the control and the tocilizumab groups, respectively. In the tocilizumab group, lipid metabolism-related changes such as an increase in total cholesterol (TC), triglycerides (TG), and low-density lipoprotein cholesterol (LDLC) were common. Increases in TC, TG, and LDLC under non-fasting were reported in 36, 20, and 28% of the patients, respectively. Most of them were grade 1 according to the National Cancer Institute Common Toxicity Criteria (NCI-CTC). Values increased until week 4 and thereafter remained constant. High-density lipoprotein cholesterol (HDL) values were also raised in the tocilizumab group. Therefore, the atherogenic index, calculated by (TC-HDL)/HDL, did not change at all throughout the study period of 24 weeks.

Increases in AST, ALT, and total bilirubin were reported in 8, 11, and 0% of the patients in the control group, and 3, 5, and 2% in the tocilizumab group, respectively. These

values did not continue to be increased, but became stable at week 16 in the tocilizumab group (Fig. 4). All the patients with these abnormalities in the tocilizumab group were NCI-CTC grade 1 except for 1 patient with grade 2 increase in total bilirubin. There was no patient who withdrew from this study for the reason of liver functional abnormality.

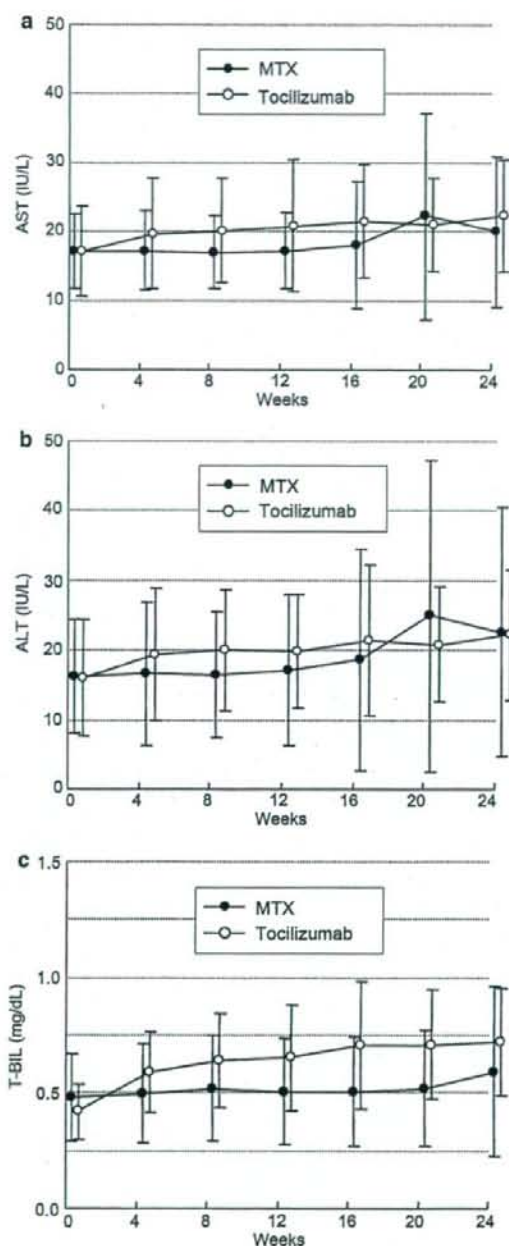
Anti-tocilizumab antibodies were not detected in this study.

#### Discussion

This study was a multi-center, randomized, blinded, double-dummy trial of tocilizumab in active RA patients who had an inadequate response to low dose MTX treatment in Japan. The results of this study confirmed the excellent efficacy of tocilizumab monotherapy for signs and symptoms as shown in previous studies [7, 8]. Since MTX is an anchor drug in RA treatment, it is noteworthy that tocilizumab treatment is a very efficacious treatment for the patients with an inadequate response to MTX. In addition, switching MTX therapy to tocilizumab monotherapy was safe and effective.

The dose of MTX prior to enrollment was 10–25 mg/week in CHARISMA study, which was conducted in Europe [13], while all patients in this study were treated with MTX 8 mg/week. The dosage 8 mg of MTX/week in this trial is the maximum dosage approved in Japan. The Japanese government recommends 6–8 mg/week of MTX based on the evidence from the Japanese clinical trials of MTX for RA [14, 15]. The MTX dosage used in Japan is lower than that used in Western populations treated in the EU or US. The average body weight of the patients in this study was 54 kg, and much lower than those of EU and US patients. Additionally, all patients were given folic acid in the CHARISMA study, in contrast to only 51% of the patients in this study. Considering these factors, the differences in the clinical efficacy of MTX between the CHARISMA study and this study might not be so large as expected when looking at the difference in the MTX dose.

Maini et al. demonstrated in the CHARISMA study, that adding MTX to tocilizumab increased the efficacy in terms of ACR50 and ACR70 response rates, although there was no difference in ACR20 response rates between the tocilizumab 8 mg/kg monotherapy and the tocilizumab 8 mg/kg plus MTX. Thus, the combination with MTX may be a therapeutic option, if the toxicity is not increased. In this study, however, even monotherapy with tocilizumab 8 mg/kg induced DAS28 remission at 6 months in about 40% of patients. Furthermore, since anti-tocilizumab antibodies are not detected without use of MTX, the combination with MTX is not required to suppress the emergence of anti-



**Fig. 4** Change from baseline in serum levels of aspartate transaminase (AST), alanine transaminase (ALT), total bilirubin (T-BIL). Values are the mean for each group at each time point

tocilizumab antibodies as long as 8 mg/kg of tocilizumab is used. Therefore, tocilizumab will be useful for the patients who do not tolerate MTX.

This double-blind study of tocilizumab also confirms the previous finding that IL-6 receptor inhibition improves serum VEGF levels of RA patients [16]. Serum VEGF levels markedly decreased during tocilizumab therapy compared to the treatment with MTX. VEGF is produced by macrophages, fibroblasts surrounding microvessels, vascular smooth muscle cells, synovial lining cells in synovium [17], neutrophils in synovial fluid [18], and peripheral blood mononuclear cells [19] from patients with RA. VEGF is a potent angiogenic factor and thought to be responsible for the angiogenesis necessary to oxygenate the hypertrophic synovial tissues of the affected joints of RA patients [20, 21]. VEGF also induces vascular permeability and mediates inflammation [22–24]. Therefore, the decrease in VEGF may be an important part of the mechanism how IL-6 receptor inhibition with tocilizumab exerts its therapeutic efficacy in RA. Since serum VEGF levels correlate with disease activity scores and radiographic progression in RA patients [16, 25], the dramatic decrease in VEGF also underlines the efficacy of tocilizumab. The normalization of VEGF by blockade of IL-6 function alone indicates that IL-6 is essential for the VEGF production in this disease.

Tocilizumab monotherapy was generally well tolerated. There was no specific type of infection related to tocilizumab therapy. There is no indication for an increased risk of reactivation of latent tuberculosis, which is often a problem in anti-TNF therapy [26]. In this study patients did not receive prophylactic medication nor were they screened for latent or active tuberculosis at the time of screening.

The increase in TC observed is in concordance with observations in previous studies of tocilizumab [7, 8]. This may be secondary to the improvement in inflammation. Furthermore, there was no cardiovascular adverse event related to the increase in TC. However, further investigation will be required to evaluate whether or not tocilizumab might increase the risk for developing ischemic heart diseases.

The mean value elevations of liver functional tests (AST, ALT and total bilirubin) were seen in the tocilizumab group as well as in the control group, but they were within normal range. Liver functional tests abnormalities were more frequently observed in the control group than in the tocilizumab group. Moreover, most of them were grade 1 according to the NCI-CTC. These abnormalities were clinically not significant and no hepatitis was observed. Therefore, tocilizumab monotherapy appears to be as tolerable as MTX in terms of liver function.

## Conclusion

This study demonstrates that tocilizumab monotherapy in patients with active RA who had an inadequate response to

low dose MTX treatment in Japan has an excellent efficacy with a positive benefit-risk ratio.

**Acknowledgments** The authors wish to thank the SATORI investigators for the treatment and Takahiro Kakehi, B.Sc., Yuji Kimura, M.Sc., Kenichi Yamada, B.Sc. and Karsten Kissel, MD for their valuable assistance with the design and analysis of the study and preparation of this manuscript. This work was financially supported by Chugai Pharmaceutical Co., Ltd., Tokyo, Japan. The SATORI investigators were as follows: Tatsuya Atsumi, M.D. (Hokkaido University, Hokkaido, Japan); Takeshi Sasaki, M.D. (Tohoku University, Miyagi, Japan); Takayuki Sumida, M.D. (University of Tsukuba, Ibaraki, Japan); Masahiro Iwamoto, M.D. (Jichi Medical University, Tochigi, Japan); Tsutomu Takeuchi, M.D. (Saitama Medical Center/School, Saitama, Japan); Nobuyuki Miyasaka, M.D. (Tokyo Medical and Dental University, Tokyo, Japan); Michio Hirakata, M.D. (Keio University, Tokyo, Japan); Kazuhiko Yamamoto, M.D. (University of Tokyo, Tokyo, Japan); Akio Yamada, M.D. (Jikei University, Tokyo, Japan); Shigetoh Tohma, M.D. (Sagamihara National Hospital, Kanagawa, Japan); Hirahito Endo, M.D. (Kitasato University, Kanagawa, Japan); Yoshiaki Ishigatsubo, M.D. (Yokohama City University, Kanagawa, Japan); Takeshi Kuroda, M.D. (Niigata University, Niigata, Japan); Shogo Banno, M.D., Yoshihito Hayami, M.D. (Nagoya City University, Aichi, Japan); Masao Tanaka, M.D. (Kyoto University, Kyoto, Japan); Tadao Miyake, M.D. (Osaka General Medical Center, Osaka, Japan); Masaki Suemura, M.D. (Nissay Hospital, Osaka, Japan); Shiro Ohshima, M.D. (Osaka University, Osaka, Japan); Masato Matsushita, M.D. (Osaka Second Police Hospital, Osaka, Japan); Yukihiko Saeki, M.D. (Osaka Minami Medical Center, Osaka, Japan); Hiroshi Uda, M.D. (Sakai-Onshinkai Hospital, Osaka, Japan); Kiyoshi Takasugi, M.D. (Dogo Spa Hospital, Ehime, Japan); Takahiko Horiuchi, M.D. (Kyushu University, Fukuoka, Japan); Kazuyoshi Saito, M.D. (University of Occupational and Environmental Health, Fukuoka, Japan); Katsumi Eguchi, M.D. (Nagasaki University, Nagasaki, Japan).

**Conflict of interest statement** NN has served as a consultant to and received honoraria from Chugai Pharmaceutical, the manufacturer of tocilizumab. NN also works as a scientific advisory board of Hoffmann-La Roche. TK holds a patent for tocilizumab. The other authors have no competing interests.

## References

- Harris ED Jr. Rheumatoid arthritis: pathophysiology and implications for therapy. *N Engl J Med.* 1990;322:1277–89.
- Cush JJ, Lipsky PE. Phenotypic analysis of synovial tissue and peripheral blood lymphocytes isolated from patients with rheumatoid arthritis. *Arthritis Rheum.* 1988;31:1230–8.
- Paleolog EM. Angiogenesis: a critical process in the pathogenesis of RA—a role for VEGF? *Br J Rheumatol.* 1996;35:917–9.
- Sato K, Tsuchiya M, Saldanha J, Koishihara Y, Ohsugi Y, Kishimoto T, et al. Reshaping a human antibody to inhibit the interleukin 6-dependent tumor cell growth. *Cancer Res.* 1993;53:851–6.
- Choy EHS, Isenberg DA, Garrood T, Farrow S, Ioannou Y, Bird H, et al. Therapeutic benefit of blocking interleukin-6 activity with an anti-interleukin-6 receptor monoclonal antibody in rheumatoid arthritis. *Arthritis Rheum.* 2002;46:3143–50.
- Nishimoto N, Yoshizaki K, Maeda K, Kuritani T, Deguchi H, Sato B, et al. Toxicity, pharmacokinetics, and dose-finding study of repetitive treatment with the humanized anti-interleukin 6 receptor antibody MRA in rheumatoid arthritis. Phase I/II clinical study. *J Rheumatol.* 2003;30:1426–35.
- Nishimoto N, Yoshizaki K, Miyasaka N, Yamamoto K, Kawai S, Takeuchi T, et al. Treatment of rheumatoid arthritis with humanized anti-interleukin-6 receptor antibody: a multicenter, double-blind, placebo-controlled trial. *Arthritis Rheum.* 2004;50:1761–9.
- Nishimoto N, Hashimoto J, Miyasaka N, Yamamoto K, Kawai S, Takeuchi T, et al. Study of active controlled monotherapy used for rheumatoid arthritis, an IL-6 inhibitor (SAMURAI): evidence of clinical and radiographic benefit from an X-ray reader-blinded randomized controlled trial of tocilizumab. *Ann Rheum Dis.* 2007;66:1162–7.
- Arnett FC, Edworthy SM, Bloch DA, McShane DJ, Fries JF, Cooper NS, et al. The American Rheumatism Association 1987 revised criteria for the classification of rheumatoid arthritis. *Arthritis Rheum.* 1988;31:315–24.
- Hochberg MC, Chang RW, Dwosh I, Lindsey S, Pincus T, Wolfe F. The American College of Rheumatology 1991 revised criteria for the classification of global functional status in rheumatoid arthritis. *Arthritis Rheum.* 1992;35:498–502.
- Fransen J, Creemers MC, Van Riel PL. Remission in rheumatoid arthritis: agreement of the disease activity score (DAS28) with the ARA preliminary remission criteria. *Rheumatology.* 2004;43:1252–5.
- Kosinski M, Zhao SZ, Dedhiya S, Osterhaus JT, Ware JE Jr. Determining minimally important changes in generic and disease-specific health-related quality of life questionnaires in clinical trials of rheumatoid arthritis. *Arthritis Rheum.* 2000;43:1478–87.
- Maini RN, Taylor PC, Szechinski J, Pavelka K, Broll J, Balint G, et al. Double-blind randomized controlled clinical trial of the interleukin-6 receptor antagonist, tocilizumab, in European patients with rheumatoid arthritis who had an incomplete response to methotrexate. *Arthritis Rheum.* 2006;54:2817–29.
- Kashiwazaki S, Ichikawa Y, Sugawara S, Nagaya I, Kawai S, Hakota M, et al. Determination of the clinical optimal dose of L-377 (methotrexate capsule) for the treatment of rheumatoid arthritis (in Japanese). *Ensyō.* 1996;16:437–58.
- Ito S, Gross WL, Reinhold-Keller E, Gause A, Aries P, Ruther W, et al. Rheumatology in Japan, Germany, and Egypt: a comparison of medical practices. *Acta Medica et Biologica.* 2006;54:51–8.
- Nakahara H, Song J, Sugimoto M, Hagihara K, Kishimoto T, Yoshizaki K, et al. Anti-interleukin-6 receptor antibody therapy reduces vascular endothelial growth factor production in rheumatoid arthritis. *Arthritis Rheum.* 2003;48:1521–9.
- Nagashima M, Yoshino S, Ishiwata T, Asano G. Role of vascular endothelial growth factor in angiogenesis of rheumatoid arthritis. *J Rheumatol.* 1995;22:1624–30.
- Kasama T, Kobayashi K, Yajima N, Shiozawa F, Yoda Y, Takeuchi HT, et al. Expression of vascular endothelial growth factor by synovial fluid neutrophils in rheumatoid arthritis (RA). *Clin Exp Immunol.* 2000;121:533–8.
- Bottomley MJ, Webb NJA, Watson CJ, Holt PJJ, Freemont AJ, Brenchley PEC. Peripheral blood mononuclear cells from patients with rheumatoid arthritis spontaneously secrete vascular endothelial growth factor (VEGF): specific up-regulation by tumor necrosis factor- $\alpha$  (TNF- $\alpha$ ) in synovial fluid. *Clin Exp Immunol.* 1999;117:171–6.
- Folkman J. Angiogenesis in cancer, vascular, rheumatoid, and other disease. *Nat Med.* 1995;1:27–31.
- Colville-Nash PR, Scott DL. Angiogenesis and rheumatoid arthritis: pathogenic and therapeutic implications. *Ann Rheum Dis.* 1992;51:919–25.
- Keck PJ, Hauser SD, Krivi G, Sanzo K, Warren T, Feder J, et al. Vascular permeability factor, an endothelial cell mitogen related to PDGF. *Science.* 1989;246:1309–12.

23. Connolly DT, Heuvelman DM, Nelson R, Olander JV, Eppley BL, Delfino JJ, et al. Tumor vascular permeability factor stimulates endothelial cell growth and angiogenesis. *J Clin Invest.* 1989;84:1470–8.
24. Koch AE, Harlow LA, Haines GK, Amento EP, Unemori EN, Wong WL, et al. Vascular endothelial growth factor: a cytokine modulating endothelial function in rheumatoid arthritis. *J Immunol.* 1994;152:4149–56.
25. Ballara S, Taylor PC, Reusch P, Marme D, Feldmann M, Maini RN, et al. Raised serum vascular endothelial growth factor levels are associated with destructive change in inflammatory arthritis. *Arthritis Rheum.* 2001;44:2055–64.
26. Keane J, Gershon S, Wise RP, Mirabile-Levens E, Kasznica J, Schwieterman WD, et al. Tuberculosis associated with infliximab, a tumor necrosis factor alpha-neutralizing agent. *N Engl J Med.* 2001;345:1098–104.

## Efficacy and safety of tocilizumab in patients with systemic-onset juvenile idiopathic arthritis: a randomised, double-blind, placebo-controlled, withdrawal phase III trial

Shumpei Yokota, Tomoyuki Imagawa, Masaaki Mori, Takako Miyamae, Yukoh Aihara, Shuji Takei, Naomi Iwata, Hiroaki Umehayashi, Takuji Murata, Mari Miyoshi, Minako Tomiita, Norihiro Nishimoto, Tadamitsu Kishimoto

### Summary

**Background** Systemic-onset juvenile idiopathic arthritis does not always respond to available treatments, including antitumour necrosis factor agents. We investigated the efficacy and safety of tocilizumab, an anti-interleukin-6-receptor monoclonal antibody, in children with this disorder.

**Methods** 56 children (aged 2–19 years) with disease refractory to conventional treatment were given three doses of tocilizumab 8 mg/kg every 2 weeks during a 6-week open-label lead-in phase. Patients achieving an American College of Rheumatology Pediatric (ACR Pedi) 30 response and a C-reactive protein concentration (CRP) of less than 5 mg/L were randomly assigned to receive placebo or to continue tocilizumab treatment for 12 weeks or until withdrawal for rescue medication in a double-blind phase. The primary endpoint of the double-blind phase was an ACR Pedi 30 response and CRP concentration of less than 15 mg/L. Patients responding to tocilizumab and needing further treatment were enrolled in an open-label extension phase for at least 48 weeks. The analysis was done by intention to treat. This study is registered with ClinicalTrials.gov, numbers NCT00144599 (for the open-label lead-in and double-blind phases) and NCT00144612 (for the open-label extension phase).

**Findings** At the end of the open-label lead-in phase, ACR Pedi 30, 50, and 70 responses were achieved by 51 (91%), 48 (86%), and 38 (68%) patients, respectively. 43 patients continued to the double-blind phase and were included in the efficacy analysis. Four (17%) of 23 patients in the placebo group maintained an ACR Pedi 30 response and a CRP concentration of less than 15 mg/L compared with 16 (80%) of 20 in the tocilizumab group ( $p < 0.0001$ ). By week 48 of the open-label extension phase, ACR Pedi 30, 50, and 70 responses were achieved by 47 (98%), 45 (94%), and 43 (90%) of 48 patients, respectively. Serious adverse events were anaphylactoid reaction, gastrointestinal haemorrhage, bronchitis, and gastroenteritis.

**Interpretation** Tocilizumab is effective in children with systemic-onset juvenile idiopathic arthritis. It might therefore be a suitable treatment in the control of this disorder, which has so far been difficult to manage.

**Funding** Chugai Pharmaceuticals.

### Introduction

Systemic-onset juvenile idiopathic arthritis is a subtype of chronic childhood arthritis of unknown cause, manifested by spiking fever, erythematous skin rash, pericarditis, and hepatosplenomegaly.<sup>1</sup> Half of patients given non-steroidal anti-inflammatory drugs or corticosteroids continue to show progressive involvement of increasing number of joints and severe functional disability with striking growth impairment. Moreover, long-term use of systemic corticosteroids leads to various disorders, including iatrogenic Cushing's disease, growth suppression, bone fracture, or cataracts. Sometimes systemic-onset juvenile idiopathic arthritis progresses to macrophage-activation syndrome, in which the inflammation might be caused by cytokine storm;<sup>2–4</sup> therefore, effective and tolerable treatments are much needed.

One major development in rheumatology was the introduction of biological-response modifiers. Tumour necrosis factor  $\alpha$  (TNF $\alpha$ ) concentrations are increased in serum and synovial fluid of children with juvenile

idiopathic arthritis, and concentrations are correlated with disease activity.<sup>5</sup> Etanercept has proven effective in the treatment of children with this type of arthritis, which is resistant to methotrexate.<sup>6</sup> To protect joints from inflammatory destruction, use of biological-response modifiers as early as possible is appropriate in patients with rheumatoid arthritis.<sup>7</sup> These findings also encourage the use of these drugs for treatment of juvenile idiopathic arthritis. However, patients with this type of arthritis have a higher rate of etanercept failure than those with other chronic arthritis subtypes,<sup>8</sup> indicating that TNF $\alpha$  is not the only cytokine implicated in the pathogenesis of the disease. Macrophage-activation syndrome has been reported during treatment with etanercept;<sup>9</sup> therefore inhibition of TNF $\alpha$  does not always prevent this potentially fatal complication.

Although serum concentrations of interleukin 1 are not increased in systemic-onset juvenile idiopathic arthritis, dysregulation of this cytokine might play a part in the pathogenesis.<sup>10</sup> Case reports and an early uncontrolled

Lancet 2008; 371: 998–1006

See Comment page 961

See Articles page 987

Department of Paediatrics, Yokohama City University School of Medicine, Yokohama, Japan (Prof S Yokota MD, T Imagawa MD, M Mori MD, T Miyamae MD, Y Aihara MD); Department of Paediatrics, Kagoshima University, Kagoshima, Japan (Prof S Takei MD); Aichi Children's Health and Medical Centre, Aichi, Japan (N Iwata MD); Miyagi Children's Hospital, Miyagi, Japan (H Umehayashi MD); Department of Paediatrics, Osaka Medical University, Osaka, Japan (T Murata MD); Kobe Children's Hospital, Kobe, Japan (M Miyoshi MD); Department of Paediatrics, Chiba University, Chiba, Japan (M Tomiita MD); and Graduate School of Frontier Bioscience, Osaka University, Osaka, Japan (Prof N Nishimoto MD, Prof T Kishimoto MD)

Correspondence to: Prof Shumpei Yokota, Department of Paediatrics, Yokohama City University School of Medicine, 3-9 Fukuura, Kanazawa-ku, Yokohama, Kanagawa 236-0004, Japan. [kyokota@med.yokohama-cu.ac.jp](mailto:kyokota@med.yokohama-cu.ac.jp)

study have suggested that treatment with anakinra, an interleukin-1-receptor antagonist, might be effective in patients with this illness,<sup>30-31</sup> but macrophage-activation syndrome still occurred despite treatment with anakinra.<sup>34,35</sup>

The pathogenesis of systemic-onset juvenile idiopathic arthritis remains obscure. However, interleukin 6 and soluble interleukin-6 receptor play a part as inflammatory mediators.<sup>36</sup> The serum interleukin-6 concentrations are related to the extent and severity of joint involvement, fever patterns, platelet counts,<sup>37</sup> growth retardation, and osteoporosis.<sup>38</sup> Transgenic mice with increased expression of human interleukin 6 were growth retarded, as are children with systemic-onset juvenile idiopathic arthritis.<sup>39</sup> The clinical use of tocilizumab, an anti-interleukin-6-receptor monoclonal antibody, in early trials had striking and long-lasting effects on both the systemic and articular manifestations of systemic-onset juvenile idiopathic arthritis, even in patients with severe disease that was refractory to other therapies.<sup>20,21</sup>

In the search to improve treatment of this difficult and debilitating childhood disease, we undertook a placebo-controlled trial of the efficacy and safety of tocilizumab (Chugai Pharmaceuticals, Tokyo, Japan) in systemic-onset juvenile idiopathic arthritis.

## Methods

### Patients

Patients were eligible if they were 2–19 years of age with disease onset before their 16th birthday and if they met the International League of Associations for Rheumatology classification criteria for systemic-onset juvenile idiopathic arthritis.<sup>21</sup> Treatment with intra-articular corticosteroids, methylprednisolone pulse treatment, immunosuppressive drugs, and disease-modifying antirheumatic drugs (DMARDs)—such as methotrexate, ciclosporin, sulfasalazine, azathioprine, and cyclophosphamide—for 2 weeks before the first administration of tocilizumab was not allowed; and treatment with TNF agents was not allowed for 12 weeks before patients started tocilizumab. Doses of oral corticosteroids had to be stable for 2 weeks before the trial.

Active disease was defined by an increase in C-reactive protein (CRP;  $\geq 15$  mg/L) concentrations and an inadequate response to corticosteroids (at  $\geq 0.2$  mg/kg prednisolone equivalent) for longer than 3 months. Clinical manifestations were carefully monitored, especially when synovitis was present with other systemic features.

Patients were excluded if they had important concurrent medical or surgical disorders, with leucopenia ( $< 3.5 \times 10^9/L$ ) or thrombocytopenia ( $< 100 \times 10^9/L$ ); cardiac disease (assessed by a paediatric cardiologist before enrolment); or developed macrophage-activation syndrome during the prestudy hospital admission. All patients were examined during screening for active infections, especially pneumonia and tuberculosis, and suspected cases were further examined by chest radiography or computed tomography.

Patients were admitted 2 weeks before the start of the trial and until the completion of the double-blind phase of the study for safety monitoring. Children were cared for by child-life specialists or they went to an in-hospital school or nursery when not accompanied by their family.

The protocols and amendments were approved by the Japanese ministry of welfare, health, and labour and the institutional review boards at every centre. The parent or legal guardian of every child gave written informed consent and the child gave assent when appropriate.

### Procedures

This study consisted of three phases—an open-label lead-in phase of 6 weeks, a double-blind, randomised, placebo-controlled phase of 12 weeks, and an open-label extension phase of at least 48 weeks, and was undertaken in eight university hospitals and children's hospitals in Japan. The primary endpoints in the open-label lead-in phase of the study were the proportion of children achieving an American College of Rheumatology Pediatric (ACR Pedi) 30 response and the proportion of those showing improvements in CRP concentrations ( $< 5$  mg/L) at the end of the 6-week treatment. All patients were to receive three doses as intravenous infusions of tocilizumab at 8 mg/kg every 2 weeks. The children were assessed for improvement, defined as achievement of the ACR Pedi 30 response—ie, at least three of six ACR Pedi variables improved by at least 30% with no more than one variable worsening by more than 30%.<sup>21</sup> The ACR Pedi variables were physician's and patients'/parents' general assessment on a 10 cm visual-analogue scale, functional ability (childhood health assessment questionnaire, Japanese version, which has been validated and will be published), number of active joints defined by the presence of swelling or, if no swelling is present, restriction of motion accompanied by pain, or tenderness, or both, and number of joints with restriction of movement, and erythrocyte sedimentation rate (ESR). Children were also assessed for ACR Pedi 50 and 70 responses—ie, at least three of six response variables improved by at least 50% and at least 70%, respectively, with no more than one variable worsening by more than 30%.

Patients who completed the open-label lead-in phase and achieved both an ACR Pedi 30 response and CRP concentrations of less than 5 mg/L were randomly assigned to receive an infusion of tocilizumab 8 mg/kg or placebo every 2 weeks (give or take 3 days) for 12 weeks in a double-blind manner. The primary endpoint was the proportion of patients in each treatment group who completed the 12-week period and maintained an ACR Pedi 30 response and CRP concentrations of less than 15 mg/L. Patients who did not maintain an ACR Pedi 30 response or those whose CRP concentrations increased to at least 15 mg/L were withdrawn for rescue medication. Methotrexate, ciclosporin, and other DMARDs and



immunosuppressive drugs were not allowed throughout the study, with the exception of stable doses of oral corticosteroids.

ACR Pedi responses, systemic feature score,<sup>24</sup> and CRP concentrations were assessed every 2 weeks. Systemic features assessed were fever, rash, lymphadenopathy in cervical, axillary, and inguinal regions, and hepatomegaly, splenomegaly, and serositis. These features were scored as either absent (0 point) or present (1 point for each one of the eight features) and the score therefore could range from 0 to 8 points. CRP concentrations were measured to assess the disease response as a surrogate marker of interleukin-6 function.

Patients were monitored for safety by routine physical examinations every day during their hospital stay. Urinalysis and blood examinations—white-blood-cell and platelet counts and measurements of haemoglobin, aminotransferases, creatinine, total cholesterol, and ESR—were done every 2 weeks. CRP and ferritin concentrations were measured every week to monitor disease activity and the development of macrophage-activation syndrome. Anti-tocilizumab IgG and IgE antibodies were measured before each administration of tocilizumab. Serum tocilizumab, interleukin 6, and soluble interleukin-6-receptor concentrations were measured every 2 weeks, but results were masked to the investigators and other study personnel during the double-blind phase. Maximum body temperature was recorded daily. Patients who developed anti-tocilizumab antibodies, had grade-3 laboratory test abnormalities according to the National Cancer Institute common terminology criteria for adverse

events,<sup>25</sup> or had important safety or compliance difficulties were withdrawn from the study.

In addition to patients who were randomised in the double-blind phase, those who did not meet the criteria for randomisation but completed the open-label lead-in phase with reductions in CRP concentrations were eligible for the open-label extension phase. All eligible patients were to receive tocilizumab 8 mg/kg every 2 weeks for at least 48 weeks. The dosing interval was adjusted according to the disease activity measured by ACR Pedi responses and CRP concentrations and it could be shortened, but not to less than 1 week. In the open-label extension phase, efficacy variables were assessed every 6 weeks and ACR Pedi variables and CRP concentrations were assessed every 2 weeks. The primary endpoint was the proportion of patients achieving an ACR Pedi 30 at the final visit. Corticosteroid-sparing effect was assessed by the reduction in corticosteroid doses, which were allowed to be adjusted during the extension phase. Safety laboratory tests were done every 2 weeks during the first 6 weeks and every 6 weeks thereafter.

All patients who left the study were required to return for a follow-up assessment 2 weeks after discontinuation of treatment. Any adverse events and laboratory abnormalities reported during the study, especially those thought to be drug-related, were followed up until resolution or stabilisation.

#### Statistical analysis

The method of analysis was by intention to treat. In the double-blind phase, patients were randomly (1 to 1 ratio) assigned to the two treatment groups. A dynamic allocation was done after the balance between the strata (CRP concentrations <30 mg/L or ≥30 mg/L) within the site was checked and for all patients randomly assigned up to that point. Treatment groups were assessed by the exact  $\chi^2$  test with a two-tailed significance level of 5%. Each treatment group had to include at least 20 patients to provide 90% power to detect a difference in the proportions of patients achieving both an ACR Pedi 30 response and CRP concentrations of less than 15 mg/L, so that the response was 2 (60%) of 20 patients in the tocilizumab group and 2 (10%) of 20 patients in the placebo group. Time to withdrawal was estimated by the Kaplan-Meier method and assessed by the log-rank test. Secondary endpoints included the time courses of efficacy variables. Comparisons of these variables at each time point were done with a *t* test.

Safety analysis was done for all patients who received at least one dose of the study drug. A last-observation-carried-forward approach was used for missing data for the patients who withdrew early.

This study is registered with ClinicalTrials.gov, numbers NCT00144599 (for the open-label lead-in and double-blind phases) and NCT00144612 (for the open-label extension phase).

	Open-label lead-in phase (n=56)	Double-blind phase	
		Placebo (n=23)	Tocilizumab (n=20)
Patients*			
Male	21 (38%)	8 (35%)	7 (35%)
Female	35 (63%)	15 (65%)	13 (65%)
Age (years)	8.3 (4.4)	9.3 (4.5)	8.0 (4.3)
Age group (years)			
2-5	20 (36%)	5 (22%)	9 (45%)
6-10	19 (34%)	11 (48%)	5 (25%)
11-15	13 (23%)	4 (17%)	5 (25%)
16-19	4 (7%)	3 (13%)	1 (5%)
Age at disease onset (years)†	4.3 (2.6)	5.1 (3.0)	3.9 (2.2)
Disease duration (years)	4.5 (3.6)	4.7 (4.0)	4.6 (3.5)
Number of past treatments‡	2.1 (1.0)	2.0 (1.0)	2.1 (1.0)
Study entry prednisolone-equivalent steroid dose (mg/kg per day)	0.51 (0.36)	0.46 (0.33)	0.42 (0.27)

Data are number (%) or mean (SD). \*Total of percentages might not equal 100% because numbers were rounded up or down. †All patients developed the disease before their 16th birthday. ‡Disease-modifying antirheumatic drugs or immunosuppressive agents.

Table 1: Baseline demographic and disease characteristics

	Open-label lead-in phase (n=56)			Double-blind phase						Open-label extension phase (n=50)	
	Baseline	6 weeks*	Improvement†	Placebo (n=23)			Tocilizumab (n=20)			48 weeks	Improvement‡
				Baseline	6 weeks*	Last observation‡	Baseline	6 weeks*	Last observation‡		
<b>Juvenile idiopathic arthritis core set criteria</b>											
Number of active joints	4.0 (0-39.0)	0 (0-34.0)	73%	4.0 (0-21.0)	0 (0-13.0)	0 (0-34.0)	3.5 (0-18.0)	0 (0-4.0)	0 (0-4.0)	0 (0-4.0)	88%
Number of joints with restricted motion	0.5 (0-47.0)	0 (0-45.0)	54%	0 (0-37.0)	0 (0-41.0)	0 (0-42.0)	0.50 (0-47.0)	0 (0-45.0)	0 (0-46.0)	0 (0-62.0)	72%
Physician's global assessment of disease severity§	52.0 (18.0-100)	8.5 (0-97.0)	75%	51.0 (18.0-95.0)	5.0 (1.0-60)	14.0 (0-84.0)	51.0 (21.0-96.0)	7.50 (0-42.0)	5.50 (0-47.0)	3.5 (0-22.0)	89%
Patient's or parent's global assessment of wellbeing¶	53.0 (0-90)	13.5 (0-69.0)	63%	55.0 (18.0-85.0)	10 (1.0-49.0)	39.0 (2.0-94.0)	51.5 (0-76.0)	12.0 (0-63.0)	4.5 (0-34.0)	8.5 (0-70)	75%
Score on childhood health assessment questionnaire¶	0.88 (0-3.00)	0.38 (0-3.00)	43%	0.63 (0-3.00)	0.25 (0-2.75)	0.38 (0-3.00)	0.88 (0-2.38)	0.38 (0-2.63)	0.38 (0-1.63)	0.13 (0-2.13)	67%
Erythrocyte sedimentation rate (mm/h)	44.5 (8.0-125.0)	4.0 (0-64.0)	82%	35.0 (8.0-68.0)	3.0 (1.0-13.0)	11.0 (1.0-41.0)	39.5 (8.0-103.0)	4.0 (0-9.0)	4.0 (0-7.0)	3.0 (0-12.0)	91%
<b>Additional assessments</b>											
Number of patients with total systemic feature score	1.0 (0-3.0)	1.0 (0-2.0)	34%	1.0 (0-2.0)	1.0 (0-2.0)	1.0 (0-2.0)	1.0 (0-3.0)	1.0 (0-2.0)	0.5 (0-2.0)	0 (0-1.0)	98%
0	7	23		6	11	8	1	8	10	47	
1	40	27		14	11	12	16	10	9	1	
2	8	6		3	1	3	2	2	1	0	
3	1	0		0	0	0	1	0	0	0	
White-blood-cell count ( $\times 10^3$ per $\mu$ L)	12.4 (4.9-30.8)	8.4 (2.5-21.9)	29%	12.8 (6.4-21.0)	8.1 (3.5-14.1)	12.2 (4.4-24.6)	11.2 (4.9-16.1)	6.6 (2.5-10.4)	7.4 (4.1-11.6)	6.4 (3.4-37.4)	35%
C-reactive protein (mg/L)	43.5 (16.0-190.0)	0.5 (0-99.0)	90%	38.0 (17.0-131.0)	0.2 (0-1.0)	15.0 (0-101.0)	35.0 (16.0-190.0)	0.1 (0-1.0)	0.1 (0-21.8)	0.1 (0-2.0)	99%

Data are median (range), unless otherwise indicated. \*Measurements at the end of open-label lead-in phase or at withdrawal. †Improvement between baseline and the end of open-label lead-in phase. ‡Measurements at the end of double-blind phase or at withdrawal. §Score on a visual-analogue scale could range from 0 mm (best) to 100 mm (worst). ¶Score could range from 0 (best) to 3 (worst). ||Systemic feature score includes febrile episode, rheumatoid rash, lymphadenopathy, hepatosplenomegaly, and serositis; score could range from 0 (best) to 8 (worst).

Table 2: Measurement of disease activity and improvement from baseline

### Role of the funding source

The sponsor of the study supplied the study medication and was responsible for data processing and management, statistical analysis, and reporting of serious adverse events. All authors had full access to the study data on request. The corresponding author had final responsibility to submit the report for publication.

### Results

Table 1 summarises the baseline demographic and clinical characteristics of the 56 patients who took part in the open-label and double-blind phases of the study. All patients had onset of systemic-onset juvenile idiopathic arthritis before their 16th birthday (range 6 months to 12 years). All patients had previously received oral corticosteroids. Most patients had previously received at least two DMARDs or immunosuppressive drugs, or both, such as methotrexate and ciclosporin.

Patients had moderate disease activity at entry in the open-label lead-in phase of the study, despite background corticosteroid treatment (table 2) as shown by the ESR,

CRP concentrations, systemic feature score (median 1, range 0-3), and fever ( $>38^{\circ}\text{C}$ , present in 49 [88%] of 56 patients). The baseline demographic characteristics of patients in the placebo and active treatment groups during the double-blind phase showed minor but not significant differences in baseline disease severity (table 2). The distribution of ACR Pedi 30, 50, and 70 responses at completion of the open-label lead-in phase was similar in the placebo and tocilizumab groups, and median ESR values and CRP concentrations were low and much the same in both groups in the double-blind phase.

Figure 1 shows the trial profile. Six patients were withdrawn during the open-label lead-in phase: three developed anti-tocilizumab IgE antibodies, two had serious adverse events (one anaphylactoid reaction, one gastrointestinal haemorrhage), and one because of absence of efficacy. Six patients did not meet the response criteria for randomisation—CRP concentrations ( $<5$  mg/L) and ACR Pedi 30 response—for the double-blind phase of the study. In the double-blind phase, one patient in the tocilizumab group had to be excluded from the efficacy analysis because the study mask for this patient was broken by

mistake and pharmacokinetic data were unexpectedly unmasked; therefore, 43 patients were included in the efficacy analysis. One patient was withdrawn from each

treatment group in the double-blind phase because of adverse events (figure 1).

In the open-label extension phase, patients randomly assigned in the double-blind phase and six patients who were not randomly assigned but completed the open-label lead-in phase were given tocilizumab. These six patients had limited treatment options and showed benefit to some extent in the open-label extension phase. All patients started tocilizumab treatment in the open-label extension phase immediately after they left or completed the initial phases. Two of 50 patients continuing tocilizumab treatment were withdrawn during the open-label extension phase because of adverse events—anaphylactoid reaction in one and development of anti-tocilizumab antibodies in the other.

All 56 patients enrolled in the open-label lead-in phase were included in the efficacy analysis. Figure 2 shows the proportion who had ACR Pedi 30, 50, and 70 responses. At the last observation, the ACR Pedi 30, 50, and 70 response rates were seen in 51 (91%), 48 (86%), and 38 (68%) of 56 patients, respectively. 48 (86%) of 56 patients had an improvement in their actual CRP concentrations to less than 5 mg/L and this reduction took place within 2 weeks of starting tocilizumab. Overall 44 (79%) of 56 patients achieved both an ACR Pedi 30 and CRP concentrations of less than 5 mg/L at week 6. Moreover, every ACR Pedi variable showed a sustained response to tocilizumab treatment. Similar to CRP concentrations, median ESR rapidly fell within 2 weeks, joint counts and childhood health assessment questionnaire decreased by week 4, and general assessments continued to improve until week 6 (table 2). The proportion of patients with the systemic feature score of at least 1 decreased from 49 (88%) of 56 patients to 33 (59%) of 56 patients during the lead-in open-label phase (table 2).

Four (17%) of 23 patients in the placebo group and 16 (80%) of 20 patients in the tocilizumab group ( $p < 0.0001$ ) completed the 12-week double-blind phase and maintained an ACR Pedi 30 response and CRP concentrations of less than 15 mg/L. Similarly, four (17%) of 23 patients had an ACR Pedi 50 response and CRP concentrations of less than 15 mg/L in the placebo group compared with 16 (80%) of 20 patients in the tocilizumab group; and three (13%) of 23 patients had an ACR Pedi 70 response and CRP concentrations of less than 15 mg/L in the placebo group versus 15 (75%) of 20 patients in the tocilizumab group. Figure 3 shows the time to early escape. Duration of sustained efficacy was increased in the tocilizumab group compared with the placebo group ( $p < 0.0001$ ). The median time to early escape was 4.9 weeks in the placebo group, but longer than 12 weeks in the tocilizumab group.

Both CRP concentrations and ESR remained low in the tocilizumab group, but increased in the placebo group after patients entered the double-blind phase. Median values for both indices on the last observation day were lower in the tocilizumab group than in the placebo (table 2).

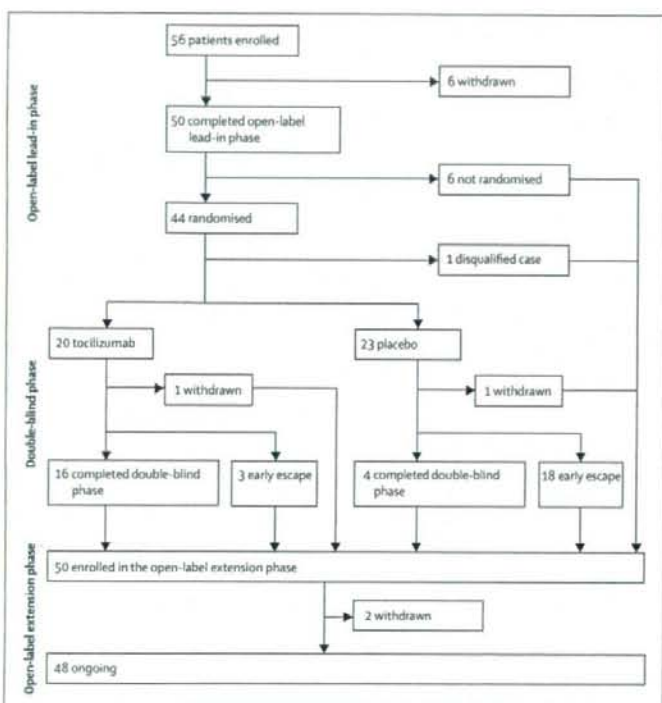


Figure 1: Trial profile

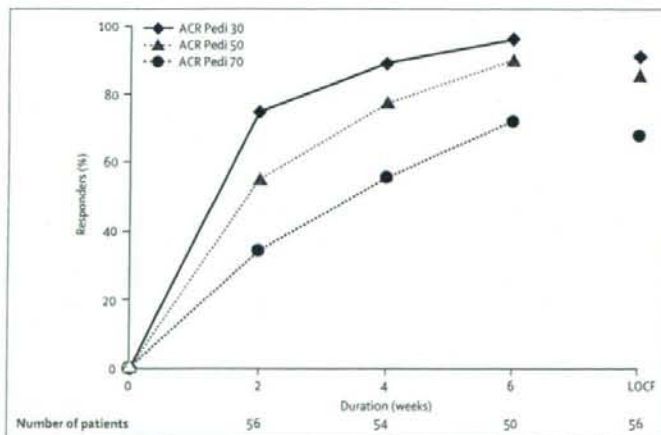


Figure 2: Time courses of American College of Rheumatology Pediatric (ACR Pedi) 30, 50, and 70 responses in initial open-label lead-in phase. LOCF—last observation carried forward.

Figure 4 shows the changes in ACR Pedi 30, 50, and 70 responses from the end of the open-label lead-in phase to the last study visit of the double-blind phase. More patients in the placebo group than in the tocilizumab group lost their response or had a reduction in their response; patients in the tocilizumab group showed further improvement in ACR Pedi 70 with continued treatment.

Four patients on placebo completed the double-blind phase of the study despite having undetectable serum tocilizumab concentrations 3–5 weeks after randomisation; these patients remained responders at the end of the double-blind phase. Three of these patients had mild disease at study entry, which might have been the reason for their lasting response to tocilizumab treatment during the open-label lead-in phase.

At the 48-week analysis in the open-label extension phase, 48 (96%) of 50 patients were still receiving tocilizumab. Median duration of treatment for the 50 patients from the initial open-label lead-in phase was 61.1 (range 8.7–98.9) weeks; 48 of these patients completed 48-week assessments. The numbers of patients who achieved ACR Pedi 30, 50, and 70 responses at 48 weeks were 47 (98%), 45 (94%), and 43 (90%), respectively. The median absolute change from baseline in ESR at week 48 was  $-34$  ( $-121$  to  $-7$ ) mm/h and median percentage change was  $-93.2\%$  ( $-100.0\%$  to  $-78.6\%$ ). The median absolute change from baseline in CRP concentrations at the same time point was  $-43.1$  ( $-190.0$  to  $-16.0$ ) mg/L and median percentage change was  $-99.7\%$  ( $-100.0\%$  to  $-95.1\%$ ).

Haemoglobin concentrations and platelet counts showed improvement after patients started tocilizumab. Median haemoglobin concentration increased from 111 (range 74–151) g/L at baseline to 124 (73–179) g/L at week 48. Median platelet count decreased from  $41.8 \times 10^{10}$  ( $16.8 \times 10^{10}$  to  $86.2 \times 10^{10}$ ) per L at baseline to  $30.2 \times 10^{10}$  ( $13.1 \times 10^{10}$  to  $55.6 \times 10^{10}$ ) per L at week 48. All 48 patients with 48-week efficacy data were given stable doses of oral corticosteroids throughout the initial open-label lead-in and double-blind phases and during the open-label extension phase, 33 (69%) and 22 (46%) were able to reduce their doses by at least 30% and at least 50%, respectively. Figure 5 shows the efficacy responses in each treatment group during the double-blind phase and open-label extension phase. The efficacy response of 21 patients who met the rescue criteria in the double-blind phase improved immediately after they resumed tocilizumab infusion in the extension phase. Patients lost their response to tocilizumab during placebo treatment in the double-blind phase but regained it once tocilizumab treatment was restarted in the open-label extension phase.

No deaths or cases of macrophage-activation syndrome occurred during the lead-in and double-blind phases of the study. Two serious adverse events were reported during the open-label lead-in phase: one anaphylactoid

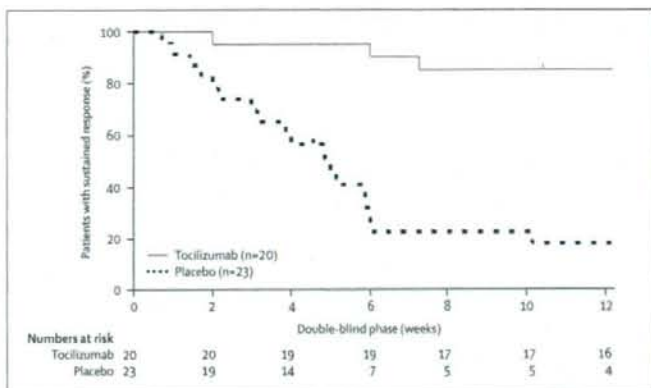


Figure 3: Time course of early escape for rescue medication

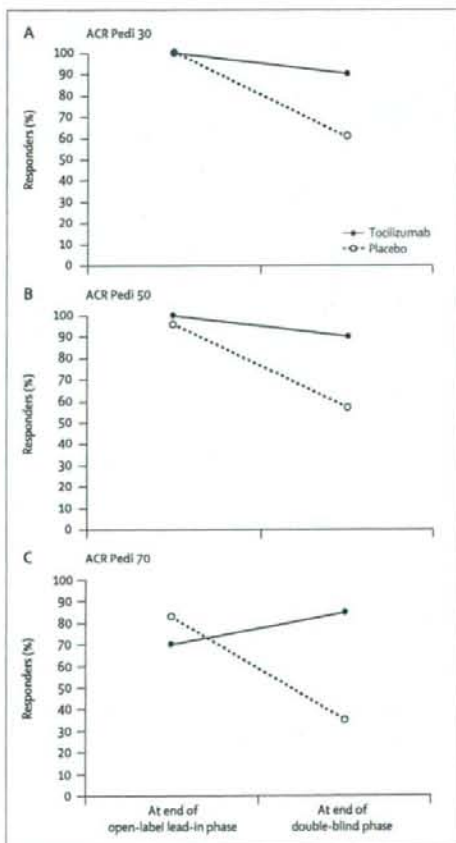


Figure 4: Changes in American College of Rheumatology Pediatric (ACR) responses from the open-label phase to the double-blind phase

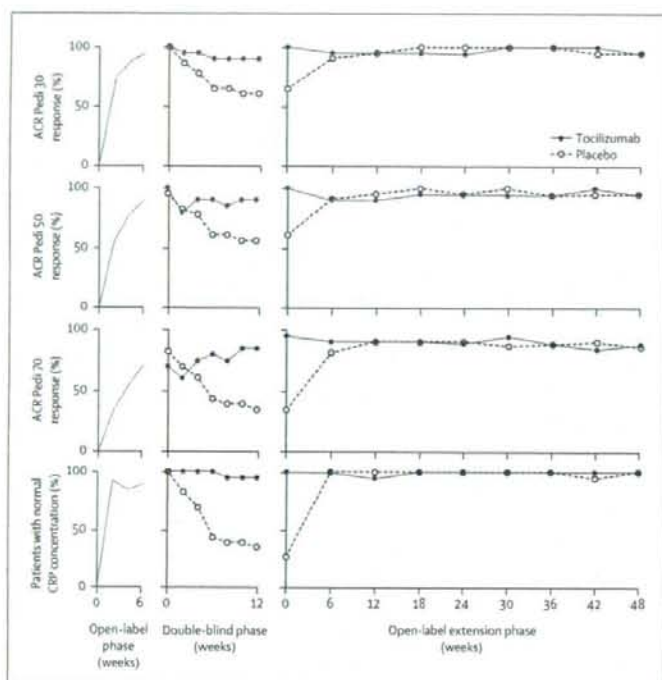


Figure 5: Efficacy responses during the double-blind and open-label extension phases  
CRP=C-reactive protein. ACR Pedi=American College of Rheumatology Pediatric.

reaction in a patient who tested negative for IgE-type anti-tocilizumab antibodies and previously had had allergic reactions to aspirin and infliximab, and one case of gastrointestinal haemorrhage from diffuse acute or chronic colonic ulceration in a patient with a history of chronic diarrhoea and rectal bleeding.

Additionally, during the double-blind phase, two adverse events needed patients to be withdrawn from the study; one had infectious mononucleosis associated with striking increases in liver enzymes (aspartate aminotransferase 527 IU/L, alanine aminotransferase 676 IU/L, and lactate dehydrogenase [LDH] 874 IU/L) and neutropenia (963 cells per  $\mu\text{L}$ ) 2 weeks after the fifth dose of tocilizumab. Laboratory values returned to normal 3 weeks after the onset of Epstein-Barr virus infectious mononucleosis and the patient resumed tocilizumab in the open-label extension phase. The other patient had herpes zoster during placebo administration in the double-blind phase when serum tocilizumab concentrations were below the limit of quantification. Herpes zoster was treated with aciclovir and the patient resumed tocilizumab administration in the open-label extension phase.

Most of the adverse events that arose during both the open-label lead-in and double-blind phases were mild or

moderate in severity and typical of those noted with other biological agents in similar settings.<sup>19,21</sup> Adverse events frequently reported were symptoms of upper-respiratory-tract infections and gastroenteritis, but not of tuberculosis. In the double-blind phase, the occurrence of gastroenteritis was similar in the tocilizumab group (one [5%] of 21 patients) and placebo (one [4%] of 23 patients) groups, whereas the frequency of upper-respiratory-tract infection was increased in the placebo group (four [17%] of 23 patients) versus the tocilizumab group (two [10%] of 21 patients). Ten patients had mild infusion reactions during the open-label lead-in phase. Development of anti-tocilizumab IgE antibodies was noted in four patients.

In the open-label extension phase of the study, 13 serious adverse events were noted, which included bronchitis, gastroenteritis, and an anaphylactoid reaction (leading to patient withdrawal). The cases of bronchitis ( $n=2$ ) and gastroenteritis ( $n=2$ ) resolved with antibiotic treatment. The most common adverse events were nasopharyngitis (33 [59%]), upper-respiratory-tract infection (19 [34%]), gastroenteritis (16 [29%]), and bronchitis (14 [25%] of 56 patients). Increases in alanine aminotransferase (16 [29%]), aspartate aminotransferase (12 [21%]), and LDH (10 [18%]) were noted; increases of at least grade 2 in alanine aminotransferase and aspartate aminotransferase were recorded in 12 and eight patients, respectively. Transaminases tended to increase early during tocilizumab administration and then to subside during continuation of treatment. Mild increases, mostly within the normal range, in total cholesterol were noted. Tuberculosis was not reported.

## Discussion

At the end of the open-label lead-in phase, the ACR Pedi 30, 50, and 70 response rates showed that tocilizumab had excellent and rapid effectiveness against systemic-onset juvenile idiopathic arthritis. After 6 weeks, the patients who did not respond—as defined in terms of both ACR Pedi 30 response and reduced CRP concentrations—were generally younger with a shorter disease duration and more severe inflammation than those who did respond to treatment. Patients who remained on tocilizumab in the double-blind phase had sustained improvements in clinical measures of effectiveness and wellbeing, whereas most of those in the placebo group needed rescue treatment.

The design of this study was chosen on the basis of counsel with the Japanese Pharmaceuticals and Medical Devices Agency because to do a standard placebo-controlled trial when there is preliminary evidence of effectiveness with a new drug would be ethically unsound.<sup>6</sup> The withdrawal design has the disadvantage that as patients are withdrawn for rescue treatment, the numbers of controls decrease. Therefore, the primary endpoint in the double-blind phase inevitably has to be time to early escape. However, in the open-label

extension phase the primary endpoint was the ACR Pedi 30 response rate, which was measured against baseline rather than a control population.

Active joints and systemic symptoms were not included in the inclusion criteria because refractory patients often received high-dose corticosteroids and the manifestation of joint disease and systemic features would be less obvious. To force these patients to reduce their corticosteroid dose to make their actual disease activity visible would be unethical. A necessity to start a mid to high dose of corticosteroids for a specific time and the failure to suppress inflammation as evidenced by CRP concentrations are good indicators of active disease in this patient population.

Masked assessors of joint disease were not used in this study, which might have biased the results. Since the joint assessments were done by trained paediatric rheumatologists who followed standardised methods, these assessors were thought to be unnecessary. However, interpretation of the results has some limitations.

Laboratory indicators of acute-phase reactants changed rapidly—within 2 weeks after the first infusion of tocilizumab. Median white-blood-cell, neutrophil, and platelet counts decreased in patients on active treatment, as previously described for patients with polyarticular juvenile idiopathic arthritis in response to etanercept,<sup>8</sup> but interleukin-6-receptor inhibition rapidly returned body temperature to normal and increased the median haemoglobin concentration. These findings accord with de Benedetti and colleagues'<sup>18</sup> hypotheses that interleukin 6 is causally related to the spiking fever and anaemia of systemic-onset juvenile idiopathic arthritis.

Common adverse events were gastrointestinal, nasopharyngeal, and upper-respiratory-tract infections, but they were mild. There might have been a potential absence of acute-phase reactions in response to infections because of inhibition of interleukin-6 signalling by tocilizumab. However, a mild increase in CRP concentration during infections suggested incomplete inhibition of interleukin-6 signalling or overwhelmed inflammatory responses.

Two serious adverse events—anaphylactoid reaction and gastrointestinal haemorrhage—were noted in the open-label lead-in phase. Gastrointestinal haemorrhage was presumably caused by the long-term high-dose corticosteroid treatment since the patient had previously had two similar episodes of gastrointestinal haemorrhage.

Aminotransferase concentrations tended to increase early in the tocilizumab administration, generally within the first 3–6 months and are possibly related to the pathological process unique to systemic-onset juvenile idiopathic arthritis, treatment methods such as steroid tapering, or biological effect of interleukin 6 on liver, or both.

A comparison of the time courses of ACR Pedi responses in the placebo and tocilizumab groups during the double-blind phase could not be made easily because

the number of patients in the placebo group decreased rapidly because of withdrawal. Four patients in a phase II long-term study remain in remission without tocilizumab treatment or any other medications.<sup>29</sup> Although spontaneous disease remission can occur in these patients, the possibility exists that the interleukin-6-receptor inhibition induced long-lasting secondary changes in inflammatory and immune processes, leading to disease remission.

Effectiveness data in the extension phase were calculated against the baseline of the open-label lead-in phase because of the absence of a transition lag between the double-blind and open-label extension phases. Because the placebo periods were mostly 2–6 weeks, all patients in the double-blind phase can be discussed as one group in the extension study. The response rates at 48 weeks were almost the same between the groups.

By week 48, ESR and CRP concentrations had decreased from baseline. After completion of the initial open-label lead-in and double-blind phases, corticosteroid doses were reduced by at least 50% in most patients. Since the complications related to corticosteroid use—including growth retardation and osteoporosis—are still major problems in these children with persistent disease, the corticosteroid-sparing effect might lead to substantial benefit in the treatment of systemic-onset juvenile idiopathic arthritis.

The extension study showed that tocilizumab can be used to treat systemic-onset juvenile idiopathic arthritis and patients maintained a good response rate in terms of ACR Pedi data without flares in disease; tocilizumab had a good tolerability profile, which was much like that of other biological agents.<sup>8</sup>

Macrophage-activation syndrome remains the most devastating and life-threatening complication in the disease course of refractory systemic-onset juvenile idiopathic arthritis. The cause of this disorder is unknown, but the decrease has arisen after introduction of several pharmacological agents, and often follows infections.<sup>27</sup> Thus, macrophage-activation syndrome could develop during tocilizumab treatment.

Tocilizumab could play an important part in the treatment of systemic-onset juvenile idiopathic arthritis because interleukin 6 is directly implicated in the pathogenesis of this disease<sup>18,27</sup> and because tocilizumab needs less frequent administration than does anakinra. Uncontrolled studies suggest that anakinra could be effective in the treatment of both systemic symptoms and arthritis in patients with systemic-onset juvenile idiopathic arthritis, but confirmatory studies are needed. Methotrexate and anti-TNF treatments are thought to be less beneficial in this arthritis than in other subtypes of juvenile idiopathic arthritis.

Two important issues related to this class of products—namely malignant diseases and autoimmunity—were not clearly assessed because of the small sample size and the short follow-up. Longer

follow-up with a larger patient population than that in this study is needed to address these issues.

Thus, the results of this placebo-controlled and open-label extension study with tocilizumab in children with systemic-onset juvenile idiopathic arthritis show a sustained clinical improvement and a favourable risk-benefit profile. The findings of this study might represent a step forward in the control of a disease that has previously proved to be difficult to manage.

#### Contributors

The study protocol was developed by the authors and clinical study investigators in collaboration with the study sponsor. All data discussed in this report were interpreted by the authors in collaboration with the study sponsor. The report was written by the corresponding author in consultation with the other authors and the sponsor. The authors participated in the study procedures, including patient enrolment, screening, clinical assessments, and follow-up.

#### Conflict of interest statement

NN received a consulting fee from the sponsor and works as a scientific advisory board member of Hoffman-La Roche, which developed tocilizumab in collaboration with the sponsor. TK holds a patent for tocilizumab for treatment of inflammatory disorders, including rheumatoid arthritis and Castleman's disease. The other authors declare that they have no conflict of interest.

#### Acknowledgments

Chugai Pharmaceuticals sponsored this study. The authors thank Remi Ozawa, Rumiko Kurosawa, Yasuo Nakagishi, Junpei Kinoshita, Shu-ichi Ito (Yokohama City University), Yoshifumi Kawano, Hiroyuki Imanaka, Nobuaki Maeno, Yasuhiro Nerome (Kagoshima University), Yoshichi Kohno, Yuzaburo Inoue (Chiba University), Hiroshi Tamai (Osaka Medical School), and Kazuyuki Yoshizaki (Osaka University) for helpful discussions, outpatient care, and involvement in the study procedures; and CWP Reynolds and P Langman for linguistic help with this report.

#### References

- Cassidy JT, Petty RE. Juvenile idiopathic arthritis. In Cassidy JT, Petty RE, eds. *Textbook of pediatric rheumatology*, 5th edn. Philadelphia: WB Saunders, 2005: 291-303.
- Billiau AD, Roskams T, Van Damme-Lombaerts R, Matthys P, Wouters C. Macrophage activation syndrome: characteristic findings on liver biopsy illustrating the key role of activated, IFN-gamma-producing lymphocytes and IL-6- and TNF-alpha-producing macrophages. *Blood* 2005; **105**: 1648-51.
- Kelly A, Ramanan AV. Recognition and management of macrophage activation syndrome in juvenile arthritis. *Curr Opin Rheumatol* 2007; **19**: 477-81.
- Cortis E, Insalaco A. Macrophage activation syndrome in juvenile idiopathic arthritis. *Acta Paediatr Suppl* 2006; **95**: 38-41.
- Grom AA, Murray KJ, Luyrink L, et al. Patterns of expression of tumor necrosis factor alpha, tumor necrosis factor beta, and their receptors in synovia of patients with juvenile rheumatoid arthritis and juvenile spondylarthropathy. *Arthritis Rheum* 1996; **39**: 1703-10.
- Lovell DJ, Giannini EH, Reiff A, et al. Etanercept in children with polyarticular juvenile rheumatoid arthritis. *N Engl J Med* 2000; **342**: 763-69.
- Genovese MC, Bathon JM, Martin RW, et al. Etanercept versus methotrexate in patients with early rheumatoid arthritis: two-year radiographic and clinical outcomes. *Arthritis Rheum* 2002; **46**: 1443-50.
- Quartier P, Taupin P, Bourdeaut F, et al. Efficacy of etanercept for the treatment of juvenile idiopathic arthritis according to the onset type. *Arthritis Rheum* 2003; **48**: 1093-101.
- Ramanan AV, Schneider R. Macrophage activation syndrome following initiation of etanercept in a child with systemic onset juvenile rheumatoid arthritis. *J Rheumatol* 2003; **30**: 401-03.
- Pascual V, Allantaz F, Arce E, et al. Role of interleukin-1 (IL-1) in the pathogenesis of systemic onset juvenile idiopathic arthritis and clinical response to IL-1 blockade. *J Exp Med* 2005; **201**: 1479-86.
- Irgoyen PI, Olsen J, Horn C, et al. Treatment of systemic juvenile rheumatoid arthritis with anakinra (abstract). *Arthritis Rheum* 2004; **50** (suppl): S437.
- Heurickson M. Efficacy of anakinra in refractory systemic arthritis (abstract). *Arthritis Rheum* 2004; **50** (suppl): S438.
- Verbky JW, White A. Effective use of the recombinant interleukin-1 receptor antagonist anakinra in therapy-resistant systemic onset juvenile rheumatoid arthritis. *J Rheumatol* 2004; **31**: 2071-75.
- Lurati A, Teruzzi B, Salmaso A, et al. Macrophage activation syndrome during anti-IL1 receptor therapy (anakinra) in a patient affected by systemic onset idiopathic juvenile arthritis. *Paed Rheumatol Online J* 2005; **3**: 79-85.
- Buoncompagni A, Loy A, Sala I, et al. Editorial: The paradox of macrophage activation syndrome triggered by biologic medications. *Paed Rheumatol Online J* 2005; **3**: 70-73.
- Rose-John S, Scheller J, Elson G, et al. Interleukin-6 biology is coordinated by membrane-bound and soluble receptors: role in inflammation and cancer. *J Leukoc Biol* 2006; **80**: 227-36.
- de Benedetti F, Massa M, Robbioni P, et al. Correlation of interleukin-6 levels with joint involvement and thrombocytosis in patients with systemic juvenile rheumatoid arthritis. *Arthritis Rheum* 1991; **34**: 1158-63.
- de Benedetti F, Martini A. Targeting the interleukin-6 receptor: a new treatment for systemic juvenile idiopathic arthritis. *Arthritis Rheum* 2005; **52**: 687-93.
- Lieskova J, Guo D, Derman E. Growth impairment in IL-6-overexpressing transgenic mice is associated with induction of SOCS3 mRNA. *Growth Horm IGF Res* 2003; **13**: 26-35.
- Woo P, Wilkinson N, Prieur A-M, et al. Open label phase II trial of single, ascending doses of MRA in Caucasian children with severe systemic juvenile idiopathic arthritis: proof of principle of the efficacy of IL-6 receptor blockade in this type of arthritis and demonstration of prolonged clinical improvement. *Arthritis Res Ther* 2005; **7**: R1281-88.
- Yokota S, Miyamae T, Imagawa T, et al. Therapeutic efficacy of humanized recombinant anti-interleukin-6 receptor antibody in children with systemic-onset juvenile idiopathic arthritis. *Arthritis Rheum* 2005; **52**: 818-25.
- Petty RE, Southwood TR, Manners P, et al. International League of Associations for Rheumatology. International League of Associations for Rheumatology classification of juvenile idiopathic arthritis: second revision, Edmonton, 2001. *J Rheumatol* 2004; **31**: 390-92.
- Giannini EH, Ruperto N, Ravelli A, Lovell DJ, Felson DT, Martini A. Preliminary definition of improvement in juvenile arthritis. *Arthritis Rheum* 1997; **40**: 1202-09.
- Woo P, Southwood TR, Prieur AM, et al. Randomized, placebo-controlled, crossover trial of low-dose oral methotrexate in children with extended oligoarticular or systemic arthritis. *Arthritis Rheum* 2000; **43**: 1849-57.
- NCI. Cancer Therapy Evaluation Program. common terminology criteria for adverse events, version 3.0. DCTD, NCI, NIH, DHHS. Bethesda: National Cancer Institute, 2006.
- Yokota S, Imagawa T, Miyamae T, et al. Long-term therapeutic experience of humanized anti-IL6 receptor monoclonal antibody (aIL-6R Mab) in systemic-onset juvenile idiopathic arthritis (So-JIA). *Arthritis Rheum* 2004; **50**: S438.
- Stephan JL, Zeller J, Hubert P, et al. Macrophage activation and rheumatic disease in childhood: a report of four new cases. *Clin Exp Rheumatol* 1993; **11**: 451-56.



## Abnormal expression of the genes involved in cytokine networks and mitochondrial function in systemic juvenile idiopathic arthritis identified by DNA microarray analysis

S Ishikawa, T Mima, C Aoki, N Yoshio-Hoshino, Y Adachi, T Imagawa, M Mori, M Tomiita, N Iwata, T Murata, M Miyoshi, S Takei, Y Aihara, S Yokota, K Matsubara and N Nishimoto

*Ann Rheum Dis* 2009;68:264-272; originally published online 3 Apr 2008;  
doi:10.1136/ard.2007.079533

---

Updated information and services can be found at:  
<http://ard.bmj.com/cgi/content/full/68/2/264>

---

*These include:*

**References**

This article cites 31 articles, 10 of which can be accessed free at:  
<http://ard.bmj.com/cgi/content/full/68/2/264#BIBL>

**Rapid responses**

You can respond to this article at:  
<http://ard.bmj.com/cgi/eletter-submit/68/2/264>

**Email alerting service**

Receive free email alerts when new articles cite this article - sign up in the box at the top right corner of the article

---

**Notes**

---

To order reprints of this article go to:  
<http://journals.bmj.com/cgi/reprintform>

To subscribe to *Annals of the Rheumatic Diseases* go to:  
<http://journals.bmj.com/subscriptions/>



# Abnormal expression of the genes involved in cytokine networks and mitochondrial function in systemic juvenile idiopathic arthritis identified by DNA microarray analysis

S Ishikawa,<sup>1</sup> T Mima,<sup>1</sup> C Aoki,<sup>1</sup> N Yoshio-Hoshino,<sup>1</sup> Y Adachi,<sup>1</sup> T Imagawa,<sup>2</sup> M Mori,<sup>2</sup> M Tomiita,<sup>3</sup> N Iwata,<sup>4</sup> T Murata,<sup>5</sup> M Miyoshi,<sup>6</sup> S Takei,<sup>7</sup> Y Aihara,<sup>8</sup> S Yokota,<sup>2</sup> K Matsubara,<sup>9</sup> N Nishimoto<sup>1</sup>

<sup>1</sup>Laboratory of Immune Regulation, Graduate School of Frontier Bioscience, Osaka University, Suita, Japan; <sup>2</sup>Department of Pediatrics, Yokohama City University School of Medicine, Yokohama, Japan; <sup>3</sup>Department of Pediatrics, Graduate School of Medicine, Chiba University, Chiba, Japan; <sup>4</sup>Aichi Children's Health and Medical Center, Daifu, Japan; <sup>5</sup>Department of Pediatrics, Osaka Medical College, Takatsuki, Japan; <sup>6</sup>Kobe Children's Hospital, Kobe, Japan; <sup>7</sup>Department of Pediatrics, Graduate School of Medical and Dental Sciences, Kagoshima University, Kagoshima, Japan; <sup>8</sup>Children's Medical Center, Yokohama City University Medical Center, Yokohama, Japan; <sup>9</sup>DNA Chip Research Inc., Yokohama, Japan

Correspondence to: N Nishimoto, Laboratory of Immune Regulation, Graduate School of Frontier Bioscience, Osaka University, 1-3, Yamada-Oka, Suita-City, Osaka 565-0871, Japan; nonihiro@fbs.osaka-u.ac.jp

SI and TM contributed equally to this work

Accepted 24 March 2008  
Published Online First 3 April 2008

## ABSTRACT

**Objectives:** Systemic juvenile idiopathic arthritis (sJIA) is a rheumatic disease in childhood characterised by systemic symptoms and a relatively poor prognosis. Peripheral leukocytes are thought to play a pathological role in sJIA although the exact cause of the disease is still obscure. In this study, we aimed to clarify cellular functional abnormalities in sJIA.

**Methods:** We analysed the gene expression profile in peripheral leukocytes from 51 patients with sJIA, 6 patients with polyarticular type JIA (polyJIA) and 8 healthy children utilising DNA microarrays. Gene ontology analysis and network analysis were performed on the genes differentially expressed in sJIA to clarify the cellular functional abnormalities.

**Result:** A total of 3491 genes were differentially expressed in patients with sJIA compared to healthy individuals. They were functionally categorised mainly into a defence response group and a metabolism group according to gene ontology, suggesting the possible abnormalities in these functions. In the defence response group, molecules predominantly constituting interferon (IFN)- $\gamma$  and tumour necrosis factor (TNF) network cascades were upregulated. In the metabolism group, oxidative phosphorylation-related genes were downregulated, suggesting a mitochondrial disorder. Expression of mitochondrial DNA-encoded genes including cytochrome *c* oxidase subunit 1 (MT-CO1) and MT-CO2 were suppressed in patients with sJIA but not in patients with polyJIA or healthy children. However, nuclear DNA-encoded cytochrome *c* oxidases were intact.

**Conclusion:** Our findings suggest that sJIA is not only an immunological disease but also a metabolic disease involving mitochondria disorder.

with sJIA. Moreover, about 10% of patients with sJIA progress to macrophage activation syndrome (MAS), which is often fatal.<sup>4-6</sup> Thus, sJIA may be a distinct disease from articular type JIA.<sup>6</sup>

In sJIA, cytokine regulation disorders have been suggested to be involved in the pathogenesis, although the exact causes of the disease is still obscure. Interleukin (IL)18 is increased in serum from patients with sJIA and correlates with clinical symptoms.<sup>7</sup> Aberrant induction of proinflammatory cytokines such as tumour necrosis factor (TNF), IL1 and IL6 is also observed in patients with sJIA<sup>8-10</sup> and therapies targeting these cytokines successfully control the disease activity.<sup>9, 11, 12</sup> These cytokines activate the immunocompetent cells, including lymphocytes and neutrophils in the affected joints as well as in peripheral blood.<sup>13, 14</sup> Therefore, analysis of the functional abnormalities in peripheral leukocytes may be helpful for understanding the pathological condition of sJIA. Since the immune system is regulated by exquisite mechanisms in cell-cell communications and cytokine networks, such abnormalities may be reflected not in the expression of the small number of independent genes, but in the deviated expression of a substantial number of genes in some networks. Thus, an exhaustive analysis using DNA microarrays could be amenable to finding such deviated expressions in the multiple genes of such networks.

In this study, we investigated the functional abnormalities of peripheral blood cells using bioinformatics analysis on the genes detected by DNA microarrays differentially expressed in patients with sJIA compared to healthy individuals.

## METHODS

### Patients and healthy individuals

The analysis using patient peripheral blood in this study was approved by the Ethical Committee of Osaka University Medical School and all the attending institutes. Each patient's parent or legal guardian gave written informed consent. Younger patients with sufficient intellectual maturity to understand what was proposed signed and dated a separately designed written informed assent form in addition to the informed consent form signed by their parent or guardian. A total of 51 patients with sJIA and 6 patients with polyJIA fulfilled the

Juvenile idiopathic arthritis (JIA) is one of the most common autoimmune diseases in childhood. It arises before 16 years of age and is accompanied by arthritis lasting more than 6 weeks. JIA is classified into seven subclasses; these include systemic JIA (sJIA) and articular type JIA, which also includes oligoarticular and polyarticular type JIA (polyJIA).<sup>1-3</sup> While patients with articular type JIA show a localised inflammation of the joints, patients with sJIA are also characterised by systemic inflammatory symptoms such as spiking fever, skin rash, pericarditis and hepatosplenomegaly. Growth disorders are frequently associated with the condition, leading to permanent disability in patients

**Table 1** Clinical data for 51 patients with systemic juvenile idiopathic arthritis (sJIA) and 6 patients with polyarticular JIA (polyJIA)

	sJIA (n = 51)	polyJIA (n = 6)
Age, median (range) years	8 (2–19)	13.5 (6–19)
Female:male ratio	33:18	4:2
Duration of JIA, median (range) years	3.3 (0.4–16.2)	7.5 (0.7–17.2)
CRP, median (range) mg/dl	4.3 (1.6–19)	4.3 (1.1–8.2)
Erythrocyte sedimentation rate	46 (8–125)	43 (29–83)
Fever:		
<37.5	18 (35.3%)	6 (100%)
37.5 to 38	14 (27.5%)	0 (0%)
>38	19 (37.2%)	0 (0%)
White blood cells, median (range)	12 300 (4920–30 700)	9050 (5200–13 200)
Proportion of neutrophils, median (range)	70.2% (38.4–96)	65.0% (40.6–90.5)
Proportion of lymphocytes, median (range)	20.5% (3.2–52.5)	23.8% (6–49.3)
Proportion of monocytes, median (range)	5.3% (0.6–12)	7.1% (3–9.7)
Number of active joints, median (range)	4 (0–39)	21 (5–27)
Doctor global assessment of disease severity, median (range)	52 (18–100)	72.5 (52–90)
Patient or parent global assessment of overall well-being, median (range)	52 (18–90)	83 (76–100)
Score on Child Health Assessment Questionnaire, median (range)	0.88 (0–3)	1.94 (0.25–2.88)
Dose of corticosteroids, median (range) mg/kg	0.37 (0.03–1.84)	0.17 (0.12–0.18)
Dose of MTX, median (range) mg/week	7.5 (0–20)	6 (0–15)
Number of concomitant DMARDs, median (range)	2 (0–5)	1 (0–2)

Eligible patients were 2 to 19 years of age and fulfilled the ILAR classification for JIA. Active joints were defined as joints with swelling not due to deformity or in joints without swelling, limitation of motion plus pain and/or tenderness. Dose of corticosteroid is converted into prednisolone. CRP, C-reactive protein; DMARD, disease-modifying antirheumatic drug; ILAR, International League of Associations of Rheumatology; MTX, methotrexate.

diagnostic criteria of the International League of Associations of Rheumatology (ILAR).<sup>1</sup> For the healthy controls, we obtained blood samples at their regular health assessment from eight healthy children whose informed assent was obtained and whose parent gave written informed consent.

#### Sample proceeding and microarray hybridisation

Peripheral blood was collected directly into PAXGene tubes (Qiagen, Valencia, California, USA). Total RNA was extracted using the PAXgene Blood RNA Kit with the optional on-column DNase digestion. Amino allylRNA (aRNA) was synthesised from 1 µg of total RNA using an Amino Allyl MessageAmp aRNA kit (Ambion, Austin, Texas, USA). aRNA, 5 µg from each sample, and the equivalent quantity of reference aRNA from a mixture of RNA from peripheral blood of 45 healthy adults were subjected to Cy3 and Cy5 labelling, respectively. Both labelled aRNA were mixed in equal amounts and hybridised with an oligonucleotide-based DNA microarray, AceGene (HumanOligoChip30K, DNA Chip Research, Kanagawa, Japan), which contained about 30 000 human genes.

#### Data acquisition and analysis

The microarrays were scanned using ScanArray Lite (PerkinElmer, Boston, Massachusetts, USA) and signal values were calculated using DNASIS Array (Hitachi Software Engineering, Tokyo, Japan). The median and SD of background levels were calculated and the genes whose intensities were less than median plus 2SD of background levels were identified as null. The Cy3/Cy5 ratios of all spots on the DNA microarrays were normalised by the global ratio median normalisation method. Genes with at least 80% good data across each group of samples were selected for further analysis.

#### Gene ontology analysis

Genes identified to be differentially expressed by more than 0.2 base 2 logarithm (about 10%) according to the microarray analysis and a median signal intensity difference of at least 100 between each type of JIA and healthy group (to reduce errors pertaining to low-level expression close to noise level) were analysed for significant functional clusters of genes using Expression Analysis Systematic Explorer (EASE) V. 2.0 (<http://david.niaid.nih.gov/david/ease.htm>).

#### Network analysis

Network analyses were conducted using Ingenuity Pathways Analysis (IPA) V. 4.2 (Ingenuity Systems; <http://www.ingenuity.com>) to investigate biological interaction networks of the genes categorised as the over-represented defence response group.

#### Quantification of the gene expression level by real-time PCR

To quantify the gene expression level in peripheral blood cells, we performed real-time quantitative PCR analysis using commercially available assays on demand probe primer sets (Applied Biosystems, Foster City, California, USA).

#### Statistical analysis

The unpaired Mann–Whitney U test was used to determine the statistical significant difference in the mRNA expression levels between the sJIA and healthy groups or between the polyJIA and healthy groups. The Pearson product-moment correlation coefficient was used to determine the index of correlation. The criterion for statistical significance was  $p < 0.05$ .

## Extended report

**Table 2** Deviated functional categories in overexpressed genes of systemic juvenile idiopathic arthritis (sJIA)

GO biological process	List (626 genes)	Population (13 802 genes)	EASE score	GO accession no.
	Hits	Hits		
Response to stimulus:				
Response to external stimulus	90	1539	8.69E-03	GO:0009605
Response to biotic stimulus	57	963	3.13E-02	GO:0009607
Defence response	52	887	4.58E-02	GO:0006952
Metabolism:				
Protein biosynthesis	43	650	1.28E-02	GO:0006412
Glycoprotein metabolism	12	132	3.72E-02	GO:0009100
Protein amino acid glycosylation	11	117	3.95E-02	GO:0006486
Protein complex assembly	11	110	2.74E-02	GO:0006461
Establishment of localisation:				
Transport	119	2049	2.82E-03	GO:0006810
Intracellular transport	38	613	4.55E-02	GO:0046907
Intracellular protein transport	30	438	2.62E-02	GO:0006886
Cell motility	24	342	3.81E-02	GO:0006928
Organisation physiological process:				
Excretion	7	40	8.69E-03	GO:0007588
Digestion	7	56	4.02E-02	GO:0007586
Cell organisation and biogenesis:				
Mitochondrion organisation and biogenesis	3	7	3.69E-02	GO:0007005

EASE, Expression Analysis Systematic Explorer software, V. 2.0; GO, Gene Ontology database.

**Table 3** Deviated functional categories in underexpressed genes of systemic juvenile idiopathic arthritis (sJIA)

GO biological process	List (1641 genes)	Population (13 802 genes)	EASE score	GO accession no.
	Hits	Hits		
Immune system process:				
Antigen processing	9	32	3.02E-02	GO:0019882
Antigen processing, exogenous antigen via MHC class II	7	18	1.46E-02	GO:0019886
Metabolism:				
Nucleobase, nucleoside, nucleotide and nucleic acid metabolism	441	3429	2.61E-02	GO:0006139
Transcription from Pol II promoter	86	477	7.37E-05	GO:0006366
Regulation of transcription from Pol II promoter	48	254	1.28E-03	GO:0006357
RNA metabolism	80	460	4.33E-04	GO:0016070
RNA processing	74	430	9.78E-04	GO:0006396
RNA splicing	26	122	4.31E-03	GO:0008380
mRNA metabolism	30	172	3.24E-02	GO:0016071
mRNA processing	27	154	4.04E-02	GO:0006397
Phosphorylation	95	645	1.98E-02	GO:0016310
Oxidative phosphorylation	13	45	5.14E-03	GO:0006119
ATP synthesis coupled electron transport	11	36	7.56E-03	GO:0042773
Mitochondrial electron transport, NADH to ubiquinone	8	29	4.92E-02	GO:0006120
Regulation of translation	16	74	2.59E-02	GO:0006417
Regulation of translational initiation	10	34	1.53E-02	GO:0006446
Aromatic compound metabolism	24	121	1.49E-02	GO:0006725
Aromatic amino acid family metabolism	11	46	4.07E-02	GO:0009072
Aromatic amino acid family biosynthesis	7	23	4.75E-02	GO:0009073
Aromatic compound biosynthesis	9	33	3.58E-02	GO:0019438
Protein folding	25	134	2.57E-02	GO:0006457
Cell organisation and biogenesis:				
Organelle organisation and biogenesis	69	435	1.05E-02	GO:0006996
Cytoskeleton organisation and biogenesis	58	351	8.57E-03	GO:0007010
Cytoplasm organisation and biogenesis	77	519	3.05E-02	GO:0007028
Cell development:				
Neurogenesis	68	455	3.63E-02	GO:0022008

EASE, Expression Analysis Systematic Explorer software, V. 2.0; GO, Gene Ontology database; MHC, major histocompatibility complex.

**Table 4** Deviated functional categories in overexpressed genes of polyarticular JIA (polyJIA)

GO biological process	List (455 genes)	Population (13 802 genes)	EASE score	GO accession no.
	Hits	Hits		
Response to stimulus:				
Response to biotic stimulus	50	963	1.49E-03	GO:0009607
Defence response	46	887	2.46E-03	GO:0006952
Response to stress	40	872	3.12E-02	GO:0006950
Immune system process:				
Immune response	42	792	2.66E-03	GO:0006955
Humoral immune response	12	175	3.00E-02	GO:0006959
Metabolism:				
Biosynthesis	62	1199	3.89E-04	GO:0009058
Macromolecule biosynthesis	55	1002	2.15E-04	GO:0009059
Protein biosynthesis	42	650	4.85E-05	GO:0006412
ATP biosynthesis	7	29	3.06E-04	GO:0006754
Oxidative phosphorylation	6	45	1.56E-02	GO:0006119
ATP synthesis coupled electron transport	5	36	2.97E-02	GO:0042773
Coenzyme metabolism	10	103	6.81E-03	GO:0006732
NADPH metabolism	3	10	4.08E-02	GO:0006739
Carbohydrate catabolism	10	88	2.39E-03	GO:0016052
Glycosaminoglycan catabolism	3	5	1.01E-02	GO:0006027
Glucose catabolism	7	57	1.08E-02	GO:0006007
Ubiquitin-dependent protein catabolism	11	122	6.96E-03	GO:0006511
Establishment of localisation:				
Ion transport	32	637	1.91E-02	GO:0006811
Proton transport	11	70	9.09E-05	GO:0015992
Cellular physiological process:				
Regulation of cell proliferation	17	269	1.65E-02	GO:0042127
Regulation of biological process:				
Regulation of biological process	19	354	4.52E-02	GO:0050789

EASE, Expression Analysis Systematic Explorer software, V. 2.0; GO, Gene Ontology database.

**RESULTS****Demographic and clinical characteristics of the patients**

The demographic and clinical characteristics of patients with sJIA and patients with polyJIA analysed in this study are summarised in table 1.

Patients with sJIA who had been treated with corticosteroids (continued treatment for 3 months or longer at a dose of 0.2 mg/kg or more as prednisolone equivalent; 44 patients) but who failed to respond adequately or in whom treatment could not be continued or the dose could not be increased due to adverse reactions (7 patients) were enrolled in this study. All the

patients had active disease in terms of C-reactive protein (CRP) of >1.5 mg/dl or erythrocyte sedimentation rate (ESR) of >30 mm/h in spite of the appropriate therapies as shown in table 1. The patients with polyJIA failed to respond adequately to the treatment with prednisolone at a dose of 0.2 mg/kg or less and/or disease-modifying antirheumatic drugs (DMARDs). They all had five or more active arthritis joints and CRP of >1.0 mg/dl or ESR of >30 mm/h despite the appropriate therapy. They had been treated with oral corticosteroids and DMARDs. Patients with sJIA received significantly higher doses of corticosteroids than patients with polyJIA ( $p<0.05$ ). There

**Table 5** Deviated functional categories in underexpressed genes of polyarticular JIA (polyJIA)

GO biological process	List (1016 genes)	Population (13 802 genes)	EASE score	GO accession no.
	Hits	Hits		
Metabolism:				
Transcription from Pol II promoter	47	477	3.51E-02	GO:0006366
Regulation of transcription from Pol II promoter	28	254	3.39E-02	GO:0006357
tRNA aminoacylation for protein translation	14	106	4.70E-02	GO:0006418
Cellular physiological process:				
Establishment and/or maintenance of cell polarity	5	13	1.21E-02	GO:0007163
Divalent and trivalent inorganic cation transport	15	106	2.31E-02	GO:0015674
Iron ion homeostasis	5	18	3.88E-02	GO:0006879
Organismal physiological process:				
Perception of sound	15	82	2.45E-03	GO:0007605
Response to stimulus:				
Response to DNA damage stimulus	25	229	4.99E-02	GO:0006974
Cell development:				
Axonogenesis	8	46	4.93E-02	GO:0007409

EASE, Expression Analysis Systematic Explorer software, V. 2.0; GO, Gene Ontology database.