

ン細胞死などが観察された。これらのマウスモデルは開放隅角緑内障の発症機序の解明に役立つだけでなく、予防・治療薬の開発にも役立つ。最新の研究から補体C1qの神経細胞シナプスでの異常発現によってマイクログリアによる神経伝達切断が生じていることが明らかになり、緑内障でも同様にこの現象が観察されている。我々は補体活性経路（古典、2次、レクチン経路）が合流する補体因子C3の阻害薬（コンプスタンチン）を用いた神経保護お薬効試験をマウスで試みた。

本研究事業で得られた多くのデータについて知的所有権の出願を行った。

2. 研究方法

(1) 緑内障感受性遺伝子の解明と早期診断法の確立：

開放隅角緑内障患者とコントロールのDNA検体をそれぞれ800検体収集した。この多施設共同研究には国立病院機構、順天堂大学医学部眼科教室、順天堂大学医学部浦安病院眼科、その他関東付近の眼科病院が複数参加した。収集DNA検体の内、300検体について個々にAffymetrix社のGeneChip 500Kを用いて50万種類のSNPを分析した。SNPチップのシグナルは患者（100人）とコントロール（200人）間で比較された後、統計処理が行われ、統計学的に緑内障に優位な遺伝子多型（SNP）を明らかにした。本研究では日本人の緑内障患者における遺伝子背景を調査することにより、欧米人とは異なるリスクの高い遺伝子変異や遺伝子多型が発見される可能性がある。

(2) 緑内障早期診断のための血漿プロテオーム解析：全ての疾患において血漿タンパク質の微量な質的・量的変化が生じると予測されている。感受性遺伝子の遺伝子多型に加えて、緑内障の早期診断に利用できる情報として、血漿タンパク質の組成（血漿プロテオーム）に注目した。開放隅角緑内障患者の血漿50検体とコントロールの50検体について4種類の分画法を使い、イオントラップ型質量分析計（LC-MS/MS）によってタンパク質の同定を行った。血漿中の99%は分子量5万ダルトンを越える22種類の蛋白で占められており、これらのタンパク質

を東レ（株）と共同開発した血漿低分子蛋白分画装置を使って除去し、逆相クロマトグラフィー、トリプシン処理を行った後にイオン交換クロマトグラフィー、逆相クロマトグラフィーで2次元的に分画され、LC-MS/MSイオントラップ型質量分析計（Thermo Fischer Scientific）を使って緑内障に特異的に存在する血漿タンパク質を同定した。質量分析スペクトグラムは2種類の蛋白同定ソフトウェア（BioWorks, Phenix）によって解析し、両ソフトでリストされた蛋白を緑内障患者と健常者間で比較検討した。

(3) 開放隅角緑内障マウスの作製：

我々はこれまで困難とされてきた進行性の開放隅角緑内障マウスの作製をヒト緑内障遺伝子（OPTN, WDR36）の改変によって作製した。本研究ではOPTN遺伝子のE50K, Del 1st LZ, H486R, Del 2nd LZ, Wild-typeとWDR36 D658G, Del 657-659, Del WDR8, Wild-typeが作製された。また、Vav2/3遺伝子のノックアウトが作製され、牛眼を発症するマウスが誕生した。疾患マウスについては眼底観察に加え、眼圧測定、ERG、網膜切片、網膜フラットマウントによる免疫染色が行われた。

(4) 3つの開放隅角緑内障遺伝子の詳細な機能解析と遺伝子変異による機能への影響の解明：

単一の遺伝子の変異による開放隅角緑内障の原因遺伝子としてMYOC, OPTN, WDR36の3遺伝子が発見されており、本研究ではこの中でも最も発症頻度の高いMYOC、正常眼圧力緑内障に関係するOPTN、そしてWDR36の機能解析研究をおこなった。MYOCは毛様体から房水中に分泌されることが知られているが、その機能は明らかにされていない。MYOCの発現・精製は難しく、きわめて不安定であるために、COS1細胞で強制発現を行い、培養液中に分泌されたMYOC分子を複数の培養細胞に加えて細胞膜蛋白との相互作用を検討した。OPTNについては抗体を作製し、細胞内局在を調べた。また、緑内障患者で発見された遺伝子変異によってOPTNと蛋白相互作用への影響を調べる。WDR36は現在も仮想遺伝子としてその機能は未知のままである。

抗体作製などにより、網膜内での局在を調べた。

(倫理面への配慮)

遺伝子解析については研究計画書、患者説明書、患者同意書、患者撤回書を作成し、東京医療センター及び関係施設の倫理委員会で審査され、承認された施設からのみ DNA 検体を収集した。患者が検体の破棄を希望した場合には直ちに検体を焼却処分する。動物実験においては、いずれの実験も動物への苦痛を軽減する処置を取ることで、使用動物数を最小限にすること、苦痛を与えないよう十分な麻酔をかけること、手術処置は両眼でなく片眼のみに行う等、*in vitro* 試験等の代替法を導入するなど動物愛護上の注意を心がけ、所属施設の「動物実験倫理委員会」の承認を得た。

3. 研究結果及び考察

(1) 緑内障感受性遺伝子の解明と早期診断法の確立:

多施設共同研究で収集された開放隅角緑内障患者 DNA は Affymetrix 社の GeneChip 500K を用いて遺伝子多型解析が行われ、患者とコントロール間で比較された。この結果、緑内障患者に統計学的優位な SNP 群を複数発見した。これらの SNP は p 値 10^{-5} - 10^{-5} の信頼度で検出されており、遺伝子座も異なっている。最も p 値の低い SNP 群が相関している領域に 2 つの遺伝子が存在するが、その一つは多数のアミノ酸置換をとまなう SNP が報告されており、これらの SNP については全てを解析したところ、その一つに強く相関した。我々はこの SNP を日本人開放隅角緑内障の最も重要な SNP と位置づけられる。相関する遺伝子はこれまでに緑内障との関係が報告されておらず、今後の機能解析が期待される。現在、アメリカ、インド、オーストラリアで同じ GeneChip を使って研究が行われており、今後の比較研究が注目される。本研究結果は知的財産権の価値があり、特許出願した (特願 2008-267716 緑内障のリスクの予測方法)。

(2) 緑内障早期診断のための血漿プロテオーム解析:

遺伝子多型解析による感受性遺伝子の発見

に加え、患者の血漿蛋白を疾患バイオマーカーとして利用するための分析を行った。東レ (株) が開発した低分子量分画装置を用いて個々の患者とコントロールの血漿検体について 50 KDa 以下の蛋白を分離し、さらに逆相クロマトグラフィー、イオン交換クロマトグラフィーによって細かく分離され、イオントラップ型質量分析計を用いて蛋白の同定が行われた。その結果、緑内障患者に特有の蛋白が複数同定された。この結果は特許出願された。質量分析計には定量機能が無いために、同定蛋白について抗体が入手可能なものについてはウエスタンブロット法によって比較定量を行っている。感受性遺伝子と血漿成分についても相関があるか検討中である。同定されたタンパク質にはドレブリンなどサル網膜切片で網膜神経線維に高発現するタンパク質も発見されており、緑内障で破壊された細胞から分解産物として血漿中に漏れてきたと考えており、緑内障の進行を血漿タンパク質の量的変化で測定できると期待される。本研究結果は知的財産権の価値があり、特許出願した (特願 2008-091522 神経障害の検定のための組成物、キットおよび方法)。

(3) 開放隅角緑内障マウスの作製:

OPTN と WDR36 の変異体を強制発現したマウスを複数系統作製した。これらのマウスには緑内障の特徴である視神経萎縮、神経節細胞死が観察された。OPTN と WDR36 のトランスジェニックマウスは網膜周辺から神経節細胞やアマクリン細胞の変性が観察され、OPTN では生後 12 ヶ月、WDR36 では生後 6 ヶ月で病態として確認できた。変異体が眼球の全細胞で発現しているにもかかわらず、緑内障に関係する網膜神経節細胞やグリア細胞のみに影響が観察されるのは驚きである。結果的には WDR36 (Del 657-659) が最も重篤なマウスとして生まれ、きわめて再現性が良い。抗 WDR36 抗体を作製し、眼球内での局在を調べた結果、神経節細胞層や内顆粒層、網膜色素上皮細胞に特に多く発現しており、毛様体上皮にも高発現が観察された。2種類の眼圧測定計を使ってマウスの眼圧を測定した結果、全てのマウスでほぼ 14mmHg を維持していた。眼圧の測定は午前 9 - 正午の間で行われた。OPTN マウスについて

は網膜周辺部の神経節細胞と接続するアマクリン及びグリア細胞であるアストロサイトの変性も観察された。ところがWDR36も同様な神経細胞の変性が観察されるが、アストロサイトの変性は観察されなかった。このようにOPTNとWDR36は同様な病態に発展するが、そこに関与する細胞のメカニズムは異なっており、このような差が患者の治療に影響することは予測される。本研究結果は知的財産権の価値があり、特許出願した(特願 2008-241209 トランスジェニック動物)。

(4) 牛眼マウスの作製:

Vav2/3 遺伝子のダブルノックアウトによって牛眼を発症するマウスを作製した。生後3週より隅角が閉塞し、13週まで眼圧が上昇、眼球の大きさが体積で最大10倍まで膨張した。眼球の膨張にしたがい、網膜は伸展し、網膜細胞全体の萎縮が観察された。2つの遺伝子は神経走行性や眼圧調整に関与している可能性があり、また、我々は毛様体での発現も確認し、房水産生にも係っていることを明らかにした。

(5) 緑内障遺伝子の機能解析:

正常眼圧緑内障の原因遺伝子として発見されたオプチニューリン(OPTN)は複数の蛋白質と相互作用することが明らかにされており、重篤なE50K変異がRab8蛋白との結合部位であることから、我々は水晶発振子、免疫沈降法、蛍光タンパク相互作用などをつかってOPTN-Rab8の蛋白相互作用を分析してきた。E50K変体はRab8との相互作用が阻害され、細胞内での小胞輸送が障害されることによってゴルジ体から細胞膜への輸送系が遮断されている可能性がある。全ての分泌タンパク質が阻害されているのか、選択的に阻害されているのか現時点では明らかでないが、分泌されていないものが明らかになれば、それを補うことによって少なくともOPTNによる緑内障を治療することは期待できる。

また、WDR36はリボソームの代謝に関係していることが明らかになってきたが、このリボソームは神経細胞突起で盛んに発現され、アクソンの伸長に関係していることが明らかになってきた。WDR36はリボソーム代謝が阻害される

最初の神経症として報告できる可能性があり、WDR36(De1657-659)マウスの神経突起の様子を解析中である。

4. 評価(研究成果)

1) 達成度について

今回我々は全ゲノム相関解析によって原発性解放隅角緑内障と相関する遺伝子多型を複数発見し、緑内障患者の血漿中により多く含まれるタンパク質の同定にも成功している。また、OPTN、WDR36の遺伝子改変によってヒトの遺伝子変異を反映する世界で初めての緑内障マウスの作製に成功した。またその過程で神経細胞死に補体C1qの関与が観察され、その抑制によって緑内障予防の可能性を見出した。しかし霊長類への応用までは今回発展させることができなかった。本研究計画のほぼ85%が達成できたと考えている。

2) 研究成果の学術的異議について

緑内障のリスク因子には遺伝、習慣、環境があると考えられているが、緑内障と相関する遺伝多型と血漿タンパク質の発見は早期診断だけでなく、発症機序の解明にも重要な情報である。また、今回はOPTN、WDR36、Vav2・3遺伝子改変によって3種類の緑内障マウスモデルが作製されたことは世界でも初めてのことであり、学会で複数発表したところ、国内外からマウスの使用についての依頼が多数寄せられている。これらのマウスは緑内障を根本的に理解するための材料として利用されていくと期待される。

3) 研究成果の行政的意義について

バイオマーカーの発見やマウスモデルの作製について知的財産権の価値が見出され、複数の特許出願が実現した。今後得られた遺伝子、タンパク質の情報と疾患個体を用いて国内外の研究者及び企業と多くの応用研究が展開できると期待される。

4) その他特記すべき事項について

今回の作製された緑内障マウスは国内外の眼科学会で高い評価を受けたが、マウスの神経乳頭や乳頭付近の血管構造はヒトと異なっており、

その病理学的解釈が難しい場合がある。やはりヒトに最も類似する霊長類モデルの作製が望まれ、残念ながら本研究ではそこまで発展させることはできなかったが、OPTNとWDR36の緑内障マウスは変異体遺伝子を非特異的に高発現することによって実現しており、同様な原理に基づいて霊長類の硝子体にウイルスベクターを用いて変異体遺伝子を高発現すれば、マウスと同様な結果が得られると予測される。現在利用されている霊長類モデルはレーザーによる隅角の焼灼によって一過性の高眼圧を誘導して作製されるが、変異体の遺伝子導入によって進行型の緑内障霊長類モデルの可能性が開け、ヒト用眼科診断機器を使ったより精度の高い研究が可能になると思われる。

5. 結論

我々は本研究において緑内障に相関する遺伝子多型、緑内障の患者血漿に存在する血漿タンパク質、さらに3つの緑内障マウスモデルの開発を行った。収集された多くのデータは今後の診断キットや予防・治療薬の開発や次の緑内障霊長類モデルの基礎になると考えている。今回のマウスモデルの研究から明らかにされたことはOPTNとWDR36の変異体が神経節細胞やアマクリン細胞への影響は異なるにも関わらず、最終的な病態にはあまり変化がないことである。緑内障は少なくとも30種類の遺伝子がグループ別に関与していると考えられ、網膜色素変性と同様なことが予測されている。病気の詳細なグループ分けと同時に分子レベルでの共通点の探索が必要と思われる。

6. 研究発表

1) 国内

口頭発表 7
件
原著論文による発表 0件
それ以外（レビュー等）の発表 1件
そのうち主なもの

論文発表

岩田岳 図説 感覚器疾患シリーズ No9 特集；
視覚障害（3） 眼疾患バイオマーカーの探索

国立医療学会誌 医療 Vol.62 No9
SEPTEMBER 2008

学会発表

第112回日本眼科学会総会（横浜、2008、4）木村至、岡本はる、池在龍、皆見政好、岩田岳。毛様体のプロテオーム解析

第112回日本眼科学会総会（横浜、2008、4）関麻子、吉田統彦、梅田慎介、鈴木通弘、吉田康弘、岩田岳。遺伝性黄斑変性症カニクイザルの連鎖解析による原因遺伝子の探索

第112回日本眼科学会総会（横浜、2008、4）池在龍、岡本はる、鈴木通弘、吉川泰弘、岩田岳。黄斑変性カニクイザルの網膜色素上皮細胞の解析

第28回日本眼薬理学会（岡山、2008、9）岩田岳 緑内障遺伝子改変動物の基礎

第45回補体シンポジウム（北海道、2008、7）岩田岳、池在龍、関麻子、吉田統彦、三宅養三、溝田敦、鈴木通弘、寺尾恵治、吉川泰弘。黄斑変性カニクイザルにおける補体関連分子の解析

第1回 Retina Research Meeting（東京順天堂大学医学部、2008、11）岩田岳 眼疾患と感受性遺伝子

第62回国立病院総合医学会（東京、2008、11）岩田岳 眼疾患バイオマーカーの探索とモデル動物を用いた予防・治療薬の開発

（著者・題名・発表誌名・巻・頁・発行年等も記入）

2) 海外

口頭発表 10件
原著論文による発表 2件
それ以外（レビュー等）の発表 0件
そのうち主なもの

論文発表

Masaki. Tanito, Masayoshi. Minami, Masakazu. Akahori, Sachiko. Kaidzu, Yasuyuki. Takai, Akihiro. Ohira, Takeshi. Iwata. LOXL1 variants in elderly Japanese patients with exfoliation syndrome/glaucoma, primary open-angle glaucoma, normal tension glaucoma, and cataract. *Molecular Vision* 2008; 14:1898-1905

Sachiko. Kaidzu, Masaki. Tanito, Akihiro. Ohira, Shinsuke. Umeda, Michihiro. Suzuki, Yasuhiro. Yoshikawa, Takeshi. Iwata. Immunohistochemical analysis of aldehyde-modified proteins in drusen in cynomolgus monkeys (*Macaca fascicularis*) *Experimental Eye Research* 86 (2008) 856-859

学会発表

Association for Research in Vision and Ophthalmology, (USA, FORTLAUDERDALE 2008) H. Okamoto, H. Shimada, K. Matsuno, K. Tanahashi, J. Utsmi, T. Iwata. Enrichment and Isolation of Low Molecular Weight Protein in Vitreous Humor Using a Newly Developed Protein Separator.

Association for Research in Vision and Ophthalmology, (USA, FORTLAUDERDALE 2008) A. Seki, T. Yoshida, S. Umeda, M. T. Suzuki, K. Terao, Y. Yoshikawa, T. Iwata. Genome-Wide Linkage Analysis of Cynomolgus Monkey Pedigree With Early-onset Macular Degeneration.

Association for Research in Vision and Ophthalmology, (USA, FORTLAUDERDALE 2008) M. Akahori, C. Oka, T. Iwata. Characterization of the Retina in Htral Deficient Mouse.

Association for Research in Vision and Ophthalmology, (USA, FORTLAUDERDALE 2008) Z-L. Chi, H. Okamoto, M. Suzuki, K. Terao, Y. Yoshikawa, T. Iwata. Characterization of Retinal

pigment Epithelium Cells Isolated From Cynomolgus Monkey With Early-onset Macular Degeneration.

XV III International Congress for Eye Research (China, Beijing 2008) Takeshi. Iwata, Zai-Long. Chi, Fumie. yasumoto, Masakazu. Akahori, Minoru. Obazawa, Itaru. Kimura, Naoki. Nakaya, Stanislav. Tomarev. THREE POTENTIAL MOUSE MODEL FOR GLAUCOMA

XV III International Congress for Eye Research (China, Beijing 2008) Itaru. Kimura, Haru. Okamoto, Zai-Long. Chi, Masayoshi. Minami, Michihiro. Suzuki, Takeshi. Iwata. PROTEOME ANALYSIS OF OCULAR CILIARY BODY

XV III International Congress for Eye Research (China, Beijing 2008) Zai-Long. Chi, Masakazu. Akahori, Minoru. Obazawa, Itaru. Kimura, Naoki. Nakaya, Atanislav. Tomarev. Masaki. Sasaoka, Atsushi. Shimazaki, Kazuhide. Kawasaki, Tetusya. Yamamoto, Takeshi. Iwata. Expression of Mutated optineurin leads to normal tension glaucoma in mice.

Sensory Organs Society for Neuroscience 2008, (USA, WashingtonDC, 2008) T. Iwata; Z. Chi; F. Yasumoto; M. Minami; M. Obazawa; M. Akahori. Expression of mutated wdr36 leads to normal tension glaucoma in mice.

Sensory Organs Society for Neuroscience 2008, (USA, WashingtonDC, 2008) Z. Chi; M. Akahori; M. Obazawa; I. Kimura; N. Nakaya; S. Tomarev; M. Sasaoka. A. Shimazaki; K. Kawase; T. Iwata. Expression of mutated optineurin leads to normal tension glaucoma in mice.

The American Society for Cell Biology 48th Annual Meeting, (USA, San Francisco, 2008) 2008, 12 Takeshi. Iwata, Zai-Long. Chi, Fumie. yasumoto, Masakazu. Akahori, Minoru. Obazawa, Itaru Kimura, Naoki. Nakaya, and Stanislav. Tomarev.

Overexpression of Mutated Optineurin and WDR36 Leads to Normal Tension Glaucoma in Mice.

7. 知的所有権の出願・取得状況(予定を含む)

岩田岳 特願 2008-091522

神経障害の検定のための組成物、キットおよび方法

岩田岳 特願 2008-092021

代謝障害を伴う疾患の検定のための組成物、キットおよび方法

岩田岳 特願 2008-092245

老化、および血管障害を伴う疾患の検定のための組成物、キットおよび方法

岩田岳 特願 2008-257469

コラーゲン線維の萎縮による組織障害の検査

のための方法、組成物及びキット

岩田岳 特願 2008-257430

糖尿病性末梢血管障害の検査のための方法、組成物およびキット

岩田岳 特願 2008-257691

細胞増殖を伴う糖尿病合併症の検査のための方法、組成物およびキット

岩田岳 特願 2008-241209

トランスジェニック動物

岩田岳 特願 2008-267716

緑内障のリスクの予測方法

岩田岳 特願 2008-272161

滲出型加齢黄斑変性のリスクの予測方法

II. 研究成果の刊行物・別刷

Models of Age-Related Vision Problems

J. Fielding Hejtmancik, Marc Kantorow, and Takeshi Iwata

The visual system provides unique opportunities to study the aging process, as well as challenges in understanding and developing therapies for age-related eye diseases. Exposure of the lens to high levels of photo-oxidative stress and the lack of protein turnover in the lens nucleus make it an optimal system in which to study protein modifications in aging. Similarly, the high level of metabolic activity in the retina and the necessity for turning over large amounts of lipids provide particular research opportunities as well. Finally, visual diseases associated with aging are among the most common threats to the quality of life in the elderly. Of age-related visual diseases, three result in a particularly high burden on the population: age-related cataracts, age-related macular degeneration, and progressive open angle glaucoma. Thus, these are dealt with in some detail in this brief review. Because of space and formatting limitations, much work described in this review could not be cited directly. The citations for most of these can be found in the references and general sources given in the chapter, and we apologize to those authors whose work is not cited directly. In addition, parts of this review draw from previous work by the three authors, reflecting their continuing preferences in style and arrangement.

Overview of the Visual System

BASIC ANATOMY/PHYSIOLOGY/BRIEF BIOCHEMISTRY

Components of the visual system include the optical components of the anterior eye (cornea, aqueous humor, lens, and vitreous body), retina, optic nerves, optic tracts, optic radiations, visual cortex, and a variety of nuclei (see Figure 68.1). The optical components of the eye focus light on the retina, which transduces the light signal into neural signals, and passes these neural signals through the optic nerves and tracts to central structures that perform more elaborate processing, integrating their information with that of the other senses. Any disease that interferes with the function of these components will cause loss of vision and blindness, and each part of the visual system has specific susceptibilities to age-related diseases or damage.

TYPES OF AGE-RELATED VISUAL DISEASES AND THEIR IMPACT ON SOCIETY

The predominant causes of age-related visual impairment and blindness vary between the developed and developing countries, and even within various demographic and ethnic groups within single countries (Thylefors *et al.*, 1995). There are many causes of visual loss in elderly patients, including diabetic retinopathy, stroke, and retinal vascular occlusive disease, along with other age-related visual diseases including pterygia and presbyopia. However, in most populations the greatest causes of blindness and vision loss in the elderly include cataracts, glaucoma, and age-related macular degeneration (Congdon, Friedman, and Lietman, 2003; Buch *et al.*, 2004).

Cataracts are the leading cause of blindness across the world, blinding 17 million persons worldwide. Cataracts are usually correctable by surgery in developed countries, with about 5% of the American population over 40 years old having undergone cataract surgery. However, they remain a significant cause of visual disability even in developed countries, being the leading cause of low vision in the United States (Congdon, Friedman, and Lietman, 2003). Glaucoma is an optic neuropathy, often related to elevated intraocular pressure, which is responsible for blindness in 6.7 million people across the world. Glaucoma is more common in

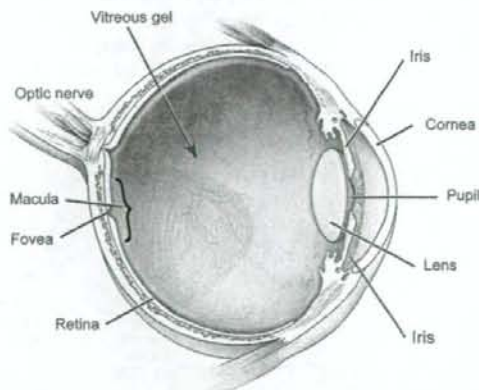


Figure 68.1 Diagram of the eye with principal structures of the anterior segment, retina, and optic nerve indicated. Courtesy of the National Eye Institute, National Institutes of Health.

African-derived populations, and increases with age. Finally, the greatest age-related cause of blindness in European-derived populations of developed countries is age-related macular degeneration (AMD). This degenerative disease progresses from fatty retinal deposits called drusen to neovascularization and retinal hemorrhage, resulting in irreversible loss of central vision.

Lens and Cataracts

The eye lens (see Figure 68.2), which contains perhaps the highest concentration of proteins found in any tissue, transmits and focuses light onto the retina. It is formed of a single cell type that differentiates from an anterior layer of cuboidal epithelia and migrates posteriorly to form elongated lens fiber cells that make up the lens nucleus. In this process, the developing fiber cells synthesize high levels of lens crystallins before losing their nuclei and mitochondria. Thus, the lens fiber cells lack aerobic metabolism and contain high concentrations of α -crystallins, which are members of the small heat shock protein family and have chaperone activity; and $\beta\gamma$ -crystallins, which are related to prokaryotic structural proteins.

BRIEF OVERVIEW

The lens is susceptible to damage with aging since its cells cannot be replaced in this encapsulated tissue and its proteins cannot turn over in the nonnucleated fiber cells. Not only does this result in a decrease in function of the normal aged lens, but it also sets the stage for development of senescent cataract in individuals with additional environmental insult or genetic proclivity. As the lens ages, vacuoles and multilamellar bodies appear between fiber cells, and occasionally the fiber plasma membrane is disrupted. Most of the elaborate cytoskeletal structure of the lens cells disappears with aging, and by the fifth decade the ability to accommodate is essentially lost. There is a decrease in transparency of the normal lens with aging so that the intensity of

light reaching the retina is reduced by about ten-fold by 80 years of age.

Cataracts which can be defined as any opacity of the crystalline lens, result when the refractive index of the lens varies significantly over distances approximating the wavelength of the transmitted light. Variation in the refractive index over these distances can result from changes in lens cell structure, changes in lens protein constituents, or both (Hejtmancik, Kaiser-Kupfer, and Piatigorsky, 2001). Cataracts are generally associated with breakdown of the lens micro-architecture. Vacuole formation can cause large fluctuations in optical density, resulting in light scattering. Light scattering and opacity also can occur if there are significant high molecular weight protein aggregates roughly 1000 Å or more in size. The short-range ordered packing of the crystallins, which make up over 90% of soluble lens proteins, is important in this regard; to achieve and maintain lens transparency crystallins must exist in a homogeneous phase.

A variety of biochemical or physical insults can cause phase separation of crystallins into protein-rich and protein-poor regions within the lens fibers. The proteins either remain in solution or form insoluble aggregates or even crystals, any of which can result in light scattering. When mutations in crystallins are sufficient in and of themselves to cause aggregation, they usually result in congenital cataracts, but if they merely increase susceptibility to environmental insults such as light, hyperglycemic, or oxidative damage, they might contribute to age-related cataracts (Hejtmancik and Smaoui, 2003). Thus, congenital cataracts tend to be inherited in a Mendelian fashion with high penetrance, whereas age-related cataracts tend to be multifactorial, with both multiple genes and environmental factors influencing the phenotype. This makes them significantly less amenable to genetic and biochemical study. Finally, although the young human lens is colorless, a gradual increase in yellow pigmentation occurs with age. As this pigmentation increases, it can result in brunescence or brown cataracts.

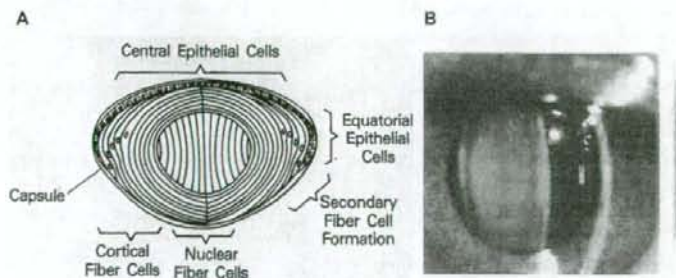


Figure 68.2 A. A diagram showing lens structure including the anterior epithelial cells; the cortical fiber cells, which elongate and loosen their nuclei and mitochondria; and the nuclear cells, in which this process has been completed. The ends of the nuclear fiber cells abut each other in a complex pattern to form the lens sutures. B. Slit lamp photograph of a nuclear cataract, the most common type of age-related cataract in European populations. Courtesy of Dr. Manuel Dattiles, National Eye Institute, National Institutes of Health.

Lens proteins and their age-related modifications

Enzymatic activity in the lens tends to decrease with age and to be lower in the central cells of the lens nucleus than in the cortical and anterior epithelial cells. As the lens ages, the Na^+ and Ca^{2+} concentrations rise, reflecting an increase in lens permeability or a decrease in pumping efficiency. With aging, both the N- and C-terminal arms of half of the intrinsic membrane protein (MP26) molecules undergo proteolysis to form MP22. The lens contains neutral proteinase, also called the *multicatalytic-proteinase complex*, which preferentially degrades oxidized proteins, leucine aminopeptidase, calpains, and the protease cofactor ubiquitin, whose activation increases after oxidative stress. The activity of these proteinases is controlled by inhibitors, which appear to be concentrated at the periphery of the lens.

Aging also leads to an increase in high-molecular-weight aggregates and water-insoluble protein between 10 and 50 years of age, especially in the α -crystallins, but also in the β - and γ -crystallins. There is also partial degradation of crystallins and covalent modifications of crystallins and other lens proteins, including an increase in disulfide bridges, deamidation of asparagine and glutamine residues, and racemization of aspartic acid residues. α A-Crystallin is cleaved nonenzymatically, particularly between Asn 101 and Glu 102. An aspartate residue in α A-crystallin appears especially susceptible because it easily forms a succinimide intermediate. Phosphorylation of lens proteins also occurs. Non-enzymatic glycosylation (glycation) occurs, especially of the ϵ -amino groups of lysine. Through the Maillard reaction, the glycation products can result in increased pigmentation, nontryptophan fluorescence, and non-disulfide covalent crosslinks. Lens proteins can also undergo carbamylation, which can induce cataracts, and may be the mechanism for the association of cataracts with chronic diarrhea and uremia. γ -Crystallins, and especially γ S-crystallin, are particularly susceptible to degradation and modification in age-dependent and other cataracts, largely being degraded to low-molecular-weight peptides by increased proteolysis in the cataractous lens.

In age-related cataracts the lens presumably develops reasonably normally during infancy and remains clear in childhood. Then, by somewhat arbitrary definition, at some time after 40 years of age, progressive opacities begin to form in the lens. As mentioned earlier, these opacities almost certainly result at least in part from the cumulative damage of environmental insults on lens proteins and cells. Many of the age-related changes seen in crystallins are accelerated in the presence of oxidative, photo-oxidative, osmotic, or other stresses, which are known to be associated with cataracts. Susceptibility to these alterations may be exacerbated by barriers to movement of small molecules between the central lens nucleus and the metabolically more active epithelium. Many of these changes can be induced *in vitro* or in model systems

by the same stresses epidemiologically associated with cataracts (Davies and Truscott, 2001; Spector, 1995). In contrast, some changes do not appear to be implicated in cataractogenesis and may even serve to protect crystallins from harmful modifications.

The lens crystallins form one obvious target for this accumulated damage, although they are certainly not the only one. Thus, as the β - and γ -crystallins slowly accumulate damage over the lifetime of an individual, they lose the ability to participate in appropriate intermolecular interactions, and even to remain in solution. As these crystallins begin to denature and precipitate, they are bound by the α -crystallins, which have a chaperone-like activity. Binding by α -crystallins maintains the solubility of $\beta\gamma$ -crystallins and reduces light scattering, but the α -crystallins appear not to renature their target proteins and release them into the cytoplasm, as do true chaperones. Rather, they hold them in complexes that, though soluble, increase in size as additional damaged protein is bound over time until they themselves begin to approach sizes sufficient to scatter light. Eventually, it seems likely that the available α -crystallin is overwhelmed by increasing amounts of modified $\beta\gamma$ -crystallin and the complexes precipitate within the lens cell, forming the insoluble protein fraction that is known to increase with age and in cataractous lenses.

Brief epidemiology of age-related cataracts

Age-related cataracts are associated with a number of environmental risk factors, including cigarette smoking or chronic exposure to wood smoke, obesity or elevated blood glucose levels, poor infantile growth, exposure to ultraviolet light, and alcohol consumption (The Italian-American Cataract Study Group, 1991). Conversely, antioxidant vitamins seem to have a protective effect, although this has not been borne out by all studies.

There is increasing epidemiological evidence that genetic factors are important in the pathogenesis of age-related cataracts (McCarty and Taylor, 2001). In 1991, the Lens Opacity Case Control Study indicated that a positive family history was a risk factor for mixed nuclear and cortical cataracts, and the Italian-American cataract study group supported a similar role for family history as a risk factor in cortical, mixed nuclear and cortical, and posterior subcapsular cataracts. In 1994, the Framingham Offspring Eye Study showed that individuals with an affected sibling had three times the likelihood of also having a cataract. The Beaver Dam Eye Study examined nuclear sclerotic cataracts using sibling correlations and segregation analysis. Although a random environmental major effect was rejected by this study, Mendelian transmission was not rejected, and the results suggested that a single major gene could account for as much as 35% of nuclear and up to 75% of cortical cataract variability. Most recently, the twin eye study demonstrated significant genetic influence of age-related cortical cataracts,

with heritability accounting for 53 to 58% of the liability for age-related cortical cataracts. This hereditary tendency was consistent with a combination of additive and dominant genes, with dominant genes accounting for 38 to 53% of the genetic effect, depending on whether cataracts were scored using the Oxford or Wilmer grading systems. Similarly, genetic factors were found to account for approximately 48% of the risk for nuclear cataracts.

HUMAN STUDIES ON AGE-RELATED CATARACTS

Linkage studies

In addition to epidemiological evidence implicating genetic factors in age-related cataracts, a number of inherited cataracts with post-infantile age of onset or progression of the opacity throughout life have been described. Mutations in beaded filament specific protein 2 (BFSP2) can cause juvenile cataracts, the Marner and Volkmann cataracts can be progressive, mutations in aquaporin 0 (MIP) and γ C-crystallin can cause progressive cataracts, and the CAAR locus is linked to familial adult onset pulverulent cataracts. These all suggest that for at least some genes, a mutation that severely disrupts the protein or inhibits its function might result in congenital cataracts inherited in a highly penetrant Mendelian fashion, whereas a mutation that causes less severe damage to the same protein or impairs its function only mildly might contribute to age-related cataracts in a more complex multifactorial fashion. Similarly, mutations that severely disrupt the lens cell architecture or environment might produce congenital cataracts, whereas others that cause relatively mild disruption of lens cell homeostasis might contribute to age-related cataracts.

Association studies

The hyperferritinemia-cataract syndrome is a recently described disorder in which cataracts are associated with hyperferritinemia without iron overload. Ferritin L levels in the lens can increase dramatically. The molecular pathology lies in the ferritin L iron responsive element, a stem loop structure in the 5' untranslated region of the ferritin mRNA. Normally, this structure binds a cytoplasmic protein, the iron regulatory protein, which then inhibits translation of ferritin mRNA, which may exist in the lens at levels approaching that of a lens crystallin. Mutation of this structure and overexpression of ferritin by loss of translational control in the hyperferritinemia-cataract syndrome results in crystallization of ferritin in the lens, and other tissues as well. Ferritin crystals appear as breadcrumb-like opacities in the cortex and nucleus. Ferritin cataracts serve as an example that the presence of crystallin proteins at such high levels in the protein-rich lens cytoplasm requires that they must be exceptionally soluble. This is emphasized by the occurrence of cataracts

resulting from single base changes decreasing crystallin solubility but not stability.

Lamellar and polymorphic cataracts have been associated with missense mutations in the MIP gene. One mutation, E134G, is associated with a nonprogressive congenital lamellar cataract, and the second T138R is associated with multifocal opacities that increase in severity throughout life. When expressed in *Xenopus laevis* oocytes, both of these mutations appear to act by interfering with normal trafficking of MIP to the plasma membrane and thus with water channel activity. In addition, both mutant proteins appear to interfere with water channel activity by normal MIP, consistent with the autosomal dominant inheritance of the cataracts.

Galactosemic cataracts provide an interesting example of mutations that severely affect a gene causing congenital cataracts, and of milder mutations that contribute to age-related cataracts. Deficiencies of galactokinase, galactose-1-phosphate uridylyl transferase, and severe deficiencies of uridine diphosphate 1-4 epimerase cause cataracts as a result of galactitol accumulation and subsequent osmotic swelling. The latter two are also associated with vomiting, failure to thrive, liver disease, and mental retardation if untreated, whereas the cataracts in galactokinase deficiency are isolated. Interestingly, galactosemic cataracts initially are reversible both in human patients and in animal models. In 2001, a novel variant of galactokinase, the Osaka variant with an A198V substitution, was shown to be associated with a significant increase in bilateral cataracts in adults (Okano *et al.*, 2001). It results in instability of the mutant protein and is responsible for mild galactokinase deficiency, leaving about 20% of normal levels. This variant allele frequency occurs in 4.1% in Japanese overall and 7.1% of Japanese with cataracts. The allele was also present in 2.8% of Koreans but had a lower incidence in Chinese and was not seen in blacks or whites from the United States. This and other GALK1 variants appeared to be absent from Northern Italians with age-related cataracts, suggesting that the genetic contributions cataract might vary in different populations.

The GALK1 results fit in well with the known influence of hyperglycemia on age-related cataracts. That these cataracts result from polyol accumulation is suggested by work in galactosemic dogs and transgenic and knockout mice. Dogs have aldose reductase levels similar to those in humans and when stressed readily develop sugar cataracts that are prevented by aldose reductase inhibitors. Mice, which have very low aldose reductase activity in the lens, are naturally resistant to sugar cataracts, either galactosemic or hyperglycemic. However, upon transgenic expression of aldose reductase, mice readily develop cataracts, especially when the galactokinase or sorbitol dehydrogenase gene is deleted. Consistent with these animal data are the recent findings that susceptibility to cataracts as a diabetic complication in humans is associated with specific allele Z of the

microsatellite polymorphism at 5' of the aldose reductase gene.

BIOCHEMICAL STUDIES OF AGE-RELATED CATARACTS

Crystallin modifications associated with cataracts

The lens crystallins are a major potential target for accumulating damage associated with age-related cataracts, although there are certainly others. Thus, as the crystallins accumulate modifications and damage over the lifetime of an individual, their ability to participate in appropriate intermolecular interactions, and even to remain in solution, decreases. Whether proteins in age-related cataracts become insoluble as a result of complete or partial denaturation, or whether they simply become less soluble due to modifications that leave their protein folds largely intact or both, is not currently known. However, it seems clear that modifications to crystallin proteins accumulate with aging and accelerate during cataractogenesis, and the combination of crystallin modification, disulfide-crosslinking, denaturation, and aggregation results in loss of lens transparency and cataract formation (Hanson *et al.*, 2000). The protein modifications involved in this process include, but are not limited to, proteolysis, racemization, oxidative changes, and glycation. The many factors believed to induce these modifications include free radicals and superoxides, along with a loss of the lens' reducing state causing oxidation and disulfide-crosslinking, sugar accumulation causing glycation, and cyanate causing carbamylation.

Protein modifications in age-related cataracts are believed to arise from a combination of environmental and endogenous factors. For instance, considerable evidence suggests that oxidative modifications are a hallmark of age-related cataracts and oxidation of crystallins and other lens proteins likely results from reactive oxygen species that are produced by both UV-light exposure and are also a byproduct of mitochondrial respiration during which as much as 2% of respiratory oxygen is converted to reactive oxygen species. A major result of oxidation is conversion of methionine to methionine sulfoxide, which increases with age in the human lens and reaches levels as high as 60% in age-related cataracts relative to clear lenses.

Multiple identified and yet unidentified proteases are present in the lens and proteolyzed crystallins are a predominate feature of age-related cataracts. Among multiple lens proteases that have been identified to act on crystallin proteins, calcium-activated proteases are believed to play major roles. Proteolysis of specific crystallins is believed to result in protein aggregation and cataracts.

Proteins in age-related cataracts become insoluble as a result of complete or partial denaturation or by becoming less soluble due to modifications that leave their protein folds largely intact, or perhaps by a combination

of these processes. Many highly studied Mendelian congenital cataract models support both denaturation, as is seen in the association of some severe crystallin mutations with cataracts, and simple insolubility with maintained protein folds as is seen in other cataracts. Many classical studies have demonstrated that lens proteins become insoluble because they are denatured as the lens ages. Insoluble protein in the aged cataractous lens not only is denatured and crosslinked, but a fraction exists as relatively short peptides cleaved from larger proteins. It seems likely that the presence of large amounts of unstable or precipitated crystallin, or other protein, does damage to the lens cell and its proteins and eventually contributes to cataracts not only directly through light scattering by protein aggregates but eventually also through disruption of cellular metabolism and damage to the cellular architecture. This is clear from numerous mouse models of cataracts resulting from crystallin mutations (Graw and Loster, 2003).

Gene expression changes in cataract

In addition to crystallin modifications, age-related cataracts are also associated with changes in gene expression detected at the level of increased or decreased mRNA in the lens epithelium (Hejtmancik and Kantorow, 2004). Since the lens epithelial cells cover the anterior surface of the lens, whereas in age-related cataracts the opacities tend to occur in the nuclear or cortical fiber cells, these gene expression changes likely reflect responses of lens epithelial cells to the presence of underlying cataracts and/or altered epithelial function in the presence of cataracts. These gene expression changes nevertheless point to altered lens pathways associated with this disease. For instance, the mRNAs encoding metallothionein and osteonectin (also known as SPARC, secreted acidic protein rich in cysteines) are increased in cataracts, whereas those for protein phosphatase 2A regulatory subunit and some ribosomal proteins including L21, L15, L13a, and L7a are decreased. These alterations suggest that increased binding of toxic metals and Ca⁺⁺ with a concomitant decrease in growth pathways and protein synthesis are features of cataract.

In addition to the identification of individual alterations in gene expression, more recent studies have sought to identify the full range of gene expression changes that occur in the lens epithelium upon cataract formation using DNA microarrays. Although literally thousands of genes whose expression is altered in cataract have been identified in these studies, some specific examples of genes increased in cataract include SP1 required cofactor for transcriptional regulation, osteomodulin, chloride channel 3, Na⁺K⁺ transporting polypeptide beta 1, and Ca⁺⁺ transporting ATPase, whereas genes decreased include α A-crystallin, multiple glutathione peroxidases, multiple ribosomal subunits, HSP 27, Na⁺/K⁺ ATPase and transketolase. The majority of the identified genes are decreased in cataract, suggesting loss of gene expression

as a consequence of lens damage. Functional clustering of the identified genes suggests that the genes increased in cataract tend to be associated with transcriptional control, ionic and cytoplasmic transport, protein salvaging pathways, and extracellular matrix components; transcripts decreased in cataract tend to be associated with protein synthesis, defense against oxidative stress, heat shock/chaperone activity, structural components of the lens, and cell cycle control (Hejtmancik and Kantorow, 2004).

Enzyme changes associated with cataracts

In addition to the protein modification and gene expression changes noted earlier, numerous metabolic and enzyme activity changes are also associated with age-related cataracts. These changes include decreased reduced glutathione content, decreased NADPH levels, increased free Ca^{++} levels, increased activity of specific proteases, and decreased ionic balance, among others. Considerable evidence suggests that many of these changes, other metabolic changes, and loss of lens protein function results from loss of the activities of specific lens protective and repair enzymes and other homeostatic systems. Although the evidence for these changes has been almost exclusively derived from animal, cell, and organ culture experimental systems, loss of the activities of multiple protective systems including α -crystallins, MnSOD, catalase, glutathione peroxidase, and γ -glutamylcysteine synthetase among many others are believed to contribute to loss of lens function and ultimately cataract formation. In addition to the loss of lens protective and homeostatic systems, the loss of key repair systems including thioltransferase and methionine sulfoxide reductases are also believed to be key events in cataract formation.

ANIMAL MODELS OF AGE-RELATED CATARACTS

Overview

Since cataractogenesis is a complex process accompanied by numerous secondary changes, animal models may provide useful information for delineating the causes of senescent and other cataracts. Hereditary cataracts in rodents have been especially useful in this regard (Graw and Loster, 2003). One example is the Philly mouse, which displays an autosomal dominant cataract in which there is a deficiency of β B2-crystallin polypeptide. The β B2-crystallin mRNA has a deletion of 12 nucleotides, resulting in a four-amino-acid deletion in the encoded protein. It has been hypothesized that this causes aberrant folding of the protein and that cataract formation occurs as a result of the molecular instability of this crystallin and is therefore a good model to examine the roles of crystallin proteolysis and aggregation in age-related cataract formation. Other models suggest that some metabolic lesions can also cause cataracts. The Nakano mouse, which has autosomal recessive cataracts

mapping to chromosome 16, shows reduced synthesis of α - and β -crystallins. This is probably due to an increase in the Na⁺/K⁺ ratio occurring because of inhibition of the sodium-potassium pump. The Fraser mouse, which displays an autosomal dominant cataract, shows preferential loss of γ -crystallins and their mRNAs. However, the gene causing this cataract segregates independently of the γ -crystallin gene cluster, suggesting that changes in crystallin expression must be secondary in this cataract. It resides on chromosome 10 and has been suggested to be allelic with the mouse lens opacity gene (LOP).

Emory mouse

Unlike the animal cataract models earlier, the Emory mouse is an interesting model for age-related cataracts that has been phenotypically but not molecularly or genetically well-characterized (Kuck, 1990). Two substrains of Emory mice in which cataracts develop at five to six months (early cataract strain) and six to eight months (late-ataract strain) are known. Emory mouse cataracts increase in severity with age and are initiated in the lens superficial cortex. They eventually progress into the deep anterior cortex and ultimately result in complete opacification. Emory mouse cataracts exhibit multiple changes that appear to mimic accelerated aging including abnormal lens growth, decreased protein accumulation, conversion of soluble to insoluble protein, decreased reduced glutathione, decreased protein sulfhydryl levels, decreased superoxide dismutase activities, decreased catalase activity, decreased glutathione peroxidase activity, decreased γ -glutamylcysteine synthetase activity, and accelerated conversion of MP26 to MP24. The Emory mouse is also associated with changes in gene expression including decreased synthesis of crystallins and increased expression of ARK tyrosine kinase, which is believed to be a major upstream activator of the stress response in many cell types.

In vivo hyperbaric oxygen treatment

Many of the modifications undergone by lens proteins in aging and cataractous lenses are consistent with those seen in photo-oxidative stress, and oxidative stress is known to be a risk factor in age-related cataracts (Giblin *et al.*, 1995). Thus, exposing animals to increased oxygen tension to simulate the more prolonged oxidative stress associated with aging is an attractive and logical model system for understanding human cataract. In these studies, animals are exposed to 100% oxygen at increased pressure several times weekly for two to three months, and lens opacities are monitored by imaging with a slit lamp. Molecular and biochemical changes in the treated animals subsequently are correlated with lens opacity and oxygen treatment. Hyperbaric oxygen treatment *in vivo* accelerates lens opacity in the nuclear region of the guinea pig lens including loss of water soluble and cytoskeletal proteins, formation of protein disulfides, and

degradation of MIP26. Such modifications are similar to modifications reported to occur in the nuclei of aging and cataractous human lenses, confirming that hyperbaric oxygen treatment is an excellent model to study those processes occurring in human cataracts.

Other

In addition to the preceding models, cell culture, organ culture, and transgenic mice provide powerful tools for the study of lens transparency. Multiple lens epithelial cell lines have been used to identify and functionally analyze those enzymes and other proteins important for resistance to oxidative stress, chaperone function, and other processes associated with cataractogenesis. For instance, the importance of specific enzymes such as methionine sulfoxide reductase and MnSOD for maintaining lens cell viability and resistance to oxidative stress have been identified through the over-expression or silencing of these enzymes in lens cells, which are subsequently treated with H₂O₂ and/or other oxidants associated with cataracts. Other approaches include similar experiments using lens cells cultured from animal knockouts deleted for specific lens proteins such as α -crystallin. In addition to cultured lens cells, cultured whole lenses also have been employed to monitor multiple biological events associated with cataracts.

In practice, creation of cataractous transgenic mouse lines is facilitated by the lens being readily examined for transparency, providing a rapid and efficient means to screen for phenotypic effects of transgenic insertions. Most cataracts in transgenic mice are associated with abnormalities of lens development, especially uncontrolled growth, toxic ablation of specific lens cells, or immune destruction of the lens. Lens abnormalities have been caused in transgenic mice using a variety of strategies. Expression of diphtheria toxin or ricin under the control of a lens-specific α -crystallin or γ -crystallin promoter, respectively, has caused ablations within the lens.

In addition to transgenic expression of normal or modified proteins, disrupted expression of a protein normally found in the lens has been shown to cause cataracts. Lack of α A-crystallin expression causes cataracts with inclusion bodies in central lens fiber cells (Brady *et al.*, 1997). Other knockouts associated with cataracts include osteonectin, connexins, and glutathione peroxidase. Collectively, these engineered cataract models emphasize the importance of the crystallins, cytoskeleton, and intercellular matrix for lens transparency.

Macular Degeneration

BRIEF OVERVIEW

Macular degenerations are a phenotypically and genotypically heterogeneous group of blinding disorders characterized by central vision loss associated with RPE

atrophy with or without choroidal neovascularization. Of these, age-related macular degeneration (AMD) is a degenerative disorder of the cone-rich macular and perimacular regions of the retina with resulting loss of central visual acuity. Although AMD principally affects the supporting and metabolic structures of the retina including the retinal pigment epithelial (RPE) cells, the choriocapillaris, and Bruch's membrane, vision loss comes from the resulting retinal atrophy and its associated photoreceptor dysfunction (see Figure 68.3). Visual dysfunction is made worse by neovascularization, the ingrowth of choroidal vessels through defects in Bruch's membrane, with secondary hemorrhage, and retinal detachment that characterize the "wet" form of AMD. This is contrasted to the "dry" or nonneovascular form, which comprises 80% of the disease but results in only roughly 20% of its associated blindness. Drusen, small yellow-white deposits below the retina, are increased in individuals with AMD. Although they do not cause visual loss by themselves, drusen represent a risk factor for development of both the geographical atrophy (dry) and neovascularization (wet) types of AMD, especially when they are soft or indistinct. Recent results from the Age-Related Eye Disease Study suggest that the incidence of AMD could be lowered significantly by diet supplementation with high-dose antioxidant vitamins and zinc.

The clinical terms *dry* and *wet* typically are used to refer to different forms of AMD, with the dry form sometimes progressing to the wet form. Early stages of the dry form are characterized by focal pigmentation and accumulation of drusen between the RPE and Bruch's membrane. In later stages, the wet form is characterized by choroidal neovascularization, detachment of the RPE, and geographic atrophy of the RPE in the macular region. Drusen are classified as hard and soft, based on their shape, diameter, and color. Hard drusen are yellowish,

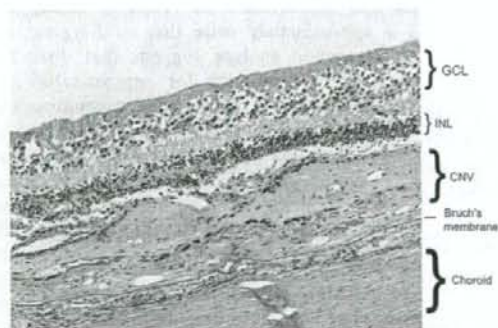


Figure 68.3 Histological section of the retina showing macular degeneration. Although the ganglion cell layer (GCL), inner nuclear layer (INL) and choroid are well preserved, the outer nuclear layer, which should appear similar to the INL, has been in large part replaced by fibrovascular choroidal neovascularization (CNV). Courtesy of Dr. Chi Chao Chan, National Eye Institute, National Institutes of Health.

smaller (with diameters of less than 50 μm), and less likely to progress to later stages of the disease. Soft drusen are larger, dark yellowish in color, and more likely to be associated with more advanced stages of the disease. In later stages of AMD, choroidal neovascularization and leakage of serous fluid into the subretinal (occult CNV) or intraretinal (classical CNV) regions leads to cell death and detachment of the RPE. Visual acuity is significantly affected when geographic atrophy of the RPE takes place in the fovea.

Epidemiology of macular degeneration

AMD has a multifactorial (or complex) etiology with contributions from a combination of environmental and genetic factors and a strong age effect. The prevalence of AMD increases dramatically with age, although the prevalence cited in various reports is highly dependent on the definition used for AMD. Overall, AMD increases from less than 1 to 2% at 50 years of age to as high as 15% at 90 years old. It has been suggested that increased skin pigmentation tends to protect from AMD, and this correlates to lower prevalence of AMD in African derived populations than Caucasians in some, but not all, studies. Various other risk factors may predispose to AMD including systemic hypertension and atherosclerosis, as well as cigarette smoking. Both photo-oxidation and inflammation have been suggested as possible pathogenic mechanisms for AMD, although the precise mechanism through which these result in disease has not been delineated.

Genetic factors have been implicated in AMD by epidemiological studies including twin studies and formal segregation analyses (Heiba *et al.*, 1994; Hammond *et al.*, 2002; Seddon, Ajani, and Mitchell, 1997). First degree relatives of individuals with AMD appear to have a two- to four-fold increased incidence of AMD over control individuals without a family history of AMD. Twin studies suggest that concordance for AMD in monozygotic twins is approximately twice that in dizygotic twins. Formal segregation analysis suggests that there is a major gene effect accounting for approximately 60% of AMD with a single major gene accounting for about 55% of AMD risk. Overall, these data suggest that the etiology of AMD has a significant genetic component.

HUMAN STUDIES OF MACULAR DEGENERATION

Mendelian linkage and association studies

In addition to ARMD, several Mendelian forms of macular degenerations have been described. The age of onset, pattern of inheritance, and clinical characteristics of these diseases vary widely. To date, about 17 human Mendelian macular degeneration genes have been mapped (Tuo, Bojanowski, and Chan, 2004). So far genes for nine different forms of human Mendelian macular degenerations have been identified using a positional

cloning approach. These genes can be broadly classified into two groups: genes that are expressed in photoreceptors (ELOVL4, RDS/peripherin, RPGR, and ABCA4) and genes expressed in RPE (Bestrophin, EFEMP1, TIMP3, Hemicentin-1, and CTRP5). The genes ELOVL4, RDS, RPGR, and ABCA4 are expressed in both rod and cone photoreceptors. Except for the ELOVL4 gene, mutations in the remaining three genes were shown to be associated with retinitis pigmentosa (RP) in addition to macular degeneration. Mutations in TIMP3, EFEMP1, Hemicentin-1, CTRP5, and Bestrophin have not been implicated in RP. Of the genes involved in causing macular degeneration, all four photoreceptor-expressed genes are associated with an atrophic phenotype, whereas the RPE-expressed genes are associated with subretinal deposits and drusen in the early stages of the disease, which then progresses to neovascularization at later stages. The genes EFEMP1, TIMP3, Hemicentin-1, and CTRP5 share structural homology and are components of the extracellular matrix, and Bestrophin was reported to be a membrane channel. Recently, Fibulin-5, which also belongs to the fibulin family of extracellular proteins and shares homology with the EFEMP1 and CTRP5 proteins, was shown to be associated with AMD.

Linkage and association studies of AMD

Although some families show Mendelian inheritance of AMD, the disease in the general population is inherited in a complex or multifactorial fashion. In attempts to identify the genes that contribute to AMD risk in the population at large, investigators have looked at inheritance of AMD in small families or even pairs of affected siblings. A number of studies have examined families in which more than one member is affected with AMD, to determine whether polymorphic genetic markers at known positions in the human genome are co-inherited with the disease. These genome-wide scans have identified at least 21 linked regions on multiple chromosomes, including most consistently regions on chromosomes 1q, 9q, 10q, 12q, and 16q. However, AMD has not been associated with mutations in genes in any of these regions except complement factor H.

Three genes, ATP binding cassette subfamily A member 4 (ABCA4), apolipoprotein E (APOE), and complement factor H (HF1), have been reported to be associated with susceptibility to AMD in the general population (Tuo, Bojanowski, and Chan, 2004). However, the role of ABCA4 is somewhat controversial, and it probably is responsible for a few percent of AMD cases at most. Involvement of APOE in AMD seems to be more solid, with most studies showing a risk ratio of individuals carrying at least one APOE- ϵ 4 allele reduced to about 40 to 50% of control values, although some studies could not replicate this finding. Recently, a Y402H polymorphism in the complement factor H protein has been shown to be associated with a two- to seven-fold increase in risk for AMD in two studies of unrelated individuals.

The gene encoding complement factor H lies in the chromosome 1q25-31 region implicated in linkage studies of both a large single family and of multiple small families and sibling pairs. One study suggested that this gene might account for as much as 50% of the hereditary tendency of AMD in the general population (Edwards *et al.*, 2005). In addition, the biochemical activities of both APOE and HF1 are consistent with the proposed atherosclerotic and inflammatory associations of AMD and the histological and biochemical analysis of the subretinal deposits. Thus, significant progress is being made in understanding the biological nature of the genes associated with macular degenerations and their roles in the disease. However, despite these advances little is understood about the overall mechanism underlying the disease process.

BIOCHEMISTRY AND PATHOLOGY OF MACULAR DEGENERATION

Histological changes

Among the early hallmarks of AMD are drusen, which are complex deposits of lipids, proteins, glycoproteins, and glycosaminoglycans that accumulate in the extracellular and inner aspects of Bruch's membrane (Anderson *et al.*, 2002). These subretinal deposits, accompanied by a diffuse thickening of Bruch's membrane, have been speculated to form a physical barrier between the RPE and choroid, obstructing the flow of nutrients from choroid to RPE, or possibly resulting in loss of cell-cell contact between RPE and Bruch's membrane and causing degeneration of retinal tissue. The RPE cells are responsible for phagocytosis and degradation of outer segment disks shed by photoreceptors. As they age and undergo oxidative stress, lipofuscin accumulates in the lysosomal compartment and leads to cellular damage and further impaired function. Though the origin of drusen remains controversial, current opinions are beginning to favor the vasculature of the choriocapillaris as a primary source rather than an intracellular source from the RPE. It is possible that the presence of lipofuscin and cellular debris excites an immune reaction and leads to the formation of drusen. This is reflected by the presence of immune components in drusen (Anderson *et al.*, 2002; see later).

Chorioretinal neovascularization (CNV) is the most common cause of vision loss in AMD. New vessels from the choriocapillaris grow through Bruch's membrane and branch horizontally through the RPE cell layer (termed classic CNV) or between the inner Bruch's membrane and RPE (termed occult CNV because it doesn't show up on angiography). Although the impetus for CNV has not been definitively determined, there are suggestions that imbalances in growth factors include pigment epithelial derived factor (PEDF, which inhibits vascular outgrowth) and vascular endothelial growth factor (VEGF, which stimulates vascular growth), possibly as

a result of hypoxia and inflammation of the RPE. Even in the absence of CNV, the changes to the RPE Bruch's membrane and the outer plexiform layer of the retina result in scar formation at that level with concomitant damage to the neurosensory outer retina, termed geographic atrophy, which can also result in loss of central vision.

Composition of drusen and its implications

Understanding the composition of drusen provides important clues to the molecular pathology of the disease. In addition to classical immunohistochemical techniques, several advanced proteome analysis tools have begun to provide detailed information about the nature and composition of drusen. Perhaps the most significant of the new findings is that drusen contain protein molecules that mediate inflammatory and immune processes. These include immunoglobulins, components of complement pathway, and modulators for complement activation (e.g., vitronectin, clusterin, membrane cofactor protein, and complement receptor-1), molecules involved in the acute-phase response to inflammation (e.g., amyloid P component, α_1 -antitrypsin, and apolipoprotein E), major histocompatibility complex class II antigens, and HLA-DR antigens (Crabb *et al.*, 2002). Cellular components also have been identified in drusen, including RPE debris, lipofuscin, and melanin, as well as processes of choroidal dendritic cells, which are felt to contribute to the inflammatory response (Mullins *et al.*, 2000).

In addition to immune components, a number of other proteins occur in drusen, some of them also found in atherosclerotic plaques and other age-related diseases in which protein deposits occur. The most common of these appear to be TIMP-3, clusterin, vitronectin, and serum albumin. Other proteins found in drusen include serum amyloid P component, apolipoprotein E, IgG, Factor X, and some complement proteins (Mullins *et al.*, 2000). A number of proteins are found exclusively or in increased amounts in drusen associated with AMD than in drusen from individuals unaffected by AMD. These include some crystallins, EEFMP1, and amyloid-beta. In addition, the presence of immunoreactive proteins and oxidative modifications of many proteins found in drusen implicate both oxidation and immune functions in the pathogenesis of AMD.

Immune aspects

These findings have led to the suggestion that immune complex-mediated inflammation damages RPE cells, and choroidal dendritic cells are activated and recruited by injured RPE, whereas RPE cells respond to control dendritic cell activation by secreting proteins that modulate the immune response. Shed or phagocytosed cell membranes of injured RPE or dendritic cells are postulated to function as cores for these secreted components to accumulate and form extracellular deposits.

Furthermore, the codistribution of IgG and terminal complement complexes in drusen implicates an immune response directed against retinal antigens, and the immune complex formation might be taking place at the site of drusen formation. This hypothesis is supported by the presence of putative anti-retinal autoantibodies in the sera of patients with ARMD. Anti-retinal autoantibodies previously have been reported in a number of ocular disorders, including retinitis pigmentosa, paraneoplastic retinopathies, and retinal vasculitis (Anderson *et al.*, 2002). In addition, patients with membranoproliferative glomerulonephritis, in which complement activation and immune complex deposition cause glomerular injury, develop drusen deposits resembling those in ARMD in ultrastructure and composition including C5 and IgG. However, the role of antiretinal autoantibodies in the pathogenesis of ARMD has not been examined in detail. It remains unknown whether the initiation of chronic inflammation and subsequent drusen formation requires autoimmune-mediated events as a primary factor. To clarify the role of autoimmunity, immunogenic molecules for circulating antiretinal autoantibodies in patients need to be identified.

Oxidative aspects

Oxidative damage is implicated in the pathogenesis of AMD by both theoretical considerations and experimental data (Roth, Bindewald, and Holz, 2004). The retina has a highly active metabolism with a resultant high oxygen demand, and is exposed to light and polyunsaturated fatty acids, all of which tend to increase its susceptibility to photo-oxidative damage. In a fashion somewhat analogous to that seen in the lens, as the retina ages its antioxidant defenses begin to decline, here including both antioxidant enzymes and antioxidants such as lutein, and macular pigment density. As the RPE age oxidation of lipids and other cellular components result in accumulation of nonmetabolizable material as lipofuscin in the lysosomes, leading to their enlargement and formation of lipofuscin granules. These closely parallel drusen formation in time and distribution in the retina. In addition, epidemiological correlation of AMD with light exposure, age, and light pigmentation as well as the prevention or delay of AMD by antioxidant vitamins in the AREDS trial also support an oxidative role in AMD.

ANIMAL MODELS OF MACULAR DEGENERATION

Overview

Limited access to appropriate biological materials, especially eye samples from affected donors at different stages of the disease, are an absolute necessity to study mechanisms underlying the macular degenerations. Because it is nearly impossible to obtain these human retinal tissues from patients or from normal controls, animal models play a crucial role for investigating the

biological pathway of disease development and for testing therapeutic strategies. Because age-related macular degeneration shares phenotypic similarities with monogenic macular degenerations, manipulation of these genes associated with monogenic macular degenerations to develop transgenic mouse models has been popular. Over the past few years, genetic engineering technologies has allowed the generation of a rapidly growing number of animal models for retinal diseases (Chader, 2002). Animal models have been used to investigate potentially protective therapeutic agents to treat photoreceptor degeneration, stem cell technology, or to test somatic gene therapy strategies (Ali *et al.*, 2000). They are also valuable for studying environmental effects like diet or light on the degeneration process. The animals that have been used to evaluate therapeutic strategies involve rodents, rabbits, pigs, and dogs. However, macula is found only in primates and birds; a monkey model with macular degeneration would be extremely valuable as they not only have a defined macula, but they are also evolutionarily close to humans.

Macular degeneration in monkeys was first described by Stafford in 1974 (Stafford, Anness, and Fine, 1984). He reported that 6.6% of elderly monkeys showed pigmentary disorders and/or drusen-like spots. El-Mofty and colleagues reported 50% incidence of maculopathy in a rhesus monkey colony at the Caribbean Primate Research Center of the University of Puerto Rico in 1978. The following report from the center indicated that specific maternal lineages had a statistically significant higher prevalence of drusen. Researchers have described a cynomolgus monkey (*Macaca fascicularis*) colony at the Tsukuba Primate Research Center (Tsukuba city, Japan) with a high incidence of macular degeneration and its pattern of inheritance (Umeda *et al.*, 2005).

Several other naturally occurring animal models have been described for retinal diseases. Rodents, mainly mice, are the most popular animal models as maintenance is less expensive compared to larger animals. However, a low cone:rod ratio and lack of a macula make mice less suitable for studying cone diseases and macular degenerations. Although the pathology in human ARMD is pronounced in the macula area, it is not confined to this central region alone. Abnormal accumulation of drusen and progressive degeneration of the retina, RPE, and underlying choroid characteristics were observed in mouse models generated by candidate gene manipulation or senescence acceleration (Ambati *et al.*, 2003). Choroidal neovascularization also has been described in naturally occurring mouse models. These observations suggest that the lack of a macula in mice may not be a disadvantage when considering the advantages of using the mouse as a model for studying macular degenerations with drusen.

Although monkey models are extremely important for macular degeneration study, there are limitations

using nonhuman primates as animal models, such as longer gestation and life span, slow rate of expanding the pedigree, and cost of maintenance. These limitations can be overcome only by utilizing the mouse model parallel to the monkey model. One such model is a mouse line expressing an inactive form of cathepsin D. The impaired enzymatic activity affects phagocytosis of photoreceptor outer segments in the RPE cells, and the mice demonstrate basal laminar and linear deposits.

Animal model of early and late onset macular degeneration monkey

In 1986, a single cynomolgus monkey (*Macaca fascicularis*) with heavy drusen was found in the Tsukuba Primate Research Center. After 19 years of mating experiments, that single pedigree has grown to having 57 affected and 182 unaffected monkeys. Macular changes are observed as early as two years after birth, with basal laminar deposits first appearing in the macular region and progressing toward the peripheral retina throughout the lifetime (see Figure 68.4). In all the cases examined no abnormalities were found in the optic disc, retinal blood vessels, or choroidal vasculatures. The affected monkeys share phenotypic similarities with the early stages of ARMD, such as drusen and accumulation of lipofuscin. The immunohistochemical and proteome analysis of drusen in these monkeys share significant similarity with composition of age-related macular degeneration monkeys and also with previously reported human drusen composition. The meaning of this observation is that early onset monkeys produce the same drusen as ARMD patients at an accelerated rate of 25 times. Thirteen human candidate gene loci have been excluded by linkage and haplotype analysis. Therefore, the gene associated with macular degeneration in these monkeys is likely to be novel and the genes involved in causing drusen phenotype in humans and monkeys could be either the same or belong to the same biological pathway.

Studies involving early-onset and late-onset macular degeneration monkeys present a unique opportunity to study two independent target points in the biological pathway of retinal tissue that lead to degeneration of the macula at different stages of life. The gene associated with monkey macular degeneration is likely to be a novel

gene as we have excluded most of the known macular degeneration loci. Cloning of the monkey macular degeneration gene will allow us to study the biological processes causing degeneration of retina. Due to high conservation between human and macaque genomes, genes associated with macular degeneration in monkeys should possibly play a key role in maintaining the normal function of retina in humans and is likely to be associated with macular degeneration in humans. Although some of the monogenic macular degeneration genes are not associated with ARMD, the phenotype observed in monkeys strongly suggests that this gene may play a role in human ARMD, and this cannot be established until validated by screening patients with ARMD. Understanding the mechanism underlying macular degeneration in these monkeys will enhance our understanding of the disease, identify clinical or molecular markers for early detection, and provide critical information needed to develop therapies for these diseases.

Progressive Open Angle Glaucoma (POAG)

BRIEF OVERVIEW

Epidemiology of POAG

Primary open angle glaucoma is a major cause of blindness throughout the world, affecting between 1 and 2% of individuals over 40 years of age (Klein *et al.*, 1992). The greatest risk factor for the development of POAG is ocular hypertension, to the extent that an elevated intraocular pressure (IOP) is often incorporated into the definition of glaucoma. In addition, the evidence implicating a genetic influence in glaucoma is very strong, and has been borne out in both model-based and model-free linkage studies. Finally, diabetes and myopia have been suggested to be related to development of POAG, but the evidence for this is inconsistent, although it seems likely that high myopia might contribute to development of POAG.

Pathology and physiology of POAG

Although the etiology and even the pathophysiology of glaucoma are still poorly understood, risk factors for glaucoma can be thought of as including both those in the anterior chamber, which tend to increase intraocular

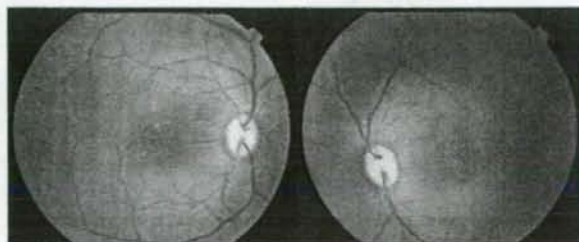


Figure 68.4 Fundoscopic view of the retina in Tsukuba primate model of macular degeneration showing drusen and macular changes.

pressure, and those in the retina and optic nerve, which tend to increase susceptibility to damage from elevated or even normal intraocular pressure. Clinically, glaucoma generally is characterized by excavation of the optic disc as seen on funduscopic examination and visual field defects with elevated intraocular pressure included either as a part of the disease or a risk factor. In a simplified schema, one might think of increased resistance of the trabecular meshwork or Schlemm's canal to outflow of the aqueous humor causing an increase in intraocular pressure, which then acts upon sensitive retinal ganglion cells. These cells then degenerate, resulting in both the increased depth and width of the optic cup and the visual field defects. If the increased pressure is acute as it usually is in juvenile onset glaucoma, this process can be painful, but generally POAG is an insidious disease in which the first recognized symptom may be irreversible visual field changes.

Although primary open angle glaucoma (POAG) is characterized by visual field loss corresponding to the excavation of the optic disc (see Figure 68.5), it is usually associated with an elevation of the intraocular pressure (IOP) over 21 mmHg. Although the pathogenesis of glaucomatous optic neuropathy is poorly understood, it is generally accepted that the IOP is a major risk factor. By definition, there is no increase in IOP over 21 mmHg at any time in eyes with normal-tension glaucoma (NTG), although it is difficult to rule out fleeting or previous elevations of IOP. IOP is heavily influenced by the inflow and outflow of aqueous humor, a plasma filtrate actively generated at stroma of ciliary body and filtered across the blood-aqueous barrier. The aqueous flows from the posterior chamber to the anterior chamber via the pupil and is released through two routes, the trabecular route and uveoscleral route. Any disturbance in the flow can cause abnormal IOP leading to a death of retinal ganglion cells (RGC), and damage to the surrounding structure of the optic nerve head where optic nerve fibers leave the eye for visual cortex.

HUMAN STUDIES OF POAG

Linkage studies

At least six loci for autosomal dominant POAG have been mapped through linkage studies, termed GLC1A-F, on chromosomes 1q23, 2cen-q13, 3q21-q24, 8q23, 10p15-p14, and 7q35-q36. A genome-wide scan in multiple small families from an Afro-Caribbean population provided significant evidence for linkage to regions on chromosomes 2q (but separate from the Mendelian POAG locus GLC2B and the infantile glaucoma locus GLC3A on chromosome 2) and 10p. Presumably, these represent loci for glaucoma risk factors common in the general population, as do the loci on chromosomes 2, 14, 17, and 19, identified by examining siblings in an American population of European descent. It is particularly important to note that few of these studies have been confirmed; especially the technically more difficult and laborious studies of POAG in the general population.

Association studies

In addition to the identification of myocilin as a causative gene in glaucoma described earlier, which was carried out by linkage studies primarily in families with juvenile glaucoma and very elevated intraocular pressure, association studies have identified sequence changes in myocilin as a risk factor in a small percentage of POAG cases. Two additional genes have been shown to be involved in glaucoma by demonstrating an association between sequence changes in those genes and glaucoma in population studies. One of these genes is optineurin, for which the strongest associations have been obtained with normal tension glaucoma, but which also might be associated with POAG in some populations. A second is the OPA1 gene, which is known primarily as a cause of optic atrophy, but is also associated with normal tension glaucoma, though not with high tension primary open angle glaucoma in most studies. Association of both these genes with normal tension glaucoma suggests that

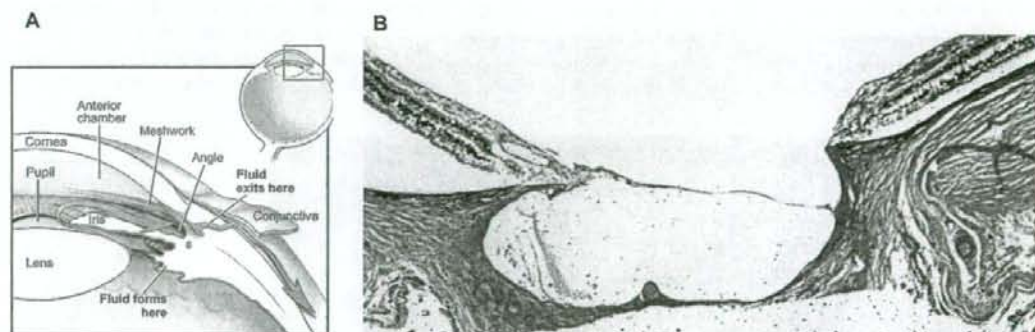


Figure 68.5 A. Diagram depicting the flow of aqueous humor from synthesis in the ciliary body to exit from the anterior chamber through the trabecular meshwork and Schlemm's canal. B. Histological section showing an excavated optic cup in an individual with glaucoma. Courtesy of Dr. Chi Chao Chan, National Eye Institute, National Institutes of Health, from the collection of Dr. W. R. Green.

there may be some relationship between normal tension glaucoma and optic atrophy, and also emphasizes the importance of genetic changes that sensitize the retina and optic nerve to minor elevations of even normal intraocular pressure.

BIOCHEMISTRY AND PATHOLOGY OF POAG

Histological changes

It is estimated that roughly 20 to 50% of the large retinal ganglion cells (RGC) are lost in POAG. Although the reduction of RGC density occurs equally throughout the retina, visual sensitivity is first lost in areas where the initial RGC density is low, especially in the peripheral regions of the retina. As the disease progresses, atrophy of the nerve fiber layer is usually observed as additional RGC is lost. Typically, vertical collapse of the optic nerve head (ONH), loss of the neural rim at the ONH, rearrangement of central blood vessels, and loss of supporting tissue occur. Scanning electron microscopy of retinas with early stages of glaucoma shows evidence of initial collapse of the anterior lamina cribrosa, primarily in the vertical poles of the optic nerve head. Based on primate studies, optic cups with larger diameters are more susceptible to high ocular pressure and thus to glaucoma.

Role of the trabecular meshwork

Trabecular meshwork (TM) is a lamellated sheet of complex tissue that covers the inner wall of Schlemm's canal. TM has uniquely developed at the angle of primates, filtering the aqueous humor out of the eye. TM consists of two parts: the nonfiltering portion mainly occupied by trabecular cells and the filtering portion. Trabecular cells are highly phagocytic cells removing particles, cell debris, and protein from the aqueous humor. The first glaucoma locus, the *trabecular meshwork inducible glucocorticoid response* (TIGR), also known as myocilin, initially was identified by looking at genes whose transcription is highly induced by steroids in these cells. The filtering portion consists of three tissues: the cribriform layer, the corneoscleral meshwork, and the uveal meshwork. These trabecular beams or strands are intertwiningly connected to each other, forming a complex filtering mesh surrounding Schlemm's canal. The trabecular beams are thickened by accumulation of extracellular materials and decrease of cell density within the corneoscleral and uveal meshwork in aged eyes.

ANIMAL MODELS OF POAG

Overview: Difficulty of modeling the human eye

Limited access to appropriate biological materials, especially eye samples from affected donors at different stages of the POAG, is an impediment to the study of mechanisms underlying the disease. Because of the extreme difficulty in obtaining such diseased eyes from

both patients and normal controls, animal models play a crucial role in investigating the biological pathway of disease development and in testing therapeutic strategies.

Different types of animal models for POAG have been found or created to mimic the optic nerve damage to resemble POAG phenotypes in humans. The greatest difficulty in constructing an animal model for POAG lies in the diversity of the anterior structures of the eye among different species (Tripathi and Tripathi, 1972, 1973). These structural differences include different iridocorneal angles or absence of specific quadrants from the TM. Nevertheless, within the limited areas in which interpretation of the data from a specific animal model parallels that in the human, various animals including the cow, dog, cat, horse, rabbit, chicken, and monkey can be used to observe POAG under various experimental conditions.

Animal models of POAG

Various animal models for inducible glaucoma have been reported. Argon laser photocoagulation of the TM in rhesus monkeys results in sustained elevation of IOP and has been used extensively to study early damage to the optic nerve head (May *et al.*, 1997). Corticosteroids such as betamethasone and dexamethasone have been used to treat rabbits, dogs, and cats to develop ocular hypertension (Bonomi *et al.*, 1978). Steroid treatment generally produces progressive glaucoma, but this process is reversed after about two months after cessation of the steroid. Trabecular blockage caused by inflammation after α -chymotrypsin treatment also has been used to produce elevated IOP in rabbit and monkey eyes (Vareilles *et al.*, 1977). Some types of avian species (chicken, quail, and turkey) have been known to develop elevated IOP as a consequence of continuous exposure to light.

Mouse models of glaucoma

Naturally occurring inherited animal glaucoma models are rare. However, extensive classification of IOP in mouse strains and molecular biological techniques to manipulate certain genes to produce transgenic or knockout/knockin mice recently have resulted in the development of a number of animal models with definitely known genetic causes for their disease (Chang *et al.*, 1999). As discussed earlier, four genes, myocilin (MYOC, TIGR), cytochrome P4501B1 (CYP1B1), optineurin (OPTN), and WDR36, currently are associated with glaucoma. OPTN, mutations of which are responsible for 16.7% of families with hereditary human NTG, is homologous to an inhibitory regulatory subunit of the high molecular kinase complex for the phosphorylation of NF- κ B. Some of its known functions include inhibition of the tumor necrosis factor- α pathway, interaction with transcription factor IIIA, and mediation of the Huntington and Rab8 interaction for regulation of