

## Safety profile of tacrolimus in patients with rheumatoid arthritis

Kimiko Akimoto · Yoshie Kusunoki ·  
Shinichiro Nishio · Kenji Takagi · Shinichi Kawai

Received: 11 October 2007 / Revised: 10 April 2008 / Accepted: 1 May 2008 / Published online: 28 May 2008  
© Clinical Rheumatology 2008

**Abstract** We assessed the safety of tacrolimus therapy for rheumatoid arthritis. Forty-two patients who started tacrolimus therapy between April 2005 and July 2006 were investigated retrospectively using data from their medical records up to June 2007. The cumulative treatment continuation rate was assessed by the Kaplan–Meier method. Fisher’s exact test was used to compare gastrointestinal symptoms between different tacrolimus doses and between the presence and absence of each concomitant medication. The mean ( $\pm$ SD) observation period was  $288 \pm 238$  days. The cumulative treatment continuation rate was, respectively, 59.5% and 38.1% at 6 months and 1 year after the patients started treatment. Tacrolimus was discontinued in 28 patients, and was discontinued because of adverse reactions in 21 patients. Gastrointestinal symptoms were the most common adverse reactions (45.2%=19/42 patients), followed by infections and hyperglycemia. Tacrolimus was discontinued in 9/19 patients with gastrointestinal symptoms, and was discontinued within 60 days of starting treatment in seven of them. Nausea and vomiting led to discontinuation in seven patients (within 60 days of starting treatment in six of them). The incidence of gastrointestinal symptoms was higher in patients receiving a daily dose  $\geq 2$  mg than in those receiving  $< 2$  mg/day. During treatment of rheumatoid arthritis by oral tacrolimus therapy, gastrointestinal symptoms were common, early, and dose-dependent. However, these symptoms were not severe and did not cause any serious safety problems.

**Keywords** Adverse reaction · Disease-modifying antirheumatic drug · Gastrointestinal symptoms · Immunosuppressant · Rheumatoid arthritis · Tacrolimus

### Introduction

Rheumatoid arthritis (RA) is an autoimmune disease that features chronic synovitis as the main pathology and can be accompanied by various extraarticular symptoms; its etiology has not yet been clarified [1]. According to the ACR Guidelines, treatment with disease-modifying antirheumatic drugs (DMARDs) should be started within 3 months of diagnosing RA [2]. Methotrexate is a very widely used DMARD, and it is combined with or switched to other agents in methotrexate-resistant patients.

Tacrolimus is a substance derived from *Streptomyces tsukubaensis* that was discovered by Kino et al. in 1984 [3]. It is an immunosuppressant with a calcineurin inhibitory effect [4] and has been used to control allogenic immune reactions after organ transplantation [5, 6]. In 1999, the efficacy of tacrolimus for RA was demonstrated in an open-label study [7]. In Japan, a placebo-controlled clinical trial [8] and a trial comparing tacrolimus with mizoribin [9] have been performed, confirming its efficacy and safety for RA. Based on the results of these studies, administration of tacrolimus at an oral dose of 3 mg/day was approved in 2005 for the treatment of RA in Japan.

Both clinical studies and investigations in the organ transplantation field have shown that tacrolimus may cause characteristic adverse reactions, such as nephropathy, gastrointestinal disorders, glucose intolerance, and hypertension, which are not induced by cytotoxic immunosuppressants. However, few reports have been published

K. Akimoto · Y. Kusunoki · S. Nishio · K. Takagi · S. Kawai (✉)  
Division of Rheumatology, Department of Internal Medicine,  
School of Medicine, Toho University,  
6-11-1, Omori-Nishi, Ota-ku,  
Tokyo 143-8541, Japan  
e-mail: skawai@med.toho-u.ac.jp

focussing on the safety of this drug when used for the treatment of RA. Therefore, we performed the present study to clarify the safety profile of tacrolimus by a retrospective investigation of RA patients treated with this drug at our department.

## Materials and methods

The present study was performed by extracting tacrolimus-treated patients from those registered in our database. This study was approved by the Ethical Committee of Toho University School of Medicine. Before performing the study, written informed consent was obtained from all patients regarding the use of information in their medical records for research purposes.

Data obtained until June 2007 were retrospectively compiled from the medical records of 42 RA patients who started tacrolimus therapy between April 2005 and July 2006. Information about concomitant medications was collected in addition to information about tacrolimus therapy, including the duration of administration (days), dosage, and adverse reactions. The subjects were 9 men and 33 women with a mean ( $\pm$ SD) age of  $60.0 \pm 13.4$  years. According to Steinbrocker's stage classification [10], 1, 12, 5, and 24 patients were in stages I, II, III, and IV, respectively. According to Steinbrocker's class classification [10], 33 and 9 patients were in classes II and III, respectively (there were no class I or IV patients).

## Tacrolimus therapy

The initial dose of tacrolimus (Prograf<sup>®</sup>, C<sub>44</sub>H<sub>69</sub>NO<sub>12</sub>-H<sub>2</sub>O; Astellas Pharma, Tokyo) was 1–3 mg/day orally, which was administered once daily (in the morning or evening), twice daily (morning and evening), or three times daily (morning, afternoon, and evening). Subsequently, the dose was adjusted within the range of 1–3 mg/day at the discretion of the investigator. Other DMARDs, glucocorticoids, and nonsteroidal antiinflammatory drugs (NSAIDs) could be used at the discretion of the investigator.

## Statistical analysis

The cumulative treatment continuation rate was investigated by the Kaplan–Meier method, and the significance of differences was determined by the log-rank test. Fisher's exact test was used to compare the incidence of gastrointestinal symptoms between different tacrolimus doses and between the presence and absence of each concomitant medication. For these analyses,  $p < 0.05$  was considered to indicate statistical significance.

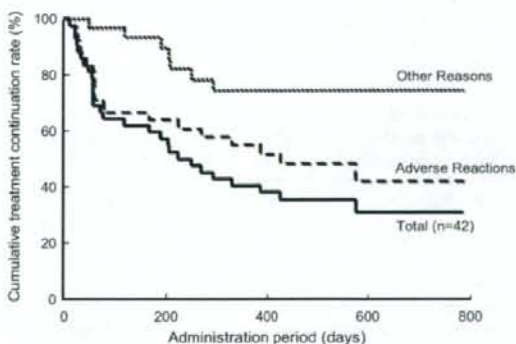
## Results

### Cumulative treatment continuation rate

When the cumulative treatment continuation rate was investigated by the Kaplan–Meier method over a mean ( $\pm$ SD) observation period of  $288 \pm 238$  days, the rate was 59.5% at 6 months and 38.1% at 1 year after starting treatment with tacrolimus (Fig. 1). Treatment was discontinued in 28 of the 42 (66.7%) patients because of adverse reactions in 21 (50.0%) patients and for other reasons in 7 (16.7%) patients. When these 21 patients were classified according to the reason for discontinuation and compared by the Kaplan–Meier method (Fig. 1), they fitted into two groups: patients who discontinued tacrolimus within 60 days of starting therapy and patients who discontinued it after this period. Early discontinuation within 60 days of starting treatment was due to adverse reactions in all but one patient.

### Adverse reactions

Table 1 shows all of the adverse reactions detected during tacrolimus treatment. For the patients who discontinued this drug because of adverse reactions, the symptoms that led to discontinuation are shown in relation to the time of onset. Gastrointestinal symptoms, such as nausea and vomiting, were the most common adverse reactions (19 patients, 45.2%), followed by infections and hyperglycemia. One patient died at 330 days after starting treatment. The cause of death was considered to be progression of chronic renal failure due to diabetes mellitus, and the relationship to tacrolimus therapy was classified as “possible.”



**Fig. 1** Cumulative treatment continuation rate of tacrolimus therapy. Cumulative continuation rates are shown for all patients treated with tacrolimus and for patients who discontinued treatment due to adverse drug reactions and for other reasons. Among the 42 patients, 28 discontinued tacrolimus treatment (21 due to adverse reactions and 7 for other reasons). The cumulative treatment continuation rate was 59.5% at 6 months and 38.1% at 1 year after initiation

**Table 1** Adverse reactions to tacrolimus in patients with rheumatoid arthritis

Adverse reactions	Number of patients (n=42) <sup>a</sup>	Patients who discontinued therapy (n=21) <sup>a</sup>			
		Day of onset			
		1–60	61–120	121–180	181
<b>Clinical adverse reactions</b>					
Gastrointestinal symptoms	19 (45.2)	7	1	0	1
Nausea, vomiting	13 (31.0)	6	0	0	1
Abdominal pain	6 (14.3)	1	1	0	0
Diarrhea	5 (11.9)	1	0	0	0
Appetite loss	3 (7.1)	1	0	0	0
Abdominal fullness	2 (4.8)	0	0	0	0
Infections	10 (23.8)	1	2	0	0
Respiratory infection	8 (19.0)	0	2	0	0
Any infection	2 <sup>b</sup> (4.8)	1	0	0	0
Cardiovascular	4 (19.0)	0	0	0	0
Elevation of blood pressure	3 (7.1)	0	0	0	0
Tachycardia	1 (2.4)	0	0	0	0
Skin and appendages	3 (7.1)	1	0	0	0
Eruptions	2 (4.8)	1	0	0	0
Itch	1 (2.4)	0	0	0	0
Dizziness	3 (7.1)	1	0	0	0
Headache	2 (4.8)	2	0	0	0
Chest pain	2 (4.8)	1	0	0	0
Others	8 <sup>c</sup> (19.0)	0	0	0	0
<b>Abnormal laboratory values</b>					
Glycemia increased	6 (14.3)	0	0	0	3
Creatinine increased	3 (7.1)	1	0	0	2
Transaminase increased	3 (7.1)	0	0	0	0
HbA <sub>1c</sub> increased	2 (4.8)	0	0	0	1
ALP increased	1 (2.4)	0	0	0	0
BUN increased	2 (4.8)	0	0	0	2
LDH increased	2 (4.8)	0	0	0	2
Uric acid increased	1 (2.4)	0	0	0	1
Triglyceride increased	1 (2.4)	0	0	0	1

ALP: alkaline phosphatase, LDH: lactate dehydrogenase

<sup>a</sup> More than one adverse event was reported for some patients. Percentages are rounded to the nearest decimal place. Values in parentheses are percentages.

<sup>b</sup> Urinary tract infection, herpes zoster.

<sup>c</sup> Insomnia, pleural effusion, metrorrhagia, hyposphagma, rib fracture, back pain, compression fracture of the lumbar spine, fatigue.

## Gastrointestinal symptoms

Among the 19 patients with gastrointestinal symptoms, 13 (31.0%), 6 (14.3%), 5 (11.9%), 3 (7.1%), and 2 (4.8%) had nausea/vomiting, abdominal pain, diarrhea, anorexia, and bloating, respectively. For the patients who discontinued tacrolimus therapy because of adverse reactions, the reasons for discontinuation are listed according to the time of onset of their symptoms in Table 1. Of the 19 patients with gastrointestinal symptoms, 9 (47.4%) patients discontinued tacrolimus therapy and 7 (77.8%) of them discontinued it within 60 days of starting treatment. Seven patients discontinued this drug because of nausea or vomiting, and 6 (85.7%) of them discontinued it within 60 days of starting treatment.

The incidence of gastrointestinal symptoms stratified according to the dose of tacrolimus was compared by Fisher's exact test (Table 2). The incidence of such symptoms was 35.5% among the 11 patients receiving an initial dose of less than 2 mg/day, while it was 72.7% among the eight patients receiving an initial dose of at least 2 mg/day, and symptoms were significantly more common ( $p < 0.05$ ) at the higher initial dose. No significant relationship was noted between patient background factors (such as sex, age, RA stage, or administration times of tacrolimus) and the incidence of gastrointestinal symptoms (data not shown). The influence of concomitant treatment with other DMARDs, glucocorticoids, NSAIDs, H<sub>2</sub> receptor antagonists, or proton pump inhibitors on the incidence of gastrointestinal symptoms was assessed, but none of these drugs had a significant effect on the occurrence of gastrointestinal symptoms (data not shown).

## Discussion

In the present study, tacrolimus therapy was discontinued by 21/42 patients because of adverse reactions. Previous clinical studies of tacrolimus performed in Japan have shown that treatment with this drug could be continued in 85.2% (1.5 mg/day) and 77.1% (3.0 mg/day) of subjects at 16 weeks after starting treatment [8] and in 62.1% (3.0 mg/day) [9] and

**Table 2** Dose of tacrolimus and gastrointestinal symptoms

Tacrolimus dose	Number of patients	Patients with gastrointestinal symptoms, n (%)
<2 mg/day	31 (73.8%)	11 (35.5%)*
≥2 mg/day	11 (26.2%)	8 (72.7%)*
Total	42	19 (45.2)

\* Percentage of patients from the respective groups.

\* $p = 0.03724$ , Fisher's exact probability test

77.2% (1.5–3.0 mg/day) [11] of subjects at 28 weeks after starting treatment. A 6-month clinical study performed overseas showed that tacrolimus therapy could be continued in 42% and 52% of the 2 and 3 mg/day groups, respectively [12]. In the present study, the cumulative treatment continuation rate calculated by the Kaplan–Meier method was 59.5% at 6 months after starting treatment. This was similar to the results obtained in the above-mentioned clinical studies when the duration of administration is considered.

The main reason for discontinuation of tacrolimus therapy in the present study was gastrointestinal symptoms, especially nausea and vomiting, and these symptoms developed soon after the start of treatment in most cases. The mechanism(s) underlying the occurrence of gastrointestinal symptoms in patients taking this drug have not been elucidated yet. Tacrolimus has the same macrolide structure as erythromycin. When administered intravenously to dogs, erythromycin stimulates gastrointestinal motility and induces various symptoms [13], and its stimulatory effect on gastrointestinal motility was reported to be similar to that of motilin in dogs [14, 15]. Tacrolimus was also reported to stimulate small bowel motility in pigs [16]. In kidney transplant patients, the gastric emptying rate was higher after the administration of tacrolimus than after the administration of cyclosporine, which is also a calcineurin inhibitor [17]. Other reports from the transplantation field indicate that tacrolimus induces gastrointestinal symptoms more frequently than cyclosporine [18, 19, 20]. These findings suggest that the macrolide structure of tacrolimus may be involved in the development of gastrointestinal symptoms by mimicking the effect of motilin.

The present study showed that the incidence of gastrointestinal symptoms was significantly higher in patients receiving tacrolimus at doses  $\geq 2$  mg/day than in those receiving  $< 2$  mg/day, suggesting that these symptoms were dose-dependent. However, the dose range of tacrolimus used to treat our RA patients was narrower than that employed in the field of organ transplantation. According to Kondo et al. [8], gastrointestinal symptoms were noted in 3/62 patients (4.8%) receiving tacrolimus at 1.5 mg/day and in 7/63 patients (11.1%) receiving it at 3 mg/day. These findings indicate the same dose dependency as that observed in the present study. Accordingly, it is considered that tacrolimus therapy for RA patients should be started from a lower dose, such as 1.5 mg/day, and then should be increased while paying close attention to symptoms.

The incidences of gastrointestinal symptoms in the two randomized controlled trials performed in Japanese RA patients receiving 3 mg/day of tacrolimus were 11.1% [8] and 20.4% [9], respectively. Although the incidence of gastrointestinal symptoms in the present study (45.2%) seems higher than those in these studies, we could not find any background factors except administration doses, corre-

lated with the symptoms. On the other hand, the incidences of tacrolimus-induced gastrointestinal symptoms were 5%, 21%, and 10% for patients undergoing hepatic, bone marrow, and kidney transplantation, respectively, in Japanese studies of transplant patients [21]. Gastrointestinal symptoms in the other study [22] developed in 7 out of 122 (5.7%) patients undergoing liver transplantation. These values in the transplantation fields appeared almost the same as those in the randomized controlled trials for RA. In contrast, the incidences of gastrointestinal symptoms were reported as 41.1% [23] and 29.3–43.9% (vomiting, constipation, nausea, and diarrhea) [24], respectively, in the renal transplantation studies, which are similar as that of the present RA study. We then suggest that the differences in the gastrointestinal symptoms among transplantation studies, randomized RA trials, and our present retrospective study were mainly attributable to the different cohorts, not to the essential differences in the disease properties, and other clinical background factors.

**Acknowledgment** We wish to thank Ms. Sonoko Sakurai for her secretarial assistance.

**Conflict of Interest Statement** Dr. Shinichi Kawai has served as a consultant to and/or received an honorarium from Astellas Pharma Inc. (Tokyo, Japan), the manufacturer of tacrolimus.

No conflict of interest has been declared by Kimiko Akimoto, Yoshie Kusunoki, Shinichiro Nishio, and Kenji Takagi.

**Funding** This study was supported in part by a grant from The Japanese Ministry of Health, Labor and Welfare (S.K.).

## References

- O'Dell JR (2005) Rheumatoid arthritis: the clinical picture. In: Koopman WJ, Moreland LW (eds) Arthritis and allied conditions: a textbook of rheumatology, vol. 1, 15th edn. Lippincott Williams & Wilkins, Philadelphia, pp 1165–1194
- American College of Rheumatology Subcommittee on Rheumatoid Arthritis Guidelines (2002) Guidelines for the management of rheumatoid arthritis: 2002 update. *Arthritis Rheum* 46:328–346
- Kino T, Hatanaka H, Miyata S et al (1987) FK-506, a novel immunosuppressant isolated from a *Streptomyces*. II. Immunosuppressive effect of FK-506 in vitro. *J Antibiot* 40:1256–1265
- Kitahara K, Kawai S (2007) Cyclosporine and tacrolimus for the treatment of rheumatoid arthritis. *Curr Opin Rheumatol* 19: 238–245
- Shapiro R, Jordan ML, Scantlebury VP et al (1995) The superiority of tacrolimus in renal transplant recipients—the Pittsburgh experience. *Clin Transpl* 199–205
- Testa G, Khintmalm GB (1997) Cyclosporine and tacrolimus: the mainstay of immunosuppressive therapy for solid organ transplantation. *Clin Liver Dis* 1:417–437
- Gremillion RB, Posever JO, Manek N et al (1999) Tacrolimus (FK506) in the treatment of severe, refractory rheumatoid arthritis: initial experience in 12 patients. *J Rheumatol* 26:2332–2336
- Kondo H, Abe T, Hashimoto H et al (2004) Efficacy and safety of tacrolimus (FK506) in treatment of rheumatoid arthritis: a

- randomized, double blind, placebo controlled dose-finding study. *J Rheumatol* 31:243–251
9. Kawai S, Hashimoto H, Kondo H et al (2006) Comparison of tacrolimus and mizoribine in a randomized, double-blind controlled study in patients with rheumatoid arthritis. *J Rheumatol* 33:2153–2161
  10. Steinbrocker O, Traeger CH, Batterman RC (1949) Therapeutic criteria in rheumatoid arthritis. *JAMA* 140:659–662
  11. Kawai S, Yamamoto K (2006) Safety of tacrolimus, an immunosuppressive agent, in the treatment of rheumatoid arthritis in elderly patients. *Rheumatol (Oxf)* 45:441–444
  12. Yocum DE, Furst DE, Kaine JL et al (2003) Efficacy and safety of tacrolimus in patients with rheumatoid arthritis: a double-blind trial. *Arthritis Rheum* 48:3328–3337
  13. Itoh Z, Suzuki T, Nakaya M et al (1984) Gastrointestinal motor-stimulating activity of macrolide antibiotics and analysis of their side effects on the canine gut. *Antimicrob Agents Chemother* 26:863–869
  14. Itoh Z, Nakaya M, Suzuki T et al (1984) Erythromycin mimics exogenous motilin in gastrointestinal contractile activity in the dog. *Am J Physiol* 247:688–694
  15. Itoh Z, Suzuki T, Nakaya M et al (1985) Structure-activity relation among macrolide antibiotics in initiation of interdigestive migrating contractions in the canine gastrointestinal tract. *Am J Physiol* 248:320–325
  16. Costa A, Alessiani M, De Ponti F et al (1996) Stimulatory effect of FK506 and erythromycin on pig intestinal motility. *Transplant Proc* 28:2571–2572
  17. Maes BD, Vanvalleghem J, Kuypers D et al (1999) Differences in gastric motor activity in renal transplant recipients treated with FK-506 versus cyclosporine. *Transplantation* 68:1482–1485
  18. The U.S. Multicenter FK506 Liver Study Group (1994) A comparison of tacrolimus (FK506) and cyclosporine for immunosuppression in liver transplantation. *N Engl J Med* 331:1110–1115
  19. Mayer AD, Dmitrewski J, Squifflet JP et al (1997) Multicenter randomized trial comparing tacrolimus (FK506) and cyclosporine in the prevention of renal allograft rejection: a report of the European Tacrolimus Multicenter Renal Study Group. *Transplantation* 64:436–443
  20. Mor E, Schwesenz A, Sheiner PA et al (1994) Reversal of gastrointestinal toxicity associated with long-term FK506 immunosuppression by conversion to cyclosporine in liver transplant recipients. *Transplantation* 57:1130–1132
  21. Astellas Pharma Inc. (2007) Prograf® (tacrolimus) prescribing information in Japan. Astellas Pharma, Tokyo.
  22. Fisher A, Schwartz M, Mor E et al (1994) Gastrointestinal toxicity associated with FK506 in liver transplant recipients. *Transplant Proc* 26:3106–3107
  23. Ekberg H, Tedesco-Silva H, Demirbas A et al (2007) Reduced exposure to calcineurin inhibitors in renal transplantation. *N Engl J Med* 357:2562–2575
  24. Pirsch JD, Miller J, Deierhoi MH et al (1997) A comparison of tacrolimus (FK506) and cyclosporine for immunosuppression after cadaveric renal transplantation. *Transplantation* 63:977–983

## Safety of long-term tacrolimus therapy for rheumatoid arthritis: an open-label, uncontrolled study in non-elderly patients

Shinichi Kawai · Kortaro Tanaka · Iwao Ohno · Kazunori Utsunomiya · Yoshihiko Seino

Received: 5 November 2007 / Accepted: 9 February 2008 / Published online: 22 April 2008  
© Japan College of Rheumatology 2008

**Abstract** In this study we focused on the safety of long-term tacrolimus therapy in non-elderly patients with rheumatoid arthritis who were treated with tacrolimus or mizoribine in a previous double-blind study. The patients received oral tacrolimus at a dose  $\leq 3$  mg once daily for 76 weeks. The safety analysis population included 115 patients aged 20–64 years. Adverse drug reactions presented as symptomatic events in 39 patients (33.9%), laboratory abnormalities in 38 patients (33.0%), and infections in 19 patients (16.5%). The major reactions were gastrointestinal disorders and hypertension as symptomatic events, increases of creatinine, urinary *N*-acetyl- $\beta$ -D-glucosamidase and hemoglobin A<sub>1C</sub> as laboratory abnormalities, and the common cold syndrome as infections. After 76 weeks of tacrolimus treatment, the ACR20 response rates of patients who had also received tacrolimus during the

preceding double-blind study was 61.5% (compared with the status at baseline in the preceding study). The corresponding response rate for patients who had previously received mizoribine was 66.0%. The mean blood concentration of tacrolimus was 3.8–4.8 ng/mL. In conclusion, safety profiles of tacrolimus treatment for long-term seems to be similar to those of previous studies in patients with rheumatoid arthritis.

**Keywords** Long-term open study · Rheumatoid arthritis · Safety · Tacrolimus

### Introduction

Tacrolimus is an immunosuppressive agent with a macrocyclic skeleton that was discovered as a metabolite of *Streptomyces tsukubaensis*. In Japan, oral and parenteral formulations have been approved for use in patients with transplantation or autoimmune diseases, while tacrolimus ointment has been approved for the treatment of atopic dermatitis. The pathogenesis of rheumatoid arthritis (RA) has been reported to be related to immunocompetent T cells [1], and the T cell-selective immunosuppressant cyclosporine has shown efficacy for this disease [2].

The mechanism of action of tacrolimus differs from those of conventional disease-modifying antirheumatic drugs (DMARDs). Tacrolimus inhibits T cell activation and thereby suppresses the production of tumor necrosis factor- $\alpha$  and other inflammatory cytokines involved in the development of RA [3]. This drug has shown efficacy in animal models of RA, such as rats with collagen-induced arthritis and adjuvant-induced arthritis [4–6]. An early phase II study of tacrolimus in patients with RA demonstrated its usefulness as a new DMARD at doses of 1.5 and 3 mg/day [7]. A late phase II study [8] and phase III studies [9, 10] conducted in non-elderly

S. Kawai (✉)

Division of Rheumatology, Department of Internal Medicine,  
Toho University School of Medicine, 6-11-1 Omori-Nishi,  
Ota-ku, Tokyo 143-8541, Japan  
e-mail: skawai@med.toho-u.ac.jp

K. Tanaka

Department of Neurology, Toyama University Hospital,  
Toyama, Japan

I. Ohno

Division of Kidney and Hypertension, Department of Internal  
Medicine, Jikei University School of Medicine, Tokyo, Japan

K. Utsunomiya

Division of Diabetes, Metabolism and Endocrinology,  
Department of Internal Medicine,  
Jikei University School of Medicine,  
Tokyo, Japan

Y. Seino

Internal Medicine, Nippon Medical School Chiba Hokusoh  
Hospital, Chiba, Japan

patients aged 20–64 years and elderly patients aged 65 years or older demonstrated the efficacy and safety of tacrolimus therapy for RA in both age groups. Based on these findings, tacrolimus was approved in 2005 for the treatment of RA with an insufficient response to existing therapy in Japan.

However, the maximum duration of treatment in these clinical studies was 28 weeks. The safety of long-term tacrolimus therapy has been investigated by a 12-month open study in the United States [11], but there have been no long-term studies in Japanese patients. Accordingly, we performed an open-label, uncontrolled study to focus on the safety of long-term tacrolimus treatment in non-elderly Japanese patients who had previously been enrolled in a phase III double-blind controlled trial [10].

## Patients and methods

### Patients

This study was conducted from May 2001 to December 2003 at 25 institutions. The subjects comprised RA patients who had participated in a previous double-blind controlled study of tacrolimus (the preceding study) [10] and had completed 28 weeks of treatment with tacrolimus or the control drug (mizoribine), or else had discontinued therapy due to lack of symptomatic improvement despite at least 12 weeks of treatment. All of the patients wished to receive long-term treatment with tacrolimus and were judged to be eligible for this study by their investigators.

The patients entering the present study had all met the following inclusion criteria at the time of their enrollment in the preceding study: (1) a diagnosis of RA according to the American College of Rheumatology (ACR) criteria (revised in 1987) [12]; (2) a disease duration of at least 6 months; (3) an age between 20 and 64 years at the time of giving informed consent; (4) an insufficient response to treatment with at least one DMARD other than tacrolimus or mizoribine before entering the study; (5) active disease (which was defined by a C-reactive protein level  $\geq 1.0$  mg/dL or an erythrocyte sedimentation rate  $\geq 30$  mm/h, at least six tender joints, and at least three swollen joints).

Patients were excluded from the present study for the following reasons: (1) study drug-related adverse events had occurred during the preceding study and the potential risks of long-term tacrolimus therapy were expected to outweigh the potential benefits, (2) surgery had been performed and the effects of surgical invasion were persistent, or (3) they had renal dysfunction, pancreatitis/glucose intolerance, hyperkalemia, severe liver dysfunction, heart disease (e.g., ischemic heart disease, arrhythmias requiring treatment, and heart failure), malignancy, severe infections, or severe drug hypersensitivity.

### Methods

Prior to the present study, the Institutional Review Board at each participating institution approved the study protocol. All of the patients involved gave written informed consent. A multicenter open-label design was employed without a control drug.

There was an off-treatment interval in all patients between the end of the preceding study and the start of tacrolimus therapy in the present study. During the interval, blinding for the preceding study was maintained and the treatment of RA was not specified.

Tacrolimus was initiated at a dose of 3 mg orally once a day after the evening meal, which was the dosage for tacrolimus group in the preceding study. Dose reduction was possible (i.e., 3 mg/day was the maximum dose) depending on the patient's symptoms or adverse drug reactions at the discretion of the investigator. The duration of treatment in the present study was scheduled to be 76 weeks. The nonsteroidal anti-inflammatory drugs (NSAIDs) and steroids that were used prior to the study could be continued, but commencement of these drugs was prohibited. Use of two or more NSAIDs was avoided whenever possible, and dose reduction was allowed for NSAIDs and steroids during the study period. Concomitant use of other DMARDs (including gold salts, D-penicillamine, bucillamine, salazosulfapyridine, lobenzarit, actarit, cyclosporine, methotrexate, and mizoribine) was prohibited. Administration of any drug (e.g., astemizole or terfenadine) that could influence the blood level of tacrolimus was also prohibited.

### Safety evaluation

Blood pressure and body weight were measured at the start of treatment (baseline), after 4 weeks of treatment, at 12-week intervals thereafter, and at the completion or discontinuation of treatment (the end of treatment). Laboratory investigations included hematology tests (red cell count, hemoglobin, hematocrit, platelet count, leukocyte count, and differential leukocyte count), biochemistry tests (aspartate aminotransferase (AST), alanine aminotransferase (ALT), alkaline phosphatase (ALP), lactate dehydrogenase (LDH),  $\gamma$ -glutamyl transpeptidase ( $\gamma$ -GTP), total bilirubin, cholesterol, triglycerides, amylase, glucose, hemoglobin A<sub>1c</sub> (HbA<sub>1c</sub>),  $\beta_2$ -microglobulin, blood urea nitrogen (BUN), serum creatinine, uric acid, and serum electrolytes [Na, K, Cl, Ca, and Mg]), urinalysis (tests for protein, glucose, urobilinogen, and *N*-acetyl- $\beta$ -D-glucosaminidase (NAG)), and electrocardiography at baseline, after 2 and 4 weeks of treatment, at 4-week intervals thereafter (12-week intervals for electrocardiography), and at the end of treatment.

The blood level of tacrolimus was measured after 2 and 4 weeks of treatment, at 4-week intervals thereafter, and at the end of treatment by high performance liquid chromatography-tandem mass spectrometry using whole blood samples collected at  $12 \pm 4$  h after drug administration. All adverse events were examined and those for which a causal relationship to tacrolimus could not be ruled out by the investigator were classified as adverse drug reactions. Adverse events other than laboratory abnormalities and infections were classified as symptomatic events to distinguish these from the other events.

#### Efficacy evaluation

Disease activity was assessed by determining the tender joint count (based on evaluation of 48 joints, including temporomandibular ( $n = 2$ ), sternoclavicular ( $n = 2$ ), shoulder ( $n = 2$ ), elbow ( $n = 2$ ), wrist ( $n = 2$ ), metacarpophalangeal ( $n = 10$ ), interphalangeal of thumb ( $n = 2$ ), proximal interphalangeal ( $n = 8$ ), hip ( $n = 2$ ), knee ( $n = 2$ ), ankle mortise ( $n = 2$ ), ankle tarsal ( $n = 2$ ), and ten complete sets of toe joints (each set was counted as one joint)) and the swollen joint count (based on evaluation of 46 joints, excluding the hips from those assessed for tenderness), with modification of the number of joints recommended by ACR [13], the C-reactive protein level, and the 1-h erythrocyte sedimentation rate (Westergren method) at baseline, at 4-week intervals thereafter, and at the end of treatment. At the same times, global assessment of disease activity by the investigator, global assessment of disease activity by the patient, and assessment of joint tenderness by the patient were also performed. At the end of treatment, clinical improvement was assessed according to both ACR response criteria (ACR20%/50%/70% responses) [14].

#### Statistical analysis

For the ACR20, ACR50, and ACR70 responses, last observation carried forward (LOCF) analysis was performed using the last observation recorded while patients were receiving the study drug. LOCF analysis was also used for DAS28. Wilcoxon signed rank test was used for comparison between baseline values and those at each time point. Statistical tests were two sided and  $p < 0.05$  was taken as statistically significant unless otherwise specified.

## Results

#### Patient characteristics

Among 204 patients who were treated during the preceding study, 103 were assigned to receive tacrolimus and 101

were given mizoribine. Tacrolimus was discontinued by 39 patients and mizoribine was discontinued by 68 patients. The main reasons for discontinuation of treatment were adverse events (12 patients in the tacrolimus group and 10 patients in the mizoribine group) and no response or worsening of RA (19 patients in the tacrolimus group and 52 patients in the mizoribine group) [10].

A total of 115 patients were enrolled in the present study. Among them, 65 patients had already been treated with tacrolimus in the preceding study and 50 patients had been treated with mizoribine. All of the patients received tacrolimus therapy in this study. There was an off-treatment interval for each patient ranging from 13 to 307 days. During this interval, the patients received other therapy for RA that did not include tacrolimus.

Treatment with tacrolimus for 76 weeks was completed by 67.8% of the subjects (78/115 patients), while tacrolimus was discontinued in 32.2% of them (37/115 patients) (Fig. 1). All 115 patients were included in the safety and efficacy analyses. The main reasons for discontinuation of treatment were adverse events in 15.7% (18/115 patients) and lack of improvement/worsening of RA in 13.0% (15/115 patients). Discontinuation due to an increase of creatinine occurred in 3.5% (4/115) of all patients. The mean age ( $\pm$ standard deviation) of the patients was  $49.8 \pm 8.7$  years at enrollment in the preceding study, and 66.1% (76/115 patients) had stage III or IV RA at that time (Table 1).

#### Treatment period and dose of tacrolimus

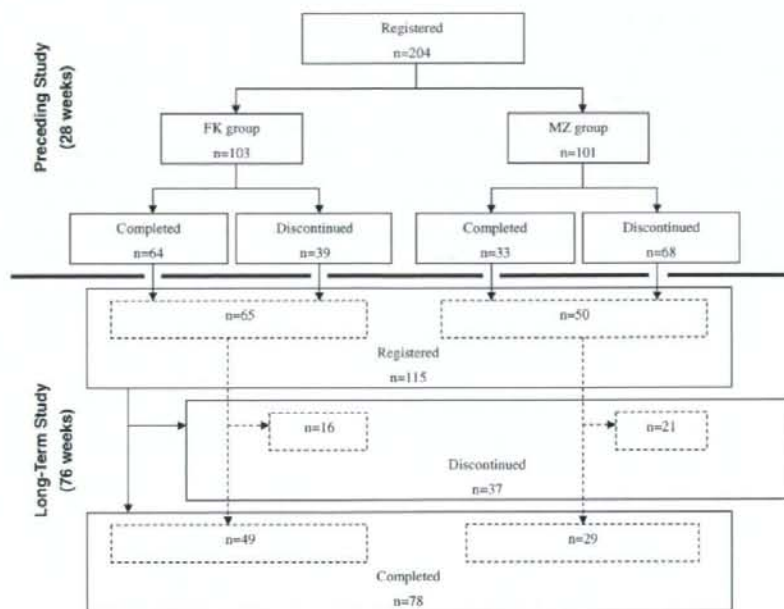
The median duration of treatment in the present study (including any period of suspension during the study) was 532.0 days. A dose of 3 mg/day was received by 91.0% (91/100) of the patients remaining on treatment after 6 months (28 weeks), 83.0% (73/88) of the remaining patients after 1 year (52 weeks), and 80.8% (63/78) of the remaining patients at completion (76 weeks), showing a gradual decrease. Thus, most of the on-study patients were receiving 3 mg/day during the study period, and most of the other patients were receiving 2.0 or 2.5 mg/day.

#### Safety

The incidence of adverse events was 88.7% (102/115 patients) and that of adverse events with a possible relationship to tacrolimus, defined as adverse drug reactions, was 58.3% (67/115 patients). During the study period, no deaths occurred. Serious adverse events occurred in ten patients, including 12 serious adverse drug reactions in six patients (diverticulitis of the colon, cerebral infarction, bronchopneumonia, multiple gastric ulcers, perforated duodenal ulcer, acute renal failure, pyelonephritis,



**Fig. 1** Disposition of the patients. Patients enrolled in the preceding study were randomized to receive tacrolimus (FK) or mizoribine (MZ). Patients who completed 28 weeks of treatment with FK or MZ, or else discontinued therapy due to lack of symptomatic improvement despite at least 12 weeks of treatment, and who were judged to be eligible for long-term treatment with tacrolimus were enrolled in the present study. *n* total number of patients in each group, FK tacrolimus; MZ mizoribine



**Table 1** Characteristics of the patients at enrollment in the preceding study

No. of patients analyzed	FK → FK, <i>n</i> = 65	MZ → FK, <i>n</i> = 50	Total, <i>n</i> = 115
Sex (no., female (%))	58 (89.2)	46 (92.0)	104 (90.4)
Age (years, mean ± SD)	49.6 ± 8.9	50.1 ± 8.5	49.8 ± 8.7
Body weight (kg, mean ± SD)	53.1 ± 7.2	53.9 ± 8.1	53.4 ± 7.6
Steinbrocker stage (no. (%))			
I	7 (10.8)	3 (6.0)	10 (8.7)
II	19 (29.2)	10 (20.0)	29 (25.2)
III	19 (29.2)	15 (30.0)	34 (29.6)
IV	20 (30.8)	22 (44.0)	42 (36.5)
Steinbrocker class (no. (%))			
1	10 (15.4)	5 (10.0)	15 (13.0)
2	48 (73.8)	35 (70.0)	83 (72.2)
3	7 (10.8)	10 (20.0)	17 (14.8)
4	0 (0.0)	0 (0.0)	0 (0.0)
Duration of RA (months, mean ± SD)	108.6 ± 98.3	131.4 ± 103.9	118.5 ± 100.9
Tender joint count (mean ± SD)	13.6 ± 7.3	13.6 ± 7.1	13.6 ± 7.2
Swollen joint count (mean ± SD)	10.5 ± 6.8	9.5 ± 4.3	10.1 ± 5.8
Erythrocyte sedimentation rate (mm/h, mean ± SD)	63.0 ± 28.5	57.0 ± 25.1	60.4 ± 27.1
C-reactive protein level (mg/dL, mean ± SD)	3.46 ± 2.85	3.75 ± 2.44	3.58 ± 2.67

proteinuria, increased creatinine, increased BUN, increased uric acid, and increased  $\beta_2$ -microglobulin). Cerebral infarction resulted in mildly remaining neurological deficits, but the other events resolved.

Symptomatic events occurred in 85 patients (73.9%), and were defined as adverse drug reactions in 39 patients

(33.9%). The major reactions were hypertension, stomach ache, gastric ulcer, diarrhea, nausea, stomach discomfort, gastritis, pollakiuria, and alopecia, so there was a predominance of gastrointestinal disorders (Table 2). Most of these adverse reactions resolved or were alleviated. Treatment with tacrolimus was continued (including dose

**Table 2** Symptomatic events

No. of patients analyzed	115
Adverse events: no. of patients (%); no. of events	85 patients (73.9%); 211 events
Adverse drug reactions: no. of patients (%); no. of events	39 patients (33.9%); 60 events
Withdrawals due to adverse drug reactions (%)	6 patients (5.2%)
Adverse drug reactions stratified by body system	No. of patients (%)
<b>Central and peripheral nervous system disorders</b>	
Tremor	1 (0.9)
Numbness of lips	1 (0.9)
Migraine	1 (0.9)
Dizziness	1 <sup>a</sup> (0.9)
<b>Respiratory system disorders</b>	
Rhinitis (allergic)	1 (0.9)
<b>Cardiovascular disorders (general)</b>	
ST segment depression	1 <sup>a</sup> (0.9)
Cardiomegaly	1 (0.9)
Increased blood pressure	1 (0.9)
Hypertension	4 <sup>a</sup> (3.5)
Aggravated hypertension	1 (0.9)
<b>Heart rate and rhythm disorders</b>	
Extrasystoles	1 (0.9)
<b>Vascular (extracardiac) disorders</b>	
Cerebral infarction	1 <sup>a</sup> (0.9)
<b>Gastrointestinal system disorders</b>	
Gingivitis	1 (0.9)
Stomatitis	1 (0.9)
Oesophagitis	1 (0.9)
Anorexia	1 (0.9)
Heartburn	1 (0.9)
Retching	1 (0.9)
Nausea	2 (1.7)
Vomiting	1 (0.9)
Stomach heaviness	1 (0.9)
Stomach discomfort	2 (1.7)
Stomach ache	3 (2.6)
Stomach pain	1 (0.9)
Gastritis	2 (1.7)
Gastric ulcer	3 (2.6)
Duodenal ulcer	1 (0.9)
Duodenal ulcer (perforated)	1 <sup>a</sup> (0.9)
Diarrhea	3 (2.6)
Irritable bowel syndrome	1 (0.9)
<b>Metabolic and nutritional disorders</b>	
Abnormal glucose tolerance	1 (0.9)
<b>Urinary system disorders</b>	
Pollakiuria	2 (1.7)

**Table 2** continued

Adverse drug reactions stratified by body system	No. of patients (%)
Renal failure (acute)	1 <sup>a</sup> (0.9)
<b>Reproductive disorders (female)</b>	
Menstrual irregularity	1 (0.9)
<b>Visual disorders</b>	
Conjunctivitis (allergic)	1 (0.9)
<b>Disorders of other special senses</b>	
Dysosmia	1 (0.9)
<b>Skin and appendageal disorders</b>	
Pruritus	1 (0.9)
Pruritus cutaneous	1 (0.9)
Urticaria	1 (0.9)
Erythema	1 (0.9)
Alopecia	2 (1.7)
<b>Body as a whole-general disorders</b>	
Hot flushes	1 (0.9)
Fever	1 (0.9)
Oedema of lower extremities	1 (0.9)
Fatigability	1 (0.9)
Weakness	1 (0.9)

<sup>a</sup> Tacrolimus treatment was discontinued in these patients

reduction or retreatment after withdrawal) in seven patients with persistent adverse reactions (migraine, aggravated hypertension, gastric ulcer, abnormal glucose tolerance, menstrual irregularity, dysosmia, and alopecia). Treatment was discontinued due to adverse drug reactions in six patients (dizziness, ST segment depression, hypertension, cerebral infarction, perforated duodenal ulcer, and acute renal failure), and these abnormalities resolved or were alleviated after discontinuation.

Abnormal changes in laboratory values were observed in 47 patients (40.9%), and were classified as adverse drug reactions in 38 patients (33.0%). The major reactions were increases of creatinine, urinary NAG, HbA<sub>1c</sub>, BUN, and ALP, as well as a decrease of magnesium, showing a predominance of abnormal renal function and abnormal glucose tolerance (Table 3). Most of these adverse reactions resolved. Tacrolimus treatment was continued (including dose reduction) in most of eight patients with 18 persistent events [increased ALP (4), increased  $\gamma$ GTP (2), increased uric acid (2), increased triglycerides, increased HbA<sub>1c</sub>, increased total bilirubin, increased creatinine, increased BUN, increased urinary NAG, increased red cell count, increased hemoglobin, increased hematocrit, and decreased magnesium]. Treatment was discontinued in seven patients with ten events [increased creatinine (4), increased glucose (2), increased HbA<sub>1c</sub> (2), increased

**Table 3** Abnormal laboratory findings

No. of patients analyzed	115
Adverse events: no. of patients (%); no. of events	47 patients (40.9%); 103 events
Adverse drug reactions: no. of patients (%); no. of events	38 patients (33.0%); 78 events
Withdrawals due to adverse drug reactions (%)	7 patients (6.1%)
Adverse drug reactions	No. of patients (%)
Red cell count increased	1 (0.9)
Hemoglobin increased	1 (0.9)
Hemoglobin decreased	1 (0.9)
Hematocrit increased	1 (0.9)
Leukocytosis	1 (0.9)
Neutrophilia	1 (0.9)
Lymphopenia	1 (0.9)
Alkaline phosphatase increased	6 (5.2)
$\gamma$ -glutamyl transpeptidase increased	4 (3.5)
Total bilirubin increased	1 (0.9)
Creatinine increased	14 <sup>1-4</sup> (12.2)
Blood urea nitrogen increased	7 <sup>5</sup> (6.1)
Uric acid increased	3 (2.6)
$\beta_2$ -microglobulin increased	2 (1.7)
Amylase increased	1 (0.9)
Blood sugar increased	3 <sup>6,7</sup> (2.6)
Hemoglobin A <sub>1c</sub> increased	8 <sup>6,7</sup> (7.0)
Triglycerides increased	2 (1.7)
Potassium increased	1 (0.9)
Magnesium decreased	6 (5.2)
Urinary sugar	2 <sup>6</sup> (1.7)
Urinary protein	2 (1.7)
Urinary <i>N</i> -acetyl- $\beta$ -D-glucosamidase increased	9 (7.8)

<sup>1-7</sup> Tacrolimus treatment was discontinued in these patients (reactions bearing the same number occurred in the same individual)

BUN, or urinary sugar], and these laboratory abnormalities all resolved or improved after discontinuation.

Infections occurred in 70 patients (60.9%), and were classified as adverse drug reactions in 19 patients (16.5%). The major infections considered to be adverse drug reactions were common cold syndrome, pneumonia, and *Candida* esophagitis (Table 4). All of these adverse infections resolved or were alleviated, but treatment was discontinued due to infections (bronchitis, bronchopneumonia, pneumonia, diverticulitis, and pyelonephritis) in five patients.

#### Blood level of tacrolimus

The mean whole blood concentration of tacrolimus was 3.8–4.8 ng/mL, with a median value of 3.6–4.5 ng/mL. One patient had a blood level greater than 20 ng/mL

**Table 4** Infections

No. of patients analyzed	115
Adverse events: no. of patients (%); no. of events	70 patients (60.9%); 105 events
Adverse drug reactions: no. of patients (%); no. of events	19 patients (16.5%); 23 events
Withdrawals due to adverse drug reactions (%)	5 patients (4.3%)
Adverse drug reactions	No. of patients (%)
Sinusitis	1 (0.9)
Sore throat	1 (0.9)
Upper respiratory tract infection	1 (0.9)
Common cold syndrome	6 (5.2)
Coughing	1 (0.9)
Bronchitis	1 <sup>a</sup> (0.9)
Bronchopneumonia	1 <sup>a</sup> (0.9)
Pneumonia	2 <sup>a</sup> (1.7)
<i>Candida</i> esophagitis	2 (1.7)
Diverticulitis	1 <sup>a</sup> (0.9)
Pyelonephritis	1 <sup>a</sup> (0.9)
Tinea	1 (0.9)
Rash (acneiform)	1 (0.9)
Dermatitis	1 (0.9)
Herpes zoster	1 (0.9)
Purulence	1 (0.9)

<sup>a</sup> Tacrolimus treatment was discontinued in these patients

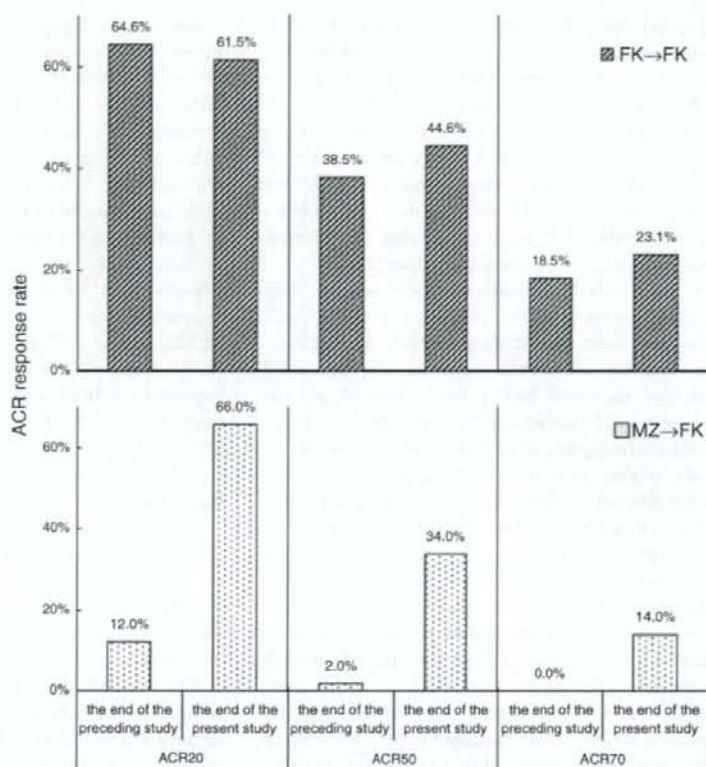
(21.19 ng/mL at 14 h and 40 min after taking 3 mg of tacrolimus on study day 449), but this patient's blood levels ranged between 4.67 and 7.12 ng/mL at the other times of assessment (8–16 h after administration) and no adverse drug reactions occurred throughout the study.

#### Efficacy

Compared with their status at baseline of the preceding study, the patients who received tacrolimus during both studies (FK→FK group) had an ACR20 response rate (number of responders/number of patients evaluated) of 64.6% (42/65) and 61.5% (40/65), respectively, at the end of the preceding and present studies, and the two response rates were similar. The corresponding ACR20 response rates of the patients who received mizoribine during the preceding study (MZ→FK group) were 12.0% (6/50) and 66.0% (33/50), respectively, with a better response at the end of the present study. Changes of the ACR50 and 70 response rates in the two groups were similar to those of the ACR20 (Fig. 2).

The median DAS28 value showed a significant decrease ( $p < 0.001$ ) throughout the study from 8 weeks onward in the FK→FK group and from 4 weeks onward in the

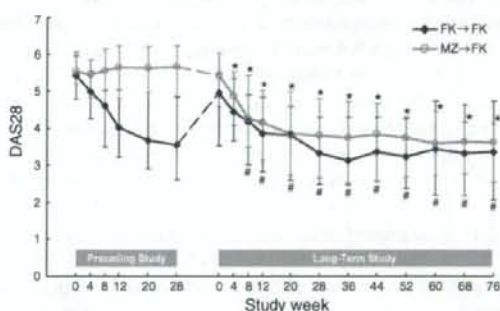
**Fig. 2** Clinical improvement measured by the ACR20/50/70 responses. Response rates were calculated relative to the status at enrollment in the preceding study. *FK→FK*: patients receiving tacrolimus during both the preceding and present studies. *MZ→FK* patients receiving mizoribine during the preceding study and FK in the present study



*MZ→FK* group compared with that at baseline of the present study (Fig. 3).

## Discussion

Common problems encountered with DMARDs are: (1) a slow onset of action and sometimes an insufficient response or no response; (2) an occasional decline of efficacy over time after a response is initially obtained; (3) unsuitability for some patients due to various adverse effects (specific to each drug); and (4) difficulty in continuing long-term therapy. These problems are currently handled by switching DMARDs or by concomitant use of other DMARDs/non-DMARDs. Thus, it is worthwhile to develop drugs with a new mechanism of action or greater efficacy to expand the available treatment options. Tacrolimus inhibits T cell activation and thereby suppresses the production of inflammatory cytokines, including tumor necrosis factor- $\alpha$  responsible for the occurrence of RA [3]. Therefore, this drug was investigated as a new DMARD with a different mechanism of action from those of the standard drugs, and it was approved for the treatment of RA in 2005 in Japan.



**Fig. 3** Changes of DAS28 (median and the 1st–3rd quartiles). Asterisks and sharps indicate significant differences ( $p < 0.05$ ) between baseline and each time point within the groups. *FK→FK* patients receiving tacrolimus during both the preceding and present studies. *MZ→FK* patients receiving mizoribine during the preceding study and FK in the present study

The present open-label uncontrolled study was performed to focus on the safety of long-term tacrolimus therapy, and the results suggested that this drug may be safe for long-term use in non-elderly Japanese patients with RA.

The present study was conducted following the preceding study, but a period of 13–307 days elapsed between the end of treatment in the preceding study and the start of treatment in the present study, with the interval being more than 4 weeks in 70.4% (81/115) of the patients. Since therapy for RA was not specified during the interval, the patients received various medications. Thus, this study was not actually an extension of the previous double-blind study, so we analyzed it as an open-label uncontrolled study that involved patients from the earlier study.

Safety was evaluated by assessing the adverse drug reactions that occurred during long-term treatment with tacrolimus. The main adverse drug reactions were gastrointestinal disorders, abnormal renal function (increased creatinine and increased BUN), and abnormal glucose tolerance (increased glucose and increased HbA<sub>1c</sub>). These are all known adverse reactions of tacrolimus and no events specifically related to long-term therapy were detected. Most of the adverse reactions resolved or improved, while most of those that persisted were mild enough to allow the continuation of treatment.

Concomitant NSAID and/or steroid therapy as well as advanced age are common features in patients with RA. Thus, patients who are treated with tacrolimus should be assessed for the presence of renal dysfunction and abnormal glucose tolerance, and they should be monitored carefully during administration. If such abnormalities are detected, adequate measures such as dose reduction/suspension or discontinuation of tacrolimus therapy should be taken according to the patient's condition. In the present study, hypertension and cardiac dysfunction ascribable to tacrolimus therapy were also observed. Since RA itself has been reported to be a risk factor for cardiovascular disease [15–17], careful attention should be paid to the development of cardiovascular complications during tacrolimus therapy. Severe central nervous system disorders such as encephalopathy have been encountered in patients treated with tacrolimus after transplantation [18], but central nervous system disorders were relatively infrequent during the present study and there were no serious events.

The standard dose of tacrolimus for RA is 3 mg/day, which is lower than that for transplantation patients, so there is a lower incidence of adverse drug reactions and most events are mild. Use of tacrolimus after transplantation is determined by weighing the potential risks and benefits in each patient, while safety is given a higher priority in the case of RA patients. Most of the adverse drug reactions encountered during the present study resolved or improved with appropriate management, and 67.8% (78/115) of the patients were able to complete 76 weeks of tacrolimus therapy. Of the 78 patients who completed treatment, 55 (70.5%) had also completed tacrolimus therapy during the preceding study, so these patients tolerated long-term tacrolimus therapy very well.

Because the response to treatment of patients enrolled in the present study may have been affected by the drug (tacrolimus or mizoribine) administered in the preceding study, we assessed efficacy separately divided into the treatment group in the preceding study. Compared with the status at baseline of the preceding study, the ACR20 response rate of the FK→FK group was 64.6% (42/65 patients) at the end of the preceding study and 61.5% (40/65 patients) at the end of the present study, so the two response rates were similar. The corresponding ACR20 response rates for the MZ→FK group at the end of the present study was 66.0% (33/50 patients). Changes of the ACR50 and ACR70 response rates in the two groups were similar to those for ACR20. The DAS28 showed significant improvement from 8 weeks after the start of the present study in the FK→FK group and from 4 weeks in the MZ→FK group, when compared with that at baseline of this study, and the improvement persisted throughout the study period.

Both the FK→FK and MZ→FK groups included patients who showed various responses to tacrolimus and the latter group included patients refractory to mizoribine, but the present study demonstrated that tacrolimus did not lose efficacy during long-term treatment for up to 76 weeks.

However, the present study may have suffered from selection bias due to enrollment of patients who were likely to have tolerated and responded to tacrolimus in the preceding study, as well as evaluation bias related to its unblinded and uncontrolled design. In addition, the off-treatment interval between the preceding and present studies as well as the unspecified drugs used during the interval may have influenced the results of the present study. Because this study was conducted with a suboptimal design, patients and methods, there is an obvious need for caution when interpreting the results. Despite such considerations, the present study still confirmed the absence of new adverse drug reactions or any loss of efficacy during long-term treatment with tacrolimus for 76 weeks.

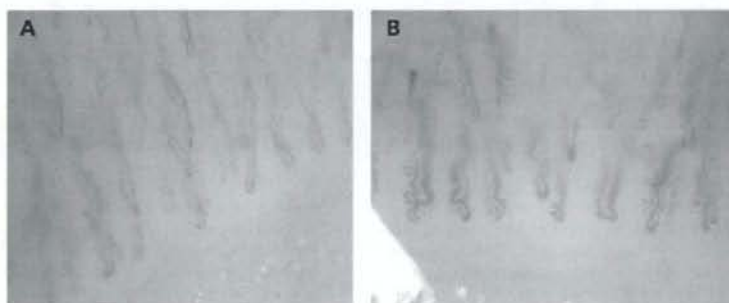
In conclusion, safety profiles of tacrolimus treatment for long-term seem to be similar to those of previous studies [8–11] in non-elderly patients with rheumatoid arthritis. Careful note should be taken of any fresh information obtained by post-marketing surveillance or other studies.

**Acknowledgments** We wish to thank the following investigators and institutions for participating in this study: Koji Taneichi, MD (Kitami Red Cross Hospital, Hokkaido); Takashi Murayama, MD and Satoshi Nakazaki, MD (Kanazawa Rehabilitation Hospital, Ishikawa); Seigaku Hayashi, MD (Fukui General Hospital); Takashi Kanno, MD, PhD (Ohta Nishinouchi Hospital, Fukushima); Yuichi Nishioka, MD, PhD (Yamanashi Prefectural Central Hospital, Yamanashi); Makoto Nishinarita, MD, PhD and Shuji Ohta, MD (Taga General Hospital, Ibaraki); Takayuki Sumida, MD, PhD (Tsukuba University Hospital, Ibaraki); Hitoaki Okazaki, MD, PhD (Jichi Medical School Hospital,

Tochigi); Shoji Kumaki, MD, PhD (Hokushin General Hospital, Nagano); Kimihiro Suzuki, MD, PhD (National Defense Medical College Hospital, Saitama); Tsutomu Takeuchi, MD, PhD (Saitama Medical Center, Saitama Medical University, Saitama); Fumihiko Imai, MD, PhD (Imai Medical Clinic, Saitama); Naoya Takashina, MD (Takashina Clinic, Tokyo); Shigeru Hosaka, MD (Hosaka Clinic, Tokyo); Shigeto Tohma, MD (Sagamihara National Hospital, National Hospital Organization, Kanagawa); Hirobumi, Kondo, MD, PhD (Kitasato University School of Medicine, Kanagawa); Tadao Mitsui, MD, PhD (Aichi Medical University Hospital, Aichi); Katsuji Shimizu, MD, DMSc (Gifu University School of Medicine and Gifu University Hospital, Gifu); Norikazu Murata, MD, PhD and Osamu Saiki, MD, PhD (National Hospital Organization, Osaka Minami Medical Center, Osaka); Tsukasa Matsubara, MD, PhD (Matsubara Clinic, Hyogo); Keisuke Hashimoto, MD, PhD and Yoshinobu Koyama, MD, PhD (Matsubara Mayflower Hospital, Hyogo); Eisuke Shono, MD, PhD (Fukuoka University Hospital, Fukuoka); Masakazu Kondo, MD (Kondo Clinic of Rheumatology and Orthopaedics, Fukuoka); Hideyuki Ikematsu, MD (Hara-doi Hospital, Fukuoka); and Ryuji Nagamine, MD, PhD (Kyushu Rosai Hospital, Fukuoka). This study was funded by a grant from Astellas Pharma Inc. (Tokyo, Japan). All authors participated as a medical consultant or members of the safety committee of Astellas Pharma Inc. They have received consultant fees from this company.

## References

- Panayi GS, Lanchbury JS, Kingsley GH. The importance of the T cell in initiating and maintaining the chronic synovitis of rheumatoid arthritis. *Arthritis Rheum.* 1992;35:729–35.
- Yocum DE, Pincus T, Choy EHS, Scott DL, Richardson C, Emery P, et al. Cyclosporin in the treatment of severe rheumatoid arthritis and the emerging role of a microemulsion-based formulation (Neoral®). *Drugs.* 1995;50(Suppl.1).
- Sakuma S, Kato Y, Nishigaki F, Sasakawa T, Magari K, Miyata S, et al. FK506 potently inhibits T cell activation-induced TNF- $\alpha$  and IL-1 $\beta$  production in vitro by human peripheral blood mononuclear cells. *Br J Pharmacol.* 2000;130:1655–63.
- Inamura N, Hasimoto M, Nakahara K, Aoki H, Yamaguchi I, Kohsaka M. Immunosuppressive effect of FK506 on collagen-induced arthritis in rats. *Clin Immunol Immunopathol.* 1988;46:82–90.
- Miyahara H, Hotokebushi T, Arita C, Arai K, Sugioka Y, Takagishi K, et al. Comparative studies of the effects of FK506 and cyclosporin A on passively transferred collagen-induced arthritis in rats. *Clin Immunol Immunopathol.* 1991;60:278–88.
- Magari K, Miyata S, Nishigaki F, Ohkubo Y, Mutoh S, Goto T. Differential effects of FK506 and methotrexate on inflammatory cytokine levels in rat adjuvant-induced arthritis. *J Rheumatol.* 2003;30:2193–200.
- Hara M, Sugawara S, Hirose S, Uchida S, Irimajiri S, Kondo H, et al. Therapeutic effects of FK506 on patients with rheumatoid arthritis (in Japanese). *Inflamm Regen.* 2002;22:213–26.
- Kondo H, Abe T, Hashimoto H, Uchida S, Irimajiri S, Hara M, et al. Efficacy and safety of tacrolimus (FK506) in treatment of rheumatoid arthritis: a randomized, double-blind, placebo-controlled dose-finding study. *J Rheumatol.* 2004;31:243–51.
- Kawai S, Yamamoto K. Safety of tacrolimus, an immunosuppressive agent, in the treatment of rheumatoid arthritis in elderly patients. *Rheumatology.* 2006;45:441–4.
- Kawai S, Hashimoto H, Kondo H, Murasawa T, Kiuchi T, Abe T. Comparison of tacrolimus and mizoribine in a randomized, double-blind controlled study in patients with rheumatoid arthritis. *J Rheumatol.* 2006;33:2153–61.
- Yocum DE, Furst DE, Bensen WG, Burch FX, Borton MA, Mengle-Gaw LJ, et al. Safety of tacrolimus in patients with rheumatoid arthritis: long-term experience. *Rheumatology.* 2004;43:992–9.
- Arnett FC, Edworthy SM, Bloch DA, McShane DJ, Fries JF, Cooper NS, et al. The American Rheumatism Association 1987 revised criteria for the classification of rheumatoid arthritis. *Arthritis Rheum.* 1988;31:315–24.
- Felson DT, Anderson JJ, Boers M, Bombardier C, Chernoff M, Fried B, et al. The American College of Rheumatology preliminary core set of disease activity measures for rheumatoid arthritis clinical trials. *Arthritis Rheum.* 1993;36:729–40.
- Felson DT, Anderson JJ, Boers M, Bombardier C, Furst D, Goldsmith C, et al. American College of Rheumatology preliminary definition of improvement in rheumatoid arthritis. *Arthritis Rheum.* 1995;38:727–35.
- Maradit-Kremers H, Crowson CS, Nicola PJ, Ballman KV, Roger VL, Jacobsen SJ, et al. Increased unrecognized coronary heart disease and sudden deaths in rheumatoid arthritis: a population-based cohort study. *Arthritis Rheum.* 2005;52:402–11.
- Nicola PJ, Maradit-Kremers H, Roger VL, Jacobsen SJ, Crowson CS, Ballman KV, et al. The risk of congestive heart failure in rheumatoid arthritis: a population-based study over 46 years. *Arthritis Rheum.* 2005;52:412–20.
- Maradit-Kremers H, Nicola PJ, Crowson CS, Ballman KV, Gabriel SE. Cardiovascular death in rheumatoid arthritis: a population-based study. *Arthritis Rheum.* 2005;52:722–32.
- Singh N, Bonham A, Fukui M. Immunosuppressive-associated leukoencephalopathy in organ transplant recipients. *Transplantation.* 2000;69:467–72.



**Figure 2** Higher magnification of selected areas of finger four in patient 2 (also shown in fig 1, B3) demonstrating the non-homogeneous distribution of capillary morphology. A. Segment with normalised pattern. B. Elongated, tortuous, partly enlarged capillaries with some thrombosis. Informed consent was obtained for publication of this figure.

Our findings support the reversibility of the microvascular changes in patients with SSc and MCTD on a short time interval. Intense immunosuppression seems to have an impact on vascular remodelling in patients with SSc and MCTD.

**M Aschwanden,<sup>1</sup> T Daikeler,<sup>2</sup> K A Jaeger,<sup>1</sup> C Thalhammer,<sup>1</sup> A Gratwohl,<sup>3</sup> M Matucci-Cerinic,<sup>4</sup> A Tyndall<sup>2</sup>**

<sup>1</sup> Department of Angiology, University Hospital, Basel, Switzerland; <sup>2</sup> Department of Rheumatology, University Hospital, Basel, Switzerland; <sup>3</sup> Department of Haematology, University Hospital, Basel, Switzerland; <sup>4</sup> Department of Internal Medicine, Section of Rheumatology, University of Florence, Florence, Italy

**Correspondence to:** M Aschwanden, Department of Angiology, University Hospital Basel, Petersgraben 4, CH-4031 Basel, Switzerland; aschwandenm@uhbs.ch

**Competing interests:** None.

MA and TD contributed equally to this work.

Accepted 1 November 2007

*Ann Rheum Dis* 2008;**67**:1057–1059. doi:10.1136/ard.2007.082008

## Clinical value of second- and third-generation assays of anti-cyclic citrullinated peptide antibodies in rheumatoid arthritis

Anti-cyclic citrullinated peptide (CCP) antibodies are useful for the diagnosis of rheumatoid arthritis (RA) because of their higher specificity.<sup>1</sup> First-generation anti-CCP (CCP1) ELISAs were based on synthetic peptides derived from human filaggrin.<sup>2</sup> The second-generation anti-CCP (CCP2) test, which contains epitopes selected from libraries of citrullinated peptides, performs better than anti-CCP1.<sup>3,4</sup> Recently, a third-generation anti-CCP (CCP3) test was introduced. We compare the performance of the anti-CCP3 test with that of two anti-CCP2 tests, and assess their value in diagnosing RA.

A total of 502 participants were studied: 227 patients fulfilling the American College of Rheumatology criteria for RA,<sup>5</sup> 173 patients with non-RA autoimmune diseases (details are indicated in the footnote of table 1) and 102 healthy controls. The mean (SD) age of the patients was 60.2 (13.1) years and 53.8 (15.8) years, female patients comprised 78.4%

## REFERENCES

- Kahaleh MB.** Vascular involvement in systemic sclerosis (SSc). *Clin Exp Rheumatol* 2004;**22**(Suppl 33):19–23.
- Cipriani P, Guiducci S, Miniati I, Cinelli M, Urbani S, Marrelli A, et al.** Impairment of endothelial cell differentiation from bone marrow-derived mesenchymal stem cells: new insight into the pathogenesis of systemic sclerosis. *Arthritis Rheum* 2007;**56**:1994–2004.
- Baron M, Bell M, Bookman A, Buchignani M, Dunne J, Hudson M, et al.** Office capillaroscopy in systemic sclerosis. *Clin Rheumatol* 2007;**26**:1268–74.
- Cutolo M, Pizzorni C, Sulli A, Accardo S.** Nailfold videocapillaroscopy assessment of microvascular damage in systemic sclerosis. *J Rheumatol* 2000;**27**:155–60.
- Maricq HR, Harper FE, Khan MM, Tan EM, LeRoy EC.** Microvascular abnormalities as possible predictors of disease subsets in raynaud phenomenon and early connective tissue disease. *Clin Exp Rheumatol* 1983;**1**:195–205.
- Vonk MC, Marjanovic Z, van den Hoogen FH, Zohar S, Schattenberg AV, Fibbe WE, et al.** Long-term follow-up results after autologous haematopoietic stem cell transplantation for severe systemic sclerosis. *Ann Rheum Dis* 2006;**67**:98–104.
- Filaci G, Cutolo M, Scudeletti M, Castagneto C, Derchi I, Garrossi R, et al.** Cyclosporin A and liprost treatment of systemic sclerosis: clinical results and interleukin-6 serum changes after 12 months of therapy. *Rheumatology* 1999;**38**:992–6.

and 89.0% and the mean (SD) disease duration was 10.3 (8.8) years and 9.1 (9.0) years in the RA group and non-RA group, respectively. One hundred and two healthy controls were also studied. Mean (SD) age was 39.4 (7.9) years and 40.2% were female.

Patients underwent serological tests for anti-CCP antibodies (Inova Diagnostics, CA, USA: anti-CCP3; Axis-Shield Diagnostics, Scotland, UK: anti-CCP2a and Inova Diagnostics: anti-CCP2i), rheumatoid factor (RF) by nephelometry (Mitsubishi Kagaku Iatron, Tokyo, Japan), RF-IgM by ELISA (Inova Diagnostics), anti-agalactosyl IgG antibody (CARF) (Sanko Junyaku, Tokyo, Japan) and RF-IgG (Sanko Junyaku). The cut-off values used for all tests were those specified by the manufacturer. Research ethics committee approval was obtained and all participants gave informed consent.

Table 1 shows the sensitivity and specificity of the serological tests. Figure 1 shows the relationship between the sensitivity and specificity of these tests at different cut-off values in receiver operating characteristic (ROC) curves. The ROC curves show three groups of tests; the anti-CCP tests, the RF/RF-IgM/CARF tests and the RF-IgG test. The area under the curve (AUC) for the anti-CCP tests is almost identical. We compared the anti-CCP antibody titres measured by these three anti-CCP tests, and noted a significant correlation between every test pair

## Letters

**Table 1** Sensitivity and specificity of serological tests in patients with and without\* rheumatoid arthritis (RA)

	Sensitivity (%)	Specificity (%)	PPV (%)	NPV (%)
CCP2a	76.5	86.1	87.8	73.8
CCP2i	70.0	91.3	91.4	69.9
CCP3	77.1	86.1	87.9	74.1
RF	73.2	69.8	75.6	67.0
RF-IgM	80.6	56.1	70.7	68.8
CARF	80.0	65.9	75.3	71.7
RF-IgG	11.7	93.2	69.4	44.2

\*Non-RA includes systemic lupus erythematosus (n = 66), systemic sclerosis (n = 28), Sjögren's syndrome (n = 33), mixed connective tissue disease (n = 15), polymyalgia rheumatica (n = 6), polyomyositis/dermatomyositis (n = 8), Behçet's syndrome (n = 4), adult-onset Still's disease (n = 3), antiphospholipid antibody syndrome (n = 1), psoriatic arthritis (n = 1), Churg-Strauss syndrome (n = 1), polyarthritis nodosa (n = 1), Wegener's granulomatosis (n = 1), pustulosis palmoplantaris (n = 1), Hashimoto's disease (n = 3) and autoimmune haemolytic anaemia (n = 1). NPV, negative predictive value; PPV, positive predictive value; RF, rheumatoid factor.

(CCP3 vs CCP2a,  $r_s = 0.860$ ,  $p < 0.01$ ; CCP3 vs CCP2i,  $r_s = 0.860$ ,  $p < 0.01$ ; CCP2a vs CCP2i,  $r_s = 0.935$ ,  $p < 0.01$  by Spearman's rank test). In healthy controls, anti-CCP2i, anti-CCP3 and RF were positive in 1.0%, 6.9% and 5.9%, respectively. The positive rate of anti-CCP3 test was slightly higher than that of the anti-CCP2i.

Recent studies reported in Belgium<sup>6,7</sup> and in Italy<sup>8</sup> demonstrated that the third-generation anti-CCP test had no better diagnostic performances than the second-generation assays in patients with RA. Our results also suggest that the performance of the newly introduced anti-CCP3 test does not exceed that of the anti-CCP2 tests in a Japanese population. However, the second- and third-generation anti-CCP tests are powerful aids in the diagnosis of RA in comparison with traditional serological tests such as rheumatoid factors.

**K Kitahara,<sup>1,2</sup> K Takagi,<sup>1</sup> Y Kusunoki,<sup>1</sup> S Nishio,<sup>1</sup> T Nozaki,<sup>3</sup> H Inomata,<sup>3</sup> M Takei,<sup>3</sup> S Sawada,<sup>3</sup> S Kawai<sup>1</sup>**

<sup>1</sup> Division of Rheumatology, Department of Internal Medicine, Toho University School of Medicine, Tokyo, Japan; <sup>2</sup> Department of Immunology, Toho University School of Medicine, Tokyo, Japan; <sup>3</sup> Division of Haematology and Rheumatology, Department of Medicine, Nihon University School of Medicine, Tokyo, Japan

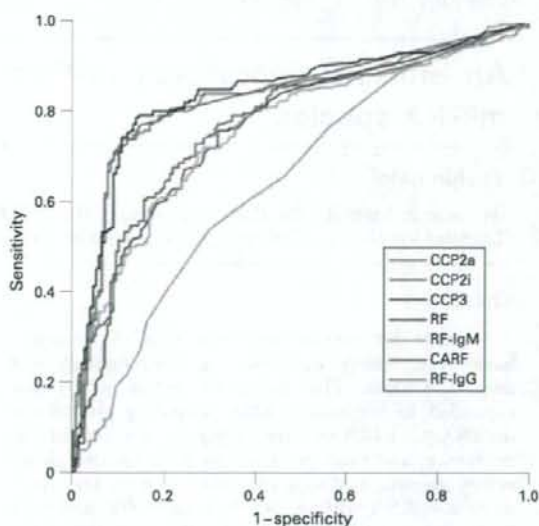
**Correspondence to:** Professor S Kawai, Division of Rheumatology, Toho University School of Medicine, 6-11-1 Omori-Nishi, Ota-ku, Tokyo 143-8541, Japan; skawai@mod.toho-u.ac.jp

**Acknowledgements:** We thank Ms Sonoko Sakurai for secretarial assistance.

**Funding:** This work was supported in part by the project research grant No 18-5 of Toho University School of Medicine to KK, by a research grant from the Japanese Ministry of Health, Labour and Welfare to SK and by research grants from SRL, Inc, Tokyo, Japan to SK and SS. The funding sponsors took no part in this study.

**Competing interests:** None.

**Ethics approval:** Research ethics committee approval was obtained.



**Figure 1** Receiver operating characteristic curves of anti-cyclic citrullinated peptide (anti-CCP) tests, rheumatoid factor (RF), RF-IgM, CARF and RF-IgG. Mean (SE) area under the curve: anti-CCP2a test, 0.83 (0.02); anti-CCP2i test, 0.83 (0.02); anti-CCP3 test, 0.84 (0.02); RF, 0.76 (0.03); RF-IgM, 0.76 (0.02); CARF, 0.78 (0.02); RF-IgG, 0.65 (0.03).

Accepted 30 November 2007

*Ann Rheum Dis* 2008;67:1059–1060. doi:10.1136/ard.2007.082826

## REFERENCES

- Nishimura K, Sugiyama D, Kogata Y, Tsuji G, Nakazawa T, Kawano S, et al. Meta-analysis: diagnostic accuracy of anti-cyclic citrullinated peptide antibody and rheumatoid factor for rheumatoid arthritis. *Ann Intern Med* 2007;146:797–808.
- Zendman AJ, van Venrooij WJ, Pruijn GJ. Use and significance of anti-CCP autoantibodies in rheumatoid arthritis. *Rheumatology (Oxford)* 2006;45:20–5.
- van Gaalen FA, Visser H, Huizinga TW. A comparison of the diagnostic accuracy and prognostic value of the first and second anti-cyclic citrullinated peptides (CCP1 and CCP2) autoantibody tests for rheumatoid arthritis. *Ann Rheum Dis* 2005;64:1510–2.
- Vallbracht I, Helmke K. Additional diagnostic and clinical value of anti-cyclic citrullinated peptide antibodies compared with rheumatoid factor isotypes in rheumatoid arthritis. *Autoimmun Rev* 2005;4:389–94.
- Arnett FC, Edworthy SM, Bloch DA, McShane DJ, Fries JF, Cooper NS, et al. The American Rheumatism Association 1987 revised criteria for the classification of rheumatoid arthritis. *Arthritis Rheum* 1988;31:315–24.
- Lutteri L, Malaise M, Chapelle JP. Comparison of second- and third-generation anti-cyclic citrullinated peptide antibodies assays for detecting rheumatoid arthritis. *Clin Chim Acta* 2007.
- Coenen D, Verschuren P, Westhovens R, Bossuyt X. Technical and diagnostic performance of 6 assays for the measurement of citrullinated protein/peptide antibodies in the diagnosis of rheumatoid arthritis. *Clin Chem* 2007;53:498–504.
- Bizzaro N. Antibodies to citrullinated peptides: a significant step forward in the early diagnosis of rheumatoid arthritis. *Clin Chem Lab Med* 2007;45:150–7.



## An efficient fluorescent method for selective detection of mature miRNA species

Yoshio Kato<sup>1</sup>\*

<sup>1</sup>Research Institute for Cell Engineering (RICE), National Institute of Advanced Industrial Science and Technology (AIST), Central 4, 1-1-1, Higashi, Tsukuba, 305-8562, Japan

### ABSTRACT

Methods for specific detection of RNA molecules have been widely developed in biotechnology and diagnostic field. The diagnostic target is recently expanded to non-coding RNA, including microRNAs (miRNAs). miRNAs are initially synthesized as precursor, and then processed to their physiologically active species, miRNAs. Detection of only the active mature miRNA without interference of the precursor forms is extremely important for their functional and physiological significance. We developed a novel fluorescent DNA probe to detect the mature miRNA with high specificity. Since the probe discriminates the mature miRNA from the precursor without electrophoretic separation, it should be useful for real-time detection of the mature miRNAs.

### INTRODUCTION

MiRNAs are a class of small regulatory RNAs that post-transcriptionally regulate gene expression through sequence-specific interactions with the 3' untranslated regions of target mRNA. Some miRNAs show localized expression patterns with limited tissue, cell, and spatio-temporal specificities. Moreover, one third of all mammalian mRNAs seem to be under miRNA regulation. Hundreds of miRNAs have been found in various organisms, and many miRNAs are evolutionarily conserved, suggesting their important roles in biological processes.

The miRNA pathway begins with the transcription of a primary miRNA by RNA polymerase II from miRNA genes. It contains a typical stem-loop structure that is processed and releases a generally 70 nt precursor miRNA (pre-miRNA). The pre-miRNA is further processed by a ribonuclease, Dicer, to yield the 22 nt mature miRNA, which is then incorporated into the RNA-induced silencing complex (RISC). RISC-bound miRNA directs the cleavage and/or the translational repression of mRNAs, thus providing a post-transcriptional control of gene expression.

Characterization of miRNAs in different biological samples can provide clues on their physiological functions. However, knowledge regarding the characterization and expression patterns of miRNAs is currently restricted to a subset of known miRNAs. This is due in part to limitations of current miRNA detection assays.

The technical problems for detection of miRNAs in cellular RNAs are often caused by their small size. Northern analysis is still the standard way for the detection of miRNA levels since the analysis clarifies the size of RNAs, and discriminates the mature RNAs from their precursors. Even though this technique is highly sensitive and quantitative, it is time consuming and, often needs radio-isotopes. Although RT-PCR has the advantage of simpler detection, but it is still ambiguous and does not distinguish between the mature and precursor miRNA.

Of note, it is unavoidable that a probe against a mature RNA also hybridizes to and detects the precursor RNA, since the precursor always include the sequence of the mature RNA, suggesting that such probes can not be used to determine the subcellular localization of mature RNAs.

To overcome this problem, we developed a novel method designated as "molecular spotter" probe for detection of mature miRNAs. The probe is based on molecular beacon approach (1) using a single-stranded DNA molecule that forms a stem and loop structure. The probe emits fluorescence only in the presence of target mature RNAs, but not in the presence of their precursors.

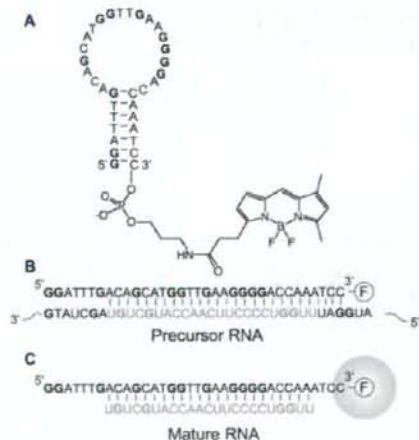


Fig. 1 Structure of the molecular spotter probe against miR133. (A) 3' terminus of the probe is covalently linked with BODIPY-FL (F), which is quenched by vicinal guanine. (B) The probe hybridizes to the precursor but not fluoresces due to the adjacent guanine quencher (G) in the precursor. (C) Only when the mature RNA is hybridized, the probe emits fluorescence.

## RESULTS AND DISCUSSION

The principle of molecular spotter probes is based on a molecular beacon probe using a single-stranded nucleic acid molecule that acquires a stem and a loop structure. The loop portion of the molecule is a probe sequence that is complementary to a predetermined sequence in a target miRNA. In the molecular spotter probe, the sequences of either part of the stem are selectively designed to be complementary to the sequences of precursor but not that of mature miRNA.

The cytosine base at one end of the probe is covalently linked with 4,4-difluoro-5,7-dimethyl-4-bora-3a,4a-diaza-s-indacene-3-propionic acid (BODIPY<sup>®</sup>-FL) (Molecular Probes). The fluorescent emission from the probe modified with BODIPY-FL can be diminished after hybridization with adjacent natural guanine bases (2).

To test the molecular spotter approach, we designed the probe for a specific miRNA, miR133 (Fig. 1A). The probe possesses a complementary sequence including 3'-end labeled-cytosine which is complementary to the guanine in the pre-miR133 but not in the mature miR133. The probe itself did not emit fluorescent under the condition with 100 mM NaCl and 10 mM Tris-HCl (pH 7.5) (Fig. 1A).

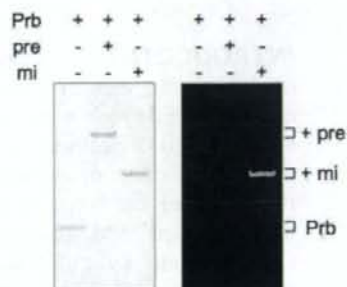
When the probe was hybridized with pre-miR133, its fluorescence was quenched by the guanine bases in the pre-miR133 with complementarity to the probe (Fig. 1B). Hybridization of the probe with a mature miR133 which have no complementary guanine was resulted in fluorescence. (Fig. 1C). Oligo-deoxyribonucleotides that possess the sequence of miR133 were used instead of RNAs in this article.

Since the fluorescence characteristic of BODIPY-FL, which the excitation maximum is 500 nm and the emission maximum is 515 nm, is similar to one of typical fluorescein dye, the molecular spotter probe can be measured by conventional fluorescent detector settings. For example, the fluorescence from 2  $\mu$ l of the solution that contained 200 nM of both probe and miR133 was detected using fluorospectrometer (Nano-drop Technologies). The hybridization was readily detectable within 5 min after mixing due to the fast kinetics in liquid phase.

To confirm the structures that can be formed by the hybridization of our probe and the targets, we carried out gel mobility shift assay. The mixture of the probe and the mature miR133 or pre-miR133 was subjected to the non-denaturing polyacrylamide gel electrophoresis (PAGE) at 4°C (Fig. 2). As a result of visible staining of nucleic acids by Mupid-blue (3), all conformers shown in Figure 1 were observed according to their molecular weight (Fig. 2, left). On the other hand, when we scanned the same gel by Fluoro-Imager (Molecular Dynamics), only the complex with the probe and miR-133 resulted in highly fluorescent band, instead others did not (Fig. 2, right). It is clear that the molecular spotter probe can hybridize to both the mature and precursor miRNA sequences, but the

fluorophore of the probe is quenched by its adjacent guanine base.

Since miR-133 is identified as a muscle specific miRNA by enhancing the proliferation of myoblasts, miR-133 is possible to be a marker molecule in response to the myogenic differentiation. When we mixed the probe with the extract from mouse C2C12, which is a skeletal muscle myogenic progenitor cell line, we could detect the fluorescence from the differentiated cells. Further optimization of the experimental condition is necessary for the specific detection of mature miR-133 in living cells, as reported previously in case of molecular beacon (4).



**Fig. 2** Gel mobility shift assay in native PAGE. Nucleic acids were stained by Mupid-blue (left). After the probe (Prb) was hybridized with equimolar mature miR133 (+ mi) or pre-miR133 (+ pre), the mobility of the probe was shifted in accordance with the molecular weight. The same gel was scanned by Fluoro-Imager (right). Only when mature miR133 was hybridized with the probe, fluorescence of the probe was significantly activated, indicating that the complex of the probe and pre-miR133 was quenched due to adjacent guanine in pre-miR133.

## CONCLUSION

In comparison with the molecular beacon, since the natural guanine base is the quencher of BODIPY-FL fluorophore, the additional quencher molecules such as Dabcyl are not necessary. Direct fluorescent detection without any enzymatic reactions allows real-time quantitative monitoring of the target RNAs.

## REFERENCES

1. Tyagi, S., Kramer, F.R. (1996) *Nat. Biotechnol.*, **14**, 303-308.
2. Kurata, S., Kanagawa, T., Yamada, K., Torimura, M., Yokomaku, T., Kamagata, Y., Kurane, R. (2001) *Nucleic Acids Res.*, **29**, e34.
3. Uddin, M.K., Kato, Y., Takagi, Y., Mikuma, T., Taira, K. (2004) *Nucleic Acids Res.*, **32**, 4618-4629.
4. Cui, Z.Q., Zhang, Z.P., Zhang, X.E., Wen, J.K., Zhou, Y.F., Xie, W.H. (2005) *Nucleic Acids Res.*, **33**, 3245-3252.

\*Corresponding author. E-mail: y-kato@aist.go.jp

## DETECTION OF ACTIVE MICRO-RNA SPECIES USING FLUORESCENT DNA PROBE

Kittiphong Paiboonskuwong, Yoshio Kato\*

Research Institute for Cell Engineering (RICE), National Institute of Advanced  
Industrial Science & Technology (AIST),  
1-1-1 Higashi, Tsukuba, 305-8562, JAPAN

\* y-kato@aist.go.jp

**INTRODUCTION.** Specific detection of nucleic acid molecules is widely used in basic and diagnostic biological research. Fluorescently labelled oligonucleotide probes are commonly employed for this purpose and have been expanded to detection of non-coding RNAs. Micro-RNAs (miRNAs) represent a class of non-coding small RNAs that play important roles in regulation of fundamental cellular processes such as cell proliferation, cell differentiation and apoptosis through modulation of gene expression. Characterization of miRNAs and their expression levels in different biological samples can provide clues on their physiological functions.

Generally, miRNAs are initially synthesized as precursor, and then processed to their physiologically active species, miRNAs. Detection of only the active mature miRNA without interference of the precursor forms is extremely important for their functional and physiological significance. However, most of the current techniques for the miRNA detection lack such selectivity and sensitivity. In this study, we have developed a novel fluorescent probe "molecular spotter" that emits fluorescence only in the presence of target mature RNAs and hence provide a method for selective detection of the mature miRNAs.

**RESULTS.** The probe is based on molecular beacon approach (1) using a single-stranded DNA molecule that forms a stem and loop structure. A terminus of the probe is labeled with BODIPY-FL (Molecular Probes) of which fluorescence is quenched by the adjacent guanine base (2). The loop portion of the molecule is a probe sequence that is complementary to a predetermined sequence in a target miRNA. When the probe hybridizes with precursor miRNA, its fluorescence is quenched by the guanine in the precursor with complementarity to the probe. Hybridization of the probe with a mature miRNAs (no complementary guanine) results in fluorescent emission.

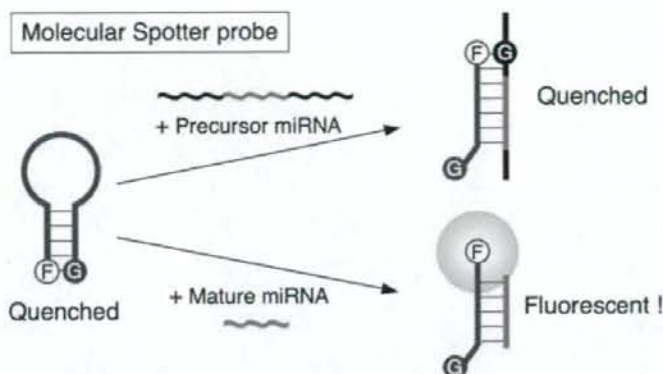


Fig. 1. Schematic representation of molecular spotter probe. One end of the probe is cytosine covalently linked with a fluorophore BODIPY-FL (F), which is quenched by the adjacent guanine base (G) through the base-pairing. The probe is designed to be quenched due to the guanine base in the precursor RNA. Only when the mature RNA is hybridized, the probe emits fluorescence.

**DISCUSSION.** The molecular spotter probe can hybridize to both the mature and precursor miRNA sequences; the fluorophore of the probe by itself is quenched by its complementary pairing to the guanine base. Hence, the elimination of the probe

from the sample solution is not needed for the specific detection of target RNA. In comparison with the molecular beacon, since the natural guanine base is the quencher of BODIPY-FL fluorophore, the additional quencher molecules such as Dabcyl are not necessary. Direct fluorescence detection without any enzymatic reactions allows real-time quantitative monitoring of the target RNAs.

**ACKNOWLEDGEMENT.** This work is supported by KAKENHI.

#### REFERENCES.

1. Tyagi, S., and Kramer, F.R. (1996) *Nat. Biotechnol.* 14, 303-308
2. Kurata, S., Kanagawa, T., Yamada, K., Torimura, M., Yokomaku, T., Kamagata, Y., and Kurane, R. (2001) *Nucleic Acids Res.* 29, e34