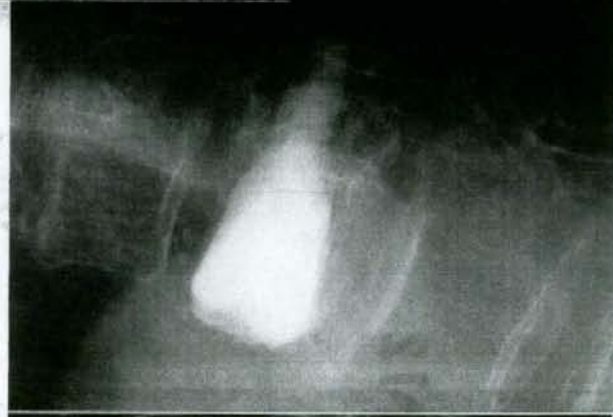




術前

改良Frankel C1



術後1ヶ月



術後34ヶ月

改良Frankel E



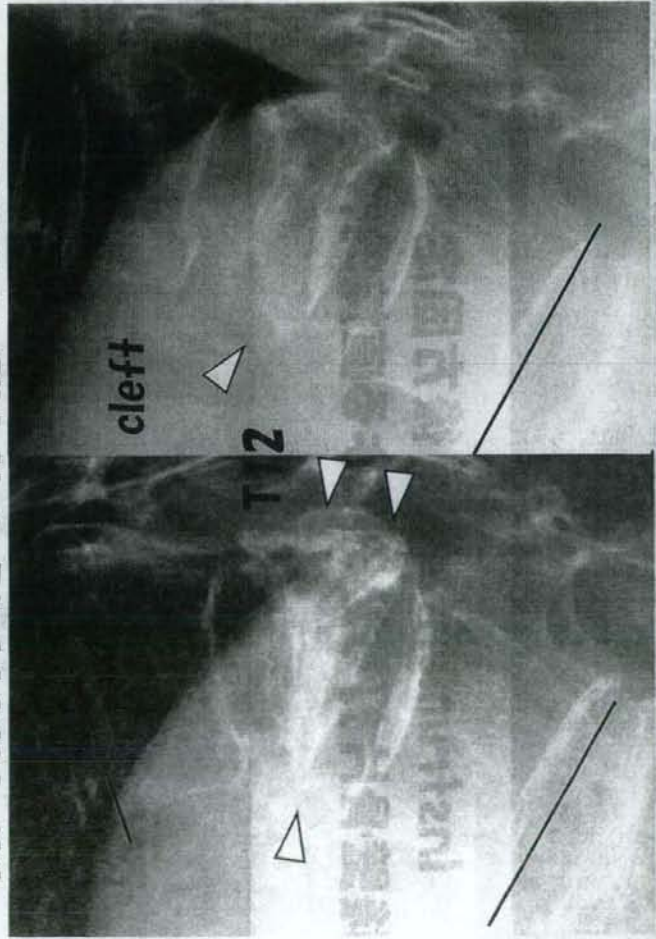
遅発性脊髄麻痺の発生要因として

椎体後壁の脊柱管内突出

局所後弯

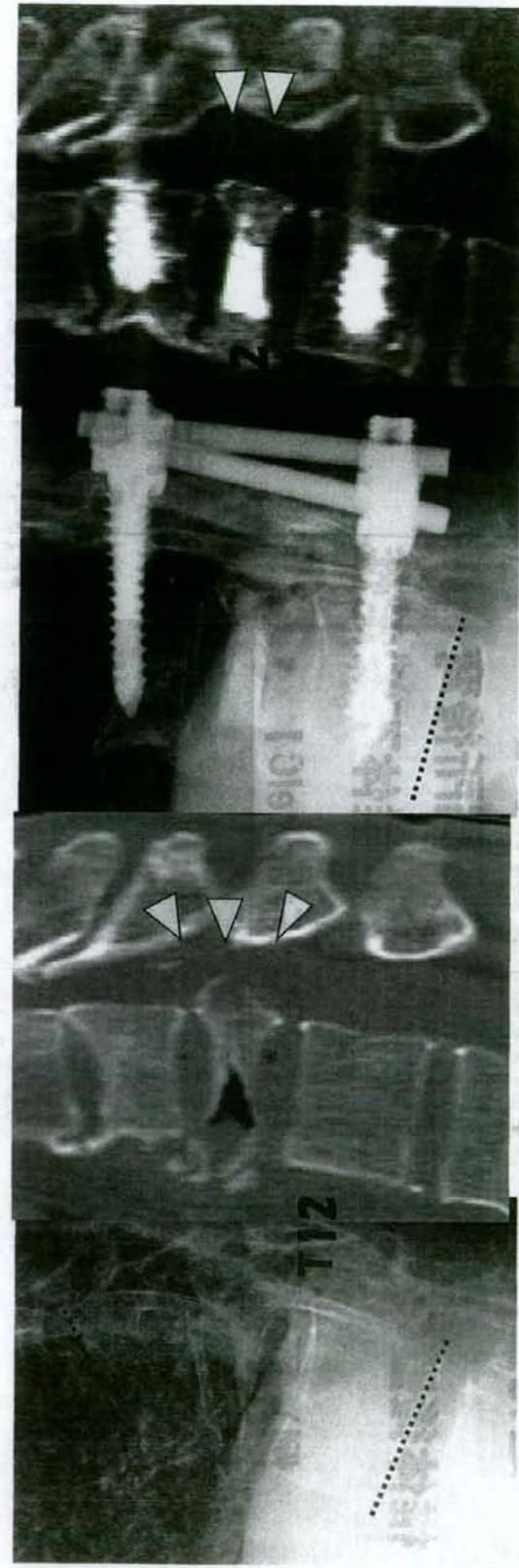
椎体不安定性

例) 両側下垂足 歩行不能 FrankelC1



椎体形成術単独で
↑ 低侵襲性に
治療可能な場合がある

Instrumentation 後方固定
 後壁骨片打ち込みによる直接的神経除圧
 を椎体形成術に併用する



術前

術前CT

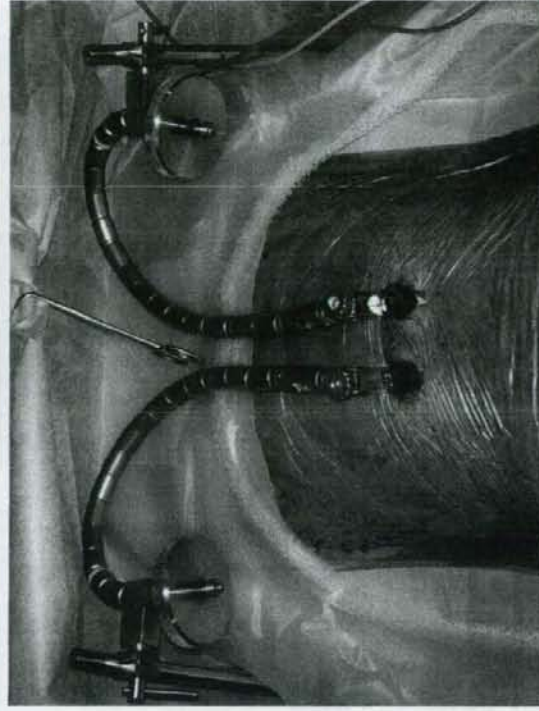
術後1年

後壁打ち込み除圧
 術後4ヵ月

非経皮的手技
全身麻酔を要する
術後72時間の安静が必要

しかし、

- 低侵襲
- 安全で臨床的に有用
- CPCに適した方法



■適応と限界の見極め

■より効果的に変形矯正を行う工夫

■さらなる低侵襲化

研究成果の刊行に関する一覧表

2008年

発表者氏名	論文タイトル名	発表誌名	巻号	ページ	出版年
Fujita N, Imai J, Suzuki T, Yamada M, Ninomiya K, Miyamoto K, Iwasaki R, Morioka H, Matsumoto M, Chiba K, Watanabe S, Suda T, Toyama Y, Miyamoto T.	Vascular endothelial growth factor-A is a survival factor for nucleus pulposus cells in the intervertebral disc.	Biochem Biophys Res Commun	372	367-372	2008
Fukui M, Chiba K, Kawakami M, Kikuchi S, Konno S, Miyamoto M, Seichi A, Shimamura T, Shirado O, Taguchi T, Takahashi K, Takeshita K, Tani T, Toyama Y, Wada E, Yonenobu K, Tanaka T, Hirota Y	Japanese Orthopaedic Association Back Pain Evaluation Questionnaire. Part 3. Validity study and establishment of the measurement scale : Subcommittee on Low Back Pain and Cervical Myelopathy Evaluation of the Clinical Outcome Committee of the Japanese Orthopaedic Association, Japan.	J Orthop Sci	13	173-179	2008
Hikata T, Takaishi H, Takito J, Hakozaki A, Furukawa M, Uchikawa S, Kimura T, Okada Y, Matsumoto M, Yoshimura A, Nishimura R, Reddy SV, Asahara H,	PIAS3 negatively regulates RANKL-mediated osteoclastogenesis directly in osteoclast precursors and indirectly via osteoblasts.	Blood			2008

Toyama	Y					
Hirose	Y,	A functional polymorphism in THBS2 that affects alternative splicing and MMP binding is associated with lumbar-disc herniation.	Am J Hum Genet	82.	1122-1129	2008
Chiba	K,					
Karasugi	T,					
Nakajima	M,					
Kawaguchi	Y,					
Mikami	Y,					
Furuichi	T,					
Mio	F,					
Miyake	A,					
Miyamoto	T,					
Ozaki	K,					
Takahashi	A,					
Mizuta	H,					
Kubo	T,					
Kimura	T,					
Tanaka	T,					
Toyama	Y,					
Ikegawa	S.					
Horiuchi	K,	Growth suppression and apoptosis induction in synovial sarcoma cell lines by a novel NF-kappaB inhibitor, dehydroxymethylepoxyquinomicin (DHMEQ).	Cancer Lett	272	336-344	2008
Morioka	H,					
Nishimoto	K,					
Suzuki	Y,					
Susa	M,					
Nakayama	R,					
Kawai	A,					
Sonobe	H,					
Takaishi	H,					
Ozaki	T,					
Yabe	H,					
Umezawa	K,					
Toyama	Y					
Horiuchi	K,	Posttranslational regulation of cell-surface colony-stimulating factor-1.	Crit Rev Immunol	28	215-227	2008
Toyama	Y					
Kobayashi	S,	Association of STAT4 with susceptibility to rheumatoid arthritis and systemic lupus erythematosus in the Japanese population.	Arthritis Rheum	58	1940-1946	2008
Ikari	K,					
Kaneko	H,					
Kochi	Y,					
Yamamoto	K,					
Shimane	K,					
Nakamura	Y,					
Toyama	Y,					
Mochizuki	T,					
Tsukahara	S,					
Kawaguchi	Y,					
Terai	C,					
Hara	M,					

Tomatsu T, Yamanaka H, Horiuchi T, Tao K, Yasutomo K, Hamada D, Yasui N, Inoue H, Itakura M, Okamoto H, Kamatani N, Momohara S.					
Matsumoto M, Chiba K, Toyama Y, Takeshita K, Seichi A, Nakamura K, Arimizu J, Fujibayashi S, Hirabayashi S, Hirano T, Iwasaki M, Kaneoka K, Kawaguchi Y, Ijiri K, Maeda T, Matsuyama Y, Mikami Y, Murakami H, Nagashima H, Nagata K, Nakahara S, Nohara Y, Oka S, Sakamoto K, Saruhashi Y, Sasao Y, Shimizu K, Taguchi T, Takahashi M, Tanaka Y, Tani T, Tokuhashi Y, Uchida K, Yamamoto K, Yamazaki M, Yokoyama T,	Surgical results and related factors for ossification of posterior longitudinal ligament of the thoracic spine: a multi-institutional retrospective study.	Spine	33	1034-1041	2008

Yoshida M, Nishiwaki Y.					
Matsumoto M, Watanabe K, Tsuji T, Ishii K, Takaishi H, Nakamura M, Toyama Y, Chiba K.	Risk factors for closure of lamina after open-door laminoplasty.	J Neurosurg Spine	9	530-537	2008
Miyake A, Nishimura G, Futami T, Ohashi H, Chiba K, Toyama Y, Furuichi T, Ikegawa S.	A compound heterozygote of novel and recurrent DTDST mutations results in a novel intermediate phenotype of Desbuquois dysplasia, diastrophic dysplasia, and recessive form of multiple epiphyseal dysplasia.	J Hum Genet	53	764-768	2008
Morisue H, Matsumoto M, Chiba K, Matsumoto H, Toyama Y, Aizawa M, Kanzawa N, Fujimi TJ, Uchida H, Okada I.	Novel apatite fiber scaffolds can promote three-dimensional proliferation of osteoblasts in rodent bone regeneration models.	J Biomed Mater Res A			2008
Nagoshi N, Shibata S, Kubota Y, Nakamura M, Nagai Y, Satoh E, Morikawa S, Okada Y, Mabuchi Y, Katoh H, Okada S, Fukuda K, Suda T, Matsuzaki Y, Toyama Y, Okano H.	Ontogeny and multipotency of neural crest-derived stem cells in mouse bone marrow, dorsal root ganglia, and whisker pad.	Cell Stem Cell	2	392-403	2008
Ohta S, Ueda Y, Yaguchi M, Matsuzaki Y.	Isolation and characterization of dendritic cells from common marmosets for preclinical cell therapy studies.	Immunology	123	566-574	2008

Nakamura M, Toyama Y, Tanioka Y, Tamaoki N, Nomura T, Okano H, Kawakami Y, Toda M.					
Renault-Mihara F, Okada S, Shibata S, Nakamura M, Toyama Y, Okano H.	Spinal cord injury: emerging beneficial role of reactive astrocytes' migration.	Int J Biochem Cell Biol	40	1649-1653	2008
Takagi T, Nakamura M, Yamada M, Hikishima K, Momoshima S, Fujiyoshi K, Shibata S, Okano HJ, Toyama Y, Okano H.	Visualization of peripheral nerve degeneration and regeneration: Monitoring with diffusion tensor tractography.	Neuroimage			2008
Sato S, Kimura A, Ozdemir J, Asou Y, Miyazaki M, Jinno T, Ae K, Liu X, Osaki M, Takeuchi Y, Fukumoto S, Kawaguchi H, Haro H, Shinomiya K, Karsenty G, Takeda S.	The distinct role of the Runx proteins in chondrocyte differentiation and intervertebral disc degeneration: Findings in murine models and in human disease.	Arthritis Rheum	58	2764-2775	2008
Shimizu S, Asou Y, Itoh S, Chung UI, Kawaguchi H, Shinomiya K, Muneta T.	Prevention of cartilage destruction with intraarticular osteoclastogenesis inhibitory factor/osteoprotegerin in a murine model of osteoarthritis.	Arthritis Rheum	56	3358-3365	2007

Fukui M, Chiba K, Kawakami M, Kikuchi S, Konno S, Miyamoto M, Seichi A, Shimamura T, Shirado O, Taguchi T, Takahashi K, Takeshita K, Tani T, Toyama Y, Wada E, Yonenobu K, Tanaka T, Hirota Y.	Japanese Orthopaedic Association Back Pain Evaluation Questionnaire. Part 3. Validity study and establishment of the measurement scale : Subcommittee on Low Back Pain and Cervical Myelopathy Evaluation of the Clinical Outcome Committee of the Japanese Orthopaedic Association, Japan.	J Orthop Sci	13	173-179	2008
Hatashita S, Sekiguchi M, Kobayashi H, Konno S, Kikuchi S.	Contralateral neuropathic pain and neuropathology in dorsal root ganglion and spinal cord following hemilateral nerve injury in rats.	Spine	33	1344-1351	2008
Kato K, Kikuchi S, Konno S, Sekiguchi M.	Participation of 5-hydroxytryptamine in pain-related behavior induced by nucleus pulposus applied on the nerve root in rats.	Spine	33	1330-1336	2008
Sugioka T, Hayashino Y, Konno S, Kikuchi S, Fukuhara S.	Predictive value of self-reported patient information for the identification of lumbar spinal stenosis.	Fam Pract	25	237-244,	2008
Sekiguchi M, Shirasaka M, Konno S, Kikuchi S.	Analgesic effect of percutaneously absorbed non-steroidal anti-inflammatory drugs: an experimental study in a rat acute inflammation model.	BMC Musculoskeletal Disord	9	15	2008
Hiyama A, Mochida J, Omi H, Serigano K, Sakai D.	Cross talk between Smad transcription factors and TNF-alpha in intervertebral disc degeneration.	Biochem Biophys Res Commun	369	679-685,	2008
Hiyama A, Mochida J, Sakai D.	Stem cell applications in intervertebral disc repair.	Cell Mol Biol (Noisy-le-grand)	54	24-32	2008

Katsuno R, Hasegawa T, Iwashina T, Sakai D, Mikawa Y, Mochida J.	Age-related effects of cocultured rat nucleus pulposus cells and macrophages on nitric oxide production and cytokine imbalance.	Spine	33	845-849	2008
川崎 元敬, 泉 仁, 池本 竜則, 武政 龍一, 谷口 慎一郎, 谷 俊一	悪性腫瘍と鑑別を要し脊髄麻痺をきたした化膿性脊椎炎の2症例	西日本脊椎研究会誌 (0287-1092)	34(1)	17-22	2008
武政 龍一	【腰痛のリハビリテーション】腰痛を呈する疾患とその治療 腰椎分離・分離すべり症	MEDICAL REHABILITATION	98	149-155	2008
池本 竜則, 谷 俊一, 谷口 慎一郎, 武政 龍一, 池内 昌彦	2 度の前方アプローチによる手術を要した腰椎感染症の2例	中部日本整形外科学会雑誌	51(5)	917-918	2008