

ersburg, Maryland) was measured with a liquid scintillation counter.

Statistical Analysis

All data were expressed as means \pm SEM. Statistical differences between two groups were determined with Student *t* test. Statistical differences among more than three groups were determined with a one-way analysis of variance (ANOVA) or a repeated ANOVA followed by the Bonferroni multiple comparison test; $p < .05$ was regarded as statistically significant.

Results

Effect of Leu-Ile on METH-Induced Increase in GDNF Levels

Levels of GDNF expression induced by Leu-Ile (.037, .37, 3.7, and 37 μ g/mL) were determined in the cultured neurons with the EIA method. The GDNF levels were significantly increased 24 hours after the addition of Leu-Ile (.37 μ g/mL) resulting in a bell-shaped dose response curve compared with the control group [$F(4,25) = 8.895$, $p < .05$, one-way ANOVA] (Figure 2A). Therefore, a dose of .37 μ g/mL was used in this experiment. The time course of GDNF mRNA expression was determined 6, 12, and 24 hours after Leu-Ile (.37 μ g/mL) treatment in the cultured neurons. The GDNF mRNA levels were significantly elevated 24 hours after Leu-Ile treatment in the cultured neurons compared with the control group [$F(5,42) = 7.627$, $p < .05$, one-way ANOVA] (Figure 2B).

Glial cell line-derived neurotrophic factor-positive cells were found among the neurons, which were immunopositive for MAP2, in the NAc of mice co-treated with Leu-Ile (1.5 μ mol/kg, IP) and METH (1 mg/kg, SC); GDNF-positive cells were also found among astro glial cells, which were immunopositive for GFAP, in the NAc of mice co-treated with Leu-Ile (1.5 μ mol/kg, IP) and METH (1 mg/kg, SC) (Figure 2C).

The GDNF levels in the NAc were determined after the co-administration of Leu-Ile and METH with the EIA method. Methamphetamine (1 mg/kg) increased GDNF levels in the NAc compared with those in the vehicle/saline-treated mice. The GDNF levels after the co-administration of Leu-Ile (1.5 and 15 μ mol/kg, IP) and METH (1 mg/kg) were much more increased compared with those in the vehicle/METH-treated mice [$F(5,38) = 16.971$, $p < .05$, one-way ANOVA] (Figures 2C and 2D). Moreover, we determined GDNF levels in the NAc after Leu-Ile treatment during the withdrawal from METH after 9 successive days of METH administration. The schedule is described in Figure 1D. An acute challenge of METH in mice treated with vehicle for 5 days after the development of METH-induced sensitization increased GDNF levels in the NAc compared with levels in the saline/vehicle/METH-treated mice. An acute challenge of METH in mice treated with Leu-Ile (1.5 and 15 μ mol/kg) for 5 days after the development of METH-induced sensitization resulted in a much greater increase compared with levels in the METH/vehicle/METH-treated mice [$F(3,20) = 23.777$, $p < .05$, one-way ANOVA] (Figure 2E).

Effect of Leu-Ile on METH-Induced Increase in TNF- α Levels

Expression levels of TNF- α mRNA induced by Leu-Ile (.037, .37, 3.7, and 37 μ g/mL) were determined in the cultured neurons with the real-time reverse transcription polymerase chain reaction (RT-PCR) method, because TNF- α induces the synthesis of GDNF as described in the introductory section of this report. Levels of TNF- α mRNA were significantly increased 24 hours after the addition of Leu-Ile (.37 μ g/mL), resulting in a bell-shaped dose response curve compared with the control group

[$F(4,30) = 2.572$, $p < .05$, one-way ANOVA] (Figure 3A). The time course of TNF- α mRNA expression was determined 6, 12, and 24 hours after Leu-Ile (.37 μ g/mL) treatment in the cultured neurons. The TNF- α mRNA levels were significantly elevated 24 hours after the Leu-Ile (.37 μ g/mL) treatment in the cultured neurons compared with the control group [$F(5,42) = 6.067$, $p < .05$, one-way ANOVA] (Figure 3B).

Tumor necrosis factor- α -positive cells were found among the neurons that were immunopositive for MAP2 but not for GFAP in the NAc of mice co-treated with Leu-Ile (1.5 μ mol/kg, IP) and METH (1 mg/kg, SC) (Figure 3C).

The areas occupied by TNF- α -immunopositive cells were measured to estimate the effects of Leu-Ile on the production of TNF- α protein. The area with TNF- α immunoreactive cells was determined in the NAc by using the software WinROOF (Mitani Shoji, Fukui, Japan). Methamphetamine (1 mg/kg, SC) potentiated the immunoreactivity to TNF- α in the NAc. After the co-administration of Leu-Ile (1.5 and 15 μ mol/kg, IP) and METH (1 mg/kg, SC), immunoreactivity was much more increased in the NAc [$F(5,32) = 26.836$, $p < .05$, one-way ANOVA] (Figures 3C and 3D). Moreover, we determined levels of TNF- α protein in the NAc after Leu-Ile treatment during the withdrawal from METH after 9 successive days of METH administration. The schedule is described in Figure 1D. An acute challenge of METH in mice treated with vehicle for 5 days after the development of METH-induced sensitization increased TNF- α levels in the NAc compared with those in the saline/vehicle/METH-treated mice. An acute challenge of METH in mice treated with Leu-Ile (1.5 and 15 μ mol/kg) for 5 days after the development of METH-induced sensitization markedly increased TNF- α levels compared with those in the METH/vehicle/METH-treated mice [$F(3,22) = 26.800$, $p < .05$, one-way ANOVA] (Figure 3E).

We checked whether the concentration of TNF- α in venous blood was changed after the intraperitoneal injection of Leu-Ile in mice. In venous blood, the TNF- α concentration was not changed 1, 2, 4, and 8 hours after the Leu-Ile treatment (1.5 μ mol/kg, IP). In contrast, the concentration was dramatically increased 1, 2, and 4 hours after the TNF- α treatment (4 μ g/body, IP) (Figure 3F).

Regulatory Effect of TNF- α on GDNF Expression in Cultured Neurons

With the real-time RT-PCR method, levels of GDNF mRNA stimulated by TNF- α (20 and 100 ng/mL) were determined in the cultured neurons. The mRNA levels were significantly elevated by TNF- α (100 ng/mL) compared with the control group [$F(2,11) = 7.826$, $p < .05$, one-way ANOVA] (Figure 4A). Next, the time course of GDNF mRNA expression was determined 6, 12, and 24 hours after TNF- α (100 ng/mL) treatment. The mRNA levels were significantly elevated 24 hours after the treatment with TNF- α (100 ng/mL) compared with the control group [$F(5,46) = 6.114$, $p < .05$, one-way ANOVA] (Figure 4B). The GDNF levels showed a significant increase 24 hours after the addition of TNF- α (100 and 200 ng/mL) compared with the control group [$F(4,25) = 12.372$, $p < .05$, one-way ANOVA] (Figure 4C).

Effects of Leu-Ile on METH-Induced Place Preference and Hyperlocomotion/Sensitization in Wild-Type Mice

We investigated the effects of Leu-Ile on the behavioral responses to METH. First, the effects of Leu-Ile on the rewarding effects of METH were examined in CPP paradigm, in which animals learn the association of an environment paired with drug

exposure; CPP is, therefore, considered a measure of the rewarding properties of drugs of abuse. The experimental schedule is described in Figure 1A. As shown in Figure 5A, METH (1 mg/kg, SC) produced place preference in mice. When mice were treated with Leu-Ile (1.5 μ mol/kg, IP) 1 hour before receiving METH, the METH-induced place preference was significantly attenuated [$F(5,53) = 5.338, p < .05$, one-way ANOVA] (Figure 5A). Leu-Ile (1.5 and 15 μ mol/kg, IP) itself failed to induce place preference in mice (Figure 5A second and third columns in saline-treated group).

We next examined the effects of Leu-Ile on METH-induced hyperlocomotion and sensitization. The sensitization to the locomotor-stimulating effects is argued to reflect one neuroadaptive process associated with dependence. The experimental schedule is described in Figure 1C. As shown in Figure 5B, acute METH treatment at a dose of 1 mg/kg caused a marked increase in locomotor activity, and repeated administration for 9 days resulted in an enhancement of the locomotor-stimulating effect of METH (sensitization) [$F(4,45) = 2.919, p < .05$, one-way ANOVA]. Leu-Ile (1.5 and 15 μ mol/kg, IP) did not inhibit acute METH-induced hyperlocomotion on day 4, although it inhibited METH-induced hyperlocomotion and sensitization on days 8–12 [$F(5,54) = 24.374$ at day 8, $F(5,54) = 20.738$ at day 10, $F(5,54) = 30.956$ at day 12, $p < .05$, one-way ANOVA] (Figure 5B). Leu-Ile (1.5 and 15 μ mol/kg, IP) did not affect spontaneous locomotor activity in saline-treated mice (Figure 5B).

Effects of Leu-Ile Treatment After the Development of Place Preference and Sensitization Induced by METH in Wild-Type Mice

The therapeutic effects of Leu-Ile on METH-induced place preference were examined. The experimental schedule is described in Figure 1B. Mice were administered Leu-Ile (1.5 and 15 μ mol/kg, IP) after the development of METH-induced place preference for 5 days without METH treatment. In this experiment, the second post-conditioning was carried out 5 days after the first post-conditioning. Although METH (1 mg/kg)-induced place preference was maintained for 5 days after the first post-conditioning in wild-type mice, it was attenuated by Leu-Ile treatment (1.5 μ mol/kg, IP) for 5 days between the first and second post-conditionings [$F(5,58) = 14.407, p < .05$, one-way ANOVA] (Figure 5C).

Next, the therapeutic effects of Leu-Ile on METH-induced sensitization were examined. The experimental schedule is described in Figure 1D. The repeated administration of METH (1 mg/kg, SC) for 9 days resulted in sensitization of METH. Sensitization was observed on day 18 of the administration of METH (1 mg/kg, SC) 5 days after withdrawal from METH [$F(5,154) = 23.107, p < .05$, one-way ANOVA]. Mice were treated with Leu-Ile (1.5 and 15 μ mol/kg, IP) for 5 days during the withdrawal period. Leu-Ile (1.5 and 15 μ mol/kg, IP) inhibited METH (1 mg/kg, SC)-induced sensitization on day 18 [$F(3,36) = 21.840, p < .05$, one-way ANOVA] (Figure 5D).

We confirmed that Leu-Ile at the low dose, 1.5 μ mol/kg, which could inhibit METH-induced rewarding effects, increased GDNF and TNF- α both in combination with METH and after withdrawal from repeated treatment with METH in CPP paradigm. In contrast, Leu-Ile at the higher dose, 15 μ mol/kg, which could not inhibit METH-induced rewarding effects, failed to increase them [data not shown; $F(5, 30) = 12.387$ and 19.764 for GDNF and TNF- α levels, respectively, after co-treatment of Leu-Ile and METH in CPP paradigm; $F(3,20) = 12.260$ and 16.670

for GDNF and TNF- α levels, respectively, after Leu-Ile treatment during withdrawal from METH in CPP paradigm]. The results of GDNF and TNF- α contents in the NAc after locomotor test are described in Figures 2D, 2E, 3D, and 3E.

Effects of Leu-Ile on the Rewarding Effects of METH in GDNF(±) and TNF- α (-/-) Mice

To confirm the involvement of GDNF and TNF- α in the rewarding effects of METH, the effect of Leu-Ile on METH-induced place preference was examined in GDNF(±) and TNF- α (-/-) mice. The experimental schedule is described in Figure 1A. As shown in Figure 6, although at a low dose of METH (3 mg/kg), GDNF(+/+) and wild-type mice did not develop place preference, GDNF(±) and TNF- α (-/-) mice did [GDNF(±): $F(7,64) = 6.493$; TNF- α (-/-): $F(7,56) = 9.514, p < .05$, one-way ANOVA]. When Leu-Ile (1.5 and 15 μ mol/kg, IP) was administered 1 hour before METH, it failed to exhibit a significant effect on the action of METH in GDNF(±) and TNF- α (-/-) mice (Figure 6). These results suggest that GDNF and TNF- α act to negate the rewarding effects of METH and are involved in the effects of Leu-Ile on these rewarding effects.

Effects of Leu-Ile on METH-Induced DA Responses

To explore the mechanisms of the inhibitory effects of Leu-Ile on METH-induced rewarding effects and sensitization, the effects of Leu-Ile on the increase in extracellular DA levels induced by repeated or single METH treatment were examined in the NAc of mice, by using an in vivo microdialysis technique. Repeated and single METH (1 mg/kg, SC) treatment caused a marked increase in extracellular DA levels in the NAc on day 9 and day 1, respectively (Figures 7A and 7B). Peaks of extracellular DA levels were 2.5- and 2.0-fold the baseline, respectively. Treatment with Leu-Ile (1.5 μ mol/kg, IP) for 9 days significantly inhibited the repeated METH-induced increase in extracellular DA levels [$F(1,7) = 5.227, p < .05$, repeated ANOVA] (Figure 7A). In contrast, pretreatment with Leu-Ile (1.5 μ mol/kg, IP) 1 hour before the single METH treatment failed to inhibit the increase in extracellular DA levels (Figure 7B).

We examined the therapeutic effect of Leu-Ile on the METH-induced increase in extracellular DA levels in the NAc of mice after the repeated treatment with METH. As shown in Figure 7C, an acute challenge with METH (1 mg/kg, SC) 5 days after withdrawal caused a marked increase in extracellular DA levels in the NAc of mice treated with vehicle for 5 days during the withdrawal from METH (1 mg/kg, SC). The peak of extracellular DA levels was 2.0-fold the baseline. Leu-Ile (1.5 μ mol/kg, IP) treatment for 5 days during the withdrawal from METH significantly attenuated the METH-induced increase in extracellular DA levels [$F(1,14) = 1.689, p < .05$, repeated ANOVA] (Figure 7C).

Next, we examined the effect of Leu-Ile on the METH-induced decrease in synaptosomal DA uptake in the midbrain. Repeated METH treatment (1 mg/kg, SC) caused a decrease in [3 H] DA uptake by 38% compared with the vehicle/saline-treated mice. Leu-Ile (1.5 μ mol/kg, IP) inhibited the METH-induced decrease in synaptosomal [3 H] DA uptake [$F(3,28) = 12.477, p < .05$, one-way ANOVA] (Figure 7D).

Finally, we examined the therapeutic effect of Leu-Ile on the METH-induced decrease in synaptosomal DA uptake in the midbrain. As shown in Figure 7E, an acute challenge with METH (1 mg/kg, SC) after treatment with vehicle for 5 days during withdrawal from METH caused a decrease in [3 H] DA uptake by 51% in the midbrain compared with the saline/vehicle/METH-treated mice. Leu-Ile (1.5 μ mol/kg, IP) treatment for 5 days

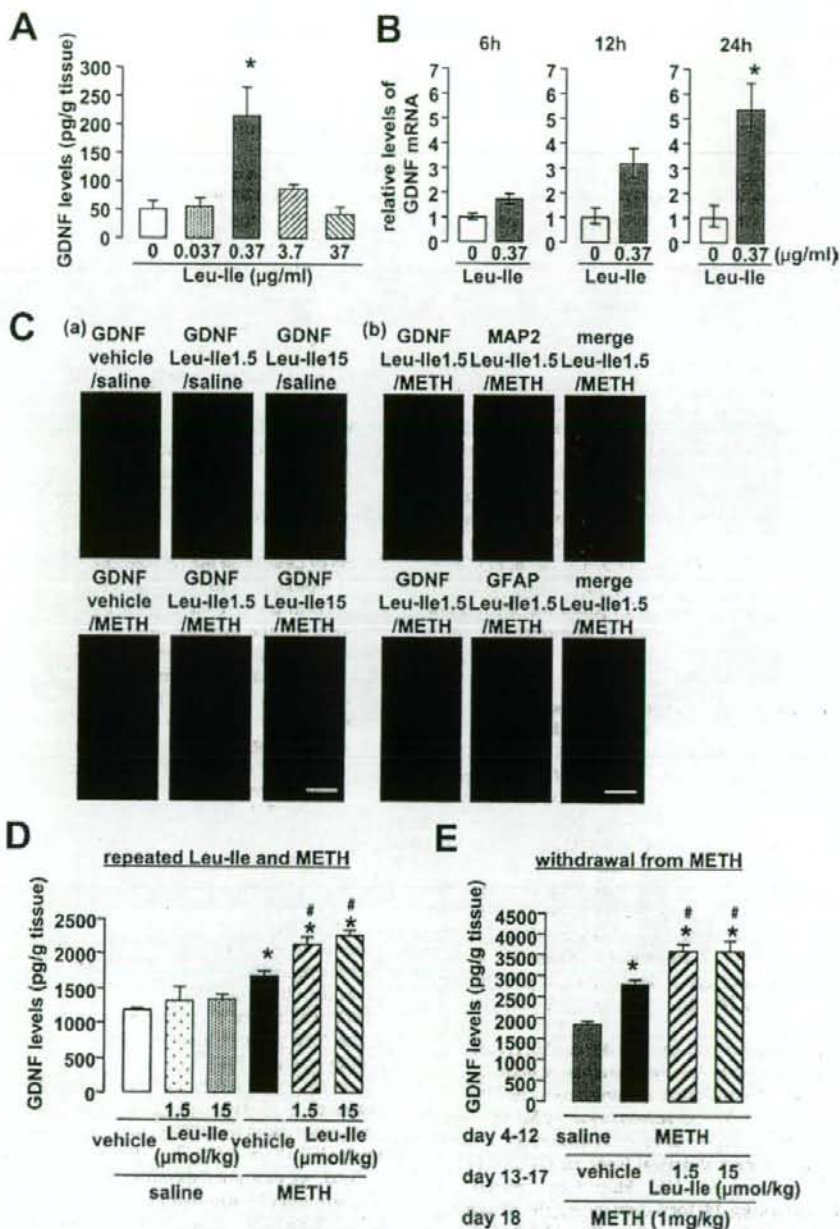


Figure 2. Effect of Leu-ile on methamphetamine (METH)-induced increase in glial cell line-derived neurotrophic factor (GDNF) levels. **(A)** The dose-response stimulatory effects of Leu-ile on GDNF levels in cultured neurons. Corti-hippocampal neurons of 18-day-old rat embryos were cultured in serum-free defined medium containing Leu-ile (.037, .37, 3.7, and 37 μg/ml). The GDNF levels were determined 24 hours after the addition of Leu-ile by enzyme immunoassay. Values are means ± SEM ($n = 5-10$). * $p < .05$ versus control subjects. **(B)** The time-course stimulatory effects of Leu-ile on the expression of GDNF messenger RNA in cultured neurons. Corti-hippocampal neurons of 18-day-old rat embryos were cultured in serum-free defined medium containing Leu-ile (.37 μg/ml). Total RNA was prepared 6, 12, and 24 hours after the addition of Leu-ile. Values are means ± SEM ($n = 8$). * $p < .05$ versus control subjects. **(C)** Immunostaining of GDNF in the nucleus accumbens (NAc) after the administration of Leu-ile and/or METH **(a)**. Double-labeling fluorescence photomicrographs for GDNF and microtubule-associated protein-2 (MAP2) or glial fibrillary acidic protein (GFAP) **(b)**. The GDNF-immunoreactive cells (red) were colocalized with MAP2-positive and GFAP-positive cells (green) in the NAc. Double immunostaining for GDNF and MAP2 or GFAP in the NAc reveals GDNF expression in neuronal and astro glial cells. Scale bars, 20 μm. **(D)** Change of GDNF levels in the NAc after the administration of Leu-ile and/or METH. Mice were treated with Leu-ile (1.5 and 15 μmol/kg, IP) 1 hour before METH (1 mg/kg, SC) once/day for 9 days and decapitated 24 hours after the last METH injection. Values are means ± SEM ($n = 6-8$). * $p < .05$ versus vehicle/saline-treated mice. # $p < .05$ versus vehicle/METH-treated mice. **(E)** Change of GDNF levels in the NAc after Leu-ile treatment during the withdrawal from METH. Mice were treated with Leu-ile (1.5 and 15 μmol/kg, IP) for 5 days after the development of METH (1 mg/kg, SC)-induced sensitization. The next day, the mice were administered only METH (1 mg/kg, SC) and decapitated 24 hours after the administration. Values are means ± SEM ($n = 6$). * $p < .05$ versus saline/vehicle/METH-treated mice. # $p < .05$ versus METH/vehicle/METH-treated mice.

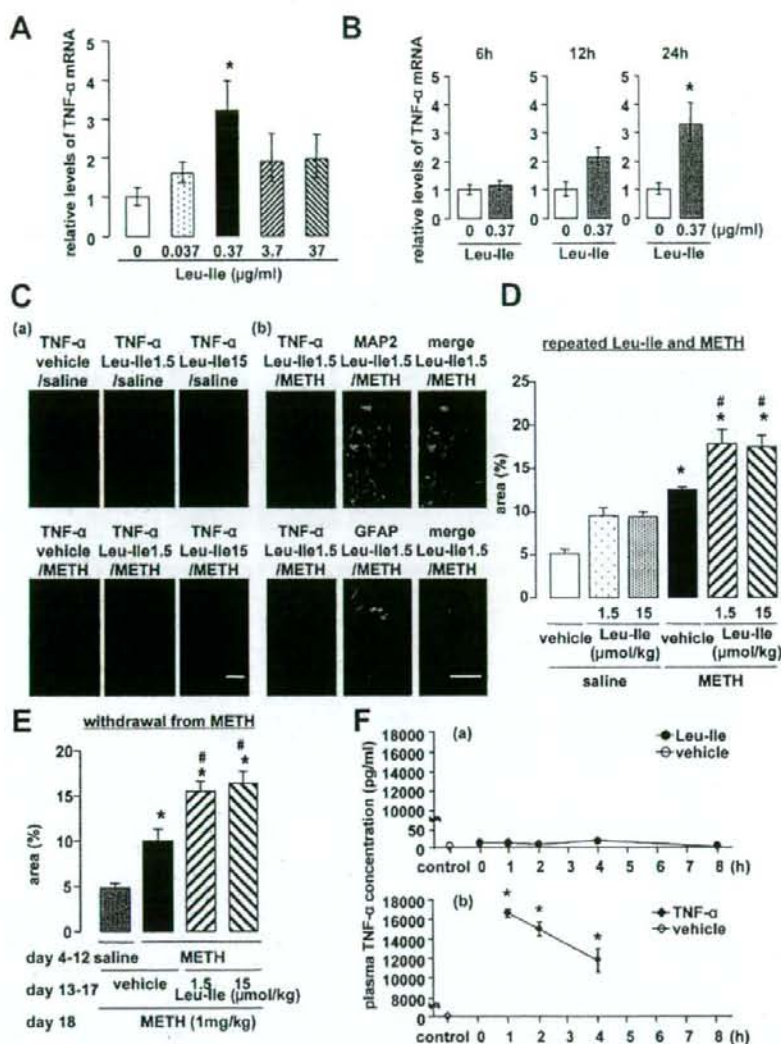


Figure 3. Effect of Leu-ile on METH-induced increase in tumor necrosis factor- α (TNF- α) levels. **(A)** The dose-response stimulatory effects of Leu-ile on the expression of TNF- α messenger RNA (mRNA) in cultured neurons. Corti-hippocampal neurons of 18-day-old rat embryos were cultured in serum-free defined medium containing Leu-ile (.037, .37, 3.7, and 37 μ g/ml). Total RNA was prepared 24 hours after the addition of Leu-ile. Values are means \pm SEM ($n = 7$). * $p < .05$ versus control subjects. **(B)** The time-course stimulatory effects of Leu-ile on the expression of TNF- α mRNA in cultured neurons. Corti-hippocampal neurons of 18-day-old rat embryos were cultured in serum-free defined medium containing Leu-ile (.37 μ g/ml). Total RNA was prepared 6, 12, and 24 hours after the addition of Leu-ile. Values are means \pm SEM ($n = 8$). * $p < .05$ versus control subjects. **(C)** Immunostaining of TNF- α in the NAC after the administration of Leu-ile and/or METH **(a)**. Double-labeling fluorescence photomicrographs for TNF- α and MAP2 or GFAP **(b)**. The TNF- α immunoreactive cells (red) were colocalized with MAP2-positive cells (green) in the NAC. Double immunostaining for TNF- α and MAP2 in the NAC reveals TNF- α expression in neuronal cells. Scale bars, 100 **(a)** and 20 **(b)** μ m. **(D)** Change of TNF- α expression in the NAC after the administration of Leu-ile and/or METH. Mice were treated with Leu-ile (1.5 and 15 μ mol/kg, IP) 1 hour before METH (1 mg/kg, SC) for 9 days and decapitated 24 hours after the last METH injection. The area of TNF- α positive cells in $3.8 \times 10^4 \mu\text{m}^2$ was estimated with the software WinRoof. Values are means \pm SEM ($n = 6-8$). * $p < .05$ versus saline/vehicle/METH-treated mice. * $p < .05$ versus vehicle/METH-treated mice. **(E)** Change of TNF- α expression in the NAC after Leu-ile treatment during the withdrawal from METH. Mice were treated with Leu-ile (1.5 and 15 μ mol/kg, IP) for 5 days after the development of METH (1 mg/kg, SC)-induced sensitization. The next day, the mice were administered only METH (1 mg/kg, SC) and decapitated 24 hours after the administration. Values are means \pm SEM ($n = 6-8$). * $p < .05$ versus saline/vehicle/METH-treated mice. * $p < .05$ versus METH/vehicle/METH-treated mice. **(F)** Tumor necrosis factor- α concentration in peripheral blood after the treatment with Leu-ile. Mice were treated with Leu-ile (1.5 μ mol/kg, IP), and venous blood was collected 0, 1, 2, 4, and 8 hours after the injection **(a)**. Values are means \pm SEM ($n = 4$) (upper panel). Mice were treated with TNF- α (4 μ g/body, IP), and venous blood was collected 1, 2, and 4 hours after the injection **(b)**. Values are means \pm SEM ($n = 3-4$) (lower panel). The concentration of TNF- α was measured with a mouse TNF- α (upper panel) or human TNF- α enzyme-linked immunosorbent assay (ELISA) kit (lower panel). * $p < .05$ versus vehicle-treated mice. Other abbreviations as in Figure 2.

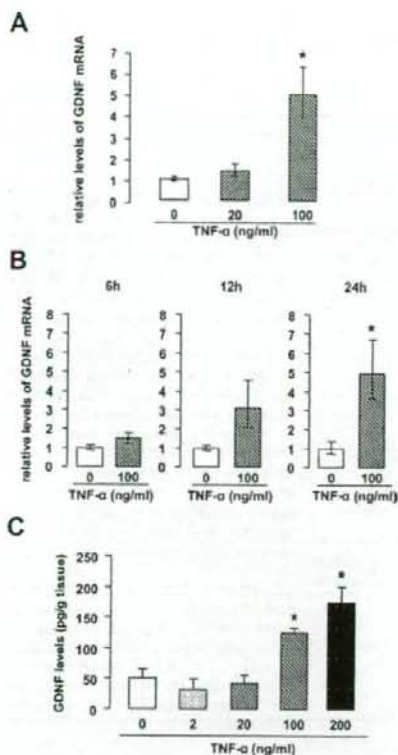


Figure 4. Regulatory effect of TNF- α on GDNF expression in cultured neurons. **(A)** The dose-response stimulatory effects of TNF- α on the expression of GDNF messenger RNA (mRNA) in cultured neurons. Corti-hippocampal neurons of 18-day-old rat embryos were cultured in serum-free defined medium containing TNF- α (20 and 100 ng/mL). Total RNA was prepared 24 hours after the addition of TNF- α . Values are means \pm SEM ($n = 4-5$). * $p < .05$ versus control subjects. **(B)** The time-course stimulatory effects of TNF- α on the expression of GDNF mRNA in cultured neurons. Corti-hippocampal neurons of 18-day-old rat embryos were cultured in serum-free defined medium containing TNF- α (100 ng/mL). Total RNA was prepared 6, 12, and 24 hours after the addition of TNF- α . Values are means \pm SEM ($n = 8-12$). * $p < .05$ versus control subjects. **(C)** The dose-response stimulatory effects of TNF- α on GDNF levels in the cultured neurons. Corti-hippocampal neurons of 18-day-old rat embryos were cultured in serum-free defined medium containing TNF- α (2, 20, 100, and 200 ng/mL). The GDNF levels were determined 24 hours after the addition of TNF- α by enzyme immunoassay. Values are means \pm SEM ($n = 5-10$). * $p < .05$ versus control subjects. Other abbreviations as in Figure 2.

during the withdrawal from METH inhibited the METH-induced decrease in synaptosomal [3 H] DA uptake [$F(2,21) = 7.544$, $p < .05$, one-way ANOVA] (Figure 7E).

Discussion

There are currently few efficacious medications for drug dependence. Recently, it has been reported that an opioid κ receptor agonist, TRK-820, inhibits not only the rewarding effects of morphine and cocaine but also a mecamylamine-precipitated nicotine-withdrawal aversive effect (Mori *et al.* 2002; Tsuji *et al.* 2001). A DA D3 receptor partial agonist, BP897 affects cocaine-

associated stimulus-induced drug-seeking behavior in rats (Cervo *et al.* 2003). These medications should be effective even when they are administered after the development of drugs of abuse. In this study, the METH-induced place preference and sensitization that formed before Leu-Ile treatment were attenuated by Leu-Ile (Figures 5C and 5D), by regulating extracellular DA levels (Figures 7C and 7E). These results suggest that Leu-Ile could be a novel therapeutic agent for dependence on METH.

Leu-Ile increased GDNF levels in the cultured neurons (Figures 2A and 2B). In vivo, Leu-Ile treatment both in combination with METH and after withdrawal from repeated treatment with METH also increased GDNF levels (Figures 2D and 2E). We have previously demonstrated that Leu-Ile targets the Hsc70/Hsp90 cochaperone and, thus, triggers Akt/CREB signaling, resulting in an upregulation of GDNF expression (Cen *et al.* 2006). In addition, Leu-Ile treatment, both in combination with METH and after withdrawal from repeated treatment with METH, inhibited place preference and sensitization to METH (Figure 5). Glial cell line-derived neurotrophic factor blocks the ability of cocaine and morphine to increase levels of tyrosine hydroxylase in the VTA and blunts the biochemical and behavioral responses to chronic cocaine or morphine exposure (Messer *et al.* 2000). Glial cell line-derived neurotrophic factor decreases tyrosine hydroxylase levels in normal animals, suggesting an active down-regulation of the synthesis of this enzyme (Lu and Hagg 1997). These results suggest that Leu-Ile plays an inhibitory role in the rewarding effects and sensitization induced by METH via the induction of GDNF expression.

As described at the beginning of this article, TNF- α induces GDNF expression and blocks METH-induced dependence. Therefore, we investigated whether Leu-Ile induces the expression of TNF- α . Leu-Ile increased TNF- α mRNA levels in the cultured neurons (Figures 3A and 3B). In vivo, Leu-Ile treatment, both in combination with METH and after withdrawal from repeated treatment with METH, also increased TNF- α levels (Figures 3D and 3E) in the brain but not in the peripheral blood stream (Figure 3F). Leu-Ile can penetrate the BBB and initiate the synthesis of GDNF in the brain (Nitta *et al.* 2004). Therefore, we suggest that Leu-Ile penetrates the BBB and induces TNF- α expression only in the brain. The expression of TNF- α is induced through the activation of transcription factors such as activator protein-1 and nuclear factor- κ B (NF- κ B) (Guha *et al.* 2000; Rahman and MacNee 2000). Changes in transcription factors might result in long-term changes in gene expression, thereby contributing to neuronal adaptations that underlie behavioral sensitization to chronic psychostimulant treatment (Nestler 2001). Furthermore, TNF- α influences synaptic strength and transmission (Albensi and Mattson 2000; Beattie *et al.* 2002). Collectively, these observations lead to the hypothesis that Leu-Ile might have inhibitory effects on long-lasting behavioral changes induced by repeated METH treatment via the induction of TNF- α expression.

Tumor necrosis factor- α was expressed in the neurons of the NAc after the co-administration of Leu-Ile with METH (Figure 3C), whereas GDNF was expressed in the neuronal and astroglial cells (Figure 2C). Therefore, TNF- α expression induced by Leu-Ile might regulate GDNF expression in neuronal cells, although little is known about the regulation of GDNF synthesis in the brain. It has been reported that GDNF expression in astrocytes can be induced by inflammatory stimuli such as TNF- α and lipopolysaccharide (Appel *et al.* 1997). These previous reports have suggested that the induction of GDNF expression might be regulated through production of TNF- α . In the present study, TNF- α increased GDNF expression in the cultured neu-

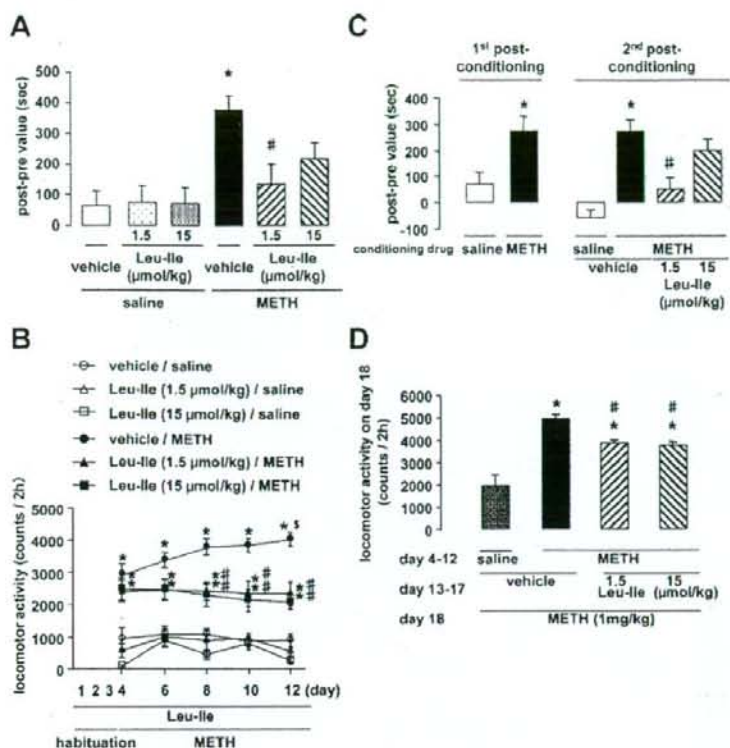


Figure 5. Effects of Leu-Ile on methamphetamine (METH)-induced place preference and hyperlocomotion/sensitization in wild-type mice. **(A)** Effect of Leu-Ile on METH-induced place preference in wild-type mice. Mice were treated with Leu-Ile (1.5 and 15 μmol/kg, IP) 1 hour before receiving METH (1 mg/kg, SC) or saline during the conditioning. Values are means ± SEM ($n = 9-10$). * $p < .05$ versus vehicle/saline-treated mice. # $p < .05$ versus vehicle/METH-treated mice. **(B)** Effect of Leu-Ile on METH-induced hyperlocomotion and sensitization in wild-type mice. Mice were treated with Leu-Ile (1.5 and 15 μmol/kg, IP) 1 hour before the METH (1 mg/kg, SC) injection. Values are means ± SEM ($n = 10$). Locomotor activity was measured for 2 hours after the METH treatment. Analysis of variance with repeated measures revealed significant differences in the locomotor activity [$F(5,54) = 59.1278, p < .05$]. * $p < .05$ versus vehicle/saline-treated mice. # $p < .05$ versus vehicle/METH-treated mice. **(C)** Effect of Leu-Ile treatment after the development of place preference induced by METH in wild-type mice. Mice were treated with Leu-Ile (1.5 and 15 μmol/kg, IP) for 5 days after withdrawal from METH. Values are means ± SEM ($n = 7-10$). * $p < .05$ versus saline/vehicle-treated mice. # $p < .05$ versus METH/vehicle-treated mice. **(D)** Effect of Leu-Ile treatment after the development of METH-induced sensitization in wild-type mice. Mice were treated with Leu-Ile (1.5 and 15 μmol/kg, IP) for 5 days after the development of METH (1 mg/kg, SC)-induced sensitization. Values are means ± SEM ($n = 10$). Locomotor activity was measured for 2 hours after the METH treatment on day 18. * $p < .05$ versus saline/vehicle/METH-treated mice. # $p < .05$ versus METH/vehicle/METH-treated mice.

rons (Figure 4). Furthermore, Leu-Ile induced GDNF and TNF- α expression (Figures 2 and 3). Therefore, Leu-Ile might induce GDNF as a result of TNF- α expression to inhibit METH-induced rewarding effects and sensitization, although another signal pathway should be considered—that Leu-Ile upregulates GDNF expression by activating Hsp90/Akt/CREB signaling (Cen *et al.* 2006).

Leu-Ile increased GDNF and TNF- α expression in the cultured neurons (Figures 2A and 3A) and inhibited METH-induced place preference (Figures 5A and 5C) in bell-shaped response curves. It has been reported that TNF- α , reactive oxygen species (H_2O_2), and β -amyloid activate NF- κ B in bell-shaped dose-response curves (Kaltschmidt *et al.* 1999). Rasagiline, an anti-Parkinson drug, activates NF- κ B and increases GDNF in bell-shaped dose-response curves (Maruyama *et al.* 2004). We confirmed that Leu-Ile at the lower dose, 1.5 μmol/kg, which could inhibit the rewarding effects of METH, increased GDNF and TNF- α expression both in combination with METH and after withdrawal from repeated METH treatment in the CPP paradigm. Conversely, Leu-Ile at the higher dose, 15 μmol/kg, which could not inhibit the rewarding effects of METH, failed to increase GDNF and TNF- α levels (data not shown). These results suggest involvement of induction of GDNF and TNF- α expression in inhibitory effect of Leu-Ile on the rewarding effects and sensitization of METH.

Leu-Ile attenuated the METH-induced place preference (Figure 5A). Glial cell line-derived neurotrophic factor and TNF- α could be involved in the inhibitory effects of Leu-Ile on the rewarding effects of METH, because no effects of Leu-Ile were observed in the GDNF(-/-) and TNF- α (-/-) mice (Figure 6).

These findings support that GDNF and TNF- α play important roles in METH-induced behavioral changes and suggest that Leu-Ile attenuates rewarding effects via the induction of GDNF and TNF- α expression.

The mesolimbic dopaminergic pathway projecting from the VTA to NAc is considered to play a major role in mediating the rewarding effects of electrical stimulation of the brain and drugs of abuse (Everitt and Wolf 2002; Koob 1992; Koob *et al.* 1998). This pathway is important not only for the rewarding effects but also for the locomotor-stimulating effects of METH (Mizoguchi *et al.* 2004; Nagai *et al.* 2005b; Nakajima *et al.* 2004). Leu-Ile inhibited METH-induced hyperlocomotion and sensitization (Figures 5B and 5D), at least in part, through the NAc, because it showed inhibitory effects on the increase in extracellular DA levels induced by repeated METH treatment (Figures 7A and 7C) and the decrease in synaptosomal DA uptake (Figures 7D and 7E) in the NAc. Although Leu-Ile failed to inhibit the hyperlocomotion induced by single METH treatment, it inhibited repeated METH-induced sensitization (Figure 5B). These results suggest that Leu-Ile has inhibitory effects on neuronal plasticity induced by repeated METH treatment but not on single METH-induced hyperlocomotion or the increase in extracellular DA levels (Figure 7B). Because acute treatment of Leu-Ile failed to inhibit single METH-induced hyperlocomotion and the increase in extracellular DA levels, the induction of GDNF and TNF- α expression requires repeated treatment of Leu-Ile.

We have previously reported that TNF- α attenuates the METH-induced increase in extracellular DA levels and potentiates DA uptake into synaptic vesicles and negates METH-induced inhibition of DA uptake in the striatum (Nakajima *et al.* 2004). We

have also demonstrated that the tissue plasminogen activator-plasmin system accelerates the release of DA, which is involved in the rewarding effects of METH and morphine (Nagai *et al.* 2004, 2005a, 2005b). In the present study, we demonstrated that Leu-Ile attenuated the increase in extracellular DA levels in the NAc induced by repeated METH treatment (Figures 7A and 7C) and negated METH-induced inhibition of DA uptake in the midbrain (Figures 7D and 7E). The inhibition of the METH-induced increase in extracellular DA levels and decrease of DA uptake by repeated Leu-Ile treatment might be one plausible mechanism by which Leu-Ile inhibits METH-induced chronic behavioral changes via the induction of TNF- α expression. One might consider that TNF- α could attenuate the rewarding effects and sensitization of other drugs of abuse if it activates DA uptake and thereby attenuates the METH-induced increase in extracellular DA levels. Our results have shown that TNF- α or Leu-Ile inhibits morphine-induced place preference and sensitization by regulating extracellular DA levels (Niwa M, Nitta A, Yamada Y, Nakajima A, Saito K, Seishima M, Noda Y, and Nabeshima T, unpublished observations). These observations support our hypothesis about effect of Leu-Ile on drug abuse.

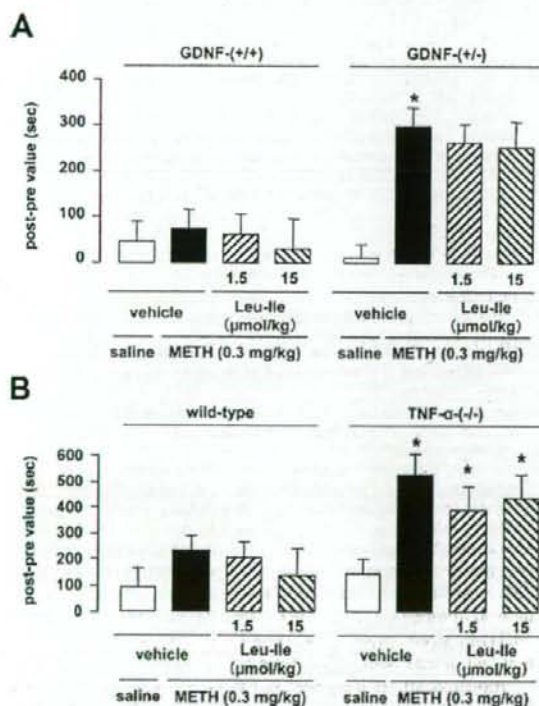


Figure 6. Effect of Leu-Ile on METH-induced place preference in GDNF(±) and TNF- α (-/-) mice. (A) Effect of Leu-Ile treatment on METH-induced place preference in GDNF(±) mice. Mice were treated with METH (3 mg/kg, SC) or saline during the conditioning. Values are means \pm SEM ($n = 7-12$). * $p < .05$ versus vehicle/METH-treated GDNF(+/+) mice. (B) Effect of Leu-Ile treatment on METH-induced place preference in TNF- α (-/-) mice. Mice were treated with METH (3 mg/kg, SC) or saline during the conditioning. Values are means \pm SEM ($n = 8$). * $p < .05$ versus vehicle/METH-treated wild-type mice. Abbreviations as in Figure 2.

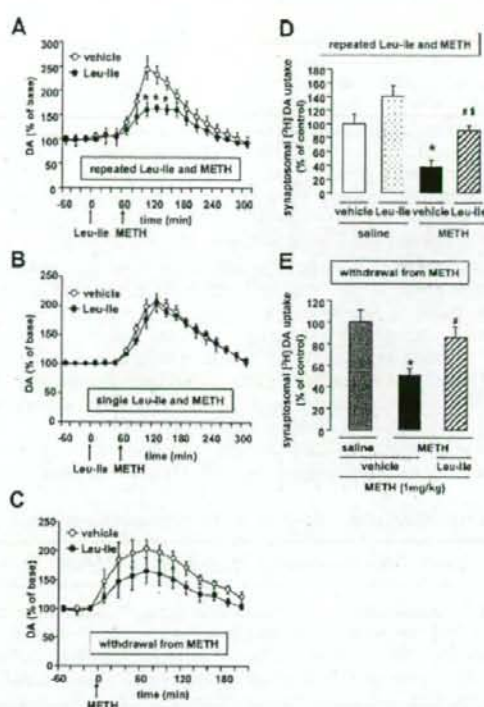


Figure 7. Effect of Leu-Ile on methamphetamine (METH)-induced dopamine (DA) responses. (A) In vivo effect of Leu-Ile on the increase in extracellular DA levels induced by repeated METH treatment. Mice were treated with Leu-Ile (1.5 μ mol/kg, IP) 1 hour before METH (1 mg/kg, SC) once/day for 9 days. Basal extracellular DA levels were $.50 \pm .10$ and $.81 \pm .35$ nmol/L for the vehicle/METH- and Leu-Ile/METH-treated mice, respectively. Values are means \pm SEM ($n = 4-5$). * $p < .05$ versus vehicle/METH-treated mice. (B) In vivo effect of Leu-Ile on the increase in extracellular DA levels induced by single METH treatment. Mice were treated with Leu-Ile (1.5 μ mol/kg, IP) once, 1 hour before receiving METH (1 mg/kg, SC). Basal extracellular DA levels were $.81 \pm .09$ and $.80 \pm .12$ nmol/L for the vehicle/METH- and Leu-Ile/METH-treated mice, respectively. Values are means \pm SEM ($n = 5$). (C) In vivo effect of Leu-Ile treatment during the withdrawal from METH on the METH-induced increase in extracellular DA levels. Mice were treated with Leu-Ile (1.5 μ mol/kg, IP) for 5 days during the withdrawal from METH (1 mg/kg, SC). Basal extracellular DA levels were $.27 \pm .02$ and $.24 \pm .01$ nmol/L for the METH/vehicle- and METH/Leu-Ile-treated mice, respectively. Values are means \pm SEM ($n = 8$). (D) Effect of Leu-Ile on the decrease in synaptosomal DA uptake induced by repeated METH treatment. Mice were treated with Leu-Ile (1.5 μ mol/kg, IP) 1 hour before METH (1 mg/kg, SC) once/day for 9 days and decapitated 1 hour after the last METH treatment. The synaptosomal [3 H] DA uptake was $.47 \pm .10$, $.61 \pm .10$, $.13 \pm .03$, and $.39 \pm .05$ pmol/4-min/mg protein for vehicle/saline-treated, Leu-Ile/saline-treated, vehicle/METH-treated, and Leu-Ile/METH-treated mice, respectively. The final concentration of [3 H] DA was 5 nmol/L. Values are means \pm SEM ($n = 8$). * $p < .05$ versus vehicle/saline-treated mice. * $p < .05$ versus Leu-Ile/saline-treated mice. * $p < .05$ versus vehicle/METH-treated mice. (E) The therapeutic effect of Leu-Ile on the decrease in synaptosomal DA uptake induced by repeated METH treatment. Mice were treated with Leu-Ile (1.5 μ mol/kg, IP) for 5 days after the development of METH (1 mg/kg, SC)-induced sensitization. The next day, the mice were administered only METH (1 mg/kg, SC) and decapitated 1 hour after the administration. The synaptosomal [3 H] DA uptake was $.50 \pm .06$, $.25 \pm .03$, and $.43 \pm .05$ pmol/4-min/mg protein for saline/vehicle/METH-treated, METH/vehicle/METH-treated, and METH/Leu-Ile/METH-treated mice, respectively. The final concentration of [3 H] DA was 5 nmol/L. Values are means \pm SEM ($n = 8$). * $p < .05$ versus saline/vehicle/METH-treated mice. * $p < .05$ versus METH/vehicle/METH-treated mice.

It has been reported that Leu-Ile induces the expression of brain-derived neurotrophic factor (BDNF) (Nitta et al. 2004) in addition to that of GDNF and TNF- α . Infusion of BDNF into the NAC enhances the stimulation of locomotor activating by cocaine in rats, whereas the development of sensitization and CPP is delayed in heterozygous BDNF knockout mice compared with wild-type littermates (Hall et al. 2003; Horger et al. 1999). These results suggest a possible role for BDNF in long-term adaptations of the brain to cocaine (Yamada and Nabeshima 2004). In the present study, we targeted anti-addictive factors like GDNF and TNF- α but not pro-addictive factors like BDNF to find a new therapeutic agent for drug dependence. As shown in bell-shaped dose-response curves described previously, the narrow effective dose range of Leu-Ile might be due to the balance of level between anti- and pro-addictive factors induced by Leu-Ile.

Our findings suggest that Leu-Ile has inhibitory effects on METH-induced rewarding effects and sensitization by negating the METH-induced inhibition of DA uptake as well as attenuating the METH-induced increase in extracellular DA levels in the NAC via the induction of GDNF and TNF- α expression. Leu-Ile could be a novel therapeutic agent for METH-induced dependence.

This study was supported in part by a Grant-in-aid for Scientific Research and Special Coordination Funds for Promoting Science and Technology, Target-Oriented Brain Science Research Program; by a Grant-in-aid for Scientific Research (B) and Young Scientists (A); by the 21st Century Center of Excellence Program "Integrated Molecular Medicine for Neuronal and Neoplastic Disorders" from the Ministry of Education, Culture, Sports, Science and Technology of Japan; by a Grant-in-aid for Health Science Research on Regulatory Science of Pharmaceuticals and Medical Devices, and Comprehensive Research on Aging and Health from the Ministry of Health, Labor and Welfare of Japan; by a Smoking Research Foundation Grant for Biomedical Research; by the Mochida Memorial Foundation for Medical and Pharmaceutical Research; by a grant from the Brain Research Center from 21st Century Frontier Research Program funded by the Ministry of Science and Technology, Republic of Korea; and by Japan Canada Joint Health Research Program.

The authors are grateful to Amgen and Dainippon Pharmaceutical Co., Ltd. for the supply of recombinant human GDNF and TNF- α , respectively, and to Dr. Kiyoyuki Kitaichi, Nagasaki International University, for his help collecting blood.

Albensi BC, Mattson MP (2000): Evidence for the involvement of TNF and NF- κ B in hippocampal synaptic plasticity. *Synapse* 35:151-159.

Appel E, Kolman O, Kazimirsky G, Blumberg PM, Brodie C (1997): Regulation of GDNF expression in cultured astrocytes by inflammatory stimuli. *Neuroreport* 8:3309-3312.

Beattie EC, Stellwagen D, Morishita W, Bresnahan JC, Ha BK, Von Zastrow M, et al. (2002): Control of synaptic strength by glial TNF- α . *Science* 295:2282-2285.

Bluthe RM, Pawlowski M, Suarez S, Parnet P, Pittman Q, Kelley KW, et al. (1994): Synergy between tumor necrosis factor- α and interleukin-1 in the induction of sickness behavior in mice. *Psychoneuroendocrinology* 19:197-207.

Boulanger L, Poo M (1999): Gating of BDNF-induced synaptic potentiation by cAMP. *Science* 284:1982-1984.

Cen X, Nitta A, Ohya S, Zhao Y, Ozawa N, Mouril A, et al. (2006): An analogue of dipeptide-like structure of FK506 increases GDNF expression through CREB activated by Hsp90/Akt signaling pathway. *J Neurosci* 26:3335-3344.

Cervo L, Carovall F, Stark JA, Mennini T (2003): Cocaine-seeking behavior in response to drug-associated stimuli in rats: Involvement of D3 and D2 dopamine receptors. *Neuropsychopharmacology* 28:1150-1159.

Connor B, Dragunow M (1998): The role of neuronal growth factors in neurodegenerative disorders of the human brain. *Brain Res Brain Res Rev* 27:1-39.

Everitt BJ, Wolf ME (2002): Psychomotor stimulant addiction: A neural systems perspective. *J Neurosci* 22:3312-3320.

Fleckenstein AE, Metzger RR, Wilkins DG, Gibb JW, Hanson G (1997): Rapid and reversible effects of methamphetamine on dopamine transporters. *J Pharmacol Exp Ther* 282:834-838.

Franklin KBJ, Paxinos G (1997): *The Mouse Brain in Stereotaxic Coordinates*. San Diego, California: Academic Press.

Giros B, Jaber M, Jones SR, Wightman RM, Caron MG (1996): Hyperlocomotion and indifference to cocaine and amphetamine in mice lacking the dopamine transporter. *Nature* 379:606-612.

Guha M, Bai W, Nadler JL, Natarajan R (2000): Molecular mechanisms of tumor necrosis factor- α gene expression in monocytic cells via hyperglycemia-induced oxidant stress-dependent and -independent pathways. *J Biol Chem* 275:17728-17739.

Hall FS, Drgonova J, Goeb M, Uhl GR (2003): Reduced behavioral effects of cocaine in heterozygous brain-derived neurotrophic factor (BDNF) knockout mice. *Neuropsychopharmacology* 28:1485-1490.

Heikkila RE, Orlansky H, Cohen G (1975): Studies on the distinction between uptake inhibition and release of 3 H-dopamine in rat brain tissue slices. *Biochem Pharmacol* 24:847-852.

Horger BA, Iyasere CA, Berhow MT, Messer CJ, Nestler EJ, Taylor JR (1999): Enhancement of locomotor activity and conditioned reward to cocaine by brain-derived neurotrophic factor. *J Neurosci* 19:4110-4122.

Kaltschmidt B, Uherk M, Wellmann H, Volk B, Kaltschmidt C (1999): Inhibition of NF- κ B potentiates amyloid β -mediated neuronal apoptosis. *Proc Natl Acad Sci USA* 96:9409-9414.

Koob GF (1992): Drugs of abuse: Anatomy, pharmacology and function of reward pathways. *Trends Pharmacol Sci* 13:177-184.

Koob GF, Sanna PP, Bloom FE (1998): Neuroscience of addiction. *Neuron* 21:467-476.

Kuwahara M, Sugimoto M, Tsuji S, Miyata S, Yoshida A (1999): Cytosolic calcium changes in a process of platelet adhesion and cohesion on a von Willebrand factor-coated surface under flow conditions. *Blood* 94:1149-1155.

Lin LF, Doherty DH, Lile JD, Bektesh S, Collins F (1993): GDNF: A glial cell line-derived neurotrophic factor for midbrain dopaminergic neurons. *Science* 260:1130-1132.

Lu X, Hagg H (1997): Glial cell line-derived neurotrophic factor prevents death, but not reductions in tyrosine hydroxylase, of injured nigrostriatal neurons in adult rats. *J Comp Neurol* 388:484-494.

Maruyama W, Nitta A, Shamoto-Nagai M, Hirata Y, Akao Y, Yodim M, et al. (2004): N-Propargyl-1 (β)-aminolindane, rasagiline, increases glial cell line-derived neurotrophic factor (GDNF) in neuroblastoma SH-SY5Y cells through activation of NF- κ B transcription factor. *Neurochem Int* 44:393-400.

Messer CJ, Eisch AJ, Carlezon WA Jr., Whisler K, Shen L, Wolf DH, et al. (2000): Role for GDNF in biochemical and behavioral adaptations to drugs of abuse. *Neuron* 26:247-257.

Mizoguchi H, Yamada K, Mizuno M, Mizuno T, Nitta A, Noda Y, et al. (2004): Regulations of methamphetamine reward by extracellular signal-regulated kinase 1/2-ets-like gene-1 signaling pathway via the activation of dopamine receptors. *Mol Pharmacol* 65:1293-1301.

Mori T, Nomura M, Nagase H, Narita M, Suzuki T (2002): Effects of a newly synthesized kappa-opioid receptor agonist, TRK-820, on the discriminative stimulus and rewarding effects of cocaine in rats. *Psychopharmacology* 161:17-22.

Nagai T, Kamei H, Ito M, Hashimoto K, Takuma K, Nabeshima T, et al. (2005a): Modification by the tissue plasminogen activator-plasmin system of morphine-induced dopamine release and hyperlocomotion, but not anti-nociceptive effect in mice. *J Neurochem* 93:1272-1279.

Nagai T, Noda Y, Ishikawa K, Miyamoto Y, Yoshimura M, Ito M, et al. (2005b): The role of tissue plasminogen activator in methamphetamine-related reward and sensitization. *J Neurochem* 92:660-667.

Nagai T, Yamada K, Yoshimura M, Ishikawa K, Miyamoto Y, Hashimoto K, et al. (2004): The tissue plasminogen activator-plasmin system participates in the rewarding effect of morphine by regulating dopamine release. *Proc Natl Acad Sci USA* 101:3650-3655.

Nakajima A, Yamada K, Nagai T, Uchiyama T, Miyamoto Y, Mamiya T, et al. (2004): Role of tumor necrosis factor- α in methamphetamine-induced drug dependence and neurotoxicity. *J Neurosci* 24:2212-2225.

- Nestler EJ (2001): Molecular basis of long-term plasticity underlying addiction. *Nat Rev Neurosci* 2:119-128.
- Neumann H, Schwelgreiter R, Yamashita T, Rosenkranz K, Wekerle H, Barde Y (2002): Tumor necrosis factor inhibits neurite outgrowth and branching of hippocampal neurons by a Rho-dependent mechanism. *J Neurosci* 22:854-862.
- Nitta A, Ito M, Fukumitsu H, Ohmiya M, Ito H, Sometani A, *et al.* (1999a): 4-methylcatechol increases brain-derived neurotrophic factor content and mRNA expression in cultured brain cells and in rat brain *in vivo*. *J Pharmacol Exp Ther* 291:1276-1283.
- Nitta A, Nishioka H, Fukumitsu H, Furukawa Y, Sugiura H, Shen L, *et al.* (2004): Hydrophobic dipeptide Leu-Ile protects against neuronal death by inducing brain-derived neurotrophic factor and glial cell line-derived neurotrophic factor synthesis. *J Neurosci Res* 78:250-258.
- Nitta A, Ohmiya M, Sometani A, Itoh M, Nomoto H, Furukawa Y, *et al.* (1999b): Brain-derived neurotrophic factor prevents neuronal cell death induced by corticosterone. *J Neurosci Res* 57:227-235.
- Niwa M, Nitta A, Yamada Y, Nakajima A, Saito K, Seishima M, *et al.* Tumor necrosis factor- α and its inducer inhibit morphine-induced rewarding effects and sensitization. Submitted.
- Noda Y, Miyamoto Y, Mamiya T, Kamel H, Furukawa H, Nabeshima T (1998): Involvement of dopaminergic system in phencyclidine-induced place preference in mice pretreated with phencyclidine repeatedly. *J Pharmacol Exp Ther* 286:44-51.
- Pichel JG, Shen L, Sheng HZ, Granholm AC, Drago J, Grinberg A, *et al.* (1996): Defects in enteric innervation and kidney development in mice lacking GDNF. *Nature* 382:73-76.
- Rahman I, MacNee W (2000): Regulation of redox glutathione levels and gene transcription in lung inflammation: therapeutic approaches. *Free Radic Biol Med* 28:1405-1420.
- Robbins TW, Everitt BJ (1999): Drug addiction: Bad habits add up. *Nature* 398:567-570.
- Robinson TE, Kolb B (1997): Persistent structural modifications in nucleus accumbens and prefrontal cortex neurons produced by previous experience with amphetamine. *J Neurosci* 17:8491-8497.
- Robinson TE, Kolb B (1999): Alterations in the morphology of dendrites and dendritic spines in the nucleus accumbens and prefrontal cortex following repeated treatment with amphetamine or cocaine. *Eur J Neurosci* 11:1598-1604.
- Seiden LS, Sabol KE, Ricaurte GA (1993): Amphetamine: Effects on catecholamine systems and behavior. *Annu Rev Pharmacol Toxicol* 33: 639-677.
- Taniguchi T, Tanaka M, Ikeda A, Momotani E, Sekikawa K (1997): Failure of germinal center formation and impairment of response to endotoxin in tumor necrosis factor α deficient mice. *Lab Invest* 77:647-658.
- Tsuji M, Takeda H, Matsumiya T, Nagase H, Narita M, Suzuki T (2001): The novel κ -opioid receptor agonist TRK-820 suppresses the rewarding and locomotor-enhancing effects of morphine in mice. *Life Sci* 68:1717-1725.
- Tsuji S, Sugimoto M, Miyata S, Kuwahara M, Kinoshita S, Yoshioka A (1999): Real-time analysis of mural thrombus formation in various platelet aggregation disorders: Distinct shear-dependent roles of platelet receptors and adhesive proteins under flow. *Blood* 94:968-975.
- Wada R, Tiff CJ, Proia RL (2000): Microglial activation precedes acute neurodegeneration in Sandhoff disease and is suppressed by bone marrow transplantation. *Proc Natl Acad Sci U S A* 97:10954-10959.
- Yamada K, Iida R, Miyamoto Y, Saito K, Sekikawa K, Sedishima M, *et al.* (2000): Neurobehavioral alternations in mice with a targeted deletion of the tumor necrosis factor- α gene: Implication for emotional behavior. *J Neuroimmunol* 111:131-138.
- Yamada K, Nabeshima T (2004): Pro- and anti-addictive neurotrophic factors and cytokines in psychostimulant addiction: Mini review. *Ann N Y Acad Sci* 1025:198-204.

Tumor Necrosis Factor- α and Its Inducer Inhibit Morphine-Induced Rewarding Effects and Sensitization

Minae Niwa, Atsumi Nitta, Yuichiro Yamada, Akira Nakajima, Kuniaki Saito, Mitsuru Seishima, Yukihiro Noda, and Toshitaka Nabeshima

Background: Tumor necrosis factor- α (TNF- α) is emerging as an important modulator of the function of the central nervous system (CNS). We have demonstrated that TNF- α or Leu-Ile, a TNF- α inducer, inhibits methamphetamine-induced rewarding effects and sensitization. In this study, we investigated the effects of TNF- α or Leu-Ile on morphine (MOR)-induced rewarding effects and sensitization.

Methods: Levels of TNF- α messenger RNA (mRNA) and protein were determined by real-time reverse transcription polymerase chain reaction (RT-PCR) and immunohistochemistry. Effects of TNF- α or Leu-Ile on MOR-induced rewarding effects and sensitization were investigated by conditioned place preference and locomotor activity tests. Extracellular dopamine levels were examined using in vivo microdialysis. Effects of TNF- α or Leu-Ile on MOR-induced antinociceptive effect and withdrawal symptoms were examined by hot plate test and naloxone-precipitated withdrawal.

Results: Morphine induced TNF- α mRNA expression via dopamine and opioid receptors. Posttreatment with TNF- α or Leu-Ile attenuated the MOR-induced place preference and sensitization even after their development, as well as pretreatment with TNF- α or Leu-Ile blocked them. An inhibitory effect of Leu-Ile on MOR-induced place preference was not observed in TNF- α knockout mice. Tumor necrosis factor- α or Leu-Ile inhibited the increase in extracellular dopamine levels in the nucleus accumbens induced by repeated MOR treatment.

Conclusions: These results suggest that TNF- α inhibits MOR-induced rewarding effect and sensitization by regulating extracellular dopamine levels, and Leu-Ile inhibits them via the induction of TNF- α .

Key Words: Dopamine (DA), Leu-Ile, morphine (MOR), rewarding effect, sensitization, tumor necrosis factor- α (TNF- α)

Tumor necrosis factor- α (TNF- α) plays an important role in a variety of infectious, inflammatory, and autoimmune conditions (Vassalli 1992). Tumor necrosis factor- α also affects the central nervous system (CNS) directly or indirectly through the stimulation of vagal afferents (Maier and Watkins 1998). Thus, this proinflammatory cytokine is emerging as a modulator of CNS function. Regarding the behavioral effects of TNF- α , transgenic mice expressing high levels of TNF- α in the brain showed several changes in exploratory activity and emotional behavior in association with reduced tyrosine hydroxylase (TH) immunoreactivity in the caudate putamen (CPu) without neuronal cell death (Aloe and Fiore 1997). On the other hand, TNF- α knockout mice show anxiogenic-like behavior accompanied by an increase in serotonin metabolism (Yamada *et al.* 2000).

Recently, we have demonstrated that TNF- α plays a neuroprotective role in methamphetamine (METH)-induced drug dependence and neurotoxicity by inhibiting the METH-induced increase in extracellular dopamine (DA) levels through activation

of plasmalemmal dopamine transporter (DAT) as well as vesicular monoamine transporter-2 (Nakajima *et al.* 2004). Furthermore, we have demonstrated that Leu-Ile, which induces glial cell line-derived neurotrophic factor (GDNF) production via TNF- α synthesis, inhibits METH-induced rewarding effect and sensitization by regulating extracellular DA levels in the nucleus accumbens (NAc) (Niwa *et al.*, in press).

The psychostimulative effects of METH are associated with an increase in extracellular DA levels in the brain by facilitating the release of DA from presynaptic nerve terminals and inhibiting reuptake (Giros *et al.* 1996; Heikkilä *et al.* 1975; Kalivas and Stewart 1991; Seiden *et al.* 1993). It is well known that drugs of abuse, including METH and morphine (MOR), modulate the activity of mesolimbic dopaminergic neurons, projecting from the ventral tegmental area (VTA) of the midbrain to the NAc (Koob 1992, 1998; Wise 1996). Brain DA systems have also been focused on in histochemical, biochemical, and pharmacological research into psychological dependence on opioids, such as MOR (Funada *et al.* 1993; Narita *et al.* 2001). Morphine increases dopaminergic neurotransmission in the NAc via the activation of DA cells in the VTA, an area with a high density of μ -opioid receptors. This activation results mainly from the disinhibition of inhibitory γ -aminobutyric acid (GABA)ergic interneurons in the VTA (Bonci and Williams 1997; Johnson and North 1992). Various studies have provided substantial evidence to support roles for mesolimbic dopaminergic transmission in the rewarding effects of and behavioral sensitization to opioids (Vezina and Stewart 1984). Further, it has been proposed that activity-dependent synaptic plasticity and remodeling of the mesolimbic dopaminergic system play a crucial role in the development of drug dependence (Nestler 2001).

We hypothesized that those genes whose expression was altered by repeated administration of METH and MOR could be candidates for drug-dependence-related genes, because both METH and MOR increase dopaminergic neurotransmis-

From the Department of Neuropsychopharmacology and Hospital Pharmacy (MN, AN, YY, AN, YN, TN), Nagoya University Graduate School of Medicine, Nagoya, Japan; Department of Informative Clinical Medicine (KS, MS), Gifu University Graduate School of Medicine, Gifu, Japan; and Division of Clinical Science in Clinical Pharmacy Practice (YN), Management and Research, Faculty of Pharmacy, Meijo University, Nagoya, Japan.

Address reprint requests to Toshitaka Nabeshima, Ph.D., Department of Neuropsychopharmacology and Hospital Pharmacy, Nagoya University Graduate School of Medicine, 65 Tsuruma-cho, Showa-ku, Nagoya 466-8560, Japan; E-mail: tnabeshi@med.nagoya-u.ac.jp.

Received May 23, 2006; revised September 30, 2006; accepted October 4, 2006.

sion in the NAc (Nagai *et al.* 2004, 2005a, 2005b; Niwa *et al.*, in press).

To build on our findings, in the present study we examined the roles of TNF- α and Leu-Ile in the rewarding effect and the sensitization to the locomotor-stimulating effects of MOR.

Methods and Materials

Reagents

Tumor necrosis factor- α was donated by Dainippon Pharmaceutical Co., Ltd. (Osaka, Japan). Leu-Ile was purchased from Kokusan Chemical Co., Ltd. (Tokyo, Japan). All other materials used were of reagent grade.

Animals

Animals were housed in plastic cages and kept in a temperature-, humidity-, and light-controlled room ($23 \pm 1^\circ\text{C}$; $50 \pm 5\%$ humidity; 12:12 hour light-dark cycle starting at 8:00 AM) and had free access to food and water, except during behavioral experiments. All animals' care and use were in accordance with the National Institutes of Health Guide for the Care and Use of Laboratory Animals and were approved by the Institutional Animal Care and Use Committee of Nagoya University School of Medicine. Animals were treated according to the Guidelines of Experimental Animal Care issued from the Office of the Prime Minister of Japan. The behavioral experimental schedule is shown in Figure 1.

The male C57BL/6- wild-type mice were obtained from Sic Japan (Hamamatsu, Japan). The generation of TNF- α knockout mice, TNF- α (-/-), was conducted as reported (Taniguchi *et al.* 1997; Nakajima *et al.* 2004). Tumor necrosis factor- α (-/-) mice were bred locally in the Laboratory Animal Center, University of Nagoya University Graduate School of Medicine in Japan, on the C57BL/6 background. Male C57BL/6- wild-type and C57BL/6-TNF- α (-/-) mice, 8 to 12 weeks of age, were used in the experiments.

Drug Treatment

Mice were administered TNF- α (1 and 4 μg , intraperitoneal [IP]), Leu-Ile (1.5 and 15 $\mu\text{mol/kg}$, IP), or vehicle once a day 1 hour before MOR (10 mg/kg, subcutaneous [SC]) treatment for 9 days (Figure 1A). Tumor necrosis factor- α /MOR, Leu-Ile/MOR, or vehicle/MOR indicate coadministration of TNF- α (1 and 4 μg , IP), Leu-Ile (1.5 and 15 $\mu\text{mol/kg}$, IP), or vehicle and MOR (10 mg/kg, SC). In the withdrawal experiment, mice were administered TNF- α (1 and 4 μg , IP), Leu-Ile (1.5 and 15 $\mu\text{mol/kg}$, IP), or vehicle without MOR for 5 days after the withdrawal from MOR following 9 successive days of MOR administration (Figure 1B). Morphine/TNF- α /MOR, MOR/Leu-Ile/MOR, or MOR/vehicle/MOR indicate an acute challenge of MOR in mice treated with TNF- α (1 and 4 μg , IP), Leu-Ile (1.5 and 15 $\mu\text{mol/kg}$, IP), or vehicle for 5 days after the development of MOR-induced sensitization. To determine messenger RNA (mRNA) expression and protein levels, mice were decapitated 2 and 24 hours after the last MOR injection, respectively. In the real-time reverse transcription polymerase chain reaction (RT-PCR) experiment on the antagonism of MOR-induced TNF- α expression, mice were treated with DA D1 receptor antagonist *R*(+)-7-chloro-8-hydroxy-3-methyl-1-phenyl-2, 3, 4, 5-tetrahydro-1*H*-3-benzazepine (*R*[+]-SCH23390) (.01 and .1 mg/kg, IP), DA D2 receptor antagonist raclopride (.1 and 1 mg/kg, IP), and the specific opioid receptor antagonist naloxone (NAL) (5 mg/kg, IP) 30, 30, and 15 min before MOR (10 mg/kg, SC) once per day for 9 days, respectively.

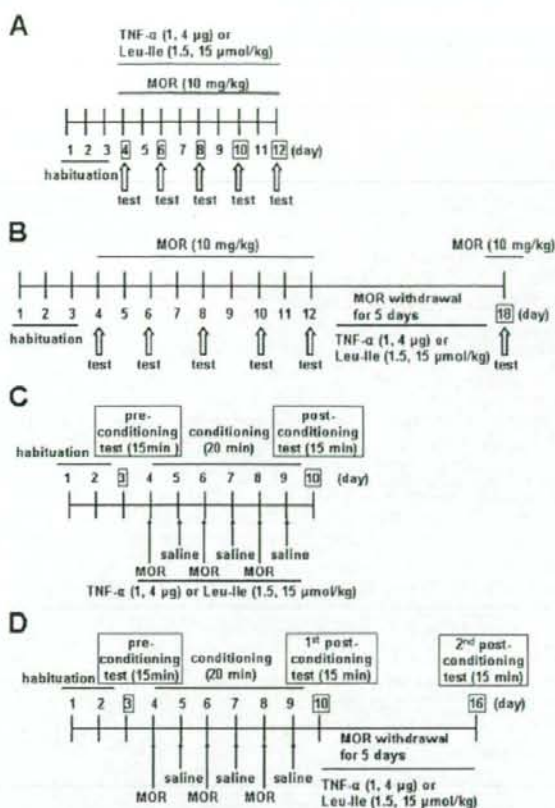


Figure 1. Experimental schedules. (A) Experimental schedule for the measurement of locomotor activity to investigate effects of TNF- α or Leu-Ile on MOR-induced sensitization. Mice were habituated to apparatus 240 min a day for 3 days and then co-treated with TNF- α or Leu-Ile and MOR for 9 days. Mice were treated with TNF- α (1 and 4 μg , IP) or Leu-Ile (1.5 and 15 $\mu\text{mol/kg}$, IP) 1 hour before MOR (10 mg/kg, SC). Locomotor activity was measured for 3 hours after the MOR treatment. Open arrows indicate the days when locomotor activity was measured. (B) Experimental schedule for the measurement of locomotor activity to investigate the effects of TNF- α or Leu-Ile after the withdrawal from MOR. Mice were treated with TNF- α or Leu-Ile after the development of MOR-induced (10 mg/kg, SC) sensitization: Mice were treated with MOR for 9 days and then with TNF- α (1 and 4 μg , IP) or Leu-Ile (1.5 and 15 $\mu\text{mol/kg}$, IP) for 5 days without MOR. On day 18, mice were administered only MOR (10 mg/kg, SC), and locomotor activity was measured for 3 hours after the MOR treatment. Open arrows indicate the day when locomotor activity was measured. (C) Experimental schedule for the conditioned place preference task to investigate effects of TNF- α or Leu-Ile on MOR-induced place preference. Mice were co-treated with TNF- α or Leu-Ile and MOR in the conditioning period. Mice were treated with TNF- α (1 and 4 μg , IP) or Leu-Ile (1.5 and 15 $\mu\text{mol/kg}$, IP) 1 hour before MOR (10 mg/kg, SC) or saline. The postconditioning test was carried out 1 day after the conditioning. Closed arrows indicate the days of MOR or saline injection. (D) Experimental schedule for the conditioned place preference task to investigate the effects of TNF- α or Leu-Ile after the withdrawal from MOR. Mice were not treated with TNF- α or Leu-Ile in the conditioning period. Mice were treated with TNF- α (1 and 4 μg , IP) or Leu-Ile (1.5 and 15 $\mu\text{mol/kg}$, IP) for 5 days after withdrawal from MOR. The first postconditioning test was carried out 1 day after conditioning. The second postconditioning test was carried out 5 days after the first postconditioning test. Closed arrows indicate the days of MOR or saline injection. TNF- α , tumor necrosis factor- α ; MOR, morphine; IP, intraperitoneal; SC, subcutaneous.

Semiquantitative mRNA Analysis by Real-Time RT-PCR

Mice were decapitated 2 hours after the last injection of MOR, and the brains were quickly removed. Various regions including the frontal cortex (Fc), NAc, CPU, and hippocampus (Hip) were rapidly dissected out, frozen, and stored in a deep freezer at -80°C until the assays. Total RNA was isolated using an RNeasy Mini Kit (Qiagen, Hilden, Germany). The levels of TNF- α mRNA were determined by real-time RT-PCR (Bio-Rad Laboratories Inc., Hercules, California) using a TaqMan probe. The 18S ribosomal RNA was used as the internal control (PE Applied Biosystems, Foster, California). Total RNA was converted into complementary DNA (cDNA) using a SuperScript First-Strand System for RT-PCR Kit (Invitrogen Life Technologies, Carlsbad, California) in a total volume of 21 μL (reverse transcriptase [RT]-reaction mixture). Polymerase chain reaction (PCR) was performed using 1 μL of the RT-reaction mixture, 10 nm of each (forward and reverse) primer, 80 nm of TaqMan probe, and 12.5 μL of TaqMan Universal PCR Master Mix (PE Applied Biosystems) in a total reaction volume of 25 μL . The mouse TNF- α primers used were as follows: 5'-CCCTTGCCAGCCAGAA-3' (forward) and 5'-CCCCCTAAAAGACGAAGATG-3' (reverse) and TaqMan probe: 5'-AGCTTGATGTCATCTCTTCGTGGGCT-3'. Partial cDNA sequences of mouse TNF- α have been deposited in the National Center for Biotechnology Information (NCBI) GenBank database (accession number: NM_013693). The amplification consisted of an initial step (50°C for 2 min and 95°C for 2 min) and then 40 cycles of denaturation for 15 sec at 95°C and annealing for 1 min at 60°C in an iCycle iQ Detection System (Bio-Rad Laboratories, Inc., Tokyo, Japan). The signal was detected according to the manufacturer's instructions. The expression levels were calculated as described previously (Wada *et al.* 2000).

Immunohistochemical Analysis

For samples for immunohistochemical analysis, mice were killed 24 hours after repeated treatment with Leu-Ile (1.5 $\mu\text{mol}/\text{kg}$, IP) 1 hour before the administration of MOR (10 mg/kg, SC, once a day for 9 days). The brains were sliced at 20 μm in the cryostat. Slices were rinsed briefly with phosphate-buffered saline (PBS) containing .01% Triton X-100 (washing buffer; Sigma-Aldrich, St. Louis, Missouri). They were incubated with primary antibodies in washing buffer overnight at 4°C . After being washed, slices were incubated with secondary antibodies for 2 hours. Polyclonal goat anti-TNF- α antibody (1:100; R&D Systems Ltd., Minneapolis, Minnesota), monoclonal mouse anti-neuron-specific nuclear antigen (NeuN) antibody (1:200; Chemicon, Temecula, California), and monoclonal mouse anti-glial fibrillary acidic protein (GFAP) antibody (1:200; Chemicon International, Inc., Temecula, California) served as primary antibodies. Donkey anti-goat Alexa Fluor 546 (1:1000; Molecular Probes, Inc., Eugene, Oregon) and rabbit anti-mouse Alexa Fluor 488 (1:1000; Molecular Probes, Inc.) were used as secondary antibodies for TNF- α immunostaining. Each stained tissue was observed under a fluorescence microscope (Axioskop 2 plus; Carl Zeiss, Jena, Germany) and analyzed with Axiovision 3.0 systems (Carl Zeiss).

The area with TNF- α -positive cells in the defined NAc region of mice was determined using the software WinROOF (Mitani Co., Ltd., Fukui, Japan) (Kuwahara *et al.* 1999; Tsuji *et al.* 1999). We employed an immunostaining method with which one can analyze the distribution and levels of TNF- α protein in the present investigation, since it is too difficult to use Western

blotting or an enzyme immunoassay to quantify the amount of TNF- α protein in brain tissue.

Locomotor Activity

Locomotor activity was measured using an infrared detector (Neuroscience Co., Ltd., Tokyo, Japan) in a plastic box ($32 \times 22 \times 15$ cm high). Mice were administered Leu-Ile (1.5 and 15 $\mu\text{mol}/\text{kg}$, IP) or vehicle and habituated for 1 hour in the box. Mice were administered MOR (10 mg/kg, SC) or saline 1 hour after the TNF- α or Leu-Ile treatment, and the locomotor activity was measured for 2 hours immediately after the MOR or saline administration (Figures 1A and 1B). Leu-Ile and MOR were injected once a day for 9 days (days 4–12). In the experiment with withdrawal, mice were administered TNF- α , μ Leu-Ile, or vehicle for 5 days (days 13–17) after the withdrawal from MOR following 9 successive days of MOR administration. On day 18, the mice were administered only MOR (10 mg/kg, SC), and locomotor activity was measured for 2 hours immediately after the administration (Figure 1C).

Conditioned Place Preference

The apparatus used for the place-conditioning task consisted of two compartments: a transparent Plexiglas box and a black Plexiglas box (both $15 \times 15 \times 15$ cm high). To enable mice to distinguish easily the two compartments, the floors of the transparent and black boxes were covered with white plastic mesh and black frosting Plexiglas, respectively. Each box could be divided by a sliding door (10×15 cm high). The place-conditioning paradigm was performed by using a previously established procedure with a minor modification (Noda *et al.* 1998; Mizoguchi *et al.* 2004; Niwa *et al.*, in press). The experimental schedule for the condition place preference task is shown in Figures 1C and 1D. In the preconditioning test, the sliding door was opened, and the mouse was allowed to move freely between both boxes for 15 min once a day for 3 days. On the third day of the preconditioning test, we measured the time that the mouse spent in the black and transparent boxes by using a Scanet SV-20 LD (Melquest Co., Ltd., Toyama, Japan). The box in which the mouse spent the most time was referred to as the "preferred side," and the other box as the "nonpreferred side." Conditioning was performed during 6 successive days. Mice were given MOR or saline in the apparatus with the sliding door closed. That is, a mouse was subcutaneously given MOR and put in its nonpreferred side for 20 min. On the next day, the mouse was given saline and placed opposite the drug-conditioning site for 20 min. These treatments were repeated for three cycles (6 days). In the postconditioning test, the sliding door was opened, and we measured the time that the mouse spent in the black and transparent boxes for 15 min, using the Scanet SV-20 LD. Place-conditioning behavior was expressed by Post-Pre, which was calculated as: $(\text{postvalue}) - (\text{prevalue})$, where postvalues and prevalues were the difference in time spent at the drug-conditioning and the saline-conditioning sites in the postconditioning and preconditioning tests, respectively.

In Vivo Microdialysis

Mice were anesthetized with sodium pentobarbital, and a guide cannula (AG-8, EICOM, Kyoto, Japan) was implanted into the NAc (+1.1 mm anteroposterior, +1.0 mm mediolateral from the bregma, and -4.0 mm dorsoventral to the dura) according to the atlas of Franklin and Paxinos (1997) and secured to the skull using stainless steel screws and dental acrylic cement. One day after the operation, a dialysis probe (AI-8-1; 1-mm mem-

brane length, EICOM) was inserted through the guide cannula and perfused continuously with artificial cerebrospinal fluid (aCSF; 147 mmol/L sodium chloride [NaCl], 4 mmol/L potassium chloride [KCl], and 2.3 mmol/L calcium chloride [CaCl₂]) at a rate of 1.0 μ L/min. Dialysate was collected in 20-min fractions and injected into the high-performance liquid chromatography (HPLC) system (EICOM) for the measurement of DA levels. Three samples were used to establish baseline levels of extracellular DA before the administration of TNF- α or Leu-Ile and MOR.

Hot Plate Test

To develop tolerance, mice received MOR (10 mg/kg) subcutaneously twice a day for 5 days.

Noiceptive threshold was assessed as the response time to the hot plate (55 \pm 1°C). The response was defined by the animal either licking its forepaws or hindpaws or flicking its hindpaws. Licking of the hindpaws was taken as the end point. The cutoff time (90 sec) was set to minimize injury to the mouse. The antinociceptive effect of MOR was determined 60 min after the first treatment on day 1 and the second treatment on day 5 (Hamdy *et al.* 2004; Miyamoto *et al.* 2004).

Induction of Withdrawal Syndrome

Withdrawal was precipitated on day 6 by injecting NAL (5 mg/kg, IP) 2 hours after the final administration of MOR, according to previous reports (Itoh *et al.* 2000; Mamiya *et al.* 2001). Twenty minutes before the observation, mice were placed in a transparent acrylic cylinder (20 cm in diameter, 35 cm high) to habituate to the new environment. Immediately after the NAL challenge, each mouse was placed gently again in the cylinder, and the frequency of NAL-precipitated withdrawal signs (jumping, forepaw tremor, and rearing) was recorded for 15 min (Hamdy *et al.* 2004; Ren *et al.* 2004).

Statistical Analysis

All data were expressed as means \pm SEM. Statistical differences between two groups were determined with Student *t* test. Statistical differences among more than three groups were determined using a one-way analysis of variance (ANOVA) or a repeated ANOVA, followed by the Bonferroni multiple comparison test; $p < .05$ was regarded as statistically significant.

Results

Change of Expression of TNF- α mRNA After MOR Treatment

As an initial step in assessing the relationship between TNF- α and MOR, the effects of single and repeated MOR administration on the expression of TNF- α mRNA in various regions of the mouse brain were measured 2 hours after the final MOR treatment using the real-time RT-PCR method. Although single MOR treatment did not induce expression of TNF- α mRNA in any regions examined, repeated MOR treatment remarkably induced it in the NAc [$F(2,21) = 17.108$, $p < .05$, one-way ANOVA] and CPU [$F(2,21) = 8.300$, $p < .05$, one-way ANOVA] (Figure 2A). The increase in TNF- α mRNA expression caused by MOR in the NAc was inhibited by pretreatment with the DA D1 receptor antagonist SCH23390 (1 mg/kg, IP), the D2 receptor antagonist raclopride (1 mg/kg, IP) [$F(9,40) = 5.390$, $p < .05$, one-way ANOVA] (Figure 2B), and the specific opioid receptor antagonist, naloxone (5 mg/kg, IP) [$F(3,28) = 14.301$, $p < .05$, one-way ANOVA] (Figure 2C), although neither antagonist itself had an effect on TNF- α mRNA expression in the control group, suggesting the involvement of DA D1, D2, and opioid receptors in the MOR-induced increase in TNF- α mRNA expression.

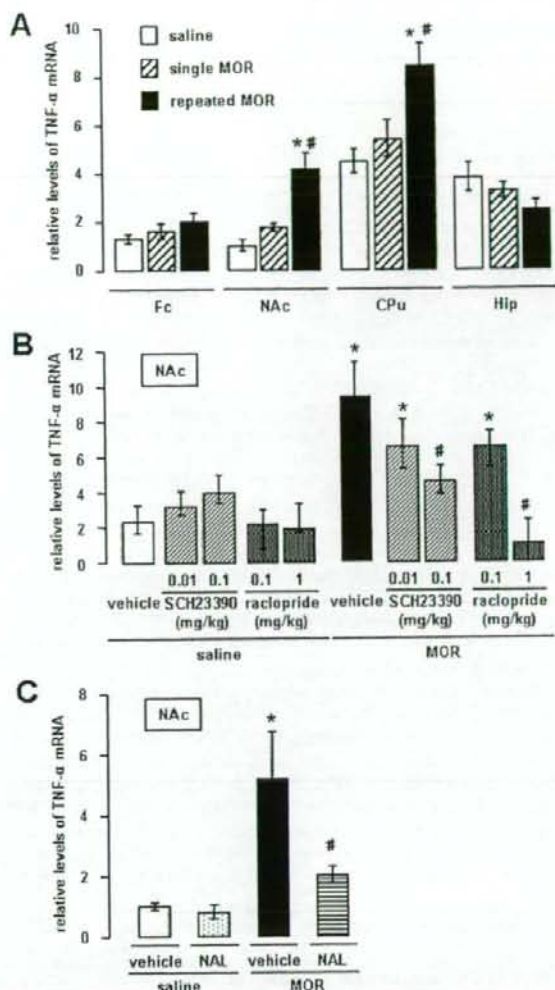


Figure 2. Change of expression of TNF- α mRNA after repeated MOR treatment. (A) Change of expression of TNF- α mRNA in the various regions of the mouse brain after single or repeated MOR (10 mg/kg, SC) treatment for 1 day or 9 days, respectively. Values are means \pm SEM ($n = 8$). * $p < .05$ versus saline-treated mice. # $p < .05$ versus single MOR-treated mice. (B) Effects of the DA D1 receptor antagonist SCH23390 and D2 receptor antagonist raclopride on MOR-induced expression of TNF- α mRNA in the NAc. Mice were treated with *R*(+)-SCH23390 (0.01 and 0.1 mg/kg, IP) and raclopride (0.1 and 1 mg/kg, IP) 30 min before MOR (10 mg/kg, SC) once per day for 9 days and decapitated 2 hours after the last MOR treatment. Values are means \pm SEM ($n = 5$). * $p < .05$ versus vehicle/saline-treated mice. # $p < .05$ versus vehicle/MOR-treated mice. (C) Effect of naloxone (NAL) on MOR-induced expression of TNF- α mRNA in the NAc. Mice were treated with NAL (5 mg/kg, IP) 15 min before MOR (10 mg/kg, SC) once per day for 9 days and decapitated 2 hours after the last MOR treatment. Values are means \pm SEM ($n = 8$). * $p < .05$ versus vehicle/saline-treated mice. # $p < .05$ versus vehicle/MOR-treated mice. Fc, frontal cortex; NAc, nucleus accumbens; CPU, caudate putamen; Hip, hippocampus; TNF- α , tumor necrosis factor- α ; mRNA, messenger RNA; MOR, morphine; SC, subcutaneous; DA, dopamine; *R*(+)-SCH23390, *R*(+)-7-chloro-8-hydroxy-3-methyl-1-phenyl-2,3,4,5-tetrahydro-1H-3-benzazepine; IP, intraperitoneal; NAL, naloxone.

Change of TNF- α Expression After the Treatment with Leu-Ile and/or MOR

We have reported that TNF- α mRNA levels were elevated in the NAC, CPU, Hip, and amygdala after repeated daily administration of METH (2 mg/kg for 5 days) in the rat brain (Nakajima et al. 2004). Moreover, we have found that TNF- α mRNA, GDNF mRNA, and GDNF levels were significantly elevated 24 hours after treatment with Leu-Ile (.37 μ g/mL) in cultured neurons compared with the control group (Niwa et al. in press).

We investigated the dose-response effect of Leu-Ile on the expression of TNF- α mRNA in the NAC. Leu-Ile (1.5 and 15 μ mol/kg, IP) increased the levels of TNF- α mRNA compared with the vehicle-treated mice [$F(3,38) = 10.615$, $p < .05$, one-way ANOVA] (Figure 3A).

Tumor necrosis factor- α -positive cells were found among the neurons that were immunopositive for NeuN but not for GFAP, in Leu-Ile-treated (1.5 μ mol/kg, IP) and MOR-treated (10 mg/kg, SC) mouse brain (Figure 3B). There was no observation of TNF- α immunopositive cells in TNF- α (-/-) mice (Figure 3B(c)).

Areas with TNF- α immunoreactive cells were detected in the NAC using the software WinROOF (Mitani Co. Ltd., Fukui, Japan). The areas occupied by TNF- α -positive cells were measured to estimate the effects of Leu-Ile on the production of TNF- α protein. Morphine (10 mg/kg, SC) potentiated the immunoreactivity to TNF- α in the NAC. After the coadministration of Leu-Ile (1.5 and 15 μ mol/kg, IP) and MOR (10 mg/kg, SC), immunoreactivity was much more increased in the NAC [$F(5,32) = 38.841$, $p < .05$, one-way ANOVA] (Figures 3B and 3C). Moreover, we determined levels of TNF- α protein in the NAC after Leu-Ile treatment during the withdrawal from MOR following 9 successive days of MOR administration. The schedule is described in Figure 1B. An acute challenge of MOR in mice treated with vehicle for 5 days after the development of MOR-induced sensitization increased TNF- α levels in the NAC compared with those in the saline/vehicle/MOR-treated mice. An acute challenge of MOR in mice treated with Leu-Ile (1.5 and 15 μ mol/kg) for 5 days after the development of MOR-induced sensitization markedly increased TNF- α levels compared with those in the MOR/vehicle/MOR-treated mice [$F(3,22) = 75.245$, $p < .05$, one-way ANOVA] (Figure 3D).

Effects of TNF- α or Leu-Ile on MOR-Induced Hyperlocomotion/Sensitization Before and After the Development of Sensitization

We investigated the effects of TNF- α or Leu-Ile on the behavioral responses to MOR. First, we examined the effects of TNF- α or Leu-Ile on the development of MOR-induced hyperlocomotion and sensitization. Sensitization refers to the augmentation of behavioral responses to drugs of abuse that occurs during their repeated administration and persists long after drug exposure is discontinued (Boudreau and Wolf 2005; Robinson and Berridge 2000). The experimental schedule is described in Figure 1A. Tumor necrosis factor- α (1 and 4 μ g, IP) or Leu-Ile (1.5 and 15 μ mol/kg, IP) did not affect spontaneous locomotor activity in saline-treated mice (Figure 4A). As shown in Figure 4A, single MOR treatment (day 4) at the dose of 10 mg/kg increased locomotor activity, and repeated administration for 9 days (days 4–12) resulted in an enhancement of the locomotor-stimulating effect of MOR (sensitization: days 8–12) [$F(4,35) = 15.402$, $p < .05$, one-way ANOVA]. Coadministration of TNF- α (1 and 4 μ g, IP) or Leu-Ile (1.5 and 15 μ mol/kg, IP) with MOR inhibited the development of MOR-induced hyperlocomotion and sensitization on days 8–12 [$F(9,70) = 65.020$ at day 8, $F(9,70) = 68.815$

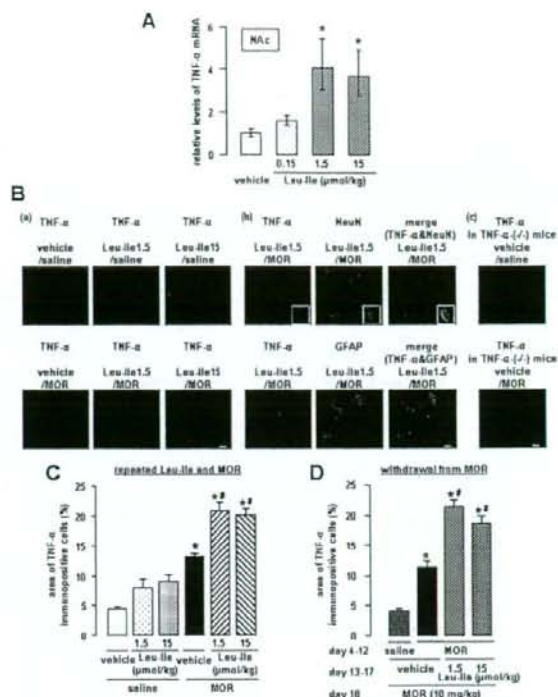


Figure 3. Change of TNF- α expression after the treatment with Leu-Ile and/or MOR. (A) The dose-response effect of Leu-Ile on the expression of TNF- α mRNA in the NAC. Mice were treated with Leu-Ile (1.5, 1.5, and 15 μ mol/kg, IP) for 9 days and decapitated 2 hours after the last injection. Values are means \pm SEM ($n = 10-11$). * $p < .05$ versus vehicle-treated mice. (B) Immunostaining of TNF- α in the NAC after the repeated administration of Leu-Ile and/or MOR in wild-type mice (a). Double-labeling fluorescence photomicrographs for TNF- α and NeuN or GFAP in wild-type mice (b). Tumor necrosis factor- α -immunoreactive cells (red) were colocalized with NeuN-positive cells (green) in the NAC. Double immunostaining for TNF- α and NeuN in the NAC reveals TNF- α expression in neuronal cells. Immunostaining of TNF- α in the NAC after the repeated administration of vehicle and saline or MOR in TNF- α (-/-) mice (c). Immunopositive cells of TNF- α were absent in TNF- α (-/-) mice. Scale bar, 20 μ m. (C) Change of TNF- α expression in the NAC after the administration of Leu-Ile and/or MOR. Mice were treated with Leu-Ile (1.5 and 15 μ mol/kg, IP) 1 hour before MOR (10 mg/kg, SC) for 9 days and decapitated 24 hours after the last MOR injection. The area of TNF- α positive cells in $3.8 \times 10^4 \mu\text{m}^2$ was estimated using the software WinROOF. Values are means \pm SE ($n = 6-8$). * $p < .05$ versus vehicle/saline-treated mice. * $p < .05$ vs. vehicle/MOR-treated mice. (D) Change of TNF- α expression in the NAC after Leu-Ile treatment during the withdrawal from MOR. Mice were treated with Leu-Ile (1.5 and 15 μ mol/kg, IP) without MOR for 5 days after the development of MOR-induced (10 mg/kg, SC, for 9 days) sensitization. The next day, the mice were administered only MOR (10 mg/kg, SC) and decapitated 24 hours after the administration. Values are means \pm SE ($n = 6-8$). * $p < .05$ versus saline/vehicle/MOR-treated mice. * $p < .05$ versus MOR/vehicle/MOR-treated mice. TNF- α , tumor necrosis factor- α ; MOR, morphine; mRNA, messenger RNA; NAC, nucleus accumbens; IP, intraperitoneal; NeuN, neuron-specific nuclear antigen; GFAP, glial fibrillary acidic protein; SC, subcutaneous.

at day 10, $F(9,70) = 85.493$ at day 12, $p < .05$, one-way ANOVA). Tumor necrosis factor- α or Leu-Ile had no effect on days 4–6 (Figure 4A). These results demonstrate that TNF- α or Leu-Ile inhibits the development of MOR-induced hyperlocomotion and sensitization on repeated administration but not single administration.

Next, the inhibitory effects of TNF- α (1 and 4 μ g, IP) or

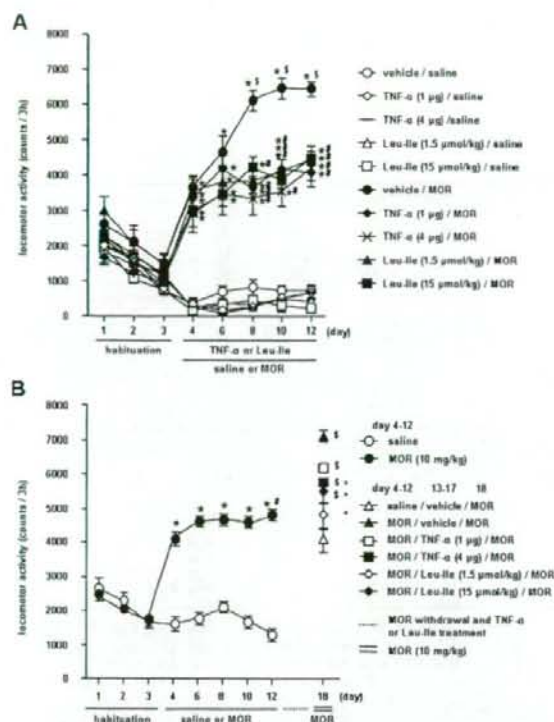


Figure 4. Effects of TNF- α or Leu-Ile on MOR-induced hyperlocomotion/sensitization before and after the development of sensitization. **(A)** Effect of TNF- α or Leu-Ile on MOR-induced hyperlocomotion and sensitization in wild-type mice. Mice were treated with TNF- α (1 and 4 μ g, IP) or Leu-Ile (1.5 and 15 μ mol/kg, IP) 1 hour before receiving the MOR (10 mg/kg, SC) injection. Values are means \pm SEM ($n = 8$). Locomotor activity was measured for 3 hours after the MOR treatment. Analysis of variance with repeated measures revealed significant differences in locomotor activity. * $p < .05$ versus vehicle/saline-treated mice. # $p < .05$ versus vehicle/MOR-treated mice. $^{\dagger}p < .05$ versus vehicle/MOR-treated mice on day 4. **(B)** Effect of TNF- α or Leu-Ile treatment after the development of MOR-induced sensitization in wild-type mice. Mice were treated with TNF- α (1 and 4 μ g, IP) or Leu-Ile (1.5 and 15 μ mol/kg, IP) without MOR for 5 days after the development of MOR-induced (10 mg/kg, SC, for 9 days) sensitization. Values are means \pm SEM ($n = 10$). Locomotor activity was measured for 3 hours after the MOR treatment. * $p < .05$ versus saline-treated mice. # $p < .05$ versus MOR-treated mice on day 4. $^{\dagger}p < .05$ versus saline/vehicle/MOR-treated mice. $^{\ddagger}p < .05$ versus MOR/vehicle/MOR-treated mice. TNF- α , tumor necrosis factor- α ; MOR, morphine; IP, intraperitoneal; SC, subcutaneous.

Leu-Ile (1.5 and 15 μ mol/kg, IP) were investigated after the development of MOR-induced (10 mg/kg) sensitization. The experimental schedule is described in Figure 1B. The repeated administration of MOR for 9 days again resulted in an enhancement of the locomotor-stimulating effect of MOR (sensitization) [$F(4,245) = 2.374$, $p < .05$, one-way ANOVA]. Sensitization was maintained on day 18, 5 days after withdrawal from MOR. To investigate the therapeutic effects of TNF- α and Leu-Ile, mice were treated with TNF- α (1 and 4 μ g, IP) or Leu-Ile (1.5 and 15 μ mol/kg, IP) for 5 days during the withdrawal period. Tumor necrosis factor- α (4 μ g, IP) or Leu-Ile (1.5 and 15 μ mol/kg, IP) inhibited MOR-induced (10 mg/kg) sensitization on day 18 [$F(5,54) = 12.221$, $p < .05$, one-way ANOVA] (Figure 4C). The results of TNF- α levels in the NAC after locomotor test are described in Figures 3C and 3D.

Effects of TNF- α or Leu-Ile on MOR-Induced Place Preference Before and After Its Development

The effects of TNF- α or Leu-Ile on the rewarding effects of MOR were examined in a place-conditioning paradigm, in which animals learn the association of an environment paired with drug exposure. Place conditioning is, therefore, considered a measure of the rewarding properties of drugs of abuse. The experimental schedule is described in Figure 1D. As shown in Figure 5A, MOR (10 mg/kg, SC) produced place preference in mice. When TNF- α (4 μ g, IP) or Leu-Ile (1.5 μ mol/kg, IP) was administered 1 hour

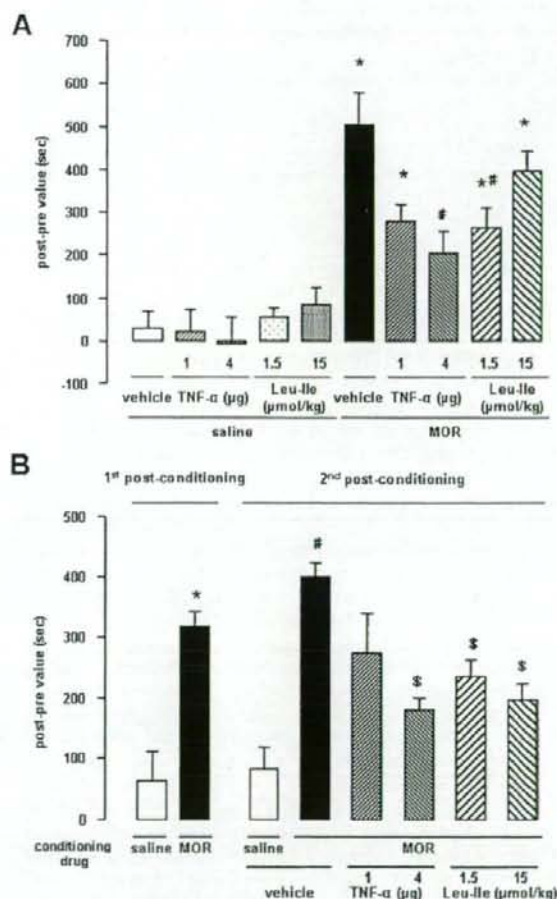


Figure 5. Effects of TNF- α or Leu-Ile on MOR-induced place preference before and after its development. **(A)** Effects of TNF- α or Leu-Ile on development of MOR-induced place preference in wild-type mice. Mice were treated with TNF- α (1 and 4 μ g, IP) or Leu-Ile (1.5 and 15 μ mol/kg, IP) 1 hour before MOR (10 mg/kg, SC) or saline during the conditioning. Values are means \pm SEM ($n = 13$). * $p < .05$ versus vehicle/saline-treated mice. # $p < .05$ versus vehicle/MOR-treated mice. **(B)** Effect of TNF- α or Leu-Ile treatment after the development of place preference induced by MOR in wild-type mice. Mice were treated with TNF- α (1 and 4 μ g, IP) or Leu-Ile (1.5 and 15 μ mol/kg, IP) without MOR for 5 days after withdrawal from MOR. Values are means \pm SEM ($n = 15$). * $p < .05$ versus saline-treated mice in first conditioning test. # $p < .05$ versus saline/vehicle-treated mice in second conditioning test. $^{\dagger}p < .05$ versus MOR/vehicle-treated mice in second conditioning test. TNF- α , tumor necrosis factor- α ; MOR, morphine; IP, intraperitoneal; SC, subcutaneous.

before MOR, the development of MOR-induced place preference was significantly attenuated [$F(9,120) = 13.067, p < .05$, one-way ANOVA] (Figure 5A). Tumor necrosis factor- α (1 and 4 μg , IP) or Leu-ile (1.5 and 15 $\mu\text{mol/kg}$, IP) itself failed to affect place preference in mice (second, third, fourth, and fifth columns in Figure 5A). We confirmed that Leu-ile at the lower dose, 1.5 $\mu\text{mol/kg}$, which could inhibit the rewarding effects of MOR, increased TNF- α expression in combination with MOR in the conditioned place preference (CPP) paradigm. On the contrary, Leu-ile at the higher dose, 15 $\mu\text{mol/kg}$, which could not inhibit the rewarding effects of MOR, failed to increase TNF- α expression in combination with MOR in the CPP paradigm [data not shown; $F(5,30) = 35.937$ for co-treatment with Leu-ile and MOR in CPP paradigm].

To investigate the therapeutic effect of TNF- α or Leu-ile, mice were administered TNF- α (1 and 4 μg , IP) or Leu-ile (1.5 and 15 $\mu\text{mol/kg}$, IP) for 5 days without MOR treatment after the development of MOR-induced place preference. The experimental schedule is described in Figure 1E. In this experiment, the second postconditioning was carried out 5 days after the first postconditioning. Although MOR-induced (10 mg/kg) place preference was maintained for 5 days after the first postconditioning in wild-type mice, it was attenuated by the treatment with TNF- α (4 μg , IP) or Leu-ile (1.5 and 15 $\mu\text{mol/kg}$, IP) for 5 days between the first and second postconditionings [$F(5,84) = 8.561, p < .05$, one-way ANOVA] (Figure 5C). We confirmed that Leu-ile at doses of 1.5 and 15 $\mu\text{mol/kg}$, which could inhibit the rewarding effects of MOR, increased TNF- α expression after withdrawal from repeated MOR treatment in the CPP paradigm [data not shown; $F(3,20) = 60.346$ for Leu-ile treatment during withdrawal from MOR in CPP paradigm].

Effects of TNF- α or Leu-ile on the Rewarding Effects of MOR in TNF- α (-/-) Mice

The role of endogenous TNF- α in the rewarding effects of MOR was determined using TNF- α (-/-) mice. To confirm the involvement of TNF- α in the rewarding effects of MOR, the effect of Leu-ile on the MOR-induced place preference was also examined in TNF- α (-/-) mice. The experimental schedule is described in Figure 1D. Although at a dose of 10 mg/kg MOR induced place preference in both wild-type and TNF- α (-/-) mice, at 3 mg/kg it failed to induce place preference in wild-type mice (Figures 6A and 6B). On the other hand, TNF- α (-/-) mice developed place preference even at the dose of 3 mg/kg [$F(7,56) = 9.711, p < .05$, one-way ANOVA] (Figure 6A). When TNF- α (4 μg , IP) was administered 1 hour before MOR, it inhibited MOR-induced place preference in TNF- α (-/-) mice [$F(11,84) = 5.730, p < .05$, one-way ANOVA] (Figure 6B). Leu-ile (1.5 and 15 $\mu\text{mol/kg}$, IP) treatment 1 hour before MOR failed to inhibit the MOR-induced place preference in TNF- α (-/-) mice (Figure 6B).

Effects of TNF- α or Leu-ile on MOR-Induced Increase in Extracellular DA Levels

The dopaminergic system is important not only for the rewarding effects but also for the locomotor-stimulating effects of MOR and METH (Nagai *et al.* 2004, 2005a, 2005b; Nakajima *et al.* 2004; Niwa *et al.*, in press). To clarify the mechanisms of the inhibitory effects of TNF- α or Leu-ile on MOR-induced rewarding effect and sensitization, the influence of TNF- α or Leu-ile on the repeated or single MOR-induced increase in extracellular DA levels was examined in the NAc of mice, by using an *in vivo* microdialysis technique. Repeated and single MOR (10 mg/kg,

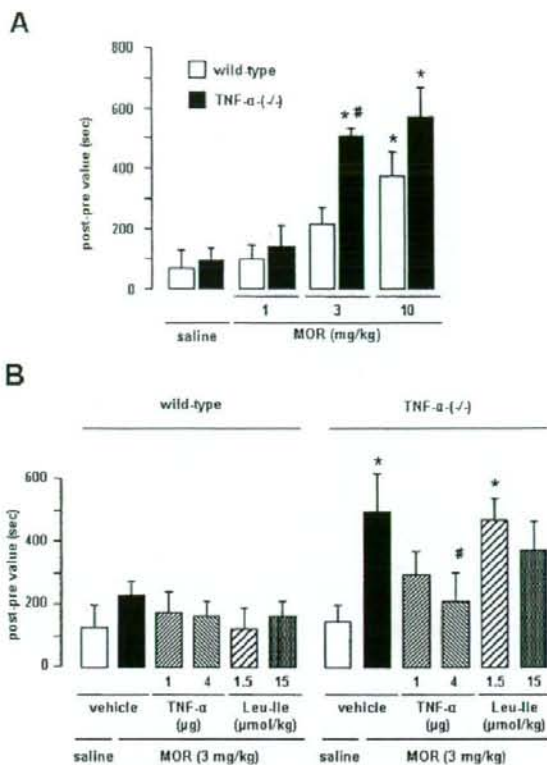


Figure 6. Effects of TNF- α or Leu-ile on the rewarding effects of MOR in TNF- α (-/-) mice. (A) Morphine-induced place preference in wild-type and TNF- α (-/-) mice. Mice were treated with MOR (1, 3, and 10 mg/kg, SC) or saline during the conditioning. Values are means \pm SEM ($n = 8$). * $p < .05$ versus saline-treated wild-type mice. # $p < .05$ versus MOR-treated wild-type mice. (B) Effect of TNF- α or Leu-ile treatment on MOR-induced place preference in wild-type and TNF- α (-/-) mice. Mice were treated with MOR (3 mg/kg, SC) or saline during the conditioning. Values are means \pm SEM ($n = 8$). * $p < .05$ versus vehicle/saline-treated TNF- α (-/-) mice. # $p < .05$ versus vehicle/MOR-treated TNF- α (-/-) mice. TNF- α , tumor necrosis factor- α ; MOR, morphine; SC, subcutaneous.

SC) treatment caused a marked increase in extracellular DA levels in the NAc on day 9 (repeated treatment) and day 1 (single treatment), respectively (Figures 7A and 7B). Peaks of extracellular DA levels in repeated and single treatments were 2.2-fold and 2.1-fold of the baseline, respectively. Treatment with TNF- α (1 and 4 μg , IP) or Leu-ile (1.5 and 15 $\mu\text{mol/kg}$, IP) for 9 days significantly inhibited the repeated MOR-induced increase in extracellular DA levels [$F(4,23) = 5.118, p < .05$, repeated ANOVA] (Figure 7A). On the other hand, pretreatment with TNF- α (1 and 4 μg , IP) or Leu-ile (1.5 and 15 $\mu\text{mol/kg}$, IP) 1 hour before the single MOR treatment failed to inhibit the increase in extracellular DA levels in mice (Figure 7B).

Effects of TNF- α or Leu-ile on MOR-Induced Antinociceptive Effects and Withdrawal Symptoms

Tolerance refers to a situation where increasingly higher doses of a drug become necessary to elicit an equivalent physiological response. This behavioral manifestation is usually

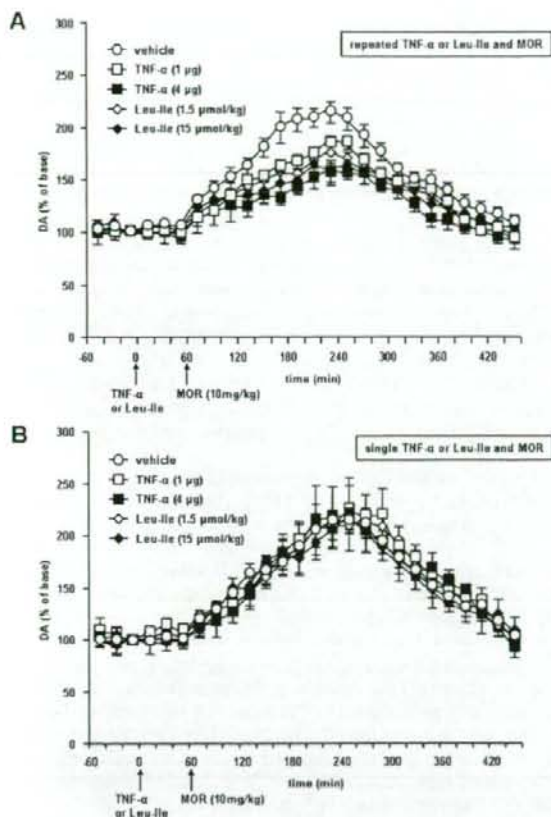


Figure 7. Effects of TNF- α or Leu-ile on MOR-induced increase in extracellular DA levels. **(A)** Effect of exogenous TNF- α or Leu-ile on the repeated MOR treatment-induced increase in extracellular DA levels. Mice were treated with TNF- α (1 and 4 μ g, IP) or Leu-ile (1.5 and 15 μ mol/kg, IP) 1 hour before MOR (10 mg/kg, SC) once a day for 9 days. Extracellular levels of DA were measured in the NAc by in vivo microdialysis. Basal extracellular DA levels were $3.1 \pm .4$, $3.0 \pm .4$, $2.8 \pm .3$, $2.8 \pm .4$, and $3.0 \pm .5$ pg/20 μ L for the vehicle/MOR-, TNF- α 1 μ g/MOR-, TNF- α 4 μ g/MOR-, Leu-ile 1.5 μ mol/MOR-, and Leu-ile 15 μ mol/MOR-treated mice, respectively. Values are means \pm SEM ($n = 5-7$). Analysis of variance with repeated measures revealed significant differences in extracellular DA levels. **(B)** Effect of exogenous TNF- α or Leu-ile on the single MOR treatment-induced increase in extracellular DA levels. Mice were treated with TNF- α (1 and 4 μ g, IP) or Leu-ile (1.5 and 15 μ mol/kg, IP) once 1 hour before MOR (10 mg/kg, SC). Extracellular levels of DA were measured in the NAc by in vivo microdialysis. Basal extracellular DA levels were $2.1 \pm .4$, $1.9 \pm .2$, $2.0 \pm .2$, $1.9 \pm .2$, and $1.8 \pm .2$ pg/20 μ L for the vehicle/MOR-, TNF- α 1 μ g/MOR-, TNF- α 4 μ g/MOR-, Leu-ile 1.5 μ mol/MOR-, and Leu-ile 15 μ mol/MOR-treated mice, respectively. Values are means \pm SEM ($n = 5-6$). Analysis of variance with repeated measures revealed no significant differences in extracellular DA levels. TNF- α , tumor necrosis factor- α ; MOR, morphine; DA, dopamine; IP, intraperitoneal; SC, subcutaneous; NAc, nucleus accumbens.

best exemplified when studying the antinociceptive or rewarding effects of MOR (Di Chiara and North 1992; Laakso *et al.* 2002).

We examined the influence of TNF- α or Leu-ile on the antinociceptive effect of MOR in a hot plate test. As shown in Figure 8A, there was no difference in hot plate latency by co-administration of vehicle, TNF- α (1 and 4 μ g, IP), or Leu-ile (1.5 and 15 μ mol/kg, IP) with single and repeated MOR (10

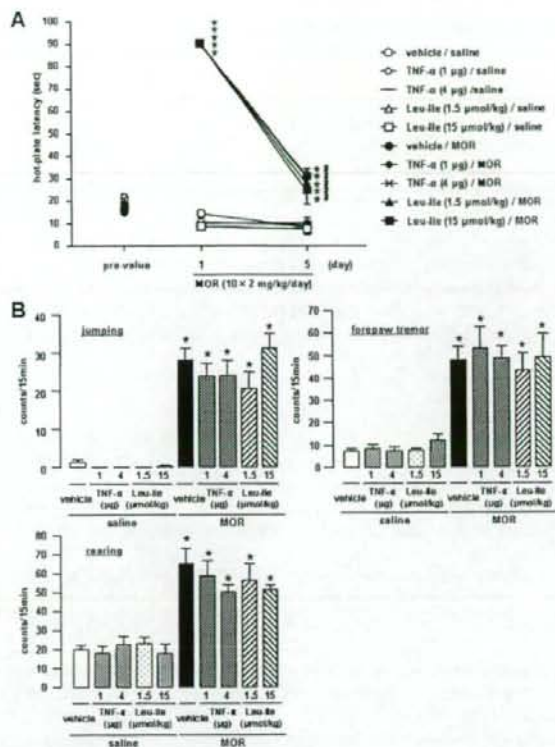


Figure 8. Effects of TNF- α or Leu-ile on the MOR-induced antinociceptive effects and symptoms of withdrawal. **(A)** Effects of TNF- α or Leu-ile on the antinociceptive effect and tolerance induced by repeated MOR treatment. Mice were treated with TNF- α (1 and 4 μ g, IP) or Leu-ile (1.5 and 15 μ mol/kg, IP) 1 hour before MOR (10 mg/kg, SC) twice a day for 5 days. The analgesic effect of MOR was determined 60 min after the first MOR treatment on day 1 and the second MOR treatment on day 5. Values are means \pm SEM ($n = 6-10$). * $p < .05$ versus vehicle/saline-treated mice on the first day. * $p < .05$ versus vehicle/MOR-treated mice on the first day. **(B)** Effects of repeated co-administration of TNF- α or Leu-ile with MOR on naloxone-precipitated (NAL; 5 mg/kg, IP) withdrawal symptoms. Mice were treated with TNF- α (1 and 4 μ g, IP) or Leu-ile (1.5 and 15 μ mol/kg, IP) 1 hour before MOR (10 mg/kg, SC) twice a day for 5 days. On the sixth day, mice were treated with TNF- α (1 and 4 μ g, IP) or Leu-ile (1.5 and 15 μ mol/kg, IP) and NAL (5 mg/kg, IP) 1 hour before and 2 hours after MOR (10 mg/kg, SC) treatment, respectively. Immediately after the NAL treatment, NAL-precipitated MOR withdrawal symptoms (jumping, forepaw tremor, rearing) were enumerated manually for 15 min. Saline-precipitated MOR withdrawal symptoms: [jumping], $.00 \pm .00$ (vehicle/saline), $.00 \pm .00$ (TNF- α 1 μ g/saline), $.00 \pm .00$ (TNF- α 4 μ g/saline), $.00 \pm .00$ (Leu-ile 1.5 μ mol/saline), $.00 \pm .00$ (Leu-ile 15 μ mol/saline), $.10 \pm .00$ (vehicle/MOR), $.00 \pm .00$ (TNF- α 1 μ g/MOR), $.00 \pm .00$ (TNF- α 4 μ g/MOR), $.00 \pm .00$ (Leu-ile 1.5 μ mol/MOR), $.00 \pm .00$ (Leu-ile 15 μ mol/MOR); [forepaw tremor] 9.00 ± 1.28 (vehicle/saline), 10.00 ± 1.06 (TNF- α 1 μ g/saline), 12.83 ± 1.64 (TNF- α 4 μ g/saline), 9.70 ± 1.40 (Leu-ile 1.5 μ mol/saline), 13.81 ± 1.80 (Leu-ile 15 μ mol/saline), 14.60 ± 2.24 (vehicle/MOR), 12.67 ± 1.74 (TNF- α 1 μ g/MOR), 13.50 ± 2.32 (TNF- α 4 μ g/MOR), 13.60 ± 1.97 (Leu-ile 1.5 μ mol/MOR), 12.00 ± 2.63 (Leu-ile 15 μ mol/MOR); [rearing] 34.30 ± 2.38 (vehicle/saline), 29.33 ± 4.47 (TNF- α 1 μ g/saline), 30.00 ± 3.57 (TNF- α 4 μ g/saline), 28.60 ± 3.25 (Leu-ile 1.5 μ mol/saline), 32.17 ± 1.89 (Leu-ile 15 μ mol/saline), 42.60 ± 5.48 (vehicle/MOR), 38.50 ± 2.72 (TNF- α 1 μ g/MOR), 39.17 ± 3.27 (TNF- α 4 μ g/MOR), 38.40 ± 3.01 (Leu-ile 1.5 μ mol/MOR), 32.50 ± 2.79 (Leu-ile 15 μ mol/MOR). Values are means \pm SEM ($n = 6-10$). * $p < .05$ versus vehicle/saline-treated mice. TNF- α , tumor necrosis factor- α ; MOR, morphine; IP, intraperitoneal; SC, subcutaneous; NAL, naloxone.

mg/kg, SC). In addition, a tolerance in the analgesic effects of MOR to thermal stimuli was developed in all MOR-treated mice [$F(2,27) = 383.976$, $F(2,15) = 277.874$, $F(2,15) = 723.622$, $F(2,27) = 517.466$, $F(2,15) = 112.064$, $p < .05$, one-way ANOVA] (Figure 8A).

Finally, we investigated the effects of repeated co-administration of TNF- α or Leu-Ile with MOR on NAL-precipitated withdrawal. Withdrawal symptoms (jumping, forepaw tremor, rearing) after treatment with NAL (5mg/kg, IP) were shown in all repeated MOR-treated (10 \times 2 mg/kg/day for 5 days) mice [$F(9,66) = 22.846$, $F(9,66) = 13.938$, $F(9,66) = 10.676$, $p < .05$, one-way ANOVA]. There was no difference in the NAL-precipitated withdrawal syndrome by co-administration of vehicle, TNF- α (1 and 4 μ g/day for 5 days, IP), or Leu-Ile (1.5 and 15 μ mol/kg/day for 5 days, IP) with repeated MOR (10 mg/kg, SC) (Figure 8B).

Discussion

Drugs of abuse are able to elicit compulsive drug-seeking behaviors on repeated administration, which ultimately leads to the phenomenon of addiction (Laakso *et al.* 2002). In terms of lost lives and productivity, drug addiction remains one of the most serious threats to the nation's public health (Nestler 2002).

Recently, we have demonstrated that TNF- α or Leu-Ile, which induces GDNF production via TNF- α synthesis, inhibits METH-induced dependence (Nakajima *et al.* 2004; Niwa *et al.*, in press). Morphine is a drug of abuse like METH, although they have opposite effects, acting as a psychosedative and psychostimulant, respectively. In the present study, to extend our findings, we examined the effects of TNF- α or Leu-Ile on the rewarding effect, the sensitization to the locomotor-stimulating effects, and the increase in extracellular DA levels induced by MOR.

Although single MOR treatment did not induce expression of TNF- α mRNA in any regions examined, repeated MOR treatment remarkably induced it in the NAc and CPu (Figure 2A). Moreover, we confirmed TNF- α protein was not increased after single treatment of MOR using immunostaining method (data not shown). We suggest that the induction of TNF- α by MOR requires repeated treatment. The MOR-induced increase in the expression of TNF- α mRNA in the NAc was completely inhibited by pretreatment with the DA D1 receptor antagonist SCH23390, the D2 receptor antagonist raclopride (Figure 2B), and the specific opioid receptor antagonist NAL (Figure 2C), suggesting that the activation of DA D1, D2, and opioid receptors is attributable to MOR-induced gene expression of TNF- α . It is likely that activation of DA transmission in neurons, where TNF- α specifically acts (Figure 3B), is necessary for MOR-induced TNF- α expression. The expression of TNF- α is induced through the activation of transcription factors such as activator protein-1 (AP-1) and nuclear factor- κ B (NF- κ B) by the activation of JNK/p38 MAPK (Guha *et al.* 2000; Rahman and MacNee 2000). Further, TNF- α acts on mitochondria to generate reactive oxygen species (ROS), which are involved in the activation of AP-1 and NF- κ B (Rahman and MacNee 2000). Changes in transcription factors may result in long-term changes in gene expression, thereby contributing to neuronal adaptations that underlie behavioral sensitization (Nestler 2001).

Tumor necrosis factor- α induces GDNF expression (Niwa *et al.*, in press) and blocks METH-induced dependence (Nakajima *et al.* 2004). Tumor necrosis factor- α or Leu-Ile treatment, both in combination with MOR and after withdrawal from repeated treatment with MOR, inhibited place preference and sensitization

to MOR (Figures 4 and 5). Therefore, we investigated whether Leu-Ile, which is a GDNF inducer, induces the expression of TNF- α . Leu-Ile increased TNF- α mRNA levels in the NAc (Figure 3A). Leu-Ile treatment, both in combination with MOR and after withdrawal from repeated treatment with MOR, also increased TNF- α levels (Figures 3B, 3C, and 3D) in the brain but not in the peripheral blood stream (Niwa *et al.*, in press). Leu-Ile can penetrate the blood-brain barrier (BBB) and initiate the synthesis of GDNF in the brain (Nitta *et al.* 2004). Therefore, we suggest that Leu-Ile penetrates the BBB and induces TNF- α expression only in the brain. Therefore, we suggest that Leu-Ile plays an inhibitory role in rewarding effects and sensitization induced by MOR via the induction of TNF- α expression.

Tumor necrosis factor- α (-/-) mice showed marked conditioned place preference at the low dose of MOR, which failed to establish place preference in wild-type mice (Figure 6A). Morphine-induced place preference in TNF- α (-/-) mice was significantly attenuated by the administration of TNF- α (Figure 6B). These results suggest that TNF- α acts to negate the rewarding effects of MOR.

From the point of view of pharmacotherapy, Leu-Ile would be better than TNF- α itself, since TNF- α damages the peripheral tissues by triggering the expression of other cytokines (Bluthe *et al.* 1994). Tumor necrosis factor- α could be involved in the inhibitory effects of Leu-Ile on MOR-induced rewarding effects, since no effect of Leu-Ile was observed in the TNF- α (-/-) mice (Figure 6B). Our results showed that Leu-Ile, which induces GDNF production via TNF- α synthesis, inhibited MOR-induced place preference and sensitization not only during, but also after, their development (Figures 4 and 5), as in the case of METH (Niwa *et al.*, in press). Glial cell line-derived neurotrophic factor levels in the NAc after the co-administration of Leu-Ile and MOR were much more increased compared with those in the vehicle/MOR-treated mice (Niwa *et al.* 2006, unpublished observations). Glial cell line-derived neurotrophic factor could be involved in the inhibitory effects of Leu-Ile on MOR-induced rewarding effects, since no effect of Leu-Ile was observed in the GDNF heterozygous mice (Niwa *et al.* 2006, unpublished observations). These results suggest that GDNF acts to negate the rewarding effects of MOR and are involved in the effects of Leu-Ile on rewarding effects. Glial cell line-derived neurotrophic factor blocks biochemical adaptations to the chronic use of cocaine or MOR, as well as the rewarding effects of cocaine (Messer *et al.* 2000). Therefore, Leu-Ile may induce production of GDNF as a result of TNF- α expression to inhibit drug-induced rewarding effects and sensitization, although another pathway should be considered—that Leu-Ile upregulates GDNF expression by activating heat shock protein 90 (Hsp90)/Akt/cyclic adenosine 3', 5'-monophosphate (cAMP) response element binding protein (CREB) signaling (Cen *et al.* 2006).

Leu-Ile inhibited MOR-induced place preference (Figures 5A) in bell-shaped response curves. We confirmed that Leu-Ile at the lower dose, 1.5 μ mol/kg, which could inhibit the rewarding effects of MOR, increased TNF- α expression both in combination with MOR and after withdrawal from repeated MOR treatment in the CPP paradigm. On the contrary, Leu-Ile at the higher dose, 15 μ mol/kg, which could not inhibit the rewarding effects of MOR, failed to increase TNF- α expression in combination with MOR in the CPP paradigm (data not shown). These results suggest involvement of induction of TNF- α expression in inhibitory effect of Leu-Ile on the rewarding effects and sensitization of MOR.

There has been considerable progress in identifying the mechanisms that contribute to the long-lasting neural and behav-

loral plasticity related to addiction, including drug-induced changes in gene transcription, in RNA and protein processing, and in synaptic structure (Nestler 2001). Although a single administration of TNF- α or Leu-Ile failed to inhibit the single treatment-induced hyperlocomotion, it inhibited the sensitization to hyperlocomotion induced by repeated treatment with MOR (Figures 4A and 4B). These results suggest that TNF- α or Leu-Ile has inhibitory effects on neuronal plasticity induced by repeated MOR treatment but not on hyperlocomotion or the increase in extracellular DA levels induced by single MOR treatment (Figure 7B). Several reports have suggested that TNF- α influences synaptic strength and transmission (Albensi and Mattson 2000; Beattie *et al.* 2002). Further, the expression of TNF- α is induced through the activation of transcription factors such as AP-1 and NF- κ B (Guha *et al.* 2000; Rahman and MacNee 2000). Our results have shown that Leu-Ile binds heat shock cognate protein (Hsc70) and triggers the phosphorylation of NF- κ B and CREB via a pathway involving Hsp90/Akt and induces GDNF expression (Cen *et al.* 2006). We suggest that the induction of TNF- α and GDNF by Leu-Ile requires repeated treatment, and these molecules inhibit MOR-induced rewarding effects and sensitization.

The mesolimbic dopamine system projecting from the VTA to NAc is considered to play a major role in mediating the rewarding effects of electrical stimulation of the brain and drugs of abuse (Koob *et al.* 1998). The VTA and NAc have been shown to be the key brain regions that underlie the actions of opioids (e.g., MOR) and psychostimulants (e.g., METH and cocaine) (Koob 1992). It is well recognized that the rewarding effects of opioids and psychomotor stimulants depend on the mesocorticolimbic dopamine system innervating the NAc (Everitt and Wolf 2002; Koob *et al.* 1998; Mizoguchi *et al.* 2004). It has been suggested that the enhancement of DA release in the NAc is an essential process related to the rewarding effects of MOR (Matthews and German 1984). Further, the NAc is involved in the locomotor-stimulating effect of MOR (Brase *et al.* 1977; Oliverio *et al.* 1975), which is regarded as a result of the increase in extracellular DA levels (Koob and Nestler 1997; Matthews and German 1984). We have recently demonstrated that the tissue plasminogen activator (tPA)-plasmin system participates in the rewarding and locomotor-stimulating effects induced not only by MOR but also by METH by triggering the release of dopamine in the NAc (Nagai *et al.* 2004, 2005a, 2005b; Yamada *et al.* 2005). Leu-Ile inhibited the sensitization of hyperlocomotion induced not only by MOR (Figures 4B and 4C) but also by METH (Niwa *et al.*, in press), at least in part, through the action in the NAc, since it had inhibitory effects on the repeated MOR treatment-induced increase in extracellular DA levels (Figure 7A). Leu-Ile induces the expression of not only TNF- α (Figure 3A) but also GDNF (Niwa *et al.*, in press). Tumor necrosis factor- α induced by Leu-Ile activates plasmalemmal and vesicular DA transporter (Nakajima *et al.* 2004). Glial cell line-derived neurotrophic factor induced by Leu-Ile inhibits the drug-induced upregulation of tyrosine hydroxylase activity (Messer *et al.* 2000). Thereby, TNF- α and GDNF induced by Leu-Ile attenuate the MOR-induced increase in extracellular DA levels (Figure 7A) and then inhibit MOR-induced rewarding effect and sensitization (Figures 4 and 5).

Chronic use of an opioid results in tolerance to and dependence on the drug (Chavkin and Goldstein 1984; Law *et al.* 1982; Puttifarcken *et al.* 1988). Dependence is defined by a number of abnormal responses after the abrupt withdrawal of a drug (Johnson and Fleming 1989). Tumor necrosis factor- α or Leu-Ile has no effect on MOR-induced tolerance and physical dependence (Figure 8). Tumor necrosis factor- α or Leu-Ile

regulates dopaminergic neurons, at least in part, through action in the NAc, whereas the cortex is the terminal/intermediate area for noradrenergic neurons associated with drug addiction and plays a key role in NAL-precipitated MOR withdrawal (Terwilliger *et al.* 1991). Therefore, the mechanism by which TNF- α or Leu-Ile inhibits MOR-induced rewarding effect and sensitization is different from that of the NAL-precipitated MOR withdrawal syndrome.

Our findings suggest that TNF- α inhibits MOR-induced rewarding effect and sensitization by attenuating the MOR-induced increase in extracellular DA levels, and Leu-Ile inhibits them via the induction of TNF- α expression. Leu-Ile could be a novel therapeutic agent for MOR-induced dependence.

This study was supported in part by a Grant-in-aid for Scientific Research and Special Coordination Funds for Promoting Science and Technology, Target-Oriented Brain Science Research Program; by a Grant-in-aid for Scientific Research (B) and Young Scientists (A); by the 21st Century Center of Excellence Program "Integrated Molecular Medicine for Neuronal and Neoplastic Disorders" from the Ministry of Education, Culture, Sports, Science and Technology of Japan; by a Grant-in-aid for Health Science Research on Regulatory Science of Pharmaceuticals and Medical Devices, and Comprehensive Research on Aging and Health from the Ministry of Health, Labor and Welfare of Japan; by a Smoking Research Foundation Grant for Biomedical Research; by the Mochida Memorial Foundation for Medical and Pharmaceutical Research; by a grant from the Brain Research Center from 21st Century Frontier Research Program funded by the Ministry of Science and Technology, Republic of Korea; and by Japan Canada Joint Health Research Program.

We are grateful to Dai-Itippon Pharmaceutical Co., Ltd. for the supply of recombinant human TNF- α .

- Albensi BC, Mattson MP (2000): Evidence for the involvement of TNF and NF- κ B in hippocampal synaptic plasticity. *Synapse* 35:151–159.
- Aloe L, Fiore M (1997): TNF- α expressed in the brain of transgenic mice lowers central tyrosine hydroxylase immunoreactivity and alters grooming behavior. *Neurosci Lett* 238:65–68.
- Beattie EC, Stellwagen D, Morishita W, Bresnahan JC, Ha BK, Von Zastrow M, *et al.* (2002): Control of synaptic strength by glial TNF- α . *Science* 295:2282–2285.
- Bluth RM, Pawlowski M, Suarez S, Parnet P, Pittman Q, Kelley KW, *et al.* (1994): Synergy between tumor necrosis factor- α and interleukin-1 in the induction of sickness behavior in mice. *Psychoneuroendocrinology* 19:197–207.
- Bonci A, Williams JT (1997): Increased probability of GABA release during withdrawal from morphine. *J Neurosci* 17:796–803.
- Boudreau AC, Wolf ME (2005): Behavioral sensitization to cocaine is associated with increased AMPA receptor surface expression in the nucleus accumbens. *J Neurosci* 25:9144–9151.
- Brase DA, Loh HH, Way EL (1977): Comparison of the effects of morphine on locomotor activity, analgesia and primary and protracted physical dependence in six mouse strains. *J Pharmacol Exp Ther* 201:368–374.
- Cen X, Nitta A, Ohya S, Zhao Y, Ozawa N, Mouri A, *et al.* (2006): An analogue of dipeptide-like structure of FKS06 increases GDNF expression through CREB activated by Hsp90/Akt signaling pathway. *J Neurosci* 26:3335–3344.
- Chavkin C, Goldstein A (1984): Opioid receptor reserve in normal and morphine-tolerant guinea pig ileum myenteric plexus. *Proc Natl Acad Sci U S A* 81:7253–7257.
- Di Chiara G, North RA (1992): Neurobiology of opioid abuse. *Trends Pharmacol Sci* 13:185–193.
- Everitt BJ, Wolf ME (2002): Psychomotor stimulant addiction: A neural systems perspective. *J Neurosci* 22:3312–3320.
- Franklin KBJ, Paxinos G (1997): *The Mouse Brain in Stereotaxic Coordinates*. San Diego: Academic press.

- Funada M, Suzuki T, Narita M, Misawa M, Nagase H (1993): Blockade of morphine reward through the activation of κ -opioid receptors in mice. *Neuropharmacology* 32:1315-1323.
- Giros B, Jaber M, Jones SR, Wightman RM, Caron MG (1996): Hyperlocomotion and indifference to cocaine and amphetamine in mice lacking the dopamine transporter. *Nature* 379:606-612.
- Guha M, Bai W, Nadler JL, Natarajan R (2000): Molecular mechanisms of tumor necrosis factor alpha gene expression in monocytic cells via hyperglycemia-induced oxidant stress-dependent and -independent pathways. *J Biol Chem* 275:17728-17739.
- Hamdy MM, Noda Y, Miyazaki M, Mamiya T, Nozaki A, Nitta A, *et al.* (2004): Molecular mechanisms in dizocilpine-induced attenuation of development of morphine dependence: An association with cortical Ca^{2+} /calmodulin-dependent signal cascade. *Behav Brain Res* 152:263-270.
- Heikkilä RE, Orlansky H, Cohen G (1975): Studies on the distinction between uptake inhibition and release of 3H -dopamine in rat brain tissue slices. *Biochem Pharmacol* 24:847-852.
- Itoh A, Shiotani T, Nakayama S, Mamiya T, Hasegawa T, Noda Y, *et al.* (2000): Attenuation of the development of morphine dependence/tolerance by nifracetam: Involvement of adenosine 3':5'-cyclic monophosphate system. *Behav Brain Res* 115:65-74.
- Johnson SM, Fleming WW (1989): Mechanisms of cellular adaptive sensitivity changes: Applications to opioid tolerance and dependence. *Pharmacol Rev* 41:435-488.
- Johnson SW, North RA (1992): Opioids excite dopamine neurons by hyperpolarization of local interneurons. *J Neurosci* 12:483-488.
- Kalivas PW, Stewart J (1991): Dopamine transmission in the initiation and expression of drug- and stress-induced sensitization of motor activity. *Brain Res Brain Res Rev* 16:223-244.
- Koob GF (1992): Drugs of abuse: Anatomy, pharmacology and function of reward pathways. *Trends Pharmacol Sci* 13:177-184.
- Koob GF, Nestler EJ (1997): The neurobiology of drug addiction. *J Neuropsychiatry Clin Neurosci* 9:482-497.
- Koob GF, Sanna PP, Bloom FE (1998): Neuroscience of addiction. *Neuron* 21:467-476.
- Kuwahara M, Sugimoto M, Tsuji S, Miyata S, Yoshida A (1999): Cytosolic calcium changes in a process of platelet adhesion and cohesion on a von Willebrand factor-coated surface under flow conditions. *Blood* 94:1149-1155.
- Laakso A, Mohn AR, Gainetdinov RR, Caron MG (2002): Experimental genetic approaches to addiction. *Neuron* 36:213-228.
- Law PY, Hom DS, Loh HH (1982): Loss of opiate receptor activity in neuroblastoma X glioma NG108-15 hybrid cells after chronic opiate treatment. A multiple-step process. *Mol Pharmacol* 22:1-4.
- Maier SF, Watkins LR (1998): Cytokines for psychologists: Implications of bidirectional immune-to-brain communication for understanding behavior, mood, and cognition. *Psychol Rev* 105:83-107.
- Mamiya T, Noda Y, Ren X, Hamdy M, Furukawa S, Kameyama T, *et al.* (2001): Involvement of cyclic AMP systems in morphine physical dependence in mice: Prevention of development of morphine dependence by rolipram, a phosphodiesterase 4 inhibitor. *Br J Pharmacol* 132:1111-1117.
- Matthews RT, German DC (1984): Electrophysiological evidence for excitation of rat ventral tegmental area dopamine neurons by morphine. *Neuroscience* 11:617-625.
- Messer CJ, Eisch AJ, Carlezon WA Jr, Whisler K, Shen L, Wolf DH, *et al.* (2000): Role for GDNF in biochemical and behavioral adaptations to drugs of abuse. *Neuron* 26:247-257.
- Miyamoto Y, Yamada K, Nagai T, Mori H, Mishina M, Furukawa H, *et al.* (2004): Behavioral adaptations to addictive drugs in mice lacking the NMDA receptor $\epsilon 1$ subunit. *Eur J Neurosci* 19:151-158.
- Mizoguchi H, Yamada K, Mizuno M, Mizuno T, Nitta A, Noda Y, *et al.* (2004): Regulations of methamphetamine reward by extracellular signal-regulated kinase 1/2/ets-like gene-1 signaling pathway via the activation of dopamine receptors. *Mol Pharmacol* 65:1293-1301.
- Nagai T, Kamei H, Ito M, Hashimoto K, Takuma K, Nabeshima T, *et al.* (2005a): Modification by the tissue plasminogen activator-plasmin system of morphine-induced dopamine release and hyperlocomotion, but not anti-nociceptive effect in mice. *J Neurochem* 93:1272-1279.
- Nagai T, Noda Y, Ishikawa K, Miyamoto Y, Yoshimura M, Ito M, *et al.* (2005b): The role of tissue plasminogen activator in methamphetamine-related reward and sensitization. *J Neurochem* 92:660-667.
- Nagai T, Yamada K, Yoshimura M, Ishikawa K, Miyamoto Y, Hashimoto K, *et al.* (2004): The tissue plasminogen activator-plasmin system participates in the rewarding effect of morphine by regulating dopamine release. *Proc Natl Acad Sci U S A* 101:3650-3655.
- Nakajima A, Yamada K, Nagai T, Uchiyama T, Miyamoto Y, Mamiya T, *et al.* (2004): Role of tumor necrosis factor-alpha in methamphetamine-induced drug dependence and neurotoxicity. *J Neurosci* 24:2212-2225.
- Narita M, Funada M, Suzuki T (2001): Regulations of opioid dependence by opioid receptor types. *Pharmacol Ther* 89:1-15.
- Nestler EJ (2001): Molecular basis of long-term plasticity underlying addiction. *Nat Rev Neurosci* 2:119-128.
- Nestler EJ (2002): From neurobiology to treatment: Progress against addiction. *Nat Neurosci* 5:1076-1079.
- Nitta A, Nishioka H, Fukumitsu H, Furukawa Y, Sugiura H, Shen L, *et al.* (2004): Hydrophobic dipeptide Leu-Ile protects against neuronal death by inducing brain-derived neurotrophic factor and glial cell line-derived neurotrophic factor synthesis. *J Neurosci Res* 78:250-258.
- Niwa M, Nitta A, Yamada Y, Nakajima A, Saito K, Seishima M, *et al.* (in press): An inducer for glial cell line-derived neurotrophic factor and tumor necrosis factor- α protects methamphetamine-induced reward and sensitization. *Biol Psychiatry*.
- Noda Y, Miyamoto Y, Mamiya T, Kamei H, Furukawa H, Nabeshima T (1998): Involvement of dopaminergic system in phencyclidine-induced place preference in mice pretreated with phencyclidine repeatedly. *J Pharmacol Exp Ther* 286:44-51.
- Oliverio A, Castellano C, Eleftheriou BE (1975): Morphine sensitivity and tolerance: A genetic investigation in the mouse. *Psychopharmacologia* 42:219-224.
- Puttfarcken PS, Werling LL, Cox BM (1988): Effects of chronic morphine exposure on opioid inhibition of adenylyl cyclase in 7315c cell membranes: A useful model for the study of tolerance at μ opioid receptors. *Mol Pharmacol* 33:520-527.
- Rahman I, MacNee W (2000): Regulation of redox glutathione levels and gene transcription in lung inflammation: Therapeutic approaches. *Free Radic Biol Med* 28:1405-1420.
- Ren X, Noda Y, Mamiya T, Nagai T, Nabeshima T (2004): A neuroactive steroid, dehydroepiandrosterone sulfate, prevents the development of morphine dependence and tolerance via c-fos expression linked to the extracellular signal-regulated protein kinase. *Behav Brain Res* 152:243-250.
- Robinson TE, Berridge KC (2000): The psychology and neurobiology of addiction: An incentive-sensitization view. *Addiction* 95(suppl 2):S91-S117.
- Selden LS, Sabol KE, Ricaurte GA (1993): Amphetamine: Effects on catecholamine systems and behavior. *Annu Rev Pharmacol Toxicol* 33:639-677.
- Taniguchi T, Tanaka M, Ikeda A, Momotani E, Sekikawa K (1997): Failure of germinal center formation and impairment of response to endotoxin in tumor necrosis factor α deficient mice. *Lab Invest* 77:647-658.
- Terwilliger RZ, Beitner-Johnson D, Sevarino KA, Crain SM, Nestler EJ (1991): A general role for adaptations in G-proteins and the cyclic AMP system in mediating the chronic actions of morphine and cocaine on neuronal function. *Brain Res* 548:100-110.
- Tsuji S, Sugimoto M, Miyata S, Kuwahara M, Kinoshita S, Yoshioka A (1999): Real-time analysis of mural thrombus formation in various platelet aggregation disorders: Distinct shear-dependent roles of platelet receptors and adhesive proteins under flow. *Blood* 94:968-975.
- Vassalli P (1992): The pathophysiology of tumor necrosis factors. *Annu Rev Immunol* 10:411-452.
- Vezina P, Stewart J (1984): Conditioning and place-specific sensitization of increases in activity induced by morphine in VTA. *Pharmacol Biochem Behav* 20:925-934.
- Wada R, Tiff CJ, Proia RL (2000): Microglial activation precedes acute neurodegeneration in Sandhoff disease and is suppressed by bone marrow transplantation. *Proc Natl Acad Sci U S A* 97:10954-10959.
- Wise RA (1996): Neurobiology of addiction. *Curr Opin Neurobiol* 6:243-251.
- Yamada K, Iida R, Miyamoto Y, Saito K, Sekikawa K, Sedishima M, *et al.* (2000): Neurobehavioral alternations in mice with a targeted deletion of the tumor necrosis factor-alpha gene: Implication for emotional behavior. *J Neuroimmunol* 111:131-138.
- Yamada K, Nagai T, Nabeshima T (2005): Drug dependence, synaptic plasticity, and tissue plasminogen activator. *J Pharmacol Sci* 97:157-161.