

**Figure 7**  
**Effects of anti-CD4 MoAb, the fMLF peptide, and RANTES on the susceptibility of cells to HIV/SIV strains.** NP-2/CD4/CCR5 (open symbols) and NP-2/CD4/FPRL1 (closed symbols) cells were pretreated with anti-CD4 MoAb Nu-TH/1 (A), the fMLF peptide (B) or RANTES for two hours at 37°C (C), and then inoculated with two HIV-1 strains, GUN-7WT (○ and ●) and HCM342 (□ and ■), HIV-2 CBL23 strain (△ and ▲), and SIV mndGB-1 strain (◇ and ◆). Six days after infection, cells positive for HIV-1 antigens were detected by IFA using a fluorescence microscope.

regions of the coreceptors interacting with HIV or SIV are reported to be distributed in extracellular domains such as NTR and ECLs of GPCRs [44]. In contrast, the highly hydrophobic fMLF peptide has been reported to bind to the membrane-spanning region of FPRL1 [45]. Therefore, we assume that the difference in the binding site between the fMLF peptide and HIV-1 is one of the reasons why the fMLF peptide could not efficiently interfere with the interaction of FPRL1 with HIV-1.

The fMLF peptide also partially inhibited infection of NP-2/CD4/CCR5 cells with several HIV-2 or SIV strains (Fig. 7B). The amino acid sequences of the membrane-spanning regions are more conserved among GPCRs than those of NTRs and ECLs. Between FPRL1 and CCR5, the amino acid sequence homology of their membrane-spanning regions is about 30%, although that for their NTRs and ECLs is about 8.5% (data not shown). Therefore, the fMLF peptide might have a partially inhibitory effect on infection of NP-2/CD4/CCR5 cells with the CBL23 and mndGB-1 strains. The low, but apparent inhibitory effect of the fMLF peptide on HIV-2 infection mediated by CCR5 suggests that it can be a starting material to develop a novel anti-HIV drug.

Expression of the major coreceptor CCR5 or CXCR4 has been detected in various cells (Fig. 2A) [46]. Expression of FPRL1 mRNA was also detected in human cells derived from a wide variety of origins, such as PBLs, C8166 (T cells), Molt4#8 (T cells), 293T (embryonic kidney cells), HOS (osteosarcoma cells), U251MG (astrocytoma cell),

and U87/CD4 (glioma cell) (Fig. 2A). In addition to these cells, expression of the FPRL1 gene has been reported to be detected in various types of cells such as neutrophils or phagocytes, and in many organs [31,46], even though their roles in human cells other than neutrophils remain to be elucidated. Roles of coreceptors other than CCR5 and CXCR4 in HIV-1 infection and the pathogenesis of AIDS should be investigated further.

### Conclusion

FPRL1 is a novel and efficient HIV/SIV coreceptor. In particular, it should be noted that FPRL1 is efficiently used by primary HIV-1 isolates. FPRL1 works as a bifunctional factor in HIV-1 infection. Namely, FPRL1 works not only as an inhibitory factor but also as an enhancing factor for HIV-1 to enter target cells. Expression of FPRL1 gene was detected in various types of tissues and cells. HIV1-infection mediated through FPRL1 may, therefore, play any important roles in progression of complicated symptoms of AIDS. The clinical significance of FPRL1 in HIV-1 infection *in vivo* should be further studied.

### Methods

#### Cells

The human T cell line C8166 [48] and CCR5-transduced C8166 cells, C8166/CCR5 [49], were used to propagate viral stocks of HIV/SIV strains. NP-2/CD4 cells were established by transducing the CD4 gene into a human glioma cell line, NP-2, using a retrovirus vector as described elsewhere [16,49]. The human T cell lines C8166, C8166/CCR5, and Molt4#8 [50] were cultured in RPMI 1640

medium (NISSUI Co. Ltd., Tokyo, Japan) containing 10% fetal calf serum (FCS). The human osteosarcoma cell line HOS [51] and CD4-transduced human glioma cell line U87/CD4 [52,53], as well as NP-2/CD4 [49], NP-2/CD4/CCR5 [49], NP-2/CD4/CXCR4 [49], and NP-2/CD4/FPRL1 (see below) cells were cultured in Eagle's minimum essential medium (NISSUI Co., Inc., Tokyo, Japan) supplemented with 10% FCS. The human embryonal kidney cell line 293T [54], human hepatoblastoma cell line HepG2 [55], human hepatoma cell line Huh7, and human astrocytoma cell line U251MG [56] were maintained in Dulbecco's modified Eagle minimum essential medium (NISSUI Co., Inc., Tokyo, Japan) supplemented with 10% FCS. Brain-derived fibroblast-like BT-20/N cells [53,57], derived from the surgically dissected human brain tissue of a patient with glioma and thought to originate from brain blood vessels, were cultured in RPMI 1640 medium containing 10% FCS, endothelial cell growth supplements (BD Bioscience, Medford, MA) (10 µg/ml), and epidermal growth factor (10 ng/ml). Peripheral blood lymphocytes (PBLs) were isolated from healthy blood donors as previously described [58]. PBLs were stimulated with phytohemagglutinin (PHA) and cultured in RPMI 1640 medium containing 10% FCS and recombinant IL-2 (100 U/ml).

#### Virus strains

Cell line-adapted R5-X4 HIV-1 strains (GUN-1WT [57], GUN-4WT [59], and GUN-7WT [59]), GPR1-X4 HIV-1 variants (GUN-1V [57], GUN-4V [59], and GUN-7V [59]), an X4 HIV-1 strain (IIIB [60]), R5 HIV-1 strains (SF162 [61] and Ba-L [62]), HIV-2 strains (CBL23 [63], GH-1 [64], ROD/B [65], and SBL6669 [66]), and SIV strains (mac251 [67] and mndGB-1 [68]) were used. All of these HIV-1 strains are classified as subtype B based on their amino acid sequences of the Env protein [57-62]. The culture supernatants of C8166 cells infected with HIV/SIV strains except SF162, Ba-L, and mac251 strains, were harvested as viral stocks when cytopathicity was microscopically observed. SF162, Ba-L, and mac251 strains were propagated in C8166/CCR5 cells as previously described [49]. Primary HIV-1 isolates were propagated in PBLs and used in this study. Their origins, subtypes, and Genbank accession numbers of the *env* genes are described below. AG204 (Vietnam, subtype AE, Genbank accession number AB044003), AG206 (Vietnam, subtype AE, AB044005), AG208 (Vietnam, subtype AE, AB044007), HCM303 (Vietnam, subtype AE, AB044020), HCM305 (Vietnam, subtype AE, AB044022), HCM308 (Vietnam, subtype AE, AB044024), HCM309 (Vietnam, subtype AE, AB044025), and HCM342 (Vietnam, subtype AE, AB044034), mIDU101 (Myanmar, subtype C, AB097871), mSTD104 (Myanmar, subtype C, unpublished).

#### PCR primers

Oligonucleotide primers were synthesized (Proligo K. K., Tokyo, Japan) to detect the expression of mRNA for CD4, glyceraldehyde-3-phosphate dehydrogenase (GAPDH), CCR5, CXCR4, GPR1, or FPRL1 by reverse transcription (RT)-PCR. Each gene name, followed by each sense and antisense primer name, their nucleotide sequences and positions in the open reading frame [DDBJ/EMBL/Genbank accession number] are described below. CD4: CD4CN, 5'-ATGAACCGGGGAGTCCCTTTAGGCACITG-3' (sense: from the 1st to the 30th position, i. e. 1st-30th); and CD4CR, 5'-TCAATGGGGCTACATGTCITCTGAAACCG-3' (anti-sense: 1,039th-1,068th) [DDBJ/EMBL/Genbank accession number, NM000616]. GAPDH: G3PDHN, 5'-TGAAGGGTCGGAGTCAACGGATTGGT-3' (sense, 11th-36th); and GAPDHR, 5'-TAGACGGCAGGTCCAGGTCCACCAC-3' (antisense, 724th-747th) [BT006893]. PCR primers used to detect GPCR cDNA are as follows: CCR5: CCR5CN, 5'-ATGGATATCAAGTGTCAGTCCAATCTAT-3' (sense, 1st-30th); and CCR5CR, 5'-TCACAAGCCCACAGATATTTCTGCTCCCC-3' (antisense, 1,001st-1,030th) [NM000529]. CXCR4: CXCR4CN, 5'-ATGGAGGGGATCAGTATATACACTCAGAT-3' (sense: 1st-30th); and CXCR4CR, 5'-TTAGCTGGAGTGAACACTGAAGACTCAGA-3' (antisense, 979-1,008th) [NM003467]. FPRL1: FPRL1CN, 5'-ATGGAAACCACTTCTCCACTCTGAAAT-3' (sense, 1st-30th); and FPRL1CR, 5'-TCACATTGCCTGTAACCTCAGTCTCGCAGG-3' (antisense, 1,027rd-1,056nd) [M76672]. GPR1: GPR1CN, 5'-ATGGAAAGATTGGAGGAAACATTATTGAA-3' (sense, 1st-30th); and GPR1CR, 5'-TTATTGAGCTGTTCCAGGAGACACAGATT-3' (antisense, 1,039th-1,068th) [U13666].

#### Detection of GPCR mRNA

Total RNA was isolated from human cells using an RNA extraction kit, SepaGene (Sanko-Junyaku Inc., Tokyo, Japan), in accordance with the manufacturer's protocol. cDNA for the total cellular RNA was constructed as described elsewhere [49]. mRNA expression for CCR5, CD4, CXCR4, GPR1, FPRL1, and GAPDH was detected by PCR of cDNA preparations using the sense and antisense primer pairs described above [49]. Amplified cDNA was detected by 1% (w/v) agarose gel electrophoresis.

#### Cloning of the FPRL1 gene

A DNA fragment encoding the entire open reading frame (ORF) of the FPRL1 gene was amplified by RT-PCR using the FPRL1-specific primers, FPRL1CN and FPRL1CR, and cDNA constructed from the total RNA isolated from C8166 cells. The ORF DNA of the FPRL1 gene was cloned into the TA-cloning plasmid pDrive (QIAGEN K. K., Tokyo, Japan) and the plasmid obtained was designated pDrive/FPRL1. The DNA fragment containing FPRL1 ORF was isolated from the pDrive/FPRL1 plasmid by EcoRI

digestion and subcloned into the expression plasmid pCX-*bsr* [69]. The FPRL1 plasmid obtained was designated pCX-puro/FPRL1. The cloned FPRL1 gene was sequenced and found to be 100% homologous in terms of amino acid sequences to the reported gene [M76672] [30].

#### Establishment of FPRL1-expressing cells

An FPRL1-expressing cell line was established as follows. The plasmid harboring the receptor gene for ecotropic murine leukemia virus (MuLV) and hygromycin-resistance gene was transfected into NP-2/CD4 cells and hygromycin-resistant cells were selected as reported previously [16]. BOSC23 cells [70] were transfected with the pCX-*bsr*/FPRL1 plasmid and ecotropic MuLV pseudotype was produced from the cells. NP-2/CD4 cells were infected with the ecotropic MuLV pseudotype produced by BOSC23 cells. The blasticidin-resistant NP-2/CD4 cells were selected through cultivation in medium containing blasticidin (10 µg/ml) (CALBIOCHEM, San Diego, CA) for two weeks. Surviving cells were designated NP-2/CD4/FPRL1. NP-2/CD4/CCR5, NP-2/CD4/CXCR4, and NP-2/CD4/GPR1 cells were established previously [16,23]. The expressions of mRNAs for CCR5, CXCR4, GPR1, and FPRL1 genes in these cells were detected by RT-PCR using cDNA and the PCR primers prepared as described above.

#### Infection assay

NP-2/CD4, NP-2/CD4/CCR5, NP-2/CD4/CXCR4, NP-2/CD4/FPRL1 and NP-2/CD4/GPR1 cells ( $5 \times 10^4$ ) were seeded into 24-well culture plates 24 h prior to viral inoculation. These cells were exposed to HIV/SIV in an amount of virus corresponding to  $1 \times 10^4$  cpm of the reverse transcriptase activity as previously described [71]. After incubation for two hours, the cells were washed three times with E-MEM containing 10% FCS and then cultured in 500 µl of fresh medium at 37°C. The cells were passaged every two days.

#### Determination of the effects of an anti-CD4 monoclonal antibody, GPCR ligands, and tyrosine sulfation on HIV-1 infection

To determine CD4 dependency of HIV infection, NP-2/CD4/CCR5 and NP-2/CD4/FPRL1 cells were cultured in E-MEM containing a serially diluted anti-CD4 monoclonal antibody (MoAb), Nu-TH/1 (Nichirei Inc., Tokyo, Japan), at 37°C for two hours. The cells were incubated in E-MEM with or without Nu-TH/1 MoAb at 37°C for two hours and then exposed to HIV-1 in an amount corresponding to  $1 \times 10^4$  cpm of RT activity. After removing the inocula, the cells were incubated at 37°C in E-MEM containing 10% (v/v) FCS for four days.

To investigate the effects of ligands on infection of cells with HIV/SIV strains, NP-2/CD4/CCR5 or NP-2/CD4/

FPRL1 cells were incubated in E-MEM containing RANTES (100 µg/ml) (BIOCARTA US, San Diego, CA) or formyl-Met-Leu-Phe (fMLF) peptide (100 µg/ml) (WAKO Junyaku, Inc., Tokyo, Japan) at 37°C for three hours. Then, the cells were exposed to HIV-1 as described above.

CCR5 and FPRL1 contain several tyrosine residues in their NTRs and ECLs, but only NTRs harbor the signal sequence for tyrosine sulfation [73]. To clarify the effect of tyrosine sulfation in NTR of CCR5 and FPRL1, NP-2/CD4/CCR5 and NP-2/CD4/FPRL1 cells were incubated in E-MEM containing an inhibitor of tyrosine sulfation, NaClO<sub>3</sub> (10 mM), for 48 hours and then inoculated with viruses.

#### Detection of HIV-1/SIV-infected cells

The susceptibilities of the cells described above to HIV/SIV were determined by indirect immunofluorescence assay (IFA), which detects HIV-1-, HIV-2-, or SIV-antigens expressed in infected cells, as previously reported [71]. A pool of sera derived from HIV-1-infected humans or SIV-mac-infected macaques was used as the first antibody [16,49]. Infection was checked on days 2, 4, and 6 after inoculation.

#### Phylogenetic analysis

The multiple alignment of the amino acid sequences of 20 CKRs and 16 GPCRs closely related to CKRs and their phylogenetic tree was constructed using the ClustalW program [72]. GPCR names and their abbreviations in the protein database SWISS PROT were as follows: type-1 angiotensin II receptor AG2R [DDB]/EMBL/Genbank accession number, M91464, type-2 angiotensin II receptor AG22 [U20860], type-1B angiotensin II receptor AG2S [D13814], apelin receptor APJ [U03642], B1 bradykinin B1 receptor BRB1 [U12512], B2 bradykinin receptor BRB2 [M88714], C3a anaphylatoxin receptor C3AR [U28488], C5a anaphylatoxin receptor C5AR [X58674], C5a anaphylatoxin receptor C5L2 [B038237], CC-CKR CCR1 [NM001295], CC-CKR CCR2b [NM000648], CC-CKR CCR3 [NM001837], CC-CKR CCR4 [NM005508], CC-CKR CCR5 [NM000579], CC-CKR CCR6 [NM004367], CC-CKR CCR7 [NM001838], CC-CKR CCR8 [NM005201], CC-CKR CCR9 [NM006641], CC-CKR CCR10 [NM016602], CC-CKR CCR11 [AF110640], CX3C-CKR CX3CR1 [NM001337], CXC-CKR CXCR1 [NM000634], CXC-CKR CXCR2 [NM001557], CXC-CKR CXCR3 [NM001504], CXC-CKR CXCR4 [NM003467], CXC-CKR CXCR5 [NM001716], CXC-CKR CXCR6 [NM006564], CC-CKR D6 [NM001296], formylpeptide receptor 1 FPRL1 [M76672], formylpeptide receptor 2 [M37128], FPRL1-related receptor FPR1 [M76673], proteinase-activated receptor 1 PAR1 [M62424], protease-activated receptor 2 PAR2 [Z49993], protease-activated receptor 3 PAR3 [U92971], and protease-activated receptor 4 PAR4 [AF080214].

### Authors' contributions

NS conceived and designed this study, NS also carried out the molecular genetic and virological studies, and drafted the manuscript, AT carried out establishment of cell lines, AO and TM carried out biochemical studies. AH, CA, SK, TO, and YT participated in virus preparation and their characterization, HH played important roles in coordination of this study and helped to draft the manuscript.

### Additional material

#### Additional file 1

Table 1. HIV/SIV coreceptors and formylpeptide receptors, and amino acid sequences of their NTRs.

Click here for file

[http://www.biomedcentral.com/content/supplementary/1742-4690-5-52-S1.ppt]

#### Additional file 2

Table 2. Use of GPCRs as coreceptors by HIV-1, HIV-2, and SIV.

Click here for file

[http://www.biomedcentral.com/content/supplementary/1742-4690-5-52-S2.ppt]

#### Additional file 3

Table 3. FPRL1 use and amino acid sequences of the V3 domain of HIV-1 strains.

Click here for file

[http://www.biomedcentral.com/content/supplementary/1742-4690-5-52-S3.ppt]

### Acknowledgements

This work was supported in part by grants-in-aid from the Ministry of Education, Culture, Sports, Science and Culture, and Technology and the Ministry of Health, Labor and Welfare of Japan, and 21st Century COE Program, "Biomedical Research using Accelerator Technology", Gunma University Graduate School of Medicine, Gunma, Japan, and Core Research for Evolution Science and Technology, Japan Science and Technology Corporation, Japan.

### References

- Clapham PR, Blanc D, Weiss RA: Specific cell surface requirements for the infection of CD4-positive cells by human immunodeficiency virus types 1 and 2 and by simian immunodeficiency virus. *Virology* 1991, **181**:703-715.
- Dalglish AG, Beverley PC, Clapham PR, Crawford DH, Greaves MF, Weiss RA: The CD4 T4 antigen is an essential component of the receptor for the AIDS retrovirus. *Nature* 1984, **312**:763-767.
- Bleul CC, Farzan M, Choe H, Parolin C, Clark-Lewis I, Sodroski J, Springer TA: The lymphocyte chemoattractant SDF-1 is a ligand for LESTR/fusin and blocks HIV-1 entry. *Nature* 1996, **382**:829-833.
- Deng H, Liu R, Ellmeier W, Choe S, Unutmaz D, Burkhardt M, di Marzio P, Marmor S, Sutton RE, Hill CM, Davis CB, Peiper SC, Schall TJ, Littman DR, Landau NR: Identification of a major co-receptor for primary isolates of HIV-1. *Nature* 1996, **381**:661-666.
- Berger EA, Murphy PM, Farber JM: Chemokine receptors as HIV-1 coreceptors: roles in viral entry, tropism, and disease. *Annu Rev Immunol* 1999, **17**:657-700.
- Samson M, Libert F, Doranz BJ, Rucker J, Liesnard C, Farber CM, Saragosti S, Lapoumeroulle C, Cognaux J, Forceille C, Muijldermans G, Verhofstede C, Burtonboy G, Georges M, Imai T, Rana S, Yi Y, Smyth RJ, Collman RG, Doms RW, Vassart G, Parmentier M: Resistance to HIV-1 infection in caucasian individuals bearing mutant alleles of the CCR-5 chemokine receptor gene. *Nature* 1996, **382**:722-725.
- Liu R, Paxton WA, Choe S, Ceradini D, Martin SR, Horuk R, MacDonald ME, Stuhlmann H, Koup RA, Landau NR: Homozygous defect in HIV-1 co-receptor accounts for resistance of some multiply-exposed individuals to HIV-1 infection. *Cell* 1996, **86**:367-377.
- Glushakova S, Grivel JC, Fitzgerald W, Ylweater A, Zimmerberg J, Margolis B: Evidence for the HIV-1 phenotype switch as a causal factor in acquired immunodeficiency. *Nat Med* 1998, **4**:346-349.
- Hu QX, Barry AP, Wang ZX, Connolly SM, Peiper SC, Greenberg ML: Evolution of the human immunodeficiency virus type 1 envelope during infection reveals molecular corollaries of specificity for coreceptor utilization and AIDS pathogenesis. *J Virol* 2000, **74**:11858-11872.
- Freedman BD, Liu QH, Del Corno M, Collman RG: HIV-1 gp120 Chemokine Receptor-Mediated Signaling in Human Macrophages. *Immunol Res* 2003, **27**:261-276.
- Gosling J, Montecarlo FS, Atchison RE, Arai H, Tsou CL, Goldsmith MA, Charo IF: Molecular uncoupling of C-C chemokine receptor 5-induced chemotaxis and signal transduction from HIV-1 coreceptor activity. *Proc Natl Acad Sci USA* 1997, **94**:5061-5066.
- Butcher EC, Williams M, Youngman K, Rott L, Briskin M: Lymphocyte trafficking and regional immunity. *Adv Immunol* 1999, **72**:209-253.
- Bacon K, Baggolini M, Broxmeyer H, Horuk R, Lindley I, Mantovani A, Maysushima K, Murphy P, Nomiyama H, Oppenheim J, Rot A, Schall T, Tsang M, Thorpe R, Van Damme J, Wadhwa M, Yoshie O, Zlotnik A, Zoon K: Chemokine/chemokine receptor nomenclature. *J Interferon Cytokine Res* 2002, **22**:1067-1068.
- Neil SJ, Aasa-Chapman MM, Clapham PR, Nibbs RJ, McKnight A, Weiss RA: The promiscuous CC chemokine receptor D6 is a functional coreceptor for primary isolates of human immunodeficiency virus type 1 (HIV-1) and HIV-2 on astrocytes. *J Virol* 2005, **79**:9618-9624.
- Doranz BJ, Rucker J, Yi Y, Smyth RJ, Samson M, Peiper SC, Parmentier M, Collman RG, Doms RW: A dual-tropic primary HIV-1 isolate that uses fusin and the beta chemokine receptors CXCR-5, CXCR-3, and CXCR-2b as fusin cofactors. *Cell* 1996, **85**:1149-1158.
- Jinno A, Shimizu N, Soda Y, Haraguchi Y, Kitamura T, Hoshino H: Identification of the chemokine receptor TER119/CCR8 expressed in brain-derived cells and T cells as a new coreceptor for HIV-1 infection. *Biochem Biophys Res Comm* 1998, **243**:497-502.
- Deng HK, Unutmaz D, KewalRamani VN, Littman DR: Expression cloning of new receptors used by simian and human immunodeficiency viruses. *Nature* 1997, **388**:296-300.
- Kanbe K, Shimizu N, Soda Y, Takagishi K, Hoshino H: A CXCR chemokine receptor, CXCR5/BLR1, is a novel and specific coreceptor for human immunodeficiency virus type 2. *Virology* 1999, **265**:264-273.
- Liao F, Alkhatib G, Peden KW, Sharma G, Berger EA, Farber JM: STRL33, A novel chemokine receptor-like protein, functions as a fusion cofactor for both macrophage-tropic and T cell line-tropic HIV-1. *J Exp Med* 1997, **185**:2015-2023.
- Combadiere C, Salzwedel K, Smith ED, Tiffany HL, Berger EA, Murphy PM: Identification of CX3CR1, A chemotactic receptor for the human CX3C chemokine fractalkine and a fusion coreceptor for HIV-1. *J Biol Chem* 1998, **273**:23799-23804.
- Choe H, Farzan M, Konkel M, Martin K, Sun Y, Marcon L, Cayabyab M, Berman M, Dorf ME, Gerard N, Gerard C, Sodroski J: The orphan seven-transmembrane receptor apj supports the entry of primary T-Cell-Line-tropic and dualtropic human immunodeficiency virus type 1. *J Virol* 1998, **72**:6113-6118.
- Samson M, Edinger AL, Stordeur P, Rucker J, Verhasselt V, Sharron M, Govaerts C, Mollereau C, Vassart G, Doms RW, Parmentier M: ChemR23, a putative chemotactant receptor, is expressed in monocyte-derived dendritic cells and macrophages and is a coreceptor for SIV and some primary HIV-1 strains. *Eur J Immunol* 1998, **28**:1689-1700.

23. Shimizu N, Soda Y, Kanbe K, Liu HY, Jinno A, Kitamura T, Hoshino H: **An orphan G protein-coupled receptor, GPR1, acts as a coreceptor to allow replication of human immunodeficiency virus types 1 and 2 in brain-derived cells.** *J Virol* 1999, **73**:5231-5239.
24. Farzan M, Choe H, Martin K, Marcon L, Hofmann W, Karlsson G, Sun Y, Barrett P, Marchand N, Sullivan N, Gerard C, Sodroski J: **Two orphan seven-transmembrane segment receptors which are expressed in CD4-positive cells support simian immunodeficiency virus infection.** *J Exp Med* 1997, **186**:405-411.
25. Shimizu N, Soda Y, Kanbe K, Liu HY, Mukai R, Kitamura T, Hoshino H: **A putative G protein-coupled receptor, RDC1, is a novel coreceptor for human and simian immunodeficiency viruses.** *J Virol* 2000, **74**:619-626.
26. Owman C, Garzino-Demo A, Cocchi F, Popovic M, Sibirsh A, Gallo RC: **The leukotriene B4 receptor functions as a novel type of coreceptor mediating entry of primary HIV-1 isolates into CD4-positive cells.** *Proc Natl Acad Sci USA* 1998, **95**:9530-9534.
27. Zhang Y, Lou B, Lai RB, Gettie A, Marx PA, Moore JP: **Use of inhibitors to evaluate coreceptor usage by simian and simian/human immunodeficiency viruses and human immunodeficiency virus type 2 in primary cells.** *J Virol* 2000, **74**:6893-6910.
28. Farzan M, Mirzabekov T, Kolchinsky P, Wyatt R, Cayabyab M, Gerard NP, Gerard C, Sodroski J, Choe H: **Tyrosine sulfation of the amino terminus of CCR5 facilitates HIV-1 entry.** *Cell* 1999, **96**:667-676.
29. Huttner WB: **Sulphation of tyrosine residues—a widespread modification of proteins.** *Nature* 1982, **299**:273-276.
30. Perez HD, Holmes R, Kelly E, McClary J, Andrews WH: **Cloning of a cDNA encoding a receptor related to the formyl peptide receptor of human neutrophils.** *Gene* 1992, **118**:303-304.
31. Takano T, Fiore S, Maddox JF, Brady HR, Peticas NA, Serhan CN: **Aspirin-triggered 15-epi-lipoxin A4 (LXA4) and LXA4 stable analogues are potent inhibitors of acute inflammation: evidence for anti-inflammatory receptors.** *J Exp Med* 1997, **185**:1693-1704.
32. Li BQ, Wetzel MA, Mikovits JA, Henderson EA, Rogers TJ, Gong W, Le Y, Russett FW, Wang JM: **The synthetic peptide WKYMVM attenuates the function of the chemokine receptors CCR5 and CXCR4 through activation of formyl peptide receptor-like 1.** *Blood* 2001, **97**:2941-2947.
33. Costagliola S, Pannells V, Bonomi M, Koch J, Many MC, Smits G, Vassart G: **Tyrosine sulfation is required for agonist recognition by glycoprotein hormone receptors.** *EMBO J* 2002, **21**:504-513.
34. Kato K, Kusagawa S, Motomura K, Yang R, Shino T, Nohtomi K, Sato H, Shibamura K, Hien NT, Chi PK, Thang RH, Thanh DC, Quoc NC, Thang BD, Long HT, Nagai Y, Takebe Y: **Closely related HIV-1 CRF01\_AE variant among injecting drug users in northern Vietnam: evidence of HIV spread across the Vietnam-China border.** *AIDS Res Hum Retroviruses* 2001, **17**:113-123.
35. Endres MJ, Clapham PR, Marsh M, Ahuja M, Turner JD, McKnight A, Thomas JF, Stoeber-Haggarty B, Choe S, Vance PJ, Wells TN, Power CA, Sutterwala SS, Doms RW, Landau NR, Hoxie JA: **CD4-independent infection by HIV-2 is mediated by fusin/CXCR4.** *Cell* 1996, **87**:745-756.
36. Liu HY, Soda Y, Shimizu N, Haraguchi Y, Jinno A, Takeuchi Y, Hoshino H: **CD4-Dependent and CD4-independent utilization of coreceptors by human immunodeficiency viruses type 2 and simian immunodeficiency viruses.** *Virology* 2002, **278**:276-288.
37. Dragic T, Litwin V, Allaway GP, Martin SR, Huang Y, Nagashima KA, Cayanan C, Maddon PJ, Koup RA, Moore JP, Paxton WA: **HIV-1 entry into CD4+ cells is mediated by the chemokine receptor *CCR-5*.** *Nature* 1996, **381**:647-648.
38. Murakami T, Nakajima T, Koyanagi Y, Tachibana K, Fujii N, Tamamura H, Yoshida N, Waki M, Matsumoto A, Yoshie O, Kishimoto T, Yamamoto N, Nagasawa T: **A small molecule CXCR4 inhibitor that blocks T cell line-tropic HIV-1 infection.** *J Exp Med* 1997, **186**:1389-1393.
39. Takeuchi Y, Nagumo T, Hoshino H: **Low fidelity of cell-free DNA synthesis by reverse transcriptase of human immunodeficiency virus.** *J Virol* 1988, **62**:3900-3902.
40. Bjorndal A, Deng H, Jansson M, Fiore JR, Colognesi C, Karlsson A, Albert J, Scarlati G, Littman DR, Fenyo EM: **Coreceptor usage of primary human immunodeficiency virus type 1 isolates varies according to biological phenotype.** *J Virol* 1997, **71**:7478-7487.
41. Speck RF, Wehrly K, Platt EJ, Atchison RE, Charo IF, Kabat D, Chesbro B, Goldsmith MA: **Selective employment of chemokine receptors as human immunodeficiency virus type 1 coreceptors determined by individual amino acids within the envelope V3 loop.** *J Virol* 1997, **71**:7136-7139.
42. Le Y, Wetzel MA, Shen W, Gong W, Rogers TJ, Henderson EE, Wang JM: **Desensitization of chemokine receptor CCR5 in dendritic cells at the early stage of differentiation by activation of formyl peptide receptors.** *Clin Immunol* 2001, **99**:365-372.
43. Le Y, Yang Y, Cui Y, Yazzawa H, Gong W, Qiu C, Wang JM: **Receptors for chemotactic formyl peptides as pharmacological targets.** *Int Immunopharmacol* 2002, **2**:1-13.
44. Miettinen HM, Mills JS, Gripenrot JM, Dratz EA, Granger BL, Jesaitis AJ: **The ligand binding site of the formyl peptide receptor maps in the transmembrane region.** *J Immunol* 1997, **159**:4045-4054.
45. Mills JS, Miettinen H, Cummings D, Jesaitis AJ: **Characterization of the binding site on the formyl peptide receptor using three receptor mutants and analogs of Met-leu-Phe and Met-Trp-Leu-Leu.** *J Biol Chem* 2000, **275**:39012-39017.
46. Unutmaz D, Littman DR: **Expression pattern of HIV-1 coreceptors on T cells: implications for viral transmission and lymphocyte homing.** *Proc Natl Acad Sci USA* 1997, **94**:1615-1618.
47. Le Y, Hu J, Gong W, Shen W, Li B, Dunlop NM, Halvarson DO, Blair DG, Wang JM: **Expression of functional formyl peptide receptors by human astrocytoma cell lines.** *J Neuroimmunol* 2000, **111**:102-108.
48. Salahuddin SZ, Markham PD, Wang-Staal F, Franchini G, Kalyanaram VS, Gallo RC: **Restricted expression of human T-cell leukemia-lymphoma virus HTLV in transformed human umbilical cord blood lymphocytes.** *Virology* 1983, **129**:51-54.
49. Soda Y, Shimizu N, Jinno A, Liu HY, Kanbe K, Kitamura T, Hoshino H: **Establishment of a new system for determination of coreceptor usages of HIV based on the human glioma NP-2 cell line.** *Biochem Biophys Res Commun* 1999, **258**:313-321.
50. Minowada J, Onuma T, Moore GE: **Rosette-forming human lymphoid cell lines. I. Establishment and evidence for origin of thymus-derived lymphocytes.** *J Natl Cancer Inst* 1972, **49**:891-895.
51. Steuer AF, Rhim JS, Hentosh PM, Ting RC: **Survival of human cells in the aggregate form: potential index of in vitro cell transformation.** *J Natl Cancer Inst* 1977, **58**:917-921.
52. Ponten J, Macintyre EH: **Long term culture of normal and neoplastic human glia.** *Acta Pathol Microbiol Scand* 1968, **74**:465-486.
53. Takeuchi Y, Akutsu M, Murayama K, Shimizu N, Hoshino H: **Host range mutant of human immunodeficiency virus type 1: modification of cell tropism by a single point mutation at the neutralization epitope in the env gene.** *J Virol* 1989, **63**:1710-1718.
54. Sena-Esteves M, Saeki Y, Camp SM, Chioocca EA, Breakefield XO: **Single-step conversion of cells to retrovirus vector producers with herpes simplex virus-Epstein-Barr virus hybrid amplicons.** *J Virol* 1999, **73**:10426-10439.
55. Knowles BB, Howe CC, Aden DP: **Human hepatocellular carcinoma cell lines secrete the major plasma proteins and hepatitis B surface antigen.** *Science* 1980, **209**:497-499.
56. Osborn M, Ludwig-Festl M, Weber K, Bignami A, Dahl D, Bayreuther K: **Expression of glial and vimentin type intermediate filaments in cultures derived from human glial material.** *Differentiation* 1981, **19**:161-167.
57. Takeuchi Y, Inagaki M, Kobayashi N, Hoshino H: **Isolation of human immunodeficiency virus from a Japanese hemophilia B patient with AIDS.** *Jpn J Cancer Res* 1987, **78**:11-15.
58. McKeating JA, Gow J, Goudsmit J, Pearl JH, Mulder C, Weiss RA: **Characterization of HIV-1 neutralization escape mutants.** *AIDS* 1989, **3**:777-784.
59. Shimizu SN, Shimizu NG, Takeuchi Y, Hoshino H: **Isolation and characterization of human immunodeficiency virus type 1 variants infectious to brain-derived cells: detection of common point mutations in the V3 region of the env gene of the variants.** *J Virol* 1994, **68**:6130-6135.
60. Ratner L, Fisher A, Jagodzinski LL, Mitsuya H, Liou RS, Gallo RC, Wong-Staal F: **Complete nucleotide sequences of functional clones of the AIDS virus.** *AIDS Res Hum Retroviruses* 1987, **3**:57-69.
61. Cheng-Mayer C, Quiroga M, Tung JW, Dina D, Levy JA: **Viral determinants of human immunodeficiency virus type 1 T-cell or**

- macrophage tropism, cytopathogenicity, and CD4 antigen modulation. *J Virol* 1990, **64**:4390-4398.
62. Yamaguchi K, Byrn RA: **Clinical isolates of HIV-1 contain few pre-existing protease inhibitor resistance conferring mutations.** *Biochim Biophys Acta* 1995, **1253**:136-140.
  63. Potempa S, Picard L, Reeves JD, Wilkinson D, Weiss RA, Talbot SJ: **CD4-independent infection by human immunodeficiency virus type 2 strain ROD/B: the role of the N-terminal domain of CXCR-4 in fusion and entry.** *J Virol* 1997, **71**:4419-4424.
  64. Ishikawa K, Tsujimoto H, Nakai M, Mingle AJ, Osei-Kwasi M, Aggrey SE, Nettey VB, Afoakwa SN, Fukasawa M, Kodama T: **Isolation and characterization of HIV-2 from an AIDS patient in Ghana.** *AIDS* 1988, **2**:383-388.
  65. Guyader M, Emerman M, Sonigo P, Clavel F, Montagnier L, Alizon M: **Genome organization and transactivation of the human immunodeficiency virus type 2.** *Nature* 1987, **326**:662-669.
  66. Franchini G, Collalti E, Arya SK, Fenyo EM, Biberfeld G, Zagury JE, Kanki PJ, Wong-Staal F, Gallo RC: **Genetic analysis of a new subgroup of human and simian T-lymphotropic retroviruses: HTLV-IV, LAV-2, SBL-6669, and STLV-IIIAGM.** *AIDS Res Hum Retroviruses* 1987, **3**:11-17.
  67. Daniel MD, Letvin NL, King NW, Kanniga M, Sehgal PK, Hunt RD, Kanki PJ, Essex M, Desrosiers RC: **Isolation of a T-cell tropic HTLV-III-like retrovirus from macaques.** *Science* 1985, **228**:1201-1204.
  68. Tsujimoto H, Cooper RW, Kodama T, Fukasawa M, Miura T, Ohta Y, Ishikawa K, Nakai M, Frost E, Roelants GE: **Isolation and characterization of simian immunodeficiency virus from mandrills in Africa and its relationship to other human and simian immunodeficiency viruses.** *J Virol* 1988, **62**:4044-405.
  69. Akagi T, Shishido T, Murata K, Hanafusa H: **v-Crk activates the phosphoinositide 3-kinase/AKT pathway in transformation.** *Proc Natl Acad Sci USA* 2000, **97**:7290-7295.
  70. Pear WS, Nolan GP, Scott ML, Baltimore D: **Production of high-titer helper-free retroviruses by transient transfection.** *Proc Natl Acad Sci USA* 1993, **90**:8392-8396.
  71. Hoshino H, Esumi E, Miwa M, Shimoyama M, Minato K, Tobinai K, Hirose M, Watanabe S, Inada N, Kinoshita K, Kamihira S, Ichimaru M, Sugimura T: **Establishment and characterization of 10 cell lines derived from patients with adult T-cell leukemia.** *Proc Natl Acad Sci USA* 1983, **80**:6061-6065.
  72. Thompson JD, Higgins D, Gibson TJ: **Improving the sensitivity of progressive multiple sequence alignment through sequence weighting, positions-specific gap penalties and weight matrix choice.** *Nucleic Acids Res* 1994, **22**(22):4673-4680.
  73. Monigatti F, Gasteiger E, Bairoch A, Jung E: **The Sulfinator: predicting tyrosine sulfation sites in protein sequences.** *Bioinformatics* 2002, **18**:769-770.

Publish with **BioMed Central** and every scientist can read your work free of charge

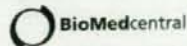
"BioMed Central will be the most significant development for disseminating the results of biomedical research in our lifetime."

Sir Paul Nurse, Cancer Research UK

Your research papers will be:

- available free of charge to the entire biomedical community
- peer reviewed and published immediately upon acceptance
- cited in PubMed and archived on PubMed Central
- yours — you keep the copyright

Submit your manuscript here:  
[http://www.biomedcentral.com/info/publishing\\_adv.asp](http://www.biomedcentral.com/info/publishing_adv.asp)



## Detection of human papillomavirus type 56 in Bowen's disease involving the nail matrix

A. Shimizu, A. Tamura, M. Abe, S. Motegi, Y. Nagai, O. Ishikawa, Y. Nakatani,\* Y. Yamamoto,† H. Uezato† and H. Hoshino\*

Department of Dermatology and \*Department of Virology and Preventive Medicine, Gunma University Graduate School of Medicine, 3-39-22 Showa-machi, Maebashi, Gunma 371-8511, Japan

†Department of Dermatology, School of Medicine, University of the Ryukyus, Okinawa, Japan

### Summary

#### Correspondence

Akira Shimizu.

E-mail: ashimizu@med.gunma-u.ac.jp

#### Accepted for publication

23 January 2008

#### Key words

Bowen's disease, human papillomavirus type 56, longitudinal melanonychia, matrix, nail, polymerase chain reaction

#### Conflicts of interest

None declared.

**Background** As Bowen's disease of the nail apparatus is quite rare, there have been only a few reports on the prevalence of human papillomavirus (HPV) infection in this condition.

**Objectives** The purpose of this study was to clarify the association of HPV with this disease involving the nail apparatus.

**Methods** Five patients with Bowen's disease of the nail apparatus were investigated clinically, virologically and histologically. Total DNAs extracted from excised skin lesions were analysed using polymerase chain reaction (PCR) for the presence of HPV DNA and the amplified products were subjected to DNA sequence analyses. Histological localization of HPV DNA was examined by *in situ* hybridization.

**Results** In three of five patients, HPV was detected by PCR amplification, and subsequent sequence analyses of the PCR products showed the sequences of HPV type 56. A common clinical feature of the three HPV-positive patients was longitudinal melanonychia. In contrast, the two HPV-negative patients presented with a convex nail deformity and a periungual ulcerative lesion. In two of three positive cases, there was a silent point mutation in the L1 gene of each HPV. In the remaining one case, the nucleotide sequence was consistent with the consensus sequence of HPV 56. Sequence analyses of the E6 gene revealed the infection of different variants of HPV 56 among the three cases. The viral genomes were located in keratinocyte nuclei upon *in situ* hybridization.

**Conclusions** HPV 56 may be involved in the carcinogenesis of Bowen's disease affecting the nail matrix with longitudinal pigmentation.

Bowen's disease is a squamous cell carcinoma *in situ* of the skin and mucocutaneous regions.<sup>1</sup> If untreated, invasive carcinoma capable of metastasis may develop in 3–5% of patients with Bowen's disease.<sup>2</sup> In recent studies, several types of human papillomavirus (HPV) DNA have been identified in the lesions of Bowen's disease.<sup>3–11</sup> Most HPV-positive lesions in Bowen's disease are localized in the genital region or distal extremities, and HPV type 16 has been frequently detected.<sup>10–12</sup>

Bowen's disease arising at areas other than the nail apparatus usually manifests as an erythematous, pigmented patch with scale and erosion. The nail apparatus consists of six main components: the nail matrix, nail plate, cuticular system, nail bed, anchoring system of ligaments, and nail folds. As Bowen's disease develops in the epithelium, Bowen's disease of the nail apparatus occurs within the epithelium of the nail matrix, nail bed or nail fold.

Probably because Bowen's disease arising from the nail apparatus is quite rare, there have been only a few reports investigating the prevalence of HPV infection in this condition.<sup>3–8</sup> In the present study, we performed a clinicopathological examination and DNA analyses of five cases of Bowen's disease that had developed in the nail apparatus to clarify the involvement of HPV infection in these cases.

### Materials and methods

#### Patients and specimens

Surgically resected specimens from five patients with Bowen's disease of the nail apparatus, treated between January 1997 and December 2005, were used for this study. The tissue specimens, fixed in 10% neutralized buffered formalin and

embedded in paraffin wax, were used for routine histopathological examination. Informed consent was obtained from the subjects.

#### Polymerase chain reaction amplification with consensus sequence primers and sequence analysis

Formalin-fixed and paraffin-embedded samples were cut into 10- $\mu$ m sections. DNA was extracted from them using Dexpat<sup>®</sup> (Takara, Kyoto, Japan) according to the manufacturer's instructions. HPV polymerase chain reaction (PCR) was performed with two sets of consensus sequence primers, L1C1/L1C2<sup>13</sup> and GP5+/6+,<sup>14</sup> which locate in the L1 open reading frame of the HPV genome. The predicted sizes of amplified DNA using the L1C1/L1C2 and GP5+/6+ primers are about 250 and 140 bp, respectively. These two primer pairs have been reported to amplify mainly mucosal HPVs.<sup>13,14</sup> The PCR conditions were described previously.<sup>13,14</sup> Briefly, to detect viral DNA by PCR, an 18- $\mu$ L reaction mixture, containing 1 $\times$  Ex Taq buffer, 2 mmol L<sup>-1</sup> MgCl<sub>2</sub>, each deoxyribonucleotide triphosphate at 200 nmol L<sup>-1</sup>, 60 ng sense and antisense PCR primers and 5 U TaKaRa Ex Taq<sup>®</sup> (Takara) at a final concentration, was added to 2  $\mu$ L DNA extracts. The PCR protocol employed for the primer pair L1C1/L1C2 was 40 cycles under the following conditions: denaturation at 95 °C for 1.5 min, annealing at 48 °C for 1.5 min and extension at 72 °C for 2 min. For the primer pair GP5+/6+, the PCR protocol was 40 cycles under the following conditions: denaturation at 95 °C for 1 min, annealing at 55 °C for 1 min and extension at 72 °C for 1 min. To assess the DNA quality of each sample, the human  $\beta$ -globin gene was also amplified. Each PCR product was separated by electrophoresis in 2% agarose gels, stained with ethidium bromide, and visualized under ultraviolet (UV) radiation. The PCR products were purified and cloned into a pGEM<sup>®</sup>-T Easy vector (Promega, Madison, WI, U.S.A.) and transfected into *Escherichia coli*. The PCR products cloned into the vectors were sequenced with an automated sequencer. At least six colonies were selected for each PCR product and subjected to DNA sequencing. All sequencing data obtained from each colony were identical. We checked for contamination by including in-between sectioning of paraffin blocks with other skin tissue, and subsequent PCR analysis of isolated DNA from these negative control sections.

#### Polymerase chain reaction amplification with human papillomavirus type 56-specific primers and sequence analysis

As the amplified PCR products were consistent with HPV type 56, we further performed PCR with two sets of HPV 56-specific primers, HPV56 120F/307R and HPV56 285F/510R, which locate in the E6 open reading frame of the HPV genome. The sequences of the primers as follows: HPV56 120F, 5'-AATCCACAGGAACGTCACC-3'; HPV56 307R, 5'-CATACCTCTGCACACTGCATAAGG-3'; HPV56 285F, 5'-CCATTATG-

CAGTGTGCAGAGTATG-3'; HPV56 510R, 5'-CGGTCCAACCATGTGCTATTAG-3'. The predicted sizes of amplified DNA using the HPV56 120F/307R and HPV56 285F/510R primers are 187 and 225 bp, respectively. The PCR conditions were the same as those used with the L1C1/L1C2 and GP5+/6+ primers. The PCR protocol employed for the primer pairs HPV56 120F/307R and HPV56 285F/510R was 40 cycles under the following conditions: denaturation at 95 °C for 1.5 min, annealing at 48 °C for 1 min and extension at 72 °C for 2 min. Each PCR product was separated by electrophoresis in 2% agarose gels, stained with ethidium bromide, and visualized under UV radiation. The PCR products were purified and cloned into a pGEM<sup>®</sup>-T Easy vector and transfected into *E. coli*. The PCR products cloned into the vectors were sequenced with an automated sequencer.

#### In situ hybridization

The catalysed signal amplification method (GenPoint System; Dako, Kyoto, Japan) was used for *in situ* hybridization according to the manufacturer's instructions. Formalin-fixed, paraffin-embedded sections from patients 1, 3, 4 and 5 were used, while in patient 2, frozen specimens were used. Briefly, for patients 1 and 4, formalin-fixed, paraffin-embedded 4- $\mu$ m tissue sections mounted on silanized slides were deparaffinized; for patient 2, cryostat 4- $\mu$ m tissue sections were mounted on silanized slides without deparaffinization. Each sample was pretreated in buffer (Target retrieval solution; Dako) at 95 °C for 40 min, digested with 4  $\mu$ g ml<sup>-1</sup> proteinase K at room temperature for 10 min, incubated in 0.3% hydrogen peroxide in methanol for 20 min, and then air dried. After heat denaturation at 90 °C for 5 min in hybridization solution mixed with biotinylated high-risk HPV probe cocktail (GenPoint HPV; Dako), that contains HPV types 16, 18, 31, 33, 35, 39, 45, 51, 52, 56, 58, 59 and 68 DNA, the slides were incubated at 37 °C overnight. Then, the slides were washed with 0.1  $\times$  saline sodium citrate at 50 °C for 20 min. Following treatment with horseradish peroxidase-conjugated streptavidin (Dako), the biotinyl tyramide amplification reaction was conducted. Then, the substrates were exposed to streptavidin conjugated with horseradish peroxidase. The sections were incubated with 3'-diaminobenzidine chromogen substrate and counterstained with haematoxylin.

## Results

### Clinical features

We examined five lesions of Bowen's disease involving the nail apparatus of five Japanese patients (three men and two women; mean age 49 years, range 29–68). The clinical characteristics of the five lesions were diverse (Table 1). Four lesions were located on the toes and one lesion on the finger. Patients 1, 2 and 4 presented with longitudinal melanonychia with partial nail plate destruction (Figs 1a, 2a). Convex nail deformity with yellowish discoloration was observed in



Table 1 Summary of clinical features and human papillomavirus (HPV) analyses of Bowen's disease of the nail apparatus

Patient	Age (years)/sex	Site	Clinical appearance	HPV type	Variants	<i>in situ</i> hybridization
1	34/M	Left II toe	LM, PND	56 (P)	ED2162, ED2232, OK315, OK42	+
2	68/M	Right I finger	LM, PND	56	Reference sequence, BR5868	+
3	63/M	Right IV toe	Ulcer, PND	-	-	-
4	29/F	Left I toe	LM, PND	56 (P)	ED2162, ED2232, OK315, OK42	+
5	51/F	Left II toe	Nail deformity	-	-	-

LM, longitudinal melanonychia; PND, partial nail plate destruction; P, polymorphism; ED, Edinburgh; OK, Oklahoma; BR, Brazil.

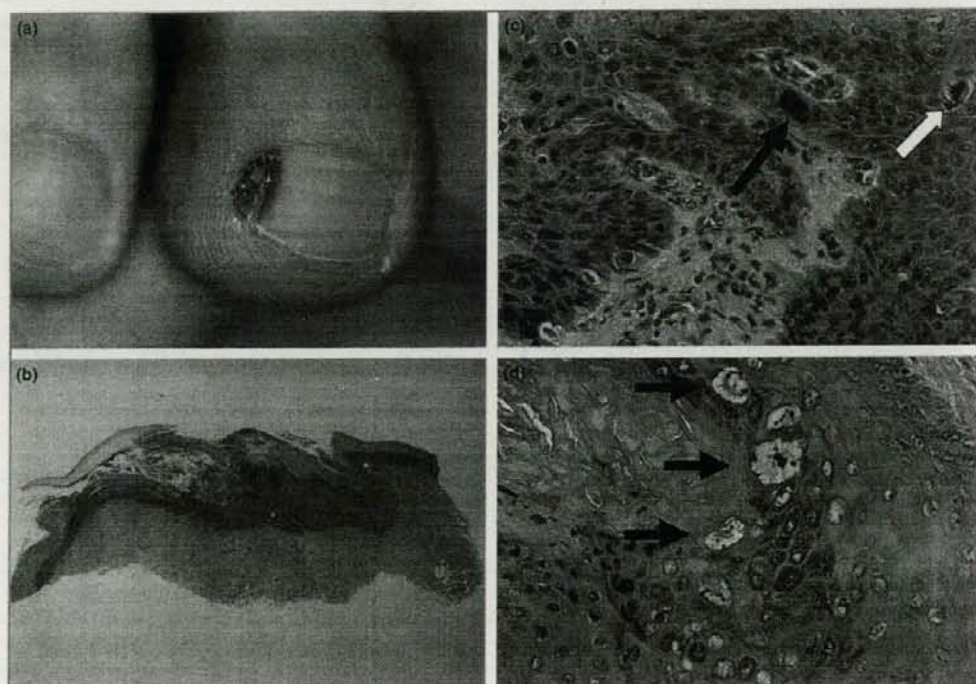


Fig 1. Patient 1: clinical appearance and histopathology. (a) Clinical appearance. Longitudinal melanonychia with partial nail plate destruction in the left second toenail. (b) Histological specimen of the tumour. A low-power view showing marked hyperkeratosis and acanthosis with nail plate destruction. (c) A high-power view of the same section. The black arrow shows a clumping cell, which is characteristic for Bowen's disease. The white arrow shows a dyskeratotic cell. (d) A high-power view of the same section. Atypical keratinocytes with koilocytosis (indicated by arrows) are present in the stratum granulosum. Haematoxylin and eosin; original magnification: (a)  $\times 20$ ; (b, c)  $\times 200$ .

patient 5, and periungual ulceration was observed in patient 3. None of the patients had a history of arsenic exposure, radiation therapy, or immunosuppressive therapy.

#### Histopathology

Despite the different clinical features, all the lesions showed essentially the same histopathological changes. The epithelium

was irregularly thickened (Figs 1b, 2b). Throughout the epithelium, the cells lay in disarray, resulting in a 'windblown' appearance.<sup>15</sup> Highly atypical keratinocytes with large, irregularly shaped nuclei, including 'clumping cells', a characteristic of Bowen's disease, proliferated within the epithelium (Figs 1c, 2c). Keratinocytes with koilocytosis, which are frequently seen in HPV-infected lesions,<sup>16</sup> were seen in some areas (Figs 1d, 2d).

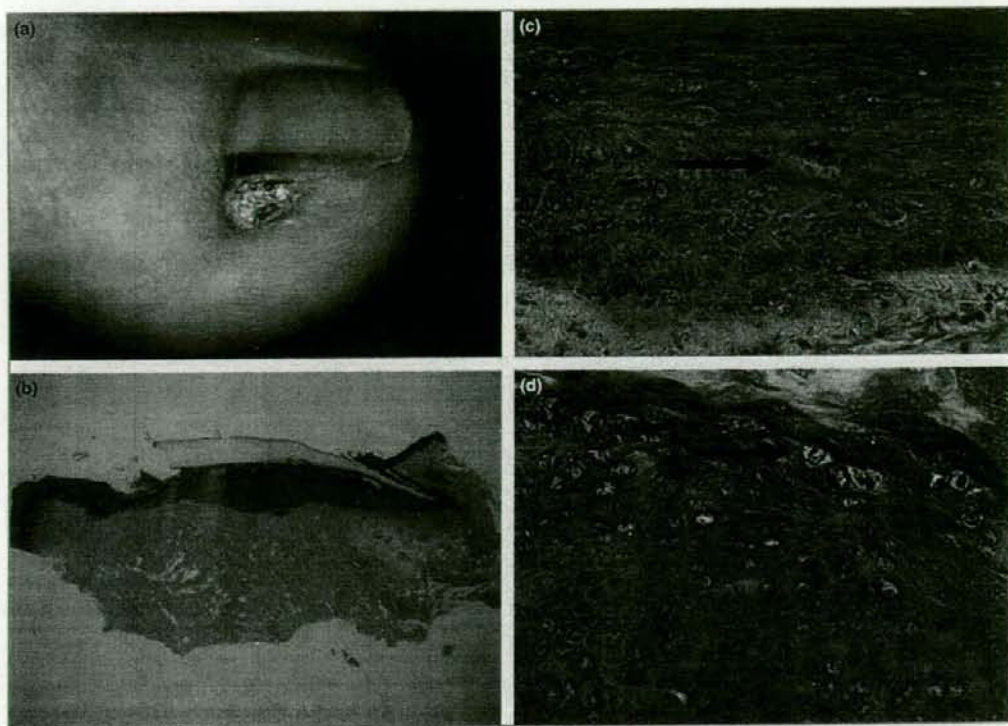


Fig 2. Patient 4: clinical appearance and histopathology. (a) Clinical appearance. Longitudinal melanonychia with partial nail plate destruction in the left first toe. (b) Histological specimen of the tumour. A low-power view showing acanthosis in the nail bed and matrix. (c) A high-power view of the same section. The epithelium contained many atypical cells including clumping cells (arrow). (d) A high-power view of the same section showing atypical cells arranged irregularly in the nail matrix. The arrow indicates a keratinocyte with koilocytosis. Haematoxylin and eosin; original magnification: (a)  $\times 20$ ; (b, c)  $\times 200$ .

#### Polymerase chain reaction amplification with consensus sequence primers and sequence analysis

When DNA isolated from these five lesions of Bowen's disease was subjected to PCR using the L1C1/L1C2 primers, HPV DNAs were successfully amplified in patients 1, 2 and 4 (Fig. 3a). The PCR products from these three patients were subjected to DNA sequencing which revealed that their sequences corresponded to the L1 gene of HPV 56. The sequences of patients 1 and 4 showed a substitution of A for G at the 5680th position, which is predicted to be translationally silent (Val $\rightarrow$ Val). The remaining patient, patient 2, gave a sequence identical to the consensus L1 sequence (Fig. 3b). As a control, DNA extracted from a lesion of Bowenoid papulosis was used. The sequence of HPV type 16 had been amplified previously from this sample. A PCR band was seen at the expected position of 252 bp. By sequencing, it was confirmed that this sample harboured HPV type 16 (data not shown) but not HPV 56.

Furthermore, HPV DNAs were also successfully amplified using the GP5+/6+ primers (Fig. 3a). PCR bands were

obtained from patients 1, 2 and 4. The PCR products were subjected to DNA sequencing, which revealed that their sequences corresponded to the L1 gene of HPV 56. In the Bowenoid papulosis sample, a PCR band was seen at the expected position of 142 bp and the sequences were consistent with HPV type 16 (data not shown). These findings exclude the possibility of laboratory contamination of HPV 56 DNA.

#### Polymerase chain reaction amplification with human papillomavirus type 56-specific primers and sequence analysis

Because the amplified PCR products were consistent with HPV 56, we performed further PCR with two sets of HPV-56 specific primers, HPV56 120F/307R and HPV56 285F/510R, which locate in the E6 open reading frame of the HPV genome. When DNA isolated from these five lesions of Bowen's disease was subjected to PCR using the HPV56 120F/307R primers, HPV DNAs were successfully amplified in patients 1, 2 and 4 (Fig. 4a). The PCR products from these three patients

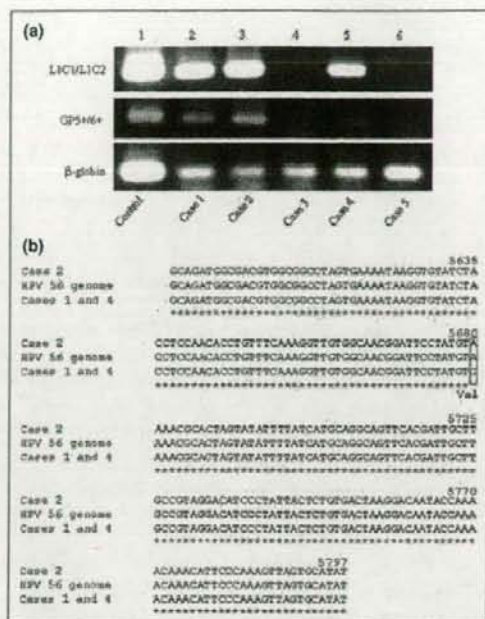


Fig 3. Human papillomavirus (HPV) DNA detection using polymerase chain reaction (PCR) and sequence analysis. (a) Detection of HPV DNA using the two HPV primer pairs, L1C1/L1C2 and GP5+/6+. Lane 1, patient with bowenoid papulosis (control, HPV type 16); lane 2, patient 1; lane 3, patient 2; lane 4, patient 3; lane 5, patient 4; and lane 6, patient 5. Amplification of human  $\beta$ -globin was used as a positive control. In HPV type 16 used as a control, positive bands were seen at 252 bp and 142 bp by using primer pairs L1C1/L1C2 and GP5+/6+, respectively. (b) DNA sequencing of the PCR products obtained with the L1C1/L1C2 primers and their sequence alignment. The consensus sequence of HPV 56 is shown as HPV 56 genome. The sequence obtained from patient 2 was identical to the consensus sequence. The sequences obtained from patients 1 and 4 were identical to each other and differ from the consensus sequence at one position, which is indicated by the boxed letters and the lack of an asterisk in the sequence alignment.

were subjected to DNA sequencing, which revealed that their sequences corresponded to the E6 gene of HPV 56. The sequences of patients 1 and 4 showed two missense mutations and those of patient 2 showed one silent mutation compared with the consensus E6 sequence (Fig. 4b). It was clarified that cases 1 and 4 were compatible with the HPV 56 variants ED2162, ED2232, OK315, HK2555 and OK42 with one point mutation, while case 2 was compatible with the HPV 56 variants BR4114, BR5868 and consensus E6 sequence with one point mutation.

Using primers HPV56 285F/510R, HPV DNAs were successfully amplified in patients 1, 2 and 4 (data not shown). The PCR products from these patients were subjected to DNA sequencing which revealed that their sequences corresponded to the E6 gene of HPV 56. The sequences of patient 1 showed

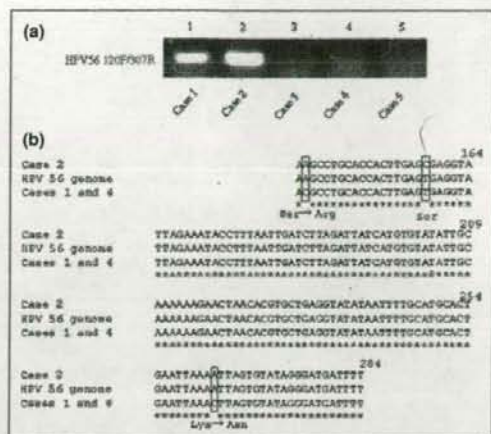


Fig 4. Human papillomavirus (HPV) DNA detection using polymerase chain reaction (PCR) and sequence analysis. (a) Detection of HPV DNA using the HPV 56-specific primer pairs, HPV56 120F/307R. Lane 1, patient 1; lane 2, patient 2; lane 3, patient 3; lane 4, patient 4; and lane 5, patient 5. (b) DNA sequencing of the PCR products obtained with the HPV56 120F/307R primers and their sequence alignment. The consensus sequence of HPV 56 is shown as HPV 56 genome. The sequence obtained from patient 2 was identical to the consensus sequence. The sequences obtained from patients 1 and 4 were identical to each other and differ from the consensus sequence at three positions, as indicated by the boxed letters and the lack of an asterisk in the sequence alignment.

one silent mutation and those of patients 2 and 4 were consistent with the consensus E6 sequence (data not shown). It was clarified that case 1 was compatible with the HPV 56 variants BR5868, ED2162, ED2232, OK315, OK42 and consensus E6 sequence with one point mutation, while cases 2 and 4 were consistent with the HPV 56 variants BR5868, ED2162, ED2232, OK315, OK42 and consensus E6 sequence. Based on the results of PCR using HPV56 120F/307R and HPV56 285F/510R primers, we concluded that HPV 56 in patient 1 was related to ED2162, ED2232, OK315 and OK42 with two mutations, whereas that in patient 4 was also related to them with one mutation. In patient 2, the sequences of HPV 56 were related to BR5868 and consensus E6 sequence with one mutation. According to the phylogenetic evaluation by Prado *et al.*, the variants in patients 1 and 4 were remote from that in patient 2.<sup>17</sup>

**In situ hybridization**

In situ hybridization showed that the HPV probes hybridized to cells derived from all three specimens from patients 1, 2 and 4, that were positive for HPV by PCR. On the other hand, negative results were obtained for cells derived from the two specimens from patients 3 and 5, which were negative for HPV by PCR. Positive cells with intense nuclear staining were

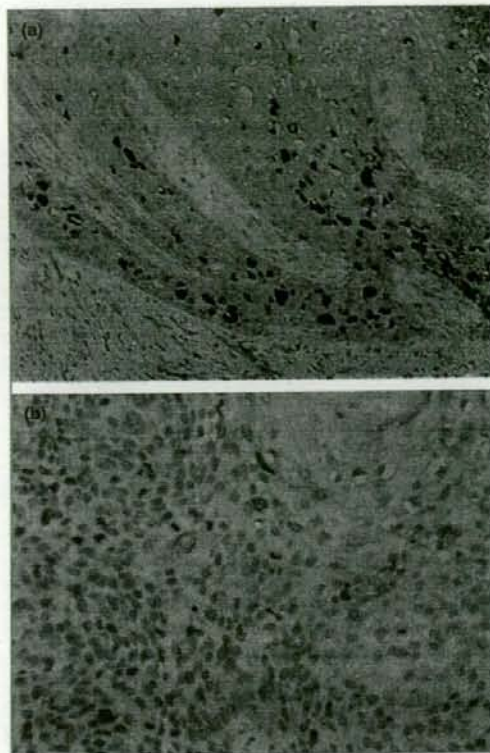


Fig 5. Demonstration of human papillomavirus (HPV) DNA. (a) HPV DNA was detected in the nuclei of the nail matrix epithelium by *in situ* hybridization using the GenPoint HPV (Dako, Kyoto, Japan) system (patient 2). (b) No positive signal was obtained in a polymerase chain reaction-negative sample (patient 3). Haematoxylin counterstaining; original magnification  $\times 100$ .

found in almost the full thickness of the epithelium of patient 2 (Fig. 5a) and in the upper layers of the epithelium of patients 1 and 4 (data not shown). No positive signal was obtained throughout the epithelium of patients 3 (Fig. 5b) and 5 (data not shown).

## Discussion

Bowen's disease is a squamous cell carcinoma *in situ*, often arising at sun-exposed areas of the skin. However, most lesions occur without an apparent cause. The lesions sometimes develop after UV exposure, intake of arsenic, and HPV infection.<sup>10,18,19</sup>

It is well known that HPVs are closely involved with the development of uterine cervical cancer.<sup>20</sup> HPVs have been divided into two major groups: high-risk and low-risk groups for cancer.<sup>21</sup> The high-risk group consists of HPV types 16, 18, 31, 33, 35, 39, 45, 51, 52, 56 and 58, which are often detected in intraepithelial neoplasia and/or invasive cancer.

The low-risk group includes HPV types 6, 11, 42, 43 and 44, which are frequently found in benign neoplasms. HPV 56, detected in our patients, belongs to the high-risk group.

Bowen's disease presenting with longitudinal melanonychia is rare: only eight patients have been reported to date.<sup>3,5,8,12-25</sup> Genetic analyses were performed in only three of these patients, and HPV type 16 or 56 was detected in each of these patients.<sup>4,8</sup> However, sequence analyses were not performed in any patients. Bowen's disease of the nail apparatus is rare and, to our knowledge, genetic analyses of nine patients have been reported to date. In these reports, HPV type 16 was detected in six patients<sup>3-6</sup> and each of HPV types 34, 56 and 73 was demonstrated in one patient.<sup>6-8</sup> Interestingly, the HPV 56-positive lesion in a reported patient was clinically similar to our HPV 56-positive lesions, i.e. longitudinal melanonychia.<sup>8</sup> On the other hand, the lesions where other types of HPVs were detected represented different clinical manifestations, e.g. subungual verrucous tumour (type 16),<sup>2</sup> periungual plaques (type 34)<sup>7</sup> or subungual pigmented plaques (type 73).<sup>6</sup> These lesions are known to be clinical features when the nail bed or the nail fold is mainly involved.

HPV 56 was first detected in uterine cervical cancer and was reported as a new type of HPV in 1989.<sup>26</sup> HPV 56 has often been found in invasive cancer of the cervix and intraepithelial neoplasia, in contrast to a low incidence of detection in normal cervical tissues and cervical condylomas. To our knowledge, there have been only three reports of skin lesions in which HPV 56 was detected. One patient had Bowen's disease on the foot,<sup>9</sup> and the second patient had Bowen's disease presenting longitudinal melanonychia described above.<sup>8</sup> In the third patient, HPV 56 was detected in hair follicles in the genital area after treatment of perianal warts caused by HPV 56.<sup>27</sup>

Longitudinal melanonychia represents the presence of a pigmented lesion involving the nail matrix, which generates the nail plate. Therefore, Bowen's disease presenting longitudinal melanonychia indicates the involvement of the nail matrix. In contrast to HPV types 16 and 18, which are strongly linked to Bowen's disease of the genital region or distal extremities, HPV 56 has rarely been detected in these lesions of Bowen's disease. However, four of five reported patients with HPV 56-positive Bowen's disease, including our three patients, developed manifestations in the nail apparatus and clinically exhibited longitudinal melanonychia. Furthermore, in the patient with longitudinal melanonychia in whom HPV type 16 was detected, the procedure of HPV typing was PCR and hybridization and sequence analysis was not performed.<sup>4</sup> By sequencing the E6 gene, we found that some specific variants of HPV 56 might be associated with Bowen's disease of the nail matrix. It was clarified that the variants in patients 1 and 4 were related to ED2162, ED2232, OK315 and OK42, obtained in Edinburgh and Oklahoma, whereas the variants in patient 2 was related to the reference sequence and BR5868, obtained in Brazil. There has been no report on the variants of HPV 56 in Japan. Then, we could not explain why the variants detected in our patients coincided with the variants collected in Europe, U.S.A. and Brazil, far from Japan. We did not ask

the patients if they had been to those countries. According to the phylogenetic analysis by Prado *et al.*, these two groups are quite remote from each other.<sup>17</sup> From the clinical aspect, patients 1, 2 and 4 showed fundamentally the same features, i.e. longitudinal melanonychia with partial nail plate destruction. These findings suggest that several variants of HPV 56 are involved in the carcinogenesis of Bowen's disease of the nail matrix, which results in longitudinal melanonychia.

## References

- MacKie RM, Quinn AG. Non-melanoma skin cancer and other epidermal skin tumours. In: *Rook's Textbook of Dermatology* (Burns T, Breathnach SM, Cox NH, Griffiths CEM, eds), 7th edn, Vol. 2. Oxford: Blackwell Publishing, 2004; 33-6.
- Kao GF. Carcinoma arising in Bowen's disease. *Arch Dermatol* 1986; 122:1124-6.
- Sau P, McMarlin SL, Sperling LC, Katz R. Bowen's disease of the nail bed and peritongual area. A clinicopathologic analysis of seven cases. *Arch Dermatol* 1994; 130:204-9.
- Sass U, Andre J, Stene JJ, Noel JC. Longitudinal melanonychia revealing an intraepidermal carcinoma of the nail apparatus: detection of integrated HPV-16 DNA. *J Am Acad Dermatol* 1998; 39:490-3.
- Forslund O, Nordin P, Andersson K *et al.* DNA analysis indicates patient-specific human papillomavirus type 16 strains in Bowen's disease on fingers and in archival samples from genital dysplasia. *Br J Dermatol* 1997; 136:678-82.
- Mitsuishi T, Sata T, Matsukura T *et al.* The presence of mucosal human papillomavirus in Bowen's disease of the hands. *Cancer* 1997; 79:1911-17.
- Kawashima M, Jablonska S, Favre M *et al.* Characterization of a new type of human papillomavirus found in a lesion of Bowen's disease of the skin. *J Virol* 1986; 57:688-92.
- Lambiase MC, Gardner TL, Altman CE, Albertini JG. Bowen disease of the nail bed presenting as longitudinal melanonychia: detection of human papillomavirus type 56 DNA. *Cutis* 2003; 72:305-9.
- Uezato H, Hagiwara K, Ramuzi ST *et al.* Detection of human papilloma virus type 56 in extragenital Bowen's disease. *Acta Derm Venereol (Stockh)* 1999; 79:311-13.
- Ikenberg H, Gissmann L, Gross G *et al.* Human papillomavirus type-16-related DNA in genital Bowen's disease and in Bowenoid papulosis. *Int J Cancer* 1983; 32:563-5.
- Stone MS, Noonan CA, Tschien J, Bruce S. Bowen's disease of the feet. Presence of human papillomavirus 16 DNA in tumor tissue. *Arch Dermatol* 1987; 123:1517-20.
- Kettler AH, Rutledge M, Tschien JA, Buffone G. Detection of human papillomavirus in nongenital Bowen's disease by *in situ* DNA hybridization. *Arch Dermatol* 1990; 126:777-81.
- Yoshikawa H, Kawana T, Kitagawa K *et al.* Detection and typing of multiple genital human papillomaviruses by DNA amplification with consensus primers. *Jpn J Cancer Res* 1991; 82:524-31.
- de Roda Husman AM, Walboomers JM, van den Brule AJ *et al.* The use of general primers GP5 and GP6 elongated at their 3' ends with adjacent highly conserved sequences improves human papillomavirus detection by PCR. *J Gen Virol* 1995; 76:1057-62.
- Kirkham N. Tumors and cysts of the epidermis. In: *Lever's Histopathology of the Skin* (Elder D, Elenitsas R, Jaworsky C, Johnson B Jr, eds), 8th edn. Philadelphia, PA: Lippincott Williams & Wilkins, 1997; 708.
- Penneys N. Diseases caused by viruses. In: *Lever's Histopathology of the Skin* (Elder D, Elenitsas R, Jaworsky C, Johnson B Jr, eds), 8th edn. Philadelphia, PA: Lippincott Williams & Wilkins, 1997; 579.
- Prado JC, Calleja-Macias IE, Bernard HU *et al.* Worldwide genomic diversity of the human papillomaviruses-53, 56, and 66, a group of high-risk HPV's unrelated to HPV-16 and HPV-18. *Virology* 2005; 340:95-104.
- Jackson R, Grainge JW. Arsenic and cancer. *Can Med Assoc J* 1975; 113:396-401.
- Miki Y, Kawatsu T, Matsuda K *et al.* Cutaneous and pulmonary cancers associated with Bowen's disease. *J Am Acad Dermatol* 1982; 6:26-31.
- zur Hausen H. Roots and perspectives of contemporary papillomavirus research. *J Cancer Res Clin Oncol* 1996; 122:3-13.
- Schiffman MH, Kiviat NB, Burk RD *et al.* Accuracy and interlaboratory reliability of human papillomavirus DNA testing by hybrid capture. *J Clin Microbiol* 1995; 33:545-50.
- Baran R, Simon C. Longitudinal melanonychia: a symptom of Bowen's disease. *J Am Acad Dermatol* 1988; 18:1359-60.
- Baran R, Eichmann A. Longitudinal melanonychia associated with Bowen's disease: two new cases. *Dermatology* 1993; 186:159-60.
- Saijo S, Kato T, Tagami H. Pigmented nail streak associated with Bowen's disease of the nail matrix. *Dermatologica* 1990; 181:156-8.
- Mirza B, Muir JB. Bowen's disease of the nail bed. *Australas J Dermatol* 2004; 45:232-3.
- Lorincz AT, Quinn AP, Goldsborough MD *et al.* Human papillomavirus type 56: a new virus detected in cervical cancers. *J Gen Virol* 1989; 70:3099-104.
- Adachi A, Suzuki T, Tomita Y. Detection of human papillomavirus type 56 DNA, belonging to a mucous high-risk group, in hair follicles in the genital area of a woman no longer suffering from viral warts. *Br J Dermatol* 2004; 151:212-15.

## Mass spectrometric analysis of carbohydrate heterogeneity for the characterization of glycoprotein-based products

糖タンパク質医薬品の特性・品質評価における  
質量分析法を用いた糖鎖不均一性解析

Nana, Kawasaki\*; Satsuki, Itoh; Noritaka, Hashii;  
Akira, Harazono; Daisuke, Takakura; and Teruhide, Yamaguchi

National Institute of Health Sciences 1-18-1 Kamiyoga, Setagaya-ku, Tokyo 158-8501

Tel: 81-03-3700-9074; Fax: 81-03-3700-9084; E-mail: nana@nihs.go.jp

(Received on February 24, 2008, accepted on May 7, 2008)

*Key Words: liquid chromatography/mass spectrometry, glycoprotein, oligosaccharide, glycopeptide*

### Abstract

Analysis of the carbohydrate heterogeneity of glycoprotein-based substances is crucial for establishing the nomenclature and definition of biological substances, ensuring consistency in the quality of these products, comparatively assessing the products obtained after the implementation of changes in the manufacturing process, and developing biosimilar or follow-on biological products. Liquid chromatography/mass spectrometry is recognized as one of the most useful techniques for analyzing the carbohydrate heterogeneity of glycoprotein substances. Here, we demonstrate the utility of LC/MS for analyzing the carbohydrate heterogeneity by using some representative glycoproteins such as tissue-plasminogen activator, a monoclonal antibody, the follicle-stimulating hormone, and human chorionic gonadotropin. Further, we demonstrate that MS-based glycoprotein analysis has potential applications in glycomics.

### 要約

糖タンパク質医薬品の糖鎖の不均一性解析は、医薬品の命名・定義、品質の恒常性確保、並びに製造方法変更及びバイオ後続品開発の際の同等性・同質性評価において重要である。液体クロマトグラフィー/質量分析法は、糖タンパク質医薬品の糖鎖不均一性解析法として最も有用性の高い分析法の一つとして知られている。本稿では、組織プラスミノゲンアクチベータ、モノクローナル抗体、卵胞刺激ホルモン及びヒト絨毛性性腺刺激ホルモンなどの代表的糖タンパク質の分析例を示しながら、糖鎖不均一性解析におけるLC/MSの有用性を概説する。また、質量分析法を用いた糖タンパク質解析法をグライコムクスに応用した例を紹介する。

### A. Introduction

Recent advances in the field of biotechnology have enabled the development of various proteins, protein derivatives, and fusion proteins for use as drugs in medicine. Most biotechnological drugs that have been approved in Japan in 2007 are glycoprotein derivatives; these drugs include Alglucosidase Alfa, Bevacizumab, Darbepoetin Alfa, and Idursulfase (1). The carbohydrate moieties present in most glycoprotein derivatives are known to affect the biological activity of these substances. Glycan analysis is therefore considered important for the characterization and evaluation of the quality of drugs.

Analysis of the carbohydrate heterogeneity of glycoproteins is becoming increasingly important. The heterogeneity of glycan moieties is a crucial factor to be

### A. はじめに

遺伝子組換え技術の進展に伴い、様々なタンパク質、タンパク質改変体、あるいは融合タンパク質が医薬品として開発されている。2007年に日本で承認されたバイオ医薬品の多くは、アルグルコシダーゼ アルファ、ペバシズマブ、ダルベポエチン アルファ、及びデュルスルファーゼのような糖タンパク質である(1)。多くの糖タンパク質医薬品の糖鎖が生物活性等に影響を与えることが知られていることから、特性解析や品質評価における糖鎖解析は重要である。

さらに別の側面からも、糖鎖不均一性解析の重要性が認識されるようになってきた。すなわち、糖鎖不均一性は、医薬品を命名・定義する上で重要であるということである。医薬品の名称は、基原や臨床効果に基づき、世界保健機関

considered for establishing the nomenclature and definition of glycoprotein-based substances. The International Nonproprietary Names (INN) committee of the World Health Organization (WHO) proposes names for new drugs on the basis of the origins and clinical effects of the drugs (2). Different names are proposed for drugs containing different amino acid sequences. Glycoproteins that contain identical amino acid sequences but comprise different glycoforms are distinguished from each other by the use of Greek letters such as alfa and beta. For instance, epoetins, whose amino acid sequences are identical to that of human erythropoietin, are assigned different Greek letters on the basis of differences in their glycoforms. As of 2007, the INN had recognized 9 different epoetins and had assigned them letters from alfa to zeta. The terms "epoetin alfa" and "epoetin beta" are used to refer to epoetins consisting of the alfa and beta glycoforms, respectively; these drugs are marketed as different substances in Japan. However, the degree of glycosylation is known to change during various manufacturing processes; hence, a method for comparative assessment of the degree of glycosylation is required for the development of biosimilar or follow-on biological products as well as for the implementation of changes in the processes adopted for the manufacture of glycoprotein-based products. The establishment of the general criteria to be considered and of a relevant method for analyzing carbohydrate heterogeneity is a high-priority issue related to the manufacture of glycoprotein products in the United States, European Union, and Japan.

The methods most commonly used for analyzing the carbohydrate heterogeneity of glycoprotein substances are high-performance liquid chromatography (HPLC) with fluorescence detection (3), capillary electrophoresis, fluorescence-assisted carbohydrate electrophoresis (FACE) (4), and high-performance anion-exchange chromatography with pulsed amperometric detection (HPAEC-PAD) (5). Recently, mass spectrometry (MS) has gained popularity as a method for analyzing the carbohydrate heterogeneity of glycoproteins (6). Although MS is advantageous in that it can provide structural information in considerable detail, it has limitations with regard to reproducibility and quantification. Investigations focusing on these limitations should be performed in order to extend the applications of MS to the analysis of glycans in glycoprotein substrates. Here, we demonstrate the utility of MS, especially liquid chromatography/electrospray ionization mass spectrometry (LC/ESI-MS) for analyzing the carbohydrate heterogeneity in glycoprotein-based substances. Further, we discuss the applications of MS-based analyses in glycomics.

(WHO)の医薬品国際一般名称 (INN) 委員会が命名する(2)。アミノ酸配列が異なる医薬品には、異なる名称が与えられる。ペプチド部分が同一でグリコフォームが異なる医薬品は、名称の後に alfa や beta などの異なるギリシャ文字が追加されて、区別される。例えば、ヒトエリスロポエチンと同一のアミノ酸配列を持つエポエチンには、グリコフォームの違いで異なるギリシャ文字が与えられており、現在 INN にはアルファからゼータまで9種類のエポエチンが収載されている。日本で販売されているエポエチン アルファ及びエポエチン ベータは、それぞれアルファグリコフォーム及びベータグリコフォームを持つ異なる医薬品である。しかし、グリコフォームは製造工程が変わると変化するため、製造方法の変更やバイオ後続品の開発にあたっては、糖鎖不均一性の同等性・同質性評価が要求される。そのために、米国、ヨーロッパ及び日本において、糖タンパク質医薬品の糖鎖の不均一性をどの程度解析すべきか等の基本的考え方、並びに解析のための適切な方法を確立することが、バイオ後続品開発における重要課題となっている。

糖タンパク質医薬品の糖鎖の不均一性解析法としてよく利用されている方法は、HPLC/蛍光検出法(3)、キャピラリー電気泳動法、蛍光標識糖鎖電気泳動法 (FACE) (4)及び高速陰イオン交換クロマトグラフィー/パルス電流検出法 (HPAEC-PAD) (5)であろう。さらに最近、質量分析法 (MS) が不均一性解析に利用されるようになってきた(6)。MSは、多くの構造情報を提供できる点で優れているが、定量性や再現性に問題がある。今後、定量性や再現性について新たな手法が導入されれば、糖鎖試験法としての有用性はさらに広がるものと思われる。本稿では、糖タンパク質の糖鎖不均一性解析法としてのMS、特に液体クロマトグラフィー/エレクトロスプレーイオン化質量分析法 (LC/ESI-MS) の有用性について概説する。さらに、MSをグリコミクスに応用した例についても紹介する。

## B. LC/MS of proteolytic glycoproteins

Peptide mapping is performed to confirm amino acid sequences and identify posttranslational modifications for the structural characterization of almost all recombinant proteins, and it is used to test the quality of these substances. In recent studies, LC/MS has frequently been employed for peptide mapping. The MS-based peptide mapping of proteolytic glycoproteins enables not only the analysis of amino acid sequences but also the detection of site-specific glycosylation (7-10). As an example of peptide mapping, here, we describe the MS-based peptide mapping that has previously been performed for tissue-plasminogen activator (t-PA) (11), which is an anticoagulant, and for a monoclonal antibody (12).

### 1) t-PA

t-PA is a single-chain glycoprotein consisting of 527 amino acid residues (molecular weight (MW): approximately 70,000). It contains 3 potential N-glycosylation sites—at Asn117, Asn184, and Asn448—and is attached to Fuc at Thr61 (Fig. 1) (13,14). The order of domains present in this protein from the N-terminal end is as follows: finger, epidermal growth factor (EGF), kringle 1, kringle 2, and catalytic domains. The single polypeptide is converted to a heterodimer through plasmin-mediated cleavage at Arg275-Ile276. t-PA is rapidly cleared from the blood, and high-mannose-type oligosaccharides that

## B. 糖タンパク質消化物の LC/MS

ペプチドマッピングは、タンパク質部分の一次構造や翻訳後修飾を確認するための方法として、多くの遺伝子組換えタンパク質医薬品の特性解析及び品質試験に用いられている。最近では、LC/MSがペプチドマッピングによく利用されるようになってきた。LC/MSを用いて糖タンパク質消化物マッピングを行うと、アミノ酸配列だけでなく、部位特異的な糖鎖の不均一性も同時に確認することができる(7-10)。LC/MSを用いたペプチドマッピングの代表例として、以下に、血栓溶解剤である組織プラスミノゲンアクチベータ (t-PA) (11) とモノクローナル抗体(12)のペプチドマッピングを紹介する。

### 1) t-PA

t-PAは、527個のアミノ酸残基からなる分子量約7万の1本鎖糖タンパク質で、分子内の3箇所(Asn117, 184, 448)にN結合型糖鎖が、また、Thr61にフコースが結合している(Fig. 1)(13,14)。t-PAは、N末側から、フィンガードメイン、EGFドメイン、クリングル1ドメイン、クリングル2ドメイン、catalyticドメインから構成されている。t-PAは、プラスミンによりArg 275-Ile276が切断されると2本鎖t-PAになる。t-PAは、血中からの消失が早く、肝臓での代謝には、クリングル1ドメイン上のAsn117に結合している高マンノース型糖鎖やEGFドメインが関与していると考えられている(15,16)。

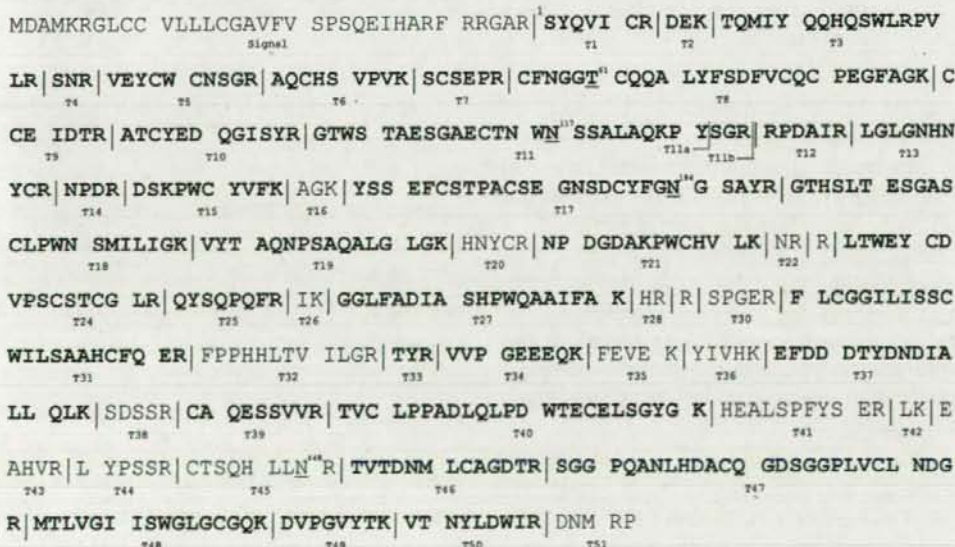
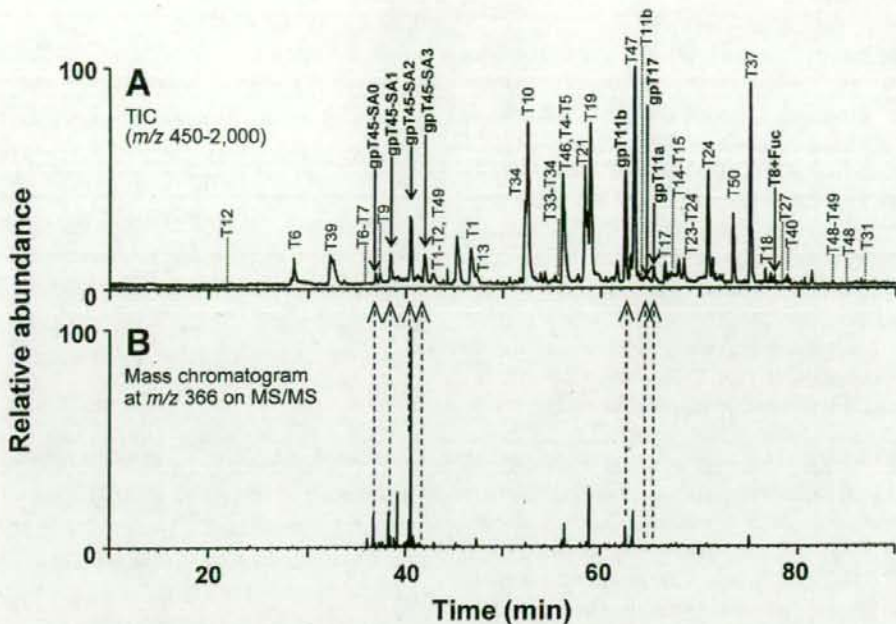


Fig. 1. Amino acid sequences of t-PA and tryptic peptides T1-T51. Boldface type indicates the peptides identified by the database search analysis with the SEQUEST search engine (Thermo Fisher Scientific). Potential N-glycosylation sites are underlined. Thr61 is fucosylated.





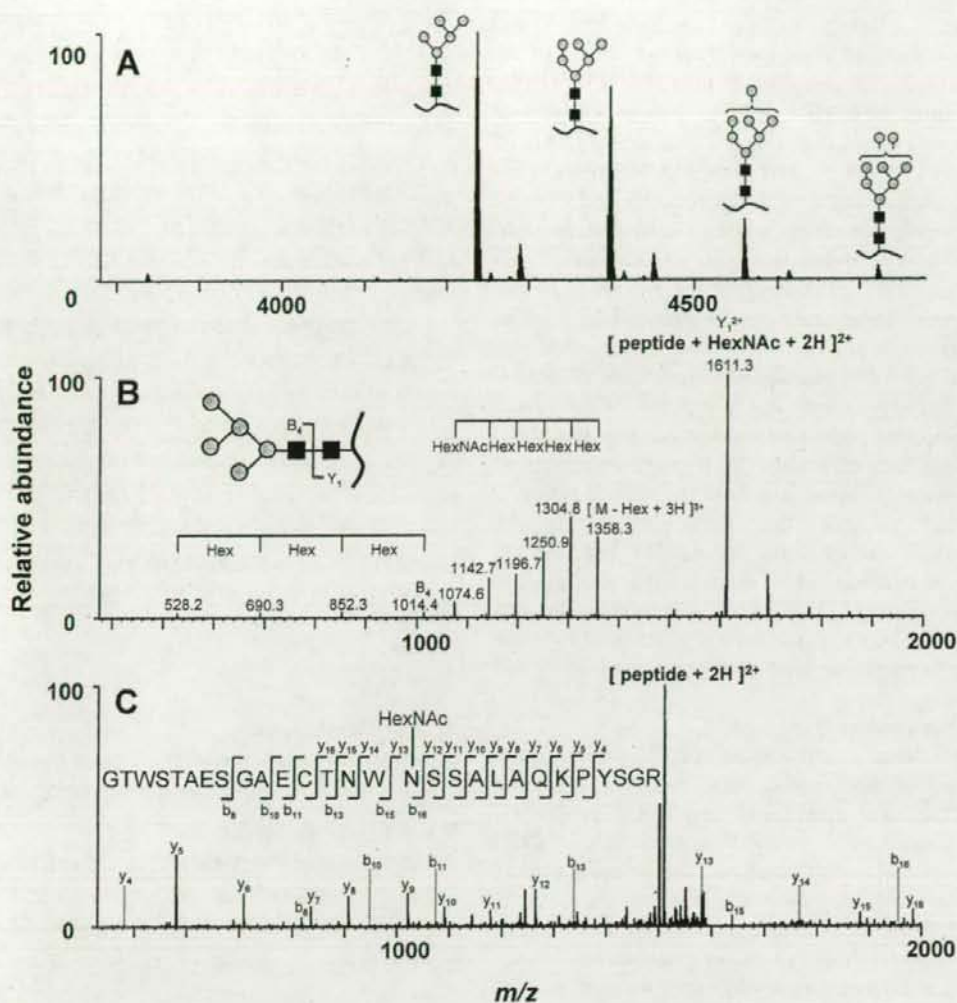
**Fig. 2. Mass spectrometric peptide map of tryptic digest of carboxymethylated t-PA from human melanoma cell (Wako Pure Chemical Industries).** (A) Total ion chromatogram (TIC) obtained by a single MS scan ( $m/z$  450–2,000) in the positive ion mode. (B) Mass chromatogram at  $m/z$  366 obtained by MS/MS. LC, Paradigm MS4 system (Michrom Bioresources); column, L-column (C18,  $150 \times 0.075$  mm,  $3 \mu\text{m}$ , Chemicals Evaluation and Research Institute); flow rate, 300 nl/min; A buffer, 0.1% formic acid/2% acetonitrile; B buffer, 0.1% formic acid/90% acetonitrile; gradient condition, 2–45% of B (100 min); MS, LTQ-FT (Thermo Fisher Scientific); electrospray voltage, 1.8 kV (positive ion mode).

are present at the Asn117 residues of the kringle 1 and EGF domains are involved in its rapid clearance via the liver (15,16). Site-specific glycosylation analysis as well as amino acid sequencing is important for the characterization of t-PAs. Alteplase, which is marketed worldwide, is a glycoprotein consisting of an amino acid sequence identical to that of human t-PA. Two t-PA analogs (monteplase and pamiteplase) that have been genetically modified in order to prolong their half-life in blood are also marketed in Japan, and 2 other analogs, namely, reteplase and tenecteplase, have been approved in the United States and the European Union (17).

Figure 2A shows a tryptic map of t-PA (derived from human melanoma cells), as observed in a single MS scan. Each peak in the map was identified by running the MS<sup>n</sup> data that was acquired in a data-dependent manner through a database search (with 85% amino acid coverage). Fucosylated T8 (T8+Fuc), non-glycosylated T11b, glycosylated T11b (gpT11b), and non-glycosylated T17 were successfully identified by using the possible

t-PA はアミノ酸配列だけでなく、部位特異的な糖鎖不均一性の確認が必要な医薬品の一つといえよう。現在、国内外で販売されているアルテプラゼは、ヒト t-PA と同じアミノ酸配列を持つ糖タンパク質医薬品である。さらに、血中での滞留時間を延長させるために、遺伝子工学的に t-PA を改変した医薬品が国内では 2 品目 (モンテプラゼ、パミテプラゼ)、欧米でも異なる 2 品目 (reteplase, tenecteplase) が販売されている (17)。

Fig. 2A に、シングル MS スキャンで得られた t-PA (ヒト黒色腫細胞由来) のトリプシン消化物マップを示す。マップ上の各ピークは、データ依存的に取り込まれた MS<sup>n</sup> データを用いたデータベース検索によって帰属した (アミノ酸配列の 85% を確認した)。また、Asn に HexNAc (203 Da)、Ser/Thr に dHex (146 Da) が結合している可能性を追加してデータベース検索することによって、Fuc 結合 T8 (T8+Fuc)、糖鎖非結合 T11b、糖鎖結合 T11b (gpT11b)、及び糖鎖非結合 T17 を同定することができた。データベース検索では T45 を



**Fig. 3. Mass spectra of glycopeptide T11b.** (A) Deconvoluted mass spectrum acquired at elution position of glycopeptides T11b (62.22–62.68 min). (B) MS/MS spectrum acquired from  $[M+3H]^{3+}$  ( $m/z$  1411.94) as a precursor ion. Carbohydrate structure was deduced from the fragment pattern. (C) MS/MS/MS spectrum acquired from  $[peptide+2H]^{2+}$  ( $m/z$  1611.3) as a precursor ion. The peptide sequence and glycosylation site were identified by the database search analysis.

modifications of HexNAc (203 Da) on Asn and dHex (146 Da) on Ser/Thr. The final peptide, i.e., T45, could not be identified by a database search. However, using the glycan-distinctive  $Hex_1HexNAc_1^+$  ions ( $m/z$  366) that yielded peaks in the MS/MS, the acquisition positions of the glycopeptide MS data were mapped (Fig. 2B). The T45 glycopeptides (gpT45) were separated into 4 peaks based on the number of sialic acid residues present in the glycans (gpT45-SA0-SA3).

Figure 3A shows the deconvoluted mass spectrum

特定できなかったが、MS/MSによって生じた糖鎖に特徴的なイオン  $Hex_1HexNAc_1^+$  ( $m/z$  366) を用いることによって、糖ペプチドのMSデータが取り込まれている位置を特定することができた (Fig. 2B)。糖ペプチド T45 (gpT45) は、シアル酸結合数によって異なる4つのピークに分離されていた (gpT45-SA0-SA3)。

Fig. 3A は、糖ペプチド gpT11b のマスマスペクトルをデコンボリューションしたものである。主要イオンの計算質量から、高マンノース型糖鎖 (Man-5, -6, -7 及び -8) の結合が

of gpT11b. The linkages of Man-5, Man-6, Man-7, and Man-8 were deduced from the calculated masses of the predominant ions. Figure 3B shows the MS/MS spectrum acquired using  $[M+3H]^{3+}$  ( $m/z$  1411.9) as a precursor ion; this spectrum suggests that the attachment of Man-5 is determined by the product ions. MS/MS reveals that peptide fragments attached to the reducing-end GlcNAc residue generally arise from N-glycosylated peptides. Further, MS/MS/MS reveals that these peptide-related ions yield b- and y-ions via cleavage of the peptide backbone (18). The peptide sequence can be deduced by running these fragments through a database search. The ion at  $m/z$  1611.3 in Fig. 3B can be assigned to  $[\text{peptide} + \text{GlcNAc} + 2H]^{2+}$  of T11b. As shown in the MS/MS/MS spectrum obtained using the peptide-related ion as a precursor (Fig. 3C), the sequence of peptide T11b could be confirmed from the b- and y-ions arising from the peptide region.

Thus, through the peptide mapping by LC/MS/MS, it was confirmed that Asn117, 184, and 448 of t-PA were attached to high-mannose-type oligosaccharides, monosialylated, biantennary oligosaccharide, and bi- and triantennary oligosaccharides containing 0-3 Neu-Acs, respectively. These results were consistent with those in previous reports.

## 2) Monoclonal antibody

Monoclonal antibody-derived biological substances are being developed globally, and as of November 2007, the INN had named 144 monoclonal antibodies. Monoclonal antibodies produced in cells such as CHO cells by biotechnological techniques are now being used as drugs. These antibodies are categorized on the basis of their origin as murine, chimeric, humanized, and human-derived antibodies. In 2007, 3 chimeric antibodies (Basiliximab, Infliximab, and Rituximab) and 5 humanized ones (Tocilizumab, Bevacizumab, Palivizumab, Trastuzumab, and Gemtuzumab Ozogamicin) were approved in Japan. The CH<sub>2</sub> domain in the H-chain of IgGs is commonly attached to an N-linked oligosaccharide. Since the antibody-dependent cell-mediated cytotoxicity (ADCC) of most antitumor drugs derived from IgG1 is influenced by core fucosylation in the N-linked oligosaccharide attached to the CH<sub>2</sub> domain (19), it is necessary to analyze the carbohydrate heterogeneity and to establish a test for glycan characterization in order to apply monoclonal antibody-based drugs. The test for glycan characterization could be replaced with an *in vivo* assay if the glycan profile is found to be strongly associated with the *in vivo* activity of the drug. The establishment of a quantitative and qualitative method for glycan characterization that can be used as an alternative to animal experiments is crucial for the development of glycoprotein-based drugs.

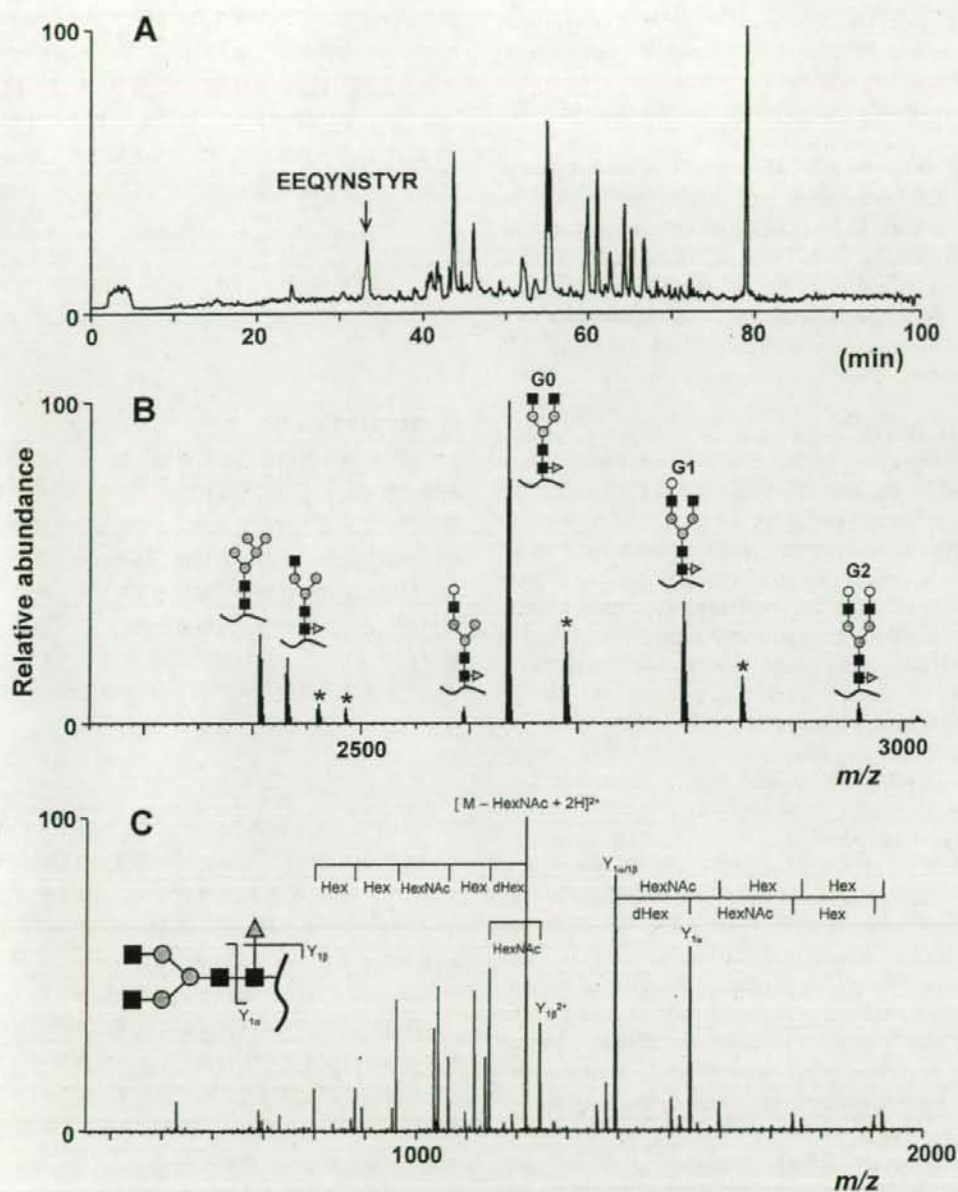
推定された。Fig. 3Bは、 $[M+3H]^{3+}$  ( $m/z$  1411.9)を前駆イオンとして得られたMS/MSスペクトルで、生じたフラグメントから、Man-5であることが確認された。N結合型糖鎖付加ペプチドのMS/MSでは、ペプチドに還元末端GlcNAcが結合したイオンが生じることが多い。これらのペプチド関連イオンを前駆イオンとしてさらにMS/MS/MSを行うと、ペプチド部分が開裂してb-及びy-イオンが生じる(18)。これらのフラグメントを使ってデータベース検索すると、ペプチドの配列を推定することができる。Fig. 3Bでは、 $m/z$  1611.3のイオンをT11bの $[\text{peptide} + \text{GlcNAc} + 2H]^{2+}$ と帰属することができる。Fig. 3Cは、このイオンを前駆イオンとして得られたMS/MS/MSスペクトルである。ペプチド部分から生じたb-及びy-イオンから、ペプチドT11bの配列を確認できる。

以上のようにLC/MS/MSを用いたペプチドマッピングによって、t-PAのAsn117, 184, 及び448にそれぞれ高マンノース型糖鎖, モノシアルル2本鎖型糖鎖, 及びシアル酸を0-3個含む2及び3本鎖型糖鎖が結合していることが確認された。この結果は、既知の結果とよく一致している。

## 2) モノクローナル抗体

モノクローナル抗体を基原とする医薬品の開発が世界中で進められており、2007年11月現在、INNに144品目が収載されている。現在医薬品として用いられているモノクローナル抗体は、遺伝子組換え技術によってCHO細胞などを用いて製造されたものである。モノクローナル抗体は基原によって、マウス抗体、キメラ抗体、ヒト化抗体、及びヒト抗体などに分類される。現在国内では、キメラ抗体3品目(バシリキシマブ、リツキシマブ、インフリキシマブ)及びヒト化抗体5品目(トシリズマブ、ベバシズマブ、パリシズマブ、トラツズマブ、ゲムツズマブオゾガマイシン)が承認されている。IgGのH鎖のCH<sub>2</sub>ドメインには共通してN結合型糖鎖が結合している。この位置に結合しているN結合型糖鎖のコアFコースの有無は、IgG1を基原とする抗腫瘍薬の抗体依存性細胞傷害活性(ADCC活性)に影響を及ぼすことから(19)、このようなモノクローナル抗体の承認申請にあたっては、糖鎖不均一性解析と糖鎖試験法の設定が必要になるだろう。特に、糖鎖試験の結果と*in vivo*活性試験の間に相関がある場合は、糖鎖試験法を*in vivo*活性試験におきかえられる可能性があり、動物実験代替法として、糖鎖を定性的かつ定量的に分析する試験法を設定することは重要であろう。

Fig. 4Aは、あるモノクローナル抗体製剤のトリブシン消化物マップである。32分前後に検出されているピークがH鎖



**Fig. 4.** Mass spectrometric peptide map of tryptic digest of the carboxymethylated monoclonal antibody. (A) TIC obtained by single MS scan ( $m/z$  450–2,000) in the positive ion mode. (B) Deconvoluted mass spectrum at the elution position of the glycopeptides (32.57–33.66 min). \* Non-glycopeptide signal (C) Representative MS/MS spectrum acquired from  $[M+2H]^{2+}$  ( $m/z$  1318.04) as a precursor ion. Analytical condition: see Fig. 2.

Figure 4A shows the tryptic map of a commercially available monoclonal antibody-based drug. The peak detected at 32 min was assigned to the glycopeptide derived

に由来する糖ペプチドのピークと帰属された。このペプチドに結合している糖鎖は、デコンホリユーションしたマススペクトル上のプロトン化分子の計算質量から、Man-5及び2本