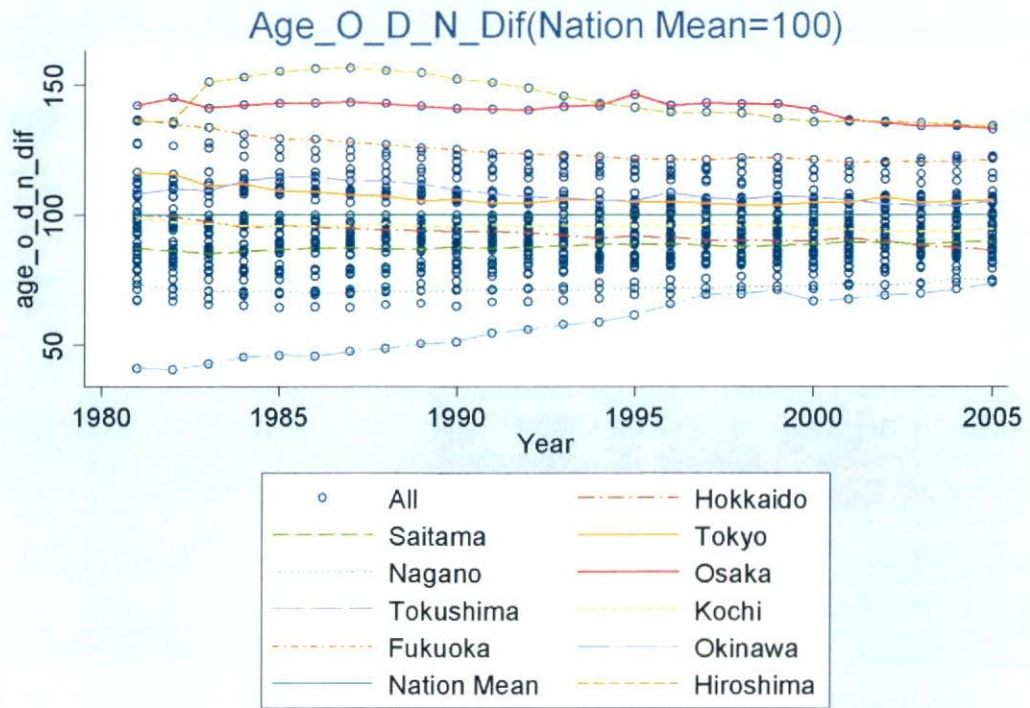
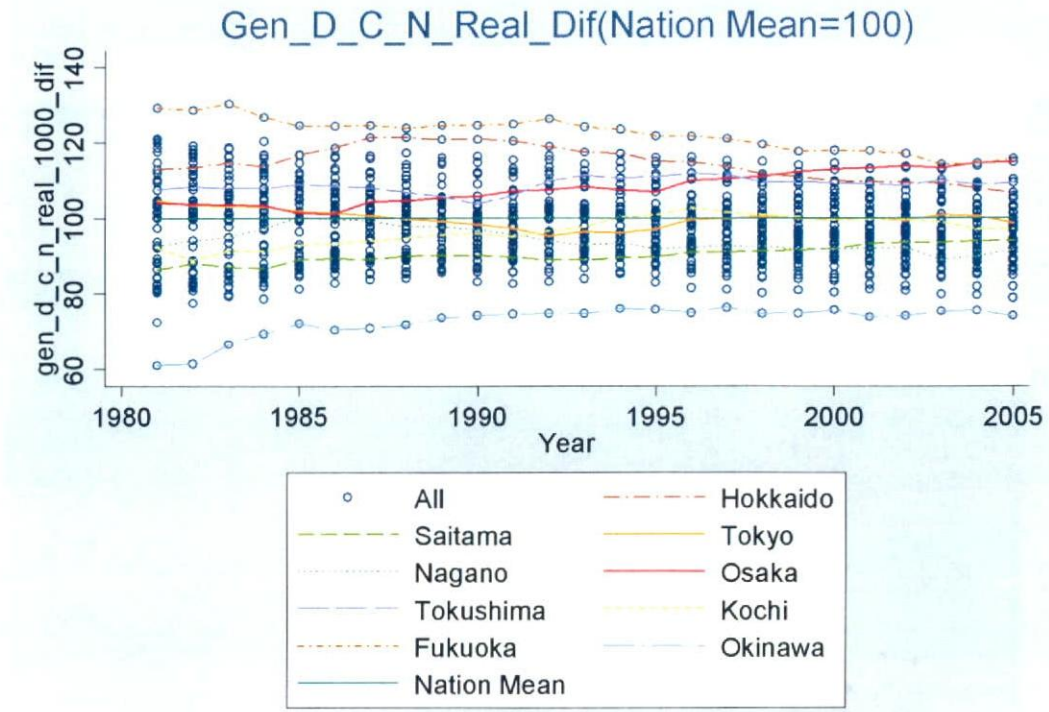


Figure 4-20. Variation of the Aged Outpatient (Days per Population : D/N)



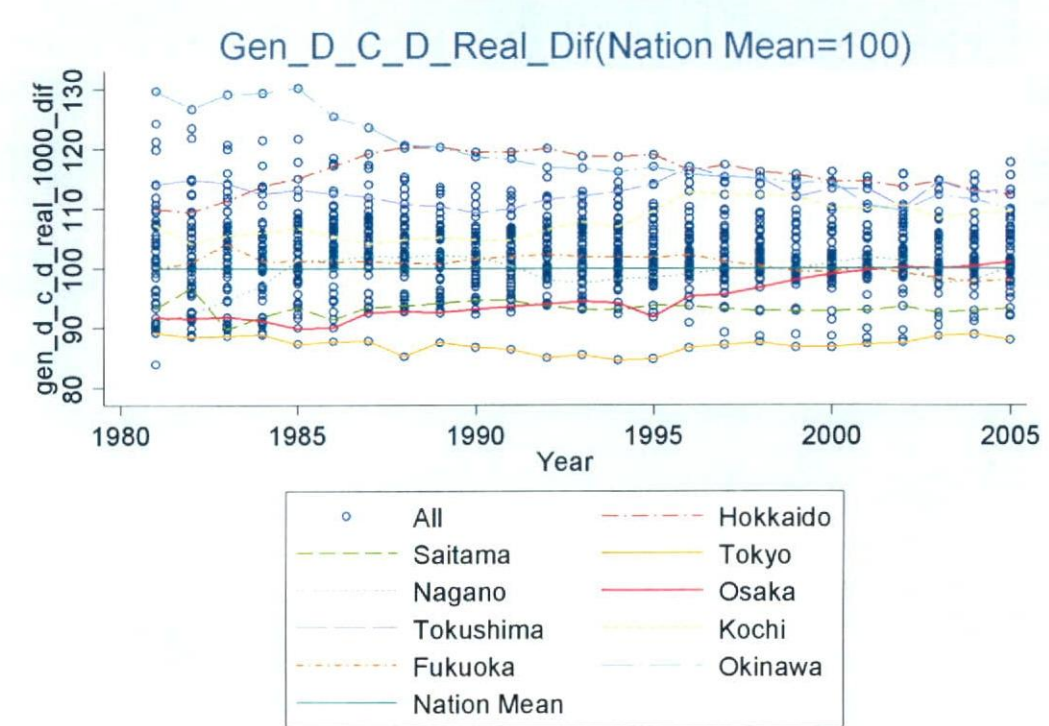
Source: Author's calculation which method and data sources are explained in text.

Figure 4-21. Variation of the General Dental (Medical Cost per Capita: C/N)



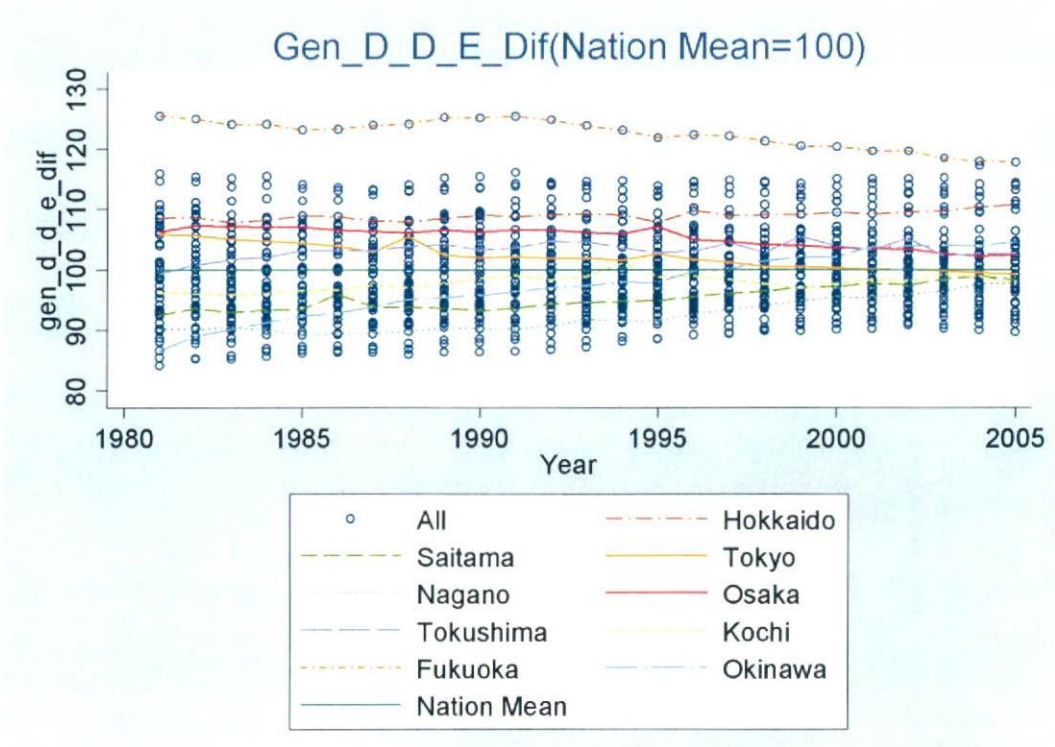
Source: Author's calculation which method and data sources are explained in text.

Figure 4-22. Variation of the General Dental (Medical Cost per Day: C/D)



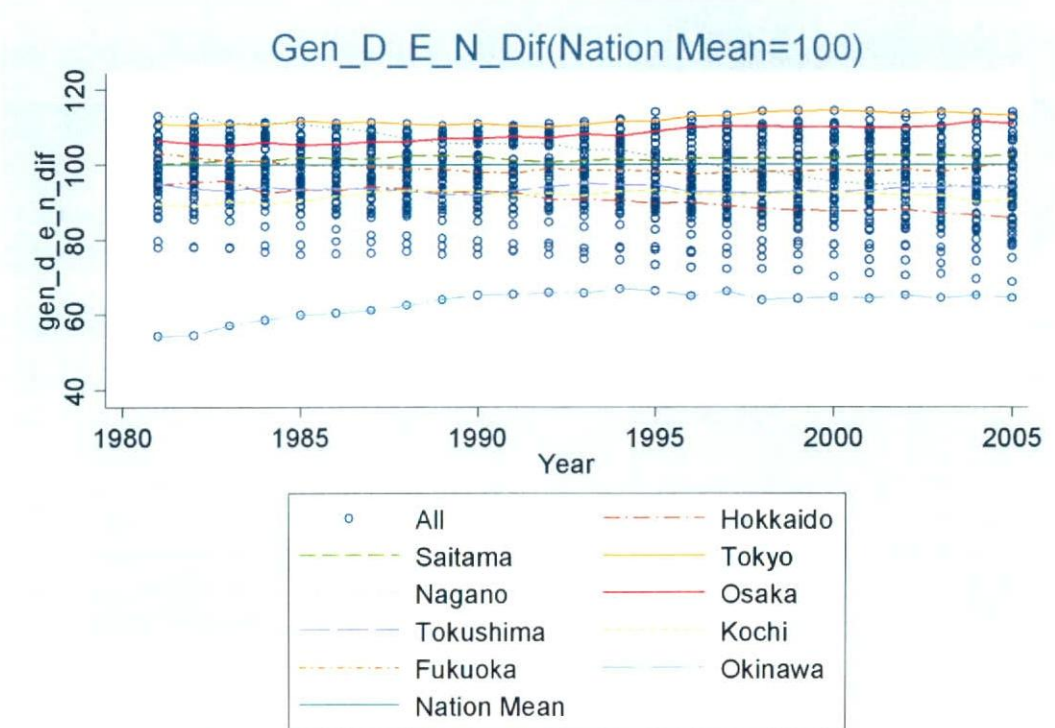
Source: Author's calculation which method and data sources are explained in text.

Figure 4-23. Variation of the General Dental (Days per Event: D/E)



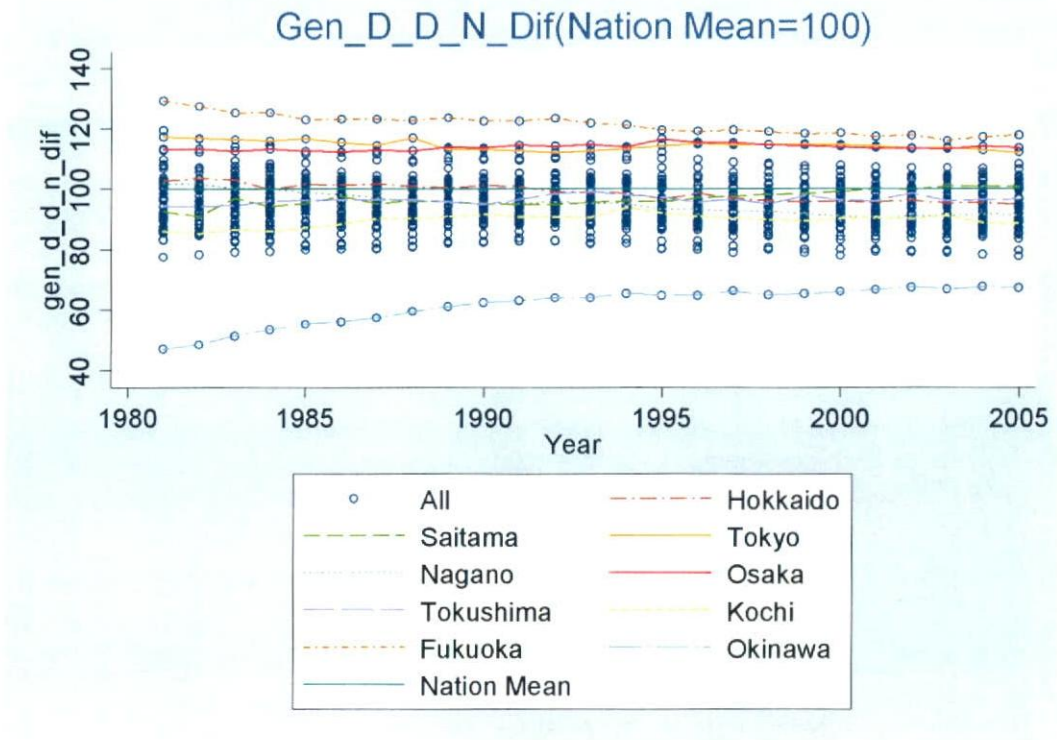
Source: Author's calculation which method and data sources are explained in text.

Figure 4-24. Variation of the General Dental (Events per Population : E/N)



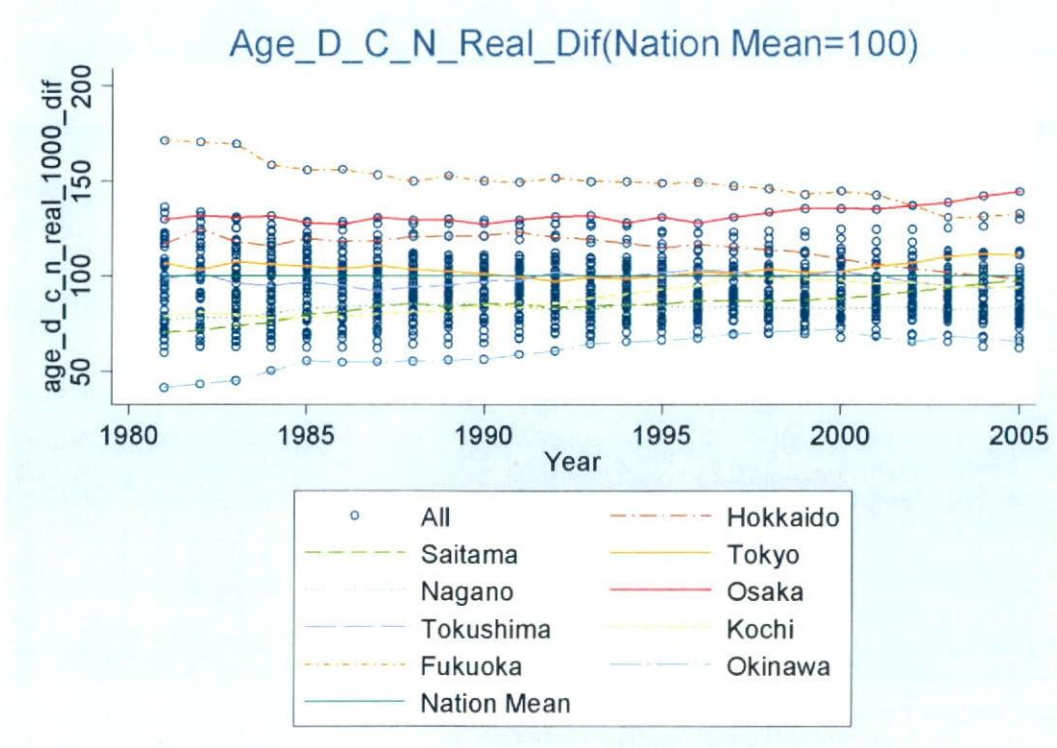
Source: Author's calculation which method and data sources are explained in text.

Figure 4-25. Variation of the General Dental (Days per Population : D/N)



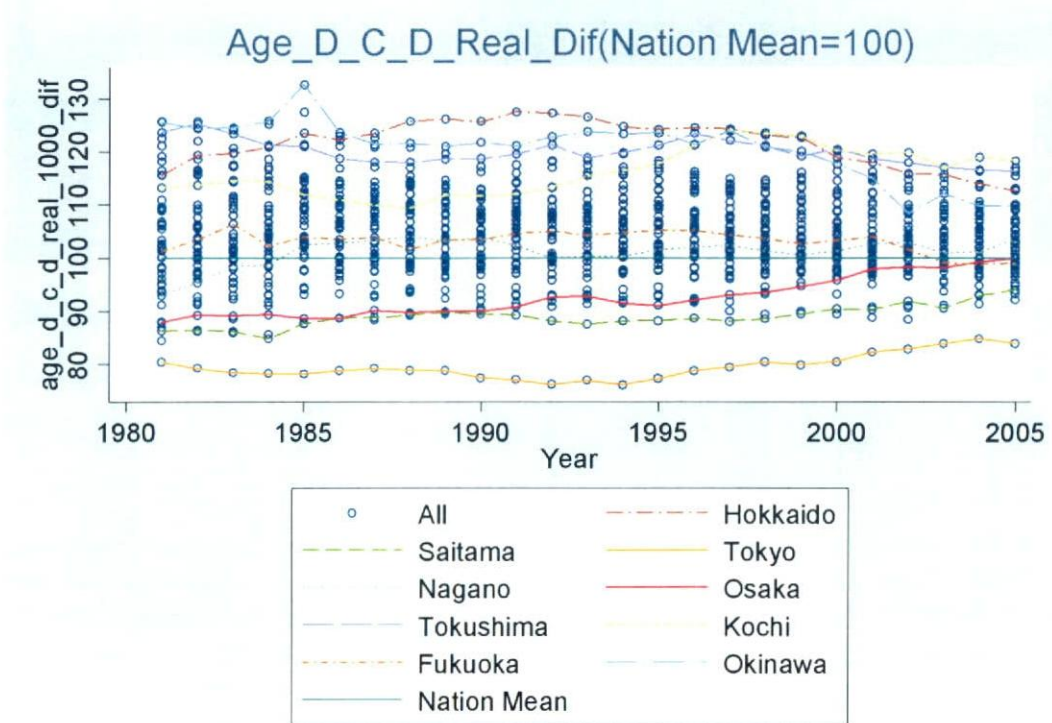
Source: Author's calculation which method and data sources are explained in text.

Figure 4-26. Variation of the Aged Dental (Medical Cost per Capita: C/N)



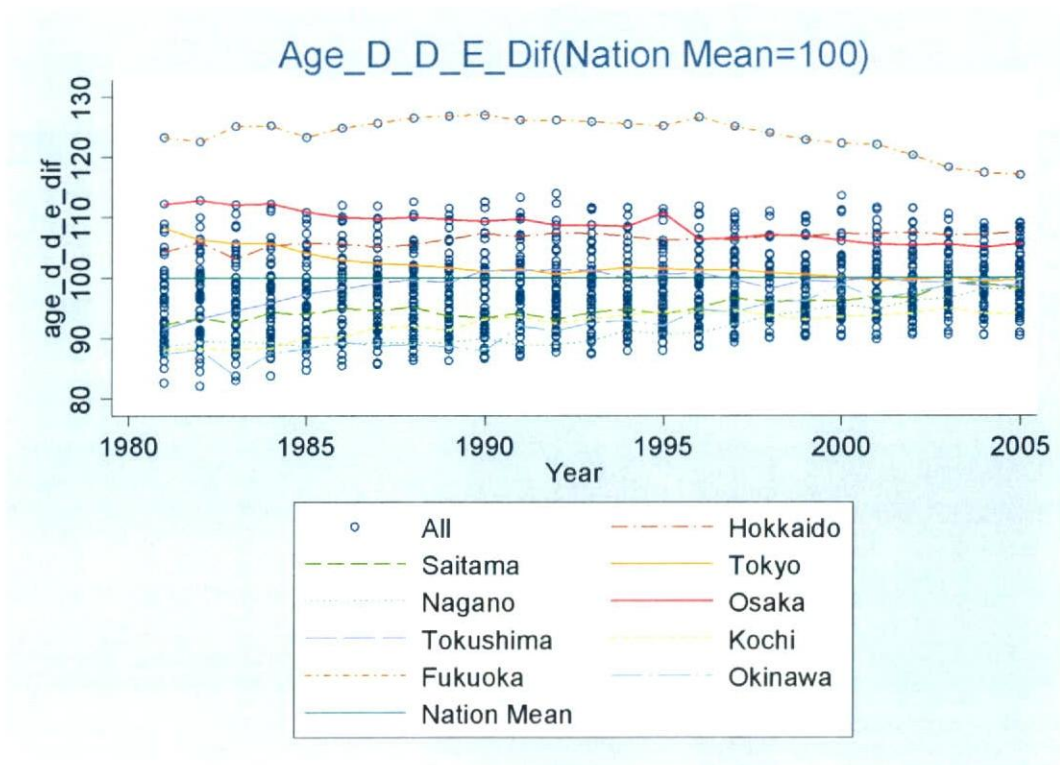
Source: Author's calculation which method and data sources are explained in text.

Figure 4-27. Variation of the Aged Dental (Medical Cost per Day: C/D)



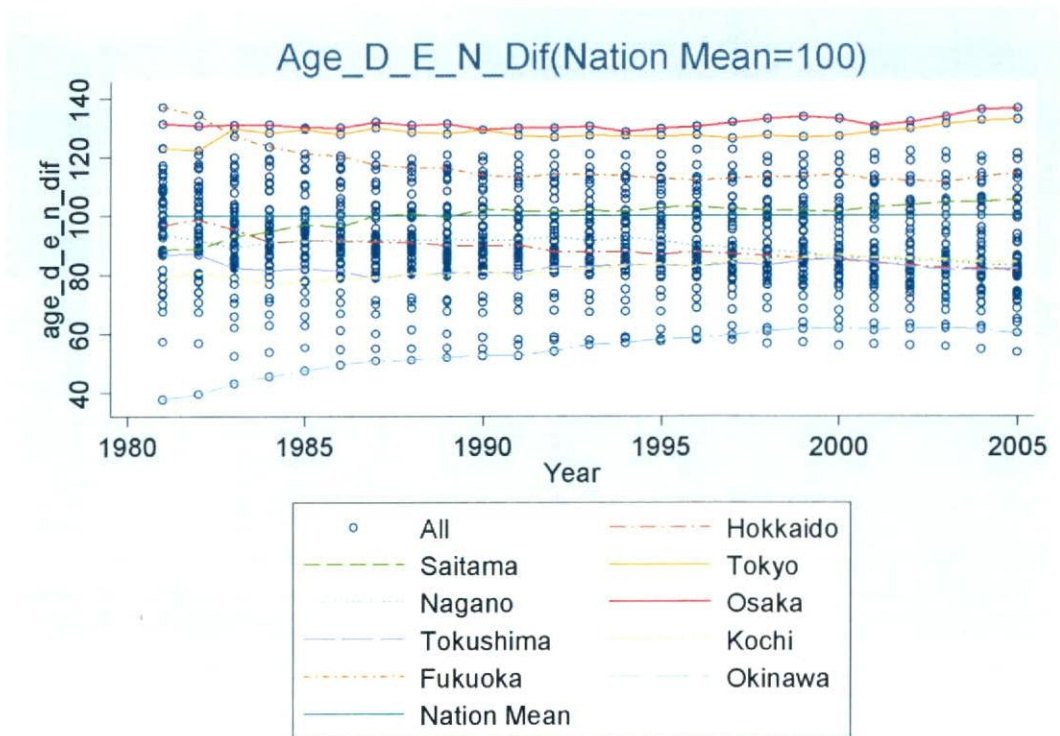
Source: Author's calculation which method and data sources are explained in text.

Figure 4-28. Variation of the Aged Dental (Days per Event: D/E)



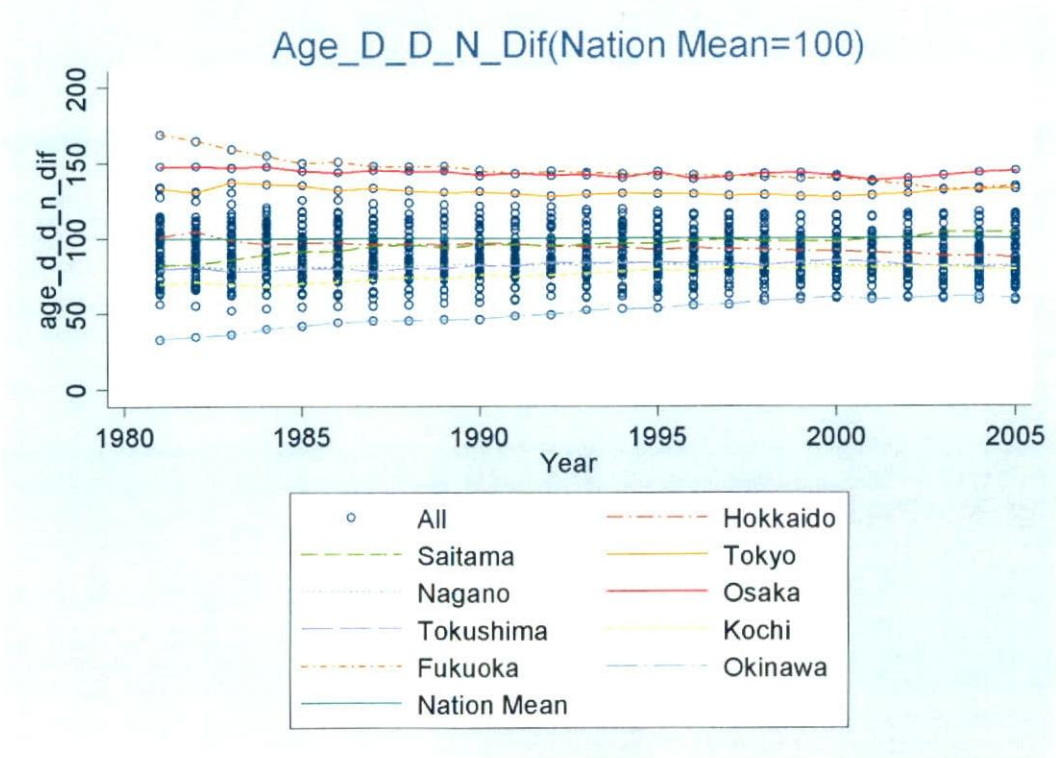
Source: Author's calculation which method and data sources are explained in text.

Figure 4-29. Variation of the Aged Dental (Events per Population : E/N)



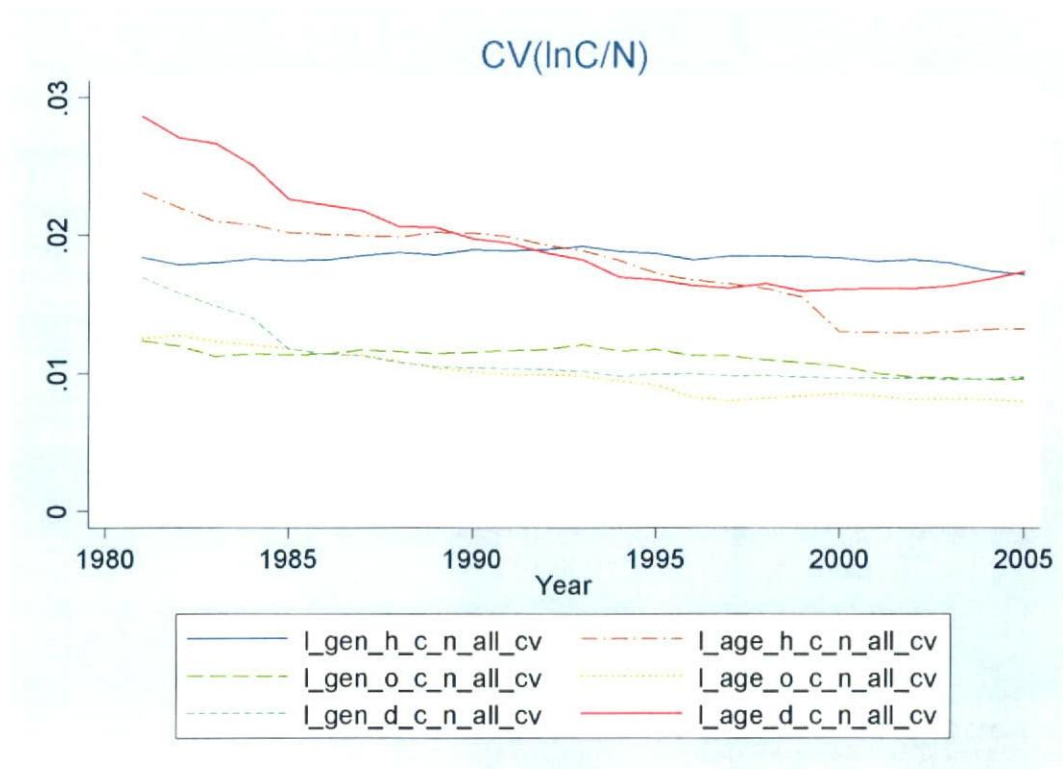
Source: Author's calculation which method and data sources are explained in text.

Figure 4-30. Variation of the Aged Dental (Days per Population : D/N)



Source: Author's calculation which method and data sources are explained in text.

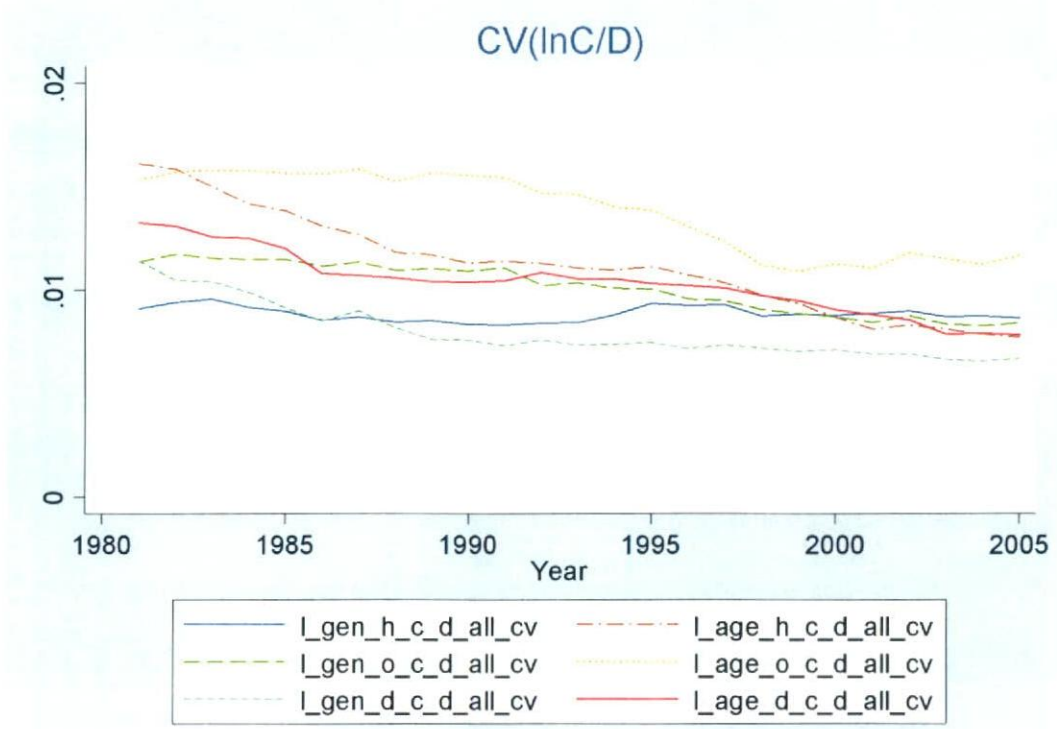
Figure 5-1. Coefficient of Variation (CV) of Natural Log of Cost per Capita (ln C/N)



Source: Author's calculation which method and data sources are explained in text.

Note: The CVs (Coefficient of Variation) of the "Aged Hospitalization" and "Aged Dental" had been large in the early 1980s, since then they have declined significantly in the late 1990s. In contrast, CV for the "General Hospitalization" has continued to be large throughout the period.

Figure 5-2. Coefficient of Variation (CV) of Natural Log of Cost per Day (ln C/D)

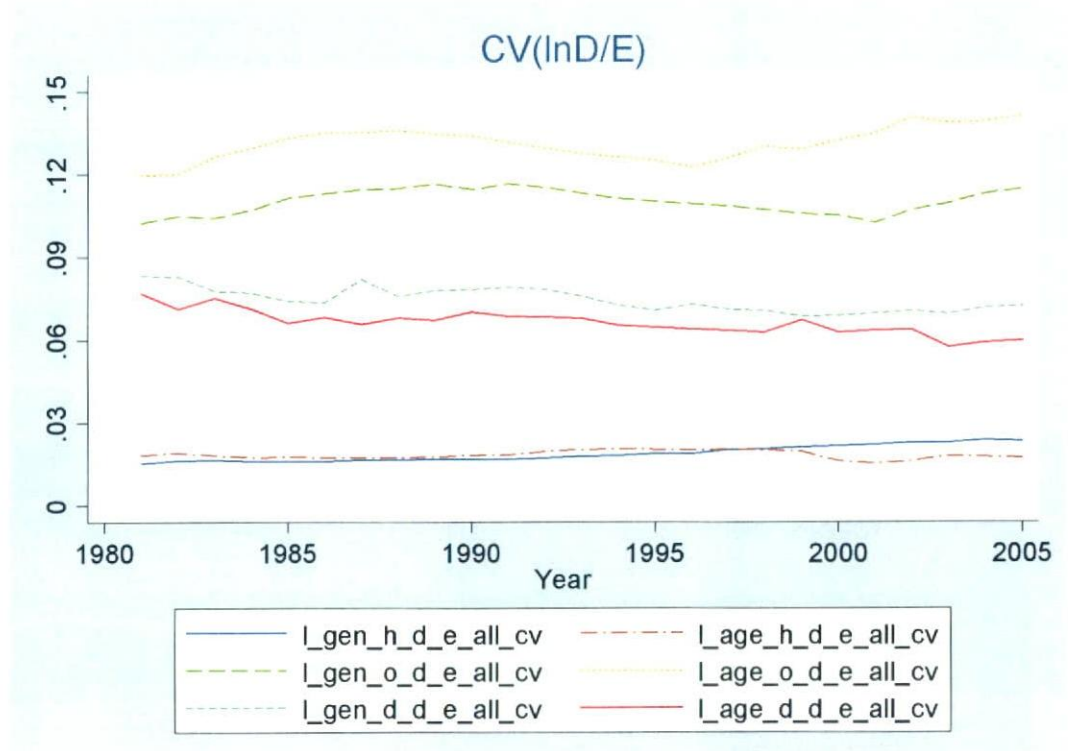


Source: Author's calculation which method and data sources are explained in text.

Note: CV for Ln(C/D) had declined for the "Aged Hospitalization", "Aged Outpatient", "Aged Dental".

It had declined slightly for the "General Outpatient" and "General Dental" while that had been stable for "General Hospitalization".

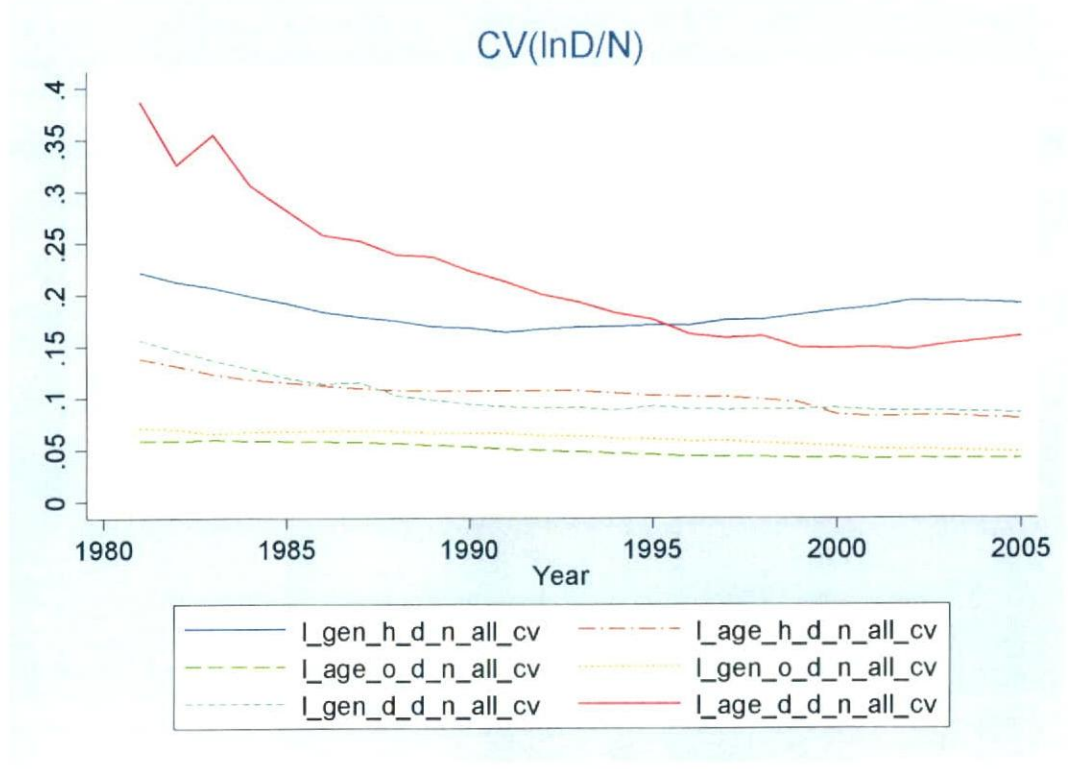
Figure 5-3. Coefficient of Variation (CV) of Natural Log of Days per Event (ln D/E)



Source: Author's calculation which method and data sources are explained in text.

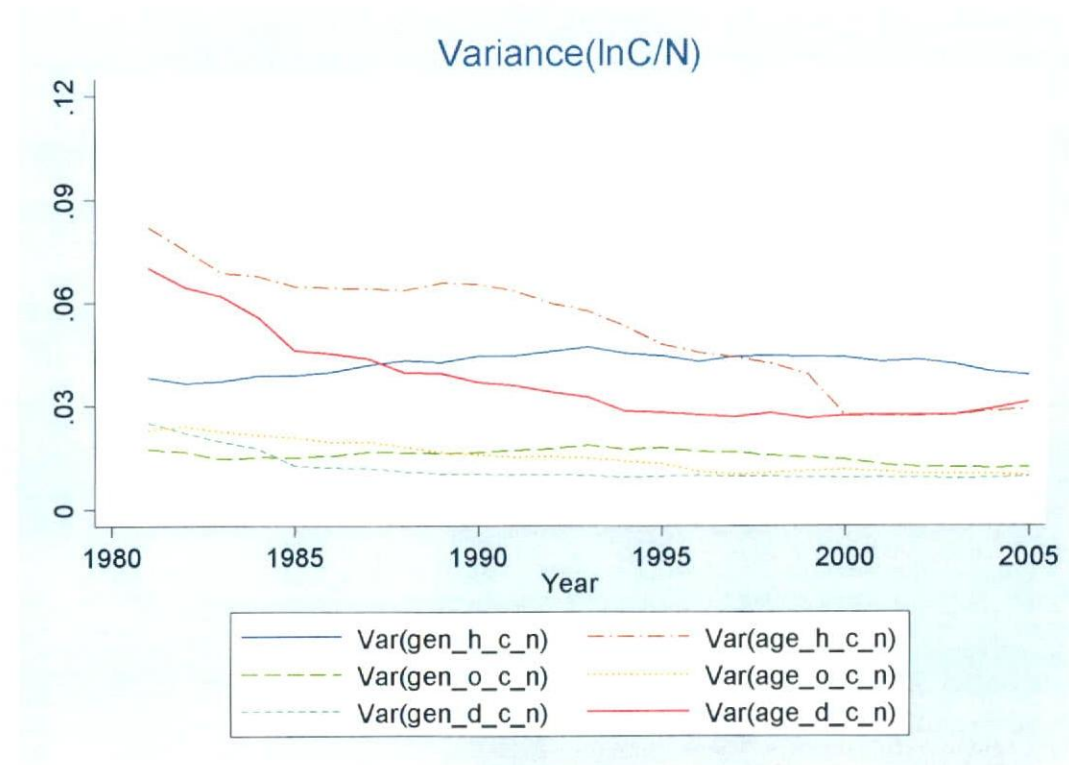
Note: CV for natural log of D/E for hospitalization had been small and stable, which fact indicates that there had not been large differences across regions. That of the "Aged Hospitalization" had declined sharply in 2000 when the long term-care Insurance was introduced. "Aged Dental" had smaller CV than the "General Dental". The "Aged Outpatient" had larger CV than the "General Outpatient" and it had started to increase since 1996.

Figure 5-4. Coefficient of Variation (CV) of Natural Log of Days per Population (ln D/N)



Source: Author's calculation which method and data sources are explained in text.

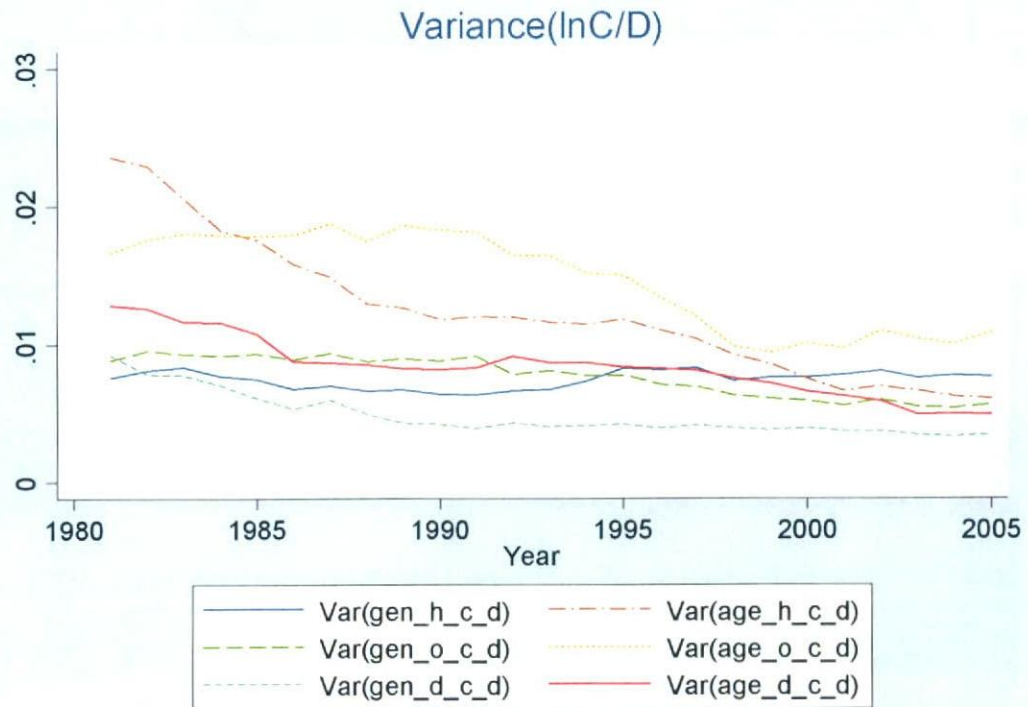
Figure 5-5. Variance of Natural Log of Cost per Capita (ln C/N)



Source: Author's calculation which method and data sources are explained in text.

Note: The variances of ln C/N of the "Aged Hospitalization", "Aged Dental" had been large, both of which had declined sharply in the 1981-2000. The variance of the "General Hospitalization" had increased in the 1990s.

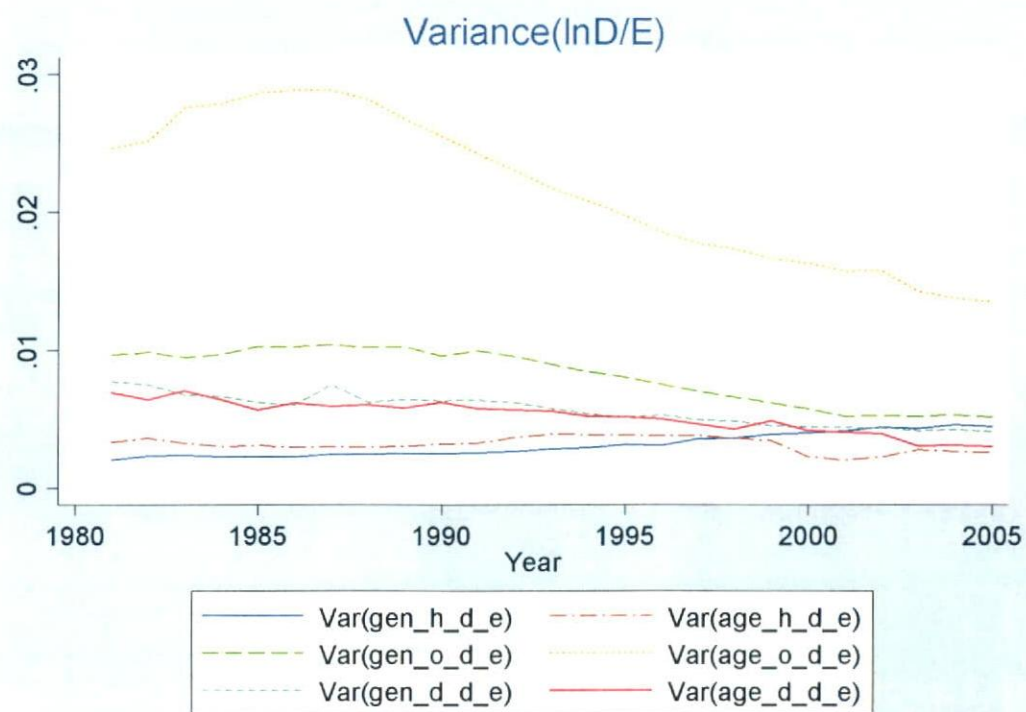
Figure 5-6. Variance of Natural Log of Cost per Capita (ln C/D)



Source: Author's calculation which method and data sources are explained in text.

Note: The variances of aged services (Age_H_C_D, Age_O_C_D) have declined. The variance of Gen_H_C_D have been small through the period.

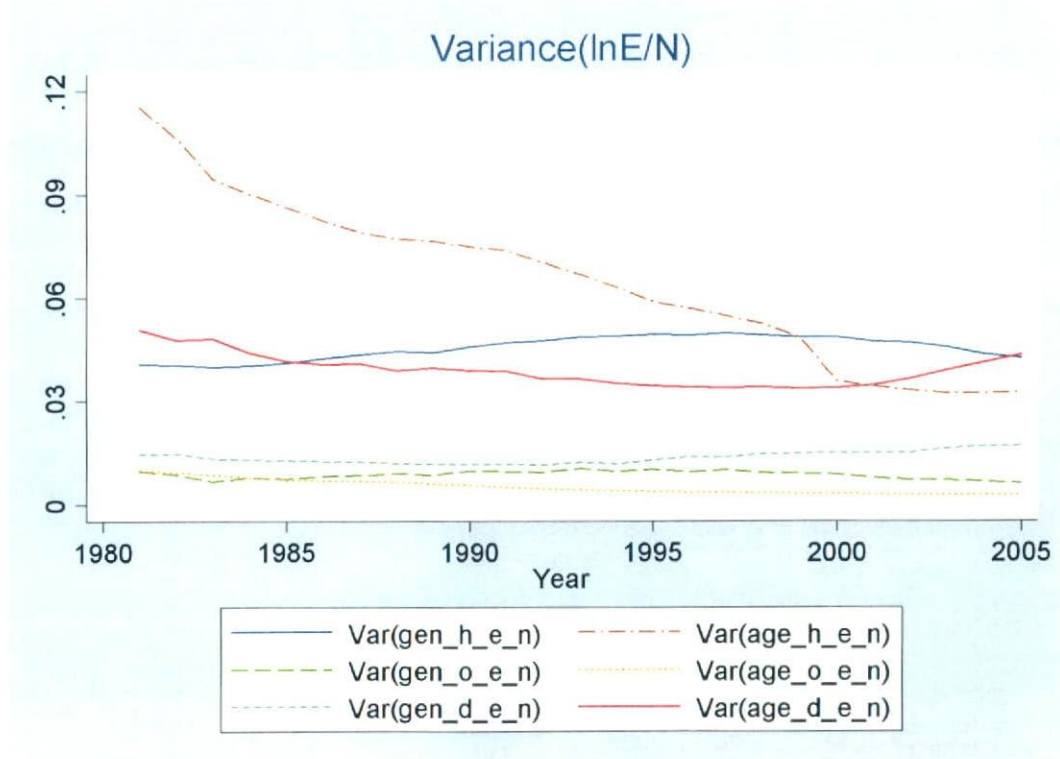
Figure 5-7. Variance of Natural Log of Cost per Capita (ln C/N)



Source: Author's calculation which method and data sources are explained in text.

Note: The variance of Age_O_D_E has declined sharply since the late 1980s, while the variances of other services such as Gen_H_D_E and Age_H_D_E have been stable.

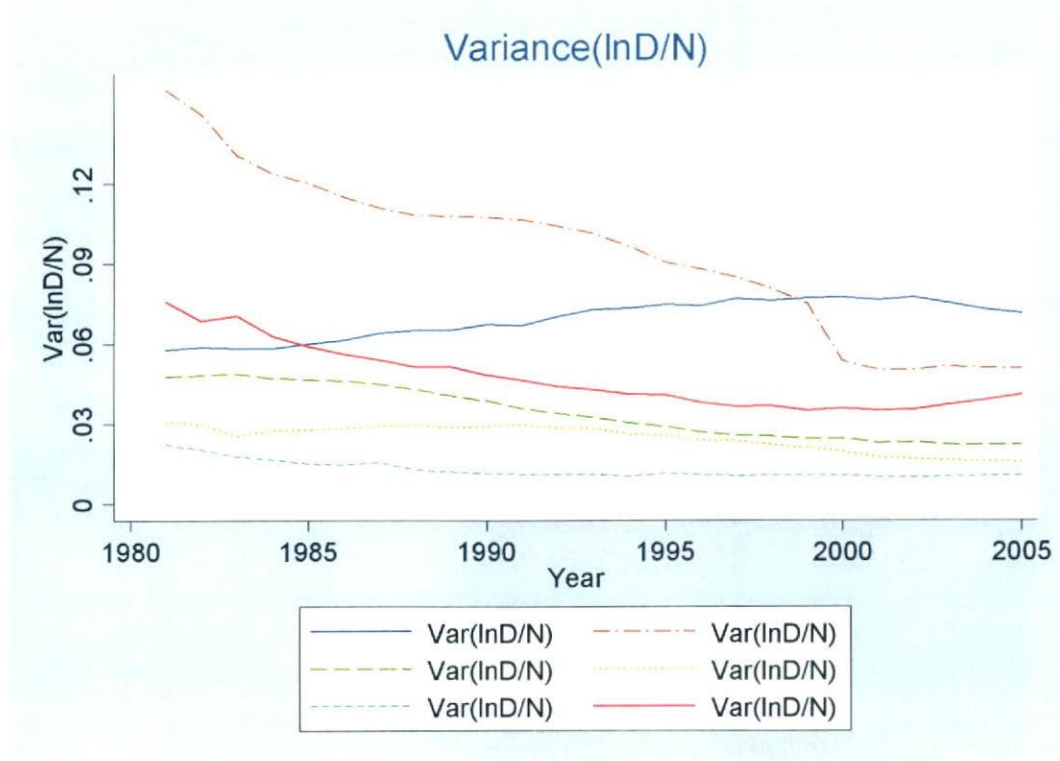
Figure 5-8. Variance of Natural Log of Events per Population (ln E/N)



Source: Author's calculation which method and data sources are explained in text.

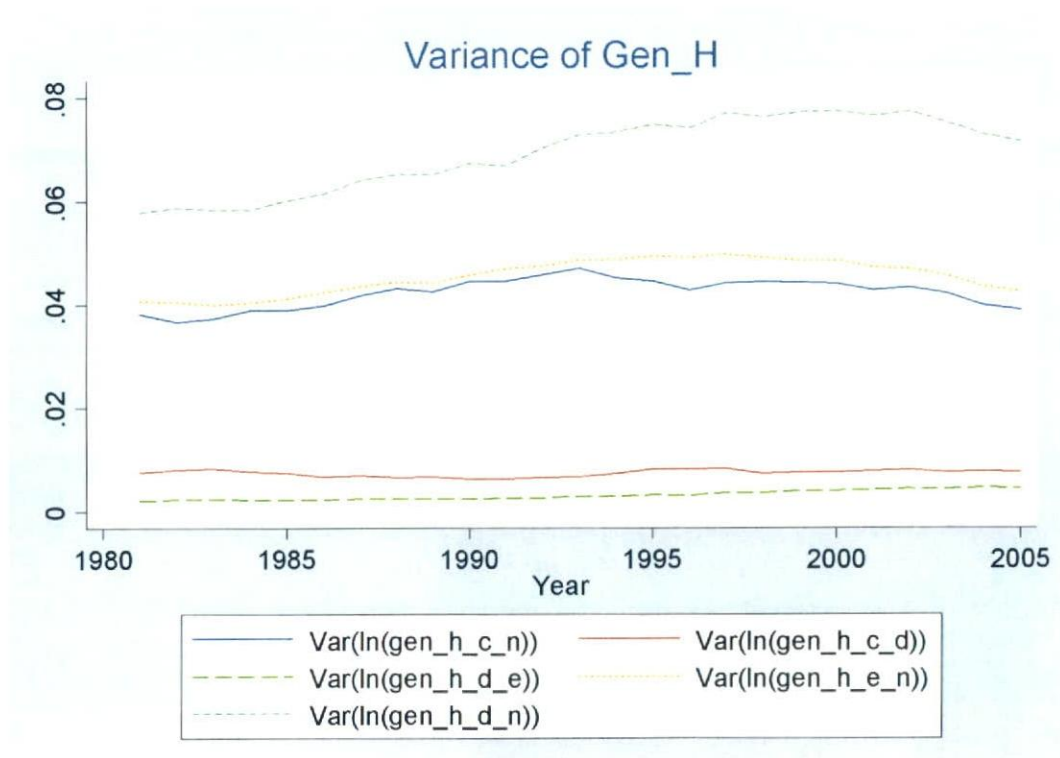
Note: The variance of Age_H_E_N had declined sharply in particular in the late 1990s prior to the introduction of the Long-term Care Insurance in 2000. The variance of Age_O_E_N had been small and stable. The variance of Gen_H_E_N had increased slightly in the 1990s. The variance of Age_D_E_N had increased since 2000.

Figure 5-9. Variance of Natural Log of Days per Population (ln D/N)



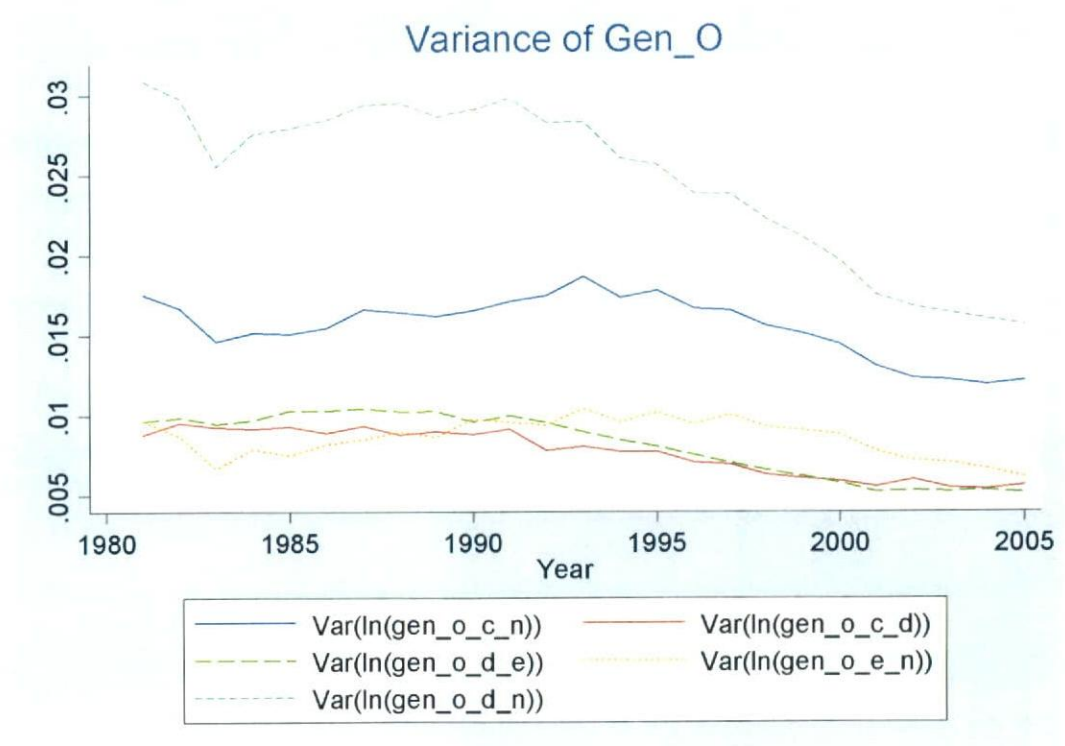
Source: Author's calculation which method and data sources are explained in text.

Figure 5-10. Variance of Natural Log Measures of the General Hospitalization



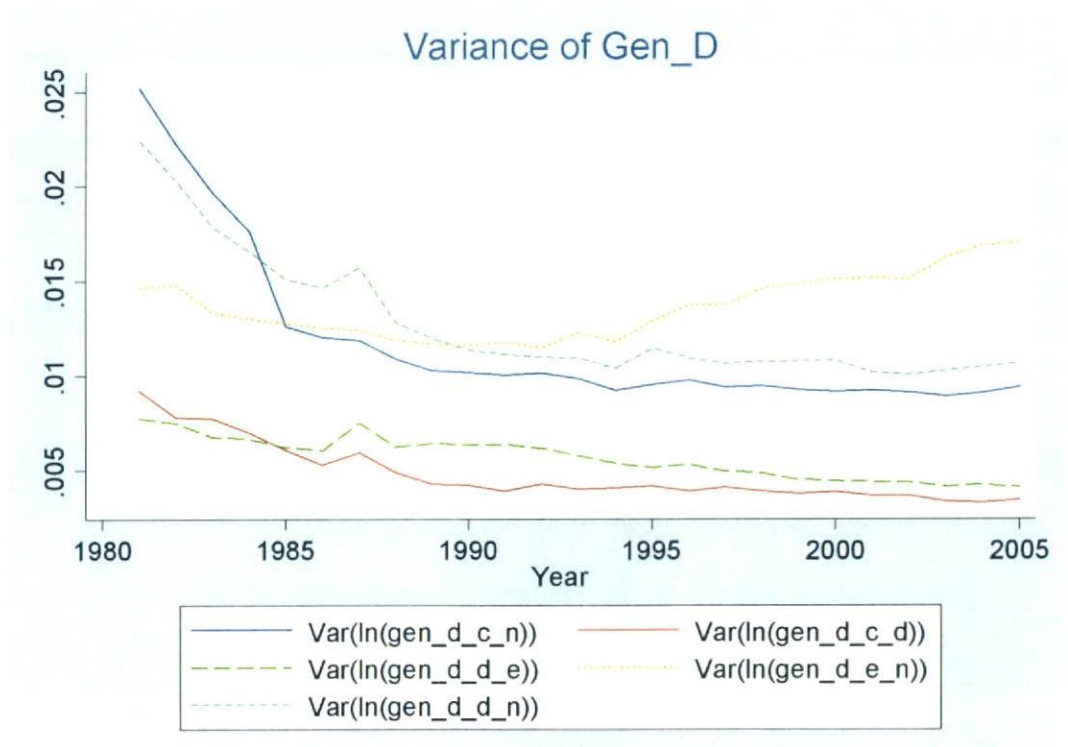
Source: Author's calculation which method and data sources are explained in text.

Figure 5-11. Variance of Natural Log Measures of the General Outpatient



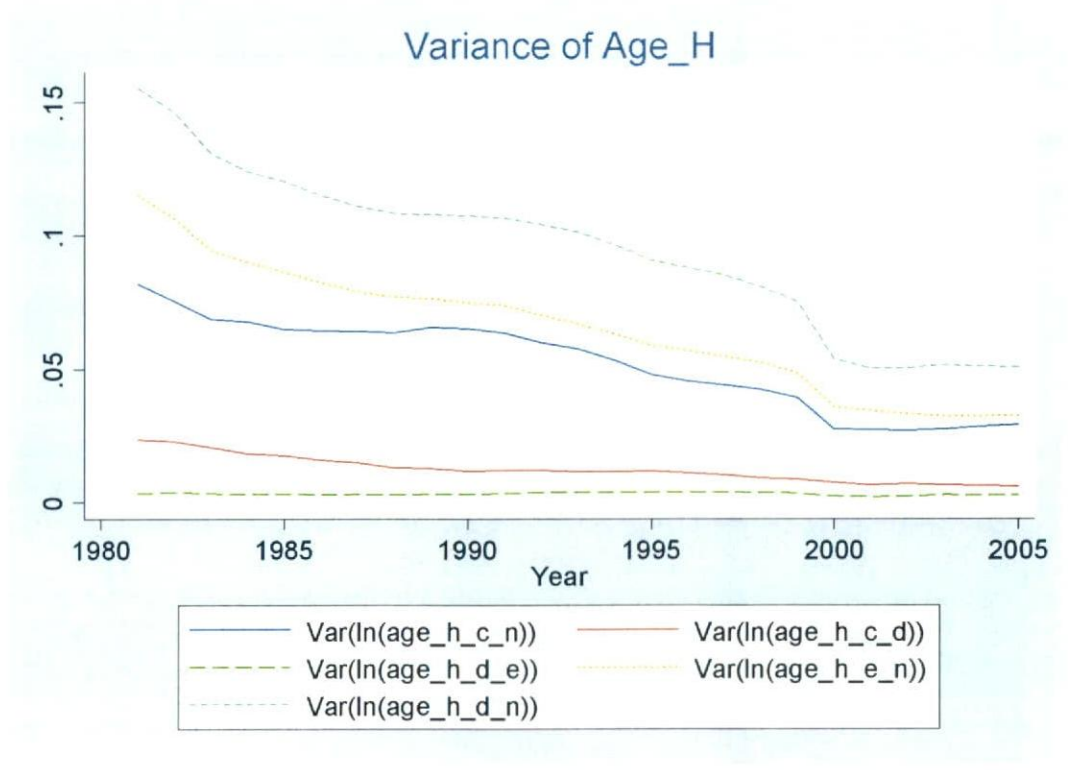
Source: Author's calculation which method and data sources are explained in text.

Figure 5-12. Variance of Natural Log Measures of the General Dental



Source: Author's calculation which method and data sources are explained in text.

Figure 5-13. Variance of Natural Log Measures of the Aged Hospitalization



Source: Author's calculation which method and data sources are explained in text.