

Figure 2 Histogram of the distribution of wage plus full second-tier benefit in 2000 and 2004

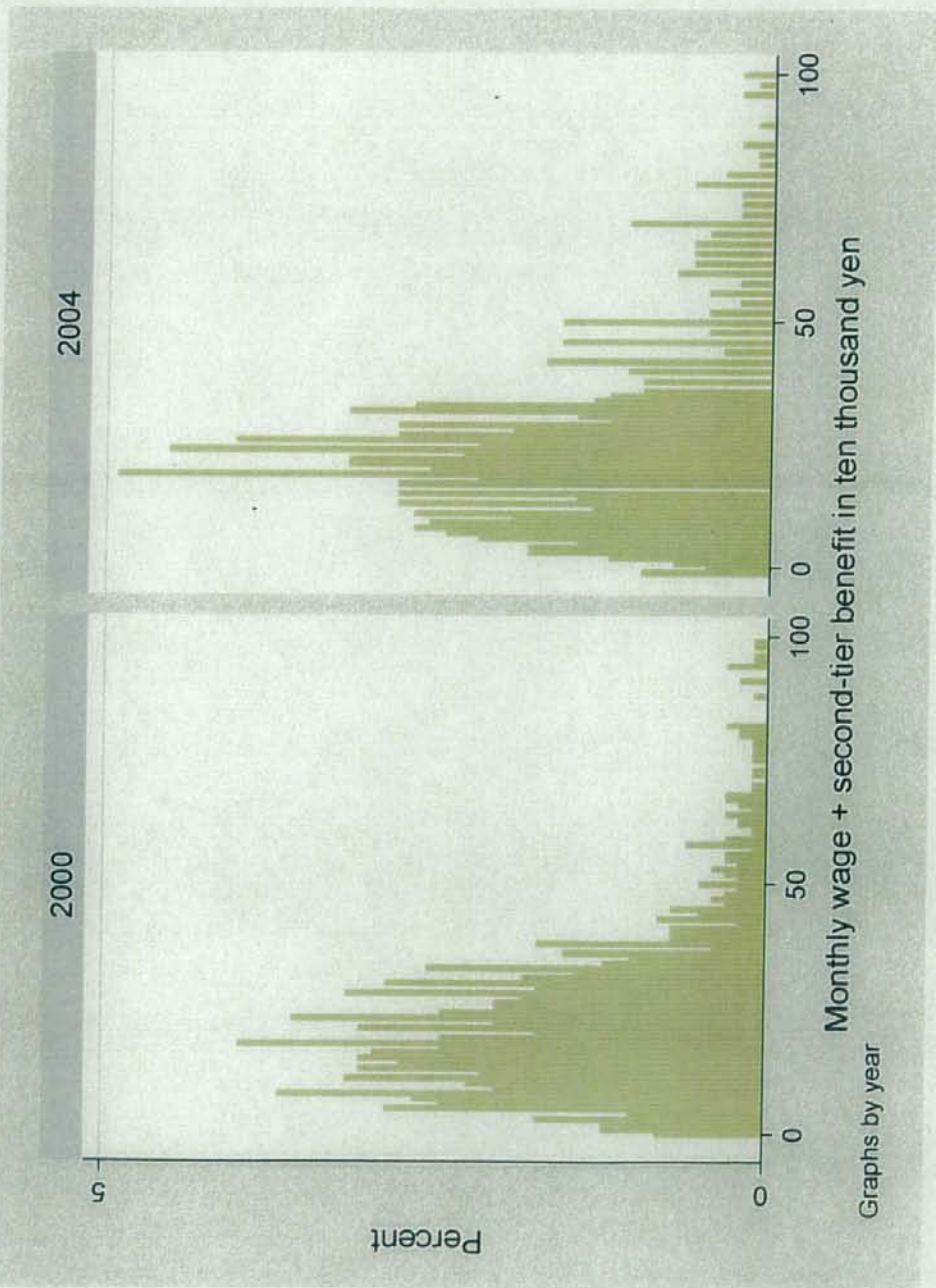


Figure 3 Wage distribution for the age group 65-69 in 1983 and 1988

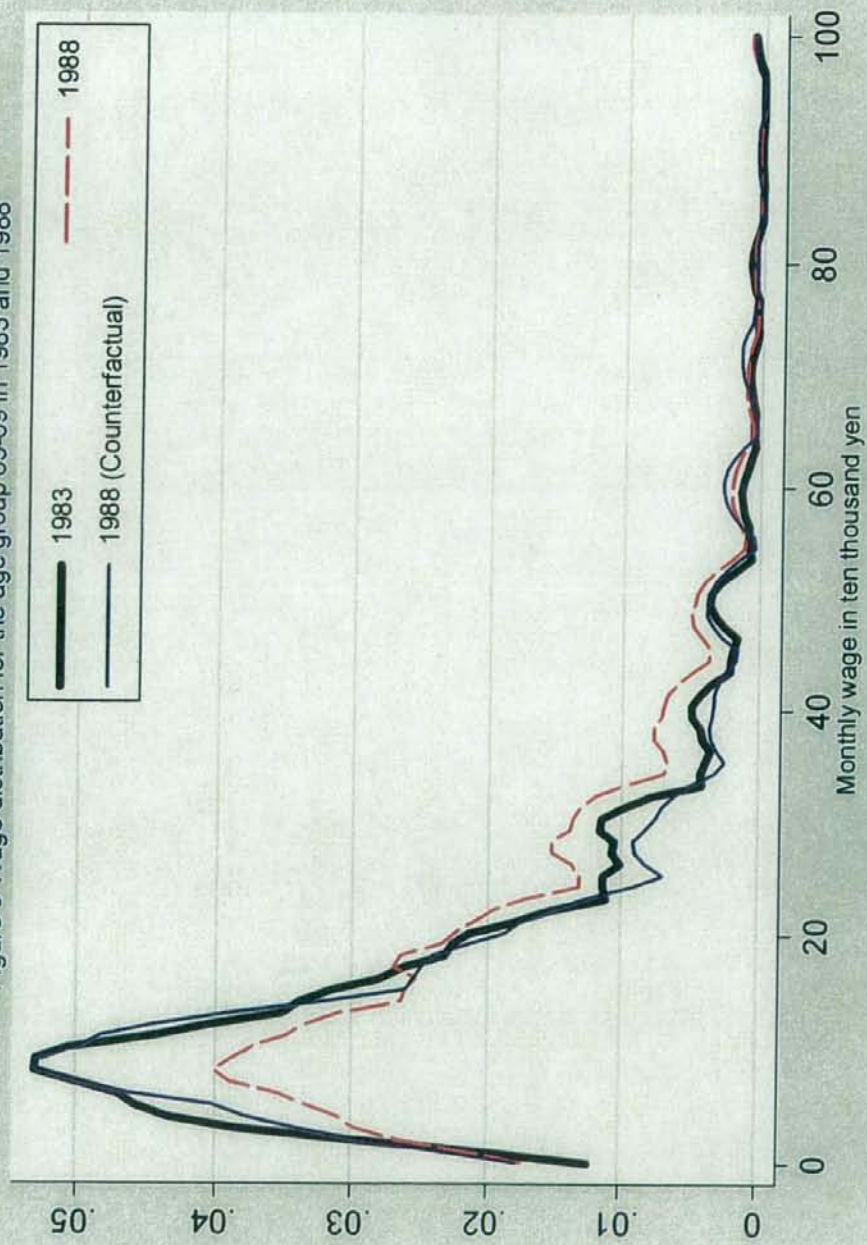


Figure 4 Wage and second-tier benefit distribution for the age group 65-69 in 2000 and 2004

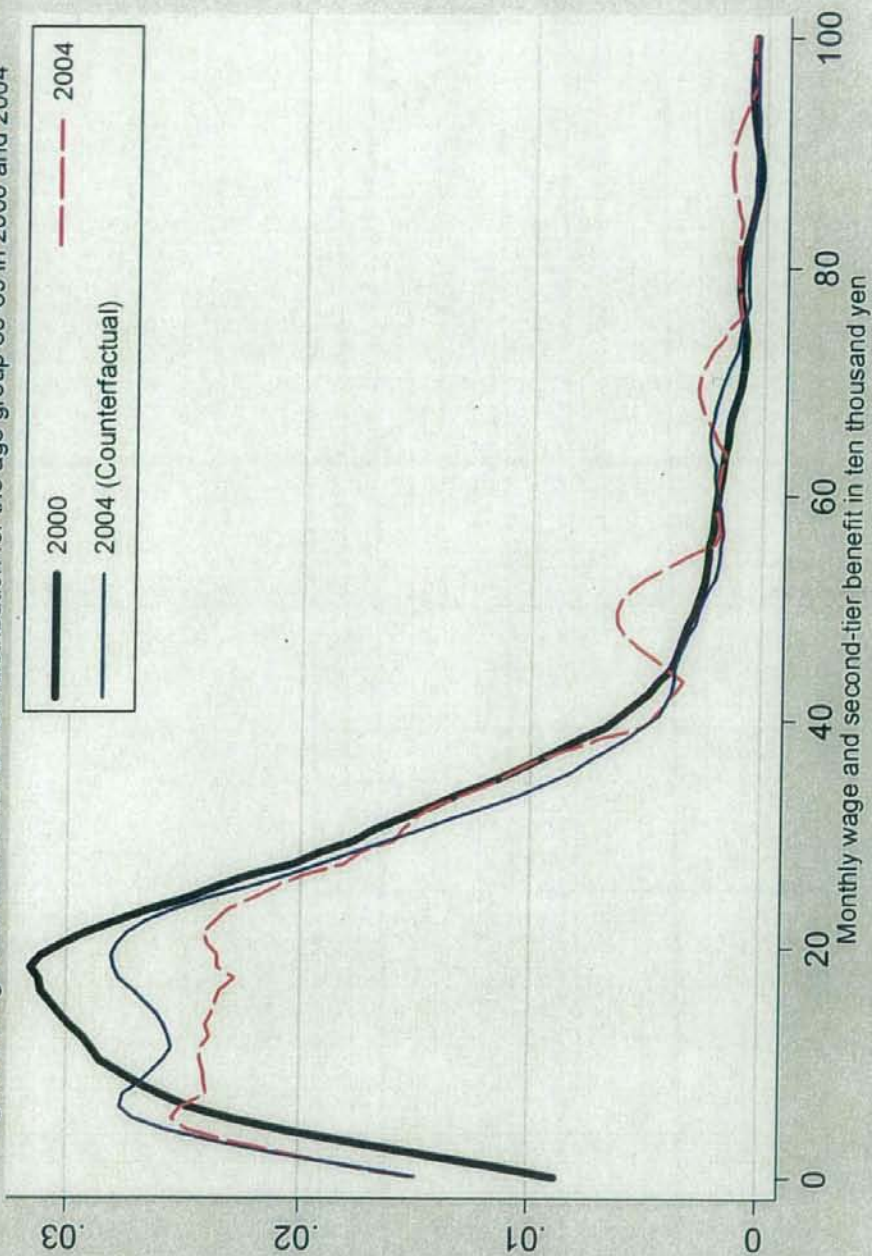
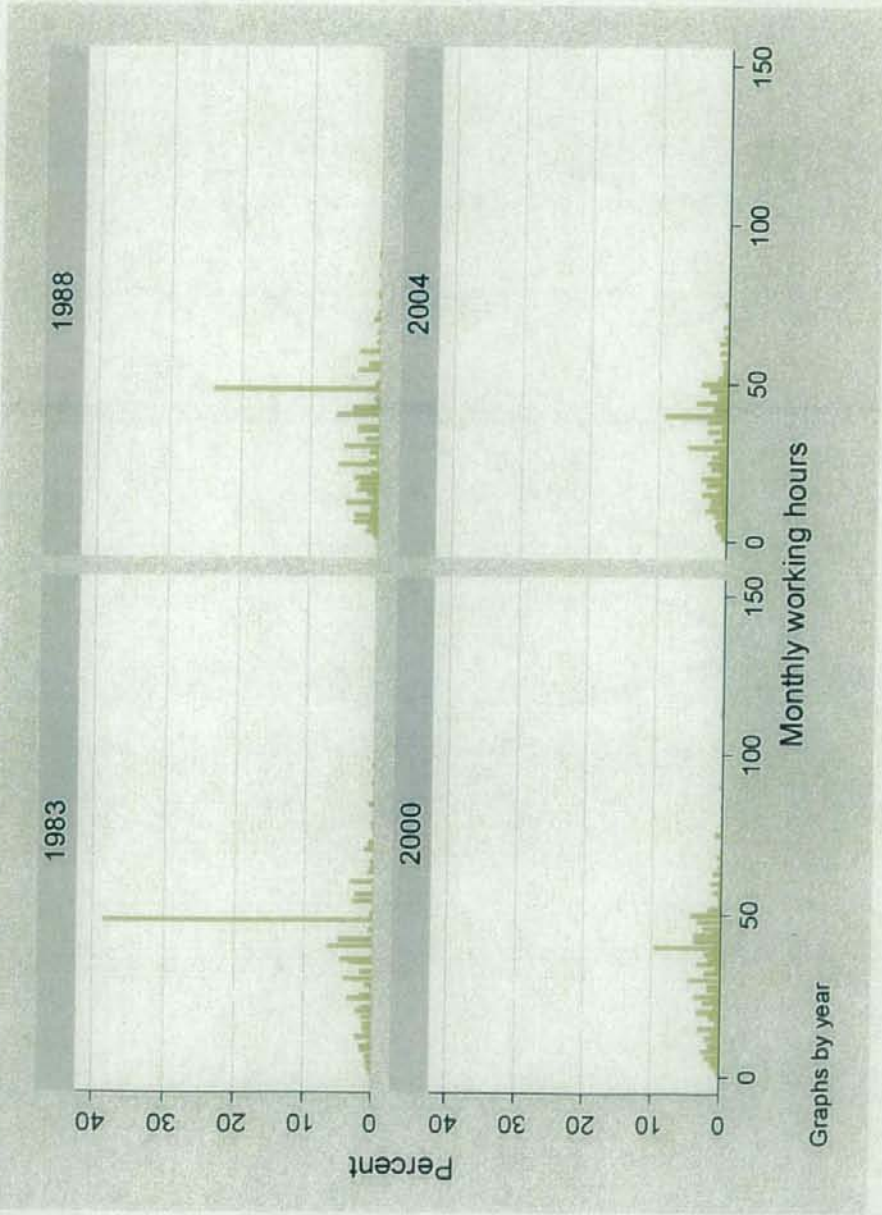


Table 1 Direct Response to the Effect of the Earnings Test: The 2004 survey

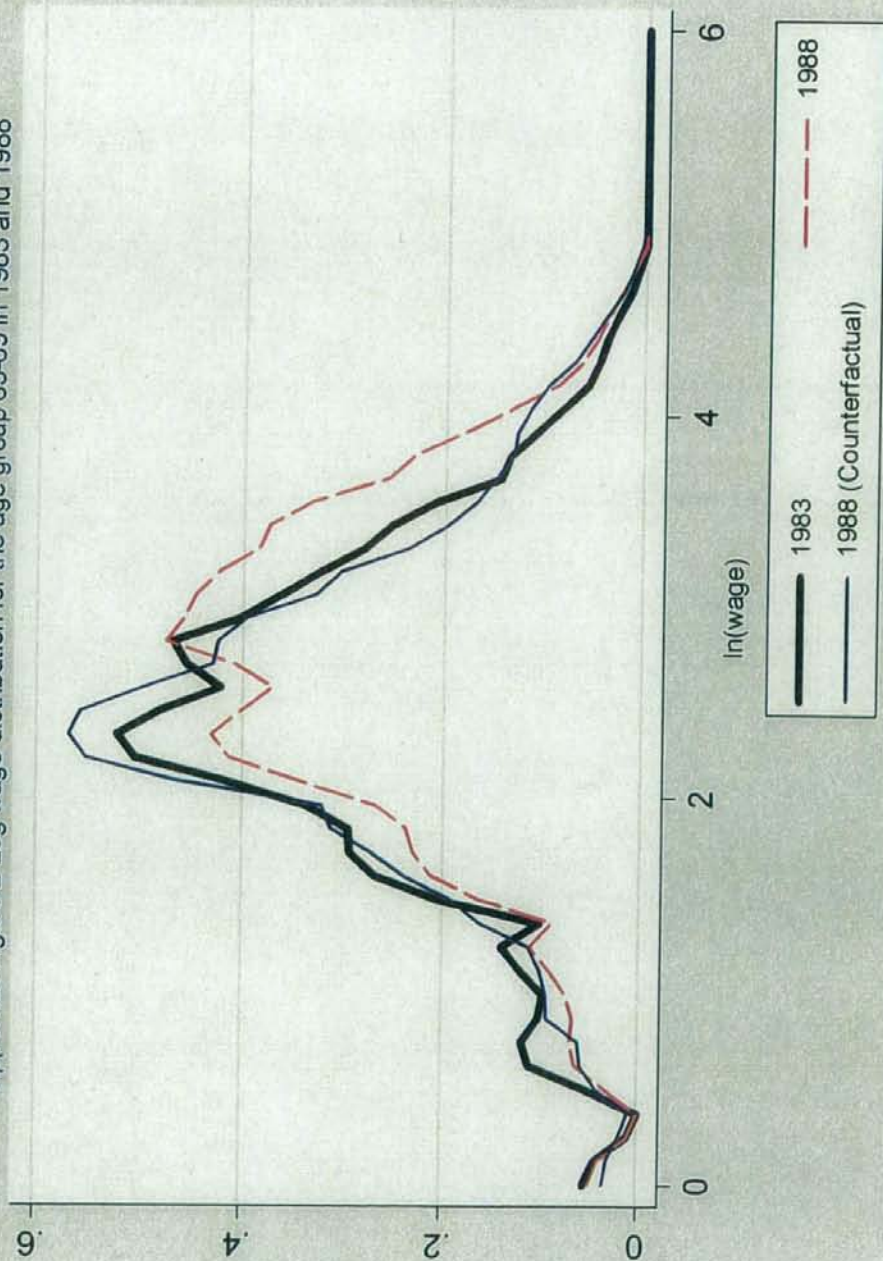
	Number of respondents	Monthly wage		Monthly wage + second-tier benefits		Working Hours per day		Working days per week	
		average	(S.D.)	average	(S.D.)	average	(S.D.)	average	(S.D.)
upper number									
lower number									
Not working at all	469	0.26	(2.61)	12.03	(8.99)	0.16	(0.90)	0.17	(0.93)
Restrict working days or hours	268	10.29	(13.31)	21.92	(23.54)	5.58	(2.73)	3.50	(1.82)
Not affected by the earnings test	497	19.32	(18.23)	31.79	(30.23)	6.81	(2.52)	4.63	(1.69)
Others	354	5.42	(13.48)	17.19	(20.47)	2.27	(3.34)	1.49	(2.33)
Total	1,588	9.07	(15.34)	21.03	(23.65)	3.63	(3.70)	2.42	(2.51)

(Note) Author's calculation.

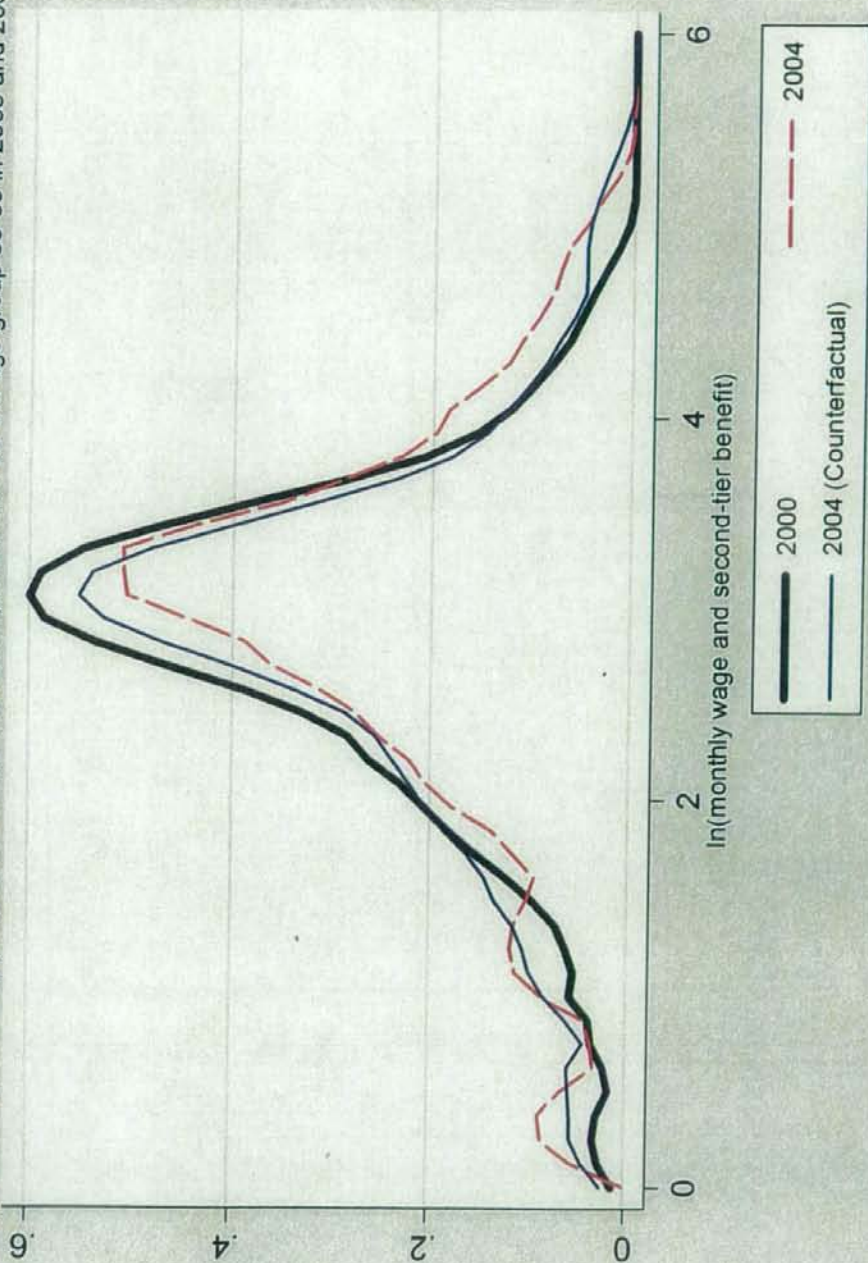
Appendix Figure Working hours per month



Appendix Figure 2 Log wage distribution for the age group 65-69 in 1983 and 1988



Appendix Figure 3 Log (wage and second-tier benefit) distribution for the age group 65-69 in 2000 and 2004



Appendix Table Summary statistics of the main variables in the decomposition analysis

	1983	1988	2000	2004
Male	0.768	0.696	0.718	0.737
Age		share		
age65	0.214	0.240	0.224	0.274
age66	0.243	0.247	0.226	0.213
age67	0.194	0.199	0.189	0.200
age68	0.183	0.174	0.193	0.162
age69	0.166	0.141	0.168	0.151
Type of job				
Expert or technical	0.101	0.095	0.109	0.172
Management	0.151	0.148	0.105	0.111
Administration	0.101	0.086	0.086	0.092
Sales	0.118	0.103	0.086	0.067
Services	0.052	0.083	0.096	0.116
Security guard	0.032	0.039	0.044	0.046
Agriculture, Forestry and Fishery	0.083	0.113	0.042	0.056
Transportation	0.014	0.023	-	-
Communication	0.000	0.003	-	-
Mining	0.002	0.000	-	-
Transportation and communication			0.287	0.211
Production workers (all)			0.125	0.122
Production workers (ceramic products)	0.011	0.001	-	-
Production workers (metal materials)	0.006	0.007	-	-
Production workers (chemical products)	0.005	0.003	-	-
Production workers (metal products)	0.029	0.027	-	-
Production workers (machinery products)	0.014	0.020	-	-
Production workers (transportation products)	0.008	0.009	-	-
Production workers (precision products)	0.012	0.003	-	-
Production workers (food products)	0.028	0.020	-	-
Production workers (spinning products)	0.012	0.009	-	-
Production workers (clothing products)	0.032	0.029	-	-
Production workers (wood products)	0.012	0.016	-	-
Production workers (pulp/paper products)	0.005	0.010	-	-
Production workers (printing)	0.014	0.001	-	-
Production workers (plastic products)	0.009	0.007	-	-
Production workers (pelt products)	0.003	0.001	-	-
Production workers (others)	0.015	0.011	-	-
Production workers (operation)	0.002	0.003	-	-
Production workers (electronics)	0	0.003	-	-
Production workers (construction)	0.038	0.032	-	-
Production workers (transportation)	0.017	0.014	-	-
Production workers (miscellaneous)	0.072	0.080	-	-
Firm size				
1-4 persons	0.022	0.026		
5-29 persons	0.121	0.129		
30-99 persons	0.083	0.082		
100-299 persons	0.048	0.047		
300- persons	0.074	0.044		
governments	0.018	0.014		
Working days per week	5.406	4.709	4.646	4.431
(S.E.)	(1.238)	(1.746)	(1.671)	(1.639)
Working hours per day	7.230	6.686	6.757	6.616
(S.E.)	(2.257)	(2.214)	(2.350)	(2.275)
Number of observations	651	697	986	890

(Note) In addition to the variables in this table, we include indicator variables for each prefecture (47 prefectures) in the estimation.