

the Genetic Power Calculator, assumes substantial additional information about the genetic architecture and marker frequencies for the disorder being studied and is adapted to use with allele frequency information from individual genotyping. Using a reasonable set of assumptions about the genetic architecture and linkage disequilibrium between markers and disease alleles, we obtained powers of 0.63 and 0.4 for samples 1 and 2 from this approach.⁶¹

Alternative Means for Analyzing GWA Data

The experiments presented herein compare (1) disease/nondisease pools (a group factor); (2) multiple case and control pools (a within-disease group factor); (3) for each pool, multiple chip assays (a within-pool factor); and (4) sample 1 vs sample 2 results. While there is no single consensus for how to treat issues raised by so many multiple comparisons, there is also no reason to assume that there is such underlying normality of the data that parametric tests, or tests that make assumptions about underlying distributions of the data (eg, analysis of variance), should be used. Monte Carlo approaches used herein provide empirical statistical values that are based on the data sets that are actually generated in these experiments and provide tests for most of the hypotheses. In previous work, these results have correlated reasonably well with those from permutation and false discovery rate tests.³²

Use of Detailed Linkage Disequilibrium Data From HapMap Samples as a Proxy for the Detailed Linkage Disequilibrium for the Present Samples

While general patterns of linkage disequilibrium are readily inferred from HapMap data, the detailed patterns of linkage disequilibrium from a number of samples that we have previously investigated have differed, often significantly, from those in HapMap samples. Use of HapMap data as a primary basis for calculation of linkage disequilibrium in the present samples complicates the Monte Carlo simulation paradigms that we used. We have thus used chromosomal distances as a primary metric in ways that allow crisp Monte Carlo simulations for the SNPs that are well localized and eliminated data from SNPs that are not well localized.

RESULTS

A number of features of the genotyping data support the validity of the approach used herein.³² From sample 1, 371 820 SNPs (of 489 922 on 2 array types) and, from sample 2, 466 614 SNPs (of 609 431 on 4 array types) lie on chromosomes 1 to 22 and displayed minor allele frequencies of 0.02 or less. In the data from samples 1 and 2, 368 811 SNPs overlapped. Pooled genotyping for these SNPs displays features that support modest variability. Mean SEMs for the differences among the 4 replicate measurements of each DNA pool were ± 0.040 and 0.038 for samples 1 and 2. The SEMs for pool-to-pool differences were ± 0.025 and 0.029 . Power calculations that used the observed variability from these samples, $\alpha = .05$, and the observed within-group standard deviations document 0.92 and 1 and 0.7 and 0.99 power to detect 5% and 10% differences in mean abuser vs control allele frequencies in samples 1 and 2, respectively.

A number of SNPs displayed nominally significant allele frequency differences between methamphetamine-

dependent vs control individuals. In samples 1 and 2, 15 565 and 25 538 SNPs displayed t values with $P < .05$ (**Figure**). We term these SNPs *nominally positive SNPs*; since these P values are not corrected for multiple comparisons, these data do not allow us to distinguish these values from chance.

We obtained results that differed from those expected by chance; however, when we evaluated the extent to which 3 or more of these nominally positive SNPs "cluster" together with 25 kb or more separating them, 846 clusters contained 3749 of the 15 569 nominally positive SNPs from sample 1 and 1787 clusters contained 8388 of the 25 538 nominally positive SNPs from sample 2. Such clustering is found in no Monte Carlo trial of how frequently randomly selected sets of either 15 565 SNPs from sample 1 or 25 538 SNPs from sample 2 lie clustered within 25 kb of each other. With correction for the multiple comparisons made herein, the empirical P value for clustering of nominally positive SNPs is thus $< .00001$ for both samples 1 and 2. This degree of clustering within each single sample provides a control for the fact that we identified bona fide haplotypes that occur at different frequencies in the pools constructed from methamphetamine-dependent vs control samples. Stochastic differences in the frequencies at which these haplotypes occurred in our methamphetamine-dependent vs control samples that are independent of the addiction phenotype could conceivably contribute to some of the clustering in each individual sample, however.

We obtained evidence for replication and results that could not be expected by chance alone when we evaluated the genes that were identified by clustered nominally positive results from both sample 1 and sample 2 (Table and eTable, available at <http://www.archgenpsychiatry.com>). The degree of convergent identification of genes by data from each of these 2 samples was never observed by chance in any of 100 000 Monte Carlo simulation trials ($P < .00001$). The clustering of positive results in the same genes in both samples is thus very unlikely to represent stochastic effects. We term the genes identified in 2 samples in this way "*methamphetamine dependence*" genes. We use this term in quotation marks because variants in at least some of these genes are also likely to alter vulnerabilities to addictions for other substances (see later). The Monte Carlo P values assigned to each gene in the Table identify the probabilities that random segments of genes that have the same size as the true gene identified in each of these 2 samples would display at least the numbers of nominally positive SNPs actually identified in the true gene (see correction for multiple comparisons in the Table legend).

These "*methamphetamine dependence*" genes displayed convergence with genes identified by (1) clustered positive results from 639 000 SNP GWA studies of polysubstance abuse in National Institute on Drug Abuse European American and African American samples,³² (2) nominally positive SNPs from 100 000 GWA studies of alcohol dependence,^{57,58} and (3) nominally positive SNPs in comparisons of nicotine-dependent vs nondependent smokers (Table).⁵⁸ Data from samples 1 and 2 converge with these previously reported data sets, with Monte Carlo P values of (1) .0412, (2) .0016, and (3) .0003, re-

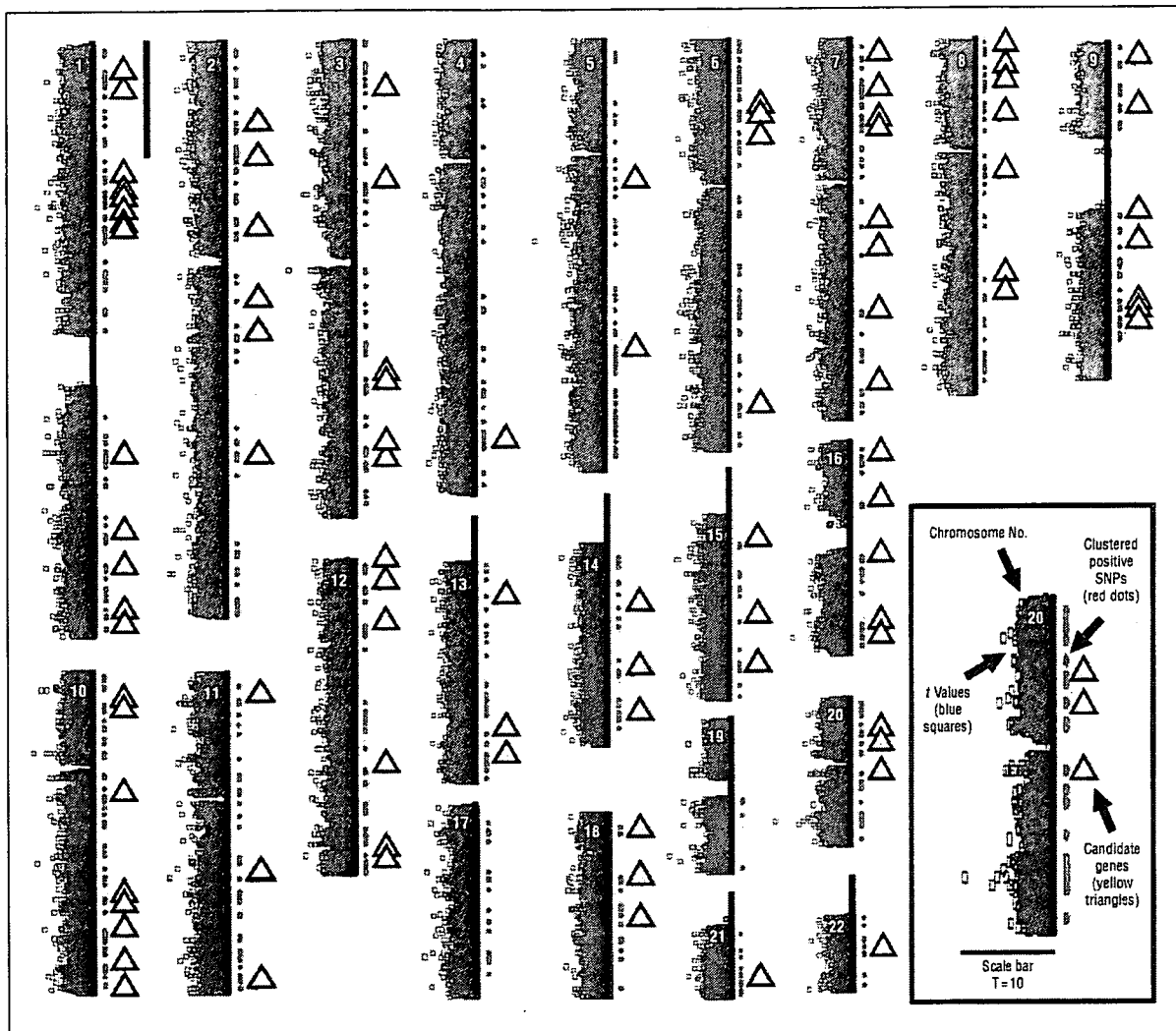


Figure. Cartoons of chromosomes 1 to 22. The blue squares to the left of the axis represent *t* values for the methamphetamine-dependent vs control allele frequency ratios mapped to the chromosomal position of each corresponding single-nucleotide polymorphism (SNP). The SNPs for which abuser-control differences display *P* values > .05 and that pass the clustering criteria of 3 outlier SNPs from 2 array types with less than a 25-kilobase inter-SNP distance are marked with red dots to the right of the axis. Clustered SNPs in genes with convergent evidence from both sample 1 and sample 2 are marked with yellow triangles to the right of the axis. The scale bar represents 50 Mb, with chromosomal positions based on National Center for Biotechnology Information (Bethesda, Maryland) MAPVIEWER coordinates and supplemental data from NetAffyx. The chromosomes are ordered in rows from left to right by chromosome number.

spectively. These analyses both correct for the multiple comparisons made and provide substantial additional support for many of the genes identified herein.

A number of the reproducibly positive genes identified in the current study are also identified by clustered positive results from 500 000 GWA studies of European American smokers who were successful vs unsuccessful in abstaining from smoking during clinical trials for smoking cessation (*P* = .002⁵⁹ and *P* < .00001 [G.R.U., unpublished data, 2007]).

The large differences between these observed results and chance clustering makes it highly unlikely that most of the clustered positive SNPs resulted from misgenotyping, for which there should be no reason that results should cluster. The SNPs that displayed clustered positive results in the current study failed to overlap appreciably more than expected by chance with the SNPs that displayed the larg-

est variances from array to array (391 SNPs identified vs 386 expected by chance). Many of the positive SNPs in this report were thus likely to cluster since they lie near and display linkage disequilibrium with functional variants that contribute to individual differences in vulnerability to methamphetamine dependence. Convergence with observations made in other samples supports this idea and suggests that some of the functional variants that were identified by these clustered positive SNPs are likely to contribute to vulnerability to addictions to other substances as well as to methamphetamine.

There is also no evidence that most of the SNPs identified herein were found because of occult racial/ethnic stratification between methamphetamine-dependent and control groups. There was no significant overlap between clustered reproducibly positive SNPs from samples 1 and 2 with the SNPs that provided the largest racial/

ethnic differences from comparisons between European American and African American controls or between Japanese and Chinese HapMap samples (though 523 and 737 of the outlier SNPs from samples 1 and 2 do lie in the top 2.5% of the SNPs that distinguish JPT [Japanese from Tokyo] from CHB [Han Chinese from Beijing] HapMap samples, when 389 and 532 would be expected by chance; $.06 > P > .05$).

COMMENT

This report identifies chromosomal regions that are likely to contain allelic variants that alter vulnerability to methamphetamine dependence. The validity of these observations is supported by the clustering of nominally positive SNPs and from the convergence of data from 2 independent samples. The clustered positive markers from this work identify "methamphetamine dependence" genes whose products are involved in cell adhesion, enzymatic, transcriptional regulation, and other processes. The classes of genes identified and convergence with results from other GWA studies point toward substantial roles for individual differences in mnemonic, as well as rewarding, brain systems and individual differences in vulnerability to methamphetamine dependence.²⁰

The reliability and validity of the current approach are supported by many lines of evidence. These include data for clinical assessments made by multiple observers, the reliability and validity of the microarray-based genotyping approaches used herein,^{32,52,57,62} the extent to which the markers that displayed nominally positive differences between abusers and controls clustered together in specific chromosomal regions, the extent to which observations made in these 2 samples converge with each other, and the extent to which these results converge with those from other studies that compare dependent vs control individuals. We have also confirmed many of the results from these approaches using individual genotyping (A. Hishimoto, MD, PhD, T.D., and G.R.U., unpublished data, 2007).

Modeling studies indicate that the experimental designs used herein have significant statistical power to detect modest differences in allelic frequencies between methamphetamine-dependent individuals and controls. Nonetheless, there remains the likelihood of both false-positive and false-negative results. Power calculations indicate that our current approach will fail to identify 1% and 38% of the alleles that actually have 10% and 5% abuser vs control differences, respectively, in both samples; other calculations support higher false-negative rates (see "Power Calculations" subsection). As always, larger samples would help to reduce these false-negative results. However, independent of the separate statistical considerations for each population studied herein, the degree of replication and convergence between the 2 samples and with other drug-abusing populations provides additional confidence in results obtained.

Monte Carlo analyses indicate that we never, by chance, could identify a group of SNPs as large as the group in the Table that (1) display nominally significant *P* values, (2) cluster together in groups of 3 or more within small chromosomal regions, and (3) provide replication

so that clustered nominally positive SNPs from comparisons in sample 1 fit with the clustered nominally positive SNPs in comparisons from sample 2. These statistical arguments are buttressed by technical convergence. Each of the clusters of nominally positive SNPs identified herein contain positive SNPs that are independently identified on at least 2 array types, each determined in quadruplicate.

In addition to the overall statistical confidence in the set of the genes identified herein, a number of these "methamphetamine dependence" genes overlap with genes identified in other GWA studies of addiction vulnerability and related phenotypes. More than half of the 23 cell adhesion genes identified in the current work are identified by prior GWA studies of polysubstance and alcohol dependence (8 genes), nicotine dependence (1 gene), memory (1 gene), and/or smoking cessation success (4 genes) in samples collected in the United States and Australia from individuals of self-reported European and African ancestries. Clustered positive markers in *DAB1* thus also distinguish those successful in quitting smoking vs those unsuccessful; *CLSTN2* (OMIM *611323) markers also identify success in quitting smoking and individual differences in memory; *NRXN1* markers also identify vulnerability to nicotine dependence among smokers; markers in *CRIM1*, *CSMD1*, *SGCZ*, *PTPRD*, and *LRRN6C* identify vulnerability to polysubstance use and to alcohol dependence; and markers in *CDH13* (OMIM *601364) and *DSCAM* (OMIM *602523) identify vulnerability to polysubstance use, alcohol dependence, and success in quitting smoking. These molecules join neurexin 3,^{52,63} *NrCAM*,⁶⁴ and *PTPRB* (H. Ishiguro, MD, PhD, and G.R.U., unpublished data, 2007) and other cell adhesion molecule genes that display addict vs control associations in at least 3 different samples. Such results support careful use of "methamphetamine dependence" genes to describe genes likely to contain variants that predispose to methamphetamine dependence rather than to describe gene variants that predispose to vulnerability to only this drug.

Enzyme genes that are identified herein and also by repeated substance abuse GWA studies include *DAF/CD55*, *FHIT*, *PDE4D*, and *PRKG1* (OMIM *176894). The putative transcription factor *ZNF423* is also identified by comparisons between those successful and unsuccessful in smoking cessation.

The channel gene *RYR3*, the transporter gene *XKR4*, the gene for RNA processing *A2BP1* (OMIM *605104), and the structural genes *ELMO1*, *SORCS1*, and *TACC2* are also identified by clustered positive results from repeated comparisons between substance-dependent and control samples. Markers at *A2BP1* also distinguish smokers who are successful vs unsuccessful in quitting.

The genes that contain markers whose frequencies distinguish the methamphetamine-dependent vs control subjects in the present report and also distinguish dependent vs nondependent subjects and those successful vs unsuccessful in quitting smoking represent an especially interesting group. These genes include *CDH13*, *DSCAM*, *PRKG1*, and *A2BP1*. Cadherin 13 is a glycosyl phosphatidylinositol-anchored cell adhesion molecule that is expressed in neurons in brain regions that are known to have a role in addiction, including the hippo-

campus, frontal cortex, and ventral midbrain.⁶⁵ *CDH13* can inhibit neurite extension from select neuron populations^{65,66} and activate a number of signaling pathways.⁶⁷⁻⁷⁰ It is thus a strong candidate for roles in brain mechanisms important for both developing and quitting addictions.

DSCAM is a single transmembrane domain cell adhesion molecule with immunoglobulin and fibronectin domains that is expressed strongly in the brain^{71,72} and hippocampus in ways that are required for appropriate neuronal connections to form in memory-associated circuits in model organisms.^{73,74} Flies with altered *Dscam* expression display alterations in memories of both rewarded and punished behaviors.⁷⁴

PRKG1 is expressed in the brain and hippocampus and other neurons.^{75,76} Nitric oxide dramatically modulates brain cyclic guanine monophosphate systems; *PRKG1* thus provides a major target for the products of nitric oxide synthases. Mnemonic and addictive functions can each be altered by changes in cyclic guanine monophosphate-dependent protein kinase and/or nitric oxide synthases.⁷⁷⁻⁷⁹

The *A2BP1* gene is highly expressed in neurons in brain regions that include the hippocampus.⁸⁰ *A2BP1* binds to a UGCAUG splicing enhancer element found 3' to a substantial number of neuron-specific exons and thus acts as a specific regulator of the splicing processes that form mature messenger RNAs.⁸¹ *A2BP1* itself contains a number of splicing variants that are likely to alter its functions.

Identifying *CLSTN2* markers in the present repeated comparisons between methamphetamine-dependent vs control subjects in repeated comparisons of success in quitting smoking and in relation to individual differences in memory is also interesting. *CLSTN2* is well positioned to provide calcium-dependent cell-adhesion functions in brain regions that include the hippocampus and in the postsynaptic densities where it is highly expressed. The identification of this and other genes whose variants are good candidates to contribute to mnemonic aspects of addiction support the view that substantial components of the individual difference in vulnerability to dependence on addictive substances relate to individual differences in mnemonic systems.²⁰

The convergence between the genes identified by these samples and by genes identified in previous GWA studies for dependence on other legal and illegal addictive substances supports roles for allelic variants that are well represented in chromosomes from African, European, and Asian racial/ethnic groups.^{32,37} Genes identified by these methamphetamine-dependence studies, but not as strongly by any of these other GWA comparisons, are also of interest. Neuregulin 1 is a strong candidate gene for vulnerability to schizophrenia in Icelandic and related populations.⁸²⁻⁸⁴ Conceivably, variants in neuregulin 1 might even provide a generalized vulnerability to psychosis that could manifest itself in the presence of either methamphetamine or other risk factors for schizophrenia.

It is important to consider limitations of this convergent replicated GWA data for methamphetamine dependence. (1) The sample sizes available for this work provide moderate power to detect gene variants related to methamphetamine dependence in each sample. False-negative results are likely since we required positive data

from each of the 2 samples. The likelihood of false negatives is also increased since we required positive results from several SNPs from at least 2 array types that cluster within small chromosomal regions, making it easier to miss modest association signals within small genes that contain few SNPs or genes whose SNPs lie on only 1 array type. (2) We focused only on data from autosomal regions herein. This focus allowed us to combine data from male and female subjects but may have neglected potentially important contributions from genes on sex chromosomes. (3) Differences in allele frequencies in different populations could explain why some genes were strongly associated with methamphetamine dependence in the Asian samples studied herein but not as strongly with related substance-dependence phenotypes studied in European American or African American samples. (4) Many of the subjects for this work came to clinical attention because of methamphetamine psychosis. They might thus not be totally representative of all methamphetamine-dependent individuals. (5) While each of these individuals was methamphetamine dependent, many also reported use of additional addictive substances, such as inhalants. These clinical considerations, as well as the overlap between the "methamphetamine dependence" genes identified herein and the genes identified in other GWA work, support the idea that many, but not all, of these loci are likely to contain allelic variants that provide a more general vulnerability to addictive substances. While we term these genes "methamphetamine dependence" genes to denote the fact that variants in these genes are likely to alter vulnerability to developing dependence on this substance, we use the term in quotation marks to denote the probability that many of these allelic variants may predispose individuals to dependence on other addictive substances as well. (6) None of the controls for this study reported any significant use of methamphetamine. The genes identified herein thus could influence vulnerabilities to initiation of methamphetamine use, persistence of this use, and/or the transition from persistent use to methamphetamine dependence. (7) The current report uses only one of a number of current approaches to analysis of data from GWA. Additional discussion of the limits of techniques for identifying polygenic influences in complex disorders and traits can be found elsewhere.⁸⁵⁻⁸⁷ Despite these cautions, however, the replicated positive results that we document herein and the failure of control experiments to support alternative hypotheses do provide substantial confidence in roles for most of the genes reported.

The current data, and results of classic genetic studies, thus support polygenic influences on vulnerability to methamphetamine dependence from genes that, as a group, are highly unlikely to represent chance observations. *P* values for individual genes, based on the data from the current work, suggest that some of these genes are very strongly supported and some more modestly supported by these current data. Genes identified by both the current results and by data from other related reports appear especially worthy of further evaluation. Taken together, the data point toward the likelihood that brains of individuals who are most vulnerable to this addiction are likely to differ in a number of ways from those of in-

dividuals who are least vulnerable. Understanding these differences in increasing detail should aid us in improving understanding, prevention, and treatments for methamphetamine dependence.

Submitted for Publication: May 8, 2007; final revision received September 14, 2007; accepted September 17, 2007.

Author Affiliations: Molecular Neurobiology Branch, National Institutes of Health Intramural Program, Department of Health and Human Services, Baltimore, Maryland (Drs Uhl, Drgon, and Q-R. Liu and Mss Johnson and Walther); Division of Psychiatry, National Center Hospital for Mental, Nervous, and Muscular Disorders, National Center of Neurology and Psychiatry, Tokyo, Japan (Dr Komiyama); Department of Neuropsychiatry, Kurume University School of Medicine, Kurume, Japan (Dr Harano); Department of Psychiatry and Neurology, Hamamatsu University School of Medicine, Hamamatsu, Japan (Dr Sekine); Department of Psychiatry, Nagoya University Graduate School of Medicine, Nagoya, Japan (Drs Inada and Ozaki); Department of Psychiatry, Teikyo University School of Medicine, Chiba Medical Center (Dr Inada), and Department of Psychiatry, Graduate School of Medicine, Chiba University (Dr Iyo), Chiba, Japan; Department of Psychiatry, Fujita Health University School of Medicine, Aichi, Japan (Dr Iwata); Department of Psychiatry, Showa University Northern Yokohama Hospital, Yokohama, Japan (Dr Yamada); Department of Biological Psychiatry, Tohoku University Graduate School of Medicine, Sendai, Japan (Dr Sora); Japanese Genetics Initiative on Drug Abuse (Drs Komiyama, Harano, Sekine, Inada, Ozaki, Iyo, Iwata, Yamada, Sora and Ujike); Department of Psychiatry, Chang Gung Memorial Hospital, Keelung, Taiwan (Dr Chen); Department of Psychiatry, Taipei City Hospital, and Taipei City Psychiatric Center, Taipei, Taiwan, Republic of China (Drs H-C. Liu and Lin); Department of Neuropsychiatry, Graduate School of Medicine and Dentistry, Okayama University, Okayama, Japan (Dr Ujike).

Correspondence: George R. Uhl, MD, PhD, Molecular Neurobiology, 333 Cassell Dr, Ste 3510, Baltimore, MD 21224 (guhl@intr.nida.nih.gov).

Financial Disclosure: None reported.

Funding/Support: Financial support was received from National Institutes of Health Intramural Program (National Institute on Drug Abuse), Department of Health and Human Services, and the Taiwanese and Japanese Ministries for Science and Technology and the participating Japanese and Taiwanese institutions.

Additional Information: The eTable is available at <http://www.archgenpsychiatry.com>.

Additional Contributions: We acknowledge the invaluable assistance of the subjects and their families.

REFERENCES

- Uhl GR. Molecular genetic underpinnings of human substance abuse vulnerability: likely contributions to understanding addiction as a mnemonic process. *Neuropharmacology*. 2004;47(suppl 1):140-147.
- Uhl GR. Molecular genetics of substance abuse vulnerability: remarkable recent convergence of genome scan results. *Ann N Y Acad Sci*. 2004;1025:1-13.
- Uhl GR, Drgon T, Johnson C, Fatusin OO, Liu QR, Contoreggi C, Li CY, Buck K, Crabbe J. Higher order addiction molecular genetics: convergent data from genome-wide association in humans and mice [published online ahead of print July 25, 2007]. *Biochem Pharmacol*. 2008;75(1):98-111.
- Uhl GR, Elmer GI, Labuda MC, Pickens RW. Genetic influences in drug abuse. In: Bloom FE, Kupfer DJ, eds. *Psychopharmacology: The Fourth Generation of Progress*. New York, NY: Raven Press; 1995:1793-2783.
- Uhl GR, Gold LH, Risch N. Genetic analyses of complex behavioral disorders. *Proc Natl Acad Sci U S A*. 1997;94(7):2785-2786.
- Uhl GR. Molecular genetics of substance abuse vulnerability: a current approach. *Neuropsychopharmacology*. 1999;20(1):3-9.
- Cadoret RJ, Troughton E, O'Gorman TW, Heywood E. An adoption study of genetic and environmental factors in drug abuse. *Arch Gen Psychiatry*. 1986;43(12):1131-1136.
- Cadoret RJ, Yates WR, Troughton E, Woodworth G, Stewart MA. Adoption study demonstrating two genetic pathways to drug abuse. *Arch Gen Psychiatry*. 1995;52(1):42-52.
- Goldberg J, Henderson WG, Eisen SA, True W, Ramakrishnan V, Lyons MJ, Tsuang MT. A strategy for assembling samples of adult twin pairs in the United States. *Stat Med*. 1993;12(18):1693-1702.
- Grove WM, Eckert ED, Heston L, Bouchard TJ Jr, Segal N, Lykken DT. Heritability of substance abuse and antisocial behavior: a study of monozygotic twins reared apart. *Biol Psychiatry*. 1990;27(12):1293-1304.
- Gynther LM, Carey G, Gottesman II, Vogler GP. A twin study of non-alcohol substance abuse. *Psychiatry Res*. 1995;56(3):213-220.
- Tsuang MT, Lyons MJ, Eisen SA, Goldberg J, True W, Lin N, Meyer JM, Toomey R, Faraone SV, Eaves L. Genetic influences on DSM-III-R drug abuse and dependence: a study of 3,372 twin pairs. *Am J Med Genet*. 1996;67(5):473-477.
- Tsuang MT, Lyons MJ, Meyer JM, Doyle T, Eisen SA, Goldberg J, True W, Lin N, Toomey R, Eaves L. Co-occurrence of abuse of different drugs in men: the role of drug-specific and shared vulnerabilities. *Arch Gen Psychiatry*. 1998;55(11):967-972.
- Karkowski LM, Prescott CA, Kendler KS. Multivariate assessment of factors influencing illicit substance use in twins from female-female pairs. *Am J Med Genet*. 2000;96(5):665-670.
- Kendler KS, Prescott CA. Cocaine use, abuse and dependence in a population-based sample of female twins. *Br J Psychiatry*. 1998;173:345-350.
- Kendler KS, Karkowski LM, Corey LA, Prescott CA, Neale MC. Genetic and environmental risk factors in the aetiology of illicit drug initiation and subsequent misuse in women. *Br J Psychiatry*. 1999;175:351-356.
- Woodward CE, Maes HH, Silberg JL, Meyer JM, Eaves LJ. Tobacco, alcohol and drug use in 8-16 year old twins. *NIDA Res Monogr*. 1996;162:309.
- Merikangas KR, Stolar M, Stevens DE, Goulet J, Preisig MA, Fenton B, Zhang H, O'Malley SS, Rounsaville BJ. Familial transmission of substance use disorders. *Arch Gen Psychiatry*. 1998;55(11):973-979.
- True WR, Heath AC, Scherrer JF, Xian H, Lin N, Eisen SA, Lyons MJ, Goldberg J, Tsuang MT. Interrelationship of genetic and environmental influences on conduct disorder and alcohol and marijuana dependence symptoms. *Am J Med Genet*. 1999;88(4):391-397.
- Uhl GR. Molecular genetics of addiction vulnerability. *NeuroRx*. 2006;3(3):295-301.
- Cervino AC, Hill AV. Comparison of tests for association and linkage in incomplete families. *Am J Hum Genet*. 2000;67(1):120-132.
- Sham PC, Cherny SS, Purcell S, Hewitt JK. Power of linkage versus association analysis of quantitative traits, by use of variance-components models, for sibship data. *Am J Hum Genet*. 2000;66(5):1616-1630.
- Risch N, Merikangas K. The future of genetic studies of complex human diseases. *Science*. 1996;273(5281):1516-1517.
- Schork NJ, Nath SK, Fallin D, Chakravarti A. Linkage disequilibrium analysis of biallelic DNA markers, human quantitative trait loci, and threshold-defined case and control subjects. *Am J Hum Genet*. 2000;67(5):1208-1218.
- Barcellos LF, Klitz W, Field LL, Tobias R, Bowcock AM, Wilson R, Nelson MP, Nagatomi J, Thomson G. Association mapping of disease loci, by use of a pooled DNA genomic screen. *Am J Hum Genet*. 1997;61(3):734-747.
- Germer S, Holland MJ, Higuchi R. High-throughput SNP allele-frequency determination in pooled DNA samples by kinetic PCR. *Genome Res*. 2000;10(2):258-266.
- Hacia JG, Fan JB, Ryder O, Jin L, Edgemon K, Ghandour G, Mayer RA, Sun B, Hsie L, Robbins CM, Brody LC, Wang D, Lander ES, Lipshutz R, Fodor SP, Collins FS. Determination of ancestral alleles for human single-nucleotide polymorphisms using high-density oligonucleotide arrays. *Nat Genet*. 1999;22(2):164-167.
- Uhl GR, Liu QR, Walther D, Hess J, Naiman D. Polysubstance abuse-vulnerability genes: genome scans for association, using 1,004 subjects and 1,494 single-nucleotide polymorphisms. *Am J Hum Genet*. 2001;69(6):1290-1300.

29. Chen WJ, Liu SK, Chang CJ, Lien YJ, Chang YH, Hwu HG. Sustained attention deficit and schizotypal personality features in nonpsychotic relatives of schizophrenic patients. *Am J Psychiatry*. 1998;155(9):1214-1220.
30. Buchholz KK, Cadoret R, Cloninger CR, Dinwiddie SH, Hesselbrock VM, Nurnberger JI Jr, Reich T, Schmidt I, Schuckit MA. A new, semi-structured psychiatric interview for use in genetic linkage studies: a report on the reliability of the SSAGA. *J Stud Alcohol*. 1994;55(2):149-158.
31. American Psychiatric Association. *Diagnostic and Statistical Manual of Mental Disorders*. 4th ed. Washington, DC: American Psychiatric Association; 1994.
32. Liu QR, Drgon T, Johnson C, Walther D, Hess J, Uhl GR. Addiction molecular genetics: 639,401 SNP whole genome association identifies many "cell adhesion" genes. *Am J Med Genet B Neuropsychiatr Genet*. 2006;141(8):918-925.
33. Itoh K, Hashimoto K, Shimizu E, Sekine Y, Ozaki N, Inada T, Harano M, Iwata N, Koriyama T, Yamada M, Sora I, Nakata K, Ujike H, Iyo M. Association study between brain-derived neurotrophic factor gene polymorphisms and methamphetamine abusers in Japan. *Am J Med Genet B Neuropsychiatr Genet*. 2005;132(1):70-73.
34. Iwata N, Inada T, Harano M, Koriyama T, Yamada M, Sekine Y, Iyo M, Sora I, Ujike H, Ozaki N. No association is found between the candidate genes of t-PA/plasminogen system and Japanese methamphetamine-related disorder: a collaborative study by the Japanese Genetics Initiative for Drug Abuse. *Ann N Y Acad Sci*. 2004;1025:34-38.
35. Morita Y, Ujike H, Tanaka Y, Uchida N, Nomura A, Ohtani K, Kishimoto M, Morio A, Imamura T, Sakai A, Inada T, Harano M, Koriyama T, Yamada M, Sekine Y, Iwata N, Iyo M, Sora I, Ozaki N, Kuroda S. A nonsynonymous polymorphism in the human fatty acid amide hydrolase gene did not associate with either methamphetamine dependence or schizophrenia. *Neurosci Lett*. 2005;376(3):182-187.
36. Hashimoto T, Hashimoto K, Matsuzawa D, Shimizu E, Sekine Y, Inada T, Ozaki N, Iwata N, Harano M, Koriyama T, Yamada M, Sora I, Ujike H, Iyo M. A functional glutathione S-transferase P1 gene polymorphism is associated with methamphetamine-induced psychosis in Japanese population. *Am J Med Genet B Neuropsychiatr Genet*. 2005;135(1):5-9.
37. Ujike H, Inada T, Harano M, Koriyama T, Yamada M, Sekine Y, Sora I, Iwata N, Iyo M, Ozaki N. Genetic studies on substance dependence [in Japanese]. *Seishin Shinkeigaku Zasshi*. 2004;106(12):1598-1603.
38. Nishiyama T, Ikeda M, Iwata N, Suzuki T, Kitajima T, Yamanouchi Y, Sekine Y, Iyo M, Harano M, Koriyama T, Yamada M, Sora I, Ujike H, Inada T, Furukawa T, Ozaki N. Haplotype association between GABAA receptor gamma2 subunit gene (GABRG2) and methamphetamine use disorder. *Pharmacogenomics J*. 2005;5(2):89-95.
39. Morita Y, Ujike H, Tanaka Y, Uchida N, Nomura A, Otani K, Kishimoto M, Morio A, Inada T, Harano M, Koriyama T, Yamada M, Sekine Y, Iwata N, Iyo M, Sora I, Ozaki N. The X-box binding protein 1 (XBP1) gene is not associated with methamphetamine dependence. *Neurosci Lett*. 2005;383(1-2):194-198.
40. Ikeda M, Iwata N, Suzuki T, Kitajima T, Yamanouchi Y, Kinoshita Y, Sekine Y, Iyo M, Harano M, Koriyama T, Yamada M, Sora I, Ujike H, Inada T, Ozaki N. Positive association of AKT1 haplotype to Japanese methamphetamine use disorder [published online ahead of print June 28, 2005]. *Int J Neuropsychopharmacol*. 2006;9(1):77-81.
41. Ide S, Kobayashi H, Tanaka K, Ujike H, Sekine Y, Ozaki N, Inada T, Harano M, Koriyama T, Yamada M, Iyo M, Ikeda K, Sora I. Gene polymorphisms of the mu opioid receptor in methamphetamine abusers. *Ann N Y Acad Sci*. 2004;1025:316-324.
42. Harano M, Uchimura N, Abe H, Ishibashi M, Iida N, Yanagimoto K, Tanaka T, Maeda H, Sora I, Iyo M, Koriyama T, Yamada M, Sekine Y, Inada T, Ozaki N, Ujike H. A polymorphism of DRD2 gene and brain atrophy in methamphetamine psychosis. *Ann N Y Acad Sci*. 2004;1025:307-315.
43. Inada T, Iijima Y, Uchida N, Maeda T, Iwashita S, Ozaki N, Harano M, Koriyama T, Yamada M, Sekine Y, Iyo M, Sora I, Ujike H. No association found between the type 1 sigma receptor gene polymorphisms and methamphetamine abuse in the Japanese population: a collaborative study by the Japanese Genetics Initiative for Drug Abuse. *Ann N Y Acad Sci*. 2004;1025:27-33.
44. Kozumi H, Hashimoto K, Kumakiri C, Shimizu E, Sekine Y, Ozaki N, Inada T, Harano M, Koriyama T, Yamada M, Sora I, Ujike H, Takei N, Iyo M. Association between the glutathione S-transferase M1 gene deletion and female methamphetamine abusers. *Am J Med Genet B Neuropsychiatr Genet*. 2004;126(1):43-45.
45. Ujike H, Harano M, Inada T, Yamada M, Koriyama T, Sekine Y, Sora I, Iyo M, Katsu T, Nomura A, Nakata K, Ozaki N. Nine or fewer repeat alleles in VNTR polymorphism of the dopamine transporter gene is a strong risk factor for prolonged methamphetamine psychosis. *Pharmacogenomics J*. 2003;3(4):242-247.
46. World Health Organization. *ICD-10: International Statistical Classification of Diseases and Related Health Problems: Tenth Revision*. 2nd ed. Geneva, Switzerland: World Health Organization; 2004.
47. Smith SS, O'Hara BF, Persico AM, Gorelick DA, Newlin DB, Vlahov D, Solomon L, Pickens R, Uhl GR. Genetic vulnerability to drug abuse: the D2 dopamine receptor Taq I B1 restriction fragment length polymorphism appears more frequently in polysubstance abusers. *Arch Gen Psychiatry*. 1992;49(9):723-727.
48. Persico AM, Bird G, Gabbay FH, Uhl GR. D2 dopamine receptor gene TaqI A1 and B1 restriction fragment length polymorphisms: enhanced frequencies in psychostimulant-preferring polysubstance abusers. *Biol Psychiatry*. 1996;40(8):776-784.
49. Mägi R, Pfeufer A, Nelis M, Montpetit A, Metspalu A, Remm M. Evaluating the performance of commercial whole-genome marker sets for capturing common genetic variation. *BMC Genomics*. 2007;8:159.
50. Wilkerson S, Chen B, Wirtenberger M, Burwinkel B, Forst A, Hemminki K, Canzian F. Allelotyping of pooled DNA with 250 K SNP microarrays. *BMC Genomics*. 2007;8:77.
51. Macgregor S, Visscher PM, Montgomery G. Analysis of pooled DNA samples on high density arrays without prior knowledge of differential hybridization rates. *Nucleic Acids Res*. 2006;34(7):e55.
52. Liu QR, Drgon T, Walther D, Johnson C, Poleskaya O, Hess J, Uhl GR. Pooled association genome scanning: validation and use to identify addiction vulnerability loci in two samples. *Proc Natl Acad Sci U S A*. 2005;102(33):11864-11869.
53. Meaburn E, Butcher LM, Schalkwyk LC, Plomin R. Genotyping pooled DNA using 100K SNP microarrays: a step towards genomewide association scans. *Nucleic Acids Res*. 2006;34(4):e27.
54. Butcher LM, Meaburn E, Knight J, Sham PC, Schalkwyk LC, Craig IW, Plomin R. SNPs, microarrays and pooled DNA: identification of four loci associated with mild mental impairment in a sample of 6000 children. *Hum Mol Genet*. 2005;14(10):1315-1325.
55. Papassotiropoulos A, Stephan DA, Huentelman MJ, Hoerndli FJ, Craig DW, Pearson JV, Huynh KD, Brunner F, Corneveaux J, Osborne D, Wollmer MA, Aerni A, Coluccia D, Hanggi J, Mondadori CR, Buchmann A, Reiman EM, Caselli RJ, Henke K, de Quervain DJ. Common Kibra alleles are associated with human memory performance. *Science*. 2006;314(5798):475-478.
56. Bansal A. Trends in reporting of SNP associations. *Lancet*. 2001;358(9298):2016.
57. Johnson C, Drgon T, Liu QR, Walther D, Edenberg H, Rice J, Foroud T, Uhl GR. Pooled association genome scanning for alcohol dependence using 104,268 SNPs: validation and use to identify alcoholism vulnerability loci in unrelated individuals from the collaborative study on the genetics of alcoholism. *Am J Med Genet B Neuropsychiatr Genet*. 2006;141(8):844-853.
58. Bierut LJ, Madden PA, Breslau N, Johnson EO, Hatsukami D, Pomerleau OF, Swan GE, Rutter J, Bertelsen S, Fox L, Fugman D, Goate AM, Hinrichs AL, Konvicka K, Martin NG, Montgomery GW, Saccone NL, Saccone SF, Wang JC, Chase GA, Rice JP, Ballinger DG. Novel genes identified in a high-density genome wide association study for nicotine dependence. *Hum Mol Genet*. 2007;16(1):24-35.
59. Uhl GR, Liu QR, Drgon T, Johnson C, Walther D, Rose JE. Molecular genetics of nicotine dependence and abstinence: whole genome association using 520,000 SNPs. *BMC Genet*. 2007;8(1):10.
60. Dupont WD, Plummer WD Jr. Power and sample size calculations: a review and computer program. *Control Clin Trials*. 1990;11(2):116-128.
61. Purcell S, Cherny SS, Sham PC. Genetic Power Calculator: design of linkage and association genetic mapping studies of complex traits. *Bioinformatics*. 2003;19(1):149-150.
62. Butcher LM, Meaburn E, Liu L, Fernandes C, Hill L, Al-Chalabi A, Plomin R, Schalkwyk L, Craig IW. Genotyping pooled DNA on microarrays: a systematic genome screen of thousands of SNPs in large samples to detect QTLs for complex traits. *Behav Genet*. 2004;34(5):549-555.
63. Hishimoto A, Liu QR, Drgon T, Pietrikova O, Walther D, Zhu XG, Troncoso JC, Uhl GR. NREXIN3 polymorphisms are associated with alcohol dependence and altered expression of specific isoforms. *Hum Mol Genet*. 2007;16(23):2880-2891.
64. Ishiguro H, Liu QR, Gong JP, Hall FS, Ujike H, Morales M, Sakurai T, Grumet M, Uhl GR. NRCAM in addiction vulnerability: positional cloning, drug-regulation, haplotype-specific expression, and altered drug reward in knockout mice. *Neuropsychopharmacology*. 2006;31(3):572-584.
65. Takeuchi T, Misaki A, Liang SB, Tachibana A, Hayashi N, Sonobe H, Ohtsuki Y. Expression of T-cadherin (CDH13, H-Cadherin) in human brain and its characteristics as a negative growth regulator of epidermal growth factor in neuroblastoma cells. *J Neurochem*. 2000;74(4):1489-1497.
66. Fredette BJ, Miller J, Ranscht B. Inhibition of motor axon growth by T-cadherin substrata. *Development*. 1996;122(10):3163-3171.
67. Kipmen-Korgun D, Osibow K, Zoratti C, Schraml E, Greilberger J, Kostner GM, Jurgens G, Graier WF. T-cadherin mediates low-density lipoprotein-initiated cell proliferation via the Ca(2+)-tyrosine kinase-Erk1/2 pathway. *J Cardiovasc Pharmacol*. 2005;45(5):418-430.
68. Philippova M, Ivanov D, Allenspach R, Takuwa Y, Erne P, Resink T. RhoA and Rac mediate endothelial cell polarization and detachment induced by T-cadherin. *FASEB J*. 2005;19(6):588-590.

69. Hug C, Wang J, Ahmad NS, Bogan JS, Tsao TS, Lodish HF. T-cadherin is a receptor for hexameric and high-molecular-weight forms of Acrp30/adiponectin. *Proc Natl Acad Sci U S A*. 2004;101(28):10308-10313.
70. Ivanov DB, Philippova MP, Tkachuk VA. Structure and functions of classical cadherins. *Biochemistry (Mosc)*. 2001;66(10):1174-1186.
71. Yamakawa K, Huot YK, Haendelt MA, Hubert R, Chen XN, Lyons GE, Korenberg DSCAM Jr. A novel member of the immunoglobulin superfamily maps in a Down syndrome region and is involved in the development of the nervous system. *Hum Mol Genet*. 1998;7(2):227-237.
72. Barlow GM, Micales B, Lyons GE, Korenberg JR. Down syndrome cell adhesion molecule is conserved in mouse and highly expressed in the adult mouse brain. *Cytogenet Cell Genet*. 2001;94(3-4):155-162.
73. Chen BE, Kondo M, Garnier A, Watson FL, Puettmann-Holgado R, Lamar DR, Schmucker D. The molecular diversity of Dscam is functionally required for neuronal wiring specificity in *Drosophila*. *Cell*. 2006;125(3):607-620.
74. Keene AC, Krashes MJ, Leung B, Bernard JA, Waddell S. *Drosophila* dorsal paired medial neurons provide a general mechanism for memory consolidation. *Curr Biol*. 2006;16(15):1524-1530.
75. Feil S, Zimmermann P, Knorn A, Brummer S, Schlossmann J, Hofmann F, Feil R. Distribution of cGMP-dependent protein kinase type I and its isoforms in the mouse brain and retina. *Neuroscience*. 2005;135(3):863-868.
76. Demyanenko GP, Halberstadt AI, Pryzwansky KB, Wemer C, Hofmann F, Maness PF. Abnormal neocortical development in mice lacking cGMP-dependent protein kinase I. *Brain Res Dev Brain Res*. 2005;160(1):1-8.
77. Weitzdoerfer R, Hoeger H, Engidawork E, Engelmann M, Singewald N, Lubec G, Lubec B. Neuronal nitric oxide synthase knock-out mice show impaired cognitive performance. *Nitric Oxide*. 2004;10(3):130-140.
78. Itzhak Y, Martin JL, Black MD, Huang PL. The role of neuronal nitric oxide synthase in cocaine-induced conditioned place preference. *Neuroreport*. 1998;9(11):2485-2488.
79. Kleppisch T, Wolfsgruber W, Feil S, Allmann R, Wotjak CT, Goebbels S, Nave KA, Hofmann F, Feil R. Hippocampal cGMP-dependent protein kinase I supports an age- and protein synthesis-dependent component of long-term potentiation but is not essential for spatial reference and contextual memory. *J Neurosci*. 2003;23(14):6005-6012.
80. Allen Institute for Brain Science Allen Brain Atlas. <http://brain-map.org/>. Accessed January 23, 2007.
81. Underwood JG, Boutz PL, Dougherty JD, Stoilov P, Black DL. Homologues of the *Caenorhabditis elegans* Fox-1 protein are neuronal splicing regulators in mammals. *Mol Cell Biol*. 2005;25(22):10005-10016.
82. Stefansson H, Sarginson J, Kong A, Yates P, Steinthorsdottir V, Gudfinnsson E, Gunnarsdottir S, Walker N, Petursson H, Crombie C, Ingason A, Gulcher JR, Stefansson K, St Clair D. Association of neuregulin 1 with schizophrenia confirmed in a Scottish population. *Am J Hum Genet*. 2003;72(1):83-87.
83. Stefansson H, Sigurdsson E, Steinthorsdottir V, Bjornsdottir S, Sigmundsson T, Ghosh S, Brynjolfsson J, Gunnarsdottir S, Ivarsson O, Chou TT, Hjaltason O, Birgisdottir B, Jonsson H, Gudnadottir VG, Gudmundsdottir E, Bjornsson A, Ingvarsson B, Ingason A, Sigfusson S, Hardardottir H, Harvey RP, Lai D, Zhou M, Brunner D, Mutel V, Gonzalo A, Lemke G, Sainz J, Johannesson G, Andresson T, Gudbjartsson D, Manolescu A, Frigge ML, Gurney ME, Kong A, Gulcher JR, Petursson H, Stefansson K. Neuregulin 1 and susceptibility to schizophrenia. *Am J Hum Genet*. 2002;71(4):877-892.
84. Stefansson H, Steinthorsdottir V, Thorgeirsson TE, Gulcher JR, Stefansson K. Neuregulin 1 and schizophrenia. *Ann Med*. 2004;36(1):62-71.
85. Wellcome Trust Case Control Consortium. Genome-wide association study of 14,000 cases of seven common diseases and 3,000 shared controls. *Nature*. 2007;447(7145):661-678.
86. Dudbridge F, Gusnanto A, Koeleman BP. Detecting multiple associations in genome-wide studies. *Hum Genomics*. 2006;2(5):310-317.
87. NHLBI Research and Policy Update, number 35, November 2006. www.nhlbi.nih.gov/resources/listserv/number35.htm. Accessed January 23, 2007.

The Dysbindin Gene (*DTNBP1*) Is Associated with Methamphetamine Psychosis

Makiko Kishimoto, Hiroshi Ujike, Yasuko Motohashi, Yuji Tanaka, Yuko Okahisa, Tatsuya Kotaka, Mutsuo Harano, Toshiya Inada, Mitsuhiko Yamada, Tokutaro Komiyama, Toru Hori, Yoshimoto Sekine, Nakao Iwata, Ichiro Sora, Masaomi Iyo, Norio Ozaki, and Shigetoshi Kuroda

Background: The dysbindin (*DTNBP1* [dystrobrevin-binding protein 1]) gene has repeatedly been shown to be associated with schizophrenia across diverse populations. One study also showed that risk haplotypes were shared with a bipolar disorder subgroup with psychotic episodes, but not with all cases. *DTNBP1* may confer susceptibility to psychotic symptoms in various psychiatric disorders besides schizophrenia.

Methods: Methamphetamine psychosis, the psychotic symptoms of which are close to those observed in schizophrenia, was investigated through a case ($n = 197$)–control ($n = 243$) association analyses of *DTNBP1*.

Results: *DTNBP1* showed significant associations with methamphetamine psychosis at polymorphisms of P1635 (rs3213207, $p = .00003$) and SNPA (rs2619538, $p = .049$) and the three-locus haplotype of P1655 (rs2619539)-P1635-SNPA (permutation $p = .0005$). The C-A-A haplotype, which was identical to the protective haplotype previously reported for schizophrenia and psychotic bipolar disorders, was a protective factor ($p = .0013$, odds ratio [OR] = .62, 95% confidence interval [CI] .51–.77) for methamphetamine psychosis. The C-G-T haplotype was a risk for methamphetamine psychosis ($p = .0012$, OR = 14.9, 95% CI 3.5–64.2).

Conclusions: Our genetic evidence suggests that *DTNBP1* is involved in psychotic liability not only for schizophrenia but also for other psychotic disorders, including substance-induced psychosis.

Key Words: Akt1, *DTNBP1*, dysbindin, methamphetamine psychosis, substance dependence

A genetic variation of the dystrobrevin-binding protein 1 (*DTNBP1*) gene has recently been shown to be associated with schizophrenia in several independent studies. Straub *et al.* (1) revealed original evidence for a positive genetic association between schizophrenia and variants in a gene on 6p22.3, dysbindin (*DTNBP1*), which is located within one of several promising loci revealed by a genomewide linkage scan. Many replication studies showed consistent findings in different populations, for example, German (2), Irish (3), Chinese (4), Swedish/German/Polish (5), UK/Irish (5), Bulgarian (6), Ameri-

can (7), Scottish/Chinese (8), and Japanese (9), although the significantly associated alleles and haplotypes were not always consistent among populations. Two postmortem studies also revealed that dysbindin protein or its mRNA level was reduced in the dorsolateral prefrontal cortex and in presynaptic glutamatergic terminals of the hippocampus of schizophrenia patients (10,11). These findings suggest that the dysbindin is involved in the pathogenesis of schizophrenia.

Recently, Raybould *et al.* (12) examined three loci of the *DTNBP1* gene in a large sample of patients with bipolar disorder, another endogenous psychosis, in UK Caucasians, and found that the *DTNBP1* gene was not associated with all cases of bipolar disorder but was associated with a subgroup of bipolar disorder characterized by the complication of psychotic features during episodes. The risk and protective haplotype were identical to those found in their previous schizophrenia study (13). Therefore, they speculated that the *DTNBP1* genetic variation influences susceptibility to schizophrenia and bipolar psychosis across the Kraepelinian dichotomy.

Abuse of large amounts of methamphetamine for long periods easily produces psychotic symptoms, such as delusions of reference, persecution, and poisoning, as well as auditory and visual hallucinations (14–16). Further consumption of methamphetamine may result in severe psychosis, liability to relapse with reconsumption of methamphetamine or psychological stress, and a gradually worsening prognosis. Clinical similarities between methamphetamine psychosis and schizophrenia in a cross-section of clinical features have been noted; these include auditory hallucination and delusion, the longitudinal process of progressive exacerbation with acute relapses, relatively good response to neuroleptics, and enduring vulnerability to relapse to stressors, especially in the paranoid type of schizophrenia. Indeed, methamphetamine psychosis has long been considered a pharmacologic model of schizophrenia (17,18), and shared molecular mechanisms could be involved in these psychotic disorders. Based on this rationale, it is possible that the *DTNBP1*

From the Department of Neuropsychiatry (MK, HU, YM, YT, YO, TK, SK), Okayama University Graduate School of Medicine, Dentistry and Pharmaceutical Sciences; Japanese Genetics Initiative for Drug Abuse (JGIDA) (HU, MH, TI, MY, TK, TH, YS, NI, IS, MI, NO); Department of Neuropsychiatry (MH), Kurume University Graduate School of Medicine; Department of Psychiatry (TI), Teikyo University School of Medicine, Chiba Medical Center, Ichihara; Department of Psychogeriatrics (TK), National Institute of Mental Health, National Center of Neurology and Psychiatry, Kodaira; Department of Psychiatry (TK, TH), National Center Hospital for Mental, Nervous and Muscular Disorders, National Center of Neurology and Psychiatry, Tokyo, Japan; Department of Psychiatry and Neurology (YS), Hamamatsu University School of Medicine; Department of Psychiatry (NI), Fujita Health University School of Medicine, Houmei; Department of Neuroscience (IS), Division of Psychobiology, Tohoku University Graduate School of Medicine, Sendai; Department of Psychiatry (MI), Chiba University Graduate School of Medicine; Department of Psychiatry (NO), Nagoya University Graduate School of Medicine, Japan.

Address reprint requests to H. Ujike, M.D., Ph.D., Department of Neuropsychiatry, Okayama University Graduate School of Medicine, Dentistry and Pharmaceutical Sciences, 2-5-1 Shikata-cho, Okayama 700-8558, Japan; E-mail: hujike@cc.okayama-u.ac.jp.

Received January 6, 2007; revised February 17, 2007; accepted March 14, 2007.

gene may influence susceptibility to substance-induced psychoses in the same manner that influence susceptibility to schizophrenia and bipolar psychosis disorders. To examine this hypothesis, we investigated the association between *DTNBP1* and methamphetamine psychosis in a case-control analyses.

Methods and Materials

Subjects

The subjects consisted of 197 patients (162 male, 35 female; mean age \pm SD, 38.1 \pm 12.6) with methamphetamine psychosis (MAP) and 243 age-, gender-, and geographic-origin-matched healthy control subjects (193 male, 50 female; mean age \pm SD, 37.2 \pm 12.0) who had no individual or family history of drug dependence or major psychotic disorders such as schizophrenia and bipolar disorders. All the subjects were unrelated Japanese who were born and lived in relatively restricted areas of Japan. All patients were outpatients or inpatients in psychiatric hospitals of the Japanese Genetics Initiative for Drug Abuse (JGIDA). Consensus diagnoses of methamphetamine psychosis were made by two trained psychiatrists according to the ICD-10 criteria on the basis of unstructured interviews and medical records. All healthy control subjects were also psychiatrically screened based on unstructured interviews. The study protocol and purpose were explained to all subjects participating in the study, and written informed consent was obtained from all subjects. This study was approved by the Ethics Committee of each participating institute of JGIDA.

The patients with methamphetamine psychosis were divided into subgroups according to three clinical phenotypes that may indirectly indicate the severity of and liability to psychosis:

1. *Latency to onset of psychotic state after initial methamphetamine consumption:* Median latency was 3 years; 99 (54.4%) of patients developed psychotic symptoms within 3 years of the first methamphetamine abuse, and 83 (45.6%) patients did after 3 or more years.
2. *Duration of the psychotic state after therapy:* Methamphetamine-induced psychosis (transient type) will usually subside within 10 days to 1 month following discontinuance of consumption and beginning of pharmacologic therapy with antipsychotics such as haloperidol or risperidone. Some patients show sustained (longer than 1 month) psychotic symptoms (prolonged type), however, regardless of detoxification from methamphetamine and adequate antipsychotic therapy (16,19). In our study, 107 (56.6%) patients showed the transient type of psychosis, and 82 (43.4%) patients showed the prolonged type of psychosis.
3. *Complication of spontaneous psychosis:* Once methamphetamine psychosis has developed, some remitted patients may experience spontaneous relapse due to nonspecific stresses, such as severe fatigue or life problems, without consumption of methamphetamine. The observation period for the presence or absence of spontaneous relapse was at least 1 year and averaged 12.3 \pm 11.1 years. Eighty-three patients (42.8%) experienced spontaneous relapse, and 111 (57.2%) did not.

As to multisubstance abuse status, 37.2% patients concurrently abused other illicit drugs in addition to methamphetamine. Cannabinoids were most frequently abused (34.0%), followed by LSD (14.1%), cocaine (13.1%), opioids (12%), and hypnotics (9.9%). More than 60% of patients abused only methamphetamine, but about half had a past history of organic solvent abuse

in their teenage years. All clinical data were obtained from interviews with patients and their families. Urine examination was not applied.

DNA Analysis

We genotyped the three single nucleotide polymorphisms (SNPs), P1655 (rs2619539), P1635 (rs3213207), and SNPA (rs2619538) of the *DTNBP1* gene that were examined previously by O'Donovan's group and were shown to have a significant association with both schizophrenia and psychotic bipolar disorders (12,13). They showed in the schizophrenia study that these three locus haplotypes showed the most significant results among 26 significantly associated haplotypes constructed by combinations of 9 SNPs of *DTNBP1*. P1655 and P1635 were two of the markers that had provided the most significant results in the study by Straub *et al.* (1), and SNPA was reported to be significantly associated with schizophrenia in a Japanese population (9).

The genomic DNA was extracted from peripheral leukocytes using the phenolchloroform method. Genotyping was performed by the polymerase chain reaction (PCR)-restriction fragment length polymorphism method. Each polymorphic site was amplified by PCR in a volume of 15 μ L containing 3% dimethyl sulfoxide and .75 units of Taq DNA polymerase (Promega, Japan) using a unique primer set (P1655 [mismatch]; 5'-ATCAGGCAAATGATGACTGC-3', 5'-GCCITTTAAATAATCCTATTAGCTATGAGAGT-3', P1635; 5'-CTTTATGCAATAAGTATTCCTG-3', 5'-GTATACCCTGTTTTAAGCAGAC-3', SNPA; 5'-CCTGTTTCTCAACTTAGTACAC-3', 5'-CCITTTATCTTATTTAACTCCTG-3'). PCR reaction was performed under the following conditions: 95°C for 5 min, then 35 denaturing cycles of 30 sec each at 95°C, 1 min of annealing at the appropriate temperature, and 30 sec of extension, and final elongation at 72°C for 10 min. The PCR products were digested with the corresponding restriction enzyme for each polymorphism, *HinfI* for P1655, *BseNI* for P1635, and *CaiI* for SNPA, and then electrophoresed on 3.0% agarose gels and stained with ethidium bromide. All genotyping was performed in a blinded fashion, with the control and case samples mixed randomly. Part of the genotyping of P1655, P1635, and SNPA was confirmed by direct sequencing and a TaqMan SNP genotyping assay (C_16036968_10), respectively.

Statistical Analysis

Statistical analysis of association was performed using SNPalyze software (Dynacom, Mobara City, Chiba, Japan). Deviation from Hardy-Weinberg equilibrium and the case-control study were tested using the χ^2 test. Linkage disequilibrium (LD) was tested using the χ^2 test, and D' and r^2 values were made the index in the authorization of LD. Case-control haplotype analysis was performed by the permutation method, and permutation p values were calculated based on 100,000 replications.

GenBank/EMBL Accession Numbers

Genome; NC_000006.10, NT_007592.14, MIM; 607145.

Results

The genotype distribution and allele frequencies for each polymorphism of patients with methamphetamine psychosis and control subjects are shown in Table 1. The genotype distributions of patients and control subjects did not deviate from the Hardy-Weinberg equilibrium at any of the three SNPs. We found a significant difference between patients and control subjects in the frequencies of the genotype or allele at P1635 and SNPA of

Table 1. Genotype and Allele Distribution of Three Single Nucleotide Polymorphisms of the *DTNBP1* Gene in Control Subjects and Patients with Methamphetamine (MAP) Psychosis

	N	Genotype			p	Allele		p
		C/C	C/G	G/G		C	G	
P1655								
rs2619539								
Control	240	118 (49.2)	107 (44.6)	15 (6.2)	.17	343 (71.5)	137 (28.5)	.076
MAP Psychosis	190	78 (41.0)	94 (49.5)	18 (9.5)		250 (65.8)	130 (34.2)	
P1635								
rs3213207								
Control	243	239 (98.4)	4 (1.6)	0 (0)	.000025	482 (99.2)	4 (.8)	.000030
MAP Psychosis	197	175 (88.8)	22 (11.2)	0 (0)		372 (94.4)	22 (5.6)	
SNPA								
rs2619538								
Control	232	225 (97.0)	7 (3.0)	0 (0)	.046	457 (98.5)	7 (1.5)	.049
MAP Psychosis	197	182 (92.4)	15 (7.6)	0 (0)		379 (96.2)	15 (3.8)	

Numbers in parentheses indicate percentages.

the *DTNBP1* gene (P1635: genotype, $\chi^2 = 17.74$, $df = 1$, $p = .000025$; allele $\chi^2 = 17.20$, $df = 1$, $p = .000030$; SNPA: genotype $\chi^2 = 4.63$, $df = 1$, $p = .046$; allele $\chi^2 = 4.51$, $df = 1$, $p = .049$). The minor alleles of P1635 and SNPA, G and T alleles, respectively, were in excess in methamphetamine psychosis when compared with control subjects. To avoid a type I error due to multiple comparison, the Bonferroni correction was applied to the results. The G allele of P1635 was still significantly more frequent in the methamphetamine psychosis patients than in control subjects, but SNPA was not significantly different after correction. P1655 did not show significant differences in distribution of allele and genotype between groups.

Comparison between subgroups of the patients according to clinical phenotypes showed a significant difference in allelic and genotypic distribution of P1635 between the two subgroups

divided by duration of psychotic state after therapy, transient and prolonged types (Table 2). The frequency of the minor allele G of P1635 was only 0.8% in control subjects, whereas it was 3.3% in patients with transient psychosis and 8.5% in patients with prolonged psychosis ($p = .027$, compared with transient psychosis). After Bonferroni correction, this was not significant. The other clinical phenotypes, psychosis latency and spontaneous relapse, were not associated with any SNP examined.

Estimation of the pairwise LD between the three SNPs of the *DTNBP1* gene using the D' and r^2 values as an index showed that P1655, P1635, and SNPA have strong LD (D' ranging between 0.65 and 1.0) with each other (Table 3). We then analyzed the three-marker haplotypes (Table 4) and found significant differences in patients and control subjects at P1655-P1635-SNPA ($\chi^2 = 27.8$, $df = 6$, global permutation $p = .0005$).

Table 2. Association of the *DTNBP1* Gene with Subgroups of Patients Divided by Clinical Phenotypes

	N	Genotype			p	Allele		p
		C/C	C/G	G/G		C	G	
P1655								
Latency to Onset of Psychosis, <3Y	96	35 (36.5)	50 (52.1)	11 (11.4)	.41	120 (62.5)	72 (37.5)	.20
Latency to Onset of Psychosis, $\geq 3Y$	79	36 (45.6)	37 (46.8)	6 (7.6)		109 (69.0)	49 (31.0)	
Transient MAP Psychosis	103	44 (42.7)	50 (48.6)	9 (8.7)	.71	138 (67.0)	68 (33.0)	.46
Prolonged MAP Psychosis	79	29 (36.7)	42 (53.2)	8 (10.1)		100 (63.3)	58 (36.7)	
Spontaneous Relapse; No	108	41 (38.0)	54 (50.0)	13 (12.0)	.40	136 (63.0)	80 (37.0)	.24
Spontaneous Relapse; Yes	77	34 (44.1)	38 (49.4)	5 (6.5)		106 (68.8)	48 (31.2)	
P1635								
Latency to Onset of Psychosis, <3Y	99	89 (89.9)	10 (10.1)	0 (0)	.63	188 (94.9)	10 (5.1)	.64
Latency to Onset of Psychosis, $\geq 3Y$	81	71 (87.7)	10 (12.3)	0 (0)		152 (93.8)	10 (6.2)	
Transient MAP Psychosis	107	100 (93.5)	7 (6.5)	0 (0)	.022	207 (96.7)	7 (3.3)	.027
Prolonged MAP Psychosis	82	68 (82.9)	14 (17.1)	0 (0)		150 (91.5)	14 (8.5)	
Spontaneous Relapse; No	111	98 (88.3)	13 (11.7)	0 (0)	.87	209 (94.1)	13 (5.9)	.88
Spontaneous Relapse; Yes	82	73 (89.0)	9 (11.0)	0 (0)		155 (94.5)	9 (5.5)	
SNPA								
Latency to Onset of Psychosis, <3Y	99	91 (91.9)	8 (8.1)	0 (0)	.91	190 (96.0)	8 (4.0)	.910
Latency to Onset of Psychosis, $\geq 3Y$	82	75 (91.5)	7 (8.5)	0 (0)		157 (95.7)	7 (4.3)	
Transient MAP Psychosis	108	102 (94.4)	6 (5.6)	0 (0)	.170	210 (97.2)	6 (2.8)	.18
Prolonged MAP Psychosis	82	73 (89.0)	9 (11.0)	0 (0)		155 (94.5)	9 (5.5)	
Spontaneous Relapse; No	110	104 (94.5)	6 (5.5)	0 (0)	.26	214 (97.3)	6 (2.7)	.27
Spontaneous Relapse; Yes	82	74 (90.2)	8 (9.8)	0 (0)		156 (95.1)	8 (4.9)	

Number in parentheses indicate percentages.

Table 3. Pairwise Linkage Disequilibrium Between Single Nucleotide Polymorphisms of the *DTNBP1* Gene

	P1655	P1635	SNPA
P1655		.9643	1.0000
P1635	.0128		.6519
SNPA	.0114	.3522	

Right upper and left lower diagonal showed D' and r^2 values, respectively.

The estimated haplotype frequency of C-A-A of P1655-P1635-SNPA was significantly lower in patients with methamphetamine psychosis than in control subjects ($p = .0013$). Conversely, the C-G-T haplotype was significantly higher in patients than in control subjects ($p = .0012$). Permutation p values of these haplotypes remained significant even after Bonferroni correction. Odds ratios were .62 (95% confidence interval [CI] .51–.77) and 14.9 (95% CI 3.5–64.2), respectively, indicating that the C-A-A haplotype protected against development of methamphetamine psychosis. On the other hand, the C-G-T haplotype was a significant risk factor for development of methamphetamine psychosis.

Discussion

We found a significant association between the *DTNBP1* gene and methamphetamine psychosis in individual marker and haplotype-based case-control analyses. The G allele of P1635 was shown to be a risk factor for methamphetamine psychosis. Numakawa *et al.* (9) reported that the G allele of P1635 was a risk factor for schizophrenia in Japanese; other reports have shown that it was also overtransmitted in Irish (1) but not in German schizophrenia (2). We also found that the G allele of P1635 was in excess in a subgroup showing a prolonged psychotic state, indicating that the allele was a risk for a worse prognosis of psychosis or refractoriness to antipsychotic therapy in patients with methamphetamine psychosis. The T allele of SNPA also showed a nominally significant risk for methamphetamine psychosis. Although it did not remain significant after multiple comparison correction, one study of schizophrenia showed that it was a significant risk (9), whereas another did not (13). The most striking findings in our study were that analyses of a haplotype constructed by P1655-P1635-SNPA of the *DTNBP1* gene revealed a strong association with methamphetamine psychosis ($p = .0005$). The C-A-A haplotype was significantly more common in control subjects than patients with methamphetamine psychosis ($p = .0013$), implying a substantial protective factor given the odds ratio of .62. The protective haplotype found in our study of methamphetamine psychosis was identical with that previously reported in studies of schizophrenia and psychotic bipolar disorders (12,13). This evidence may indicate that the C-A-A haplotype of *DTNBP1* reduces the liability of individuals who suffer from endogenous psychoses or substance abuse to complications of psychotic symptoms such as delusions and hallucinations. Another possibility should be also considered, however; the C-A-A haplotype may be associated with methamphetamine dependence but not methamphetamine psychosis because all the patients examined in our study suffered not only from methamphetamine psychosis but also dependence. Accordingly, these hypotheses should be examined in other psychotic disorders—for example, psychotic depression, organic psychoses, and cocaine paranoia—as well as in other dependence disorders. In contrast, the C-G-T haplotype was a significant risk

for development of methamphetamine psychosis. The frequency of the C-G-T haplotype was small at about 3% in methamphetamine psychosis but almost absent in control subjects, resulting in a strong risk and an odds ratio of 14.9. This haplotype was absent in the UK/Irish studies. In these studies, the C-A-T haplotype was a risk for both schizophrenia and psychotic bipolar disorder; however, this haplotype was rare (<1%) in Japanese samples and was not a significant factor for methamphetamine psychosis. In addition, the UK/Irish studies showed the G-G-T haplotype was as rare as 3% in control subjects but completely absent in schizophrenia, indicating a potent protective factor against schizophrenia. Again, this haplotype was absent in our samples. Such inconsistencies between the present study and UK/Irish studies indicate that the influence of genetic variation of *DTNBP1* on susceptibility to psychiatric disorders differs among the three distinct disorders (i.e., methamphetamine psychosis, schizophrenia, and psychotic bipolar disorder), although the protective C-A-A haplotype was common to all of them. In addition, population differences in SNP frequencies may also affect results. For example, the minor allele frequency of SNPA was .02, which was consistent with another Japanese study (9), but UK/Irish samples showed a frequency of .45 (13). The P1655 frequency was .28 in our samples, which was similar to another Japanese sample (.31) but different from Caucasian samples (.47 in Straub's study [1] and .49 in Williams's study [13]).

The relationship between abnormal dysbindin function and methamphetamine psychosis is unclear. The *DTNBP1* gene encodes a 40-Kd coiled-coil-containing protein that binds to β -dystrobrevin to form dystrophin-associated protein complex (DPC), which is found in postsynaptic densities of the brain (20). *DTNBP1*, however, is particularly expressed in certain axon terminals, notably, mossy fiber synaptic terminals in the cerebellum and hippocampus independent of DPC (20). Talbot *et al.* (10) found that patients with schizophrenia displayed a presynaptic *DTNBP1* reduction in the hippocampus, and an inversely correlated increase in vesicular glutamate transporter-1 occurred in the same schizophrenia cases, suggesting a relationship between glutamatergic neurotransmission and *DTNBP1*. Evidence in vitro showed that overexpression of *DTNBP1*-enhanced glutamate release accompanied by an increase of presynaptic machinery SNAP25 and synapsin 1 and a knockdown of *DTNBP1* by siRNA-reduced glutamate release. Reduced expression of *DTNBP1* in schizophrenic brains may result in hypofunction of the glutamatergic system in the brain, which has been promising hypothesis for the pathophysiology of schizophrenia (21,22). Based on the clinical similarity between methamphetamine psychosis and schizophrenia, it has been assumed that shared neural mechanisms, not only dopamine systems but also gluta-

Table 4. Haplotype Frequencies of the *DTNBP1* Gene of Control Subjects and Methamphetamine (MAP) Psychosis

Haplotype	Controls Frequency	MAP Psychosis Frequency	Permutation p
P1655-P1635-SNPA			
C-A-A	.7101	.6046	.0013
G-A-A	.2741	.3315	.076
C-G-T	.0022	.0318	.0012
C-G-A	.0023	.0178	.11
C-A-T	.0073	.0055	.83
G-G-A	0	.0089	.15
G-A-T	.0039	0	.18

Haplotype analysis was performed by the permutation method. The global permutation p value was .0005.

mate systems, may be involved in the two psychotic disorders. Many lines of evidence from experimental studies using behavioral sensitization by repeated psychostimulant treatment, which has been recognized as an animal model of methamphetamine psychosis (18), showed pivotal roles of N-methyl-D-aspartate (NMDA) receptors and glutamate systems in the development of behavioral sensitization. Thus repeated administration of amphetamine or cocaine produces behavioral sensitization with enhanced efflux of glutamate in the ventral tegmental area (VTA) and accumbens, which are key brain structures for sensitization phenomena (23,24). NMDA receptor antagonists, including the noncompetitive antagonist MK-801, prevent behavioral sensitization to amphetamines when administered systemically or micro-injected into the VTA (25–28). In contrast, phencyclidine, another NMDA antagonist, exacerbates amphetamine-induced abnormal behaviors and a hyperdopaminergic state in the prefrontal cortex and striatum (29–31). Amphetamines can also directly inhibit the NMDA receptor complex (32). Although the roles of NMDA receptors and glutamatergic systems in animal models of methamphetamine psychosis seem to be complex, our findings may indicate that variants of *DTNBP1* affect susceptibility to methamphetamine psychosis by implication of glutamatergic neurotransmission. In addition, *DTNBP1* was shown to enhance phosphorylation of AKT protein by PI3-kinase and protect against neuronal cell death. Impaired PI3-kinase-Akt signaling and a genetic association with the *AKT1* gene were found in schizophrenia (20,33,34). Previously, we also found a significant association of the *AKT1* haplotype with the same patients of methamphetamine psychosis (35). It is possible that *DTNBP1* confers susceptibility to methamphetamine psychosis via the PI3-kinase-Akt signaling cascade. In vitro evidence of interaction between dysbindin and dopamine system was recently reported. Kumamoto *et al.* (36) found that mRNA of dysbindin expressed in the mouse substantia nigra, that suppression of dysbindin expression in PC 12 cells resulted in an increase of dopamine release, and that overexpression of dysbindin produced a tendency to decrease dopamine release. This finding suggests that dysbindin dysfunction may induce susceptibility to methamphetamine psychosis through interaction with dopamine systems.

Alternatively, the effect of *DTNBP1* on cognitive ability should be considered. In an analysis of the phenotype–haplotype relationship, Williams *et al.* (13) found that the C-A-A protective haplotype was significantly associated only with higher educational attainment. A longitudinal study of childhood and adolescent antecedents of drug and alcohol problems in adulthood showed that, for both males and females, educational attainment was directly associated with a reduced risk for substance use problems (37). In this respect, higher educational attainment due to carrying the C-A-A haplotype might be involved in a reduced risk for methamphetamine psychosis, and the phenotype of higher educational attainment might be a common protective factor in methamphetamine psychosis and schizophrenia. Further studies are required to confirm this possibility.

Although our results remained significant after Bonferroni correction, it is possible that this was a chance finding resulting from reduced power due to small sample size. Analysis showed, however, that our sample size for the three SNPs had powers of .9994, 1.0000, and .9594 to detect an effect size ($w = .1892, .5388, \text{ and } .1263$, respectively), with a significance level of .05 to detect significant associations in allelic analysis between control subjects and subjects with methamphetamine psychosis. Our total sample size is therefore large enough statistically, and it is unlikely that our positive findings result from reduced power.

When methamphetamine psychosis patients are divided into subgroups according to clinical phenotypes, however, the statistical power may be reduced. It is possible that a rare haplotype C-G-T as a risk for methamphetamine psychosis may result from a chance fluctuation. In addition, a false-positive association owing to population stratification could not be excluded in this study despite careful matching of control subjects and patients. Our findings should be confirmed in larger samples and in different populations.

This work was supported by a Grant-in-Aid from the Ministry of Education, Culture, Sports, Science and Technology of Japan; a grant from the Ministry of Health, Labor, and Welfare of Japan; and from the Zikei Institute of Psychiatry (Okayama, Japan).

The authors have no conflicts of interest to declare.

1. Straub RE, Jiang Y, MacLean CJ, Ma Y, Webb BT, Myakishev MV, *et al.* (2002): Genetic variation in the 6p22.3 gene *DTNBP1*, the human ortholog of the mouse dysbindin gene, is associated with schizophrenia. *Am J Hum Genet* 71:337–348.
2. Schwab SG, Knapp M, Mondabon S, Hallmayer J, Borrmann-Hassenbach M, Albus M, *et al.* (2003): Support for association of schizophrenia with genetic variation in the 6p22.3 gene, dysbindin, in sib-pair families with linkage and in an additional sample of triad families. *Am J Hum Genet* 72:185–190.
3. van den Oord EJ, Sullivan PF, Jiang Y, Walsh D, O'Neill FA, Kendler KS, *et al.* (2003): Identification of a high-risk haplotype for the dystrobrevin binding protein 1 (*DTNBP1*) gene in the Irish study of high-density schizophrenia families. *Mol Psychiatry* 8:499–510.
4. Tang JX, Zhou J, Fan JB, Li XW, Shi YY, Gu NF, *et al.* (2003): Family-based association study of *DTNBP1* in 6p22.3 and schizophrenia. *Mol Psychiatry* 8:717–718.
5. van Den Bogaert A, Schumacher J, Schulze TG, Otte AC, Ohlraun S, Kovalenko S, *et al.* (2003): The *DTNBP1* (dysbindin) gene contributes to schizophrenia, depending on family history of the disease. *Am J Hum Genet* 73:1438–1443.
6. Kirov G, Ivanov D, Williams NM, Preece A, Nikolov I, Milev R, *et al.* (2004): Strong evidence for association between the dystrobrevin binding protein 1 gene (*DTNBP1*) and schizophrenia in 488 parent-offspring trios from Bulgaria. *Biol Psychiatry* 55:971–975.
7. Funke B, Finn CT, Plocik AM, Lake S, DeRosse P, Kane JM, *et al.* (2004): Association of the *DTNBP1* locus with schizophrenia in a U.S. population. *Am J Hum Genet* 75:891–898.
8. Li T, Zhang F, Liu X, Sun X, Sham PC, Crombie C, *et al.* (2005): Identifying potential risk haplotypes for schizophrenia at the *DTNBP1* locus in Han Chinese and Scottish populations. *Mol Psychiatry* 10:1037–1044.
9. Numakawa T, Yagasaki Y, Ishimoto T, Okada T, Suzuki T, Iwata N, *et al.* (2004): Evidence of novel neuronal functions of dysbindin, a susceptibility gene for schizophrenia. *Hum Mol Genet* 13:2699–2708.
10. Talbot K, Eidem WL, Tinsley CL, Benson MA, Thompson EW, Smith RJ, *et al.* (2004): Dysbindin-1 is reduced in intrinsic, glutamatergic terminals of the hippocampal formation in schizophrenia. *J Clin Invest* 113:1353–1363.
11. Weickert CS, Straub RE, McClintock BW, Matsumoto M, Hashimoto R, Hyde TM, *et al.* (2004): Human dysbindin (*DTNBP1*) gene expression in normal brain and in schizophrenic prefrontal cortex and midbrain. *Arch Gen Psychiatry* 61:544–555.
12. Raybould R, Green EK, MacGregor S, Gordon-Smith K, Heron J, Hyde S, *et al.* (2005): Bipolar disorder and polymorphisms in the dysbindin gene (*DTNBP1*). *Biol Psychiatry* 57:696–701.
13. Williams NM, Preece A, Morris DW, Spurlock G, Bray NJ, Stephens M, *et al.* (2004): Identification in 2 independent samples of a novel schizophrenia risk haplotype of the dystrobrevin binding protein gene (*DTNBP1*). *Arch Gen Psychiatry* 61:336–344.
14. Sato M, Numachi Y, Hamamura T (1992): Relapse of paranoid psychotic state in methamphetamine model of schizophrenia. *Schizophr Bull* 18: 115–122.
15. Tatetsu S (1963): Methamphetamine psychosis. *Folia Psychiatr Neurol Jpn Suppl* 7:377–380.
16. Ujike H, Sato M (2004): Clinical features of sensitization to methamphetamine observed in patients with methamphetamine dependence and psychosis. *Ann N Y Acad Sci* 1025:279–287.

17. Snyder SH (1973): Amphetamine psychosis: A "model" schizophrenia mediated by catecholamines. *Am J Psychiatry* 130:61–67.
18. Ujike H (2002): Stimulant-induced psychosis and schizophrenia: The role of sensitization. *Curr Psychiatry Rep* 4:177–184.
19. Sato M, Chen CC, Akiyama K, Otsuki S (1983): Acute exacerbation of paranoid psychotic state after long-term abstinence in patients with previous methamphetamine psychosis. *Biol Psychiatry* 18:429–440.
20. Benson MA, Newey SE, Martin-Rendon E, Hawkes R, Blake DJ (2001): Dysbindin, a novel coiled-coil-containing protein that interacts with the dystrobrevins in muscle and brain. *J Biol Chem* 276:24232–24241.
21. Moghaddam B (2003): Bringing order to the glutamate chaos in schizophrenia. *Neuron* 40:881–884.
22. Konradi C, Heckers S (2003): Molecular aspects of glutamate dysregulation: Implications for schizophrenia and its treatment. *Pharmacol Ther* 97:153–179.
23. Reid MS, Berger SP (1996): Evidence for sensitization of cocaine-induced nucleus accumbens glutamate release. *Neuroreport* 7:1325–1329.
24. Xue CJ, Ng JP, Li Y, Wolf ME (1996): Acute and repeated systemic amphetamine administration: Effects on extracellular glutamate, aspartate, and serine levels in rat ventral tegmental area and nucleus accumbens. *J Neurochem* 67:352–363.
25. Karler R, Calder LD, Chaudhry IA, Turkkanis SA (1989): Blockade of "reverse tolerance" to cocaine and amphetamine by MK-801. *Life Sci* 45:599–606.
26. Segal DS, Kuczenski R, Florin SM (1995): Does dizocilpine (MK-801) selectively block the enhanced responsiveness to repeated amphetamine administration? *Behav Neurosci* 109:532–546.
27. Wolf ME, Jeziorski M (1993): Coadministration of MK-801 with amphetamine, cocaine or morphine prevents rather than transiently masks the development of behavioral sensitization. *Brain Res* 613:291–294.
28. Cador M, Bjjou Y, Cailhol S, Stinus L (1999): D-amphetamine-induced behavioral sensitization: Implication of a glutamatergic medial prefrontal cortex-ventral tegmental area innervation. *Neuroscience* 94:705–721.
29. Greenberg BD, Segal DS (1985): Acute and chronic behavioral interactions between phencyclidine (PCP) and amphetamine: evidence for a dopaminergic role in some PCP-induced behaviors. *Pharmacol Biochem Behav* 23:99–105.
30. Balla A, Sershen H, Serra M, Koneru R, Javitt DC (2003): Subchronic continuous phencyclidine administration potentiates amphetamine-induced frontal cortex dopamine release. *Neuropsychopharmacology* 28:34–44.
31. Balla A, Hashim A, Burch S, Javitt DC, Lajtha A, Sershen H (2001): Phencyclidine-induced dysregulation of dopamine response to amphetamine in prefrontal cortex and striatum. *Neurochem Res* 26:1001–1006.
32. Yeh GC, Chen JC, Tsai HC, Wu HH, Lin CY, Hsu PC, *et al.* (2002): Amphetamine inhibits the N-methyl-D-aspartate receptor-mediated responses by directly interacting with the receptor/channel complex. *J Pharmacol Exp Ther* 300:1008–1016.
33. Emamian ES, Hall D, Birnbaum MJ, Karayiorgou M, Gogos JA (2004): Convergent evidence for impaired AKT1-GSK3beta signaling in schizophrenia. *Nat Genet* 36:131–137.
34. Zhao Z, Ksiezak-Reding H, Riggio S, Haroutunian V, Pasinetti GM (2006): Insulin receptor deficits in schizophrenia and in cellular and animal models of insulin receptor dysfunction. *Schizophr Res* 84:1–14.
35. Ikeda M, Iwata N, Suzuki T, Kitajima T, Yamanouchi Y, Kinoshiya Y, *et al.* (2006): Positive association of AKT1 haplotype to Japanese methamphetamine use disorder. *Int J Neuropsychopharmacol* 9:77–81.
36. Kumamoto N, Matsuzaki S, Inoue K, Hattori T, Shimizu S, Hashimoto R, *et al.* (2006): Hyperactivation of midbrain dopaminergic system in schizophrenia could be attributed to the down-regulation of dysbindin. *Biochem Biophys Res Commun* 345:904–909.
37. Fothergill KE, Ensminger ME (2006): Childhood and adolescent antecedents of drug and alcohol problems: A longitudinal study. *Drug Alcohol Depend* 82:61–76.

The Glycine Transporter 1 Gene (*GLYT1*) Is Associated With Methamphetamine-Use Disorder

Yukitaka Morita,¹ Hiroshi Ujike,^{1,2*} Yuji Tanaka,¹ Makiko Kishimoto,¹ Yuko Okahisa,¹ Tatsuya Kotaka,¹ Mutsuo Harano,^{2,3} Toshiya Inada,^{2,4} Tokutaro Komiyama,^{2,5} Toru Hori,^{2,5} Mitsuhiro Yamada,^{2,6} Yoshimoto Sekine,^{2,7} Nakao Iwata,^{2,8} Masaomi Iyo,^{2,9} Ichiro Sora,^{2,10} Norio Ozaki,^{2,3} and Shigetoshi Kuroda¹

¹Department of Neuropsychiatry, Okayama University Graduate School of Medicine, Dentistry and Pharmaceutical Sciences 2-5-1 Shikata-cho, Okayama, Japan

²Japanese Genetics Institute for Drug Abuse, Japan

³Department of Neuropsychiatry, Kurume University Graduate School of Medicine, Kurume, Japan

⁴Department of Psychiatry, Teikyo University Ichikawa Hospital, Ichikawa, Japan

⁵Division of Psychiatry, National Center Hospital for Mental, Nervous and Muscular Disorders, National Center of Neurology and Psychiatry, Kodaira, Japan

⁶National Institute of Mental Health, National Center of Neurology and Psychiatry, Kodaira, Japan

⁷Department of Psychiatry and Neurology, Hamamatsu University School of Medicine, Hamamatsu, Japan

⁸Department of Psychiatry, Fujita Health University School of Medicine, Houmei, Japan

⁹Department of Psychiatry, Chiba University Graduate School of Medicine, Chiba, Japan

¹⁰Division of Psychobiology, Department of Neuroscience, Tohoku University Graduate School of Medicine, Sendai, Japan

Glycine transporter (GlyT)-1 plays a pivotal role in maintaining the glycine level at the glutamatergic synapse. Glycine is an allosteric agonist of *N*-methyl-D-aspartate (NMDA) receptors. Because activation of NMDA receptors is an essential step for induction of methamphetamine dependence and psychosis, differences in the functioning of GlyT-1 due to genetic variants of the *GlyT-1* gene (*GLYT1*) may influence susceptibility. A case-control genetic association study of the *GLYT1* gene examined 204 patients with methamphetamine-use disorder and 210 healthy controls. We examined three single nucleotide polymorphisms (SNPs), SNP1, IVS3 + 411C > T, rs2486001; SNP2, 1056G > A, rs2248829; and SNP3, IVS11 + 22G > A, rs2248632, of the *GLYT1* gene and found that SNP1 showed a significant association in both genotype ($P = 0.0086$) and allele ($P = 0.0019$) with methamphetamine-use disorder. The T-G haplotype at SNP1 and SNP2 was a significant risk factor for the disorder ($P = 0.000039$, odds ratio: 2.04). The present findings indicate that genetic variation of the *GLYT1* gene may contribute to individual vulnerability to methamphetamine dependence and psychosis. © 2007 Wiley-Liss, Inc.

KEY WORDS: substance dependence; glycine transporter (GlyT); association study

Grant sponsor: Zikei Institute of Psychiatry (Okayama, Japan); Grant sponsor: Ministry of Health, Labour and Welfare of Japan; Grant sponsor: Ministry of Education, Culture, Sports, Science and Technology of Japan.

*Correspondence to: Hiroshi Ujike, M.D., Department of Neuropsychiatry, Okayama University Graduate School of Medicine, Dentistry and Pharmaceutical Sciences 2-5-1 Shikata-cho, Okayama 700-8558, Japan. E-mail: hujike@cc.okayama-u.ac.jp

Received 9 November 2006; Accepted 13 April 2007

DOI 10.1002/ajmg.b.30565

Published online 20 June 2007 in Wiley InterScience (www.interscience.wiley.com)

© 2007 Wiley-Liss, Inc.

Please cite this article as follows: Morita Y, Ujike H, Tanaka Y, Kishimoto M, Okahisa Y, Kotaka T, Harano M, Inada T, Komiyama T, Hori T, Yamada M, Sekine Y, Iwata N, Iyo M, Sora I, Ozaki N, Kuroda S. 2008. The Glycine Transporter 1 Gene (*GLYT1*) Is Associated With Methamphetamine-Use Disorder. *Am J Med Genet Part B* 147B:54–58.

INTRODUCTION

Abuse of methamphetamine induces a strong psychological dependence, and further consumption produces highly psychotic states, such as auditory hallucinations and persecutory delusions [Tatetsu, 1963; Ujike and Sato, 2004]. Conditioned place preference (CPP) and behavioral sensitization induced by methamphetamine treatment in rodents have been recognized as animal models of methamphetamine dependence and psychosis. Many lines of experimental evidence have shown that A10 dopamine neurons in the ventral tegmentum area (VTA) projecting into the accumbens, amygdala, and prefrontal cortex play central roles in the induction of CPP and sensitization to methamphetamine [Kalivas and Stewart, 1991; McBride et al., 1999; Ujike, 2002]. It was also demonstrated that activation of glutamate neurons in the prefrontal cortex projecting into the accumbens, amygdala, and VTA and activation of *N*-methyl-D-aspartate (NMDA) receptors are essential to the development of CPP and sensitization [Wolf, 1998]. For example, bilateral lesions of the prefrontal cortex prevented the induction of sensitization to psychostimulants [Wolf et al., 1995], and systemic treatment or intra-VTA injection of NMDA antagonists also prevented it [Karler et al., 1989; Vezina and Queen, 2000]. NMDA receptors are multi-meric protein complexes that are activated by glutamate binding to the NR2 subunit [Laube et al., 1997]. Glycine also activates the NMDA receptors by binding to allosteric sites of the NR1 subunit [Johnson and Ascher, 1987]. Recent studies indicated that glycine concentrations around NMDA receptors in the forebrain are efficiently regulated and maintained at a subsaturated level by glycine transporters (GlyTs), which belong to a superfamily of 12 transmembrane Na⁺/Cl⁻-dependent transporters [Sato et al., 1995]. GlyT antagonists, e.g., *N*-[3-(4'-fluorophenyl)-3-(4'-phenylphenoxy)] propylsarcosine (NFPS), inhibited glycine uptake [Harsing et al., 2003]

and robustly enhanced the NMDA receptor functions [Bergeron et al., 1998; Kinney et al., 2003]. GlyTs are divided into two subtypes, GlyT-1 and GlyT-2 encoded by *GLYT1* (SLC6A9, MIM 601019) and *GLYT2* (SLC6A5, MIM 604159), respectively. GlyT-1 is known to be predominantly expressed in glial cells in the central nervous system, especially the frontal cortex, and hippocampus [Borowsky et al., 1993; Zafra et al., 1995]. However, GlyT-1 was recently reported in neurons as well [Cubelos et al., 2005], where it is closely associated with NMDA receptors and regulates the extracellular glycine concentration at synapses [Smith et al., 1992]. GlyT-2 is mainly expressed in the spinal cord and brainstem, where it belongs to the family of Na⁺/Cl⁻-dependent plasma membrane transporters [Liu et al., 1993], and is colocalized with inhibitory glycine receptors [Gomez et al., 2003]. Therefore, it is possible that altered function of GlyT due to genetic variants of the *GLYT1*, but not the *GLYT2* gene, may affect individual susceptibility to methamphetamine-use disorder. We investigated the association between the *GLYT1* gene polymorphisms and the disorder by a case-control study.

MATERIALS AND METHODS

Subjects

The subjects were 204 patients with methamphetamine-use disorder (167 males and 37 females; mean age, 37.4 years; SD 11.9 years) who met the ICD-10-DCR criteria (F15.2) and who were outpatients or inpatients in psychiatric hospitals of the Japanese Genetics Initiative for Drug Abuse (JGIDA), and 210 age-, gender-, and geographical origin-matched normal controls (163 males and 47 females; mean age, 36.5 years; SD 10.6 years), who were mostly medical staff members without a past individual or family history of drug dependence or major psychotic disorders. Patients who had a comorbidity of any other major psychiatric disorders, e.g., schizophrenia and bipolar disorder, were excluded. Assessment for the diagnosis of methamphetamine-use disorder and controls were performed by trained psychiatrists on the basis of all available information, including hospital notes. These assessments were done by unstructured interview.

The patients started methamphetamine abuse at 21.0 ± 5.5 years. As to multi-substance abuse status, 37.2% patients concurrently abused other illicit drugs besides methamphetamine. Cannabinoids were most frequently abused (34.0%), and followed by LSD (14.1%), cocaine (13.1%), opioids (12%), and hypnotics (9.9%). More than 60% patients abused methamphetamine solely, but about half of them had a past history of organic solvent abuse in their teenage. One hundred eighty-eight patients have or had the comorbidity of methamphetamine psychosis (F15.50). More details about the backgrounds of the patients have been published elsewhere [Ujike et al., 2003]. After the study was described, written informed consent was obtained from all participants. This study was approved by the Ethics Committee at each institute of the JGIDA.

Genotyping

The genomic DNA was extracted from peripheral leukocytes using the standard phenol/CHCl₃ method. Over 100 single nucleotide polymorphisms (SNPs) spanning the *GLYT1* gene were listed in the NCBI SNP database and the International HapMap project data. Since there was no non-synonymous SNP in the gene which should have potential physiological effects, we selected SNPs which fulfilled the following conditions: (1) those allele frequencies in a Japanese population were already known by the database and their minor allele frequencies were over 10%, (2) they were recognized by inexpensive restriction enzymes, (3) they were not located in deep introns, (4) they were located apart from each other to

cover the entirety of the gene. Finally, we selected three SNPs, rs2486001 (IVS3 + 411C > T, SNP1), rs2248829 (1056G > A, SNP2), rs2248632 (IVS11 + 22G > A, SNP3). The three SNPs of the *GLYT1* gene were individually amplified by polymerase chain reaction (PCR) using the primers listed in Table I. PCR was carried out in a total volume of 15 µl with 3% dimethyl sulfoxide and 0.75 units of Taq DNA polymerase in the reaction mixture. Initial denaturation was performed for 5 min at 95°C; 35 cycles were then performed (30 sec of denaturing at 95°C, 30 sec of annealing at the appropriate temperature, and 30 sec of extension at 72°C), followed by a final extension at 72°C for 5 min. The PCR products were then analyzed on 3.0% agarose gels after digestion with Eco47I (SNP1), HincII (SNP2), and MnlI (SNP3), respectively (Table I). Genotyping of SNP1, SNP2, and SNP3 were confirmed by direct sequencing of a part of the samples. To ensure the positive association for SNP1, we confirmed the genotypes of all samples by a different PCR mismatch primer set to produce a recognition site for a different restriction enzyme, Eco0109I (Table I).

Statistical Analysis

Deviation of the genotype counts from Hardy-Weinberg equilibrium was tested using a chi-square goodness-of-fit test. The statistical significance of difference was assessed by a chi-square test (genotype comparison) or log likelihood ratio test (allele comparison) at a significance level of 0.05. The pairwise linkage disequilibrium (LD) and haplotype frequencies were estimated by the EH algorithm using the SNPalyze program (Dynacom Co., Mobara-shi, Chiba, Japan).

RESULTS

Both genotype and allele frequency distributions of patients with methamphetamine-use disorder and control subjects are shown in Table II. The genotype distributions of SNP1, 2, and 3 of patients and controls did not deviate significantly from Hardy-Weinberg equilibrium. We found significant differences in the frequency of genotypes and alleles of SNP1 (genotype, $\chi^2 = 9.52$, $P = 0.0086$; allele, $G = 9.66$, $P = 0.0019$) and SNP2 (genotype, $\chi^2 = 6.04$, $P = 0.048$; allele, $G = 4.14$, $P = 0.042$) between patients with methamphetamine-use disorder and control subjects. SNP3 showed no significant differences in allele or genotype between groups. After Bonferroni correction, the genotype and allele frequencies of SNP1, but not SNP2, remained significant. The odds ratio of the T allele of SNP1 for methamphetamine-use disorder was 1.69 (95% confidence interval: 1.22–2.36).

We calculated the pairwise LD between SNP1, SNP2, and SNP3. D' (absolute value) and r^2 for pairwise LD are shown in Table III. High LD was detected between SNP1 and SNP2 ($D' = 0.76$, $r^2 = 0.064$), SNP1 and SNP3 ($D' = 0.92$, $r^2 = 0.087$), and SNP2 and SNP3 ($D' = 0.87$, $r^2 = 0.70$).

Because SNP1, SNP2, and SNP3 were shown to be located on the same LD block, the global haplotypic association was analyzed for every combination of the three SNPs (Table IV). Haplotypes consisting of SNP1–SNP2, SNP2–SNP3, and SNP1–SNP2–SNP3 showed significant association with patients with methamphetamine-use disorder. Among them, the haplotype comprising SNP1–SNP2 showed the smallest P value ($P = 0.000011$). The frequency of each haplotype consisting of SNP1–SNP2 is shown in Table V. The T-G haplotype of SNP1–SNP2 showed a significant excess in patients with methamphetamine-use disorder over control subjects ($P = 0.000039$), indicating that this haplotype was a risk factor for methamphetamine-use disorder, with an odds ratio of 2.04 (95% confidence interval, 1.45–2.86). These associations were still significant even after Bonferroni correction.

TABLE I. PCR Primers for Single Nucleotide Polymorphisms in the Glycine Transporter-1 (GLYT1) Gene

SNP	Primer sequence	Product size (bp)	Annealing temp. (°C)	Restriction enzyme
SNP1 (IVS3 + 411C > T, rs2486001)	Forward-1	122	61	Eco471
	Reverse-1			
	Forward-2	188	65	
	Reverse-2			
SNP2 (1056G > A, rs2248829)	Forward	141	61	HincII
	Reverse			
SNP3 (IVS11 + 22G > A, rs2248632)	Forward	131	63	MnII
	Reverse			

TABLE II. Genotype and Allele Frequencies of SNPs of the GLYT1 gene

Group	N	Genotype		P	Corrected P	Allele	P	Corrected P
SNP1 (rs2486001)	210	C/T (%)	T/T (%)	0.0086	0.026	C (%)	T (%)	0.0019
		139 (66.2)	8 (3.8)			341 (81.0)	79 (19.0)	
Control	204	82 (40.2)	16 (7.8)	0.048	—	294 (72.1)	114 (27.9)	0.042
		G/A (%)	A/A (%)			G (%)	A (%)	
SNP2 (rs2248829)	210	76 (36.2)	24 (11.4)	0.45	—	296 (70.5)	124 (29.5)	—
		G/G (%)	A/A (%)			G (%)	A (%)	
Control	204	119 (56.7)	10 (4.8)	0.45	—	313 (76.7)	95 (23.3)	—
		G/G (%)	A/A (%)			G (%)	A (%)	
SNP3 (rs2248632)	210	81 (38.6)	16 (7.6)	0.45	—	307 (73.1)	113 (26.9)	0.20
		122 (58.1)	12 (5.7)			287 (76.3)	89 (23.7)	
Control	204	70 (33.3)	12 (5.7)	0.45	—	287 (76.3)	89 (23.7)	—
		G/G (%)	A/A (%)			G (%)	A (%)	

METH, methamphetamine.

TABLE III. Pairwise Linkage Disequilibrium Estimations Between Single Nucleotide Polymorphisms (SNPs) in the *GLYT1* Gene

	SNP1	SNP2
SNP2	$D' = 0.76$ $r^2 = 0.064$	
SNP3	$D' = 0.92$ $r^2 = 0.087$	$D' = 0.87$ $r^2 = 0.70$

DISCUSSION

We found that the T allele of SNP1 (IVS3+411C>T, rs2486001) and the T-G haplotype consisting of SNP1 and SNP2 (1056G>A, rs2248829) of the *GLYT1* gene showed a substantially significant association with methamphetamine-use disorder (allele $P = 0.0018$, haplotype $P = 0.000039$). The T-G haplotype of the gene approximately doubles the risk of predisposition to methamphetamine-use disorder.

GlyTs strictly maintain glycine concentrations in the vicinity of NMDA receptors. Glycine binds to glycine sites on the NR1 subunit of NMDA receptors and activates NMDA receptor signaling. Because the glycine concentration is set low by GlyTs, glycine sites are subsaturated in the physiological condition [Sato et al., 1995]. An increase of glycine concentration due to a glycine diet or administration of a glycine transport inhibitor, NFPS, enhanced the NMDA receptor function in vitro [Bergeron et al., 1998; Martina et al., 2004] and in vivo [Chen et al., 2003]. Heterozygous *GLYT1* gene knockout mice showed enhancement of NMDA receptor function [Gabernet et al., 2005]. Therefore, increases and decreases in glycine induce stronger and weaker NMDA receptor neurotransmission. Because many lines of experimental evidence have shown that the glutamatergic system and NMDA receptor signaling in the brain play pivotal roles in the development of substance dependence on psychostimulants including amphetamine, methamphetamine, and cocaine [Cervo and Samanin, 1995; Bernalov, 1996; Kim and Jang, 1997; Wolf, 1998], it is possible that modulation of glycine sites or GlyTs also affects substance dependence. Induction of amphetamine-induced CPP in rodents was prevented by a glycine site antagonist L-701,324 (7-chloro-4-hydroxy-3-(2-phenoxy)phenyl-2(1H)-quinolone) [Mead and Stephens, 1999], and a glycine site partial agonist ACPC (1-aminocyclopropanecarboxylic acid), which disturbs the effects of endogenous glycine [Papp et al., 2002]. Combined with our findings, variants of the *GLYT1* gene may affect susceptibility to methamphetamine dependence by modulating NMDA receptor function.

NMDA receptor signaling is also considered to be involved in psychotic disorders. Phencyclidine and ketamine, non-competitive antagonists of NMDA receptors, produce a psychotic state in healthy subjects and exacerbate symptoms in schizophrenics [Javitt and Zukin, 1991; Breier et al., 1997], and hypofunction of NMDA receptors is assumed to be a possible pathophysiology of schizophrenia. Mice with reduced expression of NR1 and the $\epsilon 1$ subunit of NMDA receptors due to

TABLE IV. Multi-Loci Association Analyses of the *GLYT1* Gene

SNP ID	1SNP	2SNP	3SNP
SNP1 (C > T)	0.0019		
SNP2 (G > A)	0.043	0.000011	0.000050
SNP3 (G > A)	0.20	0.0040	

TABLE V. Estimated Haplotype Frequencies for Patients With Methamphetamine-Use Disorder and Controls

SNP	Haplotype	METH	CON	P value
SNP1-2	C-G	0.48	0.54	0.080
	C-A	0.24	0.27	0.30
	T-G	0.28	0.16	0.000039
	T-A	0.00	0.027	—

genetic manipulation showed abnormal phenotypes similar to those observed in animal models of schizophrenia [Mohn et al., 1999; Miyamoto et al., 2001]. Recent human genetic studies also revealed a significant association of the *GRIN1* and *GRIN2A* genes encoding the NR1 and NR2A subunits of NMDA receptors, respectively, with susceptibility to schizophrenia [Itokawa et al., 2003; Zhao et al., 2006]. In addition, the GlyT inhibitors SSR504734 (2-chloro-N-[(S)-phenyl(2S)-piperidin-2-yl]methyl]-3-trifluoromethyl benzamide) and NFPS produced antipsychotic profiles in experimental paradigms [Javitt et al., 2004; Depoortere et al., 2005], and heterozygous *GLYT1* knockout mice had reversed amphetamine-induced disruption of prepulse inhibition, one of the physiological phenotypes of psychosis [Tsai et al., 2004]. Because the majority of patients with methamphetamine-use disorder examined in the present study had a comorbid diagnosis of methamphetamine psychosis, it is possible that the *GLYT1* gene may be involved in liability to psychotic symptoms. We re-analyzed the data and found that methamphetamine psychosis is also significantly associated with SNP1 of the *GLYT1* gene (data not shown). Hence, the present findings may indicate that genetic variants of the *GLYT1* gene could predict a risk of comorbidity of psychosis after repeated methamphetamine abuse.

The coding sequence of the human *GLYT1* gene is divided into 14 exons (based on NM 1024845) distributed over a region of 133 kb, most of which (exons 2-14) cluster within 7 kb [Adams et al., 1995]. SNP1 (IVS3+411C>T) is located in intron 3, and SNP2 (1056G>A) is located in exon 7, but is synonymous. Usually, these SNPs are considered non-functional. However, recent advances in molecular genetics show intronic RNAs can actually be processed to smaller RNAs, snoRNAs, or miRNAs, which control various levels of gene expression in physiology and development, including transcription, RNA splicing, editing, translation, and turnover [Mattick and Makunin, 2006]. It is possible that SNP1 affects the *GLYT1* gene expression and results in susceptibility to methamphetamine-use disorders. Alternatively, other functional mutations in the *GLYT1* gene with LD with SNP1 or locating on the T-G haplotype of SNP1-SNP2 may be involved in an increased genetic risk for methamphetamine-use disorder because SNP1 was shown to be in an LD block extending at least from intron 3 to intron 11 in our Japanese samples. HapMap project data of a Japanese population (Rel 21a) showed a larger LD block from intron 1 to intron 12. *GLYT1* is expressed as three splice forms by alternative splicing in 5'-regions, *GLYT1a*, *GLYT1b*, and *GLYT1c* [Borowsky et al., 1993; Zafra et al., 1995]. It is possible that unexamined polymorphisms in intron 1 in LD with SNP1 may affect alternative splicing of the *GLYT1* mRNA and result in susceptibility to methamphetamine-use disorders.

REFERENCES

Adams RH, Sato K, Shimada S, Tohyama M, Puschel AW, Betz H. 1995. Gene structure and glial expression of the glycine transporter GlyT1 in embryonic and adult rodents. *J Neurosci* 15(3 Pt 2):2524-2532.

- Bergeron R, Meyer TM, Coyle JT, Greene RW. 1998. Modulation of N-methyl-D-aspartate receptor function by glycine transport. *Proc Natl Acad Sci USA* 95(26):15730–15734.
- Bespalov A. 1996. The expression of both amphetamine-conditioned place preference and pentylenetetrazol-conditioned place aversion is attenuated by the NMDA receptor antagonist (+/-)-CPP. *Drug Alcohol Depend* 41(1):85–88.
- Borowsky B, Mezey E, Hoffman BJ. 1993. Two glycine transporter variants with distinct localization in the CNS and peripheral tissues are encoded by a common gene. *Neuron* 10(5):851–863.
- Breier A, Malhotra AK, Pinals DA, Weisenfeld NI, Pickar D. 1997. Association of ketamine-induced psychosis with focal activation of the prefrontal cortex in healthy volunteers. *Am J Psychiatry* 154(6):805–811.
- Cervo L, Samanin R. 1995. Effects of dopaminergic and glutamatergic receptor antagonists on the acquisition and expression of cocaine conditioning place preference. *Brain Res* 673(2):242–250.
- Chen L, Muhlhauer M, Yang CR. 2003. Glycine transporter-1 blockade potentiates NMDA-mediated responses in rat prefrontal cortical neurons in vitro and in vivo. *J Neurophysiol* 89(2):691–703.
- Cubelos B, Gimenez C, Zafra F. 2005. Localization of the GLYT1 glycine transporter at glutamatergic synapses in the rat brain. *Cereb Cortex* 15(4):448–459.
- Depoortere R, Dargazanli G, Estenne-Bouhtou G, Coste A, Lanneau C, Desvignes C, Poncelet M, Heaulme M, Santucci V, Decobert M, et al. 2005. Neurochemical, electrophysiological and pharmacological profiles of the selective inhibitor of the glycine transporter-1 SSR504734, a potential new type of antipsychotic. *Neuropsychopharmacology* 30(11):1963–1985.
- Gabernet L, Pauly-Evers M, Schwerdel C, Lentz M, Bluethmann H, Vogt K, Alberati D, Mohler H, Boison D. 2005. Enhancement of the NMDA receptor function by reduction of glycine transporter-1 expression. *Neurosci Lett* 373(1):79–84.
- Gomez J, Ohno K, Betz H. 2003. Glycine transporter isoforms in the mammalian central nervous system: Structures, functions and therapeutic promises. *Curr Opin Drug Discov Devel* 6(5):675–682.
- Harsing LG Jr, Gacsalyi I, Szabo G, Schmidt E, Sziray N, Sebban C, Tesolin-Decros B, Matyus P, Egedy A, Spedding M, et al. 2003. The glycine transporter-1 inhibitors NFPS and Org 24461: A pharmacological study. *Pharmacol Biochem Behav* 74(4):811–825.
- Itokawa M, Yamada K, Yoshitsugu K, Toyota T, Suga T, Ohba H, Watanabe A, Hattori E, Shimizu H, Kumakura T, et al. 2003. A microsatellite repeat in the promoter of the N-methyl-D-aspartate receptor 2A subunit (GRIN2A) gene suppresses transcriptional activity and correlates with chronic outcome in schizophrenia. *Pharmacogenetics* 13(5):271–278.
- Javitt DC, Zukin SR. 1991. Recent advances in the phencyclidine model of schizophrenia. *Am J Psychiatry* 148(10):1301–1308.
- Javitt DC, Balla A, Burch S, Suckow R, Xie S, Sershen H. 2004. Reversal of phencyclidine-induced dopaminergic dysregulation by N-methyl-D-aspartate receptor/glycine-site agonists. *Neuropsychopharmacology* 29(2):300–307.
- Johnson JW, Ascher P. 1987. Glycine potentiates the NMDA response in cultured mouse brain neurons. *Nature* 325(6104):529–531.
- Kalivas PW, Stewart J. 1991. Dopamine transmission in the initiation and expression of drug- and stress-induced sensitization of motor activity. *Brain Res Brain Res Rev* 16(3):223–244.
- Karler R, Calder LD, Chaudhry IA, Turkanis SA. 1989. Blockade of "reverse tolerance" to cocaine and amphetamine by MK-801. *Life Sci* 45(7):599–606.
- Kim HS, Jang CG. 1997. MK-801 inhibits methamphetamine-induced conditioned place preference and behavioral sensitization to apomorphine in mice. *Brain Res Bull* 44(3):221–227.
- Kinney GG, Sur C, Burno M, Mallorga PJ, Williams JB, Figueroa DJ, Wittmann M, Lemaire W, Conn PJ. 2003. The glycine transporter type 1 inhibitor N-[3-(4'-fluorophenyl)-3-(4'-phenylphenoxy)propyl]sarcosine potentiates NMDA receptor-mediated responses in vivo and produces an antipsychotic profile in rodent behavior. *J Neurosci* 23(20):7586–7591.
- Laube B, Hirai H, Sturgess M, Betz H, Kuhse J. 1997. Molecular determinants of agonist discrimination by NMDA receptor subunits: Analysis of the glutamate binding site on the NR2B subunit. *Neuron* 18(3):493–503.
- Liu QR, Lopez-Corcuera B, Mandiyan S, Nelson H, Nelson N. 1993. Cloning and expression of a spinal cord- and brain-specific glycine transporter with novel structural features. *J Biol Chem* 268(30):22802–22808.
- Martina M, Gorfinkel Y, Halman S, Lowe JA, Periyalwar P, Schmidt CJ, Bergeron R. 2004. Glycine transporter type 1 blockade changes NMDA receptor-mediated responses and LTP in hippocampal CA1 pyramidal cells by altering extracellular glycine levels. *J Physiol* 557(Pt 2):489–500.
- Mattick JS, Makunin IV. 2006. Non-coding RNA. *Hum Mol Genet* 15 Spec No 1:R17–R29.
- McBride WJ, Murphy JM, Ikemoto S. 1999. Localization of brain reinforcement mechanisms: Intracranial self-administration and intracranial place-conditioning studies. *Behav Brain Res* 101(2):129–152.
- Mead AN, Stephens DN. 1999. CNQX but not NBQX prevents expression of amphetamine-induced place preference conditioning: A role for the glycine site of the NMDA receptor, but not AMPA receptors. *J Pharmacol Exp Ther* 290(1):9–15.
- Miyamoto Y, Yamada K, Noda Y, Mori H, Mishina M, Nabeshima T. 2001. Hyperfunction of dopaminergic and serotonergic neuronal systems in mice lacking the NMDA receptor epsilon1 subunit. *J Neurosci* 21(2):750–757.
- Mohn AR, Gainetdinov RR, Caron MG, Koller BH. 1999. Mice with reduced NMDA receptor expression display behaviors related to schizophrenia. *Cell* 98(4):427–436.
- Papp M, Gruca P, Willner P. 2002. Selective blockade of drug-induced place preference conditioning by ACPC, a functional NMDA-receptor antagonist. *Neuropsychopharmacology* 27(5):727–743.
- Sato K, Adams R, Betz H, Schloss P. 1995. Modulation of a recombinant glycine transporter (GLYT1b) by activation of protein kinase C. *J Neurochem* 65(5):1967–1973.
- Smith KE, Borden LA, Hartig PR, Branchek T, Weinshank RL. 1992. Cloning and expression of a glycine transporter reveal colocalization with NMDA receptors. *Neuron* 8(5):927–935.
- Tatetsu S. 1963. Methamphetamine psychosis. *Folia Psychiatr Neurol Jpn* (Suppl 7):377–380.
- Tsai G, Ralph-Williams RJ, Martina M, Bergeron R, Berger-Sweeney J, Dunham KS, Jiang Z, Caine SB, Coyle JT. 2004. Gene knockout of glycine transporter 1: Characterization of the behavioral phenotype. *Proc Natl Acad Sci USA* 101(22):8485–8490.
- Ujike H. 2002. Stimulant-induced psychosis and schizophrenia: The role of sensitization. *Curr Psychiatry Rep* 4:177–184.
- Ujike H, Harano M, Inada T, Yamada M, Komiyama T, Sekine Y, Sora I, Iyo M, Katsu T, Nomura A, et al. 2003. Nine- or fewer repeat alleles in VNTR polymorphism of the dopamine transporter gene is a strong risk factor for prolonged methamphetamine psychosis. *Pharmacogenomics* 3(4):242–247.
- Ujike H, Sato M. 2004. Clinical features of sensitization to methamphetamine observed in patients with methamphetamine dependence and psychosis. *Ann N Y Acad Sci* 1025:279–287.
- Vezina P, Queen AL. 2000. Induction of locomotor sensitization by amphetamine requires the activation of NMDA receptors in the rat ventral tegmental area. *Psychopharmacology (Berl)* 151(2–3):184–191.
- Wolf ME. 1998. The role of excitatory amino acids in behavioral sensitization to psychomotor stimulants. *Prog Neurobiol* 54(6):679–720.
- Wolf ME, Dahlin SL, Hu XT, Xue CJ, White K. 1995. Effects of lesions of prefrontal cortex, amygdala, or fornix on behavioral sensitization to amphetamine: Comparison with N-methyl-D-aspartate antagonists. *Neuroscience* 69(2):417–439.
- Zafra F, Gomez J, Olivares L, Aragon C, Gimenez C. 1995. Regional distribution and developmental variation of the glycine transporters GLYT1 and GLYT2 in the rat CNS. *Eur J Neurosci* 7(6):1342–1352.
- Zhao X, Li H, Shi Y, Tang R, Chen W, Liu J, Feng G, Shi J, Yan L, Liu H, et al. 2006. Significant association between the genetic variations in the 5' end of the N-methyl-D-aspartate receptor subunit gene GRIN1 and schizophrenia. *Biol Psychiatry* 59(8):747–753.

Methamphetamine-induced locomotor activity and sensitization in dopamine transporter and vesicular monoamine transporter 2 double mutant mice

Setsu Fukushima · Haowei Shen · Harumi Hata ·
Arihisa Ohara · Kayo Ohmi · Kazutaka Ikeda ·
Yohtaro Numachi · Hideaki Kobayashi · F. Scott Hall ·
George R. Uhl · Ichiro Sora

Received: 6 September 2006 / Accepted: 19 February 2007 / Published online: 22 March 2007
© Springer-Verlag 2007

Abstract

Rationale The dopamine transporter (DAT) and the vesicular monoamine transporter 2 (VMAT2) play pivotal roles in the action of methamphetamine (MAP), including acute locomotor effects and behavioral sensitization. However, the relative impact of heterozygous DAT and VMAT2 knockouts (KOs) on the behavioral effects of MAP remains unknown.

Objectives To evaluate the roles of DAT and VMAT2 in MAP-induced locomotor behavior, we examined locomotor activity and sensitization in heterozygous DAT KO (DAT+/-), heterozygous VMAT2 KO (VMAT2+/-), double heterozygous DAT/VMAT2 KO (DAT+/-VMAT2+/-), and wild-type (WT) mice.

Results Acute 1 mg/kg MAP injection induced significant locomotor increases in WT and VMAT2+/- mice but not in DAT+/- and DAT+/-VMAT2+/- mice. Acute 2 mg/kg MAP significantly increased locomotor activity in all genotypes. Repeated 1 mg/kg MAP injections revealed a delayed and

attenuated development of sensitization in DAT+/- and DAT+/-VMAT2+/- mice compared to WT mice and delayed development in VMAT2+/- mice. In repeated 2 mg/kg MAP injections, DAT+/- and DAT+/-VMAT2+/- mice showed delayed but not attenuated development of sensitization, while there was no difference in the onset of sensitization between VMAT2+/- and WT mice. In DAT+/-VMAT2+/- mice, all of MAP-induced behavioral responses were similar to those in DAT+/- but not VMAT2+/- mice.

Conclusions Heterozygous deletion of DAT attenuates the locomotor effects of MAP and may play larger role in behavioral responses to MAP compared to heterozygous deletion of VMAT2.

Keywords Sensitization · Dopamine transporter · Vesicular monoamine transporter 2 · Methamphetamine · Knockout mice · Locomotor activity · Heterozygote

S. Fukushima · H. Hata · A. Ohara · K. Ohmi · Y. Numachi ·
H. Kobayashi · I. Sora (✉)
Department of Biological Psychiatry,
Tohoku University Graduate School of Medicine,
1-1 Seiryō-machi,
Sendai 980-8574, Japan
e-mail: isora@mail.tains.tohoku.ac.jp

H. Shen · K. Ikeda · I. Sora
Division of Psychobiology, Tokyo Institute of Psychiatry,
Tokyo, Japan

F. S. Hall · G. R. Uhl · I. Sora
Molecular Neurobiology Branch,
National Institute on Drug Abuse-Intramural Research Program,
National Institutes of Health, DHHS,
Baltimore, MD, USA

Introduction

Methamphetamine (MAP) is a psychostimulant that induces enhanced arousal and euphoria acutely and psychosis and addiction chronically (Sato et al. 1992). The acute and chronic pharmacological consequences of MAP in human users have been observed in behavioral experiments in animals, including both hyperactivity and sensitization of locomotor responses (Segal and Schuckit 1983). Behavioral sensitization is a phenomenon whereby repeated intermittent exposure to MAP-like psychostimulant elicits a progressive enhancement of those responses, which persists for extended time periods after withdrawal from the drug and is easily reinstated by exposure to the drug or

psychosocial stress (Robinson and Becker 1986). This process closely resembles the course of the relapse in MAP-induced psychosis or schizophrenia, thus sensitization in animals has been suggested to model these psychoses (Sato et al. 1983). Behavioral sensitization is thought to be an early and enduring manifestation of neuronal plasticity associated with changes in mesolimbic dopamine neurotransmission (Kalivas et al. 1993; Kalivas and Stewart 1991). MAP induces dopamine release through exchange diffusion of plasma membrane dopamine transporter (DAT) (Seiden et al. 1993) and release of vesicular dopamine into the cytosol by acting on the vesicular monoamine transporter 2 (VMAT2) (Sulzer et al. 2005). The dopamine-releasing effect of MAP has been postulated to mediate its locomotor stimulant and rewarding effects (Pontieri et al. 1995; White and Kalivas 1998). Therefore, DAT and VMAT2 should play pivotal roles in the mechanisms underlying the actions of MAP.

DAT knockout (KO) mice and VMAT2 KO mice have been used to investigate the roles of DAT and VMAT2 in dopamine neurotransmission and pharmacological mechanisms underlying the actions of psychostimulants. Homozygous deletion of the DAT gene has been reported to produce a tenfold increase (Shen et al. 2004) or fivefold elevation (Jones et al. 1998a) of extracellular dopamine concentrations in the striatum measured by *in vivo* microdialysis, while heterozygous deletion of DAT was not found to significantly increase extracellular dopamine (Shen et al. 2004) or to produce a smaller twofold elevation (Jones et al. 1998a) of dopamine in the striatum. Homozygous DAT KO mice show growth retardation and hyperactivity, whereas heterozygous DAT KO mice did not show gross abnormalities in either development or baseline behavioral parameters (Giros et al. 1996; Sora et al. 1998). Habituated homozygous DAT KO mice do not show any significant cocaine-induced increase in locomotion (Giros et al. 1996; Mead et al. 2002; Sora et al. 1998; Uhl et al. 2002). However, when habituation is limited, cocaine and *d*-amphetamine can decrease locomotor activity in homozygous DAT KO mice (Gainetdinov et al. 1999). Consistent with the acute effects of psychostimulants, repeated *d*-amphetamine administration did not induce sensitization in homozygous DAT KO mice (Spielewoy et al. 2001).

Behavioral effects of psychostimulants on heterozygous DAT KO mice have been inconsistent and remain uncertain. Spielewoy et al. (2001) reported that acute and chronic *d*-amphetamine reduced locomotor activity in heterozygous DAT KO mice. Acute cocaine administration has been reported to increase locomotion in heterozygous DAT KO mice similar to wild-type (WT) mice (Giros et al. 1996; Sora et al. 1998), but Mead et al. (2002) reported that acute and chronic cocaine administration did not alter locomotion in heterozygous DAT KO mice.

As homozygous VMAT2 KO is lethal (Fon et al. 1997; Takahashi et al. 1997; Wang et al. 1997), only heterozygous VMAT2 KO mice are available for behavioral experiments. Heterozygous VMAT2 KO mice do not show gross abnormalities in development or baseline behavioral parameters (Takahashi et al. 1997). Acute amphetamine administration increased locomotor activity in heterozygous VMAT2 KO mice more than in WT mice (Takahashi et al. 1997; Uhl et al. 2000; Wang et al. 1997). Effects of chronic amphetamine or MAP administration on heterozygous VMAT2 KO mice have not yet been characterized. However, acute cocaine administration has also been shown to increase locomotor activity more in heterozygous VMAT2 KO mice than WT mice, although heterozygous VMAT2 KO mice did not apparently exhibit cocaine sensitization (Wang et al. 1997).

Thus, pharmacological responses of heterozygous DAT KO mice remain controversial, and characterization of heterozygous VMAT2 mice has been limited. Furthermore, the relative impact of VMAT2 and DAT KO on the behavioral effects of psychostimulants remains unknown. We therefore conducted studies to simultaneously examine the effects of these KOs alone and in combination. In this paper, we have directly compared behavioral responses of heterozygous DAT KO (DAT+/-), heterozygous VMAT2 KO (VMAT2+/-), combined heterozygous KO (DAT+/-VMAT2+/-), and WT mice to acute and chronic MAP administration.

Materials and methods

Subjects

Individual DAT and VMAT2 KO strains used in this report have been described previously (Sora et al. 1998; Takahashi et al. 1997). All mice were bred at the Institute for Animal Experimentation, Tohoku University Graduate School of Medicine (Sendai, Japan). Mice lacking one copy of DAT and/or VMAT2 and WT littermate controls were obtained by heterozygote crosses that had been previously generated on 129Sv-C57BL/6J mixed genetic background. Genotypes of the KO mice were determined using polymerase chain reaction (PCR) with genomic DNA extracted from tail biopsies. Mice were weaned at 4 weeks of age and were group-housed (two to five per cage), segregated by sex, with food and water available *ad libitum* in a temperature- and light-controlled housing room (lights on at 0800 hours, lights off at 2000 hours). For locomotor testing, naïve 10–13-week-old male mice, weighing 20–35 g, were used. All experiments were conducted during the light phase of the cycle, between 9 A.M. and 5 P.M. All animal experiments were carried out according to the Guide for the Care and Use of