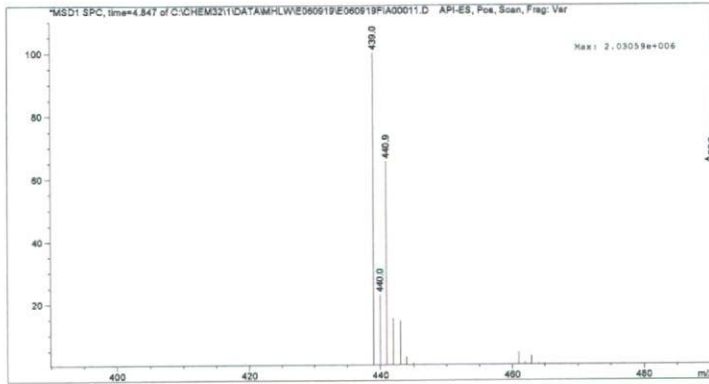


マススペクトル



検量線

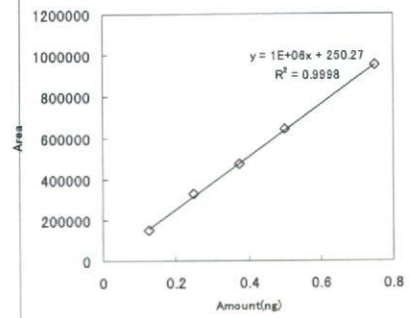
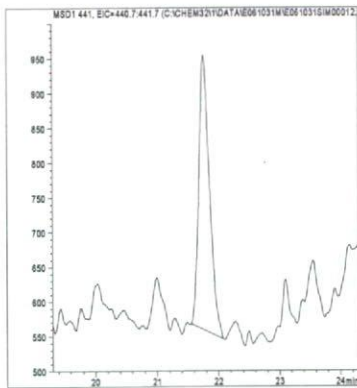
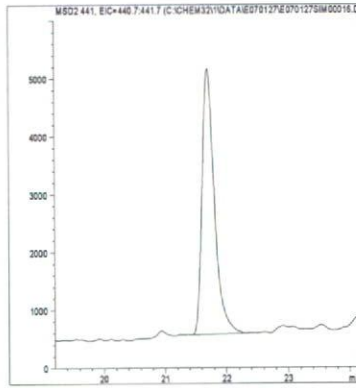


図1. マススペクトルおよび検量線 (ピラゾリネート)

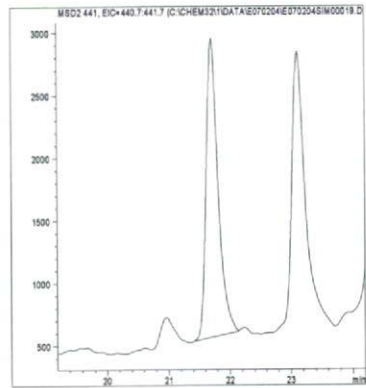
最小検出量評価 (0.001ng)



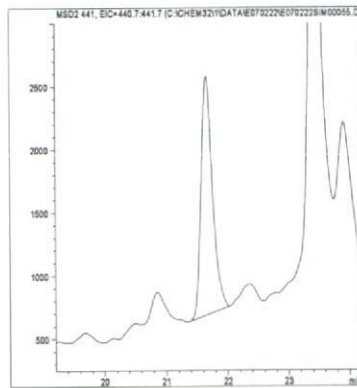
標準品 (0.05ng)



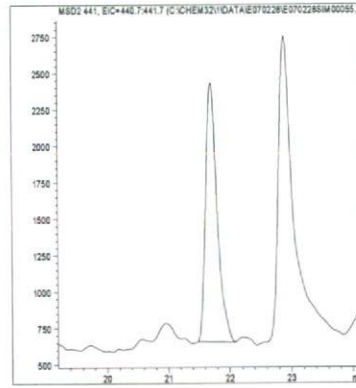
筋肉 (0.01mg/kg 添加)



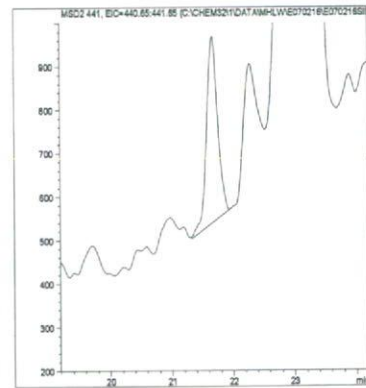
脂肪 (0.01mg/kg 添加)



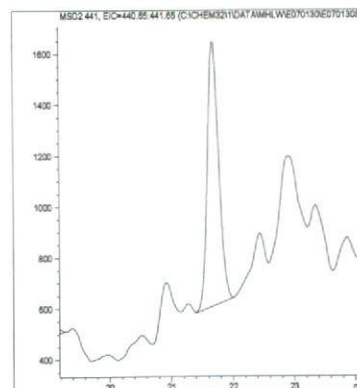
肝臓 (0.01mg/kg 添加)



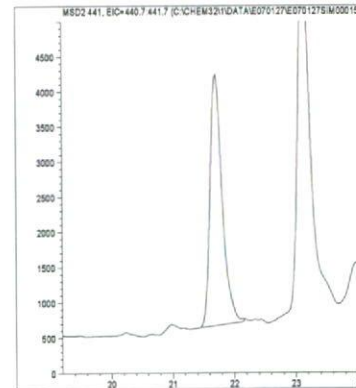
うなぎ (0.01mg/kg 添加)



えび (0.01mg/kg 添加)



牛乳 (0.01mg/kg 添加)



卵 (0.01mg/kg 添加)

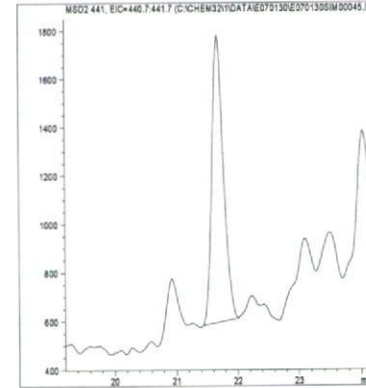
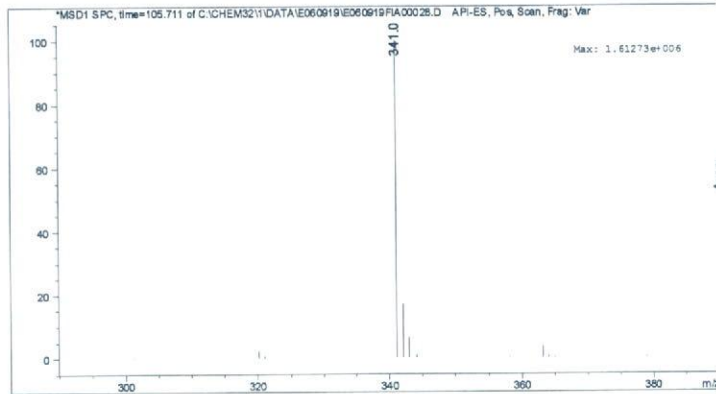


図2. 最小検出量評価, 標準品, 回収試料のマスクロマトグラム (ピラゾリネート)

マススペクトル



検量線

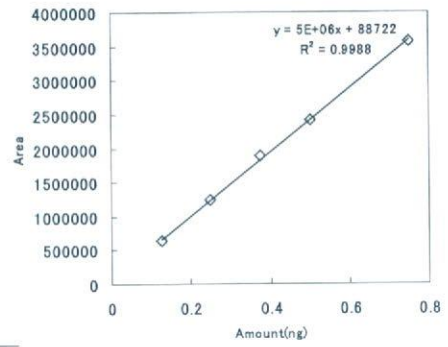
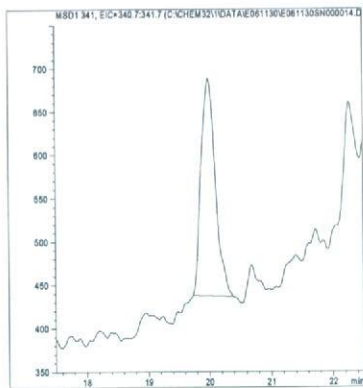
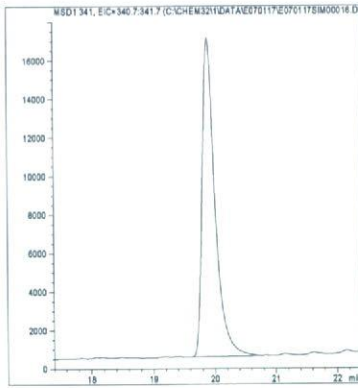


図 1. マススペクトルおよび検量線 (ピリダフェンチオン)

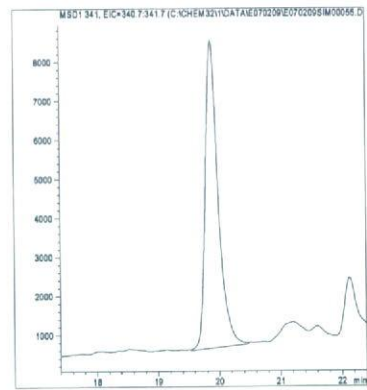
最小検出量評価 (0.0001ng)



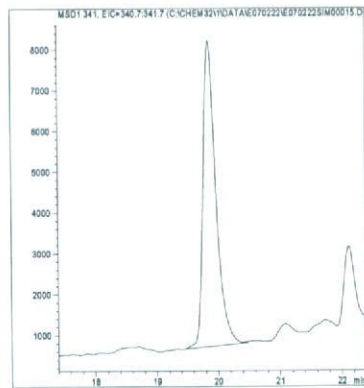
標準品 (0.05ng)



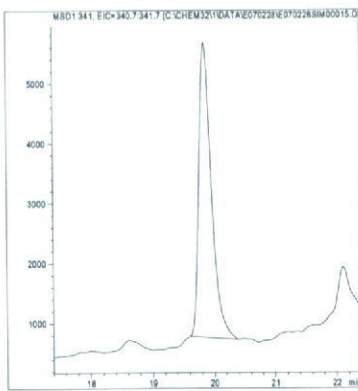
筋肉 (0.01mg/kg 添加)



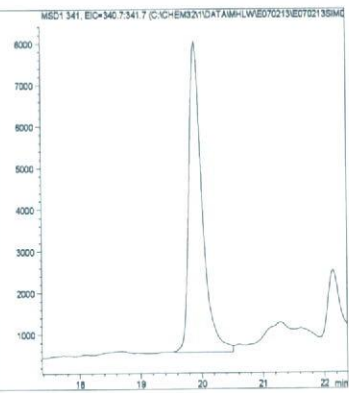
脂肪 (0.01mg/kg 添加)



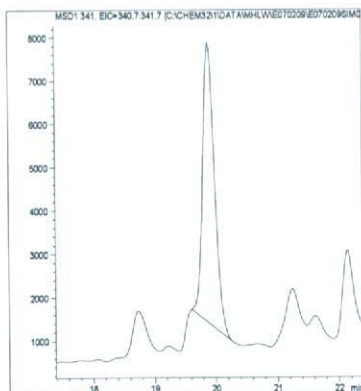
肝臓 (0.01mg/kg 添加)



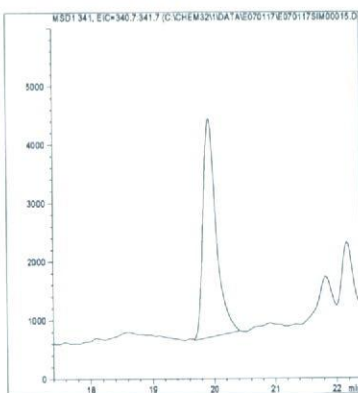
うなぎ (0.01mg/kg 添加)



えび (0.01mg/kg 添加)



牛乳 (0.01mg/kg 添加)



卵 (0.01mg/kg 添加)

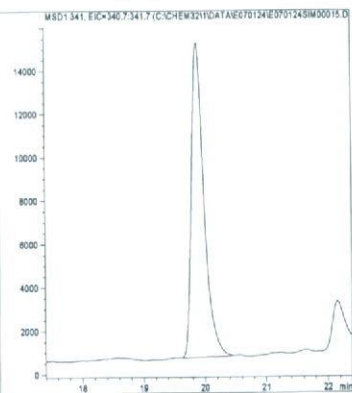
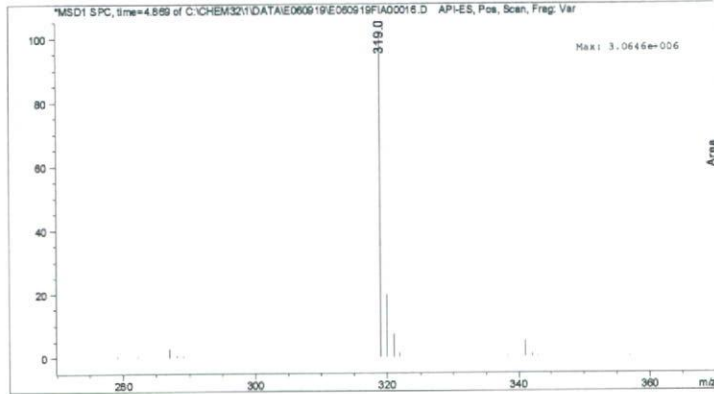


図 2. 最小検出量評価, 標準品, 回収試料のマスプロトグラム (ピリダフェンチオン)

マススペクトル



検量線

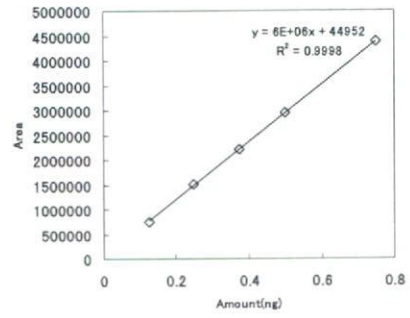
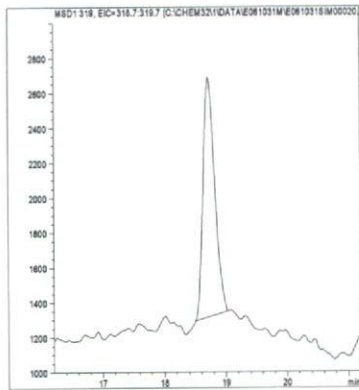
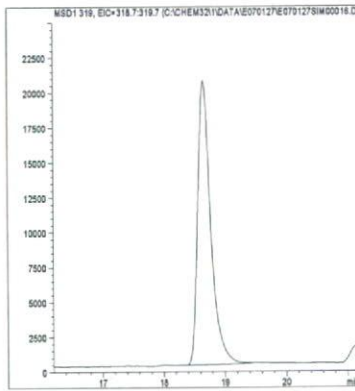


図 1. マススペクトルおよび検量線 (ピリフタリド)

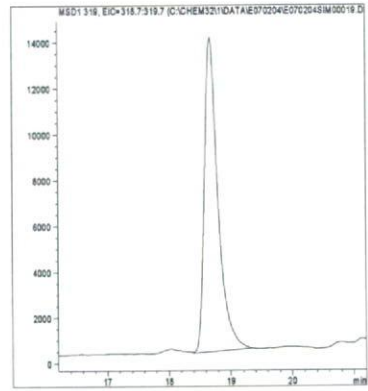
最小検出量評価 (0.0005ng)



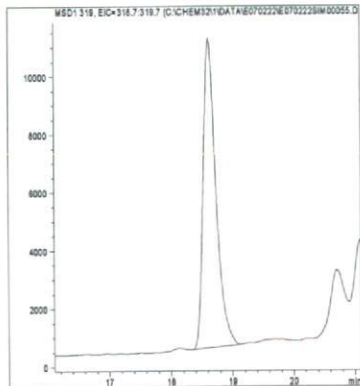
標準品 (0.05ng)



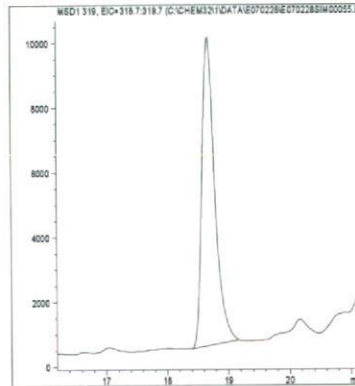
筋肉 (0.01mg/kg 添加)



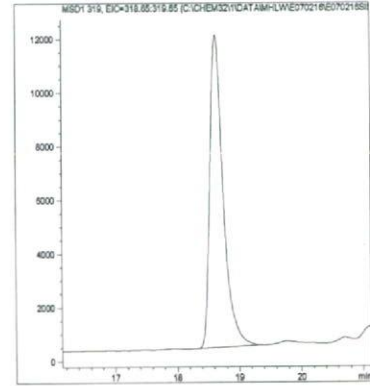
脂肪 (0.01mg/kg 添加)



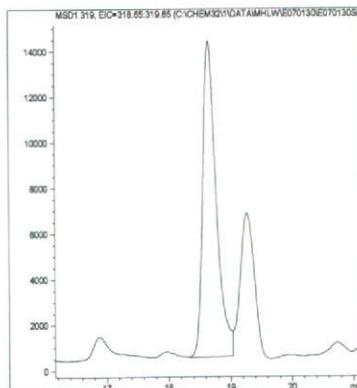
肝臓 (0.01mg/kg 添加)



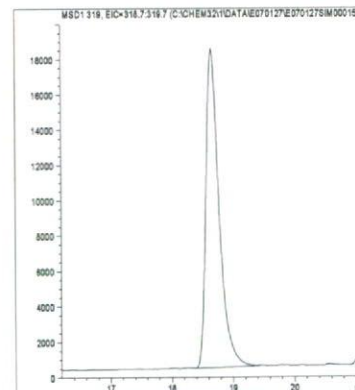
うなぎ (0.01mg/kg 添加)



えび (0.01mg/kg 添加)



牛乳 (0.01mg/kg 添加)



卵 (0.01mg/kg 添加)

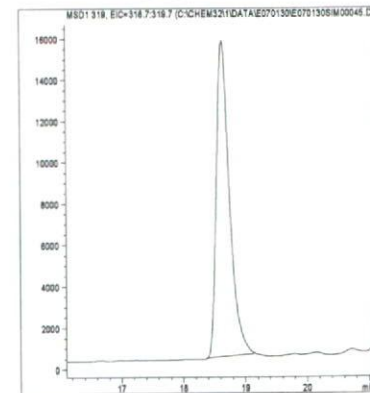
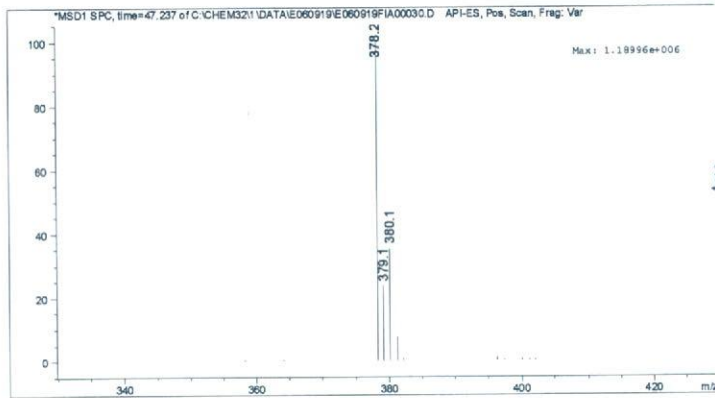


図 2. 最小検出量評価, 標準品, 回収試料のマスクロマトグラム (ピリフタリド)

マススペクトル



検量線

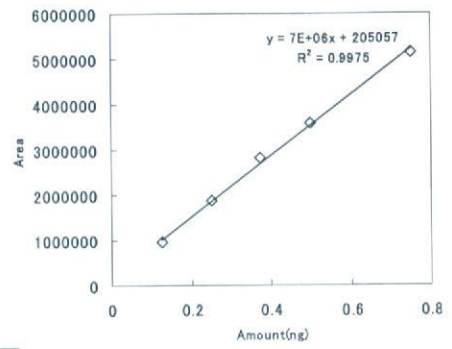
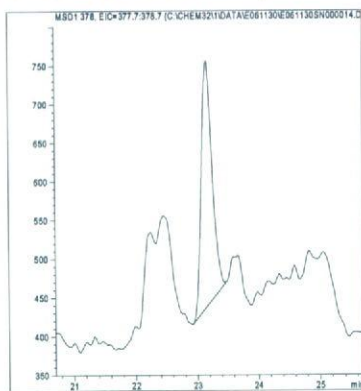
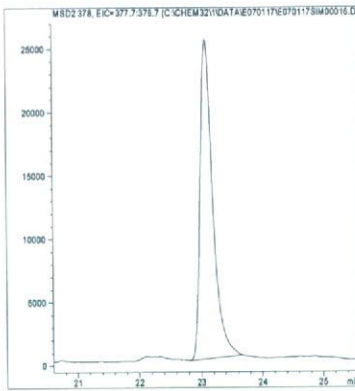


図1. マススペクトルおよび検量線 (ピリミジフェン)

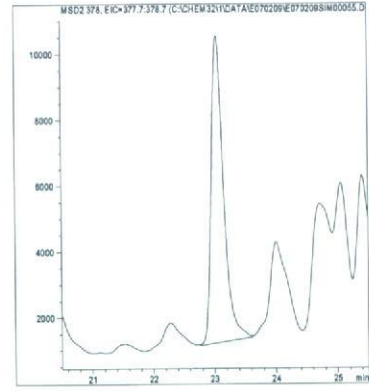
最小検出量評価 (0.0001ng)



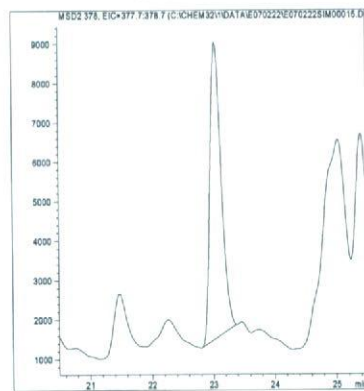
標準品 (0.05ng)



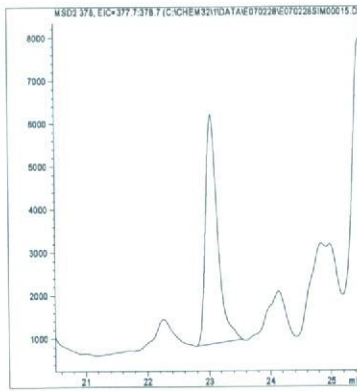
筋肉 (0.01mg/kg 添加)



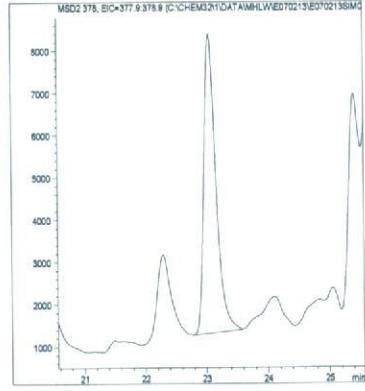
脂肪 (0.01mg/kg 添加)



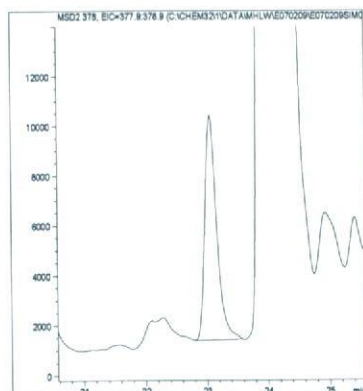
肝臓 (0.01mg/kg 添加)



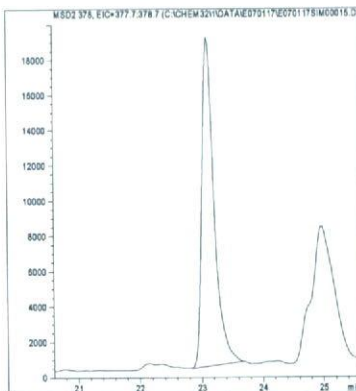
うなぎ (0.01mg/kg 添加)



えび (0.01mg/kg 添加)



牛乳 (0.01mg/kg 添加)



卵 (0.01mg/kg 添加)

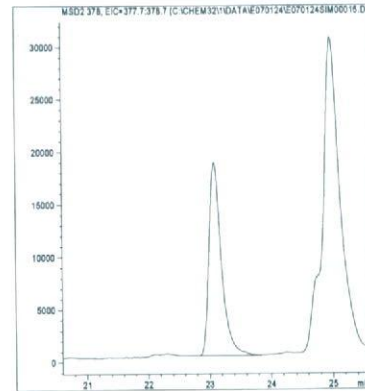
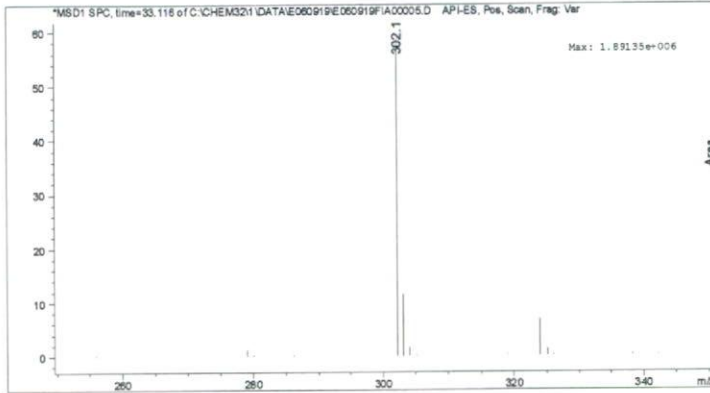


図2. 最小検出量評価, 標準品, 回収試料のマスキロマトグラム (ピリミジフェン)

マススペクトル



検量線

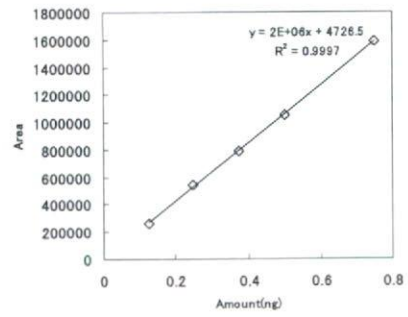
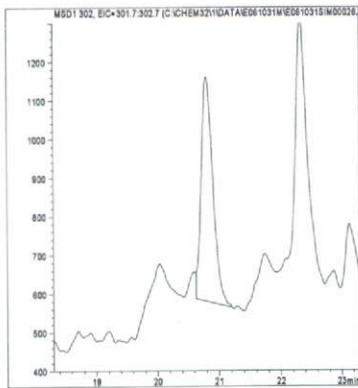
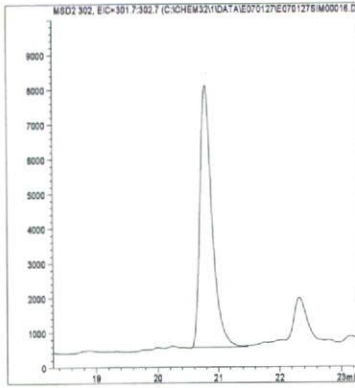


図1. マススペクトルおよび検量線 (フェノキシカルブ)

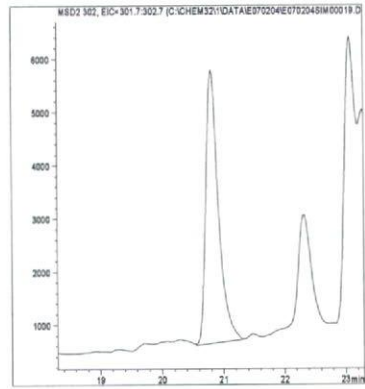
最小検出量評価 (0.001ng)



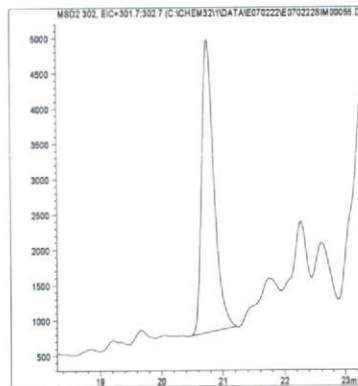
標準品 (0.05ng)



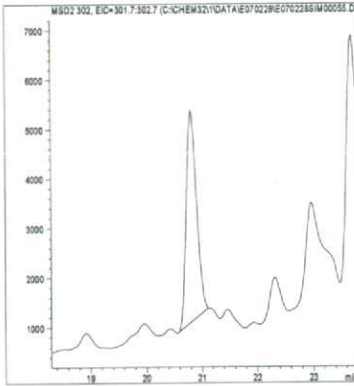
筋肉 (0.01mg/kg 添加)



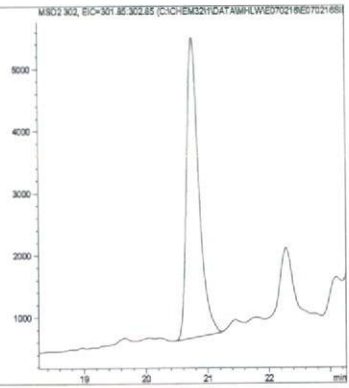
脂肪 (0.01mg/kg 添加)



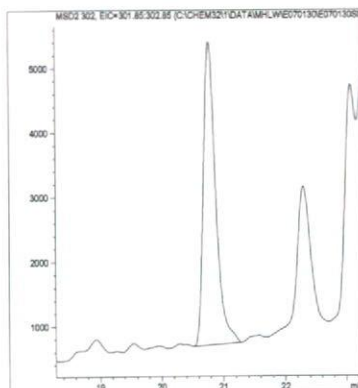
肝臓 (0.01mg/kg 添加)



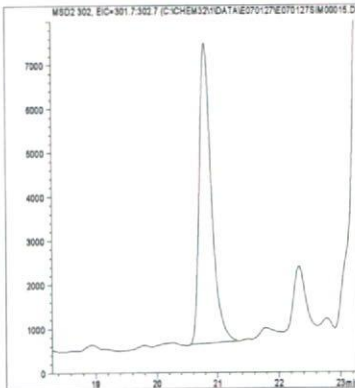
うなぎ (0.01mg/kg 添加)



えび (0.01mg/kg 添加)



牛乳 (0.01mg/kg 添加)



卵 (0.01mg/kg 添加)

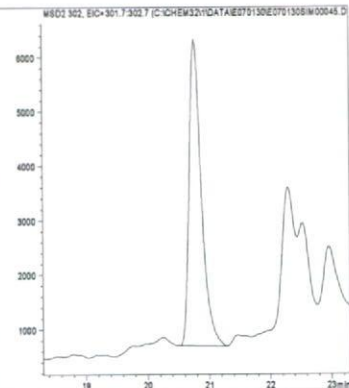
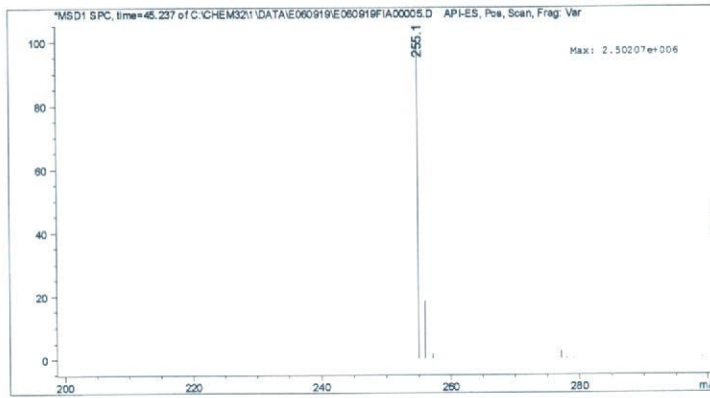


図2. 最小検出量評価, 標準品, 回収試料のマスクロマトグラム (フェノキシカルブ)

マススペクトル



検量線

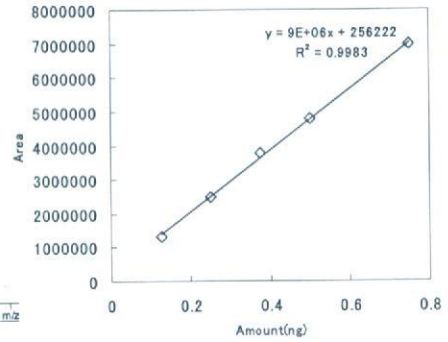
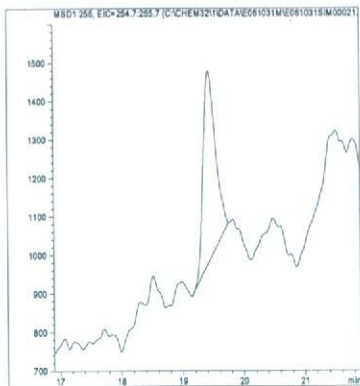
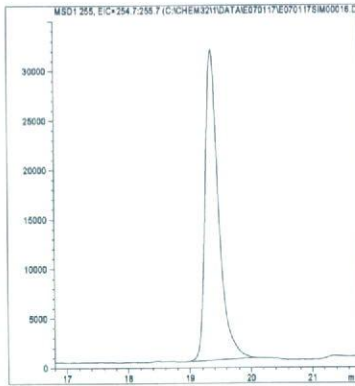


図 1. マススペクトルおよび検量線 (フェリムゾン)

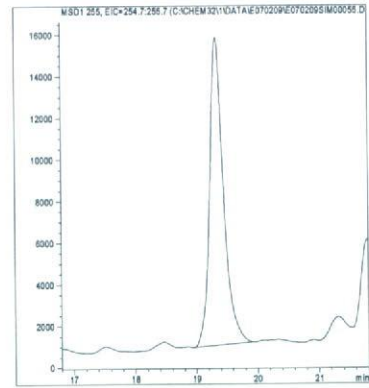
最小検出量評価 (0.0001ng)



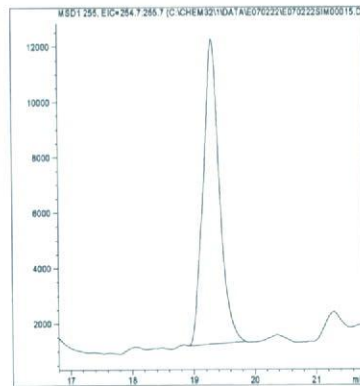
標準品 (0.05ng)



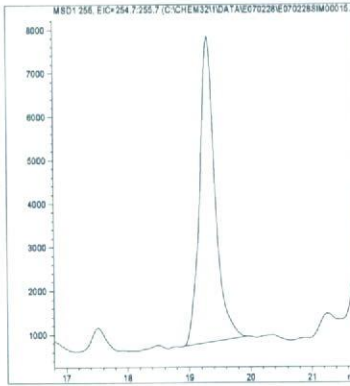
筋肉 (0.01mg/kg 添加)



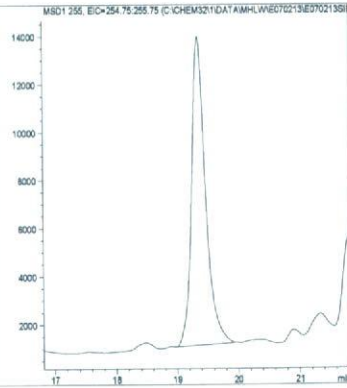
脂肪 (0.01mg/kg 添加)



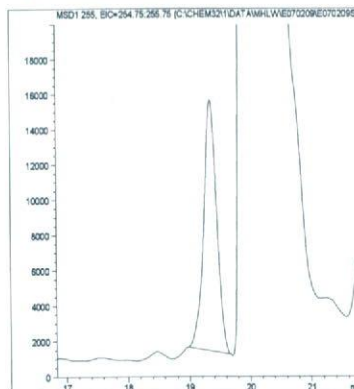
肝臓 (0.01mg/kg 添加)



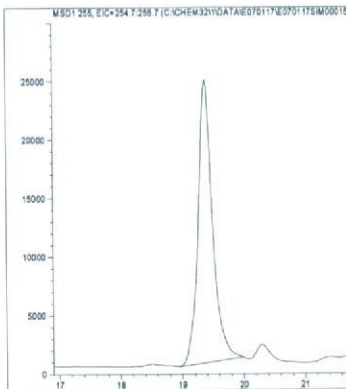
うなぎ (0.01mg/kg 添加)



えび (0.01mg/kg 添加)



牛乳 (0.01mg/kg 添加)



卵 (0.01mg/kg 添加)

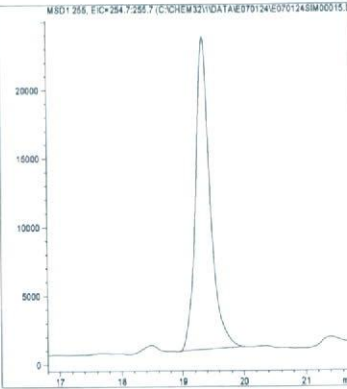
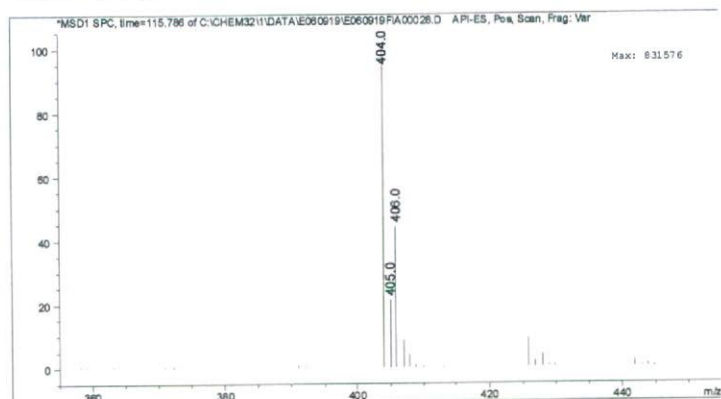


図 2. 最小検出量評価, 標準品, 回収試料のマスキンググラム (フェリムゾン)

マススペクトル



検量線

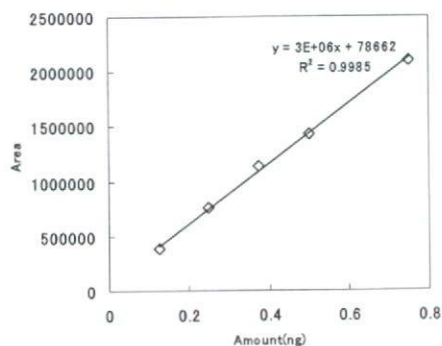
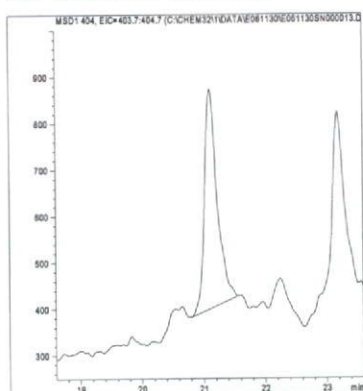
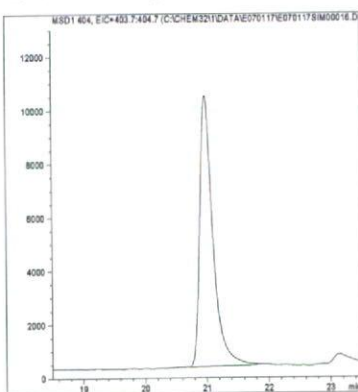


図1. マススペクトルおよび検量線 (フルチアセットメチル)

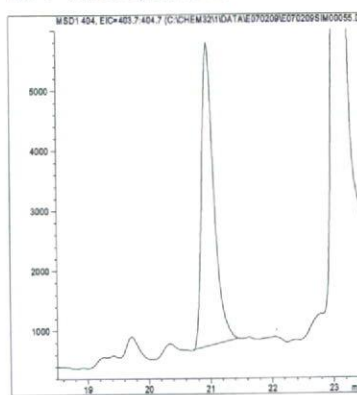
最小検出量評価 (0.0005ng)



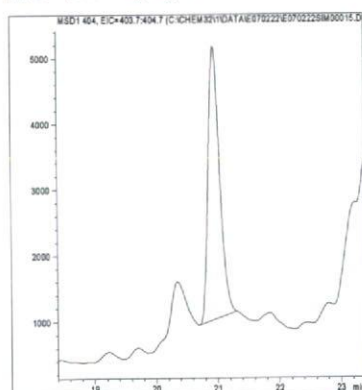
標準品 (0.05ng)



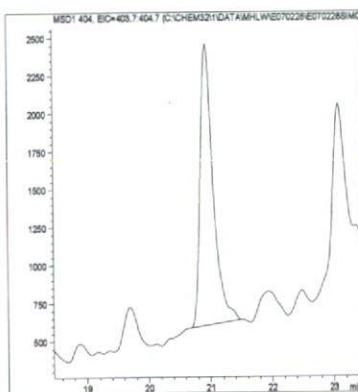
筋肉 (0.01mg/kg 添加)



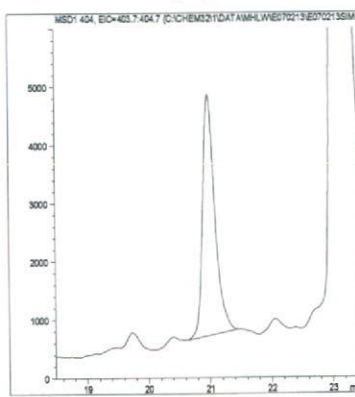
脂肪 (0.01mg/kg 添加)



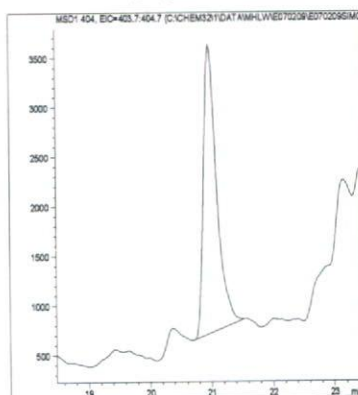
肝臓 (0.01mg/kg 添加)



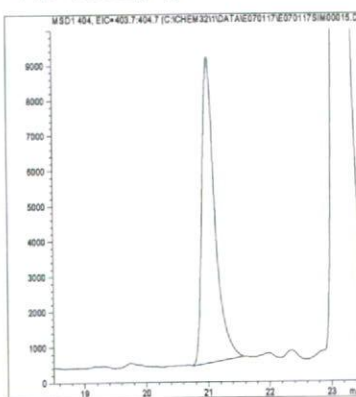
うなぎ (0.01mg/kg 添加)



えび (0.01mg/kg 添加)



牛乳 (0.01mg/kg 添加)



卵 (0.01mg/kg 添加)

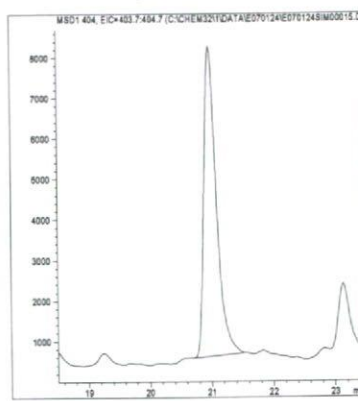
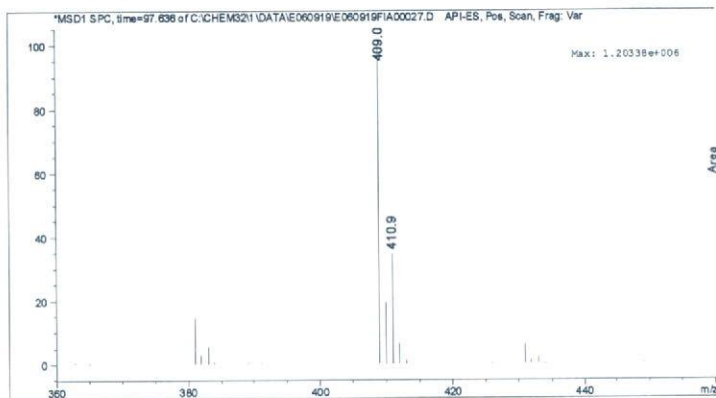


図2. 最小検出量評価, 標準品, 回収試料のマスクロマトグラム (フルチアセットメチル)

マススペクトル



検量線

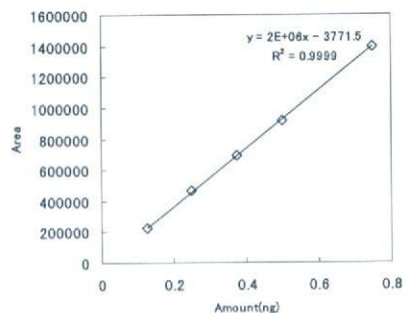
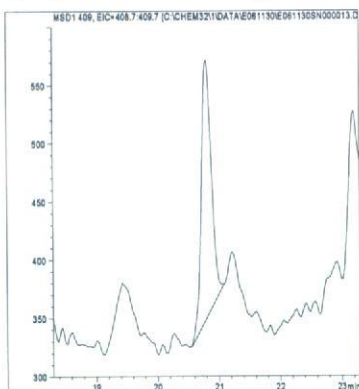
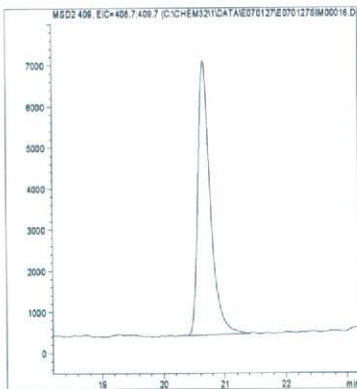


図 1. マススペクトルおよび検量線 (フルフェンピルエチル)

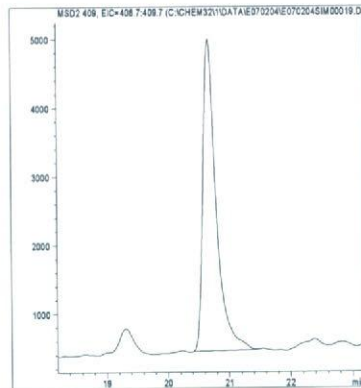
最小検出量評価 (0.0005ng)



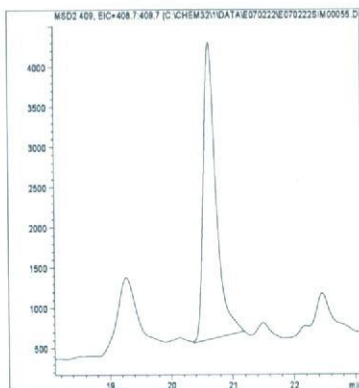
標準品 (0.05ng)



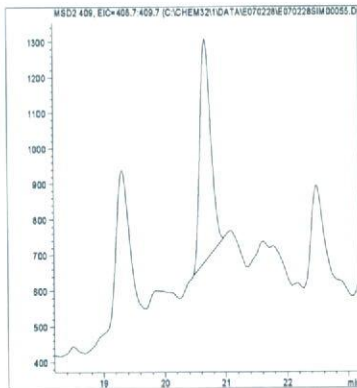
筋肉 (0.01mg/kg 添加)



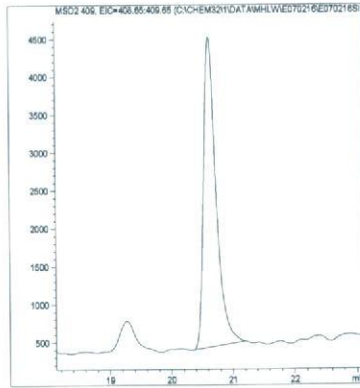
脂肪 (0.01mg/kg 添加)



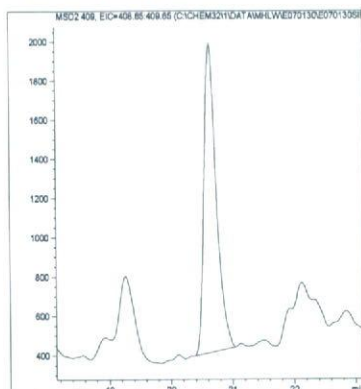
肝臓 (0.01mg/kg 添加)



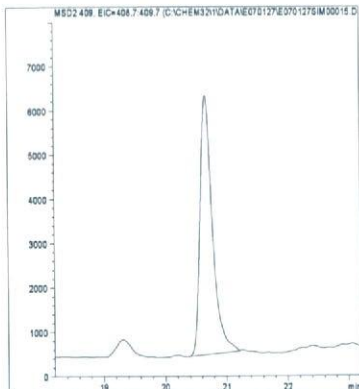
うなぎ (0.01mg/kg 添加)



えび (0.01mg/kg 添加)



牛乳 (0.01mg/kg 添加)



卵 (0.01mg/kg 添加)

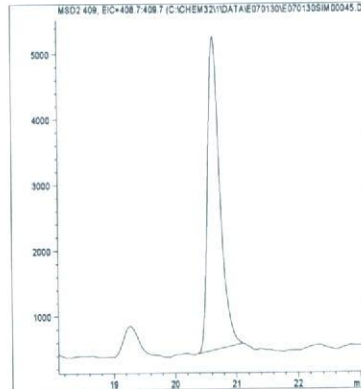
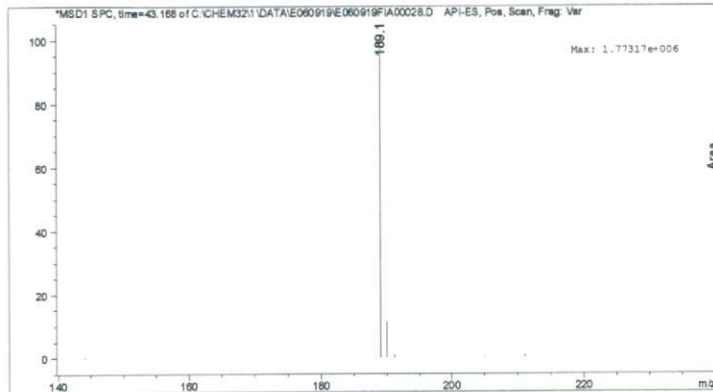


図 2. 最小検出量評価, 標準品, 回収試料のマスキロマトグラム (フルフェンピルエチル)



マススペクトル



検量線

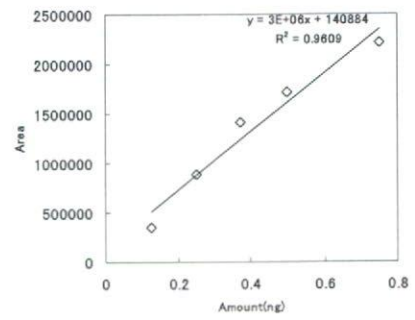
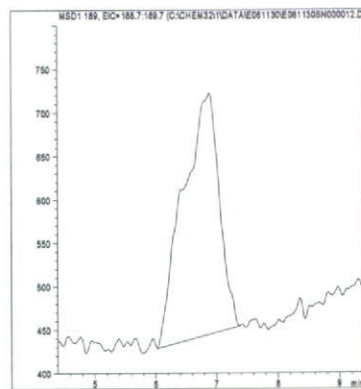
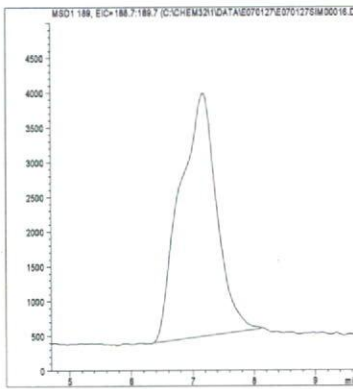


図 1. マススペクトルおよび検量線 (プロパモカルブ)

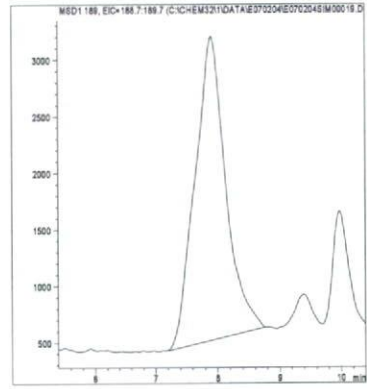
最小検出量評価 (0.001ng)



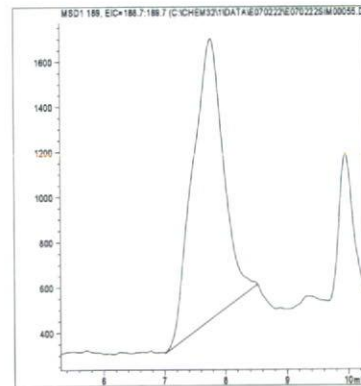
標準品 (0.05ng)



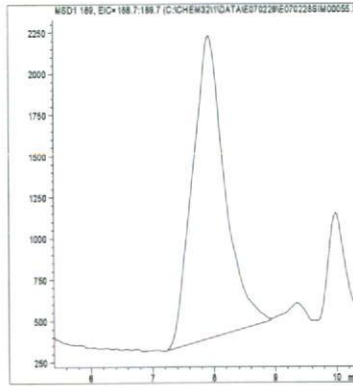
筋肉 (0.01mg/kg 添加)



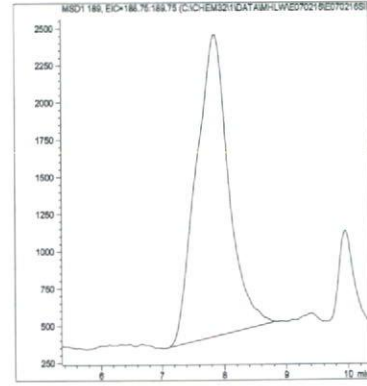
脂肪 (0.01mg/kg 添加)



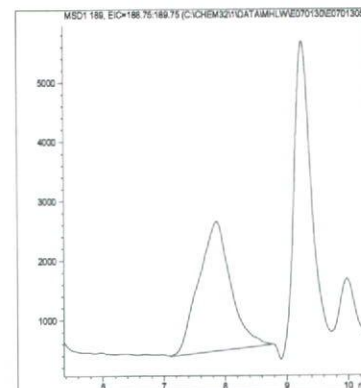
肝臓 (0.01mg/kg 添加)



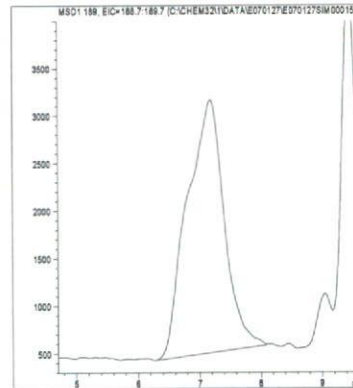
うなぎ (0.01mg/kg 添加)



えび (0.01mg/kg 添加)



牛乳 (0.01mg/kg 添加)



卵 (0.01mg/kg 添加)

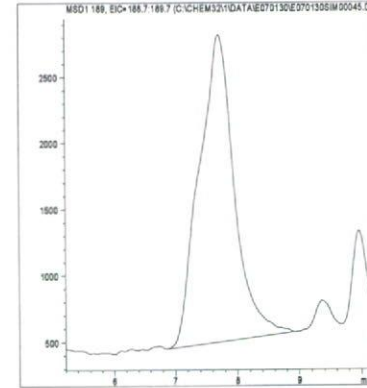
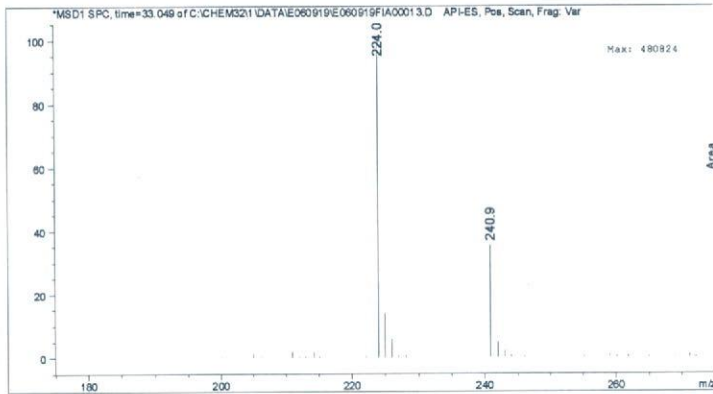


図 2. 最小検出量評価, 標準品, 回収試料のマスクロマトグラム (プロパモカルブ)

マススペクトル



検量線

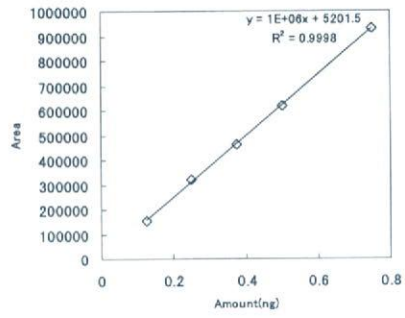
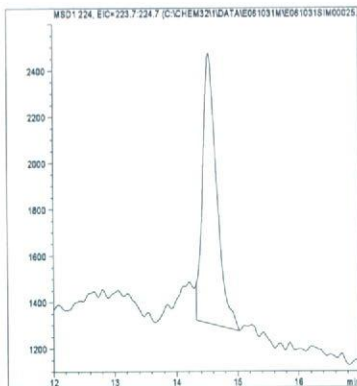
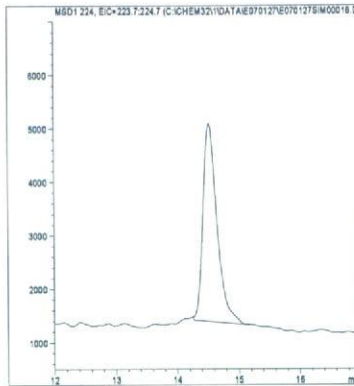


図 1. マススペクトルおよび検量線 (プロベナゾール)

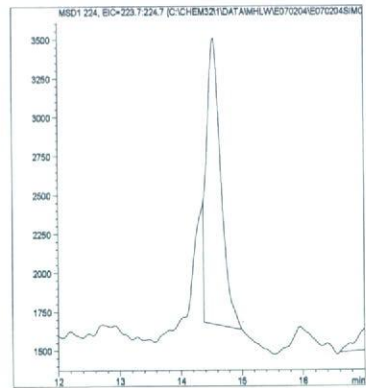
最小検出量評価 (0.005ng)



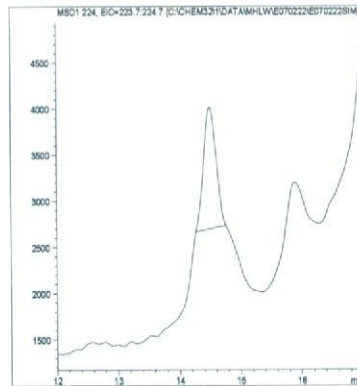
標準品 (0.05ng)



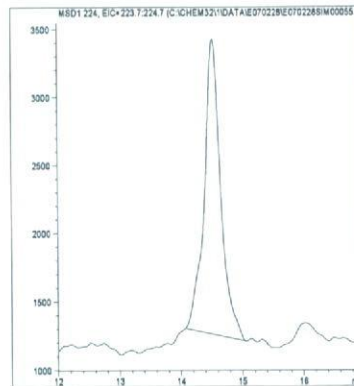
筋肉 (0.01mg/kg 添加)



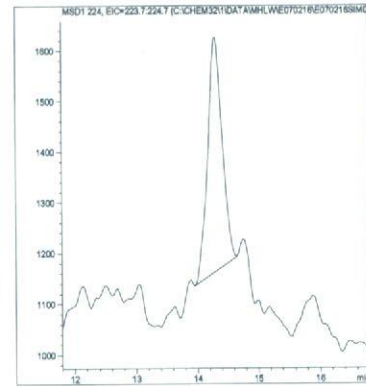
脂肪 (0.01mg/kg 添加)



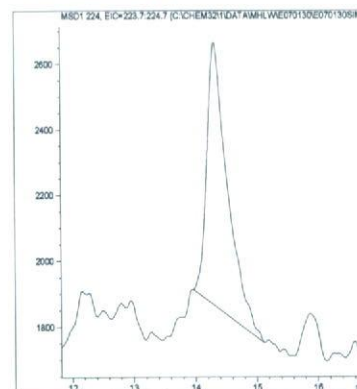
肝臓 (0.01mg/kg 添加)



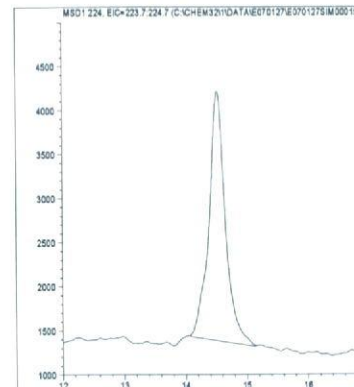
うなぎ (0.01mg/kg 添加)



えび (0.01mg/kg 添加)



牛乳 (0.01mg/kg 添加)



卵 (0.01mg/kg 添加)

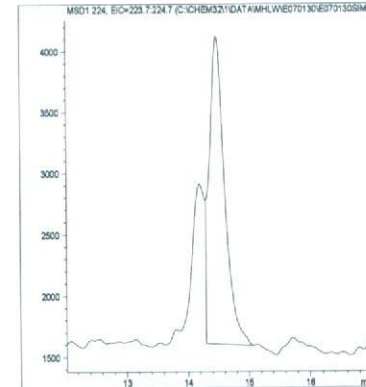
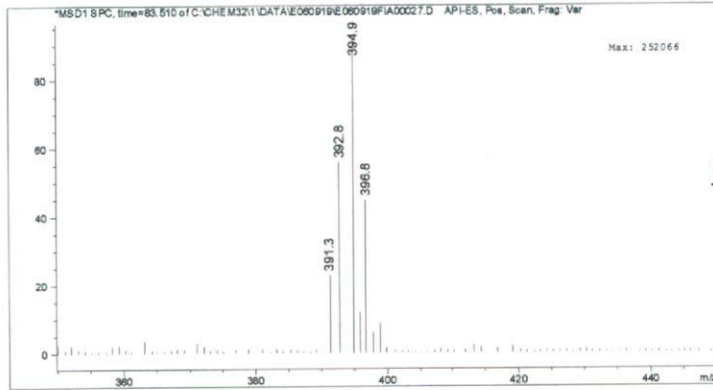


図 2. 最小検出量評価, 標準品, 回収試料のマスキングマトグラム (プロベナゾール)

マススペクトル



検量線

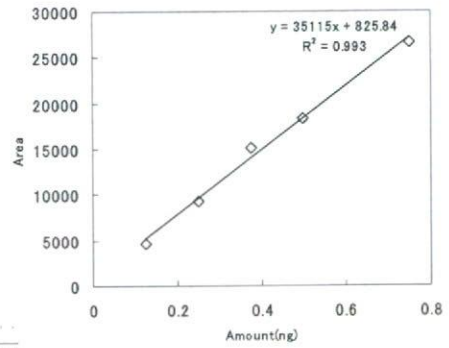
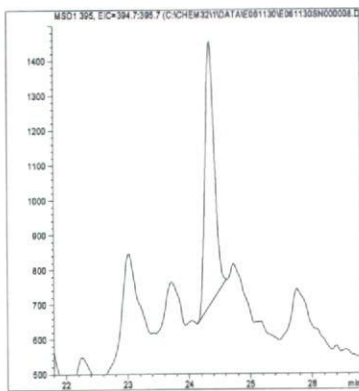
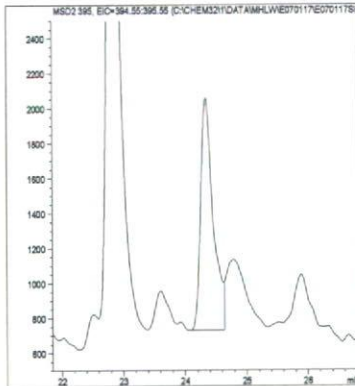


図1. マススペクトルおよび検量線 (プロモホスエチル)

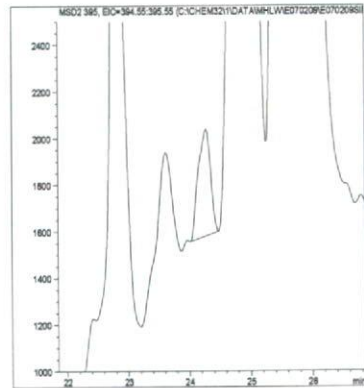
最小検出量評価 (0.1ng)



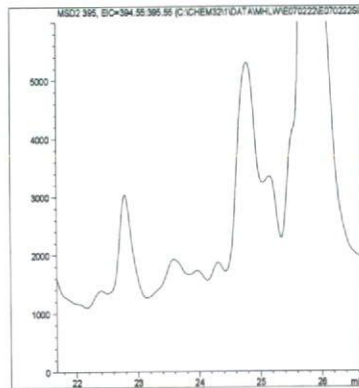
標準品 (0.5ng)



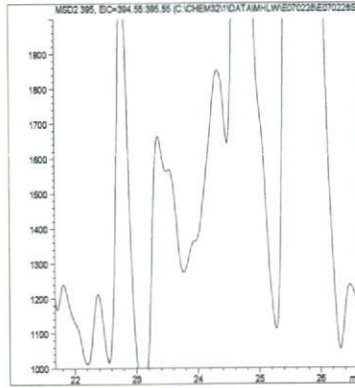
筋肉 (0.1mg/kg 添加)



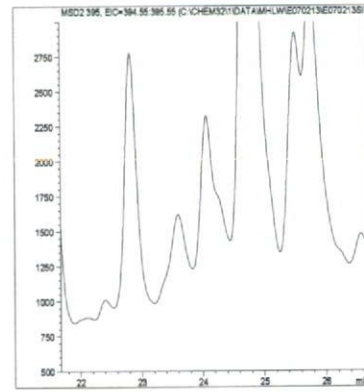
脂肪 (0.1mg/kg 添加)



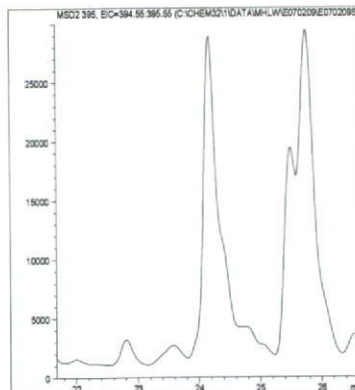
肝臓 (0.1mg/kg 添加)



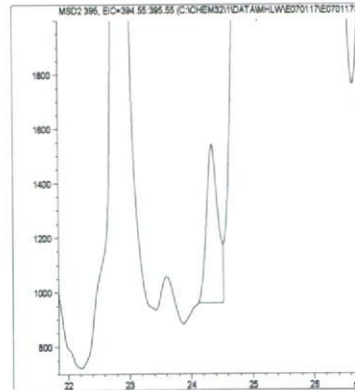
うなぎ (0.1mg/kg 添加)



えび (0.1mg/kg 添加)



牛乳 (0.1mg/kg 添加)



卵 (0.1mg/kg 添加)

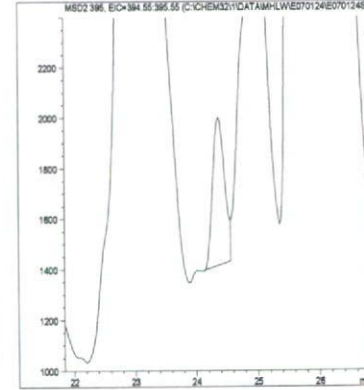
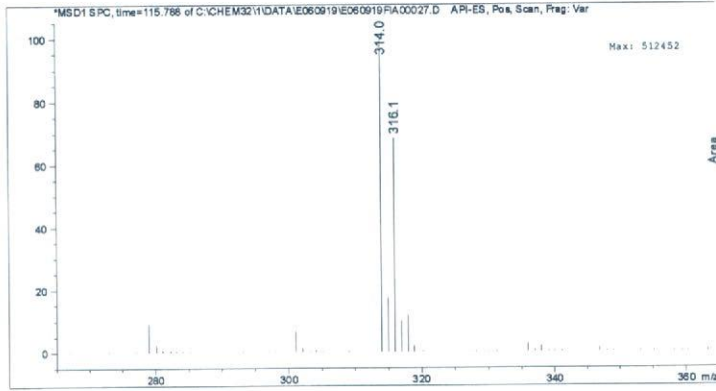


図2. 最小検出量評価, 標準品, 回収試料のマスクロマトグラム (プロモホスエチル)

マススペクトル



検量線

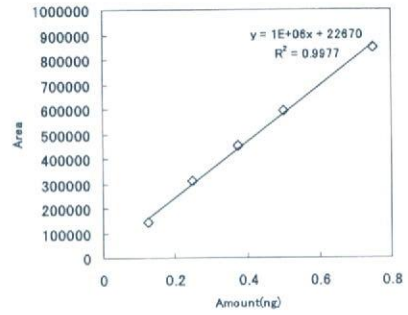
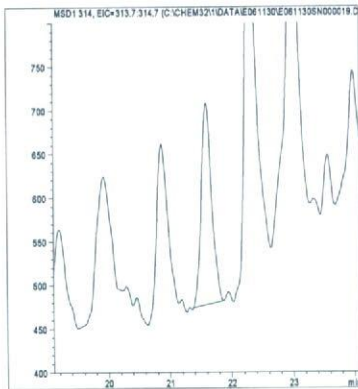
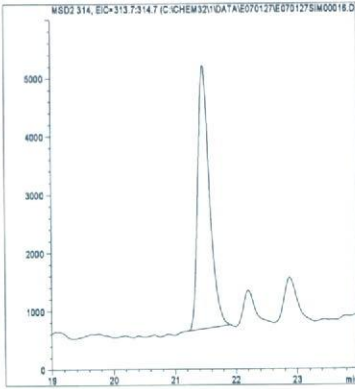


図1. マススペクトルおよび検量線 (ヘキサコナゾール)

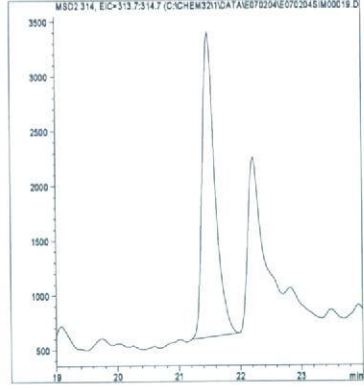
最小検出量評価 (0.001ng)



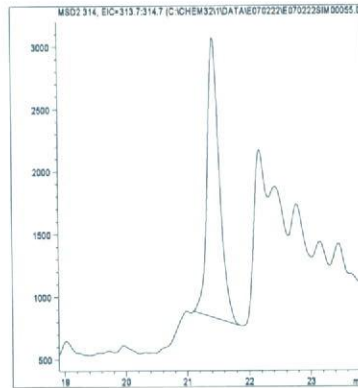
標準品 (0.05ng)



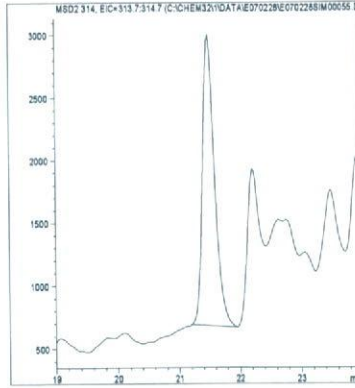
筋肉 (0.01mg/kg 添加)



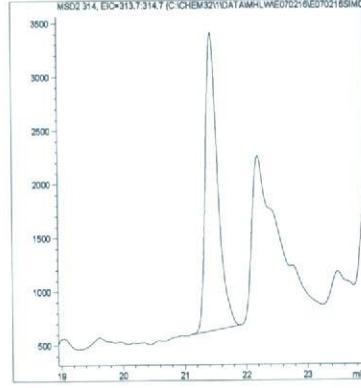
脂肪 (0.01mg/kg 添加)



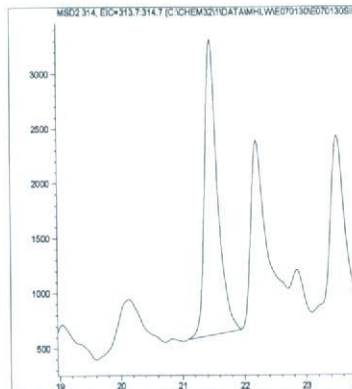
肝臓 (0.01mg/kg 添加)



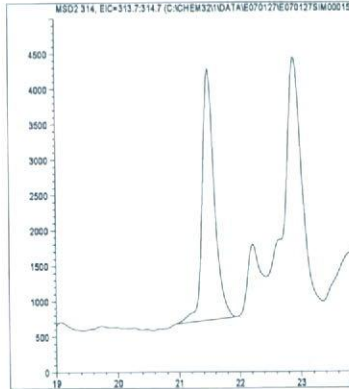
うなぎ (0.01mg/kg 添加)



えび (0.01mg/kg 添加)



牛乳 (0.01mg/kg 添加)



卵 (0.01mg/kg 添加)

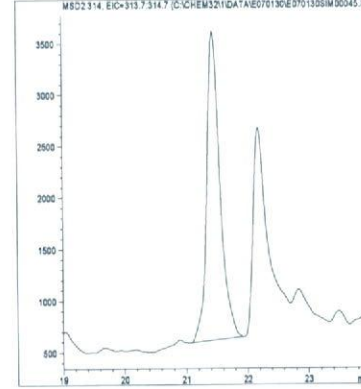
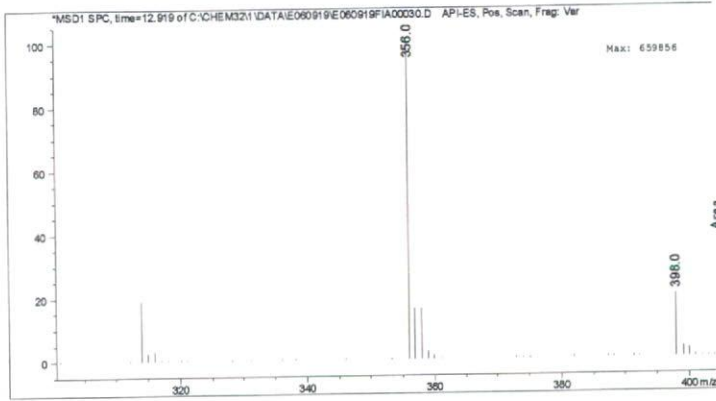


図2. 最小検出量評価, 標準品, 回収試料のマスキロマトグラム (ヘキサコナゾール)

マススペクトル



検量線

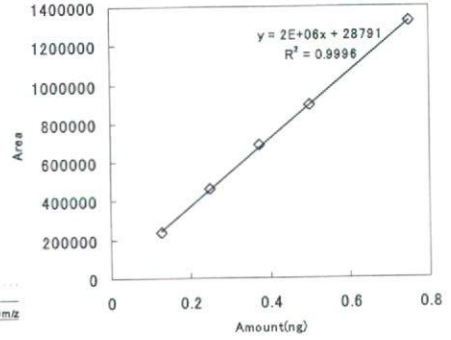
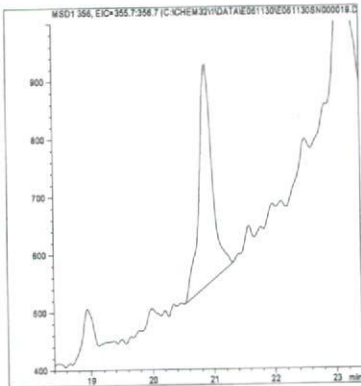
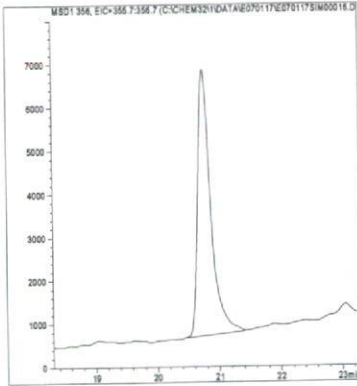


図 1. マススペクトルおよび検量線 (ペンスリド)

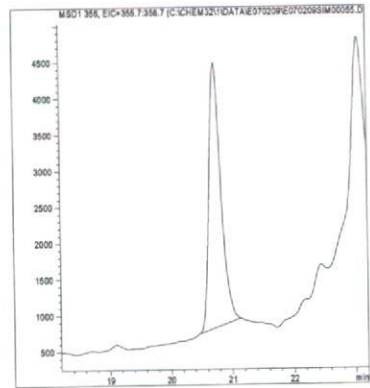
最小検出量評価 (0.001ng)



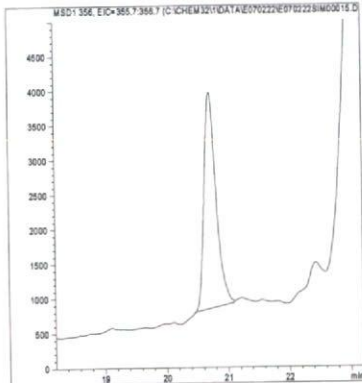
標準品 (0.05ng)



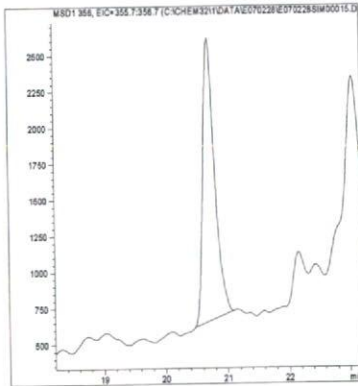
筋肉 (0.01mg/kg 添加)



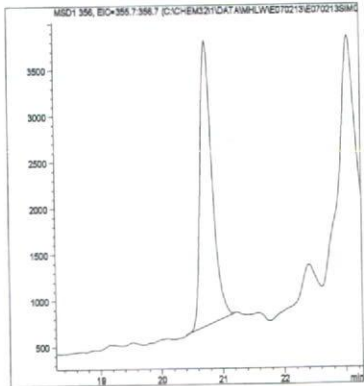
脂肪 (0.01mg/kg 添加)



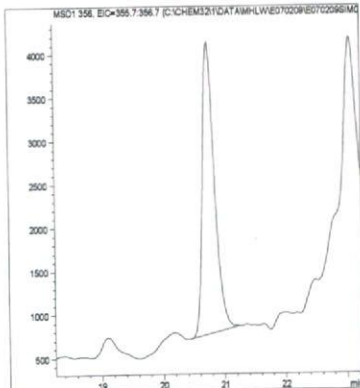
肝臓 (0.01mg/kg 添加)



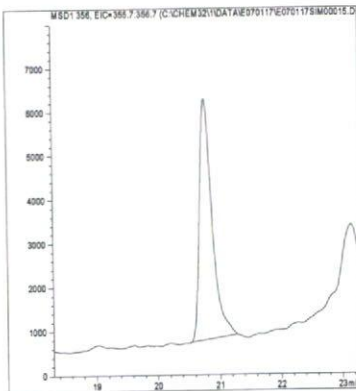
うなぎ (0.01mg/kg 添加)



えび (0.01mg/kg 添加)



牛乳 (0.01mg/kg 添加)



卵 (0.01mg/kg 添加)

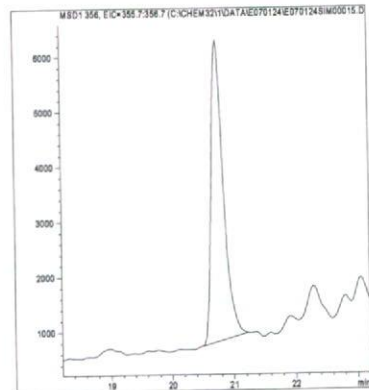
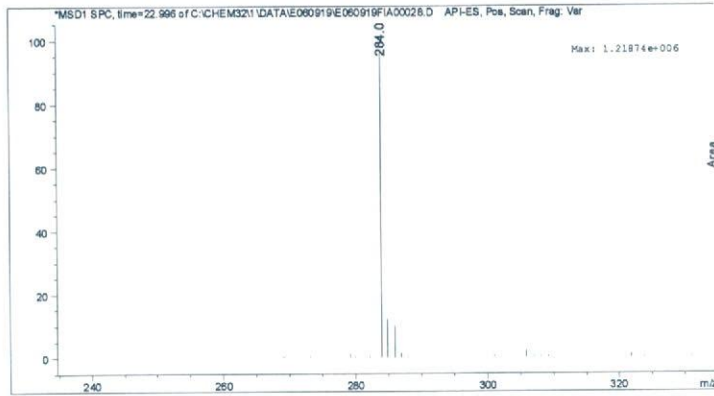


図 2. 最小検出量評価, 標準品, 回収試料のマスクロマトグラム (ペンスリド)

マススペクトル



検量線

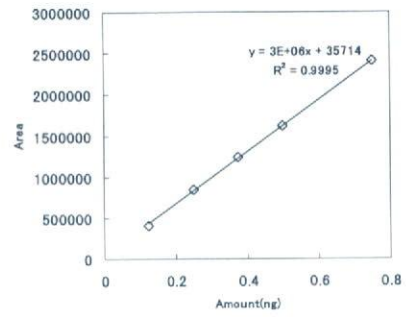
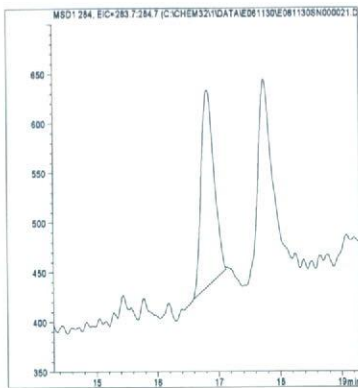
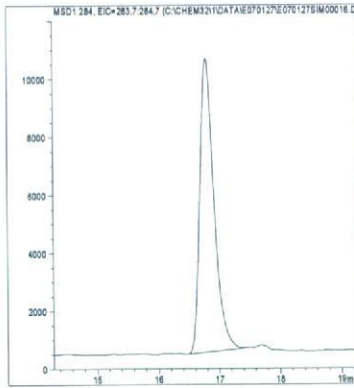


図 1. マススペクトルおよび検量線 (ホスチアゼート)

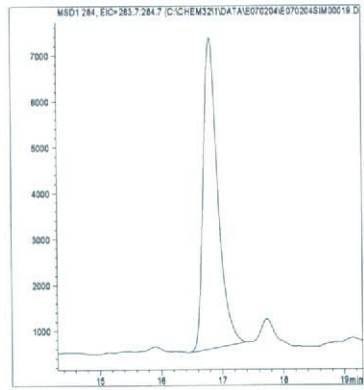
最小検出量評価 (0.0001ng)



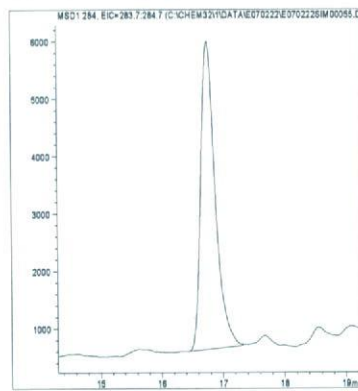
標準品 (0.05ng)



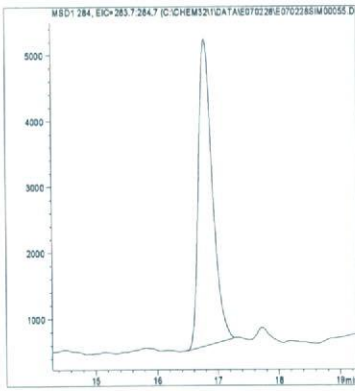
筋肉 (0.01mg/kg 添加)



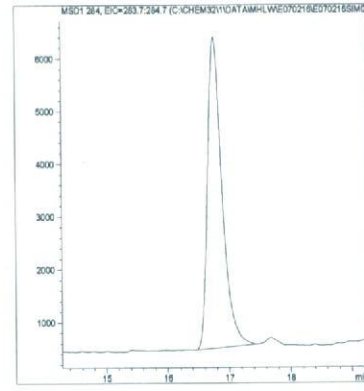
脂肪 (0.01mg/kg 添加)



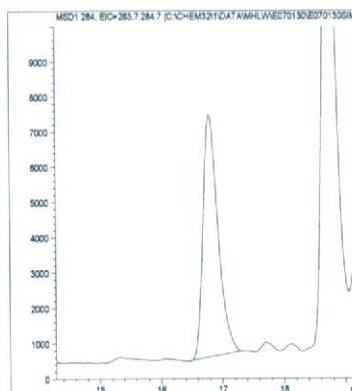
肝臓 (0.01mg/kg 添加)



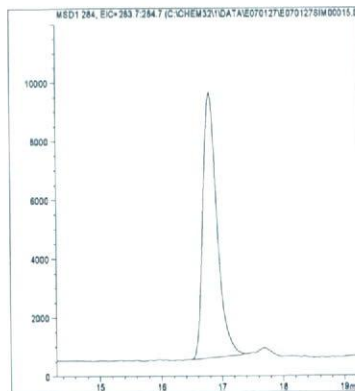
うなぎ (0.01mg/kg 添加)



えび (0.01mg/kg 添加)



牛乳 (0.01mg/kg 添加)



卵 (0.01mg/kg 添加)

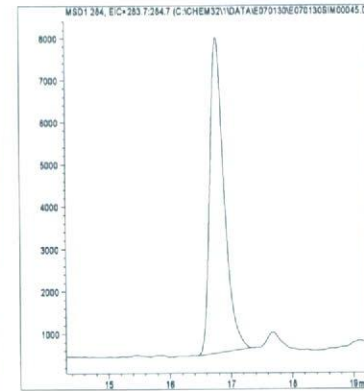
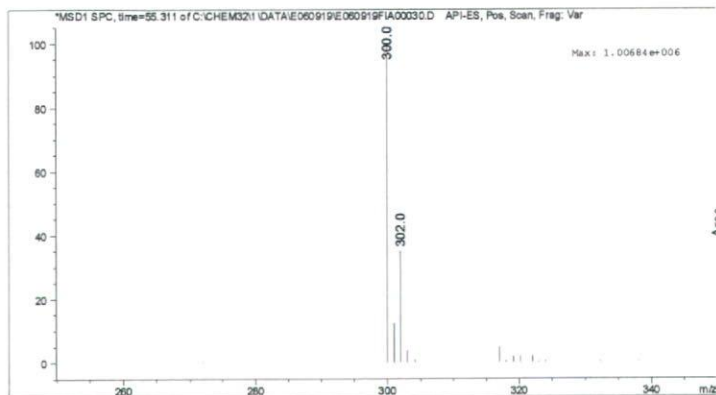


図 2. 最小検出量評価, 標準品, 回収試料のマスプロトグラム (ホスチアゼート)

マススペクトル



検量線

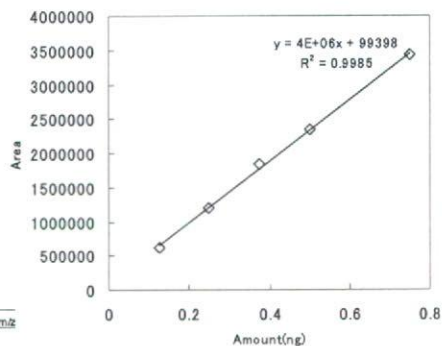
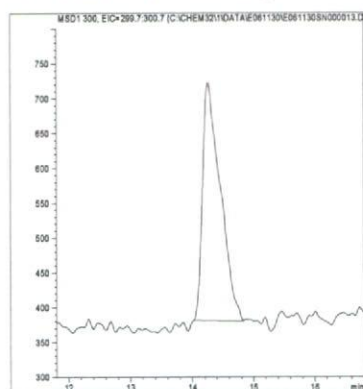
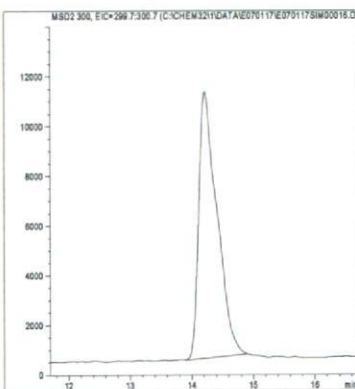


図 1. マススペクトルおよび検量線 (ホスファミドン)

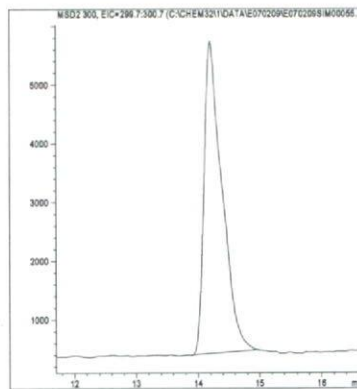
最小検出量評価 (0.0005ng)



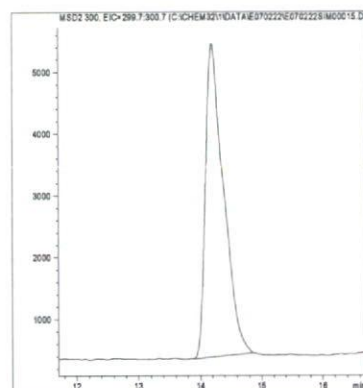
標準品 (0.05ng)



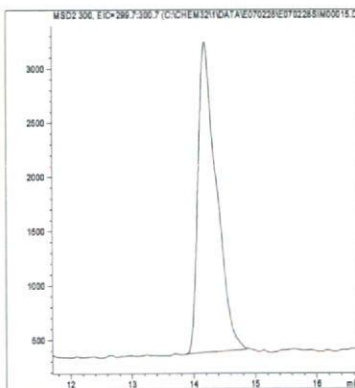
筋肉 (0.01mg/kg 添加)



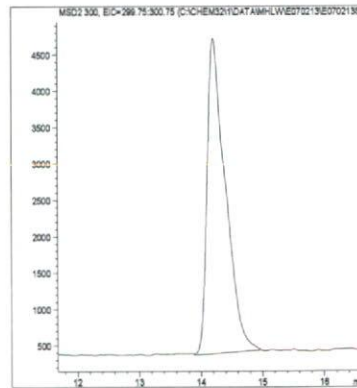
脂肪 (0.01mg/kg 添加)



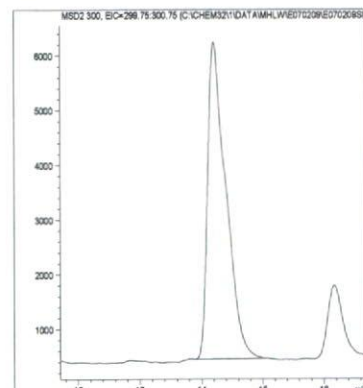
肝臓 (0.01mg/kg 添加)



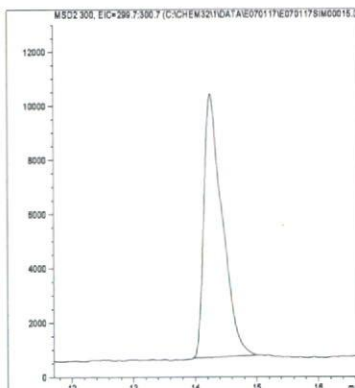
うなぎ (0.01mg/kg 添加)



えび (0.01mg/kg 添加)



牛乳 (0.01mg/kg 添加)



卵 (0.01mg/kg 添加)

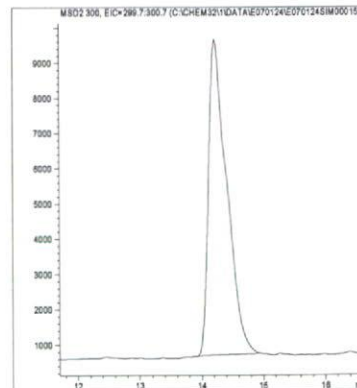
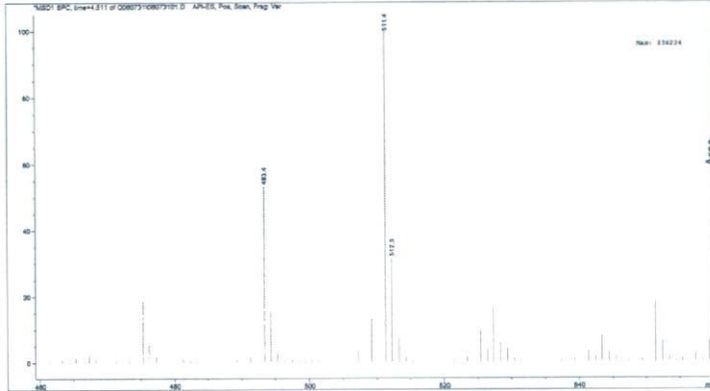


図 2. 最小検出量評価, 標準品, 回収試料のマスクロマトグラム (ホスファミドン)

マススペクトル



検量線

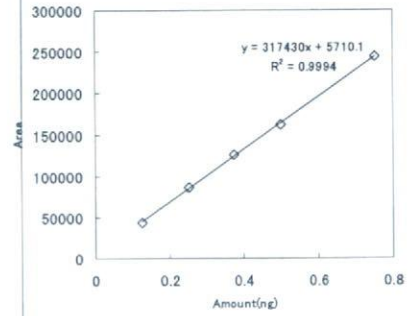
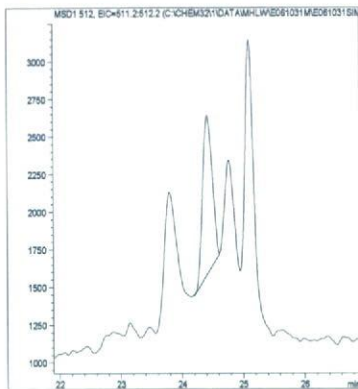
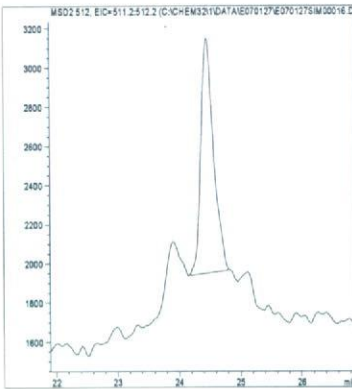


図 1. マススペクトルおよび検量線 (ミルベメクチン A3)

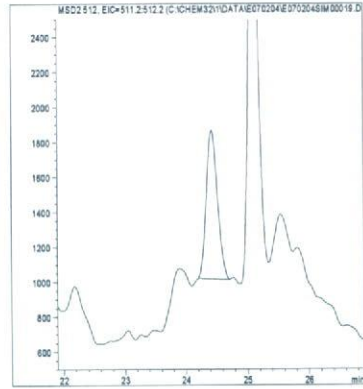
最小検出量評価 (0.01ng)



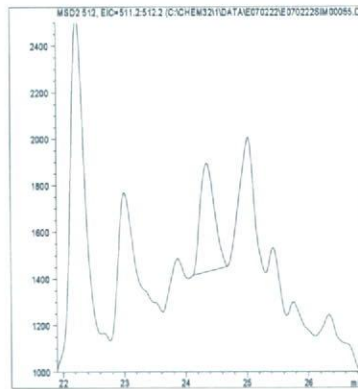
標準品 (0.05ng)



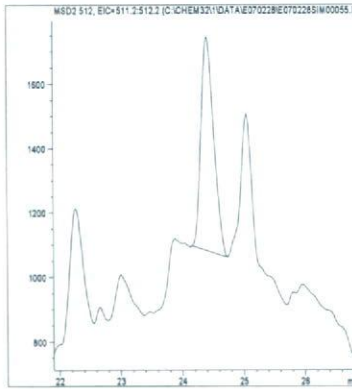
筋肉 (0.01mg/kg 添加)



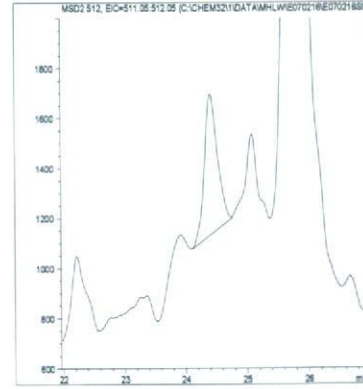
脂肪 (0.01mg/kg 添加)



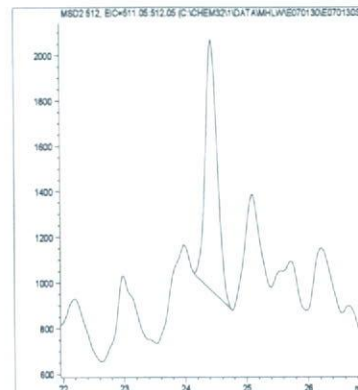
肝臓 (0.01mg/kg 添加)



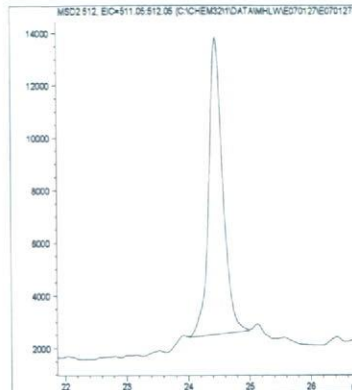
うなぎ (0.01mg/kg 添加)



えび (0.01mg/kg 添加)



牛乳 (0.1mg/kg 添加)



卵 (0.01mg/kg 添加)

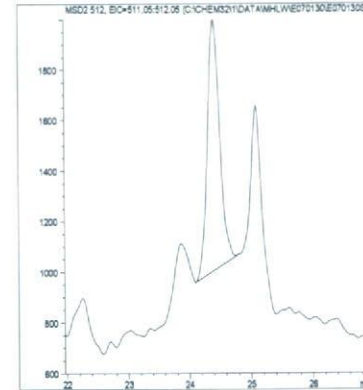
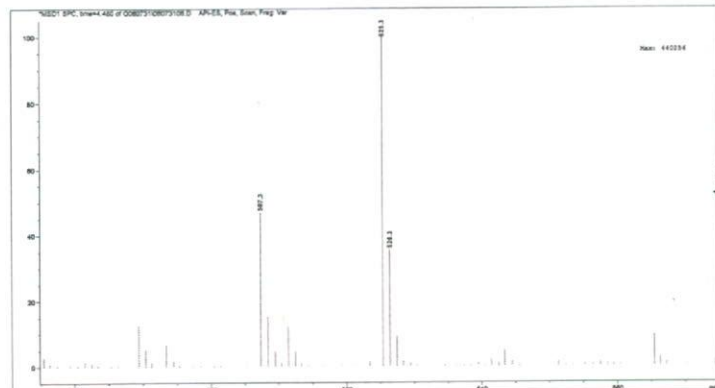


図 2. 最小検出量評価, 標準品, 回収試料のマスクロマトグラム (ミルベメクチン A3)



マススペクトル



検量線

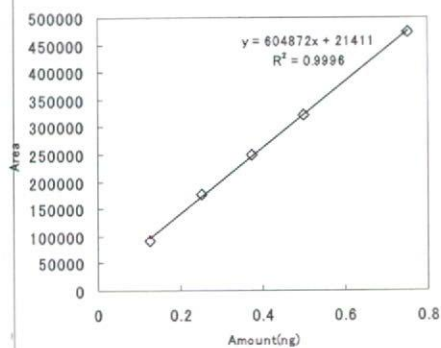
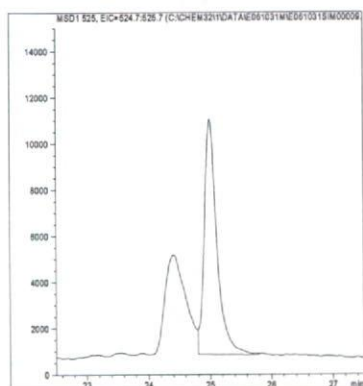
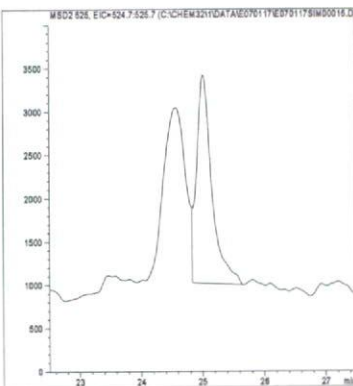


図1. マススペクトルおよび検量線 (ミルベクチン A4)

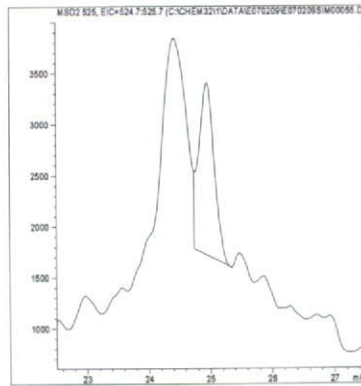
最小検出量評価 (0.05ng)



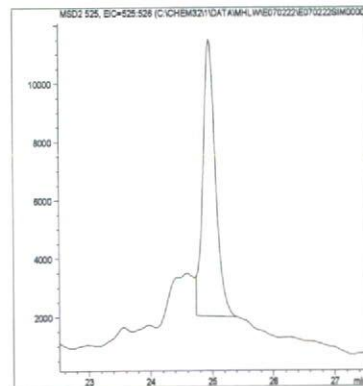
標準品 (0.05ng)



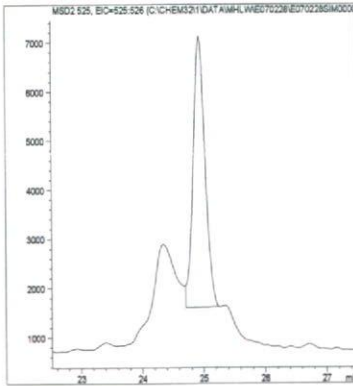
筋肉 (0.01mg/kg 添加)



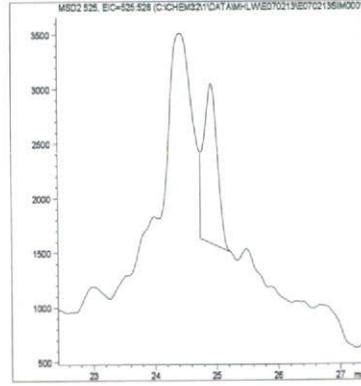
脂肪 (0.1mg/kg 添加)



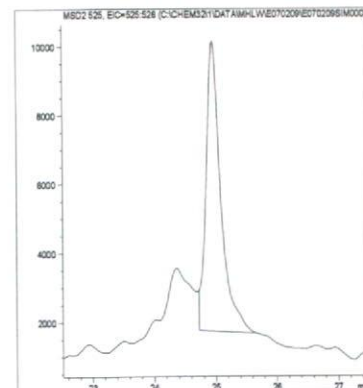
肝臓 (0.1mg/kg 添加)



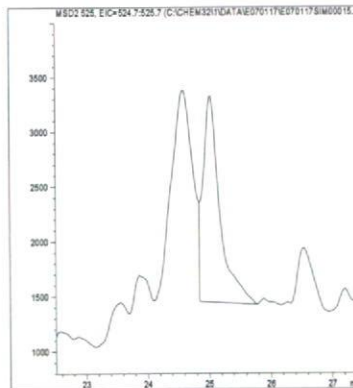
うなぎ (0.01mg/kg 添加)



えび (0.1mg/kg 添加)



牛乳 (0.01mg/kg 添加)



卵 (0.01mg/kg 添加)

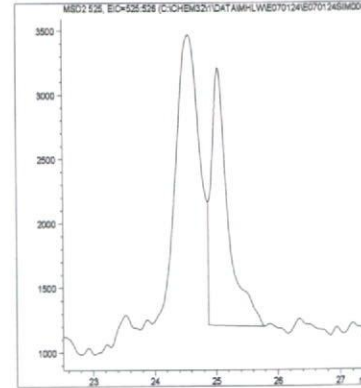
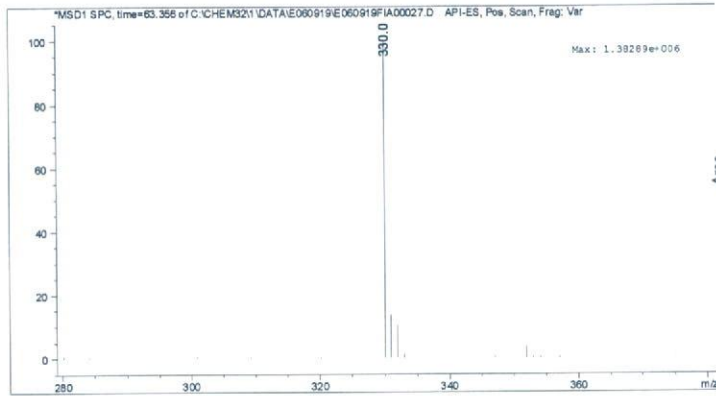


図2. 最小検出量評価, 標準品, 回収試料のマスクロマトグラム (ミルベクチン A4)

マススペクトル



検量線

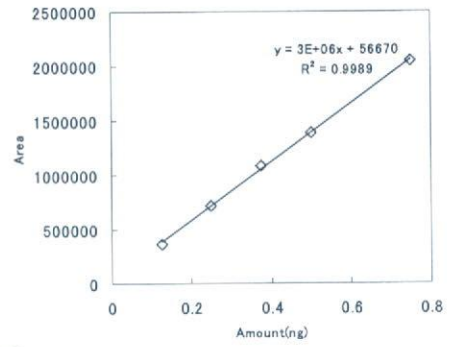
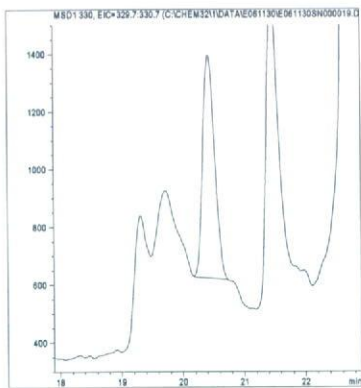
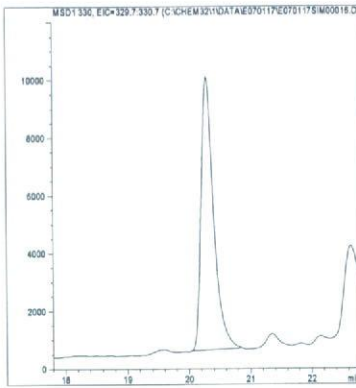


図1. マススペクトルおよび検量線 (メカルバム)

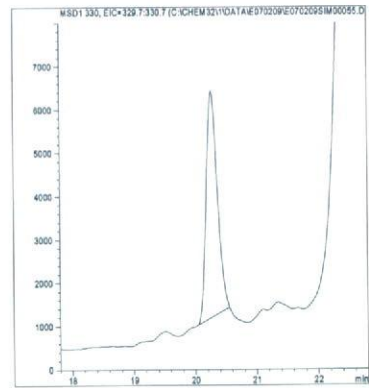
最小検出量評価 (0.001ng)



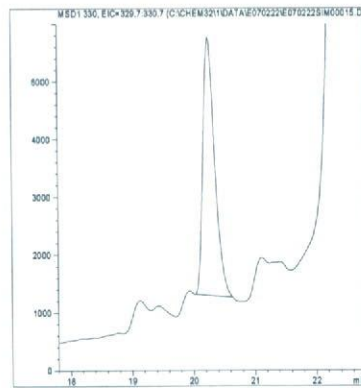
標準品 (0.05ng)



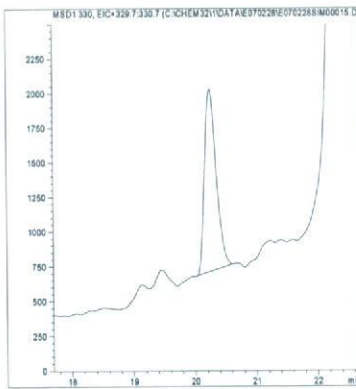
筋肉 (0.01mg/kg 添加)



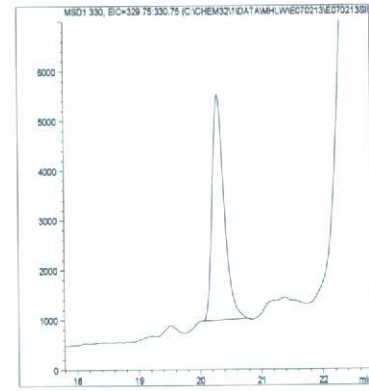
脂肪 (0.01mg/kg 添加)



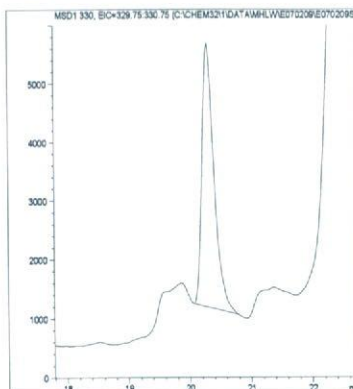
肝臓 (0.01mg/kg 添加)



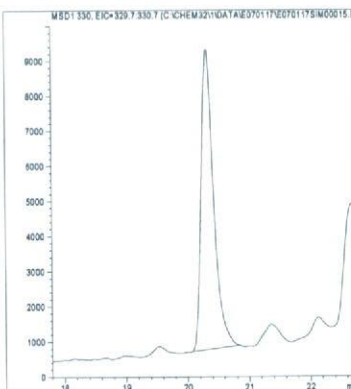
うなぎ (0.01mg/kg 添加)



えび (0.01mg/kg 添加)



牛乳 (0.01mg/kg 添加)



卵 (0.01mg/kg 添加)

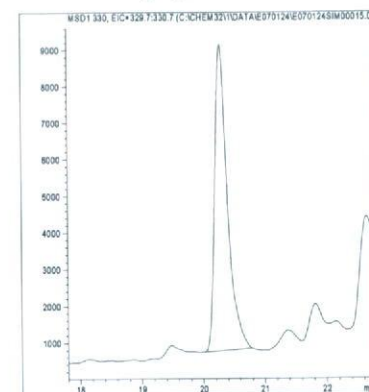
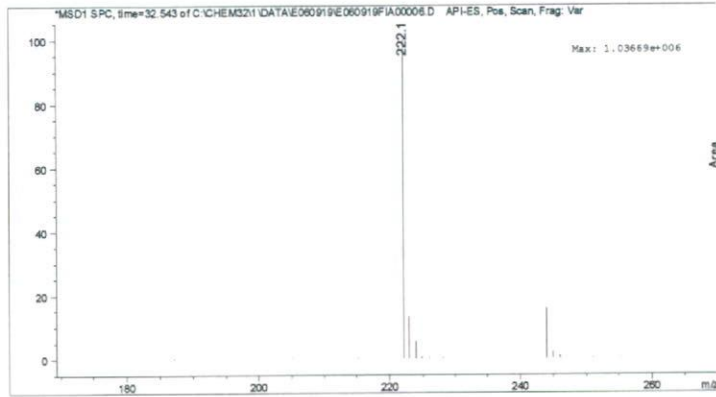


図2. 最小検出量評価, 標準品, 回収試料のマスプロトグラム (メカルバム)

マススペクトル



検量線

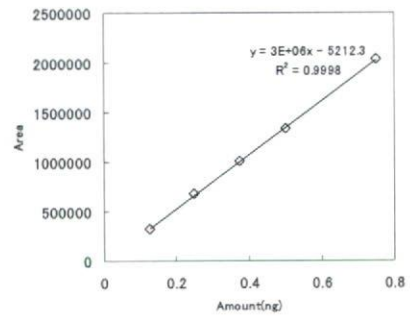
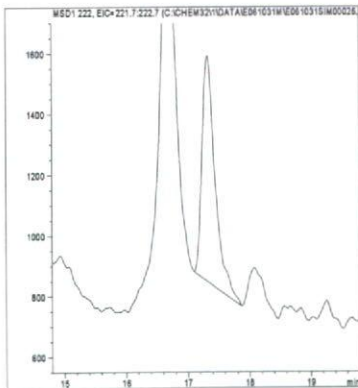
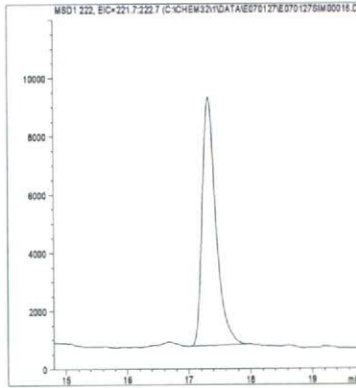


図1. マススペクトルおよび検量線 (メタベンズチアズロン)

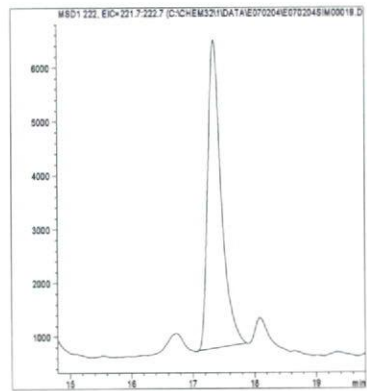
最小検出量評価 (0.001ng)



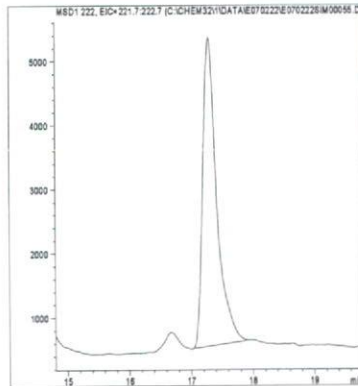
標準品 (0.05ng)



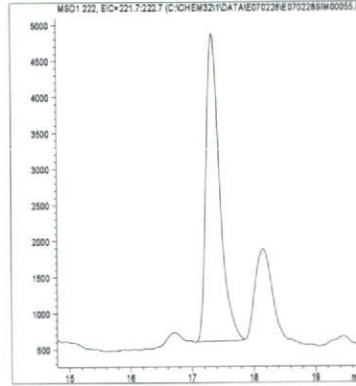
筋肉 (0.01mg/kg 添加)



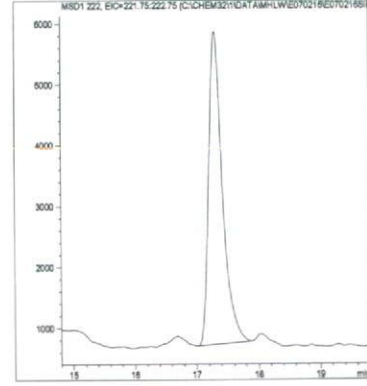
脂肪 (0.01mg/kg 添加)



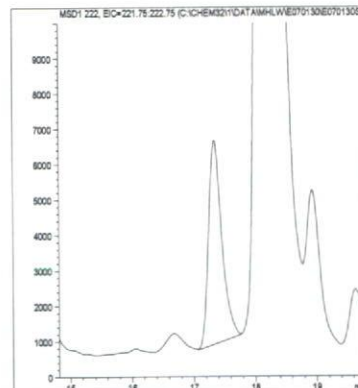
肝臓 (0.01mg/kg 添加)



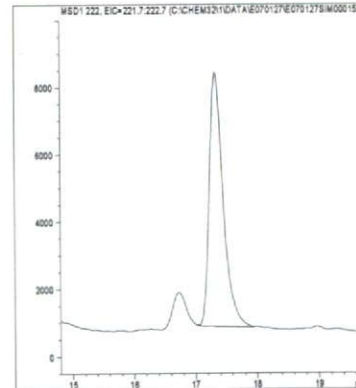
うなぎ (0.01mg/kg 添加)



えび (0.01mg/kg 添加)



牛乳 (0.01mg/kg 添加)



卵 (0.01mg/kg 添加)

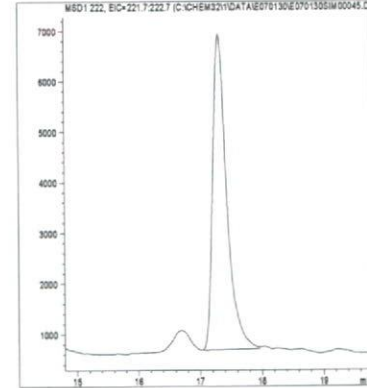
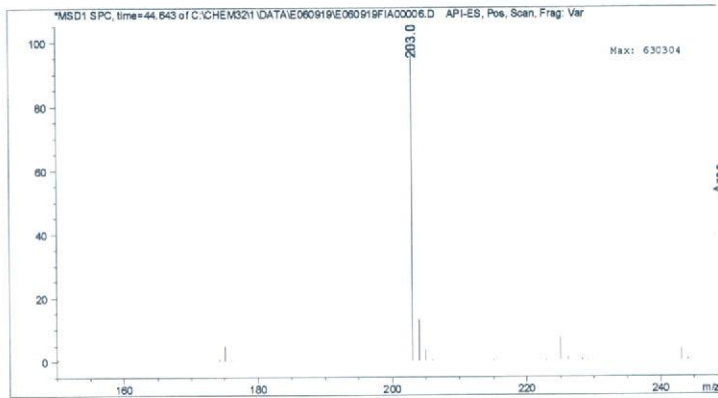


図2. 最小検出量評価, 標準品, 回収試料のマスクロマトグラム (メタベンズチアズロン)

マススペクトル



検量線

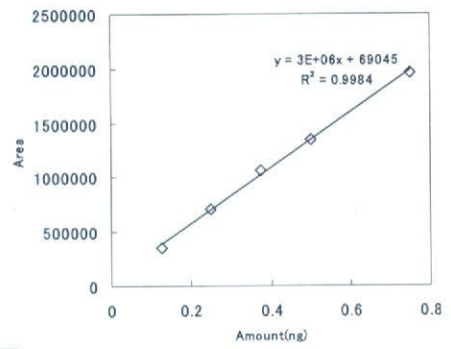
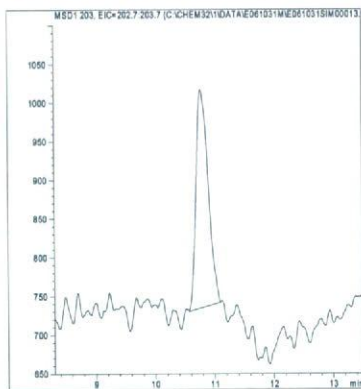
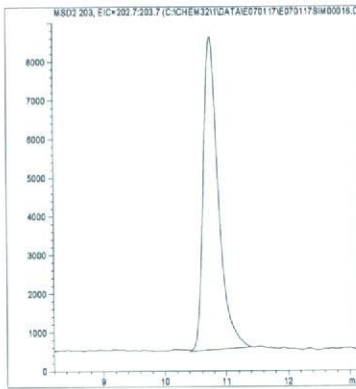


図1. マススペクトルおよび検量線 (メタミトロン)

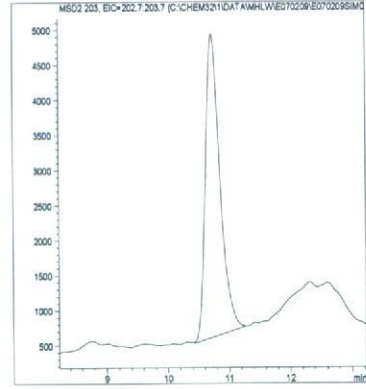
最小検出量評価 (0.0005ng)



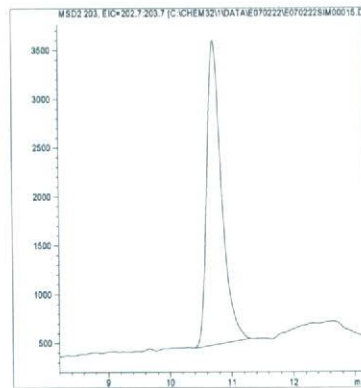
標準品 (0.05ng)



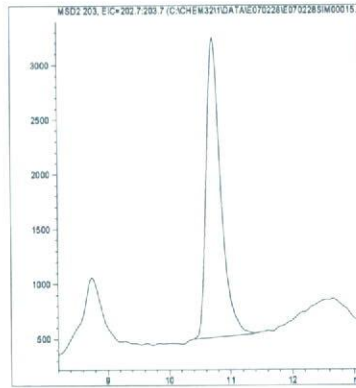
筋肉 (0.01mg/kg 添加)



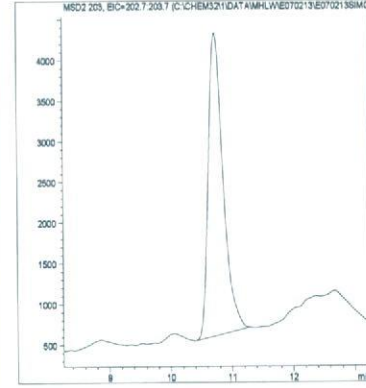
脂肪 (0.01mg/kg 添加)



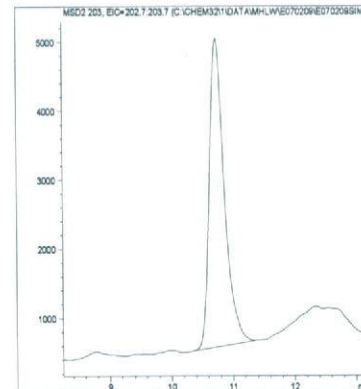
肝臓 (0.01mg/kg 添加)



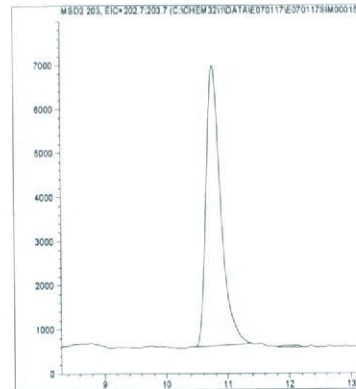
うなぎ (0.01mg/kg 添加)



えび (0.01mg/kg 添加)



牛乳 (0.01mg/kg 添加)



卵 (0.01mg/kg 添加)

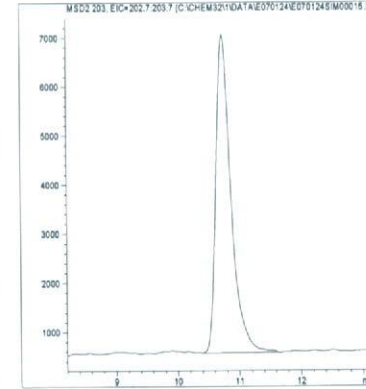


図2. 最小検出量評価, 標準品, 回収試料のマスキンググラム (メタミトロン)