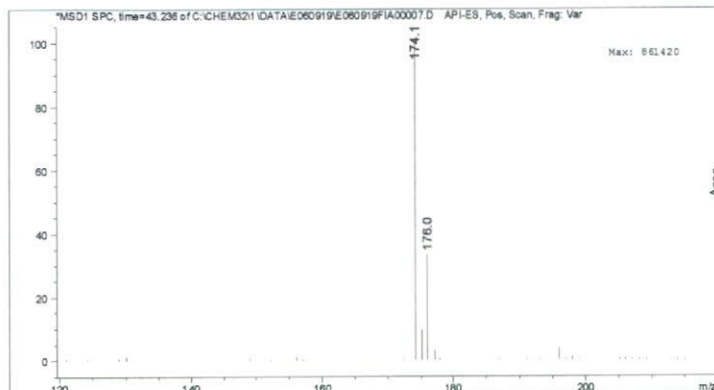


マススペクトル



検量線

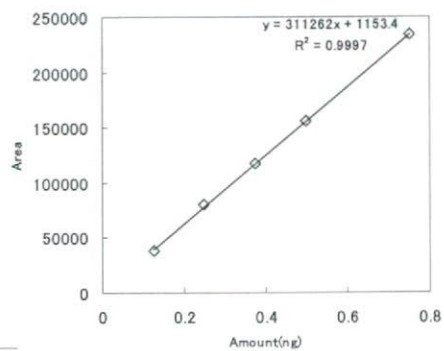
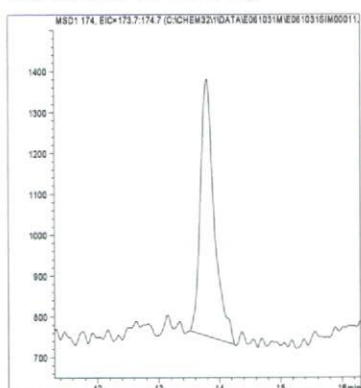
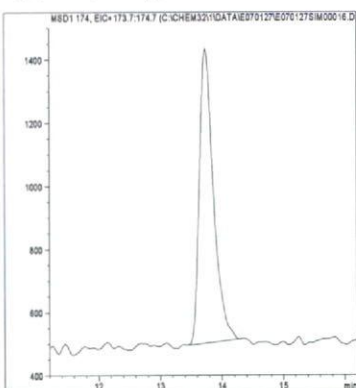


図 1. マススペクトルおよび検量線 (アリドクロール)

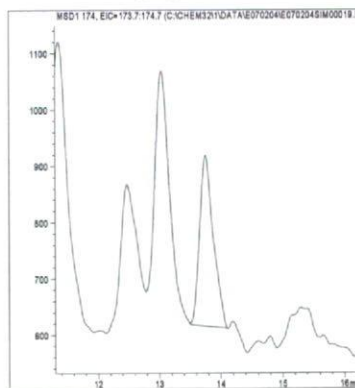
最小検出量評価 (0.005ng)



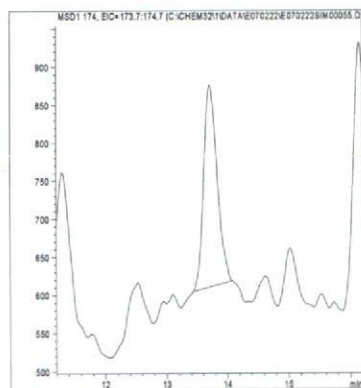
標準品 (0.05ng)



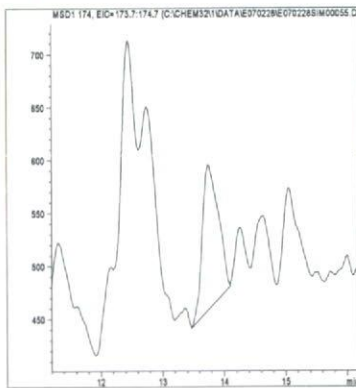
筋肉 (0.01mg/kg 添加)



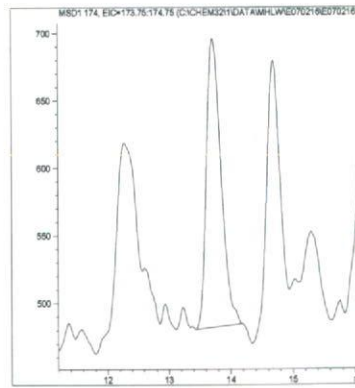
脂肪 (0.01mg/kg 添加)



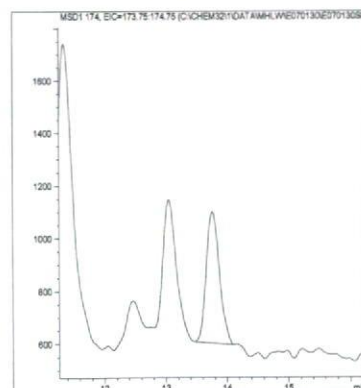
肝臓 (0.01mg/kg 添加)



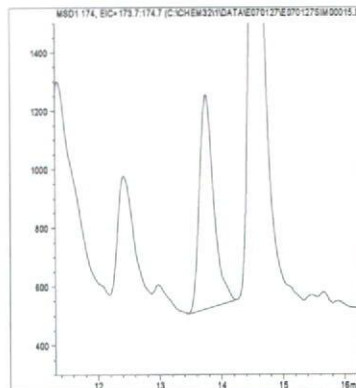
うなぎ (0.01mg/kg 添加)



えび (0.01mg/kg 添加)



牛乳 (0.01mg/kg 添加)



卵 (0.01mg/kg 添加)

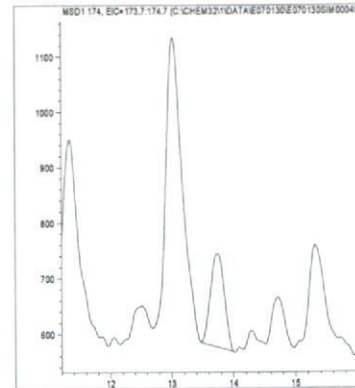
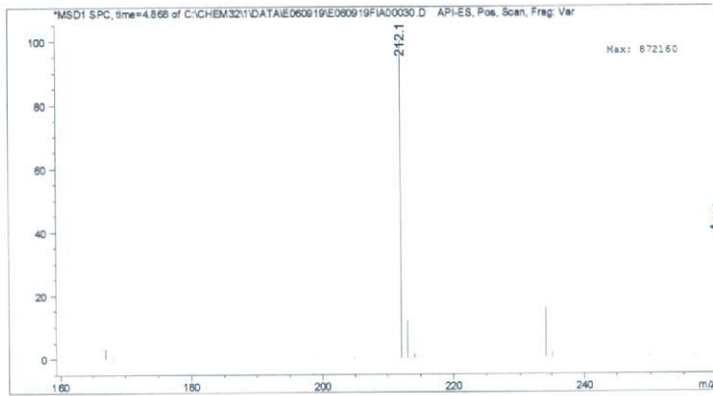


図 2. 最小検出量評価, 標準品, 回収試料のマスクロマトグラム (アリドクロール)

マススペクトル



検量線

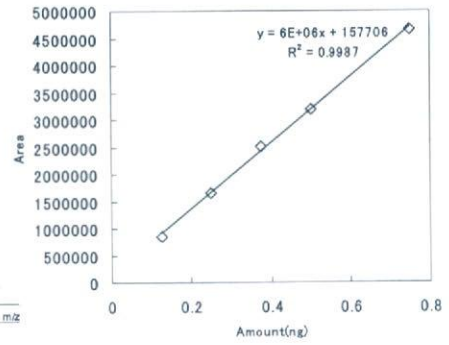
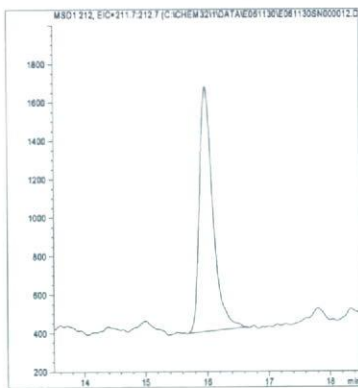
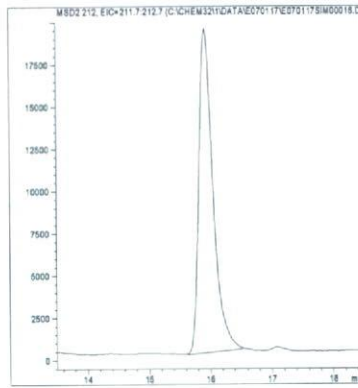


図 1. マススペクトルおよび検量線 (イソウロン)

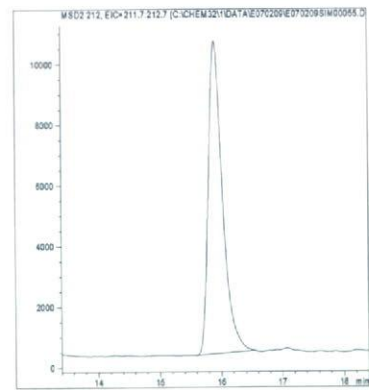
最小検出量評価 (0.001ng)



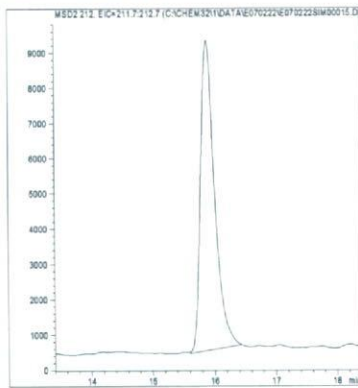
標準品 (0.05ng)



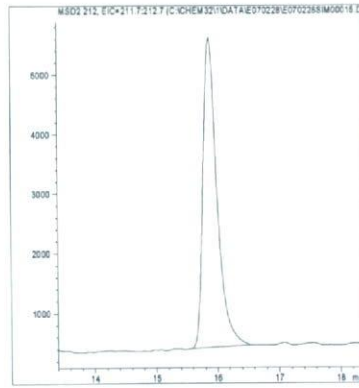
筋肉 (0.01mg/kg 添加)



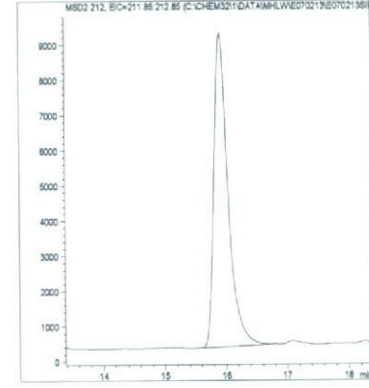
脂肪 (0.01mg/kg 添加)



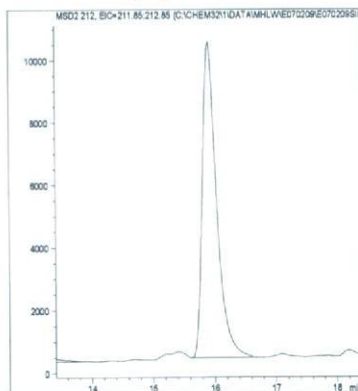
肝臓 (0.01mg/kg 添加)



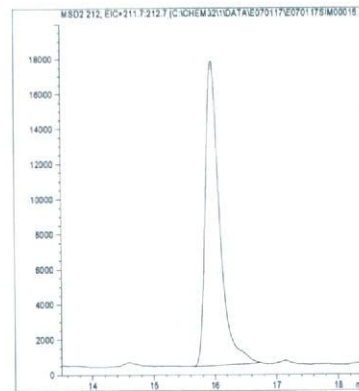
うなぎ (0.01mg/kg 添加)



えび (0.01mg/kg 添加)



牛乳 (0.01mg/kg 添加)



卵 (0.01mg/kg 添加)

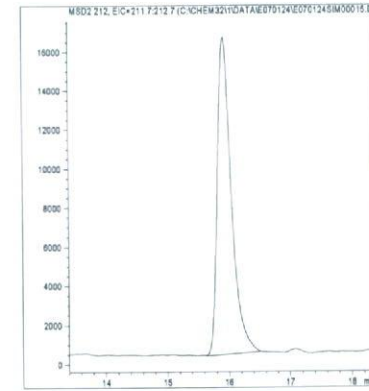
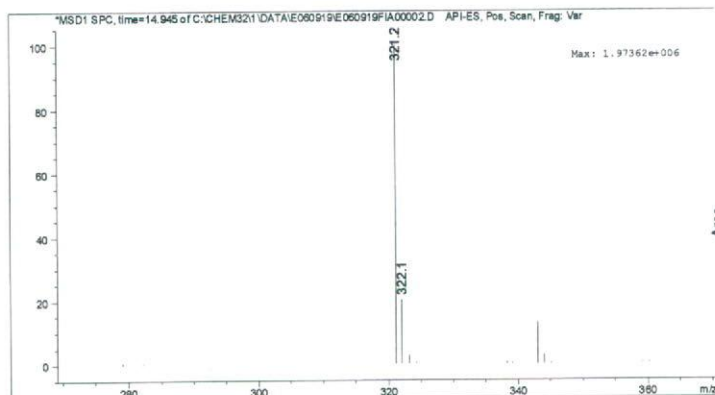


図 2. 最小検出量評価, 標準品, 回収試料のマスプロマトグラム (イソウロン)

マススペクトル



検量線

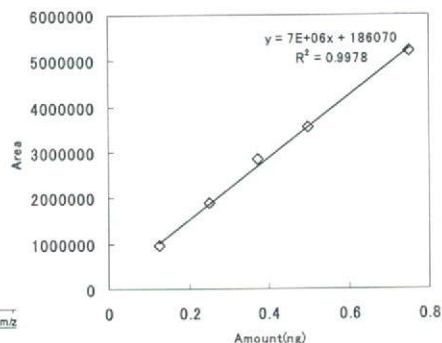
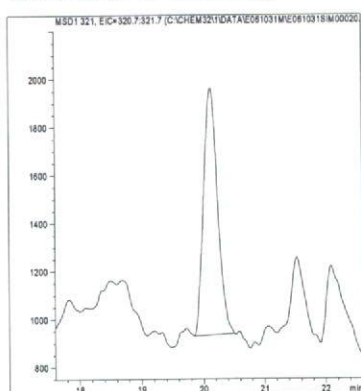
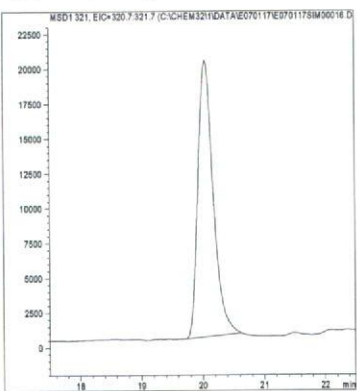


図 1. マススペクトルおよび検量線 (イプロバリカルブ)

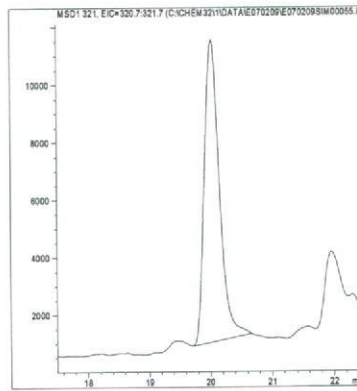
最小検出量評価 (0.0005ng)



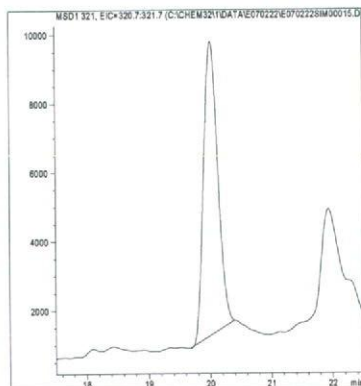
標準品 (0.05ng)



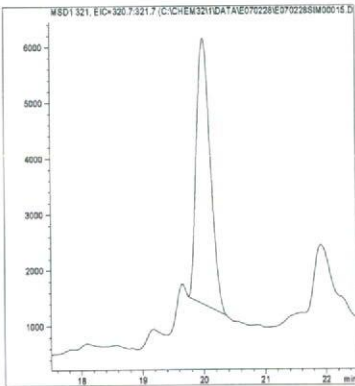
筋肉 (0.01mg/kg 添加)



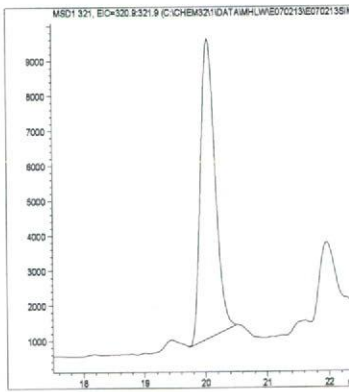
脂肪 (0.01mg/kg 添加)



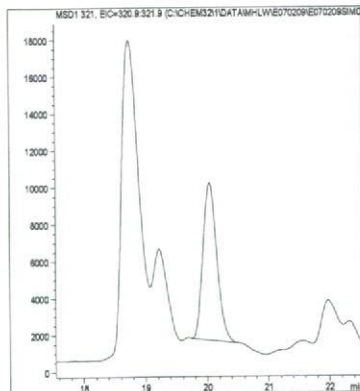
肝臓 (0.01mg/kg 添加)



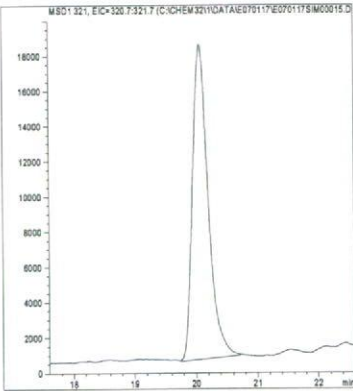
うなぎ (0.01mg/kg 添加)



えび (0.01mg/kg 添加)



牛乳 (0.01mg/kg 添加)



卵 (0.01mg/kg 添加)

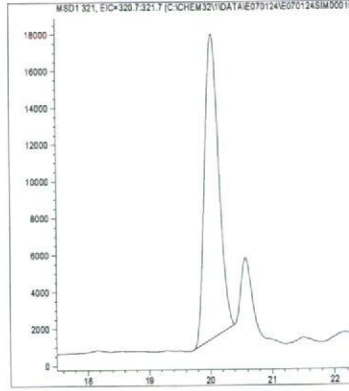
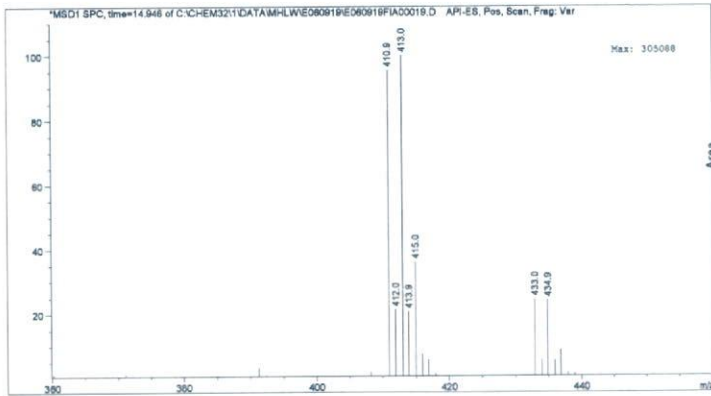


図 2. 最小検出量評価, 標準品, 回収試料のマスクロマトグラム (イプロバリカルブ)

マススペクトル



検量線

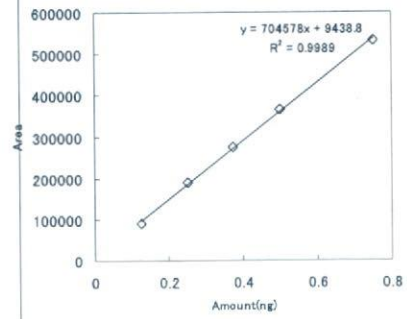
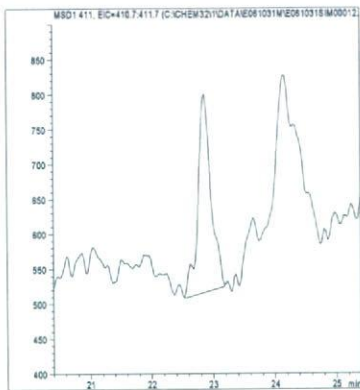
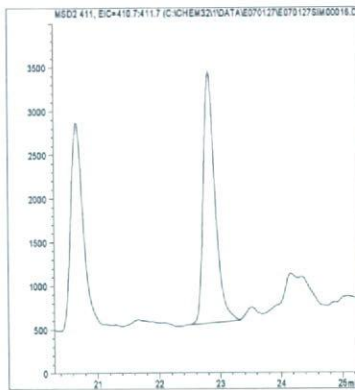


図 1. マススペクトルおよび検量線 (イミペンコナゾール)

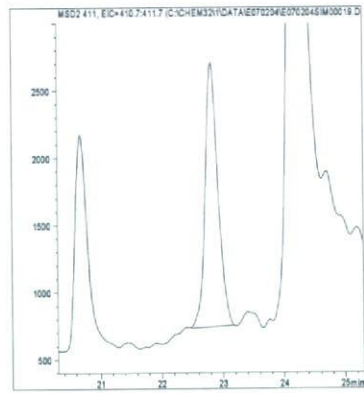
最小検出量評価 (0.001ng)



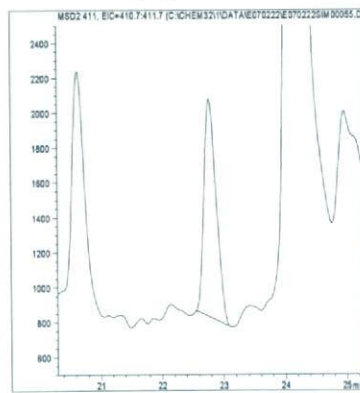
標準品 (0.05ng)



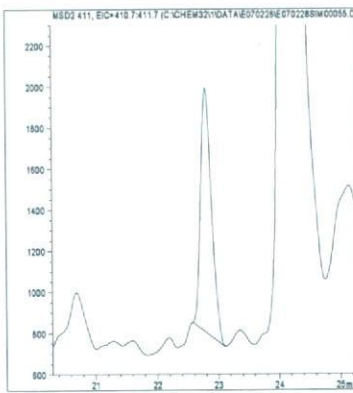
筋肉 (0.01mg/kg 添加)



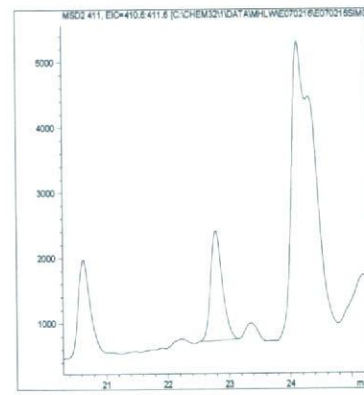
脂肪 (0.01mg/kg 添加)



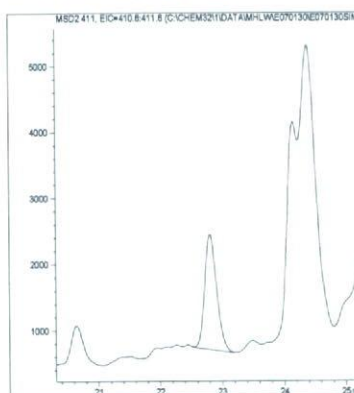
肝臓 (0.01mg/kg 添加)



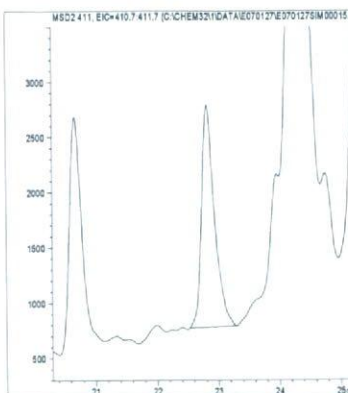
うなぎ (0.01mg/kg 添加)



えび (0.01mg/kg 添加)



牛乳 (0.01mg/kg 添加)



卵 (0.01mg/kg 添加)

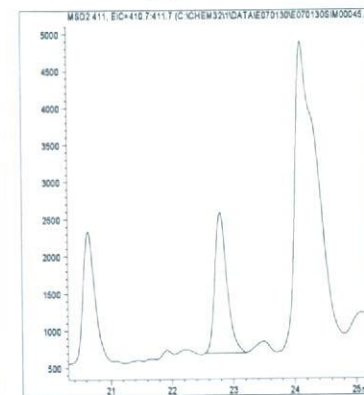
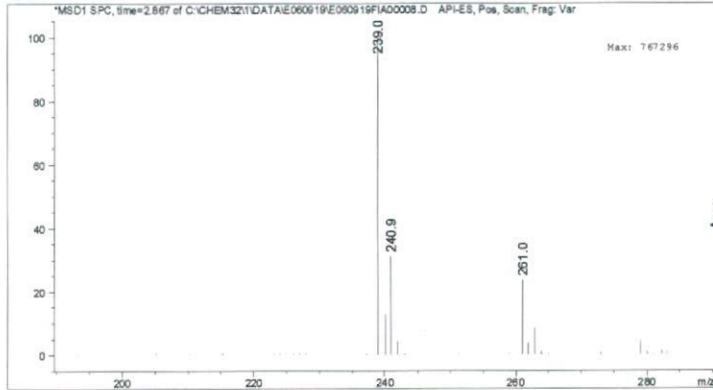


図 2. 最小検出量評価, 標準品, 回収試料のマスプロトグラム (イミペンコナゾール)

マススペクトル



検量線

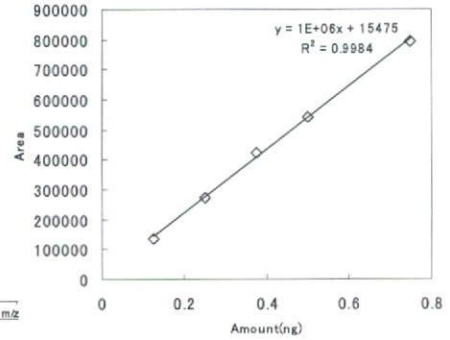
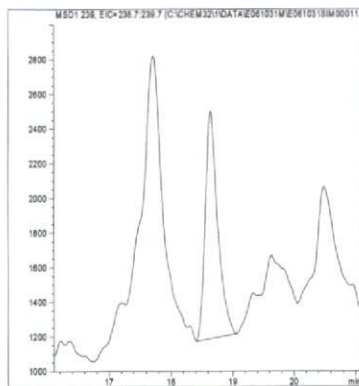
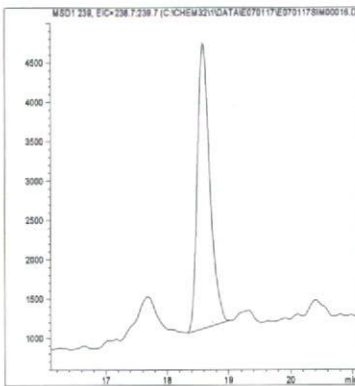


図 1. マススペクトルおよび検量線 (エチクロゼート)

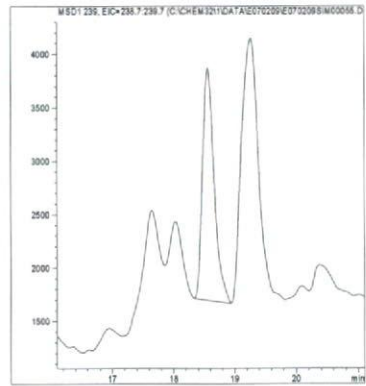
最小検出量評価 (0.005ng)



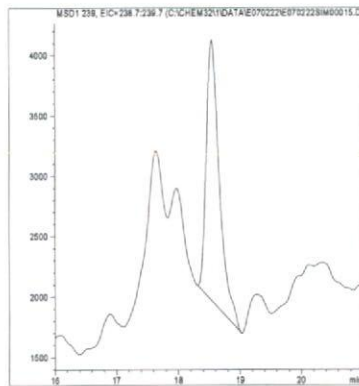
標準品 (0.05ng)



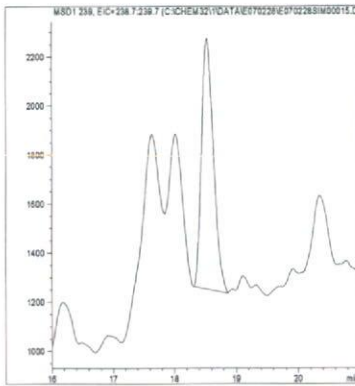
筋肉 (0.01mg/kg 添加)



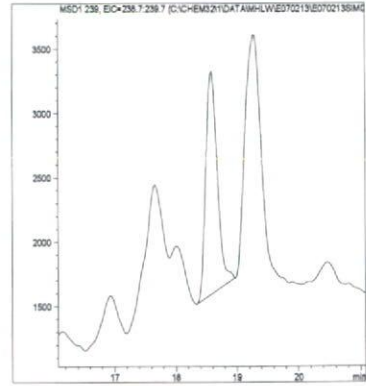
脂肪 (0.01mg/kg 添加)



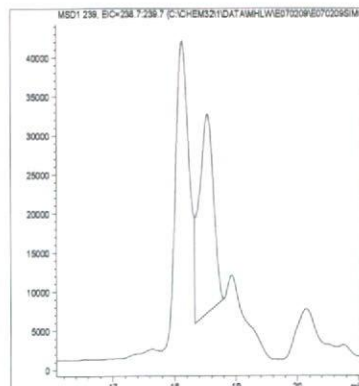
肝臓 (0.01mg/kg 添加)



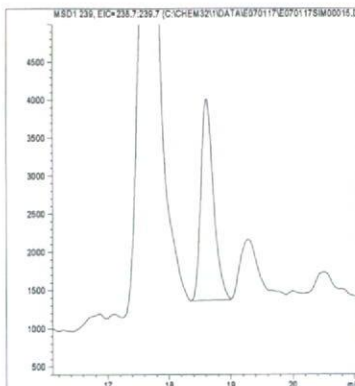
うなぎ (0.01mg/kg 添加)



えび (0.1mg/kg 添加)



牛乳 (0.01mg/kg 添加)



卵 (0.01mg/kg 添加)

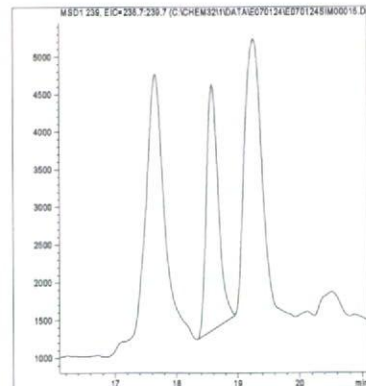
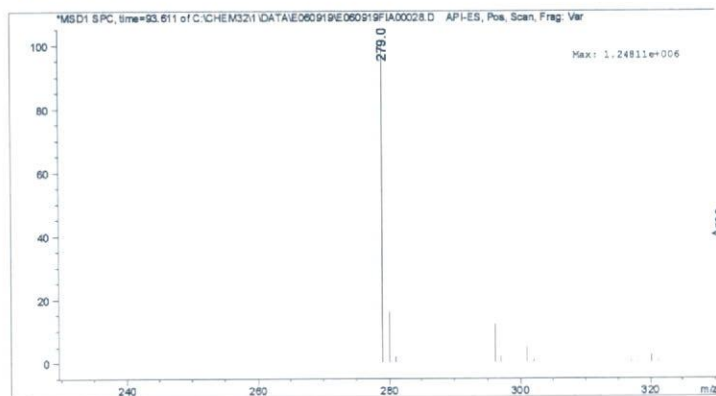


図 2. 最小検出量評価, 標準品, 回収試料のマスクロマトグラム (エチクロゼート)



マススペクトル



検量線

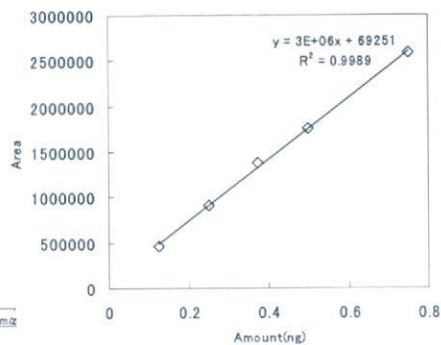
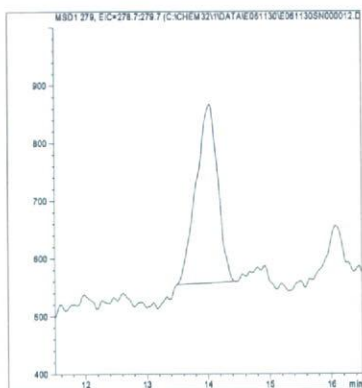
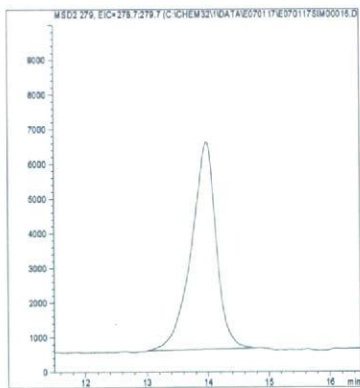


図 1. マススペクトルおよび検量線 (オキサジキシル)

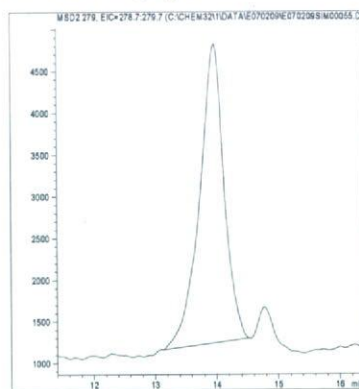
最小検出量評価 (0.001ng)



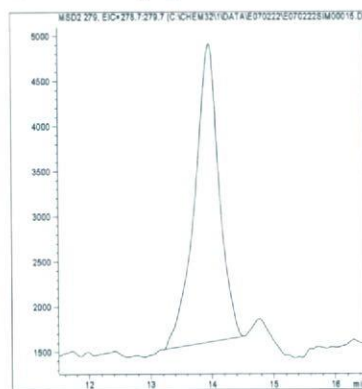
標準品 (0.05ng)



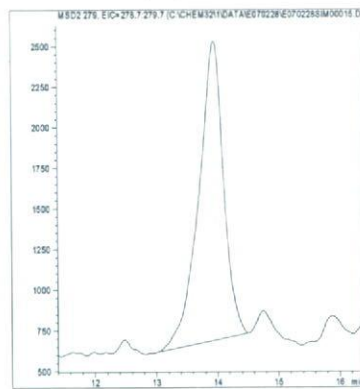
筋肉 (0.01mg/kg 添加)



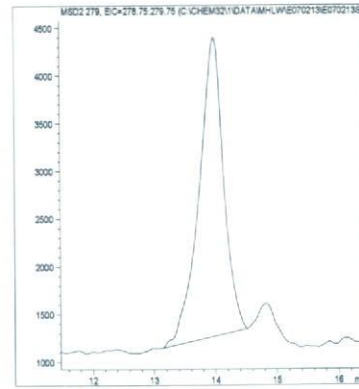
脂肪 (0.01mg/kg 添加)



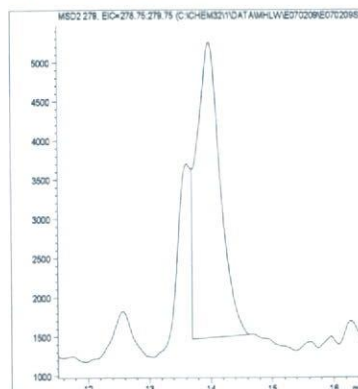
肝臓 (0.01mg/kg 添加)



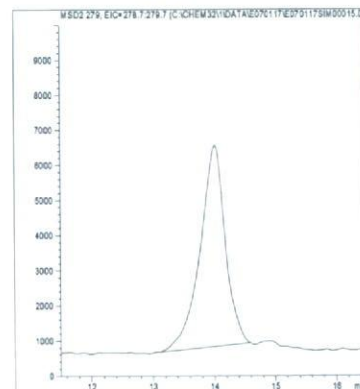
うなぎ (0.01mg/kg 添加)



えび (0.01mg/kg 添加)



牛乳 (0.01mg/kg 添加)



卵 (0.01mg/kg 添加)

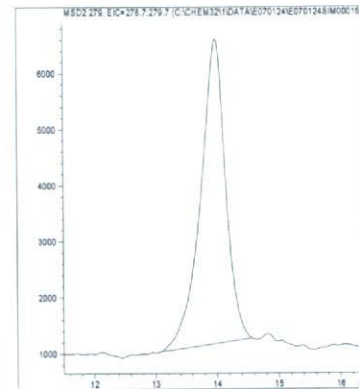
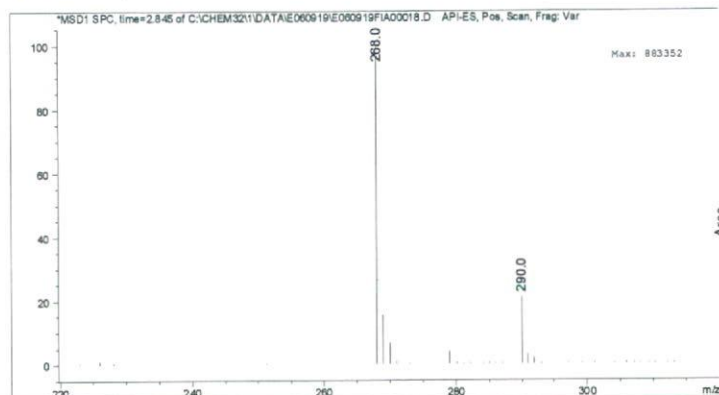


図 2. 最小検出量評価, 標準品, 回収試料のマスクロマトグラム (オキサジキシル)

マススペクトル



検量線

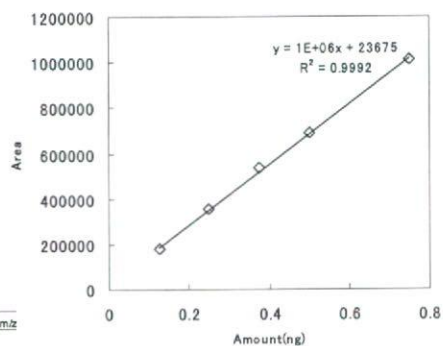
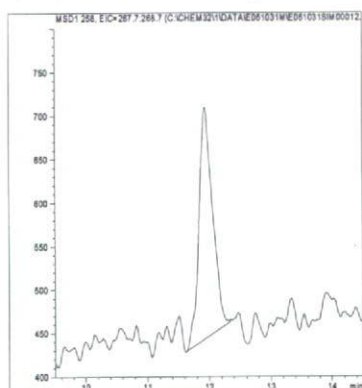
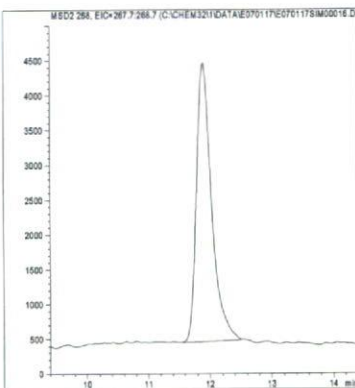


図1. マススペクトルおよび検量線 (オキシカルボキシン)

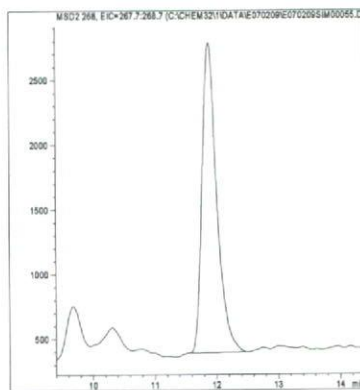
最小検出量評価 (0.001ng)



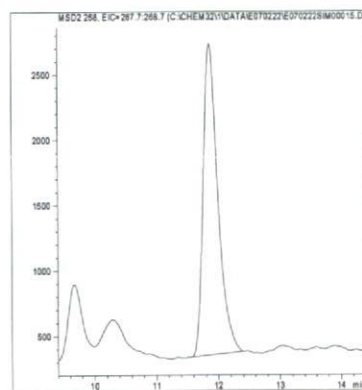
標準品 (0.05ng)



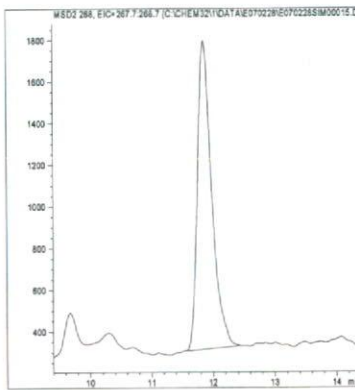
筋肉 (0.01mg/kg 添加)



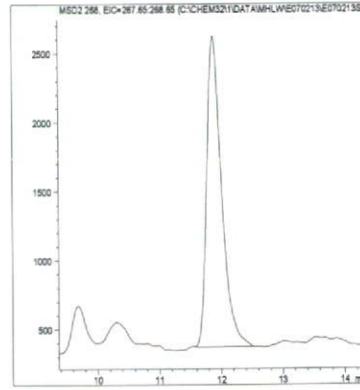
脂肪 (0.01mg/kg 添加)



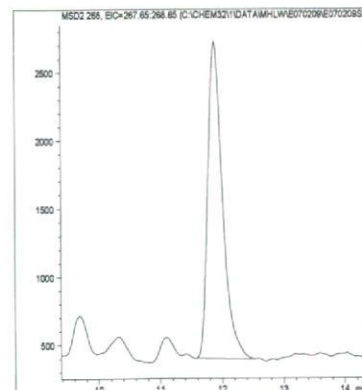
肝臓 (0.01mg/kg 添加)



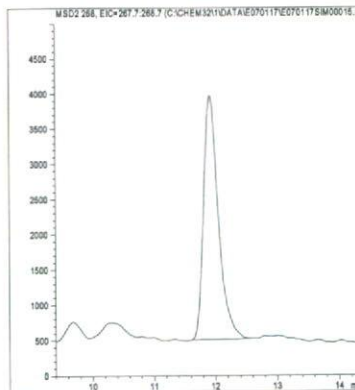
うなぎ (0.01mg/kg 添加)



えび (0.01mg/kg 添加)



牛乳 (0.01mg/kg 添加)



卵 (0.01mg/kg 添加)

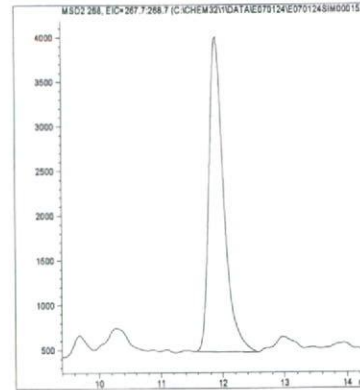
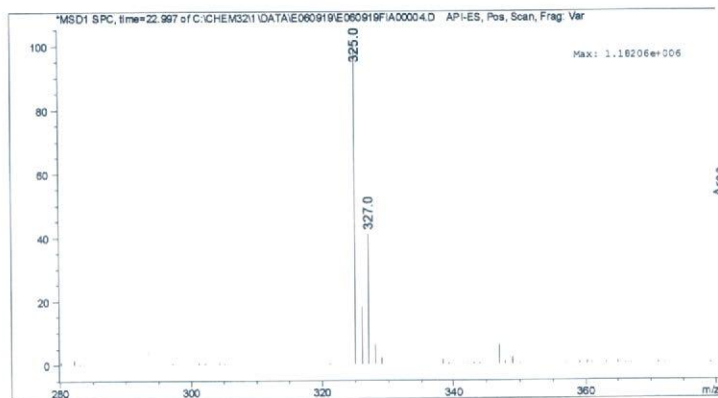


図2. 最小検出量評価, 標準品, 回収試料のマスクロマトグラム (オキシカルボキシン)

マススペクトル



検量線

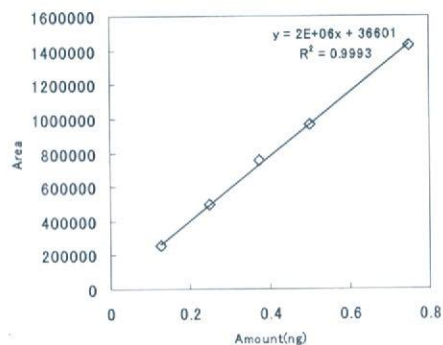
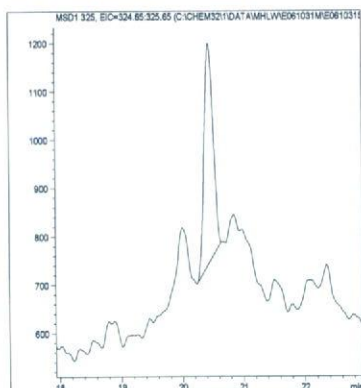
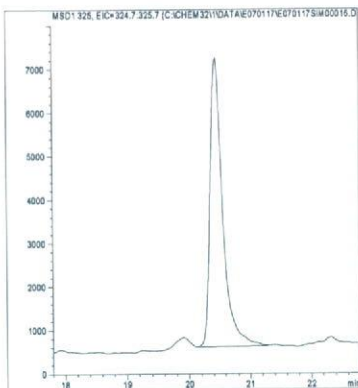


図 1. マススペクトルおよび検量線 (シアゾファミド)

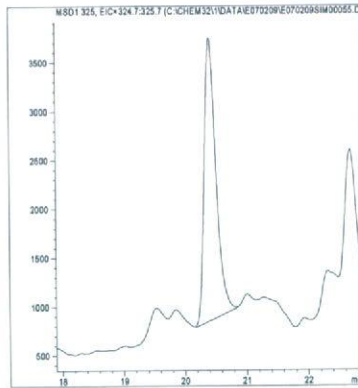
最小検出量評価 (0.001ng)



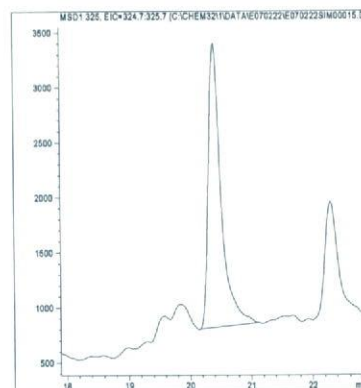
標準品 (0.05ng)



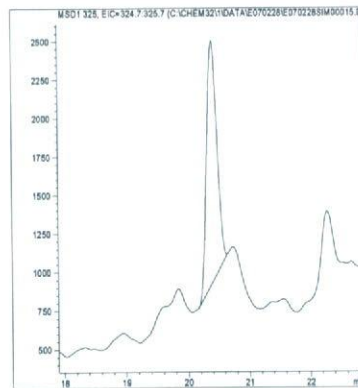
筋肉 (0.01mg/kg 添加)



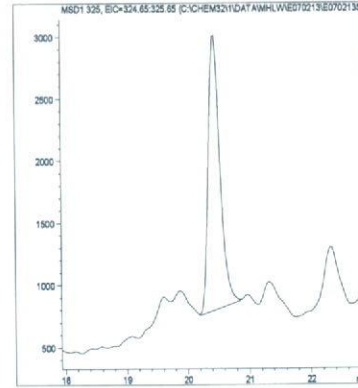
脂肪 (0.01mg/kg 添加)



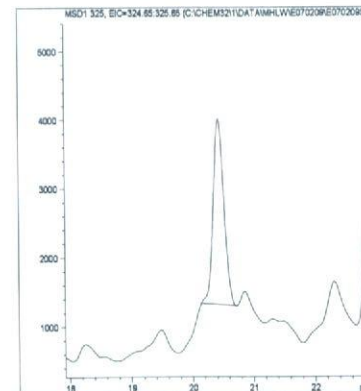
肝臓 (0.01mg/kg 添加)



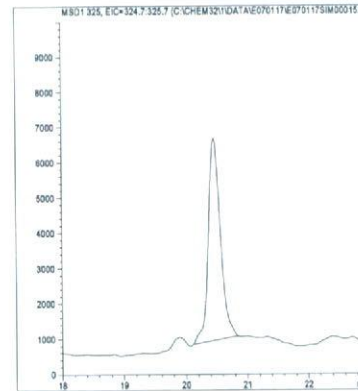
うなぎ (0.01mg/kg 添加)



えび (0.01mg/kg 添加)



牛乳 (0.01mg/kg 添加)



卵 (0.01mg/kg 添加)

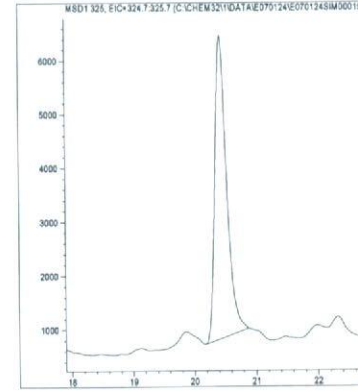
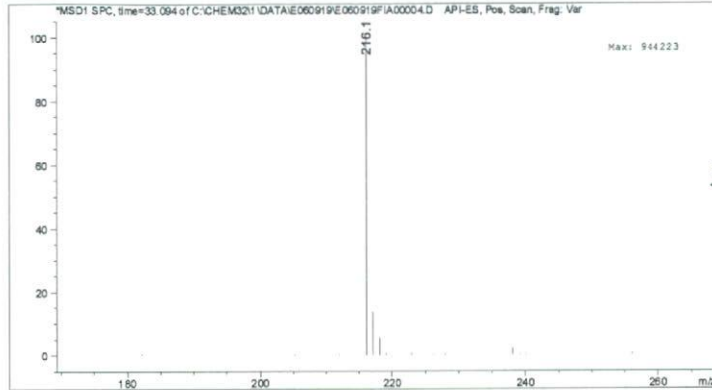


図 2. 最小検出量評価, 標準品, 回収試料のマスキングクロマトグラム (シアゾファミド)



マススペクトル



検量線

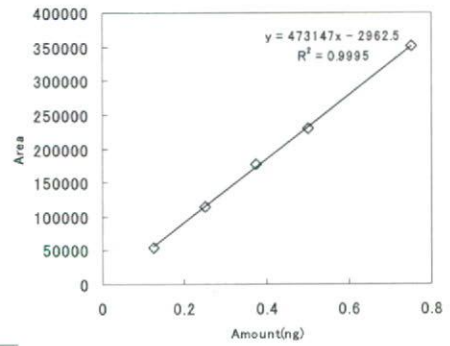
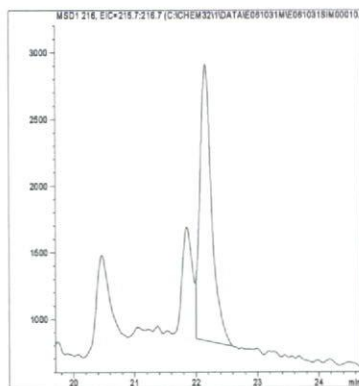
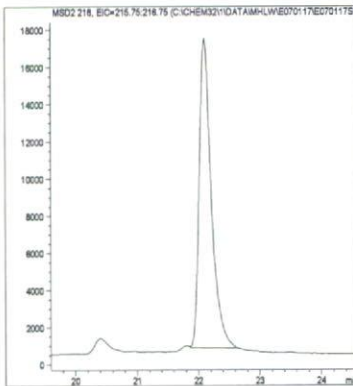


図1. マススペクトルおよび検量線 (シクロエート)

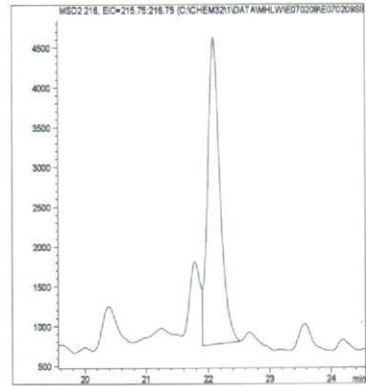
最小検出量評価 (0.01ng)



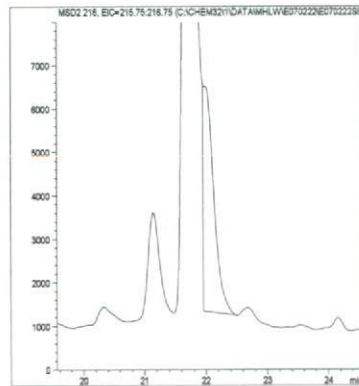
標準品 (0.5ng)



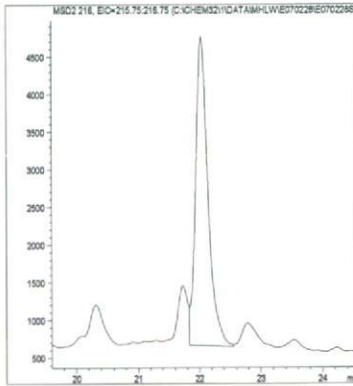
筋肉 (0.1mg/kg 添加)



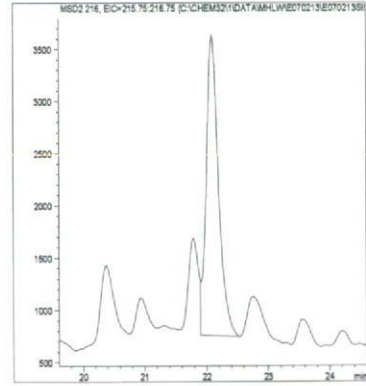
脂肪 (0.1mg/kg 添加)



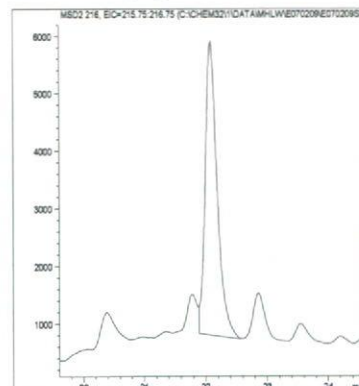
肝臓 (0.1mg/kg 添加)



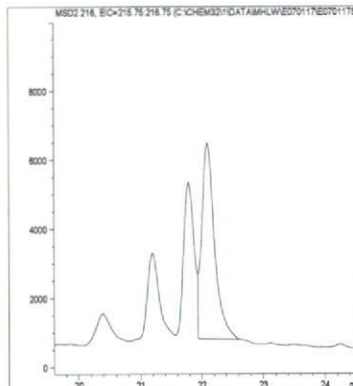
うなぎ (0.1mg/kg 添加)



えび (0.1mg/kg 添加)



牛乳 (0.1mg/kg 添加)



卵 (0.1mg/kg 添加)

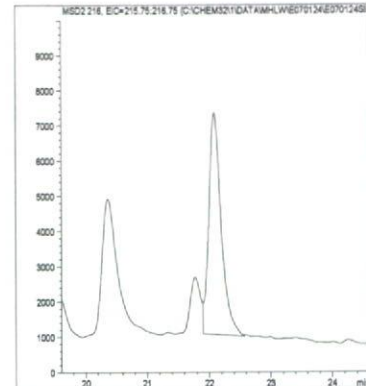
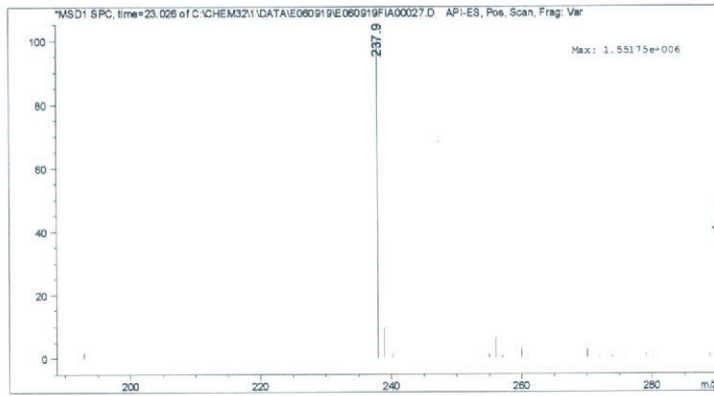


図2. 最小検出量評価, 標準品, 回収試料のマスクロマトグラム (シクロエート)

マススペクトル



検量線

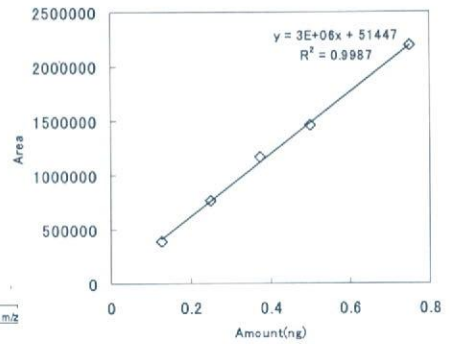
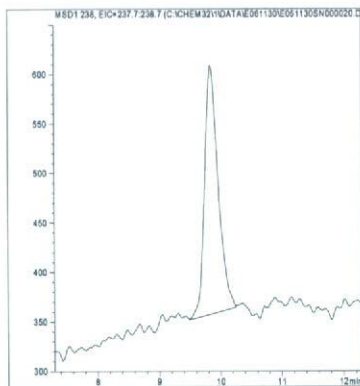
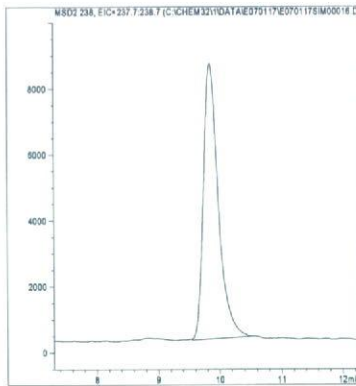


図 1. マススペクトルおよび検量線 (ジクロトホス)

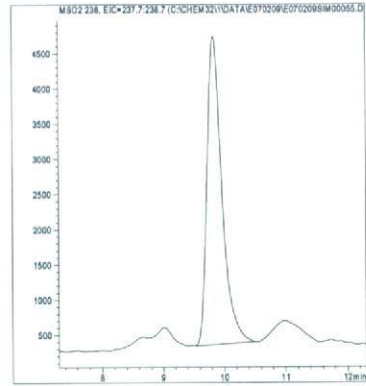
最小検出量評価 (0.0005ng)



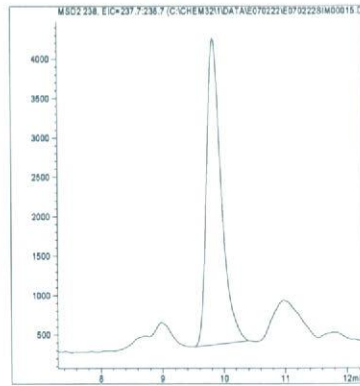
標準品 (0.05ng)



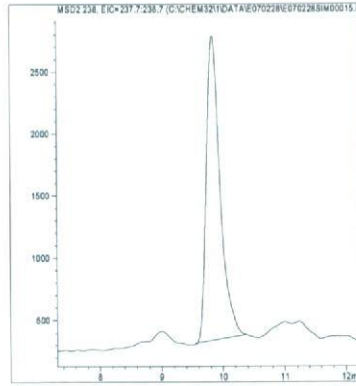
筋肉 (0.01mg/kg 添加)



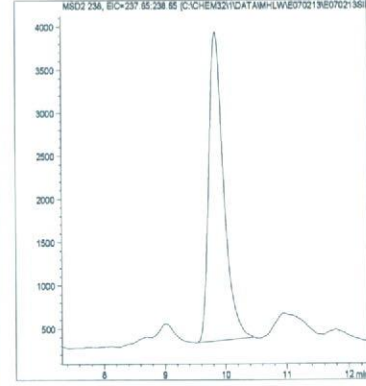
脂肪 (0.01mg/kg 添加)



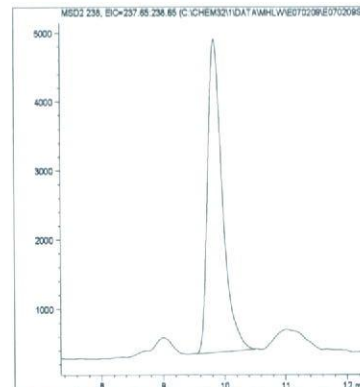
肝臓 (0.01mg/kg 添加)



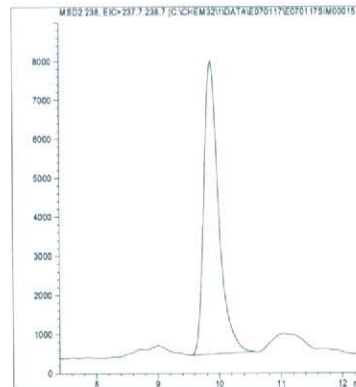
うなぎ (0.01mg/kg 添加)



えび (0.01mg/kg 添加)



牛乳 (0.01mg/kg 添加)



卵 (0.01mg/kg 添加)

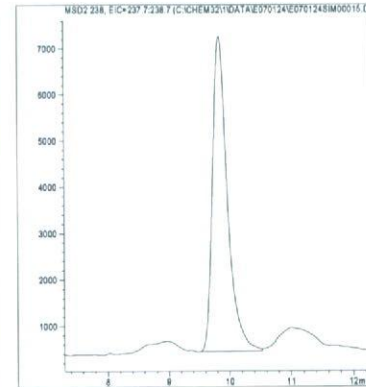
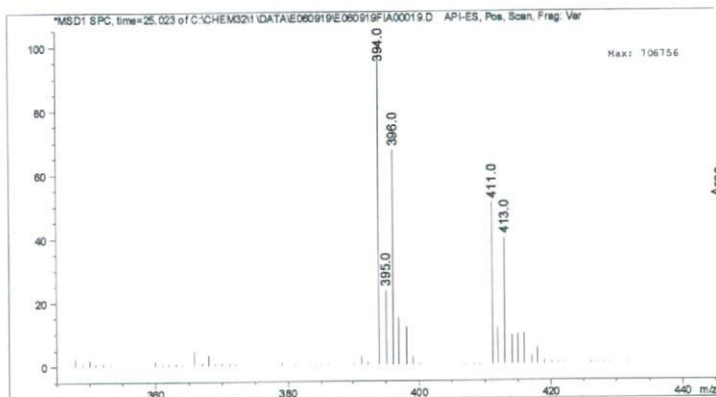


図 2. 最小検出量評価, 標準品, 回収試料のマスプロトグラム (ジクロトホス)

マススペクトル



検量線

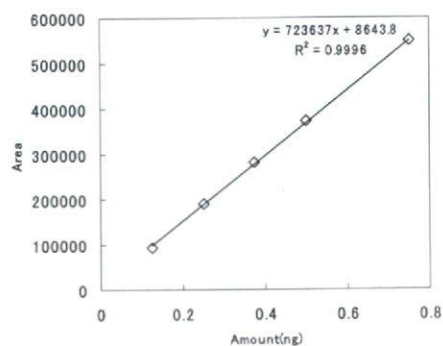
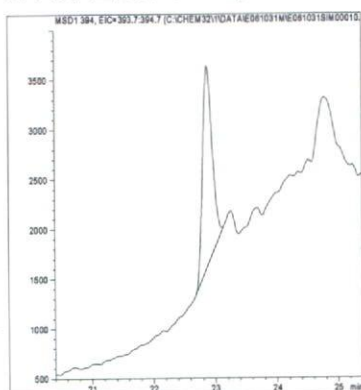
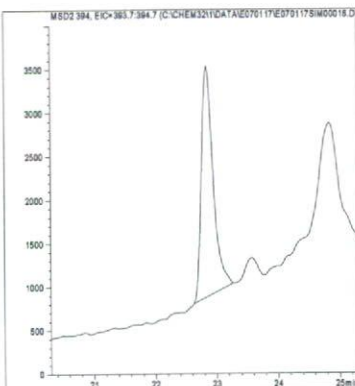


図 1. マススペクトルおよび検量線 (シニドンエチル)

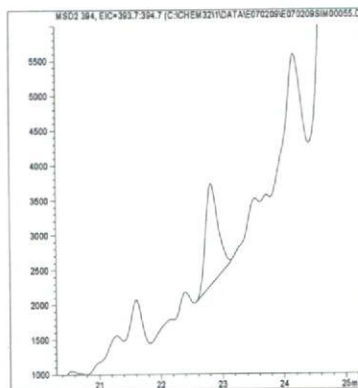
最小検出量評価 (0.01ng)



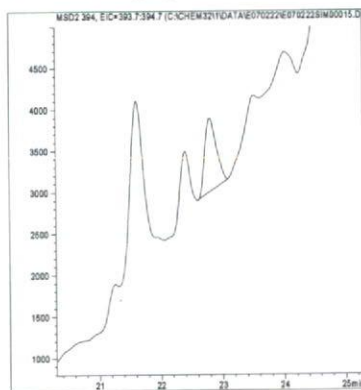
標準品 (0.05ng)



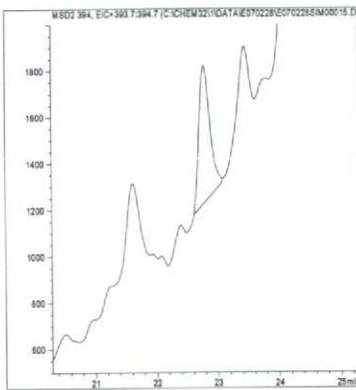
筋肉 (0.01mg/kg 添加)



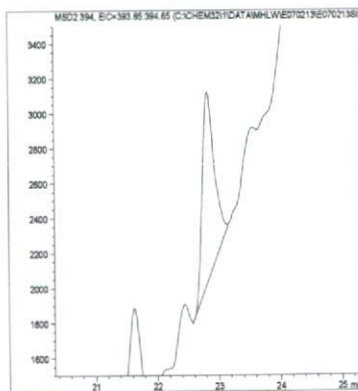
脂肪 (0.01mg/kg 添加)



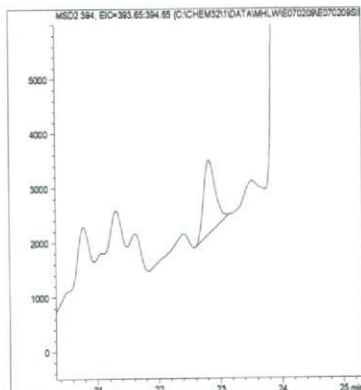
肝臓 (0.01mg/kg 添加)



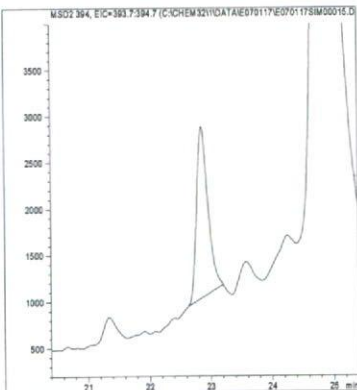
うなぎ (0.01mg/kg 添加)



えび (0.01mg/kg 添加)



牛乳 (0.01mg/kg 添加)



卵 (0.01mg/kg 添加)

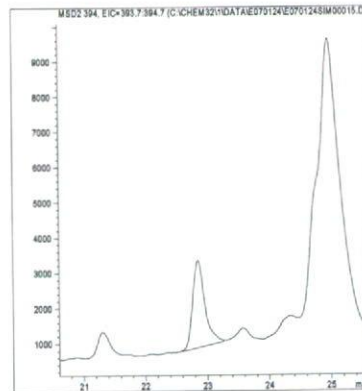
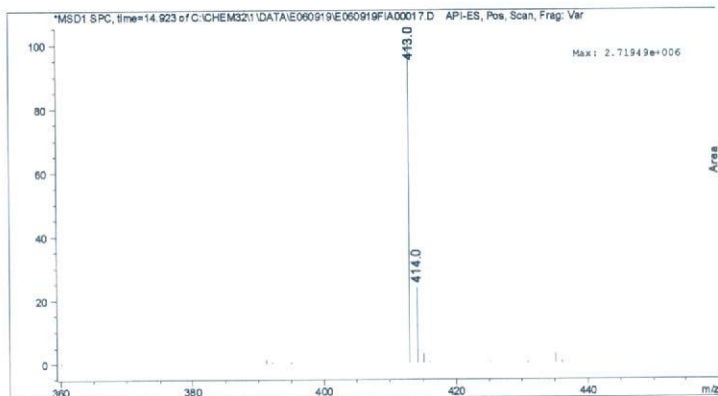


図 2. 最小検出量評価, 標準品, 回収試料のマスクロマトグラム (シニドンエチル)

マススペクトル



検量線

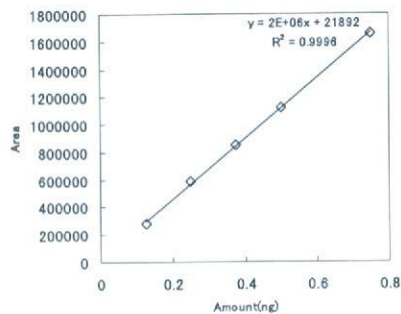
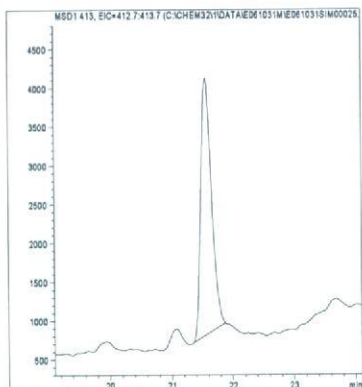
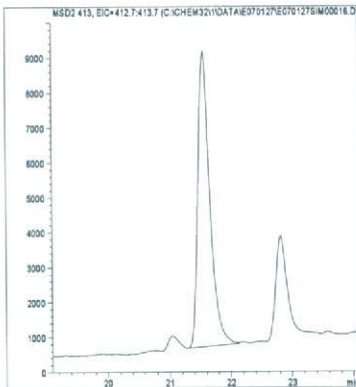


図 1. マススペクトルおよび検量線 (シフルフェナミド)

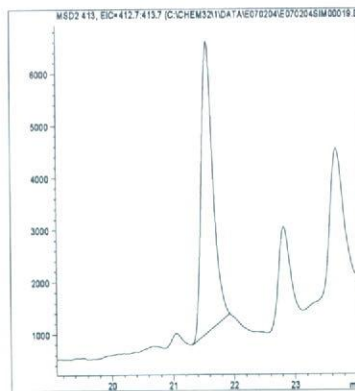
最小検出量評価 (0.005ng)



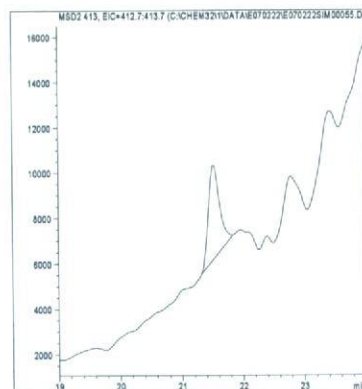
標準品 (0.05ng)



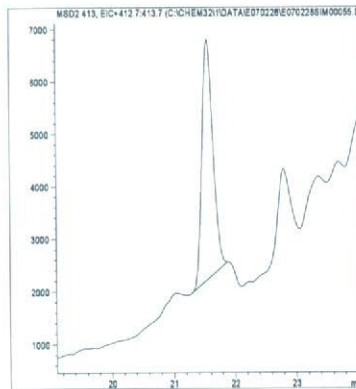
筋肉 (0.01mg/kg 添加)



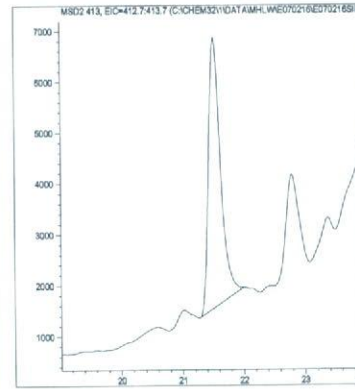
脂肪 (0.01mg/kg 添加)



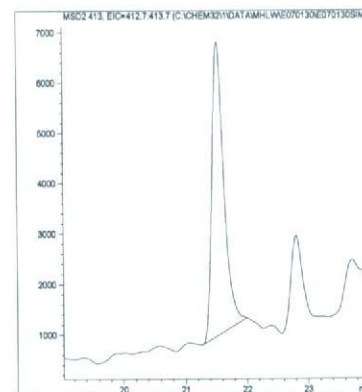
肝臓 (0.01mg/kg 添加)



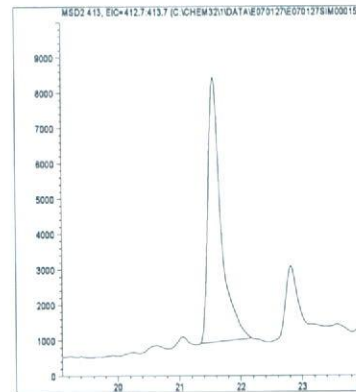
うなぎ (0.01mg/kg 添加)



えび (0.01mg/kg 添加)



牛乳 (0.01mg/kg 添加)



卵 (0.01mg/kg 添加)

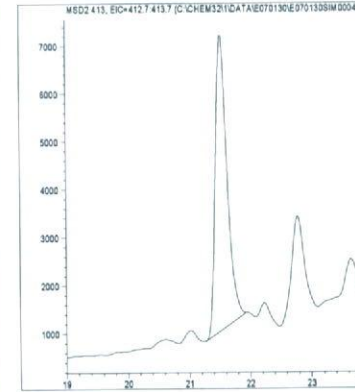
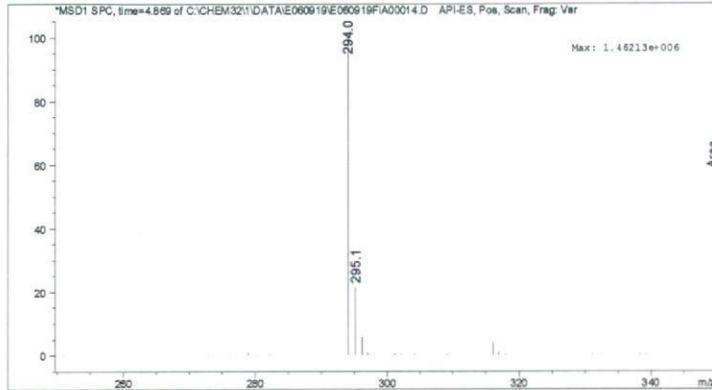


図 2. 最小検出量評価, 標準品, 回収試料のマスキロマトグラム (シフルフェナミド)

マススペクトル



検量線

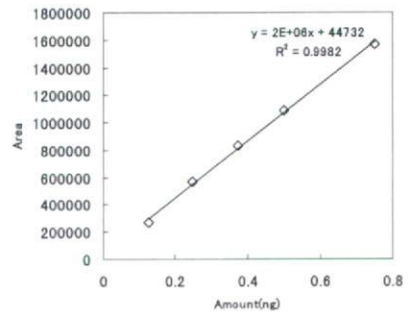
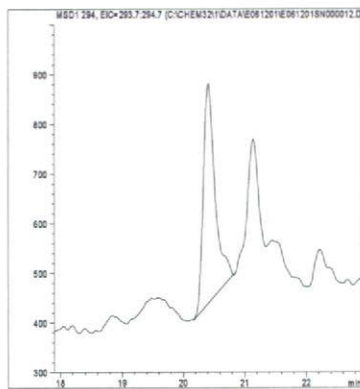
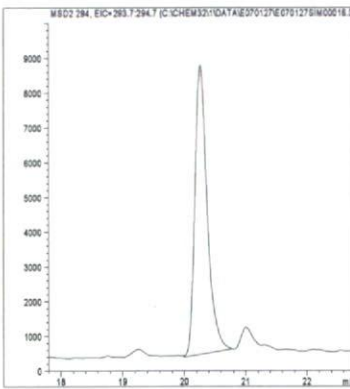


図1. マススペクトルおよび検量線 (シメコナゾール)

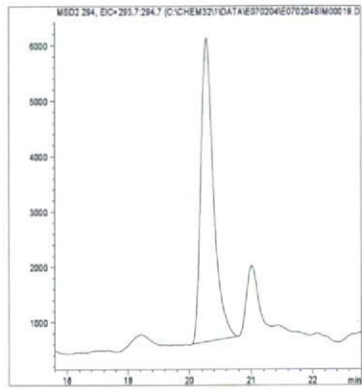
最小検出量評価 (0.001ng)



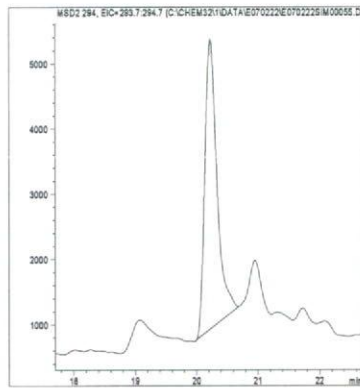
標準品 (0.05ng)



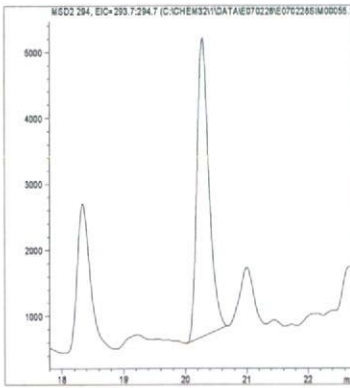
筋肉 (0.01mg/kg 添加)



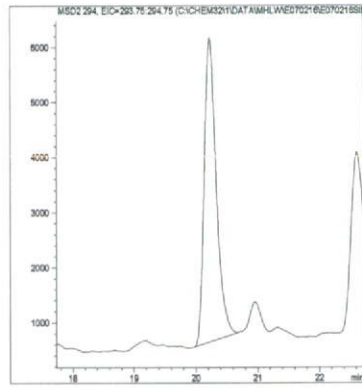
脂肪 (0.01mg/kg 添加)



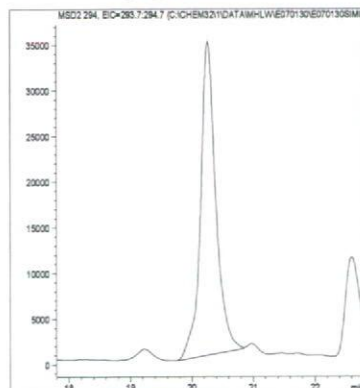
肝臓 (0.01mg/kg 添加)



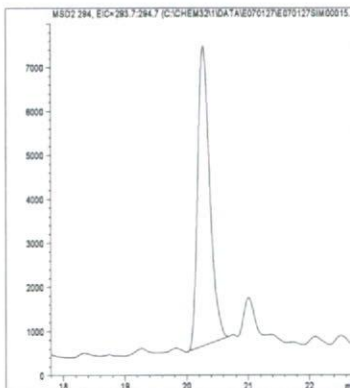
うなぎ (0.01mg/kg 添加)



えび (0.1mg/kg 添加)



牛乳 (0.01mg/kg 添加)



卵 (0.01mg/kg 添加)

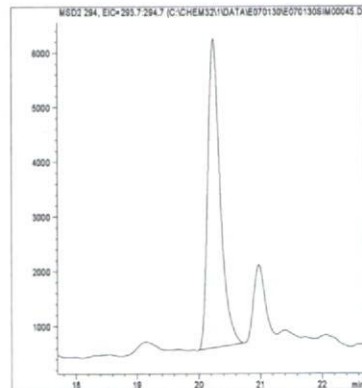
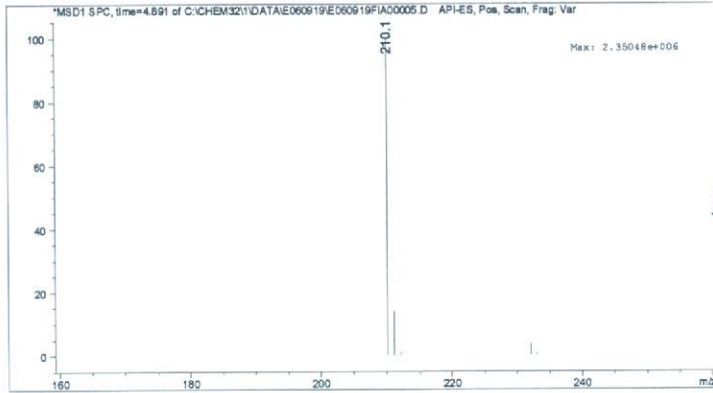


図2. 最小検出量評価, 標準品, 回収試料のマスクロマトグラム (シメコナゾール)



マススペクトル



検量線

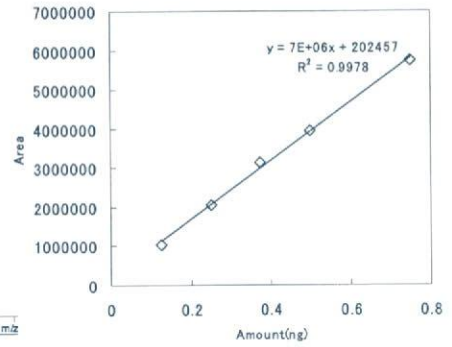
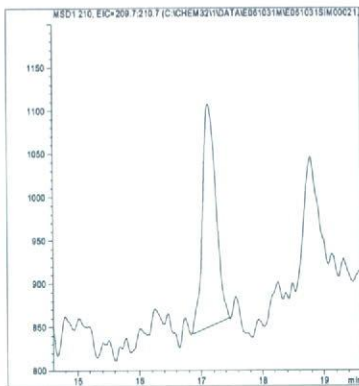
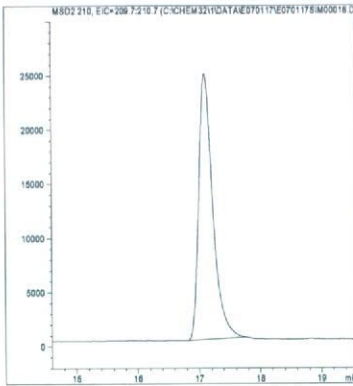


図1. マススペクトルおよび検量線 (ジメチリモール)

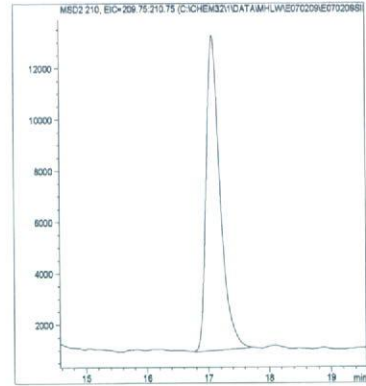
最小検出量評価 (0.0001ng)



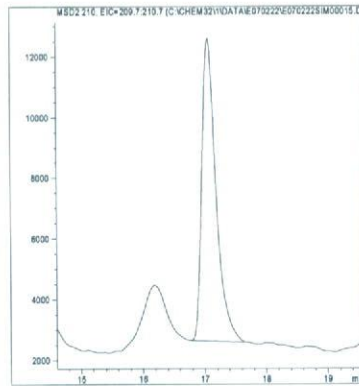
標準品 (0.05ng)



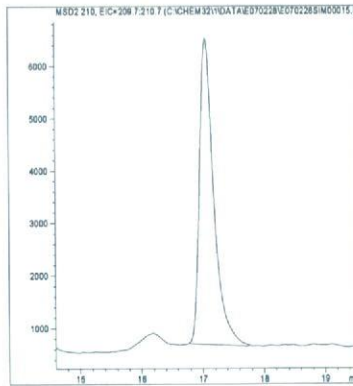
筋肉 (0.01mg/kg 添加)



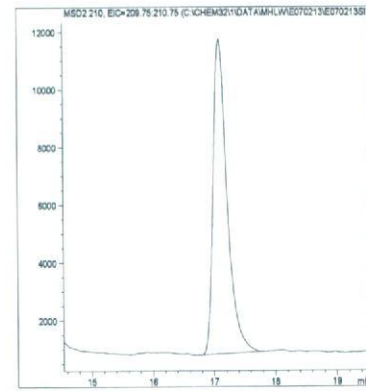
脂肪 (0.01mg/kg 添加)



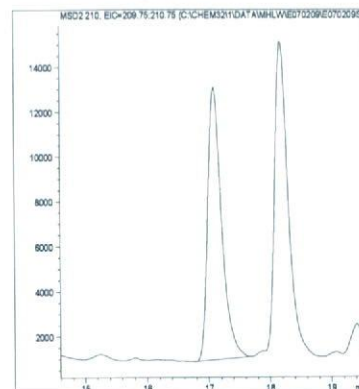
肝臓 (0.01mg/kg 添加)



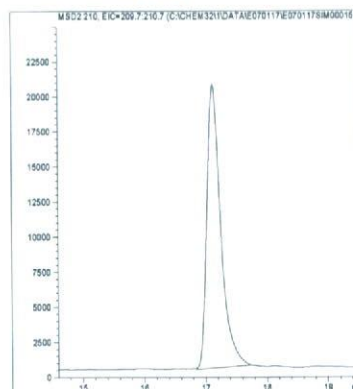
うなぎ (0.01mg/kg 添加)



えび (0.01mg/kg 添加)



牛乳 (0.01mg/kg 添加)



卵 (0.01mg/kg 添加)

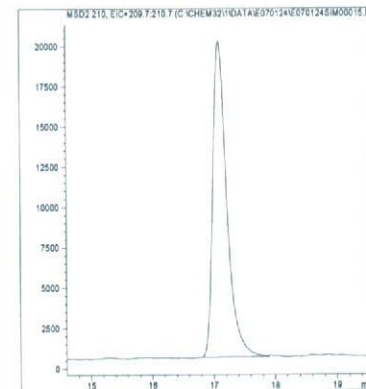
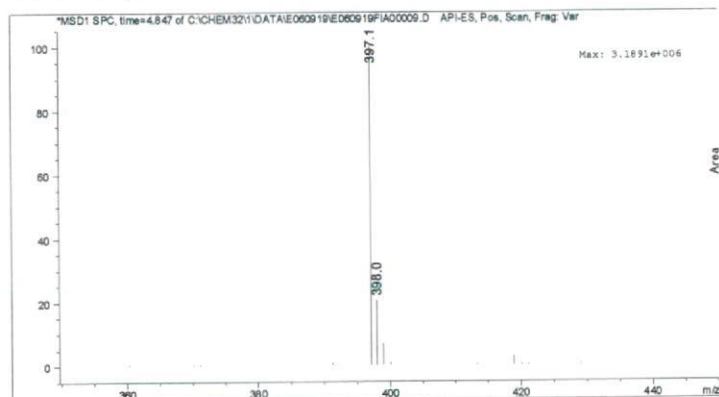


図2. 最小検出量評価, 標準品, 回収試料のマスキロマトグラム (ジメチリモール)

マススペクトル



検量線

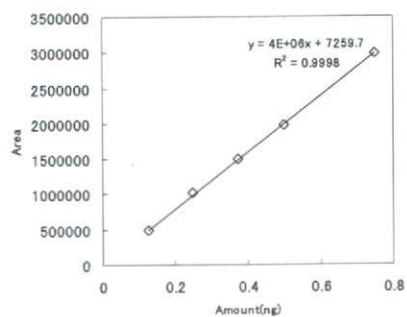
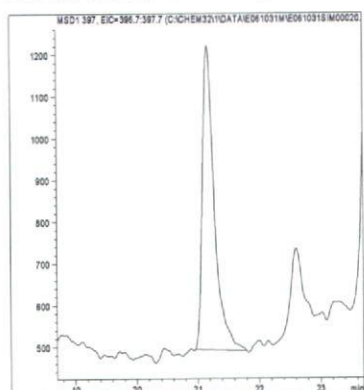
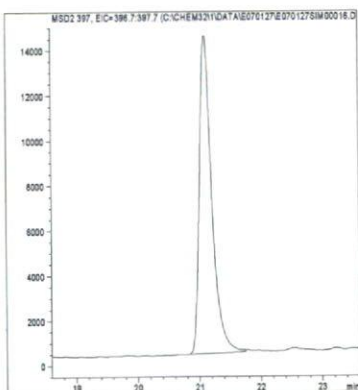


図 1. マススペクトルおよび検量線 (チアゾビル)

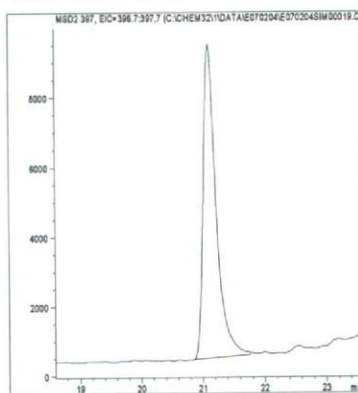
最小検出量評価 (0.0005ng)



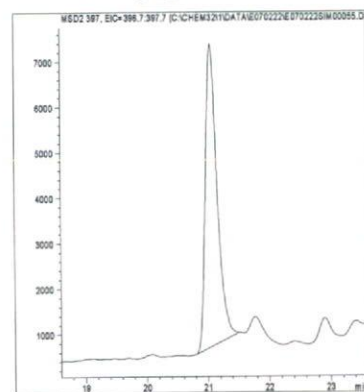
標準品 (0.05ng)



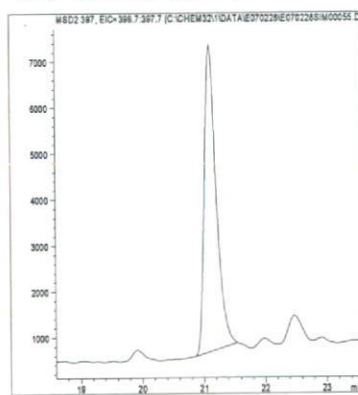
筋肉 (0.01mg/kg 添加)



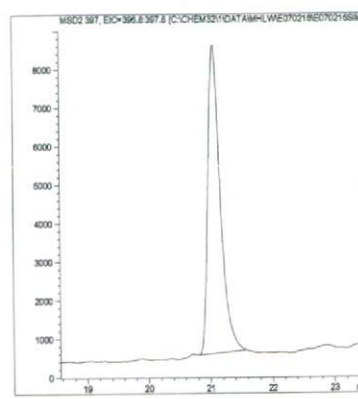
脂肪 (0.01mg/kg 添加)



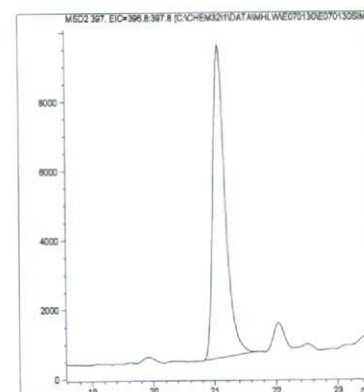
肝臓 (0.01mg/kg 添加)



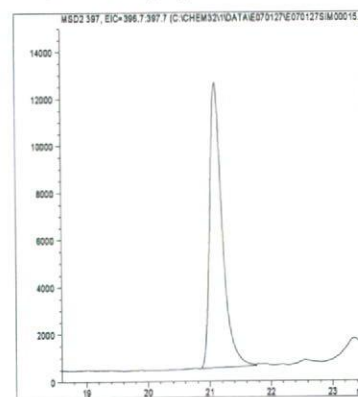
うなぎ (0.01mg/kg 添加)



えび (0.01mg/kg 添加)



牛乳 (0.01mg/kg 添加)



卵 (0.01mg/kg 添加)

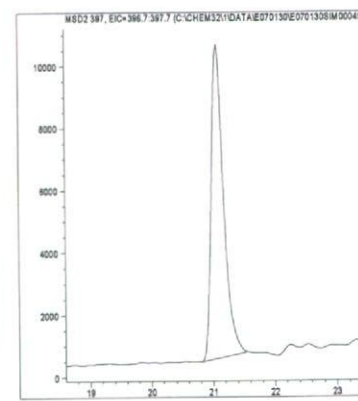
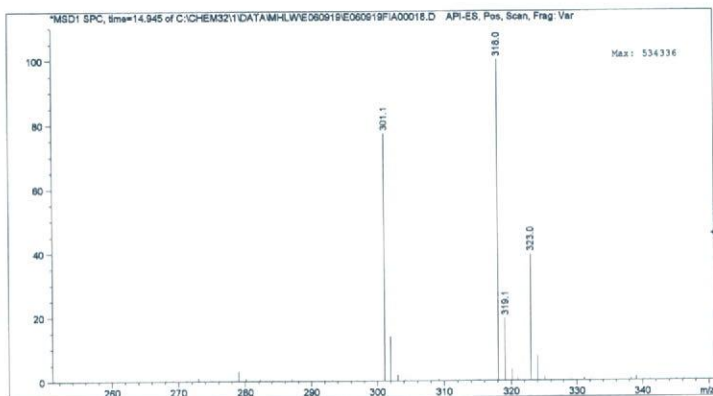


図 2. 最小検出量評価, 標準品, 回収試料のマスキロマトグラム (チアゾビル)

マススペクトル



検量線

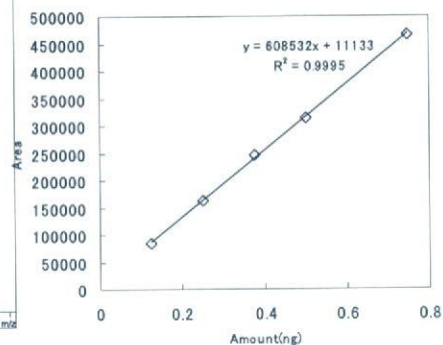
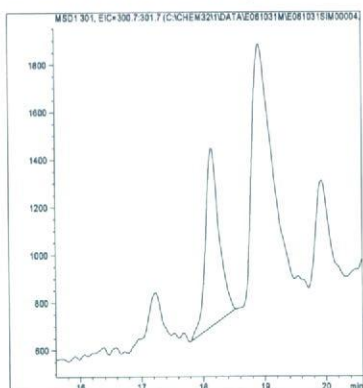
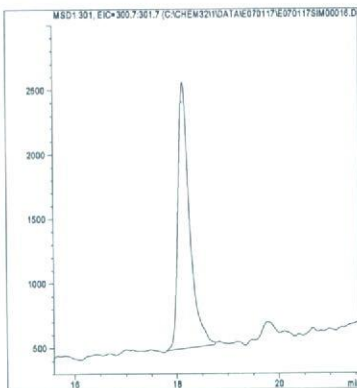


図 1. マススペクトルおよび検量線 (デスメディファム)

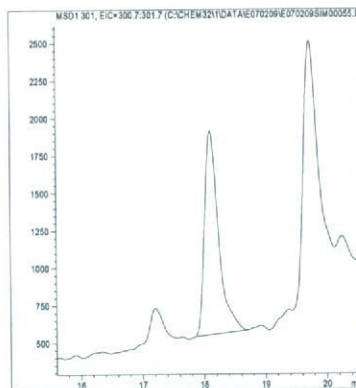
最小検出量評価 (0.005ng)



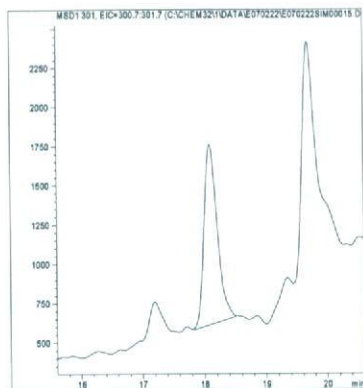
標準品 (0.05ng)



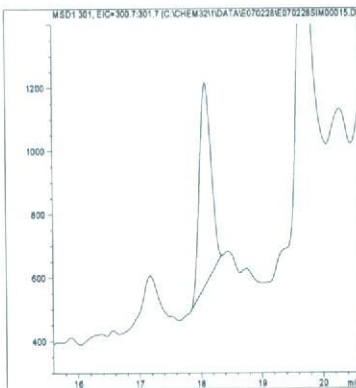
筋肉 (0.01mg/kg 添加)



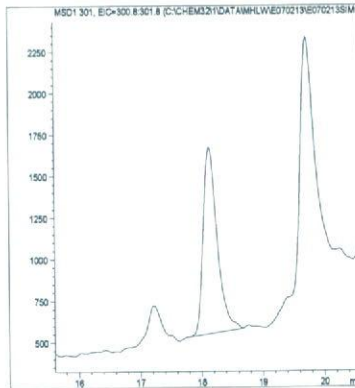
脂肪 (0.01mg/kg 添加)



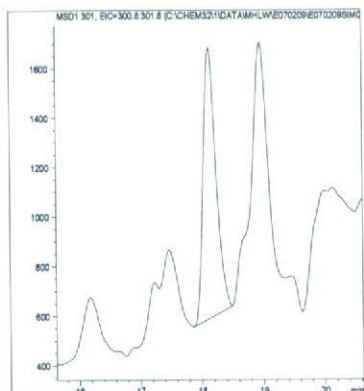
肝臓 (0.01mg/kg 添加)



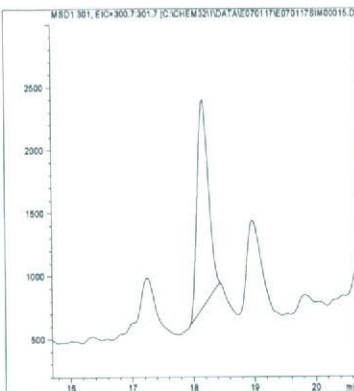
うなぎ (0.01mg/kg 添加)



えび (0.01mg/kg 添加)



牛乳 (0.01mg/kg 添加)



卵 (0.01mg/kg 添加)

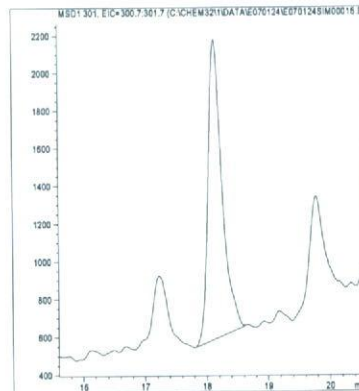
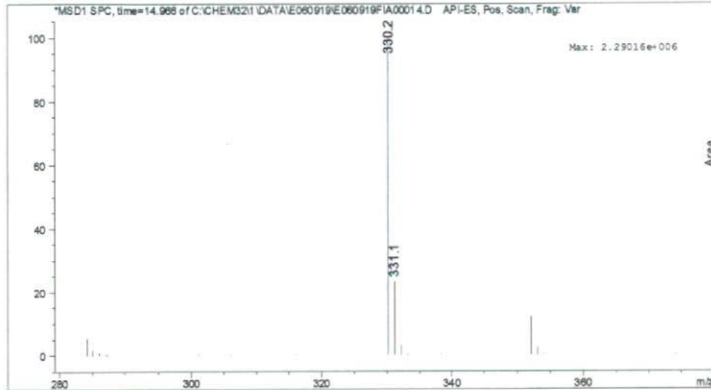


図 2. 最小検出量評価, 標準品, 回収試料のマスキロマトグラム (デスメディファム)

マススペクトル



検量線

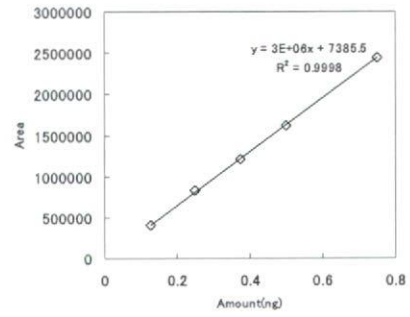
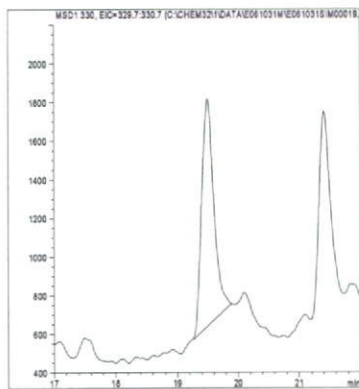
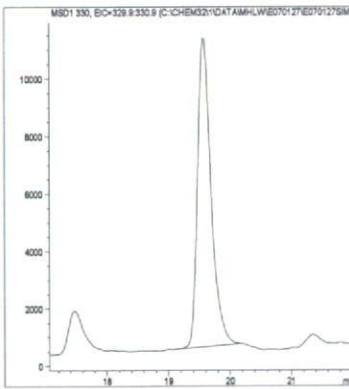


図 1. マススペクトルおよび検量線 (トラルコキシジム)

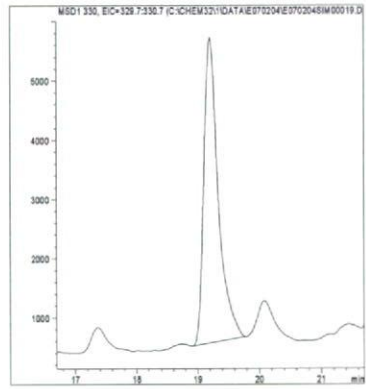
最小検出量評価 (0.001ng)



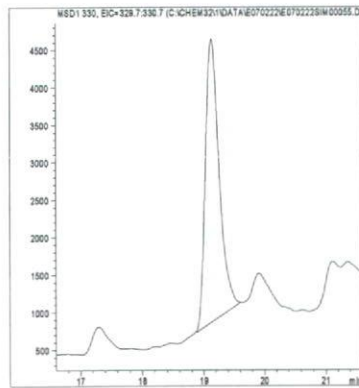
標準品 (0.05ng)



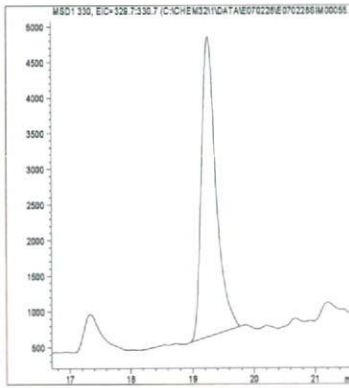
筋肉 (0.01mg/kg 添加)



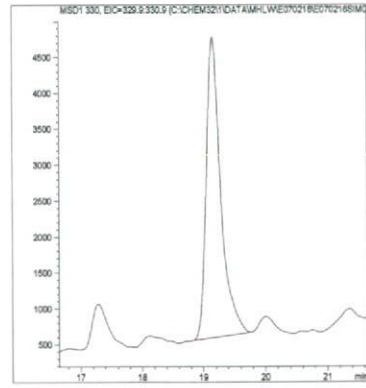
脂肪 (0.01mg/kg 添加)



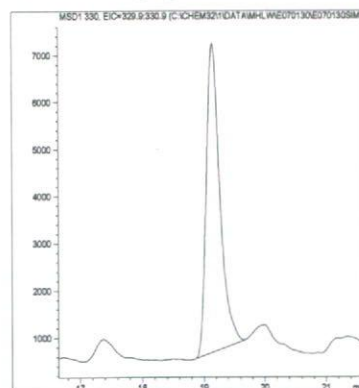
肝臓 (0.01mg/kg 添加)



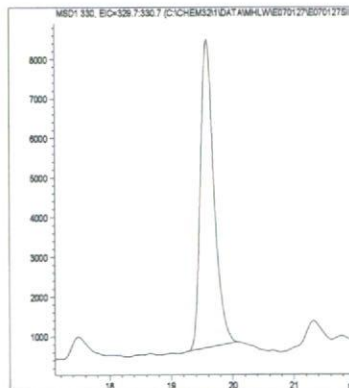
うなぎ (0.01mg/kg 添加)



えび (0.01mg/kg 添加)



牛乳 (0.01mg/kg 添加)



卵 (0.01mg/kg 添加)

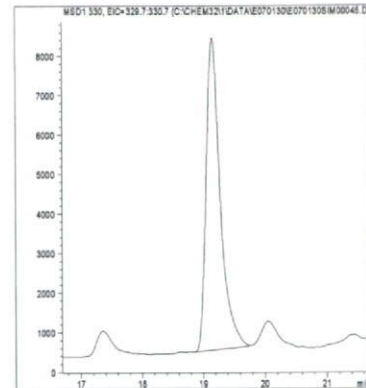
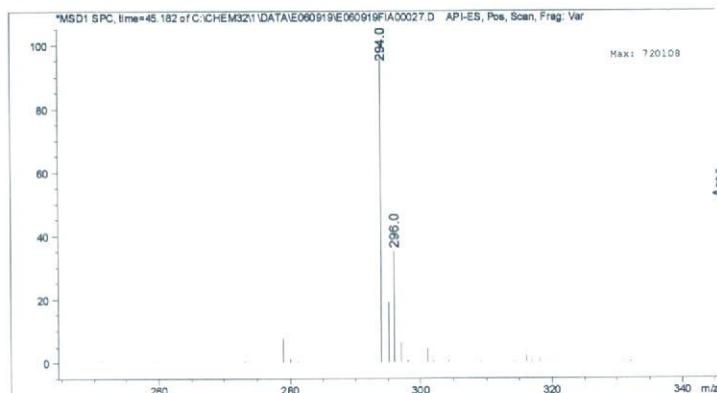


図 2. 最小検出量評価, 標準品, 回収試料のマスクロマトグラム (トラルコキシジム)



マススペクトル



検量線

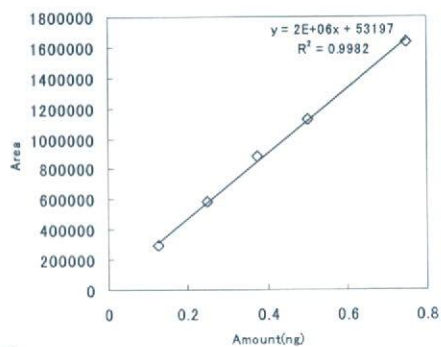
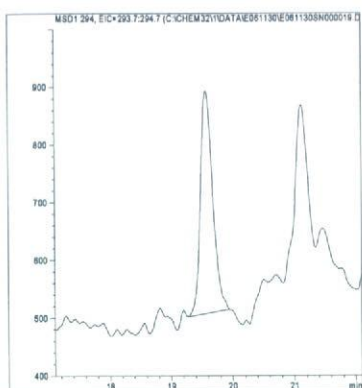
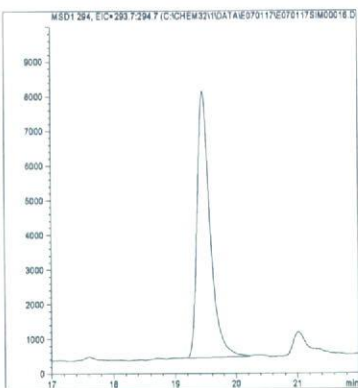


図 1. マススペクトルおよび検量線 (パクロブトラゾール)

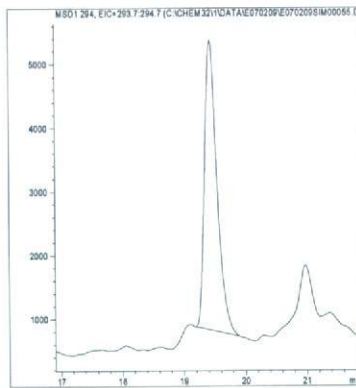
最小検出量評価 (0.001ng)



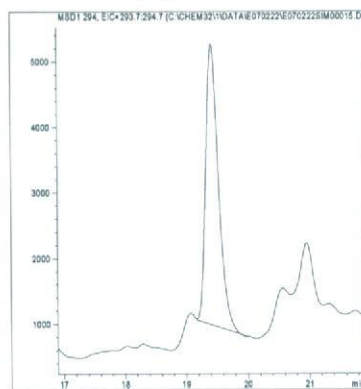
標準品 (0.05ng)



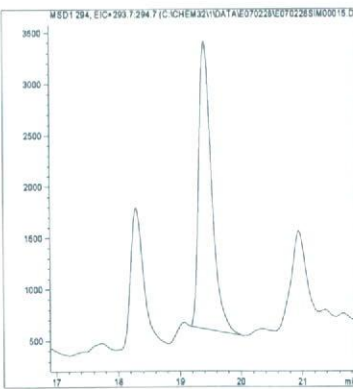
筋肉 (0.01mg/kg 添加)



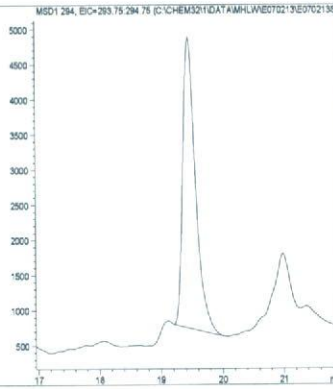
脂肪 (0.01mg/kg 添加)



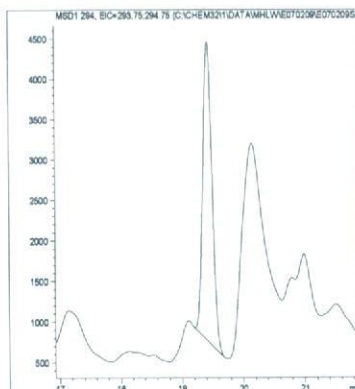
肝臓 (0.01mg/kg 添加)



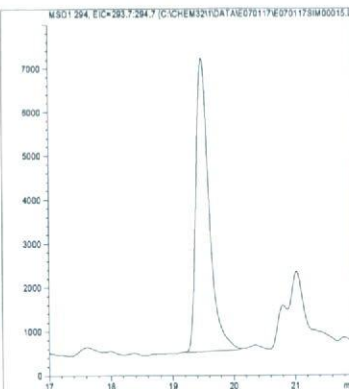
うなぎ (0.01mg/kg 添加)



えび (0.01mg/kg 添加)



牛乳 (0.01mg/kg 添加)



卵 (0.01mg/kg 添加)

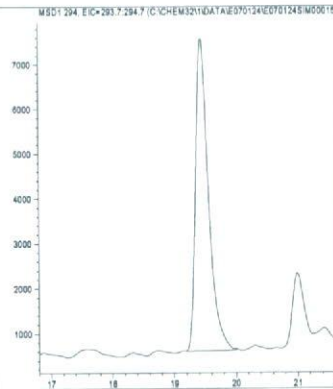
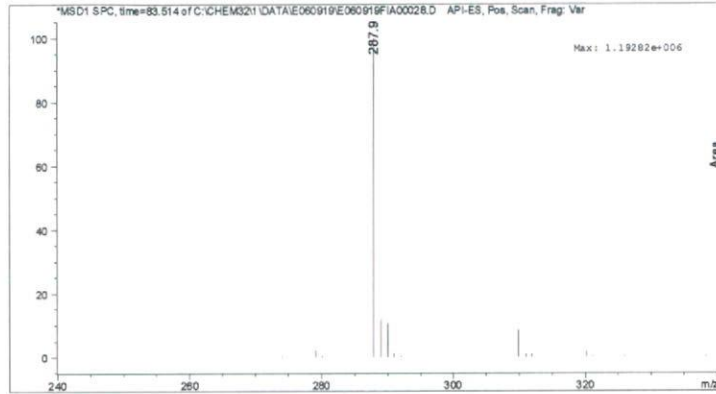


図 2. 最小検出量評価, 標準品, 回収試料のマスクロマトグラム (パクロブトラゾール)



マススペクトル



検量線

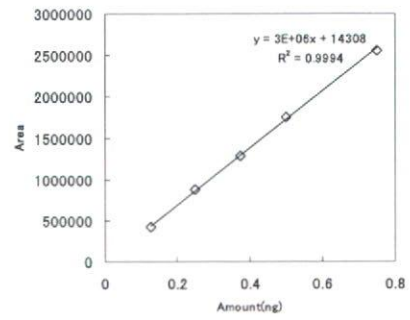
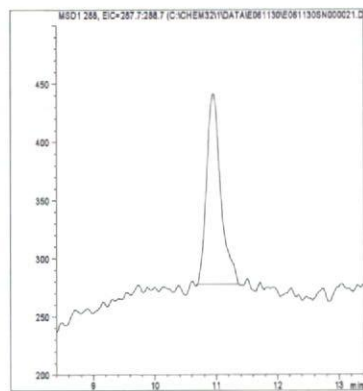
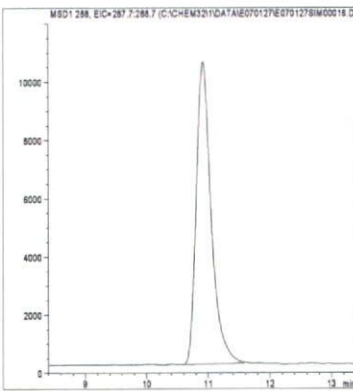


図 1. マススペクトルおよび検量線 (パミドチオン)

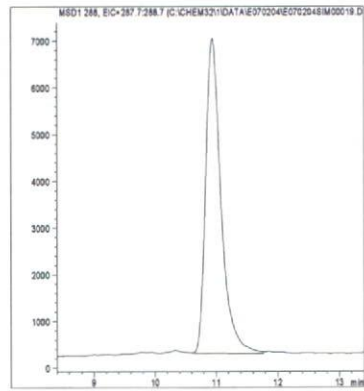
最小検出量評価 (0.0001ng)



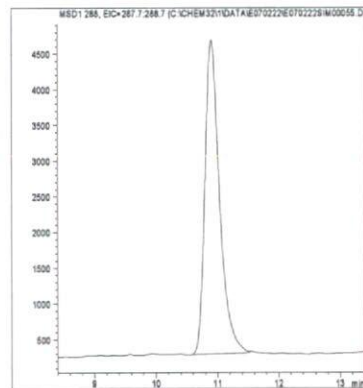
標準品 (0.05ng)



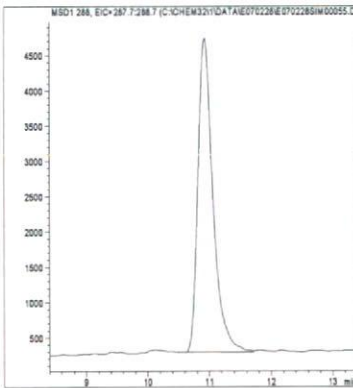
筋肉 (0.01mg/kg 添加)



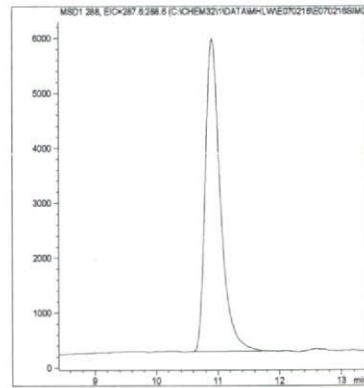
脂肪 (0.01mg/kg 添加)



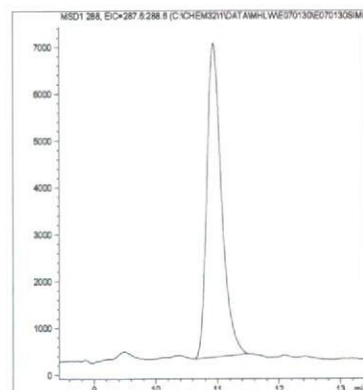
肝臓 (0.01mg/kg 添加)



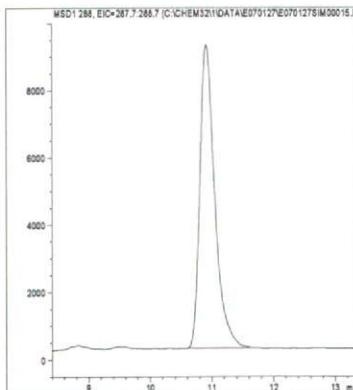
うなぎ (0.01mg/kg 添加)



えび (0.01mg/kg 添加)



牛乳 (0.01mg/kg 添加)



卵 (0.01mg/kg 添加)

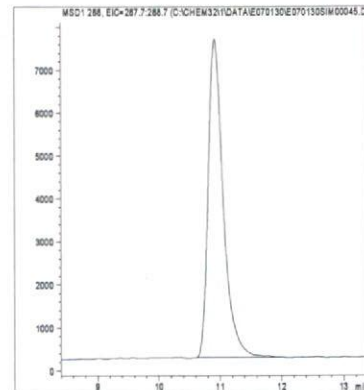
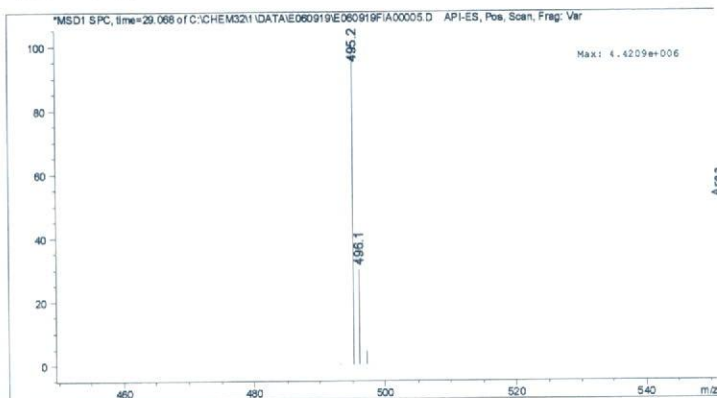


図 2. 最小検出量評価, 標準品, 回収試料のマスキロマトグラム (パミドチオン)

マススペクトル



検量線

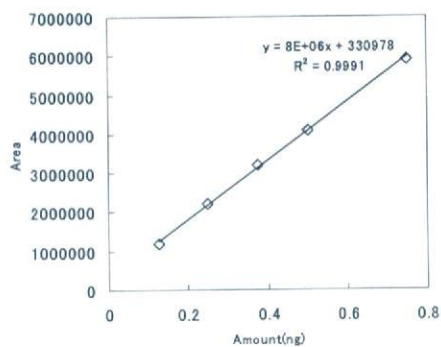
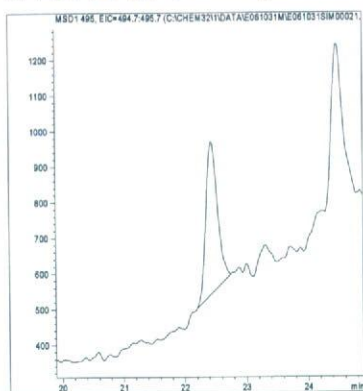
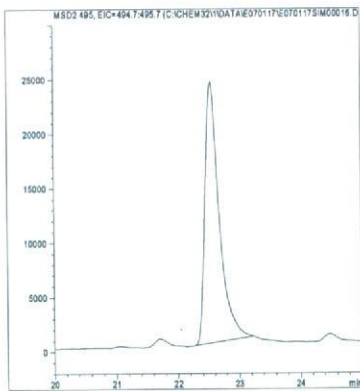


図 1. マススペクトルおよび検量線 (ヒドラメチルノン)

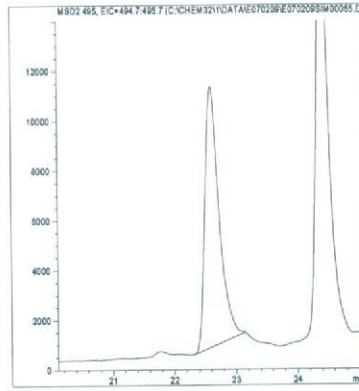
最小検出量評価 (0.0001ng)



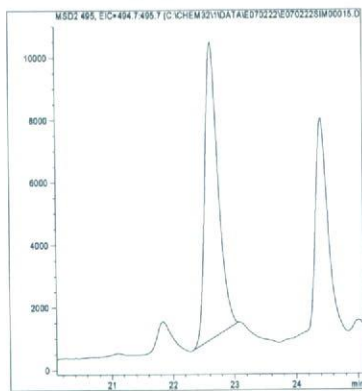
標準品 (0.05ng)



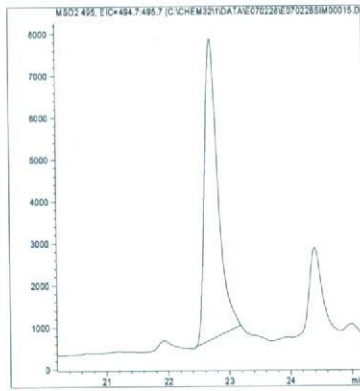
筋肉 (0.01mg/kg 添加)



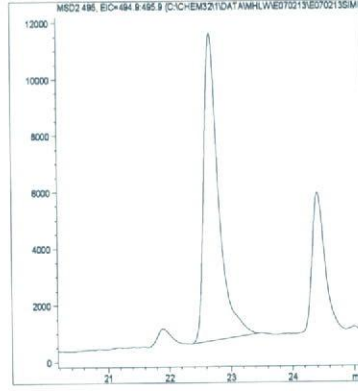
脂肪 (0.01mg/kg 添加)



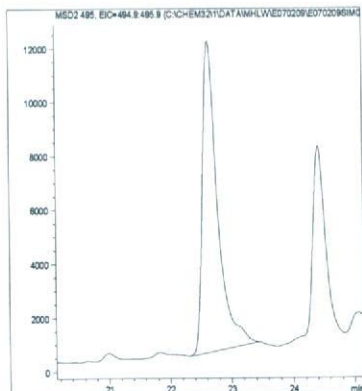
肝臓 (0.01mg/kg 添加)



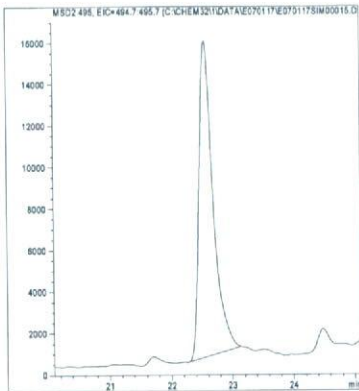
うなぎ (0.01mg/kg 添加)



えび (0.01mg/kg 添加)



牛乳 (0.01mg/kg 添加)



卵 (0.01mg/kg 添加)

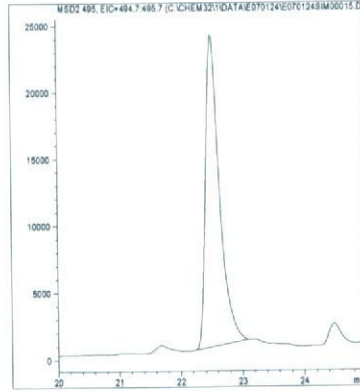


図 2. 最小検出量評価, 標準品, 回収試料のマスキロマトグラム (ヒドラメチルノン)