

- 1 symptomatology in both males (OR=4.14 CI = 3.42-5.00, <0.001, Table 3) and females
- 2 (OR=4.68 CI = 3.02-7.26, <0.001, Table 3) in this study.

1 Discussion

2 Although, dry eye disease has received a great deal of attention from health
3 workers and government agencies, large scale studies delineating prevalence of DED
4 and CL use in high school students have not been published so far.

5 The National Eye Institute (NEI) has identified tear film and dry eye research as an
6 important area in need of further research. Although clinical observations have long
7 suggested that dry eye syndromes exist in elder populations, there are few
8 epidemiological data available to describe the magnitude of the problem in high school
9 students. We carried out this cross-sectional prevalence survey to examine the
10 prevalence of severe dry eye symptomatology, clinically diagnosed dry eye and to
11 assess the prevalence of DED and CL use in the aforementioned young population.

12 Our study used the Schaumberg's dry eye questionnaire² widely used in the
13 States to enable comparisons of epidemiological dry eye data between US and Japan
14 and also represents the largest epidemiological study in a relatively young population in
15 the world and from private high school students in Japan. We found DES to be
16 relatively common among Japanese high school students.

17 The current study revealed a high prevalence of CL wear related to clinically
18 diagnosed and severe symptoms of dry eye disease.

1 Contact lens wear has often been reported to be associated with dry eye¹⁷, and a
2 significant number of CL-wearing patients experience dryness. Symptoms of dry eye
3 are common in CL wearers, with 50-75% of wearers reporting symptoms of ocular
4 irritation¹⁸⁻²². If a conservative estimate is used (50%), approximately 17 million
5 Americans have CL-related dry eye. Of importance, was our observation that SCL users
6 showed a significantly higher prevalence of clinically diagnosed dry and dry eye
7 symptomatology in both sex. The CANDEES study confirmed that dry eye symptoms
8 were more prevalent in contact lens wearers. It was found that virtually half of the
9 contact lens wearers (50.1%) experienced dry eye symptoms compared with just 21.7%
10 of non lens wearers²⁰.

11 It should be noted that only private high school were selected for the study
12 which was conducted upon a request coming from Keio University health support
13 center to investigate the prevalence of DED and CL use in Keio University affiliated
14 high school.

15 Since all Keio University affiliated high schools were private, we selected four
16 other Tokyo district private high schools, one of which consented to participate in the
17 study.

18 All private high schools require a tuition fee about 10,000 USD/year compared

1 to public/government school which require none. Our selection process might have
2 induced a bias in relation to social economy states and prevalence of DED. Further
3 study looking to differences of DED and CL use prevalence in randomly selected
4 private and public high schools need to be conducted. One other bias was that four out
5 of five private schools were boys only. We believed that further sex matched studies
6 should be carried out.

7 In summary, we found dry eye disease to be common in the Japanese private
8 high school students. Our present study represents the largest epidemiologic data from
9 Japan and in the world describing the prevalence of dry eye syndrome in high schools
10 and its relationship to the aforementioned risk factors. Although further studies are
11 needed to increase our understanding of the significance of this important public health
12 problem, the results of our study may be of guidance for specific precautions such as
13 provision of education, information and guidance on CL wear related problems and
14 their management in high school students.

1 Acknowledgements

- 2 The authors would like to thank Mr. Katunori Shimada for his professional
3 assistance in statistical analysis and Mr. Koichi Murayama for his excellent help.

1 Reference

- 2 1. Michael A Lemp, Christophe Baudouin, Jules Baum, MD et al. The Definition and
3 Classification of Dry Eye Disease. Report of the Definition and Classification
4 Subcommittee of the International Dry Eye Work Shop (2007). *Ocul Surf* 2007;5;75-92
- 5 2. Schaumberg DA, Sullivan DA, Buring JE, et al. Prevalence of dry eye
6 syndrome among US women. *Am J Ophthalmol* 2003;136;318-26
- 7 3. Miljanovic B et al. Prevalence and risk factors for dry eye syndrome among older
8 men in the United States. *IOVS* 2007;ARVO E-Abstract 4293
- 9 4. Schein OD, Hochberg MC, Munoz B, et al. Dry eye and dry mouth in the elderly: a
10 population-based assessment. *Arch Intern Med* 1999;159:1359-63
- 11 5. Schein OD, Munoz B, Tielsch JM, et al. Prevalence of dry eye among the elderly.
12 *Am J Ophthalmol* 1997;124:723-8
- 13 6. Munoz B, West SK, Rubin GS, et al. Causes of blindness and visual impairment in a
14 population of older Americans: The Salisbury Eye Evaluation Study. *Arch Ophthalmol*
15 2000;118:819-25
- 16 7. Moss SE, Klein R, Klein BE. Prevalence of and risk factors for dry eye syndrome.
17 *Arch Ophthalmol* 2000;118:1264-8
- 18 8. Christen W G, Manson JE, Glynn RJ, et al. Low-dose aspirin and risk of

- 1 cataract and sub types in a randomized trial of US physicians. *Ophthalmic Epidemiol*
2 1998;5:133-42
- 3 9. Christen W G, Gaziano JM, Hennekens CH. Design of Physicians. Health Study II. A
4 randomized trial of beta-carotene, vitamins E and C, and multivitamins, in prevention of
5 cancer, cardiovascular disease, and eye disease, and review of results of completed trials.
6 *Ann Epidemiol* 2000;10:125-34
- 7 10. Chia EM, Mitchell P, Rochtchina E, et al. Prevalence and associations of dry eye
8 syndrome in an older population: the Blue Mountains Eye Study. *Clin Experiment*
9 *Ophthalmol* 2003;31:229-32
- 10 11. McCarty CA, Bansal AK, Livingston PM, et al. The epidemiology of dry eye in
11 Melbourne, Australia. *Ophthalmology* 1998;105:1114-9
- 12 12. Lin PY, Tsai SY, Cheng CY, et al. Prevalence of dry eye among an elderly
13 Chinese population in Taiwan: the Shihpai Eye Study. *Ophthalmology*
14 2003;110:1096-101
- 15 13. Lee AJ, Lee J, Saw SM, et al. Prevalence and risk factors associated with dry eye
16 symptoms: a population based study in Indonesia. *Br J Ophthalmol* 2002;86:1347-51
- 17 14. Schaumberg DA, Buring JE, Sullivan DA et al. Hormone replacement therapy and
18 dry eye syndrome. *JAMA*. 2001;286:2114-2119.

- 1 15) Gulati A, Sullivan R, Buring JE et al. Validation and repeatability of short
2 questionnaire for dry eye syndrome. *Am J Ophthalmol*. 2006;142:125-131.
- 3 16) Miljanovic B, Dana R, Sullivan DA et al. Impact of dry eye syndrome on
4 vision-related quality of life. *Am J Ophthalmol* 2007; 143:409-415.
- 5 17. Farris RL. The dry eye: its mechanisms and therapy, with evidence that contact lens
6 is a cause. *CLAO J* 1986;12:234-46
- 7 18. Nichols JJ, Ziegler C, Mitchell GL, Nichols KK. Self-reported dry eye disease
8 across refractive modalities. *Invest Ophthalmol Vis Sci* 2005;46:1911
- 9 19. Brennan NA, Efron N. Symptomatology of HEMA contact lens wear. *Optom Vis*
10 *Sci* 1989;66:834-8
- 11 20. Doughty MJ, Fonn D, Richter D, et al. A patient questionnaire approach to
12 estimating the prevalence of dry eye symptoms in patients presenting to optometric
13 practices across Canada. *Optom Vis Sci* 1997;74:624-31
- 14 21. Vajdic C, Holden BA, et al. The frequency of ocular symptoms during spectacle and
15 daily soft and rigid contact lens wear. *Optom Vis Sci* 1999;76:705-11
- 16 22. Begley CG, Caffery B, Nichols KK, Chalmers R. Responses of contact lens wearers
17 to a dry eye survey. *Optom Vis Sci* 2000;77:40-6

Table**Table 1. Prevalence of Clinically Diagnosed Dry Eye and Severe Symptoms of Dry Eye**

	Number of DES*	Prevalence	
		Estimates	95% Confidence Interval
Clinically Diagnosed Dry Eye			
Men	123/2848	4.3%	(3.9% - 4.6%)
Women	47/585	8.0%	(7.4% - 8.4%)
Severe Symptoms of Dry Eye			
Men	599/2848	21.0%	(20.1% - 21.8%)
Women	143/585	24.4%	(23.9% - 25.0%)

Table 2. Logistic Regression Model of Predictors of the Prevalence of Clinically Diagnosed Dry Eye Syndrome

Variable	Number of MEN (n=2,848)	Number with DES (n=123)	Univariate		Multivariate	
			Crude Odds Ratio (95%CI)	P-value	Adjusted Odds Ratio (95%CI)	P-value
Contact lens						
No	1,844	39 (2.1%)	1.0		1.0	
SCL	971	81 (8.3%)	4.2 (2.9 - 6.2)	<0.001	4.2 (2.8 - 6.2)	0.019
HCL	33	3 (9.1%)	4.6 (1.4 - 15.8)	<0.001	4.4 (1.3 - 15.4)	<0.001
Variable	Number of WOMEN (n=585)	Number with DES (n=47)	Univariate		Multivariate	
			Crude Odds Ratio (95%CI)	P-value	Adjusted Odds Ratio (95%CI)	P-value
Contact lens						
No	291	9 (3.1%)	1.0		1.0	
SCL	267	36 (13.5%)	4.9 (2.3 - 10.3)	<0.001	4.9 (2.3 - 10.3)	<0.001
HCL	27	2 (7.4%)	2.5 (0.5 - 12.2)	<0.001	2.5 (0.5 - 12.2)	<0.001

CI denotes confidence interval.

Table 3. Logistic Regression Model of Predictors of the Prevalence of Severe Symptoms Dry Eye Syndrome

Variable	Number of	Number with		Univariate		Multivariate	
	MEN (n=2,848)	DES (n=599)		Crude Odds Ratio (95%CI)	P-value	Adjusted Odds Ratio (95%CI)	P-value
Contact lens							
No	1,844	230 (12.5%)		1.0		1.0	
SCL	971	360 (37.1%)		4.1 (3.4 - 5.0)	<0.001	4.6 (3.8 - 5.7)	<0.001
HCL	33	9 (27.3%)		2.6 (1.2 - 5.7)	0.015	2.6 (1.1 - 5.9)	0.029
Variable	Number of	Number with		Univariate		Multivariate	
	WOMEN (n=585)	DES (n=143)		Crude Odds Ratio (95%CI)	P-value	Adjusted Odds Ratio (95%CI)	P-value
Contact lens							
No	291	33 (11.3%)		1.0		1.0	
SCL	267	100 (37.5%)		4.7 (3.0 - 7.3)	<0.001	5.8 (3.6 - 9.3)	<0.001
HCL	27	10 (37.0%)		4.6 (1.9 - 10.9)	<0.001	5.5 (2.2 - 13.7)	0.003

CI denotes confidence interval.

Variables	Total (N=238)	東京 (N=84)	大阪 (N=79)	福岡 (N=35)	関西 (N=40)	P-value
調査地区						
東京	84(35.3%)	84(100.0%)	.	.	.	<.001 [*****]
大阪	79(33.2%)	.	79(100.0%)	.	.	
福岡	35(14.7%)	.	.	35(100.0%)	.	
関西	40(16.8%)	.	.	.	40(100.0%)	
年齢(歳)	39.7±11.5	37.4±8.2	36.4±9.0	39.7±9.9	51.0±15.9	<.001 [*****]
女性	163(68.5%)	54(64.3%)	53(67.1%)	23(65.7%)	33(82.5%)	0.210 [N.S]
ドライアイ診断						
はい	56(23.5%)	10(11.9%)	10(12.7%)	4(11.4%)	32(80.0%)	<.001 [*****]
いいえ	182(76.5%)	74(88.1%)	69(87.3%)	31(88.6%)	8(20.0%)	
不明	
ドライアイ不定常訴求程度・頻度インデックス						
1) 平均値±標準偏差	1.8±1.3	1.7±1.2	1.6±1.2	1.3±1.3	2.8±1.4	<.001 [*****]
4	26(10.9%)	4(4.8%)	4(5.1%)	2(5.7%)	16(40.0%)	<.001 [*****]
3	54(22.7%)	18(21.4%)	19(24.1%)	6(17.1%)	11(27.5%)	
2	63(26.5%)	33(39.3%)	19(24.1%)	5(14.3%)	6(15.0%)	
1	38(16.0%)	10(11.9%)	17(21.5%)	9(25.7%)	2(5.0%)	
0	57(23.9%)	19(22.6%)	20(25.3%)	13(37.1%)	5(12.5%)	
未回答	
2) 平均値±標準偏差	1.7±1.3	1.6±1.2	1.4±1.0	1.1±1.1	2.8±1.3	<.001 [*****]
4	19(8.0%)	5(6.0%)	.	.	14(35.0%)	<.001 [*****]
3	47(19.7%)	16(19.0%)	13(16.5%)	4(11.4%)	14(35.0%)	
2	64(26.9%)	27(32.1%)	23(29.1%)	10(28.6%)	4(10.0%)	
1	48(20.2%)	16(19.0%)	23(29.1%)	5(14.3%)	4(10.0%)	
0	59(24.8%)	20(23.8%)	20(25.3%)	16(45.7%)	3(7.5%)	
未回答	1(0.4%)	.	.	.	1(2.5%)	
3) 平均値±標準偏差	1.2±1.1	1.0±1.0	0.9±1.0	0.7±0.9	2.3±1.2	<.001 [*****]
4	6(2.5%)	.	.	.	6(15.0%)	<.001 [*****]
3	27(11.3%)	7(8.3%)	6(7.6%)	1(2.9%)	13(32.5%)	
2	57(23.9%)	23(27.4%)	15(19.0%)	8(22.9%)	11(27.5%)	
1	56(23.5%)	20(23.8%)	24(30.4%)	7(20.0%)	5(12.5%)	
0	91(38.2%)	33(39.3%)	34(43.0%)	19(54.3%)	5(12.5%)	
未回答	1(0.4%)	1(1.2%)	.	.	.	
4) 平均値±標準偏差	0.9±1.1	0.8±0.9	0.6±0.9	0.5±0.7	2.2±1.4	<.001 [*****]
4	8(3.4%)	.	.	.	8(20.0%)	<.001 [*****]
3	16(6.7%)	3(3.6%)	4(5.1%)	.	9(22.5%)	
2	41(17.2%)	17(20.2%)	9(11.4%)	3(8.6%)	12(30.0%)	
1	54(22.7%)	23(27.4%)	17(21.5%)	11(31.4%)	3(7.5%)	
0	119(50.0%)	41(48.8%)	49(62.0%)	21(60.0%)	8(20.0%)	
未回答	
5) 平均値±標準偏差	2.6±1.0	2.6±1.0	2.5±0.8	2.4±1.0	2.9±1.2	0.116 [N.S]
4	42(17.6%)	16(19.0%)	6(7.6%)	4(11.4%)	16(40.0%)	0.062 [N.S]
3	92(38.7%)	34(40.5%)	35(44.3%)	13(37.1%)	10(25.0%)	
2	76(31.9%)	23(27.4%)	32(40.5%)	12(34.3%)	9(22.5%)	
1	21(8.8%)	9(10.7%)	5(6.3%)	4(11.4%)	3(7.5%)	
0	7(2.9%)	2(2.4%)	1(1.3%)	2(5.7%)	2(5.0%)	
未回答	
6) 平均値±標準偏差	1.7±1.3	1.7±1.2	1.3±1.1	1.4±1.1	2.7±1.3	<.001 [*****]
4	24(10.1%)	7(8.3%)	2(2.5%)	1(2.9%)	14(35.0%)	<.001 [*****]
3	41(17.2%)	17(20.2%)	9(11.4%)	3(8.6%)	12(30.0%)	
2	69(29.0%)	24(28.6%)	25(31.6%)	13(37.1%)	7(17.5%)	
1	49(20.6%)	19(22.6%)	18(22.8%)	9(25.7%)	3(7.5%)	
0	55(23.1%)	17(20.2%)	25(31.6%)	9(25.7%)	4(10.0%)	
未回答	
7) 平均値±標準偏差	1.6±1.2	1.7±1.2	1.4±1.1	1.5±1.1	1.9±1.3	0.060 [N.S]
4	16(6.7%)	6(7.1%)	3(3.8%)	2(5.7%)	5(12.5%)	0.068 [N.S]
3	42(17.6%)	18(21.4%)	12(15.2%)	3(8.6%)	9(22.5%)	
2	54(22.7%)	18(21.4%)	14(17.7%)	11(31.4%)	11(27.5%)	
1	83(34.9%)	30(35.7%)	32(40.5%)	13(37.1%)	8(20.0%)	
0	43(18.1%)	12(14.3%)	18(22.8%)	6(17.1%)	7(17.5%)	
未回答	
8) 平均値±標準偏差	1.5±1.1	1.5±1.2	1.4±1.0	1.3±1.1	1.7±1.1	0.541 [N.S]
4	8(3.4%)	5(6.0%)	.	1(2.9%)	2(5.0%)	0.628 [N.S]
3	37(15.5%)	13(15.5%)	13(16.5%)	4(11.4%)	7(17.5%)	
2	64(26.9%)	23(27.4%)	21(26.6%)	10(28.6%)	10(25.0%)	
1	82(34.5%)	24(28.6%)	30(38.0%)	11(31.4%)	17(42.5%)	
0	47(19.7%)	19(22.6%)	15(19.0%)	9(25.7%)	4(10.0%)	
未回答	
9) 平均値±標準偏差	0.7±1.0	0.7±0.9	0.6±0.9	0.4±0.7	1.3±1.4	<.001 [*****]
4	5(2.1%)	1(1.2%)	1(1.3%)	.	3(7.5%)	0.007 [***]
3	13(5.5%)	2(2.4%)	4(5.1%)	.	7(17.5%)	
2	28(11.8%)	14(16.7%)	5(6.3%)	4(11.4%)	5(12.5%)	
1	52(21.8%)	22(26.2%)	19(24.1%)	5(14.3%)	6(15.0%)	
0	138(58.0%)	45(53.6%)	50(63.3%)	26(74.3%)	17(42.5%)	
未回答	2(0.8%)	.	.	.	2(5.0%)	
10) 平均値±標準偏差	1.7±1.1	1.8±1.1	1.5±1.0	1.4±1.0	2.3±1.3	0.002 [***]
4	14(5.9%)	5(6.0%)	1(1.3%)	.	8(20.0%)	0.004 [***]
3	48(20.2%)	17(20.2%)	14(17.7%)	6(17.1%)	11(27.5%)	
2	74(31.1%)	30(35.7%)	23(29.1%)	10(28.6%)	11(27.5%)	
1	66(27.7%)	20(23.8%)	30(38.0%)	12(34.3%)	4(10.0%)	
0	35(14.7%)	11(13.1%)	11(13.9%)	7(20.0%)	6(15.0%)	
未回答	1(0.4%)	1(1.2%)	.	.	.	
11) 平均値±標準偏差	1.3±1.2	1.4±1.2	1.2±1.0	0.9±0.8	1.8±1.4	0.003 [***]
4	13(5.5%)	4(4.8%)	1(1.3%)	.	8(20.0%)	0.022 [*]
3	29(12.2%)	15(17.9%)	10(12.7%)	.	4(10.0%)	
2	50(21.0%)	15(17.9%)	17(21.5%)	8(22.9%)	10(25.0%)	
1	75(31.5%)	24(28.6%)	28(35.4%)	14(40.0%)	9(22.5%)	
0	71(29.8%)	26(31.0%)	23(29.1%)	13(37.1%)	9(22.5%)	

未回答						
12) 平均値±標準偏差	0.6±1.2	0.6±1.2	0.4±1.0	0.3±0.7	2.9±1.5	<.001 [*****]
4	4(1.7%)	1(1.2%)	.	.	3(7.5%)	<.001 [*****]
3	11(4.6%)	4(4.8%)	5(6.3%)	.	2(5.0%)	
2	9(3.8%)	3(3.6%)	1(1.3%)	4(11.4%)	1(2.5%)	
1	4(1.7%)	2(2.4%)	.	2(5.7%)	.	
0	90(37.8%)	29(34.5%)	36(45.6%)	24(68.6%)	1(2.5%)	
未回答	120(50.4%)	45(53.6%)	37(46.8%)	5(14.3%)	33(82.5%)	
視覚聴覚不安定感重症度・頻度インデックス						
13) 平均値±標準偏差	1.6±1.2	1.4±1.2	1.6±1.1	1.2±1.2	2.0±1.5	0.040 [*]
4	16(6.7%)	3(3.6%)	4(5.1%)	1(2.9%)	8(20.0%)	0.065 [N.S]
3	42(17.6%)	17(20.2%)	12(15.2%)	5(14.3%)	8(20.0%)	
2	59(24.8%)	15(17.9%)	28(35.4%)	7(20.0%)	9(22.5%)	
1	61(25.6%)	27(32.1%)	21(26.6%)	9(25.7%)	4(10.0%)	
0	60(25.2%)	22(26.2%)	14(17.7%)	13(37.1%)	11(27.5%)	
未回答	
14) 平均値±標準偏差	1.4±1.3	1.2±1.2	1.2±1.1	1.3±1.2	2.3±1.6	<.001 [*****]
4	22(9.2%)	5(6.0%)	1(1.3%)	3(8.6%)	13(32.5%)	0.001 [***]
3	30(12.6%)	9(10.7%)	10(12.7%)	2(5.7%)	9(22.5%)	
2	53(22.3%)	20(23.8%)	20(25.3%)	7(20.0%)	6(15.0%)	
1	52(21.8%)	17(20.2%)	20(25.3%)	14(40.0%)	1(2.5%)	
0	81(34.0%)	33(39.3%)	28(35.4%)	9(25.7%)	11(27.5%)	
未回答	
15) 平均値±標準偏差	0.8±1.1	0.5±0.9	0.5±0.7	0.5±0.6	2.1±1.5	<.001 [*****]
4	11(4.6%)	1(1.2%)	.	.	10(25.0%)	<.001 [*****]
3	16(6.7%)	6(7.1%)	1(1.3%)	.	9(22.5%)	
2	16(6.7%)	3(3.6%)	6(7.6%)	1(2.9%)	6(15.0%)	
1	58(24.4%)	18(21.4%)	21(26.6%)	14(40.0%)	5(12.5%)	
0	137(57.6%)	56(66.7%)	51(64.6%)	20(57.1%)	10(25.0%)	
未回答	
16) 平均値±標準偏差	0.5±0.9	0.3±0.7	0.5±0.7	0.2±0.5	1.7±1.6	<.001 [*****]
4	3(1.3%)	.	.	.	3(7.5%)	<.001 [*****]
3	7(2.9%)	1(1.2%)	.	.	6(15.0%)	
2	15(6.3%)	6(7.1%)	5(6.3%)	1(2.9%)	3(7.5%)	
1	30(12.6%)	9(10.7%)	14(17.7%)	6(17.1%)	1(2.5%)	
0	127(53.4%)	61(72.6%)	30(38.0%)	27(77.1%)	9(22.5%)	
未回答	56(23.5%)	7(8.3%)	30(38.0%)	1(2.9%)	18(45.0%)	
17) 平均値±標準偏差	1.1±1.3	1.1±1.2	0.7±0.9	0.7±1.0	2.4±1.5	<.001 [*****]
4	18(7.6%)	6(7.1%)	2(2.5%)	1(2.9%)	9(22.5%)	<.001 [*****]
3	17(7.1%)	6(7.1%)	1(1.3%)	.	10(25.0%)	
2	35(14.7%)	13(15.5%)	11(13.9%)	6(17.1%)	5(12.5%)	
1	60(25.2%)	23(27.4%)	24(30.4%)	10(28.6%)	3(7.5%)	
0	101(42.4%)	36(42.9%)	41(51.9%)	18(51.4%)	6(15.0%)	
未回答	7(2.9%)	.	.	.	7(17.5%)	
18) 平均値±標準偏差	0.8±1.0	0.7±0.9	0.5±0.7	0.5±0.8	1.7±1.5	<.001 [*****]
4	7(2.9%)	.	.	.	7(17.5%)	<.001 [*****]
3	13(5.5%)	5(6.0%)	1(1.3%)	1(2.9%)	6(15.0%)	
2	25(10.5%)	9(10.7%)	5(6.3%)	3(8.6%)	8(20.0%)	
1	66(27.7%)	26(31.0%)	25(31.6%)	8(22.9%)	7(17.5%)	
0	127(53.4%)	44(52.4%)	48(60.8%)	23(65.7%)	12(30.0%)	
未回答	
19) 平均値±標準偏差	0.5±0.9	0.5±0.8	0.4±0.7	0.7±1.0	0.6±1.2	0.520 [N.S]
4	3(1.3%)	.	.	1(2.9%)	2(5.0%)	0.652 [N.S]
3	6(2.5%)	3(3.6%)	.	1(2.9%)	2(5.0%)	
2	25(10.5%)	9(10.7%)	9(11.4%)	5(14.3%)	2(5.0%)	
1	39(16.4%)	16(19.0%)	14(17.7%)	6(17.1%)	3(7.5%)	
0	160(67.2%)	54(64.3%)	56(70.9%)	22(62.9%)	28(70.0%)	
未回答	5(2.1%)	2(2.4%)	.	.	3(7.5%)	
20) 平均値±標準偏差	0.6±1.0	0.6±0.9	0.4±0.9	0.3±0.6	1.3±1.4	<.001 [*****]
4	6(2.5%)	1(1.2%)	.	.	5(12.5%)	0.001 [***]
3	9(3.8%)	3(3.6%)	3(3.8%)	.	3(7.5%)	
2	33(13.9%)	11(13.1%)	10(12.7%)	3(8.6%)	9(22.5%)	
1	30(12.6%)	15(17.9%)	6(7.6%)	5(14.3%)	4(10.0%)	
0	158(66.4%)	52(61.9%)	60(75.9%)	27(77.1%)	19(47.5%)	
未回答	2(0.8%)	2(2.4%)	.	.	.	
21) 平均値±標準偏差	1.5±1.3	1.4±1.2	1.4±1.1	1.4±1.3	2.0±1.5	0.043 [*]
4	17(7.1%)	4(4.8%)	2(2.5%)	2(5.7%)	9(22.5%)	0.101 [N.S]
3	36(15.1%)	13(15.5%)	11(13.9%)	4(11.4%)	8(20.0%)	
2	69(29.0%)	23(27.4%)	26(32.9%)	14(40.0%)	6(15.0%)	
1	45(18.9%)	16(19.0%)	18(22.8%)	2(5.7%)	9(22.5%)	
0	71(29.8%)	28(33.3%)	22(27.8%)	13(37.1%)	8(20.0%)	
未回答	
環境因子重症度・頻度インデックス						
22) 平均値±標準偏差	1.4±1.3	1.3±1.2	1.1±1.1	1.1±1.0	2.8±1.4	<.001 [*****]
4	19(8.0%)	1(1.2%)	1(1.3%)	.	17(42.5%)	<.001 [*****]
3	38(16.0%)	15(17.9%)	8(10.1%)	5(14.3%)	10(25.0%)	
2	48(20.2%)	19(22.6%)	20(25.3%)	4(11.4%)	5(12.5%)	
1	52(21.8%)	19(22.6%)	16(20.3%)	15(42.9%)	2(5.0%)	
0	81(34.0%)	30(35.7%)	34(43.0%)	11(31.4%)	6(15.0%)	
未回答	
23) 平均値±標準偏差	1.6±1.3	1.6±1.2	1.2±1.2	1.3±1.0	2.6±1.5	<.001 [*****]
4	19(8.0%)	1(1.2%)	1(1.3%)	.	17(42.5%)	<.001 [*****]
3	50(21.0%)	23(27.4%)	14(17.7%)	5(14.3%)	8(20.0%)	
2	48(20.2%)	18(21.4%)	16(20.3%)	8(22.9%)	6(15.0%)	
1	58(24.4%)	23(27.4%)	20(25.3%)	14(40.0%)	1(2.5%)	
0	63(26.5%)	19(22.6%)	28(35.4%)	8(22.9%)	8(20.0%)	
未回答	
24) 平均値±標準偏差	1.7±1.3	1.7±1.3	1.4±1.2	1.5±1.1	2.7±1.5	<.001 [*****]
4	26(10.9%)	4(4.8%)	4(5.1%)	1(2.9%)	17(42.5%)	<.001 [*****]
3	51(21.4%)	24(28.6%)	11(13.9%)	7(20.0%)	9(22.5%)	
2	45(18.9%)	16(19.0%)	18(22.8%)	7(20.0%)	4(10.0%)	
1	60(25.2%)	19(22.6%)	24(30.4%)	14(40.0%)	3(7.5%)	
0	54(22.7%)	20(23.8%)	22(27.8%)	6(17.1%)	6(15.0%)	

未回答	2(0.8%)	1(1.2%)	.	.	1(2.5%)	
25) 平均値±標準偏差	0.8±1.2	0.7±1.1	0.4±0.9	0.5±0.7	1.7±1.7	<.001 [*****]
4	12(5.0%)	2(2.4%)	1(1.3%)	.	9(22.5%)	<.001 [*****]
3	14(5.9%)	4(4.8%)	3(3.8%)	1(2.9%)	6(15.0%)	
2	21(8.8%)	12(14.3%)	5(6.3%)	2(5.7%)	2(5.0%)	
1	38(16.0%)	14(16.7%)	11(13.9%)	10(28.6%)	3(7.5%)	
0	139(58.4%)	46(54.8%)	56(70.9%)	22(62.9%)	15(37.5%)	
未回答	14(5.9%)	6(7.1%)	3(3.8%)	.	5(12.5%)	
26) 平均値±標準偏差	1.0±1.2	0.9±1.0	0.8±1.1	0.6±0.8	1.9±1.5	<.001 [*****]
4	8(3.4%)	.	1(1.3%)	.	7(17.5%)	<.001 [*****]
3	25(10.5%)	8(9.5%)	7(8.9%)	1(2.9%)	9(22.5%)	
2	38(16.0%)	14(16.7%)	12(15.2%)	5(14.3%)	7(17.5%)	
1	54(22.7%)	23(27.4%)	15(19.0%)	9(25.7%)	7(17.5%)	
0	112(47.1%)	38(45.2%)	44(55.7%)	20(57.1%)	10(25.0%)	
未回答	1(0.4%)	1(1.2%)	.	.	.	
27) 平均値±標準偏差	0.6±1.0	0.7±1.1	0.4±0.9	0.5±0.7	0.9±1.3	0.175 [N.S]
4	6(2.5%)	3(3.6%)	1(1.3%)	.	2(5.0%)	0.284 [N.S]
3	10(4.2%)	5(6.0%)	3(3.8%)	.	2(5.0%)	
2	16(6.7%)	5(6.0%)	5(6.3%)	3(8.6%)	3(7.5%)	
1	43(18.1%)	18(21.4%)	11(13.9%)	11(31.4%)	3(7.5%)	
0	142(59.7%)	47(56.0%)	57(72.2%)	21(60.0%)	17(42.5%)	
未回答	21(8.8%)	6(7.1%)	2(2.5%)	.	13(32.5%)	
28) 平均値±標準偏差	0.8±1.2	0.8±1.1	0.6±1.0	0.6±0.8	1.6±1.7	0.002 [***]
4	12(5.0%)	3(3.6%)	2(2.5%)	.	7(17.5%)	0.044 [*]
3	14(5.9%)	4(4.8%)	5(6.3%)	1(2.9%)	4(10.0%)	
2	24(10.1%)	13(15.5%)	5(6.3%)	5(14.3%)	1(2.5%)	
1	45(18.9%)	16(19.0%)	15(19.0%)	9(25.7%)	5(12.5%)	
0	127(53.4%)	45(53.6%)	50(63.3%)	19(54.3%)	13(32.5%)	
未回答	16(6.7%)	3(3.6%)	2(2.5%)	1(2.9%)	10(25.0%)	
29) 平均値±標準偏差	1.7±1.5	1.3±1.5	2.3±1.2	2.1±1.3	2.1±1.8	0.009 [***]
4	16(6.7%)	5(6.0%)	5(6.3%)	1(2.9%)	5(12.5%)	0.008 [***]
3	34(14.3%)	13(15.5%)	12(15.2%)	5(14.3%)	4(10.0%)	
2	18(7.6%)	7(8.3%)	8(10.1%)	3(8.6%)	.	
1	14(5.9%)	4(4.8%)	7(8.9%)	2(5.7%)	1(2.5%)	
0	42(17.6%)	31(36.9%)	3(3.8%)	2(5.7%)	6(15.0%)	
未回答	114(47.9%)	24(28.6%)	44(55.7%)	22(62.9%)	24(60.0%)	
スコアA	17.0±9.2	17.0±8.3	14.6±7.5	13.1±7.3	24.9±11.1	<.001 [*****]
スコアB	8.6±6.4	7.8±5.5	7.0±4.4	6.8±4.4	14.8±9.1	<.001 [*****]
スコアC	8.7±6.4	8.4±5.9	7.0±5.9	6.9±4.8	14.0±7.1	<.001 [*****]
スコアD	34.2±19.6	33.2±16.9	28.6±15.2	26.8±13.7	53.8±24.4	<.001 [*****]
スコアE	27.5±1.3	27.8±1.1	27.5±0.9	28.2±0.6	26.1±1.9	<.001 [*****]
スコアによるドライアイ診断	35.0±18.1	34.1±15.0	29.5±13.9	28.0±11.4	54.1±23.1	<.001 [*****]

Plus minus value:meant±sd.

Variables	Total (N=238)	臨床医診断あり (N=56)	臨床医診断なし (N=182)	P-value
調査地区				
東京	84(35.3%)	18(17.9%)	74(40.7%)	<.001 [*****]
大阪	79(33.2%)	18(17.9%)	69(37.9%)	
福岡	35(14.7%)	4(7.1%)	31(17.0%)	
慶應	40(16.8%)	32(57.1%)	8(4.4%)	
年齢(歳)	39.7±11.5	45.0±14.7	38.1±9.9	<.001 [*****]
女性	163(68.5%)	48(85.7%)	115(63.2%)	0.002 [***]
ドライアイ診断				
はい	56(23.5%)	56(100.0%)	.	<.001 [*****]
はいえ	182(76.5%)	.	182(100.0%)	
不明	.	.	.	
ドライアイ不定常重症度・頻度インデックス				
1) 平均値±標準偏差	1.8±1.3	2.8±1.3	1.5±1.2	<.001 [*****]
4	26(10.9%)	21(37.5%)	5(2.7%)	<.001 [*****]
3	54(22.7%)	17(30.4%)	37(20.3%)	
2	63(26.5%)	9(16.1%)	54(29.7%)	
1	38(16.0%)	4(7.1%)	34(18.7%)	
0	57(23.9%)	5(8.9%)	52(28.6%)	
未回答	.	.	.	
2) 平均値±標準偏差	1.7±1.3	2.6±1.2	1.4±1.1	<.001 [*****]
4	19(8.0%)	14(25.0%)	5(2.7%)	<.001 [*****]
3	47(19.7%)	28(50.0%)	27(14.8%)	
2	64(26.9%)	13(23.2%)	51(28.0%)	
1	48(20.2%)	5(8.9%)	43(23.6%)	
0	59(24.8%)	4(7.1%)	55(30.2%)	
未回答	1(0.4%)	.	1(0.5%)	
3) 平均値±標準偏差	1.2±1.1	1.9±1.1	0.9±1.0	<.001 [*****]
4	6(2.5%)	4(7.1%)	2(1.1%)	<.001 [*****]
3	27(11.3%)	14(25.0%)	13(7.1%)	
2	57(23.9%)	19(33.9%)	38(20.9%)	
1	56(23.5%)	12(21.4%)	44(24.2%)	
0	91(38.2%)	7(12.5%)	84(46.2%)	
未回答	1(0.4%)	.	1(0.5%)	
4) 平均値±標準偏差	0.9±1.1	1.7±1.3	0.7±0.9	<.001 [*****]
4	8(3.4%)	6(10.7%)	2(1.1%)	<.001 [*****]
3	16(6.7%)	8(14.3%)	8(4.4%)	
2	41(17.2%)	17(30.4%)	24(13.2%)	
1	54(22.7%)	12(21.4%)	42(23.1%)	
0	119(50.0%)	13(23.2%)	106(58.2%)	
未回答	.	.	.	
5) 平均値±標準偏差	2.6±1.0	2.8±1.0	2.5±0.9	0.030 [*]
4	42(17.6%)	16(28.6%)	26(14.3%)	0.013 [*]
3	92(38.7%)	23(41.1%)	69(37.9%)	
2	76(31.9%)	11(19.6%)	65(35.7%)	
1	21(8.8%)	4(7.1%)	17(9.3%)	
0	7(2.9%)	2(3.6%)	5(2.7%)	
未回答	.	.	.	
6) 平均値±標準偏差	1.7±1.3	2.4±1.3	1.5±1.2	<.001 [*****]
4	24(10.1%)	14(25.0%)	10(5.5%)	<.001 [*****]
3	41(17.2%)	15(26.8%)	26(14.3%)	
2	69(29.0%)	14(25.0%)	55(30.2%)	
1	49(20.6%)	7(12.5%)	42(23.1%)	
0	55(23.1%)	6(10.7%)	49(26.9%)	
未回答	.	.	.	
7) 平均値±標準偏差	1.6±1.2	1.9±1.3	1.5±1.1	0.016 [*]
4	16(6.7%)	8(14.3%)	8(4.4%)	0.025 [*]
3	42(17.6%)	11(19.6%)	31(17.0%)	
2	54(22.7%)	15(26.8%)	39(21.4%)	
1	83(34.9%)	13(23.2%)	70(38.5%)	
0	43(18.1%)	9(16.1%)	34(18.7%)	
未回答	.	.	.	
8) 平均値±標準偏差	1.5±1.1	1.8±1.0	1.4±1.1	0.034 [*]
4	8(3.4%)	2(3.6%)	6(3.3%)	0.026 [*]
3	37(15.5%)	12(21.4%)	25(13.7%)	
2	64(26.9%)	18(32.1%)	46(25.3%)	
1	82(34.5%)	18(32.1%)	64(35.2%)	
0	47(19.7%)	6(10.7%)	41(22.5%)	
未回答	.	.	.	
9) 平均値±標準偏差	0.7±1.0	1.2±1.3	0.6±0.9	<.001 [*****]
4	5(2.1%)	3(5.4%)	2(1.1%)	<.001 [*****]
3	13(5.5%)	8(14.3%)	5(2.7%)	
2	28(11.8%)	10(17.9%)	18(9.9%)	
1	52(21.8%)	10(17.9%)	42(23.1%)	
0	138(58.0%)	23(41.1%)	115(63.2%)	
未回答	2(0.8%)	2(3.6%)	.	
10) 平均値±標準偏差	1.7±1.1	2.3±1.2	1.6±1.0	<.001 [*****]
4	14(5.9%)	9(16.1%)	5(2.7%)	<.001 [*****]
3	48(20.2%)	17(30.4%)	31(17.0%)	
2	74(31.1%)	16(28.6%)	58(31.9%)	
1	66(27.7%)	8(14.3%)	58(31.9%)	
0	35(14.7%)	6(10.7%)	29(15.9%)	
未回答	1(0.4%)	.	1(0.5%)	
11) 平均値±標準偏差	1.3±1.2	1.8±1.4	1.2±1.1	<.001 [*****]
4	13(5.5%)	8(14.3%)	5(2.7%)	0.004 [***]

3	29(12.2%)	11(19.6%)	18(9.9%)	
2	50(21.0%)	11(19.6%)	39(21.4%)	
1	75(31.5%)	13(23.2%)	62(34.1%)	
0	71(29.8%)	13(23.2%)	58(31.9%)	
未回答	.	.	.	
12) 平均値±標準偏差	0.6±1.2	1.4±1.6	0.5±1.0	<.001 [*****] 0.002 [***]
4	4(1.7%)	2(3.6%)	2(1.1%)	
3	11(4.6%)	5(8.9%)	6(3.3%)	
2	9(3.8%)	1(1.8%)	8(4.4%)	
1	4(1.7%)	1(1.8%)	3(1.6%)	
0	90(37.8%)	9(16.1%)	81(44.5%)	
未回答	120(50.4%)	38(67.9%)	82(45.1%)	
視線障害不定態所重程度・頻度インデックス				
13) 平均値±標準偏差	1.6±1.2	1.9±1.4	1.5±1.2	0.033 [*] 0.053 [N.S]
4	16(6.7%)	8(14.3%)	8(4.4%)	
3	42(17.6%)	11(19.6%)	31(17.0%)	
2	59(24.8%)	15(26.8%)	44(24.2%)	
1	61(25.6%)	9(16.1%)	52(28.6%)	
0	60(25.2%)	13(23.2%)	47(25.8%)	
未回答	.	.	.	
14) 平均値±標準偏差	1.4±1.3	2.2±1.4	1.2±1.2	<.001 [*****] <.001 [*****]
4	22(9.2%)	14(25.0%)	8(4.4%)	
3	30(12.6%)	11(19.6%)	19(10.4%)	
2	53(22.3%)	14(25.0%)	39(21.4%)	
1	52(21.8%)	6(10.7%)	46(25.3%)	
0	81(34.0%)	11(19.6%)	70(38.5%)	
未回答	.	.	.	
15) 平均値±標準偏差	0.8±1.1	1.7±1.5	0.5±0.8	<.001 [*****] <.001 [*****]
4	11(4.6%)	9(16.1%)	2(1.1%)	
3	16(6.7%)	9(16.1%)	7(3.8%)	
2	16(6.7%)	8(14.3%)	8(4.4%)	
1	58(24.4%)	14(25.0%)	44(24.2%)	
0	137(57.6%)	16(28.6%)	121(66.5%)	
未回答	.	.	.	
16) 平均値±標準偏差	0.5±0.9	1.3±1.4	0.3±0.7	<.001 [*****] <.001 [*****]
4	3(1.3%)	3(5.4%)	.	
3	7(2.9%)	4(7.1%)	3(1.6%)	
2	15(6.3%)	7(12.5%)	8(4.4%)	
1	30(12.6%)	5(8.9%)	25(13.7%)	
0	127(53.4%)	13(23.2%)	114(62.6%)	
未回答	56(23.5%)	24(42.9%)	32(17.6%)	
17) 平均値±標準偏差	1.1±1.3	2.0±1.4	0.8±1.1	<.001 [*****] <.001 [*****]
4	18(7.6%)	10(17.9%)	8(4.4%)	
3	17(7.1%)	10(17.9%)	7(3.8%)	
2	35(14.7%)	10(17.9%)	25(13.7%)	
1	60(25.2%)	10(17.9%)	50(27.5%)	
0	101(42.4%)	10(17.9%)	91(50.0%)	
未回答	7(2.9%)	6(10.7%)	1(0.5%)	
18) 平均値±標準偏差	0.8±1.0	1.5±1.4	0.5±0.8	<.001 [*****] <.001 [*****]
4	7(2.9%)	7(12.5%)	.	
3	13(5.5%)	7(12.5%)	6(3.3%)	
2	25(10.5%)	8(14.3%)	17(9.3%)	
1	66(27.7%)	18(32.1%)	48(26.4%)	
0	127(53.4%)	16(28.6%)	111(61.0%)	
未回答	.	.	.	
19) 平均値±標準偏差	0.5±0.9	0.7±1.1	0.5±0.8	0.160 [N.S] 0.717 [N.S]
4	3(1.3%)	2(3.6%)	1(0.5%)	
3	6(2.5%)	3(5.4%)	3(1.6%)	
2	25(10.5%)	7(12.5%)	18(9.9%)	
1	39(16.4%)	4(7.1%)	35(19.2%)	
0	160(67.2%)	37(66.1%)	123(67.6%)	
未回答	5(2.1%)	3(5.4%)	2(1.1%)	
20) 平均値±標準偏差	0.6±1.0	1.0±1.3	0.5±0.9	0.004 [***] 0.029 [*]
4	6(2.5%)	5(8.9%)	1(0.5%)	
3	9(3.8%)	3(5.4%)	6(3.3%)	
2	33(13.9%)	9(16.1%)	24(13.2%)	
1	30(12.6%)	7(12.5%)	23(12.6%)	
0	158(66.4%)	32(57.1%)	126(69.2%)	
未回答	2(0.8%)	.	2(1.1%)	
21) 平均値±標準偏差	1.5±1.3	2.0±1.4	1.3±1.2	<.001 [*****] <.001 [*****]
4	17(7.1%)	11(19.6%)	6(3.3%)	
3	36(15.1%)	10(17.9%)	26(14.3%)	
2	69(29.0%)	15(26.8%)	54(29.7%)	
1	45(18.9%)	10(17.9%)	35(19.2%)	
0	71(29.8%)	10(17.9%)	61(33.5%)	
未回答	.	.	.	
環境因子重程度・頻度インデックス				
22) 平均値±標準偏差	1.4±1.3	2.5±1.4	1.1±1.1	<.001 [*****] <.001 [*****]
4	19(8.0%)	15(26.8%)	4(2.2%)	
3	38(16.0%)	18(32.1%)	20(11.0%)	
2	48(20.2%)	10(17.9%)	38(20.9%)	
1	52(21.8%)	4(7.1%)	48(26.4%)	
0	81(34.0%)	9(16.1%)	72(39.6%)	
未回答	.	.	.	
23) 平均値±標準偏差	1.6±1.3	2.7±1.3	1.3±1.1	<.001 [*****] <.001 [*****]
4	19(8.0%)	18(32.1%)	1(0.5%)	
3	50(21.0%)	18(32.1%)	32(17.6%)	
2	48(20.2%)	10(17.9%)	38(20.9%)	
1	58(24.4%)	4(7.1%)	54(29.7%)	
0	63(26.5%)	6(10.7%)	57(31.3%)	

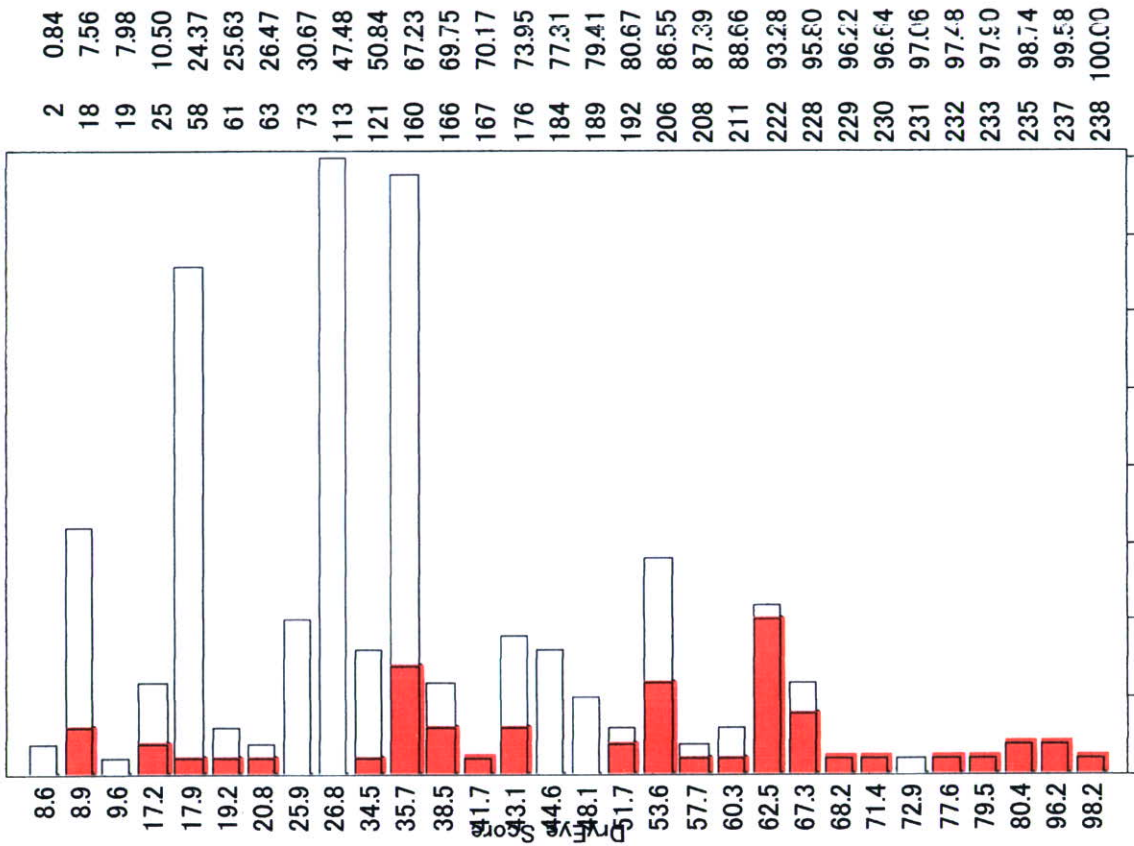
未回答					
24) 平均値±標準偏差	1.7±1.3	2.7±1.3	1.4±1.2	<.001 [*****]	
4	26(10.9%)	20(35.7%)	6(3.3%)	<.001 [*****]	
3	51(21.4%)	17(30.4%)	34(18.7%)		
2	45(18.9%)	8(14.3%)	37(20.3%)		
1	60(25.2%)	6(10.7%)	54(29.7%)		
0	54(22.7%)	5(8.9%)	49(26.9%)		
未回答	2(0.8%)	.	2(1.1%)		
25) 平均値±標準偏差	0.8±1.2	1.6±1.6	0.5±0.9	<.001 [*****]	
4	12(5.0%)	9(16.1%)	3(1.6%)	<.001 [*****]	
3	14(5.9%)	7(12.5%)	7(3.8%)		
2	21(8.8%)	7(12.5%)	14(7.7%)		
1	38(16.0%)	7(12.5%)	31(17.0%)		
0	139(58.4%)	19(33.9%)	120(65.9%)		
未回答	14(5.9%)	7(12.5%)	7(3.8%)		
26) 平均値±標準偏差	1.0±1.2	1.6±1.4	0.8±1.0	<.001 [*****]	
4	8(3.4%)	6(10.7%)	2(1.1%)	<.001 [*****]	
3	25(10.5%)	10(17.9%)	15(8.2%)		
2	38(16.0%)	12(21.4%)	26(14.3%)		
1	54(22.7%)	9(16.1%)	45(24.7%)		
0	112(47.1%)	19(33.9%)	93(51.1%)		
未回答	1(0.4%)	.	1(0.5%)		
27) 平均値±標準偏差	0.6±1.0	0.7±1.0	0.6±1.0	0.574 [N.S]	0.573 [N.S]
4	6(2.5%)	1(1.8%)	5(2.7%)		
3	10(4.2%)	2(3.6%)	8(4.4%)		
2	16(6.7%)	5(8.9%)	11(6.0%)		
1	43(18.1%)	7(12.5%)	36(19.8%)		
0	142(59.7%)	25(44.6%)	117(64.3%)		
未回答	21(8.8%)	16(28.6%)	5(2.7%)		
28) 平均値±標準偏差	0.8±1.2	1.4±1.6	0.7±1.0	<.001 [*****]	0.004 [***]
4	12(5.0%)	10(17.9%)	2(1.1%)		
3	14(5.9%)	4(7.1%)	10(5.5%)		
2	24(10.1%)	5(8.9%)	19(10.4%)		
1	45(18.9%)	7(12.5%)	38(20.9%)		
0	127(53.4%)	22(39.3%)	105(57.7%)		
未回答	16(6.7%)	8(14.3%)	8(4.4%)		
29) 平均値±標準偏差	1.7±1.5	2.3±1.7	1.6±1.4	0.012 [*]	0.011 [*]
4	16(6.7%)	11(19.6%)	5(2.7%)		
3	34(14.3%)	6(10.7%)	28(15.4%)		
2	18(7.6%)	3(5.4%)	15(8.2%)		
1	14(5.9%)	2(3.6%)	12(6.6%)		
0	42(17.6%)	8(14.3%)	34(18.7%)		
未回答	114(47.9%)	26(46.4%)	88(48.4%)		
スコアA	17.0±9.2	23.7±10.3	14.9±7.8	<.001 [*****]	
スコアB	8.6±6.4	13.4±8.4	7.1±4.8	<.001 [*****]	
スコアC	8.7±6.4	13.8±6.9	7.1±5.4	<.001 [*****]	
スコアD	34.2±19.6	50.8±23.1	29.1±15.2	<.001 [*****]	
スコアE	27.5±11.3	26.7±11.9	27.7±11.0	<.001 [*****]	
スコアによるドライアイ診断	35.0±18.1	51.3±21.8	30.0±13.4	<.001 [*****]	

Plus minus value:neantsd.

Variables	Total (N=476)	Normal[NEW CRITERIA] (N=119)	PDE[NEW CRITERIA] (N=186)	DDE[NEW CRITERIA] (N=171)	P-value
Ward					
Tokyo	168(35.3%)	59(49.6%)	44(23.7%)	65(38.0%)	<.001 [*****]
Osaka	158(33.2%)	39(32.8%)	69(37.1%)	50(29.2%)	
Fukuoka	70(14.7%)	16(13.4%)	43(23.1%)	11(6.4%)	
Keio Univ	80(16.8%)	5(4.2%)	30(16.1%)	45(26.3%)	
Age(Yr)					
	39.7±11.5	36.3±9.1	39.5±11.3	42.3±12.6	<.001 [*****]
Women	326(68.5%)	66(55.5%)	129(69.4%)	131(76.6%)	<.001 [*****]
Right eye					
	238(50.0%)	61(51.3%)	97(52.2%)	80(46.8%)	0.569 [N.S]
Left eye					
	238(50.0%)	58(48.7%)	89(47.8%)	91(53.2%)	
[OLD CRITERIA]					
Schirmer Test≤5mm	154(32.4%)	.	73(39.2%)	81(47.4%)	<.001 [*****]
BUT≤5s	326(68.5%)	.	159(85.5%)	167(97.7%)	<.001 [*****]
Fluorescein≥1pt	324(68.1%)	35(29.4%)	122(65.6%)	167(97.7%)	<.001 [*****]
Rose bengal≥3pts	109(22.9%)	.	5(2.7%)	104(60.8%)	<.001 [*****]
Diagnosis					
Normal	84(17.6%)	84(70.6%)	.	.	<.001 [*****]
PDE	109(22.9%)	35(29.4%)	74(39.8%)	.	
DDE	283(59.5%)	.	112(60.2%)	171(100.0%)	
[NEW CRITERIA]					
Schirmer Test≤5mm	154(32.4%)	.	73(39.2%)	81(47.4%)	<.001 [*****]
BUT≤5s	326(68.5%)	.	159(85.5%)	167(97.7%)	<.001 [*****]
Fluorescein≥3pt	151(31.7%)	.	9(4.8%)	142(83.0%)	<.001 [*****]
Rose bengal≥3pts	109(22.9%)	.	5(2.7%)	104(60.8%)	<.001 [*****]
Diagnosis					
Normal	119(25.0%)	119(100.0%)	.	.	<.001 [*****]
PDE	186(39.1%)	.	186(100.0%)	.	
DDE	171(35.9%)	.	.	171(100.0%)	
[OLD-NEW CRITERIA]					
Schirmer Test					
No-No	316(66.4%)	119(100.0%)	110(59.1%)	87(50.9%)	<.001 [*****]
No-Yes	
Yes-No	
Yes-Yes	154(32.4%)	.	73(39.2%)	81(47.4%)	
BUT					
No-No	148(31.1%)	119(100.0%)	27(14.5%)	2(1.2%)	<.001 [*****]
No-Yes	
Yes-No	
Yes-Yes	326(68.5%)	.	159(85.5%)	167(97.7%)	
Fluorescein					
No-No	152(31.9%)	84(70.6%)	64(34.4%)	4(2.3%)	<.001 [*****]
No-Yes	
Yes-No	173(36.3%)	35(29.4%)	113(60.8%)	25(14.6%)	
Yes-Yes	151(31.7%)	.	9(4.8%)	142(83.0%)	
Rose Bengal					
No-No	365(76.7%)	119(100.0%)	181(97.3%)	65(38.0%)	<.001 [*****]
No-Yes	
Yes-No	
Yes-Yes	109(22.9%)	.	5(2.7%)	104(60.8%)	
Diagnosis					
Normal-Normal	84(17.6%)	84(70.6%)	.	.	<.001 [*****]
Normal-PDE	
Normal-DDE	
PDE-Normal	35(7.4%)	35(29.4%)	.	.	
PDE-PDE	74(15.5%)	.	74(39.8%)	.	
PDE-DDE	
DDE-Normal	
DDE-PDE	112(23.5%)	.	112(60.2%)	.	
DDE-DDE	171(35.9%)	.	.	171(100.0%)	
[EXAMINATION]					
Schirmer					
meantsd	13.6±10.9	22.6±10.2	11.3±9.7	9.3±8.6	<.001 [*****]
median[IQR]	10.0[5.0-20.0]	22.5[14.0-35.0]	7.0[4.0-16.0]	6.0[3.5-12.0]	<.001 [*****]
BUT					
meantsd	4.5±2.8	8.0±2.5	3.8±2.0	2.8±1.3	<.001 [*****]
median[IQR]	4.0[3.0-6.0]	7.0[6.0-9.0]	3.0[3.0-5.0]	3.0[2.0-3.0]	<.001 [*****]
Fluorescein					
meantsd	1.9±2.2	0.4±0.6	1.0±0.9	4.2±2.3	<.001 [*****]
median[IQR]	1.0[0.0-3.0]	0.0[0.0-1.0]	1.0[0.0-2.0]	4.0[3.0-6.0]	<.001 [*****]
Rose bengal					
meantsd	1.5±1.6	0.4±0.6	0.8±0.8	3.0±1.7	<.001 [*****]
median[IQR]	1.0[0.0-2.0]	0.0[0.0-1.0]	1.0[0.0-1.0]	3.0[2.0-4.0]	<.001 [*****]

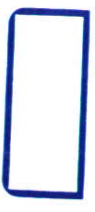
IQR:interquartile range

N %



Dry Eye
Normal

Number of Pts



Distribution of No. of Answer and Total Score(Questionary Survey)

