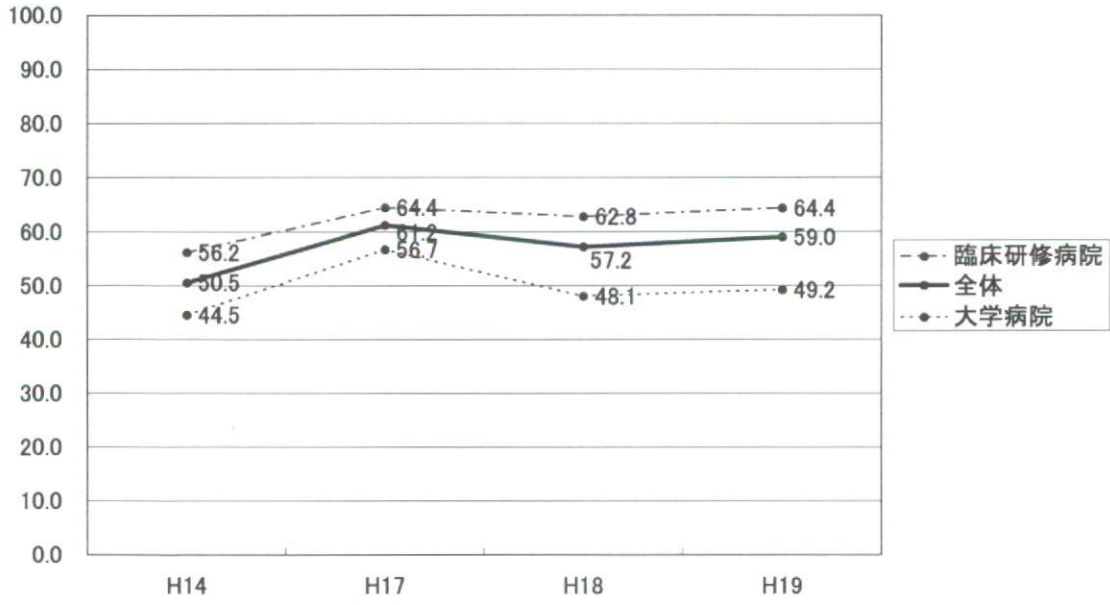
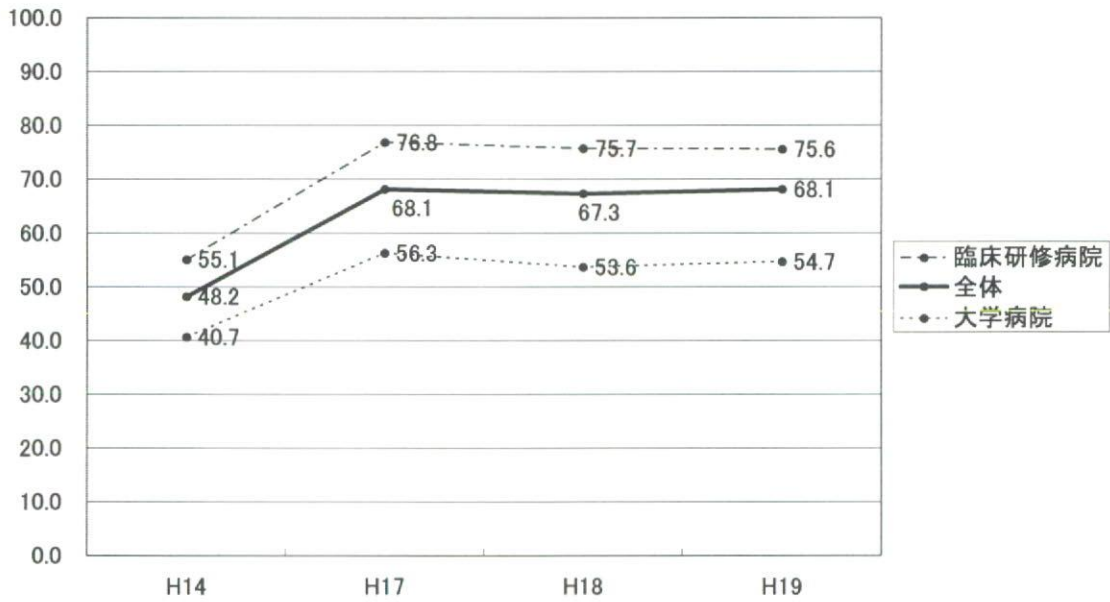


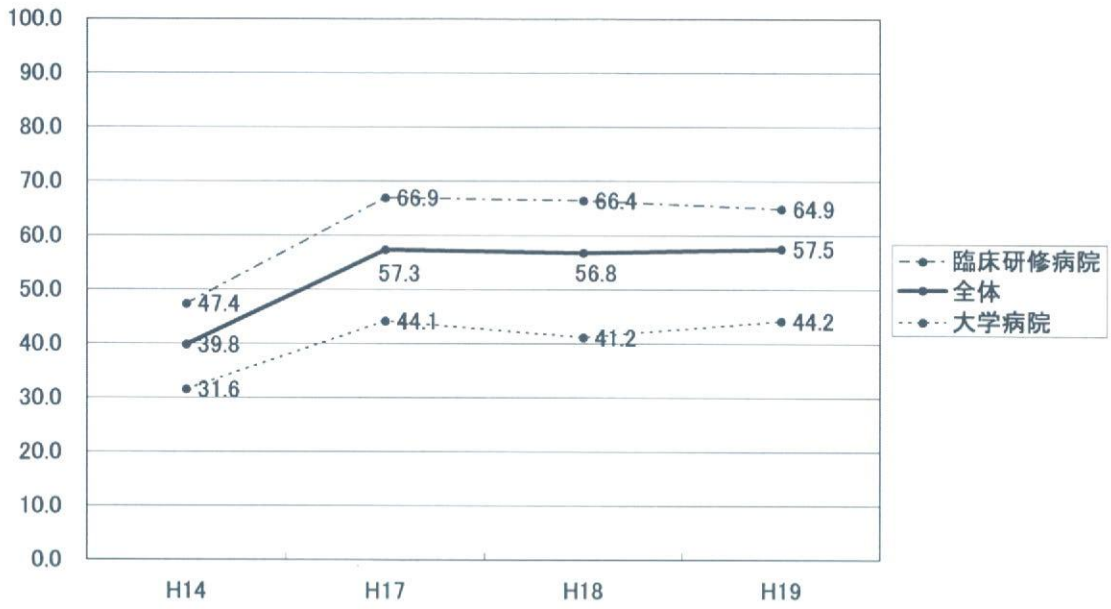
皮膚感染症



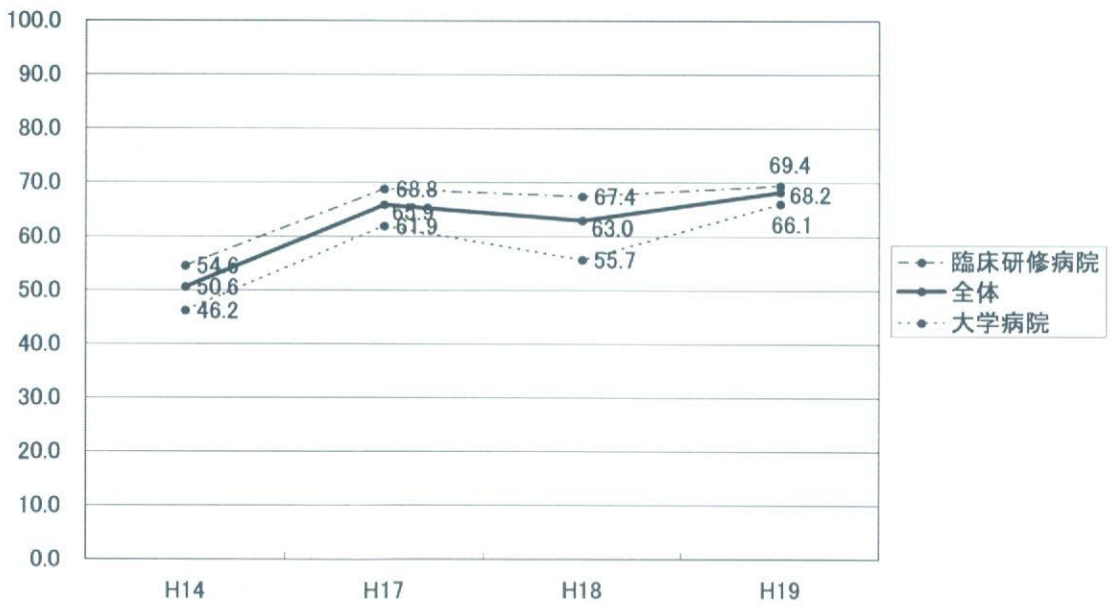
骨折



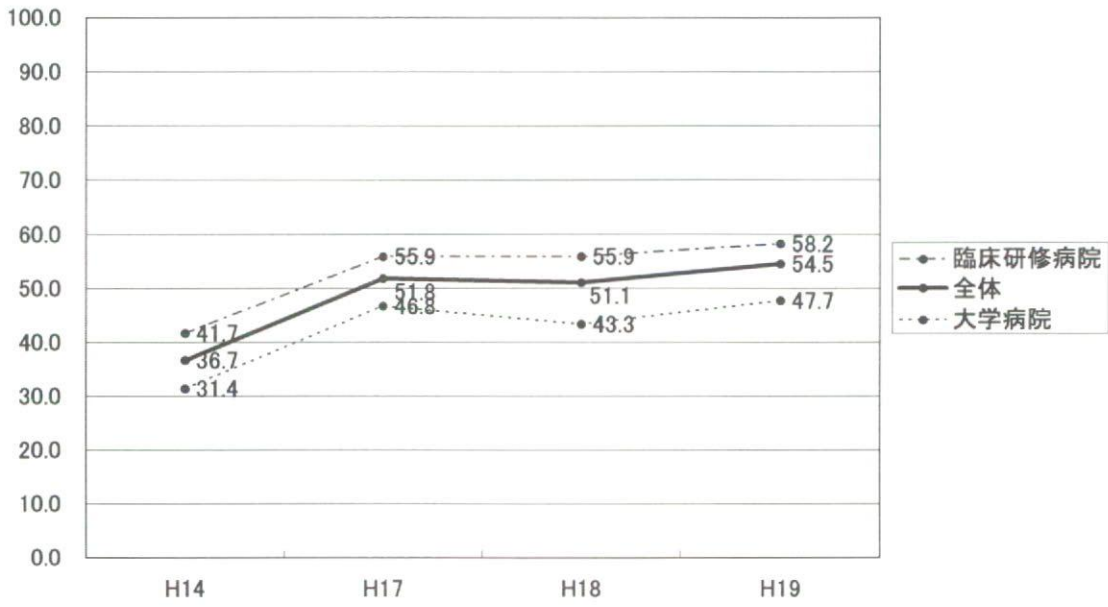
関節の脱臼、亜脱臼、捻挫、靭帯損傷



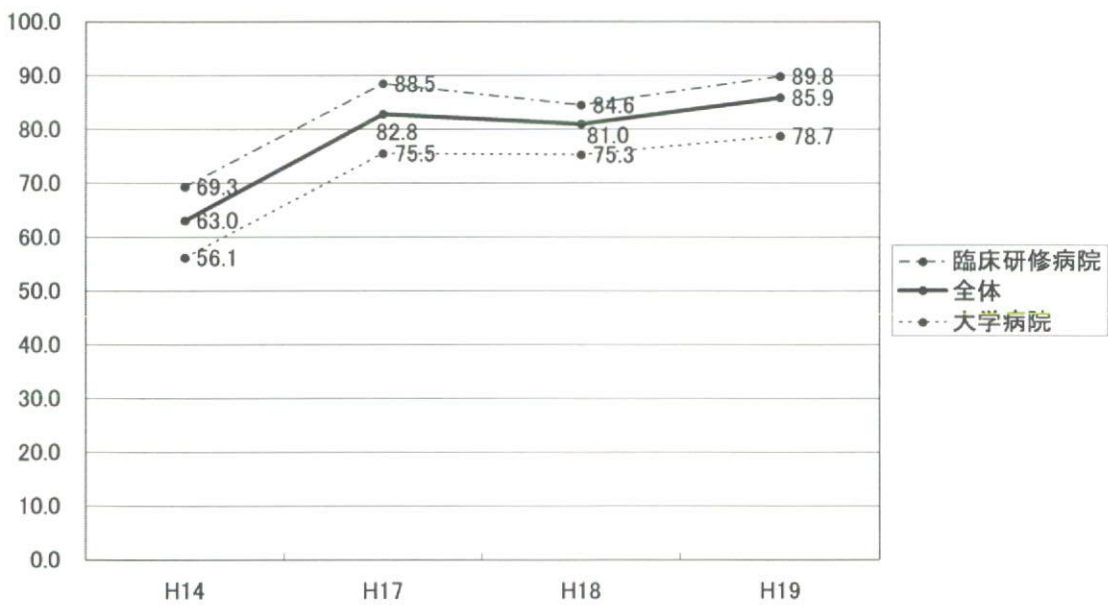
骨粗鬆症



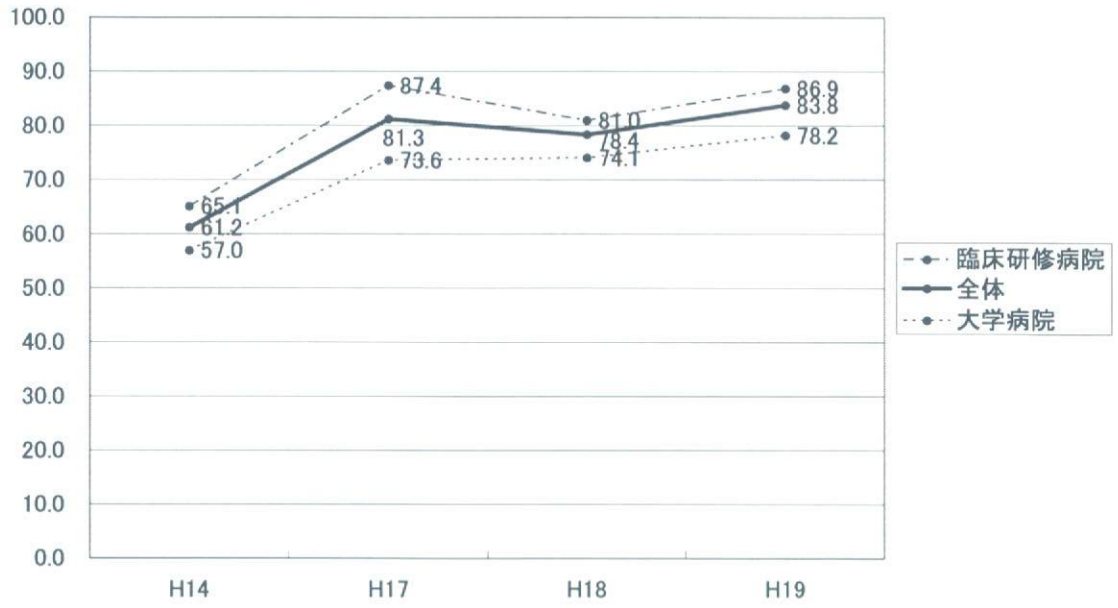
脊柱障害(腰椎椎間板ヘルニア)



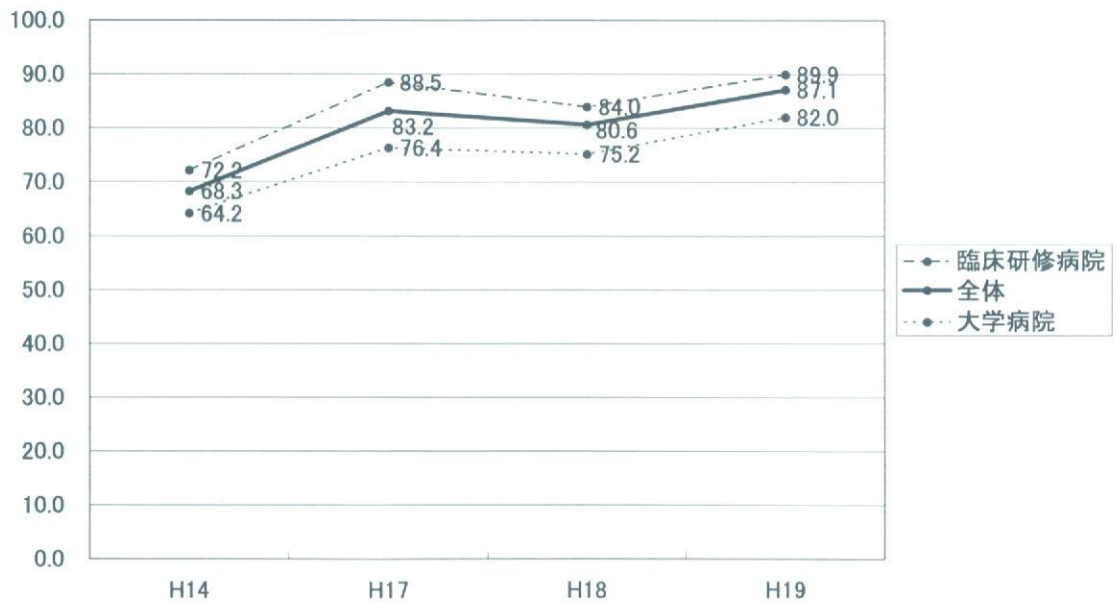
心不全



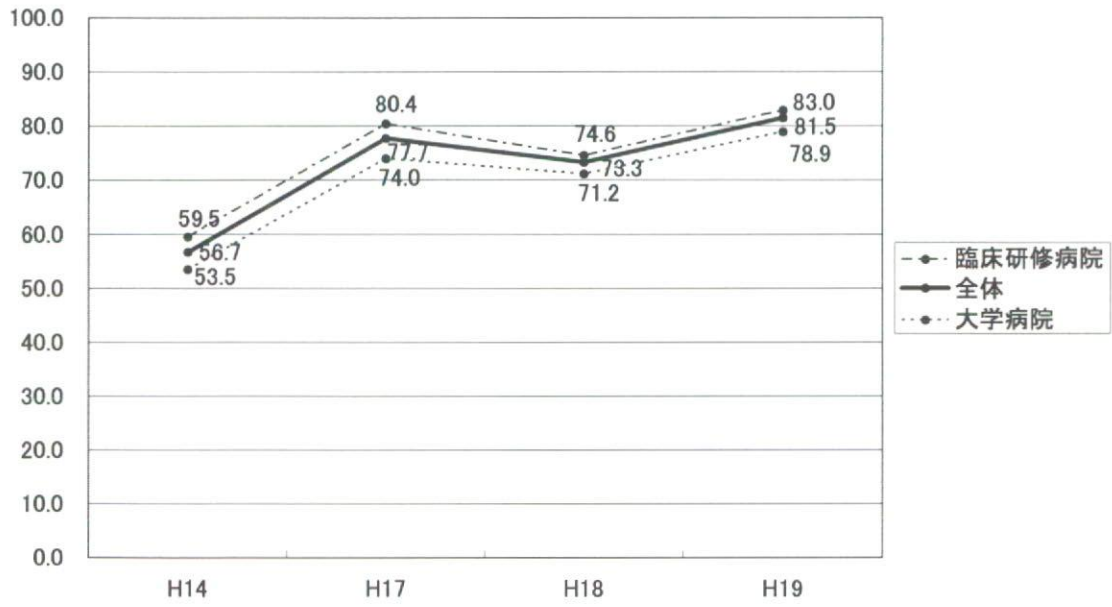
狭心症、心筋梗塞



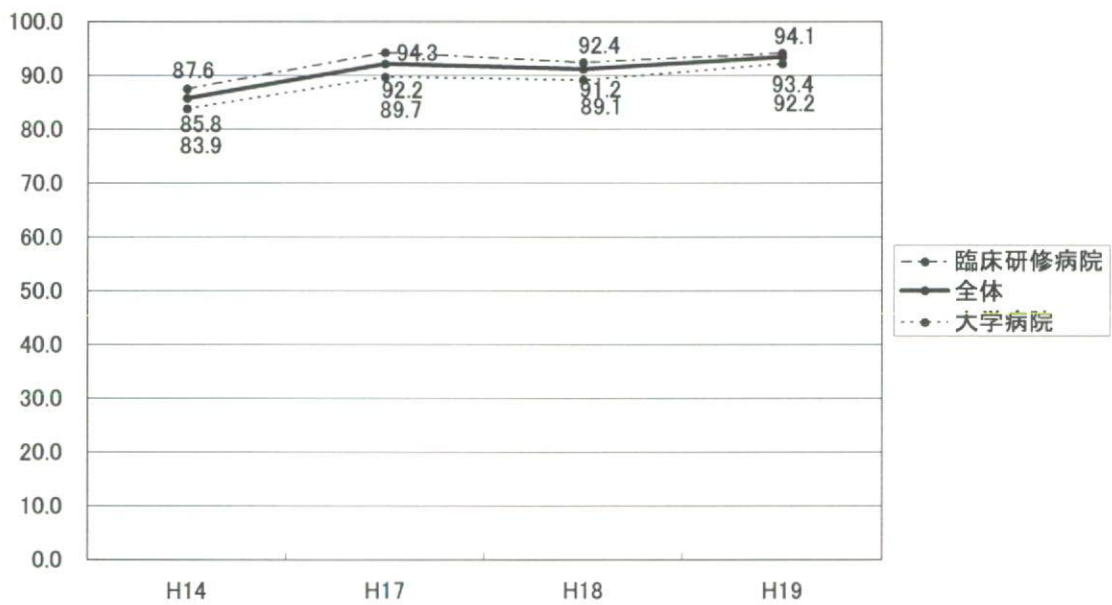
不整脈(主要な頻脈性、徐脈性不整脈)



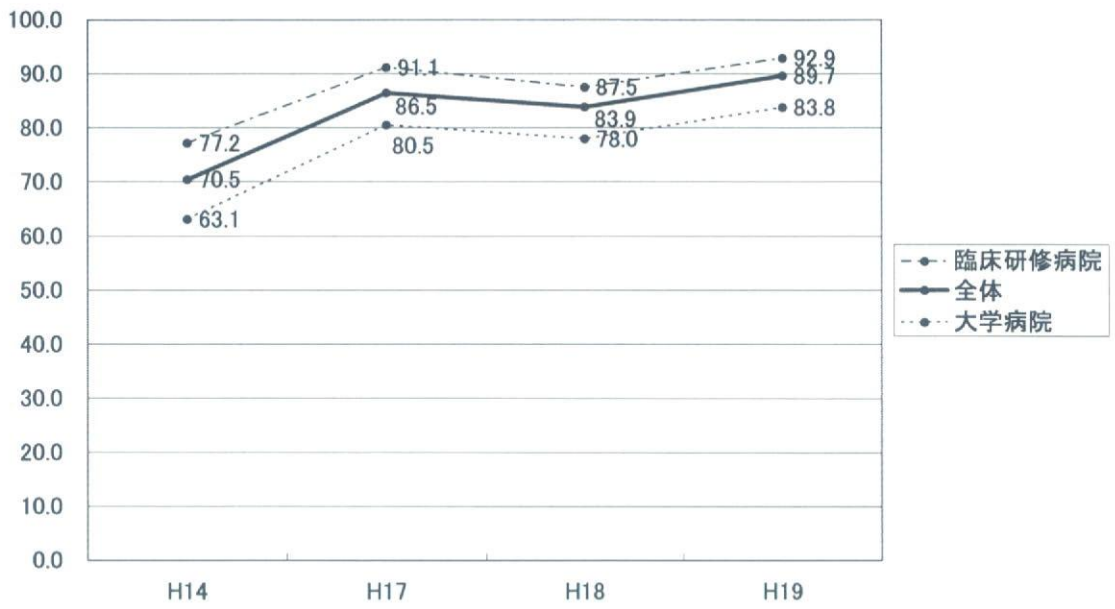
動脈疾患(動脈硬化症、大動脈瘤)



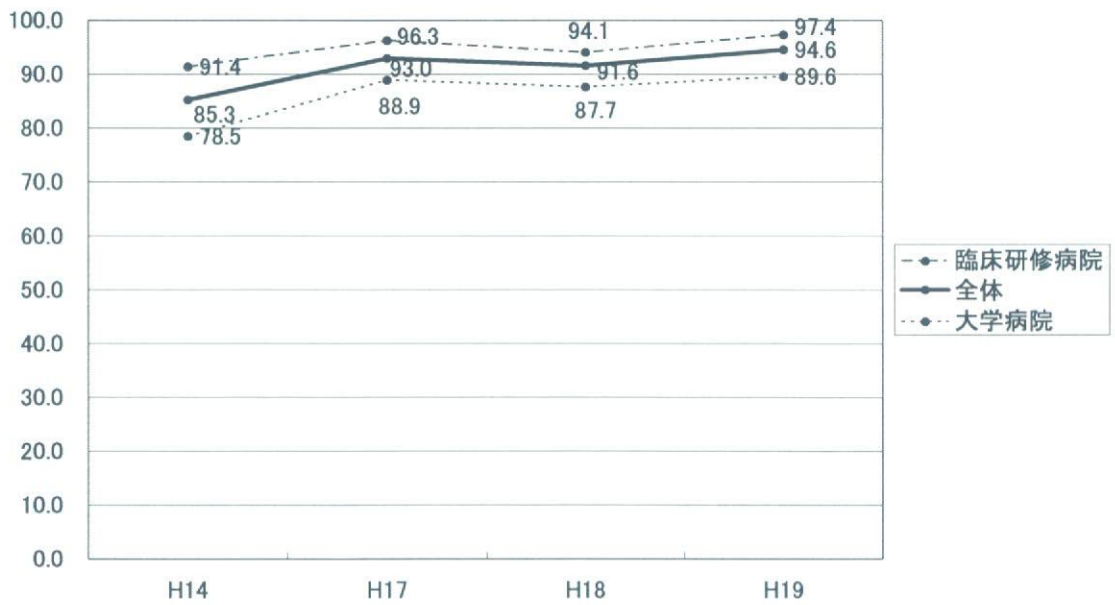
高血圧症(本態性、二次性高血圧症)



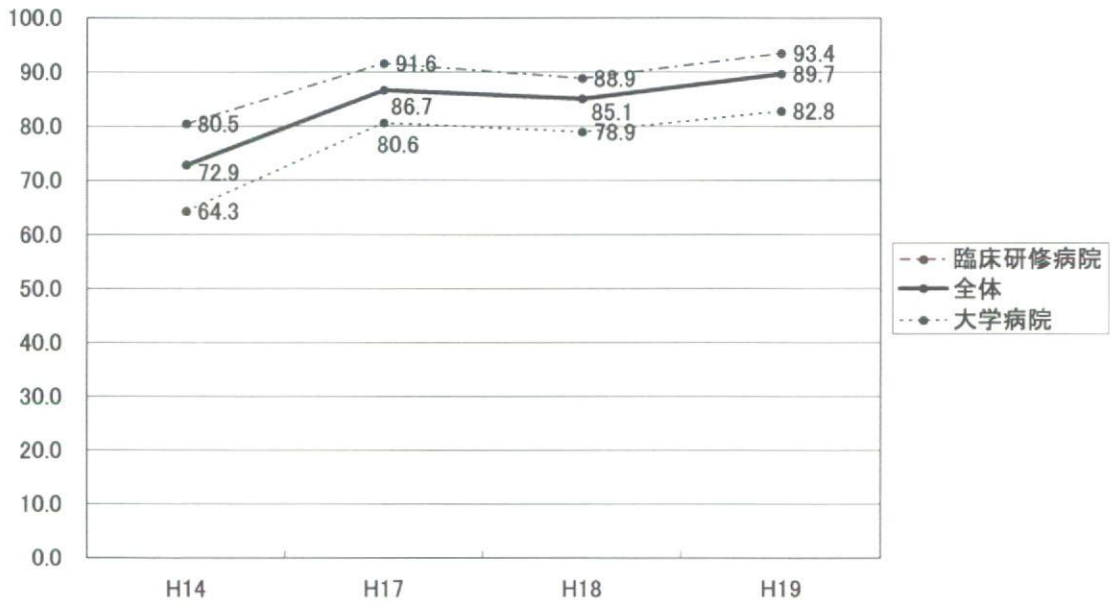
呼吸不全



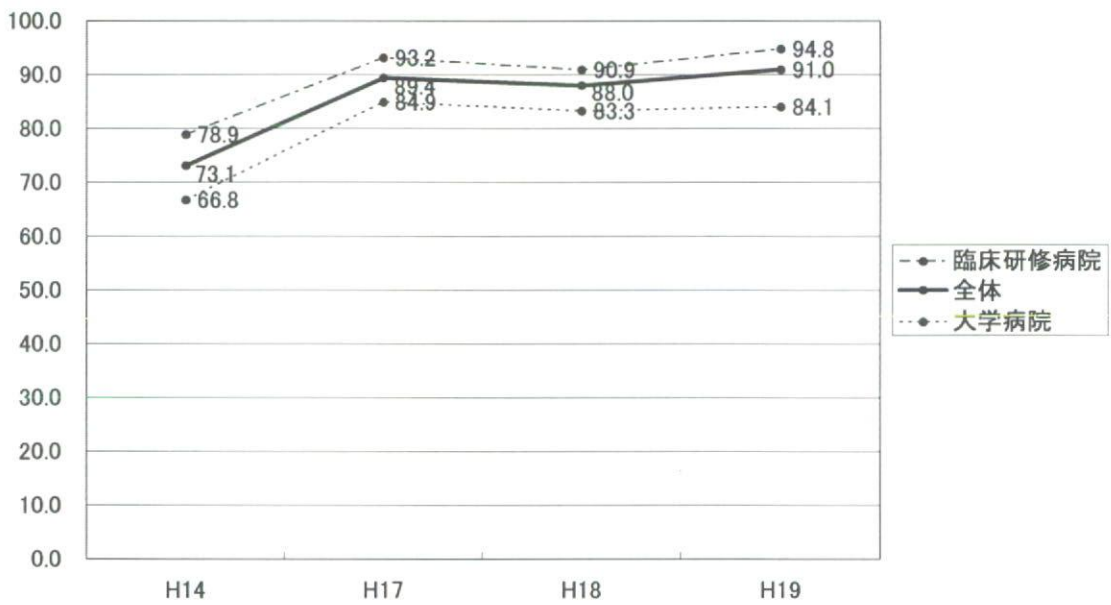
呼吸器感染症(急性上気道炎、気管支炎、肺炎)



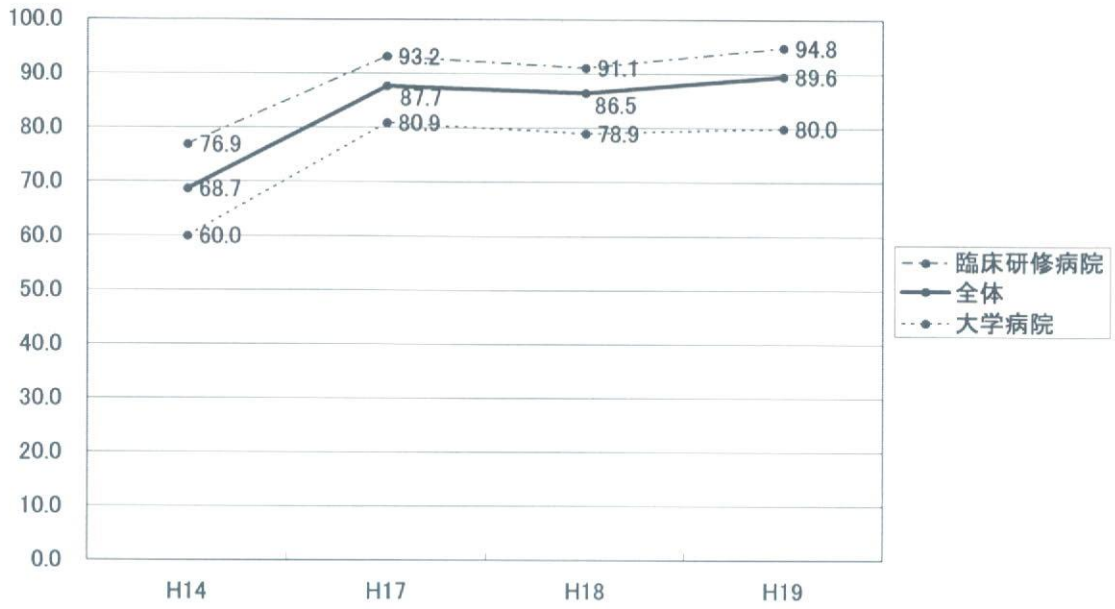
閉塞性・拘束性肺疾患(気管支喘息、気管支拡張症)



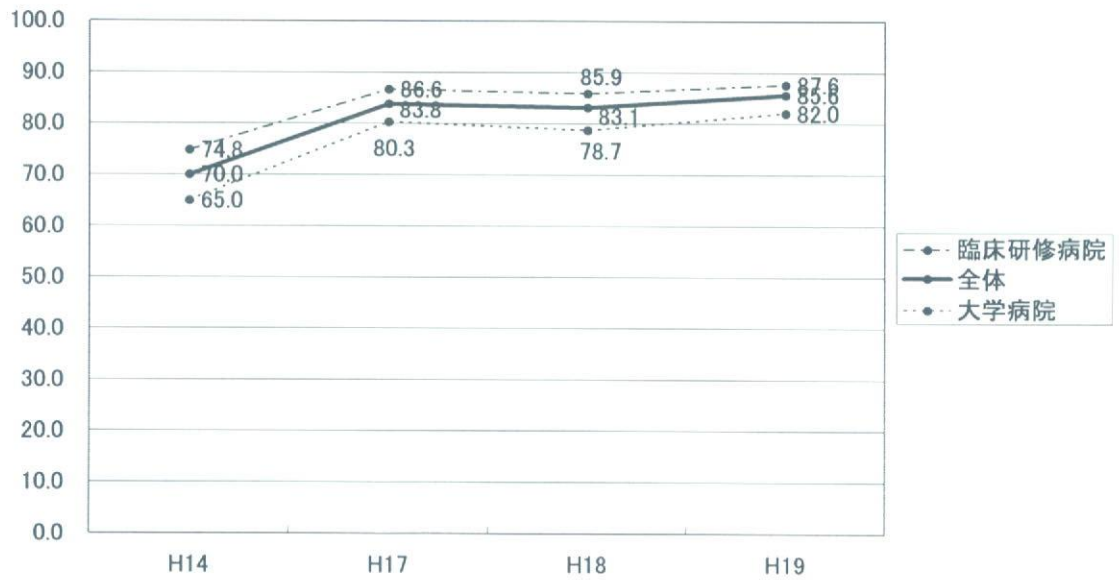
食道・胃・十二指腸疾患(食道静脈瘤、胃癌、消化性潰瘍、胃・十二指腸炎)



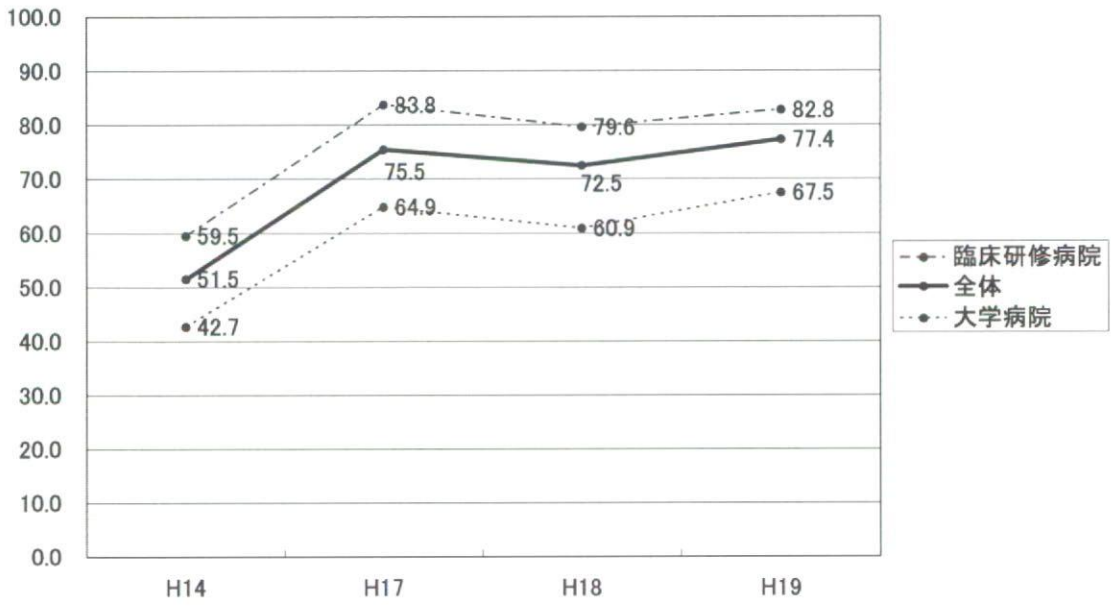
小腸・大腸疾患(イレウス、急性虫垂炎、痔核・痔瘻)



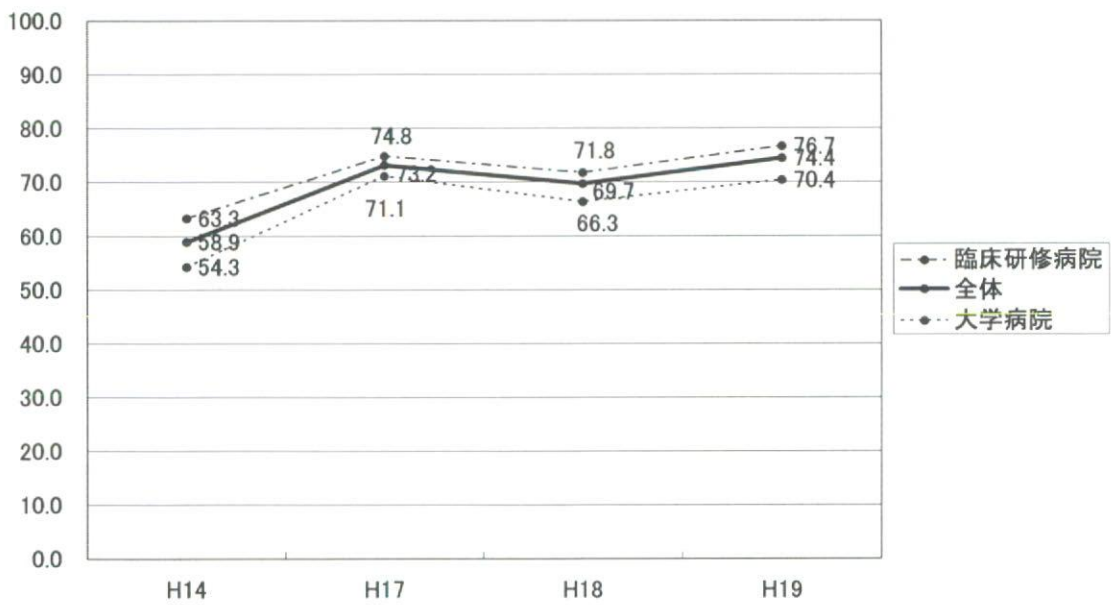
肝疾患(ウイルス性肝炎、急性・慢性肝炎、肝硬変、肝癌、アルコール性肝障害、薬物性肝障害)



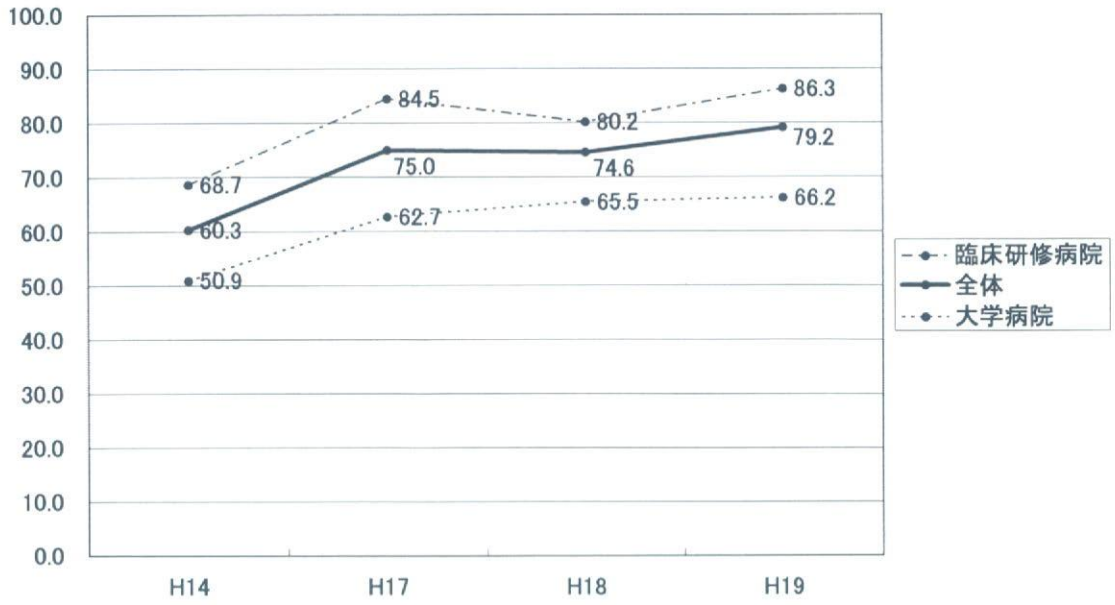
横隔膜・腹壁・腹膜(腹膜炎、急性腹症、ヘルニア)



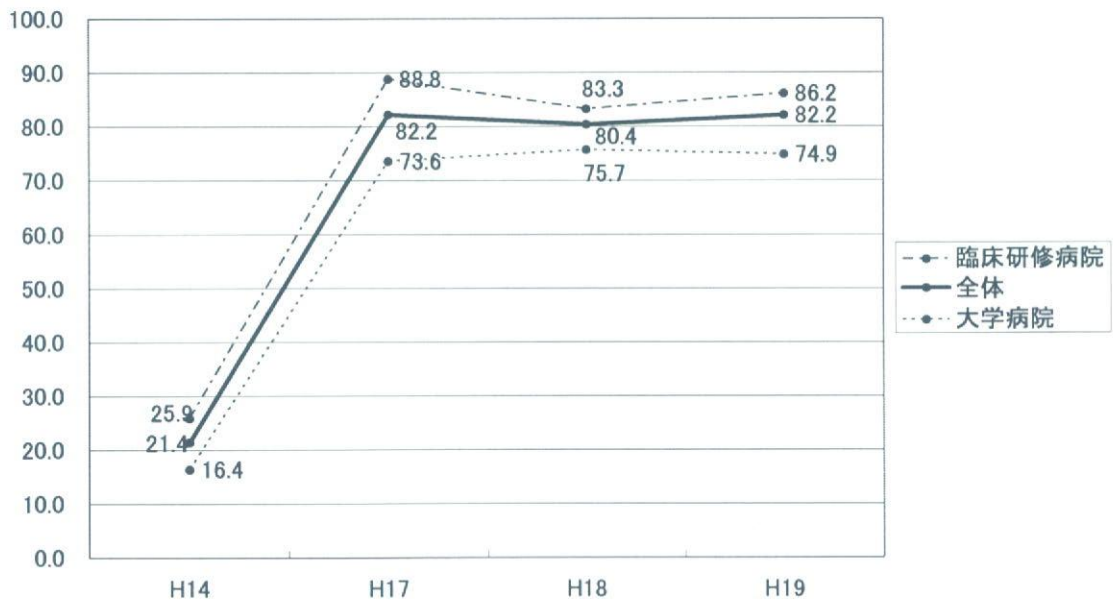
腎不全(急性・慢性腎不全・透析)



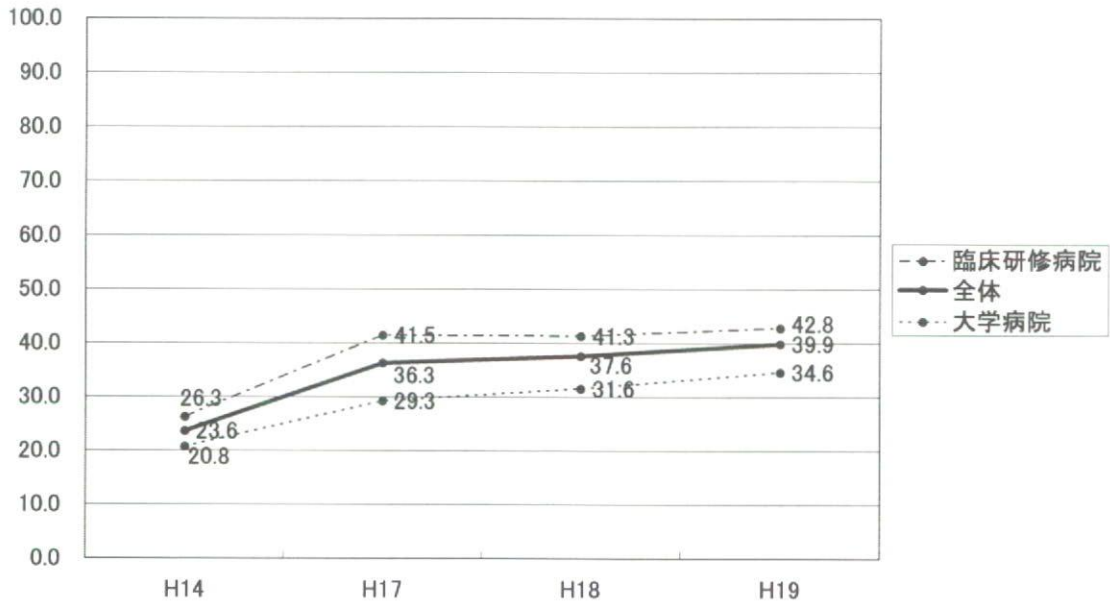
泌尿器科的腎・尿路疾患(尿路結石、尿路感染症)



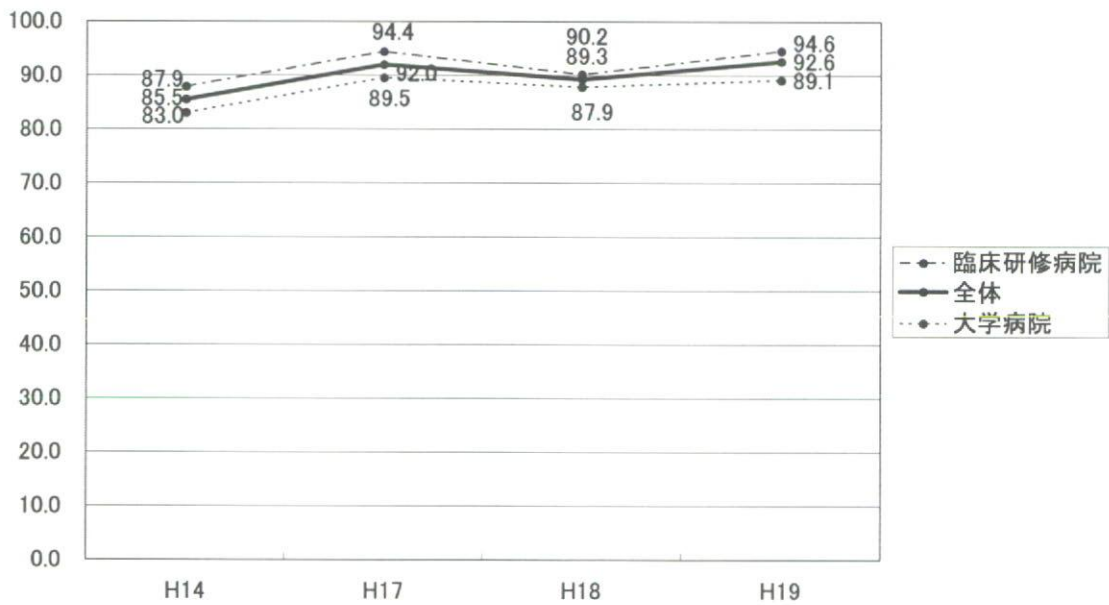
妊娠分娩(正常妊娠、流産、早産、正常分娩、産科出血、乳腺炎、産褥)



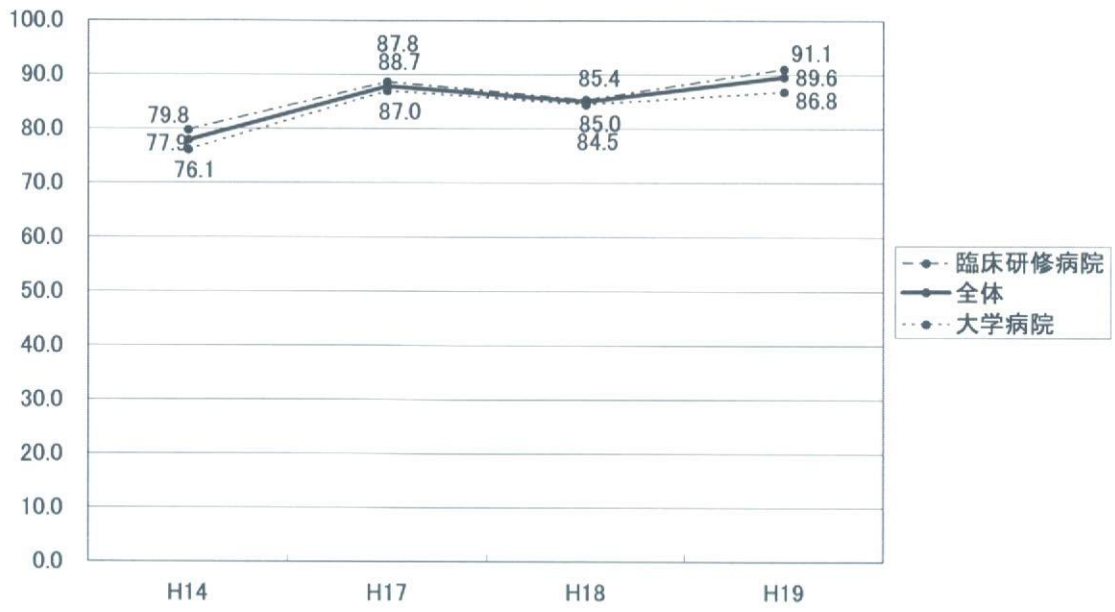
男性生殖器疾患(前立腺疾患、勃起障害、精巣腫瘍)



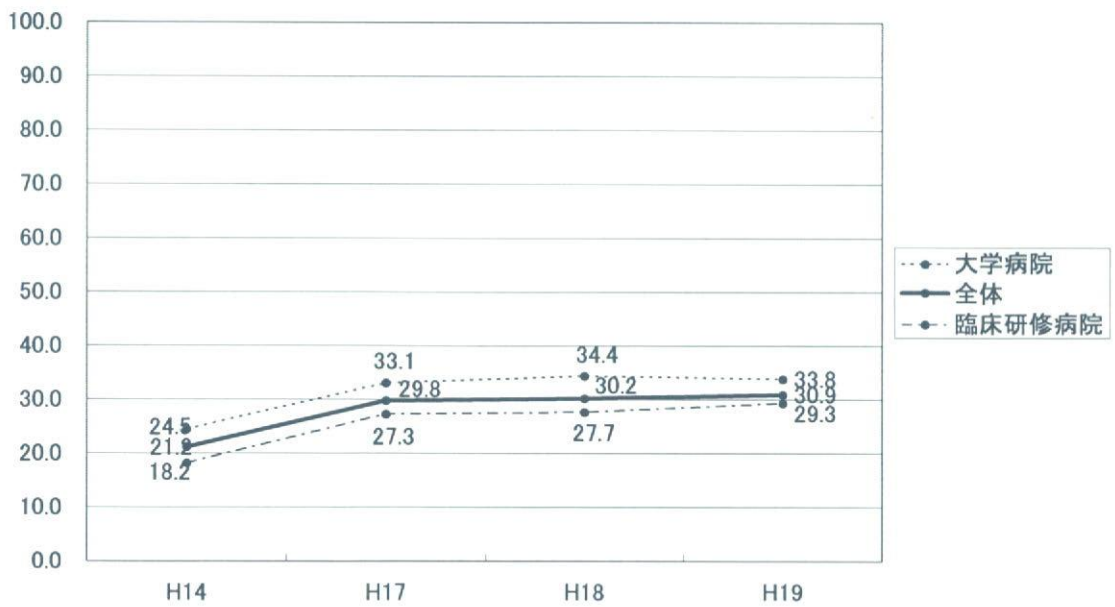
糖代謝異常(糖尿病、糖尿病の合併症、低血糖)



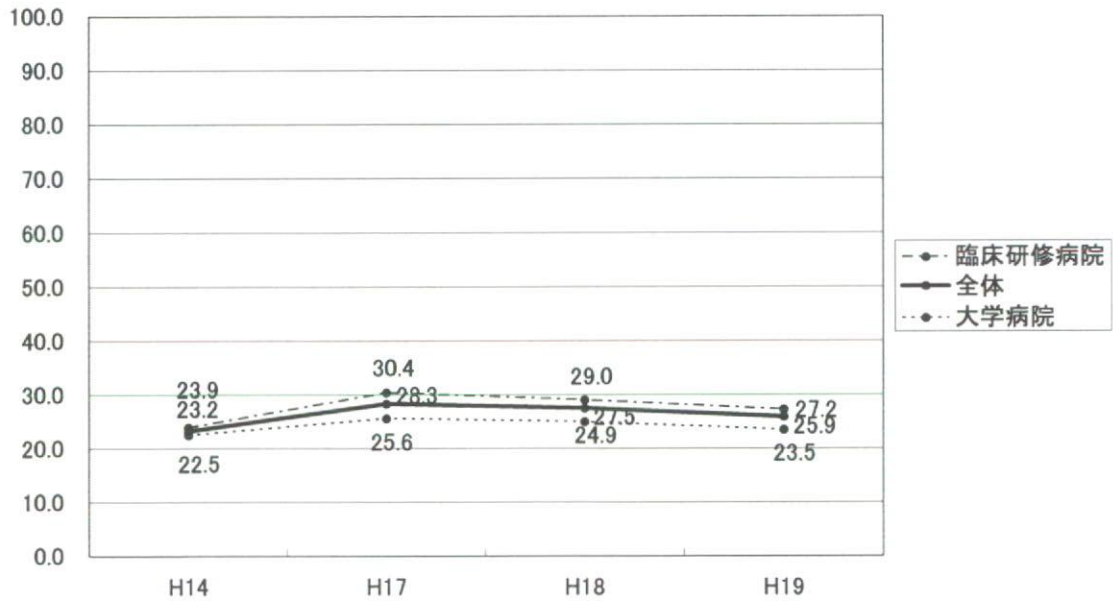
高脂血症



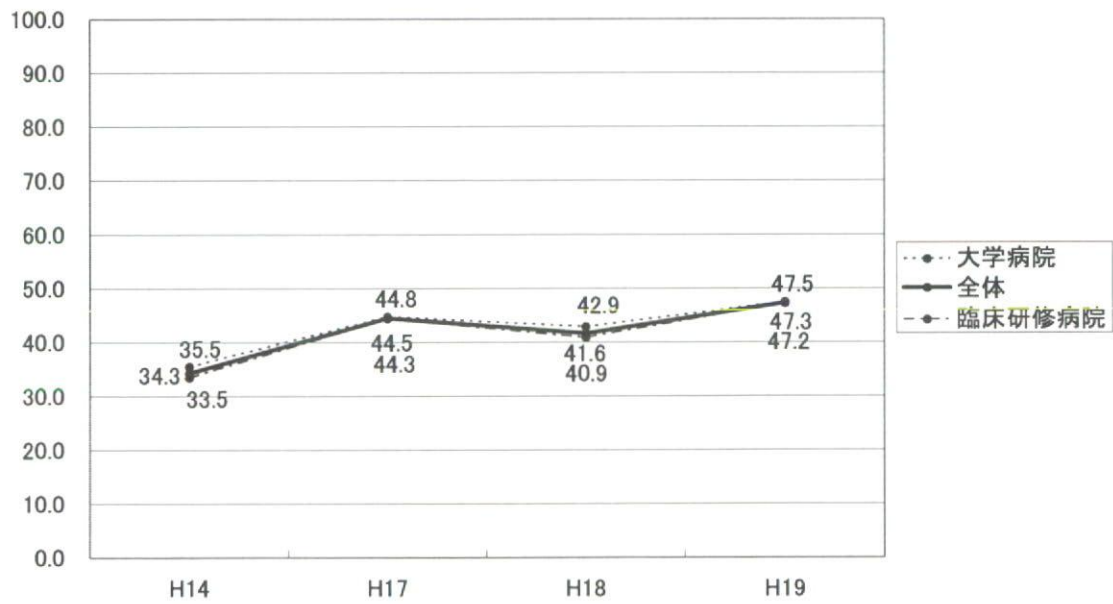
屈折異常(近視、遠視、乱視)



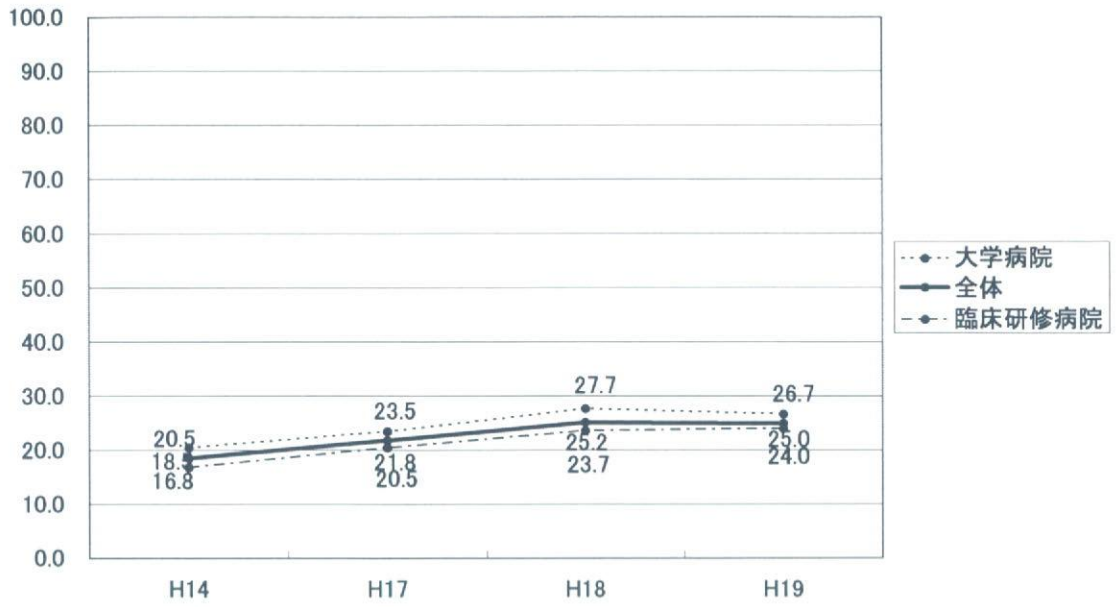
角結膜炎



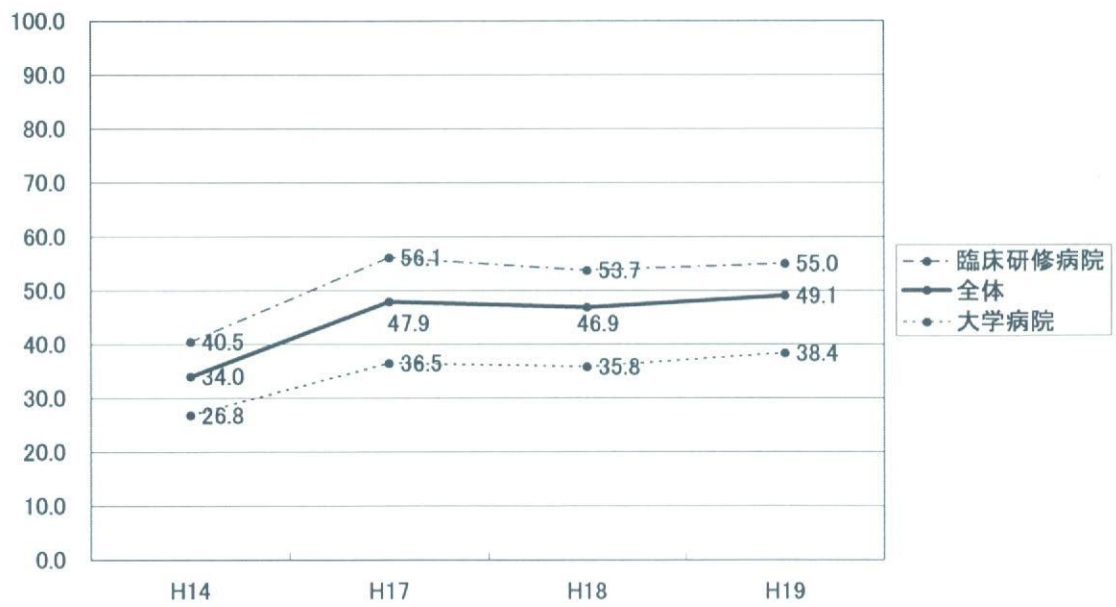
白内障



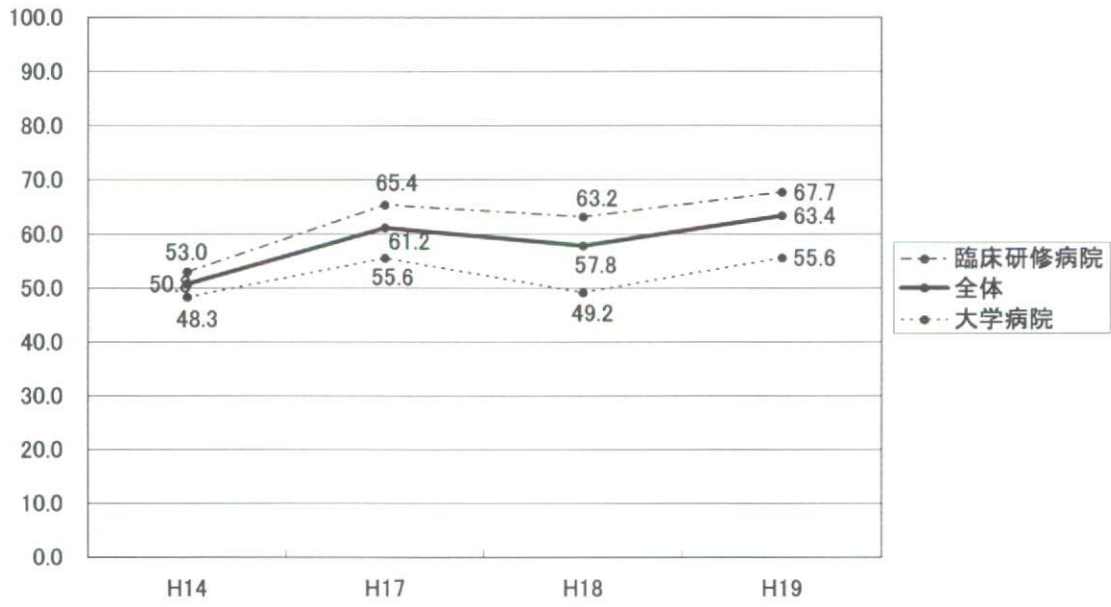
緑内障



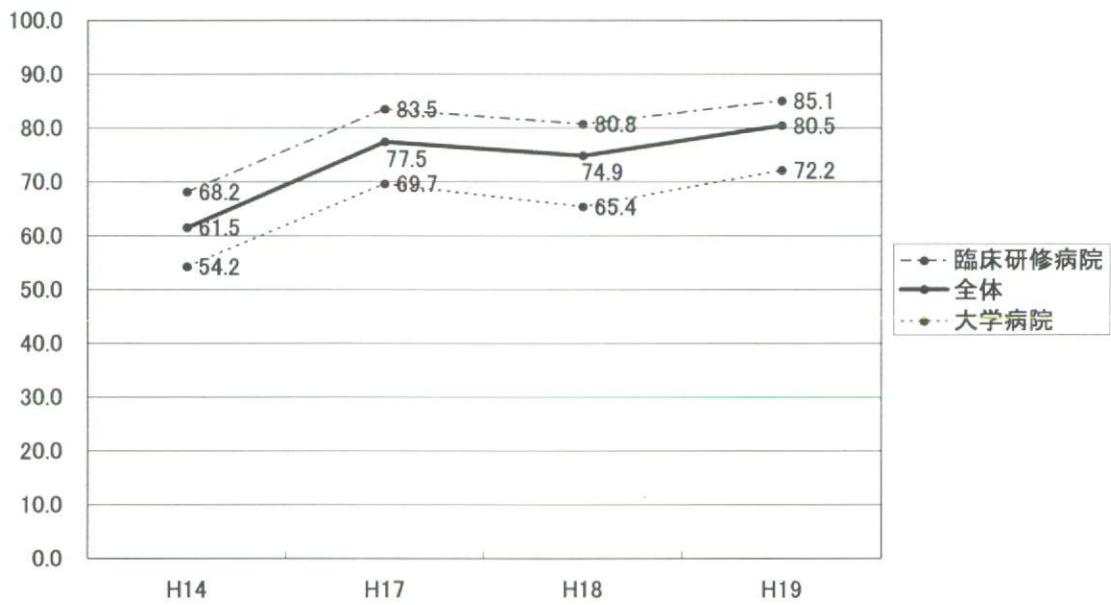
中耳炎



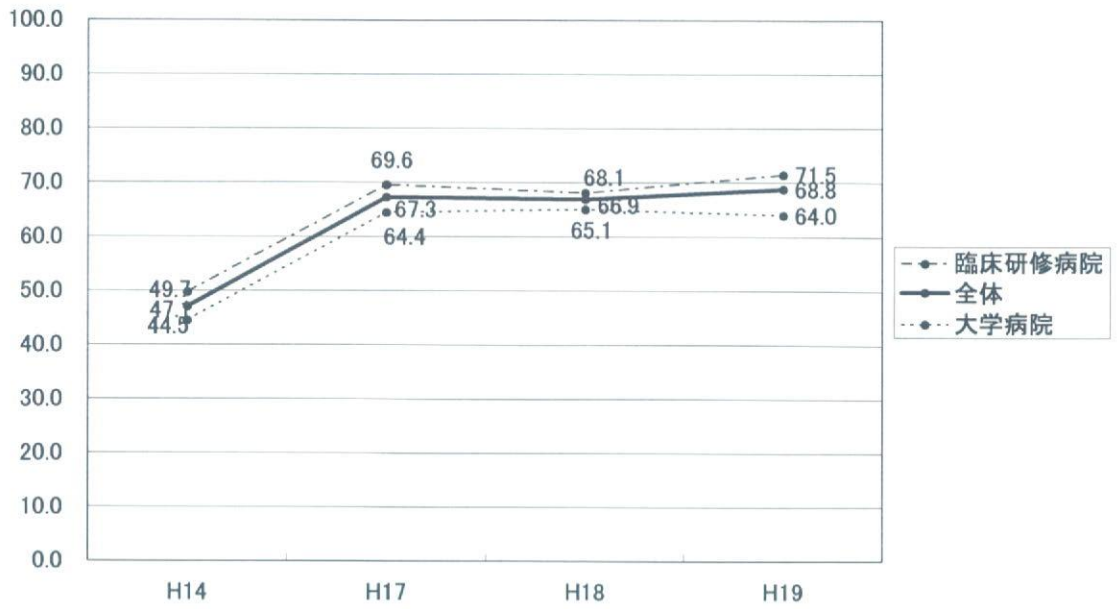
アレルギー性鼻炎



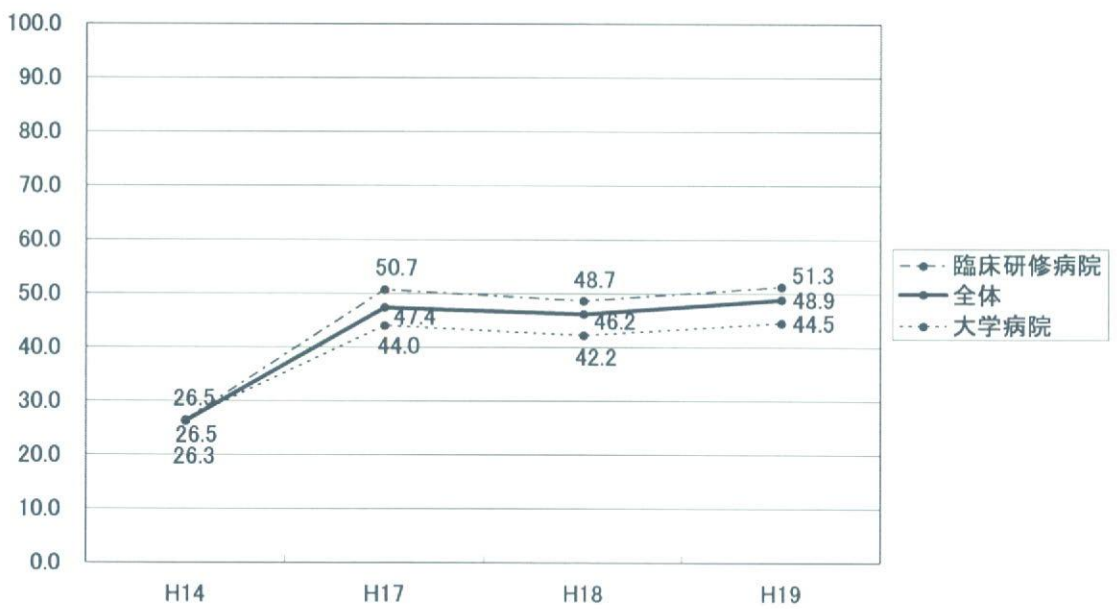
認知障害(血管性認知障害を含む)



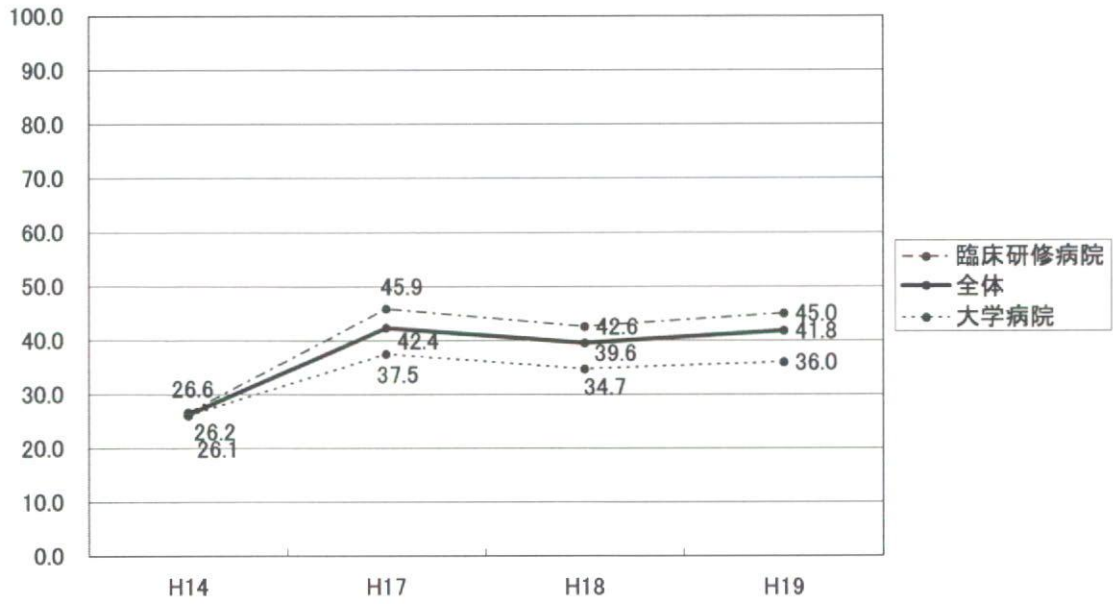
うつ病



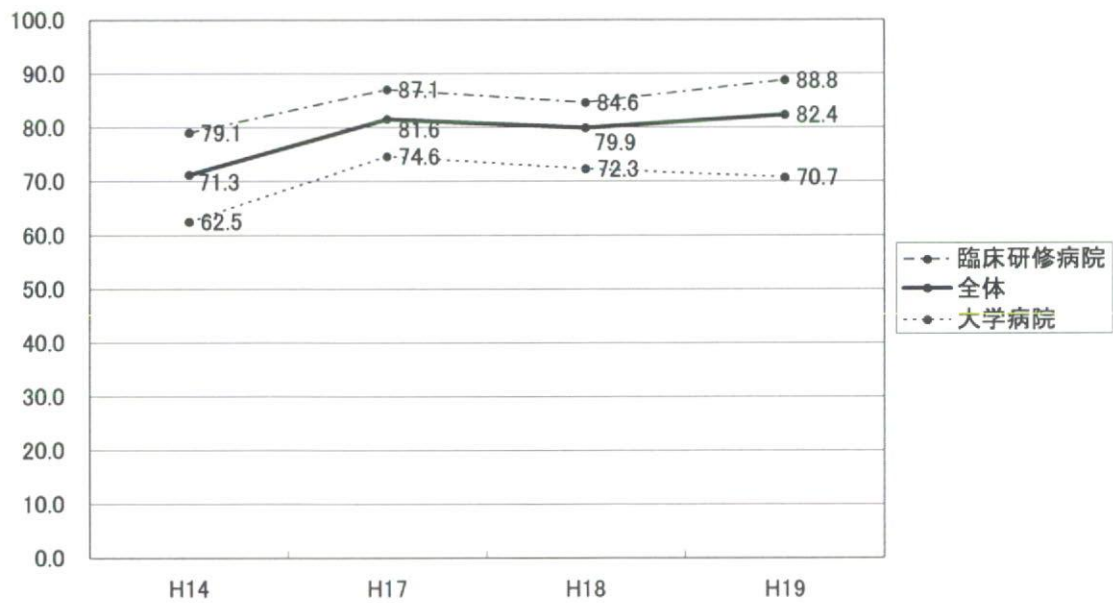
統合失調症



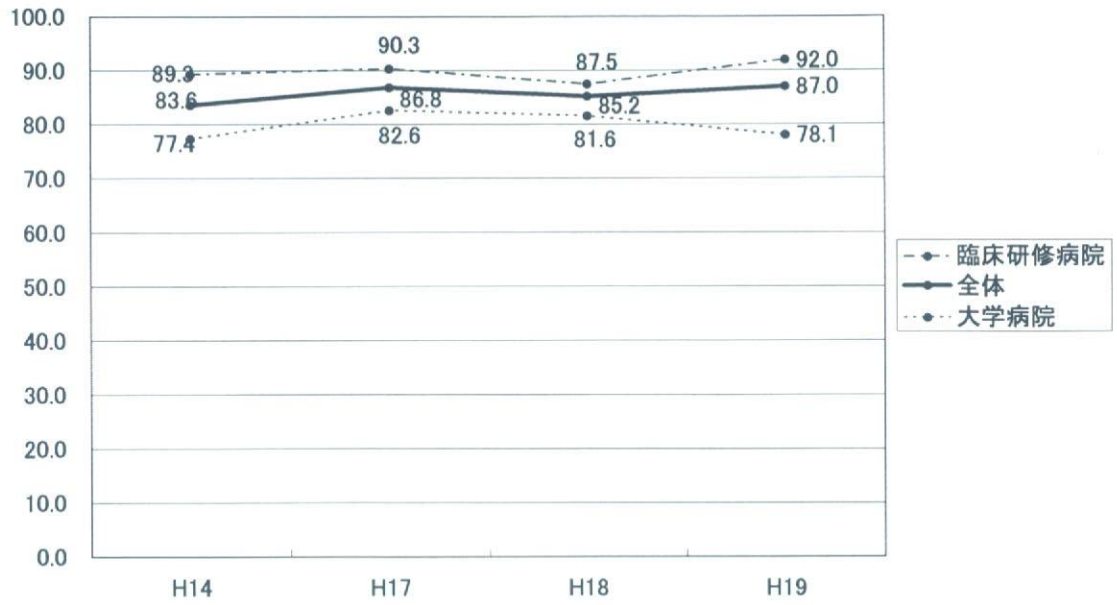
身体表現性障害、ストレス関連障害



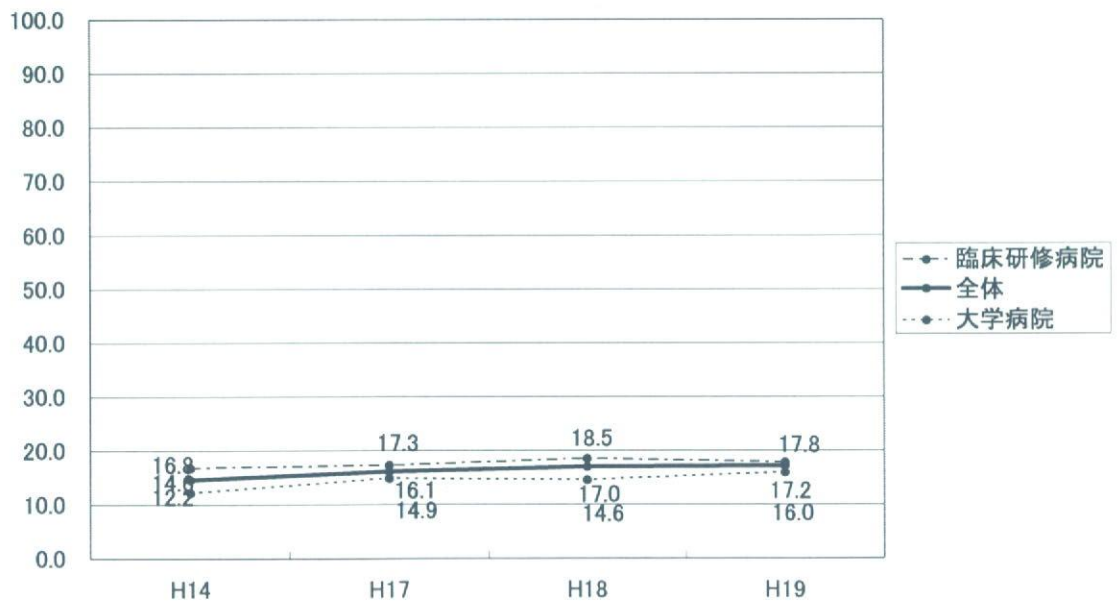
ウイルス感染症(インフルエンザ、麻疹、風疹、水痘、ヘルペス、流行性耳下腺炎)



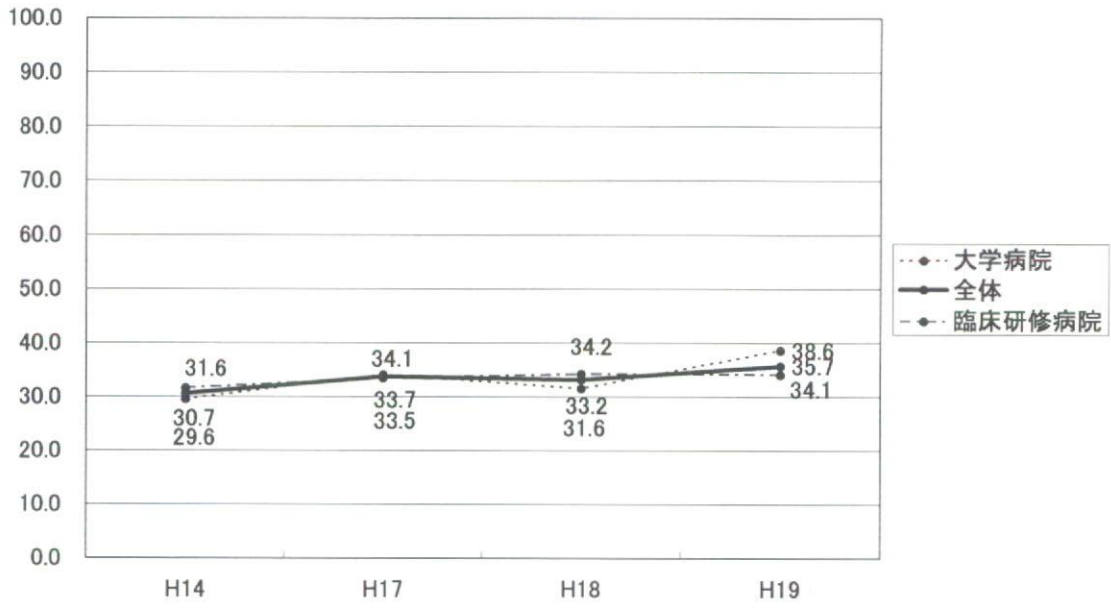
細菌感染症(ブドウ球菌、MRSA、A群連鎖球菌、クラミジア)



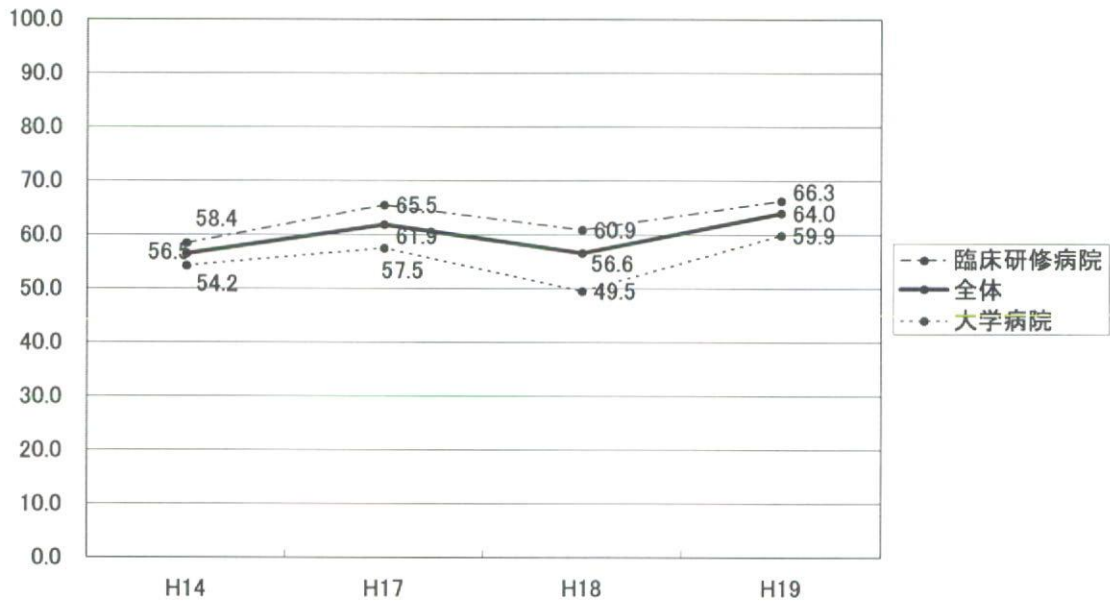
結核



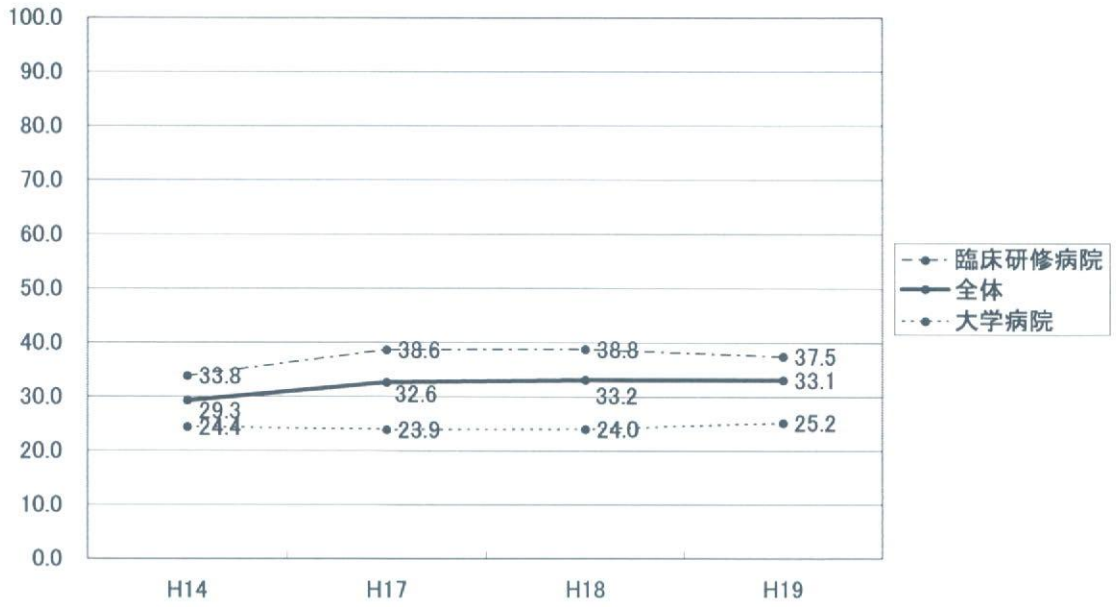
慢性関節リウマチ



アレルギー疾患



熱傷



小児けいれん性疾患

