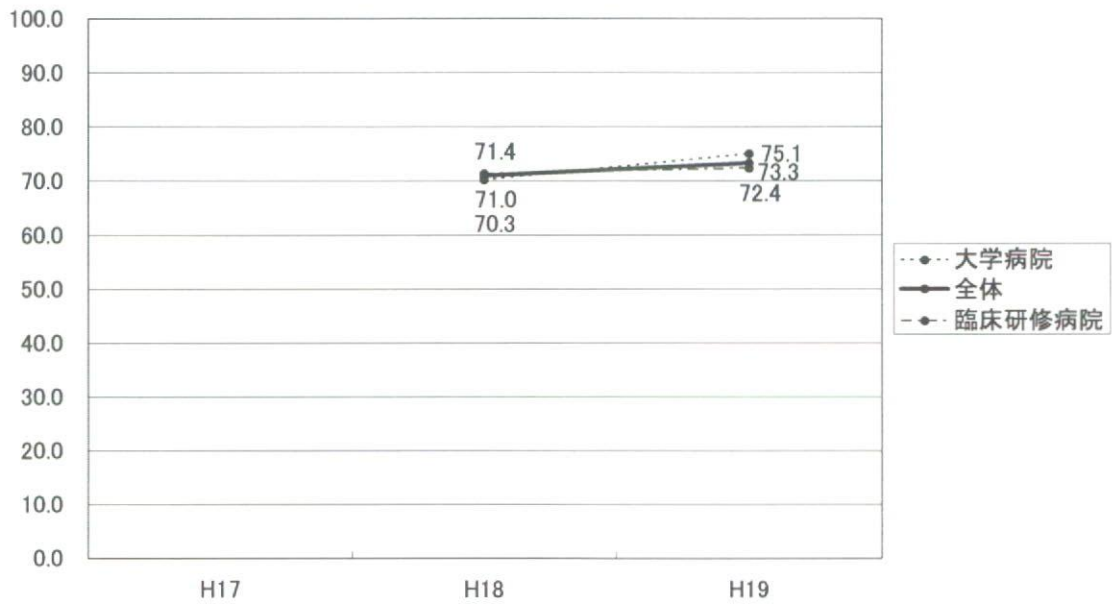
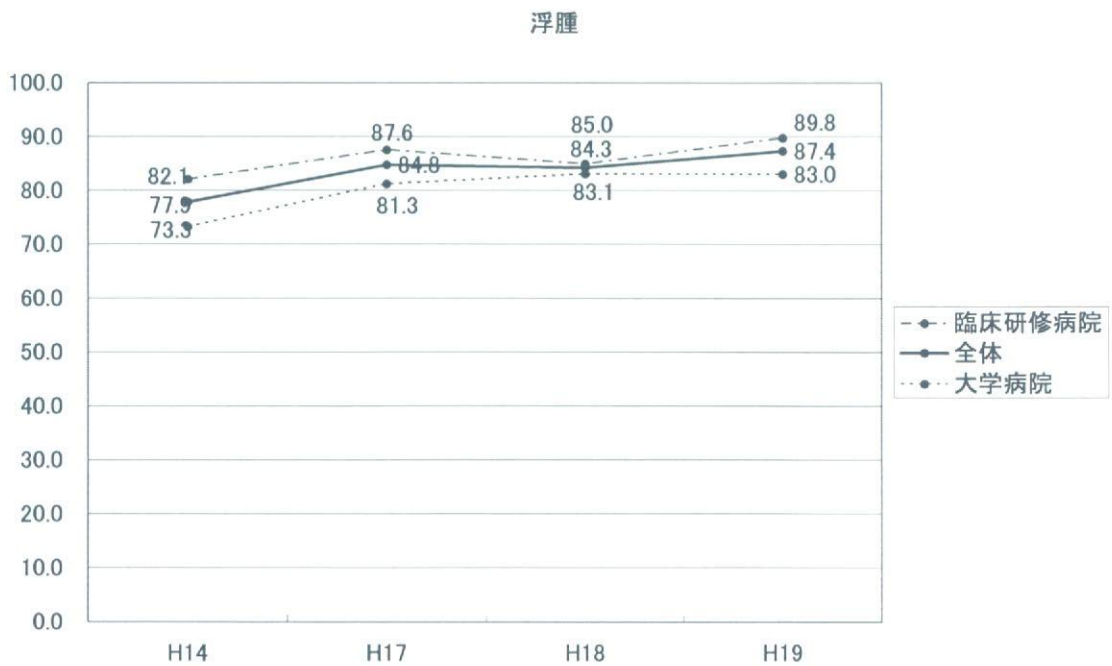
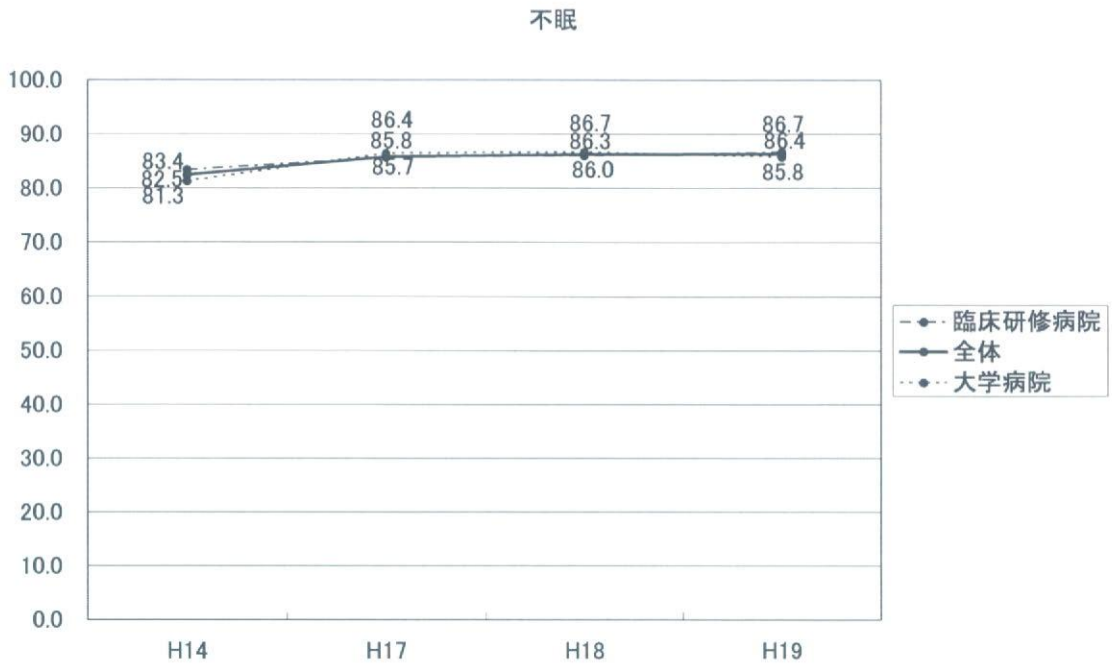


医療人として必要な姿勢・態度について後輩のロールモデルになることができる

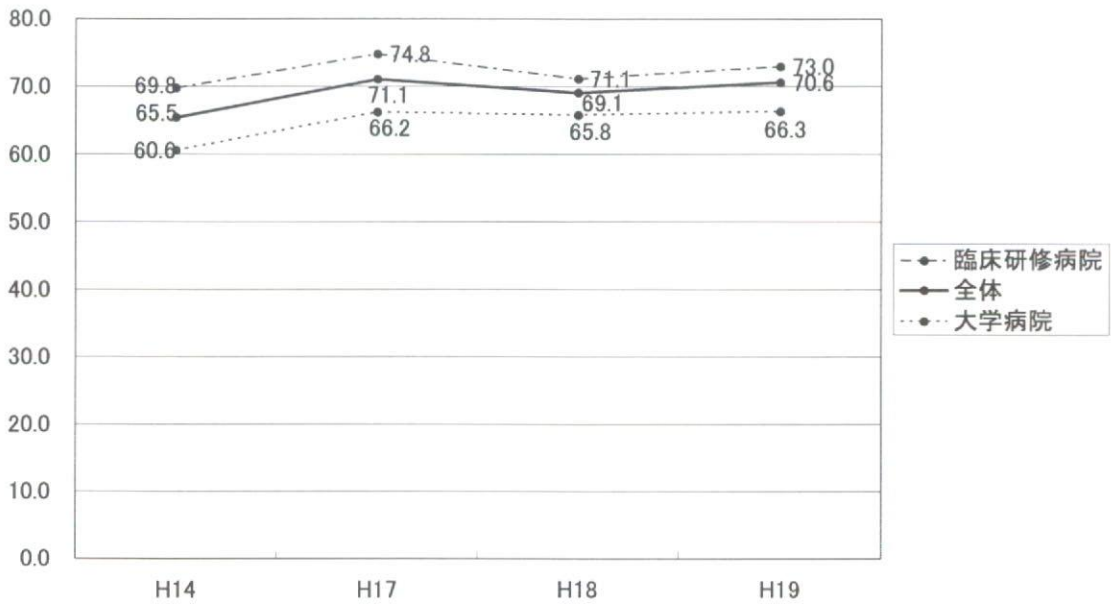


2 経験件数の新制度導入前と新制度導入後3年間の推移（全体・大学・臨床研修病院別）：  
各項目について6例以上を経験した割合を示した

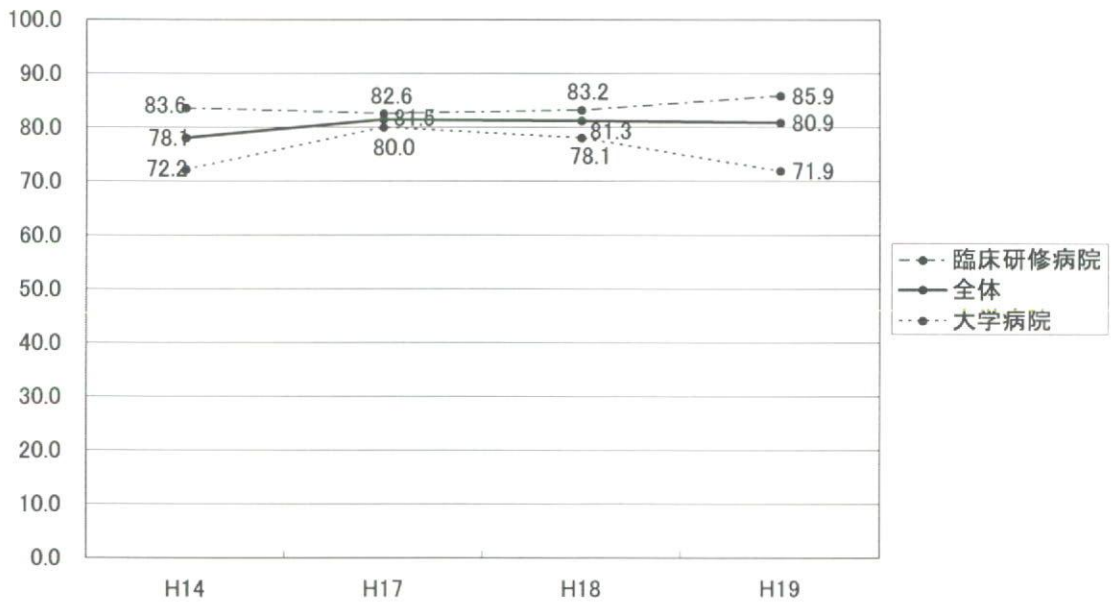
2-1 症状・病態について



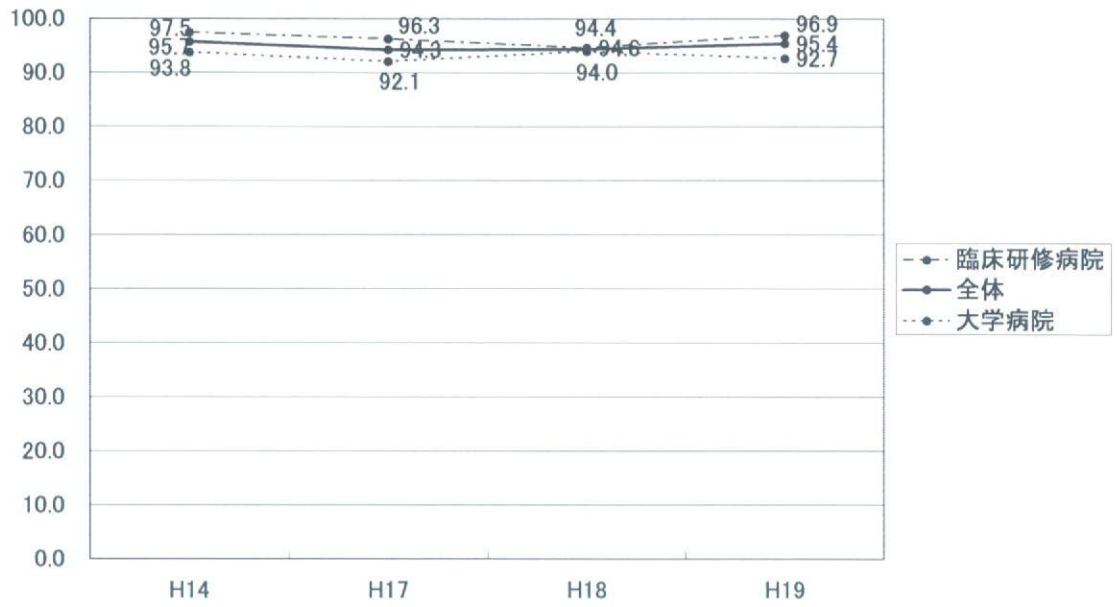
リンパ節腫脹



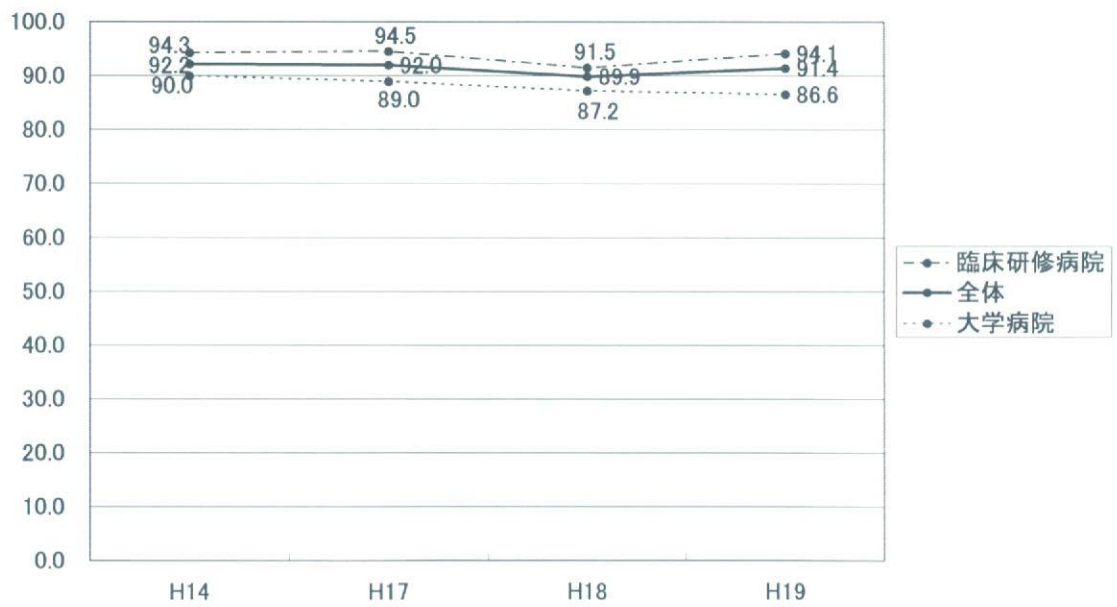
発疹



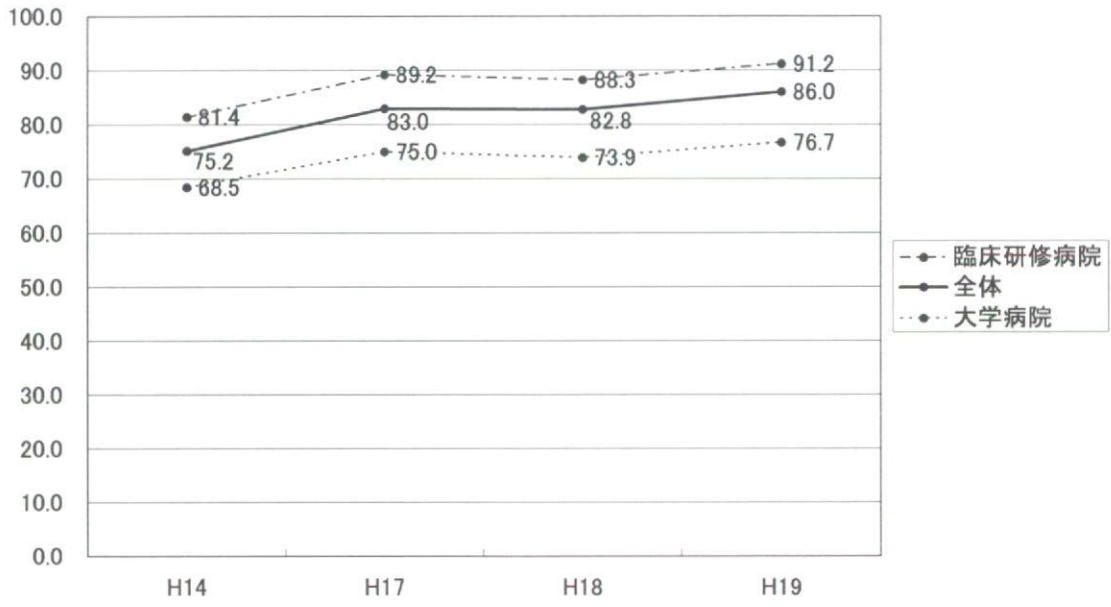
発熱



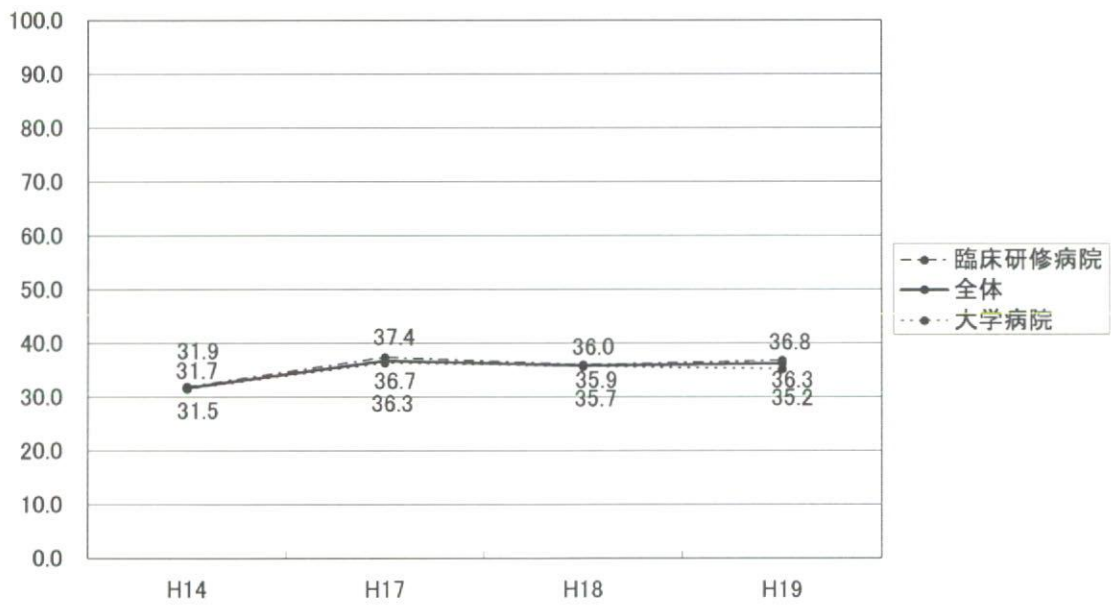
頭痛



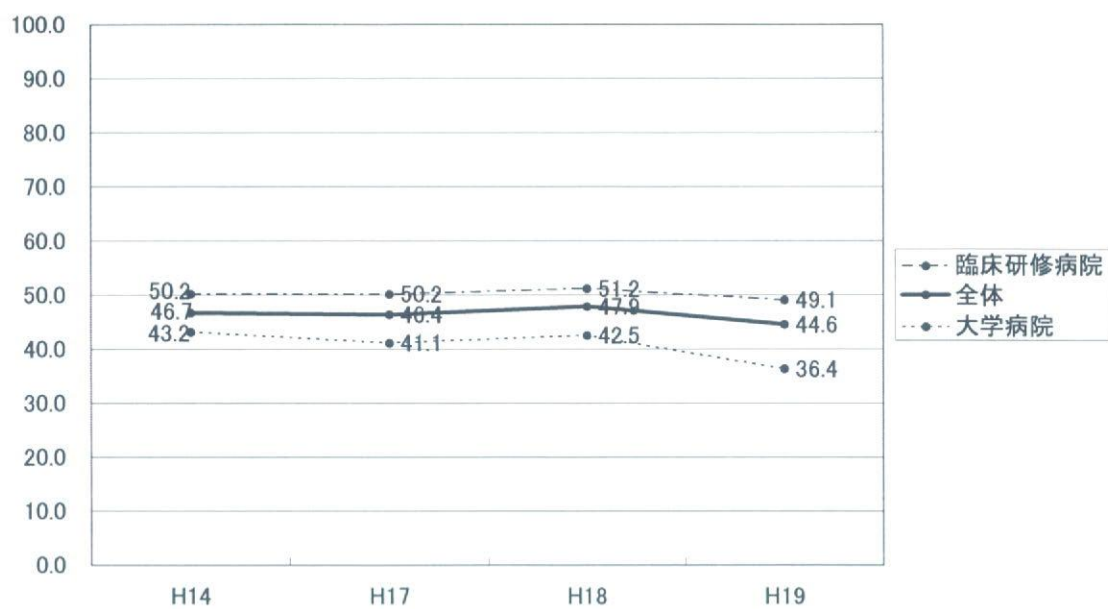
めまい



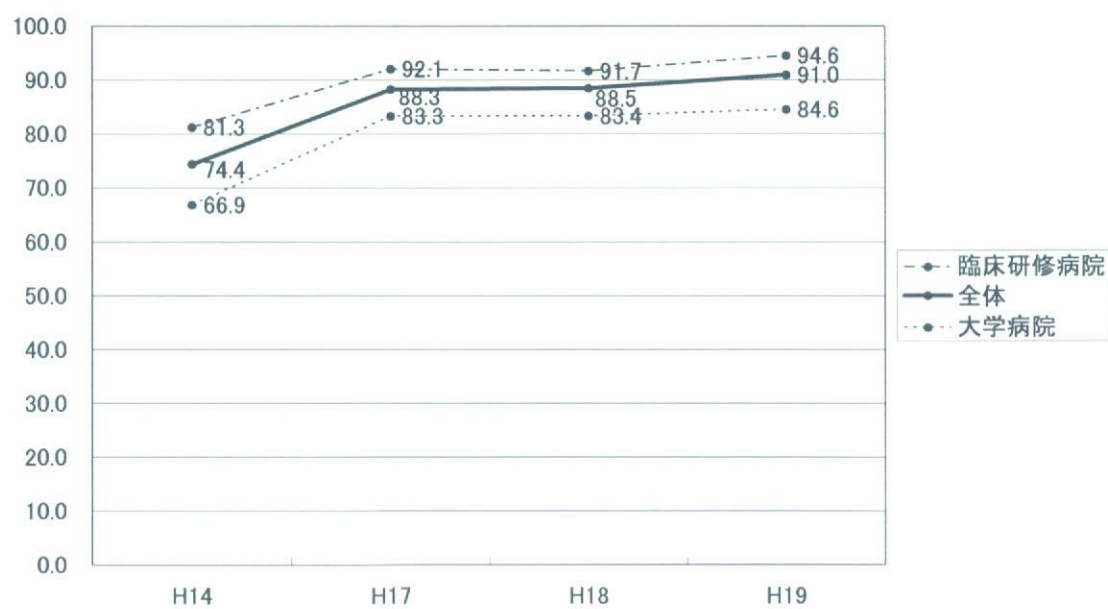
視力障害、視野狭窄



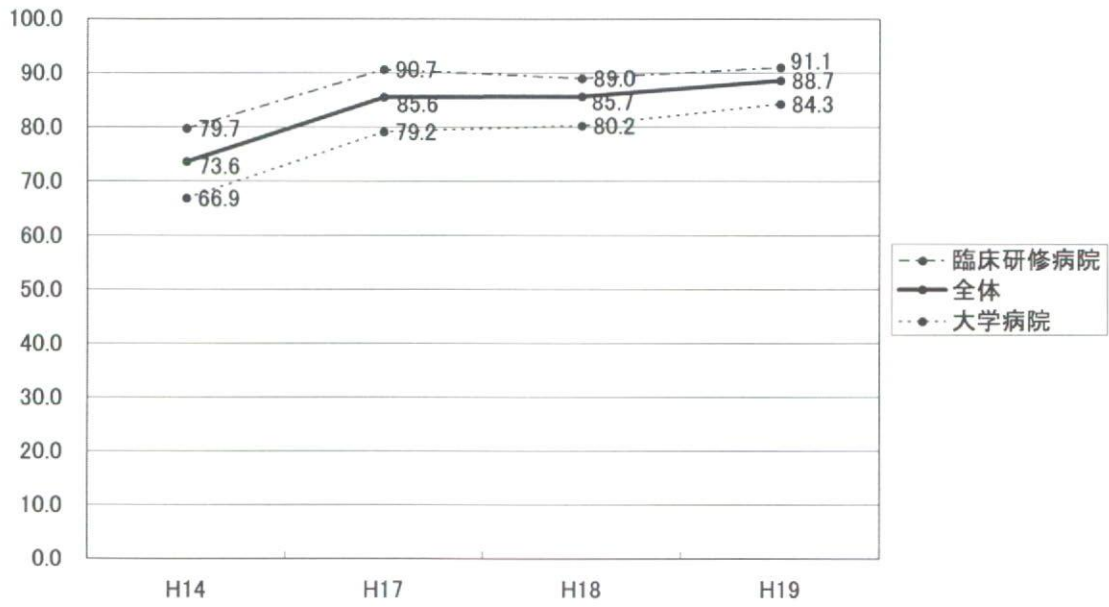
### 結膜の充血



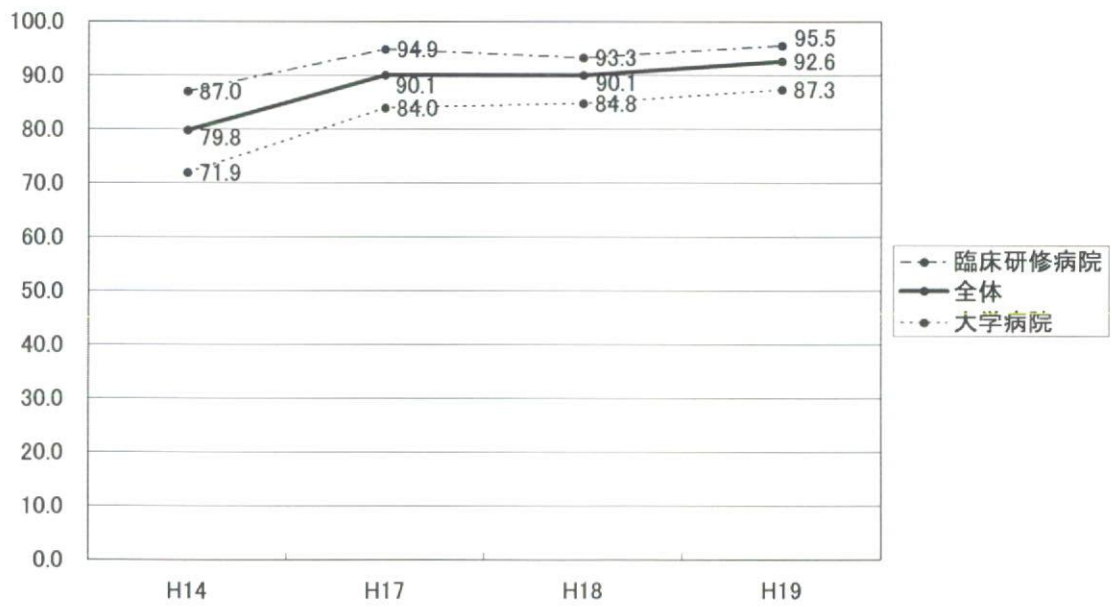
### 胸痛



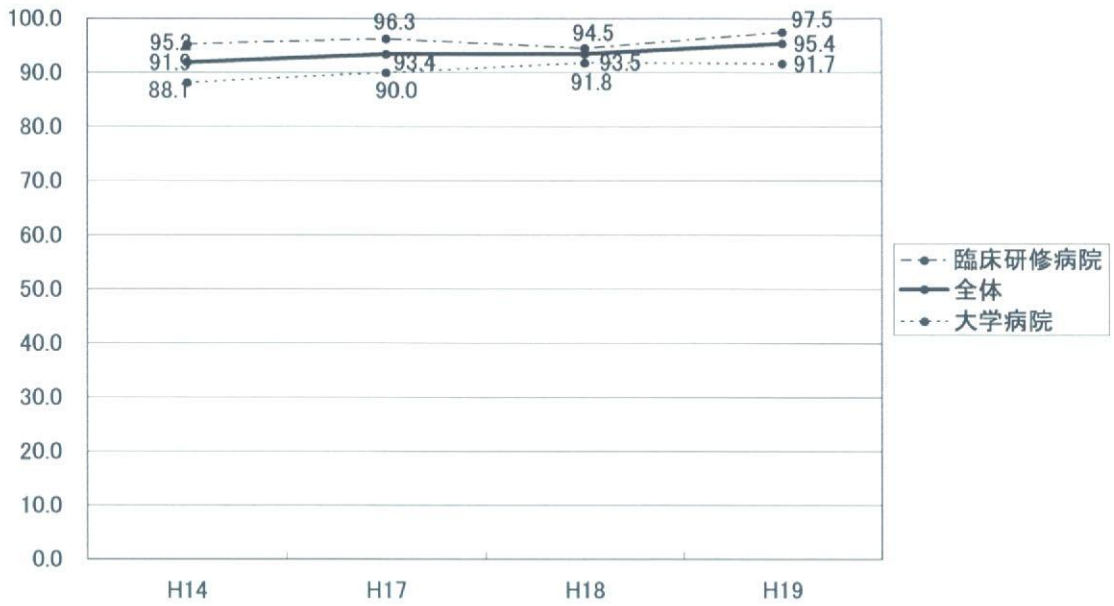
### 動悸



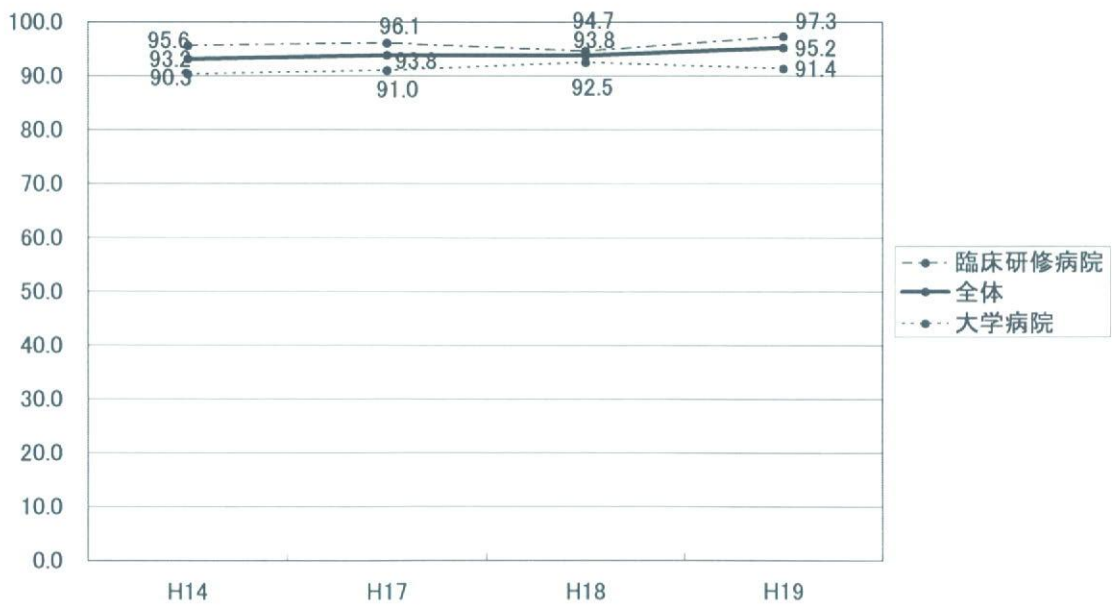
### 呼吸困難



咳・痰

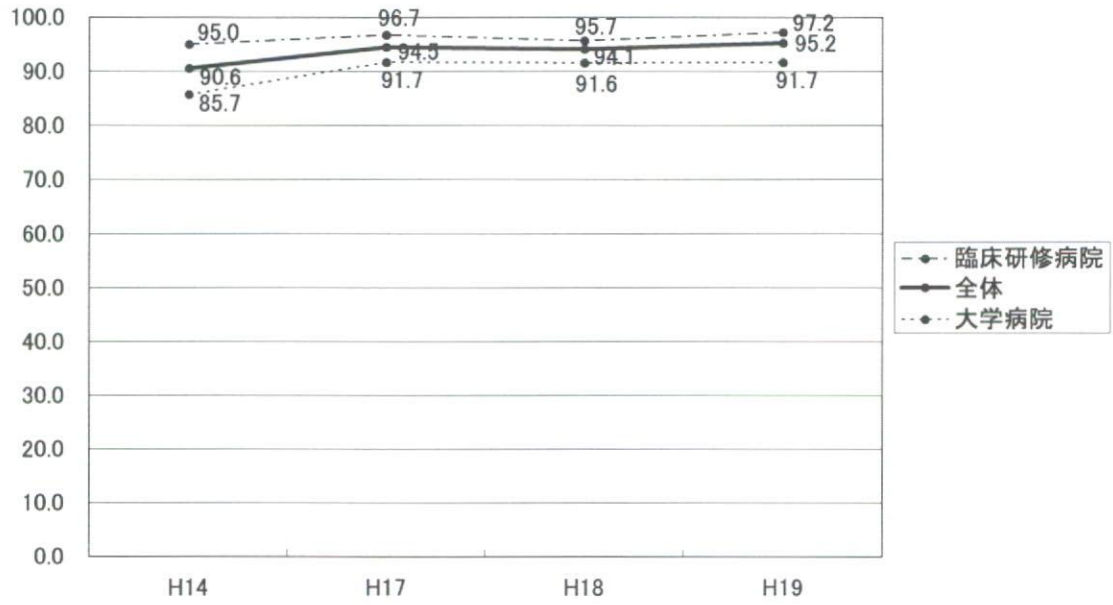


嘔気・嘔吐

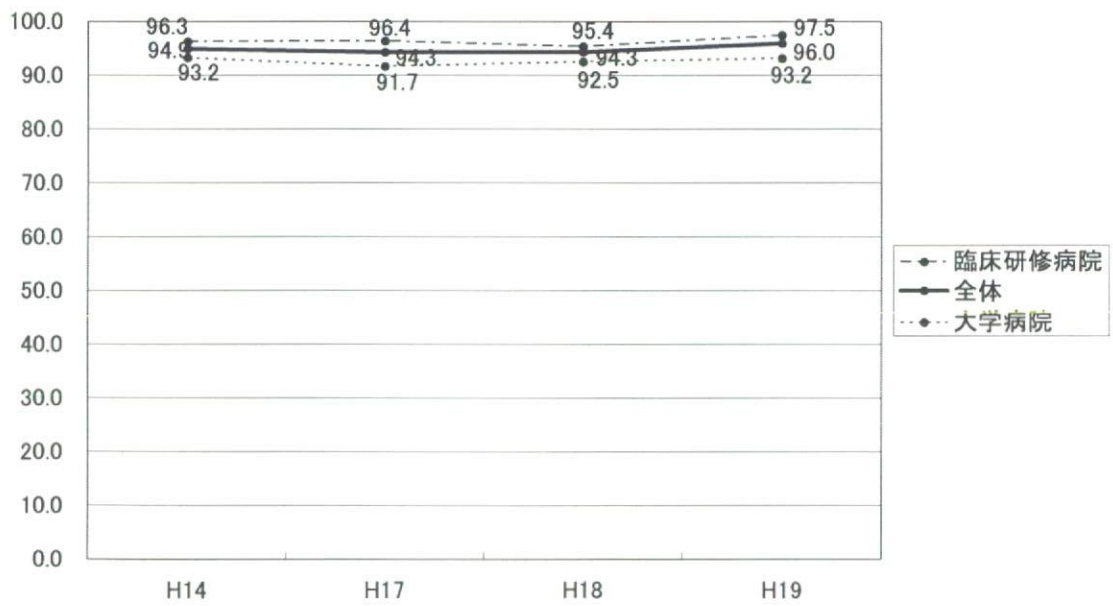




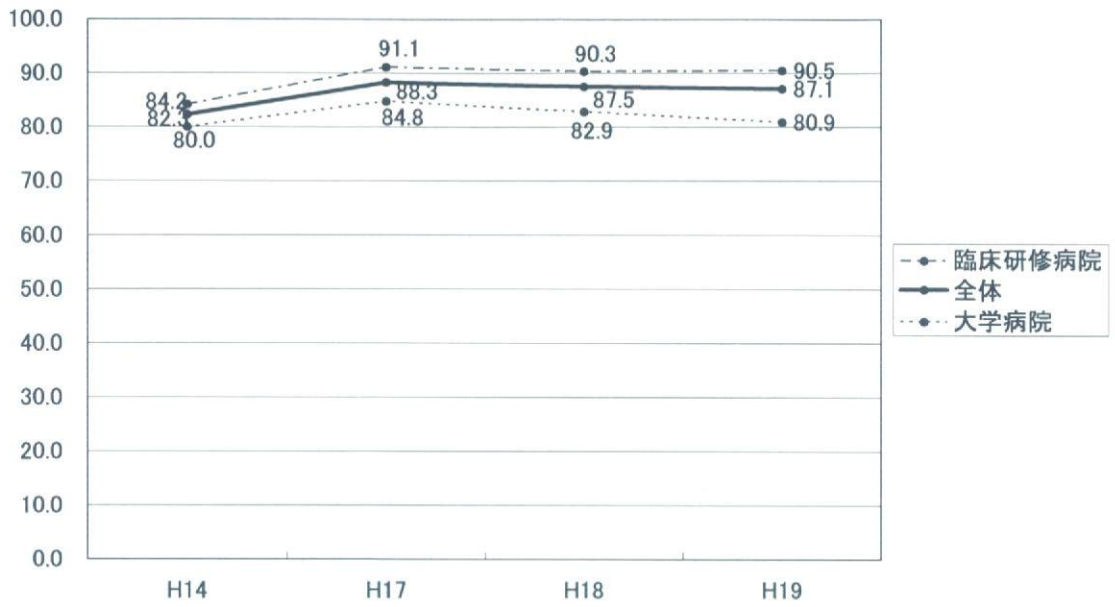
### 腹痛



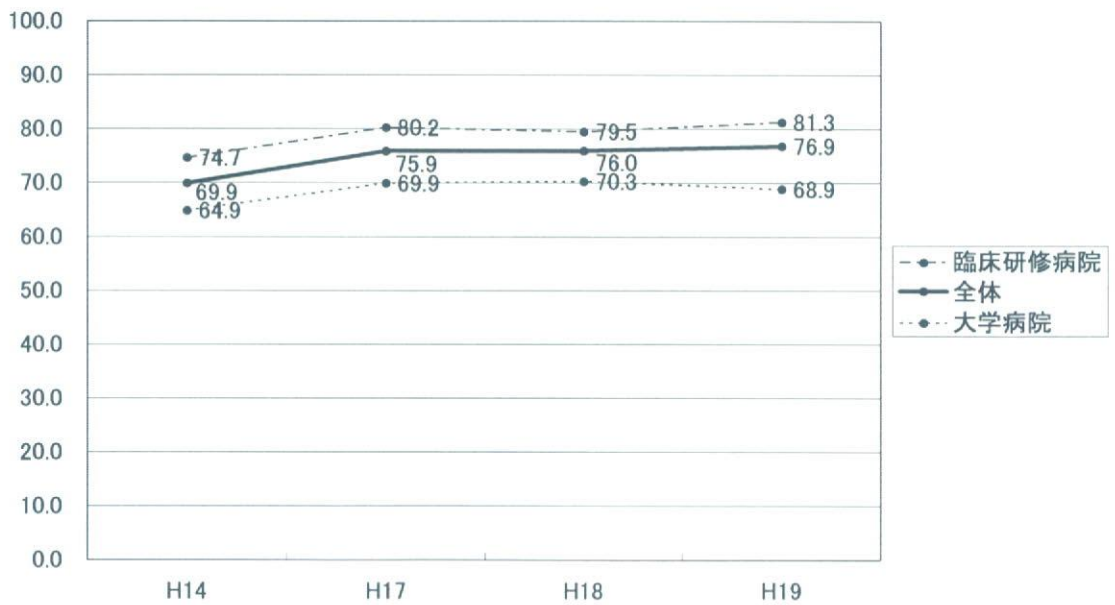
### 便通異常(下痢、便秘)



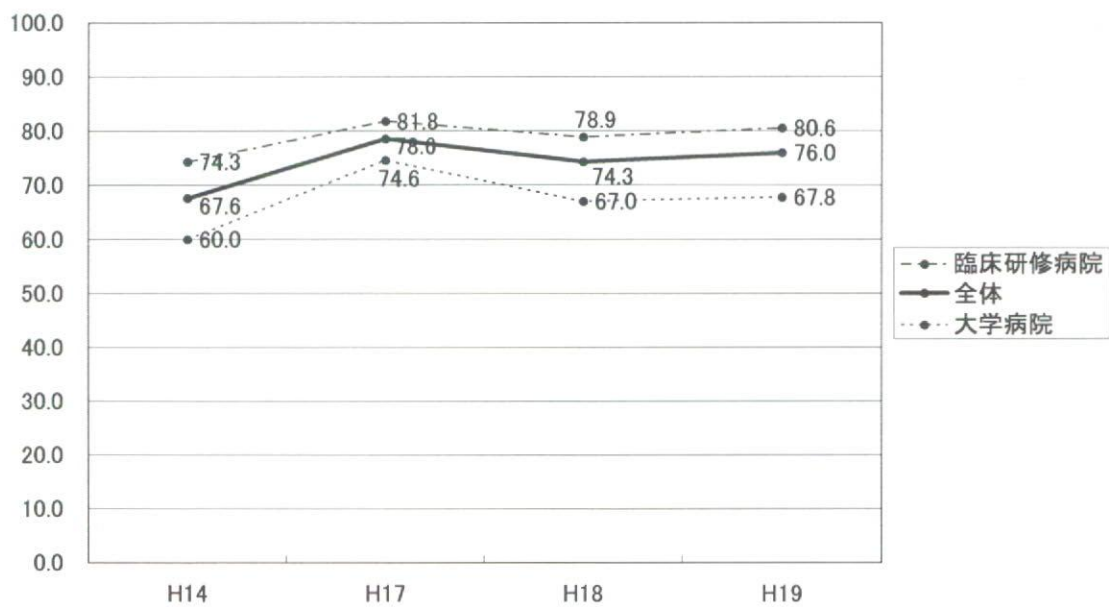
### 腰痛



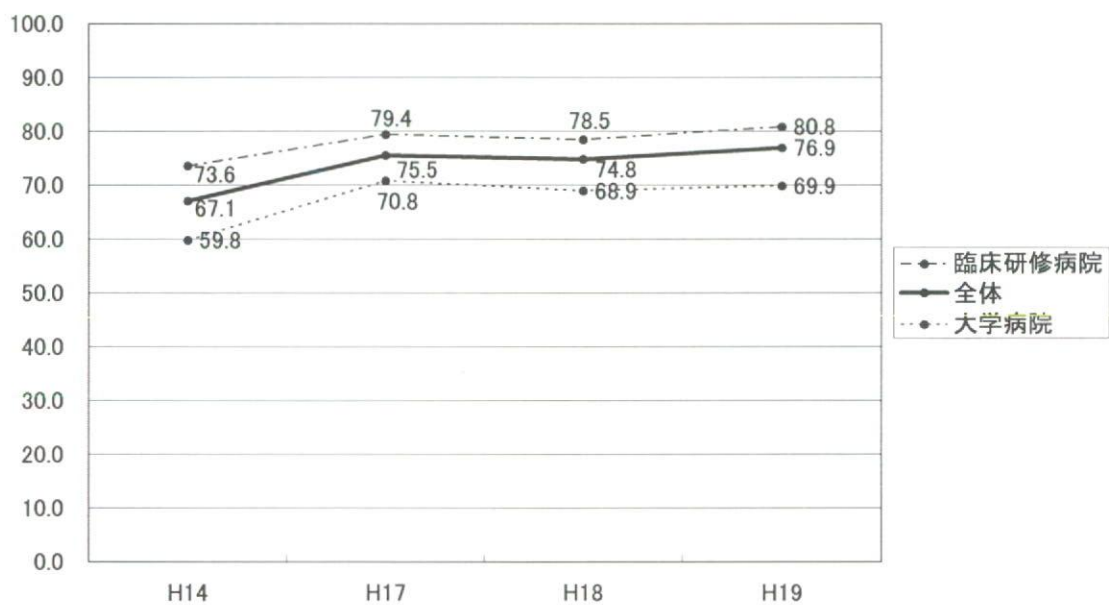
### 四肢のしびれ



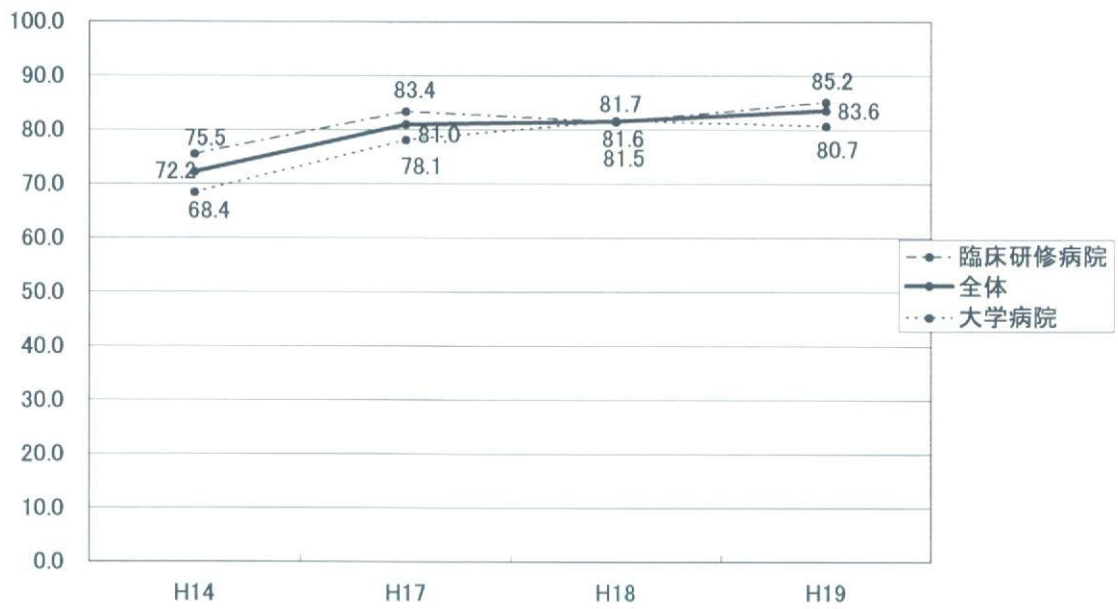
### 血尿



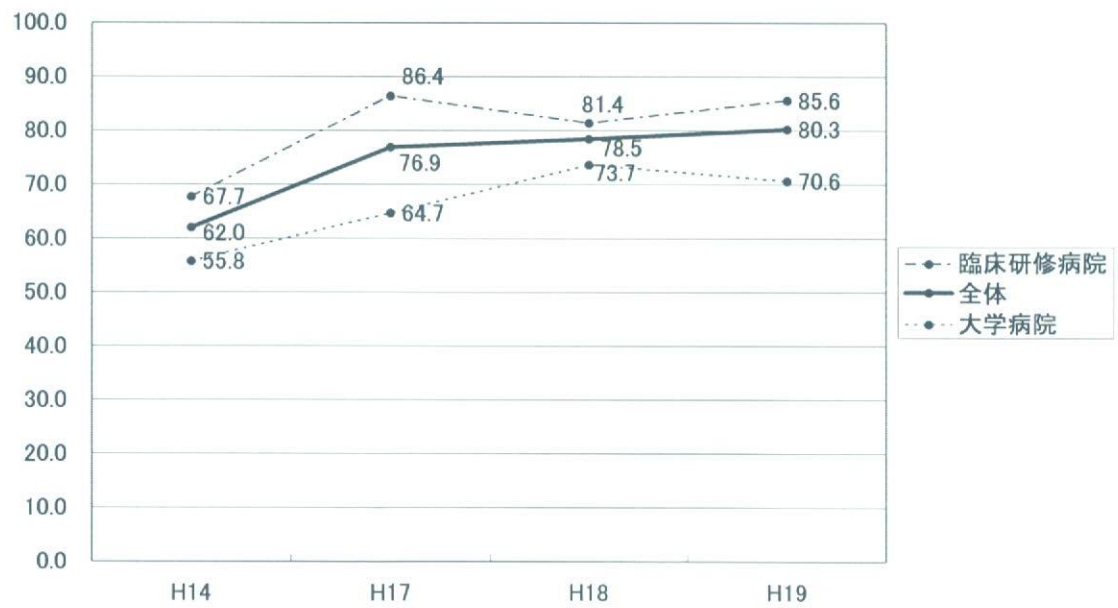
### 排尿障害(尿失禁・排尿困難)



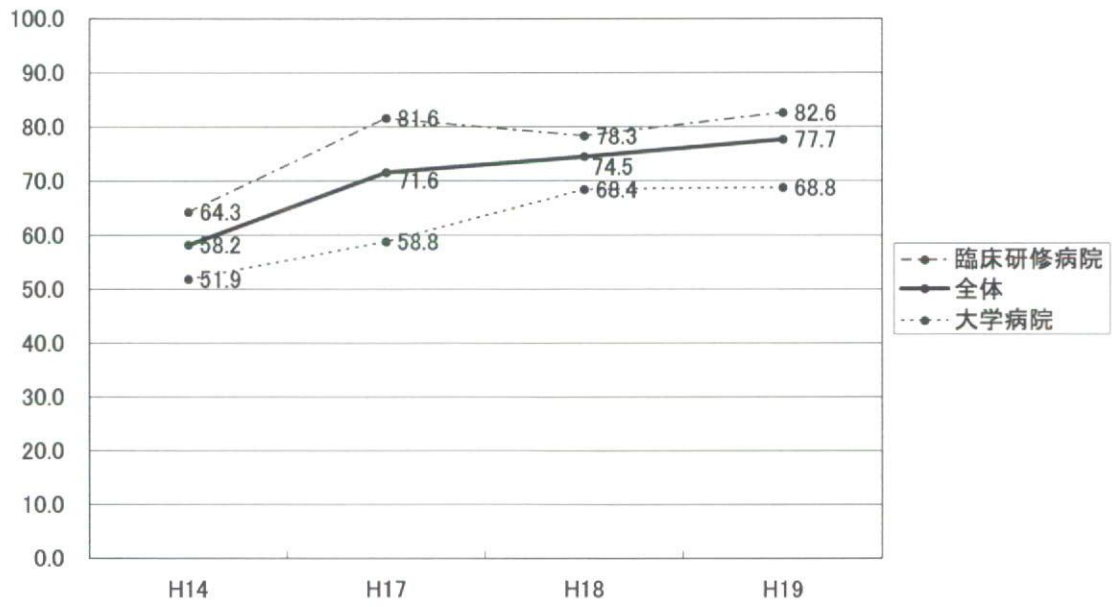
不安・抑うつ



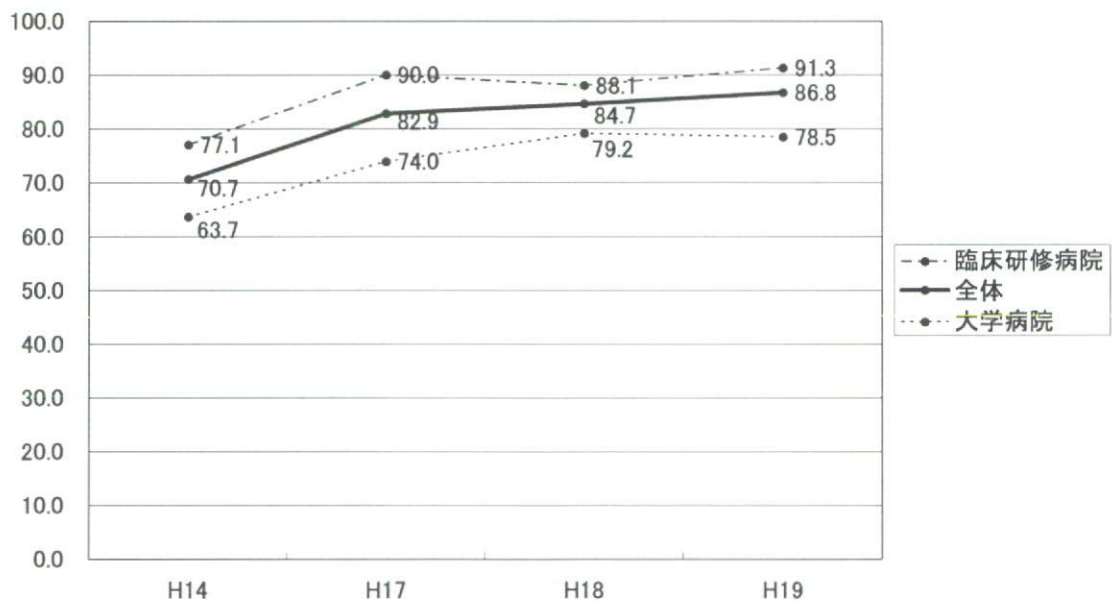
心肺停止



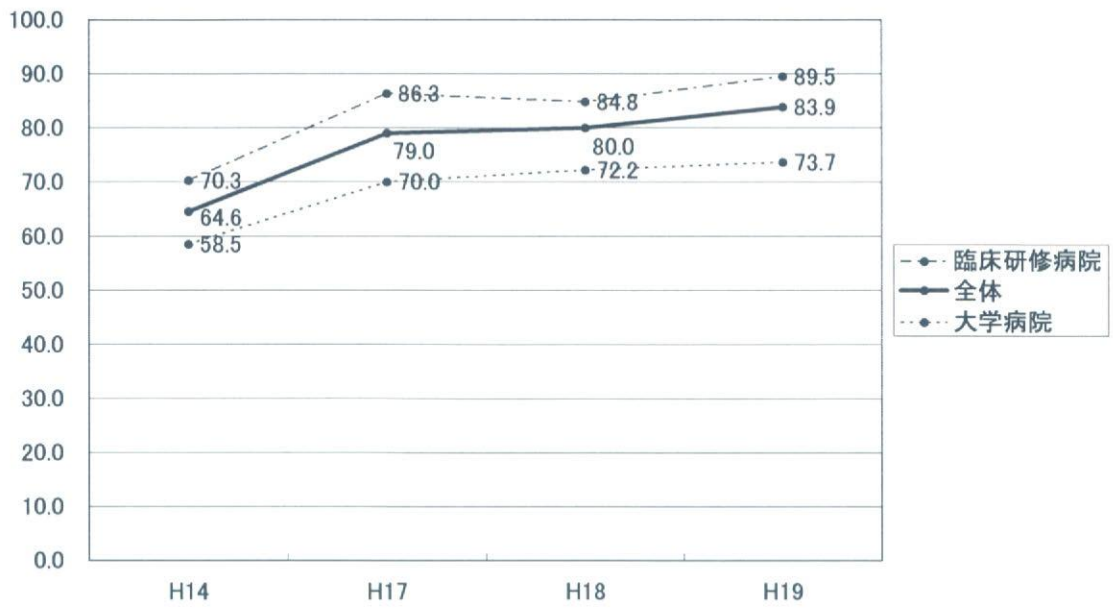
ショック



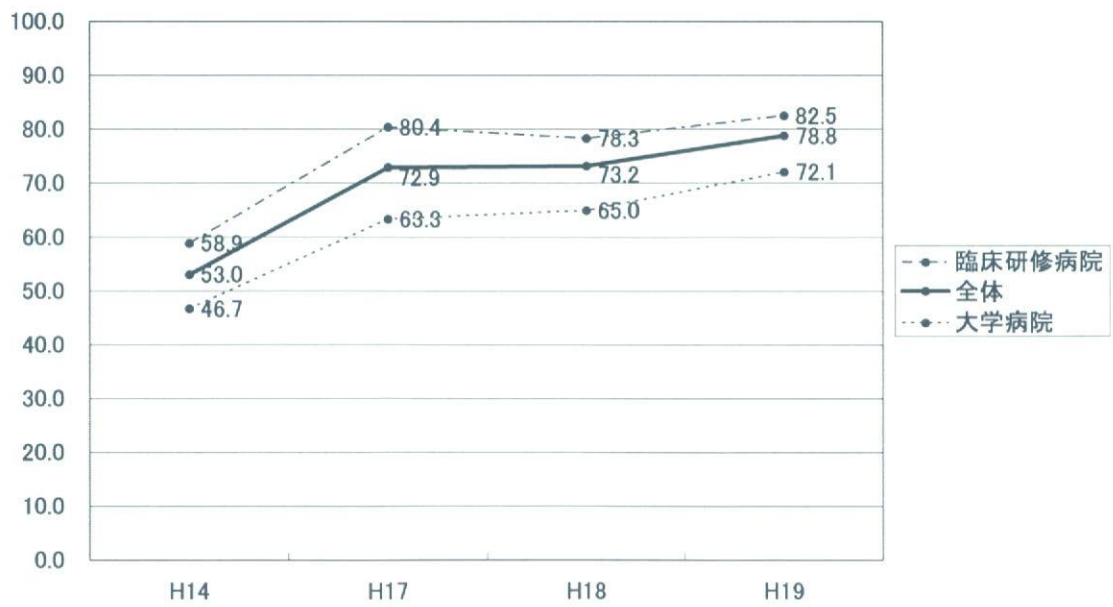
意識障害



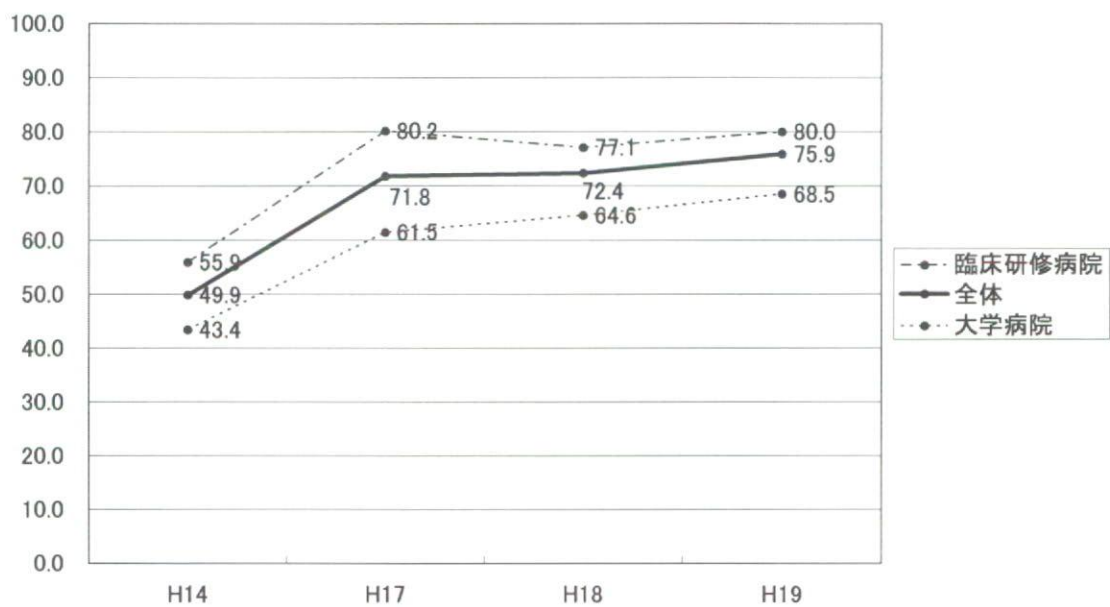
脑血管障害



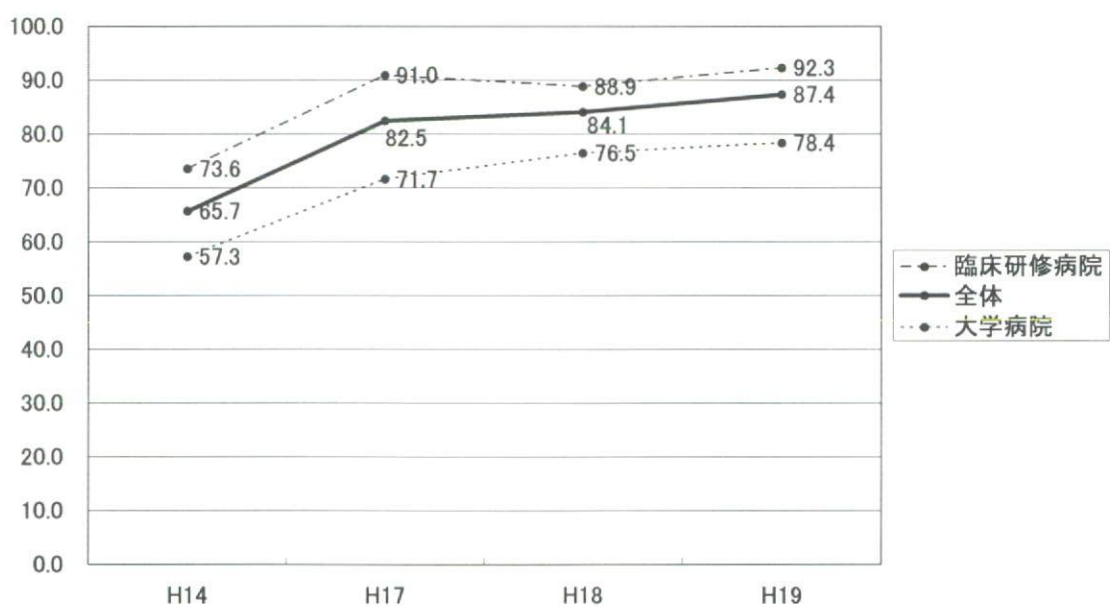
急性心不全



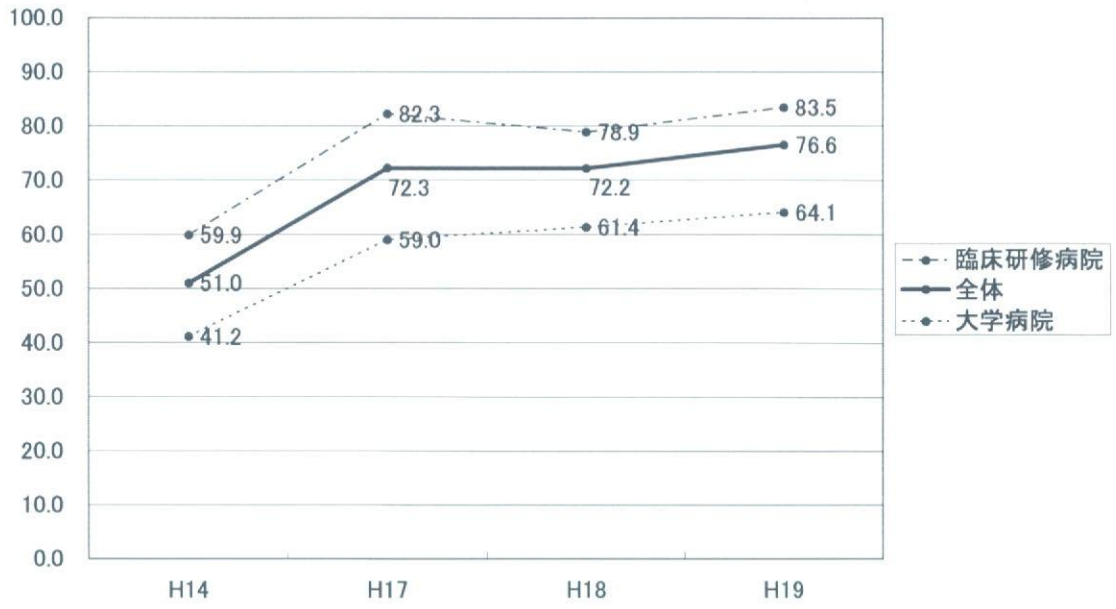
急性冠症候群



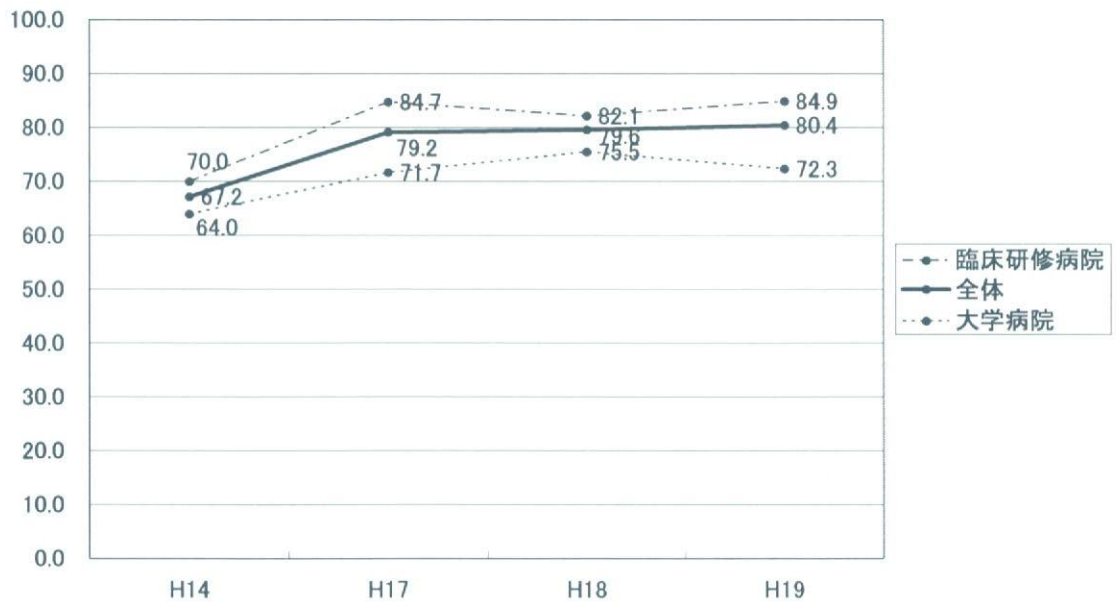
急性腹症



急性消化管出血

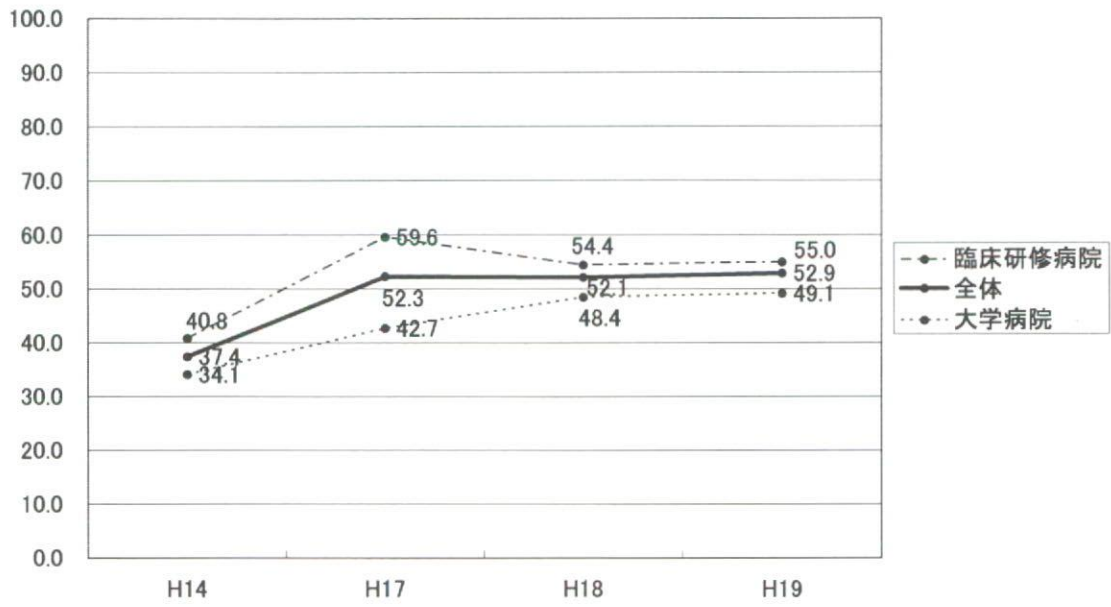


外傷

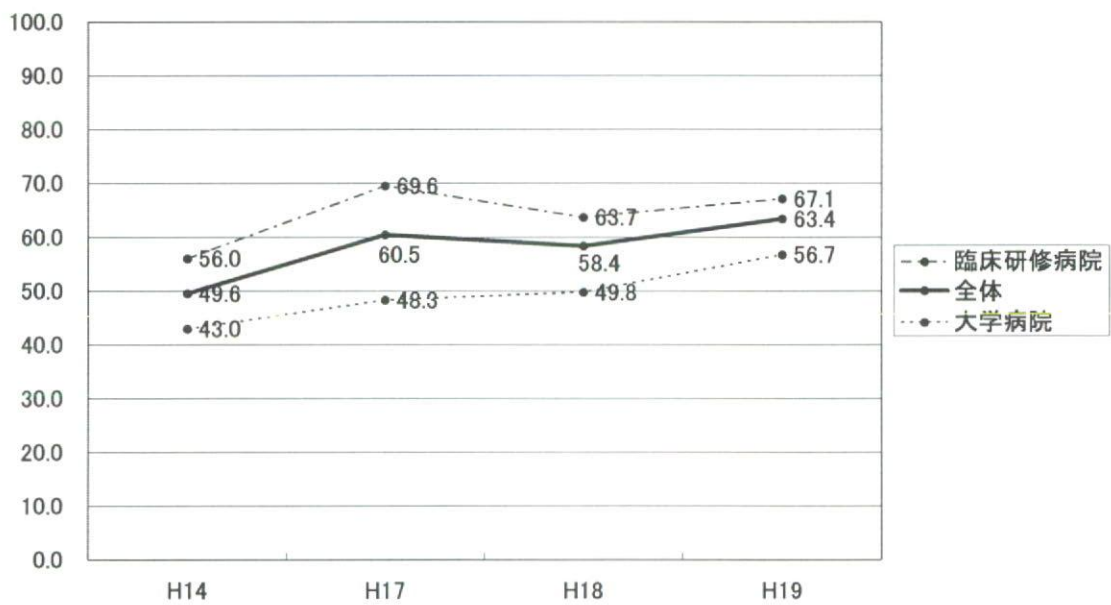




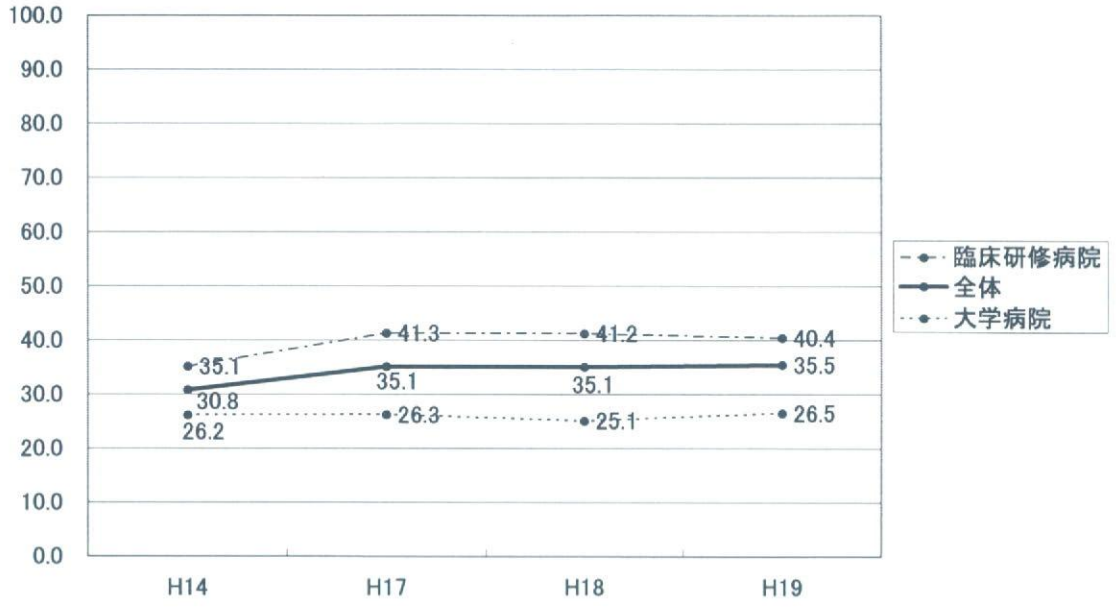
### 急性中毒



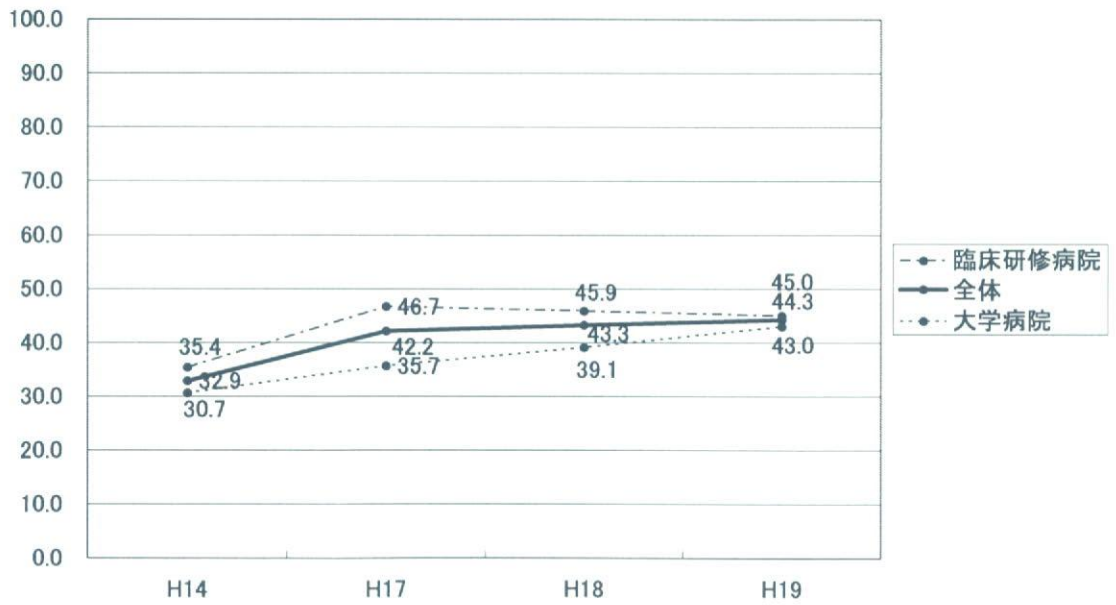
### 誤飲、誤嚥



### 熱傷

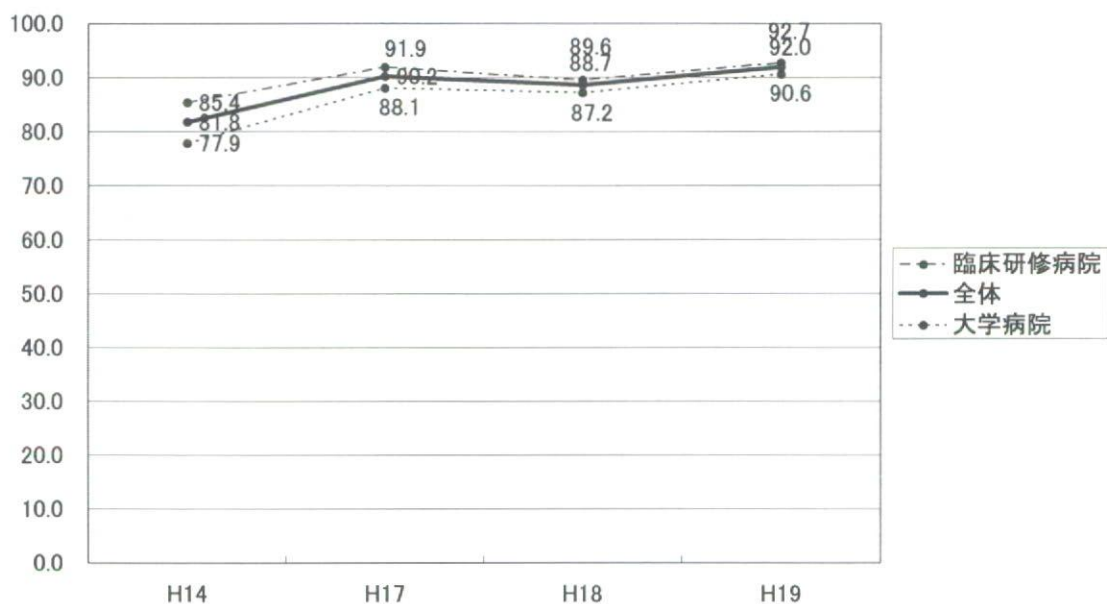


### 自殺企図

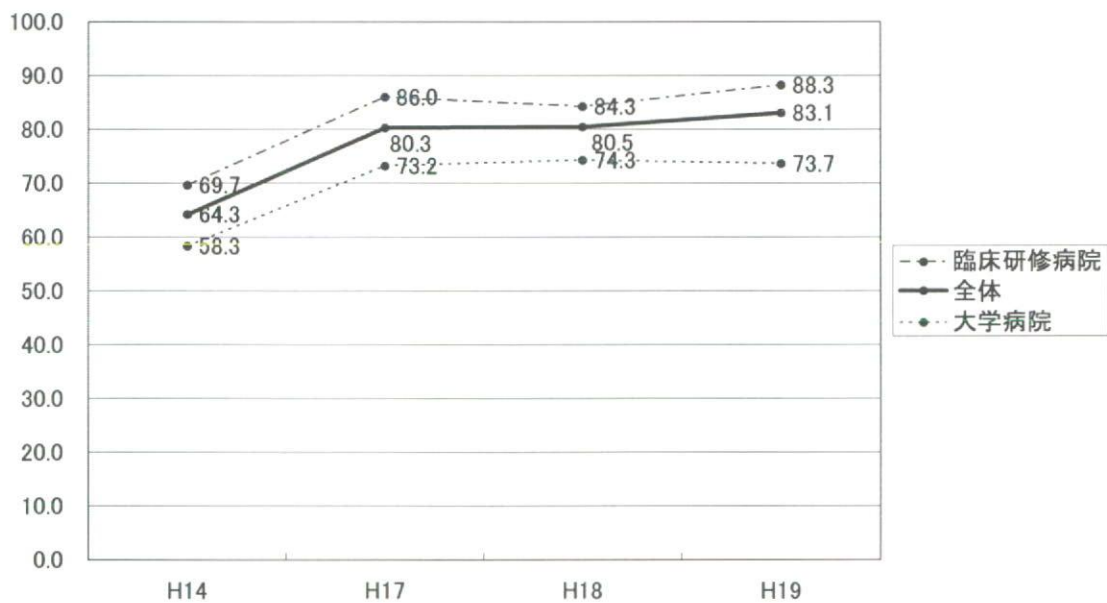


2-2 疾患について

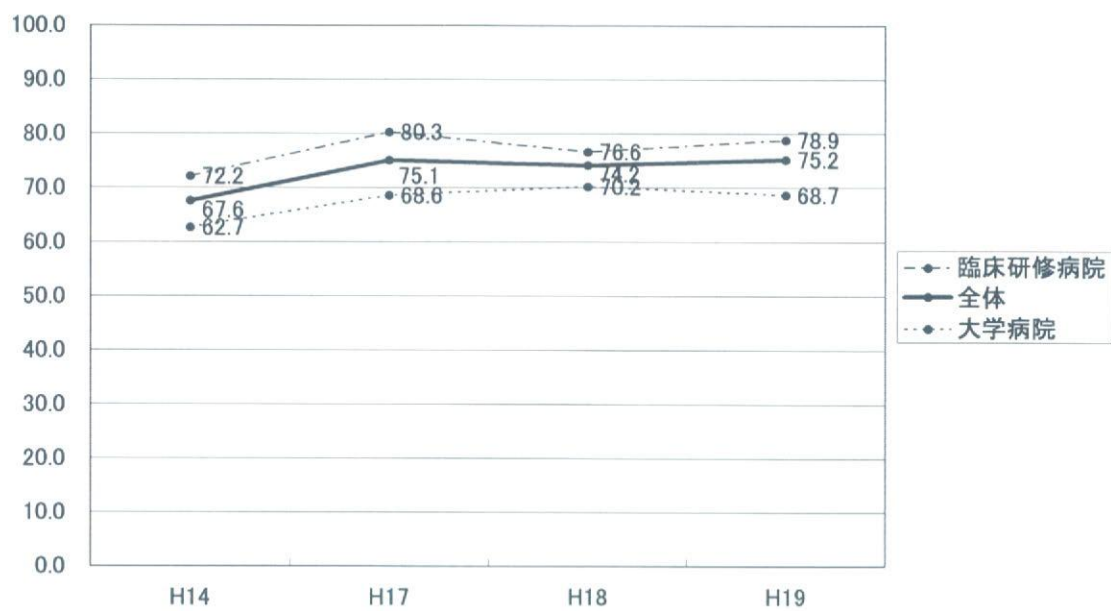
貧血(鉄欠乏性貧血、二次性貧血)



脳・脊髄血管障害(脳梗塞、脳内出血、くも膜下出血)



湿疹・皮膚炎群(接触皮膚炎、アトピー性皮膚炎)



蕁麻疹

