

antipsychotic drugs in the schizophrenics. In all the three analyses, relative WM volume (WM volume divided by the summation of GM, WM and CSF volumes) and WAIS-R (Wechsler Adult Intelligence Scale-Revised) full-scale IQ score were treated as nuisance variables. The former was included for eliminating the possible effect of WM volume change associated with aging on the FA values through partial voluming from non-WM voxels. The latter was included to allow for the effects of IQ, because there was some evidence which suggested DTI measures were correlated with cognitive decline in elderly (O'Sullivan et al., 2004). We additionally conducted the analyses without these two nuisance variables to check whether there were any differences in the results with or without nuisance variables in the statistical models. To estimate population effects (diagnostic effects), we used a single-subject, condition (controls or schizophrenics) and covariate (no covariate of interest) model for the SPM analysis. In the second analysis, we applied the single subject condition (controls or schizophrenics) and covariate (interaction with condition, covariate of interest; age) model. A single-subject, covariate only model was applied in the third analysis. For these three analyses, we set masking threshold for FA values of 0.2 for excluding voxels containing partial volume of WM and other tissues. Since the previous study demonstrating a positive correlation between FA values and age in schizophrenics reported mean FA values of around 0.4 (Jones et al., 2006), we additionally set masking threshold for FA values of 0.35 for examining correlation between age and FA values of more anisotropic WM structure in the second analysis. For the evaluation of the statistical models, we used Wake Forest University Pickatlas (Maldjian et al., 2003) to pick up cerebral WM in the Montreal Neurological Institute (MNI) space. We used uncorrected  $P < 0.001$  as a statistical threshold to search significant differences. As demonstrated in Table 2, the number of resels differed profoundly depending on smoothing kernel sizes (FWHM) and the statistical results with correction for multiple comparisons could change dramatically relying on number of resels. On the other hand, SPM results without correction for multiple comparisons were essentially unchanged regardless of smoothing kernel size (data not shown). Therefore, we did not perform correction for multiple comparisons. The resultant set of  $t$  values constituted statistical parametric map (SPM  $\{t\}$ ). We employed the filter size of 6 mm for presentation of the results considering for the original voxel dimensions of acquired data  $\{0.94 \text{ mm} \times 0.94 \text{ mm} \times (5.00 + 1.50) \text{ mm}\}$ .

#### 2.4.2. ROI analysis

To ensure the robustness of the results of the voxel-by-voxel analyses, we additionally performed ROI analyses. We used MarsBar (<http://marsbar.sourceforge.net/>) for extracting region of interest (ROI) containing all the voxels classified as WM with Wake Forest University Pickatlas from spatially normalized and smoothed FA images and calculated mean FA values of the ROI. Then, we performed correlational analyses of mean FA values with the same variables in voxel-by-voxel analysis using Statistical Package for Social Science (SPSS), 1) in both controls and schizophrenics, 2) in controls and 3) in schizophrenics. We constituted a General Linear Model for the first analysis and entered diagnosis-by-age interaction effects into the statistical model to examine if there were any diagnosis-by-age interaction effects. For the second and third analyses, Pearson's correlation coefficients between mean WM FA values and covariates were calculated.

### 3. Results

#### 3.1. Voxel-by-voxel analyses

##### 3.1.1. Comparison between schizophrenics and controls

Schizophrenics demonstrated significantly lower FA values in widespread WM areas, compared with controls. These WM areas included bilateral frontal and temporal lobes, uncinate fasciculi (external capsules), cingulum bundles, and genu and splenium of corpus

Table 3  
The summary of the WM areas in which significantly lower FA values in patients compared with controls were observed

Anatomical regions	$t$ -value	MNI coordinates		
		(Voxel level)	$x$	$y$
Rt frontal lobe white matter	4.34	22.5	52.5	-4.5
Lt frontal lobe white matter	5.43	-13.5	49.5	-6
Rt temporal lobe white matter	4.25	48	-33	-7.5
Lt temporal lobe white matter	4.19	-45	-31.5	-10.5
Rt uncinate fasciculus (external capsule)	4.00	33	12	-1.5
Lt uncinate fasciculus (external capsule)	3.84	-33	12	-1.5
Rt cingulate bundle	4.23	6	6	33
Lt cingulate bundle	4.32	-7.5	6	30
genu of corpus callosum	3.79	6	24	10.5
splenium of corpus callosum	4.18	-3	-33	19.5

callosum (Fig. 1, Table 3). There would be increased possibility of alpha errors because we did not perform correction for multiple comparisons. However, our

results were in well concordance with the results of the previous studies (Buchsbaum et al., 1998; Lim et al., 1999; Agartz et al., 2001; Burns et al., 2003; Kubicki

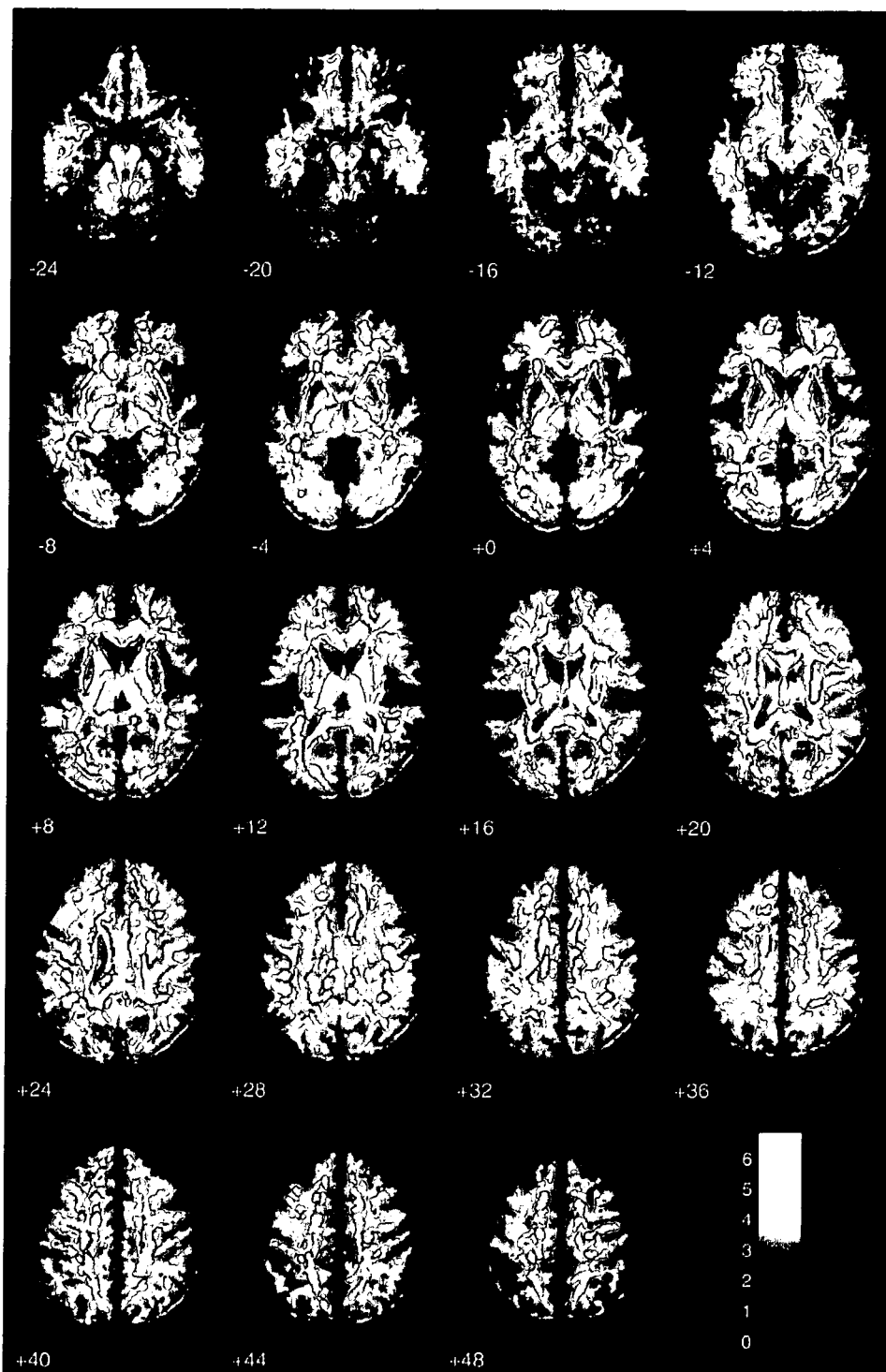


Fig. 2. Correlational analysis between FA values and age with 0.2 as a masking threshold in schizophrenics. The SPM  $\{t\}$  is displayed onto axial FA template images. The widespread WM areas showed a significant negative correlation between FA values and age in schizophrenics ( $P < 0.001$ , uncorrected).

et al., 2003). Therefore, we might be able to regard the results of these previous studies as a priori hypotheses. There were no areas of significantly higher FA values

in patients compared with controls even at a lenient threshold ( $P < 0.05$ , uncorrected). In these results of the analysis without nuisance variables in the statistical

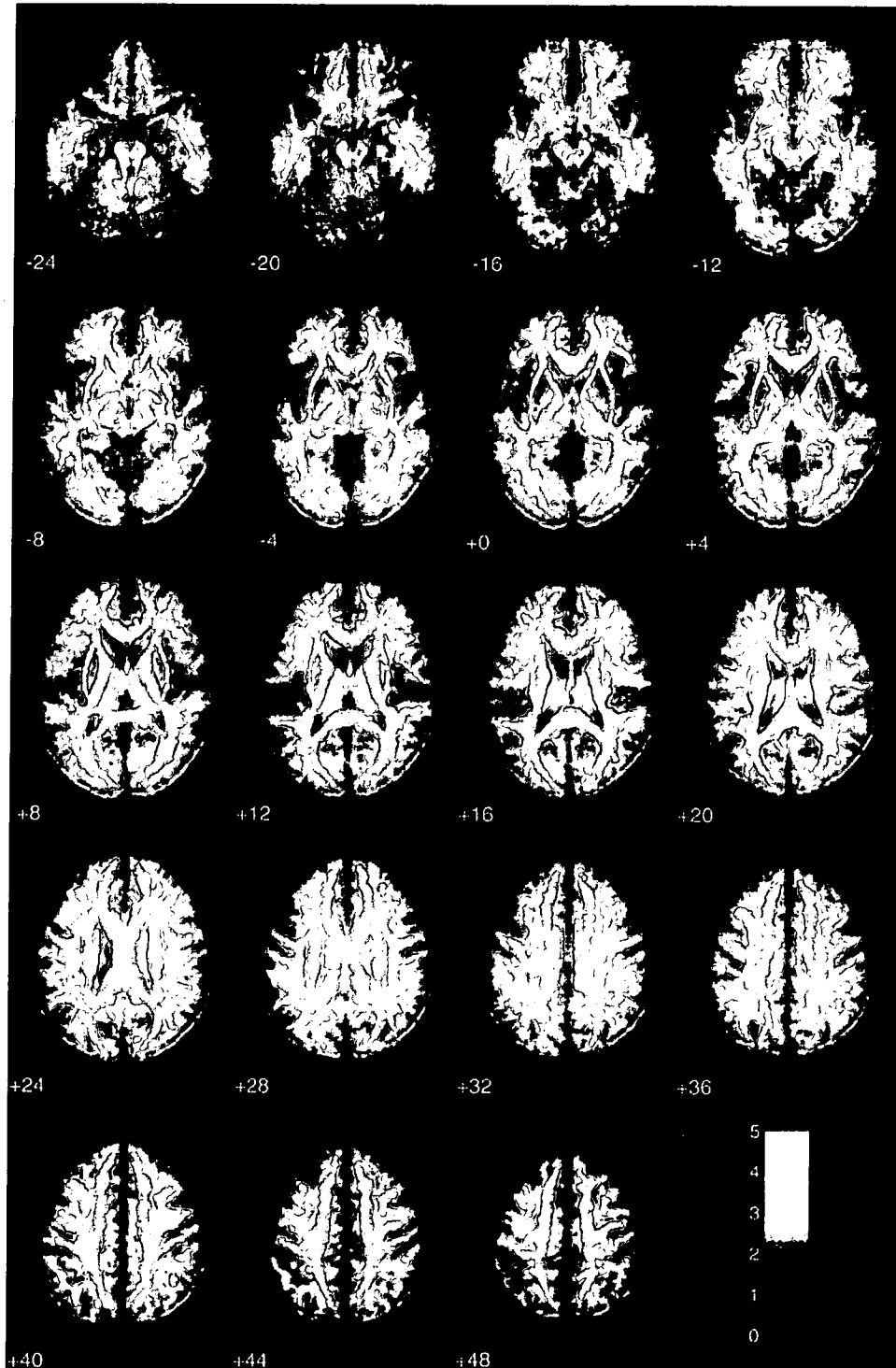


Fig. 3. Correlational analysis between FA values and age with 0.2 as a masking threshold in controls. The SPM  $\{t\}$  is displayed onto axial FA template images. The WM areas showed a significant negative correlation between FA values and age in controls ( $P < 0.001$ , uncorrected), including right prefrontal  $\{(15.0, 49.5, 30.0)$  in MNI coordinates,  $t=5.03\}$ , left frontal  $\{(-37.5, -15.0, 34.5)$ ,  $t=4.51\}$  and bilateral temporo-occipital WM  $\{(31.5, -60.0, 16.5)$ ,  $t=4.75$ ;  $(-30.0, -60.0, 15.0)$ ,  $t=4.47\}$ .

models, the distributions of the statistically significant areas were essentially unchanged compared to the results with nuisance variables although the spatial

extents of the statistically significant areas were slightly larger (data not shown), which was the case with the results of other two analyses.

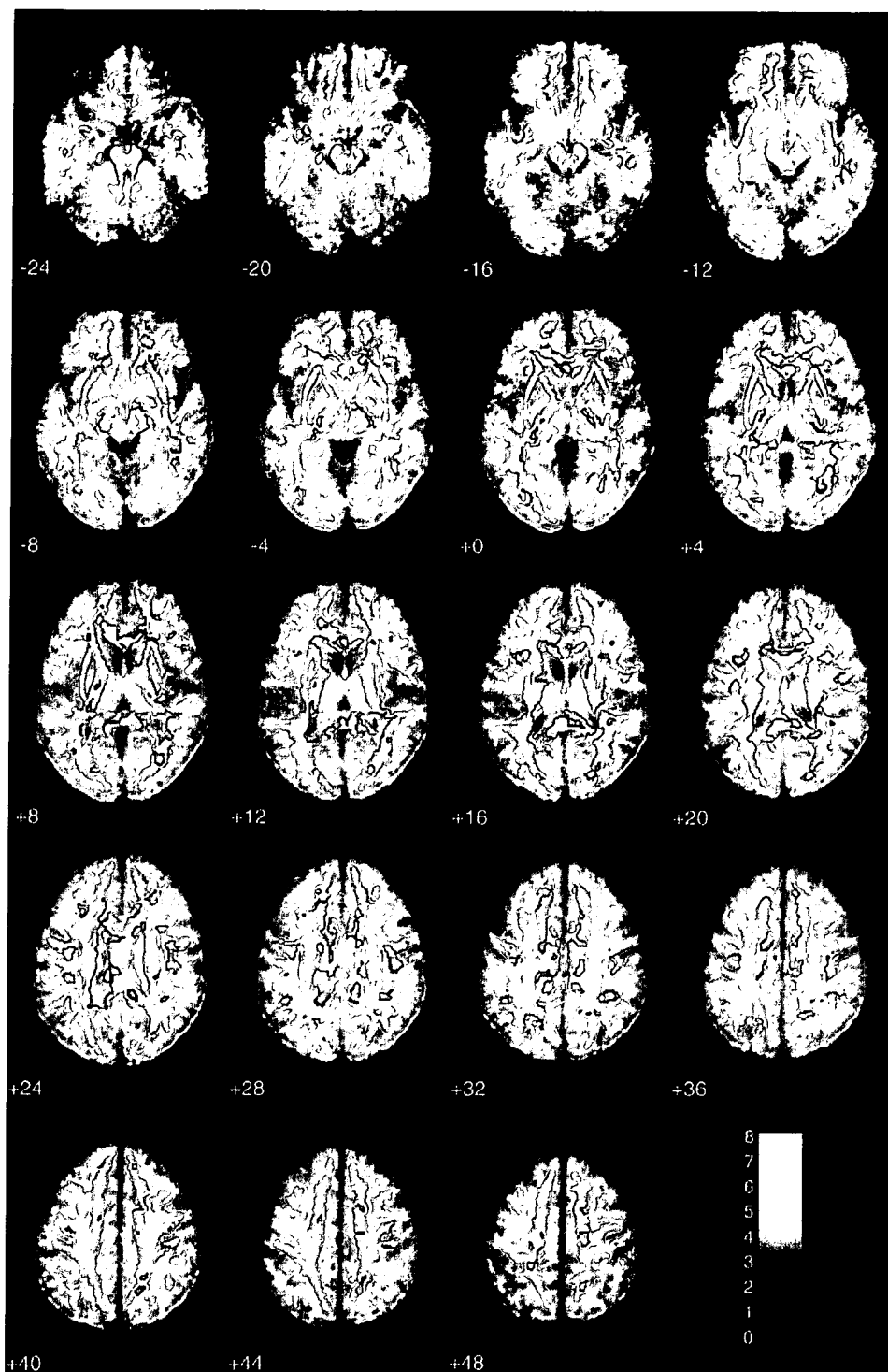


Fig. 4. Correlational analysis between FA values and duration of illness with 0.2 as a masking threshold in schizophrenics. The SPM {t} is displayed onto axial FA template images. The widespread WM areas showed a significant negative correlation between FA values and duration of illness in schizophrenics ( $P < 0.001$ , uncorrected).

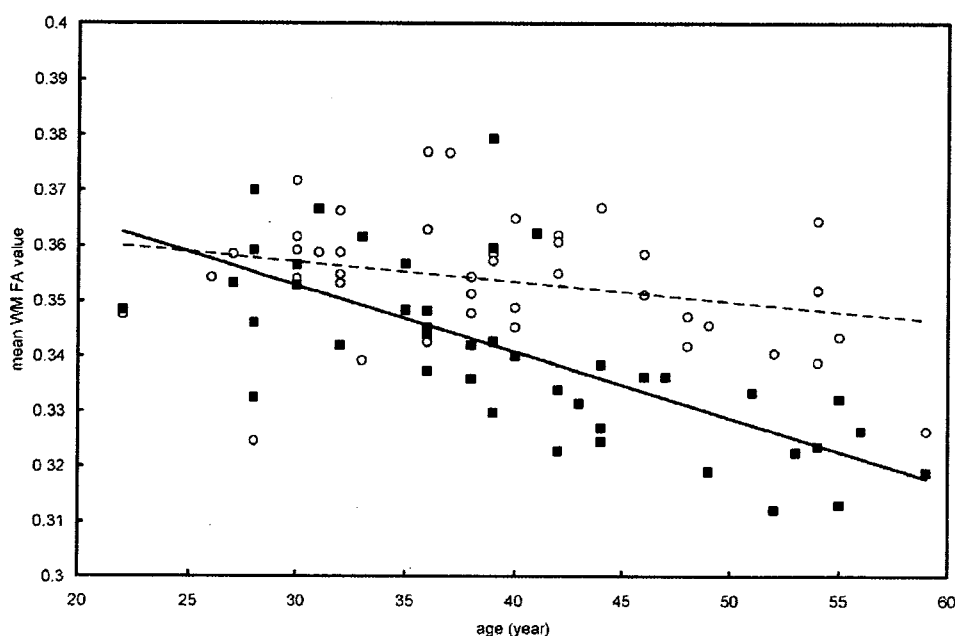


Fig. 5. A scatter plot between age and mean WM FA value when masking threshold for FA values was set to 0.2. Filled squares represent schizophrenics and open circles represent controls. The solid line indicates a regression line for schizophrenics ( $y = -0.0012x + 0.3888$ ,  $R^2 = 0.49$ , test for regression slope:  $df = 40$ ;  $t = -6.24$ ;  $P < 0.0001$ ). The dashed line indicates a regression line for controls ( $y = -0.0004x + 0.3679$ ,  $R^2 = 0.083$ , test for regression slope:  $df = 40$ ;  $t = -1.90$ ;  $P = 0.065$ ). A significant diagnosis-by-age interaction effect (general linear model:  $P = 0.009$ ) was noted.

### 3.1.2. Correlational analysis in schizophrenic and control groups

As the results of the second analysis considering aging effects, a significant negative correlation with age was observed in the FA values of widespread, almost

diffuse WM areas in the schizophrenic group (Fig. 2), while in the control group, only FA values in right prefrontal  $\{(15.0, 49.5, 30.0)$  in MNI coordinates,  $t = 5.03\}$ , left frontal  $\{(-37.5, -15.0, 34.5)$ ,  $t = 4.51\}$  and bilateral temporo-occipital WM  $\{(31.5, -60.0, 16.5)$ ,  $t = 4.75$ ;

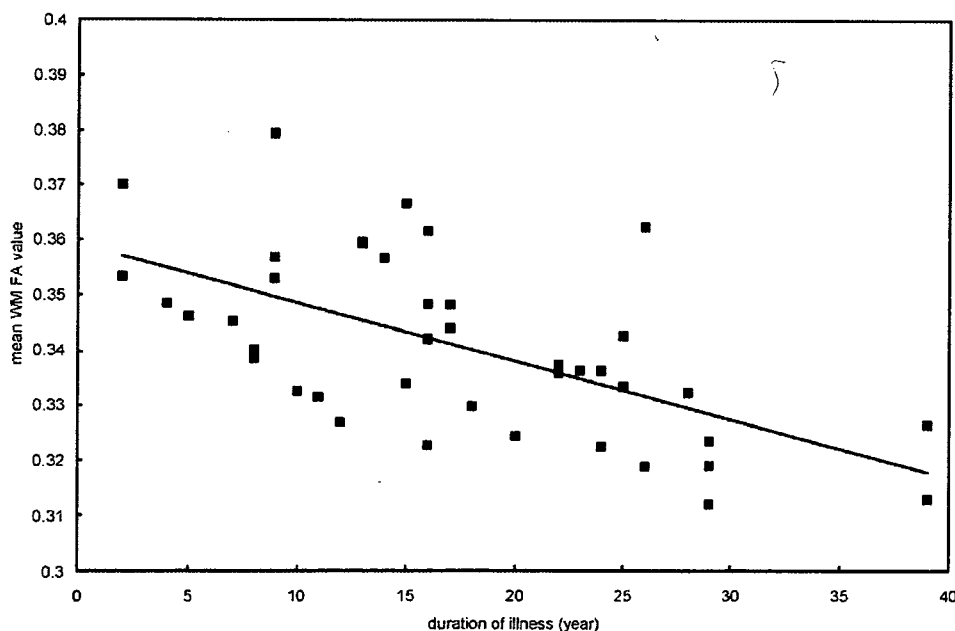


Fig. 6. A scatter plot between duration of illness and mean WM FA value when masking threshold for FA values was set to 0.2. Filled squares represent schizophrenics. The solid line indicates a regression line for schizophrenics ( $y = -0.0011x + 0.3590$ ,  $R^2 = 0.36$ , test for regression slope:  $df = 40$ ;  $t = -4.78$ ;  $P < 0.0001$ ).

( $-30.0, -60.0, 15.0$ ),  $t=4.47$ ) demonstrated a significant negative correlation with age (Fig. 3). Even if the analysis was done on voxels with FA values higher than 0.35, to examine more anisotropic WM areas, the results were essentially unchanged (data not shown).

### 3.1.3. Correlational analysis between FA values and clinical factors in schizophrenics

There was a significant negative correlation between FA values and duration of illness in widespread WM areas (Fig. 4), while there was no significant correlation of FA values with age of onset, duration of hospitalization or daily dose of antipsychotic drugs (data not shown).

## 3.2. ROI analyses

### 3.2.1. ROI-based correlational analysis in both schizophrenics and controls

First, we constituted a General Linear Model putting diagnosis as a fixed factor and age, IQ and relative WM volume as covariates.  $F$  values (significance probabilities) were as follows; diagnosis: 10.8 ( $P=0.001$ ), age: 26.1 ( $P<0.001$ ), IQ: 0.029 ( $P=0.865$ ) and relative WM volume: 16.6 ( $P<0.001$ ). Then, we added diagnosis-by-age interaction into the model.  $F$  values (significance probabilities) changed as follows; diagnosis: 2.34 ( $P=0.130$ ), age: 27.8 ( $P<0.001$ ), IQ: 0.059 ( $P=0.809$ ), relative WM volume: 14.1 ( $P<0.001$ ) and diagnosis-by-age interaction: 7.08 ( $P=0.009$ ). Effect of IQ was not significant in both models. There was a significant diagnosis-by-age interaction effect.

### 3.2.2. ROI-based correlational analysis in controls

Pearson's correlation coefficients (significance probabilities of the test of significance of the correlation: two-tailed) of mean WM FA value with age, IQ and relative WM volume in controls were as follows; FA vs. age:  $-0.287$  ( $P=0.065$ ), FA vs. IQ:  $-0.108$  ( $P=0.496$ ) and FA vs. mean WM volume:  $0.481$  ( $P=0.001$ ). Only positive correlation between mean WM FA value and relative WM volume was statistically significant.

### 3.2.3. ROI-based correlational analysis in schizophrenics

Pearson's correlation coefficients (significance probabilities of the test of significance of the correlation: two-tailed) of mean WM FA value with clinical factors in schizophrenics were as follows; FA vs. age:  $-0.702$  ( $P<0.001$ ), FA vs. duration of illness:  $-0.603$  ( $P<0.001$ ), FA vs. age of onset:  $-0.305$  ( $P=0.049$ ), FA vs. total daily dose of antipsychotics:  $0.110$  ( $P=0.489$ ), FA vs. duration of hospitalization:  $-0.172$  ( $P=0.277$ ), FA vs. IQ:  $-0.064$  ( $P=0.686$ ), FA vs. relative WM volume:  $0.421$

( $P=0.006$ ). Significant positive correlation was observed between mean WM FA value and relative WM volume. Fig. 5 shows a scatter plot between age and mean WM FA value in controls and schizophrenics. Fig. 6 shows a scatter plot between duration of illness and mean WM FA value in schizophrenics. Significant negative correlations were observed between mean WM FA value and age (or duration of illness).

## 4. Discussion

In this study, we obtained three main findings; 1) lower FA values in schizophrenic patients compared with controls in WM areas including frontal and temporal WM, bilateral uncinate fasciculi (external capsules) and cingulum bundles and genu and splenium of corpus callosum, 2) age-related reductions of FA value in the widespread WM were more prominent in schizophrenics than in controls, and 3) a negative correlation between FA value in the widespread WM and duration of illness in schizophrenics.

Recent studies demonstrated age-related FA decline in normal individuals occurred in the prefrontal WM, while temporal WM were relatively preserved (Pfefferbaum et al., 2005; Salat et al., 2005). However, in this study, negative age-dependent effects were observed only in the lenient statistical threshold in the FA values of restricted areas of the WM in controls. This could be explained by the fact that all our subjects were under the age of 60, relatively less old compared to the participants of normal aging studies.

We replicated the results of the most of the previous studies, decreased FA values in the WM of schizophrenics. In the earlier studies concerning FA values in WM of patients with schizophrenia, an inherent abnormality in WM was expected to be detected since the decrease of FA values in the WM of the schizophrenic brain was assumed to occur as neurodevelopmental impairments before onset of the illness. Several studies demonstrated that schizophrenics had reduced FA value in the prefrontal WM (Buchsbaum et al., 1998), prefrontal and parieto-occipital WM (Lim et al., 1999), splenium of the corpus callosum (Agartz et al., 2001) and adjacent occipital WM (forceps major) (Agartz et al., 2001), left uncinate fasciculus and bilateral arcuate fasciculus (Burns et al., 2003), bilateral cingulum bundles (Kubicki et al., 2003). Some of them indicated that the reduction of FA values in schizophrenics might occur independently of reduction of the white matter volume. Although some studies reported no significant FA changes in schizophrenics (Steel et al., 2001; Foong et al., 2002), most studies with chronic

schizophrenia demonstrated lower FA values in schizophrenia (Kanaan et al., 2005). A few DTI studies have examined first episode patients (Price et al., 2005; Szeszko et al., 2005). Szeszko et al. found FA decrease in the left internal capsule and left-hemisphere WM of the middle frontal gyrus and posterior superior temporal gyrus of first-episode schizophrenics and schizoaffective disorder patients, however, the decrease was less pronounced compared with results of the majority of the studies in chronic schizophrenics. On the other hand, Price et al. reported that there was no FA decrease in the corpus callosum of patients with first-episode schizophrenia. They suggested that FA reduction in schizophrenia might reflect neuropathological abnormalities, which may occur after the onset of the disease and could be progressive. Our results, 1) age related FA reduction was more prominent in schizophrenics than controls, and 2) duration of illness was related to FA reduction in schizophrenics, suggest that changes of FA value in schizophrenia are attributable, at least in part, to progressive neuropathological changes after onset of the illness.

Contrary to our results, a previous DTI study demonstrated 'positive' correlation between age and FA in schizophrenics (Jones et al., 2006). They measured FA values of WM tracts captured from tractography, and they set seedpoints of the tracts manually from one slice of FA images. Such methods might overlook general decline of FA values in the WM. Their mean FA values (average of 8 WM tracts in each subjects) were around 0.4, which was relatively higher than those of our study {our mean FA value of entire WM was  $0.35 \pm 0.01$  (mean + S.D.)}. To simulate the analysis of the previous study, we additionally performed an analysis setting masking threshold for FA values of 0.35. As a result, the significant negative correlation remained to be present even in more anisotropic WM areas.

Previous pathological studies demonstrated microscopic abnormalities of the WM in schizophrenia such as decreased expression of myelin and oligodendrocyte-related genes, the decrease in density of oligodendrocytes (Hof et al., 2002), damage of myelin sheath lamellae (Uranova et al., 2001) and maldistribution of interstitial neurons (Akbarian et al., 1996) in prefrontal WM of the brains of schizophrenic patients. Further, a previous longitudinal MR study demonstrated progressive atrophy of the white matter in schizophrenics (Ho et al., 2003). Given these previous findings and ours, it seems likely that age-dependent FA decrease, but not increase, occurs in schizophrenic brains.

As well as a negative correlation with age, FA values of schizophrenics showed negative correlation with

duration of illness but not with age of onset or daily dose of antipsychotics. The facts seem to support the hypothesis that FA reduction in schizophrenia might be associated with neuropathological abnormalities which may emerge, at least in part, after the onset of the disease and could be progressive. Further, the spatial distribution of age-related FA reduction in schizophrenics was different from those of normal individuals in previous studies that demonstrated preserved temporal white matter (Pfefferbaum et al., 2005; Salat et al., 2005). Such different distributions suggest that FA changes in schizophrenics might be associated with disease progression rather than merely exaggerated aging effects. However, it is difficult for neuroimaging studies, even for longitudinal studies, to discriminate disease progression from aging effects. The correlational study between DTI findings and pathological findings should be conducted to clarify whether reduction of FA values in schizophrenics reflect pure disease progression or merely exaggerated aging effects.

Several limitations should be considered in our study. First, our study is a cross-sectional study. To confirm progressive pathological process in the WM of the patients of schizophrenia, longitudinal studies should be conducted. Second, IQ score was not matched between groups, i.e., mean IQ score was significantly lower in schizophrenics in our samples. O'Sullivan et al. (2004) reported DTI measures were correlated strongly with cognitive decline in elderly. Thus, it could be problematic whether age-related FA decrease in our study was reflected by cognitive decline. However, no significant correlation was observed between mean WM FA values and IQ in our sample. Also, regarding schizophrenia, it has been hypothesized that most cognitive change takes place early in their psychotic episodes and it remains relatively stable through long term in the illness (Hoff et al., 2005). Hence, at least from our data, we cannot attribute age-related FA decline in schizophrenia to IQ changes. Third, the issue of partial volume effect should be addressed. In schizophrenia, progressive WM atrophy has been reported in the previous studies (Ho et al., 2003). Due to the atrophy, it is possible that the voxels located in the border of the WM and other tissues in schizophrenics were estimated as having lower FA values. However, we minimized the problem by using the high dimensional warping algorithm, threshold masking for FA values and adopting relative WM volume as a nuisance variable. Another issue is the possible effect of long-term medication with antipsychotics. Although daily dose of antipsychotics was not correlated with FA values in schizophrenics, we could not estimate accurate cumulative doses of antipsychotics

throughout the duration of illness. Several morphological MR studies and animal studies suggested that the administration of antipsychotics could affect brain morphology (Wang et al., 2004; Lieberman et al., 2005). It is possible that long-term medication with antipsychotics also affects microstructure of the WM in schizophrenics. The longitudinal animal studies may clarify this issue.

In conclusion, we confirmed decreased FA in schizophrenics, compared to controls in the widespread WM areas in a Japanese sample. We found that age-dependent FA decline was more pronounced in chronic schizophrenics compared to controls, and that such FA decline was significantly correlated with duration of illness in patients. These observations suggest that decreased FA values in schizophrenia might be attributable, at least in part, to progressive changes in the WM after the onset of the illness.

### Acknowledgment

We appreciate Osamu Takizawa (Siemens-Asahi Medical Technologies, Tokyo, Japan) for supporting to develop a program for calculation of FA values. This work was supported in part by Grants-in-Aid from the Japanese Ministry of Health, Labor and Welfare (H17-kokoro-007 and H16-kokoro-002, the Research Grant for Nervous and Mental Disorders 17B-2), the Japanese Ministry of Education, Culture, Sports, Science and Technology, Core research for Evolutional Science and Technology of Japan Science and Technology Agency and Japan Foundation for Neuroscience and Mental Health.

### References

- Agartz, I., Andersson, J.L., Skare, S., 2001. Abnormal brain white matter in schizophrenia: a diffusion tensor imaging study. *NeuroReport* 12, 2251–2254.
- Akbarian, S., Kim, J.J., Potkin, S.G., Hetrick, W.P., Bunney Jr., W.E., Jones, E.G., 1996. Maldistribution of interstitial neurons in prefrontal white matter of the brains of schizophrenic patients. *Archives of General Psychiatry* 53, 425–436.
- American Psychiatric Association, 1994. *Diagnostic and Statistical Manual of Mental Disorders: DSM-IV*. American Psychiatric Association, Washington, DC, p. xxvii. 886 pp.
- Andreasen, N.C., O'Leary, D.S., Flaum, M., Nopoulos, P., Watkins, G.L., Boles Ponto, L.L., Hichwa, R.D., 1997. Hypofrontality in schizophrenia: distributed dysfunctional circuits in neuroleptic-naive patients. *Lancet* 349, 1730–1734.
- Ashburner, J., Andersson, J.L., Friston, K.J., 1999. High-dimensional image registration using symmetric priors. *NeuroImage* 9, 619–628.
- Basser, P.J., 1995. Inferring microstructural features and the physiological state of tissues from diffusion-weighted images. *NMR in Biomedicine* 8, 333–344.
- Basser, P.J., Mattiello, J., LeBihan, D., 1994. MR diffusion tensor spectroscopy and imaging. *Biophysical Journal* 66, 259–267.
- Buchsbaum, M.S., Tang, C.Y., Peled, S., Gudbjartsson, H., Lu, D., Hazlett, E.A., Downhill, J., Haznedar, M., Fallon, J.H., Atlas, S.W., 1998. MRI white matter diffusion anisotropy and PET metabolic rate in schizophrenia. *NeuroReport* 9, 425–430.
- Bullmore, E.T., Frangou, S., Murray, R.M., 1997. The dysplastic net hypothesis: an integration of developmental and dysconnectivity theories of schizophrenia. *Schizophrenia Research* 28, 143–156.
- Burns, J., Job, D., Bastin, M.E., Whalley, H., Macgillivray, T., Johnstone, E.C., Lawrie, S.M., 2003. Structural disconnectivity in schizophrenia: a diffusion tensor magnetic resonance imaging study. *The British Journal of Psychiatry* 182, 439–443.
- Cannon, T.D., van Erp, T.G., Huttunen, M., Lonnqvist, J., Salonen, O., Valanne, L., Poutanen, V.P., Standertskjold-Nordenstam, C.G., Gur, R.E., Yan, M., 1998. Regional gray matter, white matter, and cerebrospinal fluid distributions in schizophrenic patients, their siblings, and controls. *Archives of General Psychiatry* 55, 1084–1091.
- Christiansen, P., Larsson, H.B., Thomsen, C., Wieslander, S.B., Henriksen, O., 1994. Age dependent white matter lesions and brain volume changes in healthy volunteers. *Acta Radiologica* 35, 117–122.
- Davis, K.L., Stewart, D.G., Friedman, J.L., Buchsbaum, M., Harvey, P.D., Hof, P.R., Buxbaum, J., Haroutunian, V., 2003. White matter changes in schizophrenia: evidence for myelin-related dysfunction. *Archives of General Psychiatry* 60, 443–456.
- Foong, J., Symms, M.R., Barker, G.J., Maier, M., Miller, D.H., Ron, M.A., 2002. Investigating regional white matter in schizophrenia using diffusion tensor imaging. *NeuroReport* 13, 333–336.
- Friston, K.J., Holmes, A.P., Poline, J.B., Grasby, P.J., Williams, S.C., Frackowiak, R.S., Turner, R., 1995. Analysis of fMRI time-series revisited. *NeuroImage* 2, 45–53.
- Frith, C., Dolan, R., 1996. The role of the prefrontal cortex in higher cognitive functions. *Brain Research. Cognitive Brain Research* 5, 175–181.
- Good, C.D., Johnsrude, I.S., Ashburner, J., Henson, R.N., Friston, K.J., Frackowiak, R.S., 2001. A voxel-based morphometric study of ageing in 465 normal adult human brains. *NeuroImage* 14, 21–36.
- Ho, B.C., Andreasen, N.C., Nopoulos, P., Arndt, S., Magnotta, V., Flaum, M., 2003. Progressive structural brain abnormalities and their relationship to clinical outcome: a longitudinal magnetic resonance imaging study early in schizophrenia. *Archives of General Psychiatry* 60, 585–594.
- Hof, P.R., Haroutunian, V., Copland, C., Davis, K.L., Buxbaum, J.D., 2002. Molecular and cellular evidence for an oligodendrocyte abnormality in schizophrenia. *Neurochemical Research* 27, 1193–1200.
- Hoff, A.L., Svetina, C., Shields, G., Stewart, J., DeLisi, L.E., 2005. Ten year longitudinal study of neuropsychological functioning subsequent to a first episode of schizophrenia. *Schizophrenia Research* 78, 27–34.
- Jones, D.K., Symms, M.R., Cercignani, M., Howard, R.J., 2005. The effect of filter size on VBM analyses of DT-MRI data. *NeuroImage* 26, 546–554.
- Jones, D.K., Catani, M., Pierpaoli, C., Reeves, S.J., Shergill, S.S., O'Sullivan, M., Golesworthy, P., McGuire, P., Horsfield, M.A., Simmons, A., Williams, S.C., Howard, R.J., 2006. Age effects on diffusion tensor magnetic resonance imaging tractography measures of frontal cortex connections in schizophrenia. *Human Brain Mapping* 27, 230–238.



- Kanaan, R.A., Kim, J.S., Kaufmann, W.E., Pearson, G.D., Barker, G.J., McGuire, P.K., 2005. Diffusion tensor imaging in schizophrenia. *Biological Psychiatry* 58, 921–929.
- Kubicki, M., Westin, C.F., Nestor, P.G., Wible, C.G., Frumin, M., Maier, S.E., Kikinis, R., Jolesz, F.A., McCarley, R.W., Shenton, M.E., 2003. Cingulate fasciculus integrity disruption in schizophrenia: a magnetic resonance diffusion tensor imaging study. *Biological Psychiatry* 54, 1171–1180.
- Lieberman, J.A., Tollefson, G.D., Charles, C., Zipursky, R., Sharma, T., Kahn, R.S., Keefe, R.S., Green, A.I., Gur, R.E., McEvoy, J., Perkins, D., Hamer, R.M., Gu, H., Tohen, M., 2005. Antipsychotic drug effects on brain morphology in first-episode psychosis. *Archives of General Psychiatry* 62, 361–370.
- Lim, K.O., Hedehus, M., Moseley, M., de Crespigny, A., Sullivan, E.V., Pfefferbaum, A., 1999. Compromised white matter tract integrity in schizophrenia inferred from diffusion tensor imaging. *Archives of General Psychiatry* 56, 367–374.
- Maldjian, J.A., Laurienti, P.J., Kraft, R.A., Burdette, J.H., 2003. An automated method for neuroanatomic and cytoarchitectonic atlas-based interrogation of fMRI data sets. *NeuroImage* 19, 1233–1239.
- Meier-Ruge, W., Ulrich, J., Bruhlmann, M., Meier, E., 1992. Age-related white matter atrophy in the human brain. *Annals of the New York Academy of Sciences* 673, 260–269.
- Miyakawa, T., Sumiyoshi, S., Deshimaru, M., Suzuki, T., Tomonari, H., 1972. Electron microscopic study on schizophrenia. Mechanism of pathological changes. *Acta Neuropathologica* 20, 67–77.
- Nusbaum, A.O., Tang, C.Y., Buchsbaum, M.S., Wei, T.C., Atlas, S.W., 2001. Regional and global changes in cerebral diffusion with normal aging. *AJNR American Journal of Neuroradiology* 22, 136–142.
- O'Sullivan, M., Jones, D.K., Summers, P.E., Morris, R.G., Williams, S.C., Markus, H.S., 2001. Evidence for cortical "disconnection" as a mechanism of age-related cognitive decline. *Neurology* 57, 632–638.
- O'Sullivan, M., Morris, R.G., Huckstep, B., Jones, D.K., Williams, S.C., Markus, H.S., 2004. Diffusion tensor MRI correlates with executive dysfunction in patients with ischaemic leukoaraiosis. *Journal of Neurology, Neurosurgery and Psychiatry* 75, 441–447.
- Pfefferbaum, A., Sullivan, E.V., Hedehus, M., Adalsteinsson, E., Lim, K.O., Moseley, M., 2000a. In vivo detection and functional correlates of white matter microstructural disruption in chronic alcoholism. *Alcoholism, Clinical and Experimental Research* 24, 1214–1221.
- Pfefferbaum, A., Sullivan, E.V., Hedehus, M., Lim, K.O., Adalsteinsson, E., Moseley, M., 2000b. Age-related decline in brain white matter anisotropy measured with spatially corrected echo-planar diffusion tensor imaging. *Magnetic Resonance in Medicine* 44, 259–268.
- Pfefferbaum, A., Adalsteinsson, E., Sullivan, E.V., 2005. Frontal circuitry degradation marks healthy adult aging: Evidence from diffusion tensor imaging. *NeuroImage* 26, 891–899.
- Price, G., Bagary, M.S., Cercignani, M., Altmann, D.R., Ron, M.A., 2005. The corpus callosum in first episode schizophrenia: a diffusion tensor imaging study. *Journal of Neurology, Neurosurgery and Psychiatry* 76, 585–587.
- Salat, D.H., Kaye, J.A., Janowsky, J.S., 1999. Prefrontal gray and white matter volumes in healthy aging and Alzheimer disease. *Archives of Neurology* 56, 338–344.
- Salat, D.H., Tuch, D.S., Greve, D.N., van der Kouwe, A.J., Hevelone, N.D., Zaleta, A.K., Rosen, B.R., Fischl, B., Corkin, S., Rosas, H.D., Dale, A.M., 2005. Age-related alterations in white matter microstructure measured by diffusion tensor imaging. *Neurobiology of Aging* 26, 1215–1227.
- Steel, R.M., Bastin, M.E., McConnell, S., Marshall, I., Cunningham-Owens, D.G., Lawrie, S.M., Johnstone, E.C., Best, J.J., 2001. Diffusion tensor imaging (DTI) and proton magnetic resonance spectroscopy (1H MRS) in schizophrenic subjects and normal controls. *Psychiatry Research* 106, 161–170.
- Szeszko, P.R., Ardekani, B.A., Ashtari, M., Kumra, S., Robinson, D.G., Sevy, S., Gunduz-Bruce, H., Malhotra, A.K., Kane, J.M., Bilder, R.M., Lim, K.O., 2005. White matter abnormalities in first-episode schizophrenia or schizoaffective disorder: a diffusion tensor imaging study. *The American Journal of Psychiatry* 162, 602–605.
- Uranova, N., Orlovskaya, D., Vikhreva, O., Zimina, I., Kolomeets, N., Vostrikov, V., Rachmanova, V., 2001. Electron microscopy of oligodendroglia in severe mental illness. *Brain Research Bulletin* 55, 597–610.
- Uranova, N.A., Vostrikov, V.M., Orlovskaya, D.D., Rachmanova, V.I., 2004. Oligodendroglial density in the prefrontal cortex in schizophrenia and mood disorders: a study from the Stanley Neuropathology Consortium. *Schizophrenia Research* 67, 269–275.
- Wang, H.D., Dunnavant, F.D., Jarman, T., Deutch, A.Y., 2004. Effects of antipsychotic drugs on neurogenesis in the forebrain of the adult rat. *Neuropsychopharmacology* 29, 1230–1238.

Elsevier Editorial System(tm) for Psychiatry Research

Manuscript Draft

Manuscript Number: PSY-D-07-00096R1

Title: Personality in schizophrenia assessed with the Temperament and Character Inventory (TCI)

Article Type: Research Article

Section/Category: Neuropsychology

Keywords: schizophrenia; personality; temperament; character; gender difference

Corresponding Author: Dr. Hiroshi Kunugi, M.D.

Corresponding Author's Institution:

First Author: Hiroaki Hori

Order of Authors: Hiroaki Hori; Hiroko Noguchi; Ryota Hashimoto; Tetsuo Nakabayashi ; Osamu Saitoh; Robin M Murray; Shigeo Okabe; Hiroshi Kunugi, M.D.

**Abstract:** The Temperament and Character Inventory (TCI) is a well-established self-report questionnaire measuring 4 temperament and 3 character dimensions. However, surprisingly few studies have used it to examine the personality of patients with schizophrenia, and none in Japan. Moreover, possible gender differences in personality among patients with schizophrenia have not been well documented. We administered the TCI to 86 Japanese patients with schizophrenia and age- and gender-matched 115 healthy controls to characterize personality traits in patients with schizophrenia and to examine their relationships with clinical variables, particularly gender and symptoms. Compared to controls, patients demonstrated significantly lower novelty seeking, reward dependence, self-directedness and cooperativeness, and higher harm avoidance and self-transcendence. Male patients showed even more pronounced personality alteration than female patients when both of them were compared to healthy people. Personality dimensions were moderately correlated with symptom dimensions assessed by the Positive and Negative Syndrome Scale (PANSS). These results, together with prior findings in several other countries, suggest that

schizophrenia patients have a unique personality profile which appears to be present across cultures and that the greater alteration of personality in schizophrenia males might be related to their poorer social and community functioning.

Professor Sherry Buchsbaum  
Editor-in-Chief, *Psychiatry Research*  
Department of Psychiatry,  
Mount Sinai School of Medicine,  
One Gustave L. Levy Place, New York, NY  
USA

May 11, 2007

**Re: Personality in schizophrenia assessed with the Temperament and Character Inventory  
(TCI) (PSY-D-07-00096)**

Dear Prof. Buchsbaum:

Thank you for providing us with an opportunity to resubmit our manuscript. We are also very grateful to the anonymous referee for valuable comments. According to the comments, we have revised our manuscript. Please refer to the answers to the referees on separate sheets. I hope that the revised version will be suitable for publication in *Psychiatry Research*.

We are looking forward to hearing from you in due course.

Sincerely,

HIROSHI KUNUGI  
Director, Department of Mental Dis order Research,  
National Institute of Neuroscience,  
National Center of Neurology and Psychiatry,  
4-1-1, Ogawahigashi, Kodaira, Tokyo, 187-8502,  
Japan.  
Tel/fax: +81 42 346 1714  
E-mail address: [hkunugi@ncnp.go.jp](mailto:hkunugi@ncnp.go.jp)

## \* Response to Reviewers

### **Answers to the editors' requirements:**

**Comment 1** In addition to the points raised by the reviewers, please carefully review the Guide to Authors on our website. It would be also be useful for you to review the articles contained in the sample issue on our website for examples of title page format, heading typography, and other style features.

**Answer:** According to the editors' comments, we have revised the manuscript as carefully as we can, based on the stylistic requirements of the *Journal*.

**Comment 2** We also thought the ms needs to be shortened. You can easily combine Tables 1 and 2. It also appears that the figure duplicates the data in Table 3. Please chose one or the other.

**Answer:** According to the comment, we have combined the previous Tables 1 and 2 into a new table, Table 1, and removed the data on male vs. female comparisons from Table 3 since the similar data are, as pointed out by the editors, also presented in Fig. 1. Descriptions on the gender difference in the Results section have been modified accordingly (L4-19, P11).

### **Answers to the reviewer #1:**

**Comment 1** The introduction might say more about what exactly studies have previously found. What symptoms have been linked with what personality dimensions and what was made of that by previous authors? This should be spelled out as it is the context in which the authors should later interpret the results. The literature on this subject could also be more broadly noted and cited.

**Answer:** According to the reviewer's comment, we have increased the descriptions on what previous studies have found regarding the following issues: relationships between symptoms and personality dimensions (L14-20, P4), variability of personality as assessed with the TCI across cultures (L18-21, P3), and various aspects of gender difference unfavorable to male patients (L3-6, P5). Furthermore, several relevant references have been added to the Introduction section.

**Comment 2** The introduction might say more about what specific previously unaddressed or under studied questions this study seeks to explore. What is the gap these finding intend to fill besides just using another instrument.

**Answer:** The questions we had considered unaddressed or under studied were gender difference and cross-cultural comparisons of personality in schizophrenia, and comparisons of TCI and NEO-FFI findings in schizophrenia. In addition, we thought that the relationships between symptoms and personality in schizophrenia remain to be further examined. According to the helpful comment, we have clearly stated the gaps this study intended to fill regarding these questions (L21, P3 to L1, P4; L9-13, P4; L20, P4 to L1, P5; L6-8, P5).

**Comment 3** The introduction could include they study hypotheses. What was anticipated?

**Answer:** According to the helpful comments, we have added 3 hypotheses that correspond to the aims of this study (L13-19, P5).

**Comment 4** I would not use the word deviant when referring to the personality of the sample. "Deviant" can have a very negative connotation, implying in some senses criminality or antisocial tendencies which certainly is not what the authors intend.

**Answer:** We have now realized that "deviant" has a very negative connotation which we were at first unaware of. Therefore, we have changed the word "deviant" into "altered" or "unique", and "deviance" into "alteration" throughout the manuscript.

**Comment 5** The discussion could be condensed and re-organized around the study hypotheses once laid out in the introduction.

**Answer:** According to this comment, we have re-organized the discussion section, focusing on the 3 hypotheses laid out earlier. Furthermore, we have explicitly

described whether the hypotheses have been supported (L13, P15; L17-19, P15; L5-7, P17). The speculative discussion on causal relationships between personality and development of schizophrenia has been deleted.

**Comment 6** Results could also be linked back more carefully to the results of studies using other methods of personality assessment as noted in the introduction.

**Answer:** According to the helpful comment, we have added the detailed descriptions on comparisons between the present TCI results and previous findings from NEO studies in the Discussion section (L19, P14 to L13, P15).

Personality in schizophrenia assessed with the Temperament and  
Character Inventory (TCI)

Hiroaki Hori <sup>a,b</sup>, Hiroko Noguchi <sup>a</sup>, Ryota Hashimoto <sup>a,c</sup>,  
Tetsuo Nakabayashi <sup>d</sup>, Osamu Saitoh <sup>d</sup>, Robin M. Murray <sup>e</sup>,  
Shigeo Okabe <sup>b</sup>, Hiroshi Kunugi <sup>a,\*</sup>

<sup>a</sup> *Department of Mental Disorder Research, National Institute of Neuroscience, National Center of Neurology and Psychiatry, 4-1-1, Ogawahigashi, Kodaira, Tokyo, 187-8502, Japan*

<sup>b</sup> *Department of Cell Biology, School of Medicine, Tokyo Medical and Dental University, 1-5-45, Yushima, Bunkyo-ku, Tokyo, 113-8519, Japan*

<sup>c</sup> *The Osaka-Hamamatsu Joint Research Center For Child Mental Development, Osaka University Graduate School of Medicine, D3, 2-2, Yamadaoka, Suita, Osaka, 565-0871, Japan*

<sup>d</sup> *Department of Psychiatry, National Center of Neurology and Psychiatry Musashi Hospital, 4-1-1, Ogawahigashi, Kodaira, Tokyo, 187-0031, Japan*

<sup>e</sup> *Division of Psychological Medicine, Institute of Psychiatry, Denmark Hill, DeCrespigny Park, London, SE5 8AF, UK*



Personality in schizophrenia assessed with the Temperament and Character  
Inventory (TCI)

Hiroaki Hori <sup>a,b</sup>, Hiroko Noguchi <sup>a</sup>, Ryota Hashimoto <sup>a,c</sup>, Tetsuo Nakabayashi <sup>d</sup>,  
Osamu Saitoh <sup>d</sup>, Robin M. Murray <sup>e</sup>, Shigeo Okabe <sup>b</sup>, Hiroshi Kunugi <sup>a,\*</sup>

<sup>a</sup> *Department of Mental Disorder Research, National Institute of Neuroscience, National Center of Neurology and Psychiatry, 4-1-1, Ogawahigashi, Kodaira, Tokyo, 187-8502, Japan*

<sup>b</sup> *Department of Cell Biology, School of Medicine, Tokyo Medical and Dental University, 1-5-45, Yushima, Bunkyo-ku, Tokyo, 113-8519, Japan*

<sup>c</sup> *The Osaka-Hamamatsu Joint Research Center For Child Mental Development, Osaka University Graduate School of Medicine, D3, 2-2, Yamadaoka, Suita, Osaka, 565-0871, Japan*

<sup>d</sup> *Department of Psychiatry, National Center of Neurology and Psychiatry Musashi Hospital, 4-1-1, Ogawahigashi, Kodaira, Tokyo, 187-0031, Japan*

<sup>e</sup> *Division of Psychological Medicine, Institute of Psychiatry, Denmark Hill, DeCrespigny Park, London, SE5 8AF, UK*

\* Corresponding author. Tel/fax: +81 42 346 1714

*E-mail address: [hkunugi@ncnp.go.jp](mailto:hkunugi@ncnp.go.jp) (H. Kunugi).*

## **Abstract**

The Temperament and Character Inventory (TCI) is a well-established self-report questionnaire measuring 4 temperament and 3 character dimensions. However, surprisingly few studies have used it to examine the personality of patients with schizophrenia, and none in Japan. Moreover, possible gender differences in personality among patients with schizophrenia have not been well documented. We administered the TCI to 86 Japanese patients with schizophrenia and age- and gender-matched 115 healthy controls to characterize personality traits in patients with schizophrenia and to examine their relationships with clinical variables, particularly gender and symptoms. Compared to controls, patients demonstrated significantly lower novelty seeking, reward dependence, self-directedness and cooperativeness, and higher harm avoidance and self-transcendence. Male patients showed even more pronounced personality alteration than female patients when both of them were compared to healthy people. Personality dimensions were moderately correlated with symptom dimensions assessed by the Positive and Negative Syndrome Scale (PANSS). These results, together with prior findings in several other countries, suggest that schizophrenia patients have a unique personality profile which appears to be present across cultures and that the greater alteration of personality in schizophrenia males might be related to their poorer social and community functioning.

*Keywords:* Schizophrenia; Personality; Temperament; Character; Gender difference

## **1. Introduction**

Personality in schizophrenia has been of interest ever since the pioneering intuition of Bleuler (1950) and Kraepelin (1919). Personality is considered to be an important aspect of schizophrenia primarily because it may influence symptom expression (Lysaker et al., 1999; Guillem et al., 2002) and social functioning (Lysaker et al., 1998; Eklund et al., 2004).

The Temperament and Character Inventory (TCI, Cloninger et al., 1993) is a well-established self-report questionnaire measuring 4 temperament and 3 character dimensions, developed on the basis of a psychobiological model of personality. The TCI has recently been widely used in personality studies in various psychiatric disorders including mood disorders (Hansenne et al., 1999; Cloninger et al., 2006) and personality disorders (Svrakic et al., 1993; Svrakic et al., 2002). However, to our knowledge, only three studies (Guillem et al., 2002; Boeker et al., 2006; Calvo de Padilla et al., 2006) have examined the personality of schizophrenia patients in comparison with healthy controls, using the TCI. The findings from these studies on unique personality profiles of schizophrenia are, to some extent, consistent with each other; but the limited sample sizes of the studies have made it difficult to draw definitive conclusions. It is also possible that cultural differences of personality between these studies exist, taking into account that personality traits among general population as measured by the TCI vary across cultures (Pélissolo and Lépine, 2000; Brändström et al., 2001). Such

cross-cultural comparison of personality in schizophrenia is an under-studied topic.

The knowledge to date on personality of schizophrenia patients has been based mostly on instruments other than the TCI (Malmberg et al., 1998; Lysaker et al., 1999; Gurrera et al., 2000; Van Os and Jones, 2001; Pillmann et al., 2003). A number of studies have been done to investigate personality in patients with schizophrenia by using the well-known NEO Five-Factor Inventory (NEO-FFI, Costa and McCrae, 1992), the results from which are fairly consistent; higher neuroticism and lower extraversion and conscientiousness in schizophrenia patients than in healthy controls (Gurrera et al., 2000; Pillmann et al., 2003; Camisa et al., 2005). Given the close relationship of the TCI dimensions to the “Big Five” personality dimensions of the NEO-FFI (De Fruyt et al., 2000; MacDonald and Holland, 2002; Ramanaiah et al., 2002), it would be intriguing to examine whether the personality of schizophrenia patients as assessed by the TCI shows a compatible pattern with that assessed by NEO-FFI.

Concerning the association between personality and symptom dimensions in schizophrenia, previous studies that employed the TCI (Guillem et al., 2002) as well as NEO-FFI (Lysaker et al., 1999) found certain relationships between these two dimensions; for example, Guillem et al. (2002) reported that psychotic symptoms in schizophrenia patients were associated with specific personality dimensions of the TCI. Boeker et al. (2006), by contrast, did not find any relationships between personality and symptoms although the sample size of this study was relatively small. Due to the paucity of material, the association between personality and symptoms in schizophrenia