

Overexpression of CD-11b and CXCR1 on Circulating Neutrophils* Its Possible Role in COPD

Toshiyuki Yamagata, MD, PhD; Hisatoshi Sugiura, MD, PhD;
Tomonori Yokoyama, PhD; Satoru Yanagisawa, MD; Tomohiro Ichikawa, MD;
Kazuhito Ueshima, MD; Keiichiro Akamatsu, MD, PhD;
Tsunahiko Hirano, MD, PhD; Masanori Nakanishi, MD, PhD;
Yuko Yamagata, MD, PhD; Kazuto Matsunaga, MD, PhD;
Yoshiaki Minakata, MD, PhD; and Masakazu Ichinose, MD, PhD

Background: It has been shown that the β_2 -integrin molecule is up-regulated in circulating neutrophils in COPD subjects. However, little has been reported about the expression of the cell surface molecules in such patients and their relationship with pulmonary function. The aim of the present study was to investigate the surface expression of molecules in circulating neutrophils and to clarify their possible role in the airflow limitation of COPD.

Methods: The surface expression of Mac-1 cells (ie, CD-11b and CD-18 cells) and CXC chemokine receptor (CXCR) 1 and CXCR2 of circulating neutrophils obtained from COPD patients and healthy subjects (HSs) was measured by flow cytometry analysis. The serum levels of interleukin (IL)-8 were measured by enzyme-linked immunosorbent assay.

Results: Both CD-11b and CXCR1 expression were significantly higher in COPD patients than in HSs (mean \pm SE] CD-11b concentration: HSs, 9.7 ± 1.0 ; COPD patients, 14.2 ± 1.8 [$p < 0.05$]; mean CXCR1 concentration: HSs, 9.6 ± 0.5 ; COPD patients, 11.9 ± 0.4 [$p < 0.01$]). Although aging was positively correlated with the expression of CXCR1 ($r = 0.440$; $p < 0.01$), none of the other background factors, including smoking and body mass index, showed a correlation with the expression of the molecules. Although serum IL-8 levels were higher in patients with COPD than in HSs, no significant correlation between serum IL-8 levels and the expression of any molecule was seen. The expression of CD-11b ($r = -0.317$) and CXCR1 ($r = -0.383$) showed a significant negative correlation with the severity of airflow limitation (both $p < 0.05$).

Conclusions: The overexpression of CD-11b and CXCR1 in circulating neutrophils may be associated with the development of airflow limitation in COPD patients.

(CHEST 2007; 132:890–899)

Key words: β_2 -integrin; chemokine receptor; COPD; interleukin-8; neutrophil

Abbreviations: BMI = body mass index; CXCR = CXC chemokine receptor; FITC = fluorescein isothiocyanate; HS = healthy subject; IL = interleukin; PE = phycoerythrin

COPD is characterized by an abnormal inflammatory response, mainly to tobacco smoking.¹ Although a multiplicity of cells and mediators are involved in the pathophysiology of COPD, neutrophils play a key role in the development of COPD.^{2–5} It has been reported^{2,6,7} that the number of neutrophils is increased in samples of induced sputum or BAL fluid from patients with COPD. In addition, there is a correlation between the number of neutrophils in bronchial biopsy specimens⁸ or induced sputum samples^{2,3,9} and the severity of airflow limitation.

It is thought that circulating neutrophils are recruited into the airways through adhesion to endothelial cells and migration toward various neutrophil chemotactic factors, including interleukin (IL)-8.⁵ Since E-selectin is up-regulated in endothelial cells in the airways of patients with COPD,¹⁰ the adhesion of neutrophils may be facilitated in the development of this disease. Among various neutrophil chemotactic factors, it has been also reported that levels of the potent neutrophil chemoattractant IL-8 are increased in induced sputum samples^{2,11} or BAL fluid sam-

ples^{12,13} from patients with COPD, and that there is a positive correlation between the levels of IL-8 in BAL fluid and the degree of neutrophil infiltration.¹² Thus, the migration of neutrophils into the airways is also thought to be facilitated in the development of COPD.

It has been reported that there is an increase in the concentrations of granule proteins such as myeloperoxidase and human neutrophil lipocalin, or the respiratory burst response that correlates with airflow limitation.^{7,11,14} Because the priming of neutrophils is an important event for degranulation and the generation of superoxide anion in neutrophils,¹⁵ an alteration of the surface expression of Mac-1 cells or CXCR chemokine receptors (CXCRs), even in neutrophils in peripheral blood, may contribute to the development of COPD.

The surface expression of the adhesion molecule Mac-1 (CD-11b/CD-18) on circulating neutrophils has been reported to be up-regulated in patients with COPD.¹⁶⁻¹⁸ In addition, it has been also shown that the expression of CXCR2, but not CXCR1, is decreased in circulating neutrophils,¹⁸ which may affect neutrophil recruitment. This issue is still controversial because another report¹⁹ has reported no apparent difference in the expression of CXCR1 and CXCR2 in circulating neutrophils obtained from patients with COPD.

However, the precise nature of the neutrophil surface molecules has not been fully elucidated. Further, the role of the molecules in the pathophysiology of COPD is also uncertain. Therefore, the aim of the present study was to investigate the expression of surface molecules on circulating neutrophils and to evaluate the relationship between the expression of these molecules and airflow limitation in COPD patients.

*From the Third Department of Internal Medicine, Wakayama Medical University, School of Medicine, Wakayama, Japan. This work was supported in part by grants-in-aid for scientific research from the Japanese Society for the Promotion of Science (17590801).

Dr. Ichinose has received research funding, honoraria for lectures, and is a member of COPD advisory boards for AstraZeneca, GlaxoSmithKline, and Nippon Boehringer Ingelheim. No other potential conflicts of interest to this article were reported. The other authors have reported to the ACCP that no significant conflicts of interest exist with any companies/organizations whose products or services may be discussed in this article.

Manuscript received March 4, 2007; revision accepted May 8, 2007.

Reproduction of this article is prohibited without written permission from the American College of Chest Physicians (www.chestjournal.org/misc/reprints.shtml).

Correspondence to: Masakazu Ichinose, MD, PhD, Professor and Chairman, Third Department of Internal Medicine, Wakayama Medical University, School of Medicine, 811-1 Kimiidera, Wakayama 641-8509, Japan; e-mail: masakazu@wakayama-med.ac.jp

DOI: 10.1378/chest.07-0569

MATERIALS AND METHODS

Subjects

Sixteen stable patients with mild-to-severe COPD (stage I 2, stage II 3, stage III 9, and stage IV 2), and 24 healthy subjects (HSs) [15 smokers with normal lung function and 9 life-long never-smokers] were recruited from the outpatient clinic of our institution. All COPD patients were considered to be clinically stable because none of them had required medical attention and/or a change in their regular therapy such as inhaled bronchodilators; nor had any of them had bronchial or respiratory tract infections during the 4 months preceding the study. None of them had been treated with inhaled or oral corticosteroids. Patients with bronchial asthma, pneumonia, or lung cancer were excluded from the study. All patients refrained from smoking for the 12 h before the blood sampling. This study was approved by the ethics committee of our institution. Informed written consent was obtained from all subjects. The characteristics of each group are shown in Table 1.

Lung Function Testing

Lung function was evaluated with a dry rolling-seal spirometer (System 7; Minato Medical Science; Osaka, Japan). Each measurement was performed 15 min after the inhalation of 400 µg of salbutamol via a metered-dose inhaler.

Isolation of Circulating Neutrophils

Human circulating neutrophils were isolated from whole blood by a density gradient technique using a medium designed for separating polymorphonuclear leukocytes from

Table 1—Characteristics of Study Subjects*

Characteristics	HSs (n = 24)	COPD Patients (n = 16)
Age, yr	62.3 ± 2.1	71.4 ± 2.0†
Gender		
Male	24	16
Female	0	0
Smoking status		
Nonsmoker	9	0
Ex-smoker	8	13
Current smoker	7	3
Pack-yr	54.6 ± 5.5	75.5 ± 5.3
FVC		
L	3.28 ± 0.16	3.04 ± 0.14‡
%	95.3 ± 3.8‡	91.0 ± 3.4
IC		
L	2.45 ± 0.16	2.11 ± 0.15
%	107.4 ± 4.7	108.1 ± 7.3
FEV ₁		
L	2.62 ± 0.13	1.26 ± 0.13§
% predicted	100.4 ± 3.9	49.3 ± 4.7§
FEV ₁ /FVC ratio, %	80.0 ± 1.4	42.5 ± 3.4§

*Values are given as the mean ± SE, unless otherwise indicated.

IC = inspiratory capacity.

†p < 0.01 vs HSs.

‡p < 0.05 vs HSs.

§p < 0.0001 vs HSs.

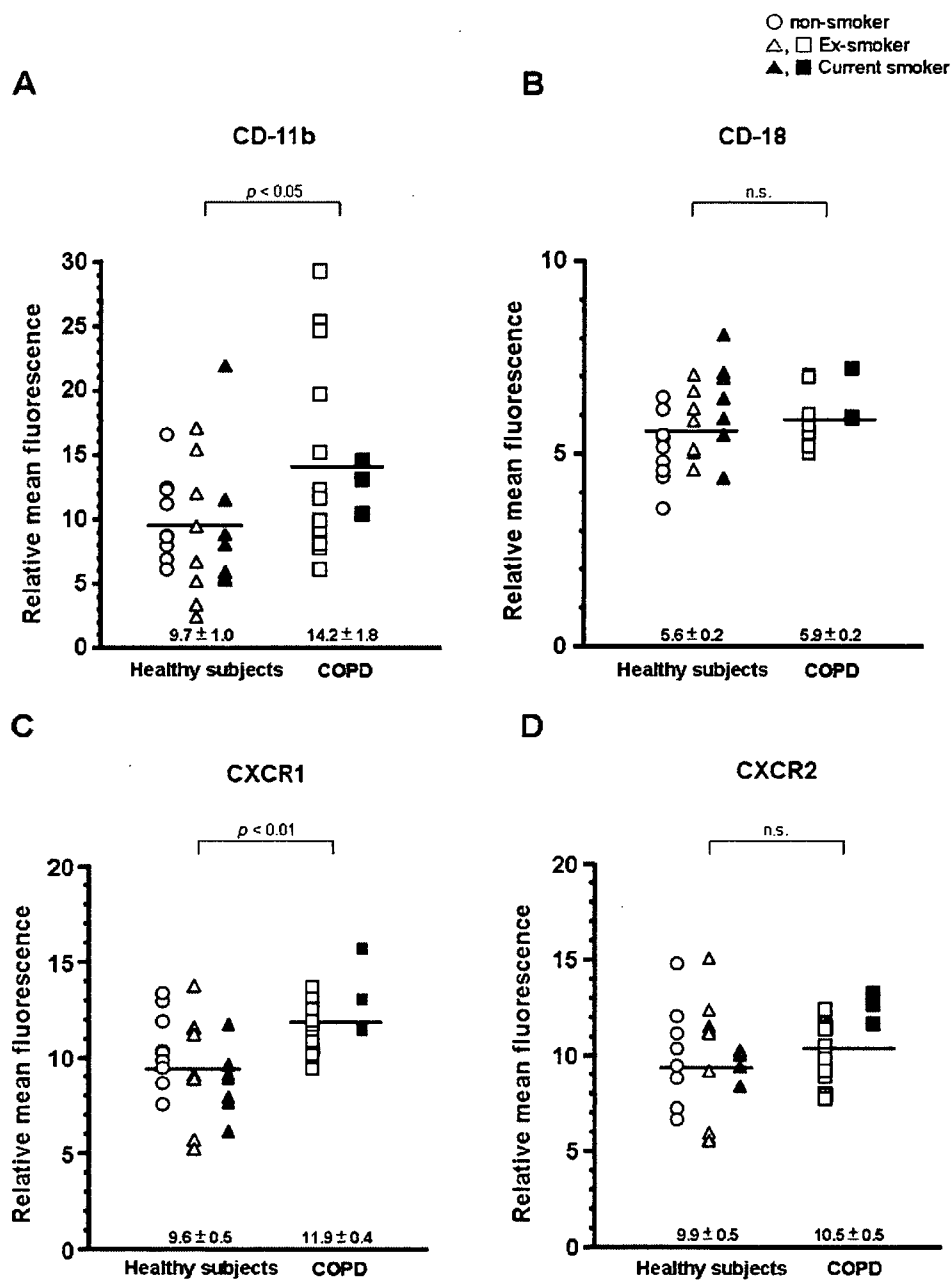


FIGURE 1. Surface expression of CD-11b, CD-18, and CXCRs on circulating neutrophils. *Top left, A:* the expression of CD-11b was significantly higher in patients with COPD than in HSs. No significant difference in CD-11b expression between nonsmokers and smokers was seen. *Top right, B:* there was no significant difference in CD-18 expression in HSs and patients with COPD. *Bottom left, C:* the expression of CXCR1 was significantly higher in patients with COPD than in HSs. No significant difference in the CXCR1 expression between nonsmokers and smokers was seen. *Bottom right, D:* there was no significant difference in CXCR2 expression between the two groups. Bars indicate mean values. n.s. = not significant.

whole blood cells (Mono-Poly Resolving Medium; Daiippon Pharmaceutical Co, Ltd, Laboratory Products; Osaka, Japan) according to the directions of the manufacturer.^{20,21} Briefly, 10 mL of whole blood was collected by vein puncture into tubes containing ethylenediaminetetraacetic acid anticoagulant. Then, 5-mL blood samples were gently mounted onto 4

mL of the medium designed for separating polymorphonuclear leukocytes from whole blood cells (Mono-Poly Resolving Medium; Daiippon Pharmaceutical Co, Ltd, Laboratory Products) without mixing. The samples were then centrifuged at 400g for 20 min at room temperature. The blood was separated into the following four layers from top to bottom:

plasma; lymphocytes/mononuclear cells; neutrophils; and RBCs. The neutrophil layer was gently collected by Pasteur pipettes without aspirating the other layers and was put into fresh 50-mL tubes. This procedure enables one to obtain neutrophils with > 90% purity. After washing in phosphate-buffered saline solution and counting the number of cells, the neutrophils were suspended in phosphate-buffered saline solution at a concentration of 5×10^6 cells/mL; then the expression of each molecule was measured by flow cytometry.

Flow Cytometry Analysis

Measurements of the surface expression of Mac-1 cells (*ie*, CD-11b/CD-18 cells), CXCR1, and CXCR2 in HS and patients with COPD were performed (FACSCalibur flow cytometer; Becton Dickinson Biosciences; San Jose, CA). Briefly, 1×10^6 neutrophils were incubated in 20 μ L of each antibody solution for 40 min at 4°C. After washing, the cells in 50 mL of phosphate-buffered saline solution were fixed by 1% paraformaldehyde, and then the binding of each antibody was detected using a flow cytometer. The specific binding of each antibody was expressed as the relative fluorescence shown by the ratio of the obtained mean fluorescence intensity values of the cells stained with CD-11b, CD-18, CXCR1, or CXCR2 to the mean fluorescence values for the IgG1 or IgG2a isotype control, as previously reported.²²

Quantification of Serum IL-8

The levels of serum IL-8 were measured using a commercially available enzyme-linked immunosorbent assay kit (Becton Dickinson Biosciences) according to the instructions provided by the manufacturer. The minimum detectable concentration of IL-8 was 0.8 pg/mL. A standard curve was obtained with serial dilution of the supplied recombinant human IL-8 by linear regression. The concentration of IL-8 in each sample was obtained by interpolation of its absorbance from a standard curve, and the mean value of the duplicate samples was then taken as a representative value.

Reagents

A medium for separating polymorphonuclear leukocytes from whole blood cells (Mono-Poly Resolving Medium; Dainippou Pharmaceutical Co, Ltd, Laboratory Products) was used. Phycoerythrin (PE)-conjugated antihuman CD-11b, PE-conjugated anti-human CXCR1 antibody, fluorescein isothiocyanate (FITC)-conjugated antihuman CD-18, FITC-conjugated antihuman CXCR2 antibody, PE-conjugated or FITC-conjugated Ig G1 isotype control, and PE-conjugated IgG2a isotype control were used (Becton Dickinson Biosciences). All other chemicals were purchased from Sigma Aldrich Japan (Tokyo, Japan).

Statistical Analysis

The data were expressed as the mean \pm SE. A Mann-Whitney *U* test was used for single comparisons. For multiple comparisons, analysis of variance and Fisher protected least significant difference tests were performed. The analysis of correlations between each factor was performed by using the Spearman correlation coefficient rank test. A *p* value of < 0.05 was considered to be significant.

RESULTS

The surface expression of CD-11b on circulating neutrophils from patients with COPD was signifi-

cantly higher than that from HSs (HSs, 9.7 ± 1.0 ; COPD patients, 14.2 ± 1.8 ; $p < 0.05$) [Fig 1, top left, A]. No apparent difference in CD-11b expression was seen between nonsmokers and ex-smokers or current smokers. In the COPD group, there was also no significant difference in CD-11b expression between ex-smokers and current smokers. There was no significant difference in the expression of CD-18 cells between HSs and COPD patients (HS, 5.6 ± 0.2 ; COPD patients, 5.9 ± 0.2) [Fig 1, top right, B].

The surface expression of CXCR1 in circulating neutrophils in COPD patients was significantly higher than that in HSs (HSs, 9.6 ± 0.5 ; COPD, 11.9 ± 0.4 ; $p < 0.01$) [Fig 1, bottom left, C]. However, no apparent difference was seen between nonsmokers and ex-smokers or current smokers. In COPD group, there was also no significant difference in CXCR expression between ex-smokers and current smokers. Compared with CXCR1 expression, no significant difference in the surface expression of CXCR2 was seen between the two groups of subjects (HSs, 9.9 ± 0.5 ; COPD patients, 10.5 ± 0.5) [Fig 1, bottom right, D].

To determine the factors that affect the up-regulation of CD-11b and CXCR1 expression in COPD patients, the correlation between the expression of these molecules and various background characteristics including age, smoking amount, and body mass index (BMI) were evaluated. As shown in Table 2, none of the characteristic parameters such as aging, smoking amount, and BMI had an apparent correlation with the degree of CD-11b expression. As shown in Figure 2, top left, A, the overall expression of CXCR1 was positively correlated with aging ($r = 0.440$; $p < 0.01$). The overall expression of CXCR1 was also not correlated with smoking amount and BMI (Fig 2, top right, B, bottom left, C). As shown in Table 2, the expression of CD-18 and CXCR2 had no correlation with any of the background characteristics.

The correlation analysis between each surface molecule in circulating neutrophils is shown in Table 3. Among the expression of each molecule,

Table 2—Correlation Among β_2 -Integrin, CXCR Expression, and Subject Characteristics*

Variables	CD-11b	CD-18	CXCR1	CXCR2
Age	0.253	-0.092	0.440†	0.165
Pack-yr	0.230	0.238	0.262	0.007
BMI	-0.157	0.081	-0.271	0.041
IL-8 level	-0.113	0.011	0.017	0.114

*Values are given as Spearman correlation coefficients. † $p < 0.01$.

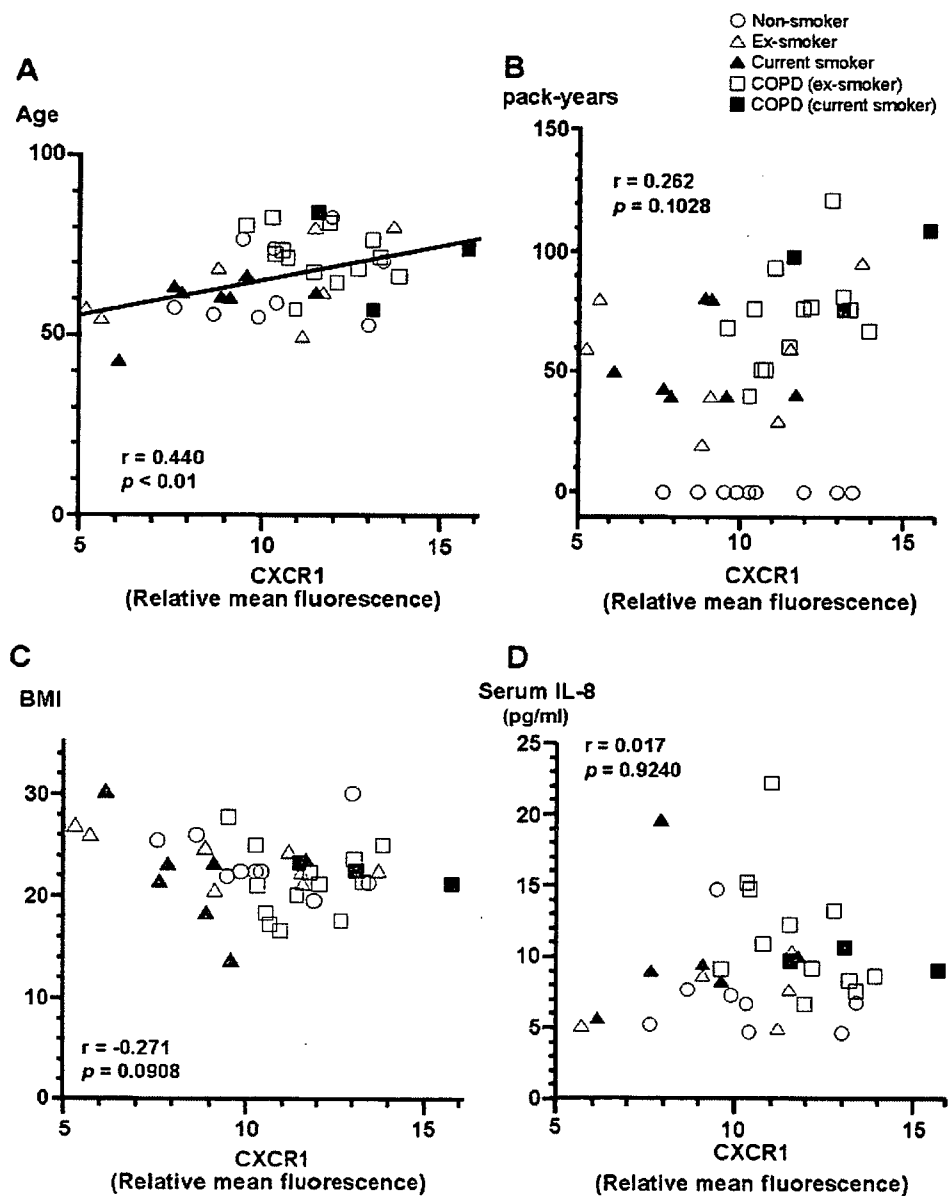


FIGURE 2. Correlation between the CXCR1 expression and background characteristics. *Top left, A:* overall expression of CXCR1 was positively correlated with age. Overall expression of CXCR1 was not correlated with the amount of smoking (*top right, B*). BMI (*bottom left, C*), and serum IL-8 levels (*bottom right, D*).

there was a significant positive correlation between the expression of CD-11b and CXCR1 ($r = 0.488$; $p < 0.01$). Therefore, we next evaluated whether the baseline serum levels of IL-8, a common ligand for CXCR1 and CXCR2, was involved in the expression of CD-11b and CXCR1. First, we measured the serum level of IL-8 in each group of subjects. As shown in Figure 3, the serum IL-8 levels in COPD patients were significantly higher than those in HSs (HS, 8.1 ± 0.8 ; COPD patients, 10.9 ± 1.0 pg/mL; $p < 0.05$). However,

there was no apparent correlation between serum IL-8 levels and the expression of CD-11b and CXCR1 (Table 2, Fig 2, *bottom right, D*). Background characteristics such as aging and smoking status were also not correlated with the serum levels of IL-8.

To elucidate whether the up-regulation of CD-11b and CXCR1 is associated with the alteration of the physiologic parameters, the correlation between the expression of these molecules and pulmonary function was evaluated. Neither CD-18

Table 3—Correlation Between β_2 -Integrin and CXCR Expression*

Variables	CD-18	CXCR1	CXCR2
CD-11b	-0.082	0.488†	-0.022
CD-18		-0.132	0.126
CXCR1			0.413

*Values are given as Spearman correlation coefficients.
† $p < 0.01$.

nor CXCR2 was correlated with any of the parameters of pulmonary function. Neither the surface expression of CD-11b nor that of CXCR1 was correlated with the FVC percent predicted and inspiratory capacity percent predicted (Table 4; Fig 4 top left, A, top right, B; Fig 5 top left, A, top right, B). In contrast, there was a significant negative correlation between the CD-11b expression and the severity of airflow limitation ($r = -0.317$; $p < 0.05$) [Table 4, Fig 4, bottom, C]. Similarly, the expression of CXCR1 also had a significant negative correlation with the severity of the airflow limitation ($r = -0.383$; $p < 0.05$) [Table 4, Fig 5, bottom, C].

DISCUSSION

In the present study, we have shown that the expressions of CD-11b and CXCR1 were significantly increased on the surface of circulating neutrophils in COPD patients. Furthermore, the degree of the CD-11b and CXCR1 expression had a significant negative correlation with the severity of the airflow limitation.

CD-11b is an adhesion molecule that is expressed on the neutrophil surface and plays an important role in the adhesion and migration of neutrophils from the systemic circulation into the airways, and in the activation of neutrophils.^{23,24} Therefore, an alteration of CD-11b expression may affect the migratory function of neutrophils. It has been reported¹⁶⁻¹⁸ that the expression of CD-11b in circulating neutrophils is already up-regulated in COPD patients, suggesting that neutrophils in the systemic circulation are primed in COPD patients. The results in our present study are consistent with these reports and suggest that the neutrophil migratory function might be facilitated in the systemic circulation in COPD patients. In contrast, it has been recently reported²⁵ that the chemotactic activity of IL-8 is reduced in neutrophils from patients with severe COPD compared with those from patients with mild COPD. The precise reason for this discrepancy is unclear. However, it might be due to differences in the techniques employed or the patient characteristics.

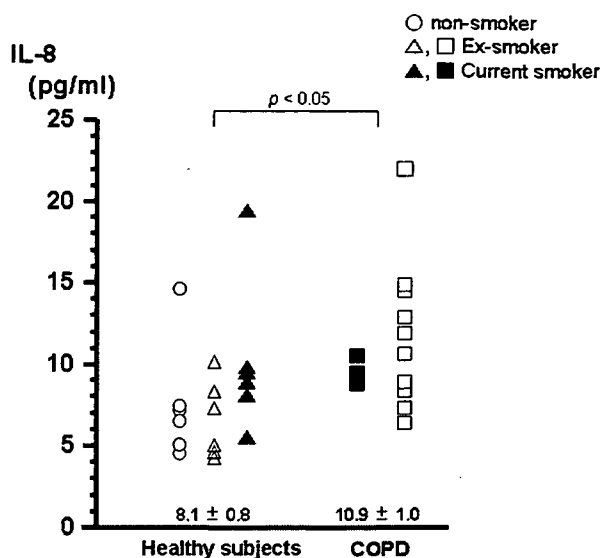


FIGURE 3. Serum levels of IL-8. The serum levels of IL-8 in the COPD patient group were significantly higher than those in the HS group.

CXCR1 activates neutrophils and mediates neutrophil functions including chemotaxis,²⁶ intracellular calcium changes,²⁷ phospholipase D activation,²⁷ and the respiratory burst^{27,28} through the binding of specific ligands such as IL-8. Therefore, our present results show the possibility that, in patients with COPD, neutrophils are primed and susceptible to activation while in the systemic circulation, which is an issue that needs to be clarified by further investigation. With regard to the expression of CXCRs, controversial results have been reported. Pignatti et al¹⁸ have shown that CXCR2 expression in circulating neutrophils, but not CXCR1 expression, was decreased in COPD patients, whereas Nicholson et al¹⁹ have shown more recently that there was not difference in both CXCR1 and CXCR2 expression between COPD patients and HSs. Both results are inconsistent with those of the present study. However, the airflow limitation of the subjects in these reports was less severe than in the patients in the present study. Therefore, there is a possibility that

Table 4—Correlation Between β_2 -Integrin, Chemokine Receptor Expression, and Pulmonary Function*

Variables	CD-11b	CD-18	CXCR1	CXCR2
FVC % predicted	0.038	-0.041	-0.124	0.003
IC % predicted	-0.046	0.025	-0.107	0.072
FEV ₁ % predicted	-0.317†	-0.257	-0.383†	-0.045

*Values are given as Spearman correlation coefficients.
† $p < 0.05$.

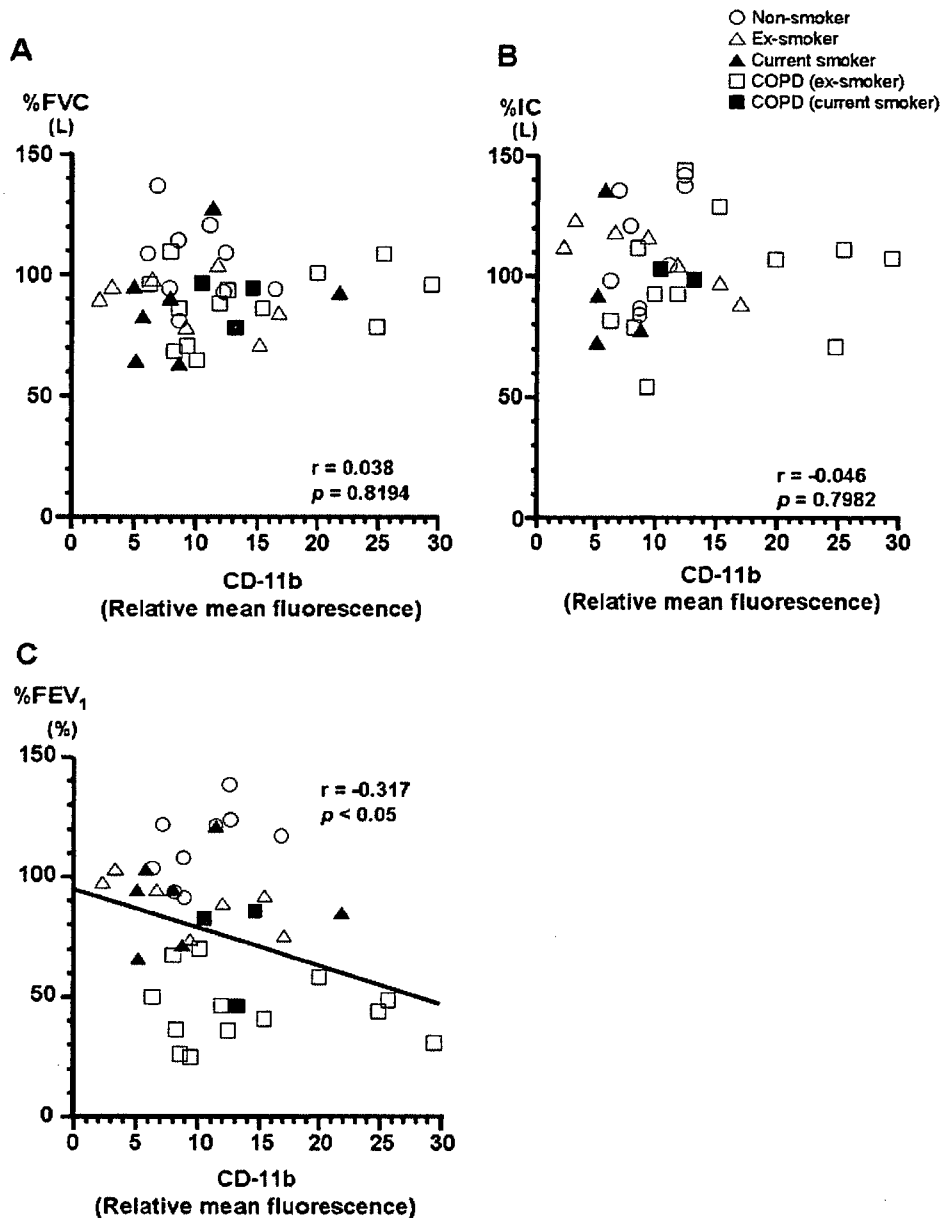


FIGURE 4. Correlation between the expression of CD-11b and pulmonary function. There was no significant correlation between the expression of CD-11b and the percent predicted FVC (top left, A) or the percent predicted IC (top right, B). Bottom, C: the expression of CD-11b showed a significant negative correlation with the severity of airflow limitation. %FVC = FVC percent predicted; %IC = IC percent predicted; %FEV₁ = FEV₁ percent predicted.

our present results might show the expression of CXCRs in patients with more severe COPD. In addition, in the study by Nicholson et al,¹⁹ the number of the subjects was relatively small. Thus, such differences may account for the discrepancy in the CXCR expression.

Among various background characteristics, except age in CXCR1 expression, no other background factors including smoking amount and BMI had any correlation with the expression of

CD-11b, CD-18, and CXCR1. In the present study, there was a difference in age between the two subject groups. Thus, there is a possibility that the up-regulation of CXCR1 expression in COPD patients was due to the difference in age. However, there was no such correlation within the COPD group alone. Therefore, aging could be a factor in the expression of CXCR1; however, some other mechanism might also be related to the up-regulation of CXCR1 expression. It has been

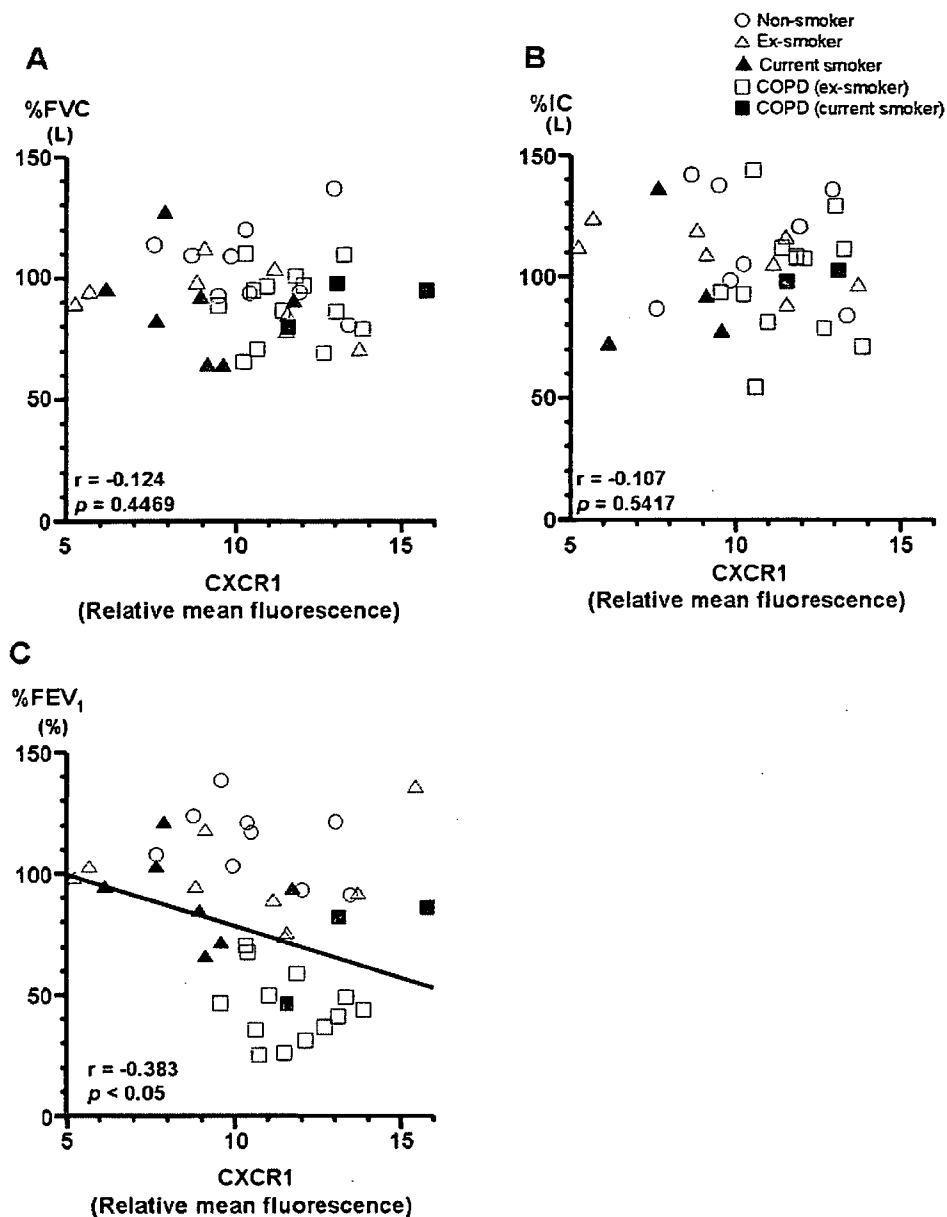


FIGURE 5. Correlation between the expression of CXCR1 and pulmonary function. There was no significant correlation between the expression of CXCR1 and %FVC (top left, A) or %IC (top right, B); Bottom, C: the expression of CXCR1 showed a significant negative correlation with the severity of the airflow limitation. See the legend of Figure 4 for abbreviations not used in the text.

reported²⁹ that smoking causes an increase in neutrophil retention in the lung and has a stimulatory effect on granulocyte-macrophage colony-stimulating factor,³⁰ which may affect neutrophil function. In fact, a previous study³¹ showed that cigarette smoke condensate augmented CD-11b/CD-18 expression in neutrophils. Thus, there is a possibility that smoking may cause the up-regulation of each molecule in circulating neutrophils. In the present study, the amount of smoking did not correlate with the overall expression of each mol-

ecule. However, in subjects who had a history of smoking (patients with COPD and smokers), the amount of smoking correlated only with CXCR1 expression (data not shown; $r = 0.427$; $p < 0.05$). Therefore, long-term exposure to smoking may play some role in the regulation of CXCR1. In the present study, the subject number was relatively small, which may affect the present results. Further investigation with a larger number of subjects will be needed to confirm this possibility.

Recent investigations have shown that granulo-

cyte-macrophage colony-stimulating factor or bradykinin may enhance CXCR1 expression in human polymorphonuclear leukocytes³² or human nasal tissue,³³ respectively. In addition, it has been demonstrated that IL-4 and IL-13 strongly increased CXCR1 and CXCR2 expression in human monocytes and macrophages.³⁴ It has been demonstrated³⁵ that the numbers of IL-4 and IL-13 immunopositive cells were increased in the bronchial submucosa of patients with chronic bronchitis. Thus, there is a possibility that various other mechanisms may contribute to the up-regulation of CXCR1 expression.

In the present study, a significant correlation was seen between the expression of CD-11b and that of CXCR1. This suggests that the specific ligand of CXCR1, IL-8, may cause the up-regulation of CD-11b through the activation of CXCR1. Indeed, it has been reported that the stimulation with IL-8 up-regulates the surface expression of Mac-1 cells in human neutrophils.^{36,37} Therefore, we next evaluated whether the baseline serum levels of IL-8 were involved in the expression of these molecules. As shown in Figure 3, the serum levels of IL-8 were increased in patients with COPD. However, there was no significant correlation between serum IL-8 levels and the expression of each molecule. In addition, there was no correlation between serum IL-8 levels and background characteristics. Although we never evaluated whether the increased expression of CXCR1 is associated with the increased sensitivity for IL-8, these results suggest that baseline serum IL-8 levels may have no role in the up-regulation of CD-11b and CXCR1 expression.

It has been demonstrated²⁻⁵ that neutrophils play a key role in the development of COPD. Indeed, it has been reported^{2,6,7} that the infiltration of neutrophils is increased in induced sputum or BAL fluid from COPD patients. In addition, more importantly, it has also been shown that the extent of this increase in the infiltration of neutrophils in bronchial biopsy specimens⁸ or induced sputum samples^{2,3,9} has a significant negative correlation with the severity of airflow limitation. In the present study, as shown in Figures 4, *bottom, C*, and 5, *bottom, C*, the up-regulation of both CD-11b and CXCR1 expression in circulating neutrophils significantly correlated with the severity of the airflow limitation. Taken together, it was considered that the up-regulation of CD-11b and CXCR1 may have a role in the development of COPD, probably through the increase in the migration of neutrophils into the airways in response to various chemotactic factors including IL-8 and the activation of neutrophils in inflamed airways, which may cause the augmentation of

airway inflammation and the subsequent progression of airflow limitation.

In conclusion, the surface expression of CD-11b and CXCR1 on circulating neutrophils was up-regulated in COPD patients compared with that in HSS. This up-regulation of CD-11b and CXCR1 expression was significantly correlated with the severity of the airflow limitation, suggesting that the up-regulation of these molecules may play a role in the enhancement of the neutrophil migration into airways and in the activation in airways, and then in the development of airflow limitation in COPD. However, the precise mechanisms of the regulation of the expression of these molecules are still unclear. Further investigation will be needed to elucidate the exact mechanisms by which these molecules are up-regulated and their role in the pathophysiology of COPD.

ACKNOWLEDGMENT: The authors thank Mr. Brent Bell for reading the manuscript.

REFERENCES

- 1 Global Initiative for Chronic Obstructive Lung Disease. Global strategy for the diagnosis, management, and prevention of chronic obstructive pulmonary disease, 2006. Available at: www.goldcopd.com. Accessed August 10, 2007
- 2 Keatings VM, Collins PD, Scott DM, et al. Differences in interleukin-8 and tumor necrosis factor- α in induced sputum from patients with chronic obstructive pulmonary disease or asthma. *Am J Respir Crit Care Med* 1996; 153:530-534
- 3 Peleman RA, Rytala PH, Kips JC, et al. The cellular composition of induced sputum in chronic obstructive pulmonary disease. *Eur Respir J* 1999; 13:839-843
- 4 Stockley RA. Neutrophils and the pathogenesis of COPD. *Chest* 2002; 121(suppl):151S-155S
- 5 Barnes PJ. Mediators of chronic obstructive pulmonary disease. *Pharmacol Rev* 2004; 56:515-548
- 6 Maestrelli P, Saetta M, Di Stefano A, et al. Comparison of leukocyte counts in sputum, bronchial biopsies, and bronchoalveolar lavage. *Am J Respir Crit Care Med* 1995; 152:1926-1931
- 7 Keatings VM, Barnes PJ. Granulocyte activation markers in induced sputum: comparison between chronic obstructive pulmonary disease, asthma, and normal subjects. *Am J Respir Crit Care Med* 1997; 155:449-453
- 8 Di Stefano A, Capelli A, Lusuardi M, et al. Severity of airflow limitation is associated with severity of airway inflammation in smokers. *Am J Respir Crit Care Med* 1998; 158:1277-1285
- 9 Hill AT, Bayley D, Stockley RA. The interrelationship of sputum inflammatory markers in patients with chronic bronchitis. *Am J Respir Crit Care Med* 1999; 160:893-898
- 10 Di Stefano A, Maestrelli P, Roggeri A, et al. Upregulation of adhesion molecules in the bronchial mucosa of subjects with chronic obstructive bronchitis. *Am J Respir Crit Care Med* 1994; 149:803-810
- 11 Yamamoto C, Yoneda T, Yoshikawa M, et al. Airway inflammation in COPD assessed by sputum levels of interleukin-8. *Chest* 1997; 112:505-510
- 12 Pesci A, Balbi B, Majori M, et al. Inflammatory cells and mediators in bronchial lavage of patients with chronic obstructive pulmonary disease. *Eur Respir J* 1998; 12:380-386

- 13 Tanino M, Betsuyaku T, Takeyabu K, et al. Increased levels of interleukin-8 in BAL fluid from smokers susceptible to pulmonary emphysema. *Thorax* 2002; 57:405–411
- 14 Richards GA, Theron AJ, Van der Merwe CA, et al. Spirometric abnormalities in young smokers correlate with increased chemiluminescence responses of activated blood phagocytes. *Am Rev Respir Dis* 1989; 139:181–187
- 15 Condliffe AM, Kitchen E, Chilvers ER. Neutrophil priming: pathophysiological consequences and underlying mechanisms. *Clin Sci (Lond)* 1998; 94:461–471
- 16 Noguera A, Busquets X, Sauleda J, et al. Expression of adhesion molecules and G proteins in circulating neutrophils in chronic obstructive pulmonary disease. *Am J Respir Crit Care Med* 1998; 158:1664–1668
- 17 Noguera A, Batle S, Miralles C, et al. Enhanced neutrophil response in chronic obstructive pulmonary disease. *Thorax* 2001; 56:432–437
- 18 Pignatti P, Moscato G, Casarini S, et al. Downmodulation of CXCL8/IL-8 receptors on neutrophils after recruitment in the airways. *J Allergy Clin Immunol* 2005; 115:88–94
- 19 Nicholson GC, Tennant RC, Carpenter DC, et al. A novel flow cytometric assay of human whole blood neutrophil and monocyte CD11b levels: upregulation by chemokines is related to receptor expression, comparison with neutrophil shape change, and effects of a chemokine receptor (CXCR2) antagonist. *Pulm Pharmacol Ther* 2007; 20:52–59
- 20 Yanai M, Butler JP, Suzuki T, et al. Intracellular elasticity and viscosity in the body, leading, and trailing regions of locomoting neutrophils. *Am J Physiol* 1999; 277:C432–C440
- 21 Yanai M, Butler JP, Suzuki T, et al. Regional rheological differences in locomoting neutrophils. *Am J Physiol Cell Physiol* 2004; 287:C603–C611
- 22 Traves SL, Smith SJ, Barnes PJ, et al. Specific CXC but not CC chemokines cause elevated monocyte migration in COPD: a role for CXCR2. *J Leukoc Biol* 2004; 76:441–450
- 23 Parkos CA, Delp C, Arnaout MA, et al. Neutrophil migration across a cultured intestinal epithelium: dependence on a CD11b/CD18-mediated event and enhanced efficiency in physiological direction. *J Clin Invest* 1991; 88:1605–1612
- 24 Liu Y, Shaw SK, Ma S, et al. Regulation of leukocyte transmigration: cell surface interactions and signaling events. *J Immunol* 2004; 172:7–13
- 25 Yoshikawa T, Dent G, Ward J, et al. Impaired neutrophil chemotaxis in chronic obstructive pulmonary disease. *Am J Respir Crit Care Med* 2007; 175:473–479
- 26 Loetscher P, Seitz M, Clark-Lewis I, et al. Both interleukin-8 receptors independently mediate chemotaxis: Jurkat cells transfected with IL-8R1 or IL-8R2 migrate in response to IL-8, GRO α and NAP-2. *FEBS Lett* 1994; 341:187–192
- 27 Jones SA, Wolf M, Qin S, et al. Different functions for the interleukin 8 receptors (IL-8R) of human neutrophil leukocytes: NADPH oxidase and phospholipase D are activated through IL-8R1 but not IL-8R2. *Proc Natl Acad Sci U S A* 1996; 93:6682–6686
- 28 Green SP, Chuntharapai A, Curnutte JT. Interleukin-8 (IL-8), melanoma growth-stimulatory activity, and neutrophil-activating peptide selectively mediate priming of the neutrophil NADPH oxidase through the type A or type B IL-8 receptor. *J Biol Chem* 1996; 271:25400–25405
- 29 MacNee W, Wiggs B, Belzberg AS, et al. The effect of cigarette smoking on neutrophil kinetics in human lungs. *N Engl J Med* 1989; 321:924–928
- 30 Terashima T, Wiggs B, English D, et al. Phagocytosis of small carbon particles (PM10) by alveolar macrophages stimulates the release of polymorphonuclear leukocytes from bone marrow. *Am J Respir Crit Care Med* 1997; 155:1441–1447
- 31 Koethe SM, Kuhnmuench JR, Becker CG. Neutrophil priming by cigarette smoke condensate and a tobacco anti-idiotypic antibody. *Am J Pathol* 2000; 157:1735–1743
- 32 Lloyd AR, Biragyn A, Johnston JA, et al. Granulocyte-colony stimulating factor and lipopolysaccharide regulate the expression of interleukin 8 receptors on polymorphonuclear leukocytes. *J Biol Chem* 1995; 270:28188–28192
- 33 Eddleston J, Christiansen SC, Jenkins GR, et al. Bradykinin increases the in vivo expression of the CXC chemokine receptors CXCR1 and CXCR2 in patients with allergic rhinitis. *J Allergy Clin Immunol* 2003; 111:106–112
- 34 Bonocchi R, Facchetti F, Dusi S, et al. Induction of functional IL-8 receptors by IL-4 and IL-13 in human monocytes. *J Immunol* 2000; 164:3862–3869
- 35 Miotto D, Ruggieri MP, Boschetto P, et al. Interleukin-13 and -4 expression in the central airways of smokers with chronic bronchitis. *Eur Respir J* 2003; 22:602–608
- 36 Detmers PA, Lo SK, Olsen-Egbert E, et al. Neutrophil-activating protein 1/interleukin 8 stimulates the binding activity of the leukocyte adhesion receptor CD11b/CD18 on human neutrophils. *J Exp Med* 1990; 171:1155–1162
- 37 Drost EM, MacNee W. Potential role of IL-8, platelet-activating factor and TNF- α in the sequestration of neutrophils in the lung: effects on neutrophil deformability, adhesion receptor expression, and chemotaxis. *Eur J Immunol* 2002; 32:393–403



Decreased expression of antioxidant enzymes and increased expression of chemokines in COPD lung

Masafumi Tomaki^a, Hisatoshi Sugiura^a, Akira Koarai^a, Yuichi Komaki^a, Takefumi Akita^a,
Tatsumi Matsumoto^b, Atsushi Nakanishi^b, Hiromasa Ogawa^a,
Toshio Hattori^a, Masakazu Ichinose^{c,*}

^aDivision of Respiratory and Infectious Diseases, Tohoku University Graduate School of Medicine, 1-1, Seiryō-machi, Aoba-ku, Sendai 980-8574, Japan

^bTakeda Pharmaceutical Company, Ltd., 2-17-85, Jusohonmachi, Yodogawa-ku, Osaka 532-8686, Japan

^cThe Third Department of Internal Medicine, Wakayama Medical University, 811-1, Kimiidera, Wakayama 641-0012, Japan

Received 23 February 2006; received in revised form 26 June 2006; accepted 29 June 2006

Abstract

The involvement of inflammation in the pathogenesis of chronic obstructive pulmonary disease (COPD) has been investigated using samples from relatively central airways such as airway biopsies, but there have been fewer studies in the peripheral lung, which is thought to be the main site of the disease process. To determine the molecules that relate to the mechanisms underlying the pathogenesis of COPD, we evaluated the mRNA expression of inflammatory cytokines, chemokines, oxidant enzymes, antioxidant enzymes, proteinases and antiproteinases in peripheral lung tissues from 33 COPD and non-COPD subjects who were undergoing lung resection for lung cancer using an RT-PCR technique.

Among the 42 studied candidate genes, the expressions of mRNA for catalase, glutathion *S*-transferase P1 (GSTP1), glutathion *S*-transferase M1 (GSTM1), microsomal epoxide hydrolase (mEPHX) and tissue inhibitor of metalloproteinase 2 (TIMP2) were significantly decreased in COPD lung tissues compared with those in non-COPD tissues, and most of these decreases were significantly correlated with the degree of airflow limitation. On the other hand, the expressions of mRNA for interleukin 1 β (IL-1 β), interleukin 8 (IL-8), growth-related oncogene- α (Gro- α) and monocyte chemoattractant protein-1 (MCP-1) were significantly increased in COPD lungs. Most of these changes were also associated with cigarette smoking.

These data suggest that an impairment of protective mechanisms against oxidants and xenobiotics, in addition to the upregulation of CXC- and CC-chemokines, may be associated with cigarette smoking and involved in the inflammatory process of COPD.

© 2006 Elsevier Ltd. All rights reserved.

Keywords: Catalase; Glutathion *S*-transferase P1; Glutathion *S*-transferase M1; Microsomal epoxide hydrolase; Tissue inhibitor of metalloproteinase 2; mRNA; RT-PCR

1. Introduction

Chronic obstructive pulmonary disease (COPD) is a disease characterized by airway inflammation and progressive airflow limitation that is not fully reversible. The morbidity and mortality of the disease have increased in recent years and it is a serious public health problem in many countries throughout the world [1]. Abnormal inflammatory responses of the lungs against noxious gases

and particles, such as cigarette smoke, are thought to cause small airway disease, namely obstructive bronchiolitis, and parenchymal destruction, leading to the pathophysiologic changes of COPD such as airflow limitation [2]. Although the precise mechanisms of these processes have not been fully clarified, several mechanisms have been suggested to contribute to the disease process.

The cellular inflammatory response in COPD is characterized by increases in neutrophils, macrophages and CD8-positive T lymphocytes in the lungs [3]. Inflammatory mediators from these cells and epithelial cells contribute to interactions among these cells and cause the

*Corresponding author. Tel.: +81 73 4410616; fax: +81 73 4472201.
E-mail address: masakazu@wakayama-med.ac.jp (M. Ichinose).

pathophysiological changes of COPD including mucus hypersecretion, fibrosis, and parenchymal destruction [4]. Oxidative stress, which may result from excessive oxidants and/or impaired antioxidant activities, is thought to be one of the major causes of inflammation and injury in diseased lungs. Oxidative stress arises during the inflammatory process in the lung and also from the environment. Both endogenous reactive oxygen species released from inflammatory cells such as neutrophils and macrophages and oxidant compounds in cigarette smoke or air pollution cause injuries to lung tissues [5]. These harmful molecules are eliminated by antioxidant enzyme activities in normal lungs [6]. In COPD lungs, these protective mechanisms seem to be impaired. Another mechanism in the COPD pathogenesis is an imbalance of proteinase and antiproteinase. α_1 -antitrypsin has been shown to be involved in the structural changes in COPD, and a number of proteinases and antiproteinases have been reported to play roles in the inflammatory process in COPD [7].

The involvement of inflammation, oxidative stress and a proteinase/antiproteinase imbalance in the pathogenesis of COPD has been investigated using samples from COPD subjects. Many studies employing samples from relatively central airways such as airway biopsies and induced sputum have revealed an alteration in the formation of inflammatory mediators, oxidant, antioxidant, proteinase and antiproteinase in COPD airways. However, there have been fewer studies in the peripheral lung, which is thought to be the main site of the disease process.

In this study, we evaluated the expressions of 42 genes for inflammatory cytokines, chemokines, oxidant enzymes, antioxidant enzymes, proteinases and antiproteinases in peripheral lung tissues from COPD and non-COPD subjects. We found decreased mRNA expressions for catalase, glutathion *S*-transferase P1 (GSTP1), glutathion *S*-transferase M1 (GSTM1), microsomal epoxide hydrolase (mEPHX) and tissue inhibitor of metalloproteinase 2 (TIMP2) and increased expressions for interleukin 1 β (IL-1 β), interleukin 8 (IL-8), growth-related oncogene- α (Gro- α) and monocyte chemotactic protein-1 (MCP-1) in the COPD lung. Most of these changes were associated with the degree of airflow limitation and cigarette smoking.

2. Materials and methods

2.1. Subjects

Thirty-three patients with or without COPD who were undergoing lung resection for lung cancer took part in the study after giving written informed consent. This study was approved by the Tohoku University Committee on Clinical Investigations and by the Ethics Review Board of Miyagi Prefectural Cancer Center. According to the presence or absence of COPD and a history of smoking, the subjects were divided into three groups: 10 non-COPD subjects who never smoked, 9 non-COPD smokers and 14 COPD subjects. All patients with COPD satisfied the Global

Initiative for Chronic Obstructive Lung Disease guidelines [2] and were diagnosed as having pulmonary emphysema through computed tomography. The smokers were divided into current smokers and ex-smokers, defined as those who had quit smoking for at least 3 months prior to the study. The clinical characteristics of the study subjects are shown in Table 1. All patients were stable and had no respiratory tract infection during the month preceding the study. Forced vital capacity (FVC), forced expiratory volume in 1 s (FEV₁), maximum flow rate at 50% of vital capacity divided by measured body height (V₅₀/HT) and maximum flow rate at 25% of vital capacity divided by measured body height (V₂₅/HT) were measured using a dry rolling-seal spirometer (FUDAC-70; Fukuda Denshi Co., Ltd., Tokyo, Japan) in the week before surgery.

2.2. Lung tissue collection

Peripheral lung tissue was obtained from the subpleural parenchyma of the lobe resected at surgery, avoiding areas involved by tumor. The tissue specimen (size 5 × 5 × 10 mm) was immediately immersed in Isogen (Nippon Gene Co., Ltd., Tokyo, Japan) and kept at –80 °C until RT-PCR analysis.

2.3. Isolation of total RNA and real-time quantitative PCR

Total RNA from each sample was extracted in guanidine isothiocyanate and phenol (Isogen) according to the manufacturer's instructions. Total RNA (500 ng) was reverse transcribed with random hexamer and MultiScribe Reverse Transcriptase using TaqMan Gold RT-PCR Kit (Applied Biosystems, Foster City, CA). cDNA samples corresponding to 8 ng of total RNA were measured by real-time quantitative PCR using Applied Biosystems prism 7900HT Sequence Detection System according to the manufacturer's instructions. The primers and probes were

Table 1
Characteristics of study subjects

	Non-COPD		COPD
	Never smoked	Smokers	
Number	10	9	14
Male/Female	2/8	5/4	12/2
Age (year)	66.6 ± 2.5	57.1 ± 5.3	72.9 ± 1.5 ^{††}
Smoking status (ex/current)	—	5/4	11/3
Smoking history (pack-year)	0	21.6 ± 6.7 ^{**}	51.6 ± 6.0 ^{**}
%FVC (%)	122.3 ± 8.3	107.3 ± 3.0	89.6 ± 4.5 ^{**}
%FEV ₁ (%)	135.6 ± 9.7	111.7 ± 3.2	78.5 ± 6.7 ^{**}
FEV ₁ /FVC% (%)	79.8 ± 1.4	77.2 ± 1.0	58.6 ± 3.0 ^{**}

The data are expressed as mean ± SEM.

^{**} $P < 0.01$ compared with the non-COPD never-smoked group (Mann-Whitney *U*-test).

^{††} $P < 0.01$ compared with the non-COPD smoker group (Mann-Whitney *U*-test).

obtained from TaqMan Gene Expression Assays or Pre-Developed TaqMan Assay Reagents (Applied Biosystems, Foster City, CA) or designed for each of the genes according to the Primer Express 2.0 program provided by Applied Biosystems (Table 2). Reporter dyes and quencher dyes for all designed probes were 6-carboxyfluorescein (FAM) and 6-carboxytetramethylrhodamine (TAMRA), respectively.

The amount of target message in each sample was estimated from a threshold cycle number (CT), which is inversely correlated with the number in its initial mRNA level and used to determine gene expression. The CT-values were generated by the ABI PRISM 7900HT SDS software version 2.0. The CT value of each gene was normalized using the formula $\Delta CT = (CT \text{ of each gene}) - (CT \text{ of } \beta\text{-actin})$. The expression levels of each gene per β -actin were calculated according to the formula $2^{-(\Delta CT)}$.

2.4. Statistical analysis

All data are expressed as mean \pm SEM. Statistical analysis was carried out using nonparametric analysis of variance (Kruskal–Wallis test) to evaluate variance among the three groups. If a significant variance was found, an unpaired two-group test (Mann–Whitney *U*-test) was used to determine significant differences between individual groups. For analysis within group correlations, Spearman's rank correlation test was used. Values of $P < 0.05$ were considered statistically significant.

3. Results

3.1. mRNA expressions of the 42 studied candidate genes

Table 3 shows all the data of the mRNA amounts observed in this study. We found some significant differences between COPD and non-COPD subjects. The expressions of mRNA for catalase, GSTP1, mEPHX, GSTM1 and TIMP2 were significantly decreased in COPD lung tissues compared with those in non-COPD tissues. On the other hand, the mRNA expressions for IL-1 β , IL-8, Gro- α and MCP-1 were significantly increased in COPD compared with non-COPD. None of the other studied genes showed significant changes in mRNA expression in COPD versus non-COPD subjects.

3.2. Decreased expression of enzymes protective against oxidants and xenobiotics

The expressions of mRNA for catalase, GSTP1 and mEPHX were significantly decreased in COPD lung tissues compared with those in non-COPD tissues (Fig. 1). The expression of mRNA for catalase was significantly decreased in lung tissues from COPD subjects (0.165 ± 0.013) compared with those from non-COPD smokers (0.233 ± 0.026 , $P = 0.023$) and those who never smoked (0.251 ± 0.025 , $P = 0.003$). The GSTP1 mRNA

expression was significantly decreased in lung tissues from COPD subjects (0.449 ± 0.027) compared with those from non-COPD smokers (0.554 ± 0.028 , $P = 0.023$) and those who never smoked (0.647 ± 0.069 , $P = 0.019$). The mEPHX mRNA expression was significantly decreased in lung tissues from COPD subjects (0.153 ± 0.014) compared with those from non-COPD smokers (0.223 ± 0.014 , $P = 0.003$) and those who never smoked (0.228 ± 0.028 , $P = 0.022$). The expression of mRNA for GSTM1 was significantly increased in lung tissues from non-COPD smokers (0.229 ± 0.044) compared with those from non-COPD subjects who never smoked (0.136 ± 0.033 , $P = 0.034$) and those from COPD subjects (0.126 ± 0.019 , $P = 0.014$) (Fig. 2).

3.3. Decreased expression of antiproteinase

The expression of mRNA for TIMP2 was significantly increased in lung tissues from non-COPD smokers (1.135 ± 0.101) compared with those from non-COPD subjects who never smoked (0.873 ± 0.166 , $P = 0.014$) and those from COPD subjects (0.870 ± 0.110 , $P = 0.038$) (Fig. 2).

3.4. Increased expression of inflammatory cytokines and chemokines

The expressions of mRNA for IL-1 β (0.203 ± 0.058 vs. 0.051 ± 0.021 , $P = 0.004$), IL-8 (0.618 ± 0.188 vs. 0.071 ± 0.036 , $P = 0.003$), Gro- α (0.015 ± 0.04 vs. 0.002 ± 0.001 , $P = 0.005$) and MCP-1 (1.300 ± 0.316 vs. 0.286 ± 0.120 , $P = 0.002$) were significantly increased in lungs from COPD subjects compared with those from subjects who never smoked. The differences in the expressions of mRNA for IL-1 β , IL-8, Gro- α and MCP-1 between in COPD subjects and in non-COPD smokers were not statistically significant (Fig. 3).

3.5. Correlations between gene expressions and pulmonary function and cigarette smoking habit

The expressions of mRNA for catalase, GSTP1 and mEPHX were significantly correlated with the parameters of pulmonary function: % of predicted values of forced vital capacity (%FVC), % of predicted values of forced expiratory volume in one second (%FEV₁), FEV₁/FVC%, V₅₀/HT and V₂₅/HT (Fig. 4 and Table 4). The mRNA expressions for these enzymes were negatively correlated with cigarette smoking history assessed as pack-year (Table 4).

In contrast, the expressions of mRNA for IL-1 β , IL-8, Gro- α and MCP-1 were negatively correlated with V₅₀/HT and were associated with cigarette smoking history (Table 4). The expressions of IL-8 and Gro- α were also negatively correlated with FEV₁/FVC% (Table 4).

When analyzed in two groups of non-COPD smokers and COPD subjects, the expression of mRNA for TIMP2

Table 2
Real-time quantitative PCR primers and probes

Gene	Accession no.	Sequence or assay ID	
XDH	NM_000379	Hs00166010_m1	
HMOX1	NM_002133	Hs00157965_m1	
GPX3	genbank:NM_002084NM_002084	TCCCTGCAACCAATTTGGA CCATTGACATCCCCTTTCTCA TCCTTCCTACCCTCAAGTATGTCGACCA AGGACTTCATCTCCCGCTTTG	Forward primer: 593–613 Reverse Primer: 723–703 TaqMan probe: 642–670
GSTM1	NM_000561	CCATCTTTGAGAACACAGGTCTTG TCTGCCTACATGAAGTCCAGCCGCTT CCTCCGCTGCAAATACATCTC CAGTGCCTTCACATAGTCATCCTT CTCATCTACACCAACTATGAGGCGGG	Forward primer: 599–619 Reverse Primer: 691–668 TaqMan probe: 637–662
GSTP1	NM_000852	CATAAGGTGATGTTCCCTGTGTT GGAGATGTGAGGACCAGTAAGGA TCGAGGACAAGTTCCTCCAGAACAAGGC	Forward primer: 326–346 Reverse Primer: 398–375 TaqMan probe: 348–373
GSTT1	NM_000853	AAAACACGGTGGGCCAAA ACATCGGCCACACCATCTTT CCCAAGTCTCCAACATGCCTCTCTTCA	Forward primer: 346–369 Reverse Primer: 492–470 TaqMan probe: 440–467
SOD1	NM_000454	Hs00167309_m1	Forward primer: 210–227 Reverse Primer: 293–274 TaqMan probe: 257–231
SOD2	NM_000636	Hs00162090_m1	
SOD3	NM_003102	Hs00156308_m1	
Catalase	NM_001752	Hs00164458_m1	
mEPHX	NM_000120	Hs00233958_m1	
MMP1	NM_002421	Hs00234422_m1	
MMP2	NM_004530	Hs00234579_m1	
MMP9	NM_004994	Hs00159178_m1	
MMP12	NM_002426	Hs00357734_m1	
ELA2	NM_001972	Hs00171558_m1	
TIMP1	NM_003254	Hs00234278_m1	
TIMP2	NM_003255	Hs00165475_m1	
SERPINA1	NM_000295	Hs00268206_m1	
SLPI	NM_003064	H327046T	
IL-13	NM_002188	H327055T	
TNF- α	NM_000594	GCTTCAGAAAACACCTCAGACA ATGCCGGTACTGGTTCCTCTCCT TCAGTGCTCCAAATGCCGAAAGG	Forward primer: 552–574 Reverse Primer: 683–663 TaqMan probe: 580–603
TNF- α R	NM_001065	4327035T	
IL-1 β	NM_000576	4327052T	
IFN- α	NM_000619	4327048T	
IL-17	NM_002190	4327057T	
GM-CSF	NM_000758	4327043T	
IL-10	NM_000572	TTCTGAGGAGCCTGCAACATG TCCCCTGCCTCACAATGAT CGGATCCAAGCAAATGGCCAATGA CGGAAGGAACCATCTCACTGT ATCAGGAAGGCTGCCAAGAGA GTAAACATGACTTCCAAGCTGGCCGTG CATCTGGGTGTTGTCCTTTCTG GACAGCCTCGAAGATTAGATGGA TGCCCTGGAAAACGAACATGAGCC ACCTTCTCATCGGGCATCAC GAAGTCTTCCAGCTCAGCAGTGT CCACCTGTAGGCCAGAAGGATGT	Forward primer: 754–774 Reverse Primer: 842–823 TaqMan probe: 798–821
Gro- α	NM_001511	Hs00173626_m1	Forward primer: 96–122 TaqMan probe: 96–122
IL-8	NM_000584	TACTCCACAGACTGCACCAACTG CGTGTATTGCTTCCCCTCAA TGTGCTTGGAGGTGCCCACTTCTCAA ACCGACCACAGAGCTGGAGA ATGTCAAGTCTTCTGAGAGGGTG TTCTCAACGCCCGCAGCTACGAGT CGGCCATCATTCCTTTTTACTG AACCACATGACCATCAACTGA CTGTGTGAATCCACCGCTAGAAACCA	Forward primer: 73–93 Reverse Primer: 145–125 TaqMan probe: 96–122 Forward primer: 2137–2158 Reverse Primer: 2278–2256 TaqMan probe: 2193–2216
BLT1	NM_000752	Hs00173626_m1	Forward primer: 1624–1643 Reverse Primer: 1767–1745 TaqMan probe: 1692–1715
BLT2	NM_019839	Hs00173626_m1	
VEGF	NM_003376	TACTCCACAGACTGCACCAACTG CGTGTATTGCTTCCCCTCAA TGTGCTTGGAGGTGCCCACTTCTCAA ACCGACCACAGAGCTGGAGA ATGTCAAGTCTTCTGAGAGGGTG TTCTCAACGCCCGCAGCTACGAGT CGGCCATCATTCCTTTTTACTG AACCACATGACCATCAACTGA CTGTGTGAATCCACCGCTAGAAACCA	Forward primer: 1263–1285 Reverse Primer: 1391–1372 TaqMan probe: 1343–1368
MUC5AC	AJ298317	Hs00377632_m1	Forward primer: 863–882 Reverse Primer: 1005–983 TaqMan probe: 912–935
MUC5B	Z72496	CGGCCATCATTCCTTTTTACTG AACCACATGACCATCAACTGA CTGTGTGAATCCACCGCTAGAAACCA	Forward primer: 1226–1247 Reverse Primer: 1315–1294 TaqMan probe: 1263–1289
MUC8	U14383		
CTSL	NM_145918		

Table 2 (continued)

Gene	Accession no.	Sequence or assay ID
MCP-1	NM_002982	4329524T
TGF- β	NM_000660	4327054T
EGF	NM_001963	Hs00153181_m1
IL-4	NM_000589	4327038T
IL-5	NM_000879	4327039T

Numbers refer to oligonucleotide position contained within the published cDNA.

was significantly correlated with V_{50}/HT ($r_s = 0.469$, $P = 0.028$), but not with other parameters including %FEV₁ ($r_s = 0.376$, $P = 0.077$) nor cigarette smoking history ($r_s = -0.342$, $P = 0.106$). The expression of mRNA for GSTM1 had no significant relationship with parameters for airflow limitation (data not shown) and cigarette smoking history ($r_s = -0.393$, $P = 0.065$).

In smokers with and without COPD, there was no association between the mRNA expressions for these molecules and duration since smoking cessation (data not shown).

4. Discussion

In this study, we observed decreased expressions of mRNA for catalase, GSTP1, GSTM1, mEPHX and TIMP2 and increased expressions of mRNA for IL-1 β , IL-8, Gro- α and MCP-1 in peripheral lungs from patients with COPD. Most of these changes in mRNA expressions were associated with the degree of airflow limitation and with the cigarette smoking habit.

Although the precise mechanisms of the pathogenesis of COPD have not been fully elucidated, it is thought that the inflammatory responses of the lungs induced by noxious gases and particles, such as oxidants and xenobiotics, play a major role in the onset and progression of the disease. An impairment of protective mechanisms of the lungs against such harmful molecules would also contribute to the disease process.

Oxidative stress and imbalances in the host defense mechanisms appear to be among the causes of COPD. Reactive oxygen/nitrogen species have been suggested to be involved in the pathophysiology of COPD through several studies analyzing airway samples such as induced sputum [8,9]. It also has been reported that antioxidant enzyme activities are altered in COPD. In the present study, the mRNA expression for catalase, a catalyzing enzyme for the clearance of hydrogen peroxide, was decreased in the peripheral lungs from COPD subjects. It has been reported that catalase activity is decreased in circulating red blood cells in patients with COPD [10], while the level of catalase is often increased in those from smokers, probably due to upregulation as an adaptive response against oxidative stress by cigarette smoking [11]. Recently, Ning and colleagues have reported the decreased gene expression for catalase in surgically obtained lung tissue from patients

with COPD, using a serial analysis of gene expression [12]. Our results are consistent with their result and further extend the findings by showing that the decrease in catalase mRNA expression in the peripheral lung tissue was correlated to the degree of airflow limitation in COPD patients. These results suggest that impaired protective activity of catalase against oxidative stress may lead to enhanced pathophysiological changes in COPD.

Other protective mechanisms against toxic substrates involve xenobiotic-metabolizing enzymes such as GSTP1, GSTM1 and mEPHX, the mRNA expressions of which were decreased in COPD patients in the present study. GSTP1 and GSTM1 are members of the glutathione *S*-transferase family known as antioxidative xenobiotic enzymes. GSTP1 and GSTM1 are expressed in alveoli, alveolar macrophages and respiratory bronchioli in the peripheral lung [13], and play an important role in the detoxification of xenobiotics which are contained in cigarette smoke and occupational and environmental pollutants. GSTP1 has been reported to exert a protective effect against cigarette smoke extract in human lung fibroblasts in vitro [14]. mEPHX is strongly expressed in bronchial epithelial cells in the lung [15], and is involved in the first-pass metabolism of highly reactive epoxide intermediates. Several genetic researches also have suggested that polymorphisms of GSTP1, GSTM1 and mEPHX genotypes may associate with a susceptibility to COPD or the severity of the disease in some races including Japanese [16–18].

Also, members of the TIMP family exert inhibitory activities against matrix metalloproteinases the involvement of which in the disease process of COPD has been suggested [19]. Recently, it has been reported that polymorphisms of the TIMP2 gene are associated with COPD susceptibility in a Japanese population suggesting a relationship between the decreased activity of TIMP2 and the pathogenesis of the disease [20]. It has been also reported that TIMP2 mRNA expression is decreased in the lung tissue from severer COPD subjects [12]. Our data are in line with these reports.

In the present study, decreased mRNA expressions for catalase, GSTP1 and mEPHX were evident in the peripheral lung tissue in COPD. The degree of the decrease in the mRNA expressions for these antioxidant and xenobiotic enzymes significantly correlated with the degree of airflow limitation, %FVC, %FEV₁, FEV₁/FVC%, V_{50}/HT

Table 3
mRNA expressions of the 42 studied candidate genes

	Non-COPD		COPD
	Never smoked	Smokers	
Genes that are significantly downregulated in COPD versus non-COPD			
Catalase	0.251 ± 0.025	0.233 ± 0.026	0.165 ± 0.013**†
GSTP1	0.647 ± 0.069	0.554 ± 0.028	0.449 ± 0.027**†
mEPHX	0.228 ± 0.028	0.223 ± 0.014	0.153 ± 0.014**††
GSTM1	0.136 ± 0.033	0.229 ± 0.044*	0.126 ± 0.019†
TIMP2	0.873 ± 0.166	1.135 ± 0.101*	0.870 ± 0.110†
Genes that are significantly upregulated in COPD versus non-COPD			
IL-1β	0.051 ± 0.021	0.105 ± 0.037	0.203 ± 0.058**
IL-8	0.071 ± 0.036	0.237 ± 0.093	0.618 ± 0.188**
Gro-α	0.002 ± 0.001	0.009 ± 0.006	0.015 ± 0.005**
MCP-1	0.286 ± 0.120	0.739 ± 0.255	1.299 ± 0.316**
Genes where no significant change is observed in COPD versus non-COPD			
XDH	0.001 ± 0.000	0.001 ± 0.000	0.001 ± 0.000
HMOX1	0.133 ± 0.020	0.211 ± 0.040	0.333 ± 0.083
GPX3	0.736 ± 0.178	1.030 ± 0.117	0.831 ± 0.206
GSTT1	0.013 ± 0.006	0.022 ± 0.012	0.023 ± 0.008
SOD1	0.058 ± 0.008	0.047 ± 0.010	0.045 ± 0.007
SOD2	0.384 ± 0.090	0.517 ± 0.122	0.660 ± 0.139
SOD3	0.221 ± 0.018	0.234 ± 0.013	0.187 ± 0.013
MMP1	0.001 ± 0.001	0.002 ± 0.002	0.004 ± 0.002
MMP2	0.649 ± 0.113	0.867 ± 0.161	0.816 ± 0.091
MMP9	0.009 ± 0.002	0.016 ± 0.010	0.012 ± 0.004
MMP12	0.002 ± 0.001	0.002 ± 0.001	0.002 ± 0.001
ELA2	0.001 ± 0.000	0.001 ± 0.000	0.001 ± 0.000
TIMP1	0.545 ± 0.148	0.766 ± 0.240	0.931 ± 0.178
SERPINA1	0.529 ± 0.062	0.685 ± 0.084	0.804 ± 0.085
SLPI	0.524 ± 0.173	0.354 ± 0.089	0.293 ± 0.050
IL-13	0.001 ± 0.001	0.001 ± 0.001	0.003 ± 0.001
TNF-α	0.019 ± 0.003	0.034 ± 0.005	0.034 ± 0.006
TNF-α R	0.114 ± 0.013	0.146 ± 0.011	0.131 ± 0.011
IFN-γ	0.001 ± 0.001	0.002 ± 0.001	0.001 ± 0.000
IL-17	0.000 ± 0.000	0.000 ± 0.000	0.000 ± 0.000
GM-CSF	0.000 ± 0.000	0.000 ± 0.000	0.000 ± 0.000
IL-10	0.004 ± 0.001	0.007 ± 0.002	0.006 ± 0.001
BLT1	0.004 ± 0.000	0.004 ± 0.000	0.003 ± 0.000
BLT2	0.001 ± 0.000	0.002 ± 0.000	0.001 ± 0.000
VEGF	0.412 ± 0.053	0.491 ± 0.039	0.397 ± 0.047
MUC5AC	0.011 ± 0.010	0.004 ± 0.004	0.000 ± 0.000
MUC5B	0.001 ± 0.001	0.001 ± 0.001	0.001 ± 0.000
MUC8	0.001 ± 0.000	0.001 ± 0.000	0.001 ± 0.000
CTSL	0.118 ± 0.019	0.099 ± 0.014	0.134 ± 0.018
TGF-β	0.121 ± 0.013	0.161 ± 0.012*	0.159 ± 0.012
EGF	0.000 ± 0.000	0.000 ± 0.000	0.001 ± 0.000
IL-4	0.000 ± 0.000	0.000 ± 0.000	0.000 ± 0.000
IL-5	0.000 ± 0.000	0.000 ± 0.000	0.001 ± 0.000

The data are expressed as mean ± SEM.

* $P < 0.05$, ** $P < 0.01$ compared with the non-COPD never-smoked group (Mann–Whitney U -test).

† $P < 0.05$, †† $P < 0.01$ compared with the non-COPD smoker group (Mann–Whitney U -test).

and V_{25}/HT . These data suggest that impairments in the activities of these enzymes protective against oxidants and xenobiotics could contribute to the pathophysiological changes in COPD. Since reactive xenobiotics also inhibit

antiproteinases and increase proteinase secretion from neutrophils, a combination of oxidative stress and an imbalance of proteinase/antiproteinases may aggravate the airway inflammation and tissue disruption in COPD. On the other hand, the expressions of mRNA for GSTM1 and TIMP2 were significantly increased in lung tissues from non-COPD smokers compared with those from non-COPD subjects who never smoked, but were not increased in lung tissues from COPD subjects. These changes may imply that GSTM1 and TIMP2 could be upregulated due to cigarette smoking as adaptive responses and that these protective mechanisms could be impaired in COPD lungs leading to the development of the disease.

Decreased mRNA expression levels of catalase, GSTP1 and mEPHX, but not GSTM1 and TIMP2, were associated with cigarette smoking history assessed as the amount of cigarettes smoked (pack-years). The relationships between cigarette smoke exposure and the expressions of these enzymes are uncertain. However, some studies have suggested that cigarette smoke exposure may decrease the activities or expressions of catalase and GSTP1. The catalase activity in erythrocytes was decreased in cigarette smokers compared with non-smokers, and was slowly increased in smokers after smoking cessation [21]. The activity of GST in lung tissue was reduced by cigarette smoking [22]. In another study, ongoing cigarette smoke exposure correlated with depressed levels of GSTP1 mRNA expression in buccal cells [23]. Also, cigarette smoke exposure to a previously tobacco-naïve subject induced a transient decline of GSTP1 mRNA expression in such cells [23]. As for mEPHX, however, its activity and mRNA expression have been reported so far to be not affected in rat tissues including lungs [24] or enhanced in the lungs of patients with lung cancer [22] by cigarette smoke exposure. In those studies, the changes of mEPHX activity might have resulted from the relatively short-term effect of cigarette smoke exposure. The negative correlation between the mEPHX mRNA expression in the peripheral lung tissues and cigarette smoking in the present study may suggest a long-term effect of cigarette smoke exposure on the mEPHX expression in the lungs. The mechanisms of the decreases in the mRNA expressions for catalase, GSTP1 and mEPHX in the peripheral lung tissue by the effects of cigarette smoke are unknown. Further investigation that addresses this issue may increase our understanding about the cigarette smoke-induced processes by which the protective mechanisms against toxic substrates in the lungs become impaired.

In the present study, we found elevated expression levels of mRNA for several inflammatory cytokines and chemokines, IL-1β, IL-8, Gro-α and MCP-1, in the lungs from COPD subjects. The cellular inflammatory response in COPD is dominated by neutrophils, macrophages and CD8-positive T lymphocytes in the lungs [3]. It has been reported that increased activities of inflammatory cytokines and chemokines related to these inflammatory cells are associated with COPD and cigarette smoke exposure

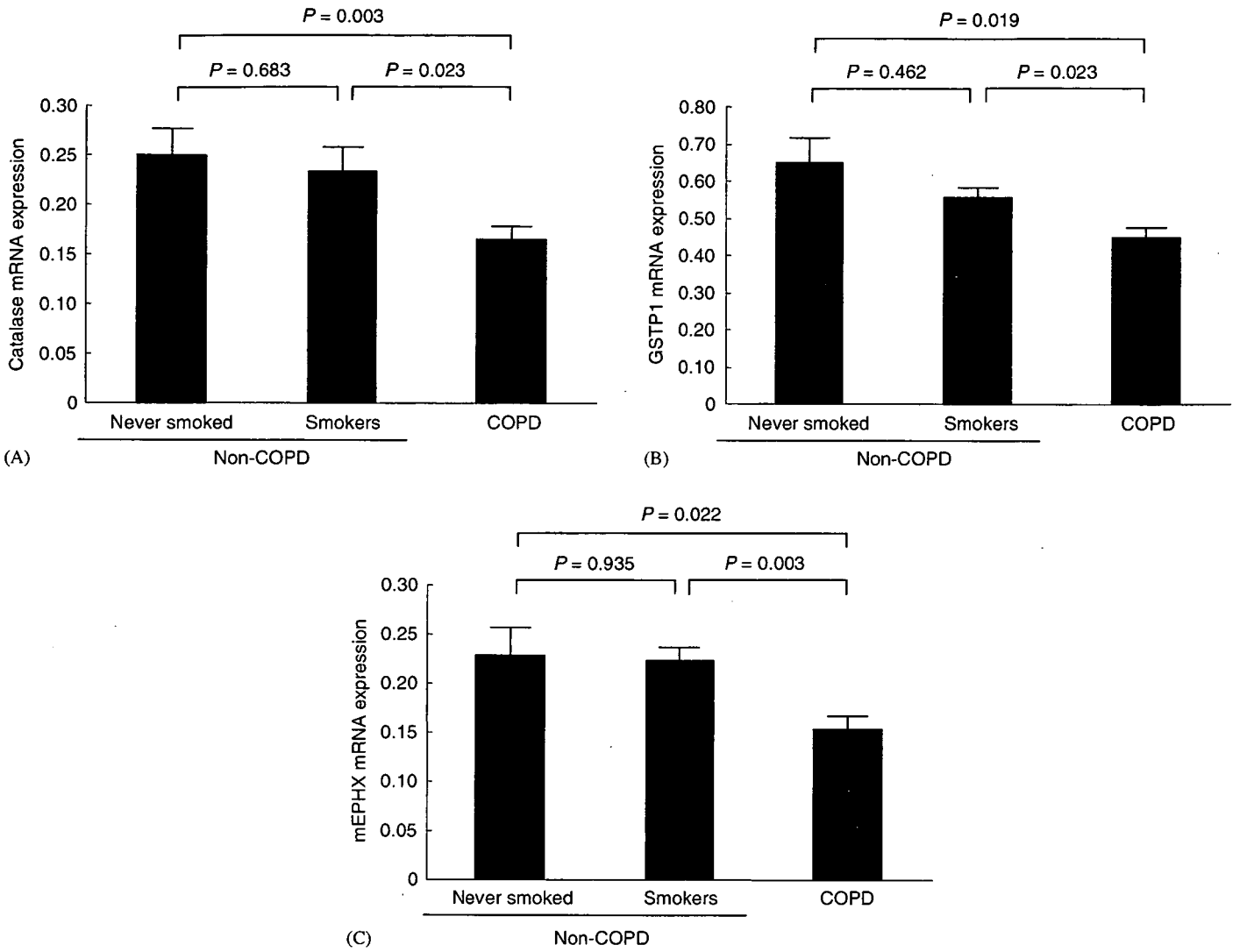


Fig. 1. mRNA expression for catalase (plate A), GSTP1 (plate B) and mEPHX (plate C) in lung tissues from those who never smoked, non-COPD smokers and COPD subjects. Data are shown as mean \pm SEM. P values compared between two groups (Mann-Whitney U -test).

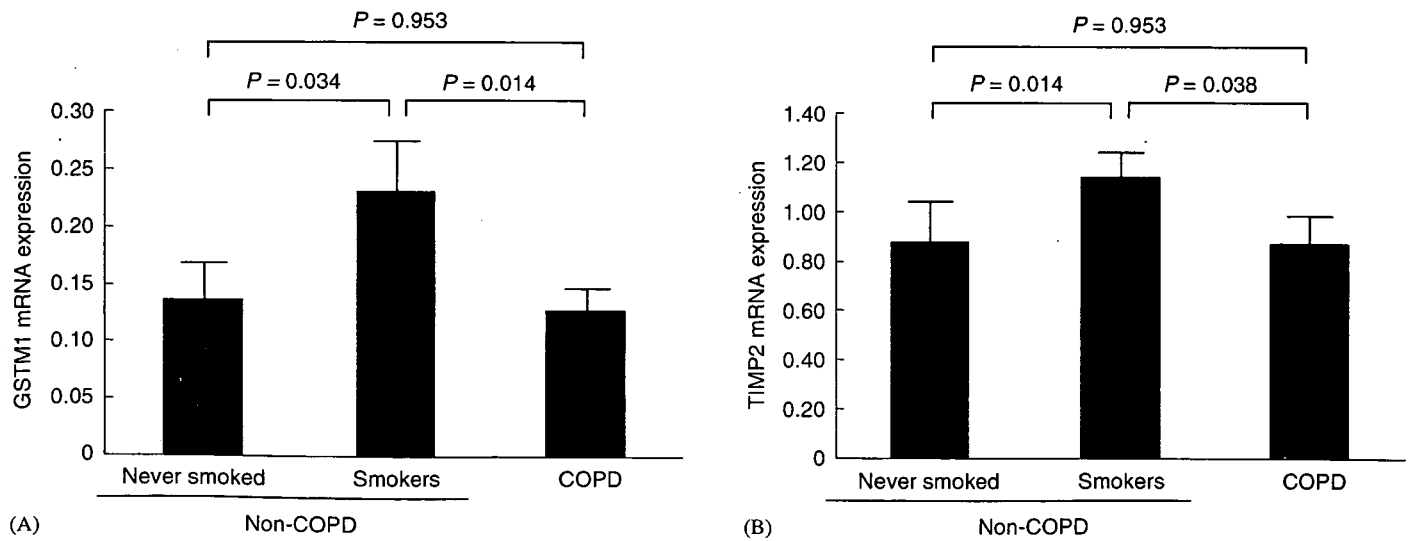


Fig. 2. mRNA expression for GSTM1 (plate A) and TIMP2 (plate B) in lung tissues from those who never smoked, non-COPD smokers and COPD subjects. Data are shown as mean \pm SEM. P values compared between two groups (Mann-Whitney U -test).

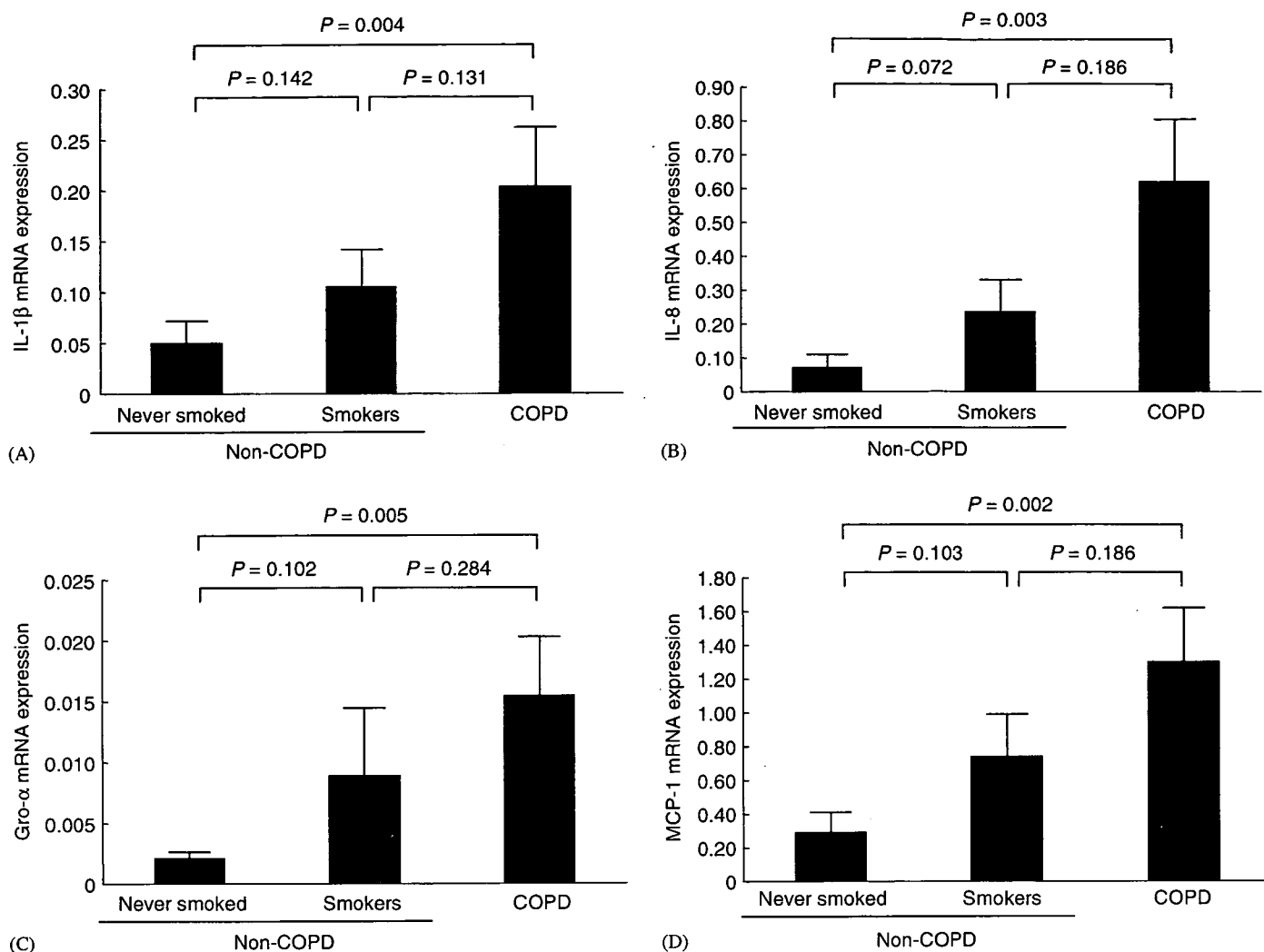


Fig. 3. mRNA expression for IL-1 β (plate A), IL-8 (plate B), Gro- α (plate C) and MCP-1 (plate D) in lung tissues from those who never smoked, non-COPD smokers and COPD subjects. Data are shown as mean \pm SEM. *P* values compared between two groups (Mann–Whitney *U*-test).

[25–30]. Our results are consistent with these previous reports suggesting the involvement of these cytokines in the disease process of COPD.

Although the present study revealed significant changes in the mRNA expressions for several molecules in the whole tissue of the peripheral lungs of COPD subjects, the exact cellular sites of the altered mRNA expressions for individual genes are unknown. As for the chemokines, an analysis of lung tissue using an *in situ* hybridization technique has revealed higher mRNA and protein expression levels for IL-8 and MCP-1 in bronchiolar epithelium in COPD subjects compared to those in smokers without COPD [31]. Recently, Fuke et al. [32] have reported that the expressions of mRNA for IL-8 and MCP-1 are elevated in bronchiolar epithelial cells but not in alveolar macrophages by means of a laser-capture microdissection technique. These results suggest that the increased expression levels of IL-8 and MCP-1 in the peripheral lung tissue found in the present study may be due to the increased expression in epithelial cells.

The limitations of this study are lack of sex and age matching among the groups and lack of smoking history matching between the groups who had cigarette smoking histories. Cigarette smoking history assessed as pack-years positively or negatively correlated with the mRNA expressions for some enzymes and cytokines mRNA expressions. The data suggest that cigarette smoke exposure affects the disease process of COPD, but do not provide an answer for the question of why only some smokers develop COPD. Recently, two studies reported the altered expressions of a number of genes in epithelial cells from smokers [33] and in lung tissues from COPD subjects [12]. Including the present study, three studies have analyzed gene expressions in the lungs of COPD subjects or smokers, but the profiles of the subjects differed in terms of the disease severity and smoking status among the study groups. The collection of data acquired from a large population having differences in disease severity and smoking profiles is needed to further elucidate the mechanisms of disease onset and progression.

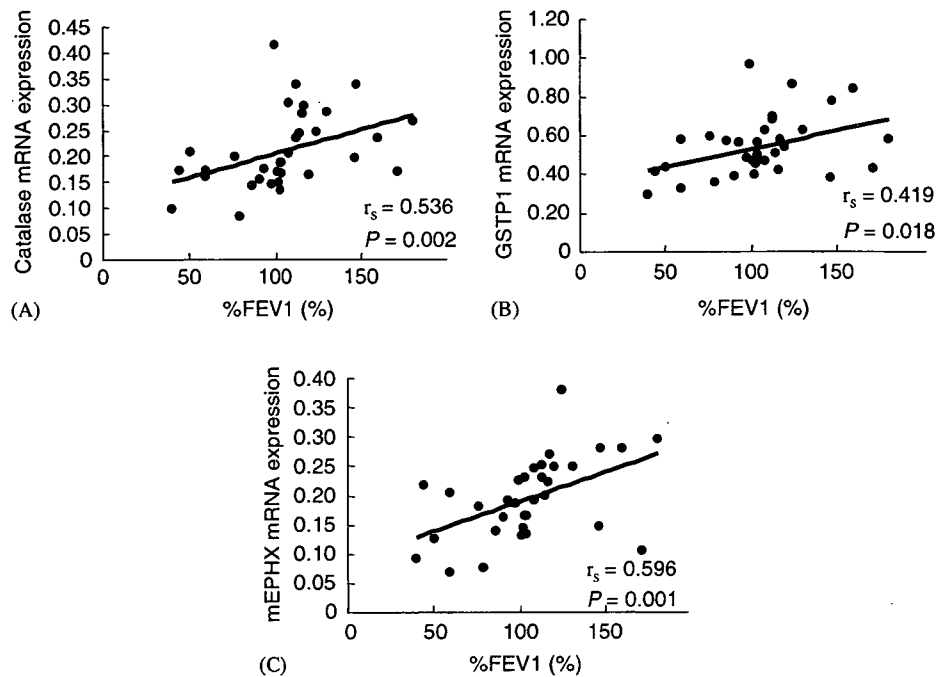


Fig. 4. Relationships between mRNA expressions for catalase (plate A), GSTP1 (plate B) and mEPHX (plate C) and the degree of airflow limitation. Relationship was analysed by Spearman's rank correlation test. A correlation coefficient of Spearman's rank correlation test (r_s) and P -value are indicated.

Table 4
Correlation coefficients of Spearman's rank correlation test (r_s) for relationships between mRNA expression and lung function, smoking history

	Catalase	GSTP1	mEPHX	IL-1 β	IL-8	Gro- α	MCP-1
%FVC	0.457**	0.368*	0.495**	-0.297	-0.320	-0.349*	-0.262
%FEV ₁	0.536**	0.419*	0.596**	-0.316	-0.329	-0.342	-0.280
FEV ₁ /FVC%	0.433*	0.411*	0.423*	-0.317	-0.398*	-0.392*	-0.330
V ₅₀ /HT	0.420*	0.368*	0.402*	-0.357*	-0.383*	-0.375*	-0.373*
V ₂₅ /HT	0.432*	0.354*	0.442*	-0.264	-0.328	-0.358*	-0.277
Smoking (pack-year)	-0.518**	-0.514**	-0.399*	0.567**	0.511**	0.573**	0.561**

r_s is a correlation coefficient of Spearman's rank correlation test.

* $P < 0.05$.

** $P < 0.01$ (Spearman's rank correlation test).

In summary, we found decreased mRNA expressions for catalase, GSTP1, GSTM1, mEPHX and TIMP2 and increased mRNA expressions for IL-1 β , IL-8, Gro- α and MCP-1 in peripheral lung tissues from COPD subjects. Most of these changes were associated with the degree of airflow limitation and with cigarette smoking habit. The impairment of protective mechanisms against oxidants and xenobiotics as well as upregulation of CXC- and CC-chemokines seems to be associated with cigarette smoking and to be involved in the pathogenesis of COPD. Interventions targeting these molecules may provide a possible strategy for modifying the disease process of COPD.

Acknowledgements

We are grateful to Drs. Kaoru Koike and Shinsaku Ueda for assistance in recruiting subjects and in preparing samples, to Mrs. and Ms. Shigeru Morita, Hiroki Iwashita,

Yumiko Uno and Masashi Yamasaki for assistance with RT-PCR and to Mr. Brent Bell for reading the manuscript. MT and HS do not have a financial relationship with a commercial entity that has an interest in the subject of this manuscript. AK received a scholarship of \$30,000 in 2004 from Pfizer. YK and TA do not have a financial relationship with a commercial entity that has an interest in the subject of this manuscript. TM and AN are employees of Takeda. HO does not have a financial relationship with a commercial entity that has an interest in the subject of this manuscript. TH received \$20,000 in 2003 and \$20,000 in 2004 from Takeda as research grants. MI received \$11,000 in 2004 for serving on an advisory board for Takeda.

References

- [1] Murray CJ, Lopez AD. Evidence-based health policy—lessons from the global burden of disease study. *Science* 1996;274:740–3.

- [2] Global Initiative for Chronic Obstructive Lung Disease. Global strategy for the diagnosis, management, and prevention of chronic obstructive pulmonary disease. NHLBI/WHO Workshop Report, Updated 2004. National Heart, Lung, and Blood Institute, National Institutes of Health, Bethesda, Maryland, USA.
- [3] Saetta M, Turato G, Maestrelli P, Mapp CE, Fabbri LM. Cellular and structural bases of chronic obstructive pulmonary disease. *Am J Respir Crit Care Med* 2001;163:1304–9.
- [4] Barnes PJ. Mechanisms in COPD: differences from asthma. *Chest* 2000;117:10S–4S.
- [5] MacNee W. Oxidative stress and lung inflammation in airways disease. *Eur J Pharmacol* 2001;429:195–207.
- [6] Cantin AM, Fells GA, Hubbard RC, Crystal RG. Antioxidant macromolecules in the epithelial lining fluid of the normal human lower respiratory tract. *J Clin Invest* 1990;86:962–71.
- [7] Stockley RA. Neutrophils and protease/antiprotease imbalance. *Am J Respir Crit Care Med* 1999;160:S49–52.
- [8] Ichinose M, Sugiura H, Yamagata S, Koarai A, Tomaki M, Ogawa H, et al. Xanthine oxidase inhibition reduces reactive nitrogen species production in COPD airways. *Eur Respir J* 2003;22:457–61.
- [9] Ichinose M, Sugiura H, Yamagata S, Koarai A, Shirato K. Increase in reactive nitrogen species production in chronic obstructive pulmonary disease airways. *Am J Respir Crit Care Med* 2000;162:701–6.
- [10] Matskevich GN, Korotkina RN, Devlikanova A, Vishnevskii AA, Karelin AA. The study of the antioxidant enzymes in erythrocytes in lung diseases. *Patol Fiziol Eksp Ter* 2003;23–5.
- [11] Toth KM, Berger EM, Beehler CJ, Repine JE. Erythrocytes from cigarette smokers contain more glutathione and catalase and protect endothelial cells from hydrogen peroxide better than do erythrocytes from nonsmokers. *Am Rev Respir Dis* 1986;134:281–4.
- [12] Ning W, Li CJ, Kaminski N, Feghali-Bostwick CA, Alber SM, Di YP, et al. Comprehensive gene expression profiles reveal pathways related to the pathogenesis of chronic obstructive pulmonary disease. *Proc Natl Acad Sci USA* 2004;101:14895–900.
- [13] Cantlay AM, Smith CA, Wallace WA, Yap PL, Lamb D, Harrison DJ. Heterogeneous expression and polymorphic genotype of glutathione S-transferases in human lung. *Thorax* 1994;49:1010–4.
- [14] Ishii T, Matsuse T, Igarashi H, Masuda M, Teramoto S, Ouchi Y. Tobacco smoke reduces viability in human lung fibroblasts: protective effect of glutathione S-transferase P1. *Am J Physiol Lung Cell Mol Physiol* 2001;280:L1189–95.
- [15] Omiecinski CJ, Aicher L, Holubkov R, Checkoway H. Human peripheral lymphocytes as indicators of microsomal epoxide hydrolase activity in liver and lung. *Pharmacogenetics* 1993;3:150–8.
- [16] Ishii T, Matsuse T, Teramoto S, Matsui H, Miyao M, Hosoi T, et al. Glutathione S-transferase P1 (GSTP1) polymorphism in patients with chronic obstructive pulmonary disease. *Thorax* 1999;54:693–6.
- [17] Cheng SL, Yu CJ, Chen CJ, Yang PC. Genetic polymorphism of epoxide hydrolase and glutathione S-transferase in COPD. *Eur Respir J* 2004;23:818–24.
- [18] Yoshikawa M, Hiyama K, Ishioka S, Maeda H, Maeda A, Yamakido M. Microsomal epoxide hydrolase genotypes and chronic obstructive pulmonary disease in Japanese. *Int J Mol Med* 2000;5:49–53.
- [19] Ohnishi K, Takagi M, Kurokawa Y, Satomi S, Kontinen YT. Matrix metalloproteinase-mediated extracellular matrix protein degradation in human pulmonary emphysema. *Lab Invest* 1998;78:1077–87.
- [20] Hirano K, Sakamoto T, Uchida Y, Morishima Y, Masuyama K, Ishii Y, et al. Tissue inhibitor of metalloproteinases-2 gene polymorphisms in chronic obstructive pulmonary disease. *Eur Respir J* 2001;18:748–52.
- [21] Zhou JF, Yan XF, Guo FZ, Sun NY, Qian ZJ, Ding DY. Effects of cigarette smoking and smoking cessation on plasma constituents and enzyme activities related to oxidative stress. *Biomed Environ Sci* 2000;13:44–55.
- [22] Petruzzelli S, Camus AM, Carrozzi L, Ghelarducci L, Rindi M, Menconi G, et al. Long-lasting effects of tobacco smoking on pulmonary drug-metabolizing enzymes: a case-control study on lung cancer patients. *Cancer Res* 1988;48:4695–700.
- [23] Spivack SD, Hurteau GJ, Jain R, Kumar SV, Aldous KM, Gierthy JF, et al. Gene-environment interaction signatures by quantitative mRNA profiling in exfoliated buccal mucosal cells. *Cancer Res* 2004;64:6805–13.
- [24] Gielen JE, Goujon F, Sele J, Van Canfort J. Organ specificity of induction of activating and inactivating enzymes by cigarette smoke and cigarette smoke condensate. *Arch Toxicol Suppl* 1979:239–51.
- [25] Kuschner W, D'Alessandro A, Wong H, Blanc P. Dose-dependent cigarette smoking-related inflammatory responses in healthy adults. *Eur Respir J* 1996;9:1989–94.
- [26] Ekberg-Jansson A, Andersson B, Bake B, Bojsten M, Enander I, Rosengren A, et al. Neutrophil-associated activation markers in healthy smokers relates to a fall in DL (CO) and to emphysematous changes on high resolution CT. *Respir Med* 2001;95:363–73.
- [27] Rusznak C, Mills PR, Devalia JL, Sapsford RJ, Davies RJ, Lozewicz S. Effect of cigarette smoke on the permeability and IL-1beta and sICAM-1 release from cultured human bronchial epithelial cells of never-smokers, smokers, and patients with chronic obstructive pulmonary disease. *Am J Respir Cell Mol Biol* 2000;23:530–6.
- [28] Keatings VM, Collins PD, Scott DM, Barnes PJ. Differences in interleukin-8 and tumor necrosis factor-alpha in induced sputum from patients with chronic obstructive pulmonary disease or asthma. *Am J Respir Crit Care Med* 1996;153:530–4.
- [29] Traves SL, Culpitt SV, Russell RE, Barnes PJ, Donnelly LE. Increased levels of the chemokines GROalpha and MCP-1 in sputum samples from patients with COPD. *Thorax* 2002;57:590–5.
- [30] Masubuchi T, Koyama S, Sato E, Takamizawa A, Kubo K, Sekiguchi M, et al. Smoke extract stimulates lung epithelial cells to release neutrophil and monocyte chemotactic activity. *Am J Pathol* 1998;153:1903–12.
- [31] de Boer WI, Sont JK, van Schadewijk A, Stolk J, van Krieken JH, Hiemstra PS. Monocyte chemoattractant protein 1, interleukin 8, and chronic airways inflammation in COPD. *J Pathol* 2000;190:619–26.
- [32] Fuke S, Betsuyaku T, Nasuhara Y, Morikawa T, Katoh H, Nishimura M. Chemokines in bronchiolar epithelium in the development of chronic obstructive pulmonary disease. *Am J Respir Cell Mol Biol* 2004;31:405–12.
- [33] Hackett NR, Heguy A, Harvey BG, O'Connor TP, Luetlich K, Flieder DB, et al. Variability of antioxidant-related gene expression in the airway epithelium of cigarette smokers. *Am J Respir Cell Mol Biol* 2003;29:331–43.