

Maeda T, Yamada H, Akao N, Iga M, Endo T, Koibuchi T, Odawara T, Iwamoto A, Fujii T.	Unusual radiological findings of <i>Fasciola hepatica</i> infection with a huge cystic and multilocular lesions.	Internal Medicine	47	449-452	2008
赤尾信明	臨床検査に必要な寄生虫感染症の知識	Medical Technology	36	12-16	2008
大友弘士, 赤尾信明	感染症に及ぼす地球温暖化の影響	新感染症学(下)-新時代の基礎・臨床研究-日本臨牀		653-658	2007
赤尾信明	変貌するトキソカラ症と新しい動物モデル(1).	東獣ジャーナル	45(12)	15-17	2007
赤尾信明	変貌するトキソカラ症と新しい動物モデル(1).	東獣ジャーナル	45(11)	16-18	2007



Trypanosoma cruzi infection from the view of CD8⁺ T cell immunity — An infection model for developing T cell vaccine

Yasushi Miyahira *

Department of Global Infectious Diseases and Tropical Medicine, National Defense Medical College, 3-2 Namiki, Tokorozawa City, Saitama 359-8513 Japan

Received 27 June 2007; received in revised form 23 July 2007; accepted 24 July 2007

Available online 1 August 2007

Abstract

Chagas' disease is caused by *Trypanosoma cruzi* (*T. cruzi*) which was once prevalent in Central and South America. Although the recent success in Triatoma vector control has made the disease being possibly "extinct" in the near future, the development of effective preventive and therapeutic vaccines is still necessary to prevent the resurgence of the neglected infection. In addition to the importance for containing the disease, *T. cruzi* infection presents unique features for elucidating hosts' immune responses against intracellular infectious agents. Due to its biological capacity for invading into principally any types of cells and for causing systemic infection which damages particularly muscle and neural cells, T cell immunity is critical for resolving its infection. Although T cell-mediated immune responses have been, so far, extensively investigated in viral and bacterial infections, parasitic infection such as malaria has presented epoch-making discovery in T cell immunity. Recent advances in the analyses of T cell-mediated immune responses against *T. cruzi* infection now make this infectious disease potentially more suitable for detecting subtle immunological changes in hosts' immune defense upon modifying immune system. The current review focuses on the usefulness of *T. cruzi* infection as a model for developing effective CD8⁺ T cell-mediated vaccine against intracellular infectious agents.

© 2007 Elsevier Ireland Ltd. All rights reserved.

Keywords: CD8⁺ T cells; *Trypanosoma cruzi*; T cell vaccine

1. Introduction

Trypanosoma cruzi (*T. cruzi*) is the etiological agent of Chagas' disease in Central and South America [1]. We see drastic epidemiological changes in Chagas' disease since the initiation of large-scale vector control program which is called "Southern Cone Initiative" [2,3]. As the incidence of Triatoma vector-transmitted Chagas' disease has dramatically declined, the importance of the disease has become controversial from the clinical point of view. However, by considering the zoonotic feature of Chagas' disease which is even prevalent among wild and domestic animals, it is too optimistic to expect not only its eradication but even its control. One more important issue which we should consider in Chagas' disease is that there are

thousands of chronically-infected people around the world [2,3], and that there is no concrete surveillance system to detect and control the disease. *T. cruzi* infection, therefore, still holds an enormous potential to resurge, once the economic back-up to the current effort for vector control program discontinues.

Since the successful vaccination and eradication campaign against smallpox [4], the induction of protective immune responses by vaccines has become a mainstream strategy to prevent the onset of and death from infectious diseases. Most of the diseases had been considered preventable by the induction of neutralizing antibodies [5,6]; however, it's now become obvious that some infectious agents such as the human immunodeficiency virus (HIV) could be hardly controlled well by the conventional vaccine strategies [6,7]. Among various immunological effector mechanisms including innate and acquired immunity, T cells are critical for resolving intracellular infectious diseases [8,9]. Since CD8⁺ T cells possess effector function to suppress the replication of infectious pathogens in vivo [6], the research area aiming for the induction of CD8⁺ T cell-mediated protective immunity has

* Mailing address: Department of Global Infectious Diseases and Tropical Medicine, National Defense Medical College, 3-2 Namiki, Tokorozawa City, Saitama 359-8513 Japan. Tel.: +81 4 2995 1576; fax: +81 4 2996 5197.

E-mail address: miyahira@ndmc.ac.jp.

become a center of intense research efforts to find control measures against antibody-resistant pathogens [10,11].

Characterization of T cell immunity has been, so far, achieved mainly in viral and bacterial infections. Lymphocytic choriomeningitis virus infection is well known as a useful infection model in immunology especially represented by the discovery of MHC restriction [12]. Enormous efforts for developing T cell vaccine against HIV infection have led to the new discoveries in T cell immunity [13]. Analyses of hosts' T cell immunity upon *Listeria monocytogenes* infection contributed to the detailed characterization of CD8⁺ T cell immune responses [14].

Regarding the parasitic infections, malaria is literally the sole parasitic disease which added substantial knowledge to the advancement of research on CD8⁺ T cells [15]. Prime-boost vaccination regimen, which demonstrated, for the first time, that the augmentation or "boost" of CD8⁺ T cell immune responses is feasible, was discovered during the research on malaria vaccine development [16,17]. In addition, the importance of interleukin (IL)-4 in CD8⁺ T cell immune responses was first documented in malaria research [18].

Despite these intense efforts for developing preventive and therapeutic CD8⁺ T cell-mediated vaccine against intracellular infectious agents, the goal is still far away to reach and there are still many unsolved questions to be answered in T cell immunity. Chagas' disease, besides its clinical importance, presents unique features in immunological interactions between host and infectious agent. Of particular interest, as it invades and replicates in essentially all types of cells of mammalian hosts, T cell-mediated immunity is critical for resolving the infection [19]. The depletion of CD8⁺ or CD4⁺ T cells results in unrelenting parasitemia and a fatal outcome in mice [20–22], supporting the importance of T cell immunity in Chagas' disease. Since *T. cruzi* possesses much more antigens than viruses or bacteria, the complexity of parasitic protozoa could be potentially disadvantageous for analyzing host–parasite relationships. However, taking advantage of *T. cruzi* infection could be, on the contrary, beneficial for searching for new phenomena in infections, which might be hardly visible, and therefore could not be elucidated in viral or bacterial infections. A newly-established experimental system to analyze T cell immunity in experimental Chagas' disease would be a useful infection model to develop effective T cell vaccine, a long-awaited strategy to combat intracellular infectious diseases.

2. CD8⁺ T cells as a main effector for developing T cell vaccine

The typical kinetics of CD8⁺ T cell immune responses after infections or vaccinations is described in Fig. 1. Although CD8⁺ T cells initiate their replication after just a brief encounter with specific antigen and expand swiftly (Expansion phase) [23,24], the responses of antigen-specific CD8⁺ T cells dwindle quickly, leading to the steep decrease of its cell number (Contraction phase) [25]. The fade of CD8⁺ T cell immune responses, however, does not imply that the primed antigen-specific CD8⁺ T cells revert to the initial baseline, and in reality, a part of the

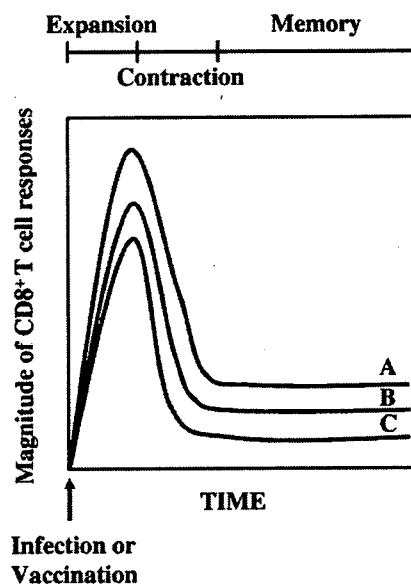
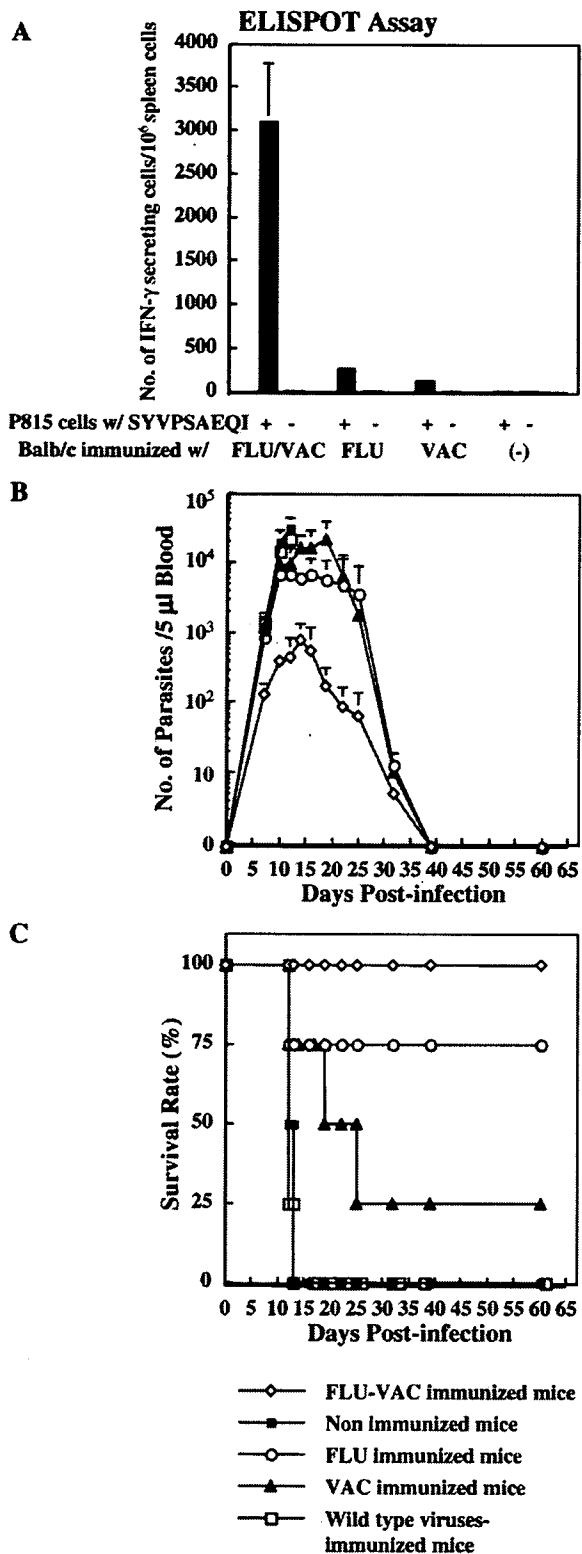


Fig. 1. The typical kinetics of CD8⁺ T cell immune responses after infections or vaccinations. CD8⁺ T cells initiate their replication after just a brief encounter with specific antigen and expand swiftly (expansion phase). The responses of antigen-specific CD8⁺ T cells dwindle quickly, leading to the steep decrease of its cell number (contraction phase). The fade of CD8⁺ T cell immune responses does not imply that the primed antigen-specific CD8⁺ T cells revert to the initial baseline, and in reality, a part of the cells remain alive as memory T cells (memory phase). Naïve and memory T cells are different both in phenotypes and in biological features. The maintenance of memory T cells requires IL-7 and IL-15 for their survival, but does not require the presence of any specific antigens. The memory CD8⁺ T cells are stably maintained and last even for life. One of the critical factors for determining the size of antigen-specific memory T cells is the initial burst size of CD8⁺ T cell responses. The bigger the initial CD8⁺ T cell burst size is, the more memory T cells remain for a long term (Line A>B>C). The genesis of memory T cells is recognized as one of the important factors for the development of effective T cell vaccine, since the remaining number of memory T cells is critical for the maintenance of long-term protective immunity against infections.

cells remain alive as memory T cells (Memory phase) [26]. Naïve and memory T cells are different both in phenotypes and in biological features [27,28]. The maintenance of memory T cells requires IL-7 and IL-15 for their survival, but does not require the presence of any specific antigens [8]. The memory CD8⁺ T cells are stably maintained and last even for life. One of the critical factors for determining the size of antigen-specific memory T cells is the initial burst size of CD8⁺ T cell responses [26]. As shown in Fig. 1, the bigger the initial CD8⁺ T cell burst size is, the more memory T cells remain for a long term. The genesis of memory T cells is recognized as one of the important factors for the development of effective T cell vaccine, since the remaining number of memory T cells and the induction of a balanced ratio of memory T cell subsets are correlated with the maintenance of long-term protective immunity against infections [29]. In another word, maintaining more memory T cells implies that the recall CD8⁺ T cell responses after re-infection could be faster and more effective for suppressing the growth of re-invading pathogens. In that sense, to discover a regimen for the genesis of more memory T cells in number will be critically needed to develop an innovative future vaccination strategy.



3. Prime-boost vaccination regimen

Enumeration of antigen-specific CD8⁺ T cells became feasible by several methods [30–33]. Since CD8⁺ T cells are well known for possessing cytolytic capability, ⁵¹Chromium-release assay became a conventional way for detecting the presence of cells [30]. Technological advances for analyzing CD8⁺ T cells include interferon- γ (IFN- γ) ELISPOT assay [31], intracellular staining for IFN- γ [32] and MHC-tetramer/pentamer technology [32,33]. Since IFN- γ is regarded as one of the most important cytokines for containing infectious agents, the enumeration of IFN- γ -secreting antigen-specific CD8⁺ T cells by ELISPOT assay has become a valuable way for assessing vaccine efficacy [34]. In the majority of cases, the induction of more antigen-specific CD8⁺ T cells in number enumerated by IFN- γ ELISPOT assay is well correlated with the improved protective immunity against infections [35].

Prime-boost vaccination regimen is an epoch-making vaccine strategy, since the protocol has demonstrated, for the first time, that the boost of CD8⁺ T cell responses is feasible [16,17]. Although the protocol is now being applied to develop T cell vaccines against several infectious agents [34,35], there are still many points to be modified to improve its vaccine efficacy. In case of HIV vaccine development, the feasibility of CD8⁺ T cell-mediated preventive vaccine is now questioned due to both the immunological features of CD8⁺ T cell immune responses and the biological features of HIV itself [10,13]. The efficacy of prime-boost vaccination regimen against malaria in humans was also not as good as expected [36]. Therefore, despite the general agreement that the protocol is innovative, the more detailed characterization and the accumulation of knowledge on T cell immunity should be achieved to improve the protocol from the view of practical vaccine development.

Fig. 2. Protection of mice by immunization with the recombinant influenza and vaccinia viruses against the lethal infection of *P. yoelii* CSP-expressing *T. cruzi*. (A) Each of the six mice was first immunized with the 5×10^3 PFU SYVPSAEQI-expressing recombinant influenza virus, and then given a booster injection of the 2×10^7 PFU CSP-expressing recombinant vaccinia virus, i.p. Seventeen days after the last immunizing dose and 1 day before the *T. cruzi* challenge infection, two mice were sacrificed and their spleens were removed. The standard ELISPOT assay was performed by using freshly isolated spleen cells as effector cells. Spleen cells isolated from mice immunized with only recombinant influenza virus, from mice immunized with only recombinant vaccinia virus or from non-immunized mice were included for the assay. The results are described as mean values of IFN- γ -secreting cells per 10^6 freshly isolated spleen cells \pm SE. (B, C) Twenty mice in five groups, four mice in each group, were treated as follows. The first group received recombinant influenza virus with a booster injection of recombinant vaccinia virus (open diamonds). The second group received 5×10^3 PFU of recombinant influenza virus (open circles), while the third received 2×10^7 PFU of recombinant vaccinia virus for immunization (filled triangles). The remaining four mice were first immunized with 5×10^3 PFU wild-type influenza virus, s.c., and then given a booster injection of 2×10^7 PFU wild-type vaccinia virus, i.p., 2 weeks later (open squares). Non-immunized mice were included for the study (filled squares). After immunizations, all mice were challenged with 8×10^5 *P. yoelii* CSP-expressing *T. cruzi*, i.m., 16 days after the last immunizing dose. The time course of parasitemia (B) and the survival rate against the infection (C) of each group were monitored. The figure is reproduced from the Ref [42] with permission.

4. Vaccine-induced CD8⁺ T cells could protect mice from *T. cruzi* infection

There were circumstantial evidences that CD8⁺ T cell-dependent protective immunity is induced in *T. cruzi* infection [19–22]. One example is that, by depleting CD8⁺ T cells in vivo by administering anti-CD8 mAb, the course of *T. cruzi* infection was exacerbated [20]. Another example is that the *T. cruzi* antigen-encoding DNA vaccine-induced antigen-specific CD8⁺ T cells [37–41]. However, in these initial DNA vaccine reports, there were no studies on the in vivo depletion of specific immune cells; therefore, indicating that the protective immunity might depend on not only the CD8⁺ T cells but the other effector mechanisms such as antibodies. The first indication that the vaccine-induced CD8⁺ T cells are effective for conferring protective immunity against *T. cruzi* infection came from an artificial system in which a murine malaria-derived antigen was used to transform *T. cruzi* [42]. The transformation of *T. cruzi* with a gene encoding *Plasmodium yoelii* circumsporozoite protein (CSP) was conducted due to the unavailability of identified CD8⁺ T cell-inducing epitope on intrinsic *T. cruzi* antigens at that time. The generation of CSP-expressing *T. cruzi* made the analyses of CD8⁺ T cell immunity during the infection feasible, since the CSP contains a well-characterized CD8⁺ T cell-inducing, H-2K^d-restricted epitope, SYVPSAEQI [43]. As shown in Fig. 2, the prime-boost immunization of BALB/c mice with SYVPSAEQI-expressing influenza virus followed by the CSP-expressing vaccinia virus protected them from the lethal infection of CSP-expressing *T. cruzi* (Fig. 2B, C). The protective immunity depended on the induction of CD8⁺ T cells (Fig. 2A), since their depletion by administering anti-CD8 mAb to immunized mice before infection completely abrogated the vaccine efficacy [42]. The results demonstrated, for the first time, that the vaccine-induced CD8⁺ T cells could protect mice from *T. cruzi* infection.

5. *T. cruzi* antigens which confer CD8⁺ T cell-dependent protective immunity

The identification of CD8⁺ T cell-inducing epitope on intrinsic *T. cruzi* antigens had been awaited for years. It was first achieved in 1997, by identifying VDYNFTIV/K^b on a *T. cruzi* trans-sialidase antigen [44]. Identification of more CD8⁺ T cell-inducing epitopes on *T. cruzi* antigens, VNHRFTLV/K^b [45], VNHDFTVV/K^b [45], IYNVGQVSI/K^d [46], ANYNFTLV/K^b [40], ELTMYKQLL/K^b [47], TEWETGQI/K^k [48] or ANYKFTLV/K^b [49], was followed (Table 1). Among these epitopes, there is an indication that the CD8⁺ T cells responding against ANYNFTLV and ANYKFTLV bind to the same T cell receptor [49]. CD8⁺ T cell responses against H-2K^b-restricted ANYNFTLV [40] or ANYKFTLV [49] consist of nearly 30% of all CD8⁺ T cells at a peak after Brazil strain of *T. cruzi* infection [49] or after ANYNFTLV-expressing recombinant virus vector vaccination [50 and Miyahira et al., unpublished observation]. The epitopes, ANYNFTLV/ANYKFTLV, present one of the strongest documented responses against a single epitope in any infectious disease [49], and could be the best and suitable

epitopes for elucidating hosts' CD8⁺ T cell responses against *T. cruzi* infection.

6. DNA vaccine-induced protective immunity against *T. cruzi* infection

Since the DNA itself was demonstrated to be a potent immunomodulator for the induction of hosts' immune responses, DNA vaccine has been hoped to become a mainstream technology to perform immunizations which should be both immunogenic and safe [51]. Among several potential advantages, DNA is easier to be purified than protein; therefore, there is no need to perform laborious purification procedure by which protein-based immunogens must be processed to reach a clinical grade. Considering numerous reports on the efficacy of DNA vaccine against a variety of infectious diseases, it was not surprising to find that it was also effective for conferring protective immunity against *T. cruzi* infection [37,38,40]. The characterization of DNA vaccine-induced protective immunity against intracellular infectious agents revealed its dependence not only on the induction of neutralizing antibodies but on the induction of antigen-specific CD8⁺ T cell responses [52]. Despite the optimism and expectations during the initial stage of technological advancement, however, recent studies demonstrated that DNA vaccine is not as immunogenic as expected in humans, and suggested that modifications for augmenting immune responses should be considered by incorporating adjuvants into DNA vaccine-based regimens [51]. Several approaches to the optimization of DNA vaccine are the appropriate choice of a vector including the promoter-enhancer complex, the optimization of codon usage, the use of N-terminal ubiquitination signals, the unmethylated CpG sequences [51]. Cytokines or chemokines as plasmids or proteins delivered

Table 1
Intrinsic *T. cruzi* antigen-derived, CD8⁺ T cell-inducing epitopes recognized by murine cells

Sequence	H-2 haplotype	<i>T. cruzi</i> antigen	Reference
VDYNFTIV	K ^b	TSA-1	Wizel et al., 1997 [44]
VNHDFTVV	K ^b	ASP-1	
VNHRFTLV	K ^b	ASP-2	
KNYPFSSI	K ^b	ASP-1	Low et al., 1998 [45]
NTLVFPLV	K ^b	ASP-1	
DNRQYSFV	K ^b	ASP-1	
EKEANALYLWV	D ^b /K ^b	ASP-1	
IYNVGQVSI	K ^d	TCTS	Rodrigues et al., 1999 [46]
ANYNFTLV	K ^b	TSSA	Katae et al., 2002 [40]
ELTMYKQLL	K ^b	LYT1	Fralish and Tarleton, 2003 [47]
TEWETGQI	K ^k	ASP-2	Araujo et al., 2005 [48]
ANYKFTLV	K ^b	trans-sialidase	
ANYKFTLL	K ^b	trans-sialidase	
ANYDFTLV	K ^b	trans-sialidase	Martin et al., 2006 [49]
ANYNFTLL	K ^b	trans-sialidase	
VNYDFTLV	K ^b	trans-sialidase	
VNYDFTIV	K ^b	trans-sialidase	

simultaneously with DNA vaccines are other examples for achieving the optimization [51]. Table 2 summarizes genetic adjuvants which are effective for the enhanced/diminished induction of antigen-specific CD8⁺ T cells. Some of them were also assessed with regard to the improved protective immunity against the infection-induced pathologies [40,41,51,53,54].

By combining *T. cruzi* antigen-encoding DNA with cytokine-encoding genetic adjuvant, both the enhancement of CD8⁺ T cell responses and improved protective immunity against lethal infection could be achieved. Either an IL-12-encoding DNA alone [40] or an IL-12 gene with a gene encoding granulocyte-macrophage colony stimulating factor (GM-CSF) [41] was an effective genetic adjuvant for both the better induction of CD8⁺ T cells and improved protection against *T. cruzi*. These results, which were demonstrated in *T. cruzi* infection, were in accordance with previous reports demonstrated against other infectious agents [51,53]. This consistency between *T. cruzi* infection and other infectious diseases indicates that the scientific achievements demonstrated in *T. cruzi* infection would be generalized to the better vaccination strategy against other infectious diseases. IL-12 is a crucial component for the induction of long-lasting protective immunity against intracellular infectious agents [55]. The better management for reducing its toxic effect would make the use of IL-12 as an adjuvant reach to a clinical application [56].

In addition to IL-12 and GM-CSF, the gene encoding the ligand to receptor activator for NFκB (RANKL) was also effective for enhancing antigen-specific CD8⁺ T cell responses [54]. By co-administering a *T. cruzi* antigen-encoding plasmid DNA (pTSSA) with RANKL gene (pRANKL), the induced CD8⁺ T cell responses exhibited approximately two- to three-fold increase in number (Fig. 3). The effect was not restricted only to the use of DNA vaccine, since the co-administration of RANKL gene with the recombinant influenza virus expressing *P. yoelii* CSP-derived CD8⁺ T cell-inducing epitope significantly augmented the induction of CD8⁺ T cell responses [54]. Considering the immunological effect of RANKL on hosts' immune responses [57], the adjuvant effect of RANKL gene could be probably attributed to the extended survival of dendritic cells which are potent antigen-presenting cells. Since the RANK-RANKL interaction is critical for bone metabolism [57], the over-expression of RANKL in vivo could cause adverse effect. This point will have to be taken into consideration to elucidate its immunological effect further and to achieve its future clinical application.

7. Roles of costimulatory molecules affecting the protective immunity against *T. cruzi*

Costimulatory molecules are vital for the appropriate activation and differentiation of T cells. There are a wide variety of costimulatory molecules which have been reported so far [58,59]. Each molecule presents unique features for immunological function. Targeting on the molecules would be one of the key elements for developing successful CD8⁺ T cell vaccine. However, there are few reports elucidating the immunological function of those molecules during *T. cruzi* infection despite their enormous potential for contributing to the better understanding for the disease.

CD28–CD80/CD86 costimulatory pathway is one of the few which were analyzed relatively in detail in *T. cruzi* infection [60]. Deficiency of CD28 molecule or the simultaneous blockade of CD80/CD86 molecules resulted in the increased susceptibility against *T. cruzi* infection [60]. It was correlated with the decreased antigen-specific IFN-γ secretion and the decreased induction of antigen-specific CD8⁺ T cell responses. CD28–CD80/CD86 costimulatory pathway is also critical to induce protective immunity when DNA vaccine is used as a vaccine immunogen [60]. Without CD28 molecule, both the induction of CD8⁺ T cells and the DNA vaccine-induced protective immunity was abrogated.

Importantly, the requirement for this costimulatory pathway for the induction of immunological resistance has varied depending on infectious agents (Table 3) [60–76]. Although there are no definite explanations for the differential requirement of costimulations to achieve biodefense against various infections, it indicates that the elucidation of each costimulatory molecule against each infectious agent should be completed to explore for better immunological intervention strategies against either known or emerging infectious diseases.

8. Recombinant virus vector vaccination against *T. cruzi* infection

Vaccination using recombinant virus vectors has become a promising strategy to induce T cell immunity against

Table 2
Genetic adjuvants in vaccinations

Cytokines, chemokines, costimulatory molecules	Induction of CD8 ⁺ T cell responses	Protective immunity against <i>T. cruzi</i>	Protective immunity against other infections	Refs.
IL-1α	IL-15			
TNF-α	IL-18			
TNF-β	CCR7 ligand SLC			
IFN-γ	CCR7 ligand ELC	↑	ND	[51,53]
IL-2	CCL3 (MIP-1α)			
IL-12+GM-CSF+CD86	CCL5 (RANTES)			
IL-12+CD80	CtB			
IL-12		↑	↑	[40,41]
IL-12+GM-CSF		↑	↑	[51,53]
RANKL		↑	↑	ND
CD80+ICAM-1+LFA-3				
Caspase-3 (apoptotic)				
BCL-xL (antiapoptotic)		↑	ND	↑
Fli-C (TLR-5 antagonist)				
IL-4		↓	ND	→
IL-5				ND

ND; Not Done.

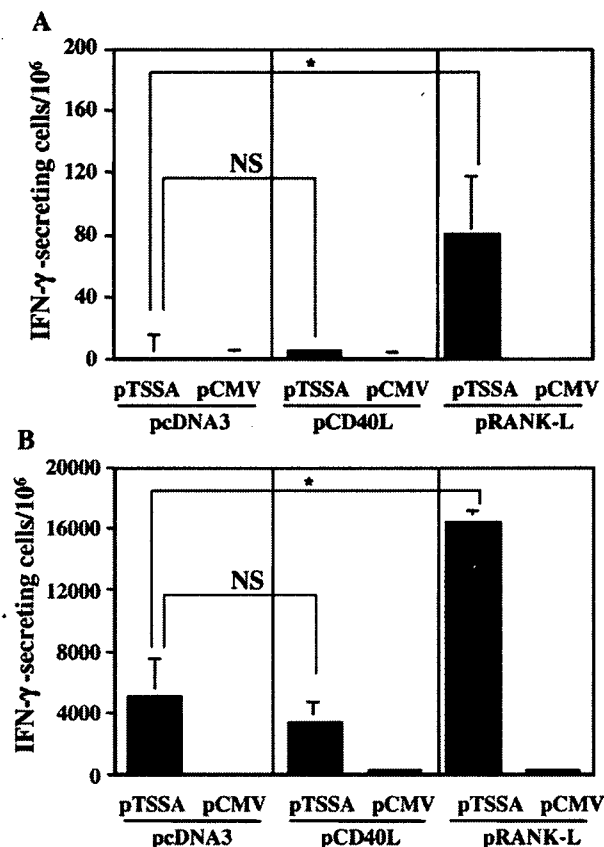


Fig. 3. Coadministration of pRANKL, but not pCD40L, with pTSSA enhances the induction of TSSA-specific CD8⁺ T cells. (A, B) B6 mice were immunized with 100 μ g of pTSSA or pCMV and 100 μ g of pCD40L, pRANKL, or pcDNA3, which were all suspended in 50 μ l of sterile PBS, into the right hind leg quadriceps twice at a 10-day interval. The mice were sacrificed 12 days after the second immunization, and their spleens were removed. Splenocytes from individual mice were cultured with irradiated EL-4 cells pulsed with ANYNFTLV peptide for 1 wk. The freshly isolated splenocytes (A) or the 1-wk cultured splenocytes (B) were subjected to the ELISPOT assay for IFN- γ -producing cells in response to ANYNFTLV peptide-pulsed EL-4 cells. The number of IFN- γ -secreting cells/ 10^6 cells was counted 24 h later. The number of IFN- γ -secreting cells that appeared against peptide-unpulsed EL-4 was subtracted from the number of IFN- γ -secreting cells that appeared against peptide-pulsed EL-4. Data represent the mean \pm SD of four mice in each group. *, $p < 0.05$ by the Dunnett's two-tailed t -test. NS, not significantly different. The figure is reproduced from Ref. [54] with permission.

intracellular infectious agents [77]. Among virus vectors, adenovirus and vaccinia virus have been shown to be the most efficient vectors for inducing protective immune responses against HIV [78,79] and malaria [16,80,81].

The generation of replication-deficient virus mutants makes this strategy safer and more effective for containing the threat and spread of infections. As described above, the recombinant virus vector vaccination was also demonstrated effective for conferring protective immunity against *T. cruzi*, which was artificially engineered to express a well-characterized, immunogenic foreign antigen [42]. Since the intrinsic *T. cruzi* antigens which contained CD8⁺ T cell-inducing epitope were identified, a question if the recombinant virus vectors expressing an intrinsic *T. cruzi* antigen are really effective for conferring immunological protection, should have been determined. In addition, it had also remained to be determined whether the vaccine-induced CD8⁺ T cell responses against intrinsic antigens are sufficient for controlling the *T. cruzi* infection.

The CD8⁺ T cell-inducing epitope, ANYNFTLV/K^b was used to generate recombinant attenuated adenovirus (replica-

tion-deficient) and recombinant attenuated vaccinia virus (modified vaccinia virus Ankara: MVA), which express only the small portion of *T. cruzi* antigen, the minimal 8-mer peptide (Fig. 4) [50]. The enumeration of ANYNFTLV-specific CD8⁺ T cells revealed that the priming with ANYNFTLV-expressing adenovirus followed by the booster injection of ANYNFTLV-expressing MVA gave the highest number of induced epitope-specific CD8⁺ T cells. In comparison, the combined immunization of DNA-priming with the recombinant MVA-boost was performed and was not as good as the CD8⁺ T cell immune responses induced by the recombinant adenovirus-priming / the recombinant MVA-boost [50]. The infection of lethal or sublethal dose of *T. cruzi* resulted in the significant suppression of parasitemia and the improved survival of immunized mice, demonstrating that the immune responses against a single CD8⁺ T cell-inducing epitope, ANYNFTLV, could control *T. cruzi* infection (Fig. 5) [50].

T. cruzi is well known for its heterogeneity among isolates which could be a serious obstacle for developing CD8⁺ T cell vaccine [82]. However, the peptide ANYNFTLV on *T. cruzi*

Table 3
Immunological effect of deficiency for CD28–CD80/CD86 costimulation on the induction of CD8⁺ T cells and protective immunity against infections

Pathogen	D8 ⁺ T cell induction	Protective immunity	References
<i>Trypanosoma cruzi</i>	↓	↓	[60]
<i>Leishmania major</i>	ND	↑→↓	[61–63]
<i>Plasmodium chabaudi</i>	ND	↓	[64,65]
<i>Toxoplasma gondii</i>	ND	→	[66,67]
<i>Coxiella burnetii</i>	ND	↑	[68]
<i>Listeria monocytogenes</i>	↓	↓	[69]
<i>Mycobacterium bovis</i>	ND	→	[70]
<i>Salmonella typhimurium</i>	ND	↓	[71]
Ectromelia virus	→	↓	[72]
Gammaherpesvirus 68	→	→	[73]
Influenza virus	↓	↓	[74]
LCMV	↓→	→	[75,76]
Vesicular stomatitis virus	↓	↓	[76]

ND; Not Done.

trans-sialidase antigen is, interestingly, well conserved among isolates [49] despite the CD8⁺ T cell-mediated immune responses against the sequence could protect mice. It is suggested that CD8⁺ T cell is one of the most powerful driving forces to generate antigenic polymorphism of infectious agents [13], which will confer resistance against CD8⁺ T cells. In this regard, the conservation of the sequence among various *T. cruzi* isolates is puzzling, since the immune response against ANYNFTLV could be regarded as one of the strongest ones documented in any infectious disease [49]. If the epitope ANYNFTLV had given an influential impact on the survival of *T. cruzi*, it should have been, theoretically, more polymorphic. This might indicate that CD8⁺ T cell responses are only partially effective for the suppression of expanding infection and might not be very efficient for completely eliminating *T. cruzi* [50]. If *T. cruzi* has acquired evasion mechanisms against hosts' CD8⁺ T cell immune responses, it will be an important subject to be

analyzed and will have to be clarified to develop better CD8⁺ T cell vaccine strategy. These unknown mechanisms might be the reasons why *T. cruzi* infection frequently becomes chronic [83].

9. *T. cruzi* infection as a unique model for developing T cell vaccine

T. cruzi infection as a model for elucidating hosts' CD8⁺ T cell responses presents both advantageous and disadvantageous aspects. *T. cruzi* is a eukaryotic cell which contains much more antigens than bacteria or viruses. Numerous antigens mean that the antigens which confer protective immunity will not be easy to be identified. Analyses of CD8⁺ T cell responses are particularly troublesome, since they are regulated by an immunological phenomenon called immunodominance [9,84]. There is an estimate calculating approximately one CD8⁺ T cell-inducing epitope per 500 to 1000 amino acid sequences [9]. There are, therefore, numerous potential epitopes in numerous *T. cruzi* antigens. However, CD8⁺ T cell responses in vivo direct to only a few, or quite frequently, to only one [9,84]. The immunodominance clearly suggests that the identification of epitope is crucial for the development of effective T cell vaccine. The more a pathogen contains antigens, the more difficult the identification of immunodominant and protective epitope is. In this regard, the CD8⁺ T cell-inducing epitopes, ANYNFTLV/ANYKFTLV present on *T. cruzi* antigens, would be the optimal and appropriate ones to conduct CD8⁺ T cell research when taking advantages of experimental Chagas' disease as a disease model.

T. cruzi replicates and grows relatively slowly when compared to bacterial or viral infectious agents. The doubling time for replication of *T. cruzi* varies depending on isolates but is approximately between 24 to 72 h [82]. Since infection can be regarded as numbers game between infectious agents and hosts' immune cells [29], slow replication of *T. cruzi* indicates that there could be better chance for immune cells to outnumber *T. cruzi*. Although *T. cruzi* replicates inside cells, it is well known

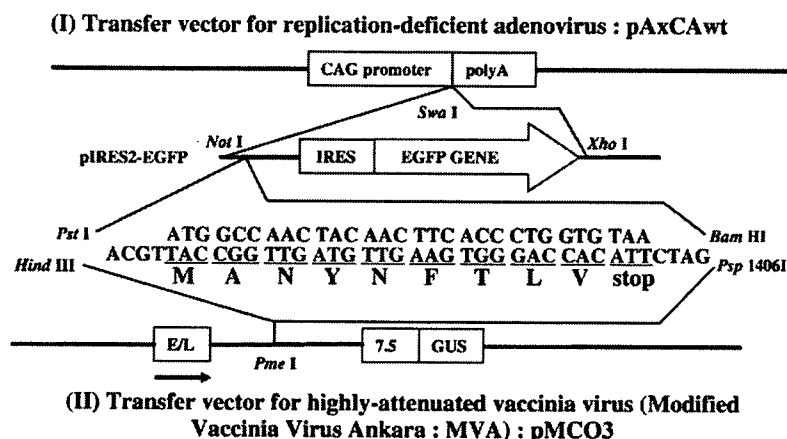


Fig. 4. Generation of recombinant viral vectors. An H-2K^b-restricted CD8⁺ T cell epitope, ANYNFTLV was identified on *T. cruzi trans*-sialidase surface antigen (TSSA). A mini-gene encoding the MANYNFTLV peptide was inserted either into pAxCAwt, a transfer vector for replication-deficient adenovirus, or into pMCO3, a transfer vector for highly-attenuated vaccinia virus, modified vaccinia virus Ankara (MVA). CAG, modified chicken β-actin promoter with CMV-IE enhancer; poly A, poly A addition signal; IRES, internal ribosome entry site; EGFP, enhanced green fluorescent protein; E/L, synthetic early/late MVA promoter; 7.5, MVA P7.5 promoter; GUS, gene encoding *E. coli* β-glucuronidase. The figure is reproduced from the Ref. [50] with permission.

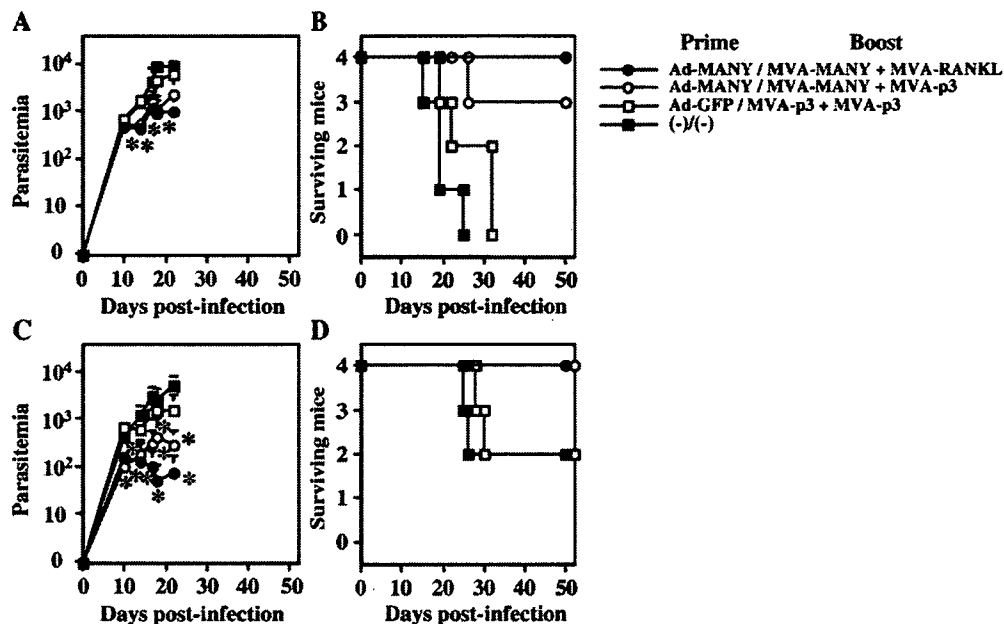


Fig. 5. Prime-boost immunization with Ad-MANY/MVA-MANY + MVA-RANKL can control lethal *T. cruzi* infection. B6 mice ($n=4$) were first primed with 5×10^8 PFU of Ad-MANY or Ad-GFP, and then boosted with 5×10^8 PFU of MVA-MANY or MVA-p3 and 5×10^7 PFU of MVA-RANKL or MVA-p3 11 days later. The mice were infected i.p. with 10,000 (A, B) or 2,000 (C, D) Tulahuen strain of *T. cruzi* blood-form trypomastigotes 14 days after the boost immunization. The number of parasites in 5 μ l of peripheral blood (parasitemia) was counted periodically, and the data represent the mean \pm SD of four mice in each group (A, C). *, $p < 0.05$ compared to the un-immunized mice by the Dunnett's two-tailed *t*-test (A, C). The longer survival of Ad-MANY/MVA-MANY + MVA-RANKL group was significantly different ($p < 0.05$ by the unpaired Mann-Whitney *U*-test) from that of Ad-GFP/MVA-p3 + MVA-p3 group of mice (B). The survival of other groups was not significantly different from that of Ad-GFP/MVA-p3 + MVA-p3 group of mice (B, D). Ad-MANY: recombinant adenovirus expressing ANYNFTLV epitope, Ad-GFP: recombinant adenovirus expressing GFP, MVA-MANY: recombinant MVA expressing ANYNFTLV epitope, MVA-p3: recombinant MVA transformed with a transfer vector, MVA-RANKL: recombinant MVA expressing murine RANKL. The figure is reproduced from the Ref. [50] with permission.

that the increment of non-replicative *T. cruzi* trypomastigote form in the peripheral blood is well correlated with the progression of pathologies. In addition to its easy performance to determine the cell number without sacrificing animals, the slow progression of disease caused by *T. cruzi* could make the assessment of various CD8⁺ T cell vaccination protocols more efficient to detect subtle immunological changes when modifying immune system.

In the field of infectious diseases, the control of chronic infections such as HIV infection or chronic hepatitis as well as the control of emergent, acute and fatal infectious diseases is two of the most important subjects to be solved. The precise mechanisms why hosts cannot completely eliminate invading pathogens should be elucidated in infectious diseases which progress toward a chronic state. Chagas' disease presents not only the acute phase pathologies but the chronic ones in approximately 20–35% of infected individuals [3]. There is an animal model representing chronic Chagas' disease in humans by combining certain *T. cruzi* isolates with certain mouse strains [85]. The etiology of chronic Chagas' disease is still controversial [86,87]. There are two major hypotheses to explain the pathologies of chronic Chagas' disease; one is "autoimmune hypothesis" [86], and another is "persistent infection hypothesis" [87]. Whether the etiological cause of chronic Chagas' disease is due to either mechanism, the elucidation of the roles of antigen-specific CD8⁺ T cells in chronic infectious pathologies could be performed in the current *T. cruzi* infection model.

The last merit for taking advantage of *T. cruzi* infection to conduct CD8⁺ T cell research comes from the nature of infectious agent itself. Malaria is well known for its critical contribution to CD8⁺ T cell immunity, as represented by the discovery of prime-boost vaccination regimen [17,34,35]. However, CD8⁺ T cells exert their immunological function against only the part of the complicated life cycle of malaria parasite. After the inoculation of sporozoites during the anopheline mosquito feeding, they invade almost exclusively into hepatocytes, where CD8⁺ T cells could suppress the development of malaria liver stage. The assessment of immunological function of CD8⁺ T cells is, therefore, based on their inhibitory effect in the restricted organ, only in liver. In addition, malaria liver stage causes no clinical symptoms. In contrast and different from malaria, *T. cruzi* invades principally into any types of cells except red blood cells. Despite it exhibits relatively stronger affinity to muscle or neural cells, every organ could be damaged by the infection. Based on the unique features of *T. cruzi* infection, the vaccine efficacy, especially the CD8⁺ T cell immunity, could be assessed with regard to the improvement of systemic condition. This point may be another advantage for choosing *T. cruzi* infection to search for better CD8⁺ T cell-mediated intervention strategies.

10. Concluding remarks

Chagas' disease has been afflicting people living in the Central and South America for thousands years [88]. However,

due to its relatively restricted endemic area and the dramatic success of Southern Cone Initiative [2,3] for eliminating *Triatoma* vectors by insecticides, it is now called as a neglected disease. Besides there are still thousands people who are chronically-infected with *T. cruzi*, the unique features of its infection should not be neglected only based on its clinical significance. Different from bacterial or viral infections, *T. cruzi* infection could present new scientific insight on phenomena of infection and could be a useful model for adding new knowledge to the CD8⁺ T cell immunity. In this regard, *T. cruzi* infection holds an enormous potential for contributing to the discovery of universally effective T cell vaccine strategy against intracellular infectious agents.

Acknowledgements

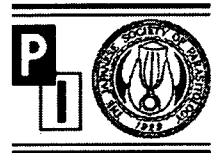
The author expresses sincere appreciation to people who have supported him. James A. Dvorak at the U.S. National Institutes of Health was especially an unforgettable mentor for the author.

References

- [1] Chagas C. Nova tripanozomíase humana: estudos sobre a morfologia e o ciclo evolutivo do *Schizotrypanum cruzi* n. gen., n. sp., agente etiológico de nova entidade morbida do homem. Mem Inst Oswaldo Cruz 1909;1:159–218.
- [2] Schofield CJ, Jannin J, Salvatella R. The future of Chagas disease control. Trends Parasitol 2006;22:583–8.
- [3] Moncayo A, Ortiz Yanine MI. An update on Chagas disease (human American trypanosomiasis). Ann Trop Med Parasitol 2006;100:663–77.
- [4] Parrino J, Graham BS. Smallpox vaccines: past, present, and future. J Allergy Clin Immunol 2006;118:1320–6.
- [5] Robinson HL, Amara RR. T cell vaccines for microbial infections. Nat Med 2005;11:S25–32.
- [6] Yewdell JW, Haeryfar SM. Understanding presentation of viral antigens to CD8⁺ T cells in vivo: the key to rational vaccine design. Annu Rev Immunol 2005;23:651–82.
- [7] Burton DR, Desrosiers RC, Doms RW, Koff WC, Kwong PD, Moore JP, et al. HIV vaccine design and the neutralizing antibody problem. Nat Immunol 2004;5:233–6.
- [8] Williams MA, Holmes BJ, Sun JC, Bevan MJ. Developing and maintaining protective CD8⁺ memory T cells. Immunol Rev 2006;211:146–53.
- [9] Yewdell JW. Confronting complexity: real-world immunodominance in antiviral CD8⁺ T cell responses. Immunity 2006;25:533–43.
- [10] Letvin NL. Progress and obstacles in the development of an AIDS vaccine. Nat Rev Immunol 2006;6:930–9.
- [11] Tsuji M, Zavala F. T cells as mediators of protective immunity against liver stages of *Plasmodium*. Trends Parasitol 2003;19:88–93.
- [12] Zinkernagel RM, Doherty PC. The discovery of MHC restriction. Immunol Today 1997;18:14–7.
- [13] McMichael AJ. HIV vaccines. Annu Rev Immunol 2006;24:227–55.
- [14] Pamer EG. Immune responses to *Listeria monocytogenes*. Nat Rev Immunol 2004;4:812–23.
- [15] Hafalla JC, Cockburn IA, Zavala F. Protective and pathogenic roles of CD8⁺ T cells during malaria infection. Parasite Immunol 2006;28:15–24.
- [16] Li S, Rodrigues M, Rodriguez D, Rodriguez JR, Esteban M, Palese P, et al. Priming with recombinant influenza virus followed by administration of recombinant vaccinia virus induces CD8⁺ T-cell-mediated protective immunity against malaria. Proc Natl Acad Sci U S A 1993;90:5214–8.
- [17] Miyahira Y, Garcia-Sastre A, Rodriguez D, Rodriguez JR, Murata K, Tsuji M, et al. Recombinant viruses expressing a human malaria antigen can elicit potentially protective immune CD8⁺ responses in mice. Proc Natl Acad Sci U S A 1998;95:3954–9.
- [18] Carvalho LH, Sano G, Hafalla JC, Morrot A, Curotto de Lafaille MA, Zavala F. IL-4-secreting CD4⁺ T cells are crucial to the development of CD8⁺ T-cell responses against malaria liver stages. Nat Med 2002;8:166–70.
- [19] DosReis GA. Cell-mediated immunity in experimental *Trypanosoma cruzi* infection. Parasitol Today 1997;13:335–42.
- [20] Tarleton RL. Depletion of CD8⁺ T cells increases susceptibility and reverses vaccine-induced immunity in mice infected with *Trypanosoma cruzi*. J Immunol 1990;144:717–24.
- [21] Tarleton RL, Koller BH, Latour A, Postan M. Susceptibility of β_2 -microglobulin-deficient mice to *Trypanosoma cruzi* infection. Nature 1992;356:338–40.
- [22] Tarleton RL, Grusby MJ, Postan M, Glimcher LH. *Trypanosoma cruzi* infection in MHC-deficient mice: further evidence for the role of both class I- and class II-restricted T cells in immune resistance and disease. Int Immunol 1996;8:13–22.
- [23] Kaech SM, Ahmed R. Memory CD8⁺ T cell differentiation: initial antigen encounter triggers a developmental program in naive cells. Nat Immunol 2001;2:415–22.
- [24] van Stipdonk MJ, Lemmens EE, Schoenberger SP. Naive CTLs require a single brief period of antigenic stimulation for clonal expansion and differentiation. Nat Immunol 2001;2:423–9.
- [25] Badovinac VP, Porter BB, Harty JT. Programmed contraction of CD8⁺ T cells after infection. Nat Immunol 2002;3:619–26.
- [26] Hou S, Hyland L, Ryan KW, Portner A, Doherty PC. Virus-specific CD8⁺ T-cell memory determined by clonal burst size. Nature 1994;369:652–4.
- [27] Seder RA, Ahmed R. Similarities and differences in CD4⁺ and CD8⁺ effector and memory T cell generation. Nat Immunol 2003;4:835–42.
- [28] Kalia V, Sarkar S, Gourley TS, Rouse BT, Ahmed R. Differentiation of memory B and T cells. Curr Opin Immunol 2006;18:255–64.
- [29] Huster KM, Stemberger C, Busch DH. Protective immunity towards intracellular pathogens. Curr Opin Immunol 2006;18:458–64.
- [30] Grabstein K, Chen YU. In: Mishell BB, Shiigi SM, Henry C, Mishell RI, editors. Selected Methods in Cellular Immunology. New York: Freeman; 1980. p. 124.
- [31] Miyahira Y, Murata K, Rodriguez D, Rodriguez JR, Esteban M, Rodrigues MM, et al. Quantification of antigen specific CD8⁺ T cells using an ELISPOT assay. J Immunol Methods 1995;181:45–54.
- [32] Murali-Krishna K, Altman JD, Suresh M, Sourdive DJ, Zajac AJ, Miller JD, et al. Counting antigen-specific CD8 T cells: a reevaluation of bystander activation during viral infection. Immunity 1998;8:177–87.
- [33] Ogg GS, McMichael AJ. HLA-peptide tetrameric complexes. Curr Opin Immunol 1998;10:393–6.
- [34] Dunachie SJ, Hill AV. Prime-boost strategies for malaria vaccine development. J Exp Biol 2003;206:3771–9.
- [35] Woodland DL. Jump-starting the immune system: prime-boosting comes of age. Trends Immunol 2004;25:98–104.
- [36] Bejon P, Mwacharo J, Kai O, Mwangi T, Milligan P, Todryk S, et al. A phase 2b randomised trial of the candidate malaria vaccines FP9 ME-TRAP and MVA ME-TRAP among children in Kenya. PLoS Clin Trials 2006;1:e29.
- [37] Wizek B, Garg N, Tarleton RL. Vaccination with trypanostigote surface antigen 1-encoding plasmid DNA confers protection against lethal *Trypanosoma cruzi* infection. Infect Immun 1998;66:5073–81.
- [38] Costa F, Franchin G, Pereira-Chiocola VL, Ribeiro M, Schenkman S, Rodrigues MM. Immunization with a plasmid DNA containing the gene of *trans*-sialidase reduces *Trypanosoma cruzi* infection in mice. Vaccine 1998;16:768–74.
- [39] Fujimura AE, Kinoshita SS, Pereira-Chiocola VL, Rodrigues MM. DNA sequences encoding CD4⁺ and CD8⁺ T-cell epitopes are important for efficient protective immunity induced by DNA vaccination with a *Trypanosoma cruzi* gene. Infect Immun 2001;69:5477–86.
- [40] Katae M, Miyahira Y, Takeda K, Matsuda H, Yagita H, Okumura K, et al. Co-administration of an interleukin-12 gene and a *Trypanosoma cruzi* gene improves vaccine efficacy. Infect Immun 2002;70:4833–40.
- [41] Garg N, Tarleton RL. Genetic immunization elicits antigen-specific protective immune responses and decreases disease severity in *Trypanosoma cruzi* infection. Infect Immun 2002;70:5547–55.

- [42] Miyahira Y, Kobayashi S, Takeuchi T, Kamiyama T, Nara T, Nakajima-Shimada J, et al. Induction of CD8⁺ T cell-mediated protective immunity against *Trypanosoma cruzi*. *Int Immunol* 1999;11:133–41.
- [43] Rodrigues M, Nussenzweig RS, Romero P, Zavala F. The in vivo cytotoxic activity of CD8⁺ T cell clones correlates with their levels of expression of adhesion molecules. *J Exp Med* 1992;175:895–905.
- [44] Wizel B, Nunes M, Tarleton RL. Identification of *Trypanosoma cruzi* trans-sialidase family members as targets of protective CD8⁺ Tc1 responses. *J Immunol* 1997;159:6120–30.
- [45] Low HP, Santos MA, Wizel B, Tarleton RL. Amastigote surface proteins of *Trypanosoma cruzi* are targets for CD8⁺ CTL. *J Immunol* 1998;160:1817–23.
- [46] Rodrigues MM, Ribeiro M, Pereira-Chioccola V, Renia L, Costa F. Predominance of CD4 Th1 and CD8 Tc1 cells revealed by characterization of the cellular immune response generated by immunization with a DNA vaccine containing a *Trypanosoma cruzi* gene. *Infect Immun* 1999;67:3855–63.
- [47] Fralish BH, Tarleton RL. Genetic immunization with LYTI or a pool of trans-sialidase genes protects mice from lethal *Trypanosoma cruzi* infection. *Vaccine* 2003;20,21:3070–80.
- [48] Araujo AF, de Alencar BC, Vasconcelos JR, Hiyane MI, Marinho CR, Penido ML, et al. CD8⁺-T-cell-dependent control of *Trypanosoma cruzi* infection in a highly susceptible mouse strain after immunization with recombinant proteins based on amastigote surface protein 2. *Infect Immun* 2005;73:6017–25.
- [49] Martin DL, Weatherly DB, Laucella SA, Cabinian MA, Crim MT, Sullivan S, et al. CD8⁺ T-Cell responses to *Trypanosoma cruzi* are highly focused on strain-variant trans-sialidase epitopes. *PLoS Pathog* 2006;2:e77.
- [50] Miyahira Y, Takashima Y, Kobayashi S, Matsumoto Y, Takeuchi T, Ohyanagi-Hara M, et al. Immune responses against a single CD8⁺-T-cell epitope induced by virus vector vaccination can successfully control *Trypanosoma cruzi* infection. *Infect Immun* 2005;73:7356–65.
- [51] Jechlinger W. Optimization and delivery of plasmid DNA for vaccination. *Expert Rev Vaccines* 2006;5:803–25.
- [52] Donnelly JJ, Wahren B, Liu MA. DNA vaccines: progress and challenges. *J Immunol* 2005;175:633–9.
- [53] Berzofsky JA, Ahlers JD, Belyakov IM. Strategies for designing and optimizing new generation vaccines. *Nat Rev Immunol* 2001;1:209–19.
- [54] Miyahira Y, Akiba H, Katae M, Kubota K, Kobayashi S, Takeuchi T, et al. Cutting edge: a potent adjuvant effect of ligand to receptor activator of NFκB gene for inducing antigen-specific CD8⁺ T cell response by DNA and viral vector vaccination. *J Immunol* 2003;171:6344–8.
- [55] Gurnathan S, Prussin C, Sacks DL, Seder RA. Vaccine requirements for sustained cellular immunity to an intracellular parasitic infection. *Nat Med* 1998;4:1409–15.
- [56] Car BD, Eng VM, Lipman JM, Anderson TD. The toxicology of interleukin-12: a review. *Toxicol Pathol* 1999;27:58–63.
- [57] Theill LE, Boyle WJ, Penninger JM. RANK-L and RANK: T cells, bone loss, and mammalian evolution. *Annu Rev Immunol* 2002;20:795–823.
- [58] Collins M, Ling V, Carreno BM. The B7 family of immune-regulatory ligands. *Genome Biol* 2005;6:223.
- [59] Aggarwal BB. Signalling pathways of the TNF superfamily: a double-edged sword. *Nat Rev Immunol* 2003;3:745–56.
- [60] Miyahira Y, Katae M, Kobayashi S, Takeuchi T, Fukuchi Y, Abe R, et al. Critical contribution of CD28–CD80/CD86 costimulatory pathway to protection from *Trypanosoma cruzi* infection. *Infect Immun* 2003;71:3131–7.
- [61] Compton HL, Farrell JP. CD28 costimulation and parasite dose combine to influence the susceptibility of BALB/c mice to infection with *Leishmania major*. *J Immunol* 2002;168:1302–8.
- [62] Brown DR, Green JM, Moskowicz NH, Davis M, Thompson CB, Reiner SL. Limited role of CD28-mediated signals in T helper subset differentiation. *J Exp Med* 1996;184:803–10.
- [63] Brown JA, Greenwald RJ, Scott S, Schweitzer AN, Satoskar AR, Chung C, et al. T helper differentiation in resistant and susceptible B7-deficient mice infected with *Leishmania major*. *Eur J Immunol* 2002;32:1764–72.
- [64] Rummel T, Batchelder J, Flaherty P, LaFleur G, Navati P, Burns JM, et al. CD28 costimulation is required for the expression of T-cell-dependent cell-mediated immunity against blood-stage *Plasmodium chabaudi* malaria parasites. *Infect Immun* 2004;72:5768–74.
- [65] Elias RM, Sardinha LR, Bastos KR, Zago CA, da Silva AP, Alvarez JM, et al. Role of CD28 in polyclonal and specific T and B cell responses required for protection against blood stage malaria. *J Immunol* 2005;174:790–9.
- [66] Hunter CA, Ellis-Neyer L, Gabriel KE, Kennedy MK, Grabstein KH, Linsley PS, et al. The role of the CD28/B7 interaction in the regulation of NK cell responses during infection with *Toxoplasma gondii*. *J Immunol* 1997;158:2285–93.
- [67] Villegas EN, Elloso MM, Reichmann G, Peach R, Hunter CA. Role of CD28 in the generation of effector and memory responses required for resistance to *Toxoplasma gondii*. *J Immunol* 1999;163:3344–53.
- [68] Honstetter A, Meghari S, Nunes JA, Lepidi H, Raoult D, Olive D, et al. Role of the CD28 molecule in the control of *Coxiella burnetii* infection. *Infect Immun* 2006;74:1800–8.
- [69] Mitrucker HW, Kursar M, Kohler A, Hurwitz R, Kaufmann SH. Role of CD28 for the generation and expansion of antigen-specific CD8⁺ T lymphocytes during infection with *Listeria monocytogenes*. *J Immunol* 2001;167:5620–7.
- [70] Hogan LH, Markofski W, Bock A, Barger B, Morrissey JD, Sandor M. *Mycobacterium bovis* BCG-induced granuloma formation depends on gamma interferon and CD40 ligand but does not require CD28. *Infect Immun* 2001;69:2596–603.
- [71] Mitrucker HW, Kohler A, Mak TW, Kaufmann SH. Critical role of CD28 in protective immunity against *Salmonella typhimurium*. *J Immunol* 1999;163:6769–76.
- [72] Fang M, Sigal LJ. Direct CD28 costimulation is required for CD8⁺ T cell-mediated resistance to an acute viral disease in a natural host. *J Immunol* 2006;177:8027–36.
- [73] Lee BJ, Reiter SK, Anderson M, Sarawar SR. CD28^{-/-} mice show defects in cellular and humoral immunity but are able to control infection with murine gammaherpesvirus 68. *J Virol* 2002;76:3049–53.
- [74] Bertram EM, Tafuri A, Shahinian A, Chan VS, Hunziker L, Recher M, et al. Role of ICOS versus CD28 in antiviral immunity. *Eur J Immunol* 2002;32:3376–85.
- [75] Suresh M, Whitmire JK, Harrington LE, Larsen CP, Pearson TC, Altman JD, et al. Role of CD28–B7 interactions in generation and maintenance of CD8 T cell memory. *J Immunol* 2001;167:5565–73.
- [76] Andreasen SO, Christensen JE, Marker O, Thomsen AR. Role of CD40 ligand and CD28 in induction and maintenance of antiviral CD8⁺ effector T cell responses. *J Immunol* 2000;164:3689–97.
- [77] Stephenson JR. Genetically modified viruses: vaccines by design. *Curr Pharm Biotechnol* 2001;2:47–76.
- [78] Gherardi MM, Perez-Jimenez E, Najera JL, Esteban M. Induction of HIV immunity in the genital tract after intranasal delivery of a MVA vector: enhanced immunogenicity after DNA prime-modified vaccinia virus Ankara boost immunization schedule. *J Immunol* 2004;172:6209–20.
- [79] Shiver JW, Ermini EA. Recent advances in the development of HIV-1 vaccines using replication-incompetent adenovirus vectors. *Annu Rev Med* 2004;55:355–72.
- [80] Rodrigues EG, Zavala F, Eichinger D, Wilson JM, Tsuji M. Single immunizing dose of recombinant adenovirus efficiently induces CD8⁺ T cell-mediated protective immunity against malaria. *J Immunol* 1997;158:1268–74.
- [81] Zavala F, Rodrigues M, Rodriguez D, Rodriguez JR, Nussenzweig RS, Esteban M. A striking property of recombinant poxviruses: efficient inducers of *in vivo* expansion of primed CD8⁺ T cells. *Virology* 2001;280:155–9.
- [82] Miyahira Y, Dvorak JA. *Kinetoplastidae* display naturally occurring ancillary DNA-containing structures. *Mol Biochem Parasitol* 1994;65:339–49.
- [83] Marin-Neto JA, Cunha-Neto E, Maciel BC, Simoes MV. Pathogenesis of chronic Chagas heart disease. *Circulation* 2007;115:1109–23.
- [84] Yewdell JW, Bennink JR. Immunodominance in major histocompatibility complex class I-restricted T lymphocyte responses. *Annu Rev Immunol* 1999;17:51–88.
- [85] Postan M, Bailey JJ, Dvorak JA, McDaniel JP, Pottala EW. Studies of *Trypanosoma cruzi* clones in inbred mice. III. Histopathological and

- electrocardiographical responses to chronic infection. *Am J Trop Med Hyg* 1987;37:541–9.
- [86] Cunha-Neto E, Bilate AM, Hyland KV, Fonseca SG, Kalil J, Engman DM. Induction of cardiac autoimmunity in Chagas heart disease: a case for molecular mimicry. *Autoimmunity* 2006;39:41–54.
- [87] Tarleton RL. Parasite persistence in the aetiology of Chagas disease. *Int J Parasitol* 2001;31:550–4.
- [88] Aufderheide AC, Salo W, Madden M, Streitz J, Buikstra J, Guhl F, et al. A 9000-year record of Chagas' disease. *Proc Natl Acad Sci U S A* 2004;101:2034–9.



Review

Toxocariasis in Japan

Nobuaki Akao*, Nobuo Ohta

Section of Environmental Parasitology, Graduate School of Tokyo Medical and Dental University, Yushima 1-5-45, Bunkyo-ku, Tokyo, 113-8519 Japan

Received 27 December 2006; received in revised form 16 January 2007; accepted 17 January 2007

Available online 26 January 2007

Abstract

Toxocariasis has long been considered a parasitic disease affecting pet owners and children who often play in sandboxes at public parks. Recent cases of this animal-borne infection, however, indicate that its clinical manifestations and etiologies are changing. In this article, we will describe the critical characteristic features of toxocariasis alongside the contributions of Japanese researchers to a better understanding of the disease.

© 2007 Elsevier Ireland Ltd. All rights reserved.

Keywords: *Toxocara canis*; *Toxocara cati*; Toxocariasis; Visceral larva migrans

Contents

1. Introduction	87
2. Toxocariasis in humans	88
2.1. Clinical cases	88
2.2. Characteristic features of toxocariasis	88
2.2.1. Toxocariasis as a food-borne infectious disease	88
2.2.2. Respiratory illness and toxocariasis	88
2.2.3. Urticaria-like skin lesions and toxocariasis	89
2.2.4. Toxocariasis is a disease that affects adults rather than children	89
2.2.5. Myelitis and toxocariasis	90
2.3. <i>T. cati</i>	90
3. Advances in serological diagnosis	90
3.1. Antigens	90
3.2. Rapid diagnostic test for toxocariasis	91
4. Conclusion	91
Acknowledgements	91
References	91

1. Introduction

Among animal-borne diseases, toxocariasis is one of the most popular parasitic infections in the world, caused by the larval stage of *Toxocara* spp. Humans are infected mainly by the tiny developmental stage of the parasite, which belong to the

family Ascaridoidea, through their pet dogs and cats. Other natural hosts include wild Canidae for *Toxocara canis* and wild felines for *Toxocara cati*. Symptoms depend on organs affected and the magnitude of infection. It is usually a non-fatal disease, but the larvae migrate through the eyes and can cause severe vision disability or even blindness.

In 1950, Dr. Wilder, an American ophthalmologist, histopathologically identified a nematode of unknown etiology in the retinas of 26 out of 46 enucleated eyes with retinoblastoma [1].

* Corresponding author.

E-mail address: ocha.vip@tmd.ac.jp (N. Akao).

Two years later, Beaver et al. [2] recognized the same parasite in the liver of three young children. Shortly afterwards, the parasite was correctly identified as an infectious stage larva of *T. canis* [3–5]. Since then, many clinicians and biologists have been accumulating knowledge of *Toxocara* and toxocariasis.

In this review article, we describe the lesser-known contributions of Japanese researchers to the understanding of *Toxocara* and toxocariasis. This article builds on the work of Kondo [6], focusing on the topics that he did not cover in his review and on new findings since his publication.

2. Toxocariasis in humans

2.1. Clinical cases

Toxocariasis is clinically classified into four types: visceral, ocular, neurologic, and covert [7,8]. In 1963, the first report on toxocariasis in Japan was presented orally at the 32nd Annual Meeting of the Japanese Society of Parasitology by Fushimi et al. [9]. A 14 year-old boy was admitted to a university hospital because of fever, hepatomegaly and persistent eosinophilia. The patient died from severe anemia six months later. Though no autopsy or serological examinations were performed, the patient was strongly suspected to have suffered from visceral toxocariasis. In the early 1960s, immunological tests for parasitic infections, especially for helminthiasis, had only just begun, and antigen for the diagnosis of toxocariasis was not yet known.

Just as in other parasitic infections, direct demonstration is the only way to make definite diagnosis of toxocariasis. However, it is difficult to find the larva in either tissue biopsies or autopsies due to its very small size. So far in Japan, one morphologically and two pathologically confirmed cases have been reported [10–12]. Two additional reports, both of ocular toxocariasis, were doubtful because of the lack of characteristic features of the parasite; the authors nevertheless reproduced the microscopic findings of the purported larva in their papers [13,14]. One of these two cases showed increased antibody production in vitreous fluid against *Toxocara* antigen prepared from larval excretory–secretory product (LES), suggesting that the case might be attributable to ocular toxocariasis.

Serology is an alternative method for the diagnosis of toxocariasis. A method has been established for *in vitro* cultivation of the larvae, with LES prepared from the culture medium serving as an antigen. Detection of specific antibodies against LES provides evidence of *Toxocara* infection in individual patients and useful tool for understanding the epidemiological characteristics of this disease. The first serological survey in Japan was reported by Matsumura and Endo [15] using sera of 83 clinically healthy children. In their sample, 3.6% tested were positive for LES. In another study, Matsumura and Endo [16] demonstrated that 20 of 530 adults possessed the IgG antibody to LES. The positive individuals were thought to have a latent or past infection. In a large-scale seroepidemiological survey, Kondo et al. [17] collected 3277 sera from 14 prefectures in Japan and tested for LES antibodies. Antibodies were confirmed in 52 individuals (1.6%), but geographical patterns were notable: the highest prevalence rate

was observed in Miyagi Prefecture (6.1%), and the lowest was in Ibaragi Prefecture (0.5%). The researchers concluded that the overall seroprevalence rate was in good agreement with those reported from other countries [17–19].

Based on improvements in the field of serology, diagnosis of toxocariasis is usually made by detection of the specific antibody to LES, along with clinical manifestations such as eosinophilia, eosinophilic pneumonia, or ophthalmoscopic findings.

2.2. Characteristic features of toxocariasis

2.2.1. Toxocariasis as a food-borne infectious disease

Using serological methods, there were nearly 200 reports of toxocariasis in the database of Japana Centra Revuo Medicina, and almost 300 cases have been diagnosed in Japan in the past two decades. Among these cases, some significant reports have provided a new perspective on the pathogenic mechanisms of toxocariasis.

Since Beaver et al. [2] introduced the concept of visceral larva migrans, characterized by chronic eosinophilia with granulomatous lesions in the liver, toxocariasis was regarded as a disease in children who were infected by soil contaminated with embryonated eggs [20]. In 1983, Sakai et al. [21] reported a case of toxocariasis after ingestion of raw chicken liver. The 57-year-old man was admitted to a hospital due to cough, fever and weight loss. Complete blood count revealed a marked increase in eosinophils in peripheral blood with leukocytosis, and serum antibody against *T. canis* was strongly positive. Before onset, he and his friends had eaten raw chicken livers derived from his poultry and boar farm. Soon after the meal, they experienced abdominal pain, vomiting and diarrhea, but the symptoms improved within two days after ingestion. One month later, his chief complaints emerged. Two similar cases were subsequently reported by the same group [22].

These cases clearly indicate that the disease should be considered a food-borne parasitic infection. Four additional papers describing six patients were published in Japan in the 1980s [22–25]. These patients, all male and between 22 and 51 years of age, had a history of eating raw meat or liver of fowl and/or cattle before onset of symptoms. The possibility that raw liver of domestic animals can transmit the pathogens of human visceral larva migrans was substantiated by Lee et al. [26] of Yonsei University College of Medicine in Korea. They found that a dietary habit of raw liver was much more frequently seen in males than in females, especially in the 31–40 age group. Experimental studies revealed that chicken, cattle and swine were able to act as paratenic hosts for *T. canis* [27–29]. Most of the adult cases reported in recent years in Japan are categorized as this type of infection [30].

2.2.2. Respiratory illness and toxocariasis

In animal models in rodents, hatched larvae migrate into the lungs through the liver after ingestion, resulting in liver dysfunction and pneumonia [31–33]. In humans, similar manifestations are well documented in the literature [30,34–36]. Pulmonary lesions appear on computed tomography as multifocal subpleural nodules with halos or ground-glass

opacities and ill-defined margins. Additionally, transient pulmonary infiltrates are a characteristic finding. Morimatsu et al. [30] recently reported a familial case of visceral toxocariasis after consumption of raw chicken livers. In this case, the patients, a father (71 years old) and his son (45 years old), ate raw chicken livers three weeks before onset and then developed mild fever, general fatigue, headache and respiratory disorder. The specific antibody to LES was identified both in their serum samples and in bronchoalveolar lavage fluid (BALF). *T. canis* larvae were recovered from chicken liver from the same source as that ingested by the patients. These cases showed that BALF is a reliable specimen to demonstrate LES antibodies when the patient shows respiratory illness.

2.2.3. Urticaria-like skin lesions and toxocariasis

Parasitic infection is often said to be associated with chronic urticaria [37]. This is still a controversial issue, but acute urticaria is certainly associated with infection with larva from the marine fish parasite, *Anisakis simplex* [38]. Japanese have long tradition of eating raw fish, sashimi and sushi, and anisakidosis is a common parasitic infection in Japan. It is well documented that urticaria is closely related to the infestation of *Anisakis* larva [38,39]. As with anisakidosis, an allergic reaction could be elicited by the invasion of *Toxocara* larvae and result in skin rash that looks like hives. These skin manifestations might occur as a result of immunological response to larval metabolites [40,41].

In 1999, the first confirmed case of toxocariasis with larva in subcutaneous tissue was reported [11]. A 26-year-old female with fever, headache, and dry cough was admitted to a university hospital. Her peripheral blood smear showed an eosinophilia (61%) and her chest radiograph revealed multiple nodules. A diagnosis of visceral toxocariasis was made after detection of LES antibodies. During her hospitalization, several brown itchy nodules, which were thought to be prurigo, developed on her legs. Histological examination showed *Toxocara* larva in the center of an eosinophilic and lymphocytic abscess. The patient admitted frequently eating raw beef liver almost one year before her hospitalization for its purported health benefits. We can learn from this case that larvae migrating into subcutaneous tissue directly elicit pruriginous skin lesions.

2.2.4. Toxocariasis is a disease that affects adults rather than children

Many reviews from western countries indicated that children under 12 years old, who often play outside, are the most affected age group for toxocariasis [42,43]. They are accidentally infected with *T. canis*/*T. cati* eggs, which expelled in feces puppies and fully develop in the surrounding environment within two to four weeks. Therefore, contaminated soil is the most important etiological source for toxocariasis [44,45]. Hori et al. [46] reported a case of visceral toxocariasis in a 1.5-year-old girl with fever, hepatomegaly, and eosinophilia (73%). The patient had a history of pica, particularly eating soil from a nearby park where she frequently played with her brother. Serological examination strongly suggested that she was suffering from *Toxocara* infection (Fig. 1a, b). They also found many embryonated eggs from the soil in the park that

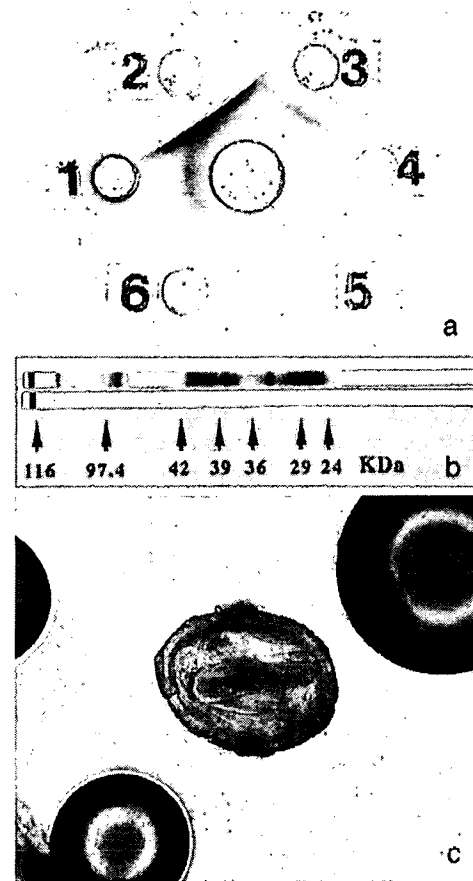


Fig. 1. The results of double gel diffusion (a) and western blot (b) tests of a patient of visceral toxocariasis. Strong precipitin bands were obviously observed between larval excretory–secretory products (LES) of *Toxocara canis* and patient's serum by means of double gel diffusion test. Antigens used in this test were adult worm extract (AEX) of *T. canis* (1), LES of *T. canis* (2), AEX of *Dirofilaria immitis* (3), AEX of *Ascaris suum* (4), LES of *Anisakis simplex* (5) and AEX of *Ascaris lumbricoides* (6). Western blot test shows a whole range of LES molecules were reacted with the patient's serum (upper strip) but not with a normal control serum (bottom strip). An embryonated egg recovered from the soil in the park where the patient often played (c). A fully developed and live *Toxocara* larva was found in the egg.

contained a live larva closely resembling *T. canis* eggs (Fig. 1c). Fortunately, her brother showed a negative result in serological tests.

In a review article of Barriga [47], the average age of visceral toxocariasis was 9.5 years, and only 18% of patients were adults. However, in recent investigations, adults rather than young children were more frequently affected by this parasite. This tendency is particularly true for ocular toxocariasis. Yoshida et al. [48] described that, among 38 Japanese cases of ocular toxocariasis, 34 (89%) were older than 20 years of age, and suggested that clinical features observed in these patients were somewhat different from those of previously reported cases [49]. Therefore, ocular toxocariasis is no longer merely a disease of young children, but affects any age group having a risk factor such as consumption of raw meat or close contact with contaminated soil.

As of the end of 2006, 584 clinically suspected cases of toxocariasis (112 of visceral type and 472 of ocular type) have been referred to our laboratory for detection of the anti-*Toxocara* antibody. We omitted 109 cases from this study due to a lack of description of the patient's age and sex. In visceral toxocariasis, the male-to-female ratio in the remaining sample was 2.04 (male: 53, female 26). The average age was 39.2 ± 21.7 (range, 0–83 years old) in male and 31.3 ± 23.9 (range, 0.5–82 years old) in female. On the other hand, the male-to-female ratio in ocular toxocariasis group was 1.16 (male: 213, female: 183). The average age was 39.3 ± 18.5 among males (range, 2–83 years old) and 37.6 ± 18.2 among females (range, 2–74 years old). There were no significant differences in age distribution between males and females (Fig. 2). A similar result was obtained by Fujino et al. in 1998 [50].

2.2.5. Myelitis and toxocariasis

According to the case-control study by Magnaval et al. [51], migration of *T. canis* larvae in the human brain does not frequently induce recognizable neurological signs, but is possibly responsible for repeated low-dose infections. These light parasitic burdens usually do not appear to elicit a special clinical symptom, but in some cases, severe neurological disorders such as encephalitis, myelitis and meningitis are

manifested [52]. In Japan, Ota et al. [53] reported a case of eosinophilic meningo-encephalo-myelitis due to *Toxocara* infection. The patient, a 21-year-old woman, showed frontal headache, low-grade fever and convulsion. She had a long history of close contact with her pet dog. Immunological tests were strongly positive for LES antigen in both her serum and cerebrospinal fluid. Based on clinical evidence and characteristic features in similar patients, Kira and his colleagues proposed a new disease entity: "atopic myelitis" or "parasitic myelitis." They assumed that allergic reaction to LES might be involved in this neurologic disorder [54]. Interestingly, most of the patients lived in Kyushu District, in the south of Japan, suggesting that myelitis due to *Toxocara* infection might be a regional clustering disease.

2.3. *T. cati*

Because morphological differences between *T. canis* and *T. cati* in the adult stage are apparent [55], *T. cati* is easy to identify when patients expel adult worms. It has been suggested that *T. cati* could develop in children through the ingestion of the immature worm of *T. cati* [56]. More than 26 cases were reported so far [56,57], but there was only one case was reported from Japan. A 5-year-old male boy was admitted to a hospital due to a complaint of vomiting 3 worm-like foreign bodies. These worms were morphologically identified as two female and one male immature worms [58].

On the contrary, there are few reports of human intestinal infection with adult worms of *T. canis* [59], and many of these are believed to be erroneous observations [60]. Serological discrimination between toxocariasis *canis* and toxocariasis *cati*, however, is not so apparent, because of complete cross-reactivity between the two LESs, although *T. cati*-specific LES has been identified [61]. Therefore, distinguishing between *T. canis* and *T. cati* is even more difficult if somatic antigens are used in the serological diagnosis [62–64]. For the precise serodiagnosis of toxocariasis, a great deal of additional research effort is needed to obtain *T. cati*-specific LES antigens.

3. Advances in serological diagnosis

3.1. Antigens

As mentioned above, the most reliable and suitable antigen for the diagnosis of toxocariasis is LES from *T. canis*. Once the larvae are cultivated *in vitro*, they are viable for up to two years. During this period, no morphological changes have been observed, but chemosusceptibility to some compounds were found to have changed [65], suggesting that the physiological natures of the larva do change over this time period. The nature of LES was extensively studied by Maizels and colleagues [61,66–68]. Around the same time, Sugane and Oshima demonstrated that LES had an ability to induce not only IgG and IgM antibodies, but also IgE antibody in mice. Allergenic activity was lost when LES was treated with guanidine hydrochloride and 2-mercaptoethanol. LES also showed a cross-reaction with serum from *Ascaris suum*-infected mice

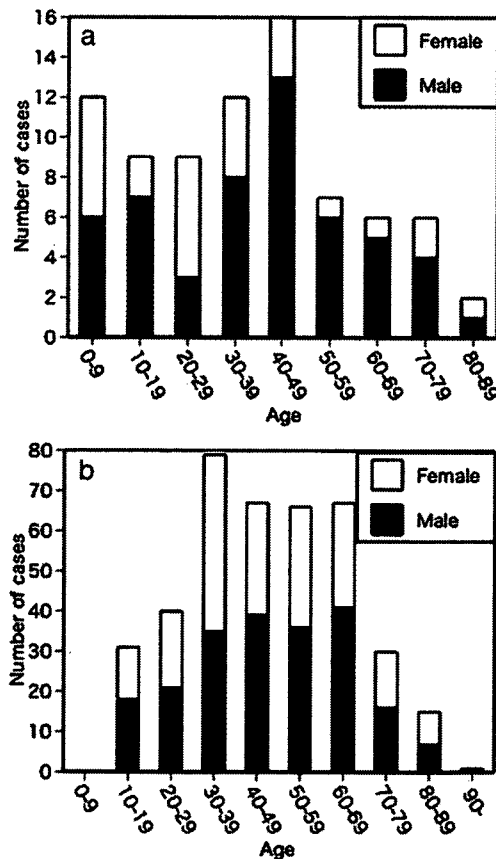


Fig. 2. Age distribution of suspected cases of visceral ($n=79$)(a) and ocular toxocariasis ($n=396$)(b) referred to our laboratory from August 1994 to December 2006.

[69]. In addition, studies have identified numerous lectin-specific glycoconjugates on the surface of the larvae [61,66–68,70–73], and these have been found to dynamically change during the course of infection in murine [74] and rabbit models [75].

Although the antigenicity and specificity of LES is fairly high, cross-reaction to other parasites, especially nematode parasites, have been observed [76]. To overcome this problem, Yamasaki et al. [77] produced a recombinant antigen that reacted with serum from patients with toxocariasis but not from those with roundworm or hookworm infections.

3.2. Rapid diagnostic test for toxocariasis

For many years, numerous diagnostic measures, such as the double gel diffusion test, immunoelectrophoresis, indirect hemagglutination test, latex agglutination test, plate-based ELISA, membrane-based dot-ELISA, etc., have been employed to detect specific antibodies against LES. However, these tests require 1.5 hours or more to obtain an accurate result. In 1997, a new rapid diagnostic test kit for the detection of anti-LES antibody was introduced by us [78]. The test is based on the antigen-sensitized nitrocellulose membrane-based assay. It is easy to perform, does not require any sophisticated apparatus or expertise and the results can be obtained within 3 min. This test kit can even detect the antibody in intraocular fluid.

4. Conclusion

In this review article, we present an overview of human toxocariasis in Japan. Due to space limitations, we do not describe in detail the aspects of experimental investigations concerning biology, immunology and molecular biology using animal models. However, we briefly pay special attention to Japanese investigators who contributed to advance the understanding of toxocariasis. In early studies, Oshima established a standard method for the oral inoculation of eggs, in which the albuminoid coat of the egg is first removed in order to prevent the adhesion of eggs onto glassware [79]. Sugane is a longtime co-worker of Oshima, and his colleagues are actively engaged in the field of immunology [80–88]. They demonstrated many examples of cellular immunity to *Toxocara* infection in mice. The late Dr. Tsuji made pioneering efforts to develop immunodiagnostic techniques for toxocariasis [50,89,90]. Recently, Mongolian gerbils, *Meriones unguiculatus* have been established as a suitable animal model for experimental ocular and neurologic toxocariasis [91–94].

Human toxocariasis is a public health hazard not only in children but also in adults, both in developing and developed countries. There are still questions to which we have no answers: How does ocular toxocariasis develop? Why do nearly half of ocular toxocariasis patients not produce detectable antibody to LES? What is the pathogenesis of neurologic toxocariasis? What mechanisms are involved in the reemergence of *Toxocara* larvae during pregnancy both in definitive and definitive hosts? In addition, we have not yet established an effective anthelmintic against *Toxocara* parasites in the

tissue stage, especially for the ocular toxocariasis. Continuous efforts should be made to address these issues. Finally, toxocariasis is a disease that afflicts two of the very best and oldest friends of humans: dogs and cats. Therefore, we must continue to study this puzzling disease both for the sake of humans, and for that of our animal friends.

Acknowledgements

We wish to acknowledge the late Dr. Kaoru Kondo, the former Professor of the Department of Parasitology, School of Medicine, Kanazawa University, who gave us an opportunity for the study of *Toxocara* and toxocariasis. We also thank Drs K. Aragane, T. Suzuki, T. Hori, and Y. Morimatsu for providing us the patient's samples and information.

References

- [1] Wilder HC. Nematode endophthalmitis. *Trans Am Acad Ophthalmol Otolaryngol* 1950;55:99–109.
- [2] Beaver PC, Synder CH, Carrera GM. Chronic eosinophilia due to visceral larva migrans. *Pediatrics* 1952;9:7–19.
- [3] Smith MHD, Beaver PC. Persistence and distribution of *Toxocara canis* larvae in the tissues of children and mice. *Pediatrics* 1953;12:491–7.
- [4] Nichols RL. The etiology of visceral larva migrans. I. Diagnostic morphology of infective second-stage *Toxocara* larvae. *J Parasitol* 1956;42:349–57.
- [5] Sprent JFA. Observation on the development of *Toxocara canis* (Werner, 1782) in the dogs. *Parasitology* 1957;48:184–93.
- [6] Kondo K. *Toxocara* infection and toxocariasis. In: Kamegai S, Hayashi S, editors. *Progress of Medical Parasitology in Japan* Tokyo: Meguro Parasitological Museum; 2003. p. 475–84.
- [7] Glickman LT, Magnaval JF. Zoonotic roundworm infections. *Infect Dis Clin North Am* 1993;7:717–32.
- [8] Taylor MR, Keané CT, O'Connor P, Mulvihill E, Holland C. The expanded spectrum of toxocaral disease. *Lancet* 1988;1:692–5.
- [9] Fushimi J, Nishimura T, Murakami K. On a case which is considered as human toxocariasis cured by dithiazanine iodine. *Jpn J Parasitol* 1963;12:303–4.
- [10] Yoshioka H. Nematode endophthalmitis, possibly due to *Toxocara canis*. Report of a case. *Jpn Clin Ophthalmol* 1966;20:149–54.
- [11] Aragane K, Akao N, Matsuyama T, Sugita M, Natsuaki M, Kitada O. Fever, cough, and nodules on ankles. *Lancet* 1999;354:1872.
- [12] Akao N, Nishi-Nakagawa K, Nishi O. Ocular toxocariasis: recovery of intraocular larva-like foreign body from a uveitis patient. *Clin Parasitol* 2003;14:71–3 [in Japanese].
- [13] Ijui N, Shimizu T, Fukuhara J, Nawa Y, Hara Y, Saishin M, Nishiyama T. Demonstration of causative organism by vitrectomy in a case of ocular toxocariasis. *Jpn J Clin Ophthalmol* 1999;53:1305–7 [in Japanese].
- [14] Haruta Y. Toxocariasis. *Practical Ophthalmol* 1993;8:136–9 [in Japanese].
- [15] Matsumura K, Endo R. Enzyme-linked immunosorbent assay for toxocariasis, its application to the sera of children. *Zentralbl Bakteriell Mikrobiol Hyg A* 1982;253:402–6.
- [16] Matsumura K, Endo R. Seroepidemiological study on toxocaral infection in man by enzyme-linked immunosorbent assay. *J Hyg (Lond)* 1983;90: 61–5.
- [17] Kondo K, Akao N, Ohyama T, Okazawa T. Sero-epidemiological investigation of toxocariasis in Asian area. In: *The 5th Asian-Pacific Congress for Parasitic Zoonoses*. In: Yamaguchi T, Araki T, Chen ER, editors. *The Organizing Committee of Asian-Pacific Congress for Parasitic Zoonoses*; 1998. p. 65–70.
- [18] Uga S, Ono K, Kataoka N, Hasan H. Seroepidemiology of five major zoonotic parasite infections in inhabitants of Sidoarjo, East Java, Indonesia. *Southeast Asian J Trop Med Public Health* 1996;27:556–61.

- [19] Rai SK, Uga S, Ono K, Nakanishi M, Shrestha HG, Matsumura T. Seroepidemiological study of *Toxocara* infection in Nepal. Southeast Asian J Trop Med Public Health 1996;27:286–90.
- [20] Overgaauw PA. Aspects of *Toxocara* epidemiology: human toxocariasis. Crit Rev Microbiol 1997;23:215–31.
- [21] Sakai K, Okajima Y, Ohuchi K. A case of visceral larva migrans due to the ingestion of raw hen liver. Naika 1983;51:963–7 [in Japanese with English abstract].
- [22] Ito K, Sakai K, Okajima T, Ouchi K, Funakoshi A, Nishimura J, et al. Three cases of visceral larva migrans due to ingestion of raw chicken or cow liver. J Jpn Soc Int Med 1986;75:759–66 [in Japanese].
- [23] Nakatsuji Y, Shigemoto S, Kojiro N, Nanahoshi M, Masaki S. Brother cases of serologically diagnosed visceral larva migrans. J Jpn Soc Int Med 1989;78:35–40 [in Japanese].
- [24] Nagakura K, Tachibana H, Kaneda Y, Kato Y. Toxocariasis possibly caused by ingesting raw chicken. J Infect Dis 1989;160:735–6.
- [25] Mitsugi K, Umei T, Inoue T, Sumida I, Hanada M. Visceral larva migrans by *Toxocara cati* with multiple nodules in liver. J Jpn Soc Int Med 1988;77:1742–3 [in Japanese].
- [26] Lee KT, Min HK, Chung PR, Chang JK. Studies on the inducing possibility of human visceral larva migrans associated with eating habit of raw liver of domestic animals. Korean J Parasitol 1976;14:51–60.
- [27] Taira K, Permin A, Kapel CM. Establishment and migration pattern of *Toxocara canis* larvae in chickens. Parasitol Res 2003;90:521–3.
- [28] Taira K, Saeed I, Permin A, Kapel CM. Zoonotic risk of *Toxocara canis* infection through consumption of pig or poultry viscera. Vet Parasitol 2004;121:115–24.
- [29] Takakura Y. An epidemiological study of food-borne toxocariasis: fowl and cattle as paratenic hosts of *Toxocara canis*. J Juzen Med 1993;102:828–935 [in Japanese with English abstract].
- [30] Morimatsu Y, Akao N, Akiyoshi H, Kawazu T, Okabe Y, Aizawa H. A familial case of visceral larva migrans after ingestion of raw chicken livers: appearance of specific antibody in bronchoalveolar lavage fluid of the patients. Am J Trop Med Hyg 2006;75:303–6.
- [31] Epe C, Sabel T, Schnieder T, Stoye M. The behavior and pathogenicity of *Toxocara canis* larvae in mice of different strains. Parasitol Res 1994;80:691–5.
- [32] Kayes SG, Jones RE, Omholt PE. Use of bronchoalveolar lavage to compare local pulmonary immunity with the systemic immune response of *Toxocara canis*-infected mice. Infect Immun 1987;55:2132–6.
- [33] Kayes SG. Nonspecific allergic granulomatosis in the lungs of mice infected with large but not small inocula of the canine ascarid, *Toxocara canis*. Clin Immunol Immunopathol 1986;41:55–65.
- [34] Inoue K, Inoue Y, Arai T, Nawa Y, Kashiwa Y, Yamamoto S, et al. Chronic eosinophilic pneumonia due to visceral larva migrans. Intern Med 2002;41:478–82 [in Japanese].
- [35] Hayashi K, Tahara H, Yamashita K, Kuroki K, Matsushita R, Yamamoto S, et al. Hepatic imaging studies on patients with visceral larva migrans due to probable *Ascaris suum* infection. Abdom Imaging 1999;24:465–9.
- [36] Ishibashi H, Shimamura R, Hirata Y, Kudo J, Onizuka H. Hepatic granuloma in toxocaral infection: role of ultrasonography in hyper eosinophilia. J Clin Ultrasound 1992;20:204–10.
- [37] Demirci M, Yildirim M, Aridogan BC, Baysal V, Korkmaz M. Tissue parasites in patients with chronic urticaria. J Dermatol 2003;30:777–81.
- [38] Del Pozo MD, Audicana M, Diez JM, Munoz D, Ansotegui JJ, Fernandez E, et al. *Anisakis simplex*, a relevant etiologic factor in acute urticaria. Allergy 1997;52:576–9.
- [39] Fernandez de Corres L, Audicana M, Del Pozo MD, Munoz D, Fernandez E, Navarro JA, et al. *Anisakis simplex* induces not only anisakiasis: report on 28 cases of allergy caused by this nematode. J Investig Allergol Clin Immunol 1996;6:315–9.
- [40] Humbert P, Niezborala M, Salembier R, Aubin F, Piarroux R, Buchet S, et al. Skin manifestations associated with toxocariasis: a case-control study. Dermatology 2000;201:230–4.
- [41] Piarroux R, Gavignat B, Hierro S, and Humbert P. Toxocariasis and the skin. In: editors. *Toxocara: The Enigmatic Parasite Toxocara: The Enigmatic Parasite*: CABI International, 2005.
- [42] Woodruff AW. Toxocariasis. Br Med J 1970;3:663–9.
- [43] Parasitic zoonoses. Report of a WHO expert committee with the participation of FAO. World Health Organ Tech Rep Ser 1979;1–107.
- [44] Uga S, Matsuo J, Kimura D, Rai SK, Koshino Y, Igarashi K. Differentiation of *Toxocara canis* and *T. cati* eggs by light and scanning electron microscopy. Vet Parasitol 2000;92:287–94.
- [45] Uga S. Prevalence of *Toxocara* eggs and number of faecal deposits from dogs and cats in sandpits of public parks in Japan. J Helminthol 1993;67:78–82.
- [46] Hori T, Yoshida M, Fuse S, Igarashi C, Fujita S, Yoshida Y, et al. Prominent eosinophilia in a patient with toxocariasis. J Clin Pediatr 1997;45:157–61 [in Japanese].
- [47] Barriga OO. A critical look at the importance, prevalence and control of toxocariasis and the possibilities of immunological control. Vet Parasitol 1988;29:195–234.
- [48] Yoshida M, Shirao Y, Asai H, Nagase H, Nakamura H, Okazawa T, et al. A retrospective study of ocular toxocariasis in Japan: correlation with antibody prevalence and ophthalmological findings of patients with uveitis. J Helminthol 1999;73:357–61.
- [49] Wilkinson CP, Welch RB. Intraocular *Toxocara*. Am J Ophthalmol 1971;71:921–30.
- [50] Fujino T, Haruki K, Matsui T, Yokota N, Kobayashi F, M. T. The serodiagnostic examination for helminthiasis (1991–1996). J Ky Med Assoc 1998;29:581–4.
- [51] Magnaval JF, Galindo V, Glickman LT, Clanet M. Human *Toxocara* infection of the central nervous system and neurological disorders: a case-control study. Parasitology 1997;115(Pt 5):537–43.
- [52] Eberhardt O, Bialek R, Nagele T, Dichgans J. Eosinophilic meningomyelitis in toxocariasis: case report and review of the literature. Clin Neurol Neurosurg 2005;107:432–8.
- [53] Ota S, Komiyama A, Johkura K, Hasegawa O, Kondo K. Eosinophilic meningo-encephalo-myelitis due to *Toxocara canis*. Rinsho Shinkeigaku 1994;34:1148–52 [in Japanese].
- [54] Osoegawa M. Diagnosis and treatment of CNS parasite infection with special reference to parasitic myelitis. Rinsho Shinkeigaku—Clin Neurol 2004;44:961–4 [in Japanese with English abstract].
- [55] Fisher M. *Toxocara cati*: an underestimated zoonotic agent. Trends Parasitol 2003;19:167–70.
- [56] Eberhard ML, Alfano E. Adult *Toxocara cati* infections in U.S. children: report of four cases. Am J Trop Med Hyg 1998;59:404–6.
- [57] von Reyn CF, Roberts TM, Owen R, Beaver PC. Infection of an infant with an adult *Toxocara cati* (Nematoda). J Pediatr 1978;93:247–9.
- [58] Ueno Y, Hasui M, Kondo K, Komatsubara A. A case report of infant infected with adults of *Toxocara cati*. Clin Parasitol 1999;10:54–6 [in Japanese].
- [59] Bisseru B, Woodruff AW, Hutchinson RI. Infection with adult *Toxocara canis*. Br Med J 1966;1:1583–4.
- [60] Beaver PC, Jung RC, Cupp EW. Clinical parasitology. Philadelphia: Lea & Febiger; 1984.
- [61] Kennedy MW, Maizels RM, Meghji M, Young L, Qureshi F, Smith HV. Species-specific and common epitopes on the secreted and surface antigens of *Toxocara cati* and *Toxocara canis* infective larvae. Parasite Immunol 1987;9:407–20.
- [62] Nishikata H, Hirata Y, Shimamura R, Dohmen K, Kudo J, Ishibashi H, et al. A case of visceral larva migrans by *Toxocara cati* infection with multiple liver granuloma. Nippon Shokakibyō Gakkai Zasshi 1991;88:2697–702 [in Japanese with English abstract].
- [63] Shimokawa H, Nakashima T, Akagi K, Omae T, Tsuji M. Visceral larva migrans by *Toxocara cati*. Fukuoka Igaku Zasshi 1982;73:64–9.
- [64] Takeda M, Tanabe K, Nishi Y, Tsuji M, Iwanaga Y. Familial cases of *Toxocara cati* infection. Nippon Rinsho 1975;33:3558–65.
- [65] Akao N, Goto Y, Kondo K, Tsuda Y. Changing chemosusceptibility in the second-stage larvae of *Toxocara canis* by long-term incubation. J Helminthol 1993;67:145–50.
- [66] Maizels RM, de Savigny D, Ogilvie BM. Characterization of surface and excretory–secretory antigens of *Toxocara canis* infective larvae. Parasite Immunol 1984;6:23–37.
- [67] Maizels RM, Page AP. Surface associated glycoproteins from *Toxocara canis* larval parasites. Acta Trop 1990;47:355–64.

- [68] Page AP, Maizels RM. Biosynthesis and glycosylation of serine/threonine-rich secreted proteins from *Toxocara canis* larvae. *Parasitology* 1992;105 (Pt 2):297–308.
- [69] Sugane K, Oshima T. Purification and characterization of excretory and secretory antigen of *Toxocara canis* larvae. *Immunology* 1983;50:113–20.
- [70] Loukas A, Doedens A, Hintz M, Maizels RM. Identification of a new C-type lectin, TES-70, secreted by infective larvae of *Toxocara canis*, which binds to host ligands. *Parasitology* 2000;121(Pt 5):545–54.
- [71] Gems D, Maizels RM. An abundantly expressed mucin-like protein from *Toxocara canis* infective larvae: the precursor of the larval surface coat glycoproteins. *Proc Natl Acad Sci U S A* 1996;93:1665–70.
- [72] Page AP, Rudin W, Maizels RM. Lectin binding to secretory structures, the cuticle and the surface coat of *Toxocara canis* infective larvae. *Parasitology* 1992;105(Pt 2):285–96.
- [73] Page AP, Rudin W, Fluri E, Blaxter ML, Maizels RM. *Toxocara canis*: a labile antigenic surface coat overlying the epicuticle of infective larvae. *Exp Parasitol* 1992;75:72–86.
- [74] Akao N, Kondo K. Glycoconjugates of excretory–secretory antigens of second stage larvae of *Toxocara canis*: analysis of their reactivity to lectins. *Jpn J Parasitol* 1986;35:395–401.
- [75] Akao N, Kondo K, Okamoto T, Yoshimura H. Antigenic analysis of excretory–secretory products of second stage larvae of *Toxocara canis* and the antigen recognition in the course of infection. *Jpn J Parasitol* 1983;32:541–8 [in Japanese with English abstract].
- [76] De Andrade Lima Coelho R, De Carvalho LB, Perez EP, Araki K, Takeuchi T, Ito A, et al. Prevalence of toxocariasis in northeastern Brazil based on serology using recombinant *Toxocara canis* antigen. *Am J Trop Med Hyg* 2005;72:103–7.
- [77] Yamasaki H, Araki K, Lim PK, Zasmy N, Mak JW, Taib R, et al. Development of a highly specific recombinant *Toxocara canis* second-stage larva excretory–secretory antigen for immunodiagnosis of human toxocariasis. *J Clin Microbiol* 2000;38:1409–13.
- [78] Akao N, Chu AE, Tsukidate S, Fujita K. A rapid and sensitive screening kit for the detection of anti-*Toxocara* larval ES antigens. *Parasitol Int* 1997;46:189–95.
- [79] Oshima T. Standardization of techniques for infecting mice with *Toxocara canis* and observations on the normal migration routes of the larvae. *J Parasitol* 1961;47:652–6.
- [80] Hiratochi M, Takamoto M, Tatemichi S, Sugane K. Inhibition of interleukin 5 production with no influence on interleukin 4 production by an anti-allergic drug, tranilast, in *Toxocara canis*-infected mice. *Int J Immunopharmacol* 2000;22:463–71.
- [81] Takamoto M, Wang ZX, Watanabe N, Matsuzawa A, Nariuchi H, Sugane K. Eosinophilia, IgE production, and cytokine production by lung T cells in surface CD4-deficient mutant mice infected with *Toxocara canis*. *Immunology* 1998;95:97–104.
- [82] Takamoto M, Isobe M, Sugane K. The role of ICAM-1/LFA-1 and VCAM-1/VLA-4 interactions on T helper 2 cytokine production by lung T cells of *Toxocara canis*-infected mice. *Immunology* 1998;95:419–26.
- [83] Hokibara S, Takamoto M, Isobe M, Sugane K. Effects of monoclonal antibodies to adhesion molecules on eosinophilic myocarditis in *Toxocara canis*-infected CBA/J mice. *Clin Exp Immunol* 1998;114:236–44.
- [84] Takamoto M, Ovington KS, Behm CA, Sugane K, Young IG, Matthaei KI. Eosinophilia, parasite burden and lung damage in *Toxocara canis* infection in C57BL/6 mice genetically deficient in IL-5. *Immunology* 1997;90:511–7.
- [85] Sugane K, Kusama Y, Takamoto M, Tominaga A, Takatsu K. Eosinophilia, IL-5 level and recovery of larvae in IL-5 transgenic mice infected with *Toxocara canis*. *J Helminthol* 1996;70:153–8.
- [86] Takamoto M, Kusama Y, Takatsu K, Nariuchi H, Sugane K. Occurrence of interleukin-5 production by CD4-CD8-(double-negative) T cells in lungs of both normal and congenitally athymic nude mice infected with *Toxocara canis*. *Immunology* 1995;85:285–91.
- [87] Kusama Y, Takamoto M, Kasahara T, Takatsu K, Nariuchi H, Sugane K. Mechanisms of eosinophilia in BALB/c-nu/+ and congenitally athymic BALB/c-nu/nu mice infected with *Toxocara canis*. *Immunology* 1995;84:461–8.
- [88] Takamoto M, Sugane K. Mechanisms of eosinophilia in *Toxocara canis* infected mice: in vitro production of interleukin 5 by lung cells of both normal and congenitally athymic nude mice. *Parasite Immunol* 1993;15:493–500.
- [89] Tuji M. Comparative studies on the antigenic structure of several helminths by immunoelectrophoresis. *Jpn J Parasitol* 1975;24:227–36.
- [90] Tuji M. On the immunoelectrophoresis for helminthological researches. *Jpn J Parasitol* 1974;23:335–45.
- [91] Akao N. Critical assessment of existing and novel systems of toxocariasis. In: Holland CV, HVS, editors. *Toxocara: the enigmatic parasite*. London: CABI International; 2005. p. 74–85.
- [92] Akao N, Takayanagi TH, Suzuki R, Tsukidate S, Fujita K. Ocular larva migrans caused by *Toxocara cati* in Mongolian gerbils and a comparison of ophthalmologic findings with those produced by *T. canis*. *J Parasitol* 2000;86:1133–5.
- [93] Takayanagi TH, Akao N, Suzuki R, Tomoda M, Tsukidate S, Fujita K. New animal model for human ocular toxocariasis: ophthalmoscopic observation. *Br J Ophthalmol* 1999;83:967–72.
- [94] Akao N, Tomoda M, Hayashi E, Suzuki R, Shimizu-Suganuma M, Shichinohe K, et al. Cerebellar ataxia due to *Toxocara* infection in Mongolian gerbils, *Meriones unguiculatus*. *Vet Parasitol* 2003;113:229–37.

Migration behaviour and pathogenesis of five ascarid nematode species in the Mongolian gerbil *Meriones unguiculatus*

S. Cho¹, M. Egami², H. Ohnuki², Y. Saito¹, S. Chinone¹,
K. Shichinohe³, M. Suganuma³ and N. Akao^{2*}

¹Department of Veterinary Parasitology, Azabu University, Fuchinobe 1-17-71, Sagamihara 229-8501, Japan: ²Section of Environmental Parasitology, Graduate School, Tokyo Medical and Dental University, Yushima 1-5-45, Bunkyo-ku, Tokyo 113-85119, Japan: ³Division of Laboratory Animal Science, Nippon Medical School, Sendagi 1-1-5, Bunkyo-ku, Tokyo 113-9602, Japan

Abstract

To understand the characteristic features of the Mongolian gerbil, *Meriones unguiculatus*, as an animal model of ascarid infections, the migration behaviour and pathogenesis of larvae were investigated in experimentally infected gerbils. Embryonated eggs from each of *Toxocara canis*, *Baylisascaris procyonis*, *B. transfuga*, *Ascaris suum*, and *A. lumbricoides* were orally inoculated into gerbils and larvae were recovered from various organs at designated periods. In *T. canis*-infected gerbils, larvae were present in the liver 3 days after infection and in the skeletal muscle and brain via the heart and lungs at a similar rate. In *B. procyonis*- and *B. transfuga*-infected gerbils, larvae were present in the lungs within 24 h after infection, with some having reached the brain by that time. After 24 h, larvae of *B. procyonis* tended to accumulate in the brain, while those of *B. transfuga* accumulated in skeletal muscles. In *A. suum*- and *A. lumbricoides*-infected gerbils, larvae remained in the liver on day 5 post-infection and elicited pulmonary haemorrhagic lesions, which disappeared 7 days after initial infection. Thereafter, no larvae of any type were recovered. Ocular manifestations were frequently observed in *T. canis*- and *B. procyonis* infected gerbils, but were rare in *B. transfuga*-infected gerbils. In the cases of *A. suum* and *A. lumbricoides*, migration to the central nervous system and eyes was extremely rare, and larvae had disappeared by 2 weeks post-infection. Fatal neurological disturbances were observed in *B. procyonis*-infected gerbils, whereas irreversible non-fatal neurological symptoms were observed in the case of *B. transfuga*.

Introduction

Larval stages of ascarid nematodes elicit severe tissue damage when they invade hosts which are not normally the definitive host. The racoon roundworm, *Baylisascaris procyonis*, is particularly prone to cause a fatal neurological disturbance (Huff *et al.*, 1984; Kuchle *et al.*, 1993; Moertel *et al.*, 2001; Wise *et al.*, 2005). The dog

roundworm, *Toxocara canis*, and the cat roundworm, *T. cati*, are also responsible for the visceral larva migrans syndrome (VLM) in humans (Glickman & Magnaval, 1993; Fisher, 2003). The VLM caused by these two roundworms is commonly known as toxocariasis, which is considered a disease of infants and children, although adults are also infected (Glickman *et al.*, 1987; Aragane *et al.*, 1999; Yoshida *et al.*, 1999). Moreover, outbreaks of VLM due to the pig roundworm, *Ascaris suum*, have been reported from the southern part of Japan (Maruyama *et al.*, 1996; Sakakibara *et al.*, 2002). Meningitis can occur when *Ascaris* larvae migrate into the central nervous system

*Author for correspondence
Fax: +81 3 5684 2849
E-mail: ocha.vip@tmd.ac.jp