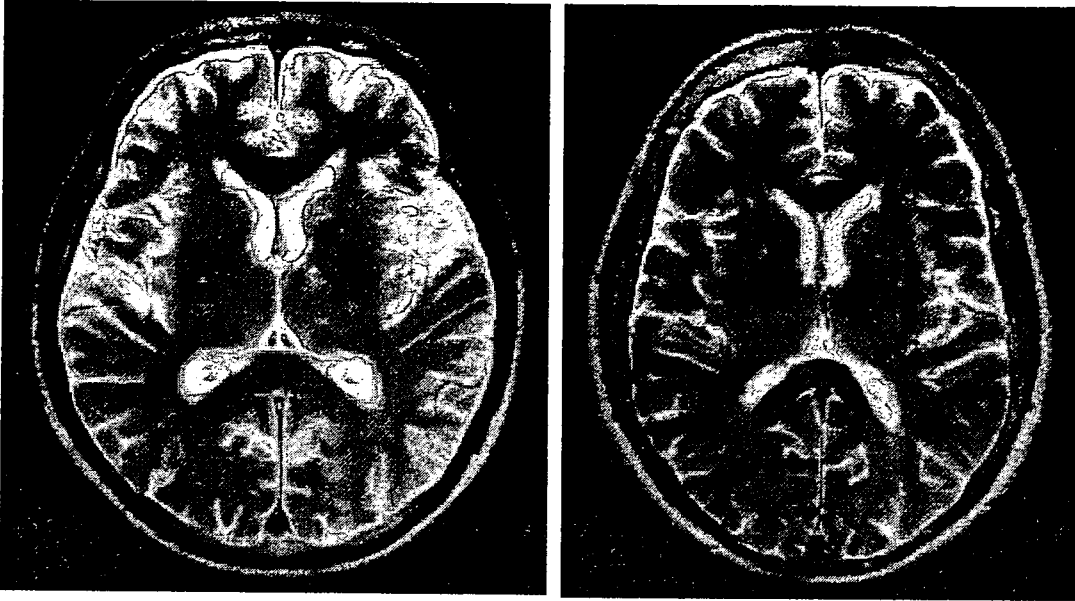
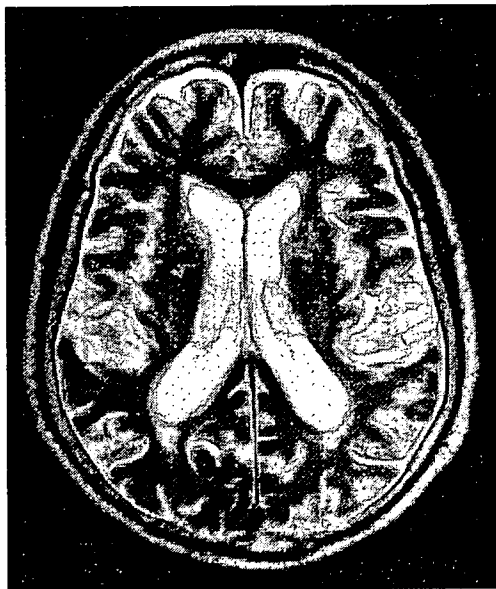
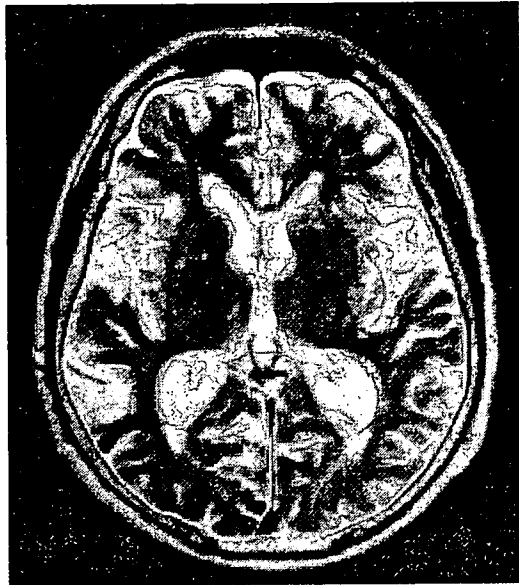
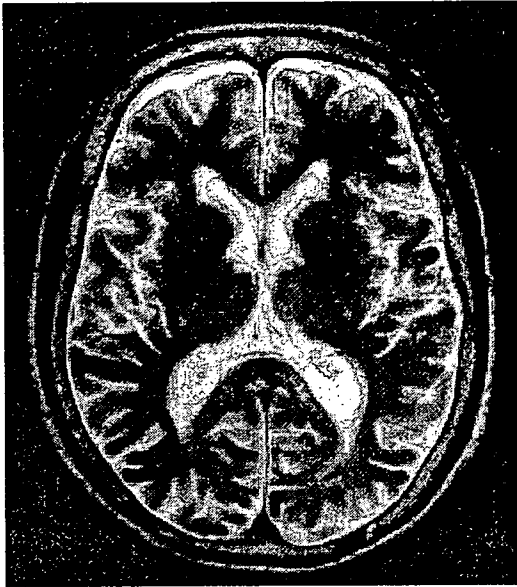


Periventricular hyperintensity

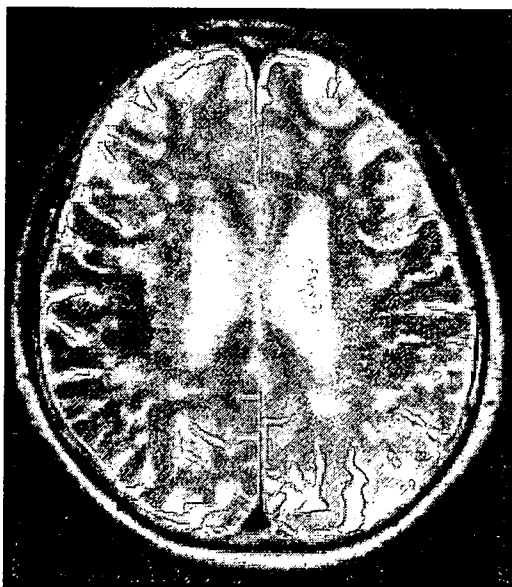
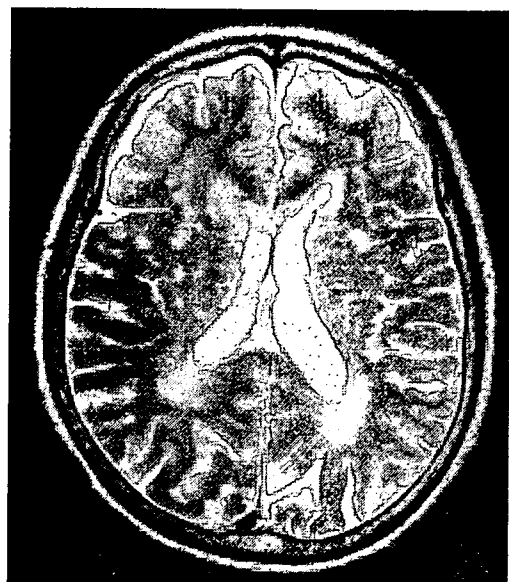
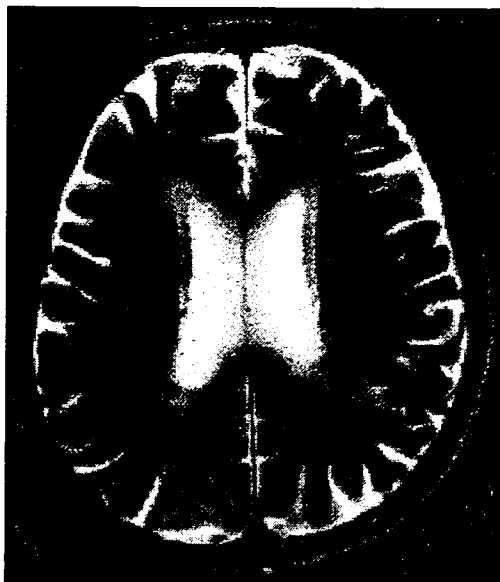
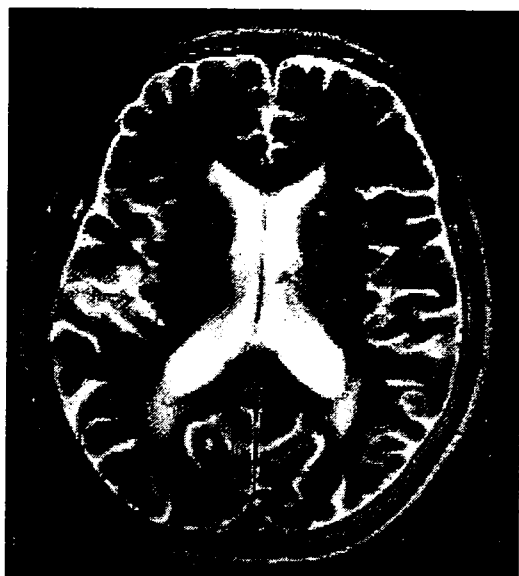
I. None or minimal periventricular signal hyperintensities in the form of caps only in the anterior horn of lateral ventricles.



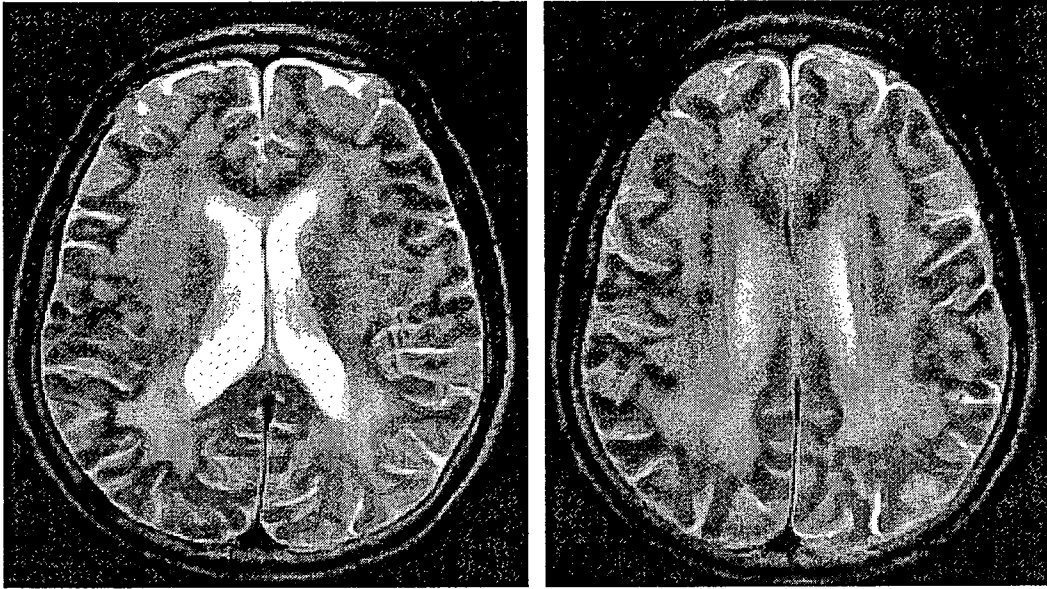
II. Caps in both anterior and posterior horns of lateral ventricles.



III. multifocal periventricular hyperintense punctuate lesions.

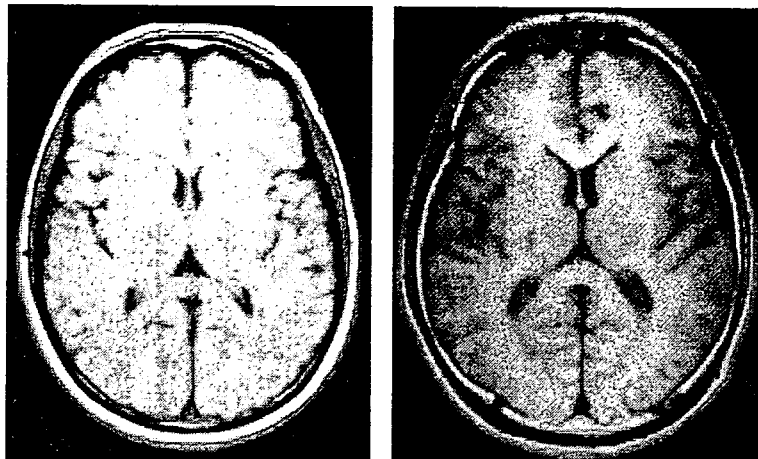


IV. Multiple high signal intensity area that reached confluency in the periventricular region and white matter.

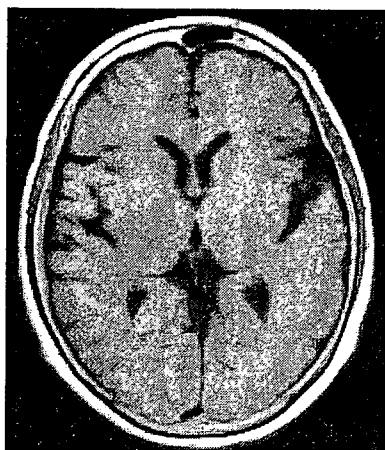


Ventricular dilatation

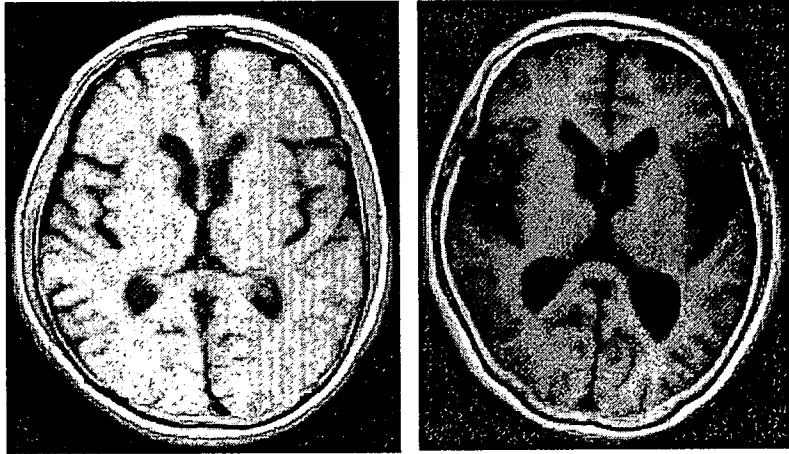
I. none



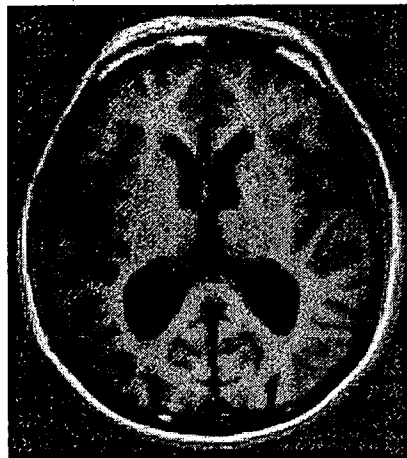
II. mild



III. moderate

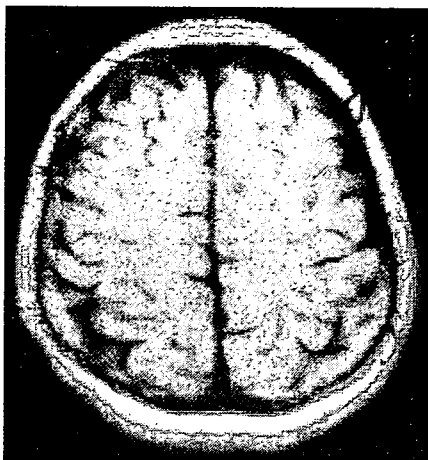


IV. severe

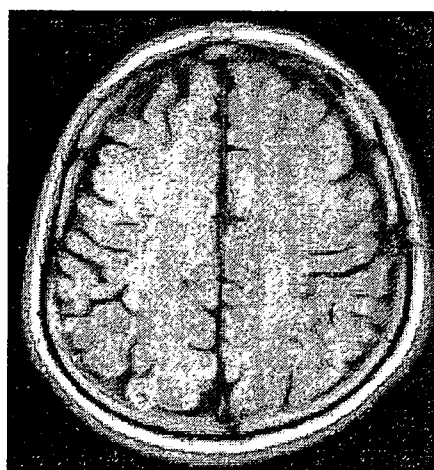
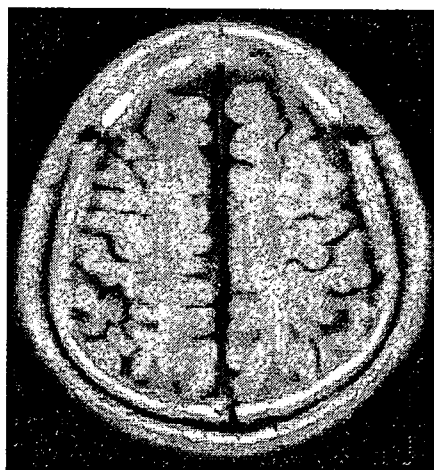


Brain atrophy

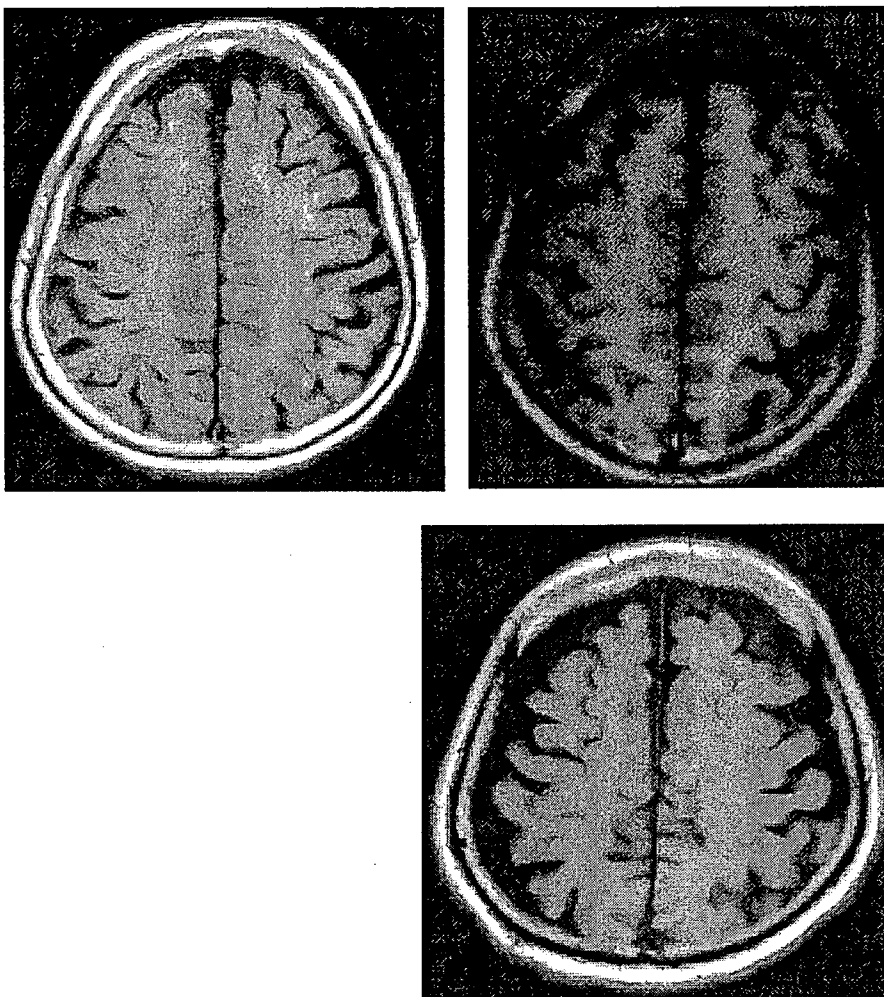
I. none



II. mild



III. Moderate



IV. severe

Brain Atrophy

		40-49yr		50-59yr		60-69yr		70-79yr		80yr -		Total	
		N	%	N	%	N	%	N	%	N	%	N	%
normal	Male	181	98.4	139	90.3	109	71.7	44	27.7	4	8.0	477	68.2
	Female	194	100.0	146	99.3	149	93.7	115	70.6	25	50.0	629	88.2
	Total	375	99.2	285	94.7	258	83.0	159	49.4	29	29.0	1106	78.3
mild	Male	3	1.6	15	9.7	43	28.3	99	62.3	29	58.0	189	27.0
	Female	0	0.0	1	0.7	10	6.3	47	28.8	24	48.0	82	11.5
	Total	3	0.8	16	5.3	53	17.0	146	45.3	53	53.0	271	19.2
moderate	Male	0	0.0	0	0.0	0	0.0	16	10.1	17	34.0	33	4.7
	Female	0	0.0	0	0.0	0	0.0	1	0.6	1	2.0	2	0.3
	Total	0	0.0	0	0.0	0	0.0	17	5.3	18	18.0	35	2.5
Total	Male	184	100.0	154	100.0	152	100.0	159	100.0	50	100.0	699	100.0
	Female	194	100.0	147	100.0	159	100.0	163	100.0	50	100.0	713	100.0
	Total	378	100.0	301	100.0	311	100.0	322	100.0	100	100.0	1412	100.0

Ventricular Dilatation

		40-49yr		50-59yr		60-69yr		70-79yr		80yr -		Total	
		N	%	N	%	N	%	N	%	N	%	N	%
Normal	Male	173	94.0	123	79.9	68	44.7	27	17.0	4	8.0	395	56.5
	Female	185	95.4	140	95.2	120	75.5	67	41.1	4	8.0	516	72.4
	Total	358	94.7	263	87.4	188	60.5	94	29.2	8	8.0	911	64.5
Mild	Male	8	4.3	31	20.1	79	52.0	98	61.6	23	46.0	239	34.2
	Female	8	4.1	7	4.8	37	23.3	79	48.5	32	64.0	163	22.9
	Total	16	4.2	38	12.6	116	37.3	177	55.0	55	55.0	402	28.5
Moderate	Male	3	1.6	0	0.0	5	3.3	32	20.1	21	42.0	61	8.7
	Female	1	0.5	0	0.0	2	1.3	16	9.8	14	28.0	33	4.6
	Total	4	1.1	0	0.0	7	2.3	48	14.9	35	35.0	94	6.7
Severe	Male	0	0.0	0	0.0	0	0.0	2	1.3	2	4.0	4	0.6
	Female	0	0.0	0	0.0	0	0.0	1	0.6	0	0.0	1	0.1
	Total	0	0.0	0	0.0	0	0.0	3	0.9	2	2.0	5	0.4
Total	Male	184	100.0	154	100.0	152	100.0	159	100.0	50	100.0	699	100.0
	Female	194	100.0	147	100.0	159	100.0	163	100.0	50	100.0	713	100.0
	Total	378	100.0	301	100.0	311	100.0	322	100.0	100	100.0	1412	100.0

Cerebral Infarction

		40-49yr		50-59yr		60-69yr		70-79yr		80yr -		Total	
		N	%	N	%	N	%	N	%	N	%	N	%
not examined	Male	6	3.3	4	2.6	5	3.3	4	2.5	2	4.0	21	3.0
	Female	7	3.6	5	3.4	4	2.5	6	3.7	1	2.0	23	3.2
	Total	13	3.4	9	3.0	9	2.9	10	3.1	3	3.0	44	3.1
no cvd	Male	22	12.0	38	24.7	28	18.4	17	10.7	5	10.0	110	15.7
	Female	12	6.2	40	27.2	30	18.9	20	12.3	0	0.0	102	14.3
	Total	34	9.0	78	25.9	58	18.6	37	11.5	5	5.0	212	15.0
cvd	Male	156	84.8	112	72.7	119	78.3	138	86.8	43	86.0	568	81.3
	Female	175	90.2	102	69.4	125	78.6	137	84.0	49	98.0	588	82.5
	Total	331	87.6	214	71.1	244	78.5	275	85.4	92	92.0	1156	81.9
Total	Male	184	100.0	154	100.0	152	100.0	159	100.0	50	100.0	699	100.0
	Female	194	100.0	147	100.0	159	100.0	163	100.0	50	100.0	713	100.0
	Total	378	100.0	301	100.0	311	100.0	322	100.0	100	100.0	1412	100.0

Lacuna

		40-49yr		50-59yr		60-69yr		70-79yr		80yr -		Total	
		N	%	N	%	N	%	N	%	N	%	N	%
not recorded	Male	6	3.3	4	2.6	4	2.6	3	1.9	2	4.0	19	2.7
	Female	7	3.6	5	3.4	4	2.5	6	3.7	1	2.0	23	3.2
	Total	13	3.4	9	3.0	8	2.6	9	2.8	3	3.0	42	3.0
no lacuna	Male	22	12.0	38	24.7	29	19.1	19	11.9	5	10.0	113	16.2
	Female	12	6.2	40	27.2	31	19.5	20	12.3	0	0.0	103	14.4
	Total	34	9.0	78	25.9	60	19.3	39	12.1	5	5.0	216	15.3
one lacuna	Male	153	83.2	99	64.3	60	39.5	25	15.7	4	8.0	341	48.8
	Female	173	89.2	94	63.9	98	61.6	64	39.3	4	8.0	433	60.7
	Total	326	86.2	193	64.1	158	50.8	89	27.6	8	8.0	774	54.8
multiple lacune	Male	3	1.6	13	8.4	59	38.8	112	70.4	39	78.0	226	32.3
	Female	2	1.0	8	5.4	26	16.4	73	44.8	45	90.0	154	21.6
	Total	5	1.3	21	7.0	85	27.3	185	57.5	84	84.0	380	26.9
Total	Male	184	100.0	154	100.0	152	100.0	159	100.0	50	100.0	699	100.0
	Female	194	100.0	147	100.0	159	100.0	163	100.0	50	100.0	713	100.0
	Total	378	100.0	301	100.0	311	100.0	322	100.0	100	100.0	1412	100.0

Thrombosis

		40-49yr		50-59yr		60-69yr		70-79yr		80yr -		Total	
		N	%	N	%	N	%	N	%	N	%	N	%
not recorded	Male	6	3.3	4	2.6	4	2.6	3	1.9	2	4.0	19	2.7
	Female	7	3.6	5	3.4	4	2.5	6	3.7	1	2.0	23	3.2
	Total	13	3.4	9	3.0	8	2.6	9	2.8	3	3.0	42	3.0
no thrombosis	Male	176	95.7	148	96.1	145	95.4	150	94.3	44	88.0	663	94.8
	Female	187	96.4	141	95.9	150	94.3	154	94.5	48	96.0	680	95.4
	Total	363	96.0	289	96.0	295	94.9	304	94.4	92	92.0	1343	95.1
thrombosis	Male	2	1.1	2	1.3	3	2.0	6	3.8	4	8.0	17	2.4
	Female	0	0.0	1	0.7	5	3.1	3	1.8	1	2.0	10	1.4
	Total	2	0.5	3	1.0	8	2.6	9	2.8	5	5.0	27	1.9
Total	Male	184	100.0	154	100.0	152	100.0	159	100.0	50	100.0	699	100.0
	Female	194	100.0	147	100.0	159	100.0	163	100.0	50	100.0	713	100.0
	Total	378	100.0	301	100.0	311	100.0	322	100.0	100	100.0	1412	100.0

Cerebral Embolism

		40-49yr		50-59yr		60-69yr		70-79yr		80yr -		Total	
		N	%	N	%	N	%	N	%	N	%	N	%
not recorded	Male	6	3.3	4	2.6	4	2.6	3	1.9	2	4.0	19	2.7
	Female	7	3.6	5	3.4	4	2.5	6	3.7	1	2.0	23	3.2
	Total	13	3.4	9	3.0	8	2.6	9	2.8	3	3.0	42	3.0
no embolism	Male	178	96.7	150	97.4	147	96.7	150	94.3	43	86.0	668	95.6
	Female	187	96.4	142	96.6	153	96.2	154	94.5	47	94.0	683	95.8
	Total	365	96.6	292	97.0	300	96.5	304	94.4	90	90.0	1351	95.7
embolism	Male	0	0.0	0	0.0	1	0.7	6	3.8	5	10.0	12	1.7
	Female	0	0.0	0	0.0	2	1.3	3	1.8	2	4.0	7	1.0
	Total	0	0.0	0	0.0	3	1.0	9	2.8	7	7.0	19	1.3
Total	Male	184	100.0	154	100.0	152	100.0	159	100.0	50	100.0	699	100.0
	Female	194	100.0	147	100.0	159	100.0	163	100.0	50	100.0	713	100.0
	Total	378	100.0	301	100.0	311	100.0	322	100.0	100	100.0	1412	100.0

Cerebral Bleeding

		40-49yr		50-59yr		60-69yr		70-79yr		80yr -		Total	
		N	%	N	%	N	%	N	%	N	%	N	%
not recorded	Male	6	3.3	4	2.6	5	3.3	4	2.5	2	4.0	21	3.0
	Female	7	3.6	4	2.7	4	2.5	5	3.1	1	2.0	21	2.9
	Total	13	3.4	8	2.7	9	2.9	9	2.8	3	3.0	42	3.0
no bleeding	Male	177	96.2	150	97.4	145	95.4	155	97.5	47	94.0	674	96.4
	Female	187	96.4	142	96.6	154	96.9	157	96.3	49	98.0	689	96.6
	Total	364	96.3	292	97.0	299	96.1	312	96.9	96	96.0	1363	96.5
cerebral bleeding	Male	1	0.5	0	0.0	2	1.3	0	0.0	1	2.0	4	0.6
	Female	0	0.0	1	0.7	1	0.6	1	0.6	0	0.0	3	0.4
	Total	1	0.3	1	0.3	3	1.0	1	0.3	1	1.0	7	0.5
Total	Male	184	100.0	154	100.0	152	100.0	159	100.0	50	100.0	699	100.0
	Female	194	100.0	147	100.0	159	100.0	163	100.0	50	100.0	713	100.0
	Total	378	100.0	301	100.0	311	100.0	322	100.0	100	100.0	1412	100.0

Periventricular hyperintensity (PVH)

		40-49yr		50-59yr		60-69yr		70-79yr		80yr -		Total	
		N	%	N	%	N	%	N	%	N	%	N	%
not examined	Male	0	0.0	0	0.0	0	0.0	1	0.6	0	0.0	1	0.1
	Female	0	0.0	1	0.7	0	0.0	1	0.6	0	0.0	2	0.3
	Total	0	0.0	1	0.3	0	0.0	2	0.6	0	0.0	3	0.2
no PVH	Male	178	96.7	142	92.2	88	57.9	34	21.4	4	8.0	446	63.8
	Female	191	98.5	135	91.8	99	62.3	58	35.6	2	4.0	485	68.0
	Total	369	97.6	277	92.0	187	60.1	92	28.6	6	6.0	931	65.9
mild PVH	Male	6	3.3	12	7.8	57	37.5	90	56.6	25	50.0	190	27.2
	Female	3	1.5	11	7.5	53	33.3	73	44.8	29	58.0	169	23.7
	Total	9	2.4	23	7.6	110	35.4	163	50.6	54	54.0	359	25.4
moderate PVH	Male	0	0.0	0	0.0	7	4.6	31	19.5	21	42.0	59	8.4
	Female	0	0.0	0	0.0	7	4.4	27	16.6	17	34.0	51	7.2
	Total	0	0.0	0	0.0	14	4.5	58	18.0	38	38.0	110	7.8
severe PVH	Male	0	0.0	0	0.0	0	0.0	3	1.9	0	0.0	3	0.4
	Female	0	0.0	0	0.0	0	0.0	4	2.5	2	4.0	6	0.8
	Total	0	0.0	0	0.0	0	0.0	7	2.2	2	2.0	9	0.6
Total	Male	184	100.0	154	100.0	152	100.0	159	100.0	50	100.0	699	100.0
	Female	194	100.0	147	100.0	159	100.0	163	100.0	50	100.0	713	100.0
	Total	378	100.0	301	100.0	311	100.0	322	100.0	100	100.0	1412	100.0