

## Biofunctional Hybrid of Titanium with Polymers

Takao Hanawa<sup>a</sup>, Harumi Sakamoto<sup>b</sup> and Yuta Tanaka<sup>c</sup>

Department of Metallurgy, Institute of Biomaterials and Bioengineering, Tokyo Medical and Dental University, 2-3-10 Kanda-surugadai, Chiyoda-ku, Tokyo 101-0062, Japan

<sup>a</sup> hanawa.met@tmd.ac.jp, <sup>b</sup> sak-met@tmd.ac.jp, <sup>c</sup> y\_tanaka\_r@mail.goo.ne.jp

**Keywords:** titanium, polymer, PEG, segmented polyurethane, immobilization, electrodeposition, silane coupling.

**Abstract.** Application of metals will be expanded to new medical devices, scaffold for tissue engineering, artificial organs, etc. with the addition of biofunction. Therefore, immobilization or combination of functional polymers to metals is significant subject for the application of metals to biofunctional materials and sensors. Metal-polymer hybrid materials are promising biomaterials future, especially for artificial organs. To form metal-polymer hybrid for biomedical devices, two techniques are predominant according to the purpose: Immobilization of biofunctional polymers to metals and bonding of biopolymers with metals. In the first case, poly(ethylene glycol: PEG) is a biofunctional molecule on which adsorption of proteins is inhibited. Control of immobilization mode of PEG modified with NH<sub>2</sub> to titanium surface by electrodeposition is feasible and the adsorption of proteins is inhibited by the deposited PEG. This technique could be applied to all metallic materials. In the other case, we attempted to form a composite of titanium with segmented polyurethane (SPU) thorough silane-coupling agent ( $\gamma$ -MPS). This composite material is applied to texture of titanium covered by SPU as artificial organs.

### Metals as Biomaterials

Metals are used as biomaterials and over 70% of implant devices consist of metals. Advantages of metals are large strength and toughness in comparison with ceramics and polymers. However, metals are sometimes misunderstood as unfavorable materials for medical use that show toxicity, fatigue, and corrosion in the human body (Fig. 1). In addition, metals themselves never show biofunction because no biofunction is added to metals during manufacturing process: melting, casting, forging, rolling, and heat treatment. Therefore, metals are not expected as biofunctional materials. In order to add a biofunction to metals, surface modification is absolutely necessary.

Following applications of metals are expected as biomaterials:

1. Implant for orthopedics, cardiovascular surgery, and dentistry.  
Bone formation, soft tissue adhesion, and blood compatibility are requested.
2. Scaffold materials for tissue engineering.  
Cell adhesion and activation of cells are requested.
3. Base materials for biosensing.

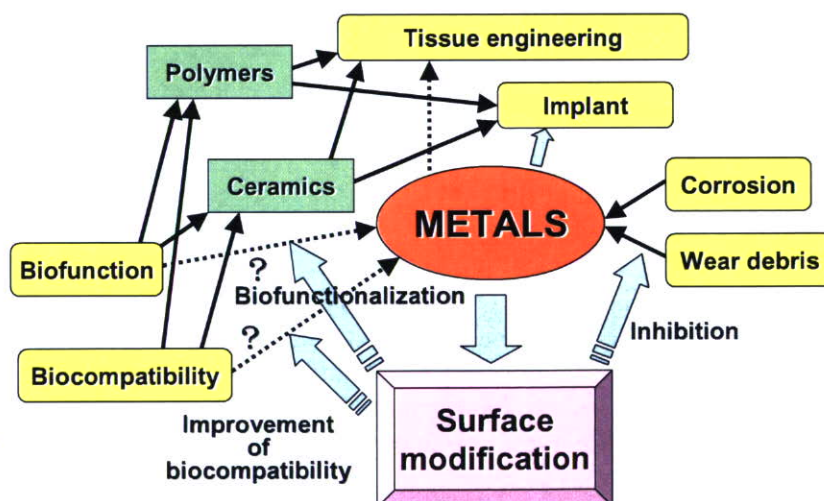


Fig. 1. Situation of metals as biomaterials and surface modification.



Inhibition of cell adhesion and biomolecule adsorption is requested.

For these applications, controlling of cell adhesion and protein adsorption is the most important event.

When a metallic material is implanted into a human body, immediate reaction occurs between its surface and the living tissues. In other words, immediate reaction at this initial stage straightaway determines and defines a metallic material's tissue compatibility. Since conventional metallic biomaterials are usually covered with metal oxides, surface oxide films on metallic materials play an important role not only against corrosion but also in tissue compatibility. Surface properties of a metallic material may be controlled with surface modification techniques.

### Surface Modification

Surface properties of a metallic material may be controlled with surface modification techniques. To develop and apply the appropriate surface modification technique, knowledge of the material's surface composition is absolutely necessary. This is because surface modification is a process that improves surface property by changing the composition and structure, while leaving the mechanical properties of the material intact. Surface modification is a process that changes a material's surface composition, structure and morphology,

leaving the bulk mechanical properties intact. With surface modification, chemical and mechanical durability, as well as tissue compatibility of surface layer could be improved. Surface property is particularly significant for biomaterials, and thus surface modification techniques are particularly useful to biomaterials. Dry-process (using ion beam) and hydro-process (which is performed in aqueous solutions) are predominant surface modification techniques. Apatite coating on titanium with plasma spray, titanium nitride coating with sputter deposition, and titanium oxide growth with morphological control by electrolysis are already available for commercial use (as shown in Fig. 2).

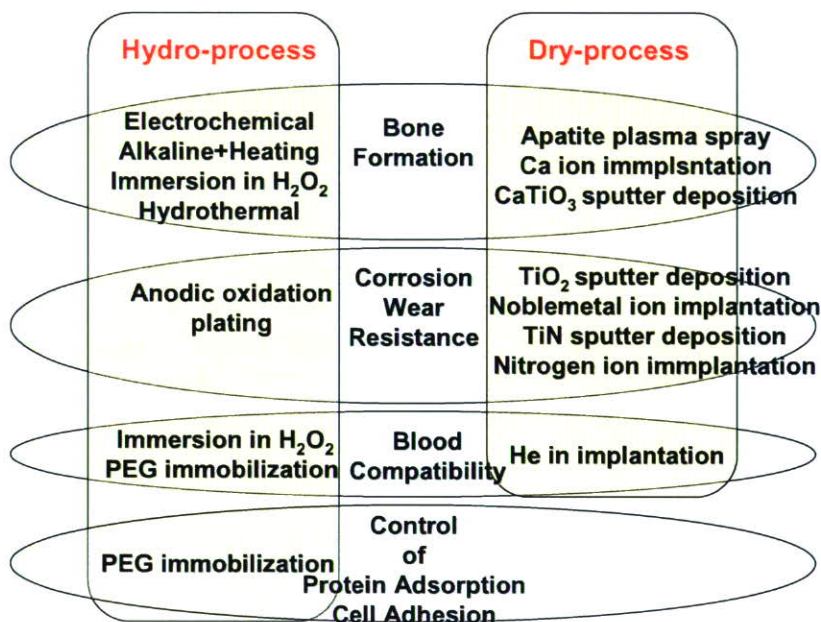


Fig. 2. Surface modification of metals as biomaterials.

### Metal-Polymer Composite

Polymers sometimes show a lack of strength and durability as a biomaterial. On the other hand, metals are used because of their high durability, strength, and formability, while they do not have bioactive and biofunctional properties. Metal-polymer hybrid materials are promising biomaterials future, especially for artificial organs.

In the design of bone-substituting and blood-contacting materials for both medical implants and bioaffinity sensors, it is a major challenge to generate surfaces and interfaces that are able to withstand proteins adsorption.

To accelerate bone formation surrounding implant materials, the materials are modified with biomolecules. Several phosphoric acids were synthesized and grafted onto titanium. Proliferation, differentiation and protein production of rats' osteoblastic cells on the titanium were then

investigated [1]. Type I collagen production increased with modification by ethane-1,1,2-triphosphoric acid and methylenediphosphonic acid. To improve hard tissue response, bone morphogenetic protein-4 (BMP-4) was immobilized on Ti-6Al-4V alloy through lysozyme [2]. To improve tissue compatibility, attempts were made for silane chemistry to couple proteins to the oxidized metal surfaces of Co-Cr-Mo, Ti-6Al-4V, Ti and Ni-Ti [3].

Platelets adhesion, adsorption of proteins, peptides and antibodies, and DNA can likewise be controlled by modifications. A class of copolymers based on poly (L-lysine)-g-poly (ethylene glycol), PLL-g-PEG, was found to spontaneously adsorb from aqueous solutions onto  $\text{TiO}_2$ ,  $\text{Si}_{0.4}\text{Ti}_{0.6}\text{O}_2$  and  $\text{Nb}_2\text{O}_5$  to develop blood-contacting materials and biosensors [4]. Poly(ethylene glycol)-poly(DL-lactic acid) (PEG-PLA) copolymeric micelles were attached on functionalized  $\text{TiO}_2$  and Au. The micelle layer enhanced the protein resistance of the surfaces by up to 70%.

Silicon and titanium oxide surfaces ( $\text{SiO}_2/\text{Si}$  and  $\text{TiO}_2/\text{Ti}$ ) were covalently modified with bioactive molecules (e.g., peptides) in a simple three-step procedure to control cellular and biomolecular functions on the surfaces. Bioactive surfaces were synthesized by first immobilizing N-(2-aminoethyl)-3-aminopropyl-trimethoxysilane (EDS) to polished quartz disks, polished silicon wafers or sputter-deposited titanium films. Subsequently, a maleimide-activated surface — amenable to tethering molecules — with a free thiol (e.g., cysteine) was created by coupling sulfosuccinimidyl 4-(N-maleimidomethyl) cyclohexane-1-carboxylate (sulfo-SMCC) to the terminal amine on EDS. Peptides with terminal cysteine residues were immobilized on maleimide-activated oxides [5].

The surface of stainless steel was first modified by the silane coupling agent (SCA), (3-mercaptopropyl)trimethoxysilane. The silanized stainless steel surface (SCA-SS surface) was subsequently activated by argon plasma and then subjected to UV-induced graft polymerization of poly(ethylene glycol)methacrylate (PEGMA). The PEGMA graft-polymerized stainless steel coupon (PEGMA-g-SCA-SS) with a high graft concentration, and thus a high PEG content, was found to be very effective in preventing bovine serum albumin and  $\gamma$ -globulin adsorption [6].

Metal oxide surfaces ( $\text{Ta}_2\text{O}_5$ ,  $\text{Al}_2\text{O}_3$ ,  $\text{Nb}_2\text{O}_5$ ,  $\text{ZrO}_2$ ,  $\text{SiO}_2$ ) were coated by self-assembled monolayers (SAMs) of dodecyl phosphate ( $\text{DDPO}_4$ ) and 12-hydroxy dodecyl phosphate ( $\text{OH-DDPO}_4$ ). The coating was done by a novel surface modification protocol based on the adsorption of alkyl phosphate ammonium salts from aqueous solution for application to biochemical analyses and biosensors [7]. To apply a surface plasmon resonance (SPR) to biosensors, a sandwich immunoassay was performed on a thin gold film set in SPR cell. The molecular motion of self-assembled monolayers on gold was examined using SPR under an electric field.

To form metal-polymer hybrid for biomedical devices, two techniques are predominant according to the purpose: Immobilization of bifunctional polymers to metals and bonding of biopolymers with metals.

### Immobilization of Bifunctional Polymers to Metals

In the first case, poly(ethylene glycol), PEG, is a bifunctional molecule on which adsorption of proteins is inhibited. In stents, blood compatibility or prevention of adhesion of platelet is necessary. In guide wires and guiding catheters, sliding lubrication in blood vessel is important when those are inserted into there. For these purpose, the fundamental property required to metal surface is the inhibition of protein adsorption. PEG is a unique bifunctional molecule on which adsorption of proteins is inhibited. No universal and one-stage technique for the immobilization of PEG to base metals has been developed. In this study, PEG terminated at both terminals or one terminal with amine bases was immobilized onto titanium surface with electrodeposition. The PEG was solved to NaCl solution and electrodeposition was carried out in the electrolyte with 5 V for 300 s. The thickness of deposited PEG layer was determined using ellipsometry and bonding manner of PEG to titanium surface was characterized using X-ray photoelectron spectroscopy (XPS). As a result, a certain



amount of PEG is adsorbed on titanium not only with electrodeposition but also with immersion when PEG is terminated by amine. However, terminated amines exist at the surface of titanium and combines with titanium oxide as N-HO by electrodeposition, while amines randomly exist in the deposited layer and show ionic bond with titanium oxide by immersion. Moreover, the difference in amine termination leads to different bonding manner, U-shape in PEG terminated both terminals and brush in PEG terminated one terminal. Electrodeposition of PEG was effective for the inhibition of the adsorption of albumin. This process is useful for all electroconductive materials and complicated morphology [8].

### Combination of Metals with Biopolymers

On the other hand, to develop metal-polymer complexes with high mechanical strength and flexibility for implants, Ti combined with a segmented polyurethane (SPU) through a 3-(trimethoxysilyl) propylmethacrylate ( $\gamma$ -MPS) as a coupling agent in this study (Fig. 3). The effects of thickness of  $\gamma$ -MPS layer and polymerization on the tensile and shear strengths of Ti-SPU bonding were evaluated. The thickness of  $\gamma$ -MPS layer was determined by an ellipsometer. The failure interface was characterized using scanning electron microscopy and bonding manner were characterized using XPS and glow discharge optical emission spectrometry (GD-EOS). Consequently, the thickness of  $\gamma$ -MPS layer increased with the increase of the solution concentration of  $\gamma$ -MPS and soaking time. Bonding strength between Ti and SPU was dramatically increased in the presence of  $\gamma$ -MPS layer and increased with the thickness of the layer. Failure inside  $\gamma$ -MPS layer was found when the  $\gamma$ -MPS thickness was 1 nm, while failure in  $\gamma$ -MPS/SPU interface and SPU cohesion failure were observed when the  $\gamma$ -MPS thickness was more than 1 nm. Furthermore, after soaking in Hanks' solution at 310 K for 1 month, the tensile and shear strength of Ti-SPU bonding were slightly decreased. On the other hand, they increased with ultraviolet ray radiation and/or heating. This study revealed the useful of  $\gamma$ -MPS to improve between Ti and SPU for implants. This Ti-SPU composite may be a future promising biomaterial.

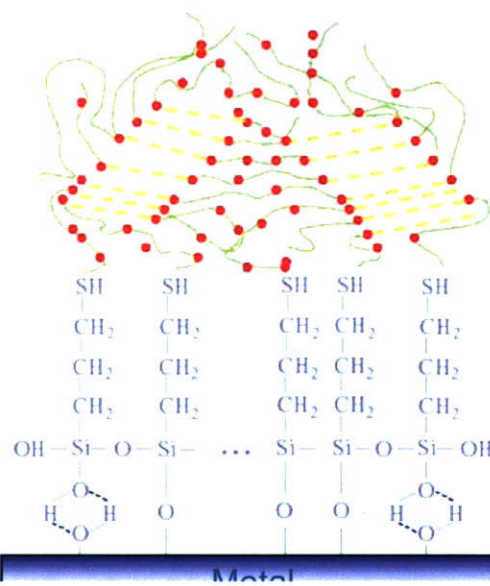


Fig. 3 Metal-polymer composite through silane coupling

### References

- [1] C. Viornery, H. L. Guenther, B.-O. Arronson, P. Pechy, P. Descouts and M. Gratzel: *J. Biomed. Mater. Res.* Vol. 62 (2002), p.149.
- [2] D. A. Puleo, R. A. Kissling and M.-S. Sheu: *Biomaterials* Vol. 23 (2002), p.2079.
- [3] A. Nanci, J. D. Wuest, L. Peru, P. Brunet, V. Sharma, S. Zalzal and M. D. McKee: *J. Biomed. Mater. Res.* Vol. 40 (1998), p.324.
- [4] N. P. Huang, R. Michel, J. Vörös, M. Textor, R. Hofer, A. Rossi, D. L. Dlbart, J. A. Hubbell and N. D. Spencer: *Langmuir* Vol. 17 (2001), p.489.
- [5] S. J. Xiao, M. Textor, N. D. Spencer and H. Sigrist: *Langmuir* Vol. 14 (1998), p.5507.
- [6] F. Zhang, E. T. Kang, K. G. Neoh, P. Wang and K. L. Tan: *Biomaterials* Vol. 22 (2001), p. 1541.
- [7] M. Textor, L. Ruiz, R. Hofer, A. Rossi, K. Feldman, G. Hähner and N. D. Spencer: *Langmuir* Vol. 16 (2000), p. 3257.
- [8] Y. Tanaka, H. Doi, Y. Iwasaki, S. Hiromoto, T. Yoneyama, K. Asami, H. Imai and T. Hanawa: *Mater. Sci. Eng. C* (in press).



## Immobilization of Poly(Ethylene Glycol) Terminated with Amine to Titanium Surface by Electrodeposition

Y.Tanaka, H.Doi, Y.Iwasaki, T.Yoneyama and T.Hanawa

Institute of Biomaterials and Bioengineering, Tokyo Medical and Dental University

2-3-10 Kanda-Surugadai, Chiyoda-ku, Tokyo 101-0062, Japan

<sup>a</sup> y\_tanaka\_r@mail.goo.ne.jp, <sup>b</sup> doi.met@tmd.ac.jp, <sup>c</sup> yasu.org@tmd.ac.jp,

<sup>d</sup> yoneyama.met@tmd.ac.jp, <sup>e</sup> hanawa.met@tmd.ac.jp

**Keywords:** Titanium, Poly(ethylene glycol), Immobilization, Electrodeposition, Surface analysis

**Abstract.** In many applications such as catheters, artificial blood vessels and diagnostic sensors, blood compatibility or prevention of adhesion of platelet is required. The preferred way to control these purposes is to eliminate or drastically reduce the adsorption of proteins. Surface modification with Poly(ethylene glycol), PEG has long been known to reduce undesirable protein adsorption. No technique for the immobilization of PEG to base metal has been developed. In this study, PEG terminated at both terminals or one terminal with amine bases was immobilized onto titanium surface by immersion or electrodeposition. The bonding manners of PEG onto titanium, which involve directionality of terminated amines and chemical bonding states of interface between the deposited PEG layer and TiO<sub>2</sub>, were characterized using X-ray photoelectron spectroscopy, XPS. As a result, terminated amines locate inside of the PEG layer and combine mainly with TiO<sub>2</sub> as stable NHO by electrodeposition, while amines randomly exist and show mainly unstable bonding with TiO<sub>2</sub> by immersion. Moreover, the difference of amine termination leads to different bonding manners, U-shape in PEG terminated both terminals and brush in PEG terminated one terminal. This immobilization process is one-stage convenient technique and useful for all electroconductive and morphological materials.

### Introduction

Metals are often applied in medical and dental devices because they have greater strength and toughness than ceramics or polymers. Therefore, metals cannot be replaced with ceramics or polymers at present. On the other hand, metallic materials are generally not expected to be the biomaterials of the future at the research level because they do not have bioactive and biofunctional properties. However, metals with biofunctions have been required in the recent past. For example, in the area of blood-contacting devices such as stents and catheters, preventing the adsorption of proteins and platelets, blood activation and thrombus formation is required. In guide wires and guiding catheters, lubrication in the blood vessels is also important for proper sliding and insertion. Surface modification using biofunctional molecule such as heparin, self-assembled monolayer and poly(ethylene glycol), PEG has been shown to be effective for these purposes. Of these, PEG continues to provide the most promising results in terms of reducing undesirable protein adsorption. Therefore, the immobilization of PEG to a metal surface is an important method towards the biofunctionalization of the metal surface.

The immobilization of biofunctional polymers on a noble metals such as gold is usually conducted by –SH or –SS– binding; however, this technique can only be used for noble metals. In addition, a polycationic comb-like graft co-polymer, poly (L-lysine)-g-poly (ethylene glycol), PLL-g-PEG, is immobilized onto negatively charged metal oxide surfaces by a dipping process into an aqueous solution of the polymer. A surface of stainless steel was firstly modified by a silane-coupling agent, SCA, (3-mercaptopropyl)trimethoxysilane. These processes require several stages but are effective for immobilization; however, no promising technique for the immobilization of PEG to a metal surface has been so far developed.



In this study, PEG terminated at both terminals or one terminal with amine bases was immobilized onto a titanium surface by immersion or electrodeposition in an attempt to develop a new technique that could be used for all metals and morphological materials. Furthermore, directionality of terminated amines and chemical bonding states of interface between the deposited PEG layer and  $\text{TiO}_2$  were characterized using X-ray photoelectron spectroscopy, XPS because the protein-repellent effects or durability of PEG layer could be controlled by the bonding manners of PEG onto titanium surface. Finally, the adsorption of albumin on the PEG immobilized surface formed by immersion or electrodeposition was evaluated.

### Experimental procedure

Both terminals of PEG were terminated with amine (B-PEG; PEG1000 Diamine, NOF Corporation, Japan), and only one terminal was terminated with amine (O-PEG; SUNBRIGHT MEPA-10H, NOF Corporation, Japan) because the terminals of PEG is positively charged, from  $\text{NH}_2$  to  $\text{NH}_3^+$ , for electrodeposition. The chemical structures of the PEGs are shown in Fig. 1. Molecular weights of both PEGs were about 1000. 2mass% PEG was dissolved in a  $0.3 \text{ mol L}^{-1}$  NaCl solution, and electrodeposition was carried out at 310 K with  $-5 \text{ V}$  for 300 s (Fig. 2). The pH of the solution with PEG was 11. Therefore, titanium oxide surface is negatively charged. A commercially pure titanium disk (diameter 8 mm, thickness 2 mm) with grade 2 was metallographically polished and ultrasonically rinsed in acetone and deionized water. The titanium disk was fixed in a polytetrafluoroethylene holder that exposed the area of  $28.3 \text{ mm}^2$ . The cathodic potential was charged from open circuit potential,  $E_{open}$  to  $-5 \text{ V}$  vs. SCE and maintained at this potential for 300 s. For comparison, titanium was immersed in the electrolyte containing B-PEG for 2 h and 24 h without any electric charge at 310 K.

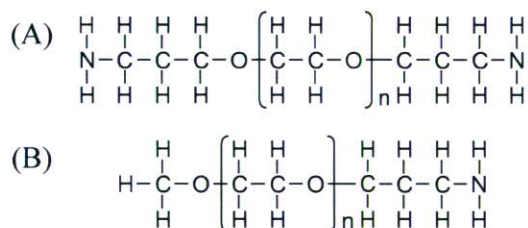


Fig. 1. Chemical structures of PEGs in which both terminals (A) and one terminal (B) were terminated with amine.

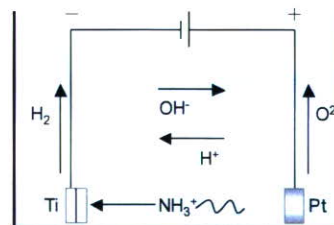


Fig. 2. Schematic illustration of electrodeposition.

The thickness of the PEG layer deposited on titanium surface was determined with an ellipsometer (DVA-36Ls, Mizojiri Optical Co., Ltd.) in air. The bonding manners of PEG onto titanium were characterized using XPS (SSI-SSX100). The take-off angle for photoelectron detection was  $35^\circ$  from the surface of the specimen. The inhibition of protein adsorption to a PEG immobilized surface was evaluated. Albumin (fluorescein isothiocyanate conjugated bovine, A9771, Sigma) was dissolved into phosphate-buffered saline without calcium chloride and magnesium chloride (PBS: Dulbecco's PBS, D1408, Sigma) with a concentration of  $4.5 \text{ g L}^{-1}$ . The PEG immobilized specimens were immersed in albumin-containing PBS for 30 min, rinsed with PBS and deionized water, and then dried with a stream of nitrogen gas (99.9%). The surface of specimens was observed with a fluorescence microscope (E-600, Nikon).

### Results and discussion

Fig. 3 shows the thicknesses of the PEG layers determined by ellipsometry. These thicknesses are measured in air; therefore, the real thickness in solutions is larger than these values because the PEG layers swell on exposure to water. The thickness of the PEG layer, which is the amount of



immobilized PEG, was the largest in this order: 24 h immersion in B-PEG, electrodeposition of B-PEG for 300 s, electrodeposition of O-PEG for 300 s, and 2h immersion in B-PEG. This indicated that electrodeposition was more effective than immersion for the immobilization of PEG on the titanium surface. In case of 24 h immersion in B-PEG, the charged terminals of PEG attracted electrostatically titanium surface.

Carbon, nitrogen, oxygen, and titanium were detected using XPS and typical XPS spectra of C 1s and N 1s electron energy regions of these elements are shown in Fig. 4. Integrated intensities of these elemental peaks are originated from their own chemical states shown in Fig. 4 [1-3]. The proportion of the integrated intensity equals to that of existence.

The change in the ratios,  $[C-O, C-N]/[C-C, CH_2]$ , in the C 1s peak in each specimen is shown in Fig. 5. The C-N bond governs this ratio because C-C bonds exist in the entire molecule of PEG, while C-N bonds only exist in the terminals. The photoelectron signals in XPS abruptly decay depending on the depth direction. Therefore, the C-N bond at terminals was located inside of the PEG layer by electrodeposition more often than by immersion. In other words, nitrogen atoms were located at the interface between PEG and  $TiO_2$  by electrodeposition.

The change in the ratios,  $[NH_3^+]/[NHO]$ , in the N 1s peak is shown in Fig. 6. This ratio was much smaller in electrodeposited specimens than in immersed specimens. Therefore, amines in terminals existed mainly as stable NHO bond rather than as unstable  $NH_3^+$  by electrodeposition.

These XPS results are illustrated the PEG immobilized manners onto titanium surfaces as Fig. 7. Amines in terminals locate inside of the PEG layer and combine mainly with  $TiO_2$  as stable NHO by electrodeposition, while amines randomly exist and show mainly unstable bonding with  $TiO_2$  by immersion. Also, the difference of amine termination leads to different bonding manners, U-shape in B-PEG and brush in O-PEG. This immobilization process is one-stage convenient technique and useful for all electroconductive and morphological materials. Moreover, the electrodeposition of PEG was effective for the inhibition of albumin adsorption.

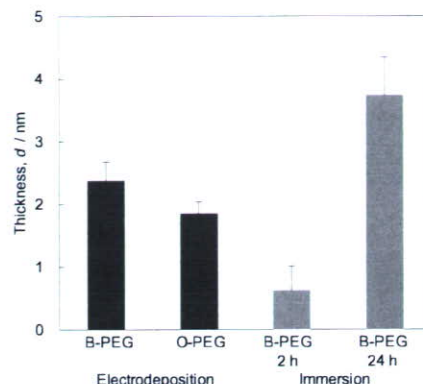


Fig. 3 Thickness of the PEG layer deposited on titanium by electrodeposition and immersion. B-PEG: both-terminal-modified PEG. O-PEG: one-terminal-modified PEG.

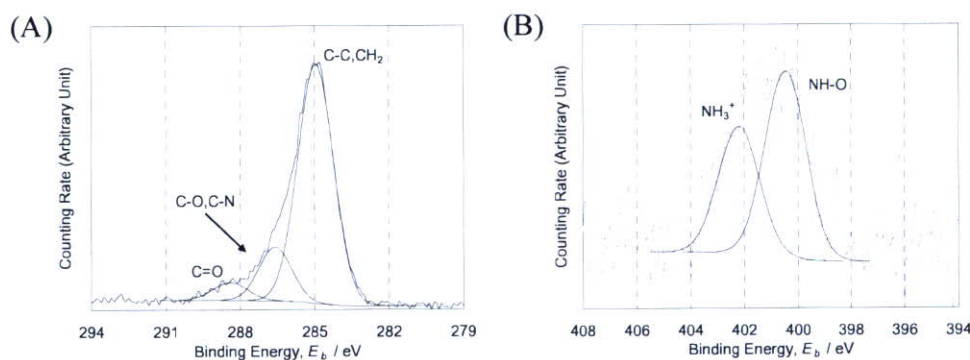


Fig. 4. C 1s (A) and N 1s (B) electron energy region spectra by XPS and decomposition of the peaks to component peaks.

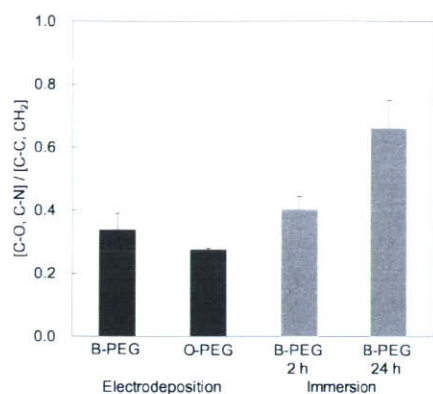


Fig. 5. Ratio,  $[C-O, C-N] / [C-C, CH]$ , obtained from the deconvoluted C 1s electron energy region peak. B-PEG: both-terminal-modified PEG. O-PEG: one-terminal-modified PEG.

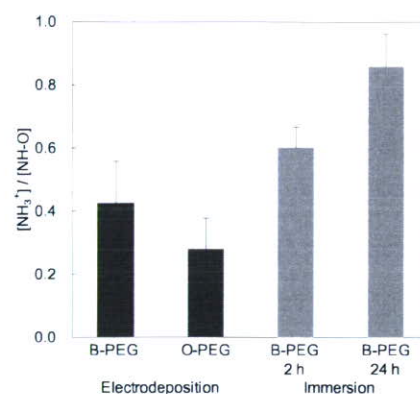


Fig. 6. Ratio,  $[NH_3^+] / [NHO]$ , obtained from the deconvoluted N 1s electron energy region peak. B-PEG: both-terminal-modified PEG. O-PEG: one-terminal-modified PEG.

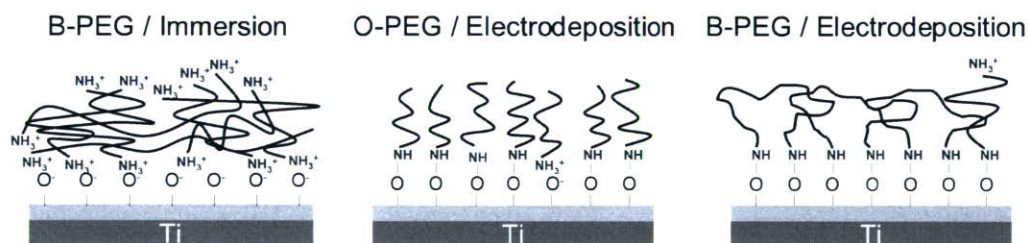


Fig. 7. Schematic model of the deposition mode and chemical bonding state of PEG by immersion and electrodeposition.

## Conclusions

A certain amount of PEG was adsorbed on titanium by both electrodeposition and immersion when PEG is only terminated by amine. However, terminated amines exist at the surface of titanium and are combined with  $TiO_2$  as stable NHO by electrodeposition, while amines randomly exist and show an unstable bonding with  $TiO_2$  by immersion. The B-PEG is immobilized as a U-shape, and the O-PEG is immobilized as a brush. The electrodeposition of PEG was effective for the inhibition of albumin adsorption. This immobilization process is useful for all electroconductive and morphological materials.

## References

- [1] T. Hanawa, K. Asami, K. Asaoka, J. Biomed. Mater. Res. Vol. 40 (1998), p.530-538.
- [2] B. Lindberg, R. Maripuu, K. Siegbahn, R. Larsson, C.-G. Gölander, J. C. Eriksson, J. Colloid Interf. Sci. Vol. 95 (1983), p.308-321.
- [3] T. Solomun, A. Schimanski, H. Sturm, E. Illenberger, Chem. Phys. Lett. Vol. 387 (2004), p.312-316.



## A New Technique of Titanium and Segmented Polyurethane Complex through 3-(trimethoxysilyl) propylmethacrylate for Artificial Implants

Harumi Sakamoto<sup>a</sup>, Hisashi Doi<sup>b</sup>, Equo Kobayashi<sup>c</sup> and Takao Hanawa<sup>d</sup>

Institute of Biomaterials and Bioengineering, Tokyo Medical and Dental University, Tokyo 101-0062, Japan

<sup>a</sup>sak-met@tmd.ac.jp, <sup>b</sup>doi.met@tmd.ac.jp, <sup>c</sup>equo.met@tmd.ac.jp, <sup>d</sup>hanawa.met@tmd.ac.jp

**Keywords:** Titanium, Segmented polyurethane, Silane coupling agent, Shear stress, Surface analysis.

**Abstract.** To develop metal-polymer composite with high mechanical strength and flexibility for artificial implants, commercially pure titanium (Ti) combined with segmented polyurethane (SPU) through (3-trimethoxysilyl) propylmethacrylate ( $\gamma$ -MPS). The effects of thickness of  $\gamma$ -MPS layer on the shear bonding strength between Ti and SPU were investigated. The thickness of  $\gamma$ -MPS layer was determined by ellipometry. Shear bonding stress of Ti-SPU composite was measured by shear bonding test. Furthermore, fractured surface of Ti-SPU composite was analyzed by optical microscopy and X-ray photoelectron spectroscopy. Consequently, shear bonding stress of Ti-SPU composite was dramatically increased with the increase of the  $\gamma$ -MPS layer thickness. This study revealed that  $\gamma$ -MPS is useful to improve bonding between Ti and SPU for artificial implants.

### Introduction

Currently, polymers are widely used as biomaterials because of their multiple functions. In particular, biofunctionalizations by surface modification to polymer surface are important to achieve improvement of biocompatibility. However, polymers sometimes show insufficient strength and durability for some purpose caused from their structure. On the other hand, metals are widely used as biomaterials like stents, hip joints and bone plates with a long history, since metals have good mechanical properties, especially toughness, and long terms durability. If once polymer and metal were bonded and used as a composite material, a new material having good biocompatibility and high mechanical strength could be created. It is required that interfacial structure designing of composite to develop the material that function based on the structure at nanometer level.

In the dental field, bonding of polymer with metal has been required to make dentures till today. In particular, silane coupling agent which has difunctional molecules is widely used to combine metal and polymer. However, most of research on bonding with silane coupling agent in the dental material field were only investigated about bonding force, and there is few report that examines which factors of the silane coupling agent influences the bonding.

The aim of this study is to establish the technique of metal-polymer composite using silane coupling agent and to investigate accurate appraisal methods of these composites. As the base materials for the composite, titanium (Ti) and segmented polyurethane (SPU) were employed. Titanium is the most promising metallic biomaterial and segmented polyurethane is also widely used because of its antithrombogenicity. Shear bonding force between Ti and SPU that were made in various conditions was measured by shear bonding test. Furthermore, structure at nanometer level of fractured surface of composite after shear bonding test was investigated by X-ray photoelectron spectroscopy (XPS). From these experimental, factors that affect on bonding were specified.

### Material and Methods

Grade 2 commercially pure titanium (CP-Ti) disks with 2 and 5 mm in thickness and 8

mm in diameter were prepared from wrought titanium rods (Rare Metallic Co., Inc., Japan). The disks were metallographically polished and ultrasonically rinsed in acetone and deionized water. 0.1, 0.5, 1.0, 2.0 vol.% (3-mercaptopropyl)trimethoxysilane ( $\gamma$ -MPS) solutions were prepared by diluting 100% concentration of  $\gamma$ -MPS (Kanto Chemical Co., Inc., Japan) with deionized water which adjusted pH 4 using acetic acid. The disks were then immersed in the freshly prepared  $\gamma$ -MPS solution for 1, 10, 50 and 100 min. 2-mm thick disk coated with  $\gamma$ -MPS was used for the determination of the thickness of  $\gamma$ -MPS layer by ellipsometry, whereas 5-mm thick disks were continually used for shear bonding test. 3% SPU was prepared from a mixture of 600 mg Corethane70A (Crovita, USA), 10 mL tetrahydrofuran (Kanto Chemical Co., Inc., Japan) and 10 mL dimethylformamide (Kanto Chemical Co., Inc., Japan). 5-mm thick disks coated with  $\gamma$ -MPS were then immersed in the freshly prepared SPU solution and kept in a vacuum desiccator for 2 days. Then titanium-SPU (Ti-SPU) composite grip was made by bonding autopolymerized acrylic resin (UNIFAST II, GC, Japan) to SPU coated 5-mm thick disks, which were used in the shear bonding test.

Thickness of  $\gamma$ -MPS layer was determined using ellipsometry (DVA-36Ls, Mizojiri Optical Co., Ltd., Japan) in air. Light source was He-Ne laser (632.8 nm) and the incident angle to the titanium surface was  $70^\circ$ . The thickness was calculated by optical constants of the refractive index and absorption coefficient of titanium oxide on the titanium substrate, 2.209 and 3.079, respectively.

Shear bond strength of the Ti-SPU composite was evaluated using an universal mechanical test machine (2000-IB, Shimadzu, Japan) with a crosshead speed of  $0.1 \text{ mm s}^{-1}$  at room temperature. For the shear bonding test, an apparatus was originally designed as shown in Fig.1. The SPU fractured area was measured using a personal computer (NIH Image 1.62 program) and area fraction of SPU covering the fractured surface area fraction was then calculated.

The fractured mode of the Ti-SPU composite and the chemical bonding state were characterized using XPS (SSI-SSX100). The take-off angle for photoelectron detection from the specimen surface was  $35^\circ$ . All binding energies given in this paper are relative to the Fermi level, and all spectra were excited with the monochromatized Al  $K\alpha$  line (1486.61 eV). The energy values were based on published data [1]. To estimate the photoelectron peak intensities, the background was subtracted from measured spectrum according to Shirley's method [2]. The composition and thickness of the surface oxide and the composition of the substrate were simultaneously calculated according to a method devised by one of the authors of this study [3-4]. Empirical data and theoretically calculated data of relative photoionization cross-sections were used for the quantification.

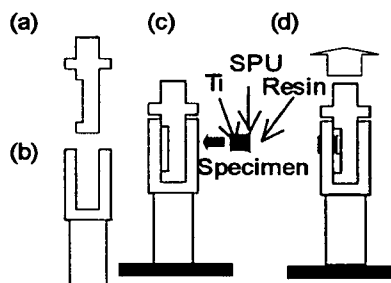


Fig. 1 Schematic image of the apparatus for adhesion shear test, (a) Moving and (b) fixed part. (c) The Ti-SPU composite was set through the holes on both parts which arranged straight. (d) By pulling up of the moving part, shear stress was applied onto the boundary of composite.

## Result and Discussion

Different thickness of  $\gamma$ -MPS layer with various immersion time and concentration of  $\gamma$ -MPS solution was shown in Fig.2. Even though the immersion time was increased, the thickness of  $\gamma$ -MPS layer was not significantly increased when immersed in 0.1, 0.5 or 1.0 % of  $\gamma$ -MPS solutions. However, the thickness of  $\gamma$ -MPS layer dramatically increased with longer immersion time when specimens were immersed in 2.0%  $\gamma$ -MPS solution. The thickness increased as the immersion time increase, but it decreased when immersion time was 100 min. It could be said that longer immersion time does not always increase the thickness of  $\gamma$ -MPS layer. The shear stress of the Ti-SPU composite increased with the increase of the concentration  $\gamma$ -MPS solution when the immersion time was limited for 1 min (data was not shown). The shear stress of Ti-SPU



composite immersed in 1.0, 2.0%  $\gamma$ -MPS solutions also increased with immersion times as shown in Fig.3. Furthermore, shear stress increased with the increase of thickness of  $\gamma$ -MPS layer as seen by the relation between shear stress of Ti-SPU composite and thickness of  $\gamma$ -MPS layer shown in Fig. 4.

Fig. 5 shows relation between shear stress and SPU area fraction to total fractured area of Ti-SPU composite. The shear stress was proportionally increased. Result could clarify that higher shear stress was observed on the Ti-SPU composite fractured at SPU area.

By XPS analysis, carbon, nitrogen, sulfur, silicon, and titanium were detected on the fractured surface. Table 1 shows the ratios,  $[C-O, C-N, C=N]/[C]$ ,  $[C=O, OH, Si-O-Si]/[O]$ , and  $[Ti^0]/[Ti]$  in the C 1s, O 1s and Ti 2p peaks, respectively, obtained from specimen with and without  $\gamma$ -MPS layer.  $[C-O, C-N, C=N]/[C]$ , was significantly larger in Ti-SPU composite with the presence of  $\gamma$ -MPS layer. The C-O, C-N and C=N peaks were thought to originate from the SPU element. In other words, Ti-SPU composite was fractured remaining SPU element on the fractured surface regardless of  $\gamma$ -MPS layer. However, amount of residual SPU on the fractured surface of Ti-SPU composite with  $\gamma$ -MPS layer was more than that of Ti-SPU composite without  $\gamma$ -MPS layer. Regardless of  $\gamma$ -MPS layer,  $Ti^0$  bond was detected on the fractured surface of Ti-SPU composites. The  $Ti^0$  peak originated from the titanium metal substrate. Thus, the fracture layer that remained on the surface of Ti-SPU composite was very thin (less than 10 nm). Similar to  $[Ti^0]/[Ti]$ , the proportional ratio of  $[C=O, OH, Si-O-Si]/[O]$  in the O 1s peaks was slightly larger in Ti-SPU composite with than without  $\gamma$ -MPS layer. The Si-O-Si peak originated from the  $\gamma$ -MPS layer. This is reason why proportional ratio of Ti-SPU composite with  $\gamma$ -MPS layer was bigger than that of Ti-SPU composite without  $\gamma$ -MPS layer.

The relative concentration of carbon, nitrogen, oxygen, sulfur, silicon and titanium in specimens were calculated and assumed that gross amount of these elements detected by XPS was 100 mol%. Table 2 presents the concentrations of carbon, oxygen and titanium on the fractured surfaces of Ti-SPU composite with or without  $\gamma$ -MPS layer. Carbon concentration originated from the SPU was significantly higher in Ti-SPU composite with the presence of  $\gamma$ -MPS layer. Moreover, large amount of SPU remained on the surface of Ti-SPU composite with  $\gamma$ -MPS layer compared to the Ti-SPU composite without  $\gamma$ -MPS layer. On the other hand, oxygen and titanium concentration decreased when  $\gamma$ -MPS layer was present. Using XPS, signals from titanium oxide and titanium substrate were small due to the remained layer.

Schematic model of Ti-SPU composite structure

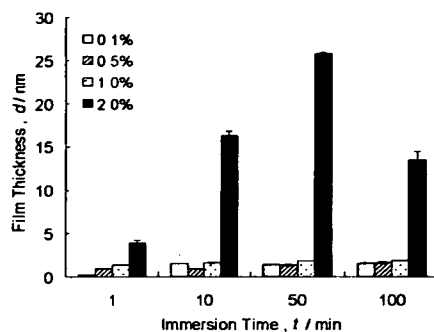


Fig.2 Thickness of the  $\gamma$ -MPS layer deposited on CP-Ti with various immersion time and concentration of  $\gamma$ -MPS solution.

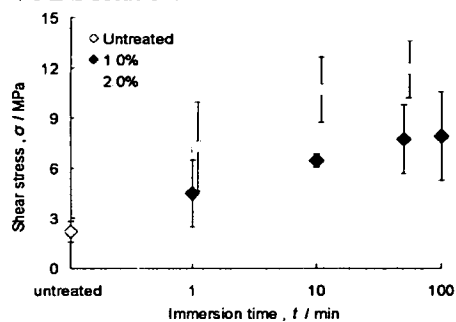


Fig.3 Shear stress of the Ti-SPU composite after immersion in 1.0, 2.0%  $\gamma$ -MPS solution at various immersion time.

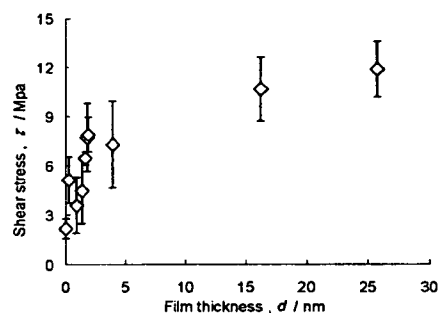


Fig. 4 Relation between shear stress and thickness of  $\gamma$ -MPS layer.

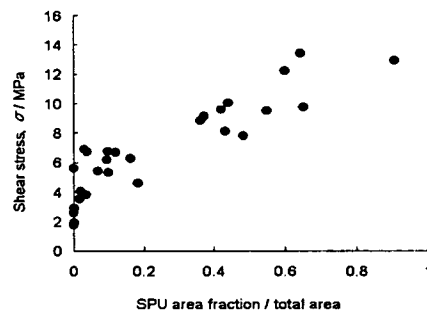


Fig. 5 Relation between shear stress and SPU area fraction to total fraction area.

through  $\gamma$ -MPS is shown Fig. 6. It is considered that a length of one molecular unit is more than 1 nm. If the numbers of one molecular unit per a unit surface area have not yet reached to maximum numbers, each molecular unit keeps distance from the their neighbors and is consequently allowed to lean on them. This could result, in the thin of  $\gamma$ -MPS layer (less than 1 nm). On the other hand, if the numbers of molecular unit will be become thicker layer (more than 1 nm). Thick  $\gamma$ -MPS layer has more molecular units bond to SPU. At thick  $\gamma$ -MPS layer, thus, shear stress of Ti-SPU composite was increased. SPU element remained on that fractured surfaces of Ti-SPU composite broken by shear force. This implies that b SPU area fraction remained on Ti-SPU composite, because of the  $\gamma$ -MPS layer. Furthermore, thicker  $\gamma$ -MPS layer coating, larger SPU area fraction was found.

### Summary

Thickness of  $\gamma$ -MPS layer could be controlled by immersion time and concentration of  $\gamma$ -MPS solution. Shear stress of Ti-SPU composite was increased with thickness of  $\gamma$ -MPS layer. It is considered that many molecular unites bonded with the SPU stands straight on the limited surface area, and resulted in to become thicker  $\gamma$ -MPS layer, while less molecular unites on the SPU easily leant to neighbor, and resulted in to become thinner  $\gamma$ -MPS layer apparently. This study revealed that  $\gamma$ -MPS is very useful to improve the adhesion strength of Ti-SPU composite for artificial implants. Factors governing shear bonding strength between Ti and SPU was thickness of  $\gamma$ -MPS layer.

### Rifference

- [1] K. Asami, J. Electron Spectrosc. Vol. 9 (1976), p.469-478.
- [2] D.A. Shirley: Phys. Rev. B5 (1972), p. 4709-4714
- [3] K. Asami, K. Hashimoto and S. Shimodaira: Corr. Sci. Vol. 17 (1977), p. 713-723
- [4] K. Asami and K. Hashimoto: Corros. Sci. Vol. 24 (1984), p. 83-97

Table 1 The proportional ratio of concentration of [C-O, C-N, C=N] / [C], [C=O, Si-O-Si, OH-] / [O] and [Ti<sup>0</sup>] / [Ti] in fractured surface of the Ti-SPU composite. (number) mean  $\pm$  S.D. \* in the table represent significant differences between the corresponding. values (P<0.05)

	Area (%)		
	C	O	Ti
	C-O, N-C, N=C	C=O, OH <sup>-</sup> , Si-O-Si	Ti <sup>0</sup> *
without $\gamma$ -MPS layer	20.6 (0.2)	44.7 (5.6)	5.2 (0.1)
with $\gamma$ -MPS layer	25.5 (0.9) ]*	50.7 (3.8)	6.2 (0.8)

Table 2 XPS results for relative concentration of elements in fractured surface of the Ti-SPU composite.(number) mean  $\pm$  S.D. \* in the table represent significant differences between the corresponding. values (P<0.05)

	Concentration (at%)		
	C	O	Ti
without $\gamma$ -MPS layer	43.9 (2.0)	42.4 (1.5)	3.9 (0.1)
with $\gamma$ -MPS layer	56.9 (1.3) ]*	35.7 (1.2) ]*	2.8 (1.0)

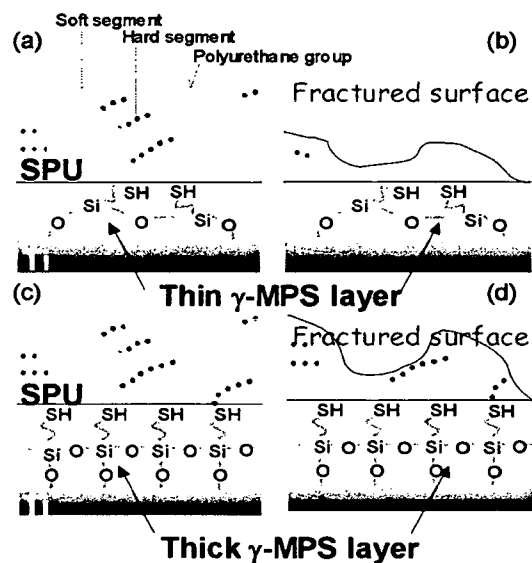


Fig. 6 Schematic model of the Ti-SPU composite structure through  $\gamma$ -MPS (a) Thin and (c) thick layer. Fractured surface of Ti-SPU composite after adhesion shear test.(c) thin and (d) thick layers of  $\gamma$ -MPS.



## EFFECTS OF CROSS-LINKAGE AND HYDROXYL GROUPS ON BONDING STRENGTH BETWEEN TITANIUM AND SEGMENTED POLYURETHANE THROUGH 3-(TRIMETHOXYSILYL) PROPYL METHACRYLATE

Harumi Sakamoto<sup>1, a</sup>, Yohei Hirohashi<sup>2, b</sup>, Hisashi Doi<sup>1, c</sup>, Kazuhiko Noda<sup>2, d</sup>  
and Takao Hanawa<sup>1, e</sup>

<sup>1</sup>Institute of Biomaterials and Bioengineering, Tokyo Medical and Dental University, JAPAN

<sup>2</sup>Department of Materials Science and Engineering, Shibaura Institute of Technology, JAPAN

<sup>a</sup>sak-met@tmd.ac.jp, <sup>b</sup>c03109@sic.shibaura-it.ac.jp, <sup>c</sup>doi.met@tmd.ac.jp,

<sup>d</sup>knoda@sic.shibaura-it.ac.jp and <sup>e</sup>hanawa.met@tmd.ac.jp

**Keywords:** Titanium, Segmented polyurethane, Silane coupling agent, Active hydroxyl groups, and Cross-links

**Abstract.** To create a new material with good biocompatibility and high mechanical strength for artificial organs, titanium (Ti) and segmented polyurethane (SPU) were bonded through 3-(trimethoxysilyl) propyl methacrylate ( $\gamma$ -MPS), and specify causes governing the bonding strength of Ti/ $\gamma$ -MPS/SPU interface. The number of cross-links of SPU and the concentration of active hydroxyl groups on the surface oxide film of Ti were controlled by UV-irradiation and hydrogen peroxide immersion. The number of cross-links of SPU was measured by differential scanning calorimetry (DSC) and the concentration of the active hydroxyl groups was also determined using a zinc-complex substitution technique. Consequently, Ti/ $\gamma$ -MPS/SPU shear bonding stress was increased with the increase of the number of cross-links of SPU. In addition, the increase of cross-links in SPU also improved the Ti/ $\gamma$ -MPS/SPU shear bonding stress.

### Introduction

Metals are widely used as biomaterials because of their high mechanical properties, especially toughness and long-term durability. However, the biocompatibility of metals is generally inferior to that of polymers and ceramics because no biofunction is added to metals during their manufacturing process. In order to expand the clinical application of metals, the biocompatibility of metals must be improved. On the other hand, polymers have been widely used since they have a high degree of flexibility and biocompatibility. If a metal and a polymer could be bonded and used as a composite material, a new material having good biocompatibility and high mechanical strength could be created. The encompassing clarification of the causes governing the bonding strength of the interface is one of the most challenging aspects to develop composite materials between metals and polymers.

The bonding of metals with polymers is currently utilized in dentistry. In particular, silane coupling agents are comprehensively used to combine metals with polymers. However, few reports have examined and discussed the chemical structures at the bonding interface and how they influence the bonding strength.

In a previous study<sup>[1]</sup>, the unequivocal relationship between the shear bonding stress and the chemical structure at the bonding interface of a Ti-segmented polyurethane (SPU) composite using a silane coupling agent ( $\gamma$ -(trimethoxysilyl) propyl methacrylate:  $\gamma$ -MPS) was investigated. One of the causes governing the shear bonding stress between Ti and SPU is thickness of the  $\gamma$ -MPS layer.

The objective of this study was to investigate the effect of active hydroxyl groups on the surface oxide film of Ti and cross-links of SPU on the shear bonding stress of the interface in Ti-SPU



composite. The number of cross-links of SPU was measured by differential scanning calorimetry (DSC) and the concentration of the active hydroxyl groups on the surface oxide film was also determined with the zinc-complex substitution technique<sup>[2]</sup>. The shear bonding stress between Ti and SPU in Ti-SPU composites manufactured under various bonding conditions was evaluated.

## Material and Methods

### UV-irradiation treatment.

Commercially pure Ti disks with 2-mm thickness and 8-mm diameter (grade 2; Rare Metallic Co., Inc., Japan) were metallographically polished. 0.1, 1.0, and 2.0vol.%  $\gamma$ -MPS (Kanto Chemical Co., Inc., Japan) was prepared by diluting with deionized water and adjusted to pH 4.0 using acetic acid. Ti disks were immersed in 0.1 vol.%  $\gamma$ -MPS for 1 min (A), in 1.0vol.%  $\gamma$ -MPS for 1 min (B), and in 2.0vol.%  $\gamma$ -MPS for 50 min (C). According to previous research<sup>[1]</sup>, it is predicted that the thickness of the  $\gamma$ -MPS layer on the Ti disks was the largest in this order: C, B, A.

To prepare a 3vol.% SPU solution, 600 mg Corethane70A (Crovita, USA), 10 mL tetrahydrofuran (Kanto Chemical Co., Inc., Japan), and 10 mL dimethylformamide (Kanto Chemical Co., Inc., Japan) were mixed. The Ti disks coated with  $\gamma$ -MPS were then immersed in the SPU solution for 2 d. Ti disks bonded to SPU were irradiated using a UV irradiation unit (Labolight, GC, Japan) for 20 s, 40 s, 60 s, and 80 s. The grip for the shear bonding tests was formed on the outer surface of the SPU layer using an autopolymerized acrylic resin (UNIFAST II, GC, Japan). The shear bonding stress of the Ti/ $\gamma$ -MPS/SPU interface of the Ti-SPU composite was evaluated using a universal mechanical test machine (2000-IB, Shimadzu, Japan) with a crosshead speed of 0.1 mm min<sup>-1</sup> at ambient temperature (Fig. 1).

SPU sheets were manufactured to determine the glass transition temperature ( $T_g$ ) of SPU. 10 mL of the 3% SPU solution was dried in the vacuum desiccator for 2 d to obtain SPU sheets. UV was irradiated onto 10-mg SPU sheets for 0 s, 60 s, and 900 s. DSC (DSC7000, ULVAC, Tokyo) was carried out under a nitrogen atmosphere from -100 °C to 100 °C at a heating rate of 20 °C min<sup>-1</sup>.  $T_g$  was determined as the intersection of the forward-extrapolated baseline with the backward-extrapolated initial slope of the peak.

### Hydrogen peroxide immersion treatment.

The concentration of active hydroxyl groups could increase by immersion into a hydrogen peroxide (H<sub>2</sub>O<sub>2</sub>) solution<sup>[3]</sup>. Ti disks were immersed in a 3vol.% H<sub>2</sub>O<sub>2</sub> solution (Kanto Chemical Co., Inc., Japan) at 303 K for 1 h, 24 h, 48 h, and 72 h to control the concentration of active hydroxyl groups on Ti. The chemical state of the surface oxide of the H<sub>2</sub>O<sub>2</sub> treated Ti was determined using X-ray photoelectron spectroscopy (XPS, SSX100, SSI, UK) and the concentration of active hydroxyl groups existing on the surface oxide film on Ti disks was determined using a zinc complex substituting technique. The H<sub>2</sub>O<sub>2</sub>-treated Ti disks were immersed in a  $\gamma$ -MPS solution and bonded to SPU as described above. After the grips had been formed, the shear bonding test of the Ti/ $\gamma$ -MPS/SPU interface was carried out in the same manner as described above.

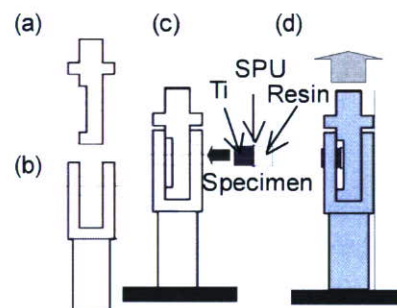


Fig. 1 Schematic image of the apparatus for adhesion shear test, (a) Moving and (b) fixed part. (c) The Ti-SPU composite was set through the holes on both parts which arranged straight. (d) By pulling up of the moving part, shear stress was applied onto the boundary of composite.



## Result and Discussion

### Effect of UV irradiation on Ti-SPU composite.

The relationships between the UV irradiation time and the shear bonding stress of the Ti/ $\gamma$ -MPS/SPU interface are shown in Fig. 2. Regardless of the thickness of the  $\gamma$ -MPS layer, the shear bonding stress of the Ti/ $\gamma$ -MPS/SPU interface increased with the UV-irradiation time. However, it decreased at 80s irradiation (A and B) and 60 s irradiation (C). The optimal UV-irradiation times were 60 s (A and B) and 40 s (C).

The typical thermal analysis curves around the  $T_g$  region are shown in Fig. 3. The  $T_g$  of SPU without UV irradiation, that with 1-min irradiation, and that with 15min irradiation were  $-54.3^\circ\text{C}$ ,  $-49.1^\circ\text{C}$ , and  $-53.0^\circ\text{C}$ , respectively. The  $T_g$  of SPU increased with the UV irradiation. However, the  $T_g$  decreased after long irradiation.

It was considered that UV irradiation increased the number of cross-links in SPU, in other words, the degree of apparent polymerization. Therefore, the determination of the  $T_g$  of SPU was carried out using DSC. It is widely known that  $T_g$  increases with the increase in the number of cross-links in a polymer. Consequently, it was revealed that  $T_g$  and the number of cross-links in SPU increased at the optimal UV irradiation. However,  $T_g$  decreased with excessive irradiation of UV. This indicated that excessive UV irradiation decreased the number of cross-links, *i.e.*, the degree of apparent polymerization. Furthermore, the SPU deteriorated with UV irradiation.

Schematic illustrations of the effects of UV irradiation on the Ti/ $\gamma$ -MPS/SPU interface are shown in Fig. 4. Hydrophobic  $\text{CH}_2$  groups of SPU and  $\gamma$ -MPS existed as mutually intertwined. These intertwining  $\text{CH}_2$  groups consolidated more when the number of cross-links in SPU increased with UV irradiation (Fig. 4(b)). Therefore, the shear bonding stress of the Ti/ $\gamma$ -MPS/SPU interface increased with UV irradiation.

### Effect of hydroxyl groups on Ti-SPU composite.

The O 1s electron energy region peak contained three component peaks originating from oxide,  $\text{O}^{2-}$ , hydroxide or hydroxyl groups,  $\text{OH}^-$ , and hydrate and/or adsorbed water,  $\text{H}_2\text{O}$ . The ratios of  $[\text{O}^{2-}]/[\text{O}]$ ,  $[\text{OH}^-]/[\text{O}]$ , and  $[\text{H}_2\text{O}]/[\text{O}]$  on the surface oxide film of Ti disks plotted against the  $\text{H}_2\text{O}_2$ -treatment time are shown in Fig. 5. In a Ti disk with  $\text{H}_2\text{O}_2$  treatment for 1 h, the  $[\text{O}^{2-}]/[\text{O}]$  increased, whereas the  $[\text{OH}^-]/[\text{O}]$  and the  $[\text{H}_2\text{O}]/[\text{O}]$  decreased. With the  $\text{H}_2\text{O}_2$  solution as an oxidant, the oxidation of the surface oxide film progressed. Each ratio was almost constant up to 48 h. The surface oxide film of Ti disks was completely oxidized and consisted of only  $\text{TiO}_2$ . The  $[\text{O}^{2-}]/[\text{O}]$  and  $[\text{OH}^-]/[\text{O}]$

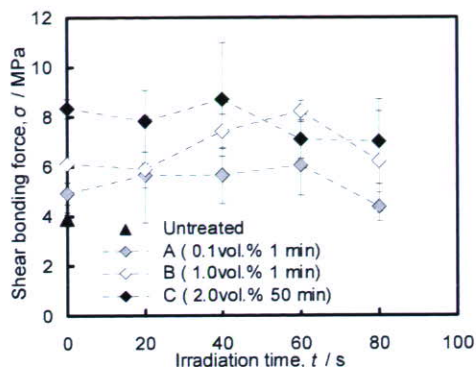


Fig. 2 Relationship between the UV-irradiating time and the shear bonding stress of the Ti/ $\gamma$ -MPS/SPU interface of the Ti-SPU composite, immersed in (A) 0.1% $\gamma$ -MPS for 1 min, (B) 1.0%  $\gamma$ -MPS for 1 min, and (C) 2.0% $\gamma$ -MPS for 50 min.

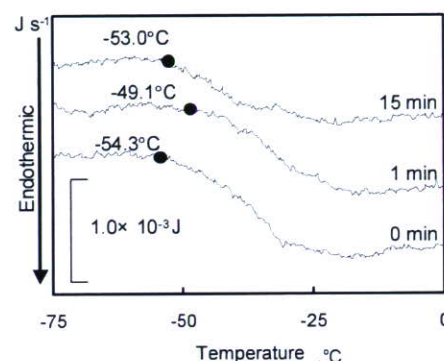


Fig. 3 Typical thermal analysis curve around the  $T_g$  region.

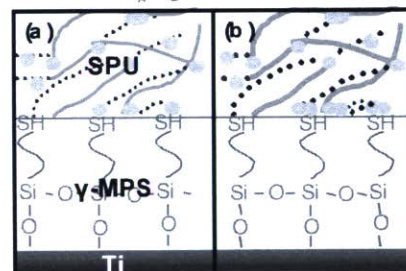


Fig. 4 Schematic model of Ti/ $\gamma$ -MPS/SPU interface structure through  $\gamma$ -MPS. (a) Untreated, (b) UV-irradiation.

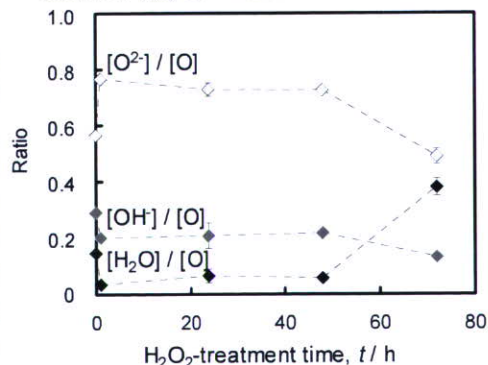


Fig. 5 Ratio of the proportion of the concentration of  $\text{O}^{2-}$  to that of O,  $\text{OH}^-$  to that of O, and  $\text{H}_2\text{O}$  to that of O in surface oxide film on Ti disks plotted against  $\text{H}_2\text{O}_2$  treatment time.



decreased, and the  $[H_2O]/[O]$  suddenly increased at 72 h. Titania gels were formed on the surface oxide film.

Fig. 6 shows the normalized concentration of active hydroxyl groups per unit area on the surface oxide film. The normalized concentration of active hydroxyl groups on the surface oxide film increased with an increase of the  $H_2O_2$ -treatment time. On the other hand, it decreased in the 72 h  $H_2O_2$  treatment.

The results of the shear bonding test are shown in Fig.7. The shear bonding stress of the Ti/ $\gamma$ -MPS/SPU interface increased with the  $H_2O_2$  treatment time under  $\gamma$ -MPS immersion conditions of A, B, and C. However, it decreased with the 72h treatment. The shear bonding stress of the Ti/ $\gamma$ -MPS/SPU interface increased with the increase of the active hydroxyl groups on the surface oxide film.

The chemical structure of the Ti/ $\gamma$ -MPS/SPU interface is illustrated in Fig.8. When the concentration of active hydroxyl groups increased, the number of molecular units of the  $\gamma$ -MPS bonding active hydroxyl groups increased. In a previous publication<sup>[1]</sup>, the shear bonding stress of Ti/ $\gamma$ -MPS/SPU interface was shown to increase with the increase of the  $\gamma$ -MPS molecular unit. Therefore, the shear bonding stress of the Ti/ $\gamma$ -MPS/SPU interface increased with the increase of the concentration of the active hydroxyl group on the surface oxide film. The shear bonding stress of the Ti/ $\gamma$ -MPS/SPU interface decreased when titania gel was formed on the Ti substrate by  $H_2O_2$  treatment for 72 h. As described above, titania gel contains many water molecules. Water molecules induce the re-hydrolysis of a silane coupling agent bonded to metal surface as a result, the shear bonding stress of the Ti/ $\gamma$ -MPS/SPU interface decreased.

## Summary

The number of cross-links of SPU increased with UV irradiation. However, excessive UV irradiation decreased the number of cross-links. The shear bonding stress of the Ti/ $\gamma$ -MPS/SPU interface increased with the increase of the number of cross-links of SPU.

On the other hand, the concentration of the active hydroxyl groups on the surface oxide film was controlled by the  $H_2O_2$ -treatment. However, long-term  $H_2O_2$  treatment resulted in the formation of a titania gel on the Ti substrate. The shear bonding stress of the Ti/ $\gamma$ -MPS/SPU interface increased with an increase in the concentration of the active hydroxyl group on the surface oxide film. This study should lead to enhancements in the creation of metal-polymer composites for artificial organs.

## References

- [1] Sakamoto H, Doi H, Kobayashi E, Yoneyama T, Suzuki Y, Hanawa T: J Biomed Mater Res, Part A (Published Online 10.1002/jbm.a.30957).
- [2] Imai M, Nishio M: Sumitomo-Keikinzoku-Giho Vol. 30(1980), p. 72
- [3] Tangvall P, Elwing H, Sjöqvist L, Lundström: Biomaterials Vol. 10 (1989) P.118

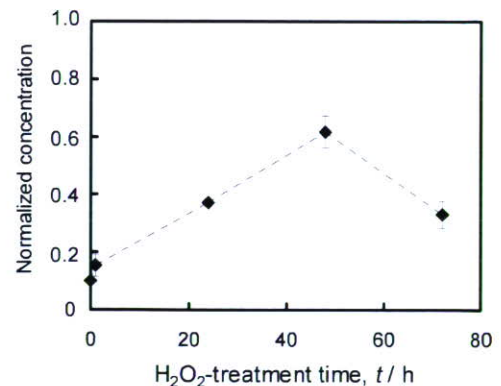


Fig. 6 Normalized concentration of active hydroxyl groups on the surface oxide film on titanium by untreated Ti against the  $H_2O_2$  treatment time.

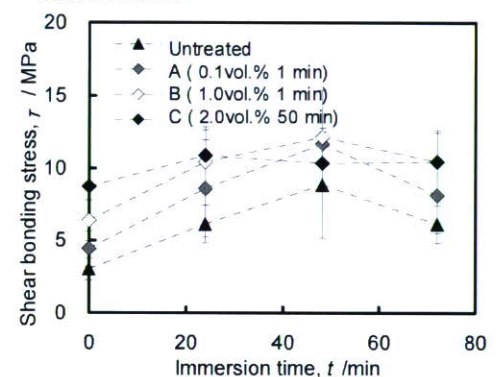


Fig. 7 Shear bonding stress of the Ti/ $\gamma$ MPS/SPU interface of a Ti-SPU composite manufactured under various conditions. Untreated and immersed in (A) 0.1% $\gamma$  MPS for 1 min, (B) 1.0% $\gamma$ -MPS for 1 min, and (C) 2.0% $\gamma$ - MPS for 50 min.

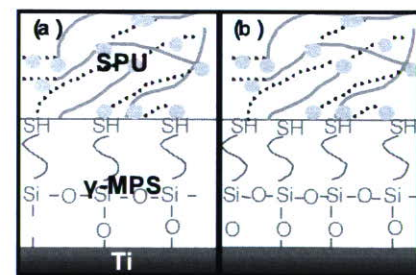


Fig.8 Schematic model of Ti/ $\gamma$ -MPS/SPU interface structure through  $\gamma$ -MPS. (a) Untreated, (b)  $H_2O_2$ -treatment.



**Biofunctionalization of metal surface**  
**by immobilization of poly(ethylene glycol) terminated amine**  
**Yuta Tanaka<sup>1,a</sup>, Yuh Matsuo<sup>2,b</sup>, Haruka Saito<sup>2,c</sup>, Yusuke Tsutsumi<sup>1,d</sup>,**  
**Hisashi Doi<sup>1,e</sup>, Takayuki Yoneyama<sup>1,f</sup>, Hachiro Imai<sup>2,g</sup>, Takao Hanawa<sup>1,h</sup>**

<sup>1</sup> Institute of Biomaterials and Engineering, Tokyo Medical and Dental University, Tokyo 101-0062, Japan

<sup>2</sup> Department of Materials Science, Shibaura Institute of Technology, Tokyo 108-8548, Japan

<sup>a</sup>tanaka.met@tmd.ac.jp, <sup>b</sup>yuh\_jack0114@yahoo.co.jp, <sup>c</sup>haruka19850101@yahoo.co.jp,

<sup>d</sup>tsutsumi.met@tmd.ac.jp, <sup>e</sup>doi.met@tmd.ac.jp, <sup>f</sup>yoneyama@dent.nihon-u.ac.jp,

<sup>g</sup>imai@sic.shibaura-it.ac.jp, <sup>h</sup>hanawa.met@tmd.ac.jp

**Keywords:** Titanium, Poly(ethylene glycol), Electrodeposition, Active hydroxyl groups, XPS

**Abstract.** In many biomedical devices such as catheters and diagnostic sensors, blood compatibility is required. The best way to control this property is to prevent or drastically reduce the adsorption of proteins. Poly(ethylene glycol) terminated amine at both terminals, NH<sub>2</sub>-PEG-NH<sub>2</sub>, is immobilized on a commercially pure titanium, a 316L austenitic stainless steel, and a cobalt-chromium-molybdenum alloy with immersion or electrodeposition. Chemical bonding states at the interface and orientation of PEG molecules were characterized using X-ray photoelectron spectroscopy, glow discharge optical emission spectroscopy, and Fourier-transformed infrared spectrometer with a reflection absorption spectrometer. As a result, NH<sub>2</sub>-PEG-NH<sub>2</sub> was immobilized onto metal surface as a U-shape mainly with stable NHO bonding in electrodeposition. In the case of electrodeposition, the concentration of active surface hydroxyl groups on surface oxide film played an important role in the immobilization.

## Introduction

Metals themselves do not have any biofunction because no stage to give biofunctions to metals exists on their manufacturing process such as melting, casting, forging, heat treatment, etc., while some of them show good biocompatibility. When metals are applied to biomedical devices or biosensing base materials, biofunctions such as the prevention of proteins adsorption and platelets adhesion, and thrombus formation onto the metal surface without affecting the bulk properties is necessary. The development of surface modifications for offering the biofunctions onto the metal have been investigated [1-3] and have been shown to be a promising approach in the development of biofunctional metals for biomedical devices such as vascular stents or guiding catheters. For these purposes, the fundamental property is inhibition of protein adsorption.

Poly(ethylene glycol) is a biofunctional molecule on which adsorption of proteins is inhibited. Therefore, immobilization of PEG to metal surface is an important event to bio-functionalize the metal surface. The surface of stainless steel was firstly modified by the silane coupling agent (SCA), (3-mercaptopropyl)trimethoxysilane. The silanized stainless steel surface (SCA-SS surface) was subsequently activated by argon plasma and then subjected to UV-induced graft polymerization of poly(ethylene glycol)methacrylate (PEGMA). The PEGMA graft-polymerized stainless-steel coupon (PEGMA-g-SCA-SS) with a high graft concentration, and thus a high PEG content, was found to be very effective in preventing bovine serum albumin and  $\gamma$ -globulin adsorption [4]. This process contains multi-stage to be performed while those are effective for the immobilization and no promising technique for immobilization of PEG to metal surface is developed at present.



An orientation of PEG molecules is recognized a main factor for preventing the surface from protein adsorption. An immobilized manner with immersion is difficult to control of orientation and density of PEG. Therefore, in this study, PEG terminated at both terminals or one terminal with amine bases was immobilized on a commercially pure titanium, cp-Ti, a 316L austenitic stainless steel, SS, and a cobalt-chromium-molybdenum alloy, Co-Cr-Mo with electrodeposition. The aim of this study was to determine a chemical bonding states at the metal surface and PEG interface and orientations of PEG molecules. Also, the relationship between the concentrations of active hydroxyl groups of cp-Ti, SS, and Co-Cr-Mo and the thicknesses of PEG layers were investigated.

## Materials and Methods

Both terminals of PEG were terminated with amine ( $\text{NH}_2\text{-PEG-NH}_2$ ; PEG1000 Diamine, NOF Corporation, Japan), and only one terminal of PEG was terminated with amine ( $\text{NH}_2\text{-PEG}$ ; SUNBRIGHT MEPA-10H, NOF Corporation, Japan) because the terminals of PEG is positively charged, from  $\text{NH}_2$  to  $\text{NH}_3^+$ , for electrodeposition. The chemical structures of the PEGs are shown in Fig. 1. Molecular weights of both PEGs were about 1000. 2mass%PEG was dissolved in a

$0.3 \text{ mol L}^{-1}$  NaCl solution, and electrodeposition was carried out at 310 K with  $-5 \text{ V}$  for 300 s. The pH of the solution with PEG was 11. A cp-Ti (grade 2), SS and Co-Cr-Mo (ISO 5832-4:1996) disks (8 mm in diameter and 2 mm in thickness) were metallographically polished and ultrasonically rinsed in acetone. Chemical bonding states at the interface and orientation of PEG molecules immobilized with electrodeposition were characterized using X-ray photoelectron spectroscopy (XPS), glow discharge optical emission spectroscopy (GD-OES) and Fourier-transformed infrared spectrometer with a reflection absorption spectrometer (FTIR-RAS). For comparison, cp-Ti was immersed in a solution containing  $\text{NH}_2\text{-PEG-NH}_2$  for 2 h or 24 h without any electric charge. The concentration of active hydroxyl groups on each metal were determined with a zinc-complex substitution technique [5]. A thickness of PEG layer on each metal was determined by an ellipsometer.

## Results and Discussion

Thicknesses of PEG layers immobilized on the titanium surface were determined by the ellipsometer. These thicknesses are measured in air, therefore, the real thickness in solutions is larger than these values because the  $\text{NH}_2\text{-PEG-NH}_2$  layers swell on exposure to water. The thickness of the PEG layer was the largest in this order: 24-h immersion into  $\text{NH}_2\text{-PEG-NH}_2$  solution, 300-s electrodeposition into  $\text{NH}_2\text{-PEG-NH}_2$  solution, 300-s electrodeposition in  $\text{NH}_2\text{-PEG}$  solution and 2-h immersion in  $\text{NH}_2\text{-PEG-NH}_2$  solution. This result indicated that electrodeposition was more effective than immersion for the immobilization of PEG on the titanium surface.

The difference in  $[\text{C-O}, \text{C-N}]/[\text{C-C}, \text{C-H}]$  ratios shown in Fig. 2 led to the orientation of

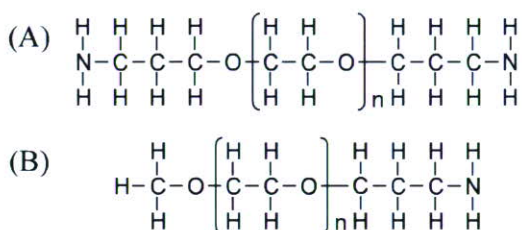


Fig. 1. Chemical structures of PEGs in which both terminals (A) and one terminal (B) were terminated with amine.

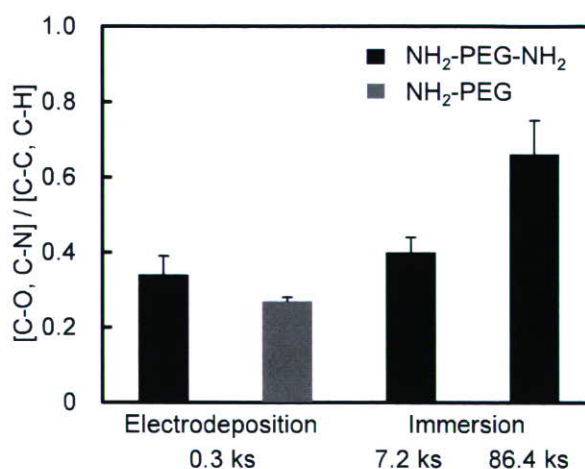


Fig. 2. Ratio,  $[\text{C-O}, \text{C-N}] / [\text{C-C}, \text{C-H}]$ , obtained from the deconvoluted C 1s electron energy region peak.



amine onto the titanium surface. The C-N bond governs this ratio because C-C bonds exist in the entire molecule of PEG, while C-N bonds only exist in the terminals. In addition, the photoelectron signals in XPS abruptly decay depending on the depth direction. Therefore, the C-N bonds at terminals were located inside the PEG layer in electrodeposition more than in immersion. The GD-OES results shown in Fig. 3 are expressed with the emission lines plotted against acquisition time. Depth profiles of titanium have a change in slope of the curve as shown on a dotted line. This point is assumed as the interface between PEG layer and titanium surface oxide. Therefore, the nitrogen signal in left side of this point is originated from PEG molecules and increased in the direction of the interface from outersurface in electrodeposition. Therefore, the orientation of amine onto titanium surface was supported by GD-OES results. FTIR-RAS results revealed that  $\text{NH}_2\text{-PEG-NH}_2$  were oriented in a direction perpendicular to titanium surfaceoxide in electrodeposition.

Also,  $\text{NH}_3^+$  and NHO peaks in N 1s XPS spectrum led to the bonding state in the interface between PEG layer and titanium surface oxide. The  $[\text{NH}_3^+]/[\text{NHO}]$  ratio in Fig. 4 was much smaller in electrodeposition than in immersion. Therefore, amines in terminals existed mainly as stable NHO bond rather than as unstable  $\text{NH}_3^+$  in electrodeposition. These surface analytical techniques revealed the immobilization manners of PEG molecules on titanium surfaces as shown in Fig. 5. Amines in terminals locate inside of the PEG layer and combine mainly with  $\text{TiO}_2$  as stable NHO by electrodeposition, while amines randomly exist and show mainly unstable bonding with  $\text{TiO}_2$  by immersion. Also, the difference in amine termination leads to different bonding manners, U-shape in  $\text{NH}_2\text{-PEG-NH}_2$  and brush in  $\text{NH}_2\text{-PEG}$ .

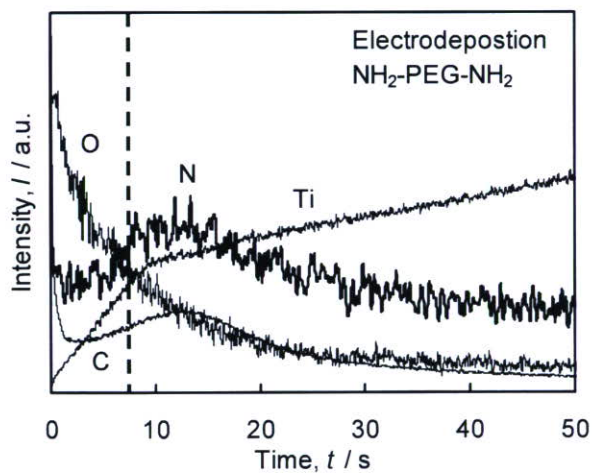


Fig. 3. The depth profiles of elements from PEG-immobilized titanium with electrodeposition.

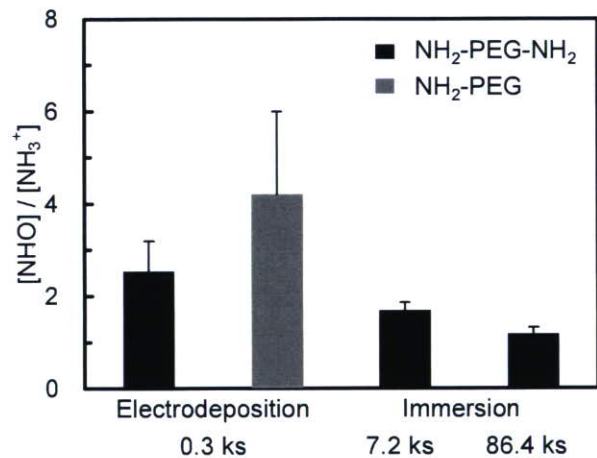


Fig. 4. Ratio,  $[\text{NH}_3^+]/[\text{NHO}]$ , obtained from the deconvoluted N 1s electron energy region peak.

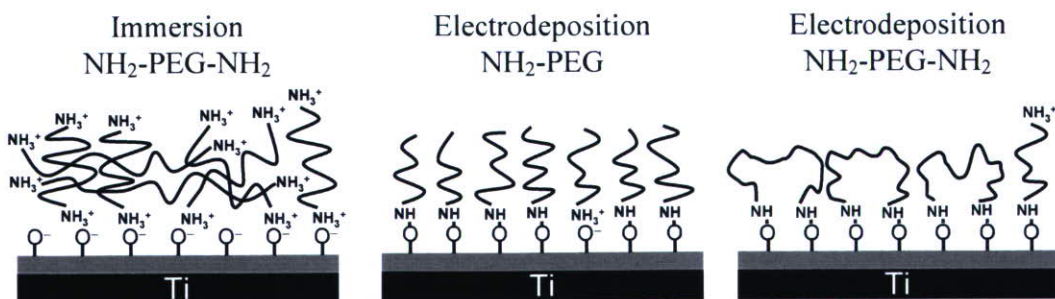


Fig. 5. Schematic model of the immobilization manner and chemical bonding state of PEG with immersion and electrodeposition.

The concentrations of the active hydroxyl groups in Co-Cr-Mo were significantly larger than those in cp-Ti and SS, but no difference was observed between cp-Ti and SS, as shown in Fig. 6. The concentrations of hydroxyl groups on and inside the surface oxide film of each metal were calculated with XPS as well as with the zinc-complex substitution technique. The concentrations of the hydroxyl groups in Co-Cr-Mo oxide film were the largest in both techniques. These results represent the activity of Co-Cr-Mo to form the hydroxyl groups on and inside the surface oxide film. The thicknesses of the  $\text{NH}_2\text{-PEG-NH}_2$  layer immobilized with electrodeposition were the largest in Co-Cr-Mo, as shown Fig. 7. This relationship corresponds to that of the active hydroxyl groups on the surface oxide film. These results revealed that the active hydroxyl groups played an important role in the electrodeposition of  $\text{NH}_2\text{-PEG-NH}_2$ , while they did not in the immersion. In case of immersion, the thickness of PEG on the SS oxide film was significantly larger than those on cp-Ti and Co-Cr-Mo in Fig. 7. The thickness of PEG immobilized on each oxide film with immersion is in inverse proportion to the relative permittivity of each oxide film. Therefore, the relative permittivity of surface oxides on the metals played an important role in immobilization with immersion.

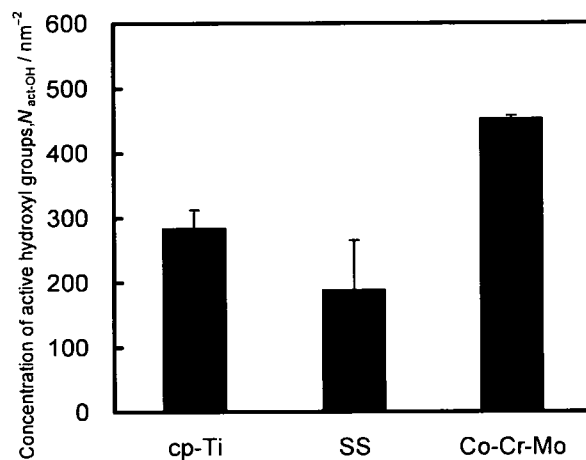


Fig. 6. Concentrations of the active hydroxyl groups on cp-Ti, SS, and Co-Cr-Mo determined by using the zinc-complex substitution technique.

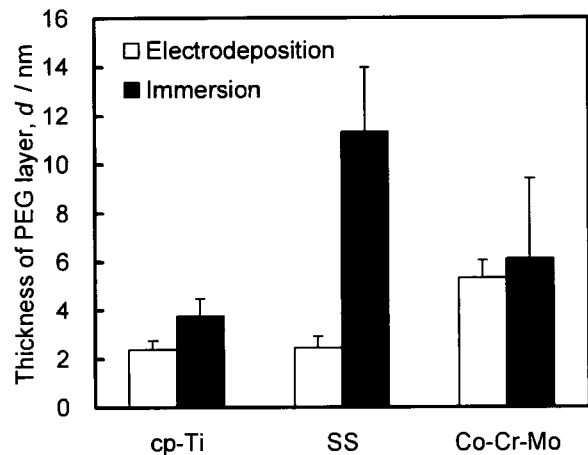


Fig. 7. Thickness of the  $\text{NH}_2\text{-PEG-NH}_2$  layer on cp-Ti, SS and Co-Cr-Mo immobilized with electrodeposition and immersion.

## Conclusion

$\text{NH}_2\text{-PEG-NH}_2$  was immobilized onto metal surface as a U-shape mainly with stable NHO bonding. In the case of electrodeposition, the concentration of active surface hydroxyl groups played an important role in the immobilization. This immobilization process is one-stage convenient technique and useful for all electroconductive materials with any morphology.

## References

- [1] G. L. Kenausis, J. Vörös, D. L. Elbert, N. Huang, R. Hofer, L. Ruiz-Taylor, M. Textor, J. A. Hubbell, N.D. Spencer, *J. Phys. Chem. B* 104 (2000) p3298-3309.
- [3] N. P Huang, G. Csucs, K. Emoto, Y. Nagasaki, K. Kataoka, M. Textor, N. D. Spencer, *Langmuir* 18 (2002) p252-258.
- [4] F. Zhang, E. T. Kang, K. G. Neoh, P. Wang, K. L. Tan, *Biomaterials* 22 (2001) 1541-1548. Dj.M. Maric, P.F. Meier and S.K. Estreicher: *Mater. Sci. Forum* 83-87 (1992) p119
- [5] M. Imai, M. Nishio, *Sumitomo-Keikin-zoku-giho* 30 (1980) p72-77.