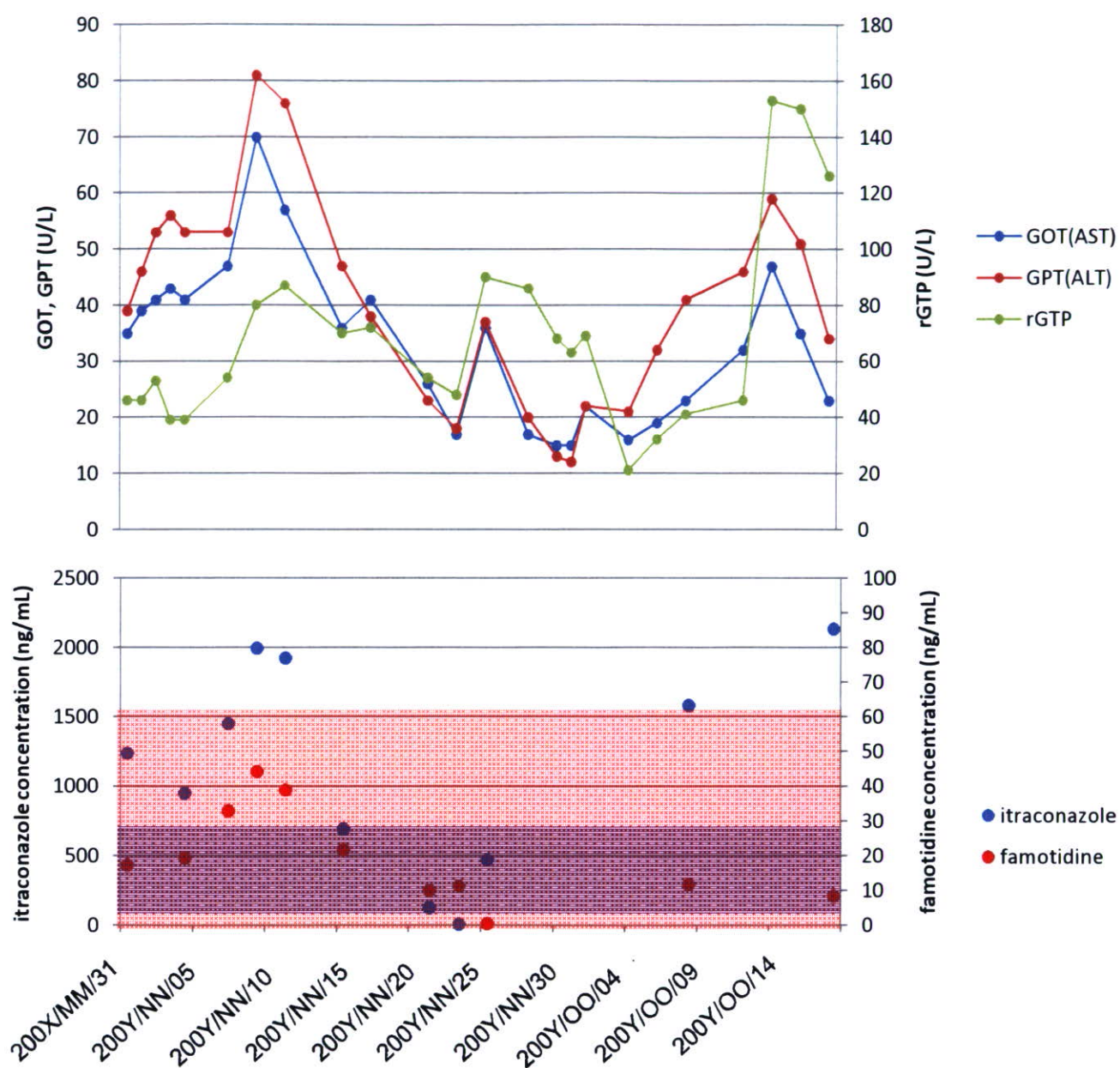
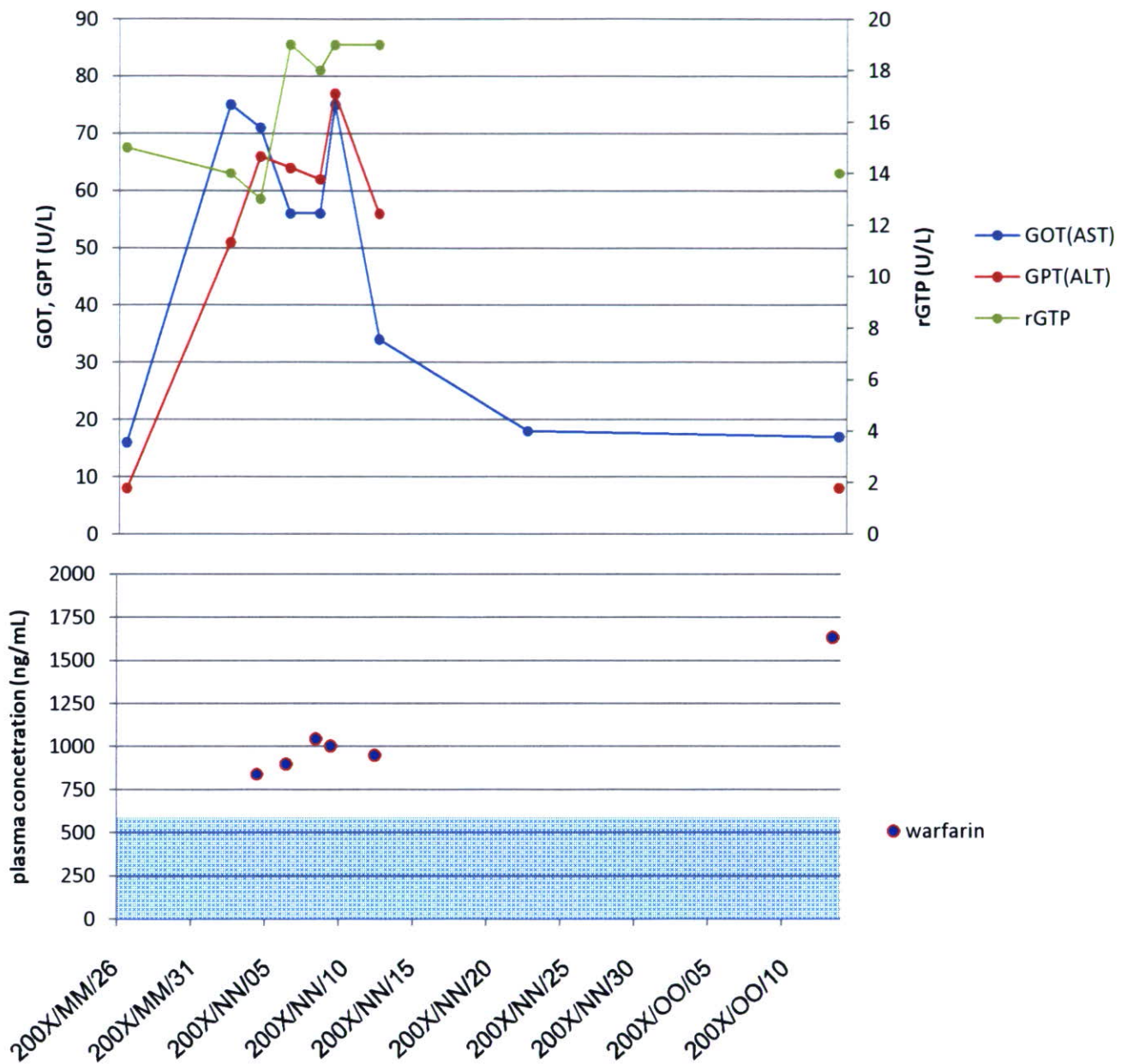


## 症例 2



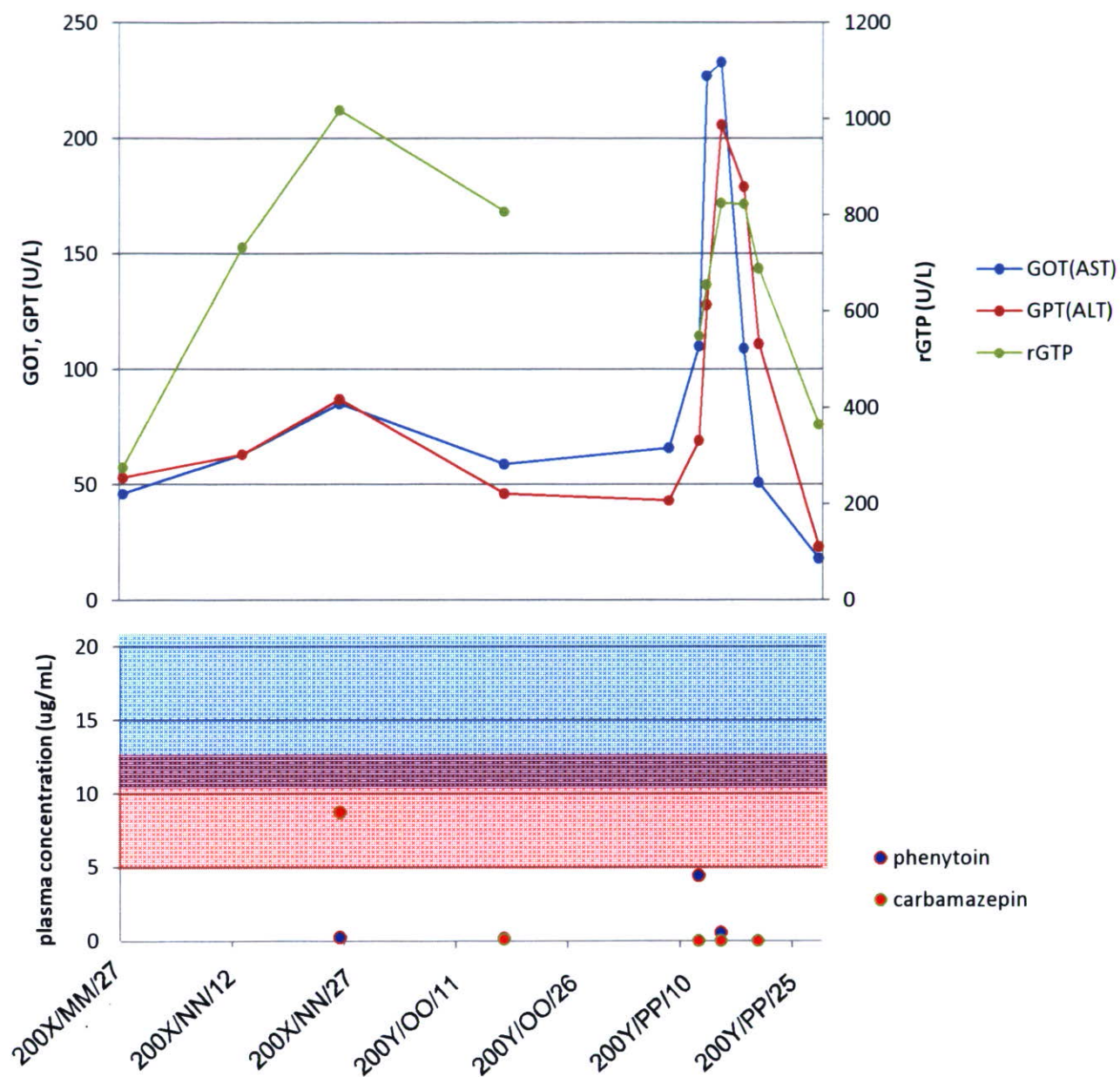
Itraconazole は一般的な臨床濃度域を上回る濃度推移である。一方、famotidine は一般的な臨床濃度域内であった。Itraconazole 中止によるitraconazole濃度低下に伴い、肝機能マーカーも改善していることから、itraconazoleがDILIの起因薬として有力な候補であることが考えられた。

## 症例 5



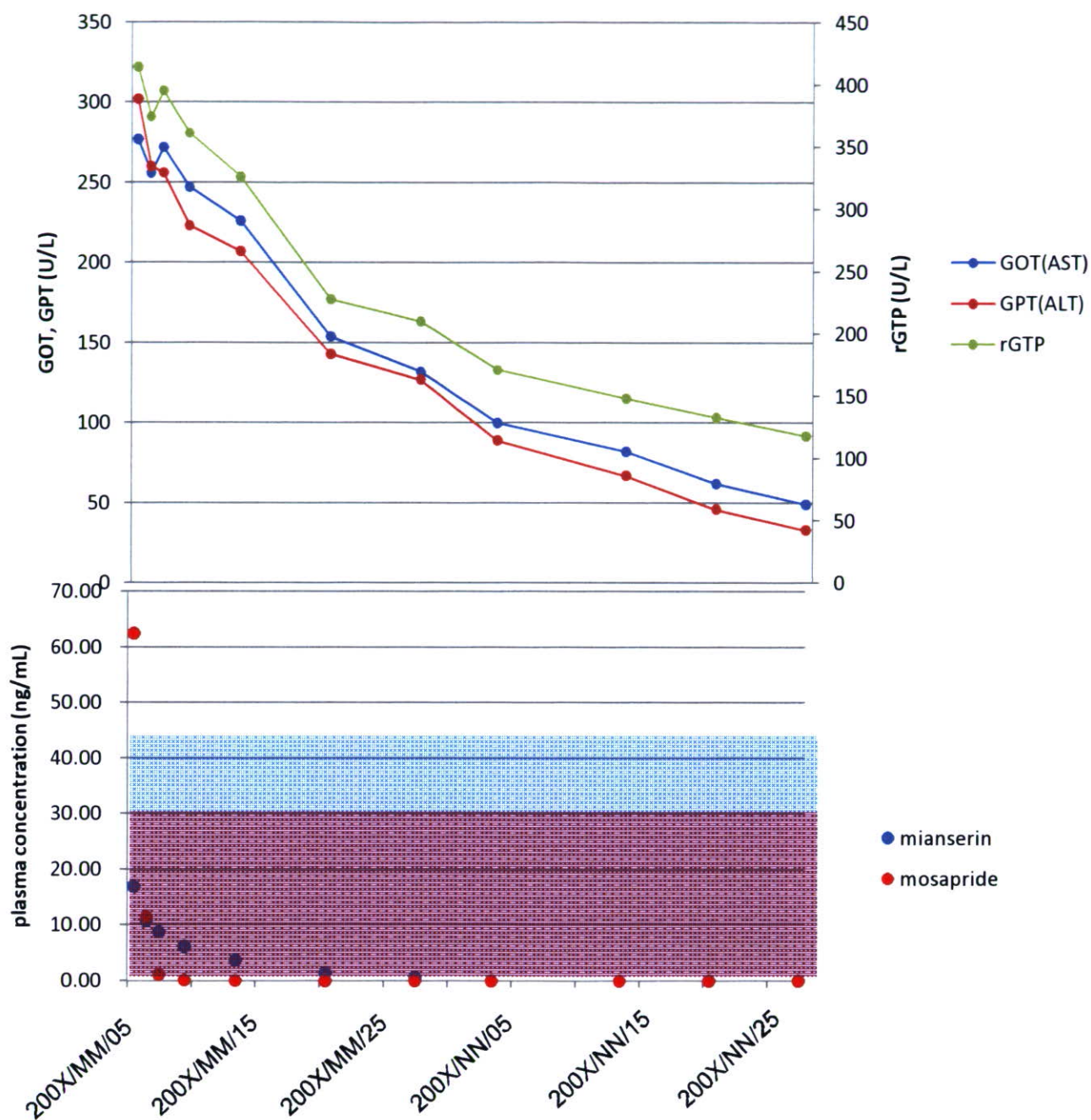
warfarin の投与量は患者によって大きく異なるため、本症例の服用量 (3.5 mg) を服用した場合の予測濃度範囲を1 mg服用時のデータより算出した。肝機能マーカーが悪化している期間のwarfarin濃度は臨床域より高く、肝機能悪化の原因となった可能性も考えられるが、warfarinの服用自体は継続したにも関わらず、肝機能マーカーは改善しており、肝機能悪化の他の要因が関与しているものと考えられる。

## 症例 8



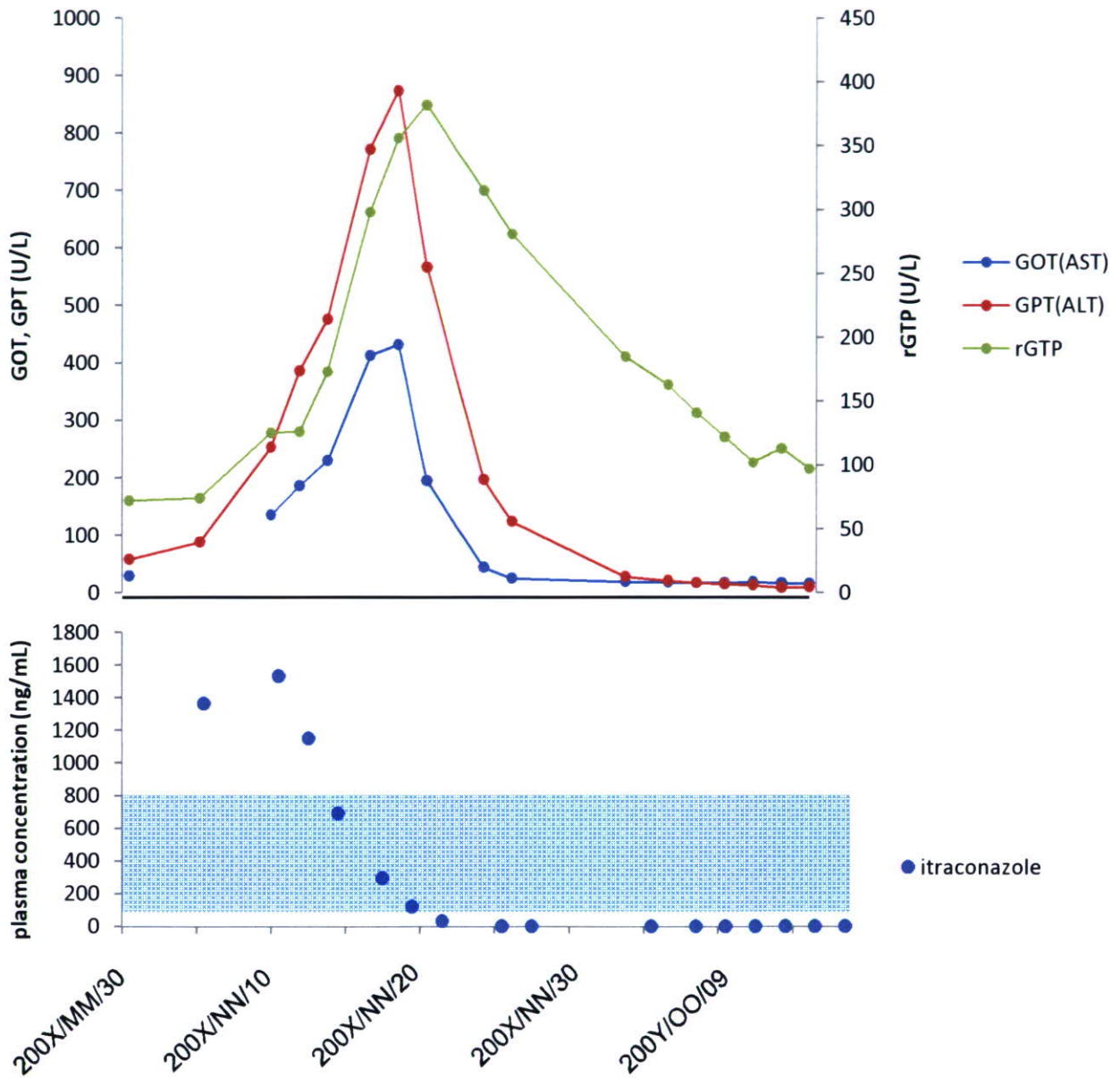
服薬状況から推定された起因薬であるphenytoin、carbamazepineはいずれも治療域内あるいは以下であり、より詳細な検討が必要と考えられる。

## 症例 9



入院時にはすでに肝機能マーカーのピーク値としていた患者であり、原因薬の特定は困難だが、mianserinを中止後に肝機能マーカーが改善していること、一時的に臨床用量を上回る濃度推移をしていたことから、mianserinが何らかの関与をしている可能性も考えられる。

## 症例 11



Itraconazoleのけ中濃度低下に伴い肝機能マーカーが改善していることから、itraconazoleは本症例の起因薬物として有力候補と考えられる。

添付資料7: DMET 2.0による遺伝子多型解析結果の例

Sample Name	Gene	External Id	Assay Id	Allele 1	Allele 2
Hepatotoxicity_1	ABCB1	MDR1_A-1G	366793	G	G
Hepatotoxicity_1	ABCB1	MDR1_A-44G	367417	A	G
Hepatotoxicity_1	ABCB1	MDR1star14_A61G	367673	A	A
Hepatotoxicity_1	ABCB1	rs1045642	366577	C	T
Hepatotoxicity_1	ABCB1	rs1128501	367607	G	G
Hepatotoxicity_1	ABCB1	rs1128502	367564	A	A
Hepatotoxicity_1	ABCB1	rs1128503	366581	C	T
Hepatotoxicity_1	ABCB1	rs1202183	367497	A	A
Hepatotoxicity_1	ABCB1	rs17064	367606	A	A
Hepatotoxicity_1	ABCB1	rs2032581	366580	A	A
Hepatotoxicity_1	ABCB1	rs2032582	368263	A	T
Hepatotoxicity_1	ABCB1	rs2032588	366792	C	C
Hepatotoxicity_1	ABCB1	rs2229109	367495	G	G
Hepatotoxicity_1	ABCB1	rs2235012	365848	G	G
Hepatotoxicity_1	ABCB1	rs2235013	367696	A	G
Hepatotoxicity_1	ABCB1	rs2235015	367563	G	G
Hepatotoxicity_1	ABCB1	rs2235033	367088	C	T
Hepatotoxicity_1	ABCB1	rs2235036	366795	G	G
Hepatotoxicity_1	ABCB1	rs2235039	367092	G	G
Hepatotoxicity_1	ABCB1	rs2235044	366971	G	G
Hepatotoxicity_1	ABCB1	rs2707943	366167	C	C
Hepatotoxicity_1	ABCB1	rs3842	367713	G	G
Hepatotoxicity_1	ABCB11	rs1521808	367206	G	G
Hepatotoxicity_1	ABCB11	rs2287616	366576	T	T
Hepatotoxicity_1	ABCB11	rs2287617	367207	G	G
Hepatotoxicity_1	ABCB11	rs2287622	367494	C	T
Hepatotoxicity_1	ABCB11	rs3732038	365841	A	A
Hepatotoxicity_1	ABCB11	rs3770602	367205	A	G
Hepatotoxicity_1	ABCB11	rs3770603	367561	C	T
Hepatotoxicity_1	ABCB11	rs3815675	367326	T	T
Hepatotoxicity_1	ABCB11	rs4148767	368254	Ins	Ins
Hepatotoxicity_1	ABCB11	rs4148768	367204	C	T
Hepatotoxicity_1	ABCB11	rs4148770	367491	T	T
Hepatotoxicity_1	ABCB11	rs4148777	367208	T	T
Hepatotoxicity_1	ABCB11	rs4668115	367085	C	T
Hepatotoxicity_1	ABCB11	rs473351	367324	G	G
Hepatotoxicity_1	ABCB11	rs495714	367416	A	A
Hepatotoxicity_1	ABCB11	rs496550	366575	G	G
Hepatotoxicity_1	ABCB11	rs497692	366366	NC	NC
Hepatotoxicity_1	ABCB11	rs7563233	367325	T	T
Hepatotoxicity_1	ABCB11	rs7578587	367492	T	T
Hepatotoxicity_1	ABCB11	rs7602171	367695	A	G
Hepatotoxicity_1	ABCB4	ABCB4_12639C>G	367082	C	C
Hepatotoxicity_1	ABCB4	ABCB4_12662G>A	367647	G	G
Hepatotoxicity_1	ABCB4	ABCB4_23831C>T	366573	C	C
Hepatotoxicity_1	ABCB4	ABCB4_35652G>C	366165	G	G
Hepatotoxicity_1	ABCB4	ABCB4_55399G>C	366788	G	G
Hepatotoxicity_1	ABCB4	ABCB4_55437G>A	367084	G	G
Hepatotoxicity_1	ABCB4	ABCB4_66101A>G	366789	A	A
Hepatotoxicity_1	ABCB4	ABCB4_67261T>C	367712	T	T
Hepatotoxicity_1	ABCB4	ABCB4_67294C>T	366166	C	C
Hepatotoxicity_1	ABCB4	rs2109505	367083	A	A
Hepatotoxicity_1	ABCB4	rs2302387	367080	A	A
Hepatotoxicity_1	ABCB4	rs31655	367203	C	C
Hepatotoxicity_1	ABCB4	rs3747806	367412	T	T
Hepatotoxicity_1	ABCB4	rs3761810	367490	T	T

Hepatotoxicity_1	ABCB4	rs4148805	367694	T	T
Hepatotoxicity_1	ABCB4	rs4148806	367079	T	T
Hepatotoxicity_1	ABCB4	rs4148808	367276	G	G
Hepatotoxicity_1	ABCB4	rs8187789	367645	C	C
Hepatotoxicity_1	ABCB4	rs8187799	366312	A	A
Hepatotoxicity_1	ABCB7	rs1054913	367200	G	G
Hepatotoxicity_1	ABCB7	rs1054914	367411	T	T
Hepatotoxicity_1	ABCB7	rs1340989	366936	C	C
Hepatotoxicity_1	ABCB7	rs1340990	366937	A	A
Hepatotoxicity_1	ABCC1	ABCC1_121977C>T	366565	C	C
Hepatotoxicity_1	ABCC1	ABCC1_86732G>A	366164	G	G
Hepatotoxicity_1	ABCC1	ABCC1_96091C>T	368069	C	C
Hepatotoxicity_1	ABCC1	ABCC1_96101G>A	367986	G	G
Hepatotoxicity_1	ABCC1	rs212090	367410	T	T
Hepatotoxicity_1	ABCC1	rs212091	367077	A	G
Hepatotoxicity_1	ABCC1	rs2301666	366564	C	C
Hepatotoxicity_1	ABCC1	rs246221	366566	C	T
Hepatotoxicity_1	ABCC1	rs35605	366162	C	C
Hepatotoxicity_1	ABCC1	rs3743527	366968	C	T
Hepatotoxicity_1	ABCC1	rs4148377	366784	G	G
Hepatotoxicity_1	ABCC1	rs8056298	367078	G	G
Hepatotoxicity_1	ABCC1	rs8057331	366363	C	C
Hepatotoxicity_1	ABCC1	rs8187853	368019	G	G
Hepatotoxicity_1	ABCC1	rs8187858	366786	C	C
Hepatotoxicity_1	ABCC1	rs8187863	366741	C	C
Hepatotoxicity_1	ABCC2	ABCC2_14356A>C	366362	A	A
Hepatotoxicity_1	ABCC2	ABCC2_1889A>G	366967	A	A
Hepatotoxicity_1	ABCC2	ABCC2_21422C>T	367408	C	C
Hepatotoxicity_1	ABCC2	ABCC2_22556A>G	367604	A	A
Hepatotoxicity_1	ABCC2	ABCC2_25256T>G	367197	T	T
Hepatotoxicity_1	ABCC2	ABCC2_30215T>C	366159	T	T
Hepatotoxicity_1	ABCC2	ABCC2_30279C>A	366780	C	C
Hepatotoxicity_1	ABCC2	ABCC2_36351T>G	366966	T	T
Hepatotoxicity_1	ABCC2	ABCC2_48827A>G	367316	A	A
Hepatotoxicity_1	ABCC2	ABCC2_49139T>C	367314	T	T
Hepatotoxicity_1	ABCC2	ABCC2_49217A>G	366778	A	A
Hepatotoxicity_1	ABCC2	ABCC2_51673T>C	367196	T	T
Hepatotoxicity_1	ABCC2	ABCC2_53393G>A	368084	G	G
Hepatotoxicity_1	ABCC2	ABCC2_62854C>T	367195	C	C
Hepatotoxicity_1	ABCC2	MRP2_C2302T	365831	C	C
Hepatotoxicity_1	ABCC2	MRP2_C2366T	366562	C	C
Hepatotoxicity_1	ABCC2	MRP2_G4348A	366157	G	G
Hepatotoxicity_1	ABCC2	rs1137968	366357	G	G
Hepatotoxicity_1	ABCC2	rs17216198	367075	C	C
Hepatotoxicity_1	ABCC2	rs17216317	366361	C	C
Hepatotoxicity_1	ABCC2	rs17222547	366965	C	C
Hepatotoxicity_1	ABCC2	rs17222674	367076	A	A
Hepatotoxicity_1	ABCC2	rs17222723	368099	T	T
Hepatotoxicity_1	ABCC2	rs2273697	366783	G	G
Hepatotoxicity_1	ABCC2	rs3740066	366963	C	C
Hepatotoxicity_1	ABCC2	rs3740070	367488	G	G
Hepatotoxicity_1	ABCC2	rs3740071	366779	G	G
Hepatotoxicity_1	ABCC2	rs3740072	367317	A	A
Hepatotoxicity_1	ABCC2	rs4148400	366964	A	A
Hepatotoxicity_1	ABCC2	rs4148401	366360	C	C
Hepatotoxicity_1	ABCC2	rs4267009	367472	G	G
Hepatotoxicity_1	ABCC2	rs7080681	367198	G	G
Hepatotoxicity_1	ABCC2	rs717620	367275	C	C

Hepatotoxicity_1	ABCC2	rs7899457	366359	C	C
Hepatotoxicity_1	ABCC2	rs8187692	368043	G	G
Hepatotoxicity_1	ABCC2	rs8187699	367074	A	A
Hepatotoxicity_1	ABCC2	rs8187706	366777	G	G
Hepatotoxicity_1	ABCC2	rs8187707	366559	C	C
Hepatotoxicity_1	ABCC2	rs8187709	367043	C	C
Hepatotoxicity_1	ABCC2	rs8187710	366776	G	G
Hepatotoxicity_1	ABCC2	rs927344	366160	T	T
Hepatotoxicity_1	ABCC3	rs1003355	365826	C	C
Hepatotoxicity_1	ABCC3	rs1051625	365824	C	C
Hepatotoxicity_1	ABCC3	rs1051640	366960	A	A
Hepatotoxicity_1	ABCC3	rs2277624	365825	G	G
Hepatotoxicity_1	ABCC4	rs1059751	366957	T	T
Hepatotoxicity_1	ABCC4	rs1059754	366773	T	T
Hepatotoxicity_1	ABCC4	rs1189466	365822	G	G
Hepatotoxicity_1	ABCC4	rs1678339	366774	C	C
Hepatotoxicity_1	ABCC4	rs1751034	367486	T	T
Hepatotoxicity_1	ABCC4	rs2274405	367172	C	T
Hepatotoxicity_1	ABCC4	rs2274406	366959	C	T
Hepatotoxicity_1	ABCC4	rs2274407	367407	C	C
Hepatotoxicity_1	ABCC4	rs3742106	367067	C	C
Hepatotoxicity_1	ABCC4	rs3765534	367313	C	T
Hepatotoxicity_1	ABCC4	rs3770	367721	T	T
Hepatotoxicity_1	ABCC4	rs4148460	367068	T	T
Hepatotoxicity_1	ABCC4	rs4148551	367559	G	G
Hepatotoxicity_1	ABCC4	rs4148553	367311	G	G
Hepatotoxicity_1	ABCC4	rs4148554	367312	T	T
Hepatotoxicity_1	ABCC4	rs4148555	367485	A	A
Hepatotoxicity_1	ABCC5	rs1053351	366557	C	C
Hepatotoxicity_1	ABCC5	rs1053386	366355	C	C
Hepatotoxicity_1	ABCC5	rs1053387	366354	C	C
Hepatotoxicity_1	ABCC5	rs3749442	367193	C	C
Hepatotoxicity_1	ABCC5	rs7636910	367603	C	T
Hepatotoxicity_1	ABCC5	rs939336	366772	A	G
Hepatotoxicity_1	ABCC6	rs2238472	366553	G	G
Hepatotoxicity_1	ABCC6	rs2856585	365819	G	G
Hepatotoxicity_1	ABCC6	rs4341770	365820	A	A
Hepatotoxicity_1	ABCC6	rs6416668	366353	C	C
Hepatotoxicity_1	ABCC6	rs8058694	366740	G	G
Hepatotoxicity_1	ABCC6	rs8058696	366511	G	G
Hepatotoxicity_1	ABCG2	rs1061017	367404	C	C
Hepatotoxicity_1	ABCG2	rs1061018	366954	T	T
Hepatotoxicity_1	ABCG2	rs2231139	367669	C	C
Hepatotoxicity_1	ABCG2	rs2231142	366770	A	C
Hepatotoxicity_1	ABCG2	rs3116439	367065	A	A
Hepatotoxicity_1	ABCG2	rs3116448	367307	T	T
Hepatotoxicity_1	ABCG2	rs3201997	367305	G	G
Hepatotoxicity_1	ADH1A	rs6828526	366918	G	G
Hepatotoxicity_1	ADH1B	rs1041969	366127	C	C
Hepatotoxicity_1	ADH1B	rs1229983	367163	T	T
Hepatotoxicity_1	ADH1B	rs1229984	366702	A	G
Hepatotoxicity_1	ADH1B	rs6413413	366915	A	A
Hepatotoxicity_1	ADH4	rs1126670	367629	T	T
Hepatotoxicity_1	ADH4	rs1126671	367373	G	G
Hepatotoxicity_1	ADH4	rs1126672	367025	C	C
Hepatotoxicity_1	ADH4	rs2032349	367024	C	C
Hepatotoxicity_1	ADH5	rs1050637	367455	T	T
Hepatotoxicity_1	ADH6	rs4147546	366474	G	G



Hepatotoxicity_1	ADH6	rs6843298	366278	G	G
Hepatotoxicity_1	ADH7	rs1042111	366705	C	C
Hepatotoxicity_1	ADH7	rs1573496	367161	C	C
Hepatotoxicity_1	ADH7	rs284797	367264	G	G
Hepatotoxicity_1	ADH7	rs971074	367028	G	G
Hepatotoxicity_1	AHR	rs1803079	367692	C	C
Hepatotoxicity_1	AHR	rs1803080	367711	C	C
Hepatotoxicity_1	AHR	rs2066853	367558	A	G
Hepatotoxicity_1	ALDH1A1	rs1049981	367160	A	A
Hepatotoxicity_1	ALDH1A1	rs1063447	366701	T	T
Hepatotoxicity_1	ALDH1A1	rs13959	366700	C	C
Hepatotoxicity_1	ALDH1A1	rs8187929	366911	A	A
Hepatotoxicity_1	ALDH2	rs1062136	367023	A	A
Hepatotoxicity_1	ALDH2	rs1064933	366274	G	G
Hepatotoxicity_1	ALDH2	rs671	366910	G	G
Hepatotoxicity_1	ALDH3A1	rs2072330	366699	T	T
Hepatotoxicity_1	ALDH3A1	rs887241	366033	G	G
Hepatotoxicity_1	AOX1	rs3731722	366698	T	T
Hepatotoxicity_1	ATP7A	rs5959130	367401	NC	NC
Hepatotoxicity_1	ATP7B	rs1051332	366144	A	G
Hepatotoxicity_1	ATP7B	rs1061472	365818	A	G
Hepatotoxicity_1	ATP7B	rs1801243	367400	G	T
Hepatotoxicity_1	ATP7B	rs1801244	366768	C	G
Hepatotoxicity_1	ATP7B	rs1801246	365817	G	G
Hepatotoxicity_1	ATP7B	rs1801249	366767	C	T
Hepatotoxicity_1	ATP7B	rs2277447	366352	C	C
Hepatotoxicity_1	ATP7B	rs732774	367483	A	G
Hepatotoxicity_1	ATP7B	rs7334118	365816	T	T
Hepatotoxicity_1	ATP7B	rs928169	366145	C	G
Hepatotoxicity_1	CDA	CDA_A70T	366271	G	G
Hepatotoxicity_1	CDA	rs1048977	366697	C	C
Hepatotoxicity_1	CDA	rs2072671	366029	A	A
Hepatotoxicity_1	CHST10	rs1057056	366908	G	G
Hepatotoxicity_1	CHST10	rs1465829	366468	G	G
Hepatotoxicity_1	CHST10	rs1530030	366263	C	T
Hepatotoxicity_1	CHST10	rs3748930	366470	C	G
Hepatotoxicity_1	CHST10	rs3748931	366469	C	C
Hepatotoxicity_1	CHST10	rs3748932	367020	G	G
Hepatotoxicity_1	CHST10	rs3748933	367019	G	G
Hepatotoxicity_1	CHST10	rs3748934	366907	C	C
Hepatotoxicity_1	CHST10	rs3828193	367022	A	C
Hepatotoxicity_1	CHST10	rs4149520	367021	T	T
Hepatotoxicity_1	CHST10	rs4149521	367534	T	T
Hepatotoxicity_1	CHST10	rs6759686	366264	G	G
Hepatotoxicity_1	CHST11	rs1048662	367261	A	A
Hepatotoxicity_1	CHST11	rs2463018	366905	G	G
Hepatotoxicity_1	CHST11	rs2463437	367586	C	T
Hepatotoxicity_1	CHST11	rs2468110	366906	A	A
Hepatotoxicity_1	CHST11	rs7847	368123	T	T
Hepatotoxicity_1	CHST11	rs7958885	366465	T	T
Hepatotoxicity_1	CHST11	rs903247	367372	C	T
Hepatotoxicity_1	CHST13	rs1054097	367018	G	G
Hepatotoxicity_1	CHST13	rs1056522	366018	C	C
Hepatotoxicity_1	CHST2	rs6664	367454	C	T
Hepatotoxicity_1	CHST3	rs12418	366753	G	G
Hepatotoxicity_1	CHST3	rs4148943	367157	C	C
Hepatotoxicity_1	CHST3	rs4148944	366903	A	G
Hepatotoxicity_1	CHST3	rs4148945	367259	C	C

Hepatotoxicity_1	CHST3	rs4148946	366902	C	T
Hepatotoxicity_1	CHST3	rs4148947	366259	NC	NC
Hepatotoxicity_1	CHST3	rs4148949	367016	C	T
Hepatotoxicity_1	CHST3	rs4148950	366901	G	G
Hepatotoxicity_1	CHST3	rs4148953	367014	G	G
Hepatotoxicity_1	CHST3	rs4747236	366464	G	G
Hepatotoxicity_1	CHST3	rs7072219	367627	A	A
Hepatotoxicity_1	CHST3	rs730720	366258	G	G
Hepatotoxicity_1	CHST3	rs730722	367258	C	G
Hepatotoxicity_1	CHST3	rs731027	366900	T	T
Hepatotoxicity_1	CHST4	rs3813744	366898	C	C
Hepatotoxicity_1	CHST5	rs2641806	366256	C	C
Hepatotoxicity_1	CHST5	rs2738792	367707	T	T
Hepatotoxicity_1	CHST5	rs2937027	366255	A	A
Hepatotoxicity_1	CHST5	rs3784932	366007	T	T
Hepatotoxicity_1	CHST6	rs436153	366000	T	T
Hepatotoxicity_1	CHST7	rs7056956	365995	G	G
Hepatotoxicity_1	CHST7	rs735716	367664	A	A
Hepatotoxicity_1	CHST9	rs1155514	367533	A	A
Hepatotoxicity_1	CHST9	rs417808	367156	A	A
Hepatotoxicity_1	CHST9	rs418546	367706	A	A
Hepatotoxicity_1	COMT	rs4633	365989	C	C
Hepatotoxicity_1	COMT	rs6270	365990	G	G
Hepatotoxicity_1	COMT	rs769224	366248	G	G
Hepatotoxicity_1	COMT	rs8192488	365993	C	C
Hepatotoxicity_1	CROT	ABCB4_72251A>G	366790	A	A
Hepatotoxicity_1	CYP11A1	rs1049968	366403	C	C
Hepatotoxicity_1	CYP11A1	rs1130841	366402	G	G
Hepatotoxicity_1	CYP11A1	rs6160	366404	C	C
Hepatotoxicity_1	CYP11B1	rs1134095	366985	T	T
Hepatotoxicity_1	CYP11B1	rs1137484	368040	C	C
Hepatotoxicity_1	CYP11B1	rs1137486	367895	PRA	PRA
Hepatotoxicity_1	CYP11B1	rs1137487	365914	T	T
Hepatotoxicity_1	CYP11B1	rs3802229	368039	C	C
Hepatotoxicity_1	CYP11B1	rs4736312	367219	C	C
Hepatotoxicity_1	CYP11B1	rs4998895	367761	PRA	PRA
Hepatotoxicity_1	CYP11B1	rs4998896	367901	C	C
Hepatotoxicity_1	CYP11B1	rs4998897	367962	G	G
Hepatotoxicity_1	CYP11B1	rs4998898	367906	C	C
Hepatotoxicity_1	CYP11B1	rs4998899	367764	A	A
Hepatotoxicity_1	CYP11B1	rs4998900	367847	G	G
Hepatotoxicity_1	CYP11B1	rs5017237	367852	C	C
Hepatotoxicity_1	CYP11B1	rs5017238	365913	A	A
Hepatotoxicity_1	CYP11B1	rs5017239	365912	C	C
Hepatotoxicity_1	CYP11B1	rs5027480	366607	C	C
Hepatotoxicity_1	CYP11B1	rs5282	366395	G	G
Hepatotoxicity_1	CYP11B1	rs5283	365903	T	T
Hepatotoxicity_1	CYP11B1	rs5297	365915	T	T
Hepatotoxicity_1	CYP11B1	rs5298	366198	T	T
Hepatotoxicity_1	CYP11B1	rs5300	366397	A	A
Hepatotoxicity_1	CYP11B1	rs5301	368002	G	G
Hepatotoxicity_1	CYP11B1	rs5302	367784	A	A
Hepatotoxicity_1	CYP11B1	rs5303	367902	C	C
Hepatotoxicity_1	CYP11B1	rs6405	365904	G	G
Hepatotoxicity_1	CYP11B1	rs7003319	366396	C	C
Hepatotoxicity_1	CYP11B2	rs4539	366185	A	A
Hepatotoxicity_1	CYP11B2	rs5315	366388	T	T
Hepatotoxicity_1	CYP17A1	rs1042386	366182	C	C

Hepatotoxicity_1	CYP17A1	rs6162	366983	A	G
Hepatotoxicity_1	CYP17A1	rs6163	367101	A	C
Hepatotoxicity_1	CYP17A1	rs6164	366603	G	G
Hepatotoxicity_1	CYP17A1	rs743572	366604	A	G
Hepatotoxicity_1	CYP17A1	rs762563	365892	C	C
Hepatotoxicity_1	CYP19A1	rs10046	366823	C	T
Hepatotoxicity_1	CYP19A1	rs1050677	367100	C	C
Hepatotoxicity_1	CYP19A1	rs1050787	366982	T	T
Hepatotoxicity_1	CYP19A1	rs1062033	366181	C	G
Hepatotoxicity_1	CYP19A1	rs2236722	366980	T	T
Hepatotoxicity_1	CYP19A1	rs2304461	367427	G	G
Hepatotoxicity_1	CYP19A1	rs2304462	367277	C	C
Hepatotoxicity_1	CYP19A1	rs4646	366824	G	T
Hepatotoxicity_1	CYP19A1	rs700518	366981	A	G
Hepatotoxicity_1	CYP19A1	rs700519	367174	C	C
Hepatotoxicity_1	CYP1A1	CYP1A1E0314_302	366631	C	C
Hepatotoxicity_1	CYP1A1	CYP1A1star10	366216	C	C
Hepatotoxicity_1	CYP1A1	CYP1A1star2C	367942	A	G
Hepatotoxicity_1	CYP1A1	CYP1A1star3	366522	T	T
Hepatotoxicity_1	CYP1A1	CYP1A1star4	367889	C	C
Hepatotoxicity_1	CYP1A1	CYP1A1star5	367853	C	C
Hepatotoxicity_1	CYP1A1	CYP1A1star8	367111	T	T
Hepatotoxicity_1	CYP1A1	rs2278970	367943	C	C
Hepatotoxicity_1	CYP1A1	rs2856833	366632	C	C
Hepatotoxicity_1	CYP1A1	rs4987133	366422	T	T
Hepatotoxicity_1	CYP1A2	CYP1A2star1C	368215	G	G
Hepatotoxicity_1	CYP1A2	CYP1A2star1D	368392	Ins	Del
Hepatotoxicity_1	CYP1A2	CYP1A2star1K_-163CA	366300	A	A
Hepatotoxicity_1	CYP1A2	CYP1A2star1K_-729CT	366505	C	C
Hepatotoxicity_1	CYP1A2	CYP1A2star1K_-739TG	365811	T	T
Hepatotoxicity_1	CYP1A2	CYP1A2star2	366140	C	C
Hepatotoxicity_1	CYP1A2	CYP1A2star3_1042GA	366339	G	G
Hepatotoxicity_1	CYP1A2	CYP1A2star3_1545TC	366762	C	T
Hepatotoxicity_1	CYP1A2	CYP1A2star4	366134	A	A
Hepatotoxicity_1	CYP1A2	CYP1A2star5	366945	G	G
Hepatotoxicity_1	CYP1A2	CYP1A2star6	365802	C	C
Hepatotoxicity_1	CYP1A2	CYP1A2star7	366714	G	G
Hepatotoxicity_1	CYP1B1	CYP1B1star17	368151	Ins	Ins
Hepatotoxicity_1	CYP1B1	CYP1B1star18	366421	G	G
Hepatotoxicity_1	CYP1B1	CYP1B1star19	366214	C	C
Hepatotoxicity_1	CYP1B1	CYP1B1star20	366420	G	G
Hepatotoxicity_1	CYP1B1	CYP1B1star21	366856	G	G
Hepatotoxicity_1	CYP1B1	CYP1B1star22	368191	Ins	Ins
Hepatotoxicity_1	CYP1B1	CYP1B1star23	367981	C	C
Hepatotoxicity_1	CYP1B1	CYP1B1star25	366628	C	C
Hepatotoxicity_1	CYP1B1	CYP1B1star26	368193	Ins	Ins
Hepatotoxicity_1	CYP1B1	CYP1B1star3	366630	G	G
Hepatotoxicity_1	CYP1B1	rs4398252	365947	T	T
Hepatotoxicity_1	CYP1B1	rs4986889	366855	A	A
Hepatotoxicity_1	CYP20A1	rs1048013	367426	C	T
Hepatotoxicity_1	CYP20A1	rs2043449	367611	A	A
Hepatotoxicity_1	CYP24A1	rs2296239	367424	C	T
Hepatotoxicity_1	CYP24A1	rs2296241	367423	A	G
Hepatotoxicity_1	CYP24A1	rs2762934	366817	G	G
Hepatotoxicity_1	CYP24A1	rs3171182	366979	PRA	PRA
Hepatotoxicity_1	CYP24A1	rs3834669	368188	Ins	Ins
Hepatotoxicity_1	CYP24A1	rs6068812	367332	A	A
Hepatotoxicity_1	CYP24A1	rs6068816	366978	T	T

Hepatotoxicity_1	CYP26A1	rs2229104	366816	C	C
Hepatotoxicity_1	CYP27A1	rs5838709	368150	Ins	Ins
Hepatotoxicity_1	CYP27B1	rs8176349	366179	G	G
Hepatotoxicity_1	CYP27B1	rs8176350	367099	G	G
Hepatotoxicity_1	CYP27B1	rs8176351	367098	G	G
Hepatotoxicity_1	CYP2A13	CYP2A13star1F	366418	T	T
Hepatotoxicity_1	CYP2A13	CYP2A13star1H_2366CT	366627	C	C
Hepatotoxicity_1	CYP2A13	CYP2A13star1H_6432CT	366520	C	T
Hepatotoxicity_1	CYP2A13	CYP2A13star4	365938	C	C
Hepatotoxicity_1	CYP2A13	rs3885816	366375	G	G
Hepatotoxicity_1	CYP2A13	rs8192721	366988	G	G
Hepatotoxicity_1	CYP2A6	CYP2A6star11	368364	T	T
Hepatotoxicity_1	CYP2A6	CYP2A6star13_13GA	365800	G	G
Hepatotoxicity_1	CYP2A6	CYP2A6star13_51AG	366759	G	G
Hepatotoxicity_1	CYP2A6	CYP2A6star15_22CT	366110	C	C
Hepatotoxicity_1	CYP2A6	CYP2A6star16_2161CA	367171	C	C
Hepatotoxicity_1	CYP2A6	CYP2A6star2	366024	T	T
Hepatotoxicity_1	CYP2A6	CYP2A6star5	368356	G	G
Hepatotoxicity_1	CYP2A6	CYP2A6star6	365979	G	G
Hepatotoxicity_1	CYP2A6	CYP2A6star7_6558TC	368360	T	T
Hepatotoxicity_1	CYP2A6	CYP2A6star8_6600GT	366864	G	G
Hepatotoxicity_1	CYP2A6	CYP2A6star9	366634	G	T
Hepatotoxicity_1	CYP2A6	rs1138697	368053	G	G
Hepatotoxicity_1	CYP2A6	rs1143243	366596	A	A
Hepatotoxicity_1	CYP2A6	rs2002977	367966	C	C
Hepatotoxicity_1	CYP2A6	rs3891219	366262	A	A
Hepatotoxicity_1	CYP2A6	rs4997557	368078	C	C
Hepatotoxicity_1	CYP2A7	rs1060090	367792	G	G
Hepatotoxicity_1	CYP2A7	rs1060091	367774	G	G
Hepatotoxicity_1	CYP2A7	rs1060092	367990	T	T
Hepatotoxicity_1	CYP2A7	rs1060094	367908	A	A
Hepatotoxicity_1	CYP2A7	rs1060095	367967	G	G
Hepatotoxicity_1	CYP2A7	rs1060096	367982	A	A
Hepatotoxicity_1	CYP2A7	rs2261144	365886	A	G
Hepatotoxicity_1	CYP2A7	rs2545753	366313	T	T
Hepatotoxicity_1	CYP2A7	rs2545754	366592	G	G
Hepatotoxicity_1	CYP2A7	rs4079366	366810	G	G
Hepatotoxicity_1	CYP2A7	rs6413474	367868	A	A
Hepatotoxicity_1	CYP2B6	CYP2B6_12820GA	368397	G	G
Hepatotoxicity_1	CYP2B6	CYP2B6_13076GA	368401	G	G
Hepatotoxicity_1	CYP2B6	CYP2B6_136AG	368395	A	A
Hepatotoxicity_1	CYP2B6	CYP2B6_18273GA	368404	A	G
Hepatotoxicity_1	CYP2B6	CYP2B6_21388TA	368407	T	T
Hepatotoxicity_1	CYP2B6	CYP2B6star1C_14593CG	367222	C	G
Hepatotoxicity_1	CYP2B6	CYP2B6star1C_15582CT	366857	C	T
Hepatotoxicity_1	CYP2B6	CYP2B6star2B_12740GC	366257	G	G
Hepatotoxicity_1	CYP2B6	CYP2B6star3	366122	C	C
Hepatotoxicity_1	CYP2B6	CYP2B6star6_15631GT	366685	G	G
Hepatotoxicity_1	CYP2B6	CYP2B6star8	365985	A	A
Hepatotoxicity_1	CYP2B6	CYP2B6star9_21563CT	367147	C	C
Hepatotoxicity_1	CYP2B6	rs3211369	366456	A	A
Hepatotoxicity_1	CYP2B6	rs3826711	366116	C	C
Hepatotoxicity_1	CYP2B7P1	rs3745219	366242	C	C
Hepatotoxicity_1	CYP2C18	rs1042194	367722	G	T
Hepatotoxicity_1	CYP2C18	rs1326830	367422	G	T
Hepatotoxicity_1	CYP2C18	rs2281891	367331	A	G
Hepatotoxicity_1	CYP2C18	rs2296681	367565	T	T
Hepatotoxicity_1	CYP2C18	rs2860840	366374	C	T

Hepatotoxicity_1	CYP2C19	CYP2C19star10_680CT	367592	C	C
Hepatotoxicity_1	CYP2C19	CYP2C19star12_1473AC	366812	A	A
Hepatotoxicity_1	CYP2C19	CYP2C19star13_1228CT	367097	C	C
Hepatotoxicity_1	CYP2C19	CYP2C19star14_50TC	366975	T	T
Hepatotoxicity_1	CYP2C19	CYP2C19star2_681GA	367666	A	G
Hepatotoxicity_1	CYP2C19	CYP2C19star3_636GA	366832	G	G
Hepatotoxicity_1	CYP2C19	CYP2C19star4_1AG	366830	A	A
Hepatotoxicity_1	CYP2C19	CYP2C19star5_1297CT	368115	C	C
Hepatotoxicity_1	CYP2C19	CYP2C19star6_395GA	366825	G	G
Hepatotoxicity_1	CYP2C19	CYP2C19star7	367614	T	T
Hepatotoxicity_1	CYP2C19	CYP2C19star8	366820	T	T
Hepatotoxicity_1	CYP2C19	CYP2C19star9_431GA	367878	G	G
Hepatotoxicity_1	CYP2C19	rs5787121	368146	Ins	Ins
Hepatotoxicity_1	CYP2C8	CYP2C8star2_805AT	367109	A	A
Hepatotoxicity_1	CYP2C8	CYP2C8star3_1196AG	367429	A	A
Hepatotoxicity_1	CYP2C8	CYP2C8star5	368178	Ins	Ins
Hepatotoxicity_1	CYP2C9	CYP2C9star10	367503	A	A
Hepatotoxicity_1	CYP2C9	CYP2C9star11	366399	C	C
Hepatotoxicity_1	CYP2C9	CYP2C9star12	366835	C	C
Hepatotoxicity_1	CYP2C9	CYP2C9star2	1684203	C	C
Hepatotoxicity_1	CYP2C9	CYP2C9star3	366621	A	A
Hepatotoxicity_1	CYP2C9	CYP2C9star4	367975	T	T
Hepatotoxicity_1	CYP2C9	CYP2C9star5	367972	C	C
Hepatotoxicity_1	CYP2C9	CYP2C9star6	368346	Ins	Ins
Hepatotoxicity_1	CYP2C9	CYP2C9star8	1684193	G	G
Hepatotoxicity_1	CYP2C9	CYP2C9star9	367700	A	A
Hepatotoxicity_1	CYP2C9	rs1057909	366454	A	A
Hepatotoxicity_1	CYP2D6	AlleleQuantID13	378782	NC	NC
Hepatotoxicity_1	CYP2D6	AlleleQuantID17	378786	NC	NC
Hepatotoxicity_1	CYP2D6	AlleleQuantID2	378771	NC	NC
Hepatotoxicity_1	CYP2D6	AlleleQuantID20	378789	NC	NC
Hepatotoxicity_1	CYP2D6	AlleleQuantID22	378791	NC	NC
Hepatotoxicity_1	CYP2D6	AlleleQuantID23	378792	NC	NC
Hepatotoxicity_1	CYP2D6	AlleleQuantID24	378793	NC	NC
Hepatotoxicity_1	CYP2D6	AlleleQuantID25	378794	NC	NC
Hepatotoxicity_1	CYP2D6	AlleleQuantID27	378796	NC	NC
Hepatotoxicity_1	CYP2D6	AlleleQuantID28	378797	NC	NC
Hepatotoxicity_1	CYP2D6	AlleleQuantID3	378772	NC	NC
Hepatotoxicity_1	CYP2D6	AlleleQuantID35	378804	NC	NC
Hepatotoxicity_1	CYP2D6	AlleleQuantID38	378807	NC	NC
Hepatotoxicity_1	CYP2D6	AlleleQuantID39	378808	NC	NC
Hepatotoxicity_1	CYP2D6	AlleleQuantID40	378809	NC	NC
Hepatotoxicity_1	CYP2D6	AlleleQuantID41	378810	NC	NC
Hepatotoxicity_1	CYP2D6	AlleleQuantID48	378817	NC	NC
Hepatotoxicity_1	CYP2D6	AlleleQuantID5	378774	NC	NC
Hepatotoxicity_1	CYP2D6	AlleleQuantID52	378821	NC	NC
Hepatotoxicity_1	CYP2D6	AlleleQuantID54	378823	NC	NC
Hepatotoxicity_1	CYP2D6	AlleleQuantID56	378825	NC	NC
Hepatotoxicity_1	CYP2D6	AlleleQuantID57	378826	NC	NC
Hepatotoxicity_1	CYP2D6	AlleleQuantID59	378828	NC	NC
Hepatotoxicity_1	CYP2D6	AlleleQuantID67	378836	NC	NC
Hepatotoxicity_1	CYP2D6	AlleleQuantID68	378837	NC	NC
Hepatotoxicity_1	CYP2D6	AlleleQuantID69	378838	NC	NC
Hepatotoxicity_1	CYP2D6	AlleleQuantID71	378840	NC	NC
Hepatotoxicity_1	CYP2D6	AlleleQuantID72	378841	NC	NC
Hepatotoxicity_1	CYP2D6	AlleleQuantID81	378850	NC	NC
Hepatotoxicity_1	CYP2D6	AlleleQuantID83	378852	NC	NC
Hepatotoxicity_1	CYP2D6	AlleleQuantID85	378854	NC	NC

Hepatotoxicity_1	CYP2D6	AlleleQuantID87	378856	NC	NC
Hepatotoxicity_1	CYP2D6	AlleleQuantID88	378857	NC	NC
Hepatotoxicity_1	CYP2D6	AlleleQuantID89	378858	NC	NC
Hepatotoxicity_1	CYP2D6	AlleleQuantID9	378778	NC	NC
Hepatotoxicity_1	CYP2D6	AlleleQuantID90	378859	NC	NC
Hepatotoxicity_1	CYP2D6	AlleleQuantID91	378860	NC	NC
Hepatotoxicity_1	CYP2D6	AlleleQuantID93	378862	NC	NC
Hepatotoxicity_1	CYP2D6	AlleleQuantID94	378863	NC	NC
Hepatotoxicity_1	CYP2D6	AlleleQuantID95	378864	NC	NC
Hepatotoxicity_1	CYP2D6	AlleleQuantID96	378865	NC	NC
Hepatotoxicity_1	CYP2D6	AlleleQuantSNP1	1684117	NC	NC
Hepatotoxicity_1	CYP2D6	AlleleQuantSNP14	1684151	NC	NC
Hepatotoxicity_1	CYP2D6	AlleleQuantSNP15	1684175	NC	NC
Hepatotoxicity_1	CYP2D6	AlleleQuantSNP17	1684141	NC	NC
Hepatotoxicity_1	CYP2D6	AlleleQuantSNP19	1684123	NC	NC
Hepatotoxicity_1	CYP2D6	AlleleQuantSNP22	1684127	NC	NC
Hepatotoxicity_1	CYP2D6	AlleleQuantSNP23	1684129	NC	NC
Hepatotoxicity_1	CYP2D6	AlleleQuantSNP25	1684133	NC	NC
Hepatotoxicity_1	CYP2D6	AlleleQuantSNP28	368293	NC	NC
Hepatotoxicity_1	CYP2D6	AlleleQuantSNP7	1684224	NC	NC
Hepatotoxicity_1	CYP2D6	AlleleQuantSNP8	1684270	NC	NC
Hepatotoxicity_1	CYP2D6	CYP2D6star10_100CT	368275	C	T
Hepatotoxicity_1	CYP2D6	CYP2D6star11_883GC	368279	G	G
Hepatotoxicity_1	CYP2D6	CYP2D6star12_124GA	368289	G	G
Hepatotoxicity_1	CYP2D6	CYP2D6star14_1758GA	368291	G	G
Hepatotoxicity_1	CYP2D6	CYP2D6star15	368317	Del	Del
Hepatotoxicity_1	CYP2D6	CYP2D6star17_1023CT	368296	C	C
Hepatotoxicity_1	CYP2D6	CYP2D6star17_2850CT	368284	C	C
Hepatotoxicity_1	CYP2D6	CYP2D6star18	1684118	Del	Del
Hepatotoxicity_1	CYP2D6	CYP2D6star19_2539delAACT	368325	Ins	Ins
Hepatotoxicity_1	CYP2D6	CYP2D6star19_4180GC	368297	C	G
Hepatotoxicity_1	CYP2D6	CYP2D6star21_2573insC	368334	Del	Del
Hepatotoxicity_1	CYP2D6	CYP2D6star35_-1584CG	1684316	C	C
Hepatotoxicity_1	CYP2D6	CYP2D6star35_31GA	1684243	G	G
Hepatotoxicity_1	CYP2D6	CYP2D6star38	368337	Ins	Ins
Hepatotoxicity_1	CYP2D6	CYP2D6star3A	368306	Ins	Ins
Hepatotoxicity_1	CYP2D6	CYP2D6star4_1846GA	368389	G	G
Hepatotoxicity_1	CYP2D6	CYP2D6star41_2988GA	368417	G	G
Hepatotoxicity_1	CYP2D6	CYP2D6star42	1684137	Del	Del
Hepatotoxicity_1	CYP2D6	CYP2D6star44_2950GC	368278	G	G
Hepatotoxicity_1	CYP2D6	CYP2D6star6_1707Tdel	368309	Ins	Ins
Hepatotoxicity_1	CYP2D6	CYP2D6star7	368270	A	A
Hepatotoxicity_1	CYP2D6	CYP2D6star9	368313	Ins	Ins
Hepatotoxicity_1	CYP2E1	CYP2E1star3	366659	G	G
Hepatotoxicity_1	CYP2E1	CYP2E1star4	366228	G	G
Hepatotoxicity_1	CYP2E1	CYP2E1star5B_-1053CT	367732	C	T
Hepatotoxicity_1	CYP2E1	CYP2E1star5B_-1293GC	366653	C	G
Hepatotoxicity_1	CYP2E1	CYP2E1star7_-333TA	365972	A	A
Hepatotoxicity_1	CYP2E1	CYP2E1star7_-352AG	366439	A	G
Hepatotoxicity_1	CYP2E1	CYP2E1star7_-71GT	367236	G	G
Hepatotoxicity_1	CYP2E1	rs2515641	367567	C	C
Hepatotoxicity_1	CYP2E1	rs915909	367121	C	C
Hepatotoxicity_1	CYP2F1	rs2287942	366807	T	T
Hepatotoxicity_1	CYP2F1	rs305968	365873	A	A
Hepatotoxicity_1	CYP2F1	rs305974	366376	A	G
Hepatotoxicity_1	CYP2J2	CYP2J2star2	366990	A	A
Hepatotoxicity_1	CYP2J2	CYP2J2star3	366841	C	C
Hepatotoxicity_1	CYP2J2	CYP2J2star4	367103	T	T

Hepatotoxicity_1	CYP2J2	CYP2J2star5	367120	G	G
Hepatotoxicity_1	CYP2J2	CYP2J2star6	366378	A	A
Hepatotoxicity_1	CYP2J2	CYP2J2star7	365851	G	T
Hepatotoxicity_1	CYP2J2	rs1056595	366431	C	C
Hepatotoxicity_1	CYP2J2	rs1056596	366223	T	T
Hepatotoxicity_1	CYP2J2	rs2228114	367119	T	T
Hepatotoxicity_1	CYP2S1	rs338599	366373	C	C
Hepatotoxicity_1	CYP39A1	rs7761731	367330	A	T
Hepatotoxicity_1	CYP3A4	CYP3A4star12	367337	C	C
Hepatotoxicity_1	CYP3A4	CYP3A4star13	366424	C	C
Hepatotoxicity_1	CYP3A4	CYP3A4star14	366219	T	T
Hepatotoxicity_1	CYP3A4	CYP3A4star15A	366423	G	G
Hepatotoxicity_1	CYP3A4	CYP3A4star16	368068	C	C
Hepatotoxicity_1	CYP3A4	CYP3A4star17	368372	T	T
Hepatotoxicity_1	CYP3A4	CYP3A4star18_878TC	366151	T	T
Hepatotoxicity_1	CYP3A4	CYP3A4star19_1399C	367433	C	C
Hepatotoxicity_1	CYP3A4	CYP3A4star19_IVS10+12GA	366993	A	G
Hepatotoxicity_1	CYP3A4	CYP3A4star2	367704	T	T
Hepatotoxicity_1	CYP3A4	CYP3A4star3	366862	T	T
Hepatotoxicity_1	CYP3A4	CYP3A4star4	367226	A	A
Hepatotoxicity_1	CYP3A4	CYP3A4star5	367717	C	C
Hepatotoxicity_1	CYP3A4	CYP3A4star7	367510	G	G
Hepatotoxicity_1	CYP3A4	CYP3A4star8	367434	G	G
Hepatotoxicity_1	CYP3A4	CYP3A7star1C_-262TA	367506	T	T
Hepatotoxicity_1	CYP3A4	CYP3A7star1C_-270TG	367615	T	T
Hepatotoxicity_1	CYP3A4	CYP3A7star1C_-291GT	367702	G	G
Hepatotoxicity_1	CYP3A4	rs1041988	367432	T	T
Hepatotoxicity_1	CYP3A4	rs2257401	366846	C	G
Hepatotoxicity_1	CYP3A4	rs3091339	367509	A	A
Hepatotoxicity_1	CYP3A4	rs3208361	368071	A	A
Hepatotoxicity_1	CYP3A4	rs3208363	367715	T	T
Hepatotoxicity_1	CYP3A43	CYP3A43star1B	366845	C	C
Hepatotoxicity_1	CYP3A43	CYP3A43star3	367221	C	C
Hepatotoxicity_1	CYP3A43	rs4646474	367421	G	G
Hepatotoxicity_1	CYP3A43	rs680055	367210	G	G
Hepatotoxicity_1	CYP3A43	rs800667	367329	A	A
Hepatotoxicity_1	CYP3A5	CYP3A5_S100Y	367431	C	C
Hepatotoxicity_1	CYP3A5	CYP3A5star10_F446S	366951	T	T
Hepatotoxicity_1	CYP3A5	CYP3A5star2	367225	C	C
Hepatotoxicity_1	CYP3A5	CYP3A5star3_6986AG	367309	A	G
Hepatotoxicity_1	CYP3A5	CYP3A5star3B_H30Y	367302	C	C
Hepatotoxicity_1	CYP3A5	CYP3A5star3D_L82R	366148	T	T
Hepatotoxicity_1	CYP3A5	CYP3A5star3F_I488T	367398	T	T
Hepatotoxicity_1	CYP3A5	CYP3A5star4	366860	A	A
Hepatotoxicity_1	CYP3A5	CYP3A5star5	367508	T	T
Hepatotoxicity_1	CYP3A5	CYP3A5star6	367480	G	G
Hepatotoxicity_1	CYP3A5	CYP3A5star8	367478	C	C
Hepatotoxicity_1	CYP3A5	CYP3A5star9	367182	G	G
Hepatotoxicity_1	CYP3A7	CYP3A7star1B	367108	C	C
Hepatotoxicity_1	CYP3A7	CYP3A7star1C_-232AC	366625	A	A
Hepatotoxicity_1	CYP3A7	CYP3A7star1C_-281AT	367649	A	A
Hepatotoxicity_1	CYP3A7	CYP3A7star1C_-282TC	367676	T	T
Hepatotoxicity_1	CYP3A7	CYP3A7star1C_-284TA	367677	PRA	PRA
Hepatotoxicity_1	CYP3A7	CYP3A7star1D	366413	G	G
Hepatotoxicity_1	CYP46A1	rs15506	366586	C	C
Hepatotoxicity_1	CYP4B1	CYP4B1star2_881delAT	368196	Ins	Ins
Hepatotoxicity_1	CYP4B1	CYP4B1star2_R340	366412	C	C
Hepatotoxicity_1	CYP4B1	CYP4B1star2_R375	366213	C	C

Hepatotoxicity_1	CYP4B1	CYP4B1star3	366844	C	C
Hepatotoxicity_1	CYP4B1	CYP4B1star4	366987	A	A
Hepatotoxicity_1	CYP4B1	rs7513658	366410	G	G
Hepatotoxicity_1	CYP4F11	rs1060463	366803	A	G
Hepatotoxicity_1	CYP4F11	rs1064796	365866	C	G
Hepatotoxicity_1	CYP4F11	rs2305801	365865	G	G
Hepatotoxicity_1	CYP4F11	rs3765070	366802	C	T
Hepatotoxicity_1	CYP4F11	rs8104361	365864	G	G
Hepatotoxicity_1	CYP4F12	rs593421	365863	T	T
Hepatotoxicity_1	CYP4F12	rs609290	366585	C	C
Hepatotoxicity_1	CYP4F12	rs609636	365862	C	C
Hepatotoxicity_1	CYP4F12	rs688755	366584	T	T
Hepatotoxicity_1	CYP4F2	rs2074900	366173	A	G
Hepatotoxicity_1	CYP4F2	rs2108622	366172	C	C
Hepatotoxicity_1	CYP4F2	rs3093106	366801	A	A
Hepatotoxicity_1	CYP4F2	rs3093114	365861	C	C
Hepatotoxicity_1	CYP4F2	rs3093136	366972	C	C
Hepatotoxicity_1	CYP4F2	rs3093200	365859	C	C
Hepatotoxicity_1	CYP4F2	rs4605294	365773	G	G
Hepatotoxicity_1	CYP4F2	rs8100960	366370	T	T
Hepatotoxicity_1	CYP4F2	rs8110714	366583	G	G
Hepatotoxicity_1	CYP4F8	rs2056822	366171	C	C
Hepatotoxicity_1	CYP4F8	rs2072600	366799	A	A
Hepatotoxicity_1	CYP4F8	rs4239614	367094	T	T
Hepatotoxicity_1	CYP4F8	rs4646532	366368	C	C
Hepatotoxicity_1	CYP4F8	rs4808326	365855	G	G
Hepatotoxicity_1	CYP51A1	rs7793861	367327	C	C
Hepatotoxicity_1	CYP51A1	rs7797834	367420	A	A
Hepatotoxicity_1	CYP7A1	rs8192874	365853	A	A
Hepatotoxicity_1	CYP7A1	rs8192875	367498	G	G
Hepatotoxicity_1	CYP7B1	rs8192907	367697	C	C
Hepatotoxicity_1	CYP8B1	rs735320	366367	G	G
Hepatotoxicity_1	CYP8B1	rs741817	366170	G	G
Hepatotoxicity_1	DPYD	DPYDstar10	367009	G	G
Hepatotoxicity_1	DPYD	DPYDstar13	366684	T	T
Hepatotoxicity_1	DPYD	DPYDstar2A	367528	G	G
Hepatotoxicity_1	DPYD	DPYDstar3	1684178	Ins	Ins
Hepatotoxicity_1	DPYD	DPYDstar7	368441	Ins	Ins
Hepatotoxicity_1	DPYD	DPYDstar8	367155	C	C
Hepatotoxicity_1	DPYD	DPYDstar9B	367369	G	G
Hepatotoxicity_1	DPYD	rs1042478	366246	T	T
Hepatotoxicity_1	DPYD	rs1042479	366893	T	T
Hepatotoxicity_1	DPYD	rs1801265	366896	C	T
Hepatotoxicity_1	DPYD	rs2297595	367012	A	A
Hepatotoxicity_1	DPYD	rs3918289	367551	C	C
Hepatotoxicity_1	DPYD	rs6670886	366894	C	C
Hepatotoxicity_1	DPYD	rs6675198	367532	A	A
Hepatotoxicity_1	EPHX1	rs1051740	367152	C	T
Hepatotoxicity_1	EPHX1	rs1051741	366681	C	C
Hepatotoxicity_1	EPHX1	rs2234697	366459	C	C
Hepatotoxicity_1	EPHX1	rs2234698	366892	T	T
Hepatotoxicity_1	EPHX1	rs2234699	366683	T	T
Hepatotoxicity_1	EPHX1	rs2234700	366244	T	T
Hepatotoxicity_1	EPHX1	rs2292566	367583	G	G
Hepatotoxicity_1	EPHX1	rs2292568	367008	C	C
Hepatotoxicity_1	EPHX1	rs4149229	367150	A	G
Hepatotoxicity_1	EPHX1	rs4986931	367149	G	G
Hepatotoxicity_1	FMO1	rs1126692	367663	A	A



Hepatotoxicity_1	FMO1	rs12954	367453	G	G
Hepatotoxicity_1	FMO1	rs742350	367366	G	G
Hepatotoxicity_1	FMO1	rs7877	367367	G	G
Hepatotoxicity_1	FMO2	FMO2_Del337G	368260	Ins	Ins
Hepatotoxicity_1	FMO2	FMO2_G1172C	367252	G	G
Hepatotoxicity_1	FMO2	FMO2_G175A	367365	G	G
Hepatotoxicity_1	FMO2	FMO2_G713A	366679	G	G
Hepatotoxicity_1	FMO2	FMO2_Ins1589T	368443	Del	Del
Hepatotoxicity_1	FMO2	rs2020860	367452	T	T
Hepatotoxicity_1	FMO2	rs2020866	366891	C	C
Hepatotoxicity_1	FMO2	rs2020869	367007	A	A
Hepatotoxicity_1	FMO2	rs2020870	367004	A	G
Hepatotoxicity_1	FMO2	rs2307492	367006	T	T
Hepatotoxicity_1	FMO2	rs6671692	367253	G	G
Hepatotoxicity_1	FMO2	rs7512785	367720	C	T
Hepatotoxicity_1	FMO2	rs7515157	367582	C	T
Hepatotoxicity_1	FMO3	FMO3_D132H	367247	G	G
Hepatotoxicity_1	FMO3	FMO3_L360P	367468	T	T
Hepatotoxicity_1	FMO3	rs1050902	366677	T	T
Hepatotoxicity_1	FMO3	rs1050906	366238	A	A
Hepatotoxicity_1	FMO3	rs1736557	367003	A	G
Hepatotoxicity_1	FMO3	rs1800822	367364	C	C
Hepatotoxicity_1	FMO3	rs2066530	366890	T	T
Hepatotoxicity_1	FMO3	rs2066532	367249	G	G
Hepatotoxicity_1	FMO3	rs2066534	366678	C	C
Hepatotoxicity_1	FMO3	rs2066536	367178	C	C
Hepatotoxicity_1	FMO3	rs2266780	367144	A	A
Hepatotoxicity_1	FMO3	rs2266782	367251	G	G
Hepatotoxicity_1	FMO3	rs909530	366889	C	C
Hepatotoxicity_1	FMO4	rs1042767	367525	T	T
Hepatotoxicity_1	FMO4	rs3737925	367142	T	T
Hepatotoxicity_1	FMO4	rs3737926	367451	G	G
Hepatotoxicity_1	FMO5	rs1044848	367581	T	T
Hepatotoxicity_1	FMO6	rs1736565	367524	C	C
Hepatotoxicity_1	FMO6	rs7889839	366887	A	A
Hepatotoxicity_1	GSTA1	rs1051566	367961	G	G
Hepatotoxicity_1	GSTA1	rs1051720	368050	C	C
Hepatotoxicity_1	GSTA1	rs1051733	368055	G	G
Hepatotoxicity_1	GSTA1	rs1051739	367938	G	G
Hepatotoxicity_1	GSTA1	rs1051745	367970	C	C
Hepatotoxicity_1	GSTA1	rs1051757	367920	A	A
Hepatotoxicity_1	GSTA1	rs1051775	368108	A	A
Hepatotoxicity_1	GSTA1	rs1051777	368103	A	A
Hepatotoxicity_1	GSTA1	rs1051778	368088	T	T
Hepatotoxicity_1	GSTA1	rs1051866	367993	C	C
Hepatotoxicity_1	GSTA1	rs1051873	367997	C	C
Hepatotoxicity_1	GSTA1	rs1051874	367965	T	T
Hepatotoxicity_1	GSTA1	rs3209670	368056	G	G
Hepatotoxicity_1	GSTA2	rs2180314	367051	G	G
Hepatotoxicity_1	GSTA2	rs2234951	367245	C	C
Hepatotoxicity_1	GSTA2	rs2234952	367719	T	T
Hepatotoxicity_1	GSTA2	rs2266632	367139	G	G
Hepatotoxicity_1	GSTA2	rs6577	367362	A	A
Hepatotoxicity_1	GSTA3	rs1052661	366886	A	A
Hepatotoxicity_1	GSTA4	rs1802061	367579	G	G
Hepatotoxicity_1	GSTA4	rs367836	367580	A	C
Hepatotoxicity_1	GSTA4	rs405729	367659	A	G
Hepatotoxicity_1	GSTA4	rs4147617	367361	A	A

Hepatotoxicity_1	GSTA4	rs7496	367522	A	G
Hepatotoxicity_1	GSTM2	rs1056795	368014	C	C
Hepatotoxicity_1	GSTM2	rs1056799	367863	T	T
Hepatotoxicity_1	GSTM2	rs1056800	367979	G	G
Hepatotoxicity_1	GSTM3	rs1803687	367135	G	G
Hepatotoxicity_1	GSTM3	rs1803688	367136	G	G
Hepatotoxicity_1	GSTM3	rs2234696	367285	A	A
Hepatotoxicity_1	GSTM3	rs7483	365976	A	G
Hepatotoxicity_1	GSTM4	rs3211189	367937	T	T
Hepatotoxicity_1	GSTM4	rs3211193	367242	C	C
Hepatotoxicity_1	GSTM4	rs592792	366455	G	G
Hepatotoxicity_1	GSTO1	rs15032	366665	C	C
Hepatotoxicity_1	GSTO1	rs3211015	366751	C	C
Hepatotoxicity_1	GSTO1	rs7589	366453	G	G
Hepatotoxicity_1	GSTP1	rs1138272	366450	C	C
Hepatotoxicity_1	GSTP1	rs4986949	366664	G	G
Hepatotoxicity_1	GSTP1	rs8191444	366662	C	C
Hepatotoxicity_1	HNMT	rs1801105	366447	NC	NC
Hepatotoxicity_1	MAOB	rs5952696	366446	T	T
Hepatotoxicity_1	MAOB	rs7879356	367133	T	T
Hepatotoxicity_1	NAT1	NAT1_A-40T	367594	A	A
Hepatotoxicity_1	NAT1	NAT1star14_G560A	367575	G	G
Hepatotoxicity_1	NAT1	NAT1star17	367132	C	C
Hepatotoxicity_1	NAT1	NAT1star19	368410	C	C
Hepatotoxicity_1	NAT1	NAT1star22	367658	A	A
Hepatotoxicity_1	NAT1	NAT1star5_976delA	368240	Ins	Ins
Hepatotoxicity_1	NAT1	NAT1star5_A884G	367725	A	A
Hepatotoxicity_1	NAT1	NAT1star5_GG350CC	368183	G	G
Hepatotoxicity_1	NAT1	NAT1star5_GGG497CCC	368247	G	G
Hepatotoxicity_1	NAT1	rs4986783	367447	T	T
Hepatotoxicity_1	NAT1	rs4986990	367358	G	G
Hepatotoxicity_1	NAT1	rs4986991	367444	T	T
Hepatotoxicity_1	NAT1	rs4986992	367521	T	T
Hepatotoxicity_1	NAT1	rs4986993	367729	T	T
Hepatotoxicity_1	NAT1	rs4986994	367449	C	C
Hepatotoxicity_1	NAT1	rs4987076	366120	G	G
Hepatotoxicity_1	NAT1	rs5030839	367572	C	C
Hepatotoxicity_1	NAT1	rs8190858	366877	C	C
Hepatotoxicity_1	NAT2	NAT2_A845C	366320	A	A
Hepatotoxicity_1	NAT2	NAT2_C759T	367621	C	C
Hepatotoxicity_1	NAT2	rs1041983	367622	C	T
Hepatotoxicity_1	NAT2	rs1208	367518	A	A
Hepatotoxicity_1	NAT2	rs1799929	367127	C	C
Hepatotoxicity_1	NAT2	rs1799931	367356	A	G
Hepatotoxicity_1	NAT2	rs1801279	367175	G	G
Hepatotoxicity_1	NAT2	rs1801280	366656	T	T
Hepatotoxicity_1	NAT2	rs1805158	367282	C	C
Hepatotoxicity_1	NAT2	rs4986996	366655	G	G
Hepatotoxicity_1	NAT2	rs4986997	366654	A	A
Hepatotoxicity_1	NNMT	rs1050207	366876	A	A
Hepatotoxicity_1	NQO1	rs1050873	367655	A	A
Hepatotoxicity_1	NQO1	rs10517	367126	C	C
Hepatotoxicity_1	NQO1	rs1063556	367517	T	T
Hepatotoxicity_1	NQO1	rs1800566	367238	C	T
Hepatotoxicity_1	NQO1	rs3191214	367443	C	C
Hepatotoxicity_1	NQO1	rs689453	366651	G	G
Hepatotoxicity_1	NR1I2	rs1063955	367190	G	G
Hepatotoxicity_1	NR1I2	rs4058490	366953	C	C

Hepatotoxicity_1	NR3C1	rs258751	367188	C	C
Hepatotoxicity_1	NR3C1	rs33391	367300	G	G
Hepatotoxicity_1	NR3C1	rs6189	366311	G	G
Hepatotoxicity_1	NR3C1	rs6190	366552	G	G
Hepatotoxicity_1	NR3C1	rs6192	367063	T	T
Hepatotoxicity_1	NR3C1	rs6193	367644	A	A
Hepatotoxicity_1	NR3C1	rs6194	367189	G	G
Hepatotoxicity_1	NR3C1	rs6196	367710	A	A
Hepatotoxicity_1	NR3C1	rs6197	367301	T	T
Hepatotoxicity_1	NR3C1	rs6199	367064	C	C
Hepatotoxicity_1	POR	rs17685	367106	C	C
Hepatotoxicity_1	PPARD	rs1003973	367668	A	C
Hepatotoxicity_1	PPARD	rs1883321	366543	G	G
Hepatotoxicity_1	PPARD	rs1883322	366338	A	G
Hepatotoxicity_1	PPARD	rs1883323	366340	T	T
Hepatotoxicity_1	PPARD	rs2038067	366508	C	T
Hepatotoxicity_1	PPARD	rs2076167	366142	A	G
Hepatotoxicity_1	PPARD	rs2267664	367396	A	G
Hepatotoxicity_1	PPARD	rs2267665	366137	A	G
Hepatotoxicity_1	PPARD	rs2267668	367059	A	G
Hepatotoxicity_1	PPARD	rs2267669	366133	A	G
Hepatotoxicity_1	PPARD	rs2284197	367060	A	A
Hepatotoxicity_1	PPARD	rs2299867	366544	G	G
Hepatotoxicity_1	PPARD	rs3798343	366947	C	G
Hepatotoxicity_1	PPARD	rs4278009	367294	C	C
Hepatotoxicity_1	PPARD	rs4292520	367923	A	A
Hepatotoxicity_1	PPARD	rs4323304	365807	A	A
Hepatotoxicity_1	PPARD	rs4360132	366537	A	A
Hepatotoxicity_1	PPARD	rs4388282	367293	A	A
Hepatotoxicity_1	PPARD	rs4555908	366114	C	C
Hepatotoxicity_1	PPARD	rs4587165	367600	A	A
Hepatotoxicity_1	PPARD	rs6457813	367602	C	C
Hepatotoxicity_1	PPARD	rs6457814	366347	C	C
Hepatotoxicity_1	PPARD	rs6457815	367186	T	T
Hepatotoxicity_1	PPARD	rs6457816	366139	T	T
Hepatotoxicity_1	PPARD	rs6901410	366346	T	T
Hepatotoxicity_1	PPARD	rs6911817	366538	C	C
Hepatotoxicity_1	PPARD	rs6913026	366546	C	C
Hepatotoxicity_1	PPARD	rs6915115	367641	C	C
Hepatotoxicity_1	PPARD	rs6919734	367557	G	G
Hepatotoxicity_1	PPARD	rs6937483	366545	NC	NC
Hepatotoxicity_1	PPARD	rs6940722	366343	G	G
Hepatotoxicity_1	PPARD	rs7739752	366952	C	C
Hepatotoxicity_1	PPARD	rs7746988	367642	T	T
Hepatotoxicity_1	PPARD	rs7751481	366541	A	G
Hepatotoxicity_1	PPARD	rs7754530	366548	T	T
Hepatotoxicity_1	PPARD	rs7758272	367062	A	A
Hepatotoxicity_1	PPARD	rs7771323	366510	A	A
Hepatotoxicity_1	PPARD	rs7771474	366739	C	C
Hepatotoxicity_1	PPARD	rs7772754	366547	C	C
Hepatotoxicity_1	PPARG	rs1801282	367058	C	C
Hepatotoxicity_1	PPARG	rs4135352	367599	C	C
Hepatotoxicity_1	PTGIS	CYP8A1star3_S118R	366611	T	T
Hepatotoxicity_1	PTGIS	CYP8A1star4_R379S	366207	C	C
Hepatotoxicity_1	PTGIS	rs5584	366206	C	C
Hepatotoxicity_1	PTGIS	rs5621	365922	G	G
Hepatotoxicity_1	PTGIS	rs5623	365923	A	A
Hepatotoxicity_1	PTGIS	rs5624	366205	T	T

Hepatotoxicity_1	PTGIS	rs5625	366405	C	C
Hepatotoxicity_1	PTGIS	rs5626	366610	C	C
Hepatotoxicity_1	PTGIS	rs5629	366406	A	C
Hepatotoxicity_1	PTGIS	rs5630	367107	C	C
Hepatotoxicity_1	PTGIS	rs6067121	366204	G	G
Hepatotoxicity_1	RALBP1	rs10898	367596	T	T
Hepatotoxicity_1	RALBP1	rs12680	366529	G	G
Hepatotoxicity_1	RALBP1	rs3322	366757	G	G
Hepatotoxicity_1	RPL13	rs458440	366707	A	A
Hepatotoxicity_1	RPL13	rs8058041	366527	G	G
Hepatotoxicity_1	RPL13	rs8058221	367708	G	G
Hepatotoxicity_1	SEC15L1	rs7917267	366383	G	G
Hepatotoxicity_1	SLC10A1	rs4646285	365801	G	G
Hepatotoxicity_1	SLC10A2	rs157381	366761	C	C
Hepatotoxicity_1	SLC10A2	rs188096	367292	A	C
Hepatotoxicity_1	SLC10A2	rs1977489	367290	A	A
Hepatotoxicity_1	SLC10A2	rs2301157	367667	T	T
Hepatotoxicity_1	SLC10A2	rs2301159	367554	C	T
Hepatotoxicity_1	SLC10A2	rs279941	367598	G	T
Hepatotoxicity_1	SLC10A2	rs279942	367553	C	G
Hepatotoxicity_1	SLC10A2	rs3803258	367056	T	T
Hepatotoxicity_1	SLC10A2	rs7987433	367393	T	T
Hepatotoxicity_1	SLC13A1	rs2140516	366944	C	T
Hepatotoxicity_1	SLC13A1	rs6466854	366535	G	G
Hepatotoxicity_1	SLC13A1	rs6962039	368143	G	G
Hepatotoxicity_1	SLC15A1	PEPT1_P586L	366941	C	C
Hepatotoxicity_1	SLC15A1	rs1339067	368049	T	T
Hepatotoxicity_1	SLC15A1	rs2274827	365799	G	G
Hepatotoxicity_1	SLC15A1	rs2274828	367971	C	C
Hepatotoxicity_1	SLC15A1	rs4646227	367180	G	G
Hepatotoxicity_1	SLC15A1	rs8187821	367752	C	C
Hepatotoxicity_1	SLC15A1	rs8187823	367392	G	G
Hepatotoxicity_1	SLC15A1	rs8187830	367289	C	C
Hepatotoxicity_1	SLC15A1	rs8187832	366942	C	C
Hepatotoxicity_1	SLC15A1	rs8187836	367597	C	C
Hepatotoxicity_1	SLC15A1	rs8187838	367945	C	C
Hepatotoxicity_1	SLC15A1	rs8187840	366533	G	G
Hepatotoxicity_1	SLC15A1	SLC15A1_26110G>C	366940	G	G
Hepatotoxicity_1	SLC15A1	SLC15A1_26189G>A	366943	G	G
Hepatotoxicity_1	SLC15A1	SLC15A1_26211T>A	367181	T	T
Hepatotoxicity_1	SLC15A1	SLC15A1_28652C>T	366534	C	C
Hepatotoxicity_1	SLC15A1	SLC15A1_50099A>G	367055	A	A
Hepatotoxicity_1	SLC15A2	rs1143669	367288	C	C
Hepatotoxicity_1	SLC15A2	rs1143670	366532	A	G
Hepatotoxicity_1	SLC15A2	rs1143671	365797	C	T
Hepatotoxicity_1	SLC15A2	rs1143672	367287	A	G
Hepatotoxicity_1	SLC15A2	rs1920305	367391	G	G
Hepatotoxicity_1	SLC15A2	rs1920313	367286	C	C
Hepatotoxicity_1	SLC15A2	rs1920314	366758	A	A
Hepatotoxicity_1	SLC15A2	rs2257212	367476	C	T
Hepatotoxicity_1	SLC15A2	rs2293616	366939	A	G
Hepatotoxicity_1	SLC15A2	rs4388019	367390	T	T
Hepatotoxicity_1	SLC16A1	rs1049434	366332	A	A
Hepatotoxicity_1	SLC16A1	rs7169	367640	T	T
Hepatotoxicity_1	SLC19A1	rs1051269	366109	C	C
Hepatotoxicity_1	SLC22A1	OCT1_3UTR1	366732	G	G
Hepatotoxicity_1	SLC22A1	OCT1_3UTR2	366731	C	C
Hepatotoxicity_1	SLC22A1	OCT1_A413	366528	G	G