

2. N症例 (トラスツズマブ投与+トラスツズマブ非投与症例)

BBN

30 patients

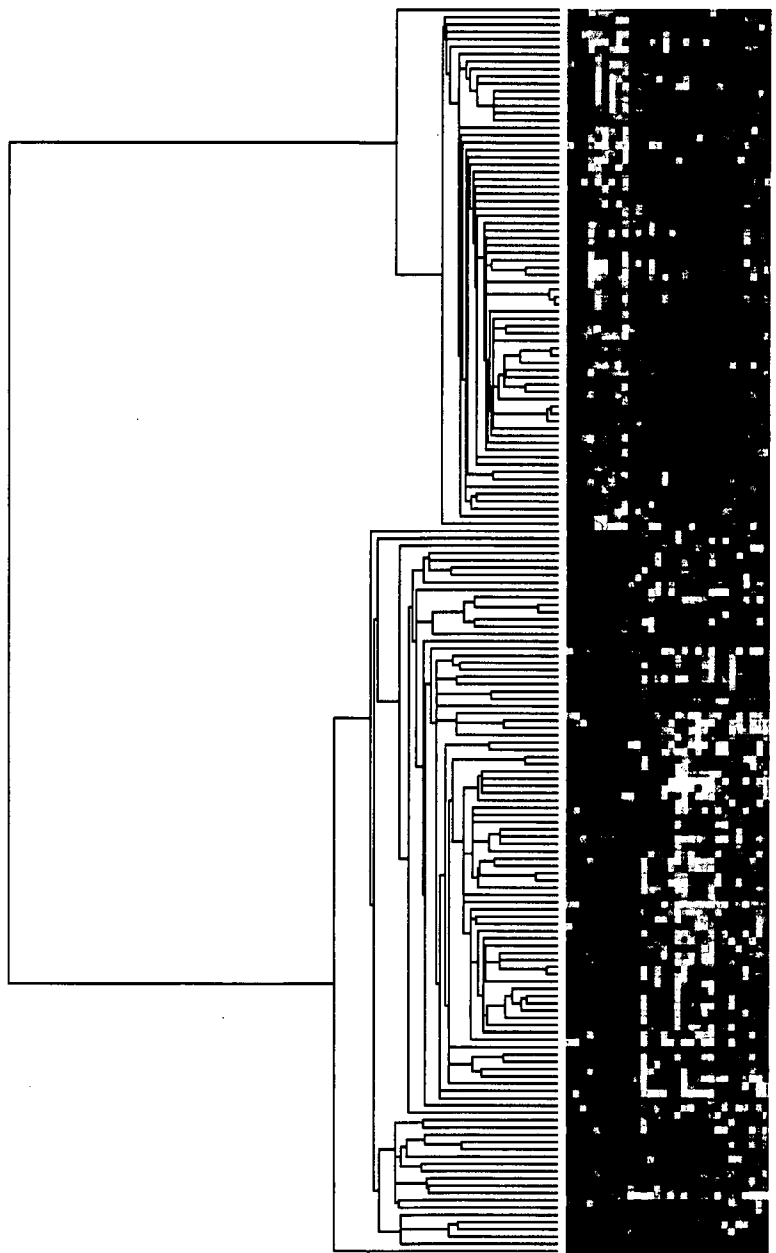
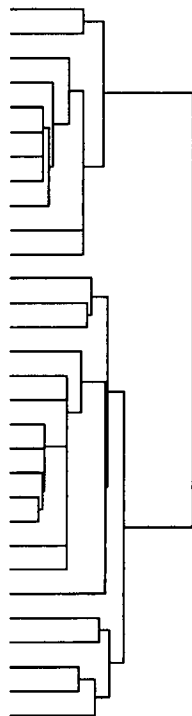
171 probes : 相関係数の絶対値が0.5以上のProbe

Hierarchical Clustering

Average Linkage

Similarity Metric: Pearson Correlation

BBN 017 cCR
BBN 012 SD
BBN 038 PR
BBN 003 pCR
BBN 039 pCR
BBN 019 pCR
BBN 027 pCR
BBN 015 pCR
BBN 024 pCR
BBN 022 PR
BBN 005 PD
BBN 011 PD
BBN 037 cCR
BBN 021 cCR
BBN 020 PR
BBN 033 cCR
BBN 036 PR
BBN 013 cCR
BBN 035 PR
BBN 023 cCR
BBN 034 pCR
BBN 025 cCR
BBN 001 PR
BBN 018 PD
BBN 002 PR
BBN 026 PR
BBN 014 cCR
BBN 032 PR
BBN 030 cCR
BBN 016 SD



BLN1

30 patients

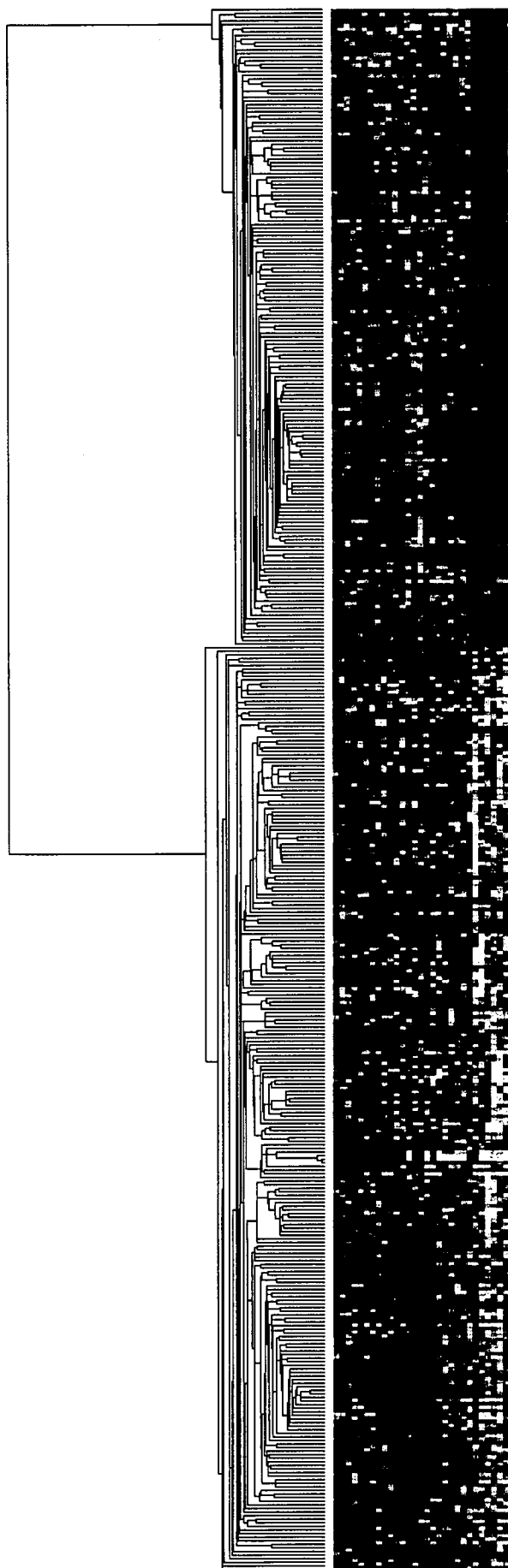
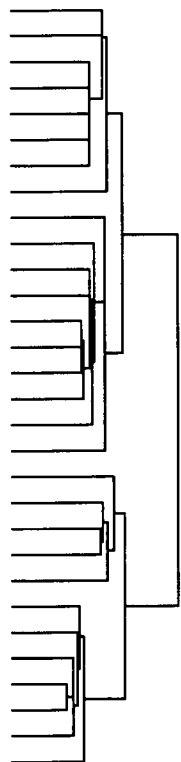
435 probes : 相関係数の絶対値が0.4以上のProbe

Hierarchical Clustering

Average Linkage

Similarity Metric: Pearson Correlation

BLN 017 cCR
BLN 020 PR
BLN 002 PR
BLN 004 cCR
BLN 025 cCR
BLN 009 cCR
BLN 010 cCR
BLN 026 PR
BLN 023 cCR
BLN 001 PR
BLN 037 cCR
BLN 033 cCR
BLN 035 PR
BLN 038 PR
BLN 036 PR
BLN 034 cCR
BLN 032 PR
BLN 018 PD
BLN 005 PD
BLN 030 cCR
BLN 013 cCR
BLN 008 cCR
BLN 021 cCR
BLN 027 dCR
BLN 015 dCR
BLN 007 dCR
BLN 006 dCR
BLN 003 dCR
BLN 024 dCR
BLN 022 PR



BLN2

30 patients

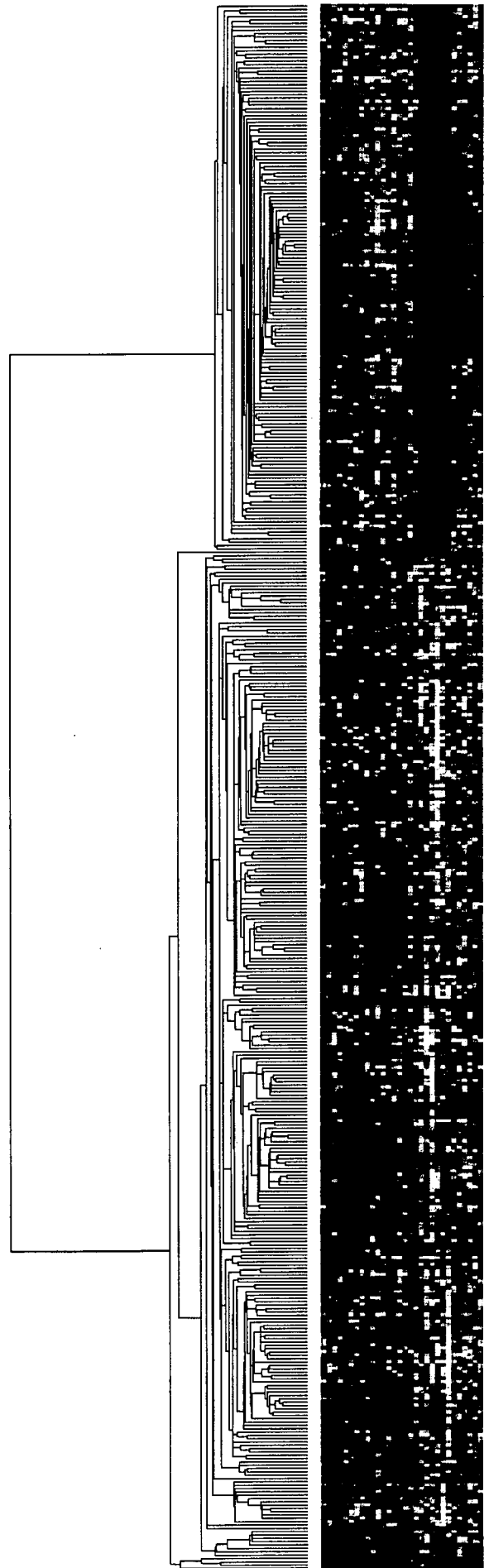
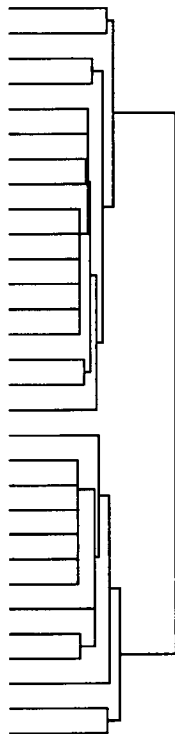
466 probes : 相関係数の絶対値が0.4以上のProbe

Hierarchical Clustering

Average Linkage

Similarity Metric: Pearson Correlation

BLN 025 cCR
BLN 023 cCR
BLN 022 PR
BLN 020 PR
BLN 026 PR
BLN 035 PR
BLN 037 cCR
BLN 032 PR
BLN 013 cCR
BLN 009 cCR
BLN 030 cCR
BLN 038 PR
BLN 034 cCR
BLN 033 cCR
BLN 017 cCR
BLN 010 cCR
BLN 036 PR
BLN 004 cCR
BLN 015 dCR
BLN 007 dCR
BLN 006 dCR
BLN 027 dCR
BLN 024 dCR
BLN 003 dCR
BLN 001 PR
BLN 008 cCR
BLN 002 PR
BLN 021 cCR
BLN 018 PD
BLN 005 PD



BLN3

30 patients

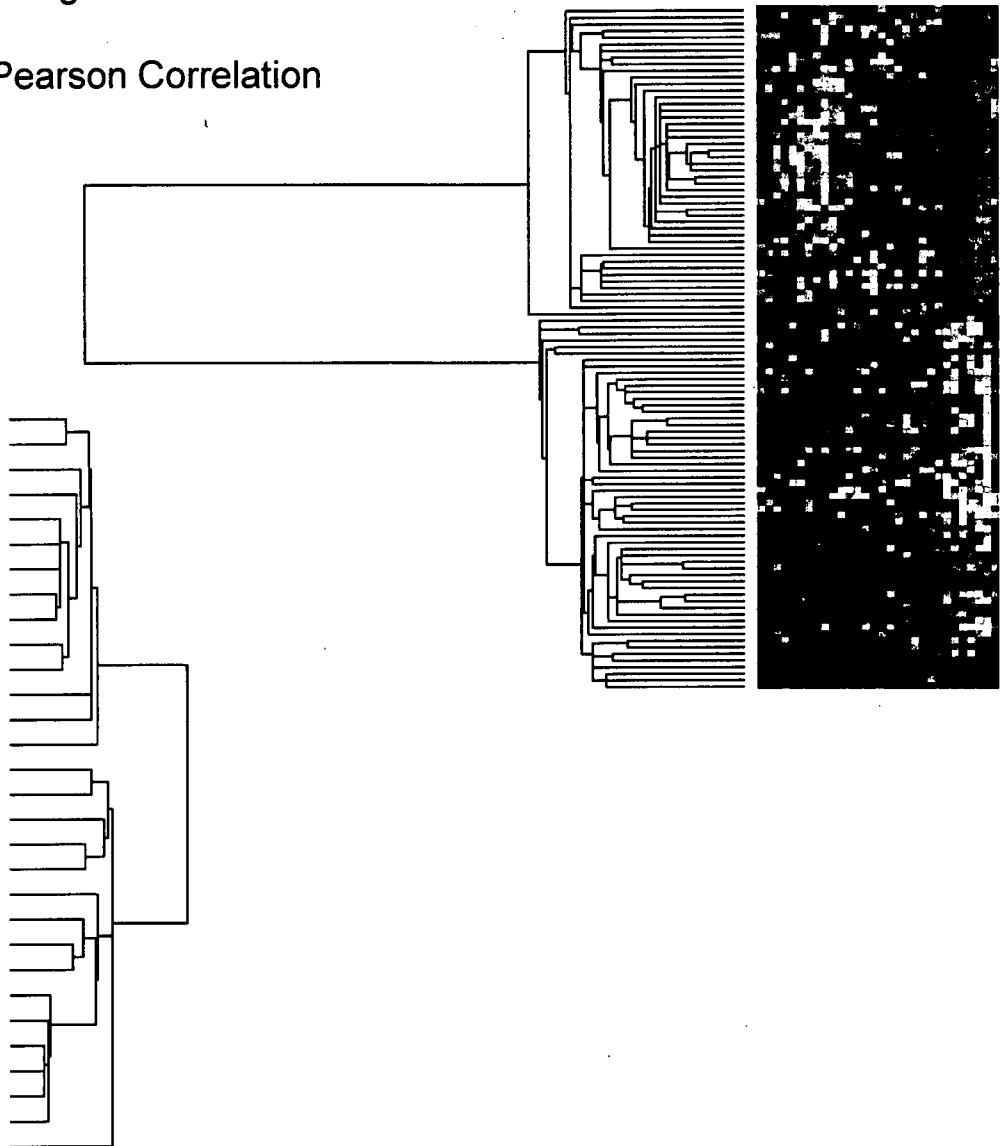
104 probes : 相関係数の絶対値が0.5以上のProbe

Hierarchical Clustering

Average Linkage

Similarity Metric: Pearson Correlation

BLN 036 PR
BLN 018 PD
BLN 020 PR
BLN 033 cCR
BLN 025 cCR
BLN 021 cCR
BLN 022 PR
BLN 008 cCR
BLN 002 PR
BLN 034 cCR
BLN 032 PR
BLN 013 cCR
BLN 009 cCR
BLN 026 PR
BLN 038 PR
BLN 010 cCR
BLN 005 PD
BLN 017 cCR
BLN 001 PR
BLN 037 cCR
BLN 030 cCR
BLN 035 PR
BLN 023 cCR
BLN 006 dCR
BLN 015 dCR
BLN 003 dCR
BLN 024 dCR
BLN 007 dCR
BLN 027 dCR
BLN 004 cCR



3. M症例

BLM1

21 patients

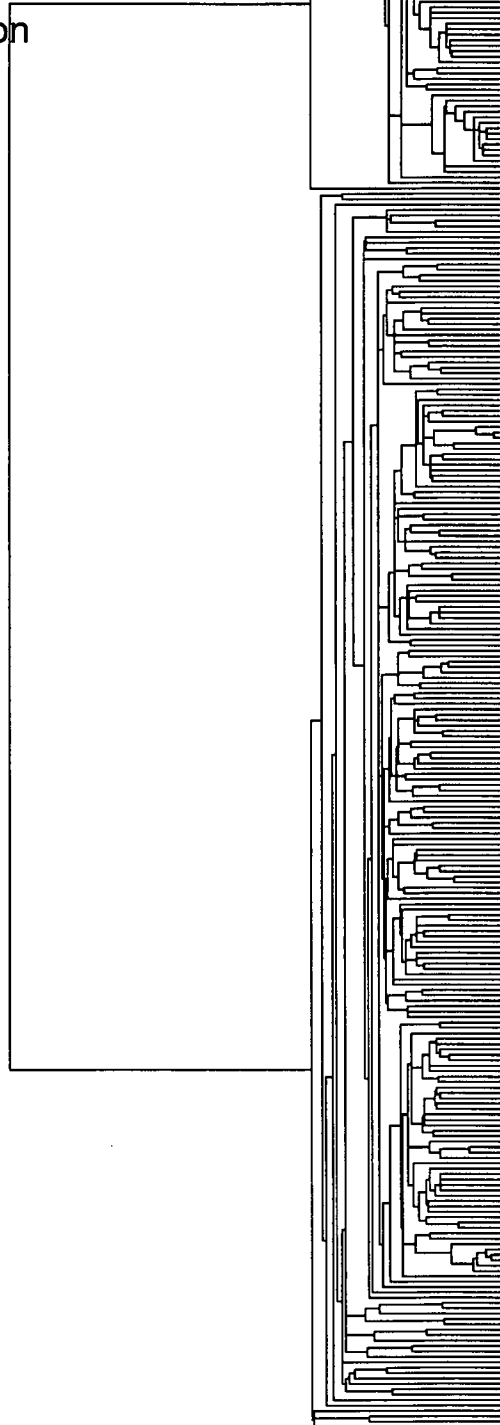
334probes : 相関係数の絶対値が
0.5以上のProbe

Hierarchical Clustering

Average Linkage

Similarity Metric: Pearson Correlation

ILM 012 LSD
ILM 003 LSD
ILM 009 PR
ILM 001 PR
ILM 008 LSD
ILM 018 LSD
ILM 014 LSD
ILM 015 CR
ILM 007 PD
ILM 010 SD
ILM 020 SD
ILM 013 USD
ILM 005 PD
ILM 011 SD
ILM 006 USD
ILM 004 PD
ILM 021 SD
ILM 016 PD
ILM 019 USD
ILM 017 PD
ILM 002 PD



BLM2

21 patients

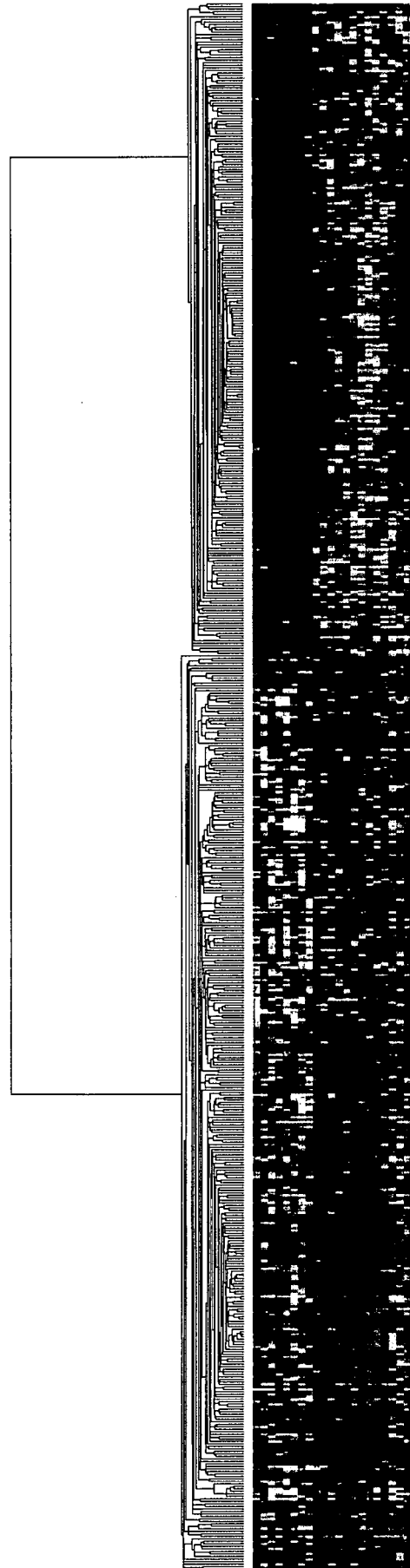
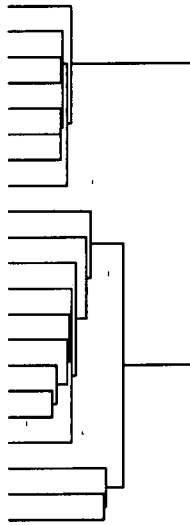
624 probes : 相関係数の絶対値が0.5以上のProbe

Hierarchical Clustering

Average Linkage

Similarity Metric: Pearson Correlation

BLM 014 LSD
BLM 003 LSD
BLM 018 LSD
BLM 012 LSD
BLM 001 PR
BLM 009 PR
BLM 008 LSD
BLM 015 CR
BLM 006 USD
BLM 016 PD
BLM 010 SD
BLM 005 PD
BLM 004 PD
BLM 020 SD
BLM 021 SD
BLM 011 SD
BLM 007 PD
BLM 019 USD
BLM 002 PD
BLM 017 PD
BLM 013 USD



BLM3

14 patients

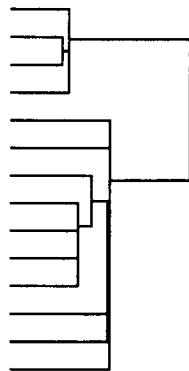
1391 probes : 相関係数の絶対値が0.5以上のProbe

Hierarchical Clustering

Average Linkage

Similarity Metric: Pearson Correlation

BLM 001 PR
BLM 009 PR
BLM 008 LSD
BLM 003 LSD
BLM 011 SD
BLM 019 USD
BLM 010 SD
BLM 005 PD
BLM 021 SD
BLM 013 USD
BLM 007 PD
BLM 002 PD
BLM 006 USD
BLM 004 PD



研究成果の刊行に関する一覧表

雑誌

発表者氏名	論文タイトル名	発表誌名	巻号	ページ	出版年
Shien T, <u>Kinoshita T</u> , et al.	Usefulness of preoperative multidetector-row computed tomography in evaluation the extent of invasive lobular carcinoma in patients with or without neoadjuvant chemotherapy.	Breast Cancer	in press		(別刷なし)
Shien T, <u>Kinoshita T</u> , et al.	Evaluation of axillary status in patients with breast cancer using thin-section CT.	Int JCO	in press		(別刷なし)
<u>Shimizu C</u> , <u>Fujiwara Y.</u>	Personalized systemic treatment for breast cancer patients: is it a reality?	Breast Cancer	Epub ahead of print		2008 (別刷なし)
Shien T, <u>Shimizu C</u> , Seki K, Shibata T, Hojo T, Ando M, Kohno T, Katsumata N, Akashi-Tanaka S, <u>Kinoshita T</u> , <u>Fujiwara Y.</u>	Comparison among different classification systems regarding the pathological response of preoperative chemotherapy in relation to the long-term outcome.	Breast Cancer Res Treat	Epub ahead of print		2008
Mukai H, Watanabe T, Ando M, <u>Shimizu C</u> , Katsumata N.	Assessment of different criteria for the pathological complete response (pCR) to primary chemotherapy in breast cancer: standardization is needed.	Breast Cancer Res Treat	Epub ahead of print		2008
Nishio S, Katsumata N, Matsumoto K, Tanabe H, Yonemori K, Kohno T, <u>Shimizu C</u> , Ando M, Kasamatsu T, <u>Fujiwara Y.</u>	Analysis of the clinicopathological prognosis of stage IVb cervical carcinoma.	Oncol Rep	19(2)	497-503	2008

Yonemori K, Yamaguchi U, Kaneko M, Uno H, Takeuchi M, Ando M, <u>Fujiwara Y</u> , Hosono A, Makimoto A, Hasegawa T, Yokoyama R, Nakatani F, Kawai A, Beppu Y, Chuman H.	Prediction of response and prognostic factors for Ewing family of tumors in a low incidence population.	J Cancer Res Clin Oncol	134(3)	389-395	2008
Shien T, <u>Shimizu</u> C, Akashi-Tanaka S, Yonemori K, Kohno T, Hojo T, Ando M, Katsumata N, <u>Kinoshita T</u> , <u>Fujiwara Y</u> .	Clinically efficacy of S-1 in pretreated metastatic breast cancer patients.	Jpn J Clin Oncol	38(3)	172-175	2008
Nakajima TE, Yasunaga M, Kano Y, <u>Koizumi F</u> , Kato K, Hamaguchi T, Yamada Y, Shirao K, Shimada Y, Matsumura Y.	Synergistic antitumor activity of the novel SN-38-incorporating polymeric micelles, NK012, combined with 5- fluorouracil in a mouse model of colorectal cancer, as compared with that of irinotecan plus 5-fluorouracil.	Int J Cancer	122(9)	2148-2153	2008
Yoshida T, Okamoto I, Okabe T, Iwasa T, Satoh T, <u>Nishio K</u> , Fukuoka M, Nakagawa K.	Matuzumab and cetuximab activate the epidermal growth factor receptor but fail to trigger downstream signaling by Akt or Erk.	Int J Cancer	122(7)	1530-1538	2008
Okabe T, Okamoto I, Tsukioka S, Uchida J, Iwasa T, Yoshida T, Hatashita E, Yamada Y, Satoh T, <u>Tamura K</u> , Fukuoka M, Nakagawa K.	Synergistic antitumor effect of S-1 and the epidermal growth factor receptor inhibitor gefitinib in non-small cell lung cancer cell lines: role of gefitinib-induced down- regulation of thymidylate synthase.	Mol Cancer Ther	7(3)	599-606	2008

Tamura K, Okamoto I, Kashii T, Negoro S, Hirashima T, Kudoh S, Ichinose Y, Ebi N, Shibata K, Nishimura T, Katakami N, Sawa T, Shimizu E, Fukuoka J, Satoh T, Fukuoka M.	Multicenter prospective phase II trial of gefitinib for advanced non-small cell lung cancer with epidermal growth factor receptor mutations: Results of the West Japan Thoracic Oncology Group trial (WJTOG0403).	Br J Cancer	98(5)	907-914	2008
Nakayama T, Hieshima K, Arao T, Jin Z, Nagakubo D, Shirakawa A-K, Yamada Y, Fujii M, Oiso N, Kawada A, Nishio K, Yoshie O.	Aberrant expression of Fra-2 promotes CCR4 expression and cell proliferation in adult T-cell leukemia.	Oncogene	Epub ahead of print		2007
Yonemori K, Tateishi U, Uno H, Yonemori Y, Tsuta K, Takeuchi M, Mastuno Y, Fujiwara Y, Asamura H, Kusumoto M.	Development and validation of diagnostic prediction model for solitary pulmonary nodules.	Respirology	12(6)	856-862	2007
Yonemori K, Kunitoh H, Tsuta K, Tamura T, Arai Y, Shimada Y, Fujiwara Y, Sasajima Y, Asamura H, Tamura T.	Prognostic factors for malignant pericardial effusion treated by pericardial drainage in solid-malignancy patients.	Med Oncol	24(4)	425-430	2007
Ito Y, Fujiwara Y, Ohashi Y.	The Q-Q plot of p-values for predicting outcomes with the gene expression data.	Jpn J Biomometrics	28(1)	37-46	2007
Kouno T, Ando M, Yonemori K, Matsumoto K, Shimizu C, Katsumata N, Komiyama M, Okajima E, Matsuoka N, Fujimoto H, Fujiwara Y.	Weekly paclitaxel and carboplatin against advanced urotelial carcinoma after failure of a platinum-based regimen.	Eur Urol	52(4)	1115-1122	2007

Akashi-Tanaka S, Omatsu M, <u>Shimizu C</u> , Ando M, Terada K, Shien T, <u>Kinoshita T</u> , <u>Fujiwara Y</u> , Seki K, Hasegawa T, Fukutomi T.	Favorable outcome in patients with breast cancer in the presence of pathological response after neoadjuvant endocrine therapy.	The Breast	16(5)	482-488	2007
<u>Shimizu C</u> , Ando M, Kouno T, Katsumata N, <u>Fujiwara Y</u> .	Current trends and controversies over pre-operative chemotherapy for women with operable breast cancer.	Jpn J Clin Oncol	37(1)	1-8	2007
Yonemori K, Katsumata N, Kaneko M, Uno H, Matsumoto K, Kouno T, <u>Shimizu C</u> , Ando M, Takeuchi M, <u>Fujiwara Y</u> .	Prediction of response to repeat utilization of anthracycline in recurrent breast cancer patients previously administered anthracycline-containing chemotherapeutic regimens as neoadjuvant or adjuvant chemotherapy.	Breast Cancer Res Treat	103(3)	313-318	2007
Kimura H, Suminoe M, Kasahara K, Sone T, Araya T, Tamori S, <u>Koizumi F</u> , <u>Nishio K</u> , Miyamoto K, Fujimura M, Nakao S.	Evaluation of epidermal growth factor receptor mutation status in serum DNA as a predictor of response to gefitinib (IRESSA).	Br J Cancer	97(6)	778-784	2007
Ohashi R, Takahashi F, Cui R, Yoshioka M, Gu T, Sasaki S, Tominaga S, <u>Nishio K</u> , Tanabe K, Takahashi K.	Interaction between CD44 and hyaluronate induces chemoresistance in non-small cell lung cancer cell.	Cancer Lett	252(2)	225-234	2007
Sone T, Kasahara K, Kimura H, <u>Nishio K</u> , Mizuguchi M, Nakatsumi Y, Shibata K, Waseda Y, Fujimura M, Nakao S.	Comparative analysis of epithelial growth factor receptor mutations and gene amplification as predictors of gefitinib efficacy in Japanese patients with non-small-cell lung cancer.	Cancer	109(9)	1836-1844	2007

Basaki Y, Hosoi F, Oda Y, Fotovati A, Maruyama Y, Oie S, Ono M, Izuimi H, Kohno K, Sakai K, Shimoyama T, <u>Nishio K</u> , Kuwano M.	Akt-dependent nuclear localization of malignant characteristics by ovarian cancer cells.	Oncogene	26(19)	2736-2746	2007
Maegawa M, Takeuchi K, Funakoshi E, Kawasaki K, <u>Nishio K</u> , Shimizu N, Ito F.	Growth stimulation of non-small cell lung cancer cell lines by antibody against epidermal growth factor receptor promoting formation of ErbB2/ErbB3 heterodimers.	Mol Cancer Res	5(4)	393-401	2007
Sekine I, Minna JD, <u>Nishio K</u> , Tamura T, Saijo N.	Genes regulating sensitivity of solid tumor cell lines to cytotoxic agents: a literature review.	Jpn J Clin Oncol	37(5)	329-336	2007
Takeda M, Arao T, Yokote H, Komatsu T, Yanagihara K, Sasaki H, Yamada Y, Tamura T, Fukuoka K, Kimura H, Saijo N, <u>Nishio K</u> .	AZD2171 shows potent antitumor activity against gastric cancer over-expressing FGFR2/KGFR.	Clin Cancer Res	13(10)	3051-3057	2007
Horiike A, Kimura H, <u>Nishio K</u> , Ohyanagi F, Satoh Y, Okumura S, Ishikawa Y, Nakagawa K, Horai T, Nishio M.	Detection of epidermal growth factor receptor mutation in transbronchial needle aspirates of non-small cell lung cancer.	Chest	131(6)	1628-1634	2007
Igarashi Y, Izumi H, Uchiumi T, <u>Nishio K</u> , Arao T, Tanabe M, Uramoto H, Sugio K, Yasumoto K, Sasaguri Y, Wang KY, Otsuji Y, Kohno K.	Clock and ATF4 transcription system regulates drug resistance in human cancer cell lines.	Oncogene	26(33)	4749-4760	2007

Oda Y, Ohishi Y, Basaki Y, Koabayashi H, Hirakawa T, Wake N, Ono M, <u>Nishio K</u> , Kuwano M, Tsuneyoshi M.	Prognostic implication of the nuclear localization of Y-box-binding protein-1 and CXCR4 expression in ovarian cancer: Their correlation with activated Akt, LRP/MVP and P-glycoprotein expression.	Cancer Sci	98(7)	1020-1026	2007
Wakasugi T, Izumi H, Uchiumi T, Suzuki H, Arao T, <u>Nishio K</u> , Kohno K.	ZNF143 interacts with p73 and is involved in cisplatin resistance.	Oncogene	26(36)	5194-5203	2007
Kimura H, Sakai K, Arao T, Shimoyama T, Tamura T, <u>Nishio K</u> .	Antibody-dependent cellular cytotoxicity of cetuximab against tumor cells with wild-type of mutant epidermal growth factor receptor.	Cancer Sci	98(8)	1275-1280	2007
Marko-Varga G, Ogiwara A, Nishimura T, Kawamura T, Fujii K, Kawakami T, Kyono Y, Tu H, Anyoji H, Kanazawa M, Akimoto S, Hirano T, Tsuboi M, <u>Nishio K</u> , Hada S, Jiang H, Fukuoka M, Nakata K, Nishiwaki Y, Kunito H, Peers IS, Harbron CG, South MC, Higenbottam T, Nyberg F, Kudoh S, Kato H.	Personalized medicine and proteomics-lessons from non-small lung cancer.	J Proteome Res	6(8)	2925-2935	2007
Cui R, Takahashi F, Ohashi R, Gu T, Yoshioka M, <u>Nishio K</u> , Ohe Y, Tominaga S, Takagi Y, Sasaki S, Fukuchi Y, Takahashi K.	Abrogation of the interaction between osteopontin and $\alpha v \beta 3$ integrin reduces tumor growth of human lung cancer cells in mice.	Lung Cancer	57(3)	302-310	2007

Sakai K, Yokote H, Murakami-Murofushi K, Tamura T, Saijo N, <u>Nishio K</u> .	Pertuzumab, a novel HER dimerization inhibitor, inhibits the growth of human lung cancer cells mediated by the HER3 signaling pathway.	Cancer Sci	98(9)	1498-1503	2007
Morinaga R, Okamoto I, Furuta K, Kawano Y, <u>Sekijima M</u> , Dote K, Stou T, <u>Nishio K</u> , Fukuoka M, Nakagawa K.	Sequential occurrence of non-small cell and small cell lung cancer with the same EGFR mutation.	Lung Cancer	58(3)	411-413	2007
Tsuya A, Kurata T, <u>Tamura K</u> , Fukuoka M.	Skeletal metastases in non-small cell lung cancer: a retrospective study.	Lung Cancer	57(2)	229-232	2007
Akashi Y, Okamoto I, Suzuki M, <u>Tamura K</u> , Iwasa T, Hisada S, Satoh T, Nakagawa K, Ono K, Fukuoka M.	The novel microtubule-interfering agent TZT-1027 enhances the anticancer effect of radiation <i>in vitro</i> and <i>in vivo</i> .	Br J Cancer	96(10)	1532-1539	2007
Shimizu T, Satoh T, <u>Tamura K</u> , Ozaki T, Okamoto I, Fukuoka M, Nakagawa K.	Oxaliplatin/fluorouracil /leucovorin (FOLFOX4 and modified FOLFOX6) in patients with refractory or advanced colorectal cancer: post-approval Japanese population experience.	Int J Clin Oncol	12(3)	218-223	2007
Ozaki T, <u>Tamura K</u> , Satoh T, Kurata T, Shimizu T, Miyazaki M, Okamoto I, Nakagawa K, Fukuoka M.	Phase I study of combination therapy with S-1 and weekly docetaxel for advanced gastric cancer.	Anticancer Res	27(4C)	2657-2665	2007
<u>Tamura K</u> , Nakagawa K, Kurata T, Satoh T, Nogami T, Takeda K, Mitsuoka S, Yoshimura N, Kudoh S, Negoro S, Fukuoka M.	Phase I study of TZT-1027, a novel synthetic dolastatin 10 derivative and inhibitor of tubulin polymerization, administered weekly in patients with advanced solid tumors.	Cancer Chemother Pharmacol	60(2)	285-293	2007
Kurata T, Okamoto I, <u>Tamura K</u> , Fukuoka M.	Amurubicin for non-small-cell lung cancer and small-cell lung cancer.	Invest New Drugs	25(5)	499-504	2007

Saeki T, Nomizu T, Toi M, Ito Y, Noguchi S, Kobayashi T, Asaga T, Minami H, Yamamoto N, <u>Aogi K</u> , Ikeda T, Ohashi Y, Sato W, Tsuruo T.	Dofequidar fumarate (MS-209) in combination with cyclophosphamide, doxorubicin, and fluorouracil for patients with advanced or recurrent breast cancer.	J Clin Oncol	25(4)	411-417	2007
<u>Kinoshita T.</u>	Sentinel lymph node biopsy is feasible for breast cancer patients after neoadjuvant chemotherapy.	Breast Cancer	14(1)	10-15	2007
Kurebayashi J, Moriya T, Ishida T, Hirakawa H, Kurosumi M, Akiyama F, <u>Kinoshita T</u> , Takei H, Takahashi K, Ikeda M, Nakashima K.	The prevalence of intrinsic subtypes and prognosis in breast cancer patients of different races.	Breast	16 (Suppl 2)	S72-S77	2007
Tsukamoto S, Akashi-Tanaka S, Shien T, Terada K, <u>Kinoshita T.</u>	Brain metastases after achieving local pathological complete responses with neoadjuvant chemotherapy.	Breast Cancer	14(4)	420-424	2007
Matsumoto K, <u>Shimizu C</u> , <u>Fujiwara Y.</u>	The next step to approaching central nervous system metastasis in HER2-positive metastatic breast cancer patients.	Asia-Pacific J Clin Oncol	2	6-8	2006
Yonemori K, Ando M, Shibata T, Katsumata N, Matsumoto K, Yamanaka Y, Kouno T, <u>Shimizu C</u> , <u>Fujiwara Y.</u>	Tumor-marker analysis and verification of prognostic models in patients with cancer of unknown primary, receiving platinum-based combination chemotherapy.	J Cancer Res Clin Oncol	132(10)	635-642	2006

Park S, <u>Shimizu C</u> , Shimoyama T, Takeda M, <u>Kinoshita T</u> , Kohno T, Katsumata N, Kang YK, <u>Nishio K</u> , <u>Fujiwara Y</u> .	Gene expression profiling of ATP binding cassette (ABC) transporters as a predictor of the pathologic response to neoadjuvant chemotherapy in breast cancer patients.	Breast Cancer Res	99(1)	9-17	2006
Yonemori K, Hasegawa T, <u>Shimizu C</u> , Shibata T, Matsumoto K, Kouno T, Ando M, Katsumata N, <u>Fujiwara Y</u> .	Correlation of p53 and MIB-1 expression with both the systemic recurrence and survival in cases of phyllodes tumors of the breast.	Pathol Res Pract	202(10)	705-712	2006
Matsumoto K, Katsumata N, Yamanaka Y, Yonemori K, Kohno T, <u>Shimizu C</u> , Andoh M, <u>Fujiwara Y</u> .	The safety and efficacy of the weekly dosing of irinotecan for platinum- and taxanes-resistant epithelial ovarian cancer.	Gynecol Oncol	100(2)	412-416	2006
Shimoyama T, Hamano T, Natsume T, <u>Koizumi F</u> , Kiura K, Tanimoto M, <u>Nishio K</u> .	Reference profiling of the genomic response induced by an antimicrotubule agent, TZT-1027(Soblidotin), <i>in vitro</i> .	Pharmacogenomics J	6(6)	388-396	2006
Shimoyama T, <u>Koizumi F</u> , Fukumoto H, Kiura K, Tanimoto M, Saijo N, <u>Nishio K</u> .	Effects of different combinations of gefitinib and irinotecan in lung cancer cell lines expressing wild or deletional EGFR.	Lung Cancer	53(1)	13-21	2006
<u>Nishio K</u> , Arao T.	Progress in the field of molecular biology and application of biotechnology to medical oncology.	Acta Med Kinki Univ	31(2)	57-62	2006
Kawaishi M, Yokote H, Kimura H, Kasahara K, <u>Nishio K</u> .	Development and characterization of an antibody specifically recognizing a mutant EGFR (L858R) protein expressed frequently in non-small cell lung cancer.	Acta Med Kinki Univ	31	67-74	2006

Nishio K, Arao T, Kato T, Yokote H.	EGFR mutation in various tissues.	Cancer Chemother Pharmacol	58 (Suppl 1)	s39-s41	2006
Kimura H, Fujiwara Y, Sone T, Kunito H, Tamura T, Kasahara K, Nishio K.	EGFR mutation status in tumor-derived DNA from pleural effusion fluid is a practical basis for predicting response to gefitinib.	Br J Cancer	95(10)	1390-1395	2006
Kato T, Nishio K.	Clinical aspects of epidermal growth factor receptor inhibitors: Benefit and risk.	Respirology	11(6)	693-698	2006
Nishio M, Taguchi F, Ohyanagi F, Horiike A, Ishikawa Y, Satoh Y, Okumura S, Nakagawa K, Nishio K, Horai T.	Gefitinib efficacy associated with multiple expression of HER family in non-small cell lung cancer.	Anticancer Res	26	3761-3765	2006
Sakai K, Yokote H, Murakami-Murofushi K, Tamura T, Saijo N, Nishio K.	In-flame deletion in the EGF receptor alters kinase inhibition by gefitinib.	Biochem J	397(3)	537-543	2006
Yanagihara K, Takigahira M, Takeshita F, Komatsu T, Nishio K, Hasegawa F, Ochiya T.	A photon counting technique for quantitatively evaluating progression of peritoneal tumor dissemination.	Cancer Res	66(15)	7532-7539	2006
Kimura H, Kasahara K, Kawaishi M, Kunitoh H, Tamura T, Holloway B, Nishio K.	Detection of epidermal growth factor receptor mutations in serum as a predictor of the response to gefitinib in patients with non-small lung cancer.	Clin Cancer Res	12(13)	3915-3921	2006
Kimura H, Fujiwara Y, Sone T, Kunitoh H, Tamura T, Kasahara K, Nishio K.	High sensitivity detection of epidermal growth factor receptor mutations in the pleural effusion of non-small cell lung cancer patients.	Cancer Sci	97(7)	642-648	2006

Kimura H, Kasahara K, Shibata K, Sone T, Yoshimoto A, Kita K, Ichikawa Y, Waseda Y, Watanabe K, Shirasaki H, Ishiura Y, Mizuguchi M, Nakatsumi Y, Kashii T, Kobayashi M, Kunitoh H, Tamura T, <u>Nishio K</u> , Fujimura M, Nakao S.	EGFR mutation of tumor and serum in gefitinib-treated patients with chemotherapy-naïve non-small cell lung cancer.	J Thoracic Oncol	1(3)	260-267	2006
Sakai K, Arao T, Shimoyama T, Murofushi K, <u>Sekijima M</u> , Kaji N, Tamura T, Saijo N, <u>Nishio K</u> .	Dimerization and the signal transduction pathway of a small intracellular deletion in the epidermal growth factor receptor.	FASEB J	20(2)	311-313	2006
Sekine I, Minna JD, <u>Nishio K</u> , Tamura T, Saijo N.	A literature review of molecular markers predictive of clinical response to cytotoxic chemotherapy in patients with lung cancer.	J Thoracic Oncol	1(1)	31-37	2006
Arao T, Yanagihara K, Takigahira M, Takeda M, <u>Koizumi F</u> , Shiratori Y, <u>Nishio K</u> .	ZD6474 inhibits tumor growth and intraperitoneal dissemination in a highly metastatic orthotopic gastric cancer model.	Int J Cancer	118(2)	483-489	2006
Yamanaka R, Arao T, Yajima N, Homma J, Genkai N, Sano M, <u>Sekijima M</u> , <u>Nishio K</u> .	Identification of expressed genes characterizing long-term survival in malignant glioma patients.	Oncogene	25(44)	5994-6002	2006

Sakuma N, Komatsubara Y, Takeda H, Hirose H, <u>Sekijima M</u> , Nojima T, Miyakoshi J.	DNA strand breaks are not induced in human cells exposed to 2.1425 GHz band CW and W-CDMA modulated radiofrequency fields allocated to mobile radio base stations.	Bioelectromagnetics	27(1)	51-57	2006
Miyake M, Tateishi U, Maeda T, Arai Y, Seki K, Hasegawa T, Sugimura K.	Sclerosing perineurioma: Tumor of the hand with a short T2.	Skeletal Radiol	35(7)	543-546	2006
Tateishi U, Hasegawa T, Seki K, Terauchi T, Moriyama N, Arai Y.	Disease activity and 18F-FDG uptake in organising pneumonia: semi-quantitative evaluation using computed tomography and positron emission tomography.	Eur J Nucl Med Mol Imaging	33(8)	906-912	2006
Tateishi U, Yamaguchi U, Seki K, Terauchi T, Arai Y, Hasegawa T.	Glut-1 expression and enhanced glucose metabolism are associated with tumour grade in bone and soft tissue sarcomas: a prospective evaluation by [18F]fluorodeoxyglucose positron emission tomography.	Eur J Nucl Med Mol Imaging	33(6)	683-691	2006
Tateishi U, Miyake M, Maeda T, Arai Y, Seki K, Hasegawa T.	CT and MRI findings in KIT-weak or KIT-negative atypical gastrointestinal stromal tumors.	Eur Radiol	16(7)	1537-1543	2006
Kanazawa T, Akashi-Tanaka S, Iwamoto E, Takasugi M, Shien T, <u>Kinoshita T</u> , Miyakawa K, <u>Shimizu C</u> , Ando M, Katsumata N, <u>Fujiwara Y</u> , Fukutomi T.	Diagnosis of complete response to neoadjuvant chemotherapy using diagnostic imaging in primary breast cancer patients.	Breast J	11(5)	311-316	2005

Yonemori K, Katsumata N, Uno H, Matsumoto K, Kouno T, Tokunaga S, Yamanaka Y, <u>Shimizu C</u> , Ando M, Takeuchi M, <u>Fujiwara Y.</u>	Efficacy of weekly paclitaxel in patients with docetaxel-resistant metastatic breast cancer	Breast Cancer Res Treat	89(3)	237-241	2005
<u>Nishio K</u> , Arao T, Shimoyama T, <u>Fujiwara Y.</u> Tamura T, Saijo N.	Translational studies for target-based drugs.	Cancer Chemother Pharmacol	56 (Suppl 1)	s90-s93	2005
Korfee S, Eberhardt W, <u>Fujiwara Y.</u> <u>Nishio K.</u>	The role of DNA-microarray in translational cancer research.	Curr Pharmacogenom ics	3(3)	201-216	2005
<u>Koizumi F.</u> Shimoyama T, Taguchi F, Saijo N, <u>Nishio K.</u>	Establishment of a human non-small cell lung can cer cell line resistant to gefitinib.	Int J Cancer	116(1)	36-44	2005
Yanagihara K, Takigahira M, Tanaka H, Komatsu T, Fukumoto H, <u>Koizumi F.</u> <u>Nishio K.</u> Ochiya T, Ino Y, Hirohashi S.	Development and biological analysis of peritoneal metastasis mouse models for human scirrhus stomach cancer	Cancer Sci	96(6)	323-332	2005
Ando K, Ohmori T, Inoue F, Kadofuku T, Hosaka T, Ishida H, Shirai T, Okuda K, Hirose T, Horichi N, <u>Nishio K.</u> Saijo N, Adachi M, Kuroki T.	Enhancement of sensitivity to tumor necrosis factor α in non-small cell lung cancer cells with acquired resistance to gefitinib.	Clin Cancer Res	11(24)	8872-8879	2005