

induction of cytochrome P450 enzymes, especially of the CYP 1 family, in the liver or other organs (26,34,35). Thus, it is hypothesized that chemicals exerting no estrogenic activity themselves but inducing CYP 1 might also modify estrogen-dependent tumor development. However, solid evidence in animal models is limited, although Kojima *et al.* (7) reported previously that dietary I3C inhibited spontaneous uterine adenocarcinoma development by increasing estradiol 2-hydroxylation activity.

Cancers of the uterine corpus, most of them being histologically endometrial adenocarcinomas, have recently been increasing in many countries of the economically developed world. The tumor development is strongly related to estrogen statement in women. In rats, spontaneous endometrial adenocarcinomas are generally very rare but Maekawa and his co-workers have described high incidences of such lesions with morphological and biological similarities to human tumors in aged Donryu rats, and shown that this is due to an age-related ovarian hormonal imbalance resulting in an increase of the serum estrogen/progesterone ratio (36–38). In addition, they have established a two-stage uterine carcinogenesis model using this rat strain to detect promotive or preventive effects of test-chemicals (39–42). The present study was conducted to clarify effects of I3C on uterine carcinogenesis using this rat model, focusing on modulation of estrogen-metabolic enzymes in the liver. In addition, estrogenic or anti-estrogenic activity of I3C on ovariectomized rat uteri was also investigated.

Materials and methods

Animals and housing conditions

236 female Crj:Donryu rats at 8 weeks of age were purchased from Charles River Japan (Kanagawa, Japan). The animals were maintained in an air-conditioned animal room under constant conditions of $24 \pm 2^\circ\text{C}$ and $55 \pm 10\%$ humidity with a 12-h light/dark cycle (light, 08:00–20:00; dark, 20:00–08:00), housed three or four to a cage. Commercial powder diet (CRF-1, Oriental Yeast, Kanagawa, Japan), and E2 and dimethylsulfoxide (DMSO) *ad libitum* for the acclimatizing period. Animal care and use followed the NIH Guide for the Care and Use of Laboratory Animals.

Chemicals

I3C, 4HE, 2HE and 16α -hydroxyestradiol (16α HE) were purchased from Sigma-Aldrich (MO), *N*-ethyl-*N'*-nitro-*N*-nitrosoguanidine (ENNG) from Nacalai Tesque (Kyoto, Japan), and E2 and dimethylsulfoxide (DMSO) from Wako Pure Chemicals (Osaka, Japan).

Selection of dosing of I3C

2000 p.p.m. of I3C in diet has been reported as an effective dose in a multi-organ tumorigenesis model in rats (12) and 500 p.p.m. is known to induce cytochrome P450s in the rat liver (20).

Uterotrophic assay (experiment 1)

To assess estrogenic or anti-estrogenic activity of I3C, 38 female Donryu rats were ovariectomized under ether anaesthesia at 9 weeks of age, and starting 2 weeks thereafter were assigned to nine groups receiving: only ovariectomy (controls); daily s.c. treatment of E2 at a dose of $1 \mu\text{g}/\text{kg}$; 4HE at a dose of $5 \mu\text{g}/\text{kg}$; 2HE at a dose of $5 \mu\text{g}/\text{kg}$; 16α HE at a dose of $1 \mu\text{g}/\text{kg}$; daily administration of 500 or 2000 p.p.m.-I3C in basal diets (I3C500 or I3C2000, respectively); or daily s.c. treatment of $1 \text{ mg}/\text{kg}$ E2 plus I3C500 or I3C2000 for 2 weeks. After 2 weeks treatment, all animals were killed and the uteri were weighed. The uteri and livers were fixed in 10% neutral-buffered formaldehyde solution, routinely processed, sectioned and stained with hematoxylin and eosin. The uteri were measured for the height of the luminal epithelium with an image analyzer, IPAP-Win (Sumika-techno Service Co., Osaka, Japan).

Uterine carcinogenesis (experiments 2 and 3)

To clarify the effects of I3C on rat uterine endometrial adenocarcinoma development, female rats were treated with a single dose of $20 \text{ mg}/\text{kg}$ ENNG into a unilateral uterine horn via the vagina using a stainless catheter at 11 weeks of age. This is known to exert no carcinogenic effects except in the uteri (39). After the initiation, in experiment 2, 30 animals were fed dietary

I3C500 up to 15 months of age (for 12 months), and compared with 24 control rats fed powder basal diet without I3C. At 15 months of age, all surviving animals were necropsied (experiment 2).

For experiment 3 to elucidate sequential changes regarding the effects of I3C on uterine carcinogenesis and hepatic metabolism of E2, 144 females were allocated to the following four groups after the ENNG initiation: control (39 females); dietary I3C2000 (39 females); and twice weekly s.c. treatment with $1 \mu\text{g}/\text{kg}$ E2 (E2, 30 females) or $5 \mu\text{g}/\text{kg}$ 4HE (4HE, 36 females). At 6, 9 and 12 months of age, four to nine animals per group were examined, and all survivors were terminated at 15 months of age. After macroscopic examination, the reproductive system and related organs, including the ovaries, uteri and vagina, endocrine system organs and any macroscopical abnormalities, were fixed in 80% cold ethanol solution (uteri), or 10% neutral-buffered formaldehyde solution (other organs). These tissues and/or organs fixed were routinely processed for histopathological examination.

In both experiments, the upper, middle and lower parts of each uterine horn and the cervix were cut into three pieces in cross-section to evaluate uterine proliferative lesions, classified into three degrees of atypical hyperplasia (slight, moderate or severe) and adenocarcinomas, according to the criteria described previously (37,38). Briefly, slight hyperplasia was used when the numbers of glands with no or slight cellular atypia were increased within the endometrium. Moderate hyperplasia referred to increased numbers of glands with slightly to moderately atypical cells in focal and/or diffuse areas of the endometrium. Severe hyperplasia was composed of irregular proliferations of atypical glands in diffuse area of the endometrium. Adenocarcinomas were diagnosed on the basis of invasion of tumor cells into the muscularis. In addition, adenocarcinomas were subdivided into well, moderately and poorly differentiated types, and also classified as to the degree of invasion: limited to the uterus, invading into the serosa and/or surrounding adnexae, and with distant metastasis, in accordance with the simplified FIGO histopathological grades for human uterine cancers (43). Animals found dead or killed when moribund were also examined in the same manner. Throughout the two experiments, body weights were measured at regular intervals and clinical signs were checked daily for all animals.

Estrous cyclicity

Vaginal cytology was observed in all animals to investigate estrous cyclicity throughout the study (experiments 2 and 3).

Preparation of livers

At 6, 9, 12 and 15 months of age in experiment 3, right and median lobes of selected livers of each group were frozen in liquid nitrogen for analysis of enzyme activities related to estrogen metabolism (6, 9, 12 and 15 months of age) or mRNA expression of cytochrome P450s by reverse transcription PCR (RT-PCR) (15 months of age), and stored at -80°C until use.

mRNA expression of cytochrome P450 enzymes in the liver

Small pieces of the liver (~200 mg) were obtained from three control and four I3C2000-treated animals in experiment 3 at 15 months of age. The samples were homogenized in 4 ml RLT buffer, mixed with $40 \mu\text{l}$ β -mercaptoethanol, and RNA was isolated using an RNeasy Midi extraction Kit (QIAGEN, Germany) and stored at -80°C until RT-PCR analysis.

RT-PCR and PCR primers of cytochrome P450 1A1, 1A2, 1B1 and GAPDH mRNA transcription in the present study were done as reported previously (26,44,45). Aliquots (500 ng) of total liver RNA were used for the RT-PCR. The primers were synthesized and purified by Takara Bio (Shiga, Japan). Levels of cytochrome P450s mRNA expression relative to GAPDH mRNA expression were calculated as ratios using an image analyzer (NIH image, Bethesda, MD).

Immunohistochemical distribution of cytochrome P450 enzymes in the liver

Cytochrome P450 protein amounts in the liver were examined immunohistochemically using paraffin-embedded sections from animals in experiments 2 and 3. After blocking endogenous peroxidase by incubation with hydrogen peroxidase (3%, v/v) in methanol, deparaffinized liver sections were incubated with anti-rat CYP 1A1, 1A2, 2B1 or 3A2 (Daiichi Pure Chemicals, Tokyo, Japan), diluted 1:100 in Tris-buffered solution (Takara Bio) with 1% skim milk at 37°C for 1 h. After the incubation, the sections were exposed to secondary antibodies and linked with streptavidin peroxidase using a DAKO LSAB+ kit (DAKO cytometry, CA). Binding was visualized by incubating sections with 3,3'-diaminobenzidine tetrahydrochloride (Wako Pure Chemicals), and counterstaining with hematoxylin for histopathological examination. Immunohistochemical distribution of CYP 1B1 could not be examined in the present study, because no anti-rat CYP 1B1 antibody was available for immunohistochemistry using formalin-fixed and paraffin-embedded sections.

Enzyme activities related to estrogen metabolism in the liver

Estradiol 2- and 4-hydroxylase and 16 α -hydroxylase activities in liver (median lobe) samples obtained from four or five rats in the control-, I3C2000-, E2- or 4HE-treated groups at 6, 9, 12 and 15 (except 16 α -hydroxylase activity) months of age in experiment 3 were determined by SRL (Tokyo, Japan), as for previous reports (7,22).

Statistical analysis

Values for incidences including data of uterine proliferative lesions and estrous cyclicity were analyzed statistically using the Fisher's exact probability test. Other data were analyzed using ANOVA, and post hoc comparisons between the treated and control groups were made with the Dunnett's *t*-test. *P* values < 0.05 were considered to be statistically significant. In the uterotrophic assay, the uterine weights and heights in treated groups were compared with those in the control (only ovariectomized rats) and positive control (E2-treated) groups.

Results

Estrogenic or anti-estrogenic activities of I3C (experiment 1)

Uterine weights and heights of the luminal epithelium are shown in Figure 1. Neither dose of I3C affected parameter in ovariectomized rats, with or without E2 replacement. The uterine weights and heights with 5 μ g/kg 4HE treatment were comparable with those with 1 μ g/kg E2 treatment, while 16 α HE and 2HE treatments had much lower and no estrogenic activity, respectively.

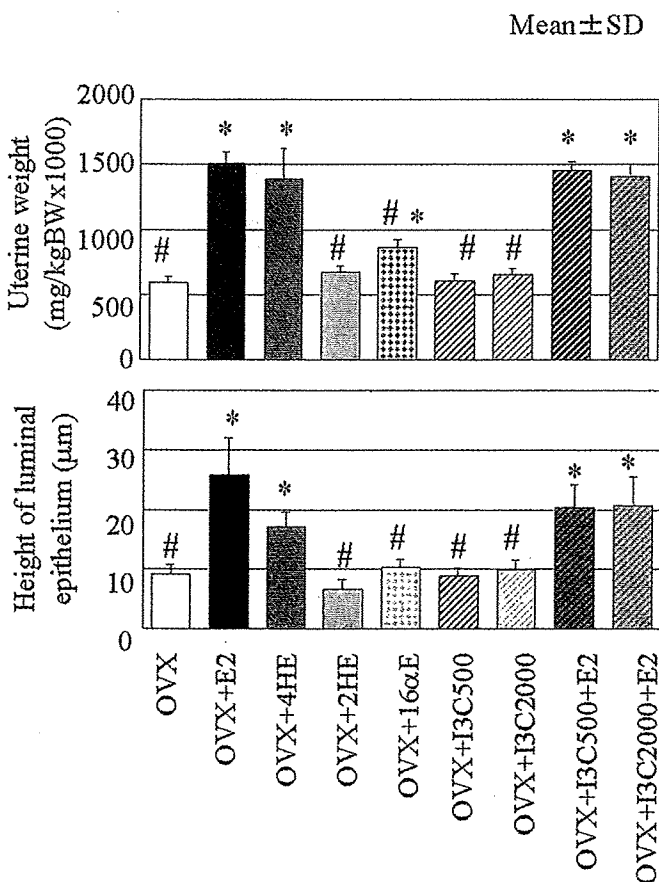


Fig. 1. Relative uterine weights and heights of uterine luminal epithelium in experiment 1. **P* or #*P* refer to significant differences from the control (ovariectomy only) and E2-treated groups, respectively, at 1% or below.

Body weights, clinical signs, survival curves and estrous cyclicity (experiments 2 and 3)

Body weights were depressed by I3C treatment with both doses (data not shown). During experiments 2 and 3, no treatment-related clinical signs were observed and survival curves in all treated groups were comparable with those of the relevant control groups (data not shown). In both experiments, I3C and E2 treatment did not increase persistent estrus (PE) status up to 15 months of age, while subcutaneous treatment of 4HE in experiment 3 significantly increased PE status after 5 months of age (Figure 2).

Effects of I3C on uterine carcinogenesis (experiments 2 and 3)

Incidences of uterine proliferative lesions and data for their multiplicity are shown in Table I. In experiment 2, the incidence of adenocarcinomas in the group treated with I3C500 was significantly elevated compared with the control group. In experiment 3, the incidence of adenocarcinomas was significantly increased in the 4HE group, compared with that of the control group. I3C2000 and E2 treatments also increased the incidences (44 and 50%, respectively) as compared with the control value (22%), but not significantly. Multiplicities of the uterine proliferative lesions were significantly increased by both I3C and 4HE treatments, whereas only a tendency for increase was evident with E2. Histologically, almost all uterine adenocarcinomas were of well-differentiated type, and morphological or biological malignancy was not influenced by the I3C treatment. In sequential observation of uterine tumor development, slight atypical hyperplasias had already appeared in the 4HE- and E2-treated groups at 6 months of age when no proliferative lesions were detected in controls. Development profiles for uterine proliferative lesions for I3C-treated and control animals were comparable up to 12 months of age.

Pathological examination of other organs

At all examined times in experiment 3, the relative liver weights were consistently elevated in the I3C2000 treated group (data not shown). Microscopically, centrilobular hypertrophy of hepatocytes was observed in all I3C-treated groups of experiments 1, 2 and 3. Most ovaries in all groups were atrophic with small cystic atretic follicles and lacking corpus lutea at termination of experiments 2 and 3. In these two experiments, various non-neoplastic and neoplastic lesions were observed in representative organs and other endocrine tissues; however, all lesions were similar to those detected

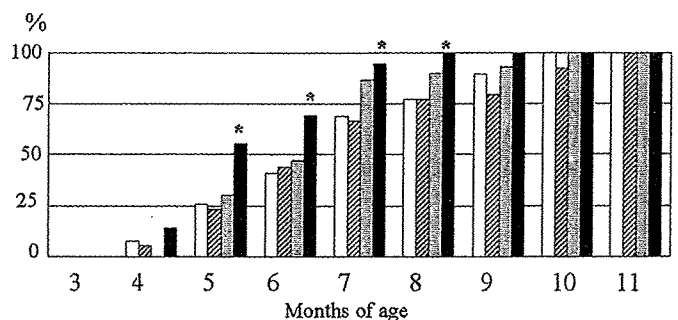


Fig. 2. Percentage incidences of animals showing PE from vaginal cytology in experiment 3. White, stripe, gray and black columns indicate the control, I3C2000-, E2- and 4HE-treated groups, respectively. **P* refers to significant differences from control incidences at 5% or below.

Table I. Incidence of uterine proliferative lesions^a and their multiplicities in experiments 2 and 3

	No. of rats with no abnormalities	Hyperplasia			Adenocarcinoma	Multiplicities ^b
		Slight	Moderate	Severe		
Experiment 2						
15 months of age						
Control (<i>n</i> = 24)	4	2	5	7	6	1.04 ± 0.62
I3C500 (<i>n</i> = 30)	1	2	3	7	17*	1.50 ± 0.63*
Experiment 3						
15 months of age						
Control (<i>n</i> = 18)	2	2	7	3	4	1.17 ± 0.62
I3C2000 (<i>n</i> = 18)	1	2	5	2	8	1.78 ± 0.73**
E2 (<i>n</i> = 16)	0	3	2	3	8	1.50 ± 0.52
4HE (<i>n</i> = 16)	0	0	5	1	10*	1.69 ± 0.60**

^aUterine proliferating lesions include slight to severe atypical hyperplasia and adenocarcinomas, these criteria referred to Nagaoka *et al.* (37,38).

^bMultiplicities are calculated average number of uterine proliferative lesion per rats, and indicated mean ± SD.

Values in parentheses show the number of rats examined.

***Significantly different from relevant control group at $P < 0.05$ and $P < 0.01$, respectively.

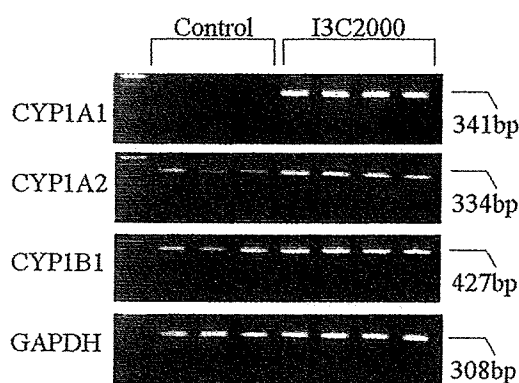


Fig. 3. mRNA expression for CYPs 1A1, 1A2, 1B1 and GAPDH in the livers of control and I3C2000-treated groups at 15 months of age in experiment 3.

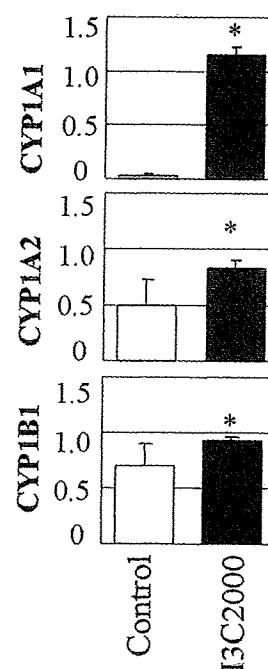


Fig. 4. Levels of expression of CYPs 1A1, 1A2 and 1B1 mRNAs relative to GAPDH mRNA in the liver, as for Figure 3. The intensities of P450s are relative to GAPDH mRNA levels (calculated as 1.0).

spontaneously in this rat strain (36), and there were no differences in these lesions among the groups. Necropsy of animals found dead or killed when moribund also did not reveal any treatment-related changes.

mRNA expression of cytochrome P450s in the liver

Findings for mRNA expression of CYP 1A1, 1A2 and 1B1 in the liver of experiment 3 are demonstrated in Figures 3 and 4. In the control group, CYP 1A1 was not detectable. I3C treatment significantly increased CYP 1A1, 1A2 and 1B1 mRNA expression compared with the control group, with induction of 1A1 expression being the most prominent.

Immunohistochemical staining of cytochrome P450s

CYP 1A1 and 1A2 were clearly demonstrable in the hepatocytes of centrilobular areas in all I3C-treated groups in experiments 2 and 3 up to 12 months of age, while very weak expression of 1A2 was observed in relevant controls (Figure 5). At 15 months of age, 1A1 expression in the I3C-treated group was similar to that at the other examined times, whereas 1A2 expression was too varied to detect any differences from relevant controls in experiments 2 and 3. Results for other CYPs such as 2B1 or 3A2 were comparable among the livers in the control and treated groups up to 15 months of age.

Enzyme activities related to estrogen metabolism in the liver
Estradiol 2-, 4- and 16 α -hydroxylase activities in the liver (experiment 3) are shown in Table II. The estradiol 2-hydroxylase activities in the I3C-, E2- and 4HE-treated groups showed increasing trends compared with the control group at most of the examined points. However, there were no significant differences among them due to great variation except 15 months of age, when a significant increase was increased by I3C treatment. The 4-hydroxylase activities demonstrated significant increases in the I3C- and 4HE-treated groups at 9 and 15 months of age, or tendencies for increase in all treated groups at all examined times, except the 4HE-treated group at 12 months of age. At all examined points, 16 α -hydroxylase activities showed neither significant differences nor any tendency for change with the treatments.

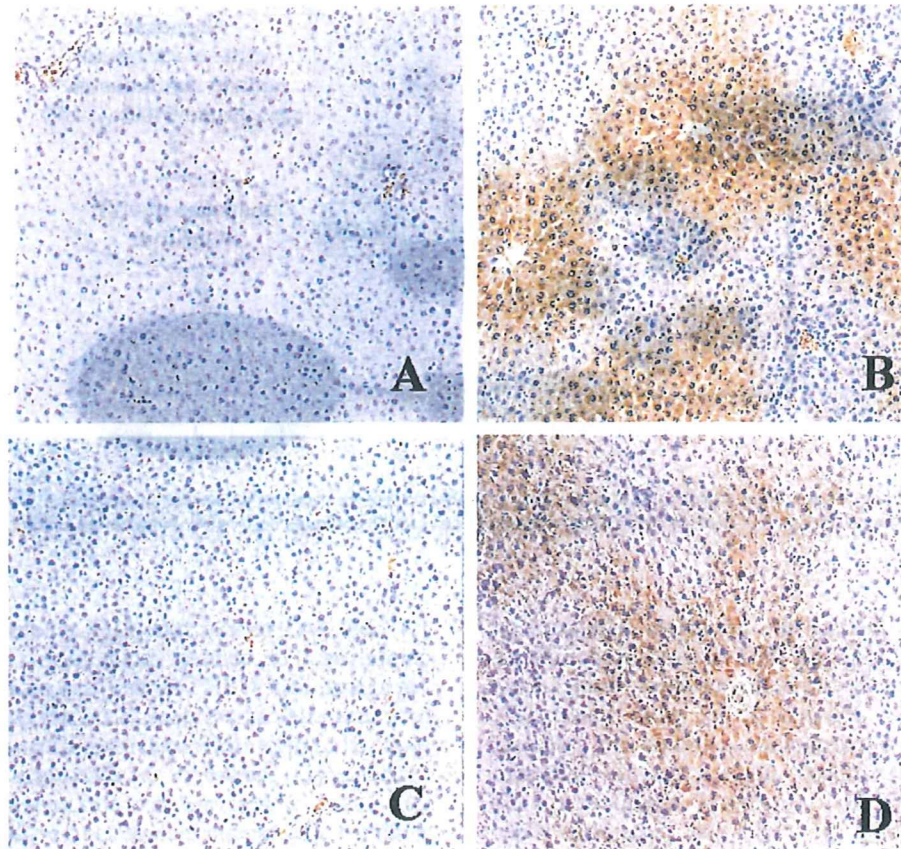


Fig. 5. Immunohistochemical staining of CYP 1A1 and 1A2 in the livers of animals at 15 months of age in experiment 3. (A and B) CYP 1A1 expression in control and I3C2000-treated animals. (C and D) CYP 1A2 expression in control and I3C2000-treated animals. Hematoxylin was used for counterstaining.

Table II. Enzyme activity related to estrogen metabolism in the liver (experiment 3)

	Enzyme activities related to estrogen metabolism (pmol/min/mg protein)		
	Estradiol 2-Hydroxylase	Estradiol 4-Hydroxylase	Estradiol 16 α -Hydroxylase
6 months of age			
Control (5)	66.76 \pm 23.50	2.97 \pm 1.18	2.88 \pm 1.00
I3C2000 (5)	139.72 \pm 83.72	5.24 \pm 2.39	2.65 \pm 1.31
E2 (3)	104.88 \pm 23.44	5.46 \pm 2.40	3.34 \pm 0.59
4HE (4)	108.14 \pm 5.84	5.66 \pm 0.58	4.37 \pm 0.90
9 months of age			
Control (5)	61.82 \pm 29.35	1.78 \pm 0.73	1.30 \pm 0.21
I3C2000 (5)	88.30 \pm 25.79	4.19 \pm 1.63*	1.75 \pm 0.62
E2 (4)	92.72 \pm 24.47	3.44 \pm 1.66	2.18 \pm 0.34
4HE (3)	110.22 \pm 31.36	4.60 \pm 1.54*	1.99 \pm 0.85
12 months of age			
Control (4)	78.05 \pm 29.45	3.52 \pm 2.52	1.24 \pm 0.36
I3C2000 (4)	149.80 \pm 51.88	5.14 \pm 2.52	1.05 \pm 0.13
E2 (4)	86.37 \pm 64.90	5.06 \pm 3.16	1.47 \pm 0.64
4HE (4)	78.57 \pm 8.63	3.20 \pm 0.49	1.42 \pm 0.64
15 months of age			
Control (4)	75.08 \pm 15.23	3.94 \pm 1.18	NE
I3C2000 (4)	205.32 \pm 51.92**	7.14 \pm 1.36**	NE
E2 (4)	67.79 \pm 10.55	3.01 \pm 0.87	NE
4HE (4)	108.16 \pm 7.32	5.97 \pm 0.75*	NE

Values in parentheses mean number of rats examined. Values mean average \pm SD. NE, not examined.

*Significantly different from control group, $P < 0.05$.

**Significantly different from control group, $P < 0.01$.

Discussion

In the present study using rat uterine cancer model, dietary treatment with I3C clearly demonstrated promoting effects on endometrial adenocarcinoma development. I3C can act both as an inhibitor and promoter of carcinogenesis, and our data are in line with the promoting results observed earlier with several animal carcinogenesis models (11,12). As for a cause of the complex effects, I3C is unstable under the acid condition and a number of acid-catalyzed metabolites such as 3,3'-diindolylmethane and indolcarbazole are produced in the gut (46). The acid condensation product has shown to be a potent aryl hydrocarbon receptor agonist, providing anti-estrogenic and antitumorogenic activity (47). In the present study, the activity of each acid-catalyzed metabolite of I3C to the rat uteri was not investigated; however, the dietary treatment with I3C at doses of 500 or 2000 p.p.m. did not show any estrogenic- or anti-estrogenic activity in the rat uteri, indicating that the promoting effect did not result from direct binding of I3C to estrogen receptor α in the rat uteri as estrogenic or anti-estrogenic agents.

I3C is widely accepted to induce CYPs 1A1, 1A2 and/or 1B1 in the liver and other organs (13–15,20,21). In rats, CYPs 1A1 and 1A2 catalyze mainly E2 into 2HE, the dominant product of catechol estrogen with weak hormonal potency and no carcinogenic effects (7,22,24,25,31), by hepatic 2-hydroxylation of estradiol (24,25), whereas CYP 1B1 is a major catalyzing enzyme of E2 to 4HE, a strongly carcinogenic and toxic metabolite (23,26,32,33,48).

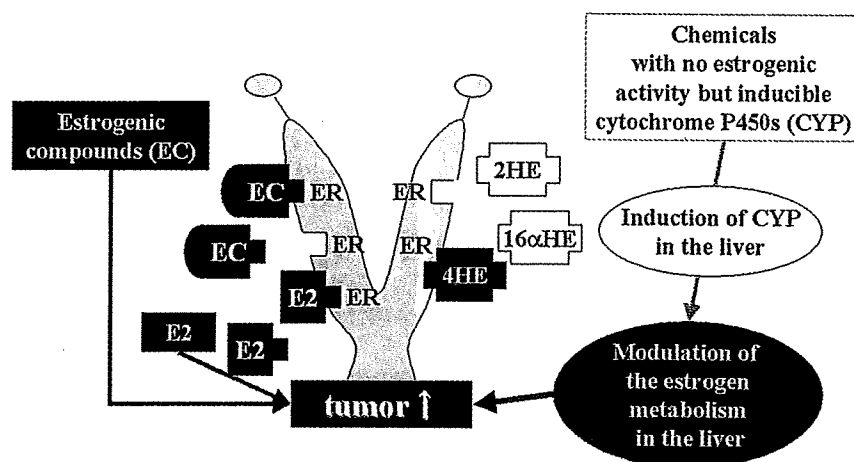


Fig. 6. Hypothesized mechanisms of promoting effects of chemicals with or without estrogenic activity on uterine carcinogenesis in rats. 16 α HE, 16 α -hydroxyestradiol; ER, estrogen receptor α . Black blocks indicate promotion of uterine carcinogenesis, while white blocks indicate weak or no promoting activity.

In the present study, dietary I3C treatment increased the induction of CYPs 1A1, 1A2 and 1B1 enzymes in the liver at either the mRNA level or its producing proteins. In the assays of estradiol hydroxylase activities in the liver, dietary I3C increased both 2- and 4-hydroxylase activities, in particular the latter. These results strongly suggest that the induction of the CYP 1 family by I3C is linked to modulation of E2 metabolism. In this study we could not determine which enzyme in the CYP 1 family was most effective in this regard. The present finding that 4HE treatment increased uterine adenocarcinoma development provides the evidence that it possesses stronger carcinogenic effects on rat uterus than E2, whereas uterotrophic activity of 4HE was weaker, in line with previous reports (23,32,33,48).

Endometrial adenocarcinoma development is strongly related to estrogen exposure in women and the Donryu rat features endocrinological similarities to the human case, ovarian hormonal imbalance leading to elevation of the serum estrogen/progesterone ratio, manifested as atrophic ovary with small polycystic atretic follicles and lack of corpora lutea and a long-term PE status as indicated by vaginal cytology (36–38). Using the two-stage uterine carcinogenesis model in this rat strain (39), continuous stimulation by estrogens or estrogenic compounds, which directly bind to estrogen receptor in the uteri or induction of early occurrence of the PE status enhanced uterine carcinogenesis (49,50).

In the present study, dietary I3C enhanced uterine carcinogenesis without affecting estrous cyclicity or showing estrogenic activity in the uteri. Induction of CYPs 1A1, 1A2 and 1B1 in the liver by dietary I3C and sequential modulation of estrogen metabolism therefore should be nominated as crucial to the promoting effects. The modulation, in particular the continuous increase of 4HE level, by I3C treatment might be important as part of the hypothesized pathway described schematically in Figure 6.

A number of chemicals and environmental pollutants induce CYP 1 family enzymes in the liver or other organs (26,34,51,52). 2,3,7,8-Tetrachlorodibenzo-*p*-dioxin or diesel exhaust is reported to up-regulate CYP 1B1 (45,51–54). In most mammalian species, the main estradiol metabolites were generated by hepatic microsomal P450s in the liver and other tissues (22,23) and the functions and regulation of CYPs

1A1 and 1A2 appear to be highly conserved (55). Therefore, animal data concerning modulation of estrogen metabolism via induction of CYP 1 family may provide useful information for human risk assessment, although further investigations are required to detail their exact significance.

The precise reason for the discrepancy between the promotion observed here and the previous report that dietary I3C inhibited spontaneous uterine tumor development in Donryu rats (7) could not be determined. The differences might be due to the dietary doses applied, or resultant variation in the ratios of E2 to 2HE and 4HE, especially the latter, in addition to the difference in the uteri with or without initiation of ENNG. Several reports proposed that the ratio of 2HE/4HE formation was important as a marker of estrogen-dependent tumor development (26,33).

Acknowledgements

This study was supported by a Grant-in-Aid for Science Research on Priority Areas from the Ministry of Education, Science and Culture of Japan and a Grant-in-Aid from the Ministry of Health, Labor and Welfare of Japan. We sincerely appreciate the valuable contribution of Ms Miwa Yoshizaki, Takara-Bio Co., Ltd.

References

1. Jongen, W. (1996) Glucosinolates in brassica: occurrence and significance as cancer-modulating agents. *Proc. Nutr. Soc.*, **55**, 433–446.
2. Meng, Q., Yuan, F., Goldberg, I.D., Rosen, E.M., Auburn, K. and Fan, S. (2000) Indole-3-carbinol is a negative regulator of estrogen receptor- α signaling in human tumor cells. *J. Nutr.*, **130**, 2927–2931.
3. Michnovicz, J.J. and Bradlow, H.L. (1990) Induction of estradiol metabolism by dietary indole-3-carbinol in humans. *J. Natl. Cancer Inst.*, **82**, 947–949.
4. Michnovicz, J.J., Adlecreutz, H. and Bradlow, H.L. (1997) Changes in levels of urinary estrogen metabolites after oral indole-3-carbinol treatment in humans. *J. Natl. Cancer Inst.*, **89**, 718–823.
5. Bonnesen, C., Eggleston, I.M. and Hayes, J.D. (2001) Dietary indoles and isothiocyanates that are generated from cruciferous vegetables can both stimulate apoptosis and confer protection against DNA damage in human colon cell lines. *Cancer Res.*, **61**, 6120–6130.
6. Bradlow, H.L., Michnovicz, J.J., Telang, N.T. and Osborne, M.P. (1991) Effects of dietary indole-3-carbinol on estradiol metabolism and spontaneous mammary tumors in mice. *Carcinogenesis*, **12**, 1571–1574.

7. Kojima, T., Tanaka, T. and Mori, H. (1994) Chemoprevention of spontaneous endometrial cancer in female Donryu rats by dietary indole-3-carbinol. *Cancer Res.*, **54**, 1446-1449.
8. Wattenberg, L.W. and Loub, W.D. (1978) Inhibition of polycystic aromatic hydrocarbon induced neoplasia by naturally occurring indoles. *Cancer Res.*, **38**, 1410-1413.
9. Babich, B.S., Borenfreund, E. and Stern, A. (1993) Comparative cytotoxicities of selected minor dietary non-nutrients with chemopreventive properties. *Cancer Lett.*, **73**, 1410-1413.
10. Reddy, B.S., Hanson, D., Mathews, L. and Sharma, C. (1983) Effects of micronutrients, antioxidants and related compounds on the mutagenicity of 3,2'-dimethyl-4-aminobiphenyl, a colon and breast carcinogen. *Food Chem. Toxicol.*, **21**, 129-132.
11. Exon, J.H., South, E.H., Magnuson, B.A. and Hendrix, K. (2001) Effects of indole-3-carbinol on immune response, aberrant crypt foci and colonic crypt cell proliferation in rats. *J. Toxicol. Environ. Health Part A*, **62**, 561-573.
12. Stoner, G., Casto, B., Ralston, S., Roebuck, B., Pereira, C. and Bailey, G. (2002) Development of a multi-organ rat model for evaluating chemopreventive agents: efficacy of indole-3-carbinol. *Carcinogenesis*, **23**, 265-272.
13. Dashwood, R.H. and Xu, M. (2003) The disposition and metabolism of 2-amino-3-methylimidazo[4,5-f]quinoline in the F344 rat at high versus low doses of indole-3-carbinol. *Food Chem. Toxicol.*, **41**, 1185-1192.
14. Nho, C.W. and Jeffery, E. (2001) The synergistic upregulation of phase II detoxication enzymes by glucosinolate breakdown products in cruciferous vegetables. *Toxicol. Appl. Pharmacol.*, **174**, 146-152.
15. Ritter, C.L., Prigge, W.F., Reichert, M.A. and Malejka-Giganti, D. (2001) Oxidations of 17 β -estradiol and estrone and their interconversions catalyzed by liver, mammary gland and mammary tumor after acute and chronic treatment of rats with indole-3-carbinol or β -naphthoflavone. *Can. J. Physiol. Pharmacol.*, **79**, 519-532.
16. He, Y.H., Friesen, M.D., Ruch, R.J. and Schut, H.A. (2000) Indole-3-carbinol as a chemopreventive agent in 2-amino-1-methyl-6-phenylimidazo [4,5-b]pyridine (PhIP) carcinogenesis: inhibition of PhIP-DNA adduct formation, acceleration of PhIP metabolism and induction of cytochrome P450 in female F344 rats. *Food Chem. Toxicol.*, **38**, 15-23.
17. Park, J.Y. and Bjeldanes, L.F. (1992) Organ-selective induction of cytochrome P-450-dependent activities by indole-3-carbinol-derived products: influence on covalent binding of benz[a]pyrene to hepatic and pulmonary DNA in the rat. *Chem. Biol. Interact.*, **83**, 235-247.
18. Stresler, D.M., Bailey, G.S. and Williams, D.E. (1994) Indole-3-carbinol and β -naphthoflavone induction of aflatoxin B1 metabolism and cytochrome P-450 associated with bioactivation and detoxication of aflatoxin B1 in the rat. *Drug Metab. Dispos.*, **22**, 383-391.
19. Xu, M., Schut, H.A., Bjeldanes, L.F., Williams, D.E., Bailey, G.S. and Dashwood, R.H. (1997) Inhibition of 2-amino-3-methylimidazo[4,5-f]quinoline-DNA adducts by indole-3-carbinol: dose-response studies in the rat colon. *Carcinogenesis*, **18**, 2149-2153.
20. Horn, T.L., Reichert, M.A., Bliss, R.L. and Malejka-Giganti, D. (2002) Modulations of P450 mRNA in liver and mammary gland and P450 activities and metabolism of estrogen in liver by treatment of rats with indole-3-carbinol. *Biochem. Pharmacol.*, **64**, 393-404.
21. Leibelt, D.A., Hedstrom, O.R., Fischer, K.A., Pereira, C.B. and Williams, D.E. (2003) Evaluation of chronic dietary exposure to indole-3-carbinol and absorption-enhanced 3,3'-diindolylmethane in Sprague-Dawley rats. *Toxicol. Sci.*, **74**, 10-21.
22. Dannan, G.A., Porubek, D.J., Nelson, S.D., Waxman, D.J. and Guengerich, E.P. (1986) 17 β -Estradiol 2- and 4-hydroxylation catalyzed by rat hepatic cytochrome P-450: roles of individual forms, inductive effects, developmental patterns and alterations by gonadectomy and hormone replacement. *Endocrinology*, **118**, 1952-1960.
23. Hammond, D.K., Zhu, B.T., Wang, M.Y., Ricci, M.J. and Liehr, J.G. (1997) Cytochrome P450 metabolism of estradiol in hamster liver and kidney. *Toxicol. Appl. Pharmacol.*, **145**, 54-60.
24. Zhu, B.T. and Conney, A.H. (1998) Functional role of estrogen metabolism in target cells: review and perspectives. *Carcinogenesis*, **19**, 1-27.
25. Wilson, A.M. and Reed, G.A. (2001) Predominant 4-hydroxylation of estradiol by constitutive cytochrome P450s in the female ACI rat liver. *Carcinogenesis*, **22**, 257-263.
26. Badawi, A.F., Cavalieri, E.L. and Rogan, E.G. (2000) Effect of chlorinated hydrocarbons on expression of cytochrome P450 1A1, 1A2 and 1B1 and 2- and 4-hydroxylation of 17 β -estradiol in female Sprague-Dawley rats. *Carcinogenesis*, **21**, 1593-1599.
27. Van Aswegen, C.H., Purdy, R.H. and Wittliff, J.L. (1989) Binding to 2-hydroxyestradiol and 4-hydroxyestradiol to estrogen receptor human breast cancers. *J. Steroid Biochem.*, **32**, 485-492.
28. MacLusky, N.J., Barnea, E.R., Clark, C.R. and Naftolin, F. (1983) Catechol estrogens and estrogen receptors. In Merriam, G.R. and Lipsett, M.B. (eds) *Catechol Estrogens*. Raven Press, New York, pp. 151-165.
29. Liehr, J.G. (2000) Is estradiol a genotoxic mutagenic carcinogen? *Endocrine Rev.*, **21**, 40-54.
30. Martucci, C.P. and Fishman, J. (1993) P450 enzymes of estrogen metabolism. *Pharmacol. Ther.*, **57**, 237-257.
31. Liehr, J.G., Fang, W.F., Sirbasku, D.A. and Ari-Ulubelen, A. (1986) Carcinogenicity of catechol estrogens in Syrian hamster. *J. Steroid Biochem.*, **24**, 353-356.
32. Liehr, J.G., Ricci, M.J., Jefcoate, C.R., Hannigan, E.V., Hokanson, J.A. and Zhu, B.T. (1995) 4-Hydroxylation of estradiol by human uterine myometrium and myoma microsomes: implications for the mechanism of uterine tumorigenesis. *Proc. Natl Acad. Sci. USA*, **92**, 9220-9224.
33. Liehr, J.G. and Ricci, M.J. (1996) 4-Hydroxylation of estrogens and markers of human mammary tumors. *Proc. Natl Acad. Sci. USA*, **93**, 3294-3296.
34. Segura-Aguilar, J., Castro, V. and Bergman, A. (1997) Effects of four organohalogen environmental contaminants on cytochrome P450 forms that catalyze 4- and 2-hydroxylation of estradiol in the rat liver. *Biochem. Mol. Med.*, **60**, 149-154.
35. Suchar, L.A., Chang, R.L., Thomas, P.E., Rosen, R.T., Lech, J. and Conney, A.H. (1996) Effects of phenobarbital, dexamethasone and 3-methylcholanthrene administration on the metabolism of 17 β -estradiol by liver microsomes from female rats. *Endocrinology*, **137**, 663-676.
36. Maekawa, A., Onodera, H., Tanigawa, H., Furuta, K., Kanno, J., Matsuoka, C., Ogiu, T. and Hayashi, Y. (1986) Spontaneous neoplastic and non-neoplastic lesions in aging Donryu rats. *Jpn. J. Cancer Res.*, **77**, 882-890.
37. Nagaoka, T., Onodera, H., Matsushima, Y., Todate, A., Shibutani, M., Ogasawara, H. and Maekawa, A. (1990) Spontaneous uterine adenocarcinomas in aged rats and their relation to endocrine imbalance. *J. Cancer Res. Clin. Oncol.*, **116**, 623-628.
38. Nagaoka, T., Takeuchi, M., Onodera, H., Matsushima, Y., Ando-Lu, J. and Maekawa, A. (1994) A sequential observation of spontaneous endometrial adenocarcinoma development in Donryu rats. *Toxicol. Pathol.*, **22**, 261-269.
39. Ando-Lu, J., Takahashi, M., Imai, S., Ishihara, R., Kitamura, T., Iijima, T., Takano, S., Nishiyama, K., Suzuki, K. and Maekawa, A. (1994) High-yield induction of endometrial adenocarcinomas in Donryu rats by a single intra-uterine administration of N-ethyl-N'-nitro-N-nitrosoguanidine. *Jpn. J. Cancer Res.*, **85**, 789-793.
40. Maekawa, A., Takahashi, M., Ando, J. and Yoshida, M. (1999) Uterine carcinogenesis by chemicals/hormones in rodents. *J. Toxicol. Pathol.*, **12**, 1-11.
41. Nishiyama, K., Ando-Lu, J., Nishimura, S., Takahashi, M., Yoshida, M., Sasahara, K., Miyajima, K. and Maekawa, A. (1998) Initiating and promoting effects of concurrent oral administration of ethylenethiourea and sodium nitrite on uterine endometrial adenocarcinoma development in Donryu rats. *In Vivo*, **12**, 363-368.
42. Yoshida, M., Kudoh, K., Katsuda, S., Takahashi, M., Ando, J. and Maekawa, A. (1998) Inhibitory effects of uterine endometrial carcinogenesis in Donryu rats by tamoxifen. *Cancer Lett.*, **134**, 43-51.
43. Pecorelli, S., Benedet, J.L., Creasman, W.T. and Shepherd, J.H. (1999) FIGO staging of gynecologic cancer. *Int. J. Gynecol. Obstet.*, **64**, 5-10.
44. Shimada, T., Sugie, A., Shindo, A., Nakajima, T., Azuma, E., Hashimoto, M. and Inoue, K. (2003) Tissue-specific induction of cytochrome P450 1A1 and 1B1 by polycyclic aromatic hydrocarbons and polychlorinated biphenyls in engineered C57BL/6 J mice of arylhydrocarbon gene. *Toxicol. Appl. Pharmacol.*, **187**, 1-10.
45. Walker, N.J., Portier, C.J., Lax, S.F., Croffits, F.G., Li, Y., Lucier, G.W. and Sutter, T.R. (1999) Characterization of the dose-response of CYP1B1, CYP1A1 and CYP1A2 in the liver of female Sprague-Dawley rats following chronic exposure to 2,3,7,8-tetrachlorodibenzo-p-dioxin. *Toxicol. Appl. Pharmacol.*, **154**, 279-286.
46. Chen, I., Safe, S. and Bjeldanes, L. (1996) Indole-3-carbinol and diindolylmethane as aryl hydrocarbon (Ah) receptor agonists and antagonists in T47D human breast cancer cells. *Biochem. Pharmacol.*, **51**, 1069-1076.
47. Chen, I., AcDougal, A., Wang, F. and Safe, S. (1998) Aryl hydrocarbon receptor-mediated antiestrogenic and antitumorigenic activity of diindolylmethane. *Carcinogenesis*, **19**, 1631-1639.
48. Newbold, R.R. and Lier, J.G. (2000) Induction of uterine adenocarcinoma in CD-1 mice by catechol estrogens. *Cancer Res.*, **60**, 235-237.
49. Katsuda, S., Yoshida, M., Kuroda, H., Ando, J., Takahashi, M., Kurokawa, Y., Watanabe, G., Taya, K. and Maekawa, A. (2002) Uterine adenocarcinoma in N-ethyl-N'-nitro-N-nitrosoguanidine-treated rats with high-dose

- exposure to p-tert-octylphenol during adulthood. *Jpn. J. Cancer Res.*, **93**, 117-124.
50. Yoshida, M., Katsuda, S., Tanimoto, T., Asai, S., Nakae, D., Kurokawa, Y., Taya, K. and Maekawa, A. (2002) Induction of different types of uterine adenocarcinomas in Donryu rats due to neonatal exposure to high-dose p-t-octylphenol for different periods. *Carcinogenesis*, **23**, 1745-1750.
51. Hatanaka, N., Yamazaki, H., Kizu, R., Hayakawa, K., Aoki, Y., Iwanari, M., Nakajima, M. and Yokoi, T. (2001) Induction of cytochrome P450 1B1 in lung, liver and kidney of rats exposed to diesel exhaust. *Carcinogenesis*, **22**, 2033-2038.
52. Santostefano, M.J., Richardson, V.M., Walker, N.J., Blanton, J., Lindros, K.O., Lucier, G.W., Alcsey, S.K. and Birnbaum, L.S. (1999) Dose-dependent localization of TCDD in isolated centrilobular and periportal hepatocytes. *Toxicol. Sci.*, **52**, 9-19.
53. Counmoul, X., Diry, M., Robillot, C. and Barouki, R. (2001) Differential regulation of cytochrome P450 1A1 and 1B1 by a combination of dioxin and pesticides in the breast tumor cell line MCF-7. *Cancer Res.*, **61**, 3942-3948.
54. Shimada, T., Hayes, C.H., Yamazaki, H., Amin, S., Hecht, S.S., Guengerich, P.F. and Sutter, T.R. (1996) Activation of chemically diverse procarcinogens by human cytochrome P-450 1B1. *Cancer Res.*, **56**, 2979-2984.
55. Parkinson, A. (1996) An overview of current cytochrome P450 technology for assessing the safety and efficacy of new materials. *Toxicol. Pathol.*, **24**, 45-57.

Received April 14, 2004; revised June 18, 2004; accepted June 22, 2004

Chemopreventive Effects of Hydroxymatairesinol on Uterine Carcinogenesis in Donryu Rats

SHIN-ICHI KATSUDA,^{*,1} MIDORI YOSHIDA,[†] NIINA SAARINEN,[‡] ANNIKA SMEDS,[§] DAI NAKAE,[†] RISTO SANTTI,[‡] AND AKIHIKO MAEKAWA[†]

**Department of Biological Safety Research, Japan Food Research Laboratories, Tama-shi, Tokyo 206-0025, Japan; †Department of Pathology, Sasaki Institute, Chiyoda-ku, Tokyo 101-0062, Japan; ‡Department of Anatomy, Institute of Biomedicine, University of Turku, FIN-20520 Turku, Finland; and §Department of Organic Chemistry, Åbo Akademi University, Biskopsgatan 8, FIN-20500 Turku, Finland*

Hydroxymatairesinol (HMR), obtained from the heartwood of spruce (*Picea abies*), has been demonstrated to exert chemopreventive effects on the development of mammary tumors in rats. To examine the influence of HMR on uterine carcinogenesis, adult Donryu rats were initiated with a single intra-uterine treatment of *N*-ethyl-*N*'-nitro-*N*-nitrosoguanidine (ENNG) at 11 weeks of age and fed thereafter 0, 200, or 600 ppm HMR mixed in the soy-containing diet until 15 months of age. Incidences of uterine adenocarcinoma in both 200 and 600 ppm HMR-dosed groups were significantly reduced to 11% and 15%, respectively, less than 50% of 0 ppm, at the end of the experiment ($P < 0.05$). A delay in the start of persistent estrus by HMR was observed at 8 months of age compared with controls given carcinogen alone. From urinalysis, HMR was metabolized mainly to enterolactone and hydroxyenterolactone. These findings suggest that HMR or its metabolites exert chemopreventive effects in the rat ENNG-uterine carcinogenesis model. *Exp Biol Med* 229:417–424, 2004

Key words: hydroxymatairesinol; rat; endometrial adenocarcinoma; chemoprevention

Various natural and man-made substances possessing possible adverse influences, such as induction or promotion of cancer development, are present in our contemporary environment. Likewise, cancer-preventive

potential has been found in both natural and synthetic substances. In Asian countries, the risk of acquiring steroid hormone-dependent cancers, for example in the breast and prostate, appears to be relatively low compared with that of Western countries (1). This may be because of dietary factors, such as lower consumption of fruits, vegetables, and legumes—particularly soy—in the West compared with Asia. In epidemiological studies, soy or soy food intake may protect against breast cancer (2–4). Isoflavonoids primarily found in soybeans may have a strong influence (5). Similarly, both epidemiological (5) and experimental evidence (6) have shown that lignans, which humans ingest mostly from a fiber-rich diet, may also reduce the risk of breast cancer. In a case-control study in the San Francisco Bay Area (7), lignan and isoflavone were also found to be associated with a low risk of endometrial cancer.

Large amounts of lignans are present in coniferous trees. Hydroxymatairesinol (HMR; Fig. 1) is one example obtained from the heartwood of Norway spruce (*Picea abies*). Because HMR exists mainly in an unconjugated free form, it can be isolated by simple extraction without hydrolysis (8). Anticarcinogenic properties of HMR against 7,12-dimethylbenz[*a*]anthracene (DMBA)-induced rat mammary adenocarcinomas have already been demonstrated (8, 9). Hydroxymatairesinol is metabolized to enterolactone (ENL) (8), a lignan produced by intestinal bacteria from plant lignan precursors in fiber-rich diets. In epidemiological studies, high serum and urine ENL concentrations have been linked to a low risk of breast cancer (10, 11), but controversial results have also been obtained (12, 13). A cause-effect relationship between high ENL concentration and influenced disease risk remains to be demonstrated. It is not known whether ENL is biologically active as an anticarcinogenic agent or merely a marker for healthful, fiber-rich diets in general (14).

We have documented that the Donryu rat has a high

Part of this study was supported by a grant-in-aid from the Ministry of Health, Labor, and Welfare of Japan.

¹ To whom requests for reprints should be addressed at Department of Biological Safety Research, Japan Food Research Laboratories, 6-11-10 Nagayama, Tama-shi, Tokyo 206-0025, Japan. E-mail: katudas@jftrl.or.jp

Received October 16, 2003.
Accepted February 5, 2004.

1535-3702/04/2295-0001\$15.00

Copyright © 2004 by the Society for Experimental Biology and Medicine

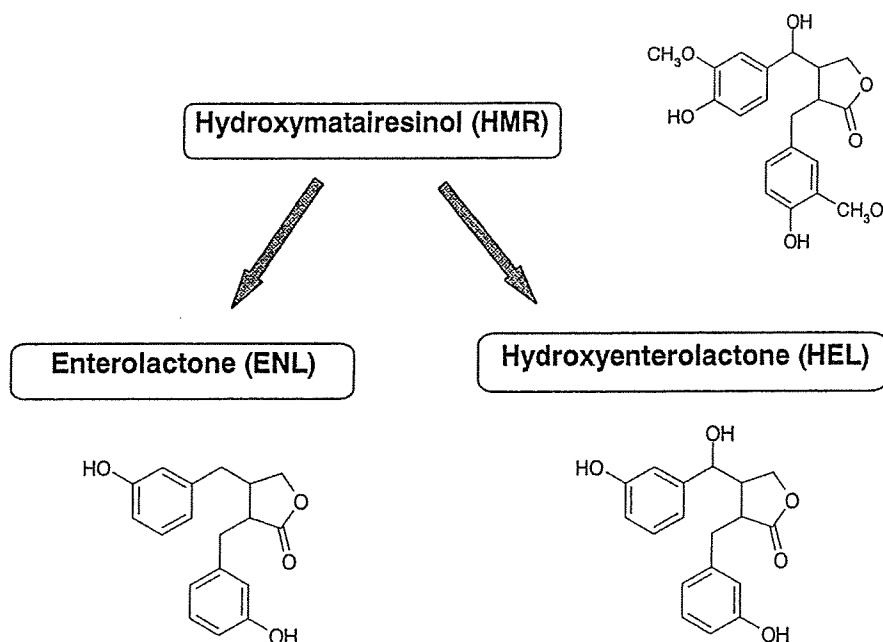


Figure 1. Chemical structure of hydroxymatairesinol (HMR) and schematic illustration of its putative metabolic pathway, which involve demethylation and dehydroxylation reactions catalyzed by intestinal bacteria.

incidence of spontaneous development of endometrial adenocarcinoma, which is associated with hormonal imbalance, and is characterized by an age-dependent increase in the estrogen to progesterone (E2/P) ratio (15–17). The incidence of spontaneous endometrial adenocarcinoma in this rat strain tends to decrease in the reproducing animal, compared with the nulliparous case, the suppression being associated with changes in the hormonal milieu (18). These results indicate that the Donryu rat might be a valuable animal model for the study of endometrial adenocarcinoma linked to endogenous estrogens in humans. The incidence of such tumors in this rat strain is elevated after a single intrauterine administration of *N*-ethyl-*N'*-nitro-*N*-nitrosoguanidine (ENNG). A two-stage rat uterine carcinogenesis model has been shown to be very useful for detection of the tumor-promotive effects of various agents, including endocrine-disrupting chemicals (EDCs; Refs. 19, 20). This animal system can be used successfully for studies of tumor-chemopreventive effects of long-term exposure to various compounds during adulthood, with normalization or suppression of cell proliferation in the uterus or indirect effects such as perturbation of endocrine regulation (21).

To clarify the chemopreventive effects of HMR on uterine carcinogenesis, we performed an experiment using the carcinogenesis model in Donryu rats. Types and characteristics of uterine adenocarcinoma in the rat vary, depending on the age of exposure to exogenous compounds (20, 22). Hydroxymatairesinol was dosed to adult rats after precise estrous cycles were established at 11 weeks of age and continued until 15 months of age. In all our past studies of endometrial adenocarcinoma using the Donryu rat model, the soy-containing conventional diet, CRF-1, was supplied

but its composition was not analyzed. The possibility that phytoestrogens such as isoflavones in a diet also influence tumor development should be considered. On the other hand, the soy-containing 1324 diet has been widely used as a basal diet in European countries. Accordingly, two controls, each supplied with diets of differing phytochemical components, were designed into the present study. First, isoflavone contents of both diets were analyzed by high-performance liquid chromatography (HPLC), according to previously described methods (23). Average contents of total isoflavones were 471 and 257 ppm in the basal (1324) and conventional (CRF-1) diets, respectively.

Materials and Methods

Animals and Housing Conditions. Female Crj:Donryu rats were obtained from Charles River Japan Inc. (Kanagawa, Japan). They were housed in plastic cages and kept in an air-conditioned animal room under constant conditions of $23^{\circ} \pm 2^{\circ}\text{C}$ and $50\% \pm 20\%$ humidity with a 12:12-hr light:dark cycle and were maintained on a soy-containing conventional diet, CRF-1 (Oriental Yeast Inc., Tokyo, Japan) and tap water *ad libitum*. Animal care and use followed the NIH Guide for the Care and Use of Laboratory Animals.

Experimental Design. Hydroxymatairesinol was isolated from the heartwood of Norway spruce (*Picea abies*) by using a method previously described (9, 24, 25). The purity of HMR was determined to be 96.6% using the GC-MS method. The 105 rats were divided into 4 groups of 25 to 27 animals each. Hydroxymatairesinol was mixed according to the weight of a pure HMR extract in a nonpurified, soy-containing 1324 diet (Altromin GmbH,

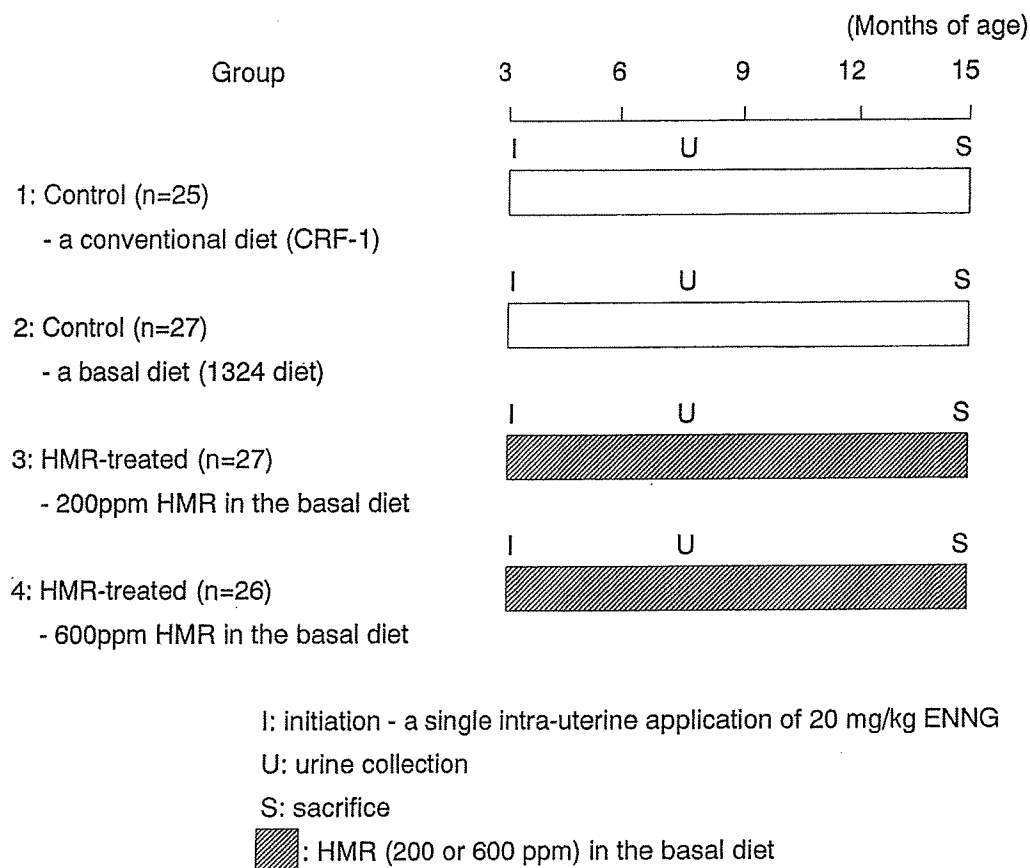


Figure 2. Experimental design for examination of the effects of hydroxymatairesinol (HMR) on rat uterine carcinogenesis. Rats were initiated with *N*-ethyl-*N'*-nitro-*N*-nitrosoguanidine (ENNG) and then fed a conventional diet (CRF-1; Group 1), a basal diet (1324; Group 2), or HMR (200 and 600 ppm; Groups 3 and 4) in the basal diet.

Lage, Germany), at doses of 200 and 600 ppm (Groups 3 and 4). The two control groups were provided with a conventional diet (CRF-1; Group 1) or the basal diet (1324; Group 2) alone (Fig. 2). Crude protein, crude fat, crude fiber, ash, moisture, nitrogen-free extract, and metabolizable energy of the conventional diet were 22.4%, 5.7%, 3.1%, 6.6%, 7.8%, 54.5%, and 3590 kcal/kg, respectively. Those of the basal diet were 19.0%, 4.0%, 6.0%, 7.0%, 13.5%, 50.5%, and 2050 kcal/kg, respectively.

Duration of Treatment. Just after carcinogen treatment, the feeding of each diet including HMR was started at 11 weeks of age and continued until 15 months of age.

Chemical Carcinogen Treatment. At 11 weeks of age, a single dose of 20 mg/kg *N*-ethyl-*N'*-nitro-*N*-nitrosoguanidine (ENNG), purchased from Nacalai Tesque, Inc. (Kyoto, Japan), and dissolved in polyethylene glycol, was introduced into one of the uterine horns of the rats, using a stainless catheter via the vagina.

Observation and Laboratory Examinations. Each animal was weighed weekly during the first 3 months of treatment and at least once a month thereafter. The amounts of feed supplied were measured, and HMR-intake per animal was calculated from food consumption. Vaginal

smears were checked at 4, 5, 6, 8, and 12 months of age for confirmation of the estrous cycle stage. Persistent estrus was determined based on continued estrus for at least 4 days. At termination, all animals were weighed and sacrificed. Reproductive tract tissues and the other organs were quickly removed and fixed in 10% neutral buffered formalin, then routinely processed for histopathological examination. Each uterus was cut into about 12 slices in cross-section, and proliferative endometrial lesions were classified into three degrees of hyperplasia (slight, +; moderate, ++; severe, +++), and adenocarcinoma using the categories for rat uterine proliferative lesions reported previously (8, 10).

Urinary Lignan Analysis. In the previous studies (18), age-related persistent estrus followed by anovulation in Donryu rats was started at 5 months of age, and its incidence was markedly increased until 8 months. Hence, urine was collected at 8 months of age when many animals were thought to be subjected to the hormonal imbalance. Six rats selected at random from each group were placed in metabolic cages, and urine was collected for 24 hours in glass jars containing 120 μ l of 0.56 *M* ascorbic acid and 120 μ l of 0.15 *M* sodium azide as preservatives. Urine samples

Table 1. Mean Food Consumption of the Experimental Groups and Mean Daily Intakes of Hydroxymatairesinol (HMR) in the Dosed Groups^a

Group	Consumption (g/kg/day)	HMR intake (mg/kg/day)
Control—conventional diet (CRF-1)	45.6±1.1	—
Control—basal diet (1324 diet alone)	53.1±1.9**	—
200 ppm HMR in the basal diet	55.2±1.4**	11.0±0.3
600 ppm HMR in the basal diet	54.5±1.9**	32.7±1.1***

^a Values represent the mean ± SEM. Mean food consumption in Group 1 was significantly lower than that in Groups 2, 3, and 4 (**, $P < 0.01$). Mean HMR-intakes are significantly different (***, $P < 0.001$) between Groups 3 and 4.

were stored at -70°C until analysis of lignans such as HMR, secoisolariciresinol (SECO), matairesinol (MR), enterodiol (END), hydroxyenterolactone (HEL), and ENL was made. Aliquots of 0.5 ml of thawed urine samples were mixed with 1.0 ml of 0.15 M sodium acetate buffer (pH 4.0) and 15 μl of *Helix pomatia* enzyme mixture. For hydrolysis of lignan conjugates, the samples were incubated at 37°C overnight. The hydrolyzed samples were extracted using Sep-Pak tC18 columns (Waters Associates, Milford, MA) conditioned with 2.0 ml of 0.15 M sodium acetate buffer. The urine samples to which 2.5 μg of the internal standard flavone had been added were loaded into columns and washed with 0.15 M acetate buffer, then the polyphenolic fraction was eluted with 2.0 ml methanol. The samples were gently evaporated to dryness under nitrogen flow in a water bath at 45°C , dissolved in 5.0 ml methanol, and then an aliquot of 0.1 ml was diluted with 0.9 ml of 0.1% acetic acid. The final flavone concentration was 50 ng/ml. A variety of lignans were analyzed by HPLC-MS-MS using a PE Sciex API3000 triple quadrupole mass spectrometer equipped with a Turbo ion spray ionization source (electrospray ionization). Detailed methods have been described in a previous paper (26).

Statistical Analysis. Data on tumor incidence were statistically analyzed using the cumulative chi-square test (27). If significance was detected, differences between groups were confirmed by chi-square test. Other data were analyzed using the Student's *t* test for comparison between two groups and one-way analysis of variance (ANOVA) for multiple groups. *Post hoc* multiple comparisons were performed by Tukey's test when numbers of data were equal or Scheffe's test in other cases. A *P* value less than 0.05 was considered to be statistically significant.

Results

Food Consumption and Daily Intake of HMR in the Experimental Groups. Data for food consumption and intake of HMR in the experimental groups are

Table 2. Delay of Persistent Estrus by Hydroxymatairesinol (HMR) Dosing^a

Group	Mean week of age of persistent estrus start
Control—conventional diet (CRF-1)	30.3±1.2
Control—basal diet (1324 diet alone)	32.1±1.3
200 ppm HMR in basal diet	35.4±1.6*
600 ppm HMR in basal diet	35.3±1.6*

^a Values represent the mean ± SEM, $n = 25, 27, 27,$ and 26 rats of each group, respectively. Means of Group 3 and 4 are significantly different (* $P < 0.05$) from Groups 1 and 2.

summarized in Table 1. In the control group fed conventional diet (Group 1), food consumption was lower than those in Groups 2, 3, or 4 ($P < 0.01$). There were no significant differences in food consumption among the other 3 experimental groups. Mean daily intakes of HMR were 11.0 and 32.7 mg/kg/day in the 200- and 600-ppm dosed groups, respectively, and they differed statistically ($P < 0.001$).

Effects of HMR on Start of Persistent Estrus. At 4 months of age (about 1 month after dosing started), the estrous cycle stage could be easily identified using vaginal smears, a precise 4-day cycle being evident in all groups. In the control groups supplied with the conventional (Group 1) or basal (Group 2) diet, no significant difference of the beginning of persistent estrus, characterized by vaginal smears exhibiting nucleated epithelial or cornified cells, was detected. Mean ages of persistent estrus start were 30.3 and 32.1 weeks in Groups 1 and 2, respectively. However, in HMR-dosed groups (Groups 3 and 4), persistent estrus was significantly lengthened for 3 to 5 weeks ($P < 0.05$), as shown in Table 2. Almost all animals in the experimental groups were in persistent estrus until 12 months of age.

Uterine Proliferative Lesions and Other Histopathologic Findings. During the experimental period, no animals in any of the groups died. No significant changes in relative weights of the uterus and ovaries were detected at termination at 15 months of age (data not shown). A comparison of development of uterine proliferative lesions in controls and HMR-dosed rats is given in Table 3. Almost all animals had endometrial hyperplasia or adenocarcinoma. Total incidences of endometrial hyperplasia were 64%, 63%, 78%, and 80% in Groups 1–4, respectively, no shifting the burden from late stage lesions to early stage being obvious. Most hyperplasias were focal proliferations of uterine glands with apparent duct structures in the stroma of the endometrium. The characteristics and incidences of endometrial hyperplasia did not differ among the groups. Endometrial adenocarcinoma was significantly decreased by the HMR treatments ($P < 0.05$). Incidences of adenocarcinoma in 200- and 600-ppm, HMR-dosed groups were reduced to 11% and 15%, respectively, compared with those

Table 3. Numbers and Incidences of Uterine Endometrial Proliferative Lesions at 15 Months of Age in the Four Experimental Groups^a

Group	N	Hyperplasia				Adenocarcinoma
		—	+	++	+++	
Control—conventional diet (CRF-1)	25	0 (0)	2 (8)	8 (32)	6 (24)	9 (36)
Control—basal diet (1324 diet alone)	27	2 (7)	2 (7)	8 (30)	7 (26)	8 (30)
200 ppm HMR in the basal diet	27	3 (11)	5 (19)	9 (33)	7 (26)	3* (11)
600 ppm HMR in the basal diet	26	1 (4)	4 (15)	12 (46)	5 (19)	4* (15)

^a Values in parentheses are incidences (%). Significantly different from Groups 1 and 2 (* $P < 0.05$). These data show that hydroxymatairesinol (HMR) significantly reduced the number of endometrial adenocarcinomas versus controls in Groups 1 and 2 given no HMR.

of the two control groups (conventional and basal diet), being 36% and 30%, respectively. The adenocarcinomas were well-differentiated, invading the serosa of the corpora uteri, glandular structures being obvious.

Ovarian atrophy or cyst formation and lack of any corpora lutea were observed in almost all animals. Proliferation of ovarian interstitial cells was also evident. Various neoplastic and nonneoplastic lesions were also found in other organs and tissues, but no differences were apparent among the groups.

Urinary Lignans. Urinary concentrations of lignans such as HMR, SECO, MR, END, HEL, and ENL at 8 months of age are shown in Figure 3. Those in the control group supplied with conventional diet (Group 1) were comparable to those with the basal diet (Group 2), and HMR was undetectable in either control group. In the 200- and 600-ppm groups, however, urinary concentrations of HMR were dose-dependently increased at 25 and 88 $\mu\text{g}/\text{ml}$, respectively, and similar elevation was evident for ENL and HEL concentrations. Urinary concentrations of SECO, MR, and END were low or undetectable.

Discussion

In the present study, HMR, obtained from the heartwood of spruce (*Picea abies*), demonstrated an inhibitory effect on the development of uterine adenocarcinoma in Donryu rats initiated by ENNG, in line with the experimental evidence of inhibition of the growth of DMBA-induced rat mammary tumors published earlier (8, 9). Secoisolariciresinol diglycoside (SDG), isolated from flaxseed, is metabolized to both END and ENL, and has shown chemopreventive properties in the DMBA-induced mammary-tumor model (28). ENL potently inhibits the growth of DMBA-induced mammary carcinoma in the rat (29). Until now, however, there has been no report of anticarcinogenic effects of lignans on female genital tracts, including rodent uteri. The present results provide the first support for the hypothesis that long-term exposure to HMR might similarly result in a chemopreventive effect on rat uterine carcinogenesis.

Plant lignans are metabolized by the mammalian gut microflora mainly to ENL and END, called mammalian lignans (30). The urinary lignans of HMR-dosed animals were mostly HMR, HEL, and ENL in the present study; the increase was 63- and 210-fold for HEL and 5- and 10-fold for ENL in urine 24 hours after feeding 200- and 600-ppm HMR-containing diets, respectively. Previously, it was reported that ENL excretion in urine was elevated 1.5- to 9-fold after single oral dosing of HMR at 3-50 mg/kg (8). Oral administration of HMR to Sprague-Dawley rats resulted in doubled excretion of ENL, with a single gavage at 25 mg/kg (26). Daily dosage of HMR in the present study was 11.0 and 32.7 mg/kg, respectively; thus urinary ENL concentrations after a single administration in the present study were comparable to those in the previous reports. In a recent *in vitro* study, metabolites of HMR generated by human intestinal microflora were characterized as ENL and HEL (31), strongly suggesting that HMR might be transformed into these two forms in the mammalian gut (Fig. 1).

Estrogens are well established as important etiological agents for uterine carcinogenesis in humans (32-35). Although exact roles remain to be detailed, tumor-promoting effects involving up-regulation of cell proliferation have long been suggested. Recently, natural compounds having antiestrogenic activity were proven to have chemopreventive effects against estrogen-dependent carcinoma development (1). Competition for estrogen receptor-binding (36) and inhibition of aromatase activity (29) are plausible explanations for chemopreventive effects of compounds such as flavonoids and lignans. Lignans and endogenous estrogens have structural similarities, suggesting possible estrogen-like or antiestrogen-like activity. Secoisolariciresinol diglycoside feeding to rats during pregnancy and lactation has been found to increase the uterine weights of offspring at weaning, but not at later stages (37). It causes irregular estrous cycling and/or persistent estrus in adult, normal-cycling rats (38). HMR, however, exerted no significant estrogen-like or antiestrogenic effects on the immature rat uterine growth test (8). There were also no

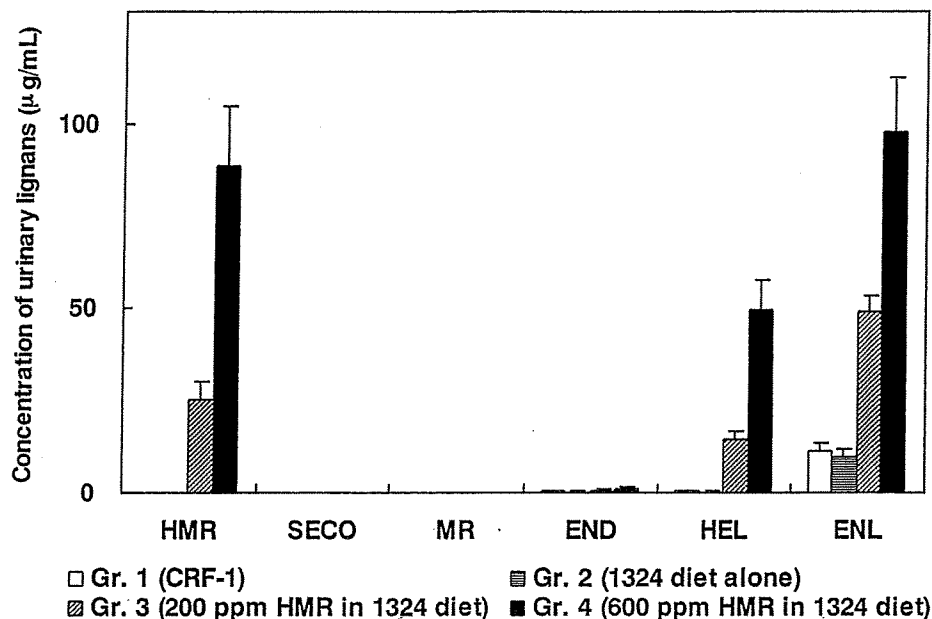


Figure 3. Urinary lignans at 8 months of age. Hydroxymatairesinol (HMR), secoisolariciresinol (SECO), matairesinol (MR), enterodiol (END), hydroxyenterolactone (HEL), and enterolactone (ENL) were analyzed by HPLC-MS-MS. Values are mean \pm SEM ($n = 6$).

effects on uterine weights, ovarian weights, or estrous cycle period in the present experiment.

We have documented that the Donryu rat is a high-incidence strain for spontaneous development of endometrial adenocarcinoma and is associated with a hormonal imbalance characterized by early development of persistent estrus (15–17). Previously, it was reported that disorders or suppression of the estrous cycle, appearing very early in rats exposed prenatally to DES, might be associated with neoplastic development (39). It has been shown that *p*-tert-octylphenol, known as an EDC and having estrogenic activity, causes early occurring, persistent estrus with exposure for the first 5 days after puberty, although no abnormalities in growth and development of the reproductive organs could be found up to maturation; finally, development of uterine adenocarcinoma was accelerated (22). Although the pathogenesis of uterine tumor development by these compounds remains to be elucidated, a hormonal disorder characterized by early development of persistent estrus and increase of the E2/P ratio is exclusively involved (21). In the present study, delay in starting persistent estrus because of HMR dosing was significant. Persistent estrus results from anovulation, which is effected by change in action of various hormones such as LH-RH, LH, and estrogen. Recently, ENL was demonstrated to act as a weak aromatase inhibitor *in vitro* and to reduce the relative uterine weights of DMBA-treated, nonovariectomized rats (29). Aromatase inhibitors and antiestrogenic pharmaceuticals can reduce estrogen levels, followed by elevation of FSH and growth of ovarian follicles. The mechanisms underlying the delay of persistent estrus with

HMR dosing is unclear, but ENL, a major metabolite, could be responsible through its action on aromatase.

In the present experiment, the 1324 diet was selected as a basal diet, instead of the conventional CRF-1 diet for Donryu rats (21), but both were included as controls, the CRF-1 group for historical background data in the rat strain and the 1324 diet group for HMR dosing. No significant differences in tumor development, start of persistent estrus, or other parameters were evident between the two control groups. There is evidence that subcutaneous injections of genistein and daidzein have an inhibitory effect on endometrial carcinogenesis in *N*-methyl-*N*-nitrosourea and E2-treated mice (40). The fact that the tumor incidences in both controls were comparable despite different contents of isoflavones suggests that these isoflavones are unlikely to have an inhibitory effect on cancer development in the present study. Difference in route of exposure, dose and/or inhibitory effect on the aromatase activity of these isoflavones (41) might be responsible for the discrepancy. Tumor incidence in the conventional-diet group was relatively low compared with that of the previous data (21). Although the reason is unclear, the design of the experiment appears appropriate for investigation of the chemopreventive effects on uterine carcinogenesis, given the positive influence detected.

In conclusion, long-term administration of HMR can reduce the development of uterine adenocarcinoma in Donryu rats, suggesting that its indirect modulation of hormonal regulation and its effect on estrogen production create an unfavorable milieu for tumor growth. To test this hypothesis, further examination of the detailed mechanisms of HMR's cancer-chemopreventive activity will be required.

We thank Hiromi Ichihara for her expert technical assistance with the histopathological preparations, Michiyo Tosa and Ryotaro Ebisui for analysis of isoflavones of diets, and Dr. Hidetaka Sato for expertise in statistical analysis. We would also like to thank Christer Eckerman for HMR extraction, and Teija Toivonen and Pauliina Penttinen for urine sample preparation. Finally, we thank Katriina Kauppila and Tadaaki Toyoshima at the Embassy of Finland in Japan.

- Adlercreutz H, Mazur W. Phyto-oestrogens and Western diseases. *Ann Med* 29:95–120, 1997.
- Hirose K, Tajima K, Hamajima N, Inoue M, Takezaki T, Kuroishi T, Yoshida M, Tokudome S. A large-scale, hospital-based case-control study of risk factors of breast cancer according to menopausal status. *Jpn J Cancer Res* 86:146–54, 1995.
- Wu AH, Wan P, Hankin J, Tseng CC, Yu MC, Pike MC. Adolescent and adult soy intake and risk of breast cancer in Asian-Americans. *Carcinogenesis* 23:1491–1496, 2002.
- Wu AH, Ziegler RG, Nomura AM, West DW, Kolonel LN, Horn-Ross PL, Hoover RN, Pike MC. Soy intake and risk of breast cancer in Asians and Asian Americans. *Am J Clin Nutr* 68:1437S–1443S, 1998.
- Dai Q, Franke AA, Jin F, Shu XO, Hebert JR, Custer LJ, Cheng J, Gao YT, Zheng W. Urinary excretion of phytoestrogens and risk of breast cancer among Chinese women in Shanghai. *Cancer Epidemiol Biomarkers Prev* 11:815–821, 2002.
- Chen J, Tan KP, Ward WE, Thompson LU. Exposure to flaxseed or its purified lignan during suckling inhibits chemically induced rat mammary tumorigenesis. *Exp Biol Med* 228:951–958, 2003.
- Goodman MT, Wilkens LR, Hankin JH, Lyu LC, Wu AH, Kolonel LN. Association of soy and fiber consumption with the risk of endometrial cancer. *Am J Epidemiol* 146:294–306, 1997.
- Saarinen NM, Wäri A, Mäkelä SI, Eckerman C, Reunanen M, Ahotupa M, Salmi SM, Franke AA, Kangas L, Santti R. Hydroxymatairesinol, a novel enterolactone precursor with antitumor properties from coniferous tree (*Picea abies*). *Nutr Cancer* 36:207–216, 2000.
- Saarinen NM, Wäri A, Mäkelä SI, Eckerman C, Reunanen M, Ahotupa M, Salmi SM, Franke AA, Kangas L, Santti RS. Uptake and metabolism of hydroxymatairesinol in relation to its anticarcinogenicity in DMBA-induced rat mammary carcinoma model. *Nutr Cancer* 41:82–90, 2001.
- Ingram D, Sanders K, Kolybaba M, Lopez D. Case-control study of phyto-oestrogens and breast cancer. *Lancet* 350:990–994, 1997.
- Pietinen P, Stumpf K, Mannisto S, Kataja V, Uusitupa M, Adlercreutz H. Serum enterolactone and risk of breast cancer: a case-control study in eastern Finland. *Cancer Epidemiol Biomarkers Prev* 10:339–344, 2001.
- Hulten K, Winkvist A, Lenner P, Johansson R, Adlercreutz H, Hallmans G. An incident case-referent study on plasma enterolactone and breast cancer risk. *Eur J Nutr* 41:168–176, 2002.
- Kilkkinen A, Virtamo J, Vartiainen E, Sankila R, Virtanen MJ, Adlercreutz H, Pietinen P. Serum enterolactone concentration is not associated with breast cancer risk in a nested case-control study. *Int J Cancer* 108:277–280, 2004.
- Adlercreutz H. Phytoestrogens and breast cancer. *Steroid Biochem Mol Biol* 83:113–118, 2002.
- Maekawa A, Onodera H, Tanigawa H, Furuta K, Matsuoka C, Ogiu T, Hayashi Y. Spontaneous neoplastic and non-neoplastic lesions in aging Donryu rats. *Jpn J Cancer Res (Gann)* 77:882–890, 1986.
- Nagaoka T, Onodera H, Matsushima Y, Todate A, Shibutani M, Ogasawara H, Maekawa A. Spontaneous uterine adenocarcinomas in aged rats and their relation to endocrine imbalance. *J Cancer Res Clin Oncol* 116:623–628, 1990.
- Nagaoka T, Takeuchi M, Onodera H, Matsushima Y, Ando-Lu J, Maekawa A. Sequential observation of spontaneous endometrial adenocarcinoma development in Donryu rats. *Toxicol. Pathol* 22, 261–269, 1994.
- Nagaoka T, Takegawa K, Takeuchi M, Maekawa A. Effects of reproduction on spontaneous development of endometrial adenocarcinomas and mammary tumors in Donryu rats. *Jpn J Cancer Res* 91:375–382, 2000.
- Ando-Lu J, Takahashi M, Imai S, Ishihara R, Kitamura T, Iijima T, Takano S, Nishiyama K, Suzuki K, Maekawa A. High-yield induction of endometrial adenocarcinomas in Donryu rats by a single intra-uterine administration of *N*-ethyl-*N'*-nitro-*N*-nitrosoguanidine. *Jpn J Cancer Res* 85:789–793, 1994.
- Katsuda S, Yoshida M, Kuroda H, Ando J, Takahashi M, Kurokawa Y, Watanabe G, Taya K, Maekawa A. Uterine adenocarcinoma in *N*-ethyl-*N'*-nitro-*N*-nitrosoguanidine-treated rats with high-dose exposure to *p*-tert-octylphenol during adulthood. *Jpn J Cancer Res* 93:117–124, 2002.
- Maekawa A, Takahashi M, Ando J, Yoshida M. Uterine carcinogenesis by chemicals/hormones in rodents. *J Toxicol Pathol* 12:1–11, 1999.
- Yoshida M, Katsuda S, Tanimoto T, Asai S, Nakae D, Kurokawa Y, Taya K, Maekawa A. Induction of different types of uterine adenocarcinomas in Donryu rats due to neonatal exposure to high-dose *p*-t-octylphenol for different periods. *Carcinogenesis* 23:1745–1750, 2002.
- Kudou S, Fleury Y, Welti D, Magnolato D, Uchida T, Kitamura K, Okubo K. Malnyl isoflavone glycosides in soybean seeds (*Glycine max* Merrill). *Agric Biol Chem* 55:2227–2233, 1991.
- Ekman R. Analysis of lignans in Norway spruce by combined gas chromatography-mass spectrometry. *Holzforschung* 30:79–85, 1976.
- Ekman R. Distribution of lignans in Norway spruce. *Acta Acad Aboensis Ser B* 39:1–6, 1979.
- Saarinen NM, Smeds A, Mäkelä SI, Ämmälä J, Hakala K, Pihlava J-M, Ryhänen E-L, Sjöholm R, Santti R. Structural determinants of plant lignans for the formation of enterolactone *in vivo*. *J Chromatogr B* 777:311–319, 2002.
- Shimizu K, Hirose N, Hirotsu C, Adachi E. A classification of circadian blood pressure profiles using a cumulative chi-square technique. *Scand J Clin Lab Invest* 60:703–712, 2000.
- Tou JCL, Thompson LU. Exposure to flaxseed or its lignan component during different development stages influences rat mammary gland structure. *Carcinogenesis* 20:1831–1835, 1999.
- Saarinen NM, Houvinen R, Wäri A, Mäkelä SI, Valentín-Blasini L, Sjöholm R, Ämmälä J, Lehtilä R, Eckerman C, Collan YU, Santti RS. Enterolactone inhibits the growth of 7,12-dimethylbenz(a)anthracene-induced mammary carcinomas in the rat. *Mol Cancer Ther* 1:869–876, 2002.
- Axelsson M, Sjövall J, Gustafsson BE, Setchell KD. Origin of lignans in mammals and identification of a precursor from plants. *Nature* 298:659–660, 1982.
- Heinonen S, Nurmi T, Liukkonen K, Poutanen K, Wahala K, Deyama T, Nishibe S, Adlercreutz H. In vitro metabolism of plant lignans: new precursors of mammalian lignans enterolactone and enterodiol. *J Agric Food Chem* 49:3178–3186, 2001.
- Lingeman CH. Hormones and hormonomimetic compounds in the etiology of cancer. *Recent Results Cancer Res* 66:1–48, 1979.
- Hilliard G.D, Norris HJ. Pathologic effects of oral contraceptives. *Recent Results Cancer Res* 66:49–71, 1979.
- Zeil HK. Estrogen's role in endometrial cancer. *Obstet Gynecol* 60:509–515, 1982.
- Fox H. Endometrial carcinogenesis and its relation to oestrogen. *Pathol Res Pract* 179:13–19, 1984.
- Wang L-Q. Mammalian phytoestrogens: enterodiol and enterolactone. *J Chromatogr B* 777:289–309, 2002.
- Tou JCL, Chen J, Thompson LU. Flaxseed and its lignan precursor, secoisolariciresinol diglycoside, affect pregnancy outcome and reproductive development in rats. *J Nutr* 128:1861–1868, 1998.
- Orcheson LJ, Rickard SE, Seidl MM, Thompson LU. Flaxseed and its

- mammalian lignan precursor cause a lengthening or cessation of estrous cycling in rats. *Cancer Lett* 125:69-76, 1998.
39. Kitamura T, Nishimura S, Sasahara K, Yoshida M, Ando J, Takahashi M, Shirai T, Maekawa A. Transplacental administration of diethylstilbestrol (DES) causes lesions in female reproductive organs of Donryu rats, including endometrial neoplasia. *Cancer Lett* 141:219-228, 1999.
40. Lian Z, Niwa K, Tagami K, Hashimoto M, Gao J, Yokoyama Y, Mori H, Tamaya T. Preventive effects of isoflavones, genistein and daizein, on estradiol-17 β -related endometrial carcinogenesis in mice. *Jpn J Cancer Res* 92:726734, 2001.
41. Campbell DR, Kurzer MS. Flayonoid inhibition aromatase enzyme activity in human preadipocytes. *J Steroid Biochem Mol Biol* 46:381-388, 1993.

—Original—

Maternal Exposure to Low Doses of Bisphenol A Has No Effects on Development of Female Reproductive Tract and Uterine Carcinogenesis in Donryu Rats

Midori YOSHIDA¹⁾, Takasumi SHIMOMOTO¹⁾, Sayumi KATASHIMA¹⁾,
Gen WATANABE²⁾, Kazuyoshi TAYA²⁾ and Akihiko MAEKAWA¹⁾

¹⁾Department of Pathology, Sasaki Institute, Tokyo 101-0062, ²⁾Veterinary Physiology,
Tokyo University of Agriculture and Technology, Tokyo 183-8509, Japan

Abstract. Effects of maternal exposure to low doses of bisphenol A (BPA), including those comparable with human exposure levels, on growth and development of the female reproductive system and uterine carcinogenesis in Donryu rats were investigated. Dams were administered BPA (0, 0.006 and 6 mg/kg/day) daily by gavage from gestation day 2 up to the day before weaning (postnatal day 21 at offspring). The serum levels of BPA were significantly elevated in the dams receiving 6 mg/kg/day, however, BPA levels in the milk of dams, and those in the serum and liver of offspring were similar between control and treated groups. The treatment did not exert any influences on uterine development including weight, gland genesis and estrogen receptor α expression, vaginal opening and gonadotropin secretion in the female offspring up to puberty. After maturation, no effects were evident with regard to estrous cyclicity in female offspring treated with BPA. In addition, the treatment had no effects on age-related morphological changes of the reproductive and endocrine organs and uterine carcinogenesis until 15 months of age. The results demonstrate that maternal exposure to BPA at levels comparable to human exposure did not have any effects on the female reproductive system of offspring in rats. In addition, BPA was also found in the serum, milk and liver of control dams and pups, and low levels of BPA were detected in drinking water and pellet diet. The present study showed that the experimental animals were also exposed to environmental BPA in the animal room.

Key words: Bisphenol A, Low doses, Female reproductive system, Toxicity, Uterine carcinogenesis
(J. Reprod. Dev. 50: 349–360, 2004)

Bisphenol A (BPA), volume chemical used in the manufacture of polycarbonate plastics, has been found in canned foods packed in lacquer subjects, containers and composite dental sealants [1]. BPA is reported to be an endocrine disrupting chemical (EDC) with weak estrogenic activity in both *in vitro* and *in vivo* systems [2], binding to both estrogen receptor (ER) α and ER β with low affinity and causing reporter gene transactivation *in vitro* [3, 4]. Uterotropic effects of BPA at high doses (3

daily oral applications of 400, 600 or 800 mg/kg/day) were reported in immature female rats [5], and significant increases in the luminal epithelial height and the thickness of both stromal and myometrial layers of the uterus were also observed in ovariectomized mice injected 0.8–8 mg/day of BPA for 4 days [6]. A study conducted by the National Toxicology Program (NTP) in the USA demonstrated that maternal exposure to high doses of BPA, at 0.5 or 1.0% in feed (approximately daily intakes of 875 and 1750 mg/kg/day), reduced the number of live pups per litter and litters per pair in

Accepted for publication: March 8, 2004

Correspondence: M. Yoshida (e-mail: midoriy@sasaki.or.jp)

first generation mice [7]. However, pre- and/or postnatal high dose BPA exposure did not have any apparent adverse effects on pubertal development in female rats or reproductive functions in rats and mice [8–10].

On the other hand, perinatal treatment with BPA at much lower doses has been reported to influence growth and male reproductive organ parameters such as weights of the testis, prostate, preputial glands and epididymis, and the efficiency of sperm production in rodents [11–15]. However, other investigators have reported no treatment-related effects of low doses of BPA given to pregnant mice [16–18] and to rats in a three generation reproductive toxicity study [19].

In female rodents, inappropriate perinatal exposure to endogenous and/or exogenous estrogens is known to induce serious and irreversible effects on the reproductive system [20–24]. Perinatal and/or postnatal effects of EDCs on the reproductive organs in rodents are very complex and the underlying mechanisms remain to be fully determined. Recently, some investigators have reported 'delayed' influences of perinatal exposure to estrogens or EDCs on the female reproductive system which are manifested after puberty or sexual maturation [25–27]. In fish, the ovo-testis can serve as a good indicator of estrogenic effects of EDCs [28]. For assessment to human health, it is very important to investigate the effects of low doses of EDCs, including BPA, on the reproductive organs at levels comparable to human exposure. Although there is as yet no consensus regarding the endpoint markers for detecting perinatal effects of EDCs in rodents, the following phenomena have been pointed out as perinatal effects of estrogens or EDCs with estrogenic activities: lowering of gonadotropin levels at prepuberty, anovulation, polycystic ovary, persistent estrus, early vaginal opening, abnormal development of uterus such as inhibition of uterine gland-genesis and abnormal expression of ER α , and increased uterine or vaginal carcinogenicity [10, 20–25, 27, 29, 30]. In particular, induction of uterine cancers by perinatal exposure to estrogens or EDCs with estrogenic activity is the most striking event, since natural occurrence of uterine cancer is generally rare in rats. Our co-workers found that uterine endometrial adenocarcinomas spontaneously developed in aged Donryu rats with a high incidence, and that the tumors showed a

number of morphological and biological similarities to humans, such as ovarian hormonal imbalance leading to elevation of the serum estrogen/progesterone ratio [31–33]. Therefore, we selected this rat strain in the present study for the experimental animal.

In the investigations of maternal exposure to EDCs, especially with low dose exposure, it is very important to examine the biotransfer of chemicals from dams to offspring, because the effects of EDCs on the target organs are fundamentally related to serum EDCs level [34]. Although there has been much speculation about the potential adverse effects of low dose exposure to estrogenic EDCs including BPA [15–17], little information is available regarding test compound transfer from dams to offspring via the placenta or milk.

The purpose of the study was to investigate the effects of maternal exposure to low doses of BPA, at levels comparable to human exposure, on the growth and development of the female reproductive tracts, and also uterine carcinogenesis in rats observed from prepuberty up to 15 months of age, using the many endpoint markers reported previously. In addition, we monitored the transfer of BPA to offspring via the placenta and milk.

Materials and Methods

Animals

Forty-six pregnant female Crj:Donryu rats at gestation day (GD) 2, verified by plugs and sperm in the vagina and judged pregnant by the breeder, were purchased from Charles River Japan (Kanagawa, Japan).

Treatment of BPA

Animals were allocated into three groups: 0 mg/kg/day (control group, 12 dams), 0.006 mg/kg/day BPA (Tokyo Kasei Kagaku, Tokyo, Japan) (15 dams) group and 6 mg/kg/day BPA (19 dams). The concentration of 0.006 mg/kg was selected as relevant to provide the 63 ppb that is defined as the average daily intake from canned food in human beings [35]. The 6 mg/kg was selected as appropriate to simulate the maximum dose level (80 ppm) detected in plastic plates for children [35]. BPA was suspended in 0.05% carboxymethylcellulose solution (CMC; Wako Pure Chemicals, Osaka, Japan) for dosing. The dams

were orally administered BPA or the vehicle, 0.05% CMC (2 ml/kg body weight), every morning from GD 2 to the day before weaning (21 days after delivery) by gavage. The treatment period was selected to observe the effects of maternal treatment with BPA for as long as possible.

Examination of dams

Body weights of dams were checked once a week during the pregnancy and lactating periods. All dams were observed at least twice a day for morbidity, mortality and treatment-related clinical signs. The day of birth was designated postnatal day (PND) 0. After delivery, dams with offspring were housed in plastic cages containing wooden chips, and litter sizes were adjusted to 8–10 pups/dam at PND 4 or 6. All dams were euthanatized at weaning (PND 21) and the numbers of implantation sites in the uterus were recorded after complete necropsy. The uterus, vagina, ovaries, pituitary, adrenals, liver and kidneys were fixed in 10% neutral buffered formaldehyde solution, routinely processed and examined histopathologically.

Examination of offspring

Body weights, sex, external abnormalities and the number of offspring: The number and sex of offspring were checked at PNDs 1. At PNDs 1, 7, 14 and 21, body weights and external abnormalities were examined.

Uterine development: Three to 5 animals from different dams per group were euthanatized at PNDs 10, 14, 21, 28 and 8 weeks of age to investigate uterine development in female offspring except uterine weights at PND 10 and uterine gland genesis at 8 weeks. After the uteri were weighed, uterine gland-genesis in the uterine horn was histopathologically quantified as follows. The uteri were fixed in 10% neutral buffered formalin solution, 4 to 7 cross sections per uterine horn were dissected from the upper, middle and lower parts of the uterine horn, and routinely processed for histopathology. The number of uterine glands in 4 to 7 cross sections per animal was measured and the average number of glands was calculated for each group. To observe ER α expression and cell proliferating activity in the developing uteri, the same uteri as those measured for uterine gland genesis were incubated with anti-ER α (DakoCytomation, Kyoto, Japan) and anti-

proliferating cell nuclear antigens (Dako Japan) at PNDs 10, 14, 21 and 28, and the expression against their antibodies was examined immunohistochemically.

Ovulation: On the morning of estrus stage at 8 weeks of age, 4 animals from different dams per each group were euthanatized and the number of ova in their oviducts were counted.

Age of vaginal opening and estrous cyclicity: All female offspring were checked daily for vaginal opening. After the opening, estrous cyclicity was examined by vaginal cytology throughout the study.

Hormone profiles: Blood from the animals used for examination of uterine development was collected by decapitation and the serum was stored at -80C until assay. Up to PND 14, pooled serum samples from the animals examined for uterine growth and gland genesis were used. Serum follicle stimulating hormone (FSH) and luteinizing hormone (LH) levels at PNDs 10, 14, 21 or 28 were measured using NIDDK-rat-FSH and -LH radioimmunoassay (RIA) kits (NIAMDD; NIH, Bethesda, MD, USA), and compared among three groups, according to the method reported previously [36,37].

Uterine carcinogenicity study: For initiation of carcinogenesis, female pups (35, 36 or 35 animals in 0, 0.006 or 6 mg/kg group, respectively) at 11 weeks of age were administered a single dose of 20 mg/kg N-ethyl-N'-nitro-N-nitrosoguanidine (ENNG; Nacalai Tesque Inc., Tokyo, Japan) into a uterine horn using a stainless steel catheter via the vagina, as reported previously [38]. The ENNG-treatment is reported to exert no toxic or carcinogenic effect on tissues or organs other than the uteri in rats [38]. At the termination of the experiment, all surviving animals (15 months of age) (24, 30 and 30 animals in 0, 0.006 and 6 mg/kg groups, respectively) underwent histopathological examination. Animals found dead and sacrificed when moribund were also examined similarly. After complete necropsy, the reproductive and representative organs were fixed in 10% neutral buffered formalin, and then routinely processed. Each uterus was cut into about 12 slices in cross-section for hematoxylin and eosin staining. Endometrial proliferative lesions were classified into three degrees of hyperplasia (slight, moderate or severe) and adenocarcinomas, according to our categories described previously [39]. In addition,

adenocarcinomas were subdivided into well, moderately and poorly differentiated types, and also classified as to the degree of invasion: limited to the uterus, invading into the serosa and/or surrounding adnexae, and with distant metastasis, in accordance with the simplified FIGO histopathological grades for human uterine cancers [40].

Histopathological examination: The ovaries, vagina and other representative organs including liver, kidneys, brain and endocrine organs were fixed in 10% neutral buffered formaldehyde solution at PNDs 10, 14, 21, 28 and 8 weeks of age for histopathological examination.

Serum and tissue concentrations of BPA in dams and their offspring

In dams, BPA concentrations in the serum at weaning (PNDs 21) of their offspring and in milk collected in the stomachs of their pups at PNDs 10 and 14 were analyzed by gas chromatography mass spectrometry (QT-5050; Shimadzu, Kyoto, Japan) using the modified method reported previously [34]. Samples of milk were pooled from each litter for analysis.

In offspring, BPA concentrations in the serum and the liver were sequentially measured at PNDs 10, 14, and 21 in the same manner as their dams.

Housing conditions including measurement of environmental BPA

Animals were maintained in an air-conditioned animal room under constant conditions of $24 \pm 2^\circ\text{C}$ and $55 \pm 10\%$ humidity with a 12 h light/dark cycle (light, 0800–2000 h; dark, 2000–0800 h). All pups were weaned at PND 21 and female offspring in the same treatment group were housed 3 or 4 pups per cage. Commercial pellet diet and drinking water were available *ad libitum*, and animals drank tap water stored in plastic containers throughout the study. Animal care and use followed the NIH Guide for the Care and Use of Laboratory Animals.

To examine environmental BPA, concentrations of environmental BPA in the animal room, samples of fresh tap water, drinking water stocked in plastic containers used for water supply to the animals and in fresh pellet diet were determined using high performance liquid chromatography (HPLC). For tissue preparation, an internal standard (dimethylbutylidene-bisphenol) was added to tap water and drinking water samples and evaporated

to dryness for sample preparation. Pellet diet samples were grained, added to distilled water and 2 N sodium hydroxide and shaken for 1 hr. The samples were centrifuged and the aqueous layer was added to an internal standard and 2 N hydrogen chloride. The mixture was extracted twice with ethyl acetate and the organic solvent layers were evaporated to dryness. Both the residue of water and pellet diet samples were dissolved in 60% acetonitrile solution and subjected to HPLC analysis. HPLC was carried out using a M-600 pump (Waters, USA), Mightysil RP-18GP (Kanto Kagaku Co. Ltd, Tokyo, Japan) and a F-1080 fluorescence detector (Hitachi Co., Tokyo, Japan) [41].

Statistical analysis

Values for incidences were statistically analyzed using Fisher's exact probability test. Other data were analyzed using ANOVA, and post hoc comparisons between BPA-treated and control groups were made with the Dunnett's *t*-test. *P* values less than 0.05 were considered to be statistically significant.

Results

The body weights were similar in the control and treated groups during the BPA-treatment period (GD2 to PND 21), and no treatment-related clinical signs were observed in dams (data not shown). Table 1 summarizes data for reproductive ability of dams. There were no significant differences among the groups in all parameters: gestation period, the number of implantation sites, the average number of offspring per litter, and the body weights of offspring at birth. No external abnormalities were detected in any offspring. The body weights of female offspring were similar among control and treated groups from puberty up to 15 months of age.

The days of vaginal opening of offspring are shown in Table 1. No significant inter-group differences were found. After vaginal opening, precise 4-day cyclicity was observed in all animals. Table 2 shows uterine weights and uterine gland genesis from PNDs 10 up to 8 weeks of age. At PNDs 14, 21, 28 and 8 weeks of age, uterine weights did not differ among three groups. Sequential changes in the number of uterine glands in the

Table 1. Dams and offspring data during gestation and lactation period

Dose	0 mg/kg/day	0.006 mg/kg/day	6 mg/kg/day
Number of dams examined	12	15	19
Gestation period (days)	22.0 ± 0	21.9 ± 0.5	22.1 ± 0.2
Number of pups/dam at birth (A)			
Total	12.8 ± 2.0	14.1 ± 1.3	13.7 ± 2.0
Female	6.1 ± 2.2	7.1 ± 1.3	6.9 ± 2.0
Male	6.7 ± 2.6	7.0 ± 1.1	6.9 ± 2.5
Number of implantations (B)	13.4 ± 2.7	14.8 ± 1.0	14.9 ± 1.4
A/B	0.96 ± 0.05	0.95 ± 0.07	0.92 ± 0.13
Body weights of pups			
Females			
PND 1	5.89 ± 0.35	5.87 ± 0.34	5.52 ± 0.78
PND 7	13.90 ± 1.43	14.04 ± 1.25	14.12 ± 1.03
PND 14	28.32 ± 1.78	29.06 ± 1.97	29.67 ± 1.86
PND 21	44.13 ± 2.44	45.18 ± 2.42	45.58 ± 2.37
Males			
PND 1	6.24 ± 0.35	6.21 ± 0.33	6.10 ± 0.66
PND 7	14.90 ± 1.43	15.11 ± 1.20	14.86 ± 0.69
PND 14	29.61 ± 1.92	30.72 ± 1.56	29.77 ± 1.68
PND 21	46.13 ± 2.66	47.97 ± 2.45	47.69 ± 2.51
Age of vaginal opening of female offspring (days)	29.4 ± 1.9	29.5 ± 1.4	30.0 ± 1.4

PND, post natal day. Values are means ± SD.

Table 2. Sequential changes of uterine weight and gland genesis of female offspring

	Doses of BPA		
	0 mg/kg	0.006 mg/kg	6 mg/kg
Number of female offspring examined			
PND 14	5	3	4
PND 21	4	4	4
PND 28	3	3	3
8 weeks of age	3	3	3
Uterine weight (mg)			
PND 14	36.8 ± 4.6	39.7 ± 5.5	32.0 ± 3.4
PND 21	51.0 ± 4.2	44.0 ± 6.2	48.3 ± 9.7
PND 28	218.5 ± 23.9	384.7 ± 177.1	318.3 ± 114.8
8 weeks of age ^{a)}	488.3 ± 33.5	540.7 ± 107.0	533.3 ± 55.8
Uterine gland genesis (number of glands in 3-7 cross sections)			
PND 10	0 ± 0	0 ± 0	0 ± 0
PND 14	5.14 ± 1.64	4.90 ± 0.99	4.13 ± 1.36
PND 21	4.76 ± 1.35	5.85 ± 1.68	4.76 ± 1.73
PND 28	7.63 ± 2.19	7.23 ± 2.89	8.38 ± 1.85

PND, post natal day. Values are means ± SD. a) The animals were euthanatized in the morning at estrus.

treated groups at PNDs 10, 14, 21 and 28 were similar to those in the control group. No obvious morphological changes, including expression of ER α and the labeling index for cell proliferation activity in the uterus were observed in either of the

BPA-treated groups before puberty (Fig. 1). In all of the 3 groups, persistent estrus, characterized by vaginal smears exhibiting nucleated epithelial and/or cornified cells, began to appear after 5 months of age and then gradually increased with age, so that