

表10-2 薬物乱用開始前後の補導・逮捕内容(件数)

		補導・逮捕の内容						計(実人数)
		窃盗	傷害・暴行	恐喝	強盗	薬物関連	その他	
覚せい剤	(前)	14 (26.9%)	17 (32.7%)	8 (15.4%)	2 (3.8%)	8 (15.4%)	10 (19.2%)	52
	(後)	18 (10.8%)	39 (23.5%)	14 (8.4%)	4 (2.4%)	126 (75.9%)	20 (12.0%)	166
有機溶剤	(前)	9 (50.0%)	3 (16.7%)	2 (11.1%)	0	5 (27.8%)	2 (11.1%)	18
	(後)	8 (15.7%)	11 (21.6%)	3 (5.9%)	1 (2.0%)	34 (66.7%)	8 (15.7%)	51
大麻	(前)	0	0	0	0	0	0	0
	(後)	0	0	1 (100.0%)	0	0	0	1
睡眠薬	(前)	0	2 (50.0%)	0	0	1 (25.0%)	1 (25.0%)	4
	(後)	2 (25.0%)	5 (62.5%)	0	0	0	1 (12.5%)	8
抗不安薬	(前)	0	1 (100.0%)	0	0	0	0	1
	(後)	0	0	0	0	1 (100.0%)	0	1
鎮痛薬	(前)	0	0	0	0	0	0	0
	(後)	1 (100.0%)	0	0	0	0	0	1
鎮咳薬	(前)	0	0	0	0	0	0	0
	(後)	7 (70.0%)	0	0	0	2 (20.0%)	0	10
リタリン	(前)	0	0	0	0	0	0	0
	(後)	2 (40.0%)	0	1 (20.0%)	0	2 (40.0%)	0	5
多剤 (規制薬物)	(前)	0	0	1 (50.0%)	0	2 (100.0%)	0	2
	(後)	2 (13.3%)	2 (13.3%)	1 (6.7%)	0	6 (40.0%)	1 (6.7%)	15
多剤 (医薬品)	(前)	0	0	0	0	0	0	0
	(後)	2 (33.3%)	1 (16.7%)	0	0	2 (33.3%)	1 (16.7%)	6
その他	(前)	1 (100.0%)	0	0	0	0	0	1
	(後)	1 (33.3%)	0	0	0	2 (66.7%)	0	3
計	(前)	24 (30.8%)	23 (29.5%)	11 (14.1%)	2 (2.6%)	16 (20.5%)	13 (16.7%)	78
	(後)	43 (16.1%)	58 (21.7%)	20 (7.5%)	5 (1.9%)	175 (65.5%)	31 (11.6%)	267

表11 配偶関係

		未婚	同棲	内縁	既婚	別居	離婚	死別	再婚	その他	不明	計
覚せい剤	(男)	89 (42.8%)	2 (1.0%)	1 (0.5%)	17 (8.2%)	4 (1.9%)	68 (32.7%)	1	1 (0.5%)	2	23 (11.1%)	208
	(女)	24 (44.4%)	2 (3.7%)	3 (5.6%)	3 (5.6%)	2 (3.7%)	10 (18.5%)	0	1 (1.9%)	0	9 (16.7%)	54
有機溶剤	(男)	41 (64.1%)	2 (3.1%)	1 (1.6%)	3 (4.7%)	0	9 (14.1%)	0	0	0	8 (12.5%)	64
	(女)	10 (58.8%)	2 (11.8%)	0	2 (11.8%)	0	3 (17.6%)	0	0	0	0	17
睡眠薬	(男)	13 (46.4%)	1 (3.6%)	0	5 (17.9%)	0	5 (17.9%)	2 (7.1%)	1 (3.6%)	0	1 (3.6%)	28
	(女)	5 (26.3%)	0	1 (5.3%)	4 (21.1%)	0	3 (15.8%)	4 (21.1%)	0	0	2 (10.5%)	19
抗不安薬	(男)	7 (58.3%)	0	0	3 (25.0%)	0	0	0	1 (8.3%)	0	1 (8.3%)	12
	(女)	3 (42.9%)	0	0	2 (28.6%)	0	2 (28.6%)	0	0	0	0	7
鎮痛薬	(男)	2 (40.0%)	0	0	1 (20.0%)	0	0	1 (20.0%)	0	0	1 (20.0%)	5
	(女)	1 (25.0%)	0	1 (25.0%)	1 (25.0%)	0	0	1 (25.0%)	0	0	0	4
鎮咳薬	(男)	8 (50.0%)	0	1 (6.3%)	3 (18.8%)	0	1 (6.3%)	0	0	0	3 (18.8%)	16
	(女)	6 (85.7%)	0	0	1 (14.3%)	0	0	0	0	0	0	7
大麻	(男)	8 (80.0%)	0	1 (10.0%)	1 (10.0%)	0	0	0	0	0	0	10
	(女)	3 (100.0%)	0	0	0	0	0	0	0	0	0	3
リタリン	(男)	7 (70.0%)	0	0	3 (30.0%)	0	0	0	0	0	0	10
	(女)	3 (60.0%)	0	0	0	0	1 (20.0%)	0	0	0	1 (20.0%)	5
その他	(男)	6 (50.0%)	0	0	3 (25.0%)	0	1 (8.3%)	0	0	0	2 (16.7%)	12
	(女)	0	0	0	2 (33.3%)	0	1 (16.7%)	0	0	0	3 (50.0%)	6
多剤 (医薬品)	(男)	4 (44.4%)	0	0	1 (11.1%)	0	2 (22.2%)	0	0	0	2 (22.2%)	9
	(女)	5 (29.4%)	1 (5.9%)	1 (5.9%)	2 (11.8%)	0	2 (11.8%)	0	0	0	6 (35.3%)	17
多剤 (規制薬物)	(男)	10 (62.5%)	0	0	3 (18.8%)	1 (6.3%)	2 (12.5%)	0	0	0	0	16
	(女)	4 (66.7%)	0	0	0	0	1 (16.7%)	0	1 (16.7%)	0	0	6
計	(男)	195 (50.0%)	5 (1.3%)	4 (1.0%)	43 (11.0%)	5 (1.3%)	88 (22.6%)	4 (1.0%)	3 (0.8%)	2 (0.5%)	41 (10.5%)	390
	(女)	64 (44.1%)	5 (3.4%)	6 (4.1%)	17 (11.7%)	2 (1.4%)	23 (15.9%)	5 (3.4%)	2 (1.4%)	0 (0.0%)	21 (14.5%)	145
男女計		259 (48.4%)	10 (1.9%)	10 (1.9%)	60 (11.2%)	7 (1.3%)	111 (20.7%)	9 (1.7%)	5 (0.9%)	2 (0.4%)	62 (11.6%)	535

表12-1 主たる使用薬物別にみた薬物初回使用年齢

主たる使用薬物 (使用薬物)	覚せい剤 (覚せい剤)		有機溶剤 (有機溶剤)		睡眠薬 (睡眠薬)	
年齢(歳)	男性	女性	男性	女性	男性	女性
<10			1 (1.6%)			
10~14	3 (1.4%)	2 (3.7%)	25 (39.1%)	6 (35.3%)		
15~19	72 (34.6%)	28 (51.9%)	26 (40.6%)	7 (41.2%)	1 (3.6%)	3 (15.8%)
20~24	70 (33.7%)	14 (25.9%)	1 (1.6%)	1 (5.9%)	4 (14.3%)	4 (21.1%)
25~29	24 (11.5%)	4 (7.4%)	0 (0.0%)	1 (5.9%)	4 (14.3%)	3 (15.8%)
30~34	12 (5.8%)	1 (1.9%)	2 (3.1%)		4 (14.3%)	1 (5.3%)
35~39	6 (2.9%)		1 (1.6%)		5 (17.9%)	1 (5.3%)
40~44	1 (0.5%)			1 (5.9%)	1 (3.6%)	2 (10.5%)
45~49			1 (1.6%)		2 (7.1%)	
50~54					1 (3.6%)	
55~59						
60~64					1 (3.6%)	
65~						1 (5.3%)
不明	20 (9.6%)	5 (9.3%)	7 (10.9%)	1 (5.9%)	5 (17.9%)	4 (21.1%)
計	208 (100.0%)	54 (100.0%)	64 (100.0%)	17 (100.0%)	28 (100.0%)	19 (100.0%)
平均年齢(男女別)	21.7±5.2	19.5±4.2	16.6±6.3	17.6±7.2	32.7±10.9	30.5±18.3
平均年齢(全体)	21.2±5.1		16.8±6.5		31.8±14.1	

表12-2 主たる使用薬物別にみた薬物初回使用年齢

主たる使用薬物 (使用薬物)	抗不安薬 (抗不安薬)		鎮痛薬 (鎮痛薬)		鎮咳薬 (鎮咳薬)	
年齢(歳)	男性	女性	男性	女性	男性	女性
10~14		1 (14.3%)				1 (14.3%)
15~19	1 (8.3%)	1 (14.3%)	1 (20.0%)		5 (31.3%)	2 (28.6%)
20~24	3 (25.0%)	1 (14.3%)		1 (25.0%)	4 (25.0%)	2 (28.6%)
25~29		2 (28.6%)			4 (25.0%)	
30~34	3 (25.0%)			1 (25.0%)		1 (14.3%)
35~39	1 (8.3%)					1 (14.3%)
40~44	3 (25.0%)					
45~49			1 (20.0%)	1 (25.0%)		
50~54					1 (6.3%)	
55~59			1 (20.0%)			
不明	1 (8.3%)	2 (28.6%)	2 (40.0%)	1 (25.0%)	2 (12.5%)	
計	12 (100.0%)	7 (100.0%)	5 (100.0%)	4 (100.0%)	16 (100.0%)	7 (100.0%)
平均年齢(男女別)	30.2±8.3	21.4±6.0	39.7±18.6	34.0±13.5	23.3±9.0	23.3±9.4
平均年齢(全体)	27.4±8.6		36.8±14.8		23.3±8.9	

表12-3 主たる使用薬物別にみた薬物初回使用年齢

主たる使用薬物 (使用薬物)	大 麻 (大 麻)		その他 (その他)	
年齢(歳)	男性	女性	男性	女性
15~19	7 (70.0%)	1 (33.3%)		1 (20.0%)
20~24	2 (20.0%)	0 (0.0%)	2 (22.2%)	1 (20.0%)
25~29		1 (33.3%)	1 (11.1%)	1 (20.0%)
30~34			2 (22.2%)	
35~39			1 (11.1%)	
45~49			2 (22.2%)	
50~54				1 (20.0%)
55~59				1 (20.0%)
不明	1 (10.0%)	1 (33.3%)	1 (11.1%)	(0.0%)
計	10 (100.0%)	3 (100.0%)	9 (100.0%)	5 (100.0%)
平均年齢(男女別)	20.7±4.7	20.5±6.4	31.0±9.1	35.2±18.1
平均年齢(全体)	20.7±4.7		32.4±12.3	

表12-4 主たる使用薬物別にみた薬物初回使用年齢

主たる使用薬物 (使用薬物)	多剤(医薬品)			
	(睡眠薬)		(抗不安薬)	
年齢(歳)	男性	女性	男性	女性
15～19		2 (16.7%)		3 (25.0%)
20～24		3 (25.0%)		2 (16.7%)
25～29	1 (50.0%)	2 (16.7%)	1 (50.0%)	2 (16.7%)
30～34		3 (25.0%)		3 (25.0%)
35～39				
40～44		1 (8.3%)		1 (8.3%)
不明	1 (50.0%)	1 (8.3%)	1 (50.0%)	1 (8.3%)
計	2 (100.0%)	12 (100.0%)	2 (100.0%)	12 (100.0%)
平均年齢(男女別)	28.0	26.8±6.7	28.0	26.4±7.1
平均年齢(全体)	26.9±6.4		26.5±6.8	

表12-5 主たる使用薬物別にみた薬物初回使用年齢

主たる使用薬物 (使用薬物)	多剤(規制薬物)					
	(覚せい剤)		(有機溶剤)		(大麻)	
年齢(歳)	男性	女性	男性	女性	男性	女性
10～14	1 (14.3%)		2 (50.0%)			
15～19	1 (14.3%)		1 (25.0%)	1 (100.0%)	1 (33.3%)	
20～24	3 (42.9%)		1 (25.0%)		1 (33.3%)	
25～29	1 (14.3%)					
30～34		1 (50.0%)				
35～39					1 (33.3%)	
不明	1 (14.3%)	1 (50.0%)				2 (100.0%)
計	7 (100.0%)	2 (100.0%)	4 (100.0%)	1 (100.0%)	3 (100.0%)	2 (100.0%)
平均年齢(男女別)	20.5±4.3	33.0	15.8±2.8	15.0	25.3±11.4	-
平均年齢(全体)	22.3±6.2		15.7±2.5		25.3±11.4	

表13 主たる薬物別にみた薬物使用期間

	主たる使用薬物						
	覚せい剤	有機溶剤	睡眠薬	抗不安薬	鎮痛薬	鎮咳薬	大麻
使用期間(年)							
平均	12.0±9.0	12.3±8.1	8.8±8.6	7.6±6.6	7.3±5.4	14.1±7.9	5.2±5.1
<1	5 (1.9%)	1 (1.2%)	0	2 (10.5%)	0	1 (4.3%)	1 (7.7%)
1～2	14 (5.3%)	4 (4.9%)	3 (6.4%)	0	0	1 (4.3%)	2 (15.4%)
2～3	12 (4.6%)	3 (3.7%)	6 (12.8%)	2 (10.5%)	2 (22.2%)	0	1 (15.4%)
3～4	7 (2.7%)	5 (6.2%)	2 (4.3%)	2 (10.5%)	0	0	2 (15.4%)
4～5	6 (2.3%)	3 (3.7%)	2 (4.3%)	0	0	0	1 (7.7%)
5～10	45 (17.2%)	15 (18.5%)	8 (17.0%)	4 (21.1%)	2 (22.2%)	4 (17.4%)	3 (23.1%)
10～15	44 (16.8%)	5 (6.2%)	4 (8.5%)	2 (10.5%)	1 (11.1%)	2 (8.7%)	1 (7.7%)
15～20	26 (9.9%)	14 (17.3%)	4 (8.5%)	2 (10.5%)	1 (11.1%)	3 (13.0%)	1 (7.7%)
20～25	22 (8.4%)	12 (14.8%)	0	1 (5.3%)	0	2 (8.7%)	0
25～30	6 (2.3%)	2 (2.5%)	1 (2.1%)	0	0	3 (13.0%)	0
30～35	8 (3.1%)	1 (1.2%)	0	0	0	2 (8.7%)	0
35≤	3 (1.1%)	0	1 (2.1%)	0	0	0	0
不明	64 (24.4%)	16 (19.8%)	16 (34.0%)	4 (21.1%)	3 (33.3%)	5 (21.7%)	1 (7.7%)
計	262 (100.0%)	81 (100.0%)	47 (100.0%)	19 (100.0%)	9 (100.0%)	23 (100.0%)	13 (100.0%)

表14-1 主たる使用薬物別にみた併用薬物と使用開始年齢

(併用薬物)	主たる使用薬物			
	覚せい剤	有機溶剤	大 麻	多剤(規制薬物)
なし	81 (30.9%)	43 (53.1%)	3 (23.1%)	0
覚せい剤	262 (100.0%) 21.2±5.1	30 (37.0%) 21.8±5.8	6 (46.2%) 22.8±4.6	17 (77.3%) 22.4±6.6
有機溶剤	143 (54.6%) 15.5±2.9	81 (100.0%) 16.8±6.5	1 (7.7%) 15	14 (63.6%) 16.1±5.0
睡眠薬	28 (10.7%) 27.5±10.2	9 (11.1%) 25.0±9.5	2 (15.4%) 23	4 (18.2%) 34.0±14.7
抗不安薬	17 (6.5%) 29.9±15.0	5 (6.2%) 29.5±10.6	0 (0.0%)	4 (18.2%) 21.7±0.6
鎮痛薬	7 (2.7%) 22.8±11.7	0 (0.0%)	0 (0.0%)	0 (0.0%)
鎮咳薬	9 (3.4%) 25.5±10.5	2 (2.5%) 18.5±2.1	0 (0.0%)	1 (4.5%) -
リタリン	6 (2.3%) 25.3±7.9	1 (1.2%) -	1 (7.7%) 21	3 (13.6%) 27.0±10.4
大麻	92 (35.1%) 21.2±5.7	14 (17.3%) 20.9±4.3	13 (100.0%) 20.7±4.7	12 (54.5%) 20.5±5.2
コカイン	29 (11.1%) 23.3±5.3	1 (1.2%) -	1 (7.7%) 34	3 (13.6%) 23.3±2.1
ヘロイン	9 (3.4%) 22.0±5.4	0 (0.0%)	0 (0.0%)	1 (4.5%) 21.0

(複数回答)

表14-2 主たる使用薬物別にみた併用薬物と使用開始年齢

(併用薬物)	主たる使用薬物					
	睡眠薬	抗不安薬	鎮痛薬	鎮咳薬	リタリン	多剤(医薬品)
なし	25 (53.2%)	6 (31.6%)	6 (66.7%)	11 (47.8%)	4 (26.7%)	0
覚せい剤	6 (12.8%) 22.3±4.6	2 (10.5%) 21.5±2.1	0 (0.0%)	4 (17.4%) 23.5±5.0	4 (26.7%) 25.5±6.0	6 (23.1%) 19.2±3.4
有機溶剤	3 (6.4%) 14.3±2.3	0 (0.0%)	0 (0.0%)	4 (17.4%) 14.3±2.1	2 (13.3%) -	5 (19.2%) 14.6±0.9
睡眠薬	47 (100.0%) 31.8±14.1	10 (52.6%) 28.1±9.7	3 (33.3%) 53.0±2.8	2 (8.7%) 20.0	6 (40.0%) 24.4±5.7	25 (96.2%) 24.2±6.2
抗不安薬	11 (23.4%) 30.5±6.4	19 (100.0%) 27.4±8.6	2 (22.2%) 51.0	3 (13.0%) 29.5±13.4	6 (40.0%) 23.8±6.4	24 (92.3%) 23.3±5.8
鎮痛薬	4 (8.5%) 28.3±3.4	3 (15.8%) 20.5±7.8	9 (100.0%) 36.8±14.8	1 (4.3%) 20.0	0 (0.0%)	3 (11.5%) 24.5±3.5
鎮咳薬	5 (10.6%) 24.2±10.1	1 (5.3%) 28.0	0 (0.0%)	23 (100.0%) 23.3±8.9	1 (6.7%) 17.0	4 (15.4%) 20.8±2.1
リタリン	2 (4.3%) 29.0±2.8	0 (0.0%)	0 (0.0%)	1 (4.3%) 30.0	15 (100.0%) 22.9±5.4	1 (3.8%) 33
大麻	5 (10.6%) 20.6±5.0	0 (0.0%)	0 (0.0%)	6 (26.1%) 15.8±1.9	2 (13.3%) 28.5±0.7	2 (7.7%) 17.5±2.1
コカイン	1 (2.1%) 22.0	0 (0.0%)	0 (0.0%)	1 (4.3%) 20.0	0 (0.0%)	0 (0.0%)
ヘロイン	0 (0.0%)	0 (0.0%)	0 (0.0%)	0 (0.0%)	0 (0.0%)	0 (0.0%)

(複数回答)

表15-1 主たる使用薬物別にみた過去1年間における使用薬物

(使用薬物)	主たる使用薬物				
	覚せい剤	有機溶剤	大麻	多剤(規制薬物)	その他
覚せい剤	75 (28.6%)	5 (6.2%)	2 (15.4%)	5 (22.7%)	0 (0.0%)
有機製剤	7 (2.7%)	38 (46.9%)	0 (0.0%)	4 (18.2%)	0 (0.0%)
大麻	13 (5.0%)	0 (0.0%)	7 (53.8%)	5 (22.7%)	1 (5.6%)
コカイン	1 (0.4%)	0 (0.0%)	0 (0.0%)	1 (4.5%)	0 (0.0%)
ヘロイン	0 (0.0%)	0 (0.0%)	0 (0.0%)	0 (0.0%)	6 (33.3%)
MDMA	4 (1.5%)	0 (0.0%)	1 (7.7%)	2 (9.1%)	0 (0.0%)
マジックマッシュルーム	1 (0.4%)	0 (0.0%)	0 (0.0%)	0 (0.0%)	0 (0.0%)
LSD	1 (0.4%)	0 (0.0%)	0 (0.0%)	0 (0.0%)	0 (0.0%)
睡眠薬	11 (4.2%)	1 (1.2%)	1 (7.7%)	2 (9.1%)	0 (0.0%)
抗不安薬	7 (2.7%)	1 (1.2%)	0 (0.0%)	2 (9.1%)	1 (5.6%)
鎮痛薬	7 (2.7%)	0 (0.0%)	0 (0.0%)	0 (0.0%)	1 (5.6%)
鎮咳薬	3 (1.1%)	0 (0.0%)	0 (0.0%)	1 (4.5%)	0 (0.0%)
リタリン	2 (0.8%)	0 (0.0%)	0 (0.0%)	1 (4.5%)	0 (0.0%)
薬物別計	262 (100.0%)	81 (100.0%)	13 (100.0%)	22 (100.0%)	18 (100.0%)

表15-2 主たる使用薬物別にみた過去1年間における使用薬物

(使用薬物)	主たる使用薬物					
	睡眠薬	抗不安薬	鎮痛薬	鎮咳薬	リタリン	多剤(医薬品)
覚せい剤	1 (2.1%)	1 (5.3%)	0 (0.0%)	0 (0.0%)	2 (13.3%)	0 (0.0%)
有機製剤	0 (0.0%)	1 (5.3%)	0 (0.0%)	0 (0.0%)	0 (0.0%)	0 (0.0%)
大麻	0 (0.0%)	0 (0.0%)	0 (0.0%)	0 (0.0%)	1 (6.7%)	0 (0.0%)
コカイン	0 (0.0%)	0 (0.0%)	0 (0.0%)	0 (0.0%)	0 (0.0%)	0 (0.0%)
ヘロイン	0 (0.0%)	0 (0.0%)	0 (0.0%)	(0.0%)	0 (0.0%)	0 (0.0%)
MDMA	0 (0.0%)	0 (0.0%)	0 (0.0%)	(0.0%)	1 (6.7%)	0 (0.0%)
マジックマッシュルーム	0 (0.0%)	0 (0.0%)	0 (0.0%)	(0.0%)	0 (0.0%)	0 (0.0%)
LSD	0 (0.0%)	0 (0.0%)	0 (0.0%)	0 (0.0%)	0 (0.0%)	0 (0.0%)
睡眠薬	36 (76.6%)	10 (52.6%)	2 (22.2%)	0 (0.0%)	5 (33.3%)	15 (57.7%)
抗不安薬	6 (12.8%)	18 (94.7%)	2 (22.2%)	1 (4.3%)	5 (33.3%)	15 (57.7%)
鎮痛薬	4 (8.5%)	3 (15.8%)	9 (100.0%)	1 (4.3%)	0 (0.0%)	3 (11.5%)
鎮咳薬	1 (2.1%)	0 (0.0%)	0 (0.0%)	13 (56.5%)	1 (6.7%)	1 (3.8%)
リタリン	1 (2.1%)	0 (0.0%)	0 (0.0%)	0 (0.0%)	10 (66.7%)	0 (0.0%)
薬物別計	47 (100.0%)	19 (100.0%)	9 (100.0%)	23 (100.0%)	15 (100.0%)	26 (100.0%)

表16 主たる使用薬物別にみた喫煙歴

	喫煙歴あり	禁煙中	喫煙歴なし	不明・記載なし	計	平均年齢
(主たる使用薬物)						
覚せい剤	216 (82.4%)	8 (3.1%)	5 (1.9%)	33 (12.6%)	262 (100.0%)	15.3±2.9
有機溶剤	67 (82.7%)	2 (2.5%)	1 (1.2%)	11 (13.6%)	81 (100.0%)	14.8±3.3
大麻	8 (61.5%)	2 (15.4%)	2 (15.4%)	1 (7.7%)	13 (100.0%)	17.0±1.6
睡眠薬	32 (68.1%)	3 (6.4%)	6 (12.8%)	6 (12.8%)	47 (100.0%)	18.8±4.7
抗不安薬	12 (63.2%)	0 (0.0%)	2 (10.5%)	5 (26.3%)	19 (100.0%)	15.6±1.8
鎮痛薬	7 (77.8%)	0 (0.0%)	0 (0.0%)	2 (22.2%)	9 (100.0%)	18.5±2.1
鎮咳薬	17 (73.9%)	1 (4.3%)	1 (4.3%)	4 (17.4%)	23 (100.0%)	16.0±2.3
リタリン	9 (60.0%)	1 (6.7%)	3 (20.0%)	2 (13.3%)	15 (100.0%)	15.5±0.6
多剤(規制薬物)	20 (76.9%)	0 (0.0%)	1 (3.8%)	5 (19.2%)	26 (100.0%)	15.4±1.5
多剤(医薬品)	13 (59.1%)	1 (4.5%)	2 (9.1%)	6 (27.3%)	22 (100.0%)	15.2±3.2
その他	9 (50.0%)	2 (11.1%)	2 (11.1%)	5 (27.8%)	18 (100.0%)	20.0±1.0
計	410 (76.6%)	20 (3.7%)	25 (4.7%)	80 (15.0%)	535 (100.0%)	15.6±3.1

表17 主たる使用薬物別にみた飲酒歴

	飲酒歴あり	禁酒中	飲酒歴なし	不明・記載なし	計	平均年齢
覚せい剤	169 (64.5%)	33 (12.6%)	21 (8.0%)	39 (14.9%)	262 (100.0%)	16.2±2.7
有機溶剤	54 (66.7%)	5 (6.2%)	9 (11.1%)	13 (16.0%)	81 (100.0%)	16.3±2.8
大麻	6 (46.2%)	3 (23.1%)	1 (7.7%)	3 (23.1%)	13 (100.0%)	17.3±2.2
睡眠薬	21 (44.7%)	6 (12.8%)	10 (21.3%)	10 (21.3%)	47 (100.0%)	17.9±3.7
抗不安薬	10 (52.6%)	1 (5.3%)	4 (21.1%)	4 (21.1%)	19 (100.0%)	15.9±1.9
鎮痛薬	5 (55.6%)	1 (11.1%)	0 (0.0%)	3 (33.3%)	9 (100.0%)	19.0±1.2
鎮咳薬	17 (73.9%)	2 (8.7%)	0 (0.0%)	4 (17.4%)	23 (100.0%)	16.3±2.2
リタリン	8 (53.3%)	0 (0.0%)	5 (33.3%)	2 (13.3%)	15 (100.0%)	17.8±1.3
多剤(規制薬物)	15 (57.7%)	3 (11.5%)	4 (15.4%)	4 (15.4%)	26 (100.0%)	20.8±12.1
多剤(医薬品)	11 (50.0%)	1 (4.5%)	5 (22.7%)	5 (22.7%)	22 (100.0%)	15.0±5.7
その他	9 (50.0%)	2 (11.1%)	2 (11.1%)	5 (27.8%)	18 (100.0%)	19.3±4.5
計	325 (60.7%)	57 (10.7%)	61 (11.4%)	92 (17.2%)	535 (100.0%)	16.6±2.9

表18 薬物別にみた乱用開始から依存に至る期間(月)

	薬物別LOTAD*												
	覚せい剤	有機製剤	大麻	コカイン	ヘロイン	MDMA	マジックマッシュルーム	LSD	睡眠剤	抗不安薬	鎮痛薬	鎮咳薬	リタリン
平均	30.2	19.5	32.7	7.0	6.5	10.9	6.5	20.0	28.7	17.7	23.3	22.6	9.2
S.D.	50.2	39.7	53.2	7.1	6.4	15.3	7.8	6.9	36.2	19.2	49.4	30.5	9.3
報告症例数	141	94	17	2	4	6	2	3	38	27	8	15	13

表19 初回使用薬物

	n	%
有機溶剤	237	(44.3%)
覚せい剤	102	(19.1%)
睡眠薬	54	(10.1%)
大 麻	35	(6.5%)
抗不安薬	17	(3.2%)
鎮咳薬	17	(3.2%)
リタリン	13	(2.4%)
その他	11	(2.1%)
鎮痛薬	9	(1.7%)
ヘロイン	6	(1.1%)
MDMA(エクスタシー)	5	(0.9%)
不明・記載なし	29	(5.4%)
合 計	535	(100.0%)

表20-1 薬物初回使用の動機(複数回答)

(動機)	主たる使用薬物									
	覚せい剤		有機溶剤		睡眠薬		抗不安薬		鎮痛薬	
	(男)	(女)	(男)	(女)	(男)	(女)	(男)	(女)	(男)	(女)
誘われて	96 (46.2%)	27 (50.0%)	32 (50.0%)	9 (52.9%)	3 (10.7%)	3 (15.8%)	1 (8.3%)	1 (14.3%)	0	0
刺激を求めて	50 (24.0%)	5 (9.3%)	11 (17.2%)	1 (5.9%)	0	0	1 (8.3%)	1 (14.3%)	0	0
好奇心・興味から	101 (48.6%)	18 (33.3%)	26 (40.6%)	11 (64.7%)	2 (7.1%)	4 (21.1%)	1 (8.3%)	0	0	0
断り切れずに	17 (8.2%)	6 (11.1%)	3 (4.7%)	3 (17.6%)	1 (3.6%)	1 (5.3%)	0	1 (14.3%)	0	0
自暴自棄になって	6 (2.9%)	1 (1.9%)	2 (3.1%)	3 (17.6%)	0	2 (10.5%)	0	0	0	0
覚醒効果を求めて	7 (3.4%)	1 (1.9%)	1 (1.6%)	0	0	0	0	0	0	0
疲労の除去	6 (2.9%)	0	0	0	0	0	0	1 (14.3%)	0	0
性的効果を求めて	3 (1.4%)	5 (9.3%)	0	0	0	0	0	0	0	0
ストレス解消	18 (8.7%)	2 (3.7%)	1 (1.6%)	2 (11.8%)	1 (3.6%)	2 (10.5%)	3 (25.0%)	1 (14.3%)	0	0
抑うつ気分の軽減	6 (2.9%)	0	1 (1.6%)	0	3 (10.7%)	1 (5.3%)	4 (33.3%)	1 (14.3%)	0	1 (25.0%)
不安の軽減	6 (2.9%)	2 (3.7%)	1 (1.6%)	2 (11.8%)	8 (28.6%)	6 (31.6%)	9 (75.0%)	2 (28.6%)	0	1 (25.0%)
不眠の軽減	2 (1.0%)	0	2 (3.1%)	0	17 (60.7%)	8 (42.1%)	1 (8.3%)	0	0	1 (25.0%)
疼痛の軽減	1 (0.5%)	0	0	0	0	1 (5.3%)	0	2 (28.6%)	3 (60.0%)	2 (50.0%)
咳嗽の軽減	0	0 (0.0%)	0	0	0	0	0	0	0	0
やせるため	0	3 (5.6%)	2 (3.1%)	0 (1.0%)	0	0	0	0	0	0
その他	3 (1.4%)	2 (3.7%)	1 (1.6%)	0	0	0	0	0	0	0
症例数	208 (100.0%)	54 (100.0%)	64 (100.0%)	17 (100.0%)	28 (100.0%)	19 (100.0%)	12 (100.0%)	7 (100.0%)	5 (100.0%)	4 (100.0%)

表21-1 薬物初回使用の契機となった人物(複数回答)

	主たる使用薬物									
	覚せい剤		有機溶剤		睡眠薬		抗不安薬		鎮痛薬	
	(男)	(女)	(男)	(女)	(男)	(女)	(男)	(女)	(男)	(女)
なし(自発的使用)	14 (6.7%)	2 (3.7%)	9 (14.1%)	0	5 (17.9%)	2 (10.5%)	1 (8.3%)	1 (14.3%)	2 (40.0%)	1 (25.0%)
配偶者	0	0	1 (1.6%)	1 (5.9%)	0	0	0	1 (14.3%)	0	0
同棲相手	0	2 (3.7%)	0	1 (5.9%)	1 (3.6%)	0	0	0	0	0
恋人・愛人	1 (0.5%)	11 (20.4%)	1 (1.6%)	1 (5.9%)	0	1 (5.3%)	0	0	0	0
同性の友人	107 (51.4%)	15 (27.8%)	29 (45.3%)	6 (35.3%)	2 (7.1%)	3 (15.8%)	1 (8.3%)	0	0	0
異性の友人	6 (2.9%)	17 (31.5%)	5 (7.8%)	8 (47.1%)	0	0	0	1 (14.3%)	0	0
知人	17 (8.2%)	4 (7.4%)	3 (4.7%)	0	0	0	0	1 (14.3%)	0	0
医師	0	0	0	0	13 (46.4%)	9 (47.4%)	8 (66.7%)	2 (28.6%)	1 (20.0%)	2 (50.0%)
薬剤師	0	0	0	0	2 (7.1%)	0	0	0	0	0
親	1 (0.5%)	0	0	0	1 (3.6%)	0	0	1 (14.3%)	0	0
同胞	5 (2.4%)	0	2 (3.1%)	0	0	0	0	0	0	0
密売人	4 (1.9%)	0	0	0	0	0	1 (8.3%)	0	0	0
その他	8 (3.8%)	2 (3.7%)	2 (3.1%)	0	0	0	1 (8.3%)	0	1 (20.0%)	0
症例数	208 (100.0%)	54 (100.0%)	64 (100.0%)	17 (100.0%)	28 (100.0%)	19 (100.0%)	12 (100.0%)	7 (100.0%)	5 (100.0%)	4 (100.0%)

表21-2 薬物初回使用の契機となった人物(複数回答)

	主たる使用薬物									
	鎮咳薬		大麻		リタリン		多剤 (医薬品)		多剤 (規制薬物)	
	(男)	(女)	(男)	(女)	(男)	(女)	(男)	(女)	(男)	(女)
なし(自発的使用)	3 (18.8%)	3 (42.9%)	0	0	0	0	2 (22.2%)	3 (17.6%)	2 (12.5%)	0
配偶者	0	0	0	0	0	0	0	1 (5.9%)	0	1 (16.7%)
同棲相手	0	0	0	0	0	0	0	0	0	0
恋人・愛人	0	1 (14.3%)	0	0	0	0	0	0	0	0
同性の友人	5 (31.3%)	2 (28.6%)	5 (50.0%)	0	0	2 (40.0%)	3 (33.3%)	2 (11.8%)	9 (56.3%)	4 (66.7%)
異性の友人	0	0	0	1 (33.3%)	0	0	0	1 (5.9%)	0	3 (50.0%)
知人	0	1 (14.3%)	1 (10.0%)	0	0	0	0	0	2 (12.5%)	0
医師	1 (6.3%)	0	0	0	8 (80.0%)	3 (60.0%)	3 (33.3%)	7 (41.2%)	0	0
薬剤師	1 (6.3%)	0	0	0	1 (10.0%)	0	0	0	0	0
親	0	0	0	0	0	0	0	1 (5.9%)	1 (6.3%)	0
同胞	0	0	0	0	0	0	0	1 (5.9%)	0	0
密売人	0	0	0	0	0	0	0	0	1 (6.3%)	0
その他	1 (6.3%)	0	1 (10.0%)	0	0	0	2 (22.2%)	1 (5.9%)	0	0
症例数	16 (100.0%)	7 (100.0%)	10 (100.0%)	3 (100.0%)	10 (100.0%)	5 (100.0%)	9 (100.0%)	17 (100.0%)	16 (100.0%)	6 (100.0%)

表22-1 薬物の入手経路(複数回答)

	主たる使用薬物									
	覚せい剤		有機溶剤		睡眠薬		抗不安薬		鎮痛薬	
	(男)	(女)	(男)	(女)	(男)	(女)	(男)	(女)	(男)	(女)
最近1年間は使用せず	113 (54.3%)	24 (44.4%)	24 (37.5%)	4 (23.5%)	3 (10.7%)	2 (10.5%)	0	0	1 (20.0%)	1 (25.0%)
友人	8 (3.8%)	3 (5.6%)	3 (4.7%)	4 (23.5%)	0	0	1 (8.3%)	0	0	0
知人	11 (5.3%)	3 (5.6%)	3 (4.7%)	1 (5.9%)	1 (3.6%)	0	0	0	0	0
恋人・愛人	1 (0.5%)	5 (9.3%)	1 (1.6%)	1 (5.9%)	0	0	0	0	0	0
家族	2 (1.0%)	0	0	0	0	0	0	1 (14.3%)	0	0
密売人(日本人)	28 (13.5%)	4 (7.4%)	4 (6.3%)	3 (17.6%)	0	1 (5.3%)	0	0	0	0
密売人(外国人)	10 (4.8%)	3 (5.6%)	0	0	0	0	0	0	0	0
医師	0	0	0	0	21 (75.0%)	11 (57.9%)	9 (75.0%)	5 (71.4%)	0	2 (50.0%)
薬局	0	0	0	0	4 (14.3%)	4 (21.1%)	2 (16.7%)	1 (14.3%)	2 (40.0%)	2 (50.0%)
その他	3 (1.4%)	2 (3.7%)	11 (17.2%)	5 (29.4%)	0	0	0	0	1 (20.0%)	0
症例数	208 (100.0%)	54 (100.0%)	64 (100.0%)	17 (100.0%)	28 (100.0%)	19 (100.0%)	12 (100.0%)	7 (100.0%)	5 (100.0%)	4 (100.0%)

表22-2 薬物の入手経路(複数回答)

	主たる使用薬物									
	鎮咳薬		大麻		リタリン		多剤 (医薬品)		多剤 (規制薬物)	
	(男)	(女)	(男)	(女)	(男)	(女)	(男)	(女)	(男)	(女)
最近1年間は使用せず	6 (37.5%)	2 (28.6%)	3 (30.0%)	0	1 (10.0%)	2 (40.0%)	1 (11.1%)	3 (17.6%)	6 (37.5%)	3 (50.0%)
友人	0	0	1 (10.0%)	1 (33.3%)	0	0	0	0	3 (18.8%)	1 (16.7%)
知人	0	0	1 (10.0%)	0	0	0	0	0	2 (12.5%)	1 (16.7%)
恋人・愛人	0	0	0	0	0	0	0	0	0	0
家族	0	0	0	0	0	0	0	0	0	0
密売人(日本人)	0	0	2 (20.0%)	0	0	1 (20.0%)	0	1 (5.9%)	2 (12.5%)	0
密売人(外国人)	0	0	1 (10.0%)	0	0	0	0	0	0	0
医師	0	0	0	0	9 (90.0%)	2 (40.0%)	5 (55.6%)	12 (70.6%)	3 (18.8%)	0
薬局	8 (50.0%)	4 (57.1%)	0	0	0	1 (20.0%)	3 (33.3%)	2 (11.8%)	1 (6.3%)	0
その他	0	1 (14.3%)	0	0	0	0	2 (22.2%)	0	2 (12.5%)	0
症例数	16 (100.0%)	7 (100.0%)	10 (100.0%)	3 (100.0%)	10 (100.0%)	5 (100.0%)	9 (100.0%)	17 (100.0%)	16 (100.0%)	6 (100.0%)

表23-1 主たる使用薬物別にみたICD-10分類による主診断

	ICD-10分類									薬物別 症例数
	[F1x.0]	[F1x.1]	[F1x.2]	[F1x.4]	[F1x.5]	[F1x.57]	[F1x.6]	[F1x.7]	[F1x.8]	
	急性中 毒	有害な 使用	依存症 候群	せん妄 を伴う離 脱状態	精神病 性障害 (症状持 続<6M)	精神病 性障害 (症状持 続>6M) *	健忘症 候群	残遺性 障害お よび遅 発性精 神病性 障害	他の精 神およ び行動 の障害	
覚せい剤	13 (5.0%)	5 (1.9%)	46 (17.6%)	0 (0.0%)	34 (13.0%)	66 (25.2%)	0 (0.0%)	90 (34.4%)	8 (3.1%)	262 (100.0%)
有機溶剤	8 (9.9%)	4 (4.9%)	29 (35.8%)	0 (0.0%)	3 (3.7%)	21 (25.9%)	1 (1.2%)	13 (16.0%)	2 (2.5%)	81 (100.0%)
睡眠薬	1 (2.1%)	0 (0.0%)	40 (85.1%)	2 (4.3%)	2 (4.3%)	0 (0.0%)	0 (0.0%)	2 (4.3%)	0 (0.0%)	47 (100.0%)
抗不安薬	1 (5.3%)	2 (10.5%)	15 (78.9%)	0 (0.0%)	0 (0.0%)	1 (5.3%)	0 (0.0%)	0 (0.0%)	0 (0.0%)	19 (100.0%)
鎮痛薬	0 (0.0%)	1 (11.1%)	7 (77.8%)	0 (0.0%)	0 (0.0%)	0 (0.0%)	0 (0.0%)	0 (0.0%)	0 (0.0%)	9 (100.0%)
鎮咳薬	0 (0.0%)	0 (0.0%)	15 (65.2%)	0 (0.0%)	2 (8.7%)	0 (0.0%)	0 (0.0%)	6 (26.1%)	0 (0.0%)	23 (100.0%)
大 麻	0 (0.0%)	0 (0.0%)	4 (30.8%)	0 (0.0%)	4 (30.8%)	4 (30.8%)	0 (0.0%)	1 (7.7%)	0 (0.0%)	13 (100.0%)
リタリン	0 (0.0%)	0 (0.0%)	11 (73.3%)	0 (0.0%)	1 (6.7%)	0 (0.0%)	0 (0.0%)	3 (20.0%)	0 (0.0%)	15 (100.0%)
その他	3 (16.7%)	0 (0.0%)	11 (61.1%)	0 (0.0%)	1 (5.6%)	0 (0.0%)	0 (0.0%)	1 (5.6%)	1 (5.6%)	18 (100.0%)
多剤(医薬品)	1 (3.8%)	2 (7.7%)	19 (73.1%)	1 (3.8%)	0 (0.0%)	1 (3.8%)	0 (0.0%)	2 (7.7%)	0 (0.0%)	26 (100.0%)
多剤(規制薬物)	0 (0.0%)	2 (9.1%)	5 (22.7%)	0 (0.0%)	3 (13.6%)	3 (13.6%)	0 (0.0%)	9 (40.9%)	0 (0.0%)	22 (100.0%)
合 計	27 (5.0%)	16 (3.0%)	202 (37.8%)	3 (0.6%)	50 (9.3%)	96 (17.9%)	1 (0.2%)	127 (23.7%)	12 (2.2%)	535 (100.0%)

(注) 精神病性障害(症状持続>6M)* : ICD-10には含まれない項目

表23-2 主・副診断いずれかにおける依存症候群

	依存症候群に該当する症例(%)		薬物別症例数
覚せい剤	155	(59.2%)	262
有機溶剤	51	(63.0%)	81
大 麻	9	(69.2%)	13
睡眠薬	45	(95.7%)	47
抗不安薬	16	(84.2%)	19
鎮痛薬	7	(77.8%)	9
鎮咳薬	19	(82.6%)	23
リタリン	14	(93.3%)	15
多剤(規制薬物)	15	(68.2%)	22
多剤(医薬品)	22	(84.6%)	26
その他	12	(66.7%)	18
合 計	365	(68.2%)	535

表24 性別にみたICD-10による主診断

	男 性		女 性		計	
【F1x.0】急性中毒	20	(5.1%)	7	(4.8%)	27	(5.0%)
【F1x.1】有害な使用	12	(3.1%)	4	(2.8%)	16	(3.0%)
【F1x.2】依存症候群	129	(33.1%)	73	(50.3%)	202	(37.8%)
【F1x.4】せん妄離脱状態	2	(0.5%)	1	(0.7%)	3	(0.6%)
【F1x.5】精神病性障害(<6M)	34	(8.7%)	16	(11.0%)	50	(9.3%)
【F1x.57】精神病性障害(>6M)	82	(21.0%)	14	(9.7%)	96	(17.9%)
【F1x.6】健忘症候群	1	(0.3%)	0	(0.0%)	1	(0.2%)
【F1x.7】残遺・遅発性障害	100	(25.6%)	27	(18.6%)	127	(23.7%)
【F1x.8】その他	9	(2.3%)	2	(1.4%)	11	(2.1%)
(不明・記載なし)	1	(0.3%)	1	(0.7%)	2	(0.4%)
計	390	(100.0%)	145	(100.0%)	535	(100.0%)

表25-1 主たる使用薬物別にみた臨床用量依存症例

主たる使用薬物	症例数	各薬物別症例における割合(%)	各薬物別症例数
睡眠薬および抗不安薬	56	(84.8%)	66
多剤(医薬品)	21	(80.8%)	26
リタリン	7	(46.7%)	15
多剤(規制薬物)	6	(27.3%)	22
鎮咳薬	4	(17.4%)	23
その他	2	(11.1%)	18
鎮痛薬	1	(11.1%)	9
大 麻	1	(7.7%)	13
覚せい剤	6	(2.3%)	262
合 計	104	(22.9%)	454

表25-2 臨床用量依存のガイドライン項目該当数

診断ガイドライン	該当症例数	(%)
1) 不安や不眠などの治療目的で開始した臨床用量を6ヶ月以上継続服用している	78	(75.0%)
2) 本来の症状は解消されて寛解状態にある	35	(33.7%)
3) その間、使用量の著しい増加を認めない	47	(45.2%)
4) 中断によって反跳現象／退薬症候が出現する	32	(30.8%)
5) 計画的な漸減・中止により退薬症候の出現が避けられた場合に、ベンゾジアゼピンの服用なしに経過する	27	(26.0%)

表26 精神病エピソードの既往と精神科治療開始年齢

主たる使用薬物	精神病エピソードの既往					不明・記載なし		精神科治療開始年齢	薬物別症例数
	既往あり			既往なし					
	例数	(%)	発症年齢	例数	(%)				
覚せい剤	183	(69.8%)	27.3±8.3	34	(13.0%)	45	(17.2%)	29.3±9.4	262
有機溶剤	41	(50.6%)	23.9±7.2	25	(30.9%)	15	(18.5%)	24.0±7.1	81
大 麻	8	(61.5%)	24.1±5.6	2	(15.4%)	3	(23.1%)	25.5±5.1	13
睡眠薬	11	(23.4%)	34.4±20.8	30	(63.8%)	6	(12.8%)	36.9±18.0	47
抗不安薬	3	(15.8%)	19	16	(84.2%)	0	(0.0%)	32.2±9.8	19
鎮痛薬	4	(44.4%)	41.0±21.9	4	(44.4%)	1	(11.1%)	41.2±14.6	9
鎮咳薬	5	(21.7%)	26.8±5.1	11	(47.8%)	7	(30.4%)	33.2±11.1	23
リタリン	9	(60.0%)	25.8±6.1	5	(33.3%)	1	(6.7%)	24.0±7.1	15
多剤(規制薬物)	16	(72.7%)	26.3±12.0	5	(22.7%)	1	(4.5%)	30.0±12.6	22
多剤(医薬品)	6	(23.1%)	27.5±8.1	14	(53.8%)	6	(23.1%)	28.0±9.1	26
その他	3	(16.7%)	26.0±1.4	9	(50.0%)	6	(33.3%)	31.1±8.9	18
合 計	289	(54.0%)	27.0±9.3	155	(29.0%)	91	(17.0%)	29.4±10.9	535

表27 精神疾患の家族歴

	家族歴なし		家族歴あり		不明・記載なし		薬物別症例数
	例数	(%)	例数	(%)			
覚せい剤	143	(54.6%)	64	(24.4%)	55	(21.0%)	262
有機溶剤	47	(58.0%)	18	(22.2%)	16	(19.8%)	81
大麻	7	(53.8%)	5	(38.5%)	1	(7.7%)	13
睡眠薬	26	(55.3%)	10	(21.3%)	11	(23.4%)	47
抗不安薬	10	(52.6%)	4	(21.1%)	5	(26.3%)	19
鎮痛薬	2	(22.2%)	3	(33.3%)	4	(44.4%)	9
鎮咳薬	11	(47.8%)	7	(30.4%)	5	(21.7%)	23
リタリン	8	(53.3%)	5	(33.3%)	2	(13.3%)	15
多剤(規制薬物)	10	(45.5%)	5	(22.7%)	7	(31.8%)	22
多剤(医薬品)	10	(38.5%)	7	(26.9%)	9	(34.6%)	26
その他	8	(44.4%)	2	(11.1%)	8	(44.4%)	18
計	282	(52.7%)	130	(24.3%)	123	(23.0%)	535

表28-1 気分障害の併存(薬物別)

	気分障害の併存の有無								薬物別 症例数		
	(1) 併存あり		(2) 併存が疑われる		(1)+(2)		併存なし			不明・記載なし	
覚せい剤	16	(6.1%)	40	(15.3%)	56	(21.4%)	158	(60.3%)	48	(22.4%)	262
有機溶剤	2	(2.5%)	6	(7.4%)	8	(9.9%)	55	(67.9%)	18	(28.6%)	81
大麻	1	(7.7%)	3	(23.1%)	4	(30.8%)	8	(61.5%)	1	(8.3%)	13
睡眠薬	8	(17.0%)	11	(23.4%)	19	(40.4%)	24	(51.1%)	4	(9.3%)	47
抗不安薬	4	(21.1%)	2	(10.5%)	6	(31.6%)	12	(63.2%)	1	(5.6%)	19
鎮痛薬	2	(22.2%)	0	(0.0%)	2	(22.2%)	6	(66.7%)	1	(12.5%)	9
鎮咳薬	3	(13.0%)	4	(17.4%)	7	(30.4%)	15	(65.2%)	1	(4.5%)	23
リタリン	6	(40.0%)	2	(13.3%)	8	(53.3%)	7	(46.7%)	0	(0.0%)	15
多剤(規制薬物)	1	(4.5%)	6	(27.3%)	7	(31.8%)	15	(68.2%)	0	(0.0%)	22
多剤(医薬品)	4	(15.4%)	13	(50.0%)	17	(65.4%)	4	(15.4%)	5	(23.8%)	26
その他	4	(22.2%)	1	(5.6%)	5	(27.8%)	9	(50.0%)	4	(28.6%)	18
計	51	(9.5%)	88	(16.4%)	139	(26.0%)	313	(58.5%)	83	(18.4%)	535

表28-2 気分障害の併存(性別)

	気分障害の併存の有無								性別症 例数		
	(1) 併存あり		(2) 併存が疑われる		(1)+(2)		併存なし			不明・記載なし	
男性	34	(8.7%)	55	(14.1%)	89	(22.8%)	239	(61.3%)	62	(15.9%)	390
女性	17	(11.7%)	33	(22.8%)	50	(34.5%)	74	(51.0%)	21	(14.5%)	145
計	51	(9.5%)	88	(16.4%)	139	(26.0%)	313	(58.5%)	83	(15.5%)	535

表28-3 気分障害の類型(薬物別)

	気分障害の類型別症例数(%薬物別気分障害症例)								気分障害の並存 あり(計)	
	うつ病性障害		双極性障害		気分循環性障害		NOS・その他			
覚せい剤	36	(64.3%)	3	(5.4%)	2	(3.6%)	7	(12.5%)	56	(100.0%)
有機溶剤	1	(12.5%)	2	(25.0%)	0	(0.0%)	2	(25.0%)	8	(100.0%)
大麻	3	(75.0%)	0	(0.0%)	0	(0.0%)	0	(0.0%)	4	(100.0%)
睡眠薬	15	(78.9%)	1	(5.3%)	1	(5.3%)	2	(10.5%)	19	(100.0%)
抗不安薬	6	(100.0%)	0	(0.0%)	0	(0.0%)	0	(0.0%)	6	(100.0%)
鎮痛薬	2	(100.0%)	0	(0.0%)	0	(0.0%)	0	(0.0%)	2	(100.0%)
鎮咳薬	4	(57.1%)	1	(14.3%)	0	(0.0%)	0	(0.0%)	7	(100.0%)
リタリン	7	(87.5%)	1	(12.5%)	0	(0.0%)	0	(0.0%)	8	(100.0%)
多剤(規制薬物)	5	(71.4%)	0	(0.0%)	1	(14.3%)	1	(14.3%)	7	(100.0%)
多剤(医薬品)	17	(100.0%)	0	(0.0%)	0	(0.0%)	1	(5.9%)	17	(100.0%)
その他	3	(60.0%)	0	(0.0%)	0	(0.0%)	1	(20.0%)	5	(100.0%)
計	99	(71.2%)	8	(5.8%)	4	(2.9%)	14	(10.1%)	139	(100.0%)

(うつ病性障害:大うつ病性障害、気分変調性障害を含む)

表28-4 気分障害の類型(性別)

	気分障害の類型別症例数(%薬物別気分障害症例)								気分障害の並存 あり(計)	
	うつ病性障害		双極性障害		気分循環性障害		NOS・その他			
男性	61	(68.5%)	8	(9.0%)	3	(3.4%)	6	(6.7%)	89	(100.0%)
女性	38	(76.0%)	0	(0.0%)	1	(2.0%)	8	(16.0%)	50	(100.0%)
計	99	(71.2%)	8	(5.8%)	4	(2.9%)	14	(10.1%)	139	(100.0%)

表28-5 気分障害の発症と薬物使用との時間的關係

	薬物使用前		薬物使用后		計	
うつ病性障害	37	(45.7%)	44	(54.3%)	81	(100.0%)
双極性障害	2	(28.6%)	5	(71.4%)	7	(100.0%)
気分循環性障害	3	(100.0%)	0	(0.0%)	3	(100.0%)
特定不能	2	(50.0%)	2	(50.0%)	4	(100.0%)
その他	2	(25.0%)	6	(75.0%)	8	(100.0%)
計	46	(44.7%)	57	(55.3%)	103	(100.0%)

表29-1 成育史上の問題の有無(薬物別)

	成育史上何らかの問題が報告された症例 (%薬物別症例)	成育史上の問題の内容				
		「15歳以前」の 親との離別	不登校	いじめられ体験	家庭内暴力	被虐待体験
覚せい剤	98 (37.4%)	37 (37.8%)	35 (35.7%)	22 (22.4%)	22 (22.4%)	28 (28.6%)
有機溶剤	33 (40.7%)	11 (33.3%)	12 (36.4%)	14 (42.4%)	8 (24.2%)	3 (9.1%)
大麻	5 (38.5%)	3 (60.0%)	1 (20.0%)	1 (20.0%)	1 (20.0%)	1 (20.0%)
睡眠薬	12 (25.5%)	3 (25.0%)	5 (41.7%)	6 (50.0%)	2 (16.7%)	2 (16.7%)
抗不安薬	12 (63.2%)	4 (33.3%)	3 (25.0%)	2 (16.7%)	4 (33.3%)	4 (33.3%)
鎮痛薬	0 (0.0%)	0 (0.0%)	0 (0.0%)	0 (0.0%)	0 (0.0%)	0 (0.0%)
鎮咳薬	7 (30.4%)	3 (42.9%)	1 (14.3%)	0 (0.0%)	1 (14.3%)	3 (42.9%)
リタリン	7 (46.7%)	3 (42.9%)	3 (42.9%)	3 (42.9%)	1 (14.3%)	0 (0.0%)
多剤(規制薬物)	11 (50.0%)	4 (36.4%)	4 (36.4%)	2 (18.2%)	0 (0.0%)	0 (0.0%)
多剤(医薬品)	16 (61.5%)	4 (25.0%)	8 (50.0%)	7 (43.8%)	5 (31.3%)	8 (50.0%)
その他	3 (16.7%)	1 (33.3%)	0 (0.0%)	1 (33.3%)	0 (0.0%)	1 (33.3%)
計	204 (38.1%)	73 (35.8%)	72 (35.3%)	58 (28.4%)	44 (21.6%)	50 (24.5%)

表29-2 成育史上の問題の有無(薬物別)

	成育史上何らかの問題が報告された症例 (%性別症例)	成育史上の問題の内容				
		「15歳以前」の 親との離別	不登校	いじめられ体験	家庭内暴力	被虐待体験
男性	130 (33.3%)	47 (36.2%)	45 (34.6%)	30 (23.1%)	28 (21.5%)	26 (20.0%)
女性	74 (51.0%)	26 (35.1%)	27 (36.5%)	28 (37.8%)	16 (21.6%)	24 (32.4%)
計	204 (38.1%)	73 (35.8%)	72 (35.3%)	58 (28.4%)	44 (21.6%)	50 (24.5%)

表30-1 自傷行為または自殺企図の有無(薬物別)

	あり	なし	不明・記載なし	薬物別計
覚せい剤	88 (33.6%)	120 (45.8%)	54 (20.6%)	262 (100.0%)
有機溶剤	21 (25.9%)	47 (58.0%)	13 (16.0%)	81 (100.0%)
大麻	4 (30.8%)	7 (53.8%)	2 (15.4%)	13 (100.0%)
睡眠薬	17 (36.2%)	23 (48.9%)	7 (14.9%)	47 (100.0%)
抗不安薬	11 (57.9%)	5 (26.3%)	3 (15.8%)	19 (100.0%)
鎮痛薬	2 (22.2%)	4 (44.4%)	3 (33.3%)	9 (100.0%)
鎮咳薬	5 (21.7%)	12 (52.2%)	6 (26.1%)	23 (100.0%)
リタリン	6 (40.0%)	8 (53.3%)	1 (6.7%)	15 (100.0%)
多剤(規制薬物)	10 (45.5%)	6 (27.3%)	6 (27.3%)	22 (100.0%)
多剤(医薬品)	18 (69.2%)	7 (26.9%)	1 (3.8%)	26 (100.0%)
その他	4 (22.2%)	9 (50.0%)	5 (27.8%)	18 (100.0%)
計	186 (34.8%)	248 (46.4%)	101 (18.9%)	535 (100.0%)

表30-2 自傷行為または自殺企図の有無(性別)

	あり		なし		不明・記載なし		性別計	
男性	104	(26.7%)	212	(54.4%)	74	(19.0%)	390	(100.0%)
女性	82	(56.6%)	36	(24.8%)	27	(18.6%)	145	(100.0%)
計	186	(34.8%)	248	(46.4%)	101	(18.9%)	535	(100.0%)

表31-1 反社会性パーソナリティ障害の併存(薬物別)

	(1)診断基準を 満たす		(2)診断基準は 満たさないが傾 向がある		(1)および(2)		薬物使用との時間的關係	
							薬物使用前から 存在した	薬物使用後に 顕在化した
覚せい剤	21	(8.0%)	49	(18.7%)	70	(26.7%)	25 (35.7%)	21 (30.0%)
有機溶剤	6	(7.4%)	9	(11.1%)	15	(18.5%)	7 (46.7%)	4 (26.7%)
大麻	1	(7.7%)	2	(15.4%)	3	(23.1%)	2 (66.7%)	0 (0.0%)
睡眠薬	2	(4.3%)	4	(8.5%)	6	(12.8%)	2 (33.3%)	1 (16.7%)
抗不安薬	1	(5.3%)	2	(10.5%)	3	(15.8%)	2 (66.7%)	0 (0.0%)
鎮痛薬	0	(0.0%)	1	(11.1%)	1	(11.1%)	1 (100.0%)	0 (0.0%)
鎮咳薬	0	(0.0%)	4	(17.4%)	4	(17.4%)	0 (0.0%)	4 (100.0%)
リタリン	0	(0.0%)	1	(6.7%)	1	(6.7%)	0 (0.0%)	0 (0.0%)
多剤(規制薬物)	2	(9.1%)	5	(22.7%)	7	(31.8%)	4 (57.1%)	2 (28.6%)
多剤(医薬品)	0	(0.0%)	3	(11.5%)	3	(11.5%)	1 (33.3%)	1 (33.3%)
その他	0	(0.0%)	1	(5.6%)	1	(5.6%)	0 (0.0%)	1 (100.0%)
計	33	(6.2%)	81	(15.1%)	114	(21.3%)	44 (38.6%)	34 (29.8%)

表31-2 反社会性パーソナリティ障害の併存(性別)

	(1)診断基準を 満たす		(2)診断基準は 満たさないが傾 向がある		(1)および(2)		薬物使用との時間的關係	
							薬物使用前から 存在した	薬物使用後に 顕在化した
男性	27	(6.9%)	66	(16.9%)	93	(23.8%)	34 (36.6%)	26 (28.0%)
女性	6	(4.1%)	15	(10.3%)	21	(14.5%)	10 (47.6%)	8 (38.1%)
計	33	(6.2%)	81	(15.1%)	114	(21.3%)	44 (38.6%)	34 (29.8%)

表31-3 境界性パーソナリティ障害の併存(薬物別)

	(1)診断基準を 満たす	(2)診断基準は 満たさないが傾 向がある	(1)および(2)	薬物使用との時間的關係	
				薬物使用前から 存在した	薬物使用後に 顕在化した
覚せい剤	7 (2.7%)	28 (10.7%)	35 (13.4%)	11 (31.4%)	5 (14.3%)
有機溶剤	1 (1.2%)	6 (7.4%)	7 (8.6%)	2 (28.6%)	1 (14.3%)
大麻	1 (7.7%)	0 (0.0%)	1 (7.7%)	1 (100.0%)	0 (0.0%)
睡眠薬	6 (12.8%)	5 (10.6%)	11 (23.4%)	7 (63.6%)	0 (0.0%)
抗不安薬	3 (15.8%)	4 (21.1%)	7 (36.8%)	5 (71.4%)	1 (14.3%)
鎮痛薬	0 (0.0%)	2 (22.2%)	2 (22.2%)	1 (50.0%)	1 (50.0%)
鎮咳薬	2 (8.7%)	2 (8.7%)	4 (17.4%)	3 (75.0%)	1 (25.0%)
リタリン	0 (0.0%)	4 (26.7%)	4 (26.7%)	2 (50.0%)	1 (25.0%)
多剤(規制薬物)	0 (0.0%)	4 (18.2%)	4 (18.2%)	4 (100.0%)	0 (0.0%)
多剤(医薬品)	5 (19.2%)	6 (23.1%)	11 (42.3%)	4 (36.4%)	1 (9.1%)
その他	1 (5.6%)	0 (0.0%)	1 (5.6%)	1 (100.0%)	0 (0.0%)
計	26 (4.9%)	61 (11.4%)	87 (16.3%)	41 (47.1%)	11 (12.6%)

表31-4 境界性パーソナリティ障害の併存(性別)

	(1)診断基準を 満たす	(2)診断基準は 満たさないが傾 向がある	(1)および(2)	薬物使用との時間的關係	
				薬物使用前から 存在した	薬物使用後に 顕在化した
男性	4 (1.0%)	27 (6.9%)	31 (7.9%)	10 (32.3%)	3 (9.7%)
女性	22 (15.2%)	34 (23.4%)	56 (38.6%)	31 (55.4%)	8 (14.3%)
計	26 (4.9%)	61 (11.4%)	87 (16.3%)	41 (47.1%)	11 (12.6%)

図1 主たる使用薬物別にみた症例(%)の推移

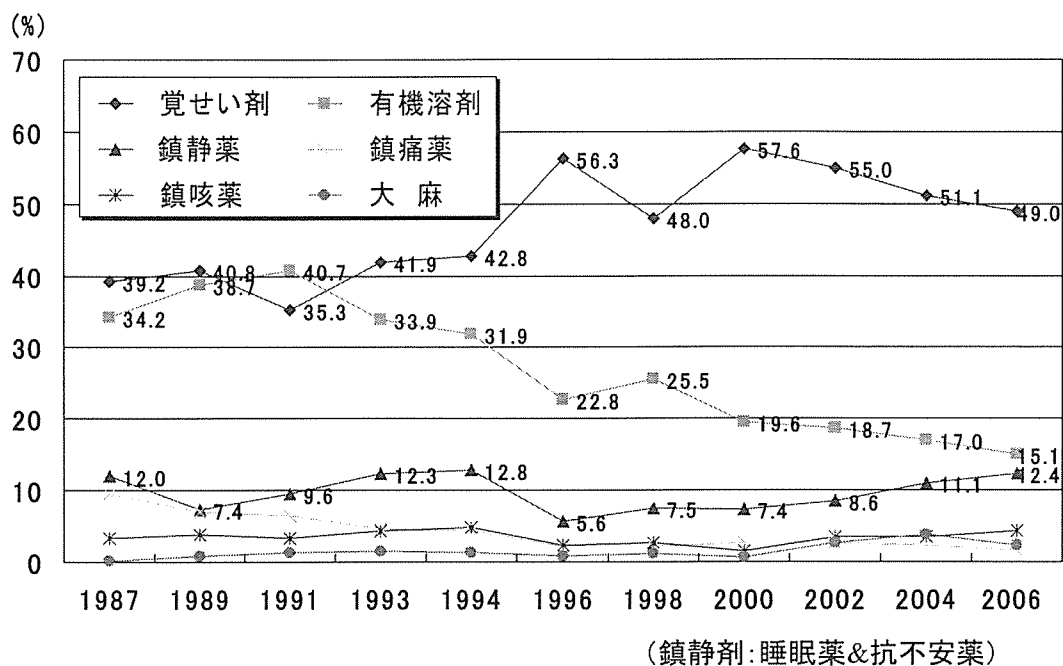


図2 使用歴のある薬物の推移

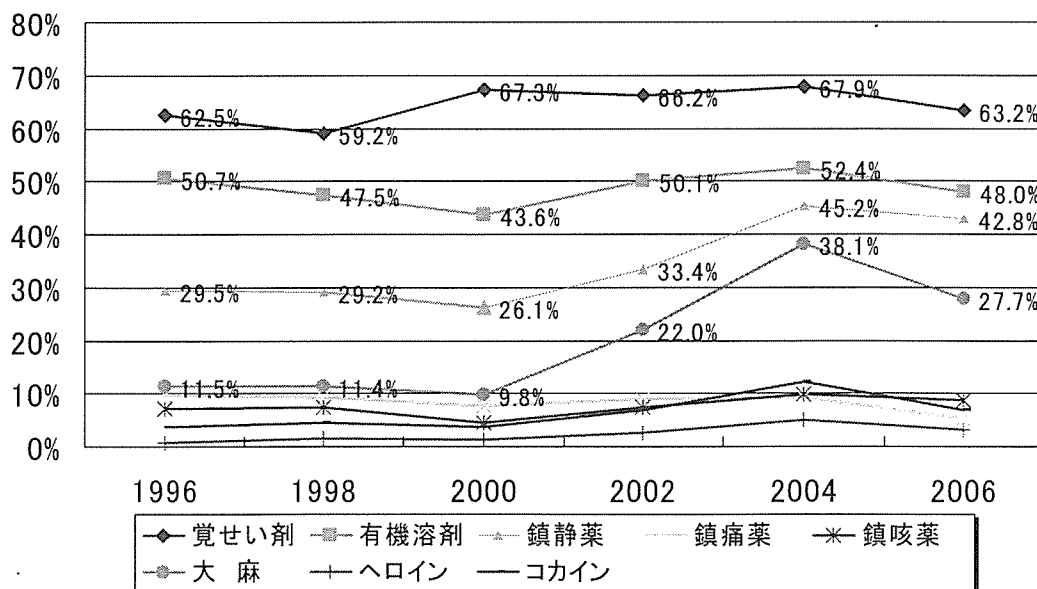


図3 初回使用薬物の推移

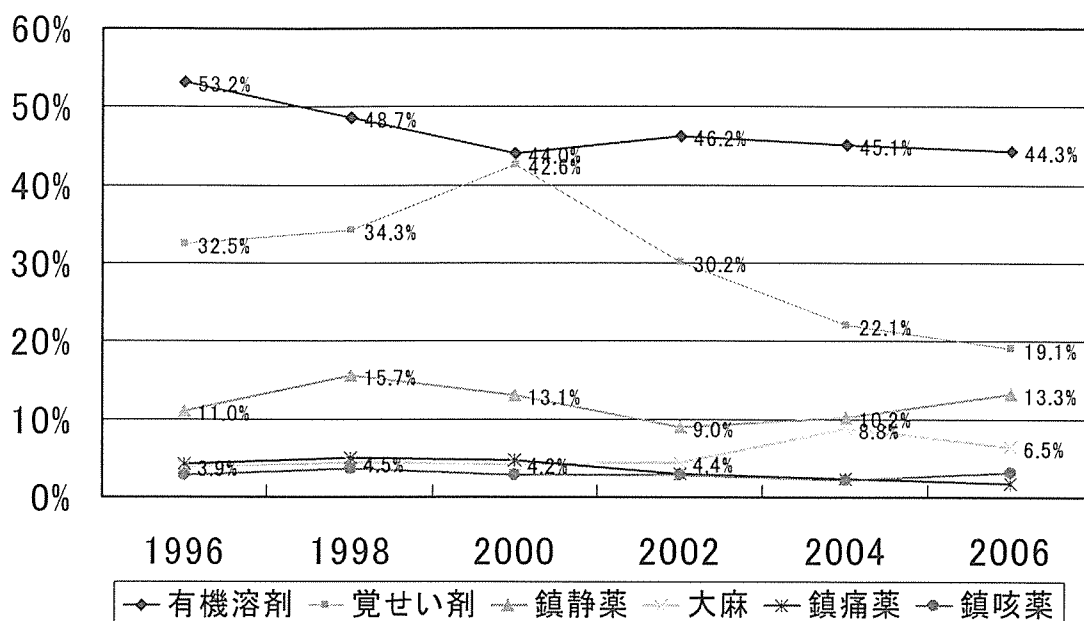
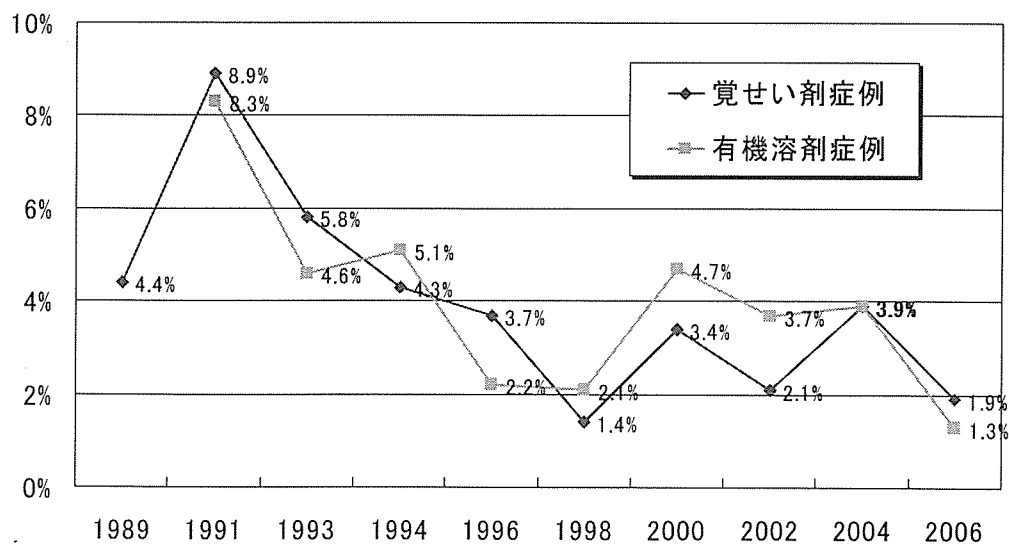


図4 初期乱用例(使用期間:1年未満)の推移
— 覚せい剤, 有機溶剤症例 —



(使用期間=調査時年齢-初回使用年齢)

図5 長期乱用症例(使用開始後5年以上)の推移
— 覚せい剤, 有機溶剤症例 —

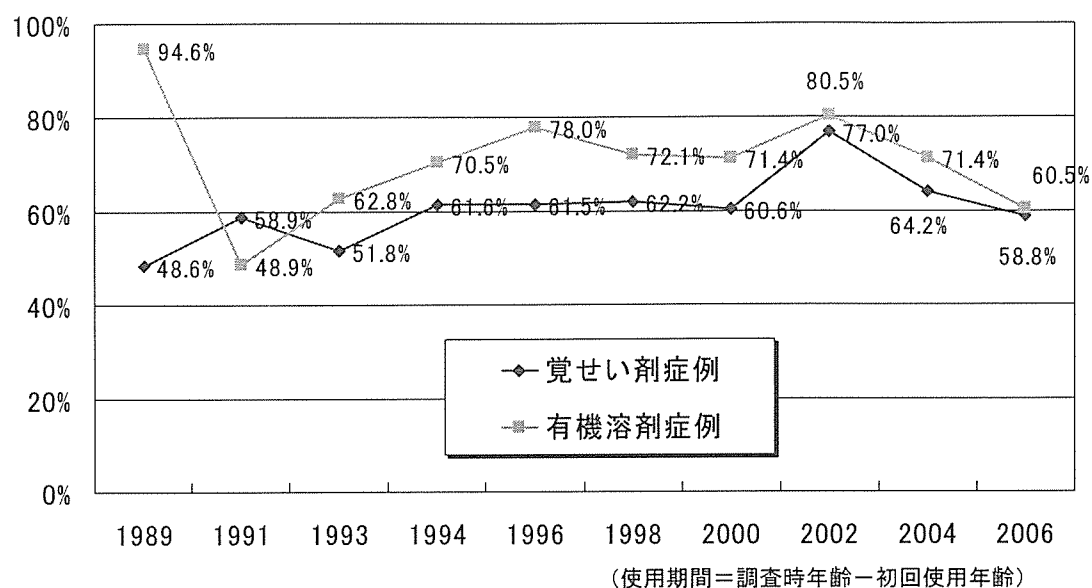


図6 覚せい剤初回使用方法の推移(性別)

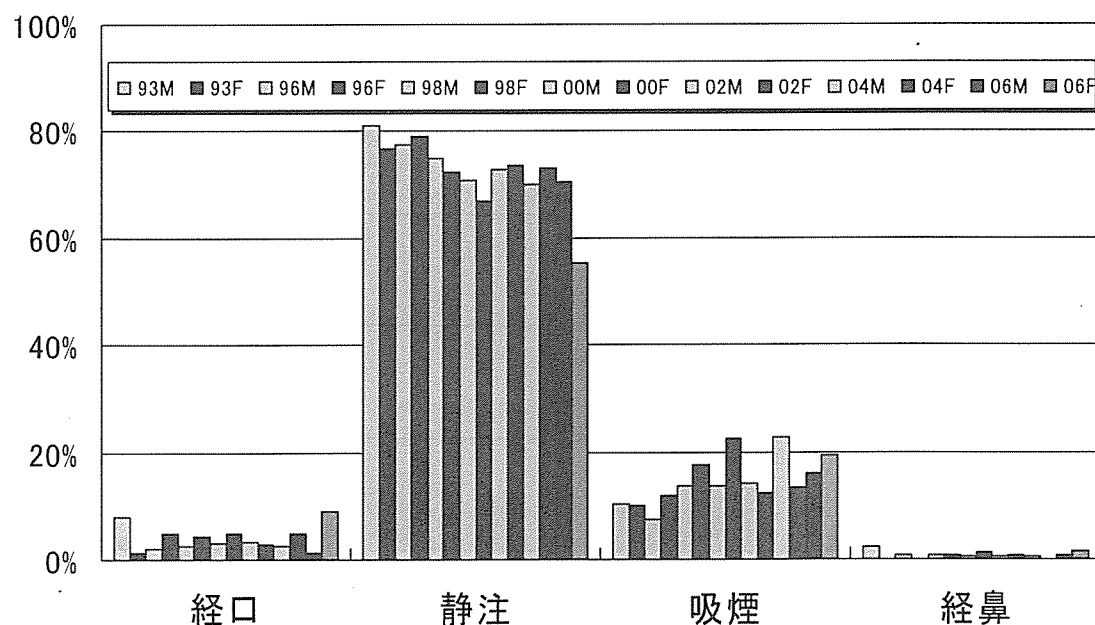


図5 長期乱用症例(使用開始後5年以上)の推移
 — 覚せい剤, 有機溶剤症例 —

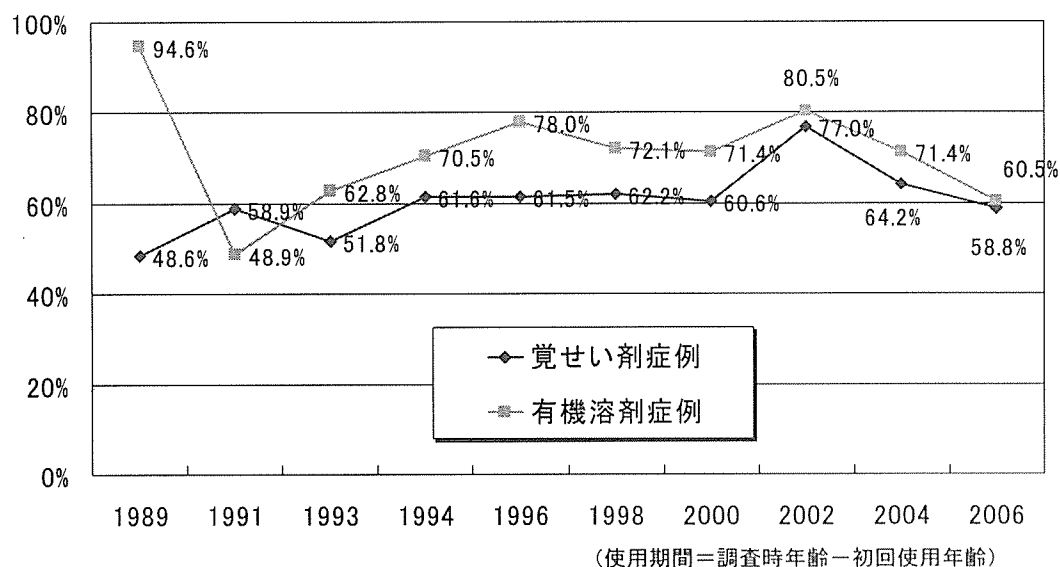


図6 覚せい剤初回使用方法の推移(性別)

