

patibility of the Ti–Zr alloy compared with those of Ti and Zr by implantation tests using rats. Pure chromium (Cr) was used as a positive control material. After 8 months' implantation to a subcutaneous position, the reaction of the tissue around the specimen was studied hematologically and histologically. Since cases of sensitization to pacemakers which are made of Ti have been reported,^{27,28} we topically applied a metal salt solution to rats in order to detect hypersensitivity to the metal. Further, the *in vitro* proliferation of spleen lymphocytes was also measured to evaluate immune system activity.

2. Materials and Methods

2.1 Test materials

Specimens of Ti, Zr, Ti–Zr binary alloy (Ti containing 50 atom% Zr), and Cr were used. The preparation of these specimens was reported in detail by Kobayashi *et al.*²⁰ Briefly, the specimens were prepared from sponge Ti (>99.8 mass% purity), Zr (>99.5 mass% purity), and electrolytic Cr metal (>99.98 mass% purity) by arc melting with a non-consumable tungsten electrode on a water-chilled copper hearth under an ultra-high-purity argon atmosphere. To prevent the macroscopic composition gradient by insufficient mixing, ingots were turned over and re-melted at least five times. To minimize mechanical trauma during implantation, the specimens were prepared in the form of plates with a diameter of 14 mm and a thickness of 1 mm, and were cut out from these button ingots using a silicon carbide wheel cutter. The plate specimens were polished mechanically to a mirror finish using emery paper (gradually finer, up to 600 grit) followed by 0.03 mm alumina paste. Each specimen was washed with 70% ethanol and ultra-pure water, and autoclaved.

2.2 Animals

Female F344/DuCrj rats, 5 weeks old, were obtained from Charles River Japan Inc. (Kanagawa, Japan) and randomized into five groups of six rats each. The animals were housed in air-conditioned facilities (temperature $23 \pm 2^\circ\text{C}$, relative humidity $55 \pm 5\%$, light cycle 12 h/day). Diet (F-2, Funabashi Farm Co., Chiba, Japan) and water were available *ad libitum* throughout the experimental period. After a 1-week acclimation period, all animals were used in the implantation test. All animals were cared for according to the Japan animal rights act and the NIH–Japan guidelines for the care and use of laboratory animals.

2.3 Implantation procedure^{26,29}

The animals were anesthetized with 50 mg/kg Nembutal (sodium pentobarbital, Dainabot Co., Ltd., Osaka, Japan) *via* intraperitoneal injection. After the induction of anesthesia, the hair on the back was shaved around the implantation site and the skin was sterilized by brushing with a 70% ethanol solution. An incision was made with scissors on the right side of the shaved back skin, and a specimen was inserted subcutaneously. Control animals were treated by a sham operation with no implantation. After the operation, the incision was sutured. During the experimental period, body weight and health conditions were monitored.

2.4 Hematological and histological examination

At the end of the experimental period, the animals were anesthetized with diethyl ether, and total blood (approximately 4–5 ml) was collected from the abdominal aorta. The hematological data, such as red blood cell count (RBC), hemoglobin concentration (HGB), hematocrit (HCT), mean cell volume (MCV), mean cell hemoglobin (MCH), mean cell hemoglobin concentration (MCHC), platelet count (PLT), and white blood cell count (WBC), in the blood sample were measured by a fully automated blood cell counter (M-2000, TOA Medical Electronics Co., Ltd. [Today's Sysmex Co.], Hyogo, Japan). In addition, differentiation of white blood cells was examined using an automated hematology analyzer (MICROX HEG-120A, Omron Tateisi Electronics Co., Tokyo, Japan; Sysmex Co. is presently acquiring Omron's blood image analysis business). According to the common method, spleen, liver, kidney, and the tissue surrounding the specimen were excised from each sacrificed animal. These tissues, along with the specimen, were fixed in 10% formalin and embedded in paraffin. After the specimen was removed gently, the tissue was sectioned and stained with hematoxylin and eosin for microscopic examination. The histological sections were examined microscopically, and the tissue responses—*i.e.*, the distributions of fibroblasts, neutrophils, eosinophils, macrophages, giant cells, lymphocytes, and plasma cells—in the fibrous capsule that formed around the specimen were recorded, as was the infiltration of inflammatory cells around the capsule.^{26,29} The intensity of these histological items was ranked as – = no frequency (0), + = low frequency (1), ++ = moderate frequency (2) and +++ = high frequency (3). The total score for the eight items was derived. The thickness of the fibrous capsule that formed around the specimen was also measured by a micrometer.²⁹ The thickness was determined in the orthogonal direction of the boundary between the capsule and the hole left by the specimen, and expressed as a mean value of 10 spots.²⁹

2.5 Evaluation of sensitization response

At 8 months after implantation, a 50 μl aliquot of 2% titanium chloride (TiCl_4) in ethanol, 10% zirconium chloride (ZrCl_4) in 70% ethanol solution, or 0.02% potassium dichromate ($\text{K}_2\text{Cr}_2\text{O}_7$) in 25% ethanol solution was applied to the shaved skin of the back using a closed-patch dressing (Trii Pharmaceutical Co., Ltd., Tokyo, Japan) for 24 h. Salt of each metal was used as an application chemical for the determination of skin reaction in the patch testing.^{26,30} The challenge concentrations of metal salts were determined by a preliminary irritation test, and they were the maximum concentrations to not elicit responses in normal animals. An application vehicle for metal salts at each concentration was prepared to maximize the content of ethanol in water. The skin reactions of erythema and oedema were evaluated by visual assessment at 24 h after removing the closed-patch dressing.

After 8 months of implantation, the spleen was excised and placed on a sterile 200-mesh stainless steel gauge in a 35 mm plastic dish. After 2 ml of Hanks' balanced salt solution (pH 7.4, Sigma-Aldrich Inc., St. Louis, MO, USA) was added to the dish, the spleen was crushed mechanically using

Table 1 Body and organ weights of rats after implantation of each material for 8 months.

Material	Weight (g) (Mean \pm SD, n = 6)					
	Body	Thymus	Spleen	Liver	Kidney	
					Right	Left
Absolute weight						
Control	213.8 \pm 16.3	0.085 \pm 0.009	0.35 \pm 0.03	5.15 \pm 0.47	0.61 \pm 0.04	0.62 \pm 0.04
Ti	223.7 \pm 20.7	0.086 \pm 0.010	0.39 \pm 0.01*	5.63 \pm 0.59	0.65 \pm 0.05	0.65 \pm 0.04
Ti-Zr	221.0 \pm 12.4	0.082 \pm 0.013	0.37 \pm 0.01	5.78 \pm 0.32*	0.64 \pm 0.03	0.64 \pm 0.03
Zr	231.5 \pm 8.1*	0.091 \pm 0.013	0.38 \pm 0.01*	5.30 \pm 0.39	0.65 \pm 0.05	0.64 \pm 0.05
Cr	227.7 \pm 7.4	0.087 \pm 0.012	0.38 \pm 0.02	5.96 \pm 0.26**	0.67 \pm 0.03*	0.65 \pm 0.04
Relative weight (organ/body \times 1000)						
Control		0.40 \pm 0.03	1.66 \pm 0.19	24.2 \pm 2.5	2.88 \pm 0.16	2.90 \pm 0.10
Ti		0.39 \pm 0.03	1.75 \pm 0.13	25.2 \pm 1.8	2.93 \pm 0.08	2.92 \pm 0.20
Ti-Zr		0.37 \pm 0.05	1.67 \pm 0.10	26.2 \pm 0.7	2.88 \pm 0.10	2.92 \pm 0.10
Zr		0.39 \pm 0.05	1.66 \pm 0.10	22.9 \pm 1.1	2.82 \pm 0.15	2.77 \pm 0.20
Cr		0.38 \pm 0.05	1.69 \pm 0.12	26.2 \pm 1.2	2.94 \pm 0.09	2.87 \pm 0.12

*, **: Significantly different from the control group ($p < 0.05$, $p < 0.01$).

Table 2 Hematological data of rats implanted with alloys.

Item	Group				
	Control	Ti	Ti-Zr	Zr	Cr
RBC ($\times 10^4$ /ml)	812 \pm 27	729 \pm 13*	765 \pm 24*	779 \pm 37	769 \pm 16*
HGB (g/dl)	14.8 \pm 0.5	13.6 \pm 0.2*	14.4 \pm 0.4	14.6 \pm 0.6	14.4 \pm 0.2
HCT (%)	41.8 \pm 1.1	38.2 \pm 0.8*	40.0 \pm 1.7	40.3 \pm 1.8	39.9 \pm 0.8*
MCV (fl)	51.5 \pm 0.6	52.4 \pm 0.4*	52.3 \pm 0.8	51.7 \pm 0.3	51.9 \pm 0.2
MCH (pg)	18.2 \pm 0.2	18.7 \pm 0.3*	18.8 \pm 0.2*	18.8 \pm 0.2*	18.8 \pm 0.3*
MCHC (g/dl)	35.4 \pm 0.5	35.6 \pm 0.7	35.9 \pm 0.5	36.4 \pm 0.2*	36.1 \pm 0.5*
PLT ($\times 10^4$ / μ l)	61.1 \pm 4.9	65.8 \pm 5.7	66.3 \pm 6.8	70.8 \pm 3.1*	60.0 \pm 4.2
WBC ($\times 10^2$ / μ l)	20.0 \pm 7.0	14.0 \pm 2.0	18.0 \pm 4.0	19.0 \pm 6.0	15.0 \pm 3.0
Differential cell counts (%)					
Neutrophil-band	0.5 \pm 0.7	0.1 \pm 0.3	0.3 \pm 0.5	0.1 \pm 0.2	0.1 \pm 0
Neutrophil-segmented	31.5 \pm 5.8	34.4 \pm 7.7	28.8 \pm 6.6	28.9 \pm 3.8	30.6 \pm 4
Basophil	0.0 \pm 0.0	0.0 \pm 0.0	0.0 \pm 0.0	0.0 \pm 0.0	0.0 \pm 0.0
Eosinophil	2.5 \pm 1.3	2.2 \pm 1.3	2.5 \pm 1.2	1.3 \pm 0.8	1.5 \pm 1
Lymphocyte	63.1 \pm 6.6	61.3 \pm 6.7	65.7 \pm 5.9	67.8 \pm 3.6	65.7 \pm 4
Monocyte	2.4 \pm 1.0	2.1 \pm 1.3	2.8 \pm 1.5	1.9 \pm 1.3	2.2 \pm 2

Data represent mean values \pm SD (n = 6).

*Significantly different from the control at $p < 0.05$.

a syringe, and spleen cells were released. The cell suspension was transferred into a 15 ml tube, and the tube was centrifuged at 1200 rpm for 5 min at 4°C. After the supernatant was removed, the cells were treated with 2 ml of 0.83% ammonium chloride-tris solution (pH 7.65) for 5 min at 37°C for hemolysis. The cells were washed twice by centrifuge at 1200 rpm for 5 min with Hanks' balanced salt solution and resuspended in RPMI-1640 culture medium (Nissui Pharmaceutical Co., Ltd., Tokyo, Japan) supplemented with 25 mM *N*-2-hydroxyethylpiperazine-*N'*-2-ethanesulfonic acid, 100 units/ml penicillin, 100 μ g/ml streptomycin, and 10% fetal bovine serum. The cell suspensions (5×10^5 cells/200 μ l) were seeded into 96-well culture plates (three wells per group) and cultured with 10 μ l of 10^{-8} mol/L $K_2Cr_2O_7$, 10^{-5} mol/L $TiCl_4$, 10^{-5} mol/L $ZrCl_4$, or 5 μ g/mL Con A and 9.25 KBq [3H]methyl thymidine (3HTdR) for 48 h at 37°C in a humidified atmosphere of 5% CO_2 in air. After incubation, the cells were collected from each well on a glass filter (Type Filter Mat 11731,

SKATRON Instruments AS, Lier, Norway) using an automatic cell harvester (Type 11025, SKATRON Instruments AS). The incorporation of 3HTdR into cells (counts per minute, cpm) was determined by liquid scintillation counting (LSC-5101, Aloka Co. Ltd., Tokyo, Japan).

3. Results

3.1 Body and organ weights

After 8 months of implantation, no significant visual changes such as rust or cracks were found on the surface of any specimen. In all implant groups, no decreases in body and organ weights were found compared with the control group (Table 1). The body weight in the Zr-implant group was higher than that in the control group. The thymus, spleen, liver, and kidney of some animals in the implant groups weighed more than those of control animals. However, the organ weights relative to body weight were not significantly different from group to group.

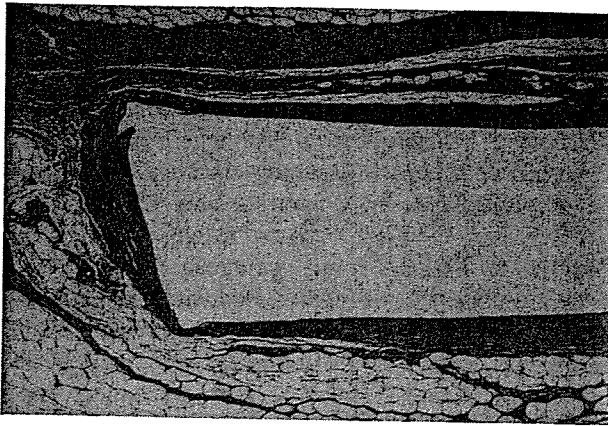


Fig. 1 Histological section of subcutaneous tissue around Ti (hematoxylin and eosin, original magnification $\times 16$). The central lumen was the site of the implant, and the tissue surrounding the lumen formed a fibrous capsule. The thickness of the fibrous capsule was expressed as the mean \pm standard deviation (SD) of 10 spots.

3.2 Hematological examination

Table 2 shows the results of analyses of blood constituents, such as RBC, PLT, and WBC counts, and HGB concentration. In the Ti-implant group, slight decreases in WBC count as well as HCT and HGB concentrations were found compared with the control group. Although some implant groups showed small changes in several parameters, none of the specimens showed a clear increasing or decreasing trend in any of these parameters. With regard to hematograms of WBC, no significant difference was found between the control and implant groups.

3.3 Histological examination

Figure 1 is a photograph of a histological section of tissue surrounding a Ti specimen. The central lumen was the specimen's extraction mark. Mature fibroblasts were found to form a distinct capsule between the soft tissue and the Ti specimen. Figure 2 is a typical image of tissues surrounding some specimens at high magnification ($\times 100$). The lower part is the specimen's extraction mark. Two of the six animals in the Ti-implant group showed a moderate inflammatory response, and the image of animal no. 3 is shown in (a). Various types of cells infiltrated the fibrous membrane. The photograph in Fig. 3(b) is a tissue image of animal no. 7 of the Ti–Zr alloy-implant group. All animals in this group had levels of tissue reaction similar to those shown in Table 3(b). A fibrous capsule was formed, but the frequency of cell infiltration into the membrane around the Ti–Zr alloy implant was lower than that with the other materials. In the Zr-implant group, the frequency of cell infiltration into the surrounding tissue was higher than that in the Ti–Zr alloy-implant group but lower than that in the Ti-implant group (photograph not shown). The strongest tissue response was observed in the Cr-implant group, and many inflammatory cells were present in the fibrous layer (photograph not shown).

Table 3 summarizes the histological findings of the tissue responses to each material. The distribution frequencies of inflammatory cells or fibroblasts in or around the fibrous capsule were ranked and the total score was derived for each

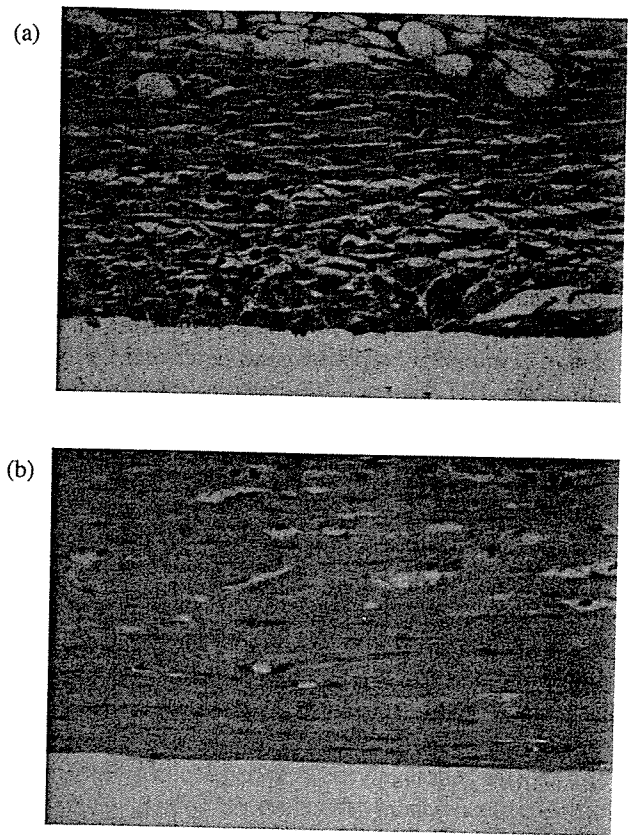


Fig. 2 Histological image of tissue around Ti (a) and Ti–Zr alloy (b) at high magnification ($\times 100$).

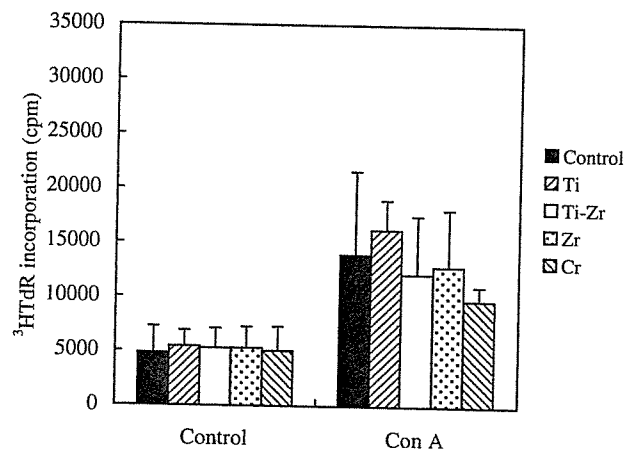


Fig. 3 Con A-induced blastogenesis of spleen lymphocytes in rats implanted with the material for 8 months. Single cell suspension of spleen cells (5×10^5 cells) was cultured with $5 \mu\text{g}/\text{ml}$ Con A and [^3H]methyl thymidine ($^3\text{HTdR}$) for 48 h. The culture was terminated by automatic cell harvesting, and the $^3\text{HTdR}$ incorporation (cpm) was determined. The data are the mean \pm SD of 6 animals.

material. The cell distributions in tissues surrounding the materials observed in this study were not as strong as those in our previous implantation study, which used a 4-month experimental period.²⁶ Large amounts of fibroblasts were observed in all animals in the Cr-implant group and in some animals in the Ti-implant group. Greater numbers of macrophages, the main inflammatory cell types, infiltrated the fibrous capsules around the Cr or Ti specimens compared

Table 3 Histological findings of the tissues around materials implanted for 8 months.

Sample	No.	In fibrous capsule										Total score	Thickness of fibrous capsule (µm)	(mean ± SD)	
		Fibroblasts	Neutrophils	Eosinophils	Macrophages	Giant cells	Lymphocytes	Plasma cells	Around fibrous capsule		Inflammatory cells				
Ti	1	+++	+	+	++	+	++	+++	+	+	++	++	15	83	119 ± 48
	2	+	+	+	+	-	+	-	+	+	+	+	6	71	
	3	+++	+++	+	+++	++	+++	++	+	+	+++	+++	19	80	
	4	+	+	-	+	-	+	-	-	+	+	+	5	170	
	5	+++	+	-	+	-	+	-	-	+	+	+	6	179	
	6	+	-	-	+	-	+	-	-	+	+	+	4	129	
Ti-Zr	7	+	+	-	+	-	+	-	+	+	+	+	5	119	128 ± 16
	8	+	+	-	+	-	+	-	+	+	+	+	5	121	
	9	+	+	-	+	-	+	-	+	+	+	+	5	140	
	10	+	+	-	+	-	+	-	+	+	+	+	5	108	
	11	+	+	-	+	-	+	-	+	+	+	+	5	153	
	12	+	+	-	+	-	+	-	+	+	+	+	5	126	
Zr	13	+	+	-	+	-	+	-	+	+	+	-	4	141	153 ± 11
	14	+++	+	+	+	-	++	-	+	+	+	+	8	165	
	15	+	+	-	+	-	+	-	+	+	+	+	5	143	
	16	+	+	-	+	-	+	-	+	+	+	+	5	165	
	17	+	+	-	+	-	+	-	+	+	+	+	5	160	
	18	+	+	-	+	-	+	-	+	+	+	-	4	146	
Cr	19	+++	++	+++	++	-	++	-	+++	+	++	++	15	222	170 ± 36
	20	+++	+	++	++	-	++	-	++	+	++	+	11	161	
	21	++	+	+	+	-	++	-	++	+	++	++	9	167	
	22	+++	+++	++	+++	+	+++	+++	+++	+	+++	+++	21	198	
	23	++	+	-	+	-	+	-	+	+	+	-	5	118	
	24	+	+	++	+	-	++	-	++	+	+	+	8	155	

Each parameter was scored as -- = no frequency (0), + = low frequency (1), ++ = moderate frequency (2), and +++ = high frequency (3).

with the Ti-Zr or Zr specimens. A few giant cells were found in the Ti- and Cr-implant groups, but not in the Zr-implant and Ti-Zr alloy-implant groups. Increased numbers of neutrophils, eosinophils, and lymphocytes were found especially in the Cr-implant group compared with the Ti-Zr alloy- and Zr-implant groups. The total scores in the Ti-Zr alloy- and Zr-implant groups were significantly lower than that in the Cr-implant group.

The capsule membrane formed around the Ti specimen was thinner than those around the Zr and Cr specimens. Individuals varied considerably in membrane thickness in the Ti-implant group, so no statistically significant differences were obtained between the Ti- the Ti-Zr alloy-implant group. The membrane around the Cr specimen was the thickest ($170 \pm 36 \mu\text{m}$) among the materials tested and differed significantly from that around the Ti-Zr alloy specimen ($126 \pm 16 \mu\text{m}$). A statistical difference in membrane thickness was also found between the Ti-Zr alloy- and the Zr-implant groups.

3.4 Sensitization

A patch test was performed to assess the sensitization to each metal. The animals were topically challenged with 0.02% $\text{K}_2\text{Cr}_2\text{O}_7$, 2% TiCl_4 , or 10% ZrCl_4 solution on the skin. None of the animals exhibited positive skin reactions to any of these metal salt solutions, so sensitization to Cr, Ti, or Zr did not develop as a result of implantation of the metal specimens.

Spleen lymphocyte proliferation is an *in vitro* indicator in the assessment of immune function and provides information useful for diagnosing contact allergy. The proliferation activity without mitogens or metal salts was similar among the test groups. The addition of $\text{K}_2\text{Cr}_2\text{O}_7$ solution did not stimulate lymphocyte proliferation in the Cr-implant group. In the same way, the stimulation index obtained by the addition of TiCl_4 or ZrCl_4 were almost all 1.0 in the Ti-, Zr-, and Ti-Zr alloy-implant groups (Table 4). Con A-induced blastogenesis was somewhat lower in the Cr-implant group than in the other groups, but no significant difference was observed (Fig. 3).

Table 4 Lymphocyte proliferative responses by stimulation with each metal salt.

Sample	Stimulation index (mean \pm SD)		
	TiCl_4 10^{-6} mol/L	ZrCl_4 10^{-6} mol/L	$\text{K}_2\text{Cr}_2\text{O}_7$ 10^{-9} mol/L
Control	1.04 ± 0.08	1.03 ± 0.06	1.01 ± 0.07
Ti	1.00 ± 0.09	ND	ND
Ti-Zr	0.98 ± 0.03	0.99 ± 0.05	ND
Zr	ND	0.99 ± 0.02	ND
Cr	ND	ND	0.97 ± 0.05

Spleen was collected from each animal, and a single cell suspension of spleen cells was prepared. The cells (5×10^5 cells) were cultured with each concentration of metal salt and 25 μCi [^3H]methyl thymidine ($^3\text{HTdR}$) for 48 h, and the $^3\text{HTdR}$ incorporation (cpm) into cells was determined. A stimulation index, the ratio of $^3\text{HTdR}$ incorporation relative to control wells, was derived for each metal salt. The data are mean \pm SD for 6 animals.

ND = not determined.

4. Discussion

In a corrosive environment, component elements of metallic materials are released from the surface as ions and chemical compounds, and some of them may cause local adverse tissue reactions and the development of metal allergy.^{1,14)} Commercially pure Ti has generally good biocompatibility,¹⁴⁻¹⁷⁾ but its mechanical strength is insufficient for use in artificial hip joints.^{16,20)} Furthermore, the appearance of increased wear debris from Ti has been associated with tissue inflammation.^{1,2,31)} Elements for Ti alloys are classified into three microstructural categories: α -stabilizers [aluminum (Al), oxygen (O), nitrogen (N), carbon (C)], β -stabilizers [molybdenum (Mo), vanadium (V), iron (Fe), Cr, Ni, Co] and neutral [zirconium (Zr)]. The properties of Ti alloys vary according to the composition of the elements. Ti alloys with α and near- α microstructures exhibit superior corrosion resistance but low ambient temperature strength. The $\alpha + \beta$ and β alloys have high strength and good formability but relatively low corrosion resistance.¹⁸⁾ For example, Ti-6Al-4V alloy was developed as a high-strength material, but its low corrosion resistance in the living body was problematic.¹⁸⁾ Kobayashi *et al.* experimented with Zr, whose chemical properties are similar to those of Ti, and formed an insoluble oxide. They developed a Ti-Zr alloy that has an $\alpha + \beta$ structure and better mechanical properties than commercially pure Ti. Because of its good mechanical properties, such as tensile strength and hardness, Ti-Zr alloy was presented as a new biomedical material for use in artificial joints or bone plates.²⁰⁾

Since orthopedic devices are generally implanted into a corrosive environment for anywhere from several months to the lifetime of the patient, long-term evaluation of biocompatibility is necessary. In a previous study, we investigated sensitization of the rat to Cr by implantation of Cr-Fe alloys into a subcutaneous position for 4 months.²⁶⁾ Lewin *et al.* also evaluated the local response to bone screws in guinea pigs after 4 months' implantation.³²⁾ Oron and Alter examined the corrosion of metal specimens by implantation into rats for 14 months, and found progressive increase in corrosion concomitant with the length of implantation period.²⁾ In this study, an implantation period of 8 months was used because Ti-Zr alloy and other metal specimens do not easily corrode and release metallic ions. Furthermore, the early inflammatory responses caused by surgical injury could be disregarded.

The results of body or relative organ weights, hematological examination, and mitogen-induced blastogenesis suggest that the implantation of test materials did not cause systemic toxicity or decrease immune activity (Tables 1 and 2, Fig. 3). The membrane thickness around the Cr specimen was significantly higher than that around the Ti-Zr alloy specimen (Table 3). The membranes that formed around the Ti-Zr and Ti specimens were similar in thickness to that around the 316L-type stainless steel (SUS316L) specimen, which is used clinically.^{8,26)} Fibroblasts migrated to the injury site around the implants in the early phase and increased in density with an increasing amount of extracellular collagen. The tightly formed fibroblast membrane inhibits circulation of biological substances to inside the membrane, possibly

with negative consequences. However, the membrane thickness is related only to fibroblasts but not to other cells, so it has debatable utility as an index of tissue response in implantation studies that cover long periods.

Local tissue response to a material is the most important aspect of the material's biocompatibility, and is mainly related to inflammatory reaction.¹⁵⁾ It can be evaluated by analyzing the cell population or the morphological characteristics of the tissue around the implant.^{8,21,22)} Ryhänen *et al.* found no qualitative differences in histology between stainless steel, Ti-6Al-4V, and Ti-Ni alloy 26 weeks after implantation in rats.⁸⁾ Macrophages are the main inflammatory cell types in a short-term implantation. They play an important role in acute inflammation and probably in determining the final biocompatibility of an implanted material.^{33,34)} They release various mediators that influence the activities of fibroblasts, lymphocytes, and other cells.^{33,34)} In addition, macrophages form multinucleated foreign-body giant cells, which constitute evidence of a specific inflammatory response evoked by a foreign substance.³⁵⁾ Two of the six animals in the Ti-implant group showed a moderate inflammatory response. In all animals in the Ti-Zr alloy-implant group, the frequency of cell infiltration into the membrane was smaller than in other implanted groups (Fig. 2). The numbers of macrophages and inflammatory cells in the fibrous tissue around the Cr and Ti specimens were higher than those around the Ti-Zr and Zr specimens (Table 3). In the Ti- and Cr-implant groups, giant cells were found. These observations indicate that the Cr and Ti specimens induced inflammatory reactions more strongly than did the Ti-Zr and Zr specimens. Neutrophils, eosinophils, and lymphocytes are involved in immune responses.^{8,36)} The infiltration frequency of these cells into the fibrous membrane was especially high in the Cr-implant group. A small increase in these cells was observed in the Ti-implant group relative to the control group. However, the number and type of infiltrating cells did not differ among the tested materials. The histological examination did not allow us to clearly say whether or not hypersensitive response occurred in an animal. The total scores obtained in the Ti-Zr alloy- and Zr-implant groups were significantly lower than that in the Cr-implant group. The total score in the Ti-Zr alloy-implant group was the same as or less than those of the Ti-implant and SUS316L-implant groups, the latter of which scored 7.3 ± 1.5 in the previous study.²⁶⁾ These results suggest that the Ti-Zr alloy has good biocompatibility.

The patch test using metal salts is the most widely used method for evaluating metal allergy.^{30,37)} The *in vitro* lymphocyte proliferation test is also considered useful for assessing allergic conditions or immune activity.^{38,39)} If a positive reaction appears following the implantation of a metallic device, the contribution of the device to the development of metal sensitivity should be considered. We previously observed that animals became sensitized by the high amount of Cr ion released from the easily corrosive Cr-Fe alloy implanted in them.^{5,26)} The stable oxide complex layer that formed on the surfaces of Ti, Zr, and their alloys allowed little release of their ions.^{16,18,25)} Although highly unusual, cases of contact sensitivity to pacemakers which are made of Ti have been reported.^{27,28)} A positive skin reaction

to titanium chloride was obtained by a sensitization test using guinea pigs.³⁸⁾ Topical exposure to Ti and Zr salt solutions in rats implanted with Ti, Zr, or Ti-Zr alloy specimens resulted in no skin responses. Ti and Zr salts did not stimulate the proliferation of lymphocytes in these implanted animals (Table 4). None of these materials caused blastogenesis of spleen lymphocytes in the groups implanted with them (Fig. 3). These results indicated that the implantation of the Ti, Zr, and Ti-Zr alloy specimens did not induce sensitization to Ti or Zr ions. This may be explained by the weak sensitization potentials of Zr and Ti ions. Or it may be that the amount of ions released from each specimen was insufficient to cause a sensitization response.

As a result, the Ti-Zr alloy and Zr had better biocompatibility than Ti and Cr. Considering the fragility of Zr, we concluded Ti-Zr alloy as the best material tested in this study. For orthopedic implants, the hardness of metallic materials is important. However, for clinical application, other factors are more important: wear resistance, fretting corrosion resistance, and mechanical/tensile strength such as Young's modulus determine a material's suitability for the targeted position or tissue. In the future, we intend to design new alloys using a Ti-Zr base to serve this purpose.

5. Conclusion

By implanting Ti, Zr, Cr, or Ti-Zr alloy into rats for 8 months, we evaluated the tissue response around the implant and the development of metal sensitization. There was no toxicological change in body or organ weights or in hematological parameters. The tissue inflammatory responses to the Ti-Zr alloy were lower than those to Ti. No sensitization response to the Ti-Zr alloy appeared. The Ti-Zr alloy has better biocompatibility than Ti for use as an artificial surgical implant.

REFERENCES

- 1) J. J. Jacobs, J. L. Gilbert and R. M. Urban: *J. Bone. Jt. Surg. Am.* **80** (1998) 268-282.
- 2) U. Oron and A. Alter: *Clin. Orthop. Relat. Res.* **185** (1984) 295-300.
- 3) S. Hierholzer, G. Hierholzer, K. H. Sauer and R. S. Paterson: *Arch Orthop. Trauma Surg.* **102** (1984) 198-200.
- 4) U. E. Pazzaglia, C. Minoia, L. Cecilian and C. Riccardi: *Acta Orthop. Scand.* **54** (1983) 574-579.
- 5) T. Tsuchiya, Y. Ikarashi, T. Uchima, H. Doi, A. Nakamura Y. Ohshima, M. Fujimaki, K. Toyoda, E. Kobayashi, T. Yoneyama and H. Hamanaka: *Mater. Trans.* **43** (2002) 3058-3064.
- 6) L. Savarino, D. Granchi, G. Ciapetti, E. Cenni, M. Greco, R. Rotini, C. A. Veronesi, N. Baldini and A. Giunti: *J. Biomed. Mater. Res. A.* **66** (2003) 450-456.
- 7) A. McNamara and D. F. Williams: *Biomaterials.* **2** (1981) 33-40.
- 8) J. Ryhänen, M. Kallioinen, J. Tuukkanen, J. Junila, E. Niemelä, P. Sandvik and W. Serlo: *J. Biomed. Mater. Res.* **41** (1998) 481-488.
- 9) M. Uo, F. Watari, A. Yokoyama, H. Matsuno and T. Kawasaki: *Biomaterials.* **22** (2001) 677-685.
- 10) L. Kanerva, T. Sipilainen-Malm, T. Estlander, A. Zitting, R. Jolanki and K. Tarvainen: *Contact Dermatitis.* **31** (1994) 304-307.
- 11) W. R. Schriver, R. H. Shereff, J. M. Dommitz, E. F. Swintak and S. Civjan: *Oral Surg.* **42** (1976) 578-581.
- 12) D. Granchi, G. Ciapetti, L. Savarino, S. Stea, F. Filippini, A. Sudanese, R. Rotini and A. Giunti: *Biomaterials.* **21** (2000) 2059-2065.
- 13) L. Kanerva and L. Forstrom: *Contact Dermatitis.* **44** (2001) 103-104.
- 14) C. Schmidt, A. A. Ignatius and L. E. Claes: *J. Biomed. Mater. Res.* **54**

- (2001) 209-215.
- 15) K. Yamaguchi, H. Konishi, S. Hara and Y. Motomura: *Spine J.* **1** (2001) 204-208.
 - 16) C. E. Wen, Y. Yamada, K. Shimojima, Y. Chino, T. Asahina and M. Mabuchi: *J. Mater. Sci. Mater. Med.* **13** (2002) 397-401.
 - 17) G. D. Krischak, F. Gebhard, W. Mohr, V. Krivan, A. Ignatius, A. Beck, N. J. Wachter, P. Reuter, M. Arand, L. Kinzl and L. E. Claes: *Arch Orthop. Trauma Surg.* **124** (2004) 104-113.
 - 18) M. Long and H. J. Rack: *Biomaterials.* **19** (1998) 1621-1639.
 - 19) J. O. Galante, J. Lemons, M. Spector, P. D. Wilson, Jr. and T. M. Wright: *J. Orthop. Res.* **9** (1991) 760-775.
 - 20) E. Kobayashi, S. Matsumoto, H. Doi, T. Yoneyama and H. Hamanaka: *J. Biomed. Mater. Res.* **29** (1995) 943-950.
 - 21) F. Katou, N. Andoh, K. Motegi and H. Nagura: *J. Craniomaxillofac Surg.* **24** (1996) 155-162.
 - 22) D. F. Williams: *J. Bone. Joint Surg. Br.* **76** (1994) 348-349.
 - 23) S. H. Lee, F. R. Brennan, J. J. Jacobs, R. M. Urban, D. R. Ragasa and T. T. Glant: *J. Orthop. Res.* **15** (1997) 40-49.
 - 24) S. D. Rogers, D. W. Howie, S. E. Graves, M. J. Percy and D. R. Haynes: *J. Bone. Joint Surg. Br.* **79** (1997) 311-315.
 - 25) C. Piconi and G. Maccauro: *Biomaterials.* **20** (1999) 1-25.
 - 26) Y. Ikarashi, T. Tsuchiya, K. Toyoda, E. Kobayashi, H. Doi, T. Yoneyama and H. Hamanaka: *Mater. Trans.* **43** (2002) 3065-3071.
 - 27) M. A. Peters, A. L. Schroeter, H. M. van Hale and J. C. Broadbent: *Contact Dermatitis.* **11** (1984) 214-222.
 - 28) P. A. Laylor, P. A. Revell, A. B. Gray, S. Wright, G. T. Railton and M. A. Freeman: *J. Bone. Joint Surg.* **73** (1991) 25-28.
 - 29) Y. Ikarashi, K. Toyoda, N. Ohsawa, T. Uchima, T. Tsuchiya, M. Kaniwa, M. Sato, M. Takahashi and A. Nakamura: *J. Biomed. Mater. Res.* **26** (1992) 339-356.
 - 30) Y. Ikarashi, J. Momma, T. Tsuchiya and A. Nakamura: *Biomaterials.* **17** (1996) 2103-2108.
 - 31) H. Bughuzzi: *Biomed. Sci. Instrum.* **32** (1996) 81-86.
 - 32) J. Lewin, J. U. Lindgren and J. E. Wahlberg: *J. Orthop. Res.* **5** (1987) 604-608.
 - 33) J. M. Anderson and K. M. Miller: *Biomaterials.* **5** (1984) 5-10.
 - 34) D. G. Vince, J. A. Hunt and D. F. Williams: *Biomaterials.* **12** (1991) 731-736.
 - 35) A. R. Murch, M. D. Grounds, C. A. Marshall and J. A. Papadimitriou: *J. Pathol.* **137** (1982) 177-180.
 - 36) M. Thewes, R. Kretschmer, M. Gfesser, J. Rakoski, M. Nerlich, S. Borelli and J. Ring: *Arch Orthop. Trauma Surg.* **121** (2001) 223-226.
 - 37) P. Thomas, B. Summer, C. A. Sander, B. Przybilla, M. Thomas and T. Naumann: *Allergy.* **55** (2000) 969-972.
 - 38) S. Torgersen, O. T. Gilhuus-Moe and N. R. Gjerdet: *Int. J. Oral Maxillofac Surg.* **22** (1993) 246-250.
 - 39) N. J. Hallab, K. Mikecz, C. Vermes, A. Skipor and J. J. Jacobs: *Mol. Cell. Biochem.* **222** (2001) 127-136.