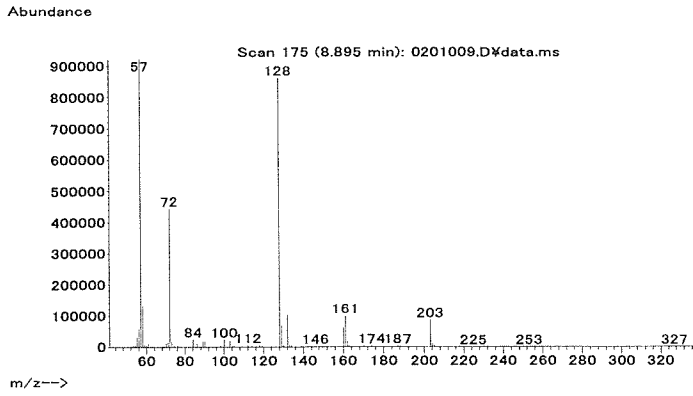
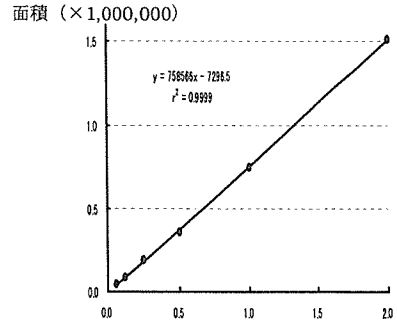


マススペクトル



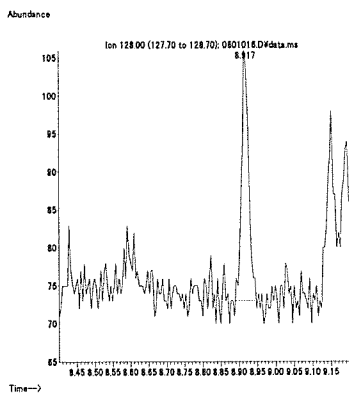
検量線



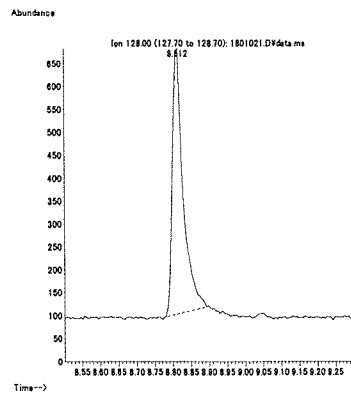
重量 (ng)

図 1. マススペクトルおよび検量線 (ペプレート)

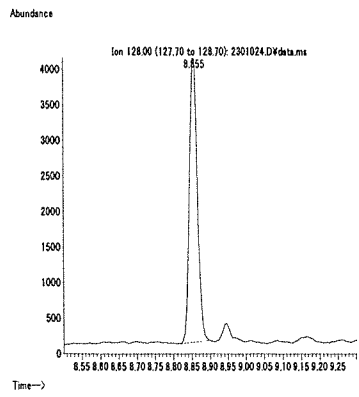
最小検出量評価 (0.001 ng)



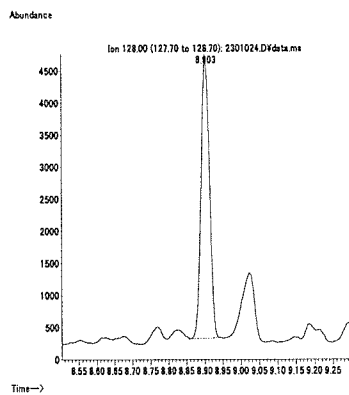
標準品 (0.125 ng)



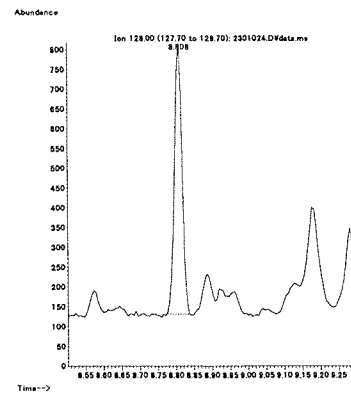
筋肉 (0.01 mg/kg 添加)



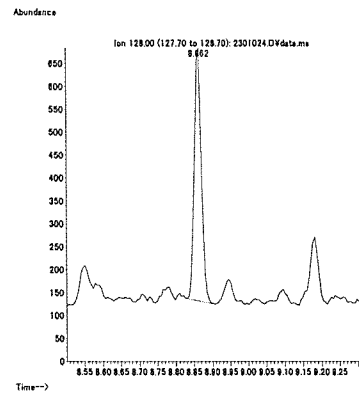
脂肪 (0.01 mg/kg 添加)



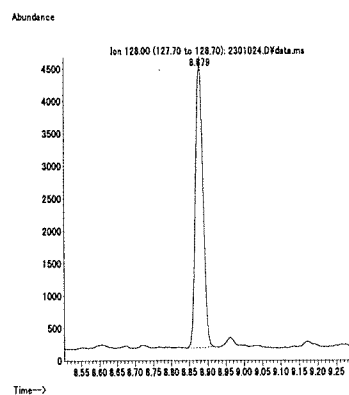
肝臓 (0.01 mg/kg 添加)



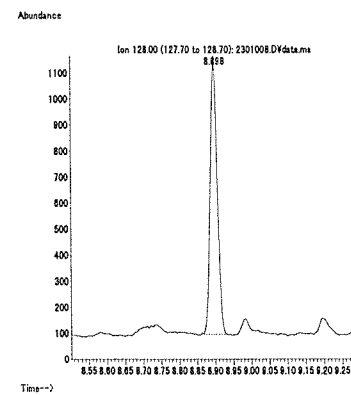
うなぎ (0.01 mg/kg 添加)



えび (0.01 mg/kg 添加)



牛乳 (0.01 mg/kg 添加)



卵 (0.01 mg/kg 添加)

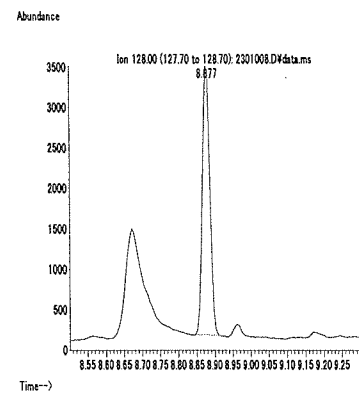
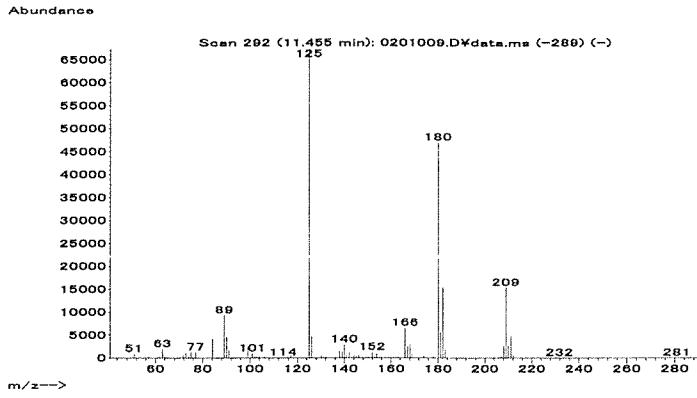


図 2. 最小検出量評価, 標準品, 回収試料のマスキマトグラム (ペプレート)

マススペクトル



検量線

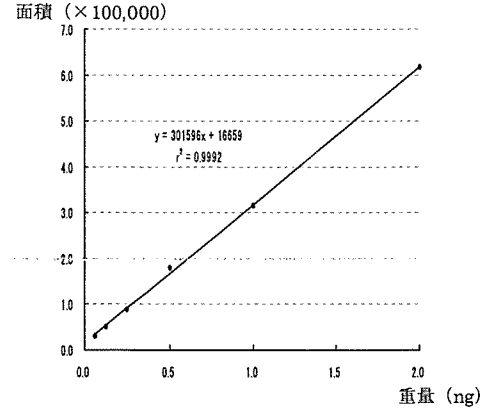
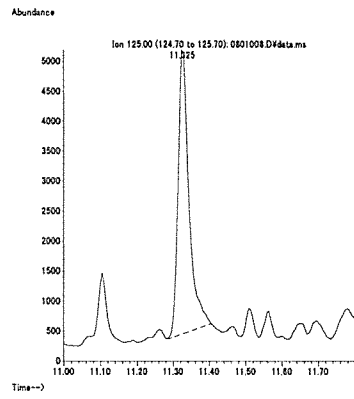
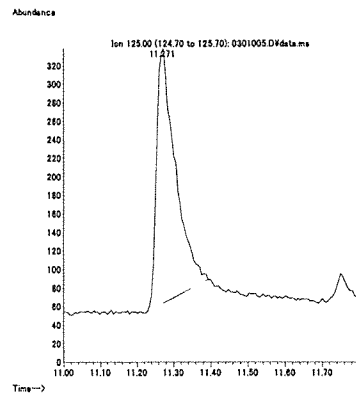
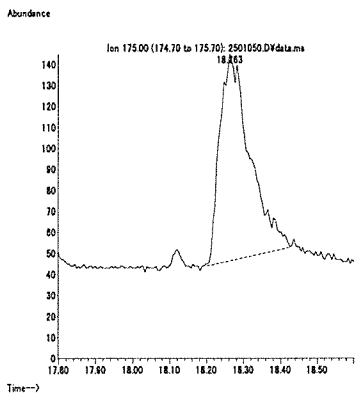


図1. マススペクトルおよび検量線 (ペンシクロン)

最小検出量評価 (0.004 ng)

標準品 (0.125 ng)

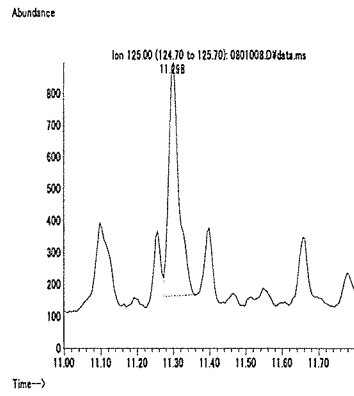
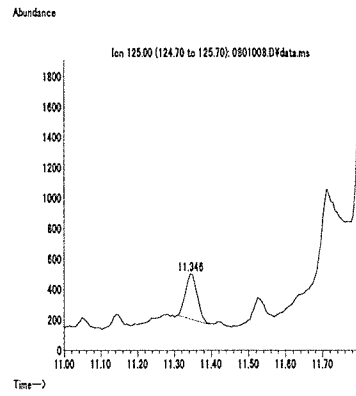
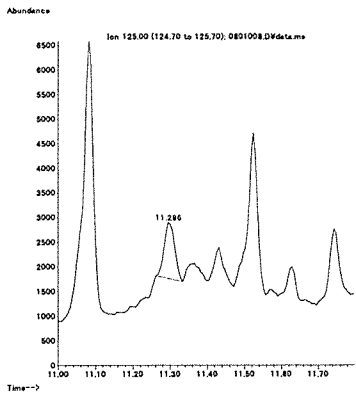
筋肉 (0.01 mg/kg 添加)



脂肪 (0.01 mg/kg 添加)

肝臓 (0.01 mg/kg 添加)

うなぎ (0.01 mg/kg 添加)



えび (0.01 mg/kg 添加)

牛乳 (0.01 mg/kg 添加)

卵 (0.01 mg/kg 添加)

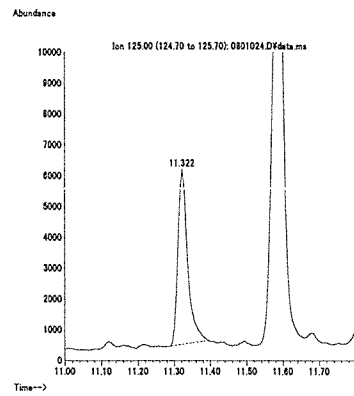
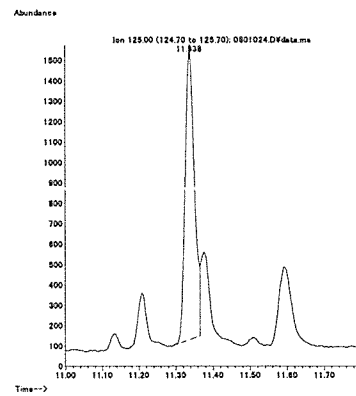
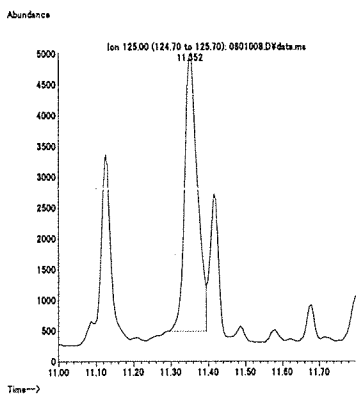
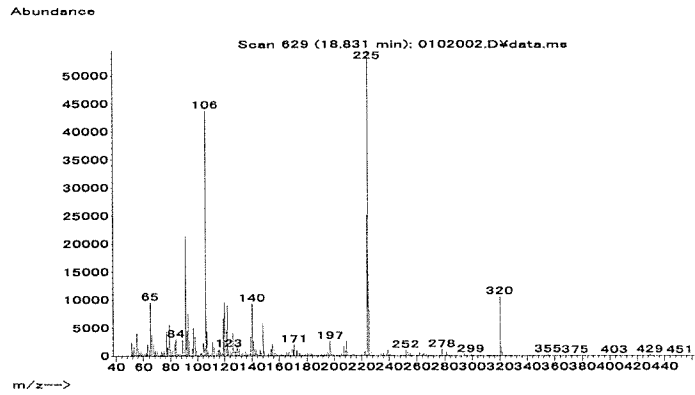


図2. 最小検出量評価, 標準品, 回収試料のマスキロマトグラム (ペンシクロン)

マススペクトル



検量線

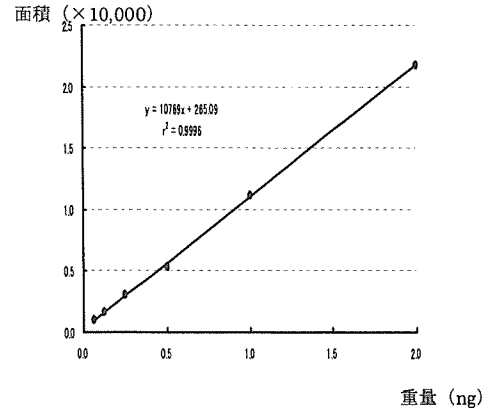
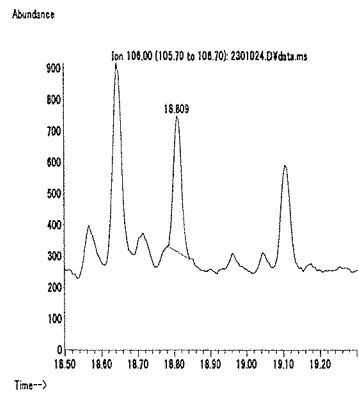
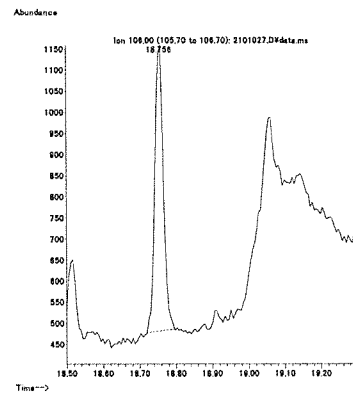
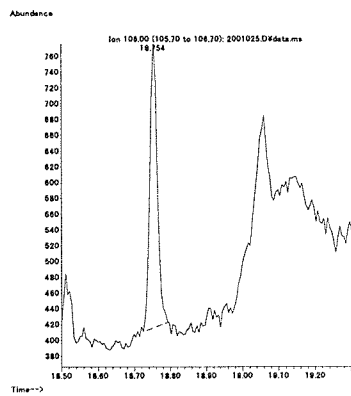


図1. マススペクトルおよび検量線 (ベンジルアデニン)

最小検出量評価 (0.5 ng)

標準品 (1 ng)

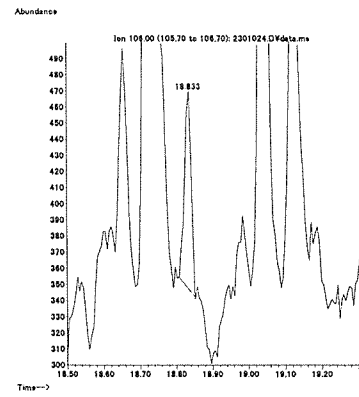
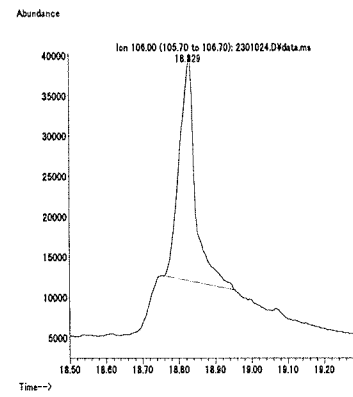
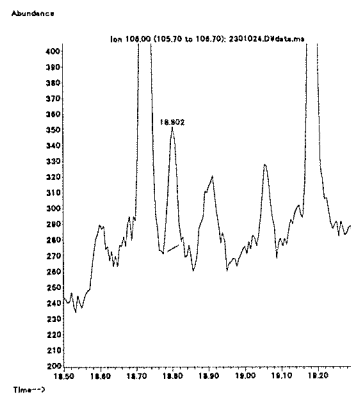
筋肉 (0.1 mg/kg 添加)



脂肪 (0.1 mg/kg 添加)

肝臓 (0.1 mg/kg 添加)

うなぎ (0.1 mg/kg 添加)



えび (0.1 mg/kg 添加)

牛乳 (0.1 mg/kg 添加)

卵 (0.1 mg/kg 添加)

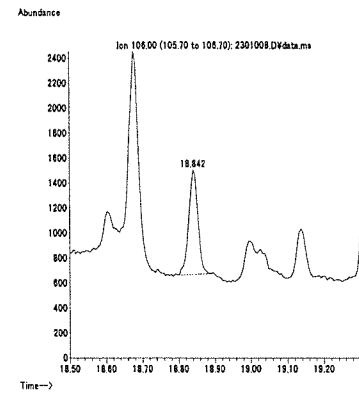
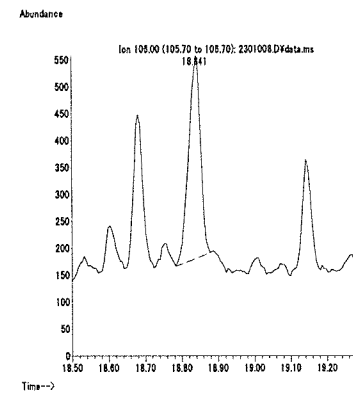
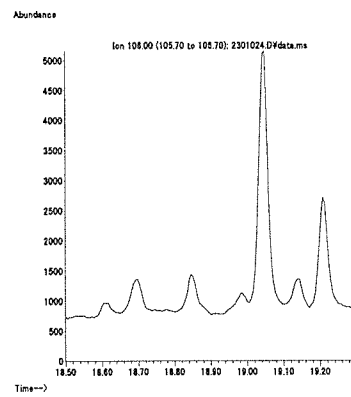
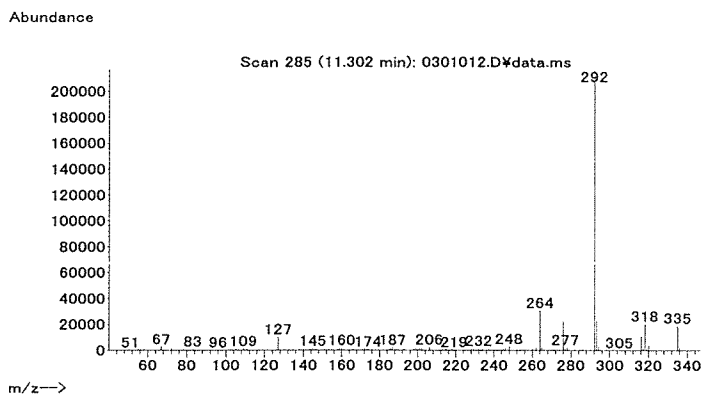


図2. 最小検出量評価, 標準品, 回収試料のマスプロトグラム (ベンジルアデニン)

マススペクトル



検量線

面積 (×100,000)

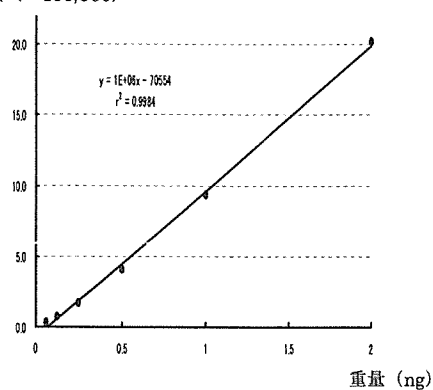
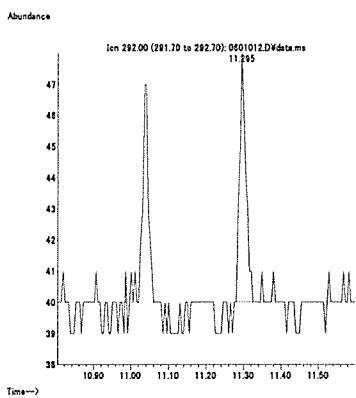
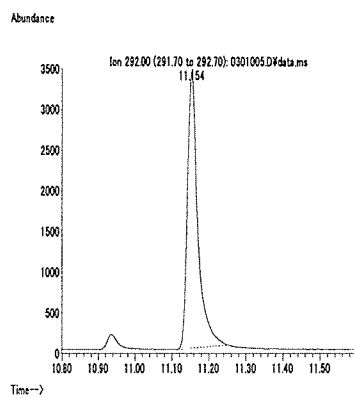


図 1. マススペクトルおよび検量線 (ベンフルラリン)

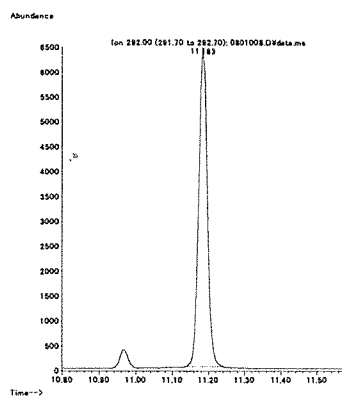
最小検出量評価 (0.0004 ng)



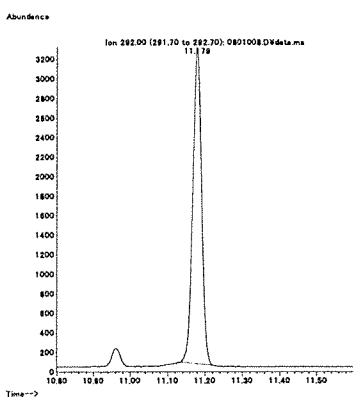
標準品 (0.125 ng)



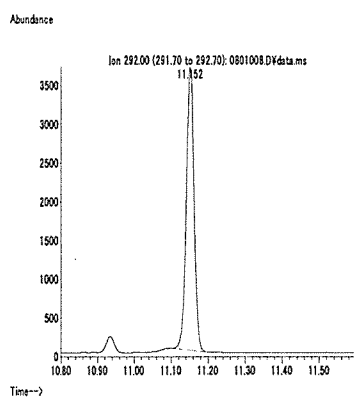
筋肉 (0.01 mg/kg 添加)



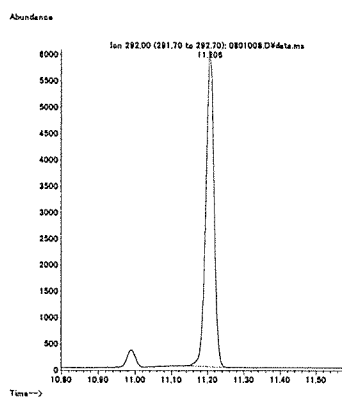
脂肪 (0.01 mg/kg 添加)



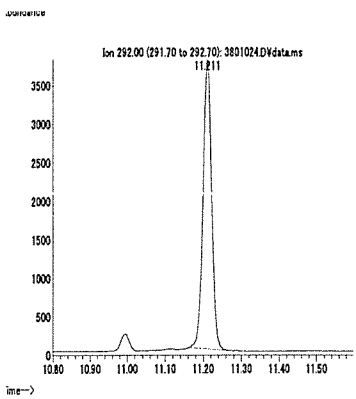
肝臓 (0.01 mg/kg 添加)



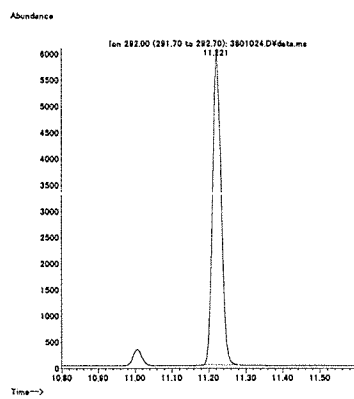
うなぎ (0.01 mg/kg 添加)



えび (0.01 mg/kg 添加)



牛乳 (0.01 mg/kg 添加)



卵 (0.01 mg/kg 添加)

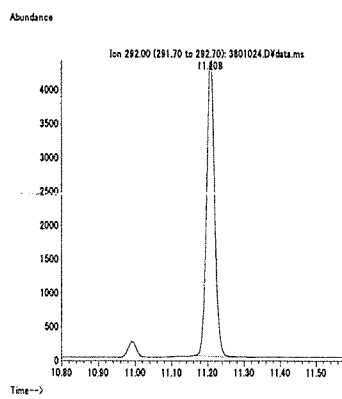
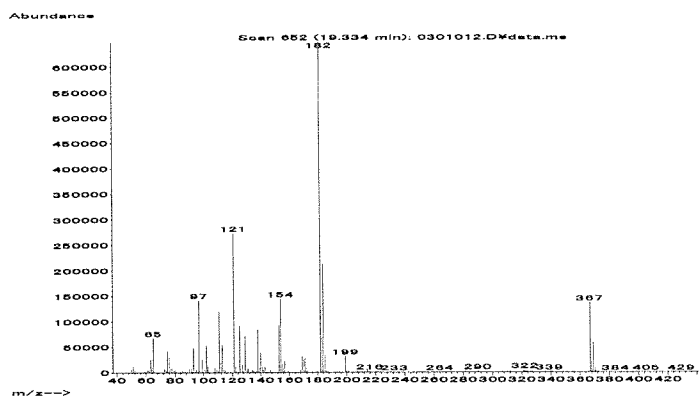


図 2. 最小検出量評価, 標準品, 回収試料のマスキロマトグラム (ベンフルラリン)

マススペクトル



検量線

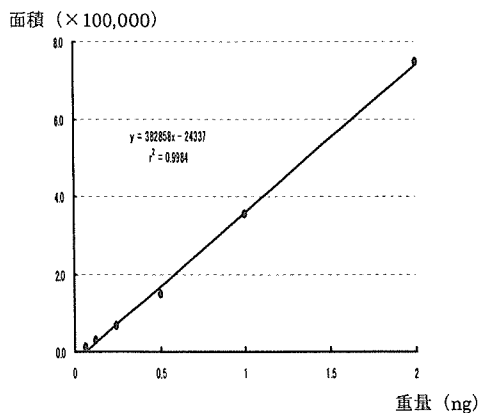
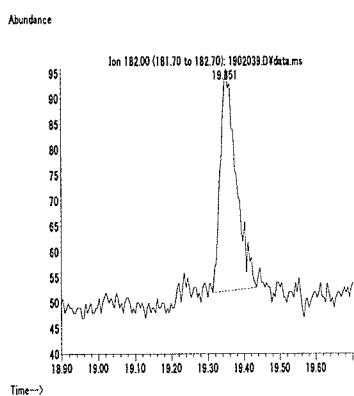
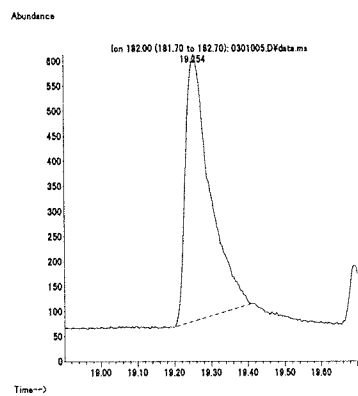


図 1. マススペクトルおよび検量線 (ホサロン)

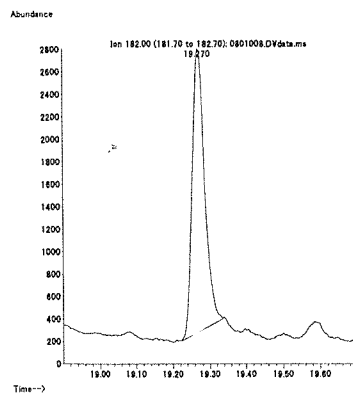
最小検出量評価 (0.02 ng)



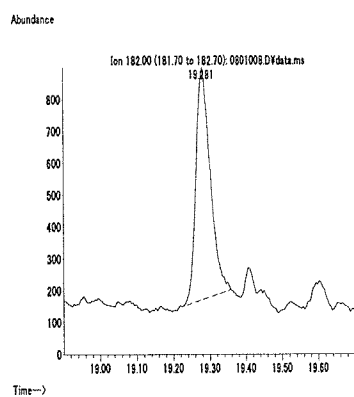
標準品 (0.125 ng)



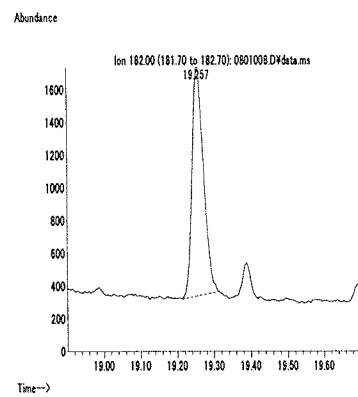
筋肉 (0.01 mg/kg 添加)



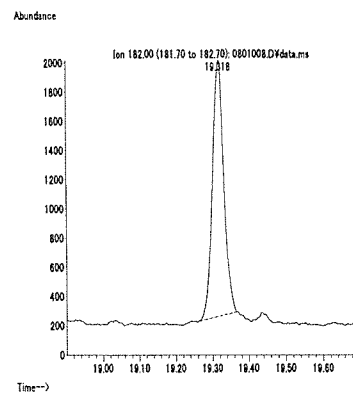
脂肪 (0.01 mg/kg 添加)



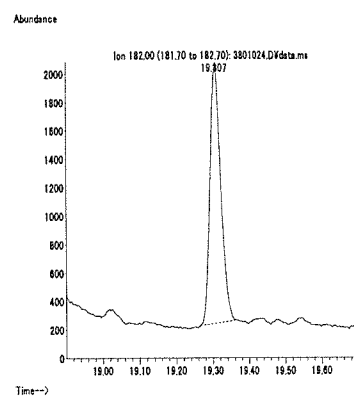
肝臓 (0.01 mg/kg 添加)



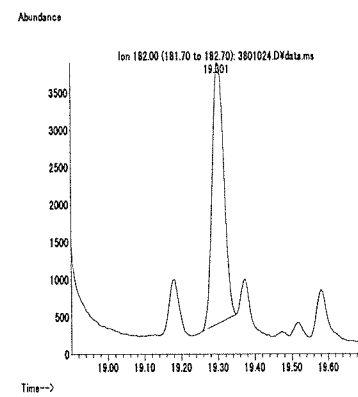
うなぎ (0.01 mg/kg 添加)



えび (0.01 mg/kg 添加)



牛乳 (0.01 mg/kg 添加)



卵 (0.01 mg/kg 添加)

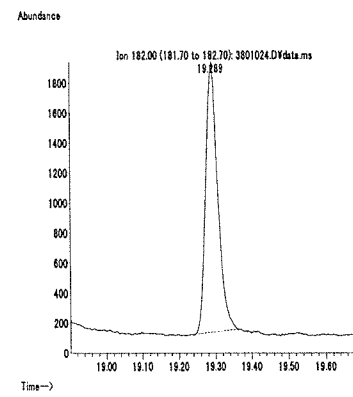
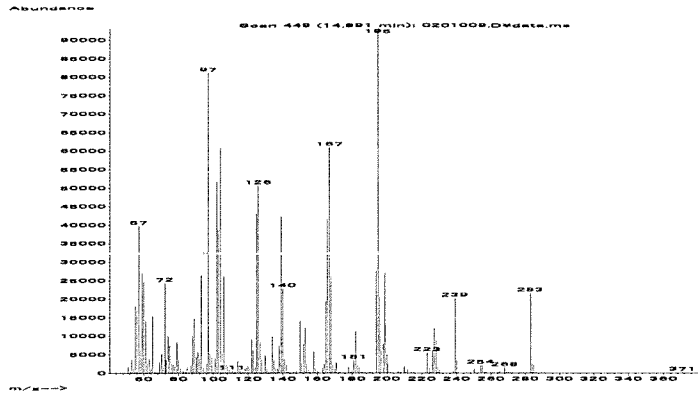


図 2. 最小検出量評価, 標準品, 回収試料のマスクロマトグラム (ホサロン)

マススペクトル



検量線

面積 (×100,000)

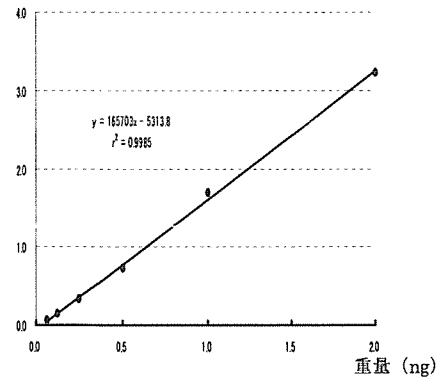
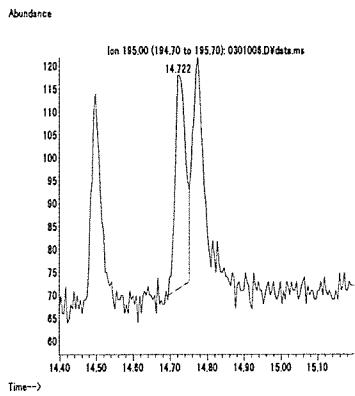
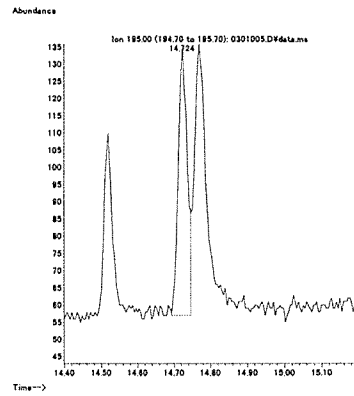


図 1. マススペクトルおよび検量線 (ホスチアゼート(1))

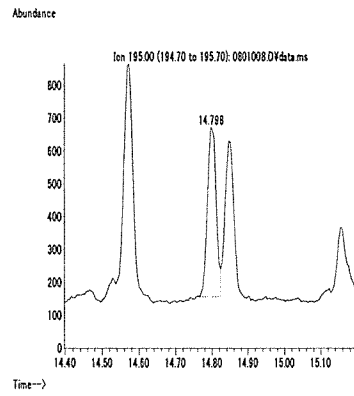
最小検出量評価 (0.02 ng)



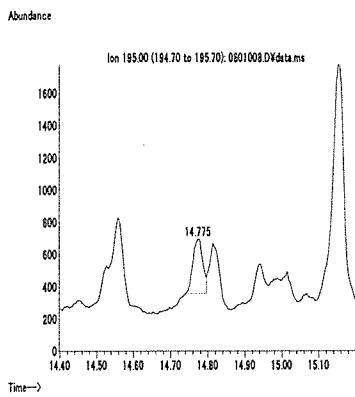
標準品 (0.125 ng)



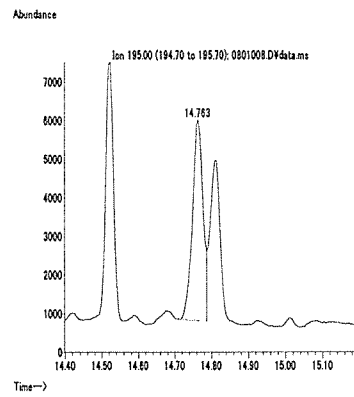
筋肉 (0.01 mg/kg 添加)



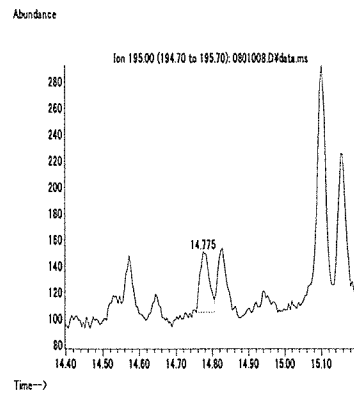
脂肪 (0.01 mg/kg 添加)



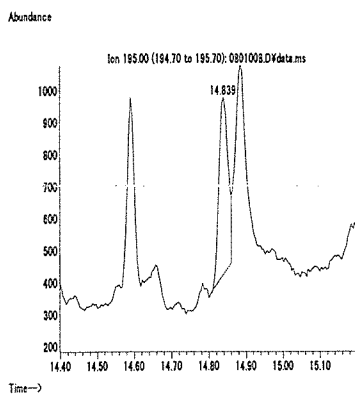
肝臓 (0.1 mg/kg 添加)



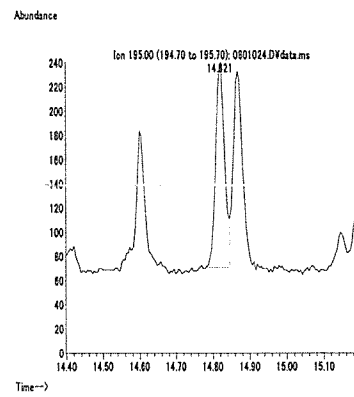
うなぎ (0.01 mg/kg 添加)



えび (0.01 mg/kg 添加)



牛乳 (0.01 mg/kg 添加)



卵 (0.01 mg/kg 添加)

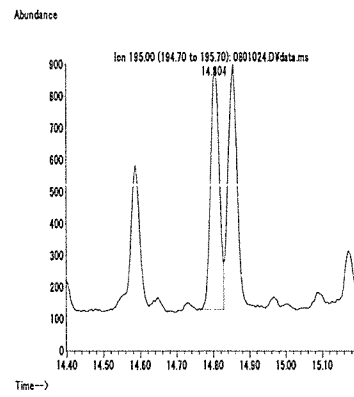
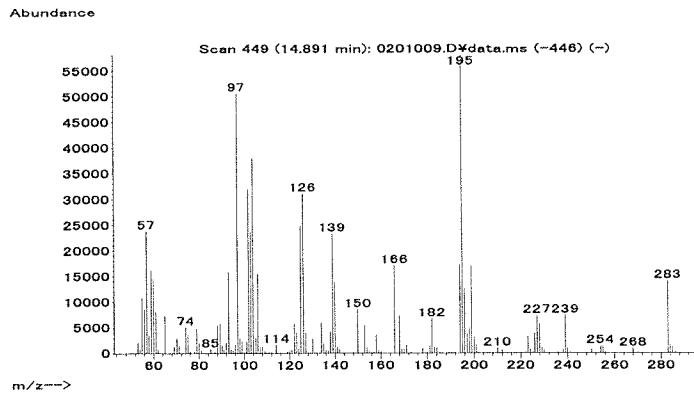


図 2. 最小検出量評価, 標準品, 回収試料のマスクロマトグラム (ホスチアゼート(1))

マススペクトル



検量線

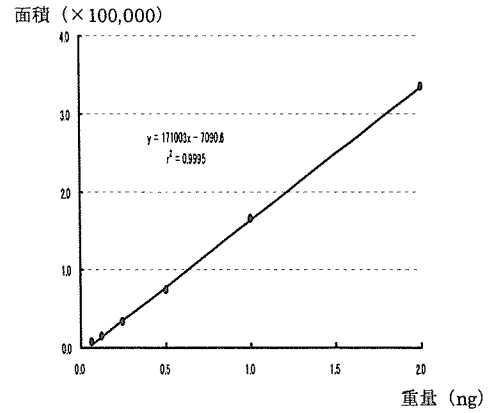
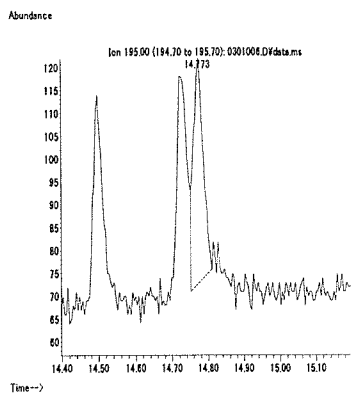
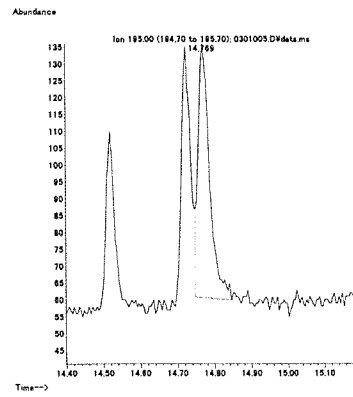


図1. マススペクトルおよび検量線 (ホスチアゼート(2))

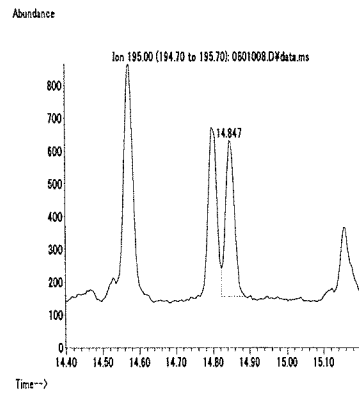
最小検出量評価 (0.02 ng)



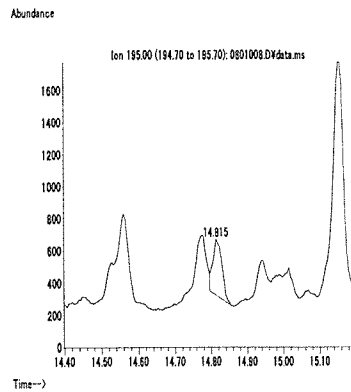
標準品 (0.125 ng)



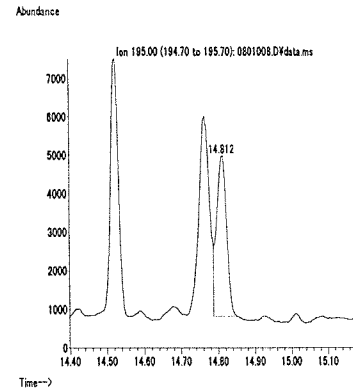
筋肉 (0.01 mg/kg 添加)



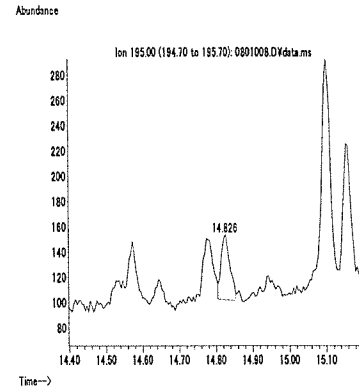
脂肪 (0.01 mg/kg 添加)



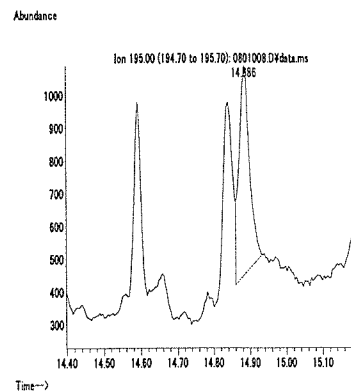
肝臓 (0.1 mg/kg 添加)



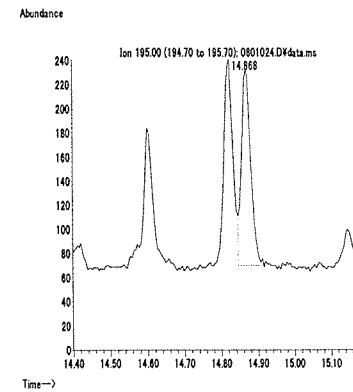
うなぎ (0.01 mg/kg 添加)



えび (0.01 mg/kg 添加)



牛乳 (0.01 mg/kg 添加)



卵 (0.01 mg/kg 添加)

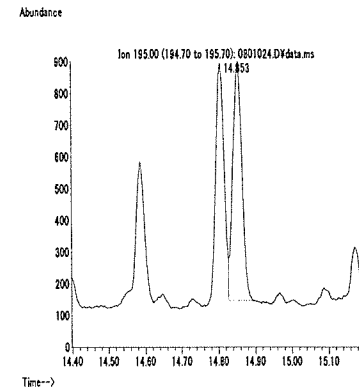
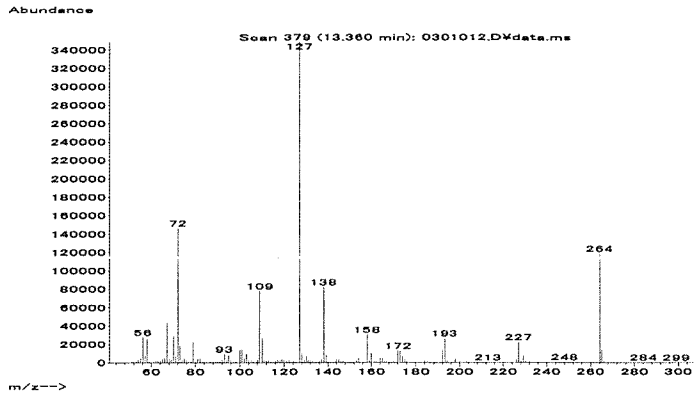


図2. 最小検出量評価, 標準品, 回収試料のマスキンググラム (ホスチアゼート(2))

マススペクトル



検量線

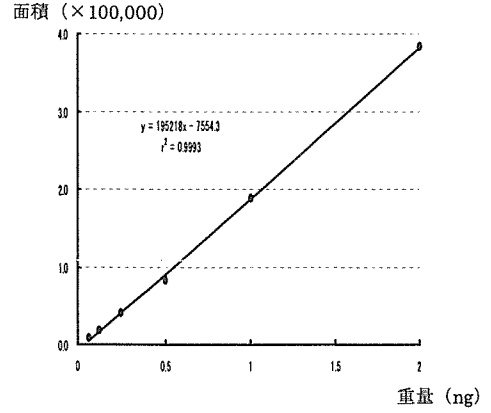
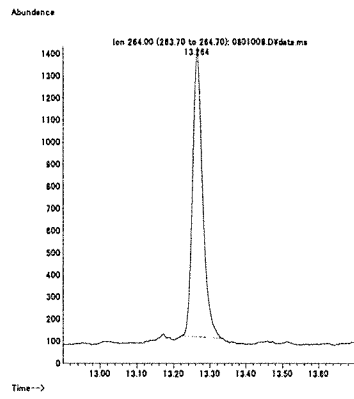
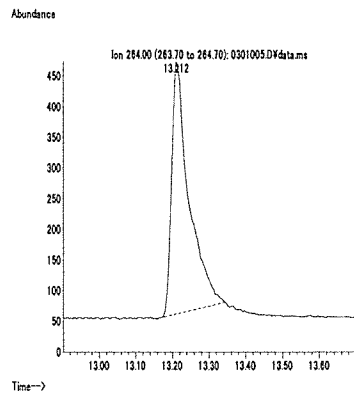
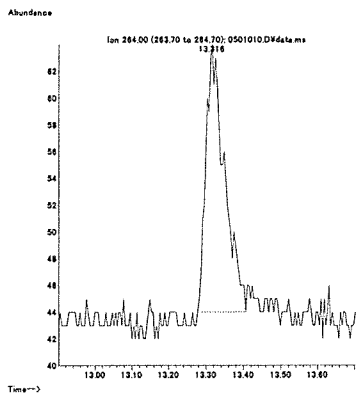


図 1. マススペクトルおよび検量線 (ホスファミドン)

最小検出量評価 (0.008 ng)

標準品 (0.125 ng)

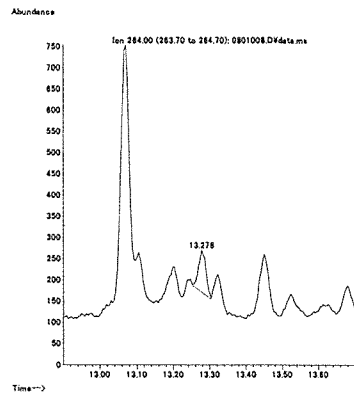
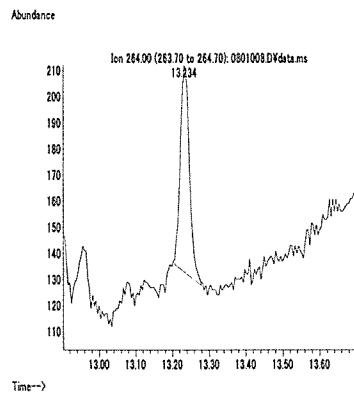
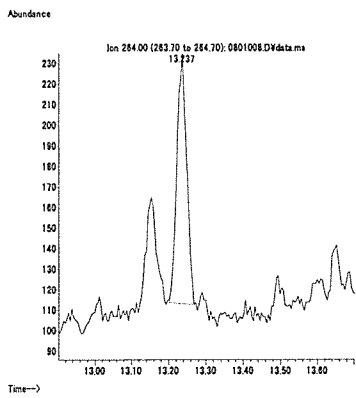
筋肉 (0.1 mg/kg 添加)



脂肪 (0.01 mg/kg 添加)

肝臓 (0.01 mg/kg 添加)

うなぎ (0.01 mg/kg 添加)



えび (0.01 mg/kg 添加)

牛乳 (0.01 mg/kg 添加)

卵 (0.01 mg/kg 添加)

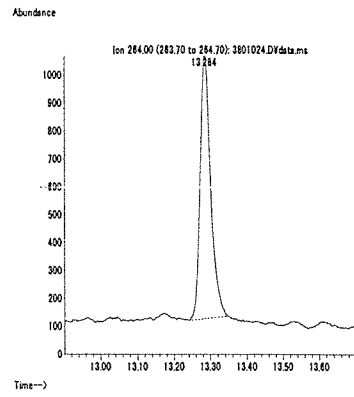
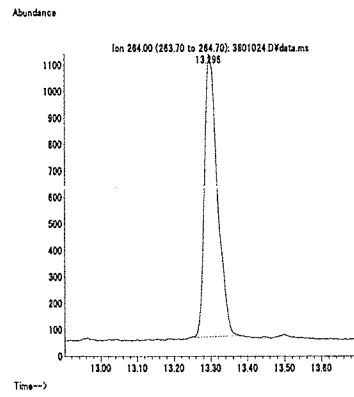
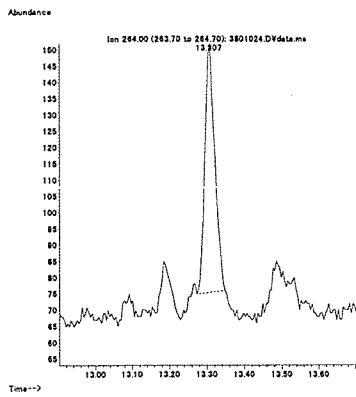
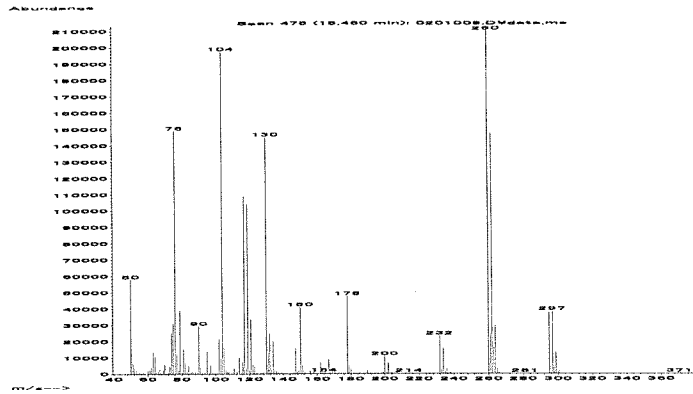


図 2. 最小検出量評価, 標準品, 回収試料のマスクロマトグラム (ホスファミドン)



マススペクトル



検量線

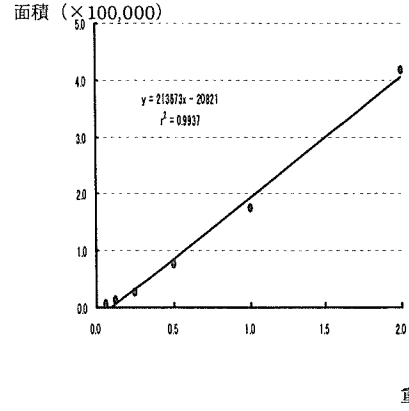
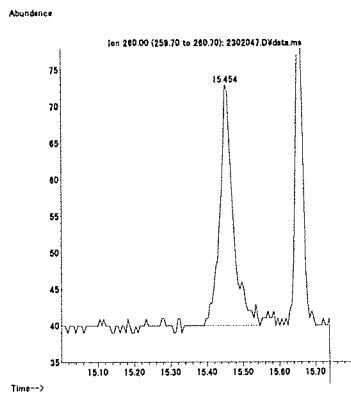
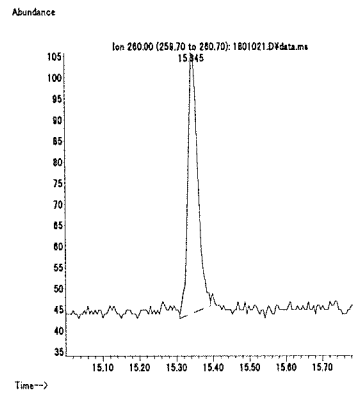


図 1. マススペクトルおよび検量線 (ホルペット)

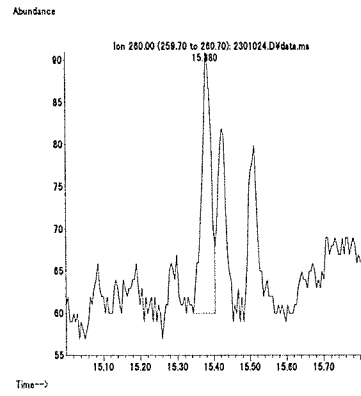
最小検出量評価 (0.04 ng)



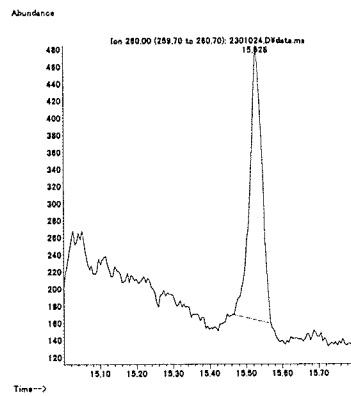
標準品 (0.125 ng)



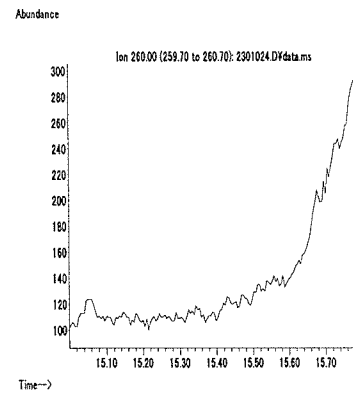
筋肉 (0.1 mg/kg 添加)



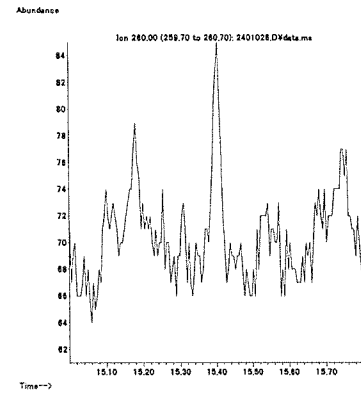
脂肪 (0.01 mg/kg 添加)



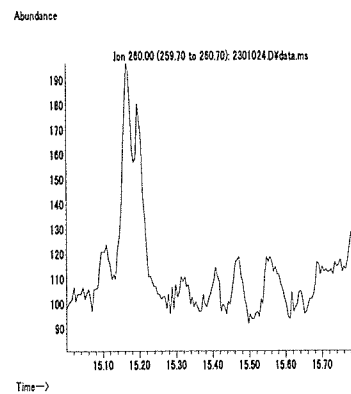
肝臓 (0.1 mg/kg 添加)



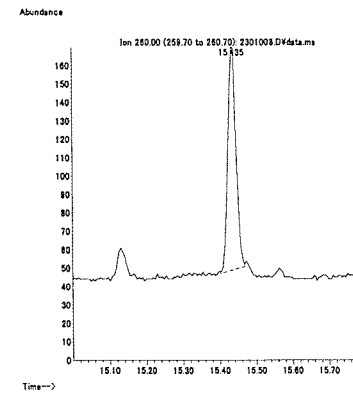
うなぎ (0.1 mg/kg 添加)



えび (0.1 mg/kg 添加)



牛乳 (0.01 mg/kg 添加)



卵 (0.1 mg/kg 添加)

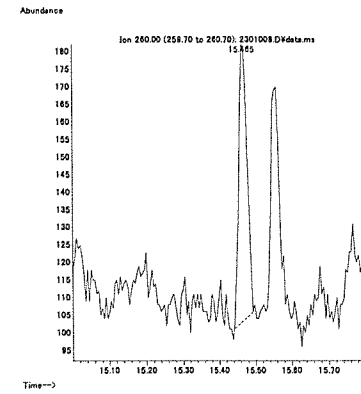
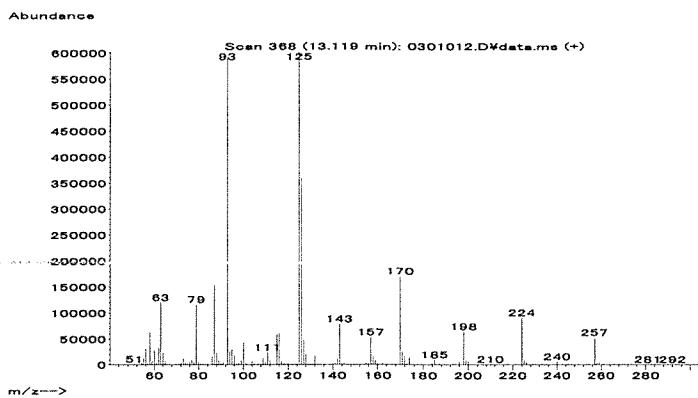


図 2. 最小検出量評価, 標準品, 回収試料のマスキロマトグラム (ホルペット)

マススペクトル



検量線

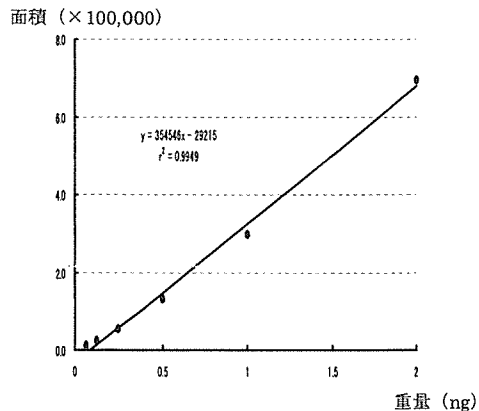
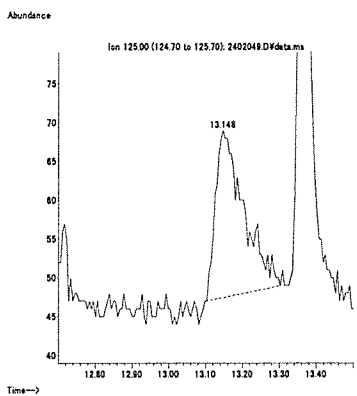
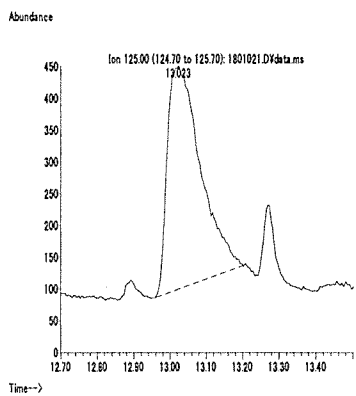


図 1. マススペクトルおよび検量線 (ホルモチオン)

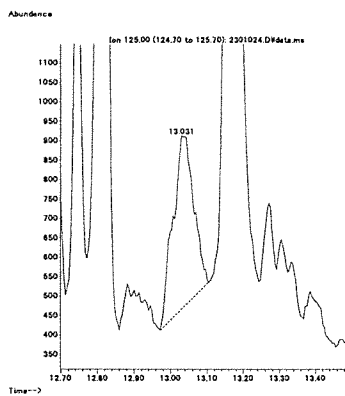
最小検出量評価 (0.04 ng)



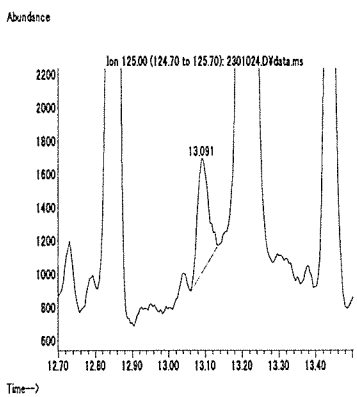
標準品 (0.125 ng)



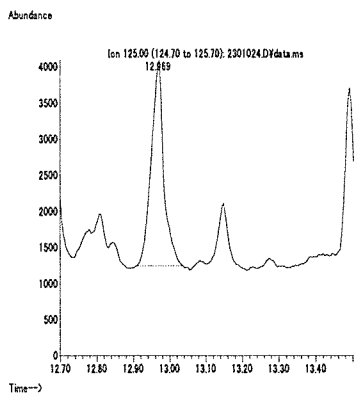
筋肉 (0.01 mg/kg 添加)



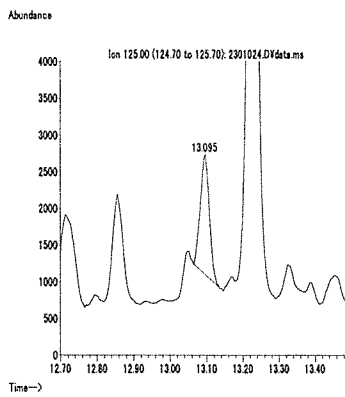
脂肪 (0.01 mg/kg 添加)



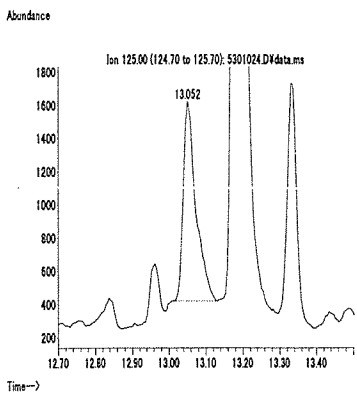
肝臓 (0.01 mg/kg 添加)



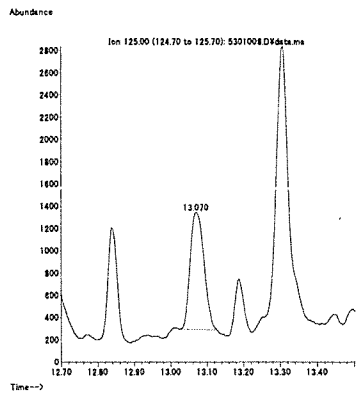
うなぎ (0.01 mg/kg 添加)



えび (0.1 mg/kg 添加)



牛乳 (0.01 mg/kg 添加)



卵 (0.01 mg/kg 添加)

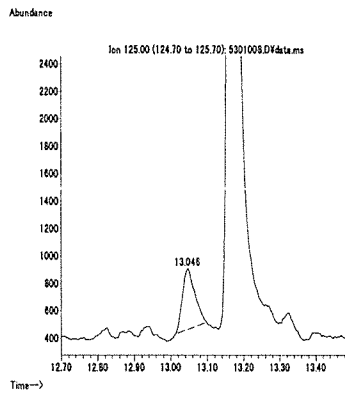
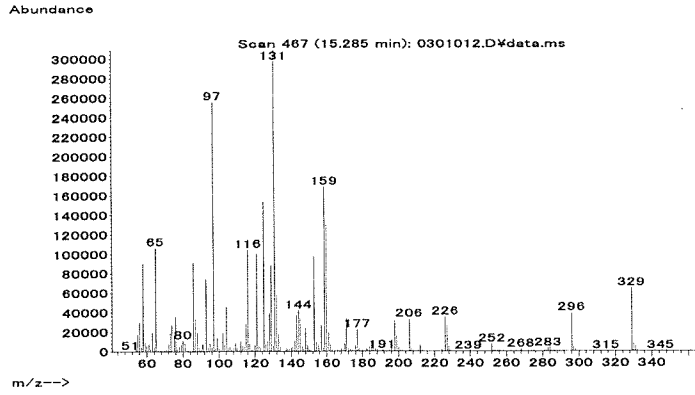


図 2. 最小検出量評価, 標準品, 回収試料のマスキロマトグラム (ホルモチオン)

マススペクトル



検量線

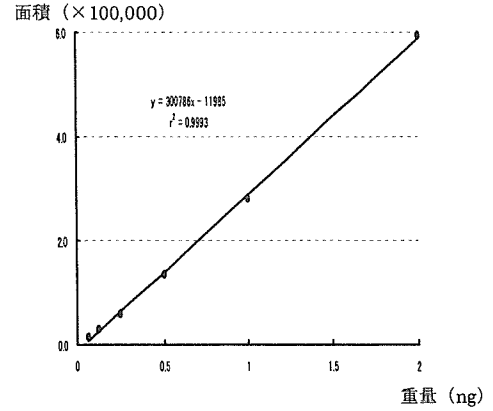
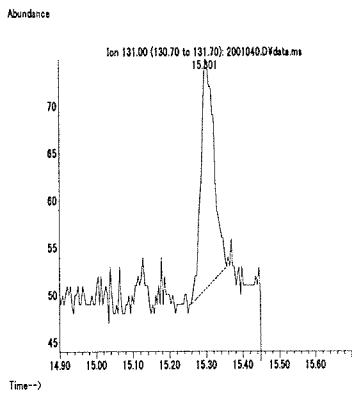
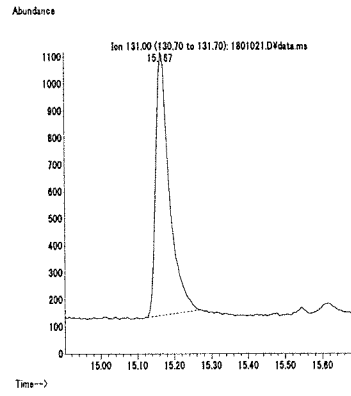


図1. マススペクトルおよび検量線 (メカルバム)

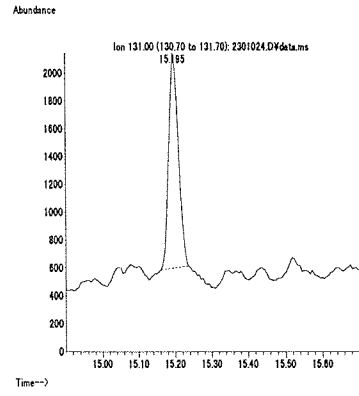
最小検出量評価 (0.02 ng)



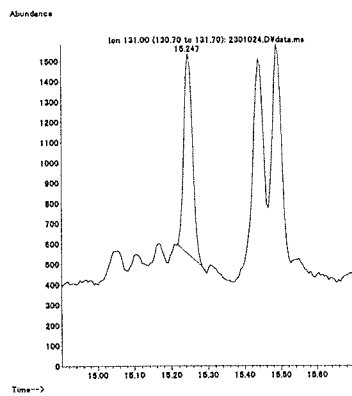
標準品 (0.125 ng)



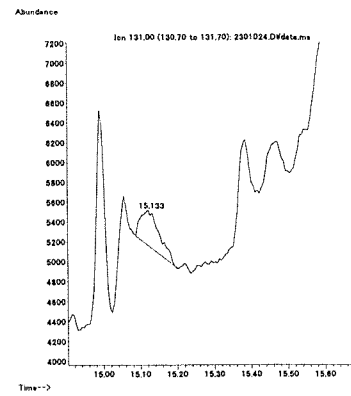
筋肉 (0.01 mg/kg 添加)



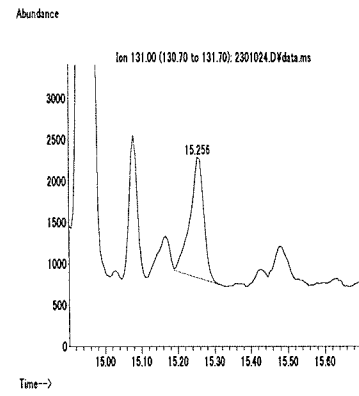
脂肪 (0.01 mg/kg 添加)



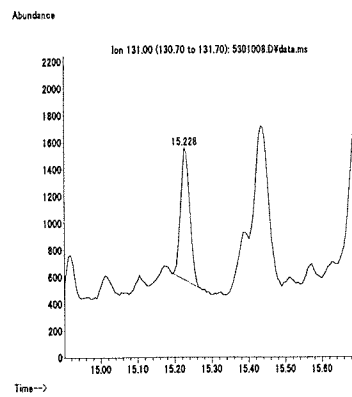
肝臓 (0.1 mg/kg 添加)



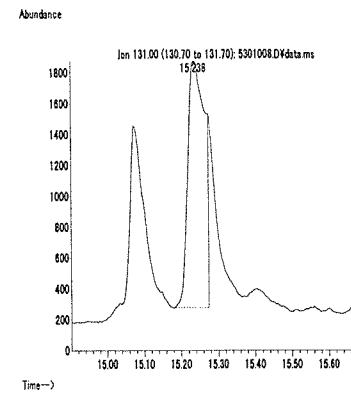
うなぎ (0.01 mg/kg 添加)



えび (0.01 mg/kg 添加)



牛乳 (0.01 mg/kg 添加)



卵 (0.01 mg/kg 添加)

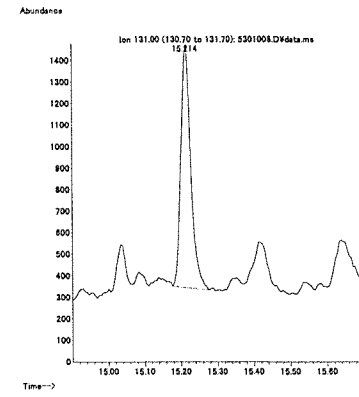
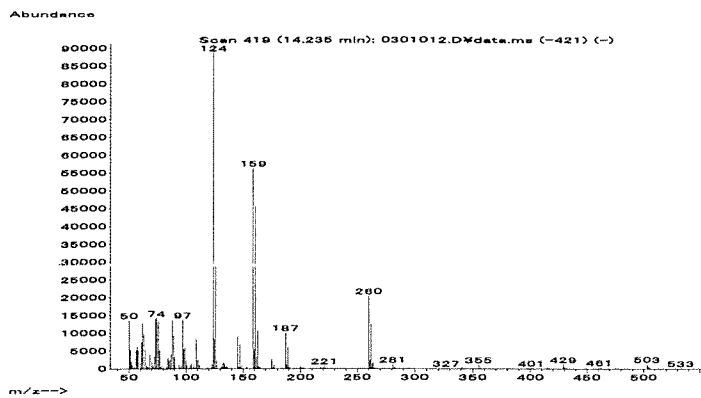


図2. 最小検出量評価, 標準品, 回収試料のマスプロトグラム (メカルバム)

マススペクトル



検量線

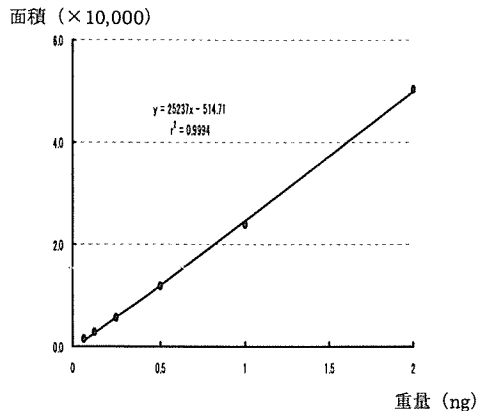
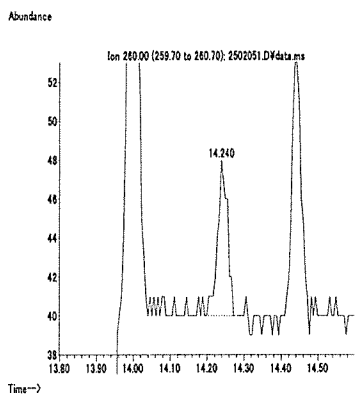
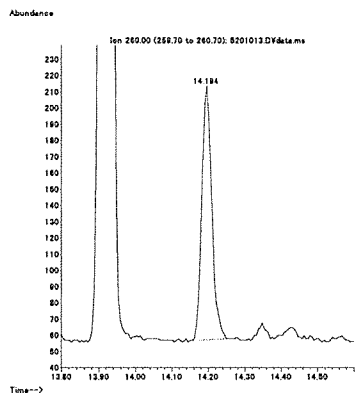


図1. マススペクトルおよび検量線 (メタゾール)

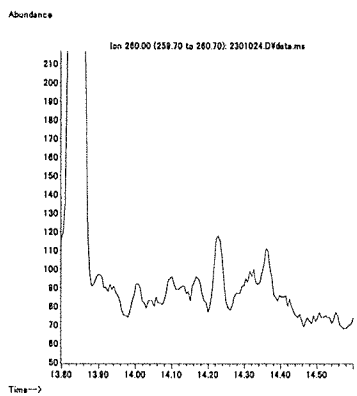
最小検出量評価 (0.1 ng)



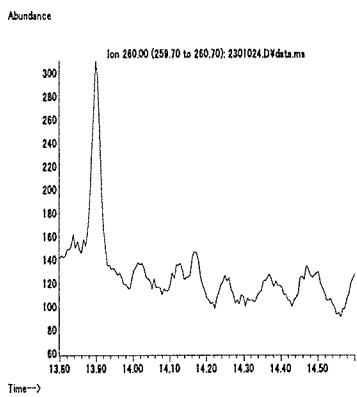
標準品 (2 ng)



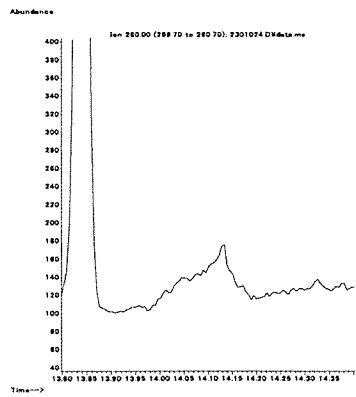
筋肉 (0.1 mg/kg 添加)



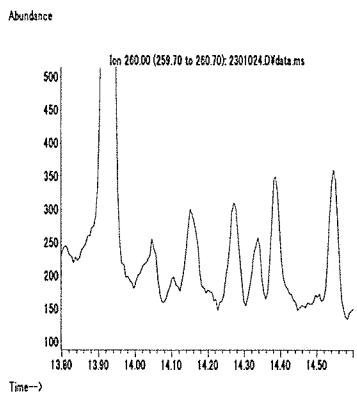
脂肪 (0.1 mg/kg 添加)



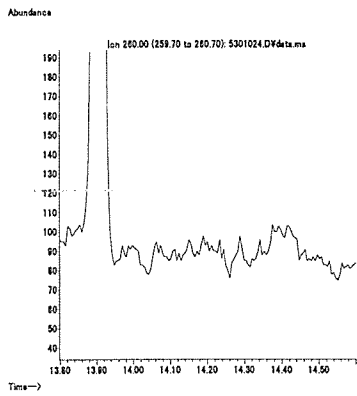
肝臓 (0.1 mg/kg 添加)



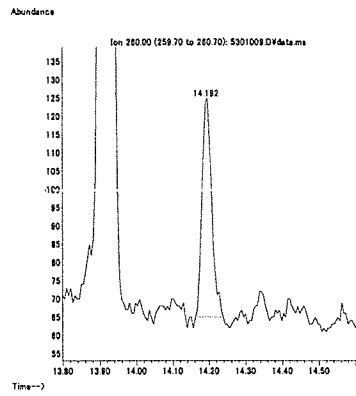
うなぎ (0.1 mg/kg 添加)



えび (0.1 mg/kg 添加)



牛乳 (0.1 mg/kg 添加)



卵 (0.1 mg/kg 添加)

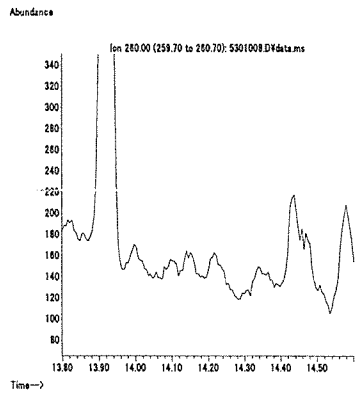
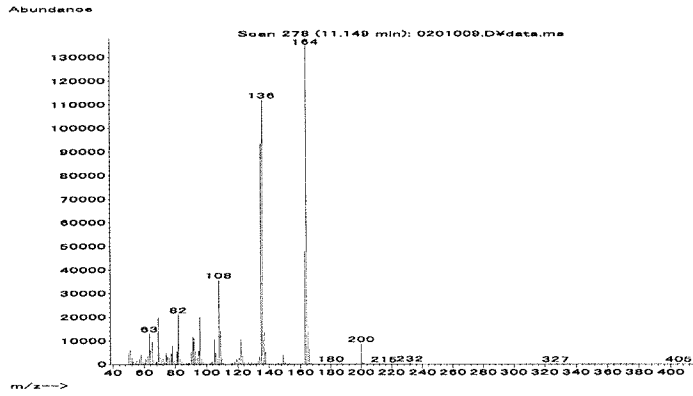
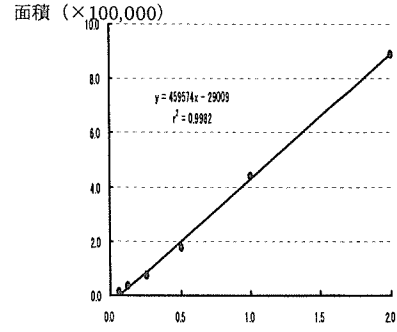


図2. 最小検出量評価, 標準品, 回収試料のマスクロマトグラム (メタゾール)

マススペクトル



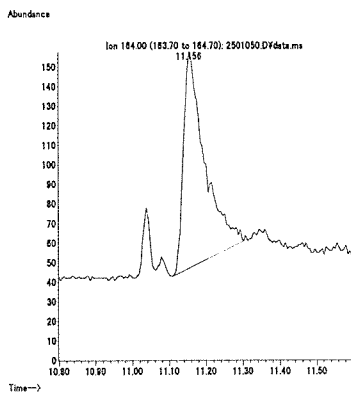
検量線



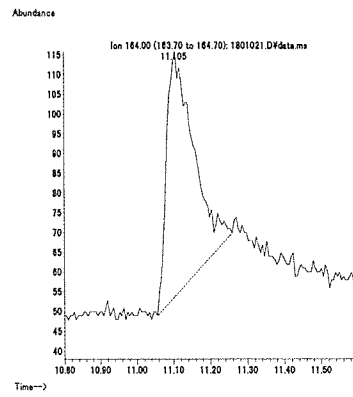
重量 (ng)

図 1. マススペクトルおよび検量線 (メタベンズチアズロン)

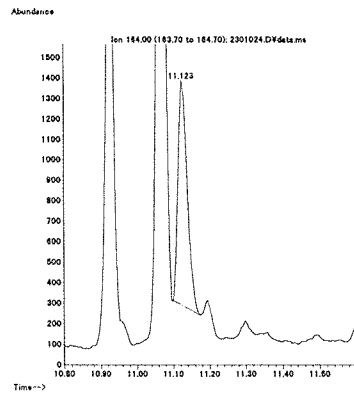
最小検出量評価 (0.1 ng)



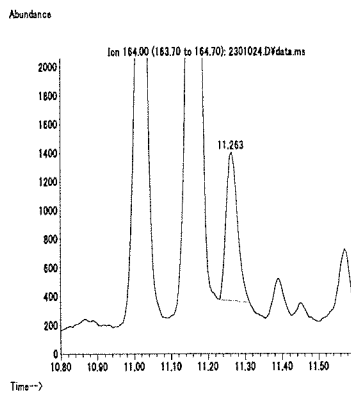
標準品 (0.125 ng)



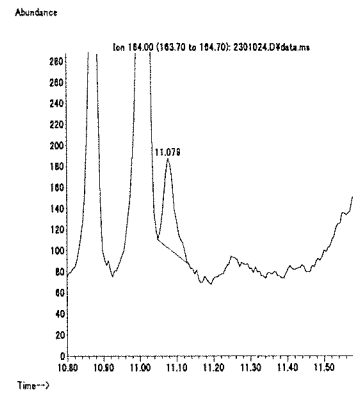
筋肉 (0.01 mg/kg 添加)



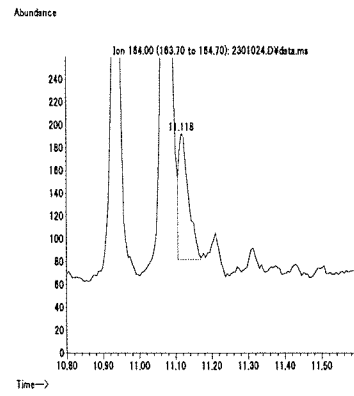
脂肪 (0.01 mg/kg 添加)



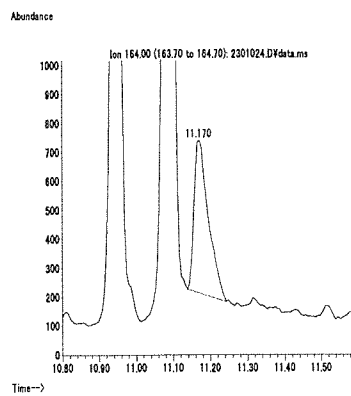
肝臓 (0.01 mg/kg 添加)



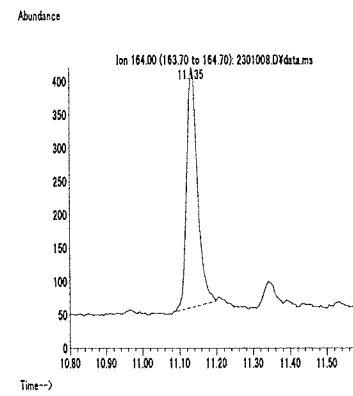
うなぎ (0.01 mg/kg 添加)



えび (0.01 mg/kg 添加)



牛乳 (0.01 mg/kg 添加)



卵 (0.01 mg/kg 添加)

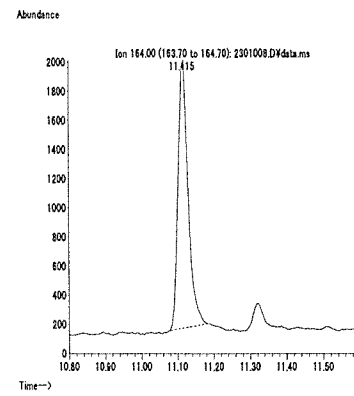
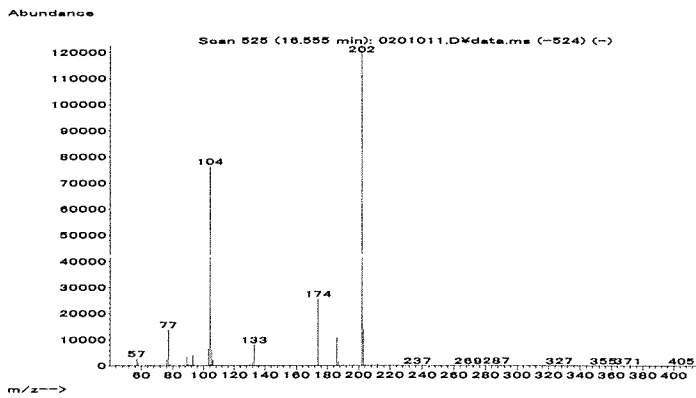


図 2. 最小検出量評価, 標準品, 回収試料のマスキロマトグラム (メタベンズチアズロン)

マススペクトル



検量線

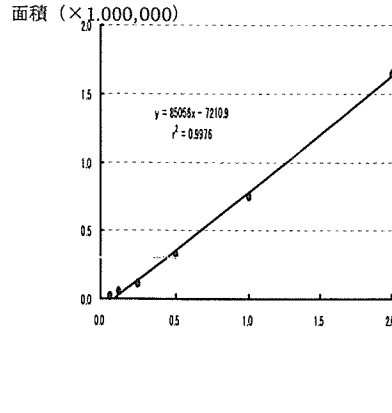
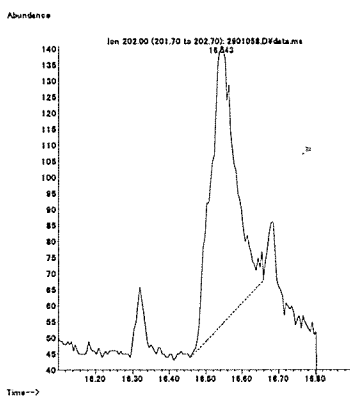
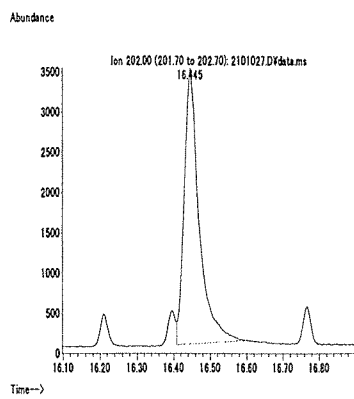


図 1. マススペクトルおよび検量線 (メタミトロン)

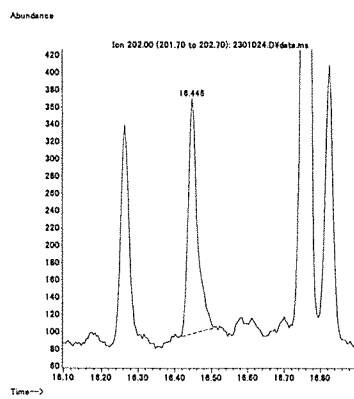
最小検出量評価 (0.2 ng)



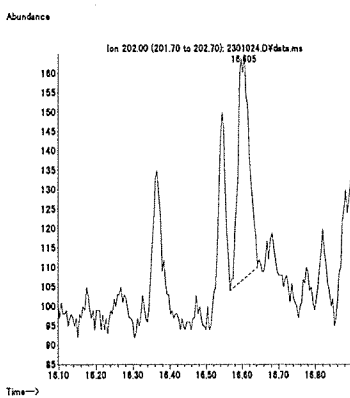
標準品 (1 ng)



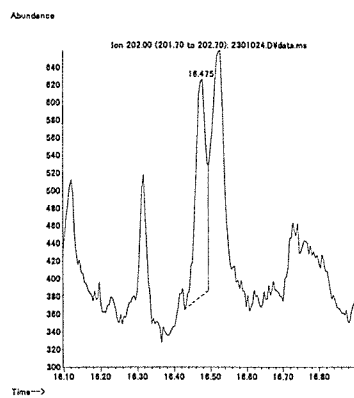
筋肉 (0.1 mg/kg 添加)



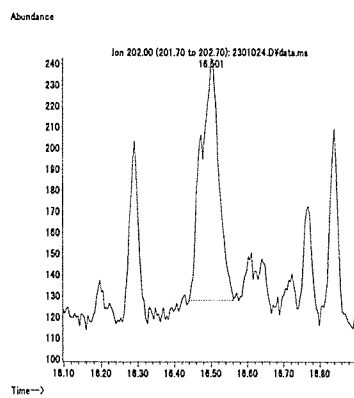
脂肪 (0.1 mg/kg 添加)



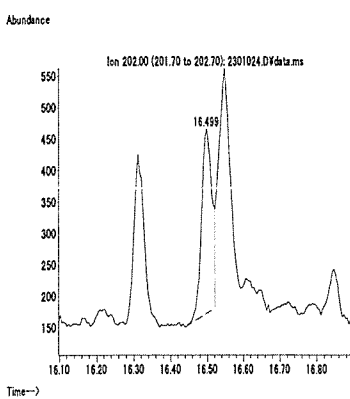
肝臓 (0.1 mg/kg 添加)



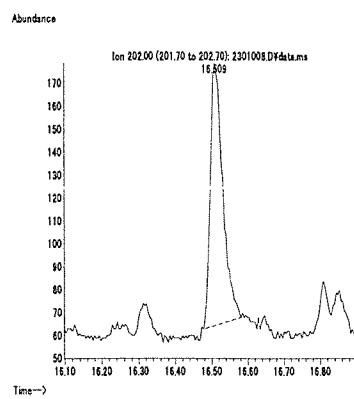
うなぎ (0.1 mg/kg 添加)



えび (0.1 mg/kg 添加)



牛乳 (0.01 mg/kg 添加)



卵 (0.01 mg/kg 添加)

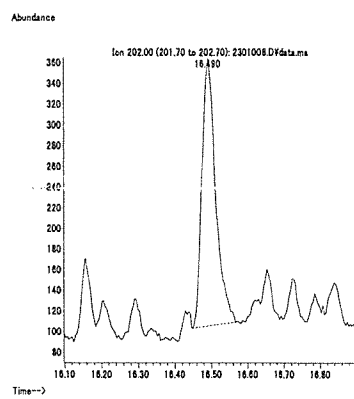
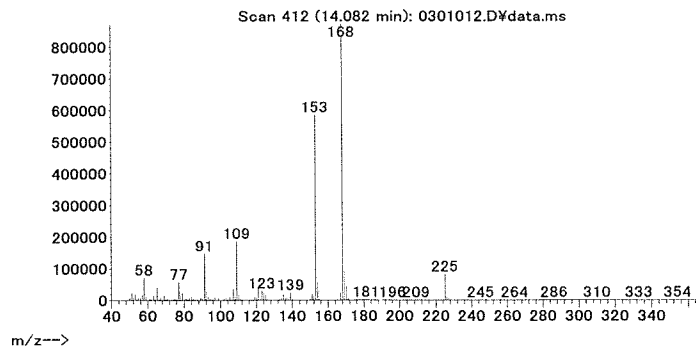


図 2. 最小検出量評価, 標準品, 回収試料のマスクロマトグラム (メタミトロン)

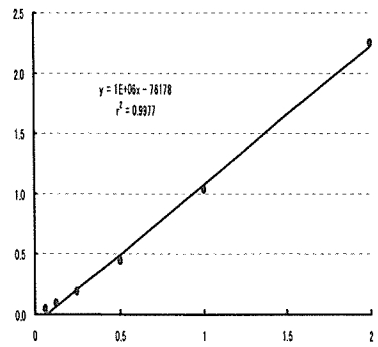
マススペクトル

Abundance



検量線

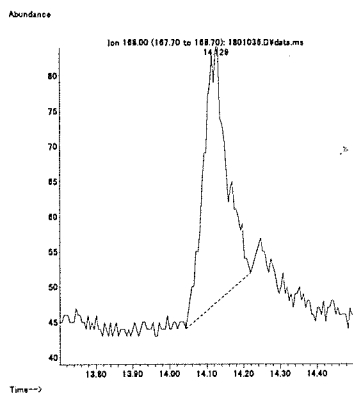
面積 (×1,000,000)



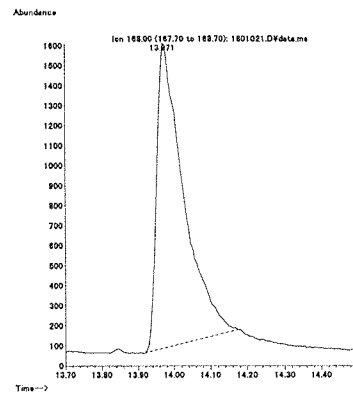
重量 (ng)

図 1. マススペクトルおよび検量線 (メチオカルブ)

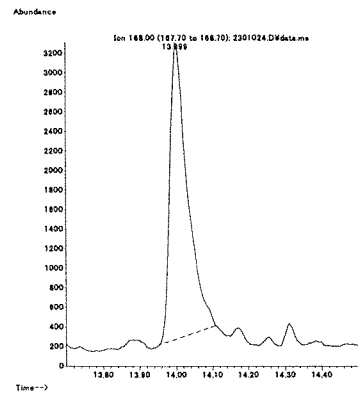
最小検出量評価 (0.01 ng)



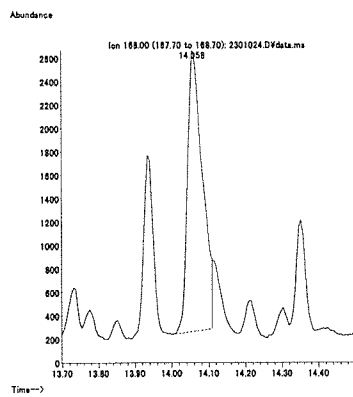
標準品 (0.125 ng)



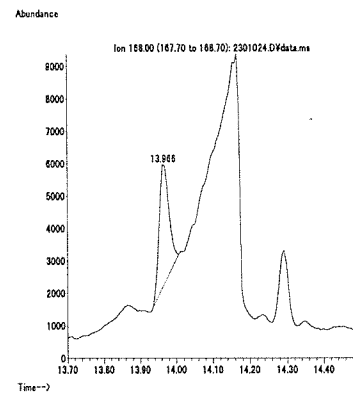
筋肉 (0.01 mg/kg 添加)



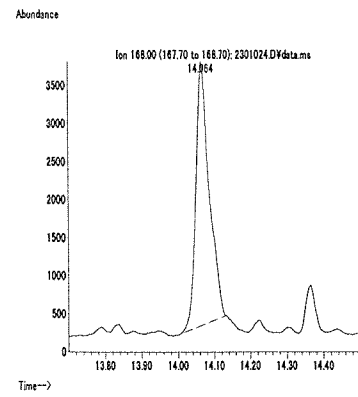
脂肪 (0.01 mg/kg 添加)



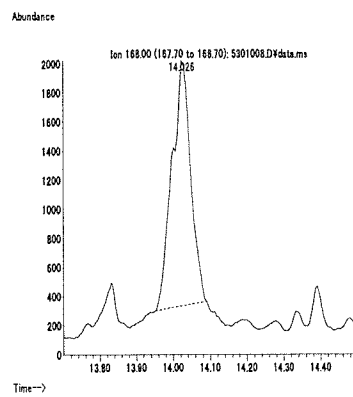
肝臓 (0.01 mg/kg 添加)



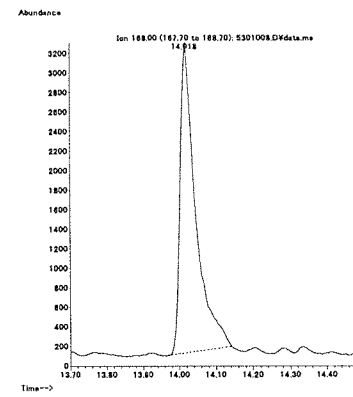
うなぎ (0.01 mg/kg 添加)



えび (0.01 mg/kg 添加)



牛乳 (0.01 mg/kg 添加)



卵 (0.01 mg/kg 添加)

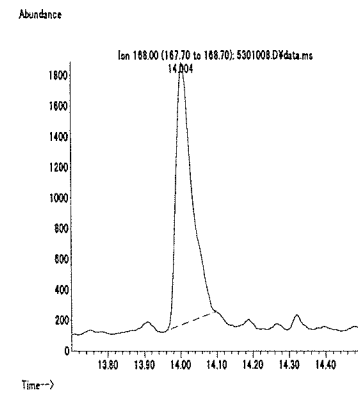
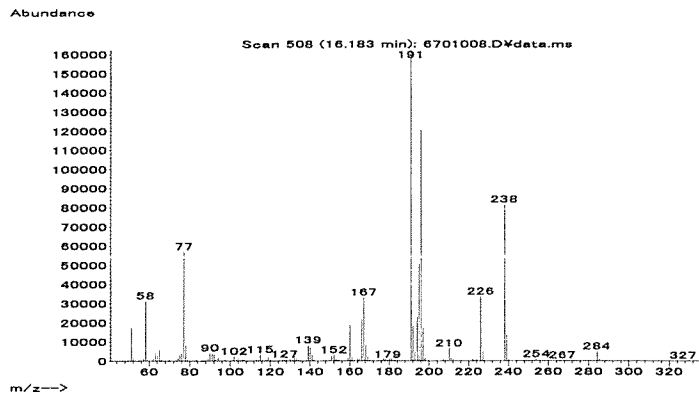


図 2. 最小検出量評価, 標準品, 回収試料のマスプロマトグラム (メチオカルブ)

マススペクトル



検量線

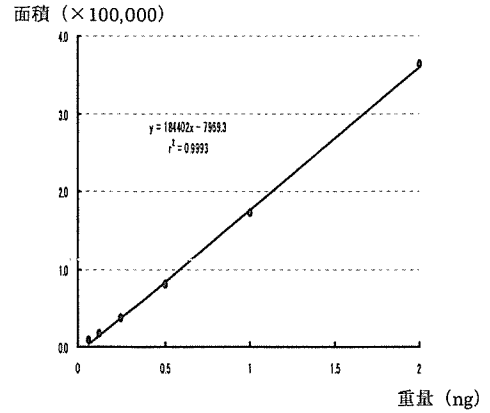
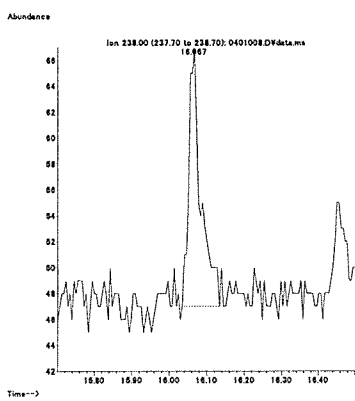
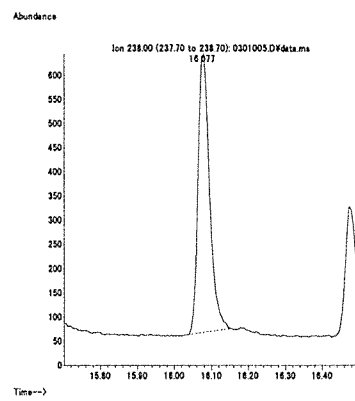


図 1. マススペクトルおよび検量線 (メトミノストロピン(E))

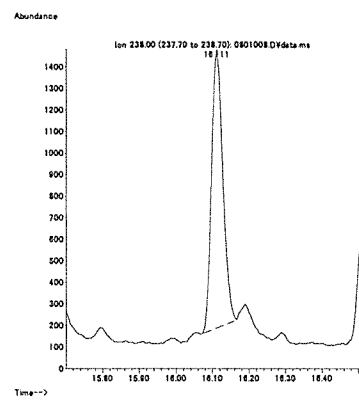
最小検出量評価 (0.004 ng)



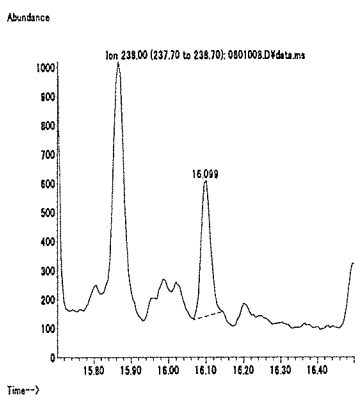
標準品 (0.125 ng)



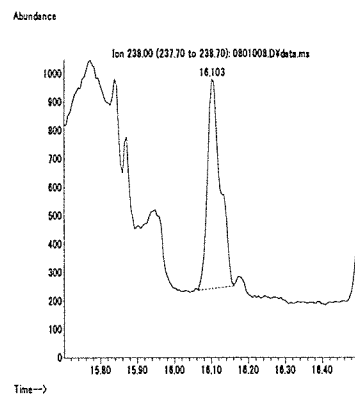
筋肉 (0.01 mg/kg 添加)



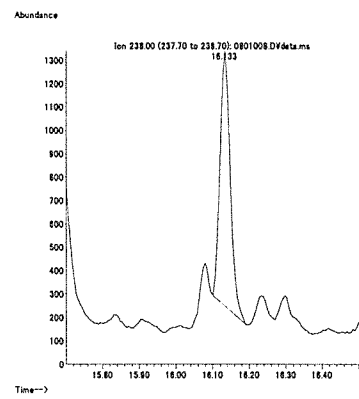
脂肪 (0.01 mg/kg 添加)



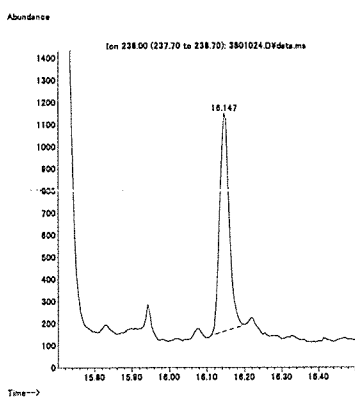
肝臓 (0.01 mg/kg 添加)



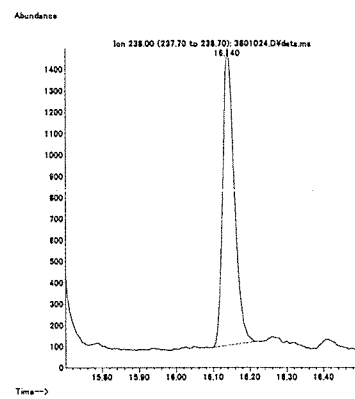
うなぎ (0.01 mg/kg 添加)



えび (0.01 mg/kg 添加)



牛乳 (0.01 mg/kg 添加)



卵 (0.01 mg/kg 添加)

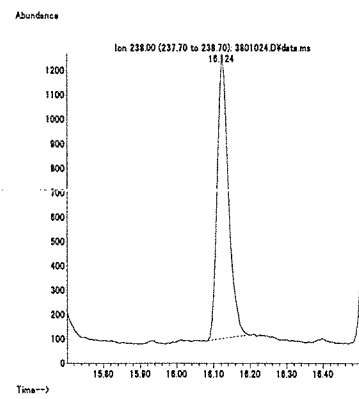
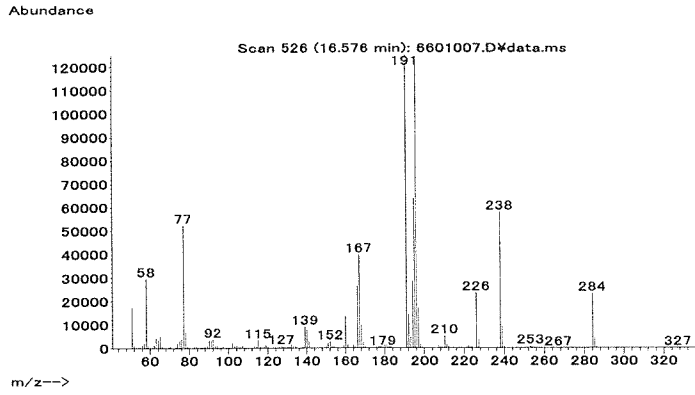


図 2. 最小検出量評価, 標準品, 回収試料のマスプロマトグラム (メトミノストロピン(E))

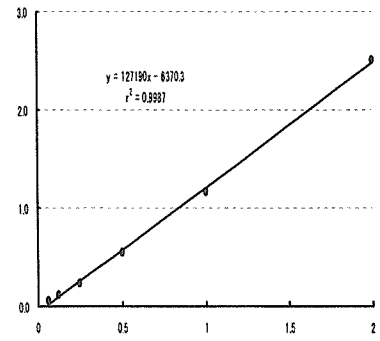


マススペクトル



検量線

面積 (×100,000)



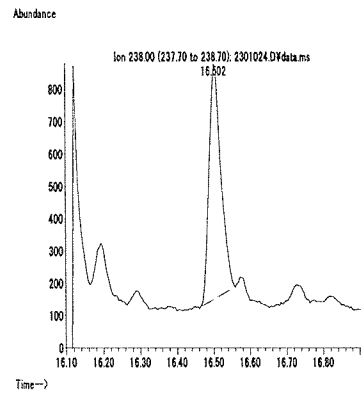
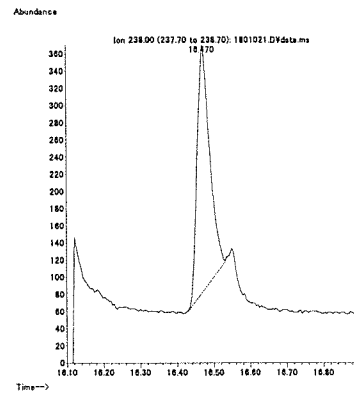
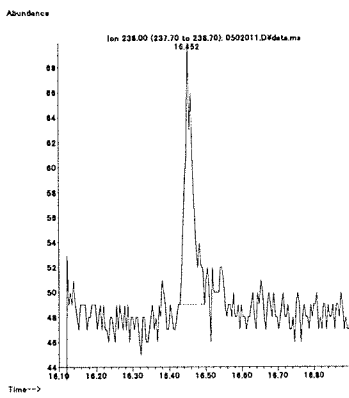
重量 (ng)

図1. マススペクトルおよび検量線 (メトミノストールビン(Z))

最小検出量評価 (0.008 ng)

標準品 (0.125 ng)

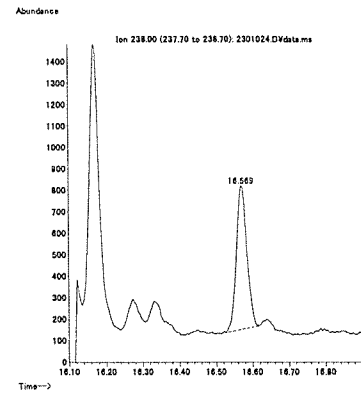
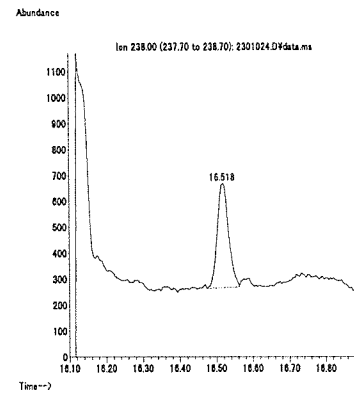
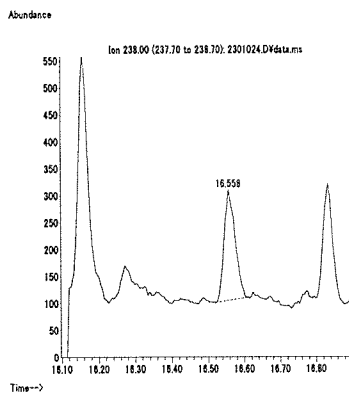
筋肉 (0.01 mg/kg 添加)



脂肪 (0.01 mg/kg 添加)

肝臓 (0.01 mg/kg 添加)

うなぎ (0.01 mg/kg 添加)



えび (0.01 mg/kg 添加)

牛乳 (0.01 mg/kg 添加)

卵 (0.01 mg/kg 添加)

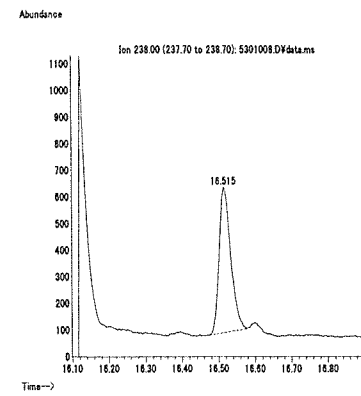
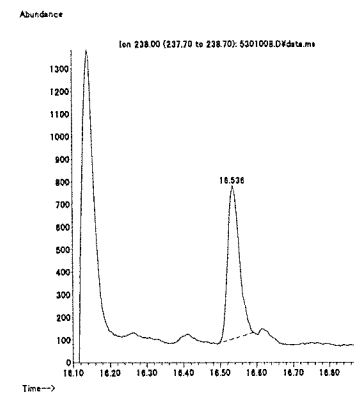
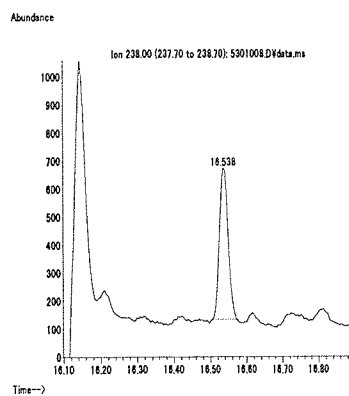
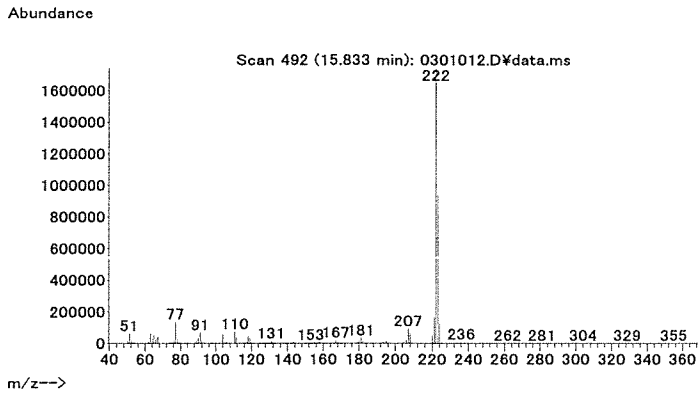


図2. 最小検出量評価, 標準品, 回収試料のマスクロマトグラム (メトミノストールビン(Z))

マススペクトル



検量線

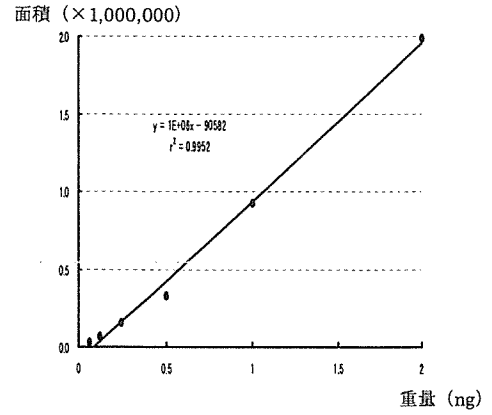
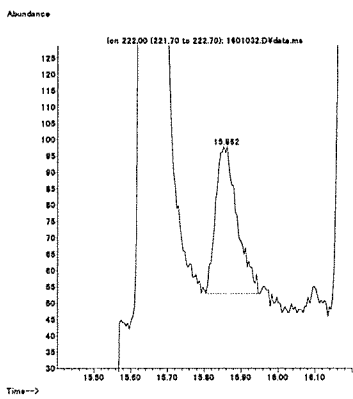
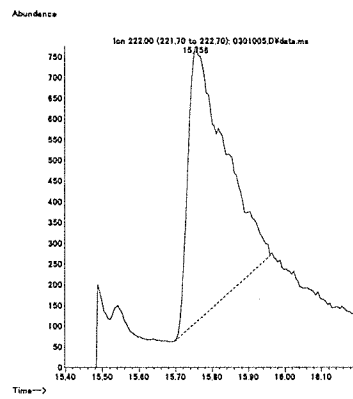


図 1. マススペクトルおよび検量線 (メパニピリム)

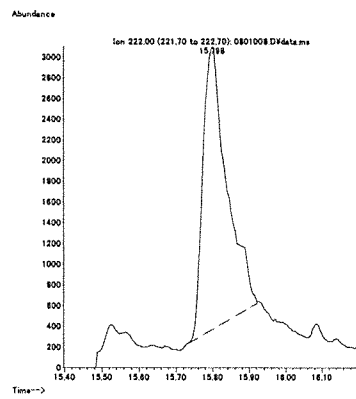
最小検出量評価 (0.01 ng)



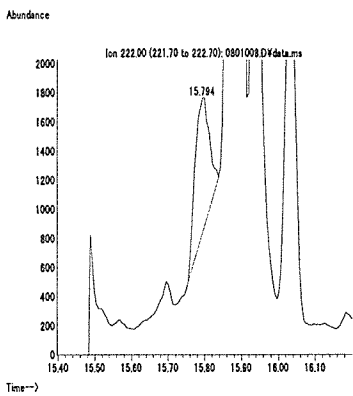
標準品 (0.125 ng)



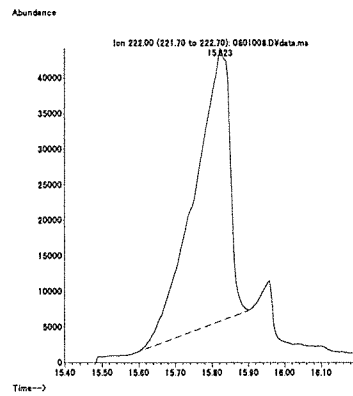
筋肉 (0.01 mg/kg 添加)



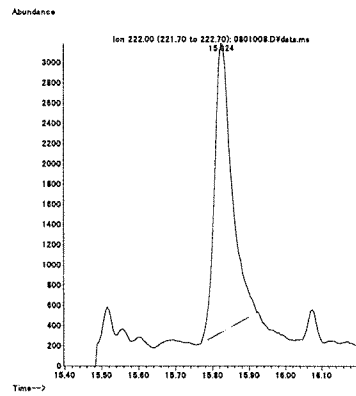
脂肪 (0.01 mg/kg 添加)



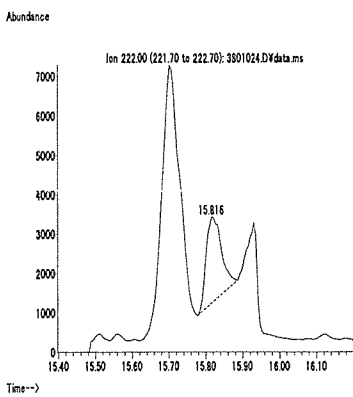
肝臓 (0.01 mg/kg 添加)



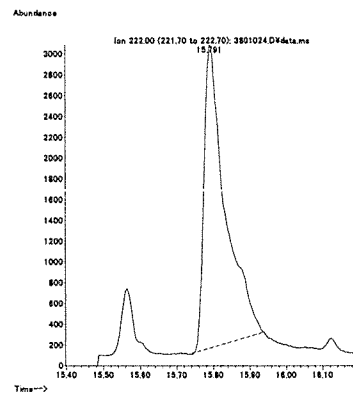
うなぎ (0.01 mg/kg 添加)



えび (0.01 mg/kg 添加)



牛乳 (0.01 mg/kg 添加)



卵 (0.01 mg/kg 添加)

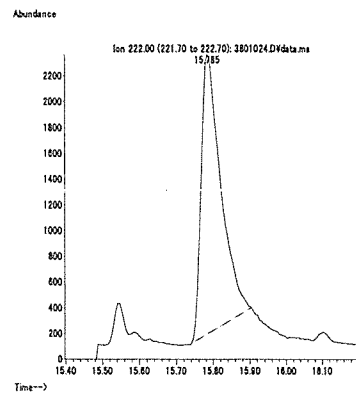
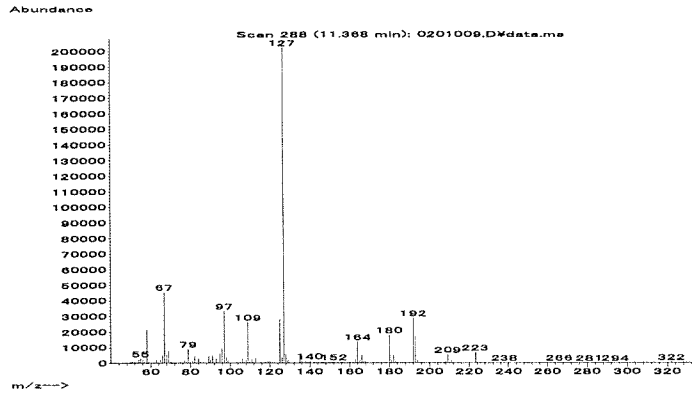


図 2. 最小検出量評価, 標準品, 回収試料のマスプロマトグラム (メパニピリム)

マススペクトル



検量線

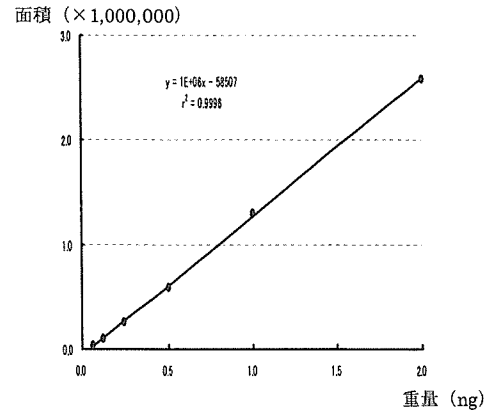
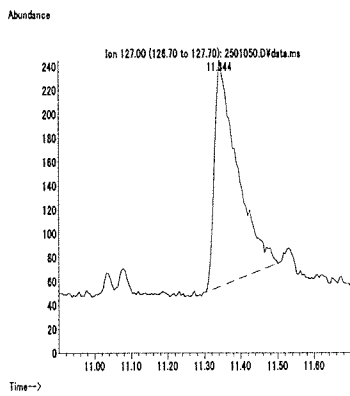
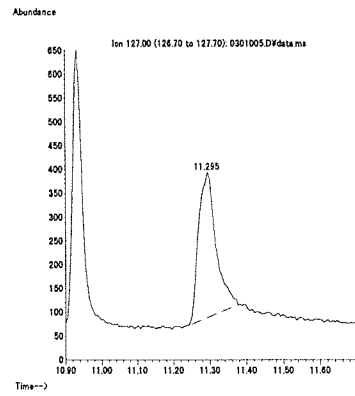


図1. マススペクトルおよび検量線 (モノクロトホス)

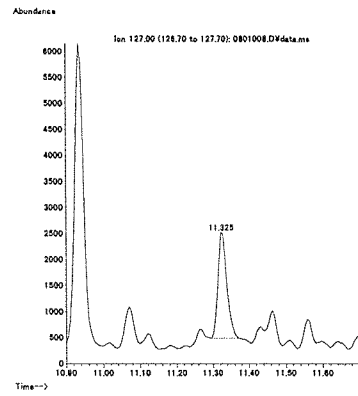
最小検出量評価 (0.1 ng)



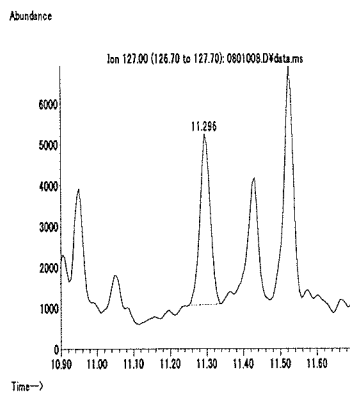
標準品 (0.125 ng)



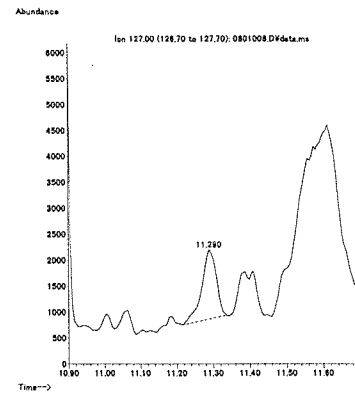
筋肉 (0.01 mg/kg 添加)



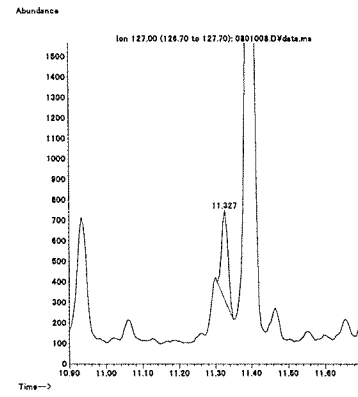
脂肪 (0.01 mg/kg 添加)



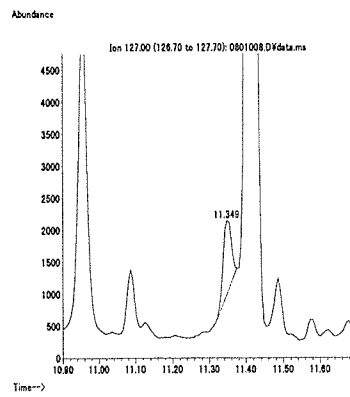
肝臓 (0.1 mg/kg 添加)



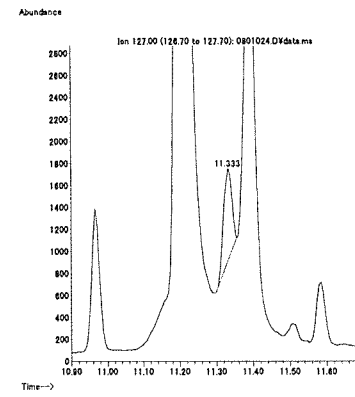
うなぎ (0.01 mg/kg 添加)



えび (0.01 mg/kg 添加)



牛乳 (0.01 mg/kg 添加)



卵 (0.01 mg/kg 添加)

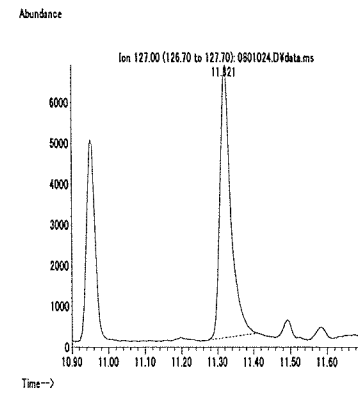
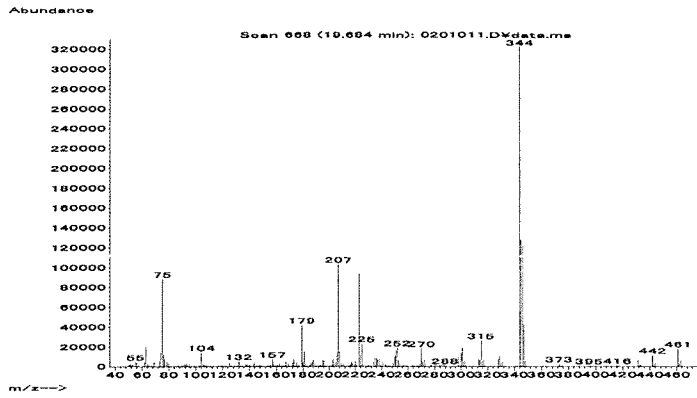


図2. 最小検出量評価, 標準品, 回収試料のマスプロトグラム (モノクロトホス)

マススペクトル



検量線

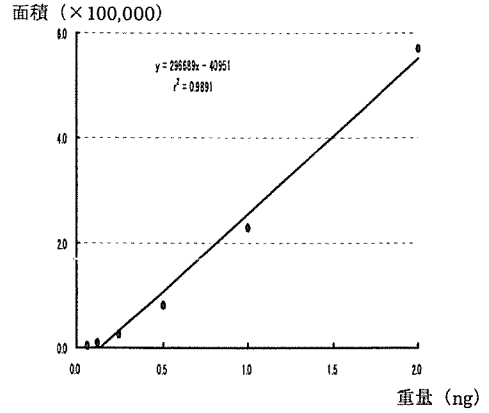
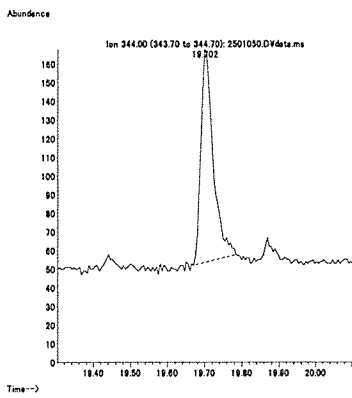
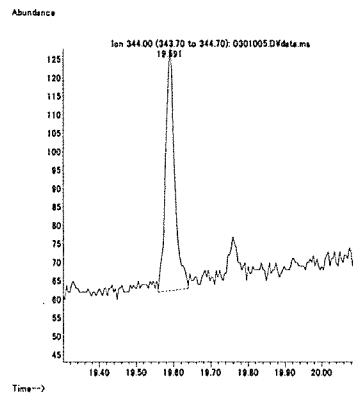


図 1. マススペクトルおよび検量線 (ラクtofエン)

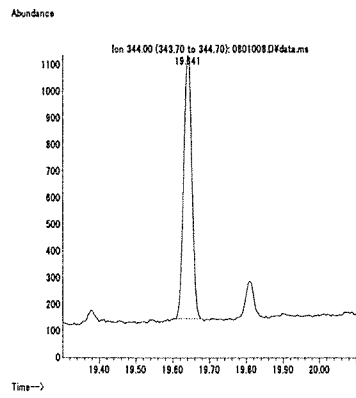
最小検出量評価 (0.1 ng)



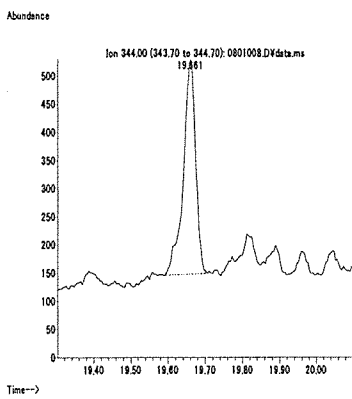
標準品 (0.125 ng)



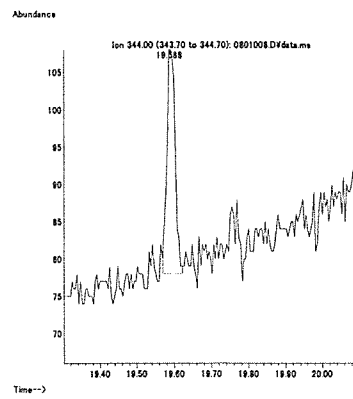
筋肉 (0.01 mg/kg 添加)



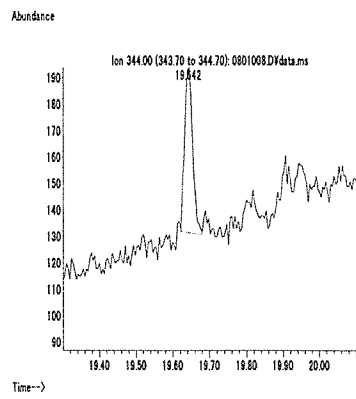
脂肪 (0.01 mg/kg 添加)



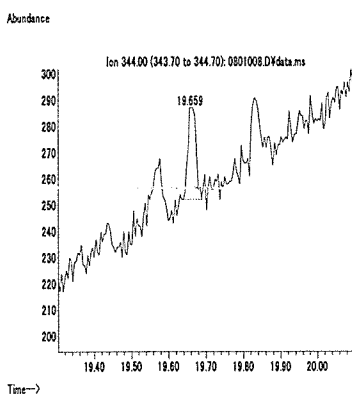
肝臓 (0.01 mg/kg 添加)



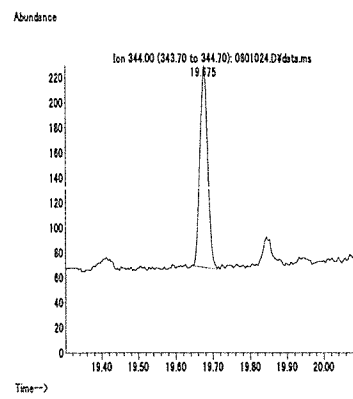
うなぎ (0.01 mg/kg 添加)



えび (0.01 mg/kg 添加)



牛乳 (0.01 mg/kg 添加)



卵 (0.01 mg/kg 添加)

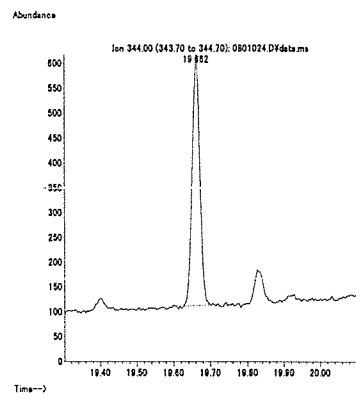


図 2. 最小検出量評価, 標準品, 回収試料のマスクロマトグラム (ラクtofエン)