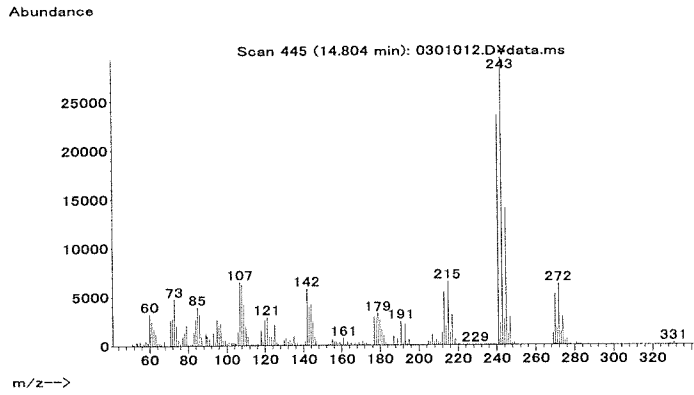


マススペクトル



検量線

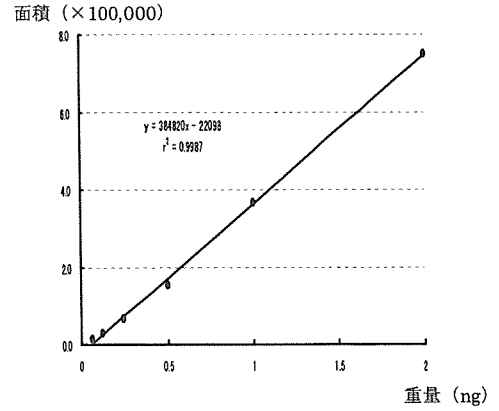
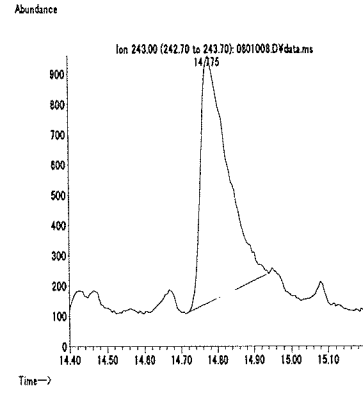
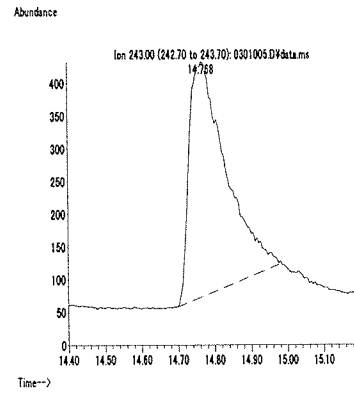
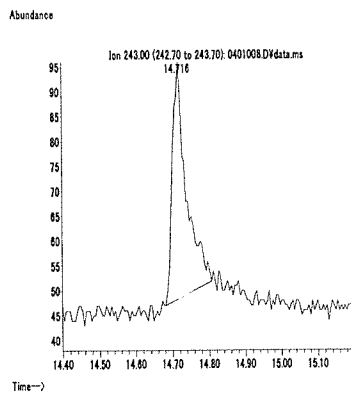


図 1. マススペクトルおよび検量線 (フサライド)

最小検出量評価 (0.004 ng)

標準品 (0.125 ng)

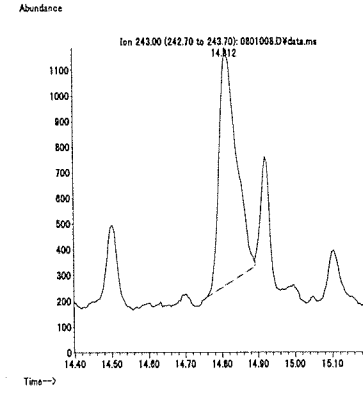
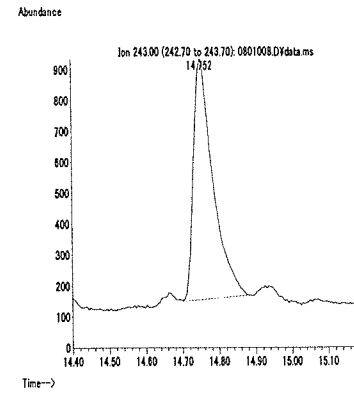
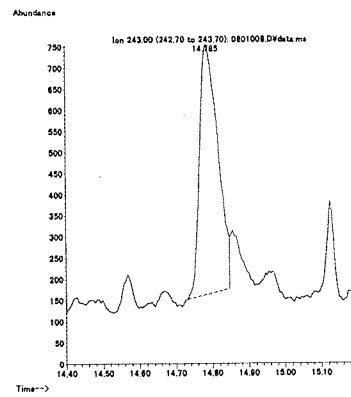
筋肉 (0.01 mg/kg 添加)



脂肪 (0.01 mg/kg 添加)

肝臓 (0.01 mg/kg 添加)

うなぎ (0.01 mg/kg 添加)



えび (0.01 mg/kg 添加)

牛乳 (0.01 mg/kg 添加)

卵 (0.01 mg/kg 添加)

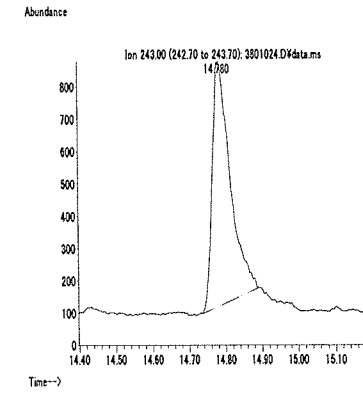
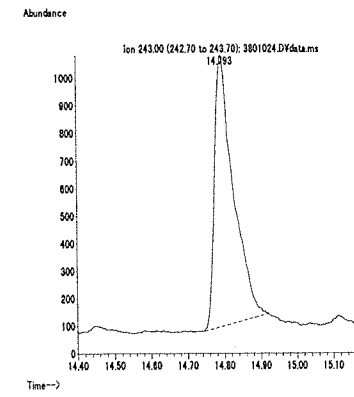
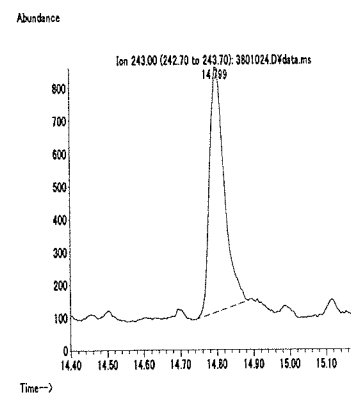
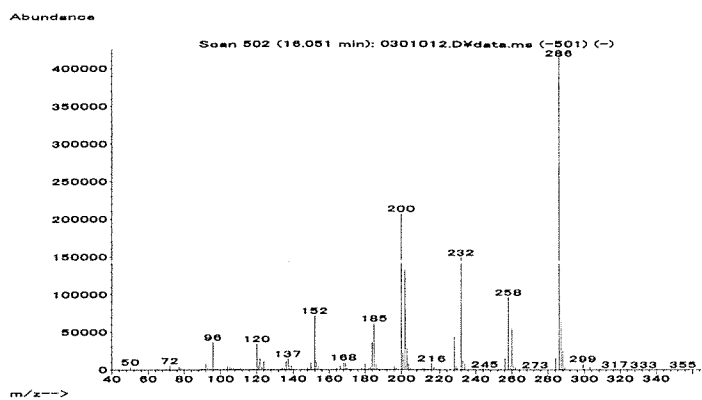


図 2. 最小検出量評価, 標準品, 回収試料のマスキロマトグラム (フサライド)

マススペクトル



検量線

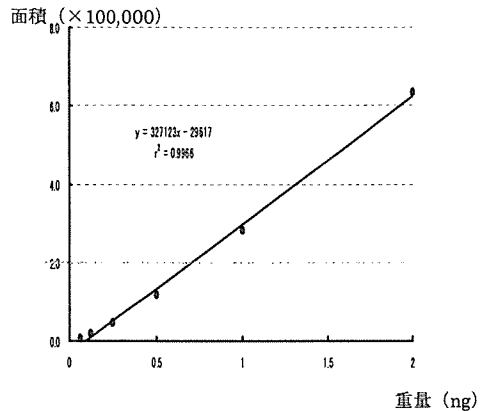
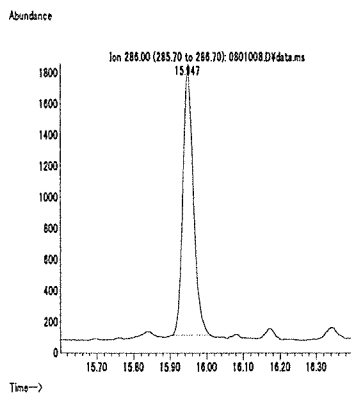
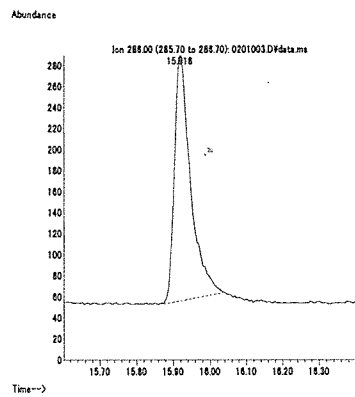
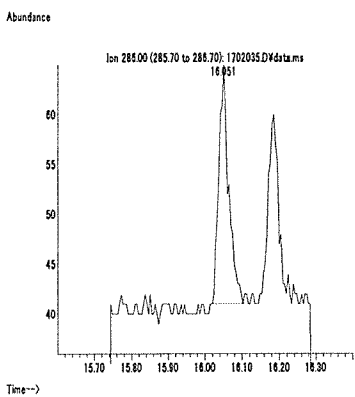


図1. マススペクトルおよび検量線 (ブタミホス)

最小検出量評価 (0.01 ng)

標準品 (0.125 ng)

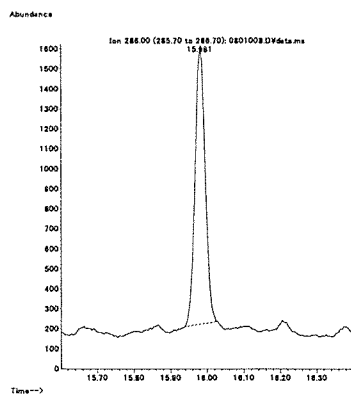
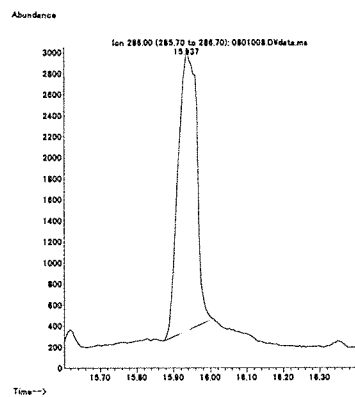
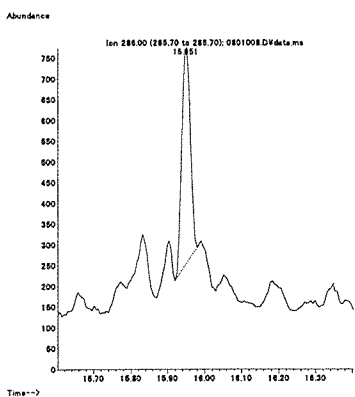
筋肉 (0.01 mg/kg 添加)



脂肪 (0.01 mg/kg 添加)

肝臓 (0.01 mg/kg 添加)

うなぎ (0.01 mg/kg 添加)



えび (0.01 mg/kg 添加)

牛乳 (0.01 mg/kg 添加)

卵 (0.01 mg/kg 添加)

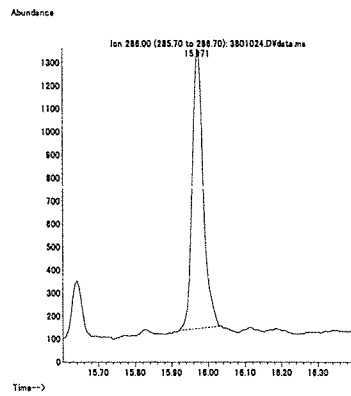
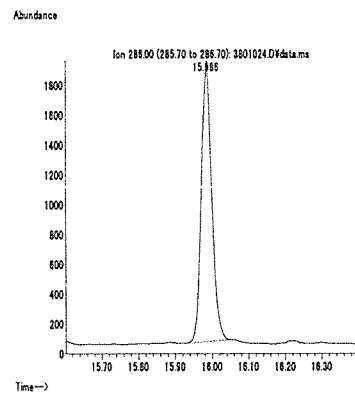
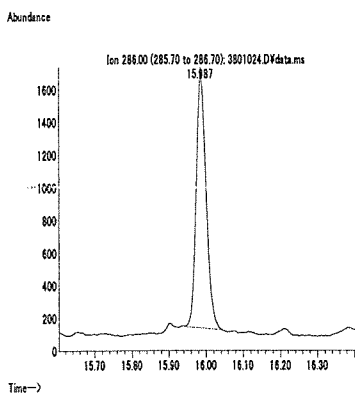
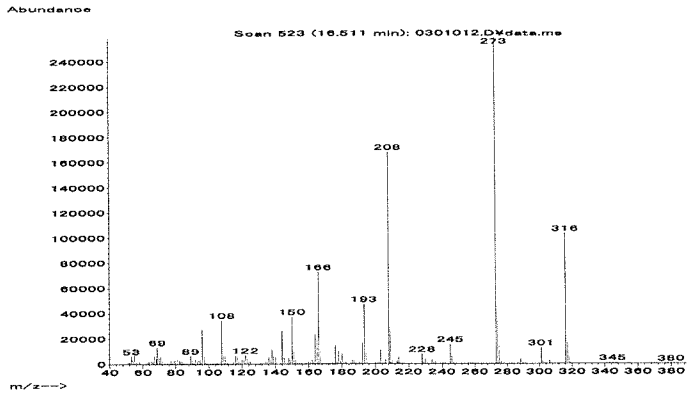


図2. 最小検出量評価, 標準品, 回収試料のマスクロマトグラム (ブタミホス)

マススペクトル



検量線

面積 (×100,000)

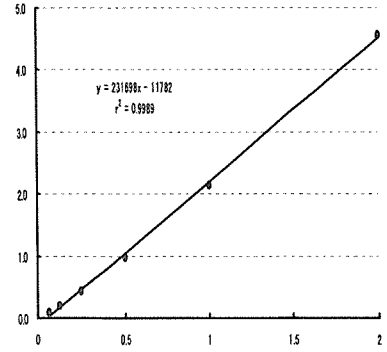
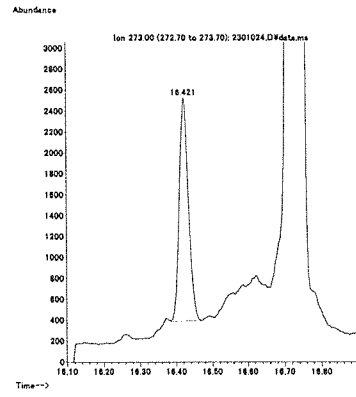
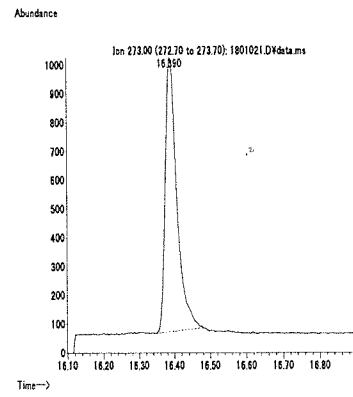
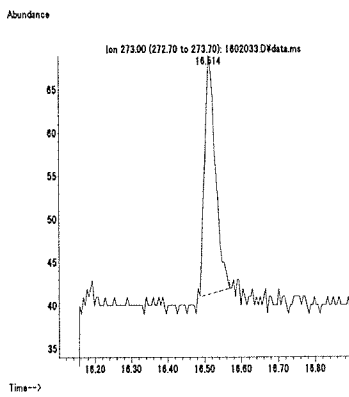


図1. マススペクトルおよび検量線 (プピリメート)

最小検出量評価 (0.01 ng)

標準品 (0.125 ng)

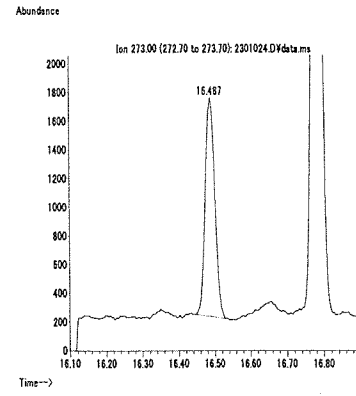
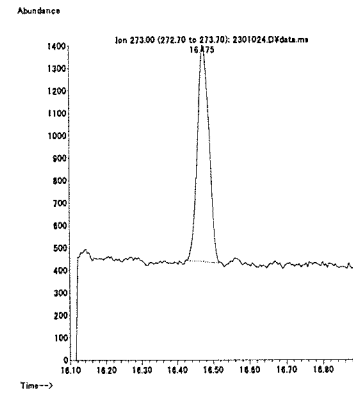
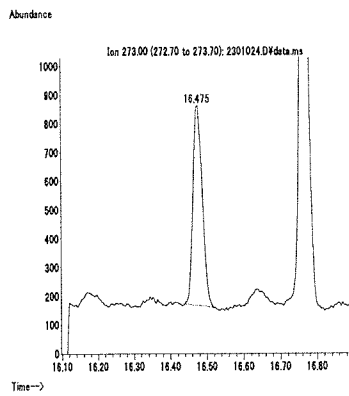
筋肉 (0.01 mg/kg 添加)



脂肪 (0.01 mg/kg 添加)

肝臓 (0.01 mg/kg 添加)

うなぎ (0.01 mg/kg 添加)



えび (0.01 mg/kg 添加)

牛乳 (0.01 mg/kg 添加)

卵 (0.01 mg/kg 添加)

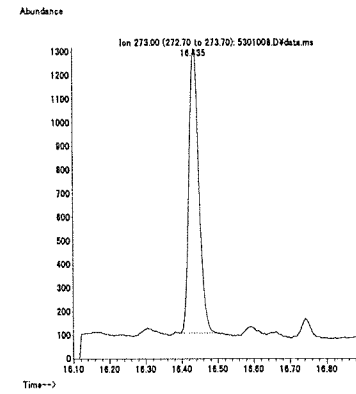
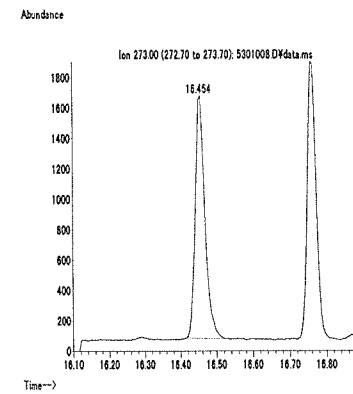
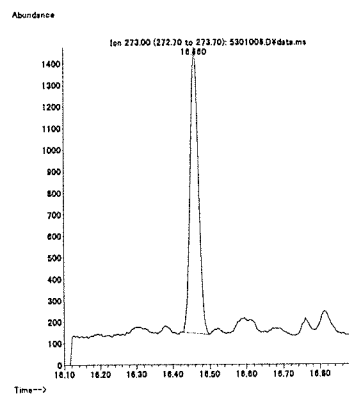
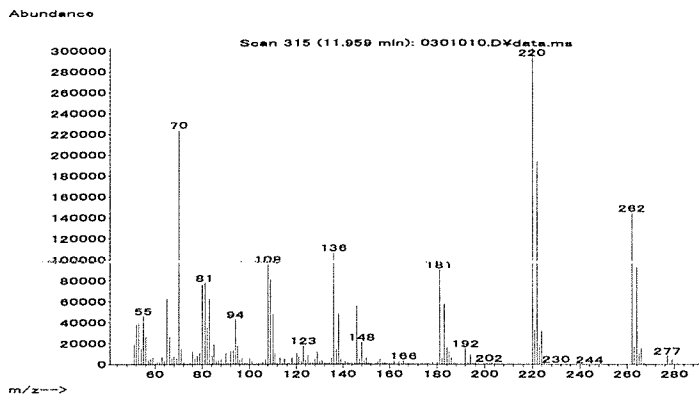


図2. 最小検出量評価, 標準品, 回収試料のマスクロマトグラム (プピリメート)

マススペクトル



検量線

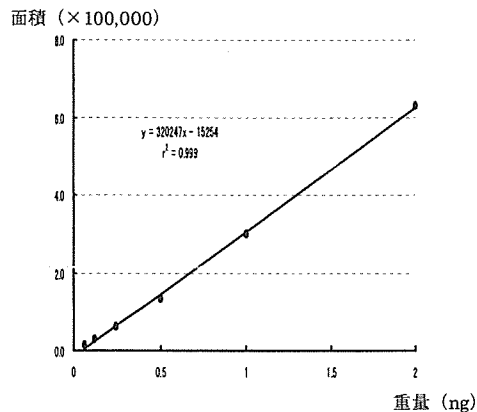
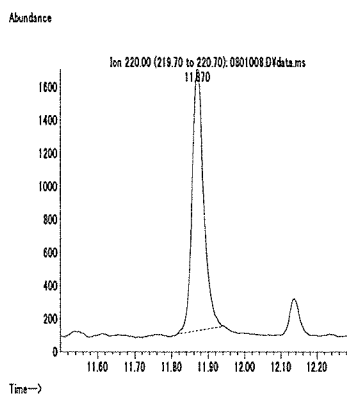
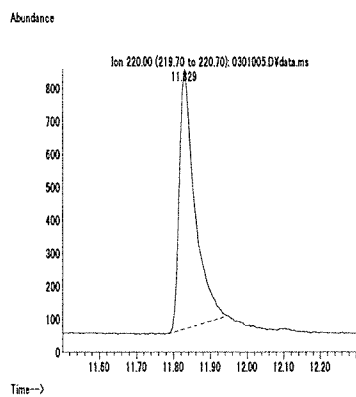
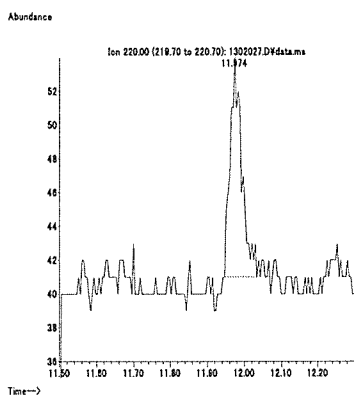


図 1. マススペクトルおよび検量線 (フリラゾール)

最小検出量評価 (0.004 ng)

標準品 (0.125 ng)

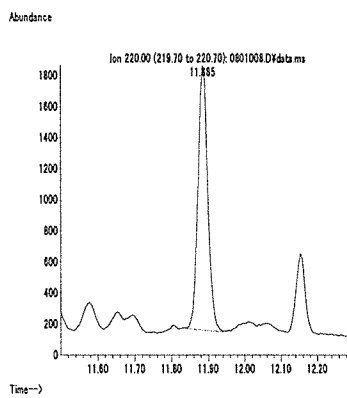
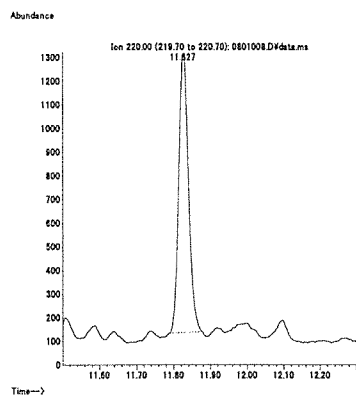
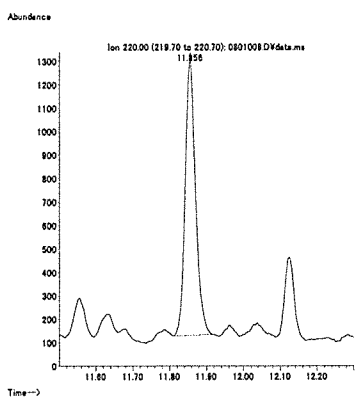
筋肉 (0.01 mg/kg 添加)



脂肪 (0.01 mg/kg 添加)

肝臓 (0.01 mg/kg 添加)

うなぎ (0.01 mg/kg 添加)



えび (0.01 mg/kg 添加)

牛乳 (0.01 mg/kg 添加)

卵 (0.01 mg/kg 添加)

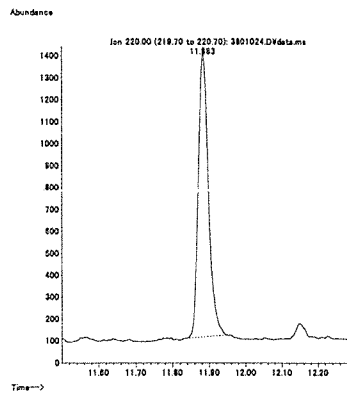
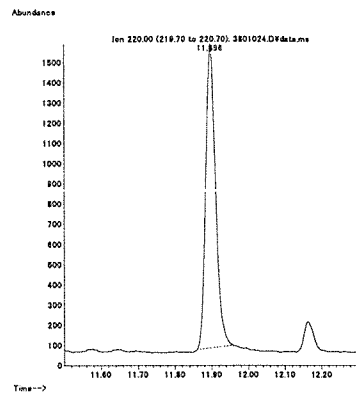
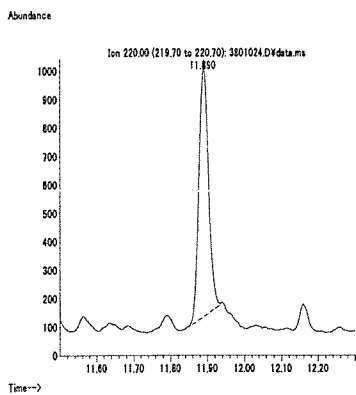
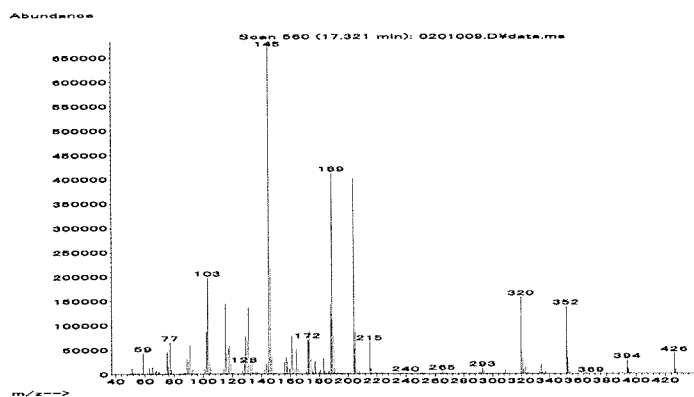


図 2. 最小検出量評価, 標準品, 回収試料のマスキロマトグラム (フリラゾール)

マススペクトル



検量線

面積 (×1,000,000)

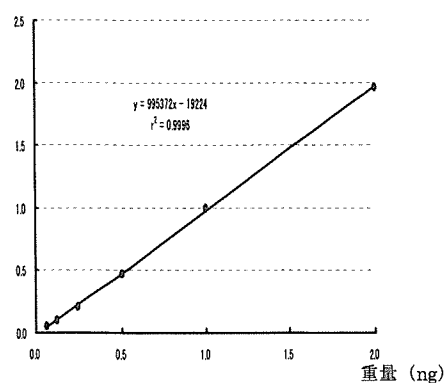
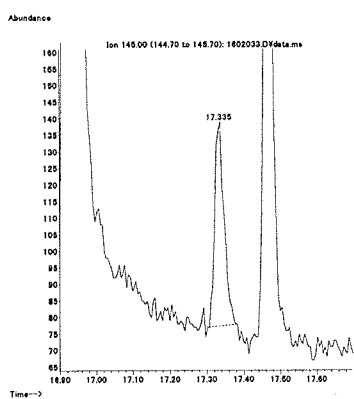
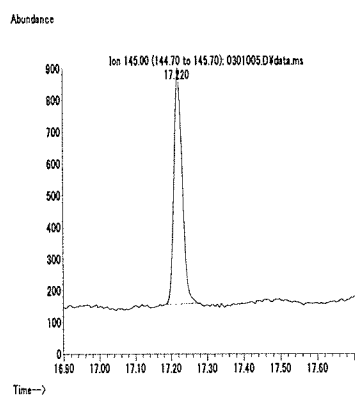


図1. マススペクトルおよび検量線 (フルアクリピリム)

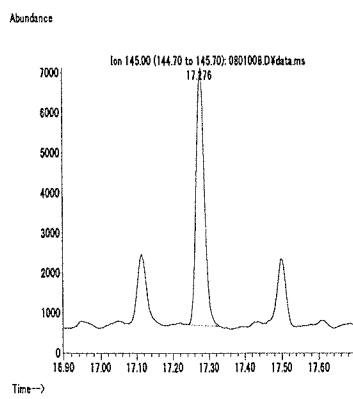
最小検出量評価 (0.01 ng)



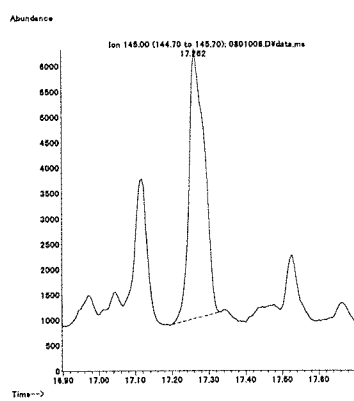
標準品 (0.125 ng)



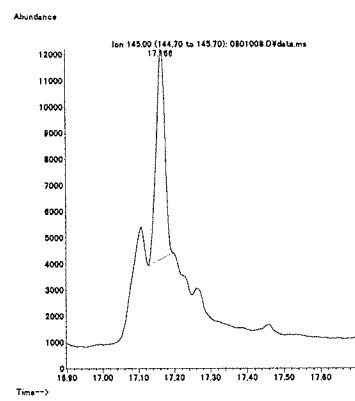
筋肉 (0.01 mg/kg 添加)



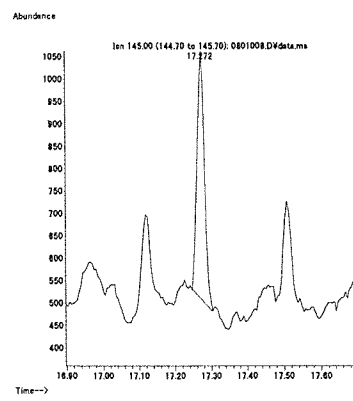
脂肪 (0.01 mg/kg 添加)



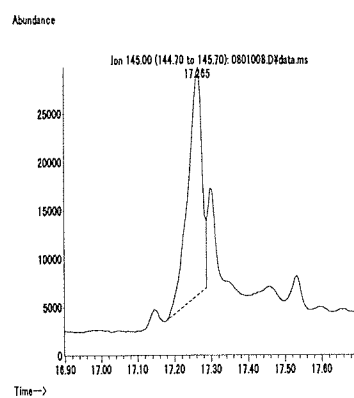
肝臓 (0.01 mg/kg 添加)



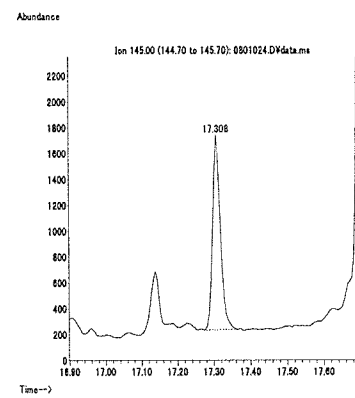
うなぎ (0.01 mg/kg 添加)



えび (0.01 mg/kg 添加)



牛乳 (0.01 mg/kg 添加)



卵 (0.01 mg/kg 添加)

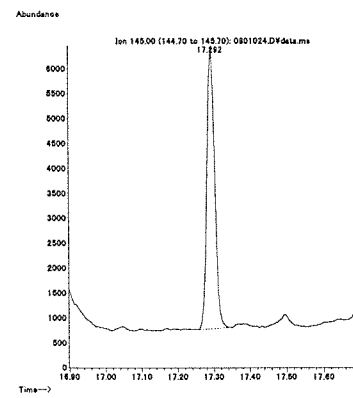
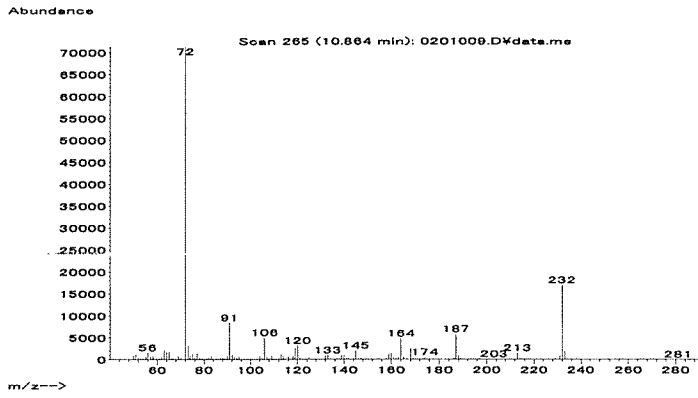


図2. 最小検出量評価, 標準品, 回収試料のマスプロトグラム (フルアクリピリム)

マススペクトル



検量線

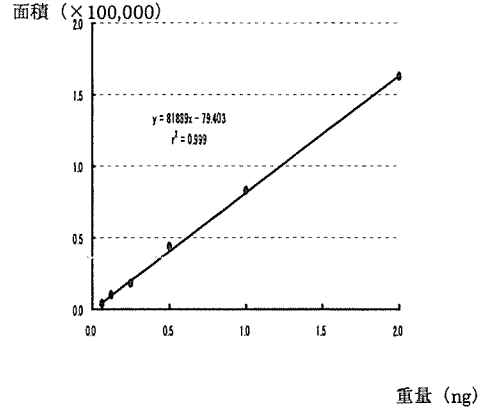
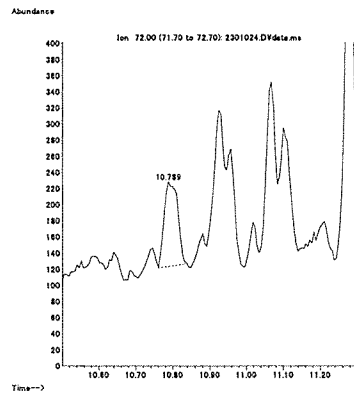
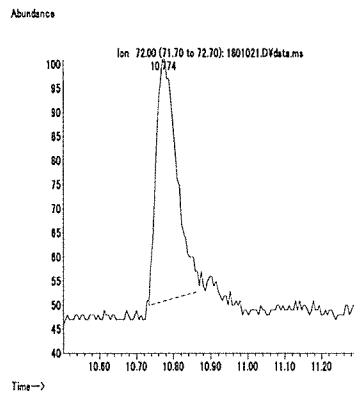
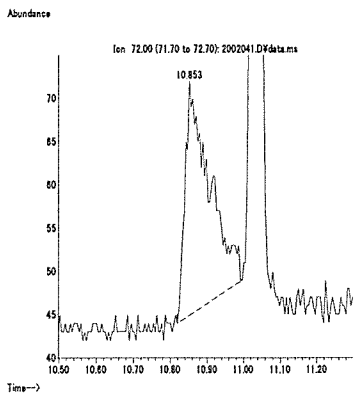


図 1. マススペクトルおよび検量線 (フルオメツロン)

最小検出量評価 (0.02 ng)

標準品 (0.125 ng)

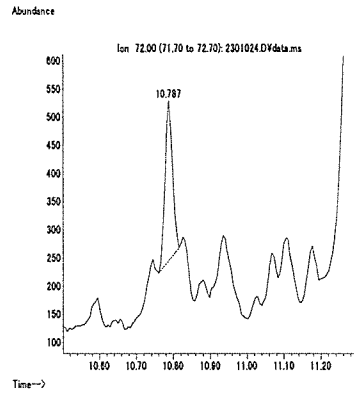
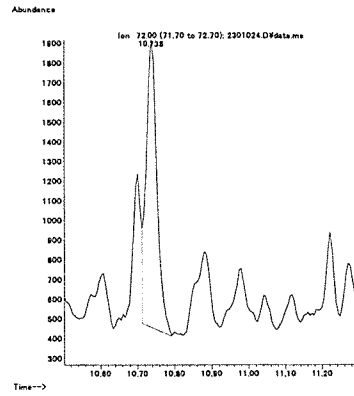
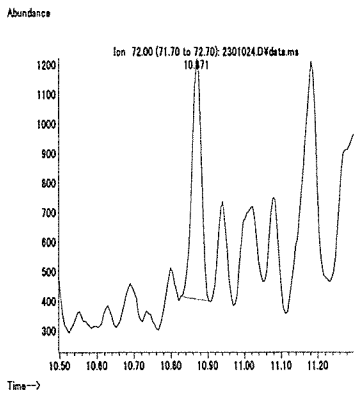
筋肉 (0.01 mg/kg 添加)



脂肪 (0.01 mg/kg 添加)

肝臓 (0.1 mg/kg 添加)

うなぎ (0.1 mg/kg 添加)



えび (0.1 mg/kg 添加)

牛乳 (0.01 mg/kg 添加)

卵 (0.01 mg/kg 添加)

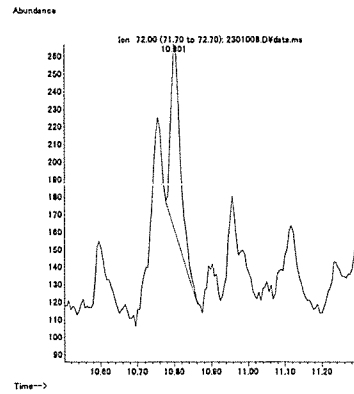
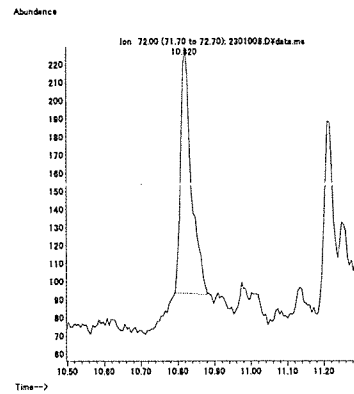
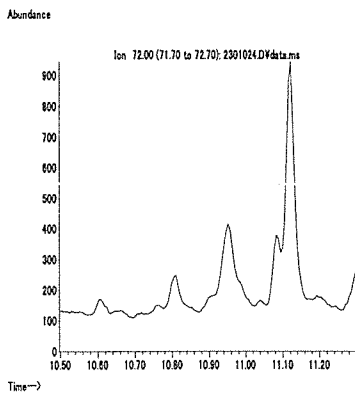
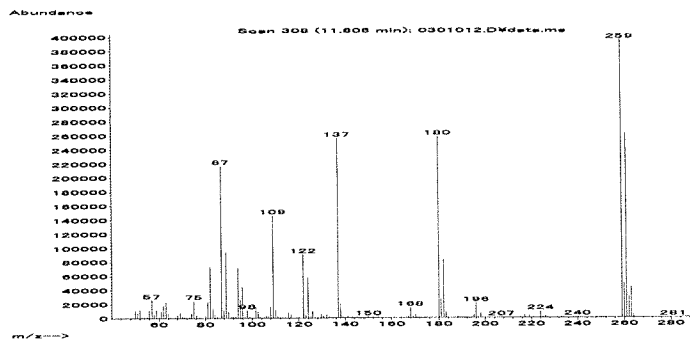


図 2. 最小検出量評価, 標準品, 回収試料のマスクロマトグラム (フルオメツロン)

マススペクトル



検量線

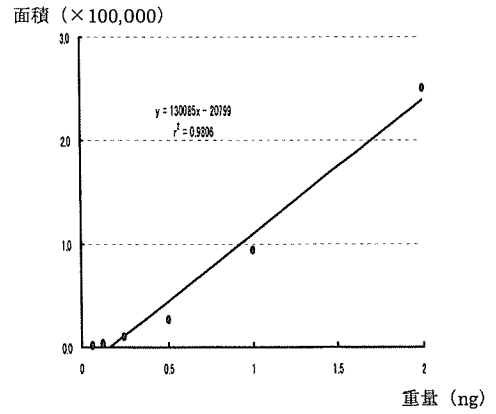
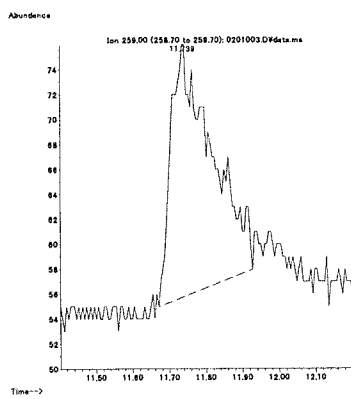
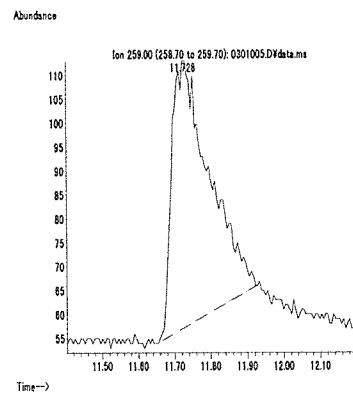


図1. マススペクトルおよび検量線 (フルオルイミド)

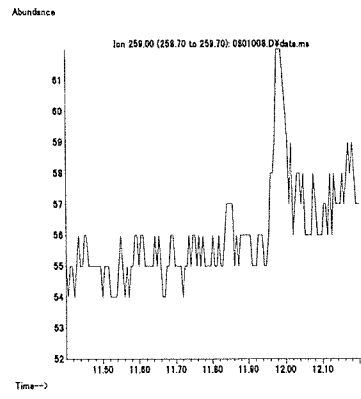
最小検出量評価 (0.0625 ng)



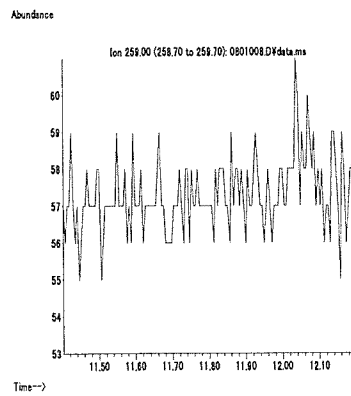
標準品 (0.125 ng)



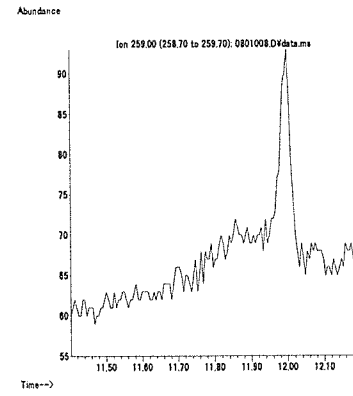
筋肉 (0.1 mg/kg 添加)



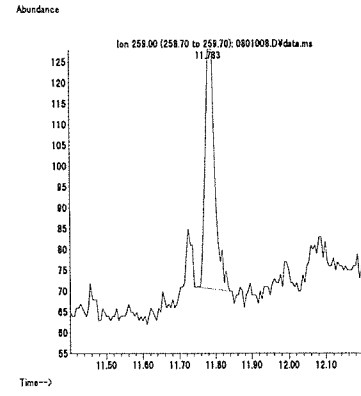
脂肪 (0.1 mg/kg 添加)



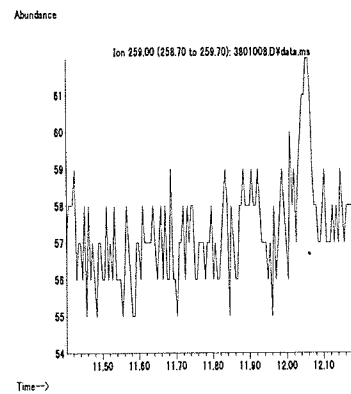
肝臓 (0.1 mg/kg 添加)



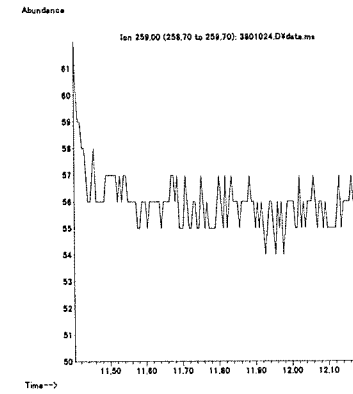
うなぎ (0.1 mg/kg 添加)



えび (0.1 mg/kg 添加)



牛乳 (0.1 mg/kg 添加)



卵 (0.1 mg/kg 添加)

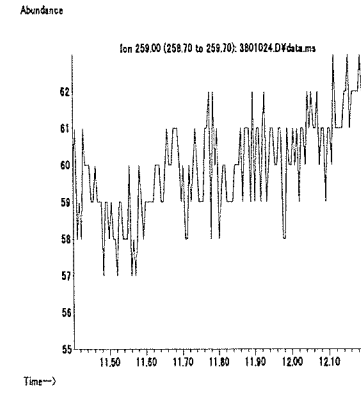
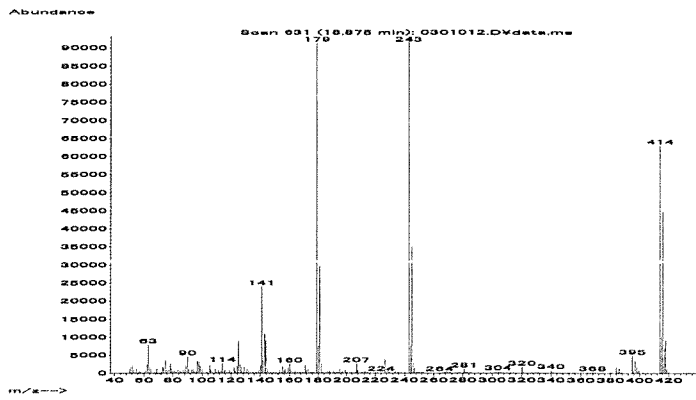


図2. 最小検出量評価, 標準品, 回収試料のマスクロマトグラム (フルオルイミド)

マススペクトル



検量線

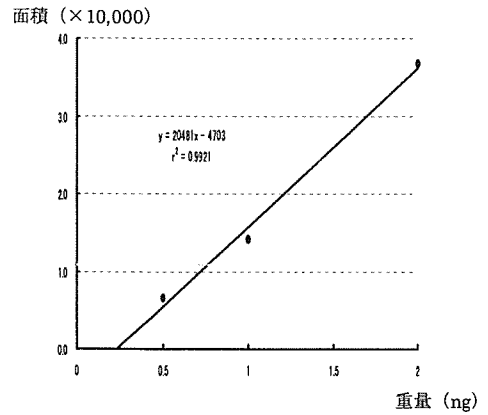
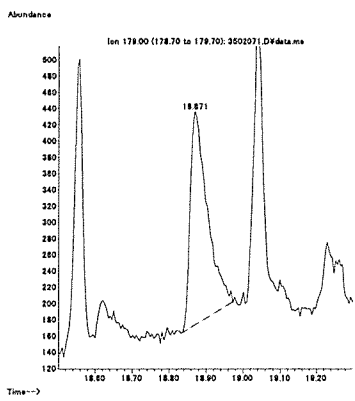
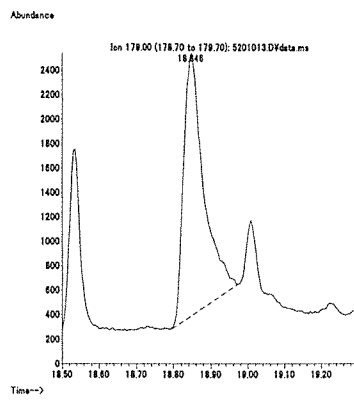


図1. マススペクトルおよび検量線 (フルスルファミド)

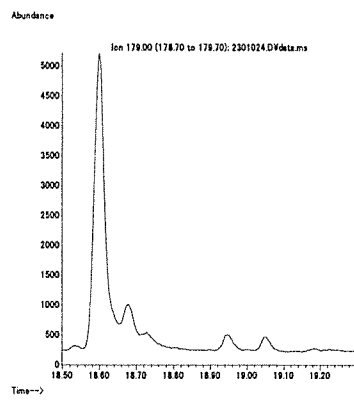
最小検出量評価 (1 ng)



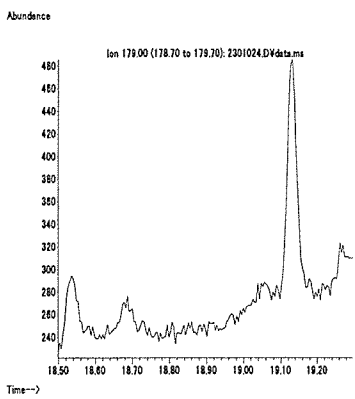
標準品 (1 ng)



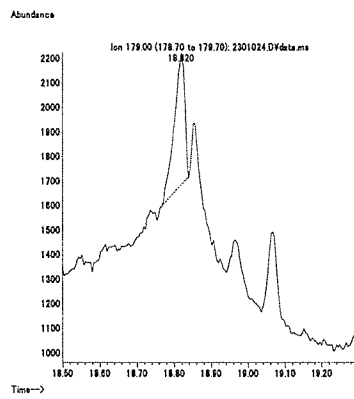
筋肉 (0.1 mg/kg 添加)



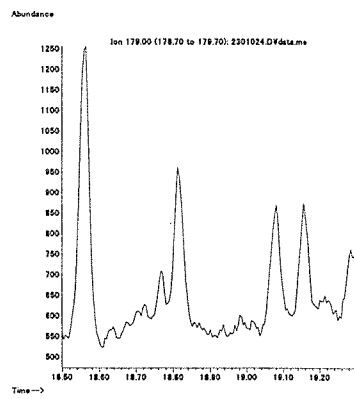
脂肪 (0.1 mg/kg 添加)



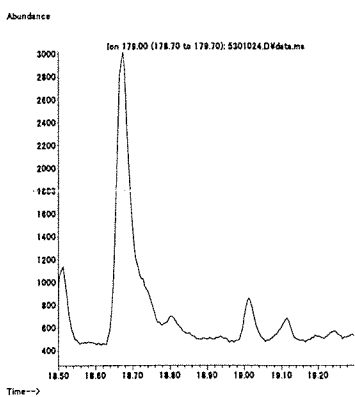
肝臓 (0.1 mg/kg 添加)



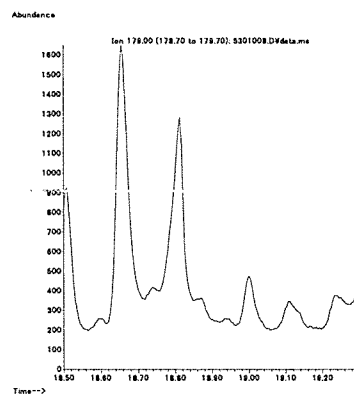
うなぎ (0.1 mg/kg 添加)



えび (0.1 mg/kg 添加)



牛乳 (0.1 mg/kg 添加)



卵 (0.1 mg/kg 添加)

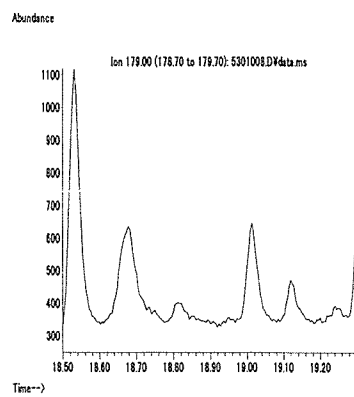
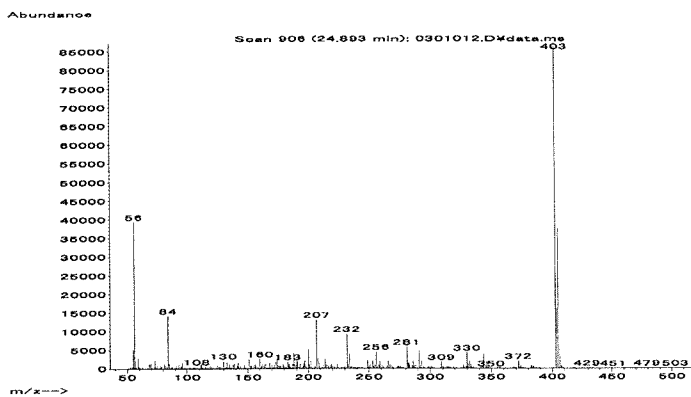


図2. 最小検出量評価, 標準品, 回収試料のマスクロマトグラム (フルスルファミド)

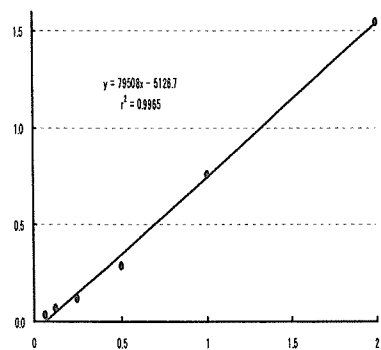


マススペクトル



検量線

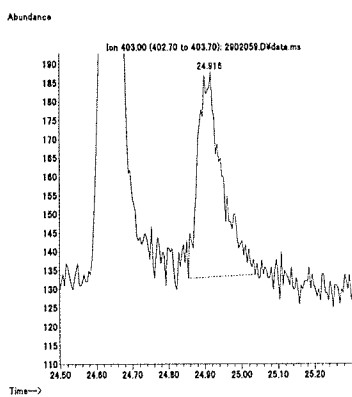
面積 (×100,000)



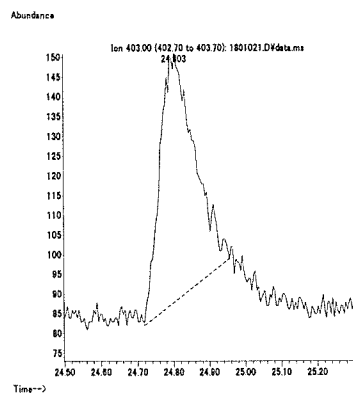
重量 (ng)

図1. マススペクトルおよび検量線 (フルチアセットメチル)

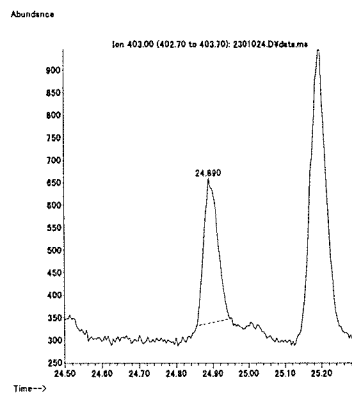
最小検出量評価 (0.2 ng)



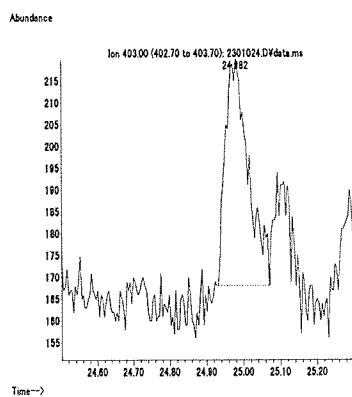
標準品 (0.125 ng)



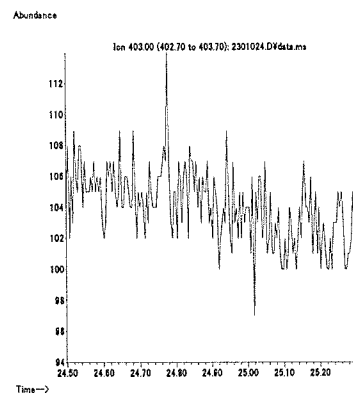
筋肉 (0.01 mg/kg 添加)



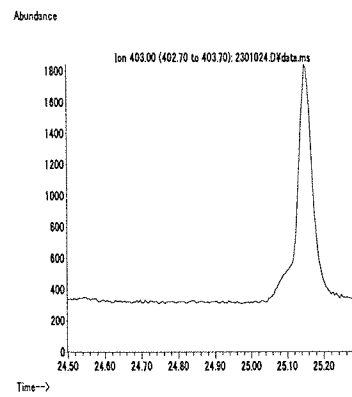
脂肪 (0.01 mg/kg 添加)



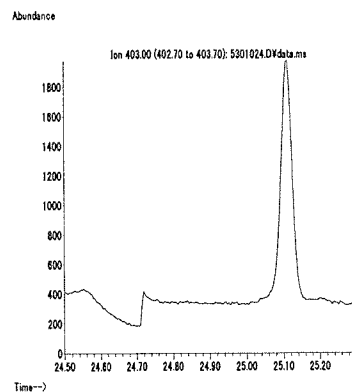
肝臓 (0.1 mg/kg 添加)



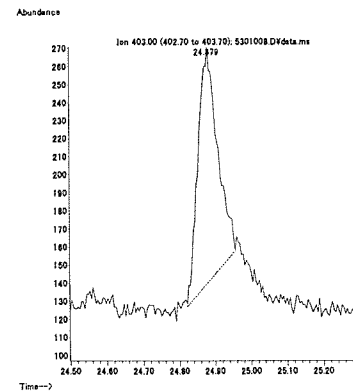
うなぎ (0.1 mg/kg 添加)



えび (0.1 mg/kg 添加)



牛乳 (0.01 mg/kg 添加)



卵 (0.1 mg/kg 添加)

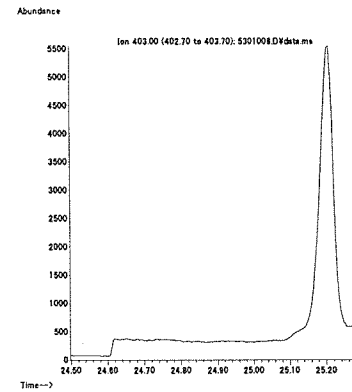
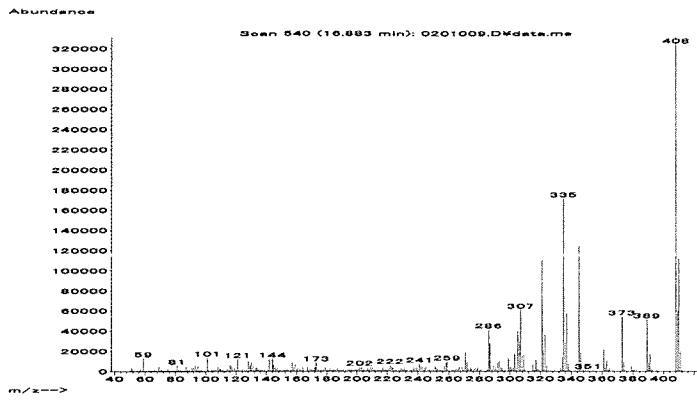


図2. 最小検出量評価, 標準品, 回収試料のマスクロマトグラム (フルチアセットメチル)

マススペクトル



検量線

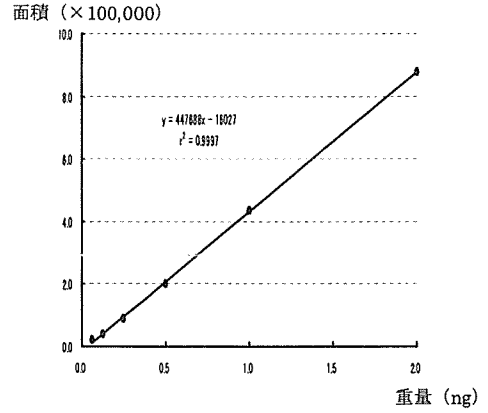
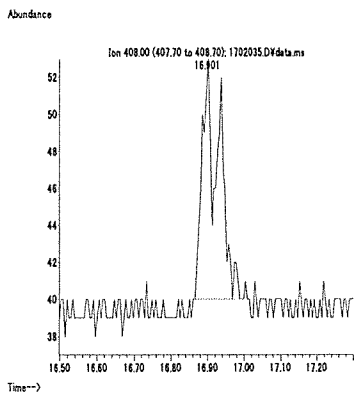


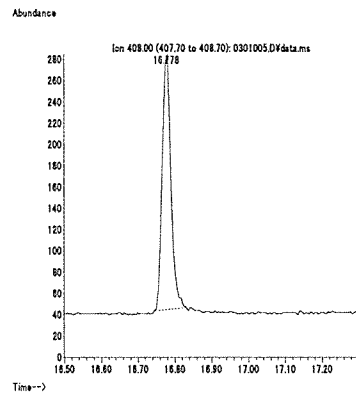
図 1. マススペクトルおよび検量線 (フルフェンピルエチル)

最小検出量評価 (0.01 ng)



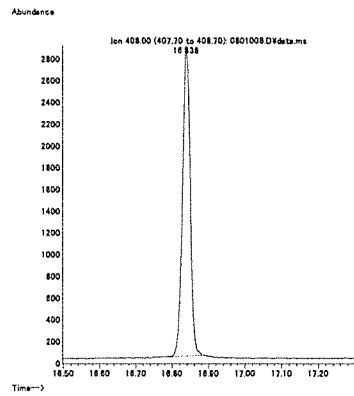
脂肪 (0.01 mg/kg 添加)

標準品 (0.125 ng)

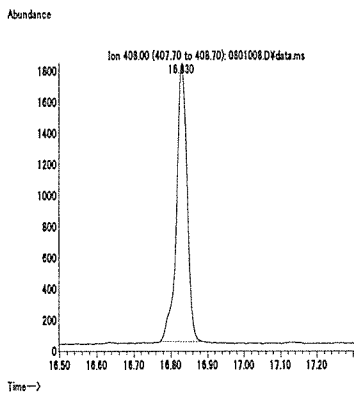


肝臓 (0.1 mg/kg 添加)

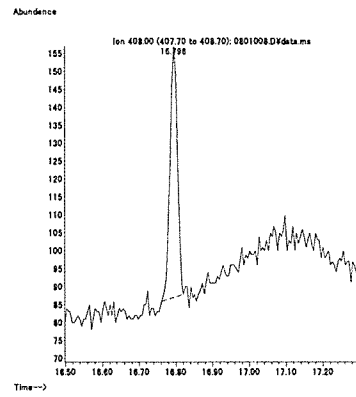
筋肉 (0.01 mg/kg 添加)



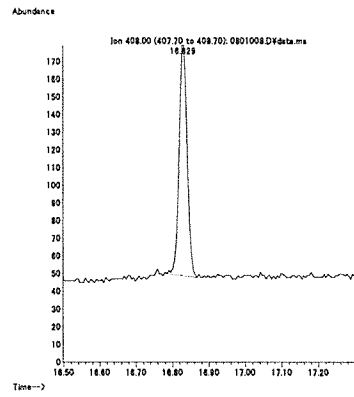
うなぎ (0.01 mg/kg 添加)



えび (0.1 mg/kg 添加)



牛乳 (0.01 mg/kg 添加)



卵 (0.01 mg/kg 添加)

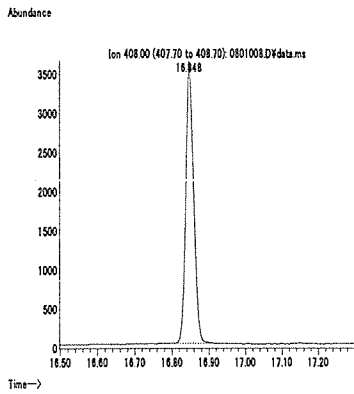
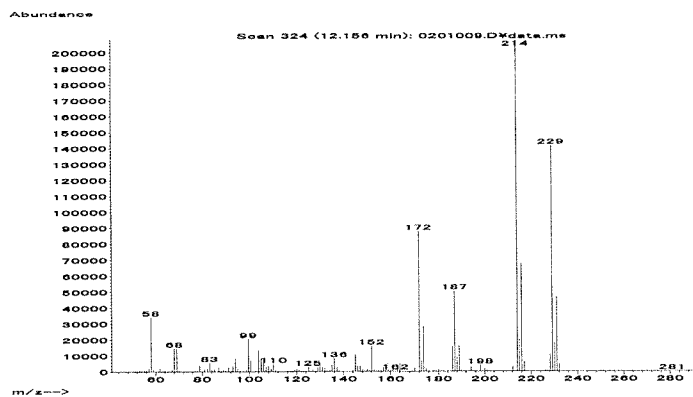


図 2. 最小検出量評価, 標準品, 回収試料のマスクロマトグラム (フルフェンピルエチル)

マススペクトル



検量線

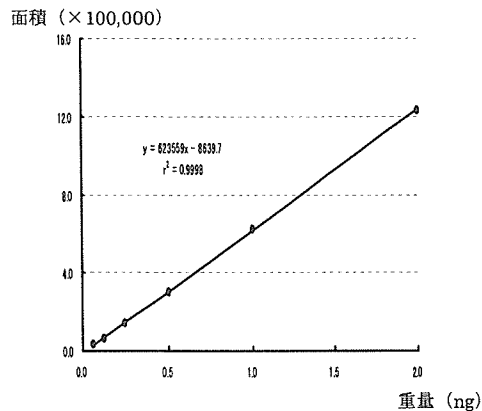
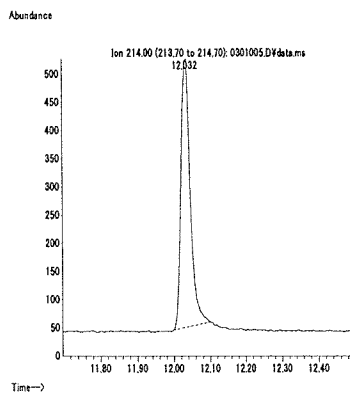
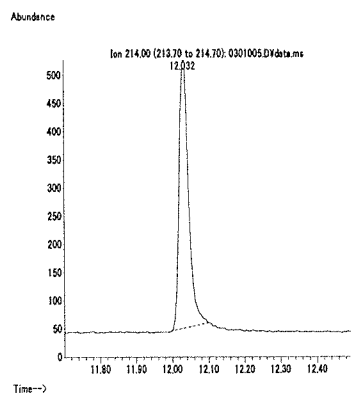
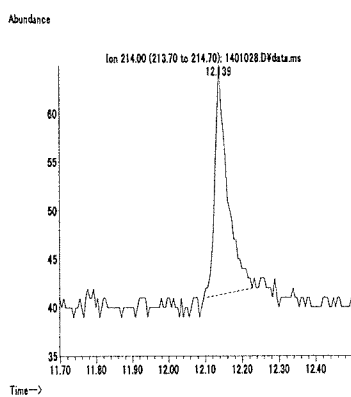


図1. マススペクトルおよび検量線 (プロパジン)

最小検出量評価 (0.004 ng)

標準品 (0.125 ng)

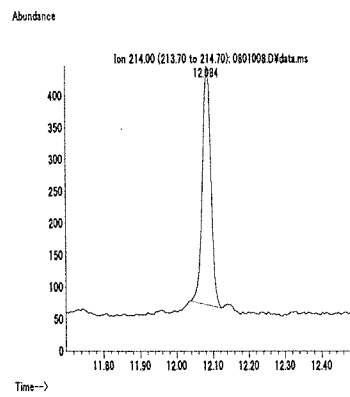
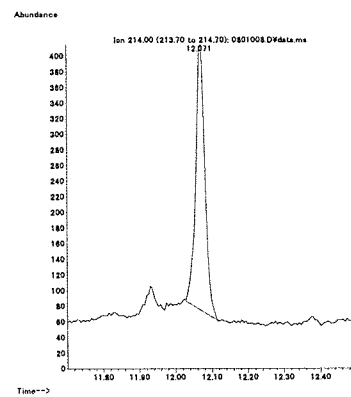
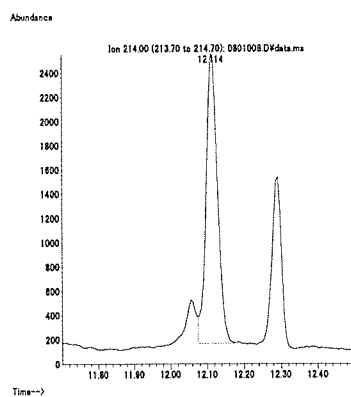
筋肉 (0.01 mg/kg 添加)



脂肪 (0.01 mg/kg 添加)

肝臓 (0.01 mg/kg 添加)

うなぎ (0.01 mg/kg 添加)



えび (0.01 mg/kg 添加)

牛乳 (0.01 mg/kg 添加)

卵 (0.01 mg/kg 添加)

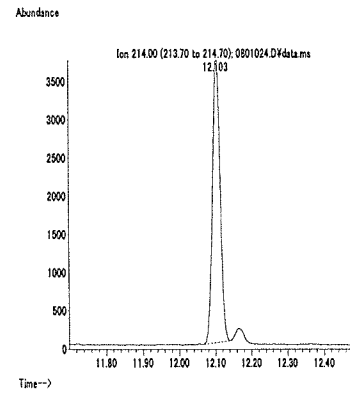
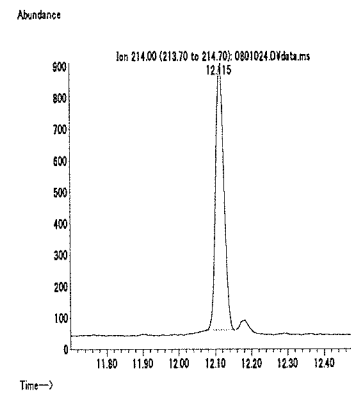
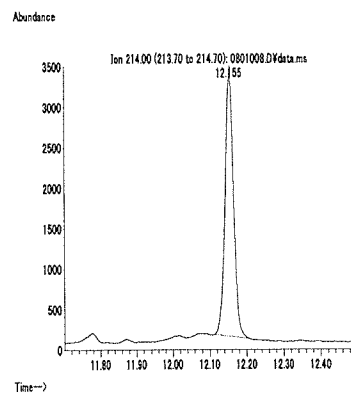
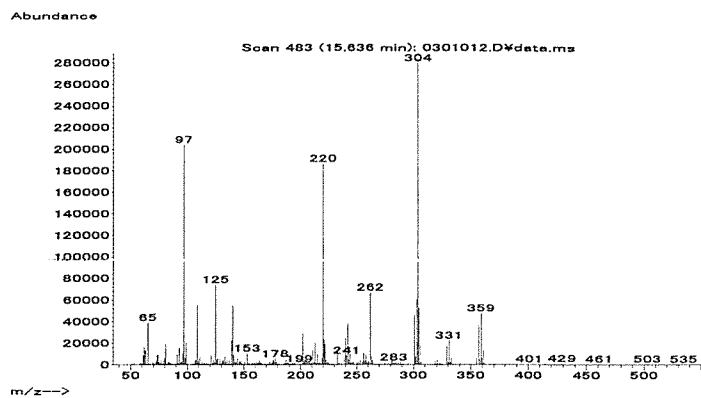


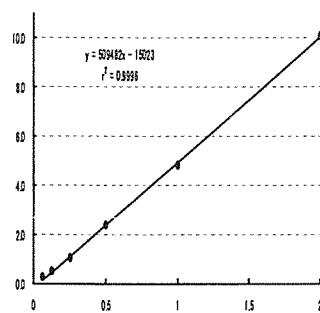
図2. 最小検出量評価, 標準品, 回収試料のマスクロマトグラム (プロパジン)

マススペクトル



検量線

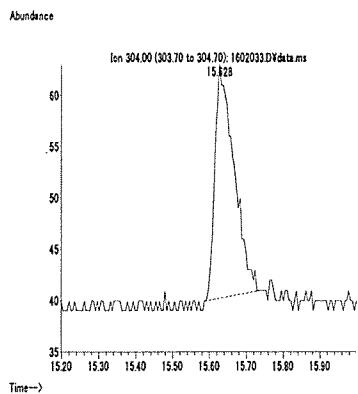
面積 (×100,000)



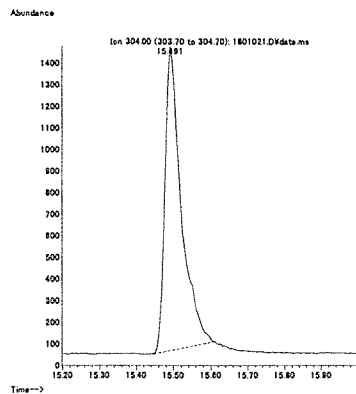
重量 (ng)

図 1. マススペクトルおよび検量線 (プロパホス)

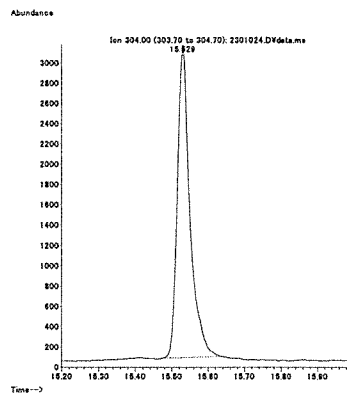
最小検出量評価 (0.01 ng)



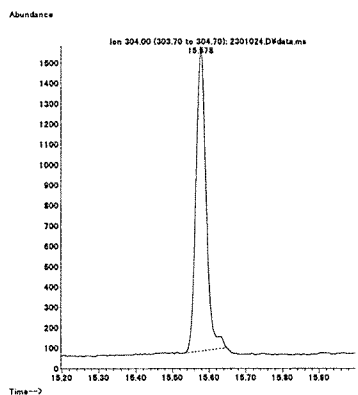
標準品 (0.125 ng)



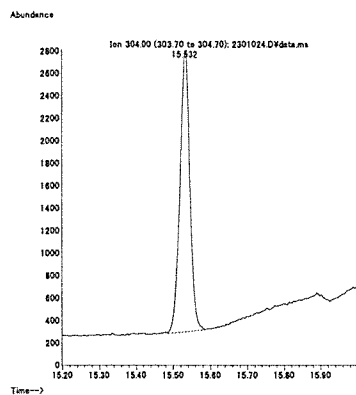
筋肉 (0.01 mg/kg 添加)



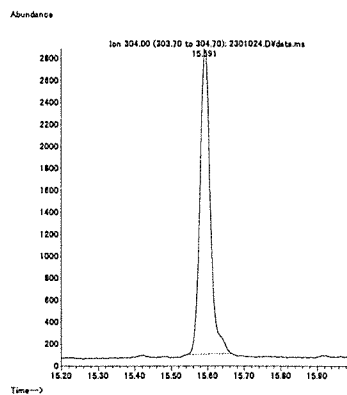
脂肪 (0.01 mg/kg 添加)



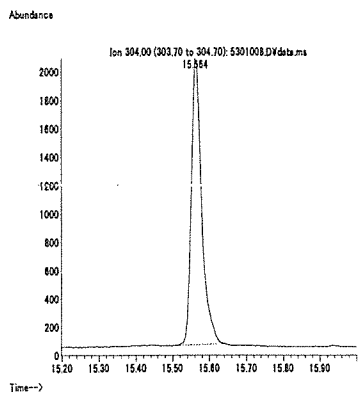
肝臓 (0.01 mg/kg 添加)



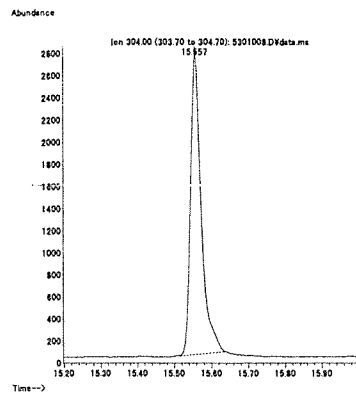
うなぎ (0.01 mg/kg 添加)



えび (0.01 mg/kg 添加)



牛乳 (0.01 mg/kg 添加)



卵 (0.01 mg/kg 添加)

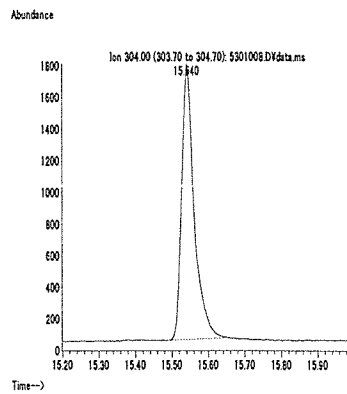
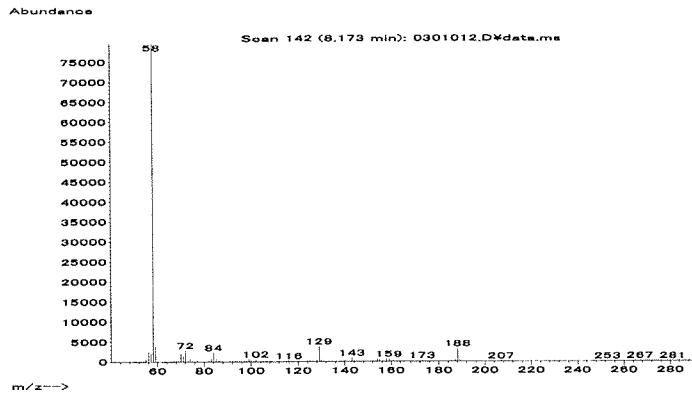


図 2. 最小検出量評価, 標準品, 回収試料のマスクロマトグラム (プロパホス)

マススペクトル



検量線

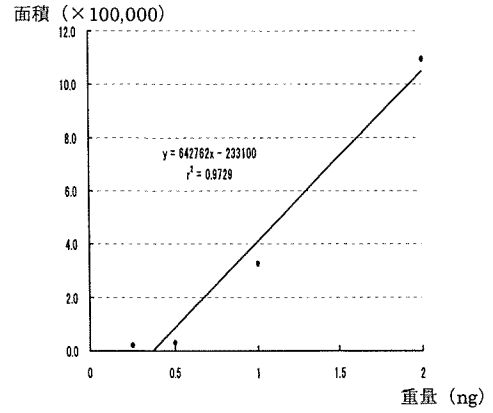
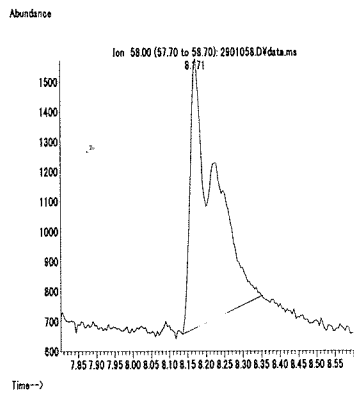
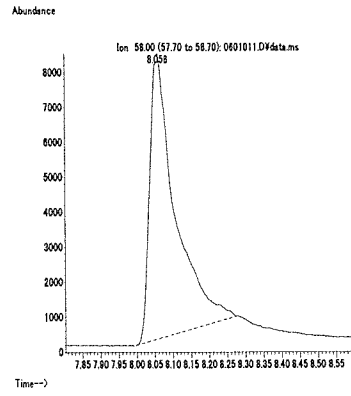


図 1. マススペクトルおよび検量線 (プロパモカルブ)

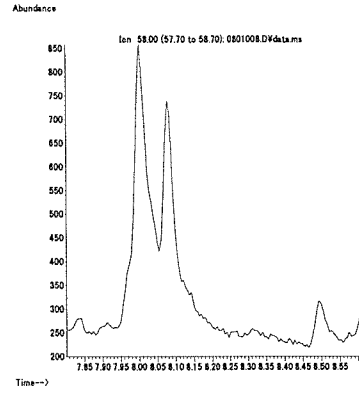
最小検出量評価 (0.2 ng)



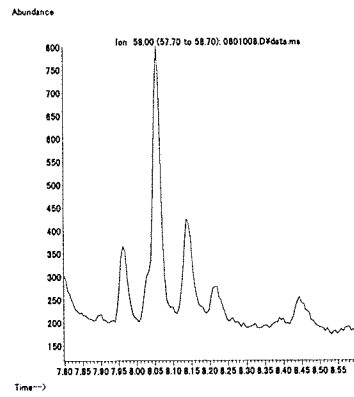
標準品 (1 ng)



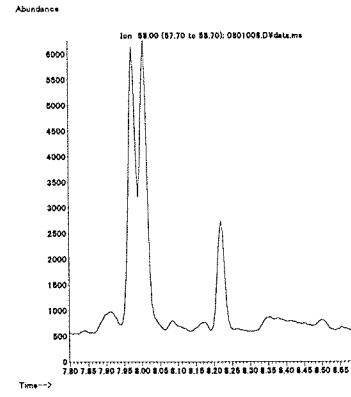
筋肉 (0.1 mg/kg 添加)



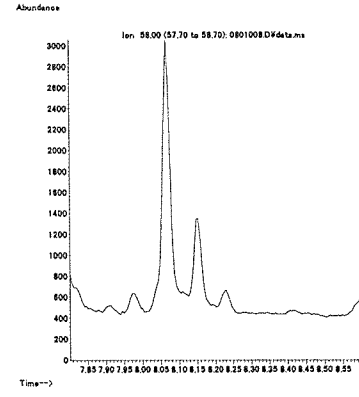
脂肪 (0.1 mg/kg 添加)



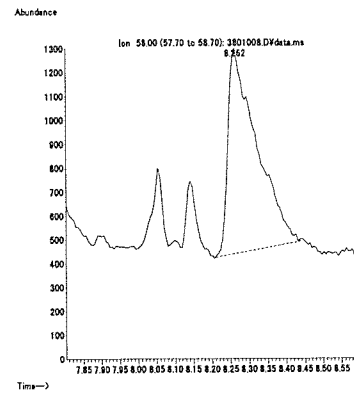
肝臓 (0.1 mg/kg 添加)



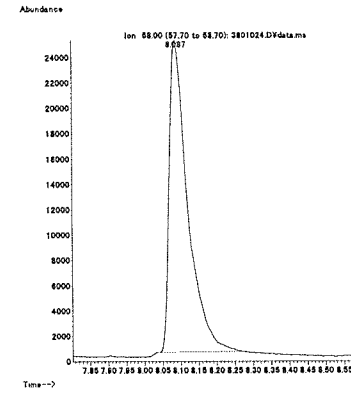
うなぎ (0.1 mg/kg 添加)



えび (0.1 mg/kg 添加)



牛乳 (0.1 mg/kg 添加)



卵 (0.1 mg/kg 添加)

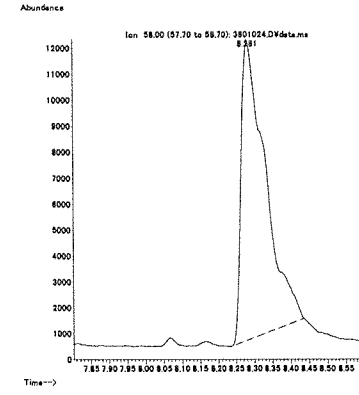
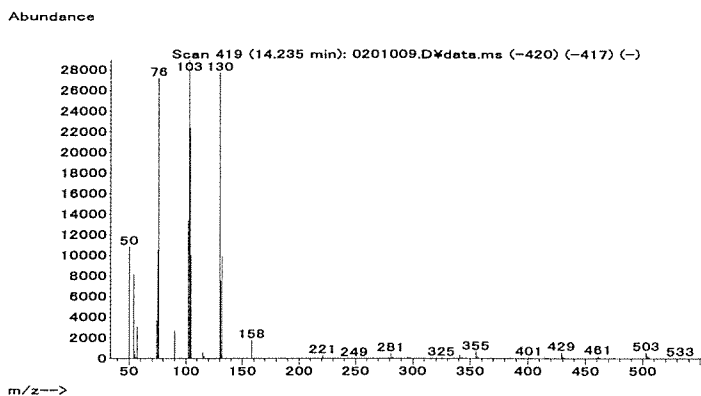


図 2. 最小検出量評価, 標準品, 回収試料のマスクロマトグラム (プロパモカルブ)

マススペクトル



検量線

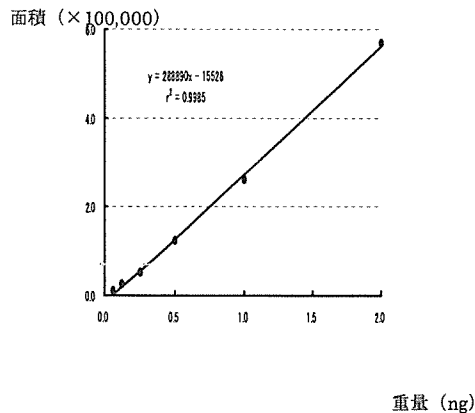
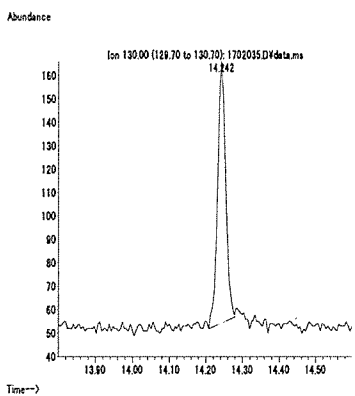
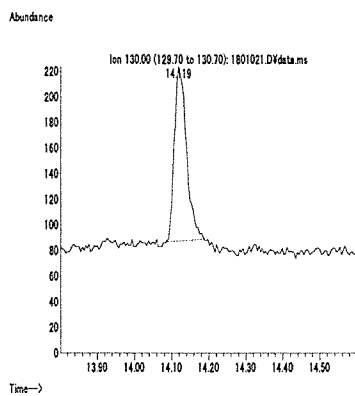


図 1. マススペクトルおよび検量線 (プロベナゾール)

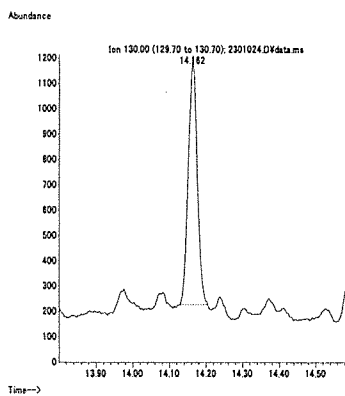
最小検出量評価 (0.01 ng)



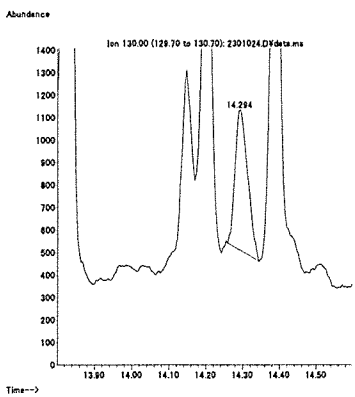
標準品 (0.125 ng)



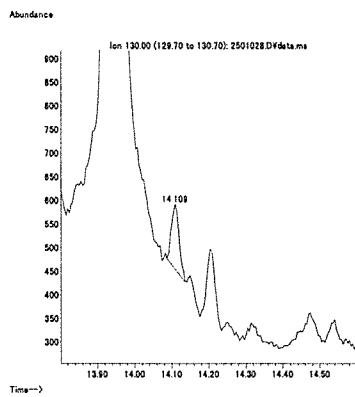
筋肉 (0.01 mg/kg 添加)



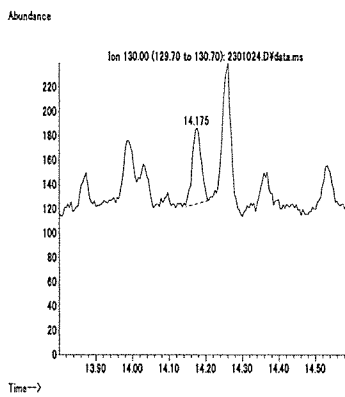
脂肪 (0.01 mg/kg 添加)



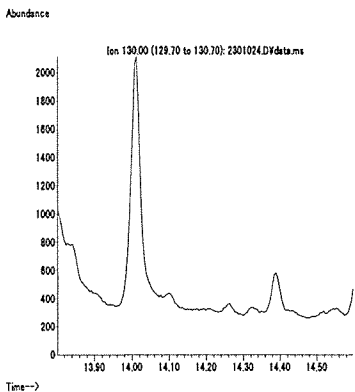
肝臓 (0.01 mg/kg 添加)



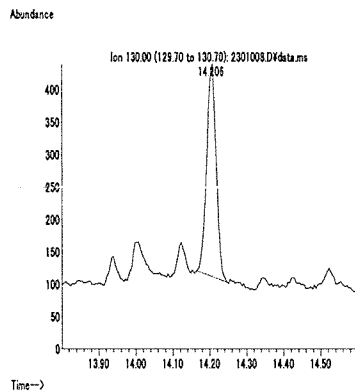
うなぎ (0.01 mg/kg 添加)



えび (0.1 mg/kg 添加)



牛乳 (0.01 mg/kg 添加)



卵 (0.01 mg/kg 添加)

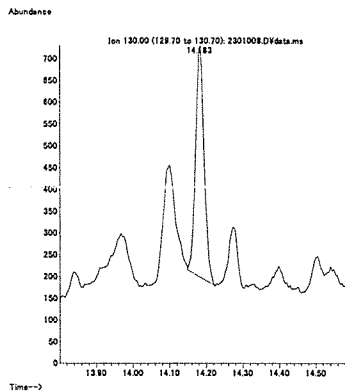
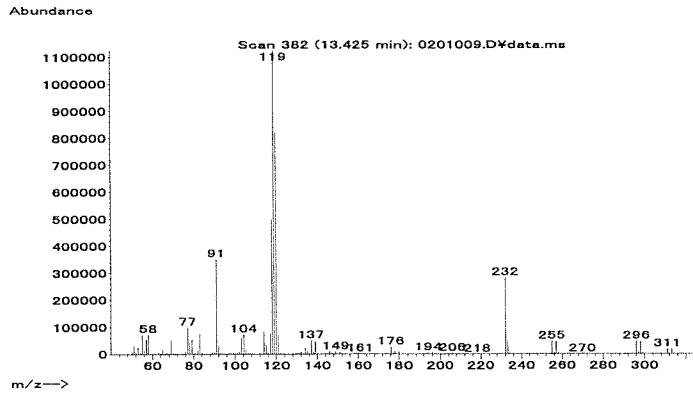


図 2. 最小検出量評価, 標準品, 回収試料のマスクロマトグラム (プロベナゾール)

マススペクトル



検量線

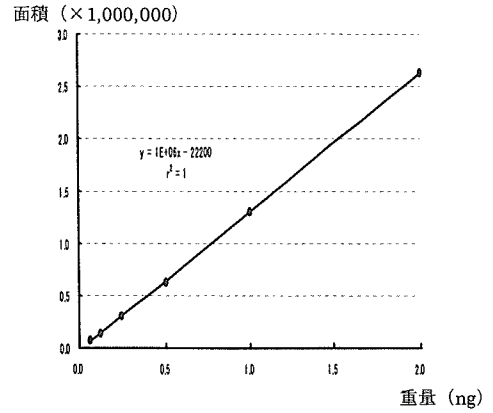
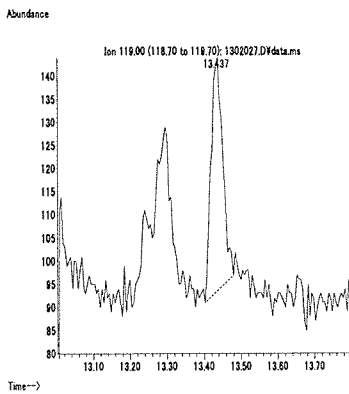
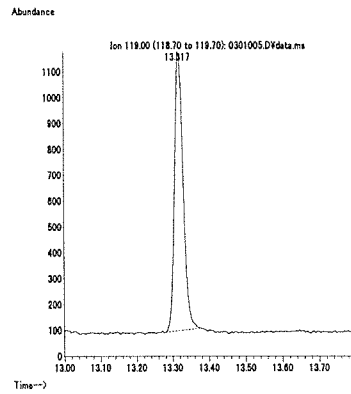


図 1. マススペクトルおよび検量線 (プロモブチド)

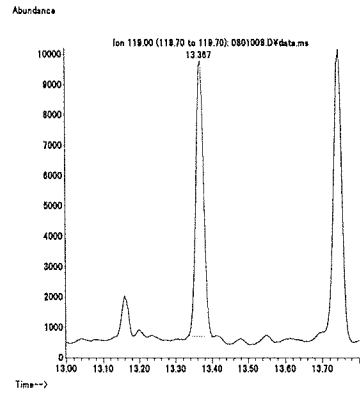
最小検出量評価 (0.004 ng)



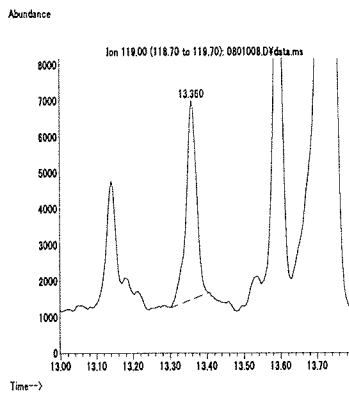
標準品 (0.125 ng)



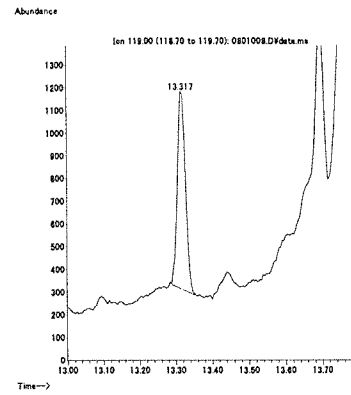
筋肉 (0.01 mg/kg 添加)



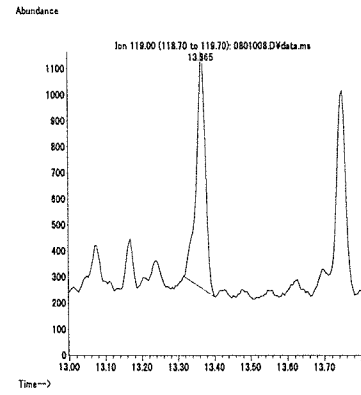
脂肪 (0.01 mg/kg 添加)



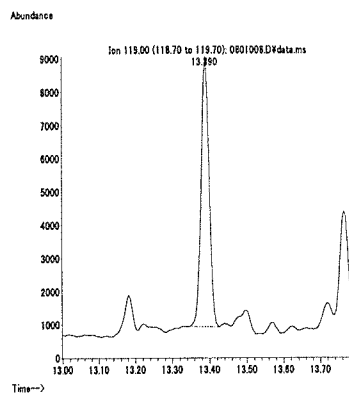
肝臓 (0.01 mg/kg 添加)



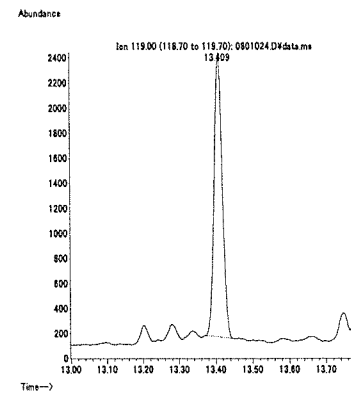
うなぎ (0.01 mg/kg 添加)



えび (0.01 mg/kg 添加)



牛乳 (0.01 mg/kg 添加)



卵 (0.01 mg/kg 添加)

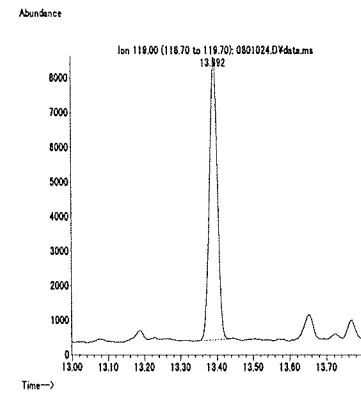
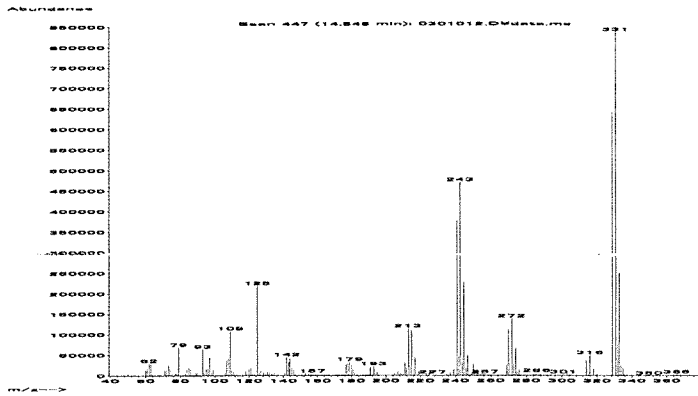


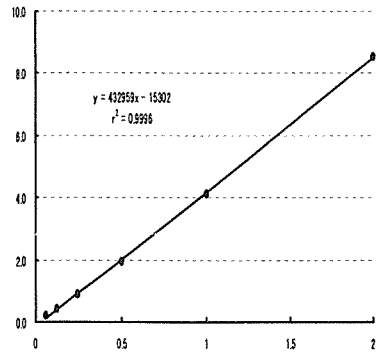
図 2. 最小検出量評価, 標準品, 回収試料のマスクロマトグラム (プロモブチド)

マススペクトル



検量線

面積 (×100,000)



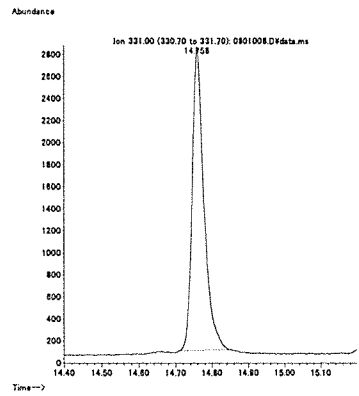
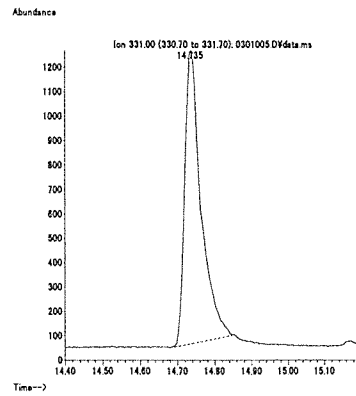
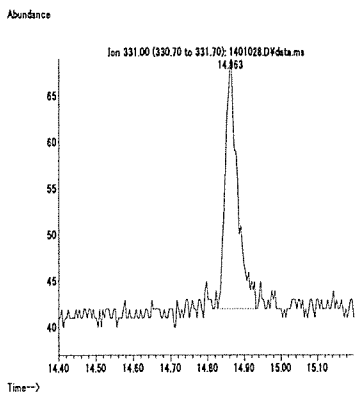
重量 (ng)

図 1. マススペクトルおよび検量線 (プロモホス)

最小検出量評価 (0.004 ng)

標準品 (0.125 ng)

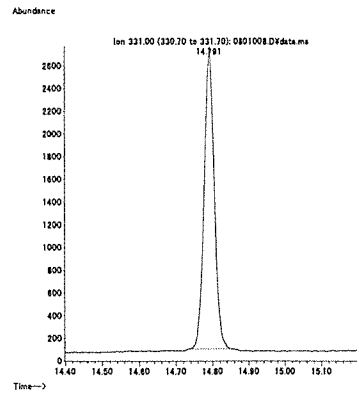
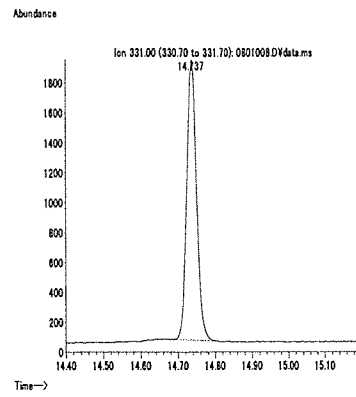
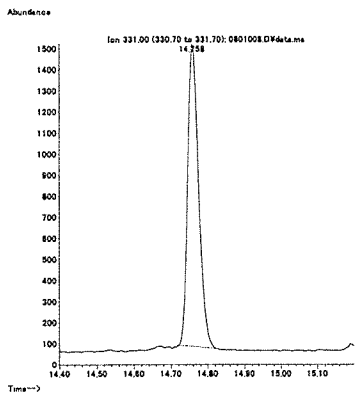
筋肉 (0.01 mg/kg 添加)



脂肪 (0.01 mg/kg 添加)

肝臓 (0.01 mg/kg 添加)

うなぎ (0.01 mg/kg 添加)



えび (0.01 mg/kg 添加)

牛乳 (0.01 mg/kg 添加)

卵 (0.01 mg/kg 添加)

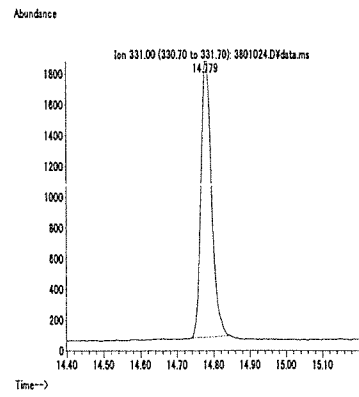
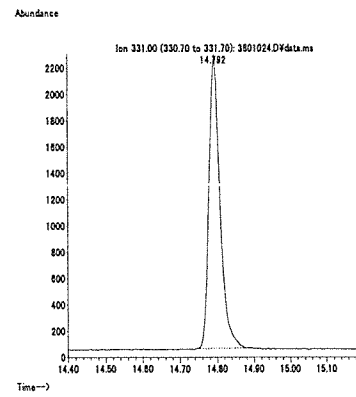
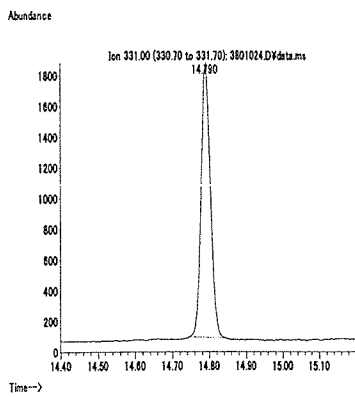
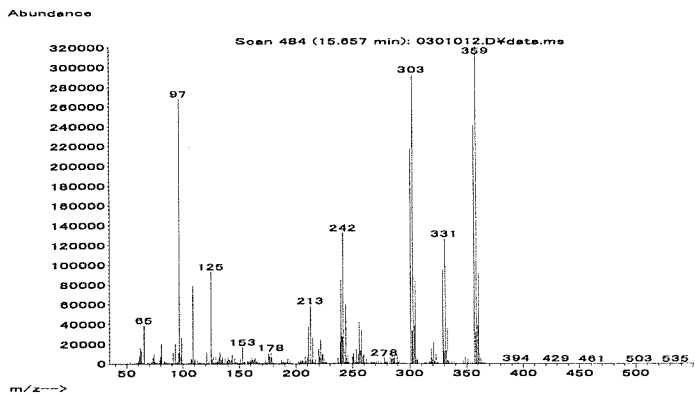


図 2. 最小検出量評価, 標準品, 回収試料のマスクロマトグラム (プロモホス)



マススペクトル



検量線

面積 (×100,000)

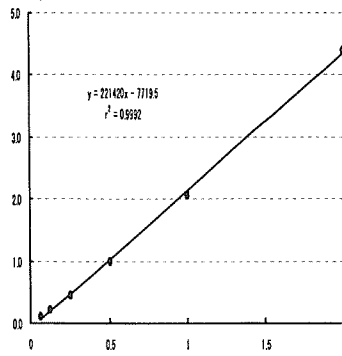
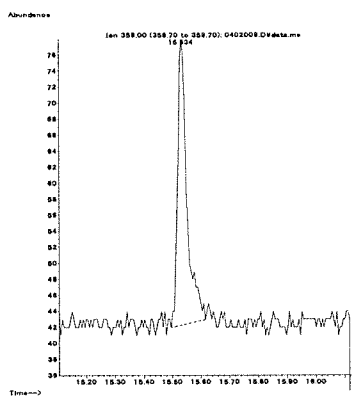
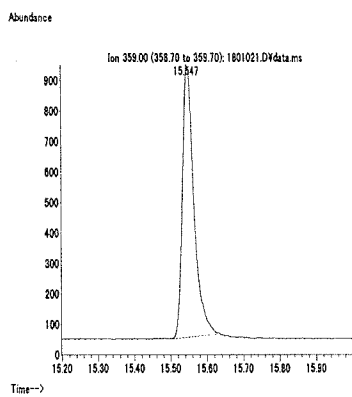


図 1. マススペクトルおよび検量線 (プロモホスエチル)

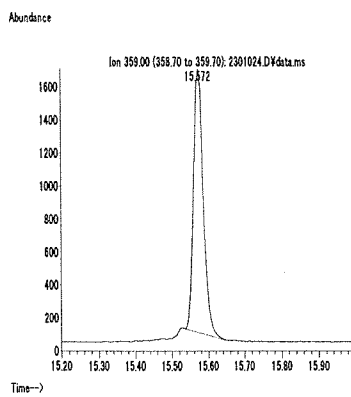
最小検出量評価 (0.004 ng)



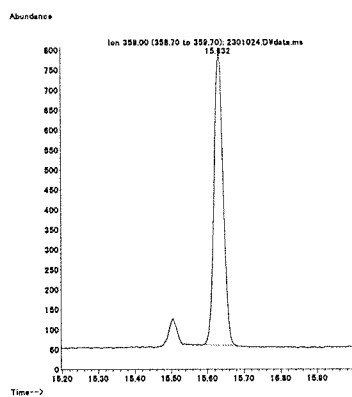
標準品 (0.125 ng)



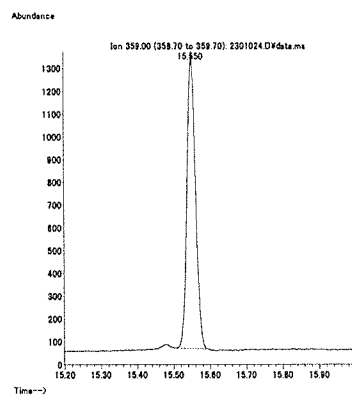
筋肉 (0.01 mg/kg 添加)



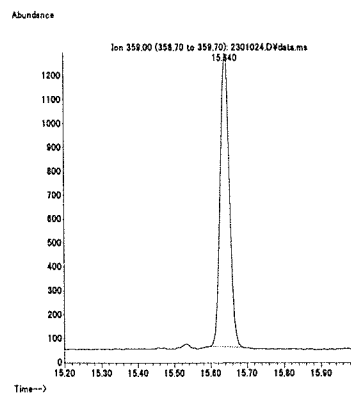
脂肪 (0.01 mg/kg 添加)



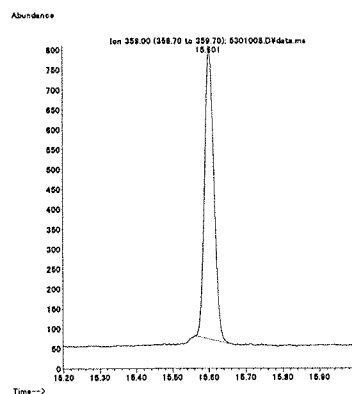
肝臓 (0.01 mg/kg 添加)



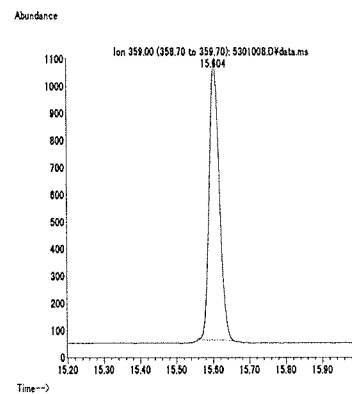
うなぎ (0.01 mg/kg 添加)



えび (0.01 mg/kg 添加)



牛乳 (0.01 mg/kg 添加)



卵 (0.01 mg/kg 添加)

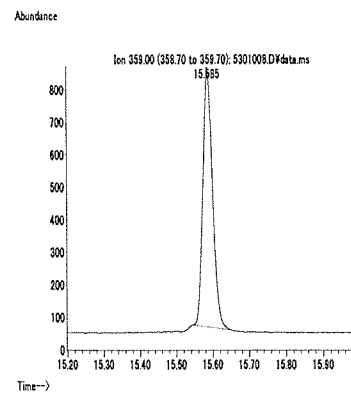
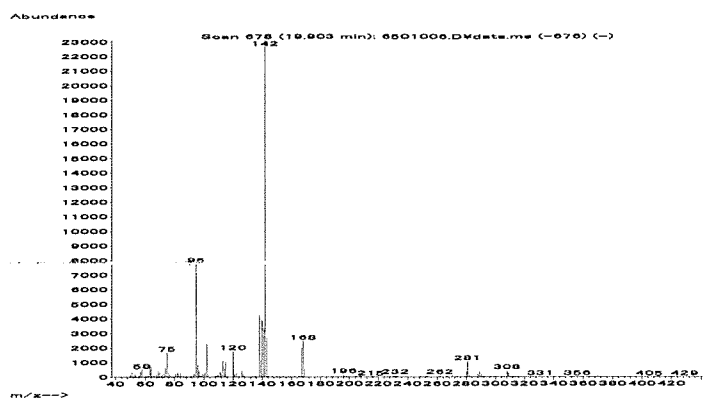


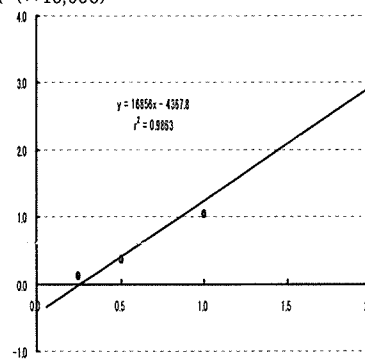
図 2. 最小検出量評価, 標準品, 回収試料のマスクロマトグラム (プロモホスエチル)

マススペクトル



検量線

面積 (×10,000)



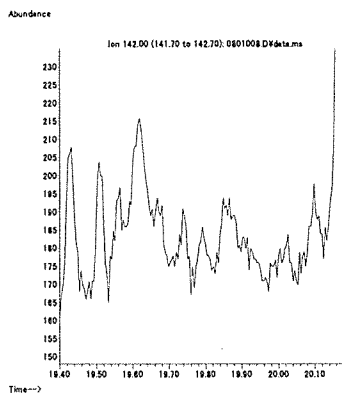
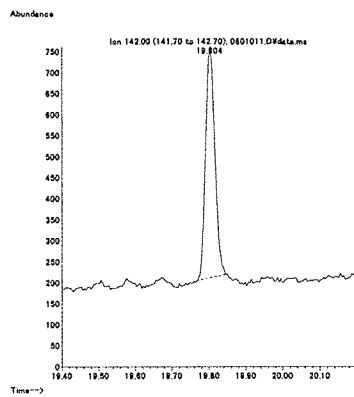
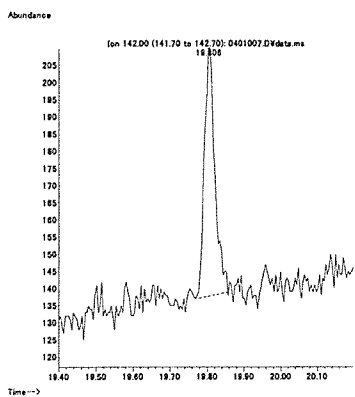
重量 (ng)

図 1. マススペクトルおよび検量線 (フロラスラム)

最小検出量評価 (0.25 ng)

標準品 (1 ng)

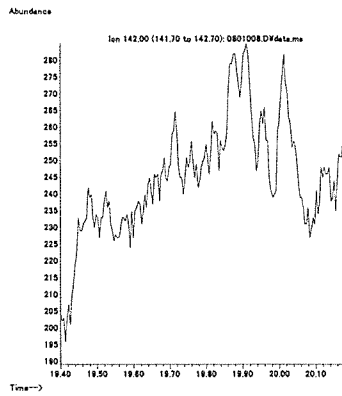
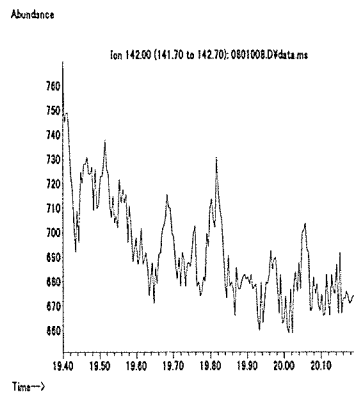
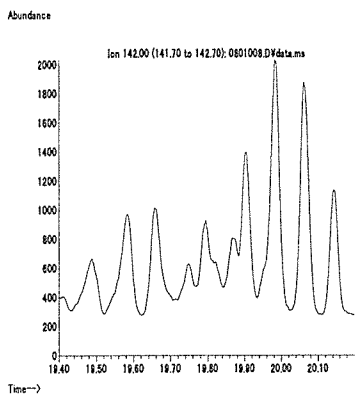
筋肉 (0.1 mg/kg 添加)



脂肪 (0.1 mg/kg 添加)

肝臓 (0.1 mg/kg 添加)

うなぎ (0.1 mg/kg 添加)



えび (0.1 mg/kg 添加)

牛乳 (0.1 mg/kg 添加)

卵 (0.1 mg/kg 添加)

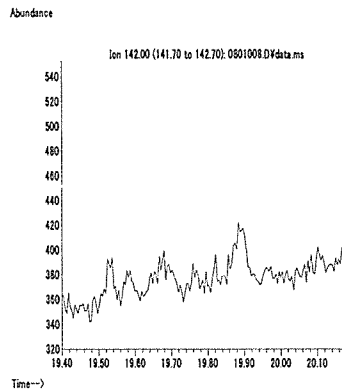
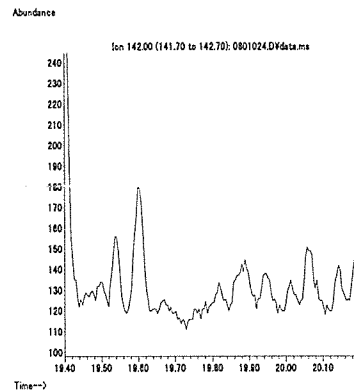
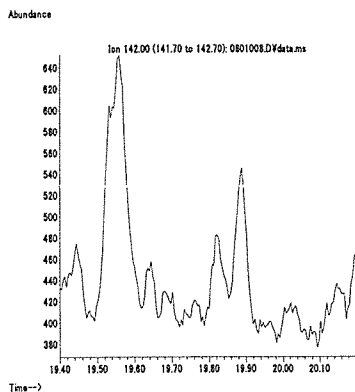
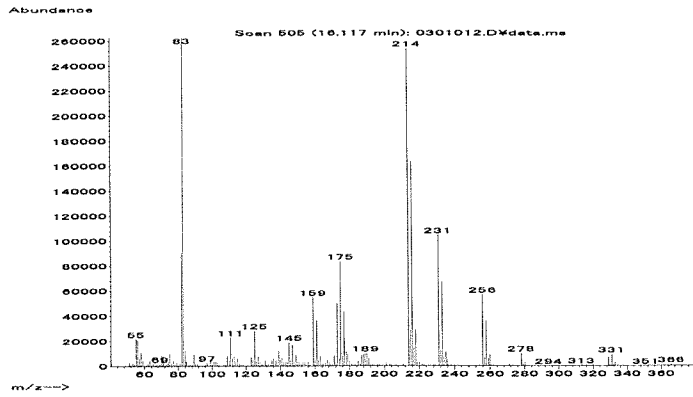


図 2. 最小検出量評価, 標準品, 回収試料のマスクロマトグラム (フロラスラム)

マススペクトル



検量線

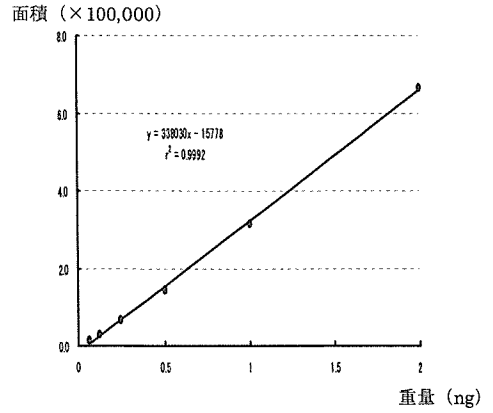
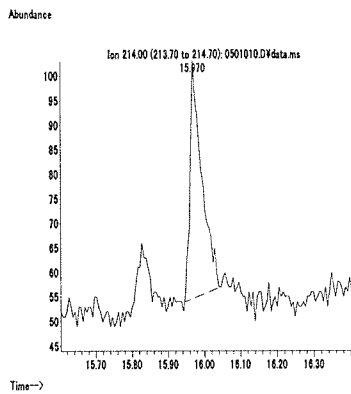
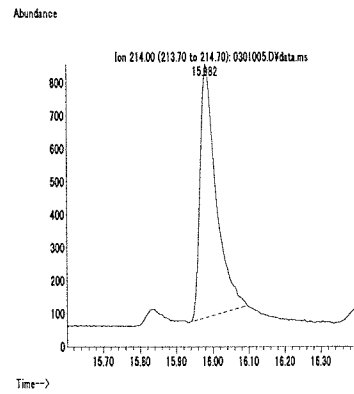


図 1. マススペクトルおよび検量線 (ヘキサコナゾール)

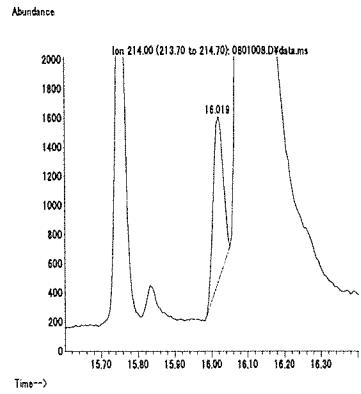
最小検出量評価 (0.008 ng)



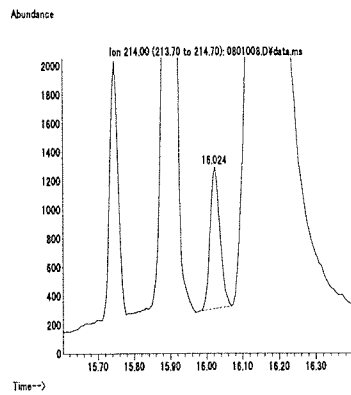
標準品 (0.125 ng)



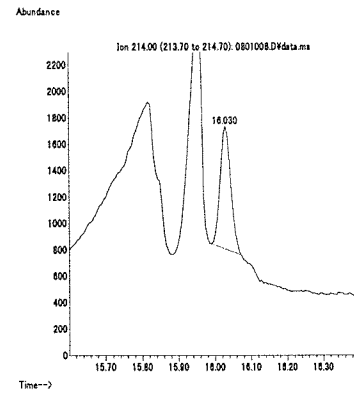
筋肉 (0.01 mg/kg 添加)



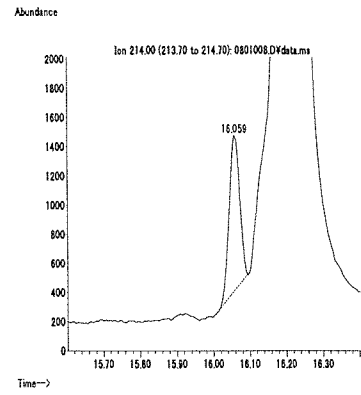
脂肪 (0.01 mg/kg 添加)



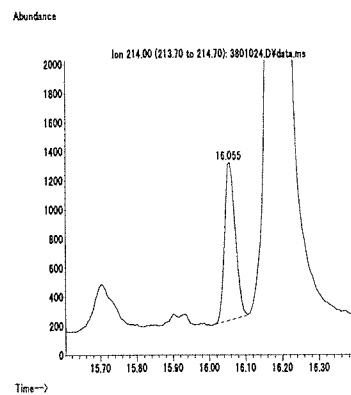
肝臓 (0.01 mg/kg 添加)



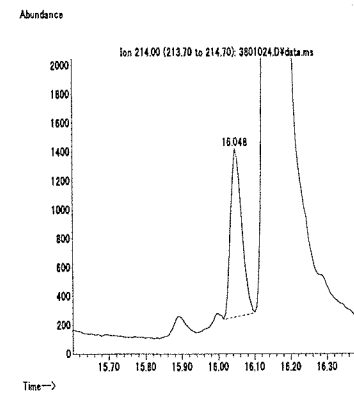
うなぎ (0.01 mg/kg 添加)



えび (0.01 mg/kg 添加)



牛乳 (0.01 mg/kg 添加)



卵 (0.01 mg/kg 添加)

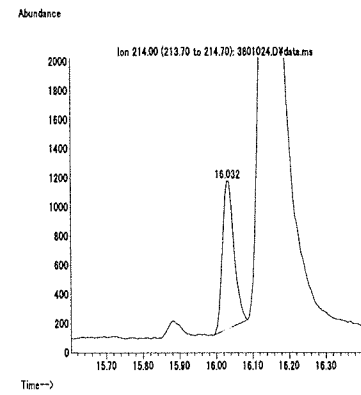
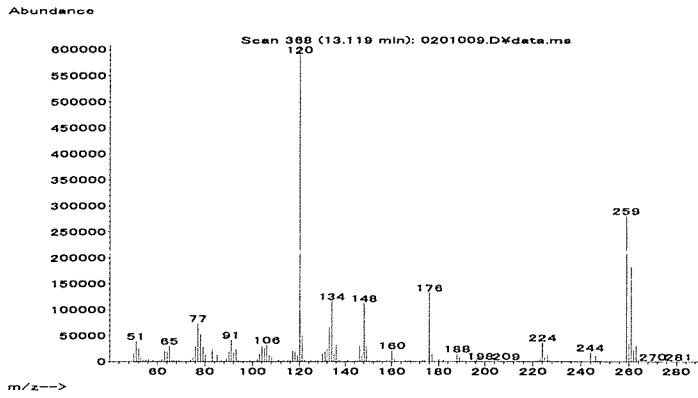


図 2. 最小検出量評価, 標準品, 回収試料のマスキロマトグラム (ヘキサコナゾール)

マススペクトル



検量線

面積 (×100,000)

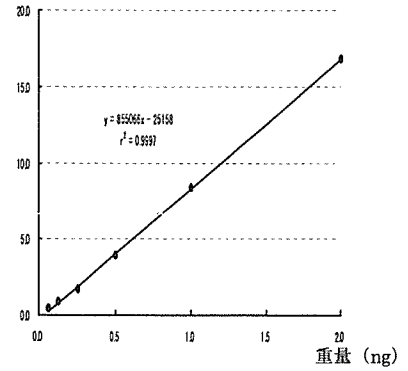
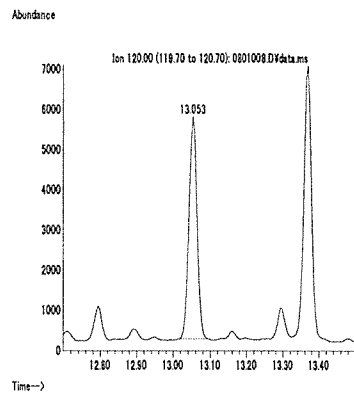
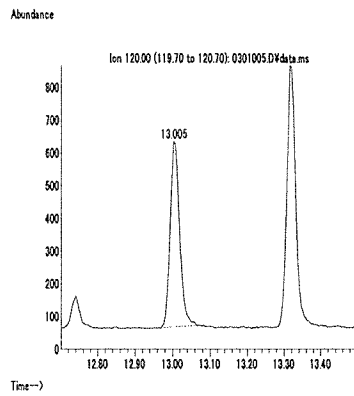
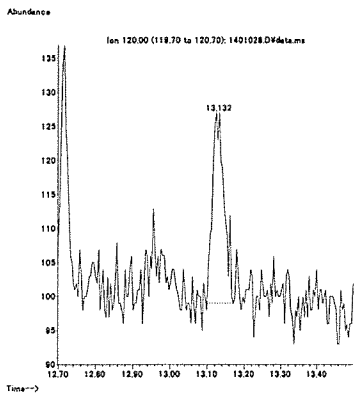


図 1. マススペクトルおよび検量線 (ペノキサコール)

最小検出量評価 (0.004 ng)

標準品 (0.125 ng)

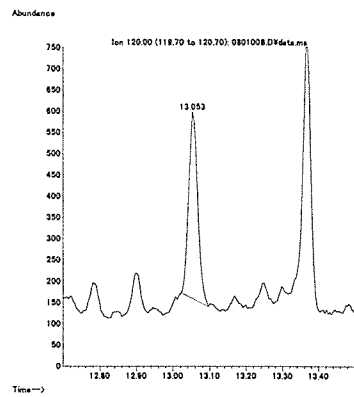
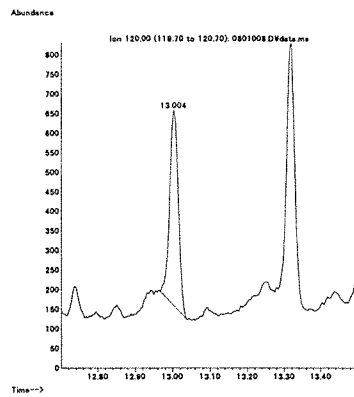
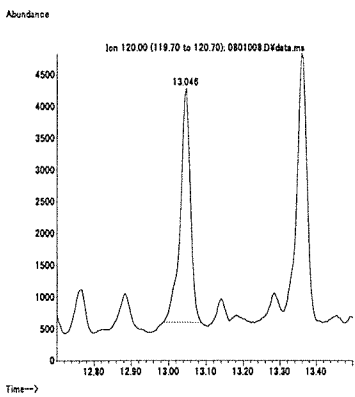
筋肉 (0.01 mg/kg 添加)



脂肪 (0.01 mg/kg 添加)

肝臓 (0.01 mg/kg 添加)

うなぎ (0.01 mg/kg 添加)



えび (0.01 mg/kg 添加)

牛乳 (0.01 mg/kg 添加)

卵 (0.01 mg/kg 添加)

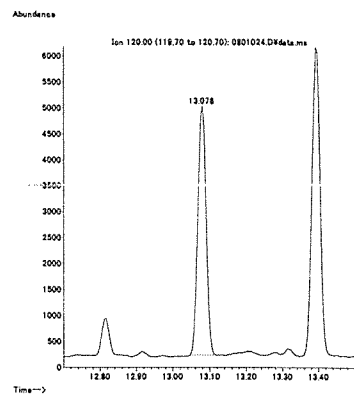
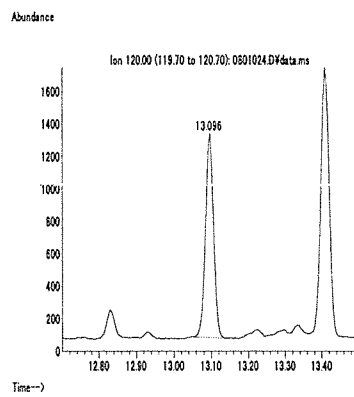
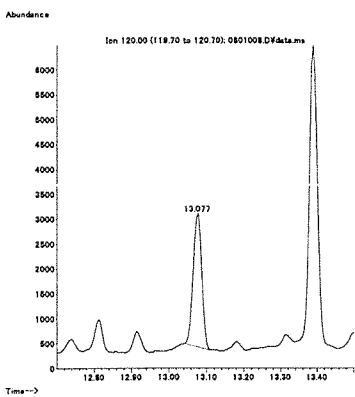


図 2. 最小検出量評価, 標準品, 回収試料のマスクロマトグラム (ペノキサコール)