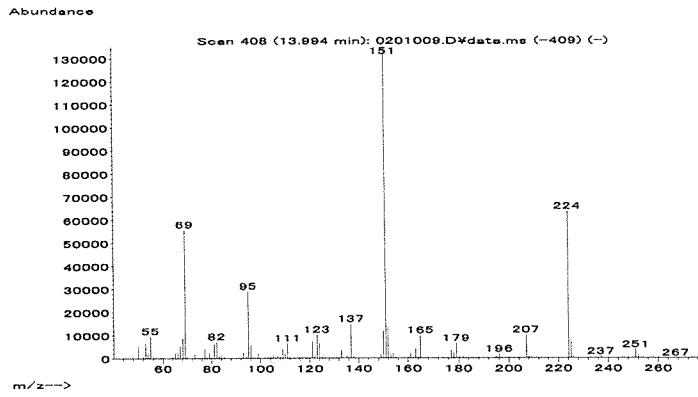


マススペクトル



検量線

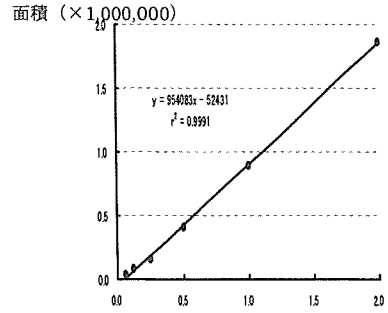
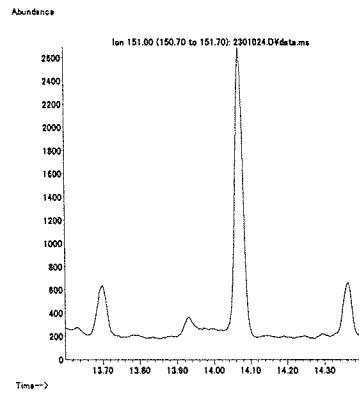
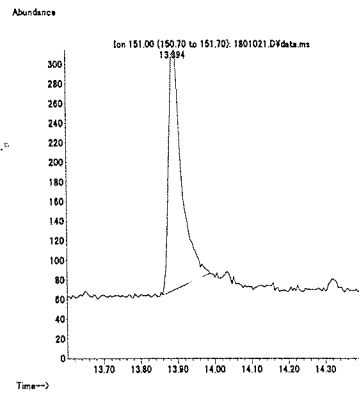
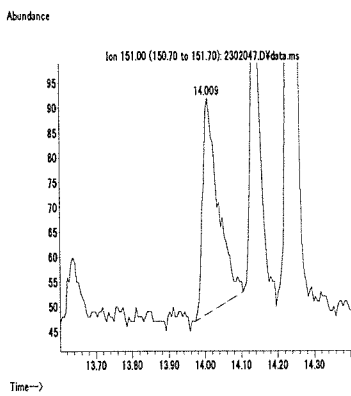


図 1. マススペクトルおよび検量線 (トリネキサパックエチル)

最小検出量評価 (0.04 ng)

標準品 (0.125 ng)

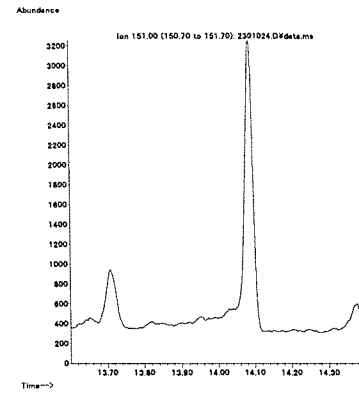
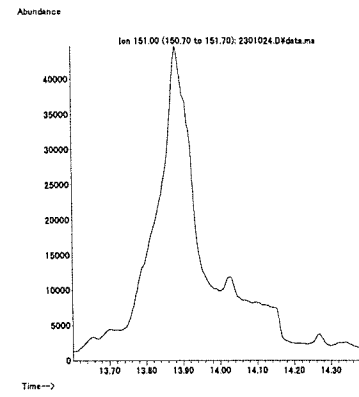
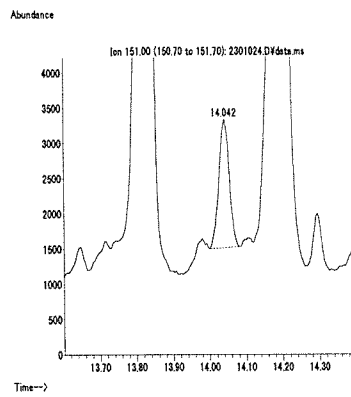
筋肉 (0.1 mg/kg 添加)



脂肪 (0.01 mg/kg 添加)

肝臓 (0.1 mg/kg 添加)

うなぎ (0.1 mg/kg 添加)



えび (0.1 mg/kg 添加)

牛乳 (0.1 mg/kg 添加)

卵 (0.1 mg/kg 添加)

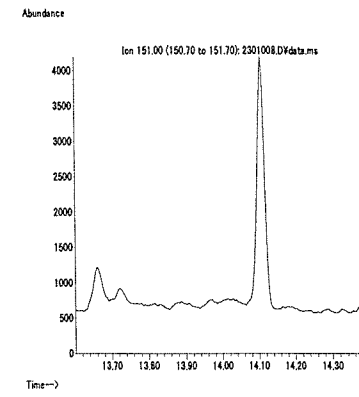
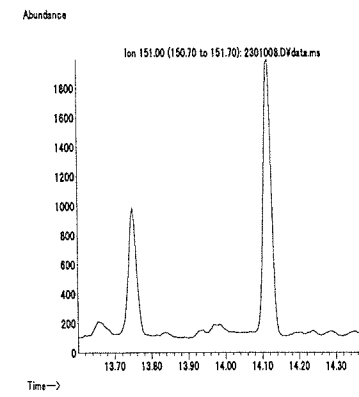
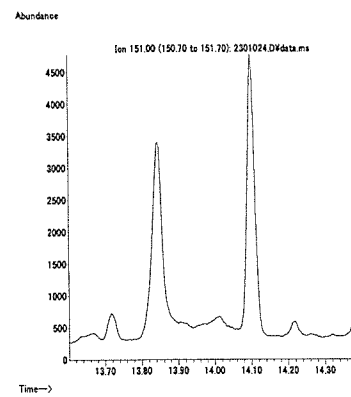
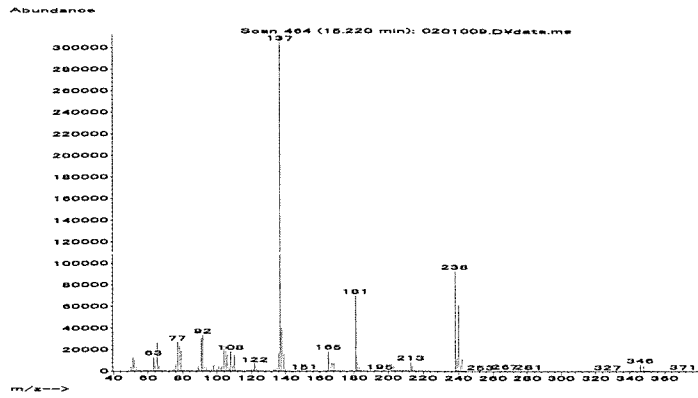


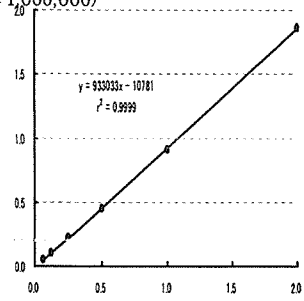
図 2. 最小検出量評価, 標準品, 回収試料のマスクロマトグラム (トリネキサパックエチル)

マススペクトル



検量線

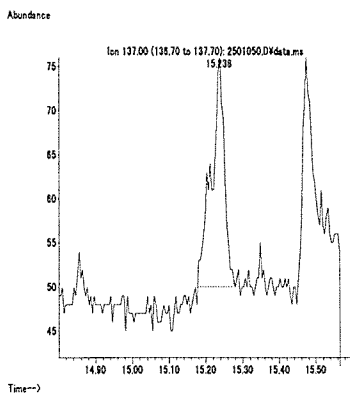
面積 (×1,000,000)



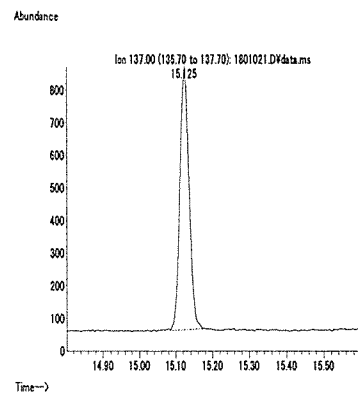
重量 (ng)

図 1. マススペクトルおよび検量線 (トリルフルアニド)

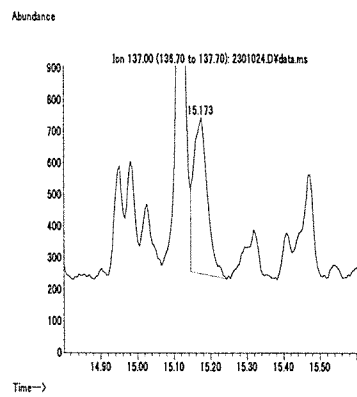
最小検出量評価 (0.1 ng)



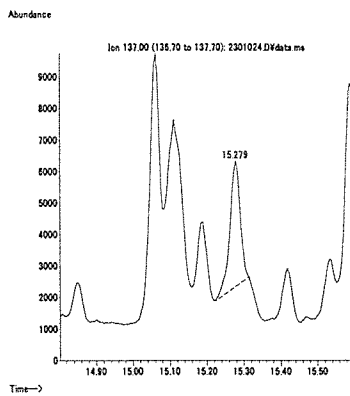
標準品 (0.125 ng)



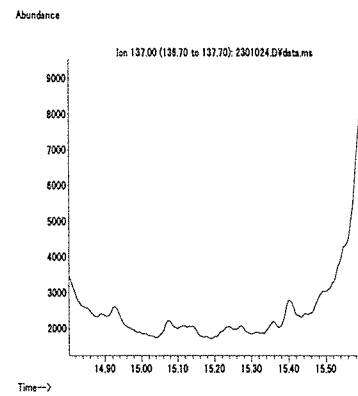
筋肉 (0.01 mg/kg 添加)



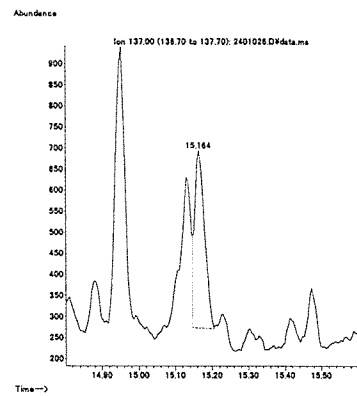
脂肪 (0.01 mg/kg 添加)



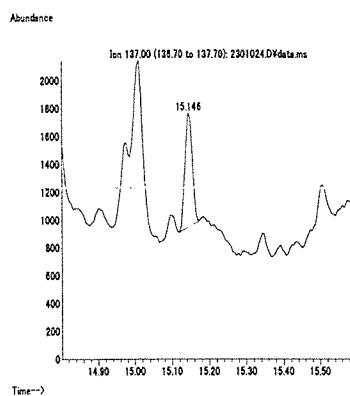
肝臓 (0.1 mg/kg 添加)



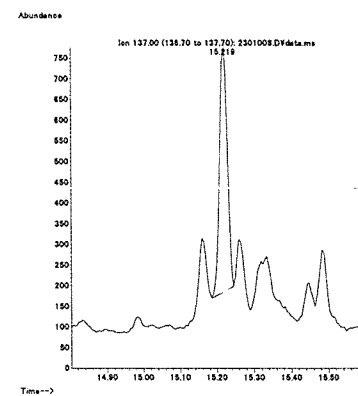
うなぎ (0.1 mg/kg 添加)



えび (0.01 mg/kg 添加)



牛乳 (0.1 mg/kg 添加)



卵 (0.1 mg/kg 添加)

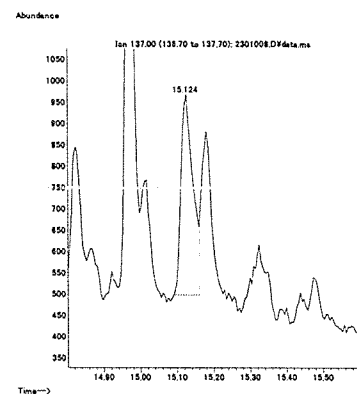
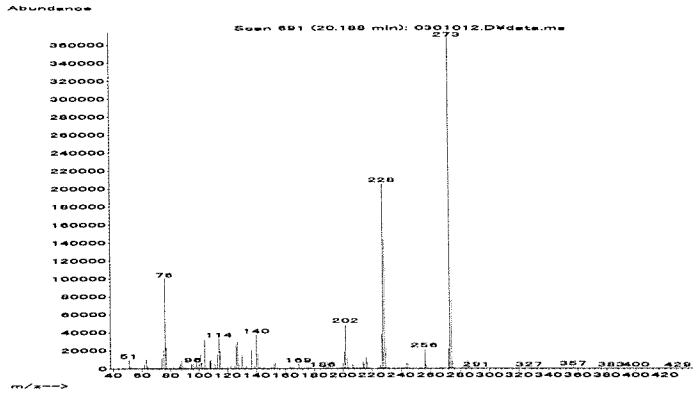


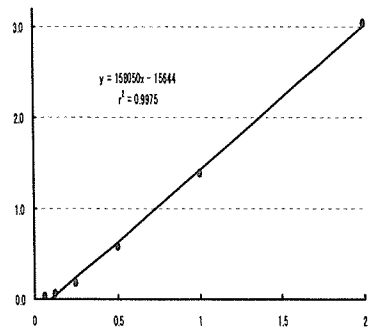
図 2. 最小検出量評価, 標準品, 回収試料のマスキロマトグラム (トリルフルアニド)

マススペクトル



検量線

面積 (×100,000)



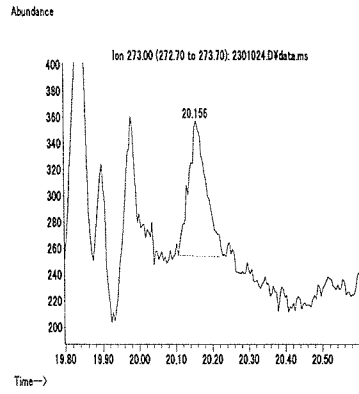
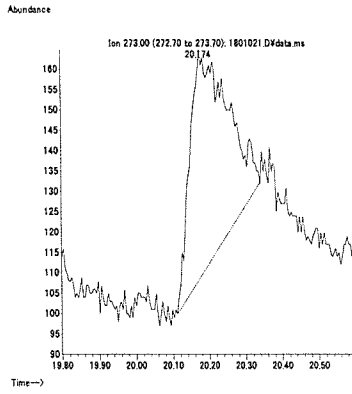
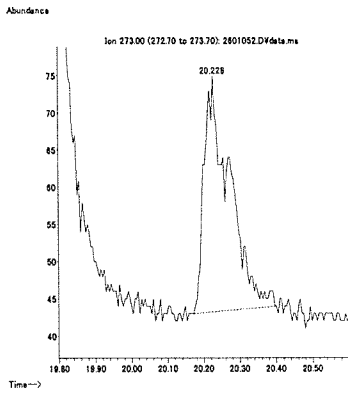
重量 (ng)

図 1. マススペクトルおよび検量線 (ナブタラム)

最小検出量評価 (0.1 ng)

標準品 (0.125 ng)

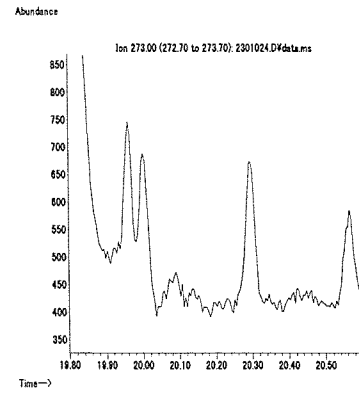
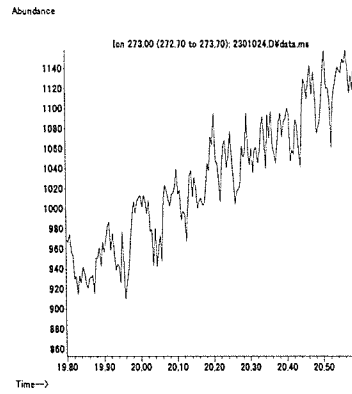
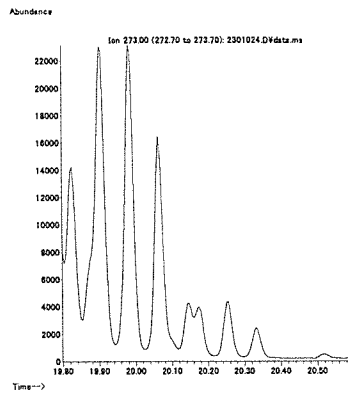
筋肉 (0.1 mg/kg 添加)



脂肪 (0.1 mg/kg 添加)

肝臓 (0.1 mg/kg 添加)

うなぎ (0.1 mg/kg 添加)



えび (0.1 mg/kg 添加)

牛乳 (0.1 mg/kg 添加)

卵 (0.1 mg/kg 添加)

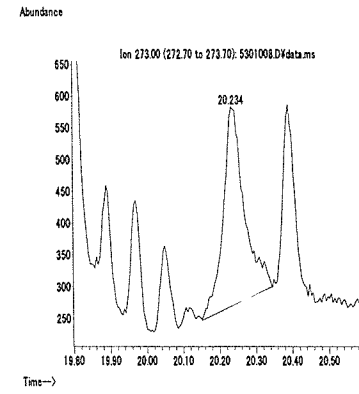
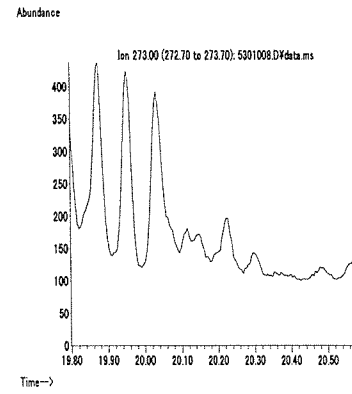
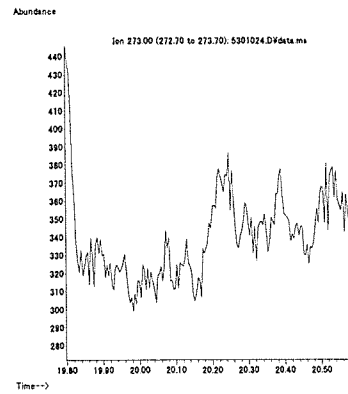
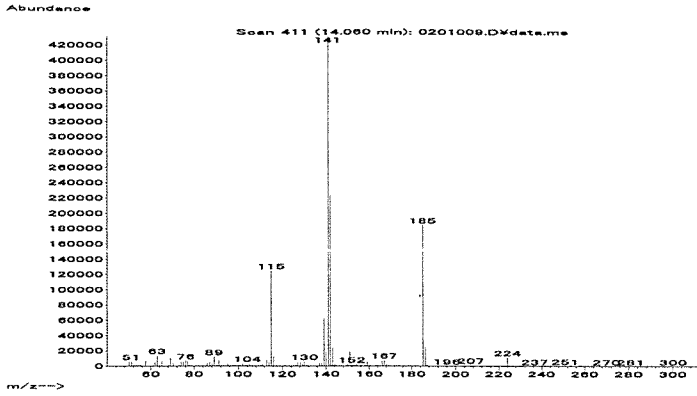


図 2. 最小検出量評価, 標準品, 回収試料のマスクロマトグラム (ナブタラム)

マススペクトル



検量線

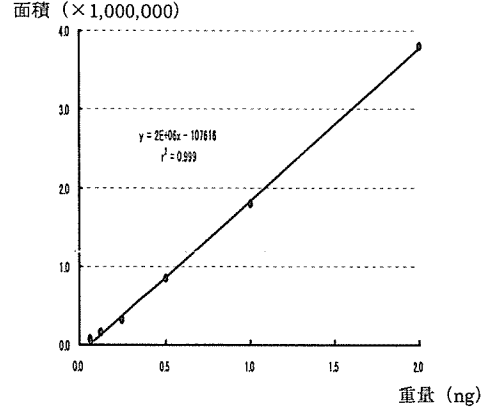
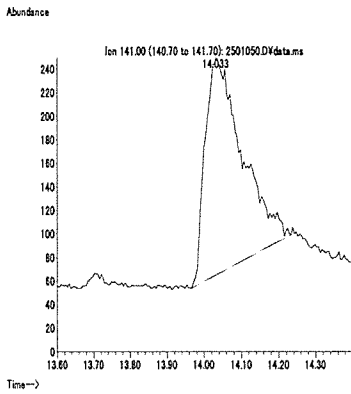


図 1. マススペクトルおよび検量線 (2-(1-ナフチル)アセタミド)

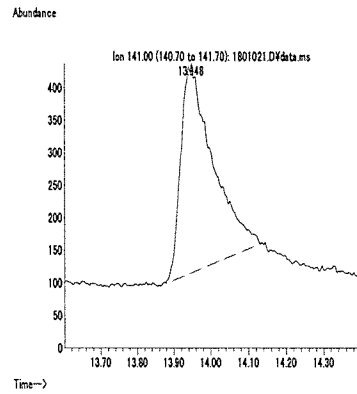
最小検出量評価 (0.1 ng)

標準品 (0.125 ng)

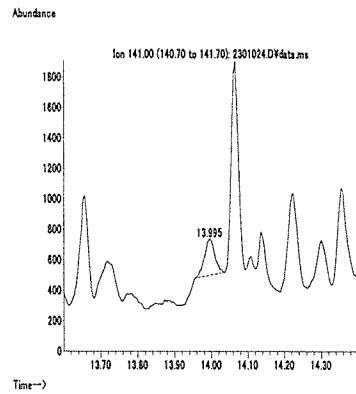
筋肉 (0.01 mg/kg 添加)



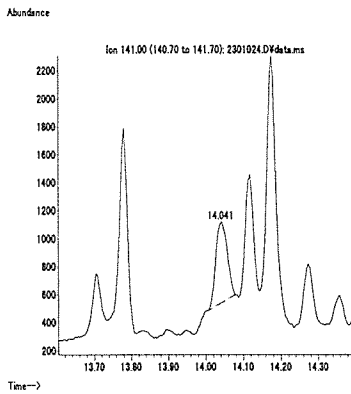
脂肪 (0.1 mg/kg 添加)



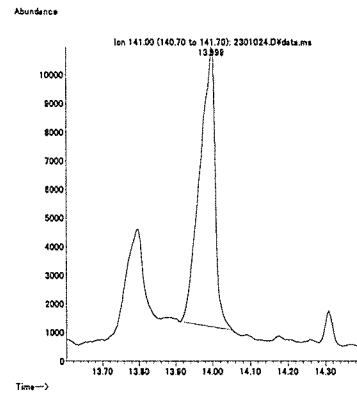
肝臓 (0.01 mg/kg 添加)



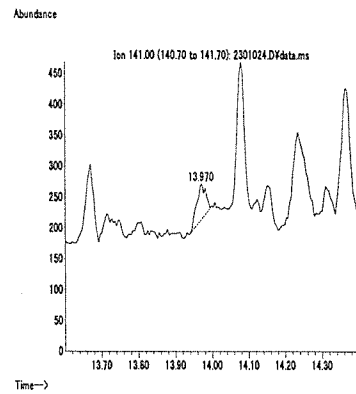
うなぎ (0.01 mg/kg 添加)



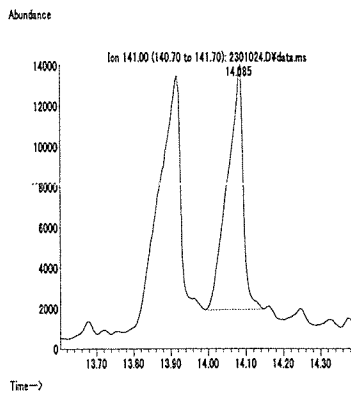
えび (0.01 mg/kg 添加)



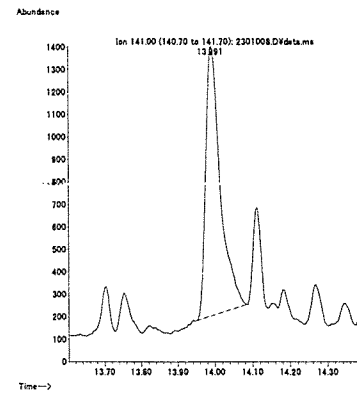
牛乳 (0.01 mg/kg 添加)



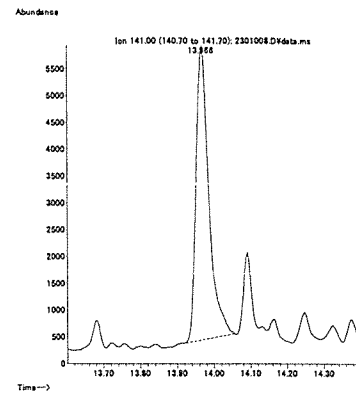
卵 (0.01 mg/kg 添加)



えび (0.01 mg/kg 添加)



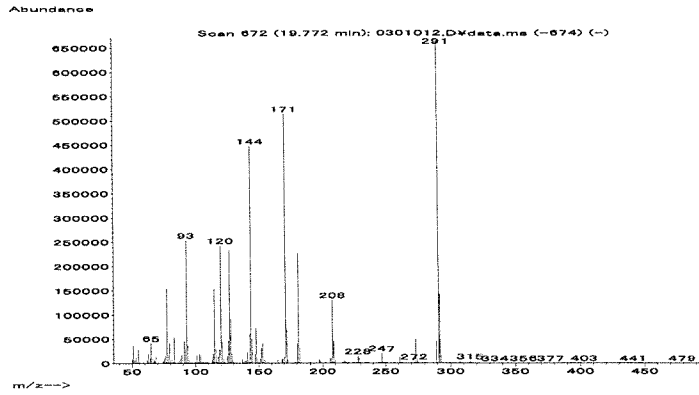
牛乳 (0.01 mg/kg 添加)



卵 (0.01 mg/kg 添加)

図 2. 最小検出量評価, 標準品, 回収試料のマス کروマトグラム (2-(1-ナフチル)アセタミド)

マススペクトル



検量線

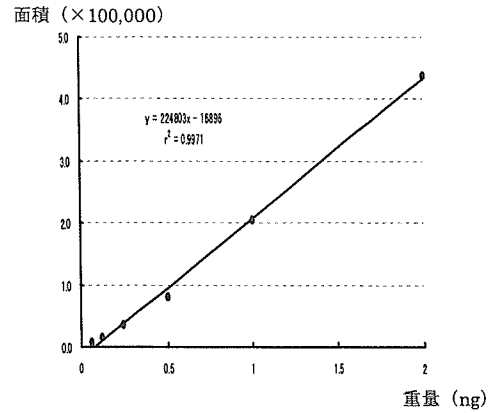
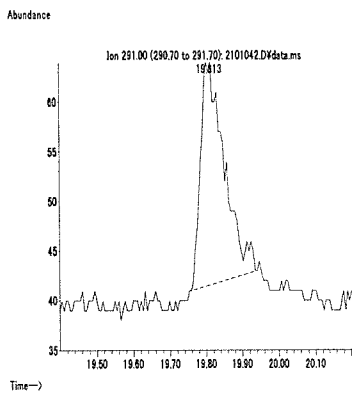
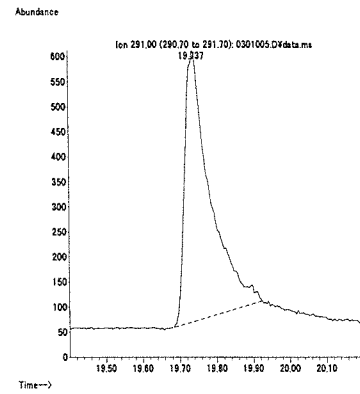


図 1. マススペクトルおよび検量線 (ナプロアニリド)

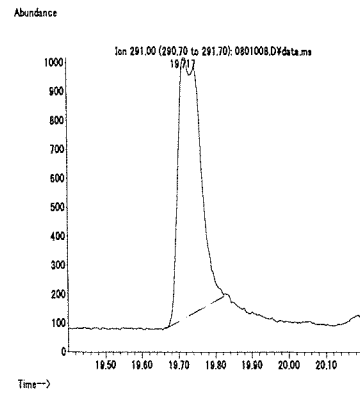
最小検出量評価 (0.02 ng)



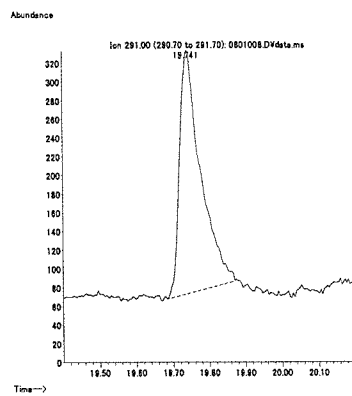
標準品 (0.125 ng)



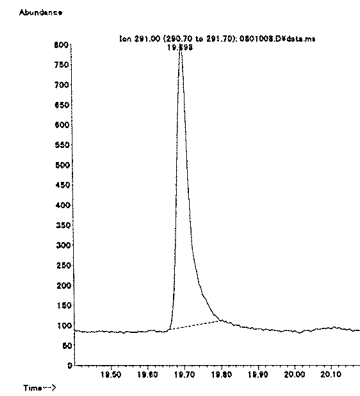
筋肉 (0.01 mg/kg 添加)



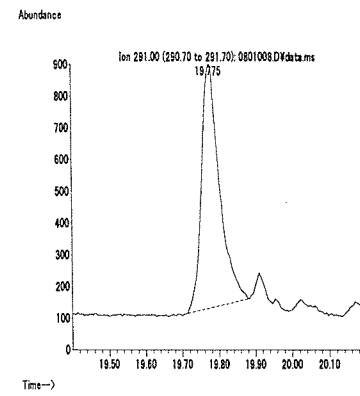
脂肪 (0.01 mg/kg 添加)



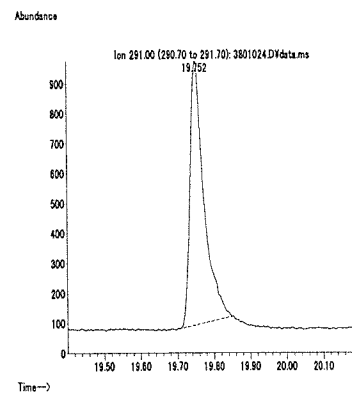
肝臓 (0.01 mg/kg 添加)



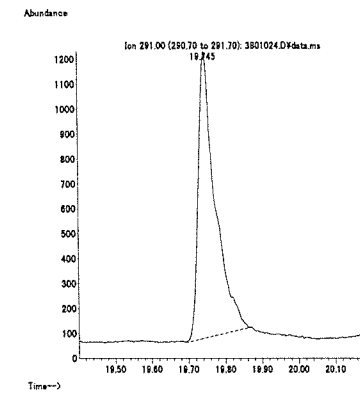
うなぎ (0.01 mg/kg 添加)



えび (0.01 mg/kg 添加)



牛乳 (0.01 mg/kg 添加)



卵 (0.01 mg/kg 添加)

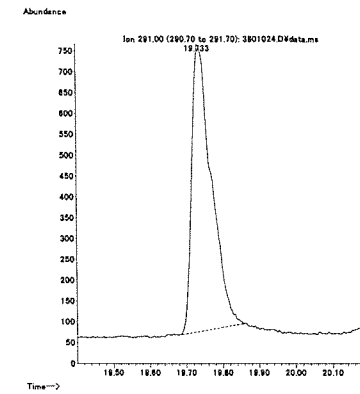
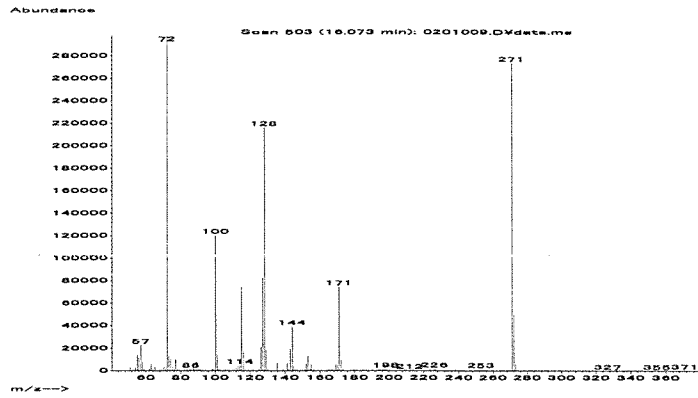


図 2. 最小検出量評価, 標準品, 回収試料のマスプロトグラム (ナプロアニリド)

マススペクトル



検量線

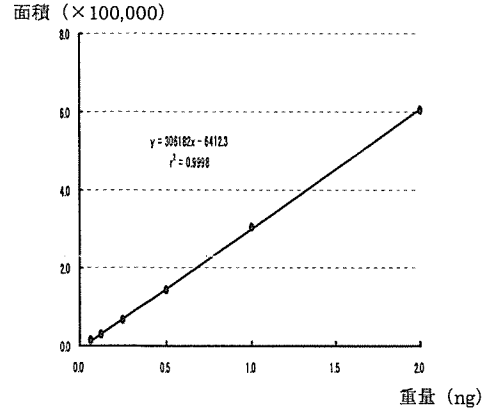
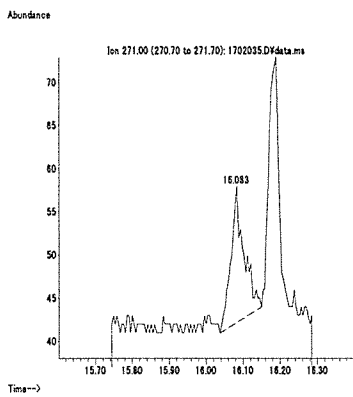
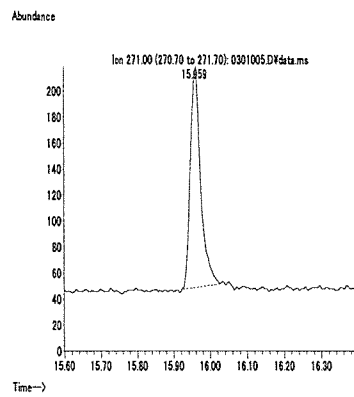


図 1. マススペクトルおよび検量線 (ナプロパミド)

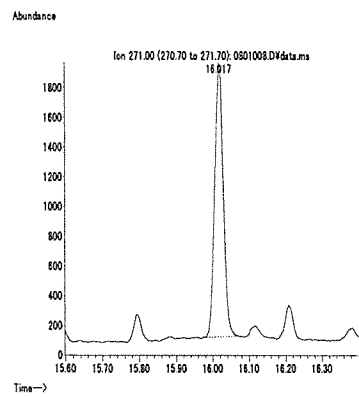
最小検出量評価 (0.01 ng)



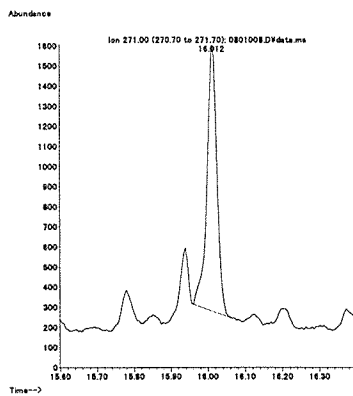
標準品 (0.125 ng)



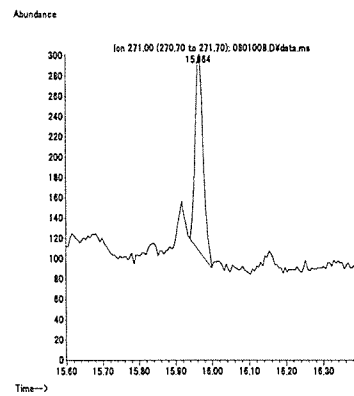
筋肉 (0.01 mg/kg 添加)



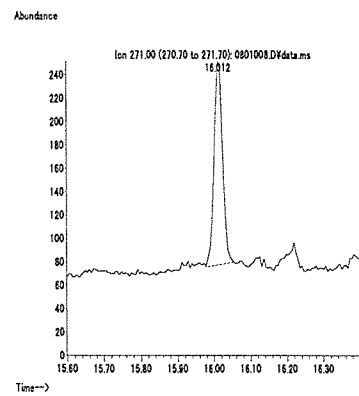
脂肪 (0.01 mg/kg 添加)



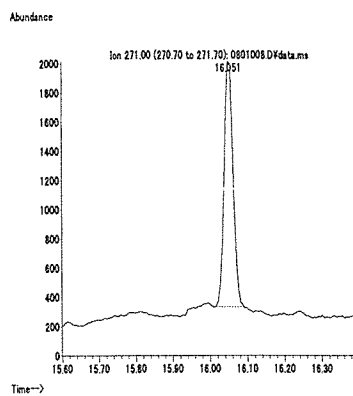
肝臓 (0.01 mg/kg 添加)



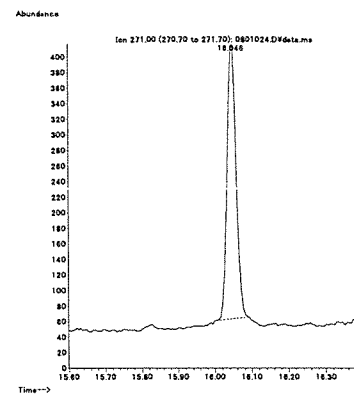
うなぎ (0.01 mg/kg 添加)



えび (0.01 mg/kg 添加)



牛乳 (0.01 mg/kg 添加)



卵 (0.01 mg/kg 添加)

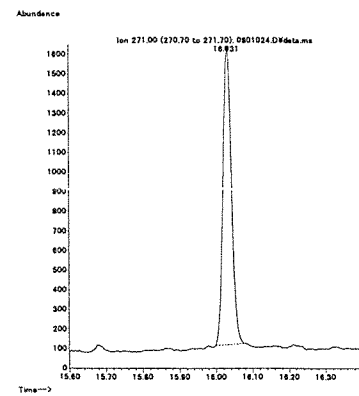
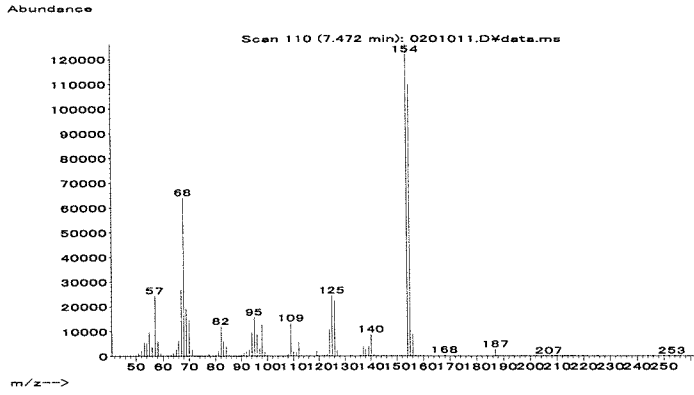


図 2. 最小検出量評価, 標準品, 回収試料のマスキロマトグラム (ナプロパミド)

マススペクトル



検量線

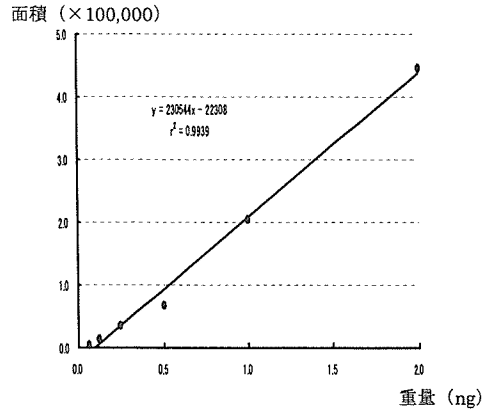
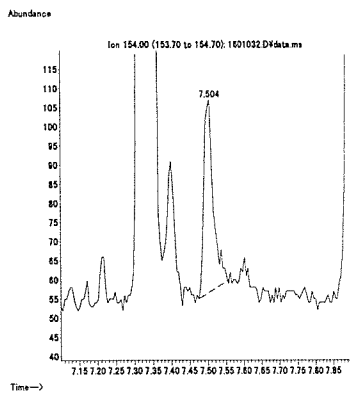
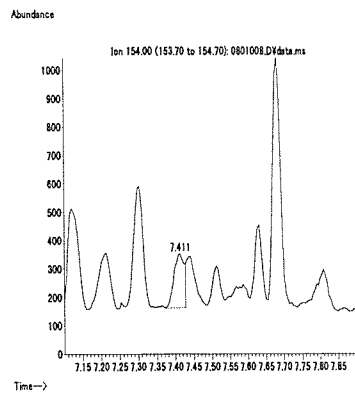


図 1. マススペクトルおよび検量線 (ニコスルフロン)

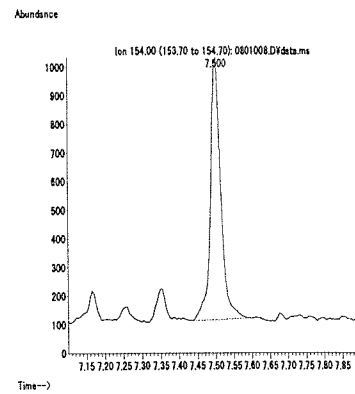
最小検出量評価 (0.01 ng)



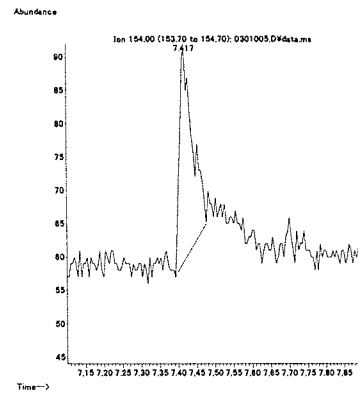
脂肪 (0.01 mg/kg 添加)



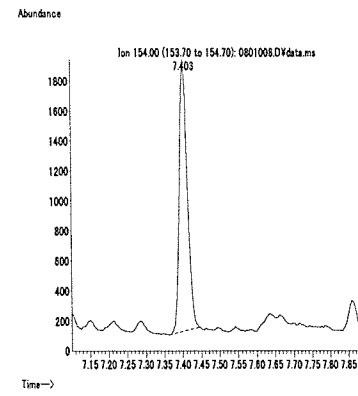
えび (0.01 mg/kg 添加)



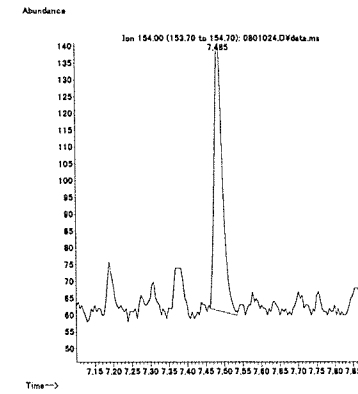
標準品 (0.125 ng)



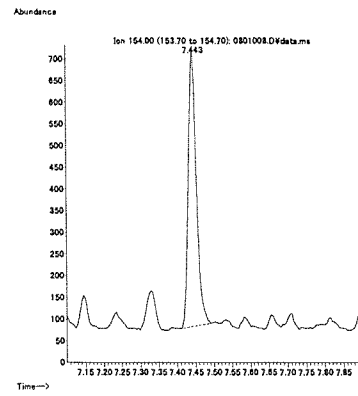
肝臓 (0.1 mg/kg 添加)



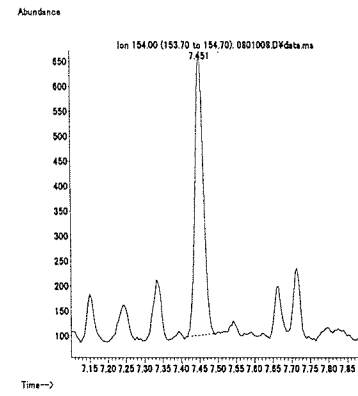
牛乳 (0.01 mg/kg 添加)



筋肉 (0.1 mg/kg 添加)



うなぎ (0.1 mg/kg 添加)



卵 (0.01 mg/kg 添加)

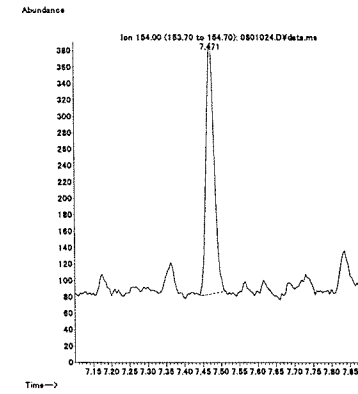
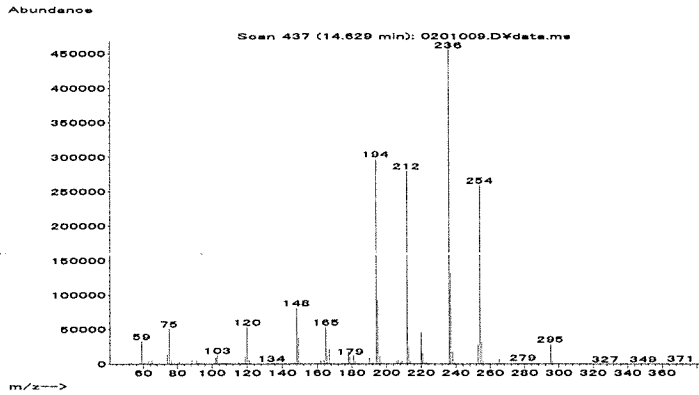


図 2. 最小検出量評価, 標準品, 回収試料のマスクロマトグラム (ニコスルフロン)

マススペクトル



検量線

面積 (×100,000)

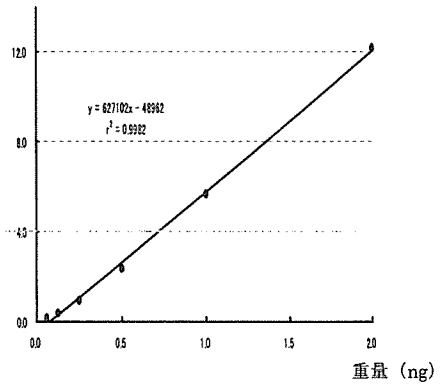
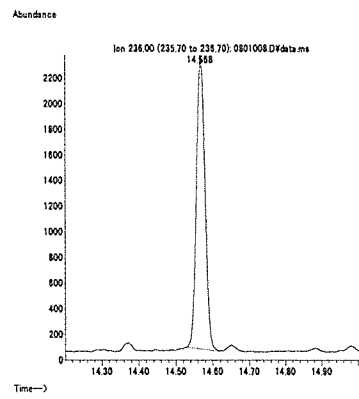
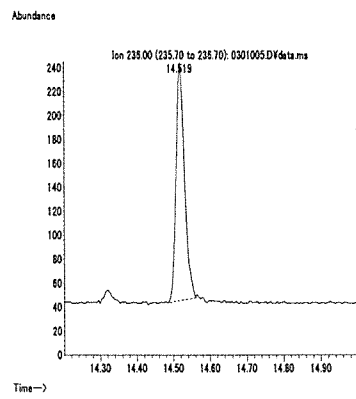
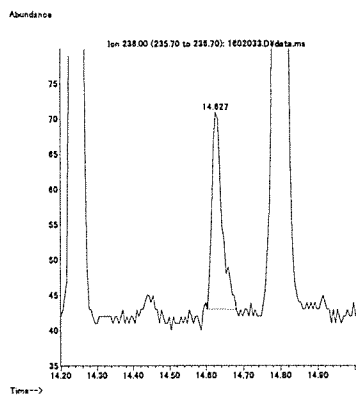


図 1. マススペクトルおよび検量線 (ニトロタールイソプロピル)

最小検出量評価 (0.01 ng)

標準品 (0.125 ng)

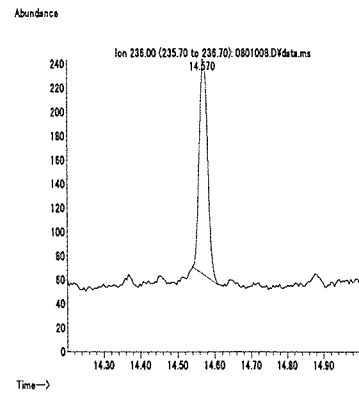
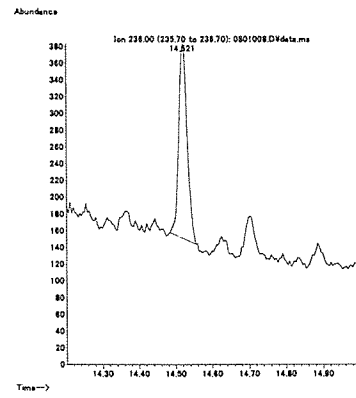
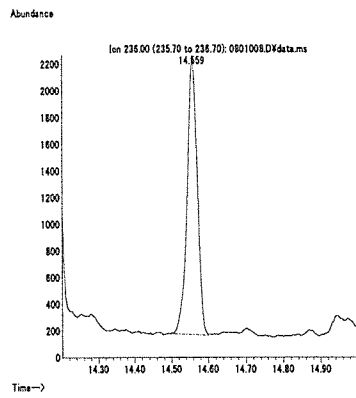
筋肉 (0.01 mg/kg 添加)



脂肪 (0.01 mg/kg 添加)

肝臓 (0.01 mg/kg 添加)

うなぎ (0.01 mg/kg 添加)



えび (0.01 mg/kg 添加)

牛乳 (0.01 mg/kg 添加)

卵 (0.01 mg/kg 添加)

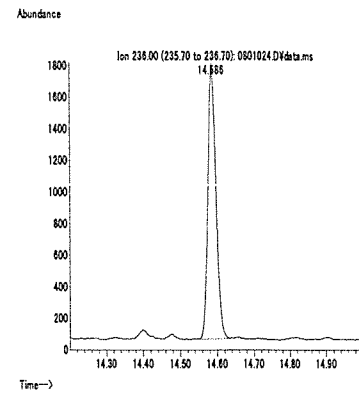
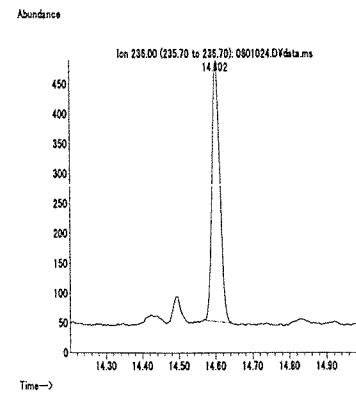
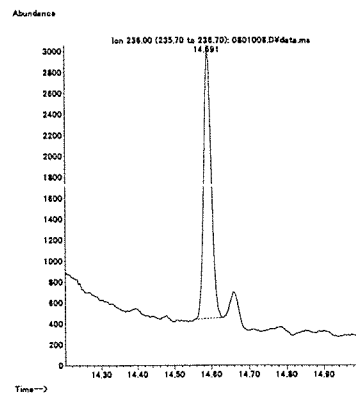
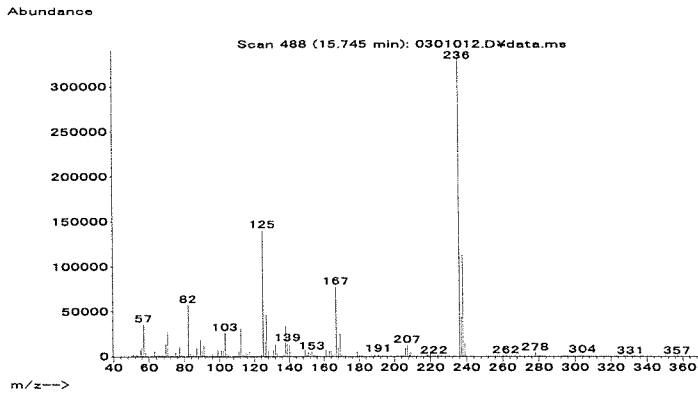


図 2. 最小検出量評価, 標準品, 回収試料のマスキロマトグラム (ニトロタールイソプロピル)

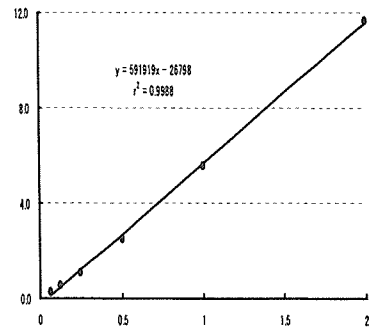


マススペクトル



検量線

面積 (×100,000)



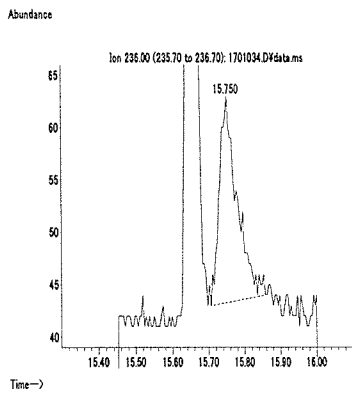
重量 (ng)

図 1. マススペクトルおよび検量線 (パクロブトラゾール)

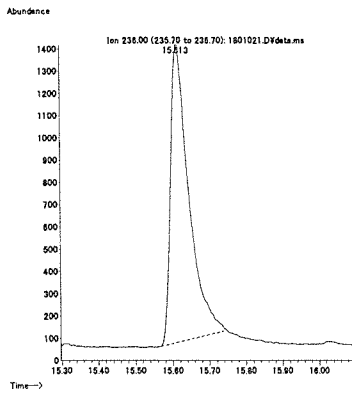
最小検出量評価 (0.01 ng)

標準品 (0.125 ng)

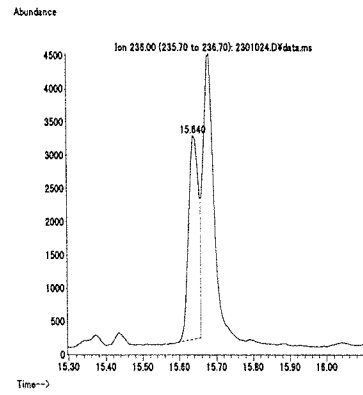
筋肉 (0.01 mg/kg 添加)



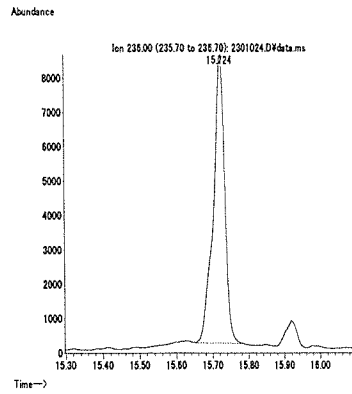
脂肪 (0.1 mg/kg 添加)



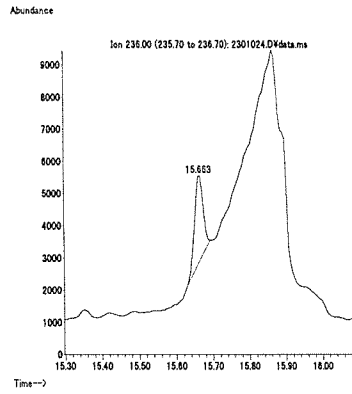
肝臓 (0.01 mg/kg 添加)



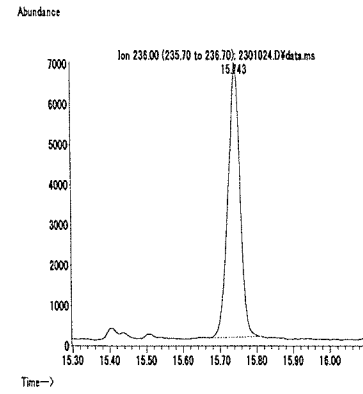
うなぎ (0.01 mg/kg 添加)



えび (0.01 mg/kg 添加)



牛乳 (0.01 mg/kg 添加)



卵 (0.01 mg/kg 添加)

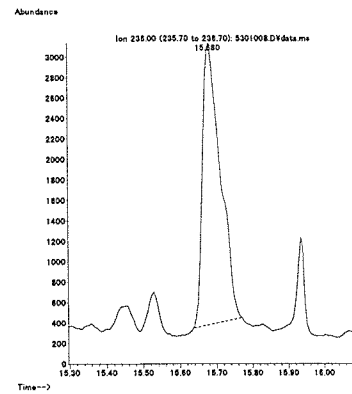
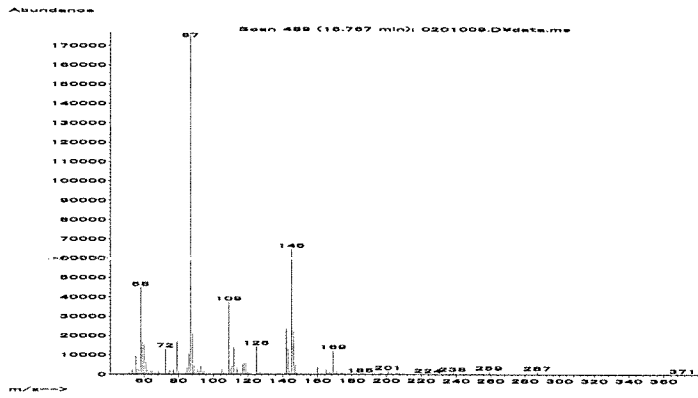


図 2. 最小検出量評価, 標準品, 回収試料のマスクロマトグラム (パクロブトラゾール)

マススペクトル



検量線

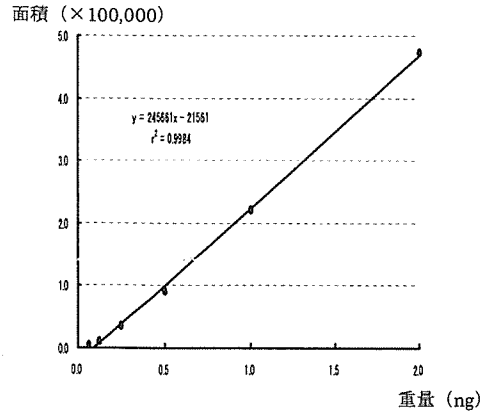
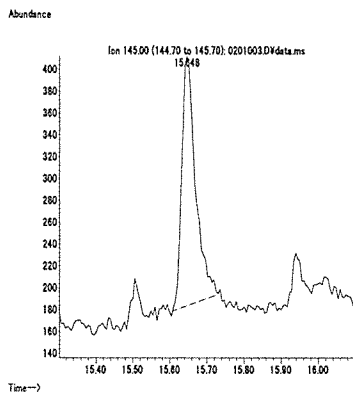
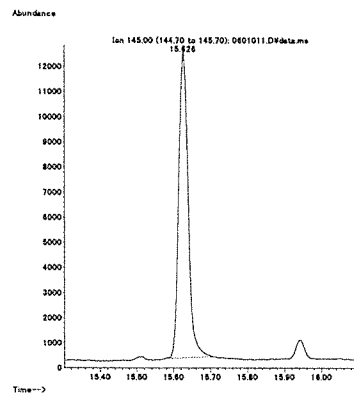


図 1. マススペクトルおよび検量線 (バミドチオン)

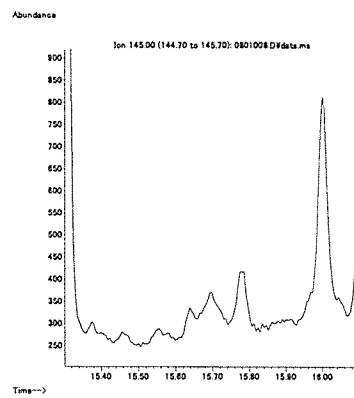
最小検出量評価 (0.0625 ng)



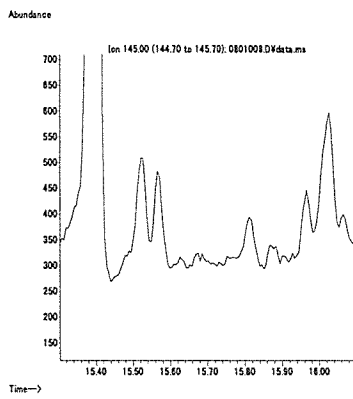
標準品 (1 ng)



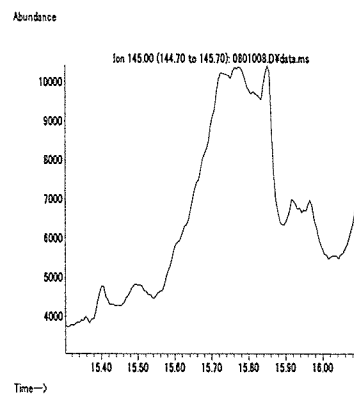
筋肉 (0.1 mg/kg 添加)



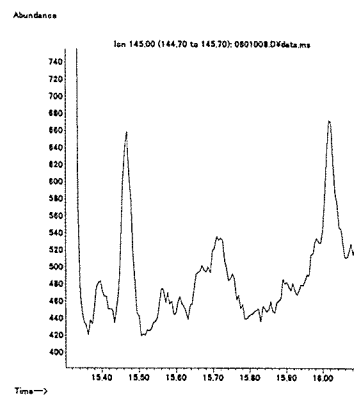
脂肪 (0.1 mg/kg 添加)



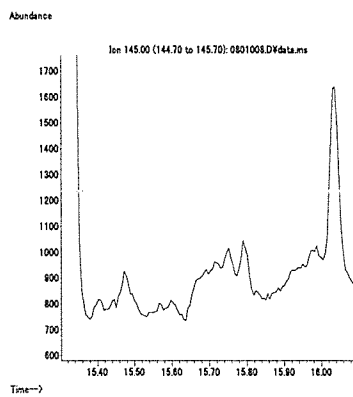
肝臓 (0.1 mg/kg 添加)



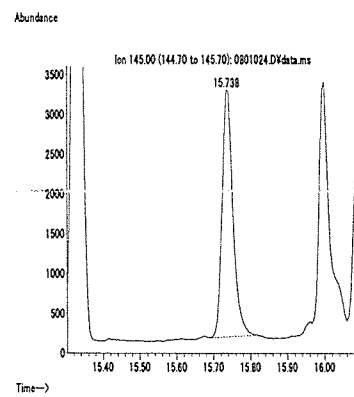
うなぎ (0.1 mg/kg 添加)



えび (0.1 mg/kg 添加)



牛乳 (0.1 mg/kg 添加)



卵 (0.1 mg/kg 添加)

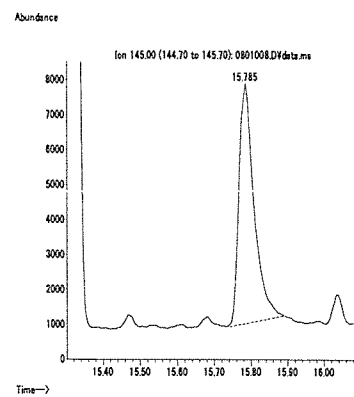
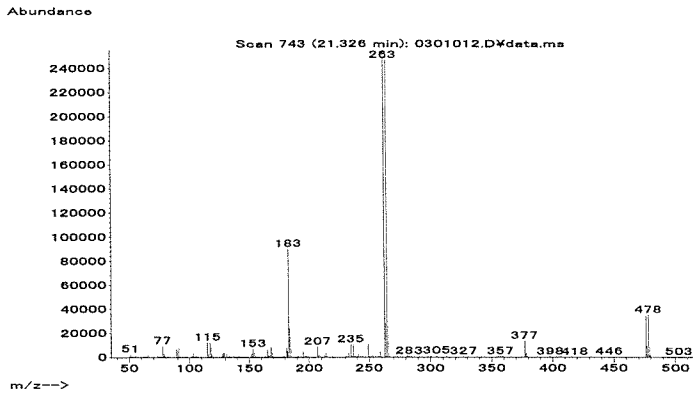


図 2. 最小検出量評価, 標準品, 回収試料のマスキロマトグラム (バミドチオン)

マススペクトル



検量線

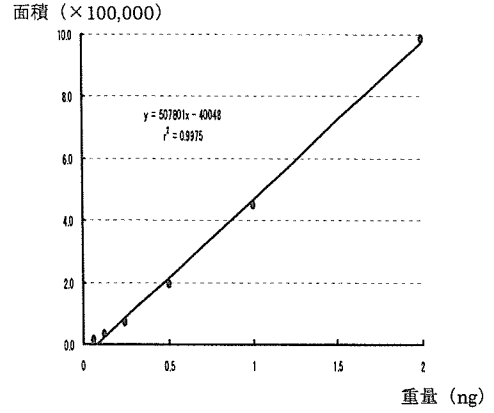
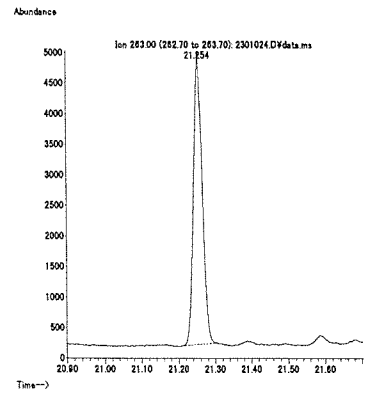
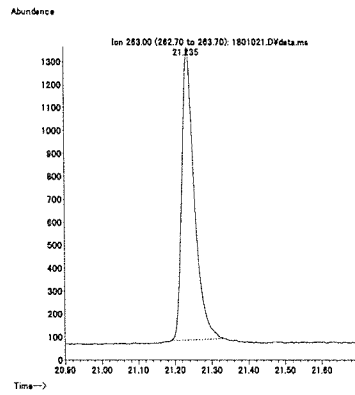
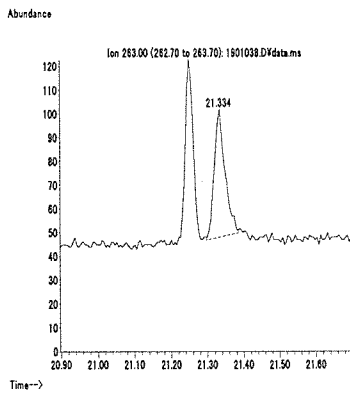


図 1. マススペクトルおよび検量線 (ハルフェンブロックス)

最小検出量評価 (0.02 ng)

標準品 (0.125 ng)

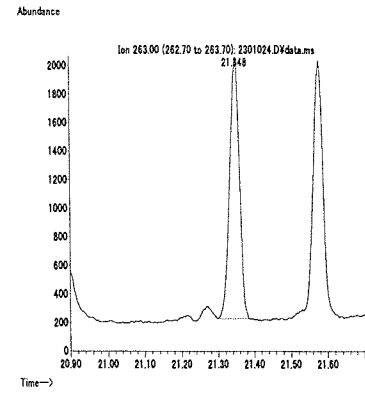
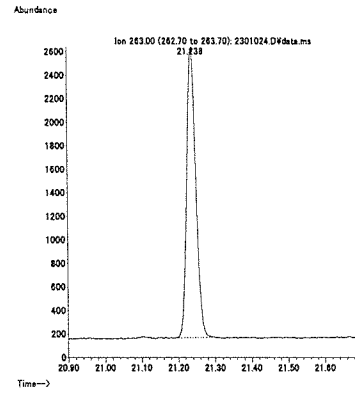
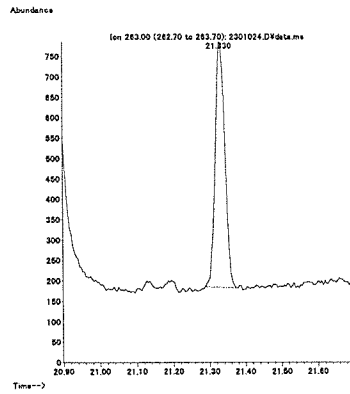
筋肉 (0.01 mg/kg 添加)



脂肪 (0.01 mg/kg 添加)

肝臓 (0.01 mg/kg 添加)

うなぎ (0.01 mg/kg 添加)



えび (0.01 mg/kg 添加)

牛乳 (0.01 mg/kg 添加)

卵 (0.01 mg/kg 添加)

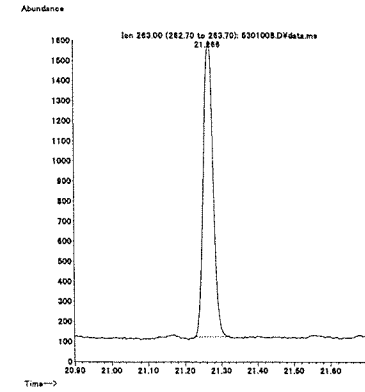
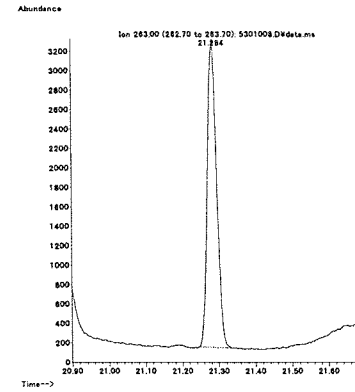
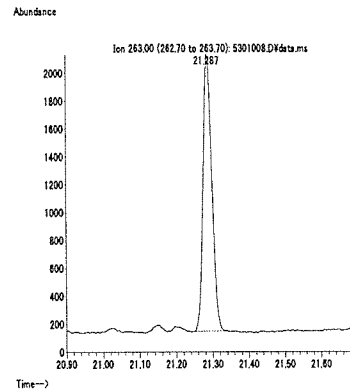
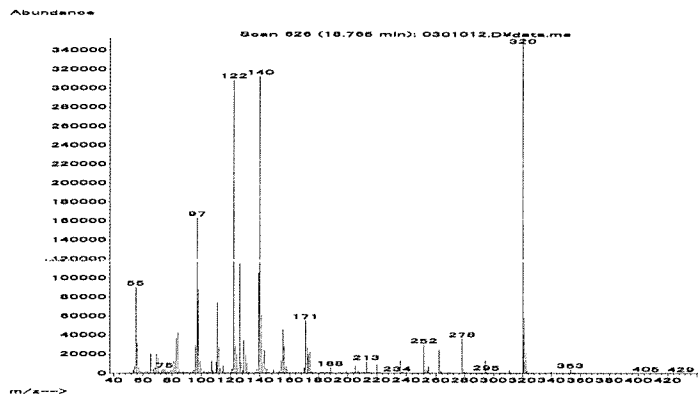


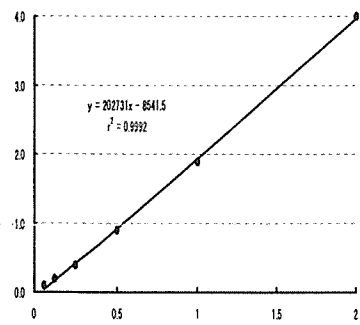
図 2. 最小検出量評価, 標準品, 回収試料のマスクロマトグラム (ハルフェンブロックス)

マススペクトル



検量線

面積 (×100,000)



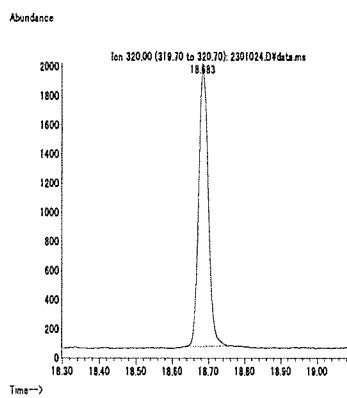
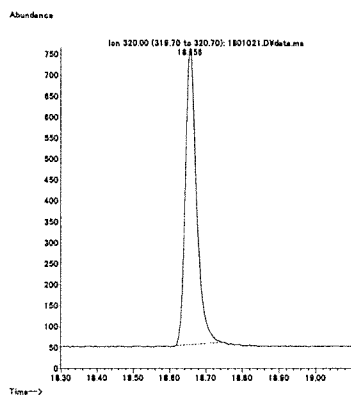
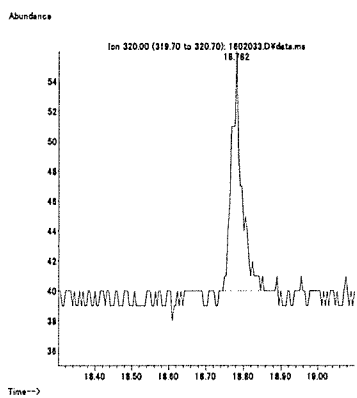
重量 (ng)

図1. マススペクトルおよび検量線 (ピペロホス)

最小検出量評価 (0.01 ng)

標準品 (0.125 ng)

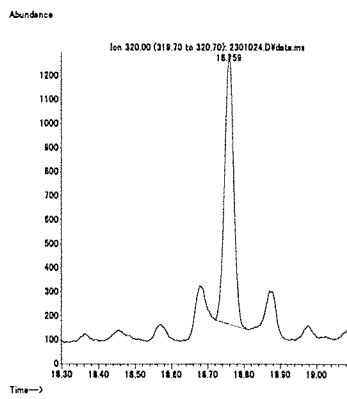
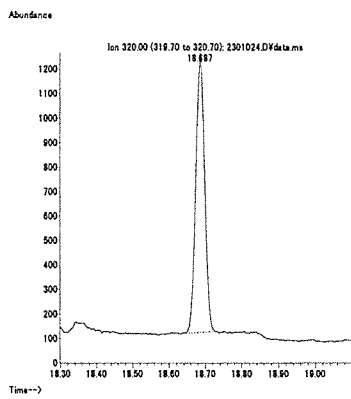
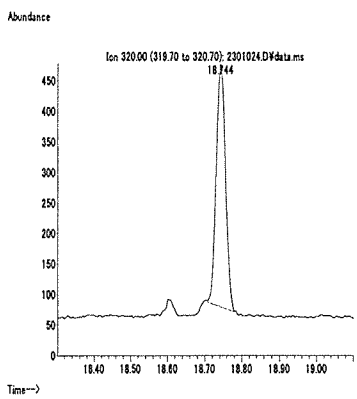
筋肉 (0.01 mg/kg 添加)



脂肪 (0.01 mg/kg 添加)

肝臓 (0.01 mg/kg 添加)

うなぎ (0.01 mg/kg 添加)



えび (0.01 mg/kg 添加)

牛乳 (0.01 mg/kg 添加)

卵 (0.01 mg/kg 添加)

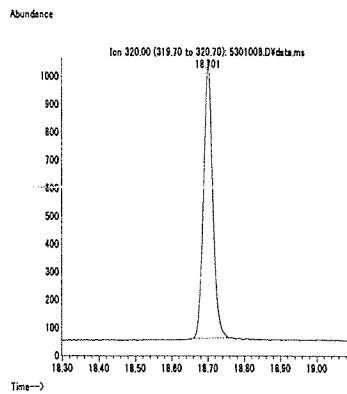
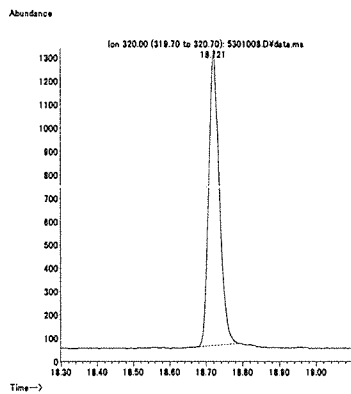
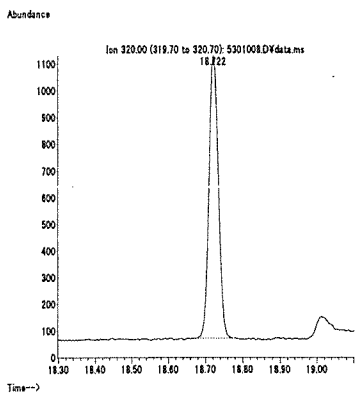
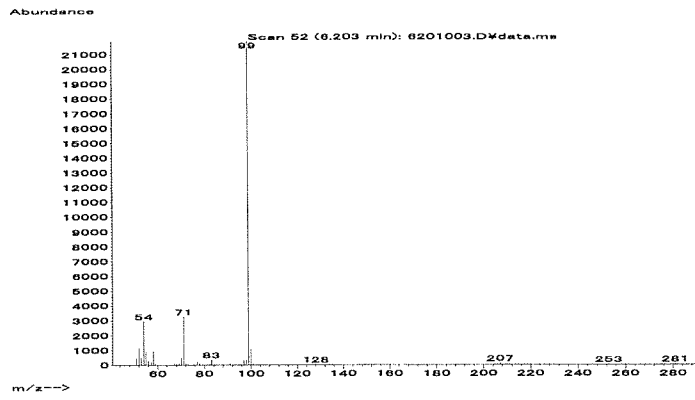


図2. 最小検出量評価, 標準品, 回収試料のマスキロマトグラム (ピペロホス)

マススペクトル



検量線

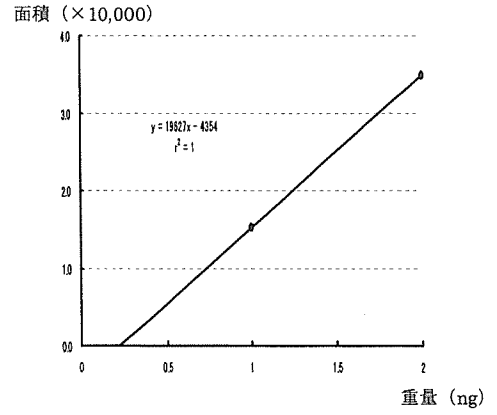


図 1. マススペクトルおよび検量線 (ヒメキサゾール)

最小検出量評価 (1 ng)

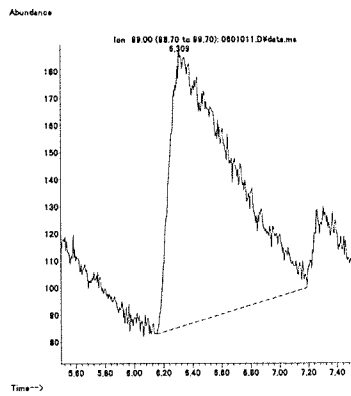
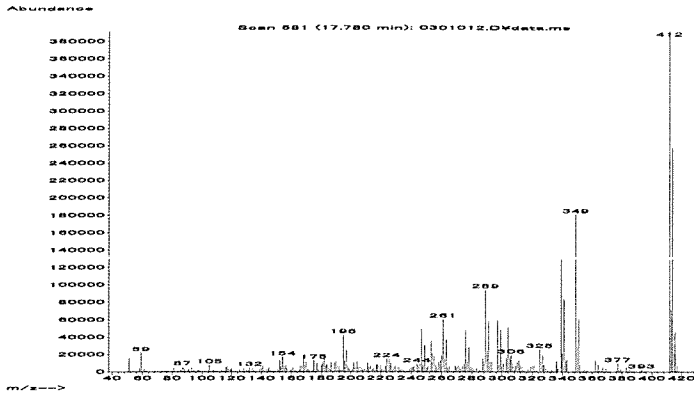


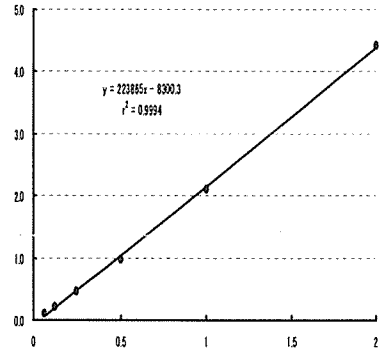
図 2. 最小検出量評価, 標準品, 回収試料のマスキロマトグラム (ヒメキサゾール)

マススペクトル



検量線

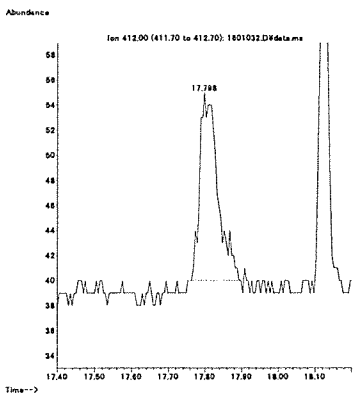
面積 (×100,000)



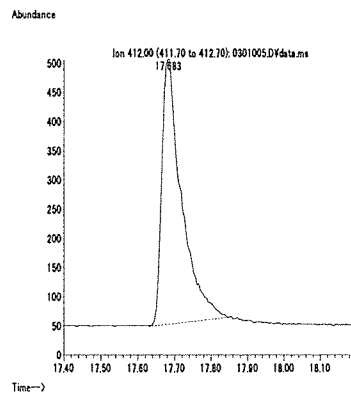
重量 (ng)

図1. マススペクトルおよび検量線 (ピラフルフェンエチル)

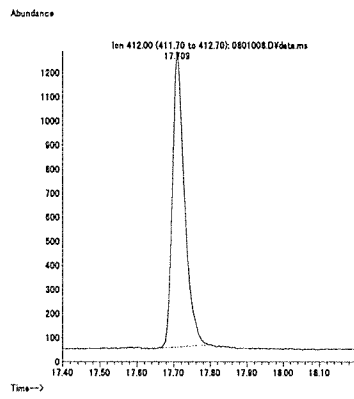
最小検出量評価 (0.01 ng)



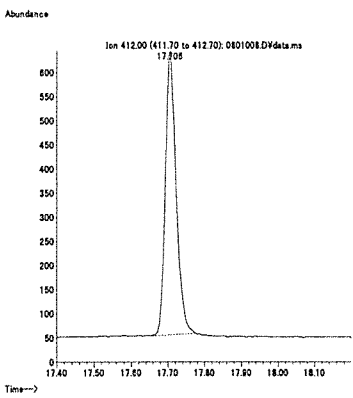
標準品 (0.125 ng)



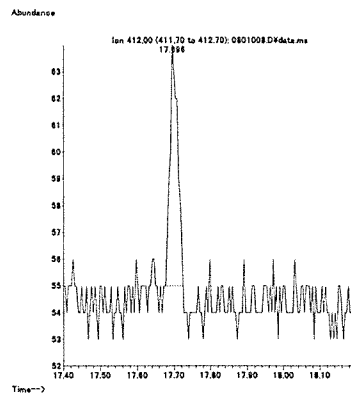
筋肉 (0.01 mg/kg 添加)



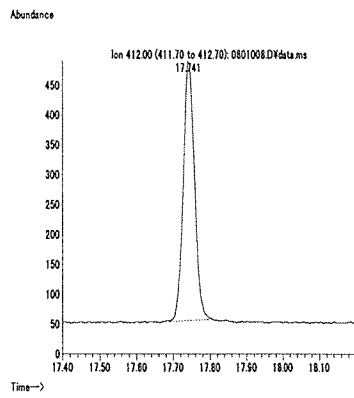
脂肪 (0.01 mg/kg 添加)



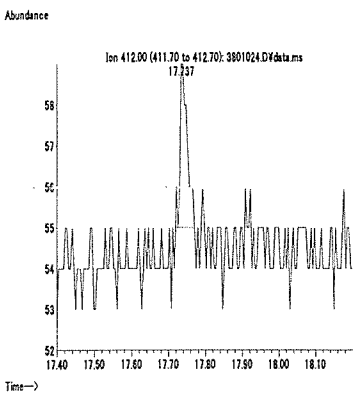
肝臓 (0.1 mg/kg 添加)



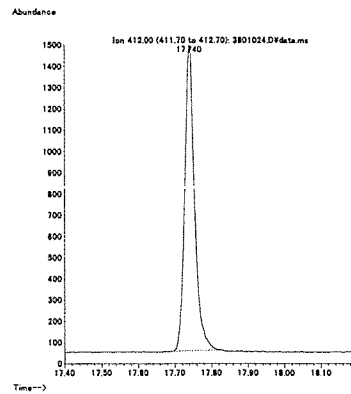
うなぎ (0.01 mg/kg 添加)



えび (0.01 mg/kg 添加)



牛乳 (0.01 mg/kg 添加)



卵 (0.01 mg/kg 添加)

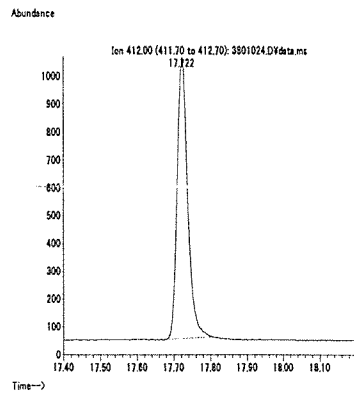
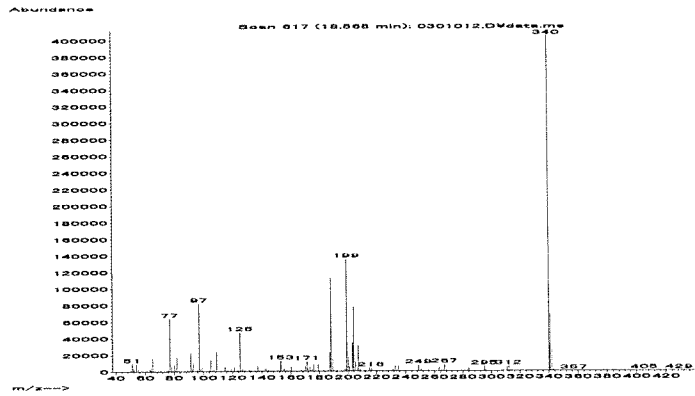


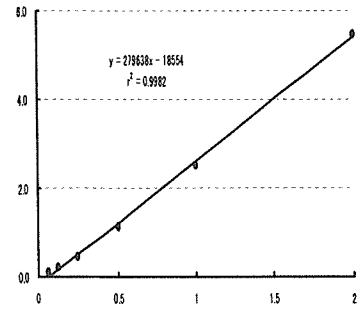
図2. 最小検出量評価, 標準品, 回収試料のマスクロマトグラム (ピラフルフェンエチル)

マススペクトル



検量線

面積 (×100,000)



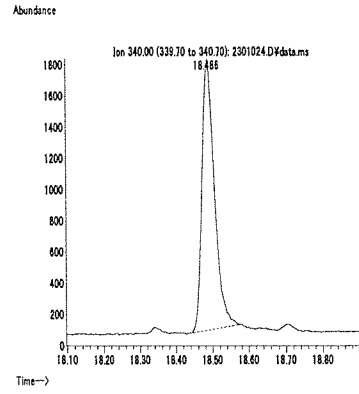
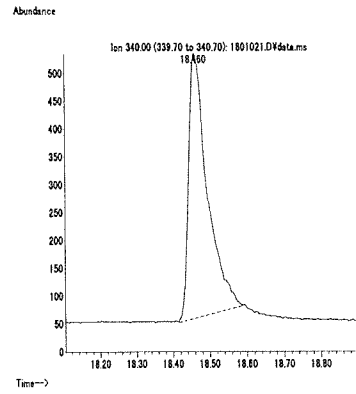
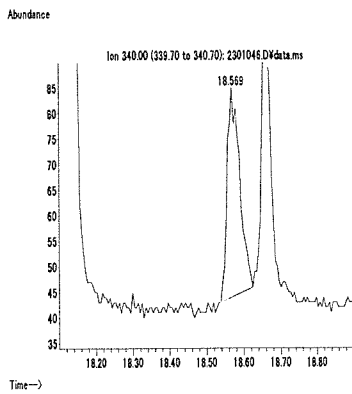
重量 (ng)

図1. マススペクトルおよび検量線 (ピリダフェンチオン)

最小検出量評価 (0.04 ng)

標準品 (0.125 ng)

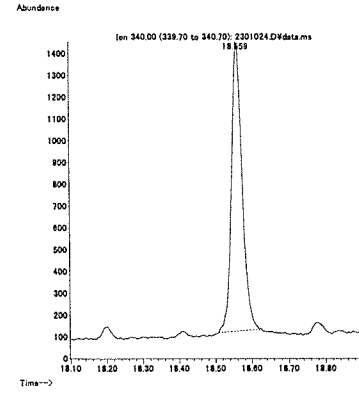
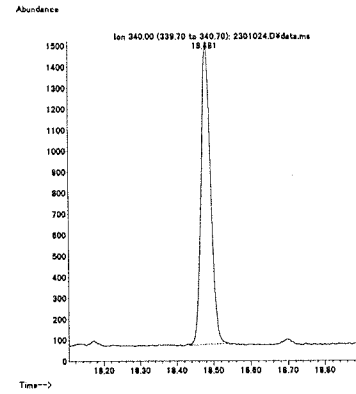
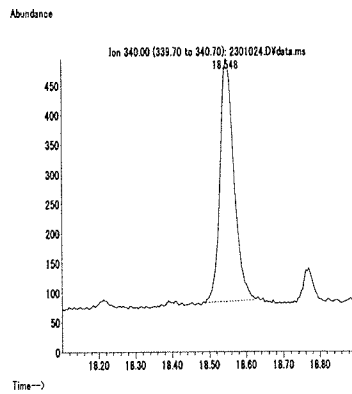
筋肉 (0.01 mg/kg 添加)



脂肪 (0.01 mg/kg 添加)

肝臓 (0.01 mg/kg 添加)

うなぎ (0.01 mg/kg 添加)



えび (0.01 mg/kg 添加)

牛乳 (0.01 mg/kg 添加)

卵 (0.01 mg/kg 添加)

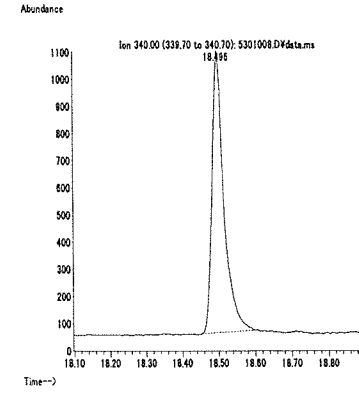
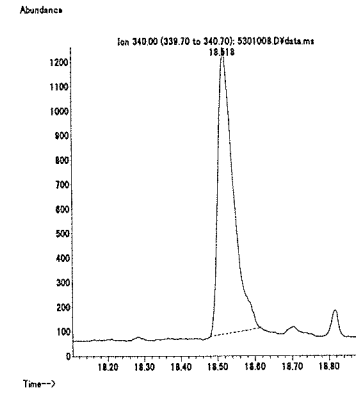
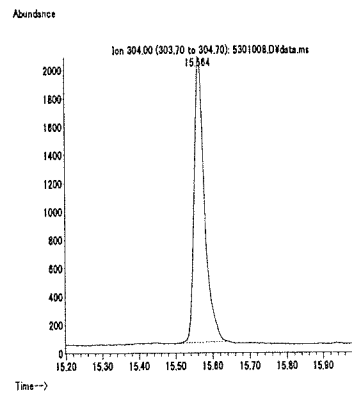
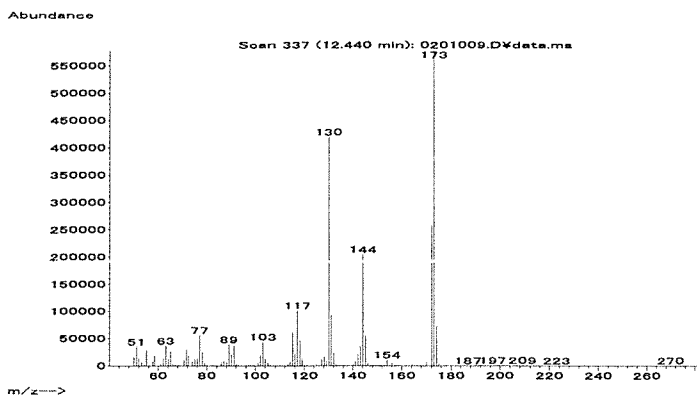


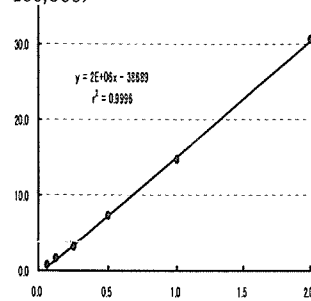
図2. 最小検出量評価, 標準品, 回収試料のマスクロマトグラム (ピリダフェンチオン)

マススペクトル



検量線

面積 (×100,000)



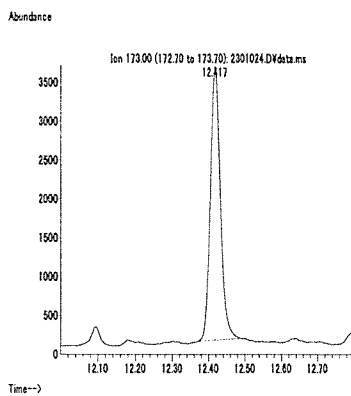
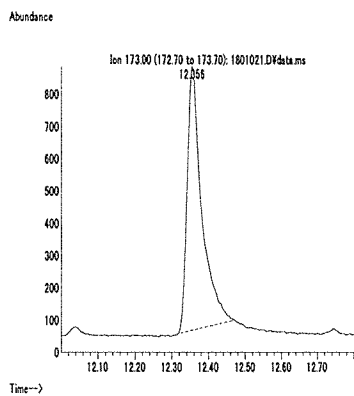
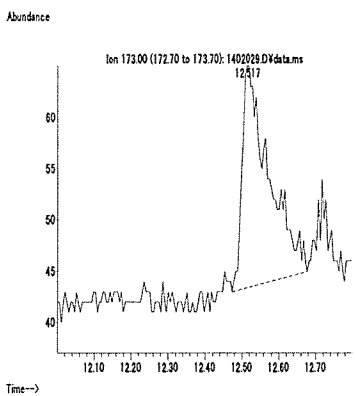
重量 (ng)

図 1. マススペクトルおよび検量線 (ピロキロン)

最小検出量評価 (0.004 ng)

標準品 (0.125 ng)

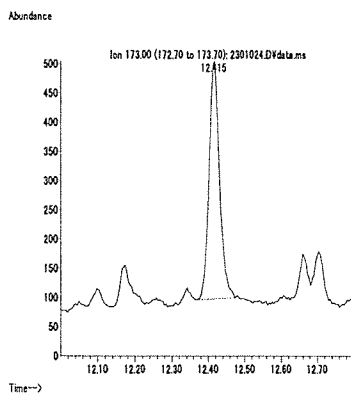
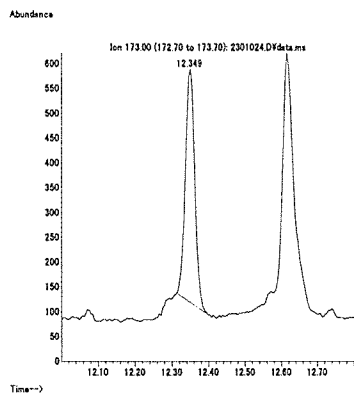
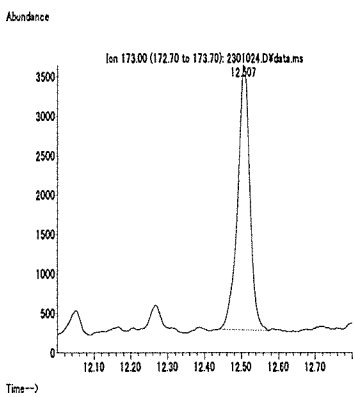
筋肉 (0.01 mg/kg 添加)



脂肪 (0.01 mg/kg 添加)

肝臓 (0.01 mg/kg 添加)

うなぎ (0.01 mg/kg 添加)



えび (0.01 mg/kg 添加)

牛乳 (0.01 mg/kg 添加)

卵 (0.01 mg/kg 添加)

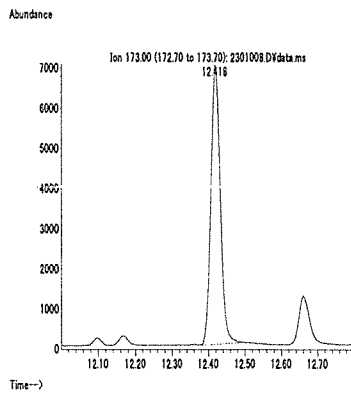
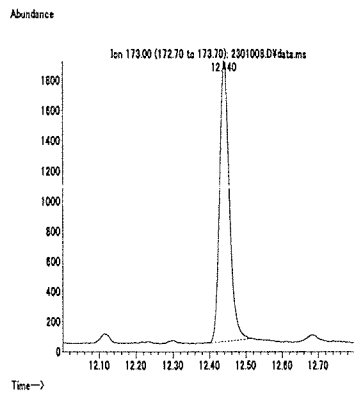
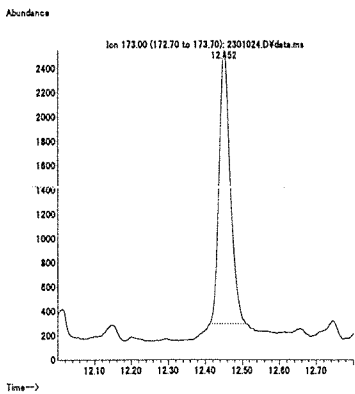
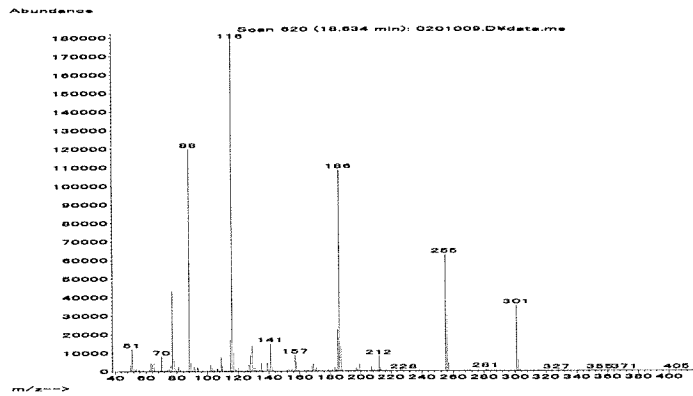


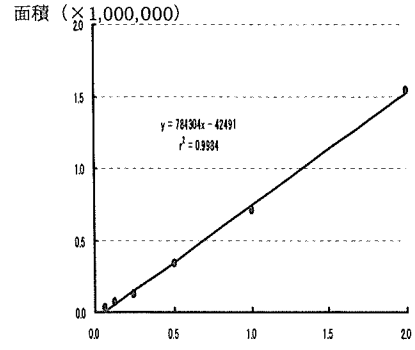
図 2. 最小検出量評価, 標準品, 回収試料のマスクロマトグラム (ピロキロン)



マススペクトル



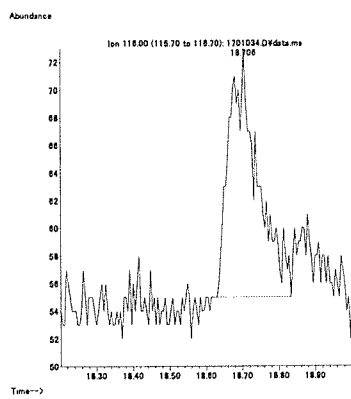
検量線



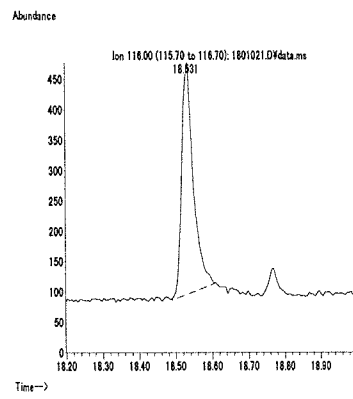
重量 (ng)

図 1. マススペクトルおよび検量線 (フェノキシカルブ)

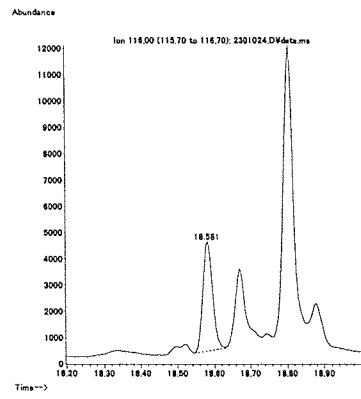
最小検出量評価 (0.01 ng)



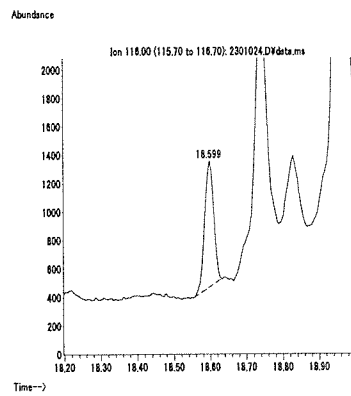
標準品 (0.125 ng)



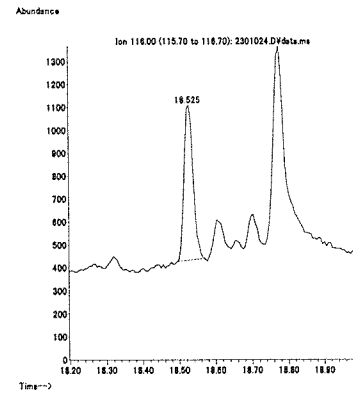
筋肉 (0.01 mg/kg 添加)



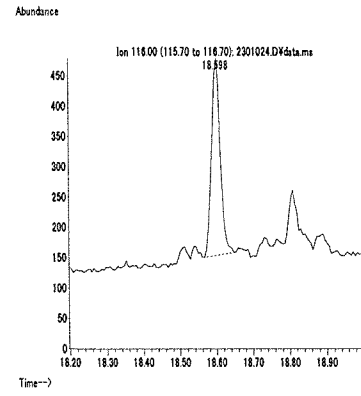
脂肪 (0.01 mg/kg 添加)



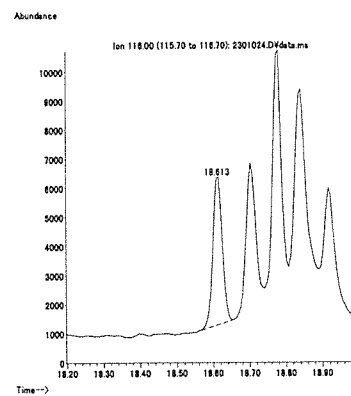
肝臓 (0.01 mg/kg 添加)



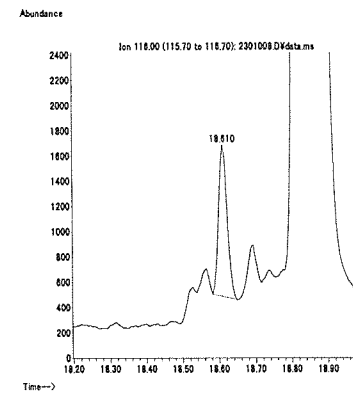
うなぎ (0.01 mg/kg 添加)



えび (0.01 mg/kg 添加)



牛乳 (0.01 mg/kg 添加)



卵 (0.01 mg/kg 添加)

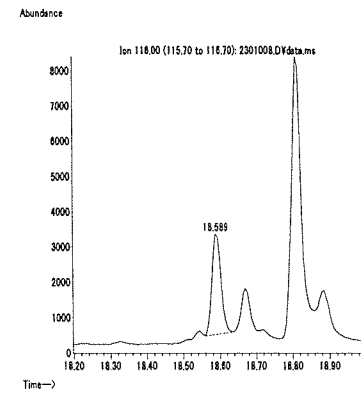
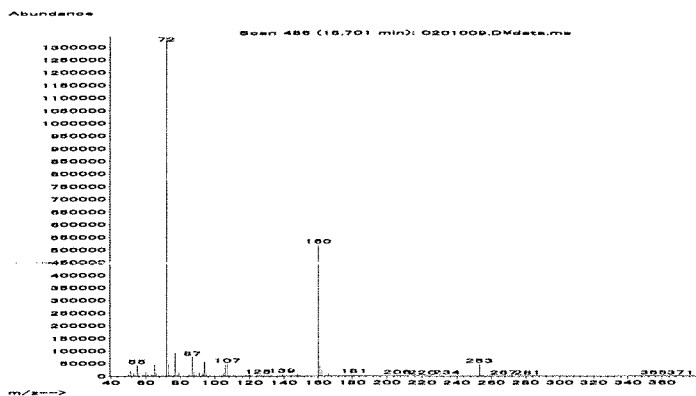


図 2. 最小検出量評価, 標準品, 回収試料のマスクロマトグラム (フェノキシカルブ)

マススペクトル



検量線

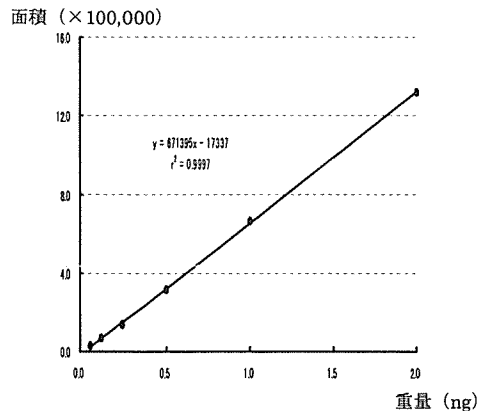
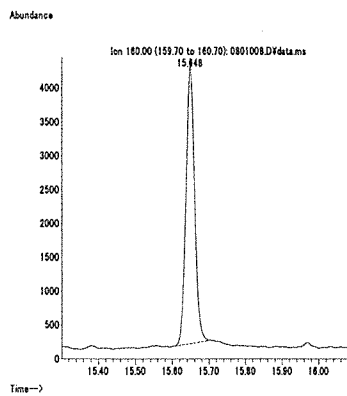
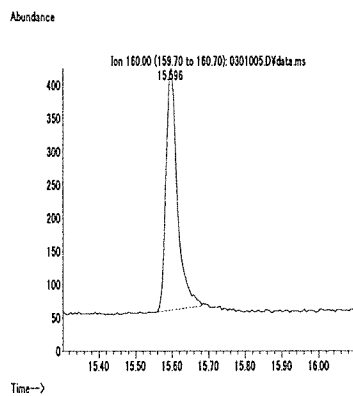
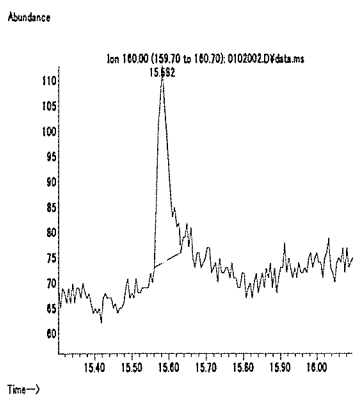


図 1. マススペクトルおよび検量線 (フェノチオカルブ)

最小検出量評価 (0.004 ng)

標準品 (0.125 ng)

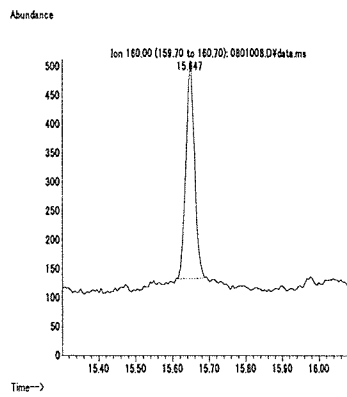
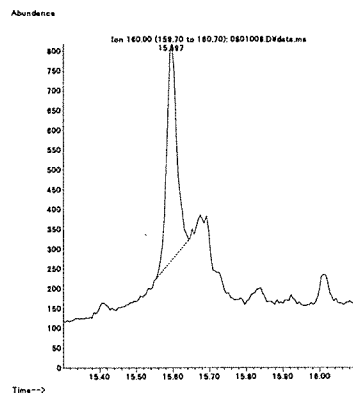
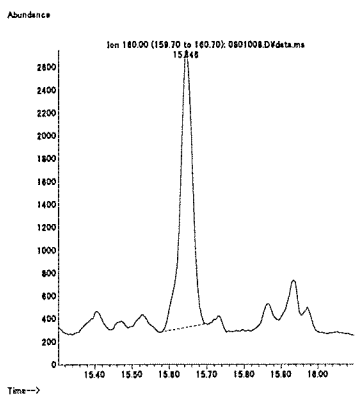
筋肉 (0.01 mg/kg 添加)



脂肪 (0.01 mg/kg 添加)

肝臓 (0.01 mg/kg 添加)

うなぎ (0.01 mg/kg 添加)



えび (0.01 mg/kg 添加)

牛乳 (0.01 mg/kg 添加)

卵 (0.01 mg/kg 添加)

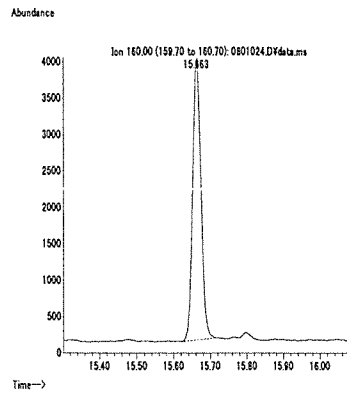
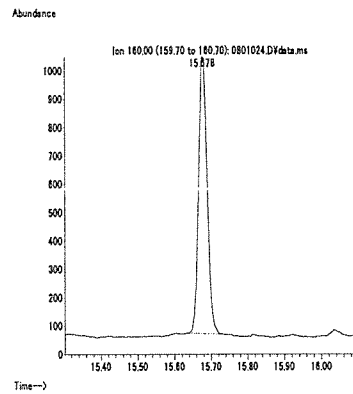
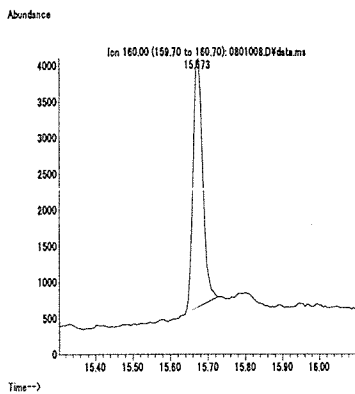
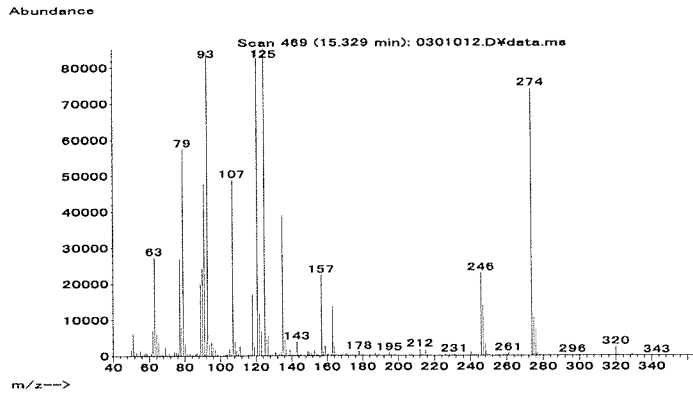


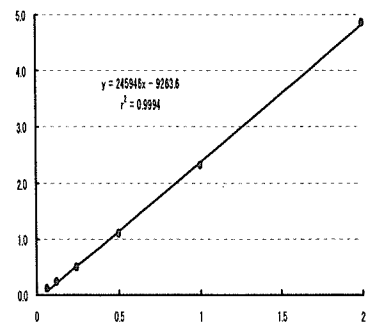
図 2. 最小検出量評価, 標準品, 回収試料のマスプロマトグラム (フェノチオカルブ)

マススペクトル



検量線

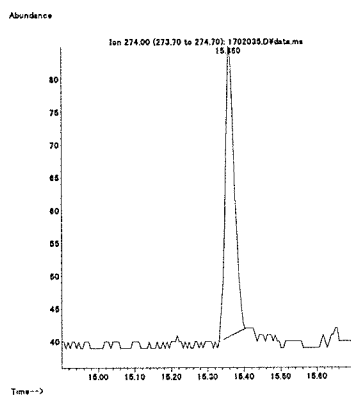
面積 (×100,000)



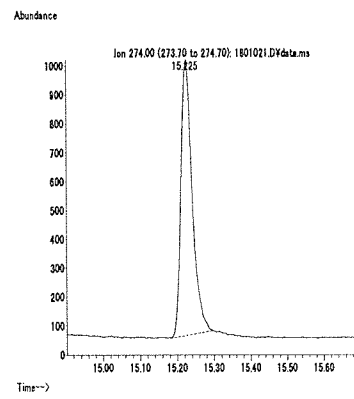
重量 (ng)

図 1. マススペクトルおよび検量線 (フェントエート)

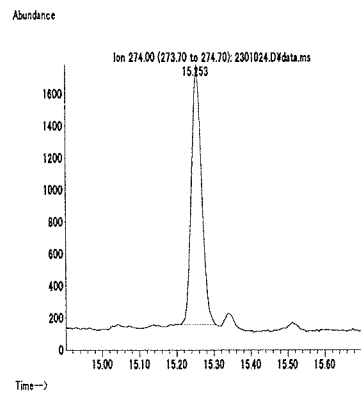
最小検出量評価 (0.01 ng)



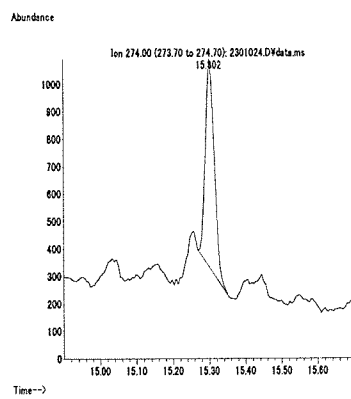
標準品 (0.125 ng)



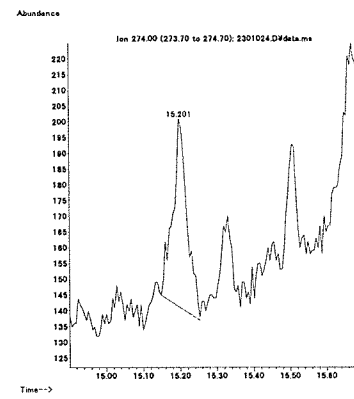
筋肉 (0.01 mg/kg 添加)



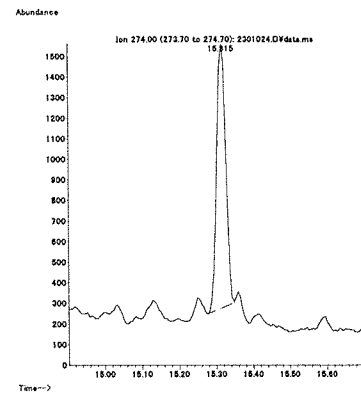
脂肪 (0.01 mg/kg 添加)



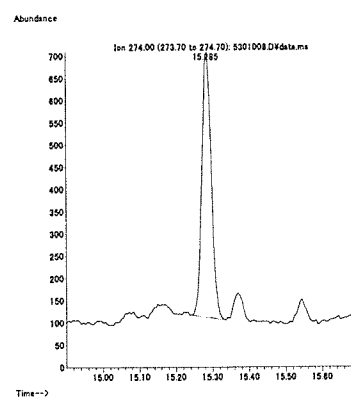
肝臓 (0.01 mg/kg 添加)



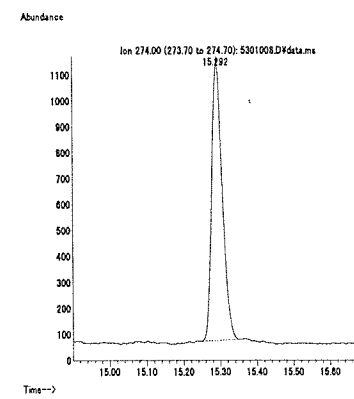
うなぎ (0.01 mg/kg 添加)



えび (0.01 mg/kg 添加)



牛乳 (0.01 mg/kg 添加)



卵 (0.01 mg/kg 添加)

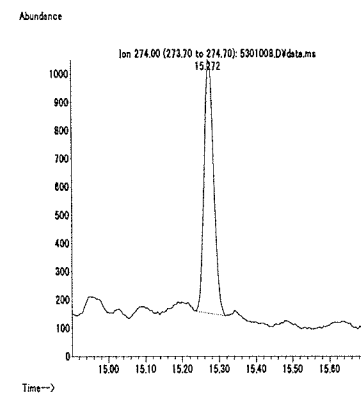
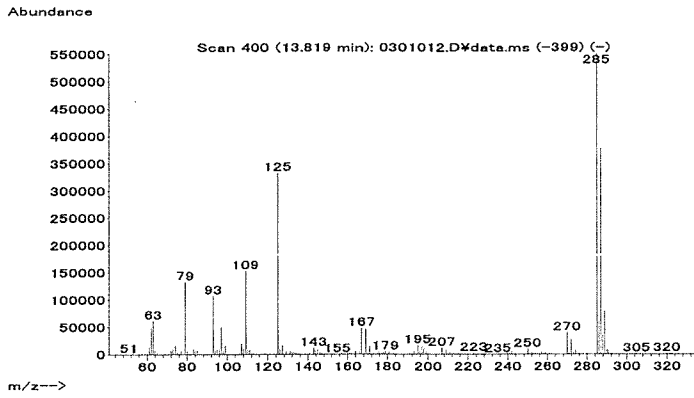


図 2. 最小検出量評価, 標準品, 回収試料のマスクロマトグラム (フェントエート)

マススペクトル



検量線

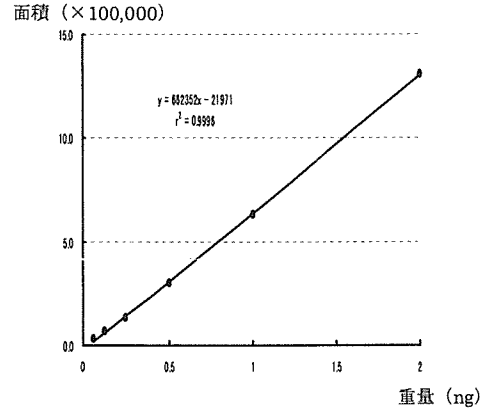
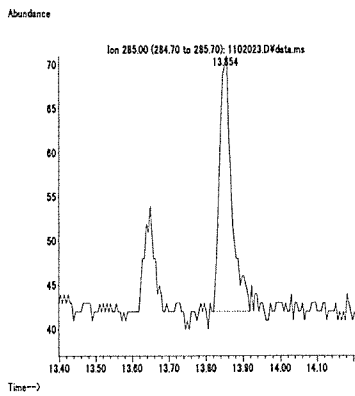
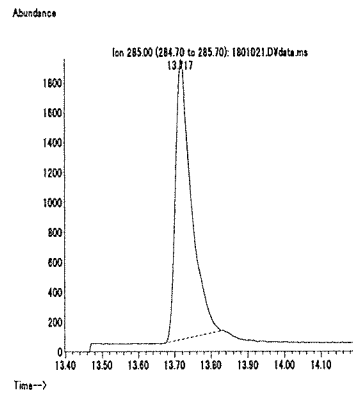


図 1. マススペクトルおよび検量線 (フェンクロルホス)

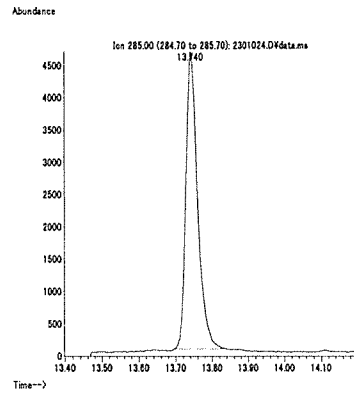
最小検出量評価 (0.002 ng)



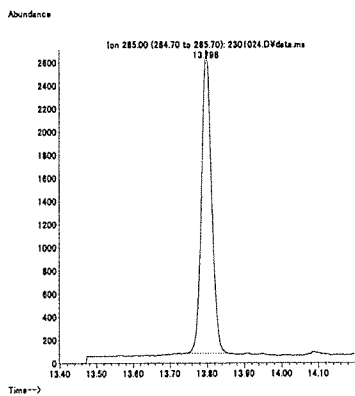
標準品 (0.125 ng)



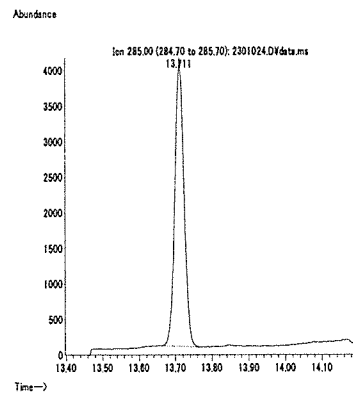
筋肉 (0.01 mg/kg 添加)



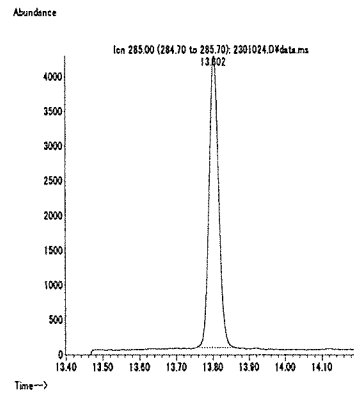
脂肪 (0.01 mg/kg 添加)



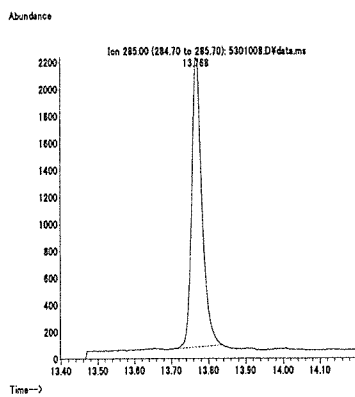
肝臓 (0.01 mg/kg 添加)



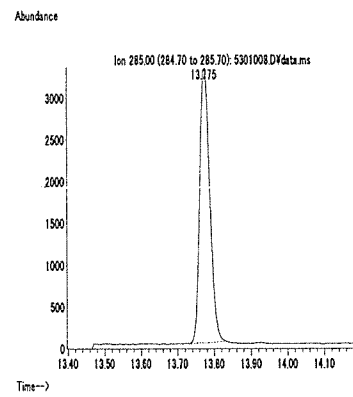
うなぎ (0.01 mg/kg 添加)



えび (0.01 mg/kg 添加)



牛乳 (0.01 mg/kg 添加)



卵 (0.01 mg/kg 添加)

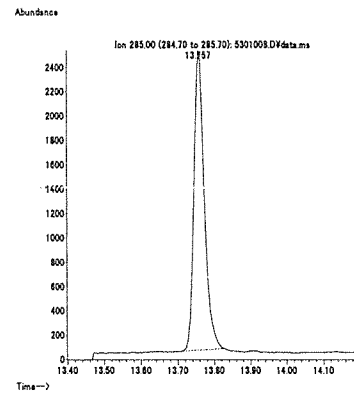


図 2. 最小検出量評価, 標準品, 回収試料のマスプロトグラム (フェンクロルホス)