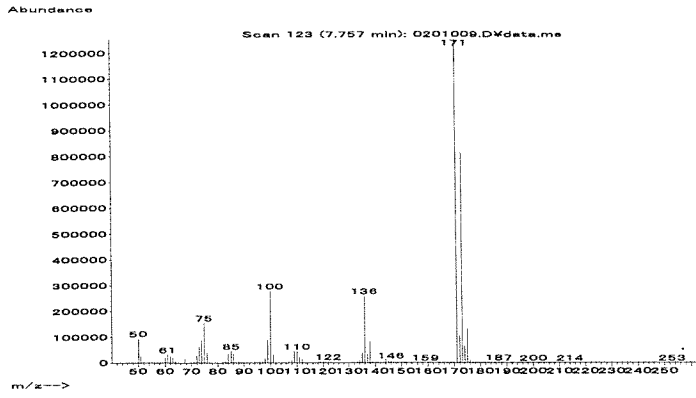


マススペクトル



検量線

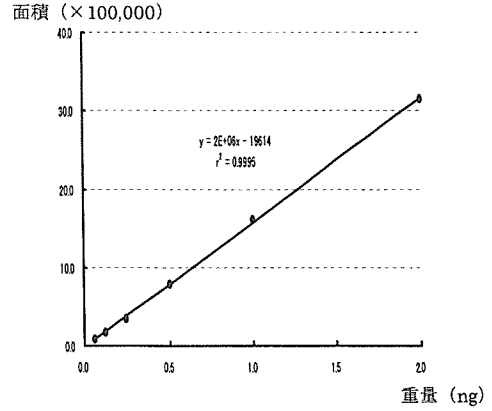
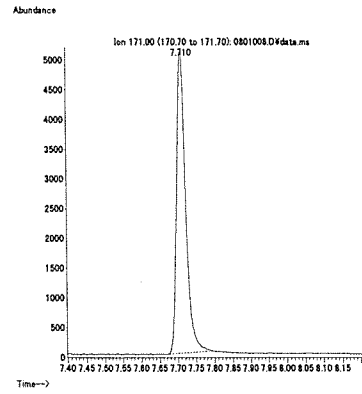
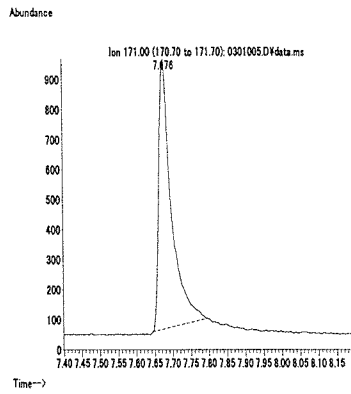
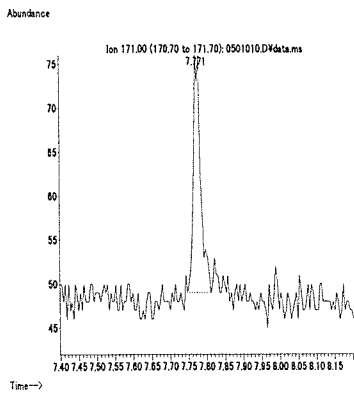


図 1. マススペクトルおよび検量線 (ジクロベニル)

最小検出量評価 (0.0004 ng)

標準品 (0.125 ng)

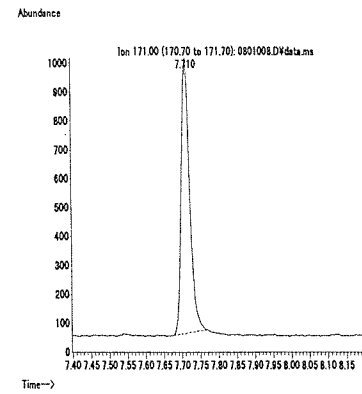
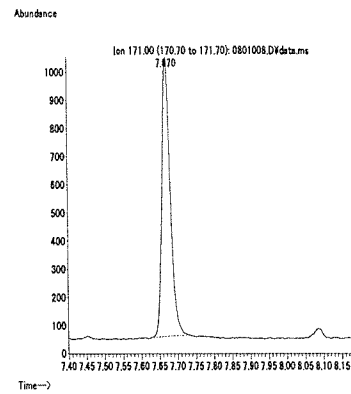
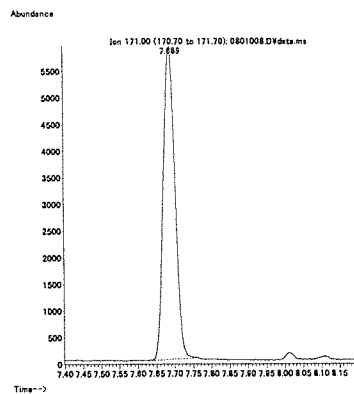
筋肉 (0.01 mg/kg 添加)



脂肪 (0.01 mg/kg 添加)

肝臓 (0.01 mg/kg 添加)

うなぎ (0.01 mg/kg 添加)



えび (0.01 mg/kg 添加)

牛乳 (0.01 mg/kg 添加)

卵 (0.01 mg/kg 添加)

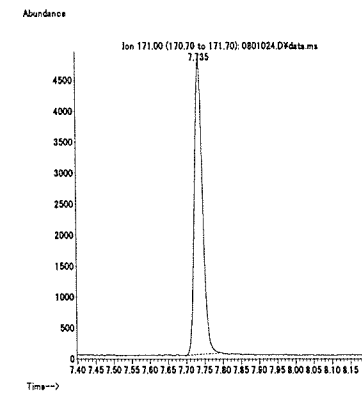
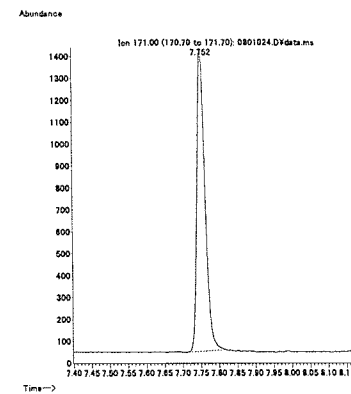
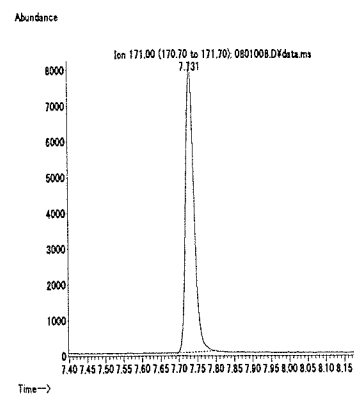
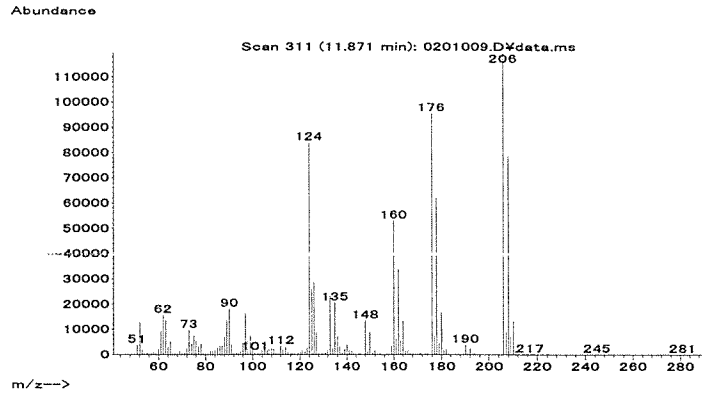


図 2. 最小検出量評価, 標準品, 回収試料のマスクロマトグラム (ジクロベニル)

マススペクトル



検量線

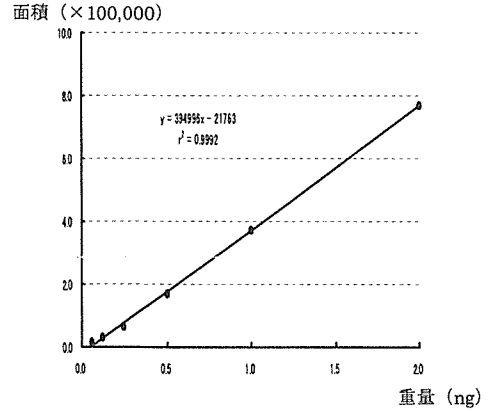
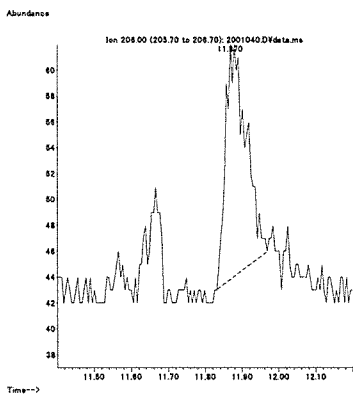
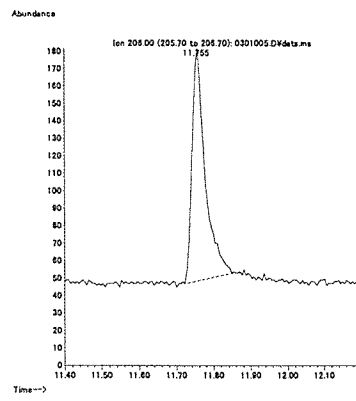


図 1. マススペクトルおよび検量線 (ジクロラン)

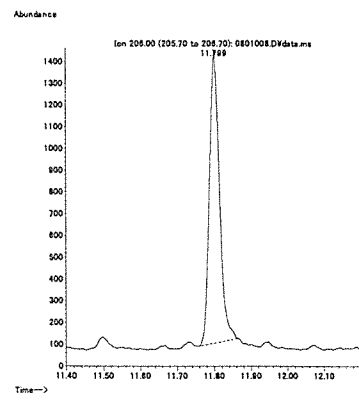
最小検出量評価 (0.02 ng)



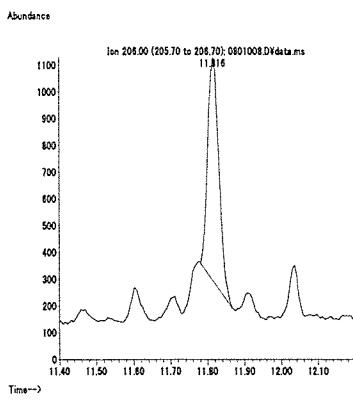
標準品 (0.125 ng)



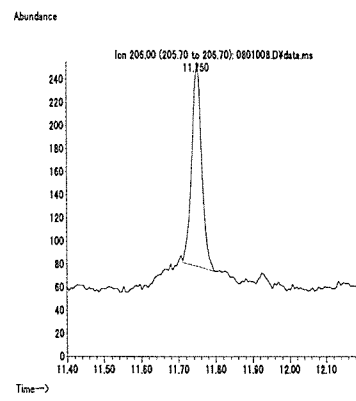
筋肉 (0.01 mg/kg 添加)



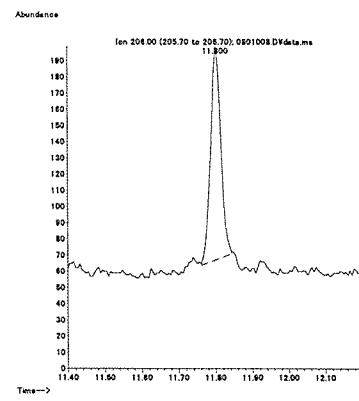
脂肪 (0.01 mg/kg 添加)



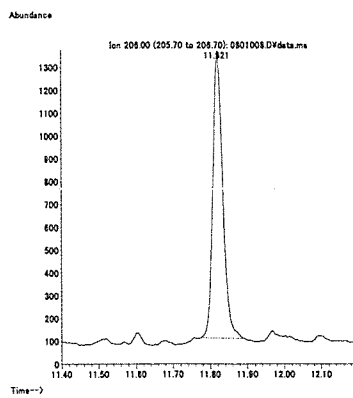
肝臓 (0.01 mg/kg 添加)



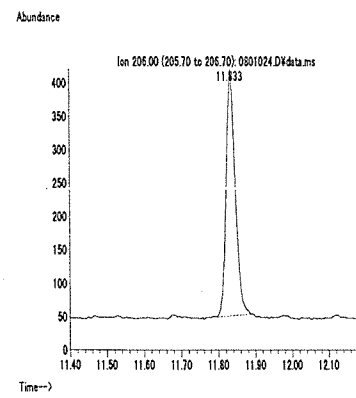
うなぎ (0.01 mg/kg 添加)



えび (0.01 mg/kg 添加)



牛乳 (0.01 mg/kg 添加)



卵 (0.01 mg/kg 添加)

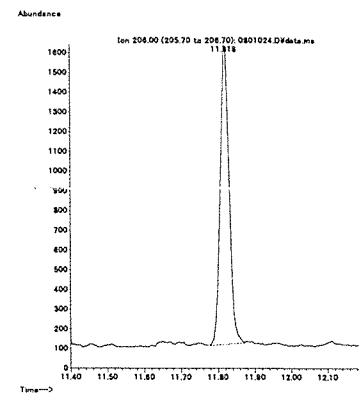
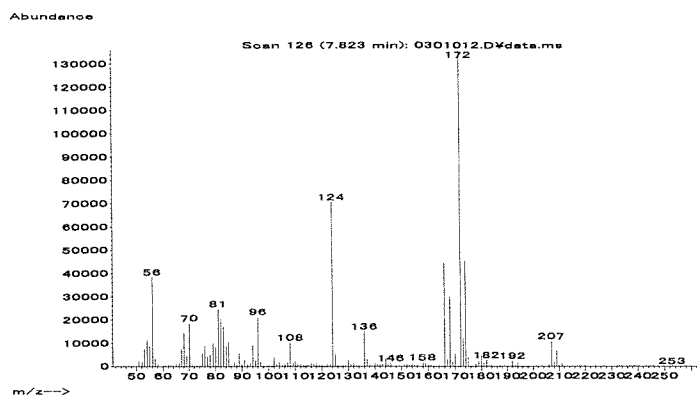


図 2. 最小検出量評価, 標準品, 回収試料のマスキロマトグラム (ジクロラン)

マススペクトル



検量線

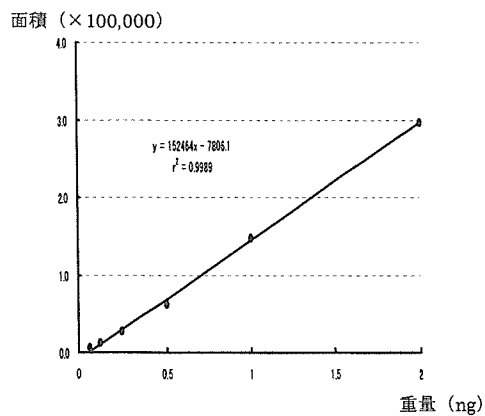
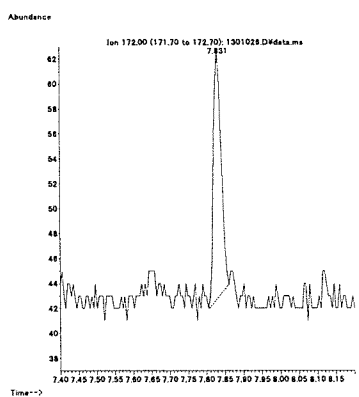
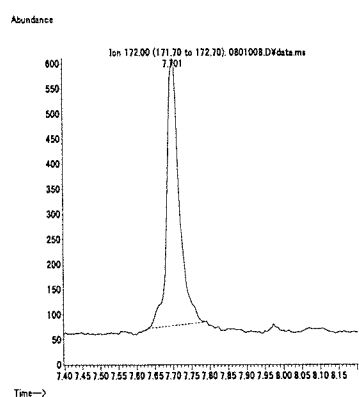


図 1. マススペクトルおよび検量線 (ジクロルミド)

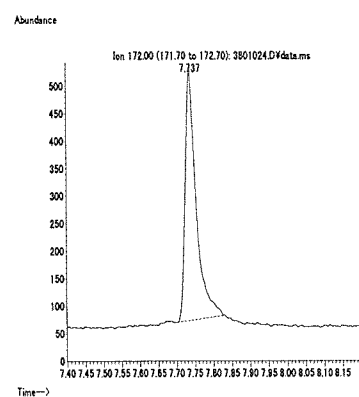
最小検出量評価 (0.004 ng)



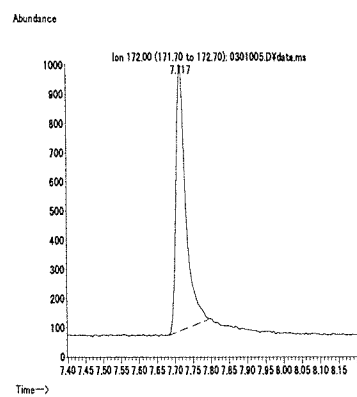
脂肪 (0.01 mg/kg 添加)



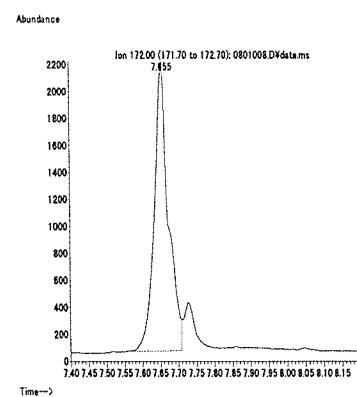
えび (0.01 mg/kg 添加)



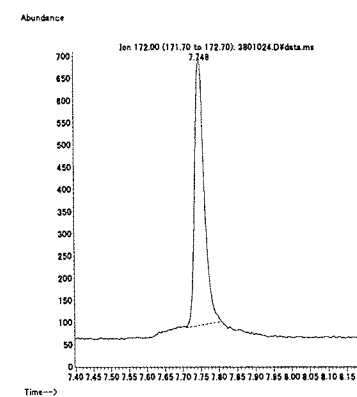
標準品 (0.125 ng)



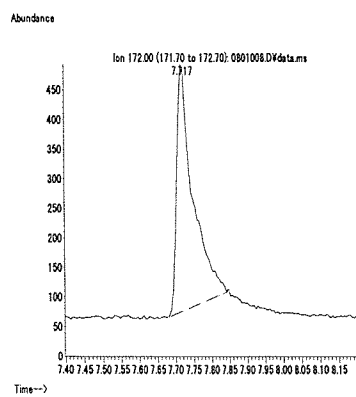
肝臓 (0.01 mg/kg 添加)



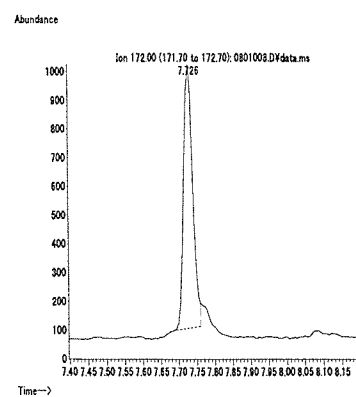
牛乳 (0.01 mg/kg 添加)



筋肉 (0.01 mg/kg 添加)



うなぎ (0.01 mg/kg 添加)



卵 (0.01 mg/kg 添加)

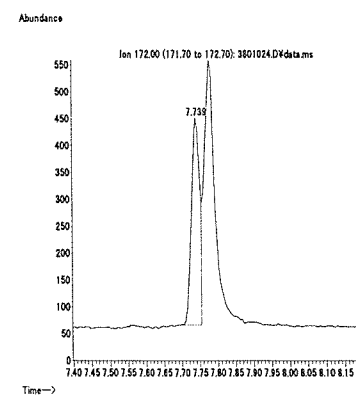
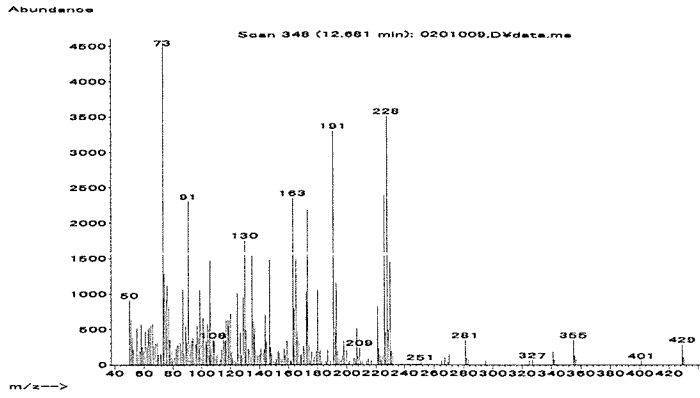


図 2. 最小検出量評価, 標準品, 回収試料のマスプロトグラム (ジクロルミド)

マススペクトル



検量線

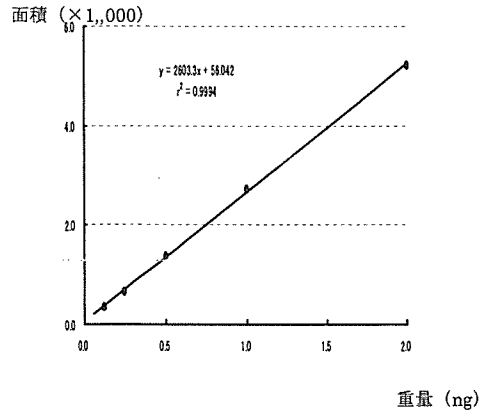
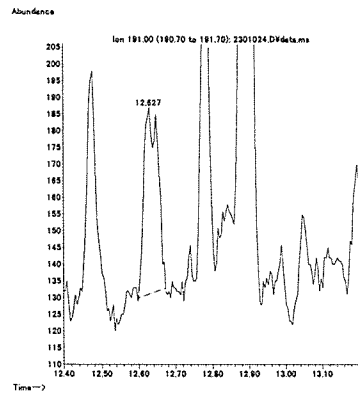
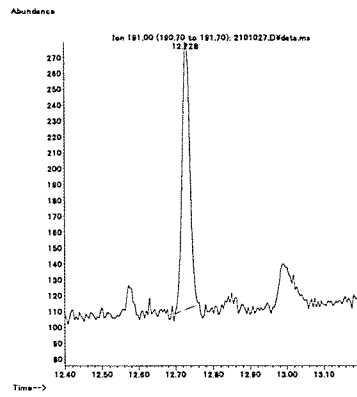
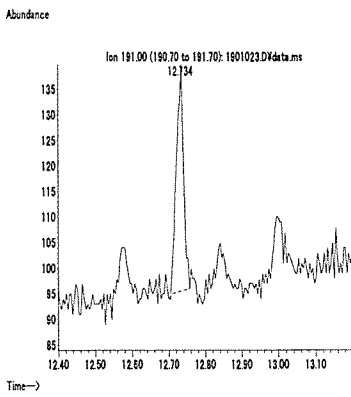


図 1. マススペクトルおよび検量線 (ジクロロン)

最小検出量評価 (0.25 ng)

標準品 (1 ng)

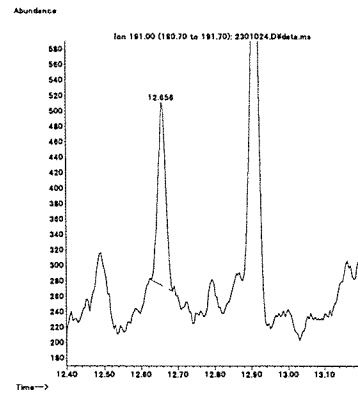
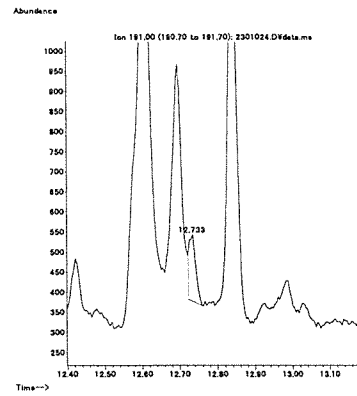
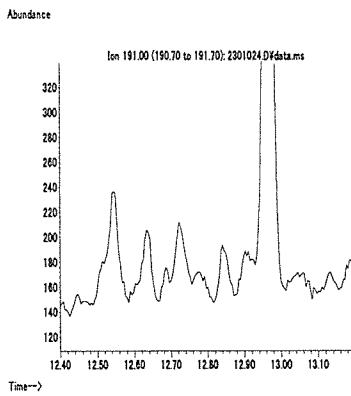
筋肉 (0.1 mg/kg 添加)



脂肪 (0.1 mg/kg 添加)

肝臓 (0.1 mg/kg 添加)

うなぎ (0.1 mg/kg 添加)



えび (0.1 mg/kg 添加)

牛乳 (0.1 mg/kg 添加)

卵 (0.1 mg/kg 添加)

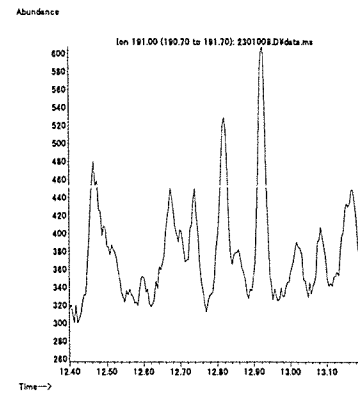
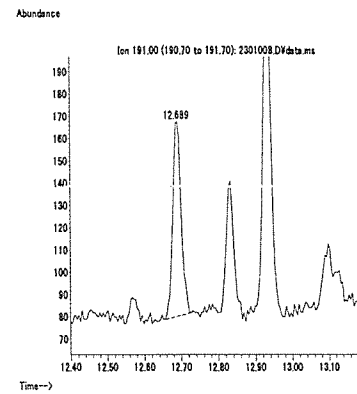
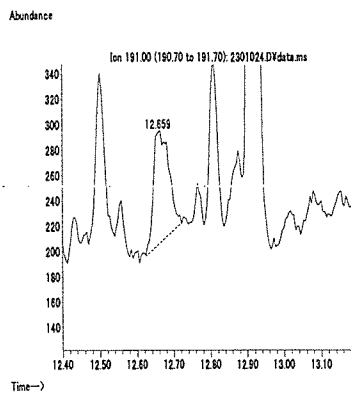
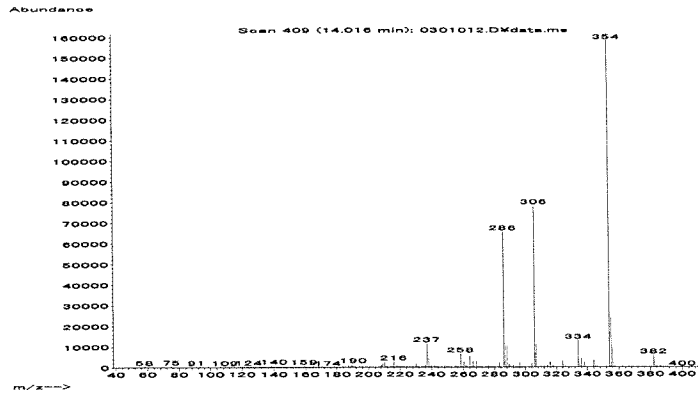


図 2. 最小検出量評価, 標準品, 回収試料のマスキロマトグラム (ジクロロン)

マススペクトル



検量線

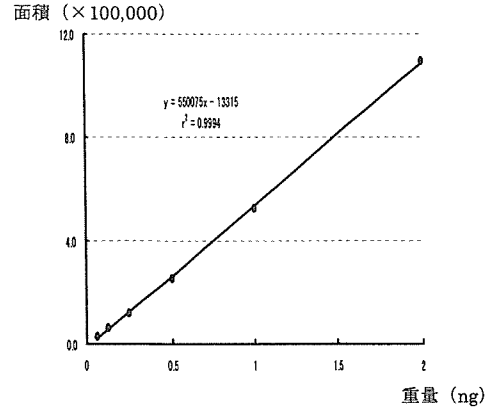
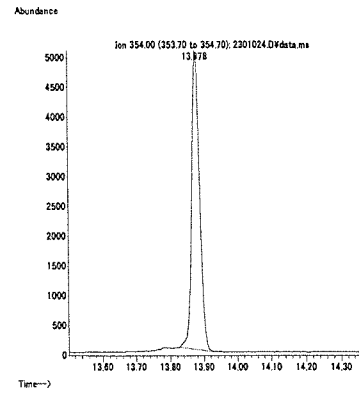
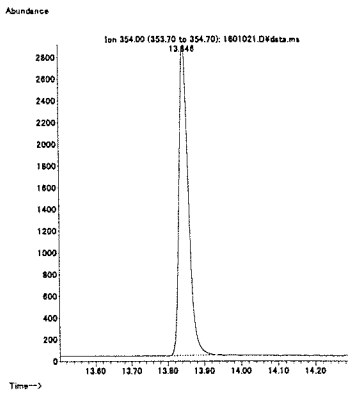
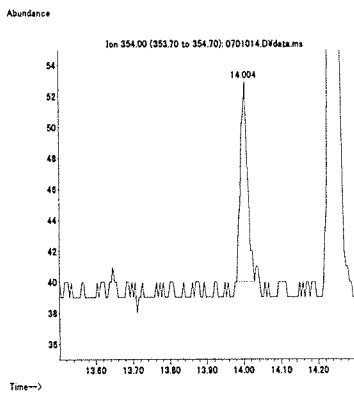


図 1. マススペクトルおよび検量線 (ジチオピル)

最小検出量評価 (0.001 ng)

標準品 (0.125 ng)

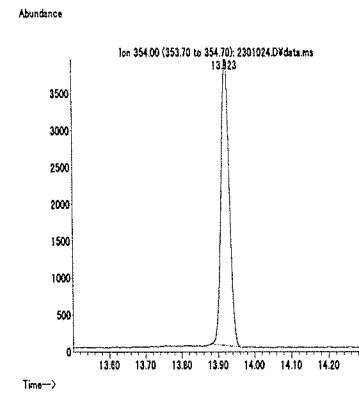
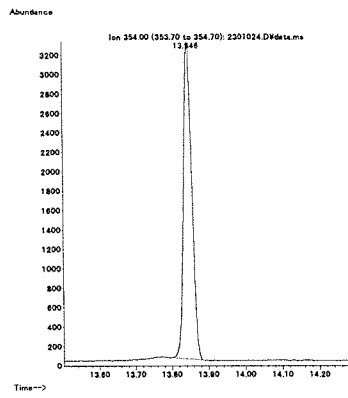
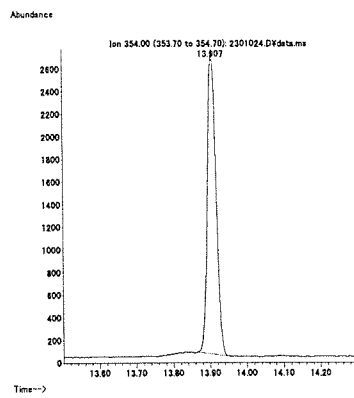
筋肉 (0.01 mg/kg 添加)



脂肪 (0.01 mg/kg 添加)

肝臓 (0.01 mg/kg 添加)

うなぎ (0.01 mg/kg 添加)



えび (0.01 mg/kg 添加)

牛乳 (0.01 mg/kg 添加)

卵 (0.01 mg/kg 添加)

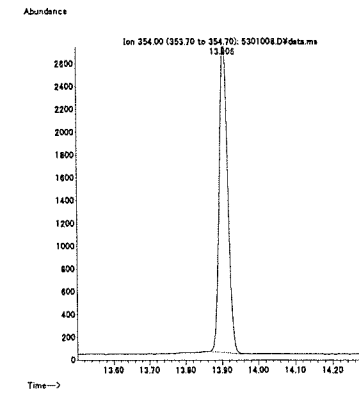
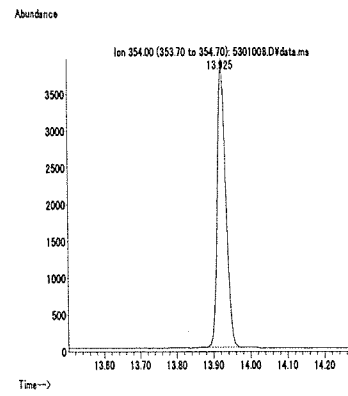
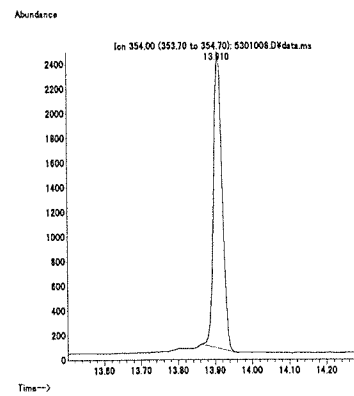
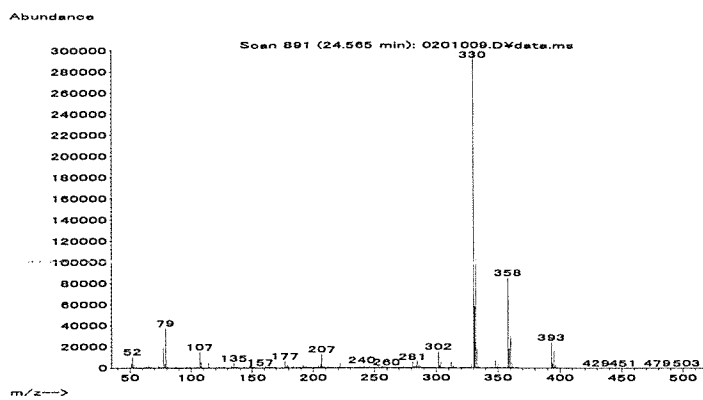


図 2. 最小検出量評価, 標準品, 回収試料のマスクロマトグラム (ジチオピル)

マススペクトル



検量線

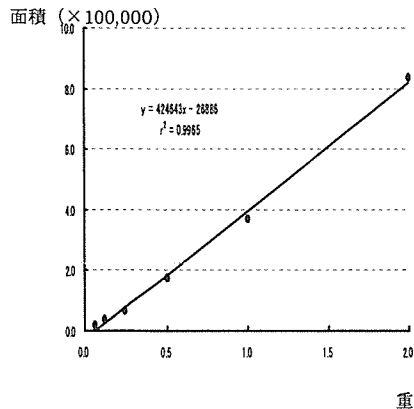
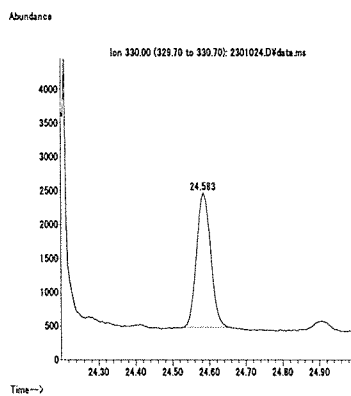
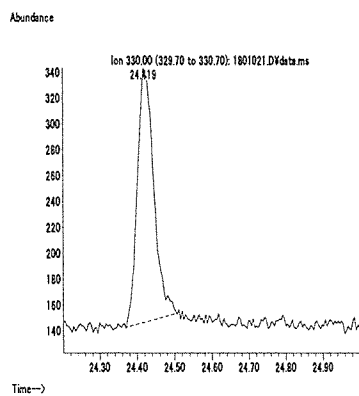
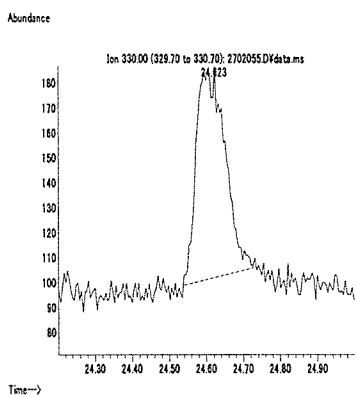


図 1. マススペクトルおよび検量線 (シニドシエチル)

最小検出量評価 (0.1 ng)

標準品 (0.125 ng)

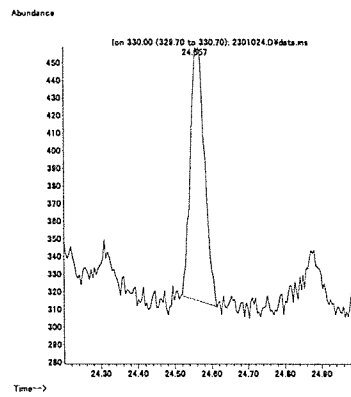
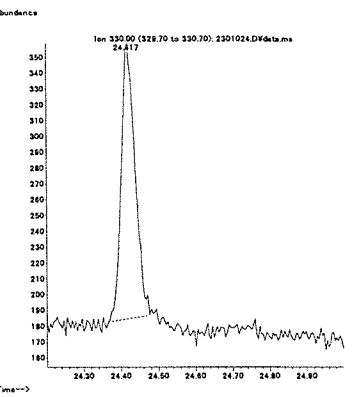
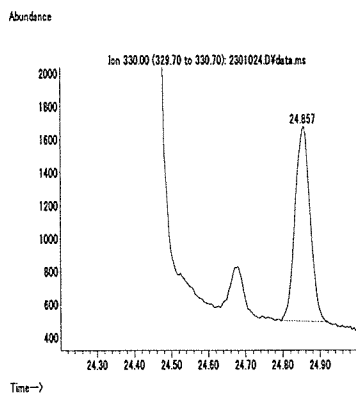
筋肉 (0.01 mg/kg 添加)



脂肪 (0.01 mg/kg 添加)

肝臓 (0.01 mg/kg 添加)

うなぎ (0.01 mg/kg 添加)



えび (0.01 mg/kg 添加)

牛乳 (0.01 mg/kg 添加)

卵 (0.01 mg/kg 添加)

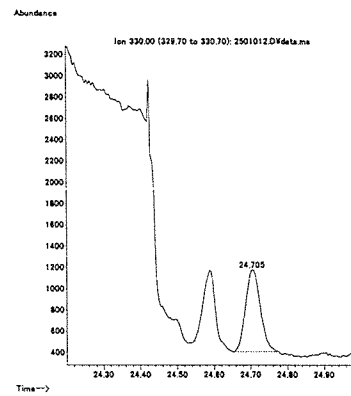
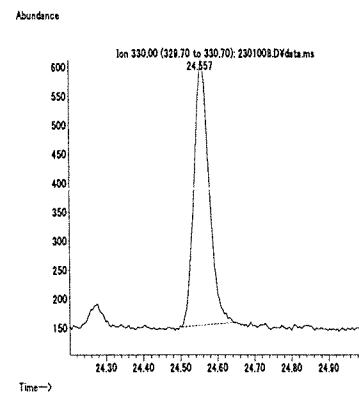
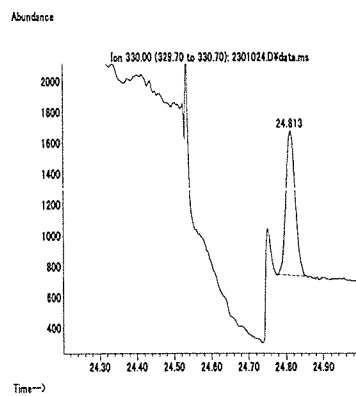
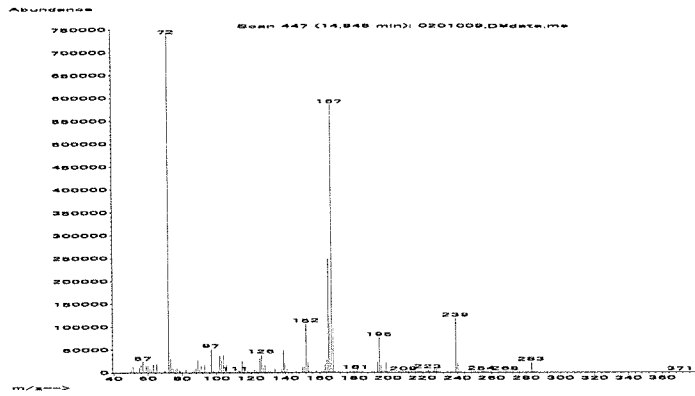


図 2. 最小検出量評価, 標準品, 回収試料のマスキロマトグラム (シニドシエチル)

マススペクトル



検量線

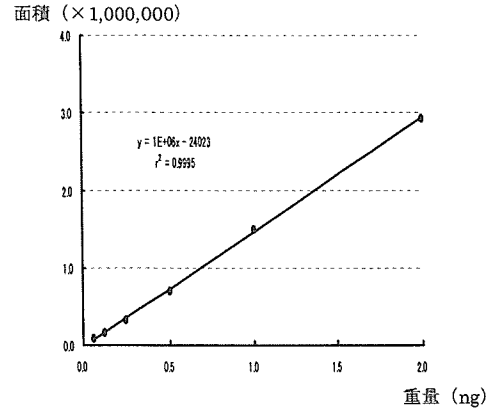
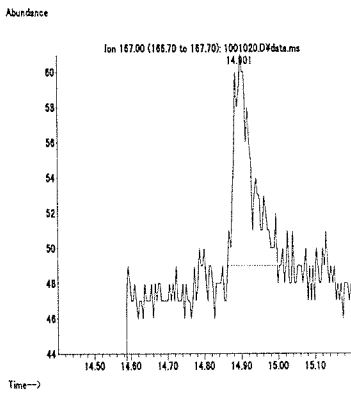
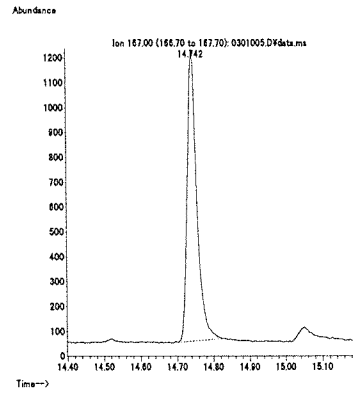


図 1. マススペクトルおよび検量線 (ジフェナミド)

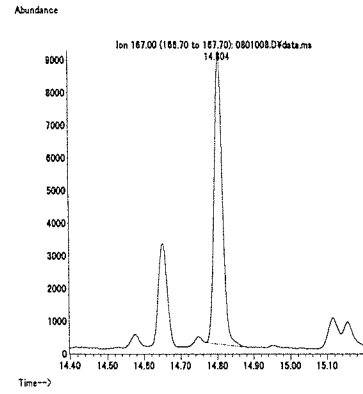
最小検出量評価 (0.002 ng)



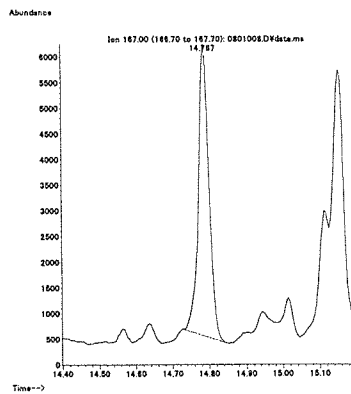
標準品 (0.125 ng)



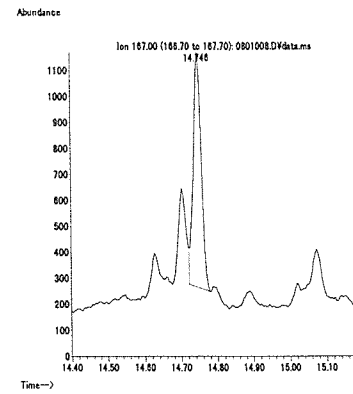
筋肉 (0.01 mg/kg 添加)



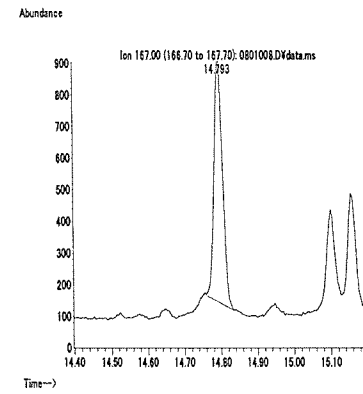
脂肪 (0.01 mg/kg 添加)



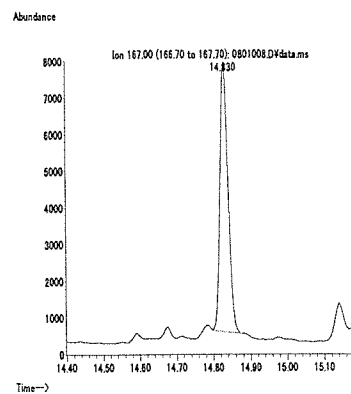
肝臓 (0.01 mg/kg 添加)



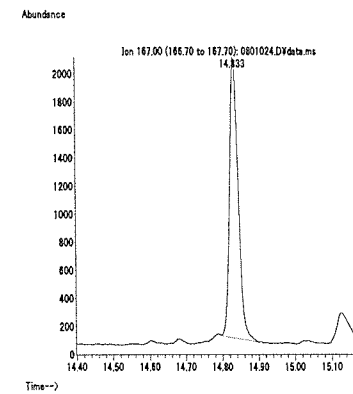
うなぎ (0.01 mg/kg 添加)



えび (0.01 mg/kg 添加)



牛乳 (0.01 mg/kg 添加)



卵 (0.01 mg/kg 添加)

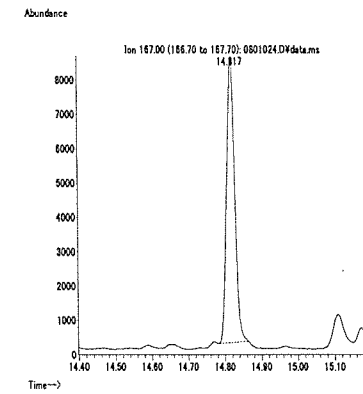
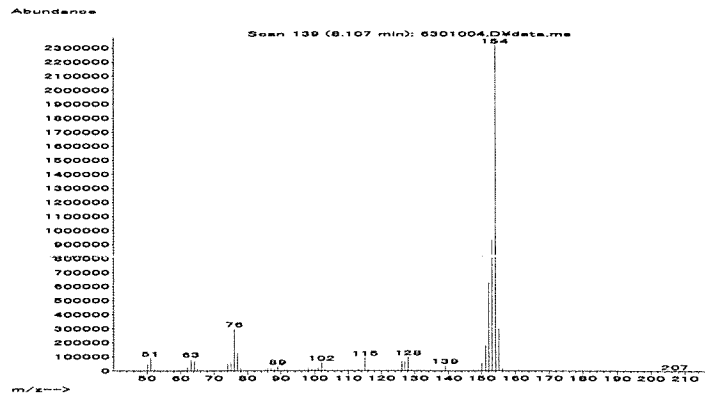


図 2. 最小検出量評価, 標準品, 回収試料のマスクロマトグラム (ジフェナミド)

マススペクトル



検量線

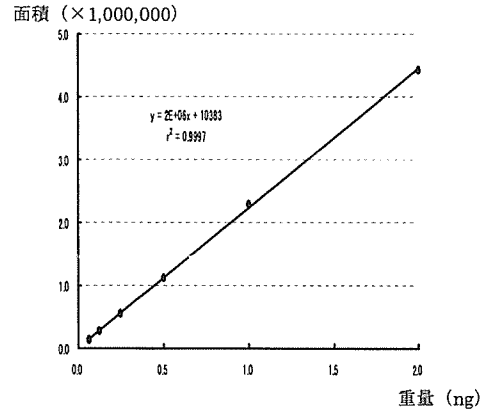
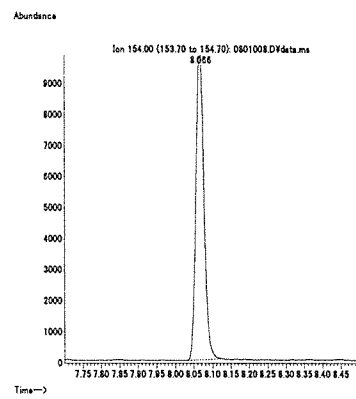
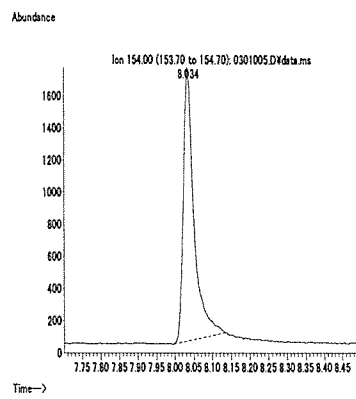
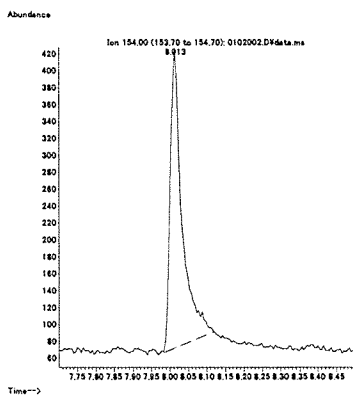


図 1. マススペクトルおよび検量線 (ジフェニル)

最小検出量評価 (0.004 ng)

標準品 (0.125 ng)

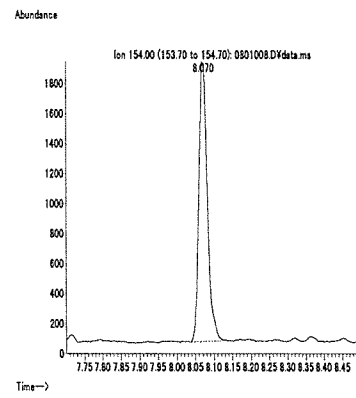
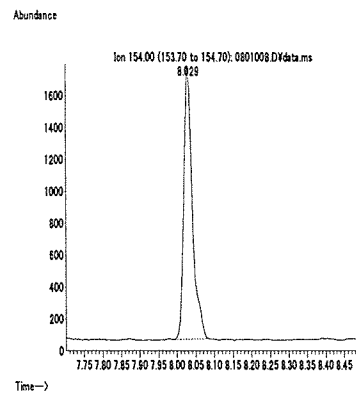
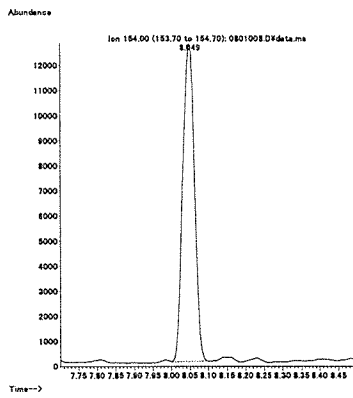
筋肉 (0.01 mg/kg 添加)



脂肪 (0.01 mg/kg 添加)

肝臓 (0.01 mg/kg 添加)

うなぎ (0.01 mg/kg 添加)



えび (0.01 mg/kg 添加)

牛乳 (0.01 mg/kg 添加)

卵 (0.01 mg/kg 添加)

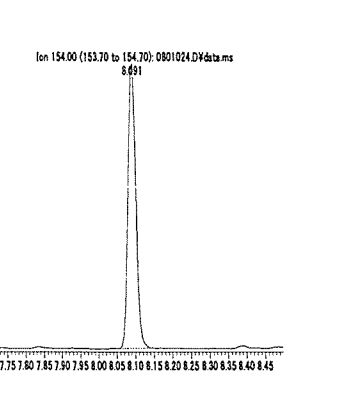
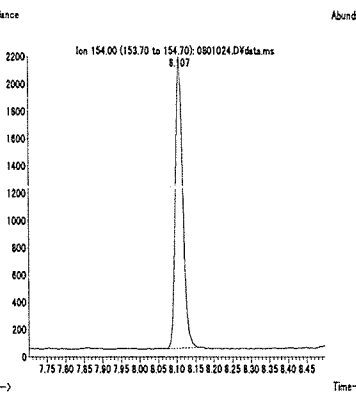
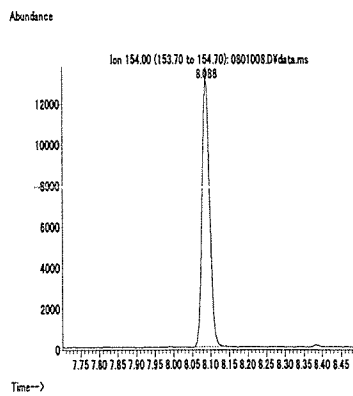
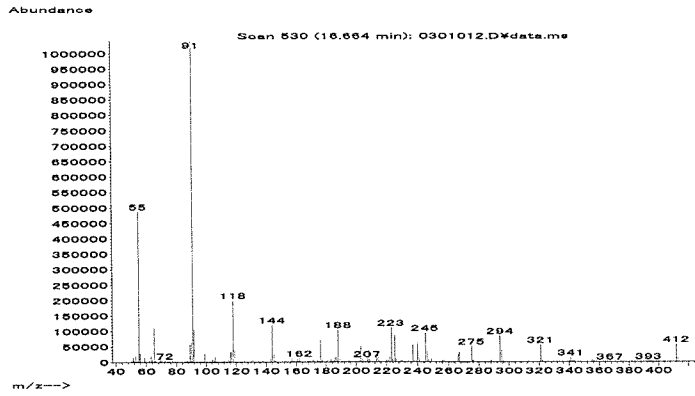


図 2. 最小検出量評価, 標準品, 回収試料のマスキロマトグラム (ジフェニル)



マススペクトル



検量線

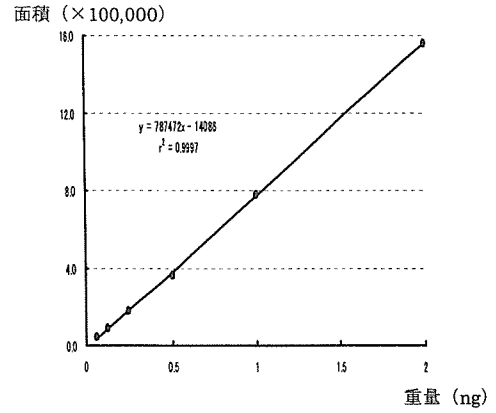
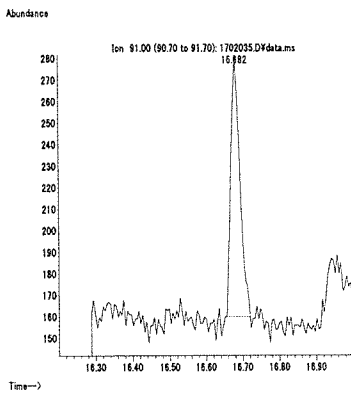
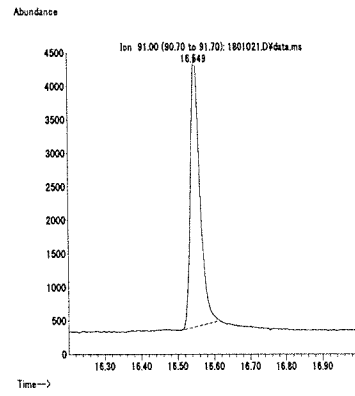


図1. マススペクトルおよび検量線 (シフルフェナミド)

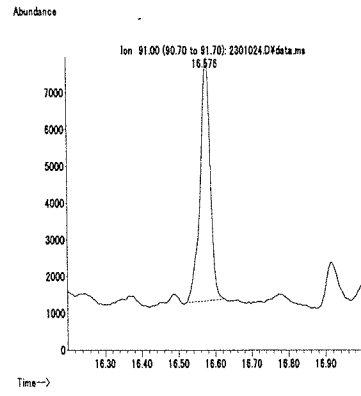
最小検出量評価 (0.01 ng)



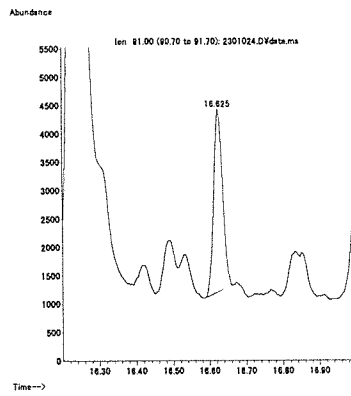
標準品 (0.125 ng)



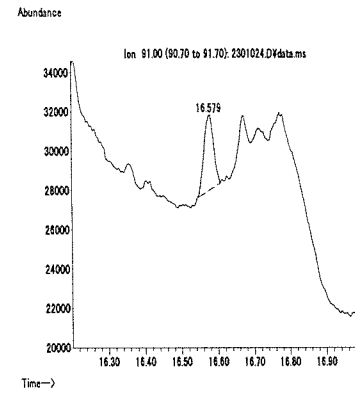
筋肉 (0.01 mg/kg 添加)



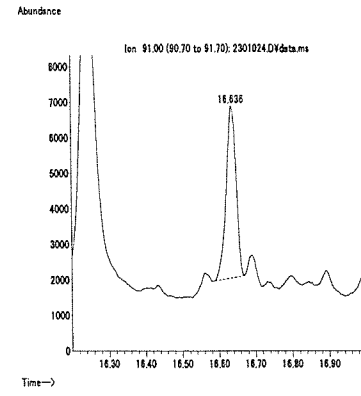
脂肪 (0.01 mg/kg 添加)



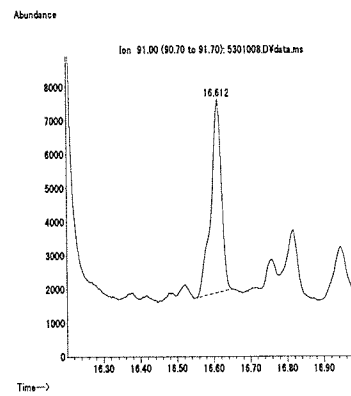
肝臓 (0.01 mg/kg 添加)



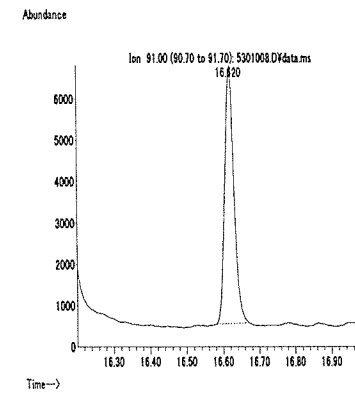
うなぎ (0.01 mg/kg 添加)



えび (0.01 mg/kg 添加)



牛乳 (0.01 mg/kg 添加)



卵 (0.01 mg/kg 添加)

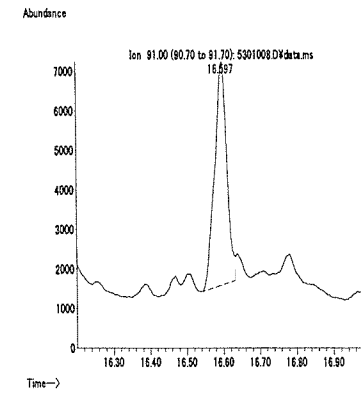
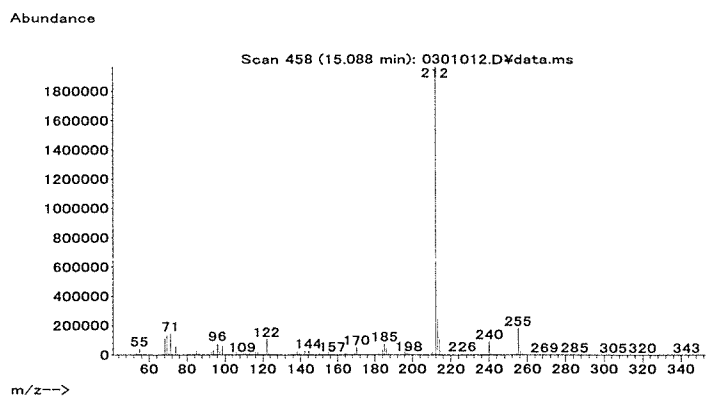


図2. 最小検出量評価, 標準品, 回収試料のマスクロマトグラム (シフルフェナミド)

マススペクトル



検量線

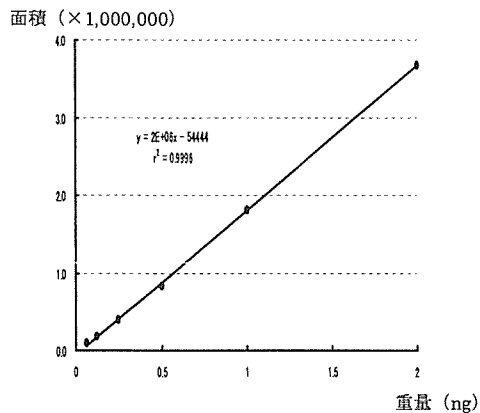
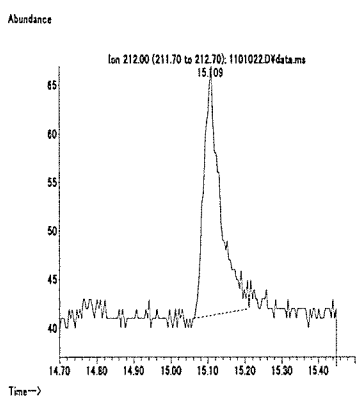
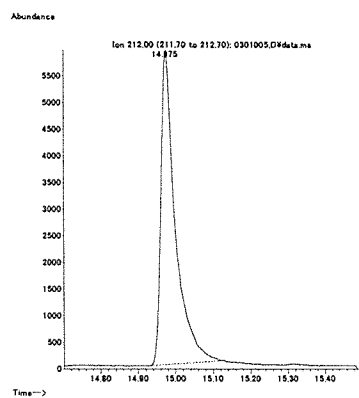


図 1. マススペクトルおよび検量線 (ジメタメトリン)

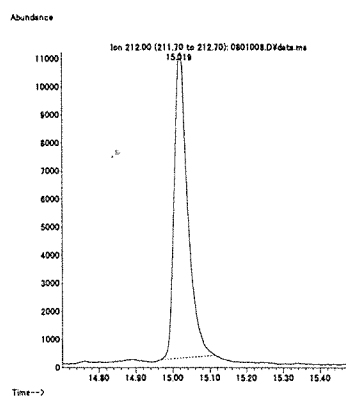
最小検出量評価 (0.002 ng)



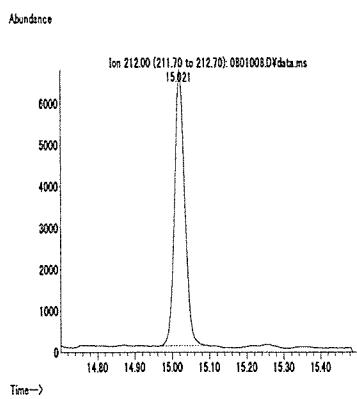
標準品 (0.125 ng)



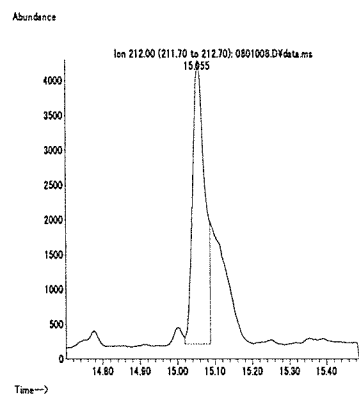
筋肉 (0.01 mg/kg 添加)



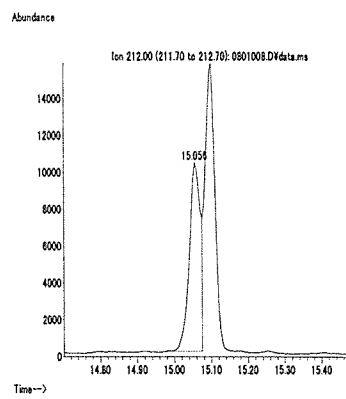
脂肪 (0.01 mg/kg 添加)



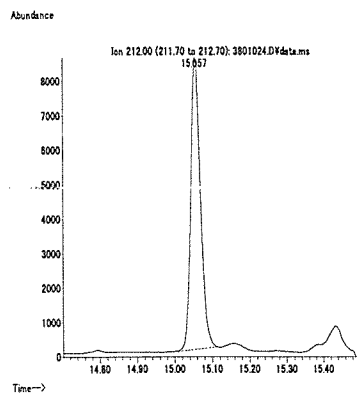
肝臓 (0.01 mg/kg 添加)



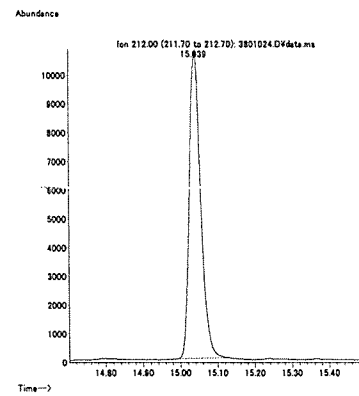
うなぎ (0.01 mg/kg 添加)



えび (0.01 mg/kg 添加)



牛乳 (0.01 mg/kg 添加)



卵 (0.01 mg/kg 添加)

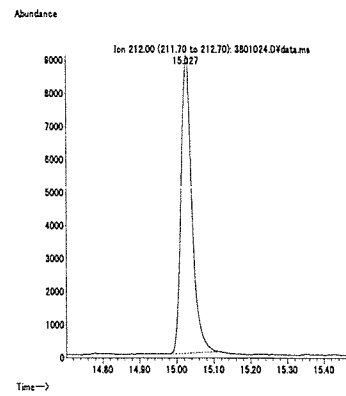
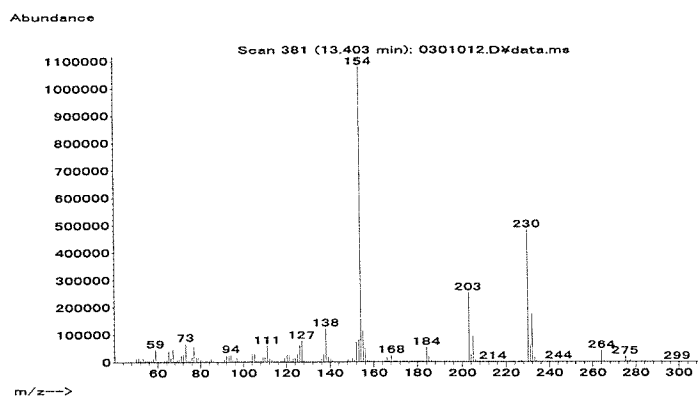


図 2. 最小検出量評価, 標準品, 回収試料のマスクロマトグラム (ジメタメトリン)

マススペクトル



検量線

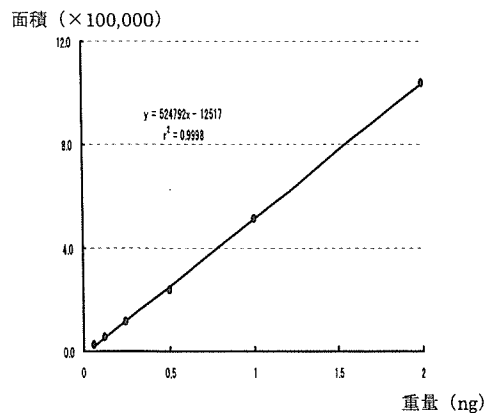
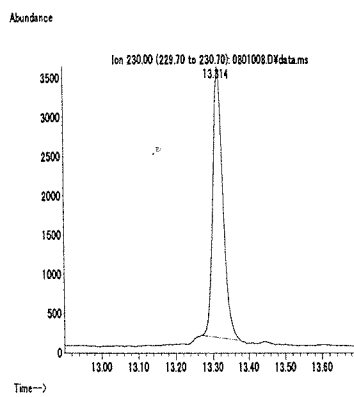
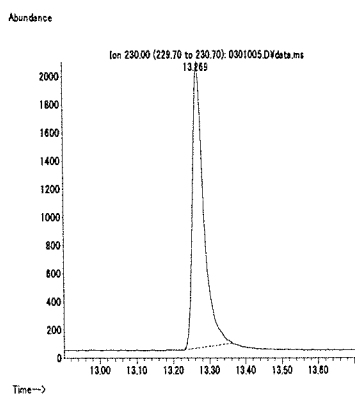
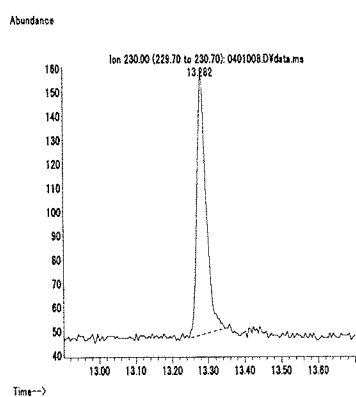


図 1. マススペクトルおよび検量線 (ジメテナミド)

最小検出量評価 (0.004 ng)

標準品 (0.125 ng)

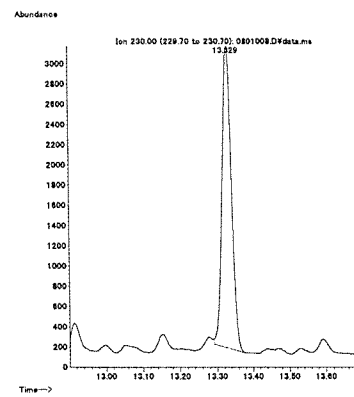
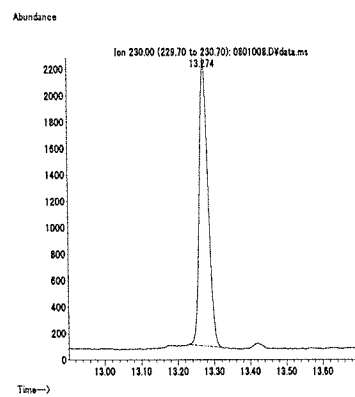
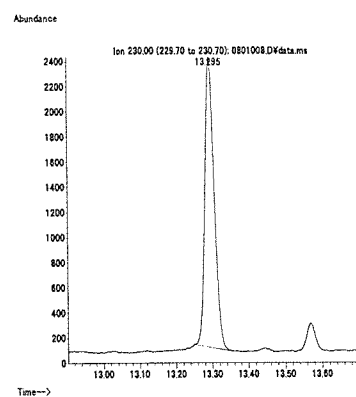
筋肉 (0.01 mg/kg 添加)



脂肪 (0.01 mg/kg 添加)

肝臓 (0.01 mg/kg 添加)

うなぎ (0.01 mg/kg 添加)



えび (0.01 mg/kg 添加)

牛乳 (0.01 mg/kg 添加)

卵 (0.01 mg/kg 添加)

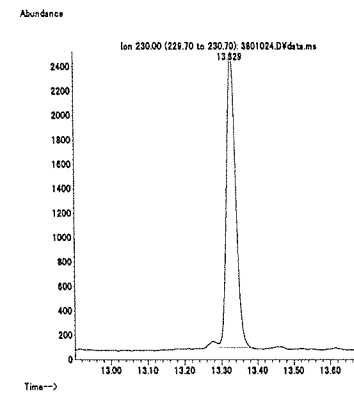
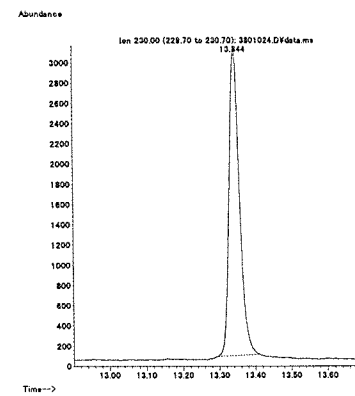
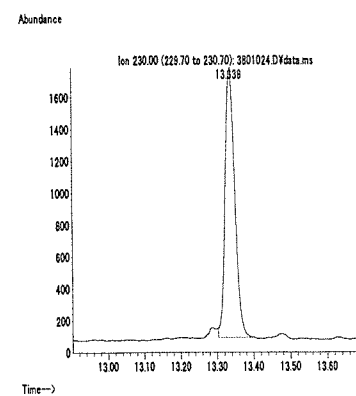
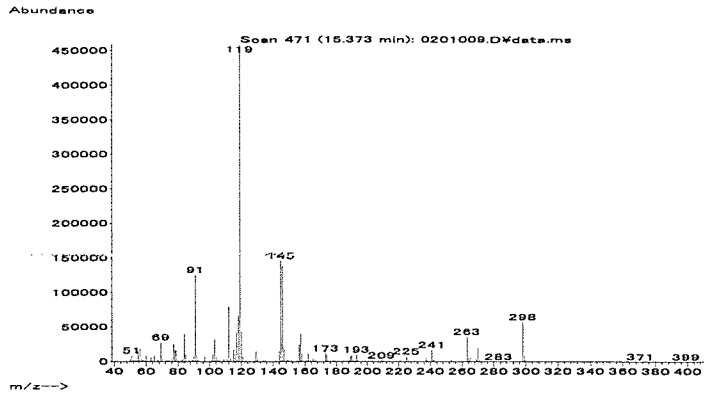


図 2. 最小検出量評価, 標準品, 回収試料のマスクロマトグラム (ジメテナミド)

マススペクトル



検量線

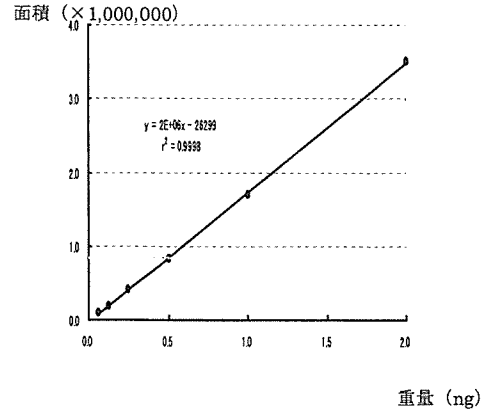
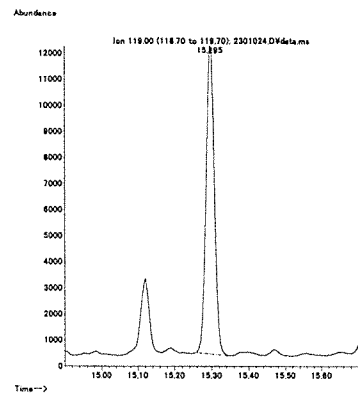
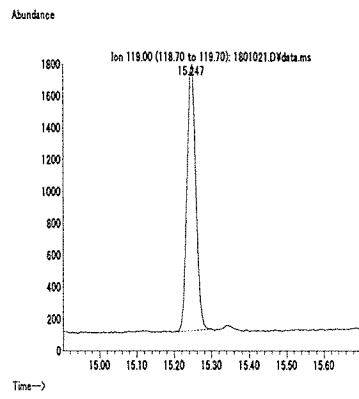
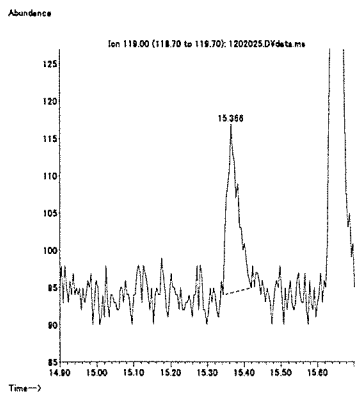


図 1. マススペクトルおよび検量線 (ジメピペレート)

最小検出量評価 (0.002 ng)

標準品 (0.125 ng)

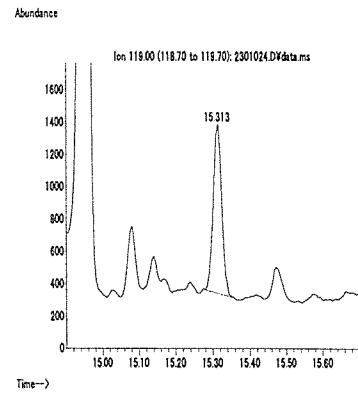
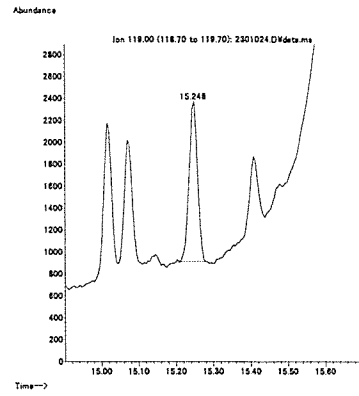
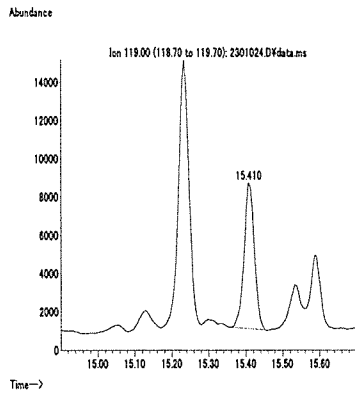
筋肉 (0.01 mg/kg 添加)



脂肪 (0.01 mg/kg 添加)

肝臓 (0.01 mg/kg 添加)

うなぎ (0.01 mg/kg 添加)



えび (0.01 mg/kg 添加)

牛乳 (0.01 mg/kg 添加)

卵 (0.01 mg/kg 添加)

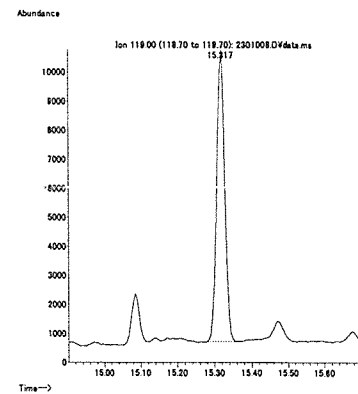
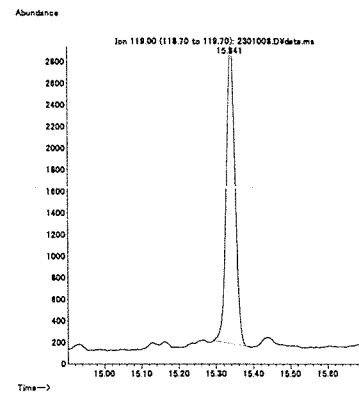
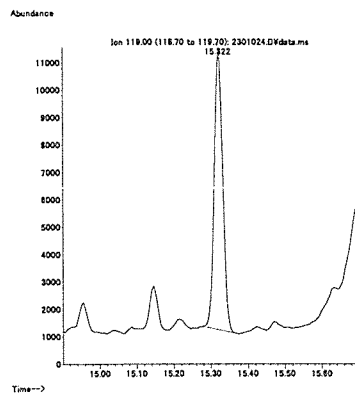
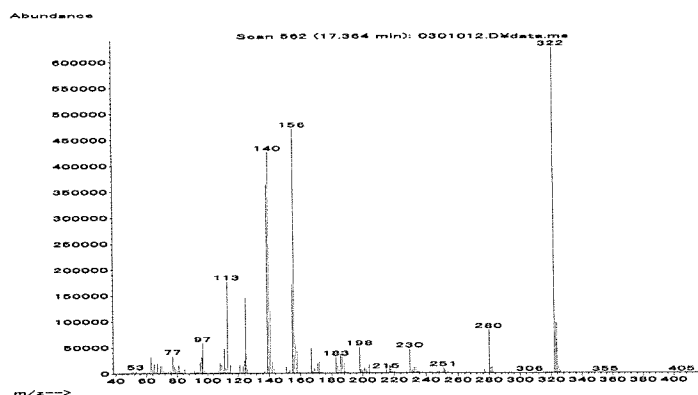


図 2. 最小検出量評価, 標準品, 回収試料のマスキロマトグラム (ジメピペレート)

マススペクトル



検量線

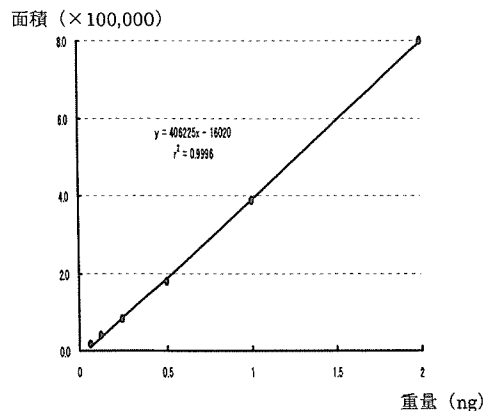
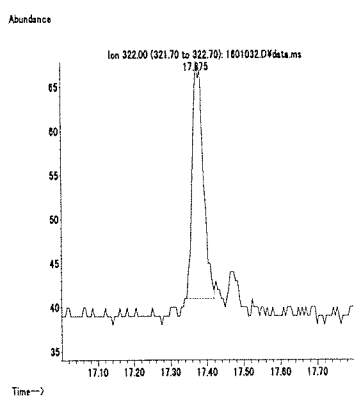
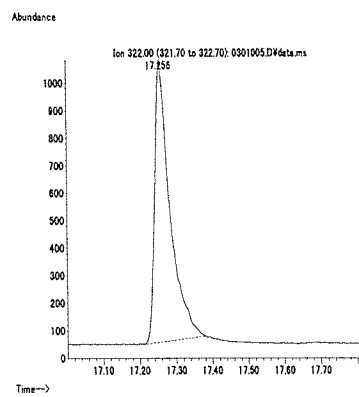


図 1. マススペクトルおよび検量線 (スルプロホス)

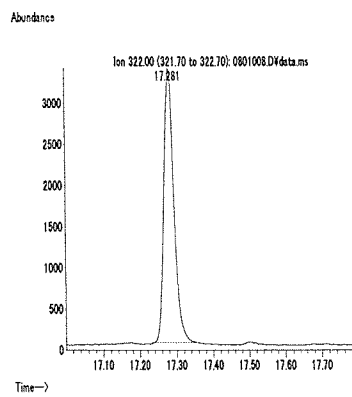
最小検出量評価 (0.01 ng)



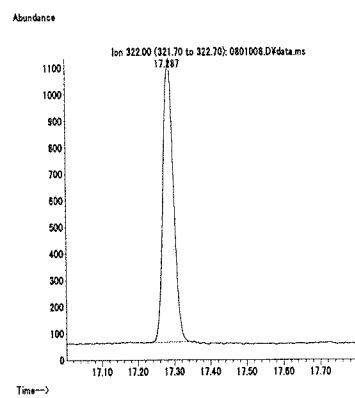
標準品 (0.125 ng)



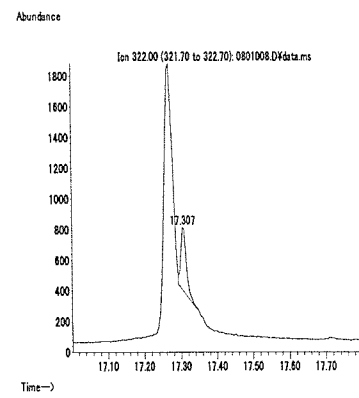
筋肉 (0.01 mg/kg 添加)



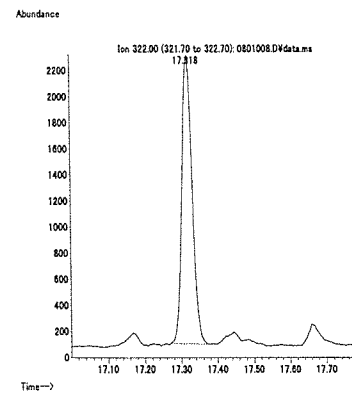
脂肪 (0.01 mg/kg 添加)



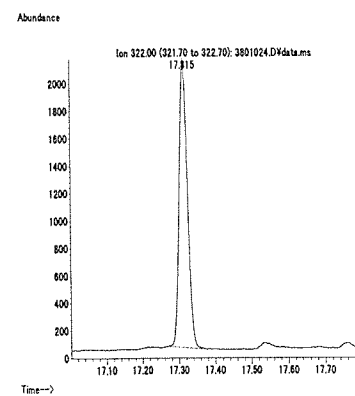
肝臓 (0.01 mg/kg 添加)



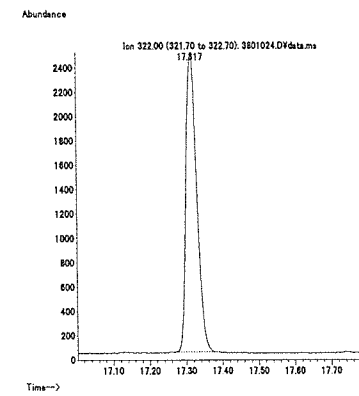
うなぎ (0.01 mg/kg 添加)



えび (0.01 mg/kg 添加)



牛乳 (0.01 mg/kg 添加)



卵 (0.01 mg/kg 添加)

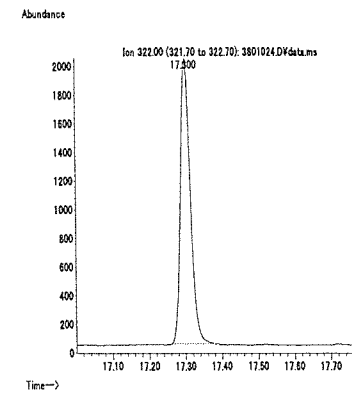
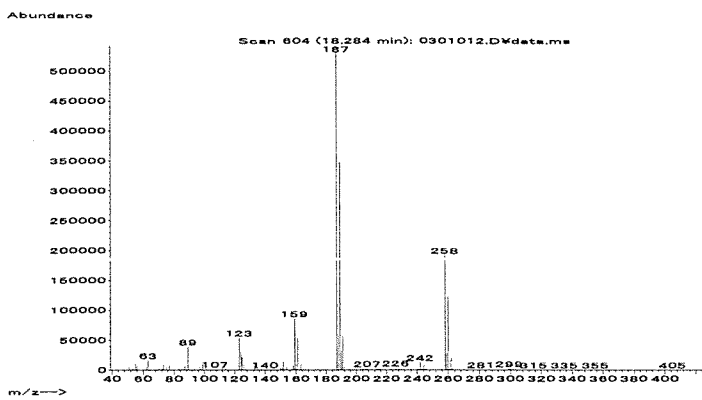


図 2. 最小検出量評価, 標準品, 回収試料のマスクロマトグラム (スルプロホス)

マススペクトル



検量線

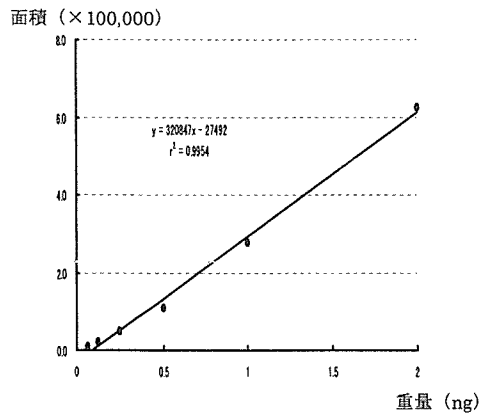
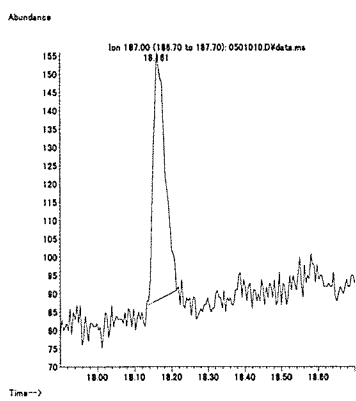
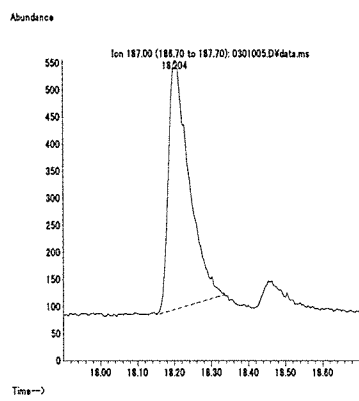


図 1. マススペクトルおよび検量線 (ゾキサミド)

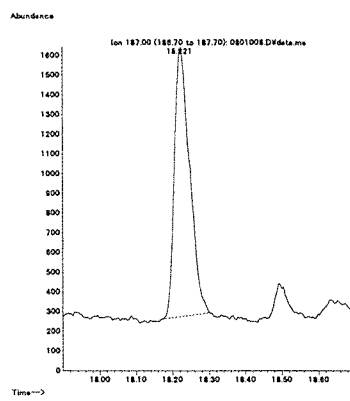
最小検出量評価 (0.008 ng)



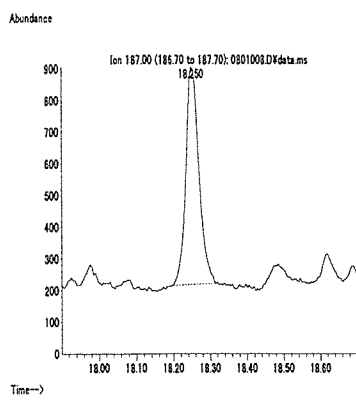
標準品 (0.125 ng)



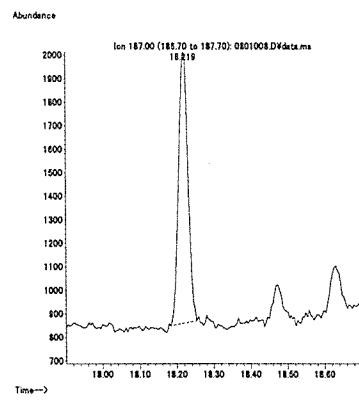
筋肉 (0.01 mg/kg 添加)



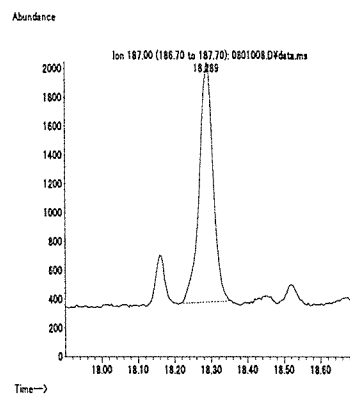
脂肪 (0.01 mg/kg 添加)



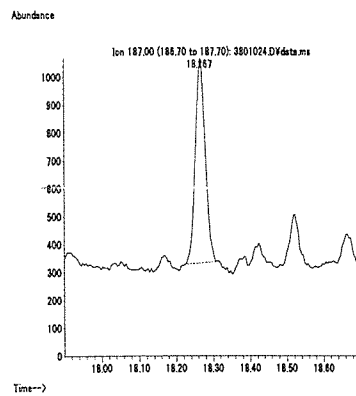
肝臓 (0.01 mg/kg 添加)



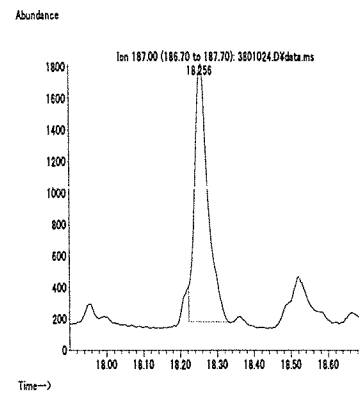
うなぎ (0.01 mg/kg 添加)



えび (0.01 mg/kg 添加)



牛乳 (0.01 mg/kg 添加)



卵 (0.01 mg/kg 添加)

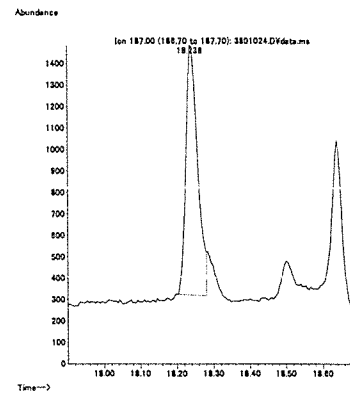
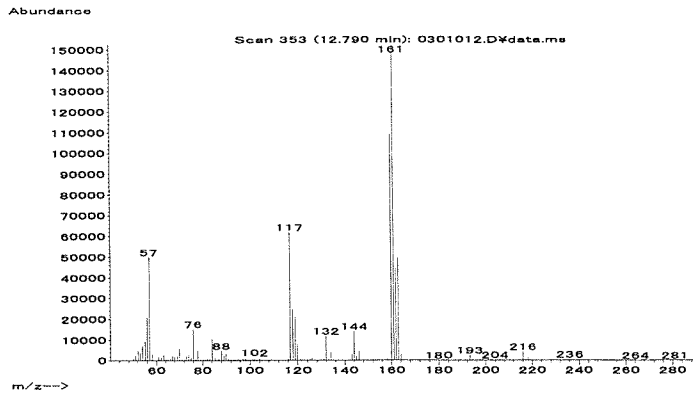


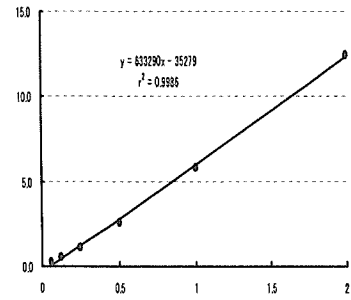
図 2. 最小検出量評価, 標準品, 回収試料のマスクロマトグラム (ゾキサミド)

マススペクトル



検量線

面積 (×100,000)



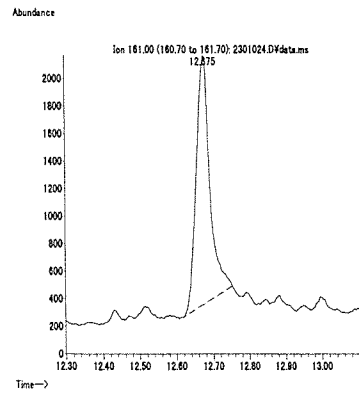
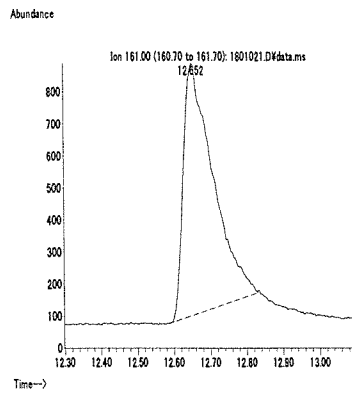
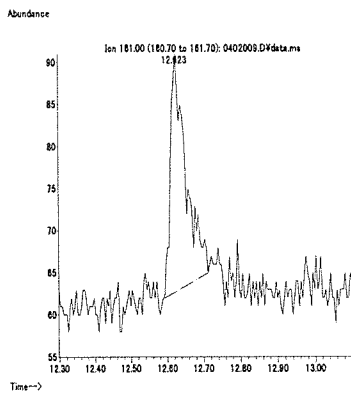
重量 (ng)

図1. マススペクトルおよび検量線 (ターバシル)

最小検出量評価 (0.004 ng)

標準品 (0.125 ng)

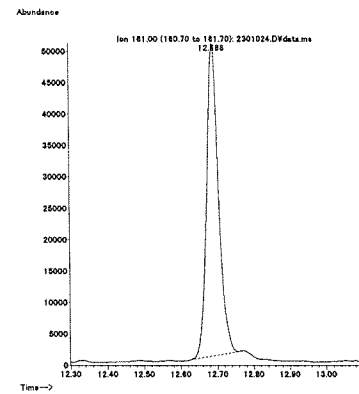
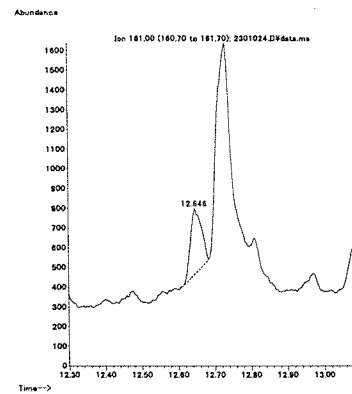
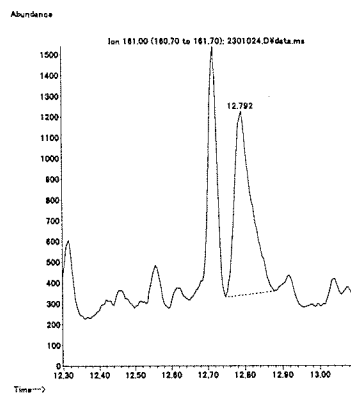
筋肉 (0.01 mg/kg 添加)



脂肪 (0.01 mg/kg 添加)

肝臓 (0.01 mg/kg 添加)

うなぎ (0.01 mg/kg 添加)



えび (0.01 mg/kg 添加)

牛乳 (0.01 mg/kg 添加)

卵 (0.01 mg/kg 添加)

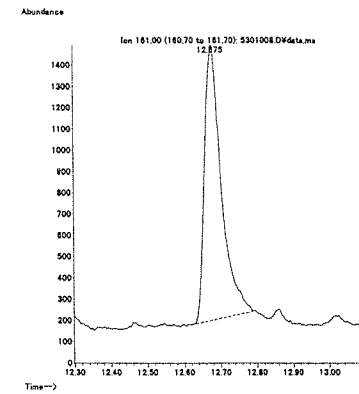
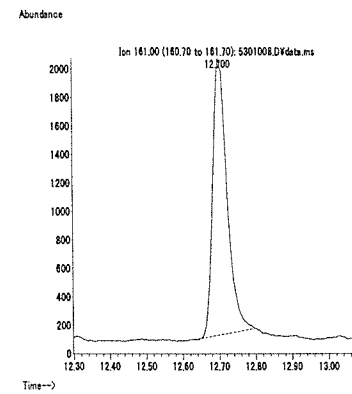
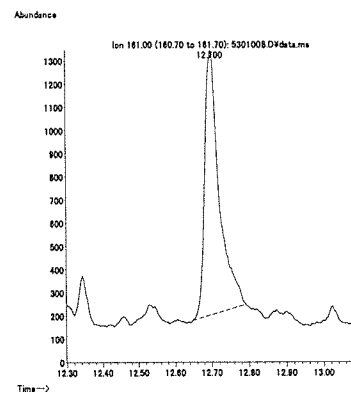
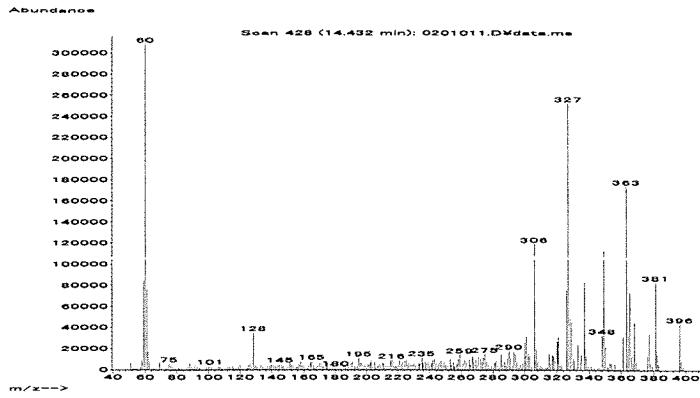


図2. 最小検出量評価, 標準品, 回収試料のマスクロマトグラム (ターバシル)

マススペクトル



検量線

面積 (×100,000)

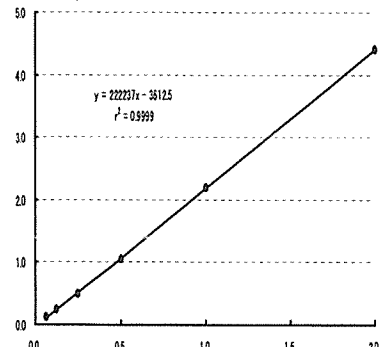
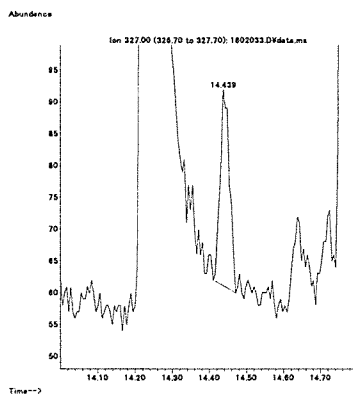
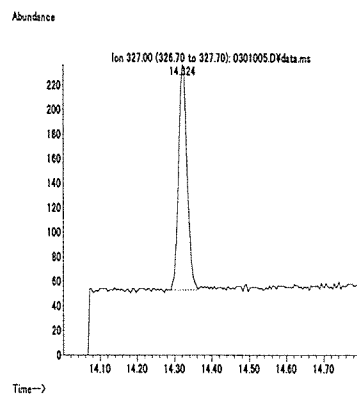


図 1. マススペクトルおよび検量線 (チアゾピル)

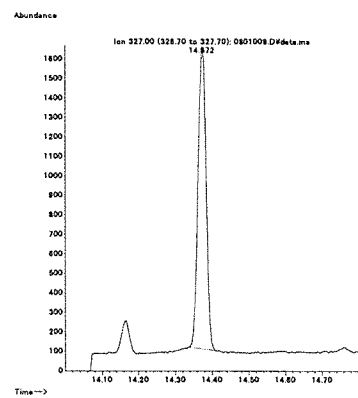
最小検出量評価 (0.01 ng)



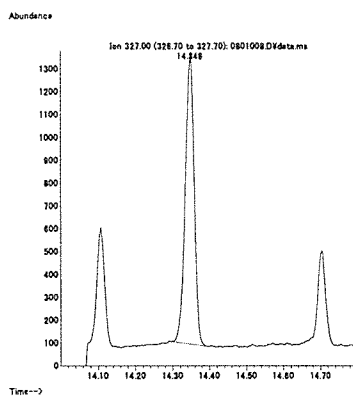
標準品 (0.125 ng)



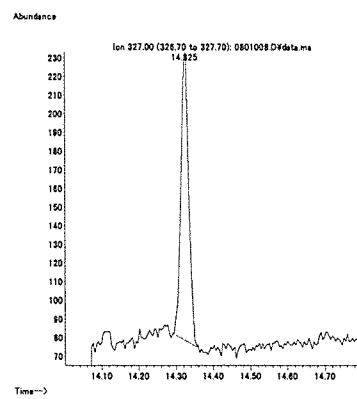
筋肉 (0.01 mg/kg 添加)



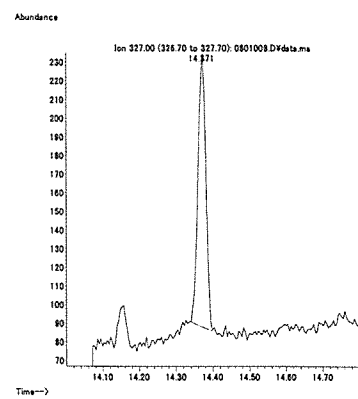
脂肪 (0.01 mg/kg 添加)



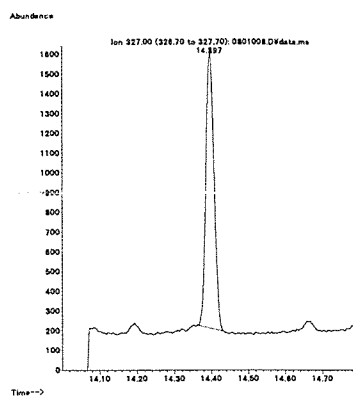
肝臓 (0.01 mg/kg 添加)



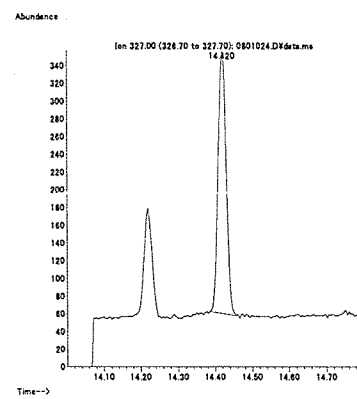
うなぎ (0.01 mg/kg 添加)



えび (0.01 mg/kg 添加)



牛乳 (0.01 mg/kg 添加)



卵 (0.01 mg/kg 添加)

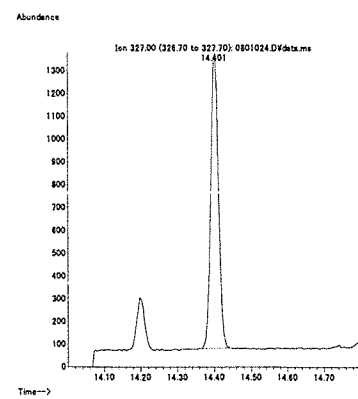
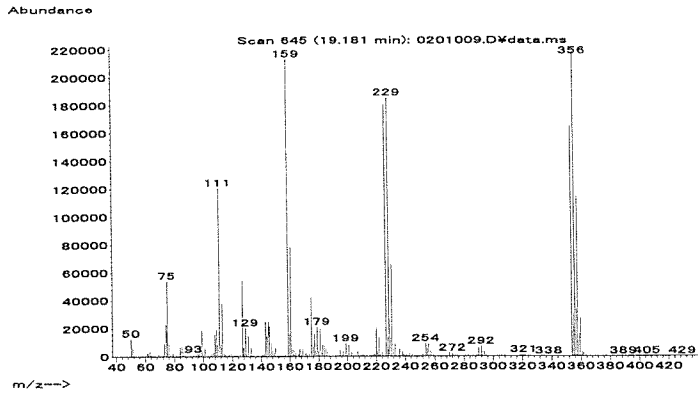


図 2. 最小検出量評価, 標準品, 回収試料のマスキンググラム (チアゾピル)



マススペクトル



検量線

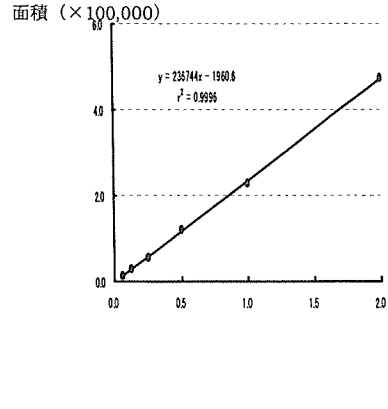
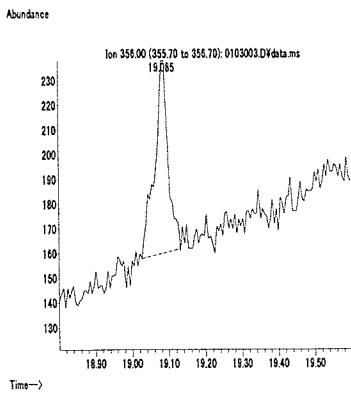
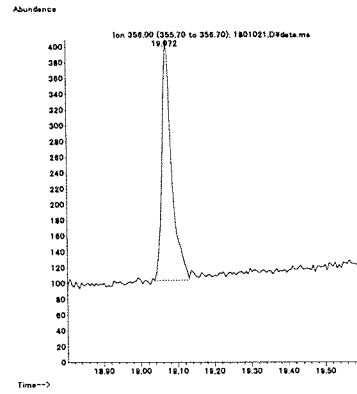


図 1. マススペクトルおよび検量線 (テトラジホン)

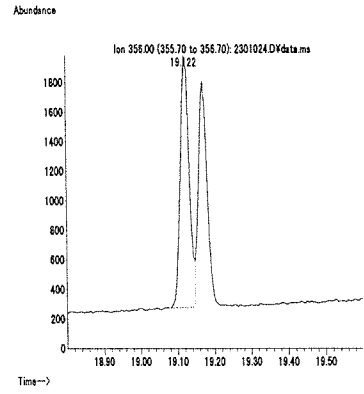
最小検出量評価 (0.004 ng)



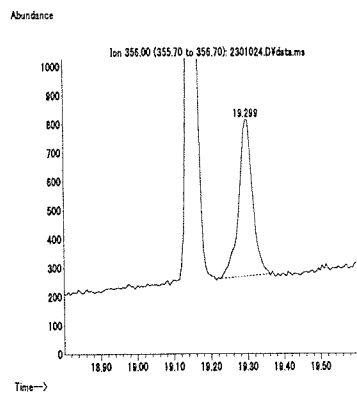
標準品 (0.125 ng)



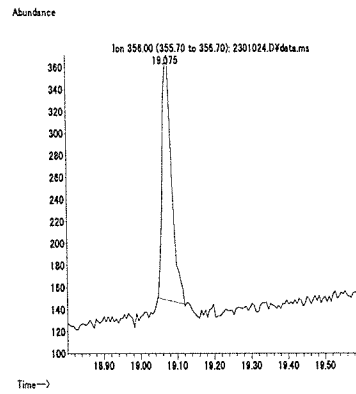
筋肉 (0.01 mg/kg 添加)



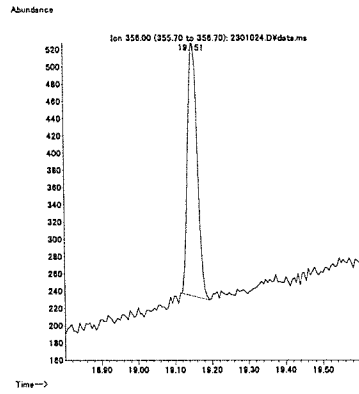
脂肪 (0.01 mg/kg 添加)



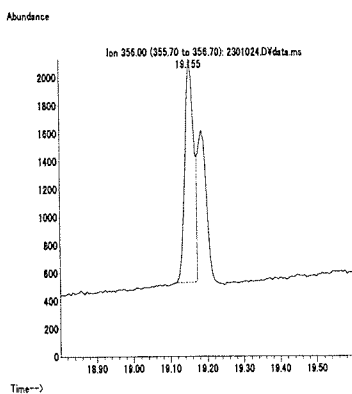
肝臓 (0.01 mg/kg 添加)



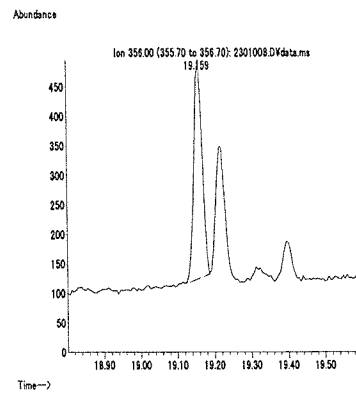
うなぎ (0.01 mg/kg 添加)



えび (0.01 mg/kg 添加)



牛乳 (0.01 mg/kg 添加)



卵 (0.01 mg/kg 添加)

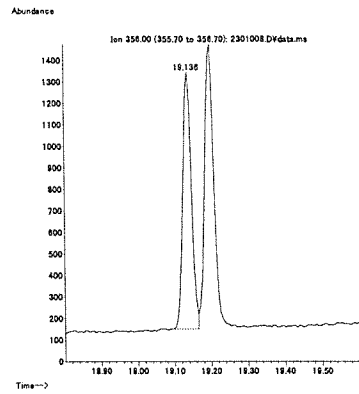
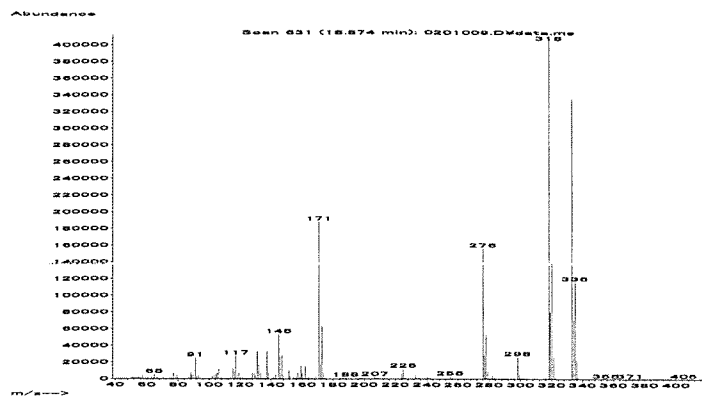


図 2. 最小検出量評価, 標準品, 回収試料のマスクロマトグラム (テトラジホン)

マススペクトル



検量線

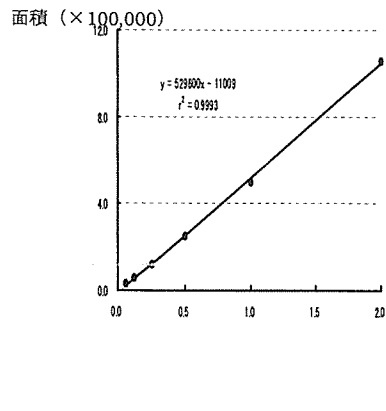
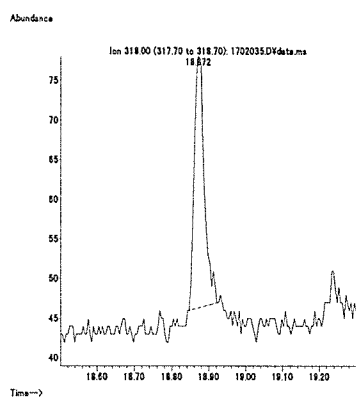
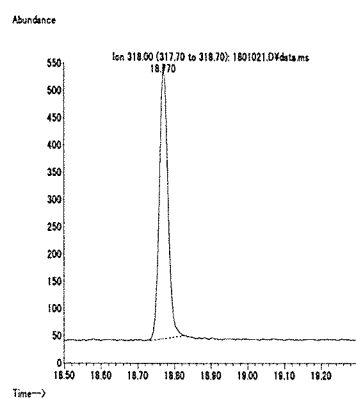


図1. マススペクトルおよび検量線 (テブフェンピラド)

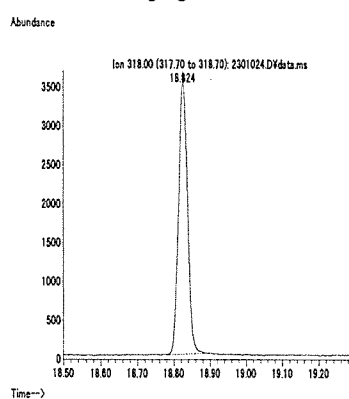
最小検出量評価 (0.01 ng)



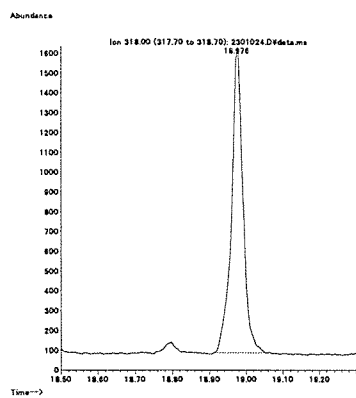
標準品 (0.125 ng)



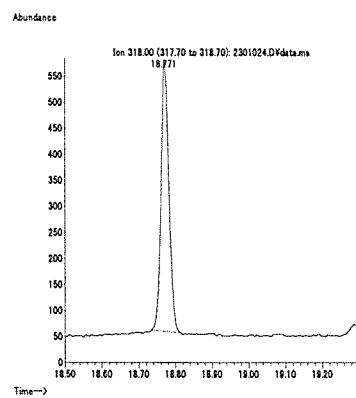
筋肉 (0.01 mg/kg 添加)



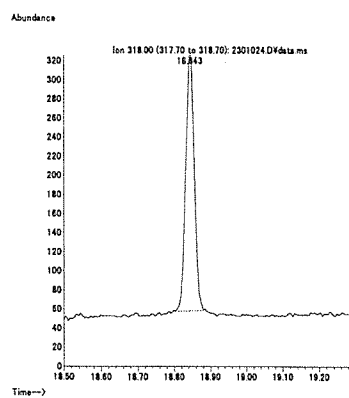
脂肪 (0.01 mg/kg 添加)



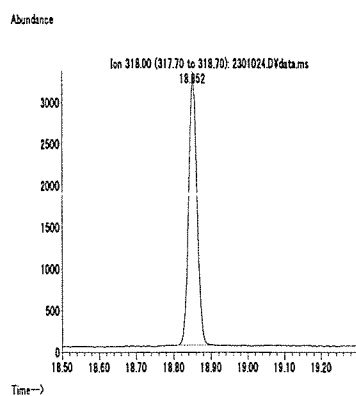
肝臓 (0.01 mg/kg 添加)



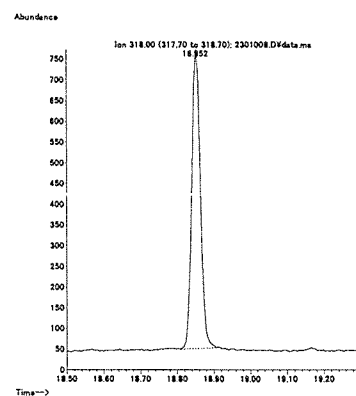
うなぎ (0.01 mg/kg 添加)



えび (0.01 mg/kg 添加)



牛乳 (0.01 mg/kg 添加)



卵 (0.01 mg/kg 添加)

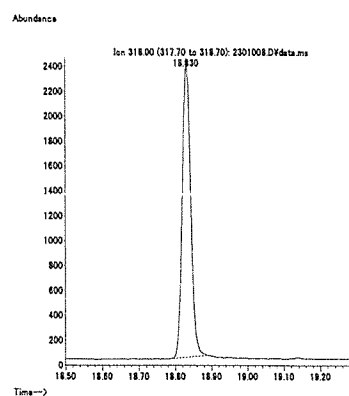
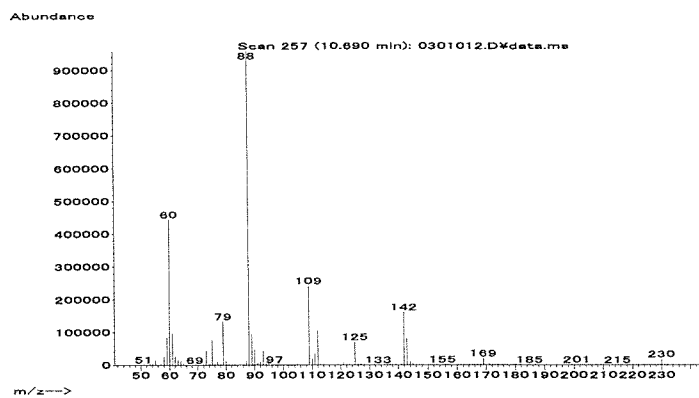


図2. 最小検出量評価, 標準品, 回収試料のマスキンググラム (テブフェンピラド)

マススペクトル



検量線

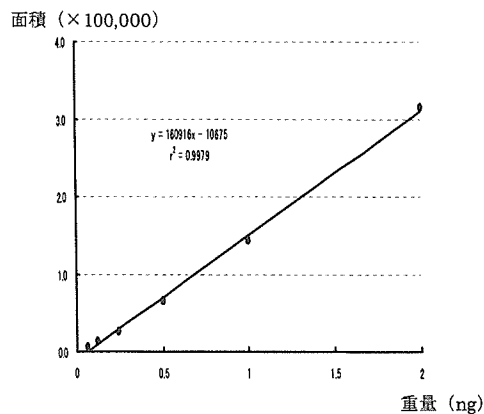
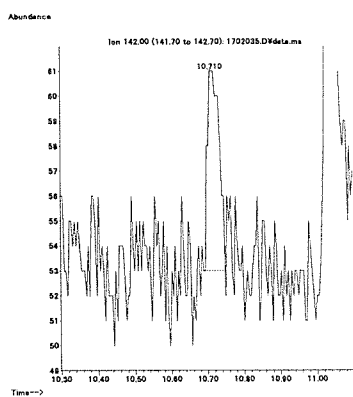
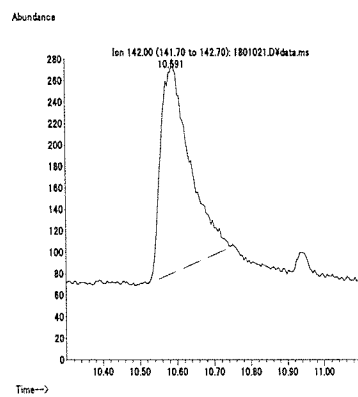


図 1. マススペクトルおよび検量線 (デメトン-S-メチル)

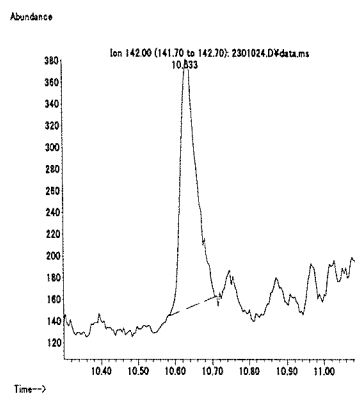
最小検出量評価 (0.01 ng)



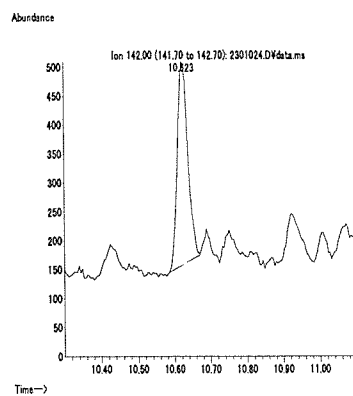
標準品 (0.125 ng)



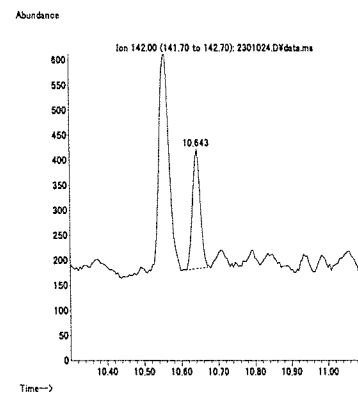
筋肉 (0.01 mg/kg 添加)



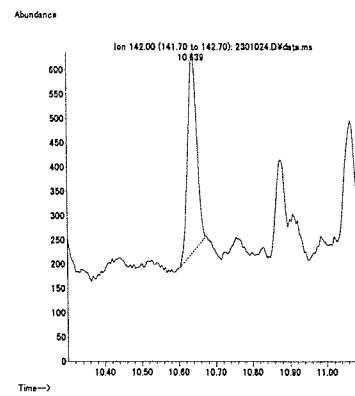
脂肪 (0.01 mg/kg 添加)



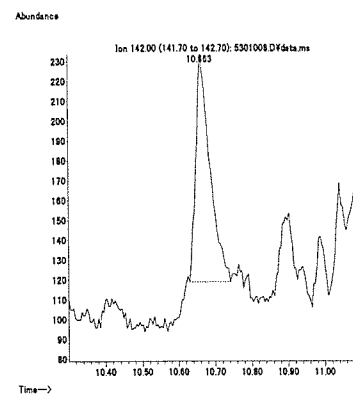
肝臓 (0.01 mg/kg 添加)



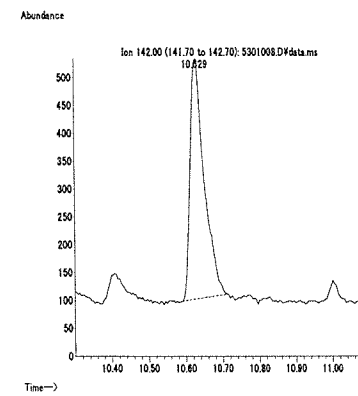
うなぎ (0.01 mg/kg 添加)



えび (0.01 mg/kg 添加)



牛乳 (0.01 mg/kg 添加)



卵 (0.01 mg/kg 添加)

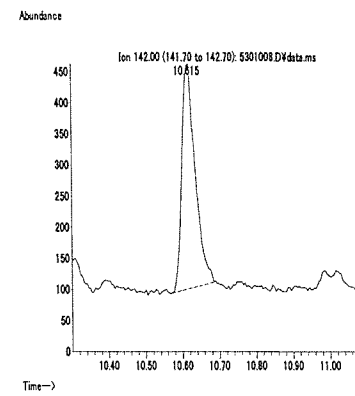
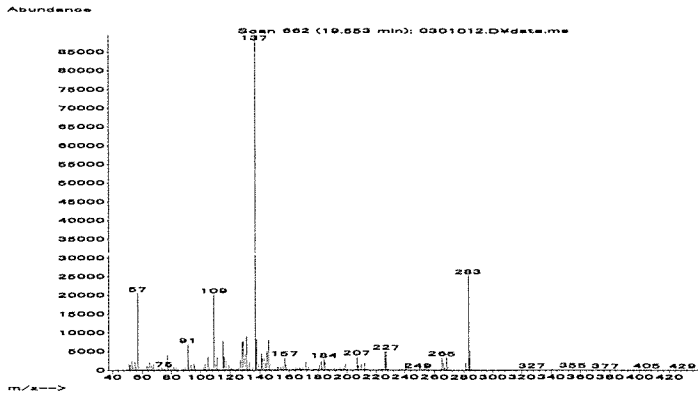


図 2. 最小検出量評価, 標準品, 回収試料のマスプロトグラム (デメトン-S-メチル)

マススペクトル



検量線

面積 (× 10,000)

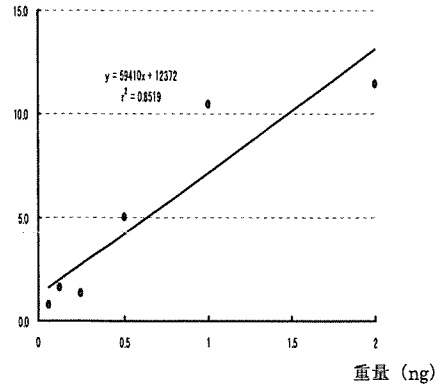
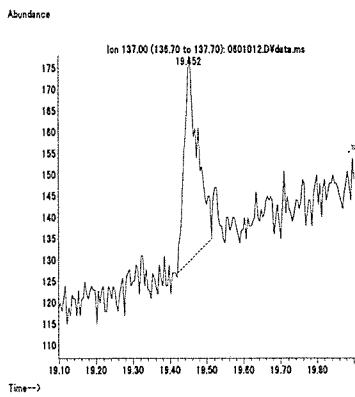
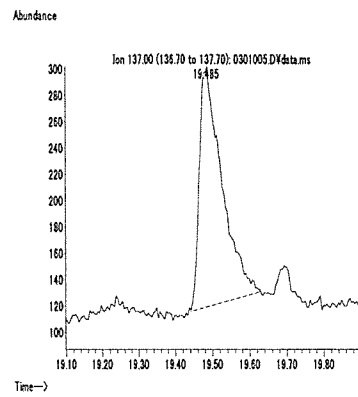


図 1. マススペクトルおよび検量線 (トラルコキシジム)

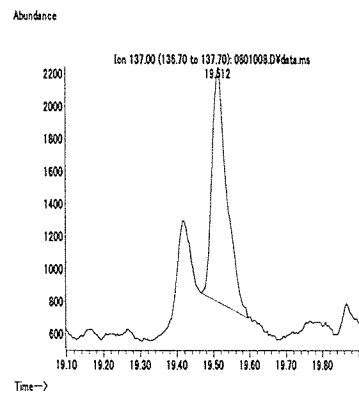
最小検出量評価 (0.02 ng)



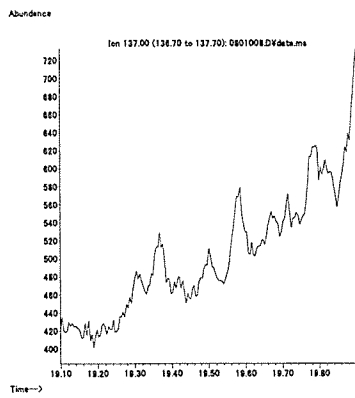
標準品 (0.125 ng)



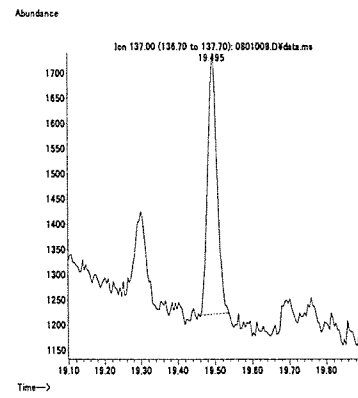
筋肉 (0.01 mg/kg 添加)



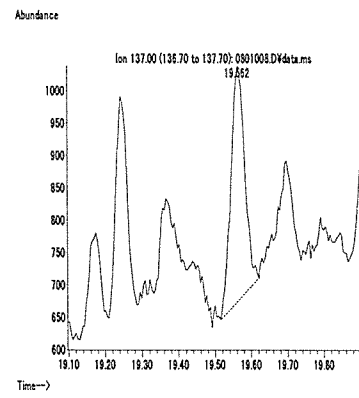
脂肪 (0.1 mg/kg 添加)



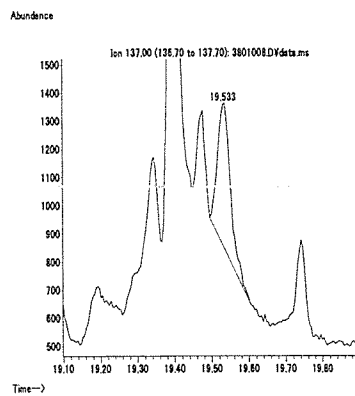
肝臓 (0.01 mg/kg 添加)



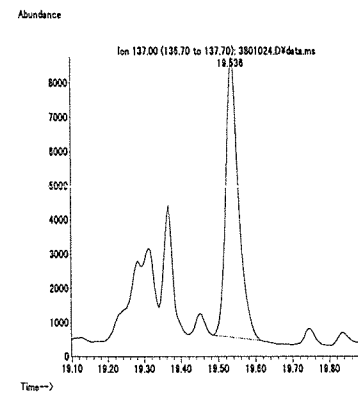
うなぎ (0.01 mg/kg 添加)



えび (0.1 mg/kg 添加)



牛乳 (0.1 mg/kg 添加)



卵 (0.1 mg/kg 添加)

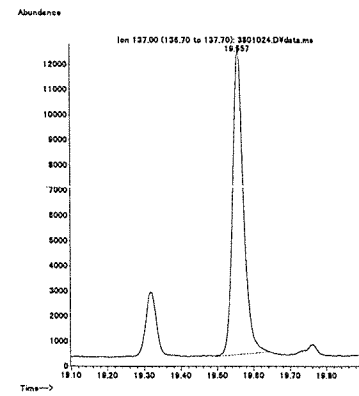


図 2. 最小検出量評価, 標準品, 回収試料のマスキングクロマトグラム (トラルコキシジム)