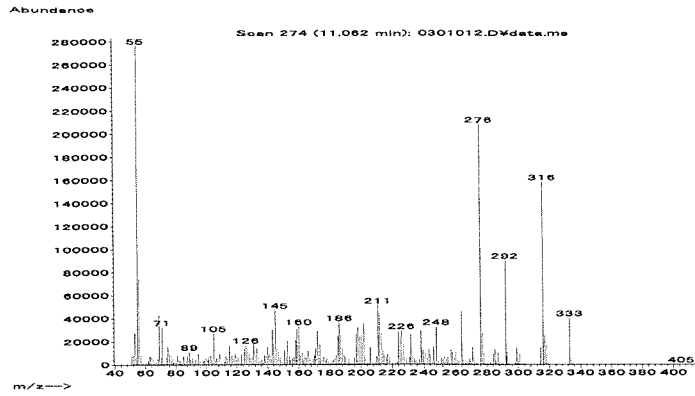


マススペクトル



検量線

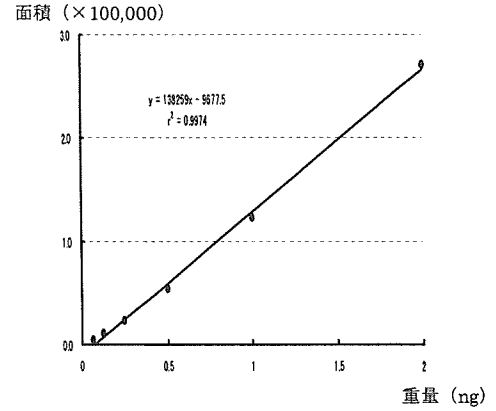
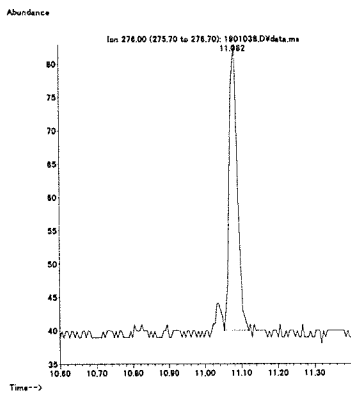
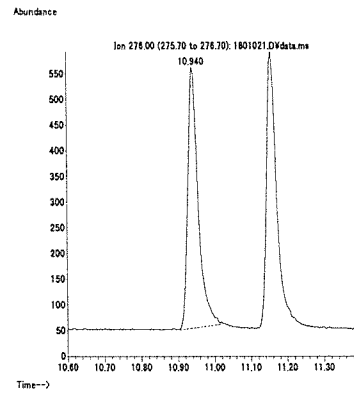


図 1. マススペクトルおよび検量線 (エタルフルラリン)

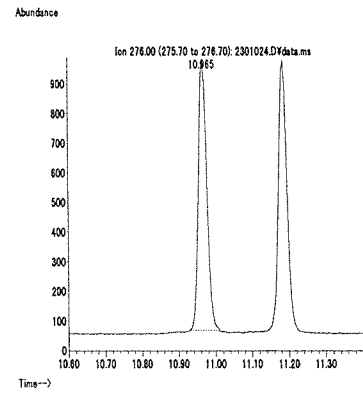
最小検出量評価 (0.02 ng)



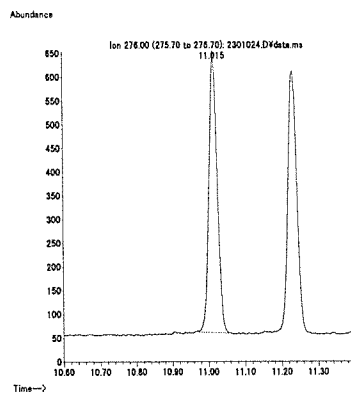
標準品 (0.125 ng)



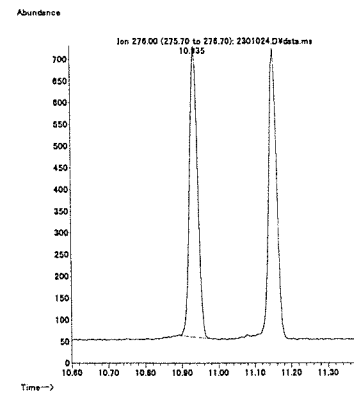
筋肉 (0.01 mg/kg 添加)



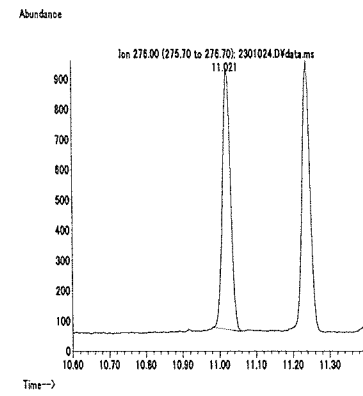
脂肪 (0.01 mg/kg 添加)



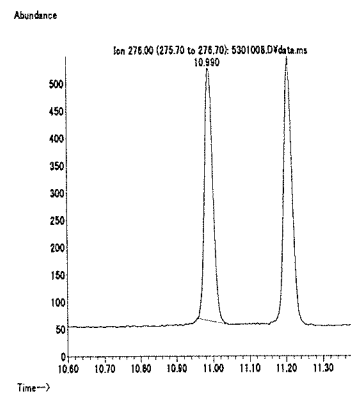
肝臓 (0.01 mg/kg 添加)



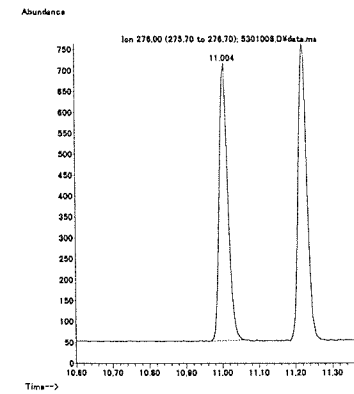
うなぎ (0.01 mg/kg 添加)



えび (0.01 mg/kg 添加)



牛乳 (0.01 mg/kg 添加)



卵 (0.01 mg/kg 添加)

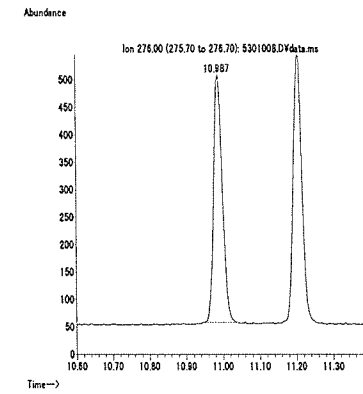
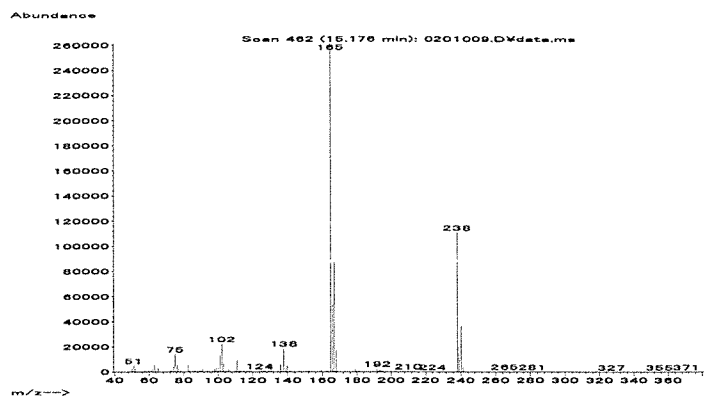


図 2. 最小検出量評価, 標準品, 回収試料のマスクロマトグラム (エタルフルラリン)

マススペクトル



検量線

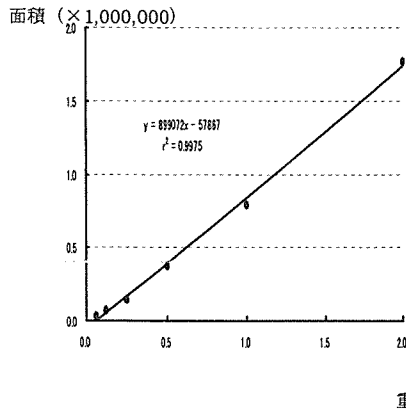
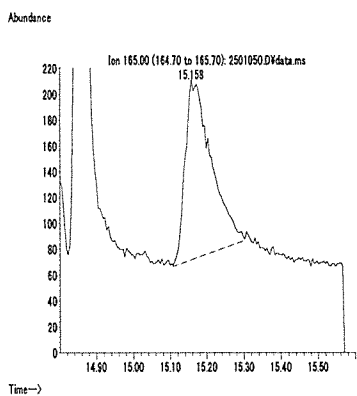
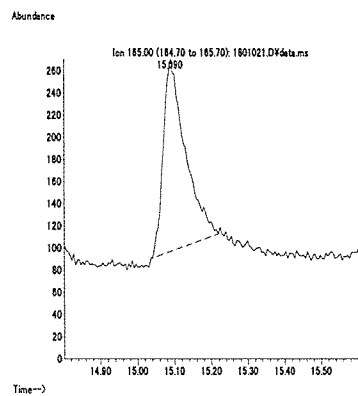


図 1. マススペクトルおよび検量線 (エチクロゼート)

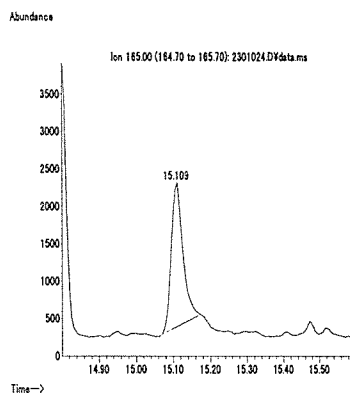
最小検出量評価 (0.1 ng)



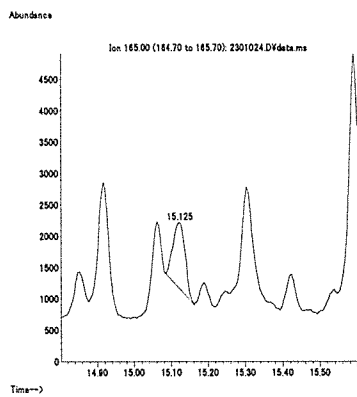
標準品 (0.125 ng)



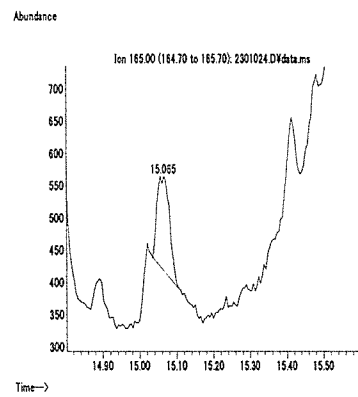
筋肉 (0.01 mg/kg 添加)



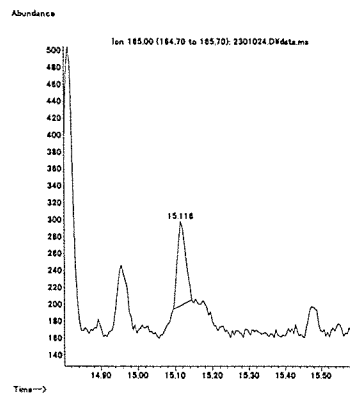
脂肪 (0.01 mg/kg 添加)



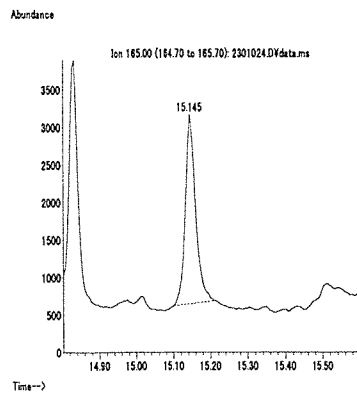
肝臓 (0.01 mg/kg 添加)



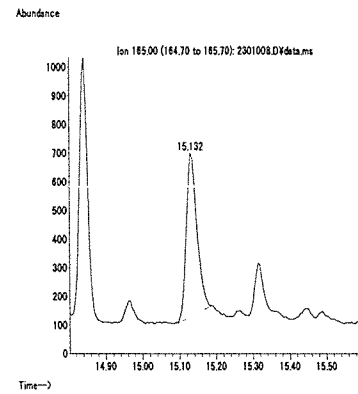
うなぎ (0.01 mg/kg 添加)



えび (0.01 mg/kg 添加)



牛乳 (0.01 mg/kg 添加)



卵 (0.01 mg/kg 添加)

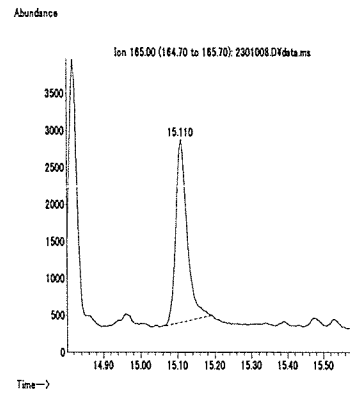
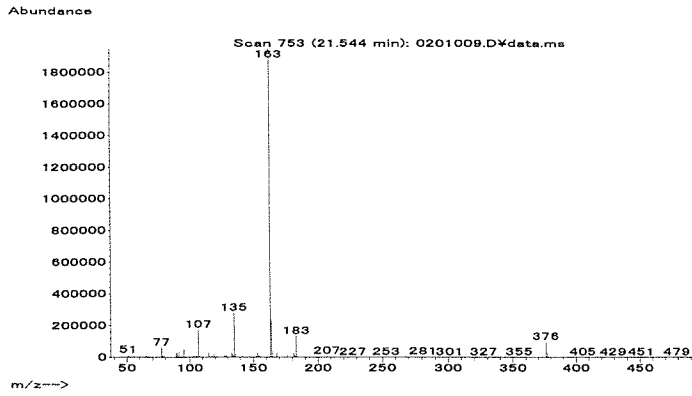


図 2. 最小検出量評価, 標準品, 回収試料のマスクロマトグラム (エチクロゼート)

マススペクトル



検量線

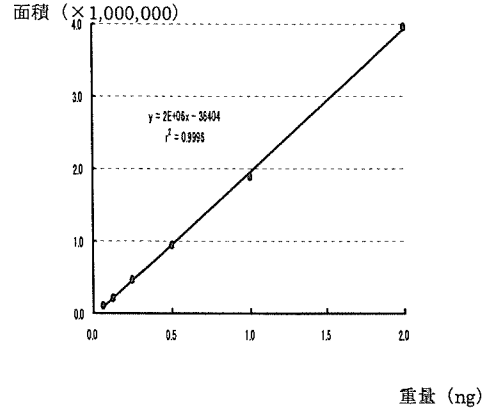
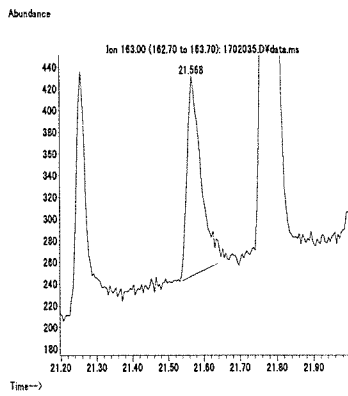
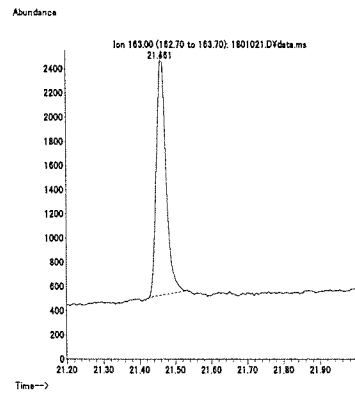


図 1. マススペクトルおよび検量線 (エトフェンプロックス)

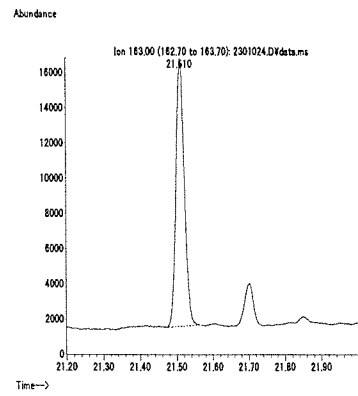
最小検出量評価 (0.01 ng)



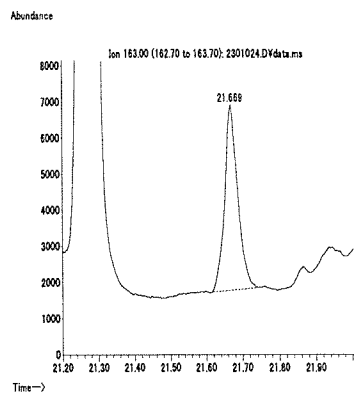
標準品 (0.125 ng)



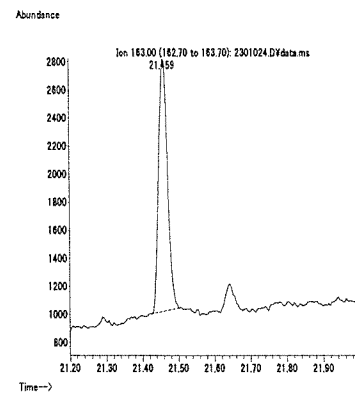
筋肉 (0.01 mg/kg 添加)



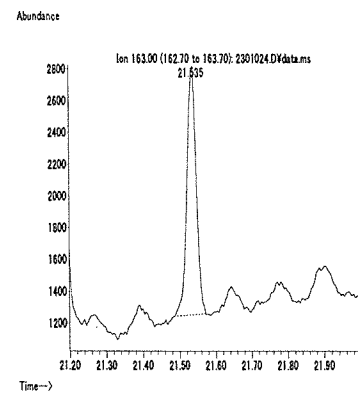
脂肪 (0.01 mg/kg 添加)



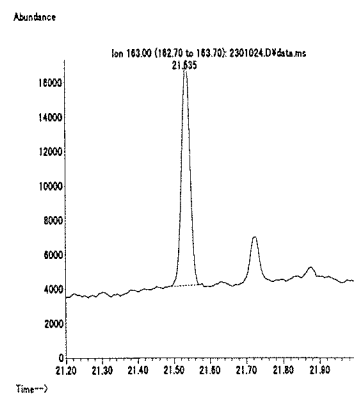
肝臓 (0.01 mg/kg 添加)



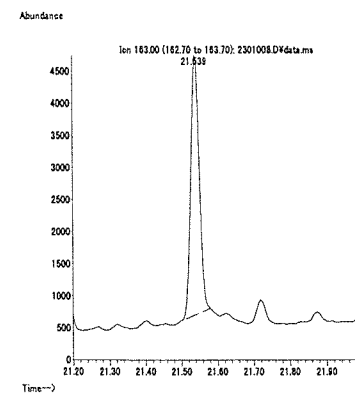
うなぎ (0.01 mg/kg 添加)



えび (0.01 mg/kg 添加)



牛乳 (0.01 mg/kg 添加)



卵 (0.01 mg/kg 添加)

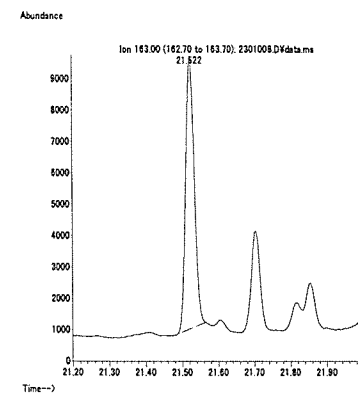
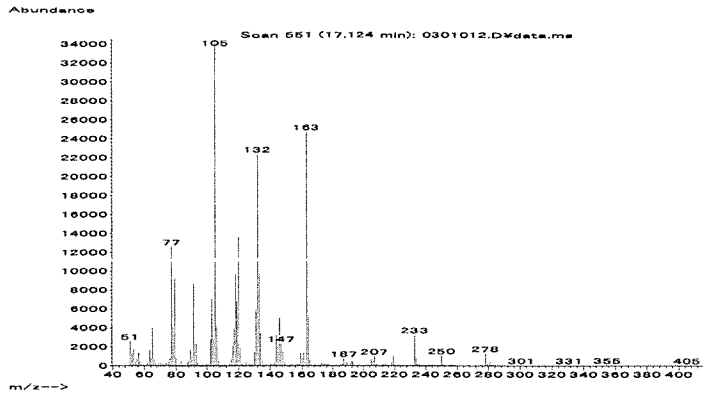


図 2. 最小検出量評価, 標準品, 回収試料のマスクロマトグラム (エトフェンプロックス)

マススペクトル



検量線

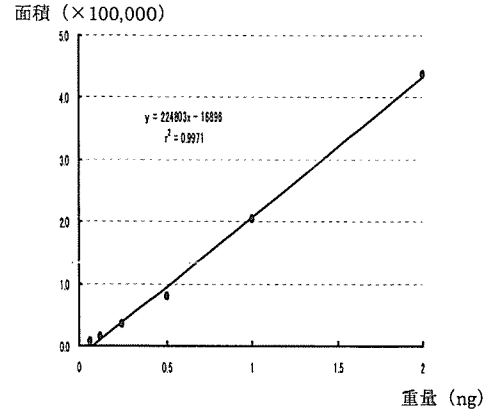
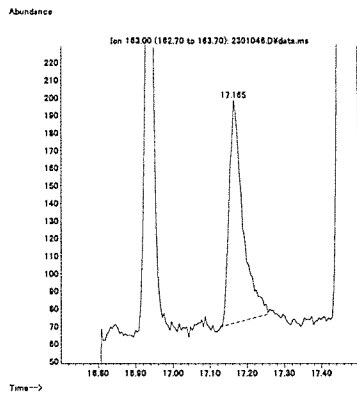
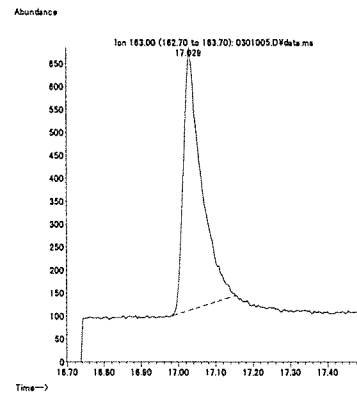


図1. マススペクトルおよび検量線 (オキサジキシル)

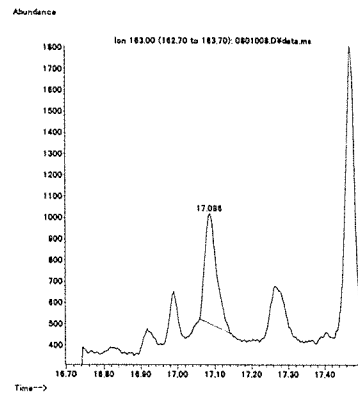
最小検出量評価 (0.04 ng)



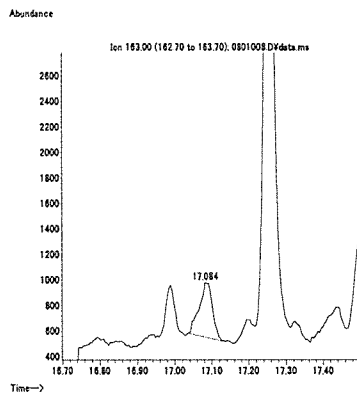
標準品 (0.125 ng)



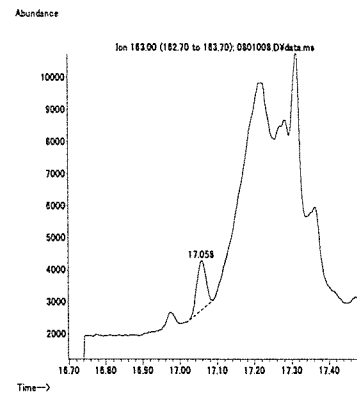
筋肉 (0.01 mg/kg 添加)



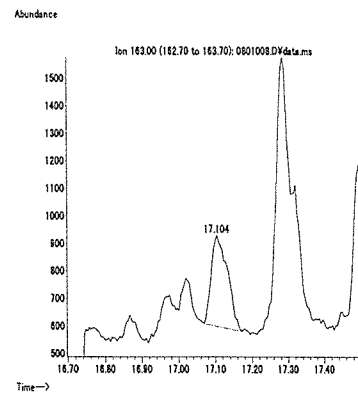
脂肪 (0.01 mg/kg 添加)



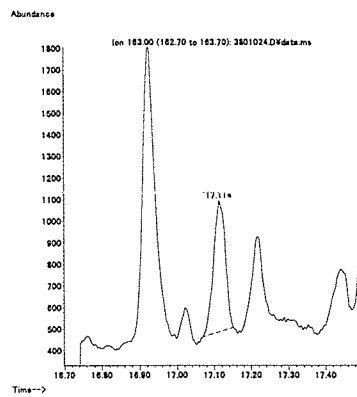
肝臓 (0.1 mg/kg 添加)



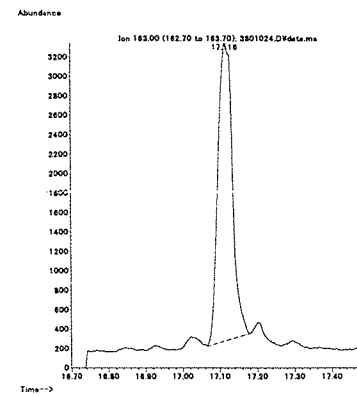
うなぎ (0.01 mg/kg 添加)



えび (0.01 mg/kg 添加)



牛乳 (0.01 mg/kg 添加)



卵 (0.01 mg/kg 添加)

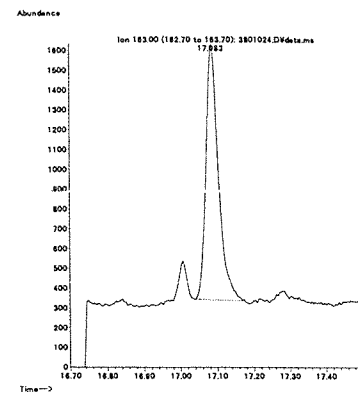
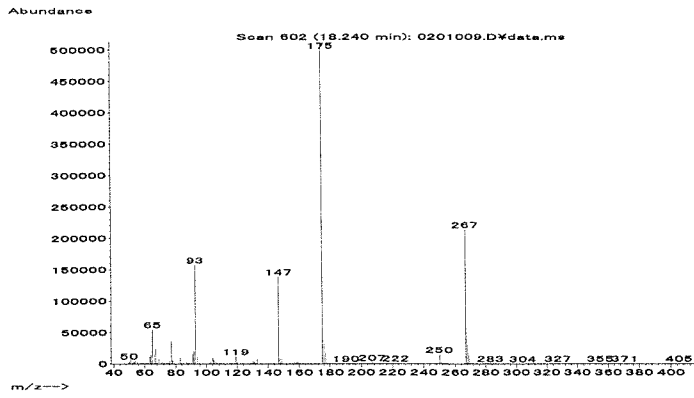


図2. 最小検出量評価, 標準品, 回収試料のマスキロマトグラム (オキサジキシル)

マススペクトル



検量線

面積 (×100,000)

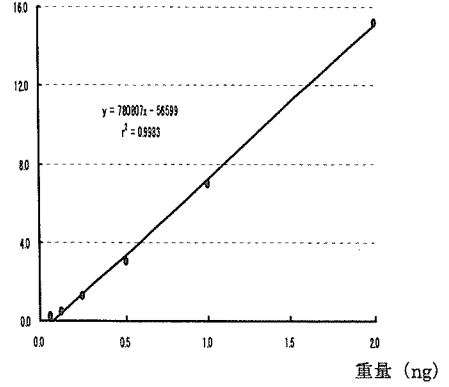
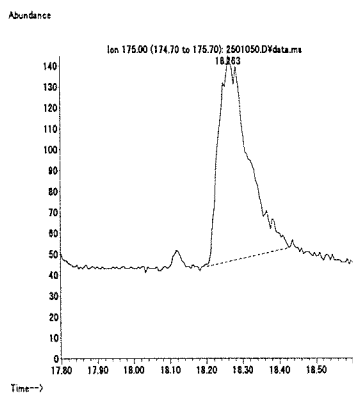
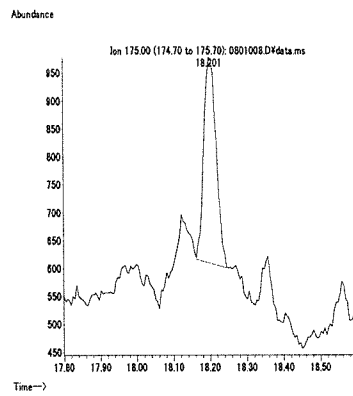


図 1. マススペクトルおよび検量線 (オキシカルボキシ)

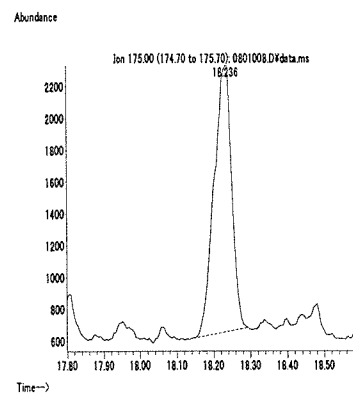
最小検出量評価 (0.1 ng)



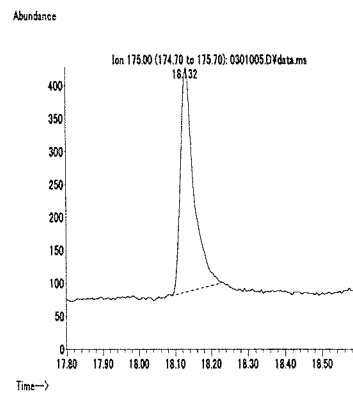
脂肪 (0.01 mg/kg 添加)



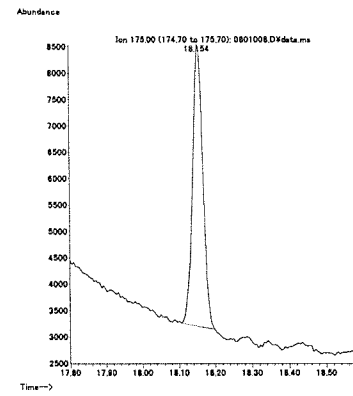
えび (0.1 mg/kg 添加)



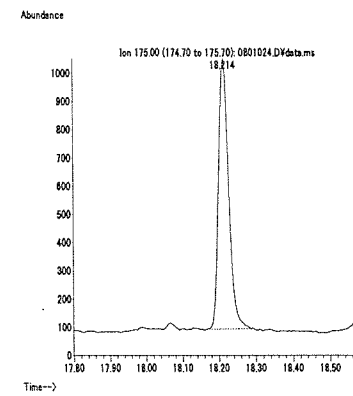
標準品 (0.125 ng)



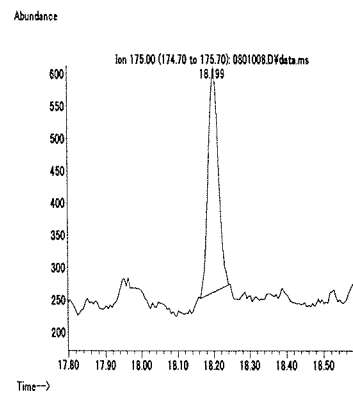
肝臓 (0.1 mg/kg 添加)



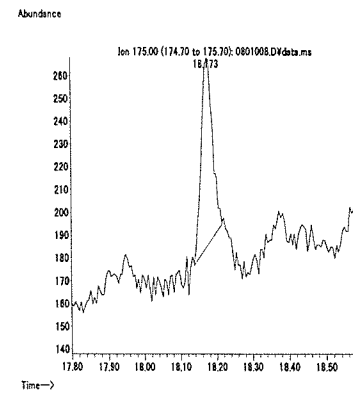
牛乳 (0.01 mg/kg 添加)



筋肉 (0.01 mg/kg 添加)



うなぎ (0.01 mg/kg 添加)



卵 (0.01 mg/kg 添加)

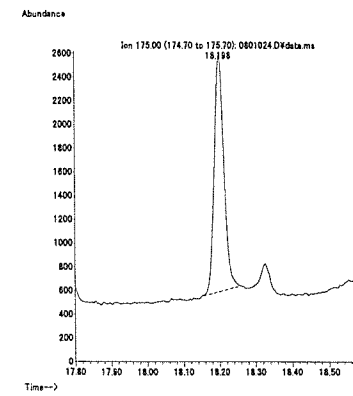
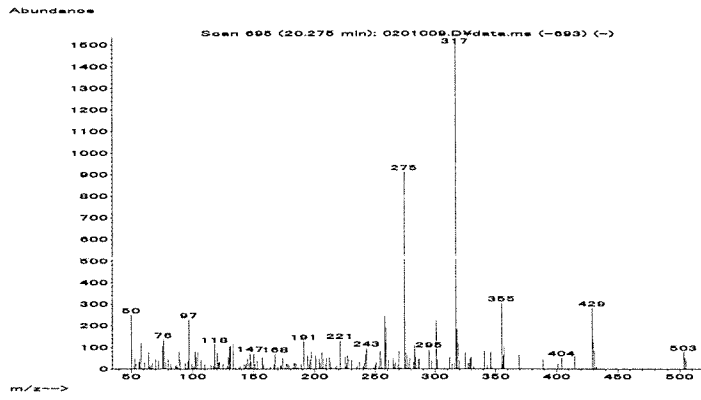
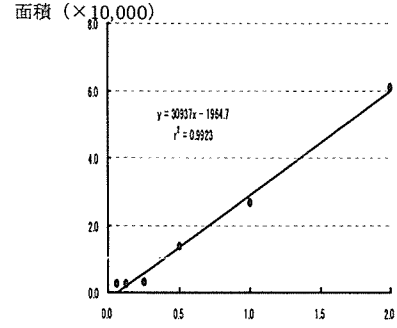


図 2. 最小検出量評価, 標準品, 回収試料のマスキロマトグラム (オキシカルボキシ)

マススペクトル



検量線



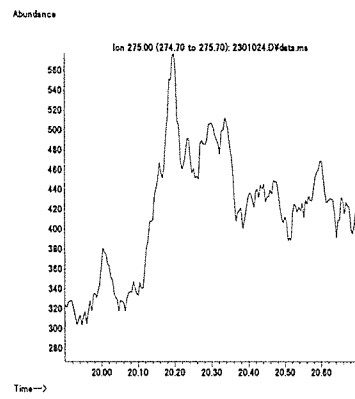
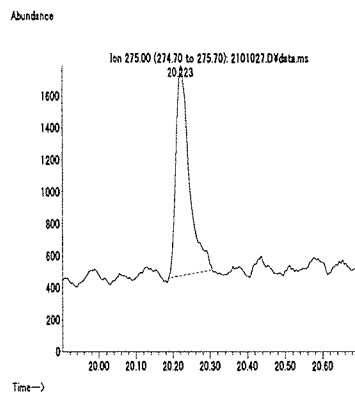
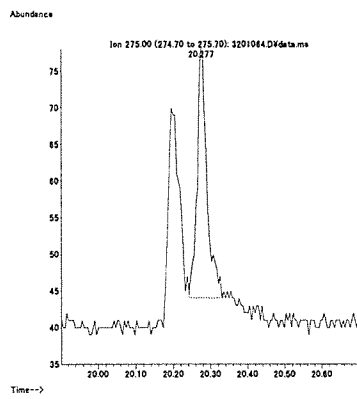
重量 (ng)

図1. マススペクトルおよび検量線 (オリザリン)

最小検出量評価 (0.4 ng)

標準品 (1 g)

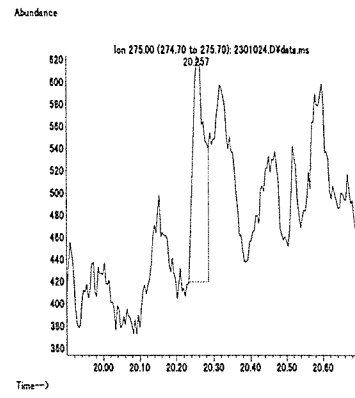
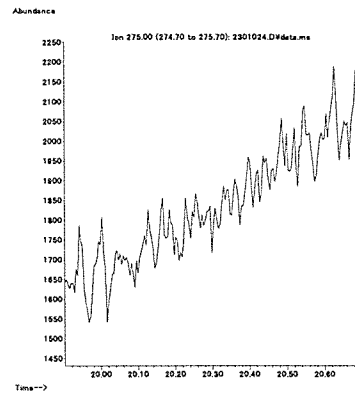
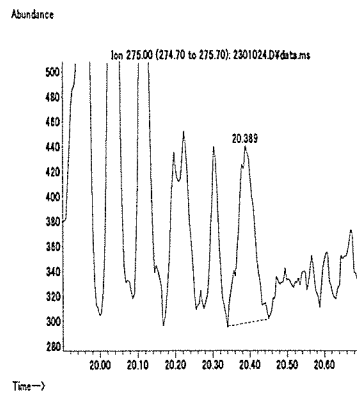
筋肉 (0.1 mg/kg 添加)



脂肪 (0.1 mg/kg 添加)

肝臓 (0.1 mg/kg 添加)

うなぎ (0.1 mg/kg 添加)



えび (0.1 mg/kg 添加)

牛乳 (0.1 mg/kg 添加)

卵 (0.1 mg/kg 添加)

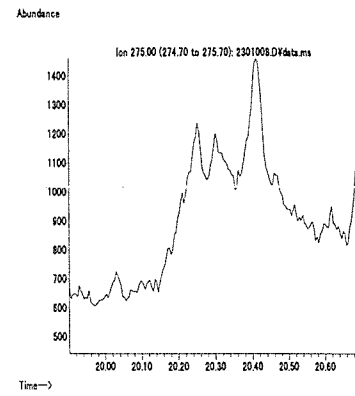
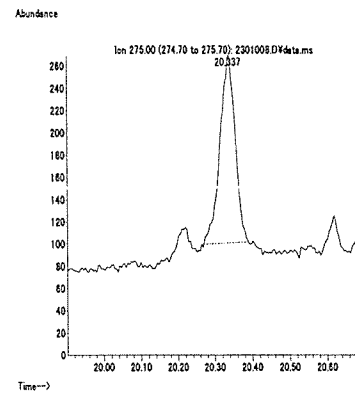
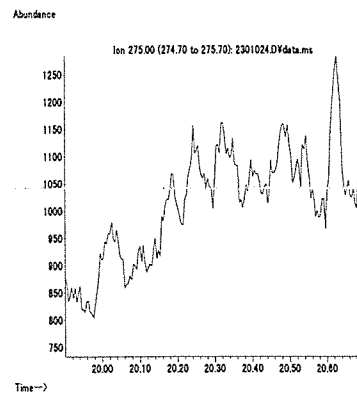
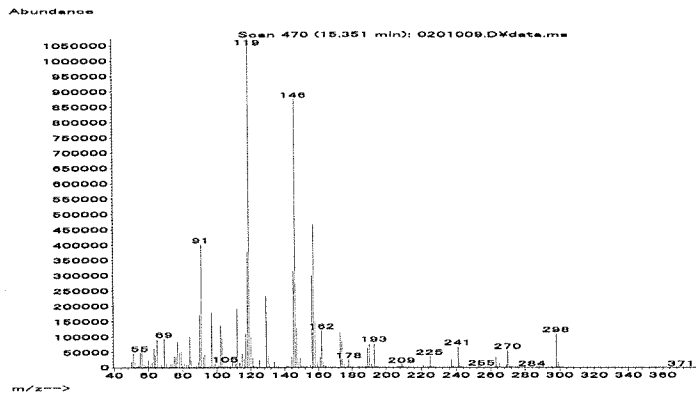


図2. 最小検出量評価, 標準品, 回収試料のマスキロマトグラム (オリザリン)

マススペクトル



検量線

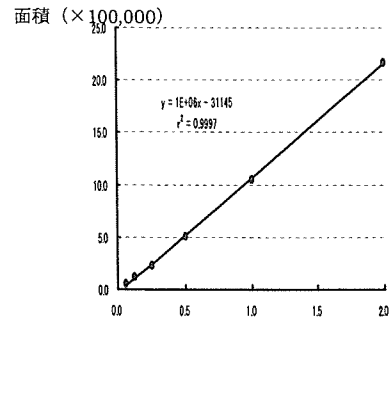
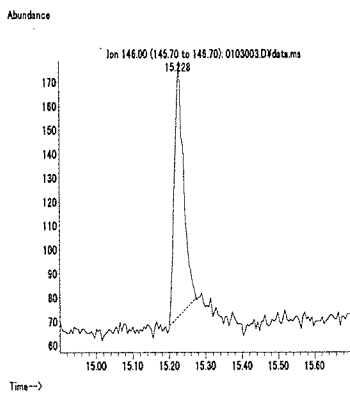


図 1. マススペクトルおよび検量線 (キナルホス)

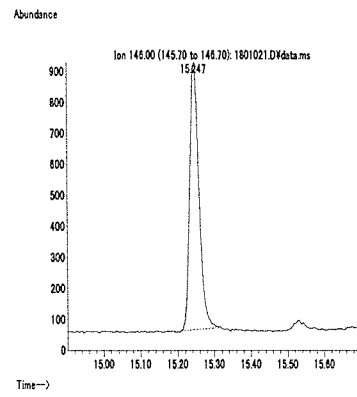
最小検出量評価 (0.004 ng)

標準品 (0.125 ng)

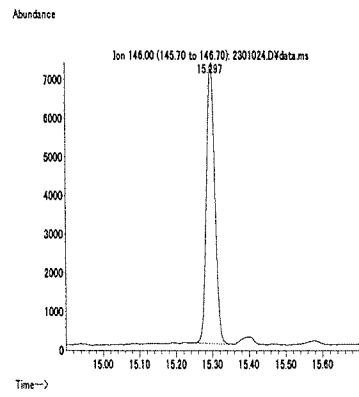
筋肉 (0.01 mg/kg 添加)



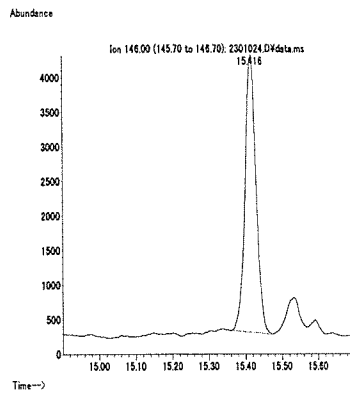
脂肪 (0.01 mg/kg 添加)



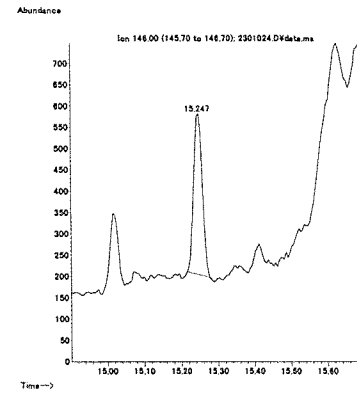
肝臓 (0.01 mg/kg 添加)



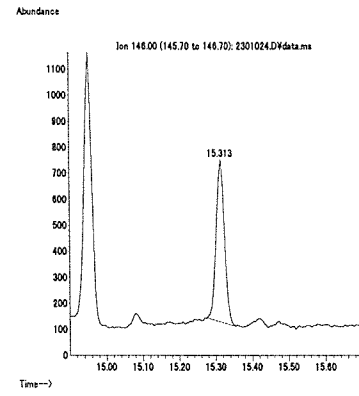
うなぎ (0.01 mg/kg 添加)



えび (0.01 mg/kg 添加)



牛乳 (0.01 mg/kg 添加)



卵 (0.01 mg/kg 添加)

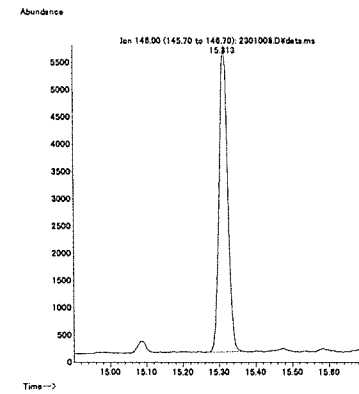
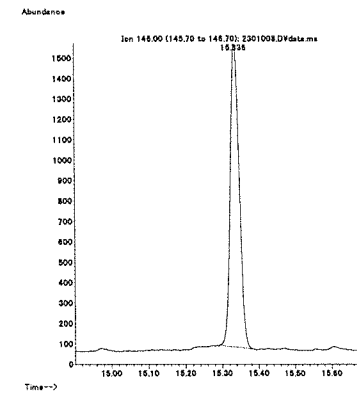
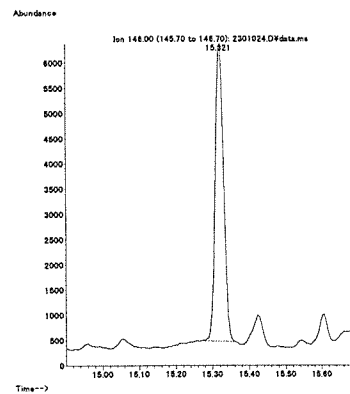
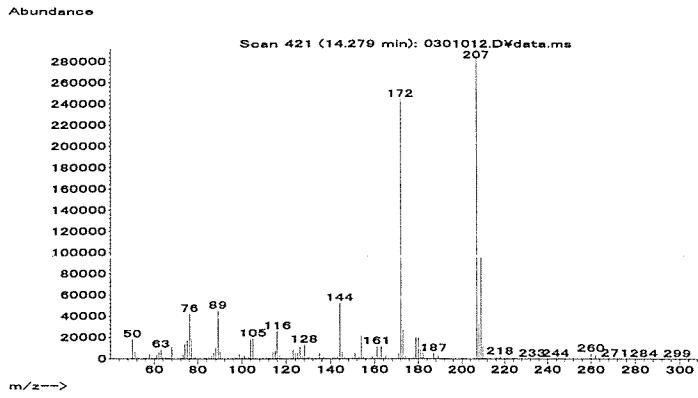


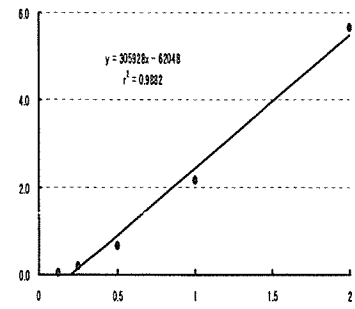
図 2. 最小検出量評価, 標準品, 回収試料のマスキロマトグラム (キナルホス)

マススペクトル



検量線

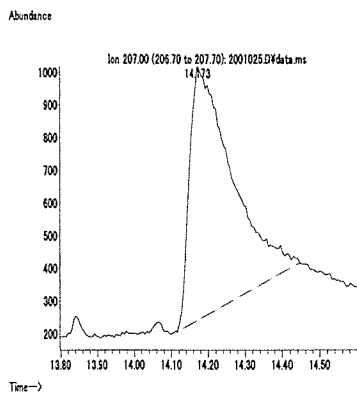
面積 (×100,000)



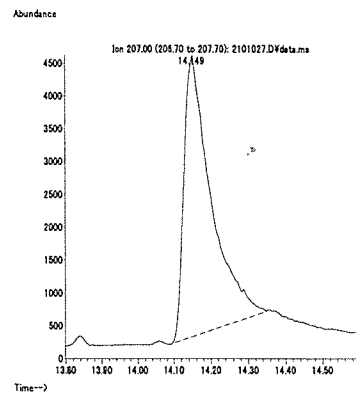
重量 (ng)

図1. マススペクトルおよび検量線 (キノクラミン)

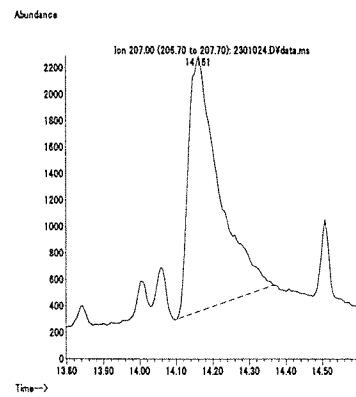
最小検出量評価 (0.5 ng)



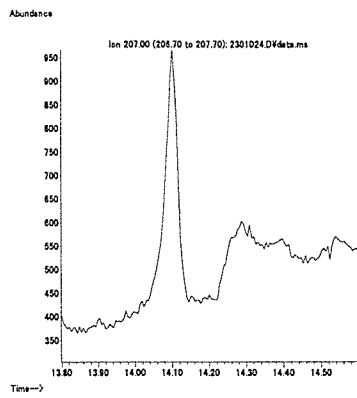
標準品 (1 ng)



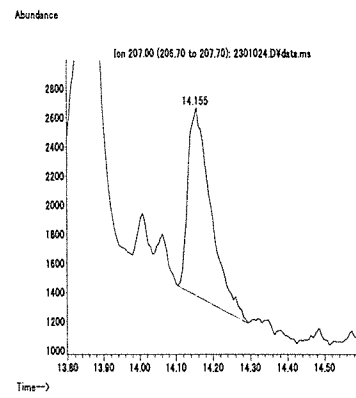
筋肉 (0.1 mg/kg 添加)



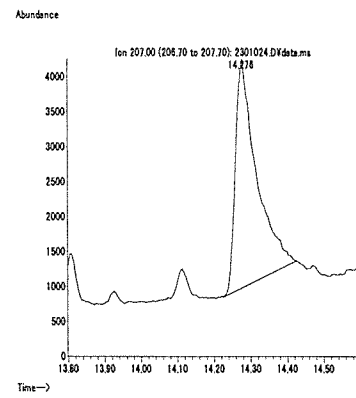
脂肪 (0.1 mg/kg 添加)



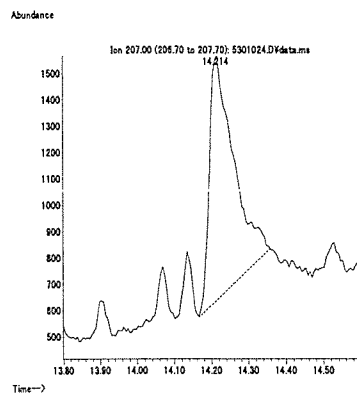
肝臓 (0.1 mg/kg 添加)



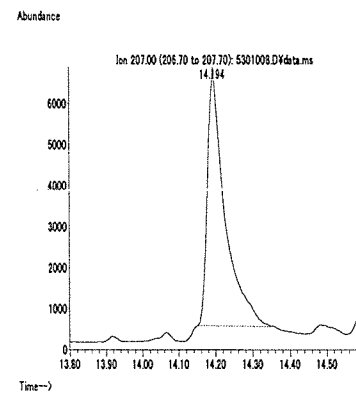
うなぎ (0.1 mg/kg 添加)



えび (0.1 mg/kg 添加)



牛乳 (0.1 mg/kg 添加)



卵 (0.1 mg/kg 添加)

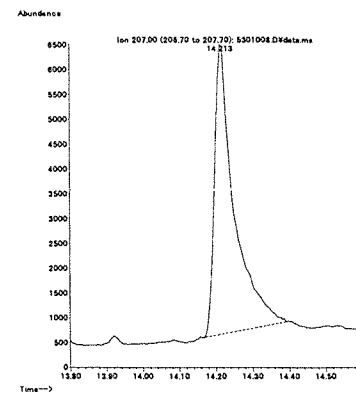
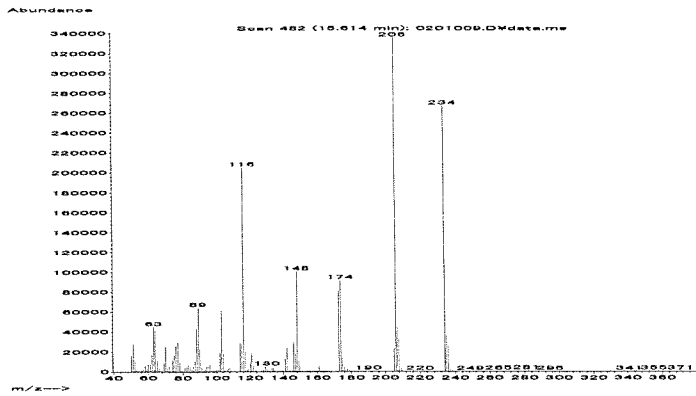


図2. 最小検出量評価, 標準品, 回収試料のマスキログラム (キノクラミン)



マススペクトル



検量線

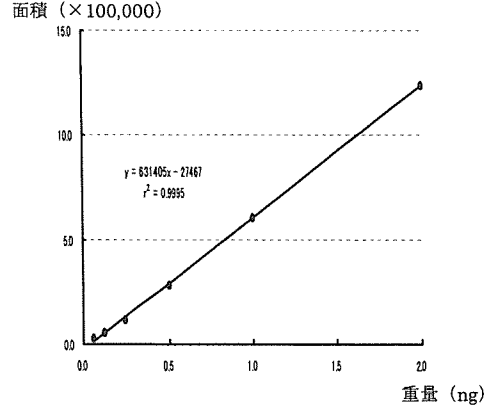
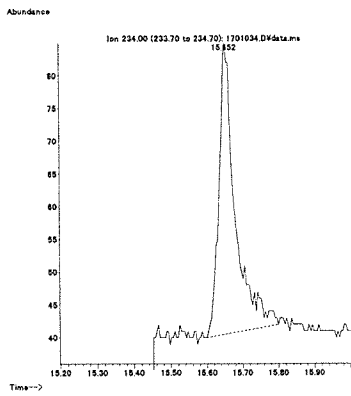
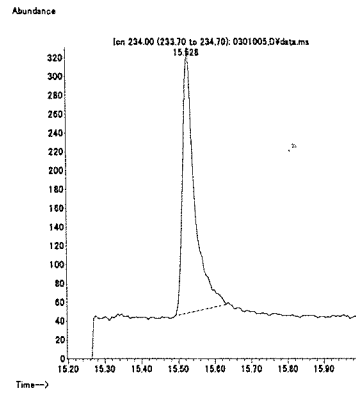


図 1. マススペクトルおよび検量線 (キノメチオナート)

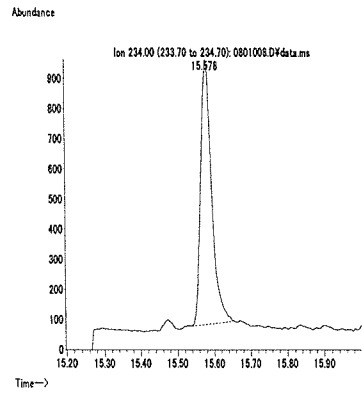
最小検出量評価 (0.01 ng)



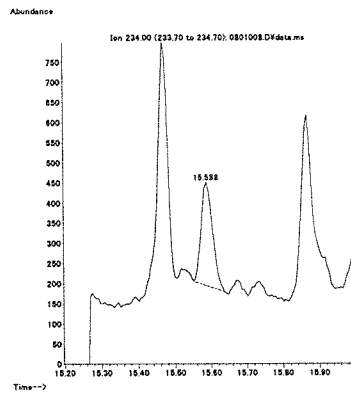
標準品 (0.125 ng)



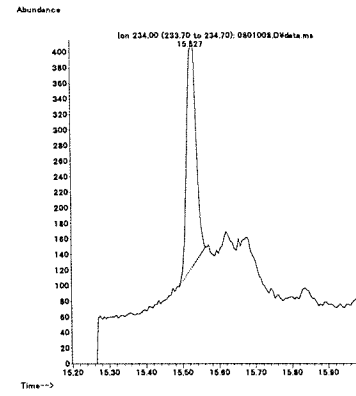
筋肉 (0.01 mg/kg 添加)



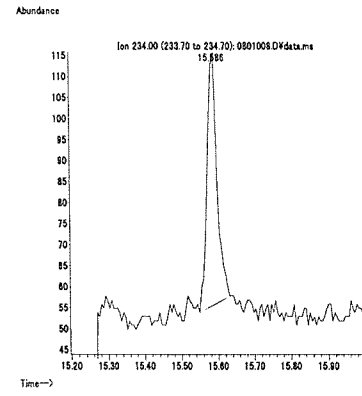
脂肪 (0.01 mg/kg 添加)



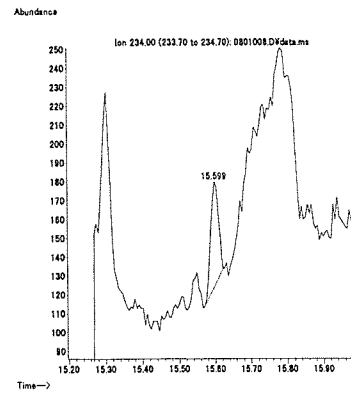
肝臓 (0.01 mg/kg 添加)



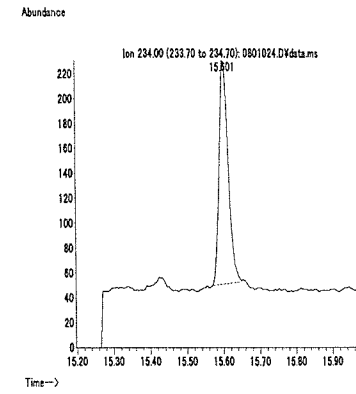
うなぎ (0.01 mg/kg 添加)



えび (0.01 mg/kg 添加)



牛乳 (0.01 mg/kg 添加)



卵 (0.01 mg/kg 添加)

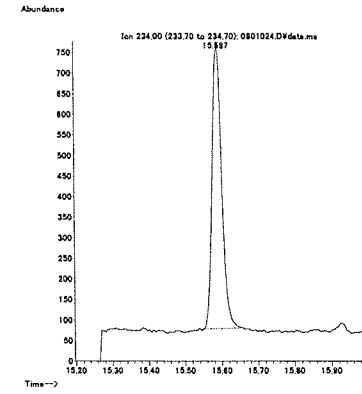
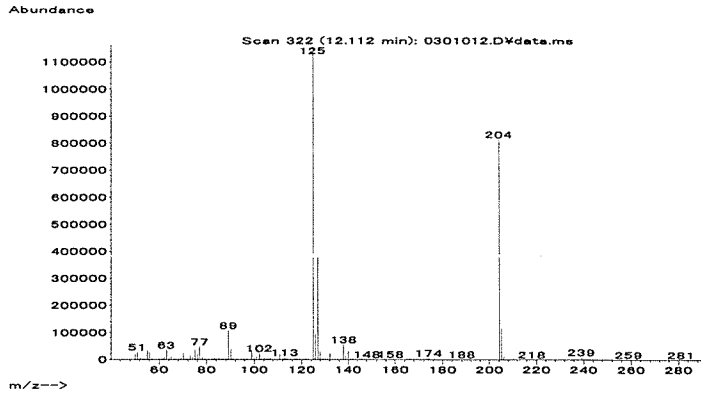


図 2. 最小検出量評価, 標準品, 回収試料のマスクロマトグラム (キノメチオナート)

マススペクトル



検量線

面積 (×100,000)

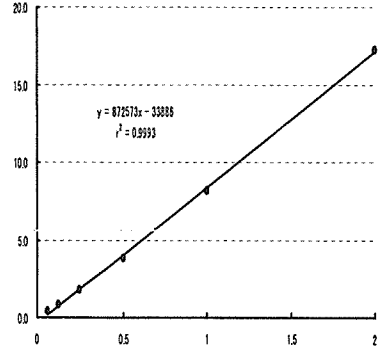
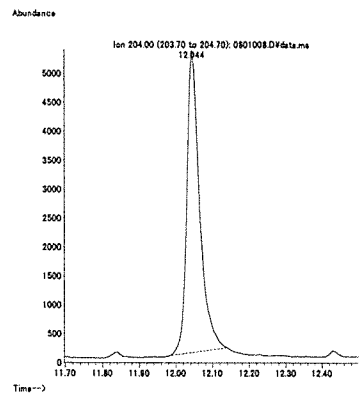
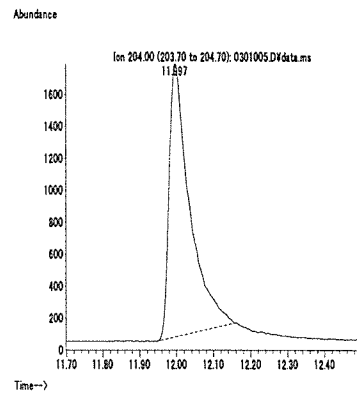
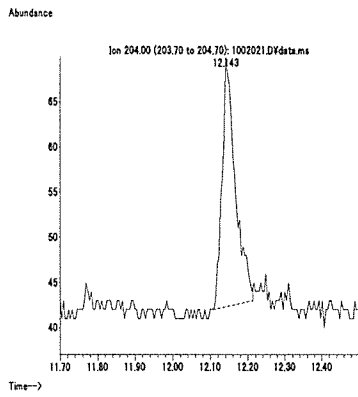


図1. マススペクトルおよび検量線 (クロマゾン)

最小検出量評価 (0.002 ng)

標準品 (0.125 ng)

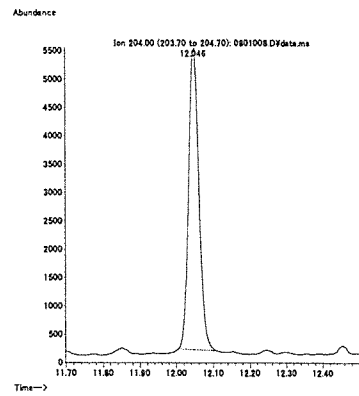
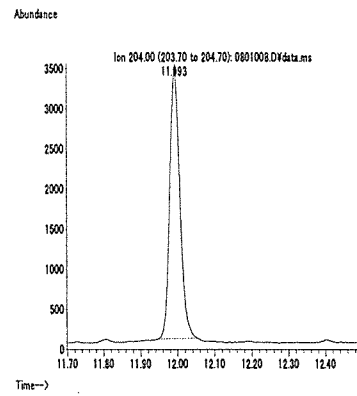
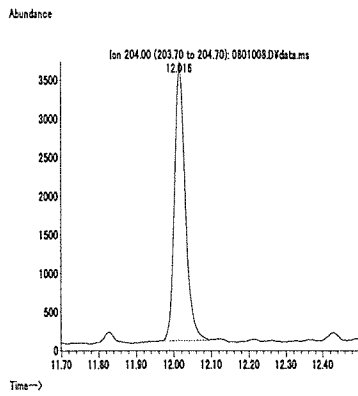
筋肉 (0.01 mg/kg 添加)



脂肪 (0.01 mg/kg 添加)

肝臓 (0.01 mg/kg 添加)

うなぎ (0.01 mg/kg 添加)



えび (0.01 mg/kg 添加)

牛乳 (0.01 mg/kg 添加)

卵 (0.01 mg/kg 添加)

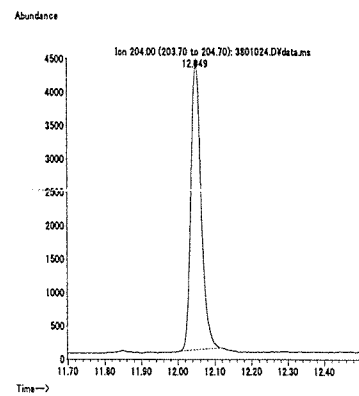
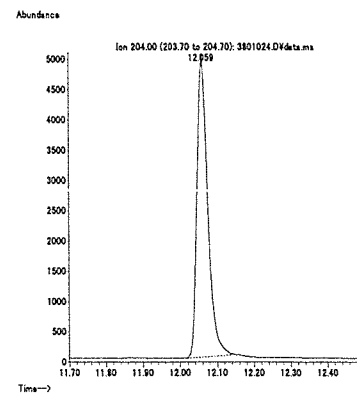
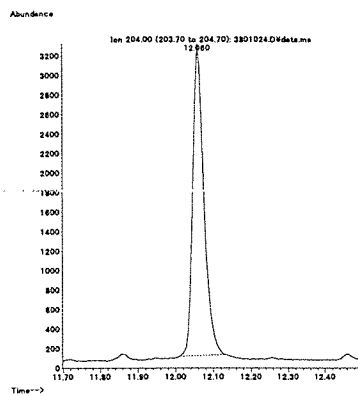
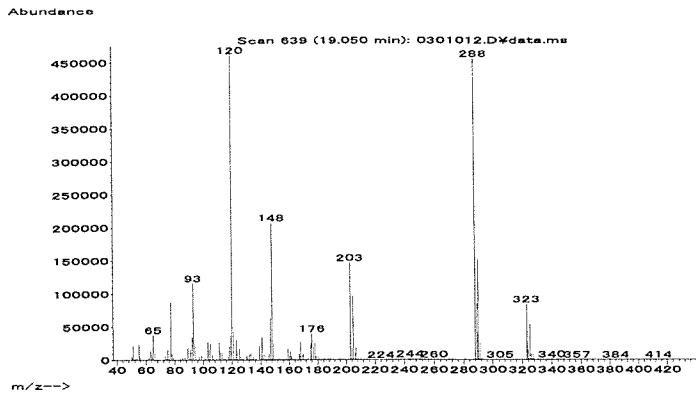


図2. 最小検出量評価, 標準品, 回収試料のマスキロマトグラム (クロマゾン)

マススペクトル



検量線

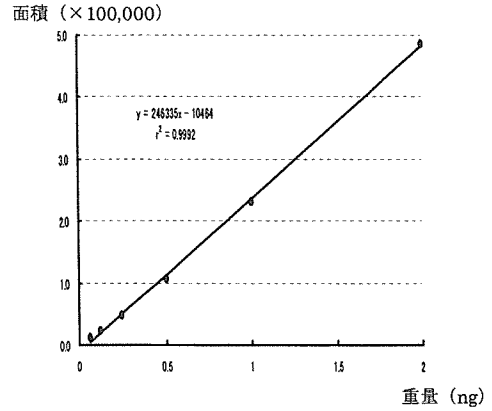
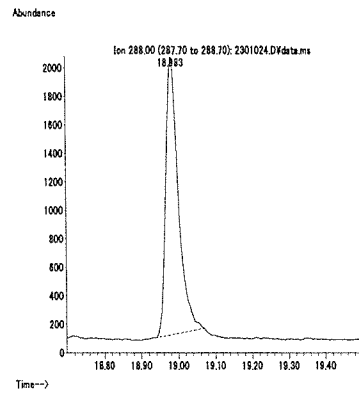
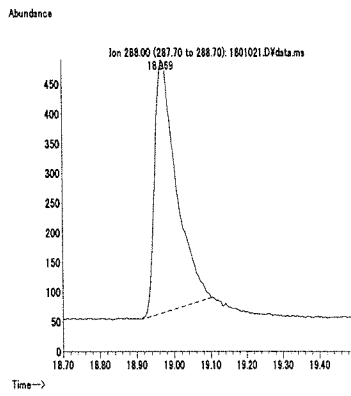
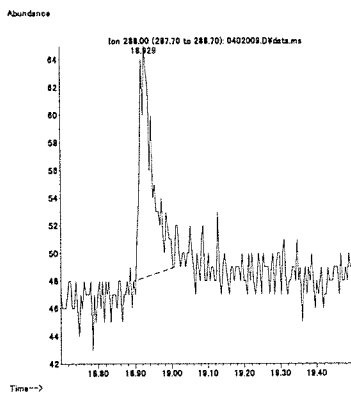


図 1. マススペクトルおよび検量線 (クロメプロップ)

最小検出量評価 (0.004 ng)

標準品 (0.125 ng)

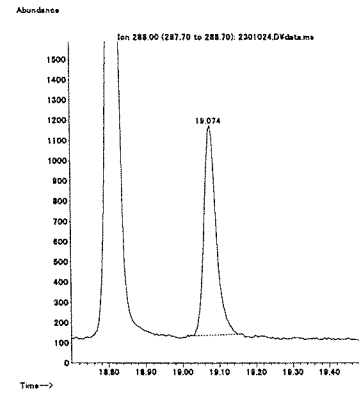
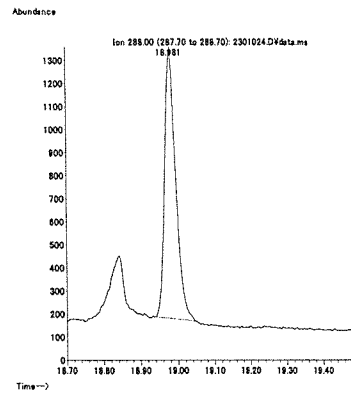
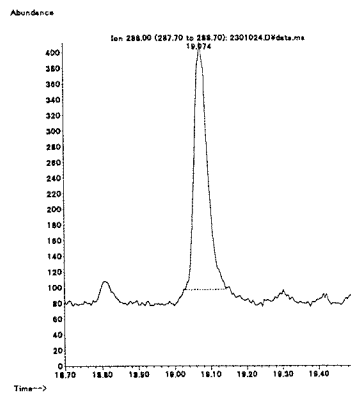
筋肉 (0.01 mg/kg 添加)



脂肪 (0.01 mg/kg 添加)

肝臓 (0.01 mg/kg 添加)

うなぎ (0.01 mg/kg 添加)



えび (0.01 mg/kg 添加)

牛乳 (0.01 mg/kg 添加)

卵 (0.01 mg/kg 添加)

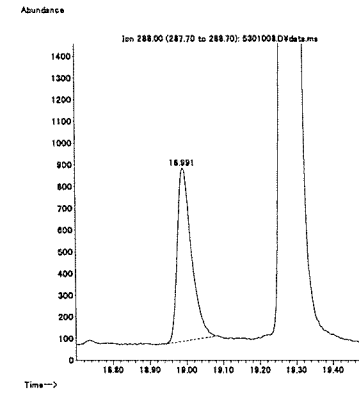
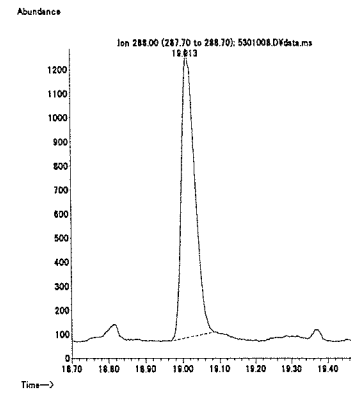
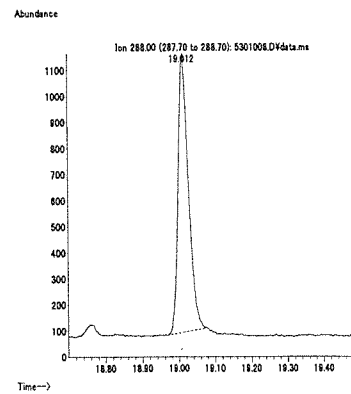
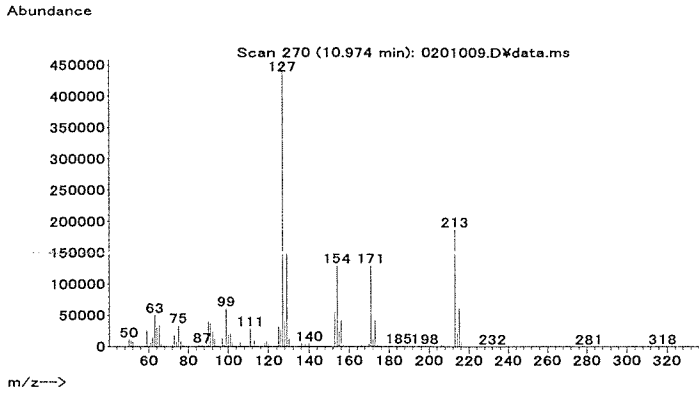


図 2. 最小検出量評価, 標準品, 回収試料のマスクロマトグラム (クロメプロップ)

マススペクトル



検量線

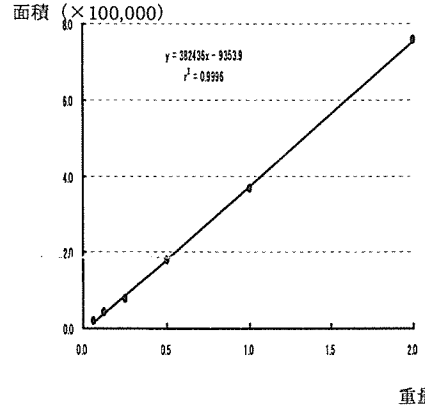
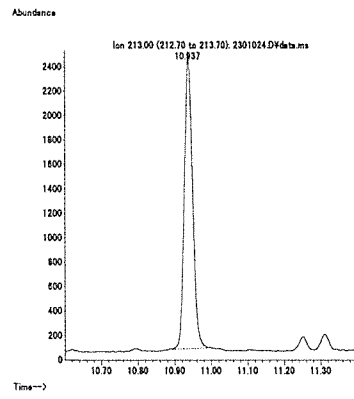
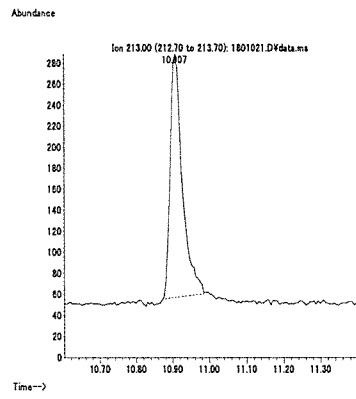
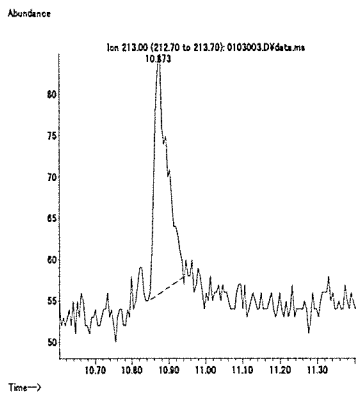


図 1. マススペクトルおよび検量線 (クロルプロファム)

最小検出量評価 (0.004 ng)

標準品 (0.125 ng)

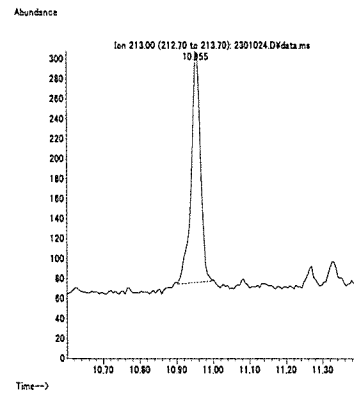
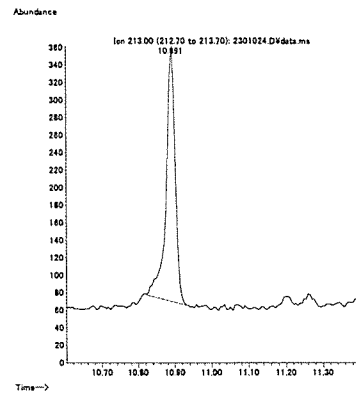
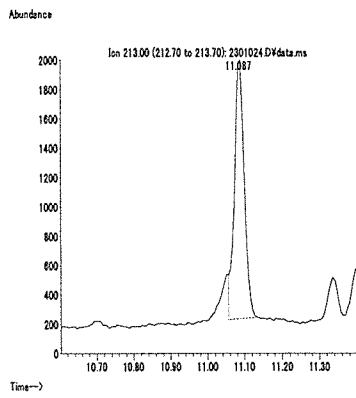
筋肉 (0.01 mg/kg 添加)



脂肪 (0.01 mg/kg 添加)

肝臓 (0.01 mg/kg 添加)

うなぎ (0.01 mg/kg 添加)



えび (0.01 mg/kg 添加)

牛乳 (0.01 mg/kg 添加)

卵 (0.01 mg/kg 添加)

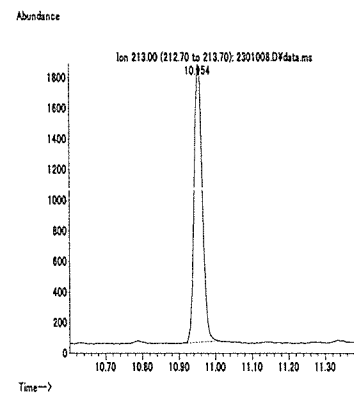
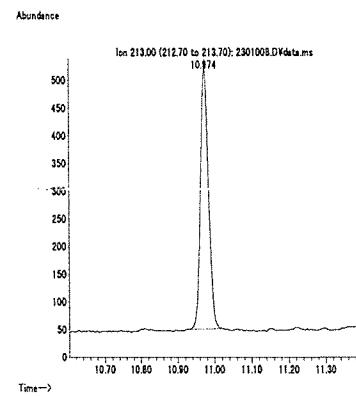
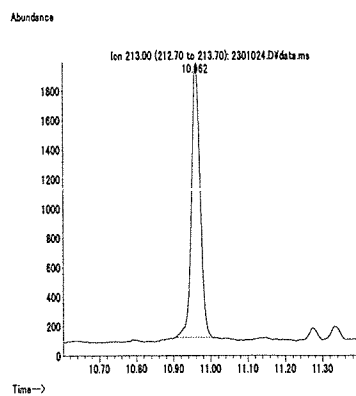
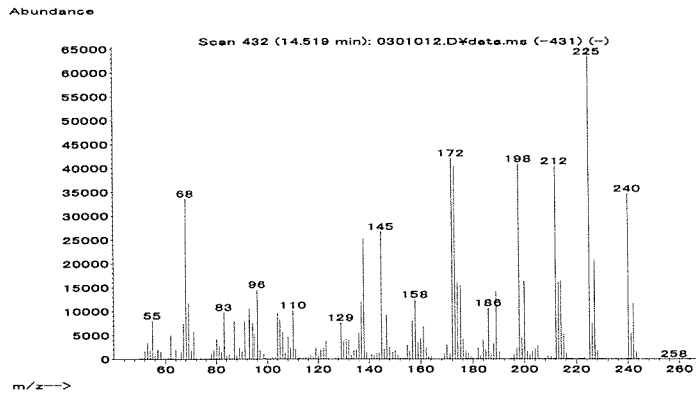


図 2. 最小検出量評価, 標準品, 回収試料のマスクロマトグラム (クロルプロファム)

マススペクトル



検量線

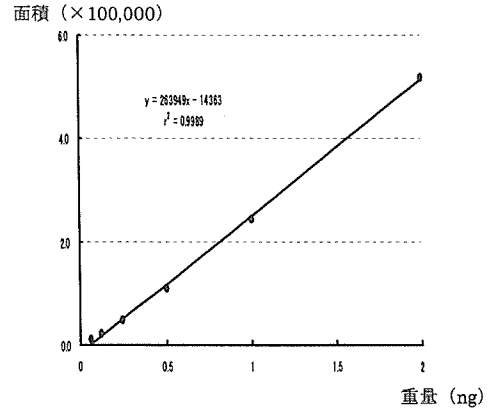
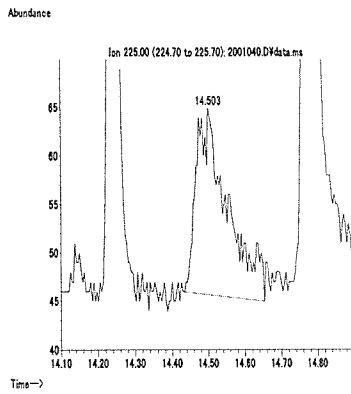
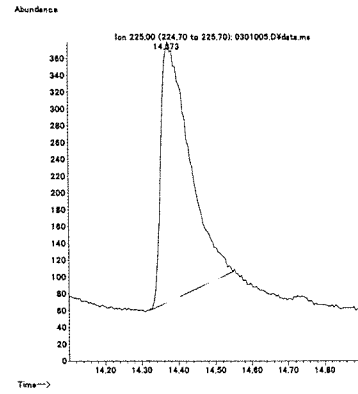


図 1. マススペクトルおよび検量線 (シアナジン)

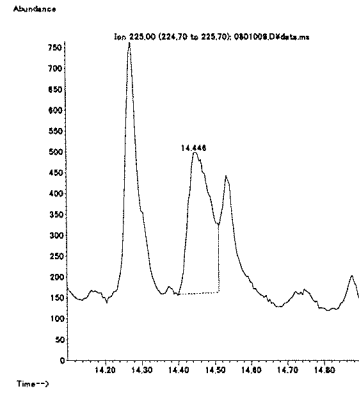
最小検出量評価 (0.02 ng)



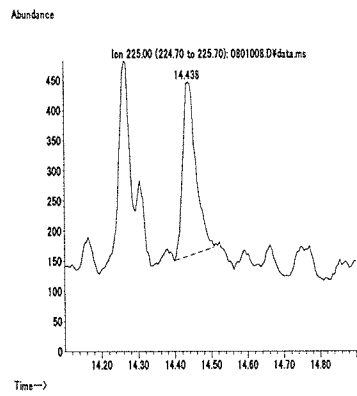
標準品 (0.125 ng)



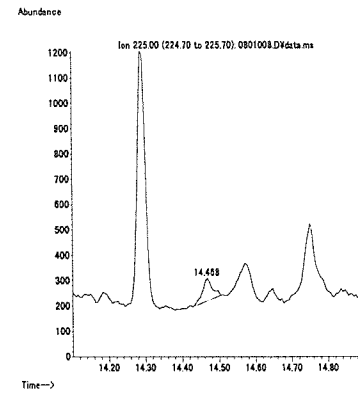
筋肉 (0.01 mg/kg 添加)



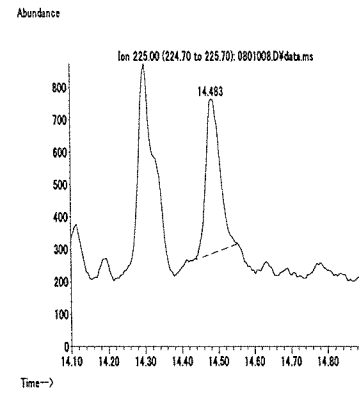
脂肪 (0.01 mg/kg 添加)



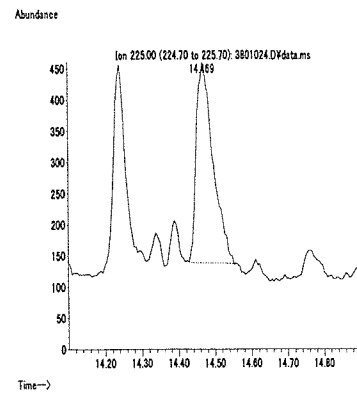
肝臓 (0.01 mg/kg 添加)



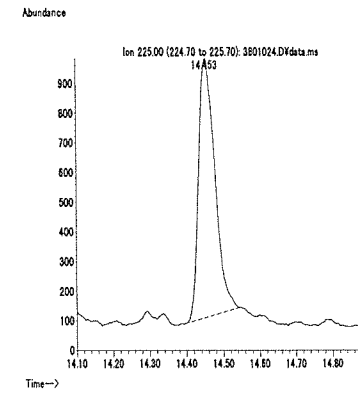
うなぎ (0.01 mg/kg 添加)



えび (0.01 mg/kg 添加)



牛乳 (0.01 mg/kg 添加)



卵 (0.01 mg/kg 添加)

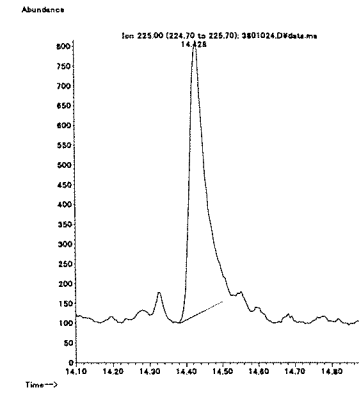
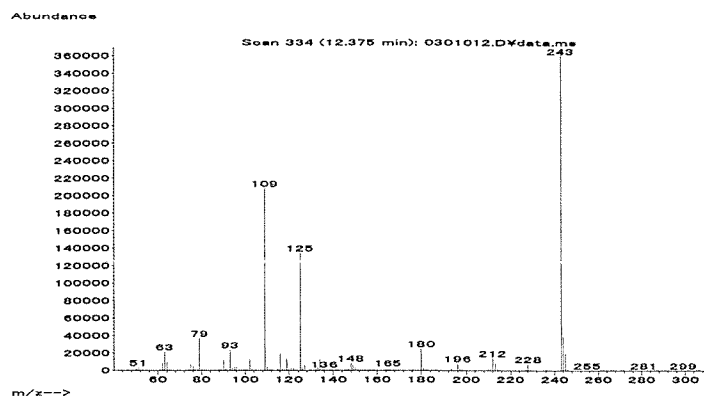


図 2. 最小検出量評価, 標準品, 回収試料のマスクロマトグラム (シアナジン)

マススペクトル



検量線

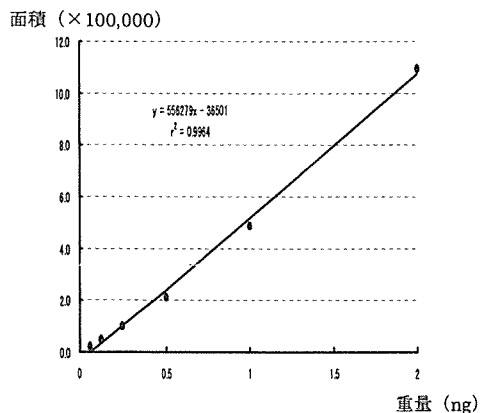
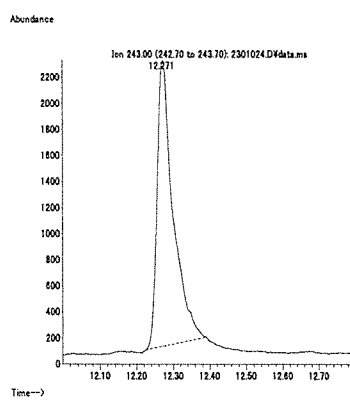
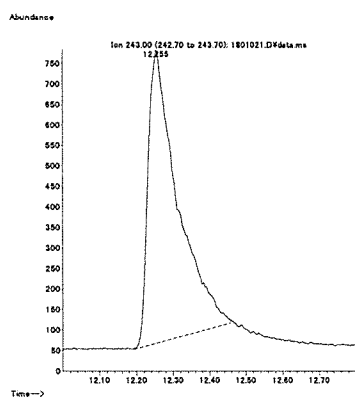
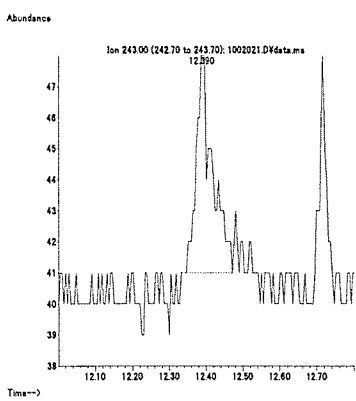


図 1. マススペクトルおよび検量線 (シアノホス)

最小検出量評価 (0.002 ng)

標準品 (0.125 ng)

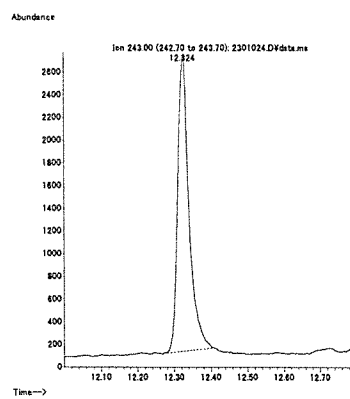
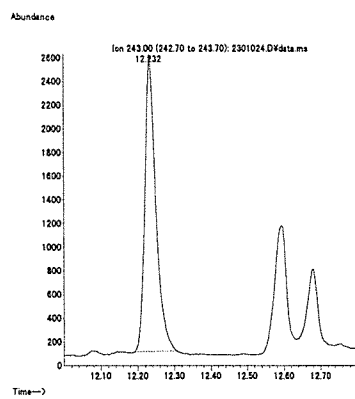
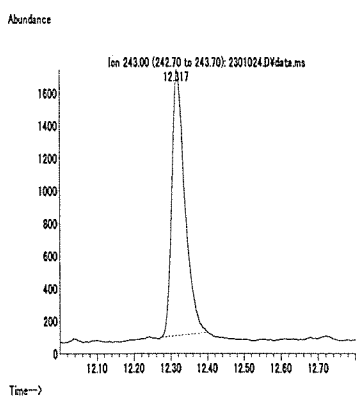
筋肉 (0.01 mg/kg 添加)



脂肪 (0.01 mg/kg 添加)

肝臓 (0.01 mg/kg 添加)

うなぎ (0.01 mg/kg 添加)



えび (0.01 mg/kg 添加)

牛乳 (0.01 mg/kg 添加)

卵 (0.01 mg/kg 添加)

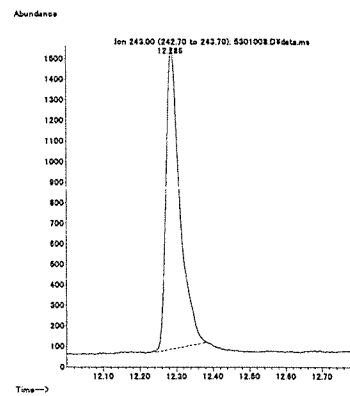
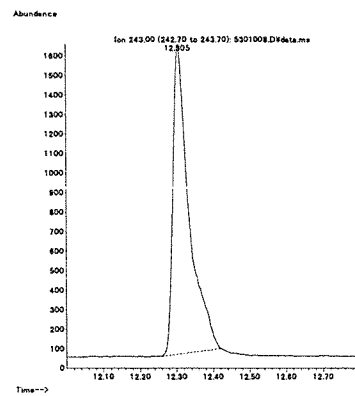
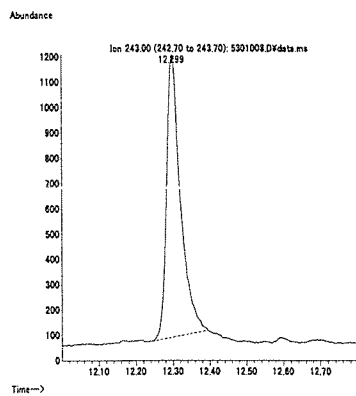
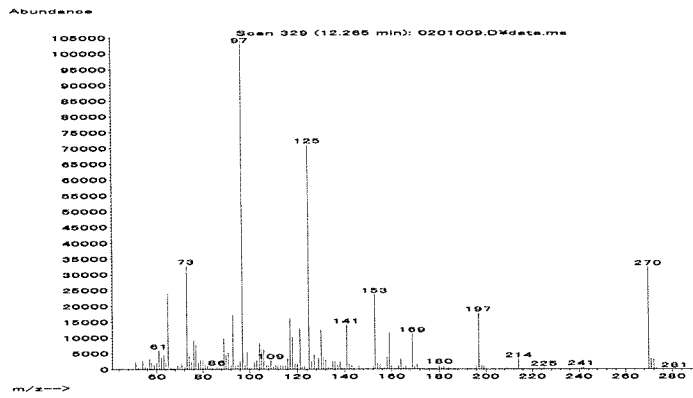


図 2. 最小検出量評価, 標準品, 回収試料のマスキロマトグラム (シアノホス)

マススペクトル



検量線

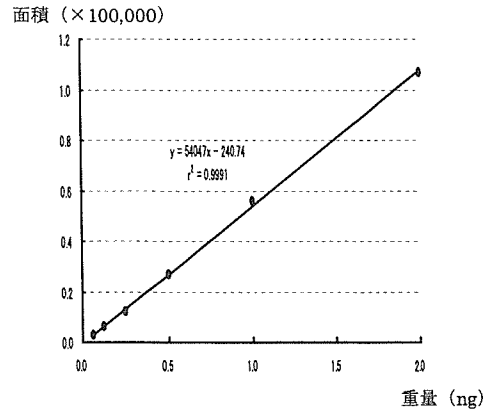
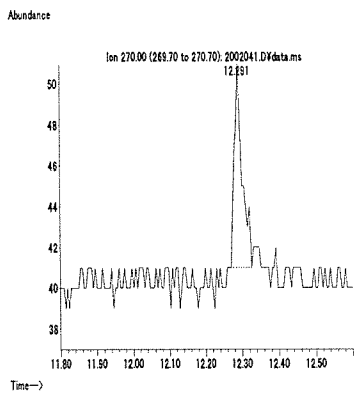
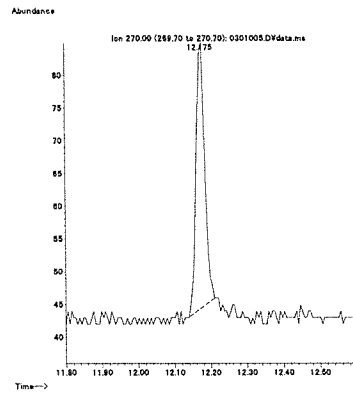


図 1. マススペクトルおよび検量線 (ジオキサチオン)

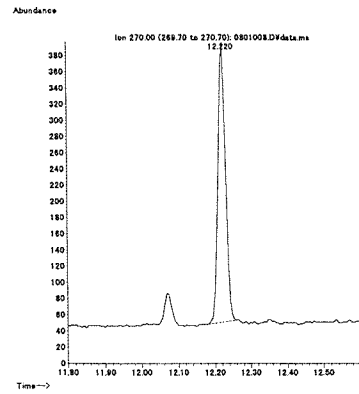
最小検出量評価 (0.02 ng)



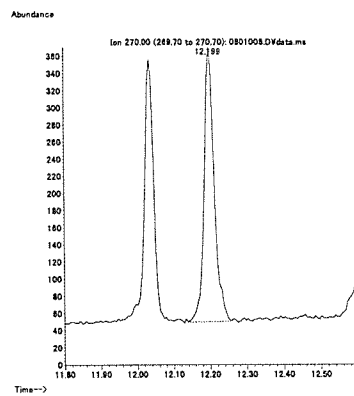
標準品 (0.125 ng)



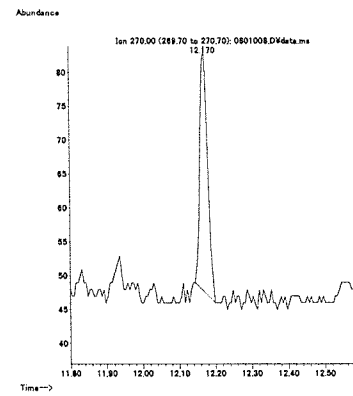
筋肉 (0.01 mg/kg 添加)



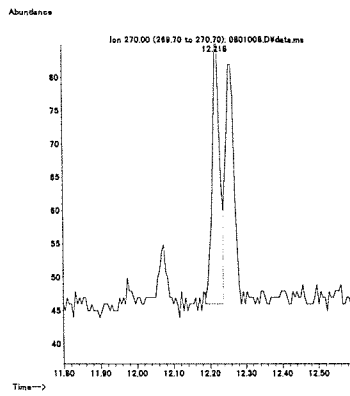
脂肪 (0.01 mg/kg 添加)



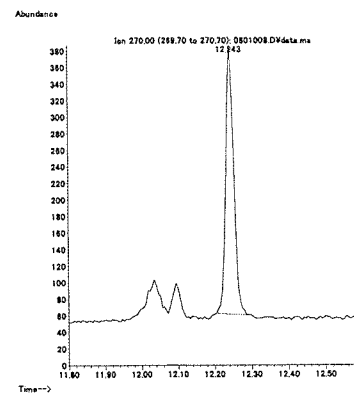
肝臓 (0.01 mg/kg 添加)



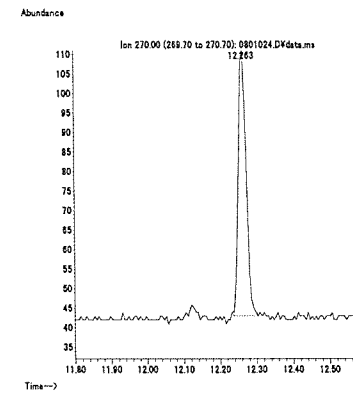
うなぎ (0.01 mg/kg 添加)



えび (0.01 mg/kg 添加)



牛乳 (0.01 mg/kg 添加)



卵 (0.01 mg/kg 添加)

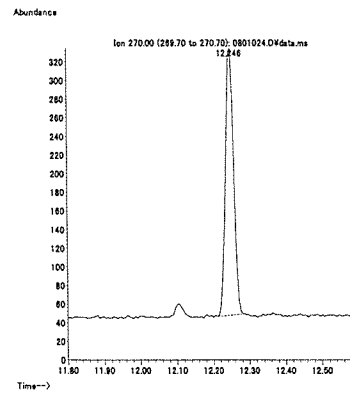
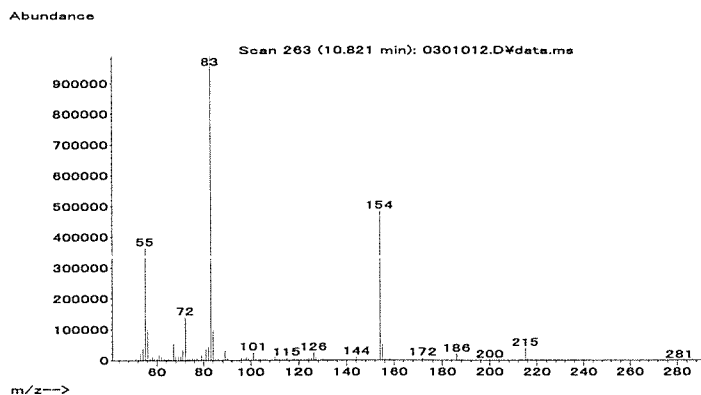


図 2. 最小検出量評価, 標準品, 回収試料のマスクロマトグラム (ジオキサチオン)

マススペクトル



検量線

面積 (×100,000)

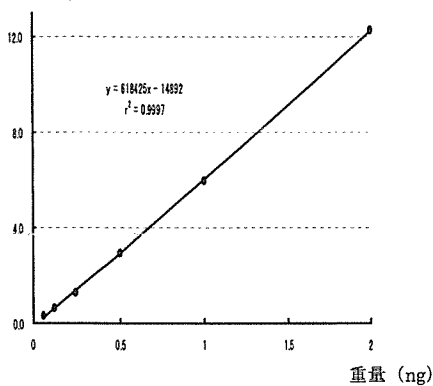
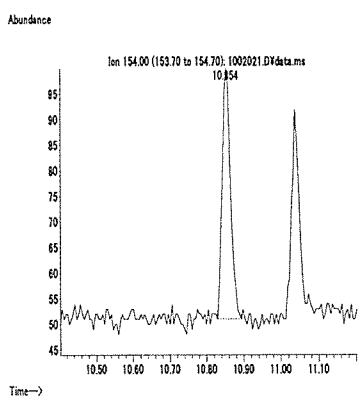
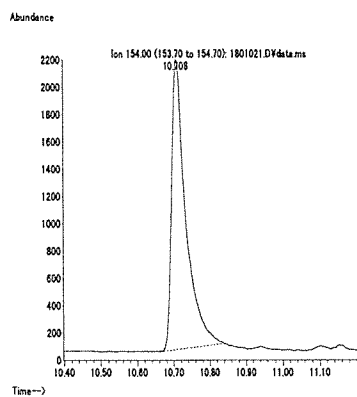


図 1. マススペクトルおよび検量線 (シクロエート)

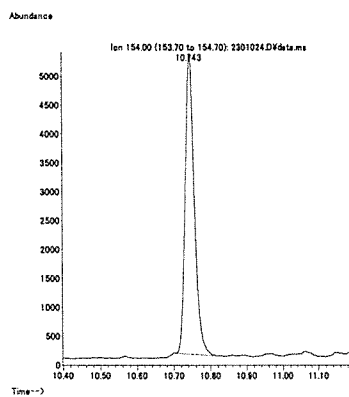
最小検出量評価 (0.002 ng)



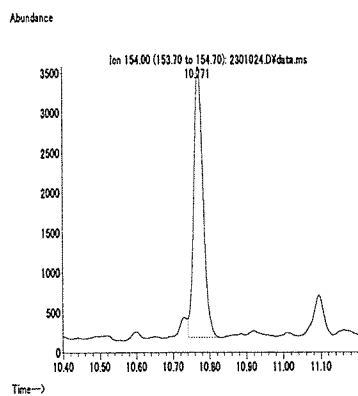
標準品 (0.125 ng)



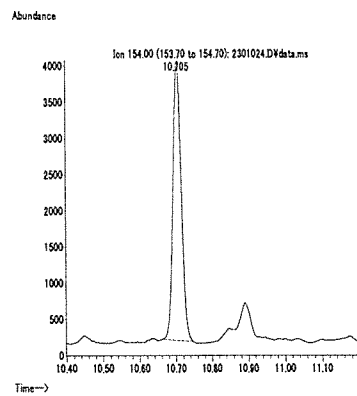
筋肉 (0.01 mg/kg 添加)



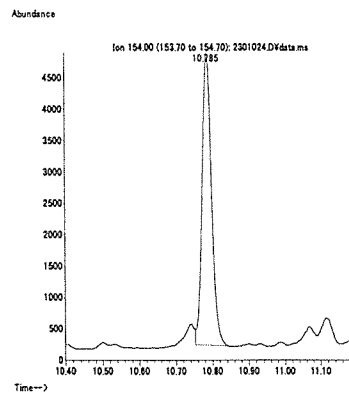
脂肪 (0.01 mg/kg 添加)



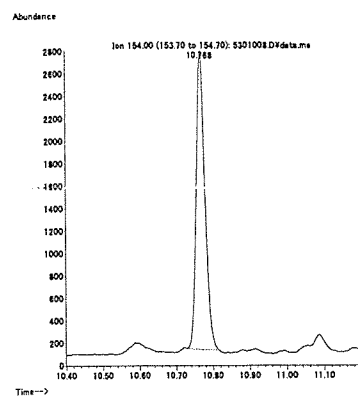
肝臓 (0.01 mg/kg 添加)



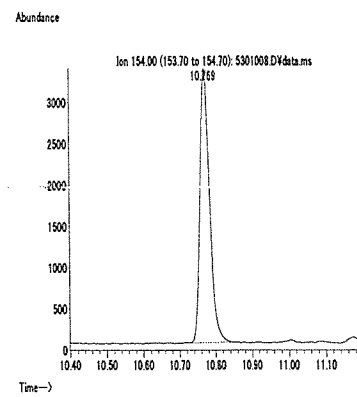
うなぎ (0.01 mg/kg 添加)



えび (0.01 mg/kg 添加)



牛乳 (0.01 mg/kg 添加)



卵 (0.01 mg/kg 添加)

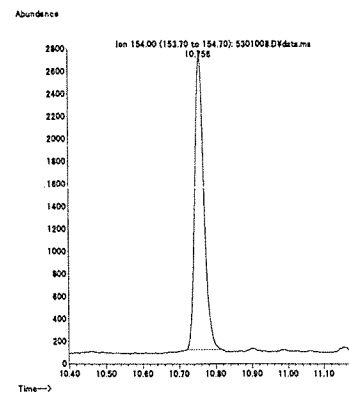
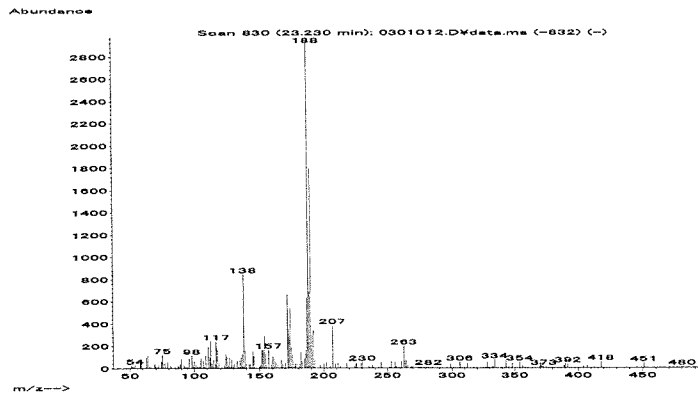


図 2. 最小検出量評価, 標準品, 回収試料のマスキロマトグラム (シクロエート)



マススペクトル



検量線

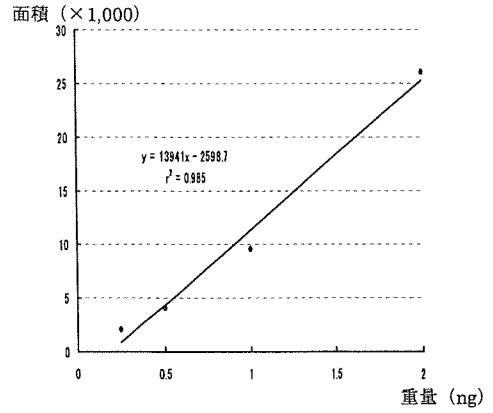
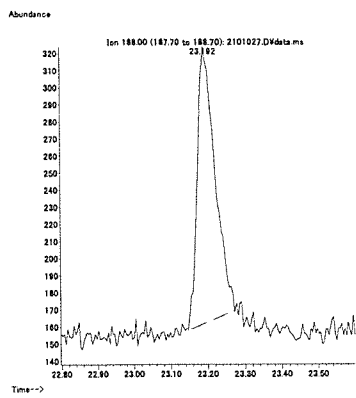
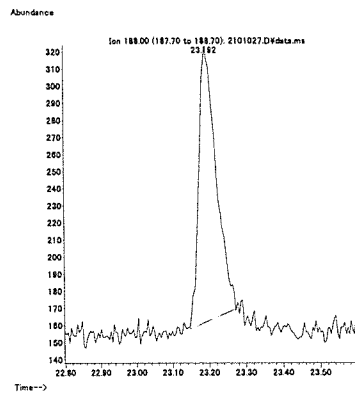


図 1. マススペクトルおよび検量線 (ジクロスラム)

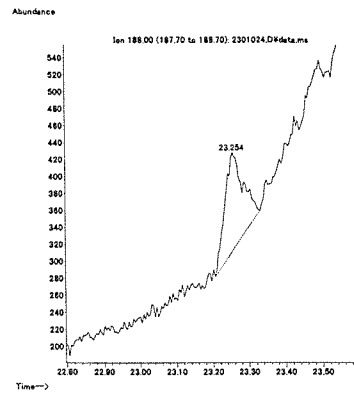
最小検出量評価 (1 ng)



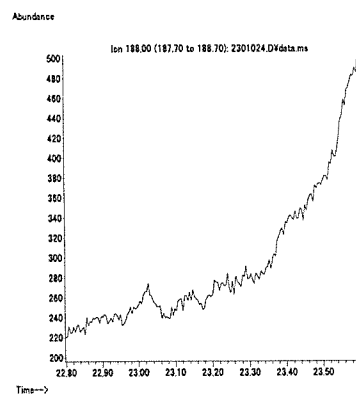
標準品 (1 ng)



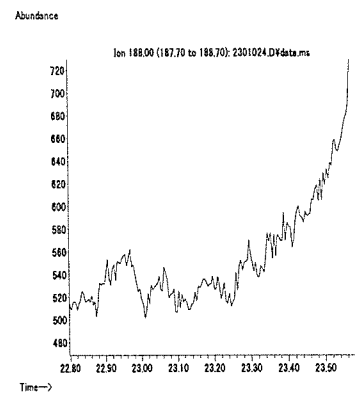
筋肉 (0.1 mg/kg 添加)



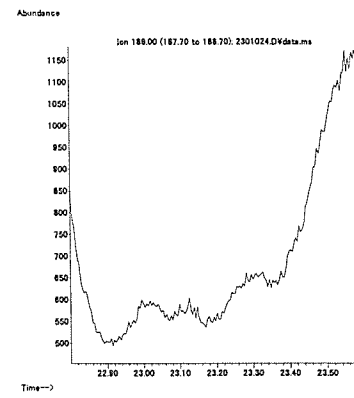
脂肪 (0.1 mg/kg 添加)



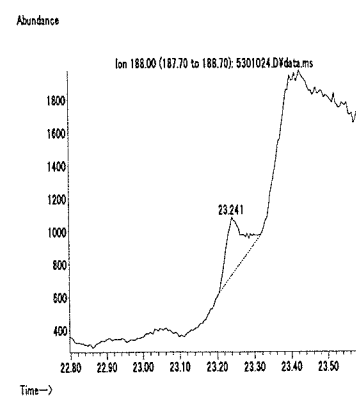
肝臓 (0.1 mg/kg 添加)



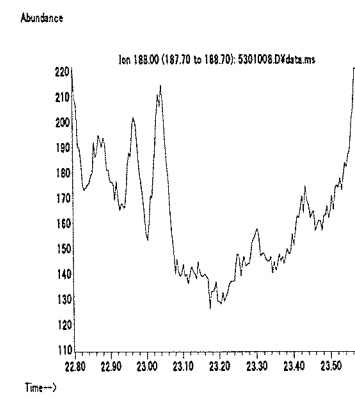
うなぎ (0.1 mg/kg 添加)



えび (0.1 mg/kg 添加)



牛乳 (0.1 mg/kg 添加)



卵 (0.1 mg/kg 添加)

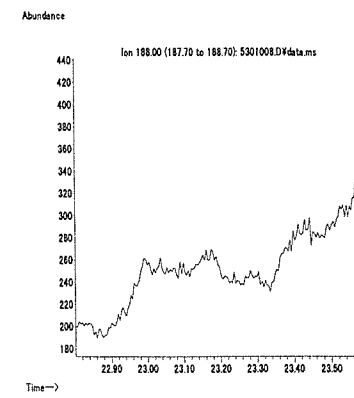
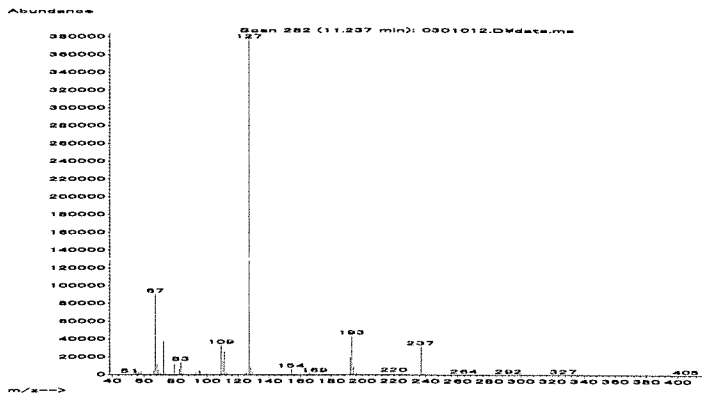


図 2. 最小検出量評価, 標準品, 回収試料のマスクロマトグラム (ジクロスラム)

マススペクトル



検量線

面積 (×100,000)

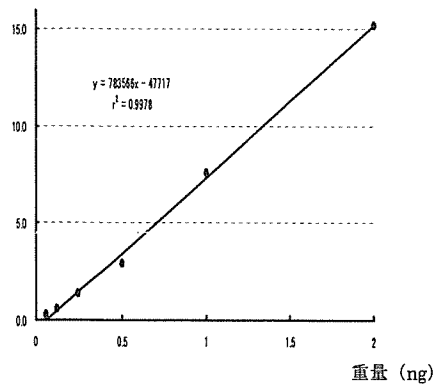
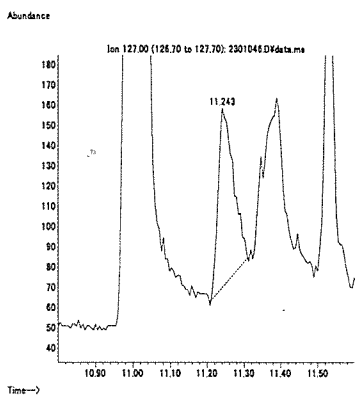
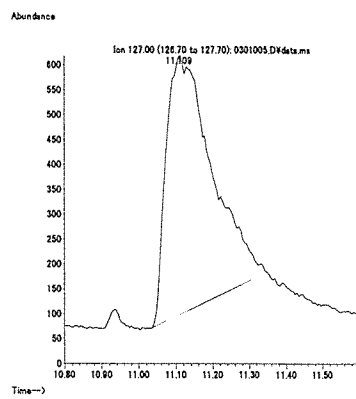


図1. マススペクトルおよび検量線 (ジクロトホス)

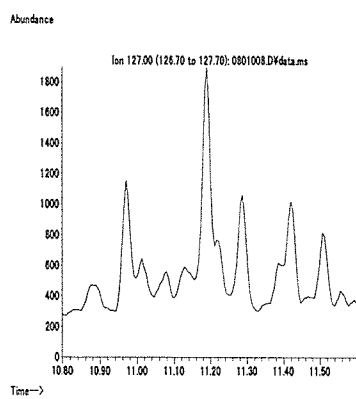
最小検出量評価 (0.04 ng)



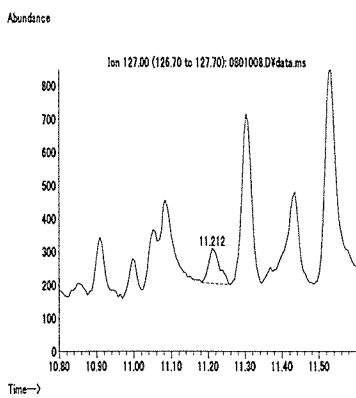
標準品 (0.125 ng)



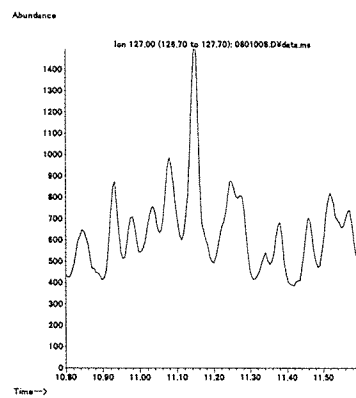
筋肉 (0.1 mg/kg 添加)



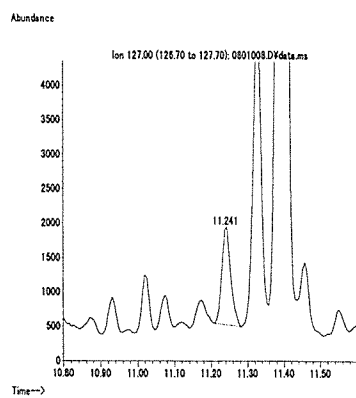
脂肪 (0.1 mg/kg 添加)



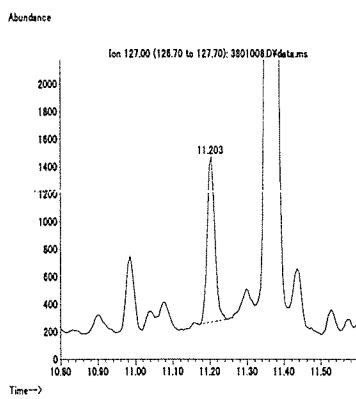
肝臓 (0.1 mg/kg 添加)



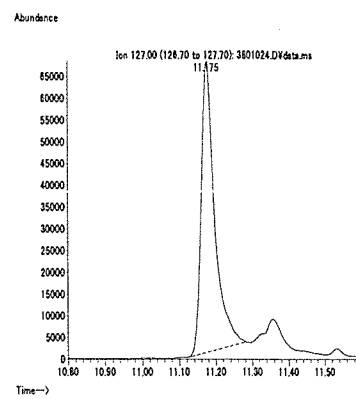
うなぎ (0.1 mg/kg 添加)



えび (0.1 mg/kg 添加)



牛乳 (0.01 mg/kg 添加)



卵 (0.01 mg/kg 添加)

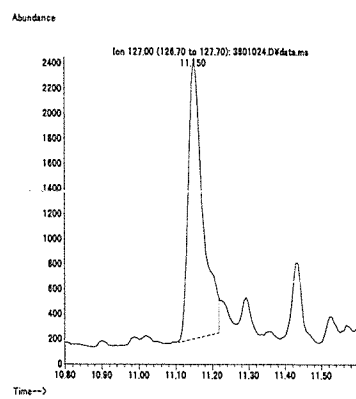
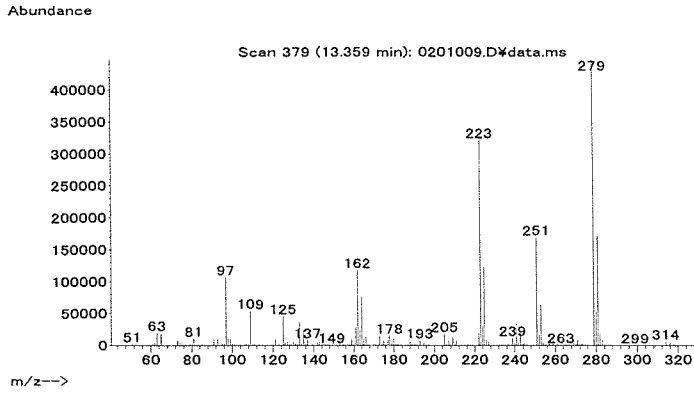


図2. 最小検出量評価, 標準品, 回収試料のマスクロマトグラム (ジクロトホス)

マススペクトル



検量線

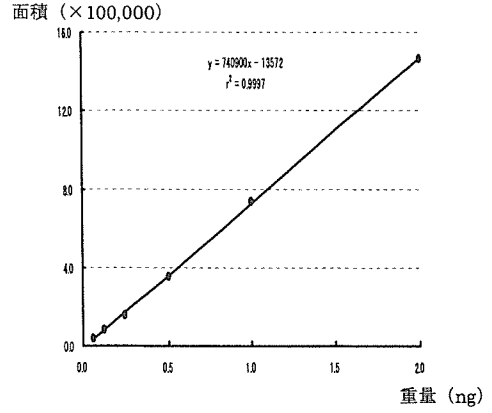
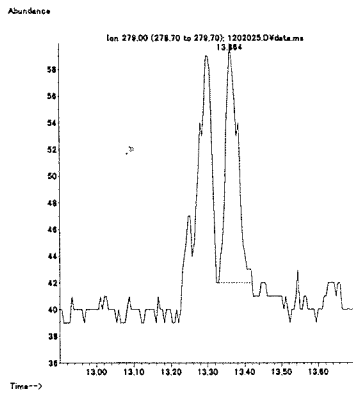


図 1. マススペクトルおよび検量線 (ジクロフェンチオン)

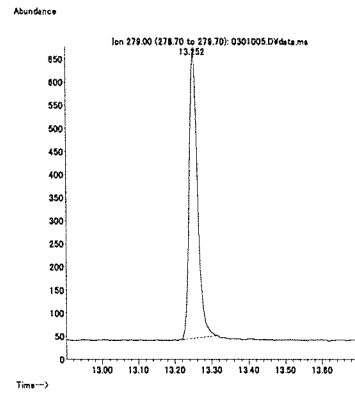
最小検出量評価 (0.002 ng)

標準品 (0.125 ng)

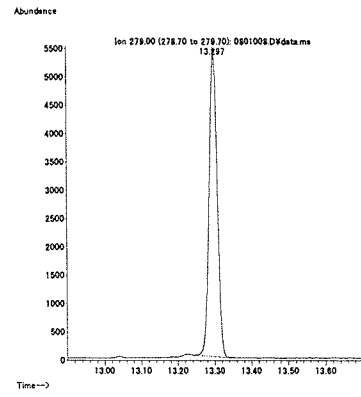
筋肉 (0.01 mg/kg 添加)



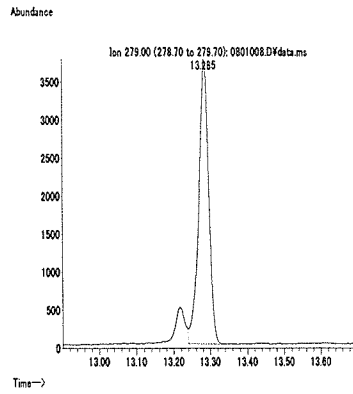
脂肪 (0.01 mg/kg 添加)



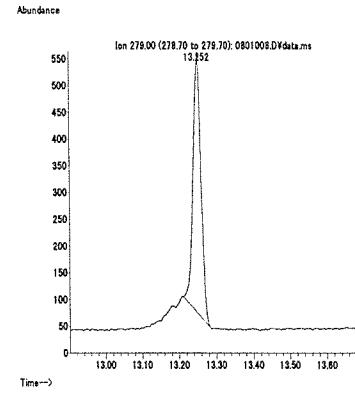
肝臓 (0.01 mg/kg 添加)



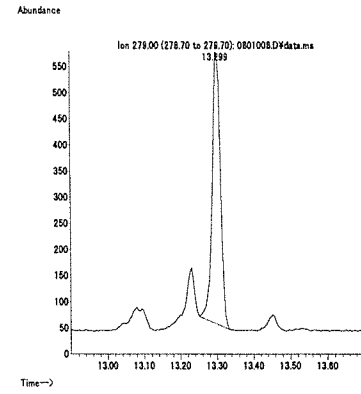
うなぎ (0.01 mg/kg 添加)



えび (0.01 mg/kg 添加)



牛乳 (0.01 mg/kg 添加)



卵 (0.01 mg/kg 添加)

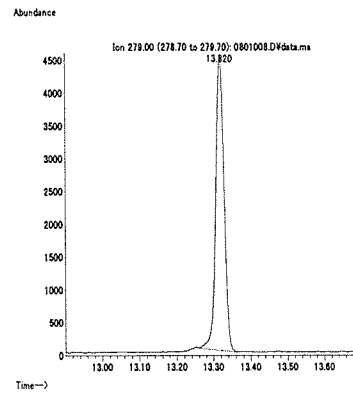
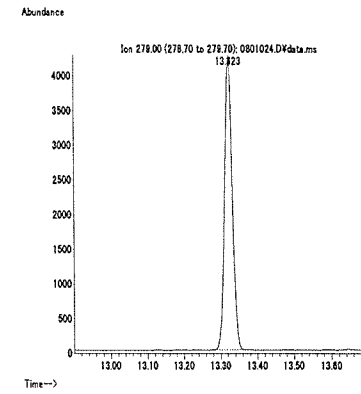
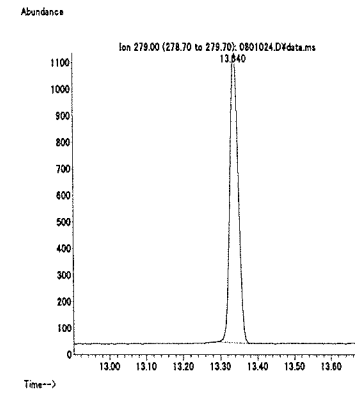
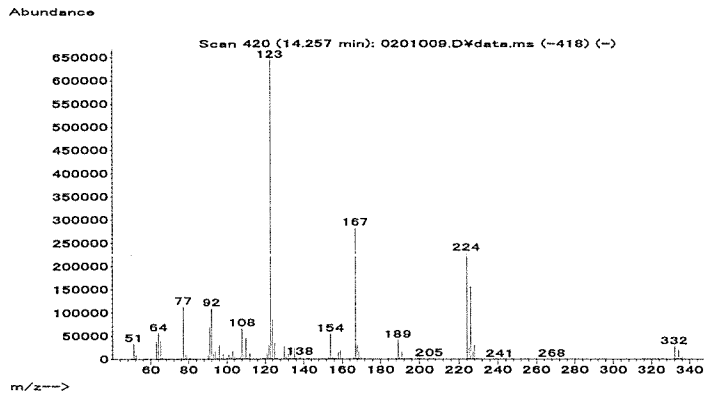


図 2. 最小検出量評価, 標準品, 回収試料のマスクロマトグラム (ジクロフェンチオン)



マススペクトル



検量線

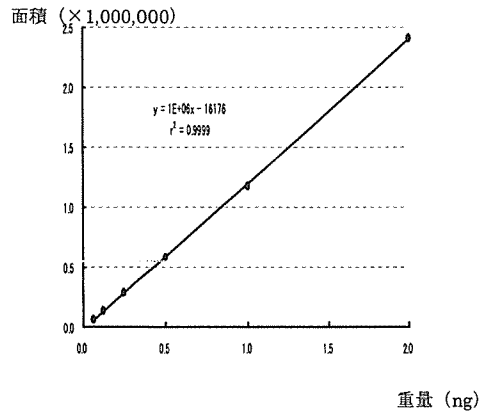
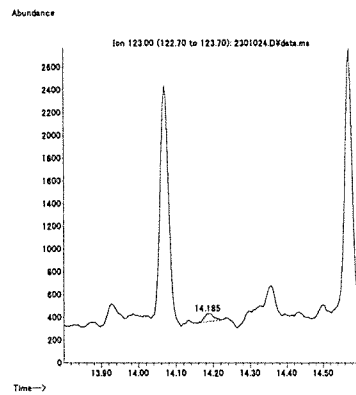
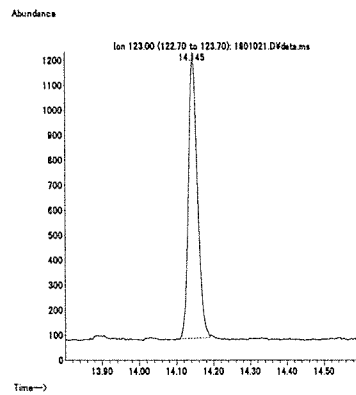
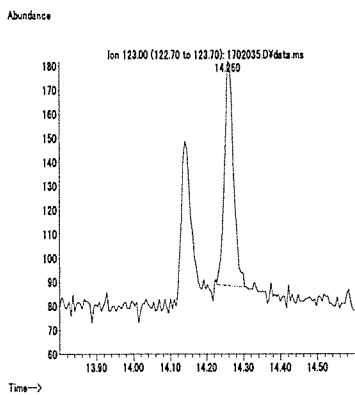


図 1. マススペクトルおよび検量線 (ジクロフルアニド)

最小検出量評価 (0.01 ng)

標準品 (0.125 ng)

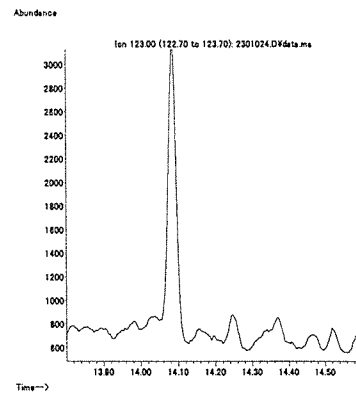
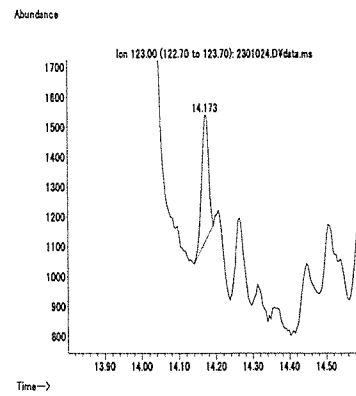
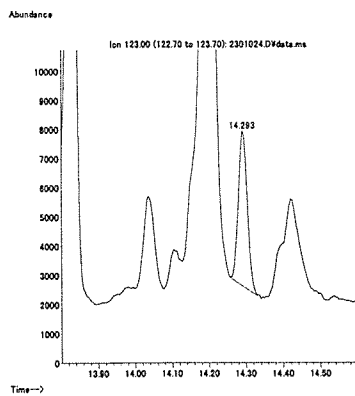
筋肉 (0.1 mg/kg 添加)



脂肪 (0.1 mg/kg 添加)

肝臓 (0.01 mg/kg 添加)

うなぎ (0.1 mg/kg 添加)



えび (0.1 mg/kg 添加)

牛乳 (0.01 mg/kg 添加)

卵 (0.1 mg/kg 添加)

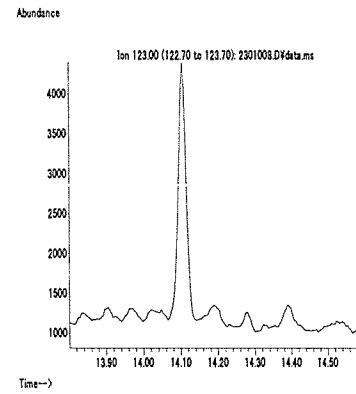
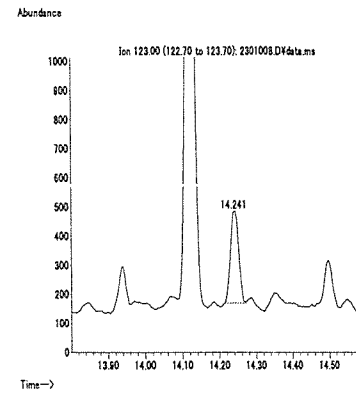
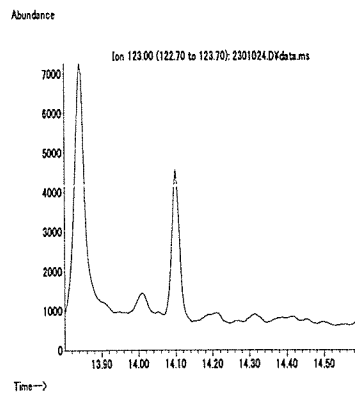


図 2. 最小検出量評価, 標準品, 回収試料のマスキロマトグラム (ジクロフルアニド)