

be much better than the original CLIP score in its stratification ability and the survival prediction of each score, because the grade of liver damage by LCSGJ evaluates liver function more precisely than the Child-Pugh classification, and 400 ng/ml for AFP is a more useful cutoff level than 400 ng/dl in our patient population. The m-CLIP score also had a good discriminating ability for patients with HCC in the training sample.

In our comparison of the m-JIS score and the m-CLIP score using cross-validation and GEE analyses, the m-JIS score had a greater predicative accuracy than the m-CLIP score for the survival of patients with HCC. In both the m-JIS and m-CLIP analyses, only patients on whom ICG tests had been performed were included. In this study, 40.6% of total patients had an m-JIS score of 0 or 1 and 10.0% had an m-JIS score of 4 or 5, while 60.9% had an m-CLIP score of 0 or 1 and 7.6% had an m-CLIP score of 4, 5, or 6. This patient distribution is similar to that in the study of Kudo et al.¹³ The difference in patient distribution might be an important factor leading to the better predicative accuracy of the m-JIS score.

One of the differences between these scoring models is the cutoff level of tumor morphology. In the m-CLIP scoring system, tumor morphology is evaluated by whether it is uninodular and has a maximum diameter greater than 10 cm. In our patient sample, only 7.6% of patients possessed tumor(s) larger than 10 cm. As tumor size is one of the most important factors used to select treatment modalities, more precise evaluation of tumor character is useful for more accurately predicting outcome in patients with HCC. Another difference is the tumor marker included in the m-CLIP score. We previously observed that AFP is an independent prognostic factor for patients with HCC who undergo liver resection.⁶ Protein induced by vitamin K absence or antagonist-II (PIVKA-II) has also been shown to be a useful prognostic factor in a univariate analysis.⁶ Recently, Marrero et al.²² reported that PIVKA-II is more sensitive and specific than AFP for differentiating HCC from other nonmalignant chronic liver diseases. *Lens culinaris* agglutinin-reactive AFP is reported to be another useful predictor in patients with HCC.²³ These tumor markers should be evaluated further to determine their suitability for use in a prognostic staging system for patients with HCC.

In conclusion, the m-JIS score can be effectively used to predict the prognosis of HCC patients in Japan, where HCC screening programs for high-risk populations have been established. Next, we plan to validate the usefulness of this scoring system in non-Japanese patient populations.

Acknowledgments. We thank especially all members of The Liver Cancer Study Group of Japan who completed the questionnaires.

References

1. Bosch FX, Ribes J, Borrás J. Epidemiology of primary liver cancer. *Semin Liver Dis* 1999;19:271–85.
2. Ikai I, Arii S, Ichida T, Okita K, Omata M, Kojiro M, et al. Report of the 16th follow-up survey of primary liver cancer. *Hepatol Res* 2005;32:163–72.
3. The Liver Cancer Study Group of Japan. Primary liver cancer in Japan. Clinicopathologic features and results of surgical treatment. *Ann Surg* 1990;211:277–87.
4. The Liver Cancer Study Group of Japan. Predictive factors for long term prognosis after partial hepatectomy for patients with hepatocellular carcinoma. *Cancer* 1994;74:2772–80.
5. Arii S, Yamaoka Y, Futagawa S, Inoue K, Kobayashi K, Kojiro M, et al. Results of surgical and nonsurgical treatment for small-sized hepatocellular carcinomas: a retrospective and nationwide survey in Japan. The Liver Cancer Study Group of Japan. *Hepatology* 2000;32:1224–9.
6. Ikai I, Arii S, Kojiro M, Ichida T, Makuuchi M, Matsuyama Y, et al. Re-evaluation of prognostic factors for survival after liver resection in patients with hepatocellular carcinoma in a Japanese nationwide survey. *Cancer* 2004;101:796–802.
7. Liver Cancer Study Group of Japan. General rules for the clinical and pathological study of primary liver cancer. 2nd English ed. Tokyo: Kanehara; 2003.
8. Wildi S, Pestalozzi BC, McCormack L, Clavien PA. Critical evaluation of the different staging systems for hepatocellular carcinoma. *Br J Surg* 2004;91:400–8.
9. The Cancer of the Liver Italian Program (CLIP) investigators. A new prognostic system for hepatocellular carcinoma: a retrospective study of 435 patients. *Hepatology* 1998;28:751–5.
10. Llovet JM, Bru C, Bruix J. Prognosis of hepatocellular carcinoma: the BCLC staging classification. *Semin Liver Dis* 1999;19:329–38.
11. Leung TW, Tang AM, Zee B, Lau WY, Lai PB, Leung KL, et al. Construction of the Chinese University Prognostic Index for hepatocellular carcinoma and comparison with the TNM staging system, the Okuda staging system, and the Cancer of the Liver Italian Program staging system: a study based on 926 patients. *Cancer* 2002;94:1760–9.
12. Kudo M, Chung H, Osaki Y. Prognostic staging system for hepatocellular carcinoma (CLIP score): its value and limitations, and a proposal for a new staging system, the Japan Integrated Staging score (JIS score). *J Gastroenterol* 2003;38:207–15.
13. Kudo M, Chung H, Haji S, Osaki Y, Oka H, Seki T, et al. Validation of a new prognostic staging system for hepatocellular carcinoma: the JIS score compared with the CLIP score. *Hepatology* 2004;40:1396–405.
14. Liang K-Y, Zeger SL. Longitudinal data analysis using generalized linear models. *Biometrika* 1986;73:13–22.
15. Okuda K, Ohtsuki T, Obata H, Tomimatsu M, Okazaki N, Hasegawa H, et al. Natural history of hepatocellular carcinoma and prognosis in relation to treatment. Study of 850 patients. *Cancer* 1985;56:918–28.
16. International Union Against Cancer. TNM classification of malignant tumor. 6th ed. Hoboken, NJ: Wiley; 2002.
17. Makuuchi M, Belghiti JB, Belli G, Fan ST, Lau JY, Ringe B, et al. IHPBA concordant classification of primary liver cancer: working group report. *J Hepatobiliary Pancreat Surg* 2003;10:26–30.
18. Lau H, Man K, Fan ST, Yu WC, Lo CM, Wong J. Evaluation of preoperative hepatic function in patients with hepatocellular carcinoma undergoing hepatectomy. *Br J Surg* 1997;84:1255–9.
19. The Cancer of the Liver Italian Program (CLIP) Investigators. Prospective validation of the CLIP score: a new prognostic system for patients with cirrhosis and hepatocellular carcinoma. *Hepatology* 2000;31:840–5.
20. Levy I, Sherman M, Liver Cancer Study Group of the University of Toronto. Staging of hepatocellular carcinoma: assessment of the CLIP, Okuda, and Child-Pugh staging systems in a cohort of 257 patients in Toronto. *Gut* 2002;50:881–5.

21. Ueno S, Tanabe G, Sako K, Hiwaki T, Hokotate H, Fukukura Y, et al. Discrimination value of the new western prognostic system (CLIP score) for hepatocellular carcinoma in 662 Japanese patients. Cancer of the Liver Italian Program. *Hepatology* 2001;34:529-34.
22. Marrero JA, Su GL, Wei W, Emick D, Conjeevaram HS, Fontana RJ, et al. Des-gamma carboxyprothrombin can differentiate hepatocellular carcinoma from nonmalignant chronic liver disease in American patients. *Hepatology* 2003;37:1114-21.
23. Yamashita F, Tanaka M, Satomura S, Tanikawa K. Prognostic significance of *Lens culinaris* agglutinin A-reactive alpha-fetoprotein in small hepatocellular carcinomas. *Gastroenterology* 1996;111:996-1001.

Clinical Aspects of Hepatocellular Carcinoma in Japan

Kiwamu Okita

Abstract

HCC in Japan has very different characteristics from that in other Asian countries. Because, among the Japanese HCC patients approximately 80% of the patients are HCV positive and they are aged over 60 years old. On the other hand, in many Asian countries HBV-positive HCC patients are dominant and their age is younger than the Japanese patients.

Early diagnosis of HCC is mainly performed by means of imaging diagnostic technique such as abdominal ultrasonography, dynamic CT, dynamic MRI and CT angiography. If small HCC less than 3 cm in diameter is found and liver function is well preserved, local ablation therapy or surgical treatment promises better than 5 years survival (over 60%). While, TAE or TACE is performed in cases of HCC larger than 3 cm in size, if liver failure is not complicated. In advanced HCC cases with multiple tumors, arterial infusion of anti-cancer drug has been applied. However, its efficacy is not estimated.

Chemoprevention is another modality for HCC. Eradication of HCV with an anti-viral agent has proven to prevent hepato-carcinogenesis. As for chemoprevention of HCC, some trials are on going in Japan.

Key words: hepatocellular carcinoma, clinical aspects

(DOI: 10.2169/internalmedicine.45.1531)

Introduction

Hepatocellular carcinoma (HCC) is currently a very common malignancy and its incidence is increasing, both in the far eastern Asian countries and in the US. Particularly, in Japan, persistent hepatitis C virus (HCV) infection is a major risk factor for the development of HCC, which is quite different from other Asian countries. Therefore, we have to recognize that HCV-associated chronic liver diseases are an extremely risky condition considering the complication of HCC.

However, the molecular mechanism of hepatocarcinogenesis in HCV infection remains unclear. Because, HCV belongs to RNA virus, and is not integrated into host hepatocyte DNA which causes the mutation. Whereas, concerning HBV, it is well known that integrated HBV genome into hepatic DNA may play an important role in hepatocarcinogenesis (1-3).

As for the mortality rate among the patients of HCC, it reached to over 30 per 100,000 population by 1995. Each year thereafter, in every year, over 30,000 patients die of HCC. On the other hand, according to the "White Paper on

the Trend of National Public Health in 2004" published by the Japanese Ministry of Health, Labor and Welfare, the mortality tends to decline gradually from 1996 in accordance with the recent progress of early detection and treatment of HCC.

In spite of the improvement in the mortality rate, there is a large number of patients with HCV-associated chronic liver diseases of over approximately 2 million that predisposes for HCC. Therefore, in order to improve the high mortality rate of HCC, we must determine epidemiological and clinical aspects of HCC in our country.

Characteristics of HCC in Japan

1. Epidemiology

Chronic infection with HCV or HBV is the major cause of HCC in Japan. Approximately 80% of Japanese HCC cases are derived from HCV-associated liver cirrhosis and chronic hepatitis, whereas the remaining less than 20% of patients are HBV positive. The frequency of HCC patients has increased rapidly since after 1980. Although it is not clear why the number of patients has increased, we must re-

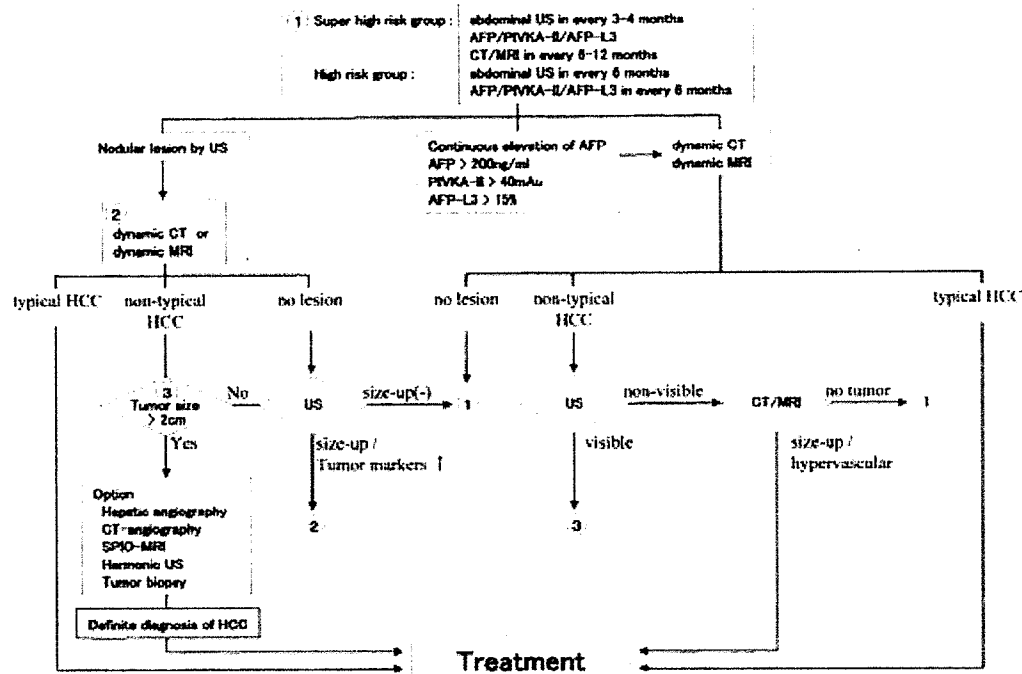


Figure 1. Algorithm of HCC surveillance. (cited from Guidline for Management of HCC based upon EBM and translated into English by author)

member the huge number of stimulant abusers during the social disorder soon after the 2nd world war and their HCV infected blood was sold to the blood bank for transfusion in many medical institutions. Because, until 1965, surgical treatment with a large volume of blood transfusion was performed among the huge number of patients with pulmonary tuberculosis. Such social background may be a trigger of the an explosive outbreak of HCC after 1980.

As for an association with genotype of HCV and HCC, the incidence of genotype 1b is markedly high among the patients. In Japan, genotype 1b is undoubtedly the dominant type. Consequently, it is not clear whether genotype 1b plays an important role in hepatocarcinogenesis in comparison with genotypes 1a, 2a, 2b, 3 and 4.

The annual incidence of HCC from HCV positive liver cirrhosis and chronic hepatitis is 6~7% and 1~2% (4), respectively. As for hepatocarcinogenesis among the patients with HCV positive liver diseases, HCC develops frequently in cirrhotic liver, whereas among the patients with HBV positive liver diseases HCC occurs not only in the cirrhotic liver, but also in chronic hepatitis. This difference may depend on the different properties of two viruses. That is, HBV is DNA virus and its X genome inhibits activity of *p53* known to be a suppressor oncogene (3). On the other hand, HCV known to be a RNA virus does not directly affect the host hepatic DNA. There is a report that HCV core protein enhances cell proliferation via activation of mitogen-activated protein kinase (MAPK) /extracellular signal-regulated kinase (ERK) (5-7).

The mitogen-activated protein kinase (MEK) /ERK signaling pathway is fundamental (8) in controlling cell develop-

ment, proliferation and cell cycle. While, there is increasing evidence that reactive oxygen species are produced by the interaction of HCV core to host liver mitochondria and results in DNA damage (9, 10). This DNA damage may cause mutation of hepatocytes as a result of genetic change. Taken together, HCV core may be involved in hepatocarcinogenesis in some role.

The incidence of HCC is higher in male patients, as compared with females. This difference is also not clear. However, it may be depend on different expression of the aldosterone receptor between male and female patients (11). This biological characteristic has been applied to hormone therapy in HCC with Tamoxifen (12). However, its therapeutic effect has not been confirmed.

The incubation period from initial infection of HCV to outbreak of HCC is about 30 years on average. Since 1989 when the check system for serum HCV was introduced into Japan, HCV positive blood has been excluded from medical use, and thereafter nowadays the number of new patients of HCV-related liver diseases has remarkably decreased. Therefore, the incidence of HCV positive liver diseases of a young age, below 20 years old, is extremely low, as compared with those over 40 years old. The peak age among the patients with HCC has been older than 60 years old. Therefore, HCC in Japan is recognized to be a malignancy particularly in the aged (13). This is quite in contrast to the countries where are the high incidence of HBV positive HCC patients are younger age.

2. Establishment of high risk group for HCC

According to Tsukuma (14), the following factors are im-

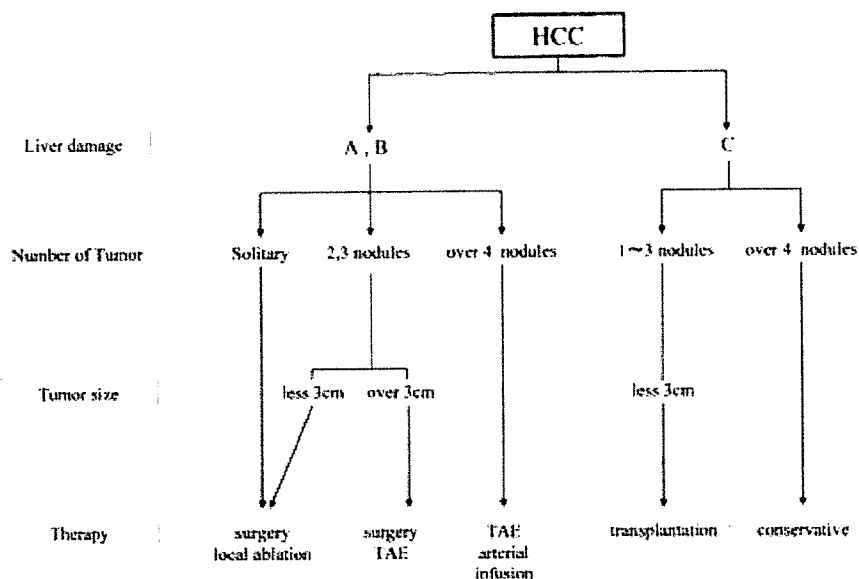


Figure 2. Algorithm of HCC therapy. (cited from Guideline for Management of HCC based upon EBM and translated into English by author)

portant in the prediction of HCC among the Japanese: male, the aged, smoker, liver cirrhosis or thrombocytopenia less $10^4/\text{mm}^3$ and over 20 ng/ml of AFP. However, for the purpose of early detection of HCC, an imaging diagnostic technique, such as abdominal ultrasonography, computed tomography (CT) or magnetic resonance imaging (MRI) is superior. Accordingly, we must recognize the patients who are positive for the prediction factors mentioned above to be high risk group for HCC, and for early detection of HCC those patients should be followed by ultrasonography every 3-4 months and CT or MRI every 6-12 months..

Clinical Aspects of HCC in Japan

1. Diagnosis

Progress of the screening system of HCC has made it possible to detect it in an early stage and the advancement of treatment has improved the 5-year survival rate. At present, the 5 year survival rate of HCC in Japan is over 60% among the patients indicating the stage of liver damage A according to the Liver Cancer Study Group of Japan (15) or the stage 0 due to the Japan Integrated Staging Score (JIS) (16).

Tumor markers such as α -fetoprotein (AFP), AFP-L3, and PIVKA-II are often used for screening of HCC. However, detection of early or small HCC (less than 3.0 cm in diameter) is difficult by means of these tumor markers. While, these tumor markers are useful for the prediction of recurrence of HCC. Different from tumor markers, the imaging diagnosis using ultrasound (US), computed tomography (CT), magnetic resonance (MR) and hepatic angiography with or without CT is extremely useful for the detection of

small HCC. Imaging diagnosis clearly indicates localization of HCC inside the liver. Whenever a suspected lesion is found by routine imaging diagnostic technique, angiography (with or without CT), dynamic CT or dynamic MR should be applied for confirmation of the diagnosis of HCC. A rigid check system in Japan for the early detection of HCC has made clear of the presence of borderline lesions known to be adenomatous hyperplasia or dysplasia. In general, HCC is fed by arterial blood, but borderline lesions are fed by portal blood. Consequently, in the case of hepatic angiography HCC is stained in the arterial phase with contrast medium injected via catheter placed into the hepatic artery, and also in the case of dynamic CT or MRI HCC is stained in the early phase within 30 seconds with the contrast medium injected intravenously. Combination with hepatic angiography and CT, so-called CT-angiography, is the strongest weapon for the early detection of HCC. On the contrary, in general borderline lesions are not stained those methods. Another characteristic of borderline lesions is that the size is usually less than 15 mm. However, confirmed diagnosis of a borderline lesion is only available by histological study of biopsied specimen (17).

The study group for "Guidelines for the Management of HCC Based upon EBM" (group chief: Professor M. Makuuchi, Tokyo University School of Medicine) proposed by the Ministry of Health, Labor and Welfare made an algorithm for the surveillance of HCC (Fig. 1). Application of this algorithm will be useful for early detection of HCC.

2. Therapy

Surgical resection should be the first choice in the therapy of HCC as well as in other solid cancers. However, HCC develops usually in the cirrhotic liver accompanied with se-

vere liver damage and therefore surgical treatment is so limited. The study group mentioned above also proposed an algorithm on the treatment of HCC (Fig. 2). The concept that surgical resection should be the first line must be correct, because the operated group has indicated a better than 5 year survival rate and good cost benefit in comparison with the patients group treated by local ablation therapy.

However, in general, patients do not want to have open surgery, even if we strongly recommend a surgical therapy in the case of small HCC developed in Child A cirrhotic liver such as liver damage A or JIS 0~1 in HCC staging system. In such cases, we have applied a local ablation therapy using radio-frequency ablation (RFA). RFA is easy to operate if the operators have sufficient experience with ultrasonography and therefore the number of cases treated by RFA is markedly increasing. But, we must pay attention to severe complications such as perforation of the gastrointestinal tract, intraperitoneal bleeding, hemobilia and liver abscess. In addition, we must note the spread of cancer cells through the inserted RFA needle into HCC due to increased pressure inside of the tumor caused by ablation. There are two types of ablation needles; one is the cool-tip type, and the other is Christmas tree like. We do not know which one is more convenient or stronger in ablation. Usually, RFA is applied to therapy of HCC in which the main tumor is less 3 cm and there are less than 3 satellite nodules.

Trans-hepatic arterial embolization (TAE) or trans-hepatic chemo-embolization (TACE) is usually performed in cases of bigger HCC over 3 cm in size. Of course, in cases that the tumor is less 3 cm in size and hypervascular, TAE or TACE is performed in combination with percutaneous ethanol injection (PEI) or RFA. TAE or TACE should be avoided in the patients whose residual hepatic function is poor, such as Child C. Otherwise, TAE or TACE in Child C makes hepatic function worse.

Arterial infusion of anti-cancer drug has been applied in the therapy of advanced cases of HCC which are not indicated for surgical treatment, local ablation and TAE or TACE. Before introduction of continuous infusion of anti-cancer drug, one shot arterial injection of the drug has been performed, but the effectiveness of this method was not clarified. Since the introduction of continuous arterial infusion, several regimes have been used as follows: 1) low dose of cisplatin and 5-fluorouracil (18), 2) low dose of cisplatin and 5-fluorouracil with leucovolin (19), 3) methotrexate, 5-fluorouracil, cisplatin and interferon- α 2b (20), 4) 5-fluorouracil and subcutaneous interferon- α (21). The effectiveness of arterial infusion of chemotherapeutic agents has not been estimated in a scientific manner. Because, the subjects are all Child C stage, and the data reported are not evidence based. However, although the number of enrolled patients was not sufficient, our study showed significant prolongation of the survival period among the patients treated as compared with the control (19).

On the other hand, from the view point of the patient's quality of life we have to carefully select the chemotherapy

for each individual patient, especially in advanced case, because of longer admission and severe adverse effects due to toxicity of chemotherapeutic agents.

Chemoprevention is another method of the therapy. Almost all HCC occurs in the liver of chronic hepatitis and liver cirrhosis caused by HBV and HCV. Consequently, eradication of these hepatitis viruses with anti-viral agents may decrease a risk of HCC (22-24). In the therapy of chronic liver diseases caused by HBV and HCV, the therapy using antiviral agents, interferon and lamivudine against HBV and interferon with or without ribavirin, against HCV, should be the first choice. Of course, HCV genotype 1b which is dominant among the HCV positive patients in Japan is remarkably resistant to interferon therapy, fortunately however combination therapy with PEG-interferon and ribavirin has improved the success rate for the eradication of HCV up to 60%.

Phlebotomy improves the liver function accompanied by a decrease in the serum iron level and significantly inhibits the development of HCC, as compared with the control in whom phlebotomy was not applied (25). Although it is known whether iron radical is very toxic, there is also increasing evidence that ROS produced by infection of HCV may play an important role in hepatocarcinogenesis (9, 10). Our studies showed clearly that attachment of HCV core to hepatic mitochondria disrupts electron transport and accelerates ROS production (9). Consequently, anti-oxidant may lead to the decrease of risk of HCC (26, 27). On a different line of agents than anti-viral and anti-oxidative agents, the following two agents developed in Japan have been noted from the view points of chemoprevention of HCC: one is acyclic retinoid (28, 29), and the other is vitamin K2 (30). Although the pharmaceutical action of these drugs is not fully understood, acyclic retinoid may induce the clonal deletion due to the induction of apoptosis in premalignant lesions and vitamin K2 may act as an anti-proliferative agent (31). A clinical trial for the evaluation of these drugs is now ongoing in Japan.

We must bear in mind that HCC can be a preventable disease if we exclude HCV by anti-viral agents and directly ROS by antioxidants. Concerning acyclic retinoid and vitamin K2, we must wait for the results of the clinical trial currently underway.

Liver transplantation is another modality to relieve the patients of HCC. However, in Japan it is quite difficult to pursue liver transplantation for HCC patients even if they want it due to the shortage of donors. To date, the number of HCC patients transplanted is so limited. However, over 70% of the transplanted patients are surviving free of HCC. Liver transplantation for HCC patients should be become more available.

Conclusion

In this article, epidemiology of HCC in Japan and its medical practice at present are described. The mortality rate

of the patients with HCC is ranked the 3rd in males and 4th in females among malignancies. Therefore, we, physicians, must pay attention to the characteristics of Japanese patients and possible to apply to make an effort to detect HCC in the early stages when it is possible to apply curative therapy.

References

- Shafritz D, Shouval D, Sherman HI, Hadzyannis SJ, Kew MC. Integration of hepatitis B virus DNA into the genome of the liver cells in chronic liver disease and hepatocellular carcinoma. Studies in percutaneous liver biopsies and postmortem tissue specimens. *N Engl J Med* **305**: 1067-1073, 1981.
- Kim C, Koike K, Saito I, Miyamura T, Jay G. HBx gene of hepatitis B virus induces liver cancer in transgenic mice. *Nature* **351**: 317-320, 1991.
- Takada S, Kananiwa N, Tsuchida N, Koike K. Hepatitis B virus X gene expression is activated by X protein but repressed by p53 tumor suppression gene product in the transient expression system. *Virology* **216**: 80-89, 1996.
- Shiratori Y, Shiina S, Imamura M, et al. Characteristic difference of hepatocellular carcinoma between hepatitis B- and C-viral infection in Japan. *Hepatology* **22**: 1027-1033, 1995.
- Hayashi J, Aoki H, Kajino K, et al. Hepatitis C virus core protein activates the MAP/ERK cascade synergistically with tumor promoter TPA, but not with epidermal growth factor or transforming growth factor alpha. *Hepatology* **32**: 958-961, 2000.
- Ito Y, Sasaki Y, Horimoto M, Wada S, et al. Activation of mitogen-activated protein kinase/extracellular signal-regulated kinases in human hepatocellular carcinoma. *Hepatology* **27**: 951-958, 1998.
- Seeger R, Krebs E.G. The MAPK signalling cascade. *FASEB J* **9**: 726-735, 1995.
- Talarmin H, Rescan C, Cariou S, et al. The mitogen activated protein kinase/extracellular signal-regulated kinase cascade activation is a key signalling pathway involved in the regulation of G1 phase progression in proliferating hepatocytes. *Mol Cell Biol* **19**: 6003-6011, 1999.
- Okuda M, Li K, Beard M, et al. Mitochondrial injury, oxidative stress and antioxidant gene expression are induced by hepatitis C virus core protein. *Gastroenterology* **122**: 366-375, 2002.
- Moriya K, Nakagawa K, Santa T, et al. Oxidative stress in the absence of inflammation in a mouse model for hepatitis C virus associated hepatocarcinogenesis. *Cancer Res* **61**: 4365-4370, 2001.
- Nagasue N, Ito A, Yukaya H, Ogawa Y. Androgen receptors in hepatocellular carcinoma and surrounding parenchyma. *Gastroenterology* **89**: 643-647, 1985.
- Castells A, Bruix J, Bru C, et al. Treatment of hepatocellular carcinoma with tamoxifen: double blind placebo controlled trial in 120 patients. *Gastroenterology* **109**: 917-922, 1995.
- Japan Society of Hepatology. Characteristic of hepatocellular carcinoma in Japan-from global point of view, the White paper on hepatocellular carcinoma. p.5-9, 1999.
- Tsukuma H, Hiyama T, Tanaka S, et al. Risk factors for hepatocellular carcinoma among patients with chronic liver disease. *N Engl J Med* **328**: 1797-1801, 1993.
- Liver Cancer Study Group of Japan. General rules for the clinical and pathological study of primary liver cancer (in Japanese). 4th ed. Kanehara Shuppan, Tokyo, 2000: 19.
- Kudo M, Chung H, Osaki Y. Prognostic staging system for hepatocellular carcinoma (CLIP score): Its value and limitations, and a proposal for new staging system, the Japan Integrated Staging Score (JIS score). *J Gastroenterol* **38**: 207-215, 2003.
- Kenmochi K, Sugihara S, Kojiro M. Relationship of histologic grade of hepatocellular carcinoma (HCC) to tumor size, and demonstration of tumor cells of multiple different grade in single HCC. *Liver* **7**: 18-26, 1987.
- Okuda K, Tanaka M, Shibata J, et al. Hepatic arterial infusion chemotherapy with continuous low dose administration of cisplatin and 5-fluorouracil for multiple recurrence of hepatocellular carcinoma after surgical treatment. *Oncol Rep* **6**: 587-591, 1999.
- Yamasaki T, Kurokawa F, Takami T, et al. Arterial infusion chemotherapy using cisplatin, 5-fluorouracil, and isovorin for patients with advanced hepatocellular carcinoma, pilot study; Is a high dose of the biological modulator effective? *Hepatol Res* **27**: 36-44, 2003.
- Urabe T, Kaneko S, Matsushita E, Unoura M, Kobayashi K. Clinical pilot study of intrahepatic arterial chemotherapy with metotrexate, 5-fluorouracil, cisplatin and subcutaneous interferon- α 2b, for patients with locally advanced hepatocellular carcinoma. *Oncology* **55**: 39-47, 1998.
- Sakon M, Nagano H, Dono K, et al. Combined intraarterial 5-fluorouracil and subcutaneous interferon- α therapy for advanced hepatocellular carcinoma with tumor thrombi in the major portal branches. *Cancer* **94**: 435-442, 2002.
- Kasahara A, Hayashi N, Mochizuki K, et al. Risk factor for hepatocellular carcinoma and its incidence after interferon treatment in patients with chronic hepatitis C. Osaka Liver Disease Study Group. *Hepatology* **27**: 1394-1402, 1998.
- Yoshida H, Shiratori Y, Moriyama M, et al. Interferon therapy reduces the risk for hepatocellular carcinoma: National surveillance program of cirrhotic and noncirrhotic patients with chronic hepatitis C in Japan. IHIT Study Group. *Ann Intern Med* **131**: 174-181, 1999.
- Okanoue T, Itoh Y, Minami M, et al. Interferon therapy lowers the rate of progression in hepatocellular carcinoma in chronic hepatitis C but not significantly in an advanced stage: retrospective study in 1148 patients. Viral Hepatitis Therapy Study Group. *J Hepatol* **30**: 653-659, 1999.
- Kato J, Kobune M, Nakamura T, et al. Normalization of elevated hepatic 8-hydroxy-2'-deoxyguanosine levels in chronic hepatitis C patients by phlebotomy and low iron diet. *Cancer Res* **61**: 8697-8702, 2001.
- Oka H, Yamamoto S, Kuroki T, et al. Prospective study of chemoprevention of hepatocellular carcinoma with Shosaiko-to (TJ-9). *Cancer* **76**: 743-749, 1995.
- Arase Y, Ikeda K, Murashima N, et al. The long term efficacy of glycyrrhizin in chronic hepatitis C patients. *Cancer* **70**: 1494-1500, 1997.
- Muto Y, Moriwaki H, Ninomiya M, et al. Prevention of second primary tumors by an acyclic retinoid, polyphenolic acid, in patients with hepatocellular carcinoma. Hepatoma Prevention Study Group. *N Engl J Med* **334**: 1561-1567, 1996.
- Muto Y, Moriwaki H, Saito A. Prevention of second primary tumors by an acyclic retinoid in patients with hepatocellular carcinoma. *N Engl J Med* **340**: 1046-1047, 1999.
- Hitomi M, Yokoyama F, Kita Y, et al. Antitumor effect of vitamins K1, K2 and K3 on hepatocellular carcinoma in vitro and in vivo. *Int J Oncol* **26**: 713-720, 2005.

Review

Management of hepatocellular carcinoma in Japan

KIWAMU OKITA

Shimonoseki Kohsei Hospital, Kamishinchi-cho 3-3-8, Shimonoseki 750-5811, Japan

Key words: hepatocellular carcinoma, epidemiology, surveillance, high-risk population, management

Introduction

Hepatocellular carcinoma (HCC) ranks as the fourth most common cancer in Japan and is responsible for more than 40 000 death annually.¹ As for the etiology of HCC, approximately 80% of patients have chronic infection with hepatitis C virus (HCV) and less than 20% have chronic infection of hepatitis B virus (HBV).² However, the increase of HCC among patients with cryptogenic liver cirrhosis has presumably resulted from the advance of nonalcoholic steatohepatitis, although its frequency is still quite low.^{3,4} The high incidence of HCC among HCV-positive Japanese patients is unique in Southeast Asia countries, where HBV-positive HCC patients are dominant. Recently, Bruix and Sherman published a review article on the management of HCC based on documents collected from practices in Europe and North America.⁵ They mentioned that the management of HCC in Japan is somewhat different from that in Western countries. Therefore, in the present article, focus is on management of HCC based on Japanese practice.

Epidemiology of HCC in Japan

The report of the Japanese Ministry of Health and Welfare on the incidence of mortality from HCC in 1996 revealed an increase in western Japan. According to the data, in eastern Japan, including the east side from a line connecting Shizuoka Prefecture, Nagano

Prefecture, and Niigata Prefecture, more than 30 deaths/100 000 population a year were observed only in Yamanashi Prefecture, whereas in western Japan, including the west side from a line connecting Aichi Prefecture, Toyama Prefecture, and Ishikawa Prefecture, the following 17 prefectures showed a high incidence of HCC in comparison with eastern Japan: 37.4 in Osaka, 34.0 in Hyogo Prefecture, 41.8 in Wakayama Prefecture, 38.5 in Shimane Prefecture, 31.1 in Okayama Prefecture, 39.8 in Hiroshima Prefecture, 36.0 in Yamaguchi Prefecture, 35.7 in Tokushima Prefecture, 31.8 in Kagawa Prefecture, 32.9 in Ehime Prefecture, 35.4 in Kochi Prefecture, 38.7 in Fukuoka Prefecture, 39.9 in Saga Prefecture, 32.6 in Nagasaki Prefecture, 32.5 in Kumamoto Prefecture, 31.7 in Oita Prefecture, and 30.3 in Kagoshima Prefecture. It has been not clear why such high a mortality rate was observed in western Japan, although of course it has been known that the prefectures showing a higher frequency of HCC are also those with a higher HCV carrier rate.

Another interesting fact is that age-specific incidence has shifted toward older people, i.e., over 60 years of age (Fig. 1).¹ This observation is quite different from observations in the United States because, according to El-Serag, patients with HCC have shifted toward a relatively younger age as compared with Japan, although HCC remains an affliction of the elderly (mean age, 65).⁶ The increase in HCC patients also parallels the shift of HCV carriers toward old age.² The spread of HCV infection in Japan causing an increasing incidence of HCC today can be attributed to the chaos such as the appearance of so many drug abusers after World War II and the use of HCV-contaminated blood for transfusion until 1989. However, prevention of HBV infection with vaccination among infants born from HBV-carrier mothers and exclusion of HCV from medical intervention have resulted in prevention of a new outbreak of viral hepatitis, which is closely related to hepatocarcinogenesis.

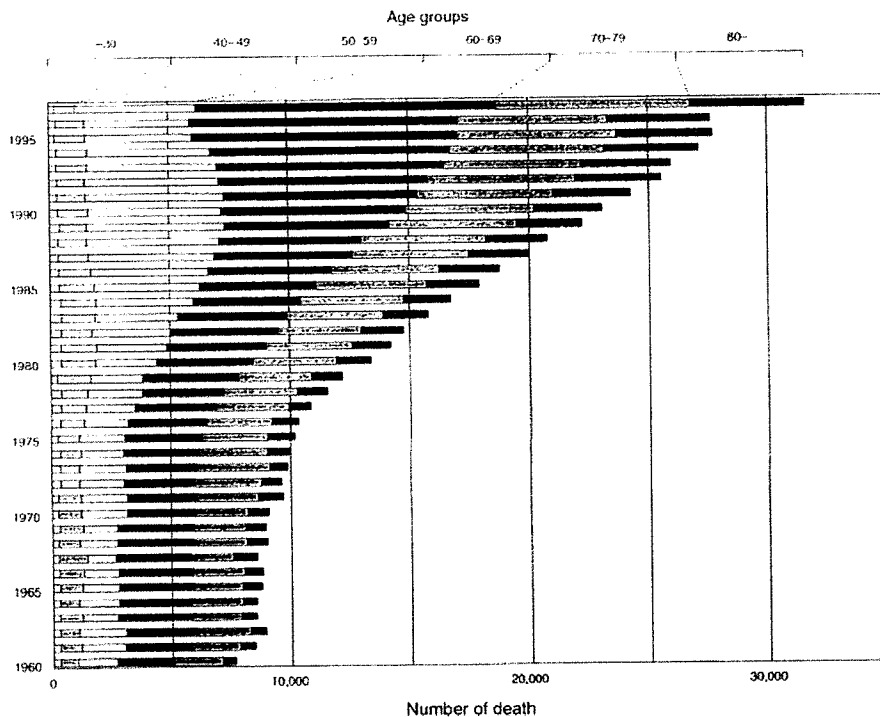


Fig. 1. Yearly deaths as a result of liver cancer in Japan¹

Surveillance of HCC in Japan

According to the World Health Organization (WHO), there are 10 criteria for cost-effective screening programs⁷: (1) the condition is an important health problem; (2) accepted treatments are available; (3) facilities for diagnosis and treatment are available; (4) the condition is recognizable in the latent/early stage; (5) suitable tests for screening are available; (6) the screening tests are acceptable to the population; (7) the natural history of the condition is well understood; (8) an agreed-upon policy on whom to treat is available; (9) the cost of diagnosis and treatment is economically balanced with overall medical expenditure; and (10) case finding should be continued. Based on the concept proposed by WHO, a study group appointed by the Japanese Ministry of Health, Welfare and Labor drew up an algorithm for screening of HCC in Japan (Fig. 2).⁸ This screening, aimed at early diagnosis of HCC, has been opened for the public. However, the present issue of this screening is not based on a randomized controlled trial (RCT).

Definition of high-risk population

There is no doubt that HBV- and HCV-positive patients with chronic hepatitis and liver cirrhosis belong to a high-risk population for HCC. Therefore, those patients should be followed not only by monthly checkups

for tumor markers such as alpha-fetoprotein (AFP), AFP-L3,⁹ and PIVKA-II¹⁰ but also by imaging diagnosis by abdominal ultrasonography every 4 months and computed tomography (CT) in each half-year (see Fig. 2). According to this screening program, a patient must pay at least approximately 57000 yen per year in cash, which corresponds to 30% of the total fee under the national health insurance system. The base of calculation is shown in Table 1.

Diagnosis of HCC

Definite diagnosis of HCC is performed by means of imaging such as hepatic angiography in combination with CT scan, dynamic CT scan, and dynamic magnetic resonance imaging (MRI). A mass more than 20 mm in diameter, if it is located within a cirrhotic liver, is highly suspicious for HCC. However, a dynamic study should be performed for the definite diagnosis of HCC. If a lesion shows arterial hypervascularity or early enhancement in the arterial phase and washes out in the delayed-phase venous phase, the diagnosis of HCC is conclusive. Tumor biopsy is not recommended because lesions more than 20 mm in diameter are highly suspicious for HCC and seeding of cancer cells through the biopsy needle should be avoided. Lesions 10–20 mm in size in a cirrhotic liver revealed during surveillance may or may not be HCC. Of course, if the dynamic study

Algorithm of HCC Surveillance

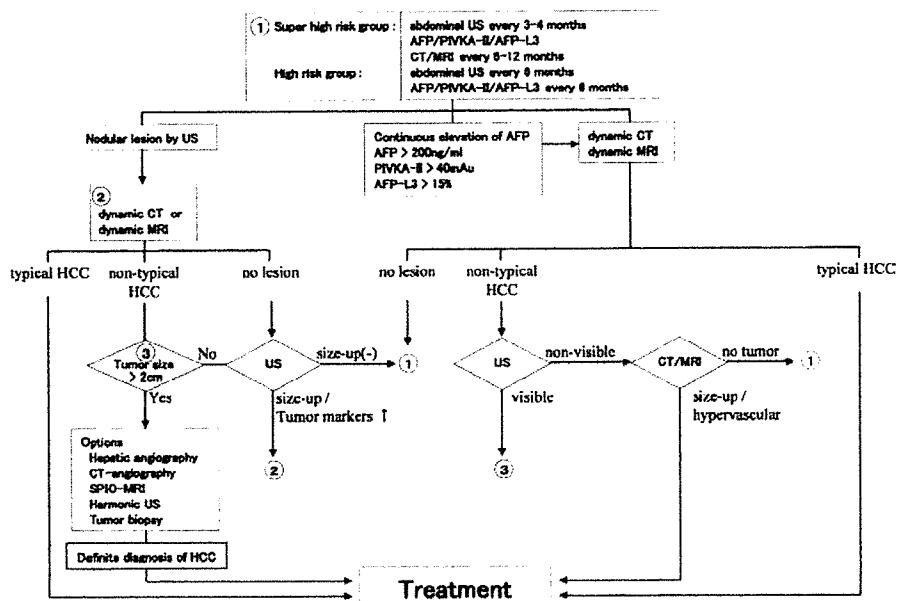


Fig. 2. Algorithm of hepatocellular carcinoma (HCC) surveillance⁸ (originally published in Japanese)

Table 1. Patient fees for surveillance of hepatocellular carcinoma (HCC)

Item	One-time fee ^a	Times	Total fees ^a
Medical administration	6	12	72
Blood chemistry	50	12	600
AFP measurement	20	6	120
PIVKA-II measurement	25	6	150
Abdominal ultrasonography	50	4	200
Computed tomography (CT)	400	1	400
Upper GI endoscopy	100	1	400
Annual total			1542

As shown in the table, the fee for each patient is at least US \$1542 per year. However, under the Japanese national health insurance system, as a burden of 30% of the total fee, each patient pays about US \$453 per year in cash

AFP, alpha-fetoprotein

^aIn U.S. dollars

indicates the characteristic figures of HCC, HCC will be diagnosed. However, if a lesion does not show typical figures by dynamic imaging, tumor biopsy will be recommended. If the biopsied specimen indicates dysplasia or adenomatous hyperplasia, this lesion should be followed with specific intention because it is known that HCC appears frequently from a dysplastic nodule or adenomatous hyperplasia.¹¹ If this lesion tends to grow or the levels of tumor markers increase in the patient's blood, dynamic CT scan or dynamic MRI should be performed again. On the other hand, in the case of a small lesion less than 10mm in diameter, there is time for observation until the lesion grows to more than 10mm in diameter.

Staging systems

Although the prognosis of solid tumors is generally related to tumor stage, survival of HCC is regulated by two factors, such as tumor stage and severity of underlying liver disease. Several attempts to produce a staging system for prediction of prognosis and helping in the selection of therapy have been performed in Japan, such as the Okuda staging system¹² and the Japan Integrated Staging (JIS) score.¹³ Of these, the JIS score based on a combination of the Child-Turcotte-Pugh stage for assessment of reserved hepatic function and the TMN staging system¹⁴ by the Liver Cancer Study Group of Japan (LCSGJ) demonstrated better stratifi-

Table 2. Degree of liver damage categorized by the Liver Cancer Study Group of Japan

Clinical and laboratory findings	Grade		
	A	B	C
Ascites	None	Controllable	Uncontrollable
Serum bilirubin (mg/dl)	<2.0	2.0–3.0	>3.0
Serum albumin (g/dl)	>3.5	3.0–3.5	<3.5
ICG R15 (%)	<15	15–40	>40
Prothrombin activity (%)	>80	50–80	<50

In a national survey of primary liver cancer, the survival rate is estimated based on the degree of liver damage as stated by the Liver Cancer Study Group of Japan (LCSGJ) at the time of initial treatment

cation ability and prognostic predictive power than the staging systems in Europe known as the Cancer of the Liver Italian Program (CLIP) score¹⁵ and the Barcelona Clinic Liver Cancer (BCLC) scoring system.¹⁶

Treatment of HCC

The treatment of HCC is mainly divided into nonsurgical and surgical treatment, including liver transplantation. Recently, an algorithm of HCC treatment was drawn up based on the Japanese experience (see Fig. 2).⁸ Survival will depend on the effect of initial treatment, which is chosen based on the degree of liver damage (Table 2) determined by the Liver Cancer Study Group of Japan (LCSGJ)¹⁵ and the character of the tumor itself. JIS is considered to be a good staging system for predicting prognosis but may not be suitable for selection of treatment.

Nonsurgical treatment

Transarterial embolization (TAE),¹⁶ chemoembolization (TACE),¹⁷ percutaneous ethanol injection (PEI),¹⁸ and percutaneous microwave coagulation (PMC)¹⁹ have been developed and distributed to other parts of the world. TAE and TACE aim to stop the arterial blood supply because HCC exhibits intense neoangiogenic activity during its progression. However, in small HCC less than 30mm in diameter, neovascularization is not so intense. Therefore, instead of TAE and TACE, percutaneous local therapy such as PEI, PMC, and radiofrequency ablation (RFA)²⁰ have been adopted. At present, RFA is superior to PEI because of strong necrotic effect in all tumor sizes.²¹ Estimation of PMC is equivocal. Interest in PMC has declined following the introduction of RFA because of the difficulty in controlling ablation power by users. Table 3 shows the survival of patients treated by PEI, RFA, TAE, or TACE, derived from the 16th report published in 2004 by LCSGJ.²²

Systemic chemotherapy or continuous hepatic artery infusion chemotherapy via ports has been applied to patients in the advanced stage who were not subjects for curative treatment. However, there is no RCT evidence that those therapies could contribute to prolongation of survival, although marginal effects such as shrinkage of tumor size or decrease of tumor number have been observed in selected cases.

Surgical resection

Advances in surgical technique and postsurgical management have magnified the significance of surgical resection.^{23,24} According to the recent report by LCSGJ (see Table 3), there is no significant difference in 5-year survival between surgical resection and local therapy, even in subjects with liver damage. Therefore, at the time of informed consent by patients, both treatments should be proposed equally and the selection of therapy placed in the patient's hands.

Liver transplantation

In Western countries, liver transplantation has been accepted widely in the initial treatment of HCC because of life prolongation in a good manner made possible by the change to a liver from a donor.²⁵ On the other hand, in contrast to Western countries, in Japan liver transplantation using a living donor is mainly performed. The outcome after live donor transplantation is the same as with cadaveric donation. The development of living donation will be of promise in Japan because of the extremely small number of cadaveric donations.

Recurrence

The recurrence rate of HCC after treatment exceeds 70% at 5 years, including recurrence due to incomplete treatment and dissemination or de novo tumors.²⁶ Therefore, even if curative treatment has been per-

Table 3. Survival of HCC in each therapeutic modality

Therapy	n	Survival rate (%)						
		1 year	2 years	3 years	4 years	5 years	8 years	10 years
Surgical treatment (liver damage)								
A	15718	90.4	82.3	74.6	66.6	59.1	42.3	33.7
B	6884	86.1	75.5	65.1	56.2	47.7	29.6	20.6
C	713	73.7	59.8	50.1	42.9	36.4	21.4	14.1
Local therapy (total)								
A	10306	94.4	87.3	76.5	64.4	52.8	28.8	21.1
B	7444	92.4	77.4	61.5	47.6	37.1	18.4	12.1
C	1665	80.2	60.2	42.3	29.5	22.5	7.2	2.9
PEI								
A	7585	95.7	86.5	75.3	62.9	51.5	28.1	20.5
B	5488	91.7	76.1	60.1	46.4	36.1	17.6	11.3
C	1346	79.7	58.3	40.2	28.4	22.1	7.1	2.8
RFA								
A	1169	97.3	92.3	86.1	—	—	—	—
B	862	95.6	88.6	78.6	—	—	—	—
C	127	82.1	79.4	—	—	—	—	—
PMC								
A	1401	96.1	90.1	82.7	73.4	61.5	—	—
B	989	94.8	82.5	67.7	53.9	42.5	26.8	26.8
C	179	83.6	71.1	56.1	36.5	25.1	—	—
TAE & TACE								
A	10429	84.1	67.5	52.4	40.1	31.1	14.1	8.5
B	8041	75.3	54.8	37.9	26.9	19.9	7.4	5.2
C	2500	55.5	32	19.7	13.1	7.6	3.3	—

Survival of HCC is compared with two factors such as the degree of liver damage and treatment
 PEI, percutaneous ethanol injection; RFA, radiofrequency ablation; FMC, precutaneous microwave coagulation; TAE, transarterial embolization; TACE, transarterial chemoembolization

Algorithm of HCC Therapy

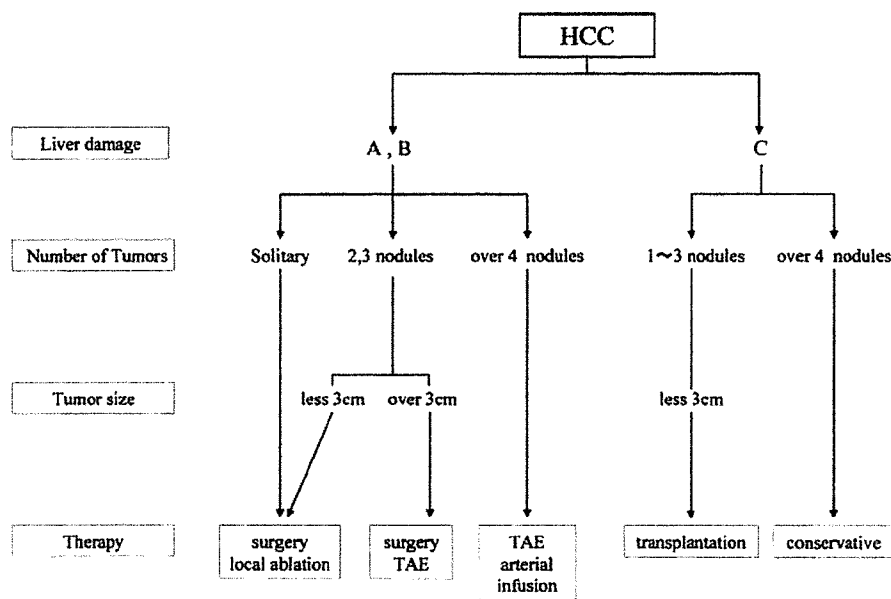


Fig. 3. Algorithm of HCC treatment⁸ (originally published in Japanese)

formed, patients should be enrolled in the surveillance program and followed with close attention. If recurrence of HCC can be observed, therapy should be followed by the algorithm of HCC treatment shown in Fig. 2.

Prevention of HCC

There is no doubt that the disappearance of inflammation due to exclusion of HBV and HCV is a key issue in the prevention of HCC. There are many reports that interferon (IFN) therapy prevents development of HCC.²⁷⁻²⁹ However, the results were not obtained by an RCT.

Several trials have been performed using IFN,³⁰ acyclic retinoid,^{31,32} and vitamin K³³ to prevent the recurrence of HCC after curative treatment. However, estimation of the preventive effect with those agents was not made by an RCT. Prevention of its recurrence after curative treatment will be an important issue because of the very high recurrence rate of HCC.

Conclusion

In conclusion, the management of HCC in Japan is somewhat different from the practice guidelines in Europe and the United States. This difference is caused by the large number of patients with HCC and the national health insurance system in Japan.

References

- Kiyosawa K, Tanaka E. Characteristics of hepatocellular carcinoma in Japan. *Oncology* 2002;62(suppl 1):5-7.
- Yoshizawa H. Hepatocellular carcinoma associated with hepatitis C virus infection in Japan: projection to other countries in the foreseeable future. *Oncology* 2002;62(suppl 1):8-17.
- Sanyal AJ. AGA technical review on nonalcoholic fatty liver disease. *Gastroenterology* 2002;123:1705-25.
- McCullough AJ. Update on nonalcoholic fatty liver disease. *J Clin Gastroenterol* 2002;34:255-62.
- Bruix J, Sherman M. Management of hepatocellular carcinoma. *Hepatology* 2005;42:1208-36.
- El-Serag HB. Epidemiology of hepatocellular carcinoma in the United States. In: Abstracts of Fourth JSH Single Topic Conference on "Hepatocellular Carcinoma: International Consensus and Controversies," December 2-3, 2005, Awaji-island, Hyogo, Japan.
- Wilson JHG, Jungner G. The principles and practice of screening for disease. *Public Health Papers* 34. Geneva: WHO; 1968.
- The Study Group for Production of the Guideline for Management of Hepatocellular Carcinoma Based upon a Scientific Base. Guideline for management of hepatocellular carcinoma based upon scientific evidence in 2005. Tokyo: Kanehara Shuppan; 2005 (in Japanese).
- Taketa K, Endo Y, Sekiya C, Tanaikawa K, Koji T, Taga H, et al. A collaborative study for the evaluation of lectin-reactive alpha-fetoprotein in early detection of hepatocellular carcinoma. *Cancer Res* 1993;53:5419-23.
- Izuno K, Fujiyama S, Yamasaki K, Sato M, Sato T. Early detection of hepatocellular carcinoma associated with cirrhosis by combined assay of des-gamma-carboxy prothrombin and alpha-fetoprotein: a prospective study. *Hepatogastroenterology* 1995;42:387-93.
- Takayama T, Makuuchi M, Hirohashi S, Sakamoto M, Okazaki N, Takayasu K, et al. Malignant transformation of adenomatous hyperplasia to hepatocellular carcinoma. *Lancet* 1990;336:1150-3.
- Okuda K, Ohtsuki T, Obata H, Tomimatsu M, Okazaki N, Hasegawa H, et al. Natural history of hepatocellular carcinoma and prognosis in relation to treatment. Study of 850 patients. *Cancer (Phila)* 1985;56:918-28.
- Kudo M, Chung H, Osaki Y. Prognostic staging system for hepatocellular carcinoma (CLIP score): its value and limitations, and a proposal for a new staging system, the Japan Integrated Staging Score (JIS score). *J Gastroenterol* 2003;38:207-15.
- Liver Cancer Study Group of Japan. General rules for the clinical and pathological study of primary liver cancer. 2nd ed. Tokyo: Kanehara; 2003.
- The Cancer of the Liver Italian Program (CLIP) investigators. A new prognostic system for hepatocellular carcinoma: a retrospective study of 435 patients. *Hepatology* 1998;28:751-5.
- Calvert X, Bruix J, Gines P, Bru C, Sole M, Vilana R, et al. Prognostic factors of hepatocellular carcinoma in the west: a multivariate analysis in 206 patients. *Hepatology* 1990;12(4 pt 1):753-60.
- Yamada R, Sato M, Kawabata M, Nakatsuka H, Nakamura K, Takashima S, et al. Hepatic artery embolization in 120 patients with unresectable hepatoma. *Radiology* 1983;148(2):397-401.
- Kasugai H, Kojima J, Tatsuta M, Okuda S, Sasaki Y, et al. Treatment of hepatocellular carcinoma by transcatheter arterial embolization combined with intraarterial infusion of a mixture of cisplatin and ethiodized oil. *Gastroenterology* 1989;97:965-71.
- Sugiura N, Takahara K, Ohto M, Okuda K, Hirooka N. Percutaneous intratumoral injection of ethanol under ultrasound imaging for treatment of small hepatocellular carcinoma (in Japanese). *Acta Hepatol Jpn* 1983;24:920.
- Seki T, Wakabayashi M, Nakagawa T, Itoh T, Shiro T, Kunieda K, et al. Ultrasonically guided percutaneous microwave coagulation therapy for small hepatocellular carcinoma. *Cancer (Phila)* 1994;74:814-25.
- Rossi S, Fornari F, Buscarini L. Percutaneous ultrasound guided radiofrequency electrocautery for the treatment of small hepatocellular carcinoma. *J Intervent Radiol* 1993;8:97-103.
- Lin SM, Lin CJ, Lin CC, Hsu CW, Chen YC. Radiofrequency ablation improves prognosis compared with ethanol injection for hepatocellular carcinoma $I = 4\text{ cm}$. *Gastroenterology* 2004;127(6):1714-23.
- Ikai I, Arii S, Ichida T, Okita K, Omata M, Kojiro M, et al. Report of the 16th follow-up survey of primary liver cancer. *Hepatol Res* 2005;32:173-84.
- Makuuchi M, Hasegawa H, Yamazaki S. Ultrasonically guided subsegmentectomy. *Surg Gynecol Obstet* 1985;161:346-50.
- Takasaki K. Hepatic resection using glissonian pedicle transaction. *J Jpn Surg Soc* 1998;99:245-50.
- Iwatsuki S, Gordon RD, Shaw BW Jr, Starzl TE. Role of liver transplantation in cancer therapy. *Ann Surg* 1985;202:401-7.
- Minagawa M, Makuuchi M, Takayama T, Kokudo N. Selection criteria for repair hepatectomy in patients with recurrent hepatocellular carcinoma. *Ann Surg* 2003;238:703-10.
- Kasahara A, Hayashi N, Mochizuki K, Takayanagi M, Yoshioka K, Kakuma S, et al. Risk factors for hepatocellular carcinoma and its incidence after interferon treatment in patients with chronic hepatitis C. *Hepatology* 1998;27:1394-402.
- Okanoue T, Itoh Y, Minami M, Sakamoto S, Yasui K, Sakamoto M, et al. Interferon therapy lowers the rate of progression to

- hepatocellular carcinoma in chronic hepatitis C, but not significantly in advanced stage: a retrospective study in 1148 patients. *J Hepatol* 1999;30:653-9.
30. Toyoda H, Kumada T, Nakano S, Takeda I, Sugiyama K, Kiriya S, et al. Effect of the dose and duration of interferon-alpha therapy on the incidence of hepatocellular carcinoma in noncirrhotic patients with a nonsustained response to interferon for chronic hepatitis C. *Oncology* 2001;61:134-42.
 31. Muto Y, Moriwaki H, Ninomiya M, Adachi S, Saito A, Takasaki KT, et al. Prevention of second primary tumors by an acyclic retinoid, polypropenoic acid, in patients with hepatocellular carcinoma. *N Engl J Med* 1996;334:1561-7.
 32. Muto Y, Moriwaki H, Saito A. Prevention of second primary tumors by an acyclic retinoid in patients with hepatocellular carcinoma. *N Engl J Med* 1999;340:1046-7.
 33. Habu D, Shiomi S, Tamon A, Takeda T, Tanaka T, Kubo S, et al. Role of vitamin K₂ in the development of hepatocellular carcinoma in women with viral cirrhosis of the liver. *JAMA* 2004; 29(3):358-61.

K. Okita: Management of hepatocellular carcinoma in Japan

Surveillance Program for Early Detection of Hepatocellular Carcinoma in Japan

Results of Specialized Department of Liver Disease

Eiji Ando, MD,* Ryoko Kuromatsu, MD,* Masatoshi Tanaka, MD,† Akio Takada, MD,* Nobuyoshi Fukushima, MD,* Shuji Sumie, MD,* Sakae Nagaoka, MD,* Jyunji Akiyoshi, MD,* Kinya Inoue, MD,* Takuji Torimura, MD,* Ryukichi Kumashiro, MD,* Takato Ueno, MD,‡ and Michio Sata, MD*

Objective: Surveillance of cirrhotic patients enables early detection of hepatocellular carcinoma (HCC) and possibly prolongs survival. The aim of this study was to explore whether early-stage HCC can be detected earlier at a specialized department of liver disease than in other institutions.

Methods: The study subjects were 574 patients with HCC. Patients were subdivided into 3 groups according to the manner of HCC detection: group A, HCC was detected in 91 patients during periodic examination at Kurume University School of Medicine; group B, HCC was detected in 301 patients during periodic examination at other institutions; group C, HCC was detected incidentally or because of symptoms in 182 patients.

Results: The HCC detected in group A was significantly of smaller size (20.4 mm) compared with groups B (27.1 mm, $P < 0.0001$) and C (57.8 mm, $P < 0.0001$). The frequency of receiving treatment (surgery or local ablation therapy) was significantly higher in group A (73%) than in groups B (52%, $P = 0.002$) and C (26%, $P < 0.0001$). The 5-year survival rates were 52% for group A, 40% for group B, and 23% for group C, respectively. The survival of group A was significantly better than that of groups B ($P = 0.0157$) and C ($P < 0.0001$).

Conclusions: Surveillance for HCC at specialized Department of Liver Disease can detect early-stage HCC, resulting in a higher chance of receiving promising treatment.

Key Words: hepatocellular carcinoma, surveillance, ultrasonography, computed tomography, tumor markers

(*J Clin Gastroenterol* 2006;40:942-948)

Received for publication January 26, 2006; accepted June 9, 2006.

From the *Division of Gastroenterology, Department of Medicine, Kurume University School of Medicine; †Research Center for Innovative Cancer therapy, and Center of the 21st Century Center of Excellence Program for Medical Science; and ‡Department of Internal Medicine, Kurume University Medical Center, Kurume city, Fukuoka, Japan.

Reprints: Eiji Ando, MD, Division of Gastroenterology, Department of Medicine, Kurume University School of Medicine, 67 Asahi-Machi, Kurume-shi, Fukuoka-ken, 830-0011, Japan (e-mail: nyando@med.kurume-u.ac.jp).

Copyright © 2006 by Lippincott Williams & Wilkins

Hepatocellular carcinoma (HCC) is the fifth most common neoplasm in the world, and the third most common cause of cancer-related death.¹ HCC has become the leading cause of death among patients with liver cirrhosis.² The incidence of HCC has increased in the United States over the past 2 decades.³ HCC commonly occurs in patients with chronic liver diseases related to hepatitis C virus (HCV) or hepatitis B virus (HBV) and the incidence of HCC in patients with HCV was reported to be 1.5% to 8% per annum.⁴⁻⁷ Several studies have shown that surveillance with ultrasonography (US) and α -fetoprotein (AFP) for patients with liver cirrhosis can detect early-stage HCC, resulting in higher chance of receiving early treatment.⁴⁻¹¹ However, some studies showed that surveillance for HCC has a limited value in prolonging survival of patients with HCC including cost effectiveness,^{12,13} and there is no randomized controlled trial to establish the value of surveillance of HCC in increasing survival of patients with chronic liver disease. Nowadays, such a study is almost impossible for ethical reasons. Discrepancies in the results of surveillance of HCC are related to differences in the incidence of HCC, target population of surveillance, frequency of surveillance, effective treatment of HCC, management of liver cirrhosis, and possibly also US equipment and skill of US examiner. The improvement of US equipment and increased proficiency of US examiner for surveillance of HCC have allowed early diagnosis of HCC, and resulted in prolonging survival of patients with liver cirrhosis over 3 quinquennia.¹⁰ US equipment and skill of US examiner vary among institutions. However, no controlled trial has compared the results of surveillance of HCC among institutions.

Three-phase computed tomography (CT) and magnetic resonance imaging (MRI) might be potentially more sensitive and specific for the diagnosis of HCC.¹⁴ Studies from the United States indicated that the screening for HCC with CT could be a cost effective strategy in transplant-eligible patients with cirrhosis.¹⁵ Des- γ -carboxy prothrombin (DCP), a new tumor marker of HCC is more specific or equally specific to AFP.^{16,17} However, surveillance studies using 3-phase CT, MRI, and DCP have not been reported.

The aims of the present study were (1) to determine differences in detecting early-stage HCC among various departments of liver disease, (2) if such differences have an impact on survival of patients with chronic liver disease, and (3) compare the values of regular 3-phase CT or regular DCP and conventional method of surveillance program of HCC in the detection of early-stage HCC.

PATIENTS AND METHODS

Patients

The study subjects were 574 Japanese patients with HCC diagnosed at Kurume University School of Medicine between January 1995 and December 2000. The diagnosis of HCC was established by histopathology and/or imaging studies (US, CT, angiography, CT-angiography, and MRI), and/or based on high plasma levels of tumor markers such as AFP and DCP. Patients were subdivided into 3 groups according to the manner of HCC discovery: group A, 91 patients were found to have HCC during periodic follow-up examination at Kurume University School of Medicine; group B, 301 patients were found to have HCC during periodic follow-up examination in other institutions; and group C, 182 patients were found to have HCC incidentally or because of symptoms.

Surveillance Program

Surveillance of 91 patients of group A included patients with chronic liver disease irrespective of age, liver cirrhosis, or etiology (HCV, HBV, alcoholic and other chronic liver diseases). Regular surveillance program of 91 patients of group A was as follows: US+AFP, 20 patients; US+AFP+DCP, 20 patients; US+AFP+CT, 15 patients; and US+AFP+CT+DCP, 36 patients. The frequency of monitoring using US, AFP, CT, DCP were 3, 6 to 12, and 3 to 6 months, respectively. During the subsequent surveillance period, imaging studies and tumor markers, together with physical examination and routine biochemical test, were repeated every 3 months. If 1 diagnostic modality indicated possible HCC, the other modalities were then performed on an out-patient basis. When nodular liver lesion was depicted by US or CT in such patients, they were admitted to Kurume University School of Medicine, and the diagnosis of HCC was confirmed by histopathology and/or imaging studies conducted based on high plasma levels of tumor markers.

The 301 patients of group B were found to have nodular liver lesions during periodic follow-up examination at other institutions at least 6-month interval by means of direct interview of the patients. The surveillance program of the 301 patients of group B was unknown. Classification of 182 patients as group C was based on finding a nodular liver lesion incidentally or at examination for symptoms and interview of patients but not at periodic follow-up examination.

Treatment Strategy

When a diagnosis of HCC was established at Kurume University School of Medicine, the following treatment options were assessed. Liver transplantation (LT)^{18,19} was not considered because of very small number of donor resources and insurance system in Japan from January 1995 to December 2000. (1) Hepatic resection (HR)²⁰ was assessed especially for patients with localized HCC and preserved hepatic reserve capacity. (2) Nonsurgical treatments, such as percutaneous ethanol injection (PEI),²¹ microwave coagulation therapy (MCT),²² radiofrequency ablation (RFA),^{23,24} transarterial chemoembolization (TACE),²⁵ hepatic arterial infusion chemotherapy (HAIC),²⁶ and systemic chemotherapy²⁷ were assessed when HR was contraindicated or the patient refused surgical treatment. The most appropriate therapeutic procedure was selected according to the tumor status and the underlying liver cirrhosis. Local ablation therapies (LAT) such as, PEI, MCT, and RFA were considered in patients with 1-3 tumor nodules, each measuring ≤ 30 mm in diameter that were devoid of vascular invasion and not associated with extrahepatic metastasis. (3) TACE, HAIC, or systemic chemotherapy was considered in patients with maximum tumor size of > 30 mm, number of tumors > 3 , presence of vascular invasion and/or presence of extrahepatic metastasis. (4) Best supportive care was assessed when patient had little hepatic reserve capacity or patient refused any treatment of HCC.

Outcome Measures

Outcome measures were analyzed retrospectively in groups A to C as follows: (1) tumor characteristics including size and number of HCC nodules, presence of vascular invasion, and presence of extrahepatic metastasis; (2) UNOS (The United Network for Organ Sharing) criteria for HCC²⁸; (3) treatment of HCC; and (4) cumulative survival of patients with HCC.

Differences of Surveillance Program at Kurume University School of Medicine

In 91 patients of group A, 51 patients underwent regular CT (15 US+AFP+CT and 36 US+AFP+CT+DCP) and 56 patients underwent regular DCP (20 US+AFP+DCP and 36 US+AFP+CT+DCP) in addition to US and AFP for surveillance program of HCC, respectively. (1) Tumor characteristics; (2) UNOS criteria for HCC; (3) treatment of HCC; and (4) cumulative survival of patients with HCC was also compared in 51 patients with regular CT [regular CT (+) group] and 40 patients without regular CT [regular CT (-) group], and in 56 patients with regular DCP [regular DCP (+) group] and 36 patients without regular DCP [regular DCP (-) group].

Statistical Analysis

We used the χ^2 , Fisher exact, and Mann-Whitney tests, where appropriate, to evaluate differences in clinical features of patients and in tumor characteristics. Survival was analyzed by the Kaplan-Meier method²⁹ and survival curves were compared by the log-rank test. Survival was

TABLE 1. Clinical Profile of 572 Patients With HCC

	Group A	Group B	Group C
No. patients	91	301	182
Age (y, mean \pm SD)	65.4 \pm 7.4	65.2 \pm 8.8	63.5 \pm 9.3
Sex			
Male (%)	54 (59)	214 (71)	158 (87)
Female (%)	37 (41)	87 (29)	24 (13)
		$P = 0.035$	$P < 0.0001$
			$P < 0.0001^*$
Etiology			
HCV-positive (%)	82 (90)	258 (86)	135 (74)
HBV-positive (%)	4 (4)	30 (10)	31 (17)
HCV-negative and HBV-negative (%)	5 (6)	13 (4)	16 (9)
			$P = 0.006$
			$P = 0.006^*$
Total bilirubin (mg/dL: mean \pm SD)	1.27 \pm 0.64	1.22 \pm 0.78	1.12 \pm 0.86
Albumin (g/dL: mean \pm SD)	3.39 \pm 0.49	3.45 \pm 0.47	3.50 \pm 0.45
Child pugh class			
A (%)	53 (58)	186 (62)	126 (69)
B or C (%)	38 (42)	115 (38)	56 (31)
AFP (ng/mL)			
0 to 100 (%)	68 (75)	181 (60)	91 (50)
> 100 (%)	23 (25)	120 (40)	91 (50)
		$P = 0.011$	$P = 0.030$
			$P < 0.0001^*$
DCP (mAU/mL)			
0 to 40 (%)	70 (77)	188 (62)	55 (30)
> 40 (%)	21 (23)	113 (38)	127 (70)

*Group B versus group C.

confirmed up to September 30, 2004. The statistical software package SPSS for Windows (version 10.0, SPSS Inc, Chicago, IL) was used for data analysis. A P value of < 0.05 was considered significant.

RESULTS

Patient Characteristics

Table 1 summarizes the clinical profile of 574 patients with HCC. The 3 groups were comparable for age, serum levels of total bilirubin and albumin, and Child Pugh class, whereas they significantly differed for sex (group A vs. B: $P = 0.035$; group A vs. C: $P < 0.0001$; group B vs. C: $P < 0.0001$) and etiology of liver disease (group A vs. C: $P = 0.006$; group B vs. C: $P = 0.006$). Serum levels of AFP (> 100 ng/mL) and DCP (> 40 mAU/mL) were significantly higher in group C than in groups A and B, and significantly higher in group B than in group A (AFP; group A vs. group B: $P = 0.011$, group A vs. group C: $P < 0.0001$, group B vs. group C: $P = 0.030$. DCP; group A vs. group B: $P = 0.011$, group A vs. group C: $P < 0.0001$, group B vs. group C: $P < 0.0001$).

HCC Features

The characteristics of HCC in the three groups are listed in Table 2. Significantly smaller size and fewer HCC nodules were detected in group A than in groups B and C, and significantly smaller in group B than in group C (tumor size: A, B, C; 20.4, 27.1, 57.8 mm, respectively, group A vs. group B: $P < 0.0001$; group A vs. group C:

$P < 0.0001$; group B vs. group C: $P < 0.0001$. Number of tumors; group A vs. group B: $P < 0.0001$; group A vs. group C: $P < 0.0001$; group B vs. group C: $P < 0.0001$). A significantly higher proportion of tumors showed vascular invasion in group C than in groups A and B, and significantly higher in group B than in group A (group A vs. group B: $P = 0.020$; group A vs. group C: $P < 0.0001$; group B vs. group C: $P < 0.0001$). Extrahepatic metastasis was noted in 9 patients. A significantly higher proportion of extrahepatic metastasis was noted in group C than in groups A and B (group A vs. group C: $P = 0.042$; group B vs. group C: $P = 0.001$).

UNOS Criteria and Treatment

Of the 574, 334 patients (58%) presented with HCC within UNOS T2 criteria (Table 2). A significantly higher proportion of patients presented with HCC within UNOS T2 criteria in group A (91%) compared with group B (68%) and group C (26%), and in group B compared with group C (group A vs. group B: $P < 0.0001$; group A vs. group C: $P < 0.0001$; group B vs. group C: $P < 0.0001$). With regard to treatment, 10 (11%), 20 (7%), and 16 (9%) of groups A, B, and C were treated with HR, respectively. Furthermore, 56 (62%), 137 (45%), and 31 (17%) of group A, B, and C were treated with LAT including PEI, MCT, and RFA, respectively. In addition, 21 (23%), 132 (44%), and 122 (67%) of groups A, B, and C were treated with interventional radiology including TACE and HAIC, respectively. For other therapies, 2 of group C were treated with systemic chemotherapy, and 4 (4%), 12 (4%), and 13 (7%) of groups A, B, and C were

TABLE 2. Tumor Characteristics and Treatment of 572 Patients With HCC

	Group A	Group B	Group C
No. patients	91	301	182
Tumor size (mm; mean ± SD)	20.4 ± 9.5	27.1 ± 17.8 <i>P</i> < 0.0001	57.8 ± 34.0 <i>P</i> < 0.0001 <i>P</i> < 0.0001*
Tumor number			
1 (%)	57 (63)	133 (44)	43 (23)
2 (%)	30 (33)	100 (33)	54 (30)
> 3 (%)	4 (4)	68 (23) <i>P</i> < 0.0001	85 (47) <i>P</i> < 0.0001 <i>P</i> < 0.0001*
Vascular invasion			
Yes (%)	0 (0)	17 (6)	44 (24)
No (%)	91 (100)	284 (94) <i>P</i> = 0.020	138 (76) <i>P</i> < 0.0001 <i>P</i> < 0.0001*
Extrahepatic metastasis			
Yes (%)	0 (0)	1 (1)	8 (4)
No (%)	91 (100)	300 (99)	174 (96) <i>P</i> = 0.042 <i>P</i> = 0.001*
UNOS criteria			
T1-2 (%)	83 (91)	204 (68)	47 (26)
T3-4 (%)	8 (9)	97 (32) <i>P</i> < 0.0001	135 (74) <i>P</i> < 0.0001 <i>P</i> < 0.0001*
Treatment			
Surgery or local ablation (%)	66 (73)	157 (52)	47 (26)
TACE, HAIC, or systemic chemotherapy (%)	21 (23)	132 (44)	122 (67)
Supportive care (%)	4 (4)	12 (4)	13 (7)

*Group B versus group C.

followed-up conservatively without any specific treatment for HCC because of hepatic failure or patient refusal of any treatment for HCC. The frequency of receiving promising treatment (HR or LAT) was significantly higher in group A (73%) than groups B (52%) and C (26%), and significantly higher in group B than group C (group A vs. group B: *P* = 0.002; group A vs. group C: *P* < 0.0001; group B vs. group C: *P* < 0.0001).

Survival Rates

The cumulative survival rates according to the modality of HCC discovery are shown in Figure 1. The 3, 5, and 7-year cumulative survival rates were 67%, 52%, and 36% for group A; 60%, 40%, and 22% for group B; and 38%, 23%, and 9% for group C, respectively. The cumulative survival rates of group A were significantly better than those of groups B (*P* = 0.0157) and C (*P* < 0.0001), and those of group B were significantly better than those of group C (*P* < 0.0001).

Differences in Surveillance Program at Kurume University School of Medicine

The detected HCC in the regular CT (+) group tended to be smaller than the regular CT (-) group (mean tumor size: 18.7 mm vs. 22.4 mm; *P* = 0.061). However, the number of tumors, serum levels of AFP and DCP, frequency of meeting UNOS T1-2 criteria and

frequency of receiving promising treatment were not significantly different between the 2 types of HCC discovery (Table 3). Furthermore, cumulative survival was comparable between regular CT (+) and CT (-)

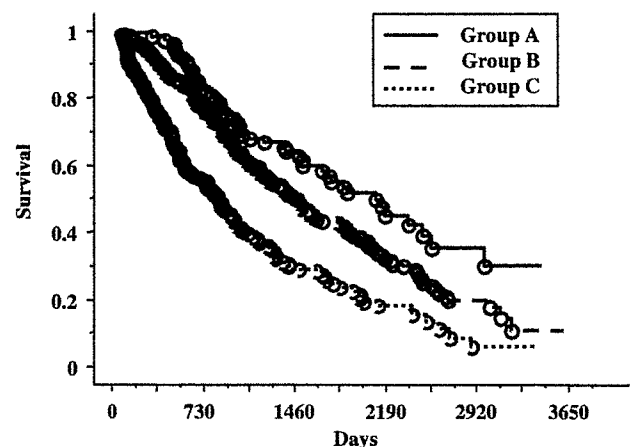


FIGURE 1. Kaplan-Meier survival curves of 574 patients with HCC according to the HCC diagnosis. The cumulative survival of group A was significantly better than that of groups B (*P* = 0.0157) and C (*P* < 0.0001), and group B was significantly better than that of group C (*P* < 0.0001).

TABLE 3. Tumor Characteristics and Treatment of 91 Patients With HCC With Regular CT and DCP

	Regular CT (+)	Regular CT (-)	<i>P</i>	Regular DCP (+)	Regular DCP (-)	<i>P</i>
No. patients	51	40		56	35	
Tumor size (mm; mean ± SD)	18.7 ± 8.5	22.4 ± 10.1	0.0610	19.6 ± 8.7	21.5 ± 10.3	NS
Tumor size (mm)			0.0439			NS
0 to 20 (%)	35 (69)	18 (45)		35 (63)	18 (32)	
21 to 30 (%)	9 (17)	16 (40)		14 (25)	11 (31)	
> 31 (%)	7 (14)	6 (15)		7 (12)	6 (17)	
Tumor number			NS			NS
1 (%)	34 (67)	23 (58)		35 (63)	22 (63)	
2 (%)	15 (29)	15 (38)		17 (30)	13 (37)	
> 3 (%)	2 (4)	2 (5)		4 (7)	0 (0)	
AFP (ng/mL)			NS			NS
0 to 100 (%)	39 (76)	29 (73)		40 (71)	28 (80)	
> 100 (%)	12 (24)	11 (27)		16 (29)	7 (20)	
DCP (mAU/mL)			NS			NS
0 to 40 (%)	9 (18)	12 (30)		13 (23)	8 (23)	
> 40 (%)	42 (82)	28 (70)		43 (77)	27 (77)	
UNOS criteria			NS			NS
T1-2 (%)	47 (92)	38 (95)		51 (91)	34 (97)	
T3-4 (%)	4 (8)	2 (5)		5 (9)	1 (3)	
Treatment			NS			NS
Surgery or local ablation (%)	40 (78)	26 (65)		40 (72)	26 (74)	
TACE, HAIC, or supportive care (%)	11 (22)	14 (35)		16 (28)	9 (26)	

groups (Fig. 2A). Tumor size, number of tumors, serum levels of AFP and DCP, frequency of meeting UNOS T1-2 criteria, frequency of receiving promising treatment, and cumulative survival were comparable between regular DCP (+) and DCP (-) groups (Table 3, Fig. 2B).

DISCUSSION

HCC commonly occurs in patients with chronic liver diseases related to HCV or HBV.⁴⁻⁷ Six months interval of surveillance including US and AFP for Child A-B cirrhotic patients is a conventional method used worldwide for early detection of HCC.⁸⁻¹² However, the results of surveillance are conflicting because of the annual incidence of HCC, target population of surveillance, frequency of surveillance, available treatment for HCC, management of liver cirrhosis, and possibly US equipment and skill of US examiner.⁴⁻¹³ Trevisani et al¹¹ reported that the center that detected HCC during surveillance was an independent prognostic indicator for elderly Italian patients with cirrhosis in multicenter clinical studies. A small sample size could also contribute to the conflicting results. Our study attempted to define the difference in the outcome of patients with HCC retrospectively according to the manner of HCC discovery (group A, surveillance at Kurume University School of Medicine; group B, surveillance at other institutions; group C, control group).

The 3 groups were comparable for age, serum total bilirubin level, serum albumin level, and Child Pugh class (Table 1). Patients with symptomatic HCC had poorer hepatic reserve capacity than patients with HCC detected by surveillance, on the basis of the larger size of the

tumors that exert a space-occupying effect despite the high proportion of patients without cirrhosis.^{9,11} Variation of hepatic reserve capacity depends on the balance between existence of cirrhosis and tumors exerting a space-occupying effect.

A significantly higher proportion of patients unrelated to HCV (HBV-positive or HBV-negative and HCV-negative) were observed in group C compared with groups A and B (Table 1). Surveillance for HCC in patients with HCV-related chronic liver disease is commonly conducted across Japan.⁵ HCC tends to be detected during surveillance in patients with HCV-related liver disease.

LT, HR, and LAT are promising therapeutic options for HCC¹⁸⁻²³ and suitable candidates for LT^{18,19} and LAT²¹⁻²³ include HCC within UNOS T2 criteria^{19,28} (single tumor; ≤ 5 cm in diameter and multiple tumors; no more than three tumor nodules, each ≤ 3 cm in diameter without vascular invasion or extrahepatic metastasis). Sangiovanni et al¹⁰ concluded that a shift of more patients from HR toward LAT was favored by the application of strict criteria for patient selection to HR and that LAT contributed to prolongation of survival of patients with HCC over 3 quinquennia. In the present study, significantly smaller and fewer HCC were detected in group A than in groups B and C, and significantly smaller in group B than in group C. Moreover, a significantly higher proportion of patients of group A (91%) presented with HCC within UNOS T2 criteria than groups B (68%) and C (26%) and significantly higher proportion of group B than group C (group A vs. group B: *P* < 0.0001; group A vs. group C: *P* < 0.0001; group B vs. group C: *P* < 0.0001). Yuen et al⁹ reported that

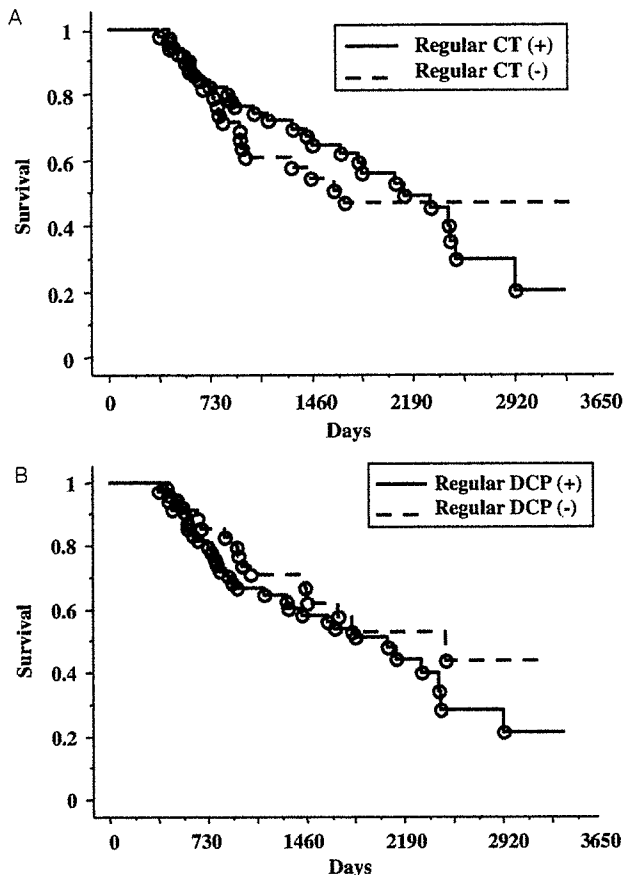


FIGURE 2. A, Kaplan-Meier survival curves of 91 patients with HCC detected at Kurume University School of Medicine. Survival was comparable between Regular CT (+) and (-) groups. B, Kaplan-Meier survival curves of 91 patients with HCC detected at Kurume University School of Medicine. Survival was comparable between Regular DCP (+) and (-) groups.

screening for HCC by AFP and US could identify tumors at an earlier stage, resulting in higher chance of receiving treatment. In the present study, the frequency of receiving promising treatment (HR or LAT) was significantly higher in group A (73%) than in groups B (52%) and C (26%), and significantly higher in group B than in group C (group A vs. group B: $P = 0.002$; group A vs. group C: $P < 0.0001$; group B vs. group C: $P < 0.0001$) (Table 2). Surveillance at specialized Department of Liver Disease could identify earlier stage of HCC than other institutions, resulting in higher chance of receiving promising treatment.

The cumulative survival rates of group A were significantly better than those of groups B ($P = 0.0157$) and C ($P < 0.0001$), and group B was significantly better than that of group C ($P < 0.0001$) (Fig. 1). These results are similar to those of Yuen et al,⁹ Sangiovanni et al,¹⁰ and Trevisani et al,¹¹ indicating that surveillance for HCC improved the survival of cirrhotic patients when effective treatment of HCC and management of liver cirrhosis

were available. Surveillance at specialized Department of liver disease may prolong survival of patients with chronic liver disease compared with surveillance for HCC at other institutions. Randomized prospective trials are needed to confirm the survival benefits of surveillance of HCC between institutions.

Arguedas et al¹⁵ reported that the screening for HCC by using CT is the most cost effective strategy in transplant-eligible patients with cirrhosis in the United States using Markov model. In the present study, we tested whether regular 3-phase CT or regular DCP in addition to regular US and AFP can detect early stage-HCC in 91 patients at Kurume University School of Medicine (Table 3). The regular CT (+) group tended to have smaller HCC than regular CT (-) group (mean tumor size: 18.7 vs. 22.4 mm; $P = 0.061$). However, the number of tumors, tumor markers, frequency of meeting UNOS T1-2 criteria, frequency of receiving promising treatment, and cumulative survival were not significantly different between the 2 types of HCC detection (Table 3, Fig. 2A). Furthermore, tumor characteristics, frequency of meeting UNOS T1-2 criteria, frequency of receiving promising treatment, and cumulative survival rate were comparable between regular DCP (+) and DCP (-) groups (Table 3, Fig. 2B). Regular CT and regular DCP in addition to conventional method of surveillance of HCC offered limited value of early detection of HCC at specialized Department of liver disease.

In conclusion, surveillance for HCC at specialized Department of liver disease can detect early-stage HCC, allowing a better chance of receiving promising treatment. Randomized prospective trials are needed to determine whether surveillance for HCC can improve survival of patients with chronic liver disease. Regular CT and regular DCP in addition to conventional methods of surveillance program of HCC seem to be of limited value in early detection of HCC.

REFERENCES

1. Parkin DM, Bray F, Ferlay J, et al. Estimating the world cancer burden: *GLOBOCAN* 2000. *Int J Cancer*. 2001;94:153-156.
2. Fattovich G, Giustina G, Degos F, et al. Morbidity and mortality in compensated cirrhosis type C: a retrospective follow-up study of 384 patients. *Gastroenterology*. 1997;112:463-472.
3. El-Serag HB, Mason AC. Rising incidence of hepatocellular carcinoma in United States. *N Engl J Med*. 1999;340:745-750.
4. Colombo M, de Franchis R, Del Ninno E, et al. Hepatocellular carcinoma in Italian patients with cirrhosis. *N Engl J Med*. 1991;325:675-680.
5. Oka H, Kurioka N, Kim K, et al. Prospective study of early detection of hepatocellular carcinoma in patients with cirrhosis. *Hepatology*. 1990;12:680-687.
6. Ikeda K, Saitoh S, Koida I, et al. A multivariate analysis of risk factors for hepatocellular carcinogenesis: a prospective observation of 795 patients with viral and alcoholic cirrhosis. *Hepatology*. 1993;18:47-53.
7. Tsukuma H, Hiyama T, Tanaka S, et al. Risk factors for hepatocellular carcinoma among patients with chronic liver disease. *N Engl J Med*. 1993;328:1797-1801.
8. Bruix J, Sherman M, Llovet JM, et al. Clinical management of hepatocellular carcinoma. Conclusions of the Barcelona-2000 EASL conference. European Association for the Study of the Liver. *J Hepatol*. 2001;35:421-430.