

図4 保存温度および日数によるゲノムDNAの断片化

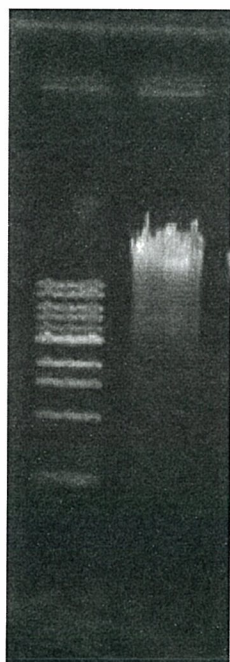


図5 採血直後-20°Cで凍結、10日後に解凍したサンプルのDNA

研究成果の刊行に関する一覧表

雑誌

| 発表者氏名   | 論文タイトル名   | 発表誌名                            | 巻号     | ページ       | 出版年      |
|---|---|---------------------------------|--------|-----------|----------|
| Itoh Y, Inoko H, Kulski JK, Sasaki S, Meguro A, Takiyama N, Nishida T, Yuasa T, Ohno S, <u>Mizuki N</u>   | Four-digit allele genotyping of the HLA-A and HLA-B genes in Japanese patients with Behcet's disease by a PCR-SSOP-Luminex method.                                    | Tissue Antigens                 | 67(5)  | 390-394   | 2006     |
| Chen X, Katoh Y, Nakamura K, Oyama N, Kaneko F, Endo Y, Fujita T, Nishida T, <u>Mizuki N</u>  | Single nucleotide polymorphisms of Ficolin 2 gene in Behcet's disease.  | J Dermatol Sci                  | 43(3)  | 201-205   | 2006     |
| Yanagihori H, Oyama N, Nakamura K, <u>Mizuki N</u> , Oguma K, Kaneko F  | Role of IL-12B promoter polymorphism in Adamantiades-Behcet's disease susceptibility: An involvement of Th1 immunoreactivity against Streptococcus Sanguinis antigen. | J Invest Dermatol               | 126(7) | 1534-1540 | 2006     |
| Hasumi Y, Inoko H, Ota M, Kulski JK, Nishizaki R, Mok J, Oka A, Okada E, Kumagai N, Nishida T, Ohno S, <u>Mizuki N</u>  | Single nucleotide polymorphisms of transforming growth factor-induced factor gene indicates to have no association with high myopia in Japanese.                      | Immunogenetics                  | 58(12) | 947-53    | 2006     |
| Matsui K, Saha S, Saitoh M, <u>Mizuki N</u> , Itoh N, Okada E, Yoshida A, Xin KQ, Nishio O, Okuda K   | Isolation and identification of adenovirus from conjunctival scrapings over a two-year period (between 2001 and 2003)   | in Yokohama, Japan. J Med Virol | 79(2)  | 200-205   | 2006     |
| Matusda A, Ebihara N, Kumagai N, Fukuda K, Ebe K, Hirano K, Sotozono C, Tei M, Hasegawa K, Shimizu M, Tamari M, Ohno S, <u>Mizuki N</u> , Ikezawa Z, Shirakawa T, Hamuro J, Kinoshita S | Functional SPNs in the promoter of the IFNGR1 gene are associated with ocular complications of atopic dermatitis.   | Invest Ophthalmol Vis Sci       | 48(2)  | 583-589   | 2007     |
| Hayashi T, Inoko H, Nishizaki R, Ohno S, Mizuki N.  | Exclusion of Transforming Growth Factor-b1 as a Candidate Gene for Myopia in the Japanese.  | Jpn J Ophthalmol                | 51     | 96-9      | 2007     |
| Teshigawara T, Hata S, Hitoi K, Watanabe Y, Ito Y, <u>Mizuki N</u>  | Penetration of gatifloxacin eye drop into the aqueous humor in humans.  | Ocular Immunol Inflamm,         |        |           | in press |
| Horie Y, Takemoto Y, Miyazaki A, Namba K, Kase S, Yoshida K, <u>Mizuki N</u> , Ohno S   | Tyrosinase gene family and Vogt-Koyanagi-Harada disease in Japanese patients.   | Mol Vis                         | 20(12) | 1601-1605 | 2006     |

|  |   |                     |       |           |          |
|--|---|---------------------|-------|-----------|----------|
| Yatsu K, <b><u>Mizuki N</u></b> , Hirawa N, Oka A, Ito N, Yamane T, Ogawa M, Shiwa T, Taraba Y, Ohno S, Soma M, Hata A, Nakano K, Ueshima H, Ogihara T, Tomoike H, Miki T, Kimura A, Mano S, Kulski JK, Umemura S, <b><u>Inoko H</u></b>   | High-resolution mapping for essential hypertension using microsatellite markers.  | Hypertension        | 49(3) | 446-452   | 2007     |
| Katsuyama Y, Ota M, <b><u>Mizuki N</u></b> , Ito A, Okada E, Ohno S, Matsunaga T, Ohmori S   | MDR1 polymorphisms effect cyclosporine AUC0-4 in Behcet's disease patients.   | Clinical Opt halmol |       |           | in press |
| Sasaki S, <b><u>Inoko H</u></b> , Ota M, Katsuyama Y, Okada E, Hasumi Y, Hayashi T <sup>1</sup> , Inamori Y, Nishizaki R, Mok J, Oka A, Kimura T, Kulski JK, Ohno S, <b><u>Mizuki N</u></b>  | A Single Nucleotide Polymorphism analysis in the LAMA1 gene in the Japanese patients with high myopia.  | Clinical Opt halmol |       |           | in press |
| Nakanishi K, <b><u>Inoko H</u></b>   | Combination of HLA-A24, -DQA1*03, and -DR9 contributes to acute-onset and early complete $\beta$ -cell destruction in type 1 diabetes: longitudinal study of residual $\beta$ -cell function. | Diabetes            | 55    | 1862-1868 | 2006     |
| Ohtsuka M, Ishii K, Kikutii YY, Warita T, Suszuki D, Sato D, Kimura M, <b><u>Inoko H</u></b>   | Construction of mouse 129/Ola BAC library for the targeting experiments using E14 embryonic stem cells.   | Genes Genet Syst    | 81    | 143-146   | 2006     |
| Shiina T, Ota M, Shimizu S, Katsuyama Y, Hashimoto N, Takasu M, Anzai T, Kulski JK, Kikkawa E, Naruse T, Kimura N, Yanagiya K, Watanabe A, Hosomichi K, Kohara S, Iwamoto C, Umehara Y, Meyer A, Wanner V, Sano K, Macquin C, Ieko K, Tokunaga K, Gojobori T, <b><u>Inoko H</u></b> , Bahram S | Rapid Evolution of MHC Class I Genes in Primates Generates New Disease Alleles in Man Via Hitchhiking Diversity.  | Genetics            | 173   | 1555-1570 | 2006     |
| Kawashima M, Tamiya G, Oka A, Hohjoh H, Juji T, Ebisawa T, Honda Y, <b><u>Inoko H</u></b> , Tokunaga K   | Genomewide association analysis of human narcolepsy and a new resistance gene.  | Am J Hum Genet      | 79    | 252-263   | 2006     |
| Sano K, Shiina T, Shimizu S, Anzai T, Kulski JK, <b><u>Inoko H</u></b>   | Novel cynomolgus macaque MHC-DPB1 polymorphisms in three South-East Asian populations.  | Tissue Antigens     | 67    | 297-306   | 2006     |

|   |  |                        |         |           |      |
|---|--|------------------------|---------|-----------|------|
| Ikwaki I, Kulski JK, <b>Inoko H</b>   | Regulation of CD93 cell surface expression by protein kinase C isoenzyme.  | Microbiol Immunol      | 50      | 93-103    | 2006 |
| Koishi S, Yamamoto K, Matsumoto H, Koishi S, Ensek i Y, Oya A, Asakura A, Aoki Y, Atsumi M, Iga T, Inomata J, <b>Inoko H</b> , Sasaki T, Nanba E, Kato N, Ishii T, Yamazaki K | Serotonin transporter gene promoter polymorphism and autism: a family-based genetic association study in Japanese population.                  | Brain Development      | 28      | 257-260   | 2006 |
| Dunn DS, <b>Inoko H</b> , Kulski JK   | The association between non-melanoma skin cancer and a young dimorphic Alu element within the major histocompatibility complex class I region. | Tissue Antigens        | 68      | 127-134   | 2006 |
| Reinders J, Rozemuller EH, van der Weide P, Oka A, Slootweg PJ, <b>Inoko H</b> , Tilanus MG   | Genes in the HLA region indicative for head and neck squamous cell carcinoma.  | Mol Immunol (Epub)     | 44      | 848-855   | 2007 |
| Luo M, Kim H, Kudrna D, Sisneros NB, Lee SJ, Mueller C, Collura K, Zuccolo A, Buckingham EB, Grim SM, Yanagiya K, <b>Inoko H</b> , Shiina T, Flajnik MF, Wang RA, Ohta Y      | Construction of a nurse shark ( <i>Ginglymostoma cirratum</i> ) bacterial artificial chromosome (BAC) library and a preliminary genome survey. | BMC Genomics           | 7       | 106       | 2006 |
| Mizuta I, Satake W, Nakabayashi Y, Ito C, Suzuki S, Momose, Nagai Y, Oka O, <b>Inoko H</b> , Fukae J, Saito Y, Sawabe M, Murayama S, Yamamoto M, Hattori N, Murata M, Toda T  | Multiple candidate gene analysis identifies $\alpha$ -synuclein as a susceptibility gene for sporadic Parkinson's disease.                     | Hum Mol Genet          | 15      | 1151-1158 | 2006 |
| Watanabe M, Nikaido M, Tsuda TT, <b>Inoko H</b> , Mindehl DP, Murata K, Okada N   | The rise and fall of the CR1 subfamily in the lineage leading to penguins.   | Gene                   | 365     | 57-66     | 2006 |
| <b>Mizuki N</b> , Watanabe Y, Miyamoto M, Iijima Y, <b>Itoh N</b> , Nishida T, Iwata S, Endo Y, Itoh D  | Flumoxed sodium and levofloxacin concentrations in aqueous humor.  | Ocular Immunol Inflamm | 13(2-3) | 229-234   | 2006 |
| Yamaki K, Takiyama N, <b>Itho N</b> , <b>Mizuki N</b> , Maehara S, Wakaiki S, Hayakawa K, Kotani T  | Experimentally induced Vogt-Koyanagi-Harada disease in two Akitas dogs.  | Exp Eye Res            | 80(2)   | 273-280   | 2005 |
| 西出忠之、加藤陽子、水木信久  | 水晶体温存硝子体手術における術後水晶体調節力。  | 臨床眼科                   | 60(9)   | 1633-1635 | 2005 |

|   |  |                          |         |           |      |
|---|--|--------------------------|---------|-----------|------|
| <u>遠藤要子</u>   | 正常眼圧緑内障患者の眼圧日内変動と血圧の関係.                  | 横浜医学                     | 56      | 161-16    | 2006 |
| <u>遠藤要子</u> , <u>伊藤典彦</u> , <u>杉田美由紀</u> , <u>門之園一明</u> , <u>水木信久</u> , <u>奥沢幸雄</u> .   | ニプラジロール点眼による傍中心窩毛細血管血流速度の増加. 2004:.      | 第7回オフサルモニューロプロテクション研究会会誌 |         | 33-38     | 2005 |
| <u>門之園一明</u> , <u>遠藤要子</u>  | フルオレセイン眼底造影法、SLO-Rodenstock.             | NEWMOOK眼科                | 第7巻     | 140-144   | 2005 |
| <u>樋口亮太郎</u> , <u>遠藤要子</u> , <u>岩田慎子</u> , <u>杉田美由紀</u> , <u>水木信久</u>   | 眼虚血症候群による血管新生緑内障の検討.                     | 臨床眼科                     | 58      | 1457-1461 | 2004 |
| <u>岩田慎子</u> , <u>遠藤要子</u> , <u>斉藤秀典</u> , <u>栗田正幸</u> , <u>杉田美由紀</u> , <u>磯部裕</u> , <u>岡田和四郎</u> , <u>北村紀子</u> , <u>益原奈美</u> , <u>椎野めぐみ</u> , <u>堀まどか</u> , <u>水木信久</u> | 正常眼圧緑内障に対するラタノプロストの眼圧下降効果.               | あたらしい眼科                  | 20      | 709-711   | 2004 |
| Hayashi T, <u>Mizuki N.</u>   | Ocular manifestations in behcet disease. | JMAJ                     | 49(7・8) | 260-268   | 2006 |