

of a small number of randomized controlled trials (RCTs) suggest that concomitant external beam radiotherapy and chemotherapy (radiochemotherapy) are preferable to chemotherapy alone or radiation alone for patients with advanced, non-resectable pancreatic cancer with no distant metastasis.<sup>15,16</sup>

The recent report by the European Study Group for Pancreatic Cancer (ESPAC-1) has shown a worsening of outcome in patients undergoing curative resection followed by adjuvant radiochemotherapy,<sup>17</sup> although another report by the Gastrointestinal Tumor Study Group (GITSG) suggested that adjuvant radiochemotherapy had a survival benefit.<sup>18</sup> However, there is no consensus on the treatment of locally invasive pancreatic cancer with no distant metastasis, since no RCTs exist for this locally advanced stage of pancreatic cancer. An RCT was therefore conducted to establish the treatment strategy for locally invasive pancreatic cancer that extends beyond the pancreatic capsule but does not invade the superior mesenteric artery or the common hepatic artery.

## MATERIAL AND METHODS

**Eligibility.** Our criteria for patient enrollment were (1) patients were between 20 and 75 years of age with a performance status of 0 through 2; (2) the tumor had either invaded the serosal (anterior) or retroperitoneal (posterior) surface of the pancreas, or extended to the intrapancreatic portal vein without complete obstruction (ie, the tumor was either S2, RP2, or PV2 according to the Japanese classification system [JCS]);<sup>19</sup> (3) no adjacent organs were involved except the transverse mesocolon, the duodenum, and the common bile duct; (4) there was no invasion to the superior mesenteric artery or the common hepatic artery, or the peripancreatic nerve plexuses (A0 and PL0); (5) para-aortic lymph node metastases were absent (N0 or N1); (6) the maximal diameter of the tumor was more than 2 cm and less than 6 cm (TS2 or TS3); and (7) there were no liver metastases or peritoneal seeding (H0 and P0). These criteria are consistent with Stage IVa cancer according to the JCS. Tumors that met the entry criteria represent a tumor that extends beyond the pancreas, but without involvement of major arteries (the celiac axis or the superior mesenteric artery). These tumors correspond to T3N0M0 (Stage IIA) or T3N1M0 (Stage IIB) of the American Joint Commission for Cancer (AJCC) staging system (T3, Stage II).

The other exclusion criteria were (1) previous radiation therapy or chemotherapy; (2) abnormal reaction to drugs, including contrast media; (3) presence of serious cardiovascular, pulmonary, renal, or hepatic diseases; (4) coexistence of another active malignant neoplasm; and (5) any conditions that the physician considers should preclude the trial.

Figure 1 shows the protocol for the present study. Once a patient met our eligibility criteria based on preoperative examinations including abdominal computed tomography (CT), angiography, ultrasonography, chest x-rays, and routine laboratory tests, informed consenting patients were registered as potential candidates at the central office of the trial not later than 1 day before the scheduled laparotomy. Eligibility was finally decided according to the operative findings of the laparotomy; eligible patients were randomly assigned to either a resection group or a radiochemotherapy group via a telephone call to our central office.

**Treatments.** Patients assigned to the resection group underwent pancreatoduodenectomy (PD) or distal pancreatectomy for resection of the main pancreatic cancer with dissection of the regional lymph nodes that were classified as Group 1 (or higher) according to JCS.<sup>19</sup> At least a half circle of the plexus of the root of the superior mesenteric artery was resected. Patients received no postoperative adjuvant therapy unless recurrence was obvious, at which point the doctor in charge was permitted to select another therapy.

In patients assigned to the radiochemotherapy group, the abdomen was closed once a biopsy specimen had been taken to confirm the diagnosis, although the surgeon in charge was free to perform an anastomotic resection such as gastrojejunostomy or biliodigestive anastomosis. The patient received radiation therapy beginning within 1 week after the operation. The radiotherapy was delivered as a single course of a total radiation dose of 5040 cGy in 28 fractions at 180 cGy over 5.5 weeks by using 10 to 14 megavolt photons. The radiation fields covered the primary tumor and a margin of 1 to 3 cm covering the regional lymph nodes, and was directed on the basis of CT images taken 1 or 2 days before treatment. The 3- or 4-field therapy and the dynamic arc conformal technique were recommended, but the 2-field therapy was allowed when necessary based on institutional availability. During the radiotherapy, there was continuous intravenous infusion of 5-fluorouracil (5-FU) at 200 mg/m<sup>2</sup>/day. This was followed by weekly intravenous infusion of 5-FU at 500 mg/m<sup>2</sup>,

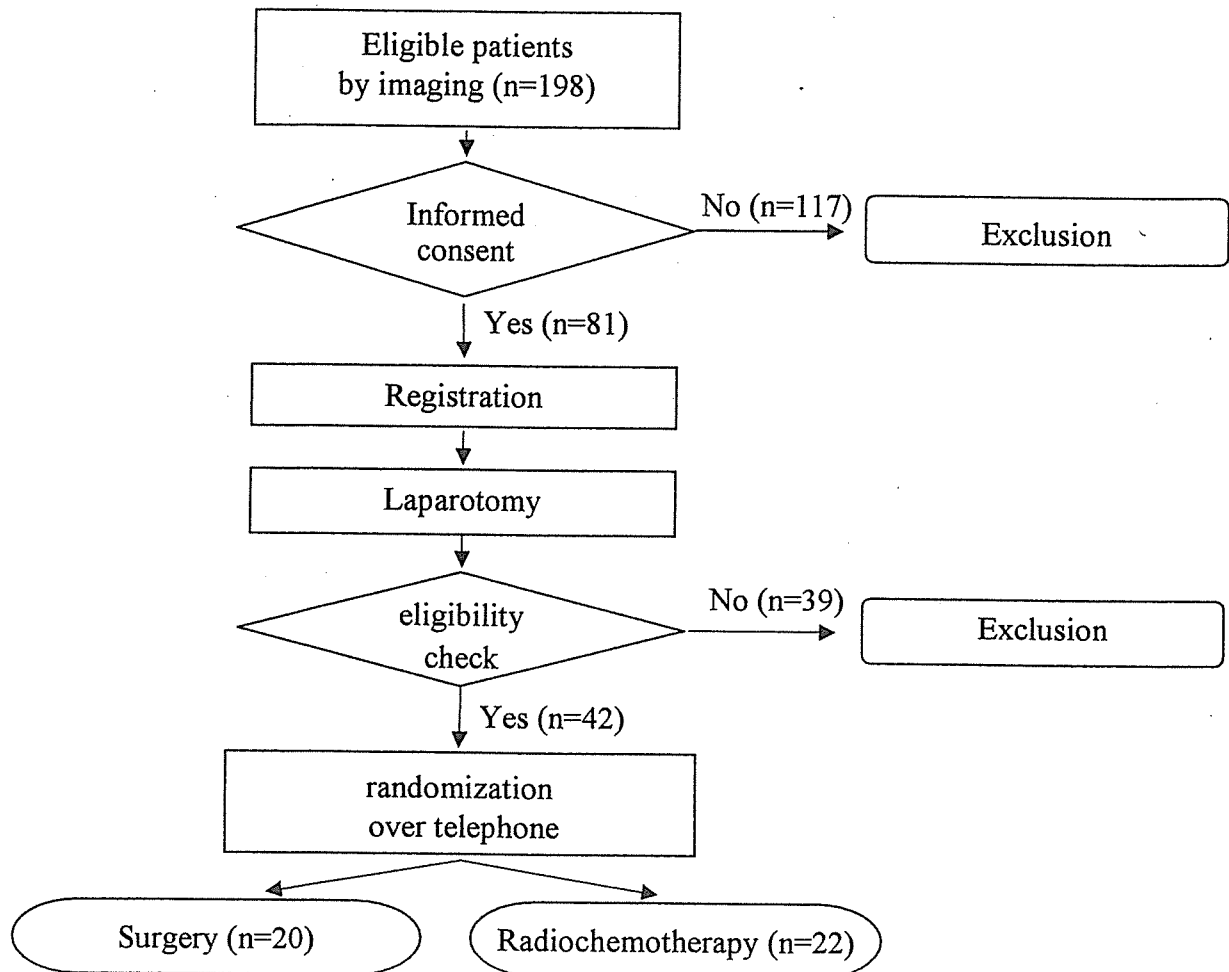


Fig 1. Schema for the study protocol.

starting in most patients within 1 week and always within 4 weeks of completion of radiochemotherapy.

**Statistical analysis.** The sample size was determined as follows: Supposing that the 1-year survival rate for Stage IVa cancer treated by surgical resection is 60% and that the 1-year survival for locally invasive cancer treated by radiochemotherapy is 40% (median survival of 9 months), 73 patients per group are needed to detect the difference at a 1-sided 5% significance level with 80% power. The target sample size was therefore set at 150 patients. Both treatments involve routine procedures, with unpredictable complications or death considered unlikely. Interim analysis was scheduled when half of the target sample size was reached.

The distributions of the baseline characteristics of the patients were compared between the treatment groups by using the chi-square test for binary variables, the Mann-Whitney *U* test for

ordinal variables, and the unpaired *t* test for continuous variables.

Conventional survival statistics, including the hazard ratio (log-rank test) and the 1-year survival rate, were calculated to compare the outcomes between the 2 treatment groups. The mean survival time was also estimated, since it has recently been recognized as a superior measure of survival benefits.<sup>20-22</sup> Mean survival time was calculated as the area under the survival curve,<sup>23</sup> and its standard error was estimated by using the Irwin method<sup>24</sup> with Kaplan-Meier adjustment<sup>25</sup> for the total number of deaths. To assess the prognostic significance of individual variables and to identify independent predictors of survival, Cox regression analysis was used with a stepwise selection procedure.

Postoperative changes in quality-of-life scores<sup>26</sup> (performance status, general well-being, diarrhea, pain) were recorded. The questionnaire covers 4 categories including daily activities, physical

**Table I.** Reasons for exclusion at laparotomy\*

	No. of patients
Peritoneal metastasis	10
Distant lymph node metastasis	9
Anterior organ invasion	7
Liver metastasis	6
Major arterial invasion	4
Retroperitoneal organ invasion	3
Stage III	3†
Portal venous stenosis‡	2
Tumor diameter >6 cm	2
Serous cystadenoma by frozen section	1
Tumor diameter <2 cm	1

\*All reasons were counted for each patient.

†Overdiagnosis preoperatively for portal venous invasion.

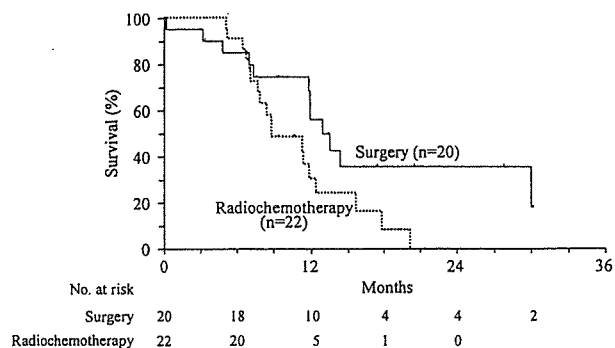
‡Portal invasion of the tumor with a development of collateral vein.

condition, social activities, and mental and psychologic status. The patients were requested to circle their own status on a scale from 1 to 5. The laboratory data (hemoglobin, total protein, albumin, total cholesterol, log carcinoembryonic antigen [CEA] and log carbohydrate antigen [CA19-9]) were recorded and compared by using repeated measure analysis of variance between the treatment groups. All analyses were run with the use of the Statistical Package for Social Science, version 11 (SPSS Inc, Chicago, Ill).

## RESULTS

During this study, 198 patients from the participating institutions were diagnosed with resectable, locally invasive pancreatic cancer that met the chosen criteria. These patients were informed in detail about the study and were asked to register for the clinical trial. Written informed consent was obtained from 81 patients (41%). The remaining 117 patients were not registered in the clinical trial because 91 strongly requested surgical resection, and the remaining 26 requested radiochemotherapy.

The study started in January 1999. The required number of patients was not enrolled in the first 2-year period, and accrual was therefore extended by an additional 2 years. At the end of the second 2-year period, it was estimated that we would need to continue accrual for another 4 years to reach the required number. This finding, together with our ethical concerns and financial difficulty, led to premature termination of the trial. The follow-up data were analyzed at this point when the power was estimated to be 67 percent. So far, a total of 81 potentially eligible patients have been registered and undergone laparotomy. Of these, 39 patients

**Fig 2.** Survival curves of the resection group and radiochemotherapy group.

were excluded based on the operative findings (Table I).

We compared the preoperative evaluation based on imaging modality with the operative findings in our 81 registered patients. Table II shows the diagnostic accuracy for each factor. CT evaluation has a diagnostic accuracy of 65% for anterior capsular invasion, 84% for retroperitoneal invasion, and 86% for portal venous system invasion.

Finally, 42 patients were randomized and were treated as indicated. Twenty patients were assigned to the resection group (12 males and 8 females) with an average age of 65 years old (range, 51-75), and 22 patients were assigned to the radiochemotherapy group (15 males and 7 females) with an average age of 63 (range, 49-72). There were no statistical differences in the patients' backgrounds. The patients in the resection group underwent surgical resection, involving PD in 15 patients (8 PDs and 7 PPPDs) and distal pancreatectomy in 4 patients. One patient in the resection group was found during the operation to have invasion to the superior mesenteric artery, and resection was abandoned by the surgeon in favor of radiochemotherapy. This patient was nevertheless included in the resection group, according to the "intention to treat" principle. Lymph node dissection was completed to group 2 (D2) in 9 patients and to group 1 plus para-aortic lymphnode (D1+ $\alpha$ ) in 10 patients according to JCS.<sup>19</sup> The pancreatic head plexuses I and II were resected in 16 patients, but were not resected in 3 patients. The entire circle of the superior mesenteric arterial plexus was resected in 4 patients, the half circle of the plexus was resected in 13 patients, and the plexus was not resected in 2 patients. The reconstruction was performed by the Whipple method in 4 patients, by the Child method in 10 patients, and by the Imanaga method in 5 patients.

In the other group, all 22 patients received radiochemotherapy after the laparotomy. In 3

**Table II.** Accuracy of preoperative evaluation by imaging modality compared to findings at laparotomy

	Overdiagnosis*	Underdiagnosis*	Correct diagnosis* (diagnostic accuracy, %)
Anterior capsular invasion (S)	21	7	53 (65)
Retroperitoneal invasion (RP)	10	3	68 (84)
Portal venous system invasion (PV)	9	2	70 (86)
Arterial system invasion (A)	0†	4	77 (95)
Distant lymph node invasion (N)	0†	9	72 (89)
Peritoneal metastasis (P)	0†	10	71 (88)
Liver metastasis (H)	0†	6	75 (93)

\*Values are the number of patients.

†Patients who were diagnosed to have these factors by imaging were not enrolled in this study.

patients, however, both radiation and 5-FU were discontinued because of severe colitis in 1 patient, disease progression in 1, and refusal of treatment in the other. The dose of radiation given to these patients ( $n = 22$ ) was  $4518 \pm 1420$  cGy. The dose of 5-FU was  $9805 \pm 4429$  mg during radiation, and  $10114 \pm 4766$  mg after the radiation therapy. The resection group and the radiochemotherapy group were comparable with respect to the baseline variables of the tumor in terms of localization: invasion to the anterior pancreatic capsule, retroperitoneal tissue, portal venous system, arterial system, distal bile duct, duodenal wall, and extrapancreatic nerve plexus. Lymph node metastases were found in 14 of 20 patients in the resection group (70%) and in 5 of 22 patients in the radiochemotherapy group (23%) ( $P < .001$ ). This difference was related to the differences in the level of lymphadenectomy between the groups.

**Morbidity, mortality and survival.** By the time of the last follow-up in April 2002, 11 patients in the resection group and 17 patients in the radiochemotherapy group had died of the disease (4 and 9, respectively, from distant metastases, 4 and 4 from locoregional recurrence, and 3 and 4 from both components). The mean follow-up from the entry was 13 months for the resection group and 10 months for the radiochemotherapy group. One additional death occurred in the resection group secondary to liver failure after thrombosis of the superior mesenteric vein and the superior mesenteric artery on the seventh postoperative day. Otherwise there were no serious complications, such as anastomotic leakage, pancreatic fistula, and bleeding.

Figure 2 shows the survival curves for the 2 treatment groups. The resection group had better survival than the radiochemotherapy group (Fig 2, Table III); operative resection increased the survival time by an average of 5.9 months, and the 1-year survival rate by 30%, and halved the hazard

ratio. The resulting statistical significance increased further when the operative death was treated as censored (the right 3 columns in Table III). Cox univariate analyses revealed the only variable to be a significant predictor of survival was the treatment ( $P = 0.02$ ) (Table IV). The Cox stepwise procedure also showed that treatment is the only independent predictor ( $P = .04$ ).

**Effects of treatment on quality of life scores and other variables.** The mean hospital stay of the resection group was shorter than that of the radiochemotherapy group ( $66 \pm 29$  days vs  $102 \pm 57$  days;  $P = .03$  on 32 df). Under the Japanese insurance system, patients are generally allowed to stay in the hospital until they can live in their homes without professional support. The total costs for the primary hospital stay were  $\$17,500 \pm \$5120$  for resection plus postoperative care, and  $\$28,200 \pm \$6130$  for radiochemotherapy (mean  $\pm$  SD).

Three months after laparotomy, both treatments were associated with significant decreases in body weight, hemoglobin, albumin, total cholesterol levels and log CA19-9; the patients' average satisfaction had increased significantly in both groups (Fig 3). The extent of these changes did not differ between the 2 groups. A significant difference was found only in the average number of bowel movements per day, which increased after resection but was unchanged after radiochemotherapy.

## DISCUSSION

Although the question of whether to perform resection for pancreatic cancer has long been discussed,<sup>11,27</sup> no general consensus has arisen. In our study, we specifically selected patients with a resectable, locally invasive pancreatic cancer that extended beyond the pancreatic capsule but did not invade the superior mesenteric artery or the common hepatic artery. This stage of pancreatic

**Table III.** Comparison of survival between the treatment groups

	<i>Resection group*</i>	<i>Radiochemotherapy group*</i>	<i>Difference ratio*</i>	<i>P value*</i>	<i>Resection group†</i>	<i>Difference ratio†</i>	<i>P value†</i>
Mean survival time (months) (95% CI)	16.9‡ (11.9-21.9)	11.0 (8.9-13.1)	5.9 (0.5-11.3)	0.03	17.8‡ (12.8-22.7)	6.8 (1.4-12.1)	.01
Median survival time (95% CI)	13.0 (10.2-15.9)	8.9 (5.0-12.8)	4.1 (-0.7-8.9)	0.10	13.7 (10.8-15.2)	4.7 (-0.1-9.6)	.06
1-year survival (%) (95% CI)	61.8 (39.2-84.4)	30.2 (9.2-51.2)	31.6 (7.4-62.4)	0.05	65 (42.2-87.9)	34.8 (3.8-65.9)	.03
Hazard ratio (95% CI)			0.46 (0.22-0.97)	0.04		0.41 (0.1-0.88)	.02

\*All deaths are included.

†Operative death is treated as censored observation.

‡This value (Irwin's restricted mean) is smaller than the true estimate (the areas under the complete survival curve) because the longest survival time is censored; hence, the additional length of life gained by surgery is also underestimated.

**Table IV.** Prognostic influences of treatment and tumor factors

<i>Variable</i>	<i>Hazard ratio*</i>	<i>P value*</i>
Treatment (resection vs radiochemotherapy)	0.41	.02‡
Location (head vs body/tail)	1.01	.91
Tumor size ( $\leq 4$ cm vs $>4$ cm)	1.00	1.00
Serosal invasion (present vs absent)	0.89	.78
Retroperitoneal invasion (present vs absent)	0.63	.30
Portal vein invasion (present vs absent)	1.28	.58
Bile duct invasion (present vs absent)	0.68	.36
Duodenal invasion (present vs absent)	0.64	.29
Gender (male vs female)	0.96	.92

\*Operative death is treated as censored observation.

‡Significant values.

cancer (Stage IVa in JCS,<sup>19</sup> T3 Stage II in AJCC system) includes the largest number of patients, and Japanese surgeons have generally tried to cure the disease by resection with or without post-operative radiochemotherapy. In the United States and other Western countries, however, possibly fewer of these patients would undergo radical surgical resection.<sup>28</sup> Certainly PD has been performed safely worldwide for the past 5 years, with an operative death rate of less than 5%.<sup>11</sup> Whether the apparently better results of surgical resection compared with nonsurgical treatments is due to selection bias (a majority of prognostically favorable patients undergo resection and the remaining patients receive other treatments) or due to more accurate disease information obtained by laparotomy has yet to be elucidated. To answer this question, we compared operative resection alone with radiochemotherapy alone under otherwise equal conditions (*ceteris paribus*).

Our present trial has several unique points. We compared 2 different types of treatments in patients having very similar conditions. Our eligi-

bility criteria were based on operative findings, which are more accurate than preoperative imaging; there were considerable discrepancies between preoperative and operative diagnoses in the extent of the tumor and distant metastases. Our eligibility criteria took into account more than 10 variables to specify the study population closely. These variables included performance status, tumor size, histopathology, nodal involvement, and tumor invasion of contiguous structures such as the serosal and retroperitoneal surface of the pancreas, duodenum, common bile duct, portal vein, major arteries, and nerve plexus. As a result, about half of all preregistered patients were excluded from the trial, leaving a subset of patients who were very homogeneous and well matched, and were expected to respond similarly to the treatments.

This study was difficult to conduct in Japan where a majority of people so far have relied on resection for pancreatic cancer because patients with pancreatic cancer rarely survive more than 3 years with any therapies that do not include resection. According to a nationwide survey by

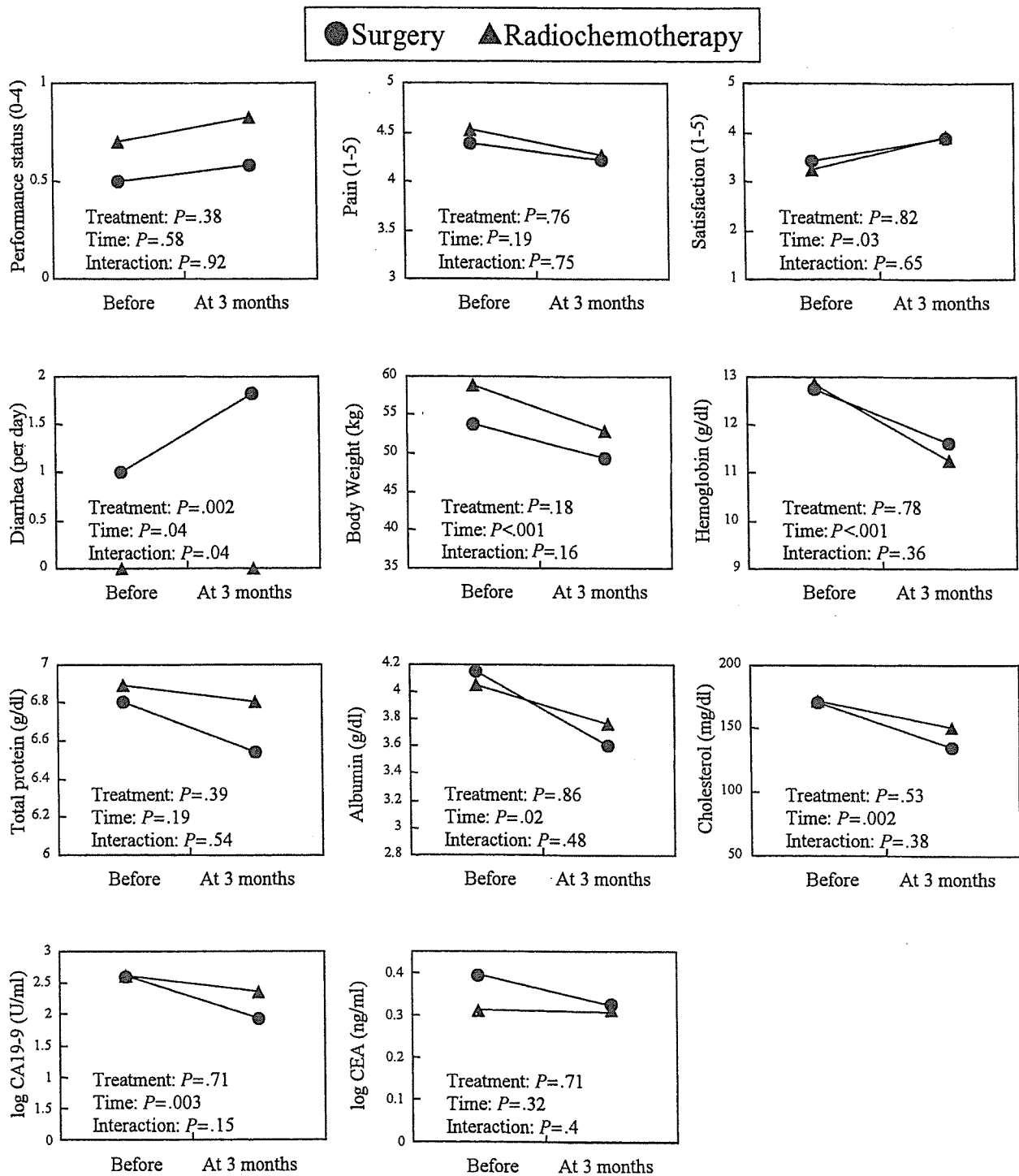


Fig 3. Changes in quality-of-life scores and other variables before and after treatment. *Treatment*: overall difference between the treatment groups. *Time*: overall difference between preoperative time and 3 months after the laparotomy. *Interaction*: interaction between treatment effect and time effect.

the Japanese Pancreas Society, 2005 patients with surgical stage IVa pancreatic ductal cancer, which is almost identical to the stage in this study, underwent resection between 1980 and 1999, with an average 1-year survival of 49%, 5-year survival of 10%, and 10-year survival of 5%.<sup>4</sup> On the other hand, no data were available on the results of radiochemotherapy alone without resection in comparable patients. Our randomized trial, however, revealed that radiochemotherapy administered to comparable patients resulted in significantly shorter survival than resective surgery. Moreover, this difference between the treatment groups was greater than expected and was detected with a much smaller number of patients than estimated at the time of sample size determination. Although statistically there remains the risk of type I error (wrong judgment that resection is better than radiochemotherapy), we concluded that the trial should not be continued and decided in favor of resection for the following reasons: It is highly unlikely that radiochemotherapy would ever achieve a long-term survival rate comparable to that of resection; no major factors could reverse the overall advantage of resection unless the operative mortality and morbidity were high; the hospital stay for the resection group was significantly shorter than that for the radiochemotherapy group; the overall cost for the resection group was lower than that for the radiochemotherapy group.

It has been thought that liver metastases are observed frequently after a radical operation. Nevertheless, the increased number of long-term survivors in Japan after a radical operation suggests the possibility that, at least, a portion of the patients with locally invasive pancreatic cancer might have a limited disease and could enjoy the maximal benefit by surgical resection. It should be taken into account that the current study was performed by a group of specialized institutions focusing on pancreatic diseases because recent reports have shown a distinct association between high patient volume and decreased mortality rates.<sup>11,29-32</sup> The mortality rate of PD for pancreatic cancer has been reported to be 3% to 8%.<sup>11</sup> The current series encountered only 1 in-hospital death after pancreatic resection, which should be a serious drawback to the surgical treatment, although the overall survival was still better in the resection group.

## CONCLUSION

Patients with pancreatic cancer without distant metastasis (ie, that extends beyond the pancreatic capsule but does not invade either the superior

mesenteric artery or the common hepatic artery) should be treated by surgical resection. The results of the European Study Group for Pancreatic Cancer (ESPAC) trial showed a potential benefit of adjuvant intravenous fluorouracil and folinic acid after surgical resection.<sup>17</sup> Therefore, it would be better for patients meeting our criteria to undergo resection, unless new treatment modalities are expected to achieve substantial long-term survival.

The authors benefited from insightful discussions with the late Dr Shuichi Okada of the National Cancer Center, Tokyo. The following persons also participated in the study. **Surgeons:** Koichi Aiura (Keio University), Tatsuya Aoki (Tokyo Medical College), Nobuo Baba (Otsu Red Cross Hospital), Koichi Hirata (Sapporo Medical University), Seiyo Ikeda (Fukuoka University), Kaichi Isono (Chiba University), Tatehiro Kajiwara (Kobe City General Hospital), Akira Kakita (Kitasato University), Tadao Manabe (Nagoya City University Medical School), Satoru Matsusue (Tenri Hospital), Morito Monden (Osaka University), Junichi Matsui (Ohtawara Red Cross Hospital), Hideki Noda (Nagahama City Hospital), Masahiko Ozaki (Yokohama Rousai Hospital), Makoto Sasaki (National Nagasaki Medical Center), Masao Tanaka (Kyushu University), Hiroshi Yamamoto (Chiba Cancer Center); **Internists:** Hiroyuki Maguchi (Teine-Keijinkai Hospital), Masayoshi Yoshimori (Kawasaki Social Insurance Hospital); **Radiologists:** Mitsuyuki Abe (Hyogo Ion Beam Medical Center), Keizo Akuta (Otsu Red Cross Hospital), Takashi Aruga (Chiba University), Masato Fushiki (Nagahama City Hospital), Masato Hareyama (Sapporo Medical University), Kazushige Hayakawa (Kitasato University), Masahiro Hiraoka (Kyoto University), Hidenori Hirata (National Kyushu Cancer Center), Kyo Itoh (Kyoto University), Etsuo Kunieda (Keio University), Kenji Nemoto (Tohoku University), Yoshiaki Okamoto (Tenri Hospital), Natsuo Oya (Kyoto University), Takeo Tsukioka (Tochigi Cancer Center), Iwao Tsukiyama (Tochigi Cancer Center).

## REFERENCES

1. Imaizumi T, Hanyu F, Harada N, Hatori T, Fukuda A. Extended radical Whipple resection for cancer of the pancreatic head: operative procedure and results. *Dig Surg* 1998;15:299-307.
2. Nagakawa T, Nagamori M, Futakami F, Tsukioka Y, Kayahara M, Ohta T, et al. Results of extensive surgery for pancreatic carcinoma. *Cancer* 1996;77:640-5.
3. Fortner JG, Kim DK, Cubilla A, Turnbull A, Pahnke LD, Shils ME. Regional pancreatectomy: en bloc pancreatic, portal vein and lymph node resection. *Ann Surg* 1977;186:42-50.
4. Pancreatic Cancer Registration Committee of Japan Pancreas Society. Report of a nation-wide survey of pancreatic cancer in 1999 (Japanese). *Suizou (J Jap Pancreas Soc)* 2001;16:115-47.
5. Yamamoto M, Ohashi O, Saitoh Y. Japan Pancreatic Cancer Registry: current status. *Pancreas* 1998;16:238-42.

6. Niederhuber JE, Brennan MF, Menck HR. The National Cancer Data Base report on pancreatic cancer. *Cancer* 1995;76:1671-7.
7. Nitecki SS, Sarr MG, Colby TV, van Heerden JA. Long-term survival after resection for ductal adenocarcinoma of the pancreas. Is it really improving? *Ann Surg* 1995;221:59-66.
8. Livingston EH, Welton ML, Reber HA. Surgical treatment of pancreatic cancer. The United States experience. *Int J Pancreatol* 1991;9:153-7.
9. Trede M, Schwall G, Saeger HD. Survival after pancreatoduodenectomy. 118 consecutive resections without an operative mortality. *Ann Surg* 1990;211:447-58.
10. Cameron JL, Pitt HA, Yeo CJ, Lillemoe KD, Kaufman HS, Coleman J. One hundred and forty-five consecutive pancreaticoduodenectomies without mortality. *Ann Surg* 1993;217:430-5.
11. Schafer M, Mullhaupt B, Clavien PA. Evidence-based pancreatic head resection for pancreatic cancer and chronic pancreatitis. *Ann Surg* 2002;236:137-48.
12. Riess H, Htun P, Löffel J, Huhn D. Chemotherapy for patients with adenocarcinoma of the pancreas. *Recent Results Cancer Res* 1996;142:415-24.
13. Fennelly D, Kelsen DP. The role of chemotherapy in the treatment of adenocarcinoma of the pancreas. *Hepatogastroenterology* 1996;43:356-62.
14. Kelsen D. The use of chemotherapy in the treatment of advanced gastric and pancreas cancer. *Semin Oncol* 1994;21:58-66.
15. Moertel CG, Frytak S, Hahn RG, O'Connell MJ, Reitemeier RJ, Rubin J, et al. Therapy of locally unresectable pancreatic carcinoma: a randomized comparison of high dose (6000 rads) radiation alone, moderate dose radiation (4000 rads + 5-fluorouracil), and high dose radiation + 5-fluorouracil: The Gastrointestinal Tumor Study Group. *Cancer* 1981;48:1705-10.
16. Moertel CG, Childs DS Jr, Reitemeier RJ, Colby MY Jr, Holbrook MA. Combined 5-fluorouracil and supervoltage radiation therapy of locally unresectable gastrointestinal cancer. *Lancet* 1969;2:865-7.
17. Néoptolemos JP, Dunn JA, Stocken DD, Almond J, Link K, Begger H, et al. Adjuvant chemoradiotherapy and chemotherapy in resectable pancreatic cancer: a randomised controlled trial. *Lancet* 2001;358:1576-85.
18. Kalsner MH, Ellenberg SS. Pancreatic cancer. Adjuvant combined radiation and chemotherapy following curative resection. *Arch Surg* 1985;120:899-903.
19. Japan Pancreas Society. Classification of Pancreatic Carcinoma (English edition). 1st ed. Tokyo: Kanehara & Co; 1996.
20. Beard SM, Holmes M, Price C, Majeed AW. Hepatic resection for colorectal liver metastases: A cost-effectiveness analysis. *Ann Surg* 2000;232:763-76.
21. Tan LB, Murphy R. Shifts in mortality curves: saving or extending lives? *Lancet* 1999;354:1378-81.
22. Wright JC, Weinstein MC. Gains in life expectancy from medical interventions—standardizing data on outcomes. *N Engl J Med* 1998;339:380-6.
23. Karrison TG. Use of Irwin's restricted mean as an index for comparing survival in different treatment groups—interpretation and power considerations. *Control Clin Trials* 1997;18:151-67.
24. Irwin JO. The standard error of an estimate of expectation of life, with special reference to expectation of tumourless life in experiments with mice. *J Hygiene* 1949;47:188-9.
25. Kaplan EL, Meier P. Nonparametric estimation from incomplete observations. *J Am Stat Assoc* 1958;53:457-81.
26. Kurihara M, Shimizu H, Tsuboi K, Kobayashi K, Murakami M, Eguchi K, et al. Development of quality of life questionnaire in Japan: quality of life assessment of cancer patients receiving chemotherapy. *Psychooncology* 1999;8:355-63.
27. DiMugno EP, Reber HA, Tempero MA. AGA technical review on the epidemiology, diagnosis, and treatment of pancreatic ductal adenocarcinoma. American Gastroenterological Association. *Gastroenterology* 1999;117:1464-84.
28. Sener SF, Fremgen A, Menck HR, Winchester DP. Pancreatic cancer: a report of treatment and survival trends for 100,313 patients diagnosed from 1985-1995, using the National Cancer Database. *J Am Coll Surg* 1999;189:1-7.
29. Gordon TA, Burleyson GP, Tielsch JM, Cameron JL. The effects of regionalization on cost and outcome for one general high-risk surgical procedure. *Ann Surg* 1995;221:43-9.
30. Glasgow RE, Mulvihill SJ. Hospital volume influences outcome in patients undergoing pancreatic resection for cancer. *West J Med* 1996;165:294-300.
31. Gouma DJ, van Geenen RC, van Gulik TM, de Haan RJ, de Wit LT, Busch OR, et al. Rates of complications and death after pancreaticoduodenectomy: risk factors and the impact of hospital volume. *Ann Surg* 2000;232:786-95.
32. Yeo CJ, Cameron JL, Lillemoe KD, Sitzmann JV, Hruban RH, Goodman SN, et al. Pancreaticoduodenectomy for cancer of the head of the pancreas. 201 patients. *Ann Surg* 1995;221:721-31.



## 膵癌骨転移合併例の臨床的特徴およびその対策

井 口 東 郎    安 田 幹 彦    松 尾    亨  
澄 井 俊 彦    船 越 顕 博<sup>1)</sup>

要旨：近年、膵癌においても骨転移合併例に遭遇する機会が増加しており、その臨床的特徴について検討し、対策について考察を加えた。膵癌骨転移は膵体尾部癌で多く、肝転移をともなう症例が多かった。骨転移の型は溶骨型で、骨代謝マーカーで溶骨を反映する血清 1CTP の上昇が認められた。骨転移成立には破骨細胞の活性化が重要な過程であるが、膵癌骨転移症例では破骨細胞活性化作用を有する PTHrP, IL-6, VEGF の血中レベルが上昇していた。膵癌で骨転移合併後の生存期間は長くないが、診断および治療開始の遅れから QOL 低下を招いている。膵癌の経過観察では、骨転移を念頭におくことと、1CTP の定期的な測定が早期診断にとって重要と考えられる。

索引用語：膵癌、骨転移、骨代謝マーカー、サイトカイン

### はじめに

膵癌は最も予後不良の癌で、以前は骨転移が問題になることは皆無に近かったが、近年の治療の進歩により、僅かではあるが生存期間の延長がみられ、それによって臨床上的問題となる骨転移合併例に遭遇する機会が増加している。骨転移は生命予後を規定することは少ないが、疼痛、病的骨折、神経症状などで QOL を著しく低下させるため、たとえその後の生存期間が短期であっても、その対策は重要である。今回、われわれは、膵癌に骨転移を合併した自験例の臨床的特徴について検討を行い、膵癌診療における骨転移対策について考察を加えた。

### 1 対象および方法

2000～2003年に九州がんセンターで入院治療を行った通常型膵癌は179例（男性113例，女性66例；40～93歳）で、このうち骨転移を合併した13例を対象とした。通常型膵癌の診断は組織学的所見あるいは画像所見および腫瘍マーカーから行った。骨転移は骨シンチでスクリーニングを行い、異常集積を認めた部位を X 線写真，MRI あるいは CT で確認した。

対象例において、臨床的特徴として膵癌占拠部位，臨床病期，骨転移部位，膵癌診断から骨転移出現までの期間，骨転移出現後の生存期間ならびに骨以外の遠隔転移について検討した。また，膵癌に合併する骨転移の診断に骨代謝マーカーが有用であるかを検討するために，対象例の骨転移診断時における骨代謝マーカー（血清 C-terminal telopeptide (1CTP)，尿 N-terminal telopeptide (NTx)，血清骨型アルカリフォスファターゼ (BAL)) を測定した。骨転移成立には破骨細胞活性化による骨吸収亢進が重要であるため<sup>1)</sup>，膵癌骨転移に関わるサイトカインを探る目的で，破骨細胞活性化作用を有するサイトカインとして PTH 関連蛋白 (PTHrP)，IL-6 および vascular endothelial growth factor (VEGF) の血中濃度を ELISA で測定した。なお，血清 VEGF レベルは腫瘍由来 VEGF に加えて血小板由来 VEGF も反映されるため<sup>2)</sup>，本項においては血小板 VEGF の影響を除外する目的で，VEGF の測定値 (pg/ml) を血小板数 ( $10^4$ /ml) で補正した値で表示した。

### II 結 果

#### 1. 膵癌骨転移の臨床的特徴 (Table 1)

膵癌骨転移症例の男女比は男性 8 例，女性 5 例で，膵癌診断時の臨床病期は 1 例が II，残る 12

1) 九州がんセンター消化器内科

Table 1. 膵癌骨転移合併例 (n=13) の臨床的特徴

症例	年齢	性	臨床病期	占拠部位	骨転移部位	骨転移の型	腫瘍診断から骨転移出現までの時期 (月)	骨転移に対する治療	骨転移出現後の生存期間 (日)	骨以外の遠隔転移
#1	59	女	II	ph	腰椎	溶骨	26	NSAIDs	83	肺
#2	79	男	IVb	pb-pt	胸-腰椎, 肋骨	混合	5	モルヒネ, BP†	87	肺, 肝
#3	71	女	IVb	pb-pt	胸-腰椎, 肋骨, 骨盤	溶骨	7	モルヒネ, BP	83	肺, 肝
#4	54	男	IVa	pt	肋骨	溶骨	6	放治‡, モルヒネ	244	肝
#5	65	男	IVa	pt	肩甲骨	溶骨	4	放治, NSAIDs	73	腹膜
#6	50	男	IVb	pb-pt	胸-腰椎, 肋骨	溶骨	0 (同時)	放治, モルヒネ, BP	77	肝, 副腎, 皮膚, 筋肉
#7	52	男	IVa	ph	胸-腰椎	混合	19	モルヒネ	58	腹膜
#8	62	女	IVb	pt	胸椎	溶骨	0 (同時)	なし	19	肝, 腹膜
#9	74	女	IVb	pt	胸椎, 骨盤	溶骨	0 (同時)	BP	84	肺, 肝
#10	55	男	IVb	pt	胸椎, 肋骨	混合	29	放治, モルヒネ, BP	82	肝
#11	46	女	IVb	ph	腰椎	溶骨	0 (同時)	放治, モルヒネ, BP	60 (生存中)	皮膚, 筋肉
#12	68	男	IVb	pt	胸-腰椎, 肋骨	溶骨	12	放治, モルヒネ, BP	31	肝, 腹膜
#13	71	男	IVb	pt	腰椎, 頰骨	溶骨	10	放治, モルヒネ, BP	36	肝

† BP, ビスフオスフォネート製剤; ‡ 放治, 放射線治療

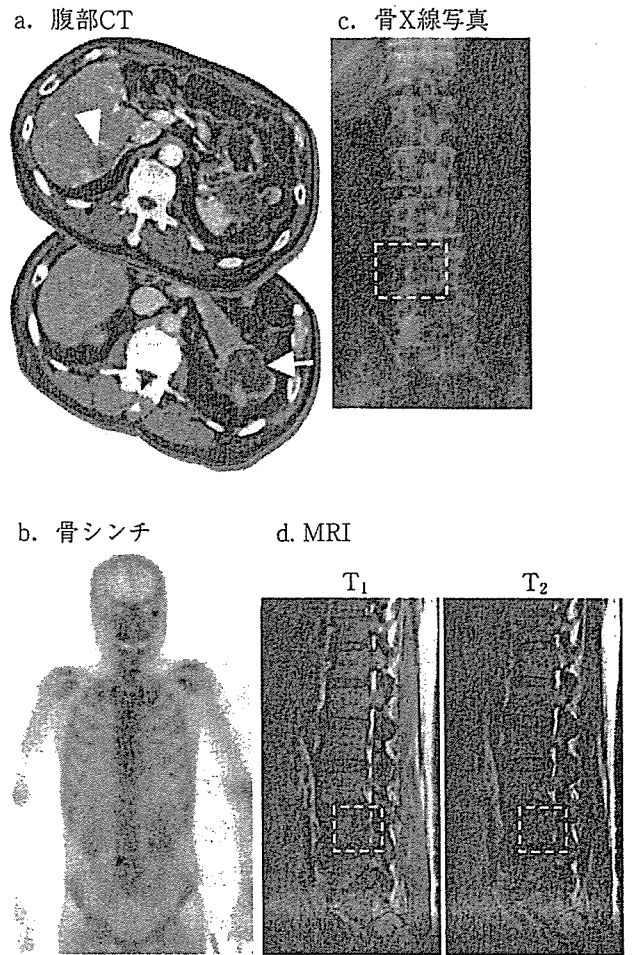


Figure 1. 膵癌骨転移典型例 (Table 1 の #13) の画像所見 a: 腹部 CT; 膵尾部の腫瘍 (膵癌, ↑) および肝転移 (△) b: 骨シンチ; 腰椎 (L<sub>4</sub>) および左頰骨に hot spot c: 骨 X線写真; 腰椎 (L<sub>4</sub>) に骨破壊像 (□) d: MRI; 腰椎 (L<sub>4</sub>) に T<sub>1</sub> 強調像で低信号, T<sub>2</sub> 強調像で等信号の転移巣 (□)

例が IV (IV a 3 例, IV b 9 例) であった。膵癌に対する治療の内訳は, 臨床病期が II (Table 1 の #1) と IV a (Table 1 の #7) の各 1 例で手術を施行し, 臨床病期が IV a, IV b の 10 例では gemcitabine (GEM) を主とした化学療法あるいは放射線化学療法を施行, 残る IV b の 1 例 (Table 1 の #6) では対症療法のみを施行した。なお, 手術を施行した 2 例の術後の臨床病期は #1 が III (根治度 A) ならびに #7 が IV a (根治度 C) であった。

Table 1 に骨転移合併例の臨床的特徴をまとめた。この 20 年間の本邦における膵癌の占拠部位別頻度をみると, 膵頭部癌 6084 例に対して膵体尾部癌 1721 例と膵頭部癌が多いのに対して<sup>3)</sup>, 膵癌骨

転移合併例は頭部の3例に対して体尾部が10例であり、腓体尾部癌に骨転移の合併が多かった。骨転移部位としては脊椎(胸, 腰椎)が11例と最も多く、以下、肋骨6例、骨盤2例、肩甲骨および頬骨が各1例と続き、骨転移の型としては溶骨型が10例と多く、残る3例は溶骨と造骨が混じった混合型であった。Figure 1に腓癌骨転移典型例(Table 1の#13)の画像所見を呈示する。本症例は腓尾部癌で肝転移を合併しており(Figure 1a), 下肢しびれ感が出現して骨転移と診断された症例である。骨シンチで腰椎(L<sub>4</sub>)および左頬骨に異常集積がみられ(Figure 1b), X線写真でL<sub>4</sub>の溶骨像が確認された(Figure 1c)。MRIでもT<sub>1</sub>強調像で低信号, T<sub>2</sub>強調像で等信号の病変がL<sub>4</sub>にみられ(Figure 1d), 溶骨性病変に一致する所見であった。

腓癌の診断が下されてから骨転移の診断までの期間については、腓癌診断時の臨床病期や治療法が各症例で異なるため、一概には論じられないが、手術を施行した2例で26カ月および19カ月、また、腓癌診断時の臨床病期はIVbであったが、5-fluorouracil (5-FU)を用いた放射線化学療法およびそれに続いてGEMによる化学療法を施行した1例で19カ月と、その期間が長かった。一方、残る10例では、4例で腓癌診断と同時に骨転移が診断されており、また、6例では腓癌診断から4~12カ月と比較的短期間に骨転移の診断がなされていた。

骨転移合併後の生存期間については、GEMを用いた放射線化学療法を施行した1例で244日と比較的長期生存が得られたが、11例で19~87日(平均65日)と骨転移合併後の生存期間は短かった。なお、1例は骨転移と診断されてから60日であるが、現在、生存中である。

骨以外の遠隔転移については、肝転移が9例と最も多く、以下肺転移が4例、腹膜播種が3例、皮膚転移が2例、筋肉転移が2例および副腎転移が1例であった。

## 2. 骨代謝マーカー (Figure 2)

骨代謝マーカーとしてはそれぞれ、溶骨および造骨を反映するマーカーがあり、今回われわれは

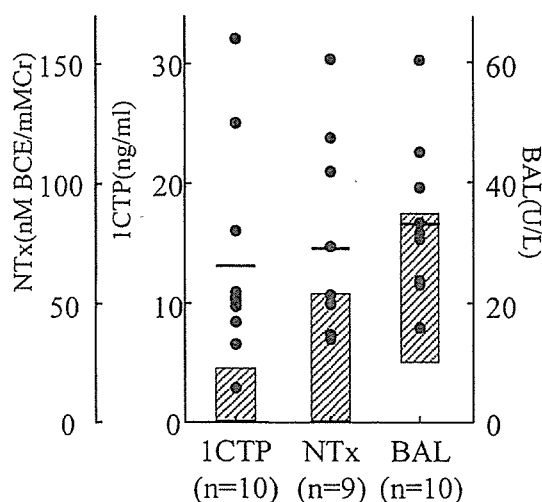


Figure 2. 腓癌骨転移合併例における骨代謝マーカーの血中(1CTP, BAL)および尿中レベル(NTx)(斜線は正常域)

溶骨マーカーとして血清1CTPおよび尿NTx, また造骨マーカーとしてBALをELISAにて測定した。

腓癌骨転移合併例における各マーカーの血中あるいは尿中レベル(平均値±SE)は、1CTP  $13.3 \pm 2.8$  ng/ml (n=10) (正常<4.5), NTx  $75.1 \pm 13.6$  nMBCE/mM Cr (n=9) (正常<55), BAL  $33.2 \pm 3.9$  U/L (n=10) (正常10~35)で、溶骨マーカーが上昇を示した。これらマーカーの上昇を症例別に検討してみると、1CTPは10例中9例(90%)とほとんどの症例で上昇していたが、NTxは9例中4例(44%)でしか上昇がみられなかった。一方、BALは3例で上昇がみられたが、そのうち2例は僅かの上昇であり、60U/Lと中等度上昇を示した1例で造骨病変が顕著であった。

## 3. 破骨細胞活性化作用を有するサイトカイン

破骨細胞活性化を有するサイトカインとしてPTHrP, IL-6, VEGFの血中レベルを測定し、その結果をFigure 3に示した。

腓癌骨転移合併例におけるPTHrP, IL-6およびVEGFの血中レベル(平均値±SE)はそれぞれ  $61.7 \pm 17.7$  pmol/L (正常13.8~55.3),  $19.6 \pm 12.3$  pg/ml (正常<4.0) および  $33.2 \pm 3.0$  VEGF/Platelet (pg/10<sup>4</sup>) (正常6.7~10.7)で、これら平均値はいずれもが上昇していたが、特にIL-6および

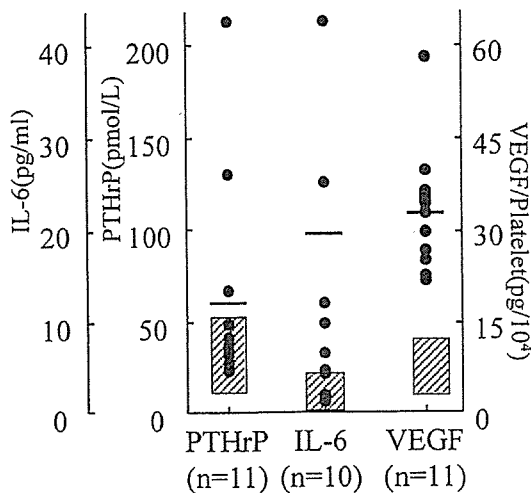


Figure 3. 膵癌骨転移合併例における破骨細胞活性化作用を有するサイトカイン (PTHrP, IL-6, VEGF) の血中レベル (▨は正常域)

VEGF が高値であった。これらサイトカインを症例別に検討してみると、PTHrP は 11 例中 3 例 (27%)、IL-6 は 10 例中 7 例 (70%) で上昇を示しており、また、VEGF は 11 例全例で上昇していた。

#### 4. 骨転移の症状およびその治療

骨転移に基づく症状としては当然、疼痛が最も多く、その中で骨転移部位の頻度からも“腰痛”を訴えるケースが多かったが、この他、脊髄圧迫による下肢しびれ感あるいは下肢麻痺を来したケースが 4 例みられた。

骨転移の治療としては疼痛対策が中心であり、痛みの程度に応じて NSAIDs, モルヒネ, 放射線治療あるいはビスフォスフォネート製剤を適宜、組み合わせて施行した (Table 1)。また、脊髄圧迫症状を来したケースでは手術も考えられたが、その後の生存期間を考慮して侵襲の少ない治療法を選択した。

### III 考 察

膵癌は本邦で増加傾向にあるが、未だ診断や治療における“breakthrough”がみられず、ほとんどは進行膵癌としてみつかるといわざるを得ない。しかしながら、近年の癌化学療法への進歩には目を見張るものがあり、膵癌においても GEM の導入後、僅か

ではあるが生存期間の延長がみられるようになり<sup>1)</sup>、われわれの成績においても、臨床病期 IV b で化学療法を施行した症例では、以前の 5-FU を主とした治療群に比較して GEM 群で約 4 カ月の生存期間の延長が認められた。一方、膵癌骨転移については、森脇ら<sup>5)</sup>が剖検における膵癌の骨転移合併頻度を 21.3% と報告しているが、実際に臨床の現場において骨転移と診断されるケースは以前は極めてまれであった。ところが最近では、膵癌においても骨転移合併例に遭遇する機会が増加しており、われわれの施設ではこの 4 年間 (2000～2003 年) に 13 例の膵癌骨転移合併例を経験し、この数値は自験膵癌症例の 7.3% となる。この成績は膵癌における臨床上問題となる骨転移合併例の増加を示しており、GEM 導入による生存期間の延長がその一因と考えられる。

膵癌骨転移は占拠部位別では体尾部癌に多く、また肝転移を有する症例に多いという臨床的特徴が認められた。膵癌占拠部位によって骨転移合併頻度が異なる理由は不明であるが、脊椎 (胸、腰椎) への転移が高頻度であることを考え合わせると、大循環を介したいわゆる経動脈性転移に加えて、門脈から脊椎静脈叢を介する経静脈性の転移も関与している可能性がある。こういった見地から膵癌の門脈浸潤について考えてみると、膵頭部癌は上腸間膜静脈に浸潤するのに対して膵体尾部癌では脾静脈へ浸潤し、このような癌の占拠部位による浸潤する脈管の違いが骨転移頻度の違いとして現れたのかもしれない。骨転移部位としては脊椎、特に腰椎が最も多く、症状として疼痛、すなわち腰痛を訴える場合が多かった。この成績は肝転移を有した膵体尾部癌で腰痛を訴える場合は、骨転移の可能性が高いことを念頭において検索を進めていかねばならないことを示唆している。

骨転移成立には癌細胞で産生されるサイトカインによる破骨細胞活性化およびそれによる骨吸収亢進過程が重要であり<sup>1)</sup>、肺癌や乳癌骨転移では PTHrP がその役割を担っていることが *in vivo* の骨転移動物モデルにおいて明らかにされた<sup>6)</sup>。実際の各種癌症例の骨転移に関わるサイトカインに

については、乳癌骨転移でPTHrPの発現頻度が高いとする報告や<sup>9)</sup>、肝細胞癌骨転移とVEGFの関連を示唆する報告<sup>9)</sup>がみられるが、不明な点が多いのが現況である。膵癌骨転移における破骨細胞活性化に関わるサイトカインについては不明であるが、われわれはそういったサイトカインとしてPTHrP、IL-6およびVEGFについて、膵癌骨転移合併例における血中レベルを検討した。その結果、IL-6とVEGFが高値を示し、PTHrPも頻度は低いながら一部の症例で上昇しており、直接的なエビデンスではないが、これらサイトカインが膵癌の骨転移成立に関与している可能性が示唆された。膵癌の骨転移は、他の消化器癌の骨転移と同様<sup>10)</sup>、溶骨型が大部分で、実際、溶骨を反映する骨代謝マーカーのうちICTPの血中レベル上昇が認められた。ただ、骨吸収マーカーの上昇は溶骨型骨転移に限ったものではなく、混合型や造骨型骨転移においても観察され<sup>11)</sup>、これらすべての型の骨転移において破骨細胞活性化による骨吸収亢進が関与していることを反映した結果と考えられる。

膵癌骨転移については、“膵癌で骨転移は少ない”といった先入観があり、疼痛を訴えているにもかかわらず骨転移を思いつかないがためにその診断が遅れ、QOLの低下を招いている場合が多いようである。そこで、その対策として、まずは“膵癌においても骨転移が増加している”ことを念頭におき、疼痛を訴える場合には骨転移の可能性を考え、速やかに骨シンチを施行し、骨転移の診断につなげねばならない。今回、われわれは膵癌骨転移合併例で血清ICTP値が上昇していることを明らかにした。膵癌骨転移の高危険群は、現時点では設定されていないが、われわれの成績からは膵体尾部癌で肝転移を有する症例で骨転移の合併頻度が高かった。よって、こういった症例においては、外来での経過観察におけるICTPの測定が骨シンチへの拾い上げを促し、より早期の骨転移の診断につながることを期待される。これによってその後の治療も早期に開始することが可能となり、QOLの低下防止につながるものと考えられる。膵癌骨転移の治療は疼痛対策が主となり、

その後の生存期間を考慮し保存的治療が選択される場合が多いと思われる。近年、強力な破骨細胞機能抑制作用を有するビスフォスフォネート製剤が登場し<sup>12)</sup>、骨転移の治療においても疼痛軽減や癌増殖抑制に効果をあげている<sup>13)</sup>。われわれも放射線治療、モルヒネ、NSAIDsといった従来の保存的治療法に加えてビスフォスフォネート製剤を積極的に使用しているが、現在のところは骨転移と診断されるのが遅く、その後の生存期間も短いため、その効果が確認できていないというのが現況である。今後、膵癌骨転移がより早期に診断されるならば、従来の治療法に加えてビスフォスフォネート製剤を適宜、組み合わせることにより、QOLの低下防止につながることを期待される。

#### おわりに

以上、膵癌骨転移の自験症例より、その臨床的特徴をまとめてみた。今後も膵癌において骨転移が増加するであろうし、そのことに留意して、骨転移をより早期に診断し、また早期に治療を施すことにより患者QOLの低下を防止せねばならない。

#### 文 献

- 1) Guise TA: Molecular mechanism of osteolytic bone metastases. *Cancer* 2000; 88 (Suppl): 2892-2898
- 2) George ML, Eccles SA, Tutton MG, et al: Correlation of plasma and serum vascular endothelial growth factor levels with platelet count in colorectal cancer: Clinical evidence of platelet scavenging? *Clin Cancer Res* 2000; 3147-3152
- 3) 松野正紀: 膵癌登録20年間のまとめにあたって. *膵臓* 2003; 18: 97-169
- 4) Burris III HA, Moore MJ, Andersen J, et al: Improvements in survival and clinical benefit with gemcitabine as first-line therapy for patients with advanced pancreas cancer: A randomized trial. *J Clin Oncol* 1997; 15: 2403-2413
- 5) 森脇昭介, 万代光一, 山上啓太郎: 癌の骨髄転移の病理形態と問題点. *病理と臨床* 1999; 17: 28-34
- 6) Iguchi H, Tanaka S, Ozawa Y, et al: An experimental model of bone metastasis by human lung cancer cells: The role of parathyroid hormone-related protein in bone metastasis. *Cancer Res*

- 1996; 56: 4040-4043
- 7) Guise TA, Yin JJ, Taylor SD, et al: Evidence for a causal role of parathyroid hormone-related protein in breast cancer-mediated osteolysis. *J Clin Invest* 1996; 98: 1544-1548
- 8) Powell GJ, Southby J, Danks JA, et al: Localization of parathyroid hormone-related protein in breast cancer metastases; Increased incidence in bone compared with other sites. *Cancer Res* 1991; 51: 3059-3061
- 9) Iguchi H, Yokota M, Fukutomi M, et al: A possible role of VEGF in the osteolytic bone metastasis of hepatocellular carcinoma. *J Exp Clin Cancer Res* 2002; 21: 309-311
- 10) 石田 剛: 骨転移の病理組織像. *The Bone* 1996; 10: 47-51
- 11) 小泉 満: 癌の骨転移診断における骨代謝マーカー. *The Bone* 2003; 17: 185-188
- 12) Ibrahim A, Scher N, Williams G, et al: Approval summary for zoledronic acid for treatment of multiple myeloma and cancer bone metastases. *Clin Cancer Res* 2003; 9: 2394-2399
- 13) Tassone P, Tagliaferri P, Palmieri C, et al: Zoledronic acid induces antiproliferative and apoptotic effects in human pancreatic cancer cells *in vitro*. *Br J Cancer* 2003; 88: 1971-1978
- ( 論文受領, 平成 16 年 1 月 26 日 )  
    ( 受理, 平成 16 年 4 月 30 日 )

## Clinical features and management of pancreatic cancer with bone metastases

Haruo IGUCHI, Mikihiro YASUDA, Toru MATSUO, Toshihiko SUMII and Akihiro FUNAKOSHI<sup>1)</sup>

<sup>1)</sup>*Division of Gastroenterology, National Kyushu Cancer Center*

Prognosis of pancreatic cancer is one of the worst among various cancers, however, incidence of bone metastasis has been increased even in pancreatic cancer in recent years. Therefore, we examined clinical features of pancreatic cancer presenting bone metastases who were treated in our cancer center, and propose how to manage these patients.

We experienced 13 patients (7.3%) with pancreatic cancer with bone metastases during 2000-2003. Among these patients, pancreatic cancer was located at pancreatic body to tail in 10 cases, while it was located at pancreatic head in 3 cases. Liver metastasis was noted in 7 of 13 cases with bone metastases. Radiographical imagings of bone lesions revealed osteolytic bone destruction, and serum levels of bone resorption marker, I CTP, were elevated in these patients. Stimulation of osteoclastic bone resorption is a critical step for bone metastasis, thus, serum levels of cytokines (PTHrP, IL-6, VEGF), which exert a promotive effect on bone resorption, were measured. Serum levels of IL-6 and VEGF were elevated in most of these patients, while elevation of serum PTHrP levels was found in 3 of 13 patients with bone metastases. Survival periods of pancreatic cancer patients with bone metastases was not long, however, treatment for bone metastases is important in terms of quality of life (QOL). An earlier diagnosis is essential to prevent deterioration in the QOL of pancreatic cancer patients presenting bone metastases. Periodical measurement of serum I CTP in addition to bone scintigraphy is helpful for the earlier diagnosis for bone metastases.

---

〔原 著〕

## Stage IV膵癌に対する放射線化学療法と gemcitabine による化学療法の成績

澄井 俊彦 松尾 享 井口 東郎 船越 顕博\*

要 旨：1991年から2002年に放射線化学療法（CRT）を完遂した自験膵癌52例（stage IVa 27例：A群，IVb 25例：B群，その亜分類N<sub>3</sub>（+）7例：B1群，M（+）18例：B2群）とgemcitabine（GEM）での化学療法22例（C群）を対象に，各群の治療成績を累積生存曲線で比較検討した．CRTはcisplatinあるいは5-fluorouracil（5-FU）を増感剤とし，総線量50.4 Gy照射後，5-FUまたはGEMを投与した．A，B，C群の50%生存期間（median survival time, MST）はそれぞれ366日，196日，256日で生存曲線ではB，C群に比しA群で有意な延長を認めた（ $p < 0.001$ ， $p < 0.05$ ）．各群間の生存曲線の比較では，B2群（ $n=18$ ，MST；158日）に比べ，A+B1群（ $n=34$ ，MST；341日），B1群（ $n=7$ ，MST；249日）も有意な延長を示した（ $p < 0.0001$ ， $p < 0.005$ ）．C群はB2群より有意の延長を認め（ $p < 0.05$ ），B1群と有意差はなかった．維持化学療法の薬剤に関し，GEMを用いた群（GEM群， $n=8$ ）のMSTは434日，5-FUを用いた群（5-FU群， $n=43$ ）のMSTは218日で，前者の生存曲線が有意に延長していた（ $p < 0.05$ ）．以上より，遠隔転移例にはCRTではなくGEM投与を行うべきで，遠隔転移がないIVb例もGEM投与を検討する余地が示唆された．CRT後の化学療法は，5-FUよりもGEMの投与が推奨される．また，GEMを増感剤として使用したCRTの成績の検討も重要であると思われた．

索引用語：進行膵癌 放射線化学療法 化学療法 gemcitabine 累積生存曲線

### 背景と目的

Burrisらの報告<sup>1)</sup>以来，stage IVの膵癌の治療法は，遠隔転移が存在する場合は，gemcitabine（GEM）を用いた化学療法が第一選択であることは一般に認知され，筆者らが行った多施設における進行膵癌に対するGEMの成績<sup>2)</sup>でも平均生存期間は約7.5カ月で当科における従来の化学療法<sup>3)</sup>の成績調査<sup>3)</sup>に比べ良好であった．一方，遠隔転移のないstage IVaのいわゆる局所進行膵癌に対する治療法は，外科的療法か，内科的療法かは長い間議論的であった．我々は，以前から積極的に

放射線化学療法（CRT：chemoradiation）を施行してその治療成績を報告してきた<sup>4)</sup>が，今後CRTにもGEMが使用されることが十分考えられる．そこで今回，進行膵癌の標準的治療方針の決定に向けて検討すべき課題は何であるかを整理するため，筆者らの施設において行われてきたstage IVの膵癌に対する治療成績を顧みた．

### 対象と方法

1991年から2002年に当施設で，CRTが完遂できたstage IVの膵癌52例，およびGEMでの化学療法を施行した遠隔転移を有した22例を対象とした．CRTはcisplatin 6 mg/m<sup>2</sup>あるいは5-fluorouracil（5-FU）250 mg/m<sup>2</sup>を増感剤として放

\* 九州がんセンター消化器内科

<受理日：平成16年5月7日>



射線照射直前に点滴静注し、総線量 50.4 Gy (1.8 Gy/回, 28 回) の照射を行った。その後は 5-FU (1 例は経過中に 5-FU から GEM に変更, 8 例は GEM) を用いた維持化学療法を行った。原則として 5-FU は 500 mg/m<sup>2</sup> を週 1 回, GEM は 1,000 mg/m<sup>2</sup> を週 1 回の割合で外来で投与した。なお, CRT の完遂率は 86.7% (52/60 例) で, 中止理由は全身倦怠感が多かった。Staging は膵癌取扱い規約第 5 版<sup>9)</sup> の分類を用いて, CT, 血管造影の所見を主体に行った。CRT 症例を A 群: IVa 27 例, B 群: IVb 25 例, その亜分類として B 1 群: N<sub>3</sub> (+) でその他の遠隔転移のない IVb 7 例, B 2 群: 遠隔転移を有する IVb 18 例とした。CRT 施行前の画像検査では明らかな肝転移を指摘できずに, CRT 直後に肝転移を認めた 6 症例は B 2 群とした。また, GEM での治療群 22 例 (IVb) を C 群とした。対象の背景を Table 1 に示した。各群の性, 年齢に差は認めないが, GEM 群は遠隔転移を伴う stage IVb 症例が主体なので, 発見が遅れる傾向にある体尾部癌が他の 2 群に比べ多かった。以上の各群の累積生存曲線 (以下生存曲線) を Kaplan-Meier 法にて評価し, log-rank 検定で比較検討した。

成 績

まず, A, B, C 群の 50% 生存期間 (median

Table 1 Subjects

therapy	chemoradiation		gemcitabine
	IVa	IVb*	IVb
stage			
No. of patients	27 cases	25 cases	22 cases
male	16 cases	16 cases	13 cases
female	11 cases	9 cases	9 cases
age (years) (M±SD)	64.7±9.0	66.6±11.0	61.1±11.7
localization			
head	20 cases	15 cases	4 cases
head/body			1 case
body/tail	7 cases	10 cases	15 cases
whole			1 case
unknown			1 case

\* Twenty-five patients with stage IVb disease received chemoradiotherapy. They included 7 patients who had N<sub>3</sub> lymph node metastasis but lacked liver metastasis. Six patients classified as stage IVb disease because liver metastases appeared soon after chemoradiotherapy.

survival time, MST) はそれぞれ 366 日, 196 日, 256 日で, 生存曲線は B, C 群に比し A 群で有意な延長を認めた (p=0.0008, p=0.0247) (Fig. 1)。A+B 1 群の生存曲線は (n=34, MST; 341 日), B 2 群の生存曲線と比較すると有意の延長を認めた (p<0.0001) (Fig. 2)。B 1 と B 2 群の MST はそれぞれ 249 日, 158 日で, 生存曲線は B 1 群にお

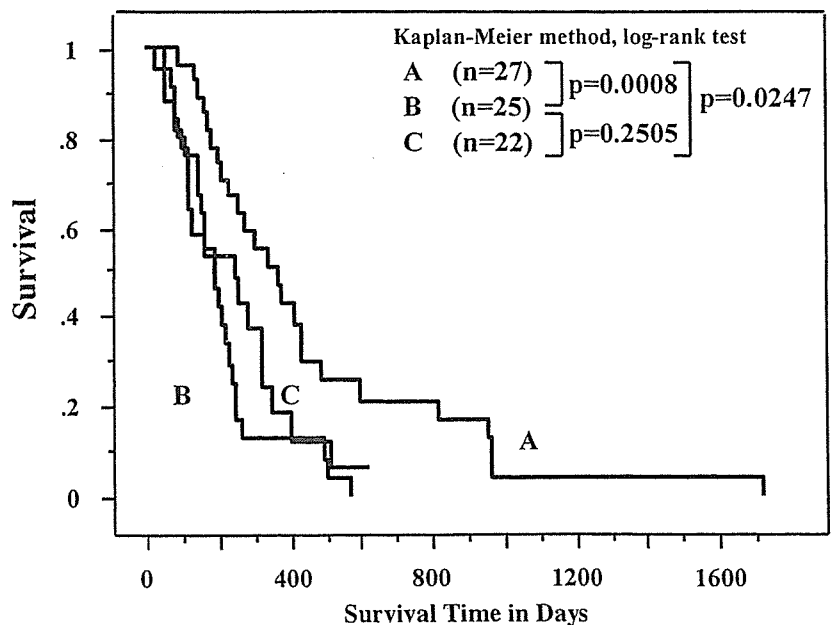


Fig. 1 Survival of patients according to treatment and stage of disease

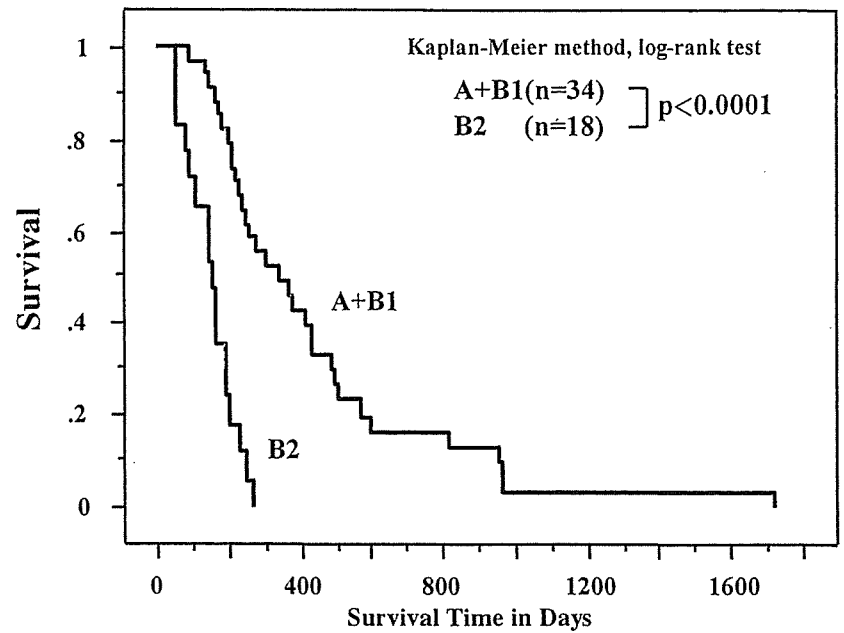


Fig. 2 Survival of patients who received chemoradiotherapy according to distant metastasis

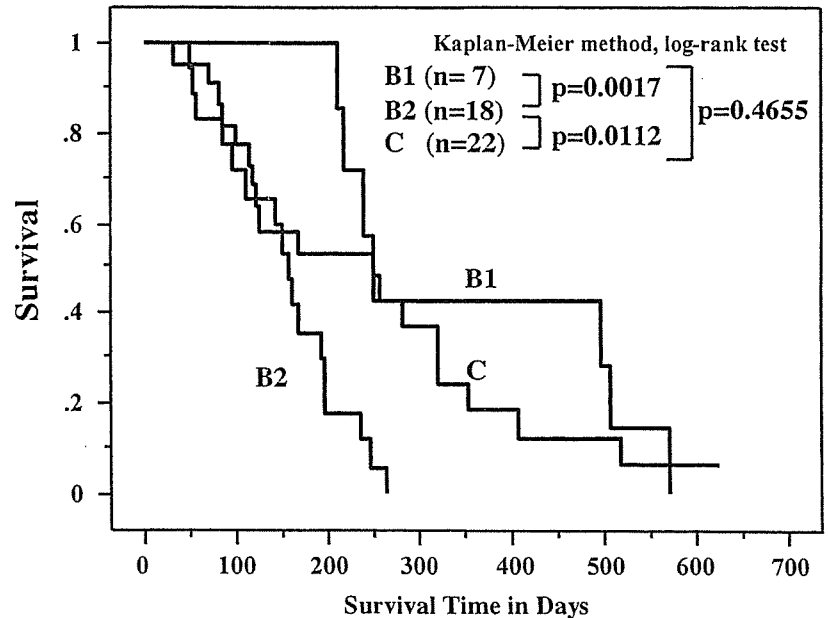


Fig. 3 Survival of patients with stage IVb disease according to treatment and distant metastasis

いて有意の延長を認めた ( $p=0.0017$ )。A と B1 群間の生存曲線に有意の差は認めず ( $p=0.5756$ )、B2 と C 群の生存曲線では C 群の有意の延長を認めた ( $p=0.0112$ )。B1 と C 群間の生存曲線でも有意の差は認めなかった ( $p=0.4655$ ) (Fig. 3)。以上の各群別の MST と平均生存期間を、Table 2 にまとめて示した。

次に、A+B1 群 ( $n=34$ )、すなわち、遠隔転移のない stage IV 症例の治療成績について検討を加えた (Table 3)。腫瘍占拠部位別では頭部 ( $n=26$ 、

MST ; 279 日)、体尾部 ( $n=8$ 、MST ; 366 日)で、生存曲線に有意な差は認めなかった。腫瘍マーカーの推移が判定できた 26 例について、50%以上の低下群 ( $n=9$ )、不変群 ( $n=8$ )、上昇群 ( $n=9$ ) の 3 群で比較すると、MST はそれぞれ 571 日、279 日、211 日で上昇群、不変群、低下群の順に延長する傾向を認めたが、生存曲線では各群間に有意の差は認めなかった。また、抗腫瘍効果については、PR 群 ( $n=5$ )、NC 群 ( $n=21$ )、PD 群 ( $n=4$ ) では、MST はそれぞれ 599 日、377 日、201 日

**Table 2** Median survival times and mean survival times for each group

Therapy	Stage	Group	n	Median survival times (days)	Mean survival times (days, M±SE)	
CRT	IVa	A	27	366	465.5±76.2	
	IVb	B	25	196	211.7±28.0	
		N <sub>3</sub>	B 1	7	249	355.6±60.5
		M <sub>1</sub>	B 2	18	158	152.3±16.1
GEM	IVb M <sub>1</sub>	C	22	256	244.4±29.8	
CRT	IV M <sub>0</sub>	A+B 1	34	341	440.8±60.9	

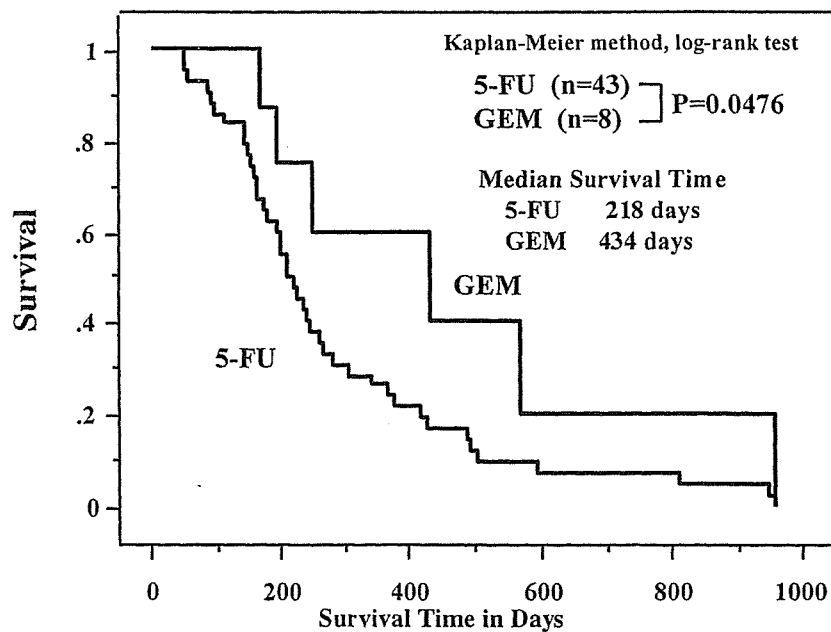
CRT : chemoradiotherapy, GEM : gemcitabine

**Table 3** Survival of patients with stage IVb disease without distant metastasis who received chemoradiotherapy

	Group	Median survival times (days)	Survival curve*
Localization	Body/Tail (n=8)	366	] NS
	Head (n=26)	279	
Tumor marker	decrease (n=9)	571	] NS ] NS ] NS
	no change (n=8)	279	
	increase (n=9)	211	
Response	PR (n=5)	599	] NS ] NS ] p<0.05
	NC (n=21)	377	
	PD (n=4)	201	

\* Survival curve were compared by the Kaplan-Meier method and log-rank test.

NS : p>0.05



**Fig. 4** Survival of patients who received chemoradiotherapy according to agents used after chemoradiotherapy

Table 4 Cause of death

therapy	chemoradiation cases (%)	gemcitabine cases (%)
peritonitis carcinomatosa	13 (35.1)	11 (64.7)
pleuritis carcinomatosa	1 ( 2.7)	4 (23.5)
hepatic failure	9 (24.3)	2 (11.8)
gastrointestinal bleeding	10 (27.0)	2 (11.8)
gastrointestinal perforation	1 ( 2.7)	0 ( 0)
DIC	7 (18.9)	1 ( 5.9)
abscess	2 ( 5.4)	0 ( 0)
esophageal cancer	1	
accident	1	

で、生存曲線の比較では PD 群に比し、PR 群で有意の延長 ( $p=0.0353$ ) を認めた。CRT 後の維持化学療法における投与薬剤について、MST は GEM 群 ( $n=8$ ) が 434 日、5-FU 群 ( $n=43$ ) が 218 日で、生存曲線の比較で GEM 群で有意の延長を認めた ( $p=0.0476$ ) (Fig. 4)。死因不明と生存症例を除いた CRT 群 (A 群と B 群) の 37 例と C 群 17 例について、死因を検討した。Table 4 にその結果を示すが、死因をひとつに特定することが困難な症例もあるので、複数の死因をカウントした症例もある。癌性腹膜炎・胸膜炎は、CRT 群 (A 群と B 群) で 14 例 (37.8%)、GEM 群では 15 例 (88.2%) であった。一方、肝不全、消化管出血・穿孔が、CRT 群でそれぞれ 9 例 (24.3%)、10 例 (27.0%) であるのに対し、GEM 群では各 2 例 (11.8%) ずつであった。

### 考 察

Moertel ら<sup>6)</sup>は、局所進行膵癌に対し、The Gastrointestinal Study Group が、初めて 5-FU 単剤による化学療法よりも 5-FU と放射線照射を組み合わせた治療の方が生存率において勝っていたと報告しているが、筆者らも以前から CRT を施行してきた。最近、GEM が化学療法の主流になり、膵癌取扱い規約が改正されたこともあって、膵癌治療における CRT の位置付けを、過去の自験例の治療成績をもとに検討した。

治療法と stage からみた生存曲線 (Fig. 1) では、CRT を施行した stage IVa 群が CRT を施行した stage IVb 群や GEM 群より良好な治療成績を示したが、これは病期による違いを表した結果だと

考える。しかし stage IVb 群では、CRT と GEM の治療成績に有意な差は認めなかった。CRT について遠隔転移 (主に肝転移) の有無で生存曲線をみると、両者には顕著な差異を認め (Fig. 2)、肝転移症例には CRT は効果がないと考えられる。さらに、stage IVb 症例に限って CRT 群を遠隔転移の有無別でその生存曲線を C 群と比較すると、遠隔転移のある症例は CRT 群 (B 2 群) に比べ、C 群で有意な延長を示した。GEM の登場以前は、肝転移がある症例にも患者の希望でやむなく CRT を施行した経緯もあるが、現時点では肝転移がある症例は CRT ではなく、GEM を選択すべきであることが改めて示された。CRT を実施した N<sub>3</sub> (+) の群と GEM 群の生存曲線の比較では、後者には遠隔転移があるので前者の生存が良好である傾向はあるが、両者に有意の差を認めず、遠隔転移のない stage IVb 群にも GEM の投与を選択する余地があることが示唆され、CRT の効果を検討するために無作為化比較試験 (RCT: randomized control trial) が必要であると考えられる。さらに、GEM には放射線の増感剤としての作用が確認されている<sup>7,8)</sup>ので、最近では GEM を増感剤として使用した CRT の報告<sup>9-11)</sup>が見受けられる。したがって、stage IVa 群だけでなく、遠隔転移の有無を問わず stage IVb 群に対しても GEM を増感剤とした CRT の方法の確立と、治療成績の検討も避けては通れない課題であろう。

遠隔転移のない stage IV 症例の生存曲線についての検討では、部位別には CRT の治療成績には差を認めなかった。腫瘍マーカーの治療前後の推移については、上昇群、不変群、低下群の順に延