

図 5.3.d.3 TS1 腫瘍における JPS Stage と生存率 Cumulative survival of the patients with TS1 cancer according to JPS Stage

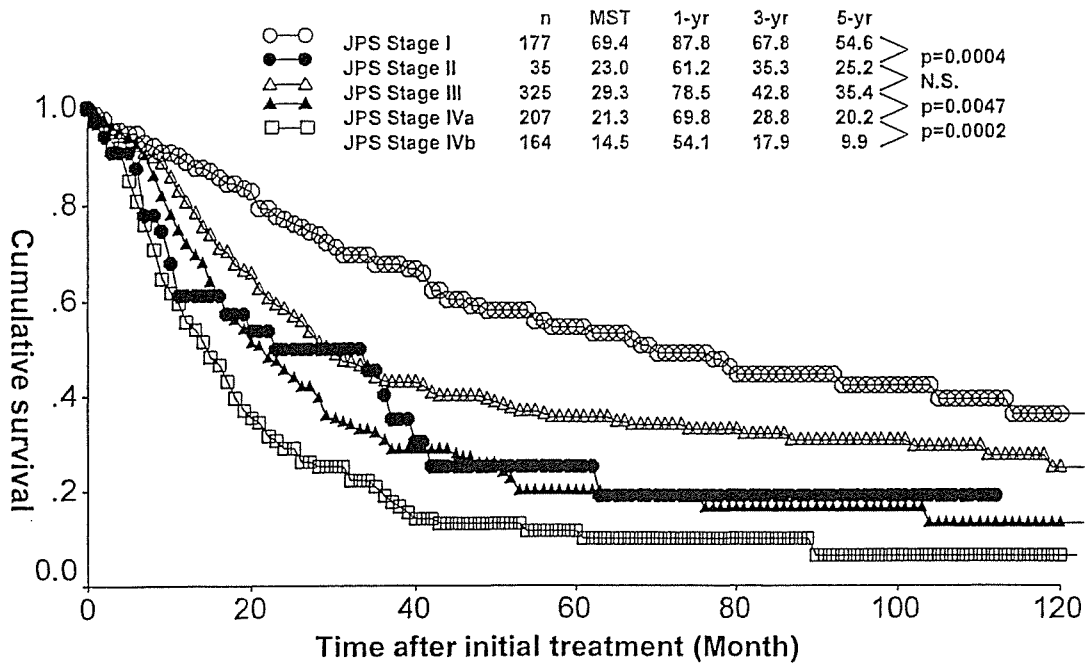
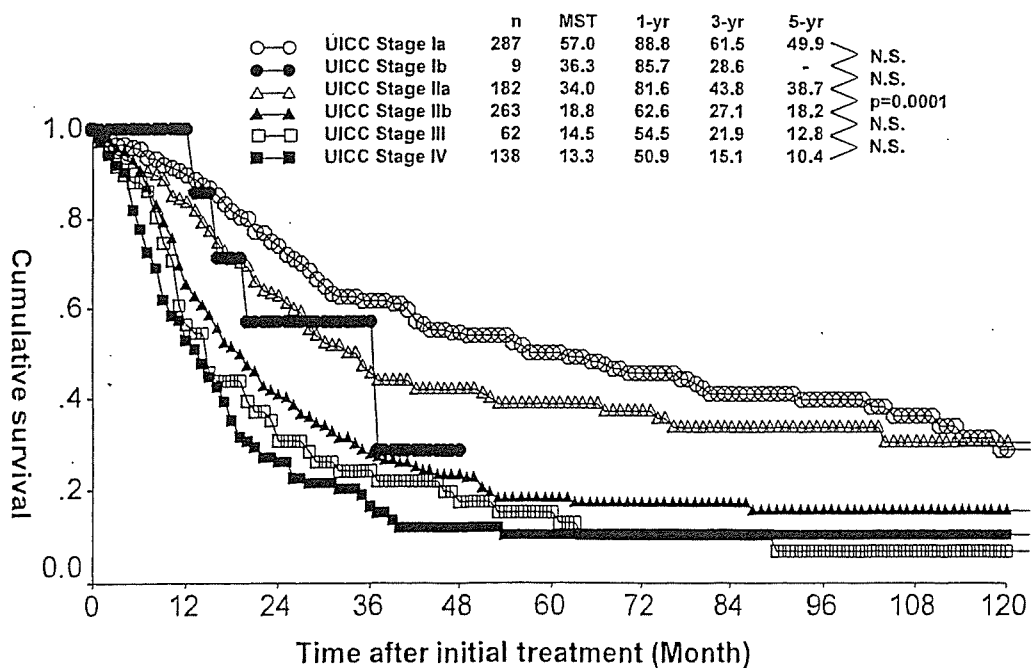


図 5.3.d.4 TS1 腫瘍における UICC Stage と生存率 Cumulative survival of the patients with TS1 cancer according to UICC Stage



IV. 病理 Histology

表 5.4.a.1 腫瘍サイズごとにみた病理組織学的分類 Tumor size and histological classification

Histological classification	TS1 (<2.0cm)	TS2 (2.1-4.0cm)	TS3 (4.1-6.0cm)	TS4 (>6.0cm)	Total
06. 乳頭腺癌 Papillary adenocarcinoma	119 (11.3%)	379 (7.6%)	221 (7.1%)	225 (9.8%)	944 (8.3%)
07. 管状腺癌 Adenocarcinoma without description of differentiation	112 (10.7%)	838 (16.8%)	610 (19.7%)	459 (20.1%)	2019 (17.7%)
08. 高分化型管状腺癌 Well differentiated tubular adenocarcinoma	283 (27.0%)	1106 (22.2%)	602 (19.5%)	326 (14.2%)	2317 (20.3%)
09. 中分化型管状腺癌 Moderately differentiated tubular adenocarcinoma	435 (41.5%)	2062 (41.5%)	1130 (36.5%)	655 (28.6%)	4282 (37.5%)
10. 低分化型管状腺癌 Poorly differentiated tubular adenocarcinoma	72 (6.9%)	421 (8.5%)	363 (11.7%)	370 (16.2%)	1226 (10.7%)
11. 腺扁平上皮癌 Adenosquamous carcinoma	6 (0.6%)	68 (1.4%)	79 (2.6%)	89 (3.9%)	242 (2.1%)
12. 粘液癌 Mucinous carcinoma	10 (1.0%)	38 (0.8%)	47 (1.5%)	58 (2.5%)	153 (1.3%)
13. 退形成性膵管癌 Anaplastic	3 (0.3%)	13 (0.3%)	8 (0.3%)	14 (0.6%)	38 (0.3%)
16a. 腺房細胞腺腫 Acinar cell adenoma	1 (0.1%)	0 (0.0%)	0 (0.0%)	0 (0.0%)	1 (0.0%)
16b. 腺房細胞癌 Acinar cell adenocarcinoma	5 (0.5%)	32 (0.6%)	20 (0.6%)	41 (1.8%)	98 (0.9%)
21. 未分化癌 Undifferentiated carcinoma	3 (0.3%)	17 (0.3%)	15 (0.5%)	52 (2.3%)	87 (0.8%)
Total	1049 (100.0%)	4974 (100.0%)	3095 (100.0%)	2289 (100.0%)	11407 (100.0%)

表 5.4.a.2 腫瘍サイズごとにみた癌の実質と間質の量比 Tumor size and cancer stroma relationship

Cancer stroma relationship	TS1 (<2.0cm)	TS2 (2.1-4.0cm)	TS3 (4.1cm-6.0cm)	TS4 (>6.0cm)	Total
1. 髄様型 Medullary type	45 (5.9%)	150 (4.4%)	79 (4.9%)	103 (14.3%)	377 (5.8%)
2. 中間型 Intermediate type	474 (62.5%)	2132 (62.7%)	915 (57.0%)	351 (48.8%)	3872 (59.7%)
3. 硬性病型 Scirrhous type	239 (31.5%)	1121 (32.9%)	610 (38.0%)	266 (36.9%)	2236 (34.5%)
Total	758 (100.0%)	3403 (100.0%)	1604 (100.0%)	720 (100.0%)	6485 (100.0%)

表 5.4.a.3 腫瘍サイズごとにみた癌の周囲組織に対する浸潤増殖様式 Tumor size and growth patterns of tumors infiltrating surrounding tissue

Growth patterns of tumors infiltrating surrounding tissue	TS1 (<2.0cm)	TS2 (2.1-4.0cm)	TS3 (4.1cm-6.0cm)	TS4 (>6.0cm)	Total
1. INF α	84 (9.8%)	168 (4.4%)	74 (4.2%)	86 (11.0%)	412 (5.7%)
2. INF β	517 (60.0%)	2151 (56.8%)	925 (51.9%)	367 (46.9%)	3960 (54.9%)
3. INF γ	260 (30.2%)	1465 (38.7%)	784 (44.0%)	329 (42.1%)	2838 (39.4%)
Total	861 (100.0%)	3784 (100.0%)	1783 (100.0%)	782 (100.0%)	7210 (100.0%)

表 5.4.a.4 腫瘍サイズごとにみたリンパ管侵襲 Tumor size and lymphatic invasion

Lymphatic invasion	TS1 (<2.0cm)	TS2 (2.1-4.0cm)	TS3 (4.1cm-6.0cm)	TS4 (>6.0cm)	Total
0. ly0 No lymphatic invasion	250 (27.2%)	561 (14.0%)	207 (11.0%)	132 (16.1%)	1150 (15.1%)
1. ly1 Slight lymphatic invasion	395 (42.9%)	1404 (35.1%)	604 (32.2%)	268 (32.6%)	2671 (35.1%)
2. ly2 Moderate lymphatic invasion	214 (23.3%)	1519 (38.0%)	764 (40.7%)	274 (33.4%)	2771 (36.4%)
3. ly3 Marked lymphatic invasion	61 (6.6%)	516 (12.9%)	301 (16.0%)	147 (17.9%)	1025 (13.5%)
Total	920 (100.0%)	4000 (100.0%)	1876 (100.0%)	821 (100.0%)	7617 (100.0%)

表 5.4.a.5 腫瘍サイズごとにみた静脈侵襲 Tumor size and venous invasion

Venous invasion	TS1 (<2.0cm)	TS2 (2.1-4.0cm)	TS3 (4.1cm-6.0cm)	TS4 (>6.0cm)	Total
0. v0 No venous invasion	492 (54.0%)	1304 (32.6%)	514 (27.3%)	245 (29.7%)	2555 (33.6%)
1. v1 Slight venous invasion	263 (28.9%)	1315 (32.9%)	619 (32.9%)	263 (31.9%)	2460 (32.3%)
2. v2 Moderate venous invasion	126 (13.8%)	1008 (25.2%)	519 (27.6%)	193 (23.4%)	1846 (24.2%)
3. v3 Marked venous invasion	30 (3.3%)	369 (9.2%)	230 (12.2%)	124 (15.0%)	753 (9.9%)
Total	911 (100.0%)	3996 (100.0%)	1882 (100.0%)	825 (100.0%)	7614 (100.0%)

表 5.4.a.6 腫瘍サイズごとにみた膵内神経浸潤の比較 Tumor size and intrapancreatic nerve invasion

Intrapancreatic nerve invasion	TS1 (<2.0cm)	TS2 (2.1-4.0cm)	TS3 (4.1cm-6.0cm)	TS4 (>6.0cm)	Total
0. ne0 No invasion of nerves	262 (34.2%)	516 (15.7%)	191 (13.2%)	117 (20.5%)	1086 (17.9%)
1. ne1 Slight invasion of nerves	231 (30.2%)	917 (27.8%)	326 (22.5%)	129 (22.6%)	1603 (26.4%)
2. ne2 Moderate invasion of nerves	196 (25.6%)	1183 (35.9%)	548 (37.8%)	177 (31.0%)	2104 (34.6%)
3. ne3 Marked invasion of nerves	76 (9.9%)	679 (20.6%)	383 (26.5%)	148 (25.9%)	1286 (21.2%)
Total	765 (100.0%)	3295 (100.0%)	1448 (100.0%)	571 (100.0%)	6079 (100.0%)

図 5.4.a.7 TS1 切除例における組織型分類と生存率

Cumulative survival of the patients after pancreatectomy for TS1 cancer according to histological types

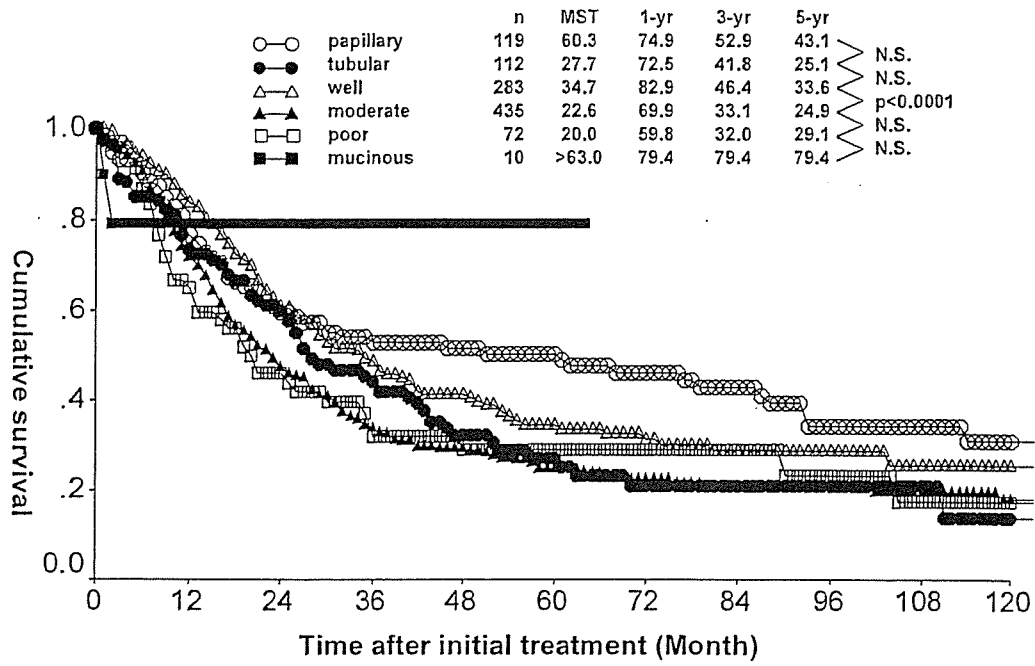


図 5.4.a.8 TS1 切除例における癌の実質と間質の量比と生存率

Cumulative survival of the patients after pancreatectomy for TS1 cancer according to cancer stroma relationship

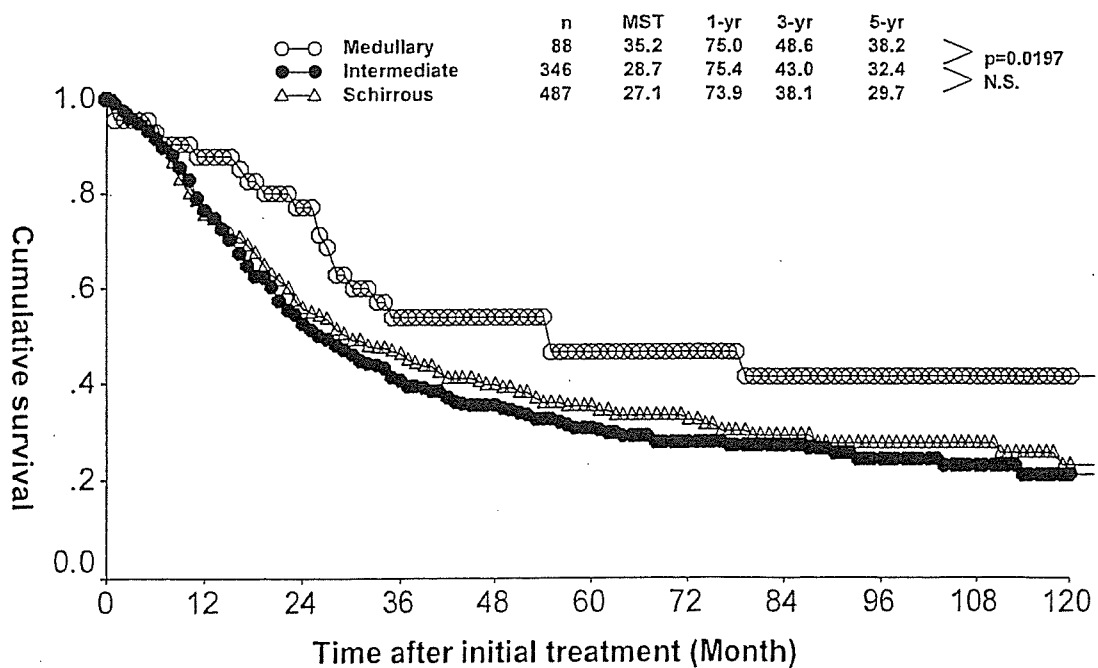


図 5.4.a.9 TS1 切除例における癌の周囲組織に対する浸潤増殖様式と生存率

Cumulative survival of the patients after pancreatectomy for TS1 cancer according to growth patterns of tumors infiltrating surrounding tissue

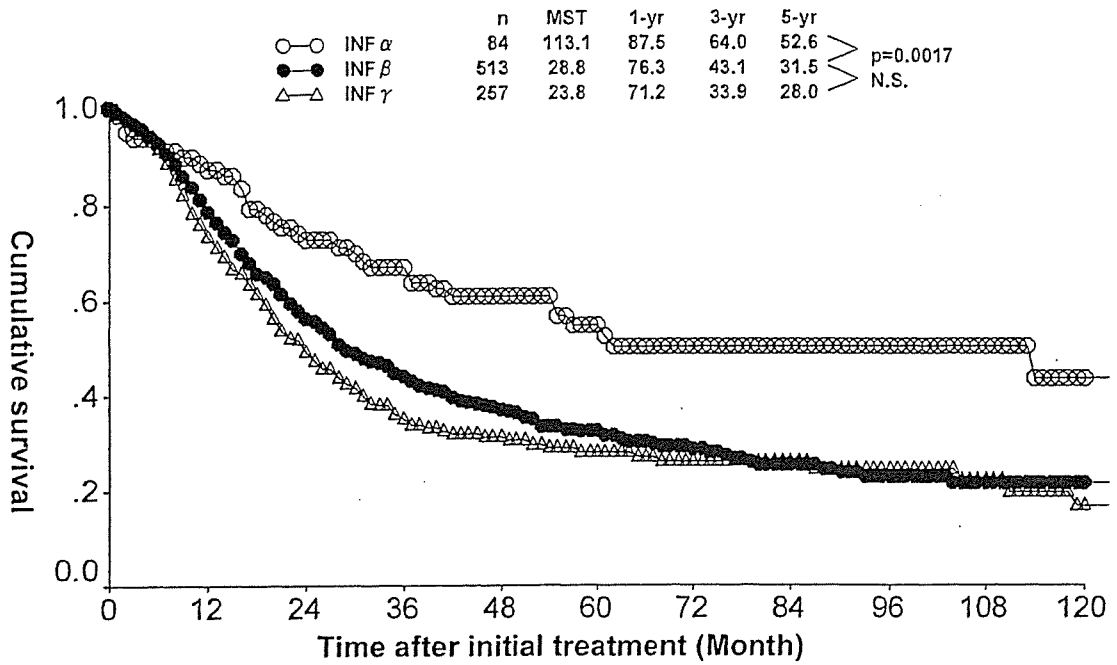


図 5.4.a.10 TS1 切除例におけるリンパ管侵襲と生存率

Cumulative survival of the patients after pancreatectomy for TS1 cancer according to lymphatic invasion

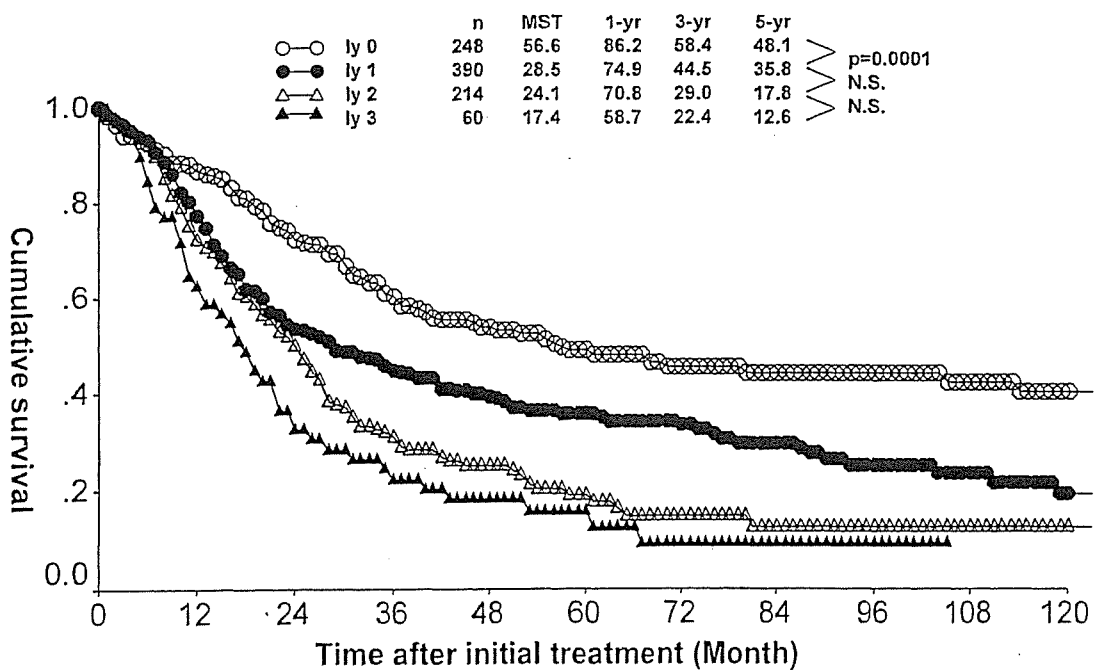


図 5.4.a.11 TS1 切除例における静脈侵襲と生存率

Cumulative survival of the patients after pancreatectomy for TS1 cancer according to venous invasion

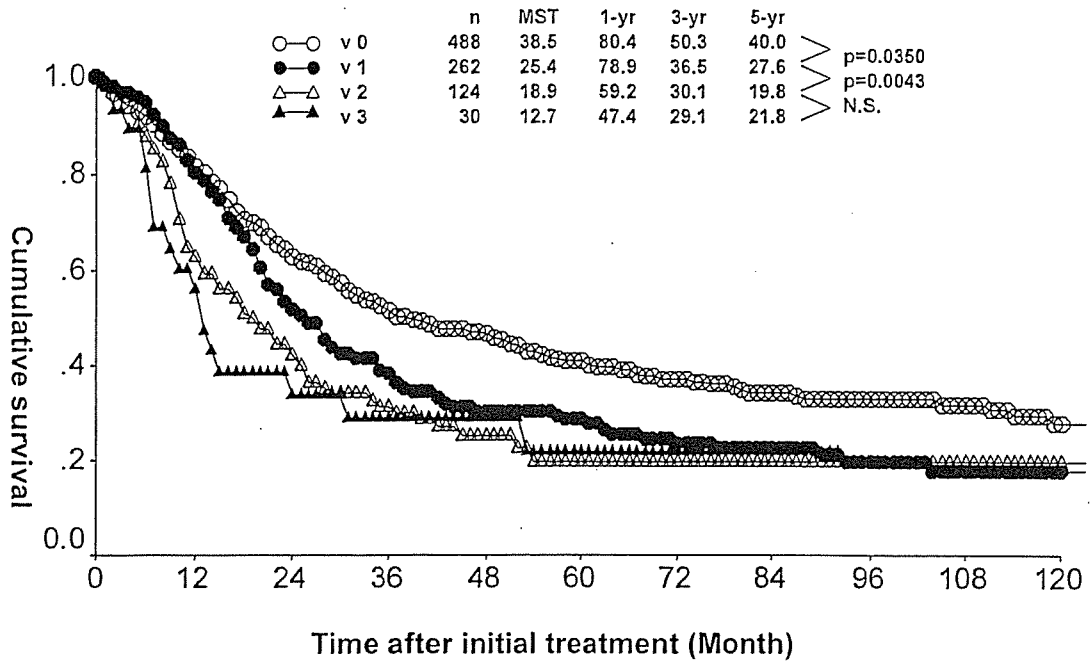
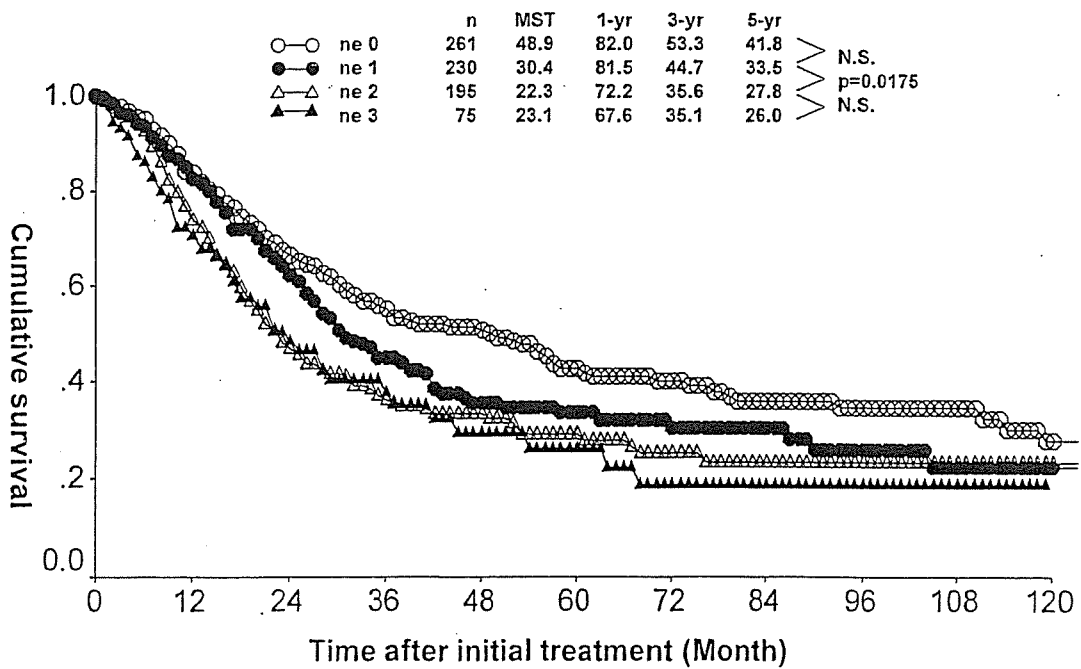


図 5.4.a.12 TS1 切除例における膵内神経浸潤と生存率

Cumulative survival of the patients after pancreatectomy for TS1 cancer according to intrapancreatic nerve invasion



V. 治療法 Treatment

a. 外科的治療 Surgical treatment

表 5.5.a.1 腫瘍サイズと切除率 Tumor size and treatment (rate of resectability)

Treatment	TS1 (<2.0cm)	TS2 (2.1-4.0cm)	TS3 (4.1cm-6.0cm)	TS4 (>6.0cm)	Total
1. 膵切除術 Pancreatectomy	989 (94.3%)	4280 (86.0%)	2052 (66.3%)	892 (39.0%)	8213 (72.0%)
2. 姑息手術 Palliative operation	24 (2.3%)	291 (5.9%)	645 (20.8%)	945 (41.3%)	1905 (16.7%)
3. 単開腹 Exploratory laparotomy	7 (0.7%)	68 (1.4%)	137 (4.4%)	262 (11.4%)	474 (4.2%)
4. 非手術 No surgical treatment	29 (2.8%)	297 (6.0%)	242 (7.8%)	157 (6.9%)	725 (6.4%)
5. 非手術剖検 Autopsy cases	0 (0.0%)	38 (0.8%)	19 (0.6%)	33 (1.4%)	90 (0.8%)
Total	1049 (100.0%)	4974 (100.0%)	3095 (100.0%)	2289 (100.0%)	11407 (100.0%)
切除率 Rate of resectability	94.3%	86.0%	66.3%	39.0%	72.0%

図 5.5.a.2 TS1 切除例における癌遺残度と生存率

Cumulative survival of the patients after pancreatectomy for TS1 cancer according to residual tumors

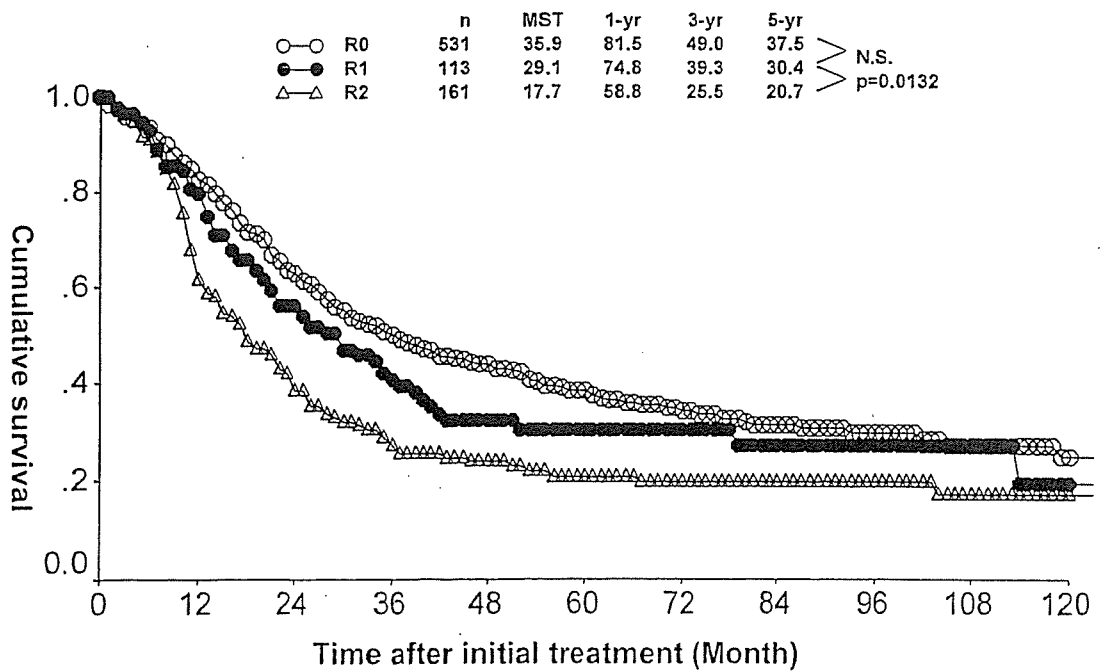


図 5.5.a.3 TS1 腫瘍におけるリンパ節郭清度と生存率

Cumulative survival of the patients with TS1 cancer according to extent of lymph node dissection

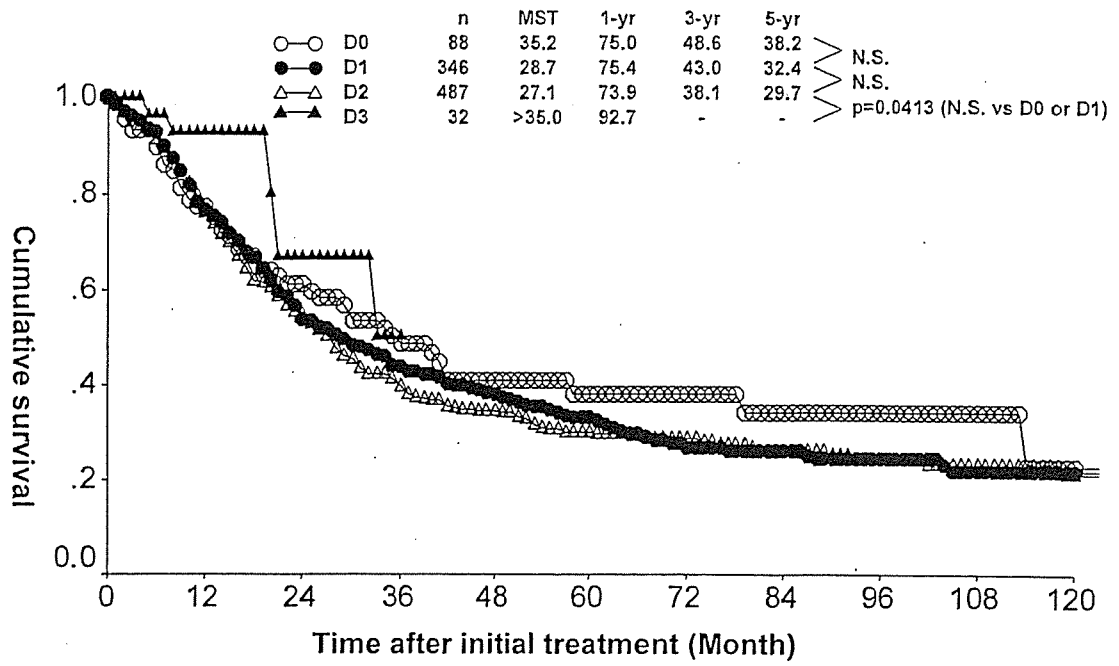


図 5.5.a.4 膵頭部 TS1 切除例 (UICC Stage IIa, IIb) における門脈合併切除と生存率

Combined resection of portal vein and cumulative survival of the patients after pancreatotomy for TS1 cancer of UICC Stage IIa or IIb in the pancreatic head

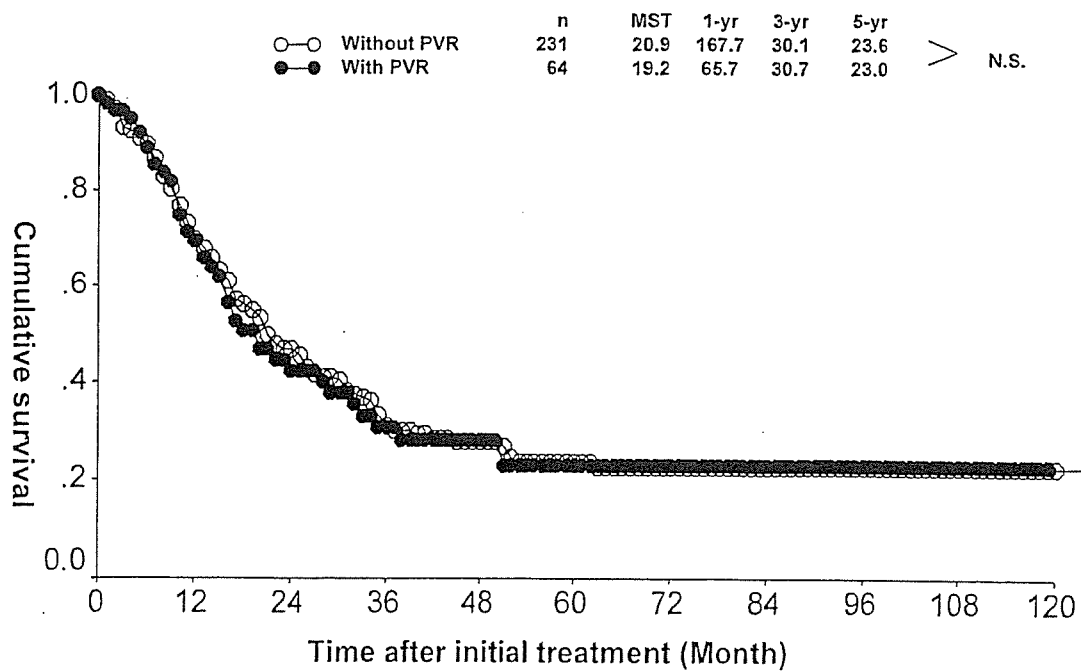


図 5.5.a.5 膵頭部 TSI 切除例 (UICC Stage IIa, IIb) における神経叢合併切除と生存率

Combined resection of peripancreatic plexus and cumulative survival of the patients after pancreatectomy for TSI cancer of UICC Stage IIa or IIb in the pancreatic head

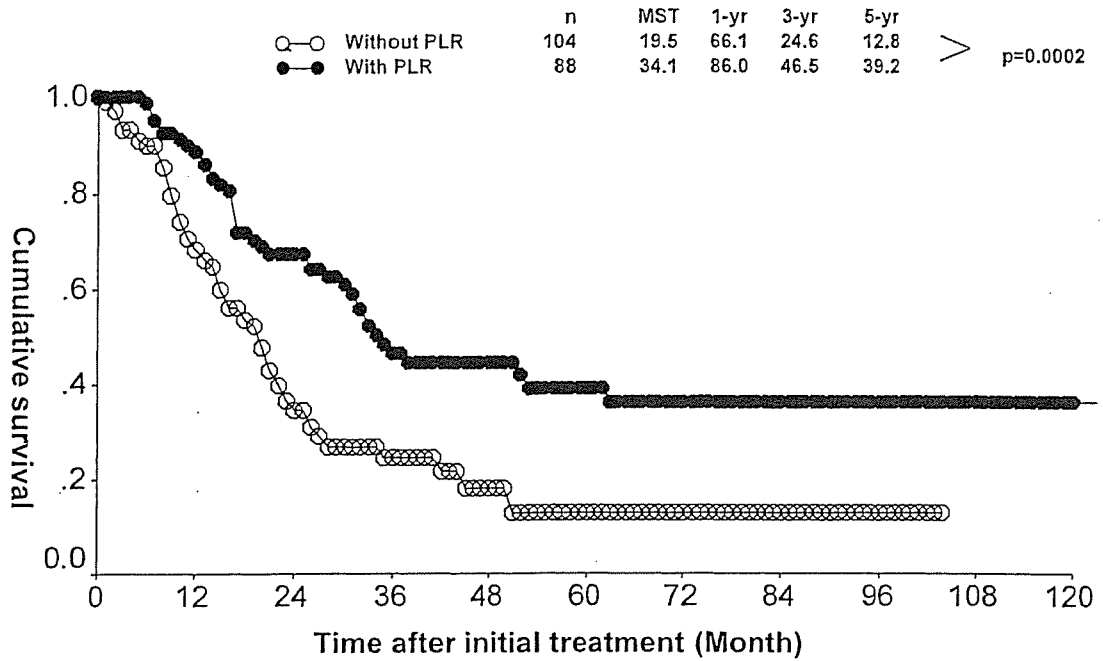


図 5.5.a.6 膵頭部 TSI 切除例 (UICC Stage IIa, IIb) における神経叢浸潤がない場合の神経叢合併切除と生存率

Combined resection of peripancreatic plexus when there is no plexus infiltration and cumulative survival of the patients after pancreatectomy for TSI cancer of UICC Stage IIa or IIb in the pancreatic head

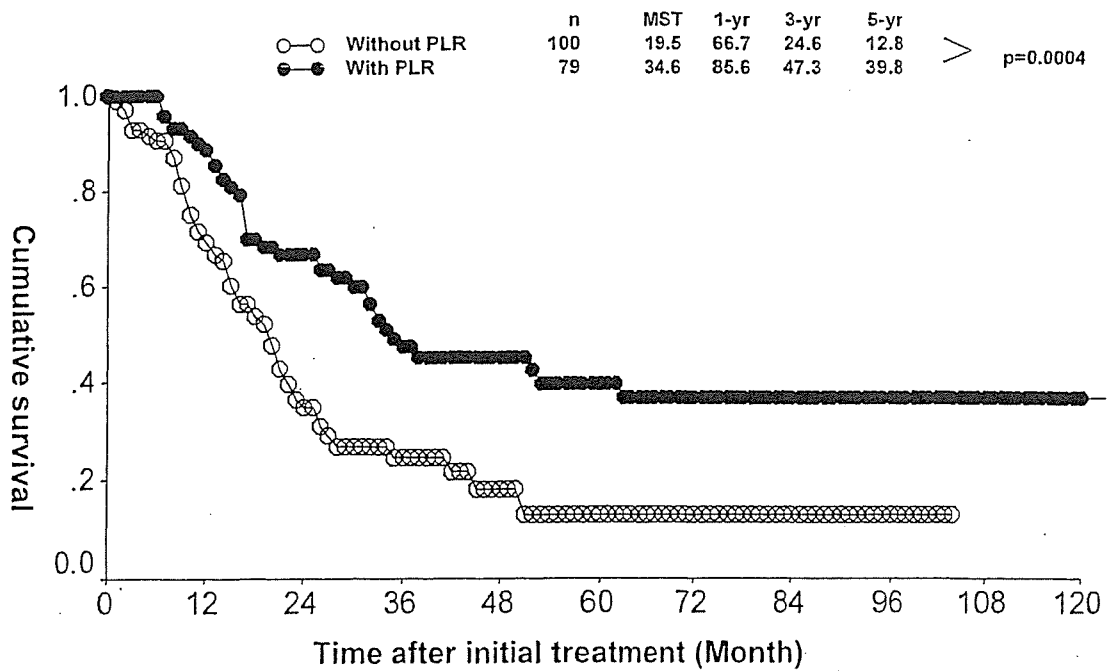


図 5.5.a.7 膵頭部 TS1 切除例 (UICC Stage IIa, IIb) における動脈合併切除と生存率

Combined resection of artery and cumulative survival of the patients after pancreatectomy for TS1 cancer of UICC Stage IIa or IIb in the pancreatic head

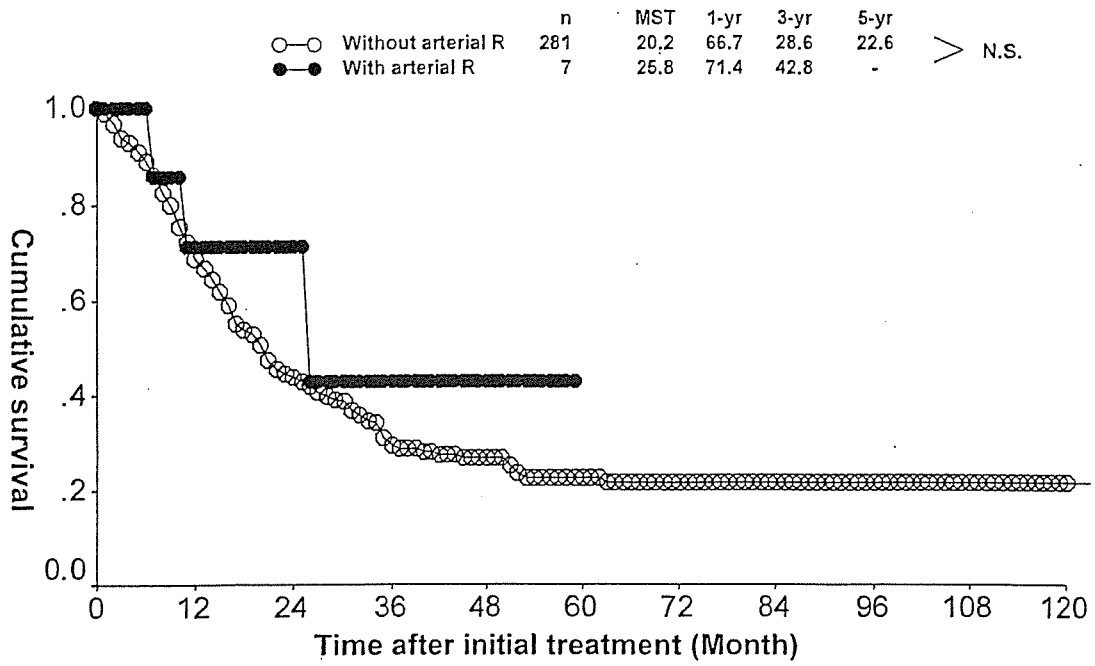


図 5.5.a.8 膵頭部 TS2 (2.1-4.0cm) 切除例 (UICC Stage IIa, IIb) における門脈合併切除と生存率

Combined resection of portal vein and cumulative survival of the patients after pancreatectomy for TS2 (2.1-4.0 cm) cancer of UICC Stage IIa or IIb in the pancreatic head

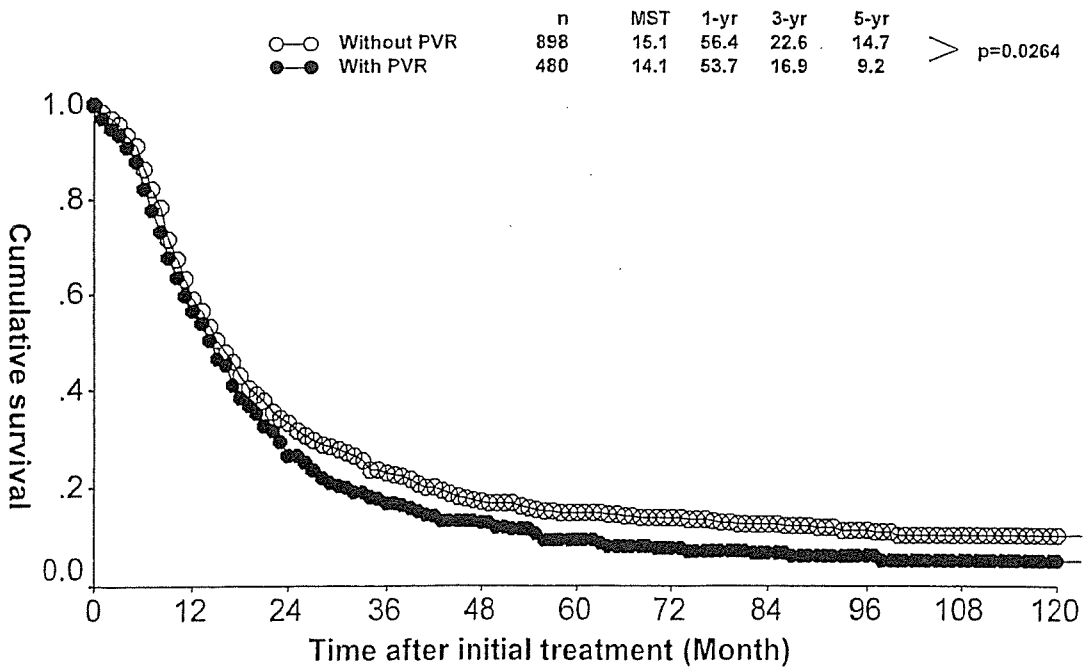
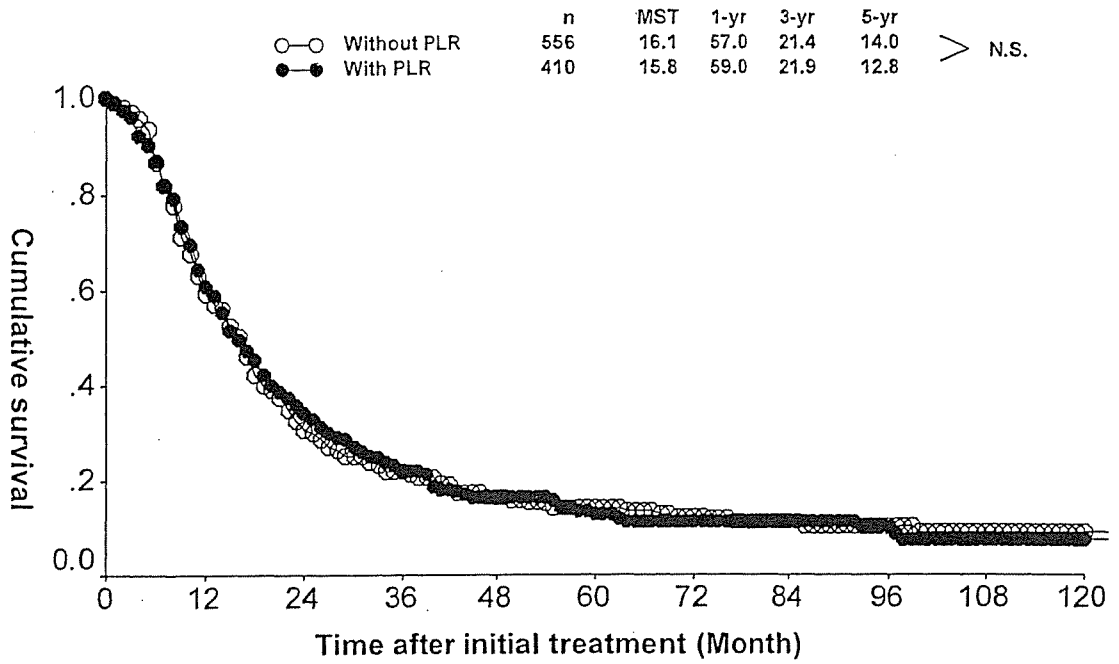


図 5.5.a.9 膵頭部 TS2 (2.1-4.0cm)切除例(UICC Stage IIa, IIb)における神経叢合併切除と生存率

Combined resection of peripancreatic plexus and cumulative survival of the patients after pancreatectomy for TS2 (2.1-4.0 cm) cancer of UICC Stage IIa or IIb in the pancreatic head



b. 化学療法 Chemotherapy

図 5.5.b.1 TS1 切除例における術前化学療法と生存率

Preoperative chemotherapy and survival of the patients after pancreatectomy for TS1 cancer

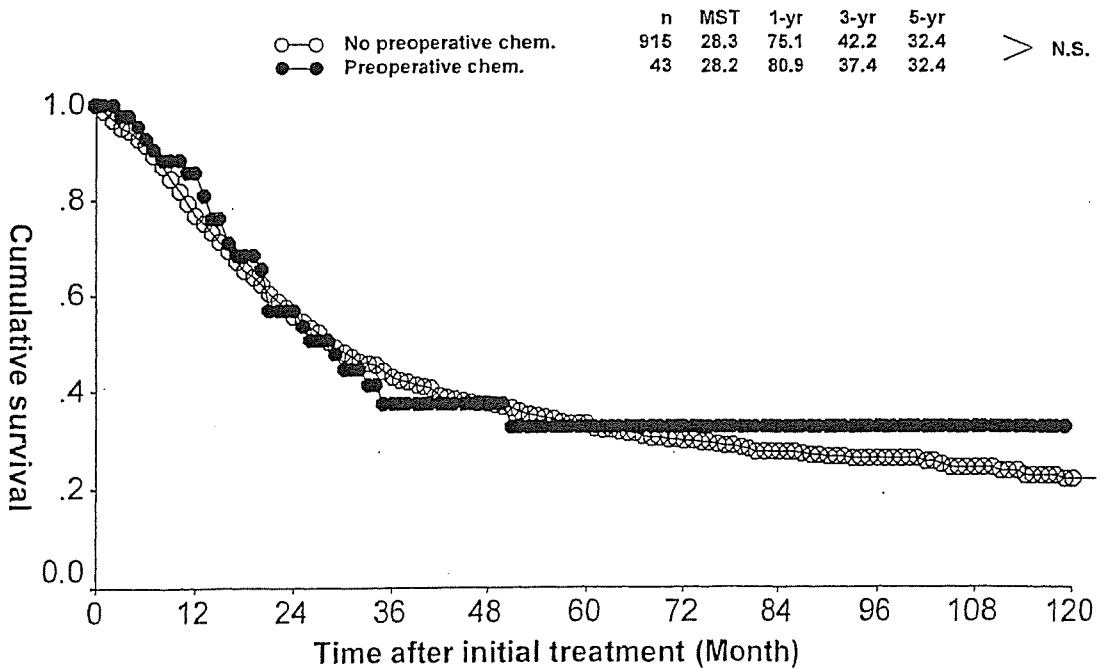


図 5.5.b.2 TS1 切除例における術中化学療法と生存率

Intraoperative chemotherapy and survival of the patients after pancreatectomy for TS1 cancer

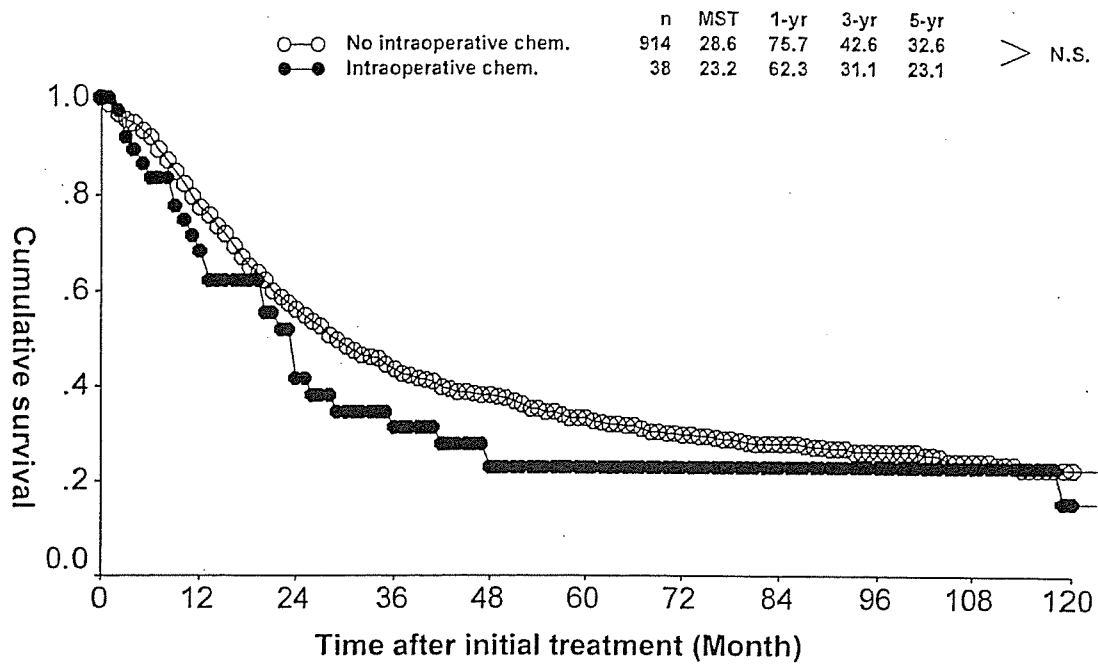
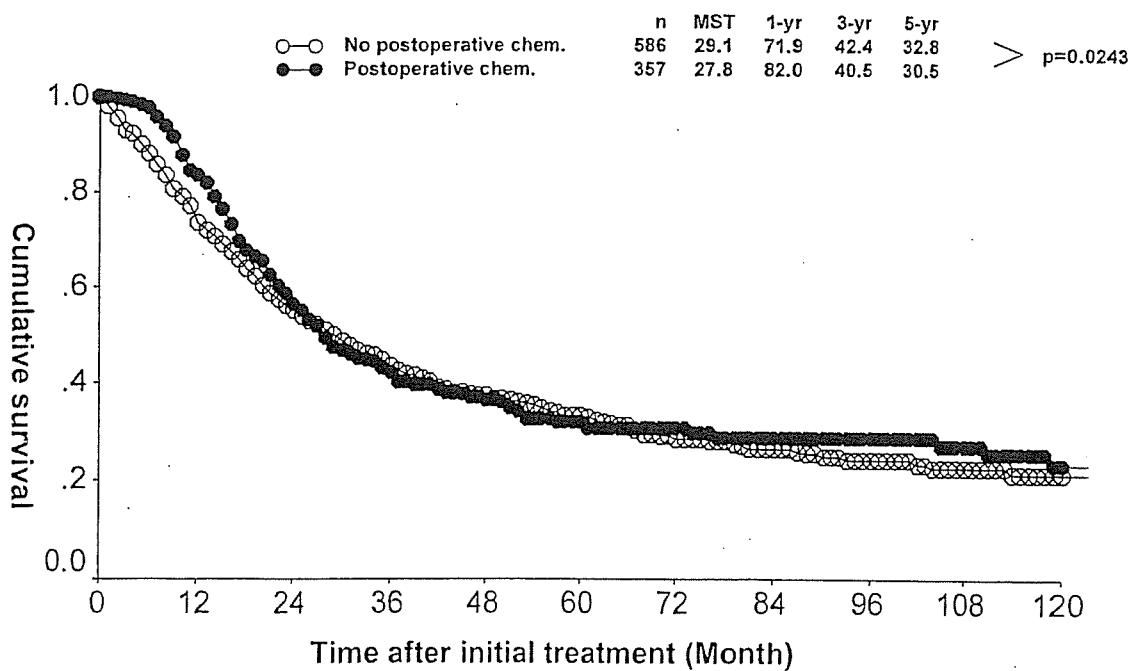


図 5.5.b.3 TS1 切除例における術後化学療法と生存率

Postoperative chemotherapy and survival of the patients after pancreatectomy for TS1 cancer



c. 放射線療法 Radiation

図 5.5.c.1 TS1 切除例における術前放射線療法と生存率

Preoperative radiation therapy and survival of the patients after pancreatectomy for TS1 cancer

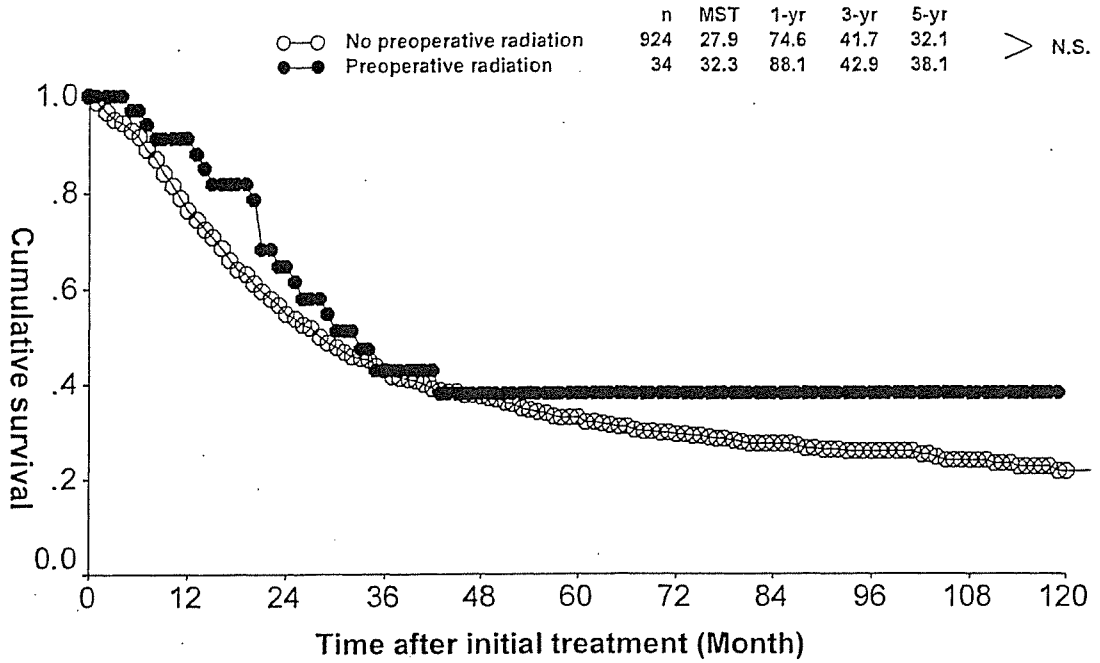


図 5.5.c.2 TS1 切除例における術中放射線療法と生存率

Intraoperative radiation therapy and survival of the patients after pancreatectomy for TS1 cancer

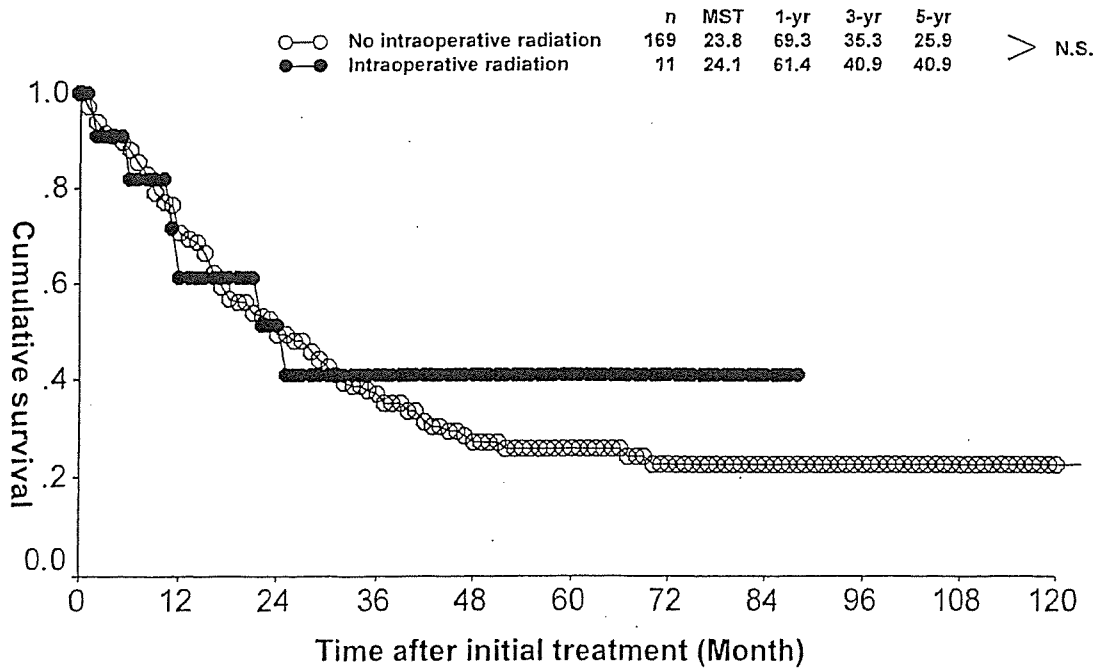
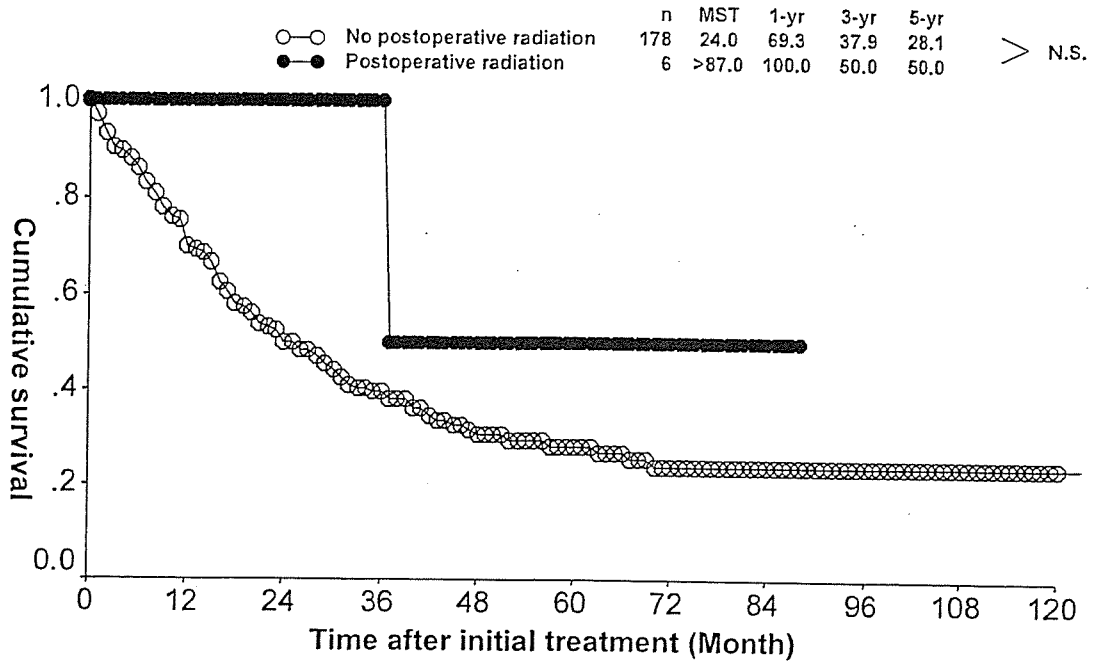


図 5.5.c.3 TS1 切除例における術後放射線療法と生存率
 Postoperative radiation therapy and survival of the patients after pancreatectomy for TS1 cancer



第6章 膵管内腫瘍 Intraductal tumors
 1. 背景因子 Background of the patients with intraductal tumors and subsequent invasive cancer
 a. 症例数の推移 Trend of number of cases

略語 Abbreviations

- IPMA-MH: 03a. 膵管内乳頭腺腫 粘液高産生性 Intraductal papillary mucinous adenoma with mucin hypersecretion
- IPMA-noM: 03b. 膵管内乳頭腺腫 粘液非高産生性 Intraductal papillary mucinous adenoma without mucin hypersecretion
- IPMC-MH: 03c. 膵管内乳頭腺癌 粘液高産生性 Intraductal papillary mucinous adenocarcinoma with mucin hypersecretion
- IPMC-noM: 03d. 膵管内乳頭腺癌 粘液非高産生性 Intraductal papillary mucinous adenocarcinoma without mucin hypersecretion
- ITA: 04a. 膵管内管状腺腫 Intraductal tubular adenoma
- ITC: 04b. 膵管内管状腺癌 Intraductal tubular adenocarcinoma
- AH-CIS: 05. 異型過形成および上皮内癌 Atypical hyperplasia and carcinoma in situ
- INV-IT: 15. 膵管内乳頭腺癌由来の浸潤癌 Invasive carcinoma originating in an intraductal tumor

表 6.1.a.1 膵管内腫瘍と膵管内腫瘍由来の浸潤癌症例数の推移 Annual trend of cases with intraductal tumors and invasive cancer derived from intraductal tumor.

Year	IPMA-MH	IPMA-noM	IPMC-MH	IPMC-noM	ITA	ITC	AH-CIS	INV-IT	Total
1987	0	0	0	0	0	0	0	1	1
1988	0	0	0	0	0	0	0	2	2
1993	0	0	17	0	0	0	6	0	23
1994	0	1	19	0	0	0	2	10	32
1995	0	0	33	0	0	0	0	9	42
1996	0	0	42	0	0	0	0	9	51
1997	0	0	31	0	0	0	4	7	42
1998	0	0	26	0	0	0	2	4	32
1999	0	0	33	0	0	0	1	15	49
2000	0	1	26	0	0	0	1	15	43
2001	28	9	28	3	4	3	0	21	96
2002	29	12	25	10	4	4	0	34	118
2003	30	17	37	9	1	4	1	8	107
2004	40	15	35	12	1	6	2	19	130
Total	127	55	352	34	10	17	19	154	768

2001年の登録症例は2002年の膵癌取り扱い規約第5版に基づいて登録されており、膵管内乳頭腺腫、膵管内管状腺腫、膵管内管状腺癌が登録されている。Intraductal papillary mucinous adenoma, tubular adenoma and tubular adenocarcinoma were defined by the 5th JPS classification in 2002. The cases experienced in 2001 were registered according to the 2002 classifications.

表 6.1.a.2 膵管内腫瘍と膵管内腫瘍由来の浸潤癌年齢と性別 Sex and age of patients with intraductal tumors and invasive cancer derived from intraductal tumor.

Age	IPMA-MH		IPMA-noM		IPMC-MH		IPMC-noM		ITA		ITC		AH-CIS		INV-IT		Total	
	Male	Female	Male	Female	Male	Female	Male	Female	Male	Female	Male	Female	Male	Female	Male	Female	Male	Female
20-29	0	0	0	0	1	1	0	0	0	0	0	0	0	0	0	0	1 (0.2%)	1 (0.4%)
30-39	0	1	0	0	0	2	0	0	0	0	0	0	0	1	0	1 (0.2%)	3 (1.1%)	
40-49	2	0	2	2	9	4	1	1	0	0	0	0	0	3	1	17 (3.5%)	8 (2.8%)	
50-59	15	6	8	8	35	19	7	5	2	1	4	2	2	16	11	89 (18.4%)	54 (18.9%)	
60-69	36	12	9	6	87	50	4	1	3	1	4	0	4	32	19	179 (37.1%)	92 (32.3%)	
70-79	34	14	15	5	75	52	6	8	1	0	4	3	5	2	34	25	174 (36.0%)	109 (38.2%)
80-89	1	2	0	0	5	9	0	1	1	1	0	0	1	0	6	4	14 (2.9%)	17 (6.0%)
90-99	0	0	0	0	0	0	0	0	0	0	0	0	0	1	0	1 (0.2%)	0 (0.0%)	
Unknown	3	1	0	0	3	0	0	0	0	0	0	0	0	1	0	7 (1.4%)	1 (0.4%)	
Total	91	36	34	21	215	137	18	16	7	3	12	5	12	7	94	60	483 (100.0%)	285 (100.0%)
Mean	66.2	66.1	65.4	62.1	65.8	66.9	64.8	66.6	66.4	69.0	64.8	65.2	67.2	65.0	67.1	67.6	66.1	66.5

表 6.1.a.3 膵管内腫瘍と膵管内腫瘍由来の浸潤癌における卵巣様間質の有無 Ovarian like stroma in intraductal tumors and invasive cancer derived from intraductal tumor.

	IPMA-MH	IPMA-noM	IPMC-MH	IPMC-noM	ITA	ITC	AH-CIS	INV-IT	Total
OLS (-)	61 (100%)	24 (100%)	98 (99.0%)	20 (100%)	6 (100%)	11 (100%)	2 (100%)	55 (100%)	277 (99.6%)
OLS (+)	0 (0.0%)	0 (0.0%)	1 (1.0%)	0 (0.0%)	0 (0.0%)	0 (0.0%)	0 (0.0%)	0 (0.0%)	1 (0.4%)
	61 (100%)	24 (100%)	99 (100%)	20 (100%)	6 (100%)	11 (100%)	2 (100%)	55 (100%)	278 (100%)

% of informative cases

b. 家族歴 Family history

表 6.1.b.1 癌の家族歴 Family history of cancer

略語 Abbreviations

- IPMA-MH: 03a. 膵管内乳頭腺腫 粘液高産生性 Intraductal papillary mucinous adenoma with mucin hypersecretion
- IPMA-noM: 03b. 膵管内乳頭腺腫 粘液非高産生性 Intraductal papillary mucinous adenoma without mucin hypersecretion
- IPMC-MH: 03c. 膵管内乳頭腺癌 粘液高産生性 Intraductal papillary mucinous adenocarcinoma with mucin hypersecretion
- IPMC-noM: 03d. 膵管内乳頭腺癌 粘液非高産生性 Intraductal papillary mucinous adenocarcinoma without mucin hypersecretion
- ITA: 04a. 膵管内管状腺腫 Intraductal tubular adenoma
- ITC: 04b. 膵管内管状腺癌 Intraductal tubular adenocarcinoma
- AH-CIS: 05. 異型過形成および上皮内癌 Atypical hyperplasia and carcinoma in situ
- INV-IT: 15. 膵管内乳頭腺癌由来の浸潤癌 Invasive carcinoma originating in an intraductal tumor

Family history	IPMA-MH	IPMA-noM	IPMC-MH	IPMC-noM	Total
0. なし No family history	79 (69.9%)	36 (70.6%)	204 (63.4%)	23 (71.9%)	469 (67.5%)
1. あり(膵癌) Family history of pancreatic cancer	6 (5.3%)	2 (3.9%)	11 (3.4%)	1 (3.1%)	32 (4.6%)
2. あり(膵癌以外) Family history of other cancer	28 (24.8%)	13 (25.5%)	105 (32.6%)	7 (21.9%)	190 (27.3%)
3. あり(膵癌を含む癌の家族歴) Including pancreatic cancer	0 (0.0%)	0 (0.0%)	2 (0.6%)	1 (3.1%)	4 (0.6%)
Total	113 (100.0%)	51 (100.0%)	322 (100.0%)	32 (100.0%)	695 (100.0%)
	ITA	ITC	AH-CIS	INV-IT	Total
0. なし No family history	3 (42.9%)	10 (62.5%)	13 (76.5%)	101 (73.7%)	127 (67.5%)
1. あり(膵癌) Family history of pancreatic cancer	0 (0.0%)	3 (18.8%)	2 (11.8%)	7 (5.1%)	32 (4.6%)
2. あり(膵癌以外) Family history of other cancer	4 (57.1%)	2 (12.5%)	2 (11.8%)	29 (21.2%)	37 (5.3%)
3. あり(膵癌を含む癌の家族歴) Including pancreatic cancer	0 (0.0%)	1 (6.3%)	0 (0.0%)	0 (0.0%)	1 (0.1%)
Total	7 (100.0%)	16 (100.0%)	17 (100.0%)	137 (100.0%)	167 (24.0%)

表 6.1.b.2 家族内膵癌 Pancreatic cancer in the kindred

Pancreatic cancer in the kindred	IPMA-MH	IPMA-noM	IPMC-MH	IPMC-noM	
0. なし No member	52 (94.5%)	19 (100.0%)	60 (98.4%)	14 (100.0%)	
1. 家族内に1人 One family member with pancreatic cancer	3 (5.5%)	0 (0.0%)	1 (1.6%)	0 (0.0%)	
2. 家族内に2人 Two family member with pancreatic cancer	0 (0.0%)	0 (0.0%)	0 (0.0%)	0 (0.0%)	
3. 家族内に3人以上 More than three	0 (0.0%)	0 (0.0%)	0 (0.0%)	0 (0.0%)	
Total	55 (100.0%)	19 (100.0%)	61 (100.0%)	14 (100.0%)	
	ITA	ITC	AH-CIS	INV-IT	Total
0. なし No member	1 (100.0%)	7 (70.0%)	1 (100.0%)	22 (95.7%)	176 (95.7%)
1. 家族内に1人 One family member with pancreatic cancer	0 (0.0%)	2 (20.0%)	0 (0.0%)	1 (4.3%)	7 (3.8%)
2. 家族内に2人 Two family member with pancreatic cancer	0 (0.0%)	0 (0.0%)	0 (0.0%)	0 (0.0%)	0 (0.0%)
3. 家族内に3人以上 More than three	0 (0.0%)	1 (10.0%)	0 (0.0%)	0 (0.0%)	1 (0.5%)
Total	1 (100.0%)	10 (100.0%)	1 (100.0%)	23 (100.0%)	184 (100.0%)

c. 既往歴 Past history

略語 Abbreviations

IPMA-MH:	03a. 膵管内乳頭腺腫 粘液高産生性 Intraductal papillary mucinous adenoma with mucin hypersecretion
IPMA-noM:	03b. 膵管内乳頭腺腫 粘液非高産生性 Intraductal papillary mucinous adenoma without mucin hypersecretion
IPMC-MH:	03c. 膵管内乳頭腺癌 粘液高産生性 Intraductal papillary mucinous adenocarcinoma with mucin hypersecretion
IPMC-noM:	03d. 膵管内乳頭腺癌 粘液非高産生性 Intraductal papillary mucinous adenocarcinoma without mucin hypersecretion
ITA:	04a. 膵管内管状腺腫 Intraductal tubular adenoma
ITC:	04b. 膵管内管状腺癌 Intraductal tubular adenocarcinoma
AH-CIS:	05. 異型過形成および上皮内癌 Atypical hyperplasia and carcinoma in situ
INV-IT:	15. 膵管内乳頭腺癌由来の浸潤癌 Invasive carcinoma originating in an intraductal tumor

表 6.1.c.1 重複癌 Past history of cancer in the other organ

Past history of cancer in the other organ	IPMA-MH	IPMA-noM	IPMC-MH	IPMC-noM	
0. なし No past history of other cancer	107 (85.6%)	45 (81.8%)	284 (83.3%)	29 (85.3%)	
1. あり(同時性) Synchronous multiple cancer	7 (5.6%)	3 (5.5%)	31 (9.1%)	3 (8.8%)	
2. あり(異時性) Metachronous multiple cancer	11 (8.8%)	7 (12.7%)	26 (7.6%)	2 (5.9%)	
Total	125 (100.0%)	55 (100.0%)	341 (100.0%)	34 (100.0%)	
	ITA	ITC	AH-CIS	INV-IT	Total
0. なし No past history of other cancer	8 (80.0%)	14 (82.4%)	15 (83.3%)	129 (87.8%)	631 (84.5%)
1. あり(同時性) Synchronous multiple cancer	1 (10.0%)	1 (5.9%)	0 (0.0%)	3 (2.0%)	49 (6.6%)
2. あり(異時性) Metachronous multiple cancer	1 (10.0%)	2 (11.8%)	3 (16.7%)	15 (10.2%)	67 (9.0%)
Total	10 (100.0%)	17 (100.0%)	18 (100.0%)	147 (100.0%)	747 (100.0%)

表 6.1.c.2 膵癌と関係ありそうな既往歴 Past history which seems to be related to pancreatic cancer

Past history	既往歴を有する症例数/有効回答数 Cases / Informative cases	有効回答数に対する% % of informative cases
1. 膵石症 Pancreatic stone	5 / 734	0.7
2. 急性膵炎 Acute pancreatitis	84 / 736	11.4
3. 慢性膵炎 Chronic pancreatitis	68 / 739	9.2
4. 膵嚢胞(非腫瘍性) Pancreatic cyst, non-neoplastic	27 / 728	3.7
5. 膵嚢胞(腫瘍性) Pancreatic cyst, neoplastic	69 / 728	9.5
6. 糖尿病 Diabetes Mellitus	184 / 741	24.8
7. 胆石症 Biliary stone	59 / 735	8.0
8. 慢性下痢 Chronic diarrhea	10 / 731	1.4
9. 慢性アルコール中毒 Chronic alcoholism	10 / 730	1.4
10. 消化性潰瘍 Peptic ulcer	42 / 730	5.8

d. 喫煙 Smoking

表 6.1.d.1 喫煙習慣 Smoking habit

	人数 Cases	%
0. 喫煙せず No smoking	113	58.5
1. 20年前から禁煙 Abstain from smoking for more than 20 years.	8	4.1
2. 10年前から禁煙 Abstain from smoking for 10 years.	7	3.6
3. 5年前から禁煙 Abstain from smoking for 5 years	6	3.1
4. 最近禁煙 Abstain from smoking recently	5	2.6
5. 1日20本以内 Less than 20 cigarettes/day	23	11.9
6. 1日20本以上 More than 20 cigarettes/day	31	16.1
Total	193	100.0

図 6.1.d.2 喫煙年数の度数分布図 Distribution of smoking years

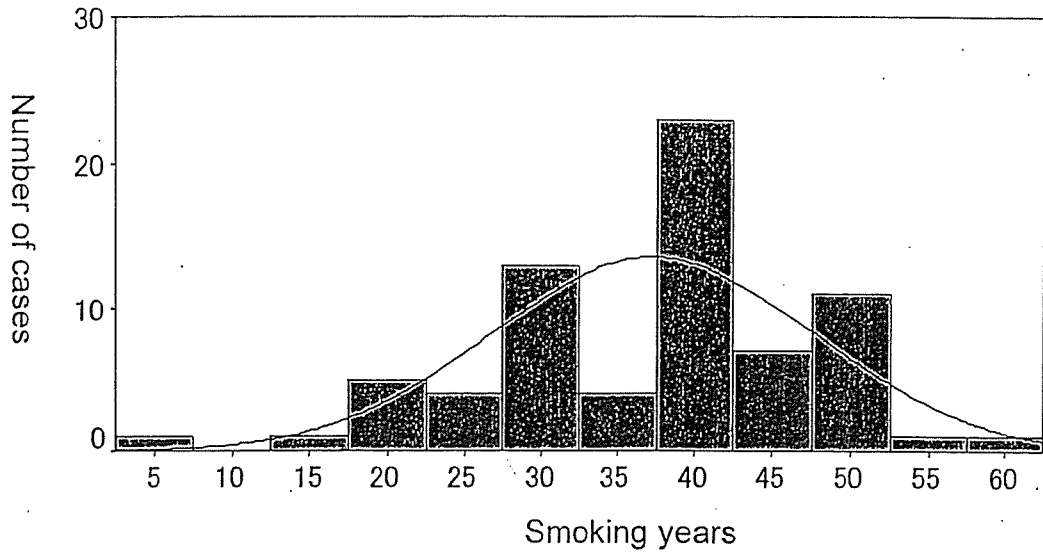


表 6.1.d.3 喫煙習慣別に見た平均年齢の有意差比較試験 Comparison of mean age by smoking habit (t-test)

	喫煙せず No smoking N=113 平均年齢 Mean age : 68.0 歳	5 年以上前に禁煙 Abstain from smoking for more than 5 years N=21 平均年齢 Mean age : 71.0 歳	最近禁煙または喫煙中 Abstain from smoking recently or currently smoking N=59 平均年齢 Mean age : 64.5 歳
喫煙せず No smoking N=113 平均年齢 Mean age : 68.0 歳			
5 年以上前に禁煙 Abstain from smoking for more than 5 years N=21 平均年齢 Mean age : 71.0 歳	N.S.		
最近禁煙または喫煙中 Abstain from smoking recently or currently smoking N=59 平均年齢 Mean age : 64.5 歳	p=0.012	p=0.004	

図 6.1.d.4 喫煙指数の度数分布図 Distribution of smoking index (= daily number of cigarettes x smoking years)

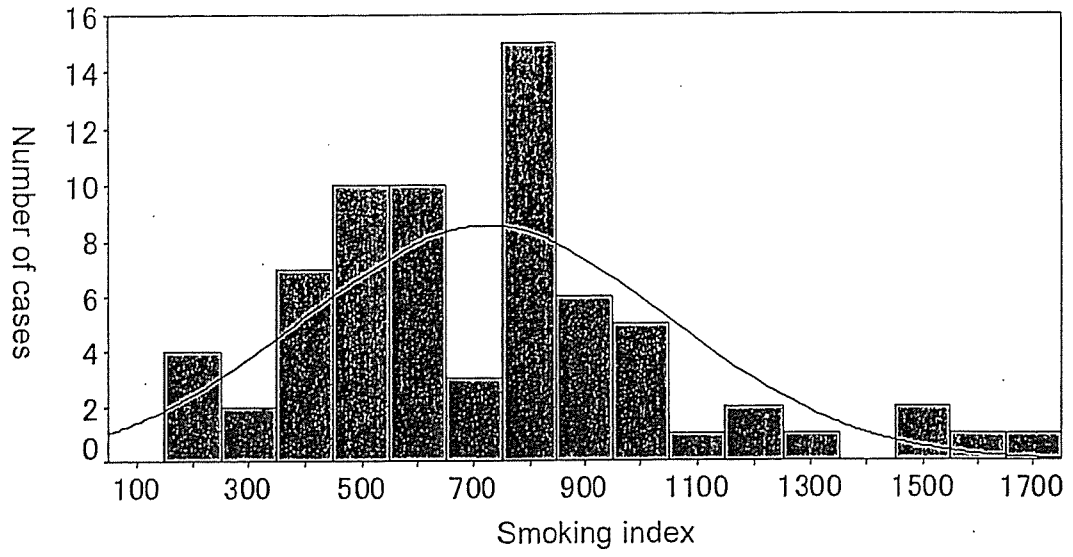
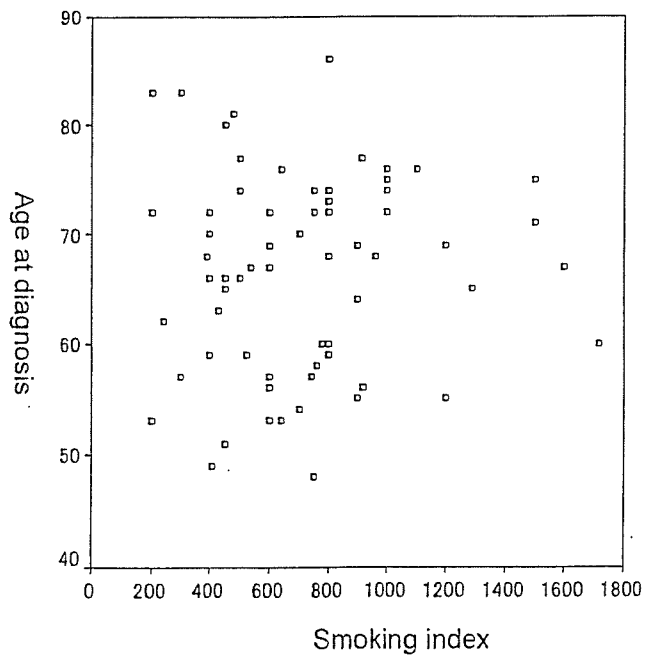


図 6.1.d.5 喫煙指数と年齢の散布図 Scatter gram of smoking index and age at diagnosis



e. 飲酒 drinking
表 6.1.e.1 飲酒習慣 Drinking frequency

	人数 Cases	%
0. 飲酒せず No drinking	108	58.7
1. 数か月に1回程度の飲酒 Once in several months	5	2.7
2. 数週間に1回程度の飲酒 Once in several weeks	8	4.3
3. 数日に1回 Once in few days	20	10.9
4. 毎日 Everyday	43	23.4
Total	184	100.0

図 6.1.e.2 飲酒年数の度数分布図 Distribution of drinking years

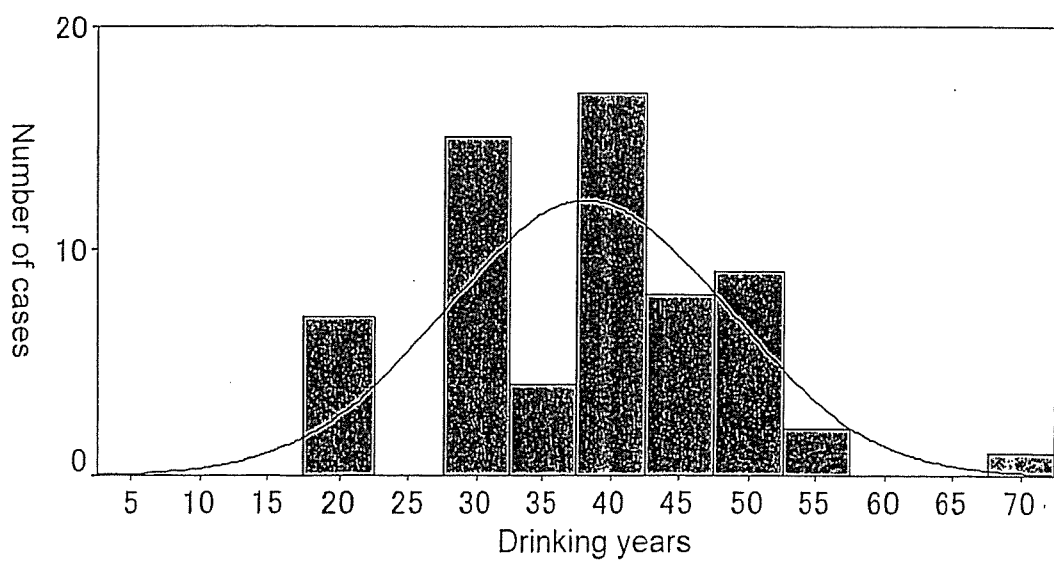


図 6.1.e.3 飲酒指数の度数分布図 Distribution of drinking index (= alcohol units x frequency level (0 to 4 as in the Table 6.1.e.1 x drinking years)

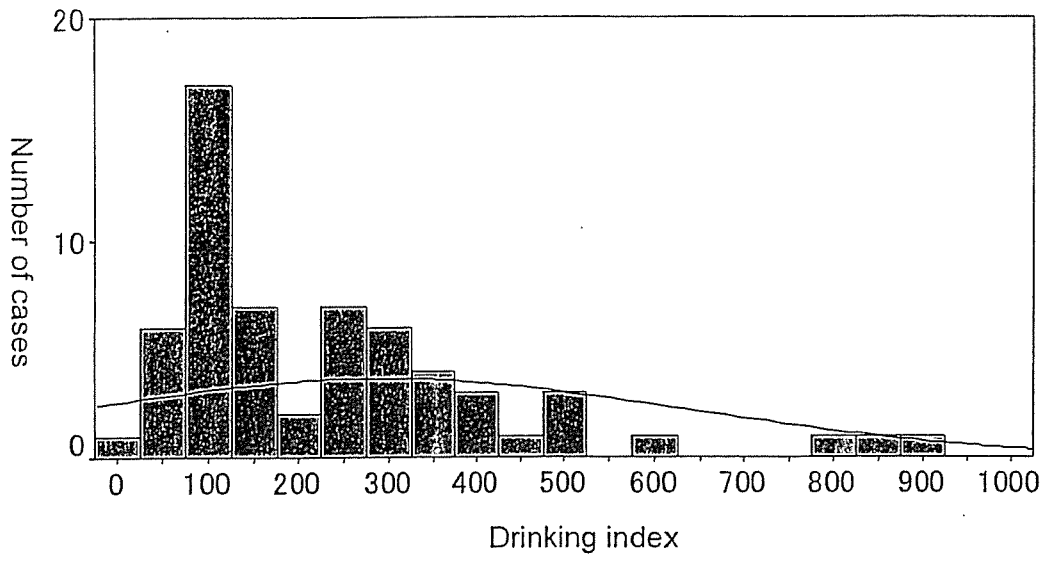


図 6.1.e.4 飲酒指数と年齢の散布図 Scatter gram of drinking index and age at diagnosis

