

b. 組織学的分類 Histological classification

表 4.2.b.1 組織学的分類の比較 Comparison of histological classification

Histological classification	Patients who died within 5 years	5 year survivors	total
06. 乳頭腺癌 Papillary adenocarcinoma	513 (8.2%)	120 (22.6%)	633 (9.3%)
07. 管状腺癌 Adenocarcinoma without description of differentiation	747 (12.0%)	61 (11.5%)	808 (11.9%)
08. 高分化型管状腺癌 Well differentiated tubular adenocarcinoma	1391 (22.3%)	131 (24.6%)	1522 (22.5%)
09. 中分化型管状腺癌 Moderately differentiated tubular adenocarcinoma	2691 (43.1%)	139 (26.1%)	2830 (41.8%)
10. 低分化型管状腺癌 Poorly differentiated tubular adenocarcinoma	613 (9.8%)	26 (4.9%)	639 (9.4%)
11. 腺扁平上皮癌 Adenosquamous carcinoma	124 (2.0%)	10 (1.9%)	134 (2.0%)
12. 粘液癌 Mucinous carcinoma	62 (1.0%)	21 (3.9%)	83 (1.2%)
13. 退形成性腺管癌 Anaplastic	21 (0.3%)	2 (0.4%)	23 (0.3%)
16b. 腺房細胞癌 Acinar cell adenocarcinoma	38 (0.6%)	17 (3.2%)	55 (0.8%)
21. 未分化癌 Undifferentiated carcinoma	41 (0.7%)	5 (0.9%)	46 (0.7%)
Total	6241 (100.0%)	532 (100.0%)	6773 (100.0%)

Chi-square test: $p < 0.001$

表 4.2.b.2 癌の実質と間質の量比の比較 Comparison of cancer stroma relationship

Cancer stroma relationship	Patients who died within 5 years	5 year survivors	total
1. 髄様型 Medullary type	232 (4.9%)	60 (15.0%)	292 (5.7%)
2. 中間型 Intermediate type	2836 (60.4%)	229 (57.4%)	3065 (60.2%)
3. 硬性型 Scirrhous type	1628 (34.7%)	110 (27.6%)	1738 (34.1%)
Total	4696 (100.0%)	399 (100.0%)	5095 (100.0%)

Chi-square test: $p < 0.001$

表 4.2.b.3 癌の周囲組織に対する浸潤増殖様式の比較 Comparison of growth patterns of tumors infiltrating surrounding tissue

Growth patterns of tumors infiltrating surrounding tissue	Patients who died within 5 years	5 year survivors	total
1. INF α	230 (4.3%)	81 (18.5%)	311 (5.4%)
2. INF β	2876 (54.0%)	236 (53.8%)	3112 (54.0%)
3. INF γ	2222 (41.7%)	122 (27.8%)	2344 (40.6%)
Total	5328 (100.0%)	439 (100.0%)	5767 (100.0%)

Chi-square test: $p < 0.001$

表 4.2.b.4 リンパ管侵襲の比較 Comparison of lymphatic invasion

Lymphatic invasion	Patients who died within 5 years	5 year survivors	total
0. ly0 No lymphatic invasion	654 (11.7%)	186 (38.0%)	840 (13.8%)
1. ly1 Slight lymphatic invasion	1910 (34.1%)	189 (38.6%)	2099 (34.5%)
2. ly2 Moderate lymphatic invasion	2201 (39.3%)	96 (19.6%)	2297 (37.7%)
3. ly3 Marked lymphatic invasion	835 (14.9%)	19 (3.9%)	854 (14.0%)
Total	5600 (100.0%)	490 (100.0%)	6090 (100.0%)

Chi-square test: $p < 0.001$

表 4.2.b.5 静脈侵襲の比較 Comparison of venous invasion

Venous invasion	Patients who died within 5 years	5 year survivors	total
0. v0 No venous invasion	1724 (30.8%)	274 (56.0%)	1998 (32.8%)
1. v1 Slight venous invasion	1861 (33.2%)	144 (29.4%)	2005 (32.9%)
2. v2 Moderate venous invasion	1422 (25.4%)	55 (11.2%)	1477 (24.3%)
3. v3 Marked venous invasion	590 (10.5%)	16 (3.3%)	606 (10.0%)
Total	5597 (100.0%)	489 (100.0%)	6086 (100.0%)

Chi-square test: $p < 0.001$

表 4.2.b.6 膵内神経浸潤の比較 Comparison of intrapancreatic nerve invasion

Intrapancreatic nerve invasion	Patients who died within 5 years	5 year survivors	total
0. ne0 No invasion of intrapancreatic nerves	627 (14.4%)	160 (39.9%)	787 (16.5%)
1. ne1 Slight invasion of intrapancreatic nerves	1120 (25.7%)	99 (24.7%)	1219 (25.6%)
2. ne2 Moderate invasion of intrapancreatic nerves	1600 (36.7%)	109 (27.2%)	1709 (35.9%)
3. ne3 Marked invasion of intrapancreatic nerves	1018 (23.3%)	33 (8.2%)	1051 (22.1%)
Total	4365 (100.0%)	401 (100.0%)	4766 (100.0%)

Chi-square test: $p < 0.001$

c. 進展度 Tumor extent

表 4.2.c.1 腫瘍占拠部位の比較 Comparison of tumor location

Tumor location	Patients who died within 5 years	5 year survivors	total
1. 膵頭部癌 Cancer in the head of the pancreas	4234 (68.1%)	350 (65.8%)	4584 (67.9%)
2. 膵体尾部癌 Cancer in the body and tail of the pancreas	1063 (17.1%)	126 (23.7%)	1189 (17.6%)
3. 2 区域以上の癌 Cancer in the two areas of the pancreas	801 (12.9%)	47 (8.8%)	848 (12.6%)
4. 膵全体癌 Cancer in the whole pancreas	117 (1.9%)	9 (1.7%)	126 (1.9%)
Total	6215 (100.0%)	532 (100.0%)	6747 (100.0%)

Chi-square test: $p < 0.001$

表 4.2.c.2 腫瘍の大きさの比較 Comparison of tumor size (TS)

	Tumor size	Patients who died within 5 years	5 year survivors	total
膵頭部癌 Cancer in the head of the pancreas	1. TS1 (\leq 2.0 cm)	415 (10.1%)	97 (29.0%)	512 (11.5%)
	2. TS2 (2.1- 4.0 cm)	2434 (59.4%)	171 (51.0%)	2605 (58.8%)
	3. TS3 (4.1- 6.0 cm)	1049 (25.6%)	48 (14.3%)	1097 (24.7%)
	4. TS4 ($>$ 6.0 cm)	200 (4.9%)	19 (5.7%)	219 (4.9%)
	Total	4098 (100.0%)	335 (100.0%)	4433 (100.0%)
膵体尾部癌 Cancer in the body and tail of the pancreas	1. TS1 (\leq 2.0 cm)	93 (9.1%)	40 (33.9%)	133 (11.7%)
	2. TS2 (2.1- 4.0 cm)	445 (43.5%)	50 (42.4%)	495 (43.4%)
	3. TS3 (4.1- 6.0 cm)	330 (32.3%)	19 (16.1%)	349 (30.6%)
	4. TS4 ($>$ 6.0 cm)	154 (15.1%)	9 (7.6%)	163 (14.3%)
	Total	1022 (100.0%)	118 (100.0%)	1140 (100.0%)

Chi-square test: $p < 0.001$

表 4.2.c.3 膵内胆管浸潤の比較 Comparison of bile duct infiltration (CH)

	Bile duct infiltration	Patients who died within 5 years	5 year survivors	total
膵頭部癌 Cancer in the head of the pancreas	0. CH(-) Without invasion	826 (20.1%)	136 (39.7%)	962 (21.6%)
	1. CH(+) With invasion	3287 (79.9%)	207 (60.3%)	3494 (78.4%)
	Total	4113 (100.0%)	343 (100.0%)	4456 (100.0%)
膵体尾部癌 Cancer in the body and tail of the pancreas	0. CH(-) Without invasion	966 (95.1%)	119 (98.3%)	1085 (95.4%)
	1. CH(+) With invasion	50 (4.9%)	2 (1.7%)	52 (4.6%)
	Total	1016 (100.0%)	121 (100.0%)	1137 (100.0%)

Chi-square test: $p < 0.001$ for the cancer in the head, N.S. for the lesions in the body and tail.

表 4.2.c.4 十二指腸浸潤の比較 Comparison of duodenal infiltration (DU)

	Duodenal infiltration	Patients who died within 5 years	5 year survivors	total
膵頭部癌 Cancer in the head of the pancreas	0. DU(-) Without invasion	2070 (49.7%)	225 (64.8%)	2295 (50.9%)
	1. DU(+) With invasion	2093 (50.3%)	122 (35.2%)	2215 (49.1%)
	Total	4163 (100.0%)	347 (100.0%)	4510 (100.0%)
膵体尾部癌 Cancer in the body and tail of the pancreas	0. DU(-) Without invasion	976 (95.6%)	123 (100.0%)	1099 (96.1%)
	1. DU(+) With invasion	45 (4.4%)	0 (0.0%)	45 (3.9%)
	Total	1021 (100.0%)	123 (100.0%)	1144 (100.0%)

Chi-square test: $p < 0.001$ for the cancer in the head, $p = 0.018$ for the lesions in the body and tail.

表 4.2.c.5 膵前方被膜浸潤の比較 Comparison of serosal infiltration (S)

	Serosal infiltration	Patients who died within 5 years	5 year survivors	total
膵頭部癌 Cancer in the head of the pancreas	0. S(-) Without invasion	2160 (52.1%)	257 (74.7%)	2417 (53.9%)
	1. S(+) With invasion	1984 (47.9%)	87 (25.3%)	2071 (46.1%)
	Total	4144 (100.0%)	344 (100.0%)	4488 (100.0%)
膵体尾部癌 Cancer in the body and tail of the pancreas	0. S(-) Without invasion	205 (19.7%)	64 (51.2%)	269 (23.0%)
	1. S(+) With invasion	838 (80.3%)	61 (48.8%)	899 (77.0%)
	Total	1043 (100.0%)	125 (100.0%)	1168 (100.0%)

Chi-square test: $p < 0.001$ for the cancer in the head, $p < 0.001$ for the lesions in the body and tail.

表 4.2.c.6 膵後方組織浸潤の比較 Comparison of retroperitoneal infiltration (RP)

	Retroperitoneal infiltration	Patients who died within 5 years	5 year survivors	total
膵頭部癌 Cancer in the head of the pancreas	0. RP (+) With invasion	1865 (46.5%)	229 (68.8%)	2094 (48.2%)
	1. RP (-) Without invasion	2145 (53.5%)	104 (31.2%)	2249 (51.8%)
	Total	4010 (100.0%)	333 (100.0%)	4343 (100.0%)
膵体尾部癌 Cancer in the body and tail of the pancreas	0. RP (-) Without invasion	267 (26.5%)	71 (58.2%)	338 (29.9%)
	1. RP (+) With invasion	741 (73.5%)	51 (41.8%)	792 (70.1%)
	Total	1008 (100.0%)	122 (100.0%)	1130 (100.0%)

Chi-square test: $p < 0.001$ for the cancer in the head, $p < 0.001$ for the lesions in the body and tail.

表 4.2.c.7 門脈系静脈浸潤の比較 Comparison of portal venous system infiltration (PV)

	Portal venous system infiltration	Patients who died within 5 years	5 year survivors	total
膵頭部癌 Cancer in the head of the pancreas	0. PV (+) With invasion	1986 (47.4%)	258 (74.6%)	2244 (49.4%)
	1. PV (+) With invasion	2206 (52.6%)	88 (25.4%)	2294 (50.6%)
	Total	4192 (100.0%)	346 (100.0%)	4538 (100.0%)
膵体尾部癌 Cancer in the body and tail of the pancreas	0. PV (-) Without invasion	430 (41.5%)	95 (76.6%)	525 (45.2%)
	1. PV (+) With invasion	607 (58.5%)	29 (23.4%)	636 (54.8%)
	Total	1037 (100.0%)	124 (100.0%)	1161 (100.0%)

Chi-square test: $p < 0.001$ for the cancer in the head, $p < 0.001$ for the lesions in the body and tail.

表 4.2.c.8 動脈浸潤の比較 Comparison of arterial infiltration (A)

	Arterial infiltration	Patients who died within 5 years	5 year survivors	total
膵頭部癌 Cancer in the head of the pancreas	0. A (+) With invasion	3264 (78.4%)	321 (93.0%)	3585 (79.5%)
	1. A (+) With invasion	901 (21.6%)	24 (7.0%)	925 (20.5%)
	Total	4165 (100.0%)	345 (100.0%)	4510 (100.0%)
膵体尾部癌 Cancer in the body and tail of the pancreas	0. A (-) Without invasion	506 (49.2%)	102 (81.6%)	608 (52.7%)
	1. A (+) With invasion	523 (50.8%)	23 (18.4%)	546 (47.3%)
	Total	1029 (100.0%)	125 (100.0%)	1154 (100.0%)

Chi-square test: $p < 0.001$ for the cancer in the head, $p < 0.001$ for the lesions in the body and tail.

表 4.2.c.9 神経叢浸潤の比較 Comparison of plexus infiltration (PL)

	Plexus infiltration	Patients who died within 5 years	5 year survivors	total
膵頭部癌 Cancer in the head of the pancreas	0. PL (+) With invasion	2365 (71.8%)	289 (91.2%)	2654 (73.5%)
	1. PL (+) With invasion	929 (28.2%)	28 (8.8%)	957 (26.5%)
	Total	3294 (100.0%)	317 (100.0%)	3611 (100.0%)
膵体尾部癌 Cancer in the body and tail of the pancreas	0. PL (-) Without invasion	532 (65.2%)	107 (92.2%)	639 (68.6%)
	1. PL (+) With invasion	284 (34.8%)	9 (7.8%)	293 (31.4%)
	Total	816 (100.0%)	116 (100.0%)	932 (100.0%)

Chi-square test: $p < 0.001$ for the cancer in the head, $p < 0.001$ for the lesions in the body and tail.

表 4.2.c.10 他臓器浸潤の比較 Comparison of infiltration to the other organs (OO)

	Infiltration to the other organs	Patients who died within 5 years	5 year survivors	total
膵頭部癌 Cancer in the head of the pancreas	0. OO (+) With invasion	3703 (88.5%)	332 (96.2%)	4035 (89.1%)
	1. OO (+) With invasion	480 (11.5%)	13 (3.8%)	493 (10.9%)
	Total	4183 (100.0%)	345 (100.0%)	4528 (100.0%)
膵体尾部癌 Cancer in the body and tail of the pancreas	0. OO (-) Without invasion	674 (64.4%)	110 (88.0%)	784 (66.9%)
	1. OO (+) With invasion	373 (35.6%)	15 (12.0%)	388 (33.1%)
	Total	1047 (100.0%)	125 (100.0%)	1172 (100.0%)

Chi-square test: $p < 0.001$ for the cancer in the head, $p < 0.001$ for the lesions in the body and tail.

d. JPS TNM

表 4.2.d.1 JPS T 因子の比較 Comparison of JPS T factors

	JPS T	Patients who died within 5 years	5 year survivors	total
膵頭部癌 Cancer in the head of the pancreas	JPS T1	68 (1.7%)	34 (10.3%)	102 (2.4%)
	JPS T2	125 (3.2%)	43 (13.0%)	168 (4.0%)
	JPS T3	1144 (29.3%)	153 (46.4%)	1297 (30.6%)
	JPS T4	2572 (65.8%)	100 (30.3%)	2672 (63.0%)
	Total	3909 (100.0%)	330 (100.0%)	4239 (100.0%)
膵体尾部癌 Cancer in the body and tail of the pancreas	JPS T1	35 (3.5%)	24 (19.8%)	59 (5.2%)
	JPS T2	43 (4.3%)	17 (14.0%)	60 (5.3%)
	JPS T3	122 (12.1%)	36 (29.8%)	158 (14.0%)
	JPS T4	806 (80.1%)	44 (36.4%)	850 (75.4%)
	Total	1006 (100.0%)	121 (100.0%)	1127 (100.0%)

Chi-square test: $p < 0.001$ for the cancer in the head, $p < 0.001$ for the lesions in the body and tail.

表 4.2.d.2 JPS N 因子の比較 Comparison of JPS N factors

	JPS N	Patients who died within 5 years	5 year survivors	total
膵頭部癌 Cancer in the head of the pancreas	JPS N0	1101 (28.0%)	203 (63.8%)	1304 (30.7%)
	JPS N1	926 (23.5%)	61 (19.2%)	987 (23.2%)
	JPS N2	1100 (27.9%)	37 (11.6%)	1137 (26.7%)
	JPS N3	809 (20.6%)	17 (5.3%)	826 (19.4%)
	Total	3936 (100.0%)	318 (100.0%)	4254 (100.0%)
膵体尾部癌 Cancer in the body and tail of the pancreas	JPS N0	353 (39.7%)	74 (72.5%)	427 (43.1%)
	JPS N1	250 (28.1%)	22 (21.6%)	272 (27.4%)
	JPS N2	91 (10.2%)	1 (1.0%)	92 (9.3%)
	JPS N3	195 (21.9%)	5 (4.9%)	200 (20.2%)
	Total	889 (100.0%)	102 (100.0%)	991 (100.0%)

Chi-square test: $p < 0.001$ for the cancer in the head, $p < 0.001$ for the lesions in the body and tail.

表 4.2.d.3 JPS M 因子の比較 Comparison of JPS M factors

	JPS M	Patients who died within 5 years	5 year survivors	total
膵頭部癌 Cancer in the head of the pancreas	JPS M0	3221 (76.3%)	327 (94.0%)	3548 (77.7%)
	JPS M1	999 (23.7%)	21 (6.0%)	1020 (22.3%)
	Total	4220 (100.0%)	348 (100.0%)	4568 (100.0%)
膵体尾部癌 Cancer in the body and tail of the pancreas	JPS M0	681 (64.2%)	115 (92.0%)	796 (67.2%)
	JPS M1	379 (35.8%)	10 (8.0%)	389 (32.8%)
	Total	1060 (100.0%)	125 (100.0%)	1185 (100.0%)

Chi-square test: $p < 0.001$ for the cancer in the head, $p < 0.001$ for the lesions in the body and tail.

表 4.2.d.4 遠隔転移の比較 Comparison of type of distant metastases

Type of distant metastasis	Patients who died within 5 years	5 year survivors	total
Distant lymph nodes (LYM)	4080 (72.4%)	436 (93.0%)	4516 (74.0%)
	1554 (27.6%)	33 (7.0%)	1587 (26.0%)
Total	5634 (100.0%)	469 (100.0%)	6103 (100.0%)
Liver metastasis (HEP)	5722 (92.3%)	521 (98.7%)	6243 (92.8%)
	476 (7.7%)	7 (1.3%)	483 (7.2%)
Total	6198 (100.0%)	528 (100.0%)	6726 (100.0%)
Peritoneal dissemination (PER)	5827 (95.2%)	519 (99.2%)	6346 (95.5%)
	296 (4.8%)	4 (0.8%)	300 (4.5%)
Total	6123 (100.0%)	523 (100.0%)	6646 (100.0%)

表 4.2.d.5 JPS Stage の比較 Comparison of JPS Stage

	JPS Stage	Patients who died within 5 years	5 year survivors	total
膵頭部癌 Cancer in the head of the pancreas	JPS Stage I	36 (1.0%)	27 (8.9%)	63 (1.5%)
	JPS Stage II	67 (1.8%)	31 (10.2%)	98 (2.4%)
	JPS Stage III	699 (18.5%)	130 (42.8%)	829 (20.3%)
	JPS Stage IVa	1329 (35.2%)	78 (25.7%)	1407 (34.5%)
	JPS Stage IVb	1645 (43.6%)	38 (12.5%)	1683 (41.3%)
	Total	3776 (100.0%)	304 (100.0%)	4080 (100.0%)
膵体尾部癌 Cancer in the body and tail of the pancreas	JPS Stage I	21 (2.3%)	17 (16.8%)	38 (3.7%)
	JPS Stage II	20 (2.2%)	13 (12.9%)	33 (3.2%)
	JPS Stage III	91 (9.9%)	31 (30.7%)	122 (12.0%)
	JPS Stage IVa	346 (37.8%)	29 (28.7%)	375 (36.9%)
	JPS Stage IVb	438 (47.8%)	11 (10.9%)	449 (44.1%)
	Total	916 (100.0%)	101 (100.0%)	1017 (100.0%)

Chi-square test: p<0.001 for the cancer in the head, p<0.001 for the lesions in the body and tail.

e. UICC TNM

表 4.2.e.1 UICC T 因子の比較 Comparison of UICC T factors

	UICC T	Patients who died within 5 years	5 year survivors	total
膵頭部癌 Cancer in the head of the pancreas	UICC T1	178 (4.3%)	58 (17.5%)	236 (5.3%)
	UICC T2	443 (10.8%)	65 (19.6%)	508 (11.4%)
	UICC T3	2149 (52.4%)	169 (50.9%)	2318 (52.2%)
	UICC T4	1335 (32.5%)	40 (12.0%)	1375 (31.0%)
	Total	4105 (100.0%)	332 (100.0%)	4437 (100.0%)
膵体尾部癌 Cancer in the body and tail of the pancreas	UICC T1	41 (4.0%)	25 (21.0%)	66 (5.8%)
	UICC T2	58 (5.7%)	13 (10.9%)	71 (6.3%)
	UICC T3	374 (36.8%)	55 (46.2%)	429 (37.8%)
	UICC T4	542 (53.4%)	26 (21.8%)	568 (50.1%)
	Total	1015 (100.0%)	119 (100.0%)	1134 (100.0%)

Chi-square test: p<0.001 for the cancer in the head, p<0.001 for the lesions in the body and tail.

表 4.2.e.2 UICC N 因子の比較 Comparison of UICC N factors

	UICC N	Patients who died within 5 years	5 year survivors	total
膵頭部癌 Cancer in the head of the pancreas	UICC N0	1102 (28.0%)	203 (63.8%)	1305 (30.7%)
	UICC N1	2832 (72.0%)	115 (36.2%)	2947 (69.3%)
	Total	3934 (100.0%)	318 (100.0%)	4252 (100.0%)
膵体尾部癌 Cancer in the body and tail of the pancreas	UICC N0	355 (39.8%)	74 (72.5%)	429 (43.2%)
	UICC N1	537 (60.2%)	28 (27.5%)	565 (56.8%)
	Total	892 (100.0%)	102 (100.0%)	994 (100.0%)

Chi-square test: p<0.001 for the cancer in the head, p<0.001 for the lesions in the body and tail.

表 4.2.e.3 UICC M 因子の比較 Comparison of UICC M factors

	UICC M	Patients who died within 5 years	5 year survivors	total
膵頭部癌 Cancer in the head of the pancreas	UICC M0	3078 (72.8%)	317 (90.6%)	3395 (74.2%)
	UICC M1	1148 (27.2%)	33 (9.4%)	1181 (25.8%)
	Total	4226 (100.0%)	350 (100.0%)	4576 (100.0%)
膵体尾部癌 Cancer in the body and tail of the pancreas	UICC M0	646 (60.9%)	114 (91.2%)	760 (64.1%)
	UICC M1	414 (39.1%)	11 (8.8%)	425 (35.9%)
	Total	1060 (100.0%)	125 (100.0%)	1185 (100.0%)

Chi-square test: p<0.001 for the cancer in the head, p<0.001 for the lesions in the body and tail.

表 4.2.e.4 遠隔転移の比較 Comparison of type of distant metastases

Type of distant metastasis	Patients who died within 5 years	5 year survivors	total
Distant lymph nodes (LYM)	4080 (72.4%)	436 (93.0%)	4516 (74.0%)
	1554 (27.6%)	33 (7.0%)	1587 (26.0%)
Total	5634 (100.0%)	469 (100.0%)	6103 (100.0%)
Liver metastasis (HEP)	5722 (92.3%)	521 (98.7%)	6243 (92.8%)
	476 (7.7%)	7 (1.3%)	483 (7.2%)
Total	6198 (100.0%)	528 (100.0%)	6726 (100.0%)
Peritoneal dissemination (PER)	5827 (95.2%)	519 (99.2%)	6346 (95.5%)
	296 (4.8%)	4 (0.8%)	300 (4.5%)
Total	6123 (100.0%)	523 (100.0%)	6646 (100.0%)

表 4.2.e.5 UICC Stage の比較 Comparison of UICC Stage

	UICC Stage	Patients who died within 5 years	5 year survivors	total
膵頭部癌 Cancer in the head of the pancreas	UICC Stage Ia	81 (2.0%)	43 (14.0%)	124 (2.9%)
	UICC Stage Ib	160 (4.0%)	37 (12.0%)	197 (4.6%)
	UICC Stage IIa	496 (12.5%)	92 (29.9%)	588 (13.7%)
	UICC Stage IIb	1259 (31.7%)	70 (22.7%)	1329 (31.1%)
	UICC Stage III	827 (20.8%)	33 (10.7%)	860 (20.1%)
	UICC Stage IV	1148 (28.9%)	33 (10.7%)	1181 (27.6%)
	Total	3971 (100.0%)	308 (100.0%)	4279 (100.0%)
膵体尾部癌 Cancer in the body and tail of the pancreas	UICC Stage Ia	23 (2.3%)	17 (16.8%)	40 (3.7%)
	UICC Stage Ib	21 (2.1%)	9 (8.9%)	30 (2.7%)
	UICC Stage IIa	124 (12.5%)	31 (30.7%)	155 (14.2%)
	UICC Stage IIb	121 (12.2%)	15 (14.9%)	136 (12.5%)
	UICC Stage III	287 (29.0%)	18 (17.8%)	305 (28.0%)
	UICC Stage IV	414 (41.8%)	11 (10.9%)	425 (39.0%)
	Total	990 (100.0%)	101 (100.0%)	1091 (100.0%)

Chi-square test: p<0.001 for the cancer in the head, p<0.001 for the lesions in the body and tail.

f. 手術 Operation

表 4.2.f.1 術式の比較 Comparison of methods of pancreatectomy

	Procedures	Patients who died within 5 years	5 year survivors	total
膵頭部癌 Cancer in the head of the pancreas	TP	300 (7.1%)	17 (4.9%)	317 (7.0%)
	PD	3874 (92.3%)	329 (94.5%)	4203 (92.5%)
	DPPHR	1 (0.0%)	0 (0.0%)	1 (0.0%)
	DP	19 (0.5%)	2 (0.6%)	21 (0.5%)
	MP & PR	2 (0.0%)	0 (0.0%)	2 (0.0%)
	Total	4196 (100.0%)	348 (100.0%)	4544 (100.0%)
膵体尾部癌 Cancer in the body and tail of the pancreas	TP	66 (6.4%)	3 (2.5%)	69 (6.0%)
	PD	47 (4.6%)	4 (3.3%)	51 (4.4%)
	DP	909 (88.3%)	115 (94.3%)	1024 (88.9%)
	MP & PR	8 (0.8%)	0 (0.0%)	8 (0.7%)
	Total	1030 (100.0%)	122 (100.0%)	1152 (100.0%)

Chi-square test: N.S. for the cancer in the head, N.S. for the lesions in the body and tail.

TP: total pancreatectomy, PD: pancreaticoduodenectomy including pylorus preserving (PPPD) and subtotal stomach preserving (SSPPD), DPPHR: duodenum preserving pancreatic head resection, DP: distal pancreatectomy, MP: middle pancreatectomy, PR: partial resection

表 4.2.f.2 申告による癌遺残度の比較 Comparison of residual tumor declared by the surgeons.

	Operation	Patients who died within 5 years	5 year survivors	total
膵頭部癌 Cancer in the head of the pancreas	0. R0	1123 (33.2%)	171 (59.8%)	1294 (35.3%)
	1. R1	400 (11.8%)	35 (12.2%)	435 (11.9%)
	2. R2	1860 (55.0%)	80 (28.0%)	1940 (52.9%)
	Total	3383 (100.0%)	286 (100.0%)	3669 (100.0%)
	膵体尾部癌 Cancer in the body and tail of the pancreas	0. R0	137 (27.2%)	33 (50.8%)
1. R1		53 (10.5%)	8 (12.3%)	61 (10.7%)
2. R2		313 (62.2%)	24 (36.9%)	337 (59.3%)
Total		503 (100.0%)	65 (100.0%)	568 (100.0%)

Chi-square test: p<0.001 for the cancer in the head, p<0.001 for the lesions in the body and tail.

表 4.2.f.3 申告によるリンパ節郭清度の比較 Comparison of the level of dissection declared by the surgeons.

	Level of dissection	Patients who died within 5 years	5 year survivors	total
膵頭部癌 Cancer in the head of the pancreas	0. D0	283 (6.9%)	20 (6.1%)	303 (6.9%)
	1. D1	1347 (33.1%)	121 (36.8%)	1468 (33.3%)
	2. D2	2373 (58.2%)	188 (57.1%)	2561 (58.2%)
	3. D3	71 (1.7%)	0 (0.0%)	71 (1.6%)
	Total	4074 (100.0%)	329 (100.0%)	4403 (100.0%)
膵体尾部癌 Cancer in the body and tail of the pancreas	0. D0	242 (24.4%)	21 (17.9%)	263 (23.7%)
	1. D1	417 (42.0%)	61 (52.1%)	478 (43.1%)
	2. D2	323 (32.5%)	35 (29.9%)	358 (32.3%)
	3. D3	11 (1.1%)	0 (0.0%)	11 (1.0%)
	Total	993 (100.0%)	117 (100.0%)	1110 (100.0%)

Chi-square test: N.S. for the cancer in the head, N.S. for the lesions in the body and tail.

表 4.2.f.4 門脈合併切除の比較 Comparison of the combined resection of the portal vein.

	Portal vein resection	Patients who died within 5 years	5 year survivors	total
膵頭部癌 Cancer in the head of the pancreas	0. no PV resection	2156 (61.8%)	222 (79.9%)	2378 (63.1%)
	1. resected	1333 (38.2%)	56 (20.1%)	1389 (36.9%)
	Total	3489 (100.0%)	278 (100.0%)	3767 (100.0%)
膵体尾部癌 Cancer in the body and tail of the pancreas	0. no PV resection	773 (82.0%)	99 (90.8%)	872 (82.9%)
	1. resected	170 (18.0%)	10 (9.2%)	180 (17.1%)
	Total	943 (100.0%)	109 (100.0%)	1052 (100.0%)

Chi-square test: $p < 0.001$ for the cancer in the head, $p = 0.020$ for the lesions in the body and tail.

表 4.2.f.5 動脈合併切除の比較 Comparison of the combined resection of the artery.

	Artery resection	Patients who died within 5 years	5 year survivors	total
膵頭部癌 Cancer in the head of the pancreas	0. no arterial resection	3264 (96.0%)	270 (98.9%)	3534 (96.2%)
	1. resected	135 (4.0%)	3 (1.1%)	138 (3.8%)
	Total	3399 (100.0%)	273 (100.0%)	3672 (100.0%)
膵体尾部癌 Cancer in the body and tail of the pancreas	0. no arterial resection	816 (87.5%)	103 (93.6%)	919 (88.1%)
	1. resected	117 (12.5%)	7 (6.4%)	124 (11.9%)
	Total	933 (100.0%)	110 (100.0%)	1043 (100.0%)

Chi-square test: $p = 0.016$ for the cancer in the head, N.S. for the lesions in the body and tail.

表 4.2.f.6 神経叢合併切除の比較 Comparison of the combined resection of the peripancreatic plexus.

	Plexus resection	Patients who died within 5 years	5 year survivors	total
膵頭部癌 Cancer in the head of the pancreas	0. no plexus resection	1141 (57.1%)	89 (56.0%)	1230 (57.0%)
	1. resected	858 (42.9%)	70 (44.0%)	928 (43.0%)
	Total	1999 (100.0%)	159 (100.0%)	2158 (100.0%)
膵体尾部癌 Cancer in the body and tail of the pancreas	0. no plexus resection	433 (72.9%)	46 (75.4%)	479 (73.1%)
	1. resected	161 (27.1%)	15 (24.6%)	176 (26.9%)
	Total	594 (100.0%)	61 (100.0%)	655 (100.0%)

Chi-square test: $p < 0.001$ for the cancer in the head, $p = 0.020$ for the lesions in the body and tail.

g. 化学療法 Chemotherapy

表 4.2.g.1 術前化学療法法の比較 Comparison of the preoperative chemotherapy

	Preoperative chemotherapy	Patients who died within 5 years	5 year survivors	total
膵頭部癌 Cancer in the head of the pancreas	0. no preoperative chemotherapy	3889 (95.2%)	328 (96.8%)	4217 (95.3%)
	1. with preoperative chemotherapy	198 (4.8%)	11 (3.2%)	209 (4.7%)
	Total	4087 (100.0%)	339 (100.0%)	4426 (100.0%)
膵体尾部癌 Cancer in the body and tail of the pancreas	0. no preoperative chemotherapy	965 (94.6%)	120 (99.2%)	1085 (95.1%)
	1. with preoperative chemotherapy	55 (5.4%)	1 (0.8%)	56 (4.9%)
	Total	1020 (100.0%)	121 (100.0%)	1141 (100.0%)

Chi-square test: N.S. for the cancer in the head, p=0.028 for the lesions in the body and tail.

表 4.2.g.2 術中化学療法法の比較 Comparison of the intraoperative chemotherapy

	Intraoperative chemotherapy	Patients who died within 5 years	5 year survivors	total
膵頭部癌 Cancer in the head of the pancreas	0. no intraoperative chemotherapy	3798 (93.7%)	328 (96.5%)	4126 (93.9%)
	1. with intraoperative chemotherapy	254 (6.3%)	12 (3.5%)	266 (6.1%)
	Total	4052 (100.0%)	340 (100.0%)	4392 (100.0%)
膵体尾部癌 Cancer in the body and tail of the pancreas	0. no preoperative chemotherapy	925 (91.0%)	108 (89.3%)	1033 (90.9%)
	1. with preoperative chemotherapy	91 (9.0%)	13 (10.7%)	104 (9.1%)
	Total	1016 (100.0%)	121 (100.0%)	1137 (100.0%)

Chi-square test: p=0.042 for the cancer in the head, N.S. for the lesions in the body and tail.

表 4.2.g.3 術後化学療法法の比較 Comparison of the postoperative chemotherapy

	Postoperative chemotherapy	Patients who died within 5 years	5 year survivors	total
膵頭部癌 Cancer in the head of the pancreas	0. no postoperative chemotherapy	2295 (56.8%)	194 (57.9%)	2489 (56.9%)
	1. with postoperative chemotherapy	1747 (43.2%)	141 (42.1%)	1888 (43.1%)
	Total	4042 (100.0%)	335 (100.0%)	4377 (100.0%)
膵体尾部癌 Cancer in the body and tail of the pancreas	0. no postoperative chemotherapy	530 (52.4%)	66 (55.0%)	596 (52.7%)
	1. with postoperative chemotherapy	481 (47.6%)	54 (45.0%)	535 (47.3%)
	Total	1011 (100.0%)	120 (100.0%)	1131 (100.0%)

Chi-square test: N.S. for the cancer in the head, N.S. for the lesions in the body and tail.

h. 放射線療法 Radiation therapy

表 4.2.h.1 術前放射線療法法の比較 Comparison of the preoperative radiation

	Preoperative radiation	Patients who died within 5 years	5 year survivors	total
膵頭部癌 Cancer in the head of the pancreas	0. no preoperative radiation	3991 (98.0%)	328 (97.0%)	4319 (97.9%)
	1. with preoperative radiation	81 (2.0%)	10 (3.0%)	91 (2.1%)
	Total	4072 (100.0%)	338 (100.0%)	4410 (100.0%)
膵体尾部癌 Cancer in the body and tail of the pancreas	0. no preoperative radiation	998 (98.3%)	118 (98.3%)	1116 (98.3%)
	1. with preoperative radiation	17 (1.7%)	2 (1.7%)	19 (1.7%)
	Total	1015 (100.0%)	120 (100.0%)	1135 (100.0%)

Chi-square test: N.S. for the cancer in the head, N.S. for the lesions in the body and tail.

表 4.2.h.2 術中放射線療法法の比較 Comparison of the intraoperative radiation

	Intraoperative radiation	Patients who died within 5 years	5 year survivors	total
膵頭部癌 Cancer in the head of the pancreas	0. no intraoperative radiation	801 (94.9%)	60 (96.8%)	861 (95.0%)
	1. with intraoperative radiation	43 (5.1%)	2 (3.2%)	45 (5.0%)
	Total	844 (100.0%)	62 (100.0%)	906 (100.0%)
膵体尾部癌 Cancer in the body and tail of the pancreas	0. no preoperative radiation	192 (94.6%)	24 (100.0%)	216 (95.2%)
	1. with preoperative radiation	11 (5.4%)	0 (0.0%)	11 (4.8%)
	Total	203 (100.0%)	24 (100.0%)	227 (100.0%)

Chi-square test: N.S. for the cancer in the head, N.S. for the lesions in the body and tail.

表 4.2.h.3 術後放射線療法法の比較 Comparison of the postoperative radiation

	Postoperative radiation	Patients who died within 5 years	5 year survivors	total
膵頭部癌 Cancer in the head of the pancreas	0. no postoperative radiation	831 (97.9%)	66 (98.5%)	897 (97.9%)
	1. with postoperative radiation	18 (2.1%)	1 (1.5%)	19 (2.1%)
	Total	849 (100.0%)	67 (100.0%)	916 (100.0%)
膵体尾部癌 Cancer in the body and tail of the pancreas	0. no postoperative radiation	215 (96.0%)	25 (92.6%)	240 (95.6%)
	1. with postoperative radiation	9 (4.0%)	2 (7.4%)	11 (4.4%)
	Total	224 (100.0%)	27 (100.0%)	251 (100.0%)

Chi-square test: N.S. for the cancer in the head, N.S. for the lesions in the body and tail.

III. 非切除例の5年生存者 5 year survivors from unresectable disease.

表 4.3.a 非切除例の5年生存者の年代と治療法 Treatment and the time of 5 year survivors without pancreatectomy

Year	Palliative operation	Exploratory laparotomy
1981.00	1	0
1984.00	1	0
1985.00	1	1
1986.00	1	0
1990.00	2	0
1998.00	1	0
Total	7	1

表 4.3.b 組織型 Histology

Histological types	Palliative operation	Exploratory laparotomy
06. 乳頭腺癌 Papillary adenocarcinoma	2	0
07. 管状腺癌 Adenocarcinoma without description of differentiation	1	0
09. 中分化型管状腺癌 Moderately differentiated adenocarcinoma	3	1
10. 低分化型管状腺癌 Poorly differentiated adenocarcinoma	1	0
Total	7	1

表 4.3.c UICC Stage

UICC Stage	Palliative operation	Exploratory laparotomy
UICC Stage III	5	1
UICC Stage IV	1	0
Unknown	1	0
Total	7	1

表 4.3.d 化学療法 Chemotherapy

Chemotherapy	Palliative operation	Exploratory laparotomy
Without chemotherapy	1	0
With chemotherapy	5	1
Unknown	1	0
Total	7	1

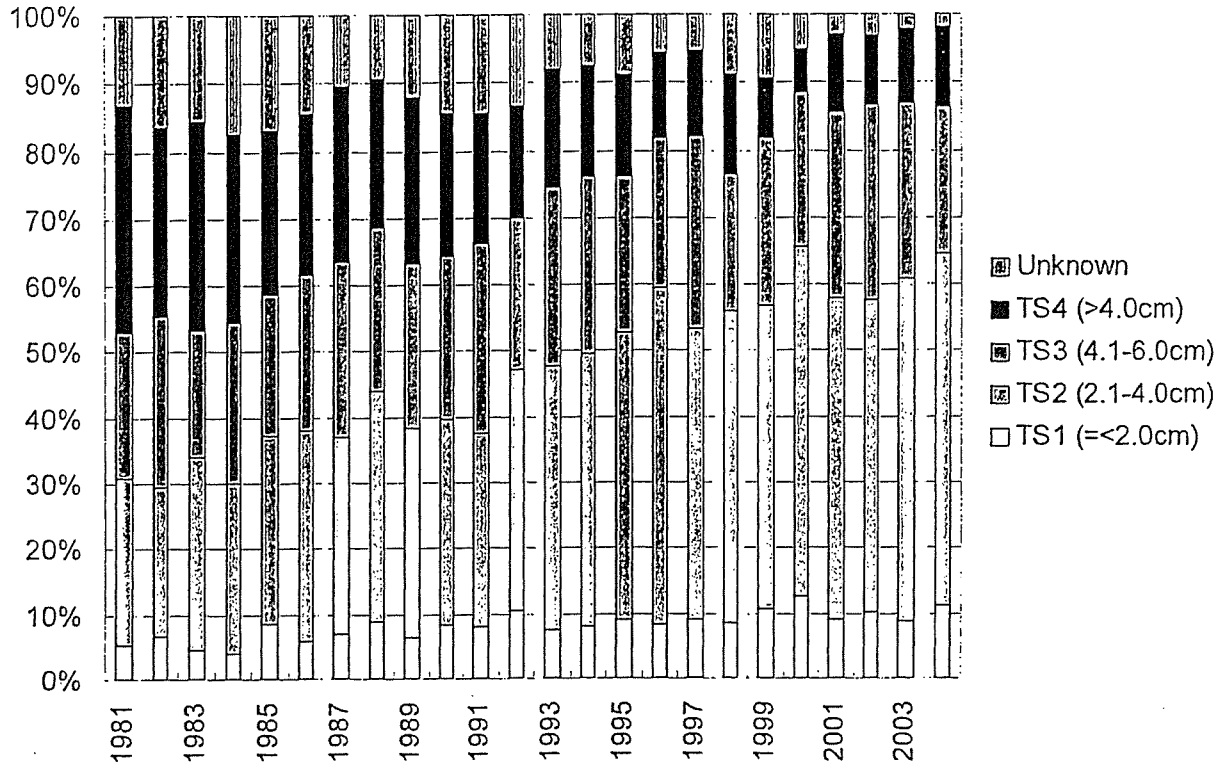
第5章 2cm 以内の通常型脾癌 Invasive cancer less than 2 cm in diameter

1. 2cm 以内脾癌の年次推移 Trend of invasive cancer less than 2 cm in diameter

表 5.1.a.1 腫瘍サイズの年次推移 Trend of tumor size

Year	TS1 (<2.0cm)	TS2 (2.1-4.0cm)	TS3 (4.1cm-6.0cm)	TS4 (>6.0cm)	Unknown	Total
1981	29 (5.3%)	138 (25.4%)	121 (22.3%)	183 (33.7%)	72 (13.3%)	543 (100.0%)
1982	24 (6.6%)	84 (23.0%)	95 (26.0%)	102 (27.9%)	60 (16.4%)	365 (100.0%)
1983	23 (4.6%)	149 (29.6%)	97 (19.2%)	156 (31.0%)	79 (15.7%)	504 (100.0%)
1984	18 (3.9%)	121 (26.2%)	112 (24.3%)	130 (28.2%)	80 (17.4%)	461 (100.0%)
1985	40 (8.5%)	135 (28.7%)	102 (21.7%)	114 (24.2%)	80 (17.0%)	471 (100.0%)
1986	29 (6.0%)	156 (32.0%)	115 (23.6%)	117 (24.0%)	70 (14.4%)	487 (100.0%)
1987	31 (6.8%)	136 (30.0%)	121 (26.7%)	118 (26.0%)	47 (10.4%)	453 (100.0%)
1988	39 (8.9%)	153 (34.9%)	109 (24.9%)	96 (21.9%)	41 (9.4%)	438 (100.0%)
1989	36 (6.3%)	182 (31.9%)	142 (24.9%)	141 (24.7%)	69 (12.1%)	570 (100.0%)
1990	55 (8.3%)	207 (31.4%)	162 (24.6%)	140 (21.2%)	95 (14.4%)	659 (100.0%)
1991	36 (7.9%)	134 (29.6%)	130 (28.7%)	87 (19.2%)	66 (14.6%)	453 (100.0%)
1992	54 (10.4%)	191 (36.8%)	118 (22.7%)	87 (16.8%)	69 (13.3%)	519 (100.0%)
1993	34 (7.5%)	183 (40.1%)	123 (27.0%)	79 (17.3%)	37 (8.1%)	456 (100.0%)
1994	41 (8.0%)	213 (41.7%)	135 (26.4%)	83 (16.2%)	39 (7.6%)	511 (100.0%)
1995	54 (9.1%)	260 (43.8%)	139 (23.4%)	89 (15.0%)	52 (8.8%)	594 (100.0%)
1996	42 (8.4%)	256 (51.1%)	112 (22.4%)	63 (12.6%)	28 (5.6%)	501 (100.0%)
1997	46 (9.0%)	226 (44.3%)	147 (28.8%)	64 (12.5%)	27 (5.3%)	510 (100.0%)
1998	42 (8.6%)	232 (47.3%)	100 (20.4%)	72 (14.7%)	44 (9.0%)	490 (100.0%)
1999	62 (10.8%)	263 (46.0%)	142 (24.8%)	51 (8.9%)	54 (9.4%)	572 (100.0%)
2000	61 (12.7%)	255 (53.0%)	109 (22.7%)	31 (6.4%)	25 (5.2%)	481 (100.0%)
2001	54 (9.1%)	289 (48.7%)	164 (27.7%)	69 (11.6%)	17 (2.9%)	593 (100.0%)
2002	55 (10.3%)	254 (47.5%)	155 (29.0%)	54 (10.1%)	17 (3.2%)	535 (100.0%)
2003	64 (8.8%)	377 (51.9%)	190 (26.2%)	60 (11.0%)	15 (2.1%)	726 (100.0%)
2004	80 (11.2%)	380 (53.4%)	155 (21.8%)	83 (11.7%)	14 (2.0%)	712 (100.0%)
Total	1049 (8.3%)	4974 (39.5%)	3095 (24.6%)	2289 (18.2%)	1197 (9.5%)	12604 (100.0%)

図 5.1.a.2 腫瘍サイズの年次推移グラフ Trend graph of tumor size



II. 診断 Diagnosis
a. 症状 Symptoms

表 5.2.a.1 膵頭部癌の腫瘍サイズと初発症状 Initial symptoms and the size of the tumor in the pancreatic head

Year	TS1 (<2.0cm)	TS2 (2.1-4.0cm)	TS3 (4.1cm-6.0cm)	TS4 (>6.0cm)	Total
00. なし None	100 (12.9%)	263 (7.0%)	73 (4.0%)	22 (3.1%)	458 (6.5%)
01. 腹痛 Abdominal pain	187 (24.2%)	993 (26.3%)	557 (30.8%)	223 (31.1%)	1960 (27.7%)
02. 体重減少 Body weight loss	23 (3.0%)	136 (3.6%)	75 (4.2%)	23 (3.2%)	257 (3.6%)
03. 嘔吐 Vomiting	5 (0.6%)	68 (1.8%)	56 (3.1%)	28 (3.9%)	157 (2.2%)
04. 食思不振 Appetite loss	44 (5.7%)	228 (6.0%)	112 (6.2%)	51 (7.1%)	435 (6.2%)
05. 黄疸 Jaundice	210 (27.2%)	1167 (30.9%)	453 (25.1%)	119 (16.6%)	1949 (27.6%)
06. 全身倦怠 General malaise	44 (5.7%)	188 (5.0%)	71 (3.9%)	31 (4.3%)	334 (4.7%)
07. 腫瘍 Tumor	1 (0.1%)	16 (0.4%)	11 (0.6%)	17 (2.4%)	45 (0.6%)
08. 腰背部痛 Back pain	32 (4.1%)	158 (4.2%)	95 (5.3%)	49 (6.8%)	334 (4.7%)
09. 糖尿病増悪 Deterioration of DM	51 (6.6%)	188 (5.0%)	82 (4.5%)	41 (5.7%)	362 (5.1%)
10. その他	7 (0.9%)	41 (1.1%)	18 (1.0%)	4 (0.6%)	70 (1.0%)
99. 不明	69 (8.9%)	330 (8.7%)	204 (11.3%)	108 (15.1%)	711 (10.1%)
Total	773 (100.0%)	3776 (100.0%)	1807 (100.0%)	716 (100.0%)	7072 (100.0%)

表 5.2.a.2 膵体尾部癌の腫瘍サイズと初発症状 Initial symptoms and the size of the tumor in the pancreatic body and tail

Year	TS1 (<2.0cm)	TS2 (2.1-4.0cm)	TS3 (4.1cm-6.0cm)	TS4 (>6.0cm)	Total
00. なし None	91 (37.6%)	234 (26.9%)	95 (14.0%)	23 (5.1%)	443 (19.8%)
01. 腹痛 Abdominal pain	67 (27.7%)	298 (34.2%)	303 (44.5%)	204 (45.6%)	872 (38.9%)
02. 体重減少 Body weight loss	10 (4.1%)	47 (5.4%)	37 (5.4%)	28 (6.3%)	122 (5.4%)
03. 嘔吐 Vomiting	2 (0.8%)	6 (0.7%)	7 (1.0%)	4 (0.9%)	19 (0.8%)
04. 食思不振 Appetite loss	6 (2.5%)	34 (3.9%)	34 (5.0%)	23 (5.1%)	97 (4.3%)
05. 黄疸 Jaundice	1 (0.4%)	9 (1.0%)	13 (1.9%)	5 (1.1%)	28 (1.2%)
06. 全身倦怠 General malaise	2 (0.8%)	18 (2.1%)	14 (2.1%)	11 (2.5%)	45 (2.0%)
07. 腫瘍 Tumor	0 (0.0%)	4 (0.5%)	3 (0.4%)	6 (1.3%)	13 (0.6%)
08. 腰背部痛 Back pain	20 (8.3%)	93 (10.7%)	80 (11.7%)	52 (11.6%)	245 (10.9%)
09. 糖尿病増悪 Deterioration of DM	30 (12.4%)	62 (7.1%)	42 (6.2%)	31 (6.9%)	165 (7.4%)
10. その他	2 (0.8%)	12 (1.4%)	9 (1.3%)	3 (0.7%)	26 (1.2%)
99. 不明	11 (4.5%)	54 (6.2%)	44 (6.5%)	57 (12.8%)	166 (7.4%)
Total	242 (100.0%)	871 (100.0%)	681 (100.0%)	447 (100.0%)	2241 (100.0%)

図5.2.a.3 TS1膵癌における初発症状と予後 Initial symptom and the survival of patients with TS1 tumor

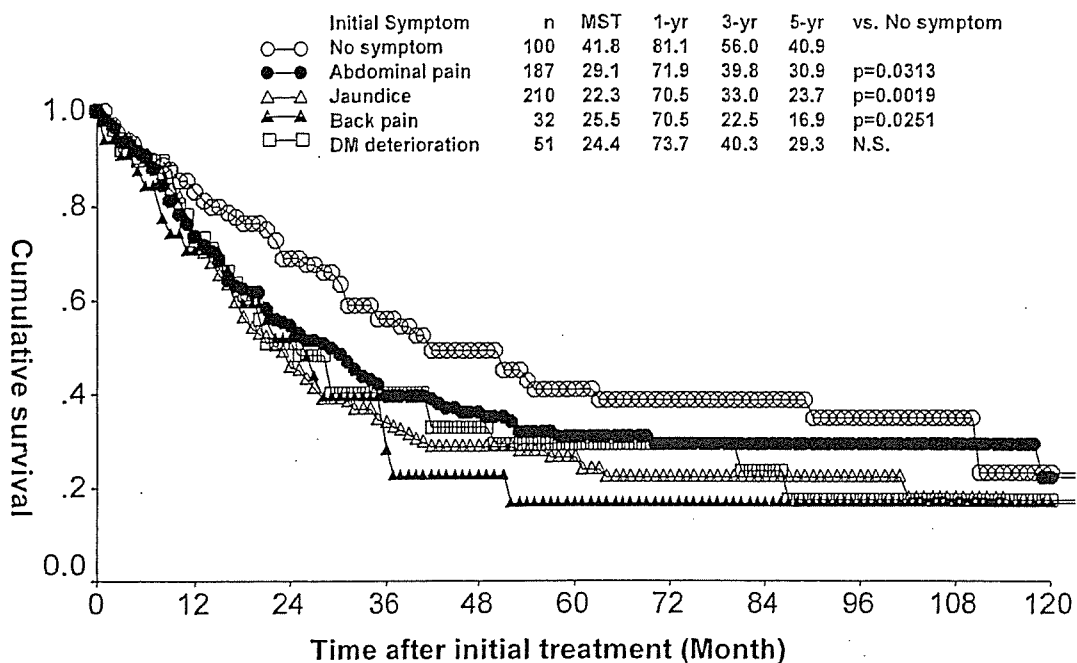
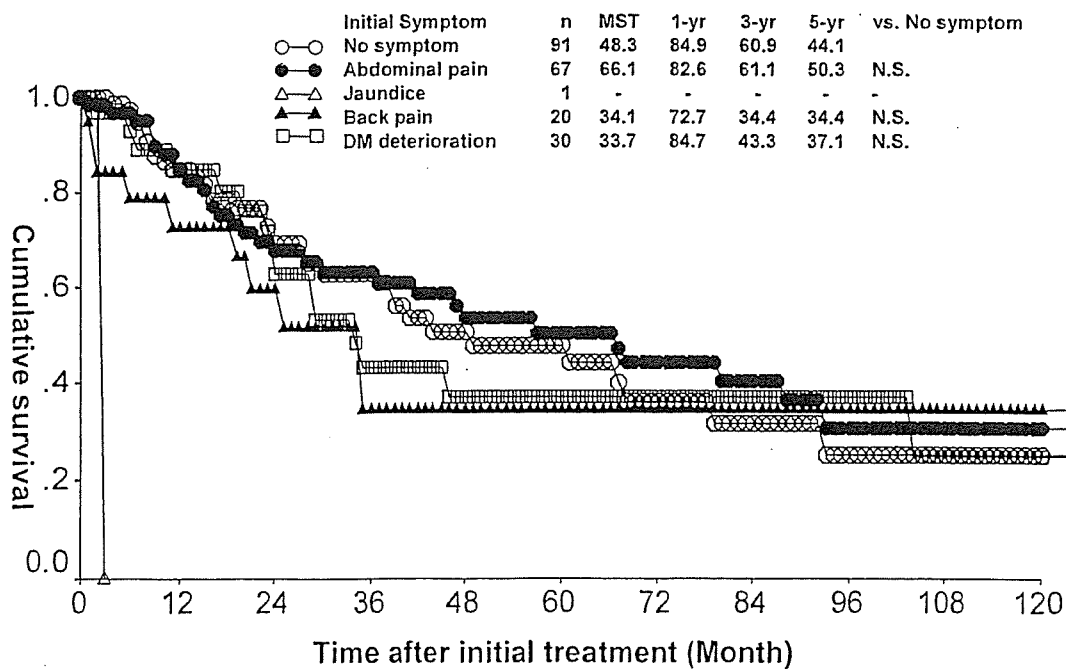


図5.2.a.4 TS1膵体尾部癌における初発症状と予後 Initial symptom and the survival of patients with TS1 tumor in the body and tail of the pancreas



b. 診断法 Diagnostic methods

表 5.2.b.1 腫瘍サイズと主病巣の診断に最も重要であった診断法 Tumor size and most valuable image modality to detect the primary lesion

Image modality	TS1 (<2.0cm)	TS2 (2.1-4.0cm)	TS3 (4.1cm-6.0cm)	TS4 (>6.0cm)	Total
01. 臨床所見 Clinical findings	13 (1.2%)	57 (1.1%)	61 (2.0%)	76 (3.3%)	207 (1.8%)
02. 消化管造影 Barium meal	10 (1.0%)	44 (0.9%)	46 (1.5%)	82 (3.6%)	182 (1.6%)
03. DIC	0 (0.0%)	5 (0.1%)	2 (0.1%)	2 (0.1%)	9 (0.1%)
04. ERCP	150 (14.3%)	389 (7.8%)	206 (6.7%)	162 (7.1%)	907 (8.0%)
05. Angiography	6 (0.6%)	17 (0.3%)	20 (0.6%)	28 (1.2%)	71 (0.6%)
06. CT	278 (26.5%)	1567 (31.5%)	1093 (35.3%)	756 (33.0%)	3694 (32.4%)
07. US	385 (36.7%)	1915 (38.5%)	1117 (36.1%)	765 (33.4%)	4182 (36.7%)
08. PTCD	88 (8.4%)	394 (7.9%)	190 (6.1%)	128 (5.6%)	800 (7.0%)
09. MRI	3 (0.3%)	10 (0.2%)	7 (0.2%)	3 (0.1%)	23 (0.2%)
10. 内視鏡 Endoscopic findings	12 (1.1%)	38 (0.8%)	30 (1.0%)	32 (1.4%)	112 (1.0%)
12. 腫シンチ Scintigraphy	5 (0.5%)	14 (0.3%)	8 (0.3%)	8 (0.3%)	35 (0.3%)
15. EUS	3 (0.3%)	2 (0.0%)	2 (0.1%)	1 (0.0%)	8 (0.1%)
17. PET	0 (0.0%)	1 (0.0%)	2 (0.1%)	1 (0.0%)	4 (0.0%)
18. その他 Other	28 (2.7%)	94 (1.9%)	67 (2.2%)	71 (3.1%)	260 (2.3%)
99. 不明 Unknown	68 (6.5%)	427 (8.6%)	244 (7.9%)	174 (7.6%)	913 (8.0%)
Total	1049 (100.0%)	4974 (100.0%)	3095 (100.0%)	2289 (100.0%)	11407 (100.0%)

c. 腫瘍マーカー Tumor markers

表 5.2.c.1 腫瘍サイズと腫瘍マーカー Tumor size and tumor markers

Image modality	TS1 (<2.0cm)	TS2 (2.1-4.0cm)	TS3 (4.1cm-6.0cm)	TS4 (>6.0cm)	Total
CEA within normal limit	555 (68.2%)	2266 (58.3%)	1240 (51.7%)	678 (43.8%)	4739 (54.8%)
CEA high	259 (31.8%)	1619 (41.7%)	1159 (48.3%)	871 (56.2%)	3908 (45.2%)
Total	814 (100.0%)	3885 (100.0%)	2399 (100.0%)	1549 (100.0%)	8647 (100.0%)
CA19-9 within normal limit	238 (46.8%)	707 (27.9%)	335 (25.7%)	153 (26.3%)	1433 (29.1%)
CA19-9 high	271 (53.2%)	1831 (72.1%)	967 (74.3%)	428 (73.7%)	3497 (70.9%)
Total	509 (100.0%)	2538 (100.0%)	1302 (100.0%)	581 (100.0%)	4930 (100.0%)
DUPAN2 within normal limit	76 (62.8%)	231 (40.2%)	106 (36.4%)	42 (38.2%)	455 (41.5%)
DUPAN2 high	45 (37.2%)	344 (59.8%)	185 (63.6%)	68 (61.8%)	642 (58.5%)
Total	121 (100.0%)	575 (100.0%)	291 (100.0%)	110 (100.0%)	1097 (100.0%)
SPAN1 within normal limit	36 (49.3%)	80 (21.6%)	32 (17.9%)	14 (25.5%)	162 (23.9%)
SPAN1 high	37 (50.7%)	291 (78.4%)	147 (82.1%)	41 (74.5%)	516 (76.1%)
Total	73 (100.0%)	371 (100.0%)	179 (100.0%)	55 (100.0%)	678 (100.0%)

図 5.2.c.2 腫瘍サイズと CEA 値 Tumor size and CEA value

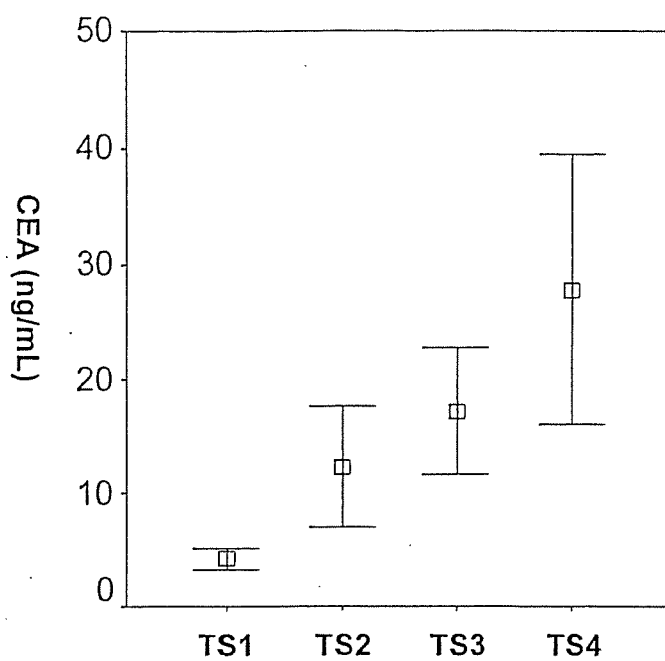


図 5.2.c.3 腫瘍サイズと CA19-9 値 Tumor size and CA19-9 value

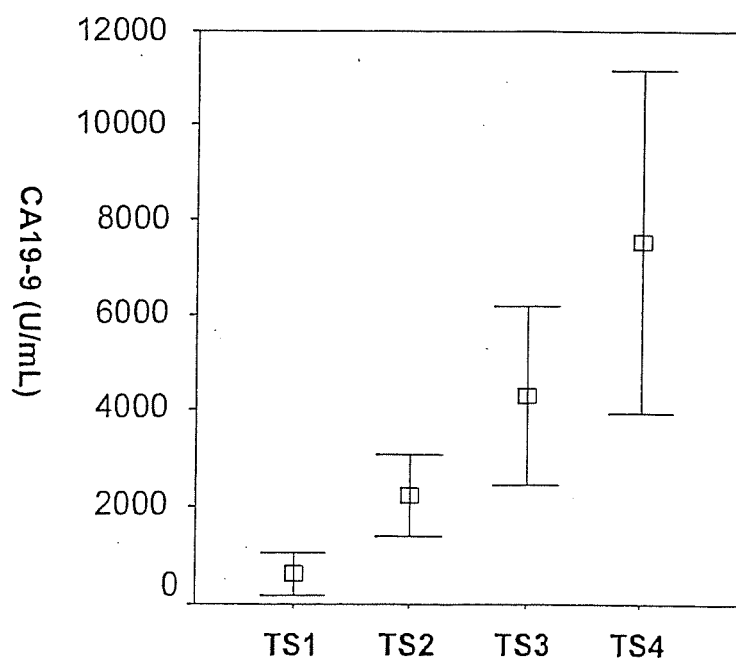


図 5.2.c.4 腫瘍サイズと DUPAN2 値 Tumor size and DUPAN2 value

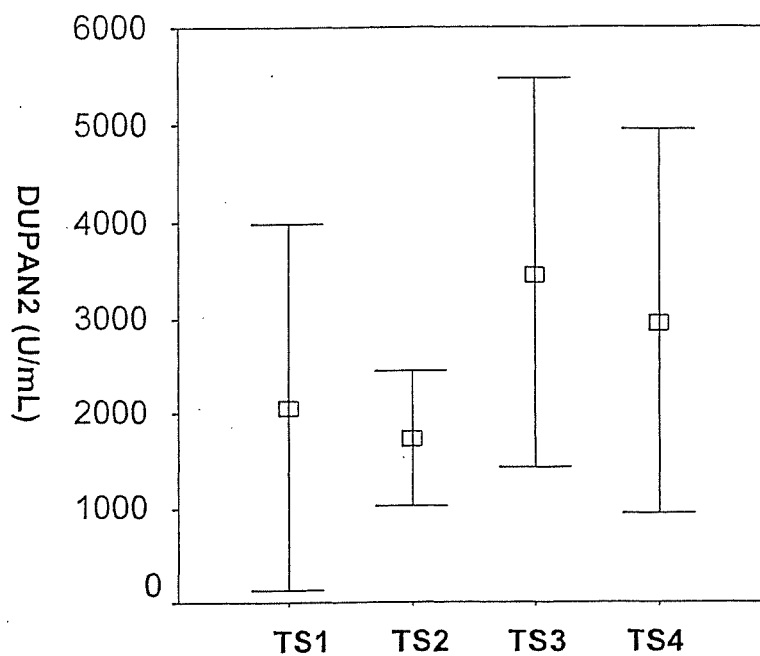
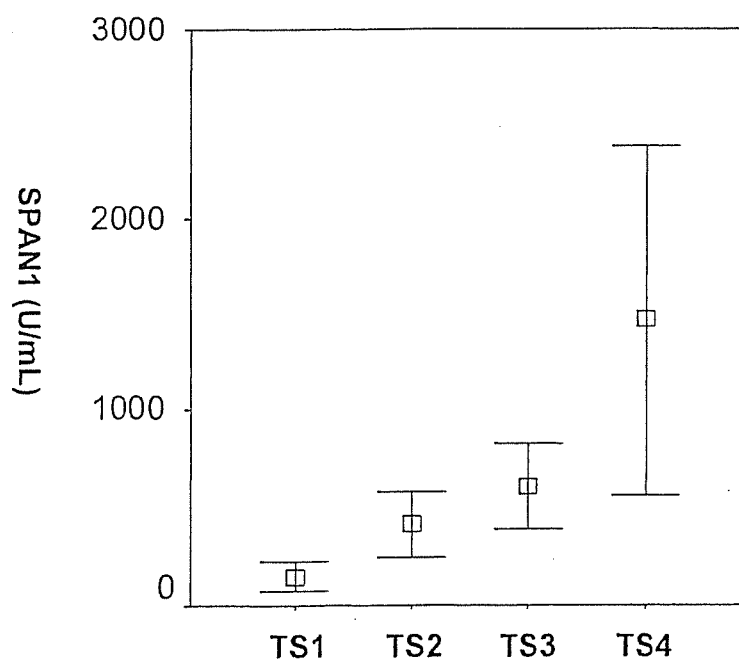


図 5.2.c.5 腫瘍サイズと SPAN1 値 Tumor size and SPAN1 value



III. 腫瘍進展度 Tumor extent

a. 局所進展 Local extent

表 5.3.a.1 腫瘍サイズと膵内胆管浸潤 Tumor size and choledochal infiltration

Choledochal infiltration		TS1 (<2.0cm)	TS2 (2.1-4.0cm)	TS3 (4.1cm-6.0cm)	TS4 (>6.0cm)	Total
Cancer in the head of the pancreas	CH(-)	306 (40.6%)	791 (21.9%)	289 (17.4%)	110 (19.2%)	1496 (22.7%)
	CH(+)	447 (59.4%)	2828 (78.1%)	1370 (82.6%)	462 (80.8%)	5107 (77.3%)
	Total	753 (100.0%)	3619 (100.0%)	1659 (100.0%)	572 (100.0%)	6603 (100.0%)
Cancer in the body and the tail of the pancreas	CH(-)	227 (98.3%)	786 (96.2%)	575 (92.7%)	316 (87.1%)	1904 (93.7%)
	CH(+)	4 (1.7%)	31 (3.8%)	45 (7.3%)	47 (12.9%)	127 (6.3%)
	Total	231 (100.0%)	817 (100.0%)	620 (100.0%)	363 (100.0%)	2031 (100.0%)

表 5.3.a.2 腫瘍サイズと十二指腸浸潤 Tumor size and duodenal infiltration

Duodenal infiltration		TS1 (<2.0cm)	TS2 (2.1-4.0cm)	TS3 (4.1cm-6.0cm)	TS4 (>6.0cm)	Total
Cancer in the head of the pancreas	DU(-)	584 (77.1%)	1911 (52.5%)	581 (34.5%)	141 (22.9%)	3217 (48.0%)
	DU(+)	173 (22.9%)	1732 (47.5%)	1105 (65.5%)	474 (77.1%)	3484 (52.0%)
	Total	757 (100.0%)	3643 (100.0%)	1686 (100.0%)	615 (100.0%)	6701 (100.0%)
Cancer in the body and the tail of the pancreas	DU(-)	233 (99.6%)	800 (96.7%)	576 (91.1%)	317 (82.3%)	1926 (92.7%)
	DU(+)	1 (0.4%)	27 (3.3%)	56 (8.9%)	68 (17.7%)	152 (7.3%)
	Total	234 (100.0%)	827 (100.0%)	632 (100.0%)	385 (100.0%)	2078 (100.0%)

表 5.3.a.3 腫瘍サイズと膵前面被膜浸潤 Tumor size and serosal infiltration

Serosal infiltration		TS1 (<2.0cm)	TS2 (2.1-4.0cm)	TS3 (4.1cm-6.0cm)	TS4 (>6.0cm)	Total
Cancer in the head of the pancreas	S(-)	639 (84.6%)	2078 (57.1%)	568 (33.3%)	104 (15.6%)	3389 (50.1%)
	S(+)	116 (15.4%)	1559 (42.9%)	1140 (66.7%)	562 (84.4%)	3377 (49.9%)
	Total	755 (100.0%)	3637 (100.0%)	1708 (100.0%)	666 (100.0%)	6766 (100.0%)
Cancer in the body and the tail of the pancreas	S(-)	167 (69.6%)	223 (27.1%)	64 (10.0%)	27 (6.5%)	481 (22.7%)
	S(+)	73 (30.4%)	600 (72.9%)	578 (90.0%)	389 (93.5%)	1640 (77.3%)
	Total	240 (100.0%)	823 (100.0%)	642 (100.0%)	416 (100.0%)	2121 (100.0%)

表 5.3.a.4 腫瘍サイズと膵後方組織浸潤 Tumor size and retroperitoneal infiltration

Retroperitoneal infiltration		TS1 (<2.0cm)	TS2 (2.1-4.0cm)	TS3 (4.1cm-6.0cm)	TS4 (>6.0cm)	Total
Cancer in the head of the pancreas	RP(-)	557 (75.6%)	1726 (49.1%)	482 (30.1%)	99 (17.7%)	2864 (44.7%)
	RP(+)	180 (24.4%)	1789 (50.9%)	1117 (69.9%)	460 (82.3%)	3546 (55.3%)
	Total	737 (100.0%)	3515 (100.0%)	1599 (100.0%)	559 (100.0%)	6410 (100.0%)
Cancer in the body and the tail of the pancreas	RP(-)	169 (72.8%)	255 (31.6%)	87 (14.4%)	27 (7.4%)	538 (26.8%)
	RP(+)	63 (27.2%)	551 (68.4%)	519 (85.6%)	338 (92.6%)	1471 (73.2%)
	Total	232 (100.0%)	806 (100.0%)	606 (100.0%)	365 (100.0%)	2009 (100.0%)

表 5.3.a.5 腫瘍サイズと門脈系静脈浸潤 Tumor size and portal venous system infiltration

Portal vein infiltration		TS1 (<2.0cm)	TS2 (2.1-4.0cm)	TS3 (4.1cm-6.0cm)	TS4 (>6.0cm)	Total
Cancer in the head of the pancreas	PV(-)	607 (79.8%)	1890 (51.8%)	505 (29.7%)	107 (18.1%)	3109 (46.4%)
	PV(+)	154 (20.2%)	1757 (48.2%)	1194 (70.3%)	483 (81.9%)	3588 (53.6%)
	Total	761 (100.0%)	3647 (100.0%)	1699 (100.0%)	590 (100.0%)	6697 (100.0%)
Cancer in the body and the tail of the pancreas	PV(-)	193 (81.4%)	387 (46.5%)	168 (26.7%)	104 (28.0%)	852 (41.1%)
	PV(+)	44 (18.6%)	446 (53.5%)	461 (73.3%)	268 (72.0%)	1219 (58.9%)
	Total	237 (100.0%)	833 (100.0%)	629 (100.0%)	372 (100.0%)	2071 (100.0%)

表 5.3.a.6 腫瘍サイズと動脈浸潤 Tumor size and arterial infiltration

Arterial infiltration		TS1 (<2.0cm)	TS2 (2.1-4.0cm)	TS3 (4.1cm-6.0cm)	TS4 (>6.0cm)	Total
Cancer in the head of the pancreas	A(-)	722 (95.1%)	2977 (82.2%)	981 (59.8%)	209 (37.5%)	4889 (74.3%)
	A(+)	37 (4.9%)	645 (17.8%)	660 (40.2%)	348 (62.5%)	1690 (25.7%)
	Total	759 (100.0%)	3622 (100.0%)	1641 (100.0%)	557 (100.0%)	6579 (100.0%)
Cancer in the body and the tail of the pancreas	A(-)	220 (92.4%)	462 (55.5%)	177 (28.5%)	94 (25.1%)	953 (46.2%)
	A(+)	18 (7.6%)	370 (44.5%)	443 (71.5%)	280 (74.9%)	1111 (53.8%)
	Total	238 (100.0%)	832 (100.0%)	620 (100.0%)	374 (100.0%)	2064 (100.0%)

表 5.3.a.7 腫瘍サイズと膵周囲神経叢浸潤 Tumor size and peripancreatic nerve plexus infiltration

Plexus infiltration		TS1 (<2.0cm)	TS2 (2.1-4.0cm)	TS3 (4.1cm-6.0cm)	TS4 (>6.0cm)	Total
Cancer in the head of the pancreas	PL(-)	629 (91.0%)	2241 (75.5%)	635 (57.2%)	125 (45.5%)	3630 (71.9%)
	PL(+)	62 (9.0%)	729 (24.5%)	476 (42.8%)	150 (54.5%)	1417 (28.1%)
	Total	691 (100.0%)	2970 (100.0%)	1111 (100.0%)	275 (100.0%)	5047 (100.0%)
Cancer in the body and the tail of the pancreas	PL(-)	211 (93.0%)	476 (71.4%)	212 (49.3%)	82 (42.9%)	981 (64.8%)
	PL(+)	16 (7.0%)	191 (28.6%)	218 (50.7%)	109 (57.1%)	534 (35.2%)
	Total	227 (100.0%)	667 (100.0%)	430 (100.0%)	191 (100.0%)	1515 (100.0%)

表 5.3.a.8 腫瘍サイズと他臓器浸潤 Tumor size and other organ infiltration

Other organ infiltration		TS1 (<2.0cm)	TS2 (2.1-4.0cm)	TS3 (4.1cm-6.0cm)	TS4 (>6.0cm)	Total
Cancer in the head of the pancreas	OO(-)	744 (7.5%)	3384 (92.5%)	1367 (79.3%)	342 (51.5%)	5837 (85.7%)
	OO(+)	19 (2.5%)	275 (7.5%)	356 (20.7%)	322 (48.5%)	972 (14.3%)
	Total	763 (100.0%)	3659 (100.0%)	1723 (100.0%)	664 (100.0%)	6809 (100.0%)
Cancer in the body and the tail of the pancreas	OO(-)	232 (96.3%)	660 (80.5%)	387 (59.7%)	137 (32.9%)	1416 (66.6%)
	OO(+)	9 (3.7%)	160 (19.5%)	261 (40.3%)	280 (67.1%)	710 (33.4%)
	Total	241 (100.0%)	820 (100.0%)	648 (100.0%)	417 (100.0%)	2126 (100.0%)

表 5.3.a.9 腫瘍サイズと JPS T 因子 Tumor size and JPS T factor

JPS T factor		TS1 (<2.0cm)	TS2 (2.1-4.0cm)	TS3 (4.1cm-6.0cm)	TS4 (>6.0cm)	Total
Cancer in the head of the pancreas	JPS T1	160 (22.4%)	0 (0.0%)	0 (0.0%)	0 (0.0%)	160 (2.5%)
	JPS T2	0 (0.0%)	176 (5.1%)	41 (2.5%)	6 (0.9%)	223 (3.5%)
	JPS T3	357 (49.9%)	1166 (34.0%)	242 (14.7%)	45 (7.0%)	1810 (28.1%)
	JPS T4	198 (27.7%)	2091 (60.9%)	1360 (82.8%)	592 (92.1%)	4241 (65.9%)
	Total	715 (100.0%)	3433 (100.0%)	1643 (100.0%)	643 (100.0%)	6434 (100.0%)
Cancer in the body and the tail of the pancreas	JPS T1	110 (48.9%)	0 (0.0%)	0 (0.0%)	0 (0.0%)	110 (5.3%)
	JPS T2	0 (0.0%)	83 (10.3%)	16 (2.5%)	4 (1.0%)	103 (5.0%)
	JPS T3	58 (25.8%)	137 (17.0%)	41 (6.5%)	9 (2.2%)	245 (11.8%)
	JPS T4	57 (25.3%)	588 (72.8%)	576 (91.0%)	396 (96.8%)	1617 (77.9%)
	Total	225 (100.0%)	808 (100.0%)	633 (100.0%)	409 (100.0%)	2075 (100.0%)

表 5.3.a.10 腫瘍サイズと申告による UICC T 因子 Tumor size and declared UICC T factor

Declared UICC T factor		TS1 (<2.0cm)	TS2 (2.1-4.0cm)	TS3 (4.1cm-6.0cm)	TS4 (>6.0cm)	Total
Cancer in the head of the pancreas	UICC T1	358 (48.3%)	15 (0.4%)	1 (0.1%)	0 (0.0%)	374 (5.7%)
	UICC T2	9 (1.2%)	663 (18.2%)	109 (6.6%)	18 (3.2%)	799 (12.1%)
	UICC T3	311 (42.0%)	1965 (54.1%)	715 (43.3%)	163 (29.1%)	3154 (47.9%)
	UICC T4	63 (8.5%)	991 (27.3%)	826 (50.0%)	380 (67.7%)	2260 (34.3%)
	Total	741 (100.0%)	3634 (100.0%)	1651 (100.0%)	561 (100.0%)	6587 (100.0%)
Cancer in the body and the tail of the pancreas	UICC T1	128 (55.2%)	4 (0.5%)	1 (0.2%)	0 (0.0%)	133 (6.4%)
	UICC T2	5 (2.2%)	119 (14.3%)	26 (4.1%)	6 (1.6%)	156 (7.5%)
	UICC T3	78 (33.6%)	345 (41.4%)	195 (31.0%)	99 (26.3%)	717 (34.6%)
	UICC T4	21 (9.1%)	366 (43.9%)	407 (64.7%)	271 (72.1%)	1065 (51.4%)
	Total	232 (100.0%)	834 (100.0%)	629 (100.0%)	376 (100.0%)	2071 (100.0%)

図 5.3.a.11 TS1 腫瘍における JPS T 因子と生存率 Cumulative survival of the patients with TS1 cancer according to JPS T factor

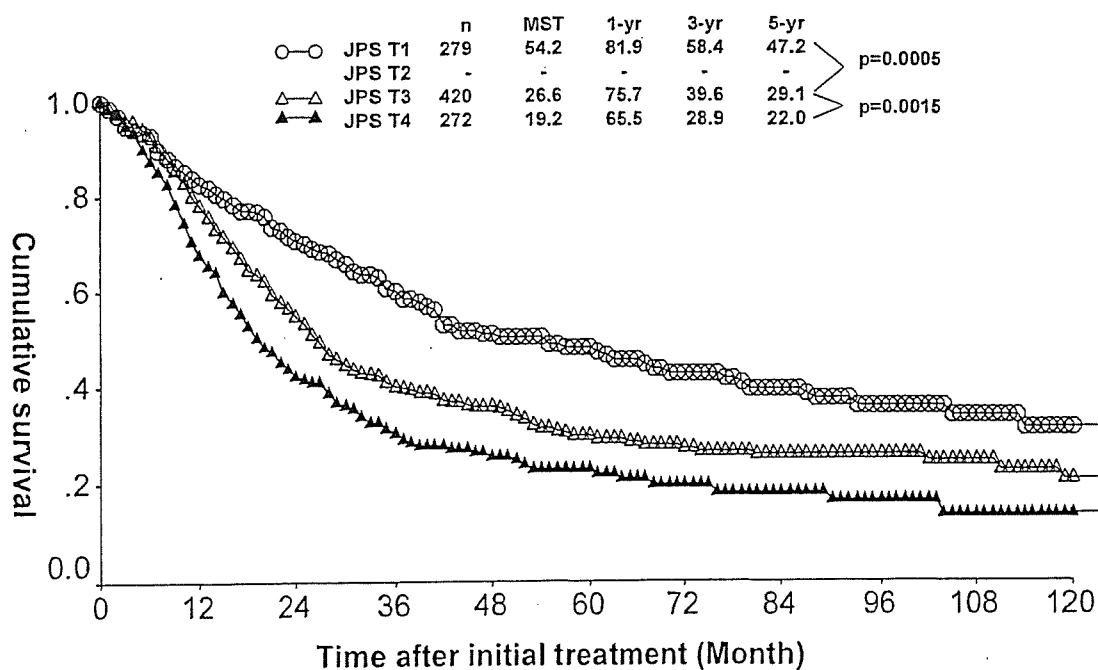
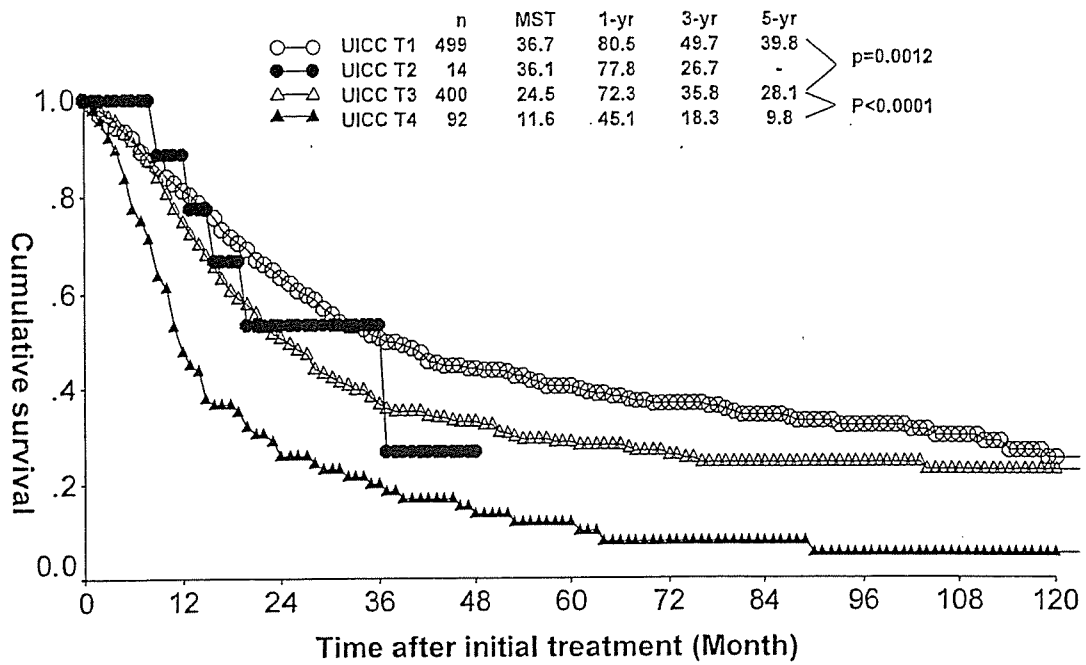


図 5.3.a.12 TS1 腫瘍における UICC T 因子と生存率 Cumulative survival of the patients with TS1 cancer according to UICC T factor



b. リンパ節転移 Lymph node metastasis

表 5.3.b.1 腫瘍サイズと JPS N 因子 Tumor size and JPS N factor

JPS N factor		TS1 (<2.0cm)	TS2 (2.1-4.0cm)	TS3 (4.1cm-6.0cm)	TS4 (>6.0cm)	Total
Cancer in the head of the pancreas	JPS N0	390 (55.4%)	1130 (33.7%)	330 (23.7%)	77 (20.8%)	1927 (33.1%)
	JPS N1	139 (19.7%)	804 (24.0%)	297 (21.3%)	54 (14.6%)	1294 (22.2%)
	JPS N2	119 (16.9%)	859 (25.6%)	377 (27.1%)	106 (28.6%)	1461 (25.1%)
	JPS N3	56 (8.0%)	558 (16.7%)	388 (27.9%)	133 (35.9%)	1135 (19.5%)
	Total	704 (100.0%)	3351 (100.0%)	1392 (100.0%)	370 (100.0%)	5817 (100.0%)
Cancer in the body and the tail of the pancreas	JPS N0	139 (68.1%)	333 (48.1%)	185 (38.1%)	76 (30.5%)	733 (44.9%)
	JPS N1	46 (22.5%)	179 (25.9%)	115 (23.7%)	50 (20.1%)	390 (23.9%)
	JPS N2	10 (4.9%)	48 (6.9%)	50 (10.3%)	20 (8.0%)	128 (7.8%)
	JPS N3	9 (4.4%)	132 (19.1%)	136 (28.0%)	103 (41.4%)	380 (23.3%)
	Total	204 (100.0%)	692 (100.0%)	486 (100.0%)	249 (100.0%)	1631 (100.0%)

表 5.3.b.2 腫瘍サイズと申告による UICC N 因子 Tumor size and declared UICC N factor

Declared UICC N factor		TS1 (<2.0cm)	TS2 (2.1-4.0cm)	TS3 (4.1cm-6.0cm)	TS4 (>6.0cm)	Total
Cancer in the head of the pancreas	UICC N0	391 (55.6%)	1136 (33.7%)	334 (23.8%)	77 (20.6%)	1938 (33.2%)
	UICC N1	312 (44.4%)	2230 (66.3%)	1068 (76.2%)	296 (79.4%)	3906 (66.8%)
	Total	703 (100.0%)	3366 (100.0%)	1402 (100.0%)	373 (100.0%)	5844 (100.0%)
Cancer in the body and the tail of the pancreas	UICC N0	145 (69.4%)	342 (48.4%)	189 (38.2%)	77 (30.2%)	753 (45.2%)
	UICC N1	64 (30.6%)	365 (51.6%)	306 (61.8%)	178 (69.8%)	913 (54.8%)
	Total	209 (100.0%)	707 (100.0%)	495 (100.0%)	255 (100.0%)	1666 (100.0%)

図 5.3.b.3 TS1 腫瘍における JPS N 因子と生存率 Cumulative survival of the patients with TS1 cancer according to JPS N factor

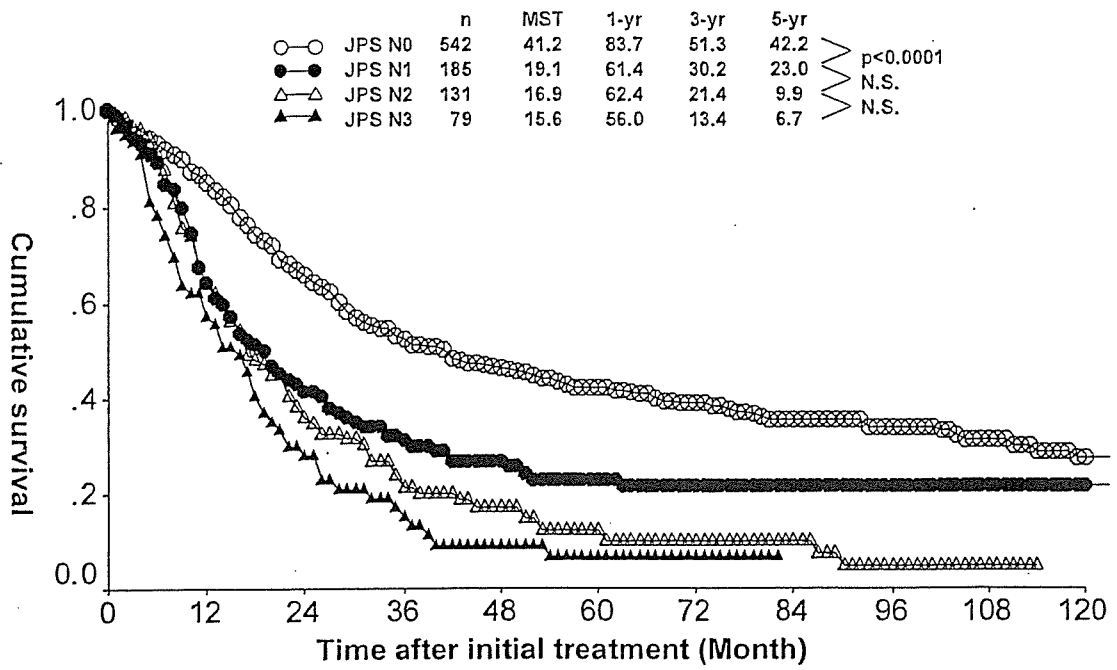
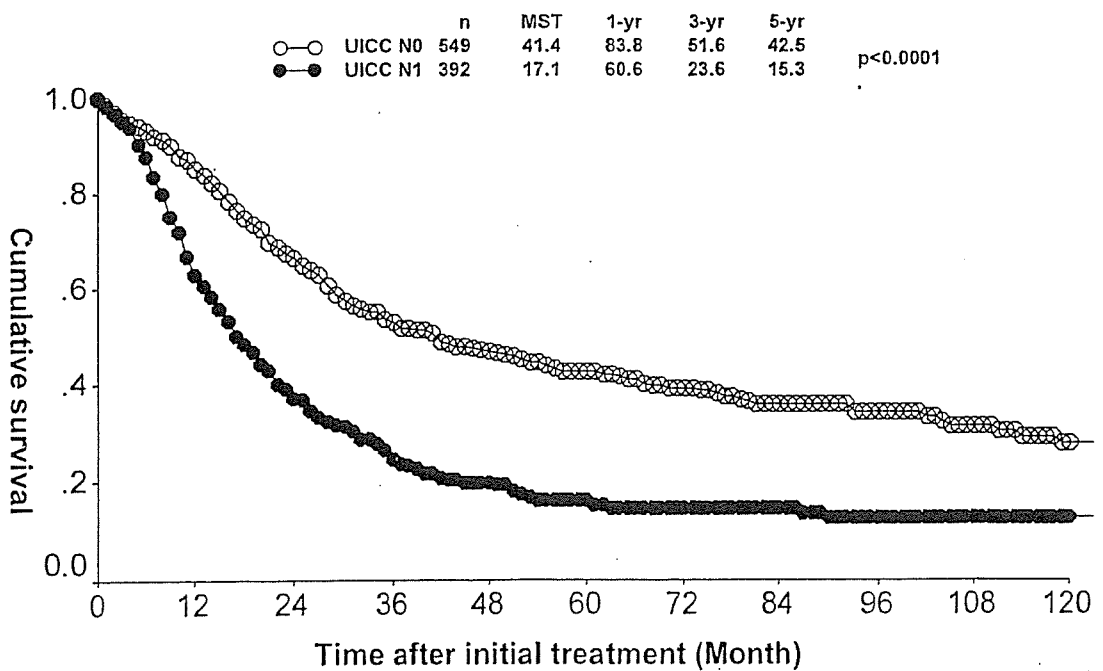


図 5.3.b.4 TS1 腫瘍における UICC N 因子と生存率 Cumulative survival of the patients with TS1 cancer according to UICC N factor



c. 遠隔転移 Distant metastasis

表 5.3.c.1 腫瘍サイズと JPS M 因子 Tumor size and JPS M factor

JPS M factor		TS1 (<2.0cm)	TS2 (2.1-4.0cm)	TS3 (4.1cm-6.0cm)	TS4 (>6.0cm)	Total
Cancer in the head of the pancreas	JPS M0	690 (89.4%)	2875 (76.8%)	1100 (61.5%)	317 (45.4%)	4982 (71.1%)
	JPS M1	82 (10.6%)	870 (23.2%)	688 (38.5%)	381 (54.6%)	2021 (28.9%)
	Total	772 (100.0%)	3745 (100.0%)	1788 (100.0%)	698 (100.0%)	7003 (100.0%)
Cancer in the body and the tail of the pancreas	JPS M0	220 (90.9%)	578 (67.0%)	322 (47.7%)	157 (35.9%)	1277 (57.6%)
	JPS M1	22 (9.1%)	285 (33.0%)	353 (52.3%)	280 (64.1%)	940 (42.4%)
	Total	242 (100.0%)	863 (100.0%)	675 (100.0%)	437 (100.0%)	2217 (100.0%)

表 5.3.c.2 腫瘍サイズと申告による UICC M 因子 Tumor size and declared UICC M factor

Declared UICC M factor		TS1 (<2.0cm)	TS2 (2.1-4.0cm)	TS3 (4.1cm-6.0cm)	TS4 (>6.0cm)	Total
Cancer in the head of the pancreas	UICC M0	675 (87.4%)	2769 (73.8%)	1046 (58.5%)	301 (43.1%)	4791 (68.3%)
	UICC M1	97 (12.6%)	982 (26.2%)	742 (41.5%)	398 (56.9%)	2219 (31.7%)
	Total	772 (100.0%)	3751 (100.0%)	1788 (100.0%)	699 (100.0%)	7010 (100.0%)
Cancer in the body and the tail of the pancreas	UICC M0	217 (89.7%)	564 (65.3%)	307 (45.7%)	145 (33.1%)	1233 (55.6%)
	UICC M1	25 (10.3%)	300 (34.7%)	365 (54.3%)	293 (66.9%)	983 (44.4%)
	Total	242 (100.0%)	864 (100.0%)	672 (100.0%)	438 (100.0%)	2216 (100.0%)

図 5.3.c.3 TS1 腫瘍における JPS M 因子と生存率 Cumulative survival of the patients with TS1 cancer according to JPS M factor

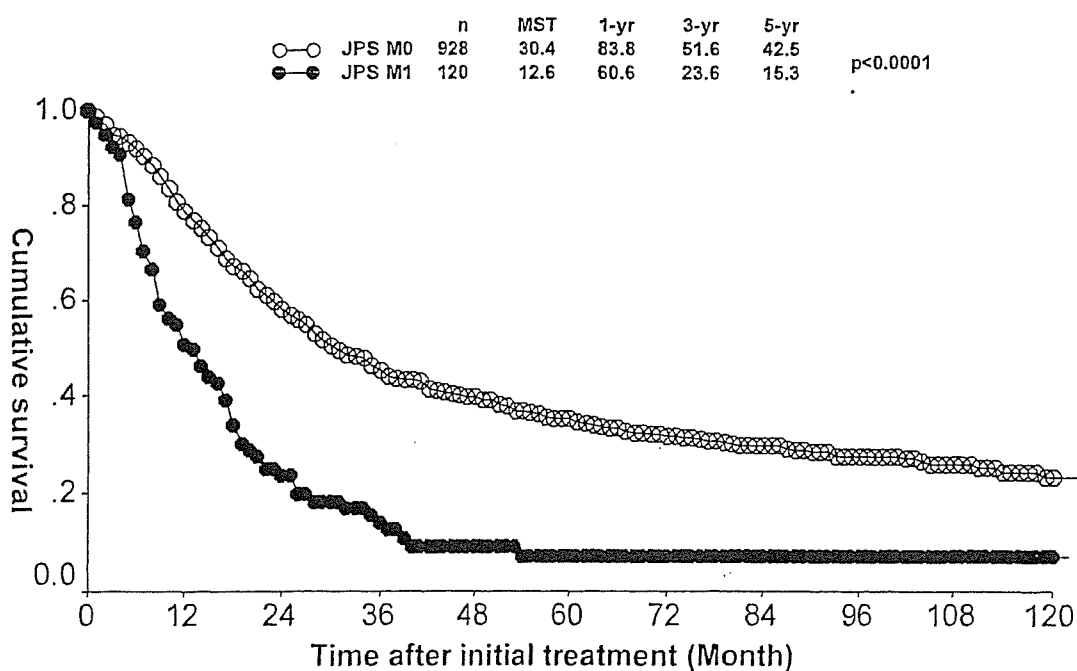
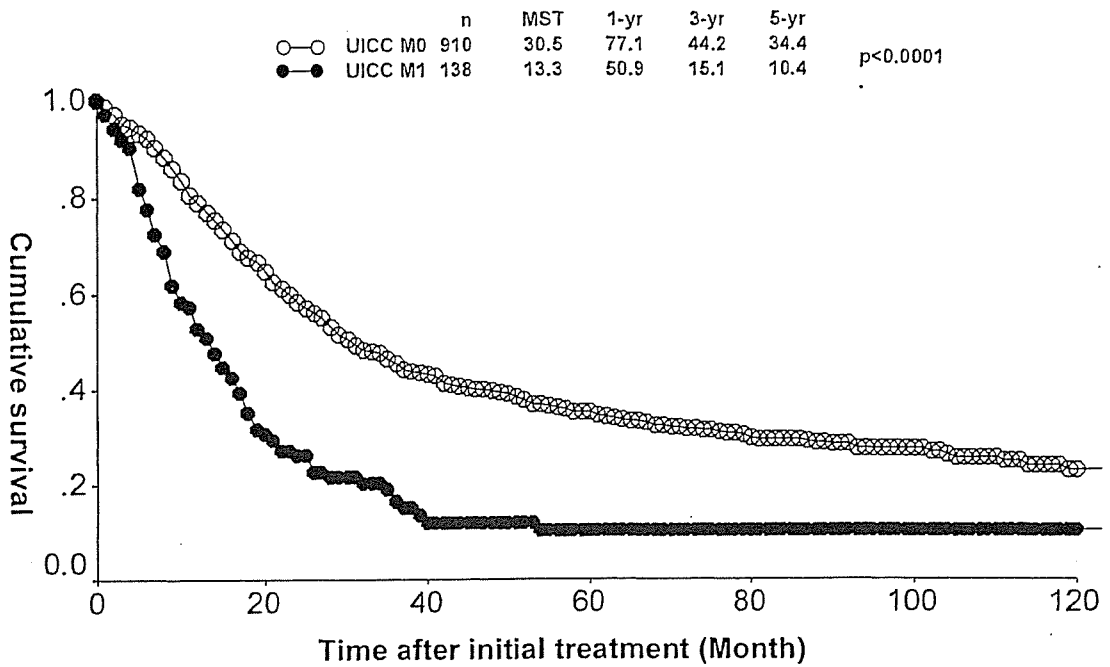


表 5.3.c.4 TS1 腫瘍における UICC M 因子と生存率 Cumulative survival of the patients with TS1 cancer according to UICC M factor



d. Stage
表 5.3.d.1 腫瘍サイズと JPS Stage Tumor size and JPS Stage

JPS M factor		TS1 (<2.0cm)	TS2 (2.1-4.0cm)	TS3 (4.1cm-6.0cm)	TS4 (>6.0cm)	Total
Cancer in the head of the pancreas	JPS Stage I	104 (15.3%)	0 (0.0%)	0 (0.0%)	0 (0.0%)	104 (1.7%)
	JPS Stage II	18 (2.7%)	87 (2.6%)	24 (1.6%)	4 (0.7%)	133 (2.2%)
	JPS Stage III	270 (39.8%)	759 (22.7%)	144 (9.5%)	26 (4.7%)	1199 (19.7%)
	JPS Stage IVa	167 (24.6%)	1159 (34.7%)	423 (27.9%)	82 (14.9%)	1831 (30.1%)
	JPS Stage IVb	119 (17.6%)	1334 (40.0%)	927 (61.1%)	440 (79.7%)	2820 (46.3%)
Total		678 (100.0%)	3339 (100.0%)	1518 (100.0%)	552 (100.0%)	6087 (100.0%)
Cancer in the body and the tail of the pancreas	JPS Stage I	67 (33.3%)	0 (0.0%)	0 (0.0%)	0 (0.0%)	67 (3.5%)
	JPS Stage II	17 (8.5%)	41 (5.6%)	7 (1.2%)	3 (0.8%)	68 (3.6%)
	JPS Stage III	52 (25.9%)	108 (14.7%)	29 (4.9%)	5 (1.4%)	194 (10.2%)
	JPS Stage IVa	37 (18.4%)	272 (37.0%)	169 (28.6%)	68 (18.6%)	546 (28.8%)
	JPS Stage IVb	28 (13.9%)	315 (42.8%)	385 (65.3%)	290 (79.2%)	1018 (53.8%)
Total		201 (100.0%)	736 (100.0%)	590 (100.0%)	366 (100.0%)	1893 (100.0%)

表 5.3.d.2 腫瘍サイズと申告された TNM 因子に基づく UICC M 因子 Tumor size and UICC Stage based on declared TNM factors

UICC Stage		TS1 (<2.0cm)	TS2 (2.1-4.0cm)	TS3 (4.1cm-6.0cm)	TS4 (>6.0cm)	Total
Cancer in the head of the pancreas	UICC Stage Ia	195 (28.0%)	6 (0.2%)	0 (0.0%)	0 (0.0%)	201 (3.1%)
	UICC Stage Ib	7 (1.0%)	269 (7.6%)	46 (2.7%)	10 (1.6%)	332 (5.1%)
	UICC Stage IIa	136 (19.5%)	522 (14.7%)	125 (7.4%)	38 (6.0%)	821 (12.5%)
	UICC Stage IIb	215 (30.9%)	1138 (32.1%)	322 (19.2%)	47 (7.4%)	1722 (26.3%)
	UICC Stage III	46 (6.6%)	630 (17.8%)	445 (26.5%)	144 (22.6%)	1265 (19.3%)
	UICC Stage IV	97 (13.9%)	982 (27.7%)	742 (44.2%)	398 (62.5%)	2219 (33.8%)
Total		696 (100.0%)	3547 (100.0%)	1680 (100.0%)	637 (100.0%)	6560 (100.0%)
Cancer in the body and the tail of the pancreas	UICC Stage Ia	83 (38.8%)	3 (0.4%)	1 (0.2%)	0 (0.0%)	87 (4.2%)
	UICC Stage Ib	2 (0.9%)	61 (7.6%)	11 (1.7%)	5 (1.2%)	79 (3.8%)
	UICC Stage IIa	43 (20.1%)	118 (14.6%)	41 (6.3%)	17 (4.1%)	219 (10.5%)
	UICC Stage IIb	47 (22.0%)	115 (14.3%)	51 (7.9%)	15 (3.6%)	228 (10.9%)
	UICC Stage III	14 (6.5%)	210 (26.0%)	178 (27.5%)	88 (21.1%)	490 (23.5%)
	UICC Stage IV	25 (11.7%)	300 (37.2%)	365 (56.4%)	293 (70.1%)	983 (47.1%)
Total		214 (100.0%)	807 (100.0%)	647 (100.0%)	418 (100.0%)	2086 (100.0%)