

図4 DVC・尿道の離断

DVCあるいは尿道の離断に際しては、切開する部位が何であるかを常に確認しながら処理を行う。

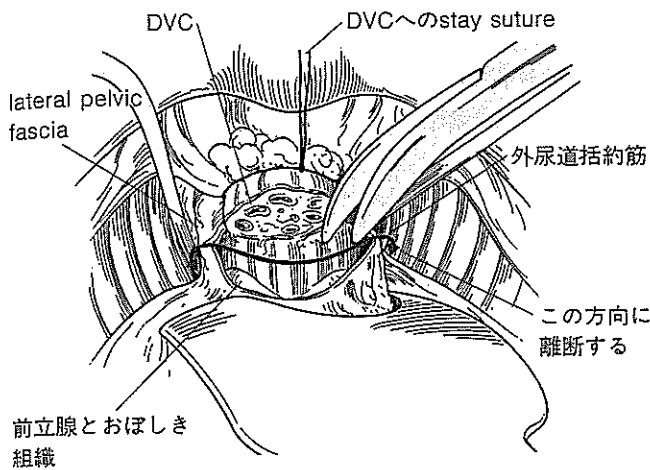
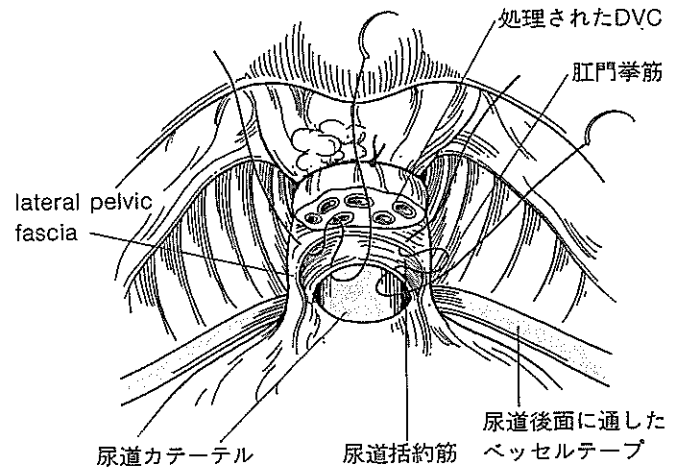


図5 尿道への運針

離断されたlateral pelvic fasciaと尿道粘膜のみに運針するようなイメージで行う。



できる (図6)。

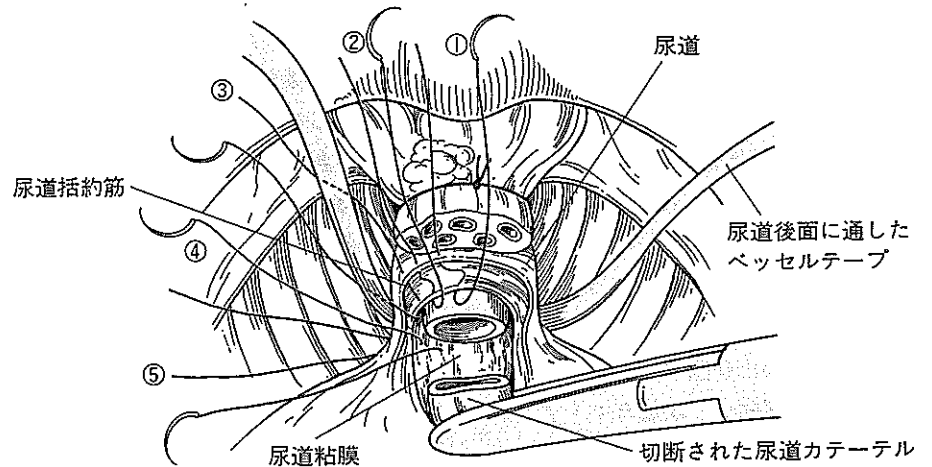
後面の運針ではlateral pelvic fasciaがはつきりしないことも多い。これは神経血管束が尿道把持の段階で外側に剝離されているためである。可能なら神経血管束付近の比較的丈夫な組織を拾う。また後面の運針では尿道粘膜面のみを拾うことはできず、外尿道括約筋もそれほど発達していないことを考慮し、全層で運針している。

5時の運針ではイメージ的には尿道の6時付近を運針するようにする。これはさらに尿道の切開を進めてみると、切断された尿道が広がり結局4時あたりに運針したことになるからである。

一般的に尿道吻合不全は後面で起こりやすいと思われる。この理由がわからず、運針したつもりなのになぜ吻合不全が起さるのか、悩んだ時期があった。この原因の1つは次のようなものと考えている。運針してから尿道の切断を順次進める方法にしてみ初めて

図6 尿道後面への運針

切断した尿道カテーテルをそのまま尿道末梢側に位置し、尿道後面の運針を全層で行う(ここでは半分の運針のみ記載した)。特に④・⑤の部位は尿道を切開しながら順次運針する。



認識したことであるが、特に後面では尿道の切断に伴い、尿道が少しずつ開いていくようであり、最終的には5時に運針したつもりなのだが、結局尿道が完全に離断されたときによく確認してみると、運針された部位が3～4時あたりになっていることが確認される。このことが後方での吻合不全の一因に

なっていると考えられるようになった。

したがって最後の運針では尿道6時の位置で左右の糸がほとんど同じ場所に運針されているようにする。この状況でも尿道を完全に離断してやると2～3mmの隙間が形成されることが一般的である。

図7 内尿道口の形成

必要以上に内径を狭くすることはせず、また粘膜も反転させずに形成する。また、膀胱周囲の脂肪を寄せることで三角部後面を縫縮する。

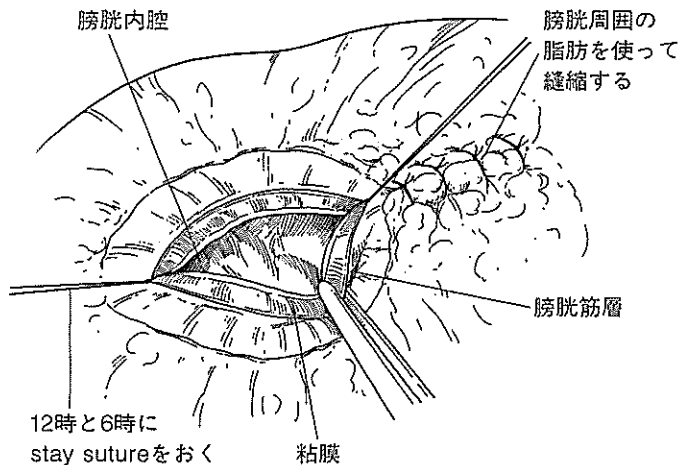
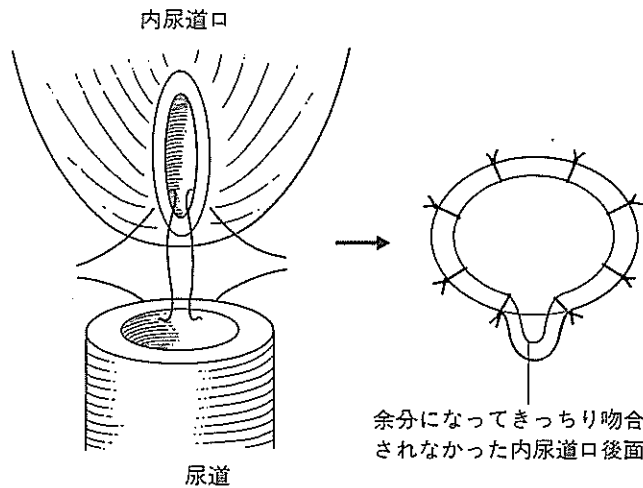


図8 吻合される内尿道口と尿道の関係

6時の部位をぎりぎりに運針しないと、吻合されたとき尿道後面に内尿道口後面が余ってしまう危険性がある。



膀胱頸部の処理

広汎前立腺全摘除術ではいわゆる posterior peel法はまったく行わない。精囊と膀胱三角部のある程度の剝離を行った後、尿道カテーテルのバルーンを膀胱前面で触知する。明らかに前立腺を越えたと認識できる場所から膀胱前面を横方向に切開する。

ある程度切開し、尿道カテーテルのバルーンが露出された段階で膀胱に1針指示糸を掛ける。以前は粘膜面を強く反転するように運針していたが、反転された粘膜面は尿道との接着にはむしろ逆効果になるため、最近では粘膜をむしろ反転させないようにしている。

尿道カテーテルを膀胱外に引き出し、尿管口ならびに三角部を確認して、原則三角部のみを残して膀胱頸部筋層を離断している。したがって前立腺を摘

出後、膀胱頸部を縫縮する必要がある。

ポイントは2つである。1つは筋層をしっかり縫合することともに膀胱粘膜が反転しないようにすることである。これは膀胱頸部の接着に逆効果になるとの認識からである。最終的に7~8針必要なことが多いが、順次、膀胱筋層を縫縮して内尿道口を形成する。近年はむしろ狭い内尿道口を形成しないようにしている。これは内尿道口の形成で尿禁制を確保しようとする結果、排尿困難の原因となりやすく、過度の形成は術後膀胱頸部硬化症様となりうるからである。これのもう1つのポイントである。実際には縦長で1.5~2cm程度の内尿道口としている。切断された尿道断端の口径を思い出しながら形成する。

広汎前立腺全摘除術では直腸筋層が露出されており、膀胱筋層との間で瘻孔をつくる危険性がある。このため膀胱

筋層の縫縮の後、露出された膀胱筋層の外側の膀胱漿膜と脂肪織を縫縮し2層に縫縮するようにしている。この操作は止血の効果もある(図7)。

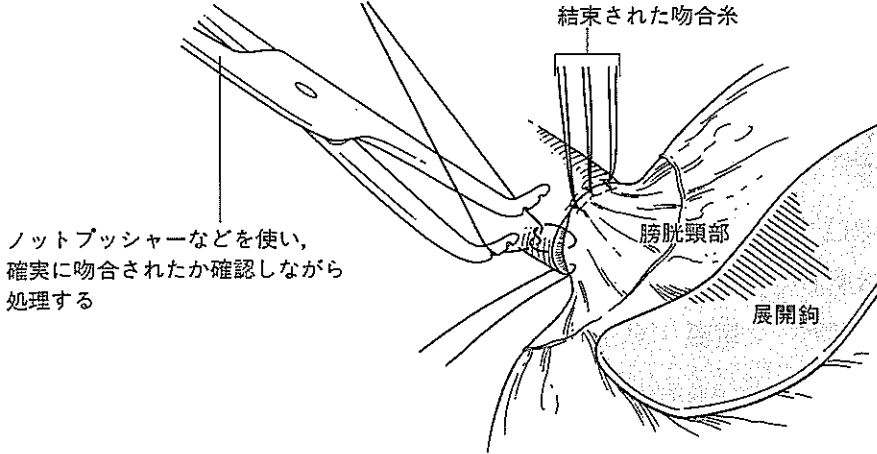
尿道吻合

形成された内尿道口に運針を行う。まず6時の位置では、まさに断端ぎりぎりに運針するようにしている。これは、内尿道口は縦線、尿道は円形の状況となっており、内尿道口の6時の位置で断端から離れて運針すると尿道に吻合されたときに内尿道口後面がV字となり、吻合不全の原因となるのではとの考えからである(図8)。

内尿道口の運針については尿道の運針と同じbiteとpitchで膀胱筋層と粘膜を運針するようにする。過度に大きく膀胱筋層に運針すると吻合部が「竹の節」のような状況となり、尿道狭窄な

図9 尿道・膀胱吻合

吻合にあたっては、直視下での処理を心がける。これにより確実に吻合されているか確認できる。そのために術野の展開が大切である。



どの原因となるのではとの考えから、まさに切断された尿道に口径差なく、そのまま素直に内尿道口を「置いてく」ようなイメージで対応している。

また粘膜面に関しても尿道の粘膜にそのまま連続させるようなイメージで運針するようしており、過度に粘膜を運針することはしない。吻合糸の最後の2本を残した段階で尿道カテーテ

ルを尿道に挿入し、膀胱に導く。

吻合に関しては直視下でノットプッシャーなどを利用して確実に吻合することである。特に後面の4時から6時の位置では尿道吻合糸の締め付ける角度に注意し、吻合糸が尿道に対して垂直に吻合されるように対応する。またこのためには尿道吻合部の展開は非常に重要である(図9)。

吻合後、膀胱に空気を250ml程度注入して、吻合の状態を確認する。水によるリークテストは曖昧であり、空気を使用して確認している。漏れがない場合には術後5日目の朝にそのままカテーテルを抜去している。その後、傷の抜糸も不要(埋没縫合)で尿禁制も良好なため、手術を受けた症例は「その後1~2日で自ら進んで退院していく」というイメージとなっている。



以上、広汎前立腺全摘除術において、尿道機能の早期回復のために「私はこうしている」という点について概説した。もちろん、「こうする」ことに対する確固たるエビデンスはなく、これまでもそうであったように、このような「こだわり」が結果によってはまったく間違った発想であるかもしれない。そのことを常に念頭に置きながら、さらに手術法の改良を日々行っているところである。

◎文献

- 1) 中川 徹, 蔦巢賢一, 藤元博行: 前立腺全摘除術. 新 癌の外科学-手術手技シリーズ2 泌尿器科癌, p89-107, メジカルビュー社, 東京, 2001.
- 2) 藤元博行, 松岡直樹: 神経温存を意図しない前立腺広汎切除術. Urologic Surgeryシリーズ6 前立腺の手術, p82-89, メジカルビュー社, 東京, 2001.

4. 局所進行前立腺癌に対する根治的前立腺摘除術 + 内分泌療法と放射線外部照射 + 内分泌療法とを 比較する無作為化比較試験の長期成績

赤倉功一郎*^{1,2} 鈴木 啓悦*¹ 井坂 茂夫*¹ 秋元 晋*¹ 伊藤 晴夫*¹
市川 智彦*¹ 鷺巣 賢一*¹ 藤元 博行*¹ 古武 敏彦*¹ 前田 修*¹
宇佐美道之*¹ 岡田 清巳*¹ 平野 大作*¹ 蜂矢 隆彦*¹ 滝本 至得*¹
吉田 修*¹ 賀本 敏行*¹ 荒井 陽一*¹ 小川 修*¹ 住吉 義光*¹
大橋 靖雄*¹ 垣添 忠生*¹ 島崎 淳*¹

*¹ 厚生省がん研究助成金「中期前立腺癌に対する集学的治療法の開発」研究班 *² 東京厚生年金病院泌尿器科

要旨：病期 B2/C 前立腺癌患者を対象として根治的前立腺摘除術+内分泌療法（46例）と放射線外部照射+内分泌療法（49例）とを比較する無作為化比較試験を行った。PSA 非再発率、臨床的非再発率、疾患特異生存率（10年で85.7%対77.1%）および全生存率はいずれも手術群において良好であったが、その差は有意ではなかった。尿失禁の頻度は手術群で有意に高かった。照射線量として60～70Gyは不十分である可能性が示唆された。

key words 前立腺癌, 放射線外部照射, 根治的前立腺摘除術

はじめに

局所限局低リスク前立腺癌に対する手術あるいは

Long-term results of a randomized trial comparing radical prostatectomy plus endocrine therapy versus external beam radiotherapy plus endocrine therapy for locally advanced prostate cancer

Koichiro Akakura, Hiroyoshi Suzuki, Shigeo Isaka, Susumu Akimoto, Haruo Ito, Tomohiko Ichikawa, Ken-ichi Tobisu, Hiroyuki Fujimoto, Toshihiko Kotake, Osamu Maeda, Michiyuki Usami, Kiyoki Okada, Daisaku Hirano, Takahiko Hachiya, Yukie Takimoto, Osamu Yoshida, Toshiyuki Kamoto, Yoichi Arai, Osamu Ogawa, Yoshiteru Sumiyoshi, Yasuo Ohashi, Tadao Kakizoe and Jun Shimazaki

The Japanese Study Group for Locally Advanced Prostate Cancer

key words : prostate cancer, radical prostatectomy, radiation therapy

*² 新宿区津久戸町 5-1 (03-3269-8111) 〒162-8543

は放射線治療の成績は比較的良好である。しかし、局所進行前立腺癌においては前立腺摘除術や放射線外部照射単独治療では満足できる成績は得られず^{1,2)}、内分泌療法との併用などが試みられてきた。そこで、転移のない局所進行前立腺癌に対する治療法を確立する目的で、根治的前立腺摘除術+内分泌療法と放射線外部照射+内分泌療法とを比較する無作為化比較試験を行った^{3,4)}。

I. 対象と方法

1989年に、厚生省がん研究助成金研究班「中期前立腺癌に対する集学的治療法の開発」により、前向き無作為化比較試験が計画された。75歳以下で performance status が0または1である臨床病期 B2 または C の組織学的に確認された前立腺癌患者を対象とした。ジエチルスチルベストロ

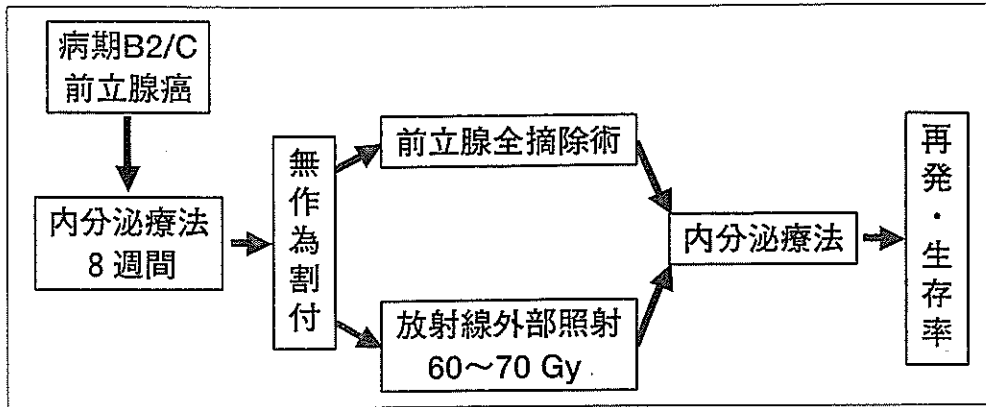


図1 研究デザイン

表1 割付患者数

	手術群	放射線群	計
千葉大学	12	14	26
国立がんセンター	10	10	20
大阪成人病センター	9	10	19
日本大学	7	7	14
京都大学	6	7	13
四国がんセンター	2	1	3
計	46	49	95

ール2 燐酸による8週間の内分泌療法の後、無作為割付により根治的手術または放射線照射を施行した。手術群では骨盤リンパ節郭清および根治的前立腺摘除術を行った。放射線群では全骨盤への40~50Gyの照射の後に前立腺部へ20Gyのブースト照射を施行した。その後も精巣摘除術あるいはLHRHアゴニストを主とした内分泌療法を継続した(図1)。2003年に予後の再調査および解析を行った。PSA (prostate specific antigen) 再発は信頼できる濃度での血清PSAの3連続上昇と定義した。臨床的再発は局所の再増大または遠隔転移の出現と定義した。

II. 結果

1989~93年に6施設から100例が登録され、5例は割付け前に除外された。評価可能患者95例のうち、46例が手術群に49例が放射線群に割付されて治療をうけた(表1)。年齢、病期、分化度、治療前PSA値に関して、両群間に有意な差はなかった。観察期間の中央値は102ヵ月(範囲6~178ヵ月)であった。10年におけるPSA非再発率、臨床的非再発率、疾患特異生存率および全生存率は、いずれも手術群において良好であ

表2 10年治療成績の比較

	手術群 (%)	放射線群 (%)	p 値
PSA 非再発率	76.2	71.1	0.25
臨床的非再発率	83.5	66.1	0.14
疾患特異生存率	85.7	77.1	0.06
全生存率	67.9	60.9	0.30

ったが、その差は有意ではなかった(表2)。ほぼ全例において勃起障害を認めた。尿失禁の頻度は手術群で有意に高かった。それ以外の晩期有害事象に稀であり、両群間に有意差はなかった(図2)。

III. 考察

1997年に行った調査解析では、観察期間の中央値は58.5ヵ月で、手術群の方が放射線群と比較して有意に予後良好であった(5年疾患特異生存率: 96.6%対84.6%, $p=0.024$)⁴⁾。今回の検討では、手術群の成績が良好であったものの統計学的に有意な差は認められなかった。この理由としては、局所進行癌における長期予後は内分泌療法の感受性に主に依存するため、観察期間を延長すると両治療群間の差が少なくなるためかもしれない。

高リスク前立腺癌に対して放射線外部照射を施行する場合には、内分泌療法を併用することで有意な予後改善効果が報告されている^{5,6)}。一方、根治手術に関しては、術前内分泌療法の臨床的有用性は証明されていないが⁷⁾、リンパ節転移陽性例に対する術後内分泌療法は有意に生存率を向上させることが報告された⁸⁾。

今回の検討では、尿失禁の頻度が手術群で多か

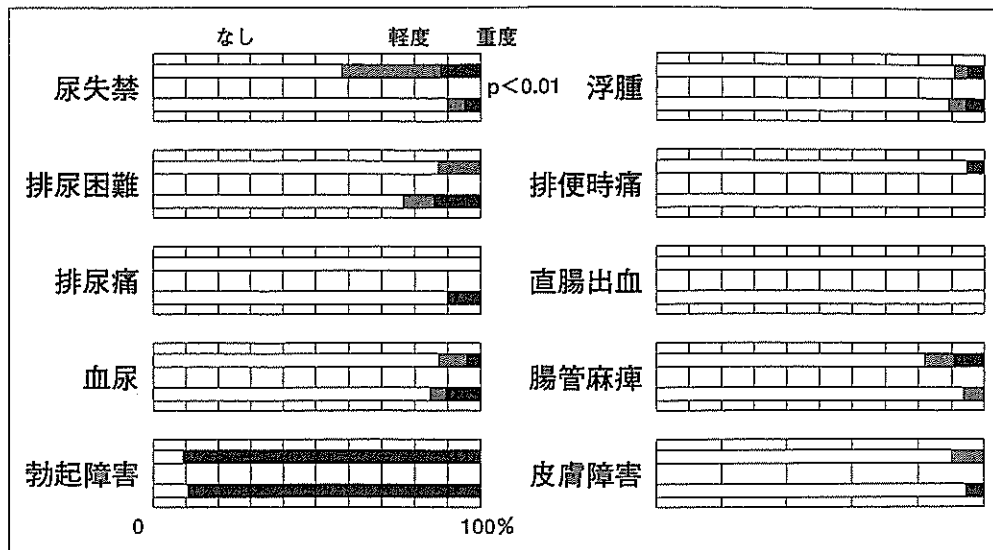


図2 晩期有害事象 (約10年後)
 上段：手術群
 下段：放射線群

った。これは、局所進行癌を対象としたためとも考えられるが、手術手技の工夫により解決可能であろう。また、今回用いた照射線量は現在推奨されているレベルより低く、より高線量を照射すれば放射線群の治療成績の向上が期待される。今後、手術手技および照射方法の改善により、有害事象の少ない効果的な治療法を確立することが望まれる。

まとめ

局所進行前立腺癌に対する治療法として、根治的前立腺摘除術+内分泌療法および放射線外部照射+内分泌療法の両者とも、比較的優れた長期成績を示した。照射線量として60～70Gyは不十分である可能性が示唆された。

文献

- 1) van den Ouden D, Davidson PJT, Hop W, et al: Radical prostatectomy as a monotherapy for locally advanced (stage T3) prostate cancer. *J Urol* **151**: 646-651, 1994
- 2) Akakura K, Furuya Y, Suzuki H, et al: External beam radiation monotherapy for prostate cancer. *Int J Urol* **6**: 408-413, 1999
- 3) Isaka S, Shimazaki J, Akimoto S, et al: A prospective randomized trial for treating stages B2 and C prostate cancer: radical surgery or irradiation with neoadjuvant endocrine therapy. *Jpn J Clin Oncol* **24**: 218-223, 1994
- 4) Akakura K, Isaka S, Akimoto S, et al: Long-term results of a randomized trial for the treatment of stages B2 and C prostate cancer: radical prostatectomy versus external beam radiation therapy with a common endocrine therapy in both modalities. *Urology* **54**: 313-318, 1999
- 5) Bolla M, Collette L, Blank L, et al: Long-term results with immediate androgen suppression and external irradiation in patients with locally advanced prostate cancer (an EORTC study): a phase III randomised trial. *Lancet* **360**: 103-108, 2002
- 6) Lawton CA, Winter K, Murray K, et al: Updated results of the phase III Radiation Therapy Oncology Group (RTOG) Trial 85-31 evaluating the potential benefit of androgen suppression following standard radiation therapy for unfavorable prognosis carcinoma of the prostate. *Int J Radiat Oncol Biol Phys* **49**: 937-946, 2001
- 7) Soloway MS, Pareek K, Sharifi R, et al: Neoadjuvant androgen ablation before radical prostatectomy in cT2bNxM0 prostate cancer: 5-year results. *J Urol* **167**: 112-116, 2002
- 8) Messing EM, Manola J, Sarosdy M, et al: Immediate hormonal therapy compared with observation after radical prostatectomy and pelvic lymphadenectomy in men with node-positive prostate cancer. *N Engl J Med* **341**: 1781-1788, 1999

Extranodal metastasis is an indicator of poor prognosis in patients with gastric carcinoma

T. Etoh¹, M. Sasako¹, K. Ishikawa¹, H. Katai¹, T. Sano¹ and T. Shimoda²

¹Gastric Surgery Division and ²Clinical Laboratory Division, National Cancer Centre Hospital, 5-1-1 Tsukiji-Chuoku, 104-0045, Tokyo, Japan
Correspondence to: Dr M. Sasako (e-mail: msasako@gan2.ncc.go.jp)

Background: The aim of this study was to determine the clinical significance and prognostic impact of extranodal metastasis (EM) in gastric carcinoma.

Methods: The study included 1023 patients who underwent gastrectomy with lymphadenectomy for primary gastric carcinoma between January 1993 and December 1996. EM was defined as the presence of tumour cells in extramural soft tissue that was discontinuous with either the primary lesion or locoregional lymph nodes.

Results: EM was detected in 146 (14.3 per cent) of the 1023 patients and in 1060 (3.0 per cent) of the 35 811 nodules that were retrieved as 'lymph nodes' from adipose connective tissues. The incidence of EM was significantly higher in patients with tumours that were large (diameter 10 cm or more), infiltrative, deeply invading or undifferentiated and in those with lymph node, peritoneal or liver metastases, or lymphatic or vascular involvement. After curative operation overall survival was significantly worse for patients with EM than those without ($P < 0.001$). Multivariate analysis identified EM as an independent prognostic factor (hazard ratio 1.82 (95 per cent confidence interval 1.23 to 2.71); $P = 0.003$).

Conclusion: EM is an independent prognostic factor and should therefore be included in the tumour node metastasis (TNM) staging system.

Paper accepted 4 October 2005

Published online 3 January 2006 in Wiley InterScience (www.bjs.co.uk). DOI: 10.1002/bjs.5240

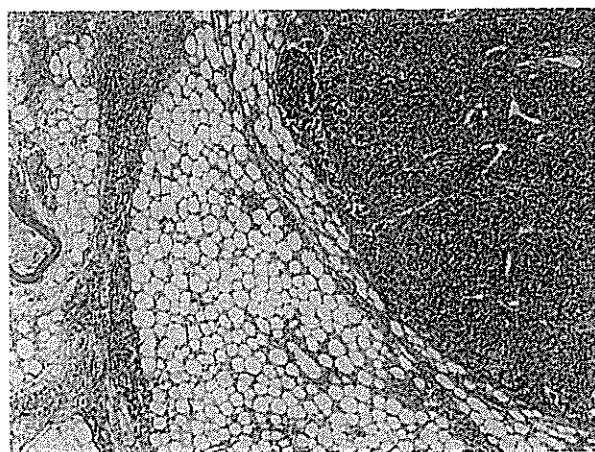
Introduction

Extranodal metastasis (EM), comprising cancer cells in soft tissue discontinuous with the primary lesion, is found during routine examination of about 10–28 per cent of resected gastric carcinoma specimens^{1,2}. According to the International Union Against Cancer (UICC), this type of tumour spread should be regarded as lymph node metastasis if the nodule has the form and smooth contour of a lymph node, but should otherwise be regarded as part of the primary tumour³. Some studies have, however, suggested that such tumour extension represents peritoneal seeding from either the primary tumour or metastatic lymph nodes. This type of tumour spread has also been reported in carcinomas of the rectum⁴, thyroid⁵, breast⁶, vulva⁷ and lung⁸, linking such spread to aggressiveness of the disease. The aim of the present study was to evaluate the clinical significance of extranodal and extramural tumour extension in gastric carcinoma.

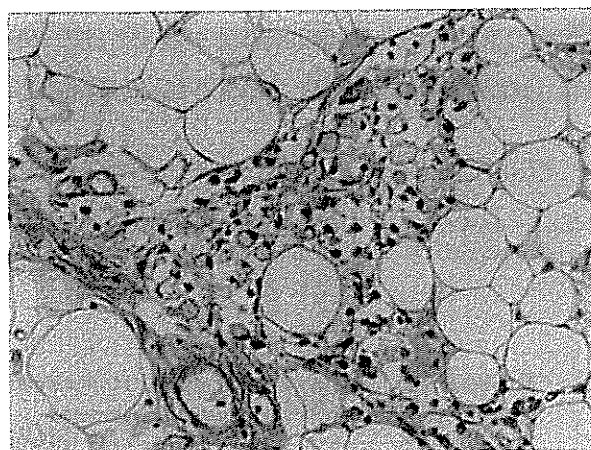
Patients and methods

One thousand and twenty-three patients who underwent gastrectomy with lymphadenectomy for primary gastric carcinoma, excluding gastric lymphoma or gastrointestinal stromal tumour, at the National Cancer Centre Hospital between January 1993 and December 1996 were included in the study.

All resected specimens were fixed in 10 per cent formalin, embedded in paraffin, and stained with haematoxylin and eosin. All solid structures in adipose connective tissue resected with the stomach were retrieved, including the lymph nodes and any areas of EM. Tumours were classified histologically into differentiated and undifferentiated types according to the World Health Organization tumour classification system⁹. The differentiated type included well and moderately differentiated tubular adenocarcinomas as well as papillary adenocarcinomas, based on the Japanese classification¹⁰,



a × 100



b × 400

Fig. 1 Haematoxylin and eosin staining shows extranodal metastasis in gastric carcinoma. Tumour cells are scattered into the perinodal soft tissue distinct from the metastatic lymph node. a Original magnification ×100, b ×400

whereas the undifferentiated type included poorly differentiated adenocarcinomas, signet-ring cell carcinomas and mucinous adenocarcinomas.

EM was defined as the presence of cancer cells in soft tissue that was discontinuous with the primary lesion or in perinodal soft tissue distinct from the lymph node. Clinicopathological data were analysed according to the Japanese classification system for gastric carcinoma as outlined by the Japanese Gastric Cancer Association¹⁰.

Follow-up continued until death or for more than 5 years in surviving patients. Information was obtained from medical charts and death certificates in the hospital population survey office. Recurrence was confirmed by physical examination, carcinoembryonic antigen testing and imaging, including computed tomography. In some patients, initial recurrence was diagnosed at two or more sites. In this instance, all the sites were counted as the site of initial recurrence.

Statistical analysis

The correlation between EM and clinicopathological features was determined using Fisher's exact test, χ^2 test or Mann-Whitney *U* test. Cumulative overall and disease-free survival rates were calculated using the Kaplan-Meier method and compared using the log rank test. Multivariate analysis was performed using the Cox proportional hazard model together with factors described previously¹¹. $P < 0.050$ was considered statistically significant.

Results

EM was detected in 146 (14.3 per cent) of the 1023 patients and in 1060 (3.0 per cent) of the 35 811 nodules retrieved as 'lymph nodes'. In the 146 patients with EM, the mean number of metastases of this type was 7 (median 3, range 1–79). *Figure 1* shows an example of EM.

The incidence of EM was significantly higher in patients with large tumours (diameter 10 cm or more) and in those with macroscopic infiltrative tumours. Histologically, EM was significantly associated with relatively deep invasion, undifferentiated tumours, lymph node metastasis, and lymphatic and vascular involvement. Overall, patients with EM had a significantly larger number of lymph node metastases, but nine patients with EM had no lymph node metastases. Liver metastasis and peritoneal dissemination were found more frequently at surgery in patients with EM (*Table 1*). Tumour stage was III or higher in 117 (80.1 per cent) of the 146 patients with EM.

Eight hundred and eighty-five (86.5 per cent) of all patients and 66 (45.2 per cent) of 146 patients with EM underwent curative surgery. After a potentially curative procedure, 45 (68 per cent) of 66 patients with EM developed recurrence, compared with 131 (16.0 per cent) of 819 patients without EM. Of those with EM, 20 patients (30 per cent) developed recurrence locally or in the lymph nodes, 16 patients (24 per cent) had distant metastases of whom 11 had hepatic involvement, and other sites of recurrence included the peritoneum in 25 (38 per cent). The primary site of recurrence was unknown in five patients.

Table 1 Correlation between extranodal metastasis and clinicopathological features in gastric carcinoma

	Extranodal metastasis		P
	Positive (n = 146)	Negative (n = 877)	
Age (years)*	61(9)	60(9)	0.582†
Sex			0.551‡
M	100 (68.5)	620 (70.7)	
F	46 (31.5)	257 (29.3)	
Tumour size (cm)			< 0.001§
< 10	61 (41.8)	798 (91.0)	
≥ 10	85 (58.2)	79 (9.0)	
Tumour type			< 0.001§
Superficial	2 (1.4)	585 (66.7)	
Circumscribed	16 (11.0)	126 (14.4)	
Infiltrative	128 (87.7)	166 (18.9)	
Histology			< 0.001‡
Differentiated	38 (26.0)	444 (50.6)	
Undifferentiated	108 (74.0)	433 (49.4)	
Tumour depth			< 0.001§
pT1	2 (1.4)	520 (59.3)	
pT2	17 (11.6)	195 (22.2)	
pT3	102 (69.9)	126 (14.4)	
pT4	25 (17.1)	36 (4.1)	
Lymph node metastasis			< 0.001‡
Yes	137 (93.8)	330 (37.6)	
No	9 (6.2)	547 (62.4)	
Lymphatic involvement			< 0.001‡
Yes	131 (89.7)	382 (43.6)	
No	15 (10.3)	495 (56.4)	
Vascular involvement			< 0.001‡
Yes	94 (64.4)	203 (23.1)	
No	52 (35.6)	674 (76.9)	
Peritoneal metastasis			< 0.001‡
Yes	59 (40.4)	20 (2.3)	
No	87 (59.6)	857 (97.7)	
Liver metastasis			< 0.001‡
Yes	12 (8.2)	14 (1.6)	
No	134 (91.8)	863 (98.4)	
Curability			< 0.001‡
Curative	66 (45.2)	819 (93.3)	
Non-curative	80 (54.8)	58 (6.7)	

Values in parentheses are percentages, except *values are mean(s.d.). pT, Pathological tumour; †Mann-Whitney U test; ‡Fisher's exact test; § χ^2 test.

Patients who underwent potentially curative resection were included in a survival analysis. Survival curves were truncated at 4 years because of the small number of patients in some groups. Overall survival was significantly worse for patients with EM than for those without ($P < 0.001$) (Fig. 2a). Five-year survival rates were 26 and 84.5 per cent respectively. Disease-free survival was also significantly worse for patients with EM ($P < 0.001$). Among node-negative patients (pathological (p) N0), overall survival was poorer in patients with EM ($P < 0.001$); 5-year survival rates for patients with or without EM were 57 and

91.4 per cent respectively. Similarly, in both the pN1 and pN2 subgroups, overall survival was significantly worse in those with EM (both $P < 0.001$). The presence of EM had no significant impact on survival among patients with N3 disease ($P = 0.098$). Analysis of patients grouped according to the number of EMs revealed that number of metastases was significantly associated with a worse prognosis ($P < 0.001$) (Fig. 2b).

Multivariate analysis of factors associated with survival after curative surgery showed that EM was an independent prognostic factor, along with depth of tumour invasion and lymph node metastasis (Table 2).

Discussion

The incidence of peritoneal metastasis found during surgery and the rate of peritoneal recurrence was high in patients with EM. There are two possible explanations for the association between EM and peritoneal metastasis. First, it is feasible that tumour cells released from a primary lesion spread directly into the extranodal and extramural spaces. This is consistent with the finding that EM showed a close correlation with cancer aggressiveness measured in terms of serosal invasion. Furthermore, tumour cells from poorly differentiated adenocarcinomas were found to be scattered into both soft and connective tissues by means of peritoneal seeding in both the present and previous studies^{1,2,12}. Another possibility is that EM occurs subsequent to lymph node involvement. Burn¹³ hypothesized that lymphaticovenous communication occurs when cancer cells metastasize to a lymph node or lymphatic vessels and obstruct lymph flow. Yamagata *et al.*¹⁴ demonstrated this experimentally in animal models. Few previous reports have shown a correlation between peritoneal metastasis and lymph node metastasis¹⁵. The present study showed a significant correlation between EM and the incidence of lymph node metastasis.

To determine whether EM should be included in the pN category, patterns of survival were examined in relation to lymph node involvement or EMs. The 5-year survival rate decreased linearly with increasing nodal involvement, classified according to the UICC tumour node metastasis (TNM) system: 88.5 per cent (pN0), 67.6 per cent (pN1), 34.7 per cent (pN2) and 14.0 per cent (pN3) based on a review of 4362 patients with gastric carcinoma at the National Cancer Centre Hospital¹⁶. Although the 5-year overall survival rate also worsened as the number of EMs increased, the deterioration was not linear and a sharp decline was noted if just one EM was present. EM in gastric carcinoma may therefore more closely resemble

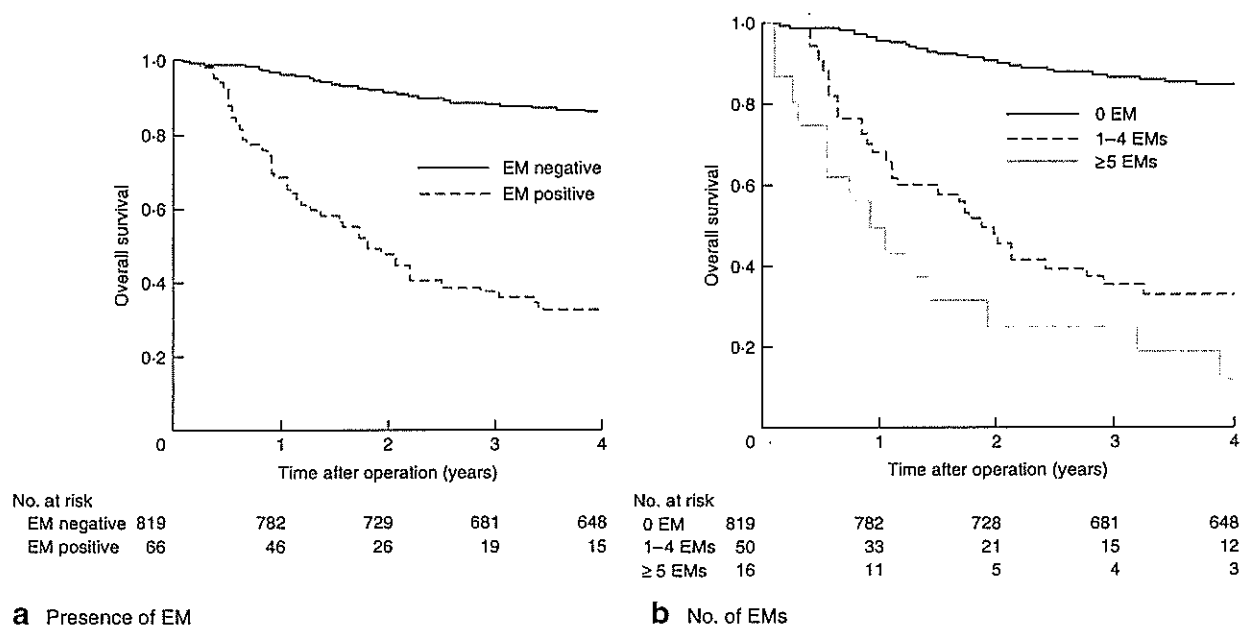


Fig. 2 Overall survival curves after curative resection a in patients with or without extranodal metastasis (EM) ($P < 0.001$, log rank test) and b in patients grouped according to the number of EMs ($P < 0.001$)

Table 2 Multivariate analysis of factors affecting prognosis after curative resection

	Standard error	Hazard ratio	P^*
Depth of invasion	0.13	1.83 (1.42, 2.35)	< 0.001
Extranodal metastasis	0.20	1.82 (1.23, 2.71)	0.003
Lymph node metastasis	0.20	1.70 (1.14, 2.51)	0.009
Macroscopic type	0.26	1.44 (0.87, 2.40)	0.158
Lymphatic invasion	0.21	1.44 (0.95, 2.17)	0.088
Venous invasion	0.18	1.23 (0.86, 1.75)	0.253

Values in parentheses are 95 per cent confidence intervals. *Cox proportional hazard model.

peritoneal metastasis than lymph node metastasis but, as there were long-time survivors with EM, it should be considered separately from peritoneal disease.

Although EM was identified as an independent predictor of a poor prognosis, about a half of patients with four or fewer EMs survived for more than 2 years without adjuvant treatment. This suggests that *en bloc* clearance of adipose connective tissue by D2 dissection is effective in some but not in all situations. If *en bloc* dissection of the gastric bed is not carried out, radiotherapy combined with chemotherapy may be effective¹⁷.

EM in gastric carcinoma was closely related to cancer aggressiveness and a poor prognosis. Its presence should be included in the clinical classification of gastric carcinoma.

Acknowledgements

The authors thank Dr Seiichiro Yamamoto (Cancer Information and Epidemiology Division, National Cancer Centre Research Institute, Tokyo, Japan) for help in performing the statistical analyses.

References

- 1 Tanaka T, Kumagai K, Shimizu K, Masuo K, Yamagata K. Peritoneal metastasis in gastric cancer with particular reference to lymphatic advancement; extranodal invasion is a significant risk factor for peritoneal metastasis. *J Surg Oncol* 2000; 75: 165-171.
- 2 Itoh H, Hase K, Suganuma T, Tomimatsu S, Wakiyama H, Horii H *et al.* Clinical value of extramural and extranodal cancer permeation as a prognostic indicator in patients with gastric cancer. *Jpn J Gastroenterol Surg* 2002; 35: 1475-1481.
- 3 Sobin LH, Fleming ID. TNM Classification of Malignant Tumors, fifth edition (1997). Union Internationale Contre le Cancer and the American Joint Committee on Cancer. *Cancer* 1997; 80: 1803-1804.
- 4 Ueno H, Mochizuki H, Tamakuma S. Prognostic significance of extranodal microscopic foci discontinuous with primary lesion in rectal cancer. *Dis Colon Rectum* 1998; 41: 55-61.
- 5 Yamashita H, Noguchi S, Murakami N, Kawamoto H, Watanabe S. Extracapsular invasion of lymph node metastasis is an indicator of distant metastasis and poor

- prognosis in patients with thyroid papillary carcinoma. *Cancer* 1997; 80: 2268–2272.
- 6 Mignano JE, Zahurak ML, Chakravarthy A, Piantadosi S, Dooley WC, Gage I. Significance of axillary lymph node extranodal soft tissue extension and indications for postmastectomy irradiation. *Cancer* 1999; 86: 1258–1262.
 - 7 van der Velden J, van Lindert AC, Lammes FB, ten Kate FJ, Sie-Go DM, Oosting H *et al.* Extracapsular growth of lymph node metastases in squamous cell carcinoma of the vulva. The impact on recurrence and survival. *Cancer* 1995; 75: 2885–2890.
 - 8 Theunissen PH, Bollen EC, Koudstaal J, Thunnissen FB. Intranodal and extranodal tumour growth in early metastasised non-small cell lung cancer: problems in histological diagnosis. *J Clin Pathol* 1994; 47: 920–923.
 - 9 Watanabe H, Jass JR, Sobin LH. *Histological Typing of Oesophageal and Gastric Tumours* (2nd edn). Springer: Berlin, 1990.
 - 10 Japanese Gastric Cancer Association. Japanese Classification of Gastric Carcinoma—2nd English Edition. *Gastric Cancer* 1998; 1: 10–24.
 - 11 Maruyama K. The most important prognostic factors for gastric cancer patients. A study using univariate and multivariate analyses. *Scand J Gastroenterol* 1987; 22(Suppl 133): 63–68.
 - 12 Koike H, Ichikawa D, Kitamura K, Tsuchihashi Y, Yamagishi H. Perinodal involvement of cancer cells in gastric cancer patients. *Surgery* 2004; 135: 266–272.
 - 13 Burn JI. Obstructive lymphopathy. *Ann R Coll Surg Engl* 1968; 42: 93–113.
 - 14 Yamagata K, Kumagai K, Shimizu K, Masuo K, Nishida Y, Yasui A. Gastrointestinal cancer metastasis and lymphogenous spread: viewpoint of animal models of lymphatic obstruction. *Jpn J Clin Oncol* 1998; 28: 104–106.
 - 15 Maehara Y, Tomisaki S, Oda S, Sakaguchi Y, Ichiyoshi Y, Sugimachi K. Lymphatic advancement to peritoneal dissemination and liver metastasis in gastric cancer patients. *Anticancer Res* 1994; 14: 2755–2757.
 - 16 Katai H, Yoshimura K, Maruyama K, Sasako M, Sano T. Evaluation of the New International Union Against Cancer TNM staging for gastric carcinoma. *Cancer* 2000; 88: 1796–1800.
 - 17 Macdonald JS, Smalley SR, Benedetti J, Hundahl SA, Estes NC, Stemmermann GN *et al.* Chemoradiotherapy after surgery compared with surgery alone for adenocarcinoma of the stomach or gastroesophageal junction. *N Engl J Med* 2001; 345: 725–730.

Stage migration caused by D2 dissection with para-aortic lymphadenectomy for gastric cancer from the results of a prospective randomized controlled trial

T. Yoshikawa¹, M. Sasako², T. Sano², A. Nashimoto³, A. Kurita⁴, T. Tsujinaka⁵, N. Tanigawa⁶ and S. Yamamoto⁷, for the Gastric Cancer Surgical Study Group of the Japan Clinical Oncology Group

¹Department of Gastrointestinal Surgery, Kanagawa Cancer Centre, Yokohama, ²Gastric Surgery Division, National Cancer Centre Hospital, Tokyo, ³Department of Surgery, Niigata Cancer Centre Hospital, Niigata, ⁴Department of Surgery, Shikoku Cancer Centre, Matsuyama, ⁵Department of Surgery, Osaka National Hospital, Osaka, ⁶Department of General and Gastroenterological Surgery, Osaka Medical College, Osaka, and ⁷Statistics and Cancer Control Division, Research Centre for Cancer Prevention and Screening/Cancer Information and Epidemiology Division, National Cancer Centre, Tokyo, Japan

Correspondence to: Dr T. Yoshikawa, Department of Gastrointestinal Surgery, 1-1-2 Nakao, Asahi-Ku, Yokohama 241-0815, Japan (e-mail: yoshikawat@kcch.jp)

Background: Extended lymphadenectomy (D2) provides accurate nodal staging of gastric cancer. The aim of this study was to clarify the degree of stage migration seen with D2 combined with para-aortic lymph node dissection for gastric cancer invading the subserosa, the serosa and adjacent structures (T2ss-4) in patients considered not to have distant metastases (M0).

Methods: Between July 1995 and April 2001, 523 patients were recruited and randomized in a prospective phase III trial comparing D2 with D2 and para-aortic nodal dissection for T2ss-4 gastric cancer without macroscopic para-aortic nodal metastases. Stage migration was evaluated by Japanese Gastric Cancer Association staging in 260 patients who underwent D2 with para-aortic dissection by analysing pathological information from the dissected lymph nodes.

Results: Node (N)-stage migration was observed in 1 per cent (1 of 82) of patients with N1 disease, 20 per cent (12 of 59) with N2, 43 per cent (10 of 23) with N3 and 8.8 per cent (23 of 260) of all patients. Final stage migration occurred in 9 per cent (5 of 58) of patients with stage IIIa, 19 per cent (8 of 42) with stage IIIb, 56 per cent (9 of 16) with stage IVa and 8.5 per cent (22 of 260) of all patients. Metastasis to N4 nodes was found in 4 per cent (four of 95) of tumours invading the subserosa and 17.4 per cent (19 of 109) of tumours penetrating the serosa. The overall incidence of N4 involvement was 8.8 per cent (23 of 260).

Conclusion: Extended para-aortic lymphadenectomy for gastric cancer provides accurate nodal staging and results in stage migration, which may improve stage-specific survival regardless of overall survival benefit.

Paper accepted 27 September 2006

Published online 19 October 2006 in Wiley InterScience (www.bjs.co.uk). DOI: 10.1002/bjs.5487

Introduction

Gastric cancer remains the second leading cause of cancer death in the world and is the most common malignancy in Japan, South America and Eastern Europe¹. Radical gastrectomy with regional lymphadenectomy is the

mainstay of curative treatment for gastric cancer that has penetrated beyond the submucosa². The procedure can be undertaken in the context of total or subtotal gastrectomy where (D2) lymphadenectomy indicates nodal dissection to the N2 level³. This has been the standard treatment for gastric cancer in Japan since the 1960s⁴.

In the 1980s extended lymphadenectomy procedures were practised in many Japanese centres with the intention of improving the prognosis of patients with locally

The Editors have satisfied themselves that all authors have contributed significantly to this publication

advanced gastric cancer. In addition to D2 lymphadenectomy, lymph nodes around the upper abdominal aorta were dissected on the basis that 20–30 per cent of patients with non-early gastric cancer (more than T1) had microscopic metastasis present in para-aortic nodes^{5–8}. The reported 5-year survival rate for patients with these nodal metastases was in the range of 14–30 per cent after extended para-aortic lymphadenectomy^{5–9}.

Based on these results, the Japanese Gastric Cancer Association defined para-aortic nodes as regional lymph nodes¹⁰. Conversely, the International Union Against Cancer (UICC)–tumour node metastasis (TNM) system classified metastases to para-aortic lymph nodes not as regional lymph node metastases (N) but as distant metastases (M)¹¹. Keighley *et al.*¹² reported that median survival was less than 5 months in British patients with tumours involving para-aortic nodes, even after extended para-aortic nodal dissection.

From retrospective studies, it has been suggested that extended para-aortic lymphadenectomy improved prognosis compared with standard D2 dissection^{9,13}. It may be, however, that extended surgery only provides more accurate staging information and that this stage migration may improve apparent stage- and N stage-specific survival¹⁴. The impact of stage migration has not yet been clarified.

A multi-institutional randomized clinical trial was therefore conducted by the Japan Clinical Oncology Group (JCOG) to evaluate the survival benefit of D2 gastrectomy with extended para-aortic dissection for T2ss–4 M0 gastric cancer (ss, subserosal) without macroscopic para-aortic nodal metastases. Morbidity and mortality results from this trial showed that D2 as well as extended surgery could be performed safely in specialized hospitals in Japan¹⁵. The present report evaluated the stage migration caused by D2 with para-aortic lymphadenectomy by analysing pathological information from dissected lymph nodes in this prospective trial. This is the first study to evaluate stage migration caused by para-aortic dissection.

Patients and methods

The randomized trial¹⁵ was approved by the JCOG and the local ethics committees of each institution. Initially, the 12 institutions of the Gastric Cancer Surgery Study Group of the JCOG participated in the trial, followed by 12 additional institutions to increase recruitment. All data management and quality assurance were done by the JCOG data centre.

Between July 1995 and April 2001, 523 patients with T2ss–4 M0 tumours, without gross metastases in para-aortic nodes, were randomly assigned to D2 (263 patients) or D2 with para-aortic dissection with curative intent (260). Para-aortic lymph nodes of 1 cm in diameter or larger were diagnosed as metastases by computed tomography. After mobilization of the duodenum, nodal status was finally judged by palpation. The effects of stage migration were evaluated in the 260 patients who underwent D2 with para-aortic lymphadenectomy.

The 12th edition of the Japanese Gastric Cancer Association staging system was used¹⁰. Lymph nodes were divided to four groups: group 1 or N1 consisted of the perigastric nodes along the lesser curvature (stations 1, 3 and 5) and the greater curvature (stations 2, 4 and 6); group 2 or N2 consisted of the nodes along the left gastric artery (station 7), along the common hepatic artery (station 8), around the coeliac artery (station 9) and along the splenic artery (stations 10 and 11); group 3 or N3 consisted of nodes along the hepatoduodenal ligament (station 12), around the pancreas (stations 13, 15, 17 and 18) and along the superior mesenteric vein (station 14); and group 4 or N4 consisted of para-aortic lymph nodes (station 16). D2 dissection involved removal of all N1 and N2 nodes for tumours in the proximal and middle stomach, and additionally stations 12, 13 and 14 for tumours in the distal stomach. For D2 with para-aortic dissection, the para-aortic lymph nodes were removed in addition to the D2 dissection. Quality control concerning nodal dissection has been described; the median number of retrieved nodes was 54 (range 14–161) in D2 and 74 (range 30–235) in D2 with para-aortic dissection¹⁵.

The lymph nodes of each station were retrieved individually from the specimen and numbered according to the Japanese Gastric Cancer Association staging system. The stomach and lymph nodes were stained with haematoxylin and eosin for histopathological examination.

Stage migration was calculated by assuming that patients had undergone hypothetical D2 dissection without para-aortic lymphadenectomy. Lymph nodes were staged according to the N1, N2 and N3 status, without N4 information (standard staging). Restaging was then undertaken after considering N4 status obtained by true extended para-aortic lymphadenectomy (extended staging). In this way, N-status migration could be determined when metastatic nodes were detected in the N4 levels. A final stage was determined in both the standard and extended staging by combining microscopic depth of invasion into the gastric wall (T status).

Results

Lymph node metastases according to standard and extended staging are shown in *Table 1*. By applying extended staging, N-stage migration was observed in 1 per cent (1 of 82) of patients with N1 disease, 20 per cent (12 of 59) with N2, 43 per cent (10 of 23) with N3 and 8.8 per cent (23 of 260) of all patients. The final staging is shown in *Table 2*. Overall stage migration occurred in 9 per cent (five of 58) of patients with stage IIIa disease, 19 per cent (8 of 42) with stage IIIb, 56 per cent (9 of 16) with stage IVa and 8.5 per cent (22 of 260) of all patients.

Table 3 shows lymph node metastases classified according to depth of invasion. Metastases to N4 nodes were found in 4 per cent (four of 95) of tumours invading the subserosa and 17.4 per cent (19 of 109) of tumours penetrating the serosa. The overall incidence of N4 involvement was 8.8 per cent (23 of 260).

Discussion

This study has clarified the incidence of microscopic metastases in patients with T2ss-4 M0 tumours and macroscopically negative para-aortic nodes.

Limited nodal dissection often provides inaccurate staging. Bunt *et al.*¹⁴ analysed the migration effects in Japanese Gastric Cancer Association staging from the

Table 1 Staging and migration of lymph node metastases

	Standard staging				Extended total
	N0	N1	N2	N3	
Extended staging					
N0	96				96
N1		81			81
N2			47		47
N3				13	13
N4		1	12	10	23
Standard total	96	82	59	23	260

Table 2 Disease stage and stage migration

	Standard staging							Extended total
	Ia	Ib	II	IIIa	IIIb	IVa	IVb	
Extended staging								
Ia	10							10
Ib		67						67
II			64					64
IIIa				53				53
IIIb					34			34
IVa						7		7
IVb				5	8	9	3	25
Standard total	10	67	64	58	42	16	3	260

Table 3 Depth of invasion and lymph node metastases

	Lymph node metastasis					Total
	N0	N1	N2	N3	N4	
Depth of invasion						
M	3					3
SM	7	4				11
MP	19	14	3	1		37
SS	44	28	14	5	4	95
SE	22	35	28	5	19	109
SEI	1		2	2		5
Total	96	81	47	13	23	260

M, mucosa; SM, submucosa; MP, muscularis propria; SS, subserosa; SE, serosa exposed; SEI, serosa exposed and invading adjacent organs.

results of D1 and D2 surgery in a Dutch phase III trial and found that the rate of stage migration was 30 per cent when D2 surgery was applied instead of D1¹⁴. They also calculated the stage-specific survival rate based on reported survival rates and stage migration, and clarified that stage migration could improve stage-specific survival without a real survival benefit from D2 lymphadenectomy¹⁴.

In this study, N-stage migration occurred in 8.8 per cent and overall stage migration was noted in 8.5 per cent of patients by applying extended staging instead of standard D2 staging. N- and stage-specific survival may therefore be improved owing to N stage and overall stage migration. Some Japanese surgeons have reported that extended nodal dissection can improve overall survival in patients with N2 tumours compared with standard D2 dissection^{9,13}. These survival differences could be explained, in part, by the N-stage migration observed in this study. There seems no sense, therefore, in comparing D2 and more extended dissection by retrospective survival analyses based on the Japanese Gastric Cancer Association staging system.

Extended para-aortic lymphadenectomy influences Japanese Gastric Cancer Association staging and UICC-TNM staging. Metastases to para-aortic nodes are treated as distant metastases (M1) by TNM staging¹¹. According to eligibility criteria in the present study, patients with metastases to distant organs such as liver and peritoneum were excluded. Para-aortic nodes were also negative macroscopically. The present results demonstrate that 8.8 per cent (23 of 260) of patients with T2ss-4 M0 gastric cancer and macroscopically negative para-aortic nodes have microscopic para-aortic nodal metastases. These patients then become classified as M1, so that extended lymphadenectomy causes M-stage migration, impacting on M-specific survival in the TNM classification.

In the present study, nodal metastases to N4 were observed in 8.8 per cent (23 of 260) of all patients and these positive nodes were found in 4 per cent (four of 95)

of tumours invading the subserosa and 17.4 per cent (19 of 109) of tumours penetrating the serosa. Previous Japanese studies have reported that 20–30 per cent of patients with non-early gastric cancer had histological metastasis in the para-aortic nodes^{5–8}. The present study confirmed N4 disease in localized advanced gastric cancer invading the subserosa or deeper. The slightly lower incidence of this finding in the present compared with previous studies may have been due to the inclusion of patients with macroscopically involved para-aortic nodes in the earlier studies.

Extended para-aortic lymphadenectomy for T2ss–4 M0 gastric cancer provides a revised nodal staging. This results in stage migration that may improve stage-specific survival regardless of a real survival benefit.

Acknowledgements

This work was supported by a Grant-in-Aid for Cancer Research from the Ministry of Health and Welfare, and the Second Term Comprehensive 10-year Strategy for Cancer Control by the Ministry of Health and Welfare, Japan.

The authors thank Dr B. G. Mann for advice on the preparation of this manuscript and Mrs K. Hongo for assistance in data management. Participating institutions (in order of patient recruitment) were National Cancer Centre Hospital, Niigata Cancer Centre Hospital, National Shikoku Cancer Centre, Osaka Medical Centre for Cancer and Cardiovascular Diseases, Osaka National Hospital, National Cancer Centre East, Tokyo Metropolitan Komagome Hospital, Aichi Cancer Centre, Osaka Medical College, International Medical Centre of Japan, Sakai City Hospital, Kanagawa Cancer Centre, Tokyo Metropolitan Bokuto Hospital, Nagaoka Chuo General Hospital, Niigata City General Hospital, Cancer Institute Hospital, Kyoto Second Red Cross Hospital, Saitama Cancer Centre, Hiroshima City Hospital, Kanazawa University (Gastroenterologic Surgery), Gifu Municipal Hospital, Kagoshima University, Iwate Medical University (Department of Surgery 1), Okayama University.

References

- Roder DM. The epidemiology of gastric cancer. *Gastric Cancer* 2002; 5(Suppl 1): 5–11.
- Sasako M. Principles of surgical treatment for curable gastric cancer. *J Clin Oncol* 2003; 21(Suppl): 274S–275S.
- Nakajima T. Gastric cancer treatment guidelines in Japan. *Gastric Cancer* 2002; 5: 1–5.
- Noguchi Y, Imada T, Matsumoto A, Coit DG, Brennan MF. Radical surgery for gastric cancer. A review of the Japanese experience. *Cancer* 1989; 64: 2053–2062.
- Takahashi S. Study of para-aortic lymph node metastasis of gastric cancer subjected to superextensive lymph node dissection. *Nippon Geka Gakkai Zasshi* 1990; 91: 29–35.
- Kitamura M, Arai K, Iwasaki Y. Clinico-pathological studies and problems on para-aortic lymph node dissection – D4 dissection. *Nippon Geka Gakkai Zasshi* 1996; 97: 302–307.
- Isozaki H, Okajima K, Fujii K, Nomura E, Izumi N, Mabuchi H *et al.* Effectiveness of paraaortic lymph node dissection for advanced gastric cancer. *Hepatogastroenterology* 1999; 46: 549–554.
- Baba M, Hokita S, Natsugoe S, Miyazono T, Shimada M, Nakano S *et al.* Para-aortic lymphadenectomy in patients with advanced carcinoma of the upper-third of the stomach. *Hepatogastroenterology* 2000; 47: 893–896.
- Kunisaki C, Shimada H, Yamaoka H, Wakasugi J, Takahashi M, Akiyama H *et al.* Significance of para-aortic lymph node dissection in advanced gastric cancer. *Hepatogastroenterology* 1999; 46: 2635–2642.
- Japanese Research Society for Gastric Cancer. *Japanese Classification of Gastric Carcinoma* (1st English edn). Kanehara & Co: Tokyo, 1995.
- Sobin LH, Wittekind C. *International Union Against Cancer. TNM Classification of Malignant Tumours* (5th edn). Wiley-Liss: New York, 1997.
- Keighley MRB, Moore J, Roginski C, Powell J, Thompson H. Incidence and prognosis of N4 node involvement in gastric cancer. *Br J Surg* 1984; 71: 863–866.
- Gunji Y, Suzuki T, Kobayashi S, Hori S, Hayashi H, Shimada H *et al.* Evaluation of D3/D4 lymph node dissection for patients with grossly N2 positive advanced gastric cancer. *Hepatogastroenterology* 2003; 50: 1178–1182.
- Bunt AMG, Hermans J, Smit VT, van de Velde CJH, Fleuren GJ, Bruijn JA. Surgical/pathologic-stage migration confounds comparisons of gastric cancer survival rates between Japan and Western countries. *J Clin Oncol* 1995; 13: 19–25.
- Sano T, Sasako M, Yamamoto S, Nashimoto A, Kurita A, Hiratsuka M *et al.* Gastric cancer surgery: morbidity and mortality results from a prospective randomized controlled trial comparing D2 and extended para-aortic lymphadenectomy – Japan Clinical Oncology Group study 9501. *J Clin Oncol* 2004; 22: 2767–2773.

Favorable Indications for Hepatectomy in Patients With Liver Metastasis From Gastric Cancer

YOSHIHIRO SAKAMOTO, MD,^{1*} TAKESHI SANO, MD,² KAZUAKI SHIMADA, MD,¹ MINORU ESAKI, MD,¹
MAKOTO SAKA, MD,² TAKEO FUKAGAWA, MD,² HITOSHI KATAI, MD,²
TOMOO KOSUGE, MD,¹ AND MITSURU SASAKO, MD²

¹Hepatobiliary and Pancreatic Surgery Division, National Cancer Center Hospital, Tokyo, Japan

²Gastric Surgery Division, National Cancer Center Hospital, Tokyo, Japan

Background: The prognosis of patients with liver metastasis from gastric cancer (LMGC) is dismal. The purpose of this study was to review our recent outcomes of hepatectomy for LMGC and to determine the suitable candidates for surgery.

Study Design: The outcomes of 37 patients with LMGC who underwent hepatectomy between 1990 and 2005 were assessed. No extrahepatic distant metastasis and feasibility of macroscopic curative resection were requisite indications for surgery. The prognostic values of clinicopathological factors were assessed by univariate and multivariate analyses.

Results: There was no in-hospital mortality. The median survival time and overall 5-year survival rate after hepatectomy of the patients with LMGC were 31 months and 11%, respectively. Intrahepatic recurrence following hepatectomy was found in 23 patients (62%). Variables independently associated with poor survival were bilobar metastasis ($P=0.002$, $CI=1.9-16.3$) and a maximum tumor diameter of ≥ 4 cm ($P=0.006$, $CI=1.4-7.7$). The depth of the primary tumor and the timing of metastasis were not associated with survival.

Conclusions: Surgical resection for LMGC may be indicated in patients with unilobar metastasis and/or tumors less than 4 cm in diameter. Synchronous metastasis is not a contraindication for hepatectomy.

J. Surg. Oncol. © 2007 Wiley-Liss, Inc.

KEY WORDS: liver metastasis; gastric cancer; hepatectomy; surgical indication

INTRODUCTION

Liver metastasis can be found in 5–9% of patients with gastric cancer [1–3]. Surgical resection of liver metastasis from gastric cancer (LMGC) is rarely indicated, because LMGC is often associated with extrahepatic disease, such as peritoneal dissemination, lymph node metastasis, and direct cancer invasion of other organs [1]. Most of the patients with LMGC are thus treated by systemic administration or hepatic arterial infusion of 5-FU, adriamycin, mitomycin C (MMC), cisplatin, and/or S-1 [3–9] (Table I). The response rates and median overall survival time of patients treated with chemotherapeutic regimens have been reported to be 25–73% and 7–15 months, respectively, and the long-term survival is dismal. Therefore, curative surgical resection may bring some hope of long-term survival.

Several authors have reported on their limited experiences of surgical resection of the metastatic tumors in selected patients of LMGC, with the 5-year survival rates ranging from 0–38% [1–3,10–17]. It has been reported that the stage of the primary gastric cancer [10,14], number of liver metastases [2,11,16], timing of hepatectomy [13,14,16], and surgical margin [11,13] would be the significant prognostic factors. To the best of

*Correspondence to: Yoshihiro Sakamoto, MD, Hepatobiliary and Pancreatic Surgery Division, National Cancer Center Hospital, 5-1-1 Tsukiji, Chuo-ku, Tokyo, Japan. Fax: +81-3-3542-3815.
E-mail: yosakamo@ncc.go.jp

Received 21 August 2006; Accepted 13 October 2006

DOI 10.1002/jso.20739

Published online in Wiley InterScience (www.interscience.wiley.com).

TABLE I. Review of Surgical and Non-Surgical Treatments of Liver Metastasis From Gastric Cancer

Author	Year	Number of patients	Method of treatment (regimen, method of administration)	Response rate (%)	Median survival time (M)	1-year survival (%)	5-year survival (%)
Chemotherapy for LMGC							
Okuyama [3]	1985	21	5FU, MMC	NA	5	10	
Arai [4]	1990	30	FAM, HAI	73	15	NA	
Kim [5]	1993	33	FP, IV	51	9	NA	
Vanhoefer [6]	2000	165	ELF, FP, FAM	9–20	7	NA	
Koizumi [7]	2000	28	S1, oral	43	(7)	(36)	
Takahashi [8]	2003	10	S1, oral	30	(14)	(50)	
Tsujitani [9]	2003	6	S1+CDDP	50	NA	NA	
Hepatectomy for LMGC							
Koga [1]	1980	9	Hepatectomy + MMC ^a		6		NA
Okuyama [3]	1985	9	Hepatectomy+5FU, MMC		24		NA
Ochiai [10]	1994	21	Hepatectomy		19		NA
Miyazaki [11]	1997	21	Hepatectomy		NA		NA
Elias [12]	1998	11	Hepatectomy		NA		20
Ambiru [13]	2001	40	Hepatectomy + 5FU, acliarubicin ^a		12		18
Imamura [14]	2001	17	Hepatectomy		12		0
Saiura [15]	2002	10	Hepatectomy + 5FU ^a		25		20
Okano [16]	2002	19	Hepatectomy		21		34
Sakamoto [2]	2002	22	Hepatectomy		21		38
Shirabe [17]	2003	36	Hepatectomy		NA		26

LMGC, liver metastasis of gastric cancer; M, months; FAM, 5-fluorouracil + adriamycin + mitomycin C; HAI, hepatic artery infusion; FP, 5-fluorouracil + cisplatin; IV, intravenous administration; ELF, etoposide + folinic acid + 5-fluorouracil (), results including extrahepatic metastasis or recurrence; CDDP, cisplatin; MMC, mitomycin C; 5FU, 5-fluorouracil; NA, not available.

^aAdjuvant chemotherapy.

our knowledge, however, only two reports have included more than 35 patients, therefore, the most favorable indications for hepatectomy in patients with LMGC still remain unclear.

We previously reported our initial experience of hepatectomy in 21 patients with LMGC between 1985–1992 [10]. Here, we review the outcomes of surgical resection in patients with LMGC conducted by us between 1990 and 2005, with the objective of reassessing the appropriate indications for this surgery.

PATIENTS AND METHODS

Between 1990 and 2005, 5,209 patients underwent gastrectomy for gastric adenocarcinoma at the Division of Gastric Surgery, National Cancer Center Hospital. Of these, 2.2% had synchronous liver metastases and 1.3% developed metachronous liver metastases after resection of the primary gastric cancer. Of these patients with liver metastasis, 37 (29 males and 8 females; median age, 64 years; age range, 39–76 years), accounting for one-fifth of all the patients with LMGC, underwent hepatectomy as curative treatment for the metastatic gastric adenocarcinomas. Although some of the patients were overlapped with our previous report [10], we collected our data from 1990, because the safety of hepatectomy procedure was established in 1990s and we need to analyze data of relatively large number of

patients. We have used the following criteria as indications for hepatic resection in our cases of LMGC: (1) absence of extrahepatic distant metastases such as peritoneal dissemination or distant lymph node metastasis, and (2) feasibility of macroscopically curative resection. Based on the results of our previous study [10], we considered (1) the presence of serosal invasion by the primary gastric cancer and (2) presence of lymphatic or venous invasion by the primary tumor in cases with metachronous tumors, as unfavorable indications for surgery, however, they were not contraindications.

Medical records of the hepatectomized 37 patients were collected, and the prognostic factors for better survival were assessed using univariate and multivariate analyses.

Statistical Analysis

The primary end-point was survival, and the overall survival rates were estimated using the Kaplan–Meier method. The log-rank test was used to compare significant differences between subgroups using a univariate analysis. A multivariate stepwise Cox's regression analysis (backward elimination method) was performed to identify factors that were independently associated with mortality. Statistical significance was defined as a *P*-value of less than 0.05. The statistical analyses were performed using a statistical analysis software package

(SPSS 9.0, SPSS, Inc., Chicago, IL). The following clinicopathologic factors were analyzed by comparing subgroups of patients divided according to each variable: age (<65, ≥65), sex, status of serosal, venous and lymphatic invasion and histologic differentiation of the primary tumor, status of lymph node metastasis, clinical stage of the primary tumor, temporal relationship of metastases with the primary disease (synchronous or metachronous), serum carcinoembryonic antigen (CEA) (<5, ≥5 ng/ml) and carbohydrate antigen 19-9 (CA19-9) levels (<37, ≥37 IU/L) before hepatectomy, number of metastatic tumors, intrahepatic distribution, size of the liver metastases (<4, ≥4 cm), hepatectomy procedure (anatomical, non-anatomical resection), extent of differentiation of the metastatic tumor, surgical margin, blood transfusion, and administration of adjuvant chemotherapy. Multivariate analysis was performed using the variables found to be significant based on the results of the univariate analysis.

RESULTS

The location of the primary gastric cancer was the cardia in 6 patients, fundus in 17 patients, and antrum in 14 patients. The depth of the tumor was T1 in 6 patients, T2 in 19 patients, T3 in 11 patients, and T4 in 1 patient [18]. The surgical procedures used for the primary tumors included distal gastrectomy in 26 patients, total gastrectomy with or without splenectomy in 9 patients, pylorus-preserving gastrectomy in 1 patient, and partial gastrectomy in 1 patient. The primary gastric tumor proved to be well to poorly differentiated adenocarcinoma of the stomach in all of the patients.

The median duration of hospitalization following gastrectomy was 19 (11–61) days. Of the 37 patients, 21 had a solitary tumor and 16 had multiple (2–12) tumors. The distribution of the tumors was unilobar in 30 patients and bilobar in 7 patients. The median maximum tumor diameter was 3.8 (0.6–8.7) cm. The hepatectomy procedure consisted of non-anatomic limited resections in 25 patients, segmentectomy in 7 patients, left hemihepatectomy in 3 patients, and right hemihepatectomy in 2 patients. Blood transfusion was required in 11 patients.

Chemotherapy after hepatectomy was administered in 6 patients using S-1 [7–9], cisplatin, 5-FU, and UFT at the discretion of each attending surgeons. After the hepatectomy, all the patients were followed up in the outpatient clinic every 3–4 months, annual measurements of the serum CEA and CA19-9 and annual CT scan were performed.

In-hospital and 30 day postoperative mortality was zero. There were two major complications; sick sinus syndrome in one patient and perforation of the colon in

another patient. Minor complications included bile leakage, pancreatic fistula, and wound infection. The overall morbidity rate was 24%. The median duration of hospitalization following hepatectomy was 19 (9–189) days.

Microscopical curative resection was accomplished in 32 patients (86%). The median overall survival time of the patients was 31 months and the overall 5-year survival rate was 11%. Two patients survived for more than 5 years after the hepatectomy. Twenty-three patients out of the thirty-seven (62%) developed recurrence in the remaining liver, seven (19%) in the lung, and five (14%) in the lymph nodes, with an overall recurrence rate of 81% (n=30) during the follow-up period. None of the patients underwent a second hepatic resection for recurrent intrahepatic metastases, and systemic chemotherapy was administered in 20 out of the 30 patients with recurrent tumors. The first-line chemotherapeutic regimens for recurrence included CPT-11 + cisplatin in 4 patients, CPT-11 + MMC in 2 patients, methotrexate + 5-FU in 5 patients, 5-FU + cisplatin in 3 patients, paclitaxel in 2 patients, UFT + mitomycin C in 1 patient, UFT in 1 patient, 5-FU in 1 patient, and NK911 in 1 patient.

Univariate analysis revealed the following factors to be associated with poor survival: presence of venous invasion of the primary tumor ($P=0.02$); bilobar metastasis ($P=0.004$); tumor diameter ≥ 4 cm (Table I; Figs. 1 and 2). No survival difference was found between patients with and without serosal invasion, and between patients who underwent synchronous and metachronous hepatectomies. The results of the multivariate analysis (Table II) indicated that bilobar metastasis and the maximum tumor diameter (≥ 4 cm) were independently associated with poor survival ($P<0.003$ and $P<0.07$, respectively) (Table III).

DISCUSSION

The overall 5-year survival of the patients with LMGC was 11%, a relatively low survival rates as compares with previous reports, but still, may be acceptable [1–3,10–16]. We excluded patients with extrahepatic recurrences and performed hepatectomy in only 37 patients' accounting for one-fifth of all the patients with LMGC (2.3 hepatectomies/year). Nonetheless, even with the relatively good patient selection, the survival rate after hepatectomy was rather unsatisfactory. Despite curative hepatectomy, we found that 62% of the patients developed intrahepatic recurrence. This high recurrence rate within 2 years of the surgery might suggest the presence of occult intrahepatic metastases even at the time of hepatectomy. Repeat hepatectomy was not conducted in our series, and patients with recurrence

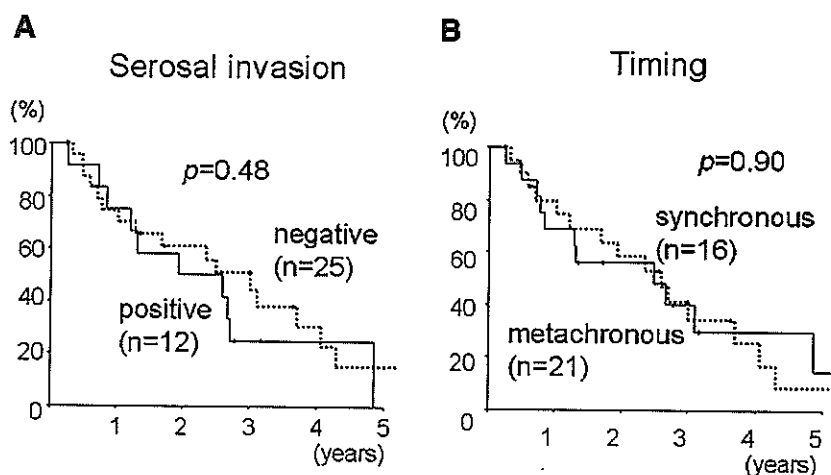


Fig. 1. Overall survivals of patients who underwent hepatectomy for liver metastasis of gastric cancer. A: No survival difference was found between patients with (solid line) and without (dotted line) serosal invasion by the primary gastric cancer. B: No survival difference was found between patients with synchronous metastasis who underwent hepatectomy with gastrectomy (solid line) and those with metachronous metastasis who underwent hepatectomy on a subsequent date (dotted line).

were administered systemic chemotherapy. These results suggest the extreme difficulty of obtaining surgical cure in patients with LMGC, and also the necessity of better patient selection and effective adjuvant chemotherapy in order to prolong the patients' survival. As the median overall survival time following hepatectomy in patients with multiple, bilobar metastasis or positive surgical margin was shorter than the median overall survival time of patients administered some effective chemotherapeutic regimens [4,8] (Table I), strict patient selection and informed consent from the patients would be mandatory.

None of the clinicopathological factors related to the primary gastric cancer were independent predictors of

survival. Previously, Ochiai et al. [10] reported from our institute that (1) the absence of serosal invasion in all cases, and (2) the absence of lymphatic invasion or venous invasion in metachronous cases were favorable factors for better survival. These criteria affected to some extent, our indication for the selection of suitable candidates for hepatectomy, and 70% of the 37 patients had no serosal invasion. This selection bias might directly reduce the deaths associated with dissemination of the primary gastric cancer. In addition, the limited number of patients and/or the difference in this study period might explain the discrepant conclusions in the two series. The diagnostic accuracy of imaging

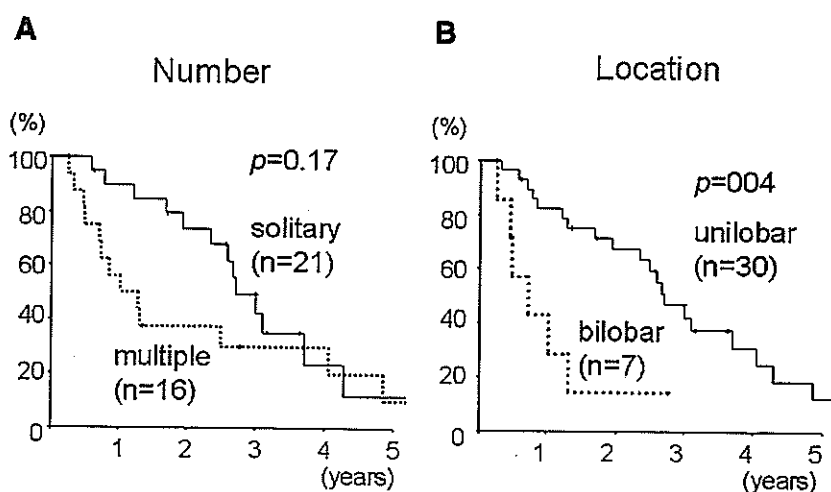


Fig. 2. Overall survivals of patients who underwent hepatectomy for liver metastasis of gastric cancer. A: No survival difference was found between patients with solitary (solid line) and multiple (dotted line) liver metastases. B: Survival of patients with unilobar metastasis (solid line) was significantly longer than that of those with bilobar metastasis (dotted line).

TABLE II. Clinicopathological Factors Associated With the Survival of Patients With Liver Metastasis From Gastric Cancer After Hepatectomy

Characteristic	Number of patients	Median survival time (months)	5-year survival rate (%)	P-value
Primary tumor				
Differentiation				
Well, pap	11	30	0	0.30
Mod, por	25	32	14	
Serosal invasion				
Absent	25	36	15	0.48
Present	12	23	0	
Venous invasion				
Absent	11	44	32	0.02
Present	26	28	0	
Lymphatic invasion				
Absent	9	44	0	0.08
Present	28	20	9	
Lymph node metastasis				
Absent	6	44	42	0.09
Present	31	28	6	
Clinical stage ^a				
Stage I, II	16	36	12	0.52
Stage III, IV	21	23	12	
Liver metastasis				
Temporal relationship				
Synchronous	16	30	15	0.90
Metachronous	21	31	9	
Tumor number				
Solitary	21	32	12	0.17
Multiple	16	12	10	
Intrahepatic distribution				
Unilobar	30	32	12	0.004
Bilobar	7	8	NA	
Tumor size				
<4 cm	19	37	29	0.02
≥4 cm	17	20	0	
Differentiation				
Well, pap	4	12	NA	0.31
Mod, por	26	32	14	
Portal vein invasion				
Absent	22	32	18	0.08
Present	13	28	0	
Surgical margin				
Negative	32	31	8	0.95
Positive	5	8	20	
Treatment				
Anatomical resection	11	31	15	0.81
Non-anatomical resection	26	32	8	
Blood transfusion during hepatectomy				
Not performed	26	31	26	0.30
Performed	11	16	0	
Adjuvant chemotherapy				
Not performed	31	32	12	0.37
Performed	6	28	NA	

NA, not available.

^aClinical stage was determined according to General Rules for Gastric Cancer Study, 1999.

studies has improved dramatically in the last two decades, which might make it easier to identify occult hepatic metastasis and contribute to modification of the patient selection criteria.

In the present study, patients with unilobar metastasis had a favorable prognosis. The first author (YS) previously reported, based on his experience in 22 patients at the Cancer Institute Hospital, another cancer center in