

---

---

# あなたの健康について

---

---

このアンケートはあなたがご自分の健康をどのように考えているかをおうかがいするものです。あなたが毎日をどのように感じ、日常の活動をどのくらい自由にできるかを知るうえで参考になります。お手数をおかけしますが、何卒ご協力のほど宜しくお願い申し上げます。

以下のそれぞれの質問について、一番よくあてはまるものに☑印をつけて下さい。

問1 あなたの健康状態は？（一番よくあてはまるものに☑印をつけて下さい）

最高に良い	とても良い	良い	あまり 良くない	良くない
▼	▼	▼	▼	▼
<input type="checkbox"/> 1	<input type="checkbox"/> 2	<input type="checkbox"/> 3	<input type="checkbox"/> 4	<input type="checkbox"/> 5

問2 1年前と比べて、現在の健康状態はいかがですか。  
（一番よくあてはまるものに☑印をつけて下さい）

1年前より、 はるかに良い	1年前よりは、 やや良い	1年前と、 ほぼ同じ	1年前ほど、 良くない	1年前より、 はるかに悪い
▼	▼	▼	▼	▼
<input type="checkbox"/> 1	<input type="checkbox"/> 2	<input type="checkbox"/> 3	<input type="checkbox"/> 4	<input type="checkbox"/> 5

問3 以下の質問は、日常よく行われている活動です。あなたは現在、健康上の理由で、こうした活動をするのがむずかしいと感じますか。むずかしいとすればどのくらいですか。

(ア～コまでのそれぞれの質問について、一番よくあてはまるものに☑印をつけて下さい)

とても むずかしい	少し むずかしい	ぜんぜん むずかしく ない
▼	▼	▼

- ア) 激しい活動、例えば、一生けんめい走る、  
重い物を持ち上げる、激しいスポーツをするなど…………… <sub>1</sub>…………… <sub>2</sub>…………… <sub>3</sub>
- イ) 適度の活動、例えば、家や庭のそうじをする、  
1～2時間散歩するなど…………… <sub>1</sub>…………… <sub>2</sub>…………… <sub>3</sub>
- ウ) 少し重い物を持ち上げたり、運んだりする  
(例えば買い物袋など)…………… <sub>1</sub>…………… <sub>2</sub>…………… <sub>3</sub>
- エ) 階段を数階上までのぼる…………… <sub>1</sub>…………… <sub>2</sub>…………… <sub>3</sub>
- オ) 階段を1階上までのぼる…………… <sub>1</sub>…………… <sub>2</sub>…………… <sub>3</sub>
- カ) 体を前に曲げる、ひざまずく、かがむ…………… <sub>1</sub>…………… <sub>2</sub>…………… <sub>3</sub>
- キ) 1キロメートル以上歩く…………… <sub>1</sub>…………… <sub>2</sub>…………… <sub>3</sub>
- ク) 数百メートルくらい歩く…………… <sub>1</sub>…………… <sub>2</sub>…………… <sub>3</sub>
- ケ) 百メートルくらい歩く…………… <sub>1</sub>…………… <sub>2</sub>…………… <sub>3</sub>
- コ) 自分でお風呂に入ったり、着がえたりする…………… <sub>1</sub>…………… <sub>2</sub>…………… <sub>3</sub>

問4 過去1カ月間に、仕事やふだんの活動（家事など）をするにあたって、身体的な理由で次のような問題がありましたか。（ア～エまでのそれぞれの質問について、一番よくあてはまるものに☑印をつけて下さい）

いつも	ほとんど いつも	ときどき	まれに	ぜんぜん ない
▼	▼	▼	▼	▼

ア) 仕事やふだんの活動をする  
時間をへらした……………<sub>1</sub>……………<sub>2</sub>……………<sub>3</sub>……………<sub>4</sub>……………<sub>5</sub>

イ) 仕事やふだんの活動が  
思ったほど、できなかつた……………<sub>1</sub>……………<sub>2</sub>……………<sub>3</sub>……………<sub>4</sub>……………<sub>5</sub>

ウ) 仕事やふだんの活動の内容に  
よっては、できないものが  
あつた……………<sub>1</sub>……………<sub>2</sub>……………<sub>3</sub>……………<sub>4</sub>……………<sub>5</sub>

エ) 仕事やふだんの活動をする  
ことがむずかしかった  
(例えばいつもより努力を  
必要としたなど)……………<sub>1</sub>……………<sub>2</sub>……………<sub>3</sub>……………<sub>4</sub>……………<sub>5</sub>

問5 過去1カ月間に、仕事やふだんの活動（家事など）をするにあたって、心理的な理由で（例えば、気分がおちこんだり不安を感じたりしたために）、次のような問題がありましたか。（ア～ウまでのそれぞれの質問について、一番よくあてはまるものに☑印をつけて下さい）

いつも	ほとんど いつも	ときどき	まれに	ぜんぜん ない
▼	▼	▼	▼	▼

ア) 仕事やふだんの活動をする  
時間をへらした……………<sub>1</sub>……………<sub>2</sub>……………<sub>3</sub>……………<sub>4</sub>……………<sub>5</sub>

イ) 仕事やふだんの活動が  
思ったほど、できなかつた……………<sub>1</sub>……………<sub>2</sub>……………<sub>3</sub>……………<sub>4</sub>……………<sub>5</sub>

ウ) 仕事やふだんの活動が  
思ったほど、集中して  
できなかつた……………<sub>1</sub>……………<sub>2</sub>……………<sub>3</sub>……………<sub>4</sub>……………<sub>5</sub>

問6 過去1カ月間に、家族、友人、近所の人、その他の仲間とのふだんのつきあいが、身体的あるいは心理的な理由で、どのくらい妨げられましたか。  
 (一番よくあてはまるものに☑印をつけて下さい)

ぜんぜん、 妨げられ なかった	わずかに、 妨げられた	少し、 妨げられた	かなり、 妨げられた	非常に、 妨げられた
▼	▼	▼	▼	▼
<input type="checkbox"/> 1	<input type="checkbox"/> 2	<input type="checkbox"/> 3	<input type="checkbox"/> 4	<input type="checkbox"/> 5

問7 過去1カ月間に、体の痛みをどのくらい感じましたか。  
 (一番よくあてはまるものに☑印をつけて下さい)

ぜんぜん、 なかった	かすかな 痛み	軽い 痛み	中くらい の痛み	強い 痛み	非常に 激しい痛み
▼	▼	▼	▼	▼	▼
<input type="checkbox"/> 1	<input type="checkbox"/> 2	<input type="checkbox"/> 3	<input type="checkbox"/> 4	<input type="checkbox"/> 5	<input type="checkbox"/> 6

問8 過去1カ月間に、いつもの仕事（家事も含みます）が痛みのために、どのくらい妨げられましたか。 (一番よくあてはまるものに☑印をつけて下さい)

ぜんぜん、 妨げられ なかった	わずかに、 妨げられた	少し、 妨げられた	かなり、 妨げられた	非常に、 妨げられた
▼	▼	▼	▼	▼
<input type="checkbox"/> 1	<input type="checkbox"/> 2	<input type="checkbox"/> 3	<input type="checkbox"/> 4	<input type="checkbox"/> 5

問9 次にあげるのは、過去1カ月間に、あなたがどのように感じたかについての質問です。

(ア～ケまでのそれぞれの質問について、一番よくあてはまるものに☑印をつけて下さい)

いつも	ほとんど いつも	ときどき	まれに	ぜんぜん ない
▼	▼	▼	▼	▼

ア) 元気いっぱいでしたか……………<sub>1</sub>……………<sub>2</sub>……………<sub>3</sub>……………<sub>4</sub>……………<sub>5</sub>

イ) かなり神経質でしたか……………<sub>1</sub>……………<sub>2</sub>……………<sub>3</sub>……………<sub>4</sub>……………<sub>5</sub>

ウ) どうにもならないくらい、  
気分がおちこんでいましたか……………<sub>1</sub>……………<sub>2</sub>……………<sub>3</sub>……………<sub>4</sub>……………<sub>5</sub>

エ) おちついていて、  
おだやかな気分でしたか……………<sub>1</sub>……………<sub>2</sub>……………<sub>3</sub>……………<sub>4</sub>……………<sub>5</sub>

オ) 活力（エネルギー）に  
あふれていましたか……………<sub>1</sub>……………<sub>2</sub>……………<sub>3</sub>……………<sub>4</sub>……………<sub>5</sub>

カ) おちこんで、ゆううつな  
気分でしたか……………<sub>1</sub>……………<sub>2</sub>……………<sub>3</sub>……………<sub>4</sub>……………<sub>5</sub>

キ) 疲れはてていましたか……………<sub>1</sub>……………<sub>2</sub>……………<sub>3</sub>……………<sub>4</sub>……………<sub>5</sub>

ク) 楽しい気分でしたか……………<sub>1</sub>……………<sub>2</sub>……………<sub>3</sub>……………<sub>4</sub>……………<sub>5</sub>

ケ) 疲れを感じましたか……………<sub>1</sub>……………<sub>2</sub>……………<sub>3</sub>……………<sub>4</sub>……………<sub>5</sub>

問10 過去1カ月間に、友人や親せきを訪ねるなど、人とのつきあいが、身体的あるいは心理的な理由で、時間的にどのくらい妨げられましたか。

(一番よくあてはまるものに☑印をつけて下さい)

いつも	ほとんど いつも	ときどき	まれに	ぜんぜん ない
▼	▼	▼	▼	▼
<input type="checkbox"/> <sub>1</sub>	<input type="checkbox"/> <sub>2</sub>	<input type="checkbox"/> <sub>3</sub>	<input type="checkbox"/> <sub>4</sub>	<input type="checkbox"/> <sub>5</sub>

問11 次にあげた各項目はどのくらいあなたにあてはまりますか。(ア～エまでのそれぞれの質問について、一番よくあてはまるものに☑印をつけて下さい)

まったく そのとおり	ほぼ あてはまる	何とも 言えない	ほとんど あてはまら ない	ぜんぜん あてはまら ない
▼	▼	▼	▼	▼

- ア) 私は他の人に比べて病気になるやすいと思う…………… <sub>1</sub> …… <sub>2</sub> …… <sub>3</sub> …… <sub>4</sub> …… <sub>5</sub>
- イ) 私は、人並みに健康である…………… <sub>1</sub> …… <sub>2</sub> …… <sub>3</sub> …… <sub>4</sub> …… <sub>5</sub>
- ウ) 私の健康は、悪くなるような気がする…………… <sub>1</sub> …… <sub>2</sub> …… <sub>3</sub> …… <sub>4</sub> …… <sub>5</sub>
- エ) 私の健康状態は非常に良い…………… <sub>1</sub> …… <sub>2</sub> …… <sub>3</sub> …… <sub>4</sub> …… <sub>5</sub>

---

質問は以上です。

「記入もれ」がないかどうか、もう一度お確かめください。

ご協力ありがとうございました。

---

## Ⅱ. 研究成果の刊行に 関する一覧表

発表者氏名	論文タイトル名	発表誌名	巻号	ページ	出版年
中村博亮	腰椎変性すべり症に対する鏡視下手術	整形外科	57	1169-75	2006
中村博亮	腰痛性疾患に対する診療テクニックとピットフォール	都島医師会会誌	102	15-19	2006
Seki M, Nakamura H, Kono H	Neurolysis is not required for young patients with a spontaneous palsy of the anterior interosseous nerve	The Journal Of Bone And Joint Surgery	88	1606-09	2006
Kono H, Nakamura H, Seki M, Hosomi R, Hara Y	Lumbar juxta-facet cyst after trauma	Journal Of Clinical Neuroscience	13	694-96	2006
Sasaoka R, Nakamura H, Konisi S, Nagayama R, Suzuki E, Terai H, Takaoka K	Objective assessment of reduced invasiveness in MED Compared with conventional one-level laminotomy	Eur Spine J	15	577-582	2006
辻尾唯雄、中村博亮、星野雅俊、寺井秀富、高岡邦夫	骨粗鬆症性脊椎椎体骨折における予後不良因子の検討	臨床整形外科	41	499-506	2006
辻尾唯雄、中村博亮、星野雅俊、寺井秀富、松村 昭、並川 崇、鈴木亨暢、高山和士、高岡邦夫	早期MRIからみた骨粗鬆症性脊椎椎体骨折の予後不良因子	骨・関節・靭帯	20	45-53	2007
Terai H, Takaoka K	Application of bone morphogenetic protein (BMP) in regenerative medicine of bone	Clin Calcium	16	745-51	2006
Hoshino M, Nakamura H, Konishi S, Nagayama R, Terai H, Tsujio T, Namikawa T, Kato M, Takaoka K	Endoscopic vertebroplasty for the treatment of chronic vertebral compression fracture. Technical note.	J Neurosurg Spine	5	461-7	2006
Hoshino M, Egi T, Terai H, Namikawa T, Takaoka K	Repair of long intercalated rib defects using porous beta-tricalcium phosphate cylinders containing recombinant human bone morphogenetic protein-2 in dogs.	Biomaterials	27	4934-40	2006
Kato M, Namikawa T, Terai H, Hoshino M, Miyamoto S, Takaoka K	Ectopic bone formation in mice associated with a lactic acid/dioxanone/ethylene glycol copolymer-tricalcium phosphate composite with added recombinant human bone morphogenetic protein-2.	Biomaterials.	27	3927-33	2006
Kato M, Toyoda H, Namikawa T, Hoshino M, Terai H, Miyamoto S, Takaoka K	Optimized use of a biodegradable polymer as a carrier material for the local delivery of recombinant human bone morphogenetic protein-2 (rhBMP-2).	Biomaterials.	27	2035-41	2006
星野雅俊、中村博亮、小西定彦、寺井秀富、辻尾唯雄、高岡邦夫	骨粗鬆症性椎体骨折後偽関節例に対するCPCを用いた椎体形成術 バルーンと内視鏡の応用	中部日本整形外科災害外科学会雑誌	49	959-60	2006
並川 崇、寺井秀富、高岡邦夫	BMPの新しいDDSによる実験的脊椎固定手術	Clinical Calcium	16	793-800	2006



発表者氏名	論文タイトル名	発表誌名	巻号	ページ	出版年
Kaneshiro Y, Oda Y, Iwakiri K, Masada T, Iwaki H, Hirota Y, Kondo K, Takaoka K	Low hepatic cytochrome P450 3A activity is a risk for corticosteroid-induced osteonecrosis.	Clin Pharmacol Ther.	80	396-402	2006
Matsushita N, Terai H, Okada T, Nozaki K, Inoue H, Miyamoto S, Takaoka K	Accelerated repair of a bone defect with a synthetic biodegradable bone-inducing implant.	J Orthop Sci.	11	505-11	2006
Zhao B, Katagiri T, Toyoda H, Takada T, Yanai T, Fukuda T, Chung UI, Koike T, Takaoka K, Kamijo R	Heparin potentiates the in vivo ectopic bone formation induced by bone morphogenetic protein-2.	J Biol Chem.	281	23246-53	2006
Yamamoto Y, Udagawa N, Matsuura S, Nakamichi Y, Horiuchi H, Hosoya A, Nakamura M, Ozawa H, Takaoka K, Penninger JM, Noguchi T, Takahashi N.	Osteoblasts provide a suitable microenvironment for the action of receptor activator of nuclear factor-kappaB ligand.	Endocrinology.	147	3366-74	2006
Suzuki A, Terai H, Toyoda H, Namikawa T, Yokota Y, Tsunoda T, Takaoka K	A biodegradable delivery system for antibiotics and recombinant human bone morphogenetic protein-2: A potential treatment for infected bone defects.	J Orthop Res.	24	327-32	2006
Sugama R, Koike T, Imai Y, Nomura-Furuwatari C, Takaoka K	Bone morphogenetic protein activities are enhanced by 3',5'-cyclic adenosine monophosphate through suppression of Smad6 expression in osteoprogenitor cells.	Bone.	38	206-14	2006
kishimoto H, Fukunaga M, Kushida K, Shiraki M, Itabashi A, Nawata H, Nakamura T, Ohta H, Takaoka K, Ohashi Y	Efficacy and tolerability of once-weekly administration of 17.5 mg risedronate in Japanese patients with involuntional osteoporosis: a comparison with 2.5-mg once-daily dosage regimen.	J Bone Miner Metab.	24	405-13	2006
今井祐記、高岡邦夫	骨の再生医療	ティッシュエンジニアリング		112-9	2006
渡邊具子、折戸芳紀、豊田宏光、洲鎌 亮、多田昌弘、高岡邦夫、小池達也	転倒予防のハード面の課題 ヒッププロテクターによる大腿骨頸部骨折の予防 Randomized Controlled Trial	Osteoporosis Japan	14	88-90	2006
小池達也、折戸芳紀、多田昌弘、洲鎌 亮、豊田宏光、小林千益、高岡邦夫	ヒッププロテクターは大腿骨頸部骨折ハイリスク集団の頸部骨折を抑制する	Osteoporosis Japan	14	42-45	2006
渡邊具子、折戸芳紀、豊田宏光、洲鎌 亮、多田昌弘、高岡邦夫、小池達也	ヒッププロテクターによる大腿骨頸部／転子部骨折の予防 randomized controlled trial	整形外科看護	11	298-304	2006

Ⅲ. 研究成果の  
刊行物・別冊

## Bone morphogenetic protein activities are enhanced by 3',5'-cyclic adenosine monophosphate through suppression of Smad6 expression in osteoprogenitor cells

Ryo Sugama, Tatsuya Koike\*, Yuuki Imai, Chizumi Nomura-Furuwatari, Kunio Takaoka

*Department of Orthopaedic Surgery, Osaka City University Medical School, Asahimachi 1-4-3, Abenoku, Osaka 545-8585, Japan*

Received 4 June 2005; revised 30 July 2005; accepted 5 August 2005

Available online 3 October 2005

### Abstract

Bone morphogenetic proteins (BMPs) belong to the transforming growth factor (TGF)- $\beta$  superfamily, and some display potent osteogenic activity both *in vivo* and *in vitro*. The BMP signaling cascade involving BMP receptors at the cell membrane and intracellular messengers (Smads) has been elucidated, but the regulatory mechanisms of BMP signaling have not been clarified. We previously found that pentoxifyline (PeTx), a nonspecific inhibitor of phosphodiesterase (PDE), and rolipram, a PDE-4-specific inhibitor, enhance BMP-4-induced osteogenic differentiation of mesenchymal cells, probably through the elevation of intracellular cyclic adenosine monophosphate (cAMP) accumulation and modulation of BMP signaling pathways as enhanced BMP-4 action was reproduced by addition of dibutyl-*l*-cAMP (dbcAMP). However, the precise mechanisms underlying the enhancing effects of those agents on BMP signaling were not completely revealed. As already reported, BMPs utilize a specific intracellular signaling cascade to target genes via R-Smads (Smad1,5,8), Co-Smad (Smad4) and I-Smads (Smad6,7). One possibility for cAMP-mediated effects on BMP signaling might be suppression of I-Smads expression since these proteins form a negative feedback loop in BMP signaling. To examine this possibility, changes in I-Smad (Smad6) expression on addition of dbcAMP or PeTx were examined in a bone-marrow-derived osteogenic cell line (ST2). Alkaline phosphatase activity in ST2 cells was consistently induced by BMP-4 treatment (300 ng/ml), and Smad6 mRNA expression was also induced by BMP-4 treatment. Although concurrent treatment of ST2 cells with BMP-4 and dbcAMP elicited further activation of alkaline phosphatase, addition of dbcAMP reduced BMP-4-induced Smad6 expression in a dose-dependent manner. Furthermore, detection of phosphorylated Smad1/5/8 on Western blotting analysis was prolonged, suggesting prolonged kinase activity of BMP receptors through suppressed expression of Smad6. Elevated intracellular cAMP might thus enhance BMP signaling by suppressing Smad6 induction and prolonging intracellular BMP signaling.

© 2005 Elsevier Inc. All rights reserved.

**Keywords:** Cyclic adenosine monophosphate; Osteoprogenitor cells; Bone morphogenetic protein; Smad6; Pentoxifyline

### Introduction

The bone-inducing activity of bone morphogenetic proteins (BMPs) was originally identified in bone matrix through ectopic bone formation after implanting decalcified bone matrix into rodent muscle. A group of BMP molecules belonging to the transforming growth factor (TGF)- $\beta$

superfamily has since been identified and recognized as multi-functional growth factors.

In bone biology, BMPs are considered crucial in bone and cartilage formation for embryonic development, postnatal bone metabolism and repair of damaged bone. From a clinical perspective, BMPs and related molecules regulating BMP activity are expected to offer powerful tools for the treatment of systemic or local skeletal disorders like osteoporosis and repair of fracture or bone defects associated with bone tumor excision or trauma. For clinical purposes, BMP-2 and BMP-7/osteogenic protein

\* Corresponding author. Fax: +81 6 6646 6260.

E-mail address: tatsuya@med.osaka-cu.ac.jp (T. Koike).

(OP)-1 have been synthesized using DNA recombination and utilized in a limited number of human cases in combination with local delivery systems [1]. Gene therapy using BMP genes has also been attempted in experimental animals [2], but efficacious and safe vectors for delivering BMP genes in gene therapy have remained problematic for gene therapy.

When considering the efficient use of BMPs either systemically or locally, one basic and important problem is the low responsiveness of human mesenchymal cells to BMPs [3]. Large doses (in the order of milligrams) of costly BMP are thus required for local lesions in each patient. To overcome such problems and enable more widespread and effective use of BMP molecules, additional agents or methods that intensify BMP activity are desirable. In this context, we screened the phosphodiesterase (PDE) inhibitors pentoxifyline (PeTx, a non-specific inhibitor of PDE) and rolipram (a PDE-4-specific inhibitor), revealing increases in BMP-2-induced bone mass following systemic daily injection of these agents [4,5]. However, the precise pharmacological basis of these effects was uncertain. Elevation of intracellular levels of cyclic adenosine monophosphate (cAMP) may have been involved and might intensify the intracellular BMP signaling cascade. One possible mechanism for cAMP to intensify BMP signaling would be interference with the negative feedback mechanism in BMP signaling formed by inhibitory Smads (I-Smads). The present study investigated changes in mRNA expression of major I-Smads, Smad6 and phosphorylated receptor-regulated Smads (R-Smads) levels after treatment with BMP-4 and dibutyryl-cAMP (dbcAMP), a cell-membrane permeable analog of cAMP, in lined murine osteogenic ST2 cells.

## Materials and methods

### Reagents

PeTx (1-(5-oxohexyl)-3,7-dimethylxanthine) and dbcAMP were purchased from Sigma Chemical Co. (St. Louis, MO, USA). PeTx and dbcAMP were prepared at 90 mM and 100 mM, respectively, as stock solutions in culture medium.

As a source of mouse BMP-4, conditioned medium from Chinese hamster ovary (CHO) cells transfected with murine BMP-4 (mBMP-4) cDNA was used. Details of the CHO cell have been described in our previous publication [6]. Briefly, cells transfected with mBMP-4 cDNA or mock vector (for controls) were inoculated at a density of  $1.0 \times 10^6$  cells/100 mm plastic dish (Falcon #3003; Becton Dickinson Labware, Tokyo, Japan) in 10 ml of  $\alpha$ -minimal essential medium ( $\alpha$ -MEM; Sigma Chemical Co.) with 10% (vol/vol) heat-inactivated fetal bovine serum (FBS; Gibco, Grand Island, NY, USA) and antibiotics/antimycotics

(100 U/ml penicillin; 100  $\mu$ g/ml streptomycin; and 0.25  $\mu$ g/ml amphotericin B, Sigma Chemical Co.) at 37°C in 5% CO<sub>2</sub> atmosphere. Conditioned medium was collected after 5 days incubation, filtered through a membrane filter (Corning, NY, USA; pore size 0.22  $\mu$ m) and stored at 4°C. Under these conditions, judging from the induction of alkaline phosphatase (ALP) activity in osteoprogenitor cells, a 5% mixture of conditioned medium corresponded to approximately 100 ng/ml of recombinant human BMP-2 (generously provided by Yamanouchi Pharmaceutical, Tokyo, Japan) (data not shown). For experiments, conditioned medium from cells transfected with mock vector was used for negative controls.

### Cell culture

Mouse mesenchymal cell line C3H10T1/2 [7], mouse bone marrow stromal cell line ST2 [8] and mouse osteoblastic cell line MC3T3-E1 [9] were obtained from the Riken Cell Bank (Ibaraki, Japan). The C3H10T1/2 and ST2 cell lines are widely regarded as osteogenic precursors as cells go on to exhibit osteoblastic phenotypes under the control of BMPs [10,11]. Cells were seeded at a density of  $3 \times 10^5$  cells/100-mm plastic dish and cultured in  $\alpha$ -MEM containing 10% FBS and antibiotics/antimycotics at 37°C in 5% CO<sub>2</sub> humidified air. Upon reaching confluence, cells were used in the following experiments.

### Determination of alkaline phosphatase activity

Alkaline phosphatase activity was measured as a marker of osteoblastic differentiation in response to BMP-4 or other agents. Cells were seeded at a density of  $1 \times 10^5$  cells/well in 48-well plates ( $n=4$  per group). Upon achieving confluence, medium was replaced by fresh medium containing 5% FBS and pre-incubated for 1 h. BMP-4 and other chemicals were then added to the cultures, and incubation was continued for 3 more days. Cells were pre-incubated with or without PeTx/dbcAMP for 15 min before treatment with BMP-4. After 3 days of incubation, medium was removed, and cells were washed 3 times with saline then lysed in 250  $\mu$ l of 0.2% Triton-X (Sigma Chemical Co.) with saline. Plates were frozen at  $-80^\circ\text{C}$  and dissolved again then sonicated for 40 s. After centrifugation, supernatant was collected and used for ALP assay and protein assay. For ALP assay, samples were incubated with 0.5 mM *para*-nitrophenol phosphate, 0.5 mM MgCl<sub>2</sub> and 0.5 M Tris-HCl for 30 min at 37°C. To stop the reaction, a quarter volume of 1 N NaOH was added, and then absorbance was read at 405 nm. As a standard, 5 mM *para*-nitrophenol was used. Protein concentration was measured using a DC protein assay kit (Bio-Rad Laboratories, CA, USA). Experiments were performed independently in triplicate.

### Determination of intracellular cAMP

When cultures maintained in 24-well plates ( $n = 4$  per group) reached confluence, medium was replaced using fresh medium of the same composition. After 1 h of pre-incubation, BMP-4 and other chemicals were added to the cultures, and incubation was continued for 5 or 15 min. The medium was then removed, and cells were overlaid with 250  $\mu$ l of 0.1 N HCl for 10 min at room temperature, collected by scraping and then centrifuged. Supernatant was then collected and used for cAMP assay, which was performed using a cAMP Kit (R&D Systems, Minneapolis, USA) according to the instructions of the manufacturer. The cAMP assay is based on the competitive binding technique, in which cAMP present in a sample competes with a fixed amount of ALP-labeled anti-cAMP rabbit polyclonal antibody.

### Northern blot analysis

Cells were seeded in 100-mm diameter dishes and cultured until confluence. Upon achieving confluence, medium was replaced by fresh medium containing 5% FBS and cultured for 1 h. Cells were then treated with BMP-4 (300 ng/ml) or dbcAMP (2 mM) for 24 h. Cells were pre-incubated with or without dbcAMP for 15 min before treatment with BMP-4.

Total RNA was isolated from cells using Isogen (Wako Pure Chemical Industries, Osaka, Japan), and poly(A)<sup>+</sup> RNA was obtained using Poly(A) Quik mRNA Isolation Kit (Stratagene, CA, USA) according to the instructions of the manufacturer. Poly(A)<sup>+</sup> RNA (2  $\mu$ g) was electrophoresed in 1.0% agarose gels in the presence of 1.1 M formaldehyde and blotted to Hybond N membranes (Amersham Bioscience, NJ, USA). The complete coding regions of mouse Smad6 cDNA were labeled by [ $\alpha$ -<sup>32</sup>P]-dCTP using a Random Primer Labeling Kit (Takara Biochemicals, Otsu, Japan). Hybridization was performed in a solution containing 0.5 M phosphate buffer, 1 mM ethylene diamine tetra-acetic acid (EDTA) and 7% sodium dodecyl sulfate (SDS) at 65°C overnight, and the filter was washed at 65°C with 6 $\times$  standard saline citrate (SSC), 0.1% SDS for 15 s, 2 $\times$  SSC and 0.1% SDS for 10 min twice. Filters were stripped using boiled distilled water containing 0.1% SDS and rehybridized. Amounts of mRNA were verified by hybridizing filters with a glyceraldehyde 3-phosphate dehydrogenase (GAPDH) probe. Signals were detected using a BAS-2500 image analysis system (Fuji Photo Film Co., Tokyo, Japan).

Smad6 cDNA was generously provided by T. Imamura (Cancer Institute of the Japanese Foundation for Cancer Research, Tokyo, Japan), and GAPDH cDNA was generated by reverse transcription polymerase chain reaction (RT-PCR) using specific primer sets as follows: for GAPDH, sense primer 5'-ATGGTGAAGGTCGGTGTGAA-3' and anti-sense primer 5'-CTCTTGCTCAGTGTCTTCTGCT-3'.

### Quantitative real-time reverse transcription polymerase chain reaction

When cultures maintained in 6-well plates ( $n = 3$  per group) became confluent, medium was replaced by fresh medium containing 5% FBS and cultured for 1 h, then BMP-4 and other chemicals were added to cultures. In the case of combined treatment, BMP-4 was added 15 min later than other chemicals. Total RNA was isolated from cells treated with each chemical for each time period using NucleoSpin RNA II (Macherey-Nagel, Duren, Germany) according to the instructions of the manufacturer. A total of 1  $\mu$ g of total RNA was reverse-transcribed into first-strand cDNA with an oligo-dT primer using Superscript II reverse transcriptase (Invitrogen, CA, USA). Real-time RT-PCR was performed according to the instructions of the manufacturer (Applied Biosystems, Foster City, CA, USA). TaqMan fluorogenic probes for Smad6 were purchased from Applied Biosystems. Real time RT-PCR for GAPDH was performed using SYBR Green Supermix (Bio-Rad Laboratories). Experimental samples were matched to a standard curve generated by amplifying serially diluted products using the same PCR protocol. Amplified GAPDH cDNA was used for internal control. To correct for variability in RNA recovery and efficiency of reverse transcription, GAPDH cDNA was amplified and quantitated in each cDNA preparation. Normalization and calculation steps were performed as described by Pfaffl [12]. Experiments were performed on 3 independent occasions, and each experiment comprised of 3 samples.

### Western blot analysis

Cells were plated at a density of  $2 \times 10^4$  cells/well on 6-well plates and cultured until confluence. At 1 h after replacing with fresh medium containing 5% FBS, BMP-4 (300 ng/ml) and dbcAMP (2 mM) were added to the media, and cells were cultured for designated periods. Dibutyl cyclic AMP (dbcAMP) was added 15 min prior to BMP-4. The resultant sample was boiled for 5 min in 20  $\mu$ l of sample buffer for SDS polyacrylamide electrophoresis (SDS-PAGE) as described previously with minor modifications [13]. Equal amounts of protein samples were applied and run on each lane of SDS 5–20% acrylamide gels (40 mA, low voltage, 90 min) and ultimately blotted to ECL<sup>TM</sup> nitrocellulose membrane (Amersham Bioscience). Membranes were developed using ECL<sup>TM</sup> plus reagent (Amersham Bioscience). Signal intensities were measured according to staining of each band using a Chemi Doc XRS-J digital densitometer (Bio-Rad Laboratories).

### Statistical analysis

Data are expressed as mean  $\pm$  SD for each group. Differences between treatment groups were analyzed using

Fisher's PLSD test. Values of  $P < 0.05$  were considered statistically significant.

## Results

### ALP induction by BMP-4, PeTx and dbcAMP

PeTx, a methylxanthine-derived nonspecific inhibitor of PDEs, had no effect on ALP activity in ST2 cells at PeTx concentrations of 0.225–0.9 mM. In contrast, PeTx enhanced BMP-induced ALP activity in a dose-dependent manner (Fig. 1A), indicating a specific enhancing effect of PeTx on BMP-2 activity. Intracellular levels of cAMP increased about 7-fold in 15 min after the addition of PeTx (0.9 mM). Levels of cAMP were unaffected by addition of BMP-4 (50 ng/ml) with PeTx (Fig. 1B).

The potentiating effect of PeTx on BMP action in ST2 cells was mimicked by the addition of dbcAMP (Fig. 1C). Similar results were obtained using C3H10T1/2 and MC3T3-E1 cells (data not shown).

### Smad6 mRNA induced by BMP-4 stimulation

Fig. 2 shows dose- and time-dependent changes in Smad6 mRNA expression following BMP-4 treatment, as deter-

mined using quantitative real-time RT-PCR methods. In ST2 cells, Smad6 mRNA expression was significantly up-regulated by mBMP-4 treatment in a dose-dependent manner over the BMP-4 dose range from 50 ng/ml to 300 ng/ml in 6 h (Fig. 2A). Up-regulated expression of Smad6 mRNA peaked in 3 h and lasted up to 24 h after BMP treatment (300 ng/ml) then gradually reduced to the baseline level within 72 h (Fig. 2B).

### Suppression of Smad6 expression by cAMP

In order to elucidate how cAMP accelerates osteoblastic differentiation in ST2 cells, the expression of Smad6 mRNA after treatment with dbcAMP and BMP-4 was analyzed. Smad6 mRNA expression was induced by BMP-4 stimulation, but addition of dbcAMP significantly ameliorated BMP-4-induced Smad6 expression (Fig. 3).

Quantitative real-time RT-PCR of Smad6 mRNA expression treated with or without BMP-4 (300 ng/ml) and various doses of dbcAMP (100–2000  $\mu$ M) at 12 h revealed that dbcAMP reduced BMP-4-induced Smad6 expression in a dose-dependent manner (Fig. 4).

Results of quantitative real-time RT-PCR for Smad6 mRNA expression at 6, 12, 24 and 72 h are shown in Fig. 5. At 6, 12 and 24 h, dbcAMP reduced the expression of Smad6 mRNA that was induced by BMP-4 (Figs. 5A–C). Although level of Smad6 mRNA induced by BMP-4 returned to

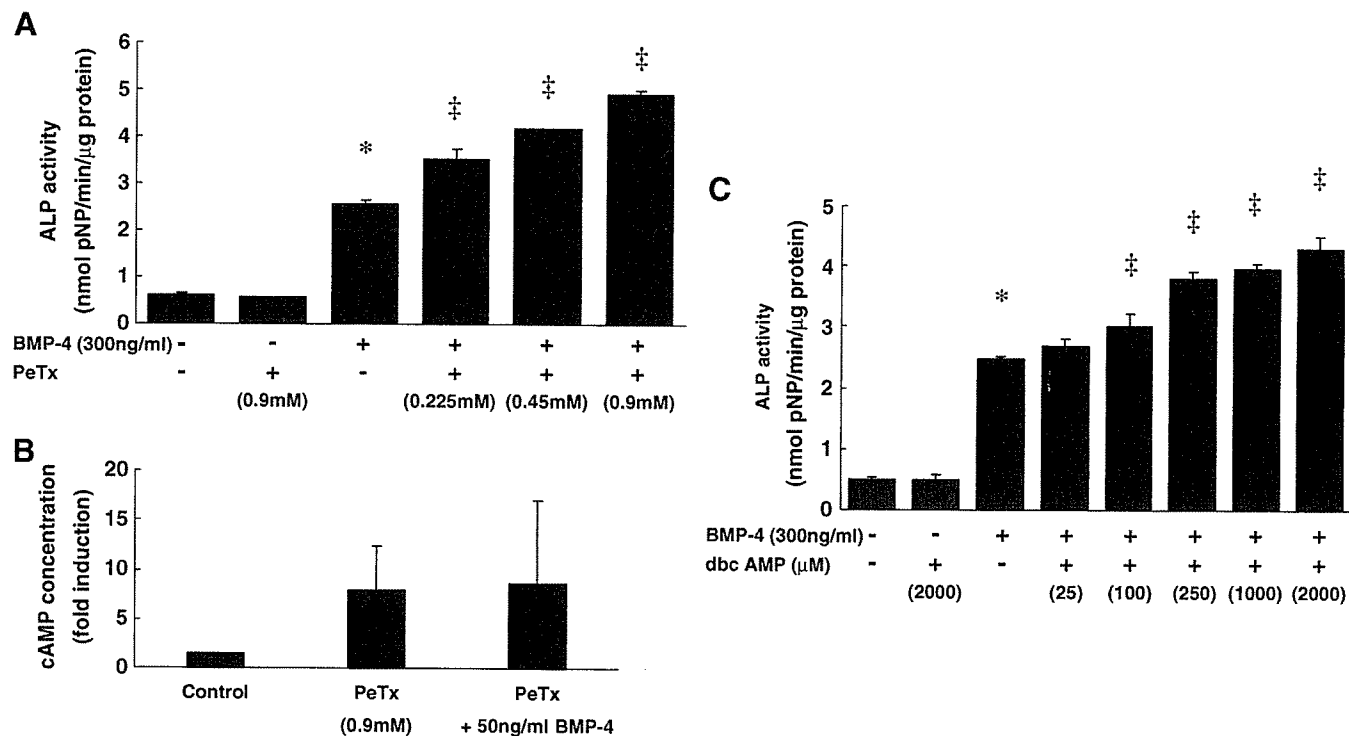


Fig. 1. (A, C) PeTx and dbcAMP intensified BMP-4-induced ALP activation in a dose-dependent manner. ST2 cells were cultured in 24-well plates until confluence then treated with BMP-4, PeTx (A) and dbcAMP (B). After 3 days, ALP activity was measured. (B) Concentration of cAMP in ST2 cells treated with BMP-4 and PeTx for 15 min. Bars and lines represent mean  $\pm$  SD for 4 wells. \* $P < 0.05$ , cells treated with BMP-4 compared with untreated cells. † $P < 0.05$ , cells treated with BMP-4/PeTx or dbcAMP compared with BMP-4-treated cells.

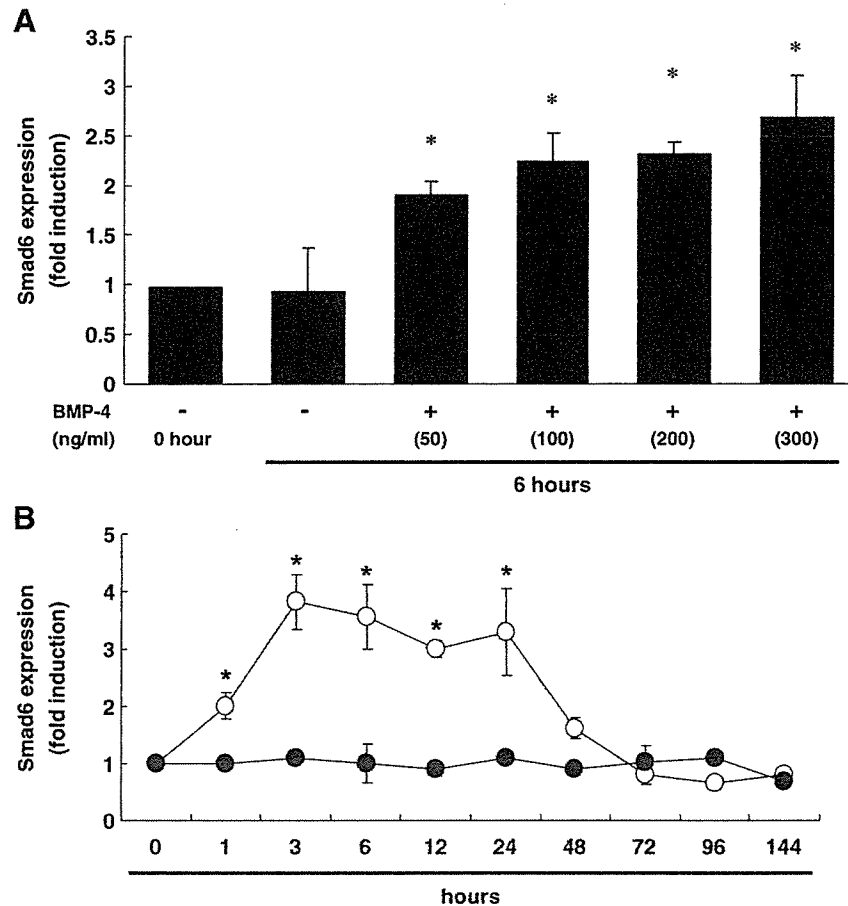


Fig. 2. Effects of BMP-4 on expression of Smad6 in ST2 cells. ST2 cells were cultured in 6-well plates to confluence then treated with BMP-4. After 6 h (A) or other designated times (B), total RNA was extracted, and levels of Smad6 expression were analyzed using real-time RT-PCR, normalized to GAPDH expression and presented as the expression level relative to that in control untreated cells. BMP-4 induced Smad6 expression in a dose-dependent manner at 6 h after stimulation (A). In panel B, closed circles represent Smad6 expression at each time point in untreated cells, and open circles represent expression in cells treated with BMP-4 (300 ng/ml). Bars and lines represent mean  $\pm$  SD for 3 wells. Similar results were obtained in 3 independent series of studies. \* $P < 0.05$ , cells treated with BMP-4 compared with untreated cells.

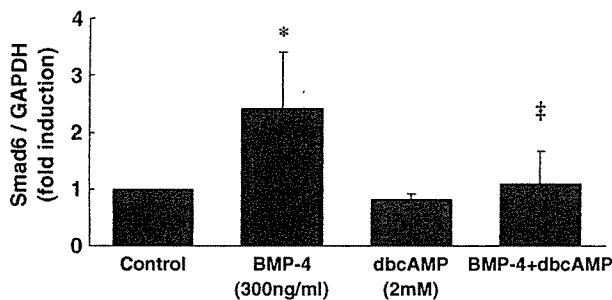


Fig. 3. Cyclic AMP reduced BMP-4-induced Smad6 expression in ST2 cells. Results of Northern blotting. After 24 h of treatment using BMP-4 (300 ng/ml), dbcAMP (2000  $\mu$ M) or both, mRNA was extracted and analyzed. Messenger RNA obtained using a Poly(A) Quik mRNA Isolation Kit was electrophoresed in agarose-formaldehyde gels, blotted to Hybond N membranes and hybridized with Smad6 and GAPDH probes. Showing the summary of 3 independent experiments. Bars and lines represent mean  $\pm$  SD for 3 experiments. \* $P < 0.05$ , cells treated with BMP-4 compared with untreated cells. ‡ $P < 0.05$ , cells treated with BMP-4/dbcAMP compared with BMP-4 treated cells.

baseline by 72 h, dbcAMP still repressed Smad6 mRNA levels (Fig. 5D).

#### Prolonged phosphorylation of BMP-specific R-Smads by dbcAMP

Phosphorylation of BMP-specific R-Smads by BMP-4 was analyzed by immunoblotting using phospho-Smad1/5/8-specific antibody with or without dbcAMP treatment (Fig. 6). Phosphorylation of Smad1/5/8 after BMP-4 stimulation started from 1 h after BMP-4 stimulation and became undetectable after day 3. Addition of dbcAMP did not exhibit significant effects at 1 or 24 h after treatment, but phosphorylated Smad1/5/8 were detected until day 5.

#### Discussion

The cyclic nucleotide PDE family includes a large numbers of PDE isomers, which are encoded in at least 13

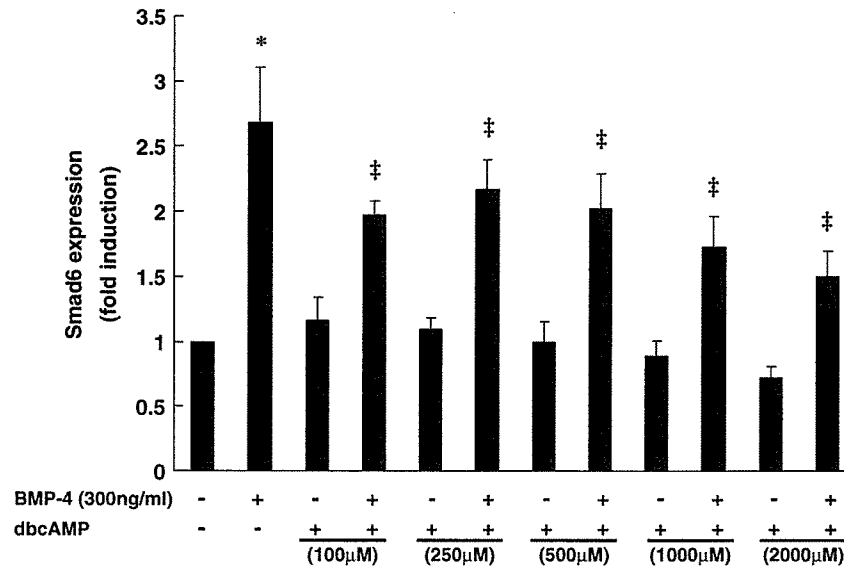
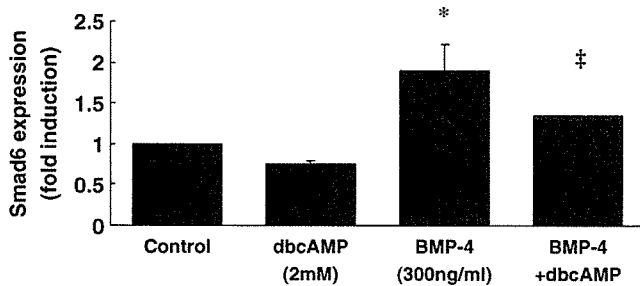


Fig. 4. Cyclic AMP reduced BMP-4-induced Smad6 expression in ST2 cells in a dose-dependent manner. After 12 h of treatment with BMP-4 (300 ng/ml), dbcAMP or both, total RNA was extracted, and expression of Smad6 was analyzed using real-time RT-PCR, normalized to GAPDH expression and presented as the expression level relative to that in control untreated cells. Bars and lines represent mean  $\pm$  SD for 3 wells. \* $P < 0.05$ , cells treated with BMP-4 compared with untreated cells. ‡ $P < 0.05$ , cells treated with BMP-4/dbcAMP compared with BMP-4 treated cells.

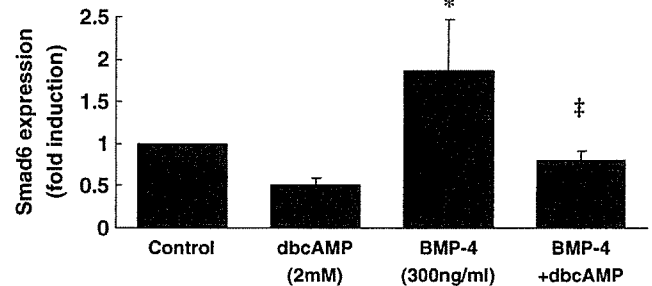
distinct genes and hydrolyze cAMP and/or cyclic guanosine monophosphate (cGMP), thereby contributing to the regulation of intracellular cAMP levels [14]. A number of compounds inhibiting respective PDE subfamily enzymes in

a selective or non-selective manner have already been developed [15]. Interestingly, some PDE inhibitors have been reported to stimulate osteoblastic differentiation and inhibit osteoclastic differentiation in vitro [16,17]. We have

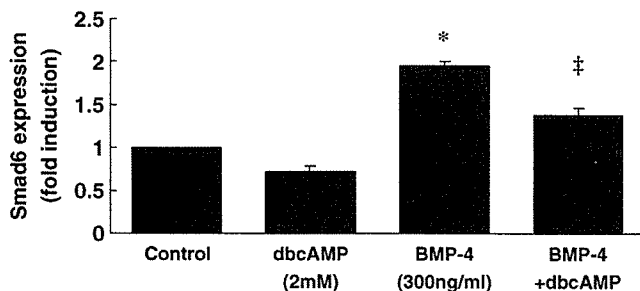
**A: 6 hours**



**C: 24 hours**



**B: 12 hours**



**D: 72 hours**

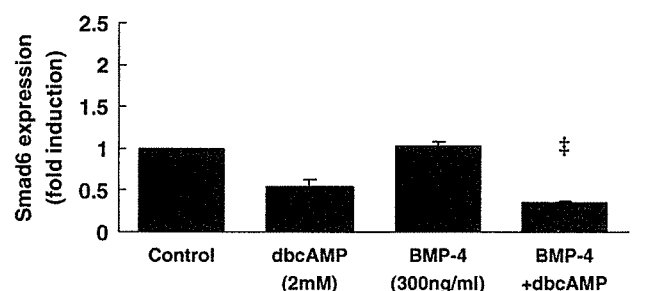


Fig. 5. Cyclic AMP reduced BMP-4-induced Smad6 expression in ST2 cells at 6, 12 and 24 h. ST2 cells were treated with BMP-4 (300 ng/ml), dbcAMP (2 mM) or both for 6 h (A), 12 h (B), 24 h (C) or 72 h (D). Total RNA was then extracted, and expression of Smad6 was analyzed using real-time RT-PCR, normalized to GAPDH expression and presented as expression level relative to that in control untreated cells. Bars and lines represent mean  $\pm$  SD for 3 wells. \* $P < 0.05$ , cells treated with BMP-4 compared with untreated cells. ‡ $P < 0.05$ , cells treated with BMP-4/dbcAMP compared with BMP-4 treated cells.



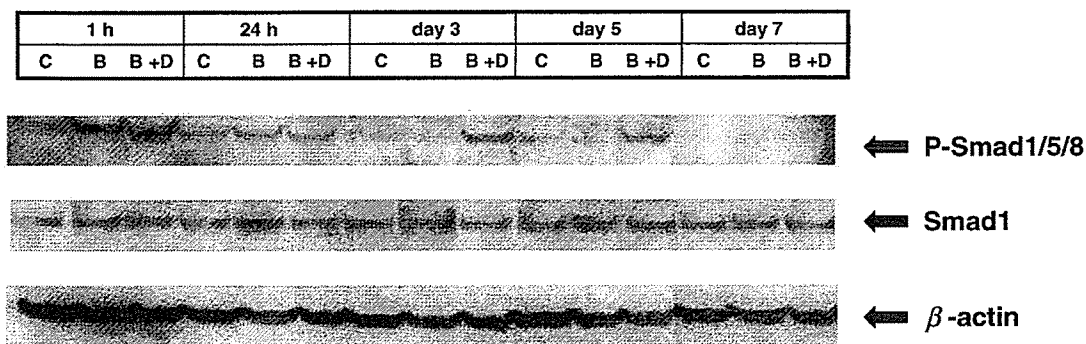


Fig. 6. Effects of dbcAMP on BMP-4-induced Smads signaling in ST2 cells. ST2 cells were pretreated for 1 h in 5% FBS before stimulation. Cells were treated with BMP-4 (300 ng/ml) or BMP-4 and dbcAMP (2 mM). Whole-cell extracts were prepared at indicated time points followed by immunoblotting. Identical amounts of protein samples were applied and run on each lane of a 10% acrylamide gels, blotted to an ECL nitrocellulose membrane, and membranes were developed using ECL plus reagent. Activated BMP-specific R-Smads were detected by anti-phospho-Smad1/5/8 antibody. Bands for Smad1 and  $\beta$ -actin are shown as a loading control. C, control; B, BMP-4; B + D, BMP-4 and dbcAMP.

reported that the PDE inhibitors, PeTx and Rolipram, increase bone mass mainly by promoting bone formation in normal mice [4,18]. Furthermore, PDE inhibitors have been shown to exert therapeutic effects in different experimental osteopenia models [17,19,20]. Although some PDE inhibitors reportedly promote bone formation under both in vivo and in vitro conditions, the precise mechanisms leading to the osteogenic effects of those PDE inhibitors are currently unknown. The present study was performed to gain clues regarding the anabolic effect of the PDE inhibitor PeTx on osteoblastic differentiation of bone marrow stroma cell-derived osteoprogenitor cells, ST2 cells.

Our previous report showed that daily injection of PeTx increased systemic bone mass by enhancing bone formation [18], and it also stimulated BMP-2 induced ectopic bone formation [4]. However, the mechanisms underlying the effects of PDE inhibitors on bone metabolism have remained obscure. Regarding mechanisms of action, one of the basic but major questions has been whether the anabolic effect of PDE inhibitors on bone metabolism is linked specifically to BMP signaling system to induce osteoblastic differentiation or results from functional activation of fully differentiated osteoblasts independent of BMP. Based on the results in our present and previous studies, the effect of PDE inhibitors might be brought about in association with BMP since the effects of PDE inhibitors in enhancing osteoblastic differentiation were not seen in the absence of BMP but were consistently noted in the presence of BMP, indicating a potential function of the PDE inhibitor in enhancing BMP signaling through elevation of intracellular cAMP levels [21]. In addition, intracellular cAMP-elevating agents such as dbcAMP and forskolin also increase BMP-4-stimulated osteoblastic differentiation when estimated by elevating ALP activity [21]. These results indicate that cAMP-elevating agents might enhance BMP signaling pathway to enhance bone formation. Regarding the effects of PDE inhibitors on BMP signaling, the results of a recent study suggest that the anabolic actions of PeTx might be attributable to cross-talk

between BMP signaling and protein kinase C (PKC) signaling cascades [22]. Rawadi et al. noted that PeTx could promote osteoblast differentiation not by protein kinase A (PKA) activation, since inhibition of PKA by H-89 (a protein kinase inhibitor) did not alter the PDE-induced osteogenic reaction, but through activation of extracellular signal-regulated kinase (ERK) 1/2 and p38 kinase pathways [22]. However, we could not exclude the possible contribution of cAMP-activated PKA to the acceleration of osteoblastic differentiation by PeTx since inhibition of PKA by H-89 partially abolishes PDE inhibitor-mediated increases in the induction of ALP by BMP-4 (data not shown). Cross-talk between the cAMP/PKA cascade and the Smads-mediated BMP signaling pathway awaits elucidation in future studies.

Among the 3 groups of Smad proteins involved in the BMP signaling pathway, Smad6 and Smad7 are classified as I-Smads. I-Smads interact with activated serine/threonine kinase BMP or TGF- $\beta$  receptors and compete with R-Smads (Smad1/5/8) to activate the receptors [23]. Smad6 has also been reported to compete with common-partner Smad (Co-Smad, Smad4) in forming complexes with R-Smads. Smad6 might be more crucial in the negative feedback loop as Takase et al. [24] reported that Smad6 mRNA was markedly induced by BMP-2 or BMP-7/OP-1 in various osteoprogenitor cell lines, whereas Smad7 expression remained unchanged in most cells. In this context, Smad6 was targeted to examine involvement of the protein in the mechanism enhancing BMP signaling by cAMP. We confirmed up-regulation of Smad6 expression in response to BMP-4 stimulation in ST2 cells. Interestingly, up-regulated expression of Smad6 by BMP-4 stimulation appears to be partially suppressed by elevated intracellular cAMP levels on addition of cell-membrane-permeable dbcAMP in a dose-dependent manner in ST2 cells. Elevated levels of phosphorylated R-Smads following BMP-4 treatment and dbcAMP lasted longer than that with BMP-4 treatment alone on Western blot analyses. Although dbcAMP significantly suppressed the

expression of Smad6 mRNA induced by BMP-4 within 6 h (Fig. 5A), levels of phosphorylated R-Smads induced by BMP-4 at 24 h were not altered (Fig. 6). This discrepancy might be explained by following two points. First, Smad6 was evaluated by mRNA level, whereas phosphorylated R-Smads were determined by protein level. Second, Smad6 binds in a stable manner to serine/threonine kinase receptors and then interferes with phosphorylation of R-Smads by receptors. This negative feedback loop might require the appropriate time lag. These results suggest that the anabolic effects of cAMP on BMP-4-induced osteoblastic differentiation might be partially attributable to suppressed expression of Smad6 in the negative feedback loop and the facilitation of positive BMP-4 signaling in cells. In addition, dbcAMP enhanced the expression of Id-1 mRNA, an inhibitor of myogenesis, induced by BMP-4 (data not shown). These findings taken together suggest that cAMP might be a modulator of BMP signaling. Ishida et al. identified the 28-base pair regions responsible for transcriptional activation by BMPs in the mouse Smad6 promoter [25]. Ionescu et al. characterized a putative cAMP response element (CRE) site in the adjacent 17-base pair [26]. In that report, dominant negative cAMP response element binding protein reduced BMP-2-stimulated Smad6 gene transcription [26], but these results were not consistent with our current results. Potential causes for these inconsistencies include interactions of other transcriptional factors and differences in cells and BMPs. Similar mechanisms were reported to explain signal cross-talk between BMP and TGF- $\beta$  [27]. Further studies are needed to elucidate relationships between cAMP and BMPs.

Smad proteins play important roles in BMP signaling and display characteristic pathways. Only a limited number of previous reports have examined relationships between the Smad pathway and cAMP. On addition of dbcAMP, BMP-4-induced Smad6 expression was significantly suppressed (Fig. 4). These results indicate that dbcAMP enhances BMP-4 osteogenic activity through the suppression of a self-regulated negative feedback loop. Parathyroid hormone (PTH) or its amino-terminal fragment is known to enhance systemic bone formation following daily subcutaneous injection and is currently utilized to recover bone mass in osteoporotic patients without the precise mechanisms of action being understood. As PTH also elevates intracellular levels of cAMP in cells with PTH-specific receptors, cAMP interference in the BMP negative feedback might be involved in PTH-enhanced systemic bone formation. Additional studies confirming suppression of I-Smads by PTH treatment are necessary to elucidate the mechanisms of action underlying the anabolic effects of PTH.

In conclusion, suppression of BMP-4-induced Smad6 expression appears to represent one of the mechanisms by which BMP action is enhanced by PeTx and dbcAMP treatments. Manipulation of the BMP signaling loop may also provide new insights into enhancing the efficacy of BMP-mediated local new bone formation for the treatment of damaged bone.

## Acknowledgments

This work was supported in part by a Grant-in-Aid for Scientific Research from the Ministry of Education, Culture, Sports, Science and Technology of Japan and Japan Society for the Promotion of Science (No. 15591595).

## References

- [1] Boden SD, Kang J, Sandhu H, Heller JG. Use of recombinant human bone morphogenetic protein-2 to achieve posterolateral lumbar spine fusion in humans: a prospective, randomized clinical pilot trial: 2002 Volvo Award in clinical studies. *Spine* 2002;27:2662–73.
- [2] Chen Y, Luk KD, Cheung KM, Xu R, Lin MC, Lu WW, et al. Gene therapy for new bone formation using adeno-associated viral bone morphogenetic protein-2 vectors. *Gene Ther* 2003;10:1345–53.
- [3] Valentin-Opran A, Wozney J, Csimma C, Lilly L, Riedel GE. Clinical evaluation of recombinant human bone morphogenetic protein-2. *Clin Orthop Relat Res* 2002;395:110–20.
- [4] Horiuchi H, Saito N, Kinoshita T, Wakabayashi S, Tsutsumimoto T, Takaoka K. Enhancement of bone morphogenetic protein-2-induced new bone formation in mice by the phosphodiesterase inhibitor pentoxifylline. *Bone* 2001;28:290–4.
- [5] Horiuchi H, Saito N, Kinoshita T, Wakabayashi S, Yotsumoto N, Takaoka K. Effect of phosphodiesterase inhibitor-4, rolipram, on new bone formations by recombinant human bone morphogenetic protein-2. *Bone* 2002;30:589–93.
- [6] Takaoka K, Yoshikawa H, Hashimoto J, Ono K, Matsui M, Nakazato H. Transfilter bone induction by Chinese hamster ovary (CHO) cells transfected by DNA encoding bone morphogenetic protein-4. *Clin Orthop* 1994;300:269–73.
- [7] Reznikoff CA, Brankow DW, Heidelberger C. Establishment and characterization of a cloned line of C3H mouse embryo cells sensitive to postconfluence inhibition of division. *Cancer Res* 1973;33:3231–8.
- [8] Ogawa M, Nishikawa S, Ikuta K, Yamamura F, Naito M, Takahashi K. B cell ontogeny in murine embryo studied by a culture system with the monolayer of a stromal cell clone, ST2: B cell progenitor develops first in the embryonal body rather than in the yolk sac. *EMBO J* 1988;7:1337–43.
- [9] Sudo H, Kodama HA, Amagai Y, Yamamoto S, Kasai S. In vitro differentiation and calcification in a new clonal osteogenic cell line derived from newborn mouse calvaria. *J Cell Biol* 1983;96:191–8.
- [10] Katagiri T, Yamaguchi A, Ikeda T, Yoshiki S, Wozney JM, Rosen V, et al. The non-osteogenic mouse pluripotent cell line, C3H10T1/2, is induced to differentiate into osteoblastic cells by recombinant human bone morphogenetic protein-2. *Biochem Biophys Res Commun* 1990;172:295–9.
- [11] Yamaguchi A, Ishizuya T, Kintou N, Wada Y, Katagiri T, Wozney JM, et al. Effects of BMP-2, BMP-4, and BMP-6 on osteoblastic differentiation of bone marrow-derived stromal cell lines, ST2 and MC3T3-G2/PA6. *Biochem Biophys Res Commun* 1996;220:366–71.
- [12] Pfaffl MW. A new mathematical model for relative quantification in real-time RT-PCR. *Nucleic Acids Res* 2001;29:e45.
- [13] Nakamura Y, Wakitani S, Nakayama J, Wakabayashi S, Horiuchi H, Takaoka K. Temporal and spatial expression profiles of BMP receptors and noggin during BMP-2-induced ectopic bone formation. *J Bone Miner Res* 2003;18:1854–62.
- [14] Soderling SH, Beavo JA. Regulation of cAMP and cGMP signaling: new phosphodiesterases and new functions. *Curr Opin Cell Biol* 2000;12:174–9.
- [15] Beavo JA, Reifsnnyder DH. Primary sequence of cyclic nucleotide phosphodiesterase isozymes and the design of selective inhibitors. *Trends Pharmacol Sci* 1990;11:150–5.

- [16] Robin JC, Ambrus JL. Study of antiosteoporotic agents in tissue culture. *J Med* 1984;15:319–22.
- [17] Waki Y, Horita T, Miyamoto K, Ohya K, Kasugai S. Effects of XT-44, a phosphodiesterase 4 inhibitor, in osteoblastogenesis and osteoclastogenesis in culture and its therapeutic effects in rat osteopenia models. *Jpn J Pharmacol* 1999;79:477–83.
- [18] Kinoshita T, Kobayashi S, Ebara S, Yoshimura Y, Horiuchi H, Tsutsumimoto T, et al. Inhibitors, pentoxifylline and rolipram, increase bone mass mainly by promoting bone formation in normal mice. *Bone* 2000;27:811–7.
- [19] Miyamoto K, Waki Y, Horita T, Kasugai S, Ohya K. Reduction of bone loss by denbufylline, an inhibitor of phosphodiesterase 4. *Biochem Pharmacol* 1997;54:613–7.
- [20] Robin JC, Ambrus JL. Studies on osteoporosis. XI. Effects of a methylxanthine derivative. A preliminary report. *J Med* 1983;14:137–45.
- [21] Tsutsumimoto T, Wakabayashi S, Kinoshita T, Horiuchi H, Takaoka K. A phosphodiesterase inhibitor, pentoxifylline, enhances the bone morphogenetic protein-4 (BMP-4)-dependent differentiation of osteoprogenitor cells. *Bone* 2002;31:396–401.
- [22] Rawadi G, Ferrer C, Spinella-Jaegle S, Roman-Roman S, Bouali Y, Baron R. 1-(5-oxohexyl)-3,7-Dimethylxanthine, a phosphodiesterase inhibitor, activates MAPK cascades and promotes osteoblast differentiation by a mechanism independent of PKA activation (pentoxifylline promotes osteoblast differentiation). *Endocrinology* 2001;142:4673–82.
- [23] Miyazawa K, Shinozaki M, Hara T, Furuya T, Miyazono K. Two major Smad pathways in TGF-beta superfamily signalling. *Genes Cells* 2002;7:1191–204.
- [24] Takase M, Imamura T, Sampath TK, Takeda K, Ichijo H, Miyazono K, et al. Induction of Smad6 mRNA by bone morphogenetic proteins. *Biochem Biophys Res Commun* 1998;244:26–9.
- [25] Ishida W, Hamamoto T, Kusanagi K, Yagi K, Kawabata M, Takehara K, et al. Smad6 is a Smad1/5-induced smad inhibitor. Characterization of bone morphogenetic protein-responsive element in the mouse Smad6 promoter. *J Biol Chem* 2000;275:6075–9.
- [26] Ionescu AM, Drissi H, Schwarz EM, Kato M, Puzas JE, McCance DJ, et al. CREB cooperates with BMP-stimulated Smad signaling to enhance transcription of the Smad6 promoter. *J Cell Physiol* 2004;198:428–40.
- [27] Maeda S, Hayashi M, Komiya S, Imamura T, Miyazono K. Endogenous TGF-beta signaling suppresses maturation of osteoblastic mesenchymal cells. *EMBO J* 2004;23:552–63.

ORIGINAL ARTICLE

Hiroshi Ohta · Shigeyuki Wakitani · Keiji Tensho  
Hiroshi Horiuchi · Shinji Wakabayashi · Naoto Saito  
Yukio Nakamura · Kazutoshi Nozaki · Yuuki Imai  
Kunio Takaoka

## The effects of heat on the biological activity of recombinant human bone morphogenetic protein-2

Received: January 17, 2005 / Accepted: May 25, 2005

**Abstract** This study was designed to investigate effects of heat on the bone-inducing activity of recombinant human bone morphogenetic protein (rhBMP)-2. rhBMP-2 samples were heated at 50, 70, 90, or 100°C for 15 min, or 1, 2, 4, or 8 h, or autoclaved at 120°C for 15 min. The bone-inducing activity of the rhBMP-2 before and after heating was assayed in in vivo and in vitro systems. For the in vivo assay, 5 µg rhBMP-2 samples were impregnated into porous collagen disks (6 mm in diameter, 1 mm thickness), freeze dried, and implanted into the back muscles of ddY mice. Three weeks later, the implant was harvested from the host and examined for ectopic new bone tissue by radiography. The new bone mass was quantified by single-energy X-ray absorptiometry. The in vitro activity of the rhBMP-2 was assayed by adding the BMP sample at a concentration of 100 ng/ml to cultures of MC3T3-E1 cells. After 48 h, the alkaline phosphatase activity was measured. After heating at 50° or 70°C, no significant reduction in bone-inducing activity was noted in either in vivo or in vitro assay systems unless the protein was exposed to sustained heat at 70°C for 8 h, based on in vitro assay data. However, heating above 90°C and for longer periods led to a decrease in the biological activity of the rhBMP-2 in a time- and temperature-dependent manner. rhBMP-2 was rendered inactive when exposed to temperatures at or in excess of 120°C.

**Key words** Heat stability · Bone induction · Molecular structure

### Introduction

Bone morphogenetic proteins (BMPs) belong to the transforming growth factor- $\beta$  superfamily [1] and possess unique biologic activity that leads to new bone formation [2–4]. BMP-2 is a member of the BMP family, and the human form (hBMP) has been successfully synthesized by the use of DNA recombination technology (rhBMP) for commercial purposes. This protein is now being evaluated as a bone-graft substitute for the treatment of nonunion fractures, bone defect repairs, and spinal fusions [5–11]. In order to use rhBMPs clinically, it is necessary to understand how the molecular structure or bone-inducing activity of BMPs may be modified during transportation, storage, and intraoperative handling. In particular, the stabilization of BMP-retaining devices, or the use of BMP-2 in combination with heat-generating bone cement, are two instances where the stability of the protein would be challenged. Several authors have described the heat resistance of natural crude BMP extracted from the rat, rabbit, and human [12–16], but there has been little work done to look at the effects of heat on the stability and biological activity of rhBMP-2. This study describes how the biological activity and molecular structure of rhBMP respond to varying degrees of heat using in vivo and in vitro assay systems.

### Materials and methods

#### Heat treatment of rhBMP-2

rhBMP-2 was provided by Yamanouchi Pharmaceutical (Tokyo, Japan) in a buffered solution (1 mg rhBMP-2/ml). This was diluted 3-fold (15 µl saline containing 5 µg rhBMP-2) and heated at 50, 70, 90, or 100°C for 15 min, or 1, 2, 4, or 8 h using a heat block (Dry Thermo Unit, Taitec, Saitama, Japan), or autoclaved at 120°C for 15 min. The biological activity of these heat-treated rhBMP-2 samples was then evaluated in in vitro and in vivo experiments to examine

H. Ohta · S. Wakitani (✉) · K. Tensho · H. Horiuchi ·  
S. Wakabayashi · N. Saito · Y. Nakamura  
Department of Orthopaedic Surgery, Shinshu University School of  
Medicine, 3-1-1 Asahi, Matsumoto 390-8621, Japan  
Tel. +81-263-37-2659; Fax +81-263-35-8844

K. Nozaki  
Applied Pharmacology Laboratories, Institute for Drug Discovery  
Research, Yamanouchi Pharmaceutical, Tsukuba, Japan

Y. Imai · K. Takaoka  
Department of Orthopaedic Surgery, Osaka City University  
Graduate School of Medicine, Osaka, Japan